

# Support The Junior Livestock Show

## The Lockney Beacon

25¢

Volume 81

Number 7

Thursday, February 18, 1982

26 Pages In 3 Sections

### Individuals, clubs, churches to nominate Chamber of Commerce encourages nominations

The Lockney Chamber of Commerce is encouraging each individual, church, club, etc. in the community to submit their nominations for the "Outstanding Man and Woman of the Year" to be selected at the annual Chamber of Commerce Banquet to be held March 11, 1982 at 7:00 p.m.

Chamber members have indicated that the selection of citizens to be honored for their outstanding services to their community is a very rewarding experience even for the committee members. This coveted award for "Outstanding Man of the Year" and "Outstanding Woman of the Year" is an annual project of the Chamber of Commerce.

Members of the selection committee, composed of one member representing each club, church, organization, or group, will meet at the First National Bank on Thursday, March 4th, 1982 at 7:30 p.m.

Some changes have been made by the Chamber of Commerce this year to provide more complete guidelines in the procedure of submitting nominations:

(1) All nominations must be in the hand of the committee chairman by

Wednesday March 3rd (24-hours before the selection committee meets). These nominations may be mailed, delivered in person to the committee chairman, or given to a member of the Chamber of Commerce. No additional letters of nomination will be accepted at the night of the selection meeting.

(2) If more than 5 letters of nomination are received supporting one candidate, then the 5 letters that are considered the best in describing the nominee (in the opinion of the committee chairman) will be read to the entire selecting committee at the time the selection is made. All additional letters beyond the 5 letters accepted and presented, will be made available for the entire committee to see or read upon request.

Tickets may be purchased from any of the members of the Chamber. The banquet will be held in the Elementary School Cafeteria at 7:00 p.m. on March 11, with J. Garland McKee, a well-known entertainer, as guest speaker. McKee's appearance along with the selection of citizens and the banquet meal will make this entire occasion something of a highlight of the year.



HUBERT FRIZZELL inducts Murle Rogers into the Lockney Rotary Club last Thursday.

### County Jr. Livestock Show begins Feb. 21

The 27th annual Floyd County Junior Livestock Show will begin Sunday, February 21 with the County Show Barns opening at 12 noon.

The show barns are located on the rodeo grounds in Floydada. Entry fees are \$5 per head for steers and \$3 per head for lambs and barrows.

Judges and classifier for the 1982 Show are: Steer Judge, Spencer Tankley, Bailey County Extension Agent; Swine Judge, Paul Gross, Amarillo District Extension Director; Lamb Judge, Joe Ed Wise, Dawson County Extension Agent; Classifier, Gary Stanford, Jones County Extension Agent.

The show, beginning on Sunday, will end on Thursday with the banquet for 4-H and FFA exhibitors and parents to be held at Lockney Elementary School Cafeteria in Lockney. The banquet, sponsored by the Floyd County Farm Bureau, is at 7 p.m.

Lockney and Floydada 4-H and FFA club and chapter sweethearts have begun membership card sales for the Show. Membership dues to the Stock Show Association are \$5 for individuals

and \$10 for businesses.

Memberships to the Association gives an individual or business voting rights in the Association and the dues are used to maintain and improve the existing showground facilities.

This year's 4-H and FFA Sweethearts are: Kathy Battey, Floydada 4-H; Misti Younger, Floydada FFA; Karyn Foster, Lockney 4-H, and Dena Casey, Lockney FFA.

The Sweetheart that collects the most membership dues will become the 1982 Floyd County Junior Livestock Show Queen.

This year's show is dedicated to the memory of Raymond Akin who donated his services as auctioneer of the show's annual auction sale of prize winning animals for 27 years.

Interest in this years auction is mounting and a concerned effort is being expanded by supporters to make this the best sale year in the Show's history.

A schedule for the show is given in full on page three of this issue.

### DAR Good Citizen

## Jeffrey McCormick wins scholarship

Jeffrey McCormick was selected by the Mary McCoy Baines Chapter of Daughters of the American Revolution Wednesday, February 10 at the annual Washington Day tea honoring candidates for DAR Good Citizens and the American History Awardees.

McCormick received the \$100 Regent's Scholarship, presented by Mrs. Donald Lee Terrell, presiding regent. He is an outstanding scholar and athlete, McCormick, a senior at Lockney High School, plans to attend college and major in physical therapy or some related study.

The tea table was laid with a white linen cloth graced by colonial bandmen figurines located below the white daisy centerpiece accented with American miniature flags and Liberty Bells. The traditional colors of red, white, and blue were accentuated by the napkins and punch.

Mmes. Jess Wayne West, John Marse, Hylton Brown, Roger Horan, J. Dillard Shields, and Mrs. Jess M. West were hostesses for the tea.

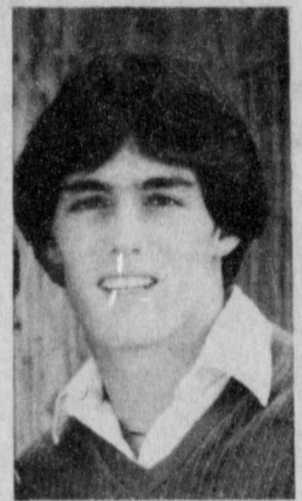
Following the tea, the group assembled for the presentations. Mrs. John McDonough gave the invocation after Mrs. Terrell gave the opening welcome and the pledge of allegiance, and those attending repeated the American Creed.

Kathleen Duke, a Good Citizen candidate, of Tulia led the group in "The Star Spangled Banner" accompanied by Mrs. Frank Phelan at the piano.

Mrs. Glen Chiddix, chairman of the American History Essay Contest, introduced the winning contestants. Essays had been written on the theme "Famous People Born in February."

Winners in Junior High Division, eighth grade were Jana Lee Lawson of Floydada, first; Cal Henley of Abernathy, second, and Pam Richardson of Petersburg, third. Honorable mention went to Rebecca Redding of Floydada and Haney Robertson of Dougherty. Mrs. Norma Feuerbacher is eighth grade history teacher at Floydada.

Tulia had all of the winners of the seventh graders in the Junior High Division. They were Angie Stuart, first;



JEFFREY McCORMICK

Scott Swinburne, second, and Lena Hernandez, third.

Melissa Huffines, won first, John Hamilton, second and Tabitha Saul, third in the sixth grade division. All were students at Ash School in Plainview.

The fifth grade winners were all from Lakeside school. They were: Emma Lee LaFont, first; Melissa Cooke, second and Becky Kendall, third.

Mrs. Vance Campbell of Floydada introduced the candidates for Good Citizen, who in turn presented their guests for the afternoon.

Candidates were Deon Zumwalt, daughter of Mr. and Mrs. Perry Zumwalt, of Floydada, Jeffrey McCormick, son of Mr. and Mrs. Audrey McCormick of Lockney; Bami Rich, daughter of Mr. and Mrs. Jim Rich of Olton; Dee Ann Attebury, daughter of Mr. and Mrs. Wade Attebury of Abernathy; Michele Bearden, daughter of Mr. and Mrs. Robert Bearden of Petersburg; Jay Pearce, son of Mr. and Mrs. Bill Pearce of Plainview; Kathleen Duke, daughter of Mr. and Mrs. Mayo M. Duke of Tulia, and Cynthia Ann Edwards, daughter of Mr. and Mrs. Harold Edwards of Silverton.

### Livestock Show begins Friday at Lockney

The annual Lockney Jr. Chamber of Commerce Livestock Show will be held February 19-20 at the Livestock Barn located on the Floyd County Fairgrounds in Lockney.

No entry fees are required for this show.

Randy Upshaw, Lubbock County Extension Agent, will be the judge of this year's show.

Barn opens at 12 noon on Friday February 19 and all animals must be in the barn by 6 p.m.

All lambs and barrows will weigh in Friday afternoon and evening.

All steers must be in the barn by 8 a.m. Saturday morning. Weigh in of the steers will be completed before 9 a.m.

Judging will begin at 9 a.m. with the

barrow entries. Lambs and steers will follow.

Entries will be accepted from any regularly enrolled 4-H member, boy or girl who is nine years of age or older before the show, or any FFA or FHA member under the supervision of the county Agent or Lockney Vocational Agriculture Instructor and attend public schools in Lockney, provided they are in show condition.

The GAB will have a concession booth at the show all day Saturday. They will serve coffee and brownies in the morning and homemade chili all day long.

The show is a preliminary to the Floyd County Jr. Livestock Show which will begin on Sunday.

### Delinquent taxes to become expensive

A congressional act, put into effect this year, will pile a mighty expensive penalty on those who allow their taxes to become delinquent.

Normally taxes, past due in February, would only cost 1% in penalty interest. At the present time all taxes are past due and the penalty and interest is at 7%. This will escalate at the rate of 1% per month until the taxes are paid.

The penalty will jump monthly from 6% in February to 12% in July and will stay at that figure the remainder of the year. By January 1983 a whopping 24% will be charged in penalty and interest.

By comparison, the penalty and interest did not reach 7% until June in 1980. The 67th Legislature increased the penalty and interest and made the increase effective on September 1, 1981.

Dub Hallmark, superintendent of schools at Lockney, said that in the past it might have been feasible to let the taxes ride since borrowed money was at a cheaper rate, but that "with this new legislation the penalty and interest can be disastrous."

The Lockney ISD has placed on retainer the law firm of Perdue, Brandon, Blain & Fielder in Amarillo for the purpose of collecting delinquent taxes.

Hallmark said that his school district will mail delinquent notices again in order to give those affected an opportunity to clear their taxes before March 15.

The same penalty and interest schedule holds for all taxing units.

The city of Floydada also employs tax attorneys in Amarillo for collection of delinquent taxes. Second notices have been sent according to city manager Bill Feuerbacher.

The following chart gives the penalty and interest rates through the year:

SCHEDULE OF PENALTY AND INTEREST RATES			
DATE	PENALTY	INTEREST	TOTAL
February, 1982	6%	1%	7%
March, 1982	7%	2%	9%
April, 1982	8%	3%	11%
May, 1982	9%	4%	13%
June, 1982	10%	5%	15%
July, 1982	12%	6%	18%
August, 1982	12%	7%	19%
September, 1982	12%	8%	20%
October, 1982	12%	9%	21%
November, 1982	12%	10%	22%
December, 1982	12%	11%	23%
January, 1983	12%	12%	24%

Interest continues to accrue at the rate of 1% per month until taxes are paid.

### SPS requests a 12.7% increase

Southwestern Public Service Company announced it will request a 12.7 percent increase in the retail price of electricity in Texas, ranging from \$5 to \$10 per month for the typical residential customer.

The proposed increases include \$19.2 million in rates within Texas city jurisdictions and \$22.3 million in rural area rates which are set by the Texas Public Utility Commission outside city jurisdictions.

Local area manager, Lewis McDaniels, filed with the city council in Lockney Tuesday morning.

Since Floydada also has a municipal system the rates for that town are set by the city council and SPS rates must

coincide. Therefore, the price increase will effect only the city of Lockney and the rural area at this time.

Bert Ballengee, the electric utility's president, said "the increase is imper-

Continued On Page 3

### School Board extends contracts

A regular meeting was held in the board room in Lockney Thursday, February 11, at 7:30 p.m.

Paul Lyle, attorney of Plainview, was present to explain delinquent taxes in general, discussing in length the old laws concerning taxation and the pros and cons of exemption of farm equipment and cattle under the new law.

A formal request has been mailed to the attorney general by Lyle in order to establish the guidelines for the school district and no definite terms can be reached until that hearing is received.

The contracts for all three principals, R.L. Knox, James Poole, and Raymond Lusk, came before the board and all three were extended.

Mac Mooney was appointed as Election Judge for the election coming up April 3, 1982, for the purpose of electing two new school board members.

In other matters that were presented to the school board, a dance was approved to be held in the elementary cafeteria Friday, February 26, 1982.



TEXAS' TOP SOYBEAN GROWER—Mike Carthel of Lockney in Floyd County, third from the left, was named the top soybean grower in the state at the recent annual meeting of the Texas Soybean Association. Carthel had a winning yield of 80.72 bushels per acre with the RA 450 variety. He received a special plaque and a trip for two to Acapulco provided by Elanco Products Co. which sponsors the statewide contest conducted by the Texas Agricultural Extension Service. Carthel was also inducted into the Texas 80 Bushel Soybean Club. With the state winner are Dr. Arlen Klosterboer of Beaumont, Extension agronomist and contest coordinator; Mrs. Carthel; and Steve Green, district sales manager for Elanco.



**Political  
Calendar**

Subject to the May Democratic  
Primary

**U.S. Congress**  
Charles Stenholm

**State Senator**  
Ray Farabee

**District Clerk**  
Mary McPherson

**County Judge**  
Choise Smith

**County Treasurer**  
Glenna Orman

**County Clerk**  
Margaret Collier

**Commissioner Precinct 2**

Bob Jarrett

Charles Carthel

**Commissioner Precinct 4**

Jack Lackey

**Justice of the Peace  
Precinct 1-4**

Walter Hollums

E.P. "Ernest" Smitherman

**Justice of the Peace**

**Precinct 3-4**

Raz Ford



**ESSAY CONTEST WINNERS**—These students were announced to be the winners in an essay contest on Soil and Water Conservation. Pictured are [l-r] Jon LaBaume, Soil Conservation manager, Patti Campbell, second place winner, Lillian Polanco, 1st place, and Ricky Heflin, third place.

**Polanco places in essay contest**

Lillian Polanco, Floydada High School student, was revealed, as the first place winner in the senior division of the essay contest Tuesday morning during a school assembly program. The essay was part of the Texas Conservation Program Awards.

R.G. Dunlap, director of the Floyd County Soil and Water Conservation District presented the cash awards to the top three winners. Lillian won \$25 for her first place essay. Second place of \$15 was awarded to Patti Campbell. Third place award

went to Ricky Heflin and he received \$10.

Honorable mention went to Penny Kirtley and Jeanine Gray.

The Floyd County Soil and Water Conservation District donated the prize money, the contest was an open contest in which any high school age person was eligible to enter.

The title for this years contest was "Soil and Water Conservation". Polanco's essay has been forwarded to the regional and state contest for

judging. regional and state contest for judging. these winners will be announced later this month or early next month.

The junior division of the essay contest is still being judged and winners will be announced at a later date.

"The directors of the Floyd County SWCD wishes to thank all the students, teachers, and others for the fine assistance given during this years contest," said Jon LaBaume, Soil Conservation manager.

**Floydada Speech Team places 7th**

The Floydada High School Speech team placed seventh in a field of 39 schools competing at the Tech Tournament this past weekend.

The debate team of Wally Davis and Don Cheek reached the quarter-finals. Jill Willson, informative extemporaneous, reached the semi-finals.

The team gathered 106 sweepstakes points in the tournament that attracted 4A and 5A schools from as far away as El Paso. The majority of schools entered were of large enrollment.

Floydada entered four debate teams. The UIL debate resolution this year is

"The federal government should establish minimum educational standards for secondary and elementary schools in the United States."

The debate teams were: Cindee Davis and Wendy Ruff; Stacy Smith and Robert Pratt; David Carr and Renda Thomason.

The extemp entries were: persuasive; Bill Harris and Lane Cheek.

Entered in the prose category were, Patti Campbell and Rande Poage. Those two also entered the duct acting competition.

The FHS team will go to Lubbock Cooper on February 27 with three

debate teams and a three member entry in each event.

Complete division entries will also participate in the Tulia High School Tournament on March 4.

On March 25 Floydada will host a one-act play festival with six schools participating.

The UIL district Tournament will be held in Lockney on April 1.

Joe Willis is FHS speech coach. Barbara Willis, his wife, is the Jr. High speech coach and takes members of the Jr. High team to most tournaments to gain experience.

**Letter to the Editor**

Editor,

I want to take this opportunity to thank all the people who judged at our recent speech tournament. They did an outstanding job. Each person was present on time and stayed to do extra work.

Also, several businesses and individuals helped to sponsor our tournament. They were: Mr. Randy Hollums, My-T Burger, Dairy Queen, Kirtleys, Script Printing, and Pizza Gold. Without their financial consideration, the second annual Whirlwind Invitational

would not have occurred.

Mrs. Gloria Cavazos, Mrs. Rose Enslow, and Mrs. Clara Bradshaw deserve a special vote of thanks for their help with concession at the tournament. All the parents of my speech and drama students helped with food and support of time and effort.

I appreciate all the hard work and patience of all these groups and individuals. Thanks again to all.

Sincerely Yours,

Joseph A. Willis  
Director, F.H.S. Speech

**INSURANCE  
FOR YOUR  
HOME  
RANCH  
FARM  
AUTO  
CROPS  
LIFE**

If a water pipe breaks and water ruins my carpet will my Homeowners policy cover the loss?

**983-3777 Floydada**

For help with insurance questions and needs call . . .

**TEXAS FARM BUREAU  
INSURANCE COMPANIES  
652-2242 Lockney**



**James Race**



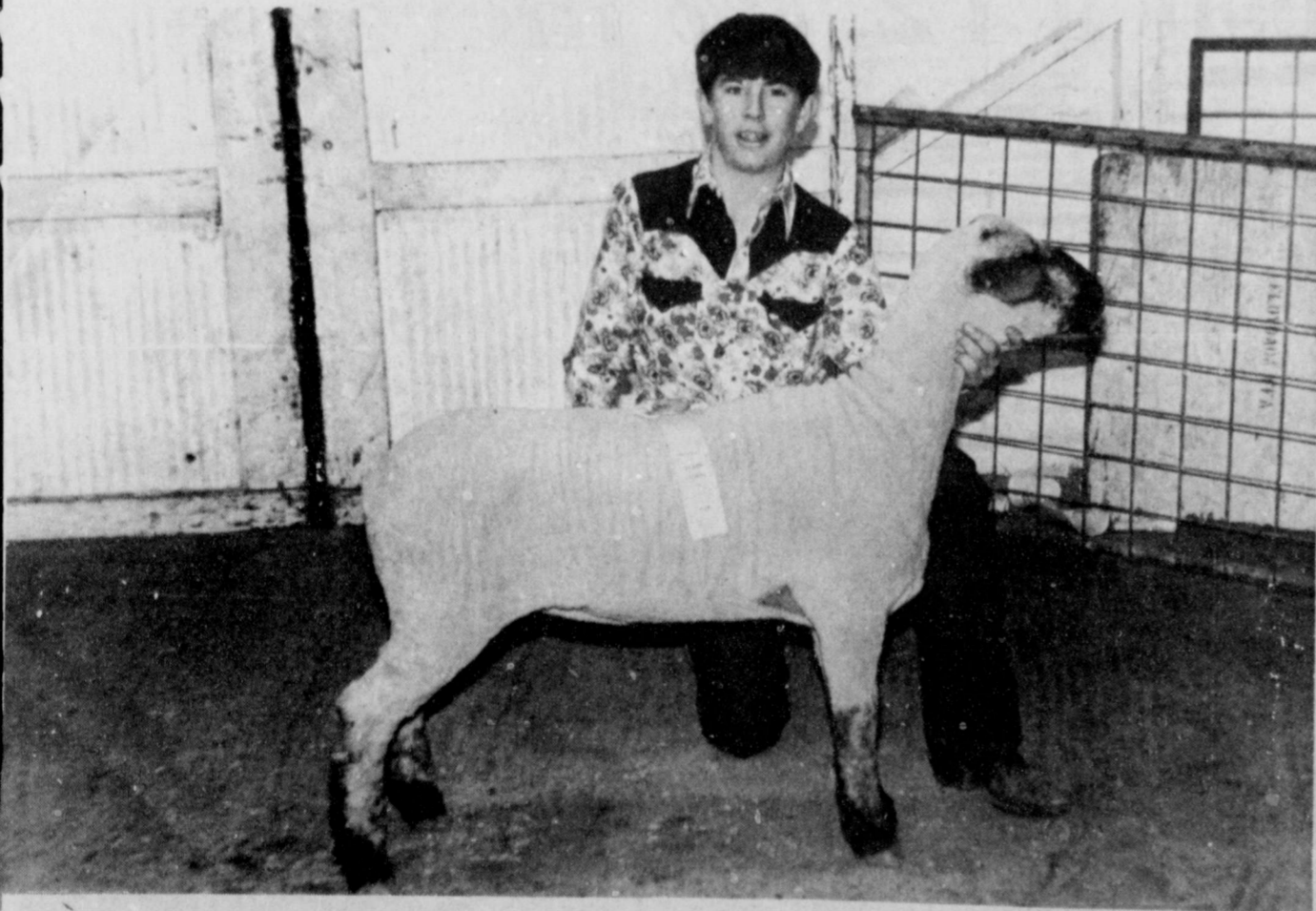
**See Tommy Assiter  
For Your All-Risk  
Crop Insurance**

**You Can Transfer  
Your Files From  
The Lubbock  
District Office Now.**

**983-2511  
206 W. California  
Floydada**

**Support Our  
FFA & 4-H Youth  
in their activities!**

**...Our future tomorrows  
are in their hands.**



**Attend The Stock Shows And Sale  
Davis Lumber &  
True Value Hardware**

102 E. Shubert Lockney, Texas 652-3385

**Our area youth need your support  
...Our Future is in their hands**



**Show them you care, attend the  
Local & County Stock Show & Sale**

*Floyd County's Progressive Bank*

**First National Bank  
in Lockney**

**MEMBER F.D.I.C.**

Accounts insured  
up to \$100,000.

**(806) 652-3355**

Look for this symbol  
We've got the answers.





## Livestock judging extended to full day

The Floydada Jr. Livestock Show, in its second year, will be expanded to a full day of judging on Saturday, February 20. The barn opens at 1 p.m. Friday and all animals must be in the barn at 5 p.m.

The show is sponsored by the Floydada Chamber of Commerce as a preliminary to the Floyd County Jr. Livestock Show which will begin on Sunday.

The two day local show will begin with the 5:30 weigh in on Friday afternoon.

Judging will begin Saturday morning at 10 a.m. with the lamb entries. The barrow and steer judging will follow.

Jerry Hawkins, Clarendon Jr. College Livestock Judging Team Coach, will be the judge.

Entries will be accepted from any regularly enrolled 4-H member, boy or girl who is nine years of age or older before the show, or any FFA or FHA member under the supervision of the county Agent or Floydada Vocational Agriculture Instructor and attend public schools in Floydada, provided they are in show condition.

Each exhibitor will be limited to 12

entries. A maximum of four steers, four lambs, or four barrows. An entry fee of \$3 per animal will be charged.

Prize money will be furnished by the Chamber of Commerce. In all three divisions the breed classes with not

more than eight will be in one class, breeds with 15 or less will be divided

into two classes; lightweight and heavy-weight.

Premiums are as follows: light and heavy classes, 1st place \$5; 2nd place \$4; 3rd place \$3; 4th place \$2; 5th place \$1. 1st through 5th also will receive ribbons.

Breed Champion and Reserve Breed Champion will receive Rosettes. Grand Champions will receive belt buckles in each division.



—Herald Staff Photo

**DAR GOOD CITIZENS** — Students from the area who were named DAR Good Citizens and honored by Mary McCoy Baines Chapter were: Jamie Rich, Olton (front row, left) Kathleen Duke, Tulia; Dee Ann Attebury, Abernathy; Cynthia Edwards

Silverton. Back row, left, Jeffrey McCormick, Lockney, who was selected for the Regent's Scholarship; Dein Zumwalt, Floydada; Jay Pearce, Plainview, and Michele Bearden, Petersburg.

## Perspectives

BY MICHAEL O'CONNOR

Richard Schweiker thinks that children receiving birth control from programs that are federally funded should have their parents notified. After all, these are minor children, and in just about everything else they do, their parents are either notified or required to give permission.

I think Mr. Schweiker is right. It seems rather ridiculous that a thirteen year old must have her report card signed by her parents, secure a liability release from her parents before going on a trip, or before having any kind of surgery, and yet may walk into a parenthood clinic and receive birth control methods without the parents knowing a thing about the whole transaction.

Detractors say that requiring parental notification brings Big Brother into the bedroom, or that the decision to become active sexually is a personal and private one, and not even the parent has a right

to violate that privacy. The big argument is that thousands of teenage girls will become pregnant because they will remain sexually active but be afraid to seek information on birth control because their parents might find out.

All of these arguments lack credibility, even though they sound good, even reasonable. The Big Brother argument is a scare tactic. It says that we have to be careful lest the government gain too much control over our lives. Strangely, some of the people who use the argument in this case disregard it in others, such as passive restraints in automobiles.

The second argument fails to take into account that more lives are affected

by the decision to become sexually active than just that of the young lady. Her parents lives will be affected, and they should be in on the process of the girl's decision.

The final argument attempts to make us believe there is only one alternative to providing private birth control, pregnant girls. This too, is a type of scare tactic. But the argument is false. There are many other alternatives, including the necessity of rebuilding the family structure so that kids do not have to fear bringing important decisions like sexual activity to their parents for guidance. This cannot be done if the parent is short circuited out of the process to begin with.

## Applications due CDBG

The City of Lockney will be taking applications for the Community Development Block Grant (CDBG) tenant-occupied housing rehabilitation program on February 18, 1982. Applications will be accepted until the close of business on February 26. Applications may be obtained at the Lockney City Hall, 215 E. Locust Street between 8 a.m. and 5 p.m. Monday through Friday.

Under the CDBG housing rehabilitation program, persons owning rental properties occupied by low/moderate income persons may be eligible to receive grants up to \$6,000 to make needed repairs on these rental properties. Only persons living in the City's

1981-82 CDBG Target Area will be eligible for this assistance. A map of the Target Area is available for inspection by all interested persons at the Lockney City Hall.

The City of Lockney will provide all necessary assistance to interested persons in completing applications for the housing rehabilitation program. Handicapped or elderly persons who may have difficulty in coming to City Hall to obtain an application should contact City Hall to arrange for special assistance.

For further information on the CDBG housing rehabilitation program, contact Erma Lee Duckworth, City Secretary, at 652-2355.

THE LOCKNEY-BEACON  
(USPS 317-220)

Published weekly each Thursday by Floyd County Publishing Co., 211 North Main St., Lockney, Texas 79241. Second class postage paid at Lockney, Texas. Subscription rates: local \$11.50 per year, out of trade area \$12.50 per year. POSTMASTER: send address changes to the Lockney Beacon, P.O. Box 187, Lockney, Texas 79241.

## Quality care is... Good, Home-Cooked Food

Food. It's such a simple thing, you probably take it for granted. But in our nursing home, we can't. We care about nutrition. We care about variety. About freshness. We care about serving a good breakfast, a hearty lunch and a solid dinner.

On our staff are people trained to develop a careful dietary plan for every resident. And we prepare our meals the way they're supposed to be. As good as home-cooked. Our food isn't just institutional food, because we are a home. We have to satisfy some of the most experienced cooks around — our residents.

Good food is only a small part of nursing home care. But it's an important part. For nutrition. For healing. For making our residents feel at home.

We try to put just as much care into everything we do. That's what total care nursing is all about.

Come and visit, and share a good home-cooked meal at our home.

Lockney  
Care Center

401 North Main Lockney - 652-2502



An affiliate of  
AMERICAN HEALTH CARE ASSOCIATION

## SPS increase

ative later this calendar year because of the need to change to coal as the fuel source in the Company's power plants, because of high money costs, and because of inflation."

Ballengue pointed out that "although inflation has totaled 23 percent since the last electricity rate adjustment two years ago, SPS is able to hold its request to half that amount as a rate increase."

A significant portion of the new revenue request will help pay for the first unit of the Company's second coal-fired power plant, Tolk Station, which is scheduled to go into service early this summer.

"We must change our system from gas to coal because coal will save our customers money," Ballengee said.

Ballengue said that "even with a rate increase, the typical Southwestern Public Service residential customer in Texas will spend about \$4 to \$5 per month less than he would have, if the company had not made the decision to move to coal and away from natural gas as boiler fuel in new power plants. For all of the Company's customers, this amounts to a savings of about \$106 million a year when the new Tolk Station is fully operating."

SPS managers in the 68 Texas cities and towns served by the utility and affected by the rate increase are now providing city officials with details of the Company's need for a rate increase.

Ballengue explained that extensive analysis of all revenue data and customer electrical demands indicates a need to file for the increase with the Texas city commissions and the Public Utility Commission. When the new rate is approved, a \$41.5 million annual revenue deficiency will be corrected.

The cost of electric service represents about two percent of the average family residential budget—the same as it was five years ago, Ballengee said. He added that the unit cost of electricity is now the same as it was in 1927, when most families used 500 units of energy each year. Now, most families use about 7,000 units a year, Ballengee said.

"We don't expect our customers to like the prospects of higher electric bills—but we believe they will understand the importance of keeping the increases to a minimum while maintaining a reliable electric system," Ballengee said.

Southwestern Public Service primarily provides electric utility service to a population of more than 1 million in a 45,000-square-mile area of the Panhandle and south plains of Texas, eastern and southeastern New Mexico, the Oklahoma Panhandle and southwestern Kansas.

## Bill Dawson files for Council in Floydada

Bill Dawson has filed for one of three seats open on the Floydada City Council. Election will be held on April 3 at the City Hall.

Two of the incumbents have re-filed for positions. They are Leroy Burns and Boone Adams. Position held by Carl Jarrett is the third seat up for election and Jarrett has not filed.

Filing deadline is March 3. Councilmen are elected for a two-year term.

City Council will hold a public hearing on the 1982-83 operating budget at their regular session on March 9 at 7:30 p.m.

The general Revenue Sharing 1982-83 budget was approved by council on February 9. Distribution of the \$34,418 funds are as follows: fire truck, \$10,000; remodel front of City Hall, \$9,418; electric distribution bucket truck, \$15,000.

Shipments of new dumpsters from the recently purchased sanitation replacement system have arrived and city personnel are preparing them for placement in the near future.

**Get moving...  
and keep moving.  
Buy American**

We happen to think the best cars in the world are made right here in the U.S.A. You'll think so too after you test drive one of our fine automobiles. Come in during our President's Day Sale for red-white-and-blue savings on some great American cars!

1982 CAVALLIER

1982 FULL-SIZE PICKUP (BLAZERS, VANS & SUBURBANS INCLUDED)

\$7500

1982 CITATION Oldsmobile Omega included

**REBATE! REBATE! REBATE!**

Oldsmobile Cutlass Cars included

1982 CHEVROLET

1982 CELEBRITY

\$5000

You can now buy a vehicle for less money than Oden's car!

**WAYS TO SAVE:** Delivered between Feb. 1 - Mar. 31

1. CASH FOR DOWN PAYMENT
2. CHECK DIRECTLY TO YOU
3. 45 DAYS TO FIRST PAYMENT
4. EXTENDED SERVICE POLICIES
5. SEE ODEN'S AND SAVE

**ODEN CHEVROLET OLDS INC.**

221 S. Main FLOYDADA 983-3787

**We urge all citizens of our area  
to come out and support our  
youth at the Floydada and  
Floyd County Stock Shows.**



"Helping you change things for the better"

**THE FIRST  
NATIONAL BANK  
OF FLOYDADA**

Accounts Insured up to \$100,000

Member F.D.I.C.





**STUDENT COUNCIL OFFICERS**—Jr. High Student Council officers display a copy of the check to be presented to the Annie Taylor Scholarship Fund. The \$150.00 was raised from a dance, carnation sale and concession stand sales the students have participated in. Pictured are (l-r) Kellie Pitts, Treasurer; Mary Ann Quilantan, Secretary; J.D. Wilson, Vice President; and Johnny Barrera, President.

## Junior High Beau and Sweetheart elected

Clay Lowrance and Paige Cannon, seventh graders, and Haney Robertson and Deborah Reeves, eighth graders at Floydada Jr. High School, were named Beau and Sweethearts at a Valentine Dance held Friday night at the FJHS gymnasium.

The dance was sponsored by the Student Council. Student Council officers are Johnny Barrera, President; J.D. Wilson, Vice President; Mary Ann Quilantan, Secretary; and Kellie Pitts, Treasurer.

Proceeds from a carnation sale, concession stand and a trivet raffle totaled approximately \$150.00 and will be donated to the Annie Taylor Scholarship Fund.

Other nominees for Sweetheart and

Beau were seventh graders Leif Younger, Tana Perry, Shannon Barbee, Darlyn Williams, Alfred Medrano and Jana Davis. Eighth grade nominees were Ramon Coronado, Rabel Contreras, Tomas Delgado, Janie Barrera, Jamie Thayer and Diana Wilson.

The winners were presented with gold heart pendants.

The trivet was won by Mrs. Tommy Lyles.

Those making donations to the fund through the trivet raffle were Mr. and Mrs. Al Galloway, Mrs. Ella Reue, Mr. and Mrs. Bill Feuerbacher, Mr. and Mrs. Jerrel Vinson, Mr. and Mrs. Tommy Lyles, Mr. and Mrs. Clar Schacht, Mr. and Mrs. Kyle Glover, Shawn Smith, Mr. and Mrs. Sam Spence, Mrs. Amy Hollums, DeLene Pearson, Mrs. Betsy Dempsey, Alissa Hambright, Tana Perry, Mary Ann Quilantan, Mrs. Bernice Walters, Mr. and Mrs. Gene Lowrance, Mr. and Mrs. Jamie Lewellyn, Mrs. LaVada Garrett, Mr. and Mrs. Randy Hollums, Mr. and Mrs. Mark Wideman and Jana Lawson.

The trivet was hand-crafted and donated by Al Galloway.



**BEAUS AND SWEETHEARTS**—These Jr. High students were named seventh and eighth grade Valentine Beaus and Sweethearts at a Valentine dance Friday night, sponsored by the FJHS Student Council. Elected were (l-r) Paige Cannon and Clay Lowrance, seventh graders, and Debora Reeves and Haney Robertson, eighth graders. Each of the winners was presented with a gold heart pendant.

### Richard R. Stafford PHD Psychologist

Wishes to announce the relocation of his office to

Haynes Building

812-B West 8th

Suite 9-B

Plainview, Texas

Hours by appointment

(806) 293-8848

## Senior citizens applications accepted

U.S. Senator John Tower has announced he is accepting applications from Texas senior citizens who wish to participate in an intern program in his Washington office May 17-21. Two citizens will be selected from

among the applicants and will spend a week in Tower's Washington office in a program designed to provide increased communication between the retired community and their representatives in Congress.

Tower said the interns will observe the legislative process through meetings with representatives of various departments, agencies and committees.

"I once again look forward to learning firsthand more about our senior citizens' problems, needs and opinions," Tower said. "At the same time, I hope the interns will learn more about the legislative process and government programs designed for their needs and then share with their peers the experiences and information gained in Washington."

Applicants should be 65 years of age or older, active in their own communities and willing to communicate their knowledge to their fellow senior citizens in the state.

Interns will receive their airfare to and from Washington, as well as a stipend to cover expenses while in Washington.

Applications may be obtained from Tower's Dallas office at 1100 Commerce, Room 7c14, Dallas 75242. The deadline for returning the applications along with two letters of recommendation to the Dallas office is March 15.

Attend the Local & County Stock Shows and Sale.

...Our Future is in their hands.

**MUNCY ELEVATOR**

Muncy

## Creative Portraits

Portrait Package

only \$12<sup>95</sup>

with deposit of 99¢

Thurs. Feb. 25

10 a.m. - 6 p.m.



**PIGGLY WIGGLY**

Includes

2-8x10's

2-5x7's

10-wallet

309 South Wall

983-2184

Floydada

**Our Future Depends on the present Attitudes of our FFA & 4-H Young People ...Show them YOU care.**



Attend the Local and County Stock Show & Sale.

**FLOYDADA COOPERATIVE GINS INC.**

Ray Gene Ferguson - Mgr.



# Norris brothers enjoy visit with mother

BY JOYCE WILLIAMS

Mr. and Mrs. C.M. Norris of Carlsbad, New Mexico spent the weekend visiting Mr. and Mrs. Bill Norris, and the men's mother, Mrs. Nora Norris in Floydada. All ate Sunday dinner with Mrs. Nora Norris and then went over to Bill and Ozena's in the afternoon.

Mr. and Mrs. Wayne McHam and sons visited her parents, Mr. and Mrs. Neil Pierce, whose daughters, Rhonda Johnston and Lucy Pierce of Austin were here this weekend. All went to Plainview for supper Saturday. On Sunday after church, the McHams, Pierces, Mr. and Mrs. Bill Womack all were dinner guests at Kings Resturant with Mrs. H.R. Patterson as hostess.

Mrs. Viola Brown and other Mt. Blanco Community club members held their Valentine banquet at the new Lighthouse Electric party room on Friday night. Eighteen guests attended the social which is a community tradition.

Mrs. Robert Pyle has been painting at her house this week.

Joe Mack and Sherry Tillson came by the Riley Teague's house for supper Saturday night. A few minutes later Mr. Earl Bishop and his granddaughter, Gail Howard of Lubbock dropped in and sat down for supper too. Then Mrs. Georgia Finley came in for a visit and they invited her to join them around the table, all having a good time together. Mr. Earl Bishop is staying by himself with Lupe, his nurse, checking on him twice a week.

Mr. and Mrs. Wayne Battey of Paris, Texas, have been in Floydada this past week. They visited Mr. and Mrs. Willey Bunch Thursday morning.

Mrs. Roy Fawver played 84 with her group at Mrs. William Mayo's Wednesday, Sunday, Mr. and Mrs. Carlton Fawver took Flora to Plainview for lunch

and then on a Sunday drive over around the north part of Floyd County, all of which she enjoyed immensely. Her daughter, Evelyn Golightly, and granddaughter Linda Hall of Clovis called her a Valentine wish this week.

Mr. and Mrs. P.L. Hart were in Haskell this past weekend visiting their son, David, and family. On Sunday the David Harts placed membership in their church at Haskell. After church, all celebrated Sara Jane's birthday with dinner at a restaurant and a birthday cake at home afterwards.

Mr. and Mrs. Homer Hambright of Alvin visited his brother, W.M. Hambright over the weekend. Mrs. Hambright was here to visit her aunt, Mrs. Kate Edwards.

Mr. and Mrs. Willie Bunch visited Holt Bishop Wednesday.

Holt Bishop entered the Methodist Hospital Monday for tests. He was accompanied by his children, Mr. and Mrs. Howard Bishop and Mr. and Mrs. Jim Peggram.

Mr. and Mrs. Reynaldo Quilanton and children celebrated Mary's birthday Sunday with dinner at Chico's in Lubbock. In the afternoon they looked at new cars.

Mrs. Rex Harrison helped with the Valentine party for her son, Brandon, and his second grade class at Duncan school on Friday. Mrs. Gloria Fannin is his teacher.

Mrs. P.L. Hart attended the Rebekahs Valentine party at the Lodge Hall Tuesday night.

Mrs. Q.D. Williams attended the meeting of the Floyd County Historical Commission in the County courtroom Wednesday, February 10. The group discussed plans for the Della Plain marker.

Kathy Green and Todd Hambright visited their parents, Mr. and Mrs. Billy

Joe Hambright over the weekend. Mrs. Viola Brown visited her grandchildren on Saturday.

Mrs. B.L. Breed is staying indoors and feeling somewhat better these days.

Mr. and Mrs. Wayne Appling were in Ft. Worth from Sunday to Wednesday last week. They attended the funeral of Bertha's sister, Mrs. Wynell Rogers, who had suffered a long illness.

Mrs. Rogers grew up in Crosby County. She made all her own funeral arrangements, selecting the music she loved, for the services held in the Greenwood Funeral Chapel. She is survived by her husband, Finis, a son, Bryan, of the home, a daughter Karen Myers of Houston, three brothers, Travis Wallace and Olin Wallace of Crosbyton and Darvine Wallace of Meridian, and her sister, Bertha Appling, of our community. The two sisters were only eighteen months apart in age and grew up the closest of companions. The Applings visited their daughter, Phyllis and Beverly in Dallas Sunday, and Beverly was able to attend the funeral with her parents.

Mr. and Mrs. Bob Alldredge kept their grandson, Jeremy, over the weekend. They attended a Valentine party at the Allen Bingham home.

Odell Williams of Shamburger Ranch at Crowell, visited Mr. and Mrs. Q.D. Williams Sunday afternoon.

Mrs. Roy Fawver attended a Sunday School class party Friday at the home of Mrs. A.S. Mize. They all made Valentines and attached them to fruit, which they took to patients at the rest home.

Mr. and Mrs. Louis Pyle attended the last basketball game of the season for David's team Monday night at Floydada. They defeated Idalou.

Mr. and Mrs. Carl Moosberg visited their daughter, Alice, at Perryton over

the weekend.

Mr. and Mrs. James Williams and children, Ashleigh and Austin, of Ft. Sill, Oklahoma, spent Sunday and Monday visiting Mr. and Mrs. Q.D. Williams. Ashleigh and Austin helped feed the cattle and rode horses. Austin hunted with his .22.

Scott Brown, a senior Ag. major at Texas Tech, moved into the Tech farm Sunday where he will work while going to school.

Mrs. Pat Brown conducted a tour of the Crosbyton Museum Sunday afternoon for 36 members of the Greater Downtown Rotary Club of Lubbock. They arrived by chartered bus. All the wives and Valentine sweethearts wore red ceramic heart necklaces given them by the Rotarians.

After the tour, all were guests of Mrs. Georgia Mae Erickson at her home, Casa del Sol, in Blanco Canyon. They were served a supper catered by Jug Little of Lubbock after they toured the beautiful solar powered home.

Mr. and Mrs. Ed Mobley of Plainview were guests of their aunt, Mrs. Q.D. Williams, at her Sunday School class Valentine supper at K-Bobs in Plainview Friday evening. Mrs. Mobley is a teacher's aide for Judy Jamison, former Floydadain, in the Plainview schools. She attends evening classes at Wayland University.

Mrs. Edmond Brown and her cousin, Mrs. Georgia Mae Erickson, attended the Texas history symposium in Leveland Friday. They heard Dr. Ernest Wallace of Texas Tech University talk on Indians of the Plains. J. Evetts Haley spoke on Plains history. A good crowd attended. This is planned to be an annual meeting. Next year's topic will be petroleum in Texas.

**Remember Now  
So You Can  
Remember Then.**

**A Professional  
8 x 10 Color Portrait  
For 88 Cents**

All ages welcome - babies, adults, and families! Choose from our selection of scenic and color backgrounds. We'll select poses, and additional portraits will be available with no obligation. Satisfaction always, or your money cheerfully refunded.

88¢ per sitting. No charge for additional group subjects. One special per person. Backgrounds may occasionally change. Remember, children must be accompanied by parent.

**These Days Only-**

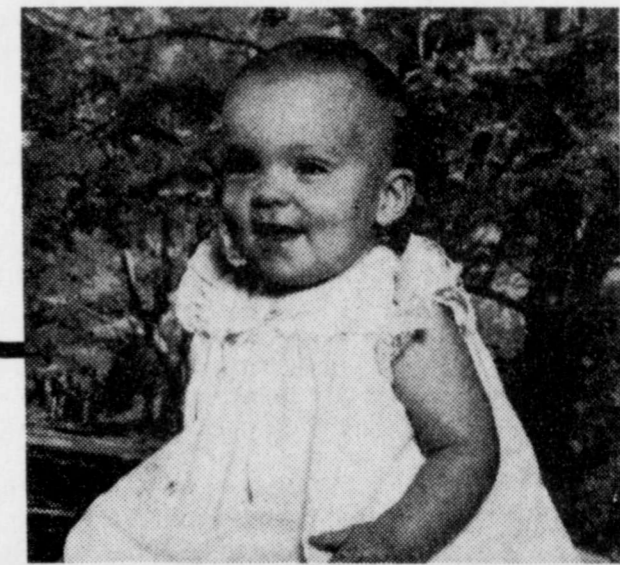
February; Thurs. Fri. Sat.  
18 19 20

DAILY: 10 a.m.-5:30 p.m.

SATURDAY: 10a.m. - 4:30 p.m.

106 East California St. - Floydada

**PERRYS**



# Green pages are new addition to directories

Locator maps of various sections of the city will be featured in new green pages in the 1982 Floydada Telephone Directory, to be mailed beginning February 12.

The green pages are the newest addition to the Floydada directory and will appear behind the Yellow Pages. They include an index and cross-references to Yellow Pages advertising.

Gridded maps feature vertical and horizontal coordinates to make it easier for customers to locate area business. "They were designed for newcomers, as well as businesses that aren't on major streets," said Phil Bode, Manager for Southwestern Bell.

Bode said the new directory contains 15 white pages.

On the cover is a watercolor painting.

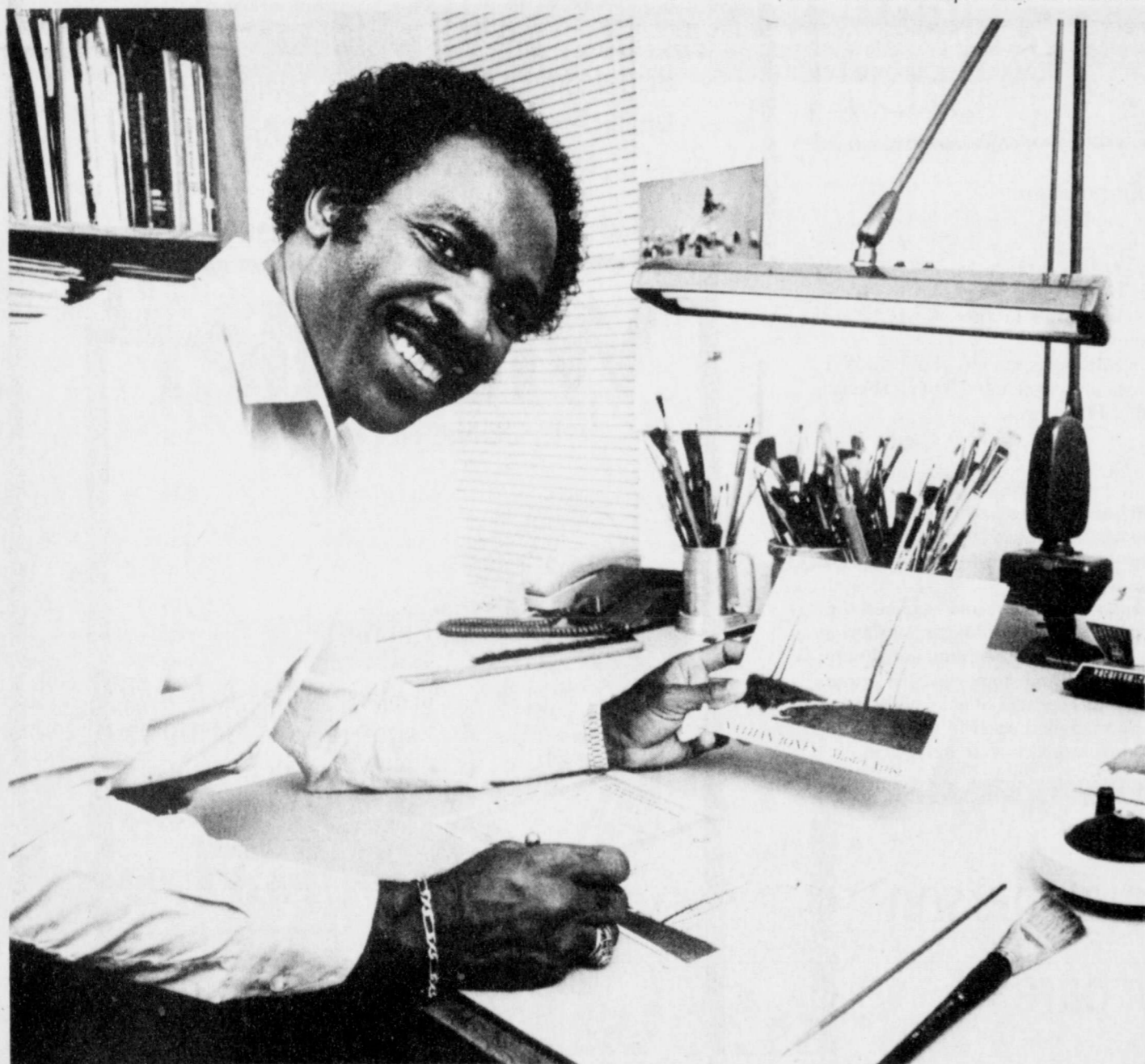
"Morning Mist," by Dallas artist Nathan Jones. The painting features ducks flying in a heavy morning mist and captures a quiet moment in a dense marsh habitat in Texas. An explanation of the painting appears on Page 1 of the Call-Guide Pages.

Each residential phone customer will receive one copy of the directory, Bode said. Additional copies may be obtained

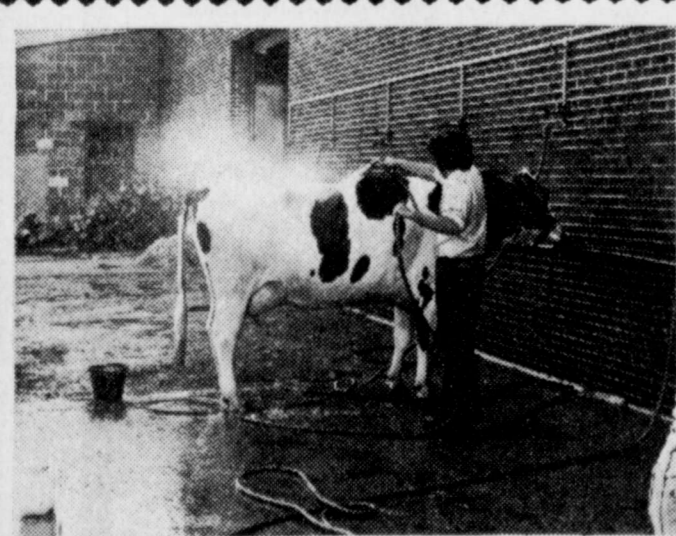
from any Southwestern Bell business office or Phone Center store after March 1, 1982.

A total of 5,500 books are being printed. Of that number, 2,800 new directories will be delivered to area residents by February 28, 1982.

"The extra books are for new customers moving into Floydada throughout the year," said Bode.



NATHAN JONES, designer of the cover page of the 1982 telephone directory.



**The Future  
of this Nation  
Rests  
on our Youth  
in Agriculture.**

**Brown's**  
DEPARTMENT STORE  
MAN'S SHOP

104-06 North Main

Lockney, Texas

## BAG THE BEST BUYS

<p>Wrights Bulk Pak Thick Sliced <b>BACON</b> \$1.39/lb</p> <p>Boneless <b>STEW MEAT</b> \$1.89/lb</p> <p><b>BEEF LIVER</b> 69¢/lb</p> <p>4 Roll Pak Delsey <b>TOILET TISSUE</b> 89¢</p> <p>70¢ Off Label Family Size <b>TIDE</b> \$5.79</p> <p>3 lb Can Shurfine <b>SHORTENING</b> \$1.69</p>	<p>2 Liter Bottle <b>COKE</b> 99¢</p> <p>Boneless <b>ROUND STEAK</b> \$1.98/lb</p> <p>Family Pak <b>HAMBURGER</b> \$1.19/lb</p> <p>Homemade <b>SAUSAGE</b> \$1.39/lb</p> <p>5 lb Bag Shurfine <b>SUGAR</b> \$1.19</p> <p>Generic quarters <b>OLEO</b> 3 pkgs \$1</p> <p>5 lb bag Gladiola <b>FLOUR</b> 79¢</p> <p>Cattleman's 18 oz. <b>BARBEQUE SAUCE</b> 69¢</p>
--	--

Prices Good Thursday, Friday, & Saturday

### KEETERS GROCERY

7:30 a.m. - 7:30 p.m.      652-2191

We Redeem Food Stamps & WIC Cards  
We Reserve The Right To Limit Quantities

We Give Circle  
W Blue St.  
Double on  
Wednesday





MRS. ROBERT RANDAL REYNOLDS

## Westbrook, Reynolds united during double-ring ceremony in Crosbyton

Miss Jamie Kay Westbrook became the bride of Mr. Robert Randal Reynolds on February 6th in a 6:30 p.m. double ring ceremony at the First Baptist Church wedding chapel in Snyder. Brother Bobby Rine, pastor of First Baptist Church, Crosbyton, read the vows.

The couple are the children of Patsy Westbrook of Kermit and Mr. and Mrs. Jim Reynolds of Crosbyton.

A 15-branch brass rainbow candelabrum flanked on both sides by a 7-branch brass candelabrum and a brass kneeling bench adorned the altar.

Musical selections were presented by Ronee Thornton, cousin of the groom, who sang "Sunrise Sunset" and "Annie's Song." Beth Bowen, pianist, and Paula Howard, organist, accompanied.

Presented in marriage by her grandfather, Henry Fowler, the bride wore a gown of Chantilly lace to depict the Southern Belle appearance designed by Mike Benet. The fitted bodice featured a flounced V-shaped ruffle to the waist, forming a V-shaped neckline and soft cap sleeve effect at the shoulders. The full skirt fell gracefully from the natural waistline. Three tiers of ruffles encircled the skirt and formed the chapel length train.

The wide brim hat worn by the bride was trimmed in Chantilly lace and adorned with matching medallions. The two tiered fingertip veil attached to the

crown atop the brim completed the attire. She carried a cascade bouquet of white and peach roses centered with a white orchid.

Following tradition the bride had as something old a handkerchief belonging to her great-grandmother; something new was a diamond necklace, gift from the groom; something borrowed were her grandmother's diamond earrings; and she wore the traditional blue garter.

Rhonda Reynolds, sister of the groom of Crosbyton, served as maid of honor and Becky Beaver, sister of the bride of Fluvanna, served as matron of honor. Edrie Ratheal, Waco, and Elena Garcia, Wink, attended as bridesmaids. Lezli Fowler was jr. bridesmaid.

All attendants wore dresses of peach Mirra-Mist with the sleeve being a long puff. A low cut sheer ruffle fell from shoulder to a matching bottom flounce. They all wore peach hats trimmed with ribbon and a small nosegay of flowers attached to the back. They carried blue nosegays with small peach and blue accents.

All wedding flowers were created and designed by the bridegroom's sister, Rhonda Reynolds.

Miss Stephanie Wenetschlaeger of Snyder was flower girl. She was dressed in a full length dress with an A-line skirt of a pastel combination peach floral design.

## Wexler hosts Calvary Baptist women meeting

The Baptist women of Calvary Baptist Church met on Monday at 4:15 p.m. in the home of Mrs. George Wexler for a Royal Service program and etc.

Each guest as they arrived was greeted with a cup of hot spiced tea and girl scout cookies. A short fellowship followed. A short business meeting was also held. Program theme was Southern Baptist Mosaic, led by chairman Mrs. Adam. Prayer calendar was by chair-

man Mrs. Hazle Powell.

Fifteen ladies and two youth were present: Jo Payne, Lucille Duncan, Cathy Hill from Lockney, Hazle Powell, Beady Owens, Merlene Breeding, Deota Adam, June Van Cleve, Estelle Warren, Mildred Haile, Edna Patton, Delzie Bradford, Evelyn Pierce, Birdie Drummond, visitors, Charles Murrin and Jeremy Hill. Hostess was Irene Wexler.

## Society Features

### Collins honoree of baby shower Saturday Feb. 6th

A baby shower for Mrs. Mike (Lu Ann) Collins was held in the home of Mrs. Leslie Fawver, Saturday, February 6, from 2-4:30 p.m.

Mrs. Collins was presented with a corsage; a baby rattle tied with green and white checked ribbon, and attached with diaper pins. Guests, were greeted at the door by Mrs. Collins and the hostesses.

Punch, cookies, and mixed nuts were served to guests from a table dressed with a yellow and white checked tablecloth, containing a centerpiece of yellow balloons labeled with prospective

baby names, and tied with green and white gingham bows. Table appointments were of white milk glass.

Hostesses presented Mrs. Collins with a car seat, baby bath, and numerous pictures of the shower. Hostesses were Mrs. Robert (Gayle) Ferguson, Mrs. Dick (Joy) Guest, Mrs. Jack (Billie) Jordan, Mrs. Bobby (Noma Lou) Rainer, Sheila Clark, Laura Campbell, and Mrs. Leslie (Jonelle) Fawver. Honored guests were Mrs. James Lovell and Mrs. Johnnie Collins, the prospective grandmothers.

### Hendrix' bundle of joy welcomed January 30th

A shower to welcome Holly and Joel Hendrix' bundle of joy was given in the Don Shurbet home on Saturday, Janu-

ary 30th. Silk flower corsages were presented to the honoree and grandmothers-to-be, Mrs. Fern Hartsell and Mrs. Bill Hendrix. Many friends and relatives came, or sent gifts.

Yellow punch and pastel color thumb print cookies and yellow mints were served to the guests by Mrs. Scott Faulkenberry. The table arrangement, which was a straw basket accented by a Teddy Bear and filled with accessories for the baby, was presented to the mother-to-be, by the hostesses, along with a high chair.

Hostesses for the lovely occasion were: Mrs. Don Shurbet, Mrs. Don Hardy, Mrs. Valarie Green, Mrs. Buddy Hatley, Mrs. Scott Faulkenberry, Mrs. Tommy Pearson, Mrs. Louis Anderson, Mrs. Buck Marricle, Mrs. Burch Lobbin, Mrs. Lynn Campbell, Mrs. Deral Young and Mrs. Randy Beedy.

**RECEPTION**  
Following the ceremony a reception was held in the Garden Room of the wedding chapel at the First Baptist Church.

The bride's table was centered with the attendant's bouquets surrounded by a dove centerpiece with candles scattered throughout. It held a three-heart shaped tier cake.

Presiding at the bride's table were Linda Cox, Zeena Cox, Donna Fowler and Paula Middleton.

The groom's table held a cake featuring an outdoor scene. It was centered with a gun and a peach and blue flower arrangement. A silver service also accented the table.

Jeanett Robinson and Patsy Faye Thornton presided.

At the register was Cindy Hogue.

The couple is now residing at Snyder. The bride is a 1979 graduate of Snyder and a 1981 graduate of WTC. She is now employed at the Snyder Chamber of Commerce.

The bridegroom, 1978 graduate of Crosbyton and 1981 graduate of WTC, is employed by I&R Industries.

**REHEARSAL DINNER**  
Mr. and Mrs. Jim Reynolds hosted a rehearsal dinner at Snyder Country Club Friday evening February 5. Approximately 40 guests were present.



#### SHACKELFORD

Mr. and Mrs. Ronnie Shackelford are the new parents of a daughter, Melissa Kay, born February 13, 1982 at 10:40 a.m. The little girl weighed 8 lbs., 4 ozs. Melissa has a brother, Kevin, who is 4 years old.

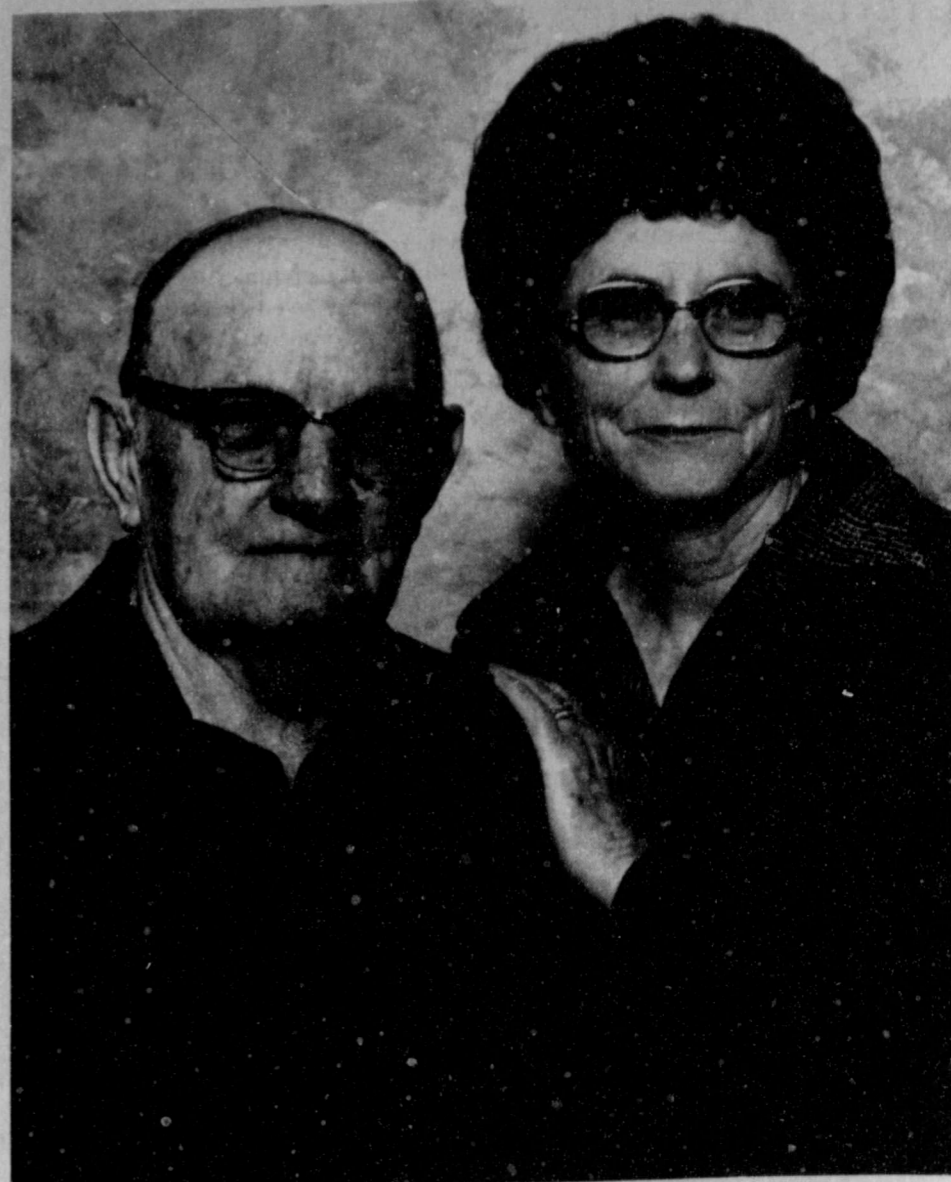
Grandparents are Mr. and Mrs. W.T. Cooper of Lockney and Violet Shackelford of Plainview.

#### LOCKNEY LOCAL

Mel and Marjorie Holcomb were in Lubbock Saturday to be with the Evelyn Nichols family at the Methodist Hospital.

Charlotte Blazier and Kimberly of Amarillo and Selicia Martin of Canyon were there to visit their aunt and family.

Kimberly came home with her grandparents to stay until Sunday night when Charlotte, Selicia and Millard Martin of Borger returned to take her home.



MR. AND MRS. M.S. (TUBBY) ROBERTSON

## Robertsons to celebrate 50th wedding anniversary

Mr. and Mrs. M.S. (Tubby) Robertson will celebrate their 50th wedding anniversary with a family gathering at their home in Floydada on Saturday, February 20.

It will be hosted by their children, Linda and Jimmy Crader of Floydada.

and Deane and Jav Miller of Garland.

Tubby and the former Pauline Hampton were married in Floydada on February 20, 1932 and have lived in Floydada most of their married life. He is a former implement dealer.

The couple has four grandchildren.



### Lovell - Collins Jewelry

806/963-3240 102 S. MAIN FLOYDADA, TEXAS 79235

Make your bridal selections now.

Bridal Selections are now available for;  
Phyllis Johnson bride-elect of Randy Fry  
and  
Vickie Johnson bride-elect of Gerry Norrell

# Wrangler

JUNIORS

Ladies, Misses & Juniors  
sizes reg. '24-'34 NOW  
**\$5.00 Off** regular price  
This Special good Thurs. & Fri. Only

**THE LOFT**  
517 East Houston 983-2235

*Remember your special times - Call for your appointment*

Mr. & Mrs. O.C. Allison, Lockney

Chuck Wilson, M. Photog., CPP  
*Wilson Photography*  
652-3731

Show that special person you really care with flowers, plants or a select gift from our store, full of gift items

**SCHACHTS**  
Flowers, Jewelry & Gifts  
"Our Pleasure Is To Serve You"

112 W Poplar Lockney 652-2385



## Historical Commission hold meeting at Courthouse

The Floyd County Historical Commission met in the County Courtroom Wednesday, February 10 with Jim Word as chairman.

They elected Olin Watson as secretary-treasurer, and Nancy Marble vice-chairman.

Mr. Word reported the Della Plain Cemetery marker is paid for and is the largest sized marker the state offered to enable viewers to read the inscription

more easily. It is being prepared in Austin by the Texas Historical Commission. The local committee sent the history to them and their experts have condensed and re-written it to fit the marker. A chain link fence will be erected around the area.

Members present included Frank Brown, Joyce Williams, Nancy Marble, Reba Henry, Emily Johnston and Judge Choise Smith.

## Il Penseroso Jr. Study Club hosted by Barnettts

Il Penseroso Jr. Study Club met February 11 at the home of Lanny and Cathy Barnett.

Co-hostesses were Sandy Adrian and Lynda Gant.

The program Emergency Weather by Johnny Ballou was cancelled by inclement weather. Twenty-one members were present for the "get reacquainted meeting."

Members voted to give money for new blinds for the library windows. The style show was discussed, also the quilt

squares are due at the next meeting on February 25.

Members present were Lynda Gant, Judy Jackson, Kathy Kellison, Lesca Durham, Treena Aston, Cindy Means, Lisa Mosley, Kelly Fortenberry, Cynthia Bybee, Ginger Mathis, Lynda Cunyus, Reeda Cay Smith, Kay Martin, Charlanne Burson, Marilyn Biggs, Cathy Barnett, Sandy Adrian, Sandra Cummings, Kim Lambert, Jessie Johnson, and special guest Courtney Kaye Cummings.

## Locals listed with America Outstanding Young Women

The Board of Advisors for the Outstanding Young Women of America awards program announced that Melanie Jan Henning of Nacogdoches, Judy Kay Dunlap of Floydada and Charlotte Decker Sutton, Hewitt, Texas have been selected for inclusion in the 1981 edition of OUTSTANDING YOUNG WOMEN OF AMERICA.

Melanie is the daughter of Mr. and Mrs. Jack Stansell of Floydada, Judy is the daughter of Mr. and Mrs. E.B. Marrs, Matador, and Charlotte is the daughter of Mr. and Mrs. Edell Moore of Floydada.

The Outstanding Young Women of America program is designed to honor and encourage exceptional young women between the ages of 21 and 36 who have distinguished themselves in their homes, their professions and their communities. Accomplishments such as these are the result of dedication, service and leadership — qualities which deserve to be recognized and remembered.

This is the goal of the many leading women's organizations, college alumni associates and public officials who nominate deserving young women to participate in the program. Serving as chairman of the program's Advisory Board is Mrs. Dexter Otis Arnold, honorary president of the General Federation of Women's Clubs.

The women listed, along with approximately 23,000 fellow Outstanding Young Women of America from across the United States, will be presented in the prestigious annual awards volume. In addition, they are now being considered for one of the fifty-one state awards to be presented to those women who have made the most noteworthy contributions in their individual states. From these fifty-one state winners, the Ten Outstanding Young Women of America will be chosen. The ten national winners will then be honored at the annual awards luncheon to be held this fall in Washington, D.C.

## This 'n' That Club serve husbands buffet supper

The This 'n' That Club entertained their husbands with a supper and "84" party Saturday night, February 3, at the party room of the Lighthouse Electric Building.

The buffet table was covered with a white cloth and had a red and white silk flower arrangement in a white milk glass bowl flanked by tall red candles in milk glass holders, red place mats with white lace doilies and napkins with red

hearts marked each place setting at tables centered with small flower arrangements and candy hearts.

After supper, games of "84" were enjoyed by members and their husbands.

Attending were Mr. and Mrs. W.H. Bunch, Bill Beedy, Maurice Campbell, Johnny Cates, Earl Crawford, F.M. Jackson, Floyd Lawson, T.L. Holland and Glenn White.

## Floydada Nursing Home Happenings

BY LYNN DANIEL

Love is just a word, and Valentines Day is just a day, until you experience a Valentines celebration with the resident at the nursing home. We didn't miss a thing, games, prizes, refreshments, entertainment, in short the works.

February 12 at 10:30 the residents kicked off the Rock and Roll Jamboree. Vera Duke was the starter on rocking and Nora McKnight was the first to kick off the roll.

Balloons were sold for a chance on a box of candy, money going to the Heart fund. Games that were played: musical balloon, Valentine toss, candy guess and lucky heart. The winners were Opal Rogers, W.C. Cates, Nora McKnight, Emmitt Lawrence, Juanita Bailey, Travis Corley and Claud Hughes. Then at 2:30 the Valentine King and Queen were crowned. We were pleased to present this honor, a crown and a box of candy to Queen Sue Thompson and King

W.C. Cates.

I can't recall having a better time at a party, it all went so well. I want to thank our own volunteers, "Companions 'n' Caring" for making this one to remember.

The residents and staff offer their sympathy to the family of Veda Griggs and Florence Simpson. We understand the great loss of these wonderful people. The love they brought to the nursing home will be with us always.

Visitors included: Evelyn and Jack Crull, Illa Belle McPeak, Charley L. Berry, Sr., St. Mary Magdalen Choir: Mary Ann Juarez, Sophie Garza, Esmeralda Deleon, Irma Briones, Elsa Garza; Deetta Odam, W.H. Fubanks, Marvin and Vertie Powell, Lucille Sisson, Hubert Davis, Ruby Davis, Vallie and Leona McNeill, Beady Owens, Beulah Denison, Elvis and Estell Warren, Worth Gwendolyn Howard, Burmah Probasco, Melisa Martin, Otis Anderson, Mr. and Mrs. Homer Ham-bright, Mr. and Mrs. Marvin Rape, R.C. Rainer, Angelita Cortinas, Dixie and Zacha Harris, Dana Ellis.

Also, Dorothy Neff, Otis, Dana, Kim and Joe Lee Ellis, Cynthia Covington, Robert Jackson, Maurice and Ella Goodwin, Marion Bailey, Ethel Sawyer, Eldie Bryant, Edd and Dorothy Neff, Hazel Bradley and Kim, Worth Gwen Howard, Debra Bailey and Justin, Zacha Harris, Nancy H. Willson, Velva Pricer, Lois Jones, Gene Baird, Melanie Ross, Kirk, Jackson and Daniel McIntosh, Mr. and Mrs. Jess Glover, Sherry Colston, Tex Smith, Clay Smith, Ruth Bishop, Corene and Murry Stewart, Clyde Bradshaw, Marie, Judy, Rusty and Jack.

## Rebekah Lodge hold regular meeting

Floydada Rebekah Lodge met on Tuesday night February 9 for their regular meeting.

The death of Ruby Davis' aunt was

reported. Also the death of Lola Allen's mother. Several others were reported not feeling well.

The Charter was draped for two past

presidents of the Rebekah Assembly of Texas. They were, sister Ruth Edmonds and sister Ethel Mauer.

Those taking part in the draping ceremony, were Pauline Pierce, Eula Parrack, Artie Webb, and Ruby Davis. Amanda Hart played "Beyond The Sunset" throughout the ceremony.

A program on Valentines Day was presented by the program committee. Valree Turner read a story pertaining to the origin of Valentines Day, then read a poem about Valentine.

Eula Parrack read a story about husbands, which was very interesting and funny.

Amanda Hart and Lona Sparks sang the Noble Grands favorite song, "Hold to God's unchanging hand," and then all the group joined in a song to Barbara Gilliland, Lodge Queen.

Everyone enjoyed the evening with refreshments of a cake baked in the shape of a heart with Happy Valentines Day written on it, also fruit salad, cheese balls, cookies, hot spiced apple juice, coffee and hot chocolate.

## Osborne guest speaker at Alpha Mu Delta meeting

The Alpha Mu Delta Chapter of Beta Sigma Phi held its regular business meeting Tuesday, February 2, at the First National Bank.

Vice President, Duffy Hinkle, brought the meeting to order. Mitzi Nixon then called the roll and read the minutes from the previous meeting.

At this time, Duffy Hinkle accepted the position of recording secretary.

Members were informed that hostesses for this meeting were Revis Pernel and Holly Hendrix. Program to be given by Tana Probasco on Enrichment.

Members were then told hostesses for the February 16 meeting would be Barbara Anderson and Mitzi Nixon. Program to be given by Donna Anderson on Diet.

Members were also reminded of the

Valentine Social February 12 at Kings Resturant.

Following this, attention was given to guest speaker Cecil Osborne, Mr. Osborne is with People Plus. He presented a film on Winning by Dr. Denis Waitley. After the film he informed all members of the Psychology of Winning Seminar to be held February 23 at Lubbock Municipal Auditorium.

In conclusion, members held a Chinese Auction while refreshments were being served.

## Extension Homemakers hosted a salad luncheon

The Harmony Extension Homemakers Club hosted a salad luncheon for the Lone Star and Homebuilders clubs Monday, February 8 in the Lighthouse Electric building.

The Valentine theme was used for the decorations on the tables. Due to the icy streets and sidewalks there weren't as many members present as had been expected.

Bingo was played before the luncheon. After the luncheon Ann Willson reviewed the book "Walking West" by

Peter and Barbara Jennings. This was especially interesting since she had reviewed the book "Walking Across America" by Peter Jennings, last year. Before Peter completed his walk across America, he met and married Barbara. Thus the second book "Walking West."

Those enjoying the luncheon were Ruth Trapp, Gladys Widner, Anna Maude Hopper, Bess Carr, Lucille Miller and Imelda Murry and the agent, Marilyn Tate.

## Emert hosts Alpha Sigma Upsilon

The regular meeting of Alpha Sigma Upsilon met in the home of Mary Emert on February 2.

Roll call was made. Program was on Enrichment. The Valentine Social was set for Saturday, February 13, at Redman's.

The next program will be given by Vikki Yeary and will be on Diet.

Those attending were Rhonda Guthrie, Mary Emert, June McGaugh, Barbara Edwards, Vikki Yeary, Janice Poteet, and Jan Nichols.

LOCKNEY LOCAL

Lockney was well represented at the World of Wheels in Lubbock last Friday, Saturday, and Sunday. It was held in the Civic Center.

Arlene Hayter showed a car owned by her father, Alton Barnes. They placed third in the late restored division with their 1954 Chevrolet. The car is completely original. It was purchased 6 years ago from the family of Ethel Gilbert, a former Floydada resident and sister of Marvin Gilbert of Lockney. The car has 38,000 actual miles.

Warren Mathis also compete in the World of Wheels along with Mike Fields, son of Buck Fields of Lockney.

**Paula's back!**  
Make tracks to the  
Witches Hut  
311 W. Houston  
652-3800  
Wed.-Sat.  
Susan Patridge  
Paula Edwards

## SEMI-ANNUAL SALE

Sale Ends Saturday!

## Thacker Jewelry

200 Broadway • Roaring Springs

PHONE:

(800) 692-4249

(806) 348-3971

**GOOD IS GOLD  
14K!**



### 14K Yellow Gold Beads

	RETAIL	SALE
3mm	\$1.00	.40
4mm	\$2.00	.80
5mm	\$3.38	\$1.35
6mm	\$6.00	\$2.40
7mm	\$6.88	\$2.75
8mm	\$10.50	\$4.20

### 14K Yellow Gold Studs

3mm	\$15.00	\$6.00
4mm	\$17.50	\$7.00
5mm	\$20.00	\$8.00

### 7mm Pearl Studs

Retail \$75.00 Sale \$26.25

### 14K Yellow Gold Charm Holder

Retail \$67.00 Sale \$27.00

### 14K Yellow Gold Charms

Retail \$42.00 Sale \$18.90

### 14K Yellow Gold Earring Jackets

	RETAIL	SALE
Leaf design	\$55.00	\$24.75
Fashion design	\$71.00	\$31.95
Ribbed Style	\$30.00	\$13.50

### 14K Yellow Gold Earrings

Shrimp Style	\$180.00	\$81.00
Triple Twist Hoop	\$108.00	\$48.60
Puffed Hoop	\$220.00	\$99.00

### 14K Yellow Gold Rings

	RETAIL	SALE
3 Diamond .20 ct.	\$680.00	\$238.00
5 Diamond .42 ct.	\$1240.00	\$434.00
21 Diamond 1.00 ct.	\$3200.00	\$1120.00
14 Diamond & Ruby .45 ct.	\$1400.00	\$490.00
6 Diamond & Emerald .37ct.	\$1600.00	\$560.00
12 Diamond & Sapphire .25ct.	\$900.00	\$315.00
9 Diamond .66 ct.	\$1620.00	\$567.00
1 Diamond & Opal .04 ct.	\$300.00	\$105.00
21 Diamond 1.27 ct.	\$3600.00	\$1260.00
20 Diamond 3.81 ct.	\$11,600.00	\$4060.00

### 14K Gold Diamond Studs

.10 ct Studs	\$240.00	\$84.00
.16 ct. Studs	\$360.00	\$126.00
.25 ct. Studs	\$440.00	\$154.00
.30 ct. Studs	\$580.00	\$203.00
.54 ct. Studs	\$1380.00	\$483.00
1.01 ct. Studs	\$2800.00	\$980.00

### 14K Gold Diamond Drops

.03 ct. Drop	\$85.00	\$29.75
.10 ct. Drop	\$260.00	\$91.00
.17 ct. Drop	\$340.00	\$119.00
.25 ct. Drop	\$500.00	\$175.00
.33 ct. Drop	\$760.00	\$266.00
.43 ct. Drop	\$1280.00	\$448.00
.82 ct. Drop	\$2100.00	\$735.00
1.05 ct. Drop	\$5700.00	\$1995.00

Many Other Items Available To Numerous To List!

Select  
Groups and Racks of  
Merchandise

**75% OFF**

**The Outlet Store**

In Lockney



# Your Satisfaction is our Reward



**SPLIT FRYERS**  
USDA Grade A Whole

**49¢**  
lb.



**SIRLOIN STEAK**  
Beef Bone-In

**\$2.19**  
lb.



**PORK CHOPS**  
Rib or Loin End Cuts

**1.49**  
lb.



**SLICED BACON**  
Oscar Mayer

**\$2.15**  
lb.

- T-Bone Steak** \$2.49  
Lean and Tender lb.
- Porterhouse Steak** \$2.59  
Beef Loin 1st Cut lb.
- Franks** 88¢  
Wilson's Certified 12 oz.
- Sliced Bologna** \$1.45  
Oscar Mayer Meat or Beef 12 oz.
- Lunch Meats** \$1.39  
Oscar Mayer 8 oz.
- Pickles or Sauerkraut** \$1.49  
Claussen 32 oz.

- Franks** \$1.79  
Oscar Mayer Meat or Beef 16 oz.
- Longhorn Cheese** \$1.79  
Kraft 1/2 Moon Cheddar or Colby 10 oz.
- Fryer Breasts** \$1.09  
Fresh U.S.D.A. Grade A lb.
- Pork Chops** \$1.79  
Center Cut Rib lb.
- Pork Chops** \$1.79  
Center Cut Loin lb.
- Sirloin Steak** \$2.79  
Boneless Tender Beef lb.



**PIGGY WIGGLY**  
309 South Wall  
Floydada

Open Daily 8:00 a.m. to 8:00 p.m.  
Sundays 9:00 a.m. to 7:00 p.m.

Prices effective Thurs. thru Wed.,  
February 18-24, 1982

Each of these advertised items is required to be readily available for sale at or below the advertised price in each store, except as specifically noted in this ad. We reserve the right to limit quantities. None sold to dealers.



**American Beauty**  
Elbo Roni, Long Spaghetti

**2 for 79¢**

Piggy Wiggly

**Super Saver**

**LOWFAT MILK**  
Shurfresh  
Limit 1 with coupon

**\$1.78¢**  
1 gal. jug

**Dairy Specials**

- Margarine** 1 lb. tub **68¢**  
Shurfresh Soft
- Biscuits** Sweetmilk, 12 oz. can **99¢**  
Shurfresh Texas Style Buttermilk 2 for
- Margarine** 1 lb. pkg. **49¢**  
Thrift King Solid
- Orange Juice** **99¢**  
Kraft 32 oz. btl.

Put \$2,500  
in your  
pocket...play  
**CASH KING**

COUPON CHART EFFECTIVE JANUARY 25, 1982

COUPON VALUE	NUMBER OF COUPONS	DECISION ONE GAME TICKET	DECISION TWO GAME TICKETS	COUPON VALUE TO BE CASHED
\$1.00	7	1 or 127	1 or 127	1 or 127
50¢	15	1 or 157	1 or 157	1 or 157
25¢	30	1 or 307	1 or 307	1 or 307
10¢	75	1 or 757	1 or 757	1 or 757
5¢	150	1 or 1507	1 or 1507	1 or 1507
2¢	300	1 or 3007	1 or 3007	1 or 3007
1¢	600	1 or 6007	1 or 6007	1 or 6007
50¢	1500	1 or 15007	1 or 15007	1 or 15007
25¢	3000	1 or 30007	1 or 30007	1 or 30007
10¢	7500	1 or 75007	1 or 75007	1 or 75007
5¢	15000	1 or 150007	1 or 150007	1 or 150007
2¢	30000	1 or 300007	1 or 300007	1 or 300007
1¢	60000	1 or 600007	1 or 600007	1 or 600007
TOTAL	13,800	1 or 13,800	1 or 13,800	1 or 13,800

COUPON VALUE DEPENDS ON NUMBER OF COUPONS YOU OBTAIN. THE MORE COUPONS YOU OBTAIN, THE GREATER YOUR CHANCE OF WINNING. COUPON VALUE IS BASED ON THE NUMBER OF COUPONS YOU OBTAIN. COUPON VALUE IS BASED ON THE NUMBER OF COUPONS YOU OBTAIN. COUPON VALUE IS BASED ON THE NUMBER OF COUPONS YOU OBTAIN. COUPON VALUE IS BASED ON THE NUMBER OF COUPONS YOU OBTAIN.



**Fruit Cocktail**  
Del Monte

**59¢**  
17 oz. can



**Gladiola Flour**  
Shurfine  
10 1/4 oz. can

**78¢**  
5-lb. bag

**Glad Trash Bags**  
10 ct. 3 ply **\$1.39**

**Palmolive Liquid Dish Detergent**  
20" Off Label **\$1.69**  
32 oz. btl.

**Paper Towels**  
Shurfine

**2 rolls for 99¢**

**Jeno's Pizza**  
Sausage, Hamburger, Pepperoni **\$1.19**  
13 1/2 oz. pkg.

**\$ DOUBLE \$**

Present this coupon along with any one manufacturer's "cents-off" coupon and get double the savings from Piggy Wiggly. Not to include "retailer", "free" or tobacco coupons or exceed the value of the item. Limit 1 coupon per manufacturer's coupon, limit 4 Double Coupons per customer. Coupons good at Piggy Wiggly Feb. 18 to Feb. 24, 1982.

**COUPON**



# Quality Produce at Affordable Prices




**BANANAS**  
Golden Ripe

3 lb. for **99¢**



**APPLES**  
Golden Delicious

lb. **49¢**



**TOMATOES**  
Red Ripe

lb. **69¢**



**POTATOES**  
10 lb. bag Russet All Purpose

**\$1.39**

**YOUR  
Home Town  
Store  
of Values!**

**GRAPEFRUIT**  
Texas Ruby Red

4 for **\$1**

**CELERY**  
Fresh Crisp Stalks

lb. **39¢**

**Carrots**  
Rich in Vitamin A

1 lb. bag **39¢**

**Cauliflower**  
Snowwhite Heads

lb. **\$1 19**

**Jalapeno Peppers**  
Spice Up Any Meal

lb. **\$1 19**

**Pineapples**  
Naturally Sweet

ea. **98¢**

**Bell Peppers**  
Excellent for Stuffing

3 for **99¢**

**Yellow Onions**  
Full of Flavor

lb. **39¢**

**BE A WINNER!**  
PLAY  
**CASH**



There are still plenty of CASH prizes to be won. Plus, all Saver Disc redeemers qualify to enter the Grand Prize Drawing. But Hurry! Only a few weeks left to enter. Pick up a FREE Game Ticket today. No Purchase Necessary. Don't miss your chance to win!

**Frozen Food Values**

**Honey Buns** Shurfine 9 oz. pkg. **69¢**

**Potatoes** Ore Ida Hash Brown 24 oz. pkg. **\$1 18**

**Burritos** Reg., Red, 5 oz. pkg. **2 for 89¢**

**Patio Beef & Bean** Green

**Cherry Pie** Mrs. Smith's 26 oz. pkg. **\$2 68**

Piggly Wiggly

**Super Saver**

**Ice Cream**  
Borden's

**\$1.59**

1/2 gal.



**Nice-N-Soft**

**\$1.39**

6 pack  
Bath Tissue

**Comet Cleanser**  
6¢ Off Label

21 oz. can **63¢**

**Dream Whip**  
Desert Topping

5 oz. pkg. **\$1 39**

**Chuck Wagon**  
Dog Food

10 lb. bag **\$3 99**

**Post Toasties**  
Breakfast Cereal

18 oz. pkg. **\$1 19**

**Coffee Mate**  
Coffee Creamer

16 oz. jar **\$1 88**



**Campbell Soup**  
Chicken Noodle

**4 for \$1**

10 3/4 oz. can



**Cut Green Beans**  
Del Monte

**3 for \$1**

16 oz. can

**\$ DOUBLE \$**

Piggly Wiggly

Present this coupon along with any one manufacturer's "cents-off" coupon and get double the savings from Piggly Wiggly. Not to include "retailer", "free" or tobacco coupons or exceed the value of the item. Limit 1 coupon per manufacturer's coupon, limit 4 Double Coupons per customer. Coupons good at Piggly Wiggly Feb. 18 to Feb. 24, 1982.

**COUPON**

**\$ DOUBLE \$**

Piggly Wiggly

Present this coupon along with any one manufacturer's "cents-off" coupon and get double the savings from Piggly Wiggly. Not to include "retailer", "free" or tobacco coupons or exceed the value of the item. Limit 1 coupon per manufacturer's coupon, limit 4 Double Coupons per customer. Coupons good at Piggly Wiggly Feb. 18 to Feb. 24, 1982.

**COUPON**

**\$ DOUBLE \$**

Piggly Wiggly

Present this coupon along with any one manufacturer's "cents-off" coupon and get double the savings from Piggly Wiggly. Not to include "retailer", "free" or tobacco coupons or exceed the value of the item. Limit 1 coupon per manufacturer's coupon, limit 4 Double Coupons per customer. Coupons good at Piggly Wiggly Feb. 18 to Feb. 24, 1982.

**COUPON**

**\$ DOUBLE \$**

Piggly Wiggly

Present this coupon along with any one manufacturer's "cents-off" coupon and get double the savings from Piggly Wiggly. Not to include "retailer", "free" or tobacco coupons or exceed the value of the item. Limit 1 coupon per manufacturer's coupon, limit 4 Double Coupons per customer. Coupons good at Piggly Wiggly Feb. 18 to Feb. 24, 1982.

**COUPON**



### Floydada School Menu

**February 22-26**  
**Monday:**  
 Breakfast — Juice, toast, bacon, jelly, milk  
 Lunch — Fish with catsup, potato salad, seven minute cabbage, chocolate pudding with vanilla wafers, hot rolls, milk  
**Tuesday:**  
 Breakfast — Juice, toast, oats, butter, milk  
 Lunch — Wieners stuffed with cheese, pinto beans, pickle spear, fruit, cornbread, milk  
**Wednesday:**  
 Breakfast — Juice, dried cereal, milk  
 Lunch — Italian spaghetti, tossed salad, buttered peas, sugar cookie, French bread, milk  
**Thursday:**  
 Breakfast — Juice, pancakes, syrup, milk  
 Lunch — Managers choice  
**Friday:**  
 Breakfast — Juice, sweet rolls, milk  
 Lunch — Char-burger on bun, lettuce, dill pickle, French fries, peach cobbler, milk



FLOYDADA HIGH SCHOOL band members [on stage] look on as the Stage Band [on floor] performs for the student body at high school during an assembly held Tuesday morning.

### Food Service Management companies must register

Food Service Management companies must be registered with the Texas Department of Human Resources to be eligible to bid for contracts for the Summer Food Services Program.

All applications for registration must be received by March 15, 1982.

Food Service Management compan-

ies which were registered in the prior two years will be mailed applications. Other interested organizations can receive applications by contacting: F. Wayne Kuykendall, Administrator, Food Services Division, 520-A, Texas Department of Human Resources, P.O. box 2960, Austin, Texas 78769 or call: (512) 835-0440, ext. 2243.

### Silverton Young Farmers discuss rodeo plans

Silverton Young Farmers met on Thursday February 11 at the high school vocational agriculture department. Guest speaker was Charlie Thompson representing C Bar T rodeo stock of Lubbock.

Members voted to have C Bar T to be the rodeo stock producer for the Briscoe County Birthday Celebration to be held in August.

The Silverton Young Farmers Award banquet to be held on Saturday February 20 was discussed. Awards will be presented to Outstanding Young Far-

mer, Outstanding Associate Member, Outstanding Agribusinessman, Outstanding FFA member and the gold star 4-H members.

Those attending were Donnie Perkins, Fred Hill, Fred Minyard, Claude Jarrett, Hana Baird, Calvin Shelton, Zane Reagan, Dave Patrick, Deannie Henderson, Clinton Dickerson, Fred Brannon, Rick Hester, Abel Asebedo, Brad Ziegler, Jerry Baird, Tobe Riddell, George Martin, Bill Reid, Wayne Stephens and the guest speaker Charlie Thompson.

### Lockney School Menu

**February 22-26**  
**Monday:**  
 Breakfast — Sausage, toast, orange juice, milk  
 Lunch — BBQ on bun, June pea salad, French fried potatoes, prunes, milk  
**Tuesday:**  
 Breakfast — Peanut butter on bread, applesauce, milk  
 Lunch — Super dogs, mustard, milk, buttered corn, biscuit, sweet potatoes, plum cobbler  
**Wednesday:**  
 Breakfast — Cereal, toast, milk, peaches  
 Lunch — Enchiladas, pinto beans, tossed salad, sopapillas, milk, honey  
**Thursday:**  
 Breakfast — Cinnamon roll, orange juice, milk  
 Lunch — Roast and gravy, potato salad, spinach, milk, pineapple, brownie, hot rolls.  
**Friday:**  
 Breakfast — Scrambled eggs, biscuit, milk, pears  
 Lunch — Fried chicken, green beans, creamed potatoes, peach cobbler, hot rolls, milk.

### Sausage Festival to be held

Slaton's 12th Annual St. Joseph's German Sausage Festival will be held February 21, starting at 11:00 a.m. The dinner will consist of 200 year old recipe of homemade German sausage, sauerkraut, mashed potatoes, green beans, cranberry sauce, homemade bread and cake served with iced tea and coffee.

### Law firm announces new partner

Jones, Trout, Flygare, Moody & Brown, a Lubbock law firm, takes pleasure in announcing that David Anthony (Tony) Ellison has become a partner in the firm.

Ellison is a December, 1978, graduate of the Texas Tech University School of Law.

Tony's wife, Jane Whitehead Ellison,

is the daughter of Mr. and Mrs. J.H. Whitehead of Ralls. Tony and Jane have one child, Lindsey.

Mr. and Mrs. Elton Ellison, also of Ralls, are the parents of the new partner.

Ellison is a graduate of Ralls High School and Texas Tech University.

**Our Future Tomorrow depends on our Youth Today!**

Attend the Livestock Show

**MIZE PHARMACY & TV**

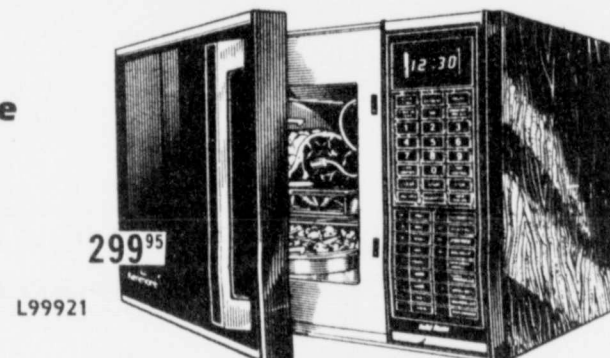
652-2435 LOCKNEY 102 S. Main

## Sears TOTAL COOKING SALE

No Matter What Cooking Appliance You Need... Buy Now And Save On Values Like These

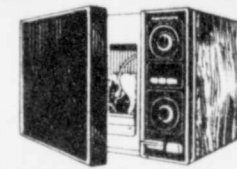
**Cut \$110**  
Sears best microwave

Was 609<sup>95</sup> **499<sup>95</sup>**  
 ★ 80 preprogrammable recipes  
 ★ 3-stage memory  
 ★ Temperature sensing probe



**Cut \$70**  
Kenmore microwave oven

Was 369<sup>95</sup> **299<sup>95</sup>**  
 ★ Temperature sensing probe  
 ★ 3 power levels



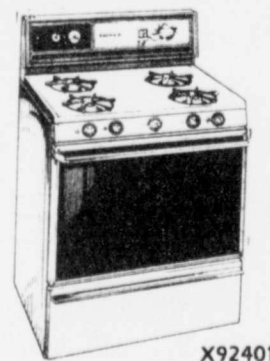
Microwaves as low as \$199



**Cut \$100**  
Kenmore gas grill

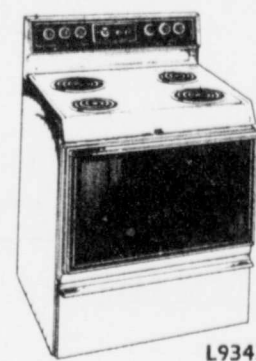
Was 199<sup>95</sup> **Outfit 99<sup>95</sup>**  
 ★ Stainless steel "H" shaped burner  
 ★ Twin controls  
 ★ Matchless ignition

GAS GRILLS AS LOW AS 99.95



**Cut \$100**  
Kenmore 30-in. gas range

Was 541<sup>95</sup> **441<sup>95</sup>**  
 ★ Black-glass oven door  
 ★ Pilot free ignition  
 ★ Manual controls



**Cut \$100**  
Kenmore 30-in. electric range

Was 511<sup>95</sup> **411<sup>95</sup>**  
 ★ Black-glass oven door  
 ★ Continuous cleaning oven  
 ★ Fully automatic oven



**Cut \$100**  
Kenmore drop-in electric range

Was 499<sup>95</sup> **399<sup>95</sup>**  
 ★ Continuous cleaning oven  
 ★ Chrome-plated cooktop  
 ★ Converti-color oven door

These are just some of the values. Come in for a complete selection. Free gift with the purchase of any range, microwave or gas grill.

FREE Microwave Demonstration

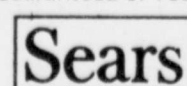
February 25, 1982 at 4:00 p.m.

For more details or special appointments just call or come by.

Satisfaction Guaranteed or Your Money Back



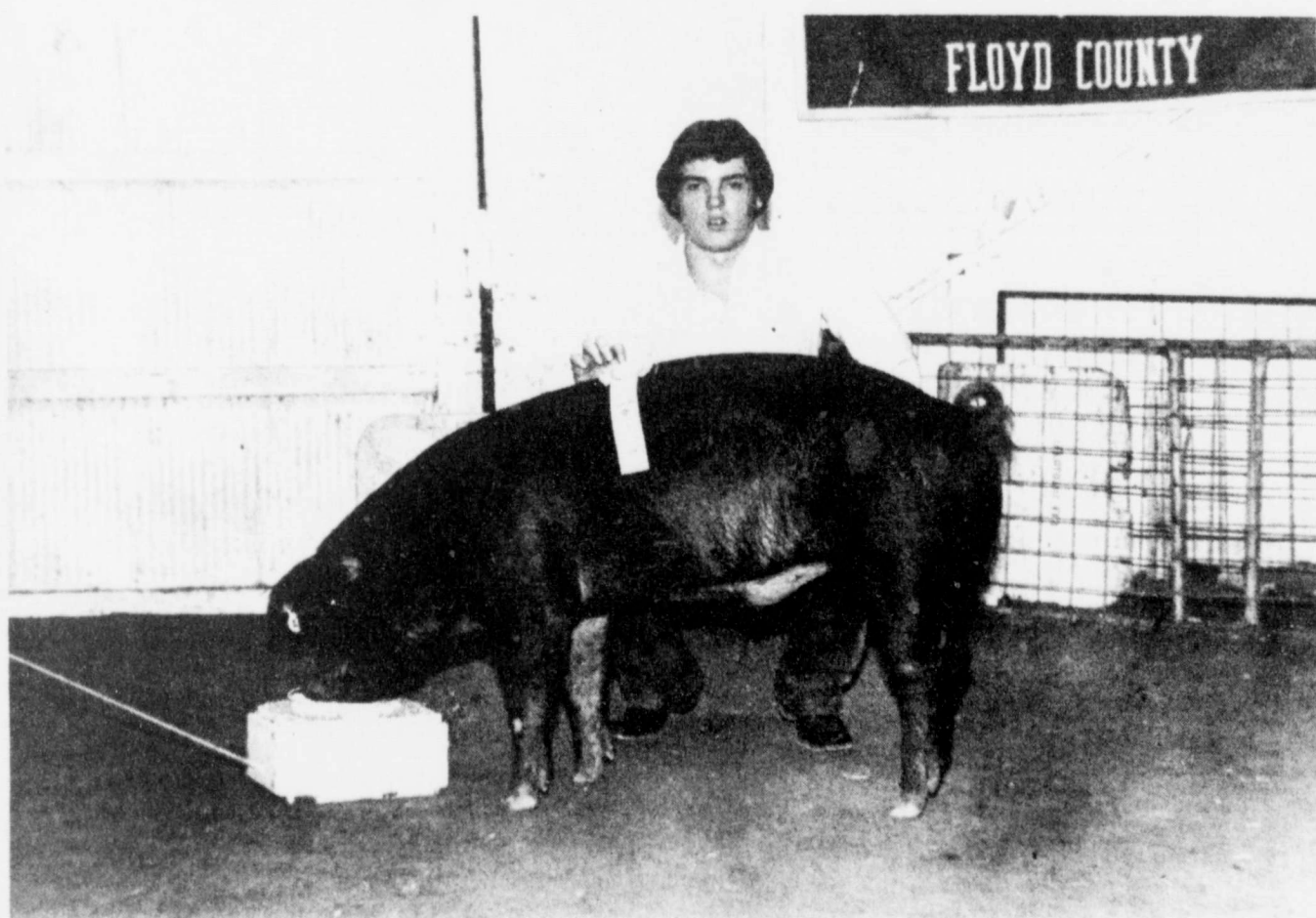
Most merchandise available for pick-up within a few days



100 S. Main  
Floydada, Tx

SEARS, ROEBUCK AND CO.

We encourage everyone To Attend the Local & County Stock Shows and Sale



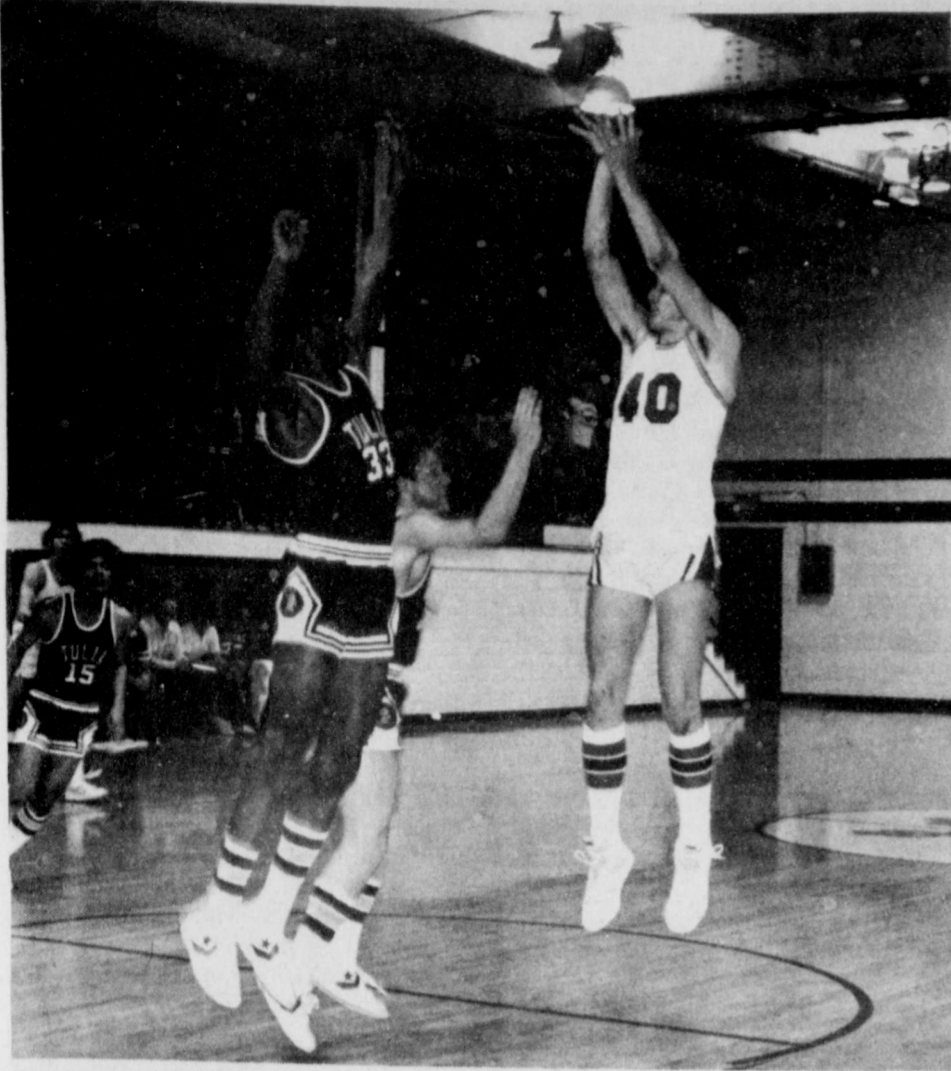
Our future years depend on the encouragement of our FFA & 4-H Youth TODAY!

**PAY-N-SAVE**

210 N. Main

652-2293





LOCKNEY HELD THE LEAD as much as five points on two occasions over the first four minutes of the final quarter, but Tulia won out.

# Horns lose 66-68 to Tulia Hornets in close finish

Playing perhaps their finest game of the "loop" season, the Horns gave the Tulia Hornets the scare of their life. Leading at the close of each quarter, the Horns lead 62-57 with 3:48 left on the clock. With 25 seconds to go, the score was tied 66-66. The Hornets took a last second shot to end the game 66-68.

Lockney hit 51 per cent of its shots but was plagued with 19 turnovers. McCormick led in scoring with 18 points followed by Kidd with 15, Rodriguez with 14, and Dipprey with 11.

Scores by quarters				
Lockney	20	31	50	66
Tulia	16	30	48	68

## Abernathy downs Shorthorns

The 8th grade Ladyhorns closed the season with defeat from the Idalou Wildcats 13-23, and the Shorthorns fell 28-38. Jerry Mathis and Melvin Shivers led scoring with 8 and 7 points respectively.

Abernathy downed the Shorthorns by a score of 40-48 with Johnny Torres adding 14 points and Melvin Shivers hit for 12 points.

The girls lost to the Antelopes by a score of 12-27. Shandra Bybee hit the boards for 10 points.

## Ladyhorns sting Hornettes

The Lockney Ladyhorns blew away the Tulia Hornettes at home last Friday night winning 69-52.

The girls led throughout the entire game, but did not pull away from Tulia until the last quarter.

Leading scorers for Lockney were Connie Coffman—20, Karen Mathis, Karyn Foster, and Patricia Torrez, all hit for 10 points.

## Boys win 60-56 in overtime

The Longhorns and the Whirlwinds played to a 56-56 tie in regulation play throwing them into an overtime situation last Tuesday night. Playing rough defense throughout the 3-minute overtime, the Horns shut out Floydada and hit for 4 points to win the game, 60-56. Top scorers were McCormick—19, Rodriguez—18, and Kidd—15.

## 7th grade winds up season with Idalou

**7th grade winds up season**  
The Lockney Junior High 7th grade teams ended their season by battling the Idalou Wildcats Monday night. The girls were upset by a score of 7-23 and the boys fell by a margin of 15-28.

Last week the two teams faced the Abernathy Antelopes. The girls were defeated 12-23. The Shorthorns lost the contest by a close score of 28-29. Dickie Hernandez led the scoring drive with 17 points.

## Whirlettes bite the dust Tuesday

The Ladyhorns defeated the Floydada Whirlettes in District 3A competition last Tuesday night 64-60.

The Whirlettes had the lead as the buzzer sounded at the end of the third quarter but a foul was called on the Whirlettes which gave Lockney an opportunity to tie the game, and did at 50 to end the third quarter.

The Whirlettes regained the lead at the beginning of the final quarter, 56-51, but the Lady Longhorns battled back to take the lead 56-57 with 2:33 remaining. Lockney was able to keep the lead only by hitting four of five free throws in the final minute of plays Wanda Rendon managed to sink a jump

Lockney was victorious 64-60 over the Whirlettes last Tuesday at Graves Gym and were edged by Idalou 45-40.

The Whirlettes started slowly and fell as much as 10 points behind midway through the first half. The Whirlettes managed to pull themselves from a 21-13 point deficit to within three points, 35-32 at the half.

Floydada took their first lead of the contest at 42-41 with 3:04 left before the end of third quarter. The Whirlettes extended the lead to 44-41 but the Lady Longhorns came back to tie it up at 44, shot as the buzzer went off but it was not enough as the Lady Longhorns went on to win the game 64-60.

Debra Alfaro lead the scoring with 18 points while Terry Pleasant had 11 and

Kellie Ferguson finished with 10 points. Also scoring were Sandra Robinson with 9 points followed by Rhonda Ratliff who added 5 points.

Robinson lead in the rebound department with 13 rebounds followed by Pleasant who ended the contest with 11 rebounds.

The game was close all the way. Coach Haynes remarked that this game was not one of the Ladyhorns better games.

Top scorers were Connie Coffman—22, Shawnda Brock—21, and Karyn Foster—11.

Score by quarters				
Lockney	21	35	50	64
Floydada	13	32	50	60

## Wayland offers BB camp

Registration for Wayland Baptist University's 1982 Flying Queens Summer Basketball Camp is now open, according to Camp Director Cathy Wilson.

Three week-long camps are scheduled — June 6-12, June 13-19, and June 20-26 — with each beginning Sunday afternoon and running through Saturday. Girls between the fifth grade through high school are eligible to participate. However, University Interscholastic League rules permit only those high school age girls who do not participate in varsity athletics to take part in camps.

Special camp features include individual attention by full-time basketball coaches with the assistance of members of the Flying Queens' team; all-star games followed by camp demonstrations on Saturday; awards and trophies for outstanding performance, desire and attitude; a camp talent show; entertainment; and a Sunday evening camp devotional.

In addition to Wilson, head coach of the Flying Queens, the 1982 camp staff will also include Sally Miller, assistant coach of the Queens and dormitory supervisor for the camp; staff director Stuart Beckwith, student assistant coach of the Queens; several outstanding area high school coaches; six members of the Flying Queens team; and high school recruits.

Cost for each session is \$125 per camper and covers room, meals, insurance, tuition, entertainment and a personalized camp T-shirt. A \$50 deposit is required at the time reservations are made.

Because enrollment is limited to 135 campers each week, reservations will be accepted as they are received. Applicants are urged to make reservations early to insure placement in the session of their choice.

Last year's camps were filled by May 1.

Reservations inquiries should be made to Wilson at Wayland Baptist University, 1900 W. 7th, Plainview, Texas 79072, or by calling 296-5521.



### Whatever happened to 2¢ electricity?

It joined the 5¢ ice cream cone, 20¢ gasoline, and the 6% home mortgage, reluctant victims of inflation, fuel shortages and higher standard of living.

Still the price of electricity has increased at a far more moderate rate than most goods and services. In fact, if the enormous increase in generating fuel cost is discounted, the price of power is about what it was in the fifties.

The cooperative cannot control fuel costs nor wholesale power rates. But in the areas they do have control, prices have stayed under control.

Lighthouse Electric Coop Inc.



LOCKNEY ALLOWED 19 turnovers which may have been their downfall, while the Hornets had only 8 turnovers.

Try our Delicious

## BAR-B-Q

It's Real **HICKORY** Smoked!

TENDER AND JUICY  
BY Smokaroma

Every Friday, Saturday & Sunday

## My-T Burger

983-2558      207 South 2nd      Floydada

PRICES EFFECTIVE FEB. 18-20, 1982  
WHILE SUPPLIES LAST

COOKED FOOD SPECIAL  
BAR B QUE SANDWICHES  
**99¢**

SUNSHINE KRISPY CRACKERS 1 LB. BOX **89¢**

Shurfine 5 lb bag SUGAR **89¢**

Folgers All Grinds 1 lb can COFFEE **\$1.89**

MORTON FAMILY PAK GLAZED DONUTS 14 OZ. PKG. **\$1.19**

FRESH POPPED, BUTTERED  
ALLSUP'S POPCORN  
**29¢** LARGE BAG

ASSORTED FLAVORS  
ALLSUP'S ICE CREAM  
**\$1.49** 1/2 GAL. RD. CTN.

If it's Borden, it's got to be good

1857 1982

BORDEN'S HI-PRO MILK 1/2 GAL. CTN. **\$1.09**

BORDEN'S 6 CT. PKG. POPSICLES **89¢**

BORDEN'S 6 CT. PKG. FUDGESICLES **89¢**

LOCKNEY

**ALLSUP'S**  
CONVENIENCE STORES  
"THERE'S ONE NEAR YOU"



# OBITUARIES

## JOHNNY ADAMS

Services for Johnny Ray Adams, 41, were at 2 p.m. Tuesday in the First Baptist Church with the Rev. Murle Rogers, pastor, officiating.

Burial was in the Plainview Cemetery under the direction of Moore-Rose Funeral Home.

Adams, a native of Clarendon, died at 10:15 p.m. Sunday in Central Plains Regional Hospital in Plainview after a short illness. He came to Floyd County from Donley County in 1953 and married Patsy Mae Anderson on May 2, 1959, in Floydada. He was a farmer and service station attendant.

Survivors include his wife; three daughters, Tammy Marie, Cindy Lea and Tracy Auell, all of the home; a son, Johnny Wayne of the home; his father, William Virgil Adams of Plainview; two brothers, Gordon Allen of East Bernard and Virgil Lee of Amarillo; two sisters, Mrs. Red (Jane) Archer of Lockney and Ruby Adams of Plainview.

Pallbearers were Gary Waldie, Joe Bennett, Herbert Dudley, Kenneth Broseh, Roy Kinard, R.V. Webster, M.D. Arterburn and E.M. Pyle Jr.

## EMORY CURRY

Services for Emory Curry, 74, of Quitman were held Friday, February 5, at 2 p.m. in Cain Chapel. Pastor of First Baptist Church of Arlington officiated.

Mr. Curry died at 5:30 p.m. February 3 in a Quitman hospital after having suffered a heart attack February 1.

He was born in Denton, August 30, 1907 and was married to Doyce Osborn December 9, 1930 in Floydada. She preceded him in death January 3, 1982.

Survivors include three daughters, June DuPee of Lakeport, California, Geneva Rogers of Throckmorton, and Joyce Khulman of Arlington; two brothers, Clifford Curry of Tuleta and Homer Curry of Olton; two sisters, Alma Smith of Floydada and Billia Monte of Houston and seven grandchildren.

## BRANDON FRANKS

Brandon Dean Franks, 2-day-old son of Mr. and Mrs. Dean Franks of Floydada, died Tuesday in Lubbock.

Graveside services were at 2 p.m. Thursday, February 11 in Memory Gardens Cemetery with Terry Schrader, minister of Pampa Church of Christ, officiating. Arrangements were by Carmichael-Whitely Funeral Directors.

Survivors in addition to parents include a stepsister, Shannon Franks of Pampa; a stepbrother, D.J. Franks of Pampa; grandparents, Mr. and Mrs. J.P. Franks and Mr. and Mrs. Bobby Matlock, all of Pampa and Mrs. Maxa Price of Dumas; great-grandparents, Mrs. Mary McGahan of Elk City, Oklahoma, Mrs. Violet Mooneyham of Madison Park, Oklahoma, Mr. and Mrs. Leslie Matlock of Pampa and Mr. and Mrs. J.R. Stansell of Amarillo.

## DALMER GOWENS

Services for Dalmer Harild Gowens, 48, of Crosbyton were at 11 a.m. Thursday, February 11, at Crosbyton First Baptist Church with the Rev. Bobby Rine and the Rev. Randy Butler, both of the church, officiating.

Burial was in Crosbyton Cemetery under direction of Adams Funeral Home.

Gowens died at 7:30 Monday at Crosbyton Hospital after a lengthy illness.

He was a lifetime resident of Crosby County. He married Kathryn Brinlee September 29, 1951, in Crosbyton. He was a member of the Crosbyton Volunteer Fire Department and the Masonic Lodge. He was a veteran of the armed services. He coached Little League baseball, girl's softball and worked with the Cub Scouts.

He was a Baptist and a member of the Downtown Bible Class.

Survivors include his wife; his mother, Lora of Crosbyton; two sons, Mike and Gary, both of Crosbyton; a daughter, Kittie Hamersley of Crosbyton; two brothers, Donnell of Floydada and Robert of Crosbyton; two sisters, Margie Scoggins of Lubbock and Ella Rogers of Haskell; and five grandchildren.

## ROBERT GUFFEE

Services for Robert Thomas Guffee, 84, of Hale Center were at 2 p.m. Friday, February 12, at First United Methodist Church of Hale Center with the Rev. Jack Webb, pastor, officiating.

Burial was in Plainview Memorial Park under direction of Freeman Funeral Home of Hale Center.

Guffee died at 12:30 p.m. Wednesday in Central Plains Hospital in Plainview after a lengthy illness.

He was a native of Sweetwater, Tennessee, and moved to Bridgeport in 1901 with his family. He married Grace Kaker December 24, 1919, in Bridgeport. The couple moved to the Hale Center area in 1924. She died in 1977. He was a rancher and a Methodist.

Survivors include two brothers, Clarence of Floydada and E.H. "Joe" of Plainview; and several nieces and nephews.

## LLOYD HENDRIX

Services for Lloyd L. Hendrix, 80, of Lubbock were at 2 p.m. Tuesday in First Baptist Church with Dr. D.L. Lowrie, pastor, officiating, assisted by the Rev. John Ballard, assistant pastor of the church, and the Rev. J.T. Bolding, retired Baptist minister.

Burial was in Resthaven Memorial Park under the direction of Sanders Funeral Home.

Hendrix died at 12:15 a.m. Monday in Methodist Hospital after a short illness.

The Parker native was married to Ida May Jones December 23, 1923, in Munday. They moved to Lubbock in 1944.

Hendrix was owner and operator of Hendrix Lumber Co. and also was a building contractor. He was a member of First Baptist Church.

Survivors include his wife; two sons, Lloyd M. of Lubbock and Billy F. of Floydada; a daughter, Joline Taylor of Lubbock; a brother, Frank of Munday; eight grandchildren; and four great-grandchildren.

Grandsons served as pallbearers.

## LOUISA MCROBERTS

Louisa McRoberts, 102, of Amarillo died Sunday, February 14.

Services were at 2 p.m. Monday in the Post Oak Baptist Church at Post Oak with the Rev. Milton Capps, pastor, officiating. Burial was in Post Oak Cemetery by Blackburn-Shaw Memorial Chapel.

Mrs. McRoberts was born in Jackson, Tennessee, on April 25, 1879, the second of nine children. Her father, Abraham Lansden Williams, was a Cumberland Presbyterian minister-schoolteacher.

In 1889, the Williams family moved to Texas by train. The family lived near Weatherford, then moved to Post Oak, a small community in Jack County near Wichita Falls.

Mrs. McRoberts married Samuel Garrett McRoberts on December 23, 1903, and they remained in the Post Oak area for 24 years. The couple had seven children, six of whom survive. McRoberts died in 1927.

After her husband's death, Mrs. McRoberts made a living by quilting and making clothes for other people.

She moved to Floydada to Amarillo in 1948.

Survivors include two sons, S.E. McRoberts of Cisco and G.E. McRoberts of Amarillo; four daughters, Zela King of De Soto, Amy Patton of Snyder, Adele Norman of Denton, and Mary Frances Penhall of Richardson; a sister, Downie Farr of Wichita Falls; 10 grandchildren, 30 great-grandchildren and four great-great-grandchildren.

## JIM E. ROBERTS

Services for Jim E. Roberts, 80, of Bovina were at 2 p.m. Monday in Bovina First Baptist Church with the Rev. J.L. Bass, pastor, officiating.

Burial was in Bovina Cemetery under direction of Parson-Ellis Funeral Home of Friona.

Roberts died at 12:20 a.m. Sunday in Parmer County Community Hospital in Friona after an illness.

Roberts was born in the Indian Territory of Oklahoma. He had lived in Bovina since 1953 and was a retired farmer. He married Rosa Bell Dunn on April 18, 1922, in Frederick, Oklahoma.

Survivors include his wife; four daughters, Ima McCormick of Portales, New Mexico, Ophelia Latimer of Lockney, Alma Clayton of Bovina and Esta Lee Lide of Bovina; a son, C.R. of Amherst; two brothers, Hubert of Corcoran, California, and Fred of Mason; 14 grandchildren; and 27 great-grandchildren.

## EUNICE TAYLOR

Services for Mrs. Eunice Taylor were at 10 a.m. Monday at the First Baptist Church of Quitaque with the Rev. Bill Curry, former pastor now of Andrews and the Rev. Sid Parsley, formerly of Quitaque and now of Hamlin, officiating. Burial was in Resthaven Cemetery under the direction of Quitaque Funeral Home.

Mrs. Taylor, 95, died Friday in Lockney. Mrs. Taylor was born in Ringgold, Louisiana. She married J.A. Taylor in 1905 in Ringgold. He died in 1950. She had been a resident of Briscoe County for the past 71 years. She was a member of First Baptist Church.

Survivors include two daughters, Eula Merrell of Clarendon and Ruth Boswell of Littleton, Colorado; three sons, Dick of Quitaque, Preston of Mount Pleasant and Joe of Mesquite; nine grandchildren; 14 great-grandchildren; and three great-great-grandchildren.

She was a member of the First Baptist Church of Quitaque.

Survivors include two daughters, Eula Merrell of Clarendon and Ruth Boswell of Littleton, Colorado; three sons, Dick of Quitaque, Preston of Mount Pleasant and Joe of Mesquite; nine grandchildren; 14 great-grandchildren; and three great-great-grandchildren.

## BESS BOBO WHITE

Services for Elizabeth (Bess) Bobo White, 85, of Floydada, formerly of

Houston, were held Thursday, February 11, at 10:00 a.m. at the First Christian Church, Floydada. Dr. Floyd C. Bradley of First Baptist Church officiated, assisted by the Rev. Karl Bunjes, pastor First Christian Church.

Mrs. White died at 6:30 p.m. Monday, February 8, at Caprock Hospital after a long illness. Burial was in Floyd County Memorial Park under direction of Moore-Rose Funeral Home.

She was a member of West University Baptist Church of Houston.

Born in Florence on November 13, 1896, Mrs. White graduated at Baylor College for Women (now the University of MHB), Belton, with a degree in piano, and was an assistant piano teacher there before going to New York City to study with Leslie Hodgson. She returned to Fort Worth as teacher and head of the music department of Southwestern Baptist Seminary, 1918-1922. There she married Russell Conwell White, a Baptist minister, April 24, 1920. He died in June, 1980, and is buried in Floydada.

Through their sixty years of marriage, Bess White served as pianist in the churches her husband pastored. She played for numerous evangelistic meetings, and was pianist for the Baptist World Alliance in Atlanta, Georgia.

Survivors include two daughters, Mrs. Thomas Hale of Pasadena, and Mrs. Kinder Farris of Floydada; a brother, Halley F. Bobo of Winston-Salem, North Carolina; seven grandchildren; and eight great-grandchildren.

Pallbearers were John N. Farris, Ed Wester, Lon Davis, Jr., Fred Zimmerman, III, and grandsons, Allen Hale, Thomas Hale, Jr., Thomas K. Farris, Jr., and John C. Farris.

## ERX WILLIAMS

Services for Erx K. Williams, 83, of Petersburg were at 2 p.m. Thursday, February 11, at First United Methodist Church of Petersburg with the Rev. Lee Couch, pastor of First United Church of Vernon, officiating, assisted by the Rev. Jerry Kunkel of First United Methodist Church of Petersburg.

Burial was in Carrs Chapel Cemetery in Petersburg under direction of Lemons Funeral Home of Plainview.

Williams died at 4:05 p.m. Tuesday in Hale Center's Hi-Plains Hospital of injuries he suffered in an automobile accident January 25 in Hale Center.

The Waco native moved to Floyd County in 1904. He married Anna Lee Heard March 14, 1920, in the Harmony

Community, and the couple farmed there after their marriage. They moved to Petersburg in 1945 from Colorado. He was a farmer and a livestock raiser and was a former Oddfellow.

He was a Methodist.

Survivors include his wife; a son, Delbert of Dumas; a daughter, Mrs. Pockets (Billie) Heard of Petersburg; five brothers, Leo of Tow, Buck of Clyde, Paul of Wichita Falls, Elmer of Plainview and Woody of Buchanan Dam; two sisters, Robertha Bagwell of Dimmitt and Thalia Clubb of Austin; three grandchildren; and four great-grandchildren.

## HATTIE D. ZIEGLER

Services for Hattie D. Ziegler, 84, of Silvertown were at 10 a.m. Tuesday in First Baptist Church, Silvertown, with Don Martin and Kenneth Martin, both of Tulia, officiating.

Burial was in Silvertown Cemetery under direction of Silvertown Funeral Home.

She died Sunday morning in Swisher

Memorial Hospital in Tulia after a brief illness.

She was born in Pancake and had lived in Silvertown since 1906. She married J.A. Ziegler November 22, 1936, in Tulia.

Survivors include five daughters, Violet Thomas of Tulia, Clara McCain of Lockney, June Andrews of Reno, Nevada, Fay Pointer of Quitaque, and Jo Vaughan of Tulia; a son, Riley of Silvertown; a sister, Doleta Boyce of Silvertown; 18 grandchildren; and 35 great-grandchildren.

## KATE EDWARDS


Funeral services for Kate Edwards, 81, of Floydada will be at 2:30 p.m. today at the First United Methodist Church. Officiating will be the Rev. Jim Smith, assisted by Dr. Floyd C. Bradley, pastor of the First Baptist Church, Floydada. Burial will follow in the Floydada Cemetery.

She died at 1:00 p.m. Tuesday at the Floydada Nursing Home.

**CLINE MONUMENT CO.**

—400 Joliet Street Phone (806) 296-2953 P.O. Box 1986—  
PLAINVIEW, TEXAS 79072

Companion Memorial Only \$595.00 Set Complete



SAVE Sales Agents Commission In Plainview

**We Have**  
**The New Century Pre-need Memorial Plan**  
**Now You Can Purchase Your Memorial Before Need**

Many families are surprised and burdened at time of need at the high cost of the 47 things they have to do, on the most helpless day of their lives. Your memorial is one decision you must make alone. Also you must pay cash for some or all of these.

**YOU MAY ASK, "WHY MAKE THIS DECISION NOW?"**

- Stops Inflation
- Prevents Emotional Overspending.
- You Can Make The Decision While You Are Still Together And Not Left For One To Do Alone.
- Advantage Of Small Monthly Payments.
- Make This Important Decision Together.

Call or stop by our office in Plainview. One of our Memorial Counselors will be glad to explain the new Century Pre-need Plan to you without obligation.

**CLINE MONUMENT CO.**

# did you know?

Reporting a power outage helps SPS personnel restore service more quickly. During major power interruptions, plant operators receive a signal telling them that a problem exists. Calls from customers help these operators pinpoint the exact location of the outage, allowing service crews to make repairs quickly, with less inconvenience to customers.



Billy Mason, Area Dispatcher, Roswell.

The most energy-efficient portable appliances are those that can be used for more than one thing. For instance, an electric fry pan may be used to fry eggs and meats, make a cake, cook roasts or prepare one-dish meals. When buying portable appliances, look for good warranty coverage and local availability of replacement parts and service. And always read the use and care book provided by the manufacturer BEFORE using the appliance. Baking a cake in an electric skillet is twice as economical as in the oven.

Christye Waters, Home Service Advisor, Lubbock.



It takes nearly one pound of coal to produce one kilowatt-hour of electricity. Southwestern Public Service has long-term coal contracts with mines in Wyoming to provide the large supply of coal needed to generate electricity for its customers. Even though it is transported about 1,000 miles, in 110-car trains, coal is still the least expensive fuel.

Jerry Hermesmeier, Plant Manager, Harrington Station.

Knowing what electricity is worth is worth knowing. For answers to your questions, call or write your SPS manager.



SOUTHWESTERN PUBLIC SERVICE COMPANY

930.1

# Support Our Area Youth & Their Activities



Our future farming depends on it. Attend the Local & County Stock Shows and Sale.

# The Tye Co.

In Lockney

REMEMBER your loved ones with a living memorial to the Caprock Hospital Auxiliary Memorial Fund. Mrs. Ben Whitaker, Treasurer.



## Annual Financial Statement of Floyd County, Texas

Annual Report of Glenna M. Orman  
County Treasurer of Floyd County, Texas, of Receipts and Expenditures  
from February 1, 1981 to February 1, 1982.

First Class---- Jury Fund

Balance February 1, 1981	\$ 1,065.95	
Receipts	18,279.82	
Amount spent during year		\$ 15,261.07
Balance, January 31, 1982		4,084.70
	\$ 19,345.77	\$ 19,345.77

Second Class----Road and Bridge

Balance February 1, 1981	\$ 57,023.67	
Receipts	260,093.66	
Amount spent during year		\$184,952.74
Transferred to other funds		124,822.67
Balance, January 31, 1982		7,341.92
	\$317,117.33	\$317,117.33

Third Class----General Fund

Balance, February 1, 1981	\$ 5,507.56	
Receipts	507,600.77	
Amount spent during year		\$404,622.83
Transferred to other funds		160,000.00
Balance, January 31, 1982		(- 51,514.50)
	\$513,108.33	\$513,108.33

Fourth Class----Officers's Salary

Balance, February 1, 1981	\$(-6,096.77)	
Receipts	146,532.04	
Amount spent during year		\$316,563.14
Transferred from other funds	200,822.67	
Balance, January 31, 1982		24,694.80
	\$341,257.94	\$341,257.94

Fifth Class----Permanent Improvement

Balance, February 1, 1981	\$ 16,215.62	
Receipts	136,997.15	
Amount spent during year		\$140,294.25
Balance, January 31, 1982		12,918.52
	\$153,212.77	\$153,212.77

Sixth Class----Special Road

Balance, February 1, 1981	\$ 15,124.25	
Receipts	533,275.92	
Amount spent during year		\$145,000.00
Transferred to other funds		376,000.00
Balance, January 31, 1982		27,400.17
	\$548,400.00	\$548,400.00

Seventh Class----Precinct #1

Balance, February 1, 1981	\$ 23,662.69	
Receipts	41,659.41	
Transferred from other funds	115,000.00	
Amount spent during year		\$153,447.73
Balance, January 31, 1982		26,874.37
	\$180,322.10	\$180,322.10

Eighth Class----Precinct #4

Balance, February 1, 1981	\$ 7,980.74	
Receipts	10,452.10	
Transferred from other funds	115,000.00	
Amount spent during year		\$127,682.30
Balance, January 31, 1982		5,750.54
	\$133,432.84	\$133,432.84

Ninth Class----Precinct #2

Balance, February 1, 1981	\$ 11,330.52	
Receipts	9,797.50	
Transferred from other funds	115,000.00	
Amount spent during year		\$124,613.24
Balance, January 31, 1982		11,514.78
	\$136,128.02	\$136,128.02

Tenth Class----Precinct #3

Balance, February 1, 1981	\$ 54,702.55	
Receipts	26,729.71	
Transferred from other funds	115,000.00	
Amount spent during year		\$181,057.24
Balance, January 31, 1982		15,375.02
	\$196,432.26	\$196,432.26

Fifteenth Class----Lateral Road

Balance, February 1, 1981	-	
Receipts--State of Texas	\$112,556.03	
Precinct Expenditures		\$ 97,882.01
Balance, January 31, 1982		14,674.02
	\$112,556.03	\$112,556.03

Floyd County Library

Balance, February 1, 1981	\$ 5,365.68	
Receipts	38,256.85	
Amount spent during year		\$ 30,371.17
Balance, January 31, 1982		13,251.36
	\$ 43,622.53	\$ 43,622.53

Floyd County Law Library

Balance, February 1, 1981	\$ 45.07	
Receipts	1,152.00	
Amount spent during year		\$ 980.10
Balance, January 1, 1982		216.97
	\$ 1,197.07	\$ 1,197.07

110th Judicial District Adult Probation

Balance, February 1, 1981	\$ 12,709.71	
Receipts	38,976.49	
Amount spent during year		\$ 42,123.95
Balance, January 31, 1982		9,562.25
	\$ 51,686.20	\$ 51,686.20

Permanent School Fund

Balance, February 1, 1981	\$ .33	
Receipts	7,000.00	
Amount spent during year		\$ 7,000.00
Balance, January 1, 1982		.33
	\$ 7,000.33	\$ 7,000.33

Available School Fund

Balance, February 1, 1981	\$ 100.41	
Receipts	5,651.59	
Amount spent during year		\$ 5,636.02
Balance, January 1, 1982		115.98
	\$ 5,752.00	\$ 5,752.00

Floyd County Revenue Sharing Fund

Balance, February 1, 1981	\$ 37,566.50	
Receipts	129,581.09	
Amount spent during year		\$124,188.49
Balance, January 31, 1982		42,959.10
	\$167,147.59	\$167,147.59

Victims of Crime Fund

Balance, February 1, 1981	\$ 91.00	
Receipts	1,060.00	
Amount spent during year		\$ 978.50
Balance, January 31, 1982		172.50
	\$ 1,151.00	\$ 1,151.00

Library Construction Fund

Balance, February 1, 1981	\$ 833.48	
Receipts	175.00	
Amount spent during year		\$ -0-
Balance, January 31, 1982		1,008.48
	\$ 1,008.48	\$ 1,008.48

110th Judicial District Juvenile Probation

Balance, February 1, 1981	\$ 2,255.74	
Receipts	34,287.42	
Amount spent during year		\$ 34,199.12
Balance, January 31, 1982		2,344.04
	\$ 36,543.16	\$ 36,543.16

\*\*\*\*\*

Statement of Indebtedness of Floyd County, Texas as of January 31, 1982

Bonded Indebtedness: None  
Note Payable Precinct #3 : \$28,377.98

Savings Accounts:: FNB, Floydada, Texas

Permanent School:	\$3,000.00
Floyd County--	
Jury Fund	3,000.00
Road and Bridge	40,000.00
General	60,000.00
Permanent Imp.	25,000.00
Special Road	10,000.00
Tenth Fund Pre #3	12,217.18

FLOYD COUNTY, TEXAS

Certificates of Deposit, First National Bank, Floydada, Texas 79235

Fund	Amount	Date Purchased	Date Matured
Permanent School	\$ 1,383.00	Oct 15, 1979	Oct 15, 1983
Library Construction	2,600.00	Mar 01, 1980	Sept 1, 1982
Permanent School	2,000.00	Aug 04, 1981	Feb 04, 1984
Revenue Sharing	10,000.00	Aug 26, 1981	Feb 24, 1982
Special Road	10,000.00	Aug 26, 1981	Feb 24, 1982
Permanent Improvement	10,000.00	Oct 22, 1981	Apr 22, 1982
Special Road	10,000.00	Oct 22, 1981	Apr 22, 1982
General	10,000.00	Oct 22, 1981	Apr 22, 1982
Revenue Sharing	10,000.00	Oct 22, 1981	Apr 22, 1982
General	10,000.00	Oct 28, 1981	Apr 28, 1982
Special Road	10,000.00	Oct 28, 1981	Apr 28, 1982
Permanent School	5,000.00	Mar 04, 1981	Feb 02, 1093
Permanent School	5,000.00	Feb 26, 1981	Aug 26, 1982
Road and Bridge	20,000.00	Nov 02, 1981	May 03, 1982
General	20,000.00	Nov 02, 1981	May 03, 1982
Special Road	15,000.00	Nov 02, 1981	May 03, 1982
Precinct #1, Lat Road	28,139.00	Nov 10, 1981	May 11, 1982
Precinct #1 Class 7	50,000.00	Nov 10, 1981	May 11, 1982
Road and Bridge	10,000.00	Nov 17, 1981	May 18, 1982
Special Road	10,000.00	Nov 17, 1981	May 18, 1982
General Fund	10,000.00	Nov 18, 1981	May 19, 1982
Special Road	20,000.00	Nov 18, 1981	May 19, 1982
General	20,000.00	Nov 30, 1981	May 31, 1982
Special Road	20,000.00	Nov 30, 1981	May 31, 1982
Road and Bridge	25,000.00	Jan 19, 1982	Jul 20, 1982
General	20,000.00	Jan 25, 1982	Jul 26, 1982
<b>TOTAL</b>	<b>\$364,122.00</b>		

Respectfully Submitted,

*Glenna M. Orman*  
Glenna M. Orman  
Floyd County Treasurer

I, Bobbie Hamilton County Auditor of Floyd County, Texas, do hereby certify that the above and foregoing is a true and correct statement of the financial condition of Floyd County, Texas as of January 31, 1982, to the best of my knowledge and belief, as shown by reports of the County Treasurer.

Witness my hand at office in Floydada, Texas this 16th day of February 1982.

Signed *Bobbie Hamilton*  
County Auditor, Floyd County, Texas



## Caprock Hospital Report

February 8-15

Thomas Sid Brown, Floydada, adm. 12-10, dis. 2-8, Hong.  
 Bess White, Floydada, adm. 12-21, expired 2-8, Jordan.  
 Kate Edwards, Floydada, adm. 1-7, dis. 2-8, Hong.  
 Mamie Margarette Bond, Floydada, adm. 1-18, dis. 2-12, Jordan.  
 Guadalupe Martinez, Floydada, adm. 1-23, continues care, Hong.  
 Robert Quilimaco, Lockney, adm. 1-24, dis. 2-8, Hong.  
 Lillie Pryor, Dougherty, adm. 1-26, continues care, Hong.  
 Lucy Pettit, Floydada, adm. 1-26, continues care, Hong.  
 Charles R. Beedy, Claude, adm. 1-26, dis. 2-9, Acar.  
 Mamie Bradshaw, Floydada, adm. 1-26, dis. 2-8, Hong.  
 Joe Garza, Floydada, adm. 1-27, dis. 2-12, Hong.  
 Lloyd McCray, Floydada, adm. 1-30, dis. 2-10, Jordan.  
 B.A. Robertson, Floydada, adm. 2-1, trans. 2-10, Jordan.  
 Gonzalo Gonzales, Floydada, adm. 2-3, dis. 2-11, Hong.  
 Harvey Lee, Matador, adm. 2-4, continues care, Jordan.  
 Doris McLain, Floydada, adm. 2-5, dis. 2-12, Hong.

Homer Farmer, Floydada, adm. 2-6, trans. 2-8, Jordan.  
 Virginia Cox, Floydada, adm. 2-6, trans. 2-10, Jordan.  
 Cecil Griggs, Floydada, adm. 2-6, continues care, Hong.  
 Woodrow Wilson, Floydada, adm. 2-7, continues care, Hong.  
 Elda Martinez, Floydada, adm. 2-7, dis. 2-12, Hong.  
 Jean Miller, Floydada, adm. 2-8, dis. 2-11, Hong.  
 Juanita Salazar, Ralls, adm. 2-8, continues care, Hong.  
 Frances McClure, Floydada, adm. 2-9, continues care, Hong.  
 Maricela Tamayo, Floydada, adm. 2-9, dis. 2-10, Acar.  
 Leon Walker, Roaring Springs, adm. 2-9, dis. 2-11, Hong.  
 Ethel Burnham, Floydada, adm. 2-10, continues care, Hong.  
 Essie Mullins, Floydada, adm. 2-10, continues care, Hong.  
 David Latta, Floydada, adm. 2-11, dis. 2-12, Hong.  
 Roy Jackson, Floydada, adm. 2-12, continues care, Hong.  
 Fidela Nuncio, Lockney, adm. 2-13, continues care, Hong.  
 Ralph Lemons, Floydada, adm. 2-14, continues care, Hong.

## Lockney Hospital Notes

February 8-15

Ethel Carroll, Lockney, adm. 1-20, continues care  
 Grace Calson, Lockney, adm. 2-1, dis. 2-13  
 Christina Leal, Quitaque, adm. 2-2, dis. 2-10  
 Natalia Cruz, Lockney, adm. 2-6, baby boy Juan born 2-6, dis. 2-9  
 Charlotte Carthel, Lockney, adm. 2-6, dis. 2-10  
 Treena Aston, Lockney, adm. 2-6, dis. 2-9  
 Clay Muncy, Lockney, adm. 2-7, dis. 2-15  
 Mary Raines, Lockney, adm. 2-7, dis. 2-10  
 John L. West, Silverton, adm. 2-8, dis. 2-13  
 Ivan Thompson, Lockney, adm. 2-8, continues care  
 Harrell Dollar, Lockney, adm. 2-11, continues care  
 Lois Martin, Lockney, adm. 2-11, continues care  
 Bernice Johnson, Roaring Springs, adm. 2-12, continues care  
 Gwen Cogdell, Floydada, adm. 2-12, continues care  
 Sallie Carpenter, Lockney, adm. 2-13, continues care  
 Tammy Sheppard, Plainview, adm.

2-10, baby boy Phillip, born 2-11, dis. 2-13  
 Brenda Kay Shackerford, Lockney, adm. 2-13, baby girl Melissa Kay born 2-13, dis. 2-15  
 Amelia Guerrero, Lockney, adm. 2-14, continues care  
 Belva Gibson, Lockney, adm. 2-15, continues care  
 Dolores Gonzales, Lockney, adm. 2-15, continues care  
 Ollie C. Meek, Floydada, adm. 2-15, continues care  
 Beatricia Collis, Lockney, adm. 2-15, continues care

## Nichols listed in critical condition following wreck

Evelyn Nichols, of Lubbock, remained in critical condition Wednesday morning at Methodist Hospital in Lubbock.  
 She and her husband, Earl, were injured in a car wreck in Lubbock Thursday, February 11.

## Veterans urged to use educational benefits

A recently published study of GI Bill usage over a twelve-year period indicates that more Vietnam-era veterans in Texas and elsewhere used their education entitlements than has been previously reported, according to the Waco VA Regional Office Director.

The study shows the percentage of veterans trained has increased over time from 60 percent among peacetime post-Korean conflict veterans to 72 percent among veterans who served during the Vietnam-era only.

The study also debunks the "Vietnam walkaway phenomenon" — that veterans who began training after release from active duty discontinued their training a short time later. The study indicates that more peacetime veterans left training than did Vietnam-era veterans.

Further, it reveals, three-quarters of the veterans who trained after discharge used some form of VA educational assistance, and an average of 60 percent completed training or reached an intermediate goal.

The Congressionally mandated study, "The Utilization of Education Entitlements by Veterans of the Post-Korean Conflict and Vietnam Era," was prepared by Research Applications, Inc., of Rockville, Maryland.

The independent study used records from more than eight million veterans from June 1966, through September 1978, to determine the extent to which eligible veterans used their GI Bill entitlements and how many veterans had successfully completed their programs of education or attained their educational or vocational objectives. Also, more than 11,000 personal interviews from VA's 1979 National Survey of Veterans were used.

Other highlights from the 399-page study:

—California had the highest number of veterans who trained, 916,000. That's 14 percent of the national total. Alaska had the lowest number, 0.2 percent or 9,927 veterans.

—More than 72 percent of all veterans interviewed stated they were satisfied with the information they had received about VA benefits before entering education programs. The main reason cited by veterans for using VA educational benefits was to get or qualify for a better job.

—Nearly 80 percent of the veterans interviewed stated they were satisfied with the amount of financial assistance received and 81 percent said they received their GI Bill checks in a timely fashion. Almost 90 percent said their

checks were accurate.

—More than 70 percent judged the government to be effective in covering their education expenses.

Since the inception of the original World War II GI Bill in 1944, nearly 18 million men and women have used one of the three GI Bills at an expense of about \$51 billion. The post-Korean GI

Bill permits a veteran to use education benefits within 10 years following discharge from service, or by December 31, 1989, whichever is earlier.

A new program, which requires financial participation by service personnel, is available for those who entered the military after December 31, 1976.



## More Classified

### Statement Of Intent To Change Rates

General Telephone Company of the Southwest, in accordance with the Rules of the Public Utility Commission of Texas, hereby gives notice of the Company's intent to implement a new schedule of rates in Texas effective March 5, 1982.

The proposed changes in rates will affect all customer classes and are designed to increase the Company's intrastate revenue by 24 percent.

A complete set of revised rate schedules has been filed with the Public Utility Commission at Austin, Texas, and is available for public inspection in each of the Company's Business Offices in the State of Texas. A summary of the Company's rate filing has also been sent to the Mayor's Office of each affected Municipality.



General Telephone

### EARN \$365.00 PER WEEK, PART TIME

We are a National Company specializing in Hot Food Vending equipment featuring National brand name foods such as HORMEL, Campbells and the like. Your machines will be located by professional locators in factories, schools, hospitals, industrial complexes and similar high traffic locations. Your machines have a one year factory warranty plus a location guarantee and company expansion program.

With a three (3) machine minimum purchase for only \$3,585.00 with just 16.5 sales per day, your route will earn \$6,419.52 gross per year, part time. If you have \$3,585.00 CASH available NOW and can start immediately, have a serviceable auto and can operate from your home, CALL NOW TOLL FREE — This offer expires February 28, 1982.

1-800-535-2115

### Consignment Auction

We are now

accepting consignments for our first

sale to be held Saturday, March

6th on the slab next to Lockney

Meat Company at U.S. 70 and F.M.

378 south. Let us turn your junk,

trinkets and trash to cash. For more

information call Sam Fortenberry

at Lockney Meat Co. 652-3305

Sam Fortenberry, Auctioneer

Bonded & Licensed

2xs-023-0937

## Angelo State Univ. is accepting applications

Applications from high school seniors are being accepted by Angelo State University for more than 300 Carr Academic Scholarships which may amount from \$2,400 to \$12,000 during a four-year course of under-graduate study for students with financial need who have outstanding academic ability and leadership qualities.

The applications for 1982-83 scholarships may be requested by writing to the Carr Academic Scholarship Program, Office of the President, Angelo State University, Box 11007-C, ASU Station, San Angelo, Texas 76909, or by

telephoning (915) 942-2103.

Students are encouraged to submit their applications as soon as possible although applications from outstanding students may be considered up until July 1, 1982 to the extent funds are still available.

Supported by a multi-million dollar trust established in 1978 by Mr. Robert G. Carr of San Angelo, the scholarships will range in value from \$600-\$3,000 per year for a maximum of four years for undergraduates, two years for graduate students.

In selecting recipients for Carr Academic Scholarships, priority will be given to students of high academic ability with financial need who have demonstrated special qualities warranting honor, respect, and esteem. Carr Academic Scholarships are awarded without regard to race, color, religion, age, sex, or national origin.

Scholarships may be renewed annually. In order to be eligible for renewal, a Carr Academic Scholarship recipient must maintain a minimum of a "B" average (3.0 GPA) on all course work attempted while enrolled as a full-time student and must maintain an exemplary personal record which demonstrates that he/she is worthy and deserving of renewal of the scholarship.

SAVE 10¢

Per Gallon On Gasoline and Diesel

USE OUR KEY LOCK

For Information Contact:

Douglass Oil Co.

Box 276

Plainview, Texas

293-1579

## Children SFSP to be available this summer

The Texas Department of Human Resources announces the availability of the Summer Food Services Program for Children to eligible organizations during the upcoming summer.

The primary purpose of the Summer Food Services Program is to provide food service to children from needy areas during periods when area schools are closed for vacation.

Service institutions eligible to sponsor the Summer Food Service Program include: public or nonprofit private

school food authorities; public or nonprofit private residential camps; and units of local, municipal or county government.

Organizations interested in sponsoring a Summer Food Program are urged to contact: Gene Montag, Director, Child Nutrition Programs, Texas Department of Human Resources, Food Services Division, 520-A, P.O. Box 2960, Austin, Texas 78769 or call (512) 835-0440, extension, 2241 by March 12, 1982.

We service most all makes and models televisions. We also make service calls to Lockney, Floydada and surrounding area. Specializing in RCA and Zenith service work.

Mize Pharmacy & TV

652-2435 Lockney

Our Youth of Today... Our Nations Leaders Tomorrow...

Come to the Stock Show & Support Our Youth.

PONDEROSA MEATS

807 East Missouri - Floydada

Show Your Support for our Future Farmers, attend the Local & County Stock Shows and Sale.

MARTIN & CO.

Floydada, Texas

GOOD LUCK!

To all the entries in the Local and County Stock Show!

ANDERSON'S DEPARTMENT STORE  
 120 West California Floydada



# SHOP COMPARE

# WANT ADS ARE YOUR BEST BUY!

## Real Estate

FOR SALE: Three bedroom, den, living area. 983-3767. tfc

FOR SALE: Several good two and three bedroom houses. Bond Real Estate. Contact Wilson Bond, 983-2151 or 983-3573. tfc

TWO 3 BEDROOM houses. Assumable loan. Bond Real Estate - 983-2151 - 983-3573. tfn

THREE BEDROOM brick, at 125 J.B. Avenue. Fireplace, screened in patio. The remaining loan can be transferred at 5 1/4 % interest. 983-3184 or call Jack Covington 652-3367.

FOR SALE: Several nice two and three bedroom houses. Loans can be arranged. Contact Sam Hale at Hale Ins. & Real Estate 983-3261. tfc

2 BEDROOM, remodeled house at 129 W. Jeffie. Call 983-2633. tfn

LARGE 3 bedroom brick house, 2 baths, paneled, central heat and air, 2 car garage with storm cellar. Dougherty, Texas. Contact Plainview Savings and Loan. Floydada Branch. 983-3725. tfn

NFW BRICK HOUSE, 3 bedroom, paneled den, fireplace, 2 baths. Lots of storage and other extras. Call 983-2147 for appointment. Tfn

3 BEDROOM BRICK home, 1 1/2 baths, 105 J.B. Avenue. Call 983-3288.

HOUSE FOR SALE: 3 bedroom, playroom, sun room, den with fireplace, 2800 sq. feet. 522 W. Mississippi. Shown by appointment. 983-5244. tfn

NICE 3 BEDROOM: 2 bath home. Modern kitchen, large utility, recently remodeled. Redwood covered patio, basement. Domestic well. 1 mile east of city limits. For information, call Darrell McCandless, 983-2444 or 983-2153. tfn

FOR SALE: 3 bedroom, 2 bath house on Ralls highway. Good terms, 10% interest. Call 983-5000. tfn

3 BEDROOM HOUSE, 2 baths on 5 acres of land. Joins city limits. 983-2175. 2-25p

FOR SALE: Home in the country, 3 bedroom, one bath, with large room upstairs for bedroom or playroom on almost 2 acres of land. 652-2456.

ONE NICE 2 bedroom in S/W Lockney. Carpet, laundry room, large fenced backyard with out building for storage, carpet and drapes. You really have to see this one to appreciate it. Known as Mattie Readhimer Estate, contact Barker Realty. Barry Barker, broker. 652-2642. L2-11c

Nice, warm, three bedroom home, central heat, refrigerator, fenced backyard. 25% down or \$6250.00. We finance balance at 12% — ten year pay out at \$269.00 per month. Put your money in a good home. Barker Ins. Agency. L2-25c

One 2-bedroom house, extra nice and one 3-bedroom house, newly decorated. Both in west Lockney. Call 652-3392 after 5. L2-25c

3 BEDROOM, 2 bath, brick house in Lockney. 675-2540. Brice Allen. Ltf

2 1/2 LOTS IN WEST part of Floydada. Floydada Insurance and Real Estate, 983-3284. 3-11c

## For Sale

1-19" Portable T.V. New picture tube. \$250.00. Call 652-2435.

"WE SELL SLEEP" Direct Mattress Co. New or renovated, for appointment call City Trim Shop, 983-2332, Floydada. tfc

1-19" RCA Portable T.V. \$200.00. Call 652-2435.

FOR PICTURE FRAMES call 983-2636. B and M Gregory. tfn

1-19" RCA Portable T.V. \$150.00. Call 652-2435.

FOR SALE: Wall hung sink, medicine cabinet, wall stove, golf clubs, guitar amplifier. Victor Smith, 983-2048. 2-18c

1-13" RCA Portable T.V. \$150.00. Call 652-2435.

FIREWOOD FOR SALE. 100% mesquite. Farm deliveries made. 652-3810. L2-25p

1-25" RCA console with new picture tube. \$300.00. Call 652-2435.

DREXEL MAHOGANY dining room suite. Table, six chairs, china hutch, 2 extra leaves. Also a Stutz pickup camper cover. Call Doyle 983-3787 day or 983-2329 after 6:00. 2-25p

1-25" RCA color console. \$200.00. Call 652-2435.

FLOYDADA Country Club membership for sale. Call 347-2630, Frank Price. 2-25p

1-25" Motorola console. \$150.00. Call 652-2435.

FIREWOOD \$55.00 per Rick Producers Cooperative Elevator. tfn

**TO BE MOVED:**  
30x60 MACHINE SHED made of pipe & sheet iron \$8,000  
Small House 4 rooms and bath (needs repair) \$1,500.00  
Double Garage of pipe and sheet iron. \$2,500.00 983-2671

Large Fruit Trees \$8.95  
Pecan & Walnut \$14.95  
Large Shade Trees \$17.95  
Emerit's Nursery 652-3116 Lockney Ltfnc

FARM 266 TOTAL ACRES, 226 acres in cultivation, 40 acres in grass, with 2 irrigation wells. Bond Real Estate 983-2151 or 983-3573. tfn

Garage Sale

GARAGE SALE starts Thursday til sold. At duplex at Spruce and Main. Lockney. Bedspreads, clothing, pictures and misc. tfn

INDOOR SALE at 613 South Main. Lockney. 2-25c

## For Rent

Reduce safe & fast with GoBese Tablets or capsules & E-Vap "water pills".  
Thompson Pharmacy

ECONOMICAL STORAGE TRY BARKER'S Jewel Box-Mini Storage and save your time and money. Ph 652-2642.  
Barker Building Main and Locust Lockney, Texas

STORAGE SPACE BOATS, FURNITURE, ANYTHING, ETC. BY THE MONTH OR SIX MONTH 10% DISCOUNT.  
West Texas Mini Storage CALL WILSON BOND 983-3573 OR 983-2151

Card of Thanks  
Gilbert Fawver would like to say thanks to all of you that were so thoughtful to send cards, the phone calls and visits you made to cheer him along. Especially to Brother Bradley for taking time out of his busy schedule to stop by during his recent stay in the hospital. He is now home but is confined to the house so he still enjoys the neighbors visits. Gilbert Fawver  
We would like to gratefully acknowledge the kind sympathy shown us at the time we lost our loved one. Our sincere appreciation to Rev. Jim Smith, Dr. Floyd C. Bradley, the ladies of the First Methodist Church, the pallbearers, the ladies for the beautiful music and the many friends and neighbors for their kindness and thoughtfulness in our time of need.  
J.C. & Martha Griggs Sue & Mel Baker The Griggs family 2-18p

REWARD \$50 reward if person who found my Mother's beautiful gold wedding ring will return it to me, or the Floydada Nursing Home. Her 69th anniversary is February 23rd, and the ring has a special meaning to her that it could have for no other person. Hazel Bradley 402 S. Second 983-2275

Wanted  
HOUSECLEANING to do, \$20.00 to clean a complete house. Call 652-2155. Ltfnc

Wanted  
Someone who would like to share spacious, modern, office and expenses. Please contact Carolyn Redding at the Lockney Beacon. 652-3318.

Want To Buy  
ACREAGE WANTED Anything from pastureland to cotton field, 3 to 10 acres (or more). Couple will consider anything. Call 983-3736 after 5:00 p.m. tff

WANTED TO BUY irrigated or dryland farm in Floyd or surrounding area. Write Box XRO, c/o Hesperian, 111 E. Missouri, Floydada. tfc

Want to buy:  
Turbine irrigation pumps, aluminum pipe, electric motors and diesel engines. A-1 Liquidators & Supply. Abernathy, 298-2880. L3-4c

WILL BUY used furniture. Call 652-2201. 2-25c

Pets  
FOR SALE: 2 fluffy white American Eskimo puppies. Registered. 983-5115. 2-18p

CLASSIFIED ADS CALL 983-3737 BEFORE 3 P.M. ON TUESDAYS  
Water reaches its greatest density at 39.2°F. (4°C). 2-18

## Farm Services

Land Leveling, terraces, bench leveling, and pump pits, all types of dirt work for soil and water conservation. Dewie Parson 983-2646. Fred Parson, 983-2074. tfc

CUSTOM APPLICATION of herbicides. Bill Wisdom. 652-3541. Ltfn

CUSTOM APPLICATION of Herbicides. Ed Warren 983-3037 or Don Warren 983-2995. tfn

2-4-D OR FERTILIZER applied on wheat. Hagie ground rig. Ed Warren 983-3037 or Don Warren 983-2995. tfn

Portable disc/rolling  
Lawson Farm Supply Inc., Floydada 983-3940

Nash Irrigation Supply. Plastic pipelines, aluminum pipe, lake pumps and accessories. 983-5231.

Check with us for LIQUID FERTILIZER ANYDROUS HERBICIDES Rigs available for application  
LONE STAR CHEMICAL INC. Office: 652-2761 Deanie Henderson: 652-3434

LEAK REPAIR No job too small or large!  
Pit Digging. Juarez Backhoe Service 983-3393

Classified Rates  
CLASSIFIED ADVERTISING RATES: 20 CENTS PER WORD FIRST INSERTION; 15 CENTS PER WORD EACH SUBSEQUENT INSERTION. MINIMUM CHARGE \$2.50 FIRST INSERTION, MINIMUM CHARGE \$1.50 SECOND INSERTION.  
CLASSIFIED DISPLAY RATE: \$1.82 PER COLUMN INCH. CARD OF THANKS: \$3.00. 983 3737 652 3318

ONE fourth of the body's bones are in the feet.

## Business Services

Adams Well Service Complete Irrigation Service. All sizes submersible pumps in stock. One day service. 983-5003. tfc

POOLE WELL SERVICE AND RADIATOR SHOP Irrigation and domestic. 407 E. Houston 983-5610 or 983-2285

"Carpet Need Cleaning?" Let me do the work for you. Dry foam, 10 cents sq. foot. Also home and auto upholstery. Call Jack Moore 983-3033, after 5 p.m. tfc

Insulation Installed & Guaranteed Free Estimates 22 Years This Area  
Marr Insulation Lockney 652-3593

INCOME TAX PREPARATION PROFESSIONALLY DONE. REASONABLE RATES. MITCHELL'S TAX SERVICE 983-3692

Business Opportunities  
NOW YOU CAN OWN YOUR OWN SPORTSWEAR & FASHION SHOP! Exciting and profitable opportunity now available in the Floydada area. PRESTIGE FASHION offers you MORE for your investment. Call Mr. Hartley. 1-214-937-9876. 2-18p

OWN YOUR OWN Jean-Sportswear Shop or Jean Program. Offering all Nationally Known Brands such as Jordache, Chic, Lee, Levi, Vanderbilt, Calvin Klein, Wrangler, over 100 other brands. \$8,900.00 to \$16,500.00 includes beginning inventory, airfare for 1 to Fashion Center, training, fixtures, Grand Opening Promotions (Also Infant/Pre-Teen Shop). Call Mr. Loughlin (612) 835-1304. 2-18p

BAKER INSURANCE AGENCY  
• Auto • Fire • Homeowner  
• Business • Mobile Homes  
• Motorcycles • Boats  
• Workmen's Compensation  
• Life • Bonds  
983-3270 NIGHTS SUNDAYS & HOLIDAYS CALL 983-2451 127 W. CALIFORNIA Sam Baker

Public Notice  
Notice is hereby given by the Parks and Wildlife Department that a public hearing will be held at 2 p.m. on March 17, 1982 at the County Courthouse at Floydada for the purpose of gathering information concerning proposed hunting, fishing and trapping regulations for Floyd County. As the result of action by the Texas Legislature, the Texas Parks and Wildlife Commission is responsible for the setting of seasons, bag limits, and means and methods of taking the wildlife resources in Floyd County. All interested persons are urged to attend and comment upon the proposed regulations.

## INSURANCE

AUTO TRUCK MOTORCYCLE MOTOR HOME HOME RENTER'S LIFE HEALTH  
Cates & Dawson Insurance Agency 231 W. California Floydada Tx. 983-5322

FLOYDADA IRON & METAL  
We buy Scrap Iron, Junk Cars, Aluminum Cans, Batteries, and sell new and used steel.  
Location - East Ross Call 983-2305

Script Printing & Office Supply \*Commercial Printing \*Office supplies & Furniture \*Business Machines 108 S. Main Floydada 983-5131 tfc

DAN'S AUTO SERVICE  
DAN TEUTON, Owner Specializing in Automatic Transmission, Motor Tune-Ups, Auto Air Conditioning.  
General Repair We Have A BRAKE LATHE to handle all passenger car brake drums. See us for complete brake service. Phone 652-2462

CUSTOM EXHAUST WORK Bruce Williams  
Specializing in Glass Packs and Turbo Mufflers At  
DANS AUTO SERVICE Lockney 652-2462

NURSES WANTED. Registered and Licensed Vocational Nurses for 3-11 and 11-7 shifts. Six day work week, then two days off and four days off every fifth weekend. Good salary, paid vacation, sick leave, and holidays. Hospital has tax annuity plan for employees that desire it and hospital and life insurance furnished each employee. Contact Flo Barnes, Director of Nurses or Gayle Fortenberry, Administrator at Lockney General Hospital, 320 N. Main, Lockney, Texas 79241, 806-652-3373, about working in this progressive small hospital with a family atmosphere.

Hollis R. Bond Real Estate PHONE 983-2151  
107 S. 5th FLOYDADA

TURNER REAL ESTATE Farms Ranches 983-2635 Floydada, Texas

Diamond Industrial Supply Co., Inc. Phone Days 296-7418 Nights 296-1200 or 296-7828  
1014 Broadway Plainview, Texas U joints Oil Seals O rings Wisconsin Chain Sprockets V belts Sheave SKF BCA Timken Bower Cotton Stripper Brushes & Bats  
"We Appreciate Your Business More"

## Automotive

1971 LTD FORD. Good condition. June Bybee at First National Bank in Lockney or after 5 call 652-2323. tfn

1980 CHEVETTE scooter, air conditioned, 18,800 actual miles, 4-speed, excellent condition. C.E. Tver. 983-2269 (after 4:30 p.m.) 2-25p

3 Economy cars. \$1250 each 1 77 Chrysler, 4 dr. \$1850 1 75 Chev. Pickup. \$2350 78 Bobcat. \$1400  
W.B. Eakin Car Lot 983-3616 Ralls Highway

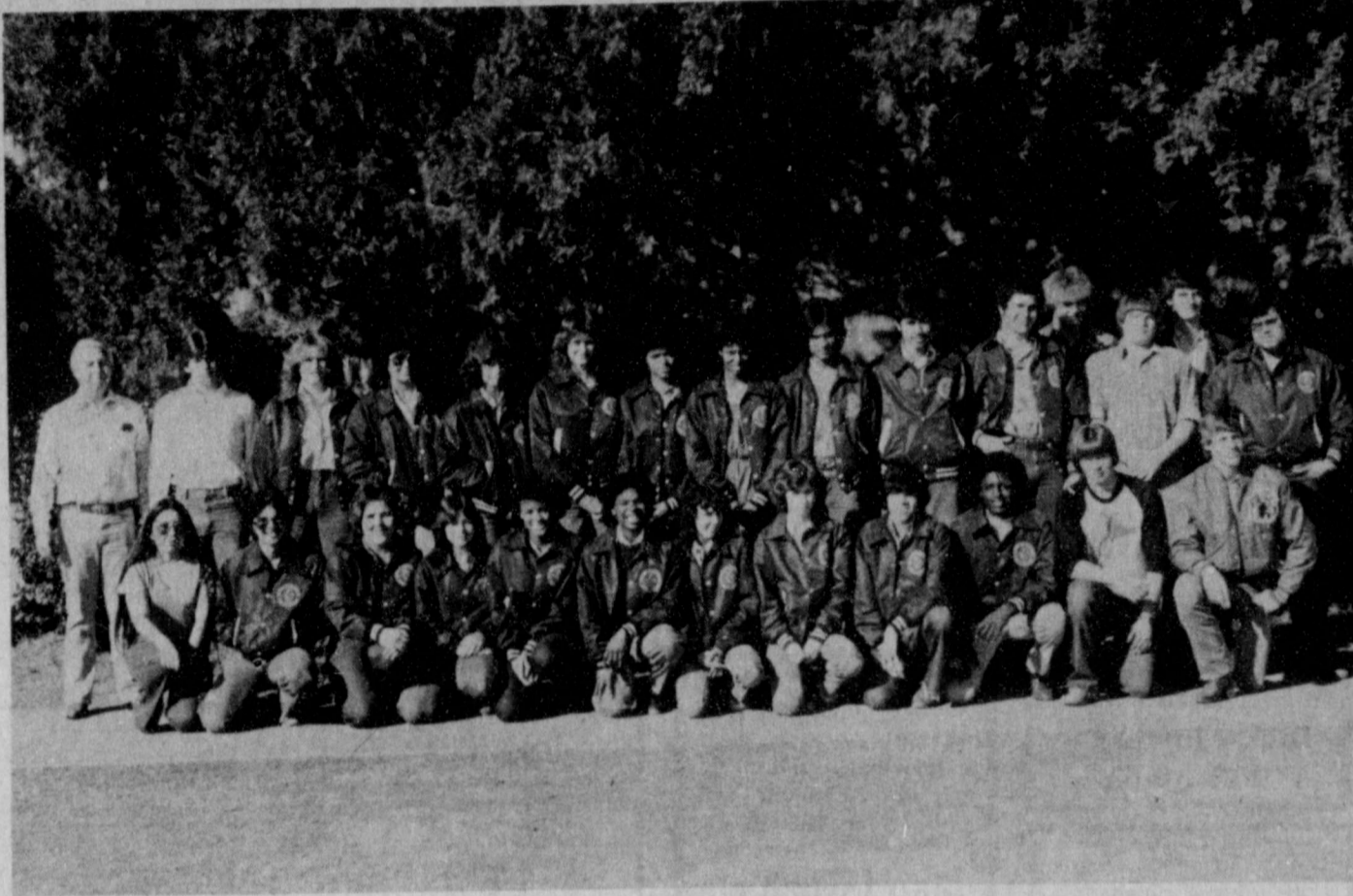
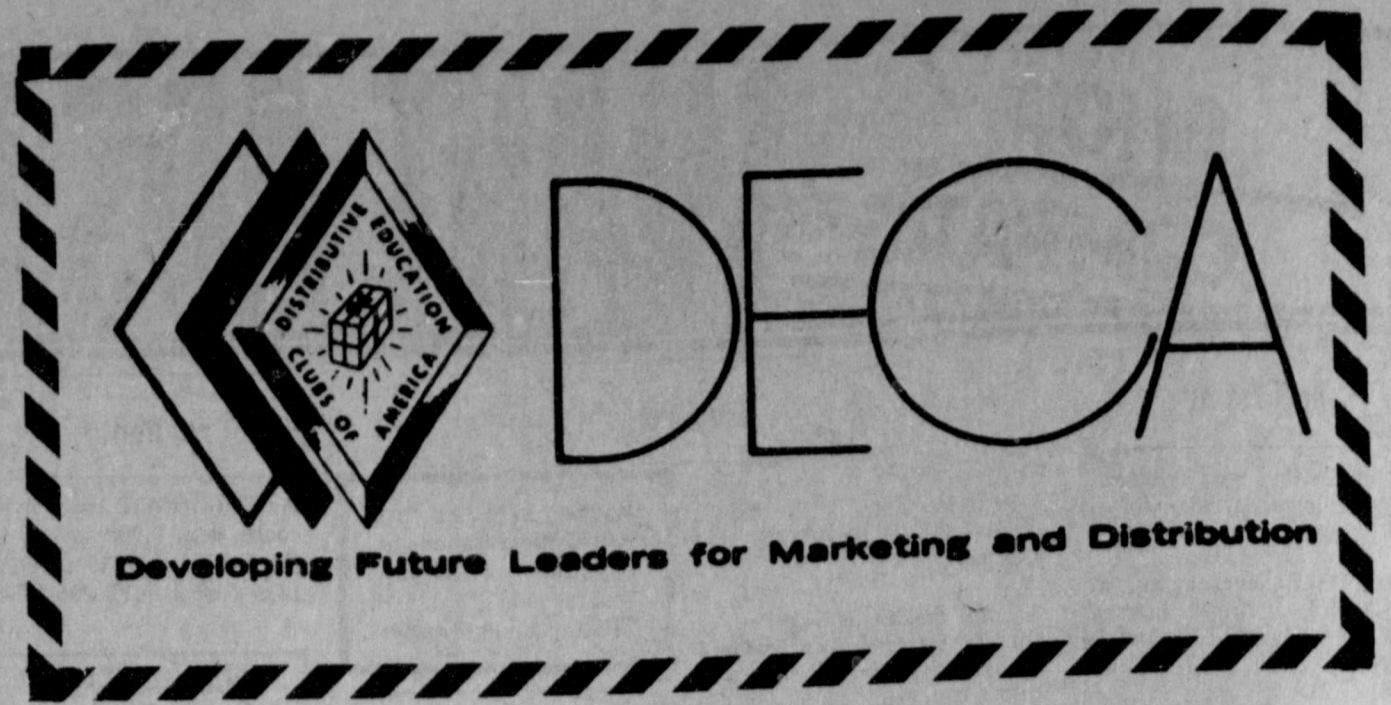
Motorcycles  
FOR SALE: 1976 motorcycle, KX400 - KAW. Call 983-2626 after 6:00 p.m. 2-18p

Auto Parts & Accessories  
F-Z RIDER SHOCKS by Monroe. Buy 3 and the 4th is FREE. Free Installation. Don's Muffler Shop, 123 W. California. TFC

Employment  
L.V.N. 3 to 11. 293-5301. Care Inn, Plainview.



# NATIONAL DECA WEEK



We would like to extend a sincere "THANK YOU" to the many businesses and individuals who have supported us over the years. A special thanks goes to the following merchants who are training our members this year.

Anderson's Dept. Store  
 Arwine Drug  
 Azteca Cafe  
 Brooks Oil Co.  
 Buddy's Food Store  
 Caprock Motor Parts  
 Collins Appliance  
 Consumers Fuel Assn.  
 Cornelius Conoco  
 Dairy Queen  
 Don Hardy Race Cars

Floydada Power & Light  
 Floydada Nursing Home  
 Floydada Water Dept.  
 Kirtley's Market  
 Lovell-Collins Jewelry  
 Mr-T Burger  
 Piggly Wiggly  
 Pizza Gold  
 Ruben's Drive-In Grocery  
 Script Printing  
 Westbrook Trade Center

## Business is Great in FLOYDADA

PRESENTED AS A PUBLIC SERVICE BY THE FLOYDADA DECA SUPPORTERS:

## FREE ENTERPRISE it's working!

Floydada Nursing Home  
 Hale Insurance & Real Estate  
 Don Hardy Race Cars  
 Anderson's Department Store  
 Hi-Plains Farms  
 Thompson Pharmacy  
 Daniel Automotive  
 Script Printing & Office Supply  
 Nash Irrigation Supply  
 Browns Implement Inc.  
 Oden Chevrolet-Olds Inc.  
 Consumers Fuel Assn.  
 My-T Burger  
 Kirtley's Market  
 Travel Center Restuarant  
 Plainview Production Credit Assn.  
 Brooks Oil Co.  
 Hales Dept. Store  
 King's Restaurant  
 City Auto Inc.  
 Cornelius Oil Co.  
 Dairy Queen  
 Qualtiy Body Shop  
 Martin & Company

Leonards Cafe  
 Blanco Offset Printing In. Inc.  
 Floyd County Hesperian  
 Moore-Rose Funeral Home  
 Ponderosa Meat Co.  
 Bobs Shamrock  
 Willson & Son-Builders Mart  
 Bishop-Ramsey Pharmacy  
 Baker Insurance Agency  
 Producers Co-op Elevator  
 Floydada Cooperative Gin  
 Farm Bureau Insurance Co.  
 Tipton Oil Company  
 Floydada Insuarnce & Real Estate  
 Arwine Drug  
 Lighthouse Electric Coop Inc.  
 Southwestern Public Service Co.  
 Caprock Motor Parts  
 Ince Oil Co. No. 15  
 Collins Appliance  
 Ruben's Drive-In Grocery  
 Floydada Power & Light  
 Floydada Seed & Delinting Co. Inc.  
 Gooch Trucking Company

Westbrooks Trade Center  
 Edmiston Plumbing and Heating  
 Allens Dixie Dog  
 Patzer Chiropractic  
 Russell Equipment & Supply Inc.  
 Piggly Wiggly No. 265  
 Reed Ford & Mercury  
 Town & Country  
 First National Bank of Floydada  
 Buddy's Food Store  
 Pizza Gold  
 Dons Muffler Shop  
 Parker Furniture  
 Gene's Cleaners  
 City Trim Shop  
 Kirk & Sons  
 Floydada Livestock Sales  
 Floydada Lions Club  
 Wayne Fuller Trucking  
 Adams Well Service  
 Brown Gin Company  
 Floydada County Implement

## DECA means Business





**KING AND QUEEN**—The residents of Floydada Nursing Home named their Valentine King and Queen at a Valentine party held last week. Elected Queen was Sue Thompson and named King was W.C. Cates. The two were voted for by penny vote donations. The proceeds from this are to benefit the American Heart Association.

## Cogdell donation made to Scott & White

Scott and White Memorial Hospital and Scott, Sherwood and Brindley Foundation announced this week that cash payments, including stocks and gifts-in-kind amounted to \$3,070 million in 1981. Of this total, \$2,793 million were new pledges.

Largest of the 1981 gifts was \$1.2 million from the Ella C. McFadden Charitable Trust of Fort Worth in the form of Southland Royalty Company stock. This money will be used for Scott and White's capital building program. The 1981 McFadden gift brings the total this trust has contributed to Scott and White to \$2.4 million, all of which is in Southland Royalty Company stock.

The second largest gift was \$500,000 from the Houston Endowment Inc. of Houston. This was the latest of a series of donations to the hospital, bringing the total gifts from this Foundation to \$4,250 million. The grant has been used to create and equip the Jesse H. and Mary Gibbs Jones Perinatal Center. The first part of this was dedicated last fall. Mr. and Mrs. Jones founded Houston Endowment in 1937. The Jones Perinatal Center provides care for problem pregnancy women and critically ill infants. The state of Texas has

designated it as the perinatal center for a 21 county region in Central Texas.

The Oxnard Foundation of San Francisco, California contributed \$200,000 in 1981 for use in cancer research. This Foundation has given Scott and White other grants for cancer research.

The fourth largest gift in 1981 was \$103,000 which was given by Mrs. Monette J. Draper of Temple. The gift was made in memory of the late W. Guy Draper who was a Scott and White Memorial Hospital trustee and Governor.

The Martha Ann Cogdell Hospital Trust of Lockney, Texas, contributed \$100,000 which has been added to the capital building fund. Since 1960 Scott and White has received \$675,000 from this fund. The Martha Ann Cogdell Hospital Trust was established by Mr. and Mrs. D.M. Cogdell of Snyder, Texas in memory of their 13-year old

daughter.

Perhaps one of the most unusual large gifts received in 1981 was the gift of 160 acres of farmland near Hereford, Texas. The land, in Deaf Smith County, is from Mr. and Mrs. George B. Miller of Fort Worth. The land has been used for wheat and grain producing and this use will be continued for the present. Mr. and Mrs. Miller have both been patients at Scott and White.

In 1972 the Brown Foundation of Houston gave Scott and White a matching/challenge grant for \$2,275,000. The hospital was given 10 years to match it. At the present time Scott and White has received all but \$82,000 of this money. The hospital must raise \$827,000 before December 31 to receive the total matching grant. The Brown Foundation was set up by George and Herman Brown who founded the Brown and Root Company.

## Senior Citizens Menu

February 22-26

Monday — Swiss steak, blackeyed peas, fried okra, cornbread, canned apricots, milk

Tuesday — Spaghetti with meat sauce and parmesan cheese, buttered green beans, tossed salad with dressing, roll, cherry cobbler, milk

Wednesday — Corned beef brisket, parsley potato with cheese sauce,

buttered mustard greens, cornbread, applesauce, milk

Thursday — Pinto beans with ham, buttered carrots, sliced tomatoes-onions, cornbread, banana van wafer pudding, milk

Friday — Oven fried fish, catsup or tartar sauce, potato tots, oriental mix vegetables, spice prune cake, milk

## Student financial aid takes cuts

Recent slashes in federal tuition assistance outlays should prompt college-bound students to take a closer look at their career objectives, according to an official of Texas' manpower-hungry health care industry.

"Uncle Sam may be tightening his fist around student financial aid dollars," said Anthony B. Owens, CAE, Texas Hospital Association (THA) Vice President. "but tuition assistance programs for Texans pursuing health careers have never been more plentiful — or generous."

Owens said that Texas hospitals and their auxiliaries put close to one-quarter million dollars "up for grabs" in 1981-82 in scholarships, grants, and loans for budding health care professionals.

Hospital-related tuition assistance plans are proliferating as concern mounts over growing shortages of laboratory and technical workers, therapists, and nurse to staff health care facilities.

"Next year, we anticipate a 15% increase statewide from current auxiliary-sponsored aid alone," Owens said. "This is an industry committed to solving its own problems — and part of that commitment is helping finance health careers education."

Texas Health Careers, THA's mas-

sive statewide recruitment arm, recently released a Directory of Financial Aids and Educational Programs to let students know where tuition assistance is available.

"We've compiled a comprehensive sourcebook of financial aid specifically for students interested in health careers," said Owens, director of the recruitment program.

"This new publication tells all you need to know about local, state, and federal funds for health educational programs, including application procedures.

"Economic trends are forcing students to assess their career plans and educational paths more realistically," Owens notes. "Unlike other career fields, the demand for health professionals is not cyclical. Our needs will increase steadily over the next several decades.

"The greater accessibility of financial aid is another incentive for students to consider health careers."

The Texas Health Careers publication will be sent to Texas high school juniors and seniors as well as career-changing adults who are considering employment in the health care industry.

Texas Health Careers is a statewide career education and recruitment program aimed at introducing young

people and adults to the broad spectrum of necessary but often neglected career opportunities in the health field. Components of the program include dissemination of career investigative literature, individual counseling, assembly presentations, and placement assistance for trained health care workers.

Texas Health Careers is an ongoing project of the non-profit Texas Hospital Education and Research Foundation.

## Washer Pitching Tourney scheduled at Post

On Saturday and Sunday, March 20 and 21, the first West Texas Championship Washer Pitching tournament will be held at the Garza County Livestock Barn in Post, Texas.

Sponsored by the OS Ranch Steer Roping & Art Exhibit, the proceeds will be donated to the West Texas Boys Ranch in San Angelo.

The tournament will be limited to the first 64 teams to enter. Entry fee is \$100/team and must be mailed by

affiliated with the Texas Hospital Association, the Austin-based trade organization for over 700 Texas hospitals and related institutions.

Inquiries about the Directory of Financial Aids and Educational Programs may be addressed to Texas Health Careers, P.O. Box 15587, Austin, Texas 78761; or phone toll-free, 1-800-252-9708.

March 6th to the OS Ranch Steer Roping & Art Exhibit, P.O. Box 310, Post, Texas 79356, along with names and addresses of the team members.

This popular event will open each day at 11:00 a.m. for general public admission. For more information, call Bob Palmer at 495-2710 during office hours; or Mike Mitchell at 495-3104 evenings.

**Farmers...  
Let H&R Block  
prepare your income  
tax returns...we could  
save you money.**

Our carefully trained tax preparers are up-to-date on all the tax credits and deductions that apply to farmers. At H&R Block, we'll take all the time necessary to do the job right because we want you to pay the lowest legitimate tax.

**H&R BLOCK®**  
THE INCOME TAX PEOPLE

106 W. Missouri  
983-5233  
Weekdays 9-6 Sat. 9-5

## Help Our Youth

Build a better tomorrow.

Support their activities today!

ATTEND

The Local & County Livestock Shows & Sales



## CONSUMERS FUEL ASSOCIATION

Farmers Supplies Irrigation Supplies  
Gas Oil Greases Tires PROPANE  
Veterinary Supplies  
Floydada, Texas

Phone 983-3394

**PARTS VALUE  
OF THE MONTH**

## Down to Earth Sale! IH TILLAGE PARTS

Now, save up to **25%**

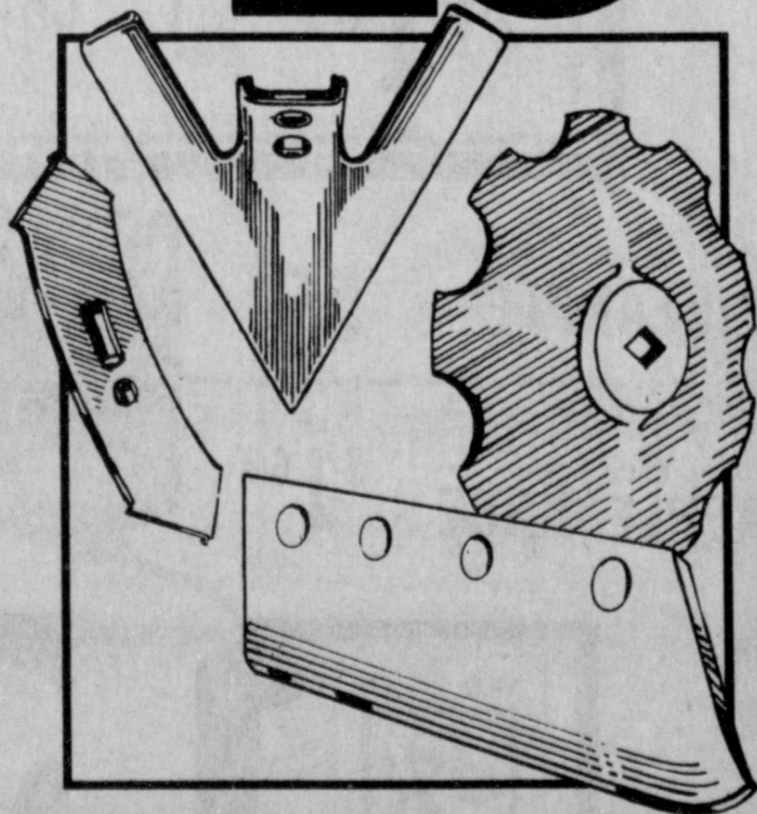
We're thawing out prices with red hot deals on tillage parts. Not just for IH equipment, but for other makes as well — all at up to 25% off regular IH suggested list prices.

**DISK BLADES**—Earth Metal™ blades with two cost-cutting IH exclusives: unequalled toughness that provides up to 20% longer life; crimped center design that gives extra strength and requires 33% less drawbar pull, saving fuel.

**PLOW PARTS**—Take your pick: flat, deep suck, and upset shares; landsides, trash plates, and colter blades. Highest quality, now for a lot less.

**CULTIVATOR PARTS**—Get set to roll this spring with all the cultivator parts you need: sweeps, shovels, points, and spikes. Buy now and get low, low prices!

Come in. Start your harvest profits now with big pre-season savings!



**PARTSMART**

**Brown's Implement Inc.**

Ralls Highway 983-2281



# Today's Lifestyles

by Marilyn Tate  
County Extension Agent



### PROGRAMS FOR SEWING ENTHUSIASTS

Two upcoming programs will be of interest to home sewers. The first program will be on machine embroidery, monogramming, and applique. It will be Monday, February 22, at 4:00 p.m. in the Agriculture Building at Floydada. If there is enough interest in these skills, we will schedule machine embroidery workshops later in the spring.

The second program will be on "Quick Tailoring Techniques for Blazers," and will be Monday, March 1, 1982 at 4:00 p.m. in the Agriculture Building, Floydada. Both of these programs are free, and are open to

everyone regardless of socioeconomic level, race, color, sex, religion or national origin. If you have questions concerning these programs call me at 983-2806.

### ULTRASUEDE

A special two-day ultrasuede workshop will be held March 25 and April 1. The workshop will be from 9:00 a.m. to 4:00 p.m. each day, and registration fee is \$40.00. Class size is limited and pre-registration is required, so call me today if you are interested!

### KEEP HOT WATER AT 'SAVE LEVEL' — SAVE LIVES, ENERGY

Prevent hot-water burns and save

energy, at the same time — in two easy steps. Keep your water heater at a "SAVE LEVEL" — to save lives, energy and money.

Remember most burn victims are older adults, preschoolers and the mentally and physically handicapped. Tap-water scalds cause 40 times more deaths than other types of scalds.

Two easy steps can keep family members out of hot water and result in significant energy — and money — savings.

First, turn down your water heater, whether it's gas or electric.

Gas water heaters are easy to turn down because the temperature control is on the outside of the heater. Most gas water-heater control dials are marked "hot" and "warm." The safest place to set your dial is in the middle of the word "warm." Most gas water heaters are present at the factory between "hot" and "warm" at 140 degrees F. — a temperature that can cause a third-degree burn in only five seconds of contact.

Electric water heaters take a bit more effort for the turn down, but it's worth it. Control dials on electric water heaters are inside the cover plate of the heater. To lower this thermostat, turn off the electric power, remove the cover plate, adjust the thermostat — to 120 degrees F. (or 48 degrees C.), replace the cover plate and turn the power back on.

Second, measure your water's temperature to make sure it's safe. Water temperature can vary within any tank by as much as 15-25 degrees regardless of the setting, so just turning the thermostat down does NOT guarantee safe levels.

The surest way to measure water is with a water thermometer, a candy thermometer or a meat thermometer. Run hot tap water for three to five minutes before letting water run on the thermometer tip. Then let it run on the tip until the mercury stops rising. If water temperature is 121 degrees F. or more, it's TOO HOT. Turn down the water-heater control and test again a

day later. Keep doing this until the thermometer shows a safer 120 degrees F.

Cooler temperatures are still sanitary as there are no household needs that require water temperatures greater than 120 degrees F. Dishwashers clean adequately at 120 degrees F., although occasional spotting of glassware may occur.

Finally, stay put for kids' baths — NEVER leave a child unattended in the bathroom. Check water temperature before placing your child in the bathtub, and turn off the hot water BEFORE you turn off the cold water.

### SEWING SHORTCUTS

Being a working woman, you probably have very little time to do the many things you really enjoy doing. If sewing is one of your hobbies, you can really make your leisure time pay by making a few of your needing clothing items.

With time limited, you will need to approach your sewing projects from a different point of view. Select patterns

and fabrics that will give you the look you want but are as simple to make as possible.

When making a skirt, select a tweed or solid color rather than a plaid or stripe that needs to be matched. To really save money, buy the more difficult to make items such as a blazer and skirt and make the vest and skirt.

Look for patterns that don't have buttons and buttonholes. Putting in a casing and elastic is much simpler than a cuff. Raglan sleeves are also much less time consuming than regular set in sleeves. Fabrics that don't ravel will eliminate seam finishes. Cutting out several garments at the same time will eliminate the need for getting out your cutting board or clearing the dining room table as often.

Organize your sewing area so that it is easy to work in and you get a lot accomplished in a short amount of time. Do as much sewing by machine as possible. On a real sporty outfit, you may be able to use several rows of topstitching to put in a hem rather than

### Cedar Hill News

## Cedar Hill enjoys pretty weather

BY GRACE LEMONS

The weather is beautiful after the snow, rain and low temperatures the past two weeks. Today is like spring.

Mrs. Peat Kelley and Sandra Mitchell have both been confined in their home with sore throats and temperatures the last few days. We trust that they will soon be up and going.

We are happy that Sid Brown was able to go home last week and is improving in his home.

Guests in the home of Edna Gilly for lunch Sunday were Mark and Lori Gilly and Emory, Gertrude Hammitt of Plainview and Donie and Joan Hammitt of Holly, Colorado visited them in the afternoon.

Janette Lackey and Edna Gilly went to Lubbock Thursday on business and enjoyed the day out.

Mr. and Mrs. W.E. Lackey returned home Wednesday after spending 20 days with their son and wife, Greer and Janet in Burlington. They enjoyed their trip but found it to be cold there too.

Pauline VanHoose and sister Eula Mae Wilson of Ralls went to Lubbock Wednesday and shopped and ate out together.

Clara Mize visited her nephew Woodrow Wilson who is a patient in the Caprock Hospital.

Mrs. Peat Kelley visited Donie Taylor last Monday in Floydada.

Edna Gilly and Janette Lackey visited Mr. and Mrs. Sid McFalls in Quitaque last Saturday and enjoyed lunch with them.

Mrs. Carl F. Lemons and granddaughters, Twyla and Traca attended the band concert held in the elementary school cafeteria last Sunday in Lockney. David Lemons participated in the program. David was one of those selected to contest in the Band Regency the week before in Lubbock.

Linda Lemons, Twyla, Traca and Vance visited her sister and new baby in the Lockney General Hospital Sunday afternoon. Little Melissa Kay was born to Ronnie and Kay Shackelford of Plainview Saturday night the 13th. She weighed 8 lbs. and 4 ozs. and was 21 inches long. The little girl has an older brother, Kevin.

Ruthie and W.M. Clark of Plainview, Craig and Trudie Gilly and Amy had dinner with Edna Gilly last Sunday.

Anyone can capitalize on his gains but it takes a real man to profit from his losses.

## Bond sales reported

Sales of Series EE & HH United States Savings Bonds in Floyd County were reported by County Bond Chairman Lewis McDaniel to be \$7,751. Sales for the first twelve-month period totaled \$47,180 for 34% of the 1981 goal of \$140,000.

Texas sales during the month amounted to \$19,354,166, while sales for the first twelve months of 1981 totaled \$252,438,142 with 100% of the yearly sales goal of \$252.3 million achieved.

Got Heating Or Plumbing Problems?

Call

Holmes Plumbing

Austin Or Steve

983-2251

Call Day Or Night

<p><b>Your Home Owned Store</b></p> <p>Martha White Apple Cinnamon, Strawberry, Orange or Blueberry</p> <p><b>MUFFIN MIX</b> 3/\$1.00</p> <p>Gallon Regular or Raw Flatlanders</p> <p><b>MILK</b> \$2.19</p>	<p><b>STAMP PRICE SPECIAL</b></p> <p>Sunny Fresh Farm Grade A Medium</p> <p><b>Eggs</b> 29¢ doz</p> <p>With One Filled S&amp;H Special Saver Book</p> <p>89¢ doz Without Book</p>	<p><b>STAMP PRICE SPECIAL</b></p> <p>200 Count Facial Tissue</p> <p><b>Kleenex</b> 19¢</p> <p>With One Filled S&amp;H Special Saver Book</p> <p>79¢ without book</p>	<p><b>STAMP PRICE SPECIAL</b></p> <p>46 oz. Texus</p> <p><b>Grapefruit Juice</b> 19¢</p> <p>With One Filled S&amp;H Special Saver Book</p> <p>79¢ without book</p>
<p><b>Your Home Operated Store</b></p> <p>12 oz. Bakers</p> <p><b>CHOCOLATE FLAVOR CHIPS</b> \$1.19</p> <p>No Deposit-No Return 2 Liter</p> <p><b>COCA COLA</b> 99¢</p>	<p><b>USDA Choice Beef</b></p> <p>USDA <b>RANCH STEAK</b> \$1.79 lb</p> <p>Family Pack <b>PORK CHOPS</b> \$1.59 lb</p> <p>USDA Boneless <b>ROUND STEAK</b> \$2.89 lb</p> <p>6 oz. Assorted Decker <b>LUNCH MEATS</b> 59¢</p> <p>8 oz Philadelphia <b>CREAM CHEESE</b> 89¢</p> <p>1 lb pkg Armour Chicken <b>FRIED PATTIES</b> \$1.69</p> <p>2 lb box Banquet <b>FRIED CHICKEN</b> \$3.79</p> <p>From Our Deli <b>CORN DOGS</b> 4/\$1.00</p>	<p><b>Giant 49 oz. Laundry Detergent</b></p> <p><b>TIDE</b> \$1.99</p>	
<p><b>Your Home Town Store</b></p> <p>5 oz Swansons</p> <p><b>MIXIN CHICKEN</b> 2/99¢</p> <p>18 oz Quick or Old Fashioned Quaker</p> <p><b>OATS</b> 99¢</p>	<p>15 oz "In Juice" Del Monte <b>PINEAPPLE</b> 59¢</p> <p>15 oz Gebhardt's <b>TAMALES</b> 59¢</p> <p>64 oz White House <b>APPLE JUICE</b> \$1.69</p> <p>16 oz Hungry Jack Instant <b>POTATOES</b> 99¢</p>		
<p>We Take W.I.C. Cards</p> <p><b>Waples West</b></p> <p><b>Buddy SUPERMARKET</b></p>			





a traditional hand sewn hem. If your machine will blind hem, this works well on many fabrics. Medium to heavy weight fabrics machine blind hem better than lightweight fabrics. Fabrics that are printed also work better than solid hemming on a scrap of fabric before putting in the entire hem and then deciding you don't like the way it looks. After blind hemming a scrap, press the sample to determine if the finished look is suitable. The fold line is difficult to press out on some fabrics.

Keep a well equipped sewing basket in your den or family room so that small projects and hand work can be done while watching television or relaxing with the family. There are many sewing short cuts that will make wise use of your time. Come by the County Extension Office for free publication B-1230, "Shortcuts to Sewing."

Educational program conducted by the Texas Agricultural Extension Service serve people of all ages regardless of socioeconomic level, race, color, sex, religion or national origin.

Center News

# Center blessed with a very beautiful Valentines Day

**BY MRS. J.E. GREEN**  
Monday, February 15:  
Yesterday was St. Valentines Day, and it seems there was a lot of visiting done. Some of ours were absent from church and we had visitors at ours. And how grateful we were for the beautiful and warmer afternoon.

Our recuperating friends are about the same except Mrs. Sally Carpenter, who is back in the Lockney Hospital since Friday nite. Let us remember all in our prayers.

Bro. Muncy was brought home from the Lockney Hospital today.

Mrs. Ava Jackson, the Mayfields and Ma Green are among those who have been fighting colds or flu.

Mrs. Hartline spent some of last week visiting friends in the hospital in Lubbock.

Mr. and Mrs. Bob Finkner of Lubbock visited Sunday with her mother, Mrs. Charles Fulkerson.

Mr. and Mrs. Hal Thomas spent over the weekend in Lubbock visiting the children. Sue and Milton Mensch and son David.

Mrs. J.D. Welborn and her local children and families had a get together dinner Sunday at the home of one of her daughters, Mr. and Mrs. Roger Gooch.

Mr. and Mrs. Bobby Plumlee of Amarillo visited over the weekend with his parents, Mr. and Mrs. W.B. Plumlee.

Mrs. Ethel Warren visited over the weekend with her son John and family of near Lubbock.

Sunday visitors at the Thomas Warren's were daughter Joyce and Jim Owens and three small sons, Mrs. Ola

Warren and Mrs. Fred Battey and Mr. Burl Huckabee.

Mr. and Mrs. Millard Watson of Mt. Blanco were hosts Sunday to a birthday dinner honoring her parents, Mr. and

Mrs. Henry Brewer. All their children and most grandchildren were present except De Wayne Brewer of Dallas. Some other relatives were present also. Areas representing those present were Floydada, Crosbyton, Lubbock, Level-

land, and Wichita Falls. There were 39 present for dinner and some came later. They had a wonderful time.

(Observation: Don't people with large families have good times!)

## Challenging overseas experience for U.S. youth at international work camps

This summer, for the first time, the Council on International Educational Exchange (CIEE) is offering U.S. youth the unusual opportunity to participate in international work camps in Scandinavia, Germany, Belgium, Holland, Switzerland, Czechoslovakia, Poland and Mexico. The program offers young

people a meaningful overseas experience at little more than the cost of getting there.

The concept of international work camps, well-known throughout the rest of the world, is unfamiliar to most in the United States. A work camp enables young people to live and work together

with their counterparts from all over the world on a development project that benefits the local community. Usually two, three or four weeks in length, camps often combine manual and social tasks.

Projects include working with handicapped children in Denmark, restoring castles in Czechoslovakia and preserving the North Sea dunes in Germany. There is no salary but room and full board are provided for the volunteers.

It is not necessary to have any special qualifications and no language other than English is required. Volunteers must be at least 18 years of age; however, 16 year olds will be accepted for Germany.

For more information on the program, contact CIEE, International Work Camps, 205 East 42nd Street, New York, New York 10017, (212) 661-1414, or 312 Sutter Street, San Francisco, California 94108, (415) 421-3473.

## Pampa woman sentenced in fraud

A Pampa, Texas woman will serve six months of a three year sentence in prison for forging her grandmother's signature on social security checks negotiated after her grandmother's death.

The sentence was imposed by U.S. District Court Judge Marv Lou Robinson in Amarillo after Freddie Jean Lowrance of 1030 S. Faulkner in Pampa pled guilty to federal forgery charges.

According to Ray Purcell, Manager of the Plainview Social Security Office, the charges resulted from an investigation conducted by the U.S. Secret Service and the Department of Health and Human Services Office of Investigations.

Mr. Purcell said the case was detected in a record matching project between the Social Security Administration and the Health Care Financing Administration to identify individuals who had died according to hospital and medicare reports, but whose death had not been reported to the Social Security.

## Marrs joins PDA's office in Lubbock

James E. Marrs has joined Property Damage Appraisers, Inc. as an appraiser in the company's newly reopened office in Lubbock, announced David T. Clayton, PDA president.

PDA, one of the nation's leading independent appraisal firms, represents most major insurance companies. Their expertise in the field of automobile and heavy equipment damage appraisal for more than 19 years has earned them a national reputation for excellence. The Texas-based company has a network of nearly 100 offices nationwide.

Marrs is an experienced appraiser, having more than 14 years experience as an auto body shop manager and staff appraiser. Barbara Ann Marrs will be assisting him in office management.

"The office will continue to serve all insurance companies and self-insureds operating in the Lubbock area," Clayton said. The office will also serve all of Bailey, Cochran, Yoakum, Lamb, Hockley, Terr, Hale, Lubbock, Lynn, Floyd, Crosby, Garza, Motley, Dickens and Kent counties, he added.

PDA's Lubbock office has now resumed operations and may be reached by calling (806) 762-6465.

## The Land Bank

Dependable long-term credit through good times and bad...

See us:



Floydada 105 South Wall

**CE SPECIAL**  
Texsun Pink  
pefruit  
Juice  
19¢  
With One Filled  
Special Saver Book  
79¢  
out book

**STAMP PRICE SPECIALS**  
for  
**Penny-pinching customers!**  
Even if pinching pennies isn't your style...we make it a fun thing to do. And shrewd too. Because it can save you a lot of money over the months...by offering you some of your favorite Brand items for just pennies...plus a 1/4 Saver Book of Green Stamps. And at the rate you can save stamps on all your other shopping...you'll have all you need for these unbelievable Stamp-Price Specials...and the S&H Gifts you want too!  
We love our penny-pinching customers. They're so smart!

**STAMP PRICE SPECIAL**  
14 oz. Bag Kraft  
**Caramels**  
39¢  
With One Filled  
S&H Special Saver Book  
99¢  
without book

**Your Home Owned Store**  
13 oz. Folgers Flaked  
**COFFEE**  
\$2<sup>19</sup>  
50 Count Mr Coffee  
**COFFEE FILTERS** 2/99¢

12 lb Purina  
**CAT CHOW** \$5<sup>89</sup>

4 oz Regular or Unscented Sure  
**ANTI-PERSPIRANT** \$1<sup>98</sup>

7 oz Tube Head & Shoulders  
**SHAMPOO** \$2<sup>69</sup>

18 oz Scope  
**MOUTHWASH** \$2<sup>19</sup>

8 oz Del Monte Hot  
**TOMATO SAUCE** 5/\$1<sup>00</sup>

200 Count Filler Notebook  
**PAPER** \$1<sup>29</sup>

Bath Size Camay  
**SOAP** 2/89¢

7 oz Campbells  
**SOUP FOR ONE** 3/\$1<sup>00</sup>

12 oz Smoke or Cheese Flavor  
**SPAM** \$1<sup>29</sup>

20 Count Glad Medium  
**GARBAGE BAGS** \$1<sup>19</sup>

19 oz Nabisco Chips Ahoy  
**COOKIES** \$1<sup>49</sup>

**Your Home Operated Store**  
15 oz. Wolf Plain or with Beans  
**CHILI**  
89¢  
5 oz. Swifts  
**VIENNA SAUSAGE**  
2/89¢

**Farm Fresh Produce**

California Hass  
**AVOCADOES**  
4/\$1<sup>00</sup>

Extra Fancy Red Delicious  
**APPLES**  
49¢  
lb

Texas Ruby Red  
**GRAPEFRUIT**  
4 lbs \$1<sup>00</sup>

California 1 lb Cello bag  
**CARROTS**  
3/\$1<sup>00</sup>

Jumbo Roll Zee  
**PAPER TOWELS**  
69¢

**Your Home Town Store**  
32 oz King Size  
**IVORY LIQUID**  
\$1<sup>39</sup>  
50 oz. Automatic Dishwasher Detergent  
**CASCADE**  
\$2<sup>19</sup>

220 South 2nd  
983-3149  
**STORE HOURS**  
Mon. Thru Sat. 8 am - 9 pm Sunday 9 am - 8 pm  
Values In This Ad  
Effective Thru Wednesday  
February 24, 1982  
We Reserve The Right To Limit Quantities

We Give  
**S&H GREEN STAMPS**  
We Redeem USDA  
Food Stamps





# FARM NEWS

## FmHA seeks to assist farmer problems

Although many farmers are facing financial difficulty because of today's cost-price squeeze, the Farmers Home Administration (FmHA) intends to do all it can to help its borrowers stay in farming. FmHA State Director J. Lynn Futch said today.

"We recognize there are problems, problems with high interest rates, inflation, a grain embargo, adverse weather and other causes," Futch said. "And these have been intensified by overall bumper crops that have affected prices."

"As Secretary of Agriculture John Block said recently, our farm economy is in a valley right now and needs some help to move on up the hill on the other

side."

Futch said Block had instructed FmHA to explore the use of private credit to supplement its own lending resources whenever possible. In addition, existing legal authority to reschedule or defer payments is to be used where practicable.

"We intend to be reasonable, just as Secretary Block ordered," Futch said. "Our objective is to keep farmers in business. That isn't to say there won't be some who go out of business, because there will be, but we are going to use the best judgement we can and reasonable criteria in making our loan decisions."

Secretary Block said that borrowers who have made good faith efforts to pay their loans, who have maintained their loan security in good condition, who follow sound, recognized management practices, and who have a reasonable chance to succeed can reasonable expect FmHA to stay with them.

"We will be working with our borrowers and with the commercial lending institutions to overcome these temporary problems," Futch said. "Agriculture is basically healthy, just as the Secretary said; there is no question about it. We just have to move out of the present situation and dig in for the long run."

## Wind stripcropping—a solution to an old problem

BY PAUL BURNHAM  
Soil Conservation Service  
Floyd County

Everyone can see the effects and problems of wind erosion when a dust storm hits Floyd County. But some producers in the area have found a good, viable solution to this airy problem, Wind Stripcropping. However, a stripcropping not only controls soil movement but also increases yield and profit while decreasing costs.

About 30 farmers in the 11 county Lubbock Area have been using wind stripcropping, some of them just starting in 1981. Kenneth Gray of Lorenzo experimented with the system in onions in 1981. Kenneth set up 2 control fields, one with strips and one without. The field with strips yielded 23% more onions, 23% more jumbo sized onions, and 23% more profit than the nonstriped field. Kenneth plans to use strips in all of his fields next year.

Another area producer, Jimmy Wedel of Muleshoe, also initiated a wind strip

system in 1981. Wedel is encouraged by the results and commented, "I have observed that cotton protected by wind strips develops sooner and is generally larger when compared to the rest of the cotton in the area. My cotton blooms earlier and I have also observed that cotton freezes later and I have no soil movement."

Some producers, though, have been using wind stripcropping for several years. Jerry and Ronald Thuet of Post have been wind stripcropping for four years now in addition to terraces. Their results compared to non-stripped fields in the area are overwhelming. They averaged 50 lbs. more lint per acre per year, experienced increased quality, and no longer do they use a sandfighter or replant because of blowout.

There is also a system in this area that is unique to Texas. Bob Melcher, a producer in Motley County, has established permanent perennial grass

strips in his field. The Weeping Lovegrass strips are only 40 inches wide and 80 feet apart on a very sandy soil. On the tighter soils of Floyd County, the strips could be 200 to 300 feet apart. Melcher is very happy with the system and said, "I have had a tremendous increase in production that I have not experienced before." A close-up look at Melcher's system will be aired on T.V. this spring.

Dave Walker of Channel 11 in Lubbock will present a 3-5 minute 'expose' on what he calls an outstanding conservation effort. The show is scheduled to be presented on the first blow day of the season.

Wind Stripcropping, by all means, is not the only solution to the problem. There are other alternatives to combat soil loss but wind stripcropping definitely has a place in today's modern farming techniques. For more information contact the Floyd County Soil Conservation Service at 983-2352.

## Hightower requests aid for farmers

Washington, D.C. — Congressman Jack Hightower has requested the Secretary of Agriculture to come to the aid of farmers that have been caught in a catch-22 situation. Hightower met with Assistant Secretary of Agriculture William Leshner in the Congressman's Washington, D.C. office Thursday afternoon.

Hightower brought to the attention of the top U.S.D.A. officials that because of the large volume of farmers that were placing their crops in the Commodity Credit Corporation loan, some loans did not get processed during the month of January and were now being required to pay 14% interest instead of the 12.25% charged January. The loan rate was adjusted on the first day of February.

"Farmers brought their crops in during January, expecting to pay the 12.25% rate of interest", stated Hightower. "Because of the number of farmers and the volume of commodities, the local A.S.C.S. officials just could not

get all of the paper work done during January and now farmers are being charged the higher interest rate."

"Cotton prices are one-half of the target price level, the cost of production has sky rocketed, and farmers are paying a per-bale charge for grading that has been inconsistent at best and extremely slow this year. Now added to these problems, farmers find that through no fault of their own, they are going to be paying this additional interest on their loans.

The Assistant Secretary promised to see if this unfair situation could be corrected and said that he would report back. It was also disclosed that Farmers Home Administration was directing their state and county offices to make additional efforts to find ways to keep qualified farmers in business. Congressman Hightower is scheduled to testify Tuesday morning regarding farm credit problems in Texas.

## Around The County

By Jett Major  
FLOYD COUNTY EXTENSION AGENT

### CALFHOOD VACCINATION OF HEIFERS IMPORTANT

Important changes in the Texas brucellosis program have been proposed and should have an important impact on the control of the disease.

Public comments are now being sought by the Texas Animal Health Commission on regulation proposals to require calfhood vaccination of heifer calves for brucellosis control under certain conditions. Amendments to the Texas program now proposed would require calfhood vaccination of all heifers born after January 1, 1982 for movement into the state or when changing ownership. Exceptions would be heifers consigned to a quarantined feedlot or pasture, those consigned to slaughter, or those S branded and consigned to a special regulated pasture.

Reduced dosage of Strain 19 vaccine, which has been available for the past year, is almost as effective as the higher dosage used in the past. With the old strength, Strain 19 was sometimes blamed for causing female animals to be diagnosed as having brucellosis, when,

in fact, it is a reaction of the vaccine itself.

Reduced dosage is expected to help eliminate confusion over levels of antibodies in the blood of vaccinated heifers. Some females in the past developed persisting residual blood titers after vaccination with the old strength of the vaccine. The titers are measurements of antibodies resulting from vaccination or brucellosis infection.

Titers induced by the vaccination using the reduced dose are lower and recede rapidly although the degree of immunity is practically equal to that produced by the higher dosage.

Vaccination ages for eligible heifer calves are now four to 12 months for all breeds. Being able to vaccinate animals up to 12 months of age with less worry about false reaction to blood tests is another advantage.

The vaccine must be administered by certified veterinarians or personnel approved by the Texas Animal Health Commission, since the vaccine is fragile and must be handled under controlled conditions to establish good immunity.

## 50th Houston Livestock Show and Rodeo to be Golden Extravaganza

Eighteen 4-H members from Floyd County and 25 FFA members from Lockney and Floydada will be participating in the 1982 Houston Livestock Show and Rodeo, February 20-March 7. With more than 29,000 expected livestock entries, the Golden Anniversary Houston Show will once again be the largest livestock show in the world.

Floyd County 4-H exhibitors in the show will be Norman Allen, market lamb; Dusty Burleson, market steer; Marty Covington, market steer; Kristy Dawdy, market steer and market barrow; Chad Edwards, market steer; Shannon Edwards, market steer; Karyl M. Foster, market lamb; Melanie A. Foster, market lamb; Chris Fulton, market steer; Susan Hendrix, market lamb; Gwen Lane, market lamb; Joel Mitchell, market lamb; Matt Mitchell, market lamb; Zach Nutt, market steer; Mitch Ross, market steer; Tom Ross, market steer; Jodie Smith, market lamb; Matt Williams, market steer and beef heifer.

FFA members from Floydada participating in the Houston Show are: Carlos Baker, market barrow; Shannon Barbee, market barrow; Tim Burns, market barrow; Marty Covington, market lamb; Garland Easter, market barrow; Joe Faulkenberry, market lamb; Cammy Hancock, market lamb and market barrow; Keith Hancock, market lamb; Mark Hatley, market barrow; Kevin Helms, market barrow; Mark Nutt, market steer and market barrow; Treana Reeves, market lamb; Hunter Smith, market lamb; Jodie Smith, market lamb; Monty Williams, market lamb and market barrow.

FFA exhibitors from Lockney are Gary Bigham, Kyle Brock, Daron Widener, Karen Mathis and Mac Sherman, all showing swine; Earl Brose and Terri Sparkman, lambs; Ty Williams, Libby Williams and Matt Williams will each show both steers and heifers.

The 1982 Show offers spectators a unique opportunity to see some of the finest livestock ever and it's all gathered under one roof," said Assistant General Manager Don Jobs, Jr.

The Houston Show also provides an opportunity for exhibitors to participate in some of the toughest of showing competition after a year's worth of preparation for their animals. This year's show once again promises to be profitable for them, as open show and junior exhibitors will vie for more than a half a million dollars in prize monies and premium auction prices above market value.

Houston, the fastest growing city in the nation, brings western heritage to life when it once again hosts this two week extravaganza. Livestock show dates are February 20-March 7, and rodeo dates are February 24-March 7.

The largest civic event in the history of the nation's fourth largest city inspires local business people and residents to take to horseback and buckboard, or at least wear western hats and boots, all in the Old West spirit of "Going Texan."

The annual rodeo parade will fall on the first Saturday of the show this year, which will be February 20, at 10:00 a.m. This event draws more than 6,000 trailriders journeying as far as 386 miles to downtown Houston where they meet with city officials, bands and spectators to lead the parade.

Open competition for the livestock show begins February 22. Professional breeders and ranch owners from some 35 states will bring in the best in breeding stock to compete in breeding beef, dairy, swine, poultry, sheep, Angora goat and rabbit shows.

During the second week of the livestock show, junior show exhibitors take over the 22.6 acre livestock exposition facility. Judging this second week begins on March 3, although some junior show competition is held during the first week. Competition here is fierce as these exhibitors know they're up against both the best in livestock and in judges.

Junior shows include breeding beef heifers, dairy cattle, breeding sheep, Angora goats, beef and dairy scramble heifers, commercial steers, breeding rabbits, market lambs, market poultry, market turkeys, market swine and market steers, including a carcass contest.

Exhibitors of market animals realize that, in addition to the premium awards and trophies, a grand championship in their market division at the Houston Show could pave the way for a future cattle herd or college diploma.

The Houston Livestock Show holds the world's record in all categories of prices paid for champion market animals: grand champion steer—\$112,000; grand champion lamb—\$60,000; grand champion barrow—\$51,500; grand champion pen of 5 broilers—\$33,000; and grand champion turkey—\$20,000.

Due to the tremendous community involvement and civic support from thousands of individuals and businesses alike, junior exhibitors are assured that

## Landscape & Gardening

BY JETT MAJOR  
FLOYD COUNTY EXTENSION AGENT

Proper selection and placement of fruit plants provide delicious produce and stunning beauty in the home landscape.

Most fruits are planted in the backyard with an attractive development around the patio. Concentrate all other plants in bold angular or curving beds around the edges of the yard. This allows open turf areas (with strategically located shade and background trees) which are bounded by easy-care shrub beds.

Don't just dot fruit trees at random throughout the yard because it breaks up otherwise spacious open areas. Fruit trees work better in groups of at least three of a kind such as three peaches or three pears, located in beds of ground cover or annual flowers along outside edges of the property.

Many other "fruitscaping" possibilities exist. For example, many backyards are completely bare and are surrounded by a wooden privacy fence with a small patio at one corner of the home near the fence. First, the patio probably needs to be enlarged with brick, exposed aggregate, decking, etc. Then, to delineate the patio area and to lead the eye to the accent corner, a short section of matching wooden fencing can be tied into the existing fence in a perpendicular arrangement (thus creating an L-shaped enclosure) that's about 8 to 10 feet beyond the newly expanded patio. Place three semi-dwarf fruit trees of a given type (i.e., peaches, plums, pears, etc., or it can be three different varieties within that one general type) in an L-shaped pattern inside the fence. Fill area between fence and patio with a combination of dwarf shrubs, ground covers or annual flowers.

When planting border beds, strive for a graduation of plant heights — taller in back near the fence to shorter in front. For example, locate genetic dwarf fruit trees near the fence, blackberries in the middle and strawberries as a

ground cover in the front of the bed. Where strawberries are grown as annuals, use low-growing vegetables or brilliantly colored annuals to fill in during summer months.

Other possibilities include using well adapted grape varieties to soften exposed sections of fencing or on arbors to shade hot patio areas. Dwarf fruit trees or cold-hardy citrus plants can be grown in tasteful, unobtrusive containers which act as gentle screens delineating a patio area or softening the deck lines.

To further increase the fruit production area consider espalier (es-PAL-ya). This system, in which all of a plant's branches are trained in a flat, vertical plane, can be used to grow fruit producing trees such as pear, plum or apple, or ornamental trees, such as evergreen pear, against a hot south or west wall.

Advantages of such an arrangement are many. The otherwise harsh, angular lines of the home are softened, fruit is produced without encroaching upon the outdoor living area, air-conditioning bills are reduced by shading sun-baked walls and heating bills are reduced by allowing maximum solar warming during winter months since fruit trees are deciduous (i.e., drop leaves in the fall). While it's true that the creation of an espalier is time consuming, results are most gratifying.


Figs are a landscape favorite because they are so easy to grow, and fresh figs are a taste treat. However, their coarse leaf texture makes an area seem smaller, so they're best used along the edge of the yard rather than near the patio.

Finally, don't forget jujubes and Japanese persimmons as they can provide interesting focal points, fall color and usable fruit, all with minimum care.

Intelligent integration of fruit into the landscape delights the eye and palate.


<p><b>ADAM'S WELL SERVICE</b></p>  <p>Floydada 983-5003</p>
<p><b>FEDERAL LAND BANK ASSOC. OF FLOYDADA</b></p>  <p>Floydada 983-2480</p>
<p><b>RUSSELL'S EQUIPMENT &amp; SUPPLY</b></p>  <p>Floydada 983-3751</p>
<p>This space available call 983-3737</p>
<p><b>FLOYDADA COOPERATIVE GINS INC.</b></p>  <p>Floydada 983-2884</p>
<p><b>ANSLEY &amp; SON</b></p>  <p>Lockney 652-3361</p>
<p><b>MARTIN &amp; COMPANY</b></p> <p>Floydada 983-3713</p>
<p><b>SUN-VUE FERTILIZER</b></p>  <p>Lockney 652-3362</p>

**RUCKER'S O.K. TIRE STORE**



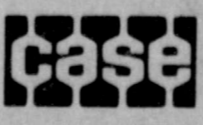
Floydada 983-3370

**FLOYD COUNTY IMPLEMENT**




Floydada 983-3732

**CASE POWER & EQUIPMENT**



Floydada 983-2836

**FIRST NATIONAL BANK OF FLOYDADA**



Floydada 983-3717

<p><b>BROWN'S IMPLEMENT INC.</b></p>  <p>Floydada 983-2281</p>
<p><b>FLOYD COUNTY FARM BUREAU</b></p>  <p>Lockney Floydada 652-2242 983-3777</p>
<p><b>FLOYDADA IMPLEMENT CO.</b></p>  <p>Floydada 983-3584</p>
<p>This space reserved for you</p>
<p><b>THE TYE COMPANY</b></p>  <p>Lockney 652-3367</p>
<p><b>MUNCY ELEVATOR</b></p> <p>Lockney 652-3100</p>
<p><b>CONSUMERS FUEL ASSOC.</b></p>  <p>Lockney 652-3336</p>
<p><b>PRODUCTION CREDIT ASSOC.</b></p>  <p>Floydada 983-2454</p>