

Seed for free fatty acid

where the fatty acids were not formed from oil and in deteriorated seed where warm, moist conditions triggered a faster than normal breakdown of oil into fatty acids," Supak said.

He noted that many seedsmen and planting plant operators use the free fatty acid test in conjunction with germination tests to assess seed quality. If the fatty acids exceed two to three percent, the seed are usually not suitable for planting purposes.

Seed with free fatty acids in the 1 to 2 percent range are considered questionable whereas seed with less than 1 percent free fatty acids usually make a suitable planting seed," Supak said. "There are exceptions," he admitted. For example, high free fatty acid levels may be due primarily to the immature nature of a given seed lot. If these seeds are removed during the delimiting process, the overall quality of seed lot may be acceptable.

Otherwise, a few badly deteriorated seeds, such as might occur near the bottom of a module formed on wet ground, may contain up to 30 percent free fatty acids while the rest of the seed are good. A few such badly deteriorated seeds in a test sample can give a false impression of the overall condition of seed lot.

On the other extreme, seed can be and not have a high free fat acid content, he noted. Seed can die from other than the high humidity-temperature condition normally required for free fatty acid develop-

ment. "If seed die or die in storage under conditions the free fatty acid may be quite low but the seed are useless for planting purposes," he said.

Hence a free fatty acid test does not provide a judgment on how the seed will eventually perform in the field, he cautioned. The test should also include an evaluation of how well the crop material in the field endured before harvest and temperature (especially during storage) and humidity (especially during germination) tests.

Some seed lots may have a germination percentage that is higher than 1 percent free fatty acids. If there are no (or very few) seeds in the lot, the seed, when planted but only under storage conditions, the agronomist would find uniform deterioration of the seed. They would not (in all likelihood) show high vigor and would be applied poorly if adverse planting conditions were encountered, Supak said.

Such seed should not be stored in storage and the vigor deterioration will tend to deteriorate stressed.

Free fatty acid levels can be a rough guide in determining the extent of seed deterioration, the agronomist said. Many delimiting and private laboratories are available to conduct both the free fatty acid and germination tests.

leaf rust

Wheat leaves are more sensitive to injury, so we usually expect no leaf rust after Thanksgiving," Berry said. "Below the caprock may not be any, he cautioned. The organism has usually spent the winter in the Rio Grande area but is may be killed all the way to San Antonio or even farther south," he said.

In the spring, leaf rust may move to the north. "It may reach as far as the Rio Grande or Seymour on southerly winds and it might even show up at times in some years," Berry said. "In my twenty years in the Rio Grande area, I've seen rust above the caprock only once."

Leaf rust was extremely heavy about the eastern Texas Panhandle, he noted. Most plant pathologists blamed the problem on an unusually mild winter last season and spring moisture.

"Leaf rust causes more concern to those who happen to need wheat for seed. They always plant early and the organism has a long time to multiply in many generations before cold comes. One solution is to delay planting as long as possible. Wheat planted this time will have no trouble with rust," the Extension specialist said.

Control is the use of rust resistant varieties. Sturdy, Sage, Osprey and Newton have resistance to leaf rust in their genes. They will show fewer rusted spots, and the yield will be much smaller, he said. Fungicides have good activity against the rust fungus. Their use can be commended, though, because they do not have the proper label for use on food wheat used for grazing, he cautioned. The cost of chemical control might prevent their use on wheat if it was legal, he added.

"It isn't much the wheat production about rust on his crop this year can make plans for next year to prevent rust losses and he can plan for the moisture which will pass through the winter."

pland

Irrigators include the use of water for irrigation and the newer method which has water flowing through the root zone of each plant. The crop was the leading crop to be irrigated in the trickle system in 1979 with some 12,000 acres.

Maps in the report include information on amounts of water use for agriculture, river and coastal basin and water conservation and major irrigation areas for the next five to ten years. Major areas are the High Plains, the Lower Rio Grande, the Central Texas, Trans-Pecos, the Graden-San Antonio area, the Rio Grande Valley, Gulf Coast and the Brazos River Valley.

NATIONAL ASSOCIATION OF FLOYDADA

1st

IT'S A FACT

It's not a kidding matter. Female (doe) goats give birth to it's called "kidding."

BROWN'S IMPLEMENT
Floydada

FLOYD COUNTY FARM BUREAU
Floydada

FLOYDADA IMPLEMENT CO.
Floydada

CORNELIUS CONOCO SERVICE STATION
Floydada

THE TYE COMPANY
Lockney

MUNCY ELEVATOR
Lockney

CONSUMERS FUEL ASSOC.
Lockney

PRODUCTION CREDIT ASSOC.
Floydada

Dame Lockbinding
P.O. Box 2550
Amarillo, Tex. 79105

The Lockney Beacon

25c

Number 49

Volume 80

Thursday, December 3, 1981

24 Pages in 3 Sections

Methodist Church hosts Murray Choir Saturday

McMurry College Chanters Choir concert Saturday night at the Methodist Church in Lockney. A program of Christmas music will be presented.

The church will sing a variety of Christmas carols as well as music written especially for the occasion. McMurry associate professor Dr. Macon Sumerlin will be the conductor.

"Tetrad," is a composition written by Dr. Sumerlin during his 30-year tenure at McMurry.

One member of the Chanters, Chris Huffman, is a 1980 graduate of Lockney High School. She is the daughter of Mr. and Mrs. Charles Huffman of Route 1, Lockney, and a sophomore nursing major.

The choir director is Mr. James Pearce. Everyone is invited to bring a covered dish and join the choir for a meal at the church fellowship hall at 6:30 p.m. The Chanters will be staying the night in homes of church members and will be guests at a breakfast Sunday morning at the church before departing for Littlefield, the next stop on their Christmas tour.

Goats make All-District

Lockney Longhorns were on the roster when the All-District announcement was made Monday.

McMurry was named to the All-District as a defensive Safety and a running back.

McMurry is a 6' 170 lb. running back. Brock is a 5'9" 170 lb. junior.

There are no Longhorns on the first squad, but three of them are on the second team roster. They are Karl Race, 5'11" 180 lb. Senior; Robert Rendon, 5'7" 140 lb. Junior; and Running Back Donald, a 6' 160 lb. Senior.

On the defensive all-district team were three more Longhorns: Phillip Kidd, 6'4" 200 lb. Senior and Linebacker, Mike Sheman, 5'7" 180 lb. Senior. An honorable mention on the All-District team is Phillip Kidd, Guard Victor

Goats make All-District

Villalon and Tight End Tyke Dipprey, 6'3" 190 lb. Senior.

Garnering Honorable Mention on defense were End Michael Carthel, 6'3" 175 lb. Junior and Cornerback Robert Rendon.

McMurry, Kidd, Sherman, Villalon, Race, McDonald and Dipprey are seniors and have closed out their high school football careers, while Brock, Carthel and Rendon will be back to bolster the Longhorn team next season.

The complete roster of 3-AAA All-District selections made by the coaches of the six schools is as follows:

FIRST TEAM OFFENSE
Center: Chris Fulton, Floydada, Sr., 5'11", 195 lbs.
Guards: Rosenda Esquibel, Idalou, Sr., 5'10", 260; Allan Neis, Abernathy, Sr., 6'4", 185; Rick Hefflin, Floydada, Sr., 5'10", 180; Norman Allen, Floydada, Sr., 6', 185.
Tackles: Rick Houston, Abernathy,

Sr., 6'5", 210; Robert Nixon, Floydada, Sr., 6'1", 195.
Tight End: Carlos Rainwater, Floydada, Sr., 6'2", 170.
Receivers: Rodney Cannon, Abernathy, Sr., 6'3", 185; Malcolm Dunn, Abernathy, Sr., 5'10", 145; Ronnie Minner, Floydada, Sr., 6'1", 170.
Running Backs: James Sherman, Idalou, Sr., 5'11", 178; Roland Powell, Idalou, Sr., 5'9", 138; Bruce Williams, Floydada, Jr., 5'9", 170; Donald Sims, Childress, Sr., 5'6", 138.
Quarterback: Max Riley, Abernathy, Sr., 5'10", 160.
Punter: Donnell Weeks, Floydada, Jr., 5'11", 165.
Kicker: Mark Hill, Idalou, Jr., 5'11", 160.

FIRST TEAM DEFENSE
Linemen: Tim Barnes, Idalou, Sr., 5'11", 150; Wynsdale Davis, Floydada, Sr., 5'11", 150; Wynsdale Davis, Floydada, Sr., 5'11", 150.
Continued On Page 3



ALL-STAR LINEUP—The ten Lockney Longhorn football players pictured above with Coach Dwayne were on the District 3-AAA All-District roster Monday. Their names and their position on the team (front row l-r) Robert Rendon, Receiver, 2nd team; Phillip Kidd, Defensive End, 2nd team; Kyle Brock, first team; Tyke Dipprey, Tight End, HM; Michael Carthel, Defensive End, HM and Mack Sherman, Defensive Tackle, 2nd team.

Hospital to offer fitness course program

People of Lockney—and Floyd County in general—will be somewhat more healthy and physically fit next year than they are this year if the Lockney General Hospital has its way.

Recognizing the long-neglected need for a physical fitness program for Lockney and the surrounding area, the hospital decided to do something about it, and engaged physical therapist Gib Gimbel, who is presently practicing in the hospital, to set up a physical fitness program for them.

Mr. Gimbel, in cooperation with the hospital, has obtained quarters for this new service at 116 South Main Street—the former offices of the Floyd County Insurance Company, where the program is expected to get underway on January 4, 1982.

The health fitness program will be by appointment only and reservations are being accepted at the present time. The facility will offer the very latest in physical fitness apparatus and will be under the supervision of Mr. Gimbel, a graduate physical therapist.

Mr. Gimbel, who states that he would prefer to change the image of the normal hospital from an institution of "sickness" to a place of "wellness," outlines the four goals of this physical fitness program:

1. Cardio-pulmonary fitness.
Continued On Page 3

FOR SHAPING UP—The stationary exercise bicycle shown above is but one of many such machines that will be used by the Lockney General Hospital in its new health fitness program to the public. Target date for opening of the



THE FIFTY-FIVE VOICE CHANTERS CHOIR of McMurry College will present a concert of Christmas music at the First United Methodist Church in Lockney beginning at 8 p.m. Saturday. A covered dish dinner will precede the concert. The public is invited to attend both the concert and the dinner. If attending the dinner, please bring a covered dish.

Hamilton appointed Auditor

Bobbie Hamilton, Floydada has been appointed as County Auditor and will begin her duties on the first of January.

Present auditor, Olin Watson, resigned the position after serving for 22 years.

Appointment of Mrs. Hamilton was made by District Judge George Miller. He said, "We're sorry to lose Olin. A person with his experience really can't be replaced, but we are very fortunate to have someone with Bobbie's background and education to apply."

Bobbie is a native of Floyd County, graduated from West Texas State University with a Bachelor of Science degree in Business Education.

She has worked for Stanolind Oil and Gas Co. in Lubbock in the land office. More recently she worked for C.P.A.

Lockney School Tax Office Moved

The school tax office in downtown Lockney closed Monday, November 30. It has been moved to its new location in the schools superintendent's office at 6th and Willow where it is now open for business. The new tax office phone number is 652-2115. For further information contact Jackie Lou Holt, school tax collector.

"Nutcracker" Opens December 11

The "Nutcracker" opens for the eleventh season 1981 - on December 11 and for the first time two of the great performing groups of the Panhandle: the Amarillo Symphony and the Lone Star Ballet are joining forces.

For their first cooperation they chose "The Nutcracker", the delightful Tchaikovsky Christmas fantasy which has pleased audiences for 100 years - an unforgettable experience of sight and sound.

Performance dates are December 11 and 12 at 8:00 P.M. and December 12 and 13 at 3:00 P.M. - all shows will be in the Amarillo Civic Center and tickets are available at the Amarillo Symphony Box office at 1000 Polk. You may call (806) 376-8782 for reservations.

WBU offers skiing, survival course

Advanced registration for a special course in cross-country skiing and winter wilderness survival techniques is now open at Wayland Baptist University.

The course will be taught in Red River, New Mexico, and offers one hour academic credit in physical education. It is scheduled for January 17-22, 1982. The course will cover instruction and on-site lab practice in cross-country skiing techniques, avalanche detection and survival techniques in extreme weather conditions.

Total cost for the trip is \$255 per person. A meeting of all interested persons will be held on Thursday, December 10, at 6:30 p.m. in Room 201 of the Education Building.

Lockney cage coach confident

Lockney High School Basketball Coach Mike Martin expressed strong confidence in the future of his team in District 3-AAA this year. "We will finish better than the fourth we have been picked for," Martin said as he went down the roster which shows five players over six feet in height and two starters returning from the 1980-81 season.

One of his returning starters is Jeffrey McCormick, a six foot Guard who averaged 22 points per game last year and was selected on the All-District squad. The other returning starter is Phillip Kidd, a 6' 3 3/4" Postman who has plenty of good experience under his belt. Both men are seniors.

Other starters include Steven Johnson, 6'4" Junior; Tyke Dipprey, 6'2" Senior; and Tony Rodriguez, 5'11" Senior. Johnson plays Post, and Dipprey and Rodriguez are Forwards.

"We will be in good shape on the bench, also," the coach continued, "at least we will be when Junior McDonald gets back." He explained that McDonald injured his knee playing touch football last week and had surgery to remove some damaged cartilage. He is expected to be out for four to five weeks.

The coach went on to name the remaining four on the varsity squad, all of whom can make a good account of themselves on the floor, though some are lacking in experience. They include Sophomore Jackie Cunyus, 5'8" Forward; Senior Karl Race, 5'9" Forward; Junior Michael Carthel, 6'3" Post and

Senior Jeff Reece, 5'9" Guard. An area basketball magazine recently rated Lockney fourth in District 3-AAA behind Abernathy in third place. The Longhorns have already played four games, winning three and losing one. They lost to Muleshoe in their first game by a score of 43-57 and since have beaten New Deal 67-56; Olton by 54-39 and Post by 58-51.

The Longhorns next game will be against Sundown in the Sudan tournament at 3 p.m. this afternoon. This is Coach Martin's first year at Lockney. He was varsity coach at Hale Center last year. He appears to be very much satisfied with his new school and the varsity squad that he has to work with.

Beacon Beams

BY BILL SAYERS

Three months ago I didn't know where Lockney was. As a matter of fact I really didn't know it existed. That is not to say that I am from a big city, or even a middle-sized town, because I came here from a town much this same size. But, now I know Lockney, and I know what it is worth—and I am very happy to be here.

Coming into a new town a person has many, many new impressions thrust upon him, and of course, they singularly can be good or they can be bad. I have—and I speak true—no bad impressions of this town or its people—I think we speak the same language.

Even in the short time I have been here I have seen how people gather together to help each other and have experienced all the friendly gestures that you extend to the bereaved, and you have my admiration and my gratitude.

We wish to express our admiration to the Lockney Longhorn football squad and to their coaches who, in our mind, made the 1981 season a real success in many ways. True, they didn't win many games, but believe me, they gave a good account of themselves in every game they played. In covering the last several games of the season, I made it a point to talk to the opposition, sometimes on the sidelines as I was taking my (mostly unsuccessful) pictures, and they always, every time, said they sure hated to play the Longhorns because they always gave them so hard a time—they just don't quit.

This was our immediate impression, and we have never had any reason to change our mind. We will say unequivocally that this was the "fightingest" football squad we have ever observed in high school. So, Longhorns, you didn't win many—but you never really lost any!

And now for the lighter side. The following elongated bit of wisdom was stolen by us from Bill Ellis's Star Lites column in the Friona Star. Who he snatched it from is beyond us, but it had to originate somewhere because we think you will admit that it is certainly appropriate to our day and time:

There is a new game on the market.

Continued On Page 3

The Rev. Michael O'Connor's

Perspectives

I've been thinking about law and order some recently. There are all kinds of reasons given for the increase in crime. Some people like to blame society - without defining just who society is, or in what ways society may be deemed culpable.

Others lay the blame on poverty. People don't have things and so they steal, and once they get into stealing it becomes inevitable that eventually someone will be the victim of a more violent crime.

Some people like to lay the blame on the courts. Penalties are not stiff enough, the courts have hamstrung the police, if we reinstated the death penalty and enforced it, we would see a drop in the crime rate.

Still others blame organized crime. These nefarious evildoers are introducing drugs to our young folk, and their addiction causes them to become involved in crime in order to support their habit.

All of these reasons have a certain amount of support, and they may all be part of the problem. But I would like to suggest another reason, that we are

training more criminals in our homes.

Put simply, most of us are involved in lawbreaking every day. We break the speed limit, and excuse ourselves. If we hit someone's car in a parking lot, we may well drive on off. We let our children drive without a license. If they commit an act of vandalism, they may well get off scott free because we simply buy the victim off (often kids are heard to say, "If we tear it up, my folks will pay to have it fixed).

We are involved in questionable business deals, weasel out of contracts and obligations, cheat on our income tax, the list goes on and on.

The problem with all this is that it shows a subtle disrespect for the law, no matter how much we profess to be law abiders. And then we wonder what has happened to our kids when they pass from youthful pranksterism into full-fledged crime.

Sure, this is a simplistic explanation, and probably does not account for a great deal of the problem, but we need to begin looking to our house before we blame some sort of ethereal "they."

Letter to the Editor

TRIBUTE TO MY "AUNT ARTIE"
(Resident of Local nursing home)

It's difficult to say exactly how I feel this day—because when I looked into those huge beautiful blue eyes of my beloved Aunt and see little if any recognition of her beloved "Pizzie" (my nickname). I recall happier days when those loving eyes saw two little girls who had lost their Mother and felt compassion and love.

This love for my sister, Betty, and I was manifest by my Aunt Artie, Unk Walter, and Grandmother Lincoln by bringing us to their home here in Floydada when our mother, Louella Lincoln Terry died. Our sister, Charlotte who was born at this time was adopted soon after birth and raised as a cousin.

The good times I remember were of trips to the brakes with picnic lunches on the tail gate of an old survey truck. There were circuses, Kidd Springs, the canyon, the sand dunes for us to look forward to. Movies during World War II with a bag of asafetida tied around our neck to ward off that dread disease of polio.

I remember little chicks, cats and dogs for us to love. —the warmth of a kitchen full of the smell of fresh home made bread. Friends were always made welcome for a visit or to go on our outing with us. Unk Walter's camera was always close at hand to snap a cherished memory.

My cousins, Betty, Bud and Gilbert have continued to make us feel at home even though Aunt Artie is now in the local nursing home. On this most recent visit, other out of town family members gathered as we reminisced about happier days of yesteryear. My gratitude extends to the Newell family and all they have meant to my life. They always accepted me as a member of this loving family.

I remember with gratitude how Aunt Artie's life was lived as she taught us that God loved us. I remember as a little girl giving my life to Christ in the Christian Church here in Floydada. I remember their 50th wedding anniversary celebrated at the church. I have a feeling of thanksgiving for each member of the community as we buried our Grandmother and Unk Walter from this lovely Church of their choice. I appreciate each of you for ministering so beautifully to these whom I have loved so dearly.

These tears I shed this day, Dear Aunt Artie, are not for you but for myself as I feel the pain of the loss of a part of my life so beautiful and fulfilling. The memories will never be forgotten. They linger as a memorial of a beautiful loving person who means so much to me. Her life an example to pattern my life after and a home as a refuge of strength so welcome and comforting.

I pray that I may give of myself so that some day my loved ones may say to me as I say to my Aunt Artie today....Thank you for loving me.

Respectfully submitted

Barbara Mitchell
204 S. Clark
Rockwall, Texas 75087

Dec. 8th to Dec. 18th

Tint for \$18⁰⁰

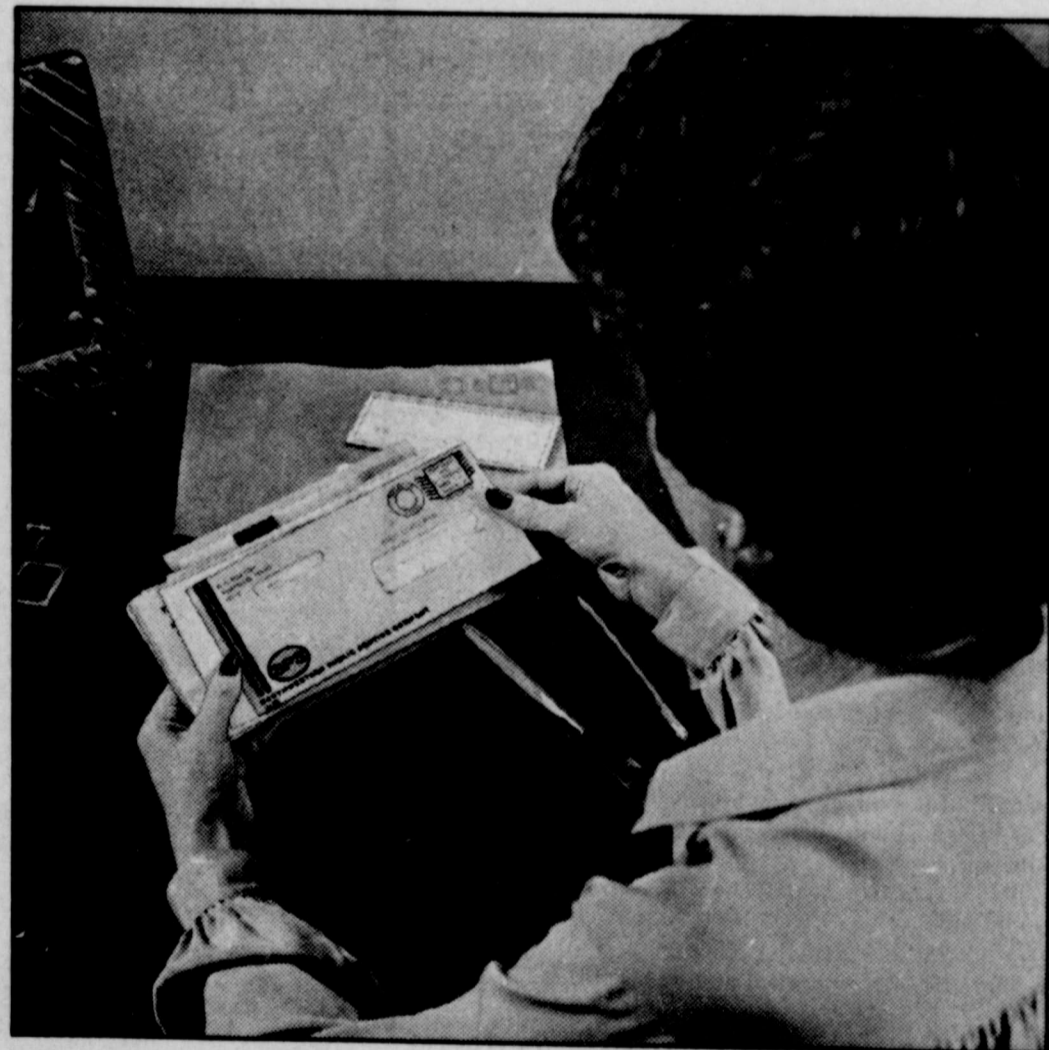
Regular Sensor Perm \$38⁰⁰

Merry Christmas from Pat and Donna

Guys and Gals

983-3941 708 S. Wall

What's an average day worth?



On an average day you probably get out of bed, adjust the thermostat, make a pot of coffee, cook breakfast . . . perhaps use the dishwasher.

Later, maybe you do a load of laundry and listen to the radio. Then you cook dinner and put the leftovers in the refrigerator. You may turn on the television or settle down in your favorite chair next to a lamp to read.

For all of you, all of this and more adds up to one day . . . just 1/30th of your average monthly electric bill.

Knowing what electricity is worth is worth knowing.



SOUTHWESTERN PUBLIC SERVICE COMPANY

630.1



THESE TWO HANDMADE AFGHANS are being raffled by the Upsilon chapter of Beta Sigma Phi. Winner will be drawn at the Saturday at the Massie Activity Center. The afghans were made by Elsie Bradford.

GIVE A FLOYD COUNTY HISTORY BOOK Christmas This Museum Will And Mail It For \$37⁹⁵ includes & Tax Contact THE FLOYD COUNTY HISTORICAL MUSEUM

Let us help you with the new All Saver Certificates! Tax-Free interest up to \$1,000. per individual \$2,000. per couple

Come in We'll be glad to answer any questions about this new way to invest in high-yielding, tax-saving all saver certificates.

First National Bank in Lockney (806) 652-3355

MEMBER F.D.I.C. up to \$100,000.

Page 1

horns All-

Brad Jeffers, Childress, 210; James Pace, 195; Anthony Davis, 185; Mark Nutt, Floyd, 180.

Scott Dean, Childress, David Davis, Abernathy, Kyle Brock, Lockney, Norman Allen, Floydada, 128.

Jeffrey McCormick, Lock, 170; Todd Beedy, Floydada, 175; Henry Vega, Idalou, 15; Alonzo Jeter, Childress, 128.

TEAM OFFENSE

Karl Race, Lockney, Sr., Jerry Keeter, Tulia, Sr., Scott Dean, Childress, Jr., James Pace, Abernathy, Sr., David Espinoza, Idalou, Sr., Anthony Davis, Tulia, Sr., Robert Rendon, Lockney, 5'7", 140; Alonzo Jeter

LOCKNEY BEACON (USPS 317-220)

Published weekly each by Floyd County Co., 211 North St., Lockney, Texas. Second class postage at Lockney, Texas. Subscriptions: local \$11.50 per year, out-of-trade area \$15.00 per year. POSTMASTER: send address changes to the Lockney Beacon, P.O. Box 187, Lockney, TX 79241.

Harris Publisher
Barnes Managing Editor
Advertising Manager

ASSTD./ KLE 2 200 CT. BOXES

CLOVER CLUB RE POTATO C

DISC

BQ SANDWICH

HONEY BUNS

KRISPY CRACKERS

MOTTAGE CHEESE

2 liter Bit. SOFT

PRICES EFFECTIVE DECEMBER 3-5, 1981

CEPT FOOD STAMP



THESE TWO HANDMADE AFGHANS are being raffled-off by the chapter of Beta Sigma Phi. Winner will be drawn at the Lions Club on Friday at the Massie Activity Center. The afghans were made by Viki and Bradford.

GIVE A FLOYD COUNTY HISTORY BOOK For Christmas This Year. Museum Will Package And Mail It For You. \$37⁵⁰ includes Postage & Tax

Contact THE FLOYD COUNTY HISTORICAL MUSEUM

us help you with the new Certificates! Free interest up to 0. per individual 0. per couple (filing jointly)

any questions about this new way to save, tax-saving all saver certificates.

National Bank of Lockney

652-3355

From Page 1

Rhorns All-District

185; Brad Jeffers, Childress, 175; Rick Houston, Abertonia, 210; James Pace, Sr., 6', 195; Anthony Davis, 6', 185; Mark Nutt, Floyd, 5'10", 180.

Scott Dean, Childress, 5'7", 175; David Davis, Abertonia, 6'0", 160; Kyle Brock, Lockney, 6'0", 170; Norman Allen, Floydada.

Jeffrey McCormick, Lockney, 5'10", 170; Todd Beedy, Floydada, 6'1", 175; Henry Vega, Idalou, 6'5", 185; Alonzo Jeter, Childress, 6'1", 175.

SECOND TEAM OFFENSE
Karl Race, Lockney, Sr., 6'1", 175; Jerry Keeter, Tulia, Sr., 6'1", 175; Scott Dean, Childress, Jr., 5'10", 175; James Pace, Abertonia, Sr., 6'0", 175; David Espinoza, Idalou, Sr., 6'0", 175; Anthony Davis, Tulia, Sr., 6'0", 175; Robert Rendon, Lockney, Sr., 5'7", 140; Alonzo Jeter, Childress, Sr., 5'7", 140.

Continued From Page 1

Beacon Beams

along the lines of "Monopoly," or "Parchesi." This one is entitled "Public Assistance." The precepts of the game would be funny, if it were not so darned serious.

In this game, which like the others, uses dice and a couple of stacks of cards, there are two different courses which the players must travel. One is entitled "The working person's rut," and the other is "The able-bodied welfare recipient's promenade."

Some of the "chances" which the "working person" may land on include these: "Labor board reinstates the employee you fired: pay \$200;" and "Penalty for withholding taxes being late: pay \$100."

Also, "Secretary alleges sex discrimination: pay \$500." Or how about: "Customer rejects finished job: pay \$100." Then there is "Caught with improper racial balance in shop: pay \$500." and "Chief client goes bankrupt: pay \$1,000."

If those sound way out, how about: "Dip into retirement fund: collect \$2,000." or "Car payment due: pay dice times 10." or "Rent Due: pay dice times 10." There are similar stops on the board for gas fill-up, grocery bill,

property tax, and utility bills.

Along the path of the playing board for the "able bodied welfare recipient" are such landing spots as "Emergency food stamps: collect \$100." and "Have illegitimate child." or "Rent TV and watch soap operas, pay \$50."

Other spots on their path include: "Act belligerent at job interview," "Play pin ball machines all day," and "Lie on application."

Other "stops" for the welfare recipient include such would-be things as shoplifting on the way to the welfare office; reading girlie magazines all day; stealing senior citizen's social security check.

In Monopoly, you remember the stack of cards called "chance?" In the new game, they are labeled "burdens" and "benefits."

Among the burdens are: Jaycees recognize your dedicated service to the community. You are presented with "Citizen of the year" award. Pay tuxedo rental, \$50." and "You and spouse are both working: pay \$100 for child care."

Other include: "Your son needs braces: \$800." and "Your sister is raped by a paroled rapist. Lose one

Continued From Page 1

Fitness Course

your body.

- Generally changing life styles—
- General muscular fitness.
- Attaining the proper fat content in through physical fitness—to a more healthy style of living.

The hospital and Mr. Gimbel emphasize that a doctor's permission is necessary to enter the program.

All interested persons may leave their names at the hospital receptionist for entry into the program.

Scout-O-Rama in Lubbock Saturday

Jim Blagg, Assistant City Manager for the city of Lubbock, has been named the general chairman for the 1981 Scout-O-Rama. The big Scout show is staged annually to demonstrate to the public the many feats of skills and knowledge the youth of the South Plains Council possess.

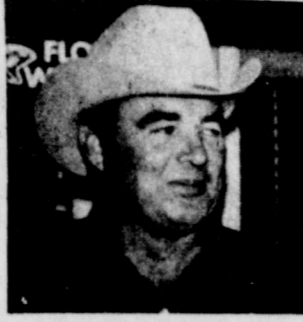
Blagg said, "This year our theme is Scouting Game: Play it with a friend. The show this year will be full of excitement and games of skill competition. Fun for the whole family."

The main show will be staged at the Lubbock Civic Center on Saturday December 5th.

LOCKNEY BEACON
USPS 317-2201

Published weekly each week by Floyd County Publishing Co., 211 North St., Lockney, Texas. Second class postage paid at Lockney, Texas. Subscription rates: local \$11.50 per year, out-of-trade area \$15.00 per year. POSTMASTER: send address changes to the Lockney Beacon, P.O. Box 187, Lockney, Texas 79241.

Harris, Publisher
Publishing Editor
Advertising Manager



DON GREEN



CARRIE BERTRAND



JIMMY CERVANTES



LOUIS BEARDEN



LOD DAVIS

Kay Hicks not pictured



Old Fashioned Christmas Dance
The Davis Farm Supply And The Loft Western Wear Invite their friends and customers to an evening of entertainment featuring the music of Steve McPeak and the Roadrunners



We welcome all of you to attend this occasion and enjoy an evening of dancing or just listening to great country & western music. Dress Casual!

Saturday, December 12, from 9 til ... at the Massie Activity Center, Floydada

ASSTD./WHITE FACIAL KLEENEX TISSUE
200 CT. BOXES **99¢**

ASSORTED FLAVORS BORDEN'S ICE CREAM
1/2 GAL. RD. CTN. **\$1.59**

POPCORNS
CLOVER CLUB REG. \$1.15 **POTATO CHIPS PKG. 79¢**

FOLGERS
FOLGERS' ALL GRINDS COFFEE 1 LB. CAN **\$2.19**

DISCOUNT CHRISTMAS TREES
LARGE SELECTION NORTHERN NEW MEXICO BLUE SPRUCE/FIRS/BALSAM ONLY **\$11.99**
SCOTCH PINES FARM GROWN IN MICHIGAN
PURPLE TAG 4 TO 5 FEET **\$15.00** ORANGE TAG 5 TO 6 FEET **\$19.00**
NEW SHIPMENT - JUST ARRIVED

BBQ SANDWICHES 99¢
MORTON'S HONEY BUNS 9 OZ. BOX **79¢**
SHINE KRISPY CRACKERS 1 LB. BOX **89¢**
BORDEN'S COTTAGE CHEESE 12 OZ. CTN. **79¢**

6 pack cans COCA-COLA 99¢

3 lb can Maryland Club COFFEE \$4.29

SOFT DRINKS 69¢

ALLSUP'S CONVENIENCE STORES
Lockney

OPEN 24 HOURS A DAY
OPEN 365 DAYS A YEAR
SUPPLIES LIMITED

PRICES EFFECTIVE DECEMBER 3-5, 1981

ACCEPT FOOD STAMPS

We are pleased to introduce our newest employee **Beth Echart**

Come in and let the friendly staff at the First help you.

Beth works in bookkeeping and proofing

"Helping you change things for the better"

THE FIRST NATIONAL BANK OF FLOYDADA

Member F.D.I.C. Accounts Insured up to \$100,000

Poores observe 50th anniversary

A reception honoring Mr. and Mrs. Orville Poore on their 50th wedding anniversary was held Sunday November 15, from 2:00-4:00 p.m. in fellowship hall of University Heights Baptist Church, Springfield, Missouri, of which they are members.

Hosting were their children and grandchildren, Mr. and Mrs. Dee Poore and family of Florissant, Missouri; Mr. and Mrs. Ray Lasley and family of Torrance, California and granddaughter; Mr. and Mrs. Randy Neisler, Rolla, Missouri.

The serving table was laid with a beautiful white applique and embroidered cloth, belonging to Mrs. Dee Poore. An arrangement of white and yellow mums and daisies, bearing a gold 50 was used as a centerpiece, and added decor to the white tiered wedding cake decorated in yellow and topped with a gold 50. A crystal punch service and silver coffee server were also used. White or chocolate cake, mints and nuts were served with either punch or coffee.

Grandchildren and sisters of the honored couple altered at the serving table, and a granddaughter and sister-in-law of the honored couple served at the guest register.

Orville came to the Lakeview community in Floyd County with his parents and family in January 1920. He

attended school at Lakeview and graduated from Floydada High School and attended Lippert's Business College in Plainview.

Maurette attended schools in Burleson, Texas, and came to the Lakeview community in Floyd County with her mother and family in 1930.

After the marriage of Orville and Maurette in Clovis, New Mexico, on November 14, 1931, they lived in the Lakeview community, Floydada, and Amarillo, Texas before moving to Purdy, Missouri in 1946.

They have been residents of Springfield, Missouri for several years where Orville was employed at S.M.S. College as maintenance carpenter foreman until his retirement in the mid 70's.

Maurette is also employed by the system as a cafeteria employee, where she has worked for several years.

Mr. and Mrs. Poore have two children and five grandchildren. Maurette's sister is Mrs. Bill (Lou) Snow of Ft. Worth; her brothers are Weldon Thornton, Lubbock, Van Thornton, Ft. Worth, and Herbert Thornton, Houston.

Orville's sisters are Mrs. J.C. (Deeota) Odam, Floydada, Mrs. Kyle (Jimmie D.) Hollomon, and Mrs. Odessa Cage, Lubbock.

Among those attending the reception were Mr. and Mrs. Dee and Ann Poore and

April, Florissant, Missouri; Mr. and Mrs. Randy Neisler (Kelly Dee Poore), Rolla, Missouri; and Dana Poore, Fayette, Arkansas; Mr. and Mrs. Ray and Pansy Lasley, Diane and Brian, Torrance, California.

Others present were Mr. and Mrs. Weldon and Claudia Thornton, Lubbock; Mr. and Mrs. Van and Dorothy Thornton, Mrs. Mary Ann

Thornton, Mr. and Mrs. Bill and Lou Snow, Ft. Worth; Mr. and Mrs. Herbert and Mary Thornton, Houston; Mrs. Odessa Cage, Lubbock; Mrs. J.C. (Deeota) Odam, Floydada; and a cousin H.B. Barnett, Lubbock and Mrs. Florence Burton, mother of Mrs. Dee Poore, Purdy, Missouri and a host of friends. Mrs. Hollomon of Lubbock was unable to attend.

1956 Study Club voices objections

Members of the 1956 Jr. Study Club joined 16 other federated clubs in Caprock District and voiced their objections to offensive products advertised on television by signing petition to the three major television networks. Members also wrote letters to the manufacturers of these products asking that they remove their commercials from public viewing.

The meeting was held in the home of Connie Bertrand who was assisted by Stacey Smith.

Sheree Cannon reported that the Floyd County Child Welfare Board is in need of financial help for the Christmas expenses of the four children who are in foster care homes. The members were encouraged to donate as individuals to help with this need.

In other business, discussion was held on the club's annual Christmas projects, Santa Land and Santagrams. JenniSu Smith will serve as chairman of the Santagrams

committee and Sharon Vickers will be in charge of Santa Land arrangements.

The members of the club has compiled a cookbook that is now available to anyone who wishes a copy. Judy Dunlap is in charge of this money raising project.

The program was presented by Stacey Smith on using grocery store coupons and refund offers that are available to anyone. She stressed that you can save alot on your grocery bill if you are willing to spend some time using the coupons that are excepted at all grocery stores.

Members of the club brought coupons that they did not want and participated in a "coupon swap."

Those present were: Julie Cathey, Judy Dunlap, Sheree Cannon, Susan Gams, Stacy Reeves, Darlynn Hambright, Janet Lloyd, Rosemary Paty, Laura Lloyd, Donna McClelland, Leora Younger, JenniSu Smith, Sharon Vickers, Jan Thompson, Stacey Smith and Connie Bertrand.

The Shireys return from California

Mr. and Mrs. Gilbert Shirey returned to their home in Torrance, California November 30 after a visit in Floydada with Mrs. Shirey's brother, Louis Newell, and mother, Mrs. Artie Newell.

They visited with Mr. Shirey's sister, the Wayne Finley family. On November 17 Pansy Finley and Gilbert Shirey, who are twins, celebrated their first birthday together since 1935.

November 21 and 22 Louis Newell was host to the Shirey's from California and Mr. and Mrs. Hudson Lincoln of Sweetwater, Mrs. Barbara Mitchell and Betty K. Lufland of Rockwall, Texas, Mrs. Allene Terry of Heath, Texas and Mrs. Thea Pounds of Newcastle, Texas.

Mr. Lincoln is an uncle and the others are cousins of Louis Newell and Betty Shirey.



MISS WAYLAND FINALISTS — Floydada Junior Tammy Payne (right) was named fourth runner-up during the 1982 Miss Wayland Baptist University Pageant recently on the Plainview campus. Janet Johnson (center), a sophomore from Clovis, New Mexico, won the 1982 crown and will represent Wayland in the Miss Texas Pageant next July in Fort Worth.

Reception to honor Clara Murry's 90th birthday

A long-time Floydada resident, Mrs. Otis E. (Clara) Murry, will be guest of honor at a reception honoring her 90th birthday on Sunday, December 13 at the First

National Bank Community Room in Floydada.

A Floyd County resident since her birth here on December 14, 1891, Clara

Day married Otis E. Murry on December 14, 1913 in Floydada, this was also the day of her 22nd birthday.

Clara's first home with her parents, two sisters and three brothers was in a half dugout on the side of a Blanco Canyon hill.

Her husband died in 1953. The couple had a set of twin

Savage honoree of baby shower

Mrs. Rex Savage was honored with a baby shower on Saturday, November 14 from 4 to 5 in the parlor of the First United Methodist Church.

Guests were served ham roll-ups, sandwiches with cream cheese filling, mints and nuts. Yellow fruit punch was also served.

The table was set with an ecru lace tablecloth. The centerpiece was a ceramic dog with silk flowers, ribbons and diaper pins attached. A paper fold out stork and yellow tapers were also used as decorations.

Special guests were: Mrs.

Savage's mother, Mrs. Dell Gray; maternal grandmother's, Mrs. Wayne Russell of Floydada and Mrs. John Taff of Lubbock; her aunt, Mrs. Mike Bartz, also of Lubbock. Four of her sisters were also in attendance.

The hostesses presented the honoree with a converta/swing (a bassinet and swing combination) and a baby book.

The hostesses were: Kay Orman, Kelli Reddy, Holly Hendrix, Noma Lou Rainer, Ann Campbell, Adeana Morris, Phyllis Johnson, Lee Battey, Nancy Willson, and Charlotte Campbell.

HO HO HO
What Christmas Gifts!

Men's Plaid Wool SHIRTS
\$24⁰⁰ reg. \$28⁰⁰

Lady Wrangler Denim JEANS
\$2⁰⁰ Off
Reg. Price
PLUS
Lots of New Items Ideal for Gift Giving

Remember FREE Gift Wrapping on All Purchase!

THE LOFT
517 East Houston 983-2235

Attention Men...

Would you like to do something well appreciated and everlasting to help your wife look and feel her very best? Stop by Pat Walker's Figure Perfection Salon and ask about our Holiday Gift Certificate.

Ladies: There is a Holiday Gift Certificate available for men too!

Pat Walker's
Figure Perfection Salons, Int'l
983-2112

205 W. Missouri
Floydada, Texas

HALE'S DEPT. STORE
You Can Win COLD CASH
One Day Only Thursday, Dec. 3rd
from 4 p.m. to 9 p.m.
\$500.00 CASH PRIZES AVAILABLE
PLUS
Our 1/2 Price Sale
Good All Day Thursday

Buy any T-Shirt or Jersey (with transfer), Man's Tie, Man's Sweater or Man's Velour Shirt at Regular Price

GET a second of Equal or less value at 1/2 PRICE

Men's Western SUITS by Haggar 20% off
Men's Washable SUITS by Haggar 20% off

Remember starting at 4 p.m. Buy any item or items and check and see if by buying that item you have won cash.

1/2 Price Sale Good All Day Thursday!
Remember, FREE Gift Wrapping with Purchase.

Now In Stock

FRESH Christmas Greens

SCHAEFFER'S
Flowers & Gifts

112 W. Poplar, Lubbock

Blouses & Tops

SALE

20% Off Reg. Price

YOU WILL NOT WANT TO MISS THIS SALE. OUR ENTIRE STOCK OF TOPS & BLOUSES HAVE BEEN REDUCED TO 20% OFF. HURRY WHILE THEY LAST. COMPLETE. WE HAVE A WIDE VARIETY OF PRINTED TOPS IN POLYESTER AND MANY VARIETIES OF NECKLINES.

PERRY

Today by

COULD IT POP? The ancient Indians used it as a little moisture level. When you buy it is processed by a processor and an airtight, un-stainer or pack- to be sure that it is moisture level popping. To pre- natural moisture of corn once it has stored the un- in an airtight

lengthy storage. does not pop crisp kernels. it most some of its moisture. To re- popcorn, fill a 1- 1/4 full with pop- add 1 tablespoon of water and shake fre- Payne is the daughter of Mr. and Mrs. Grover in Floydada.

Others pictured above are (from left) Roswell, New Mexico, third runner-up in Mexico, first runner-up. A music- Grover in Floydada.

Day married Otis E. Murry on December 14, 1913 in Floydada, this was also the day of her 22nd birthday. Clara's first home with her parents, two sisters and three brothers was in a half dugout on the side of a Blanco Canyon hill. Her husband died in 1953. The couple had a set of twin

CORN is a great snack and this is the time of year everyone seems to try these variations. What time you pop corn: PARMESAN CHEESE: 1/2 cup butter and 1/2 Parmesan cheese. Mix well. Coat popcorn with cheese-butter. Add salt to taste. Melt 2 tablespoons butter over low heat. Dissolve 1 chicken bouillon cube in melting butter. Pour over popcorn. Add salt to taste.

104-06 North Main
This Christmas give him his favorite VAN HEUSEN SHIRTS

That is what my mom does not want his beard my mommie can do for all of you out there

Come by and ask for Ogden today. You'll be the holidays in good

Birdie Hair Styling
For men

Today's Lifestyles

by Marilyn Tate
County Extension Agent



MAKES IT POP?
The ancient Indians
that it was a little
imprisoned in the
shells which made
pop, the moisture
of the kernels is the
reason. When you buy
popcorn that is processed by
a processor and
in an airtight, un-
opened container or pack-
age, you can be sure that it is
popper moisture level
just popping. To pre-
vent natural moisture of
popcorn once it has
been stored, store the un-
opened in an airtight
container.

MUSHROOM BUTTER :
Sauté 2 tablespoons chop-
ped, bottled or fresh mush-
rooms in 3 1/2 tablespoons
butter over low heat for at
least 5 minutes. Do not let
butter burn or reduce to less
than 3 tablespoons. Distri-
bute mushroom bits and

butter evenly over popcorn.
Add salt to taste.

HERB BUTTER: Melt 2
tablespoons butter over low
heat. Stir into butter 1/4
teaspoon each lemon juice,
crushed dried parsley flakes
and crushed dried basil or
savory; and 1/4 teaspoon finely

chopped chives. Drizzle over
popcorn. Add salt to taste.
**PEANUT BUTTER AND
JELLY:** Melt 1 tablespoon
each butter, peanut butter,
and jelly together over low
heat. Drizzle over popcorn.
Mix well to coat all pieces
thoroughly.

Dennison hosts Study Club

The 1929 Study Club met
November 14 at the home of
Mrs. C.W. Dennison. The
morning session was con-
ducted by the president, Mrs.
Vance Campbell. Members
brought gifts and clothing
for patients at the State
Hospital in Vernon, Texas.
Mrs. Dennison served cof-

fee and spiced tea while
members discussed club busi-
ness. Members were re-
minded to bring a five dollar
gift for the Christmas party,
December 3, at the First Na-
tional Bank Community
Room.

Following the business

session, the ladies adjourned
to Duncan school where they
attended the luncheon and
bazaar sponsored by the
Home Demonstration Clubs
of Floyd County. An enjoy-
able and informative after-
noon was spent listening to
the demonstration and look-
ing at the booths.

Hardy to present "fun recital"

Elaine Hardy will present
her "fun recital" Thursday
night at 7:30 p.m. at the
First Christian Church in
Floydada. Both Floydada
and Lockney students will
be participating.

Students will play popu-
lar, inspirational, religious
and Christmas songs on the
piano, organ, electric piano
and chimes.

Floydada students pre-
sented selections will be
Bryan Jarnagan, Ted and
Shannon Edwards, Mike and
Tammy Leatherman, Mizi
Julian, Amy and Anita Mc-
Cormick, Kim and Tana Per-
ry, Laron Check, Andra
Bonner, Christi Norrell,
Amy Ogle, Cathy Langley
and Jamie Thayer.

Lockney students who
will be performing include
Amy Kring, Inez Gibson,

Tricia Steele, Karen Ford,
Rachelle Ford, Stephanie
Bybee, Betty Cates, Jodie
and Amy Ansley, Shandra
Bybee, Dee Casey, Cherie

Parrish and Amy Shaw.
A reception will follow for
the students, relatives and
friends. Everyone is invited
to attend.

Christmas brunch to be hosted by Walls

A Christmas brunch will
be held Saturday, December
12, between the hours of
9:11:00 a.m. in the home of
Jackie Walls, 903 W. Ten-
nessee.

All proceeds from the
brunch will go to benefit the

American Cancer Society.
A door prize will be given
away and special music will
be played.

Everyone is invited to
bring a friend, neighbor,
husband, wife or relative
and attend.

What to do about those "baby blues"

Are you a new mother
suffering from post-partum
depression — more common-
ly known as "baby blues?"
Typical symptoms of "ba-
by blues" include crying for
no reason and feeling sad or
depressed after giving birth,
says Cindy B. Wilson, a
family life education special-
ist.

"Baby blues" can range
from mild to severe emotion-
al changes due to physical
changes and exhaustion, she
explains.

Experiencing "baby
blues" is a normal condition
for many new mothers, and it
can be stabilized to a great
extent, the specialist notes.
To control these downward

spiraling feelings, new mo-
thers can do a few simple
things, Wilson recommends.
"eat well-balanced meals
and rest adequately.

"share inner feelings with
someone else — don't bottle
them inside.

"plan "alone time" to
relax, nap, read or partici-
pate in a quiet, enjoyable
activity and.

"call on family, friends and
neighbors to help out with
housekeeping, cooking and
care for the newborn the first
month after giving birth.

Wilson is with the home
economics staff of the Texas
Agricultural Extension Ser-
vice, The Texas A&M Uni-
versity System.

Cedar Hill News

Cotton harvest ceases at Cedar Hill

BY GRACE LEMONS
It began raining Saturday
night and was foggy all day
Monday. The module trucks
that had been buzzing a-
round steadily taking cotton
to the gins were stopped and
other harvesting ceased.
Thanksgiving dinners giving
in homes all week.

Guests in the home of Mr.
and Mrs. Jim Conner for din-
ner Thanksgiving day were
Robert and Gwen Conner
and Holly and Robin and Mr.
and Mrs. Lee Anderson of
Amarillo. The 25th was Hol-
ly's birthday and they cele-
brated it on Thanksgiving
day at the Conners.

Connie Welch of Amarillo
spent the Thanksgiving hol-
idays with her parents, Mr.
and Mrs. J.A. Welch.
Mr. and Mrs. Greer Black-
ey and family and Roly and
Buddy Raulston and Lacy of
Burleson spent several days
in the home of Mr. and Mrs.
W.E. Lackey. Thanksgiving
day dinner was served to
them and Mr. and Mrs. Bill
DuBois, Thada and Clayton
of Silverton.

Grace Lemons visited Jim
Harper in the Caprock Hos-
pital in Floydada Tuesday.
Joyce Harper was sitting
with her husband.

Grace Lemons also visited
Pauline and John D. Van-
Hoose. Pauline is slowly im-
proving and getting around
some with crutches.
Shelia Joiner and son,
Nick of Irving, arrived Mon-
day night to spend a few
days with her parents, Mr.
and Mrs. Junior Taylor.

Mr. and Mrs. Clara Mize
spent Thanksgiving in the
home of Bill and Winnie Bee-
dy. Burton and Judy Beedy
were also present.

George Mize of Ruidoso
spent Friday night with his
parents, Mr. and Mrs. A.S.
Mize.

David Lemons and Jessica
Lemons of Lockney spent
Thursday night with their
grandparents, Mr. and Mrs.
Carl F. Lemons.

Linda Lemons of Lockney
and children, Janie and Ed-
ward Lemons and Jenese of
Seagraves and Mrs. Belle
Lemons had Thanksgiving
dinner in the home of Mr.
and Mrs. Carl F. Lemons.

Edna Gilly was host to se-
veral guests in her home
Thanksgiving. Those pre-
sent were Mildred and Clay
Anderson of Plainview, Jua-
nita and Leighton Teeple
and Dwight Teeple and Cla-
ra Redd of Floydada, Craig
and Trudi Gilly and Amy,
Mark and Lori and Emory
enjoyed the celebration.

Friday Mrs. Ruthie Clark
of Plainview, Clara Redd of
Floydada and Juanita Tee-
ple accompanied Edna Gilly
to Amarillo where they
spent the night with Virgie
Flowers. They also visited

Lucious and Pam Hill while
there.
Tom and Gladys spent
Thanksgiving in Oklahoma

with granddaughter and
husband, Pam and Jackie
Hayhurst.
Mr. and Mrs. Phil Le-

mons, Twyla, Traca and
Vance attended the wedding
of Glenda Kay Thompson
and Gary Chadwick in Hereford
Thanksgiving day. Glenda
Kay is the daughter of the
Rev. and Mrs. Jackie
Thompson. The Chadwick
home was the scene of the
wedding. Twyla Lemons re-
gistered the guests and Tra-
cia was a candlelighter. The
Lemons joined the wedding
party with Thanksgiving
supper in the home of Mr.
and Mrs. Les Thompson.

Tomorrow will be a better
day if we begin this morning
to improve it.

Lighthouse Sunday School class

enjoy fellowship in Lubbock

Monday, November 30,
the Lighthouse Sunday
School Class traveled to Lub-
bock in the church van for an
evening of fellowship and
fun.

The first stop was at
"Making Arrangement." A
demonstration was given in
making bows and Christmas
decorations. After making
some purchases, the group
went to La Bagoda and en-
joyed a fine dinner of
Mexican food.

Those going with the
group were: Molly Stringer,
Betty Edwards, Glenda Liv-

ington, Iantha Smith, Kay
Wilson, Kay Dean Smith,
Donna Harmon, Donna Hen-
derson, Barbara Hernandez,
Barbara Cocanougher, Linda
Jackson and visitors Carla
Schneider and Linda Daw-
son.

NEW SHIPMENT
Oxford Cloth
(Button down collar)
by D.C.
Mens Shirts
\$15.95
NOW ONLY
Thurs., Fri., & Sat. ONLY
The Shadow Box
Lockney 652-2227

Shop Now For Christmas...
We have a good selection
of Gift Items for the Entire Family
FREE Gift Wrapping Available

Christmas SPECIALS
20% OFF
on every item in our store
6-8:30 p.m.
Thursday, December 3rd ONLY!
Free Gift Wrapping
3 Ways To Buy: Cash-Layaways-Master Charge or VISA

ANDERSON'S
DEPARTMENT STORE
120 West California
Floydada



Senior Tammy...
...the 1982...
...on the...
...honor...
...represent...
...ill Worth.

Clara Murry's 90th birthday

Community...
...resident...
...1891. Clara

Day married Otis E. Murry
on December 14, 1913 in
Floydada. This was also the
day of her 22nd birthday.

Clara's first home with her
parents, two sisters and
three brothers was in a half
dugout on the side of a
Blanco Canyon hill.

Her husband died in 1953.
The couple had a set of twin

boys. Lloyd and Fred
had six grandchildren
great-grandchildren.

The Sunday afternoon
was hosted by Mrs. Mize
and their wives, Mrs.
Imelda Murry and Mrs.
Marie Murry.

All friends and relatives
Clara are invited to
celebrate her 90th birthday
with her family and friends
at the home of Mrs. Mize
and their wives, Mrs. Imelda
Murry and Mrs. Marie Murry,
112 W. Poplar, Lockney 652-2227.

Mrs. Dell
grandmo-
Russell
Mrs. John
her aunt,
z. also of
her sisters
dance.
presented
a converta/
and swing
a baby

were: Kay
ddy. Holly
ou Rainer,
leanna Mor-
nison, Lee
Wilson, and
ll.

3rd

at

ff
ff

r
n

Now In Stock!

FRESH
Christmas Greens & Herbs

SCHACHT'S
Flowers, Jewelry & Gifts

"Our Pleasure is To Serve You"

Serve You
112 W. Poplar Lockney 652-2227

Blouse & Top

SALE

20% Off Reg. Price

YOU WILL NOT WANT TO MISS THIS SALE
OUR ENTIRE STOCK OF
TOPS & BLOUSES HAVE BEEN REDUCED
TO 20% OFF HURRY WHILE SIZES
COMPLETE WE HAVE A WIDE SELECTION
OF PRINTED TOPS IN POLYESTER
AND MANY VARIETIES OF
NECKLINES

PERRYS

Brown's
DEPARTMENT STORE
Lockney, Texas
104-06 North Main
This Christmas
give him his favorite
VAN HEUSEN
SHIRTS

Make The Most Of Yourself



That is what my mommie says.
Hi! My name is Mandy. Santa
does not want his beard cut, but
my mommie can do wonders
for all of you out there that are

Come by and ask for Cindy
Ogden today. You'll be set for
the holidays in good fashion.

Birdie Lee's Hair Styling
For men & women.

112 S. First
983-5169

SEIKO



100 feet water tested,
two-tone yellow/stainless
steel case, gift dial,
HARDLEX mar-resist
crystal.

Yellow top/stainless steel
back, gift dial, HARDLEX
mar-resist crystal.

**FOR HIM. FOR HER.
FOR CHRISTMAS.
SEIKO QUARTZ.**

For her, the widest selection of the most
elegant and accurate quartz watches ever. For
him, a dazzling array of models including
ultra-thin dress quartz, day/date
quartz, Multi-Mode LC Digital Quartz, and
many more. Each the ultimate gift.
Seiko Quartz.

SCHACHT'S
Flowers, Jewelry & Gifts
"Our Pleasure is To Serve You"

112 W. Poplar Lockney 652-2385

Area woman celebrates 100 years of living

By MARIE HARRIS
Herald Regional Editor

TULIA — Salome Koger's keen perception of life and sense of humor have not faded through the past century although she shakes her head and says, "I've lost a lot" when someone comments on her alert mind and sharp memory.

Born Nov. 10, 1881, the Collin County native was honored on her 100th birthday with a party that was marked by the attendance of a number of friends and out-of-town relatives, a decorated birthday cake, cards, letters and calls.

Mrs. Koger received letters of congratulation from President Ronald Reagan, Governor Bill Clements, Congressman Jack Hightower and Senator Lloyd Benison. Later she was presented a Texas flag that flew over the Capitol building in Austin on her birthday and a certificate, both secured for her by State Rep. Pete Laney.

"I GET A kick out of things," said the centenarian, but added, when she was wished another happy birthday next year, that she didn't think she could stand another one as exciting as this year's celebration.

Mrs. Koger has lived in her present home in Tulia since 1945 when she left the farm, which she still owns in Swisher County southeast of Tulia. After the death of her husband, E.T. (Lige) Koger, in 1932 she continued to farm.

"I had to be rough-headed to get by," she stated. "I fought it out for 13 years during the Depression at the time the banks closed."

Her only child, a son, Leo Koger, lives with her. "He still needs me to correct him," she smiled, "but there is no crime in my boy. He is just like his mama — hard-headed."

MRS. KOGER has one grandchild, Russell Koger of Albuquerque N.M., and two great-grandchildren. A girl she reared, Oleta Lanham of Dalton, Ala., came to Mrs. Koger's party. Three nephews and two great-nieces also came. Mrs. Koger had one sister, Erma, who died two years ago at age 91.

When Salome was 10 years old she moved to Floyd County with her parents, John J. and Sarah Elizabeth Roberts. While her mother drove the wagon with Erma inside, Salome and her father herded their cattle all the way from Jack County to Floyd County. As the wagon was full of their possessions, Salome usually slept on the wagon seat and sometimes on the ground. The trip took them four weeks and they camped along the way because the country was not settled.

Arriving in Floyd County, Salome had to keep the stock rounded up until her dad could build fences. The Roberts family lived in a two-room house built by a bachelor settler who decided to move and sold his land to Roberts. At the end of the house, they added a dugout where they kept milk, groceries and a bed and spent the night there during storms.

THE FAMILY MOVED in to Lockney which then had nothing but a grocery store and school, and Salome attended the old Lockney College. The Roberts family had a brief stay in

Oklahoma and also lived in Briscoe County where Salome's dad filed on land. Later he decided to move to New Mexico.

"Mother had to leave her new stove and go," remembered Mrs. Koger. "Dad just loved to move. He could see the horizon where the earth and sky came together and wanted to see what was on the other side. We would load up what we could and leave the rest behind."

"When my father said he was going to New Mexico, I told him I was going to stay in Floyd County," Mrs. Koger continued. "I was 19 and wanted to ranch by myself and my husband-to-be was close."

KOGER, MEMBER of another Floyd County pioneer family, and his partner moved their sheep to New Mexico and sold out to ranchers and moved back to Lockney. Salome and Koger were married Nov. 20, 1901.

"He was 10 years older than I was and said he had been waiting for me to grow up," Mrs. Koger reminisced.

While Mrs. Koger lived with other women and children in what was known as "Shanty Town" in Lockney, in order to send their children to school, her husband operated a grain and feed barn and lived most of the time in its little office. He ate breakfast with a family from Arkansas that opened a boarding house in Lockney.

"WHEN SUPPLIES got low, we had to do with what we had until someone could go to the nearest town by team and wagon to get what we needed," Mrs. Koger recalled.

"My husband loved pretty stock and had registered sheep and Poland China hogs, and we both enjoyed that kind of life," Mrs. Koger said. In 1912 they moved to a place just across the line in Briscoe County, bordering Floyd and Swisher, swapping it later for one partly in Briscoe and partly in Swisher before trading for the present land in Swisher.

Mrs. Koger was a good doctor and nurse when someone was ailing. "I patched Leo's ribs and sewed his thumb back on," she stated. In high school she took physiology which she described as "nursing and diseases." She refused to take Latin and any other subject that she thought was useless for girls. Salome studied only the courses she believes she would need. When she took a test once for a teacher's certificate, she failed the rhetoric or composition part, but took the test again at age 17 and obtained her teacher's certificate. She never taught, however, because "I did not want to be deviled with other people's spoiled kids!"

MRS. KOGER IS confined to a wheelchair after breaking her hip about three years ago. In the past she enjoyed raising many flowers and cross-breeding them, including roses and poppies. "I raised pecan trees — everything!" she exclaimed.

"When anyone wanted to know how to do something, he or she went to Mrs. Koger," explained her good friend, Nancy Pepper of Tulia.

Mrs. Koger, who is not a member of a church, recently was told by a friend, "When you get to heaven, please put in a good word for me."



FLAG FOR A CENTENARIAN — Mrs. E.T. (Salome) Koger of Tulia was presented a Texas flag that flew over the capitol at Austin on her 100th birthday, Nov. 10. She was honored with a reception at her home to celebrate her century of living.

VA News

From Donna Anderson
Many veterans and their dependents and survivors are required to furnish the Veterans Administration with an annual income report in order to retain eligibility for such disability or death benefits. According to Donna Anderson, Acting Service Officer for Floyd County, the annual income cards were sent to all claimants on November 1, 1981. If the completed reports are not returned to the VA by January 1, 1982, benefit payments will be stopped.

Those receiving the income cards include veterans, widows and children receiving disability and death pension, as well as dependent parents who are in receipt of death compensation or dependency and indemnity compensation based upon the service-connected death of a son or daughter. Also receiving cards this year are

veterans whose service-connected disability ratings are 30% or more and who are in receipt of additional benefits because of dependent parents. For this latter group, the income of the dependent parents only must be reported.

Some claimants will not be required to complete the income card this year. Those persons exempted are veterans and widows of veterans who are age 72 or older and have received VA benefits for two years or longer with no material change in income.

Everyone receiving the income card must complete and return it to the VA by January 1, 1982, or no benefit check will be sent on February 1, 1982. Persons needing assistance in completing the income card should contact their local veterans Service Officer.

Tax scheme that hasn't worked explained by IRS

Should a taxpayer have faith in avoiding income taxes by buying a church charter through the mail? The people

who sell the church charters say "yes," but the IRS says "no!" The federal tax agency routinely audits tax returns filed by the so-called mail-order ministers, according to IRS District Director

Richard C. Voskuil.

"While there are legitimate tax benefits for churches, and for people who donate to religious organizations, the mail-order schemers use the money to the benefit of the organizer. There is no poverty in spite of a signed vow of poverty statement," the director said. "No tax benefits."

Donations needed Boys Ranch

For the nearly 400 boys at Cal Farley's Boys Ranch, happiness at Christmas means new clothing.

The annual drive to outfit that many boys at the Ranch has begun through the Christmas Suit Fund. This way of giving for many people who contribute a \$45.00 gift that makes it possible for one of the boys to have a new suit or clothing package. Amarillo department stores cooperate with special discounts on boys' suits. Younger boys receive gift packages that include jackets, trousers, ties, shirts or other articles according to needs.

"The new suits and clothing packages will be the best Christmas presents the boys will receive," Virgil Pater-

...recipe contest has been phen...
...wildest expectations. We...
...and are getting the cook...
...next week.

...no idea there would be as...
...and dessert classification as...
...was too difficult for the judge...
...before we have made two sepa...
...and have awarded prize points

...thank you all for making the c...
...proving that the best cooks any

1ST PLACE
WHOLE WHEAT BREAD
By Margaret Jones

...yeast...
...warm water...
...W.W. flour...
...salt

...the yeast in the warm water...
...Blend the flour and salt an...
...Knead a few minutes, cov...
...double in size. Punch down and...
...Let rise again. Bake at 350

2ND PLACE
POTATO PUFF RO...
Verla Varnell

...scalded milk...
...shortening...
...sugar...
...warm water...
...active dry yeast...
...lightly beaten...
...warm mashed potatoes...
...flour

...milk, shortening, sugar an...
...and 2 cups flour to cooled...
...remaining flour and knead...
...soft satiny and elastic. Shape i...
...bowl, turning to grease all e...
...operator at least 3 hours or over...
...minute. Shape into dinner...
...until golden brown in a 400...
...batter when you remove from a

3RD PLACE
CINNAMON BREA...
Jean Miner

...sugar...
...shortening...
...milk...
...flour...
...baking powder...
...salt

...sugar...
...put into a well grease...
...on bottom. Put enough...
...then put 1/2 of topping on a...
...Toppin

...brown sugar...
...baking Tbls. flour...
...cinnamon...
...oleo (melted)...
...of dough and top with rest...
...for 35-40 minutes.

Over \$500.00 CASH Rebate offer on Sears

Merchandise in the store.

Fashion Jewelry 50% off

Brass 25% off

14k Gold Jewelry 25% off

Flocked Xmas Tree Complete with decorations over \$200.00 value \$100.00

Pine Xmas Tree Complete with decorations over \$200.00 value \$100.00

6:00 - 9:00 p.m. ONLY

Sue Williams 983-2862 100 S. Main Floydada, Tx.

Home Sewing Sale

ALL McCALL PATTERNS HALF-PRICE

THREE WEEKS ONLY, NOV 22-30

- \$242 Cash Giveaway! Treasure Chest Specials!
- 1 "chest" notions
 - 1 "chest" ribbons & notions
 - 1 table fabrics
 - 1 table fabrics Velveteens Reg. \$11.99
 - All craft kits 1/2 price
 - All specials good from 6-9 p.m. Thursday, December 3 ONLY
 - * available on selected winter fabrics

Santa needs your suggestions!

Visit us Thursday, Dec. 3rd as we and other Floydada merchants usher in the Holiday Season.

There will be special savings throughout the shop and a cash rebate totaling \$250.00 on special selected items.

Open til 9 p.m. for your Mastercharge convenience Visa

Sue's Gifts 126 W. California Floydada 983-5312

Stay late, win and save

Floydada's Treasure Island Christmas

\$2,000.00 in Cash & Treasure available Thursday, December 3, 1981

| | |
|---|--|
| Sears Loot and treasure chest | Sue's Gifts — Cash rebates & specials |
| Stitchin' Pretty — Cash rebates & specials | White's Auto — 10% discount storewide |
| Hale's Dept. Store — Cash rebates and specials | Kirk & Sons — Treasure hunt |
| Collins Appliance — Treasure chest | Script Printing — Hunt for treasure - special prices |
| Lovell-Collins Jewelers Treasure chest | Azteca Cafe — Special dish with discount |
| Thompson's Pharmacy Mean Green & red hot specials | City Auto — Treasure chest |

Most specials effective 6:30 p.m. to 9:00 p.m.

Roye's in Qu...

Write you to attend the Open House Sunday December 6, at 1...

Brass Group 35% off

Stereo and electron 25% off

Norman Eye collection

Wassettias and azalea

standing brass plant reg. \$50.00 and regis 50.00 shopping s

freshments served.

Looking forward to in Quitaque Su

Donations needed for Boys Ranch suit fund

For the nearly 400 boys at Cal Farley's Boys Ranch, happiness at Christmas means new clothing.

The annual drive to outfit that many boys at the Ranch has begun through the Christmas Suit Fund. This has become a traditional way of giving for many people who contribute a \$45.00 gift that makes it possible for one of the boys to have a new suit or clothing package. Amarillo department stores cooperate with special discounts on boys' suits. Younger boys receive gift packages that include jackets, trousers, ties, shirts or other articles according to needs.

"The new suits and clothing packages will be the best Christmas presents the boys will receive," Virgil Patter-

son Ranch president. "We want to make sure that the boys who are getting the cookbook together for next week. No idea there would be as many entries in the dessert classification as there were. The contest was too difficult for the judges. We have made two separate contests this year and have awarded prize points in both breads and

Thank you all for making the cookbook a success. Proving that the best cooks anywhere are in Floyd County.

RECIPE CONTEST

Recipe contest has been phenomenal success. Beyond wildest expectations. We have been setting and are getting the cookbook together for next week.

No idea there would be as many entries in the dessert classification as there were. The contest was too difficult for the judges.

We have made two separate contests this year and have awarded prize points in both breads and

Thank you all for making the cookbook a success. Proving that the best cooks anywhere are in Floyd County.

1ST PLACE WHOLE WHEAT BREAD

By Margaret Jones

1 1/2 cups warm water
1/2 cup yeast
1/2 cup salt
1/2 cup W. flour

Put the yeast in the warm water and add the honey. Blend the flour and salt and add to the liquid. Knead a few minutes, cover and allow to rise in size. Punch down and place in 2 oiled loaf pans. Rise again. Bake at 350 degrees about 30

2ND PLACE POTATO PUFF ROLLS

Verla Varnell

1/2 cup scalded milk
1/2 cup shortening
1/2 cup sugar
1/2 cup salt
1/2 cup warm water
1/2 cup active dry yeast
1/2 cup lightly beaten egg
1/2 cup warm mashed potatoes
1/2 cup sifted flour

milk, shortening, sugar and salt and cool till firm. Dissolve yeast in warm water. Add yeast, egg, sugar, and 2 cups flour to cooled mixture. Beat well. Add remaining flour and knead on a lightly floured surface until satiny and elastic. Shape into a ball, place in a greased bowl, turning to grease all over. Cover and chill overnight at least 3 hours or overnight. Knead dough 1 minute. Shape into dinner rolls and place on a greased baking sheet. Cover and let rise in a warm place until almost double in bulk. Bake rolls about 15-17 minutes until golden brown in a 400 degree oven. Brush with butter when you remove from oven.

3RD PLACE CINNAMON BREAD

Jean Miner

1/2 cup sugar
1/2 cup shortening
1/2 cup milk
1/2 cup flour
1/2 cup baking powder
1/2 cup salt

Put the cake, put into a well greased pan. Add nuts (if desired) on bottom. Put enough dough to cover the bottom. Then put 1/2 of topping on as follows:

Toppin
1/2 cup brown sugar
1/2 cup Tbls. flour
1/2 cup cinnamon
1/2 cup oleo (melted)
1/2 cup dough and top with rest of topping. Bake in a 350 degree oven for 35-40 minutes.

1ST PLACE APPLE HARVEST CAKE

Margaret Jones

2 3/4 cups all-purpose flour
1 T. baking powder
1 1/2 tsp. cinnamon
1/2 tsp. salt
1 1/2 cups finely chopped apple
1 1/2 cups firmly packed brown sugar
1 cup vegetable oil
4 eggs, beaten
1/2 cup milk
2 tsp. vanilla
1 1/2 cups Quaker 100% Natural cereal

Heat oven to 325 degrees. Generously grease 12-cup fluted tube pan or 10-inch tube pan. In small bowl, combine flour, baking powder, cinnamon and salt; mix well. In large bowl combine apple, sugar, oil, eggs, milk and vanilla; add flour mixture, mixing just until dry ingredients are moistened. Stir in cereal. Spoon into prepared pan. Bake 60-65 minutes or until wooden pick inserted in center comes out clean. Cool 10 minutes; remove from pan. Cool completely on wire rack. Sprinkle with confectioners sugar, if desired.

2ND PLACE FARMINGTON TEA CAKES

Molly Huffman

1/2 cup warm milk
1/2 cup sugar
1/2 cup shortening
2 tsp. salt
2 beaten eggs
2 pkgs. yeast dissolved in 1/2 cup warm water
5 cup flour
2 tsp. nutmeg
1 tsp. mace
2 tsp. vanilla

Method: Pour warm milk over sugar, shortening and salt. When shortening melts, add remaining ingredients and mix together well. Let rise until doubled. Mash down and fill greased miniature cup cake pans about 3/4 full. Bake 10-15 minutes at 375 degrees. While still warm, roll in melted butter, then in cinnamon sugar. These are best when freshly baked. They can be kept warm in a heated crock pot with a dampened paper towel lining the bottom. Yield 7 dozen.

3RD PLACE BAKED APPLE DUMPLINGS

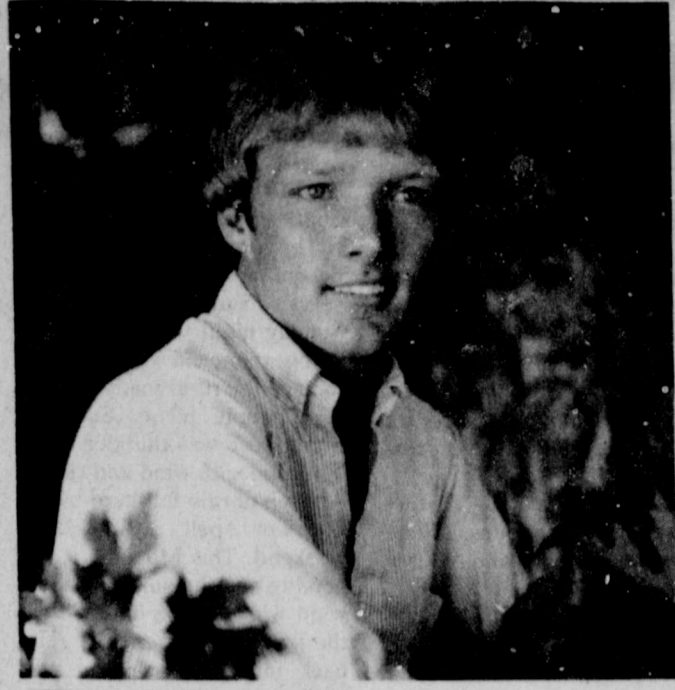
Verla Varnell

2 cups flour
1/2 tsp. salt
1/2 cup shortening
1 1/2 tsp. baking powder
1/2 cup milk

Mix and roll out dough. Cut into 8 pieces. Core and halve the apples. Place on the dough: 1 apple, 1 tsp. sugar, and a little cinnamon and a piece of butter. Fold dough over apple. Place in a baking dish. Make syrup as follows:

Syrup
2 cups sugar
2 cups boiling water
1/2 cup butter

Combine ingredients and cook over low heat until mixture boils and forms a syrup. Pour syrup over the dumplings and bake at 350 degrees for about 1 hour.



KEITH DWAYNE MARBLE, 20 year old son of Keith and Neta Marble of Floydada, has recently completed his course at the Barlizon School of Modeling and Fashion in Dallas. Mr. Marble participated in a Graduation Ceremony/Fashion Show at the Fairmont Hotel in Dallas on November 22, 1981 where he was named outstanding student from a class of thirty. Mr. Marble is a 1980 graduate of Floydada High School, and is presently attending Texas Tech University where he is studying Mechanical Engineering. Mr. Marble is signed with the Barlizon School of Modeling in Lubbock.

Emert's Nursery & Tree Service

5 gal Texas Red Oak \$9⁰⁰
5 gal Arizona Ash \$9⁰⁰

Large variety 1 gal. containers evergreens, pampas grass, crepe myrtles, etc.

\$3⁵⁰ each

Come by the nursery 3 blocks east of Lockney Hospital or see Keith Emert.
Call day or night 652-3116

Doggett to be in Floydada

FOR SPECIAL CHRISTMAS GIFTING

Denise Johnson, John Burson

State Comptroller Bob Bullock has announced that Kay Doggett from his Lubbock field office will be at the Floyd County courthouse in room 104 on December 15, from 9 a.m. to 11 a.m.

A Comptroller's representative is available to assist local residents at the courthouse the 3rd Tuesday of each month.

Bullock urged anyone with problems or questions concerning state taxes to contact Mrs. Doggett at the courthouse in person or call the Lubbock Field Office at (806) 795-0691. A toll free number (1-800-252-5555) is also available to Texas taxpayers.

Chuck Wilson, Master Photography, Certified Professional Photographer
Wilson Photography

Christmas Specials At Thacker Jewelry

ROARING SPRINGS, TEXAS

| | |
|------------------------------|---------------------------------|
| 16 Inch 14K Sparkle Necklace | 16 Inch 14K Serpentine Necklace |
| Retail \$19.95 | Retail \$34.95 |
| Your Price \$8.95 | Your Price \$14.95 |

7 Inch 14K Serpentine Bracelet
Retail \$19.95 -- **Your Price \$8.95**

All 14K Gold Chains 50% OFF

All Diamond And Precious Stone Jewelry

60% Off Retail Price

Gift Certificates Are Available

800-692-4249 806-348-3971

Santa wants to hear from all you boys & girls

FLOYD DATA
Mr. and Mrs. Billy L. Odam of San Antonio spent Saturday night with his sister-in-law, Mrs. J.C. Odam, in Floydada.

Roye's in Quitaque

Invite you to attend their Christmas Open House Sunday afternoon, December 6, at 1:00 p.m.

| | |
|--------------------------------|-------------------|
| Brass | Group of sweaters |
| 5% off | 33% off |
| Stereo and electronic products | |
| | 25% off |

Norman Private Eye collection 42.50 value for **\$11.50**
Pinsettias and azales starting at **\$6.00**
Standing brass planters reg. \$159 for **\$110.00**

Be sure and register for our 50% shopping spree.

Refreshments served. Master Charge & Visa welcome.

Looking forward to seeing you at Roye's in Quitaque Sunday afternoon

Christmas Decor!

To decorate your home, business, front door, table, mantle or just to decorate anything to make it look like Christmas, PARK FLORIST is Christmas decoration headquarters!

- Table Centerpieces - Christmas Candle Arrangements - professional styled and long lasting.
- Hurricane Lights - Votive lights & wrought iron Christmas Candelabra.
- Madonna-Carrollers & all Christmas figurines.
- The newest in permanent plastic Christmas trees - green or white.

VISIT OUR GREENHOUSES, FLOWER SHOP & GIFT SHOP & BROWSE AROUND

Park Florist

Flowers - China - Crystal - Lamps - Gifts

Over \$500⁰⁰ CASH Rebate offer on Sears

Merchandise in the store.

Fashion Jewelry 50% off

Brass 25% off

14k Gold Jewelry 25% off

Locked Xmas Tree Complete with decorations over \$200⁰⁰ value \$100⁰⁰

7 Pine Xmas Tree Complete with decorations over \$200⁰⁰ value \$100⁰⁰

10 p.m. **Sears** Thursday, December 3rd only

Sue Williams 983-2862 100 S. Main Floydada, Tx.

Home Sewing Sale

CALL PATTERNS HALF-PRICE

THREE WEEKS ONLY... NOV. 27-DEC. 7

242 Cash Giveaway! Treasure Chest Specials!

10% off notions

25% off ribbons & notions

\$1.00 off fabrics

\$0.99 off fabrics Velveteens

Kits from \$1.99

Stitchin' Pretty 118 W. California 983-3809

Floydada Nursing Home Happenings

BY DARTHA WESTBROOK

What a lovely Thanksgiving week we had, with turkey and all the trimmings, including a few extra pounds when we weighed.

We would like to take this opportunity to thank all the lovely people in Floydada who are so kind to do the little things that mean so much to our residents all year. The ones who are so faithful to come out weekly and monthly for the devotions. We know that you sacrifice your time to do this for our residents. The regular visitors who come by just to make the day go better for us, and to cheer those who live here.

We have a group who provide a monthly birthday party, with all the refreshments, flowers, name tags

and everything including a poem to make birthday's worth having. These ladies have been doing this for over 10 years I know, and they have never missed a month. That really takes dedication and love, and we love you for it City Park ladies. I hesitate to mention individuals, for fear of missing someone.

We have a lady who has a ministry of doing toenails, what a needed ministry. She is faithful, comes in and goes about her work, and you never hear much from her, but the residents look forward to her coming.

So many clubs, church groups, civic groups, and individuals come so often, and that's what makes this a home. Thanks to all of you - if you have done anything for this nursing home, I want

you to know you are truly appreciated.

Gene Watts brought a beautiful bouquet of flowers from the Perry funeral for our residents to enjoy last week. The Jr. 4-H Club brought cookies for a Thanksgiving treat, and we sure appreciate these expressions of love.

Thanks to all our visitors last week: Lois Jones, Allene Henry, Corene and Murry Stewart, Charley L. Berry, Sr., Gene Baird, Mr. and Mrs. M.H. Hartness, Worth Gwendolyn Howard, Mr. and Mrs. P.L. Hart, W.H. Eubanks, Hazel Bradley and Kim, Estelle Hinkle, Lucille Lebban, Karl Bunjes and Pauline Pierce.

Miniatures

lecture set Dec. 6th

Leonard Stewart, program director for the Miniaturists of Lubbock, will lecture on "Collecting Miniatures" at 3 p.m. Sunday (Dec. 6) at The Museum of Texas Tech University.

The free, public lecture is the second in a collections and collectibles lectures series, sponsored by the Women's Council of the West Texas Museum Association.

Stewart is owner of the Doll House Shop. His lecture will be followed by a brief question-and-answer period.

Other lectures in the series will be on collecting antiques, Jan. 10, and on collecting fine art, Feb. 7.

ON TIME FOR THE HOLIDAYS



Save now on Sharp's
Standard-Size Carousel
Microwave Oven. 650 watts,
variable power. R4620

Sale \$358
SHARP.

SHARP'S CAROUSEL TURNS THE
FOOD SO YOU DON'T HAVE TO!

Kirk and Sons
north of the square

Floydada

983-3280

The Thomas Singers



Saturday, December 5th
at 7:30 p.m.

Cedar Hill

Assembly of God

South Plains News

Inch of rain falls at South Plains

BY MRS. MURRAY JULIAN

South Plains, November 30:

The attendance at Sunday School and Baptist Church services Sunday morning and Sunday night were low, due to fog, rain, cold weather and mud on the rural roads which kept people home. Sunday night there was thunder and lightning with wind and rain. An inch of rain fell here over the wet spell during the weekend. This Monday, it is good to see the sun, and the wind will soon be drying up the fields so farmers can get back into the stripping of their cotton.

There will be a combination Thanksgiving and Christmas dinner this coming Wednesday night at the home of Mrs. Lois Lyons, on the Silverton Highway, south of town, who will host all the South Plains Baptist Church folks at a dinner in her home. The dinner will begin at 7:00 p.m. and the Rev. Cecil Osborne will be in charge of the services. Mrs. Lyons is planning to move from our vicinity the first part of the year, and she will be hostess at the dinner for all her friends from the church and to her pastor and family.

Mr. and Mrs. Herman and Mildred Thornton have recently moved to Plainview and are making their home there. They have lived in our vicinity many years southwest of South Plains on their farm, and will now be renting out their farm and will be living close to their son, Rusty, who lives in Plainview.

Mr. and Mrs. Sylvan and Bobbie Kinniburgh returned home from Ruidoso, New

Mexico Sunday night after spending part of the Thanksgiving holidays out there. They had gone out Friday, after their Thanksgiving here with their children, Mr. and Mrs. Teddy Horne and Melissa and Mrs. Beth Dickens and Latham, and her sister, Mr. and Mrs. Ray and Edith Dillard of Lockney here with them for Thanksgiving dinner and the day.

Mrs. M.M. Julian returned home Saturday from Roscoe where she had gone Wednesday to spend the Thanksgiving holidays with her children Terry and Leona Julian and son, Dickie. They all spent Thanksgiving Day in Roscoe with Mr. and Mrs. R.E. Althof, having dinner and supper there. The cotton harvest is about all through down that way, and Terry is finished with their cotton and has done some outside work, but had already finished that stripping for the year. Great modules of cotton stand everywhere there.

Mrs. Letha Mulder went to Amarillo this Monday to take her granddaughters Ronda and Candy Taylor home after they had spent the Thanksgiving holidays here and they had stayed with their grandmother, while their parents went back home. The weather was too foggy and bad for them to return home on Sunday.

Mr. and Mrs. Frank McClure went to Plainview to spend their Thanksgiving Day and have dinner and supper with their daughter, Mrs. Jean McClure and others present were the Rev. and Mrs. Jeff Messer and

son from Shamrock, Mr. and Mrs. Paul Cypert, Jennifer and Lindsey, and Mr. and Mrs. Boyd and Marjie McClure, from Kerrville, who were just recently wedded. They were here with his folks until Saturday.

Jim Harper of Haskell who came here on November 17, to enter the Caprock Hospital still is in the hospital and very ill. His family is at his bedside.

Mr. and Mrs. Jerry Monk, Leslie and Cody from Farwell, New Mexico were here for the Thanksgiving holidays with her sister, Mr. and Mrs. Royce Bethel, Shelli and Jamie, and they were all visitors with the Bethels at the South Plains Baptist Church Sunday morning.

Mrs. Jean McClure, daughter of Mr. and Mrs. Frank McClure of South Plains, and Terry Lee of Plainview were united in

marriage on November 27,

Friday morning, at 10:00 a.m. in the home of her daughter, Mrs. Paul Cypert, who lives north of Plainview. All her children were present for the wedding, including Mr. and Mrs. Paul Cypert and girls, Jennifer and Lindsey, the Rev. and Mrs. Donna and Jeff Messer and son, from Shamrock, and Mr. and Mrs. Boyd McClure and Mr. and Mrs. Frank McClure from Kerrville. Her parents Mr. and Mrs. Frank McClure also present. The Rev. Jeff Messer pronounced the wedding vows, and a wedding breakfast was served following the marriage ceremony. The couple will make their home in Plainview. We extend all good wishes to them for a happy life together.

Mr. and Mrs. Fred Marble and Cindy had guests for Thanksgiving dinner and the afternoon. With them were Carolyn's brother, Mr. and



We sell the best
windows and doors, all kinds of
Free estimates. Call collect.
The Old Glass Doctor
1-806-385-3526
"We stand behind what we sell"

Sr. Citizen Menu

December 7-11

Monday — Pepper steak, green lima beans, beets in orange sauce, cornbread, margarine, bread pudding with pineapple sauce, milk, tea, coffee.

Tuesday — Pork chop suv. Chinese noodles, broccoli spears with lemon sauce,

roll, margarine, cherry cobbler, milk, tea, coffee.

Wednesday — BBQ beef tips, buttered rice, carrot and peas, cornbread, margarine, raisin cookie, milk, tea, coffee, tomato juice.

Thursday — Cheeseburger, potato tots, cole slaw, onions, pickles, tomatoes, lettuce, pumpkin pie, milk,

tea, coffee.

Friday — Oven fried fish, tartar sauce, catsup, esc. potatoes, oriental mixed vegetables, roll, margarine, sliced peaches, milk, tea, coffee.

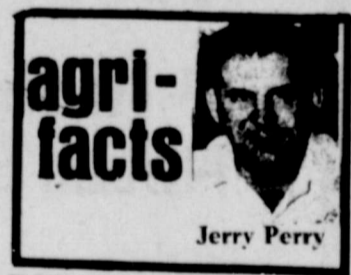
Eduardo Muniz Jr. joins Air Force

Eduardo Muniz Jr., son of Eduardo Sr. and Mary Muniz of Floydada entered the United States Air Force Delayed Enlistment Program on November 21, 1981 according to Sergeant James

W. Jackson, the Air Force Recruiter in Lubbock.

Airman Muniz selected the Law Enforcement area for job training and will attend a six week Basic Training Course at Lackland AFB, San Antonio, Texas, beginning on May 1, 1982.

Sergeant Jackson said the Air Force still has opening for qualified young men and women. His office is located at 4206 50th St. in Lubbock.



agri-facts
Jerry Perry

BOVINE-O-METRICS for the exercise program for cattle! Although the sight of a 600 pound cow exercising on a treadmill may be a little hard to swallow, that's exactly what animal scientists at Kansas State University are doing. It's being done so researchers can learn more about stress in relation to bovine respiratory diseases. Significant losses, primarily because of reduced growth rate, have been traced directly to respiratory diseases in cattle. Early symptoms are deviated body temperatures, nasal discharge, inflamed nasal passages and lethargic behavior. The K-State veterinary researchers are trying to pinpoint and alter the factors which make animals susceptible to the diseases. The end result, hopefully, will be preventive measures which can be taken by every cattleman to reduce this potential animal killer.



HOLIDAY FOOD FESTIVAL

Local Grown New Crop

PECANS \$1.19 lb



10 lb Bag Utility
POTATOES

Shurfresh gallon

MILK \$1.98



Fresh
TOMATOES

303 can Shurfine Mixed

VEGETABLES 2/89¢



18 oz. Box Duncan
CAKE MIX

10 1/2 oz. Kraft Miniature

MARSHMALLOWS 39¢

Charmin 4 roll pak
TOILET TISSUE

Fresh Ground Family Pak

HAMBURGER lb 98¢

BEEF CUTLETS

Grade A

FRYERS 59¢ lb



Bulk Pak Wrights
BACON

6-32 oz. Bottle Carton Diet or

DR PEPPER OR COKE plus deposit

Dr Pepper
Coca-Cola

KEETERS GROCERY

7:30 a.m. - 7:30 p.m.

We Redeem Food Stamps & WIC Cards
We Reserve The Right To Limit Quantities

652-2191


s at South Plain

Mr. and Mrs. Paul Cypert, Jennifer and Marjie McClure, who were united in marriage on November 27, Friday morning, at 10:06 a.m. in the home of her father, Mrs. Paul Cypert. All her children were present for the wedding, including Mr. and Mrs. Paul Cypert and girls, Jennifer and Linda, the Rev. and Mrs. Donna and Jeff Messer and son, from Shamrock, and Mr. and Mrs. Boyd McClure from Kerrville. Her parents Mr. and Mrs. Frank McClure also present. The Rev. Jeff Messer pronounced the wedding vows, and a wedding breakfast was served following the marriage ceremony. The couple will make their home in Plainview. We extend all good wishes to them for a happy life together.

Mr. and Mrs. Fred Marble and Cindy had guests for Thanksgiving dinner and the afternoon. With them were Carolyn's brother, Mr. and Mrs. Bill and Edna of Florida, and Mr. and Mrs. Tom and Mrs. Britta and John of Marble was here with folks from Texas. The afternoon visitors were Mr. and Mrs. Tonya Marble, from Mirah from Lockney.

LOCKNEY
Charlotte Blum, daughter, Kinports, of Spain, Thanksgiving with her parents, Mel and Melba.

FLOYD
The Rose High School Kilgore, formerly of Plains, visited while in Florida. Others visited Eugene Watts, for ways, and the Barnes.



Storm windows & doors cut energy costs 25% - 40%

We sell the best storm windows and doors, all kinds of glass. Free estimates. Call collect.

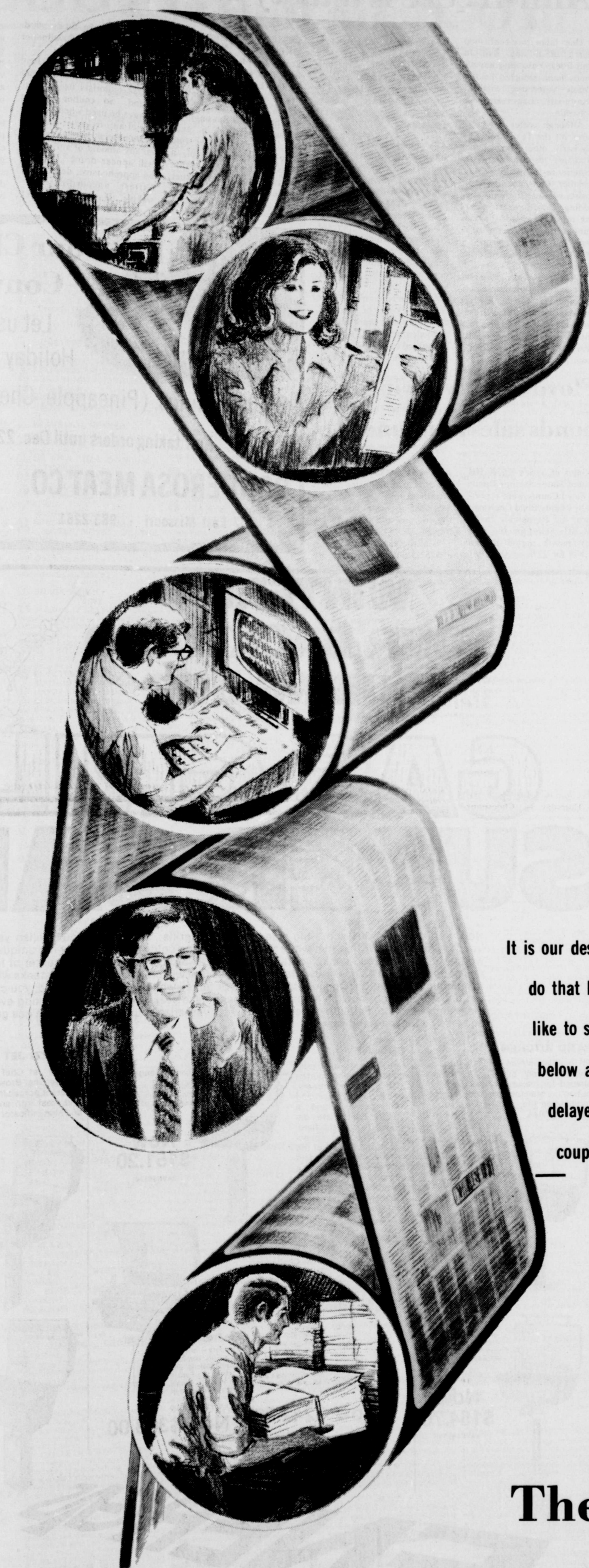
The Old Glass Doctors
1-806-385-3526
"We stand behind what we sell"

FOOD FESTIVAL

- 10 lb Bag Utility POTATOES \$1
- Fresh TOMATOES 39¢
- 18 oz. Box Duncan Hines CAKE MIX 59¢
- Charmin 4 roll pak TOILET TISSUE 99¢
- 98¢ BEEF CUTLETS \$2
- Bulk Pak Wrights BACON \$1
- 6-32 oz. Bottle Carton Diet or Regular DR PEPPER OR COKE plus deposit \$1

RS GROCERY
652-2191

Food Stamps & WIC Cards
Right To Limit Quantities



EXTRA

Hot Off The Press!

EXTRA Get the whole scoop on news, sports and entertainment... every day!

EXTRA We'll spread your word all over the community when you advertise with us!

EXTRA Get big buy lines in our classified pages!

It is our desire to give you a paper to be proud of. You can do that by helping us improve our service to you. If you would like to subscribe for the paper by mail, please fill out the coupon below and mail it to us. If for any reason your paper is being delayed because of an incorrect address, please fill out the coupon below and mail it to us for better service.

Thanks for your cooperation.

Check One . . . New Corrected

NAME _____

ADDRESS _____

The Lockney Beacon
652-3318
220 S. Main Street,
Lockney, Texas 79241

Caprock Hospital Report

November 21-30
 Pablo Salquero, Lockney, adm. 10-18, continues care, Hong.
 George Weeks, Turkey, adm. 11-11, dis. 11-26, Hong.
 Rena Baxter, Floydada, adm. 11-17, continues care, Acar.
 Jimmy Harper, Haskell, adm. 11-17, continues care, Jordan.
 Steven Galloway, Floydada, adm. 11-17, dis. 11-23, Jordan.
 T.M. Whiteley, Floydada, adm. 11-17, continues care, Jordan.
 Kate Fowler, Floydada, adm. 11-18, dis. 11-23, Hong.
 Estelle Eubanks, Floydada, adm. 11-18, dis. 11-23, Hong.
 Neely Leora King, Floydada, adm. 11-20, continues care, Jordan.
 Anna Wilson, Floydada, adm. 11-22, dis. 11-27, Jordan.
 Mable Laminack, Floydada, adm. 11-22, dis. 11-24, Jordan.
 Lillie Johnson, Floydada, adm. 11-22, dis. 11-24, Jordan.
 Margie Cuba, Floydada, adm. 11-23, dis. 11-24, Hong.
 Baby boy Cuba, "Jose Iran", Floydada, born 11-23, dis. 11-24, Hong.
 Lorena Garza, Floydada, adm. 11-23, dis. 11-25, Hong.
 Eddie McInroe, Matador, adm. 11-23, continues care, Acar.
 Ela Bailey, Floydada, adm. 11-23, continues care, Hong.
 Debbie Martinez, Floydada, adm. 11-23, dis. 11-26, Hong.

Maurine Gregg, Floydada, adm. 11-23, dis. 11-25, Hong.
 Frances M. James, Tulia, adm. 11-25, continues care, Jordan.
 David Pyle, Floydada, adm. 11-25, dis. 11-26, Hong.
 Valynda S. Chandler, Floydada, adm. 11-25, continues care, Jordan.
 Lucio T. Martinez, Floydada, adm. 11-26, continues care, Hong.

JanAN Chandler, Floydada, adm. 11-27, continues care, Jordan.
 Grace Robertson, Floydada, adm. 11-27, continues care, Jordan.
 Lawrence Brown, Borger, adm. 11-28, continues care, Jordan.
 Hollis Pavne, Floydada, adm. 11-28, continues care, Hong.
 Pearlle Moosberg, Floydada, adm. 11-29, continues care, Jordan.

Diaz deployed to Saudi Arabia

Tech. Sgt. Juan G. Diaz, son of Mr. and Mrs. Carlos V. Diaz of Petersburg, has been deployed to Riyadh, Saudi Arabia, for temporary duty.
 At the invitation of the government of Saudi Arabia, U.S. Air Force members operate three E-3A Sentry airborne warning and control system (AWACS) aircraft. The AWACS is a modified Boeing 707 designed for airborne radar surveillance

and control. Airborne radar, unlike ground surveillance, is not restricted by the earth's curvature, terrain or weather. The system is used as a defense monitoring device.
 Diaz is a medical service technician with the 552nd Airborne Warning and Control Wing, Tinker Air Force Base, Okla.
 He is a 1969 graduate of Petersburg High School.

Sr. Citizen News

Mrs. Nettie Adams had as her guest for Thanksgiving her sister Ozelle Elledge from Tulsa, Oklahoma; Mr. and Mrs. Gerald Brown of Apache, Oklahoma; a nephew, Dr. Harold Boone Hightower, wife and son Bob of San Angelo; her son,

Boone Adams, his wife Ruth and daughter Rojion. They had the traditional menu of turkey and all the trimmings and a great day visiting. They all went to church together.
 Two nieces Mrs. George Marshal and Jane Taylor called by telephone from Palm Beach, Florida. Mrs. Billie Boone, Lowrel, Mississippi also called. Dr. N.A. Hightower sent flowers from Austin, Texas. They had so much to be thankful for.

LOCKNEY LOCAL
 William Ben Reece has returned to his home in Anchorage, Alaska following a two-week visit with his mother, Clara Reece, his son, Ronnie Reece of Floydada, and other family members in Lockney and Plainview.

Have NAIL - Will DRIVE

General Construction, Commercial, Residential Home Additions, Remodeling, Garage Conversion, Metal Buildings

WORK GUARANTEED

Free Estimate

983-2912 or 793-1432



Santa needs your letters!

This Week's Special



Model No. GER 705H 25" dia. push button colortrak by R.C.A. Reg. *895⁰⁰

This week only \$695⁰⁰

No trade-in necessary

We service what we sell and most other makes and models.

Mize Pharmacy & T.V.

102 S. Main, Lockney 652-2435

Anti-freeze is a tasty but deadly poison

One laboratory-confirmed death of a dog due to anti-freeze poisoning has already been reported by the Texas Veterinary Medical Diagnostic Laboratory in Amarillo.

Although cooler temperatures hit the Texas Panhandle early, other parts of the state are just beginning to experience the chilly winter weather. Consequently, motorists who are draining and adding anti-freeze to their car radiators should be reminded that anti-freeze is a tasty but deadly poison to animals, and can result in their deaths.

"Anti-freeze has a sweet taste and is a tempting treat for animals. Consequently, veterinarians in Texas treat numbers of dogs and cats for anti-freeze poisoning each year," said Dr. Ben Johnston, president of the Texas

Veterinary Medical Association (TVMA).
 "It's probably more common than anyone realizes. An owner may find his pet in a coma or dead and not know what has happened," said Johnston.

A small amount constitutes a toxic dose for an animal - two to three c.c.s per pound of weight for a dog, and even less for a cat, said the TVMA president.

Anti-freeze poisoning accounts for about 15 percent of reported animal poisonings, but many are never reported because owners don't realize what their pet has gotten into.

Johnston recommends that old anti-freeze be flushed down the sewer drain since it is biodegradable. Any that has spilled onto the driveway or street should be washed

for 10 minutes toward the street drain. No puddles should be left for pets to get into. And no residue should be left behind because the dried crystals contain the poison. The drain pan should also be washed thoroughly.

The substance in anti-freeze which animals find tasty is ethylene glycol, a sweetish colorless liquid that also is an ingredient in other compounds found around the house. The toxin also is

found in brake fluid, windshield de-icers and wallpaper remover.

Don't forget that ethylene glycol is also a coolant and Texas motorists use it year round. So caution should always be used when disposing of anti-freeze or coolant.

An animal that has ingested any amount of anti-freeze will appear drunk. He may be apprehensive, depressed, listless, uncoordinated or wobbly. If your family pet

Floyd County savings bonds sales announced

Sales of Series EE & HH United States Savings Bonds in Floyd County were reported by County Bond Chairman Oscar G. Hernandez to be \$31,203. Sales for the first nine month period totaled \$1,848 for 22% of the 1981

goal of \$140,000.
 Texas sales during the month amounted to \$19,229,563, while sales for the first nine months of 1981 totaled \$194,037,119 with 77% of the yearly sales goal of \$252.3 million achieved.

For Your Christmas

Convert the trimmings. (Pineapple, Cherries)

Let us help you with your Holiday Ham

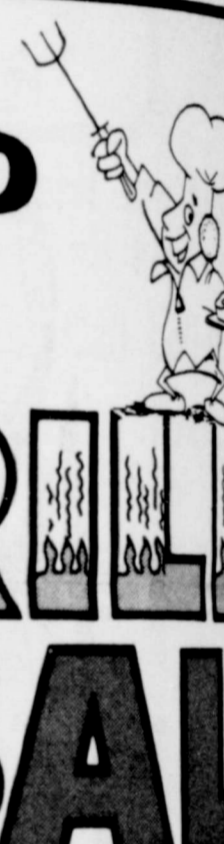
Now taking orders until Dec. 22nd

PONDEROSA MEAT CO.

807 East Missouri - 983-2261



WINTERIZE YOUR BACK YARD DURING OUR GAS GRILL SUPER SALE



Now, you can save 30% on a big selection of gas grills... bargains you'll relish year 'round. Where is it written that when the weather turns cold you can't enjoy the uniquely wonderful taste of food cooked outside? Your back yard can always be the center of fun and good eating with a gas grill. A dependable gas grill will broil hamburgers or steaks with a minimum of attention. Or, slow cook a roast or turkey while you sit inside. And, you can get big savings right now on a gas grill that will make year 'round outdoor cooking even more appealing. So, Fall into a great deal now... winterize your back yard with a gas grill and enjoy it for years and years.

PATIO KITCHEN
 PK cast aluminum grills feature stainless steel burners - "H" shaped for maximum heat distribution... stainless steel for long trouble-free life, and heavy steel rod coal grates.

PK Delta 1
 Single-burner model with 270 sq. in. chromed steel cooking grid. List Price \$150.50.

Now \$105.35
 SAVE \$45.15!

PK Regent 1
 Dual burner and controls let you use one-half or all of burner. 326 sq. in. cast iron cooking grid. List Price \$221.00.

Now \$154.70
 SAVE \$66.30!

DUCCANE
 Ducane cast aluminum grills feature top-ported stainless steel burners, which last longer and save gas... and a unique coal grate designed to prevent flare-ups and grease collection at the bottom of the firebox. Some models have Rotis-A-Grate®, a separate vertical burner for roasting from behind the meat, and porcelainized-steel cooking grids.

The Challenger 1500
 Twin burners - dual controls - one for each side which saves gas when you don't need to use the total cooking surface. 405 sq. in. nickel-chrome plated grid. List Price \$347.00.

Now \$242.90
 SAVE \$104.10!

The Challenger 800
 Single-burner model with 305 sq. in. nickel-chrome plated grid. List Price \$218.00.

Now \$151.20
 SAVE \$66.80!

JACUZZI JET CHEF
 Jacuzzi Jet Chef grills feature Char-Brown original resistant porcelainized cooking grid, cast iron and nickel-plated heat indicator on lid.

The Trophy 2000
 Two burners - one with a 310 sq. in. porcelainized-steel cooking grid, the other a Rotis-A-Grate® vertical burner, roasting motor and spit, and electronic ignition. List Price \$440.00.

Now \$308.00
 SAVE \$132.00!

ENERGAS

Gas Energy For West Texas

NOTICE:
 Add \$70 to prices shown for normal installation

BUT... DO HURRY!
 These prices are good only on grills in our warehouses... so buy now while the selection is good. No special orders. This sale ends December 15, 1981.

| Daytime | |
|----------------------------|-------|
| THRU WED | 8:00 |
| SPORTS CENTER | 8:00 |
| DAKKA | 8:00 |
| TOP OF THE MORNING | 8:00 |
| SWAGGART | 8:00 |
| W TIME MOVIE (TUE.) Little | 8:00 |
| 8:05 | 8:05 |
| W TIME MOVIE (TUE.) Little | 8:05 |
| 8:30 | 8:30 |
| W TIME MOVIE (TUE.) Little | 8:30 |
| 8:50 | 8:50 |
| W TIME MOVIE (TUE.) Little | 8:50 |
| 9:00 | 9:00 |
| W TIME MOVIE (TUE.) Little | 9:00 |
| 9:30 | 9:30 |
| W TIME MOVIE (TUE.) Little | 9:30 |
| 10:00 | 10:00 |
| W TIME MOVIE (TUE.) Little | 10:00 |
| 10:30 | 10:30 |
| W TIME MOVIE (TUE.) Little | 10:30 |
| 11:00 | 11:00 |
| W TIME MOVIE (TUE.) Little | 11:00 |
| 11:30 | 11:30 |
| W TIME MOVIE (TUE.) Little | 11:30 |
| 12:00 | 12:00 |
| W TIME MOVIE (TUE.) Little | 12:00 |
| 12:30 | 12:30 |
| W TIME MOVIE (TUE.) Little | 12:30 |
| 1:00 | 1:00 |
| W TIME MOVIE (TUE.) Little | 1:00 |
| 1:30 | 1:30 |
| W TIME MOVIE (TUE.) Little | 1:30 |
| 2:00 | 2:00 |
| W TIME MOVIE (TUE.) Little | 2:00 |
| 2:30 | 2:30 |
| W TIME MOVIE (TUE.) Little | 2:30 |
| 3:00 | 3:00 |
| W TIME MOVIE (TUE.) Little | 3:00 |
| 3:30 | 3:30 |
| W TIME MOVIE (TUE.) Little | 3:30 |
| 4:00 | 4:00 |
| W TIME MOVIE (TUE.) Little | 4:00 |
| 4:30 | 4:30 |
| W TIME MOVIE (TUE.) Little | 4:30 |
| 5:00 | 5:00 |
| W TIME MOVIE (TUE.) Little | 5:00 |
| 5:30 | 5:30 |
| W TIME MOVIE (TUE.) Little | 5:30 |
| 6:00 | 6:00 |
| W TIME MOVIE (TUE.) Little | 6:00 |
| 6:30 | 6:30 |
| W TIME MOVIE (TUE.) Little | 6:30 |
| 7:00 | 7:00 |
| W TIME MOVIE (TUE.) Little | 7:00 |
| 7:30 | 7:30 |
| W TIME MOVIE (TUE.) Little | 7:30 |
| 8:00 | 8:00 |
| W TIME MOVIE (TUE.) Little | 8:00 |
| 8:30 | 8:30 |
| W TIME MOVIE (TUE.) Little | 8:30 |
| 9:00 | 9:00 |
| W TIME MOVIE (TUE.) Little | 9:00 |
| 9:30 | 9:30 |
| W TIME MOVIE (TUE.) Little | 9:30 |
| 10:00 | 10:00 |
| W TIME MOVIE (TUE.) Little | 10:00 |
| 10:30 | 10:30 |
| W TIME MOVIE (TUE.) Little | 10:30 |
| 11:00 | 11:00 |
| W TIME MOVIE (TUE.) Little | 11:00 |
| 11:30 | 11:30 |
| W TIME MOVIE (TUE.) Little | 11:30 |
| 12:00 | 12:00 |
| W TIME MOVIE (TUE.) Little | 12:00 |

Lakeview enjoys the holidays

BY JOYCE WILLIAMS

Miss Jodi Smith, daughter of Judge and Mrs. Choise Smith, was honored Monday evening at the Gold Star Banquet, November 23, in the cafeteria of Coronado High School at Lubbock. This outstanding 4-H club member shared the spotlight with the Gold Star boy from Floyd County, Keith Hight, son of Mr. and Mrs. G.L. Hight of Lockney.

Mrs. Carla Winslow and baby son of Duncan, Oklahoma, was here to visit her parents, Mr. and Mrs. Carl Mosberg, over Thanksgiving weekend.

Lt. and Mrs. Thomas Montgomery Williams of Ft. Sill, Oklahoma are parents of a baby daughter, Amanda Lee, born Thanksgiving day, November 26, at the Ft. Sill hospital. The dark haired young lady weighed seven and a half pounds. Grandparents are Col. and Mrs. Elton Brian of San Angelo, and Mr. and Mrs. Q.D. Williams. Great-grandparents include Mr. and Mrs. Pete Calloway of Lubbock, Edgar Jones of Truscott, and Charley Williams of Hamlin. Great-great

grandfather is Sid Brown of Floydada.

Heavy fog Saturday and Sunday turned to rain Monday morning, but the sun was bright Tuesday. Most of the cotton crop is stripped and in modules over the community.

Mr. and Mrs. Louis Pyle ate Thanksgiving dinner with Mr. and Mrs. Robert Pyle and family. Paula cooked the turkey and Virginia brought the trimmings. David's pickup got hit by a cotton trailer in the field Wednesday night and flipped. He spent the night in the hospital in Floydada, but is alright now.

Mrs. Alvin McHam is improving from her near bout with pneumonia. All her children were at her house for Thanksgiving and the girls served up a big dinner. Those present included Mr. and Mrs. Ronnie McHam, Jason and Vicky of Amarillo, Mr. and Mrs. Dennis McHam and Lance of Floydada, Mr. and Mrs. Tommy McHam, Stacy, James and Justin of Floydada, Peggy and Barbara McHam of Lakeview, Mr. and Mrs. Wayne McHam and sons, Floydada,

and their grandmother McHam from the Ralls Rest Home.

Mr. and Mrs. Fred Lloyd went to Lubbock for Thanksgiving dinner at the home of their son, Mr. and Mrs. Greg Williams and family. Also present for the bountiful feast were Nancy and David Barker, Floydada, Cynthia Chambers of Lakeview, Roxanne Lloyd, Lubbock; Joyce's parents, Mr. and Mrs. Lee Keese, Mr. and Mrs. Sonny Keese and sons Jimmy and Steve, also a friend Mrs. Wanda May, all of Lubbock.

Mr. and Mrs. Dean Watson and children joined her brother and sister at the home of their parents, Mr. and Mrs. Tom Moore, for Thanksgiving dinner. Family members present included Mr. and Mrs. Luis Moore and family of Dumas; Mike of Plainview and his guest, Miss Pam Parrot of Littlefield where she teaches school; Miss Cindy Fuller; Steve Moore of Kilgore, and Mr. and Mrs. Dean Watson, and Bill Moore came in on Friday.

Holt Bishop, Mr. and Mrs. Earl Bishop, Mr. and Mrs. Jim Pegram and Kimberly of Dimmitt, Mr. and Mrs. Mike Bishop, Mr. Sid Brown, Josephine Burciago, all were Thanksgiving dinner guests

of Mr. and Mrs. Howard Bishop. Greg Bishop and Gary Nixon were in Greg's cotton field at Roaring Springs when a deer jumped over the fence right in front of them and Greg got his deer for the season.

Mr. and Mrs. Jimmy McGaugh and Marliiss ate turkey at noon Thursday with Mr. and Mrs. Leonard Alexander. His aunt, Mrs. Grace Cogdell of Plainview was also a guest. Thursday night Jerry Miller came for supper with the McGaughs.

Mrs. Dean Watson is taking it easy this week after bruising her leg while helping her husband load cattle. She had been substitute teaching at Floydada schools before her injury occurred.

Mr. and Mrs. Oscar Santos and children visited her parents, Mr. and Mrs. Smoky Quilante and family Thursday for Thanksgiving dinner. Mr. and Mrs. O.D. Williams enjoyed Thanksgiving dinner with their son and family, Mr. and Mrs. James Williams, Austin and Ashleigh at Lawton, Oklahoma. Other family members present included Nancy and Andy Goodwin and daughter, Hilary, of Idabell, Oklahoma. Monte Williams of Ft. Sill, Mr. and Mrs. Brian Akins of Midland, and Mr. and Mrs. Edgar Jones of

Truscott.

Miss Marlis McGaugh was presented a Texas History award at the Junior High awards day ceremony recently. A book has been placed in the library in her honor.

Mr. and Mrs. Jimmy McGaugh were among the band parents and sponsors who were treated to a dinner at Seven Seas restaurant in Lubbock Friday night before the football game between Floydada and Littlefield. The band teacher, Mr. Bruce Kenner, was host.

Judge and Mrs. Choise Smith and children went to Spearman Thursday for the holiday with Kay Dean's mother, Mrs. Gertha Gamble. Later in the day Choise and sons, Dean and Hunter, went quail hunting at the farm home of their aunt and uncle, Scarlett and Punk Jackson. The Smiths attended the Floydada-Littlefield game in Lubbock Friday night and stayed all night with Mr. and Mrs. Flukie Smith. All got some Christmas shopping done on Saturday.

Mrs. Cheryl Guess and children, Amy and Brian, of Levelland were here for the November 27 birthday of her mother, Mrs. Jean McClintock. Her husband, Donnie, had gone deer hunting at Ranger where his grandfather lives.

Mrs. C.W. McClintock, mother of Duane, is improving and has been returned to her rest home.

SAS

Nothing fits or feels better than our real leather hand-sewn MOCS by S.A.S.

*38 LATTICE CAMEL-NAVY

Why Settle For a Copy When We've Got The Real Thing?

Brown's
Department Store of Lockney

INSURANCE

FOR YOUR HOME RANCH FARM AUTO CROPS LIFE

What is Uninsured/Underinsured Motorist Coverage? Do I need it?

983-3777 Floydada

For help with insurance questions and needs call...

TEXAS FARM BUREAU CROPS INSURANCE COMPANIES

652-2242 Lockney

James Race

ATTENTION FARMERS!

Agronomies, breeders of Earlycot cottons, is looking for interested farmers in becoming seed dealers. Our program is very simple with the top dealer each year winning a trip for two to Hawaii and the next top ten spending several days fishing in Mexico. The dealer will be working in coordination with the area gins.

For further information contact:
Mack Hall (806) 799-1116 (night) 793-9658

ENERGAS

Gas dries 3 loads for the price of 1!

Compared to electric, the new gas clothes dryers dry 3 loads to 1. Today's gas clothes dryers have pilotless ignition, automatic shutoffs and larger drums for greater efficiency and convenience. Ask for our booklet on energy conservation tips. At Energas, we're committed to helping you save with energy-efficient gas appliances.

ENERGAS
Efficient Gas Energy for West Texas

NEW Home Town Service with you in mind Great American Reserve Insurance Co.

Life, Retirement, Education, Health, and Group

Security with 14% current interest

Bill Weir - Insurance Agency
216 W. Kentucky
Floydada, Texas

983-2614 792-3777

Public Notice

I will not be responsible for anyone's bills except mine and John's.

Mrs. John (Ivola) Walters
12-10c

The City of Floydada, on behalf of applicants to the Community Development Block Grant Program, is soliciting bids for home repair and improvement contracts. Work write-ups, including specifications and the addresses of the homes to be repaired, may be picked up at the Floydada City Office, 114 W. Virginia St., Floydada, Texas.

Sealed bid procedures will be observed and the deadline for submitting bids on Case Number 819, 8110, 8113, 8118, is 5:00 P.M. on the 4th day of January, 1982. The bids will be opened at 7:00 P.M. in the City Council meeting room at the Floydada City Office on the 4th day of January, 1982.

The right is reserved by the City and the applicant-owner to reject any and/or all bids. All qualified bidders will receive consideration for award without regard to race, color, religion, sex, or national origin.

Dorr Blasingame
Rehabilitation Coordinator
12-10c

CITY OF LOCKNEY PUBLIC NOTICE INVITATION TO BID

The City of Lockney, on behalf of applicants to the Community Development Block Grant program is soliciting bids for home repair and improvement contracts. Work write-ups, including specifications and the addresses of the homes to be repaired, may be picked up at the Lockney City Hall, 215 E. Locust Street, Lockney, Texas 79241. Copies of this material may be requested by potential bidders by calling the Lockney City Hall at (806) 652-2355.

Sealed bid procedures will be observed and the deadline for submitting bids on Application # 10028111, 09188105, 09178102, 10028112, 09218104, 09178101, 10068114, 11048101, is 5 o'clock P.M. on the 17th day of December, 1981. The bids will be opened at 7 o'clock P.M. in the City Council meeting room of the Lockney City Hall on the 17th day of December, 1981. The City and the applicant-owners reserve the right to reject any and all bids at their sole discretion.

Erma Lee Duckworth, City Secretary
P.O. Box 387
Lockney, Texas 79241

12-10c

World's original indoor set for January 27th

The world famous Sons of the Pioneers have been signed to entertain at each of the 22 performances of the World's Original Indoor Rodeo during the January 27 through February 7 Southwestern Exposition and Fat Stock Show, reports W.R. Watt Jr., show president-manager.

"We are pleased to bring this superb talent with their songs of the American West to the Fort Worth Rodeo audience," Watt said. "In song and on film, no group has been more representative of the spirit of the west."

The group's 1982 appearance will be the second time for the Sons of the Pioneers to sing during the Stock Show Rodeo. They were part of the cast of the 1958 Roy Rogers Chevy Show which was televised nationally on NBC during the February 2 closing night performance at that year's Stock Show Rodeo.

Blended harmony has become the group's trademark since its start as a trio in 1933 when Len Slye (Roy Rogers) and songwriters Bob Nolan and Tim Spencer pooled their talents. Throughout their career, the Sons of the Pioneers have endeared themselves to Western music lovers through a combination of harmony, instrumental effects and colorful tales in such favorites as "Cool Water," "Blue Shadows on the Trail," "Tumbling Tumbleweeds," "Red River Valley," and many more American classics.

Their long list of awards and honors, including designation as a "national treasure" by the Smithsonian Institution in 1979 for their substantive and continuing contributions to American culture, indicates international recognition as the premiere Western band of time.

Specialty acts to be presented during each rodeo performance include the Lora Family, seven members of a professional charro family from Monterrey, Mexico, who will present unbelievable routines of expert and precision-oriented rope tricks; and a group of the

Kent Hance named Wayland board member

U.S. Congressman Kent Hance, representative of Texas' 19th District, heads the list of newcomers to the 1981-82 Board of Trustees at Wayland Baptist University.

Hance, 38, of Lubbock, was elected to the 39-member Wayland board during the annual meeting of the Baptist General Convention of Texas last month in Waco and will begin his three-year term at the Board's regular spring meeting in March.

Hance was one of five newcomers elected to the board during the Convention. Others are J.B. Roberts of Plainview, Roy McCasland of Tulia, Mrs. E.P. White of Lamesa, and Alvie G. Burkhalter of Dalhart.

Others renominated to the Board were Wood B. Craig of Sunray, Rev. Pat Cummins of Dallas, Mrs. Bob Dillman of Canadian, Rev. John E. Gillispie of Knox City, Dr. James R. Matthews of Lubbock, W.A. Mays of Amarillo, W.E. Miller of Springlake, and Howard Smith, also of Amarillo.

Board members whose terms will expire in 1982 are Rev. Robert L. Bratcher of Odessa, Dale E. Elms of Lubbock, Mrs. Dallas Smith of Amarillo, James Mims of Midland, Mrs. Winfred Moore of Amarillo, Dr. Al-

Applications are now being accepted for the Service Worker for the Lockney Multi-Family Center, 113 SE 1st. All applications must be received by 5:00 p.m. on January 10, 1981. For further information call 853-2111 Opportunity Employer.

LEGAL NOTICE

Plainview Schools will accept separate bids for the addition to Hillcrest Elementary School, Plainview, Texas, until 3:00 p.m. December 10, 1981. Bids should be sent or delivered to the Administration Building, 7072 Portland, Plainview, Texas 79072. Bids will be read and read aloud in the Board Room of the Administration Building on December 10, 1981, at the regular Meeting to be held at 8:00 p.m.

The information for bidders, contract documents and specifications may be examined in the office of James Robison & Associates, Architects, 2244 S. Drive, Plainview, Texas, after November 22, 1981. The plans may be obtained from the architect with a deposit of \$50.00 per set. Plans shall be by mail or by person.

This is a solicitation for bids and is not an offer. It reserves the right to accept or reject any and all bids to waive all informalities.

John O. Peck, Assistant Superintendent
Plainview Independent School District

CONTRACTORS NOTICE TEXAS HIGHWAY CONSTRUCTION

Sealed proposals for constructing 134.30 miles of various limits throughout District 11, On Highway US 84, US 87, SH 114, US 121, SH 86, SH 137, FM 40, LP 289, FM 378, FM 179, FM 298, FM 400, FM 378, US 82, FM 1424, FM 168, & FM 1750 covered by CSB 68-2-32, CSB 68-3-21, CSB 68-5-22, CSB 68-6-23, CSB 68-7-24, CSB 68-8-25, CSB 68-9-26, CSB 68-10-27, CSB 68-11-28, CSB 68-12-29, CSB 69-1-30, CSB 69-2-31, CSB 69-3-32, CSB 69-4-33, CSB 69-5-34, CSB 69-6-35, CSB 69-7-36, CSB 69-8-37, CSB 69-9-38, CSB 69-10-39, CSB 69-11-40, CSB 69-12-41, CSB 70-1-42, CSB 70-2-43, CSB 70-3-44, CSB 70-4-45, CSB 70-5-46, CSB 70-6-47, CSB 70-7-48, CSB 70-8-49, CSB 70-9-50, CSB 70-10-51, CSB 70-11-52, CSB 70-12-53, CSB 71-1-54, CSB 71-2-55, CSB 71-3-56, CSB 71-4-57, CSB 71-5-58, CSB 71-6-59, CSB 71-7-60, CSB 71-8-61, CSB 71-9-62, CSB 71-10-63, CSB 71-11-64, CSB 71-12-65, CSB 72-1-66, CSB 72-2-67, CSB 72-3-68, CSB 72-4-69, CSB 72-5-70, CSB 72-6-71, CSB 72-7-72, CSB 72-8-73, CSB 72-9-74, CSB 72-10-75, CSB 72-11-76, CSB 72-12-77, CSB 73-1-78, CSB 73-2-79, CSB 73-3-80, CSB 73-4-81, CSB 73-5-82, CSB 73-6-83, CSB 73-7-84, CSB 73-8-85, CSB 73-9-86, CSB 73-10-87, CSB 73-11-88, CSB 73-12-89, CSB 74-1-90, CSB 74-2-91, CSB 74-3-92, CSB 74-4-93, CSB 74-5-94, CSB 74-6-95, CSB 74-7-96, CSB 74-8-97, CSB 74-9-98, CSB 74-10-99, CSB 74-11-100, CSB 74-12-101, CSB 75-1-102, CSB 75-2-103, CSB 75-3-104, CSB 75-4-105, CSB 75-5-106, CSB 75-6-107, CSB 75-7-108, CSB 75-8-109, CSB 75-9-110, CSB 75-10-111, CSB 75-11-112, CSB 75-12-113, CSB 76-1-114, CSB 76-2-115, CSB 76-3-116, CSB 76-4-117, CSB 76-5-118, CSB 76-6-119, CSB 76-7-120, CSB 76-8-121, CSB 76-9-122, CSB 76-10-123, CSB 76-11-124, CSB 76-12-125, CSB 77-1-126, CSB 77-2-127, CSB 77-3-128, CSB 77-4-129, CSB 77-5-130, CSB 77-6-131, CSB 77-7-132, CSB 77-8-133, CSB 77-9-134, CSB 77-10-135, CSB 77-11-136, CSB 77-12-137, CSB 78-1-138, CSB 78-2-139, CSB 78-3-140, CSB 78-4-141, CSB 78-5-142, CSB 78-6-143, CSB 78-7-144, CSB 78-8-145, CSB 78-9-146, CSB 78-10-147, CSB 78-11-148, CSB 78-12-149, CSB 79-1-150, CSB 79-2-151, CSB 79-3-152, CSB 79-4-153, CSB 79-5-154, CSB 79-6-155, CSB 79-7-156, CSB 79-8-157, CSB 79-9-158, CSB 79-10-159, CSB 79-11-160, CSB 79-12-161, CSB 80-1-162, CSB 80-2-163, CSB 80-3-164, CSB 80-4-165, CSB 80-5-166, CSB 80-6-167, CSB 80-7-168, CSB 80-8-169, CSB 80-9-170, CSB 80-10-171, CSB 80-11-172, CSB 80-12-173, CSB 81-1-174, CSB 81-2-175, CSB 81-3-176, CSB 81-4-177, CSB 81-5-178, CSB 81-6-179, CSB 81-7-180, CSB 81-8-181, CSB 81-9-182, CSB 81-10-183, CSB 81-11-184, CSB 81-12-185, CSB 82-1-186, CSB 82-2-187, CSB 82-3-188, CSB 82-4-189, CSB 82-5-190, CSB 82-6-191, CSB 82-7-192, CSB 82-8-193, CSB 82-9-194, CSB 82-10-195, CSB 82-11-196, CSB 82-12-197, CSB 83-1-198, CSB 83-2-199, CSB 83-3-200, CSB 83-4-201, CSB 83-5-202, CSB 83-6-203, CSB 83-7-204, CSB 83-8-205, CSB 83-9-206, CSB 83-10-207, CSB 83-11-208, CSB 83-12-209, CSB 84-1-210, CSB 84-2-211, CSB 84-3-212, CSB 84-4-213, CSB 84-5-214, CSB 84-6-215, CSB 84-7-216, CSB 84-8-217, CSB 84-9-218, CSB 84-10-219, CSB 84-11-220, CSB 84-12-221, CSB 85-1-222, CSB 85-2-223, CSB 85-3-224, CSB 85-4-225, CSB 85-5-226, CSB 85-6-227, CSB 85-7-228, CSB 85-8-229, CSB 85-9-230, CSB 85-10-231, CSB 85-11-232, CSB 85-12-233, CSB 86-1-234, CSB 86-2-235, CSB 86-3-236, CSB 86-4-237, CSB 86-5-238, CSB 86-6-239, CSB 86-7-240, CSB 86-8-241, CSB 86-9-242, CSB 86-10-243, CSB 86-11-244, CSB 86-12-245, CSB 87-1-246, CSB 87-2-247, CSB 87-3-248, CSB 87-4-249, CSB 87-5-250, CSB 87-6-251, CSB 87-7-252, CSB 87-8-253, CSB 87-9-254, CSB 87-10-255, CSB 87-11-256, CSB 87-12-257, CSB 88-1-258, CSB 88-2-259, CSB 88-3-260, CSB 88-4-261, CSB 88-5-262, CSB 88-6-263, CSB 88-7-264, CSB 88-8-265, CSB 88-9-266, CSB 88-10-267, CSB 88-11-268, CSB 88-12-269, CSB 89-1-270, CSB 89-2-271, CSB 89-3-272, CSB 89-4-273, CSB 89-5-274, CSB 89-6-275, CSB 89-7-276, CSB 89-8-277, CSB 89-9-278, CSB 89-10-279, CSB 89-11-280, CSB 89-12-281, CSB 90-1-282, CSB 90-2-283, CSB 90-3-284, CSB 90-4-285, CSB 90-5-286, CSB 90-6-287, CSB 90-7-288, CSB 90-8-289, CSB 90-9-290, CSB 90-10-291, CSB 90-11-292, CSB 90-12-293, CSB 91-1-294, CSB 91-2-295, CSB 91-3-296, CSB 91-4-297, CSB 91-5-298, CSB 91-6-299, CSB 91-7-300, CSB 91-8-301, CSB 91-9-302, CSB 91-10-303, CSB 91-11-304, CSB 91-12-305, CSB 92-1-306, CSB 92-2-307, CSB 92-3-308, CSB 92-4-309, CSB 92-5-310, CSB 92-6-311, CSB 92-7-312, CSB 92-8-313, CSB 92-9-314, CSB 92-10-315, CSB 92-11-316, CSB 92-12-317, CSB 93-1-318, CSB 93-2-319, CSB 93-3-320, CSB 93-4-321, CSB 93-5-322, CSB 93-6-323, CSB 93-7-324, CSB 93-8-325, CSB 93-9-326, CSB 93-10-327, CSB 93-11-328, CSB 93-12-329, CSB 94-1-330, CSB 94-2-331, CSB 94-3-332, CSB 94-4-333, CSB 94-5-334, CSB 94-6-335, CSB 94-7-336, CSB 94-8-337, CSB 94-9-338, CSB 94-10-339, CSB 94-11-340, CSB 94-12-341, CSB 95-1-342, CSB 95-2-343, CSB 95-3-344, CSB 95-4-345, CSB 95-5-346, CSB 95-6-347, CSB 95-7-348, CSB 95-8-349, CSB 95-9-350, CSB 95-10-351, CSB 95-11-352, CSB 95-12-353, CSB 96-1-354, CSB 96-2-355, CSB 96-3-356, CSB 96-4-357, CSB 96-5-358, CSB 96-6-359, CSB 96-7-360, CSB 96-8-361, CSB 96-9-362, CSB 96-10-363, CSB 96-11-364, CSB 96-12-365, CSB 97-1-366, CSB 97-2-367, CSB 97-3-368, CSB 97-4-369, CSB 97-5-370, CSB 97-6-371, CSB 97-7-372, CSB 97-8-373, CSB 97-9-374, CSB 97-10-375, CSB 97-11-376, CSB 97-12-377, CSB 98-1-378, CSB 98-2-379, CSB 98-3-380, CSB 98-4-381, CSB 98-5-382, CSB 98-6-383, CSB 98-7-384, CSB 98-8-385, CSB 98-9-386, CSB 98-10-387, CSB 98-11-388, CSB 98-12-389, CSB 99-1-390, CSB 99-2-391, CSB 99-3-392, CSB 99-4-393, CSB 99-5-394, CSB 99-6-395, CSB 99-7-396, CSB 99-8-397, CSB 99-9-398, CSB 99-10-399, CSB 99-11-400, CSB 99-12-401, CSB 100-1-402, CSB 100-2-403, CSB 100-3-404, CSB 100-4-405, CSB 100-5-406, CSB 100-6-407, CSB 100-7-408, CSB 100-8-409, CSB 100-9-410, CSB 100-10-411, CSB 100-11-412, CSB 100-12-413, CSB 101-1-414, CSB 101-2-415, CSB 101-3-416, CSB 101-4-417, CSB 101-5-418, CSB 101-6-419, CSB 101-7-420, CSB 101-8-421, CSB 101-9-422, CSB 101-10-423, CSB 101-11-424, CSB 101-12-425, CSB 102-1-426, CSB 102-2-427, CSB 102-3-428, CSB 102-4-429, CSB 102-5-430, CSB 102-6-431, CSB 102-7-432, CSB 102-8-433, CSB 102-9-434, CSB 102-10-435, CSB 102-11-436, CSB 102-12-437, CSB 103-1-438, CSB 103-2-439, CSB 103-3-440, CSB 103-4-441, CSB 103-5-442, CSB 103-6-443, CSB 103-7-444, CSB 103-8-445, CSB 103-9-446, CSB 103-10-447, CSB 103-11-448, CSB 103-12-449, CSB 104-1-450, CSB 104-2-451, CSB 104-3-452, CSB 104-4-453, CSB 104-5-454, CSB 104-6-455, CSB 104-7-456, CSB 104-8-457, CSB 104-9-458, CSB 104-10-459, CSB 104-11-460, CSB 104-12-461, CSB 105-1-462, CSB 105-2-463, CSB 105-3-464, CSB 105-4-465, CSB 105-5-466, CSB 105-6-467, CSB 105-7-468, CSB 105-8-469, CSB 105-9-470, CSB 105-10-471, CSB 105-11-472, CSB 105-12-473, CSB 106-1-474, CSB 106-2-475, CSB 106-3-476, CSB 106-4-477, CSB 106-5-478, CSB 106-6-479, CSB 106-7-480, CSB 106-8-481, CSB 106-9-482, CSB 106-10-483, CSB 106-11-484, CSB 106-12-485, CSB 107-1-486, CSB 107-2-487, CSB 107-3-488, CSB 107-4-489, CSB 107-5-490, CSB 107-6-491, CSB 107-7-492, CSB 107-8-493, CSB 107-9-494, CSB 107-10-495, CSB 107-11-496, CSB 107-12-497, CSB 108-1-498, CSB 108-2-499, CSB 108-3-500, CSB 108-4-501, CSB 108-5-502, CSB 108-6-503, CSB 108-7-504, CSB 108-8-505, CSB 108-9-506, CSB 108-10-507, CSB 108-11-508, CSB 108-12-509, CSB 109-1-510, CSB 109-2-511, CSB 109-3-512, CSB 109-4-513, CSB 109-5-514, CSB 109-6-515, CSB 109-7-516, CSB 109-8-517, CSB 109-9-518, CSB 109-10-519, CSB 109-11-520, CSB 109-12-521, CSB 110-1-522, CSB 110-2-523, CSB 110-3-524, CSB 110-4-525, CSB 110-5-526, CSB 110-6-527, CSB 110-7-528, CSB 110-8-529, CSB 110-9-530, CSB 110-10-531, CSB 110-11-532, CSB 110-12-533, CSB 111-1-534, CSB 111-2-535, CSB 111-3-536, CSB 111-4-537, CSB 111-5-538, CSB 111-6-539, CSB 111-7-540, CSB 111-8-541, CSB 111-9-542, CSB 111-10-543, CSB 111-11-544, CSB 111-12-545, CSB 112-1-546, CSB 112-2-547, CSB 112-3-548, CSB 112-4-549, CSB 112-5-550, CSB 112-6-551, CSB 112-7-552, CSB 112-8-553, CSB 112-9-554, CSB 112-10-555, CSB 112-11-556, CSB 112-12-557, CSB 113-1-558, CSB 113-2-559, CSB 113-3-560, CSB 113-4-561, CSB 113-5-562, CSB 113-6-563, CSB 113-7-564, CSB 113-8-565, CSB 113-9-566, CSB 113-10-567, CSB 113-11-568, CSB 113-12-569, CSB 114-1-570, CSB 114-2-571, CSB 114-3-572, CSB 114-4-573, CSB 114-5-574, CSB 114-6-575, CSB 114-7-57



SLICED BACON
Oscar Mayer
Oscar Mayer Franks ^{\$1.69}
Meat or Beef
\$1.99
lb.



WHOLE FRYER
Country Pride USDA Grade A
53¢
lb.
Spare Ribs Country Style lb. \$1.19
Franks Wilson Certified All Meat 12 oz. 99¢



CHUCK ROAST
Boneless Center Cut Beef
\$1.49
lb.
Sliced Bacon Wilson Certified lb. \$1.59
Sliced Bologna Wilson Certified lb. \$1.59



PORK CHOPS
Combination Pack
\$1.19
lb.
Longhorn Cheese Kraft Half Moon
Fish Fillets
Mrs. Paul's Fried

Each of these advertised items is required to be readily available for sale at or below the advertised price in each store, except as specifically noted in this ad. We reserve the right to limit quantities. None sold in other stores.
EKCO ETERNA \$11.99 Reg. Thru Dec. 9, 1981 with \$5.00 purchase
Great Food Buys! *Imari Lotus Bowl* Offer good thru Wed., December 3-9, 1981



PIGGLY WIGGLY
Prices Effective Thurs. Thru Wed., December 3-9, 1981

PLUS DOUBLE VALUE On Manufacturer's Coupon
Thurs. thru Sun., Dec. 3-6, 1981
Present Manufacturer's "cents-off" (Not to exceed \$1.00) and get double savings. Not to include "retailer" or "free" coupons or to exceed the value of the item.



APPLES
Washington
Red or Golden Delicious
59¢
lb.

Mushrooms
Snow White-Great with steaks
\$1.98
lb.



GRAPEFRUIT
Texasweet
\$1.19
4 for



BANANAS
Golden Ripe
99¢
3 lb. for

Mustard or Collard Greens bunch **49¢**

Tangerines Full of flavor lb. **59¢**
Turnips Fancy Purple Top lb. **39¢**



CABBAGE
Firm Solid Heads
15¢
lb.

MIRACLE WHIP
Kraft 32 oz. jar
\$1.19




PEPSI **\$1.39**



FOLGERS COFFEE
Regular, Electric
1 lb. can
\$1.18

Cake Mix Super Moist **78¢**

Vienna Sausage Libby 5 oz. can 2 for **88¢**

Picante Sauce 8 oz. jar Extra Hot, Mild, Hot **59¢**

Heinz Ketchup 14 oz. btl. **59¢**

Orange Juice Unsweetened 46 oz. can **89¢**

Jeno's Pizza Ass't. Variety 13 oz. pkg. **\$1.09**

Orange Beverage Shurfine Concentrate 12 oz. can 2 for **99¢**

Extract Honey 24 oz. jar **99¢**

GOLD MEDAL
25 lb. bag
\$3.99




BATH TISSUE
White Cloud
White, Yellow, Blue, Pink, Green
4 roll pkg. **99¢**



CRISCO SHORTENING
3 lb. can
2.09

Green return
MRS. J.E. GREEN
everybody! I am
ain after a 17 days'
own state. I had a
me, but glad to get
early Thursday. I was
in Calvary Church
but sorry to learn
arriving that Brother
was in the local hospi-
hope he will soon be
home again.
at Margaret's in
I of course had a
Margaret and
and two children
up to attend the
homecoming and
November 8, we left
ed. Later that week
man Sr. who had
there was ready
to Wadsworth (on
), so Margaret, ac-
ed by "yours truly,"
and stayed over
day we came home
and enjoyed a visit
my Jo and Charles
and in the Rest
with her mother Mrs.
Mrs. my good neigh-
years at Center.
feeling better.
Saturday afternoon,
and I visited in a
Rest Home with my
Mrs. Mattie
who is broken from
a broken hip. A
but of course she
Meo.

Now. S
finance
with a
John L

It won't cost you as m
tractor right now. On
deal with us any time
pay a penny in financ
tractor. And you hold
finance charges.

And that's not al
you buy with your tr
This is the best way
tractor.

Fl
Balls Highway

Outstanding 4-Hers honored in Lubbock



Outstanding 4-Hers honored — Jodie Smith (left), daughter of Mr. and Mrs. Choise Floydada, and Keith Hight, son of Mr. and Mrs. G.L. Hight of Lockney, were among 44 members honored.

LUBBOCK — Forty-four outstanding members of 4-H Clubs in the South Plains were honored here Monday night, November 23rd.

In addition to receiving the Gold Star Award, highest honor presented at the county level, the youths were challenged by a top administrator of Texas Agricultural Extension Service to strive for a good finish as a climax to their outstanding start in life.

Joining the youths at the awards banquet in the cafeteria of Coronado High School were parents, government officials, Extension leaders, fellow 4-H'ers, educators and other community leaders.

Honored from Floyd County were Jodie Smith, daughter of Mr. and Mrs. Choise Smith of Floydada; and Keith Hight, son of Mr. and Mrs. G.L. Hight, of Lockney.

The belief that we need to get off to a fast start is deeply ingrained in American custom. Dr. Uel Stockard of College Station, state leader for county programs with the Extension Service, told the audience. But he stressed that the long run of life requires more than a good start.

A good start is important, whether it's eating a good breakfast to provide a nutritious start for the day or getting a good education to prepare for life, he said.

He told how Curtis Bickey of Bryan, now a professional football player with the Baltimore Colts, became a world class track star by practicing his start for sprinting events.

"He spent hours upon hours practicing getting out of the blocks," Stockard said, because he knew that fast start gave him an advantage over runners as fast as he was, but who were slower starting.

"But getting off to a fast start is more important in the short run than it is in the long run," Stockard cautioned.

He told of another youth who got off to a fast start as a West Texas farm boy who grew up in 4-H. This boy went into agribusiness and

literally walked with Presidents," Stockard said. But he was convicted of fraud and now is a convicted felon unable to take part in much of the life of his community, Stockard noted.

"You 4-H'ers have gotten off to a fast start," Stockard said. "You've been involved in projects that have taught you leadership and followship." And he said the ability to follow good leadership is just as important as being a leader.

He suggested five things they should do to assure a good finish for their fine start in life. He urged them to develop a set of beliefs; develop goals for their career, their family life and their community life; chart a course of action to achieve these goals; be patient in working toward their goals, and take advantage of the many opportunities they receive.

Master of ceremonies for the banquet were Dr. Sam Curl, dean of agricultural science at Texas Tech University. Guests were welcomed by Jim Roberts, general manager of South Plains Electric Cooperative, one of the 12 electric cooperatives which annually sponsor the banquet. The others are Bailey County, Cap Rock, Deaf Smith, Dickens, Lamb, Lea County, Lighthouse, Lone Wolf, Lyntegar, Midwest and Swisher electric cooper-

atives. The awards presentation was narrated by 4-H'ers Tanay Tyer of Hale County and Katie Montandon of Swisher County. The awards were presented by Dr. Catherine Crawford and Billy C. Gunter, district Extension directors.

Dinner music was by 4-H'ers Justin Sharp of Swisher County and Mandy Igo of Hale County. Cleet Grif-

fin, Dawson County 4-H'er presented a patriotic closing ceremony. Also on the program were 4-H'ers Ralph Scheele of Floyd County, Linda Smith and Lonnie Howard, both of Hale County.

Floydada School Menu

December 7-11
Monday:
 Breakfast — Juice, dried cereal, milk
 Lunch — Corn dogs with mustard, pork & beans, onion rings, gingerbread cake, milk
Tuesday:
 Breakfast — Orange juice, Long Johns, milk
 Lunch — Chicken pattie on bun with cheese, French fries, pickles, ice cream cup, milk

Wednesday:
 Breakfast — Juice, pancakes, syrup, sausage, milk
 Lunch — Meat balls in brown gravy, corn on cob, tossed salad, sugar cookie, hot rolls, milk
Thursday:
 Breakfast — Juice, hot rolls, jelly, bacon, milk
 Lunch — Taco with cheese, pinto beans, tossed salad, cornbread, peach half, milk
Friday:
 Breakfast — Juice, cheese

toast, milk
 Lunch — Hamburger on bun, lettuce & dill pickle, tater tots, peach cobbler, milk.
FLOYD DATA
 Mr. and Mrs. C.W. Denison spent Thanksgiving in Lubbock with their son, Mr. and Mrs. Gilmer Denison, their children and families, and other relatives. About 30 were present for the occasion.



The electric cooperative is member-owned and operated; its directors are members who serve without salary and pay the same rates for power that other members pay.

Thus, when the cost of power goes up, the directors (who are the first to know) have a double desire to make certain that the price is never a penny more than it has to be.

When they serve the members best interests, they are serving their own as well.

Lighthouse Electric Cooperative

Got Heating Or Plumbing Problems?
 Call
Holmes Plumbing
 Austin Or Steve
 983-2251
 Call Day Or Night

FAST
PORK CHOPS
 Combination Pack
\$1.19
 lb.
\$1.59
 lb.
\$1.59
 lb.
 Longhorn Cheese Kraft Half Moon
 Fish Fillets
 Mrs. Paul's Fried

Imari Lotus Bowl Save 1/2
 Offer good thru Wed., December 3-9, 1981

VALUE On
er's Coupon
 "free" coupons or to exceed the value of the item

GRAPEFRUIT
 Texasweet
\$1
 4 for

CABBAGE
 Firm Solid Heads
15c
 lb.

FOLGERS COFFEE
 Regular, Electric Perk.
 1 lb. can
\$1.89

9c Heinz Ketchup 14 oz. btl.
9c Extract Honey 24 oz. jar

CRISCO SHORTENING
 3 lb. can
2.09

Green returns from down state

MRS. J.E. GREEN
 Mrs. J.E. Green, 30, everybody! I am again after a 17 days' down state. I had a come, but glad to get Thursday. I was at Calvary Church but sorry to learn that Brother was in the local hospital he will soon be home again.

at Margaret's in d. I of course had a name. Margaret and man and two children up to attend the Homecoming and November 8, we left later that week. Later that weekyman Sr. who had sitting there was ready to Wadsworth (on st), so Margaret, aced by "yours truly."

er and stayed over next day we came home and enjoyed a visit pretty Jo and Charles and in the Rest with her mother Mrs. Sims, my good neighbor many years at Center, feeling better.

Saturday afternoon, et and I visited in a Rest Home with my in-law, Mrs. Mattie ws, who is there from a broken hip. A ce, but of course she

would like to be home. A grandson, Kenneth Mark, a student at Baylor scheduled to meet his family, the Clyde Greens of Peralta, New Mexico came by Wednesday evening and picked me up. The Clyde Greens got here first. We all plus Mr. and Mrs. Jim Green had a wonderful Thanksgiving dinner with the Victor Greens.

Mrs. Clarence Ashton of Lockney Rest Home is reported doing very well. And Mrs. Sally Carpenter who has been in the Lockney Hospital several days is about ready to return to the Rest Home.

Jamie Boteler and wife of Dallas spent Thanksgiving and the weekend with his grandparents, Mr. and Mrs. Marion Carpenter.

The Henry Brewers had their Thanksgiving dinner on Sunday before. Several of their children and grandchildren were present. Also her brother and wife, Mr. and Mrs. Herbert Forman of Wichita Falls. Some of the clan dropped in thru the week.

Mrs. Cora Hartline spent Thanksgiving in Plainview with her daughter and family, June and Bob Landry and children.

Mr. and Mrs. C.W. Denison spent the holiday in Lubbock with a son and family.

Mrs. Elmer Warren spent Thursday and Thursday night with her son John Warren and family near Lubbock.

Mr. and Mrs. O.G. Mayfield spent Thursday nite with relatives in New Home.

Mr. and Mrs. Hal Thomas were in Lubbock with their children Sue and Milton Mensch and son David Wednesday nite and Thursday, Thursday p.m., David came home with his grandparents. Sunday the parents came over and David returned home with them.

The Clyde Greens and Ma Green had supper Friday nite with Mr. and Mrs. Anthony Latta and Carol. The Saturday evening get together at the Green home included the Clyde Greens, Mr. and Mrs. Victor Green, Don Clark Green of Big Spring, and Mr. and Mrs. Anthony Latta.

Now. Save on finance charges with a new John Deere tractor.

It won't cost you as much as you thought to buy a new John Deere tractor right now. On models 4040 through 8640, if you make a deal with us any time before January 30, 1982, you won't have to pay a penny in finance charges until June 1, 1982! You get the tractor. And you hold on to the money you would normally pay for finance charges.

And that's not all. Any new John Deere or used implements you buy with your tractor earn the same finance charge waiver. This is the best way to get behind the wheel of a new John Deere tractor.



Floyd County Implement
 Ralls Highway 983-3732
 Floydada

JOHN DEERE BONUS BONANZA

For a limited time, earn \$50 to \$1,200 in bonus buying power by ordering a new John Deere disk, hay or forage tool

Order any new John Deere hay/forage tool or disk listed here and, during this special limited-time offer, you'll qualify for a bonanza of bonuses. You'll receive \$50 to \$1,200 in John Deere money you can exchange for goods or services at our store after you take delivery. From the time you order until we make delivery, you'll get price protection on any machine in this bonus program. And, no finance charges will accrue on a disk purchase until March 1, 1982; or until the first of the month in which a hay/forage tool purchase will next be used in this area. Also remember, this equipment could earn you investment tax credit in 1981 plus tax write-off under new depreciation schedules. So act now and save. Check the list and order before this Bonus Bonanza offer ends.

| HAY AND FORAGE EQUIPMENT | | DISKS | |
|--------------------------|---------------------------|---|---------------------------|
| MACHINE | BONUS IN JOHN DEERE MONEY | DISK MODELS | BONUS IN JOHN DEERE MONEY |
| Square Balers | \$ 250 | 111, 115 | \$ 75 |
| Round Balers | \$ 250 | 210, 215, 310, 315, 340 | |
| PTO Forage Harvesters | \$ 375 | 1630, 1635 | \$ 175 |
| SP Forage Harvesters | \$1200 | 220, 230, 235, 350, 355, 440, 455, 1640 | \$ 250 |
| Mower/Conditioners | \$ 350 | 331, 335 | \$ 425 |
| SP Windrowers | \$ 450 | 370, 375 | \$ 600 |
| Ag Mowers | \$ 50 | | |
| Rakes | \$ 50 | | |

*This finance offer may be withdrawn at any time



IF YOU LIKE SAVINGS, YOU'LL LOVE OUR
CHOICE BEEF SALE

USDA Beef Chuck
ROAST..... \$1.79



Heirloom quality European
24% Lead Crystal
FREE
Collectible
CASH SAVER COUPONS
and save over \$20 on
complete 48-pc. set

| | | |
|--|---|---|
| 12 oz. Booth Battered FISH FILLETS \$1.89 | From Our Deli CORN DOGS 3/\$1.00 | Country Pride Baking HENS lb 69¢ |
|--|---|---|

USDA Boneless
ROUND STEAK lb \$2.69

Country Style
SPARE RIBS lb \$1.49

12 oz. White Swan
CHEESE SINGLES \$1.59

Wrights Sliced Slab
BACON \$1.29 lb

32 oz. 6 pack
DR PEPPER
\$1.39
Plus Deposit

4 oz. White Swan
BLACK PEPPER 69¢

7 oz. Nabisco Box Snack
CRACKERS 99¢

LIGHT CRUST FLOUR
5 LB. 89¢
25 LB. \$4.99

Gebhardt's
CHILI 19 OZ.
\$1.19

NICE N SOFT BATH TISSUE
6 ROLL \$1.39

1/2 Gallon
Grade A Buddys
MILK \$1.09

16 oz. White Swan
FRUIT COCKTAIL 59¢

15 oz. White Swan
SPINACH 2/89¢

16 oz. White Swan Peeled
TOMATOES 2/99¢

25 oz. White Swan
APPLE SAUCE 69¢

7 oz. White Swan
Macaroni & Cheese
DINNER 3/89¢

GENERIC
DOG FOOD 25 LB. \$4.79

CHEX CEREAL
WHEAT 15 OZ. \$1.19
RICE 12 OZ. \$1.19
CORN 12 OZ. \$1.19

Frozen Foods
3 oz. White Swan
INSTANT TEA \$1.19

12 oz. Hi-C
FRUIT DRINK 3/89¢

5-ALIVE FRUIT
PUNCH 12 OZ. 89¢

8 oz. White Swan
TOMATO SAUCE 4/\$1.00

Health & Beauty Aids
60 Count Tablets Extra Strength
TYLENOL \$2.19

6 1/2 oz. Pepsodent
TOOTHPASTE \$1.29

9 oz. Aqua Net
HAIR SPRAY \$1.59

Fresh Produce

WASH. D'ANJOURS
PEARS..... LB. 49¢

NAVAL
ORANGES..... 3 LBS. \$1

Golden Ripe
BANANAS lbs 3/\$1.00

TEXAS RUBY RED
GRAPEFRUIT..... lbs. 4 / \$1.00

CARROTS 1 lb Cello Bag 3 \$1 BUNCHES

FRESH GREEN BUNCHES
BROCCOLI..... LB. 59¢

1 1/2 oz. Gebhardt's
CHILI POWDER 2/99¢

DOWNY FABRIC SOFTENER 64 OZ. \$2.49

buddy's SUPERMARKET

220 SOUTH 2nd • 983-3149
STORE HOURS:
MON. THRU SAT. 8 A.M. 'TIL 10 P.M.
SUNDAY 9 A.M. 'TIL 9 P.M.

DOUBLE STAMPS ON WEDNESDAY WITH \$5.00 PURCHASE OR MORE

WE RESERVE THE RIGHT TO LIMIT QUANTITIES

These values in this adv are effective through December 9, 1981 Wednesday, December 2, 1981

STAMP

32 oz. King
DAW 99¢
with one f
S&H Special \$1.59 without

ROGO PRE 7

Final
SOFT

Waples West
GREEN STAMPS

7

Maryland Ch
100% Pure Corn

STAMP PRICE SPECIALS

More savings!

Remember what a penny could buy in the good old days? Well, take a good look at our good old thrifty Stamp-Price Specials! For just a few pennies... and a 1/4 Saver Book of Green Stamps (30 Big 10¢... it's happy days are here again... every day! Stamp-Price Specials are just one more way we help you save money through Green Stamps. Every time you shop. Hurry in for our Stamp-Price Specials Saver Books. The more you shop... the more you save. Promise through 12-9-81.

STAMP PRICE SPECIAL

32 oz. King Size Liquid
DAWN
99¢
with one filled S&H Special Saver Book
\$1.59 without book

STAMP PRICE SPECIAL

4 Roll White Swan
BATHROOM TISSUE
59¢
with one filled S&H Special Saver Book
\$1.19 without book

STAMP PRICE SPECIAL

Sunny Fresh Farm Grade A Medium
EGGS
29¢
with one filled S&H Special Saver Book
89¢ without book

STAMP PRICE SPECIAL

42 oz. White Swan Blend
SHORTENING
79¢
with one filled S&H Special Saver Book
\$1.39 with out book

Heirloom quality European
24% Lead Crystal
FREE

Collect our CASH SAVER COUPONS and save over \$287 on a complete 48-pc. service for 8

It's so easy—just fill in the Cash Saver Card with Cash Saver Coupons. You'll receive one coupon with every \$1 purchase. For example, if you'll receive 1 coupon, only takes 20 coupons. If each card entitles you to a choice of 1 place setting, you'll receive a complete set of sparkling Sheffield crystal at unbelievable savings!

*One Stemmed Water Goblet, Stemmed Wine-On-the-Rocks, Cordial Beverage or Champagne Sherbet

2.69
1.49
1.59

GENERIC
DOG FOOD
25 LB. **\$4.79**

CHEX CEREAL
WHEAT 15 OZ. **\$1.19**
RICE 12 OZ.
CORN 12 OZ.

3 oz. White Swan
INSTANT TEA \$1.49

12 oz. Hi-C
FRUIT DRINK 3/89¢

5-ALIVE FRUIT
PUNCH 12 OZ. 89¢

8 oz. White Swan
TOMATO SAUCE 4/\$1.00

Health & Beauty Aids
60 Count Tablets Extra Strength
TYLENOL \$2.79

6 1/2 oz. Pepsodent
TOOTHPASTE \$1.29

9 oz. Aqua Net
HAIR SPRAY \$1.39

buddy's SUPERMARKET

220 SOUTH 2nd • 983-3149

STORE HOURS:
MON. THRU SAT.
8 A.M. TIL 10 P.M.
SUNDAY
9 A.M. TIL 9 P.M.

THE RIGHT TO LIMIT QUANTITIES
December 9, 1981 Wednesday, December 9, 1981

\$1.99 Size
ROLD GOLD PRETZELS
79¢

1/2 Gallon
Final Touch Fabric
SOFTENER
\$2.19

200 count
Notebook Filler Count
PAPER
\$1.19

24 oz. Bag Asst. Kraft
CANDY
\$1.79

12 oz Fisher Land of Dixie Dry Roast
PEANUTS
\$1.29

14 oz.
Ragu Pizza Quick
SAUCE
79¢

Playtex
BABY NURSER TRIAL KIT \$1.39

40 Count Disposable
BOTTLES \$1.29

2 oz. Jhirmack Nutri Pak Creme
CONDITIONER \$3.49

12 oz. Nestles
CHOCOLATE MORSELS
\$1.79

\$1.99 Size Corn Chips
FRITOS
\$1.19

19 oz.
Campbells Chunky
Steak & Potato
SOUP
\$1.09

3 1/2 oz. Jhirmack Moistur pHLEX Hair
CONDITIONER
\$2.49

10 lb 11 oz. Family Size
TIDE
\$5.99
with coupon \$6.99 without coupon

16 oz. Princella
YAMS
59¢

8 oz. Jhirmack EFA or Gelave Instant Hair
CONDITIONER
\$2.19

3 lb Maryland Club
COFFEE
\$3.99
with coupon \$5.99 without coupon

Double On Wednesday With A \$5 Purchase Or More

buddy's SUPERMARKET

Values In This Adv Effective thru Wednesday, December 9, 1981
220 South 2nd - Floydada

Time to treat peach trees for pests

For homeowners with peach trees, fall is the best time to treat for one of the most destructive of all peach tree pests, the peach tree borer. A sure sign of the pest, says county Extension Agent-Entomology Paul Treptow, is the gum oozing down the trunk or branches of the tree. "This insect is mostly a pest of peach but is also found infesting plum, cherry and apricot trees," Treptow explains.

Actually, two borers commonly attack peach trees, he adds. The larval stage of the peach tree borer feeds just beneath the tree's bark in an area approximately six inches above the soil line to six inches below. The lesser peach tree borer attacks the upper portion of the tree's trunk and larger branches. The approach to controlling these pests is basically the same, but the method of application differs.

A fumigant generally used for peach tree borer control is paradichlorobenzene (PDB) crystals.

Using fumigants around peach trees is a delicate operation and should be done with great care. Over-treatment can damage the tree. The crystals, when applied to warm soil, quickly volatilize into a heavy gas which penetrates through soil crevices into burrows of overwintering borers and kills them. Crystals should only be applied when the soil is dry and the temperature is 55 degrees or above.

"When using PDB for peach tree borer control," Treptow recommends, "weeds should be removed from around the base of the tree and the soil leveled one foot from the tree trunk. PCB crystals should be placed in a narrow groove encircling the tree about two inches from the tree trunk. Care should be taken to keep crystals from directly contacting the tree. Clean soil should be placed over the crystals to form a cone-shaped pile about six inches high around the base of the tree. This soil should be removed from the base of the tree in late March or early April."

Entomologist Treptow adds that the amount of PDB to use is determined by age and size of the tree. In general, one-half ounce of crystals should be used for two-to three-year old trees.

three-fourths ounce for four-to-five-year old trees, and one ounce for mature trees.

Treptow says that both PDB and ethylene dichloride can also be used to treat peach trees infested by the lesser peach tree borer. Affected areas, recognized by masses of gum mixed with grass and sawdust running down the surface of the trunk and branches, should be treated after the leaves fall from the peach trees. A mixture of four ounces PDB in one pint of miscible oil

diluted in two pints of water or a smaller amount at the same proportions should be prepared. The mixture should be painted on the wounds and damaged areas, without encircling the trunk or limb.

For the homeowner with peach trees infested with either the peach tree borer or the lesser peach tree borer, Treptow concludes, "control measures can greatly lengthen the life of the trees."

Further information on control of the peach tree borer is available at the county Extension office.

Wind energy used for pumping water

Rural residents and agricultural producers may throw more money to the wind than they get from it with windmills and other wind machines.

In most areas, wind machines are not yet economical for pumping water if another means is available, says an agricultural engineer for the Texas Agricultural Extension Service, Texas A&M University System.

Without electricity or an engine-powered pump, however, a windmill is the best way to pump water for home or livestock use, says engineer Wayne Keese. "But the choice between a windmill and existing electrical power for pumping water should be thoroughly analyzed," he cautions.

For comparison, select a windmill and an electric pump that can provide the necessary amount of water. "Then compare the cost of owning and operating both systems," suggests Keese. "Including depreciation, interest on investment, repairs, the cost of

power for the electric pump and the cost of water storage for the windmill system."

Irrigation generally requires a higher pumping rate than a multi-blade farm windmill provides. Keese notes that modern wind turbines are being tested in combination with electric pumps to provide "wind assistance" for irrigation.

Such a system reduces the load on the electric motor while providing a dependable and constant flow of water, explains Keese. However, he says the wind-assist concept does not work as well for pumps driven by internal combustion engines.

"If wind power becomes economically feasible," Keese says, "research indicates it could provide as much as 40 percent of the energy now used for irrigation. The economic feasibility depends on several variables, but it may improve as electric power costs continue rising."

State hay show entries needed in December

Texas farmers and ranchers wanting to see how well the hay they harvested this year stacks up have until December 11 to enter samples in the Texas State Hay Show.

The show is set for January 27 at the Waco Convention Center and will feature hay samples from the 1981 crop, points out Don Dorsett, forage specialist with the Texas Agricultural Extension Service, Texas A&M University System.

The Texas State Hay Show has attracted some 300 entries in past years, but this year's show has gained a lot of interest and entries could reach the 400 mark, notes Dorsett.

Producers may submit one sample in each of the seven show classes, which include coastal bermudagrass, other bermudagrasses, other perennials, mixed grasses, summer annuals, winter annuals and legumes.

Samples should be sent to Billy M. Collier, McLennan County Extension

Agent, 420 North 6th St., Waco, TX 76702. Producers should include their name and address, county in which the hay was produced, and class to be entered.

In addition to hay samples from throughout the state, the show will feature a program of interest to hay producers, users and commercial suppliers, points out Dorsett. Keynote speaker will be Dr. Monte Rouquette of Overton, forage researcher with the Texas Agricultural Experiment Station. The show also will feature 4-H and FFA hay judging contests.

Dorsett adds that the Texas State Hay Show will culminate several days of agricultural activities in Waco. The three-day Mid-Tex Farmland and Ranch Show starts January 25, and the following day features meetings of the Blackland Income Growth (BIG) program and the Texas Forage and Grassland Council.

Stocker gain contracts provide insurance

Small grain crops will likely produce an abundance of forage this fall and early winter due to good moisture conditions over most of the state. To get the most from this forage, producers may want to consider grazing stocker cattle under a gain contract.

"With continued high interest rates and uncertain livestock prices, a stocker gain contract can provide some price insurance," points out Dr. Ashley Lovell of Stephenville, economist in management with the Texas Agricultural Extension Service, Texas A&M University System.

"However, a producer needs an accurate estimate of his costs before entering into such a contract," cautions the economist. "This is essential for determining the price needed per hundredweight of gain to make the agreement profitable."

Assuming 1.25 acres of small grain pasture per head (in the Central Texas Blacklands), Lovell estimates per acre forage costs (variable and fixed) at \$102.50 and livestock costs (feed, labor, death loss and related expenses) at \$47.77, for a total of \$150.27 per head.

As net gain per head increases from 150 to 300 pounds, total variable cost of gain per hundredweight declines from

\$87.58 to \$43.79 while total cost of gain per hundredweight drops from \$117.27 to \$58.63.

So, depending on the expected average daily gain per animal and total days of grazing, a producer can determine his position regarding a stocker gain contract. Armed with his cost figures, he can make sure the contract entered into is reasonable and offers some assurance of covering all costs, including a return for management time.

"Of course, in accepting the minimum compensation as determined by cost estimates, producers need to consider the likelihood of lower than anticipated net gains per head, unexpected forage production costs or higher than normal stocker death losses," cautions the economist.

In addition to considering a stocker gain contract, producers also have several other options, including grazing owned stockers until small grains play out or grazing them for a shorter period and then harvesting small grains for grain or hay.

"Whatever the choice regarding small grains and stocker cattle, first identify all the alternatives and the expected rewards for each," advises Lovell.

FarmNews

Management critical for forage-fed

"Management" is the key to a forage-fed beef production program—management of cattle and grazing.

This emphasis on management was a key part of the recent South Central Texas Cow-Calf Clinic which dealt with forage-fed beef and attracted some 300 cattlemen.

"Because forages are seasonal, management of grazing and cattle is critical in a forage-fed beef production program," said Dr. Bill Turner, head of the Department of Animal Science at Louisiana State University. "To gain weight, cattle must graze forages that are highly digestible. That means forages must be young and growing vigorously."

"The concept of forage-fed beef calls for a 365-day-a-year grazing program and keeping cattle on forage longer," said Turner. "Feeder cattle must be in the 800-900-pound range before going on a short-term feeding program while slaughter cattle must be kept in the 900-1100-pound range."

"You will have to select the type of cattle that will do best on forage," Turner emphasized. "There is no one best breed just like there is no one best type of grass to grow."

"The main thing is to produce lean, meaty carcasses. We still have to produce beef that is tender, juicy and flavorful whether we do it on grass or through the feedlot," Turner said.

Regarding breed selection, he noted, "You can't beat a Brahman-British breed (Hereford or Angus) crossbred cow. You want each of your cows to have a calf each year, to be a good milker and to give her calf good potential for growth."

"Pick those breeds with traits important to you," Turner emphasized. "I think in this area (South Central Texas) you need a crossbred cow with some Brahman in her. The choice of bull depends on the market you're shooting for. If the market changes, change your bull."

While advocating crossbred cows, Turner emphasized that good purebred

cattle are still essential because they provide a base for the industry.

Another speaker, Dr. Dennis Stiffler, emphasized the need for cattlemen to provide consumers with the kind of product they will use. Stiffler, a meats specialist with the Texas Agricultural Extension Service, advised cattlemen to consider a production system oriented to providing leaner beef.

While forage-fed beef meets this objective, there are other things to consider, said Stiffler. These are that forage-fed production systems have greater variability, the growth rate of animals is reduced, animals have a lower dressing percentage, and total production costs are greater because animals must be kept longer. However, carcasses from forage-fed animals tend to have a higher cutability.

"Feeding grain to forage-fed animals for at least 60 days can make for a more

desirable meat from the color of the animal. Stiffler. "Grain feeds a little more fat into the carcass which leads to tougher meat. He also cited the use of cass, cooler aging, electrical stimulation and tenderizers as means of improving beef quality. "We can use our knowledge to produce a more product that meets the demand," Stiffler said. The Cow-Calf Clinic was held by the Texas Agricultural Extension Service and the Texas System and Beef Council. Brazos, Beehive, Harris, Lee, Walker and counties.

American Agriculture

Convention set in Abilene

American Agriculture Movement members will gather December 4 and 5 at the Sheraton in Abilene for their annual state convention.

Featured speaker at noon Saturday will be Wayne Cryts, the gutsy Missouri farmer who made national headlines when he and 3,000 other farmers removed his soybeans from the bankrupt Ristine, Missouri elevator in defiance of court orders. Bankruptcy trustees planned to sell Cryts' soybeans, which he had stored on warehouse receipts, to pay off the debts of the elevator. Legal action is still pending against Cryts in what will be a landmark case.

A well-known Abilene resident, Chapman, will deliver the address Friday night, December 4, at 7:30 p.m. National AAM Chairman Meek from Plains, Mo., and Washington Coordinator, formerly of Berkeley, Calif., will be the day after speaker. AAM members will discuss a bill that is coming out of Congress and plan strategy for 1982. All interested persons are invited to the banquet Friday night only. For more information, contact Key Crawford, Texas State in Hereford at 806-364-7011.

Rangeland brush control must be continuous

Once you start a range brush control program, you'll likely have to keep it up or reinfestation will result.

"Range brush control rarely eradicates a brush species," says Dr. Tommy Welch, range brush and weed control specialist with the Texas Agricultural Extension Service, Texas A&M University System. "Though some practices provide high percentage control, most offer only partial control."

Often the brush species regains or surpasses pretreatment density.

Fall and winter is a good time to control brush to improve rangelands, says Welch.

Several brush control methods are available, Welch says, including both mechanical and chemical treatments. Among mechanical methods are chaining and grubbing while chemical treatments include kerosene, diesel, 2, 4, 5-T and pelleted or granular herbicides.

"Grubbing plants is an excellent way to control brush and may be done by hand if plants are small, says Welch. "However, a more common method is power grubbing with a grubbing unit mounted on a crawler-type or rubber-tired tractor."

Chaining involves drawing a heavy

anchor chain (40-90 pounds per foot and 150-300 feet long) between two crawler-type tractors. Chaining will uproot most large trees (4 or more inches in diameter) and is most effective about three years after a herbicide has been used. Also, moisture should be plentiful to allow removal of the bud zone from the soil to keep the tree from resprouting.

As far as chemical methods for maintenance controls are concerned, basal treatment is probably the most common use of a herbicide, Welch notes.

Kerosene, diesel or a diesel-2, 4, 5-T mixture may be poured around the base of many brush species on rangeland. Basal treatment is time-consuming but provides excellent control when the brush stand is thin.

Pelleted or granular herbicides are also available for individual plant treatment on rangeland, adds Welch. Ten percent picloram (Tordon 10K) will control many brush plants when applied around the base of plants. However, moisture is necessary to move the herbicide into the soil and the plant's root systems.

Nation's soil & water appraisal available



The most comprehensive appraisal ever conducted of the Nation's soil and water resources is now available for reference in the local USDA Soil Conservation Service offices and the Agricultural Stabilization and Conservation Service office (SCS and ASCS).

Jon J. La Baume, SCS district conservationist in Floyd County said that the appraisal—which was called for by the Soil and Water Resources Conservation Act of 1977 (RCA)—reveals that soil erosion is critical in many important farming areas of the United States. If continued, La Baume said, these high erosion rates will reduce the future ability of the country to produce food and fiber. He added that upstream flood damage and other resource losses also are likely to increase if current trends continue.


These documents replace earlier drafts of the RCA appraisal. Extensive

public comments on the drafts are reflected in the final appraisal. Limited numbers of copies will be available in each SCS state office for use by interested individuals and groups.


A recommended conservation program of the Secretary of Agriculture, which will be based on the appraisal and on public response to earlier RCA draft documents has been released for public comments. A RCA informational meeting will be held in the South Plains Association of Soil and Water Conservation District's area on Tuesday, December 8, at the South Plains Co-op Oil Mill, 2901 Ave. A, Lubbock. The meeting will begin at 10:00 a.m. and conclude at noon. Respond bulletins are now available at the local SCS, 208 South Wall in Floydada for comments by interested individuals and groups. Responses must be in to the state Soil Conservation Service office by January 15, 1982.








| |
|---|
| <p>ADAM'S WELL SERVICE</p>  <p>Floydada 983-5003</p> |
| <p>FEDERAL LAND BANK ASSOC. OF FLOYDADA</p>  <p>Floydada 983-2480</p> |
| <p>RUSSELL'S EQUIPMENT & SUPPLY</p>  <p>Floydada 983-3751</p> |
| <p>This space available call 983-3737</p> |
| <p>FLOYDADA COOPERATIVE GINS INC.</p>  <p>Floydada 983-2884</p> |
| <p>ANSLEY & SON</p>  <p>Lockney 652-3361</p> |
| <p>MARTIN & COMPANY</p> <p>Floydada 983-3713</p> |
| <p>SUN-VUE FERTILIZER</p>  <p>Lockney 652-3362</p> |

| |
|---|
| <p>RUCKER'S O.K. TIRE STORE</p>  <p>Floydada 983-3370</p> |
|---|

| |
|---|
| <p>FLOYD COUNTY IMPLEMENT</p>  <p>Floydada 983-3732</p> |
|---|

| |
|---|
| <p>CASE POWER & EQUIPMENT</p>  <p>Floydada 983-2836</p> |
|---|

| |
|--|
| <p>FIRST NATIONAL BANK OF FLOYDADA</p>  <p>Floydada 983-3717</p> |
|--|

| |
|---|
| <p>BROWN IMPLEMENT</p>  <p>Floydada</p> |
| <p>FLOYD COUNTY FARM BUREAU</p>  <p>Floydada</p> |
| <p>FLOYDADA IMPLEMENT</p>  <p>Floydada</p> |
| <p>CORNELIUS SERVICE STATION</p>  <p>Floydada</p> |
| <p>THE TYE COMPANY</p>  <p>Lockney</p> |
| <p>MUNICIPAL ELEVATOR</p>  <p>Lockney</p> |
| <p>CONSUMERS ASSOC.</p>  <p>Lockney</p> |
| <p>PRODUCERS CREDIT ASSOC.</p>  <p>Floydada</p> |

Grate:
1 pound cheddar cheese
2 ounces pimientos
Add:
2 ounces green chilies
1/2 cup mayonnaise
1/2 cup soft butter
Blend in separate bowl;
1 tablespoon water

1 large can peaches
1 large can mixed fruit
1 large can chunked pineapple
1 can maraschino cherries
1 small bowl cool whip
1 cup coconut pecans
3 or 4 sliced bananas