

# Retirement plan holds open house

The grand opening of the new residence of the South Plains Plaza, a condominium independent retirement plan, will be from noon to 6 p.m. on Sunday in Lubbock. After the model will be open from 10 a.m. to 6 p.m. Monday through Saturday, noon to 6 p.m. on days in Lubbock at west 289 between 56th and 57th streets.

Approximately 160 units are available with one or two bedrooms, with bath, or a one-and-a-half, full kitchen, living room, walk in closets, a balcony-solarium off bedroom. Each unit will have individual temperature controls and individual utility meters.

These units will be on second through the eleventh floors. The first and second floors will have common areas such as a club, dining facilities and laundry rooms.

# Local students on honor roll at Tech

More than 5,100 students at Texas Tech University were named for the deans' honor rolls in the six colleges during the 1980 fall semester.

Among them were Monte Pratt, Kerry Pratt, Lana Reed, Thompson, Carmen and Karen Turner, Floydada.

To qualify for a deans' honor roll a student must have a grade point average of 3.0 or more on a 4.0 scale, must have taken at least 12 semester hours of college credit, and must have been a full-time student in six college courses. Business Administration, Education, Engineering and Home Economics.

# CRIME CALL

Shop Tools & Air Tools

- Air Impact Wrenches, 3/8, 1/2, 3/4, and 1 Inch.
- Impact Socket Sets, All Sizes.
- Body Shop Air Tools. ● Air Drills.
- Body Grinders. ● Floor Jacks.
- Air Compressors. ● Shop Vacuums.
- Hand Tools. ● Large Drill Presses.
- Truck Jacks. ● Punch & Chisel Sets.
- Power Hack Saws.
- Many Other Miscellaneous Items.

—One Lot—  
● Housewares.  
—One Lot—  
● Gift Items.  
All Merchandise Guaranteed

THIS IS A PARTIAL LIST OF ITEMS TO BE SOLD. ALL SUBJECT TO PRIOR SALE.

Check  
Tools and Merchandise Purchased by G. Woodring Auction Co. Not Responsible For Accidents

# 7:00 P. M. Region Texas

an auction, a large selection of tools. There will be many buyers and salvage buyers be interested at our warehouse, these are the following:

able system growing; turn-on date is nearing

Lockney Cable Television system is taking large steps towards completion. Chances of a complete turn-on by the end of May looking more likely each day.

In the last two weeks, system operator Jerry Ford has completed construction of his central building.

He set up his microwave dish from Texas and installed it.

Two miles of support cable are being strung along the main cable.

Check  
Tools and Merchandise Purchased by G. Woodring Auction Co. Not Responsible For Accidents

Demo Bookbinding  
P.O. Box 2550  
Amarillo, Tex. 79105

# The Lockney Beacon

Number 10 Lockney, Floyd County, Texas, 79241 Thursday March 5, 1981 28 Pages in Three Sections 25¢

## It's Not Easy

BY CAROL LEA CLARK

The flu was invented by the medical profession to keep people busy, during the winter. I am sure two construction workers who have been hammering have begun major work behind my eyes.

I feel the sharp jabbing pain that comes except when the two guys take a coffee break or lunch break. Then the pain ceases for a few minutes, but the pain is worse when they start up again.

I must be working three shifts around the clock, because about every hour the pain will slow down for a few minutes. They get tired, and then renew their vigor. I wish I could take out their tools.

The pain might not be so bad if I could crawl in a hole by myself until I was recovered or died. I can't do that because I have a husband and a 12 semester hour child.

Normally, we have an iron clad rule that only one of us can be sick at a time, and neither can be sick if the baby is sick. We wait in line for a doctor's appointment. There is some indication that one of us is longer on his or her deathbed than the other is allowed to be sick.

How this time we goofed. My husband climbed out of bed for the first time in a week and my doctor crew must have taken it as a sign that he could now begin his job on the back of my head.

A groundhog who sees his shadow retreats, my husband took a deep breath of fresh air and went into the depths of the bed until he could see were the tops of his feet sticking up from under the blanket. I was really in trouble and a little negotiation with my doctor crew. "Just a few days," I said. "I'll be as sick as you."

I think that they could hear at the noise of the jackhammers. A final blow came when my toddler said, "It wasn't just a little runny nose. No, her eyes became swollen shut, and she kept pointing at me and moaning.

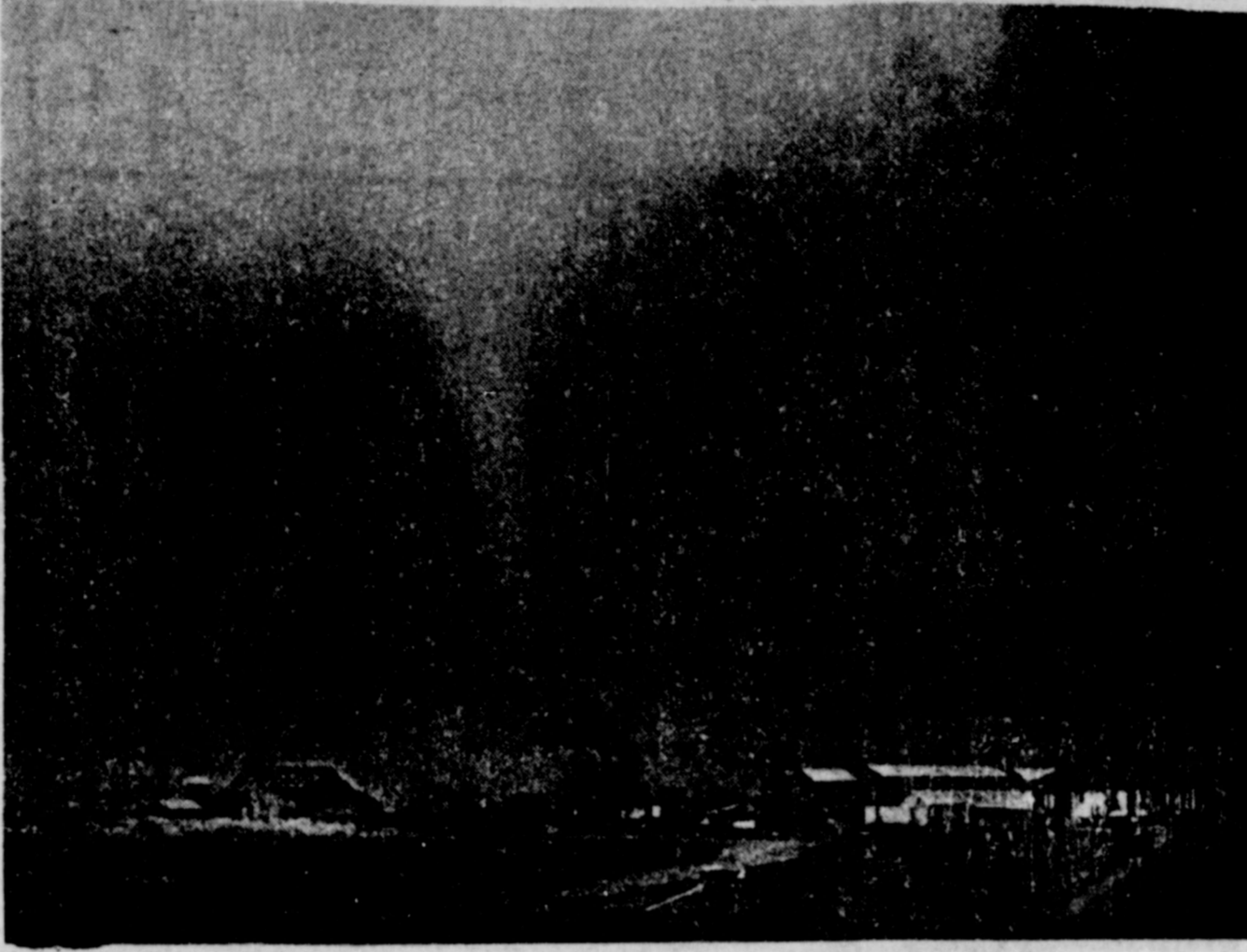
A couple of hours her eyes and nose were dripping shades of purple and red. She looked like a battered child.

My only solution was to pack all three of us in the car, with the least ill in the back seat and the doctor's office was sick call.

The doctor took one look at us and said, "What a mess."

My only hope when you feel the worst is that you can't feel any more. You just hope that you won't feel any more for too long.

My family that is sick together through the ordeal closer together. At least the family that gets sick together usually gets well together.



## Tornado!

A FUNNEL CLOUD formed from low hanging clouds near Lockney during Tuesday's thunderstorm activity. A tornado reportedly touched down outside of Lockney churning up dirt and weeds but doing no damage. Winds from the storm were clocked at between 60 to 70 miles per hour in the Lockney area. [Photo compliments of the Lubbock Avalanche-Journal by staff photographer Paul Moseley.]

## Missionary conference in Lockney

The eighth annual missionary conference at First United Methodist Church will be held tomorrow through Sunday in Lockney.

Out-of-town missionaries who will be speaking during the conference are Terry and Betty Schaberg of Indiana and David Riley of Kansas.

The public is invited to attend any or all of the conference, according to church pastor Rev. Michael O'Connor.

A covered-dish meal at 6:30 Friday night will open the meeting, followed by a missionary speaker at 7:30.

Saturday's schedule begins with a 7 a.m. breakfast for men. The ladies and elementary-aged children will meet at noon for a salad luncheon and to hear the missionaries.

The meal Saturday night will be sandwiches with each family to bring one-half dozen. Drink and dessert will be furnished at the 6:30 meal. The speakers will begin at 7:30.

Sunday morning, all adult classes will meet in the sanctuary at 9:45 to hear a speaker, with the children meeting in the educational unit, and the junior and senior high youths meeting in the fellowship hall.

Morning worship services, with missionaries as speakers, will begin at 10:55. A covered-dish luncheon will conclude the conference.

David Riley and his family are now living in Kansas but will soon be going to Haiti to serve in the area of radio communications with World Gospel Mission. The family has served in Africa in Burundi.

David was born in Kentucky but went with his parents as a child to South Africa where his parents were missionaries. After completing high school in Africa, he came to the states to attend Greenville College where he met his wife Annie.

World Gospel Mission is an inter-denominational missionary organization with 335 missionaries and homeland personnel serving in 15 countries.

Terry and Betty Schaberg represent OMS International, formerly the Oriental Missionary Society which is an undenominational faith mission with work encircling the globe. OMS International specializes in evangelism, training nationals and planting churches.

The Schabergs formerly lived in Lubbock where he was graduated in 1976 from the Texas Tech University School of Law. He is a former teacher who holds both baccalaureate and masters degrees in English from Colorado State University. He has also attended Asbury Theological Seminary in Wilmore, Kentucky.

Expecting to draw on his teaching background when applying for a missionary assignment, he was surprised to find OMS was in need of his legal training. Much like an attorney for a bank's trust department, Terry keeps abreast of various state and federal laws on wills, trusts and probate which affect estate planning and charitable giving. He also serves as assistant corporate secretary of OMS, aiding when needed in the administration of the mission.

Mrs. Betty Schaberg holds a degree in home economics education from Colorado State University. She taught on the secondary level for several years in Colorado and Texas. Serving with her husband in the OMS department of development, she is also active in her church and community in Indiana. The couple has two school-age children, Lisa and Eric.

## Copeland, Ansley file for Lockney Mayor

Long-time Lockney City Councilman J.D. Copeland and assistant fire chief Clarence Ansley have filed for election as mayor in the April 4 municipal election.

Incumbent Mayor Claude Brown, who has been Lockney's chief executive officer longer than any other man in the city's history decided not to seek a ninth consecutive term.

Brown, 59, has been mayor since 1965. He was also a councilman from 1957 to 1963.

Copeland, with the exception of six years during the 1950s, has been a Lockney councilman since 1941. He is mayor pro tem and acts as the city's chief executive in the absence of the mayor. Copeland is an insurance broker and income tax consultant.



Clarence Ansley

Ansley had earlier filed for city council but withdrew from the council race yesterday when he filed for mayor.

In addition, long-time city councilman Thurman Davis did not file for re-election. Davis has been a councilman since 1965.

The other councilman whose term expires next month, Bobby McCormick, also did not file for re-election.

Those filing for election to the city council include:

- Lawson Rowell, owner of Rowell's This R That variety store.
- Gail Kring, manager of the Lockney Co-op.
- Roger Stapp, owner of Stapp's Auto Body.
- Kenneth Wofford, a farmer.

A drawing was scheduled for late yesterday to determine ballot positions.



Claude Brown

## Five seek election to Lockney school Board

Kelton Shaw has filed for a second three year term on the Lockney Board of Education.

Shaw was one of several people who filed for election to the school board in the April 4 election prior to the deadline yesterday.

Kenneth Brosech, a member of the school board for the past nine years, did not file for re-election.

Shaw operates the Patterson Grain Elevator Company Inc., in Lockney and he has farming interest in the community.

Others filing for election to the school board include Amelia Rodriguez. Mrs. Rodriguez, a housewife, is a member of the Parents Advisory Committee which works with school officials on various federal programs.

There has never been a woman on the Lockney school board.

Others filing for election to the board were Buster Terrell, D.K. Jackson and Bill Bigham. All three men are farmers.

## Floyd farm values increase by one-third

The market value of agricultural products sold by the 691 farms in Floyd County amounted to \$96.6 million for 1978 or an average of \$139,867 each, up from \$60.1 million in 1974 with an accompanying increase in production costs, according to a preliminary report of the 1978 Census of Agriculture released today by the Bureau of the Census, U.S. Department of Commerce.

A breakdown of the county's total agricultural sales for 1978 followed by that for 1974, is as follows: Crops, \$57 million compared with \$44.3 million; livestock and livestock products, \$39.7 million and \$15.8 million; poultry and poultry products, \$1,000 and \$6,000.

While the value of gross sales rose, the farmers' costs also climbed since 1974. For example, expenditures for feed for livestock and poultry for 1978 were \$10 million compared to \$6.3 million; costs of gasoline, diesel and other petroleum products were \$8.7 million compared to \$3.8 million. Farm energy costs of all types totaled \$11 million for 1978. The estimated market value of machinery and equipment per farm increased from \$48,030 to \$85,331.

Of the total farms in the county, 200 had gross sales of \$100,000 or more and 122 had sales of under \$10,000. Farms operated by individuals or families represented 86 percent of the total; farms operated by corporations accounted for 3 percent. Some 69 percent of the operators owned all or part of the land they operated.

In 1978 the average age of farm operator was 49.3 years. Since 1974 the proportion of operators listing farming as their principal occupation changed from 90 percent to 86 percent.

Data in the reports for acreage and inventories for 1978 and 1974 are generally comparable; however, improved coverage in 1978, especially of smaller farms, should be taken into consideration in making direct comparisons of farm counts. Dollar values have not been adjusted for changes in price levels.

Other results of the census show the 691 farms counted in 1978 had an average size of 1,005 acres. For 1974, 729 farms were counted with an average

Continued On Page 3

## Lockney council holds budget hearing today

The Lockney City Council holds a public hearing at nine o'clock this morning on the proposed city budget for fiscal 1981-82.

The proposed budget totals \$326,562, an increase of about ten percent over the current budget. The new fiscal year begins April 1.

The council will hold its regular monthly meeting immediately after the public hearing.

The hearing will take place in the council chambers at city hall.



THE TOWER, left, and microwave dish, right, for the new Lockney Cable Television System have been installed. The electronic equipment for the system will be installed soon in the building at the center of the photo. System operator Jerry Ford says he hopes to have the cable working in most of the city by the end of May.

"It's going pretty good," Ford said.

"If we don't have a typhoon or rainy season the next two weeks we ought to have it on by mid-May almost everywhere."

Ford said it is still possible he may begin turning the system on in the area around Main and Locust Streets in Lockney, the area closest to his equipment, around the middle of April.

Ford said he hopes to begin pre-wiring homes in Lockney for the cable service next week.

Those interested in subscribing to the cable service may sign up for pre-wiring at 108 North Main St.

There will be a \$10 charge to pre-wire a house for one cable outlet, a \$12.50 charge for a second outlet and a \$5 for a third outlet. There is also a one-time charge of \$7.50 for wiring for the pay movie channel. All charges are payable at the time the wiring is done.

CRIME CALL  
983-5200



## Els-Tracy to wed in Kansas June 2

Reverend and Mrs. Her...  
Els of San Angelo, Texas announce the engagement of their daughter, Pamela Kay, to Mr. Walter Frank Tracy, son of Dr. and Mrs. Joseph Tracy of Nampa, Idaho.  
The future bride, formerly Floydada, received a Bachelor of Arts degree in English with concentration in Creative Writing and Journalism from Bethany Nazarene College. She presently serves as Editorial Assistant for

## Curry-F Feuerbacher to pledge vows

Mr. and Mrs. Ray Curry of Abilene, Texas announce the engagement of their daughter, Debra Laine, to Jeffrey Feuerbacher. Feuerbacher is the son of Mr. and Mrs. Bill Feuerbacher of Floydada.  
The couple will be married at the First United Methodist Church of Abilene on May 9.

We have bridal selections for Mrs. Bruce Currie Missy Wallingham  
New gift items are arriving daily.  
Come in and select a gift for that special person.

**Solomon Jewelry**  
102 South Main Street  
Floydada 983-2344

## PARADISE IN MAGIC STRETCH FABRICS



in the most amazing tropical fabric ever created: Hagggar Magic Stretch woven fabric of Dacron® as gentle as an island maiden's caress and as durable as the coat and slacks can be.  
MAGIC STRETCH LITE by HAGGAR  
Crown's DEPARTMENT STORE  
Lockney, Texas

## Women's Auxiliary discusses machine

Women's Caprock Auxiliary met in the room at Caprock Hospital Monday at 2:30 p.m. for a meeting. The group discussed the new functional machine and it will be purchased in the future for the hospital respiratory needs.  
March 25 is the date set for a blood drive at Caprock Hospital from 2 to 6 p.m. Everyone is encouraged to come and donate blood. This is from the South Plains Blood Service in Lubbock.  
More information will be given at a later date.

## Alpha Mu Delta crowns sweetheart in Plainview

Alpha Mu Delta Chapter Beta Sigma Phi held its annual Sweetheart Party, February 13, at the East Restaurant in Plainview.  
The new Sweetheart, selected by secret ballot, was the Chapter Triara of the year's Sweetheart, E. Hinkle.  
The Valentine social was held by chapter members and their husbands, and enjoyed by everyone.  
The regular business meeting was held February 17 in the home of Sharron Fulton.  
The next meeting will be held March 3 in the home of Sherry Smith.

## Generic Foods & Drugs picnic at club meeting

All approved drugs must meet the same FDA standards of quality and are subject to inspection, they are just as good as brand names when they have been approved by the Food and Drug Administration for safety and effectiveness and can be expected to act in the same way, said Mrs. Widener.  
Lila Mae Burns had charge of recreation, bingo was played by the group.  
Lovely refreshments were served to three guests, Mrs. Bess Carr, Pauline Faulkenberry and Eula Johnson. Members present were Frances McClure, Barbara Willis, Wilma Colston, Inez Walker, Mattie Norrell, Lila Mae Burns, Blanche Williams, Gladys Widener, Eunice Hong and Esther and Lillian Smith.  
Meeting adjourned to meet March 10 with Mattie Norrell.

## Mr. Mangold presents first aid

Members of Il Penseroso Study Club of Lockney met on February 16 in the home of Mrs. Lillian Hickerson. Guest speaker for the evening was Mr. Mangold. Dr. Mangold pointed out many first aid tips on what to do in case of burns, cuts and other injuries.  
Members voted on to volunteer time at the nursing home in the near future. Resolutions were made for our choice for Man and Woman of the year.  
Hostess for the evening were Lesca Durham, Cindy Means and Julie Hickerson.  
Other members present were Kathy Kellison, Linda Marr, Lynda Gant, Judy Jackson, Kay Martin, Jessie Johnson, Janette Workman, Robin Stoerner, Cynthia Bybee, Ginger Mathis, Kelly Fortenberry, Cathy Barnett, Sandy Adrian, Brenda Mangold, Anita Bigham and Gayle Jackson.

## Today's Lifestyles

By Marilyn Tate  
County Extension Agent

### FASHION IS REFRESHED FOR SPRING '81

The attitude for Spring is decidedly easygoing. Shapes are fuller, fabrics are lightweight, color is paler and details are fresh.  
The blouson is showing up in jackets and blouses. The sportiness of the shape is often softened with touches of floral embroidery and tucking.  
Fuller skirts are in with collotes being the newest trend, making skirts more wearable and casual. The tiered skirts will make a comeback with lots of lace and ruffles.  
Pants remain full, and the trend toward wide leg is catching on slowly. Most pants are 22 inches at the bottom.  
Lots of jacket news again with lots of variety — blousons, short and shaped styles that hug the waist, tunic-length jackets, unstructured classics.  
Beautiful blouses with fragile touches — lace insets, embroidery, tucks, ruffles, elegant cut-work. Sleeves will remain fuller and often puffed.  
Watch for dropped waist and shoulder lines, as well as shorter lengths in skirts, dresses and pants, as rumor has it the sixties are not dead and gone!  
Jumpsuits are remaining popular for comfortable one-step dressing.  
The natural fabrics will include cotton jersey, poplin, chenille, chino and oxfords. Also, strong are seersucker and plisse; sheers — solid or printed, many with jacquard designs; madras effects; georgettes; lacy openwork knits; animal skin prints. Prints are bolder and brighter with geometric motifs, inspired from primitive art or from the jungle. Shantung and linen surfaces everywhere to add texture.  
What was daringly bright the last few seasons has become quiet and soft. Pastels will be seen everywhere such as ice-blue, baby pink, soft citrus yellow, coral and pistachio. Exotic earth tones will surface in copper, dark brown, ruby oxblood, batik blue, and a blued forest green. Tropical colors like hot orange, yellow and bright green will be seen. The naturals will consist of bur-lap, almond, ivory, straw and oyster gray. Khaki is in, whether in British tan or American army green. The traditional navy and white will return.  
Shoes have lower heels and are definitely either active or dressy. Track and bowling shoe styles are front runners with tasseled loafers and folkloric sandals right in step. Metallic leathers and floral fabric pumps show up for day wear along with strappy, bare sandals on stacked heels.  
Educational programs conducted by the Texas Agricultural Extension Service serve people of all ages regardless of socioeconomic level, race, color, sex, religion or national origin.

## Floydada Nursing Home Happenings

We enjoyed visiting with Ester Gibson and Cordie Stephens as they served pink lemonade and cookies to the residents Monday afternoon. These ladies are members of the Sunshine Sunday School class of the First Baptist Church.  
Mr. Emmitt Lawrence received a letter from State Representative Foster Whaley congratulating him on his completion of one hundred owl wall hangings.  
We would like to welcome Lurlene and Clyde Bagwell and Una Clark to our home and hope they will enjoy their stay here.  
We would like to thank Mrs. Robert Smith for the beautiful mum plant in memory of Mr. Robert Smith.  
Many thanks to our visitors.  
We would like to thank Mrs. Charlie Hargis for sharing some of her beautiful flowers with us. We would also like to extend our sympathy to her in the loss of her husband.  
Our visitors this week included: Gladys Howards, Christine Robertson, Grady and Lorene Dunavant, Lois Guffee, Ina Hammonds, Mr. and Mrs. M.H. Hartness, Hazel Bradley and Kim, Vonceil Colston, Lois Jones, Maurice and Ella Goodwin, Sherry Colston, Ross and Zane, Marie Baxter, Tanya Covington and Brandon Clark Covington, Sallye Day, Worth Gwen Howard, Jana Finley, Diana Wilson, Kayla Emert, Linda and Candy Emert.  
Glenda Wilson, Christine Wilson, Juanita Hill, Mildred Thrasher, Sherry Colston, Hazel Bradley and Kim, Marion Bailey, Muri Mayfield, Anna Scovern, Evelyn and Jack Crull, Lucille Sisson, Beulah Denison, Elvis and Lovella Childs, Muri Mayfield, Charly L. Berry, Sr., Mr. and Mrs. P.L. Hart, Lindsey and Billie Lackey, Melissa Martin, Willey Rogers, and Harvey Tardy.

## Surprise party held for Barbara Gilliland

Floydada Rebekah Lodge met for a regular meeting on Tuesday night March 3.  
After a business session a surprise party was held for Barbara Gilliland, Noble Grand of the lodge.  
Eula Parrack, escorted the honoree to each station and each member read a tribute to her and presented her with a love gift.  
Amanda Hart played the music to "Mighty Like A Rose" and "Bless be the Tie That Binds" with all the members singing.  
Refreshments of a beautifully decorated cake made by Eula Parrack along with pie, cookies, candy, and snacks of cheese sticks, crackers, pickles and coffee and spiced tea was served to the group while they enjoyed an hour of fellowship.

## Friendship Social Club meets in Lockney

The Friendship Social Club met recently in the Rebekah Lodge Hall in Lockney, with Lockney members as hostesses.  
Sickness reported were Eula Parrack, W.B. Parrack, of Floydada and Gail Dean of Los Vegas, Nevada, granddaughter of Jewell Price. Also Weldon Graves of Lockney and Don Vernons father.  
Next meeting will be March 6 in I.O.O.F. Hall in Floydada at 7 p.m.

## Bible Baptist ladies hold monthly meeting

The ladies of the Bible Baptist Church of Floydada held their monthly meeting at the church on Tuesday, February 23 at 7:30 p.m.  
The meeting was opened with prayer voiced by Lela Mae Burns. Debra Jo Fawver then lead the group in a hymn. The ladies then listened to a tape by J.R. Church on prophesy about the second coming of the Lord. Following a discussion of the tape, Margie Sue closed in prayer.  
The ladies then enjoyed refreshments of cracker and cheese, chips, dip, and pie.  
Those attending the meeting were, Margie Sue, Nancy Welborn, Lila Taylor, Renie Chapman, Debra Jo Fawver, Jaynette Harrison, and Lela Mae Burns.  
The ladies next meeting will be on Tuesday, March 17, at the church.

## Floyd Data

Visitors at the Menard Field home last weekend were a grandson and wife, Gene and Jo Johnston, Dallas; a son and daughter-in-law, Gordon and Shirley Johnston, Fairbanks, Alaska; a daughter and husband, Doris and Joe McReynolds, Fort Smith, Arkansas; a granddaughter and husband, Diann and Jackie Anderson and little daughter, Amber-lee; a grandson, Danny McMillin, Amarillo; a daughter-in-law and husband, Evelyn and Byron Nickensons and grandchildren, Donny and Pamalie Johnston, Wolf-forth, Texas.  
LOCKNEY LOCAL  
Mr. and Mrs. Johns Cox and Mr. and Mrs. Mel Holcomb were in Hart Saturday to attend the funeral of their cousin, Ted Cox.

**Country & Western Lesson for teenagers and adults**  
Thursdays 8-9 p.m. for 6 weeks  
Pat Owen School of Dance  
call to enroll - 293-7422

## LEARN A SKILL IN YOUR SPARE TIME.



## MEET TODAY'S ARMY RESERVE.

We'll pay you to learn a skill in the Army Reserve. You earn over \$1,500 your first year for working just one weekend a month and two weeks a year, after some training. Choose from fields such as electronics, communications and construction. This training could prepare you for a full-time civilian career. There are other benefits, too. Call your Army Reserve representative, in the Yellow Pages under "Reserving".  
**All-Risk Federal Crop Insurance is now available from Linda Lemons**  
Before you spend a fortune planting your crops this year, think about protecting yourself with All-Risk Federal Crop Insurance. Just call Linda Lemons at 652-2334. Find out how the benefits of all-risk insurance can be tailored to your farming operation. All-Risk Federal Crop Insurance. In good years and bad, it pays off.  
**All-Risk Federal Crop Insurance**  
Linda Lemons  
652-2334  
108 N. Main Lockney

**We're Qualified!**  
Trust us to fill your prescriptions exactly as your doctor ordered... swiftly and professionally. And in and emergency... we'll deliver 'round the clock!

**COME OVER & SAVE**  
1 lb Nabisco Premium Crackers 59¢  
Buddy's Food  
GREEN STAMPS

**Wheels Skating Rink**  
To Open Soon!  
Come In & Visit Wheels Snack Bar & Rec-Room  
Open Now For Your Pleasure & Convenience!  
We Appreciate Your Help & Business  
T.L.Gomez

Allstate rates now 35%\* lower than Texas state rates for Homeowners insurance.  
Texas Homeowners: Allstate Homeowners Dwelling insurance helps you fight the cost of living — as we protect your home against loss from fire and many other hazards. Just call or drop in, and compare your present Homeowners policy.  
Cates & Dawson Ins. Agency  
231 W. Calif  
**Allstate**  
You're in good hands.



**Oxydol**

84 oz King Size **\$2<sup>69</sup>**      171 oz Family Size **\$5<sup>39</sup>**

S&H GREEN STAMPS

**STAMP PRICE SPECIAL**

5 lb Gladiola All Purpose

**Flour**

**39¢**

With One Filled S&H Special Saver Book **99¢** Without Book

**STAMP PRICE SPECIAL**

Sunny Fresh Farm Grade A Extra Large

**Eggs**

**19¢**

With One Filled S&H Special Saver Book **79¢** Without Book

**Alpo Beef Flavored Dog Food**

50 lb Bag **\$11<sup>99</sup>**      5 lb Bag **\$1<sup>69</sup>**

S&H GREEN STAMPS

**USDA Choice Beef**

1 lb Armour Star <b>Bacon</b> <b>\$1<sup>49</sup></b>	Armour Star Boneless <b>Ham</b> <b>\$2<sup>99</sup></b>
12 oz Kraft "Thin" American <b>Cheese</b> <b>\$1<sup>99</sup></b>	Armour Star Breaded <b>Patties</b> <b>\$1<sup>69</sup></b>
Family Pack <b>Pork Chops</b> <b>\$1<sup>39</sup></b> lb	From Our Deli Bean And Beef <b>Burritos</b> <b>3/\$1<sup>00</sup></b>
USDA Ranch <b>Steaks</b> <b>\$1<sup>79</sup></b> lb	From Our Deli Garnish <b>Corn Dogs</b> <b>3/\$1<sup>00</sup></b>
<b>Hot Links</b> <b>\$1<sup>39</sup></b> lb	Wilson Mexican <b>Hot Links</b> <b>\$1<sup>39</sup></b> lb
<b>Buttermilk</b> <b>99¢</b>	8 oz Morton <b>Pot Pies</b> <b>3</b>
12 oz Nabisco <b>Nilla Wafers</b> <b>89¢</b>	3 1/2 lb Purina Thrive <b>Cat Food</b> <b>\$</b>

6 1/2 Carnation Chunk Light

**Tuna** **93¢**

CARNATION LIGHT TUNA      CHUNK LIGHT TUNA      TUNA

S&H GREEN STAMPS

All Brands King Size Or 100's Carton

**Cigarettes**

With Coupon	<b>\$5<sup>69</sup></b>
Without Coupon	<b>\$5<sup>99</sup></b>

Good At Buddy's Expires 3-11-81

We Give

**S&H GREEN STAMPS**

We Take W.I.C. Cards

**Buddys SUPERMARKET**

**Save up to \$13 on our special CASH SAVER PROGRAM**

Each Featured Piece **\$1** only

**CAPRI BARS** — the ultimate

This pretty yours at fair

Here's how to save: you make, you'll receive. Just fill one CASH SAVER and you can trade in for covered casseroles, an au gratin or something more, every other purchased for only

6 oz Bag Cello **Radishes** **4/\$1<sup>00</sup>**

220  
9  
STO  
Mon. Thru Sat. 8  
Valu  
Effective  
M  
We Reserve The R





# TV LOG

**Rules**

...a community shelter, unit leader responsible for monitoring during threatening watch periods.

...go to an interior hallway.

...and gymnasiums or other free-span roofs.

...of reinforced construction nearby reinforced building open ditch and lie flat.

...the tornado's path at a right angle to escape, lie flat in depression, such as a ditch.

...television stations will broadcast advisory information.

...Service only to report a

...tornado watch means tornado to develop. Tornado warning has actually been

...ten agreement defines the parent may claim the child without custody of the child's support, that may generally claim the child.

...the parent having the part of the year is the dependency according to the

...the divorce or decree or other writ.

**SPS**

...Heat Pump

...you comfortable year round system. And, it's energy because even on cold days, the produces more heat than energy

...Up To 20% OFF

**On Furniture Orders**

108 S. Main 983-5131 Floydada

**THURSDAY MARCH 5, 1981**

**MORNING**

6:00 STATION FUN TIME

6:30 MORNING AMERICA

7:00 NEWS

7:30 NEWS

8:00 NEWS

8:30 NEWS

9:00 NEWS

9:30 NEWS

10:00 NEWS

10:30 NEWS

11:00 NEWS

11:30 NEWS

**EVENING**

6:00 COME TO THE WATER

6:30 ALL IN THE FAMILY

7:00 OVER EASY

7:30 THE TONIGHT SHOW

8:00 NEWS

8:30 NEWS

9:00 NEWS

9:30 NEWS

10:00 NEWS

10:30 NEWS

11:00 NEWS

11:30 NEWS

**FRIDAY MARCH 6, 1981**

**MORNING**

6:00 NEWS

6:30 NEWS

7:00 NEWS

7:30 NEWS

8:00 NEWS

8:30 NEWS

9:00 NEWS

9:30 NEWS

10:00 NEWS

10:30 NEWS

11:00 NEWS

11:30 NEWS

**EVENING**

6:00 COME TO THE WATER

6:30 ALL IN THE FAMILY

7:00 OVER EASY

7:30 THE TONIGHT SHOW

8:00 NEWS

8:30 NEWS

9:00 NEWS

9:30 NEWS

10:00 NEWS

10:30 NEWS

11:00 NEWS

11:30 NEWS

**RELIGIOUS PROGRAMMING**

**M.A.S.H.** 1972 William Marshall, Vonetta McGee, Miller

**WELCOME BACK KOTTER**

**TIC TAC DOUGH**

**NBC NEWS**

**CBS NEWS**

**HBO MOVIE (WED.)** Emil And The Detectives Pt. 1 (WED.)

**THURSDAY MARCH 5, 1981**

**EVENING**

6:00 COME TO THE WATER

6:30 ALL IN THE FAMILY

7:00 OVER EASY

7:30 THE TONIGHT SHOW

8:00 NEWS

8:30 NEWS

9:00 NEWS

9:30 NEWS

10:00 NEWS

10:30 NEWS

11:00 NEWS

11:30 NEWS

**FRIDAY MARCH 6, 1981**

**EVENING**

6:00 COME TO THE WATER

6:30 ALL IN THE FAMILY

7:00 OVER EASY

7:30 THE TONIGHT SHOW

8:00 NEWS

8:30 NEWS

9:00 NEWS

9:30 NEWS

10:00 NEWS

10:30 NEWS

11:00 NEWS

11:30 NEWS

**RELIGIOUS PROGRAMMING**

**M.A.S.H.** 1972 William Marshall, Vonetta McGee, Miller

**WELCOME BACK KOTTER**

**TIC TAC DOUGH**

**NBC NEWS**

**CBS NEWS**

**HBO MOVIE (WED.)** Emil And The Detectives Pt. 1 (WED.)

**THURSDAY MARCH 5, 1981**

**EVENING**

6:00 COME TO THE WATER

6:30 ALL IN THE FAMILY

7:00 OVER EASY

7:30 THE TONIGHT SHOW

8:00 NEWS

8:30 NEWS

9:00 NEWS

9:30 NEWS

10:00 NEWS

10:30 NEWS

11:00 NEWS

11:30 NEWS

**FRIDAY MARCH 6, 1981**

**EVENING**

6:00 COME TO THE WATER

6:30 ALL IN THE FAMILY

7:00 OVER EASY

7:30 THE TONIGHT SHOW

8:00 NEWS

8:30 NEWS

9:00 NEWS

9:30 NEWS

10:00 NEWS

10:30 NEWS

11:00 NEWS

11:30 NEWS

**RELIGIOUS PROGRAMMING**

**M.A.S.H.** 1972 William Marshall, Vonetta McGee, Miller

**WELCOME BACK KOTTER**

**TIC TAC DOUGH**

**NBC NEWS**

**CBS NEWS**

**HBO MOVIE (WED.)** Emil And The Detectives Pt. 1 (WED.)

**THURSDAY MARCH 5, 1981**

**EVENING**

6:00 COME TO THE WATER

6:30 ALL IN THE FAMILY

7:00 OVER EASY

7:30 THE TONIGHT SHOW

8:00 NEWS

8:30 NEWS

9:00 NEWS

9:30 NEWS

10:00 NEWS

10:30 NEWS

11:00 NEWS

11:30 NEWS

**FRIDAY MARCH 6, 1981**

**EVENING**

6:00 COME TO THE WATER

6:30 ALL IN THE FAMILY

7:00 OVER EASY

7:30 THE TONIGHT SHOW

8:00 NEWS

8:30 NEWS

9:00 NEWS

9:30 NEWS

10:00 NEWS

10:30 NEWS

11:00 NEWS

11:30 NEWS

**RELIGIOUS PROGRAMMING**

**M.A.S.H.** 1972 William Marshall, Vonetta McGee, Miller

**WELCOME BACK KOTTER**

**TIC TAC DOUGH**

**NBC NEWS**

**CBS NEWS**

**HBO MOVIE (WED.)** Emil And The Detectives Pt. 1 (WED.)

**THURSDAY MARCH 5, 1981**

**EVENING**

6:00 COME TO THE WATER

6:30 ALL IN THE FAMILY

7:00 OVER EASY

7:30 THE TONIGHT SHOW

8:00 NEWS

8:30 NEWS

9:00 NEWS

9:30 NEWS

10:00 NEWS

10:30 NEWS

11:00 NEWS

11:30 NEWS

**FRIDAY MARCH 6, 1981**

**EVENING**

6:00 COME TO THE WATER

6:30 ALL IN THE FAMILY

7:00 OVER EASY

7:30 THE TONIGHT SHOW

8:00 NEWS

8:30 NEWS

9:00 NEWS

9:30 NEWS

10:00 NEWS

10:30 NEWS

11:00 NEWS

11:30 NEWS

**KING'S CATERING SERVICE**

**BAR-B-QUE IS OUR SPECIALTY**

FOR RESERVATIONS CALL IRENE

BUS-983-3464 HOME-983-3040

**COMMERCIAL PRINTING**

*Script Printing & Office Supply*

**Up To 20% OFF**

**On Furniture Orders**

108 S. Main 983-5131 Floydada





# Center News

1981: Dry and cloudy. We had a few showers, but not much rain. Spring keeps drawing in.

Mr. and Mrs. Hal Thomas went to Lubbock Friday and spent the night with their children. Sue and Milton Mensch and son, David. They returned home Saturday.

Mr. and Mrs. Ruben Rutherford of Plainview visited Mr. and Mrs. Plumlee one day last week.

Bro. and Mrs. Payne had a whole pew of relatives in church Sunday including his parents, Good!

Mrs. Fred Battey had company Thursday. A Colorado Huckabee cousin, Mrs. Essie Jackson was visiting a sister in Amarillo. Earl Huckabee of Dumas heard of it, came by Amarillo (his wife had a cold and did not come) picked up the cousin and brought her to Floydada to see more cousins. They met with Mrs. Fred Battey. Among other cousins were Mrs. Ola Warren, Mr. and Mrs. Burl Huckabee and others. Among Miss Vera Meredith's company last

some time is reported much improved.

Mr. and Mrs. Hal Thomas went to Lubbock Friday and spent the night with their children. Sue and Milton Mensch and son, David. They returned home Saturday.

Mr. and Mrs. Ruben Rutherford of Plainview visited Mr. and Mrs. Plumlee one day last week.

Bro. and Mrs. Payne had a whole pew of relatives in church Sunday including his parents, Good!

Mrs. Fred Battey had company Thursday. A Colorado Huckabee cousin, Mrs. Essie Jackson was visiting a sister in Amarillo. Earl Huckabee of Dumas heard of it, came by Amarillo (his wife had a cold and did not come) picked up the cousin and brought her to Floydada to see more cousins. They met with Mrs. Fred Battey. Among other cousins were Mrs. Ola Warren, Mr. and Mrs. Burl Huckabee and others. Among Miss Vera Meredith's company last

slow drizzle of rain Saturday that didn't do much but in some spots received a half inch.

Mr. and Mrs. Vance Mitten to Crosbyton Monday they visited his while they were there.

Mr. and Mrs. W.M. Clark of Crosbyton visited Edna Gilly Monday.

Mr. and Mrs. John D. Vanlandingham Sunday evening, and Mrs. Vance Mitten and daughter, Ann of Stephentown Tuesday night in Crosbyton.

Mr. and Mrs. Jim Conner visited Mr. and Mrs. A.S. Mize Friday.

Visitors in the home of Mr. and Mrs. W.E. Lackey Monday were Wanda DuBois and her grandchildren, Cole and Christy DuBois. Greer Lackey of Burleson is still visiting in the home of her parents.

Robin Fortenberry is recuperating in his home after a recent stay in the hospital. Mary Ann Tucker is gaining

# South Plains Area News

South Plains Hobby Club will meet for the March meeting on March 11, at 2:00 p.m. in the home of Mrs. E.J. Kinslow, with a program: Demonstration How to Make A Cathedral Window Quilt, and yardstick holders. There will be a book report by Mrs. Ruth McIntosh, and roll call will be: A Book I Have Read Recently.

Cloudy skies and cold temperatures over the past week end sound as if we would have had rain, but only light showers fell around the neighborhood. We heard of good rains elsewhere, as the 1 inch at Sweetwater, and over 3 inches down around Truscott and Vera.

Services for Oree (Ted) Cox, 69, of Hart were held last Saturday in Hart, and burial was in the Hart Cemetery. Mrs. Cox died Thursday morning in the Central Plains Hospital in Plainview after a brief illness. Mrs. Cox was a cousin of Mrs. Alvin Nichols of South Plains, and we offer our sympathy to her and her family.

Mr. and Mrs. Sylvan Kinnibrugh, and their granddaughter, Melissa Horne, went to Vera on Friday to spend the week-end, and to be with Sylvan's parents, Mr. and Mrs. J.A. Kinnibrugh. Mrs. Kinnibrugh is in the hospital at Seymour, having been taken there last Monday. Mrs. Beth Dickens accompanied her parents and Melissa to Truscott and Vera for the week-end stay.

Mr. and Mrs. J.P. Taylor and Mrs. Ruby Higginbotham went to

South Plains Hobby Club will meet for the March meeting on March 11, at 2:00 p.m. in the home of Mrs. E.J. Kinslow, with a program: Demonstration How to Make A Cathedral Window Quilt, and yardstick holders. There will be a book report by Mrs. Ruth McIntosh, and roll call will be: A Book I Have Read Recently.

Cloudy skies and cold temperatures over the past week end sound as if we would have had rain, but only light showers fell around the neighborhood. We heard of good rains elsewhere, as the 1 inch at Sweetwater, and over 3 inches down around Truscott and Vera.

Services for Oree (Ted) Cox, 69, of Hart were held last Saturday in Hart, and burial was in the Hart Cemetery. Mrs. Cox died Thursday morning in the Central Plains Hospital in Plainview after a brief illness. Mrs. Cox was a cousin of Mrs. Alvin Nichols of South Plains, and we offer our sympathy to her and her family.

Mr. and Mrs. Sylvan Kinnibrugh, and their granddaughter, Melissa Horne, went to Vera on Friday to spend the week-end, and to be with Sylvan's parents, Mr. and Mrs. J.A. Kinnibrugh. Mrs. Kinnibrugh is in the hospital at Seymour, having been taken there last Monday. Mrs. Beth Dickens accompanied her parents and Melissa to Truscott and Vera for the week-end stay.

Mr. and Mrs. J.P. Taylor and Mrs. Ruby Higginbotham went to

some strength after being in the hospital recently.

Todd Harris of Floydada spent the weekend with his grandparents, Mr. and Mrs. Cephus Fortenberry, Saturday they went to Plainview and ate out.

Supper guests in the home of Mr. and Mrs. Carl F. Lemons Sunday evening were Linda Lemons, David, Jessica, Cory and Kim Carthel of Lockney and Linda Lemons, Twyla and Traca Lemons and Mrs. Belle Lemons.

Effort comes before achievement, service comes before recognition, work comes before success.

Mr. and Mrs. Ira Henderson and Mandy; Tim Julian, and his parents and sister, Mr. and Mrs. Kendis Julian and Miti; Cory Mulder, and his parents and family, Mr. and Mrs. Nathan Mulder, Cindy, Penny, and Brian Teeple and his parents, Mr. and Mrs. Dwight Teeple and Keith.

Mr. and Mrs. Raymond Upton went to Floydada Sunday at noon to have dinner with Mr. and Mrs. Johnny Wilson, who formerly lived at South Plains, but are now living in Floydada.

- TOMORROW
- 12:00 HUMBARD BOAT-POLICE STORY
  - 12:30 ROEZE BROTHERS CROSSROADS
  - 12:45 MOVIE-(DRAMA) \*\* 1/2 "They Run" 1954 Dirk Bogarde, Akim Kosterlitz
  - 1:00 ALL NIGHT PROGRAM
  - 2:00 NEWS
  - 2:30 CELEBRATION
  - 3:00 THIS IS THE LIFE
  - 3:30 DANIEL BOONE
  - 4:00 WORLD AT LARGE
  - 4:30 SOMETHING SPECIAL
  - 4:55 HOLLYWOOD REPORT
  - 5:30 JIM BAKKER
  - 6:00 NEWS
  - 6:30 TOP O' THE MORNING

## Highlights

January. Mary Tyler Moore narrates this 90 minute special with M\*A\*S\*H. Expect the unexpected as showing us how the popular t.v. series comes to be put together.

Saturday afternoon Charlie Chaplin Theatre will present "Night at the Show" begins at 3:40 p.m.

And one we will look forward to beginning at 6:00 p.m. and may night is Live From the Ole Opry. Two country western stars will be Saturday the 14th. This always been a favorite Channel 5's viewing and we hope you it again this year.

Join Bob Nash, Smith, and myself with Channel 5 staff host of volunteers for val Nights—March 7. Expect the unexpected when it ran in late

## LOCKNEY!

334

der now.

Lockney Cable T.V.

em Is Turned On.

annel

, Georgia (24 hours)

ubbock

ubbock

Beach, Virginia (24 hours)

, Illinois (24 hours)

ainment & Sports

g Network (24 hours)

ubbock

ubbock

\$10.00

same time)

.50

turnable

your house is wired

.00

each per month

\$10.00 per month

Month in Advance

le T.V. 108 N. Main

## Cedar Hill News

BY GRACE LEMONS

J.A. Welch, Wednesday they had a birthday dinner for Mrs. Peat Kelley celebrating her 77th birthday.

Clara Mize went to Littlefield Tuesday and visited Mrs. Charlie Jarmin.

Mr. and Mrs. Jim Conner visited Mr. and Mrs. A.S. Mize Friday.

Visitors in the home of Mr. and Mrs. W.E. Lackey Monday were Wanda DuBois and her grandchildren, Cole and Christy DuBois. Greer Lackey of Burleson is still visiting in the home of her parents.

Robin Fortenberry is recuperating in his home after a recent stay in the hospital. Mary Ann Tucker is gain-

## Fifth summer season for Raisin' A Ruckus"

Plains College plunges into its fifth summer with a brand new music road show, "A Ruckus."

"Raisin' a Ruckus" is the fifth in a series of summer road shows put on by South Plains College. "Texas Cradle of Giants" toured throughout the South Plains and New Mexico in 1977-78; and "The Golden Years of Country Music" performed the summers of 1979-80.

Show newcomers are Mike Kerr, 1979 graduate of Hereford High and son of Mr. and Mrs. Jay Kerr; Kay Stephens, 1980 graduate of Plains High School and daughter of Mr. and Mrs. Donald B. Stephens of Plains; Beth Satterwhite, 1979 graduate of Ropes High and daughter of Mr. and Mrs. Fred Satterwhite of Ropes;

MR BLOCK TAX TEST

Question No. 1

It is too late to claim a deduction or credit overlooked on a 1977 tax return.

True  False

Know about amending a tax return? You probably know the answer. If you don't, maybe you should. Because the IRS knows tax laws that you don't know. You can get a refund for overlooked deductions and credits up to 3 years after the filing date. So the answer to this question is FALSE.

MAKE THE TAX LAWS WORK FOR YOU

MR BLOCK

INCOME TAX PEOPLE

106 W. Missouri

983-5233

Days 9-6, Saturday 9-5

## FLOYDADA SCHOOL LUNCH MENU

- Monday:
- Breakfast—Juice, dried cereal, milk.
  - Lunch—Bar-b-que on bun, tossed salad, pickle spears, fruit cocktail cake, milk.
- Tuesday:
- Breakfast—Juice, toast, eggs, jelly, milk.
  - Lunch—Macaroni & cheese, carrots & raisin salad, green beans, fruit cup, hot rolls, milk.
- Wednesday:
- Breakfast—Juice, cinnamon toast, oatmeal, milk.
  - Lunch—Frito pie, Mex-a-beans, tossed salad, chocolate cake, slice bread, milk.
- Thursday:
- Breakfast—Juice, long John, milk.
  - Lunch—Taco with cheese, pinto beans, dill pickle spears, mix fruit, cornbread.
- Friday:
- Breakfast—Juice or fruit, cowboy bread, butter, milk.
  - Lunch—Char-burgers on buns, lettuce, tomato, pickle, French fries, apple crisp, milk.

**PROVIDENCE GIN Customer Appreciation Dinner**

Friday, March 13

**COME OVER & SAVE**

6-32 oz

**Coke, Tab And 7-Up**

**\$1.49**

Plus Deposit

**Buddy's Food**

GREEN STAMPS

**LEASE**

**John Deere Tractors**

at

**Perry Farm Machinery**

**in Petersburg.**

Sales and Service on

farm machinery

and tractors

**Perry Farm Machinery**

(806) 667-3505 Box 680, Petersburg

John Deere Dealership



Jerry Perry

**Crystalballing agriculture five years down the road is risky, but agri-economist John Marten has done just that, and predicts some interesting developments.** Export is the key word for 1985, given a hefty boost by a 250 percent overall increase during the last decade. Marten looks for total grain tonnage of at least 150 million metric tons at a total dollar volume of \$75 billion - at least. That may sound high, but the world is hungry, inflation will stay with us and the U. S. farmer has the ability to produce the crops. Marten predicts an eight to nine billion bushel corn yield in 1985, meaning average U. S. yields of 110 + per acre and, despite higher input costs, prices will remain strong enough to encourage production. Russia, Japan, China and Europe will continue to be major U. S. grain markets. Feed grain yields will increase by 2 percent per year, soybean acreage may increase only slightly and wheat acreage will continue to depend on price and set-aside decisions.



**President Reagan Deregulates Oil Industry... Strike It Rich**

**Your Chances Are Better Than Ever.**

A little known Federal law (the 1920 Mineral Leasing Act) makes it possible for you to compete equally with Exxon, Gulf, Texaco and other giants of the oil industry, because under the law a company or individual may submit only one application to lease per parcel.

More residents of Floyd County are filing in the Bureau of Land Management Oil and Gas Lease Drawing.

To Qualify for this drawing you need only be an adult and an American citizen.

The oil and gas regulations are complex and this letter offers only a thumb-nail sketch of the various ways to obtain a federal lease. The complete regulations are contained in the Code of Federal Regulations, Title 43, Part 3100. This book may be found in most public libraries.

The simultaneous oil and gas leasing system is administered by the Department of the Interior's Bureau of Land Management. On the 1st business day of January, March, May, July, September and November the BLM posts a list of lands within its jurisdiction that are available for leasing. Applications are accepted until the close of business on the 15th working day after the list is posted. If more than one application is received for a given tract, a drawing is held to decide who will get the lease. Three Application cards are drawn for each parcel, and the other in which they are drawn fixes their order of priority.

**NOTE:** No assignment of a lease may be filed before the lease is issued by BLM. No agreement to assign a lease may be made before the lease is issued, or before 60 days after the drawing, whichever is sooner. Any assignment entered into as a result of an agreement which violates these restrictions will be disapproved by BLM. These restrictions are intended to allow all interested parties an equal opportunity to negotiate for the lease and to protect applicants from being unduly influenced to enter into agreements to make transfers not in their best interest.

If you are the successful applicant, you are given 30 days to pay the first year's rental after you receive official notice. Upon payment the BLM will issue the lease. Currently the rental rate is \$1.00 per acre per year.

**MOST IMPORTANT FACTS TO CONSIDER**

- We urge you to be cautious! You should consider the speculative nature of your investment in time, effort and money before filing an application. Oil Service performs a number of services as your agent for a fee. Oil Service is not an authorized agent of the BLM or Government. It is not necessary to patronize our service to apply for an oil and gas lease.
- Most winners in the BLM drawings will tell you, "To win you need to be consistent in your filings..." While a few people have won a lease on their first time to file - most of us aren't that lucky. Decide the number of applications you want filed each period, then stay with it!! Your chances to win will be greatly improved.

Oil Service will select for you a parcel we believe to be the most desirable at \$20.00 per parcel (which includes the \$10.00 filing fee). The lease is 100% yours. Oil Service nor anyone associated with them does not have any interest of any kind in any lease you win as a result of our service. It is our continued desire that you consider using our service in the sale of your lease, and we will assist you in gaining financing of your lease payment, if required. After your application has been sent to BLM, we will send you a card telling you the State, Parcel Number, Description, Acres and estimated value of your filing.

**March 10 Is The Last Day Oil Service Will Accept Applications For The Month Filing Period-Applications Received After This Date Will Be Filed In The May Filing Period.**

Please enter my name in the earliest possible BLM drawing for parcels. I enclose payment of \$ ( \$20.00 per parcel).

Name \_\_\_\_\_ City \_\_\_\_\_  
Address \_\_\_\_\_ State \_\_\_\_\_  
Phone \_\_\_\_\_ Zip \_\_\_\_\_

Please furnish me more information.





## Exams scheduled for USPS clerk-carrier

Elmer J. Reed, Jr., Sectional Center Manager/Postmaster, Lubbock, has announced that the clerk-carrier examination and the sub rural carrier examination for the Crosbyton area will be open through March 9, in the following Post Offices: Crosbyton, Floydada, Idalou, Lockney, Lorenzo, Petersburg, Post, Ralls, Staton, Spur and Wilson.

## Area students honored at North Texas State

Some 846 students were awarded degrees at the end of the fall semester at North Texas State University.

Although no winter commencement is conducted at NTSU, all winter graduates will be invited to join the spring graduating class.

Among the NTSU graduates was Richard L. Duckworth, the son of Frank

Persons who are interested may fill out application blanks at any of the Post Offices listed in this announcement. Starting salary for clerk or carrier positions is \$9.05 per hour and the salary for the sub rural carrier positions range from \$62.15 to \$64.64 per day depending on the length and character of the route.

Duckworth of Lockney. He received the bachelor of business administration degree in marketing.

Among the NTSU graduates was Debby Louise Johnson of Floydada.

Miss Johnson, the daughter of Mr. and Mrs. Edward H. Wester of Floydada, received her bachelor of science degree in recreation.

## State gets money for weatherization

(DALLAS) — The State of Texas has been awarded a grant of more than \$2.3 million to continue implementation of the U.S. Department of Energy's (DOE) Weatherization Assistance Program for Low-Income Persons in Texas, it was announced by G. Dan Rambo, regional representative for DOE.

The grant will allow Texas to continue weatherizing homes of low-income residents under the FY 1981 plan developed by the Texas Department of Community Affairs.

This will be the fifth year that weatherization assistance has been provided to low-income Texans under the DOE Weatherization Program which has resulted in the weatherization of more

than 11,800 homes. The Texas program is part of a nationwide effort to reduce energy consumption and improve the dwelling unit environment of the low-income persons in the nation.



ELAINE HARDY'S MUSIC STUDENTS played in the Hymn Festival at the First Baptist Church in Floydada. They are: back row (l-r) Laron Cheek, Tana Perry, Cathy Langley, Andrea Bonner. Front row (l-r) Amy McCormick, Kim Perry, Amy Kring, Anita McCormick.

## World War II airmen sought

The 303rd Bomb Group (H) Association is looking for all WWII airman (aircrew and support) who served with the 303rd Bomb Group (H) in Moleworth, England 1942-1945.

The purpose of the Association is to assist in contacting former friends, receiving

news of the 303rd Reunions, and maintaining the active status of the 303rd. The Association feels that many of the former 303rders have not heard or are aware of the Reformation of the 303rd, and may be living in this area.

Former members of the 303rd are asked to contact Joseph V. Vira, 6400 Park

Street, Hollywood, FL 33024, for further information.

Other former 8th AF during WWII may write to 8th Air Force Clearing House, 3911 NW 173rd Terrace, Opa Locka, FL 33055.

## Girl Scouts mark anniversary

March 8-14 is Girl Scout Week, marking the founding of Girl Scouting on March 12, 1912.

"Each of the 341 Girl Scout Councils in the United States will observe the week in accordance with the national theme, Girl Scouting - 1980s Style," said Mrs. Nolen Swain, President of the Board of Directors, Caprock Girl Scout Council.

She further noted that Caprock Council would utilize the theme at the annual Reunion Luncheon, scheduled March 6 at the service center in Lubbock; the Girl Scout Fair to be held at Fair Park Coliseum on March 7; and in all troop activities the following week.

Mrs. Swain also announced, in connection with the birthday, the selection this past week of two Girl Scouts for national opportunities.

Mandy Stavlo, daughter of Mr. and Mrs. Danny Stavlo, and member of Senior Troop 132, was selected to attend "Upstate, Onstage," to be held in New York City. Valerie Seymour, daughter of Glenys Hailey, Cadette Troop 2 will attend "Ho West We Go," a wider opportunity sponsored by GSUSA and scheduled at the

National Center West, Ten Sleep, Wyoming. Archaeology, horseback riding, geology, and photography will be emphasized.

The Reunion Luncheon will feature a program on Girl Scouting presented by Mrs. Craig McDonald, Ralls; Mrs. Keith Strain, Mrs. John Mallory, and Mrs. James Burkeholder all of Lubbock. Mrs. W.C. Warren, also of Lubbock, will serve as

hostess for the luncheon. Reservations may be made through the service center, 74th Street.

Scheduled March 7, at the Coliseum in Fair Park, the Girl Scout "Fair" council together with songs, folk games and contemporary music for the public. Charge for admission will be Dullin.

## Silverton Young Farmers plan consignment sale

The annual Silverton Young Farmers consignment sale will be held on Saturday March 28, at the Wood Memorial Arena in Silverton. For consignments call Wayne Stephens 847-2616;

Alton Riddell, G.W. Chappell.

Any consignments the sale bill must be in by March 8. Auctioneers will be Dullin.

## Attention Floyd County Residents

On March 11, 1981, 10 A.M. American Legion Post, 111 S. Plainview, P.W.I.A. will seek to seed clouds west of Floyd Co.

Clouds modified up winds of definitely alter natures pattern rainfall for Floyd County. Request your opposition to this permit your presences at the hearing.

Floyd County Citizen  
For Naturel Weather  
W.K. Jackson (Sec.)



This Beautiful Companion Memorial

Only \$495<sup>00</sup>

CLINE MONUMENT CO.

400 Joliet Phone 296-2953 Plainview, Tx. 79072

Save Sales Agents Commission In Plainview

**INSUR-MATION**  
Floyd County  
Insurance Agency Jerry Cooper  
LOCKNEY

A friend was bragging about how well his new insurance plan for his employees works, without costing an arm and leg. He said it was a RLR which stood for Retired Lives Reserve. Please explain.

An RLR plan is really a combination term policy and savings plan with amounts confirming to a group plan. The term policy belongs to the employee and is paid for by the employer who deducts the premiums. The employee is not charged with any taxable income for the first \$50,000 of coverage. The savings plan belongs to the employer with funds used to operate the plan. Contributions are made and deducted by the employer and the employee has no taxable income from it. If the employee remains with the company until retirement, the savings plan pays the premiums for the term coverage... freeing both employer and employee from maintaining postretirement coverage.

# Super Savings Everyday

- Grade A FRYERS 59¢ lb
- Nice N Lean HAMBURGER MEAT \$1.19 lb
- Boneless CHUCK ROAST \$1.59 lb
- Choice Cut ARM ROAST \$1.89 lb
- Choice Cut CLUB STEAK \$1.89 lb
- Wrights Bulk Pak BACON \$1.19 lb
- BEEF TRIPE 39¢ lb
- HOG HEADS 39¢ lb



6-32 oz. Bottle Carton

PEPSI COLA

\$1.49 Plus Deposit



6 oz. can Minute Maid ORANGE JUICE



12 oz. can Hormel SPAM

## KEETERS GROCERY

652-2191 7:00 a.m. - 8:00 p.m.

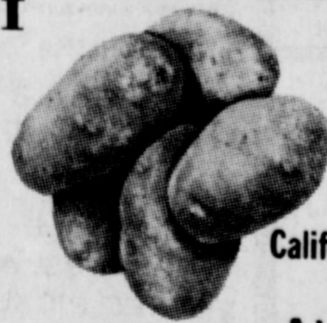
We Redeem Food Stamps & WIC Cards  
We Reserve The Right To Limit Quantities

## Choice Grain Fed Beef

Cut, Wrapped & Frozen

- Half Beef lb \$1.19
- Hind Quarters lb \$1.39
- Fore Quarters lb \$1.09

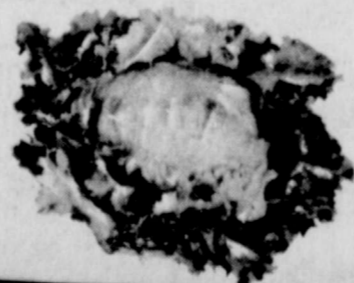
Fully Guarenteed



No 1 Grade 10 lb bag POTATOES \$1.98

California

AVOCADOES 5/\$1.00



Ice Berg LETTUCE 29¢



Gallon Jug Rich-N-Ready ORANGE JUICE

22 oz. Dish Detergent PALMOLIVE



6 oz. Jar Folgers INSTANT COFFEE

1 gallon Jug White Swan BLEACH

Flo



The Floy

# Souvenir Edition

## Floyd County Jr. Livestock Show



**Grand Champion Lamb**  
*Garland Easter*



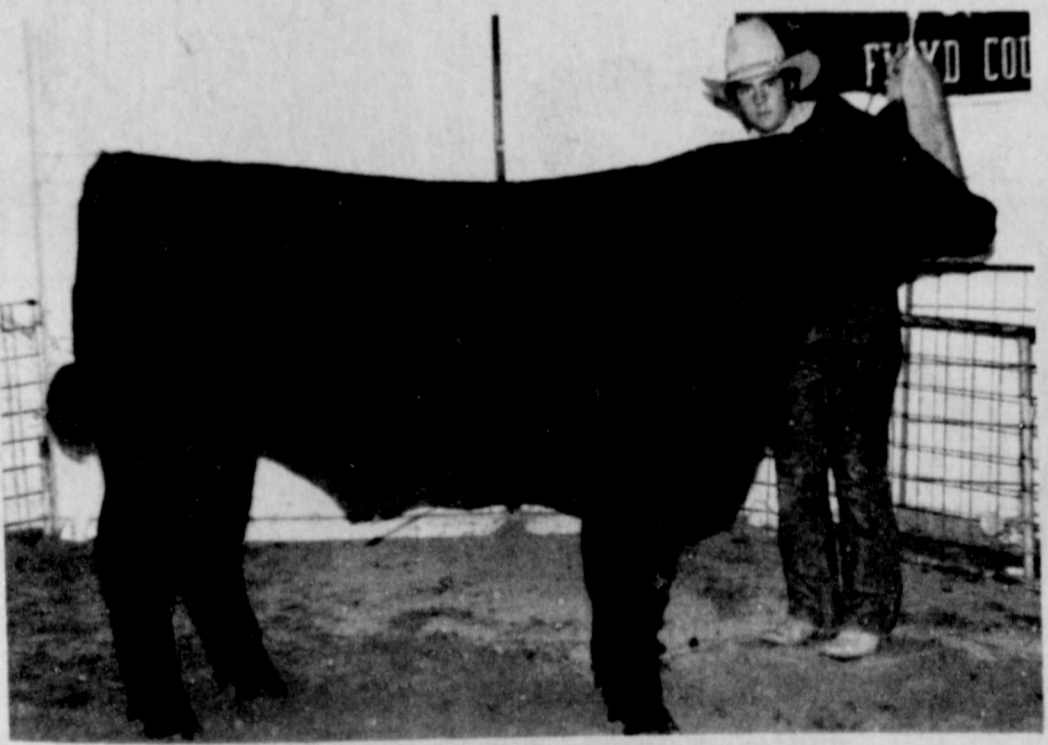
**Reserve Champion Lamb**  
*Marty Covington*



**Grand Champion Barrow**  
*Keith Hancock*



**Reserve Champion Barrow**  
*Brad McNeill*



**Grand Champion Steer**  
*Chris Fulton*



**Reserve Champion Steer**  
*Mark Nutt*

**The Floyd County Hesperian**

**The Lockney Beacon**

mark anniversary

ational Center West, Ten  
ep. Wyoming. Archae-  
y, horseback riding, geo-  
y, and photography will  
emphasized.  
The Reunion Luncheon  
feature a program on  
Scouting presented by  
Craig McDonald, Ralls;  
Mrs. Keith Strain, Mrs.  
Mallory, and Mrs. Ja-  
Burkeholder all of Lub-  
ck. Mrs. W.C. Warren,  
of Lubbock, will serve as

ilverton Young Farm  
an consignment sale

The annual Silverton  
Young Farmers consignment  
sale will be held on Saturday  
March 28, at the Wood  
Memorial Arena in Silverton.  
For consignments call  
Irene Stephens 847-2616;

Attention Floyd County Residents

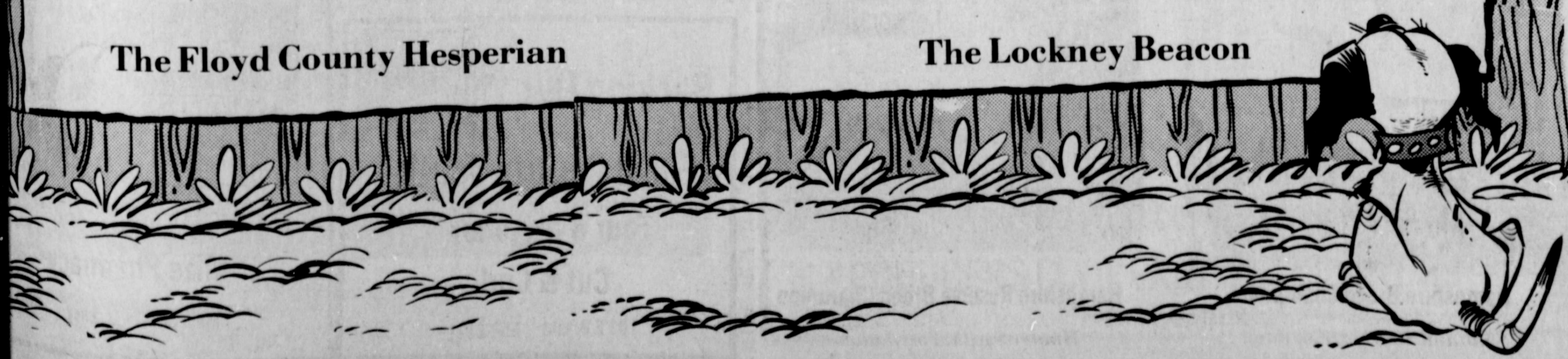
On March 11, 1981, 10 A. M. at  
American Legion Post, 111 S. Ash  
Plainview, P.W.I.A. will seek a per-  
mit to seed clouds west of Floyd County.

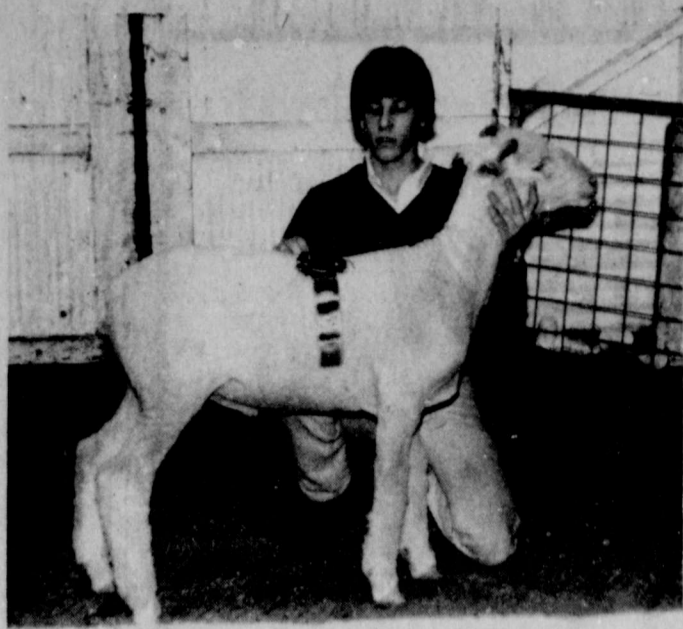
Clouds modified up winds of us  
definitely alter nature's pattern  
rainfall for Floyd County. Register  
your opposition to this permit with  
your presences at the hearing.

Floyd County Citizen  
For Naturel Weather  
W.K. Jackson (Sec.)

# Friday

Minute Maid  
ORANGE JUICE 49¢  
Hormel  
HAM \$1.99  
Crispy  
FRISBIES 69¢  
Whole each  
EGGS 39¢  
N-Ready  
ORANGE JUICE 99¢  
Detergent  
OLIVE 99¢  
White Swan  
COFFEE \$2.99  
H 69¢





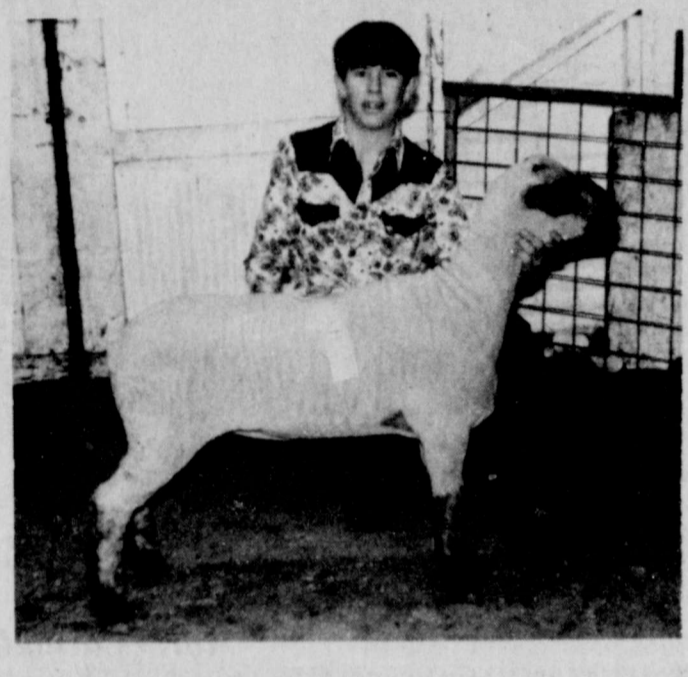
**Fine Wool Breed Champion**  
Bryant Higginbotham, Floydada



**Fine Wool Breed Reserve Champion**  
Daron Widener, Lockney



**Fine Wool Cross Breed Champion**  
Keith Hancock, Floydada



**Fine Wool Cross Reserve Breed Champion**  
Earl Broseh, Lockney



**Shropshire Champion Breed**  
Pamela Woody, Floydada



**Shropshire Reserve Breed Champion**  
Monty Teeter, Lockney



**Southdown Breed Champion**  
Gwen Lane, Lockney



**Southdown Breed Reserve Champion**  
Pamela Woody, Floydada



**Hampshire Breed Champion**  
Shannon Shurbet, Floydada



**Hampshire Reserve Breed Champion**  
Hunter Smith, Floydada

## Lamb entries up in County Show

The lamb showing of the Floyd County Jr. Livestock Show began Tuesday morning with 30 more entries than last year.

Judge was Calvin Helm of Winters. He is a former Ag teacher and has judged this show before.

Grand Champion lamb was a heavy weight Suffolk owned by Garland Easter. Floydada. It was an FFA project. The lamb brought \$5 a pound at auction and weighed 121 lbs.

Reserve Champion was also a Suffolk owned by Marty Covington, Floydada. The lamb was not sold at auction, he is going to continue exhibiting it.

### SOUTHDOWN

1st Gwen Lane, Lockney 4-H; 2nd Pamela Woody, Floydada 4-H; 3rd Marty Covington, Floydada 4-H; 4th Wesley Teeter, Lockney 4-H; 5th Rusty Teeter, Lockney 4-H; 6th Jill Whitfill, Lockney 4-H; 7th Sherre Kinard, Lockney 4-H; 8th Kevin Helms, Floydada FFA; 9th Jill Whitfill, Lockney 4-H; 10th Kathie Battey, Floydada 4-H; 11th David Brittain, Floydada FFA.

Southdown Breed Champion—Gwen Lane, Lockney.

Southdown Breed Reserve Champion—Pamela Woody, Floydada.

### FINE WOOL

Light Weight: Bryant Higginbotham, Floydada 4-H; 1st: Karyn Foster, Lockney 4-H; 2nd: Tony Saucedo, Lockney 4-H; 3rd: Joel Mitchell, Lockney 4-H; 4th: Karen Ford, Lockney 4-H; 5th: Karen Ford, Lockney 4-H; 6th: Hunter Smith, Floydada 4-H; 7th: Susan Hendrix, Floydada 4-H; 8th: Melanie Foster, Lockney 4-H; 9th.

Heavy Weight: Bryant Higginbotham, Floydada FFA; 1st: Daron Widener, Lockney FFA; 2nd: Amy Jones, Floydada 4-H; 3rd: Jodie Smith, Floydada 4-H; 4th: Matt Mitchell, Lockney 4-H; 5th: Tony Saucedo, Lockney 4-H; 6th: Choise Dean Smith, Floydada 4-H; 7th: Erik Anderson, Lockney FFA; 8th: Anna Cuauhtli, Lockney 4-H; 9th.

Fine Wool Breed Champion—Bryant Higginbotham, Floydada.

Fine Wool Breed Reserve Champion—Daron Widener, Lockney.

### FINE WOOL CROSS

Light Weight: Earl Broseh, Lockney FFA; 1st: Matt Mitchell, Lockney 4-H; 2nd: Joel Mitchell, Lockney 4-H; 3rd: Joel Mitchell, Lockney 4-H; 4th: Matt Mitchell, Lockney 4-H; 5th: Eddie Kinard, Lockney FFA; 6th: Jody Smith, Floydada 4-H; 7th: Glenn Sutterfield, Lockney FFA; 8th.

Heavy Weight: Keith Hancock, Floydada 4-H; 1st: Patricia Cuauhtli, Lockney 4-H; 2nd: Jeffrey Prisk, Lockney FFA; 3rd: Benton Easter, Floydada FFA; 4th: Matt Mitchell, Lockney 4-H; 5th: Teddy Salinas, Lockney FFA; 6th.

Fine Wool Cross Breed Champion—Keith Hancock, Floydada.

Fine Wool Cross Reserve Breed Champion—Earl Broseh, Lockney.

### SHROPSHIRE

1st Pamela Woody, Floydada 4-H; 2nd Monty Teeter, Lockney 4-H; 3rd Lori Bayley, Lockney FFA; 4th Rusty Teeter, Lockney 4-H; 5th Heather Holt, Lockney FFA; 6th Glenn Sutterfield, Lockney FFA; 7th Wesley Teeter, Lockney 4-H; 8th Grant Cage, Floydada 4-H.

Shropshire Reserve Breed Champion—Monty Teeter, Lockney.

Shropshire Champion Breed—Pamela Woody, Floydada.

### HAMPSHIRE

Light Weight: 1st Hunter Smith, Floydada 4-H; 2nd D'Lee Marble, Floydada FFA; 3rd Susan Hendrix, Floydada 4-H; 4th Karyn Foster, Lockney 4-H; 5th Jim Waller, Floydada FFA; 6th Erik Anderson, Lockney FFA; 7th Greg Sparkman, Lockney FFA; 8th Lori Bayley, Lockney FFA; 9th Donny Ferguson, Lockney FFA; 10th Earl Broseh, Lockney FFA; 11th Richard Schacht, Lockney FFA; 12th Richard Schacht, Lockney FFA; 13th Richard Schacht, Lockney FFA.

Medium Weight: 1st Susan Hendrix, Floydada 4-H; 2nd Cody J. Dennis, Floydada 4-H; 3rd Heather Holt, Lockney FFA; 4th Terri Sparkman, Lockney FFA; 5th Ralph Scheele, Lockney 4-H; 6th Gary Cawley, Lockney FFA; 7th D'Lee Marble, Floydada FFA; 8th Terri Sparkman, Lockney FFA; 9th Scott McCarty, Lockney FFA; 10th Choise Dean Smith, Floydada 4-H; 11th Jodie J. Smith, Floydada 4-H; 12th Joe Faulkenberry, Floydada FFA.

Heavy Weight: 1st Shannon Shurbet, Floydada FFA; 2nd Ritchie Thornton, Lockney 4-H; 3rd Ritchie Thornton, Lockney 4-H; 4th Lisa Terrell, Lockney 4-H; 5th Lori Bayley, Lockney FFA; 6th Rickey Prisk, Lockney FFA; 7th Monty Teeter, Lockney 4-H; 8th Keith Hight, Lockney FFA; 9th Ralph Scheele, Lockney 4-H; 10th Hugo Araujo, Lockney FFA; 11th Ritchie Thornton, Lockney 4-H; 12th Keith Hancock, Floydada 4-H; 13th Dawn Atteberry, Floydada 4-H.

Hampshire Breed Champion—Shannon Shurbet, Floydada.

Hampshire Reserve Breed Champion—Hunter Smith, Floydada.

### SUFFOLK

Light Weight: 1st Dean Smith, Floydada 4-H; 2nd Jodie J. Smith, Floydada 4-H; 3rd Monty Williams, Floydada FFA; 4th Norman Allen, Floydada FFA; 5th Grant Cage, Floydada 4-H; 6th Norman Allen, Floydada FFA; 7th Earl Broseh, Lockney FFA; 8th Greg Sparkman, Lockney FFA; 9th Grant Cage, Floydada 4-H; 10th Rachelle Ford, Lockney FFA; 11th Jim Waller, Floydada FFA; 12th Scott McCarty, Lockney FFA; 13th D'Lee Marble, Floydada FFA; 14th Jim Waller, Floydada FFA.

15th Russell Ford, Lockney 4-H; 16th Karen Ford, Lockney 4-H; 17th Check, Floydada FFA.

Medium Weight: 1st Gary Cawley, Lockney FFA; 2nd Donny Ferguson, Lockney FFA; 3rd Kevin Helms, Floydada FFA; 4th Norman Allen, Floydada FFA; 5th Rodney Smith, Lockney 4-H; 6th Eddie Kinard, Lockney 4-H; 7th Erik Anderson, Lockney 4-H; 8th Norman Allen, Floydada FFA; 9th Scott McCarty, Lockney FFA; 10th Shurbet, Floydada FFA; 11th Hunter Smith, Floydada 4-H; 12th Barttey, Floydada 4-H; 13th man, Lockney FFA; 14th man, Lockney FFA; 15th man, Lockney FFA; 16th man, Lockney 4-H; 17th man, Lockney 4-H.

Heavy Weight: 1st Gary Cawley, Lockney FFA; 2nd Donny Ferguson, Lockney FFA; 3rd Kevin Helms, Floydada FFA; 4th Norman Allen, Floydada FFA; 5th Rodney Smith, Lockney 4-H; 6th Eddie Kinard, Lockney 4-H; 7th Erik Anderson, Lockney 4-H; 8th Norman Allen, Floydada FFA; 9th Scott McCarty, Lockney FFA; 10th Shurbet, Floydada FFA; 11th Hunter Smith, Floydada 4-H; 12th Barttey, Floydada 4-H; 13th man, Lockney FFA; 14th man, Lockney FFA; 15th man, Lockney FFA; 16th man, Lockney 4-H; 17th man, Lockney 4-H.

Suffolk Breed Champion—Gary Cawley, Lockney FFA.

Suffolk Reserve Breed Champion—Marty Covington, Floydada.

### OTHER BREEDS

Light Weight: 1st Terri Sparkman, Lockney FFA; 2nd Donny Ferguson, Lockney FFA; 3rd Daron Widener, Lockney FFA; 4th Robert Prisk, Lockney FFA; 5th Susan Hendrix, Floydada 4-H; 6th Karen Ford, Lockney 4-H; 7th Heather Holt, Lockney FFA; 8th Lori Bayley, Lockney FFA; 9th Ritchie Thornton, Lockney FFA; 10th Joe Faulkenberry, Floydada FFA; 11th Gary Cawley, Lockney FFA.

Heavy Weight: 1st Earl Broseh, Lockney FFA; 2nd Amy Jones, Floydada 4-H; 3rd Amy Jones, Floydada 4-H; 4th Greg Sparkman, Lockney FFA; 5th Erik Anderson, Lockney FFA; 6th Cuauhtli, Lockney 4-H; 7th Easter, Lockney FFA; 8th Ferguson, Lockney FFA; 9th McCarty, Lockney FFA; 10th Cuauhtli, Lockney 4-H; 11th Easter, Floydada FFA.

Other Breed Champion—Earl Broseh, Lockney.

Other Breed Reserve Champion—Teddy Salinas, Lockney.

Grand Champion Lamb—Garland Easter, Floydada.

Reserve Champion Lamb—Marty Covington, Floydada.



**Other Breed Champion**  
Earl Broseh, Lockney



**Other Breed Reserve Champion**  
Teddy Salinas, Lockney

We'd like to say "Job Well Done" to all the entries in the Floyd County Livestock Show!

Backing Our  
**Floyd County Youth**  
Four R Irrigation  
Cut & Curl  
103 E Bryant 652-2121

Congratulations  
To The FFA  
On A  
Well Done  
**Mize Pharmacy**  
Main Street Lockney

**Mat W**  
**Champion**

**Alton shows**

the Floyd County Jr. Show were shown Tuesday with the same amount as last year.

Agent Bob Benson from the county was judging the steers. The Grand Champion Steer was a light cross shown by Chris [Name].

The steer was an FFA project, weighed 252 pounds. It was sold at auction and was bought by [Name].

It took Reserve with the only light winner of the show. A steer was not sold at auction, continue to exhibit it.

**ANGUS**  
Williams, Lockney 4-H; 1st: [Name], Lockney FFA; 2nd: [Name], Lockney FFA.

**HEREFORD**  
Light: Marty Covington, Lockney 4-H; 1st: Dusty Burleson, Lockney 4-H; 2nd: [Name], Lockney 4-H; 3rd: [Name], Lockney 4-H; 4th: [Name], Lockney 4-H; 5th: [Name], Lockney 4-H; 6th: [Name], Lockney 4-H; 7th: [Name], Lockney 4-H; 8th: [Name], Lockney 4-H; 9th: [Name], Lockney 4-H; 10th: [Name], Lockney 4-H; 11th: [Name], Lockney 4-H; 12th: [Name], Lockney 4-H; 13th: [Name], Lockney 4-H; 14th: [Name], Lockney 4-H; 15th: [Name], Lockney 4-H; 16th: [Name], Lockney 4-H; 17th: [Name], Lockney 4-H.

# County Show

15th Russell Ford, Lockney FFA; Karen Ford, Lockney 4-H; Check, Floydada FFA.

Medium Weight: 1st Kevin Helms, Lockney FFA; 2nd Donny Helms, Lockney FFA; 3rd Kevin Helms, Lockney FFA; 4th Norman Allen, Lockney FFA; 5th Rodney Smith, Lockney FFA; 6th Eddie Kinard, Lockney FFA; Erik Anderson, Lockney FFA; Norman Allen, Floydada FFA; McCarty, Lockney FFA; Cage, Floydada 4-H; 11th Shurbet, Floydada FFA; 12th Smith, Floydada 4-H; 13th Battey, Floydada 4-H; 14th Tomman, Lockney FFA; 15th Russell Lockney FFA; 16th Melaine Lockney 4-H; 17th Patricia Lockney 4-H.

Heavy Weight: 1st Garland Floydada FFA; 2nd Marty Covington, Floydada 4-H; 3rd Pamela Floydada 4-H; 4th Monty W. Floydada FFA; 5th Gwen Lane, Floydada 4-H; 6th Ralph Scheele, Lockney FFA; 7th Kevin Helms, Floydada FFA; Kevin Helms, Floydada FFA; Michael Cawley, Lockney 4-H; Whitfill, Lockney 4-H; 11th Kinard, Lockney 4-H; 12th Sutterfield, Lockney FFA; 13th Whitfill, Lockney FFA; 14th Dennis, Floydada 4-H; 15th Terrell, Lockney 4-H.

Suffolk Breed Champion—Easter, Floydada.

Suffolk Reserve Breed Champion—Marty Covington, Floydada.

Light Weight: 1st Teddy Salinas, Lockney FFA; 2nd Terri Spaulding, Lockney FFA; 3rd Daron Walker, Lockney FFA; 4th Rodney Ferguson, Lockney FFA; 5th Susan Lockney FFA; 6th Karen Ford, Lockney FFA; 7th Heather Holt, Lockney FFA; 8th Lori Bayley, Lockney FFA; 9th Ritchie Thornton, Lockney FFA; 10th Joe Faulkenberry, Floydada FFA; 11th Gary Cawley, Lockney FFA.

Heavy Weight: 1st Earl Lockney FFA; 2nd Amy Jones, Floydada 4-H; 3rd Amy Jones, Floydada 4-H; 4th Greg Sparkman, Lockney FFA; Erik Anderson, Lockney FFA; Cuauhtli, Lockney 4-H; 7th Easter, Floydada FFA; 8th Ferguson, Lockney FFA; 9th McCarty, Lockney FFA; 10th Cuauhtli, Lockney 4-H; 11th Easter, Floydada FFA.

Other Breed Reserve Champion—Teddy Salinas, Lockney.

Grand Champion Lamb—Easter, Floydada.

Reserve Champion Lamb—Covington, Floydada.

Other Breed Reserve Champion—Teddy Salinas, Lockney.

Grand Champion Lamb—Easter, Floydada.

Reserve Champion Lamb—Covington, Floydada.

Other Breed Reserve Champion—Teddy Salinas, Lockney.

Grand Champion Lamb—Easter, Floydada.

Reserve Champion Lamb—Covington, Floydada.

Other Breed Reserve Champion—Teddy Salinas, Lockney.

Grand Champion Lamb—Easter, Floydada.

Reserve Champion Lamb—Covington, Floydada.

Other Breed Reserve Champion—Teddy Salinas, Lockney.

Grand Champion Lamb—Easter, Floydada.

Reserve Champion Lamb—Covington, Floydada.

Other Breed Reserve Champion—Teddy Salinas, Lockney.

Grand Champion Lamb—Easter, Floydada.

Reserve Champion Lamb—Covington, Floydada.

Other Breed Reserve Champion—Teddy Salinas, Lockney.

Grand Champion Lamb—Easter, Floydada.

Reserve Champion Lamb—Covington, Floydada.

Other Breed Reserve Champion—Teddy Salinas, Lockney.

Grand Champion Lamb—Easter, Floydada.

Reserve Champion Lamb—Covington, Floydada.

Other Breed Reserve Champion—Teddy Salinas, Lockney.



**Matt Williams**  
Champion Angus

## Fulton shows champion steer

at the Floyd County Jr. Show were shown Tuesday with the same amount as last year.

Agent Bob Benson from City was judging the steers. Grand Champion Steer was a light cross shown by Chris Nutt.

Nutt took Reserve with the only weight winner of the show, a light cross steer was not sold at auction.

continue to exhibit it.

**ANGUS**  
Williams, Lockney 4-H, 1st; Williams, Lockney FFA, 2nd.

**HEREFORD**  
weight: Marty Covington, 4-H, 1st; Dusty Burleson, 4-H, 1st; Dusty Burleson, 4-H, 1st; Dusty Burleson, 4-H, 1st.

Other Breed Reserve Champion—Teddy Salinas, Lockney.

Grand Champion Lamb—Easter, Floydada.

Reserve Champion Lamb—Covington, Floydada.

Other Breed Reserve Champion—Teddy Salinas, Lockney.

Grand Champion Lamb—Easter, Floydada.

Reserve Champion Lamb—Covington, Floydada.

Other Breed Reserve Champion—Teddy Salinas, Lockney.

Grand Champion Lamb—Easter, Floydada.

Reserve Champion Lamb—Covington, Floydada.

Other Breed Reserve Champion—Teddy Salinas, Lockney.

Grand Champion Lamb—Easter, Floydada.

Reserve Champion Lamb—Covington, Floydada.

Other Breed Reserve Champion—Teddy Salinas, Lockney.

Grand Champion Lamb—Easter, Floydada.

Reserve Champion Lamb—Covington, Floydada.

Other Breed Reserve Champion—Teddy Salinas, Lockney.

Grand Champion Lamb—Easter, Floydada.

Reserve Champion Lamb—Covington, Floydada.

Other Breed Reserve Champion—Teddy Salinas, Lockney.

Grand Champion Lamb—Easter, Floydada.

Reserve Champion Lamb—Covington, Floydada.

Other Breed Reserve Champion—Teddy Salinas, Lockney.

Grand Champion Lamb—Easter, Floydada.

Reserve Champion Lamb—Covington, Floydada.

Other Breed Reserve Champion—Teddy Salinas, Lockney.

Grand Champion Lamb—Easter, Floydada.

Reserve Champion Lamb—Covington, Floydada.

Floydada FFA, 2nd; Tom Ross, Floydada 4-H, 3rd.

Light Weight: Keith Hight, Lockney 4-H, 1st; Chris Fulton, Floydada FFA, 2nd; Lisa Terrell, Lockney 4-H, 3rd.

Hereford Breed Reserve Champion—Dusty Burleson.

Hereford Breed Champion—Marty Covington.

Ralph Scheele, Lockney 4-H, 6th; Keith Hight, Lockney 4-H, 7th.

**CROSS**  
Lightweight: Shannon Edwards, Floydada 4-H, 1st; Lisa Terrell, Lockney 4-H, 2nd; Mitch Ross, Floydada 4-H, 3rd; Chad Edwards, Floydada 4-H, 4th; Walker Brooks, Floydada 4-H, 5th.

Grand Champion Steer—Chris Fulton, Floydada.

Reserve Champion Steer—Mark Nutt, Floydada.

Medium weight: Mark Nutt, Floydada 4-H, 1st; Angie Hinsley, Floydada 4-H, 2nd; Ty Williams, Lockney FFA, 3rd; Mark Nutt, Floydada 4-H, 4th; Marty Covington, Floydada 4-H, 5th; Mitch Ross, Floydada 4-H, 6th.



**Dusty Burleson**  
Champion Hereford



**Marty Covington**  
Reserve Champion Hereford



Stock Show trophy winners at banquet

## Banquet honors show participants

Floyd County Livestock Show Banquet was held Thursday night, February 26, at the Lockney Elementary Cafeteria, following the weeks stock show activities. The banquet was sponsored by the Floyd County Farm Bureau.

Presentation of awards was made by James McNeill, president of the Livestock Show Association.

Floyd County trophy sponsors were: Grand Champion Steer, Mr. and Mrs. G.L. Fawver; Grand Champion Lamb, George Sparkman; Grand Champion Barrow, Producers Cooperative Elevator; Reserve Grand Champion Steer, Jim Simpson; Reserve Grand Champion Lamb, Roger Dawdy; Reserve Grand Champion Barrow, Larry Barbee and James McNeill; Champion Angus,

Hereford and Cross, Charles Beedy, Tub Springs Ranch; Breed Champion—Finewool, Consumers Fuel Association; Breed Champion—Hampshire, Choise Smith; Breed Champion—Suffolk, Henry Hinton; Breed Champion—Southdown, Jake and Danny Colston;

Breed Champion—Finewool Cross, Womack Brothers; Breed Champion—Shropshire, Caprock Motor Parts & Hardware; Breed Champion—Other Breeds, Cal Clay Farms; Swine Breeds Champion & Reserve, Morton Irrigation; Reserve Champion Angus, Hereford, & Cross, Geneva & Jackie Elliott; Reserve Breed Champion—Finewool, Eddie Foster; Reserve Breed Champion—Hampshire, Bill Hendrix; Reserve Breed Champion—Suffolk, Elmer Dean

Williams; Reserve Breed Champion—Southdown, Albert Scheele; Reserve Breed Champion—Finewool Cross, Kenneth Holt; Reserve Breed Champion—Shropshire, Eddie Teeter; Reserve Breed Champion—Other Breeds, JIJ Sheep Farm; Showmanship—Beef, Johnny West; Showmanship—Swine, Dan Bayley; Showmanship—Sheep, In Memory of K.E. Probasco; Herdsman—Beef, Eugene Beedy; Herdsman—Sheep, Mr. and Mrs. Kenneth Brosch; Herdsman—Swine, Buddy's Food; High—Individual Judging, Motley County Abstract, Mr. and Mrs. James Russell; Div. High—Individual (BBS), Jerry Williams; Sweepstakes, Friend of Floyd County Junior Livestock Show; and Sweepstakes Plaque, Mr. and Mrs. Weldon Pruitt.

## This Community Appreciates The Faith Shown To Our Youth Through Your Donations ...

- First National Bank of Floydada
- Floyd County Implement
- McCoy Gin
- Mrs. W.A. Massie
- Davis Farm Supply
- D&P Grain Co.
- Lon Davis Grain
- Edwin Nutt
- Ponderosa Meat Company
- Floydada Seed and Delinting Co.
- Leslie L. Nixon
- Scott Gin
- Brown Gin
- McCoy Farm Supply
- William F. Bertrand
- Builders Mart
- Buddy's Food
- J.S. Hale, Jr.
- Laron Fulton Farms
- Oden Chevrolet-Olds
- Adams Well Service
- Floydada Implement Company
- Marble Brothers
- Darty Gin
- Barwise Elevator & Fertilizer
- Swift Distributors
- City Auto
- Covington Oil & Butane
- Martin and Company
- Jackie Elliott
- Geneva Elliott
- Reed Ford Sales
- James Hinton
- Jim Simpson
- Russells Equipment and Supply
- Crosbyton Seed Company
- Roger Dawdy
- Adrian Helms
- Sunbelt Delinting Co. of Lorenzo
- Babe's Service Center
- Hi Plains Farms
- Beedy's Spraying Service
- Brooks Oil Company
- IORM #31 [Matador Redman's]
- First State Bank of Matador
- Crazy C Ranch
- Howard Gene Bishop
- Federal Land Bank
- Robert Hefflin
- Moore-Rose Funeral Home
- Tipton Oil Company
- Kenneth Bean
- Joe Rainer
- J.R. Turner
- Quality Body Shop
- Craig Edwards
- First State Bank of Petersburg
- Ralls Delinting Co.
- Green Machinery
- Bill Womack
- Jones-Heflin Farms
- Petersburg Co-op Gin
- Matthews Oil Co. of Petersburg
- Parker Studio
- Fox Drilling Co. of Petersburg
- City Trim Shop
- Petersburg Co-op Grain
- Don Hardy Race Cars
- Mickey D. Hammonds
- West Texas Industries
- Elmer Dean Williams
- Hinsley Farms
- Larry Barbee

- Bill Cagle
- Weldon Pruitt
- Williams Insurance and Real Estate
- Franklin Harris
- Cornelius Conoco
- Plainview Savings and Loan
- R.R. Ferguson
- Southwestern Bell Telephone
- Hales Department Store
- Griffin-Brand Vegetable Co.
- of Plainview
- Ruckers OK Tire Store
- Kirk & Sons
- Bill Hinkle
- Leon Williams
- Jack Stansell
- Alton Higginbotham
- A.C. Pratt
- Henry Hinton
- Ernest W. Jones
- Dons Muffler Shop
- James R. Cage
- Petersburg Butane
- J & R Automotive of Petersburg
- Porter Drug of Petersburg
- Wylie Manufacturing Co.
- of Petersburg
- Higginbotham-Bartlett Co.
- of Petersburg
- Chloma A. Williams
- J.W. Smithey
- Woodrow Wilson
- Jerrold Vinson
- Charles Christian
- Goen & Goen
- J.K. West
- James Randall Bertrand
- Don Shurbet
- Thompson Pharmacy
- Arwine Drug
- Lawson Farm Supply
- Keith E. Thomas
- Choise Smith
- James Race Insurance of Tulia
- Audrey's Hair Styles
- Anderson's Department Store
- Harvey Allen
- Cleo W. Fulton
- Jack Lackey
- Plainview Savings and Loan of Matador
- Matador Motor and Implement Co.
- Norrell Tractor Parts
- Leonards Cafe
- John Dunlap
- Cecil Jackson Farms
- Park Florist
- Marion Bradford
- Donald R. Bean
- Louis Pyle
- Jackey Younger
- Sam A. Spence Insurance
- Clarence E. Guffee
- Dr. Keith Patzer
- Don Rainer
- Daniel Automotive
- Bishop-Ramsey Pharmacy
- Jerry D. Battey
- Kirley's Market
- Edmiston Plumbing
- Dr. Charles C. Craig
- Duncan Abstract
- Solomon Jewelry

Thank You For A Successful Stock Show  
**PRODUCERS COOPERATIVE ELEVATORS**  
FARMER OWNED

Other Breed Reserve Champion  
Teddy Salinas, Lockney

Congratulations

To The FFA & 4-H

On A Job

Well Done

Mize Pharmacy

Main Street Lockney

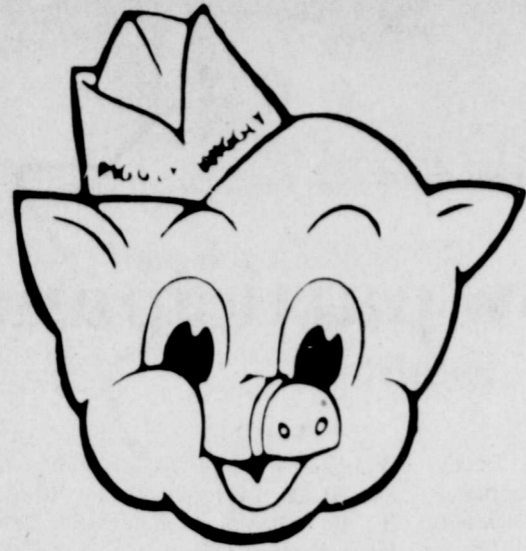
## Good turnout marks livestock judging event

The livestock judging event was held Wednesday morning. The field consisted of 154 youngsters. All were from Floyd County. There were no out of town participants this year as there have been in the past. Chairman for the event, Eddie Foster, said that the committee was very pleased with the turnout.

In the lamb category Bryant Higginbotham was first with 148 points. Mark Nutt came in second. There was a tie between he and the third place winner, Reagan Everett, of 145 points. Their overall scores were then totaled.

Nutt was ahead with a total score of 428 to Everetts 402. The barrow first in judging was won by Keith Hancock with a perfect 150 score. Jimmy Nichols was awarded second place on total points of 406 after he and Monty Seymour, 400 points, tied with 148 judging points.

In the steer judging four entrants made a perfect score of 150. They were then rated according to total points. Todd Beedy was first with 424 points. Terry Jones second with 406 points. Earl Brosch was third with 401 points and Monty Williams was 4th with 374 points.



309 S Wall  
Open Daily 8 To 8 Sunday 9 To 7  
Prices Good Thru  
March 11, 1981



Del Monte Green Cut

### Beans

3 \$1.00  
16 oz Can



Del Monte Whole Kernel Or Cream Style

### Corn

3 \$1.00  
17 oz Can



Maryland Club Regular,  
Drip, Electric Perk

### Coffee

\$2.29  
1 lb Can  
2 lb Can \$4.57

# PIGGLY WIG



Beef Chuck Boneless Center Cut

## Roast

\$2.09 lb

Fresh Not Less Than 80% Lean

### Ground Beef

\$1.79 lb

Boneless Lean Beef Cudes

### Stew

\$1.89 lb



Pork Fresh Boston Butt Bone In

## Roast

\$1.29 lb

Sliced Wilson's Certified

### Bacon

\$1.59 lb

Pork Jimmy Dean

### Sausage

\$1.69  
1 lb Roll  
\$3.35 2 lb Roll

Fryer USDA Grade A  
Legs & Thicks

Fryer USDA Grade A  
Breast



Fresh Pork Cut From Leg

## Steak

\$1.39 lb

Arm or Boneless  
Tender Roast Of Beef

\$2.29 lb

Boneless Chuck

\$2.19 lb

Keebler

## Saltines

1 lb pkg

69¢

Charmin Bath Family Pac

## Tissue

New 6 Roll

\$1.49

Post Breakfast Cereal

## Toasties

18 oz pkg

99¢

Oreo Double Stuff

### Cookies

15 oz pkg

\$1.29

Log Cabin Complete

### Mix

32 oz pkg

\$1.19

Top Choice Moist

### Dog Food

36 oz pkg

\$1.69

Bakers Angel Flake

### Coconut

14 oz Bag

\$1.49

Appian Way Pizza

### Mix

12 1/2 oz pkg

79¢

Comstock Apple

### Pie Filling

21 oz Can

\$1.09

Hefty Tall Kitchen

### Bags

30 ct pkg

\$2.59

Betty Crocker Pineapple

### Cake Mix

21 1/2 oz pkg

\$1.59

American Beauty Roni Macaroni Or

## Elbo Roni

24 oz pkg

99¢

Kids Favorite Oreo

## Cookies

19 oz

\$1.49

Banquet Frozen, Chicken, Turkey, Salisbury Steak,  
Chop Beef, Meat Loaf, Italian Platter, Bean N Frank, Western

## Dinners

11 oz pkg

69¢



California Naval

## Oranges

10 For

\$1.00

Yellow Bulk

## Onions

27¢ lb

Fresh & Tender

## Broccoli



Great For Di

## Avoca

4 \$1.00  
for

Of Flavor

## ers

99¢ lb

# DOUBLE

# GOLD BOND STAMPS

# WEDNESDAY

# DEEM FILLI NUS BOOK



the 4-H emblem, pledge,  
and motto provide a guide  
for young people to follow

The 4-H club emblem is a four leaf clover with the letter "H" on each leaf. The four "H's" stand for Head, Heart, Hands, and Health. Leaves of the clover are green and the "h's" are white. The white is for purity. Green is nature's most common color, and is symbolic of youth, life and growth.

The 4-H's represent the 4-square development of:  
Head - To help you learn new and better ways of doing things.  
Heart - To help you develop ideals and standards for living in society.  
Hands - To give you the opportunity to develop useful skills and to apply them.  
Health - To help you develop habits of good health.

"I pledge -  
My Head to clearer thinking,  
My Heart to greater loyalty,  
My Hands to larger service,  
My Health to better living,  
for my club,  
my community  
my country  
and my world."



# WIGGLY



We Honor WIC & Food Stamps Daily

Each of these advertised items is required to be readily available for sale at or below the advertised price in each store, except as specifically noted in this ad. We reserve the right to limit quantities. None sold to dealers.

Fresh Boston Butt Bone In

**Roast**  
\$1.29 lb

Fryer USDA Grade A Legs & Thicks  
Fryer USDA Grade A Breast

Fresh Pork Cut From Lean Boston Butt

**Steak**  
\$1.39 lb

Boneless Arm or Boneless Tender Roast Of Beef \$2.29 lb  
Boneless Chuck \$2.19 lb

Farmer Jones All Meat Franks 12 oz 89¢  
American Kraft's Singles Cheese 16 oz \$2.75

Split USDA Grade A

**Fryers**  
69¢ lb

Glover's Sliced Bologna 12 oz \$1.09  
Van De Kamp Fish & Chips 14 oz \$1.69

24 oz pkg **99¢**

19 oz **\$1.49**

Salisbury Steak, Ham, Bean N Frank, Western 11 oz pkg **69¢**

Vienna **2 88¢**  
5 oz Can

Liquid Laundry **\$6.99**  
128 oz btl

Salad, Pourable, Italian Catalina French **8 oz Btl 73¢**

Ore Ida Crinkle Cut **2 lb pkg 88¢**

Gold Medal Enriched All Purpose **Flour 5 lb Bag 98¢**

Del Monte Fruit **Cocktail 30 oz Can 83¢**

Kraft

**Macaroni & Cheese**  
3 **\$1.00**  
7 1/4 oz pkg

PARKAY

Kraft Parkay

**Margarine**  
2 For **99¢**  
1 lb pkg

Banquet

Banquet Fried **Chicken**  
oz pkg **\$2.29**

California Naval

**anges**  
\$1.00

Fresh & Tender **Broccoli**

Great For Dips

**Avocados**  
4 **\$1.00**  
for

Full Of Flavor **99¢** Garden Assorted Varieties **Seeds Buy 2 Get 1 Free**

Classic Polish Spears **24 oz Jar \$1.09**

**Pickles**

Welch's Frozen Grape **Juice 16 oz Can \$1.29**

U-Top-It Jen's **Pizza 32 oz pkg \$3.99**

Sunmaid Seedless **Raisins 9 oz pkg 89¢**

Pet Ritz Deep Dish **Pie Shells 2 ct pkg 89¢**

Kraft Creme **Marshmallow 7 oz Jar 69¢**

Plain, Peanut M&M **Candies 16 oz pkg \$2.19**

Hersheys Chocolate **Syrup 16 oz Can 89¢**

WEDNESDAY REDEEM FILLED BONUS BOOKLETS FOR **50¢ OFF** ANY GROCERY ITEM!





# Hancock shows grand champion barrow



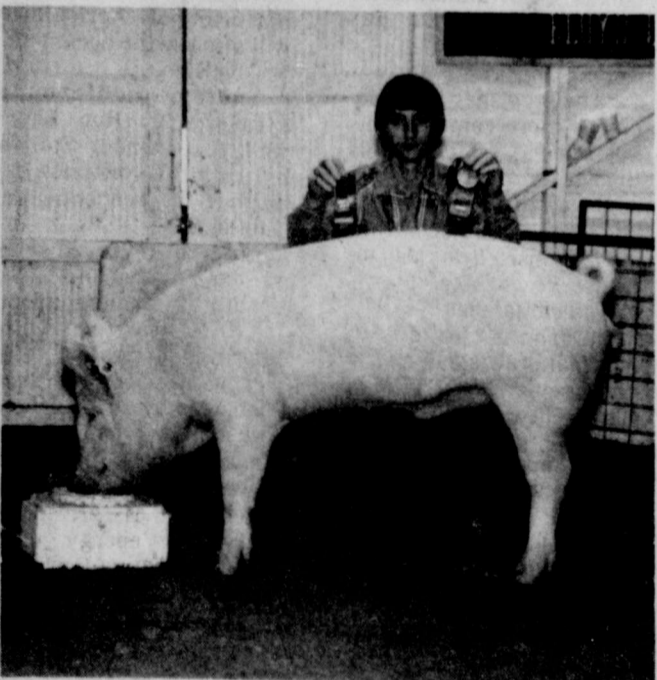
**Duroc Breed Chmpanion**  
Gary Bigham, Lockney



**Spots Breed Champion**  
Christi McNeill, Floydada



**Spots Reserve Breed Champion**  
Wyman Rexrode, Lockney



**Other Breeds Champion**  
Lane Turner, Lockney



**Chester Breed Champion**  
Wyman Rexrode, Lockney



Showing of the barrows at the Floyd County Jr. Livestock Show began Monday, with 20 barrows more than last year.

Judging barrows was Bob Skaggs, of Pampa. He is an Ag teacher. Grand Champion Barrow was a heavy weight Hampshire shown by Keith Hancock. Hancock's barrow was an FFA project weighing 242 lbs. It was

bought by Floydada Businessmen and farmers at \$3,000 a pound. The reserve Champion was shown by Brad McNeill. The heavy weight Hampshire weighed 242 lbs.

### CHESTERS

Lightweight: 1st Heath Rexrode, Lockney FFA; 2nd Max Bearden, Floydada FFA; 3rd Tracy Carlton, Lockney FFA; 4th Max Bearden, Floydada FFA; 5th Shayla Barbee, Floydada FFA; 6th Clay Harrison, Lockney 4-H; 7th Phillip Kidd, Lockney FFA; 8th John Fortenberry, Lockney FFA; 9th David Martinez, Lockney FFA.

Heavy Weight: 1st Wyman Rexrode, Lockney FFA; 2nd Mark Nutt, Floydada FFA; 3rd Heath Rexrode, Lockney FFA; 4th Garland Easter, Floydada FFA; 5th Terry Carlton, Lockney FFA; 6th Monty Williams, Floydada FFA; 7th Romeo Araujo, Lockney FFA; 8th Patricia Cuauhtli, Lockney 4-H.

Chester Breed Champion—Wyman Rexrode, Lockney.  
Chester Breed Reserve Champion—Heath Rexrode, Lockney.

### DUROCS

Light Weight: 1st Byron Brock, Lockney FFA; 2nd Larry Tannahill, Lockney FFA; 3rd Margie Araujo, Lockney FFA; 4th Larry Tannahill, Lockney FFA; 5th Karen Pruitt, Floydada FFA; 6th Ken Rogers, Lockney FFA; 7th Karen Mathis, Lockney FFA; 8th Clay Harrison, Lockney 4-H; 9th Teddy Salinas, Lockney FFA; 10th Tracy Carlton, Lockney FFA; 11th Nick Christian, Lockney FFA; 12th Billy Sherman, Lockney FFA; 13th Clay Lowrance, Floydada FFA; 14th Dena Casey, Lockney FFA; 15th Zach Nutt, Floydada 4-H; 16th Mack Sherman, Lockney FFA; 17th Monty Seymour, Floydada FFA; 18th Jay King, Lockney FFA; 19th Dee Casey, Lockney FFA.

Medium Weight: 1st Karen Mathis, Lockney FFA; 2nd Carlos Molinar, Lockney FFA; 3rd Mack Sherman, Lockney FFA; 4th Lane Turner, Lockney FFA; 5th Cody Dennis, Floydada 4-H; 6th Samuel Alvarez, Lockney FFA; 7th Robert Nixon, Floydada FFA; 8th Christi McNeill, Floydada FFA; 9th Shayla Barbee, Floydada FFA; 10th Dee McPherson, Lockney FFA; 11th Dee Casey, Lockney FFA; 12th Wyman Rexrode, Lockney FFA; 13th Kristy Dawdy, Floydada 4-H; 14th Margie Araujo, Lockney FFA; 15th Wade Jackson, Lockney FFA; 16th Jay King, Lockney FFA; 17th Brent Williams,

Floydada 4-H; 18th Larry Tannahill, Lockney FFA.

Heavy Weight: 1st Gary Bigham, Lockney; 2nd Marcus Schacht, Lockney; 3rd Cristi McNeill, Floydada; 4th Monty Williams, Floydada; 5th David Martinez, Lockney; 6th Cliff McLain, Floydada; 7th Brad McNeill, Floydada; 8th Byron Brock, Lockney; 9th Shannon Jones, Lockney; 10th Cristy Pruitt, Floydada; 11th Anna Cuauhtli, Lockney; 12th Dena Casey, Lockney; 13th Kristy Dawdy, Floydada 4-H; 14th Hugo Araujo, Lockney; 15th Benton Easter, Floydada; 16th Van Lowrance, Floydada; 17th Dwight Jackson, Lockney.

Duroc Breed Champion—Gary Bigham, Lockney.  
Duroc Reserve Breed Champion—Byron Brock, Lockney.

### HAMPSHIRES

Light Weight: 1st Wade Jackson, Lockney FFA; 2nd David Martinez, Lockney FFA; 3rd Margie Araujo, Lockney FFA; 4th Daralyn Williams, Floydada 4-H; 5th Shayla Barbee, Floydada FFA; 6th Byron Brock, Lockney FFA; 7th Billy Sherman, Lockney FFA; 8th Romeo Araujo, Lockney FFA; 9th Heath Rexrode, Lockney FFA; 10th Shannon Barbee, Floydada FFA; 11th Shannon Barbee, Floydada FFA; 12th James Fannon, Floydada 4-H.

Medium Weight: 1st Kyle Brock, Lockney; 2nd Heath Rexrode, Lockney; 3rd Karen Pruitt, Floydada; 4th Keith Owens, Lockney; 5th Stephen Turner, Lockney; 6th Ken Rogers, Lockney; 7th Robert Nixon, Floydada; 8th John Fortenberry, Lockney FFA; 9th Randy Emert; 10th Christi Pruitt, Floydada; 11th John Fortenberry, Lockney FFA.

Heavy Weight: 1st Keith Hancock, Floydada; 2nd Bran McNeill, Floydada; 3rd Karen Mathis, Lockney; 4th Lane Turner, Lockney; 5th Chad Williams, Lockney; 6th Wade Jackson, Lockney; 7th Dee McPherson, Lockney; 8th Hugo Araujo, Lockney; 9th Clay Lowrance, Floydada; 10th Van Lowrance, Floydada FFA; 11th Cliff McLain, Floydada; 12th Terry Carlton, Lockney.

Hampshire Breed Champion—Keith Hancock, Floydada.  
Hampshire Reserve Breed Champion—Brad McNeill, Floydada.

### SPOTS

Light Weight: 1st Stephen Turner, Lockney FFA; 2nd Shannon Jones,

Lockney FFA; 3rd Randy K...  
Lockney FFA; 4th Randy K...  
Lockney FFA; 5th Phillip K...  
Lockney FFA; 6th Samuel A...  
Lockney FFA; 7th Wade Jackson,

Heavy Weight: 1st Cr...  
Floydada FFA; 2nd W...  
Lockney; 3rd Garland E...  
4th Ken Rogers, Lockney...  
Glasson, Lockney FFA...  
Seymour, Floydada.

Spots Breed Champion—  
Neill.  
Spots Reserve Breed  
Wyman Rexrode.

### CROSSES

Light Weight: 1st Sh...  
Floydada FFA; 2nd De...  
Lockney FFA; 3rd Brad M...  
dada FFA; 4th Robert M...  
FFA; 5th Kyle Brock, Lock...  
Shannon Jones, Lock...  
David Martinez, Lock...  
Karen Pruitt, Floydada F...  
Sherman, Lockney FFA...  
Salinas, Lockney FFA...  
Carlton, Lockney FFA.

Medium Weight: 1st B...  
Floydada; 2nd Phillip G...  
FFA; 3rd Christi Pruitt, F...  
Dee McPherson, Lockney...  
Araujo, Lockney; 6th K...  
Lockney; 7th Carlos M...  
8th Dwight Jackson, L...  
Stephen Turner, Lockney...  
Kidd, Lockney FFA; 11th B...  
Lockney.

Heavy Weight: 1st K...  
Floydada 4-H; 2nd Keith...  
Floydada FFA; 3rd Kar...  
Lockney FFA; 4th Gary B...  
ney FFA; 5th Wyman Rex...  
FFA; 6th Robert Nixon, Flo...  
7th Cody Dennis, Lock...  
Romeo Araujo, Lockney...  
Robert Huerta, Floydada F...

Cross Breed Champion—  
ter, Floydada.  
Cross Breed Reserve C...  
Kristy Dawdy, Floydada.

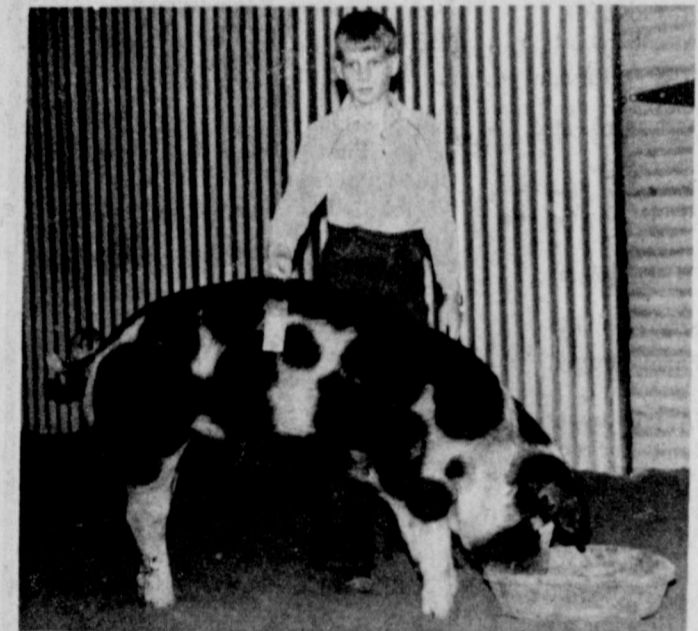
### OTHER BREEDS

Heavy Weight: 1st L...  
Lockney FFA; 2nd Ch...  
Floydada FFA.

Other Breeds Champion—  
ner, Lockney.  
Other Breeds Reserve C...  
Chad Williams, Floydada.



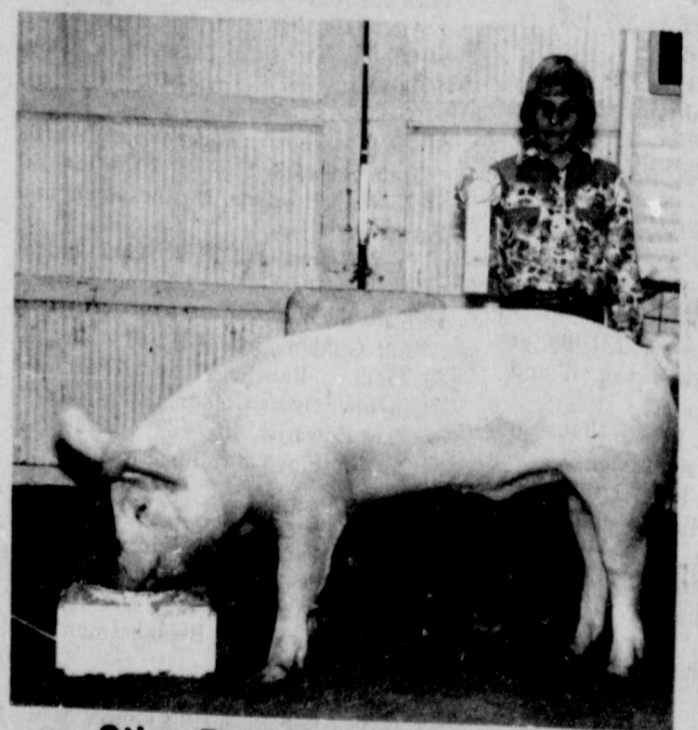
**Duroc Reserve Breed Champion**  
Byron Brock, Lockney



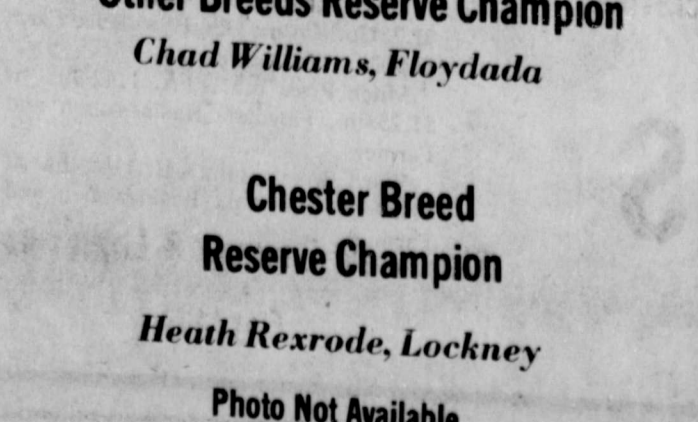
**Spots Reserve Breed Champion**  
Wyman Rexrode, Lockney



**Cross Breed Reserve Champion**  
Kristy Dawdy, Floydada



**Other Breeds Reserve Champion**  
Chad Williams, Floydada



**Chester Breed Reserve Champion**  
Heath Rexrode, Lockney

Photo Not Available

# 55th ANNUAL STOCKHOLDERS' MEETING

## CONSUMERS FUEL ASSOCIATION

OF LOCKNEY, TEXAS

THURSDAY, MARCH 12  
7:30 P. M.

LOCKNEY GRADE SCHOOL CAFETORIUM

★ DINNER

★ ELECTION OF TWO DIRECTORS

★ AUDIT REPORT

★ Business Report

## Bollworm Research Funded

Cotton Growers, Inc., Lubbock, made the first positive step in the development of a multi-million dollar program to combat bollworm infestation that have caused increasing damage to High Plains cotton in the past three years.

Reserve funds collected from the widely used Diapause Boll Weevil Control Program through its Boll Weevil Control Committee has authorized the release of up to \$50,000 to get a program underway this year. The funds are to be managed by Ed Dean, PCG Field Director.

Control funds are separate from the Diapause program, and Dean explains, and to spend weevil program funds for any other purpose required a resolution from the Boll Weevil Control Committee and agreement from the 11 High Plains states who collect the funds under the program.

Dean says that everyone on the Plains is convinced that a continued effort to control the bollworm problem is the most serious threat to cotton production since the bollworm began overwintering above the border in the early fifties. Dean says that the bollworm is an increasing threat to the entire area.

Dean also emphasizes that these funds will be committed without jeopardizing the continued success of the Diapause program in any way.

However, funds that are available for boll weevil control are limited to 1981 only and are dependent on the success of ongoing Diapause programs. To attract additional funds for future years from Cotton Growers and other entities with a vested interest in the cotton industry, the State Legislature.

Entomologists believe bollworms can be controlled with insecticides effectively at the proper time in proper weather. The great danger, they say, is the lack of widespread bollworm control in the Plains in recent years. The resultant inexperience of growers in the area could lead to a situation which could lead to a massive, indiscriminate use of insecticides. That in turn, they point out, could help the pests to develop resistance to insecticides and become uncontrollable as have bollworms and tobacco budworms in other production areas.

Dean thinks some of the original impetus of research will be to learn what effect agroecosystems have on both beneficial and pest insects; what natural bollworm enemies in the area are most effective; whether overwintering or migration is most responsible for the insect load, and what wild birds are the major hosts for bollworms.

The scope and direction of the project however will be determined at future meetings of State and private entomologists.

## Workshop set for loan officers

(WAG) of Agriculture at a National meeting to conduct a food production workshop. The workshop will be held at the Carlsbad Community College. Now, findings of a study of a system of analysis that are the desk of John Bl... Newly... President... has been... hopes to... look ser... detailed... We... took a... obvious... ever, it... grave e... we wan... new ad... blens e... Rece... clude... receipt... payment... include... time a... stration... farmers... from S... Reagan... has al... scrap... Far... continue... although... prices... stabilize... said th... We... of sup... handfu... tions... encour... payme...

workshops run concurrently and the 29th annual Farm and Ranch Conference for Commercial Agriculture according to Dr. Trumble, economist with the Agricultural Extension Service, Texas A&M University System.

Workshop topics at the Farm and Ranch Conference for Commercial Agriculture will include: dealing with inflation in farm operations; capital asset purchase and computers in agricultural management.

The credit analysis workshop will deal with management computer simulation; analysis of financial statements; analysis of large complex farm loans, and problem loans. In addition loan security workshops will be conducted by economists in management.

Information on these two workshops contact Trumble in the Department of Agricultural Economics, Texas A&M University, College Station, Texas or call (713) 845-8011.



# Today's FFA & 4-H Youth

## Are Tomorrows Leaders In Our Community's



CHAMPION AND RESERVE CHAMPION SWINE AND HERDSMANSHIP AWARDS — front row [l to r], Heath Rexrode, Wyman Rexrode, Christy McNeill, Keith Hancock, Kristy Dawdy, Chad Williams, Zack Nutt. Back row [l to r], Gary Bigham, Lane Turner, Benton Easter, Brad McNeill.



BEEF AWARDS [l to r], Chris Fulton, Mark Nutt, Marty Covington. Middle [l to r], Libby Williams, Ty Williams, Dusty Burleson. Front, Matt Williams.



AWARD WINNERS — Jody Smith [left] received the Showmanship Award and Earl Brosch [right] displays his Herdsmanship Award.



SHEEP AWARDS, back row [l to r], Darron Widener, Monty Teeter, Garland Easter, Bryant Higginbotham, Teddy Salinas, Marty Covington, Shannon Shurbet. Front row [l to r], Pamela Woody, Gwen Lane, Earl Brosch, Hunter Smith.



AWARD WINNERS — Ty Williams [left] received the Showmanship Award and Marty Covington [right] received the Herdsman Award.



AWARD WINNERS — Keith Hancock [left] received the Showmanship Award and Zach Nutt [right] received the Herdsman Award.



4-H SWEETHEART, Melanie Foster receives her sweetheart trophy from James McNeill at the Floyd County Livestock Show Banquet Thursday.



MONTY SEYMOUR was named Sweepstakes winner following last weeks stock show.

### WE CONGRATULATE THE WINNERS IN THE 1981 LIVESTOCK SHOWS.

## Floyd County's Progressive Bank The First National Bank

Accounts Insured To \$100,000

IN LOCKNEY

Member F.D.I.C.



J.D. Copeland



Kenneth Wofford

### Sharp quits

In a head of the Lockney Lady Horns varsity basketball team, Marsha Sharp, has resigned. Her resignation was accepted at the last monthly meeting of the Lockney Chapter of Education this week. Sharp, who compiled a 127-60 overall record in six years as coach of the Lady Horns, said she hopes to move on to a new high school or into college coaching.

"I'm leaving entirely for personal reasons," Sharp said. "I have no regrets with Lockney, whatsoever." Sharp's teams compiled a 35-6 record in 3-A competition over the six years, taking the district title two times and finishing second three times. Sharp is a native of Tulsa and a graduate of Wayland Baptist College. Lockney school superintendent W.H. Wofford said they have no immediate plans for Sharp in mind.

### Chamber banquet

#### Tickets on sale

Tickets for the Lockney Chamber of Commerce banquet next Thursday, March 19, are now on sale at member residences in town. The tickets are \$6 a piece and only \$3 will be sold. Tickets will also be sold at the door on the night of the banquet.

#### Meeting tonight

#### to choose honorees

A Lockney Chamber of Commerce committee will meet at 7:30 tonight at the First National Bank in Lockney to choose an outstanding man and woman of the year for 1980. Each civic club and organization, fraternal organizations and churches in Lockney have been invited to send a representative to the meeting. Candidates for the honor will be nominated and voted for at the meeting. Those chosen will be honored at the Chamber of Commerce Banquet next Thursday, March 19. Jerry Johnson and Elvira Muniz were named as the outstanding man and woman for 1979.