

Base Lockbinding  
P.O. Box 2558  
Amarillo, Tex. 79105

# The Lockney Beacon

Volume 79 Number 66 Lockney, Floyd County, Texas 79241 Thursday October 9, 1980 18 Pages In Two Sections

THE LOCKNEY BEACON (SN# 317220) is published weekly, each Thursday by Floyd County Publishing Co., 220 North Main Street, Lockney, Texas 79241. Second class postage paid at Lockney, Texas. POSTMASTER: Send address changes to THE LOCKNEY BEACON, P.O. Box 15, Lockney, TX 79241.

20 Cents

## Plainview Woman Fataally Injured

High school teacher, Helen Reese, was fatally injured in a collision with a train on Tuesday when the car she was driving was struck by a train. Mrs. Reese, 52, was pronounced dead at Central Plains Hospital about 5:30 p.m. by a physician. The Department of Public Safety officer who investigated the accident said Mrs. Reese was driving alone eastbound on Highway 101 at 4:40 p.m. and was struck by a northbound train as she crossed railroad tracks on the edge of town. The officer said Mrs. Reese spun around and came to a stop about 15 feet from the roadway. At the time of the impact, the train was traveling at about 25 mph. Mrs. Reese was freed from her car by the Lockney Volunteer Fire Department and was transported to the fire department ambulance. She died at the time of her death at Hillcrest Elementary School. She was the wife of Dr. W. W. Reese, professor of biological sciences at the Department of Biological Sciences at Wayland Baptist University. She resided with her husband at 406 S. Austin St.

Mrs. Reese taught in elementary schools in Cotton Center, Dalhart and Plainview in 1966. A member of Parkview Baptist Church, Mrs. Reese taught a Sunday School class for many years. She was a member of Delta Kappa Gamma and Plainview Classroom Teachers Association. She served as local chapter secretary of the Texas State Teachers Association and was a member of the National Education Association. Mrs. Reese was on the board of directors of the former students association at Wayland. In 1969 she was selected as "Coming Home Queen" at Wayland. Services for Mrs. Reese were at 4 p.m. on Friday in Parkview Baptist Church. Officiating was the Rev. Don Hancock of Lubbock, former pastor, assisted by the Rev. David Harp, pastor of Parkview Baptist Church. Burial followed in Plainview Memorial Park by Lemons Funeral Home. The former Helen Frances Barnhart was born February 6, 1928 in O'Donnell and grew up in Ralls, graduating from Ralls High School. She graduated from Wayland Baptist College in 1949 with the first four-year graduating class.



MANGLED REMAINS of the auto of Mrs. Helen Reese who was fatally injured in the car-train collision.

## Rains Slow Harvest

Cotton harvest has begun on the South Plains and Floyd County is expected to contribute 95,000 bales off of 241,214 acres.

The recent rains have hampered the strippers from starting. A small amount of cotton had been stripped prior to last week's 2.5 inches of rain. Some fields were dry enough for the machines to begin again this past weekend but the Monday morning rain put a halt to any activity for the first part of this week.

So far, the cotton already ginned has been turning out well at the gins. The turnouts are running between 20% and 25%. Seed turnouts are varying with fields.

Monday morning rain amounts varied in the county. Amounts of 2.5 inches to .25 inches were reported. There was some hail damage north of Lockney in the Sterley area. Losses from this were estimated in some fields to be as high as 40%.

So far, Lockney area gins have ginned about 800 bales of cotton. Floydada gins have turned out around 360 bales.

If the weather stays clear, harvest should be in full swing the latter part of this week.

## Taylor Re-Elected to SWCD Board

Taylor was re-elected to the Soil and Water Conservation Board Tuesday night. The election was held at Producers Elevator in Hill at 8 p.m. Taylor will serve for the next five years, the northeast part of Floyd County. Taylor was appointed to the Board in 1978 to fill the unexpired term of the late Gerald Lackey for zone 2. Zone boundaries were approved by the Soil and Water Conservation Board and Taylor was appointed as a replacement for the unexpired term of Bill Porcell's unexpired term. Taylor was appointed as zone 3 director of an area bounded by Hill highway on the north, the highway on the south and the highway is the Silverton highway. The purpose of the Floyd County Board is to promote sound soil and

water conservation programs on farm and ranch lands within the district and to serve as a voice for farmers and ranchers on conservation matters and other issues affecting private property rights of landowners. The board of directors coordinates the conservation efforts of various local, state and federal agencies and other organizations and has the authority to enter into working agreements with these governmental agencies and private concerns to carry out its purpose. In Texas there are 200 soil and water conservation districts. Each is a legal subdivision of state government organized by local agricultural landowners with the assistance of the Texas State Soil and Water Conservation Board. Unlike most other legal subdivisions of state government, SWCDs do not have the powers of taxation or eminent domain. All conservation programs managed by the districts are of a voluntary nature to the landowner or operator.



## SBA Declares Floyd County Eligible For Disaster Assistance

Russell R. Berry, Lubbock District Director of the Small Business Administration (SBA), announced September 29 that Floyd County had been declared eligible for drought disaster assistance from the SBA.

Berry said, "We are pleased to announce the additions of Floyd County and the bordering counties of Swisher, Briscoe, Motley, Dickens, Crosby, Lubbock and Hale which have been made eligible to receive disaster assistance through the SBA due to drought conditions experienced from June 3, 1980, through August 26, 1980, under SBA's declaration #1900."

Berry continued, "This brings a total of 68 counties in Texas which have been made eligible for drought disaster assistance through SBA to be handled in the Lubbock Disaster Office. The deadline for farmers and ranchers to file for physical losses under declaration #1900 is February 12, 1981. Agriculture related businesses have until May 12, 1981, to file for Economic Injury Disaster Loan."

For further information, interested persons may contact the SBA Lubbock Disaster Office, located at 720 Texas Avenue, by calling (806) 762-7481, or by contacting their county ASCS Office.

## Methodist Set Date for Fall Revival

Revival will be held at the First Methodist Church, October 12-15, in Sunday services are at 11:00 a.m. and 7:00 p.m. Services for Monday, Tuesday and Wednesday will be at 7:00 a.m. and 10:00 a.m. and 7:00 p.m. at Tulia Park, pastor, at Tulia Park Church, will be the preacher. The revival will be basic evangelistic according to Parks.

Rev. Wesley Putnam, pastor at Hale Center Methodist Church, will be the singer. Wesley is a well known evangelistic singer. Lucy Dean Record will be at the organ and Kim McAda will be at the piano. The entire community is invited to all services. Monday thru Wednesday morning at 7:00 a.m. We will have coffee and donuts, plus milk for all present.

**Contest Winners**  
This week's football contest winners are: 1st place, W.L. Carthel; 2nd place, Boyd Lee; and 3rd place, Michael D. Means.

## Lockney General Hospital Auxiliary Meets

The Lockney General Hospital Auxiliary met October 2, at 7 p.m. at the hospital for its regular meeting. The meeting was called to order by Dona Winter, President, and opened with a prayer led by Wynona Allison.

Proceeds from sales at the Fair booth totaled \$529.00, then over \$200.00 in donations were received. We wish to thank those who donated gift items to sell, those who made a contribution, and those who purchased items at the Fair booth. All the funds, less actual expenses, will be used to purchase special equipment for the hospital.

Dona Winter, Jewel Roberts, Grace Colson, Edna Cox and Gayle Fortenberry attended the TAHA District I, Areas A and B meeting in Plainview, September 9. Medical Alert Information was given to each Auxiliary attending the meeting.

Gayle Fortenberry reported on "Life Habits" stressing "You Belong To You." "You are responsible for your own Health, Exercise and Nutrition." A Bake Sale was tentatively set for November 21, at Recreators Cleaners. Brenda Mangold presented the program for the evening by showing slides on origins of mental illness and personality development from MHMR, Plainview. There is a plan for other educational programs to be presented in the future. The program was very informative and appreciated by all members present.

Those attending the meeting were: Grace Colson, Jewel Roberts, Gayle Fortenberry, Brenda Mangold, Edna Cox, Elsie Sherman, Bernice Barker, Merle Mooney, Helen Huffman, Josephine Smith, Wynona Allison, Dona Winter, Nita Holland, Cornelia Johnson, and a new member, Edna Workman.



NORA BYBEE

## Nora Bybee Named Bellringer Chairperson

Mrs. Nora Bybee of Lockney was named Mental Health Bellringer chairperson for the Lockney area, announced John Stevens, President of the Mental Health Association in Texas.

"The Bellringer Chairperson is a vital part of making our organization work," said Stevens.

The Mental Health Association in Texas is a voluntary citizens organization, funded entirely by private contributions. The association needs the donations from the Bellringer in order to continue its work.

"This year the Association's major goal is to improve the care for the discharged long term mentally disabled," said Stevens.

The Association is promoting self-help groups for former patients and for families of persons with mental health problems. The Association is also working to see that housing opportunities are available in communities for discharged patients.

For free information about mental health topics contact: Mental Health Association in Texas, 103 Lantern Lane, Austin, Texas 78731, 512-459-6584.

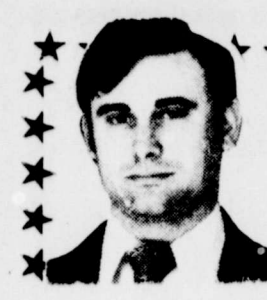


REV. BRUCE PARKS

Various advertisements for products like tape, soap, and lotions.

- TAPE: Strapping, Masking, Duct Tape, 1 1/2" x 400', 3/4" x 50 yds, 2" x 10 yds. \$1.29 YOUR CHOICE (X-6371, 2,3,4)
- Nestle CRUNCH: Salted Peanut Roll. 5/\$1 (X-6304)
- SOPHIE MAE SALTED PEANUT ROLL. 5/\$1 (X-6304)
- NATURE SCENTS BODY BARS: Herbal, wildflower or sunshine bath soaps. 4.75 oz. 3/\$1 (X-6361)
- OLD SPICE COLOGNE: The ever-popular, ever-pleasing men's fragrance 4.14 oz. \$2.99 (X-6361)
- 320 cotton squares: Ultra Care Lotion. \$2.99 (N-51)
- REXALL ECONOMY SIZE COTTON SQUARES: Built for greater absorbency. \$2.99 (N-51)
- REXALL SOFT M PERM: \$3.95 (N-51)
- REXALL BALSAM HAIR CONDITIONER WITH PROTEIN 16 oz. (P-160)
- REXALL BALSAM CONDITIONING SHAMPOO 16 oz. (P-161)
- REXALL ORGANIC HONEY & WHEAT GERM OIL SHAMPOO 16 oz. (P-210)
- REXALL ORGANIC WHEAT GERM OIL AND HONEY TIONER 16 oz. (P-200)
- NATURALIST COCOA BUTTER CREAM LOTION 16 oz. \$1.39 (P-455)
- REXALL ULTRA CARE Lotion 16 oz. \$1.49 (P-450)

# FARM & RANCH NEWS



## Around The County

By Jett Major  
FLOYD COUNTY EXTENSION AGENT

Rainfall amounts ranging from 2.5 to 4.5 inches were reported over most of Floyd County late last week and an additional two inches fell in the northwestern portion of the county early this week. Although the rainfall hampered harvest operations in the area, it was generally well received by all producers, especially those that have, or are sowing, wheat this fall. Rains have also stimulated growth in drought-stricken pastures causing grasses to finally turn a healthier green color.

Desiccation of cotton has, however, been made more difficult by the rainfall because of the harder-to-kill regrowth it has generated. Those fields that had been desiccated prior to the rainfall have also suffered some reduction in

yield potential due to lower grades and stringing out of open bolls. Head smut has been a problem in some sorghum fields that could not be harvested soon enough due to heavy rains.

If dry weather prevails next week, soybean and sorghum harvest should again get underway and be well on the way to completion. Cotton harvest, on the other hand, hasn't really had a chance to get a good start, but should be well underway this next week.

Bell pepper fields continue to be plagued by light to moderate worm infestations and some aerial spraying for these pests continue to be made in some portions of the county even at this late date.

## ASC Committee

### Election Nearing

The ASC Community Committee election this year will be held on December 1, 1980. Ballots will be mailed to voters about 10 days before the election. The voted ballots must be mailed or returned in person not later than December 1.

The ASC committees in the county are known as A, B, C, D, E, F, G, H, and I. You will be sent a ballot for the community in which your principal farming interest is located.

A slate of at least six nominees will be developed for the community. This letter informs you of the right to nominate candidates by petition. A blank petition suitable for this purpose is printed on the back of this letter. If you need additional petitions, you may copy this one or you can obtain more copies at the county ASCS office. Each petition submitted must be:

1. Limited to one nominee.
2. Signed by at least three eligible voters in the community.
3. Include a certification that the nominee is willing to serve if elected.
4. Received at the county ASCS office not later than October 27.

If six or more eligible candidates are nominated by proper petition, no further nominations will be made. If less than six are nominated by petition, the present community committee will add the number of nominees needed to complete the slate of six. A person who is nominated by petition found ineligible will be so notified and given 7 days in which to appeal.

Persons nominated should be currently engaged in the operation of a farm or ranch and be well qualified for committee work. In general, a farmer is eligible to be a community committee member if the farmer lives in the community in which he/she is eligible to vote. The duties of community committee members include:

1. Informing farmers of the purpose and provisions of the ASCS programs.
2. Keeping the county committee informed of local conditions.
3. Recommending needed changes in farm programs.
4. Participating in community meetings as necessary.
5. Performing other duties as assigned by the county committee.

ASC committee elections are open to all eligible voters without regard to race, color, religion, sex, age or national origin.

## 4-H Officers Attend Training

Club officers from Lockney 4-H and Floydada 4-H, along with Council delegates, attended the annual training meeting Monday night in the Agricultural Building in Floydada. The training was conducted by Extension Agents, Ken Langley and Jett Major. Duties and responsibilities were explained along with program planning and aspects of club organization. Officer participation in the upcoming achievement banquet to be held October 11 was discussed. A slide presentation on training opportunities at the Texas 4-H Center in

Brownwood was shown as those present enjoyed refreshments.

Officers for Lockney 4-H include: Jill Whitfill, president; Keith Hight, vice president; Earl Broseh, secretary-treasurer; Melanie Foster, reporter and council delegate; and Byron Brock, council delegate.

Floydada 4-H officers include: Marty Covington, president; Mitch Ross, vice president; Jodie Smith, secretary-treasurer; Christy Pruitt, reporter; and Chris Fulton and Tom Ross, council delegates.

## 4-H Achievement Banquet Set For October 11

Floyd County 4-H Clubs have scheduled their Achievement Banquet for Saturday, October 11 at 7 p.m. in the Lockney Elementary School Cafeteria. All members and their families are urged to attend this annual event. Awards for outstanding work done in 4-H projects and leadership will be presented by County Judge Choise Smith during the ceremony.

Banquet, but each family will need to bring a salad or vegetable and a dessert.

Immediately following the banquet, there will be a dance at the American Legion Hall in Lockney. The cost is \$2.50 per person and the public is invited.

Those planning to attend are requested to contact the County Extension Office at 983-2806.

## Winter Stocker Cattle - Are They Profitable?

Whether or not producers can make money from stocker cattle this winter depends largely on how well they buy and sell the animals as well as their rate of gain.

Yet, to make sound management decisions, stocker cattle operators must know what they're up against, and that means developing a budget, points out Norman Brints of Vernon, area economist in management with the Texas Agricultural Extension Service, Texas A&M University System.

Brints provides some estimates of variable cost for budgeting purposes which total \$400.50 a head. These are based on grazing of wheat pasture at 25 cents per head per day, a stocking rate of two acres per head, 130 days of grazing, a 3 percent death loss and stockers grading high good. His costs include the following for a 400-pound steer: steer cost, \$320; death loss, \$9.60; wheat pasture, \$32.50; hay, \$12; medicine and veterinary costs, \$3; salt and minerals, \$6 cents; miscellaneous expenses, \$2; hauling and marketing, \$5; and interest, \$15.84.

Based on these expenses (not including labor or a pickup), the economist lists the following breakeven prices per hundred pounds depending on the rate of gain per day for the 130-day grazing period: \$75.56 with a 1-pound gain; \$71.26 with a 1-1/4-pound gain; \$67.31 with a 1-1/2-pound gain; \$63.87 with a 1-3/4-pound gain; and \$60.68 with a 2-pound gain.

By using a breakeven price, a producer can determine the price he must receive to at least get his operating money back, notes Brints. As the rate of gain increases, the breakeven price drops.

Producers can boost the rate of gain or the stocking rate through a supplemental feed program, adds Brints. Of course, the economics of such a program depend on the price of cattle in relation to the price of feed and the amount of additional gain. Usually a high energy supplement fed at the rate of 1 percent of body weight will increase gain per head by about 1/2-pound per day. If supplement costs \$150 per ton, the cost per pound of gain would be 75 cents if 5 pounds of feed is fed per

head per day.

As production costs continue to increase, stocker producers need to consider several factors in making sound management decisions. Excluding the calf purchase price, interest rate and cost of pasture are the two key factors that influence producers' decisions for a given grazing situation, believes Brints. However, some of these factors have a greater effect on breakeven price than others.

Based on these factors, the economist offers several examples with regard to the variable costs mentioned earlier and a rate of gain of 1-1/2 pounds per head per day to increase the breakeven price by one cent per pound:

- interest rate must increase by 5 percent.
- pasture cost must increase by \$3 per acre.
- cost of pasture paid on an in-weight basis must increase by 35 cents per hundredweight per month.

Having a good handle on operating costs and how they affect profitability is a key to a successful stocker cattle operation, contends Brints.

### Emergency Loan

### Assistance Available For Floyd Farmers

Congressman Charles W. Stenholm announces that farmers in Floyd County may apply for emergency loan assistance to recover the losses caused by high temperatures and drought, which occurred from June 3, through August 30, 1980. Applications for emergency loans should be filed in the Farmers Home Administration County Office. Applications for physical and production losses will be accepted for 9 months from the effective date of September 16, 1980.

FmHA emergency loans are made to qualifying farmers who lack other sources of credit for loans to cover qualifying damages and/or losses to crops, property, machinery and equipment.



COTTON HARVEST comes to a grinding halt due to the rain that was desperately needed.

## MARKET REPORT

The Wednesday afternoon cash grain market was:

|                          |                                  |
|--------------------------|----------------------------------|
| Corn/cwt. — 6.00-6.10    | Steers: 200-300 lbs. — 1.00-1.06 |
| Wheat/bu. — 4.10-4.12    | 300-400 — 85-92                  |
| Milo/cwt. — 5.65         | 400-500 — 77-84                  |
| Soybeans/bu. — 6.95-7.00 | 500-600 — 76-77                  |
|                          | 600-800 — 72-74                  |

Cotton contract were at 3300 points over the 1980 loan.

Floydada Livestock Sales reported the sale on Wednesday to have a good, steady market. Prices were generally \$2-\$3 higher on lightweight cattle and steady on over 500 pound cattle. 900 head were sold.

|                          |
|--------------------------|
| Heifers: 200-300 — 75-82 |
| 300-400 — 70-74          |
| 400-500 — 65-72          |
| 500-600 — 63-66          |
| 600-800 — 60-62          |

## South Plains

Mrs. Murry Jul

Mr. and Mrs. spent their Sunday at the home of their brother, Mr. and Mrs. Kinslow, and the dinner with Mr. and Mrs. Tibbitt had as dinner with them Sunday. Mrs. E. and Latham of P. Mr. and Mrs. R. Lockney.

The October 11th will be held in the Mrs. Leighton 2:00 p.m. with the Extension Agent County, bringing a gift of \$100.00. Mrs. Mamie W. Amarillo Saturday night and the night with her brother-in-law, Mr. Buster Dunham, home on Sunday.

A gift coffee Miss Shandra Young of Mr. and Mrs. Young, was held Monday, October 13, 9:30-10:30 a.m. in the home of Mrs. Mary J. Floydada. The children, she is the son of Amarillo, have a home wedding for October 18.

Rev. and Mrs. borne went to M. Friday, October 31, the day, and to be mother, Mrs. Core. We offer our sympathy to the family members Sam Lide family (Blanche), whose services were held on the City Park Christ. She had passed away on Wednesday at the General Hospital. The Celebration Committee of the Texas W.M.U. Century One was at the Baptist Church Thursday evening, 2, for the Centennial with the program at 6:30 p.m. A supper was served one hundred guests in the dining hall. Bill B. sent music and old Trull presided.

Agri-Fact by Jerry Pen

### Case Fully Reconditioned Used Farm Equipment

At Case Power and Equipment, we take great pride in offering you only the finest reconditioned used farm equipment available. When we trade for used farm equipment, we don't just clean it up and make it look nice, we go over it from top to bottom, replacing any worn or worn-out parts before we offer our equipment for sale. Come to Case Power and Equipment today and look over our large selection of used farm equipment. You'll be glad you did.

#### Lubbock Farm Tractors

|                              |             |
|------------------------------|-------------|
| 1965 930 Cab                 | \$4,500.00  |
| AC 190 XT Series 3 Cab       | \$7,900.00  |
| 1 HC 1066 with Cab and Air   | \$11,900.00 |
| 1979 2090 Cab, Air, 225 hrs  | \$24,400.00 |
| 1979 2390 Cab, Air, 895 hrs  | \$28,800.00 |
| 1976 2670 Cab, Air, PTO      | \$29,000.00 |
| 1971 1070 Cab                | \$9,800.00  |
| 1978 990 D.B. only 321 hours | \$8,000.00  |

#### Floydada

|                            |             |
|----------------------------|-------------|
| 1976 2670 Cab, Air, PTO    | \$29,900.00 |
| Case 1370 Cab, Air         | \$15,400.00 |
| Case 1175 Cab, Air         | \$12,800.00 |
| Case 1175 with 70 Loader   | \$8,900.00  |
| Case 1175 with Cab         | \$9,900.00  |
| Ag Gator Sprayer           | \$3,450.00  |
| AT 4 1600 White 4-wheel dr | \$12,500.00 |
| PDC Cab and Air            | \$12,500.00 |

#### Lamesa

|                            |             |
|----------------------------|-------------|
| Case 830 LP                | \$4,200.00  |
| 1170 Cab and Factory Duals | \$9,900.00  |
| 1370 Case Cab, Air         | \$16,900.00 |
| 1570 Case Cab, Air         | \$21,500.00 |
| 1 HC 1466 Cab, Air         | \$17,700.00 |

Case Power and Equipment  
Lubbock 3302 Slaton Hwy. 745-4451  
Lamesa 902 S. Dallas 872-5801  
Floydada 101 South 12th 983-2838



TEXAS GROWS 'EM BIG, but Greeley, Colorado grows 'em bigger says Bill Daniel. At least that's what he was told by a passer-by. Carmen Powell of Floydada shows off a huge Colorado onion.

### Sponsored by the Following Interested Firms

|  |                                       |   |                            |
|--|---------------------------------------|---|----------------------------|
| First National Bank<br>Floydada              | Case Power & Equipment<br>Floydada    | Russell's Equipment & Supply<br>Floydada    | Perry Implement<br>Lockney |
| Floydada Cooperative<br>Gins                 | The Floyd County Hesperian            | Floydada Implement<br>Co.                   | Ansley & Sons<br>Lockney   |
| Federal Land Bank<br>Association Of Floydada | Consumers Fuel Association<br>Lockney | Plainview Savings & Association<br>Floydada |                            |
|  | Martin And Company<br>Floydada        |   |                            |

## THE WA

BORDEN'S ASSTD. ICE CREAM 1/2 GAL. RD. CTR.

BORDEN'S ASSORTED FLAVORS 3 8 OZ. CTNS.

BORDEN'S HI-PROTEIN MILK 1/2 GAL. CTN.

ALLSUPS MILK GALLON

33 OZ. BOTTLE CARTON COCA COLA PLUS DEPOSIT

2 LB 6 OZ BOX BREEZE DETERGENT REG \$2.35

SALAD DRESSING MIRACLE WHIP 32 OZ.

CLOROX GALLON BLEACH REG \$1.44

CHARMIN 4ROLL PKG BATHROOM TISSUE REG \$2.01

WE RESERVE THE RIGHT TO LIMIT PRICES EFFECTIVE OCTOBER 9-11 SPECIALS GOOD WHILE SUPPLY LASTS - LIMITED

# ALLSUPS CONVENIENCE STORE



# Weddings and Engagements



JO BETH STALLINGS

## Stallings-Dietrich Plan November Wedding

Mr. and Mrs. Claude Stallings of Lockney wish to announce the engagement and forthcoming November

marriage of Jo Beth Stallings to Michael A. Dietrich son of Sue Dietrich from Plainview and Arnold Dietrich from Providence Community.

## Young Feted With Bridal Shower

Shandra Young, bride elect of Daniel Simpson was honored with a bridal shower in the home of Mary Vickers Saturday morning, October 4 at 9:30 a.m.

The serving table was covered with a white lace tablecloth and held a brown and cream floral arrangement as the centerpiece. Coffee and fruit bread were served with nuts and mints. A brown coffee set was used. Corsages worn were of brown and cream colors.

Hostesses for the shower were: Melba Vickers, Mary Vickers, Joy Assiter, Joy Guests, Joy Fulton, Edith Muncy, Carol Bell, Jane Beane, Ann Ferguson, Janice Julian, Iva Sanders and Sue Ward.

The honoree was presented a Sunbeam electric mixer, by the hostesses.

The couple plan an October 18 wedding in the home of the bride's parents, Mr. and Mrs. Travis Young.

## Allen Home Scene Of Classmate Reunion

On Saturday night, September 27, the home of Harvey and Judy Allen was the scene of a get together of fellow classmates who attended FHS.

Ones who came were Sharon McMeans, Charles and Judy Holland of Ft. Worth; Bill and Ann Gilliland of Abilene; Judy and Charles Morehead of Canadian; Sonja Ragsdale of Stratford; Don and Carolyn Garrett, Darlene and Bill James of Houston; Bob Ed Dempsey of Barksdale AFB, Louisiana; Larry and Margaret Irby of Duncanville; Sue and Gene Bain and Price and Patty Pritchett of Dallas; Richard and George Graves of Canyon; Don and Jan Vickers of Plainview;

Aubrey Whitehead of Odessa; and Jerry and Julie Finley, Martha and Elmer Dean Williams, Gary and Linda Matsler, Sue and Leon Williams, Sue and Alton Higginbotham, Marisue Potts, and Freida and Jim Kelielhor, all of Floydada. These were all representing the class of 1960.

Attending from other graduating classes were Estella and Jerry Rich, Mary and Ed Whitehead, James and Martha Badgett, Mike Badgett, Anna Badgett, Bud Higginbotham, Margaret Aycock, Rick Holland, Pat Carthel, Gary and Shannon Jarnagin Wayland and Debbie Richardson, and Janet and Melvin Lloyd.

## Chambers Photography In Crosbyton Opened Monday, October 6

Chambers Photography opened Monday morning, October 6, at 202 W. Aspen in Crosbyton, according to owner Tom Chambers.

Chambers, a Crosbyton High School instructor last year, says his firm will feature studio portraiture, weddings, environmental portraiture, memory mates, senior and other school photos, developing and printing of 110 and 126 film, as well as custom matting and framing and personalized Christmas cards.

The firm will have office hours of 10 a.m. to 6 p.m. Monday through Friday and from 9 a.m. to 1 p.m. Saturday.

**Got Heating Or Plumbing Problems?**  
Call  
**HOLMES PLUMBING**  
Austin or Steve  
983-2251  
6:30 - 9:30 a.m. and  
5:30 p.m. Until?

## 3-R Party And Bridesmaid's Supper Compliments Irwin

A 3-R party and a bridesmaid's supper was given for Kim Irwin in the home of her aunt, Margie Young, in Floydada on September 22nd.

The Relative, Rice, and Recipe party was given to present the honoree with recipes and ingredients and rice bags.

The supper was given cafeteria style, serving sandwiches, dips, chips, and vegetable sticks, and apricot colored punch served on a table carrying out the brides fall colors. The table was covered with a brown cloth with a copper candelabra as a centerpiece and copper accessories, and also apricot colored

plates and napkins. The bar was covered with a brown cloth and displayed the gifts and recipes.

Hostesses for the occasion were aunts of the bride-to-be: Margie Young, Loretta Burns, Dorothy Turner, Louise Turner, and Peggy Medley.

Those attending were: Audeen Irwin, Mother of Kim; Shelli Irwin, Carol Irwin, Frances and Mandy Davis, Mandy Wimberly, Lori Young, and the honoree, all of Lubbock. Becky and Amy Burns, Rhonda, Shonda, and Chad Guthrie, Debbie Medley, Sheryl Derryberry and Valree (Granny) Turner.

## Denison-Surprise Birthday Brunch Honoree

On Saturday morning, October 4, Mrs. W.B. Parrack, 308 E. Hallie St., honored her sister, Beulah Denison with a surprise birthday brunch. As Mrs. Denison arrived, the group sang "Happy Birthday" to her and all enjoyed an hour of fellowship.

The highlight of the occasion was snapshots made of those present.

## Doll Show And Sale To Be Held

The Golden Spread Doll Club of Amarillo is announcing their annual Doll Show and Sale to be held Saturday, October 11, at the Federated Women's Club Building, 2001 Civic Circle in Amarillo. Feature attraction will be many types of dolls from the club members collections that will be on display. Dealers from several states will have dolls, toys, miniatures, and doll related items for sale.

Doors will open to the public from 10:00 a.m. until 6:00 p.m. Admission charges of \$1.00 for adults and 50 cents for children under 12 will be charged.

Proceeds from the sale will be donated to charity. This is an ideal outing for Mother and daughter.

## Jones-Meek Reset Wedding Date

Due to the postponement of J. Don Jones and Mickie Meeks wedding plans on August 23, 1980, the couple have reset their date for November 28, 1980 at the home of her grandmother Mrs. Lucy Bingham in Wolf-forth, Texas.

## Free Spirit Class Holds Meeting

The Free Spirit Sunday School class of the First Baptist Church met in the home of their teacher, Mrs. Frances Weathersbee on September 30 for a salad supper.

Members of the class exchanged gifts from their Secret Sisters and then had a brief business meeting.

Those attending the Salad Supper were: Duffy Hinkle, Paula Pyle, Kathy Miller, Regi Gross, Lanell Tardy, Daphna Simpson, Lee Finley, Stacy Reeves, Bama Coward, Gayle Hale, Beverly Harrison, Nova Evans, Nancy Kirk, Zohn Turner, Jane Carter, Linda Smith and the hostess, Frances Weathersbee.

**October Is Opal Month**  
Make Your Choice From  
A Wide Selection  
Of Rings, Earrings  
And Necklaces  
**SCHACHT**  
Flowers, Jewelry & Gifts  
"Our Pleasure Is To Serve You"  
112 W. Poole - Lockney - 652-2385

## Double-Ring Ceremony Unites King-Cannon

A double-ring ceremony uniting Jana Kim King and Mark Steven Cannon of Tulia was held Saturday October 4 in the First Baptist Church Chapel of Tulia. Rev. Charles Davenport, pastor of the First Baptist Church in Tulia, performed the 6:00 ceremony.

The bride is the daughter of Mr. and Mrs. D. Gene King of Tulia and the groom the son of Mr. and Mrs. J.W. Cannon of Floydada.

Adorning the chapel was a gold archway with white silk mums, greenery, blue ribbons and wedding bells hanging from the center. At the front, on each side was a pedestal with a bouquet of white mums. To either side were gold candelabra with greenery, blue bows and seven candles. The families pews had blue bows marking them.

Following tradition, for something old the bride wore her grandmother's wedding band, a new aquamarine and diamond pendant, she borrowed her grandmother's diamond earrings and wore the blue garter.

Her bouquet consisted of white silk daisies, dark green ivy and baby's breath. Lorene Luper of Brownfield, served as maid of honor. Bridesmaid was Jennifer Measles of Tulia and Kimberly Jones of Tulia was flower girl.

Attendants wore floor length, light blue two-piece dresses of soft patterned knit. The full blouse was gathered at the waist by a belt of the same material and had 3/4 sleeves and A-line skirts. As a hairpiece they wore two blue daisies and baby's breath. Bouquets of rainbow colored silk daisies and blue streamers were carried.

Best man was Doug Cannon of San Antonio, brother of the groom, and groomsmen was Dixon Mooreland of Levelland. Chris Perez, Tulia and Jeff Cannon of San Antonio were ring bearers.

The groom was attired in a white tuxedo with tail coat, blue daisy boutonniere, white ruffled shirt and bow tie. Best man and groomsmen wore navy tuxedos, white ruffled shirts, navy bow ties and white daisy boutonniere.

Music was provided by Diana Powers, Tulia, as she sang "Time in a Bottle" and "For Baby." Sue George, Tulia, was pianist. "The Wedding March" was played as the party came in.

The bride is a graduate of Tulia High School and presently employed by Swisher Electric Coop in Tulia. The groom a graduate of Floydada High School and South Plains College is farming northeast of Tulia.

A reception following the ceremony, was given by the bride's parents in the church parlor. Serving were Gayla Pool of Plainview, and Vickie Cannon, San Antonio.

The house party included Elizabeth Jones, Betty Stout, Irene Morris and Nancy Vaughn, all of Tulia.

The serving table was covered with a white chiffon tablecloth with lace overlay, which was gathered by six blue bows with white daisy centers. Antique China dolls dressed as bride and groom and surrounded by the bridesmaids and brides bouquets, served as the centerpiece. The dolls were made by the bride's grandmother and dressed by the bride's great aunt. The three tier wedding cake was decorated with blue daisies. The top tier was on four columns and a wedding bell sat inside the columns. It was topped by a lattice work heart with cherubs, illusion and baby's breath.

Another table covered with a creme colored, eyelet, floor length cloth held a white lace basket with a bouquet of rainbow colored silk daisies and blue ribbon as a centerpiece. Coffee was served from a silver service and a frozen fruit punch was in a crystal service.

REHEARSAL LUNCHEON  
A rehearsal luncheon was hosted by the groom's parents at the Swisher Electric Willie Room in Tulia. The luncheon was catered by King's Restaurant of Floydada.

The couple will reside in Tulia, following a wedding trip to New Mexico.



MRS. MARK STEVEN CANNON

## Floydada Nursing Happenings

Mrs. Ethel Cross and Elva Reeves spent two days in El Paso at a workshop. Mr. Menard Fields and Miss Mary Pearl Coward attended a meeting in Lubbock last week.

We have several of our senior citizens who are ill at home and hospitals. Harvey Tardy is doing very well.

Death came again among our members. Mrs. (Sam) Blanche Lide died Wednesday in Lubbock from a heart attack. We are all sure going to miss her in all of our different activities. Her funeral was Friday afternoon at City Park Church of Christ.

Remember Bingo on Monday night at 7:30 and 42 and 84 on Thursday nights at 7:00.

We will have our regular monthly luncheon on October 16, come one and all enjoy it with us dinner at 12:00 or near that.

We are having some work

done on the building. Right up on the building. Fred Thompson, Thelma, Mark, and any other state feel free to help.

Members and guests at must make reservations. Mrs. in

er Herrera,

Hopkins, Pam-

varria Lopez,

Lopez

Bates, D'Alan

line Criswell, Kella

Wilson

Wynne Hill, Kathy

wards, Paula El-

ra Reyes, Anna

ra Vallejo, Mar-

rez

arnest Franklin,

Schwertner

Wilson Beedy,

dney Couch, Ka-

line Green

ernesto Pesina, Tine

Lon Carthel, Anne

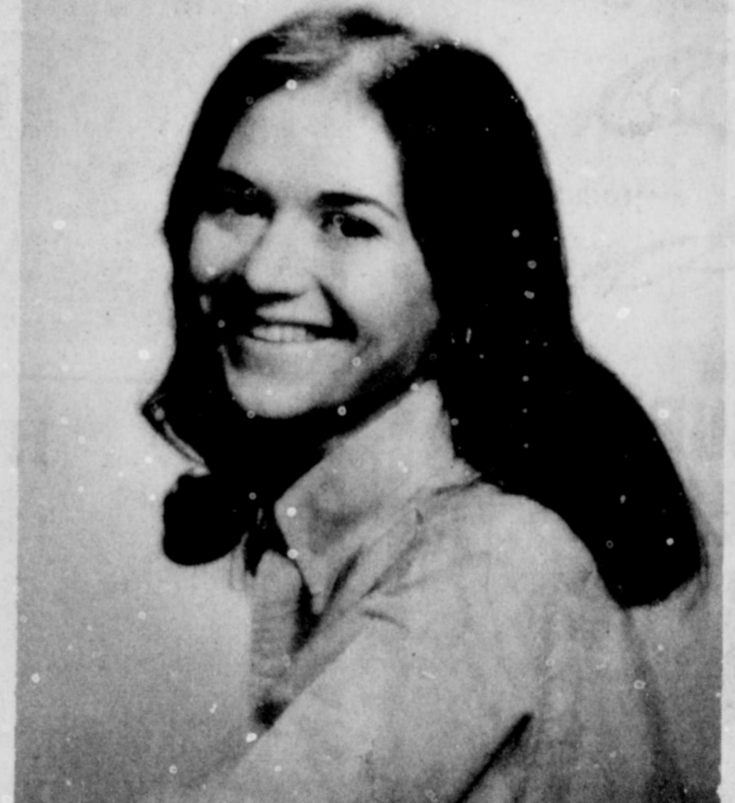
## COUNTY

Johnston  
Ricky Layne  
Angie Delynn T  
James Willie  
Lucille Lois Whit  
Calvin Colhe  
Velma Lee Wee  
Jerry Don Ben  
da Lynn Jordan  
Mark Evans  
non Bell  
Jan Antonio  
Corina Castillo  
Robt. Eugem  
Regina Sanders  
Mario Garc  
Trevino  
Jay Nelson C  
Elizabeth Bradle  
Jerry Lee Cum  
Juanita Robertson  
Daniel Rodrig  
Cisneros  
Bruce Eman  
Brenda Doyle  
Greg Andrew  
Lana Shyrl Tucke  
Baine Allen Be  
bra Ann Gilbreath  
Paul Greiving,  
Larry Allen D  
becca Kay Sewel  
Robert Grant  
Shay Chandler  
Edwin Morale  
Kay Guzman  
Francisco Davi  
Jr., Maria Maldo  
Orvil Dean G  
garet Henry Poe  
Evelyn Martine  
Mata  
Alfredo Martin  
Oidonez  
Steven Keith  
Jeannette Thom  
Artemio Diaz, S  
ra  
Guadalupe Ma  
via Perez

WARRANTY  
May-Ju  
Kathy Lou Bu  
Mize, in 1/2 Lots  
2, West Side he  
tion, Floydada.  
A.S. Mize to  
Wilson 58.75 acre  
1/4 Survey 34, Lot  
George F. Wea  
D. Hurbes, et  
Survey 1, Blk. B  
George F. Wea  
F. Smith, et al,  
1, Blk. B-6  
Allen Thrasher  
Plains Concrete  
Floydada town lo  
A.C. Castillo  
Banda, Lots 1, 2,  
Brunson Annex,  
Gregorio Band  
Ramos, Lots 1, 2,  
Brunson Annex,  
Fred L. Marble  
Marble Family In  
Herschell E.  
Doris McLain, L  
Blk. 6, Highlan  
Floydada  
Stewart D.  
Cecil D. Drake pa  
10&11, Blk.  
Heights add'n, F  
Van B. Miller t  
Viciera part of  
of 8, Blk. 3, Bar  
add'n., Floydada  
L.M. Readmim  
Griffith, Lots 5  
Muncy add'n.,  
Robert L. C  
Dalan Hanna, L  
Steen Place ad'  
F.G. Jones Jr.

**A GIANT, AREA-WIDE PRAISE**  
**IN CONCERT**  
**THE LARRY SINCLAIR**  
**Aiken**  
**First Baptist Church**  
**8 pm Oct. 10, 1980**  
**ADMISSION FREE**

**Ladies...**  
**Autumn Colors**  
**Accent Our New**  
**Wrangler Selection**  
**Of Blouses &**  
**Pullover Tops For Fall This Year**  
**Choose From A Wide Array Of**  
**Casual Or Dress For Any Occasion**  
**THE LOFT**  
517 East Houston



CAROL COGDELL

**Just Arrived**  
**Jean Patches**  
For Decorating New & Old Jeans  
Only \$1.25  
Good Selection  
Some Derby's Left  
Hurry While Last!!  
**The Shadow Box**  
Lockney

**You Are Cordially**  
**Preach**  
**Doyle W**  
In A Series Of Me  
Church C  
5th &  
Floyda  
Monday Thro  
Oct. 13-1

# COUNTY RECORDS

**Wills**

Wills probated: Estate of Alley, will and probate June 1980; Quilantan, adm. granted; Ray, will probated 1980; Sabido, will probated 1980; Bennett Thornobated June 23, 1980; Smith, will probated July 7, 1980; Mack, will probated 1980; West, will probated August 5, 1980; Sloan, will probated 1980; Batters, will probated 1980; J. and appl. filed July 17, 1980; August 11, 1980; Tinsley, will probated 22, 1980; Phillips, will probated 11, 1980; Abbas Abbott, will probate August 19, 1980; West, probated 19, 1980; Lind, will probated 29, 1980; Battey, will and probate September; Fawver, will and probate September

**WARRANTY DEEDS**

May-July

Kathy Lou Burk to A.S. Mize, in 1/2 Lots 1&2, Block 2, West Side heights, addition, Floydada.

A.S. Mize to Woodrow Wilson 58.75 acres, out of SE 1/4 Survey 34, Lot B-3

George F. Weast to Sharon D. Hurbes, et al, SW 1/4 Survey 1, Blk. B-6

George F. Weast to David F. Smith, et al, SE 1/4 Survey 1, Blk. B-6

Allen Thrasher to High Plains Concrete, various Floydada town lots

A.C. Castillo to Gregoria Banda, Lots 1, 2, & 3, Blk. 2, Brunson Annex, Lockney

Gregorio Banda to David Ramos, Lots 1, 2&3, Blk. 2, Brunson Annex, Lockney

Fred L. Marble, et al, to Marble Family Inc. 5 Tracts

Herschell E. Hinson to Doris McLain, Lots, 14&16, Blk. 6, Highland Add'n., Floydada

Stewart D. Dickson to Cecil D. Drake parts of lots 9, 10&11, Blk. 5, Bartley Heights add'n., Floydada

Van B. Miller to Jimmy M. Vickers part of Lot 7 and all of 8, Blk. 3, Bartley Heights add'n., Floydada

L.M. Readhimer to Harold Griffith, Lots 5&6, Blk. 2, Muncy add'n., Lockney

Robert L. Crawford to Dalan Hanna, Lot 33, Blk. 2, Steen Place add'n., Floydada

F.G. Jones Jr. to Hurshel Harston, 320 acres out of Survey 16, Blk. C-9

Thomas K. Farris Jr., Trustee, to First National Bank of Floydada, Lots 1, 2 & 3, Blk. 116 original Floydada

Carl P. Jarrett to Ince Oil Co., Lots 1, 2, Blk. 109, original Floydada

Central Plains Saving Association to Joe T. Rodriguez, Lots 11-16, Blk. 2, Day add'n., Lockney

John W. Wilson to Kenneth Bean, E 1/2 Survey 42, Blk. D-1

Ronald J. Darr to Mark L. Sanders, Lots 13&15, Blk. 7, Highland add'n., Floydada

Grover Stephens to Mike Vickers, E 30 ft. of Lot 13 and all 14, Blk. 11, Western add'n., Floydada

Nora McKnight, et al, to Jesus S. Duenas, Lots 1&2, and Part 15&16, Blk. 4, Brewster add'n. #3, Lockney

Van Earl Bradley to Carroll R. Anderson, part of lots 15-18, Blk. 5, Walling add'n., Lockney

Marble Family Inc. to Don H. Marble, et al, 5 Tracts

Esther Smalley to Bill Weir, Lot 13, Blk. 92, original Floydada

E.C. Cope to Jose Perez, Lots 1&2, Blk. 2, Brewster add'n. #3, Lockney

F.G. Jones Jr. to Neuron C. Floyd 13.08 acres, SE part of West 1/2 of Survey 16, Blk. C-9

James Jeffress to Mike A. Perry, Lots, 20-24, and part of 22, Blk. 1, Town and Country add'n., Lockney

Wilbur Mize to Paul L. Westbrock, Lots 14&15, Blk. A-3, original Floydada

Artiliano Garcia to Julia Flores, Lot 10, Blk. 103, original Floydada

C.L. Barry to Wayne Tipton, Lots 4, 5 & 6, Blks. 1-5, original Floydada

Mary R. Hutton to T.R. Hutton, Lots, 4-10, Blk. 1, Brewster add'n., Lockney

T.R. Hutton to T.H. Williford, Part of J.C. McFarland Survey

A.M. West to Keitia Reeves, Part, Blk. 11, Price First add'n., Floydada

# HOMEMAKERS NEWS

**Leader Training on "No-Frill Foods"** will be held Thursday, October 9 at 10:00 a.m. in the Agriculture Building. Each E.H. Club should send at least one volunteer to receive the training. Other clubs in the county who would like to have this program are also invited to send a member to the training.

Every citizen needs skills to actively and confidently participate in the government and the market place. The Texas Agricultural Extension Service supports consumer education in numerous ways, including county-wide programs. Extension Homemakers Club programs and 4-H projects.

The County Extension office also has free pamphlets and information available on a wide variety of consumer topics. For example, you can request a bulletin on how to solve consumer problems or how to clean on a shoestring, or how to grow your own garden. Call the County Extension Agent for details. Begin your consumer education today.

Educational programs conducted by the Texas Agricultural Extension Service serve people of all ages regardless of socioeconomic level, race, color, sex, religion or national origin.

## Local Women Attend The 1980 Churchwomen's Conference

Worth Howar J. Floydada, and Dona Winter Lockney, attended the 1980 Churchwomen's Conference for the Diocese of Northwest Texas in Amarillo September 26-27.

The two day conference was held at the Episcopal Conference Center located on the Lee Bivins ranch. Speaker at the conference was the Rev. Robert D. Hughes. He has a P.H.D. from the University of the Old South in Swannec, Tennessee. It is a private liberal arts institution owned by the Protestant Episcopal Church.

The conference theme was "The Image of Jesus in the Gospel According to St. John."

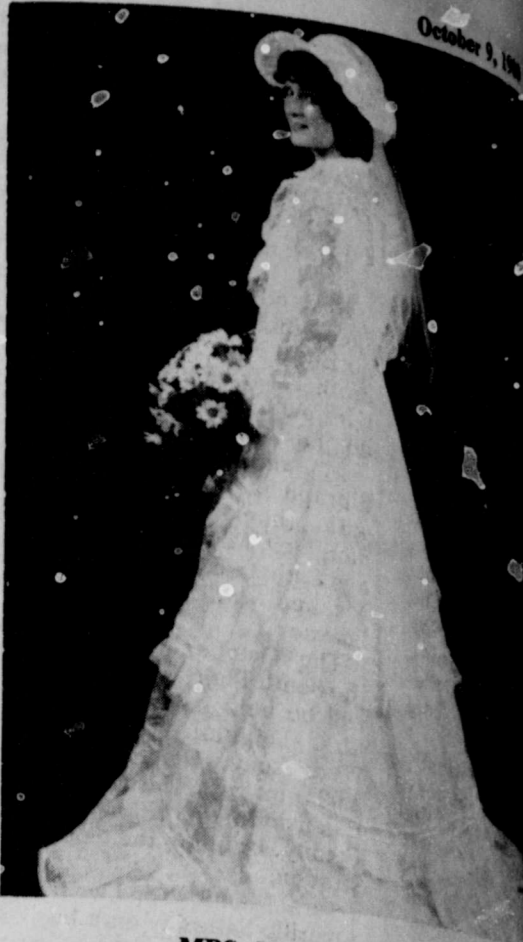
"Learning to meditate on scripture was beautifully led by Dr. Hughes," Worth Ho-

ward said. "The Episcopal Church women of the Diocese were given a spiritual bouquet to be taken away and shared with all we meet."

**FLOYD DATA**

Mrs. W.A. Lovell, the former Maggie Creed, has just returned from a trip to the Creed Family Reunion, in Ashland, Alabama. There were about fifty family members present. Those from Texas were Mrs. Lovell, her sister, Mrs. Gertrude Bates, Henry Bates, and niece, Marie Lowe.

Mrs. Lovell along with a troupe of Creeds visited home sites in adjoining counties and also visited the birthplace of Mrs. Lovell, which was Heflin, Alabama.



MRS. MARK STEVEN CARGAN

# Floydada Nursing Home Happenings

Mrs. Ethel Cross and Elva Reeves spent two days in El Paso at a workshop. Mr. Menard Fields and Miss Mary Pearl Coward attended a meeting in Lubbock last week.

We have several of our senior citizens who are ill at home and hospitals. Harvey Tardy is doing very well.

Death came again among our members. Mrs. (Ann) Blanche Lida died Wednesday in Lubbock from a heart attack. We are all sure going to miss her in all of our different activities. Her funeral was Friday afternoon at City Park Church of Christ.

Remember Bingo on Monday night at 7:30 and 42 and 84 on Thursday nights at 7:00.

We will have our regular monthly luncheon on October 16, come one and all enjoy it with us dinner at 12:00 or near that.

We are having some work done on the inside building. We have signed up on the outside building, painted and Fred Thann and Mark October and the thumbs hang in Mark October calendar for the date. Be there.

We have a memorial and anyone wanting to feel free to call memory of who we want to

**A GIANT, AREA-WIDE PRAISE GATHERING**

## IN CONCERT

**THE LARRY SINCLAIR FAMILY**

**Aiken First Baptist Church**

**8 pm Oct. 10, 1980**

**ADMISSION-FREE**

ies...  
n Colors  
Our New  
Selection  
uses &  
Tops For Fall This Year  
from A Wide Array Of  
Dress For Any Occasion

# THE LOFT

983-2235

**You Are Cordially Invited To Hear**

## The Gospel

**Preached By**  
**Doyle William**

In A Series Of Meetings At City Park  
Church Of Christ  
5th & Tenn.  
Floydada, TX  
Monday Through Thursday  
Oct. 13-16 7:30 pm

### Open House Held At Andrews Ward

Open house is a time for parents and teachers to come together to get better acquainted. On Tuesday, September 23, R.C. Andrews Elementary held its annual open house.

Preston Watson, principal and the faculty would like to express their appreciation to all the interested parents and friends of the community who took their time to come.

Besides the work of the students, the library was a place of interest. The library has been expanded to twice its size and is now a media and video center. Also our new P.E. dressing rooms were open for the public to see. This year the halls are being decorated with art work of the students. The art theme will be changed about every nine weeks.

Sixth grade students registered guests, helped in the library, and served refreshments.

Parents should remember that they are welcome to visit a child's teacher any day. Contact the teacher or office as to the teacher's conference period. Please remember to check in with the office personnel any time you visit a school.

## GOING OUT OF BUSINESS

**Carthel Oil Building**      **Lockney Highway**

S  
A  
L  
E

frames, paints,  
art supplies  
Christian gifts,  
books, and records  
and tapes.

S  
A  
L  
E

## Art Southwest

### 3-Days Only

# Giant Beef Sale

**THUR., FRI. & ALL DAY SATURDAY**

|  |  |   |
|--|--|---|
| Center Cut Round<br><b>Steak</b><br>\$2.19 lb. | Center Cut Chuck<br><b>Roast</b><br>\$1.69 lb.         | Extra Lean Ground Beef<br><b>Patties</b><br>\$7.95 20 ct Box        |
| Choice Sirloin<br><b>Steak</b><br>\$2.29 lb.   | Rump And Pikes Peak<br><b>Roast</b><br>\$1.79 lb.      | New Product Of The 80's<br><b>Pizza Patties</b><br>\$7.45 20 ct Box |
| T-Bone<br>\$2.69 lb.                           | Boneless Or Rolled Chuck<br><b>Roast</b><br>\$1.79 lb. | New Item<br><b>Ponderosa Beef Jerky</b>                             |

**PONDEROSA**  
Quality Meats  
807 E Missouri      983-2261



**Lockney Hospital Report**

**October 1-7**  
 Hallie King, Lockney, adm. 8-25, continues care  
 Estelle Powers, Lockney, adm. 9-25, dis. 10-7  
 Ramon Gonzales, Plainview, adm. 9-26, continues care  
 Esiquio Ybarra, Petersburg, adm. 9-27, dis. 10-2  
 Laura Pratt, Floydada, adm. 9-29, continues care  
 Lorene Reasoner, Floydada, adm. 9-29, dis. 10-6  
 Raymond Meriwether, Lockney, adm. 9-29, dis. 10-4  
 Charles Thomason, Lockney, adm. 9-29, dis. 10-2  
 Rosie Mata, Ralls, adm. 9-29, baby girl, Maribel, born 9-29, dis. 10-4  
 Bonnie Hill Lockney, adm. 10-2, baby girl, Kendra, born 10-2, dis. 10-6

Hattie Steele, Silverton, adm. 10-2, continues care  
 Sudie Thomas, Floydada, adm. 10-2, continues care  
 Faye Holladay, Floydada, adm. 10-2, dis. 10-4  
 W.R. Edwards, Floydada, adm. 10-2, transferred 10-7  
 Nora Hash, Plainview, adm. 10-3, continues care  
 Jack Pigg, Quitaque, adm. 10-3, dis. 10-7  
 Darnell Ayres, Floydada, adm. 10-4, continues care  
 Henry Sue, Lockney, adm. 10-6, continues care  
 Elias Saucedo, Lockney, adm. 10-6, continues care  
 George Earl Kellison, Lockney, adm. 10-7, continues care  
 Cecilia Arriaga, Plainview, adm. 10-8, continues care

**Lockney Care Center News**

by Vickie Hutten  
 Happy birthday wishes go to several of our resident having birthdays in the month of October. Donnie Hester, Mattie Poole, Stella Wilson, Belva Gibson, Eunice Taylor, Bertie Bradley and Elvie Hulcy will have birthdays ranging from 94 to 75 years of age. We would like to thank the ladies of the Main Street Church of Christ for bringing the birthday cake and punch for our October birthday party.  
 We would like to thank Mr. and Mrs. Dick Taylor for bringing the residents cantaloupes and squash. Also we would like to thank Delinda Glasson for supplying the popcorn for our popcorn party Friday afternoon. Several of the residents and some visitors enjoyed the popcorn.  
 Devotional services were held this week by, Monday, Rock Creek Church of Christ, Tuesday Maia Street Church of Christ, Wednesday, Methodist Church of Lockney, Thursday, First Baptist Church of Lockney, Friday, First Baptist Church of Fomont, and Sunday, West Side Church of Christ of Lockney.

**Happy Birthday Happy Anniversary**

**October 12** - Katy Ansley, Lois Albert, E.A. Bonner, Johnny Silva, Rodney Edwards  
**October 13** - Don Auffil, Estella Blanco, Aubria Kent, Billie Cook, Yvonne Steele, Floyd Jackson, Roy Turley, Irene Miller  
**October 14** - Murlene Whitfill, LaDora Auffil, Johnny Gaskins, LaWayne Strickland, Robert Molina, Barbara Cunyus  
**October 15** - Clyde Farish, Kelly Fortenberry, Vida Hrbacek, Glen Lane  
**October 16** - Bill Whitfill, Mrs. M.O. Davis, Jon Koonsman, Fannie Davis, Danny Clark, Frank Lorillard Jr., Frankie Lorillard, Mark Anthony Hernandez, Nancy Peralez, Joe David Gonzales  
**October 17** - Cliff Hardy, Martha Vela, Dorothy Hooten, Connie Coffman, Jim Burt, Chris Hennagan, Shirley Sutterfield, Brandon Rowell, Donna Wright, Martha Vela  
**October 18** - Amy Hernandez, Sally Shaw, Bobby Spencer

**October 12** - Granvel and Jo Webb, Van and Cheryl Bradley, Joe and Virginia Taylor  
**October 13** - Bryan and Charlotte McCulloch, Mr. and Mrs. Juan Guerrero, Severo and Hope Perez  
**October 16** - Mr. and Mrs. Bob Wright  
**October 18** - E.A. and Velman Bonner

**Nation's supply of engineers is falling short**  
 COLLEGE STATION — The dean of the nation's largest college of engineering warned recently the nation's supply of engineers falls far short of industry demand and there is no sign of relief.  
 Shortages have developed for petroleum, chemical, electrical, mechanical, aerospace, civil and safety engineers, said Dr. Robert H. Page of Texas A&M University.  
 Although Texas A&M graduated a record 881 engineers in 1979, including 80 women, recruiters from industry and business still demand more.

"If one has to submit, it is wasteful not to do so with the best grace possible."  
 Winston Churchill



Auto involved in fatal car-train wreck.

**Lockney 4-H Club Meets Monday**

Reporter: Melanie Foster  
 A 4-H meeting was held Monday, September 29, at 7:30 p.m. Old and new business was discussed. Then we had games for the younger 4-H'ers and also refreshments were served.  
 Ken Langley called an officers meeting for after the 4-H meeting.  
 Those present were: Aaron Kidd, Clay Harrison, Tracy Carlton, Terry Carlton, Matt and Joel Mitchell, Brent Hallmark, Matt Williams, Wayman Rexrode, Jason Carthel, Ruthie Lane Wilson, Tony Savcha, Clay Adrian, Phillip Glasson, Keith Hight, Ralph Scheele, Lisa Terrell, Earl Brosech, Christa Coffman, Anna Cuauhtli, Donna Vernon, Julie Diepenhorst, Scott McCarty, Heath Rexrode, Jill Whitfill, Melanie Foster, Wesley Teeter, Karyn Foster, Libby Williams.  
 Adults were: Ken Langley, Jett Major and Marilyn Tate, the Floyd County Agents; Larry Adrian, Mr. and Mrs. Church Wilson, Joe Rexrode, Sonny Carlton, Charlotte Mitchell, Paul Glasson, Linda and Buster Terrell and Sheryl Teeter.

**LOCKNEY School Menu**

**October 13-17**  
**Monday:** Breakfast—French toast, apple juice, milk, sausage  
**Thursday:** Breakfast — Scrambled egg, toast, bacon, tomato juice, milk  
**Lunch—**Fried chicken, creamed potatoes, buttered broccoli, hot rolls, milk  
**Friday:** Breakfast—Cheese toast, pears, milk  
**Lunch—**Fish burger with salad dressing, fried potatoes, peaches, cole slaw, milk, peanut butter and crackers

**Tuesday:** Breakfast — Scrambled egg, toast, orange juice, milk  
**Lunch—**Hamburgers, lettuce, pickles, corn, cherry cream pie, milk  
**Wednesday:** Breakfast—Waffles, syrup, fruit cocktail  
**Lunch—**Vienna sausage, kroust, pinto beans, cornbread, milk

**Brownies Meet and Elect Officers**

The Lockney Brownies met on September 30. Those attending were: Celia Campos, Jenny Turbeville, Shea Jackson, Aimee Green, Lorijo Poole, Rajana Van Cleve, Erin Graves, Renee Brotherton, Sidney Martinez, Jody Hayes.  
 "Health" will be the topic for the month of October. Shei Jackson was elected treasurer, Rageana Van Cleve, reporter; Celia Campos, was elected chaplain. They discussed a field trip that will be taken next week to the Thomason's Grocery.



**FFA Elects Roxanne Ford As Sweetheart**

By Kyle Brock  
 The Lockney High FFA met on Wednesday September 24. The main purpose of the meeting was to select the 1980 FFA Sweetheart. The members selected Roxanne Ford, daughter of Mr. and Mrs. Ray Neal Ford to represent them as FFA Sweetheart.  
 Other FFA activities included a District meeting held in Floydada on Tuesday. Attending from the Lockney chapter were Dwight Jackson, Lane Turner, and Dee McPherson.

**Football Contest**

**WIN**

1st Prize.....  
 2nd Prize.....  
 3rd Prize.....

**CONTEST RULES**  
 Circle on the official entry blank the team you think will win each game, and indicate the total score.  
 Contestants may mail their entries to the Beacon Office, 220 South Main, and in-person entries must be at the same time. Mail entry address is Box 79241. One winner per family per game.

**RAGIN' RED**

|   |   |
|---|---|
| Moore-Rose Funeral Home<br>Lockney, Texas<br>1. Georgia vs. 2. Mississippi            | Lockney Meats<br>Plainview Highway-Lockney<br>3. Cornell vs. 4. Harvard             |
| Davis Lumber & True Value Hardware<br>Lockney, Texas<br>5. Kansas St. vs. 6. Iowa St. | Schacht Flowers, Jewelry<br>Lockney, Texas<br>7. BYU vs. 8. Wyoming                 |
| Bob Miller Ins. & Real Estate<br>Lockney, Texas<br>9. Vanderbilt vs. 10. Tulane       | Four R Western Wear & Irrigation<br>Lockney, Texas<br>11. N. Texas St. vs. 12. TCU  |
| Lee's White Auto Store<br>Lockney, Texas<br>13. Houston vs. 14. Texas A&M             | Byrd Pharmacy<br>Lockney, Texas<br>15. Clemson vs. 16. Virginia Tech                |
| Thomason's Grocery<br>Lockney, Texas<br>17. Colgate vs. 18. Holy Cross                | The Tye Company<br>Plainview Highway-Lockney<br>19. SMU vs. 20. Baylor              |
| Providence Farm Supply & Grain Co.<br>21. Littlefield vs. 22. Seminole                | Fierros & Sons Reddy Mix Concrete<br>Lockney, Texas<br>23. Friona vs. 24. Riverdale |
| Wilson Photography<br>North of Lockney<br>25. Olton vs. 26. Hart                      | The Lockney Beacon<br>Lockney, Texas<br>27. Post vs. 28. Cookson                    |

**OFFICIAL ENTRY FORM**

Name..... Address.....  
 City.....

1-2 3-4 5-6 7-8 9-10 11-12 13-14  
 15-16 17-18 19-20 21-22 23-24 25-26 27-28

Tie Breaker: **LOCKNEY VS MULESHOE** Total Score.....



SENIOR CLASS  
 Spencer, secretary  
 Fortenberry, president



SOPHOMORE CLASS  
 Schacht, vice-president  
 Arellano, treasurer; and

**Varsity To Take**

Lockney Longhorns will travel to Friday in an effort to get back on the winning trail after suffering a loss at the hand of Olton and... The Horns now have a 2-2 record.  
 An open date this past week the boys are in good shape. Phillip who suffered a knee injury in the game against Petersburg, could possibly be back.

**Lockney Lineup**

|                     |                  |                        |
|---------------------|------------------|------------------------|
| <b>OFFENSE</b>      | Jeffery          | Left Defense           |
| Back — Domingo      | Ernest Gal       | Right Defense          |
| End — Junior Mendez | Domingo Gonzalez | Left End — mings       |
| End — Nick Blanco   | Fidel            | Right End              |
| Tackle — Byron      | Steven Gal       | Left Inside            |
| Guard — Victor      | John             | Right Inside           |
| Tackle — John       | Mario            | Left Corner            |
| End — Mike Arellano | Mike Arellano    | Safety — Males         |
|                     |                  | Right Corner McCormick |

**All About**

A Thrilling 5-...  
 We Stop...  
 DR. J. V...  
 The...  
 Heard from...  
 Each Monday Through Friday...  
 KFDA...  
 Station...  
 "The Whole..."  
 For Free Note...  
 THRU...  
 Box 100, P...

# Contest

## WIN

- 1st Prize.....
- 2nd Prize.....
- 3rd Prize.....

**CONTEST RULES**  
 Circle on the official entry blank the team you think will win each game. Winner and indicate the total score in the game.  
 Contestants may mail their entries or bring them to the Beacon Office, 220 South Main. Mail entries must be postmarked no later than 5:00 p.m. and in-person entries must be at the office at the same time. Mail entry address is Box 157, Lockney, Texas 79241. One winner per family per week.

# WIN' RED

**Lockney Meat Co.**  
 Plainview Highway-Lockney

3. Cornell vs. 4. Harvard

**Schacht Flowers, Jewelry & Gifts**  
 Lockney, Texas

7. BYU vs. 8. Wyoming

**Four R Western Wear & Irrigation**  
 Lockney, Texas

11. N. Texas St. vs. 12. Tulsa

**Byrd Pharmacy**  
 Lockney, Texas

15. Clemson vs. 16. Virginia

**The Tye Company**  
 Plainview Highway-Lockney

19. SMU vs. 20. Baylor

**Fierros & Sons Reddy Mix Concrete**  
 Lockney, Texas

23. Friona vs. 24. River Road

**The Lockney Beacon**  
 Lockney, Texas

27. Post vs. 28. Coahoma

**CALENTRY FORM**

Address.....

7-8 9-10 11-12 13-14

19-20 21-22 23-24 25-26 27-28

**S MULESHOE** Total Score.....



**SENIOR CLASS OFFICERS**—Front Row [l-r] are: Sharon Spencer, secretary; Irene Araujo, treasurer. Back Row, John Fortenberry, president; and Dwight Jackson, vice-president.



**JUNIOR CLASS OFFICERS**—Front Row, [l-r] are: Ralph Scheele, president; and Melanie Foster, reporter. Center, Wade Jackson, secretary. Back row, [l-r]: Tyke Dipprey, treasurer; and Jeffery McCormick, vice-president.



**SOPHOMORE CLASS OFFICERS**—Left to right are: Marcus Schacht, vice-president; Robin Carthel, secretary; Mario Arellano, treasurer; and Margie Araujo, president.



**FRESHMEN CLASS OFFICERS**—Front Row, [l-r] are: Stephanie Bybee, president, and Libby Williams, treasurer. Back row, [l-r] are: Shawnda Brock, secretary and Paul Castro, vice-president.

## Horns To Take On Mules

Lockney Longhorns will travel to Muleshoe Friday in an effort to get back on the winning trail after suffering a 2-2 record at the hand of Olton and Muleshoe. The Horns now have a 2-2 record.

Muleshoe has a tough defense, although their 2-3 record, does not reflect this. Lockney is at least a two touchdown underdog going in to the contest. Offensively, they have two good backs and their offensive line comes off the ball well. The game begins at 8 p.m. and it will be Muleshoe's homecoming.

### Lockney Lineup

**OFFENSE**  
 Quarterback — Jeffery McCormick  
 Running Back — Domingo or Ernest Gallegos  
 Fullback — Junior Mendez  
 Tight End — Nick Blanco  
 Left Tackle — Fidel  
 Right Tackle — Byron  
 Left Guard — Steven Gallegos  
 Right Guard — Victor  
 Left Tackle — John  
 Right Tackle — Mario  
 Left End — Mike Arellano  
 Right End — Jeffery McCormick

**DEFENSE**  
 Left Defensive Tackle — Nick Christian  
 Right Defensive Tackle — John Fortenberry  
 Left End — John Cummings  
 Right End — Fidel Blanco  
 Left Inside Linebacker — Kyle Brock  
 Right Inside Linebacker — Byron Brock  
 Strong Side Linebacker — Mack Sherman  
 Rover — Karl Race  
 Left Corner — Mike Arellano  
 Safety — Mario Gonzales  
 Right Corner — Jeffery McCormick

### Lockney Football Scores

The Lockney J.V. and freshmen teams traveled to Muleshoe on Thursday night. Both teams returned with a loss. The JV team was defeated by a score of 33-6 and the freshmen lost by a score of 27-0.

This week the JV and freshmen will host the Tulia teams and the seventh and eighth grade teams will travel to Tulia for their games.

### Muleshoe Starting Lineup:

**OFFENSE**  
 Left End — B. Poyner, 137 lbs.  
 Left Tackle — B. Holmes, 150 lbs.  
 Left Guard — B. Glaze, 156 lbs.  
 Center — C. Brantley, 172 lbs.  
 Right Guard — G. Harrison, 153 lbs.  
 Right Tackle — J. Meeks, 176 lbs.  
 Right End — B. Pena, 178 lbs.  
 Right Flanker — C. Watson, 139 lbs.  
 Quarterback — R. Angeley, 125 lbs. or M. Hysinger, 160 lbs.  
 Halfback — F. Norman, 160 lbs.  
 Halfback — C. Walker, 150 lbs.

**DEFENSE**  
 Left End — B. Pena, 178 lbs.  
 Left Tackle — W. Lasco, 180 lbs.  
 Nose Guard — M. Lewis, 187 lbs.  
 Right Guard — S. Denny, 174 lbs.  
 Right End — G. Watson, 159 lbs.  
 Linebacker — G. Velva, 160 lbs.  
 Linebacker — C. Precure, 174 lbs.  
 Left Corner — L. Norman, 130 lbs.  
 Right Corner — L. Beene, 122 lbs.  
 Safety — R. Angeley, 126 lbs.

### Antifreeze

**1 Gallon Plastic Containers**

\$3.99

Per Gallon

**Buy The Best And Buy Early**

## Hwy 70 Texaco

**Hwy 70 West**  
**Phone 652-8895**

**Open 7 days 7:00 am -- 9:00pm**

U.S. POSTAL SERVICE  
**STATEMENT OF OWNERSHIP, MANAGEMENT AND CIRCULATION**  
(Required by 39 U.S.C. 3685)

1. TITLE OF PUBLICATION: **The Lockney Beacon**

2. FREQUENCY OF ISSUE: **Weekly**

3. LOCATION OF HEADQUARTERS OR GENERAL BUSINESS OFFICES OF THE PUBLISHERS (Not printers):  
**111 E. Missouri Floydada Floyd County Texas 79235**

4. NAMES AND COMPLETE ADDRESSES OF PUBLISHER, EDITOR, AND MANAGING EDITOR:  
 PUBLISHER (Name and Address): **Shelly Harris 515 W. Kentucky Floydada, Texas 79235**  
 EDITOR (Name and Address): **Nancy Carthel Rt. F Lockney, Texas 79241**  
 MANAGING EDITOR (Name and Address): **same as the editor**

7. OWNER (If owned by a corporation, its name and address must be stated and also immediately thereunder the names and addresses of stockholders owning or holding 1 percent or more of total amount of stock. If not owned by a corporation, the names and addresses of the individual owners must be given. If owned by a partnership or other unincorporated firm, its name and address, as well as that of each individual must be given.)

| NAME                            | ADDRESS                               |
|---------------------------------|---------------------------------------|
| Floyd County Publishing Co.     | 111 E. Missouri Floydada Tx 79235     |
| J. Tom Graham                   | 321 S. Main St. Del Rio, Texas 78840  |
| Frank P. Krasovec & Jack Crosby | 1500 City Nat'l Bank Bldg. Austin, TX |
| Chis Harris                     | 1001 B West Ave. Austin, TX 78701     |

8. KNOWN BONDHOLDERS, MORTGAGEES, AND OTHER SECURITY HOLDERS OWNING OR HOLDING 1 PERCENT OR MORE OF TOTAL AMOUNT OF BONDS, MORTGAGES OR OTHER SECURITIES (If there are none, so state)

| NAME | ADDRESS |
|------|---------|
| none |         |

9. FOR COMPLETION BY NONPROFIT ORGANIZATIONS AUTHORIZED TO MAIL AT SPECIAL RATES (See 39 U.S.C. 3686)  
 The purpose, function, and nonprofit status of this organization and the exempt status for Federal income tax purposes (Check one):  
 HAVE NOT CHANGED DURING PRECEDING 12 MONTHS  HAVE CHANGED DURING PRECEDING 12 MONTHS (If changed, publisher must submit explanation of change with this statement.)

| EXTENT AND NATURE OF CIRCULATION  | AVERAGE NO. COPIES EACH ISSUE DURING PRECEDING 12 MONTHS | ACTUAL NO. COPIES OF SINGLE ISSUE PUBLISHED NEAREST TO FILING DATE |
|---|--|--|
| A. TOTAL NO. COPIES PRINTED (Net Press Run)   | 1100   | 1100   |
| B. PAID CIRCULATION<br>1. SALES THROUGH DEALERS AND CARRIERS, STREET VENDORS AND COUNTER SALES<br>2. MAIL SUBSCRIPTIONS   | 200<br>852   | 200<br>852   |
| C. TOTAL PAID CIRCULATION (Sum of B1 and B2)  | 1052   | 1052   |
| D. FREE DISTRIBUTION BY MAIL, CARRIER OR OTHER MEANS, SAMPLES, COMPLIMENTARY, AND OTHER FREE COPIES                       | -0-  | -0-  |
| E. TOTAL DISTRIBUTION (Sum of C and D)  | 1052   | 1052   |
| F. COPIES NOT DISTRIBUTED<br>1. OFFICE USE, LEFT OVER, UNACCOUNTED, SPOILED AFTER PRINTING<br>2. RETURNS FROM NEWS AGENTS | 48<br>29   | 48<br>29   |
| G. TOTAL (Sum of E, F1 and F2—should equal net press run shown in A)  | 1100   | 1100   |

11. I certify that the statements made by me above are correct and complete. *Nancy Carthel*

12. FOR COMPLETION BY PUBLISHERS MAILING AT THE REGULAR RATES (Section 132.121, Postal Service Manual)  
 39 U.S.C. 3626 provides in pertinent part: "No person who would have been entitled to mail matter under former section 4359 of this title shall mail such matter at the rates provided under this subsection unless he files annually with the Postal Service a written request for permission to mail matter at such rates."  
 In accordance with the provisions of this statute, I hereby request permission to mail the publication named in item 1 at the phased postage rates presently authorized by 39 U.S.C. 3626.  
 SIGNATURE AND TITLE OF EDITOR, PUBLISHER, BUSINESS MANAGER, OR OWNER  
*Nancy Carthel*

PS Form 3526 (Page 1) (See instructions on reverse)

### All Aboard the Bible Bus

A Thrilling 5-Year Trip From Genesis to Revelation  
 We Stop at Every Chapter — None Omitted

DR. J. VERNON MCGEE, Bible Teacher  
 Thru The Bible Radio Network  
Heard from Coast to Coast and Around the Globe

Each Monday Through Friday — 30 Minutes a Day  
 Station: **KFDA** Dial Position: **900** Time: **12:25 pm**  
"The Whole Word for the Whole World"

For Free Notes and Outlines Write to:  
**THRU THE BIBLE RADIO**  
 Box 100, Pasadena, California 91109

Del Monte  
Whole Kernel **CORN** Cream Style  
17-oz. can  
**219¢**  
cans  
With One Filled Bonus Special Booklet

Gold Medal  
**FLOUR**  
5-lb. bag  
**49¢**  
With One Filled Bonus Special Booklet

Kraft  
**Velveeta**  
1-lb. pkg.  
**99¢**  
With One Filled Bonus Special Booklet

Kraft French  
**DRESSING**  
16-oz. btl.  
**59¢**  
With One Filled Bonus Special Booklet

Hi-Dri  
**BATH TISSUE**  
29¢  
With One Filled Bonus Special Booklet

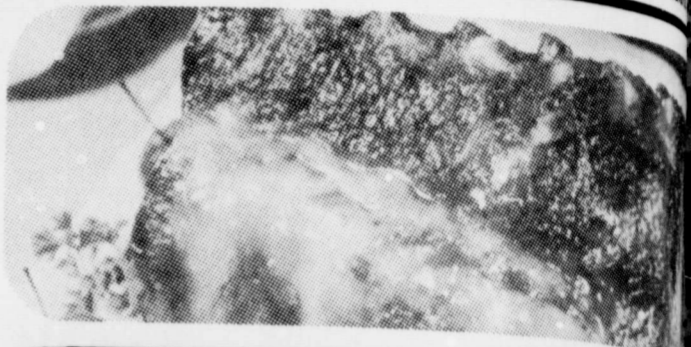
# PIGGLY WIGGLY FALL SAVINGS!

Save On Groceries This Week That Will Warm-Up Your Family's Meals.

Each of these advertised items is required to be readily available below the advertised price in each store, except as specifically noted. We reserve the right to limit quantities. None sold in other stores.



**Fresh Pork Chops** Cut From Loin End. lb. **\$1.68**  
**Sliced Bacon** Old-Fashion Market Style. lb. **\$1.39**  
**Lunch Meats** Carl Buddig Smoked. Thin Sliced 12-oz. **\$1.19**  
**Stew Meat** **\$1.98** **Franks** **\$1.09**  
**Lean Beef** lb. **\$1.98** **Farmer Jones** 12-oz. **\$1.09**  
**American Cheese** Kraft Sliced Singles. 16-oz. **\$2.79** **Fish Sticks or Fillets** Mrs. Pauls. Fried. 14-oz. **\$1.99**



**PORK LOINS**  
Whole or Half. Fresh Pork. Cut and wrapped free for your freezer. **\$1.99** lb.

**CHUCK ROAST**  
**BONELESS**  
Select Tender Beef. **\$1.99** lb.

**SPARE RIBS**  
Country Style **\$1.58** lb.

**BONELESS ARM ROAST**  
Lean. Waste Free. **\$1.99** lb.

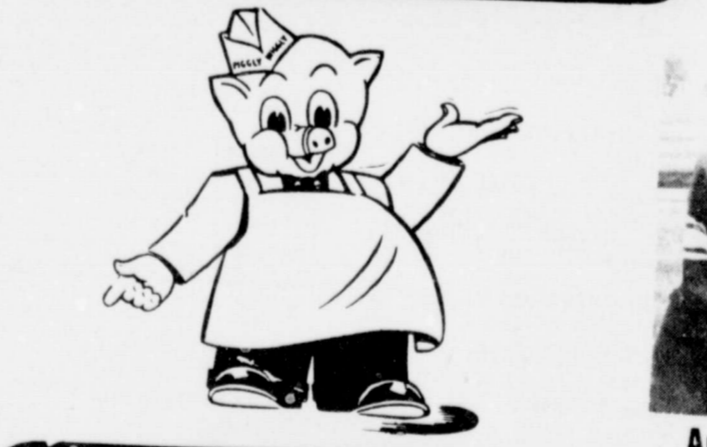
**HILLS BROS. COFFEE**  
All Ass't. Grinds  
1-lb. can **\$2.69**

**HI-DRI TOWELS**  
Household Cleaning Aid  
2 jumbo rolls **98¢**

**BANQUET MEAT PIES**  
Chicken, Beef or Turkey  
3 8-oz. pkgs. **89¢**

**PARKAY MARGARITA**  
Soft. 8-oz. tubs  
2-cl. pkgs. **69¢**

**Patio Dinners** **83¢**  
Ass't. Frozen Mexican Dinners. 11 1/2-13 oz. pkg.  
**Frito Potato Chips** **69¢**  
Plain or Flavored. 6 1/2-7-oz. bag



**GOLD BOND STAMPS**

**DEL MONTE PINEAPPLE**  
Sliced, Crushed or Chunk. 15 1/2-oz. can **55¢**

**COMSTOCK CHERRY PIE**  
Filling 21-oz. can **\$1.19**

**TIDE DETERGENT**  
49-oz. pkg. **\$1.75**

**IVORY LIQUID**  
22-oz. btl. **99¢**

**Up-side Down Cake** Pineapple. Betty Crocker Mix 21 1/2-oz. **\$1.33**  
**Cherry Pie Tonight** Betty Crocker. 11-oz. pkg. **69¢**  
**M & M Candy** Plain or Peanut 11 1/2-oz. pkg. **\$1.59**  
**Ken-L-Ration** Special Cuts 48-oz. **\$2.59**  
**Pine Sol** Household Cleaner 40-oz. **\$2.69**  
**Hefty Kitchen Bags** 30-ct. **\$2.49**

**GREEN PEPPERS** Large Stuffing Size. 7 for **\$1**  
**RED GRAPES** California Ideal Snack. lb. **88¢**  
**Butternut Squash** Bake or Mash-Excellent lb. **38¢**  
**Crisp Radishes** Icy Fresh. 4 bunches **\$1**  
**Honey Dew Melons** Juicy Sweet. 3 lbs. **\$1**



**RUSSET POTATOES**  
Great "Bakers" All Purpose **\$1.58** 10 lb. bag

**Corned Beef** Libby 12-oz. can **\$1.99**  
**Cornbread Mix** Cinch 15-oz. pkg. **\$1.99**  
**Beef Stew** Dinty-Moore 24-oz. can **\$1.99**  
**Frozen Corn** Green Giant Cream or Whole Kernel. 10-oz. pkg. **\$1.99**  
**Prune Juice** Sunsweet. 40-oz. btl. **\$1.99**  
**Aluminum Foil** Reynold Economy 75-ft. **\$1.99**

M.A.S.H. 9 WOODY WOODS 10 NBC NEWS 11 CBS NEWS

THURSDAY OCT. 9, 1980

6:00 THE MORNING NEWS  
6:30 NATIONAL BYLINE  
6:30 KANGAROO  
6:30 MONDAY (THUR. TUE.)  
6:30 TOWN Shrek In The Night  
6:30 YOUTH (FRI.) Song Of  
6:30 SCARLET LETTER (TUE.)  
6:30 CULTURE (WED.)  
7:00 NEWS PROGRAMMING  
7:00 JERRY  
7:00 ZOLA LEVITT  
7:00 SANFORD AND  
7:00 MACNEIL LEHR  
7:00 JERRY FALWE  
7:00 ALL IN THE FA  
7:00 CAROL B  
7:00 FRIENDS  
7:00 NAME THAT T  
7:00 JOKER'S WILD  
7:00 HBO INSIDE THE  
7:30 MISSIONARIES  
7:30 MOVIE - (DRAMA)  
7:30 Love Me Tender  
7:30 Richard Egan. Che  
7:30 family parted by war  
7:30 as brother fights brothe  
7:30 UP AND COM  
7:30 AMERICAN LE  
7:30 PIONSHIP SERIES  
7:30 York Yankees vs Kan  
7:30 MOVIE - (COMED  
7:30 Millionaires '80  
7:30 Peter Sellers. Becau  
7:30 will, a millionaires mus  
7:30 is a good business m  
7:30 SIX MILLION DO  
7:30 THE CASTAW  
7:30 LIGAN'S ISLAND  
7:30 always prepare for the  
7:30 War II aircraft that the  
7:30 repaired. Stars: Bob De  
7:30 (Repeat 60 mins.)  
7:30 SPECIAL MOVIE  
7:30 TION The Children O  
7:30 Stars Shirley Jones. In  
7:30 ping story of three cou  
7:30 to evacuate the ne  
7:30 names orphans out of  
7:30 country during the war.  
7:30 (2 hrs.)  
7:30 JACK VAN IMPE  
7:30 FROM JUMPS  
7:30 and Spiritus. In a r  
7:30 at the Way of the Cross  
7:30 Washington, D.C. Re  
7:30 Cleveland, the D.C.  
7:30 Mighty Clouds of Joy  
7:30 and gregation leave no  
7:30 viduals. (Repeat 60  
7:30 (Closed-Captioned)  
7:30 THIS IS THE LIFE  
7:30 HBO MOVIE - (DRAMA)  
7:30 AfterTime '1979 Mar  
7:30 David Warner. Jack the  
7:30 into the 21st century vi  
7:30 machine and Wells. To  
7:30 stop this maniacal a  
7:30 PG (112 mins.)  
7:30 8:00  
7:30 7:30 CLUB  
7:30 SNEAK PREVIE  
7:30 Gene Siskel and Roger  
7:30 new releases and mov  
7:30 Allen's new comed  
7:30 (Repeat 60 mins.)  
7:30 STREETS  
7:30 FRANCISCO  
7:30 THURSDAY NIG  
7:30 MOVIES Beulah Lan  
7:30 Lesley Ann Warren. M  
7:30 After surviving the Civ  
7:30 band a suicide and the  
7:30 The Beach. Stars: Ke  
7:30 determined to rebuild  
7:30 (Conclusion: 2 hrs.)  
7:30 8:30  
7:30 THIS OLD HOUSE  
7:30 begun and the carpent  
7:30 the eaves.  
7:30 8:55  
7:30 4) TBS NEWS  
7:30 9:00  
7:30 COSMOS One Voi  
7:30 Fugue. In search of li  
7:30 Dr. Carl Sagan explore  
7:30 tion, diversity and ho  
7:30 all plants and anim  
7:30 Captions (60 mins.)  
7:30 10) M.A.S.H.  
7:30 THE HOME FROM  
7:30 1941. The Travis and Sp  
7:30 their lives being chan  
7:30 World War II, but also  
7:30 troversies that reign  
7:30 their families. Stars: C  
7:30 Simmons. (60 mins.)  
7:30 9:30  
7:30 10) NORMAN  
7:30 PEAL  
7:30 10) BARNEY MILLER  
7:30 HBO MONSTERS, M  
7:30 MACHINES  
7:30 10:00  
7:30 2) JOHN  
7:30 SHOW  
7:30 3) NIGHT GALLERY  
7:30 4) DICK CAVETT  
7:30 Samuel Pea. Part I. P  
7:30 lawyer and author, is a  
7:30 death camp at Auschw  
7:30 to search in the WOL  
7:30 9) MORE CAMB  
7:30 AN. The story of a  
7:30 shooting schedule and  
7:30 hood. Her previous h  
7:30 conspires to alter her  
7:30 promoting a romance  
7:30 mother and the "Wol  
7:30 Simmons. (60 mins.)  
7:30 10:30  
7:30 2) ROSS BAGLEY S  
7:30 4) (BIOGRAPHICAL-D  
7:30 "Man of a Thousand  
7:30 James Cagney. Doroth  
7:30 story of the actor's  
7:30 Chaney. (Repeat 30 m  
7:30 5) ABC CAPTIONE  
7:30 6) PTL PROGRAM  
7:30 7) M.A.S.H.  
7:30 8) PRISONER: CELL  
7:30 Robert Klein. (60 min  
7:30 9) CBS LATE MOV  
7:30 SON'S. George W. T  
7:30 ing on cloud nine wh  
7:30 lecture at a college, bu  
7:30 to earth in the WOL  
7:30 where the collage is. P  
7:30 LAN AND WIFE. Cop O  
7:30 Rock Hudson. John Sch  
7:30 HBO MOVIE - (ADVER  
7:30 "Thunderball" 1968  
7:30 Claudine Auger. Jack  
7:30 stop the international  
7:30 SPECTRE that has thre  
7:30 ate two planes. (Rat  
7:30 the West, unless it is  
7:30 \$270 million. (Rat  
7:30 mins.)  
7:30 11:00  
7:30 7) BOB NEWHART  
7:30 9) MOVIE - (WEST  
7:30 "Shane" 1953. A m  
7:30 boy-don'terly hillbill  
7:30 peaceful, but is forced  
7:30 villainous gunman. (R  
7:30 11:30  
7:30 12) ABC NEWS NIG  
7:30 TOMORROW HO  
7:30 Guest: Charlotte Val  
7:30 Daddy's Girl. (60 m  
7:30 11:50  
7:30 1) CHARLIE'S ANG  
7:30 WOMAN. Charlie's A  
7:30 Remembered. A mov  
7:30 angel to find out who  
7:30 insane just as she is  
7:30 comeback. Police Wor  
7:30 When a young girl kil  
7:30 ing a carton of drugs  
7:30 hot on the trail of a  
7:30 hrs., 125 mins.)  
7:30 12:00  
7:30 10) KOINONIA  
7:30 11) NEWS







- 1. BOB GASS
- 2. THIS IS THE LIFE
- 3. WORLD AT LARGE
- 4. SOMETHING SPECIAL
- 5. P.L. PHILIPSON
- 6. ROSS BACON
- 7. FAMILY AFFAIR
- 8. ALL NIGHT
- 9. ALL NIGHT

**ALLSUP**  
CONVENIENCE STORES

**Corn Dogs**  
3/\$1.00

**German Sausage Sandwich**  
59¢

**INTRODUCING**  
Our New Expanded Deli  
Always Fresh Food  
Quick Service

Available 24 Hours Per Day  
365 Days a Year

**MENU**

- Burritos... Bean and Beef
- New Cheese and Bean
- New Beef Taco Roll
- Gooch Old Style German Sausage
- Allsup's Hot and Mild Links
- Whole BBQ Chicken
- BBQ Beef Brisket Sandwich
- Mouth Watering 3BO Spare Ribs, Per Lb.
- Allsup's BBQ Beef Sandwich
- Hot Southern Fried Pies
- Apple
- Cherry
- Peach
- New Mexican Style Taquitas
- New Chile Rellenos
- New Hot Tamales
- New 1/2 lb. Ham Sandwich
- Oscar Mayer 1/4 lb. Big One Hot Dogs
- Southern Fried Chicken Quarters
- Beer Batter Cod Fish Sandwich
- Crispy Golden Corn Dogs
- New Allsup's Pochitos (Mexican Hot Dog)
- Good Ol' American Hot Dogs

Introducing  
Chicken Fried Steak Sandwich  
New Steakfinger Sandwich

**Bar-B-Q Sandwich**  
Buy 1 for \$1.25  
Get A 12 oz. Fountain  
Coke FREE

**Bar-B-Q Sandwich**  
Buy 1 for \$1.25  
Get A 12 oz. Fountain  
Coke FREE

# OBITUARIES

**PRICE**  
Charley Clifton, 71, of Petaluma, died at 2 p.m. Monday at the First Baptist Church.

Services were at 4 p.m. Saturday in Schooler-Gordon Colonial Chapel. Burial was in Llano Cemetery.

**DARLING INFANT**  
Services for Jacob T. Darling, infant son of Mr. and Mrs. Danny Darling of Tulsa, Oklahoma, were at 2 p.m. Thursday in the Moore-Rose Chapel.

**BLANCHE D. LIDE**  
Services for Blanche Delilah Lide, 73, of Floydada were at 2:30 p.m. Friday in the City Park Church of Christ in Floydada with Doyle Gillum of Lubbock and Perry Zumwalt, minister of the City Park Church of Christ, officiating.

**WALTERS**  
Walters, 51, was born at 11 a.m. at Caprock Hospital during an apparent illness in his school bus on the highway near the intersection of Moore-Rose and Walters roads.

**CLASSWELL**  
Bertha Lasswell, 62, of Louisiana, died at 1:30 a.m. Friday.

**REMEMBER**  
your loved ones and friends with a memorial to Lockney General Hospital Memorial Fund. These memorials go toward equipment to help serve our community in the best way possible.

**REMEMBER**  
your loved ones and friends with a memorial to Lockney General Hospital Memorial Fund. These memorials go toward equipment to help serve our community in the best way possible.

**Fall Revival**  
October 12-15, 1980  
First United Methodist Church  
Lockney, Texas  
Sunday Services-  
11:00 am 7:00 pm  
Monday-Wednesday -  
7:00 am  
Breakfast,  
10:00 am And 8:00 pm

# "Thunderbirds" To Appear In Lubbock

Plans continue to be made for the 1980 aerial demonstration by the U.S. Air Force "Thunderbirds" October 12 at Reese Air Force Base. Gates to the base will open at 1 p.m. with pre-show activities beginning at 2:30. Letters of invitations have been sent to area school superintendents and some local churches inviting them to bring buses full of people from their organization to the base for the event. Air Show planners stated that those groups bringing buses wouldn't find themselves in a traffic jam before and after the show like they would if they came by car.

**NICHOLAS ORTIZ**  
Services for Nicholas Ortiz, 59, of Plainview were at 4 p.m. Tuesday in San Jose Catholic Church in Lockney with Deacon Mario Torres officiating.

**Center News**  
By J.E. Green

**Monday, October 6:**  
We had a nice shower last night and it is clear this morning and cooler. A taste of fall.

**Monday, October 13-17**  
Breakfast—Apple Juice, hot cereal, toast, milk  
Lunch—Meat loaf with sauce, cheese sauce potatoes, fried okra, peach half, hot rolls, milk  
Tuesday:  
Breakfast—Hot biscuit, eggs, jelly, milk, juice  
Lunch—Bar-b-que, pinto beans, cabbage, slaw or tomatoes, cornbread or bun, raisin muffin, milk  
Wednesday:  
Breakfast—Juice, French toast, honey, milk  
Lunch—Charburgers on bun, tomato, lettuce, dill pickles, French fries, apricot cobbler, milk  
Thursday:  
Breakfast—Hot pancakes, syrup, sausage, juice, milk  
Lunch—Oven fried chicken, butter squash, green beans, strawberry jello, hot rolls, milk  
Friday:  
Breakfast—Applesauce, cinnamon rolls, milk  
Lunch—Vegetable beef soup with crackers, grilled cheese sandwiches, celery stuffed with peanut butter, fruit cocktail cake, milk

**FLOYDADA School Menu**

**REMEMBER**  
your loved ones and friends with a memorial to Lockney General Hospital Memorial Fund. These memorials go toward equipment to help serve our community in the best way possible.

**New Case ONE-TWO Farm Tractor Offer**

**1. PLUS 2.**

**CASH REBATES up to \$3200**

**WAIVER OF FINANCE CHARGES UNTIL MARCH 1, 1981**

| Engine Model | Cash Rebate | Engine Model | Cash Rebate |
|--------------|-------------|--------------|-------------|
| 885          | \$ 500      | 2290         | \$1900      |
| 990          | \$ 700      | 2390         | \$2100      |
| 995          | \$ 700      | 2590         | \$2200      |
| 1210         | \$ 800      | 4490         | \$2300      |
| 1410         | \$ 900      | 4690         | \$3000      |
| 2090         | \$1300      | 4890         | \$3200      |

*Purchase date extended thru October 31, 1980! See us now and save!*

Lubbock 3302 Slaton Hwy 745-4451  
Lamesa 903 S. Dallas 872-5861  
Floydada 101 South 12th 983-2836

# Cedar Hill News

by Grace Lemons

Mrs. Lizzie Seay of Carri-zozo was a visitor at the Cedar Hill Baptist Church Sunday morning and she and Norma Welch went on to the Assembly of God Church for dinner and afternoon services.

**Center News**  
By J.E. Green

**Monday, October 6:**  
We had a nice shower last night and it is clear this morning and cooler. A taste of fall.

**Monday, October 13-17**  
Breakfast—Apple Juice, hot cereal, toast, milk  
Lunch—Meat loaf with sauce, cheese sauce potatoes, fried okra, peach half, hot rolls, milk  
Tuesday:  
Breakfast—Hot biscuit, eggs, jelly, milk, juice  
Lunch—Bar-b-que, pinto beans, cabbage, slaw or tomatoes, cornbread or bun, raisin muffin, milk  
Wednesday:  
Breakfast—Juice, French toast, honey, milk  
Lunch—Charburgers on bun, tomato, lettuce, dill pickles, French fries, apricot cobbler, milk  
Thursday:  
Breakfast—Hot pancakes, syrup, sausage, juice, milk  
Lunch—Oven fried chicken, butter squash, green beans, strawberry jello, hot rolls, milk  
Friday:  
Breakfast—Applesauce, cinnamon rolls, milk  
Lunch—Vegetable beef soup with crackers, grilled cheese sandwiches, celery stuffed with peanut butter, fruit cocktail cake, milk

**FLOYDADA School Menu**

**REMEMBER**  
your loved ones and friends with a memorial to Lockney General Hospital Memorial Fund. These memorials go toward equipment to help serve our community in the best way possible.

**New Case ONE-TWO Farm Tractor Offer**

**1. PLUS 2.**

**CASH REBATES up to \$3200**

**WAIVER OF FINANCE CHARGES UNTIL MARCH 1, 1981**

| Engine Model | Cash Rebate | Engine Model | Cash Rebate |
|--------------|-------------|--------------|-------------|
| 885          | \$ 500      | 2290         | \$1900      |
| 990          | \$ 700      | 2390         | \$2100      |
| 995          | \$ 700      | 2590         | \$2200      |
| 1210         | \$ 800      | 4490         | \$2300      |
| 1410         | \$ 900      | 4690         | \$3000      |
| 2090         | \$1300      | 4890         | \$3200      |

*Purchase date extended thru October 31, 1980! See us now and save!*

Lubbock 3302 Slaton Hwy 745-4451  
Lamesa 903 S. Dallas 872-5861  
Floydada 101 South 12th 983-2836

# Cedar Hill News

by Grace Lemons

Mrs. Lizzie Seay of Carri-zozo was a visitor at the Cedar Hill Baptist Church Sunday morning and she and Norma Welch went on to the Assembly of God Church for dinner and afternoon services.

**Center News**  
By J.E. Green

**Monday, October 6:**  
We had a nice shower last night and it is clear this morning and cooler. A taste of fall.

**Monday, October 13-17**  
Breakfast—Apple Juice, hot cereal, toast, milk  
Lunch—Meat loaf with sauce, cheese sauce potatoes, fried okra, peach half, hot rolls, milk  
Tuesday:  
Breakfast—Hot biscuit, eggs, jelly, milk, juice  
Lunch—Bar-b-que, pinto beans, cabbage, slaw or tomatoes, cornbread or bun, raisin muffin, milk  
Wednesday:  
Breakfast—Juice, French toast, honey, milk  
Lunch—Charburgers on bun, tomato, lettuce, dill pickles, French fries, apricot cobbler, milk  
Thursday:  
Breakfast—Hot pancakes, syrup, sausage, juice, milk  
Lunch—Oven fried chicken, butter squash, green beans, strawberry jello, hot rolls, milk  
Friday:  
Breakfast—Applesauce, cinnamon rolls, milk  
Lunch—Vegetable beef soup with crackers, grilled cheese sandwiches, celery stuffed with peanut butter, fruit cocktail cake, milk

**FLOYDADA School Menu**

**REMEMBER**  
your loved ones and friends with a memorial to Lockney General Hospital Memorial Fund. These memorials go toward equipment to help serve our community in the best way possible.

**New Case ONE-TWO Farm Tractor Offer**

**1. PLUS 2.**

**CASH REBATES up to \$3200**

**WAIVER OF FINANCE CHARGES UNTIL MARCH 1, 1981**

| Engine Model | Cash Rebate | Engine Model | Cash Rebate |
|--------------|-------------|--------------|-------------|
| 885          | \$ 500      | 2290         | \$1900      |
| 990          | \$ 700      | 2390         | \$2100      |
| 995          | \$ 700      | 2590         | \$2200      |
| 1210         | \$ 800      | 4490         | \$2300      |
| 1410         | \$ 900      | 4690         | \$3000      |
| 2090         | \$1300      | 4890         | \$3200      |

*Purchase date extended thru October 31, 1980! See us now and save!*

Lubbock 3302 Slaton Hwy 745-4451  
Lamesa 903 S. Dallas 872-5861  
Floydada 101 South 12th 983-2836

# Cedar Hill News

by Grace Lemons

Mrs. Lizzie Seay of Carri-zozo was a visitor at the Cedar Hill Baptist Church Sunday morning and she and Norma Welch went on to the Assembly of God Church for dinner and afternoon services.

**Center News**  
By J.E. Green

**Monday, October 6:**  
We had a nice shower last night and it is clear this morning and cooler. A taste of fall.

**Monday, October 13-17**  
Breakfast—Apple Juice, hot cereal, toast, milk  
Lunch—Meat loaf with sauce, cheese sauce potatoes, fried okra, peach half, hot rolls, milk  
Tuesday:  
Breakfast—Hot biscuit, eggs, jelly, milk, juice  
Lunch—Bar-b-que, pinto beans, cabbage, slaw or tomatoes, cornbread or bun, raisin muffin, milk  
Wednesday:  
Breakfast—Juice, French toast, honey, milk  
Lunch—Charburgers on bun, tomato, lettuce, dill pickles, French fries, apricot cobbler, milk  
Thursday:  
Breakfast—Hot pancakes, syrup, sausage, juice, milk  
Lunch—Oven fried chicken, butter squash, green beans, strawberry jello, hot rolls, milk  
Friday:  
Breakfast—Applesauce, cinnamon rolls, milk  
Lunch—Vegetable beef soup with crackers, grilled cheese sandwiches, celery stuffed with peanut butter, fruit cocktail cake, milk

**FLOYDADA School Menu**

**REMEMBER**  
your loved ones and friends with a memorial to Lockney General Hospital Memorial Fund. These memorials go toward equipment to help serve our community in the best way possible.

**New Case ONE-TWO Farm Tractor Offer**

**1. PLUS 2.**

**CASH REBATES up to \$3200**

**WAIVER OF FINANCE CHARGES UNTIL MARCH 1, 1981**

| Engine Model | Cash Rebate | Engine Model | Cash Rebate |
|--------------|-------------|--------------|-------------|
| 885          | \$ 500      | 2290         | \$1900      |
| 990          | \$ 700      | 2390         | \$2100      |
| 995          | \$ 700      | 2590         | \$2200      |
| 1210         | \$ 800      | 4490         | \$2300      |
| 1410         | \$ 900      | 4690         | \$3000      |
| 2090         | \$1300      | 4890         | \$3200      |

*Purchase date extended thru October 31, 1980! See us now and save!*

Lubbock 3302 Slaton Hwy 745-4451  
Lamesa 903 S. Dallas 872-5861  
Floydada 101 South 12th 983-2836

**The Land Bank**  
Long-term farm real estate loans are available for much more than just buying land.  
See us:  
Federal Land Bank Assn  
Of Floydada  
103 S. WALL 983-2411

**Tired Of Expensive Plumbing Repair Bills?**  
Aqua Magnetic Water Conditioner ionizes present calcium and magnesium in your water and does not allow it to collect in your plumbing line or fixtures.  
Contact Newell Burk  
Aqua Products  
983-3700 After 5 983-3772

**First National Bank In Lockney Is**  
In Banking Services!  
We Invite You To Make Us Your Financial Headquarters  
The Friendly Folks At Floyd County's Progressive Bank  
The First National Bank  
In Lockney, Texas Member F.D.I.C.



Mistake Made On Memorial List
Charlie Bill Owen's name was mistakenly placed on the Homecoming Memorial List 1980.

Table with columns: PUBLICATION NO., DATE OF PUBLICATION, CIRCULATION, etc.

Table with columns: CARRIER OR OTHER MEANS, CIRCULATION, etc.

Advertisement for a grocery store featuring products like SPAM, Coca-Cola, and SUGAR with prices.

If It's Results You Want-It's CLASSIFIED ADS You Need

REAL ESTATE Farms & Acre
FOR SALE: Large Brick home 7 miles southwest of Floydada on 4 1/2 acres.

WANTED
WANTED TO BUY irrigated or dryland farm in Floyd or surrounding area.

HELP WANTED
STRIPPER OPERATOR wanted contact Ray Ford, 983-2948.

LEASING
WANT TO LEASE some cotton trailers for this fall.

STOP PAINTING
Cover all outside walls and overhang with U.S. Steel Products.

BUSINESS SERVICES
REPAIR WORK done on evaporative air conditioners.

JACKSON ELECTRIC
Residential & Commercial Servicing Rural Communities.

POOL WELL SERVICE AND RADIATOR SHOP
Irrigation, domestic, and windmill service.

FARM SERVICES
Land Leveling, terraces, bench leveling, and pump pits.

Seed Wheat Cleaning
Bulk or Bag, Double Treated.

COTTON DEFOLIATING Sandhill Elevator & Fertilizer
Ronnie Graham 983-3632.

COTTON STRIPPER AND BASKETS MOUNTED
Johnny Smith 983-3892.

WANTED: Fall & Winter Grazing
Call 652-2652 Byron Brock.

Public Notices
American Cotton Growers will take sealed bids until October 19, 1980.

MEETING DATES FOR HEARINGS
FLOYDADA at County Court Room.

REAL ESTATE FOR SALE
Walk to town-new carpeting. Rental property in back.

Custom Spraying
Application of Herbicides and Insecticides.

Hollis R. Bond Real Estate
PHONE 983-2151

Darden Machine & Welding
Radiator and Gear Head Repair.

J. P. WILLIAMS WEED CONTROL
INSECT CONTROL ON TREES AND SHRUBS.

PETS FOR SALE
AKC BOXERS FAWN with beautiful white markings.

FARM MACHINERY
FOR SALE: Own a cab Model 90 stripper.

FOR RENT
HOUSE FOR RENT: 402 West Willow, 2 bedroom, playroom.

Classified Rates
CLASSIFIED ADVERTISING RATE: 15 CENTS PER WORD.

LOCKNEY PRINTING
ALL TYPES COMMERCIAL PRINTING.

BUSINESS OPPORTUNITIES
Own your own Jean Shop; go direct - no middle man.

Auto Accidents DO Happen...
If one happens to you, be protected.

BAKER Insurance Agency
Insurance Agency - W. Calif.

TURNER REAL ESTATE
983-2635 Farms/Ranches Floydada, Texas

AUTOMOTIVE
1975 Blue Chevrolet Monte Carlo, 52 thousand miles.

FOR SALE: 1975 Bel Air Chevrolet
4-door, Term's available.

AUTO PARTS & ACCESSORIES
4 shocks for the price of 3.

CUSTOM EXHAUST WORK
Bruce Williams Specializing in Glass Packs.

DAN'S AUTO SERVICE
Specializing in Automatic Transmission, Motor Tune-Ups.

Swifty DISTRIBUTORS INC.
200 proof fuel alcohol (Ethanol) for sale.

For those whose comfort meant so much to us in our time of grief...
We wish to express our sincere thanks for the many acts of kindness shown us.

We wish to express our love and gratitude to our dear friends for their help during our time of sweet sadness.

Mr. and Mrs. Danny Darling
Mr. and Mrs. Glen Darling
Mr. and Mrs. Jim Roberts
Mrs. Oleta Collier
Mr. and Mrs. Jim Conner

WE RESERVE THE RIGHT TO LIMIT QUANTITIES

**THOMASON**  
 VENTURE GROCERY & MARKET  
 PHONE 652-3346 220 South Main Lockney



Double Stamps On Wednesday

We Accept Food Stamps and WIC Cards

THESE SPECIALS GOOD ALL WEEK LONG

**Venture**  
 FOODS

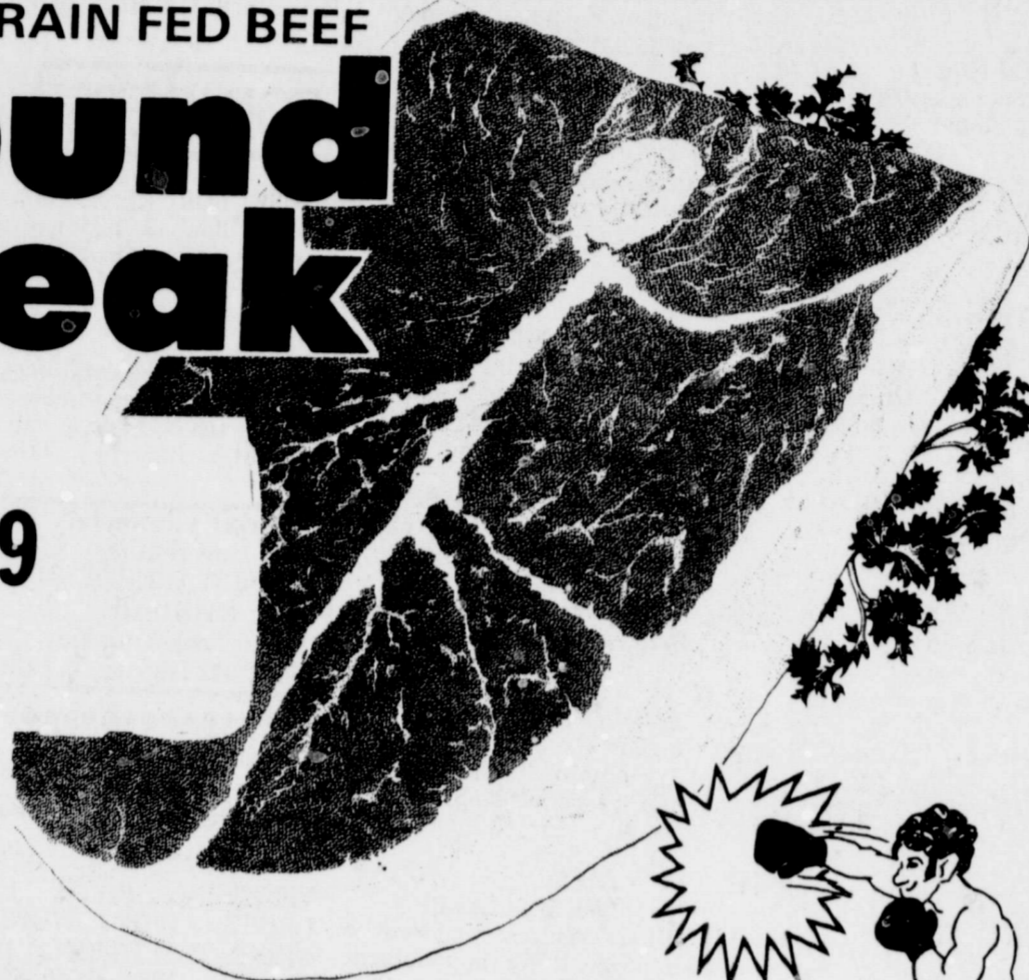
Open Monday - Saturday 8:00 a.m. - 8:00 p.m.  
 Sunday 8:00 a.m. - 5:00 p.m.

We Reserve The Right To Limit Quantity.

HEAVY GRAIN FED BEEF

**Round Steak**

\$1.99



**MEAT SPECIALS**

- HEAVY GRAIN FED BEEF BONELESS **Round Steak** LB. \$2.39
- HEAVY GRAIN FED BEEF TENDERIZED **Cutlets** LB. \$2.59
- HEAVY GRAIN FED BEEF EXTRA LEAN **Stew Cubes** LB. \$1.99
- HEAVY GRAIN FED BEEF BONELESS **Chuck Roast** LB. \$1.89
- EXTRA LEAN CHUCK QUALITY **Ground Beef** GUARANTEED 81% LEAN LB. \$1.49

- Hillshire Farm Smoked **Sausage** LB. \$1.89
- Marker Made **Sausage** \$1.39

HEAVY GRAIN FED BEEF  
**Sirloin Steak**  
 \$2.19 LB.

**PRICE FIGHTERS**

- LAUNDRY DETERGENT **Oxydol** 49 OZ. BOX \$1.79
- DEL MONTE **Catsup** 44 OZ. BTL. \$1.29

NEW YELLOW SUNSHINE!  
**Irish Spring** 2 BATH BARS 89¢

LIQUID **Purex Bleach** GAL JUG 89¢

PUREX **Toss 'N' Soft** 40 CT. BOX \$1.59

Chicken Of The Sea Chunk Light **Tuna** 6 1/2 oz Can 98¢

All Flavors **Rice-A-Roni** 3/\$1.00

Kraft qt Size **Miracle Whip** 98¢

Trappeys Jal/Reg/Slb Bac **Black Eye Peas** 2/89¢

Frito Lays Dip 69¢ **Tostitos** 79¢

Heavy Grain Feed Beef Boneless **Chuck Steak** \$1.99

**DAIRY AND FROZEN FOODS**

- ASSORTED **Jeno's Pizza** 13 OZ. PKG. \$1.19
- SHURFINE SLICED **Strawberries** 10 OZ. CTN. 69¢
- BIRDSEYE **Cool-Whip** 8 OZ. BOWL 79¢
- KRAFT **Velveeta** LB. BOX \$1.59
- KRAFT **Soft Parkay** 2/8 OZ. TUBS 79¢

32 oz 6 btl ctn

**7 UP**

Coke Dr pepper

\$1.69

Plus Tax And Deposit



CAMPBELL  
**Tomato Soup**

4 NO. CAN.



REGULAR/SMOKED FLAVORED  
**Canned Spam**

12 OZ. CAN



DEL MONTE CUT

**Green Beans**

16 OZ. CANS



BATHROOM TISSUE

**Nice 'N' Soft**

4 ROLL PKG.

WHITE/ASSORTED/NEW ACCENTS

**LOW PRICES & COURTEOUS SERVICE!**



FOLGER'S FLAVORED **Coffee** \$2.39 13 OZ. CAN

Be The Lucky person  
 When The Alarm Goes Off  
 And Win Free  
 T-Shirt



**LOWER PRICES AT VENTURE**



- CALIFORNIA **Carrots** LB. PKG. 29¢
- CALIFORNIA GREEN PASCAL **Celery** STALK 33¢

WASHINGTON FANCY RED DELICIOUS

**Apples** 49¢  
 NO. 1 US RUSSET **Potatoes** 49¢  
 CENTRAL AMERICAN **Bananas** 49¢

**THE HARVEST IS IN**  
 AND SO ARE LOWER PRICES AT VENTURE!

Wide Services Offered  
 Salvation Army

The Salvation Army offers a program of statewide... charged for the... inmates to travel... various Texas... facilities for visit... again is an exampl... Salvation Army Co... to keeping families...  
 The Salvation Army is well acquai... the needs, desires... blms facing young... today and strives to... them to be good citi...  
 Another public ser... ferred by The Salva... is the Missing Pers... reau. Through its w... organization, the Ar... an excellent positiv... duct searches on b... people seeking mis... tives. The Army h... instrumental in f... many families, fin... always, and assisti... ges.  
 The S. Salvation Ar... Texas is truly a s... organization with... located in larger Tex... manned by Salvatio... officers, and 352... Units, volunteer co... who represent the... their communities... Texas are only a fe... tes away from S... Army help in time...  
 Army operates

Berry Awarded  
 Mate Assistants

Newberry has... a graduate... the history... Hardin-Sim... for the Fall...  
 She graduated... from HSU last... transferring from... Baptist College in... 1979. Her un... graduate of Floyd... School.

Alive in  
 Revival

YOU are invited to hear  
 be ALIVE IN CHRIST at

**FIRST BAPTIST**

October  
 7:30 p.m.

Barrell Robinson  
 Preacher

All Services Televised

# Venture FOODS

Monday - Saturday 8:00 a.m. - 8:00 p.m.  
 Sunday 8:00 a.m. - 5:00 p.m.

to 4 \$  
 NO. 1 CANS  
 12 OZ. CAN

2 69  
 16 OZ. CANS

4 99  
 ROLL PKG.  
 WHITE/ASSORTED/  
 W ACCENTS

FOLGER'S FLAKED  
 Coffee \$2.39  
 13 OZ. CAN

LOWER PRICES AT VENTURE

SHINGTON FANCY RED DELICIOUS  
 Apples 49  
 NO. 1 US RUSSET Potatoes 89  
 5 LB. BAG  
 CENTRAL AMERICAN Bananas 4

5 W  
 URE!

## Wide Services Offered Salvation Army

The Army offers a prisoner visitation program. Nominal fees are charged for the families of inmates to travel by bus to various Texas correctional facilities for visits. Here again is an example of the Salvation Army's commitment to keeping families together.

The Salvation Army is involved with young people all over the state by sponsoring character building youth activities in a variety of forms. The Army has a fully equipped 380 acre camping facility near Midlothian. Through its various camping programs, the Army invites some 4,000 deserving kids to Camp Hoblitzelle every year. They receive instruction in athletics, and get to know others their own ages from around the state. Other programs designed for young people include boys' and girls' clubs and Boy Scout activities. The Salvation Army is well acquainted with the needs, desires, and problems facing young people today and strives to prepare them to be good citizens.

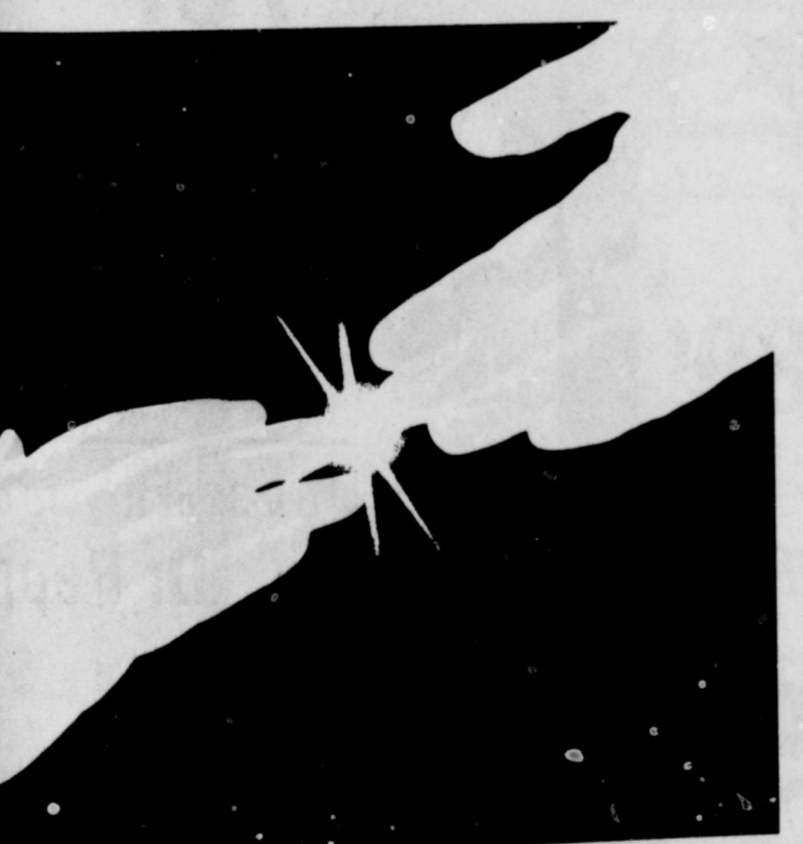
Another public service offered by The Salvation Army is the Missing Persons Bureau. Through its worldwide organization, the Army is in an excellent position to conduct searches on behalf of people seeking missing relatives. The Army has been instrumental in reuniting many families, finding run-aways, and assisting refugees.

The Salvation Army in Texas is truly a statewide organization with 40 corps located in larger Texas cities, manned by Salvation Army officers, and 352 Service Units, volunteer committees who represent the Army in their communities, most of whom are only a few minutes away from preparing tax forms. In addition, the Army operates

an area of endeavor official to all Texas corrections. The Army is instrumental in the prison family. The Army also has a parolee counseling program. In addition, the Army operates

### Berry Awarded Graduate Assistantship

Mrs. Newberry has been awarded a graduate assistantship in the history department at Hardin-Simmons University for the Fall 1989. She graduated from HSU last year transferring from Baptist College in 1979. Her undergraduate major was his-



## Alive in Christ Revival

YOU are invited to hear more about how to be ALIVE IN CHRIST at the

**FIRST BAPTIST CHURCH**  
 October 12-19  
 7:30 p.m.

Darrell Robinson Preacher  
 Marion Warren Singer

All Services Televised-Cable Channel 2



THE LAKE AT THE SALVATION ARMY'S CAMP HOBLITZELLE near Midlothian. Each year thousands of Texans from across the state enjoy the beautiful 380 acre camp.

## State Tax Representative Coming

State Comptroller Bob Bullock announced he is sending a representative from his Plainview office to Floydada on Tuesday, October 21 to assist local taxpayers and answer questions about state taxes.

Bullock said Raymond Bogus, Enforcement Officer will meet with local taxpayers at the Floyd Co. Courthouse, Room 104 from 9:00 to 11:00.

"If Floydada area merchants, or anyone else for that matter, have any questions about state taxes or need help in preparing tax forms, Mr. Bogus will be there to assist them," Bullock said.

"We're trying to cut the red tape in this office and we believe these face-to-face sessions with taxpayers help do just that," Bullock added.

Bullock reminded those taxpayers who are unable to meet with his representative on Tuesday, October 21 that they can still get their questions answered quickly by calling his TOLL-FREE tax information number in Austin. That number is 1-800-252-5555.

The Plainview office, headed by Raymond Bogus, serves Plainview and surrounding counties.

## Floyd County Library Receives Eight Book Gift From Foundation

Floyd County Library is one of over 300 public and school libraries in the state chosen to receive a gift of eight books from the Amon Carter Museum in Fort Worth.

The gifts were made possible by a grant from a private Dallas foundation. The museum undertook a similar program in the mid-70's under a grant from the Texas Commission on the Arts and Humanities.

Officials for the museum

said that they were pleased to be able to share the programs of the museum, as represented by the books, with such a large number of libraries.

The books cover a wide range of American art, history, and photography. All chronicled exhibitions that appeared at the museum and other institutions throughout the country. The Amon Carter Museum opened in 1961 and is devoted to the "westering" of America. It has published over 70 books in its twenty-year history.

The books given to the library are: *The Bison in Art* by Larry Barsness, *Cities on Stone* by John Repp, *Dorothy Lange Looks at the American Country Woman*, *The Track Going Back*, *The Democratic Art* by Peter Marzio, *American Art from the Worcester Art Museum*, *American Impressionist and Realist Paintings from the William Marshall Fuller Collection*, and *Todd Webb*.

## Representatives Sought For Exchange Program

Area representatives are being sought for the American Scandinavian Student Exchange program. Area representatives are needed to screen and interview host families for high school students from Sweden, Norway, Denmark and Finland.

The students, age 16 and 17 will arrive in the United States in August and depart in late June. All fluent in English, the students will attend local high schools. They will have pocket money

as well as medical and liability insurance.

A.S.S.E. will furnish training and materials and will assist in finding host families. Representatives will receive approximately \$125.00 for each student they are responsible for.

This is a unique opportunity to share in the culture and customs of other countries and to promote understanding in the local community.

If interested contact: Eleanor M. Tatch, 1500 Southmoor, Arlington, Texas 76010. Writers should include their telephone number, or you may call 817/469-1556 after 5:00 p.m.

## Volunteer Fire Department Receives Check

The Floydada Volunteer Fire Department received a check for \$75.00 recently from Texas Farm Bureau Insurance Companies as an expression of thanks for the Department's work on the property of James A. Colston.

The money will be used for their purchase of equipment.

The Texas Farm Bureau Insurance Companies pay fire departments this amount when the department works at a fire in rural areas, involving property insured by them.

The Insurance Company believes fire departments have contributed to reduce the amount of loss involved by fire and more importantly, to prevent fires. It is their hope this money will help the Floydada Volunteer Fire Department in their program.

## Brenda Smith Listed On Dean's List

More than 2,300 students at Texas Tech University qualified for the dean's honor rolls in the six colleges during the second term of the 1980 summer session.

Among them was Brenda Smith from Dougherty.

To qualify for a dean's honor roll a student must have a grade point average of 3.0 or more on a 4.0 scale and must have taken as many as 6 semester hours of work.

Texas Tech has an enrollment of more than 23,000 students in six colleges: Agricultural Sciences, Arts and Sciences, Business Administration, Education, Engineering and Home Economics.

Your local independent hardware merchant with national chain-buying power.

# True Value NATIONAL TRU-TEST

HARDWARE STORE

## FALL PAINT WEEK

12 Big Days

AUG. 27 to SEPT. 7

36 COLORS & WHITE

**WEATHERALL® ACRYLIC LATEX HOUSE PAINT**  
**10 97 GAL**

Protect your home with our finest latex formula. It resists cracking and fading through all kinds of weather. Apply to wood, asbestos cement shingles, concrete block, brick and stucco. Weatherall puts many seasons between you and your next painting project. HPX

32 COLORS

**SEMI-TRANSPARENT OIL STAIN AND WOOD PRESERVATIVE**  
**9 99 GAL**

A water-repelling stain that resists rot and mildew but still allows the grain of wood to come through. For shingles, shakes and rough or smooth siding, fences and decks. One coat covers and provides full protection; a second coat intensifies the color. OST

44 Colors & White

**E-Z KARE™ LATEX FLAT WALL FINISH**  
**11 99 GAL**

It's easy-to-care for because this velvety flat finish is hard to erase with repeated washings. For walls, ceilings, trim, plaster, wood and metal. EZ

32 Colors & White

**WOODSMAN® SOLID COLOR LATEX STAIN**  
**8 99 GAL**

The texture of wood is still visible through this high hiding, blister resistant finish. Also for bare masonry and stucco. LS

44 Colors & White

**MARVELUSTRE® LATEX SEMI-GLOSS**  
**11 99 GAL**

For walls, ceilings and woodwork in busy rooms such as bathrooms and kitchens. Dries hard and smooth—resists grease and soil. E

6 Colors & White

**SELECT LATEX FLAT WALL FINISH**  
**7 97 GAL**

Formulated with vinyl resins for high hiding coverage and washability. Use over plaster, wallboard, brick and concrete. A

PAINT NOW

**ONE-COAT CEILING LATEX**  
**7 99 GAL**

A bright white finish that covers most surfaces in a single coat—without streaks or lap marks. CBW

MasterCard PAY LATER

**SAT-N-HUE® LATEX FLAT**  
**10 99 GAL**

A rich-as-velvet flat for walls, ceilings & trim in all rooms. Fully washable. 44 Colors & White. P

44 Colors & White

**BLACKTOP DRIVEWAY SEALER**  
**7 97 GAL**

Covers up to 300 sq. ft. gallon. Latex blacktop coating and sealer for asphalt drives. Also mixes with cement to fill cracks. Dries in 2 hrs. A-49

# Davis Lumber Company

Lockney PHONE: 652-3385





WE GIVE  
  
 WE GIVE  
  
 WE GIVE  
  
 WE GIVE  
  
 WE GIVE  
  
 WE GIVE  
  
 WE GIVE  
  
 WE GIVE  
  
 WE GIVE  
  
 WE GIVE  
  
 WE GIVE  
  
 WE GIVE  
  
 WE GIVE  
  
 WE GIVE  
  
 WE GIVE  
  
 WE GIVE  
  
 WE GIVE  
  
 WE GIVE  
  
 WE GIVE  
  
 WE GIVE  
  
 WE GIVE  
  
 WE GIVE  
  
 WE GIVE  
  
 WE GIVE  
  
 WE GIVE  
  
 WE GIVE  


Armour Chicken Fried  
**Patties**  
 \$1.69  
 "Fresh-Frozen" Catfish  
**Steak**  
 \$1.29

1 lb Armour Star  
**Bacon** \$1.89  
 USDA Boneless Round  
**Steak** \$2.89  
 USDA Ground Beef  
**\$1.49**  
 Lean Pork  
**Steak** \$1.49  
 Deckers Boneless  
**Ham** \$2.29  
 USDA Ranch  
**Steak** \$1.89

# Play Lucky Stars

25 Winners Weekly  
 Look For Stars On Your Receipt

Gold Stars \*\*\*\*\* \$100<sup>00</sup> Gift Certificate  
 Silver Stars \*\*\*\*\* Purchase Free  
 Red Stars \*\*\*\*\* 10 lb Turkey  
 Green Stars \*\*\*\*\* 1200 S&H Green Stamps  
 Blue Stars \*\*\*\*\* 600 S&H Green Stamps

No Purchase Required Must Be 18 Or Older



Some Recent Winners  
**\$100<sup>00</sup> Gift Certificate**  
**Deliha Hernandez**

- |                                     |                                      |
|-------------------------------------|--------------------------------------|
| Purchase Free<br>J.A. Smith         | 10 lb Turkey<br>Anne Wilson          |
| 1200 S&H Stamps<br>Florence Simpson | 600 S&H Stamps<br>Frances T. Morales |
| Lois Reynolds                       | Dale Lawson                          |
| Elizabeth Moreno                    | Mrs. G. L. Fawver                    |
| Johnny Cates                        | Elisa Pleasant                       |
| Mrs. Tom Porter                     | Jossie Torrez                        |

Play Lucky Stars  
 1 lb Nabisco  
**Crackers**  
 69¢

Play Lucky Stars  
 36 Count Chinet  
 Compartment  
**Paper Plates**  
 \$1.79

Play Lucky Stars  
 18 oz Bama Strawberry  
**Preserves**  
 89¢

Play Lucky Stars  
 1/2 gal Buddy's  
**Milk**  
 99¢

6-32 oz Regular or Diet  
**7UP**  
 \$1.39  
 Plus Deposit

6-32 oz Regular or Diet  
**Dr Pepper**  
 \$1.49  
 Plus Deposit

6-32 oz  
**Tab or Cola**  
 \$1.59  
 Plus Deposit


House Instant \$4.79  
 Chunk 3/\$1.00  
 Condition \$1.79  
 ous \$1.29  
 \$1.19  
 \$1.19  
 small 59¢  
 doz  
 And Trim \$1.29  
 Milk

**Farm Fresh Produce**  
 New Mexico New Crop  
 Red Delicious **Apples** 3 lb \$1.00  
 Golden Ripe **Bananas** 3 lb \$1.00  
 Bartlett **Pears** 39¢ lb  
 Firm Green **Cabbage** 17¢ lb

10 oz Lea And Perrins  
 Worcestershire  
**Sauce** 89¢

8 count Birds Eye  
**Corn On The Cob** 89¢

220 South 2nd  
 983-3149  
**STORE HOURS**  
 Mon.-Sat. 8am - 10pm Sun. 9am-9pm  
 Values In This Ad  
 Effective Thru Wednesday  
 October 15, 1980  
 We Reserve The Right To Limit Quantities

We Give  
  
 We Take U.S.D.A.  
 Food Coupons  
 We Take W.I.C. Cards

42 oz White Swan "Red Label"  
**Shortening**  
 99¢  
 With This Coupon And Purchase of \$10<sup>00</sup> Or More  
 Good At Buddy's Expires 10-15-80

**Buddy's SUPERMARKET**



THIS LITTLE ONE doesn't have to be encouraged to Eat!!

### Fairview News Mrs Clyde Bagwell

October 6:

This Monday morning finds us with a damp cloudy morning. Early this morning 3/10 of an inch of rain fell here in town and out Fairview way E.W. Walls reports 1/2 inch and Ray Cook reports only a shower at their place.

We sympathize with the family of Mrs. Sam (Blanche) Lide who's funeral was held Friday afternoon at the City Park Church of Christ.

Mr. and Mrs. Marvin Marsee of Norman, Oklahoma spent Wednesday night here with her sister and brother-in-law, Mr. and Mrs. E.W. Walls.

Mr. and Mrs. Clyde Baxter of Lockney visited Mr. and Mrs. E.W. Walls Friday afternoon. Mrs. Baxter is Mrs. Wall's niece.

Mrs. Ray Cook went to Borger Friday to visit her brother, John Sullivan, who is ill. Joyce Linderman of Houston was also there to visit her father.

Mr. and Mrs. A.C. Rainer were hosts during the high school Homecoming for his brothers and their wives, Elvin and Bea Rainer of Lubbock, and their daughter, Billy Pat Hurst of Dallas; Norrvill and Lorna Rainer, Lavon and Beth Rainer and

Peewee and Mona Rainer, all of San Diego, California. Other relatives visiting in the A.C. Rainer home during Homecoming were L.D. and Evelyn Golightly of Irving and Viola Golightly, Saturday night all of the above named were dinner guests of Mr. and Mrs. A.C. Rainer.

Becky Crabtree of Texas Tech University of Lubbock spent the weekend at home with her parents, Mr. and Mrs. Kay Crabtree and Sam and Anissa.

Mrs. A.C. Rainer visited Mrs. Clyde Bagwell Saturday afternoon.

Mr. and Mrs. Bill Beedy spent from Wednesday to Sunday at their ranch near Claude.

Sunday night Mr. and Mrs. Bill Tye and Mr. and Mrs. Walton Wilson visited in the Bill Beedy home.

Mrs. Kate Crabtree visited in the home of her son and family, the Kay Crabtree's Sunday and had dinner with them.

Mrs. Kate Crabtree was hostess Friday afternoon for the members of the LOVE Sunday School Class and their teacher, ones present were the teacher, Mrs. Iva Benson and members, Mrs. Flora Warren, Mrs. Dee Sims, Mrs. Roy Fawver,

Mrs. A.S. Mize, Mrs. Mable Smith, Mrs. T.T. Hamilton, Mrs. Nettie Adams, Mrs. Edna Phillips, Mrs. A.G. Eubanks and Mrs. Eva Newcome and the hostess, Mrs. Kate Crabtree. This was a combined business meeting and social.

Mr. and Mrs. Randall Warren of Lubbock spent Saturday afternoon here with his parents, Mr. and Mrs. Bud Warren, they had been to Florida on their vacation and brought the slides they had made in Florida and showed them to the parents who enjoyed them very much.

Mrs. Bud Warren had the misfortune of falling last week and is nursing many cuts and bruises she received. We hope she will soon be feeling much better.

Mr. and Mrs. C.H. Wise visited at Caprock Hospital Friday afternoon with Julian Lipham and Carl Lewis, who where both patients at the hospital.

Mrs. Ethel Graham went to Lockney Sunday morning and visited Mrs. Gene Collins Jr. and later they went to Plainview and had lunch out.

Mrs. Everett Collier visited one day last week with Mrs. Ethel Graham.

Mona Dell Wise of Amarillo came late Friday afternoon and stayed over Sunday with her parents, Mr. and Mrs. C.H. Wise.

This Monday afternoon the sun is shining and farmers are looking forward to getting in the fields as soon as it dries up to sow wheat and harvest the cotton.

## LAKEVIEW NEWS

By Joyce Williams

Mr. and Mrs. Gonzales Basdulva of Wolfforth visited her sister, Mrs. Smoky Quilantan, and family last Saturday. Mary has been canning tomatoes and peppers.

Blanton and Ruby Hart-sell have several acres of tomatoes. Lots of Lakeview people have been going there, raking along baskets and boxes, and buying fresh tomatoes for canning.

Max and Andy Brown of Amarillo visited Mrs. Viola Brown and Mr. and Mrs. Edmund Brown last week.

Mr. and Mrs. James Finley and daughter, Melanie, of Midland visited Mrs. Finley's parents, Mr. and Mrs. W.H. Bunch, during the Floydada High School Homecoming. Jay graduated in 1950 and James was in the class of 1948. Melanie, who is a twirler at Midland Lce High School, had an open weekend and visited with her grandparents during Homecoming.

The W.H. Bunches, and Milton Harrison were discussing vacations on a Tuesday and thirty-six hours later had departed together on a tour of the Pacific Northwest. Going by way of Salt Lake City, Reno, and Lake Tahoe to Sacramento, California. While in Washington state they visited Margaret Ann and Jerry Bartram, in their lovely new house on their apple farm, Margaret Ann is the daughter of Mrs. Holt Bishop. The Bartrams also grow pears and peaches. The travelers

came by Mt. St. Helens, which was sprouting steam.

Mr. and Mrs. Randy Bertrand co-hosted an after-game party for the classes of 1966-67 at the home of Mr. and Mrs. Gene Smith during Homecoming.

Greg and Mike Bishop were home from Texas Tech last weekend.

Nancy Bishop attended her class reunion at the Aldine Williams insurance office on Friday evening.

The Howard Bishop's attended the Texas Tech game last weekend with Mr. and Mrs. Norman Muncy.

Mrs. Nancy Goodwin of Wright City, Oklahoma arrived last Thursday to visit her parents, Mr. and Mrs. Q.D. Williams for Homecoming. Friday night she attended an after-game party for the class of 1970, held in the Jimmie Wilson home. Other class members present included Kent and Cindy Hale, Corky and Christy Brown Johnson, both of Lubbock; Stan Wilson, Albuquerque, New Mexico; Larry Scott, Sul Ross University, Alpine; Janet Sue Watts, Denver, Colorado; Martin and Jill Bertrand Warren, Tahoka; Jack and Lacha Cummings Gregory, Floydada; Judy Jameson, Plainview; Judy Probasco Washburn, Irving; Stanley and Wendy Pierce, Hulan and Ann Fawver Carthel, Ann Hammonds Glasscock, Bob and Marilyn Harris Marlar, all of Floydada; and the hostess, Janie Wilson Traugott, of Dallas. For some of the class it was the

first visit together in ten years. They all had a wonderful visit and reunion.

W.M. Hambricht's brother, and wife, Mr. and Mrs. Homer Hambricht of Alvin, visited here from Thursday through Sunday last week. They visited her aunt, Mrs. Kate Edwards.

Mr. and Mrs. Jimmy Smith of Arlington visited for Homecoming. He is W.M. Hambricht's cousin.

Mrs. Hambricht's sister, Mrs. R.E. Cogswell of Plainview, attended the Homecoming. She taught school in Floydada in 1925 and '26. Other visitors at the W.M. Hambricht's included Mr. and Mrs. Odell Breed, Mr. and Mrs. Bob Hambricht and children, Alissa and Jim Bob, on Saturday night.

The rain, slow, gentle, soaking, measured 3/4 inches in our community last week. What's the weather museum column in the Foad County News at Crowell is an old German weather observation:

"An old Coryell County farmer, Arthur Krause, whose parents came to Texas from Germany in the 1880's, had a formula whereby he could tell if his parched tinder-dry land was due to three more months of drought.

A legacy left by his parents was the old family weather lore, the traditions and beliefs that often defy scientific explanation. Sometimes scoffed at, some of them have an amazing high

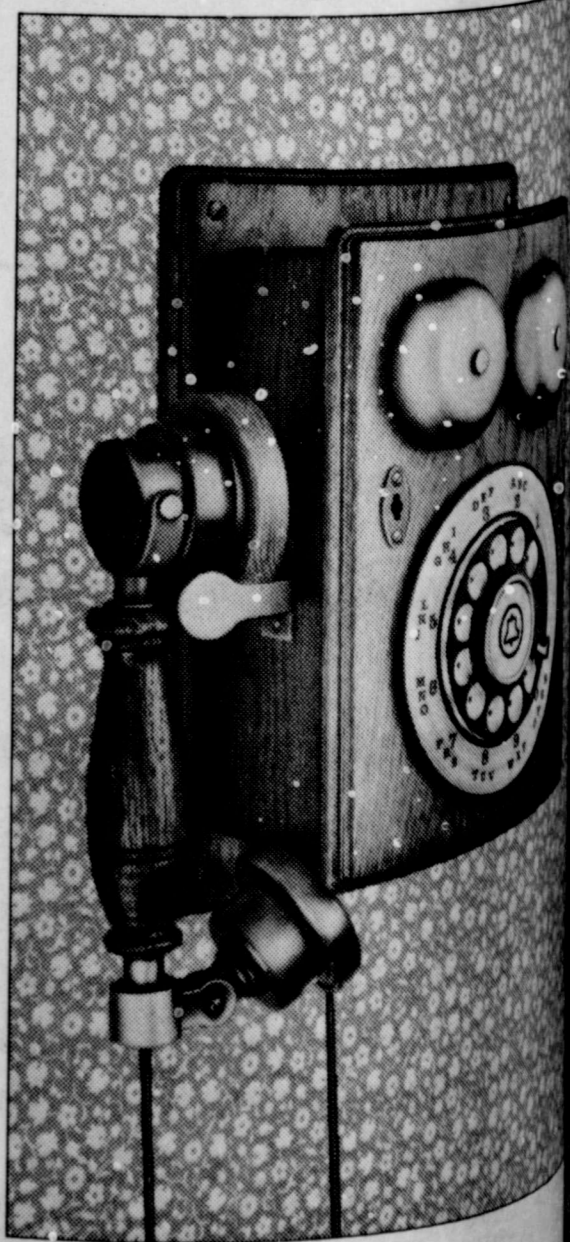
# Woodrow Wilson. Ragtime. The Great Houdini The year is 1913 and a new Bell telephone begins ringing throughout the land Ah, those were the days...


Now you can relive those days with Southwestern Bell's new Country Junction\* telephone — a happy blend of yesterday's spirit with today's technology.

Lovingly handcrafted in natural oak and antiqued nickel trim, the Country Junction phone is a classic that blends with period settings and makes an attractive statement with the crisp, cool lines of contemporary taste.

No matter where the telephone is placed — kitchen, den, family room, living area — this is a phone that will be seen and admired. Because it has modular components, installing it is as easy as hanging a picture.

In a busy, bustling world, the Country Junction telephone is a pleasant reminder of those times when all phone conversations began with the voice that smiled.



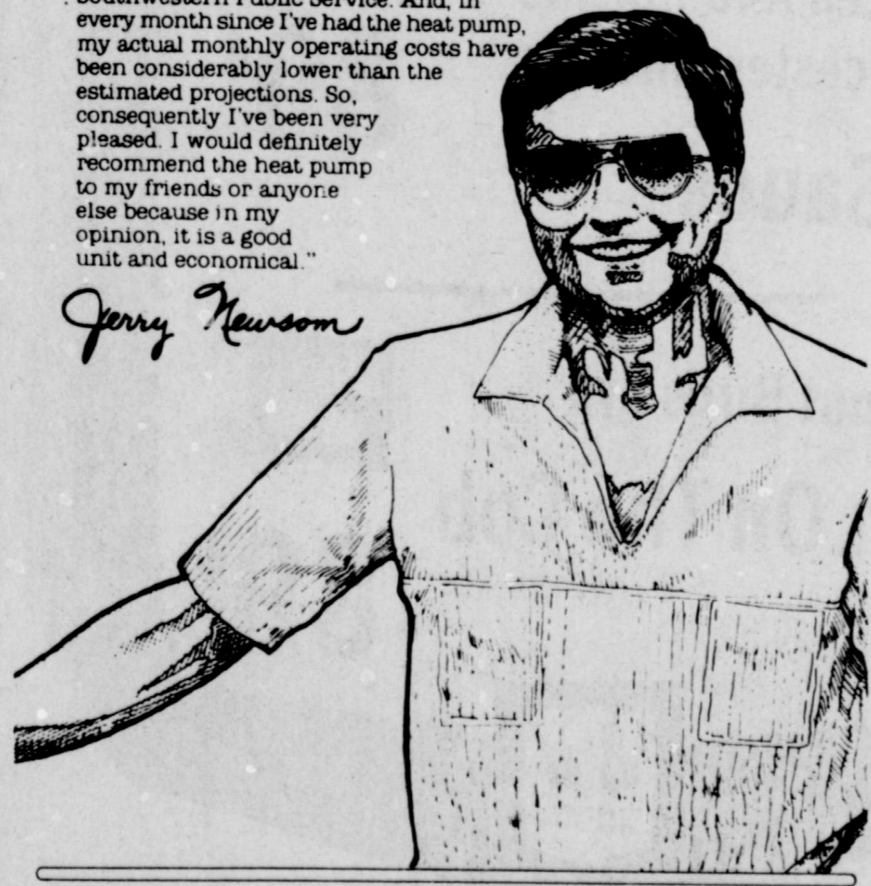
 Southwestern Bell

\*Trademark of AT&T Co.  
Working parts remain the property of the telephone company.

## It's True.

"We bought a house a few years back, and it had a heat pump in it. I was very satisfied with it and simply decided to have it put in our new home here. The reason I like the heat pump is because it is efficient, simple and clean... you don't have to fuss with any change over from heating and cooling. I was given projected operating costs of the heat pump in both homes by Southwestern Public Service And, in every month since I've had the heat pump, my actual monthly operating costs have been considerably lower than the estimated projections. So, consequently I've been very pleased. I would definitely recommend the heat pump to my friends or anyone else because in my opinion, it is a good unit and economical."

*Jerry Newson*



The things said about the heat pump are true. Find out more about the heat pump. It can save for you.

**SPS**  
SOUTHWESTERN PUBLIC SERVICE

### Commissioners Tax Count

County Commissioners voted to give a 2% discount for taxes paid in advance. Regular procedure will be followed.

Commissioners met in regular session Monday, October 13, at the Courthouse.

Effective rate has been set and added to the tax roll advising the re-evaluation of their value may be contested.

include four entities: the Plains Water, Caprock and Lockney General Hospi-

set by the two Hospital 20 cents. Caprock Hospital Precincts 1, 3 and 4. Lockney Hospital is precinct 2.

Water Board set their tax rate at 10 at 2 p.m. at the County tentative rate was set at 15 cents. This includes a 15 cent special created several years ago. County general fund of 16 cents. Budget hearing was set for

noted that elected officials and employees at Floyd County will to keep their Blue Cross Blue insurance if employed by the five years or longer. Pre- to be paid by the policy

terly; and in advance.

Get Play  
Friday Night

Longhorns will begin the season of competing in district play this Friday night at Tulla the Hornets. Kick-off time is 8

are 4-1 for the season. The team is expected to be in good and have two good backs in Wade Littlefield.

district action Floydada goes to the top and Abernathy goes to

Beauty Salon  
In Lockney

Rogers is now opening the new Carl Beauty Salon, located at the intersection of Highway 10 and 100 in Lockney.

been a beautician for nine years. She specializes in the latest fashions, manicures and the beauty line for men and

and Carl Beauty Salon will be open Wednesday and Saturday. Opening for the Cut and

Salon will be Saturday, October 17, 1980.

will be a drawing for a new car on the 24th. Registration will be from the 17th through the 24th.

LINDA ROGERS, owner of the new Carl Beauty Salon, Linda will open for

