

Base Dockbinding  
P.O. Box 2558  
Amarillo, Tex. 79105

Free the Hostages

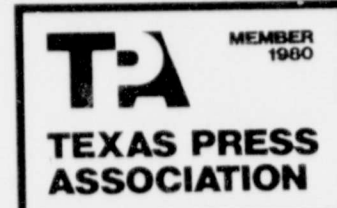
# The Lockney Beacon

Volume 79, Number 16 Lockney (Floyd County) Texas 79241

Sunday, February 24, 1980

10 Pages In One Section

20 Cents



Stock Show Exhibitors Recognized At Awards Banquet

## Lockney Youth Wins Stock Show Sweepstakes Award



AT BANQUET — Doug Sparkman received the sweepstakes award presented Thursday

night at the Floyd County Junior Livestock Show Banquet in Lockney. Sparkman was named sweepstakes award winner for his showmanship,

herdsmanship, sportsmanship and willingness to help others. Miss Whitfill sold more than \$900 in 1980 stock show memberships to win the sweetheart award. [Staff Photo]

Doug Sparkman of Lockney won the 1980 Floyd County Junior Livestock Show sweepstakes award, presented Thursday night at the stock show awards banquet. Jill Whitfill was named 1980 stock show sweetheart. Miss Whitfill, who represented the Lockney 4-H Club, sold more than \$900 in stock show memberships to claim the sweetheart trophy for this year.

David Foster, a former winner, presented the coveted sweepstakes award to Sparkman. The large traveling trophy, which the winner holds for a year, is furnished by "a friend of the Floyd County Junior Livestock Show." Weldon Pruitt sponsored the sweepstakes plaque, which Sparkman gets to keep.

Also revealed at the banquet were the winners of the county show herdsman and showmanship awards. Winners of the 1980 herdsman trophies were Dusty Burleson (beef), Kristi Dawdy (swine), and Hunter Smith (sheep). Showmanship trophies went to Danny Nutt (beef), Craig Ellison (swine), and Jodie Smith (sheep).

Tom Ross of Floydada took the trophy for overall high-score individual in the stock show judging contest. Ross scored 435 of a possible 450 judging contest points. Second place in overall judging went to Ty Williams of Lockney. Byron Brock and Todd Beedy tied for third.

Division winners in the judging contest were as follows:  
Swine division — 1. Mack Sherman and Randy Ford (tie) 2. Craig Ellison 3. Jim Waller.  
Lamb division — 1. Tom Ross 2.

Karyn Foster 3. Phillip Kidd and Mack Sherman (tie).  
Beef division — 1. Mitch Ross 2. Danny Nutt 3. Keith Nixon.

Stock show association president Ed Nutt conducted the awards presentation. Winners were announced by Roger Dawdy, swine superintendent; Bob Ross, assistant beef superintendent; and Kenneth Holt, who substituted for sheep superintendent Kenneth Brose.

Banquet Emcee Craig Gilly introduced Velvet Smith, Ambassador for Agriculture for Texas Tech University. The Tech Freshman congratulated the Floyd County youngsters on their

successful stock show and dared them to "go forth and be winners." She said "Success is having the courage not to let defeat beat you," and urged the banquet crowd: "Do not pray for tasks equal to your powers, but pray for powers equal to the task."

Pianist Penny Bertrand provided dinner music. Jim Waller gave the invocation, and Ty Williams said the benediction.

Floyd County Farm Bureau sponsored the awards banquet. Nearly 400 persons attended the event, held in the cafeteria at Lockney Elementary School.



BEST HERDSMEN — Hunter Smith (left) and Kristi Dawdy received the sheep and swine herdsman awards at

the county stock show banquet ... Dusty Burleson, not pictured, was named top steer herdsman. [Staff Photo]

## Show Champs Bring Premium Prices

Grand champion steer of the county Junior Livestock Show sold \$1.55 a pound, according to Jett county extension agent. Ty Williams of Lockney was the grand

champion exhibitor. Buyers were Plainview Farmers Supply, Providence Farm Supply and Oscar Golden. Dara Carthel's reserve champion steer brought \$1.20 a pound at the show

auction Wednesday. Petroleum Transport of Lubbock bought the reserve champ.  
Byron Brock's grand champion barrow sold for \$3.00 a pound and was purchased by Plainview Savings and Loan, Frontier Savings and Loan, Hale County State Bank, Bob Gardner Chevrolet, Fred Garrison Oil Company, and Bearings and Industrial Supplies, Inc. of

Plainview.  
The reserve champion barrow, shown by Kyle Brock, went for \$2.50 a pound. Buyers were Western Beef of Amarillo and Western Lockney of Lockney.  
The Byron Brock family added \$1.00 per hundred to all barrow bids, and Floydada Livestock Sales Company added \$1.00 per hundred to all steer bids.

## Ferguson, Montandon Are

### Hospital Board Candidates

General Hospital District No. 10 has called an election Saturday to choose successors to the district directors Leslie Ferguson and Helmut Quebe, whose terms expire in April.

Ferguson has served three two-year terms on the hospital board and is not eligible for another term.  
Candidates must present petitions, signed by at least 10 qualified voters of the district, to the hospital board secretaries for their names to be placed on the ballot.  
Friday afternoon, petitions had been received for Ferguson, who is seeking re-election, and Francis Montandon.



CONGRESSMAN JACK HIGHTOWER visited with the Mackenzie Municipal Authority Board and city officials at the Mackenzie Lake Board room Thursday afternoon. Congressman Hightower is pictured with Lon Davis of Mackenzie, president of the board, and manager of the lake Neil Taylor (right).

## Floydada Youngster Injured At Stock Show

Johnny Nichols, 12-year-old son of Mr. and Mrs. Ray Nichols, Floydada was injured Monday in car-pedestrian accident at the Floyd County stock show.  
He received two broken bones in his leg, a broken wrist and a slight concussion.

## Thomason Grocery

### In New Location

Thomason Grocery and Market is open for business at its new location, 220 South Main Street. The store has moved from its Northeast Eighth Street location, and the Thomasons are asking their customers to excuse the temporary inconvenience caused by relocation work still in progress at the new downtown location.

Thomason's grandopening celebration date will be announced later.



TOPS IN SHOWMANSHIP — Winners of the showmanship awards, presented Thursday night at the Floyd County

Junior Livestock Show Banquet, were (from left) Craig Ellison, Jodie Smith and Danny Nutt. [Staff Photo]

## Financial Aid Clinic

### Set At Lockney High

A Financial Aid Clinic will be held March 6 at the Lockney High School library at 7:00 p.m. The program will be conducted by Sheree Cannon, Lockney High School Counselor and Glenn Pounds Financial Aid Director of South Plains College.

Topics to be covered will be the types of aid available with emphasis on the Basic Education Opportunity Grant (BEOG) and how to apply for financial aid. Current income tax returns will be necessary to complete financial aid applications and should be brought to the clinic.

There is no charge for this workshop and interested adults, high school seniors and their parents are urged to attend. If there are questions concerning this workshop, Mrs. Cannon may be contacted at Lockney High School 652-3325.

## Congressman Visits Mackenzie

Congressman Jack Hightower took time Tuesday afternoon to visit the Mackenzie Water Authority board at the lake in a special called meeting to see about progress on a one million dollar grant and a Farmers Home Administration \$14 million loan needed to finish out the water project.

President of the board Lon Davis made some introductory remarks about the project, then called on the Congressman for any information he might want to share.

"We still cannot make a definite commitment on your request, but I feel like it will just take time to go through the channels and the money will be approved," the Congressman told the group.  
Lake manager Neil Taylor told the

group Mackenzie board members and representatives of Tulia, Lockney, Silverton and Floydada cities that some more revisions have been made on the application and the Temple, Texas headquarters for the state office have again submitted the application to Washington.

Congressman Hightower suggested that Taylor send him a letter requesting an interview with the Washington officials that will approve the application, and he said that might speed up the commitment for the money.

Congressman Hightower said he realized that the cost of the project was increasing day by day with a 12% inflation rate and that he would do everything possible to speed its approval.



LOTS OF HARDWARE was distributed to Floyd County Junior Livestock Show

exhibitors at the stock show awards banquet Thursday night. [Staff Photo]

Beacon  
lights

Jim Higgins

I SAY the score of the girls' game was 49-47? How embarrassing! That's not right — it was just wishful thinking, I guess. I'd better get the game before that. The score WAS 49-47, Lockney's

GILLILAND  
WELL SERVICE  
★ Windmills  
★ Small Submersibles  
★ Pump Jacks  
Phone 983-2458  
Floydada

PIGGY WIGGLY

59  
19  
299  
39  
5¢  
19

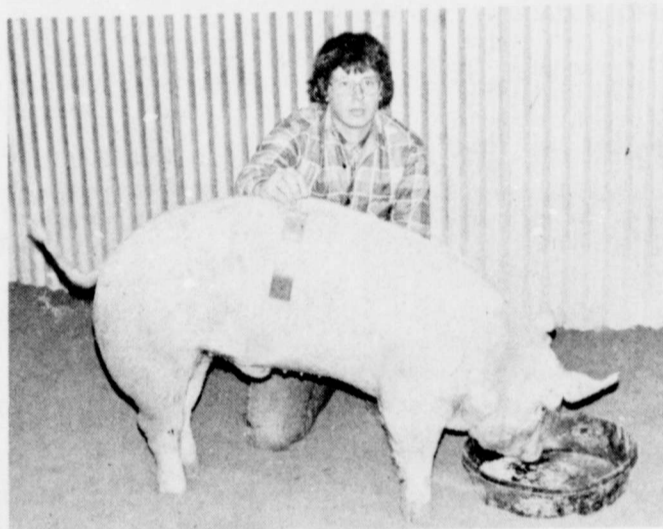
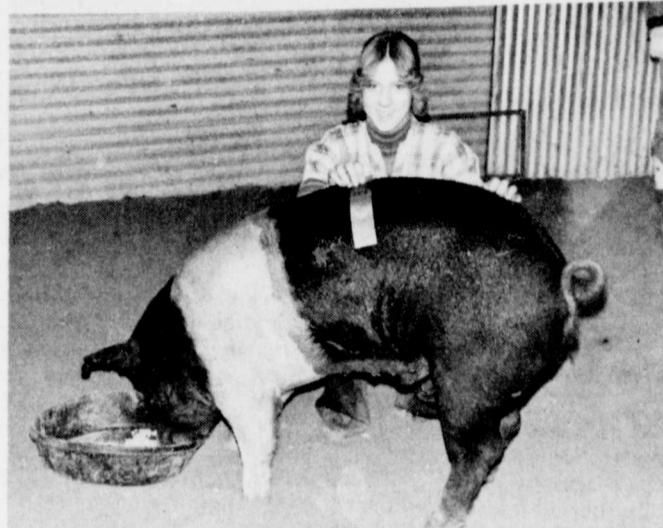
Full Cut. Bone In. Tender Beef  
Round Steak \$1.88 lb.

When Treat. Ass't. Varieties  
5 \$  
6-oz. pkgs.  
\$1  
16-oz. btl.

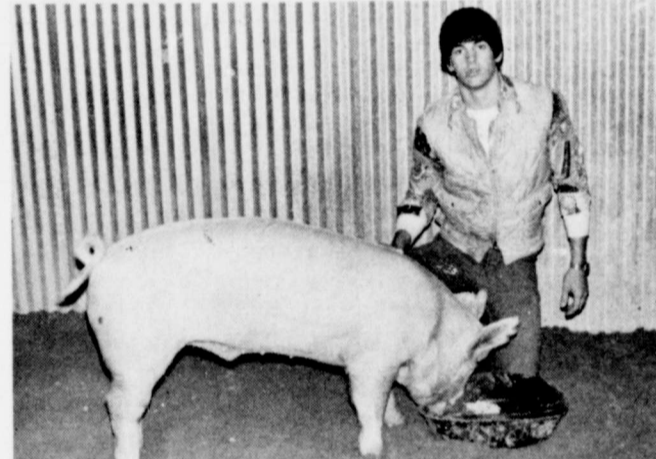
Family Pak  
Morton Donuts 14-oz. pkgs.

Pancake & Waffle Syrup  
Golden Griddle 12-oz. btl. 7  
Chef-Boy-Ar-Dee  
Beef-A-Roni 15-oz. can 6  
Sunlite Oil 48-oz. btl. 3  
Golden Grain, Cheddar and Macaroni 7 1/4-oz. pkgs. 3  
Glad, Small Garbage Bags 30-ct. pkg. 30¢

Join The Winners Play Instant Bingo  
Corn on the Cob Green Giant Nibblers 79¢ 6-ear pkg.



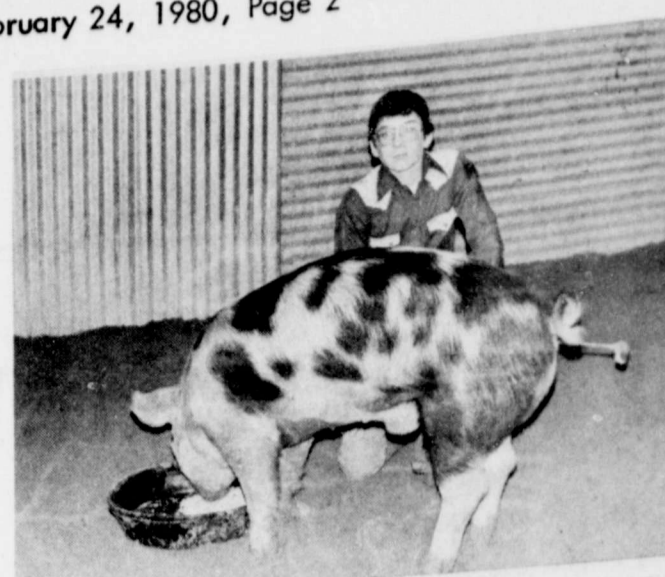
**LOCKNEY BREED CHAMPS...**  
**POLAND**—Lane Turner with Steven Turner's barrow  
**HAMPSHIRE**—Karen Mathis  
**CROSS**—Kenneth Rogers



**LOCKNEY RESERVE BREED CHAMPS...**  
**HAMPSHIRE**—Hugo Araujo  
**DUROC**—Craig Ellison  
**CHESTER**—Santos Mariscal  
**CROSS**—Phillip Kidd



The Bedouin nomad washes his hands by rubbing them with dry sand.



**LOCKNEY FIRST-PLACE BARROWS...**  
**HEAVYWEIGHT CROSS**—Brian Emert  
**LIGHTWEIGHT HAMPSHIRE**—Mergie Araujo  
**LIGHTWEIGHT DUROC**—Brian Hayes  
**LIGHTWEIGHT CHESTER**—Dwight Jackson



**LOCKNEY FIRST-PLACE LAMBS**  
**SHROPSHIRE**—Heather Holt  
**HAMPSHIRE**—Ritchie Thornton  
**SUFFOLK**—Scott McCarty  
**FINEWOOL CROSS**—Jeff Burt  
**FINEWOOL**—Matt Mitchell

**New books in the**

...books for adult readers have been added to the Library Branch Library. **Over Became of Sin?** by Menniger, M.D. in an attempt to apply to a world-wide depression. The Watermen by Michener consists of drawings made by the author for the book by John Deere. **Good Weight** by Phee, a staff writer of the New Yorker magazine is a collection of five drawings which show his compulsion to draw and to share. **To the King** is another drawing by Barbara Cartwright. The setting is after the Prussian War. **Value** is a novel by Powers. His first novel was a candidate who was a stand-up comedian to a stand-up comedian. This book is take up where Netter off — "with a tenseful, wickedly devastating series of television, power politics of manipulation." The Watermen by Michener consists of drawings made by the author for the book by John Deere. **Good Weight** by Phee, a staff writer of the New Yorker magazine is a collection of five drawings which show his compulsion to draw and to share. **To the King** is another drawing by Barbara Cartwright. The setting is after the Prussian War. **Value** is a novel by Powers. His first novel was a candidate who was a stand-up comedian to a stand-up comedian. This book is take up where Netter off — "with a tenseful, wickedly devastating series of television, power politics of manipulation." The Watermen by Michener consists of drawings made by the author for the book by John Deere.



**YOUNG SHOWMAN**—K... his lamb ready to show in Junior Livestock Show Sat...

**Major Bull Markets ?**

**\$1 Cotton ?**

**\$11 Soybeans ?**

**\$60 Hogs ?**

**Dodson - Brown Commodities, Inc.**

Using the Hal Commodities Cycle there have been over '200,000 in profitable market recommendations since 1974. Trade the consistently profitable Hal recommendations yourself. Learn money management before and during the trade. Learn how to catch the big move.

Charles Dodson will cover the basis for commodities in your particular area - the key to timing of cash sales

**Dodson - Brown Commodities, Inc.**

**Seminar**

**Thursday, February 28, 1980**

**Beginning At 7 p.m.**

**PCA Meeting Room**

**Floydada**

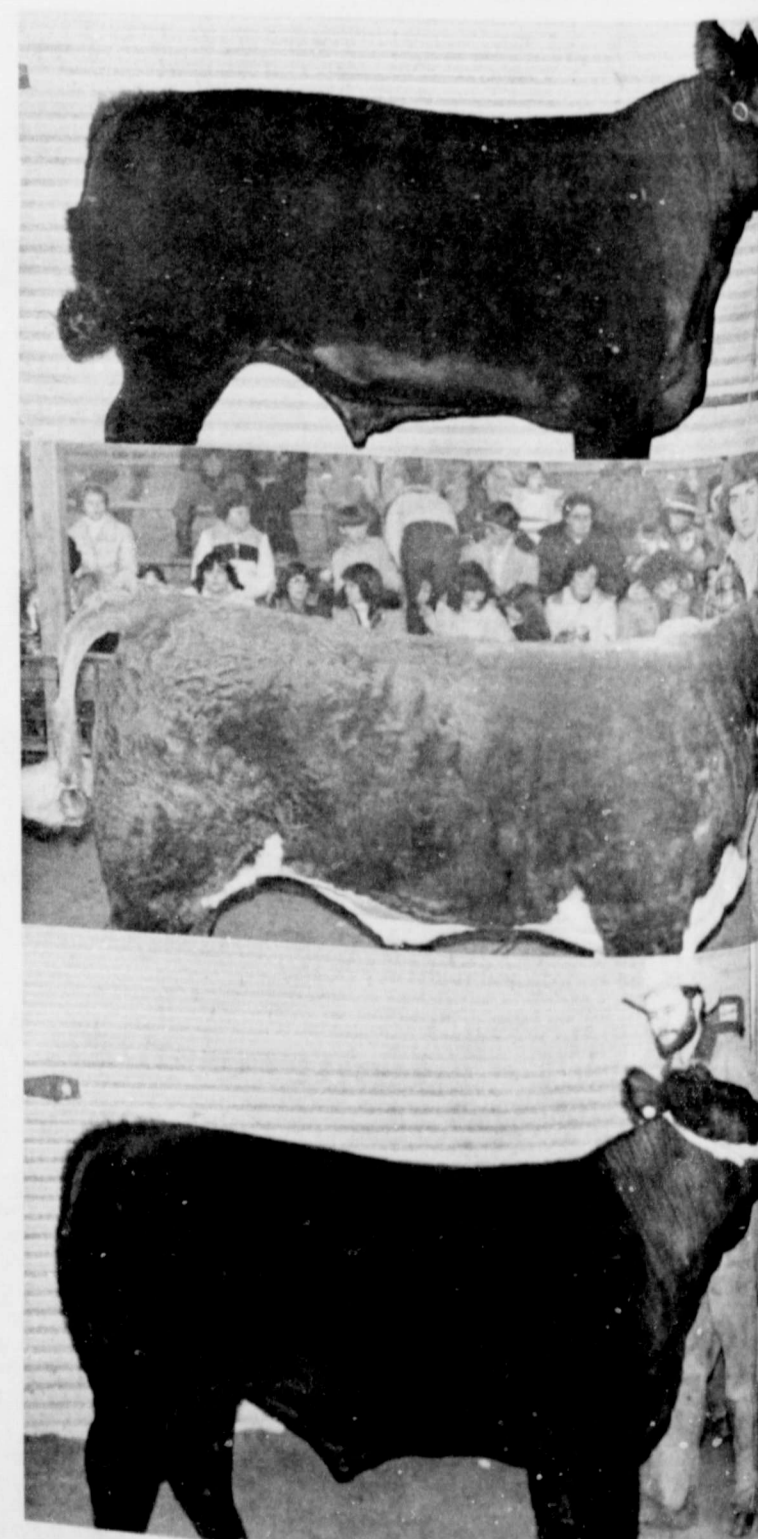
**\$15 Cover Charge**

**\$17<sup>50</sup> Per Couple**

**Lockney General Hospital Report**

Feb. 14-21

- Emma Scott, Lockney — Feb. 7-19.
- Oma Ruth Neff, Floydada — Feb. 9-14.
- Herman Cunningham, Lockney — Feb. 10-18.
- William H. Finley, Floydada — Feb. 10-15.
- Olive Myers, Lockney — Feb. 11-18.
- Gertrude Marr, Lockney — Feb. 11-18.
- Christine Leal, Quitaque — Feb. 12-19.
- Frances Gamble, Silverton — Feb. 13-15. (Baby boy born Feb. 13, dismissed Feb. 15.)
- Celia Chavez, Quitaque — Feb. 13-18.
- Delores Ortiz, Quitaque — Feb. 13-19.
- Piedad Ferrer, Lubbock — Feb. 14-16. (Baby boy born Feb. 14, dismissed Feb. 16.)
- Francis Montandon, Lockney — Feb. 14-19.
- Nan Boyd, Lockney — Feb. 14-19.
- Raymond Martin, Lockney — Feb. 15-18 (transferred).
- Delores Tarango, Plainview — Feb. 15-18.
- Harold Griffith, Lockney — Feb. 16 — continues care.
- Charlie Henderson, Lockney — Feb. 17-20.
- Jose's Trevino, Kress — Feb. 18 — continues care.
- Patsy Bailey, South Plains — Feb. 18 — continues care.
- Edd W. Whitfill, Lockney — Feb. 19 — continues care.
- Mary A. Green, Lockney — Feb. 20 — continues care.
- John C. O'Rand, Lockney — Feb. 20 — continues care.
- Berta Smith, Plainview — Feb. 20 — continues care.



**LOCKNEY FIRST-PLACE STEER EXHIBITORS**  
**LIBBY WILLIAMS** and first-place Angus.  
**BYRON BROCK** and first-place Hereford.  
**COLT GOLDEN** and first-place lightweight cross.



**How much should you pay for regulation?**

About 1/3 of the cost of generating plant is spent to federal regulation. It now takes upwards permits from 30 odd government agencies to build a generating plant, adding enormous and agonizing delays to vital projects. The price goes up on your bill. Your member-owned electric cooperative with other leaders urges a simplification licensing procedures to speed up power projects and reduce the cost.

Your member-owned electric cooperative wants to help you save

**LIGHTHOUSE ELECTRIC COOPERATIVE**  
**FLOYDADA**

## New books in the Lockney Library

Books for adult readers have been added to the Lockney Branch Library.

**Never Became a Sin?** by Menniger, M.D. in an attempt to apply psychiatry to a world-wide phenomenon — the depression, the discouragement and the helplessness which are prevalent.

**Good Weight** by McPhee, a staff writer of the New Yorker magazine, is a collection of five sketches which show his curiosity and his compulsion to write and to share.

**Who Killed the King?** is an anthology by Barbara Cartland. The setting is after the Prussian War.

**Value** is a novel by Powers. His first novel was a candidate who was from being a stand-out

comedian to a stand-out flag-waver. This book is said to take up where Network left off — "with a taut, suspenseful, wickedly funny, devastatingly serious novel of television, power and the politics of manipulation."

**The Watermen** by James Michener consists of selections made by the author from his novel **Chesapeake**. Drawings made especially for the book by John Moll accompany the stories.

**Katharine the Great** by Deborah Davis is not about a queen, but instead is about Katharine Graham and the Washington Post. Although Ms. Graham is surely one of the most powerful women in the U.S. in her position as publisher of the Washington Post, few Americans are aware of her far-reaching influence.

**Aborting America** by Bernard N. Nathanson, M.D. as edited by Walter Hooper, is said to be a doctor's personal report on the agonizing issue of abortion.

**The Man Who Kept the Secrets**, Richard Helms and the CIA, was written by Thomas Powers to reveal the man who was for 30 years involved in spying.

**Hugging, Hitting and Other Family Matters** or Children Talk About Their Families was compiled by Naomi Hampe and illustrated by Stuart Hampe.

**Sisters** by Elizabeth Fishell discusses love and rivalry in a program (CLEP) (paperback).

the ways a woman's life is shaped and influenced by having a sister.

**They Stand Together**, the

letters of C.S. Lewis to Arthur Greeves (1914-1963), as edited by Walter Hooper.

**A Private Battle** is author Cornelius Ryan's personal account of his battle against cancer. (He died Nov. 23, 1974.) After his death his wife Kathryn Morgan Ryan, herself a distinguished novelist and a collaborator on his books, joined her words with his to produce this book.

**High School Equivalency Test (GED) Review** for the new six hour exam was written by Edward C. Gruber, Ph.D. (paperback)

**Barron's How to Prepare for the College-level Examination Program (CLEP)** (paperback).

**Feelings** by Willard Gaylin, M.D. is subtitled **Our Vital Signs**. Dr. Gaylin wants us to learn to read, understand and trust our feelings. His writing style is called unpretentious.

**The Windsor Story** by J. Bryan III and Charles J.V. Murphy is an intimate portrait of Edward VIII and Mrs. Simpson.

**Endings**, a book about death by Buff Bradley says that like death itself, the book is a kind of question. It is meant to provide many things to think about and to explore further after you've closed the book.

**Mysteries of Nature** — explained and unexplained — by Roger Caras is illustrated with photographs.

**Queen of Hearts** by Vera and Bill Cleaver is a book for juvenile readers.

**The Best Jokes from Boys' Life** as selected by the editors of the magazine.

**Freight Train** by Donald Crews is a book for the beginning reader.

**Floyd County Long-Range County Program** is a paperback produced by the Texas Agricultural Extension Service and has background information on the county and objectives for the future.

**The Americans** by John Jakes is a paperback version of the Kent family chronicles, volume VIII.

**Independence** by Dana Fuller Ross is in paperback form and is the first book in a series.

Library clerk Mrs. Helene Holt has information on the International Book Project Inc. which provides individuals and groups with where and how mailing information to re-cycle books and to match book requests with book offers.

## Courthouse Squares



RIP VAN WINKLE (Edwin Child) wakes up after his long "twenty-year sleep" in the Washington Irving story. The National Children's Theatre Association's exciting production of this famous legend will be presented by Il Penseroso Junior Study Club in the Lockney Elementary School Cafeteria Tuesday [Feb. 26] at 9:30 a.m. and 1:30 p.m.

tion's exciting production of this famous legend will be presented by Il Penseroso Junior Study Club in the Lockney Elementary School Cafeteria Tuesday [Feb. 26] at 9:30 a.m. and 1:30 p.m.

## Happy Birthday

Feb. 24 — Penny Sterling, Denny Quisenberry, Michael Villa, Ray Gant, Bobbie Kellison.

Feb. 25 — Jo Ann Carthel, Howard Moore, Kim Smith, Lee Anne Galloway.

Feb. 26 — David Brittain, Kaci Mathis, Ann Race, Rudy Molina, Mary Rodriguez, Jo Webb, Debbie Hernandez, Reeda Cay Smith, Dell Ray, Marilyn Smith.

Feb. 27 — Jeff Bayley, Kim Davis, Chantal Marshall, Manuel Rendon Jr.

Feb. 28 — Josie Garcia, Virginia Sissney, Lucille Frizzell, Paige Cannon, Beverly Barker, Carolyn Duvall, Almeda Phillips.

Feb. 29 — Diane Johnson. March 1 — Teresa Vasquez, Gayle Jackson, Laverne McCarty, Donice Casey, Cynthia Martin.

## Happy Anniversary

Feb. 24 — Mr. and Mrs. Juan Garcia.

Feb. 26 — Mr. and Mrs. James Masten, Bill and Deanna McConnell, Floyd and Carolyn Jackson, Hubert and Izell Davis.

Feb. 28 — Mr. and Mrs. Paul Hrbacek, Junior and Celona Taylor.

March 1 — Carlos and Julia Iturrino, Elmo and Mable Reyes, Mr. and Mrs. Gilbert Reyna.

**Easy Pickings**  
Will Rogers once observed that "There's no credit to being a comedian when you got the whole government working for you. All you have to do is report the facts."

**On Vacation**  
A man was alone in a rowboat on the Potomac, shouting, "No, No, NO!"  
"Don't worry about him," an observer said to his friend. "He's just a political 'yes man' taking a vacation."

## The Lockney Beacon

MEMBER 1980  
TEXAS PRESS ASSOCIATION

THE LOCKNEY BEACON [USPS 317-220] is published each Sunday and Thursday by Floyd County Publishing Co., 220 South Main Street, Lockney, Texas 79241. Second-class postage paid at Lockney, Texas 79241. Subscription rates: local \$10.50 per year, out of trade area \$11.50 per year. POSTMASTER: Send address changes to THE LOCKNEY BEACON, P.O. Box 187, Lockney, TX 79241.

Jim Huggins

Publisher  
Editor



YOUNG SHOWMAN — Kip Holt gets his lamb ready to show in the Lockney Junior Livestock Show Saturday.

LOCKNEY FIRST-PLACE LAMBS:  
SHROPSHIRE — Heather Holt  
HAMPSHIRE — Ritchie Thornton  
SUFFOLK — Scott McCarty  
FINEWOOL CROSS — Jeff Bayley  
FINEWOOL — Matt Mitchell



## How much should you pay for regulation?

About 1/3 of the cost of a generating plant is spent to satisfy federal regulation.

It now takes upwards of 60 permits from 30 odd government agencies to build a generating plant, adding enormous costs and agonizing delays to these vital projects. The price shows up on your bill.

Your member owned electric cooperative with other industry leaders urges a simplification of licensing procedures to speed up power projects and reduce the cost.

Your member-owned electric cooperative wants to help you save.

LIGHTHOUSE ELECTRIC COOPERATIVE

FLOYDADA

## Lockney School Cafeteria Menu

February 25-29

Monday: Breakfast — buttered rice, milk, plums. Lunch — corn chip pie, cabbage slaw, milk, buttered corn, hot rolls, fruit cocktail cobbler.

Tuesday: Breakfast — toast, scrambled egg, milk, peaches. Lunch — Vienna sausage, fried okra, cornbread, pinto beans, milk, rolled wheat cake with frosting.

Wednesday: Breakfast — rolled wheat, milk, pineapple. Lunch — burritos, green beans, buttered new potatoes, apricot bar, hot roll, milk.

Thursday: Breakfast — toast, smoked sausage, milk, apple juice. Lunch — chicken, pea salad, creamed potatoes, tomatoes, hot roll, milk, rolled wheat cookie.

Friday: Breakfast — grits, bacon, milk, fruit cocktail. Lunch — chicken-fried steak, Spanish rice, tossed salad, pears, sopapillas, honey, milk.

## American Viewpoints



For the trust reposed in me I will return the courage and the devotion that befit the time . . .  
Franklin Delano Roosevelt

# BONUS 1980

Up to \$600 bonus buying power for early orders of John Deere Disks, Chisel Plows, or Hay and Forage Equipment



Preseason orders help John Deere plan production of most-needed models and sizes. So from February 1 through May 31, 1980, John Deere is offering impressive bonuses for preseason orders. This bonus is above and beyond our best deal to you on this equipment. Your early order qualifies you for \$50 to \$600 in John Deere money for certain models of disks, chisel plows, balers, mower/conditioners, and pull-type forage harvesters. Promptly after delivery, you'll be mailed your bonus John Deere money to spend for products or services at our store.

There's more. You'll get price protection from

the time you order any machine in the bonus program. Use a John Deere Finance Plan and no finance charges will accrue on any machine in the program until the first day of the month which begins the 1980 use season in our area. This early-order program includes a list of dozens of disks, chisel plows, and hay and forage tools. But your preseason order must be signed before March 31 to earn the most John Deere money. Come in soon, check the list, and ask us for our best deal on this new equipment. You'll be expected to take delivery of the equipment as soon as it's available.

BUYER BONUS IN JOHN DEERE MONEY FOR NEW EQUIPMENT ORDERS SIGNED DURING:

EQUIPMENT: FEB., MAR., '80 APR., MAY '80

DISKS:

111 and 115 \$ 75 \$ 50

210, 215, 310, 315, 340, 1630 \$150 \$100

220, 230, 235, 350, 440, \$225 \$150

455, 1640 \$375 \$250

370 \$500 \$350

CHISEL PLOWS:

1610 Integral Rigid, 1610 Drawn Rigid (11- thru 17-foot) \$ 75 \$ 50

1610 Drawn Rigid (19- thru 23-foot),

1610 Drawn Flexible (23- thru 27-foot) \$200 \$125

1610 Drawn Flexible (29- thru 41-foot) \$300 \$200

1650 Folding \$600 \$400

BALERS:

All Square and Round Balers \$225 \$150

MOWER/CONDITIONERS:

1207, 1209 and 1380 \$300 \$200

FORAGE HARVESTERS:

Pull-Type 3940 \$300 \$200

Pull-Type 3960 \$400 \$275

\*These offers are subject to equipment availability.

Perry Implement Company  
Lockney

Perry Farm Machinery  
Petersburg

Floyd County Implement  
Floydada



FIRST-PLACE STEER EXHIBITORS:  
MS and first-place Angus,  
and first-place Hereford,  
and first-place lightweight cross.

# Social Events

## 1934 Study Club Meets

The 1934 Study Club met in the home of Freda Simpson for the regular monthly meeting. Effie Foster called the meeting to order. Roll call was answered by "a historic home I've visited." Among other business taken care of was the reading of the club collect by Kay Hale and the president's announcement that Silverton Club will bring materials in preparation for the district meeting.

Jettie Moss introduced the speaker, Kay Hale, whose subject was historic homes of Texas. Background history of the state was presented, including descriptions of utility purposes of various parts

of houses. Among the famous homes discussed were the Brown House of Galveston; a Beaumont home located on the property where the famous oil well "Spindle Top" was located and the Lambs Head Ranch house — the first house in Throckmorton County that had a kitchen sink.

Attending the meeting were Kay Hale, Opal Ashton, Margarette Bond, Jo V. Bingham, Diane Glover, Jettie Moss, Josephine Switzer, Ruth Trapp, Margaret Springer, Lorene Newberry, Eva Parker, Flora McNeill, Queen Annie Lawson, Aline Bradley, Wanda Turner and the hostesses Effie Foster and Freda Simpson.

## Alpha Mu Delta Enjoys Valentine Social

Members of Alpha Mu Delta of Beta Sigma Phi, spouses and guests enjoyed a Valentine social on Saturday evening the 16th. Highlight of the evening was honoring Duffy Hinkle as Valentine sweetheart of the chapter.

Tuesday, February 19, members of Alpha Mu Delta met for their regular meeting at the home of Penny Bertrand. Fifteen members and 5 guests were present, guests being sorority sisters from Sigma Eta of Tullia

Texas. A reminder was made to all about the upcoming volleyball tournament to be held March 6, 7, and 8th. Donna Anderson gave an interesting program on friendship.

Carrie Bertrand and Duffy Hinkle served the lunch. Next meeting will be March 4 at the Lighthouse with Kathy Green in charge of the lesson and Tonya Marble and Donna Henderson as co-hostesses.

## Rebekah Lodge Hosts District Lodges

Floydada Rebekah Lodge was host to all the lodges in district #9 on Tuesday night, February 19. A bountiful meal of turkey and dressing with all the trimmings was served to the group before lodge opened.

Eula Parack gave the invocation and lodge opened with Barbara Gilliland in the chair of Noble Grand and

Ruby Davis presided as Vice Grand. Those reported sick were Dartha Westbrook, Dorothy Turner and Susan Turner, all home from the hospital following surgery.

The meeting was turned over to Grace Grundy, District Deputy President of district #9, who conducted a school of instruction.

Each lodge present exemplified some aspect of the lodge work. A love gift was presented to her for her work in the District the past year.

A very pleasant evening was enjoyed by all present.

**Audrey's Hair Styles**  
210 WEST HOUSTON  
Phone 983-5220  
FLOYDADA



Six generations... from left, Amanda Don Holladay, Laura Holladay, Nel Long, Neely Brookman, Inez Roach and Irene White.

## Family celebrates 6 generations

The family of Neely Brookman celebrated her 106th birthday with a special six-generation reunion.

married to the late Cornelius Brookman. The couple had seven children, five of whom are still living, eleven grandchildren, twenty-five great grandchildren, twenty-four great-great-grandchildren, and two great-great-grandchildren.

When great-granddaughter Mrs. Long asked the traditional question of to what Mrs. Brookman attributed her longevity, Mrs. Brookman said, "I always behaved myself."

LAURA HOLLADAY (second from left) is the granddaughter-in-law of Hubert and Ruby Davis and of Bill and Clorene Holladay of Floydada. Amanda Holladay (left) is their great-granddaughter.

## Baptist Women Meet

Nineteen Baptist women met in the home of Mae Garrett, Wednesday morning for Bible study. Refreshments were served as the ladies arrived.

The program, entitled "The Servant: What We Have To Tell," which tells how the evangelist, Isaiah proclaimed the advent, character, ministry, suffering, death, and kingdom of the Messiah.

Thelma Crawford was Bible study leader and gave an inspiring message entitled "Good News." Others giving meaningful parts on the program were Aline

## Professor Recruiting Participants

Do you react with your parents in the same ways and your parents react with each other in the same ways?

Research by Dr. Judith L. Materna, associate professor of psychology and family life, will focus on the theory that parents behave toward their children as they themselves were treated by their parents.

We'd like to find out to what extent this generalization is true and what factors contribute to the appearance of similarity between generations," said Materna.

Fischer and Jeffrey Larson, doctoral student in family studies, are undertaking a survey of young Lubbock couples and their parents to find answers. Subjects of the couples do not necessarily have to live in Lubbock.

Fischer, a doctoral student in family studies, are undertaking a survey of young Lubbock couples and their parents to find answers. Subjects of the couples do not necessarily have to live in Lubbock.

## Dorcus Sunday School Meets With Mrs. Garrett

The Dorcas Sunday School class of the First Baptist Church of Floydada met this week with Mae Garrett, teacher of the class.

A short program was presented and plans for the class were discussed. Mrs. Cleo Goins was presented a birth-

## Nominations Outstanding

Nominations for Awards honoring outstanding professional women in the Lubbock area are now being accepted by the Chapter of Women's Communications, Inc.

One outstanding woman will be chosen in the business, health, and the professional "young executive" categories. Nominations close March 15. The Awards will be presented during a luncheon at the Lubbock Women's Center.

Criteria for selection areas of business, education and professions include:

## Single Adults February Meeting Cancelled

The Single Adults Club's regular February meeting slated for Saturday was cancelled due to inclement weather.

The next scheduled meeting will be March 15 at Lighthouse Electric

## Title I Parents

Padres de Titulo I Materia, y estudiantes grandes de R.C. Escuela Elemental invitados para un Padres Consejero Padres Involvement el Martes, 26 de 1980 a las 7:00 de la la cafeteria de las Una corta junta de un programa de Mexicanos seran presentados van a ser Por favor atendan junta.

## Senior Citizen News

Eighty-five persons attended the Thursday luncheon at the Senior Citizen Center in Floydada. Brother Dennis Swearingin and others from the First Christian Church entertained center members with song.

A 25 inch TV has been purchased for the center.

Forty members attended a night.

## Lone Star TEHA Club Meets

The Lone Star TEHA Club met February 19 in the home of Sybil Teeple.

The meeting was called to order by president Trudie Stewart. Helen Huff, hostess Sybil Teeple.

The next meeting will be hosted by Helen Huff. The program will be "Christianity and the Cults."

## Local Students Invited To SPC

Los Tejanos, service organization at South Plains College, is inviting all high school junior and senior students in the South Plains area to the annual Tejano Day festivities, scheduled March 7.

Activities will include tours of campus, an SPC talent show, oratory and beauty competition for \$100 scholarships to SPC, dance and coronation of Tejano Day Queen.

Theme for the 10th annual Tejano Day is "Progreso Con Educacion." Guest speaker will be Dr. Eliseo Ruiz, Jr., who has a doctorate degree from the University of Texas.

in special education administration. He is principal at Los Fresnos (Texas) High School.

Contestants for the oratory contest must prepare a 5-7 minute speech in either English or Spanish, on one of the three topics: "What are your views concerning higher education?" "What can you contribute to your community through higher education?" and "What are your views about Mexican-American involvement in American politics today?"

Interested persons can check with their high school counselors for entry blanks to the scholarship competition.

## Christy Stringer Newberry Named Dean's List

Christy Stringer Newberry wife of Paul Newberry of Anson, Texas and daughter of Mr. and Mrs. Bill Stringer of Barwise community has been named to the Dean's list at Hardin Simmons University for the 1979 fall semester.

Christy is a History and Music Major and will be a candidate for graduation in May 1980.

To qualify for the Dean's list a student must have taken a course load of 12 hours or more with A's in all classes.

**Flowers**

Silverware Green Plants  
Metal Sculpture Dinnerware  
Glassware Gift Items  
Music Boxes Diamonds

"Our Pleasure Is To Serve You"

Schacht's  
Flowers Jewelry & Gifts  
Lockney 652-2388

**Ladies Dresses and Sportswear**

**75% Off**

**The Outlet Store**

Lockney

Got Heating Or Plumbing Problems?  
Call HOLMES PLUMBING  
Austin or Steve  
983-2251  
6:30 - 9:30 a.m. and 5:30 p.m. Until

**HOMASON VENTURE GROCERY & MARKET**  
PHONE 652-3346 LOCKNEY, TEXAS

We accept Food Stamps WIC Cards

**We Are Open For Business Watch For Our Grand Opening Sale**  
"Thanks For Your Patience During Our Move"  
220 South Main

**Hills Brothers 1 Pound Can Coffee \$2.79**

**Hunt's Sliced or Halves Peaches 69¢ No. 2 1/2 Can**

**Borden Ice Cream \$1.49**

**Shurfine 46 Ounce Can Grape Drink 2/\$1.00**

**Gebhardt's No. 2 1/2 Can Jumbo Tamales 79¢**

**6 - 32 Ounce Coke Or Tab \$1.89**

## Wood Cooking-U

Wooden cooking utensils need special care — for a longer useful life, says a specialist.

Chenoweth, a family management specialist, says that special care should be taken with boards for raw meat products, and with the Texas Agricultural Extension Service, says A&M University

## Skin-Deep Beauty

Start your new look for the "skin-deep" beauty, says Becky Saunderson, a clothing specialist.

With the 80's is an emphasis on the self — best, healthy, exuberant, suitable. Part of the skin care and beauty routine she says.

Men and women alike are taking a concern for the body's largest organ, the skin. They're doing something about it, she adds.

Ms. Saunderson is with the Texas Agricultural Extension Service, The Texas A&M University System. Here's an overview of basic skin care — a look at environmental factors that affect skin:

**AIR CONDITIONING** — STEAM HEAT — skin. To combat the moisturizers and fiers.

**COLD** — shocks to Avoid extremes of temperatures when Use moisturizers and protectors.

**HEAT AND POLLUTION** — generally make dirtier since perspiration does not evaporate fully. Cleanse your skin.

**SUN** — ages and wrinkles. Use appropriate screening products.

**WIND** — burns at the skin. Use skin peels and moisturizers. Fit member to add extra your basic skin-care. Exercise helps skin youthful.

We would like to send a special thanks to you for the messages of concern and encouragement we have received since I was injured. They have reminded us again of the warm friendships we shared. I am out of the hospital and hope you will continue to pray for us during this period of recuperation.

Sheriff Connie Reed and Family  
Panhandle, Texas

### Baptist Women Meet

een Baptist women met at the home of Mae ... Wednesday morn- ... Bible study. Refresh- ... were served as the ... program. entitled ... "The Servant's Home ... and Rejection". ... Carthel — "The ... Vicarion's Suffering ... Death"; and Faye ... "The Servant's ... and Exaltation." ... and gave the prayer ... Others present were ... othy Holland, Queen ... Lawson, Evelyn ... phine Switzer, Edna ... Frances McClure, ... Cline, Cleo Goetz, ... Dennison, Lorene ... Veda Meredith, ... Howard, and hostess ... Garrett.

### Episcopus Sunday School Class

### Meets With Mrs. Garrett

Episcopus Sunday School ... of the First Baptist ... of Floydada met this ... with Mae Garrett, ... of the class.

### Single Adults February

### Meeting Cancelled

Single Adults ... regular February ... slated for Saturday ... cancelled due to ... weather. ... next scheduled ... will be March 15 at ... house. Electric

### Senior Citizen News

... five persons at ... Thursday lunch ... the Senior Citizen ... Floydada. Brother ... Swearing and others ... the First Christian ... entertained center ... with song. ... inch TV has been

### Professor Recruiting Participants

... you react with your ... in the same ways ... parents react with each ... search by Dr. Judith L. ... Texas Tech Univer- ... associate professor of ... and family life, will ... on the theory that ... as their parents act ... of each other.

... 'd like to find out to ... extent this generaliza- ... true and what factors ... couples' family back- ... contribute to the ... of similarity ... generations," said ... and Jeffrey Lar- ... doctoral student in fa- ... studies, are undertaking ... of young Lubbock ... ed couples and their ... to find answers. ... of the couples do not ... usually have to live in ...

... is important to have ... tion from her parents ... parents because each ... brings his or her own ... into the marriage. ... the couple works out ... ally differing ways of ... particularly inter- ... said Fischer.

... between ages 18 ... 27, who have been ... for at least 18 ... are eligible to partici- ... in the survey. Fischer ... mail announcements of ... research project asking ... participation of the couple ...

... researchers hope to ... 100 couples and their ... Volunteers will re- ... individual question- ... to be filled out and ... When results are ... Fischer will mail ... couple and their parents ... of the study.

... aples interested in more ... tion may call Fischer ... 742-2877 or leave a ... at (806) 742-3000.

### Lone Star TEHA Club Meets

... Lone Star TEHA Club ... February 19 in the home ... of Teplee. ... meeting was called to ... by president Trudie ... Roll call was an- ... with "Have you had ... direct experience with ... Teplee gave a pro- ... "Christianity and

### Wood Cooking-Utensil Care

... wooden cooking utensils ... special care — for ... sake, a clean look ... longer utensil life, says ... Chenoweth, a family ... source management

... Special care ... be taken with boards ... for raw meat products, ... cautions. Mrs. Cheno- ... with the Texas Agri- ... Extension Service, ... Texas A&M University

### Skin-Deep Beauty

... want your new look for the ... with "skin-deep" ... says Becky Saund- ... a clothing specialist. ... with the 80's is an ... on the self — ... 's best, healthy, ex- ... vative, suitable. Part of ... trend is skin care and ... ment and beauty rou- ... she says.

... Women and men alike are ... rearingly taking a concern ... caring for the body's ... nes organ, the skin — ... they're doing something ... it, she adds. Ms. ... nders is with the Texas ... tural Extension Ser- ... The Texas A&M Uni- ... System. Here's an ... view of basic skin care — ... a look at environmental ... that affect skin.

We would like to send a special thanks to you for the messages of concern and encouragement we have received since I was injured. They have reminded us again of the warm friendships we shared. I am out of the hospital and hope you will continue to pray for us during this period of recuperation.

Sheriff Connie Reed and Family Panhandle, Texas.

### Nominations Being Accepted For

### Outstanding Women In Lubbock Area

Nominations for Matrix Awards honoring four outstanding professional women in the Lubbock area are now being accepted. The Matrix Awards will be presented by the Lubbock Chapter of Women in Communications, Inc.

One outstanding woman will be chosen in the fields of business, health/education and the professions. A fourth 'young executive' woman will also be named. Nomination deadline is March 15. The Matrix Awards will be presented during a luncheon April 17 in the Lubbock Women's Club.

Criteria for selection in the areas of business, health/education and the professions include: a

### Title I Parent Meeting Scheduled

Padres de Titulo I Lectura, Materia, y estudiantes emigrantes de R.C. Andrews Escuela Elementaria estan invitados para asistir a Padres Consejero Junta y Padres Involvemento Junta el Martes, 26 de Febrero 1980 a las 7:00 de la tarde en la cafeteria de las escuela. Una corta junta de asuntos un programa de danzas Mexicanas seran presentado. Refrescos van a ser servidos. Por favor attendan a esta junta.

Parents of Title I Reading, Math and Migrant students at R.C. Andrews Elementary School are cordially invited to attend the Parent Advisory Council and Parent Involvement meeting, Tuesday,

February 26, 1980 at 7:00 P.M. in the school cafeteria. A short business meeting and program of Mexican dances will be presented. Refreshments will be served. Please attend this meeting.

### SCHOOL LUNCH MENU

#### FLOYDADA

Monday: Breakfast: 1/2 cup fruit juice, cheese toast, 1/2 pt. milk. Lunch: peanut butter sandwich, hot vegetable soup, apple cobbler, 1/2 pt. milk.

Tuesday: Breakfast: 1/2

Wednesday: Breakfast: 1/2 cup fruit juice, dry cereal, 1/2 pt. milk. Lunch: pinto beans, mashed potatoes, buttered spinach, rocky roads, cornbread, 1/2 pt. milk.

Thursday: Breakfast: 1/2 cup fruit juice, sweet rice, 1/2 pt. milk. Lunch: hot dogs/sauce, French fries/catnap, sliced peaches, raisen nut cookies, 1/2 pt. milk.

Friday: No school.

mineral oil, let stand a few hours, then wipe off excess oil. For new wooden surfaces, the wash-and-oil treatment serves as a conditioning step before using the surface. Wooden spoons also may require occasional care, including sanding, washing and rubbing with oil. Avoid leaving a wooden utensil in a microwave oven when cooking, too, since it will dry the wood and may cause it to crack.

### Today's Lifestyles

By Marilyn Tate

County Extension Agent



### MAKE SURE YOUR CANNED FOODS ARE SAFE TO EAT

Now that you're using those home-grown vegetables that you canned so carefully last fall, you'll want to continue to follow precautionary measures to prevent their contamination by bacteria.

Before you even taste home-canned vegetables—or home-canned meats or poultry—boil them carefully. Bring them to a rolling-seething-boil, then cover the pan and continue boiling 10 minutes before tasting. Also examine and smell canned foods for spoilage. Never taste or eat canned foods taken from jars or cans that show damage such as cracks or loose or bulging lids. Never taste foods from cans that spuried liquid when opened or that give off abnormal odors.

Heating food generally makes any spoilage more evident. If, during heating, any food appears spoiled or has an off odor, dispose of it out of reach of humans, pets or livestock.

Each year, more than 2 million people in the United States suffer ill effects from foodborne bacteria.

Fortunately, relatively few people in this country are exposed to the most deadly foodborne disease we know about — botulism — which results from a toxin produced by bacteria called Clostridium botulinum.

Once called "sausage poisoning" in Germany, botulism is dangerous. According to the USDA, in the United States in this century, for every 100 persons found to have ingested the botulism toxin, 56 have died. Since 1925, about 700 Americans have died as a result of eating botulism-contaminated foods canned or otherwise processed at home. By contrast, fewer than a dozen botulism deaths have implicated foods processed by commercial manufacturers during that same period.

Most botulism poisoning in this country has been associated with improperly processed home-canned, low-acid foods such as vegetables and meats. Oxygen prevents botulism cells from growing, and sometimes it kills cells. But just under the surface of foods exposed to oxygen, anaerobic or oxygen-free conditions may exist, and when temperatures there are favorable, the cells can vegetate and produce their poison. Anaerobic conditions also are found inside jars or cans, in vacuum packages or under a layer of grease.

After a person eats botulism toxin, botulism symptoms may occur within a few hours or as long as 6 or 8 days later. Severity of illness may vary with the amount of

sample, providing the most effective means of diagnosis. Preventing botulism in home canning is based on a few basic rules.

First, remember that botulism spores—which survive when boiling—can't germinate in high-acid canned foods such as sauerkraut or fruit juices, highly salted items such as certain hams, or sugary foods such as jams or jelly.

However, this is not the case for low-acid foods such as green beans, corn, spinach or asparagus in which the botulism spores must be destroyed by using a steam-pressure canner with at least 12 pounds of pressure—240 degrees F.—for an appropriate time. No other way is safe.

Instructions on "appropriate time" needed for pressure canning—which varies with different foods—generally come with new canning equipment bought at stores, but they also may be obtained from the Floyd County Extension Office. Most canning publications call for 10 lbs. pressure, but it should be noted that this recommendation is for sea level and must be increased to 12 lbs. for adequate processing at our altitude.

Foods low in acid, hence botulism susceptible, in addition to the above-mentioned, include meats, poultry, fish and all vegetables other than tomatoes. Properly fermented or pickled foods usually contain enough acid to prevent the growth of the botulism bacteria.

It's only when botulism spores are contained in low-

acid foods with no oxygen and stored above refrigerator temperatures that they grow and produce their deadly toxin.

Information taken from U.S.D.A. publication. Educational programs conducted by the Texas Agricultural Extension Service serve people of all ages regardless of socioeconomic level, race, color, sex, religion or origin.

However, this is not the case for low-acid foods such as green beans, corn, spinach or asparagus in which the botulism spores must be destroyed by using a steam-pressure canner with at least 12 pounds of pressure—240 degrees F.—for an appropriate time. No other way is safe.

Instructions on "appropriate time" needed for pressure canning—which varies with different foods—generally come with new canning equipment bought at stores, but they also may be obtained from the Floyd County Extension Office. Most canning publications call for 10 lbs. pressure, but it should be noted that this recommendation is for sea level and must be increased to 12 lbs. for adequate processing at our altitude.

Foods low in acid, hence botulism susceptible, in addition to the above-mentioned, include meats, poultry, fish and all vegetables other than tomatoes. Properly fermented or pickled foods usually contain enough acid to prevent the growth of the botulism bacteria.

It's only when botulism spores are contained in low-

### BIRTHS

Bill and Anita Bigham of Lockney announce the birth of a baby daughter, Stacy Anika.

Stacy weighed 6 lbs. 14 1/2 oz. at birth at 12:01 a.m. Tuesday in Central Plains Hospital in Plainview.

Her big brothers are Gary, 13 years old; Troy, 9, and Clint, 6. Grandparents are W.T. and Lavern Cooper, A.L. and Mary Bigham, all of Lockney.

## Happy Birthday

## Lorena McKinny

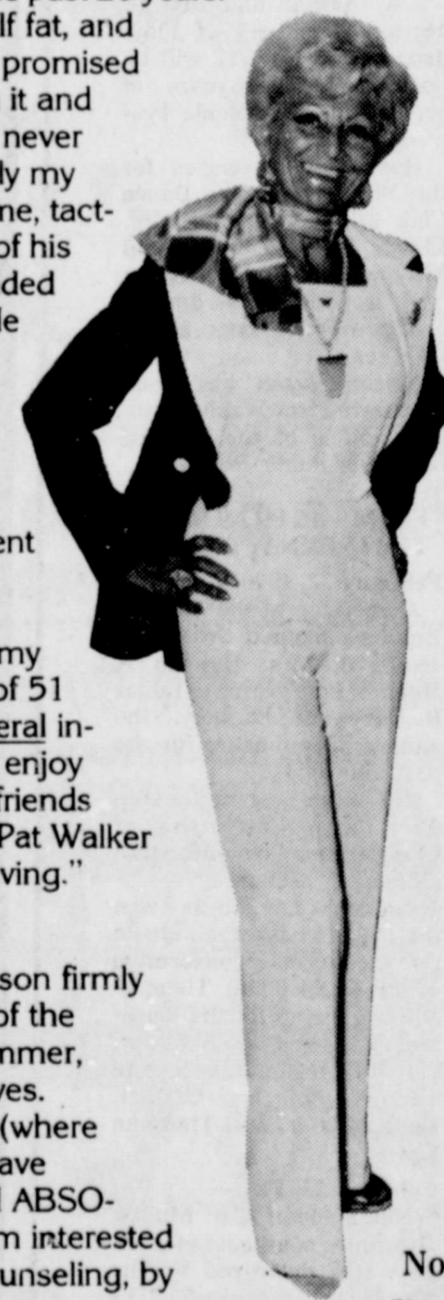
# Every woman can look and feel younger.

## Let Pat Walker help create a new you.

S. Nelson is perhaps one of the more spectacular examples of the stunning results that may be attained through Pat Walker's Figure Perfection Salons International. Read what she has to say about the program that has benefited millions throughout the world over the past 26 years:



"I hated myself fat, and every new year I promised to really get with it and lose; however, it never happened. Finally my doctor advised me, tactfully, to stay out of his office until I decided to lose weight. He just couldn't help me. Out of desperation, not believing, I called for a courtesy treatment at Pat Walker's. This was the turning point in my life. With a loss of 51 pounds and several inches, I began to enjoy my life with my friends and family, especially my three grandchildren. The Pat Walker program gave me a positive approach to everyday living."



Now Size 5!

### How's your approach to life?

Now the national director for Pat Walker, Ms. Nelson firmly believes the program can upgrade the life outlook of the overweight as surely as it makes them slimmer, trimmer, more confident of their appearance—and themselves.

In the elegant atmosphere of a Pat Walker salon (where there's none of the noise and confusion you may have encountered at gyms and spas), you can reduce IN ABSOLUTE PRIVACY. Moreover, you have assistance from interested professional counselors (who also conduct their counseling, by the way, in complete privacy).

**REDUCE NOW TO HAVE YOUR PERFECT FIGURE FOR 1980**  
**FREE Courtesy Treatment and Figure Analysis**

You are invited to come in or call for a courtesy treatment and figure analysis; we will tell you where you are going to lose, and how long it will take; we will tell you exactly how many treatments you need and the exact cost Based On \$4.00 Per Treatment

**Limited Time!**  
**Save \$50<sup>00</sup>**  
**On Your Program!**

**Call Today!**  
**983-2112**  
**Floydada**  
**293-4435**  
**Plainview**  
**763-8056**  
**Lubbock**

*Pat Walker's*  
Figure Perfection Salons International

### Floyd County Implement Company

Cordially Invites  
You And Your Family  
To  
John Deere  
Farming Frontiers

★ A Film Program Devoted To The Latest Developments And Research In Agriculture

10:30 am., Wednesday  
February 27  
At The

Floyd County Implement Company  
Ralls Highway  
Lunch Will Be Served  
Floydada

# Years Ago

## FROM THE FILES OF THE HESPERIAN

### FIVE YEARS AGO

Kay Beth Terrell on the Oklahoma Baptist University honor roll.

Dewayne Franklin was featured as artist of the month at the Floyd County Museum.

Jerry McGuire and Steve Westbrook were high pointers in the Floydada and Talia basketball game Friday night.

Cindy Day, daughter of Mr. and Mrs. J.W. Day Jr. of Floydada, has been named to the dean's list at Texas Tech University.

Mrs. Sammie Adams of Lindsey, California, is in Floydada visiting her niece, Mrs. Winfred Payne and family and her nephew, Wayne Smith and family.

Mike Vickers was selected Basketball Beau by the Whirlettes.

Lonnie Robinson is on the dean's list at South Plains College.

Mrs. Bud Henderson brought a program on "The Land" for members of the Alpha Mu Delta Chapter of Beta Sigma Phi Tuesday night at the Farm Bureau conference room.

### TEN YEARS AGO

Jerry Thompson, Claude Weathersbee and Carl Jarrett are shown selling tickets to the Floydada Chamber of Commerce board of directors.

Floydada merchant of the week is Sammy Hale of Hale and Hale Insurance.

Burglars struck Powell's Super Market in Floydada early Saturday morning and made off with cash and merchandise totaling more than \$500.

Emily Potts attends counselor workshop.

Loyd Hamilton new Bible Baptist pastor.

J.A. Arwine and Ben G. Morton, members of Floydada Lodge No. 712 will be honored for 50 years of service to the Masonic Fraternity Thursday.

Hosts and hostesses for the Whirlers Square Dance Club will be Mr. and Mrs. Elmer Dean Williams and Mr. and Mrs. Bernie Parkey.

Judy Probasco among young women honored at DAR tea.

Nelson Evans has been transferred to Washington, D.C., office of the Federal Bureau of Public Roads.

### FROM THE FILES OF THE LOCKNEY BEACON

February 22, 1946—

Ownership of the Lockney Beacon changed from the hands of Mrs. Hannah E. Hurst of Fort Worth to Edgar R. Hays of Lockney, the editor and publisher for the past four years.

J.B. Biltrey signed a contract for the dealership of Chrysler and Plymouth automobiles in Lockney.

Lockney Longhorns won the district basketball crown for the second consecutive year. Coach Sid Thomas' starting lineup for the tournament games at Matador: Harold Jeffcoat, George Turner, John Lee Carthel, Gene Messer, and Thurman Davis.

February 23, 1928—

The home of A.B. Muncy, five miles southeast of Lockney, was destroyed by fire Thursday morning. The house was a complete loss, but because of the quick work of Mr. and Mrs. Muncy and Miss Maudie Meredith, who were at the home at the time the fire broke out, some of the household goods were saved.

Rev. R.E.L. Muncy, owner of the house, and some of the Muncy boys arrived in time to assist in removing some of the furniture.

N.R. Northcutt, formerly of Plainview, will open a new dry goods store in Lockney March 10. The new store will be located in the McCollum building on the west side of Main Street.

Sand Hill Community is planning a hen party Saturday night and inviting the public to come dressed tacky. Each lady is to bring a hen and each man is to bring a dollar. Games will be played and refreshments of popcorn, ginger cakes and butter will be served.

# time out for GOD

**Main Street Church of Christ**  
Jerry Klein, minister  
Bible Study . . . . . 9:30  
Morning Worship . . . . . 10:30  
Evening Worship . . . . . 8:00  
**WEDNESDAY**  
Ladies Bible Class . . . . . 9:30  
Bible Study . . . . . 8:00

**EVANS CHAPEL BAPTIST CHURCH**  
Rev. Bennie Anderson, Pastor  
Sunday School . . . . . 10 a.m.  
Morning Worship . . . . . 11 a.m.  
Training Union . . . . . 6 p.m.  
Evening Worship . . . . . 7 p.m.  
Wednesday Prayer Meeting . . . . . 7 p.m.  
Sunday afternoon worship . . . . . 2:00

**FIRST UNITED METHODIST CHURCH**  
Rev. Dewitt Seago, SUNDAY  
Sunday School . . . . . 9:45  
Worship Service . . . . . 10:55  
UMY . . . . . 6:00  
Evening Worship . . . . . 7:00  
United Methodist Women . . . . . First Tuesday of Month  
Circles . . . . . Monday (2nd & 4th Monday nights) Tuesday & Wednesday mornings.

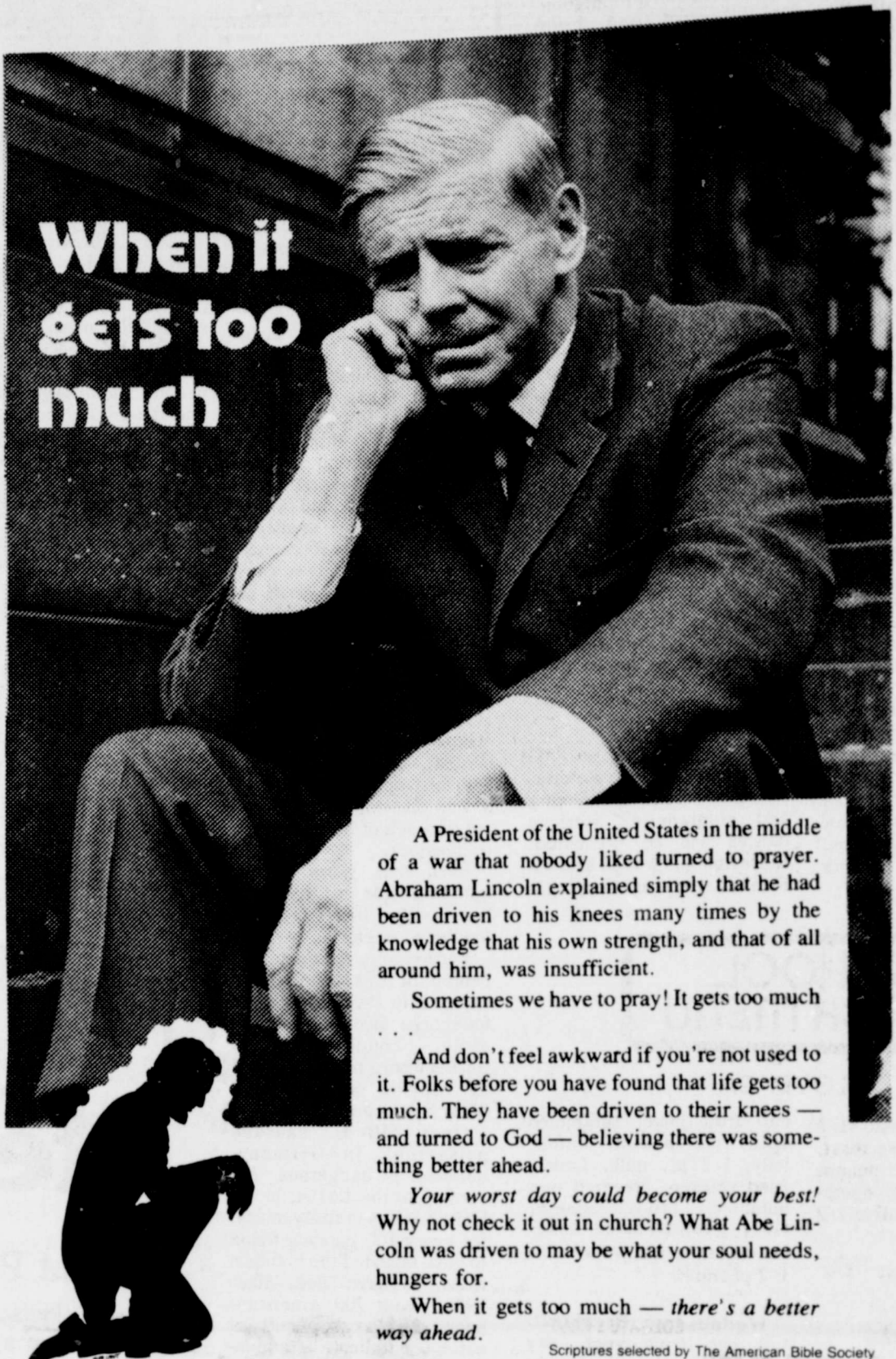
**TRINITY LUTHERAN CHURCH**  
Providence Community  
Andrew Mild  
Sunday School & Adult Bible Class . . . . . 10:00  
Divine Worship Service . . . . . 11:00

**ASSEMBLY OF GOD CHURCH**  
Sunday School . . . . . 10:00  
Morning Worship . . . . . 11:00  
Evening Worship . . . . . 7:00  
Prayer Service Wed. . . . . 7:00  
Rev. Bob Wright, Pastor

**TEMPLO BAPTISTA SALEM**  
Manuel Alaniz, Pastor  
Sunday School . . . . . 9:45  
Worship Service . . . . . 11:00  
Christian Training Time . . . . . 5:00  
Evening Worship . . . . . 8:00  
Wednesday Prayer Meeting & Choir Practice . . . . . 7:30

**AIKEN BAPTIST CHURCH**  
James Kaler, pastor  
Sunday School . . . . . 10:00  
Morning Worship . . . . . 11:00  
Training Union . . . . . 8:00  
Evening Worship . . . . . 7:00  
Prayer Service Wed. . . . . 7:30  
Brotherhood, W.M.U. And Auxiliary Wednesday . . . . . 7:30

**SAN JOSE CATHOLIC CHURCH**  
Father Joe Bixeman  
Sunday morning Mass 9 a.m.  
Saturday Evening Mass 8 p.m.  
Wednesday Evening . . . . . 8 p.m.  
Friday Evening . . . . . 8 p.m.  
Confessions Saturday . . . . . 6:30 p.m.



When it gets too much

A President of the United States in the middle of a war that nobody liked turned to prayer. Abraham Lincoln explained simply that he had been driven to his knees many times by the knowledge that his own strength, and that of all around him, was insufficient.

Sometimes we have to pray! It gets too much . . . . .  
And don't feel awkward if you're not used to it. Folks before you have found that life gets too much. They have been driven to their knees — and turned to God — believing there was something better ahead.

Your worst day could become your best! Why not check it out in church? What Abe Lincoln was driven to may be what your soul needs, hungers for.

When it gets too much — there's a better way ahead.

Scriptures selected by The American Bible Society  
COPYRIGHT 1980, WESTER ADVERTISING SERVICE - P. O. BOX 8024 - CHARLOTTEVILLE, VIRGINIA 22086

Sunday	Monday	Tuesday	Wednesday	Thursday	Friday	Saturday
Colossians	Colossians	Job	Isaiah	Isaiah	Isaiah	Isaiah
3:17-25	4:1-6	28:1-28	52:7-15	54:11-17	42:1-7	42:8-25

## This Inspirational Message Sponsored By The Following . . . . .

- Plains Electric  
Electrical Irrigation Installation
- Brown's Department Store  
Ready-to-wear
- Davis Lumber Company  
Lumber and Building Supplies
- Baccus Motor Company  
"Where To Buy Them"
- The Longhorn Inn  
The Glen Cooper Family
- Byrd Pharmacy  
Fred D. Byrd, Pharmacist
- Jackson Tire Company  
Shamrock Products - National Tire
- Consumers Fuel Association  
Everything For The Farmers
- Moore-Rose Funeral Home  
Phone 652-2211
- Patterson Grain Company  
Lockney
- Schacht Jewelry & Floral  
"It's Our Pleasure To Serve You"
- Lockney Lumber & Supply  
We Appreciate Your Business
- Lockney Beacon  
Your Hometown Newspaper
- Sun-Vue Fertilizers  
Your Smith-Douglas Dealer
- Page's Thriftway  
Friendly Service Every Day of the Week
- Dan's Auto Service  
Repair Specialists
- Perry Implement Company  
Lockney's John Deere Dealer
- Lockney Co-Op Gin & Elevator  
Serving Yourself thru Ownership

**First Baptist Church**  
John C. Jenkins, Pastor  
Monte Richards, Music director  
Sunday School 9:45 a.m.  
Morning Worship 11:00 a.m.  
Church Training 6:00 p.m.  
Evening Worship 7:00 p.m.  
Prayer Meeting 7:00 p.m.  
Wednesday 7:00 p.m.  
Adult Choir 8:00 p.m.  
Wednesday 8:00 p.m.  
High School Youth (B.Y.O.P.) 7:00 p.m.  
G.A. and Mission Friends 4:00 p.m.  
Wednesday Youth Choirs 5:00 p.m.  
Sunday R.A.'s 5:00 p.m.  
Sunday 5:00 p.m.

**PRIMERA IGLESIA BAPTISTA**  
Rev. Glenn Smith, pastor  
Sunday School . . . . . 9:45  
Morning Worship . . . . . 11:00  
Training Union . . . . . 6 p.m.  
Evening Worship . . . . . 7 p.m.  
W.M.U. Brotherhood, Choir Practice 7:30 p.m.  
Monday

**Prayer Service Wednesday**  
at . . . . . 7:30

RA's, GA's and Aetna's  
Wednesday 7:30 p.m.

**LATIN AMERICAN CHURCH OF CHRIST**  
Bible School . . . . . 9:45  
Morning Worship . . . . . 11:00  
Evening Worship . . . . . 7:00  
Wednesday Service . . . . . 8:00

**LOCKNEY LATIN ASSEMBLY OF GOD**  
Pastor Manuel Rendon  
Sunday School . . . . . 9:45  
Morning Worship . . . . . 11:00  
Evening Worship . . . . . 7:00  
Men's Fellowship Tuesday Evening . . . . . 8:00  
W.M.C. Thursday . . . . . 8:00  
Christ's Ambassadors Saturday Evening . . . . . 7:30

**WEST COLLEGE CHURCH OF CHRIST**  
West College And Third  
Frank Duckworth, Evangelist  
Sunday Morning Worship Services . . . . . 10:30  
Sunday Evening Worship Services . . . . . 8:00  
Wednesday Evening Prayer Services . . . . . 8:00

**LONESTAR BAPTIST CHURCH**  
Frank Lorillard Jr.  
Sunday School . . . . . 10:00  
Morning Worship . . . . . 11:00  
Training Union . . . . . 8:00  
Evening Worship . . . . . 7:00  
Prayer Service Wednesday Evening . . . . . 8:00  
Brotherhood, First Saturday Morning of Every Month.

**CEDAR HILL BAPTIST CHURCH**  
Sunday School . . . . . 10:00  
Morning Worship . . . . . 11:00  
Evening Worship . . . . . 7:00  
Prayer Service Wednesday at . . . . . 6:30 p.m.

Bell Quality Ch  
**Ice Cream**  
Round Carton 1/2 Gallon **89¢**

50¢ OFF LABEL DETERGENT  
**ERA LIQUID**  
**\$2.59**  
64 OZ. BTL.

**Colgate Cuts**  
BAGGIES STORAGE  
**FOOD BAGS** 50 CT. BOX **99¢**

COLGATE COST CUTTER  
20¢ OFF LABEL  
**FAB DETERGENT**  
**\$1.39**  
49 OZ. BOX

13¢ OFF LABEL LIQUID  
**PALMOLIVE**

FACIAL TISSUE  
**KLEENEX**

15¢ OFF LABEL ZEE BATHROOM  
**NICE 'N S**

MIRACLE WHIP SALAD  
**DRESSING**

FLAKED  
**FOLGERS COFFEE**  
**\$2.49**  
13 OZ. CAN

COUNTRY GARDEN  
**NAPKINS**  
**69¢**  
140 CT. PKG.

**PAGE**

**First Baptist Church**  
 John C. Jenkins  
 Pastor  
 Monte Richards,  
 Music director  
 Sunday School 9:45 a.m.  
 Morning Worship 11:00 a.m.  
 Church Training 6:00 p.m.  
 Evening Worship 7:00 p.m.  
 Prayer Meeting 7:00 p.m.  
 Wednesday 7:00 p.m.  
 Adult Choir 8:00 p.m.  
 High School Youth (B.Y.F.)  
 Wednesday 7:00 p.m.  
 G.A. and Mission Friends  
 Wednesday 4:00 p.m.  
 Youth Choirs 5:00 p.m.  
 Sunday 5:00 p.m.  
 R.A.'s 5:00 p.m.

**PRIMERA IGLESIA BAUTISTA**  
 Rev. Glenn Smith, pastor  
 Sunday School 9:45 a.m.  
 Morning Worship 11:00 a.m.  
 Training Union 5 p.m.  
 Evening Worship 7:30 p.m.  
 WMU, Brotherhood, Choir Practice 7:30 p.m.  
 Monday  
 Prayer Service Wednesday at 7:30

**LATIN AMERICAN CHURCH OF CHRIST**  
 Bible School 9:45  
 Morning Worship 10:45  
 Evening Worship 8:00  
 Wednesday Service 8:00  
**LOCKNEY LATIN ASSEMBLY OF GOD**  
 Pastor Manuel Rendon  
 Sunday School 9:45  
 Morning Worship 11:00  
 Evening Worship 7:30  
 Men's Fellowship Tuesday Evening 8:00  
 W.M.C. Thursday 8:00  
 Christ's Ambassadors Saturday Evening 7:30

**WEST COLLEGE CHURCH OF CHRIST**  
 West College And Third  
 Frank Duckworth, Evangelist  
 Sunday Morning Worship Services 10:30  
 Sunday Evening Worship Services 8:00  
 Wednesday Evening Prayer Services 8:00

**LONE STAR BAPTIST CHURCH**  
 Frank Lorillard Jr.  
 Sunday School 10:00  
 Morning Worship 11:00  
 Training Union 5:00  
 Evening Worship 6:00  
 Prayer Service Wednesday Evening 6:30  
 Brotherhood, First Saturday Morning of Every Month.

**CEDAR HILL BAPTIST CHURCH**  
 Sunday School 10:00  
 Morning Worship 11:00  
 Evening Worship 6:30  
 Prayer Service Wednesday at 6:30 p.m.

Bell Quality Chekd  
**Ice Cream**  
 Round Carton 1/2 Gallon **89¢** With Filled Bonus Booklet

Pages Homo.  
**Milk**  
 Gallon **\$1.59** With Filled Bonus Booklet

Wilson's 1 Pound  
**Bacon**  
**59¢** With Filled Bonus Booklet

Kraft 32 Ounce Jar  
**Miracle Whip**  
**69¢** With Filled Bonus Booklet



50% OFF LABEL DETERGENT  
**ERA LIQUID**  
**\$2.59**  
 64 OZ. BTL.

Colgate Cuts Costs!  
**FOOD BAGS**  
**99¢**  
 50 CT. BOX

Colgate Cost Cutter 20% OFF LABEL  
**FAB DETERGENT**  
**\$1.39**  
 49 OZ. BOX

13% OFF LABEL LIQUID  
**PALMOLIVE**  
**89¢**  
 22 OZ. BTL.

FACIAL TISSUE  
**KLEENEX**  
**69¢**  
 200 CT. BOX

15% OFF LABEL ZEE BATHROOM TISSUE  
**NICE 'N SOFT**  
**89¢**  
 4 ROLL PKG.

MIRACLE WHIP SALAD  
**DRESSING**  
**\$1.19**  
 32 OZ. JAR

SUPER SELECT CENTER CUT RIB  
**PORK CHOPS**  
**\$1.69**  
 LB.

SUPER SELECT FRESH PORK  
**SPARE RIBS**  
**\$1.19**  
 LB.

SUPER SELECT LEAN TRIM CENTER CUT LOIN  
**PORK CHOPS** **\$1.79**  
 COUNTRY STYLE LOTS OF MEAT  
**SPARE RIBS** **\$1.19**  
 SUPER SELECT LEAN TRIMMED  
**PORK STEAK** **\$1.19**  
 WILSON'S HICKORY SMOKED  
**PORK CHOPS** **\$1.79**

HORMEL'S SUPER SELECT LEAN TRIMMED PORK LOINS OR FAMILY PAK  
**PORK CHOPS**  
**\$1.19**  
 LB.

SHURFRESH SLICED QUALITY  
**BACON** **\$1.29**  
 Catfish  
**STEAKS** **\$2.49**  
 Whole Catfish **\$1.87**  
 LITTLE BOY BLUE  
**CORNDOGS** **\$1.19**

**MORE THRIFTY GROCERY BUYS**  
 LIPTON BLEND  
**TEA BAGS** **\$1.29**  
 DOUBLE LUCK MIXED CUT  
**GREEN BEANS** **\$1.19**  
 NESTEA LEMON  
**TEA MIX** **\$1.79**  
 TEXIZE AEROSOL  
**SPRAY & WASH** **\$1.29**

**TOTAL GROCERY SAVERS**  
 POST CEREAL SUPER  
**SUGAR CRISP** **\$1.29**  
 18 OZ. BOX

ARMOUR VIENNA 3% OFF LABEL  
**SAUSAGE** **49¢**  
 STARKIST LIGHT WATER REG. PAK  
**CHUNK TUNA** **89¢**  
 FOLGER'S INSTANT COFFEE  
**CRYSTALS** **\$4.99**

FIELD TRIAL CHUNK  
**DOG FOOD** **\$7.79**  
 50 LB. BAG

REFRESHING  
**INSTANT NESTEA**  
**\$1.89**  
 3 OZ. JAR

SUPPORT UNITED CEREBRAL PALSY  
**HEALTH & BEAUTY AID**

ANALGESIC  
**BUFFERIN TABLETS** **\$1.89**  
 100 CT. BTL.

FOR COLDS  
**COMTrex TABLETS** **\$1.49**  
 24 CT. BTL.

NASAL REG./MENTHOL  
**4-WAY SPRAY** **\$1.19**  
 1/2 OZ. BTL.

DEODORANT REG./UNSCENTED  
**BAN ROLL-ON** **\$1.39**  
 1.5 OZ. BTL.

RAVE PUMP  
**HAIR SPRAY** **\$1.79**  
 8 OZ. BTL.

RAVE AEROSOL  
**HAIR SPRAY** **\$1.09**  
 7 OZ. CAN

INTENSIVE CARE  
**VASELINE LOTION** **\$1.89**  
 15 OZ. BTL.

FLAKED  
**FOLGERS COFFEE**  
**\$2.49**  
 13 OZ. CAN

LARGE SIZE  
**BELL PEPPERS**  
**39¢**  
 LB.  
**ORANGES** **29¢**  
 LB.

**DAIRY VALUES**  
 CALIFORNIA SUNKIST  
**LEMONS** **39¢**  
 WASHINGTON RED DELICIOUS  
**APPLES** **\$1.19**  
 CALIFORNIA GREEN SKIN  
**AVOCADOS** **49¢**  
 CALIFORNIA GREEN PASCAL  
**CELERY** **19¢**  
 YELLOW SWEET  
**ONIONS** **2.29**

**FROZEN FOODS**  
 SHURFINE FROZEN  
**BROCCOLI SPEARS** **49¢**  
 MORTON FAMILY PAK GLAZED  
**DONUTS** **89¢**  
 TOTINO'S ASSTD. TOPPING  
**PARTY PIZZA** **\$1.09**

'DOUBLE-UP ROUND-UP'  
 SUNSHINE SALTINES  
**KRISPY CRACKERS**  
**59¢**  
 16 OZ. BOX

COUNTRY GARDEN  
**NAPKINS**  
**69¢**  
 140 CT. PKG.

KRAFT STICKS SHARP/EX. SHARP  
**CRACKER BARREL** **\$1.98**  
 10 OZ. PKG.  
 KRAFT COLBY/CHEDDAR HALFMOON HORNS  
**CHEESE** **\$1.29**  
 SHURFRESH QUARTERS  
**MARGARINE** **43¢**  
 16 OZ. BOX

SHURFINE FROZEN  
**BROCCOLI SPEARS** **49¢**  
 MORTON FAMILY PAK GLAZED  
**DONUTS** **89¢**  
 TOTINO'S ASSTD. TOPPING  
**PARTY PIZZA** **\$1.09**

**S.H. GREEN STAMPS**  
 DOUBLE ON WED.

# FARM & RANCH NEWS

## 26 Local Youth To Participate In Houston Livestock Show

20 4-H members from Floyd County and 6 FFA members from Floydada will be participating in the 1980 Houston Livestock Show and Rodeo, February 20-March 2. With more than 27,000 expected livestock entries, the Houston Show will once again be the largest in the world.

For junior exhibitors throughout the state, the Houston Show is the culmination of a year's hard work of preparing their animals for the toughest of show ring competition.

It is hard work that often pays off. open show and junior exhibitors will vie for more than a half a million dollars in prize monies and premium auction prices about market value.

From a spectator's point of view, the young exhibitors are center-stage in a two-week extravaganza that begins when Houston, the fastest growing city in the nation, takes a step backwards in time and brings a bit of western heritage to its busy streets.

Horses, buckboards and stagecoaches take to the concrete and businessmen don western hats and boots to welcome the largest civic event in the history of this bustling oil and space flight capital.

More than 6,000 trailriders journeying as far as 386 miles will join city officials and bands as the annual rodeo parade winds through the canyons of downtown streets at 9:15 a.m. on Friday, February 22.

Following the parade, the action moves farther out Main Street to the Astrodome and the adjoining Livestock Exposition Facilities where the rodeo opens with a matinee performance in the Astrodome at 2 p.m.

The livestock show begins earlier in the week with open competition on February 20. Professional breeders and ranch owners from some 35 states will bring in the best in breeding stock to compete in breeding beef, dairy, swine, poultry, sheep, Angora goat and rabbit shows.

The Houston Show is a showcase of livestock industry and cattlemen from Europe, Mexico, Central and South America plan to attend the open show to get a look at the best in stock. Last year, hundreds of international visitors from 28 countries registered with show officials and the number expected for 1980 International Days, February 20-24, is expected to be even larger.

Horse show activities will fill the 4.3 acre Abercrombie Arena, adjacent to the livestock exposition building (Astrohall). With 2,630 horses entered in the nine shows, the horse show must run for 16 days beginning on February 16, in order to accommodate all classes. In addition, the fourth annual horse judging contest is expected to have 696 contestants for competition on February 21.

Junior show exhibitors take over the 22.3 acre livestock exposition facility for the second week of the livestock show, with judging beginning on February 28. Each exhibitor knows he is up against the best in livestock, with much riding on the decision of the most experienced livestock judges in the nation.

Junior shows include breeding beef heifers, dairy, breeding sheep, Angora goats, beef and dairy scramble heifers, commercial steers, breeding rabbits, market lambs, market poultry, market turkeys, market swine and market steers, including a carcass contest.

In addition to the premium awards and trophies, exhibitors of market animals know that a grand

championship in their market division at Houston can translate into the stake for a future cattle herd or college diploma.

The Houston Livestock Show and Rodeo holds the world's record for prices paid at auction for the grand and reserve grand champion junior market animal in five categories: Grand Champion Steer, \$70,000; Reserve Grand Champion Steer, \$45,000; Grand Champion Lamb, \$30,000; Reserve Grand Champion Lamb, \$16,500; Grand Champion Barrow, \$25,000; Reserve Grand Champion Barrow, \$13,000; Grand Champion Pen of Five Broilers, \$22,000; Reserve Grand Champion Pen of Five Broilers, \$17,000; Grand Champion Turkey, \$13,005; and Reserve Grand Champion Turkey, \$7,500.

More importantly, community involvement and civic support from thousands of individuals and businesses alike combine to assure junior exhibitors that their animals selling in the market auctions will bring premium prices. Show officials estimated that 34 percent of animals entered in market competition make the auction sales.

Thousands of junior exhibitors are also competing in livestock and dairy judging contests where their knowledge of animals can win calf purchase certificates worth \$400 toward the purchase of a purebred, registered beef or dairy heifer.

More than just a crowd-pleasing rodeo event, the calf scramble offers winning boys the opportunity to earn a calf purchase certificate worth \$400. With the top 40 winners of the livestock and dairy judging contests, calf scramble winners participate in a special year-long program that stresses education and responsibility. It concludes with special show ring competition at the following year's show.

Spectators at the 1980 rodeo, February 22 thru March 2, will again be treated to top flight rodeo competition. Cowboy champions will be matched against rodeo's toughest stock with one of the richest purses in American rodeo riding on the outcome.

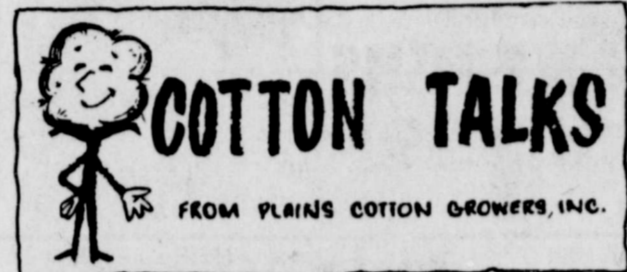
For the final performance of the rodeo on March 2, the top finalists in each event will compete in Houston rodeo finals for additional prize money, trophy saddles and the coveted title of Houston All Around Cowboy on the line. In 1979, rodeo contestants split more than \$200,000 in prize money. Rodeo fans can always count on the top cowboys and barrel racers making a stop at the Astrodome.

**GARDENING IN THE '80s**—Despite the age of computers, gardening in the '80s will likely involve many of the same tasks as in the past—tilling the soil, hoeing weeds and spraying for bugs and diseases. However, gardening will continue to increase in popularity, believes a horticulturist with the Texas Agricultural Extension Service, Texas A&M University System. Some 41 percent of all American households currently have gardens. Gardeners are spending more than \$1 billion annually on seed, equipment and other items, and their produce is valued at almost \$14 billion a year.

Also on hand in a spectacular line-up of television and recording stars to perform at the rodeo. The line-up includes the stars rodeo fans most want to see and they hold more gold records than is usually found in Fort Knox.

Opening the rodeo on Friday, February 22, for the matinee performance only is **SHAUN CASSIDY**; on Saturday, February 23, for the evening performance only, **ANNE MURRAY**; on Sunday, February 24, for two performances, **CHARLEY PRIDE**; on

Sunday, February 24, for the matinee performance only, **KC AND THE SUNSHINE BAND**; on Sunday, February 24 for the evening performance and on Saturday, March 1, for two performances, **KENNY ROGERS AND DOTTIE WEST**; and on Sunday, March 2, for two performances, **CRYSTAL GAYLE**.



According to the Donald Johnson, Executive Vice President of Plains Cotton Growers, Inc., Lubbock, it now appears virtually certain that the six-year-old disaster program which expired with the 1979 crop year will be extended through 1981.

The House in Washington February 13 on a vote of 202 to 140 approved a two-year extension as part of a bill establishing a new and expanded all-risk Federal Crop Insurance program. The Senate passed a similar measure late last year and the issue now goes to a House-Senate Conference Committee for resolution of differences.

The disaster extension parts of the two bills are almost identical, notes Johnson, "so we don't anticipate any serious problem getting the bill out of conference or back through both houses."

The only major difference in the bills relates to the Federal Crop Insurance program. The House measure gives producers the option to secure private hail and fire insurance in return for a 25 percent credit on federal premiums for other coverage. The Senate bill has no such provision.

Details on the insurance program won't be available until sometime after the final measure becomes law. Nor is it now clear when all farmers will have access to the new insurance.

"But it doesn't seem reasonable to expect that federal crop insurance in 1980 will be much if any different from that available in 1979," Johnson says. Meanwhile producers will have the disaster program in 1980 and will have the option to either retain that protection or take federal crop insurance in 1981.

The next action on a disaster program extension will come February 19 when House and Senate conferees meet on legislation raising target prices for wheat and feed grains. Besides target price provisions, the Senate bill to be discussed also provides a one-year extension of the disaster program with a payment limitation of \$50,000 per producer.

It is possible but by no means assured, Washington sources say, that the target price conferees will now agree to drop all mention of the disaster program from that bill.

Disaster protection was first written into the Agriculture Act of 1973 and was extended for the first two years of the four-year 1977 farm law, expiring with the 1979 crop year.

Farmers in the 25-county High Plains territory represented by PCG, where the disaster program was conceived, collected over \$273 million in benefits under the disaster program for the five-year period 1974 through 1978. Final disaster payment figures are not yet available on the 1979 crop but are expected to bring the six-year total to over \$300 million.

## Farm Bureau News Summary

**EMBARGO AND SUPPORT PRICE**  
There is a law that requires the Secretary of Agriculture to increase the loan rate to 90% of parity price for wheat, corn, grain sorghum, soybeans, oats, rye, barley, rice, flaxseed and cotton that are embargoed because of supply shortage.

Section 1002 of the Food and Agriculture Act of 1977 entitled "American Agriculture Protection Program" requires the Secretary of Agriculture to increase the loan to 90% of parity for a named commodity, when the President of the United States suspends the export sales of the commodity because of short supply. The loan level is to stay at 90% of parity as long as the commodity is suspended from export sales.

The President's decision to suspend sales of commodities to Russia was not based on short supply. It was based on the national security and foreign policy provisions of the Export Administration Act of 1979.

**RUSSIAN FERTILIZER TRADE**  
President Carter has temporarily restricted the imports of anhydrous ammonia from the Soviet Union to a one year quota of a million tons. The imports totalled about 900 thousand tons last year, officials said, but might have increased to 1.2 million to 1.4 million tons this year without the quota. Last year's imports were valued at about one hundred million dollars.

The Carter administration is currently considering cutting off phosphorus exports to the Soviet Union totalling about 60 million dollars a year.

Russian export-import of fertilizer is due to an agreement made several years ago between Occidental Petroleum Corporation of Los Angeles and the Soviet Union. The Soviet Union would export anhydrous ammonia and import phosphorus.

A check with the U.S. State Department reveals that a commission will be created to review exports of products to Russia to determine if they should continue. A decision on the phosphorus exports to Russia or other products could come at any time, but it will probably be four to six weeks before decisions will be made on what items can continue to be exported to Russia, if any.

**FOREIGN OWNERSHIP U.S. LANDS**  
Foreign groups and individuals have reported they own 5.2 million acres of U.S. agriculture land as of October 31, 1979. The 5.2 million acres is 485% of total 1978 land in farms - 1,072,333,000 acres.

**PEANUT PENALTIES**  
Agriculture Stabilization Conservation Service has announced a reduced penalty for unintentionally over-marketing peanuts by 92% for the 1978 crop and by 84% for the 1979 crop.

The penalty rate for the 1978 crop of peanuts is 102 of the basic support price for quota peanuts, which is determined to be \$42 per ton or 2.1 cents per pound. The 1979 crop peanut penalty rate is 20% of the basic support price of quota peanuts, which is determined to be \$84 per ton or 4.2 cents per pound.

Copies of the proposal are available from this office.

**ALCOHOL MANUFACTURER PERMITS**  
An important recent decision by the Texas Attorney General concerning the issuance of alcohol manufacturer's permits has been announced in the January issue of the Texas Register.

The official summary of the issue reads as follows: "The residency requirements for a permit (gasohol). A corporation hold a distiller's permit if an affiliate which holds a seller's permit. As much as a corporate permit holder may be examined to insure that the question of subterfuge or violation of tied house provisions is not present."

The "local industrial manufacturer's permit" mentioned in the Texas Register became effective as state law in 1979. The permit allows the use of denatured alcohol to be mixed with petroleum to create gasohol. Consumers may not be manufactured by this permit, which is administered by the Alcoholic Beverage Commission.

The "tied house provisions" mentioned above, has its origin in Section 102.01 of the Alcoholic Beverage Code, which defines "house" to mean "any ownership...between those of the alcoholic beverage at different levels", that is, manufacturer and a wholesaler, retailer, or between a wholesaler and retailer.

**RABIES VIA CORNEAL TRANSPLANT**  
A U.S. Department of Health and Welfare publication, "RABIES AND MORTALITY" dated January 25, 1980, reports that on November 28, 1979 a 36 year old man from eastern France died 10 days after receiving a corneal transplant. The donor was a 53 year old woman who had died following quadriplegia syndrome. The eye is known to have been transplanted to a dog who died. The person in eastern France who received the transplant had no contact with animals.

**SCIENCE AND EDUCATION COUNCIL**  
Secretary of Agriculture and president of the National Association of State Universities and Grant Colleges, Robert Anderson signed an agreement on February 1980 extending their sponsorship of the International Science and Education Council for another two years.

The International Science and Education Council is established in cooperation with nine members of the department and nine members of the State Universities and College Association. The group is to promote research in science and education through the world.

**ALCOHOL FUEL PROGRAM**  
USDA's Farm and Home Administration is opening up its rural industrial loan guarantee program to expand the production of alcohol.



**BILL WOULD HURT COTTON:**  
Rep. Borer (D-Tenn.) has introduced a bill that would require the Consumer Product Safety Commission to extend the children's sleepwear flammability standard to all items of children's underwear. Under the bill, the standard would take effect 18 months after its enactment, regardless of when the CPSC issued the necessary regulation. Some 100,000 bales of cotton currently are used in the children's underwear market, according to the National Cotton Council.

**EXPORTS REPORTED:** New sales of upland cotton were reported at 66,900 running bales for the week ended Feb. 3 to bring the season's total to 8,478,200. The major buyer was Japan at 52,700 bales. The week's exports were reported at 201,300 running bales (24,400 to China) compared with 168,

400 a week ago, bringing the total to 8,678,800 for the year. The 1980-81 delivery year is almost triple a week ago.

**HOTLINE WILL HELP COTTON:** A new hotline is being set up at the U.S. Department of Agriculture to help the cotton industry on by increased exports. Secretary Bobby Smith will be the Office of Transportation and telephone hotline to report that may occur in shipments. Smith said the number (202/447-5617) will be by industry members to bottlenecks and export problems.

**AND COTTON YESTERDAY:** B.C. Herodotus wrote of the first cotton in India, the first was cotton.

for any

**Estate** **Real Estate**

**FOR SALE:** Several good and three bedroom Bond Real Estate. Wilson Bond, 983-983-3573. tfe

**FOR SALE:** Brick three room, one bath, kitchen, new carpet and evaporative air conditioning storage shed, fruit trees, paint, and fenced back. All this plus a great lot 104 J.B. Ave. Floydada 293-8137 in Plainview p.m.

**FOR SALE:** Three bedroom homes for sale. can be arranged. Hale Insurance and State at 983-3261. tfe

**FOR SALE:** Three bedrooms two baths on large lot 2306.

**FOR SALE OR TRADE:** Investment Complex with farms, low interest. tfe

**FOR SALE BY OWNER — 3** Five room house with bath, and built-in porch. Close to school 983-5180. \$8000.

**FOR SALE:** To be moved room house. 652-3183.

**FOR SALE:** Two bedrooms, one bath, steel siding, \$25,000. Call 2425 or 983-3024 after weekends. tfe

**FOR SALE:** Nice home, large porch with dining area, den, 1 1/2 baths, new siding, insulated. Gated large carport and cellar, two storage rooms, fruit trees and sink fence, \$32,000. Insurance and Real call 983-3261. tfe

**FOR SALE:** House west of Lockney, 652-3187.

**FOR SALE:** Three bedrooms, brick, throughout, fireplace, refrigerator, central 100 ft. lot, fenced back covered patio, garage. 983-3387.

**FOR SALE:** House with wooden water 652-3187, Lockney.

**FOR SALE:** Mobile Home good buy for retirement in Floydada 806-983-1224.

**FOR SALE:** Mobile Home by owners in New Mexico, 1979 Wood Mobile Home plant. The donor was a 53 year old woman who had died following quadriplegia syndrome. The eye is known to have been transplanted to a dog who died. The person in eastern France who received the transplant had no contact with animals.

**FOR RENT:** Brick house South Plains. Dorsey Lockney.

**FOR RENT:** In Lockney and two bedroom. Come by 1081 or call 652-3818.

**WANTED TO BUY:** gated or dryland in Floyd or surrounding. Write Box XRO, c/o Errian, Box 700, Floydada.

**cash in with a classified ad...**

"Special tax benefits for Senior Citizens?...I should have come here last year!"

call your Farm Insurance Agent.

**DAVID GATES** Agency Manager

**BILL DAWSON** TOMMY WYLLIE FLOYDADA 983-3777

**L.T. COOPER** AUL KOONSMAN LOCKNEY 652-2242

**PAT GREEN** MATADOR 347-2880

**H&R BLOCK** THE INCOME TAX EXPERT

983-5233 Floydada

**Sponsored by the Following Interested Firms**

<b>First National Bank</b> Floydada	<b>Russell's Equipment &amp; Supply</b> Floydada	<b>Floyd County Farm Bureau</b>
<b>Case Power &amp; Equipment</b> Floydada	<b>Plainview Savings &amp; Loan Association</b> Floydada	<b>Perry Implement</b> Lockney
<b>Floydada Cooperative Gins</b>	<b>The Floyd County Hesperian</b>	<b>Ansley &amp; Son</b> Lockney
<b>McDonald Implement Co.</b> Floydada	<b>Consumers Fuel Association</b> Lockney	<b>Floydada Implement Co.</b>
<b>Federal Land Bank Association Of Floydada</b>		



# for anything... for everything... WANT ADS

### Real Estate

**FOR SALE:** Several good and three bedroom homes for sale. Bond Real Estate. Wilson Bond. 983-3373. tfc

**FOR SALE:** Nice two and three bedroom homes for sale. Hale Insurance and Estate at 983-3261. tfc

**SALE OR TRADE:** Investment Complex with terms, low interest. tfc

**SALE BY OWNER:** 3 bedroom brick, 1 3/4 bath. Poplar, Lockney. 652-4400. tfc

**SALE OR TRADE:** 2 bedroom, 1 1/2 bath, with fireplace, game room basement, metal building. 983-5315 after weekends. tfc

**SALE:** Nice home, large room with dining area, garden, 1 1/2 baths, new siding, insulated. Garage with large carport and storage. 983-3261. tfc

**FOR SALE:** 528 W. 1st St., Floydada, three bedroom, storm cellar. Call E. Frizzell, Rt. 1, 652-3788. tfc

**FOR SALE:** Mobile Home good buy for retirement. Floydada 806-983-tfc

**FOR SALE:** Brick house at South Plains. Dorsey Baker, Lockney. tfc

**FOR RENT:** In Lockney one and two bedroom apartments. Come by 108 N. Main or call 652-3818. tfc

**LOTS AND ACREAGE:** 88 Acres, 40 x 70 steel barn, three bedroom two bath house located in Dougherty. Please call Kay Steen 744-2475, French Chateau realtors 792-4345. tfc

**WANTED TO BUY:** Irrigated or dryland farm in Floyd or surrounding area. Write Box XRO, c/o Hesperian, Box 700, Floydada. tfc

**ALCOHOL FUEL PRODUCTION:** USDA's Farm and Home Administration is opening up its rural areas to expand the production of alcohol.

### Real Estate

**FOR SALE:** Brick three bedroom, one bath, modern kitchen, new carpet and new evaporative air conditioner, storage shed, fruit trees, new paint, and fenced back yard. All this plus a great location. 104 J.B. Ave. Floydada. Call 293-8137 in Plainview after 5 p.m. tfc

**FOR SALE:** Three bedroom two baths on large lot. 983-2306. tfc

**FOR SALE BY OWNER:** Five room house with one bath, and built-in back porch. Close to schools, call 983-5180. 88000. 2-28p

**FOR SALE:** to be moved — 5 room house. 652-3183. tfc

**FOR SALE:** Two bedroom, one bath, steel insulated siding, \$25,000. Call 983-2425 or 983-3024 after 6 p.m. 3-16c

**FOR SALE:** House 1 mile west of Lockney. 652-3840. L2-24p

**FOR SALE:** Three bedroom, two bath, brick, carpet throughout, fireplace, refrigerated air, central heat, 100 ft. lot, fenced back yard, covered patio, double garage. 983-3387. 2-24p

**FOR SALE:** 528 W. 1st St., Floydada, three bedroom, storm cellar. Call E. Frizzell, Rt. 1, 652-3788. tfc

**FOR SALE:** Mobile Home good buy for retirement. Floydada 806-983-tfc

**FOR SALE:** Brick house at South Plains. Dorsey Baker, Lockney. tfc

**FOR RENT:** In Lockney one and two bedroom apartments. Come by 108 N. Main or call 652-3818. tfc

**LOTS AND ACREAGE:** 88 Acres, 40 x 70 steel barn, three bedroom two bath house located in Dougherty. Please call Kay Steen 744-2475, French Chateau realtors 792-4345. tfc

**WANTED TO BUY:** Irrigated or dryland farm in Floyd or surrounding area. Write Box XRO, c/o Hesperian, Box 700, Floydada. tfc

**ALCOHOL FUEL PRODUCTION:** USDA's Farm and Home Administration is opening up its rural areas to expand the production of alcohol.

**ALCOHOL FUEL PRODUCTION:** USDA's Farm and Home Administration is opening up its rural areas to expand the production of alcohol.

**ALCOHOL FUEL PRODUCTION:** USDA's Farm and Home Administration is opening up its rural areas to expand the production of alcohol.

**ALCOHOL FUEL PRODUCTION:** USDA's Farm and Home Administration is opening up its rural areas to expand the production of alcohol.

**ALCOHOL FUEL PRODUCTION:** USDA's Farm and Home Administration is opening up its rural areas to expand the production of alcohol.

**ALCOHOL FUEL PRODUCTION:** USDA's Farm and Home Administration is opening up its rural areas to expand the production of alcohol.

**ALCOHOL FUEL PRODUCTION:** USDA's Farm and Home Administration is opening up its rural areas to expand the production of alcohol.

**ALCOHOL FUEL PRODUCTION:** USDA's Farm and Home Administration is opening up its rural areas to expand the production of alcohol.

**ALCOHOL FUEL PRODUCTION:** USDA's Farm and Home Administration is opening up its rural areas to expand the production of alcohol.

**ALCOHOL FUEL PRODUCTION:** USDA's Farm and Home Administration is opening up its rural areas to expand the production of alcohol.

**ALCOHOL FUEL PRODUCTION:** USDA's Farm and Home Administration is opening up its rural areas to expand the production of alcohol.

**ALCOHOL FUEL PRODUCTION:** USDA's Farm and Home Administration is opening up its rural areas to expand the production of alcohol.

**ALCOHOL FUEL PRODUCTION:** USDA's Farm and Home Administration is opening up its rural areas to expand the production of alcohol.

**ALCOHOL FUEL PRODUCTION:** USDA's Farm and Home Administration is opening up its rural areas to expand the production of alcohol.

**ALCOHOL FUEL PRODUCTION:** USDA's Farm and Home Administration is opening up its rural areas to expand the production of alcohol.

**ALCOHOL FUEL PRODUCTION:** USDA's Farm and Home Administration is opening up its rural areas to expand the production of alcohol.

### BUSINESS SERVICES

**INTERIOR PAINTING WALL PAPERING**  
Call Rena Turner or Nancy Mayo, 983-5130 or 983-2667. tfc

**INSULATION**  
Fire-Resistant. Installed and Guaranteed. MARR Insulation Co. Lockney 652-3593. Ltfc

**INSULATION**  
Can help save your dollars. For information call 983-2601.

**WILL DO ALL TYPES** of carpenter work. Call 983-5201 after 5:30. tfc

**LAND LEVELLING** doesn't cost, it pays. 983-2646 or 983-2074. tfc

**WANTED WORK:** Tree trimming, yard work, painting, etc. 501 E. Ross. Joe Caballero and son. 2-24p

**BEFORE YOU PAINT** Get our free estimate on U.S. Steel Siding. 100% financing budget terms, D & B Construction 2806 34th, Lubbock 793-3173. tfc

**"Carpet Need Cleaning?"** Let me do the work for you. Dry foam, 10 cents sq. foot. Call Jack Moore 983-3033 after 5 p.m. tfc

**WANT TO SAVE GAS?** Then come to Charley's Sales, Service, Sharpening and Fix-it Shop in Plainview. We have the Heald trail bikes, trykes and tryke haulers. Also the Pedal Power electric bicycle — or we can electrify your bike. We are also the distributor for Skil products. Charley's Sales, Service, Sharpening and Fix-it Shop, 2103 West Fifth, Plainview. Phone 293-8891. L-5-tfc

**Fireplaces**  
BY MAJESTIC BUILT-IN OR FREE-STANDING CALL OR COME BY AUDRY MCCORMICK 107 WILLOW LOCKNEY 652-2572 L TFC

**CAKE DECORATING**  
Custom baked and decorated for birthdays, holidays, parties, club meetings, etc. Laura Wilson 652-3770 L-tfc

**WE DO PAINTING,** floor leveling, house blocking, roofing and remodeling. We are now working Floydada Area. Contact: Childress Bro. Collect 352-9563 tfc

**CUSTOM Application of Herbicides.** Bill Wisdom 652-3541, John Widom 652-3544. Ltfc

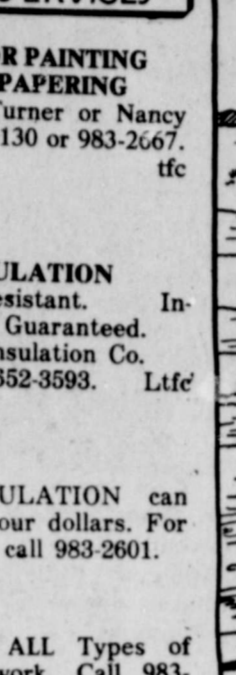
**HOUSE PAINTING,** Interior, exterior, taping, bedding, acoustical ceiling. Free Estimate. Call 293-8069 or 293-7679. 3-13p

**FISHERMEN BE READY —** Will do minor repair and cleaning of reels and rods — Install new lines — Have on hand size 6 lb. to 20 lb. test. E. Minter. 652-3338, 201 E. Willow, Lockney. L3-16p

**Kathy's Hair Design**  
303 N. 2nd Floydada Now has Shackley Products 3-13c

**"He who serves his country well has no need of ancestors."** Voltair

### COW POKES



**"Yep, I'm a successful rancher. I got a 40 year loan on my ranch, 3 years on my pickup, 90 days on my calves and there ain't no possible way of payin' off none of them."**

**We would like to continue the COWPOKE SERIES. WE NEED A SPONSOR Call 983-3737**

**TURNER REAL ESTATE**  
983-2635 Farms' Ranches Floydada, Texas

**Diamond Industrial Supply Co., Inc.**  
Phone Days 296-7418 Nights 296-1200 or 296-7-28  
1014 Broad way Plainview, Texas

Chain Sprockets V belts Sheave U-joints Oil Seals O-rings Wisconsin

SKF RCA Timken Bower Cotton Striper Brushes & Bats

"We Appreciate Your Business More" Ltfc

**WANT ADS A WORLD OF RESULTS**

**Public Notices**

**NOTICE TO BIDDERS**  
The City Council of the City of Lockney, Texas will receive sealed bids until 9:00 a.m. March 10, 1980 at City Hall in the office of the City Secretary for the following:  
One 4-Dr 1980 LTD Ford or equal  
White  
Automatic Drive  
Power front Disc Brakes  
Power Steering  
Steel Belted Radial Tires  
302 x 8 Cylinder engine  
205 x 75R Tires  
Conventional Spare  
Bumper Rub Stripes  
Front & Rear Bumper Guards  
Air Conditioning  
AM Radio  
Tinted glass  
Dual accent stripes  
Remote control mirror  
Wheel cover  
Decked tape stripes  
Bright window frames mouldings  
Wheel lip mouldings  
The city will trade a 1978 Ford LTD in on this purchase. Please reflect this trade in your bid.  
The Council reserves the right to reject any or all bids and to negotiate with the bidder of their choice.

**ATTEST:** /s/ Erma Lee Duckworth City Secretary Claude Brown Mayor L2-24, 3-2C

**FOR JUSTICE OF PEACE**  
Walter Hollams Joyce Lipham Linda Morris

**FOR COMMISSIONER**  
Precinct 3 Thomas Warren Larry Noland

**FOR U.S. CONGRESS**  
17th District Charles Stenholm Democrat

The citizens of Lockney are invited to a budget hearing of the City of Lockney. It will be held March 6, 1980 at 9 a.m. at City Hall.  
There is a total tentative budget of \$239,875.00 including \$18,000.00 in revenue sharing funds.  
The city plans to use \$6,000.00 for a new police car and \$12,000.00 for street improvement out of the revenue sharing funds. The public has a right to provide written and oral comments on the entire budget and ask questions concerning the relationship of revenue sharing to the rest of the budget. L2-24c

### FOR SALE

**WANTED:** Childrens kitchen appliances in good condition. Call 983-3304 a.m. & 983-3774 p.m. tfc

**FOR SALE:** Baled Cane. 652-3619 Ltfc

**"WE SELL SLEEP"**  
Direct Mattress Co. New or renovated, for appointment call City Trim Shop, 983-2332, Floydada. S-tfc

**FOR SALE:** Boat and outboard motor, Glaston V176 trihull, 115 h.p., Johnson, dilly drive-on trailer, mint condition. See George Miller after 3 p.m. Saturday. 2-24c

**FOR SALE:** 50 wooden egg cases, 50 waxed treated poultry boxes, 25 cents each. Not less than five sold at a time. Charley Berry, 304 E. Georgia 2-24c

**FOR SALE:** 11 yd. John Deere carry-all. Call 983-2646. tfc

**FOR SALE:** Two recliner rockers, good condition. 983-5195. 2-28p

**FOR SALE:** Sofa and chair. 983-2040. S3-2p

**NOTICE**  
WILL KEEP one small child in my home Monday thru Friday. 983-5305. 2-24c

**Tickets Available** for positive living rally with Peale, Ziglar and Robert. February 28, Civic Center, Lubbock. Call Sears 983-2862. 2-24c

**JEWEL BEAN** needs someone to strip cotton. Call 983-3501 or 652-2582. Ltfc

**"A mule always boasts that its ancestors were horses."** German Proverb

**STOP PAINTING**  
Cover all outside walls and overhang with U.S. Steel Products

**FREE ESTIMATES**  
Stan-By Steel Siding 1501 N. Columbia Plainview, Texas Phone: 293-9330 Ltfc

**STORAGE SPACE**  
BOATS, FURNITURE, ANYTHING, ETC. BY THE MONTH OR SIX MONTH 10% DISCOUNT.

**WEST TEXAS MINI STORAGE**  
983-3737 OR 983-2151 Ltfc

Check with us for **LIQUID FERTILIZER ANHYDROUS HERBICIDES**

Rigs available for application **LONE STAR CHEMICAL INC.**

Office: 652-2761  
Deanie Henderson: 652-3434 Ltfc

**DAN'S AUTO SERVICE**  
DAN TEUTON, Owner  
Specializing in Autogate Transmission, Motor Tune-Ups, Auto Air Conditioning.

General Repair We Have A **BRAKE LATHE** to handle all passenger car brake drums. See us for complete brake service. Phone 652-2462

**POLITICAL CALENDAR**  
This political column is brought to you as a public service of this newspaper.

**FOR SHERIFF**  
Fred Cardinal

**FOR TAX ASSESSOR-COLLECTOR**  
Jonelle Fawver

**FOR COMMISSIONER**  
Precinct 1 Sam Spence 2. Rodger Dawdy 3. J.W. Becker

**FOR JUSTICE OF PEACE**  
Walter Hollams Joyce Lipham Linda Morris

**FOR COMMISSIONER**  
Precinct 3 Thomas Warren Larry Noland

**FOR U.S. CONGRESS**  
17th District Charles Stenholm Democrat

The citizens of Lockney are invited to a budget hearing of the City of Lockney. It will be held March 6, 1980 at 9 a.m. at City Hall.  
There is a total tentative budget of \$239,875.00 including \$18,000.00 in revenue sharing funds.  
The city plans to use \$6,000.00 for a new police car and \$12,000.00 for street improvement out of the revenue sharing funds. The public has a right to provide written and oral comments on the entire budget and ask questions concerning the relationship of revenue sharing to the rest of the budget. L2-24c

### FOR SALE

**FOR SALE:** Good clean used refrigerator. 983-5702. tfc

**FOR SALE:** Mattress and box springs, \$30.00, contact Bobbie Miller, 983-2116. 2-17c

**FOR SALE:** Baled haygrazer, \$1.75 per bale. Tom Pierce, 983-2578. tfc

**FERGUSON** four row Roto tiller with bud shaper. Phone before 8 a.m. or after 11 p.m. 983-2091. 2-24c

**FOR SALE:** Niagara Professional Home Therapy Equipment. Call Sue Casey. 652-3414 Ltfc

**FOR SALE:** 11 yd. John Deere carry-all. Call 983-2646. tfc

**FOR SALE:** Two recliner rockers, good condition. 983-5195. 2-28p

**FOR SALE:** Sofa and chair. 983-2040. S3-2p

**NOTICE**  
WILL KEEP one small child in my home Monday thru Friday. 983-5305. 2-24c

**Tickets Available** for positive living rally with Peale, Ziglar and Robert. February 28, Civic Center, Lubbock. Call Sears 983-2862. 2-24c

**JEWEL BEAN** needs someone to strip cotton. Call 983-3501 or 652-2582. Ltfc

**"A mule always boasts that its ancestors were horses."** German Proverb

**STOP PAINTING**  
Cover all outside walls and overhang with U.S. Steel Products

**FREE ESTIMATES**  
Stan-By Steel Siding 1501 N. Columbia Plainview, Texas Phone: 293-9330 Ltfc

**STORAGE SPACE**  
BOATS, FURNITURE, ANYTHING, ETC. BY THE MONTH OR SIX MONTH 10% DISCOUNT.

**WEST TEXAS MINI STORAGE**  
983-3737 OR 983-2151 Ltfc

Check with us for **LIQUID FERTILIZER ANHYDROUS HERBICIDES**

Rigs available for application **LONE STAR CHEMICAL INC.**

Office: 652-2761  
Deanie Henderson: 652-3434 Ltfc

**DAN'S AUTO SERVICE**  
DAN TEUTON, Owner  
Specializing in Autogate Transmission, Motor Tune-Ups, Auto Air Conditioning.

General Repair We Have A **BRAKE LATHE** to handle all passenger car brake drums. See us for complete brake service. Phone 652-2462

**POLITICAL CALENDAR**  
This political column is brought to you as a public service of this newspaper.

**FOR SHERIFF**  
Fred Cardinal

**FOR TAX ASSESSOR-COLLECTOR**  
Jonelle Fawver

**FOR COMMISSIONER**  
Precinct 1 Sam Spence 2. Rodger Dawdy 3. J.W. Becker

**FOR JUSTICE OF PEACE**  
Walter Hollams Joyce Lipham Linda Morris

**FOR COMMISSIONER**  
Precinct 3 Thomas Warren Larry Noland

**FOR U.S. CONGRESS**  
17th District Charles Stenholm Democrat

The citizens of Lockney are invited to a budget hearing of the City of Lockney. It will be held March 6, 1980 at 9 a.m. at City Hall.  
There is a total tentative budget of \$239,875.00 including \$18,000.00 in revenue sharing funds.  
The city plans to use \$6,000.00 for a new police car and \$12,000.00 for street improvement out of the revenue sharing funds. The public has a right to provide written and oral comments on the entire budget and ask questions concerning the relationship of revenue sharing to the rest of the budget. L2-24c

### FOR SALE

**FOR SALE:** Good clean used refrigerator. 983-5702. tfc

**FOR SALE:** Mattress and box springs, \$30.00, contact Bobbie Miller, 983-2116. 2-17c

**FOR SALE:** Baled haygrazer, \$1.75 per bale. Tom Pierce, 983-2578. tfc

**FERGUSON** four row Roto tiller with bud shaper. Phone before 8 a.m. or after 11 p.m. 983-2091. 2-24c

**FOR SALE:** Niagara Professional Home Therapy Equipment. Call Sue Casey. 652-3414 Ltfc

**FOR SALE:** 11 yd. John Deere carry-all. Call 983-2646. tfc

**FOR SALE:** Two recliner rockers, good condition. 983-5195. 2-28p

**FOR SALE:** Sofa and chair. 983-2040. S3-2p

**NOTICE**  
WILL KEEP one small child in my home Monday thru Friday. 983-5305. 2-24c

**Tickets Available** for positive living rally with Peale, Ziglar and Robert. February 28, Civic Center, Lubbock. Call Sears 983-2862. 2-24c

**JEWEL BEAN** needs someone to strip cotton. Call 983-3501 or 652-2582. Ltfc

**"A mule always boasts that its ancestors were horses."** German Proverb

**STOP PAINTING**  
Cover all outside walls and overhang with U.S. Steel Products

**FREE ESTIMATES**  
Stan-By Steel Siding 1501 N. Columbia Plainview, Texas Phone: 293-9330 Ltfc

**STORAGE SPACE**  
BOATS, FURNITURE, ANYTHING, ETC. BY THE MONTH OR SIX MONTH 10% DISCOUNT.

**WEST TEXAS MINI STORAGE**  
983-3737 OR 983-2151 Ltfc

Check with us for **LIQUID FERTILIZER ANHYDROUS HERBICIDES**

Rigs available for application **LONE STAR CHEMICAL INC.**

Office: 652-2761  
Deanie Henderson: 652-3434 Ltfc

**DAN'S AUTO SERVICE**  
DAN TEUTON, Owner  
Specializing in Autogate Transmission, Motor Tune-Ups, Auto Air Conditioning.

General Repair We Have A **BRAKE LATHE** to handle all passenger car brake drums. See us for complete brake service. Phone 652-2462

**POLITICAL CALENDAR**  
This political column is brought to you as a public service of this newspaper.

**FOR SHERIFF**  
Fred Cardinal

**FOR TAX ASSESSOR-COLLECTOR**  
Jonelle Fawver

**FOR COMMISSIONER**  
Precinct 1 Sam Spence 2. Rodger Dawdy 3. J.W. Becker

**FOR JUSTICE OF PEACE**  
Walter Hollams Joyce Lipham Linda Morris

**FOR COMMISSIONER**  
Precinct 3 Thomas Warren Larry Noland

**FOR U.S. CONGRESS**  
17th District Charles Stenholm Democrat

The citizens of Lockney are invited to a budget hearing of the City of Lockney. It will be held March 6, 1980 at 9 a.m. at City Hall.  
There is a total tentative budget of \$239,875.00 including \$18,000.00 in revenue sharing funds.  
The city plans to use \$6,000.00 for a new police car and \$12,000.00 for street improvement out of the revenue sharing funds. The public has a right to provide written and oral comments on the entire budget and ask questions concerning the relationship of revenue sharing to the rest of the budget. L2-24c

The citizens of Lockney are invited to a budget hearing of the City of Lockney. It will be held March 6, 1980 at 9 a.m. at City Hall.  
There is a total tentative budget of \$239,875.00 including \$18,000.00 in revenue sharing funds.  
The city plans to use \$6,000.00 for a new police car and \$12,000.00 for street improvement out of the revenue sharing funds. The public has a right to provide written and oral comments on the entire budget and ask questions concerning the relationship of revenue sharing to the rest of the budget. L2-24c

The citizens of Lockney are invited to a budget hearing of the City of Lockney. It will be held March 6, 1980 at 9 a.m. at City Hall.  
There is a total tentative budget of \$239,875.00 including \$18,000.00 in revenue sharing funds.  
The city plans to use \$

