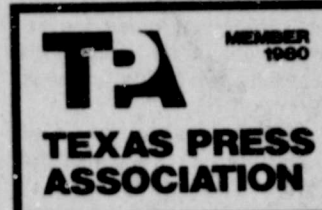


Base Dookbinding
P.O. Box 2558
Amarillo, Tex. 79105

Free the Hostages

The Lockney Beacon



Volume 79, Number 14 Lockney (Floyd County) Texas 79241

Sunday, February 17, 1980

12 Pages In One Section

20 Cents

Floyd County Stock Show Judging Starts Monday

Open Sunday, February 17 to the 1980 Floyd County Junior Stock Show. Weighing in of barrows scheduled to begin at 2 p.m. and all steers must be in place by 6 p.m.

Show judges this year are Bob Benson, steer judge; Scotty Windham, swine judge; Calvin Helm, lamb judge; and Buddy Logsdon, classifier.

Floyd County business firms and individuals will sponsor stock show trophies. Cash premiums will be given to exhibitors of the first through fifth-place animals in each barrow, lamb and steer class.

James McNeill is general superintendent of this year's show. Roger Dawdy is swine superintendent, and Kenneth Brosh is lamb superintendent. Steer superintendents are Venie Moore, JH Lane, Warren Mitchell, Rick Hrbacek, Bob Ross and Kent Covington. Paul Koonsman will serve as grounds superintendent, Travis Jones as loading superintendent.

Paul Glasson and Charles Overstreet are show veterinarians.

Official weighers are Kelton Shaw, Clar Schacht, Travis Jones, Gary Brown, JH Lane, Tommy Assiter, Weldon Pruitt and Harold W. Bennett.

The final event of stock show week in Floyd County will be a banquet for exhibitors and their parents Thursday

night. Floyd County Farm Bureau will sponsor the banquet, scheduled to begin at 7 p.m. Thursday in the Lockney Elementary School cafeteria.

Sweetheart Contest

Floyd County 4-H and FFA Sweethearts — Paula Teuton, Lockney FFA; Jill Whitfill, Lockney 4-H; Kelly Higginbotham, Floydada FFA; and Jodie Smith, Floydada 4-H — are selling membership cards. The Sweetheart accumulating the most money will become the Floyd County Junior Livestock Show Queen for 1980.

MONDAY, FEBRUARY 18

7 a.m. - Weighing steers will begin
8 a.m. - Weighing, classifying and toothling lambs
9 a.m. - All steers must be in place
10 a.m. - Steer classifying
2 p.m. - Barrows judging

TUESDAY, FEBRUARY 19

9 a.m. - Lamb judging
2 p.m. - Steer judging
(Notification to sell non-placing floor bid animals must be made one hour after completion of judging schedule.)

WEDNESDAY, FEBRUARY 20

7:45 a.m. - Livestock judging
1 p.m. - Auction sale

THURSDAY, FEBRUARY 21

7 p.m. - Banquet for 4-H and FFA exhibitors and parents.

SCHEDULE OF EVENTS

SUNDAY, FEBRUARY 17

2 p.m. - Barn open
2 p.m. - Weighing barrows
6 p.m. All barrows must be in place

1980 FLOYD COUNTY JUNIOR LIVESTOCK SHOW TROPHY SPONSORS

GRAND CHAMPION STEER	MR. & MRS. G. L. FAWNER
GRAND CHAMPION BARRON	PRODUCERS ELEVATOR
CHAMPION FINEWOOL	CONSUMERS FUEL ASSOCIATION
CHAMPION HAMPSHIRE	CHOISE SMITH
CHAMPION SUFFOLK	HENRY HINTON
CHAMPION SOUTHDOWN	JAKE & DANNY COLSTON
CHAMPION FINEWOOL CROSS	WOMACK BROTHERS
CHAMPION SHROPSHIRE	CAPROCK MOTOR
CHAMPION OTHER BREEDS	CAL CLAY FARMS
SHOWMANSHIP BEEF	KFLP RADIO
SHOWMANSHIP SHEEP	DAN BAYLEY
SHOWMANSHIP SWINE	IN-MEMORY OF K. E. PROBASCO
RESERVE STEER	JIM SIMPSON
RESERVE BARRON	LARRY BARBEE JAMES MCNEILL
HERDSMAN BEEF	EUGENE BEEDY
HERDSMAN SWINE	BUDDY'S FOOD
HIGH-INDIVIDUAL JUDGING	MOTLEY COUNTY ABSTRACT MR. & MRS. JAMES RUSSELL
DIV. HIGH-INDIV. (B B S)	DOUGHERTY FARM SUPPLY
SWEEPSTAKES	FRIEND OF FLOYD COUNTY JUNIOR LIVESTOCK SHOW
SWEEPSTAKES PLAQUE	WELDON PRUITT
CHAMPION ANGUS-HEREFORD CROSS	CHARLES BEEDY TUB SPRINGS RANCH
RESERVE CHAMPION ANGUS-HEREFORD CROSS	GENEVA & JACKIE ELLIOTT
SWINE BREEDS CHAMPION & RESERVE	MORTON IRRIGATION
HERDSMAN-SHEEP	MR. & MRS. KENNETH BROSEH
RESERVE CHAMPION FINEWOOL	EDDIE FOSTER
RESERVE HAMPSHIRE	BILL HENDRIX
RESERVE SUFFOLK	ELMER DEAN WILLIAMS
RESERVE CHAMPION SOUTHDOWN	PAUL KOONSMAN
RESERVE CHAMPION FINEWOOL CROSS	KENNETH HOLT
RESERVE CHAMPION SHROPSHIRE	EDDIE TEETER
RESERVE CHAMPION OTHER BREEDS	J L J SHEEP FARM

Floydada Men On Annual Central America Trip



Four Floydada men left Wednesday on what has become an annual trip to provide medical and dental services to people in remote areas of Central America.

Dr. Charles Craig, D.D.S., Dr. Jack G. Jordan, M.D., Louis Lloyd and Jack McIntosh took off from Floydada Municipal Airport Wednesday morning bound for Guatemala, planning to spend a week with the Quiche' Indians in the mountains about 50 miles northwest of Guatemala City.

This is the 14th year that Drs. Craig and Jordan have flown to Central America. The trips are now partially sponsored by the "Flying Dentists' Association," but the Floydada doctors' trips predate the Flying Dentists by several years.

Lloyd and McIntosh, self-proclaimed "handymen" for the doctors, have been accompanying them for some seven years. All four men are licensed pilots; this year they took two planes, Lloyd's Mooney and McIntosh's new Cessna, on the Central American journey. The back seats and baggage compartments of both planes were loaded with medical and dental supplies.

The trips usually take 10 to 12 hours of flying time spread over two and a half to three days because of weather conditions, McIntosh says. The doctors try to get in four to five working days on the 10-day trip. (The four plan to return to Floydada by next Sunday.)

McIntosh explained why the Floydada men make the yearly trip: "We all like to fly, we like Central America, the doctors like their profession, and it's a point of Christian service. Put it all together and it just comes naturally."

Association," but the Floydada doctors' trips predate the Flying Dentists by several years.

Lloyd and McIntosh, self-proclaimed "handymen" for the doctors, have been accompanying them for some seven years. All four men are licensed pilots; this year they took two planes, Lloyd's Mooney and McIntosh's new Cessna, on the Central American journey. The back seats and baggage compartments of both planes were loaded with medical and dental supplies.

The trips usually take 10 to 12 hours of flying time spread over two and a half to three days because of weather conditions, McIntosh says. The doctors try to get in four to five working days on the 10-day trip. (The four plan to return to Floydada by next Sunday.)

McIntosh explained why the Floydada men make the yearly trip: "We all like to fly, we like Central America, the doctors like their profession, and it's a point of Christian service. Put it all together and it just comes naturally."

School Board Sets Election Date

Contracts of Lockney school principal James Poole, R.L. Knox and Jim Smith, and of tax assessor-collector Sanford were extended one year at the meeting of the school board Monday night.

The board also set April 5 as date of election to select three trustees. The terms of Jerry Williams, Eddie Foster and Eugene Tannahill expire in August.

Williams has said he will not seek reelection, while Foster and Tannahill have indicated their decisions.

The election deadline is March 5. Absentee voting begins March 17 and continues through April 1 in the superintendent's office. Billie Huggins is in charge of absentee balloting.

The new head coach and athletic director Wayne Sexton met with the trustees Monday for approval of a portion of the 1980-81 budget. The board okayed a total of \$6919.85 for equipment and replacement. Early ordering of these items is necessary to have the equipment ready by the beginning of the school year in mid-August.

The board accepted a plan to meet the needs of Lockney ISD for the next five years. It will be submitted to the Division of School Accreditation for approval by that group, the school board will receive continued accreditation status from the Texas Education Agency. The school has to re-evaluate its plan every year to keep the accreditation current.

The school calendar for 1980-'81 was approved. School will begin Aug. 28 and teachers will report Aug. 25. The board approved the textbook

committee's selection of health and business course books on the high school level. The local school selects books from a Texas Education Agency approved list of five books in each subject.

Lockney, Floydada Get Larger Sales Tax Rebates

State Comptroller Bob Bullock Tuesday said Texas cities will receive more than \$36 million in February in rebates from the optional one-percent city sales tax.

Bullock said the February allocation is about \$11 million more than cities received during the same period last year.

He said more efficient deposit procedures in his agency have resulted in larger rebate checks to cities during the past few months.

Lockney's payment for the month is \$2,826.26, up nearly \$500 from the same period last year.

Floydada's share is \$7,495.17, which represents an increase of more than \$2,000 over the same period in 1979, when the city received a \$5,352.90 rebate.

Dallas will get a check for \$4.6 million, bringing that city's total for 1980 to about \$7.3 million.

Houston's rebate for this month will be \$7.3 million, compared to \$5.4 million during the same period last

year. Houston's 1980 rebates total more than \$12.4 million.

San Antonio will receive a February check for \$1.8 million, raising that city's 1980 payments to date to \$3.2 million.

Fort Worth's check will be \$1.5 million, bringing the city's 1980 pay-

ments to date to \$2.4 million.

The city sales tax is collected by merchants and businesses along with the state's four-percent sales tax and is rebated monthly by the Comptroller's office to cities where it is collected.

IN REGULAR SESSION

Floyd County Commissioners Court Meets

The Floyd County commissioners court met Monday, February 11 to conduct a routine slate of business.

Ed Hammonds met with the court to report that he has completed the insulation of heating and air conditioning for the Floyd County Courthouse.

The court was unanimous in accepting the job.

The commissioners voted unanimously to raise the travel budget for the Floyd County Extension Agents from 17 cents to 20 cents, and telephone allotment is to be set at \$1,200 per year.

Office supplies and printing budget is to be set at \$1,500 per year for 1980.

Motion was made and seconded that the county give \$500 to the soil conservation service. The \$500 donated by the county is matched by the state in the same amount. The vote was unanimous.

Three voted for and one against on the motion that the contract with KMK Enterprises, time share for the computer for the County Tax Assessors Collectors office be cancelled. But that the report for October, November, December, and January cost for this work will be \$25.00 per receipt.

In another unanimous decision the court accepted the \$1.88 increase per employee for a semi-private room under the major medical and basic policy of Blue Cross and Blue Shield Insurance.

The commissioners agreed unanimously that Floyd County pay their advance of \$4,597.50 to the Central Appraisal Board of Floyd County for the re-appraisal of the personal property of Floyd County.

The court unanimously agreed once again that the county accept the contract between Floyd County and the

City of Floydada concerning the Floydada landfill.

A unanimous vote okayed a resolution to be endorsed by Floyd County concerning the emergency medical services system.

In final business the commissioners voted unanimously again that Floyd County reinvest five Travis County water control and improvement district N-18 water works system tax and revenue bonds series 1965 total of \$,000 for the permanent school fund.

Floydada Trustees Approve

Construction, Renovation

Floydada school district trustees met unanimously Friday morning for session and renovation of athletic facilities for both boys and girls at Floydada High School.

The school board awarded a contract for construction of a new athletic field and appropriated \$6,000 for session and renovation of girls' athletic facilities at FHS.

Floydada firm, Walter Davis Construction Co., submitted the low bid of \$63,484 for turnkey construction of a field house, a 6,000-square-foot (100) metal building to be erected on the northwest corner of the FHS track and area, near the high-school build-

ing of six submitted to the school district. Three firms from Lubbock, one from Hereford and one from Amarillo submitted bids ranging from \$86,916 to \$103,844 for the building.

Field house construction is to start immediately. It is hoped that the building will be completed by June 1.

Under the planned renovation and expansion program, the downstairs area now used for boys' dressing rooms will be converted to a girls' athletic area. New lockers and carpet will be installed. Cannon said the girls' athletic area would be at least doubled.

The upstairs area will be the boys physical education dressing room. The new field house will contain dressing rooms, showers, offices, weight room and film-viewing room.

All school board members were present at the special called meeting Friday morning.

Band calendars

being sold now

Lockneyites can still buy band community calendars this week and next week.

Birthdays and anniversaries are listed on the calendar. Persons wishing to buy calendars may call the band hall at 652-3811 during school hours.

Schools dismissed Monday

Lockney school pupils will get a holiday Monday but the teachers will report for a workday.

Next holiday will be spring break when school dismisses March 14 at 2:45 p.m. and resumes March 24 at 8:45 a.m.



LONGHORN JUNIOR VARSITY team members were from left: Alex Vasquez, Mike Arrellano, David Balderas, Junior McDonald, Jeff Aullif, John Fortenberry, Phillip Kidd, Tyke Dipprey, Jeff Reecer, David Peralta and coach Greg Fulton.

WE GIVE WE GIVE WE GIVE

1 Pound Nabisco Crackers 69¢ 95¢ Value

WE TAKE U.S.D.A. FOOD COUPONS

WE TAKE W.I.C. CARDS

2 Count Carnation Hot Cocoa Mix 99¢ 9 Ounce

Carpet Fresh \$1.09 \$1.49 Value

7 Ounce Kraft Marshmallow Creme 2/89¢ 59¢ Value

6 Ounce Gladiola Yellow Corn Bread Mix 4/\$1.00 30¢ Value

Ruby Red Grapefruit 6/\$1.00 Firm Green

Cabbage 7¢ Baking Size

Potatoes 10/\$1.00

Tomatoes 39¢

1 Ounce "For Dogs" Jerky Treats 5/\$1.00

Crystal White Dish Detergent With Coupon 79¢ Without Coupon Expires 2-20-80

Buddy's "No Deposit" With Coupon 79¢ Without Coupon Expires 2-20-80

Tab With Coupon 79¢ Without Coupon Expires 2-20-80

WE GIVE WE GIVE WE GIVE

Cedar Hill News

by Grace Lemons

We received more ice accompanied with snow this week and the fields are very wet.

The Assembly of God Church had a good crowd for services Sunday in spite of the bad weather. Several visitors were present including Jean Smith and boys of Dumas and Wayne and Sherry VanHoose and Randy of Levelland.

Rev. and Mrs. Vance Mitchell were among those present at the mission seminar of the area churches in this district held at the Assembly of God church in Floydada Tuesday evening.

Our sympathy goes out to the Jack Yeary family and the Grady Walker family and Jennifer and sons in the death of Jennifer's husband, Bill Walker, who drowned while on a fishing trip. Mr. Walker was a native of Vernon. He was a farmer and

a member of the Methodist church. He is survived by his wife Jennifer; a daughter, Terry Walker of Dallas; two step sons, O'Bryan and Jason; his parents Mr. and Mrs. Grady Walker Sr. of Floydada; and one brother, Ray of Dallas.

Mrs. J.R. Kelley visited Tom Fortenberry Wednesday.

Rev. and Mrs. Vance Mitchell were among those present at the band concert in Floydada last Thursday evening. Their daughters, Sandra and Virginia participated in the concert.

Edna Gilly's mother Ruthie Bell Hill and W.M. Clark of Plainview were united in marriage at 2:30 Tuesday afternoon at the Assembly of God Church in Floydada with Rev. G.A. VanHoose reading the vows. A small reception was held at the church.

Floydada Whozit



FLOYDADA WHOZIT — This baby was born in Floyd County in a dugout 71 years ago. He worked in the construction business in Floydada for 20 years and now has a small business in Floydada.

Whozits

Phone 983-3737
To Enter Your Guess

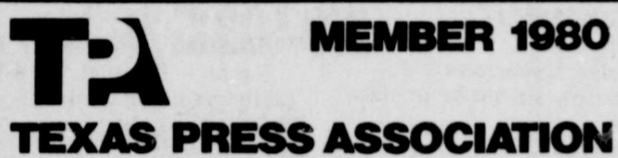
Lockney Whozit



LOCKNEY WHOZIT — This photograph was taken in 1949 at the Lockney firemen's ice cream supper. Present-day Lockneyites should recognize the fireboys third from left and second right in the front row, and extra and right in the back. Oldtimers are able to identify the others.

Phone 652-3318
To Enter Your Guess

The Lockney Beacon



THE LOCKNEY BEACON [USPS 317-220] is published each Sunday and Thursday by Floyd County Publishing Co., 220 South Main Street, Lockney, Texas 79241. Second-class postage paid at Lockney, Texas 79241. Subscription rates: local \$10.50 per year, out of trade area \$11.50 per year. POSTMASTER: Send address changes to THE LOCKNEY BEACON, P.O. Box 187, Lockney, TX 79241.

Jim Huggins

Publisher
Editor

LOCKNEY SCHOOL CAFETERIA MENU

February 19-22

Tuesday: Breakfast — muffins, apple juice, milk. Lunch — macaroni and cheese, buttered green beans, carrot stick, orange, milk, rolls, peanut butter and cracker.

Wednesday: Breakfast — scrambled egg, sausage, toast, orange juice. Lunch — fried chicken, buttered new potatoes, coleslaw, gelatin with fruit cocktail, biscuit, milk, peanut butter cake.

Thursday: Breakfast — oats, toast, fruit cocktail, milk. Lunch — pork chop, gravy, green peas with tomatoes, creamed potatoes, cornmeal rolls, milk.

Friday: Breakfast — buttered rice, bacon, milk, apple juice. Lunch — hamburger, lettuce, tomato, milk, purple plums, onion rings, pickles.

Lockney General Hospital

Feb. 7 — 14

Betha Cunyus, Lockney, adm. 2-4, dis. 2-9
Bertha Vernon, Lockney, adm. 2-5, dis. 2-12

Rachel Lopez, Floydada, adm. 2-6, baby girl Maria born 2-6, dis. 2-9
Johnny Martin, Lockney, adm. 2-6, dis. 2-10

Matalie Gonzales, Plainview, adm. 2-7, baby boy Jose Jr. born 2-7, dis. 2-9
Vickie Sheppard, Plainview, adm. 2-7, baby girl Melinda born 2-7, dis. 2-9

Jackie Hamilton, Floydada, adm. 2-7, dis. 2-12
Emma Scott, Lockney, adm. 2-7, continues care

Teresa Cedillo, Floydada, adm. 2-8, dis. 2-9
Teresa Cedillo, Floydada, adm. 2-8, dis. 2-9

Oma Ruth Neff, Floydada, adm. 2-9, continues care
Herman Cunningham, Lockney, adm. 2-10, continues care

William H. Finley, Floydada, adm. 2-10, continues care
Elbria Martinez, Plainview, adm. 2-10, dis. 2-12

Olive Myers, Lockney, adm. 2-11, continues care
Gertrude Marr, Lockney, adm. 2-11, continues care

Virginia Torrez, Lockney, adm. 2-12, baby girl Gloria born 2-12, dis. 2-14
Christina Leal, Quitaque, adm. 2-12, continues care

Frances Gamble, Silverton, adm. 2-13, continues care
Celia Chavez, Quitaque, adm. 2-13, continues care

Delores Ortiz, Quitaque, adm. 2-13, continues care
Piedad Ferrer, Lubbock, adm. 2-14, continues care

Happy Anniversary

Feb. 17 — Servando and Edna Villalon
Feb. 18 — Mr. and Mrs. Rayland Brotherton

Feb. 20 — Bobby and Ann McCormick
Feb. 21 — Cynthia and Louie Bybee

Feb. 22 — Max and Marty Smith, Loren and Inez Rhodes
Feb. 23 — Mr. and Mrs. J.P. Taylor

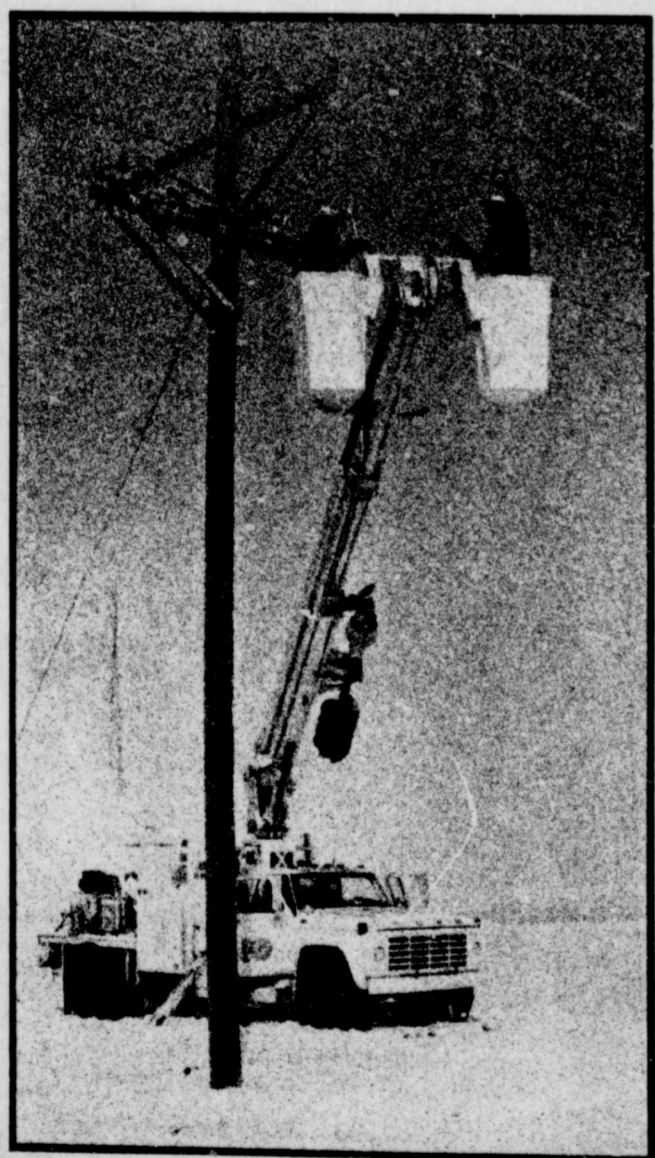
Happy Birthday

Feb. 17 — Nancy Carthel, Gilbert Reyna, Javier Rodriguez, Joann Rogers
Feb. 18 — Jim Gomez, Noemi Solis, Stephanie Rio-

jas, Susie Frazee, Phillips, Simon Blasuel DeLeon
Feb. 19 — Marjorie Arellano, Paul Brenda Williams
Feb. 20 — Loretta Reynolds, Josephine Deanie Henderson
Feb. 21 — Felicia Bill Crader, Fred Keith Jackson, Tomman, Mirtala Hope Perez
Feb. 22 — Delores Carthel, Jerri Amick, J.P. Taylor, Robles, Richard G.

Good Good am a self-made man "That sir," says "relieves the great responsibility."

YOU EXPECT US THERE



Yes you expect us there and You depend on Southwestern Public Service electricity to provide a lot of things to make your life better and more comfortable at home and work.
You depend on SPS to restore service quickly after a storm or accident.
When you need us we'll be there. It's good to know there's something you can depend on.



930.1

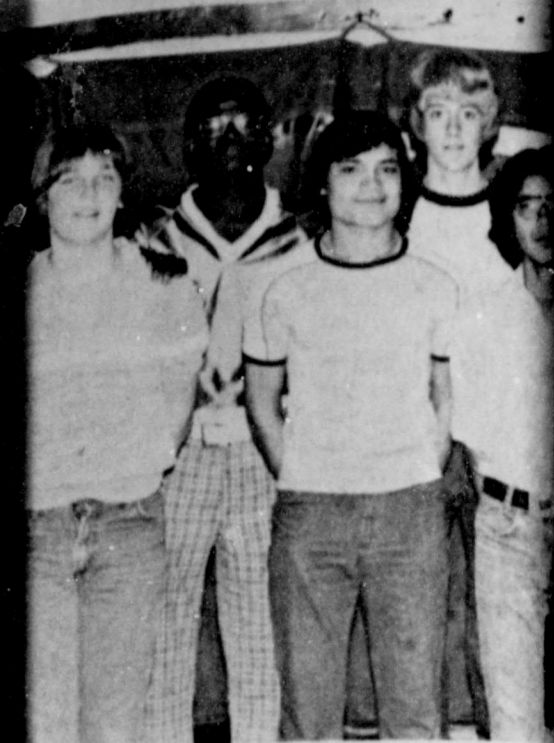


COACH TANDY MEDFORD had enough seventh graders for both an "A" and a "B" team. Members of the "A" team included back row, from left, Cindy Cooper, Terri Sparkman, Irene Cantu, Sarah Fitzgerald, Margaret Holaday and Tamara Elam. Front row, from left, Tiffani Duval, Tammy Ballejo, Mary Garcia and Laticia Molina.



"B" TEAM PLAYERS for the seventh grade were back row, from left: Minerva Salas, Linda Mata, Gracie DeLeon, Terri Hill, Mary Ester Cortez. Front row, from left: Delores Hernandez, Melissa Saucedo.

The Be



AN basketball team members from left, Tony Rodriguez, Michael Ivory, Harris, Robert Hernandez, zales, Michael Steven John



GRADE boys team members Cunyus, Ramdez, Hector manager; Gary Bigham, Glenn Sutterfield, Jackie manager; Ja



SHERI HAYNES and her grade girls team included back row, from left: Susie Pinner, Stephanie Libby Williams, Carmen Rodriguez and Tamara Elam. Front row, from left: Tiffani Duval, Tammy Ballejo, Mary Garcia and Laticia Molina.



MEMBERS OF THE seventh grade were back row, from left: Jim Murdock, Billy Sherman, Jerald Johnson, Andy Me Tector, T

The Beacon Salutes The Lockney Basketball Teams



BOYS' BASKETBALL TEAM members (front row, from left: Tony Rodriguez, Michael Gavock, Ivory Harris, Robert Hernandez, Tim Winter, Israel Gonzales, Michael Carthel, Mario Arellano, Steven Johnson, Kyle Brock, Russell Warren and Marcus Schacht. Joe Killer was coach.



FRESHMEN GIRLS' TEAM members (front row, from left: Key Reay, Elizabeth Mathis, Karen Mathis, Tara Mangum and Irene Medina; front row, from left: Robin Hardy, Amy Shaw, Mary Huffman, Doreen Alaniz, and Margie Araujo. Sheri Haynes was coach.



EIGHTH GRADE BOYS' TEAM members (front row, from left: Glenn Sutterfield, Jackie Cunyus, Randy Perales, Mike Hernandez, Hector Molina, and Chris Torres; middle row, from left: Darren Widener, manager; Jason Hill, Carlos Molinar, Cookie Vasquez, Abel Salas and Robert Rendon; front row, from left: Jeff Bayley, Jeffrey Prisk, Earl Broseh, Roger Perez and Keith Owens.



EIGHTH GRADE GIRLS' TEAM members (front row, from left: Karyia Foster, Delores Luna, Shawnda Brock and Hopie Torres; middle row, from left: Kim Carthel, Sonya Greenfield, Jerri Ann McCormick, Sylvia Hernandez and Jackie Shivers; front row, from left: Karyia Foster, Delores Luna, Shawnda Brock and Hopie Torres.



SEVENTH GRADE MEMBERS OF THE SEVENTH GRADE basketball team (front row, from left: Donna Hernandez, Delores Hernandez, Evelina Melissa Saucedo, Andy Murdock and Coach Robert Murdock; middle row, from left: Billy Mathis, Monty Ray Yarbrough, Terry Tetter, Terry Carlton, Doug Warren and Paul Moats; front row, from left: Ritchie Thornton, Kelly Hayes, Brent Hallmark and Gary Kent. James Christy was absent when the picture was made.

Attend The Floyd County Livestock Show

Beginning Monday In Floydada At 2 p.m....See You There...

Important notice: The Case Company has allocated special *incentive dollars* to us for the month of February, 1980, so we can offer you big, big savings — hundreds (or thousands...maybe?) of dollars per tractor — on any new Case tractor. Exact price reduction depends on tractor model and your "bargaining" skill.

ANNOUNCING ONE OF THE BIGGEST PRICE INCENTIVES EVER OFFERED ON NEW CASE TRACTORS.



Low profile models — 5 models, 43 to 80 pto hp

90 series 2WD's — 4 models, up to 180 pto hp

90 series 4WD's — to 300 engine hp

See your Case Tractor Specialist listed below. Save on the new Case tractor of your choice.

Case Power & Equipment

Phone 806-983-2836

101 South 12th
Floydada

Certified Parts & Service Department

Case 2870	With Duals	\$15,500 ⁰⁰	Case 1175	Cab, Air, Heater	\$14,000 ⁰⁰
Case 1175	With Cab	\$12,000 ⁰⁰	I.H.C. 1066	With Cab	\$11,750 ⁰⁰

Used Implement Trailer
\$1,000⁰⁰

February Parts Special

All Batteries, Cables, and Filters 10% Discount

Case POWER & EQUIPMENT



Eldon Eberhart
Saleman
983-2139

101 South 12th

Floydada, Texas

983-2836

Extension Homemakers Club Meets

Extension Home-Club council meeting was held Thursday, February 14, at the home of Marilyn Tate. The meeting was called by the chairman, Marilyn Tate. The prayer was voiced by the pastor, Rev. S. M. Smith. The meeting was introduced by the pastor.

The club building is under construction, but the site of the planned building has not been set. The club members are planning to purchase a new building.

Power Given For Miss McCarter

A beautiful wedding ceremony was held at the home of Mrs. Kathy McCarter on Feb. 9. The bride was Miss McCarter and the groom was Mr. Ronnie McCarter. The ceremony was officiated by Rev. S. M. Smith. The bride and groom were accompanied by their parents and other relatives.

The bride wore a white gown with a lace train. The groom wore a dark suit. The ceremony was held in a beautiful setting. The reception was held at the home of the bride's parents.

Home Scene Of Show

A show was held at the home of Mrs. Cheryl Teeter on Tuesday night. The show was a benefit for the local church. The show was held in a beautiful setting. The proceeds from the show will be used for the church's needs.

El Progreso Has Valentine Program

Refreshments of cream cheese pie, apple juice, nuts and other treats were served to the club members at the home of Mrs. Marie Brock. The program was a success and the members enjoyed the evening.

COUNTRY CRISP

Can apple pie filling, raisins, and lemon juice. Combine apples and butter, and mix well. Sprinkle over pie filling mixture at 350 degrees F. Bake 15 minutes. Serve warm with whipped cream or ice cream if desired. Makes 4 servings.

ATTEND THE COUNTY STOCK SHOW

Donnie

Book of the week



Bill Hardin, a local farmer and reporter, is the author of the book. The book is a collection of recipes and stories from his life. It is a must-read for anyone interested in local history and cooking.

add 3/4 cup cooking oil, 2 cups buttermilk, 5 cups self-rising flour. Mix well. Can be used immediately or stored in refrigerator up to one week.

Dip out as much as needed and knead on floured board a little, roll out and cut. Place in greased pan, let rise 45 minutes to 1 hour; or can go ahead and cook immediately at 425 to 450 degrees.

Boiled Custard
Scald 4 cups milk in double boiler. Beat 5 eggs, slightly — use only 2 whites; add 6 tablespoons sugar, 2 heaping tsps. flour (if whites are taken out), 1 tablespoon vanilla. Add small amount of milk to egg and sugar mixture. Slowly add to remainder of milk. Continue cooking in double boiler. Stir constantly until mixture coats spoon.

Cherry Tarts
Slightly cream 2 sticks oleo, gradually add 1 cup sugar; 2 eggs, one at a time; 1 tsp. vanilla, 2 cups flour. Mix well. Add 1 cup chopped pecans.

Angel Biscuits
Mix 2 pkg. dry yeast, 1 cup warm water, add 2 spoons sugar and 1 tsp. Stir until dissolved and



BILL HARDIN, CHEF OF THE WEEK

stake improves if it can set a day or two in a cool place.

Remove from heat, strain and place in refrigerator. The third one came from Mrs. Ben Bob Cleveland of DeQuincy, Louisiana. This is an easy one and I think very good. It can be made a day or two ahead of time, as the

entry forms may be obtained through the associations listed or by contacting J.L. Vandell, Natural Fibers & Food Protein Commission, 17360 Coit Road, Dallas 75252 or telephone 214/231-0852.

Shannons Tour In Mexico

Forrest and Kay Shannon, of Floydada, recently accompanied Buddy, Myrna and Christy Widener on a tour of Mexico. They were in a group of over 200 grocers from all over Texas who attended the 1980 Texas Retail Grocers Convention.

Hotel in Mexico City. While there they toured the Aztec Pyramids, Our Lady of Guadalupe Shrine and several other statues and monuments. They were informed of some information about the country. Mexico City's population is between 13 to 15 million. There is a 40% unemployment problem. The

average wage in Mexico for an 8 hour work day is about \$9.00. Mexico City hosts about 10 million tourists per year. The tour guides there speak fluent English, French, German, and Japanese. Forrest Shannon is manager of Buddy's Food, Floydada. Kay also works at Buddy's.

OBITUARIES

Former Floydada Resident Dies In Oklahoma

Services for Mrs. Sibyl Johnson, 77, of Muleshoe are scheduled for 11 a.m. Monday morning in the Muleshoe Church of Christ with David Cox, minister, officiating. Graveside services will be at 3 p.m. in Floyd County Memorial Park.

Mrs. Johnson died Friday at 3:45 a.m. in the Baptist Medical Center in Oklahoma City, Oklahoma. Mrs. Johnson was born January 12, 1903 in Hollis, Oklahoma. She completed her high school education in Hollis, and attended Southwestern State University in Weatherford, and taught math in Oklahoma for three years. She later moved to Floydada from Lawton, and from Floydada to Muleshoe, where she had lived for

fifteen years. In Floydada, Mrs. Johnson worked for Miladies Shop, Kay Crouch Motor Company, Peoples Hospital and was bookkeeper at Oden Chevrolet and The Hesperian. After her retirement, she moved to Muleshoe. She was preceded in death by her husband George G. Johnson December 29, 1979. Survivors are Doris McGill, Oklahoma City; Arch March, Eagle Pass; and Fred March, San Marcos; two brothers, Elsworth Gardner of Eugene, Oregon, and James Elmer Gardner of Houston, seven grandchildren and one great-grandchild.

Former Lockney Resident Dies

In Irving

A former Lockney resident, Tom Davis, 80, of Irving, died January 29. Masonic graveside rites were conducted at the cemetery in Irving.

Davis, a brother-in-law of Johns Cox and Mrs. Alvin Nichols of Lockney, had been ill for several years and critically ill for three months. He was a foreman for the Santa Fe railroad at Tulia, Slaton, Big Lake and Hamlin before he retired about 10 years ago.

He is survived by his wife Letha; two sons, Jack of Lubbock and Perry Lee of Denver, Colorado; two daughters, Mrs. Gertrude Ruth Ogles of Irving and Nola Katherine Trewin of Richardson; 11 grandchildren and five great-grandchildren.

Remember your loved ones and friends with a memorial to Lockney General Hospital Memorial Fund. These memorials go toward equipment to help serve our community in the best way possible.

REMEMBER your loved ones with a living memorial to the Caprock Hospital Auxiliary Memorial Fund. Mrs. Ben Whitaker, Treasurer.

We Have Bridal Selections For

Alison Clark
Bride-Elect Of
Randy Hale

Solomon Jewelry
102 South Main Street
Floydada 983-3240

Sears SAVE on these home appliances

Washers: COLORS WAS \$368.95 NOW \$338.95
WHITE WAS \$358.95 NOW \$328.95

Dryers: COLORS WAS \$263.95 NOW \$233.95
WHITE WAS \$253.95 NOW \$223.95

19" Colored Portable T.V. WAS \$416.95 NOW \$379.95
\$40.00 OFF

AM - FM Stereo System WAS \$359.95 NOW \$309.95
WITH CASSETTE PLAYER AND 2 SPEAKERS

Microwave Oven WAS \$509.95 NOW \$439.95
WITH STAGE MEMORY \$70.00 OFF

Gas Range WAS \$599.95 NOW \$529.95
\$70.00 OFF

Dishwasher WAS \$414.95 NOW \$344.95
PORTABLE

Dishwasher WAS \$309.95 NOW \$239.95
UNDERCOUNTER

Vacuum Cleaner \$207.95
POWER MATE

Shop Catalog by phone 983-2862

Authorized CATALOG SALES MERCHANT

Satisfaction Guaranteed or Your Money Back

983-2862
100 S. Main
Sue Williams
Floydada

SHOP AT SEARS AND SAVE
Floydada

Sears AUTHORIZED CATALOG SALES MERCHANT

30 Weight Texaco

Texaco Motor Oil 80¢ Quart

Cigarettes 60¢

Anti-Freeze \$3.99 1 Gallon

Sugary Golden 24 Ounce Yams 2/\$1.19	Del Monte 16 Ounce Tomatoes 3/\$1.00	Pet Milk 3/\$1.09	Hamburger & Hot Dog Relish 2/\$1.00
Spaghetti With Meatballs 2/\$1.00	Jack Sprat Golden Hominy 3/99¢	Jello 4/\$1.00	16 Ounce Hamburger Sliced Pickles 59¢
Chicken of the Sea Tuna 75¢	Ranch Style Navies 4/99¢	Ortega Taco Shells 49¢	Underwoods
Kraft A-1 Steak Sauce 53¢	The Spreadables Chicken Salad AND Ham Salad 85¢	Chicken Spread & Roast Beef Spread 55¢	Macaroni & Cheese 3/\$1.00
Kraft 8 Ounce French Dressing 55¢		Preserves & Jams 59¢	

Open Seven Days Highway 70 Texaco LOCKNEY

TEXACO

Today's Lifestyles

By Marilyn Tate



County Extension Agent

You are wasting money by giving it to the government free of interest when you allow your income tax money to be over-withheld. The money you give to the U.S. Government each payday in the form of payroll withholding tax goes into a sort of holding account pending settlement of your annual tax bill. If, over the course of the year, you've deposited too much into the "account" the deposits in excess of your tax bill are refunded to you. What a waste — while this surplus was languishing in a "dead" non-interest bearing account, it could have been earning at least 5 percent a year for you in a savings account. Over-withholding may be a method of forced savings, but it is an expensive one.

To arrange a loan, just get in touch with your agent, the company or the VA office if you have GI insurance.

DISADVANTAGES

1. If the insurance was bought for protection, it's self-defeating to borrow against it. You are not borrowing against the company but against your beneficiaries.
2. If you die before paying back the loan, you'll leave less for the people you want to protect. A borrowed against policy may be depleted and worth little.
3. Since companies aren't fussy about paying back the loan, people who borrow against policies often let them lapse.
4. Borrowing against a policy at six percent and reinvesting at a higher rate generally is not to the borrower's advantage.

If there is a profit it is likely too small to bother risking insurance protection. The taxes assessed on profit often discounts any earnings.

BORROWING INSURANCE

Before borrowing against a life insurance policy, consider both the advantages and the disadvantages.

THE ADVANTAGES

1. The most obvious reason to borrow from a life insurance policy is low interest. Current interest rates are around five or six to eight percent.

2. Look at the insurance contract to find the interest rate.
2. Once cash value is built up, you can borrow roughly 92 to 95 percent of that amount. The cash value will continue to grow even though you have a loan.

3. Policy loans are lenient. Companies don't give you a timetable for paying back loans.

4. In fact, you don't have to pay it back at all. The loan plus interest will simply be deducted from your policy.
4. Since the company has cash value as collateral, loans are easy to obtain. You won't be quizzed about why you want the money, nor will there be a credit check.

Got Heating Or Plumbing Problems?

Call HOLMES PLUMBING

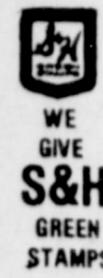
Austin or Steve
983-2251
6:30 - 9:30 a.m. and 5:30 p.m. Until!

Hand Decorated

SIERRA STONEWARE

BUDDY'S

220 South 2nd
Floydada



WE TAKE U.S.D.A. FOOD COUPONS

WE TAKE W.I.C. CARDS

STORE HOURS

Monday-Saturday, 8 a.m. to 8 p.m. - Sunday, 9 a.m. to 7 p.m.

99¢

**FOUR
PIECE
PLACE
SETTING**

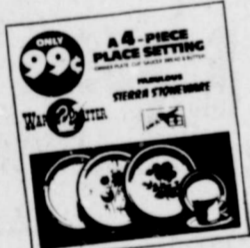
WITH 2 FILLED SAVER CARDS
• DINNER PLATE • CUP
• DESSERT DISH • SAUCER

CHOOSE FROM 3
LOVELY PATTERNS



Begin your collection by choosing one of the 3 dinner plates in patterns shown above. Then complete your 4-piece place setting by adding the pre-packaged cup, saucer & bread and butter plate.

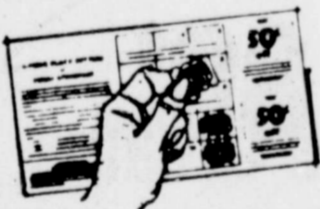
HERE'S ALL YOU DO



1. Get your free Sierra Stoneware "Sav-A-Coupon" saver card. It's yours for the asking at our checkout stands!



2. You'll get one Sierra Stoneware "Sav-A-Coupon" with each \$5.00 purchase. Two with \$10.00, three with \$15.00 and so on.



3. Collect your Sierra Stoneware "Sav-A-Coupons" in the saver card. Each card holds 15 coupons. Two filled cards can be redeemed for your 99¢ 4-piece place setting.



STONEWARE

Sierra Stoneware is today's stylish and practical solution to all your dining needs. Brighten your table each day with your selection of Sierra and share a lovely table with your friends.

The subtle blossoming of the Sierra patterns will make every meal a pleasure. Sierra is kiln-fired at the highest temperatures. Because of this firing each Sierra piece has its own distinctive character so that no two pieces are exactly alike.

To convince you of its value, we invite you to check our quality and compare it to stoneware sold in the finest department stores. You'll find that you are paying only a small fraction of its actual value on our program.



COMPLETER PIECES ON SALE AT ALL TIMES

EXCITING COORDINATED COMPLETER PIECES. Listed below are all the extras that make serving a pleasure and your Sierra collection complete. They will be on sale during the program.

- DESSERT DISHES
- SOUP/CEREAL BOWLS (2 in a box)
- SALAD/LUNCH PLATES (2 in a box)
- COVERED SUGAR BOWL
- CREAMER
- LARGE VEGETABLE BOWL
- SALT & PEPPER SHAKERS
- MUGS (2 in a box)
- MEDIUM SERVING BOWLS (2 in a box)
- LARGE PLATTER
- CASSEROLE
- COFFEE/TEA SERVER
- LARGE ALL PURPOSE BOWL

SIERRA STONEWARE CARRIES A COMPLETE OPEN-STOCK GUARANTEE

3 WAYS TO GET PLACE SETTINGS

99¢

with 2 filled Sierra Stoneware "Sav-A-Coupon" saver cards

\$2.99

with 1 filled Sierra Stoneware "Sav-A-Coupon" saver card

\$4.99

when purchased without filled saver cards.

Filled saver cards are redeemable for 4-piece place settings only. Partially filled saver cards have no redemption value.

WE GIVE S&H GREEN STAMPS WE GIVE S&H GREEN STAMPS WE GIVE S&H GREEN STAMPS

46 Ounce Texsun
Grapefruit Juice
69¢
99¢ Value



DOUBLE ON WEDNESDAY

6 1/2 Ounce Star Kist Chunk Light
"In Water"
Tuna
79¢
\$1.17 Value

Giant 49 Ounce
Fab
\$1.29
\$2.19 Value

22 Ounce Giant Liquid
Palmolive
79¢
\$1.23 Value

42 Ounce
Fresh Start Detergent
\$2.29
\$3.59 Value

4 Bar
Cashmere Bouquet
79¢
\$1.09 Value

Giant 40 Ounce
Super Suds Detergent
79¢
\$1.19 Value

2 Bar Pack Irish Spring
Soap
69¢
\$1.09 Value

32 Ounce King Size Dermassage
Dish Lotion \$1.79
\$1.79 Value

50 Ounce Crystal Clear
Dishwasher Detergent
99¢
\$2.29 Value

WE GIVE S&H GREEN STAMPS WE GIVE S&H GREEN STAMPS WE GIVE S&H GREEN STAMPS



46 Ounce Texsun
Grapefruit Juice
69¢
99¢ Value

Gallon Rich N Ready
Fruit Punch
79¢
'1.19 Value

17 Ounce Our Darling
Corn
4/\$1.00
41¢ Value

22 Ounce Liquid
"For Dishes"
Dove
69¢

1 Pound Nabisco
Crackers
69¢
95¢ Value

WE GIVE

DOUBLE ON WEDNESDAY

220 SOUTH 2ND
BUDDY'S
Store Hours
Mon.-Sat., 8 a.m. to 8 p.m. Sun., 9 a.m. to 7 p.m.
Values In This Adv Effective Through Wednesday February 20, 1980
We Reserve The Right To Limit Quantities

983-3149
We Take U.S.D.A. Food Coupons
We Take W.I.C. Cards

6 1/2 Ounce Star Kist Chunk Light "In Water"
Tuna
79¢
'1.17 Value

Giant 49 Ounce
Fab
\$1.29
'2.19 Value

22 Ounce Giant Liquid
Palmolive
79¢
'1.23 Value

42 Ounce
Fresh Start Detergent
\$2.29
'3.59 Value

4 Bar
Cashmere Bouquet
79¢
'1.09 Value

Giant 40 Ounce
Super Suds Detergent
79¢
'1.19 Value

2 Bar Pack Irish Spring
Soap
69¢
'1.09 Value

32 Ounce King Size Dermassage
Dish Lotion **\$1.49**
'1.79 Value

50 Ounce Crystal Clear
Dishwasher Detergent
99¢
'2.29 Value

1 Pound Farmland
Bacon **\$1.39**

USDA Boneless
Round Steak **\$2.69** Lb.

Center Cut
Pork Chops **\$1.99** Lb.

3 Pound Farmland
Canned Ham **\$5.99**

2 Pound Mortons
Fried Chicken **\$2.59**

USDA
Ground Beef **\$1.59** Lb.

USDA Boneless
Chuck Roast **\$1.99** Lb.

Longhorn
Cheddar Cheese **\$1.99** Lb.

12 Ounce Plainsman
Franks **99¢** Pkg.

"FROM OUR DELI" COOKED SMOKED
Sausage **\$1.99** Lb.

12 Count Carnation
Hot Cocoa Mix
99¢
'1.49 Value

9 Ounce
Carpet Fresh
\$1.09
'1.49 Value

7 Ounce Kraft
Marshmallow Creme **2/89¢**
59¢ Value

6 Ounce Gladiola Yellow
Corn Bread Mix
4/\$1.00
30¢ Value

1/2 Gallon Bell
Buttermilk
99¢
'1.39 Value

1/2 Gallon Bell
Ice Cream
\$1.49
'2.09 Value

1/2 Gallon Buddy'
Milk
99¢
'1.19 Value

6 1/2 Ounce 9-Lives
Cat Food
4/\$1.00
37¢ Value

Bath Size
Dove Soap
2/99¢
69¢ Value

13 1/2 Ounce "Generic" White or Fudge
Frosting Mix
57¢

99" Size
Doritos
2/\$1.39

Schilling "Envelope"
Spaghetti Sauce
4/\$1.00
'1.08 Value

4 Ounce Schilling
Pepper Black
79¢
'1.08 Value

1 Pound Maxwell House
Coffee
\$2.79
'3.69 Value

Ruby Red
Grapefruit
6/\$1.00

Firm Green
Cabbage **7¢** Lb.

Baking Size
Potatoes **10/\$1.00**

Red Ripe
Tomatoes **39¢** Lb.

1 Ounce "For Dogs"
Jerky Treats
5/\$1.00
39¢ Value

48 Ounce Crystal White Dish
Dish Detergent **79¢** With Coupon
Without Coupon 99¢
Expires 2-20-80

Good At Buddy's
2 Liter "No Deposit"
Coke Or Tab **79¢** With Coupon
Without Coupon 99¢
Expires 2-20-80



'S
WE TAKE U.S.D.A. FOOD COUPONS
Monday, 9 a.m. to 7 p.m.
RE
olution to all your dining
ction of Sierra and share a
ake every meal a pleasure.
ause of this firing each
at no two pieces are
our quality and compare it
ou'll find that you are
ur program.

AT ALL TIMES
ed below are all the extras
on complete. They will be on

(box)
IVING BOWLS (2 in a box)
TER

SERVER
URPOSE BOWL

N-STOCK GUARANTEE

SETTINGS

illed Sierra Stoneware
Coupon" saver cards

99 when
purchased
without
filled saver
cards.

ce place settings
emption value.



S.H. GREEN STAMPS
DOUBLE ON WED.

WINTER WARMER SPECIALS!

RANCH STYLE CHILI	15 OZ. CAN	89¢
NABISCO'S RITZ CRACKERS	16 OZ. BOX	99¢
SCHILLING BLACK PEPPER	4 OZ. CAN	\$1.09

CRISCO VEGETABLE SHORTENING
PURE CRISCO

\$2.09

3 LB. CAN

CONTADINA QUALITY
ROUND TOMATOES

3 \$1

14 1/2 OZ. CANS

Tide 15¢ OFF LABEL
TIDE DETERGENT

\$1.49

49 OZ. BOX

6-12 Ounce Cans
Pepsi Cola \$1.19

FROZEN FOODS

SHURFINE FROZEN ORANGE JUICE	6 OZ. CAN	39¢
ORE-IDA CRISPERS	20 OZ. BAG	89¢
ORE-IDA CRINKLE CUT POTATOES	5 LB. BAG	\$1.89

Bell Quality Chkd
Buttermilk 89¢
1/2 Gallon

BONELESS CENTER CUT ROUND STEAK \$2.19
LB.



Wilson Certified 1 Pound Pack
Shurfine Large
Eggs 59¢
Dozen

Bacon \$1.29

GUARANTEED 73% LEAN FRESH
GROUND BEEF \$1.29
LB.

OSCAR MAYER REGULAR/JUMBO
MEAT WIENERS \$1.59
1 LB. PKG.

TOTAL GROCERY SAVERS

REFRESHING **COCA-COLA** 99¢
2 Liters

HEAVY GRAIN FED BEEF
SIRLOIN STEAK \$2.39
LB.

HEAVY GRAIN FED BEEF
T-BONE STEAK \$2.89
LB.

OSCAR MAYER BEEF REG./JUMBO
FRANKS \$1.79
1 LB. PKG.

OSCAR MAYER REG. SLICED MEAT
BOLOGNA 99¢
8 OZ. PKG.

OSCAR MAYER SLICED BEEF REG./THICK SLICED 8 OZ. PKG. \$1.09

BOLOGNA \$1.09

Hot Links Gooch 98¢
Pork Roast 98¢
Pork Steak 98¢

REGULAR OR FOR DIP
FRITOS 99¢
9 1/2 OZ. SIZE

MAXWELL HOUSE
INSTANT COFFEE \$4.00
10 OZ. JAR

POST FRUITY OR
COCOA PEBBLES \$1.00
11 OZ. BOX

ALL GRINDS MAXWELL HOUSE SHARE THE OLYMPIC GAMES WITH MAXWELL HOUSE
COFFEE \$2.79
1 LB. CAN

NEW! SWIFT CHICKEN VIENNA
SAUSAGE 3 \$1.00
5 OZ. CANS

FOR SPOTLESS DISHES
CASCADE \$1.79
50 OZ. BOX

BATHROOM TISSUE
SOFT 'N PRETTY 4 ROLL \$89¢
PKG.

RUSSET POTATOES 89¢
ALL PURPOSE
10 LB. BAG



FLORIDA FULL OF JUICE
ORANGES \$1.19
5 LB. BAG

WASHINGTON RED DELICIOUS
APPLES 49¢
LB.

PORTALES MARYLAND SWEET
YAMS 29¢
LB.

CALIFORNIA CRISP
CARROTS 25¢
1 LB. PKG.

VINE RIPENED
TOMATOES 39¢
LB.

CENTRAL AMERICAN
BANANAS 29¢
LB.



DAIRY VALUES

VELVEETA
CHEESE SPREAD \$2.59
2 LB. BOX

HUNGRY JACK ASSTD.
BISCUITS 2 10 CT. \$89¢
CANS

SQUEEZE MARGARINE
PARKAY 16 OZ. \$89¢
BTL.

FROM OUR SHELVES

BETTY CROCKER SUPER MOIST LAYER
CAKE MIX 69¢
18 OZ. BOX

BETTY CROCKER READY-TO-SPREAD
FROSTING 99¢
16 OZ. CAN

ASSORTED BREAKFAST
WAGNER DRINK 49¢
32 OZ. BTL.

13¢ OFF LABEL
IVORY LIQUID 89¢
22 OZ. BTL.



SAVINGS DAY

Johnson & Johnson
QUALITY PRODUCTS

BAND-AID Sheer
BAND-AID Brand \$1.19
50 CT. BOX

JOHNSON & JOHNSON CLEAR
DERMICEL TAPE 79¢
1/2" x 180" ROLL

JOHNSON & JOHNSON RED CROSS
COTTON BALLS 79¢
65 CT. BOX

JOHNSON & JOHNSON RED CROSS
GAUZE PADS 79¢
3 x 3 10 CT. BOX

REGULAR OR SUPER
OB. O.B. TAMPONS \$2.29
30 CT. BOX

16 CT. BOX \$1.29

PAGES THRIFTWAY

PRICES EFFECTIVE FEB. 17-23, 1980
LOCKNEY

Beas Bookbinding
P.O. Box 2558
Amarillo, Tex. 79105

HS girls win 4

Free the Hostages

Volume 79, Number



BYRON BROCK barrow.

FLOYD COUNTY JUNIO

Williams

ing began Monday afternoon. g the 1980 livestock show in county. Ty Williams of Lockney Grand Champion steer, while s Byron Brock came away with grand champion honors for his barrow entry.

Carthel of Floydada won the Grand Champion honor for her and Kyle Brock of Lockney had erved Grand barrow.

Bayley's Shropshire, Ritchie on's "Other Breed", Terri an's Fine Wool Breed, Tracy 's Suffolk, Tracy Womack's own, Dwayne Marble's Hamp- d Jodie Smith's Fine Wool were eed champions.

BARROWS

weight Chester: 1. Hugo Araujo hen Turner 3. Tracy Carlton 4. Kidd 5. Terry Carlton.

sheer Chester: 1. Santos Mariscal* h Nixon 3. Sharon Jones 4. a Rexrode 5. Mark McCormick.

Duroc: 1. Larry Tannahill 2. McNeill 3. Kelly Hayes 4. Kelly 5. Brent Duke.

um Duroc: 1. Wade Jackson 2. Nutt 3. Craig Ellison 4. Keith 5. Robert Nutt.

ny Duroc: 1. Byron Brock* 2. McNeill** 3. Danny Nutt 4. ruitt 5. Margie Araujo.

hamshire: 1. Kenneth Rogers rade Jackson 3. Margie Araujo 4. rite Wright 5. Mark Wright.

um Hampshire: 1. Robert Nixon ellison 3. Patricia Ayala 4. Neal 5. Dee McPherson.

ny Hampshire: 1. Kyle Brock* 2. Mariscal** 3. Dean Molinar 4. Mathis 5. Christy Pruitt.