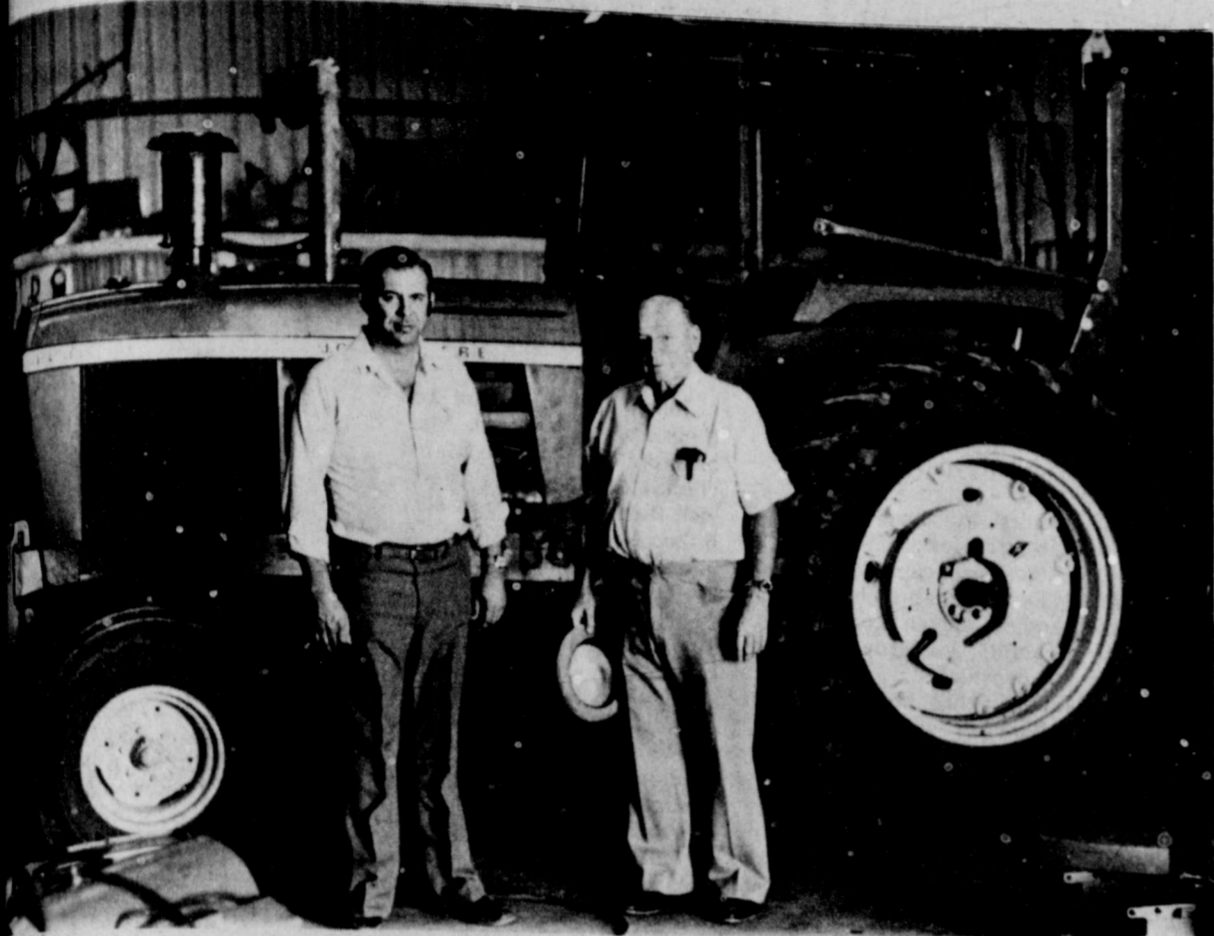




Perry family finalizes Floydada implement house purchase



Jerry and Everett Perry — Jerry and Everett Perry, new owners of the former Collins Implement Co. on Ralls Highway. The business will be renamed to Floyd County Implement Co.

Customers of Collins Implement Co. of Floydada will notice some new faces around the shop and a new name on the front but very little else will change, according to Jerry Perry, one of the three partners who recently bought the farm machinery outlet.

The new name will be Floyd County Implement Co., said Jerry Perry, who will be the new manager of the Floydada operation. Perry, his father Everett and brother John finalized negotiations for the purchase this past Thursday from Melvin Lloyd. The family also owns similar companies in Lockney and Petersburg.

Everett Perry, though officially retired, will act as supervisor for the family business.

"We'll keep everything pretty much the way it is now," manager Perry said. "We'll continue to be the John Deere dealer and handle the same products and services as before."

The Floydada manager oversaw the Lockney store since May, 1971, before coming to the site. Before that, he worked with his father in the Petersburg outlet.

Perry will move to Floydada from Lockney about Dec. 1. He and his wife Tommye, with their three daughters, Sheryl, 14, Tana, 11 and Kimberly, 9, will reside in the house they purchased at 215 Ollie. The girls will transfer to Floydada schools after the new semester begins.

Perry will bring three new staff members to the Floydada shop with him. Glenn Bailey will take over as head parts man, Earl Hill will be the new shop foreman and set-up man Jesse Rodriguez will move to Floydada. All worked in the Lockney store.

Julie Cathey will remain as secretary, mechanics James Minner and Dan Osborn, and set-up man Juan Barraza will continue on with the new management.

For the elder Perry, the move to Floydada completes a circle that began 42 years ago when he went to work for the old Stansell-Collins company in 1937.

"I started out helping to put a tractor together and stayed on till we could catch up. We never did catch up," Everett joked.

He started out as a mechanic and moved on to sales and parts in the business. He transferred to manage the Petersburg store and, piece by piece, bought up the stock until he owned the whole business.

In 1971, the Lockney shop became available and he bought that. Finally, after two months of negotiations, Perry purchased the business he started out in.

He moved to Floydada several weeks ago to a house he agreed to buy even before negotiations began on the Collins, now Floyd County Implement Co.

Hornets trim Longhorns, 23-7

The Tulia Hornets dealt the Lockney Longhorns their fourth football defeat of the 1979 season Friday night. The final score was 23-7. The loss dropped the 'Horns' season record to 4-4-1 and left them 0-3 in district play.

First time the Longhorns had their hands on the ball, they fumbled it to the Hornets at the Lockney 20-yard line. Second time they had possession (after Tulia came up half a yard short on a fourth-down fake-the-field-goal-and-pass play), the Longhorns drove 90 yards and scored in five plays, only four minutes into the contest.

Lockney quarterback Steve Warren passed 30 yards to Arnold Alaniz, and tailback Curtis Ford apparently scored on the next play, but the 'Horns were flagged for clipping and the ball was

placed on the Tulia 27-yard line. Warren tossed a quick touchdown pass to tight end Kevin Evans on the following play. Warren kicked the point, and it looked as if the Longhorns were going to have little trouble with the Hornets.

But trouble they had, starting early in the second period when a high center snap sailed over the head of Alaniz, the Longhorn punter, Alaniz managed to retrieve the pigskin in his own end zone, where he was tackled for a safety.

A short time later, Tulia started a 70-yard scoring drive. It took 12 plays, the big gainer being a 24-yard pass from quarterback Barry Cowan to tight end John Hurd which put the Hornets on the Lockney one. (The ball was actually spotted about six inches from the goal

line). Halfback Terrell Roberts did the honors on the next play, and Anthony Davis kicked the score to 9-7.

The two-pointer on Tulia's side of the scoreboard loomed large throughout the remainder of the first half and all through the third quarter, as neither club was able to mount a serious scoring threat.

Tulia did get to the Lockney 23-yard line late in the third period, but the drive ended at that point when the Hornets ran out of downs. The Longhorns moved out of their own territory on three Curtis Ford runs which netted 36 yards, but they fumbled after advancing to the Tulia 41-yard stripe. Moments later they drove from their own 19 to the Tulia 40, chiefly on runs

CONTINUED ON PAGE 3

High School Band to perform in Lubbock Wednesday morning

The High School Band will perform at 11:40 a.m. Wednesday at Jones Stadium, Lubbock, during the UIL marching contest. All band members are invited to support the band by attending.

Band parents should remember the bazaar scheduled November 17. One baked item per family and one craft item per child in band are requested as donations.

Joining presidents George and Jean Sparkman as Band Boosters officers are Kenneth and Juanita Brosh (vice presidents) and Wiletta Isom (secretary).

Sharon Spencer re-elected FTA district secretary

Mrs. M. Smith Chapter of the Future Teachers of America in the District 17 convention at Wayland Baptist College,

Plainview. All 65 members of the Lockney chapter attended two general sessions and various workshops. Conducting the money-making project for

the convention were Todd Burleson, Roy Moody, Tonya Nance, and Julie Frizzell.

Sharon Spencer, district recording secretary, was responsible for the entertainment, which consisted of the Hard Travelers from Lubbock Christian College. They were assisted by Mike Ferguson, Mike Arellano, Lane Turner, David Balderas, Jeff Reecer, Karl Race, and Jeffrey McCormick.

Katherine Moore, winner of the local Miss FTA contest, entered the district Miss FTA competition.

Running for office were Jill Whitfill and Sharon Spencer. Sharon was re-elected to the office of recording secretary. According to advisors who have been in the district for 20 years, it was the first time anyone had been re-elected.

District voting delegates from Lockney were Irene Araujo, local chapter treasurer; Penny Hight, local vice president; Jackie Gaskins, local president; Gay Frizzell; and Katherine Moore.

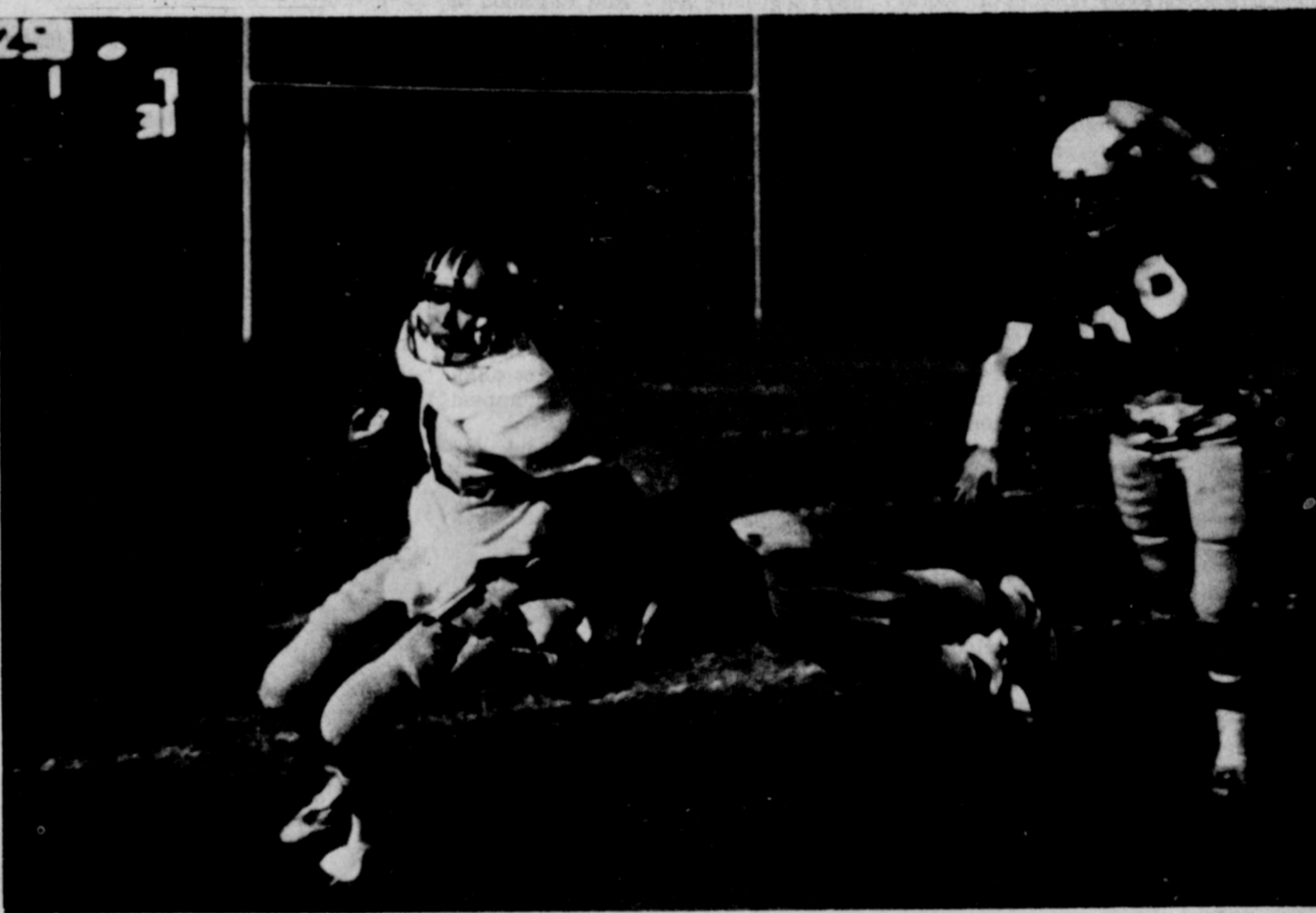


SHARON SPENCER
District FTA
Recording Secretary

Camera club being organized

An effort is being made to organize a local camera club. Interested persons are asked to meet at Lighthouse Electric in Floydada November 8 at 7:30 p.m. Further plans will be made at the

meeting. Interested persons who are unable to attend the November 8 meeting are urged to contact Danny Daniel at 983-3838 or Ray McDonald at 983-3532.



STEVE WARREN tried to pass but wound up carrying the ball on this play Friday night.

Cyclists pass through Floyd County

A quartet of modern-day adventurers passed through Floyd County last week on a 3,000-mile bicycle trek across the United States. They spent Tuesday night in Floydada and had breakfast in Lockney, where they pronounced the biscuits at Strickland's Restaurant "best of trip" so far.

Terry O'Hara, Lynn Azzinaro, Kimberly Matheson and Keith Duncan, all between 20 and 22 years of age, left Newport, Rhode Island, September 17 to journey to San Francisco. They hope to cross the California border by Thanksgiving, but are unsure when they will actually arrive in San Francisco.

The idea for the trip came up at a party last spring, they said. And as they thought more about it the determination to make the journey solidified.

The group has averaged cycling 85 miles each day as they passed through the states from Rhode Island to Texas. They crossed into the Lone Star State from Oklahoma.

"We wanted to see the country and meet different people," they said. "But most of all, we want to test our endurance and ability to deal with the elements."

"It's been a smooth journey, except

for flat tires and bent spokes," commented Miss Matheson. "We haven't met any people at all who haven't been kind."

"This is the best way to meet people," added Miss O'Hara. "We're taking the back roads so we can see more of the country."

The cyclists camp out at night when they can and stop in towns when the weather forces them to seek more substantial shelter. During the tornado watch earlier this week, they were given a room in a Matador motel by the manager.

They said that Mrs. Smith's generosity was typical of that they had discovered on their travels and particularly in Texas.

Each day brings the travelers new experiences and their notebooks are quickly filling up with names and addresses of people they have met.

"Every day is like a blank sheet that fills up with new towns and new people," they said.

But between towns and meetings, there is a lot of hard pedaling. Often, to pass the time on the road they read while they travel.

"It must look kind of funny, with all four of us with our heads down reading," they laughed.

As the weather grew worse in recent days, the group stopped and picked up additional clothing. They find the cowboy look — boots and hats — particularly fascinating. Terry and Lynn bought a pair of boots each to take home to Rhode Island.

But with the added clothes and exertion from pedaling many miles each day, it is the wind, not the temperature, that makes the journey difficult. As the group left Floydada for Clovis, New Mexico, they faced a strong northwest wind that threatened to slow their progress. An hour and a half after they left Floydada, they arrived in Lockney.

They carry an average of 40 pounds of equipment apiece on their bicycles and must carry additional water to take them across the South Plains.

Riding with the equipment was a new experience when they first started out but now riding without it felt strange, they said.

The party plans to stay a few days with relatives in Albuquerque before pushing on to their destination. After arriving in San Francisco they will visit friends, tour the city and fly home, shipping the bicycles by plane.

"One way by bicycle is enough," they said.



CYCLISTS FROM RHODE ISLAND ate breakfast at Strickland's Restaurant in Lockney Wednesday morning. From left, seated, they are Lynn Azzinaro, Keith Duncan, Kim Matheson and

Terry O'Hara. Standing behind them, offering coffee refills, are Strickland's waitresses Fern Phillips and Maxine Cantrell.

Kristi Lynn Ward
Bride - Elect Of
Clifton DeWayne Hope
Has Made Gift Selection
At
THOMPSON
REXALL PHARMACY
200 SO. MAIN FLOYDADA, TEXAS
Phone 983-5111
We Will Deliver All Gifts

Notice

Well Irrigation Pipe Company is ready to measure and figure your pipeline needs before sign-up.

County Sign-Up Date

October 29 - November 2

Contact

Pete Nash

Local Irrigation Office

Sh Irrigation Office

983-5231
Floydada



Congressman Charles W. Stenholm Congressional Comment

WASHINGTON, D.C. — We have a tendency in this country to wail and moan over the problem of political apathy — the lack of enthusiastic involvement by individuals in all phases of the electoral and legislative process.

clearly indicates that the primary beneficiaries to this legislation would be those of us already in office: incumbents who are already in a more advantageous position to be returned to office than an outside challenger.



STATE CAPITAL HIGHLIGHTS By Lyndell Williams TEXAS PRESS ASSOCIATION

AUSTIN — The U.S. Department of Justice has joined Texas Attorney General Mark White in filing legal claims against SEDCO, Inc. of Dallas, the oil drilling firm founded by Gov. Bill Clements.

of more than 100 black businessmen who had to ante up \$125 apiece for the privilege. Clements called the group "the cream of the crop."



Commentary: Sen. Lloyd Bentsen Soviet consumers have a problem that Americans can't appreciate

The Soviet consumer has a problem we can't really appreciate in this country, since it is unlike any economic problem we've ever faced. The average Russian has more money than he can spend.



The Consumer Alert

by Mark White Attorney General

A new consumer complaint handling procedure was instituted by the Consumer Protection and Antitrust Division on August 1, 1979. During the first eight weeks of this new program, the Division has filed more lawsuits against businesses that violate the Consumer Protection Act, collected more money in civil penalties and restitution in court and returned more money and property to Texas consumers through the Division's revised complaint procedures than during any similar eight week period in the history of the Division.

voluntary compliance (cease and desist orders). This averages out to 3.5 lawsuits or AVC's filed each week. The average number of lawsuits or AVC's filed during any corresponding eight weeks period in the history of the Division is 2.5. These figures indicate a seventy-one percent increase in litigation under the new procedures.

Floyd Philosopher resents energy expert's claim that his fireplace is no better than Congress

Editor's note: The Floyd Philosopher on his Johnson grass farm on White River discusses heating efficiency this week, apparently.

Lockney Locals

Johns and Vera Cox and their daughter Wanda Marble from Hart went to Mansville Saturday a week ago to visit their daughter and son-in-law Nova and Freddie Ivy and their grandchildren Ricky Ivy and their daughter Lesha, and granddaughter Sheila and Chuck Young and son Jason.

Dinah (Hodel) and Keith McCulloch and children Shannon and Marey of San Angelo and Doug and Liz Hodel and daughter Heather of Lubbock visited with their parents, Helen and Squalier Hodel, from Friday until Sunday week before last.

Viola Moody returned to St. Anthony's Hospital in Amarillo, Thursday for a chemotherapy treatment, and returned home Thursday afternoon.

Robert and Iris Moody and sons Shaun and Aaron, of Steamboat Springs, Colorado arrived last Saturday and will be living in Lockney until after the first of the year.

THE ILL Mrs. Janie Wofford, daughter-in-law of Kenneth and Retha Wofford, was able to come home from the hospital in Dallas this past Friday.

TEXAS PRESS ASSOCIATION MEMBER 1979 THE LOCKNEY BEACON (USPS 517-200) BOX 187 LOCKNEY, TEXAS 79241

Tulia wins

STATISTICS Table with columns for Team and Stats (First Downs, Yards Rushing, Yards Passing, Passes, Fumbles-Lost, Punting-Average, Penalties-Yards). Includes a SCORING section below.

The Lockney Sports



COLLISION — A Longhorn ball...

Happy Birthdays Nov. 4 — ... Nov. 5 — ... Nov. 6 — ... Nov. 7 — ... Nov. 8 — ... Nov. 9 — ... Nov. 10 — ...

Happy Anniversaries Nov. 4 — ... Nov. 6 — ... Nov. 8 — ...

Lockney School Lunch Menu November 5-9 Monday: ... Tuesday: ... Wednesday: ... Thursday: ... Friday: ...

EVANS of Lockney applies a hit to...

Tulia wins football game from page one

Warren, but the drive when a fake punt and run on snug when the 'Horns had fumbled after the 'Horns had Roberts got two cracks at the Longhorn goal line, making it across on the second try. Davis kicked again, and it was 23-7, just 59 seconds from the end. The

'Horns got to the Tulia 24 before time ran out.

STATISTICS		SCORE BY QUARTERS				
Tulia	Lockney	7	0	0	0	-7
Lockney	Tulia	0	9	0	14	-23
First Downs	16					
Yards Rushing	174					
Yards Passing	72					
Passes	7-12-0					
Fumbles-Lost	0-0					
Punts-Average	6-38					
Penalties-Yards	9-105					

INDIVIDUAL LEADERS	
Rushing: Lockney — Ford 21-120, Tulia — Travis 15-100	
Passing: Lockney — Warren 7-17-2, 79 yards, 1TD, Tulia — Cowan 6-11-0, 66 Yards; Littlefield 1-1-0, 6 yards.	
Receiving: Lockney — Evans 3-42, 1TD; Alaniz 3-27; Vincent 1-10, Tulia — Hurd 1-24; Thompson 1-19; Carlisle 1-12.	

JUNIOR VARSITY 'HORNS — Left to right, front: Alex Vasquez, Fabian Gonzales, Ty Williams, Mario Gonzales. Middle row: Steven Galvan, Eddie Kinard, Johnny Rodriguez, Joe Luna, Mack Sherman, Domingo Gonzales, David Balderas, Jeff Recer. Back: Gary Cawley, Chris Cooper, "Slick" Stennett, Lokey Mata, Ernest Galvan, Tyke Dipprey, Martin Tickle.

LONGHORN FRESHMAN TEAM — Left to right, front: managers Patrick Griffin and Scott McCarty; Frank Castro, Ricky Prisk, Sam Alvarez. Greg Gonzales, Marcus Schacht; manager Harvey Tijerina. Middle row: Tony Silva, Kyle Brock, Mario Martinez, Mario Arellano, Robert Hernandez, Donnie Ferguson, Keith Hight, Russell Ford, Ramiro Vasquez, Tony Rodriguez. Back: Russell Warren, Joey Davis, Tim Winter, Steven Johnson, Victor Rodriguez, Aurelio Salas, Ivory Harris, Hugo Araujo, Michael Carthel, Ronnie Yarborough.

EIGHTH GRADE SHORTHORNS — Left to right, front: Daron Widener and Jeff Bayley, managers; Gilbert Gonzales, Earl Broseh, Randy Emert, Carlos Molinar, David Martinez, Roy Alvarez, Paul Castro; Jeffrey Prisk and Gary Bigham, managers. Middle row: Jason Hill, Abel Salas, David G. Martinez, Cookie Vasquez, Ernest Alaniz, Keith Owens, Roger Perez, Oseas Alaniz, Ricky Molina. Back: Moses Blanco, Randy Perales, Hector Molina, Robert Rendon, Mike Hernandez, Chris Torres, Roy Smith, Richard Luna, Jackie Cunyas, Moses Rodriguez. Not pictured: Glenn Sutterfield.

SHORTHORN SEVENTH — Left to right, front: James Christy, manager; Mike Salas, Jim Ansley, Monty Teeter, Jimmy Smith, Andy Murdock, Ricky Saenz; Terry Taylor, manager. Second row: Robert Guerrero, manager; Paul Moats, Richard Schacht, Rodolfo Rodriguez, Daniel Peralez, Michael Cawley, Jessiesepulveda, Tony Saucedo, Terry Mathis, Pedro DeFor; David McCulloch, manager. Third row: Billy Bob Sherman, Scott Pooie, Amando Villalon, James Williams, Salvador Asuncion, Jerald Johnson, David McDonald, Mike Gray, Mike Gonzales, Ricky Vasquez. Back: Romeo Araujo, Ritchie Thornton, Doug Warren, Ralph Gonzales, Billy Ray Yarborough, Gary Kent, Terry Carlton, Kelly Hayes, Brent Hallmark, Adam Rodriguez.

Philosopher resents
Energy expert's claim that
Replacement is no better than Congress

The note: The Floyd Philosopher Johnson grass farm on White discusses heating efficiency this apparently.

But don't get the idea I'm don't ask a wood-cutter to stop his office as you can and I'll take there.

There's a saying that he who owns wood is twice warmed by that's a proper area for the experts to calculate. Personally, I think of a more inefficient way warm than swinging an ax or chopping until a relatively short time before a world inefficiently stays now that we have electricity, it's going to spend the winter heating oil, half the country.

Lockney Locals

Johns and Vera Cox and their daughter Wanda Mar- from Hart went to Mans- Saturday a week ago to see their daughter and son- law Nova and Freddie Ivy and their grandchildren Ric- ivy and their daughter ha, and granddaughter Milla and Chuck Young and Jason.

They visited with other s Saturday night, Daf- and Mitch Mitchell, at atington and June and Fred mphill, Irving.

Wanda attended the cloth- market in Dallas, Sun- day. They all returned home Monday.

Mr. and Mrs. Calvin Po- ner, Floyda, left two days ago Monday to visit their daughter and family, Kenneth Powells, at Van styne. During the week in became ill, and was admitted to the Medical Pl- hospital in Sherman. Ac- cording to word we received his daughter, Laverne ary, Monday, he had a stroke a week ago day and was placed in intensive care unit.

Happy Birthdays

Nov. 4 — Elsie P Carolina Castro, Grace son

Nov. 5 — Cosme Gonzal Steven Vasquez, Ewa Quebe

Nov. 6 — Adeena W ner, Pauline Sams, L Mata, Barbara Carthel, da Davis, Ernest G Susan Bain, Butch W Edythe Clarke, Henry R

Nov. 7 — Jean Spark Mike Fields, Judy Mang Rudy Martinez, Anita tierrez, Ruby Bennett, David (Pat) Frizzell, Lawson, Lynda McGavo

Nov. 8 — Dena Cas Eustolia Gonzales, Ja Bayley, Jim Pinner, Gonzales, Isabel Rob Mike Hernandez, O Blount, San Juana Gonz Felix Villarreal, Santos zales

Nov. 9 — Mary Lou G zales, Breck Record, Ra Martinez, Arla Copela Estefana Gatica, Gie Roberts

Nov. 10 — Manuel Res Sr., Van Bradley, Jackie Cunyas, Domingo Her dez Sr., Eddie Douglas, cus Schacht, Vera Jo B

Happy Anniversary

Nov. 4 — Danny and Lambert

Nov. 6 — Mr. and M.W. Hartman, Joyce F.G. Jones

Nov. 6 — Ewald and Dell Quebe

Lockney School Lunch Menu

November 5-9

Monday: Breakfast — cereal, toast, tomato milk. Lunch — Vienna sage, pinto beans, bo cabbage, cornbread, oatmeal cake with frosting

Tuesday: Breakfast — meal, peaches, toast. Lunch — baked ham, sweet potatoes, green beans, hot rolls, milk. Cocktail cobbler pudding

Wednesday: Breakfast — biscuit, sausage, juice. Lunch — tuna casserole, French-fried potatoes, gelatin, spinach, corn milk, cookies.

Thursday: Breakfast — scrambled eggs, toast, cocktail, milk. Lunch — cheese-beef tacos, Spa rice, tossed salad, sopa pillas, honey, apricot bier.

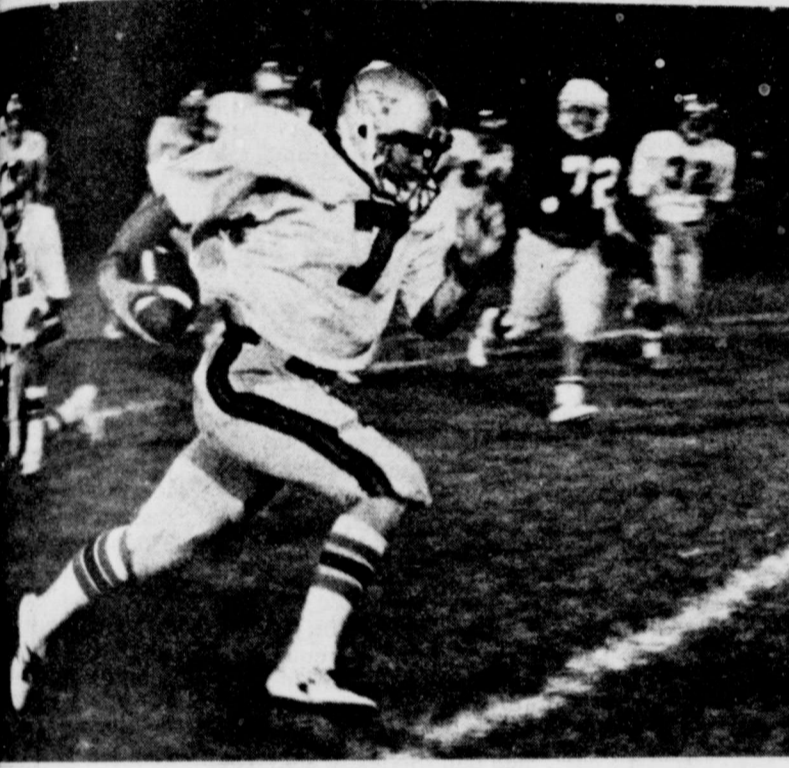
Friday: Breakfast — toasted cheese on milk. Lunch — bar chicken, creamed pota coleslaw, cornbread, pineapple, peanut butter cracker.

TEXAS PRESS ASSOCIATION
MEMBER 1979

THE LOCKNEY BEACON (USPS 317-220)
BOX 187
LOCKNEY, TEXAS 79241

Published each Sunday and Thursday at 220 S. Main, Lockney, Texas 79241. John Carvel, publisher; Jim Huggins, editor. Second-class postage paid at Lockney, Texas 79241. Subscription rates: Local \$10.50 per year, out of trade area \$11.50 per year. Postmaster: Send address changes to the above address.

The Lockney Beacon Sports



LOCKNEY — Curtis Ford has the ball as he accelerates down the field. Ford attained his objective the touchdown was called back because a Longhorn clipped on the play. The 'Horns scored on the next play, though.



COLLISION — A Longhorn ballcarrier is hustled out of bounds by three Tulia Hornets



EVANS of Lockney applies a hit to Tulia quarterback Barry Cowan.



STAFF PHOTOS

WATT A SAVINGS

Caulking around windows and doors, adequate insulation in walls and ceilings, efficient heating and cooling equipment — such as a heat pump — all are ways to help you save watts.

Booklets on ways to help you save energy — and at the same time, make your home more comfortable — are available at Southwestern Public Service Company. Come by our office today.



SPS
SOUTHWESTERN PUBLIC SERVICE



FIVE GENERATIONS OF MELINDAS — Seated is Mrs. Louisa Melinda McRoberts; [l-r] Melinda and Mrs. Julie Melinda Fleming, Mrs. Sammie Lou Mantooh and Mrs. Louise Adele Norman.

Five generations span 100 years

One Texas lineage has turned on tradition and it is the females that have carried on the family name for the past five generations. Mrs. Louisa Melinda McRoberts, a resident of Amarillo, has shared her name with the four generations of daughters that follow her.

Mrs. McRobert's daughter, Mrs. V.C. Norman of Denton, formerly of Amarillo was named for her mother. The Norman's only daughter, Mrs. Ricky Mantooh (Sammie Lou), of New Home, was named for both her grandmother and grandfather. The first daughter of Ricky and Sammie Mantooh was the third namesake as Julie Melinda was given her great-grandmother's middle name. Julie and her husband, Jon Fleming, of Seminole welcomed their first arrival in July, 1979, and little miss Jennifer Melinda Fleming became the fifth generation to share a name.

Living to see four generations take her name is certainly a distinction, but prior to the birth of her fourth namesake, Mrs. McRoberts became quite a celebrity. In April, 1979, the Amarillo media shared with its readers and viewers, the woman's reactions to celebrating her 100th birthday. Certainly on no other birthday had she received a card for every year of her age, been interviewed by the press, nor had she ever before received birthday greetings from the President of the United States!

Mrs. McRoberts moved to Amarillo in 1950 after living in Floydada for many years. Mrs. McRoberts made a home for her children and herself when her husband died in 1929. She remained

in her own home until she moved, at age 95, to the Georgia Manor, in Amarillo.

The five generations which span 100 years exactly, claim some similarities or family traits, and also some differences. Mrs. McRoberts remembers her father as a strict Presbyterian minister and her school teacher. Three generations later, her namesake was reared by school-teacher parents. Mrs. McRoberts is the first of the "little women" as the heaviest of the five tops the scales at 107 pounds! Unlike in some families who have kept one denominational faith for generations, the five have come to represent the Presbyterian, Baptist, Methodist churches and the church of Christ while a deep and abiding practicing faith is an important part of all their lives.

The five posed recently for pictures as they visited. Mrs. McRoberts has daily visits from her family, and her many grandchildren say she is still the best of the "Story-Tellers."



WILSON

Laura and Rusty Wilson of Lockney are parents of a 7 lb., 2 1/2 oz. daughter, Callie Suzanne, born at 10:16 p.m. Tuesday, October 30, at Lockney General Hospital.

Grandparents are Roland and Lydia Watson, Carolyn and Floyd Jackson, and Gail and Nell Wilson, all of Lockney. Great-grandparents are Opal Jones, Lockney; Glen and Pauline Watson, Lockney; and Mrs. Marion Monnier, Dallas.

Spears, Mecenario

United In Manila

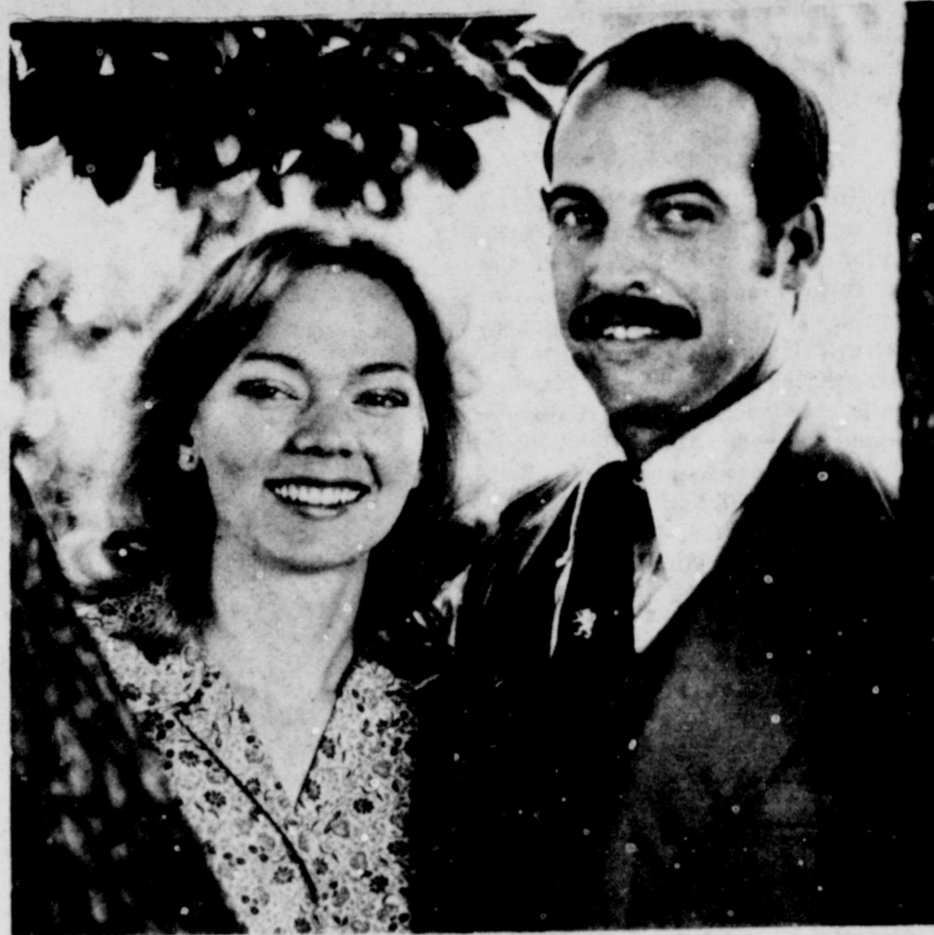
William Craig Spears and Myrna Z. Mecenario were married in Manila October 19. Spears, who is stationed at U.S. Naval Correctional Center, U.S. Naval station, Subic Bay, Philippines, is a former Floydada resident and son of Mr. and Mrs. George W. Spears, now of Boise, Idaho. He is the grandson of Mrs. W.M. Spears of Floydada. Myrna is a staff medical technologist at Nichols Air Base Hospital, Nichols Air Base, Pasay City.

The couple reside in Alonzo City, Republic, near the Naval station.



To remove onion smell from a knife and cutting board, rub them with salt and water.

Social Events



Mr. and Mrs. Zach Cummings of Glen Rose announce the engagement of their daughter Natalie to Mr. Richard Wistrand, son of Mr. and Mrs. Dick Wistrand of Roscoe. They will be married December 29 at 7 p.m. in the First Baptist Church of Glen Rose. The bride-elect is a 1975 graduate of Glen Rose High School and has also attended Texas Tech University and Tarleton State University. Miss Cummings is presently employed by Texas Utilities Generating Company at the Comanche Peak Steam Electric Station at Glen Rose. Natalie is the granddaughter of Mr. and Mrs. Zach C. Cummings of Lockney.

Lubbock singles

coming to Floydada

First Christian Church

A "singles group" from the Second Baptist Church in Lubbock will be in Floydada on Thursday November 8 at 8:00 p.m. at the First Christian Church.

The purpose of the meeting is to share with the Floydada group organizational and activities ideas for persons in the young single adult group.

All interested young singles are invited to attend the nonsectarian meeting.

Sandra Ferguson

awarded scholarship

Sandra Ferguson, daughter of Mr. and Mrs. Bearl Ferguson of Floydada, was recently awarded a \$300 scholarship by the WMU organization of the First Baptist Church in Plainview.

Sandra, who is a graduate of Floydada High School, is a junior elementary education major at Wayland Baptist College.

Floydada Jaycees sponsoring

after game dance

The Floydada Jaycees will sponsor an after game dance Friday night November 9 following the Floydada/Aberrathly football game. The dance will begin at 9:30 p.m. at the Massie Activity Center.

DJ will be Dayton Todd from KDJW in Amarillo.

Admission to the dance will be \$3 for singles and \$5 for couples.

Dorcas Class has meeting

The Dorcas Sunday School Class of the Lockney First Baptist Church met with Mrs. Emma Thomas and Mrs. Lillian Payne Tuesday afternoon. The devotional was given by Mrs. Rebecca Truett, and the subject was

"Prayer." The scripture she used was taken from Matthew 7:7, which is, "Ask and you shall receive, seek and you shall find, knock and it shall be opened unto you."

The business session was presided over by Mrs. Pauline Sams, class president.

Refreshments were served to Mmes. Pauline Sams, Maudie Muncy, Rebecca Truett, Ethel Carroll, Elvira Stewart, J.B. Allen, Oma Cummings, Ruth Reeves, Sylvia Yearly, Edna Lackey, Annie Cunningham, Bessie Smith, associate member, Irene Fowler, and the hostesses, Emma Thomas and Lillian Payne.



FOUR GENERATIONS. Mrs. W.E. Lamm (right) is shown with her daughter Mrs. Sharon of Floydada, her great-grandmother Mrs. Keith Stofel of Charleston, South Carolina. The picture was taken during a recent visit.

Alpha Mu Delta

Halloween party held

Members of the Alpha Mu Delta Chapter of Beta Sigma Phi and their children enjoyed a night of Trick-or-Treats as a group. Everyone met at Jo Ann Patterson's house and then accompanied the children to houses over town, haunting and tricking. All returned to Jo Ann's house for refreshments and fellowship.

Those present for the party were Debbie Beaty and April, Carrie Bertrand and

Lockney Hospital Auxiliary

plans November bake sale

The Lockney General Hospital Auxiliary met Thursday night in the hospital basement.

Lynna Davis, treasurer, reported that proceeds from the flea market October 18, 19 and 20 totalled \$553.50. The money will be used to purchase special equipment for the hospital. The auxiliary members wish to thank all persons who donated food and other items to sell. Your cooperation is greatly appreciated.

A bake sale is planned for November 16, beginning at 8 a.m. and ending at 6 p.m. at Reece's Cinders in Lockney. Anyone wishing to donate baked foods may bring them to Reece's on November 16. Items that are especially good are cakes, brown-

Lockney Senior Citizens

hold meeting Thursday

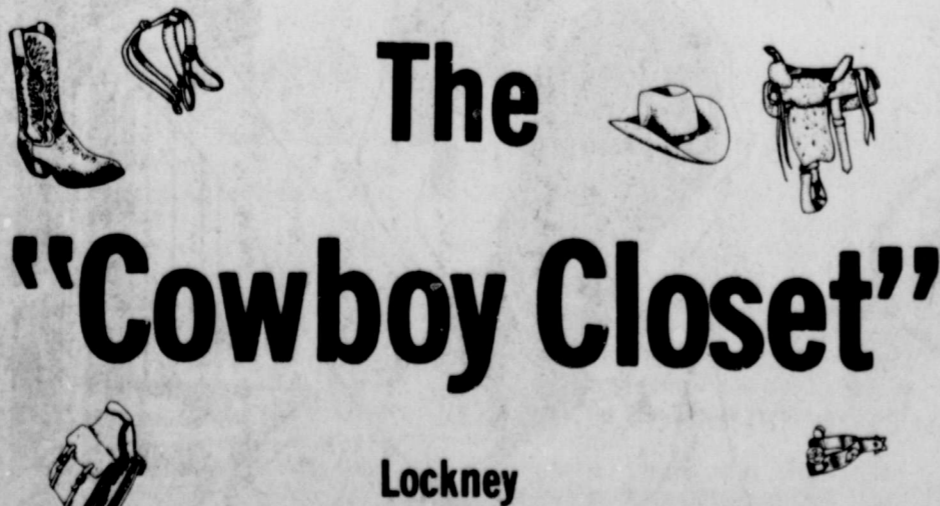
The Lockney Senior Citizens held their regular monthly covered-dish luncheon meeting Thursday morning in Fellowship Hall at the First United Methodist Church.

Twenty-three members were present for the meeting and the program was presented by Mrs. Felicia Applewhite.

The "Cowboy Closet" Now Has...

- Justin Roper Boots Regular \$105⁰⁰ Now **\$85⁰⁰**
- All Colored Wranglers Regular \$16⁹⁵ Now **\$12⁹⁵**
- Panhandle Slim Shirts Regular \$21⁵⁰ Now **\$18⁹⁵**
- Sanders Boots Regular \$120⁰⁰ Now **\$90⁰⁰**

We Have Justin Boot Socks
Get Your Name Stamped FREE With Purchase Of Belt!



CHRISTMAS ORNAMENTS — NOW ON DISPLAY



SCHACHT'S
Flowers, Jewelry & Gifts
112 W. Poplar, Lockney 652-2385
"Our Pleasure Is To Serve You"

For The Cold Weather Ahead

Brown's Has

A Good Selection Of **Thermal Underwear** For Men & Women

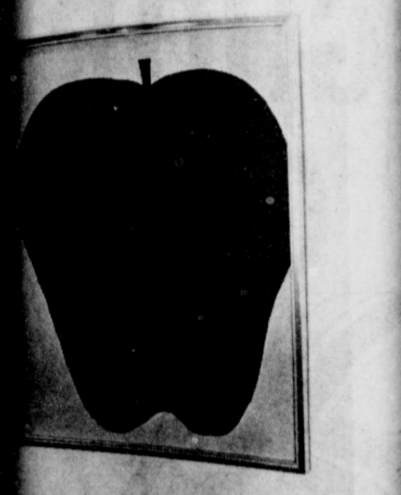


104-06 North Main Lockney, Texas

abstraction



CYNTHIA CHAMBERS, stands before a painting of hands in her home. The painting is black.



TISSUE paper apple on yellow background is a graphic illustration of non-gratification. Its message is simple, direct, and seems to betray the loss of innocence to stand.

New Food Stamp rule

Secretary of Labor Tucker announced a new food stamp rule that will increase the number of recipients who will be eligible for benefits. Foreman said the new rule goes into effect on January 1, 1980. States until December 15, 1979, may be eligible for benefits. Foreman noted that the new rule will help the increased number of recipients who will be eligible for benefits. Foreman said the new rule will help the increased number of recipients who will be eligible for benefits.

Foreman said the new rule will help the increased number of recipients who will be eligible for benefits. Foreman said the new rule will help the increased number of recipients who will be eligible for benefits. Foreman said the new rule will help the increased number of recipients who will be eligible for benefits.

Abstractionist in a representational area



CYNTHIA CHAMBERS, local abstractionist, stands before a painting of simple design which hangs in her home. The work is done in yellow and black. PHOTO BY TOM CHAMBERS

Cynthia Chambers is a Floydada hometown girl. She, along with her husband Tom, lives in the house in Lakeview community in which she lived as a child. But the house, and this you can believe, is not just the ordinary farm house. It also houses the Chambers' creative displays of talent.

The paintings and photos in their home are the focal points, and the pillows, accessories and other decor are "color cued" to them. The furniture is contemporary (with a few antiques included throughout the house) and the color selection for the larger pieces of furniture, such as the sofa and large chairs, are neutral so that the color in the paintings becomes more intense.

So why are we telling you about the interior design of the Chambers' home? Essentially because this article is about Cynthia, and Cynthia's educational background is in interior design. She has a BA in Art (specifically in interior design) from Texas Tech University. "All of this" ties directly in with her passion for abstract art, a passion which somehow seems to stand out in an area where art expression is usually along a more realistic and representational line.

In the 1920's and 1930's in Germany, a group of art enthusiasts called the Bauhaus, coined the phrase "less is best" to describe functional architecture, abstract art and the absence of applied ornament in design. Following a similar philosophy as the Bauhaus movement, Cynthia's paintings are of simple design and form with vivid color — primarily red, yellow, orange and black. She says she "feels a painting has more impact when only two or three colors are used." She likes to work with acrylics because they are a quick drying medium and she likes to "hurry up" and see the finished work hanging.

Although Cynthia has done professional work in both interior design and abstraction, her current motivation is personal satisfaction.

"I WAS DESPERATE"

States Mrs. Halla before losing 50 pounds and 54 1/4 inches at Pat Walker's



Here is Carole Halla before she began her Pat Walker Reducing Program. She says, "I was desperate. I wore a size 20 1/2 STRETCHED pant suit and weighed 30 pounds more than my 6-foot tall husband. Nothing ever worked for me - I tried so many ways to reduce. The Pat Walker Program of reducing with special attention to the individual figure problem really makes the difference." In this photo with Pat Walker, Carole Halla has already lost 50 pounds. She lost 5 1/2 inches from the underbust; 8 inches in the abdomen; 6 3/4 inches from her hips and 5 1/2 inches from her thighs. Overall, she lost a total of 54 1/2 inches. "I never thought I could look and be so tiny. I'm wearing size 11 clothes now and my husband is proud of me."

Alpha Mu Delta Halloween party held

Members of the Alpha Mu Delta Chapter of Beta Sigma Phi and their children enjoyed a night of Trick-or-Treats as a group. Everyone met at Jo Ann Patterson's house and then accompanied the children to houses over town, haunting and tricking. All returned to Jo Ann's house for refreshments and fellowship.

Those present for the party were Debbie Beaty and April, Carrie Bertrand and

Tammy and Michael Bertrand and Keri Cates and Kerri Danderson, Holly and JoAnn Patterson and Kay Powell and Daphna Simpson, Jonathan, Teresa and Nathan and Mark Hinkle and Pepper Smith and Tanner and Debbie Ogden and Ann and Lisa, Janet shell and Adam and Donna Anderson and Brady.

Lockney Hospital Auxiliary plans November bake sale

The Lockney General Hospital Auxiliary met Thursday night in the hospital basement.

Lynna Davis, treasurer, reported that proceeds from the flea market October 18, 19 and 20 totalled \$553.50. The money will be used to purchase special equipment for the hospital. The auxiliary members wish to thank all persons who donated food and other items to sell. Your cooperation is greatly appreciated.

A bake sale is planned for November 16, beginning at 8 a.m. and ending at 6 p.m. at Reecer's Cleaners in Lockney. Anyone wishing to donate baked foods may bring them to Reecer's on November 16. Items that are especially good are cakes, brown-

ies, breads, and pecan pies.

Uniforms and nametags for auxiliary members discussed at the Thursday night. A committee was appointed to design style and color to be worn.

The following members were present: Winters, Dona Winters, Davis, Brenda Myrl Wofford, Edna Grace Colson, Clara Jewell Roberts, Cindy Gayle Fortenberry, Sherman, and a new member, Bernice Barker Smith and Josephine.

Lockney Senior Citizens hold meeting Thursday

The Lockney Senior Citizens held their regular monthly covered-dish luncheon meeting Thursday morning in Fellowship Hall at the First United Methodist Church.

Twenty-three members were present for the meeting and the program was presented by Mrs. Felicia Applewhite.

Hostesses for the meeting were Marie Hendrix and Rita Lyles.

Friendship Club fellowship

I.O.O.F. Hall in Lockney with festive Thursday night, November 1, when the Friendship Club entertained members and Lockney lodge members.

Forty people sat at the pre-Thanksgiving dinner. Then with Mrs. Jo Parrack gave the invocation. Bill Gibbs played the piano. Everyone reported an evening of fellowship.

Next meeting will be in Lockney at 7 at the Rebelz Hall.



TISSUE paper apple on yellow background is a graphic illustration of nongradation. Its message is simple, direct, seems to betray the loss of innocence for seems to stand.

PHOTO BY TOM CHAMBERS



THIS FREE expression painting was done using black with a small red circle.

PHOTO BY TOM CHAMBERS

New Food Stamp ruling

The rule was published in the Sept. 25 Federal Register.

Secretary of Agriculture Carol Tucker today announced a new rule that will allow certain elderly and food stamp users to deduct their costs from their incomes.

The new rule will be effective December 15, 1980. States may apply for the new rule by January 1, 1980. States may apply for the new rule by January 1, 1980.

The new rule will be effective December 15, 1980. States may apply for the new rule by January 1, 1980.

The new rule will be effective December 15, 1980. States may apply for the new rule by January 1, 1980.

The new rule will be effective December 15, 1980. States may apply for the new rule by January 1, 1980.

The new rule will be effective December 15, 1980. States may apply for the new rule by January 1, 1980.

The new rule will be effective December 15, 1980. States may apply for the new rule by January 1, 1980.

Vocational Agriculture Boys Are Selling

Grapefruit	40 lbs.	\$9.50
	20 lbs.	\$4.75
Oranges	40 lbs.	\$11.50
	20 lbs.	\$3.75
Apples	20 lbs.	\$9.00
Turkeys 8 To 10 Lb. Avg.		\$18.00

Ask An Ag Boy For More Information

No, We Are Not A Photography Studio But On Pictures We Make For The Newspaper You Can Buy Copies For Only

\$2 each

The Floyd County Hesperian Box 700 Floydada, Texas

Call For YOUR Free Treatment

Pat Walker's can work for you too!

Enjoy the Holiday

At your first visit in one of our quiet, beautiful salons, you receive a confidential figure analysis to determine how many treatments you will need. We tell you the exact cost for your individualized program.

with Your New Figure.

Treatments are both safe and relaxing, and are given in absolute privacy. You simply lie down on the exclusive Pat Walker unit—in your regular street clothes—and let it gently provide all the exercise necessary for you to send pounds and inches in the right places.

There's Still Time!

You do not have to follow a stringent diet. The Pat Walker plan simply calls for sensible eating habits that allow you to eat your favorite foods at any meal—but within reason. And all during the program you have the help and support of your professional counselor, who gives you the advice and encouragement you need to achieve your goal.

The exclusive Pat Walker figure program has been effective for millions of women of all ages. Safe, passive exercise tones your tissue, improves your circulation and removes unwanted pounds and inches... without crash dieting. You enjoy complete privacy in elegant surroundings and you do not have to disrobe. In fact, you can take your half-hour treat-

ments anytime because you don't need special clothing and you won't even muss your hair. Call today for a figure analysis and a complimentary treatment... there is no cost and no obligation. We will plan your personalized program and tell you the total cost of your figure correction before you even begin (based on \$4 per treatment).

REDUCE NOW TO HAVE YOUR PERFECT FIGURE FOR THE HOLIDAYS

Call TODAY

Pat Walker's Figure Perfection Salons International

983-2112 293-4435
Floydada Plainview
763-8056
Lubbock

For The Weather Ahead

Brown's Has

Good Selection Of Thermal Underwear for Men & Women

Brown's DEPARTMENT STORE Lockney, Texas

Got Heating Or Plumbing Problems? Call HOLMES PLUMBING Austin or Lockney 983-2251 6:30 - 9:30 a.m. 5:30 p.m. - 10:00 p.m.

FOOTBALL CONTEST

PICK THE WINNING TEAMS!

WIN FIRST PRIZE..... \$10⁰⁰
 SECOND PRIZE..... \$6⁰⁰
 THIRD PRIZE..... \$4⁰⁰

**GO,
 FIGHT, WIN!!!**



See You At The Game



**GO
 LONGHORN
 GO**



RAGIN' RED

Open Date For Lockney

<p>MARR INSULATION Tom Marr, Owner Lockney, Texas 1. Floydada vs. 2. Abernathy</p>	<p>RAGIN' RED Open Date For Lockney</p>		
<p>Baccus Motor Co. 321 SO. MAIN ST. LOCKNEY 3. Idalou vs. 4. Tulia</p>			
<p>Page's Thriftway No. 3 "A Better Way To Save" 5. SMU vs. 6. Wichita State</p>	<p>The Cowboy Closet Come In And Visit Oddie Probasco Owner Ronnie Elrod Manager 17. Tahoka vs. 18. Post</p>	<p>White's Auto Store Lockney, Texas 25. Ohio State vs. 26. Iowa</p>	<p>Strickland's Automotive 33. Abilene Cooper vs. 34. Midland</p>
<p>Wilson Photography LOCKNEY, TEXAS 7. Houston vs. 8. Texas</p>	<p>Mize Pharmacy & TV Your Complete Family Drug Store Gift Headquarters ★ RCA Television LOCKNEY, TEXAS 19. Slaton vs. 20. Seminole</p>	<p>Webster Service & Supply "Where You're Always Welcome" 27. Alabama vs. 28. LSU</p>	<p>Thomason Grocery LOCKNEY, TEXAS 35. Lake View vs. 36. Sweetwater</p>
<p>Providence Farm Supply and Grain Co. 9. Arkansas vs. 10. Baylor</p>	<p>Dan's Automotive 21. Oklahoma vs. 22. Kansas</p>	<p>Roger's Pastry LOCKNEY, TEXAS 29. Plainview vs. 30. Lubbock High</p>	<p>The Tye Company On The Plainview Highway 37. Seagraves vs. 38. Stanton</p>
<p>Byrd Pharmacy "Accurate Prescription Service" 11. Muleshoe vs. 12. Dimmitt</p>	<p>CONTEST RULES Circle on the official entry blank the number of the team you think will win each game. Circle the winner and indicate the total score in the tie-breaker game. Contestants may mail their entries or bring them to the Beacon Office, 220 South Main. Mail entries must be postmarked no later than 5 p.m., Friday, and in-person entries must be at the office by the same time. Mail entry address is Box 187, Lockney 79241. One winner per family per week please.</p>		
<p>Davis Lumber Co. "Where Customers Send Their Friends" 13. Littlefield vs. 14. Morton</p>			

TV Log
 The TV Schedule Is Sponsored
 Each Week By The



5 KTXL
 CH. 5
 Lubbock
 4 WTBS
 CH. 17
 Atlanta



Riddles

1. (MOVIE-COMEDY) "Send me a series of..."
 2. (MOVIE) "The Godfather"
 3. (MOVIE) "The Godfather"
 4. (MOVIE) "The Godfather"
 5. (MOVIE) "The Godfather"
 6. (MOVIE) "The Godfather"
 7. (MOVIE) "The Godfather"
 8. (MOVIE) "The Godfather"
 9. (MOVIE) "The Godfather"
 10. (MOVIE) "The Godfather"

31. Lubbock Estracado vs. 32. Leveland

Strickland's Automotive

33. Abilene Cooper vs. 34. Midland H

Thomason Grocery

LOCKNEY, TEXAS

35. Lake View vs. 36. Sweetwater

The Tye Company

On The Plainview Highway

37. Seagraves vs. 38. Stanton

Longhorn Inn

Where School Friends Meet To Eat

39. Valley vs. 40. Claude

Brown's Department Store

LOCKNEY, TEXAS

41. Pittsburg Steelers vs.

42. Kansas City Chiefs

PASS IT ON

- 2 THE STORY
8 DEAF WORLD
9 MOVIE (COMEDY) * 1/2 "Abbott and Costello Meet the Keystone Kops" 1955 Fred Clark.

EVENING

- 2 6 INSIGHT
5 ONCE UPON A CLASSIC
7 FAMILY AFFAIR
9 ODD COUPLE

MOVIE (MYSTERY) ***

- "Strait-Jacket" 1964 Joan Crawford, Diane Baker. A woman who committed a series of six murders twenty years ago comes under suspicion when another series of murders start. (2 hrs.)
11:00
2 EVANGEL COLLEGE FOOTBALL
7 MOVIE (WESTERN-DRAMA) ** 1/2 "Bravados" 1958

SUNDAY

- NOV. 4, 1979
MORNING
9:30
4 MOVIE (DRAMA) *** 1/2 "Bridges At Toko-Ri" 1954 William Holden, Grace Kelly.

MOVIE (COMEDY) ***

- "Send Me No Flowers" 1964 Rock Hudson, Doria Day. A hypochondriac convinced that he has a short time to live, has his friend find a new husband for his wife. (2 hrs.)
5 MOVIE (TITLE UNANNOUNCED)
HBO MOVIE (DRAMA) *** "If Ever I See You Again" 1978 Joe Brooks, Shelley Hack.

EVENING

- 7:00
4 MOVIE (COMEDY) *** 1/2 "The Three Stooges Go Around the World" 1963 Three Stooges, Jay Sheffield.



Riddles

- 1. What large instrument do you carry in your ears?
2. Why is Lassie like a comet?
3. What did one pig say to the other pig?

- ANSWERS
1. Drums.
2. They both are stars with tails.
3. "Let's be pen pals."

Table with columns for radio stations and channels: WTBS CH. 17 Atlanta, KTXT CH. 5 Lubbock, PTL CH. 6 Charlotte, KMCC CH. 28 Lubbock, WGN CH. 9 Chicago, KTV CH. 10 Oakland, KCBD CH. 11 Lubbock, KLBK CH. 13 Lubbock, CBN CH. 2 Virginia Bch.

John Blue Module Builder
We Would Like To Book
Your Order Before January 1, 1980
\$19,200.00
If Booked Before Jan. 1, 1980
Contact:
Brown's Implement
983-2281
Ralls Highway Floydada

At The Game



GO LONGHORN GO

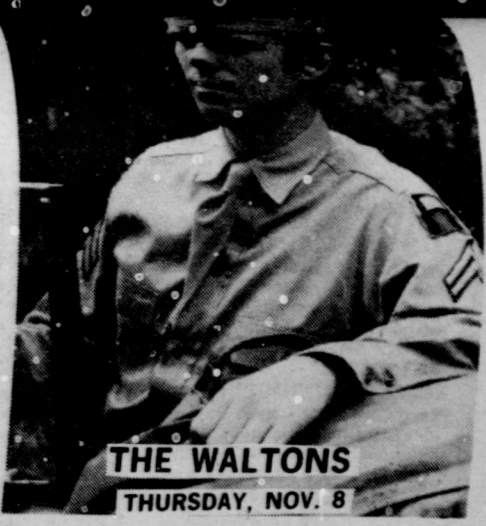


Perry Implement Comp

John Deere Implements

TV Log

The TV Schedule Is Sponsored
Each Week By The
Following Merchants



TOPPER
FRIDAY, NOV. 9

THE WALTONS
THURSDAY, NOV. 8

SUNDAY
NOV. 4, 1979

- MORNING**
- 5:00 CHRIST IN THE HOME
 - 6:00 THE STORY
 - 4 JIMMY SWAGGART
 - 6 EVER INCREASING FAITH
 - 10 RUFF HOUSE
 - 11 NEW MEXICO REPORT
 - 6:15 SACRED HEART
 - 6:30 DAWSON MEMORIAL BAPTIST CHURCH
 - DR. E. J. DANIELS
 - 10 BASS FISHIN' AMERICA
 - 11 JIMMY SWAGGART
 - 13 THIS IS THE LIFE
 - 7:00 THE LESSON
 - 4 THREE STOOGES AND FRIENDS
 - 6 ABUNDANT LIVING
 - 7 PTL PROGRAM
 - 9 NEWS
 - 10 AUTO QUIZ
 - 13 HOUR OF POWER
 - 7:15 BUYER'S FORUM
 - 7:30 CHAPEL HOUR
 - 6 PATTERN FOR LIVING
 - 10 N.B.A. BMX
 - 11 DAY OF DISCOVERY
 - 7:45 WHAT'S NU?
 - 8:00 HOUR OF POWER
 - 4 LOST IN SPACE
 - 6 FELLOWSHIP HOUR
 - 7 JIMMY SWAGGART
 - 9 MASS FOR SHUT-INS
 - 10 CELEBRITY
 - 11 ORAL ROBERTS
 - 13 JAMES ROBISON PRESENTS
 - 8:30 PROPHECY IN THE NEWS
 - 9 CHICAGO LAND CHURCH HOUR
 - 11 METHODIST CHURCH SERVICE
 - 13 AMAZING GRACE BIBLE CLASS
 - 9:00 CHANGED LIVES
 - 4 HAZEL
 - 6 JIMMY SWAGGART
 - 7 I LOVE LUCY
 - 9 ISSUES UNLIMITED
 - 10 WESTBROOK HOSPITAL
 - 11 JERRY FALWELL
 - 9:30 SPIRITUAL AWAKENING
 - 4 MOVIE -(DRAMA) *** 1/2 "Bridges At Toko-Ri" 1954 William Holden, Grace Kelly.
 - 7 MARY TYLER MOORE
 - 9 GROOVIE GOOLIES
 - 10 HOUR OF POWER

- 11 REX HUMBARD 10:00
- 2 IN TOUCH
- 6 MORNING WORSHIP HOUR
- 7 PHIL DONAHUE SHOW
- 9 TARZAN
- 10 SUNDAY SCHOOL
- 10:30 DAY OF DISCOVERY
- 11 LIVING YOUR RELIGION
- 13 FACE THE NATION
- 11:00 TIME OF DELIVERANCE
- 6 TODAY IN BIBLE PROPHECY
- 7 FIRST BAPTIST CHURCH
- 9 CISCO KID
- 10 ORAL ROBERTS
- 11 HERALD OF TRUTH
- 13 TOM LANDRY SHOW
- 11:30 ORAL ROBERTS
- 6 LONE RANGER
- 10 REX HUMBARD
- 11 SPORTSCOPE
- 13 NFL TODAY
- 11:45 MOVIE -(DRAMA) *** 1/2 "Since You Went Away" 1944 Claudette Colbert, Joseph Cotten. The story of a family suffering through W.W. II with its many tragedies and complications. (3 hrs., 15 mins.)

- AFTERNOON**
- 12:00 CORAL RIDGE
 - 2 PRESBYTERIAN
 - 6 REX HUMBARD
 - 7 DIRECTIONS
 - 9 MOVIE -(MYSTERY) ** "Charlie Chan in Panama" 1940 Sidney Toler, Jean Rogers. International spies meet their match in Charlie Chan and find themselves behind bars. (90 mins.)
 - 11 NFL FOOTBALL New England Patriots vs Buffalo Bills
 - 13 NFL FOOTBALL Dallas Cowboys vs New York Giants
 - 12:30 TEXAS TECH FOOTBALL
 - 10 IT IS WRITTEN
 - 1:00 WORLD OF PENTECOST
 - 5 SHAKESPEARE PLAYS "Julius Caesar" Charles Gray stars as Caesar, Richard Pasco as Brutus, David Collings as Cassius and Keith Mitchell as Marc Antony in this production from the BBC. (3 hrs.)
 - 6 CHRIST CHURCH
 - 7 COLLEGE FOOTBALL '79
 - 10 ELECTION '79
 - 11 HBO MOVIE -(ADVENTURE) *** 1/2 "White Lightning" 1973 Burt Reynolds, Jennifer Billingsley. A convicted moonshiner agrees to work with authorities when he learns that his kid brother has been murdered by a crooked sheriff. (101 mins.)
 - 1:30 DEAF HEAR
 - 7 FANFARRIA FALCON
 - 9 MOVIE -(WESTERN) *** 1/2 "Seminole" 1953 Rock Hudson, Barbara Hale.

- 2 AT HOME WITH THE BIBLE
- 6 FAITH THAT SINGS
- 7 SI SE PUEDE
- 10 TARZAN
- 2:30 MISSIONARIES IN ACTION
- 6 CHURCH IN THE HOME
- 3:00 HE LIVES
- 4 MOVIE -(COMEDY) **** "Farmer's Daughter" 1947 Loretta Young, Joseph Cotten. A head-strong Swedish girl fights her way into Congress. (2 hrs.)
- 7 WRESTLING
- 10 MOVIE -(COMEDY) *** "Send Me No Flowers" 1964 Rock Hudson, Doris Day. A Hypochondriac convinced that he has a short time to live, has his friend find a new husband for his wife. (2 hrs.)
- 11 MOVIE -(TITLE UNANNOUNCED)
- 13 NFL FOOTBALL Los Angeles Rams vs Seattle Seahawks
- 11 HBO MOVIE -(DRAMA) ** "If Ever I See You Again" 1978 Joe Brooks, Shelley Hack. College sweethearts are reunited after a twelve year separation. Though their lifestyles have changed, affections are still strongly felt. (PG) (105 mins.)
- 3:30 THINK ABOUT TOMORROW
- 6 DAVE LOMBARDI
- 9 MOVIE -(SCIENCE-ADVENTURE) *** "Mysterious Island" 1961 Joan Greenwood, Michael Craig. Five men, after escaping from a Confederate prison in an observation balloon, find themselves on a South Seas island where they encounter a giant bird, giant crab, two British girls, band of cutthroat pirates and Captain Nemo. (2 hrs.)
- 4:00 WIDE WORLD OF TRUTH
- 5 FIRING LINE "Crime And Punishment: Gary Gilmore" Host: William F. Buckley, Jr. Guest: Norman Mailer, author.
- 6 A SONG OF PRAISE
- 7 ISSUES AND ANSWERS
- 4:30 JERRY FALWELL
- 6 JIMMY SWAGGART
- 7 NASHVILLE ON THE ROAD
- 5:00 WRESTLING
- 5 LONG SEARCH "There Is No God But God" More than 400 million people profess a belief in Islam, and the numbers are growing. Host Ronald Eyre takes viewers to a wedding in an oasis village 50 miles from Cairo, to dawn prayers in the market town of El Fayoum, on a pilgrimage to Mecca. (60 mins.)
- 7 POP GOES THE COUNTRY
- 10 MOVIE -(SUSPENSE-DRAMA) *** "The Birds" 1963 Rod Taylor, Suzanne Pleshette. Small fishing village north of San Francisco comes under attack of thousands of birds of varying sizes, shapes and color. (2 hrs.)
- 11 ADAM 12
- 13 HBO MOVIE -(ADVENTURE) *** 1/2 "White Lightning" 1973

- 5:30 FOCUS ON THE FAMILY
- 2 ABC NEWS
- 9 DONNY AND MARIE
- 11 NBC NEWS

EVENING

 - 6:00 JIMMY SWAGGART
 - 4 NASHVILLE ON THE ROAD
 - 5 JAPAN: THE CHANGING TRADITION
 - 6 SUNDAY CELEBRATION
 - 7 SALVAGE-1 When the drought-stricken island of Fantalea offers a \$50,000 prize for the best idea to solve its water problems, Harry Broderick musters his crew to harness an iceberg and bring it to the island. (60 mins.)
 - 11 DISNEY'S WONDERFUL WORLD "20,000 Leagues Under The Sea" Stars: Kirk Douglas, James Mason. An adaptation of Jules Verne's classic science-fiction tale of a mad sea captain's efforts to control the world through the use of his submarine. (2 hrs.)
 - 13 60 MINUTES
 - 6:30 PORTER WAGONER SHOW
 - 5 JAPAN: THE CHANGING TRADITION
 - 9 WILD KINGDOM "Desert Spring" 7:00
 - 2 REX HUMBARD
 - 4 MOVIE -(COMEDY) ** 1/2 "The Three Stooges Go Around The World" 1963 Three Stooges, Jay Sheffield. Three zanies travel around the world to win a bet. (2 hrs.)
 - 5 CONNECTIONS "Thunder In The Sky" Narrator-writer James Burke takes a close look at the many changes in energy sources since the 13th century. At that time, a colder climate prevailed and shortages of wood forced man to seek alternatives in energy sources. Over time, the development of the steam engine led to the invention of the internal combustion engine, which eventually pointed the way to the jet engine. (60 mins.)
 - 6 LET GO-LET GOD
 - 7 MORK AND MINDY Mork creates turmoil inside a hospital when he discovers that Mindy has been heavily sedated and listed under another name and wrongly scheduled for brain surgery.
 - 9 IN SEARCH OF... "The Shroud Of Turin"
 - 10 MOVIE -(DRAMA) ** 1/2 "Tora! Tora! Tora!" 1970 Jason Robards, Martin Balsam. Story of the events that led up to the Pearl Harbor attack from both the American and Japanese points of view. (3 hrs.)
 - 11 ARCHIE BUNKER'S PLACE
 - 13 HBO MOVIE -(DRAMA) *** 1/2 "Ice Castles" Robby Benson, Colleen Dewhurst. A small town teenage girl hopes for an Olympic medal in figure skating and is dashed when she is injured in a freak accident. (Rated PG) (109 mins.)
 - 7:30 IT'S A BRAND NEW DAY
 - 7 SUNDAY NIGHT MOVIE "Jaws" 1975 Stars: Roy Scheider, Richard Dreyfuss.

- 9 MOVIE -(DRAMA) ** "Look Back In Darkness" 1975 Bradford Dillman, Catherine Schell. A bank robbery left a concert pianist blind and killed his wife; now, ten years later, he recognizes the killer's voice at a posh party and tracks him to a rendezvous for his own brand of justice. (90 mins.)
- 13 ONE DAY AT A TIME Long-standing resentments are uncovered between Ann and her mother after Julie's boss, a psychiatrist, comes to dinner with some interesting advice on communicating.
- 8:00 700 CLUB
- 9 MASTERPIECE THEATRE "Love For Lydia" Life at Aspen House is darkened by a death in the family. When Richardson overhears a discussion between Lydia and Blackie at a party, he mistakenly flies into a rage which brings tragic repercussions. (60 mins.)
- 6 REV. HILTON SUTTON
- 11 THE BIG EVENT "MacArthur" 1977 Stars: Gregory Peck, Marj Dusay. After Japan's surrender, General Douglas MacArthur supervises the occupation and rehabilitation of that country until the Korean conflict begins and he is assigned to command U.S. troops there. (Conclusion: 2 hrs.)
- 13 ALICE When Vera's boyfriend objects to her taking an art class that uses a nude male model, Alice intervenes in order to keep Vera at the drawing board.
- 8:30 LET GOD LOVE YOU
- 13 THE JEFFERSONS The discovery of an unfulfilled request in his father's will leads George on an unusual search into his forgotten past.
- 9:00 COMEBACK
- 5 GROWING YEARS
- 6 KOINONIA
- 9 LAWRENCE WELK SHOW
- 13 TRAPPER JOHN, M.D. Gonzo is stuck with an unwanted prospective bride as he and Trapper find themselves enmeshed in cases of child-parent strife as by-products of surgery. (60 mins.)
- HBO ON LOCATION: BILLY CRYSTAL
- 9:30 CROSSROADS
- 4 RUFF HOUSE
- 5 GROWING YEARS
- 10 SEND FORTH YOUR SPIRIT
- 4 OPEN UP
- 5 FOOTSTEPS "Spare The Rod" Ted's no-nonsense approach to discipline is in direct conflict with his wife Sand's easy-going "let them make their own decisions" philosophy. After a dramatic scene at Grandmother's, Ted realizes that threatening, yelling and scaring are not the most effective ways to deal with Marc and Portia.
- 6 PRAISE THE LORD
- 9 MOVIE -(DRAMA) *** 1/2 "Casablanca" 1943 Ingrid Bergman, Humphrey Bogart. Gambling casino explodes when an old love walks in bringing her husband, who is fleeing from the Nazis. (113 mins.)
- 10 MOVIE -(COMEDY) *** "Donovan's Reef" 1963 John Wayne, Lee Marvin. Ex-Navy man living on South Pacific island finds his idyllic existence threatened when a daughter from previous marriage arrives in search of him. (2 hrs.)
- 11 NEWS
- 13 HBO MOVIE -(HORROR) ** 1/2 "Phantasm" 1979 Horror, science fiction and comedy come together in this ingenious mixture of fright and fun. You'll shriek in laughter and fear at this eerie and impressive movie. (Rated R) (89 mins.)
- 10:15 NEWS
- 10:30 INSIGHT
- 5 FOOTSTEPS
- 9 MOVIE -(DRAMA) *** 1/2 "General Died at Dawn" 1936 Gary Cooper, Madeleine Carroll. American falls in love with a spy while battling an Oriental warlord. (113 mins.)
- 11 NBC LATE NIGHT MOVIE
- 13 BILL DANCE OUTDOORS

Sunday, November 4, 1979 Page 7

CALL CABLE TV
OF FLOYDADA 983-2911
TODAY
FOR MORE AND BETTER TV!

The Floyd County Hesperian
The Lockney Beacon

Good Eating
Good Price

BOSTON BUTT
Pork Roast
Steak 89¢
Steak 89¢
Lb.

Chops \$1.29
Lb.

KEYS 69¢
18-22 LBS. AVG. SELF-BASTING TENDER TIMER Lb.

NEWS \$2.19
BONELESS FULLY COOKED HALF Lb.

NEWS 59¢
BAKING 4-6 LBS. AVG. Lb.

NEWS 99¢
SLICED Lb.

NEWS 89¢
MEAT 12 OZ. PKG.

NEWS 99¢
MEAT 12 OZ. PKG.

NEWS 99¢
PORK 2 Lb. ROLL \$1.98

NEWS 89¢
PORK 8 OZ. PKG.



SHURFIRE QUALITY ICE CREAM
80
VARE ALF LLON

MON THRU FRI
MORNING
5:00
6 RELIGIOUS PROGRAMMING 5:30
6 RELIGIOUS PROGRAMMING 5:55
7 TOP O' THE MORNING 6:00
4 THREE STOOGES; LITTLE RASCALS
7 PTL PROGRAM
10 STEAM ROOM
9 STAR BLAZERS
10 MOVIE TOWN
11 TODAY IN TEXAS AND NEW MEXICO 7:00
2 6 RELIGIOUS PROGRAMMING
4 LEAVE IT TO BEAVER
7 GOOD MORNING AMERICA
9 RA' RAYNER AND HIS FRIENDS
13 TODAY
13 MORNING SHOW 7:30
2 WORDS OF HOPE (MON.) Festival Of Praise (TUE.)
4 ROMPER ROOM
6 RELIGIOUS PROGRAMMING 7:45
5 A.M. WEATHER 8:00
2 6 RELIGIOUS PROGRAMMING
4 LUCY SHOW
5 VARIOUS PROGRAMMING
9 GROOVIE GOOLIES
13 CAPTAIN KANGAROO 8:30
2 6 RELIGIOUS PROGRAMMING
4 GREEN ACRES
9 DREAM OF JEANNIE
10 FRAN CARLTON SHOW 9:00
2 700 CLUB
4 MOVIE 'Night People' (MON.), 'Arabesque' (TUE.), 'Take Her, She's Mine' (WED.), 'How To Commit Marriage' (THUR.), 'Time For Loving' (FRI.)
5 MISTER ROGERS
6 RELIGIOUS PROGRAMMING
9 PHIL DONAHUE SHOW
9 MOVIE 'The Suspect' (MON.), 'Walk A Crooked Line' (TUE.), 'Calling Dr. Kildare' (WED.), 'A Yank In The R.A.F.' (THUR.), 'Dest Set' (FRI.)

PTL PROGRAM
4 MOVIE -(COMEDY) ** 1/2 "Cesar and Rosalie" 1972 Yves Montand, Romy Schneider. Woman, in the art world of Paris, tries to decide between two men. (2 hrs., 15 mins.)
5 BEHIND THE SCENES
10 NEWS
13 MOVIE -(COMEDY) *** "Only Two Can Play" 1963 Peter Sellers, Mai Zetterling. The story of a librarian flirting with a society woman. (2 hrs.)
12:15
6 THE WORD 12:20
6 DAY BY DAY 12:25
6 JOY TO THE WORLD 12:30
6 GOOD LIFE
10 OPEN LINE 12:32
9 NIGHTBEAT 12:45
10 ABC NEWS 1:00
6 PTL PROGRAM
10 ELECTION '79 1:02
9 CROMIE CIRCLE 2:00
10 MOVIE -(DRAMA) JOINED IN PROGRESS) ** "Home Before Dark" 1958 Jean Simmons, Dan O'Herlihy. 2:15
4 MOVIE -(ROMANCE) ** "Long Ago, Tomorrow" 1971 Malcolm McDowell, Nanette Newman. The story of the love affair between two paraplegics. (2 hrs., 15 mins.)
2:32
9 NEWS 4:30
4 LOVE AMERICAN STYLE 5:00
4 LISTEN
6 PTL PROGRAM 5:15
4 ATHLETES 5:30
2 ROSS BAGLEY SHOW
4 NEWS
MON THRU FRI
MORNING
5:00
6 RELIGIOUS PROGRAMMING 5:30
6 RELIGIOUS PROGRAMMING 5:55
7 TOP O' THE MORNING 6:00
4 THREE STOOGES; LITTLE RASCALS
7 PTL PROGRAM
10 STEAM ROOM
9 STAR BLAZERS
10 MOVIE TOWN
11 TODAY IN TEXAS AND NEW MEXICO 7:00
2 6 RELIGIOUS PROGRAMMING
4 LEAVE IT TO BEAVER
7 GOOD MORNING AMERICA
9 RA' RAYNER AND HIS FRIENDS
13 TODAY
13 MORNING SHOW 7:30
2 WORDS OF HOPE (MON.) Festival Of Praise (TUE.)
4 ROMPER ROOM
6 RELIGIOUS PROGRAMMING 7:45
5 A.M. WEATHER 8:00
2 6 RELIGIOUS PROGRAMMING
4 LUCY SHOW
5 VARIOUS PROGRAMMING
9 GROOVIE GOOLIES
13 CAPTAIN KANGAROO 8:30
2 6 RELIGIOUS PROGRAMMING
4 GREEN ACRES
9 DREAM OF JEANNIE
10 FRAN CARLTON SHOW 9:00
2 700 CLUB
4 MOVIE 'Night People' (MON.), 'Arabesque' (TUE.), 'Take Her, She's Mine' (WED.), 'How To Commit Marriage' (THUR.), 'Time For Loving' (FRI.)
5 MISTER ROGERS
6 RELIGIOUS PROGRAMMING
9 PHIL DONAHUE SHOW
9 MOVIE 'The Suspect' (MON.), 'Walk A Crooked Line' (TUE.), 'Calling Dr. Kildare' (WED.), 'A Yank In The R.A.F.' (THUR.), 'Dest Set' (FRI.)

PTL PROGRAM
4 MOVIE -(COMEDY) ** 1/2 "Cesar and Rosalie" 1972 Yves Montand, Romy Schneider. Woman, in the art world of Paris, tries to decide between two men. (2 hrs., 15 mins.)
5 BEHIND THE SCENES
10 NEWS
13 MOVIE -(COMEDY) *** "Only Two Can Play" 1963 Peter Sellers, Mai Zetterling. The story of a librarian flirting with a society woman. (2 hrs.)
12:15
6 THE WORD 12:20
6 DAY BY DAY 12:25
6 JOY TO THE WORLD 12:30
6 GOOD LIFE
10 OPEN LINE 12:32
9 NIGHTBEAT 12:45
10 ABC NEWS 1:00
6 PTL PROGRAM
10 ELECTION '79 1:02
9 CROMIE CIRCLE 2:00
10 MOVIE -(DRAMA) JOINED IN PROGRESS) ** "Home Before Dark" 1958 Jean Simmons, Dan O'Herlihy. 2:15
4 MOVIE -(ROMANCE) ** "Long Ago, Tomorrow" 1971 Malcolm McDowell, Nanette Newman. The story of the love affair between two paraplegics. (2 hrs., 15 mins.)
2:32
9 NEWS 4:30
4 LOVE AMERICAN STYLE 5:00
4 LISTEN
6 PTL PROGRAM 5:15
4 ATHLETES 5:30
2 ROSS BAGLEY SHOW
4 NEWS
MON THRU FRI
MORNING
5:00
6 RELIGIOUS PROGRAMMING 5:30
6 RELIGIOUS PROGRAMMING 5:55
7 TOP O' THE MORNING 6:00
4 THREE STOOGES; LITTLE RASCALS
7 PTL PROGRAM
10 STEAM ROOM
9 STAR BLAZERS
10 MOVIE TOWN
11 TODAY IN TEXAS AND NEW MEXICO 7:00
2 6 RELIGIOUS PROGRAMMING
4 LEAVE IT TO BEAVER
7 GOOD MORNING AMERICA
9 RA' RAYNER AND HIS FRIENDS
13 TODAY
13 MORNING SHOW 7:30
2 WORDS OF HOPE (MON.) Festival Of Praise (TUE.)
4 ROMPER ROOM
6 RELIGIOUS PROGRAMMING 7:45
5 A.M. WEATHER 8:00
2 6 RELIGIOUS PROGRAMMING
4 LUCY SHOW
5 VARIOUS PROGRAMMING
9 GROOVIE GOOLIES
13 CAPTAIN KANGAROO 8:30
2 6 RELIGIOUS PROGRAMMING
4 GREEN ACRES
9 DREAM OF JEANNIE
10 FRAN CARLTON SHOW 9:00
2 700 CLUB
4 MOVIE 'Night People' (MON.), 'Arabesque' (TUE.), 'Take Her, She's Mine' (WED.), 'How To Commit Marriage' (THUR.), 'Time For Loving' (FRI.)
5 MISTER ROGERS
6 RELIGIOUS PROGRAMMING
9 PHIL DONAHUE SHOW
9 MOVIE 'The Suspect' (MON.), 'Walk A Crooked Line' (TUE.), 'Calling Dr. Kildare' (WED.), 'A Yank In The R.A.F.' (THUR.), 'Dest Set' (FRI.)

PTL PROGRAM
4 MOVIE -(COMEDY) ** 1/2 "Cesar and Rosalie" 1972 Yves Montand, Romy Schneider. Woman, in the art world of Paris, tries to decide between two men. (2 hrs., 15 mins.)
5 BEHIND THE SCENES
10 NEWS
13 MOVIE -(COMEDY) *** "Only Two Can Play" 1963 Peter Sellers, Mai Zetterling. The story of a librarian flirting with a society woman. (2 hrs.)
12:15
6 THE WORD 12:20
6 DAY BY DAY 12:25
6 JOY TO THE WORLD 12:30
6 GOOD LIFE
10 OPEN LINE 12:32
9 NIGHTBEAT 12:45
10 ABC NEWS 1:00
6 PTL PROGRAM
10 ELECTION '79 1:02
9 CROMIE CIRCLE 2:00
10 MOVIE -(DRAMA) JOINED IN PROGRESS) ** "Home Before Dark" 1958 Jean Simmons, Dan O'Herlihy. 2:15
4 MOVIE -(ROMANCE) ** "Long Ago, Tomorrow" 1971 Malcolm McDowell, Nanette Newman. The story of the love affair between two paraplegics. (2 hrs., 15 mins.)
2:32
9 NEWS 4:30
4 LOVE AMERICAN STYLE 5:00
4 LISTEN
6 PTL PROGRAM 5:15
4 ATHLETES 5:30
2 ROSS BAGLEY SHOW
4 NEWS
MON THRU FRI
MORNING
5:00
6 RELIGIOUS PROGRAMMING 5:30
6 RELIGIOUS PROGRAMMING 5:55
7 TOP O' THE MORNING 6:00
4 THREE STOOGES; LITTLE RASCALS
7 PTL PROGRAM
10 STEAM ROOM
9 STAR BLAZERS
10 MOVIE TOWN
11 TODAY IN TEXAS AND NEW MEXICO 7:00
2 6 RELIGIOUS PROGRAMMING
4 LEAVE IT TO BEAVER
7 GOOD MORNING AMERICA
9 RA' RAYNER AND HIS FRIENDS
13 TODAY
13 MORNING SHOW 7:30
2 WORDS OF HOPE (MON.) Festival Of Praise (TUE.)
4 ROMPER ROOM
6 RELIGIOUS PROGRAMMING 7:45
5 A.M. WEATHER 8:00
2 6 RELIGIOUS PROGRAMMING
4 LUCY SHOW
5 VARIOUS PROGRAMMING
9 GROOVIE GOOLIES
13 CAPTAIN KANGAROO 8:30
2 6 RELIGIOUS PROGRAMMING
4 GREEN ACRES
9 DREAM OF JEANNIE
10 FRAN CARLTON SHOW 9:00
2 700 CLUB
4 MOVIE 'Night People' (MON.), 'Arabesque' (TUE.), 'Take Her, She's Mine' (WED.), 'How To Commit Marriage' (THUR.), 'Time For Loving' (FRI.)
5 MISTER ROGERS
6 RELIGIOUS PROGRAMMING
9 PHIL DONAHUE SHOW
9 MOVIE 'The Suspect' (MON.), 'Walk A Crooked Line' (TUE.), 'Calling Dr. Kildare' (WED.), 'A Yank In The R.A.F.' (THUR.), 'Dest Set' (FRI.)

PTL PROGRAM
4 MOVIE -(COMEDY) ** 1/2 "Cesar and Rosalie" 1972 Yves Montand, Romy Schneider. Woman, in the art world of Paris, tries to decide between two men. (2 hrs., 15 mins.)
5 BEHIND THE SCENES
10 NEWS
13 MOVIE -(COMEDY) *** "Only Two Can Play" 1963 Peter Sellers, Mai Zetterling. The story of a librarian flirting with a society woman. (2 hrs.)
12:15
6 THE WORD 12:20
6 DAY BY DAY 12:25
6 JOY TO THE WORLD 12:30
6 GOOD LIFE
10 OPEN LINE 12:32
9 NIGHTBEAT 12:45
10 ABC NEWS 1:00
6 PTL PROGRAM
10 ELECTION '79 1:02
9 CROMIE CIRCLE 2:00
10 MOVIE -(DRAMA) JOINED IN PROGRESS) ** "Home Before Dark" 1958 Jean Simmons, Dan O'Herlihy. 2:15
4 MOVIE -(ROMANCE) ** "Long Ago, Tomorrow" 1971 Malcolm McDowell, Nanette Newman. The story of the love affair between two paraplegics. (2 hrs., 15 mins.)
2:32
9 NEWS 4:30
4 LOVE AMERICAN STYLE 5:00
4 LISTEN
6 PTL PROGRAM 5:15
4 ATHLETES 5:30
2 ROSS BAGLEY SHOW
4 NEWS
MON THRU FRI
MORNING
5:00
6 RELIGIOUS PROGRAMMING 5:30
6 RELIGIOUS PROGRAMMING 5:55
7 TOP O' THE MORNING 6:00
4 THREE STOOGES; LITTLE RASCALS
7 PTL PROGRAM
10 STEAM ROOM
9 STAR BLAZERS
10 MOVIE TOWN
11 TODAY IN TEXAS AND NEW MEXICO 7:00
2 6 RELIGIOUS PROGRAMMING
4 LEAVE IT TO BEAVER
7 GOOD MORNING AMERICA
9 RA' RAYNER AND HIS FRIENDS
13 TODAY
13 MORNING SHOW 7:30
2 WORDS OF HOPE (MON.) Festival Of Praise (TUE.)
4 ROMPER ROOM
6 RELIGIOUS PROGRAMMING 7:45
5 A.M. WEATHER 8:00
2 6 RELIGIOUS PROGRAMMING
4 LUCY SHOW
5 VARIOUS PROGRAMMING
9 GROOVIE GOOLIES
13 CAPTAIN KANGAROO 8:30
2 6 RELIGIOUS PROGRAMMING
4 GREEN ACRES
9 DREAM OF JEANNIE
10 FRAN CARLTON SHOW 9:00
2 700 CLUB
4 MOVIE 'Night People' (MON.), 'Arabesque' (TUE.), 'Take Her, She's Mine' (WED.), 'How To Commit Marriage' (THUR.), 'Time For Loving' (FRI.)
5 MISTER ROGERS
6 RELIGIOUS PROGRAMMING
9 PHIL DONAHUE SHOW
9 MOVIE 'The Suspect' (MON.), 'Walk A Crooked Line' (TUE.), 'Calling Dr. Kildare' (WED.), 'A Yank In The R.A.F.' (THUR.), 'Dest Set' (FRI.)

PTL PROGRAM
4 MOVIE -(COMEDY) ** 1/2 "Cesar and Rosalie" 1972 Yves Montand, Romy Schneider. Woman, in the art world of Paris, tries to decide between two men. (2 hrs., 15 mins.)
5 BEHIND THE SCENES
10 NEWS
13 MOVIE -(COMEDY) *** "Only Two Can Play" 1963 Peter Sellers, Mai Zetterling. The story of a librarian flirting with a society woman. (2 hrs.)
12:15
6 THE WORD 12:20
6 DAY BY DAY 12:25
6 JOY TO THE WORLD 12:30
6 GOOD LIFE
10 OPEN LINE 12:32
9 NIGHTBEAT 12:45
10 ABC NEWS 1:00
6 PTL PROGRAM
10 ELECTION '79 1:02
9 CROMIE CIRCLE 2:00
10 MOVIE -(DRAMA) JOINED IN PROGRESS) ** "Home Before Dark" 1958 Jean Simmons, Dan O'Herlihy. 2:15
4 MOVIE -(ROMANCE) ** "Long Ago, Tomorrow" 1971 Malcolm McDowell, Nanette Newman. The story of the love affair between two paraplegics. (2 hrs., 15 mins.)
2:32
9 NEWS 4:30
4 LOVE AMERICAN STYLE 5:00
4 LISTEN
6 PTL PROGRAM 5:15
4 ATHLETES 5:30
2 ROSS BAGLEY SHOW
4 NEWS
MON THRU FRI
MORNING
5:00
6 RELIGIOUS PROGRAMMING 5:30
6 RELIGIOUS PROGRAMMING 5:55
7 TOP O' THE MORNING 6:00
4 THREE STOOGES; LITTLE RASCALS
7 PTL PROGRAM
10 STEAM ROOM
9 STAR BLAZERS
10 MOVIE TOWN
11 TODAY IN TEXAS AND NEW MEXICO 7:00
2 6 RELIGIOUS PROGRAMMING
4 LEAVE IT TO BEAVER
7 GOOD MORNING AMERICA
9 RA' RAYNER AND HIS FRIENDS
13 TODAY
13 MORNING SHOW 7:30
2 WORDS OF HOPE (MON.) Festival Of Praise (TUE.)
4 ROMPER ROOM
6 RELIGIOUS PROGRAMMING 7:45
5 A.M. WEATHER 8:00
2 6 RELIGIOUS PROGRAMMING
4 LUCY SHOW
5 VARIOUS PROGRAMMING
9 GROOVIE GOOLIES
13 CAPTAIN KANGAROO 8:30
2 6 RELIGIOUS PROGRAMMING
4 GREEN ACRES
9 DREAM OF JEANNIE
10 FRAN CARLTON SHOW 9:00
2 700 CLUB
4 MOVIE 'Night People' (MON.), 'Arabesque' (TUE.), 'Take Her, She's Mine' (WED.), 'How To Commit Marriage' (THUR.), 'Time For Loving' (FRI.)
5 MISTER ROGERS
6 RELIGIOUS PROGRAMMING
9 PHIL DONAHUE SHOW
9 MOVIE 'The Suspect' (MON.), 'Walk A Crooked Line' (TUE.), 'Calling Dr. Kildare' (WED.), 'A Yank In The R.A.F.' (THUR.), 'Dest Set' (FRI.)

SHURFINE SALT
CRA
13¢ OFF LABEL
DISHWASHING DETERGENT
LIQUID DA

22 OZ. BTL.

Coke-TA
No great refr
\$1.39
32 OZ. RETURNABLES
PLUS DEPOSIT

S.I. GREEN STAMPS DOUBLE ON
S&S
GREETINGS STAMPS

-PA

(2) (8) CROSSROADS
(6) CHICO AND THE MAN
(2) (8) 700 CLUB
(9) UNDER THIS SKY Elizabeth Cady
(8) MOVIE -(ADVENTURE) ***
"Flame and the Arrow" 1950
(10) M.A.S.H.
(15) DIFF'RENT STROKES
(15) WEDNESDAY NIGHT MOVIE
8:30
(10) I LOVE LUCY
(11) HELLO, LARRY
9:00
(5) CONNECTIONS
(7) CHARLIE'S ANGELS
(10) M.A.S.H.
(11) BEST OF SATURDAY NIGHT
LIVE
HBO MOVIE -(ADVENTURE)
"Ashanti" 1979 Michael Caine,
9:30
(2) (8) MAX MORRIS
(4) UPSTAIRS, DOWNSTAIRS
(10) ODD COUPLE
10:00
(2) (8) JEWISH VOICE
(5) DICK CAVETT SHOW Guest: Ri-
chard Stroup, Part II
(7) (9) (11) (15) NEWS
(10) JACQUES COUSTEAU "Sharks"
(60 mins.)
10:30
(2) ROSS BAGLEY SHOW
(4) MOVIE -(MUSICAL-BIOGRAPHICAL) **
"Night and Day" 1946 Cary Grant,
Alexis Smith. The story of songwriter
Cole Porter. (2 hrs., 45 mins.)
(5) ABC CAPTIONED NEWS
(6) PTL PROGRAM
(7) M.A.S.H.
(9) MOVIE -(SUSPENSE) ** 1/2
"The Mechanic" 1972 Charles Bron-
son, Jan-Michael Vincent. The story of a
professional assassin and the youth he
trains to take his place. (2 hrs., 10
mins.)
(11) THE TONIGHT SHOW
(13) CBS LATE MOVIE "BLACK SHEEP
SQUADRON"
11:00
(7) BOB NEHWART SHOW
(10) NATIONAL GEOGRAPHIC
"Mysteries Of Animal Behavior" (60
mins.)
HBO MOVIE -(DRAMA) ***
"Who'll Stop The Rain" Nick Nolte,
Tuesday Weld. Can an old-fashioned
hero survive in a modern world of corrup-
tion? (R) (2 hrs., 5 mins.)
11:30
(7) LOVE BOAT--BARETTA
12:00
(2) GOOD NEWS
(10) NEWS
(11) TOMORROW Host: Tom Snyder.
Guests: Warner Wolf, Steve Sommers
and Bill Currie, sportscasters. (60
mins.)
12:30
(2) REX HUMBARD
(6) THE STORY
12:40
(9) NIGHTBEAT
1:00
(6) PTL PROGRAM
(10) LOVE AMERICAN STYLE
(11) NEW MEXICO REPORT
1:20
(4) ATLANTA HAWKS REPLAY
1:21
(9) MOVIE -(SUSPENSE) "So Evil
My Love" 1948 Ray Milland, Ann Todd.
A murder takes place in Victorian Englan-
d...involving a fugitive, a young beautiful
boarding house owner, and a wealthy
woman. (105 mins.)
1:30
(2) ROSS BAGLEY SHOW
(10) BENNY HILL SHOW
2:00
(10) F.B.I.
3:00
(2) (8) 700 CLUB
(10) CBS LATE MOVIE (JOINED IN
PROGRESS) "HAWAII FIVE-O: Hit Gun
For Sale" Stars: Jack Lord, James
MacArthur.
3:17
(9) SOUPY SALES SHOW
3:47
(9) NEWS
3:50
(4) MOVIE -(WESTERN) ** "Man
From Utah" 1934 John Wayne, Gabby
Hayes. Lawman seeks outlaws to uphold
justice in the Old West. (80 mins.)
(10) MOVIE -(WESTERN) ** 1/2 "Big
Sky" 1952 Kirk Douglas, Dewey Martin.
Keel boat expedition up the Missouri in
1830, bound for Blackfeet Indian country.
(2 hrs., 30 mins.)
4:30
(2) (8) CELEBRATION
5:00
(2) SOMETHING SPECIAL
(6) CONCERN FOR THE WORLD
5:10
(4) WORLD AT LARGE
5:30
(2) ROSS BAGLEY SHOW

(2) BACKYARD
(3) SANFORD AND SON
(8) JAPAN: THE
LIVING
TRADITION
(8) PRAISE THE LORD
(11) (15) NEWS
(9) ODD COUPLE
(10) TOM AND JERRY WITH TV
POWWW INSERTS
6:30
(2) ZOLA LEVITT
(4) ALL IN THE FAMILY
(5) MACNEIL LEHRER REPORT
(6) KIDS PRAISE THE LORD
(7) HAPPY DAYS AGAIN
(9) CAROL BURNETT AND
FRIENDS
(10) CAPTAIN COSMIC AND HIS
WONDER ROBOT 2T2
(11) THREE'S A CROWD
(13) JOKER'S WILD
7:00
(2) (8) MISSIONARIES IN
ACTION
(4) MOVIE -(WESTERN) **** "The
Searchers" 1956 John Wayne,
(5) EVENING AT SYMPHONY
(7) LAVERNE AND SHIRLEY
(9) MAUDE
(10) BIONIC WOMAN
(11) BUCK ROGERS IN THE 25th
CENTURY Buck Rogers
(13) THE WALTONS A backwoods
woman is raped and her assailant threat-
ens Olivia. (60 mins.)
HBO INSIDE THE NFL
7:30
(2) (8) WAKE UP AMERICA
(7) BENSON
(9) CHICO AND THE MAN
8:00
(2) (8) 700 CLUB
(5) SNEAK PREVIEWS
(7) BARNEY MILLER
(9) MOVIE -(DRAMA-MUSICAL) **
"Love Me Tender" 1956
(10) M.A.S.H.
(11) QUINCY
(13) HAWAII FIVE-O
HBO MOVIE -(DRAMA) *** 1/2 "Ice
Castles"
Robby Benson,
8:30
(5) CAMERA THREE "Philip Johnson"
(7) SOAP
(10) I LOVE LUCY
9:00
(5) GREAT PLAINS EXPERIENCE
(7) 20-20
(10) M.A.S.H.
(11) KATE LOVES A MYSTERY
(13) BARNABY JONES
9:30
(2) (8) NORMAN VINCENT
PEALE
(4) CIVILISATION
(5) AZTLAN
10:00
(2) (8) GOD'S NEWS BEHIND THE
NEWS
(5) DICK CAVETT SHOW Guest: Ra-
chel Roberts, actress.
(7) (9) (11) (13) NEWS
(10) THE SEEKERS PT. I.
(REPEAT)
HBO INSIDE THE NFL
10:30
(2) ROSS BAGLEY SHOW
(4) MOVIE -(DRAMA) *** 1/2 "None
But The Lonely Heart" 1943 Cary
Grant
(5) ABC CAPTIONED NEWS
(6) PTL PROGRAM
(7) M.A.S.H.
(9) MOVIE -(DRAMA) ** "Flight
from Ashiya" 1964 Richard Widmark,
(11) THE TONIGHT SHOW Host:
Johnny Carson. Guests: Michael Dou-
glas, Marilyn Horne. (90 mins.)
(13) CBS LATE MOVIE "COLUMBO"
11:00
(7) BOB NEHWART SHOW
HBO ON LOCATION: BILLY
CRYSTAL
11:30
(7) POLICE WOMAN--BARETTA
12:00
(2) KOINONIA
(10) NEWS
(11) TOMORROW Host: Tom Snyder.
Guest: Liberace. (60 mins.)
12:30
(2) HOUR OF POWER
(6) SHARING
12:32
(9) NIGHTBEAT
1:00
(4) MOVIE -(ADVENTURE) **
"Operation Bikini" 1963 Tab Hunter,
(6) PTL PROGRAM
(10) LOVE AMERICAN STYLE
(11) NEW MEXICO REPORT
1:02
(9) THAT NASHVILLE MUSIC
1:30
(2) ROSS BAGLEY SHOW
(10) BENNY HILL SHOW
1:32
(9) SOUPY SALES SHOW

(2) (8) 700 CLUB
(10) CBS LATE MOVIE (JOINED IN
PROGRESS) "BANACEK"
3:40
(9) NEWS
4:20
(10) MOVIE -(DRAMA) *** 1/2 "None
But The Lonely Heart" 1943 Cary
Grant, Ethel Barrymore.
4:30
(2) (8) SOUND OF THE SPIRIT
4:40
(10) MOVIE -(COMEDY-DRAMA) ***
"Mr. Lucky" 1943 Cary Grant
5:00
(2) (8) THE LESSON
5:05
(4) WORLD AT LARGE
5:30
(2) ROSS BAGLEY SHOW
(4) NEWS
(6) DWIGHT THOMPSON
FRIDAY
NOV. 9, 1979
EVENING
6:00
(2) BIBLE STORY
(4) SANFORD AND SON
(5) FOOTSTEPS
(6) PRAISE THE LORD
(7) (11) (15) NEWS
(9) ODD COUPLE
(10) TOM AND JERRY WITH TV
POWWW INSERTS
HBO INSIDE THE NFL
6:30
(2) THE LESSON
(4) ALL IN THE FAMILY
(5) MACNEIL LEHRER REPORT
(6) PUPPET TREE GANG
(7) HAPPY DAYS AGAIN
(9) CAROL BURNETT AND
FRIENDS
(10) CAPTAIN COSMIC AND HIS
WONDER ROBOT 2T2
(11) THREE'S A CROWD
(13) JOKER'S WILD
7:00
(2) (8) IN TOUCH
(4) MOVIE -(HORROR) ** 1/2 "Devil
Bat" 1941 Bela Lugosi, Suzanne Kaar-
en. A mad scientist breeds huge bats to
attack people. (2 hrs.)
(5) WASHINGTON WEEK IN
REVIEW
(7) ALL-STAR FAMILY FEUD The
casts of Love Boat, Soap, WKRP in Cin-
cinnati, and Real People will compete for
charity. (60 mins.)
(9) MAUDE
(10) BIONIC WOMAN
(11) SHIRLEY
(13) INCREDIBLE HULK Esther Rolle
guest stars as the troubled owner of a
taxicab company who hires David Banner
in the hope that he can help her fight a
dope-smuggling operation. (60 mins.)
HBO MOVIE -(ADVENTURE) ***
"The Passage" 1979 James Mason,
Patricia Neal. An American family at-
tempts a perilous escape from occupied
France to freedom. (Rated R) (98
mins.)
7:30
(5) WALL STREET WEEK
"Housewife To Broker" Host: Louis Ru-
keyser. Guest: Adele M. Barrett, Vice
President of Kidder, Peabody and Co.,
Inc.
(9) MOVIE -(DRAMA) ** 1/2 "Ele-
phant Walk" 1954 Elizabeth Taylor,
Peter Finch. The young bride of a Ceylon
tea plantation owner has a difficult time
adjusting to her husband's way of life. (2
hrs., 30 mins.)
8:00
(2) (8) 700 CLUB
(5) BRAVE NEW COWBOY This pro-
gram examines the cultural fascination of
the cowboy image, its roots and the
development of this image. (60 mins.)
(7) FRIDAY NIGHT MOVIE
(10) M.A.S.H.
(11) THE ROCKFORD FILES The
flame of love is rekindled between Jim
and Megan, a blind psychologist, after
she hires him to track down the slayer of
her fiancé. (60 mins.)
(13) THE DUKES OF HAZZARD A
demolition derby appears to be a coverup
for smugglers and the Dukes must break
up the operation before Rosco does to
save their own hides. (60 mins.)
8:30
(10) I LOVE LUCY
9:00
(4) WINSTON CHURCHILL--THE
VALIANT YEARS
(5) UPSTAIRS, DOWNSTAIRS The
adventures and misadventures of the
Bellamy family, upstairs at 165 Eaton
Place, and their servants, downstairs.
(60 mins.)
(10) M.A.S.H.
(11) EISCHIED Eischied puts his life on
the line when he tries to stop an enraged
veteran detective out to avenge the
death of his only daughter, a runaway who
turned to drugs and prostitution. (60
mins.)
(13) DALLAS

(2) (8) DAN GRIFFIN
(4) LAST OF THE WILD
(9) DICK CAVETT SHOW Guest: Nor-
man Cousins, author and professor.
(10) (11) (15) NEWS
(10) MOVIE -(SCIENCE FICTION) **
"Godzilla Vs. Cosmic Monster"
10:30
(2) ROSS BAGLEY SHOW
(4) MOVIE -(HORROR) ** "Last
Man On Earth" 1964 Vincent Price.
10:30
(5) ABC CAPTIONED NEWS
(6) PTL PROGRAM
(7) M.A.S.H.
(9) MOVIE -(WESTERN) ** 1/2 "Joe
Kidd" 1972 Clint Eastwood, Robert
Duvall. A man is hired to hunt down
Mexican-Americans by an evil land bar-
on. (2 hrs.)
(11) THE TONIGHT SHOW Host:
Johnny Carson. Guest: Tim Conway. (90
mins.)
(13) CBS LATE MOVIE "THE NIGHT
STALKER"
10:45
HBO MOVIE -(COMEDY) **
"Who's Killing the Great Chefs of
Europe?" Jacqueline Bisset. The
great chefs are being knocked off one by
one. (112 mins.)
11:00
(7) BOB NEHWART SHOW
11:30
(7) CHARLIE'S ANGELS
12:00
(2) INSIGHT
(10) NEWS
(11) THE MIDNIGHT SPECIAL
12:30
(2) JIMMY SWAGGART
(6) INSIGHT
(7) BIG VALLEY
(9) NIGHTBEAT
12:36
(9) MOVIE -(CRIME) *** "This Gun
for Hire" 1942 Alan Ladd,
12:45
(4) MOVIE -(MYSTERY) ** 1/2
"Ironside" 1967 Raymond Burr
1:00
(6) PTL PROGRAM
(10) LOVE AMERICAN STYLE
(11) NEW MEXICO REPORT
1:30
(2) ROSS BAGLEY SHOW
(10) MOVIE -(HORROR) ** "Fall of
the House of Usher" 1950
2:13
(9) NEWS
2:18
(9) ALL NIGHT SHOW
2:45
(4) MOVIE -(ADVENTURE-WESTERN) ** 1/2
"Dakota" 1945 John Wayne
3:00
(2) 700 CLUB
(6) FAITH THAT LIVES
3:30
(6) PRAISE THE LORD
(10) MOVIE -(MUSICAL-COMEDY)
*** "Bye, Bye Birdie" 1963 Dick Van
Dyke, Ann-Margret.
4:20
(4) LOVE AMERICAN STYLE
4:30
(2) JUST PASSING THRU
4:50
(4) WORLD AT LARGE
5:00
(2) WAKE UP AMERICA
(4) HUMAN DIMENSION
5:30
(2) ROSS BAGLEY SHOW
(4) IT'S YOUR BUSINESS
(6) A SONG OF PRAISE
(10) MOVIE -(WESTERN) *** "Ra-
chel and the Stranger" 1948
SATURDAY
NOV. 10, 1979
MORNING
5:00
(6) PRAISE THE LORD
5:30
(6) A SONG OF PRAISE
6:00
(4) THREE STOOGES; LITTLE
RASCALS
(6) DAN GRIFFIN
(10) MAGIC OF PEOPLE
6:15
(11) NEW MEXICO REPORT
6:30
(8) ORAL ROBERTS
(11) CARRASCOLENDAS
6:45
(9) NEWS
7:00
(2) EVER INCREASING FAITH
(4) ULTRAMAN
(6) LOVE SPECIAL
(7) WORLD'S GREATEST SUPER-
FRIENDS; SCHOOL ROCK

(2) (8) (10) (11) (13) (15) (16) (17) (18) (19) (20) (21) (22) (23) (24) (25) (26) (27) (28) (29) (30) (31) (32) (33) (34) (35) (36) (37) (38) (39) (40) (41) (42) (43) (44) (45) (46) (47) (48) (49) (50) (51) (52) (53) (54) (55) (56) (57) (58) (59) (60) (61) (62) (63) (64) (65) (66) (67) (68) (69) (70) (71) (72) (73) (74) (75) (76) (77) (78) (79) (80) (81) (82) (83) (84) (85) (86) (87) (88) (89) (90) (91) (92) (93) (94) (95) (96) (97) (98) (99) (100) (101) (102) (103) (104) (105) (106) (107) (108) (109) (110) (111) (112) (113) (114) (115) (116) (117) (118) (119) (120) (121) (122) (123) (124) (125) (126) (127) (128) (129) (130) (131) (132) (133) (134) (135) (136) (137) (138) (139) (140) (141) (142) (143) (144) (145) (146) (147) (148) (149) (150) (151) (152) (153) (154) (155) (156) (157) (158) (159) (160) (161) (162) (163) (164) (165) (166) (167) (168) (169) (170) (171) (172) (173) (174) (175) (176) (177) (178) (179) (180) (181) (182) (183) (184) (185) (186) (187) (188) (189) (190) (191) (192) (193) (194) (195) (196) (197) (198) (199) (200) (201) (202) (203) (204) (205) (206) (207) (208) (209) (210) (211) (212) (213) (214) (215) (216) (217) (218) (219) (220) (221) (222) (223) (224) (225) (226) (227) (228) (229) (230) (231) (232) (233) (234) (235) (236) (237) (238) (239) (240) (241) (242) (243) (244) (245) (246) (247) (248) (249) (250) (251) (252) (253) (254) (255) (256) (257) (258) (259) (260) (261) (262) (263) (264) (265) (266) (267) (268) (269) (270) (271) (272) (273) (274) (275) (276) (277) (278) (279) (280) (281) (282) (283) (284) (285) (286) (287) (288) (289) (290) (291) (292) (293) (294) (295) (296) (297) (298) (299) (300) (301) (302) (303) (304) (305) (306) (307) (308) (309) (310) (311) (312) (313) (314) (315) (316) (317) (318) (319) (320) (321) (322) (323) (324) (325) (326) (327) (328) (329) (330) (331) (332) (333) (334) (335) (336) (337) (338) (339) (340) (341) (342) (343) (344) (345) (346) (347) (348) (349) (350) (351) (352) (353) (354) (355) (356) (357) (358) (359) (360) (361) (362) (363) (364) (365) (366) (367) (368) (369) (370) (371) (372) (373) (374) (375) (376) (377) (378) (379) (380) (381) (382) (383) (384) (385) (386) (387) (388) (389) (390) (391) (392) (393) (394) (395) (396) (397) (398) (399) (400) (401) (402) (403) (404) (405) (406) (407) (408) (409) (410) (411) (412) (413) (414) (415) (416) (417) (418) (419) (420) (421) (422) (423) (424) (425) (426) (427) (428) (429) (430) (431) (432) (433) (434) (435) (436) (437) (438) (439) (440) (441) (442) (443) (444) (445) (446) (447) (448) (449) (450) (451) (452) (453) (454) (455) (456) (457) (458) (459) (460) (461) (462) (463) (464) (465) (466) (467) (468) (469) (470) (471) (472) (473) (474) (475) (476) (477) (478) (479) (480) (481) (482) (483) (484) (485) (486) (487) (488) (489) (490) (491) (492) (493) (494) (495) (496) (497) (498) (499) (500) (501) (502) (503) (504) (505) (506) (507) (508) (509) (510) (511) (512) (513) (514) (515) (516) (517) (518) (519) (520) (521) (522) (523) (524) (525) (526) (527) (528) (529) (530) (531) (532) (533) (534) (535) (536) (537) (538) (539) (540) (541) (542) (543) (544) (545) (546) (547) (548) (549) (550) (551) (552) (553) (554) (555) (556) (557) (558) (559) (560) (561) (562) (563) (564) (565) (566) (567) (568) (569) (570) (571) (572) (573) (574) (575) (576) (577) (578) (579) (580) (581) (582) (583) (584) (585) (586) (587) (588) (589) (590) (591) (592) (593) (594) (595) (596) (597) (598) (599) (600) (601) (602) (603) (604) (605) (606) (607) (608) (609) (610) (611) (612) (613) (614) (615) (616) (617) (618) (619) (620) (621) (622) (623) (624) (625) (626) (627) (628) (629) (630) (631) (632) (633) (634) (635) (636) (637) (638) (639) (640) (641) (642) (643) (644) (645) (646) (647) (648) (649) (650) (651) (652) (653) (654) (655) (656) (657) (658) (659) (660) (661) (662) (663) (664) (665) (666) (667) (668) (669) (670) (671) (672) (673) (674) (675) (676) (677) (678) (679) (680) (681) (682) (683) (684) (685) (686) (687) (688) (689) (690) (691) (692) (693) (694) (695) (696) (697) (698) (699) (700) (701) (702) (703) (704) (705) (706) (707) (708) (709) (710) (711) (712) (713) (714) (715) (716) (717) (718) (719) (720) (721) (722) (723) (724) (725) (726) (727) (728) (729) (730) (731) (732) (733) (734) (735) (736) (737) (738) (739) (740) (741) (742) (743) (744) (745) (746) (747) (748) (749) (750) (751) (752) (753) (754) (755) (756) (757) (758) (759) (760) (761) (762) (763) (764) (765) (766) (767) (768) (769) (770) (771) (772) (773) (774) (775) (776) (777) (778) (779) (780) (781) (782) (783) (784) (785) (786) (787) (788) (789) (790) (791) (792) (793) (794) (795) (796) (797) (798) (799) (800) (801) (802) (803) (804) (805) (806) (807) (808) (809) (810) (811) (812) (813) (814) (815) (816) (817) (818) (819) (820) (821) (822) (823) (824) (825) (826) (827) (828) (829) (830) (831) (832) (833) (834) (835) (836) (837) (838) (839) (840) (841) (842) (843) (844) (845) (846) (847) (848) (849) (850) (851) (852) (853) (854) (855) (856) (857) (858) (859) (860) (861) (862) (863) (864) (865) (866) (867) (868) (869) (870) (871) (872) (873) (874) (875) (876) (877) (878) (879) (880) (881) (882) (883) (884) (885) (886) (887) (888) (889) (890) (891) (892) (893) (894) (895) (896) (897) (898) (899) (900) (901) (902) (903) (904) (905) (906) (907) (908) (909) (910) (911) (912) (913) (914) (915) (916) (917) (918) (919) (920) (921) (922) (923) (924) (925) (926) (927) (928) (929) (930) (931) (932) (933) (934) (935) (936) (937) (938) (939) (940) (941) (942) (943) (944) (945) (946) (947) (948) (949) (950) (951) (952) (953) (954) (955) (956) (957) (958) (959) (960) (961) (962) (963) (964) (965) (966) (967) (968) (969) (970) (971) (972) (973) (974) (975) (976) (977) (978) (979) (980) (981) (982) (983) (984) (985) (986) (987) (988) (989) (990) (991) (992) (993) (994) (995) (996) (997) (998) (999) (1000)

**Pork Good Eating Anytime
Good Price Today!**

Pork Steak 89¢ LB.
Pork Roast 89¢ LB.
Ground Beef \$1.17 LB.

Pork Chops \$1.29 LB.
Quarter Pork Loins or Family Pak \$1.29 LB.

ODDS

PRIZE VALUE	NO. OF PRIZES	ODDS FOR ONE TICKET	ODDS FOR FIVE TICKETS
\$1000.00	2	75,000 to 1	15,000 to 1
\$100.00	15	15,000 to 1	3,000 to 1
\$50.00	40	3,750 to 1	750 to 1
\$25.00	70	2,143 to 1	429 to 1
\$1.00	1,373	100 to 1	20 to 1
TOTAL	1,500	100 to 1	20 to 1

ALL TICKETS MUST BE REDEEMED BY SATURDAY FOLLOWING MONDAY NIGHTS GAME!
NO PURCHASE NECESSARY
\$100.00 WINNERS
LEFT-DONNA RUSHING-
RIGHT-MELBA ABILA
OF KERMIT, TEXAS

THRIFTWAY INVITES YOU TO WATCH MONDAY NIGHT FOOTBALL AND PLAY TOUCHDOWN DOLLARS
THIS WEEK'S GAME **DALLAS VS. PHILADELPHIA**
NOVEMBER 12, 1979
\$1,000
YOU COULD WIN UP TO
PICK UP A TICKET EACH TIME YOU SHOP THRIFTWAY

SHURFRESH QUALITY ICE CREAM 89¢
SQUARE HALF GALLON CTN.

ZEE ASSORTED/PRINTED ZEE PAPER TOWELS 49¢
JUMBO ROLL

TOTAL GROCERY SAVERS
DREAM WHIP TOPPING 6 OZ. BOX \$1.09
TIDY CAT LITTER 10 LB. BAG 89¢
FOLGER'S MOUNTAIN GROWN COFFEE 1 LB. CAN \$3.19
FOLGER'S MOUNTAIN GROWN COFFEE 3 LB. CAN \$9.39
SHURFINE MACARONI & CHEESE DINNERS 5 7 1/2 OZ. BOXES \$1.00
CHEER DETERGENT KING CHEER 84 OZ. BOX \$2.59

SHURFINE IN PAPER BAG FLOUR 69¢
5 LB. BAG

DAIRY VALUES
SHURFRESH BUTTERMILK/SWEET MILK BISCUITS 4 8 CT. CANS 59¢
SHURFRESH SOFT MARGARINE 16 OZ. BOWL 59¢
SHURFRESH LONGHORN HALFMOON COLBY CHEESE 10 OZ. PKG. 99¢

PURE GRANULATED SHURFINE SUGAR \$1.09
5 LB. BAG

FROZEN FOODS
GREAT LITTLE DESSERT FRUIT PIES 8 OZ. BOX 39¢
SHURFINE FROZEN ORANGE CONCENTRATE JUICE 12 OZ. CAN 69¢
SHURFINE NON-DAIRY WHIPPED TOPPING 2 9 OZ. BOWL \$1.00

SHURFINE! CREAM STYLE OR WHOLE KERNEL GOLD CORN 4 \$1.00
17 OZ. CANS

SHURFINE SALTINE CRACKERS 2 \$1.00
16 OZ. BOXES

CARNATION-FRISKIES \$4.00 OFFER
CARNATION HOT COCOA MIX 12 CT. BOX \$1.19
BUFFET FOR CATS FRISKIES 4 6 1/2 OZ. CANS \$1.00
DINNERS FOR DOGS FRISKIES 3 14 OZ. CANS 89¢
CARNATION INSTANT MILK 8 QT. BOX \$2.49
COFFEE MATE CREAMER 16 OZ. JAR \$1.39

WASHINGTON RED OR GOLDEN DELICIOUS MIX OR MATCH APPLES 3 \$1.00
LBS.

HEALTH & BEAUTY AID SAVINGS
GLEEM TOOTH-PASTE 7 OZ. TUBE 99¢
DEODORANT SURE ROLL-ON 2.5 OZ. BTL. \$1.49
CONDITIONER REG./EX. BODY WELLA BALSAM 8 OZ. BTL. 99¢
SHAMPOO WELLA BALSAM 8 OZ. BTL. \$1.39
LOTION OIL OF OLAY 4 OZ. BTL. \$3.19
CREAM NIGHT VITALIZING OIL OF OLAY 2 OZ. JAR \$3.49

Coke. TAB. \$1.39
Two great refreshers
32 OZ. RETURNABLES PLUS DEPOSIT

Dr Pepper or 7up \$1.39
Plus Deposit

PALMOLIVE GOLD 4 \$1.00
BATH SIZE BARS

REGULAR OR SUPER KOTEX TAMPONS \$1.89
30 CT. BOX

S.H. GREEN STAMPS DOUBLE ON WED.

DANYA COOKWARE BY POINTERWARE
7 PIECE SET - 3 DECORATOR PATTERNS AT AN INCREDIBLE VALUE

PAGE'S THRIFTWAY
PRICES EFFECTIVE NOV. 4-10, 1979
LOCKNEY

MOVIE PROGRAMMING
11:00 AM
(1) MOVIE (COMEDY) *** "Café Society" 1927
(2) MOVIE (COMEDY) *** "Only the Lonely" 1937
(3) MOVIE (COMEDY) *** "The Day After Tomorrow" 1954
(4) MOVIE (COMEDY) *** "The Day After Tomorrow" 1954
(5) MOVIE (COMEDY) *** "The Day After Tomorrow" 1954
(6) MOVIE (COMEDY) *** "The Day After Tomorrow" 1954
(7) MOVIE (COMEDY) *** "The Day After Tomorrow" 1954
(8) MOVIE (COMEDY) *** "The Day After Tomorrow" 1954
(9) MOVIE (COMEDY) *** "The Day After Tomorrow" 1954
(10) MOVIE (COMEDY) *** "The Day After Tomorrow" 1954
(11) MOVIE (COMEDY) *** "The Day After Tomorrow" 1954
(12) MOVIE (COMEDY) *** "The Day After Tomorrow" 1954
(13) MOVIE (COMEDY) *** "The Day After Tomorrow" 1954
(14) MOVIE (COMEDY) *** "The Day After Tomorrow" 1954
(15) MOVIE (COMEDY) *** "The Day After Tomorrow" 1954
(16) MOVIE (COMEDY) *** "The Day After Tomorrow" 1954
(17) MOVIE (COMEDY) *** "The Day After Tomorrow" 1954
(18) MOVIE (COMEDY) *** "The Day After Tomorrow" 1954
(19) MOVIE (COMEDY) *** "The Day After Tomorrow" 1954
(20) MOVIE (COMEDY) *** "The Day After Tomorrow" 1954
(21) MOVIE (COMEDY) *** "The Day After Tomorrow" 1954
(22) MOVIE (COMEDY) *** "The Day After Tomorrow" 1954
(23) MOVIE (COMEDY) *** "The Day After Tomorrow" 1954
(24) MOVIE (COMEDY) *** "The Day After Tomorrow" 1954
(25) MOVIE (COMEDY) *** "The Day After Tomorrow" 1954
(26) MOVIE (COMEDY) *** "The Day After Tomorrow" 1954
(27) MOVIE (COMEDY) *** "The Day After Tomorrow" 1954
(28) MOVIE (COMEDY) *** "The Day After Tomorrow" 1954
(29) MOVIE (COMEDY) *** "The Day After Tomorrow" 1954
(30) MOVIE (COMEDY) *** "The Day After Tomorrow" 1954
(31) MOVIE (COMEDY) *** "The Day After Tomorrow" 1954
(32) MOVIE (COMEDY) *** "The Day After Tomorrow" 1954
(33) MOVIE (COMEDY) *** "The Day After Tomorrow" 1954
(34) MOVIE (COMEDY) *** "The Day After Tomorrow" 1954
(35) MOVIE (COMEDY) *** "The Day After Tomorrow" 1954
(36) MOVIE (COMEDY) *** "The Day After Tomorrow" 1954
(37) MOVIE (COMEDY) *** "The Day After Tomorrow" 1954
(38) MOVIE (COMEDY) *** "The Day After Tomorrow" 1954
(39) MOVIE (COMEDY) *** "The Day After Tomorrow" 1954
(40) MOVIE (COMEDY) *** "The Day After Tomorrow" 1954
(41) MOVIE (COMEDY) *** "The Day After Tomorrow" 1954
(42) MOVIE (COMEDY) *** "The Day After Tomorrow" 1954
(43) MOVIE (COMEDY) *** "The Day After Tomorrow" 1954
(44) MOVIE (COMEDY) *** "The Day After Tomorrow" 1954
(45) MOVIE (COMEDY) *** "The Day After Tomorrow" 1954
(46) MOVIE (COMEDY) *** "The Day After Tomorrow" 1954
(47) MOVIE (COMEDY) *** "The Day After Tomorrow" 1954
(48) MOVIE (COMEDY) *** "The Day After Tomorrow" 1954
(49) MOVIE (COMEDY) *** "The Day After Tomorrow" 1954
(50) MOVIE (COMEDY) *** "The Day After Tomorrow" 1954
(51) MOVIE (COMEDY) *** "The Day After Tomorrow" 1954
(52) MOVIE (COMEDY) *** "The Day After Tomorrow" 1954
(53) MOVIE (COMEDY) *** "The Day After Tomorrow" 1954
(54) MOVIE (COMEDY) *** "The Day After Tomorrow" 1954
(55) MOVIE (COMEDY) *** "The Day After Tomorrow" 1954
(56) MOVIE (COMEDY) *** "The Day After Tomorrow" 1954
(57) MOVIE (COMEDY) *** "The Day After Tomorrow" 1954
(58) MOVIE (COMEDY) *** "The Day After Tomorrow" 1954
(59) MOVIE (COMEDY) *** "The Day After Tomorrow" 1954
(60) MOVIE (COMEDY) *** "The Day After Tomorrow" 1954
(61) MOVIE (COMEDY) *** "The Day After Tomorrow" 1954
(62) MOVIE (COMEDY) *** "The Day After Tomorrow" 1954
(63) MOVIE (COMEDY) *** "The Day After Tomorrow" 1954
(64) MOVIE (COMEDY) *** "The Day After Tomorrow" 1954
(65) MOVIE (COMEDY) *** "The Day After Tomorrow" 1954
(66) MOVIE (COMEDY) *** "The Day After Tomorrow" 1954
(67) MOVIE (COMEDY) *** "The Day After Tomorrow" 1954
(68) MOVIE (COMEDY) *** "The Day After Tomorrow" 1954
(69) MOVIE (COMEDY) *** "The Day After Tomorrow" 1954
(70) MOVIE (COMEDY) *** "The Day After Tomorrow" 1954
(71) MOVIE (COMEDY) *** "The Day After Tomorrow" 1954
(72) MOVIE (COMEDY) *** "The Day After Tomorrow" 1954
(73) MOVIE (COMEDY) *** "The Day After Tomorrow" 1954
(74) MOVIE (COMEDY) *** "The Day After Tomorrow" 1954
(75) MOVIE (COMEDY) *** "The Day After Tomorrow" 1954
(76) MOVIE (COMEDY) *** "The Day After Tomorrow" 1954
(77) MOVIE (COMEDY) *** "The Day After Tomorrow" 1954
(78) MOVIE (COMEDY) *** "The Day After Tomorrow" 1954
(79) MOVIE (COMEDY) *** "The Day After Tomorrow" 1954
(80) MOVIE (COMEDY) *** "The Day After Tomorrow" 1954
(81) MOVIE (COMEDY) *** "The Day After Tomorrow" 1954
(82) MOVIE (COMEDY) *** "The Day After Tomorrow" 1954
(83) MOVIE (COMEDY) *** "The Day After Tomorrow" 1954
(84) MOVIE (COMEDY) *** "The Day After Tomorrow" 1954
(85) MOVIE (COMEDY) *** "The Day After Tomorrow" 1954
(86) MOVIE (COMEDY) *** "The Day After Tomorrow" 1954
(87) MOVIE (COMEDY) *** "The Day After Tomorrow" 1954
(88) MOVIE (COMEDY) *** "The Day After Tomorrow" 1954
(89) MOVIE (COMEDY) *** "The Day After Tomorrow" 1954
(90) MOVIE (COMEDY) *** "The Day After Tomorrow" 1954
(91) MOVIE (COMEDY) *** "The Day After Tomorrow" 1954
(92) MOVIE (COMEDY) *** "The Day After Tomorrow" 1954
(93) MOVIE (COMEDY) *** "The Day After Tomorrow" 1954
(94) MOVIE (COMEDY) *** "The Day After Tomorrow" 1954
(95) MOVIE (COMEDY) *** "The Day After Tomorrow" 1954
(96) MOVIE (COMEDY) *** "The Day After Tomorrow" 1954
(97) MOVIE (COMEDY) *** "The Day After Tomorrow" 1954
(98) MOVIE (COMEDY) *** "The Day After Tomorrow" 1954
(99) MOVIE (COMEDY) *** "The Day After Tomorrow" 1954
(100) MOVIE (COMEDY) *** "The Day After Tomorrow" 1954

FARM & RANCH NEWS

USDA to open grain inspection office

The U.S. Department of Agriculture will open a Federal Grain Inspection Service (FGIS) field office in Plainview, Tex., Nov. 5, 1979 at 3010 Olton Road.

The office will serve grain producers and tradesmen in the panhandles of Texas and Oklahoma, west Texas and eastern New Mexico. Hesser Westbrook, 36-year veteran of grain inspection, will be Field Office Supervisor, according to Jerry Cotter, FGIS Dallas Regional Director.

The office will supervise the grain inspection, appeal inspection and weighing activities of five inspection points — the Amarillo Grain Exchange, Farwell Grain Inspection Company, Guymon Grain Inspection, Inc., Lubbock Grain Inspection and Weighing, Inc. and Plainview Grain Inspection and Weighing, Inc.

The office will test and license qualified grain inspection personnel of the official agencies. These designated official inspection agencies average

approximately 150,000 inspections a year.

"The Plainview office was opened to relieve the Fort Worth office of about half its workload," said Cotter.

Westbrook, a native Texan, comes to Plainview from the Portland, Oregon FGIS field office. Westbrook's career in grain inspection began as a sampler at export elevators in Houston, Tex. in 1943. He worked as Chief Inspector of the Corpus Christi Grain Exchange and

the Port of Baton Rouge State Inspection Service. In 1963 he opened a private inspection point at Beaumont, Texas.

When FGIS took over official inspection duties at export locations in 1977, Westbrook joined the federal agency and transferred to Mobile, Alabama.

The Plainview office will open with six employees.

Wheat price to be determined by exports rate

"The price Texas and U.S. producers will receive for their wheat in the months ahead and the future will be directly related to the level and rate of expansion of exports," according to Leo Witkowski, Hereford, Chairman of the Texas Wheat Producers Board. "In deference to this fact," Witkowski said, "We are making one of our Board members available to Great Plains Wheat, Inc. to serve as a member of a three-man 15-day trade mission to

Europe." C.L. Edwards, a Carson County farmer of Panhandle, and immediate past-chairman of the Texas Wheat Producers Board, will begin the assignment October 9 by attending a two-day "All Western Europe Grain Trade Seminar" in Rotterdam. Others on the mission with Edwards will be Mike Hall, President, Great Plains Wheat, Inc., Washington, D.C. and Ron Walker, Executive Vice President, Colorado

Wheat Commission, Denver. After discussing the quality of the 1979 U.S. wheat crop with the Western European grain buyers and government officials at the Rotterdam session, the group will call on similar individuals in several Eastern European countries, including the Soviet Union in Moscow; East Germany in Berlin; Poland in Warsaw; and Romania in Bucharest.

Great Plains Wheat, Inc. is the U.S. wheat producers market development arm in Latin America, Europe and the Middle East and is supported by wheat commissions and producer boards in North Dakota, South Dakota, Nebraska, Colorado, Kansas, Oklahoma, Minnesota, Wyoming and Texas. The Texas Wheat Producers Board is a member of

GPW and is supported by individual producers through a 1/2 cent per bushel self-assessment on deliveries of their wheat to local elevators for research, market development and service programs.

Witkowski indicated that on-going market development activities conducted by U.S. producers through GPW and special missions such as the one Edwards is participating in has helped push U.S. wheat exports up from six hundred million bushels in 1971 when the Texas Wheat Producers Board was formed, to an expected one billion four hundred million bushels this year — a feat which has put rate acres back into production and strengthened prices over past levels.

Farm Bureau News Summary

INHERITANCE TAXES

Unless Congress repeals the carry-over basis of the Tax Reform Act of 1976, before December 31, 1979, it will become a part of the active law. The way the prior law worked before the 1976 Reform Act is as follows: A property is acquired in 1977 worth \$20,000; the owner dies in 1987 at which time the property is valued at \$100,000; his son inherits the land and decides to sell the property in 1989 for \$150,000. Under prior laws, the heir would pay capital gains on \$50,000, but under the "carry-over basis" he would have to pay a capital gain on the difference between \$20,000 and \$150,000, or \$130,000.

There is also the heavy burden of extensive record keeping that would be required if the "carry-over basis" is finally adopted.

The Carter administration is attempting to pacify anti-"carry-over basis" supporters by proposing an exemption from "carry-over basis" on estates valued at \$60,000 to \$175,000. Inflation would soon take care of this added benefit. The only way to stop the "carry-over basis" from going into effect on January 1, 1980, is to encourage Congressmen to vote for the repeal of the "carry-over basis" provision of the Tax Reform Act of 1976.

TRANSFER PAYMENTS

ECONOMIC INDICATORS, September 1979, reports the total 1978 U.S. transfer payments at \$224.1 billion. These payments are composed primarily of social insurance benefits, direct relief, and veterans' payments. Probably a better explanation is, the taking from one citizen and giving to another (transfer). These payments, from the U.S. treasury have been growing at a very rapid rate. The 1978 payments at \$224.1 billion are 238.15 percent of the \$94.1 billion transferred in 1971. Preliminary estimates for 1979, based on August figures, are \$260.8 billion, or 13.56 percent of the estimated total personal income, compared to 13.05 percent in 1978 and 10.95 percent in 1971.

COTTON EXPORTS

Cotton exports in the 1978-79 season (August-July) increased to 5.85 million running bales (6.81 million bales of 480 pounds net weight), compared with 5.22 million bales in 1977-78. Foreign demand was strong in 1978-79, as world consumption is estimated to have been nearly 63 million bales, an increase of 1.8 million over the 1977-78 level.

MEAT CONSUMPTION

USDA reports total per capita red meat and poultry consumption for 1979 at 208.8 pounds. This compares with 206.8 in 1978 and 205.6 in 1977. The lowest figure during this period is 191.8 in 1973.

The per capita consumption of beef in 1979 is estimated at 77.9 pounds, compared to 88.9 in 1978 and 83.6 pounds since 1971. The low point of this period was 1979 with a figure of 79.9 pounds per capita.

The per capita consumption of pork in 1979 at 65.4 pounds per capita is 14.9 percent above the 56.9 pounds per capita reported in 1978. The 1971 per capita consumption of pork was 68.2 pounds per capita; the low figure for this period is 51.2 pounds per capita in 1975.

BUTTER DISPOSAL

EEC gives away butter at reduced prices

Cotton Today

COURT DECIDES COTTON DUST SUITS: The District of Columbia Court of Appeals has sustained the general industry cotton dust standard for all sectors except cottonseed oil mills. Commenting on the decision, National Cotton Council President Hoke Leggett said, "The decision to remand the cottonseed oil section to OSHA is encouraging. But the court's approval of the balance of the standard is a bitter disappointment. The unfortunate thing is that the interest of workers, consumers, and the industry alike could have been better served by issuance of a less costly but equally effective standard. It's just another case," Mr. Leggett added, "where the country's already critical inflation problem is aggravated by regulatory irresponsibility."

The D. C. Court's decision does not directly affect cotton gins. The dust standard for gins remains under review in the New Orleans Fifth Circuit Court of Appeals.

COTTON EXPORTS SOAR: Sales of 385,300 running bales during the week ended October 14 propelled the current

Several good three bedroom Real Estate. Bond, 983-3573.

FOR SALE: Three bedroom room, one kitchen, new evaporative storage shed, paint, and floor. All this plus a 104 J.B. Ave. 293-8137 in P.M.

FOR SALE: Three bedroom 1 1/2 baths. Also home mobile home, storm cellar and 11 houses. Only \$17 W. Marivena tfe

FOR SALE: In Lockney. Call 652-

HOUSE FOR MACK BREAD 2324, or 983-

FOR SALE: Two two, two baths, 983-5020.

NEW LISTING: sale by owner, in good condition, location. Price, contact Owner, 983-5709.

GAINS-BARGAINS-B

TWO BEDROOM 2 1/2 BATH BRICK on lush green grass in quiet area, Lockney, Texas. Holds the charm of two fireplaces, formal dining, etc. All beautiful carpeted and draperies, two-car garage and large back yard. On corner lot.

LOCKNEY MOTEL: twelve unit motel plus carports, with two bedroom living quarters with night mobile homes. All on 1 1/2 acre located on Highway 70. The owner will consider a trade.

AND: 1977 with two irrigation wells, just northwest of Lockney on Highway 70. Owner will carry the paper.

Call Jimmie Irwin, office 792-6373, 7073, collect.

IRWIN REALTORS LUBBOCK

STORAGE SPACE: FURNITURE, etc. MONTH OR MONTH 10% DUNT.

BEST TEXAS STORAGE: 797 OR 983-2151

Can You Extra Let Us: WE BRUN, JUNKIE FREE Call 98-

Accidents Happen... Happens to be protected. car insurance coverage to your special - repairs to onal liability.

AKER: Insurance Agency 7 W. Calif. 983-3270

Ready-Mix Concrete: Ring & Finishing. Gravel Sand FIERROS & SONS 652-2224 Lockney

Time To Treat For Peach Tree Borers

by: Paul W. Treptow, Crosby-Floyd County Extension Entomologist

FLOYDADA — For homeowners with peach trees, fall is the best time to treat for one of the most destructive peach tree pests, the peach tree borer. A sure sign of the pest, says Paul Treptow, Crosby-Floyd County Extension Entomologist, is the gum oozing down the trunk or branches of the tree.

"This pest is mostly a pest of peach but is also found infesting plum, cherry and apricot trees," Treptow said. "Sooner or later, your trees stand a good chance of being infested."

Actually, two borers attack peach trees, he said. The larval stage of the peach tree borer feeds within the tree's cambian layer in an area approximately six inches above the soil line to six inches below. The lesser peach tree borer attacks the cambian layer of the upper portion of the tree's trunk and larger branches.

The approach to controlling these pests is basically the same, but the method of application differs. The best time for treatment is now until about Nov. 15.

Two fumigants generally used for peach tree borer control are paradichlorobenzene (PDB) crystals or ethylene dichloride in both the liquid and crystal forms.

PDB also is the active ingredient in some kinds of mothball crystals sold in five-and-dime or discount stores. Treptow said he saves considerable money by using mothballs as his source of PDB for borer control. However, some mothballs are made from naphthalene instead of PDB crystals and must not be used against borers.

Using fumigants around peach trees is a delicate operation and should be done with great care and precision.

"Clean soil should be placed over the crystals to form a cone-shaped pile about six inches high around the base of the tree. This soil should be removed from the base of the tree in late March or early April."

Treptow added that the amount of PDB to use is determined by age and size of the tree. In general, one-half ounce of crystals should be used for two- to three-year-old trees, three-fourths ounce for four- to five-year-old trees, and one ounce for mature trees.

Treptow said that both PDB and ethylene dichloride can also be used to treat peach trees infested by the lesser peach tree borer. Affected areas, recognized by masses of gum mixed with frass and sawdust running down the surface of the trunk and branches, should be treated after the leaves fall from the peach trees.

A mixture of four ounces PDB in one pint of miscible oil diluted in two pints of water or a smaller amount at the same proportions should be prepared. The mixture should be painted on the wounds and damaged areas, without encircling the trunk or limb.

When using ethylene dichloride for either peach tree borer or lesser peach tree borer control, proper rates and application instructions will be found on the product label.

For the homeowner with peach trees infested with either the peach tree borer or the lesser peach tree borer, Treptow concluded "control measures can greatly lengthen the life of the trees."

Further information on control of the peach tree borer is available at the county Extension office.

COTTON TALKS

FROM PLAINS COTTON GROWERS, INC.

"Save the family farm" has been one of the most worthy, most constant political slogans of our time. Political aspirants both Republican and Democrat, almost without exception, over the years have professed their allegiance to the "family farm" with the same fervor as to the flag.

And the current Administration is carrying on the tradition — with a slightly different twist. In the past, preserving the family farm was a matter of legislation to protect it against low prices, natural disasters, market manipulators and other common enemies of every agricultural producer.

This time, judging from the beginnings of the "Family Farm Task Force," the move may be toward a farm program and other Federal policies designed to protect the family farm from whatever category of farms Washington may decide is "non-family."

The task force was formed as a result of Agriculture Secretary Bob Bergland's decision to evaluate the role of government in determining the structure of agriculture. Task force director is Susan Sechler, Deputy Director of USDA's Office of Economics, Policy Analysis and Budget.

An early statement issued by Ms. Sechler said "The task force is concerned that the cumulative effect of Federal policies appears to have accelerated the trend toward fewer and larger farms..." Among the Federal policies referred to were those on taxes, price support systems and research and

extension. "The family farm is indeed a part of our heritage and the very foundation of our national culture," comments Donald Johnson, Executive Vice President of Plains Cotton Growers, Inc., Lubbock, "but there is inherent danger for agriculture when Washington sets out to draw a line between family and non-family farms and then design Federal tax laws, farm programs and other policies to protect one at the expense of the other."

What is a family farm? Is it a 40-acre strawberry patch in California, a 160-acre corn and hog farm in Iowa, or will a 1000 or 2000-acre West Texas cotton farm be included?

These are questions that concern not only High Plains farmers but farmers across the Cotton Belt where an efficient farm operation might well be too large to qualify as a family farm when future Federal policies are adopted.

"The prevailing philosophy in Washington seems to be that 'big is bad,'" Johnson notes, "and if that philosophy prevails when the 1981 farm program and future tax policies are written, commercial agriculture will be in trouble."

Secretary Bergland has called a series of five hearings across the Cotton Belt as a part of a "national dialogue" on the structure of agriculture. One is to be held December 6 in Wichita Falls, Texas. Written comments can be sent to Project Coordinator, Structure of Agriculture, USDA, Washington D.C. 20250.

Sponsored by the Following Interested Firms

First National Bank Floydada	Collins Implement Co. Floydada	Floyd County Farm Bureau
Case Power & Equipment Floydada	Russell's Equipment & Supply Floydada	Perry Implement Lockney
Floydada Cooperative Gins	Plainview Savings & Loan Association Floydada	Ansley & Son Lockney
McDonald Implement Co. Floydada	The Floyd County Hesperian	Floydada Implement Co.
Federal Land Bank Association Of Floydada	Consumers Fuel Association Lockney	Martin & Co.
		Brown Gin, Inc.

CLASSIFIED ADS sure to get results

Estate

Real Estate

Business Services

COW POKES

By Ace Reid

For Sale

For Sale

CLASSIFIED RATES

Several good three bedroom Real Estate. Wilson Bond, 983-3573. tfc

Three bedroom and 3 bedroom for sale. King Real Estate, 983-2881; 983-5028. tfc

Two and three homes for sale. Home Insurance and Real Estate at 983-3261. tfc

Three bedroom with 1 1/2 baths. Also mobile home, with storm cellar and full kitchen. Only \$17,000. 317 W. Marivena. tfc

LOVELY HOME: 202 E. Hallie. Herb. 983-3159. tfc

COMPLEX WITH TERMS, low interest. tfc

TO SELL: Lovely home 202 E. Hallie. Herb. 983-3159. tfc

TO SELL: Lovely home 202 E. Hallie. Herb. 983-3159. tfc

TO SELL: Lovely home 202 E. Hallie. Herb. 983-3159. tfc

TO SELL: Lovely home 202 E. Hallie. Herb. 983-3159. tfc

TO SELL: Lovely home 202 E. Hallie. Herb. 983-3159. tfc

TO SELL: Lovely home 202 E. Hallie. Herb. 983-3159. tfc

TO SELL: Lovely home 202 E. Hallie. Herb. 983-3159. tfc

TO SELL: Lovely home 202 E. Hallie. Herb. 983-3159. tfc

TO SELL: Lovely home 202 E. Hallie. Herb. 983-3159. tfc

TO SELL: Lovely home 202 E. Hallie. Herb. 983-3159. tfc

TO SELL: Lovely home 202 E. Hallie. Herb. 983-3159. tfc

TO SELL: Lovely home 202 E. Hallie. Herb. 983-3159. tfc

TO SELL: Lovely home 202 E. Hallie. Herb. 983-3159. tfc

TO SELL: Lovely home 202 E. Hallie. Herb. 983-3159. tfc

TO SELL: Lovely home 202 E. Hallie. Herb. 983-3159. tfc

TO SELL: Lovely home 202 E. Hallie. Herb. 983-3159. tfc

TO SELL: Lovely home 202 E. Hallie. Herb. 983-3159. tfc

TO SELL: Lovely home 202 E. Hallie. Herb. 983-3159. tfc

TO SELL: Lovely home 202 E. Hallie. Herb. 983-3159. tfc

TO SELL: Lovely home 202 E. Hallie. Herb. 983-3159. tfc

FOR SALE: Three bedroom, den, livingroom, two baths; All carpeted; storage building and shed. 983-3994. tfc

FOR SALE: Brick three bedroom, one bath, modern kitchen, new carpet and new evaporative air conditioner, storage shed, fruit trees, new paint, and fenced back yard. All this plus a great location. 104 J.B. Ave. Floydada. Call 293-8137 in Plainview after 5 p.m. tfc

FOR SALE - Brick duplex in Lockney. For information, call 652-3785. L12-30c

HOUSE FOR SALE: Joe Mack Breed 995-2202, 983-2324, or 983-3695. tfc

FOR SALE: Three bedroom, two baths, with two lots. 983-5020. tfc

NEW LISTING: House for sale by owner. Two bedroom in good condition and in good location. Priced to sell. Contact Owner Van Miller at 983-5709 11-15p

TO SELL: Lovely home 202 E. Hallie. Herb. 983-3159. tfc

TO SELL: Lovely home 202 E. Hallie. Herb. 983-3159. tfc

TO SELL: Lovely home 202 E. Hallie. Herb. 983-3159. tfc

TO SELL: Lovely home 202 E. Hallie. Herb. 983-3159. tfc

TO SELL: Lovely home 202 E. Hallie. Herb. 983-3159. tfc

TO SELL: Lovely home 202 E. Hallie. Herb. 983-3159. tfc

TO SELL: Lovely home 202 E. Hallie. Herb. 983-3159. tfc

TO SELL: Lovely home 202 E. Hallie. Herb. 983-3159. tfc

TO SELL: Lovely home 202 E. Hallie. Herb. 983-3159. tfc

TO SELL: Lovely home 202 E. Hallie. Herb. 983-3159. tfc

TO SELL: Lovely home 202 E. Hallie. Herb. 983-3159. tfc

TO SELL: Lovely home 202 E. Hallie. Herb. 983-3159. tfc

TO SELL: Lovely home 202 E. Hallie. Herb. 983-3159. tfc

TO SELL: Lovely home 202 E. Hallie. Herb. 983-3159. tfc

TO SELL: Lovely home 202 E. Hallie. Herb. 983-3159. tfc

TO SELL: Lovely home 202 E. Hallie. Herb. 983-3159. tfc

TO SELL: Lovely home 202 E. Hallie. Herb. 983-3159. tfc

TO SELL: Lovely home 202 E. Hallie. Herb. 983-3159. tfc

TO SELL: Lovely home 202 E. Hallie. Herb. 983-3159. tfc

TO SELL: Lovely home 202 E. Hallie. Herb. 983-3159. tfc

TO SELL: Lovely home 202 E. Hallie. Herb. 983-3159. tfc

APPLIANCE SERVICE: Service all major appliances, no mileage charge, 24 hour service. 797-9056 seven days a week. tfc

INSULATION Fire-Resistant. Installed and Guaranteed. MAHR Insulation Co. Lockney 652-3593. L14c

WILL DO ALL Types of carpenter work. Call 983-5201 after 5:30. tfc

WE DO INSULATION can help save your dollars. For information call 983-2601. tfc

WE DO Painting, floor leveling, house blocking, roofing and remodeling. We are now working Floydada Area. Contact Childress Bro. Collect 352-9563 tfc

NEED SOME OLD NEWS-PAPERS? We got all you want at the Beacon office, 220 South Main, Lockney. Come and get 'em Please! L14p

INTERIOR PAINTING WALL PAPERING Call Rena Turner or Nancy Mayo, 983-5130 or 983-2667. tfc

THIS MONTH'S SPECIAL: 12 x 12 storage building \$475 without floor. Delivered anywhere within 100 miles. Odam and Steel Building 983-2276, 322 W. Houston. 11-29c

ELECTROLUX SALES AND SERVICE Bags and supplies. Also call for free home demonstration 675-2718 Vicki Griffin 11-4p

WANT TO PAINT: All types of farm equipment (tractors, strippers, etc). Call Mark Mayo 983-5813 after 5, or D.C. Mayo 983-2220. tfc

CUSTOM STRIPPING: Three John Deere Strippers, Module Builder, trailers. 983-3828 or 983-2969. tfc

Fireplaces BY MAJESTIC BUILT-IN OR FREE-STANDING CALL OR COME BY ALUROY MCCORMICK 107 WILLOW LOCKNEY 652-2572 L TFC

"Carpet Need Cleaning?" Let me do the work for you. Dry foam, 10 cents sq. foot. Call Jack Moore 983-3033 after 5 p.m. tfc

LET US DO YOUR HERBICIDE and insecticide spraying. We have two ground rigs and an airplane available. Lone Star Chemical. Lone Star Chemical, Inc. Office: 652-2761 Deanie Henderson: 652-3434 L TFC

STOP PAINTING Cover all outside walls and overhang with U.S. Steel Products FREE ESTIMATES Stan-By Steel Siding 1501 N. Columbia Plainview, Texas Phone: 293-9330 L14c

Ready-Mix Concrete Forming & Finishing Rock Gravel Sand FIERROS & SONS 652-2224 Lockney L TFC

FARMS-RANCHES-CITY PROPERTIES-BUSINESS LEASES-LOANS B. B. WILKES BROKER REAL ESTATE 100 S Main, Lockney Barry Barker, Solicitor Barker Insurance Agency-652-2642 IF IT IS INSURANCE -SEE- BARKER INSURANCE AGENCY LIFE-FIRE-CASUALTY-HOSPITAL



"Yep, folks, if you don't mind droughts, dust, tornadoes, snakes, spiders, and stingin' scorpions, you're gonna love this place!"

THIS FEATURE SPONSORED BY Floydada Real Estate & Insurance Agency AUTO, FIRE & FARM INSURANCE Jim Word --- Phone 983-2360

TURNER REAL ESTATE 983-2635 Farms, Ranches Floydada, Texas

Diamond Industrial Supply Co., Inc. Phone Days 296-7418 Nights 296-1260 or 296-7-28 1014 Broad way Plainview, Texas

Chain Sprockets V belts Sheaves U joints Oil Seals O rings Wisconsin SKF RCA Timken Bower Cotton Stripper Brushes & Bats "We Appreciate Your Business More" L14c

Public Notices

NOTICE TO BIDDERS The City of Floydada, Texas will receive sealed bids at the office of the City Secretary at 114 W. Virginia until 7:30 P.M., November 13, 1979 and then opened and publicly read at the City Council meeting at 7:30 P.M. in the council meeting room at the City Hall for the following equipment to be delivered FOB, Floydada, Texas:

One computer. The computer to be furnished under this proposal shall come with Central processor with 192 thousand bytes (KB) expandable to 512 KB user memory, and 2 MHz clock speed, one (1) 15 inch, 120 character per second (CPS) bi-directional console printer, one (1) 256 character (expandable to 1,920) operator display, one (1) 18.8 million bytes (MB) fixed disk storage, two (2) 3.0 MB minidisk backup and one (1) 1,920 character CRT workstation with keyboard. The system shall have the capability to add another 37.6 MB fixed disk, add two (2) printers with speeds of 650 LPM and add five (5) CRT workstation with keyboard.

The City of Floydada requires that any vendor be responsible for the equipment, programs, training, forms, supplies and support. Any additions, deletions or variations from the specifications, (a copy may be obtained at City Hall, 114 W. Virginia, Floydada, Texas) must be noted. These specifications shall be construed as minimum. Specifications also require that the bidder furnish descriptive literature, complete specifications and all other necessary data on the equipment he proposes to furnish. Service Center must be within 100 miles of the City Hall, Floydada, Texas. Payment will be secured by warrants issued to the vendor and paid by the First National Bank, Floydada, Texas. Exemption certificates will be issued upon request by the City Secretary, Floydada, Texas. The City Council of the City of Floydada, Texas reserves the right to accept or reject any or all bids submitted. /s/ Parnell Powell Mayor

/s/ Jimmie Lou Stewart City Secretary 11-4c

NOTICE TO ALL PERSONS HAVING CLAIMS AGAINST THE ESTATE OF RUBY MUNCY Notice is hereby given that original Letters Testamentary for the Estate of Ruby Muncy, Deceased, were issued on October 31, 1979, in Cause No. 4438, pending in the County Court of Floyd County, Texas, to: Bobbie M. Atwood and Trois I. Payne The residence of such Co-Executrices is Lubbock County, Texas. The post office address is: Bobbie M. Atwood 4936 47th Street Lubbock, Texas 79414 Trois I. Payne 5228 14th Street Lubbock, Texas 79416

All persons having claims against this Estate which is currently being administered are required to present them within the time and in the manner prescribed by law. DATED the 1st day of November, 1979. NORTON BAKER Attorney for the Estate

QUILTS FOR SALE: Verdie Smith, 218 SW 4th, Lockney, 652-2648. L11-8c

FOR SALE: Portable Dish-washer, Kenmore, 2 1/2 years old, butcherblock top \$150 983-5348. tfc

FOR SALE: Thirty inch electric stove. Good condition. \$125.00 652-3414. L14c

FOR SALE: Baled alfalfa and baled oats. Thomas Pierce 983-2578 tfc

FOR SALE: 560 Int. tractor, stripper & basket. John Blue cotton module. Contact Bill Long, Siverton. 11-p

FOR SALE: MUST SELL IMMEDIATELY. LOT IN WEST FLOYDADA. Jim Reynolds, Phone 806-675-2881 or 806-675-2888, CROSBYTON. 11-11-c

FOR SALE: 125 acres dry land about 90 acres in cultivation. Cedar Hill Community. 983-2758. 11-4p

WANTED TO BUY irrigated or dryland farm in Floyd or surrounding area. Write Box XRO, c/o Hesperian, Box 700, Floydada, TX

WANTED: Experienced Mechanic-Full Time. Apply in person. M & N Automotive, 507 E. Mo. tfc

WANTED: Experienced spreader truck driver. Call Riverside Chemical Co. 652-2393. Equal opportunity employer. L11-11c

HELP WANTED Need a mature responsible assistant manager at Highway 70 Texico Lockney. Must be neat, intelligent and able to work with numbers. Contact Elmo Savage 652-8895 tfc

Pretty Kittens to give away. Call 652-3560. L11-8p

FREE: Puppies to give away. 983-3136. 11-4c

Beautiful Wedding Stationery SCHACHTS' L14c

356.00 Weekly Guaranteed. Work 2 hours daily at home (178.00 for one hour). Free brochure. B.J. H. P.O. Box 43, Floydada, Texas 79235. tfc

You Know It Confidence has been described as that quiet, absolutely assured feeling you have just before you fall flat on your face.

Don't Go to College Alone.....

Take A Friend With You Subscribe To The Hesperian & The Beacon Phone 652-3318

FOR SALE: Dearborn heater. 983-2906. 11-4c

PEANUTS FOR SALE - Fresh roasted, salted; Also shelled raw peanuts; cooking oil - gallon size, at Roy's Drug and the A.A.M. office, Quitaque. 111-15c

FOR SALE: Kenmore Electric cookstove, double oven, avocado green. 983-3853. tfc

LOCAL GROWN shelled pecans for sale, from the Bill Sherman Farm. Three pounds for \$10. See a Floyd County 4-H member or call Eddie Joe Foster (652-3540) or the County Extension office (983-2806). 11-4c

FOR SALE: Early American coffee table and end table. 983-5455 or 983-5003. Mrs. Boone Adams. 11-11c

FOR SALE: 1978 Cutlass Broughm 30,000 miles, \$5295, 983-3737 or after five 983-2783. tfc

FOR SALE: 1964 Volkswagen. Phone 983-3822 after 5 p.m. tfc

\$356.00 Guaranteed Weekly. Work 2 hours daily at home. Free brochure and application. Not a rip-off. Write ED-1402 Greencove Garland, Texas. 75040. tfc

OWN YOUR OWN highly profitable and beautiful Blue Jean Store and Fashion Shop. Mademoiselle Fashions offers this unique opportunity. Brand names such as Lee, Levi, Wrangler, Faded Glory, Male, Landlubber, and over 30 other nationally-known brands and related sportswear. \$15,500.00 includes beginning inventory, training, fixtures, and Grand Opening promotion. For information call 214-634-2066 for Mr. Wilkerson. 11-4c

WANTED: Experienced Mechanic-Full Time. Apply in person. M & N Automotive, 507 E. Mo. tfc

WANTED: Experienced spreader truck driver. Call Riverside Chemical Co. 652-2393. Equal opportunity employer. L11-11c

HELP WANTED Need a mature responsible assistant manager at Highway 70 Texico Lockney. Must be neat, intelligent and able to work with numbers. Contact Elmo Savage 652-8895 tfc

356.00 Weekly Guaranteed. Work 2 hours daily at home (178.00 for one hour). Free brochure. B.J. H. P.O. Box 43, Floydada, Texas 79235. tfc

You Know It Confidence has been described as that quiet, absolutely assured feeling you have just before you fall flat on your face.

Don't Go to College Alone.....

Take A Friend With You Subscribe To The Hesperian & The Beacon Phone 652-3318

CLASSIFIED ADVERTISING RATE: 15 CENTS PER WORD FIRST INSERTION; 10 CENTS PER WORD EACH SUBSEQUENT INSERTION. MINIMUM CHARGE 12.00. CLASSIFIED DISPLAY RATE: \$1.40 PER COLUMN INCH CARD OF THANKS: \$2.00.

Autos For Sale 4 shocks for the price of 3. Free installation. 123 W. Calif. tfc

FOR SALE: 1969 Pontiac sedan, excellent condition. Harley Workman, 652-3619. L14c

FOR SALE: 1978 Cutlass Broughm 30,000 miles, \$5295, 983-3737 or after five 983-2783. tfc

FOR SALE: 1964 Volkswagen. Phone 983-3822 after 5 p.m. tfc

\$356.00 Guaranteed Weekly. Work 2 hours daily at home. Free brochure and application. Not a rip-off. Write ED-1402 Greencove Garland, Texas. 75040. tfc

OWN YOUR OWN highly profitable and beautiful Blue Jean Store and Fashion Shop. Mademoiselle Fashions offers this unique opportunity. Brand names such as Lee, Levi, Wrangler, Faded Glory, Male, Landlubber, and over 30 other nationally-known brands and related sportswear. \$15,500.00 includes beginning inventory, training, fixtures, and Grand Opening promotion. For information call 214-634-2066 for Mr. Wilkerson. 11-4c

WANTED: Experienced Mechanic-Full Time. Apply in person. M & N Automotive, 507 E. Mo. tfc

WANTED: Experienced spreader truck driver. Call Riverside Chemical Co. 652-2393. Equal opportunity employer. L11-11c

HELP WANTED Need a mature responsible assistant manager at Highway 70 Texico Lockney. Must be neat, intelligent and able to work with numbers. Contact Elmo Savage 652-8895 tfc

356.00 Weekly Guaranteed. Work 2 hours daily at home (178.00 for one hour). Free brochure. B.J. H. P.O. Box 43, Floydada, Texas 79235. tfc

You Know It Confidence has been described as that quiet, absolutely assured feeling you have just before you fall flat on your face.

Don't Go to College Alone.....

Take A Friend With You Subscribe To The Hesperian & The Beacon Phone 652-3318

Farm Bureau News Summary

INHERITANCE TAXES Congress repeals the carry-over basis of the Tax Reform Act of 1976. Effective December 31, 1979, it will be a part of the active law. The prior law worked before the Tax Reform Act is as follows: A decedent dies in 1977 worth \$100,000. His heirs inherit the property valued at \$100,000. The property is sold in 1989 for \$150,000. The heirs would pay taxes on \$50,000, but under the carry-over basis he would have to pay taxes on the difference \$20,000 and \$150,000, or \$170,000.

Also the heavy burden of record keeping that would be required if the "carry-over basis" is adopted. The current administration is attempting to specifically anti-"carry-over basis" by proposing an exemption "carry-over basis" on estates over \$50,000. Inflation has increased the value of the property to \$170,000. The carry-over basis would stop the carry-over basis from going into effect. January 1, 1980, is the date Congressmen to vote for the "carry-over basis" provision of the Tax Reform Act of 1976.

TRANSFER PAYMENTS COMIC INDICATORS, September, reports the total 1978 U.S. payments at \$224.1 billion. Payments are composed primarily of insurance benefits, direct payments to veterans, and other payments. The explanation is, the taking of the citizen and giving to another citizen. These payments, from the federal government, have been growing at a rate. The 1978 payments at \$224.1 billion, are 238.15 percent of the total transferred in 1971. Pre-estimates for 1979, based on current rates, are \$260.8 billion, or 116.4 percent of the total income, compared to 13.05 percent in 1978 and 10.95 percent in 1977.

COTTON EXPORTS Exports in the 1978-79 season (July) increased to 5.85 million bales (6.81 million bales of 480 lb weight), compared with 5.22 million in 1977-78. Foreign demand is strong in 1978-79, as world production is estimated to have been 12 million bales, an increase of 1 million over the 1977-78 level.

MEAT CONSUMPTION Reports total per capita red meat consumption for 1979 are 122.6 pounds. This compares with 121.8 pounds in 1978 and 120.6 in 1977. The increase during this period is 19.1 percent.

PER CAPITA CONSUMPTION OF BEEF in 1978-79 season (July) increased to 5.85 million bales (6.81 million bales of 480 lb weight), compared with 5.22 million in 1977-78. Foreign demand is strong in 1978-79, as world production is estimated to have been 12 million bales, an increase of 1 million over the 1977-78 level.

PER CAPITA CONSUMPTION OF PORK in 1978-79 season (July) increased to 5.85 million bales (6.81 million bales of 480 lb weight), compared with 5.22 million in 1977-78. Foreign demand is strong in 1978-79, as world production is estimated to have been 12 million bales, an increase of 1 million over the 1977-78 level.

PER CAPITA CONSUMPTION OF CHICKEN in 1978-79 season (July) increased to 5.85 million bales (6.81 million bales of 480 lb weight), compared with 5.22 million in 1977-78. Foreign demand is strong in 1978-79, as world production is estimated to have been 12 million bales, an increase of 1 million over the 1977-78 level.

PER CAPITA CONSUMPTION OF TURKEY in 1978-79 season (July) increased to 5.85 million bales (6.81 million bales of 480 lb weight), compared with 5.22 million in 1977-78. Foreign demand is strong in 1978-79, as world production is estimated to have been 12 million bales, an increase of 1 million over the 1977-78 level.

PER CAPITA CONSUMPTION OF LAMB in 1978-79 season (July) increased to 5.85 million bales (6.81 million bales of 480 lb weight), compared with 5.22 million in 1977-78. Foreign demand is strong in 1978-79, as world production is estimated to have been 12 million bales, an increase of 1 million over the 1977-78 level.

PER CAPITA CONSUMPTION OF VEAL in 1978-79 season (July) increased to 5.85 million bales (6.81 million bales of 480 lb weight), compared with 5.22 million in 1977-78. Foreign demand is strong in 1978-79, as world production is estimated to have been 12 million bales, an increase of 1 million over the 1977-78 level.

IRWIN REALTORS LUBBOCK 111-15c

Shop Floyd County FIRST!

Garage Space

Can You Use Some Extra Money Let Us Help!!!!

STOP PAINTING

Ready-Mix Concrete

BAKER Insurance Agency

WANT TO PAINT: All types of farm equipment

Fireplaces

Can You Use Some Extra Money Let Us Help!!!!

STOP PAINTING

Ready-Mix Concrete

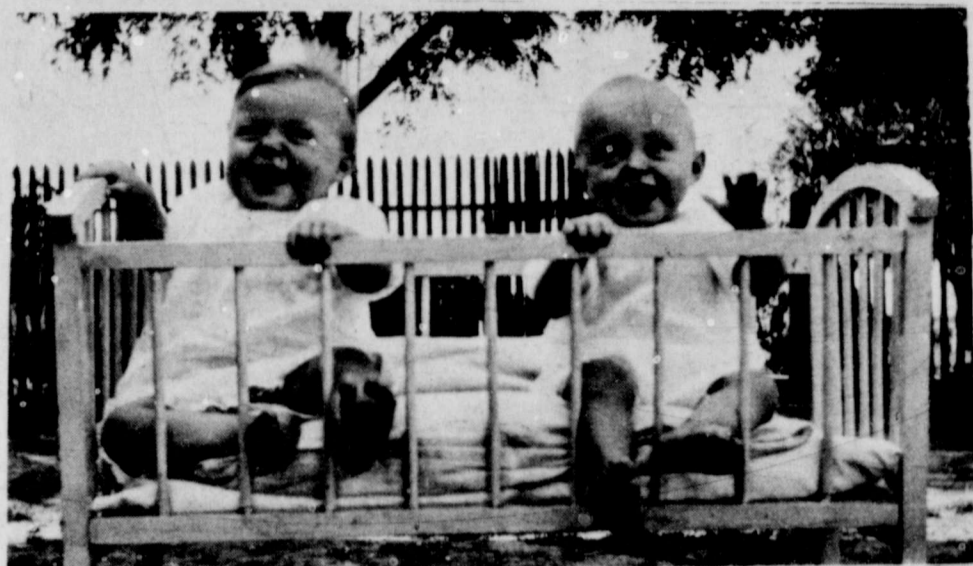
BAKER Insurance Agency

TURNER REAL ESTATE 983-2635 Farms, Ranches Floydada, Texas

Diamond Industrial Supply Co., Inc.

<

WHOZITS . . .



LOCKNEY WHOZIT - These happy twins were a year old when they were photographed in 1928. They were born

in the Providence community. Do you know who they are? Call The Lockney Beacon, 652-3318, Monday through Thursday, to identify them.



LAST WEEK - The Lockney Whozit last week was a tough one. Nobody correctly identified all six of the people clowning in front of the old building. Bill Evans got five right, correctly guessing Kenneth Wofford, Lowell Jarrett, Harold Griffith, Kathy [Thornton] Kellison and Clyde Farish. The woman second from left in the photo is Jann [Wofford] Ball. Evans thought it was Dorothy Jarrett. Linda Glasson guessed right on three of the Whozit subjects [Wofford, Griffith and Farish] but thought the others were Jean Curtsinger, Larry Jarrett and Dorothy Jarrett. Several other Whozit guesses were 'way off.



FLOYDADA WHOZIT

This week's Floydada Whozit was five years old when this picture was taken in 1953. He is reported to be fond of motorcycles and has a sometimes electrifying job.

LAST WEEK'S FLOYDADA WHOZIT

LAST WEEK - Willie Smith, Sam Spence, Helen Soloman, Mrs. Wesley Carr and the entire staff at Andrews Ward School correctly guessed last week's Floydada Whozit as race car builder Don Hardy.

Deaths

Brother of Lockney woman dies in Tulia

Services for Ershall Dallas, 55, of Tulia were held Friday afternoon at the Sixth and Gaines Streets Church of Christ in Tulia. The church minister, Ernest Smith, officiated. Burial was in Rose Hill Cemetery, directed by Wallace Funeral Home.

He was dead on arrival at Swisher Memorial Hospital, Tulia, at 10:45 p.m. Wednesday, from an apparent heart attack.

Dallas was born September 2, 1924 in Baird. He moved to Tulia when he was two years old. He married Louise Ewing on November 17, 1945 in Temple. Dallas served in World War II and was a member of the Veterans of Foreign Wars and the Disabled American Veterans.

Survivors include his wife; two daughters, Edwina Doud of Hurst and Rita Guhn of Fort Worth; two sisters, Dorothy Smith of Lockney and Willie Cartwright of Amarillo; a brother, James Dallas of Lubbock; four grandchildren and seven step-grandchildren.

Carpenter Services Held

Services for Claude L. Carpenter, 92, will be at 2:30 Saturday November 3 at the First Baptist Church in Floydada. Dr. Floyd Bradley will officiate.

Burial will be in Floyd County Memorial Park under direction of Moore Rose Funeral Home.

Survivors include his wife Sally; two sons Marion Carpenter of Floydada and Dale Carpenter of Irving; one daughter Mrs. Joe Conway of Irving; ten grandchildren, 11 great grandchildren and two great-great grandchildren.

Remember your loved ones with a memorial to Lockney General Hospital Memorial Fund. These memorials go toward equipment to help serve our community in the best way possible.

REMEMBER your loved ones with a living memorial to the Caprock Hospital Auxiliary Memorial Fund. Mrs. Ben Whitaker, Treasurer.

Thinking About Your Crop Disaster?

Call

Agri-Services, Inc.

806-983-2106

Specialist In SBA Loan Packages



SCHOOL LUNCH MENU

FLOYDADA

November 5 - 9

Monday:
Breakfast: fruit juice, oatmeal, milk.
Lunch:
Jeno's Pizza
Cheese Wedge
Lettuce/Tomato
Whole Kernal Corn
Pear Half
Milk

Tuesday:
Breakfast: fruit juice, hot biscuit, butter, jelly, milk.
Lunch:
Fish/Catsup
French Fries
Cole Slaw
Hot Roll/Butter
Honey (in cup)
Milk

Wednesday:
Breakfast: fruit juice, scrambled eggs, hot biscuit, milk.
Lunch:
Pigs in Blanket/Mustard

Thursday:
Breakfast: fruit juice, sweet rice, milk.
Lunch:
Hamburger/Mustard
Tater Tots/Catsup
Sliced Tomato/Dill Pickle
Fruit Jello
Milk

Friday:
Breakfast: fruit juice, cinnamon roll, milk.
Lunch:
Chicken Planks

Blackeye peas
Dill Pickle Spears
Peach Half
Milk

Breakfast: fruit juice, sweet rice, milk.
Lunch:
Hamburger/Mustard
Tater Tots/Catsup
Sliced Tomato/Dill Pickle
Fruit Jello
Milk

Breakfast: fruit juice, cinnamon roll, milk.
Lunch:
Chicken Planks

Cheese Wedge
Mashed Potatoes/Gravy
French Cut Green Beans
Peanut Butter Cookie
Whole Wheat Roll
Milk

Carpenter's

Alternator Service

Has Assumed The

Niehoff Dealership

To Replace Delco, Motorola, Etc.

Dirt & Dust Does Not Effect These Alternators

Carpenter's Alternator Service Parts & Service

224 West Marivena

Floydada

983-3444

BUDDY'S

220 S. 2ND
Store Hours

Mon.-Sat., 8 a.m. to 9 p.m. Sun., 9 a.m. to 8 p.m.

Values In This Adv Effective Through Wednesday November 7, 1979

We Reserve The Right To Limit Quantities

WE GIVE S&H GREEN STAMPS

9 Ounce Mortons
Honey Buns
2/99¢
79¢ Value

14 Ounce Mortons Family Pack
Donuts
89¢
1.09 Value

6 - 32 Ounce
Coke or Tab
\$1.79 Plus Deposit
2.29 Value

4 Roll White Cloud
Bathroom Tissue
79¢
1.29 Value

VALUES IN THIS AD IN ADDITION TO OUR THURSDAY

1 Pound Hills Bros
COFFEE
\$2.69
3.65 Value

1 1/2 Pound Soft N Lite
BREAD
39¢
59¢ Value

1/2 Gallon Bordens
Ice Milk 99¢
1.79 Value

Firm Green
Cabbage 89¢
Tasty

7 Ounce Jeno's
Mini Pizza 2/\$1.59

Sweet Potatoes 4 \$1.00
Golden Ripe

1 Pound Corn King
Bacon \$1.39

Bananas 4 \$1.00
Dash \$4.99
6.99 Value

USDA
Ground Beef \$1.59 Lb.

211 Ounce Home Laundry
Ivory \$1.19
1.87 Value

Family Pack
Pork Chops \$1.39 Lb.

32 Ounce King Size
Crackers 2/\$1.29
83¢ Value

Buddy's
Milk 99¢
1.24 Value

19 Ounce Nabisco
Cookies \$1.19
1.49 Value

1 Pound Nabisco
Crackers 2/\$1.29
83¢ Value

14 Ounce Kraft
Caramels 79¢
99¢ Value

10 Ounce Campbells Chunky
Beef Soup 2/89¢

32 Ounce Ragu
Spaghetti Sauce \$1.19
1.69 Value

30 Ounce Gebhardt's Jumbo
Tamales 69¢
1.09 Value

PERRY'S
ALUMINUM FOIL 4 ROLLS FOR \$1.00
STARTS TODAY NOVEMBER
SALE
Specials on every counter!
IF YOU WANT VARIETY WE HAVE IT...

PERRY'S HOLIDAY FABRIC SALE 12¢ EACH
HOLIDAY SATINETTE
Woven Satin. 45" Wide. Machine Wash.