

Osce of Amarillo and Raymond of San Diego, Calif.; six sisters, Lola Bell and Nell Cross, both of Canyon, Lillie Higgins of Amarillo, Pearl Warts of Lubbock, Jessie Vines of Flippin, Ark., and Grace Baughman of Plainview; four grandchildren; and one great-grandchild.

Sparkman Baby Rites Stated
Services for Erica Denise Sparkman, four months old, of Route F., Lockney were held Tuesday afternoon in

Evans Chapel. The Rev. Bennie Ralls officiated in the Lockney under the direction of Rose Funeral Home.

The baby died Monday in Lockney Hospital. She was born March 31, 1979.

Survivors include mother, Vickie; father, James Henderson; and parents Mr. and Mrs. Levie Tucker of

983-3149

We Take W.I.C. Cards
We Take U.S.D.A. Food Coupons

12 Ounce Keebler Vanilla Wafers 2/\$1.29 89¢ Value

1/2 Gallon Buddy's Milk 99¢ 1.29 Value

12 Count Ball Regular Jar Lids 3/\$1.00 50¢ Value

16 Ounce Raid Professional Strength Ant And Roach Spray \$2.99 \$3.59 Value

10 Pound All Purpose Potatoes 89¢

Fresh Green Bunches Onions 3 \$4.99

Firm Green Cabbage 10¢

1 Pound Cello Carrots 4/\$1.00

Pepsodent Toothbrush 39¢ 89¢ Value

1 Pound Maryland Club Coffee \$2.99 With Coupon \$3.19 Without Coupon Expires 9-5-79

Good At Buddy's 6-12 Ounce Can Coke Or Dr Pepper \$1.29 With Coupon \$1.49 Without Coupon Expires 9-5-79

Good At Buddy's

Good At Buddy's

Good At Buddy's

Good At Buddy's

Good At Buddy's

Good At Buddy's

Good At Buddy's

Good At Buddy's

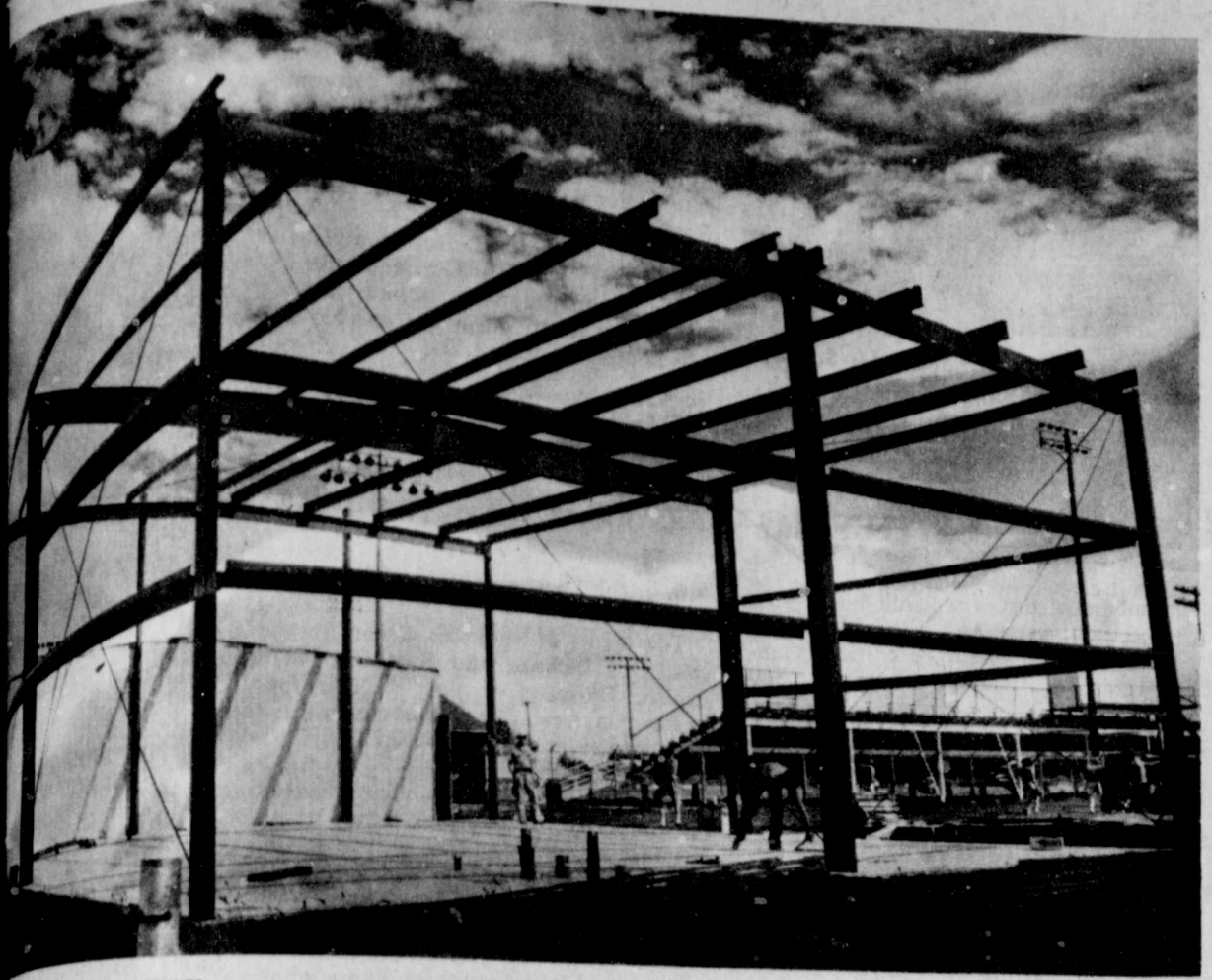
Good At Buddy's

Good At Buddy's

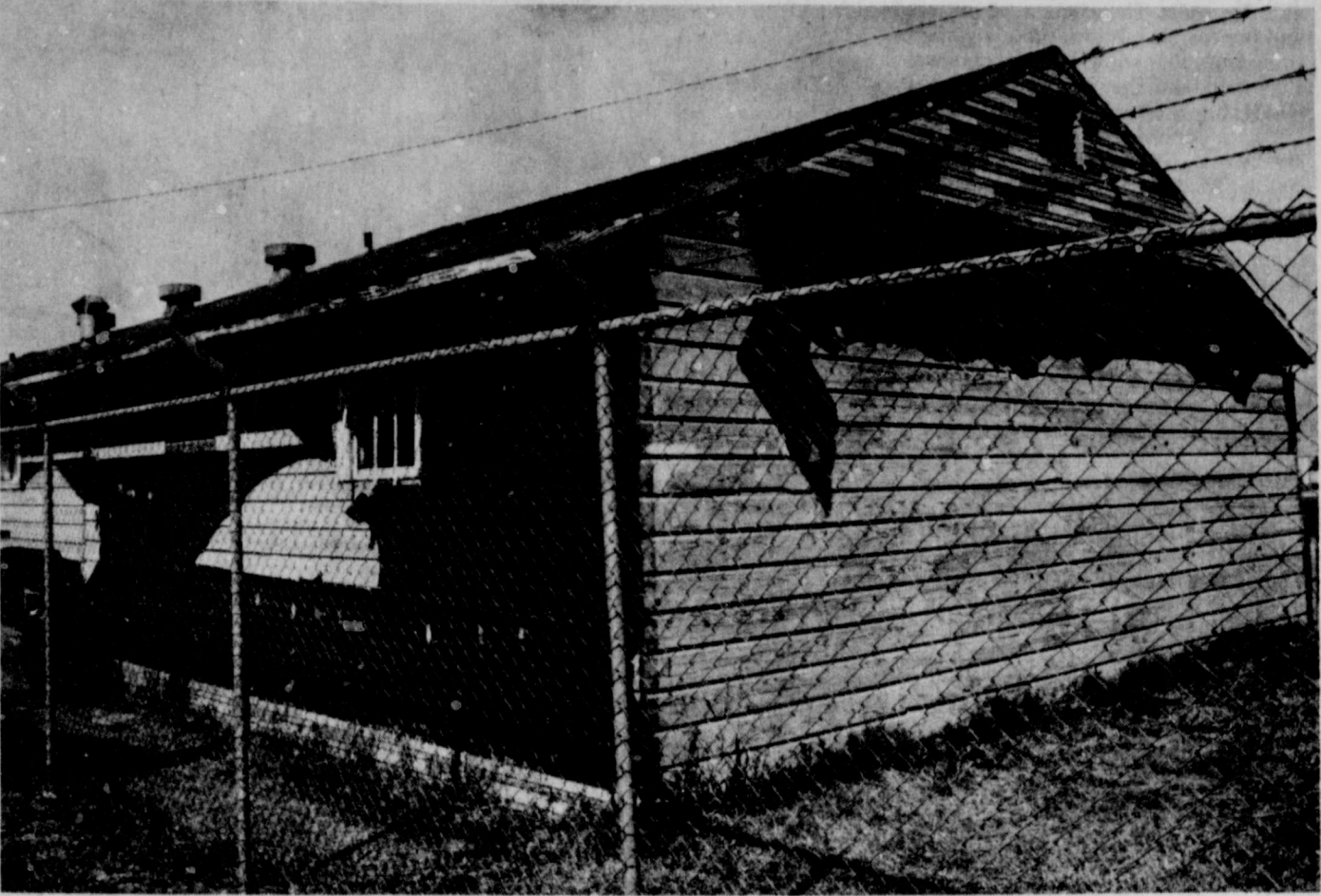
Good At Buddy's

Good At Buddy's

Good At Buddy's



CONSTRUCTION UNDERWAY on new addition at Mitchell Field (home of the Longhorn players and coaches are metal building isn't expected to be completed in time for use at the 'Horns' first home game September 14. The Longhorn players and coaches are



FAREWELL, OLD FAITHFUL—This old dressing-room building at the Lockney school football field will soon be a thing of the past. It's been in use at the present site since 1954, but it won't be needed once the new fieldhouse addition is completed. [Staff Photo]

The Lockney Beacon

Volume 78 Lockney (Floyd County) Texas 79241 Sunday September 2, 1979 22 Pages In Two Sections Number 70

President To Install Hospital Auxiliary Officers

(Bell) Marks of Dallas, of the Texas Association of Hospital Auxiliaries, will install officers of the Lockney General Hospital Auxiliary during a meeting of the auxiliary Thursday afternoon, 7:30 p.m. in the Rebekah Room, 210 West Washington. She is welcome to attend. Officers will be elected and a new president installed. Marks is a member of the Texas Association House of Delegates, the IHA Council on Hospital Auxiliary, the past president of the Central Hospital Auxiliary, and a member of White Rock Methodist Church in Dallas.

ACCO Seed Announces Staff Changes

ACCO Seed has announced two staff changes in the offices at the Aiken farm located between Lockney and Plainview.

Gary Duncan has assumed the position of Paymaster Brand sales manager for the southern 14 states of the U.S. And LeRoy Houdeshell has moved from ACCO headquarters in Belmond, Iowa, to become administrative manager in charge of accounting and administrative office functions.

Duncan, who joined ACCO in 1965 after completing his master's degree in agronomy, has lived in Plainview and worked at Aiken since 1977. He came to Aiken as regional dealer sales manager for Texas, New Mexico and Oklahoma. In 1978 responsibility for distributor sales of corn and sorghum were assumed and responsibility for cotton sales were added in July of this year.

The Waurika, Oklahoma, native enrolled in Oklahoma State University at Stillwater to earn his bachelor of science degree in 1961 and his master's degree four years later. While studying for his master's degree, he was superintendent for three years of the university's grass research program at El Reno, Oklahoma.



BELLE MARKS

Farmers Invited To Paymaster Field Day Wednesday

Dr. Ted Givens, Paymaster Sorghum Research, will introduce Paymaster's five new grain sorghum hybrids and Gary Duncan will conduct a corn variety demonstration and yield tour featuring Paymaster's 5 new corn hybrids.

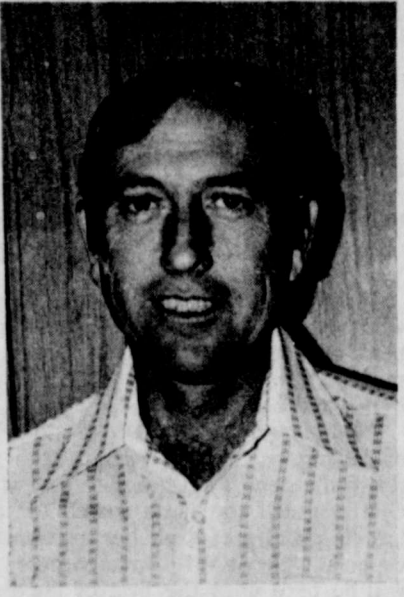
A tour of forage hybrids will be conducted by Dr. N.W. "Nick" Kramer of Paymaster Sorghum Research including management studies on sorgho-sudan grass hybrids and high yielding silage varieties.

A tour of cotton variety demonstration plots will be conducted by Dr. Delbert Hess with special emphasis on 2 new varieties.

Bill Howard, Paymaster Farm manager will show guest the effects of compost on soil properties and cotton growth.

Other tour stops will include a demonstration of limited irrigation on grain sorghum performance, cotton and sorghum breeding nurseries, cotton Verticillium wilt nursery and sorghum yield testing.

In addition, varieties used 30 years ago will be compared to present day high performing hybrids.



GARY DUNCAN



LeROY HOUDESHELL

Floyd County 4-H Banquet Set for Tuesday Night In Floydada

The 200 recognition awards banquet for Floyd County 4-H members is set for Tuesday night (September 4) at the Floyd County 4-H Awards Banquet. The banquet will begin at 7:30 p.m. at the Floyd County 4-H Elementary School in Floydada.

Members of the Floyd County 4-H are invited to attend and those who are recognized, and those who have participated in 4-H projects and activities are invited to bring their projects to the banquet.

LABOR DAY CLOSINGS SET

Most downtown Lockney merchants will close Monday to observe the "last holiday of summer," Labor Day. However, you can still buy food and gasoline in Lockney. The Beacon office will be closed Monday.

Football Contest Starts

The 1979 edition of The Lockney Beacon Football Contest makes its season debut in this edition. We're offering \$10 for first prize, \$6 for second, and \$4 for third each week of the contest. To enter, just circle on the official entry blank the numbers of the teams you think will win each game, and the winner and indicate the total score in the tie-breaker game at the bottom of the entry blank.

Mail your entry to The Lockney Beacon, Box 187, Lockney, Texas 79241, or bring them to The Beacon office, 220 South Main. They must be postmarked or in the office no later than 5 p.m. Friday before the games to be eligible for the prize money.

Reecer's Cleaners Selling Out

CLARA REECER RECALLS 50-PLUS YEARS IN FLOYD COUNTY

By Felicia Applewhite

"Now, since we are selling out, it will be the first time in 50 years that there has not been a Reecer's Cleaners in Lockney... well, it isn't just Lockney — we have a lovely business from Floydada, in fact, half of Floydada. Too, we are centrally located. We have customers from Quitaque and all down in that country — Flomot, Matador. Silverton has no cleaning business, so they come here. Of course, we have all enjoyed it, so it's sad to know we are giving it up," Mrs. Clara Reecer explains.

Gloria and Jim Gomez have bought Reecer's business, including the Reecer building. They live in Lockney. Gloria worked at Brown's in their cleaning business "something like 15 or 16 years. She is well qualified."

"Well, really, we are just in the process of my getting out," Mrs. Reecer says. "I am going to stay with her quite a while to get her well acquainted with my customers and the way we operate here. And you know, this is my home, and I told her she couldn't run me off for a while because I would miss seeing everyone. Our business has been a real pleasure," Mrs. Reecer says.

Paul Reecer came back from Midland eleven years ago to help his mother because his father's health had forced him to get out of the cleaning business. Paul stayed with her until the decision to sell, then he joined his brother Ronald in Long Roofing Company in Plainview. Paul has been in the cleaning business up to now "all his life."

Mrs. Reecer arrived in Lockney in 1926.

"When I made my first trip to Lockney, I was a frightened 19-year-old with a five-and-a-half-month-old baby. I came to join my husband, who had started the cleaning business here. "I had to change trains in Sweetwater early in the morning. It took all day long to come from Sweetwater to Plainview because of the rains. Water was up to the tracks most of the way. Those were the awful rains we had in '26."

SEE REECER, PAGE 2

REECER

FROM PAGE ONE

"Then when I got to Plainview there was one car that was used as a bus to bring people from Plainview to Lockney and Floydada. The roads were unpaved and impossible. It took quite a while to come from Plainview because cars were slow then, and they couldn't come very fast if they hadn't been.

"You didn't dare get out of the deep, slushy ruts — there was no way that you could. Meeting another car coming in the same ruts brought on a problem. There was no way to go around. The lakes were full. I never saw so much water. It was like the Pacific Ocean!

"Then, too, I was worried about the baby. After we were here, she took pneumonia and lived only a week after she got sick. Her death came on that awful Thanksgiving Day when we had one of the worst dust storms in history. I thought 'My gracious, what kind of a place have I moved to!'"

Clara (Combee) Reecer started out in her young days to be a school teacher — in no special subject, because that was the way it was done "way back then." She thought she would "just teach school" and that was it. At that time, she lived in Oklahoma and went to school at Southeastern Teachers College.

"When I went to enter the college, I was told I would have to study Oklahoma History in order to get a teaching certificate. This scared me. You know, Texas History is such a big, thick, old book. I supposed I was in for such a book in Oklahoma History.

"I went to the county school superintendent's office to get a copy of Oklahoma History. To my great relief, it had only 40 pages. Since Oklahoma hadn't been a state more than 20 years, there was not much history. Oklahoma became a state the year I was born, in 1907.

She had not gone to Oklahoma for the purpose of going to college. She had decided on college after the Combee family had moved there.

"Everybody was moving. To Oklahoma. 'Everybody' was moving to Oklahoma then. It was a new state, a new land, a new country and a challenge to people.

Clara was in college about a year when she came back to visit her grandmother in Texas, where she met Loren Reecer, who had gone into the cleaning business when he finished high school.

They were married, so instead of teaching, she "started raising her own school kids." There was a time when just one family had more children enrolled in Lockney schools than the Reecers — that was the Fords. Also, four grandchildren have graduated there. Reecers "pretty well got the town going — kept the school busy."

"Main Street wasn't paved..." "Main Street was not paved when we came here. Brick had been laid down to the corner past the last business building. They later paved the rest of Main Street when RA or one of those government things came into being. Concrete and black top was used in the last work on Main Street.

"We went to Church of Christ in the old college building until they tore it down. We went there quite a while. There was no college there then. That was all over before we came here. We just used the building. It was a wooden structure — a big old two-story building.

"Later, they built the city auditorium, and they built it like the Alamo. It was a beautiful thing. It had a nice stage. It had long rooms for club meetings and things. It had a nice swimming pool. After the Depression came, we didn't use it much."

The same building was used by the Baptist Church after the roof of their church fell in when it was loaded with ice.

"Baseball was the thing." "There was a baseball field there, too. My husband was a great baseball fan, as was everybody else. They even played the Fort Worth Cats here one time. Everybody was so excited. Baseball was the thing then instead of football.

We started our little club that we called the Pollyanna Club. Of course, that was during the Depression. The club is still going, but I don't belong anymore — haven't for a long time. It's a handwork and social club."

On Main Street above the drugstore, Dr. Greer had a clinic for quite a while. Another clinic was in the west part of town in an old two-story house. There was a Dr. Henry. He and his wife were both doctors, and they owned the clinic. The house was located "about where Wanda Baker's house is now." They were here during the "dirt/storm days."

"One of those black dusters hit" The Reecers were in a dirt storm they remembered quite well. "We were coming from Lubbock one Sunday afternoon. My mother was with us when one of those black dusters hit. We saw this black thing coming. We didn't know what it was, so we pulled over the road and stopped. It was coming from the northwest.

"When it hit us, it was so dark we couldn't see the lights. Joan was a baby then. I couldn't see her in my lap, it was so dark. Naturally we were afraid. The storm covered us all up in dirt but did not damage the car.

"Another time, we left Plainview to come to Lockney. It was on a Sunday. A terrible snow storm blew in. Snow and ice were up to fencepost tops. It didn't take us long to decide to go back.

"As a rule, weather made no difference to us. From the time we first came, we walked to work. During the war, we couldn't use a car if we had had one. Gas was rationed — could be purchased with coupons only."

Harley Sadler came Every Summer Always, Lockney has enjoyed wholesome entertainment. A part of the



CLARA REECER

entertainment was furnished by Harley Sadler. Harley came every summer for one week.

"Of course everyone turned out for the Sadler shows. He had a baseball team. Since baseball was so popular in Lockney, this went over big. Baseball was half the life of Lockney. So they played baseball in the afternoon and went to the show at night."

Sometimes Sadler had a hypnotist who had local people come to the stage in his performances.

Sadler sold candy at intermission. "We never did stop to ask ourselves whether we were eating clean candy. We just ate it. It was good."

Reecer children took Active part in school At school, the Reecer children took active part. The boys were boxers. Joan was Miss Lockney High School when she was a junior and again as a senior.

When the Miss Plains beauty contest was just begun, Joan was elected Miss Plainview. She participated in a Miss Lubbock contest. Her talent was singing.

Dixie Tavern One of the most popular places in Lockney for many years was the Dixie Tavern. It was located just across the street south of Reecer's is now.

The little square building had a kitchen on the east side. Families and neighbors met there to eat Zoll Watson's cooking. The Ayers brothers built the building on Ayers property.

Until the last few years, the Baker Hotel served clubs and other gatherings in its dining room. It was built "about the time the railroad was built through Sterley."

"When we organized the Business and Professional Club we had our dinners in the Baker Hotel. I was one of the charter members. We had many meetings there; so did other clubs around town."

"When we came here the First National Bank was in the building where the school tax office is now. The bank used all the ground floor, but insurance and lawyers' offices were upstairs. Those offices were later made into apartments."

"Any kind of alterations On men's clothes" "My main work here has been in alterations. I do any kind of alterations on men's clothes. So many people do not know how to alter men's vests now that men are wearing them again. It is a difficult job for people who are not 'old-timers'."

"I have a lot of people everywhere who bring me clothes for alterations, but I do not intend doing that work in my own home. I will be busy with my handwork."

"As I said, we are in the process of closing out now. Even though we finish the deal, I am going to stay with Gloria until she gets used to the building and meets all her customers, especially our out-of-town customers. I will be here until the first of the year because, of course, I want to help her all I can."

"I am glad that the cleaning business is picking up. We are coming back to our natural fibers. We are getting more wool and cotton and silk. These will clean and press a dozen times over and still look new."

"I'll still be in contact" "Well, as I said, I'll still be in contact. You sometimes think of Lockney people. If you get into trouble or are saddened by anything, here they all come. All races, creeds and religions come. They all flock to you marvelously. I just wouldn't live anywhere else. It has been a lovely place to live. We have been here since 1926, and that is long enough to know," Mrs. Clara Reecer says with a smile.



WAITING FOR THE TRAIN—Clara Reecer and son Paul, about nine months old, when the first train came to Sterley, about 1928 or 1929.

Farm Bureau Banquet Thursday In Lockney

Three county directors and eight state convention delegates will be chosen Thursday night at the Floyd County Farm Bureau banquet, and

members of the organization will vote on county, state and national resolutions proposed by the resolutions committee. The banquet starts at 7:30

p.m. in the Lockney Elementary School cafeteria. The terms of directors Omar Burleson, D.K. Jackson and Kenneth Pitts expire. Burleson is not eligible for re-election, having served two terms on the board of directors. Jackson and Pitts are eligible for re-election.

State voting delegates must derive the majority of their income from farming or ranching. The eight elected from Floyd County will attend the state convention December 2-5 at McAllen. Special guest will be F.M. True, state Farm Bureau director from this district. The four Floyd County students who attend the state Farm Bureau Citizenship Seminar this summer in Waco will speak to the banquet crowd.

There will be a barbecue supper, cartoon films for the youngsters, and a door prize of two Safemark tires. Ronnie Cunyus is a junior student at Texas Tech University. Cunyus' name was not included on the list of Lockney students and their schools in Thursday's Beacon.

NOTICE Lockney students will be starting their school days 15 minutes earlier this year. Starting time for the first day, Sept. 4, will be 8:45 a.m., according to Supt. W.H. Hallmark. Dismissal time will be at 3:45 p.m. except for children in kindergarten through fifth grade who live in town. They will be released at 3:30 p.m. Rural parents should expect school buses to arrive earlier than was usual last school year.

Class Of '59 Reunion Saturday

The 20th-year reunion for the Lockney High School graduating class of 1959 will be held at 7:30 p.m. Saturday evening, Sept. 1, at the Rebekah Lodge Hall.

Cover charge will be \$5 per family. Local class members are asked to bring a salad and/or vegetable dish. Parents, friends, and former teachers who would like to visit are welcome to drop by.

The class will place flowers at the Lockney First United Methodist Church this (Sunday) in memory of former classmates Ronnie Harris, Don Schacht, Stephen Handley and Nancy Nix Hayes.

Athenians Have Monthly Meeting

Eleven members of the Athena Junior Study Club met in the home of Vida Hrbacek for their monthly meeting Thursday, August 30. Virginia Owens served as co-hostess.

The main topic of discussion was the upcoming Floyd County Fair. Athena will again sell homemade ice cream at the fair. The ice cream will sell for 35 cents a dip. The booth will open after the parade on Thursday, September 20.

Following the business meeting, members cut out letters for the Athena parade float. Next month's meeting will be the yearbook party on September 13 at the home of Donnie Meriwether. Each member is asked to invite guests and contact Kathy Hunter about how many guests she will bring. The yearbook committee will serve as co-hostesses for this meeting.

Lawmen Recapture Escaped Prisoner Sunday

TEXAS PRESS MEMBER 1979 ASSOCIATION THE LOCKNEY BEACON [USPS 317-220] BOX 187 LOCKNEY, TEXAS 79241 Published each Sunday and Thursday at 220 S. Main, Lockney, Texas 79241. John Carroll, publisher; Jim Huggins, editor. Second-class postage paid at Lockney, Texas 79241. Subscription rates: Local \$10.50 per year, out of trade area \$11.50 per year. Postmaster: Send address changes to the above address.

A prisoner in the Floyd County jail managed to successfully escape from that facility last Sunday morning but his try for freedom was short lived.

Oscar Martinez Solis, in custody and charged with the armed robbery of the Allsup's Convenience Store on East Houston Street two weeks ago, slipped through a stairwell and out of the building, according to a Sheriff's department spokesman.

Acting on anonymous information, units of the Floyd County Sheriff's Department and the Floydada Police converged on a house on West Jackson Street less than an hour after the escape, where Solis was believed to have taken refuge.

A search of the house led to the lawmen finding the fugitive hiding in a clothes closet. Solis reportedly put up minor resistance when pulled from the closet.

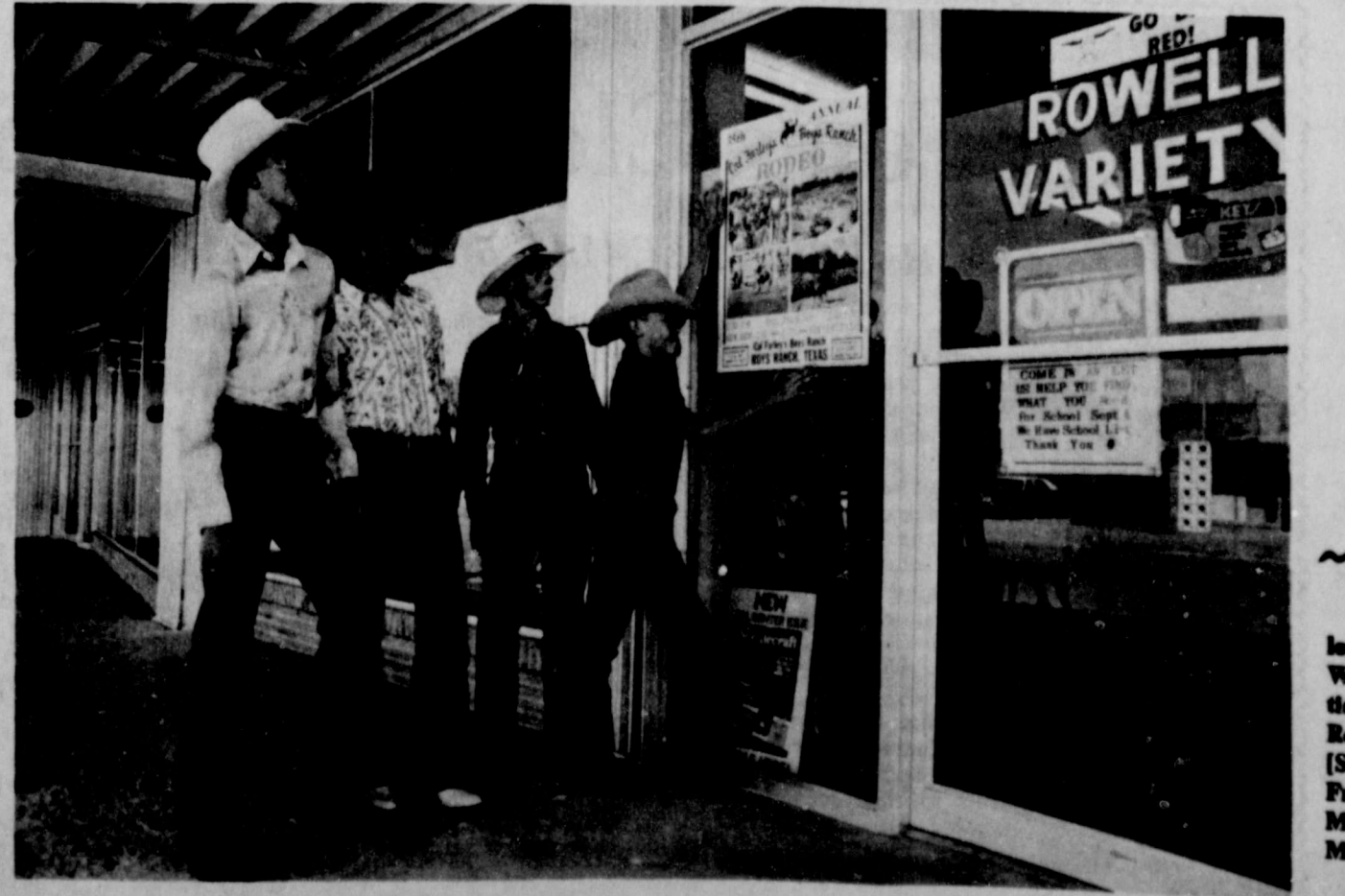
After being returned to the county jail, Solis was charged with felony escape, in addition to the aggravated robbery charge.

A 14-year-old juvenile boy, believed to be the other member of the Allsup's holdup pair was being held by juvenile authorities in Plainview.

The two reportedly were arrested after trying to bail out of jail friends who were involved in a glue-sniffing incident in Plainview. Two other young men were arrested during the same incident and charged with robbing the Handy Hut in Plainview.

A Floyd County Sheriff's spokesman noted that Solis' escape was the second in the past few years to be successfully contrived by slipping through the stairwell. However, the deputy said, that problem will be eliminated soon, with the jail renovation.

FOUR RIDERS from Cal Farley's Boy Ranch were in Lockney Wednesday putting up posters advertising the 35th annual Boys Ranch Rodeo, scheduled today and tomorrow [Sunday and Monday] at Boys Ranch. From left: Matt Thompson, 17; Kerry Mills, 13; Kevin McKinney, 16; Howard McMasters, 11. [Staff Photo]



ACCO STAFF

FROM PAGE ONE

until moving to Aiken, he was personnel manager in the Belmond office.

ACCO Seed is a division of Anderson-Clayton & Company with corporate headquarters in Houston, ACCO markets agricultural seed across the United States and several foreign countries. International headquarters for ACCO Seed are in Belmond, Iowa.

Gary Duncan and LeRoy Houdeshell join the rest of the ACCO Seed staff at Aiken in inviting the public to the Paymaster Brand farm tour and barbecue Wednesday, Sept. 5.

HARDY FUNDS

Leon Wofford and... National Bank... receiving... view.

LOCKNEY CITIZENS TO MEET

The Lockney Senior Fellowship... Methodist Church... All Senior Citizens are welcome.

LOCKNEY BAPTIST TO MEET

All band parents... Boosters of the... tember 6, in the band

HI-PLAINS GENEALOGICAL SOCIETY WILL MEET

The Hi-Plains Genealogical Society will have their first meeting Tuesday, September 4, at the Unger Memorial Library, 101 South Wall Street, Plainview.

Happy Birthdays

- Sept. 2 - Ray... Rex Mathis, Ben... Juan Castro, George... Sept. 3 - Kay... Rhodes, Johnnie... Sept. 4 - Dima... Ernest Garcia, John... Sept. 5 - Myra... Harmon Handley, J... Guerrero, Steve... Judy Wofford. Sept. 6 - Bal... Cleve, Johnny Ray... Danny Frantz, Amy... Gay McPeters, G... Ware, Robert... L. Thomas Jr. Sept. 7 - John... Carla Sue, Bill... Julia Hurrison, L... lings, Scott McCar... Blenden. Sept. 8 - Gay... Connie Bradley, ... Luna, Elmo Sw... Kidd, Delores Ma... H. Parker, Roy...

Happy Anniversary

- Sept. 3 - Mc... Red Archer, W... Charlotte Mitchell... Marjorie Houston... Sept. 4 - W... Margarito Ar... Sept. 5 - Gay... Sams. Sept. 6 - Du... Hallmark, John... Jenkins, Mr. and... ny Perales, Bill... Louise McCar... Sept. 8 - Jack... ta Isom.

Two Young Arrested

Floyd County Sheriff... Thursday reported... Texas, man and a... Floydada Taste Free... The pair was captured... leave the city, according... male companion... ed to leave the... discovered that local... their alleged holdup... Foreign Wars Hall... site. Deputies uncovered... food, cigarettes and... VFW building... At approximately 8:30... Fred Cardina opened... walking south on High... that they fitted desc... wanted pair, he rel... investigated. "They tried to... me," the Sheriff said... When the deputies... tried to flee on foot,...

County Farm Bureau

101 South Wall Floydada, Texas

NOTES

By Sharon Hillis

circulation of air in the room will speed up evaporation of moisture from the skin and will result in an increased cooling sensation. Homes not cooled by refrigerated air may also benefit from the use of both circulating and ventilating fans. By placing a ventilating fan in or near a raised window, it is possible to "cool down" one or more rooms by exhausting indoor air and sucking in cooler air from outside through another window or door. Ventilating is usually more effective at night or when outdoor air is cooler than inside the home. The best type fan to buy depends on use. Several types of circulating fans are available, including the familiar oscillating fan and the old-time ceiling fan. Window-mounted fans are used for ventilation purposes. Box fans are somewhat unique in that they can be used both to ventilate and circulate air. CIRCULATING FANS Circulating fans create movement and increase cooling sensation. Both the oscillating and the old-time ceiling mounted fan are designed to create air movement within

Paymaster FIELD Wednesday, Sept 9:00 a.m. - 2:00 On The Paymaster THREE MILES NORTH OF AIKEN HIGHWAY 70, EAST OF PLAINVIEW

Free Barbecue Introducing 5 New Grain Sorghum 5 New Corn Hybrids All Farmers, Dealers, Customers & Friends ACCO SEED DIVISION OF ANDERSON, CLAYTON & COMPANY

Attention Farmers Get

are a member of Farm and an agricultural pro... your local county Farm... needs your help in... its policies for 1980. Bureau policies are not... taking a poll, but are... by majority vote after... on and debate. The... members participat... more likely we are to... und policies.

STAFF
 PAGE ONE
 Leon Wofford and Harold have established a fund at National Bank, Lockney, Frank and Elzada Hardy, receiving chemotherapy at view.

LOCKNEY SENIOR CITIZENS TO MEET
 The Lockney Senior Citizens Fellowship Hall at the Methodist Church, for the covered dish luncheon meeting. All Senior Citizens are welcome.

LOCKNEY BAND TO MEET THURSDAY
 All band parents are attend a meeting of the Lockney Boosters at 7:30 p.m. Thursday, September 6, at the school.

HI-PLAINS GENEALOGICAL SOCIETY WILL MEET
 The Hi-Plains Genealogical Society will have their first meeting Tuesday, September 4, at 7 p.m. at the Unger Memorial Library, Street, Plainview.

WINDY DAY
 The program will be on the new genealogical Mrs. Judy Smith will be public with the new arrangement of genealogical books in the library. The public is invited to attend.

W'S N' NOTES

By Sharon Hillis

CIRCULATION OF AIR
 Circulation of air in the room will speed up evaporation of moisture from the skin and result in an increased cooling sensation.

Homes not cooled by refrigerated air may also benefit from the use of both circulating and ventilating fans.

By placing a ventilating fan in or near a raised window, it is possible to "cool down" one or more rooms by exhausting indoor air and sucking in cooler air from outside through another window or door.

Ventilating is usually most effective at night when outdoor air is cooler than indoor air.

The best type fan to buy depends on use. Several types of circulating fans are available, including the familiar oscillating fan and the old-time ceiling fan.

CIRCULATING FANS
 Circulating fans create air movement and increase cooling sensation.

Both the oscillating fan and the old-time ceiling-mounted fan are designed to create air movement within a

given space by the use of rotating blades or paddles.

OSCILLATING FANS
 Oscillating fans are portable and can be moved easily from one room to another. Efficiency in circulating air depends on design.

The more air a fan moves in a given time, the better its cooling potential.

The less electricity it requires to move the air, the cheaper and more efficient it will be to operate.

Generally, a 12-inch blade will move less air than a 20-inch blade, and the fan with the more power will thrust air further into the room.

An oscillating fan distributes its cooling effect best when set to turn from side to side. Some models permit adjustments in the arc or stationary operation by adjusting a control knob.

A clutch that slips or disengages when the swinging fan meets an obstruction is a desirable feature on an oscillating fan.

This feature prevents a serious pinch if fingers are caught between the fan head and the pedestal.

It also keeps the fan from tipping over if it meets an obstruction as it swings.

Since fan speed is often related to how noisy a unit is during operation, units that give a choice of low, medium and high speeds offer some flexibility. Expect a higher level of operation noise at higher fan speed than low or medium speed.

If the unit will be used at night or in a child's room, make sure the unit operates quietly on a low setting.

CEILING-MOUNTED FANS
 Popular in the early 1900's, ceiling-mounted fans are making a strong comeback because of their energy-saving potential as well as the nostalgic touch they add to an area.

Today's ceiling fans come in a wider assortment of colors and styles, but their operation is essentially the same as the original models.

Paddle blades, propelled by a light bulb, stir up stagnant air to keep room temperatures within the comfort zone.

Because of size and location, the ceiling fan is capable of redistributing sizable amounts of air over a wide area.

Since they use less than 200 watts, they're an economical substitute for air conditioning on those not-so-hot days, as well as an economical and effective supplement for those higher air-conditioning settings.

Units which permit a change of pitch on the paddles or blades will make for more effective use during both heating and cooling seasons.

Heavier, cool air that accumulates near the floor will be drawn upward and recirculated by the revolving paddles during the summer season.

During winter when heated air accumulates at the ceiling, the fan works to move warm air gently downward for a more consistent temperature from floor to ceiling.

Some units accomplish this dual-season feat by a motor that permits direction of the paddles to be reversed, or tilt of the blades to be changed.

While most models are equipped with variable speed motors, this feature is especially important when the unit is used in conjunction with winter heating.

Unless a low speed can be achieved, uncomfortable drafts will result throughout the heated area.

Most manufacturers package ceiling fans for easy do-it-yourself installation. Short-stem mounts are included that provide seven-foot clearance when installed on eight-foot ceilings.

Electrical connections may be made in any ceiling receptacle designed to accommodate an ordinary light bulb.

VENTILATING FANS
 Place ventilating fans in or near an open window to exhaust hot indoor air and draw cooler outdoor air inside.

A high-capacity ventilating fan can economically "cool down" a large area when outdoor temperature is lower than that inside.

A 20-inch fan should change about 1800 cubic feet of air per minute — the amount in a 15- by 15-foot room with an eight-foot ceiling. Replacing hot stagnant air with cooler outdoor air it brings into the home.

Ventilating fans are available in either portable or stationary form.

The portable form, a dual-purpose fan capable of either ventilating or circulating air, is known as a box fan.

On the other hand, window fans are mechanically similar to box fans, but they are designed for stationary use in a window.

BOX FANS
 Box fans are versatile because they are both portable and dual-purpose.

When set in or near an open window, they ventilate. They circulate air when placed within a room.

A box fan's capacity to suck air out or blow it into an area is controlled in either of two ways:

1) A switch that reverses direction of the blades, or 2) Physically turning the fan unit around to change direction of air flow. Built-in thermostats are featured on many box fan models.

Thermostat-equipped models will start up or shut off at a preset temperature.

Most units have two or three different speed settings which permit greater control of both air movement and noise during operation.

While separate window-mounting panels are available with some box fans, a few manufacturers caution against installing in an open window. Usually good ventilating performance is achieved by placing the box fan on a table 18 to 24 inches from an open window.

WINDOW FANS
 Window fans are designed for semi-permanent installation in an open window. They cannot be used to circulate air inside a room since built-in mounting panels are attached to the window frame with screws.

to blow air into a room as well as exhaust it. Thermostats are also available on many window fan models.

Cooling a room or area with a window fan can be accomplished more effectively by remembering a few guidelines:

1) Outdoor temperatures must be lower than temperature inside for cooling to take place.

2) The larger the space being cooled, the longer it will take.

3) In cooling down a large area, open at least one window in each room to be cooled. Open those windows and the one where the fan is located.

4) Close doors and windows in rooms that don't need cooling.

Brothers Find 186 Four Leaf Clovers Claim World's Record

If you've always wanted to break a world's record, here's one to try your luck at: Find more than 186 four-leaf clovers in only ten minutes.

The record set by Rob and Tom Culp, aged 11 and 9, of Denver, Col., according to the current issue of Ranger Rick's Nature Magazine for children. The two brothers stumbled upon a whole patch of four-leaf clovers at the Hugh M. Danahy city park in North Glenn, Col.

The Culp brothers have notified the Guinness Book of World Records of their astonishing find and hope their record will be made "official" by that British publication.

It is unusual but not unheard-of for four-leaf clovers to grow in clumps, according to Ranger Rick's magazine. No one knows for sure why some normal three-leafed clover plants grow four leaves.

But some scientists speculate that poor, dry soil, too much shade, or cold nights in spring may produce the four-leafed variety.

Of the 300 kinds of clover in the world, the common white clover is the most frequent producer of four-leaf plants, says Ranger Rick. It was in a white clover patch that the Culp brothers found their find.

How did the idea originate that good fortune befalls the finder of a four-leaf clover? The Culp brothers don't know, but figure that if there is any truth to the rumor, they're in for a lifetime of good luck.

The doctor said take two aspirin and call him in the morning.



Lockney

Lockney Elementary School directors Omar Burlekson and Kenneth Pittserson is not eligible for having served two terms on directors. Jackson and Pittserson delegates must derive of their income from

Lockney. The eight elected county will attend the state conference 2-5 at McAllen.

Director from this district. Boyd County students who are Farm Bureau Citizens this summer in Waco will be a barbecue supper, for the youngsters, and a two Safemark tires.

is a junior student at university. Cunyus' name is on the list of Lockney schools in their schools in Thursday

Happy Birthday

Sept. 2 — Kay Lynn Rex Mathis, Bernice Juan Castro, Garland Rhodes, Johnnie Quispe, Ernest Garcia, John Myrtle G. Harmon Handley, Guerrero, Shaws, Judy Wofford.

Sept. 3 — Kay Roy, rhodes, Johnnie Quispe, Ernest Garcia, John Myrtle G. Harmon Handley, Guerrero, Shaws, Judy Wofford.

Sept. 4 — Dimple A. Ernest Garcia, John Myrtle G. Harmon Handley, Guerrero, Shaws, Judy Wofford.

Sept. 5 — Myrtle G. Harmon Handley, Guerrero, Shaws, Judy Wofford.

Sept. 6 — Rayeanna Cleve, Johnny Ray, Danny Francis, Amy Gay McPherson, Ware, Roberto Gonzalez, L. Thomas Jr.

Sept. 7 — Johnny Carla Bain, Roy K. Julia Iturrino, Linda lings, Scott McCarty, Blendon.

Sept. 8 — Gary Connie Bradley, Luna, Elmo Savage, Kidd, Dolores Martinez, H. Parker, Roy Rolling.

Sept. 3 — Mr. and Red Archer, Warren Charlotte Mitchell, Marjorie Holcomb.

Sept. 4 — Mr. and Margarito Arellano.

Sept. 5 — Guy and Sams.

Sept. 6 — Dub and Hallmark, John and Jenkins, Mr. and Mrs. Peralas, Bill and Louise McCarter.

Sept. 8 — Jack and ta Isom.

Sept. 3 — Mr. and Red Archer, Warren Charlotte Mitchell, Marjorie Holcomb.

Sept. 4 — Mr. and Margarito Arellano.

Happy Birthday

Sept. 2 — Kay Lynn Rex Mathis, Bernice Juan Castro, Garland Rhodes, Johnnie Quispe, Ernest Garcia, John Myrtle G. Harmon Handley, Guerrero, Shaws, Judy Wofford.

Sept. 3 — Kay Roy, rhodes, Johnnie Quispe, Ernest Garcia, John Myrtle G. Harmon Handley, Guerrero, Shaws, Judy Wofford.

Sept. 4 — Dimple A. Ernest Garcia, John Myrtle G. Harmon Handley, Guerrero, Shaws, Judy Wofford.

Sept. 5 — Myrtle G. Harmon Handley, Guerrero, Shaws, Judy Wofford.

Sept. 6 — Rayeanna Cleve, Johnny Ray, Danny Francis, Amy Gay McPherson, Ware, Roberto Gonzalez, L. Thomas Jr.

Sept. 7 — Johnny Carla Bain, Roy K. Julia Iturrino, Linda lings, Scott McCarty, Blendon.

Sept. 8 — Gary Connie Bradley, Luna, Elmo Savage, Kidd, Dolores Martinez, H. Parker, Roy Rolling.

Sept. 3 — Mr. and Red Archer, Warren Charlotte Mitchell, Marjorie Holcomb.

Sept. 4 — Mr. and Margarito Arellano.

Sept. 5 — Guy and Sams.

Sept. 6 — Dub and Hallmark, John and Jenkins, Mr. and Mrs. Peralas, Bill and Louise McCarter.

Sept. 8 — Jack and ta Isom.

Sept. 3 — Mr. and Red Archer, Warren Charlotte Mitchell, Marjorie Holcomb.

Sept. 4 — Mr. and Margarito Arellano.

Paymaster FIELD DAY

Wednesday, September 5th
 9:00 a.m. - 2:00 p.m.
 On The Paymaster Farm

THREE MILES NORTH OF AIKEN, TEXAS
 HIGHWAY 70, EAST OF PLAINVIEW

★ Free Barbecue Lunch
 ★ Introducing 5 New Grain Sorghum Hybrids
 ★ 5 New Corn Hybrids ★ 2 New Cotton Varieties
 Farmers, Dealers, Customers & Friends Are Cordially Invited



Happy Anniversaries

Sept. 3 — Mr. and Red Archer, Warren Charlotte Mitchell, Marjorie Holcomb.

Sept. 4 — Mr. and Margarito Arellano.

Sept. 5 — Guy and Sams.

Sept. 6 — Dub and Hallmark, John and Jenkins, Mr. and Mrs. Peralas, Bill and Louise McCarter.

Sept. 8 — Jack and ta Isom.

Attention Farm Bureau members!

Get more mileage from your thoughts and ideas

Attend your county Farm Bureau annual meeting!

County Farm Bureau Annual Meeting
 September 6, 1979
 7:30 P.M.
 Lockney Elementary Cafeteria
 101 South Wall
 Floydada, Texas

are a member of Farm and an agricultural pro- your local county Farm needs your help in its policies for 1980. Bureau policies are not taking a poll, but are by majority vote after on and debate. The members participat- more likely we are to and policies.

Two Youth Arrested

Floyd County Sheriff's Thursday reported arresting Texas, man and a Temple in connection with the burg- Floydada Taste Free store.

The pair was captured as leave the city, according to ment spokesman.

Ramero Nino, 17, and his female companion apparently to leave the area and discovered that local lawmen- their alleged hideout in the Foreign Wars Hall, near the site. Deputies uncovered the VFW building earlier last we-

At approximately 8:30 a. Fred Cardinal spotted the walking south on Highway that they fitted descriptions wanted pair, he radioed for investigate.

"They tried to thumb a me," the Sheriff said Friday. When the deputies arrived tried to flee on foot but were captured.

Bealls OPEN LABOR DAY

Men's Fashion Knit Shirts values to 15 ⁰⁰ 6 ⁸⁸	100% Polyester Pull-On Pants 3 ⁹⁹ Regular 8 ⁰⁰ Asst. Color, Size 8 - 20	
Young Men's Fashion Jeans 1/2 Price Regular to 22 ⁰⁰ Size 28 - 32	Special Purchase --- 100% Poly Ladies Fall Blouses 7 ⁸⁸ Size 8 - 20 Value To 12 ⁰⁰	
Men's Short Sleeve Sport Shirts 6 ⁸⁸ Regular To 14 ⁰⁰	Junior, Missy, Half Size Dresses 12 ⁸⁸ Regular To 42 ⁰⁰	
Mens & Boys Tube Socks 99¢ Assort Asst. Strip Tops REGULAR 1.25 TO 1.50	Junior Tops VALUES TO 10.00 Size S, M, L 4 ⁸⁸	Just Arrived Terry Velour Tops 6 ⁸⁸
Special Group Mens & Boys 1/2 Price	Special Purchase Billfolds 1/2 Price ASST. STYLES	In Time For School Junior Blue Denim Jeans 10 ⁸⁸ Size 5 - 15 Regular 20 ⁰⁰
Boy Size 8 - 20 Pull-On Knit Shirts 3 ⁸⁸ Values To 9 ⁰⁰	Discontinued Styles Ship n' Shore Blouses Values To 22 ⁰⁰ 6 ⁰⁰	Ladies Summer Blouses 3 ⁹⁹ SIZE S, M, L
Student Sizes Only Levi Prewash Denim Jeans 9 ⁸⁸ Regular 16 ⁵⁰ Size 25 - 30 Waist	Junior & Missy Winter Coats 20% Off REGULAR TO 110.00	CLEARANCE! Jr. Linen Pants REG TO 16.00 4 ⁸⁸
Boy's Colored Denim Jeans 3 ⁸⁸ Sizes 8 - 20 Regular & Slim	Discontinued Styles Playtex Bras 20% Off	Girl's Department Winter Coats REG TO 48.00 20% Off Sportswear Coordinates 20% Off Panties VALUE 1.25 77¢
Shop Our Bargain Table Save 20% To 50% Shop And Save	Ladies Summer Shoes & Sandals REG TO 16.00 3/4 Off	Ladies Canvas Shoes REG TO 18.00 20% Off
Jarman Shoes For Men REG TO 36.00 25% Off	Special Group Boy's Shoes REG 16.00 1/2 Price	HOME FURNISHINGS DEPT Decorator Throw Pillows 6 ⁸⁸ Dedspread And Drapes To Match 25% Off Special Group Kitchen Terries, Dish Cloth Potholders 20% Off
Lingerie And Accessories Soft Vinyl Luggage 1/2 Price Ladies Scarfs REG 3.00 99¢ Cotton/Poly Summer Sleepwear 3/4 Off Nylon Sleepwear 1/2 Price		



ARTIST OF THE WEEK AT Art Southwest is Don Cheek, son of Carolyn Cheek of Floydada. Don, who is a freshman in FHS, is an art student of Winnie Carthel. An example of his work may be viewed in the display window of Art Southwest.

Floyd County Woman

Before And Afters

By Julie Finley...

Julie Finley is manager of City Trim Shop...in addition to being mother of three children, a homemaker and an active leader of Girl Scouts of America. She and her husband Jerry purchased City Trim from Mr. and Mrs. Wayne Finley in October, 1977. Jerry, who also works at the shop on his days off, is a Postal Clerk at the Post Office here in Floydada.

holstery business about 18 years ago for Jerry and Lila Kendrick, who later sold the business to the Wayne Finleys. City Trim specializes in furniture upholstery, car and pickup seats and boat tarps. Julie said she especially enjoys the satisfaction of starting out with older furniture and transforming them into beautiful and special pieces. Renovation provides its own reward in the form of a sense of accomplishment and creativity.

Jerry and Julie have three children: Jimmy, 19, who is

a sophomore at Texas Tech; Jonny, 17, an FHS senior; and Jana, 13, who is in the 8th grade. They are members of First Baptist Church in Floydada.

Julie has spent a lot of time working with scouts, serving seven years as a Girl Scout leader and prior to that, serving as a Cub Scout den mother. In addition, she enjoys "general craft type things" such as hand sewing and basket weaving, which also reflect her interest in "getting her own hands into" creative work.



Julie Finley



Mrs. Rex Rose

Tech Offers Beginning Spanish

Dr. Lorum H. Stratton, head of the romance languages department at Tech University, will be the instructor for a Floydada extension class in beginning Spanish. This is a four-credit course which will combine classroom and lab in one evening session. Registration and the first class period will be Tuesday, September 11 at 7:30 p.m. The place of meeting will be announced later.

Cost will be partially determined by the number of persons enrolled. As soon as possible to get your name on the list. Call 983-3737 or 983-2762 to put your name on the list.

Christian Church Of Powell, Rose

Labor Day Telethon For Muscular Dystrophy

"Even if you miss a little, you're not" is the theme of the Labor Day Telethon for Muscular Dystrophy. Alpha Mu Delta chapter will be assisting with the telethon by answering phones in Floydada, Lockney.

Proceeds from the telethon go to Muscular Dystrophy Association research and biophysics of normal muscle as well as clinical studies of muscular dystrophy and its related disorders.

Floydada Farm Bureau 983-3777, Lockney, 652-2444

How Much Love Is Enough?

"Just enough" love is best for kids — rather than too little or too much, says Dorothy Taylor, a family life education specialist. "Children who receive too little love feel rejected. Those who receive too much may suffer 'smother love' — and never allowed to mature," she explains. Ms. Taylor is with the Texas Agricultural Extension Service, The Texas A&M University System. Children can be damaged by excessive — or insufficient — amounts of such essentials as affection, attention, stimulation and praise, the specialist cautions. Different children require different amounts and expressions of love, so it's important for parents to know their children and their special needs, she says. Some children respond to a hug, a kiss or other displays of affection.

Winter's Coming

It's not too early to begin thinking about winter heating costs — and doing the things you can NOW to save both money and energy. Check the caulking and weatherstrips around windows and doors. If you have storm windows, see if they need repairs. If you don't have them, get some estimates to determine if you can fit them into your budget. It won't take long to get your money back in reduced fuel costs.

Many states and communities have agencies that can help you.

Some consider it bad to drop a bunch of keys

When the occasion arises, brother of Powell, brother of Floydada, and the groom Tim Powell, Texas.

Some consider it bad to drop a bunch of keys

Some consider it bad to drop a bunch of keys

Some consider it bad to drop a bunch of keys

Some consider it bad to drop a bunch of keys

Some consider it bad to drop a bunch of keys

Some consider it bad to drop a bunch of keys

Some consider it bad to drop a bunch of keys

Some consider it bad to drop a bunch of keys

Some consider it bad to drop a bunch of keys

Some consider it bad to drop a bunch of keys

Some consider it bad to drop a bunch of keys

Prices Effective September 3 - 8, 1979 WE RESERVE THE RIGHT TO LIMIT QUANTITIES

HOMASON VENTURE GROCERY & MARKET
PHONE 652-3346 LOCKNEY, TEXAS

DOUBLE STAMPS ON WEDNESDAY
Store Hours: 8 a.m. - 9 p.m. Monday - Saturday, 8 a.m. - 7 p.m. Sunday

VENTURE FOODS

Meat Specials

Whole Fryers 49¢ LB. (USDA GRADE "A")

Ham Patties 12 OZ. CAN \$1.49

Fryer Halves LB. 59¢

Wright's Hickory Smoked Ends & Pieces 3 LB. BOX \$1.17

Wilson's Dry Salt Pork LB. 79¢

Delicious Hormel 12 OZ. CAN \$1.49

California Hass Avocados EACH 39¢

California Santa Rosa Plums 3 LBS. \$1.17

Fresh Crisp Carrots 4 1 LB. CELLO BAGS \$1.17

No Trusset Potatoes 10 LBS. BAG 89¢

Tomatoes 39¢ LB. (CALIFORNIA VINE RIPE)

ENRICHED Shurfine Flour 5 LB. BAG 69¢

LUNCHEON MEAT SPAM Hormel Spam 12 OZ. CAN \$1.19

Green Beans 16 OZ. CAN 39¢

SHURFINE RED PLUM Preserves 16 OZ. JAR 59¢

SHURFINE WASTE Basket Liners 20 CT. BOX 89¢

15% OFF LABEL 5 LB. BAG ALPO Beef Flavor \$1.39

4% OFF LABEL Ajax Cleanser 14 OZ. CANS \$1.17

15% OFF LABEL Ajax Liquid 22 OZ. BTL. 79¢

Spillmate 65¢ (PAPER TOWELS)

Shurfine Soup 3 10 OZ. CANS 79¢ (CHICKEN NOODLE)

Cold Power \$1.29 (15% OFF LABEL)

SHURFINE FABRIC SOFTNER Sheets 40 CT. BOX \$1.29

PEPSI DIET PEPSI PEPSI LITE MOUNTAIN DEW HAWAIIAN PUNCH DAD'S ROOT BEER COUNTRY TIME LEMONADE 6 PACK CANS \$1.19 (SATURDAY 8th SEPTEMBER ONLY, Free Pepsi Served All Day, Come On In And "Fill-er Up")

Gracery Specials

Broccoli Spears 2/89¢ (10 OUNCE PACKAGE)

Corn On The Cob 69¢ (SHURFINE)

Shoestring French Fried Potatoes 2/79¢ (4 PER PACKAGE)

Coffee \$2.39 (SHURFINE 1 POUND)

Tea \$1.69 (SHURFINE 302 JAR)

Peaches 53¢ (SHURFINE 303 CAN)

Corn 2/69¢ (SHURFINE 303 CAN)

Tomatoes 2/89¢ (SHURFINE 303 CAN)

Health And Beauty Aids

Medical Center Rubbing Alcohol 16 OZ. BTL. 39¢

Disposable Good News Razor 2 CT. PKG. 43¢

BAND-AID 70 CT. BOX \$1.49

Catsup 39¢ (DEL MONTE 14 OZ. BTL.)

Stainless Mixing Bowls \$4.99 (6 QT. BOWL)

Lemonade \$1 (TASTY SHURFINE 3 - 12 OUNCE CAN)

Final Registration For Pre-School
At First United Methodist Church
Creative Play-Learning Experience
For Children That Will Be 4 Years Old
Before September 1, 1979
3 Mornings A Week
Monday - Wednesday - Friday
9:00 A.M. - 11:30 A.M.
Teacher: La Ann Smith
127 W. Kentucky, Floydada
For More Information Call 983-3777

Grandparents' Day
Sunday, September 9th.

There just isn't a more colorful way of expressing your love than with flowers. It's a more beautiful way. Show your grandparents how you feel about them—send flowers. Just stop by or give us a call.

Make an arrangement with **Schachts**

Poplar 652-2385 Lockney



Julie Finley

Tech Offers Beginning Spanish

Dr. Lorum H. Stratton, head of the romance languages department, Texas Tech University, will be the instructor for a Floydada extension class in beginning Spanish. This is a four-hour credit course which will combine the class and lab in one evening session.

Registration and the first class period will be Tuesday, September 11 at 6 p.m. The place of meeting will be announced later.

Cost will be partially determined by the number of persons enrolled. Call as soon as possible to get your name on the list. Call 983-3737 or 983-2783 to place your name on the list.

Labor Day Telethon For Muscular Dystrophy

"Even if you miss a little, you miss a lot" is the theme of the Jerry Lewis Labor Day Telethon for Muscular Dystrophy. Alpha Mu Delta members will be assisting with the telethon by answering phones in Floydada and Lockney.

Proceeds from the telethon go to the Muscular Dystrophy Association, which sponsors research into the biochemistry and biophysics of normal muscle, as well as clinical studies of muscular dystrophy and its related disorders.

Floydada Farm Bureau 983-5198
983-3777, Lockney, 652-2242

How Much Love Is Enough?

"Just enough" love is best for kids — rather than too little or too much, says Dorothy Taylor, a family life education specialist.

"Children who receive too little love feel rejected. Those who receive too much may suffer 'smother love' — and never allowed to mature," she explains.

Ms. Taylor is with the Texas Agricultural Extension Service, The Texas A&M University System.

Children can be damaged by excessive — or insufficient — amounts of such essentials as affection, attention, stimulation and praise, the specialist cautions.

Different children require different amounts and expressions of love, so it's important for parents to know their children and their special needs, she says.

Some children respond to a hug, a kiss or other displays of affection.



Mrs. Rex Rose

Christian Church Scene Powell, Rose Wedding

Well and Rex Rose exchanged wedding vows August 24 at the First United Methodist Church in Floydada.

and Kim Rose of Athens, Texas.

A spiral of candlelight formed by a large brass arch candelabra joined with a pair of brass spiral candelabras decorated with garlands of yellow and white daisies, framed the wedding scene. Hurricane type candelabras holding satin ropes marked the entrance to the wedding area.

Following the wedding ceremony, a reception in the fellowship of the church was hosted by parents of the couple. The wedding cake, decorated with white and yellow daisies, and a table laid with a white lace cloth over yellow, provided a cheerful and gala atmosphere.

Following a wedding trip to Dallas, the couple will live in Floydada.

SENIOR CITIZEN'S CORNER HELPFUL IDEAS FOR SUCCESSFUL RETIREMENT

Winter's Coming
It's not too early to begin thinking about winter heating costs — and doing the things you can NOW to save both money and energy.

Check the caulking and weatherstrips around windows and doors. If you have storm windows, see if they need repairs. If you don't have them, get some estimates to determine if you can fit them into your budget. It won't take long to get your money back in reduced fuel costs.

Many states and communities have agencies that will make an "energy assessment" of your home. In some areas, you can get such assistance from the utility company.

Government assistance is available. The National Bureau of Standards has issued a pamphlet called "Making the Most of Your Energy Dollars in Home Heating and Cooling." The booklet contains worksheets and offers assistance in figuring your energy problems and needs. It's available for 70 cents from the Consumer Information Center, Pueblo Colorado, 81009.

Some consider it bad luck to drop a bunch of keys.

Social Events

Floydada Rebekah Lodge Meets

The Floydada Rebekah Lodge met in regular session Tuesday August 28 with Ruby Davis, Noble Grand, and Jewell Price, Vice Grand, presiding.

Those who were reported to be ill were JoNita Gilbert, Artie Webb's daughter, who is improved and at home.

A program honoring all birthdays from January through December was held with Ruby Davis giving each month's birthday flower and birthstone. The birthday song was presented by Amanda Hart with all present joining in singing "Happy Birthday." Birthday honorees in order were: Artie Webb, Ora King, Lona Sparks, Margaret Paschal, Barbara Landreth, Barbara Gilliland, Jewell Price, Jewel Jackson, Willie Hill, Foye Gooch, Alma Dunn, Wanda O'Neal, Inez Barton, Floyd Webb, Estelle Warren, Pauline Falkenberg, Dorothy Reeves, Eula Parack, Amanda Hart, Helen Breed, Valree Turner, Mable Price, Ethel Sawyer, Ethel Cross, Grace Grundy,

Jewel Reeves, Willie Mae Smith, Harry Reeves, Edna Cummings, Della Compos, Minnie Fay Easter, Ruby Davis and Hubert Davis.

After Lodge closed, all members and their families were invited to enjoy cake and ice cream with the group.

Westers Host Dinner

For Christian Women's Class

The Women's Class of the First Christian Church enjoyed their monthly dinner in the home of Mr. and Mrs. J.C. Wester on Sunday, August 26.

Those present in addition to Wester, the teacher, and his wife Mattie, were Pauline Pierce, Burmah Probasco, Jewell Price, Estell Hinkle, Lucille Sissons and Elix Belue.

The next dinner scheduled at the Wester home for the class will be on September 30.



Creative play and learning experiences combine ...Shown above are members of

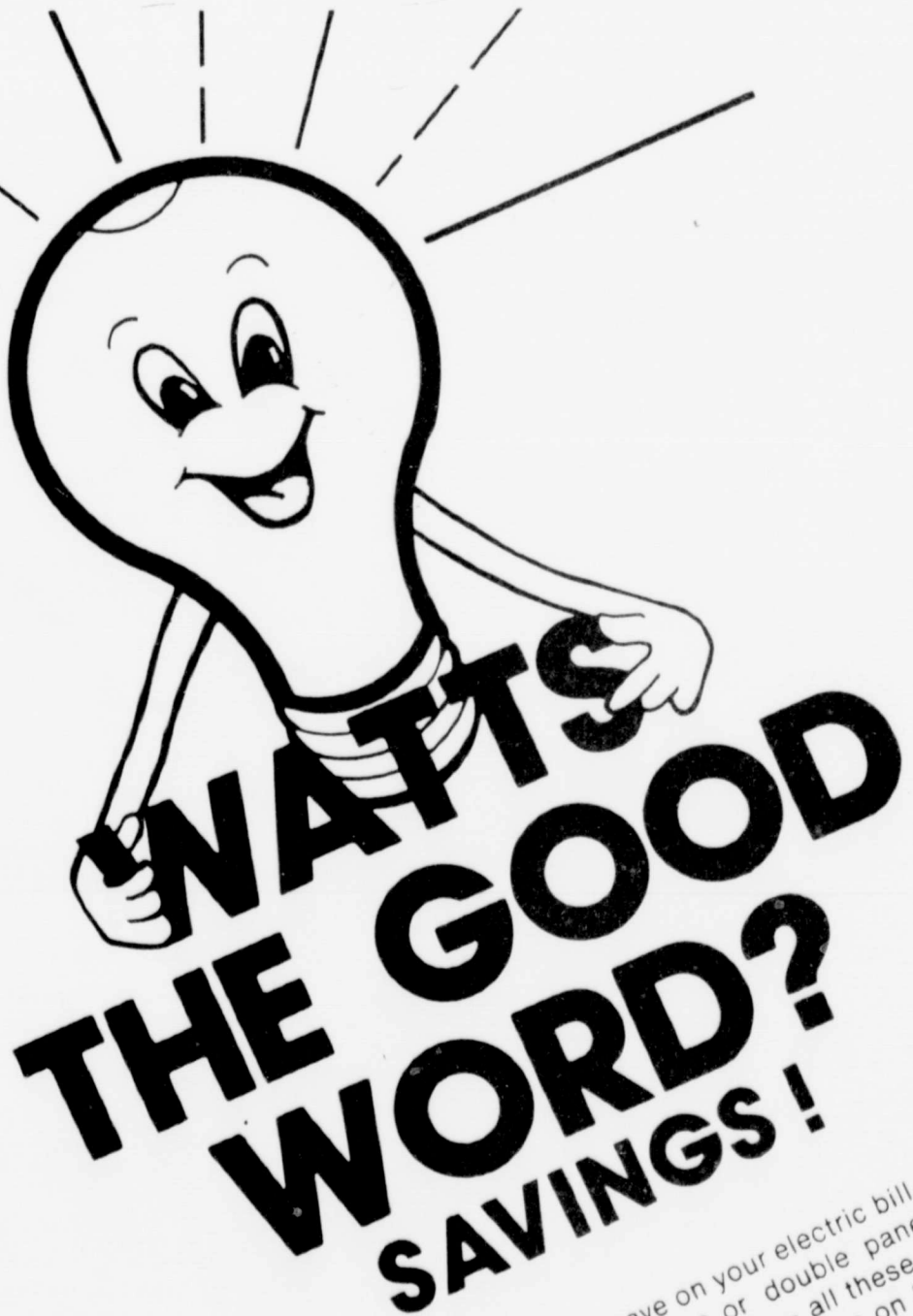
last year's pre-school class at the First United Methodist Church in Floydada.

Final Registration for this years school is now underway.

THOUGHT FOR FOOD

- 2 Cheese Crackers
- 2 sticks butter or margarine (1 use one of each)
- 2 cups flour
- 2 cups grated sharp cheddar cheese
- 2 cups rice crispies
- 1 teaspoon each of salt and sugar
- A dash of cayenne pepper and a dash of paprika

Cream cheese and butter. Add flour, rice crispies, and seasonings. Form into balls one inch in size. Flatten with tines of a fork. Bake at 350 degrees for 10 minutes. Remove from pan to wire rack, cool. Store in a tightly covered tin and keep cool. If you do keep them in the refrigerator, bring to room temperature before serving.



There are many ways you can save on your electric bill. Adequate insulation, storm doors and windows or double pane glass in windows, properly sized heating equipment — all these can make a big difference in your electric bill. For information on how you can get the most for the watts you pay for — come by our office and pick up one of our informative booklets.



SOUTHWESTERN PUBLIC SERVICE

Come And Try Our BUFFET

On Sunday 11:00 Until 2:30

Sunday Buffet

\$3.45 A Plate

American Food

Salad

Sweet Corn Green Beans

Potato Salad Sweet Peas

Mashed Potatoes & Gravy

Fried Chicken Roast Beef

Chicken Fried Steak

Mexican Food

Rice & Bean Enchiladas

Tacos Tamales

Flour Totillas

Las Maracas

Lockney

Flowers say, "We love you."



Grandparents' Day, Sunday, September 9th.

Isn't there a more colorful way of showing your love than with flowers. Show your grandparents how you feel about them — send them just stop by or give us a call.

Make an arrangement with Schachts

652-2385

Lockney

Final Registration For Pre-School Class At First United Methodist Church

Creative Play-Learning Experience For Children That Will Be 4 Years Old Before September 1, 1979

3 Mornings A Week Monday - Wednesday - Friday 9:00 A.M. - 11:30 A.M.

Teacher: Lu Ann Smith 127 W. Kentucky, Floydada For More Information Call 983-2240

Years Ago

FROM THE FILES OF THE LOCKNEY BEACON August 28, 1952

The Lockney Public Schools will begin the 1952-1953 term Monday morning, September 1. Due to lack of facilities, no general assembly or program is planned for the first day of school but students and teachers will go immediately into the work of arranging schedules and assigning lessons. A list of the faculty: High school: W. C. Irons, superintendent; F. M. Smith, principal; Miss Algene O'Daniel, Mac Lee Brewer, Mrs. Mildred Zeigler, Elvin Lyon, Mrs. Virginia Lyon, Mrs. Hortense Ball, Mrs. W. C. Irons, Mrs. Lucille Jordan, Shelly M. Lantrip, Mrs. Mary Ringwald, Neil Henderson Jr., Curtis Kelley.

For the first time in a good many years a Lockney man has been named sheriff of Floyd County. Earl Cooper of Lockney won the Democratic nomination for that office in the second primary voting last Saturday, defeating the incumbent, Leland Hart, by 281 votes in the county.

Coaches Curtis Kelley and Elvin Lyon of Lockney High School will begin football practice with the Lockney Longhorns next Monday, Sept. 1. Coach Kelley said Tuesday that they would probably have some workouts in the daylight and hold a longer session under the lights at night for several days.

Lockney Boy Scouts have recently won several awards in Scout swimming meets. Last week Roland Watson, son of Mr. and Mrs. Glen Watson, won two blue ribbons in the district swim meet. Previously Roland and Gene Handley, son of Mr. and Mrs. Harmon Handley, won five places in the Scout swimming meet at Roaring Springs. Roland and Lonell Hays, another local Scout, attended the Scout Patrol Leaders camp at the Philmont Scout Camp near Las Vegas, N.M.

Several local men went on the farm tour into Colorado last week sponsored by the Fort Worth and Denver Railroad. Making the trip from Lockney were W. E. Terrell, Lloyd Readhimer, Kenneth Wofford, J. R. Belt, John T. Carthel, and Herman King. The First National Bank of Lockney paid expenses of the local men.

April 9, 1931 - In the city election held last Tuesday, the largest vote ever cast in a city election was cast. The results were as follows:
For Mayor - W. R. Childers (re-elected)
For Secretary - John C. Broyles.
For City Marshal - Conde Davis.
For Tax Assessor and Collector - N. E. Waller.

An eighteen foot extension to the Liberty school building was completed Saturday, giving accommodations for a stage badly needed.

November 5, 1920 - The Lockney Produce

Company is adding a poultry dressing room house to their business.

Messrs. C. R. Wilkinson and Ray W. Crouch have purchased the City Cafe from Mr. Avant and will conduct it under the name of the Cozy Cafe.

Claude Holland of Lockney was accidentally killed Thursday in Falls.

From The Files Of The Floyd County Hesperian

FIVE YEARS AGO
Jimmy McGuire, new First Baptist Church staff member.

Cheerleaders for Whirlwinds are Nesa Jackson, Diana Grimes, Sharon Decker, Karen Aldredge, Jodie Eastham and Becky Bertrand.

Leroy Burns home, yard of week.

Maria Hammonds graduates Magna Cum Laude from Incarnate Word College.

Twirlers Adeana Morris, Penny Muncy, Sherry Moss, Ellen Bradley and Cary Brown.

Ray Farabee to visit Floydada.

TEN YEARS AGO
Bill Cagle is quarterback club president.

J. C. Westers celebrate 50th wedding anniversary. Joe Clint Hennig is Tech graduate.

Robert Weems and Donald Wigginton receive degrees at North Texas State University.

About 350 persons attended the Floydada Air Show Labor Day in Floydada.

TWENTY YEARS AGO
Tri-captains for Whirlwind football season are Bill Gilliland, Danny Shipley and Larry Irby. Quarterback hopefuls are Don Vickers and Rodney Teague.

Mrs. Bill Stringer and Christy accompanied her sister, Jo Francis to Munday over the weekend to visit in the home of their parents, Mr. and Mrs. Joe Earp and Brad.

Fifty-eight students registered for school at Dougherty.

The J. C. Anderson family of Amarillo were Sunday visitors in Floydada, guests of his sister, Mrs. Earl Baker and family.

FORTY YEARS AGO
Mrs. W. N. Brewster leases Enoch Coffee Shop.

Misses Leona Jameson of Dougherty and Bert Ione Smith of Floydada received degrees from Texas State College for Women.

Judge Hill Stewart of Lbbock will preach at the South Side Baptist Church Saturday.

Rev. and Mrs. Vernon Shaw and son, Kenneth, are spending this week in Ruidoso on vacation.



HOW TO BEAT THE BACK TO SCHOOL BLUES

By Genevieve Millet Landau
Director, Hasbro Center for Child Development and Education

Youngsters who have had a wonderful time enjoying the freedom that summer brings - at camp, on holidays with their parents, or just roaming around with their friends - are likely to be more or less uneasy about going back to school, elementary-age youngsters often even more than high-schoolers. And the reason is not that they don't want to work in a structured setting.

On the contrary, young children, like the rest of us, need and welcome structure and accomplishment. Their uneasiness comes from not having had much experience at making the switch from freedom to routine, and feeling worried therefore that they won't be able to function well at school tasks. That they'll have forgotten what they learned last year. That the new teacher will be

mean or won't like them. You can help make this transition easier for your child - and yourself - by responding to the real cause of your child's anxiety, the youngster's fears about fitting himself or herself into a structured school routine. So don't wait until the last day before school to start the child on his or her Fall-time habits and schedules. At least a week before

school starts, such things as... No matter what the circumstances of how full the family calendar is, every child has this responsibility... No matter what the circumstances of how full the family calendar is, every child has this responsibility... No matter what the circumstances of how full the family calendar is, every child has this responsibility...

adapt comfortably to return to school and its structured existence. During this time, the fun part of going back to school also takes place and helps to prepare the child for a happy entry. This part of school preparation for the child of course, shopping for new school supplies for new school clothing. Perhaps, too, for something school-connected and very special, say, a microscope a child who's interested in science, an Atlas or globe another youngster, an easel and new paints to sharpen budding artist's interest in developing his or her talents - even a new ball or racket for the athlete in the family.

WE GIVE

DOUBLE ON WEDNESDAY

220 SOUTH 2ND

BUDDY'S

Values in This Ad

<p>1/2 Gallon Buddy's Milk 99¢ \$1.29 Value</p>	<p>25 Pound Purina Dog Chow \$5.69 \$7.19 Value</p>
<p>Red Delicious Apples 39¢ LB.</p>	<p>DOUBLE MINT SPEARMINT JUICY FRUIT BIG RED OR FREEDENT Gum 5/79¢ 20¢ Value</p>
<p>10 Pound All Purpose Potatoes 89¢</p>	<p>7 Day Religious Candles 99¢ \$1.39 Value</p>
<p>Fresh Green Bunches Onions 3 Bunches 49¢</p>	<p>5 Pound Imperial Sugar 9¢ With Purchase Of 4 Light Bulbs</p>
<p>Firm Green Cabbage 10¢ LB.</p>	<p>12 Ounce Keebler Vanilla Wafers 2/\$1.29 39¢ Value</p>
<p>1 Pound Cello Carrots 4/\$1.00</p>	<p>6 - 32 Ounce Coke Or Tab \$1.59 Plus Deposit \$2.29 Value</p>
<p>"Envelope" Schilling Taco or Sloppy Joe Mix 3/89¢ 39¢ Value</p>	<p>1/2 Gallon Bell Buttermilk 89¢ \$1.29 Value</p>
<p>13 Ounce Milnot Can Milk 3/\$1.00 40¢ Value</p>	<p>1/2 Gallon Bell Deluxe Ice Cream \$1.39 \$1.99 Value</p>
<p>4 Ounce Ralphs Garlic Pods 57¢ 89¢ Value</p>	<p>Watermelons \$1.99 Each</p>
<p>3 Ounce Lipton Instant Tea \$1.79 \$2.28 Value</p>	<p>16 Ounce Libby's Pumpkin 3/\$1.00</p>
<p>4 1/2 Ounce Betty Crocker Side Quicks 2/99¢ 73¢ Value</p>	<p>15 Ounce Chef Boy Ar Dee Cheese Ravioli 57¢ 73¢ Value</p>
<p>12 Ounce Nestles Hot Cocoa Mix 99¢ \$1.19 Value</p>	<p>28 Ounce Ajax Liquid Cleaner \$1.19 \$1.67 Value</p>
<p>50 Ounce Crystal Clear "Dishwasher" Detergent \$1.59 \$2.19 Value</p>	<p>12 Ounce Minute Maid Orange Juice 89¢</p>

SEPTEMBER SPECIAL DAYS

1. Labor Day.
4-8. Miss America Pageant, Atlantic City, N.J.
6. Eclipse of the Moon visible in most of North America.
8-9. Old Car Festival, Dearborn, Michigan.
9. National Grandparents Day.
14-22. National Rehabilitation week.
16. World Peace Day.
17. Citizenship Day.
17-23. Constitution week.
22. Rosh Hashanah or Jewish New Year.
30. Gold Star Mother's Day.

PRESIDENTIAL BIRTHDAYS:
William Howard Taft, September 15, 1857 - March 8, 1930.

SHOP FLOYD COUNTY

EAT SCHOOL

ment and Education

mean or won't like them. You can help make this transition easier for your child - and yourself - by responding to the real cause of your child's anxiety, the youngster's fears about fitting himself or herself into a structured school routine. So don't wait until the last day before school to start the child on his or her Fall-time habits and schedules. At least a week before

school starts, set rules such things as bedtime, standards, too. Perhaps everyone can say what she thinks is right homework and when it takes place. The child and about how much and how often should be viewed when. Standards should be determined by the whole family. At parties, will be permitted during week, and so on. Important of all, sharing household responsibilities should be discussed. Summer schedules keeping is usually relaxed and everyone may be quite demanding than

Standard should be determined by the whole family. At parties, will be permitted during week, and so on. Important of all, sharing household responsibilities should be discussed. Summer schedules keeping is usually relaxed and everyone may be quite demanding than

Standard should be determined by the whole family. At parties, will be permitted during week, and so on. Important of all, sharing household responsibilities should be discussed. Summer schedules keeping is usually relaxed and everyone may be quite demanding than

Standard should be determined by the whole family. At parties, will be permitted during week, and so on. Important of all, sharing household responsibilities should be discussed. Summer schedules keeping is usually relaxed and everyone may be quite demanding than

Standard should be determined by the whole family. At parties, will be permitted during week, and so on. Important of all, sharing household responsibilities should be discussed. Summer schedules keeping is usually relaxed and everyone may be quite demanding than

Standard should be determined by the whole family. At parties, will be permitted during week, and so on. Important of all, sharing household responsibilities should be discussed. Summer schedules keeping is usually relaxed and everyone may be quite demanding than

Standard should be determined by the whole family. At parties, will be permitted during week, and so on. Important of all, sharing household responsibilities should be discussed. Summer schedules keeping is usually relaxed and everyone may be quite demanding than

Standard should be determined by the whole family. At parties, will be permitted during week, and so on. Important of all, sharing household responsibilities should be discussed. Summer schedules keeping is usually relaxed and everyone may be quite demanding than

Standard should be determined by the whole family. At parties, will be permitted during week, and so on. Important of all, sharing household responsibilities should be discussed. Summer schedules keeping is usually relaxed and everyone may be quite demanding than

Standard should be determined by the whole family. At parties, will be permitted during week, and so on. Important of all, sharing household responsibilities should be discussed. Summer schedules keeping is usually relaxed and everyone may be quite demanding than

Standard should be determined by the whole family. At parties, will be permitted during week, and so on. Important of all, sharing household responsibilities should be discussed. Summer schedules keeping is usually relaxed and everyone may be quite demanding than

Standard should be determined by the whole family. At parties, will be permitted during week, and so on. Important of all, sharing household responsibilities should be discussed. Summer schedules keeping is usually relaxed and everyone may be quite demanding than

Standard should be determined by the whole family. At parties, will be permitted during week, and so on. Important of all, sharing household responsibilities should be discussed. Summer schedules keeping is usually relaxed and everyone may be quite demanding than

Standard should be determined by the whole family. At parties, will be permitted during week, and so on. Important of all, sharing household responsibilities should be discussed. Summer schedules keeping is usually relaxed and everyone may be quite demanding than

Standard should be determined by the whole family. At parties, will be permitted during week, and so on. Important of all, sharing household responsibilities should be discussed. Summer schedules keeping is usually relaxed and everyone may be quite demanding than

Standard should be determined by the whole family. At parties, will be permitted during week, and so on. Important of all, sharing household responsibilities should be discussed. Summer schedules keeping is usually relaxed and everyone may be quite demanding than

Standard should be determined by the whole family. At parties, will be permitted during week, and so on. Important of all, sharing household responsibilities should be discussed. Summer schedules keeping is usually relaxed and everyone may be quite demanding than

Standard should be determined by the whole family. At parties, will be permitted during week, and so on. Important of all, sharing household responsibilities should be discussed. Summer schedules keeping is usually relaxed and everyone may be quite demanding than

Standard should be determined by the whole family. At parties, will be permitted during week, and so on. Important of all, sharing household responsibilities should be discussed. Summer schedules keeping is usually relaxed and everyone may be quite demanding than

Standard should be determined by the whole family. At parties, will be permitted during week, and so on. Important of all, sharing household responsibilities should be discussed. Summer schedules keeping is usually relaxed and everyone may be quite demanding than

Standard should be determined by the whole family. At parties, will be permitted during week, and so on. Important of all, sharing household responsibilities should be discussed. Summer schedules keeping is usually relaxed and everyone may be quite demanding than

Standard should be determined by the whole family. At parties, will be permitted during week, and so on. Important of all, sharing household responsibilities should be discussed. Summer schedules keeping is usually relaxed and everyone may be quite demanding than

Standard should be determined by the whole family. At parties, will be permitted during week, and so on. Important of all, sharing household responsibilities should be discussed. Summer schedules keeping is usually relaxed and everyone may be quite demanding than

Standard should be determined by the whole family. At parties, will be permitted during week, and so on. Important of all, sharing household responsibilities should be discussed. Summer schedules keeping is usually relaxed and everyone may be quite demanding than

Standard should be determined by the whole family. At parties, will be permitted during week, and so on. Important of all, sharing household responsibilities should be discussed. Summer schedules keeping is usually relaxed and everyone may be quite demanding than

Standard should be determined by the whole family. At parties, will be permitted during week, and so on. Important of all, sharing household responsibilities should be discussed. Summer schedules keeping is usually relaxed and everyone may be quite demanding than

Standard should be determined by the whole family. At parties, will be permitted during week, and so on. Important of all, sharing household responsibilities should be discussed. Summer schedules keeping is usually relaxed and everyone may be quite demanding than

Standard should be determined by the whole family. At parties, will be permitted during week, and so on. Important of all, sharing household responsibilities should be discussed. Summer schedules keeping is usually relaxed and everyone may be quite demanding than

Standard should be determined by the whole family. At parties, will be permitted during week, and so on. Important of all, sharing household responsibilities should be discussed. Summer schedules keeping is usually relaxed and everyone may be quite demanding than

Standard should be determined by the whole family. At parties, will be permitted during week, and so on. Important of all, sharing household responsibilities should be discussed. Summer schedules keeping is usually relaxed and everyone may be quite demanding than

Standard should be determined by the whole family. At parties, will be permitted during week, and so on. Important of all, sharing household responsibilities should be discussed. Summer schedules keeping is usually relaxed and everyone may be quite demanding than

Standard should be determined by the whole family. At parties, will be permitted during week, and so on. Important of all, sharing household responsibilities should be discussed. Summer schedules keeping is usually relaxed and everyone may be quite demanding than

Standard should be determined by the whole family. At parties, will be permitted during week, and so on. Important of all, sharing household responsibilities should be discussed. Summer schedules keeping is usually relaxed and everyone may be quite demanding than

Standard should be determined by the whole family. At parties, will be permitted during week, and so on. Important of all, sharing household responsibilities should be discussed. Summer schedules keeping is usually relaxed and everyone may be quite demanding than

Standard should be determined by the whole family. At parties, will be permitted during week, and so on. Important of all, sharing household responsibilities should be discussed. Summer schedules keeping is usually relaxed and everyone may be quite demanding than

Standard should be determined by the whole family. At parties, will be permitted during week, and so on. Important of all, sharing household responsibilities should be discussed. Summer schedules keeping is usually relaxed and everyone may be quite demanding than

Standard should be determined by the whole family. At parties, will be permitted during week, and so on. Important of all, sharing household responsibilities should be discussed. Summer schedules keeping is usually relaxed and everyone may be quite demanding than

Standard should be determined by the whole family. At parties, will be permitted during week, and so on. Important of all, sharing household responsibilities should be discussed. Summer schedules keeping is usually relaxed and everyone may be quite demanding than

Standard should be determined by the whole family. At parties, will be permitted during week, and so on. Important of all, sharing household responsibilities should be discussed. Summer schedules keeping is usually relaxed and everyone may be quite demanding than

Social Security News

Virginia DeWitt
Social Security
Representative

for 2 consecutive years, he or she will have Medicare protection.

My sister was seriously injured in a house fire. The doctor says she'll be in the hospital for several months and won't be able to work again for a year or longer. If she qualifies for disability benefits, will they start right away?

No. There's a 5-month waiting period for social security disability benefits. Monthly payments start with the 6th month of disability. Also, when a person has been eligible for disability benefits

For further information regarding Social Security benefits please contact the Social Security office, 1401-B West 5th Street, Plainview, Texas. You may call free of charge by dialing operator and asking for Enterprise 8-4132. A telephone call to the Plainview office may save you time and a trip.

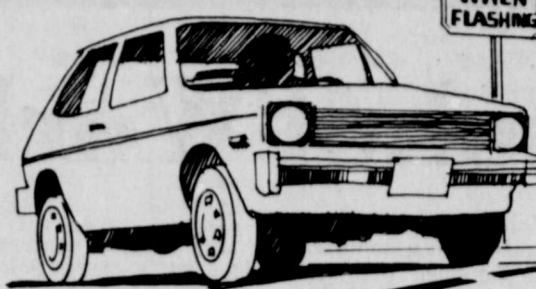
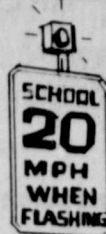
Do not take life too seriously. You never get out of it alive.
Elbert Hubbard

HOSPITAL NOTES

ADMITTED DISCHARGED

Leonard King	8-16-79	8-24-79
Claudia Alma Porter	8-21-79	8-28-79
Alice M. Howell	8-22-79	8-23-79
Lillie Mae Kirby	8-22-79	8-26-79
Juanita Arellano	8-23-79	8-26-79
Vera M. Coward	8-23-79	
Baby Boy "Daniel" Arellano	8-23-79	8-26-79
George W., Jr. Brinsfield	8-24-79	8-29-79
Lorene T. Reves	8-26-79	
Sally Ann Rogers	8-27-79	
Rosa V. Sierra	8-28-79	8-30-79
Baby Boy "Nabor"	8-28-79	8-30-79
Brandon Royce Meyers	8-28-79	8-31-79
Ruby Lena Holcomb	8-28-79	
Bob Turner	8-29-79	
Maggie B. King	8-29-79	
Oiga V. Pena	8-30-79	

School's In Session - Caution At Crosswalks



YOUR WEEK AHEAD By DAMIS

Forecast Period: 9/1 - 9/8

ARIES	Mar. 21-Apr. 19	Think carefully before making change in career direction.
TAURUS	Apr. 20-May 20	Follow your hunches. Speculation, romance, creative pursuits, all rosy.
GEMINI	May 21-June 20	Friction at home or on the job carries a depressive note.
CANCER	June 21-July 22	Dealings with partner or mate should be very favorable. Read fine print.
LEO	July 23-Aug. 22	Put financial dealings into clear focus. There just might be the promise of a raise, or some increase in earnings.
VIRGO	Aug. 23-Sept. 22	It's a favorable time for furthering your personal interests.
LIBRA	Sept. 23-Oct. 22	A tendency toward super sensitive feelings brings old grievances to the surface.
SCORPIO	Oct. 23-Nov. 21	Emotional outbursts in meeting with associates calls for a deeper analysis of aims and ambitions.
SAGITTARIUS	Nov. 22-Dec. 21	Real estate ventures could fare well. Work with family members.
CAPRICORN	Dec. 22-Jan. 19	Travel plans may have to be changed in the best interests of all.
AQUARIUS	Jan. 20-Feb. 18	Hang on to the purse strings. It could be too much outgo.
PISCES	Feb. 19-Mar. 20	Business relationships could get a little tense. Aren't you expecting too much?

Television Safety

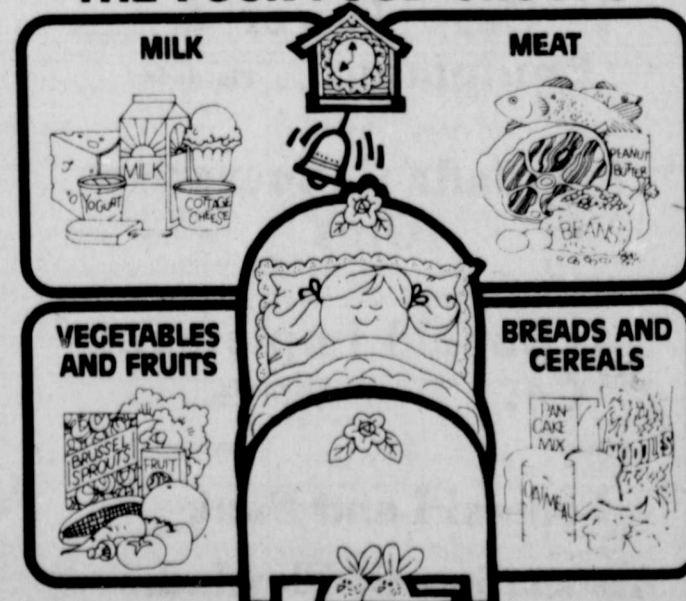
Don't take television safety for granted, advises Claudia Kerbel, a consumer information specialist with the Texas Agricultural Extension Service, The Texas A&M University System.

Can you say "yes" to every "safety must" listed below about your television set?

1. It has adequate ventilation, and the ventilation openings can allow heat generated during operation to be released.
2. The polarized power line plug (a plug with one blade wider than the other) has not been tampered with.
3. The plug is in a power outlet that is not overloaded with several extension cords.
4. Nothing is allowed to rest or roll over the power cord. This can result in shock or fire hazard.
5. Whenever you leave the room or the house, the television is turned off.
6. The television is never exposed to rain or water, and is never operated near water.
7. The television set becomes damp or wet, it is inspected by a service technician before further use. Rain or excessive moisture may cause electrical shorts that can result in fire or shock hazards.
8. All cautionary labels and warnings on the back cover of the television set are observed.

The World Trade Center towers are 103 feet taller than the Empire State Building. Chicago's Sears Tower is 101 feet taller still, making it the world's tallest building.

THE FOUR FOOD GROUPS



A practical guide to good nutrition during September

220 SOUTH 2ND

BUDY'S

Mon-Sat 9-5

Values In This Ad

WE GIVE

Bacon \$1.59 LB.

Ground Beef \$1.59 LB.

Chili \$1.99 LB.

Ham \$1.89 LB.

WE GIVE

Roast \$1.29 LB.

Boneless Sirloin \$2.59 LB.

Steak \$1.99 LB.

Short Ribs \$1.99 LB.

5 Pound Imperial Sugar 9¢

With Purchase Of 4 Light Bulbs

Vanilla Wafers 2/\$1.29

39¢ Value

Watermelons \$1.99 Each

Coke Or Tab \$1.59 Plus Deposit

2.29 Value

WE GIVE

983-3149

We Take W.I.C. Cards
We Take U.S.D.A.
Food Coupons

5 Pound Gladiola Flour 95¢

\$1.37 Value

Grade A Large Eggs 9¢

With Purchase Of 2 Lb. Owens Sausage

12 Count Ball Regular Jar Lids 3/\$1.00

50¢ Value

16 Ounce Raid Professional Ant And Roach Spray \$2.39

3.59 Value

Pepsodent Toothbrush 39¢

89¢ Value

Aim 6 Ounce Family Size Toothpaste 99¢

\$1.99 Value

16 Ounce Van Camps Pork and Beans 38¢ Value 3/\$1.00

Breeze \$2.19 Value

Coffee \$3.39 Value

Steak Sauce \$1.23 Value 89¢

Detergent \$2.79 Value 1\$1.99

Rug Fresh \$1.49 Value 99¢

Era \$1.59 Value 1\$1.19

Dog Food \$2.35 Value 1\$1.69

Pork Rinds 99¢ Value 79¢

Bar-B-Q Sauce 78¢ Value 63¢

Cereal \$1.17 Value 79¢

Tuna \$1.09 Value 77¢

Hot Dog Sauce 39¢ Value 4/\$1.00

Cake Mix 99¢ Value 69¢

Dish Lotion 73¢ Value 59¢

1 Pound Maryland Club Coffee \$2.89 With Coupon \$3.19 Without Coupon

Good At Buddy's Expires 9-5-79

6 - 12 Ounce Can Dr Pepper or Coke 99¢ With Coupon \$1.29 Without Coupon

Good At Buddy's Expires 9-5-79



FARM & RANCH NEWS



Gasohol Workshop Set For September 6 In Lubbock

A statewide workshop on gasohol will take place in the Lubbock Memorial Civic Center September 6, 1979, under co-sponsorship of the Texas Farmers Union and the Texas Tech Center For Energy Research. State Representative Dan Kubiak of Rockdale, whose support of gasohol production has earned him the name "Mr. Gasohol," will be the keynote speaker.

Jon Thomas, conference coordinator, says the conference will deal with all major problems related to gasohol production and marketing. "Gasohol is seen as a very logical solution to some of the problems of Texas farmers," Thomas said. "And this conference is designed to be a gathering point for information on gasohol." Rotating workshops are planned so that farmers

interested in gasohol production can attend a total of five sessions. The sessions will provide information on technology of gasohol production, legal aspects and financial assistance for production, equipment procurement, and mixture and uses of gasohol, including blending, storage and marketing. The workshop on ethanol production

technology will contain a comprehensive presentation on stages of modern ethanol production, including a demonstration of a working ethanol glass "still." A slide program entitled "Alcohol Fuels: A Declaration of Independence For Farmers" will answer some of the questions clouding the gasohol issue. Director Ray NFU Director of Field Services, will coordinate this workshop.

Representatives of the Federal Bureau of Alcohol, Tobacco and Firearms, and the Texas Alcoholic Beverage Commission will explain procedures for obtaining a federal and state permit for producing ethanol, both required under present law.

A separate workshop will be held to explain financial assistance available to farmers and farmer cooperatives interested in gasohol production. Representatives of the Small Business Administration and Economic Development Administration, are expected to be available for this session. Equipment producers of both large and small units will present the case for large scale and small scale ethanol production respectively. A representative from the Department of Energy is also expected to participate.

The registration fee for the conference is \$10, which includes more information with the Center For Energy Research, Tech University, Lubbock. Jon Thomas, Texas Farm Bureau, Lake Air Dr., West, Lubbock, Texas, 79405-2222. Professor Beck, 809-356-1232. Thomas, 817-772-7221.

What's Happening

BY PAUL TREPTOW Crosby-Floyd County Extension Entomologist

BOLLWORM
Bollworm activity has increased in Crosby and Floyd counties. Although worm numbers are low at this time one field has been observed with a high number of eggs. Headworms are starting to show up in sorghum. Sunflower moths and leaf feeding caterpillars are still active in sunflower fields.

COTTON

In many fields you can now find nearly mature bolls. Quite a few fields are blooming in the top of the plants. Bollworm activity has increased in many fields.

I have personally observed one field in the South Plains area of Floyd County which had 50 eggs per 100 plant terminals. Beneficial insects are present in moderate numbers in most fields. Spiders and lacewing larvae are the predominant predators being found. In the light eggs lays we have been seeing, beneficial insects should hold worms in check. Remember that in fields next to treated sorghum and sunflowers light or no beneficials will be present.

Usually 20 eggs or more per 100 plant terminals can be considered a heavy egg lay for this area. Treatment decisions cannot be made on the basis of eggs alone. No one can predict how many worms will result from the eggs laid with any degree of certainty. Economic thresholds (treatment levels) are based on worms and damaged green squares in the terminals. Treatment should be considered when 10 percent of the plants have small larvae in the terminals and damaged square counts read 8 to 10 percent. In the case of heavier worm populations larvae counts alone should be used in some cases.

The biological insecticides (Dipel, Thuricide, and Elcar) are effective in controlling light to moderate (10 to 15 percent) worm populations typically found in our area when used correctly. Ovicides may be necessary if white eggs are found in addition to economic infestations of bollworms.

While cotton aphids are still present in many fields beneficial insects have reduced them considerably in most areas.

The following concerning economic considerations in making bollworm management decisions was prepared by Jim Leser, Area Entomologist at Lubbock.

How much is a boll worth? Producers need to know the answer to this question if they are to make sound insect

control decisions. Several factors influence the value of a boll. These include, among others, market value of lint, number of bolls to make a pound of lint, percent turnout and yield potential. Early in the season, yield potential is high and we can afford to lose more fruit to weather and insects than we can later in the season when days are cooler and a killing frost is just around the corner. This same cool weather will also increase the number of bolls needed to make a pound of lint. Assuming a 22 percent turnout, this number could range anywhere from 400 to 650.

If we assume cotton is going for 50 cents a pound and 450 bolls are equal to a pound of lint, then 900 bolls are worth 1 dollar. This works out so that if roughly 1 boll per 13 row feet (1,000 of an acre) or 1 boll per 50 or so plants is lost to insect damage, 1 dollar per acre was also potentially lost. This means a producer can pay the spray pilot if 5-10 bolls per 13 row feet or 1-2 bolls per 10 plants are saved from insect damage. Actual numbers depend on chemical and rate used and application cost for bollworm control.

Just because a producer can make some money on the surface and still pay the aerial applicator does not necessarily mean that an application is economical. Bollworms have tremendous appetites. One bollworm will consume or destroy approximately 6-8 squares, 1 bloom and 1 boll during its developmental period. Early in the fruiting cycle, when mostly small bolls are found, bollworms can destroy more than 1 boll during its life time. More bolls are fewer squares would be damaged later in the season when squares are hard to find. But, bollworms generally damage only a few locks on full-sized bolls.

SORGHUM

Greenbugs have started to build up in some of the earlier treated fields. Parasitic wasp activity is high in many areas and will probably reduce greenbug numbers enough to avoid a second application in most cases.

Growers with sorghum fields that have not yet bloomed or are now blooming should be on the lookout for the sorghum midge. This insect shows up occasionally by the middle of August. The adult midge is a small, orange-colored gnat-like fly. The female lays eggs only in blooming por-

tions of a sorghum head, which makes this period of development critical. The larvae or maggots feed within the developing seed. These seeds fail to develop and cause heads to appear blasted. Economic threshold is reached when adult numbers average one per head in commercial sorghum. The best time to check to find midge is early in the morning or late in the afternoon. Take a clear plastic bag and quickly slip it over the sorghum head. The adult midge, if present, will fly out into the open area of the bag. As in any scouting procedure be sure and check several areas of each field to obtain a representative sample.

Headworm (cotton bollworm, corn earworm) counts of up to 40 percent have been found in seed production fields. The economic threshold for headworms in sorghum is dependent upon the market price, treatment cost, and yield potential. In seed production fields treatment should be considered when worm numbers approach one per head. A good way to check for these is to slip a bag over the head and shake or beat the head into a container such as a bucket or small trash can.

Assistant Ag Secretary To Address Board

ASSISTANT AG SECRETARY TO ADDRESS BOARD: P. R. (Bobby) Smith, Assistant U.S. Secretary of Agriculture and president of the International Institute for Cotton, will be a guest speaker at the National Cotton Council's Board meeting Sept. 6-7 in Little Rock. Smith will discuss IIC activities Sept. 6 at Camelot Inn. Council President C. Hoke Leggett will address the session, and Donald A. Johnson of Lubbock, Plains Cotton Growers executive vice president, will give a firsthand report of a recent trade team visit to the Far East.

Textile exports climbing; exports of textile mill products rose to \$1.42 billion in this year's first half, 52 percent above the same period last year. Cotton denim in large volume is reportedly being sold to Italy, France, Hong Kong, Canada, Belgium, and Britain. Latest figures available show cotton corduroy exports in the first quarter increased more than 20 times to France and more than four times to Italy and West Germany.

Apparel exports also climbed 49 percent during the year's first half. Men's and boy's denim trousers were

Bergland Urges Redefinition Of Farm Goals

Secretary of Agriculture Bob Bergland, reviewing farm policy and programs of the past two years, suggested recently while that "the time has come for redefinition of the goals of American agriculture."

In remarks prepared for the Commonwealth Club, Bergland said, that farmers are getting prices for their crops and livestock that are about 16 percent higher than last year, that net farm income this year may match the record \$33 billion reached in 1973, that farm exports are on their way to another new record, and that farm programs will cost taxpayers \$1.4 billion less in 1979 than they did in 1978.

"But while we are telling farmers that they are well off—that farm prices, net farm income, and farm exports are up dramatically—some farmers continue to tell us that in the midst of stability and prosperity, they can't make it," Bergland said. "For some of them, there still is bankruptcy alongside prosperity."

Farmers Invited To Paymaster Field Day Wednesday

ACCO Seed cordially invites all area farmers and their wives to its Annual Field Day on Wednesday, September 5 at Paymaster Farm, located three miles north of Aiken.

According to Gary Duncan, Paymaster Sales Manager, activities will begin with registration at 9:00 a.m. followed by field tours. A free barbecue lunch will be served at noon to all registered guests.

Field Day highlights include Dr. Ted Givens, Paymaster Sorghum Research, will introduce Paymaster's five new grain sorghum hybrids and Gary Duncan will conduct a corn variety demonstration and yield tour featuring Paymaster's 5 new corn hybrids.

A tour of forage hybrids will be conducted by Dr. N.W. "Nick" Kramer of Paymaster Sorghum Research includ-

ing management studies of dan grass hybrids and silage varieties. A tour of cotton varieties will be included.

Delbert Hess with specialty new varieties.

Bill Howard, Paymaster's manager will show guests the compost on soil properties growth.

Other tour stops will demonstrate of limited grain sorghum performance and sorghum breeding research. Verticillium wilt survey and yield testing.

In addition, varieties also ago will be compared to high performing hybrids.



There appears to be concern in the Carter Administration that the Jones-Madigan federal crop insurance bill scheduled for House consideration in September may be voted down. The bill came out of the House Ag Committee on a vote of only 21 to 20, and support from agricultural producers has been conspicuously absent.

This may well be why, thinks Donald Johnson, Executive Vice President of Plains Cotton Growers, Inc., Lubbock, the director of the Federal Crop Insurance Corporation (FCIC) has requested a meeting with cotton Producer organization representatives from across the Cotton Belt in Dallas April 30.

The director, James Deal, is bringing his actuaries along to present new premium cost figures "which we hope will look more attractive to producers than those we've been seeing," Johnson said.

"And although it would be a complete about-face," he added, "we also are hoping Mr. Deal will tell us Secretary Bergland is now willing to support a two-year extension of the current disaster program."

As it came from committee the Jones-Madigan bill would extend the disaster program through 1980, but make it available to producers in 1981 only in counties where federal crop insurance was not offered.

Under PGC's long-standing legislative policy, Johnson explains, the organization cannot support the bill unless it is amended to include a disaster program extension at least

through 1981, the last year of present farm law. PGC's position could be the disaster program "as a workable, affordable program" is in operation and it provides adequate protection.

Figures circulated to producers reportedly developed by the cotton producers for the percent of expected crop loss. House bill would be about 10 percent. "Using our 10-year program," Johnson calculates, "producers say it is an adequate protection, but inadequate protection" for feed grains and wheat.

The Senate committee bill, also scheduled for September, would make the program available to producers through 1980 and 1981. For some Talmadge of Georgia's Committee Chairman, he opposes disaster program. "So most observers agree that the disaster program that the House bill would extend subsequent House-Senate committee meeting."

Should the Jones-Madigan Johnson notes, PGC will modify its position on extension of the disaster program through 1981.

Sponsored by the Following Interested Firms

First National Bank Floydada	Collins Implement Co. Floydada	Floyd County Farm Bureau
Case Power & Equipment Floydada	Russell's Equipment & Supply Floydada	Perry Implement Lockney
Floydada Cooperative Gins	Plainview Savings & Loan Association Floydada	Ansley & Son Lockney
McDonald Implement Co. Floydada	Martin & Co.	Floydada Implement Co.
Federal Land Bank	Consumers Fuel Association Lockney	Producers Cooperative Elevators Floydada
Association Of Floydada	Wilson Electric Floydada	

CALL CABLE TV
FLOYDADA 983-
TODAY
MORE AND BETTER

WTBS CH. 17 Atlanta	KTXT CH. 5 Lubbock	PTL CH. 6 Charlottesville	KMTV CH. 7 Lubbock
Three Stooges	No Programs	Kenneth Coppeland	Praise the Lord
Marwick		Voice of Victory Oral Roberts and You	Jimmy Sweaggar Progress Newspaper
News		Jerry Fehlwell	Little Reason I Love You
Movie: "Broken Lance"		PTL Club	Best of Donahue
			Baptist Church
Movie: "About Mrs. Leslie"	No Programs	Calvary Temple	Animals Animals Texas Football
		Amazing Grace Bible Class Kreese Brothers	Ferris Buell Si Se Pa
		Music Celebration Celebration	Wrestling
		Abundant Living James Robison	Base Ball America
	Firing Line	Club PTL	U.S. Am Golf Champion
Love Ameri- can Style		Amazing Grace Bible Class Kreese Brothers	ABC News

WTBS CH. 17 Atlanta	KTXT CH. 5 Lubbock	PTL CH. 6 Charlottesville	KMTV CH. 7 Lubbock
Movie: "The Great Man's Whiskers"	Consumer Survival Kit Victory Garden	Music Celebration Celebration	Elton John The Rock
	Evening at Pope: Glen Campbell	Abundant Living James Robison	Mark & Mindy The Reaper
News and Fall of America	Masterpiece Theatre: I, Claudius	PTL Club	Movie: "True Grit"
Between the Wars Hull House	Upstairs, Downstairs		
Open Up	Sign Off	Larry Jones Ministry PTL Club	News
			Texas Football Papi Country
			Praise the Lord

WTBS CH. 17 Atlanta	KTXT CH. 5 Lubbock	PTL CH. 6 Charlottesville	KMTV CH. 7 Lubbock
Leslie	No Programs	Varied Programs	Good Morning America
Ramp Room	Weather		
Lucey Show	Sesame Street		
Gwen Acres			
Movie	Mister Rogers Neighborhood Food Preservation		Phil Don Pleasant
	Varied Programs	PTL Club	Laverne Shirley Family
Love Ameri- can Style News	Over Easy With MacNeil- Luhur Rept.		\$20,000 Pyramid Morning Magazine
	Dick Cavett Show Varied Programs	Varied Programs	All My Children
Lucey Show			Praise the Lord
Shop (NHF)	Lilas, Yoga And You Vilas Aligre		General Hospital
Pleasantville	Sesame Street		Edge of Night
Partridge Family			Mike Doolittle
Over Truck	Mister Rogers Neighborhood Eboria		Family Affair
Family Affair	Once Upon a Classic Over Easy	Harold of Truth Christopher Class-Up	ABC Mary Moore

WTBS CH. 17 Atlanta	KTXT CH. 5 Lubbock	PTL CH. 6 Charlottesville	KMTV CH. 7 Lubbock
Leslie	No Programs	Varied Programs	Good Morning America
Ramp Room	Weather		
Lucey Show	Sesame Street		
Gwen Acres			
Movie	Mister Rogers Neighborhood Food Preservation		Phil Don Pleasant
	Varied Programs	PTL Club	Laverne Shirley Family
Love Ameri- can Style News	Over Easy With MacNeil- Luhur Rept.		\$20,000 Pyramid Morning Magazine
	Dick Cavett Show Varied Programs	Varied Programs	All My Children
Lucey Show			Praise the Lord
Shop (NHF)	Lilas, Yoga And You Vilas Aligre		General Hospital
Pleasantville	Sesame Street		Edge of Night
Partridge Family			Mike Doolittle
Over Truck	Mister Rogers Neighborhood Eboria		Family Affair
Family Affair	Once Upon a Classic Over Easy	Harold of Truth Christopher Class-Up	ABC Mary Moore

CALL CABLE TV FLOYDADA 983-2911 TODAY MORE AND BETTER TV!

These Floydada And Lockney Merchants Sponsor The T.V. Schedule For You Each Week

PRESTON MILK BALLON \$1.00 USDA Inspected Plant Custom Processing, Wholesale and Retail Meats, Cut, Wrapped, Frozen, and Fully Guaranteed. Financing Available Or Freezer Beef. Lockney Meat Co. Hwy. 70 652-3305 Lockney, Texas

6 In Lubbock

workshop will be held to... The registration fee for the... of Gasohol, Don Graham, Manager of the Sun Ray Co-Op, presently a gasohol outlet in Texas, will discuss use of ethanol in diesel...



Farmers Invited To... Wednesday

ardially invites all area... ing management studies on... A tour of cotton variety de... Gary Duncan, Paymaster, activities will... Bill Howard, Paymaster... Other tour stops will include... In addition, varieties used...

COTTON TALKS FROM PLAINS COTTON GROWERS, INC.

to be concerned in the... through 1981, the final year... PGC's position program "until... as a workable, affordable... Figures circulated in recent... reported by PGC... indicate the cost to High... cotton producers for coverage... percent of expected yield... House bill would be about \$18... "Using our ten-year average... comes to about seven cents per... Johnson calculates, "which... duers say is an exorbitant... inadequate protection."... feed grains and wheat have... similar sentiments about the... The Senate companion to... bill, also scheduled for... September, would make the... program available to producers... 1980 and 1981. But Senator... Talmadge of Georgia, a... Committee Chairman, is... oppose disaster program... 1981. So most observers... that the disaster bill prev... subsequent meeting... committee meeting... Johnson notes, PGC and... extension of the disaster... through 1981.

Table with 12 columns (Cable, WTBS, KTXT, PTL, KMCC, WGN, KTV, KCBD, KLBK, CBN) and 12 rows of TV program listings for Monday, 09/02/79.

Table with 12 columns (Cable, WTBS, KTXT, PTL, KMCC, WGN, KTV, KCBD, KLBK, CBN) and 12 rows of TV program listings for Tuesday, 09/03/79.

Table with 12 columns (Cable, WTBS, KTXT, PTL, KMCC, WGN, KTV, KCBD, KLBK, CBN) and 12 rows of TV program listings for Wednesday, 09/04/79.

Table with 12 columns (Cable, WTBS, KTXT, PTL, KMCC, WGN, KTV, KCBD, KLBK, CBN) and 12 rows of TV program listings for Thursday, 09/05/79.

Table with 12 columns (Cable, WTBS, KTXT, PTL, KMCC, WGN, KTV, KCBD, KLBK, CBN) and 12 rows of TV program listings for Friday, 09/06/79.

Table with 12 columns (Cable, WTBS, KTXT, PTL, KMCC, WGN, KTV, KCBD, KLBK, CBN) and 12 rows of TV program listings for Saturday, 09/07/79.

Table with 12 columns (Cable, WTBS, KTXT, PTL, KMCC, WGN, KTV, KCBD, KLBK, CBN) and 12 rows of TV program listings for Sunday, 09/08/79.

FRIDAY 09/07/79

CABLE	4	5	6	7	9	10	11	13	2
PM	WTBS CH. 17 Atlanta	KTXT CH. 5 Lubbock	PTL CH. 6 Charlotte	KMCC CH. 28 Lubbock	WGN CH. 9 Chicago	KTV CH. 10 Oakland	KCBD CH. 11 Lubbock	KLBK CH. 13 Lubbock	CBN CH. 2 Virginia Bch
6:00	Get Smart	Footsteps	At Home with the Bible	News	Dick Van Dyke	T.V. Power with Tom and Jerry	News	News	Bible Story
6:30	My Three Sons	MacNeil-Lahrer Rept.	Jimmy Swaggart	Bewitched	Star Trek	Sanford and Son	Joker's Wild	Lesson	
7:00	Movie: 'Curse Of The Living Corpse'	Wash. Week in Review	Westbrook Hospital	Fantasy Island	Twilight Zone	Captain Cosmic Bewitched	Incredible Hulk	Intouch	
7:30									
8:00		Evening at Pops: Glen Campbell	PTL Club	Movie: 'Breaking Up is Hard to Do'	Tribute to Muhammed Ali	Six Million Dollar Man	Rockford Files	Tribute to Muhammed Ali	700 Club
8:30									
9:00	Onedin Line	Masterpiece Theatre: I, Claudius		Part 2		Odd Couple	Eddie Capra Mysteries		Richard Hague
9:30						Dating Game			
10:00	New Soupy Sales	Dick Cavett	Richard Hague	News	News	Movie: 'Nightmare'	News	News	Dan Griffin Show
10:30	Movie: 'Road to Bali'	Captioned ABC News	PTL Club	Newlywed Game	Movie: 'Herlow'		Tonight Show	U.S. Open Movie: 'The Super Fight'	Ross Bagley
11:00		Sign Off		Completely Off the Wall	Police Story				Relig Prgrms Cont'd
11:30									
12:00							Midnight Special	Movie: 'Death Follows the'	

SATURDAY 09/08/79

CABLE	4	5	6	7	9	10	11	13	2
AM	WTBS CH. 17 Atlanta	KTXT CH. 5 Lubbock	PTL CH. 6 Charlotte	KMCC CH. 28 Lubbock	WGN CH. 9 Chicago	KTV CH. 10 Oakland	KCBD CH. 11 Lubbock	KLBK CH. 13 Lubbock	CBN CH. 2 Virginia Bch
7:00	Ultraman	No Programs	Isaac	The World's Greatest Superfriends	U. S. Farm Report	Daffy Duck Show	Adventures of Mighty Mouse and Heckle & Jackie	Ever Increasing Faith	
7:30	Partridge Family				Daniel Boone				
8:00	Star Trek	To Be Announced	Plasticman	Movie: 'Bowery'		Fred and Barney Meet the Thing	Bugs Bunny/ Road Runner Show	Life in the Spirit	
8:30									
9:00	Movie: 'War and Peace' Part 2	Bible Bowl	Pirate Adventures	Boys: Jungle Gents	No Programs	Super Globe-trotters Shmoo	All-New Popeye Hour	Manna Lesson	
9:30									
10:00		PTL Club	Spider-Woman	Movie: 'A Child for Tony'	Voice of Agriculture	Adventures of Flash Gordon	New Fat Albert Show	Circle Square	
10:30									
11:00			ABC Weekend Special	Charlando	Revisita de la Semana	Johnny Quest	U.S. Open Tennis Championship	Puppet Tree	
11:30	Movie: 'Fighter'								
12:00	Attack	Shakespeare Plays	Richard Hague	Si Se Puedel	See Hunt	Our Men in the Capital	U.S. Farm Report	Best of 700 Club	
12:30									
1:00	Rat Patrol	Good News	Larry Jones Ministry	Soccer Bowl '79	Pre-Game Show	Soul Train	Pre-game Show	Through Death to Life	
1:30									
2:00	Angler Club	Jacobs Brothers High	Adventure	at Chicago	Boston: and Los Angeles at Cincinnati			Rays of Hope	
2:30	This Week in Baseball								
3:00	All-American Futurity	Great Plains Experience	Isaac	NCAA Football	the Living Dead	or Phil. at Chicago		Believers Voice of Victory	
3:30									
4:00	American Lifestyle	Soccer Made in Germany	Richard Hague	Alabama at Georgia Tech	Soul Train	Movie: 'Savage Innocents'	Porter Wagoner Nashville Music	Celebration	
4:30	Love, American Style								
5:00	Championship Wrestling	Footsteps	Good News	Sgt. Bilko	Movie Cont'd	Wild Kingdom		Program Cont'd	
5:30									

These Floydada And Lockney Merchants Sponsor The T.V. Schedule For You Each Week

SATURDAY 09/08/79

CABLE	4	5	6	7	9	10	11	13	2
PM	WTBS CH. 17 Atlanta	KTXT CH. 5 Lubbock	PTL CH. 6 Charlotte	KMCC CH. 28 Lubbock	WGN CH. 9 Chicago	KTV CH. 10 Oakland	KCBD CH. 11 Lubbock	KLBK CH. 13 Lubbock	CBN CH. 2 Virginia Bch
6:00		Consumer Survival Kit	Club PTL	Football Continued	Dick Van Dyke	See Haw	Lawrence Walk	See Haw	Insight
6:30									
7:00	Miss National Teenage Pageant	Meeting of Minds	Jacobs Brothers High	Carol and Company	Miss Black Universe	Movie: 'A New Leaf'	US Against the World III	Bad News Bears	Beat of 700 Club
7:30									
8:00	On Stage at the Agora	Sailing: Sailing Tattood Tears	PTL Club	The Love Boat	Pageant				Lesson
8:30									
9:00	Nashville on the Road	Sign Off	Isaac	News	News	Movie: 'A Reflection of Fear'	News	News	Zola Levitt
9:30									
10:00	Porter Wagoner Rock Concert			Nashville Salutes	Movie: 'Egyptian'			Dallas	Ross Bagley
10:30									
11:00			Club PTL	America			News	Movie: 'Man From Saturday Night Live'	Relig Prgrms Cont'd
11:30									
12:00				Movie: 'Nightbeat'				Colorado	
12:30									

WHOZITS . . .



Richard Wiley Was Last Week's Whozit

Lockneyites who correctly identified Richard Wiley as the Whozit subject last Sunday were Elaine Fran Sterling Cummings, Keith Jackson, Peggy Hallmark, Dottie Starnell and Stanley Reeves. That was too easy - Richard hasn't changed much since 1942.

Mrs. Grigsby Milton Jr., of Floydada, correctly identified last week's Whozit as Richard Wiley.

LOCKNEY WHOZIT-Look close and you'll see the dimple in the little boy's chin. The hefty little boy grew into a slender man, but he still has that dimple. This 11-year resident of Lockney stays quite busy year-around with his work, but he'd rather be fishing.



This week's Floydada Whozit is a brother-sister combination. The boy, pictured at 7 years, grew up to become a

Lubbock policeman. The girl, 5 in the photo, is a housewife in Lubbock and used to work in a local abstract office.

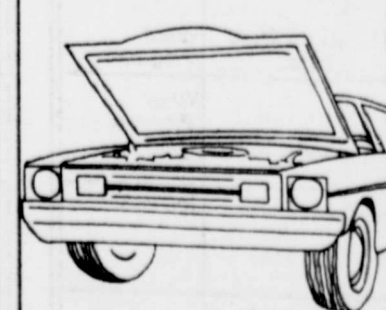


... AND SINCE PART OF THE CONGREGATION WAS OUT HERE, I THOUGHT A CHANGE IN THE SECOND SERVICE WAS IN ORDER...

Floyd Data

Della Fiske of Littleton, Colorado, is visiting with Carolyn Cheek over Labor Day weekend. Della and Carolyn taught school together in Odessa. Della now teaches 6th grade classroom and is a curriculum developer for the Arapahoe County School district.

CONSUMER CHECKLIST



Car Trouble? . . . If you desire to report vehicle safety defects, or, for recall information, write the National Highway Safety Administration (NHTSA), Washington, DC 20590, or call toll-free 800-424-9393.

Paymaster

FIELD DAY

Wednesday, September 5th

9:00 a.m. - 2:00 p.m.

On The Paymaster Farm

THREE MILES NORTH OF AIKEN, TEXAS

HIGHWAY 70, EAST OF PLAINVIEW

★ Free Barbecue Lunch

★ Introducing 5 New Grain Sorghum Hybrids

★ 5 New Corn Hybrids ★ 2 New Cotton Varieties

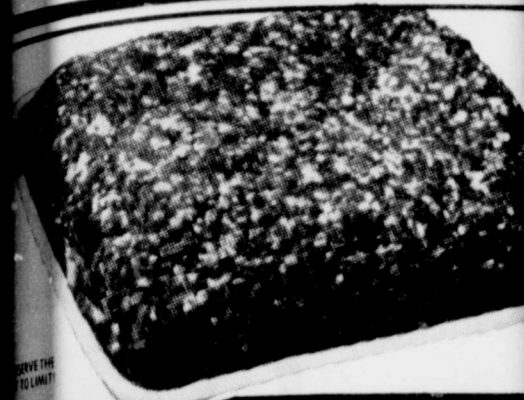
All Farmers, Dealers, Customers & Friends Are Cordially Invited



ANDERSON CLAYTON & CO.

PICK UP A TICKET EACH TIME YOU SHOP THRIFTWAY NO PURCHASE NECESSARY!

ATLANTA PHILADELPHIA SEPTEMBER



SHELF SPECIALS

- PERFECT CARPET
- DEODORIZER 20 OZ. CTN. \$1
- 303 Can
- PEACHES 49
- DEODORIZES
- PSOL SPRAY 12 OZ. CAN \$1
- POP & GLO 16 OZ. BTL. 99
- SHOT SHOT 11 OZ. CAN \$1
- SHOT AEROSOL
- DACH & ANT 11 OZ. CAN \$1

4-OFF LABEL AJAX CLEANSER 14 OZ. CAN 33

15-OFF LABEL AJAX LIQUID 22 OZ. BTL. 79

30-OFF LABEL FRESH START KING SIZE \$2

15-OFF LABEL DETERGENT COLD POWER \$1 19

GIANT BOX SHURFINE

IN PAPER BAG ENRICHED GOLDEN C

ADORN REG./EX. HOLD HAIR SPRAY 6.5 OZ. CAN \$1

CREAM REG-W/ BODY/OILY HAIR TAME RINSE 8 OZ. BTL. \$1

WHITE RAIN NON AEROSOL REG./ EX. HOLD HAIR SPRAY 8 OZ. BTL. \$1

SHAMPOO NORMAL DRY/OILY ULTRA MAX 7 OZ. BTL. \$1

PAC

ZITS...

**Richard Wiley Was
Last Week's Whozit**

Lockneyites who correctly identified Richard Wiley as the Whozit picture subject last Sunday were Elsie Pate, Sterling Cummings, Keith Jackson, Peggy Hallmark, Dottie Stanzell and Stanley Reves. That was too easy - Richard hasn't changed much since 1942.

Mrs. Grigsby Milton Jr., of Floydada, correctly identified last week's joint Floydada-Lockney Whozit as Richard Wylie.



Lubbock policeman. The girl, 5 in the photo, is a housewife in Lubbock and used to work in a local abstract office.

PICK UP A TICKET EACH TIME YOU SHOP AT THRIFTWAY
PURCHASE NECESSARY!

WIN UP TO

\$1,000

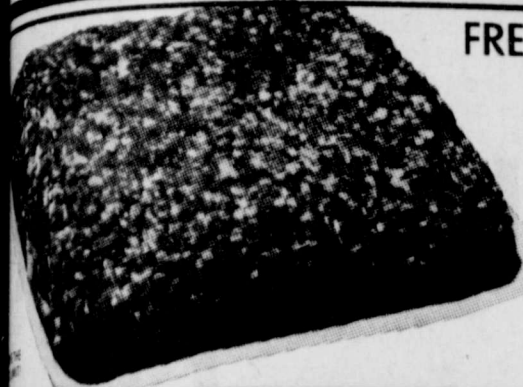


ALL PRIZES MUST BE REDEEMED BY SATURDAY FOLLOWING MONDAY NIGHTS GAME

PRIZE VALUE	NO. OF PRIZES	ODDS FOR ONE TICKET	ODDS FOR TWO TICKETS
\$1000.00	2	76,000 to 1	37,500 to 1
\$100.00	15	10,000 to 1	5,000 to 1
\$10.00	40	3,750 to 1	1,875 to 1
\$5.00	70	2,143 to 1	1,072 to 1
\$1.00	1,373	100 to 1	50 to 1
TOTAL	1,500	100 to 1	50 to 1

ATLANTA VS. PHILADELPHIA
SEPTEMBER 10, 1979

THRIFTWAY INVITES YOU TO WATCH MONDAY FOOTBALL AND PLAY TOUCHDOWN DOLLARS



FRESH LEAN GUARANTEED 73% LEAN

GROUND BEEF

\$1.29
LB.

YOUR THRIFTWAY STORES
SELL & FEATURE ONLY
FINE QUALITY AMERICAN
GROWN GRAIN FED BEEF
FRESH PORK &
QUALITY POULTRY.

CHUCK STEAK BONELESS **\$2.19** LB.
CHUCK ROAST BONELESS **\$1.79** LB.

SHelf SPECIALS

- DEODORIZER 20 OZ. CTN. **\$1.69**
- WASHES 303 Can **49¢**
- DISINFECTANT 12 OZ. CAN **\$1.59**
- SPRAY & GLO 16 OZ. BTL. **99¢**
- SHOT 11 OZ. CAN **\$1.29**
- WASH & ANT 11 OZ. CAN **\$1.29**

PURE TEA REFRESHING
INSTANT NESTEA
\$1.89
3 OZ. JAR

TOTAL GROCERY SAVERS

- TACO SAUCE 7 1/2 OZ. CAN **43¢**
- CHILIES 4 OZ. CAN **43¢**
- CRACKERS 16 OZ. BOX **59¢**
- PITTER PATTY 16 OZ. PKG. **89¢**
- COCKTAIL 17 OZ. CAN **55¢**
- GREEN BEANS 16 OZ. CAN **39¢**
- COUNTRY TIME 10 QT. CAN **\$1.89**

- HOT LINKS **\$1.09** LB.
- SAUSAGE 8 OZ. PKG. **89¢**
- BACON **98¢** LB.
- STEW CUBES **\$1.79** LB.
- WIENERS **\$1.49** 1 LB. PKG.
- BOLOGNA 12 OZ. PKG. **\$1.39**
- VARIETY PAK 12 OZ. PKG. **\$1.89**
- BACON **\$1.59** 1 LB. PKG.
- SLICED MEATS **\$1.29** 8 OZ. PKG.

- AJAX CLEANSER 14 OZ. CAN **33¢**
- AJAX LIQUID 22 OZ. BTL. **79¢**
- FRESH START 30" OFF LABEL KING SIZE **\$2.19**
- COLD POWER 15" OFF LABEL DETERGENT GIANT BOX **\$1.19**

PURE GRANULATED
SHURFINE SUGAR
5 \$1.09
LB. BAG

- SHURFINE FLOUR 5 LB. BAG **59¢**
- GOLDEN CORN 4 NO. 303 CANS **\$1.00**

- HAIR SPRAY 6.5 OZ. CAN **\$1.19**
- HAIR RINSE 8 OZ. BTL. **\$1.19**
- HAIR SPRAY 8 OZ. BTL. **\$1.19**
- ULTRA MAX 7 OZ. BTL. **\$1.19**

32 OZ. 6 BOTTLE CARTON
Coke
\$1.49
PLUS DEPOSIT

- BANANAS 3 LBS. **\$1**
- ORANGES 39¢ LB.
- PEARS **59¢** LB.
- BELL PEPPERS **43¢** LB.
- GLAZED DONUTS 14 OZ. BOX **69¢**
- PATIO DINNERS **69¢** CTN.
- SARA LEE CAKES **\$1.29** CTN.
- BROWNIES 13 OZ. PKG. **\$1.49**



CALIFORNIA HASS
AVOCADOS
3 FOR \$1

CALIF. RED/GREEN LEAF LETTUCE 2 BUNCHES **89¢**
SPANISH SWEET YELLOW ONIONS **12¢** LB.

- DELSEY TISSUE 4 ROLL PKG. **89¢**
- S.H. GREEN STAMPS DOUBLE ON WED.

- VELVEETA 2 LB. BOX **\$2.49**
- COLBY CHEESE 10 OZ. PKG. **\$1.19**
- SOFT PARKAY 2-8 OZ. CUPS **79¢**
- HUNGRY JACK 3 10 CT. CANS **\$1.00**

- RELY TAMPONS 8 CT. BOX **59¢**
- NEW FREEDOM MAXI PADS 30 CT. \$2.39 OR MINI PADS **\$1.79** 30 CT. BOX

Lockney Meat

- 1/2 BEEF Cut, wrapped and **\$1.19** LB.
- 6-8 lb. lbs. individually wrapped FILET **\$3.99** lb.
- 2 lb. bag of Own COUNTRY SAUSAGE **\$1.99**
- call liver **49¢** lb.
- 5 lb. bag HAMBURGERS **\$1.29** lb.

CUSTOM PROCESS WHOLESALE & RETAIL MEATS
U.S. 70 & FM 378 S.W.
PHONE 653-3333
LOCKNEY
SAM FORTNER, OWNER

Paymaster

FIELD DAY
Saturday, September 5th
10 a.m. - 2:00 p.m.
The Paymaster Farm
MILES NORTH OF AIKEN, TEXAS
WAY 70, EAST OF PLAINVIEW

Free Barbecue Lunch
Featuring 5 New Grain Sorghum Hybrids
Corn Hybrids ★ 2 New Cotton Varieties
Farmers, Customers & Friends Are Cordially Invited

ACCO SEED
ANDERSON CLAYTON & CO.

PAGE'S THRIFTWAY

PRICES EFFECTIVE SEPT. 2-8, 1979

Lockney

FOOTBALL CONTEST

PICK THE WINNING TEAMS!

WIN FIRST PRIZE..... \$10⁰⁰
 SECOND PRIZE..... \$6⁰⁰
 THIRD PRIZE..... \$4⁰⁰

**GO,
 FIGHT, WIN!!!**



**GO
 LONGHORN
 GO**



RAGIN' RED

<p>MARR INSULATION Tom Marr, Owner Lockney, Texas 1. Abernathy vs. 2. Petersburg</p>	<p>CONTEST RULES</p> <p>Circle on the official entry blank the number of the team you think will win each game. Circle the winner and indicate the total score in the tie-breaker game. Contestants may mail their entries or bring them to the Beacon Office, 220 South Main. Mail entries must be postmarked no later than 5 p.m., Friday, and in-person entries must be at the office by the same time. Mail entry address is Box 187, Lockney 79241. One winner per family per week please.</p>			<p>Perry Implement Co. John Deere Implements 31. Amarillo vs. 32. Odessa</p>
<p>Baccus Motor Co. 321 SO. MAIN ST. LOCKNEY 3. Tulla vs. 4. Friona</p>				<p>Moore-Rose Funeral Home Lockney Tx. 15. Tahoka vs. 16. Stanton</p>
<p>Page's Thriftway No. 3 "A Better Way To Save" 5. Morton vs. 6. Plains</p>	<p>The Cowboy Closet 17. Cooper vs. 18. Ralls</p>	<p>White's Auto Store Lockney, Texas 25. Seminole vs. 26. Monahans</p>	<p>Thomason Grocery LOCKNEY, TEXAS 35. Monterey vs. 36. Compton</p>	
<p>Wilson Photography LOCKNEY, TEXAS 7. Frenship vs. 8. Littlefield</p>	<p>Mize Pharmacy & TV Your Complete Family Drug Store Gift Headquarters ★ RCA Television LOCKNEY, TEXAS 19. Roosevelt vs. 20. Lorenzo</p>	<p>Webster Service & Supply "Where You're Always Welcome" 27. Texas Tech vs. 28. USC</p>	<p>The Tye Company On The Plainview Highway 37. Plainview vs. 38. Eastland</p>	
<p>Providence Farm Supply and Grain Co. 9. Muleshoe vs. 10. Portales</p>	<p>The Lockney Beacon 21. Denver City vs. 22. Crane</p>	<p>Roger's Pastry LOCKNEY, TEXAS 29. WTSU vs. 30. UT-Arlington</p>	<p>Longhorn Inn "Where School Friends Meet" 39. Crosbyton vs. 40. Valley</p>	
<p>Byrd Pharmacy "Accurate Prescription Service" 11. Olton vs. 12. Farwell</p>	<p>OFFICIAL ENTRY FORM</p> <p>NAME _____ ADDRESS _____</p> <p>CITY _____</p> <p>MERCHANTS STAMP _____</p> <p>1-2 3-4 5-6 7-8 9-10 11-12 13-14 15-16 17-18 19-20 21-22 23-24 25-26 27-28 29-30 31-32 33-34 35-36 37-38 39-40 41-42 43-44</p> <p>TIE BREAKER Post vs. Lockney TOTAL SCORE.....</p>			<p>Brown's Department Store LOCKNEY, TEXAS 41. Hale Center vs. 42. Bowie</p>
<p>Davis Lumber Co. "Where Customers Send Their Friends" 13. Dimmitt vs. 14. Floydada</p>				<p>CONTEST RULES</p> <p>Circle on the official entry blank the number of the team you think will win each game. Circle the winner and indicate the total score in the tie-breaker game. Contestants may mail their entries or bring them to the Beacon Office, 220 South Main. Mail entries must be postmarked no later than 5 p.m., Friday, and in-person entries must be at the office by the same time. Mail entry address is Box 187, Lockney 79241. One winner per family per week please.</p>

See You At Post

CLAS

Real Estate

FOR SALE: Three bedroom, living room, two bathrooms, all carpeted; storage building and shed. 983-3994. tfc

FOR SALE OR TRADE: DRY LAND, a beautiful bedroom home and rental property. If interested after 7 p.m. 983-3380. tfc

PRICED FOR QUICK SALE: Brick home with three bedrooms, two ceramic tile bathrooms, marble counter top living room with fireplace, formal dining room, modern kitchen with breakfast nook, storage galore, carpet throughout, storm windows and door, extra large basement with carpet and storage. All this for \$39,500. Call 983-5185. tfc

3-BEDROOM BRICK home, Lockney. 2-car garage, basement. James Ray. 652-2324 or 995-3367. L9-

HOUSE FOR SALE: 2 bedroom newly redecorated. 652-3179, Delvin Bybee. tfc

PRICE REDUCED: QUICK SALE-Living dining room carpeted, 2 carport, bedrooms, possible 3rd bedroom or shop. Large lot. W. Plainview Highway. Call 652-2737. tfc

Nice two bedroom dining room, fenced, house on lot, house 105 E. after 6 p.m. 983-3904. tfc

Three bedroom, 1 1/2 baths. Also mobile home, storm cellar and houses. Only W. Marivena. tfc

REALTOR: call her for your needs in Lubbock Ranch Chateau 2475 home or office. tfc

Three bedroom, 1 1/2 baths. Good Condition Black Breed 983-995 or 995-2202. tfc

ROOM, 1 bath, dining room for rent. 4th, Lockney. number, 652-3385. Wofford 806-293-L9-16c

LET US DO YOUR HERBICIDE and Insecticide Spraying. have two ground rigs and airplane available. Lone Star Chemical.

Lone Star Chemical, Inc. Office: 652-2761. Deanie Henderson: 652-3434

FOR SALE OR TRADE: Massey Harris Combine 14 ft. Good condition. 2595.

LET US DO YOUR HERBICIDE and Insecticide Spraying. have two ground rigs and airplane available. Lone Star Chemical.

Lone Star Chemical, Inc. Office: 652-2761. Deanie Henderson: 652-3434

FOR SALE OR TRADE: Massey Harris Combine 14 ft. Good condition. 2595.

LET US DO YOUR HERBICIDE and Insecticide Spraying. have two ground rigs and airplane available. Lone Star Chemical.

Lone Star Chemical, Inc. Office: 652-2761. Deanie Henderson: 652-3434

FOR SALE OR TRADE: Massey Harris Combine 14 ft. Good condition. 2595.

LET US DO YOUR HERBICIDE and Insecticide Spraying. have two ground rigs and airplane available. Lone Star Chemical.

Lone Star Chemical, Inc. Office: 652-2761. Deanie Henderson: 652-3434

FOR SALE OR TRADE: Massey Harris Combine 14 ft. Good condition. 2595.

LET US DO YOUR HERBICIDE and Insecticide Spraying. have two ground rigs and airplane available. Lone Star Chemical.

Lone Star Chemical, Inc. Office: 652-2761. Deanie Henderson: 652-3434

FOR SALE OR TRADE: Massey Harris Combine 14 ft. Good condition. 2595.

LET US DO YOUR HERBICIDE and Insecticide Spraying. have two ground rigs and airplane available. Lone Star Chemical.

Lone Star Chemical, Inc. Office: 652-2761. Deanie Henderson: 652-3434

CLASSIFIED ADS sure to get results

See You At Post



GO LONGHORN GO



Perry Implement Company

John Deere Implements

31. Amarillo vs. 32. Odessa

Strickland's Restaurant

33. Pampa vs. 34. Hereford

Thomason Grocery

LOCKNEY, TEXAS

35. Monterey vs. 36. Canyon

The Tye Company

On The Plainview Highway

37. Plainview vs. 38. Estacado

Longhorn Inn

"Where School Friends Meet To"

39. Crosbyton vs. 40. Valley

Brown's Department Store

LOCKNEY, TEXAS

41. Hale Center vs. 42. Bovina

Real Estate

FOR SALE: Three bedroom, den, livingroom, two baths; All carpeted; storage building and shed. 983-3994. tfc

FOR SALE OR TRADE FOR DRY LAND, a beautiful 3 bedroom home and rental property. If interested call after 7 p.m. 983-3380. tfc

PRICED FOR QUICK SALE: Brick home with three lots, good location, three bedroom, two ceramic tile baths, one with marble counter top, livingroom with fireplace, formal dining room, modern kitchen with breakfast nook, den, storage galore, carpet throughout, storm windows and door, extra large basement with carport and garage with storage. All this for \$39,500. Call 983-5185. tfc

3-BEDROOM BRICK home, Lockney. 2-car garage, basement. James Race. 652-2324 or 995-3367. L9-13c

HOUSE FOR SALE: 2 bedroom newly redecorated. Call 652-3179. Delvin Bybee. tfc

PRICE REDUCED FOR QUICK SALE-Living dining room carpeted, 2 carports 2 bedrooms, possible 3rd bedroom or shop. Large lot. 702 W. Plainview Highway. Call 652-2737. tfc

Bedroom cabin on Lake. Sleeps 6. Call 652-4480. tfc

Nice two bedroom dining room, house on lot with carport and garage house 105 E. after 6 p.m. 983-3904. tfc

Three bedroom, 1 1/2 baths. Also mobile home, storm cellar and house. Only 10 W. Marivena tfc

REALTOR in all her for your needs in Lubbock French Chateau 1947S home or etc. tfc

Three bedroom, 2 1/2 baths. Good condition. 983-2295 or 995-2202. tfc

ROOM, 1 bath dining room for W. 4th, Lockney. Number, 652-3385. Wethered 806-293-19-16c

Announcements

WILL DO ALL Types of carpenter work. Call 983-5201 after 5:30. tfc

C-D-J INSULATION can help save your dollars. For information call 983-2601.

INSULATION Fire-Resistant. Installed and Guaranteed. MARR Insulation Co. Lockney 652-3593. Ltfc

WE DO Painting, floor leveling, house blocking, roofing and remodeling. We are now working Floydada Area. Contact Childress Bro. Collect 352-9563 tfc

Minor repairs and tune up service on lawn mowers. Call Whites Home and Auto. 652-2145. Ltfc

ENROLL NOW: Piano, Guitar, Organ, and Piano Accordion Lessons. Certified and member of National Guild of Piano teachers, Lockney. Mrs. Charles L. Record. Call 652-2364, 801 or 807 W. Willow. Ltfc

"Carpet Need Cleaning?" Let me do the work for you. Dry foam, 10 cents sq. foot. Call Jack Moore 983-3033 after 5 p.m. tfc

Interior and exterior painting 983-3364. 9-2p

INTERIOR PAINTING WALL PAPERING Call Rena Turner, 983-5130. tfc

ROCKY MOUNTAIN LODGE on the Conejos near Antonito, Colorado, will remain open in September. H. usekeeping Cabins. Reservations 505/296-8624, 8501 Phoenix N.E., Albuquerque, NM 87112 or B.x 57, Antonito, Colorado 81120. Gerald Brummell. L-9/2.

PIANO LESSONS Enroll now in piano lessons, taught at my home in Providence Community. Ginger Mathis, 296-7096. L9-6c

Fireplaces BY MAJESTIC BUILT-IN OR FREE-STANDING CALL OR COME BY AUDRY MCCORMICK 107 WILLOW LOCKNEY 652-2372 L TFC

Can You Use Some Extra Money Let Us Help!!!! WE BUY SCRAP IRON, OLD JUNKERS, AND FREE PICKUP Call 983-5277

STORAGE SPACE BOATS, FURNITURE, ANYTHING, ETC. BY THE MONTH OR SIX MONTH 10% DISCOUNT. WEST TEXAS MINI STORAGE 983-3573 OR 983-2151

Auto Accidents DO Happen... If one happens to you, be protected. Our car insurance offers coverage to meet your special needs - repairs to personal liability.

BAKER Insurance Agency 127 W. Calif. Ph. 983-3270



If you think this is slop, you oughta see what I had for breakfast.

THIS FEATURE SPONSORED BY Floydada Real Estate & Insurance Agency AUTO, FIRE & FARM INSURANCE Jim Word --- Phone 983-2360

J. P. WILLIAMS

Ph. 652-2326

WEED CONTROL

ON LAWNS

INSECT CONTROL

ON TREES AND SHRUBS

BINDWEED, RAGWEED, BLUEWEED & JOHNSON GRASS

ON FARMS

C. A. LIC. NO. 22453 BUS. LIC. NO. 3106 L TFC

Diamond Industrial Supply Co., Inc.

Phone Days 296-7418 Nights 296-1200 or 296-7-28

1014 Broadway Plainview, Texas

Chain Sprockets U-joints
V-belts Oil Seals
Sheaves O-rings
Wisconsin

SKF BCA Timken Bower Cotton Stripper Brushes & Bats

"We Appreciate Your Business More" L-tfc

FARMS-RANCHES-CITY PROPERTIES- BUSINESS LEASES-LOANS

B. B. WILKES BROKER REAL ESTATE

100 S Main, Lockney Barry Barker, Solicitor
Barker Insurance Agency-652-2642

IF IT IS INSURANCE -SEE-
BARKER INSURANCE AGENCY
LIFE-FIRE-CASUALTY-HOSPITAL

TURNER REAL ESTATE

983-2635 Farms-Ranches Floydada, Texas

Public Notices

Plainview Schools will accept bids for: Air-Conditioning of Ash Elementary

Bids will be accepted until 4:00 p.m. on Thursday, September 13, 1979.

Bids should be sent to or delivered to the Administration Building, 912 Portland, Plainview, Texas 79072.

Bids will be opened and will be awarded or rejected at the meeting of the Board in the Administration Building, 912 Portland, 8:00 p.m., September 13, 1979.

Information and specifications concerning the bids may be obtained from the School Business Office, 912 Portland, Plainview, Texas.

This is a solicitation for bids and is not an offer. The school reserves the right to accept or reject any and all bids and to waive informalities.

John O. Peck
Assistant Superintendent



Mustard seed was supposed to prevent splinters.

For Sale

FOR SALE, 1979 Yamaha, 750 Special 1,000 miles, still under warranty, three rail motorcycle trailer. Call 652-2776 after 5 p.m. tfc

FOR SALE: 14-foot aluminum polyglass bottom boat with trailer. 652-3584 after six and weekends. L9-2c

FOR SALE: Good used T.V. antenna \$50.00. Mrs. H.O. Cline, 702 W. Missouri. 983-3591. tfc

FOR SALE: 10x12 gold rug with pad; 7x12 green rug; 35 1/2" x 80" screen door; 47" x 82" folding door; 983-5193 or 983-3579. 9-23c

FOR SALE: Grandfather Clocks. 983-2417, Henry Willis. 9-9p

FOR SALE: Four 15 inch deep dish cragars. 983-2783. tfc

FOR SALE: Built in double oven - O'Keefe & Merritt. Call 983-3088. tfc

FOR SALE: Bach Stradivarius Silver Trumpet/case. \$400. Excellent condition. 983-5003 or 983-5455. tfc

NICE Magnavox stereo for sale, walnut finish cabinet, 983-5030. 9-2c

FOR SALE: Knit quilt tops, hand sewn 983-3568 228 W. Tennessee. 9-2p

FOR SALE: One Ditto Spiret fluid duplicator, one bull fiddle. Phone 983-3692.

FOR SALE: Black-eyed peas, green beans, tomatoes, okra, squash. 313 E. Houston, 983-5004. Crutchfields.

FOR SALE: Punch bowl, 12 plates and cups, \$30. Extra nice four drawer filing cabinet \$125. 983-3211. tfc

FOR SALE: Good used washer and dryer. Call after 5 p.m. 652-3863. L9-9p

FOR SALE: Couch, bathnet, stroller. 983-3726.

FOR SALE: Whirlpool dryer. 983-2915.

WANT TO BUY 10 speed bicycle 983-2783. tfp

Ready-Mix Concrete

Forming & Finishing

Rock Gravel Sand

FIERROS & SONS

652-2224 Lockney

ERA

Ralph V. Graham
504 Joliet - 293-4246
305.9 acres ALL IN CULTIVATION. 2 wells, fairly Good Water. Near Lockney.

Very Nice Three bedroom home. 420 South Main, Lockney.

CALL ME TODAY
J.H. Workman - 652-3619

Help Wanted

Need responsible lady to babysit. Weekdays, 8 thru 5. Call after 5 p.m. 983-2037 tfc

WANTED: Babysitter in my home weekdays. Call 983-2860. tfc

WANTED ELECTRIC power plant operator. Will train. Contact city power plant. 983-2834 from 8 to 5 and 983-2343 after five p.m. tfc

WANTED: responsible driver to transport 7 year old boy from Don Bean farm residence to Lockney bus line on school mornings. Call after 6 p.m. 983-3629. 9-9c

SLEEP WHILE YOUR WANT ADS WORK

LOST & FOUND BLACK CHOW puppy around 222 W. Miss. Reward offered. 983-2601. tfc

For Rent In Lockney one-bedroom apartment. Come by 108 N. Main or call 652-3813. Ltfc

FOR SALE: 140 acre tract dryland and 70 acre tract dryland N.E. of Floydada. Turner Real Estate 983-2635. 9-16c

WANTED TO BUY irrigated or dryland farm in Floyd or surrounding area. Write Box XRO, c/ Hesperian, Box 700, Floydada. tfc

WANTED TO RENT-300 to 700 acres of land P.O. Box 1361 Plainview 79072. L10-7p

CONCORD GRAPES for sale. Just right for juice. G.C. Applewhite, one-half mile north of Lone Star school, 652-3472. L9-9c

FOR SALE: Grapes \$4 bushel, you pick. South of football field, Lockney. Hurl McCoy. L9-2c

FOR SALE: Good used washer and dryer. Call after 5 p.m. 652-3863. L9-9p

FOR SALE: Couch, bathnet, stroller. 983-3726.

FOR SALE: Whirlpool dryer. 983-2915.

WANT TO BUY 10 speed bicycle 983-2783. tfp

WANTED TO BUY 10 speed bicycle 983-2783. tfp

DAN'S AUTO SERVICE

DAN TEUTON, Owner
Specializing in Automatic Transmission, Motor Tune-Ups, Auto Air Conditioning.

General Repair We Have A BRAKE LATHE to handle all passenger car brake drums. See us for complete brake service.

Phone 652-2462

OUR TRADITIONS

Ever since the United States' first high school opened in Boston in 1820, young people have found their high schools to be places to learn not only about academic or career-oriented subjects but also about themselves. The high school years are a time for growing, for reading independence and autonomy.

One thing many have learned is that whether they're active in school sports or clubs; supporters of school activities; artistic or intellectual; at the hub of the in-crowd or any combination of those things, something that can help symbolize the fun and learning, achieving and growing of those high school years is a karat gold school ring.

A symbol of the pride and accomplishment of the high school student and of his or her passage to adulthood for generations, a gold ring is also valuable in itself. Today's finely crafted karat gold school rings can contain precious stones and other hallmarks of a fine piece of jewelry.

Almost any sort of engraving or symbol can be put on the gold school ring of today, including designs showing the school activity or sport the ring's wearer supports or participates in. A wide variety of stone cuts and colors are available too; many people are buying gold school rings that feature their birthstones.

Many parents, realizing that the high school years are ones their children will want to remember for years to come, are contributing to the purchase of those finely crafted karat gold rings.

It's long been a part of our heritage and can become a precious heirloom in the years to come.

CLASSIFIED RATES

CLASSIFIED ADVERTISING RATE: 15 CENTS PER WORD FIRST INSERTION; 10 CENTS PER WORD EACH SUBSEQUENT INSERTION. MINIMUM CHARGE 12.00. CLASSIFIED DISPLAY RATE: \$1.40 PER COLUMN INCH CARD OF THANKS: \$2.00.

Autos For Sale

4 shocks for the price of 3. Free installation. 123 W. Calif. tfc

FOR SALE: 1971 Chevrolet Caprice. Power steering and brakes, air conditioning, tilt wheel, 68,000 miles. Call 983-5130. tfc

FOR SALE: 1977 '98' Oldsmobile, 36,000 miles Phone 983-3002. tfc

1979 GMC SIERRA 1/2 ton, clean, dual tanks, PS-PB, air, AM-FM 8-track, tool box, GOOD GAS MILEAGE, call 983-5477 after 5 p.m. tfc

STOP PAINTING Cover all outside walls and overhang with U.S. Steel Products FREE ESTIMATES Stan-By Steel Siding 1501 N. Columbia Plainview, Texas Phone: 293-9330 L9-30p

BACKHOE Work Wanted Cotton Collins 652-2733 L9-2-79c

Garage Sale 909 W. GEORGIA, Saturday only 9-7. Baby clothes, baby items, few junior clothes, misc. tfc

Phone 983-3737 for Hesperian Classifieds

Shop Floyd County FIRST!

Farm Bureau Convention September 6

The Floyd County Farm Bureau will have its annual county convention September 6 at Lockney Elementary Cafeteria, Lockney, beginning at 7:30 p.m.

All members are urged to attend the annual meeting, but only agricultural producers

members can vote on policies, officers, delegates, or hold office.

Policy will be developed on the local level, and state and national policy recommendations will be voted on. There will be three directors elected and eight delegates to

attend the state convention in McAllen will be selected.

Mr. S.M. True of Plainview, who was selected as one of the men of the year in agriculture, will be the speaker.

Tears of Joy?



© CSFS

HOW TO TALK GOLF

The National Golf Foundation reports that more women than men are taking up golf. More leisure time, the added income produced by working women, and golf clubs designed for women have all contributed to an increasing interest in the sport.

And because of this added popularity, golf is becoming a favorite topic at cocktail parties and conven-

tions. Whether you play the game or not, you'll want to understand what is meant by being trapped in a "bunker."

To help you sound like a pro, here's a list of golf terms from the experts at PGA Golf, manufacturers of the new Butterfly club designed especially for women:

- Ace**—a hole scored in one stroke.

- Approach**—a shot aimed to the green or to the pin.
- Apron**—grassy area bordering the green, also known as the fringe.
- Birdie**—one stroke under par for a particular hole.
- Bogey**—one stroke over par for a particular hole.
- Bunker**—a sand trap.
- Chip shot**—any short shot played up toward the green from a distance of less than 20 yards.
- Dogleg**—a bend to the right or left in the fairway.
- Eagle**—a hole scored in two strokes under par.
- Fairway**—the area between the tee and green.
- Handicap**—strokes allowed a poorer player to equalize her ability with a more experienced player.
- Hook**—to hit a ball so it curves to the left of target.
- LPGA**—Ladies Professional Golf Association.
- Lie**—position in which ball rests on the ground.
- Pitch**—short shot to the green.
- Slice**—to hit a ball so it curves to the right of target.

More information on golf and tips on how to get started playing the game are included in a free brochure, "Birdie's Eye View." To obtain a copy write to: PGA Golf, Suite 1100, One E. Wacker Dr., Chicago, IL 60601.

Public Notices

PUBLIC NOTICE CITY OF FLOYDADA HOUSING AND COMMUNITY DEVELOPMENT PROGRAM

The City of Floydada has been invited to submit an amended full application for additional Community Development Block Grant Funds. These funds are proposed to be used for street paving in the city of Floydada. The City will conduct a Public Hearing on Friday, September 7, 1979 at 4:30 P.M. in the Council meeting room at the City Office, 114 W. Virginia St., Floydada, Texas.

The City will be submitting its amended application to HUD on or about September 4th, 1979.

Citizens will have the opportunity to learn about the proposed paving project at this Public Hearing.

Citizens may forward any comments on the project directly to HUD in Dallas and HUD will consider citizens comments prior to approval of the City's application.

Due to requirements for the City to submit this amendment by Sept. 4, 1979 the City has determined it is in the public interest to waive the 10 day notice normally required for the Community Development Block Grant period. Instead the City is complying with HUD's 3 day notice for single purpose applications.

Only one public hearing will be conducted on this project.

The City of Floydada encourages individual citizens and civic groups to make their views known at this public hearing. The City welcomes the full participation of its citizens in the development of the Community Development Block Grant program.

Citizens comments may be delivered in advance at the City Office any time prior to the Public Hearing. Handicapped individuals who may have difficulty attending this meeting may contact the City Office to arrange for assistance.

For further information contact Wm. A. Feuerbacher, City Manager, City of Floydada at 983-2834.

American Viewpoints



Next in importance to freedom and justice is popular education, without which neither freedom nor justice can be permanently maintained.
James A. Garfield

Wanted: For Employment

Full-Time, Permanent

September 15 Through May

Texas Migrant Council Head Start

Apply In Person At St. Mary Magdalen Church

305 Wall Street, Floydada

Now Taking Applications For The Positions Of

- CENTER DIRECTOR
- TEACHERS AIDE
- COOK
- HEAD TEACHER
- HEALTH AIDE
- Bus Driver-Custodian

Must Be Bi-Lingual
Must Have At Least High School Diploma or Equivalent
Pick Up Applications At 305 Wall Street, Floydada

USDA Extends Comment Deadline

The public has 30 additional days to comment on a proposal to limit the sale of "competitive" foods in schools. The proposal was made by the U.S. Department of Agriculture.

Competitive foods are those sold in competition with federal or subsidized meals in the nation's schools. "We extended the deadline from Sept. 6 to Oct. 6 to permit all interested parties to submit comments based on a thorough understanding of this complex issue," Assistant Secretary of Agriculture Carol Tucker Foreman said.

The department developed the proposal in response to a 1977 amendment to the Na-

tional School Lunch Act, authorizing the Secretary of Agriculture to regulate the sale of foods that compete with school meals for students' appetites.

The department withheld an earlier proposal in December because its officials believed there were significant scientific issues that needed further study.

The current proposal would limit the sale of any food that does not have at least 5 percent of the U.S. Recommended Daily Allowance for any one of the eight specified nutrients. "This provides a scientific standard

to distinguish among foods," Foreman said.

Under the proposed rule, carbonated beverages, water ices, chewing gum and some candies could not be sold until after the end of the last school lunch period each day. Foods containing 5 percent or more per serving or per 100 calories of any of eight nutrients — protein, vitamin A, ascorbic acid, niacin, riboflavin, thiamin, calcium and iron — could be sold at any time during the school day.

Interested parties should send comments on the proposal to Margaret O.K. Glavin, Director of the School

Programs Division, Food and Nutrition Service, U.S. De-

partment of Agriculture, Washington, D.C. 20250.

Lockney Dental Clinic

ANNOUNCES THE ASSOCIATION

Gerald C. Bevers D.D.S.

Donald W. Anders D.D.S.

ORTHODONTICS

HOURS BY APPOINTMENT

652-3339

Piggly Wiggly, Reg. or Ripple Potato Chips



8-oz. pkg.

59¢

Happy Times, Ass't Flavors Can Soda

7 \$1
12-oz. cans

Labor Day Savings

PIGGLY WIGGLY

Prices Good Sun. & Mon., Sept 2, 3 & 4



Little Sizzlers

Hormel Sausage

12-oz. pkg.

99¢



Fresh Ground

Lean Ground Beef

lb.

\$1.39

Piggly Wiggly, Ass't Flavors
Ice Cream
1/2 gal. ctn. \$1.19

Hunts Tomato
Ketchup
32-oz. btl. 79¢

White Swan Granulated
Sugar
Limit 1 With Additional \$10 Purchase, thereafter \$1.20
5 lb. bag 79¢

Smokey Bear, Easy Lite
Charcoal
lb. bag \$1.28

Ideal For Holiday Cook-Outs! Well Filled Ears.
Sweet Corn
10 ears \$1.00

WeatherAll

True Value Hardware

102 E. SHUBERT - PHONE: 652-3385

LOCKNEY, TEXAS

THIS EVENT LASTS 10 DAYS ONLY

MASTER FIELD DAY - Dr. Wick Kramer, sorghum re-
director for ACCO Seed, con-
ducted the Wednesday Paym-

fresh ground



Lean

Ground Beef

\$1.39

lb.

Hunts Tomato

Ketchup

79¢

32-oz. bottle

Smokey Bear, Easy Lite Quality

Charcoal

lb. bag

\$1.28

Easy Cook-Outs! Well Filled Ears!

Hot Corn

\$1.00

Buy 11 You Save \$1.50

MASTER FIELD DAY — Dr. Kramer, sorghum researcher for ACCO Seed, con-

ducted the tour of forage hybrids attended the annual field day at the Paymaster farm near Alken. A good

turnout of farmers from all over the area attended the annual field day. (Staff Photo)

Burt earned eligibility for the grant by placing in the 1979 state meet debate contest. Valedictorian of his class of 62 students, he was student council president, Freshman class secretary, and was

academic and extracurricular achievements and we're proud to have him as a TILF scholar. Burt plans to attend Texas Tech University and major in accounting.

True Value® HARDWARE

102 E. SHUBERT—PHONE: 652-3385

LOCKNEY, TEXAS

PAINT 'N SAVE NOW




WOODSMAN® POLYURETHANE VARNISH

32 FL. OZ. (1 Quart)

TRU-TEST Supreme

3.97 QUART

Tru-Test Supreme, our Very Best!

POLYURETHANE VARNISH
Provides a hammer-hard, water-resistant finish for woodwork, furniture and paneling. Use gloss finish for floors and exteriors. Satin or dull finish for interior use only. 08/012/39/55



TRU-TEST SPECIAL

LATEX FLAT WALL FINISH

128 FL. OZ. (1 Gallon)

LATEX FLAT WALL FINISH

Paint and save... with this economical, long-lasting interior finish! Spreads on smoothly, dries quickly and produces a rich, velvety finish that's fully washable. Tools and hands clean up easily in soapy water. Choose white or five pastel colors. 08/Y

3.97 GALLON

True Value PAINT 'N SAVE COUPON

X-O RUST SPRAY ENAMEL

WITH COUPON **1.49** 16 FL. OZ. WITHOUT 2.29

For long-lasting, rust preventative protection. Sprays on hard-to-get-at areas. White, 15 colors. 08/XO

LIMIT: ONE COUPON PER CUSTOMER



LATEX REDWOOD STAIN
Splash on true redwood color on exterior siding, shingles, fences, picnic tables, etc. Ideal for rough-cut lumber because it protects the wood but doesn't hide the wood texture. Applies easily with a brush or roller. Produces a flat finish. Resists weathering. 08/LRW

2.99 GALLON



HERE... Tuesday afternoon in Lockney. The fair catalogues are available at The Beacon office in Lockney or the County Extension Agent's office in Floydada. (Staff Photo)

Catalogs Are Printed

Agent's office in Floydada. A new attraction at the fair this year will be a Little Rustlers Rodeo, scheduled at 7:30 p.m. Thursday, Sept. 20, at the rodeo arena on the fairgrounds in Lockney. The Fair Queen Pageant will be held on the final night of the fair (8 p.m. Saturday, Sept. 22) this year.

Top Revenue

Big Budget

amount of funds Floyd County received for the year forced his week to downward. announcement of funding funds was earlier most items at which is have to be as meager amount, particularly here of the for county the Floyd courthouse ring have will remain jail project leasing will among the sets was cut

Tip

his junior all, basket-honorable all. He also outstanding s of 1979. F secretary. ing record of Floyd County will receive \$94,352 during the next entitlement period of 1979-80. The additional funds for the proposed budget were received and obligated during past periods, Judge Smith said.

ment Deadline
 Programs Division, Food and Nutrition Service, U.S. De-
 Partment of Washington, in the price will Register.
 Lockney Dental Clinic
 ANNOUNCES THE ASSOCIATION OF
 217 NORTH MAIN
 Gerald C. Bevers D.D.S.
 Donald W. Andrews D.D.S., M.S.
 HOURS BY APPOINTMENT ONLY
 652-3339
 the pro-
 D.K. Cla-
 School

Can Soda
 Happy Times, Ass't Flavors
 \$1.19
 12-oz. cans

Labor Day
Saving
 GLY
 Each of these advertised items is required to be ready for sale at or below the advertised price in each store, in quantities noted in this ad. We reserve the right to change quantities. None sold to dealers.

SPECIALS



THIS EVENT
 LASTS 10 DAYS ONLY



35 JAMESTOWN COLORS PLUS WHITE
WEATHERALL®
ACRYLIC LATEX HOUSE PAINT
 Our finest house paint! Because WeatherAll is an acrylic latex paint, it has a better adhesion to a wide variety of surfaces, even under wet conditions so there is less chance of cracking, blistering and peeling. Plus it resists chalking longer to resist color fading so all 35 Jamestown colors stay sharp and fresh-looking—longer. And you'll notice the difference in application, too! The flow is smooth and even, and one coat becomes the standard not the exception. 01/HPX

YOUR CHOICE
9.97
 GALLON



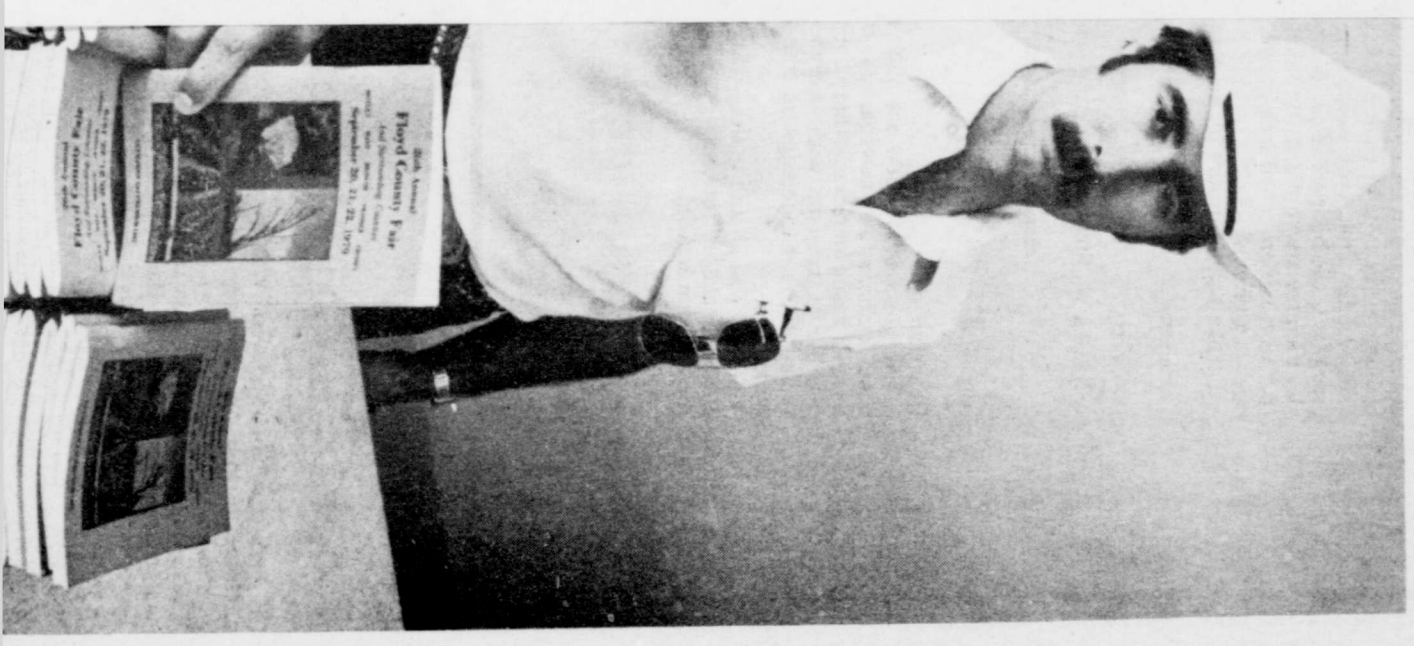
BOTH TRU-TEST
 WEATHERALL® AND
 TRU-TEST E-Z KARE™
 HAVE EARNED THE GOOD HOUSEKEEPING SEAL

SEE BACK COVER FOR NEAREST PARTICIPATING TRUE VALUE HARDWARE STORE

THE WASH 'N WEAR PAINT!

We call Tru-Test E-Z Kare the "Wash and Wear" Paint because its scrubbable-hard finish washes and wears like enamel. Most stains, greasy smudges, fingerprints and even tough food stains will scrub off repeatedly without damaging the durable-hard finish. And that means there's less need for repainting to maintain fresh-looking walls and woodwork in every room! In laboratory scrub tests, E-Z Kare withstood more scrubbing than 12 other leading interior paints. For lasting color in one easy latex application with a soapy water cleanup—get E-Z Kare! 01/EZ

White, & 44 Decorator Colors **SOAPY WATER CLEANUP!**



Number 71


Farm Bureau Conven

The Floyd County Farm Bureau will have its annual county convention September 6 at Lockney Elementary Cafeteria, Lockney, beginning at 7:30 p.m.

All members are urged to attend the annual meeting, but only agricultural producer members can

Tears of Joy?



HOW TO TAKE

The National Golf Foundation reports that more women than men are taking up golf. More leisure time, the added income produced by working women, and golf clubs designed for women have all contributed to an increasing interest in the sport.

And because of this added popularity, golf is becoming a favorite topic at cocktail parties and conven-

cer members can policies, officers, or hold office. Policy will be developed at the local level, and national policy recommendations will be voted on by three directors and eight dele-

Public Notice

PUBLIC NOTICE CITY OF FLOYDADA HOUSING AND COMMUNITY DEVELOPMENT PROGRAM

The City of Floydada has been invited to submit an amended full application for additional Community Development Block Grant Funds. These funds are proposed to be used for paving in the city of Floydada. The City will conduct a Public Hearing on Friday, September 7, 1979 at 4:30 P.M. in the Council meeting room at the City Office, 114 W. Virginia St., Floyd Texas.

The City will be submitting its amended application to HUD on or about September 7, 1979.

Citizens will have the opportunity to comment on the proposed paving project at this Public Hearing.

Citizens may forward any comments on project directly to HUD in Dallas and HUD consider citizens comments prior to approval of the City's application.

Due to requirements of the City to submit an amendment by Sept. 4, 1979 the City determined it is in the public interest to waive 10 day notice normally required for the Community Development Block Grant period. In the City is complying with HUD's 3 day notice single purpose applications.

Only one public hearing will be conducted on this project.

The City of Floydada encourages individual citizens and civic groups to make their views known at this public hearing. The City welcomes the full participation of its citizens in the development of the Community Development Block Grant program.

Citizens comments may be delivered in advance at the City Office any time prior to the Public Hearing. Handicapped individuals may have difficulty attending this meeting; contact the City Office to arrange for assistance. For further information contact Wm. Feuerbacher, City Manager, City of Floydada 983-2834.

Wanted: For Employment

Full-Time, Per

September 15 Through

Texas Migrant Count

Apply in Person At St. Martin

305 Wall Street,

Now Taking Applications From

- CENTER DIRECTOR
- TEACHERS AIDE
- COOK

Must Be Bi-Lingual
Must Have At Least High School
Pick Up Applications At 305 Wall Street, Floydada

TRU-TEST SELECT

SEMI-GLOSS ENAMEL
18 L. (1 Gallon) Latex
A **7.97** GALLON

TRU-TEST SELECT

HIGH-HIDING LATEX FLAT WALL FINISH
18 L. (1 Gallon) Latex
B **5.97** GALLON

TRU-TEST SELECT

INTERIOR-EXTERIOR UTILITY ENAMEL
18 L. (1 Gallon) Gloss
C **8.97** GALLON

© 1979 COTTER & COMPANY—100% MEMBER OWNED

(A) **SELECT SEMI-GLOSS**
Latex enamel finish is ideal for walls and woodwork—especially in the kitchen and bath. Resists moisture, grease, fumes and dirt. Scrubs clean without damage to finish. Tools clean up in soapy water. White and 6 colors. 02/C

(B) **FLAT LATEX**
An economical, but high-hiding flat finish for wallpaper, plaster, etc. Ideal for ceilings, too. Washable finish. Covers most surfaces in one coat. Dries in 30 minutes. Tools clean up in soapy water. White and 6 colors. 02/A

(C) **UTILITY ENAMEL**
All purpose enamel for interior and exterior wood, concrete, brick, plaster, metal, etc. Ideal for wherever a full gloss weather- and wear-resistant finish is desired. Five colors. The Red, The Green, three grays. 02/UF

TRU-TEST

TEXTURE PAINT

Put character into your rooms by creating exciting textured effects. Ideal for "resurfacing" old and new walls and ceilings. Spreads thick to cover hairline cracks and tape joints. Apply with brush or roller, then use sponge, putty knife, comb, texture brush, etc. to achieve the pattern you want. Covers in just one coat. Dries to touch in two hours. For all interior surfaces: plaster, wallboard, brick and masonry. Soap and water cleanup. White and 6 colors. 02/T

HEAVY STIPPLE

COMB EFFECT

SWIRL

5.97 GALLON

© 1979 COTTER & COMPANY—100% MEMBER OWNED

DURO Super Glue

COUPON WITH 99¢ WITHOUT 1.99

Super strong. Makes permanent repairs in seconds. 3 gms. 07/SUP-1

LIMIT: One Coupon Per Customer

OREL PAINT BRUSHES

Fine quality brushes for use on all surfaces—durable polyester bristles outwear ordinary bristle brushes by 3 to 1. Use for latex, oil stains, varnish, and all water-based paints on any prepared surface.

Various brushes: fully flanged, chisel angled. 07/001

2 1/2 in. 1.33 2 3/4 in. 1.77 3 in. 1.99

3 1/2 in. 2.59 4 in. 3.39

1 1/2 in. Angular Sash Brush. For narrow trim. 07/707 1.66

PLASTIC DRAPERY COVERS

Protect floor, furniture when painting. Waterproof, resist, mildew, washable. Choose 36 1/2 in. 2 mil. or 10x20 in. 1 mil. 07/290/300 1.33 EA.

RED DEVIL ELECTRIC PAINT REMOVER

Push-pull action exposes blade for scraping. With 1 blade. 07/3222PR. \$84

Takes off old paint in seconds. 1000W, 115V, UL listed. 07/3401 19.99

ROLLER FRAME

9 1/2 in. frame slips in and out of roller cover for easy cleaning. 07/09 1.55

5-WAY COMB LADDER

Use as step, extension, scissor case, 2-man ladder or as 2 separate ladders. Variable height—6 ft. as step, 10 ft. as extension. Lightweight aluminum with folding tool tray. Split-proof paint shelf, slip-resistant rubber feet. UL listed. 07/298 \$7.99

WERNER LADDERS FEEL SOLID UNDERFOOT

FORMOLUX ANTIQUE WORKSHOP REFINISHING KIT

Restore antique and fine furniture finishes without stripping, sanding or filling. Kit incl.: 1-qt. refinisher, 8-oz. gloss-lustre Tung Oil, 2 packs steel wool, refinishing pan, brush and instructions. 06/00031 \$9.99

LEMON OIL

Brings out natural lustre without wax. Penetrates into wood to prevent drying. 8 fl. oz. 06/00015 \$9.99

BLADE SCRAPER

Push-pull action exposes blade for scraping. With 1 blade. 07/3222PR. \$84

RED DEVIL ELECTRIC PAINT REMOVER

Takes off old paint in seconds. 1000W, 115V, UL listed. 07/3401 19.99

ROLLER FRAME

9 1/2 in. frame slips in and out of roller cover for easy cleaning. 07/09 1.55

5-WAY COMB LADDER

Use as step, extension, scissor case, 2-man ladder or as 2 separate ladders. Variable height—6 ft. as step, 10 ft. as extension. Lightweight aluminum with folding tool tray. Split-proof paint shelf, slip-resistant rubber feet. UL listed. 07/298 \$7.99

WERNER LADDERS FEEL SOLID UNDERFOOT

WERNER LADDERS

Extension Ladders

Aluminum alloy for extra strength. Rope and center pulley on 26-ft. and larger sizes. Trestle-frame design. 07/0116/20/24/28-2 18-ft. (13-ft. work height) \$7.99 24-ft. (17-ft. work height) \$9.99 28-ft. (21-ft. work height) \$9.99 28-ft. (25-ft. work height) \$9.99

Step ladders

Strong, heat-treated aluminum ladder features pinch-proof spreaders, pall shell with rag rail and tool holders, double-angle bracing on top and bottom steps, slip-resistant rubber feet. 07/285/16 6 ft. \$2.77 9 ft. \$2.77

5-Way Comb Ladder

Use as step, extension, scissor case, 2-man ladder or as 2 separate ladders. Variable height—6 ft. as step, 10 ft. as extension. Lightweight aluminum with folding tool tray. Split-proof paint shelf, slip-resistant rubber feet. UL listed. 07/298 \$7.99

WERNER LADDERS FEEL SOLID UNDERFOOT

MASTER FIELD DAY — Dr. "Nick" Kramer, sorghum re-
director for ACCO Seed, con-
ducted Wednesday the Paym-