

The Lockney Beacon



20¢
Per
Copy

Volume 78

Lockney, Floyd County, Texas 79241

March 18, 1979

10 Pages in One Section

Number 22

MOST BUT NOT QUITE

LHS Band Just Misses Winning Sweepstakes

High School Band and a "II" in concert Thursday night at the UIL Concert and Sight Reading Contest at Dimmitt.

The Band was trying for its third consecutive "Sweepstakes" award, and they nearly got it — one of the three judges gave the band a "I", but two judges thought it was a "II" concert performance. One judge wrote "Almost but not quite" on his comment sheet, the other wrote "A good band, but that last number hurt tonight."

Band Director Raymond Lusk said he had prepared a very challenging concert program for the band this year. The Floydada High School band fared the same as the Longhorn Band — "I" in sight reading, "II" in concert — at the contest. Dimmitt, the only other class-AA band which performed Thursday night, received "I" ratings in both contests and won a sweepstakes trophy. The other AA bands performed Friday and results were not available at press time.



BAND HARDWARE — Senior band members Ches Carthel and Kevin Stennett add the latest bits of hardware to the trophy case in the LHS band hall. The Longhorn band received the awards Thursday night at the UIL Concert and Sight Reading Contest at Dimmitt. [Staff Photo]

LHS Ag Students Earn Over \$50,000 During School Year

High school vocational agriculture students earned over \$50,000 last year, according to a report by instructor Elvin Lyon with the Education Agency.

The productive farming enterprises, number of students completing, number of head or acres, and net income are shown in the following table:

Enterprise	Students	head or Acres	Income
Raising Beef	004	010	\$0584.82
Raising Beef	002	016	\$0845.87
Raising Beef Heifers	002	008	\$0000.00
Corn	004	104	\$4523.58
Raising Pork	029	252	\$9420.47
Raising Swine	004	011	\$2913.20
Raising Hens	016	056	\$2372.82
Raising Sheep	2	017	\$0690.93
Cash Crops	2	041	\$0241.19
Real Estate	2	028	\$0103.50
Systems	2	038	\$1474.59



UIL WINNERS — These Lockney Junior High students placed in the district Interscholastic League Literary Meet Thursday at Abernathy. Left to right: Maribel Torres, tie for third in spelling seventh and eighth grade division; Monty White, second in oral reading, seventh and eighth grade; Kibbe Thornton, second in oral reading, fifth and sixth grade. [Staff Photo]

Floyd Residents Asked for Telethon Donations

Floyd residents will be asked for "pocketbooks" to assist in the telethon during the National Telethon, scheduled to be held on Friday and Saturday, March 24 and 25, at the National Telethon Club members, assisted by Alpha Mu Delta Chapter of Phi Sigma Phi, will accept donations at the telethon. Their headquarters will be in the Floyd County Courthouse, 101 South Main Street.

Lin Boss of the Telethon Club encourages the community to pledge to support the telethon. Pledge cards will be available at the telethon. Pledge cards will be available at the telethon. Pledge cards will be available at the telethon.

Contributions are to be made by telethon, which will be held from 8 p.m. Saturday, March 24, to 8 p.m. Sunday, March 25.

Lt. Col Joe W. Rigby Builds A Military Career

by Felicia Applewhite

Lieutenant Colonel Joe W. Rigby has had 20 years in military advancement since his graduation from Lockney High School in 1958. Well-earned academic and military awards and honors are woven into the factual story of his life. His first awards and honors came while he was still in high school when he was elected president of the student council and was named salutatorian of his graduating class.

Following high school graduation, he reported to his appointment as a cadet at the United States Military Academy, West Point. His appointment came through Representative George Mahon. He maintained a high academic record at West Point, where he was on the dean's list. He was also a cadet officer and was vice-president of the debate council. At the same time, he was a member of the triathlon team and was a letterman in soccer.

After West Point, from August 1962 to January 1963, he received training in Infantry Officer's Basic Course and in Parachute School. He was in Ranger School and in Jumpmaster School, where he was named an honor student.

In his assignment in January 1963 to the 2nd Battle Group, 502nd Parachute Infantry 101st Airborne Division, he was rifle platoon leader, reconnaissance platoon leader of the company and company commander. He was promoted to first lieutenant.

He won Division Commander's Trophy for best reconnaissance platoon of the 101st Airborne. His 38 jumps rated him Senior Parachutist with the accompanying reward.

Next, he was assigned to the United States Special Warfare Course (Green Berets) in September 1964 where he was an honor graduate.

In that same year, his assignment was an advisor to 3-44 Infantry of the Republic of Vietnam.

Here he was wounded in action in an attack on the North Vietnamese Army fortified position. He was evacuated and sent to Valley Forge General Hospital in Pennsylvania. For his command, the Republic of Vietnam awarded him the Bronze Star for heroism in Ground combat.

The citation for the Bronze Star read: "For heroism in connection with military operation against a hostile force, Lieutenant Rigby distinguished himself by heroic action on 28th of January 1965 in the Republic of Vietnam."

"On this date, Lieutenant Rigby was serving as an advisor to the 3rd Battalion, 44 Infantry Regiment, 23rd Division, Army of the Republic of Vietnam.

"While advising the unit in an attack against the entrenched Viet Cong, Lieutenant Rigby continually exposed himself to the intense enemy fire as he moved from point to point along the line encouraging the company to return the fire and advance."

"After having been seriously wounded and evacuated to the rear, Lieutenant Rigby learned that a call for helicopter medical evacuation had been made."

"He then secured a radio and directed not to evacuate him, and remained where he could offer the most assistance until he could be evacuated by land vehicle."

"Lieutenant Rigby's heroic actions were in keeping with the highest traditions of the United States Army and reflect great credit upon himself and the military service."

He was also awarded the Purple Heart for his wound received "in connection with the military operation against hostile force—given by direction of the President."

In addition to these awards, the Republic of Vietnam also gave him the highest award for heroism—the Vietnam National Order.

On release from the hospital, he was assigned as an instructor at the United States Army Infantry School at Fort Benning, Georgia. Here he instructed two Lockney men, Bobby Holt and Lewis Eiland "were under my instruction during courses for official candidates."

While at Fort Benning, another promotion came to Lieutenant Rigby. He became Captain Rigby.

On his completion of the assignment at Fort Benning, he was awarded the Army Commendation Medal for Meritorious Service in Implemented Programmed Instruction Teaching.

In 1967, at assigned Infantry Officer Advanced Course, he was selected for acceleration promotion to Major. He was an honor graduate.

Again, he was assigned to action in Vietnam. This was 1968. His assignment was to the 25th Infantry Division

of the United States Army in the Republic of Vietnam.

Here he served as rifle company commander of Battalion S-3 and Brigade S-3.

Again he was wounded in action when the helicopter hit an enemy mine in a helicopter-borne assault against North Vietnamese army position. He was sent to a New Jersey Hospital.

He was awarded the Silver Star for his service to the 25th Infantry Division. The reason for the award was stated: "For gallantry in action."

"Major Rigby distinguished himself by heroic action on the 7th or 8th of October 1968 while serving with Headquarters and Headquarters Company 2nd Battalion 12th Infantry in the Republic of Vietnam."

"While in their night-defense position, elements of the 2nd Battalion 12th Infantry came under an intense enemy attack. Major Rigby was instrumental in directing all our movement within and without their perimeter."

"His efforts resulted in smooth re-supply and evacuation, while the data he gathered brought effective air and artillery strikes on the insurgent's position."

"Throughout the night, Major Rigby moved from area to area, with complete disregard for his own safety, directing operations and restoring perimeter defenses."

"His valorous actions contributed immeasurably to the successful repulsion of two major attacks and inflicted heavy casualties on the enemy."

"Major Rigby's personal bravery, aggressiveness and devotion to duty are in keeping with the highest traditions of military service and reflect great credit upon himself, his unit, the 25th Infantry Division and the United States Army."

For the same action, he was awarded the Bronze Star First Oak Leaf Cluster and was given the Air Medal for heroism.

The reasons for the award were printed in a bulletin that bore the date of his accident, "13 December 1968."

It read: "For heroism while participating in ariel fight Major Rigby distinguished himself by heroic action on 13 December, 1968 while serving with the 2nd Brigade 25th Infantry Division in the Republic of Vietnam."

"When the elements of the 2nd Brigade came under heavy fire from a large Communist Force, Major Rigby directed the brigade command and control ship to the combat area."

"With complete disregard for his own safety, Major Rigby ordered the helicopter into heavy anti-aircraft fire so that accurate, supporting fires could be utilized."

"Throughout the nine-hour battle, Major Rigby stayed in the air amid Viet Cong fire and adjusted gunship fire and artillery."

"His valorous actions contributed immeasurably to the thwarting of the insurgents and the success of the mission."

"Major Rigby's personal bravery, aggressiveness and artillery service and devotion to duty are in keeping with the highest traditions of the military service and reflect great credit upon himself, the unit, the 25th Infantry



Lieutenant Colonel Joe W. Rigby of the Pentagon Army General Staff—a 1958 Lockney High School Graduate.

THE EARLY BIRD CATCHES OUR LOW PRICES, SO SHOP NOW & SAVE
EARLY BIRD SAVINGS

WE RESERVE THE RIGHT TO LIMIT

ASSTD. FLAVORS	20¢
CERTS BONUS PAK REG./SPEARMINT	PAK 20¢
DENTYNE VALUE PAK ASSTD. FLAVORS	PAK 39¢
TRIDENT ASSTD. FLAVORS GUM	18 STICK PKG. 49¢
FRESHEN-UP	PAK 20¢

HEAVY GRAIN FED BEEF

ROUND STEAK **\$2.19** LB.

HEAVY GRAIN FED BEEF T-BONE STEAK **\$2.79** LB.
 HEAVY GRAIN FED BEEF TENDERIZED CUTLETS **\$2.69** LB.
 HEAVY GRAIN FED BEEF SIRLOIN ROAST OR TIP STEAK **\$2.39** LB.

HEAVY GRAIN FED BEEF

ROUND STEAK **\$2.19** LB.

ASSORTED FLAVORS GELATIN

JELL-O

5 \$1

3 OZ. BOXES

SWIFTS BREAKFAST

SIZZLEAN STRIPS **\$1.39**

12 OZ. PKG.

HEAVY GRAIN FED BEEF

SIRLOIN STEAK **\$2.39** LB.

YOUR THRIFTWAY STORES SELL & FEATURE ONLY FINE QUALITY AMERICAN GROWN GRAIN FED BEEF, FRESH PORK, AND QUALITY POULTRY

OSCAR MAYER MEAT, BEEF, JBO, FRANKS OR 1 LB. PKG. **WIENERS** **\$1.69**

OSCAR MAYER MEAT, BEEF, THICK SLICED 8 OZ. PKG. **BOLOGNA** **99¢**

OSCAR MAYER VARIETY PAK REG./BEEF 12 OZ. PKG. **MEATS** **\$2.09**

OSCAR MAYER HAM & CHEESE OR 8 OZ. PKG. **HAM CHOPPED** **\$1.39**

OSCAR MAYER MEAT, BEEF, THICK, THIN-SLICED 12 OZ. PKG. **BOLOGNA** **\$1.49**

OSCAR MAYER SMOKIE 12 OZ. PKG. **LINKS** **\$1.89**

OIL PAK OR WATER PAK CHICKEN OF THE SEA

TUNA **69¢**

6 1/2 OZ. CAN

PUREX HEAVY DUTY DRY

DETERGENT **89¢**

42 OZ. BOX

HEAVY DUTY PUREX

BLEACH **59¢**

GAL. JUG

CAMPBELL'S CREAM OF

MUSHROOM SOUP **4 \$1**

10 3/4 OZ. CANS

BOW WOW BITE SIZE

DOG FOOD **\$3.99**

25 LB. BAG

MAXWELL HOUSE INSTANT

COFFEE **79¢**

10 OZ. JAR

ASSTD. FRUIT FLAVORS

HI-C DRINKS **59¢**

46 OZ. CAN

IN GLASS WHITEHOUSE

APPLE JUICE **69¢**

32 OZ. BTL.

10' OFF LABEL POST

GRAPENUTS **\$1.19**

24 OZ. BOX

10' OFF LABEL

WISK **79¢**

QT. JUG

15' OFF LABEL DETERGENT

LUX LIQUID **79¢**

22 OZ. BTL.

TOTAL GROCERY SAVERS

MAXWELL HOUSE INSTANT **COFFEE** 10 OZ. JAR **79¢**

ASSTD. FRUIT FLAVORS **HI-C DRINKS** 46 OZ. CAN **59¢**

IN GLASS WHITEHOUSE **APPLE JUICE** 32 OZ. BTL. **69¢**

10' OFF LABEL POST **GRAPENUTS** 24 OZ. BOX **\$1.19**

10' OFF LABEL **WISK** QT. JUG **79¢**

15' OFF LABEL DETERGENT **LUX LIQUID** 22 OZ. BTL. **79¢**

A-D-C • REG DRIP • ELEC.

MAXWELL HOUSE

\$2.09

1 LB. CAN

HEALTH & BEAUTY AID SAVINGS

EXTRA STRENGTH EXCEDRIN

PAIN RELIEVER **\$1.59**

100 CT. BTL.

PAIN RELIEVER

EXCEDRIN P.M. **\$1.29**

30 CT. BTL.

ASSORTED SHAMPOO

BODY ON TAP **\$1.29**

7 OZ. BTL.

ASSORTED DEODORANT

TICKLE ROLL-ON **\$1.59**

2 OZ. BTL.

ANALGESIC TABLETS

BUFFERIN ASPIRIN **\$1.39**

60 CT. BTL.

GROOMS HAIR

VITALIS SUPER HOLD **\$1.29**

5 OZ. BTL.

CAMBRIDGE OR MARIA GRANDE STAINLESS

SALAD FORK **33¢** EACH WITH 13¢ PURCHASE REG. PRICE 79¢

CALIFORNIA LARGE HEAD

LETTUCE **39¢**

LB.

WHITE CRYSTAL WAX

ONIONS **29¢**

LB.

FRESH TENDER

BROCCOLI **59¢**

LB.

FLORIDA FULL EAR

CORN **3 \$1.69**

3 BARS

RUBY RED

GRAPEFRUIT **25¢**

LB.

CENTRAL AMERICAN

BANANAS **3 \$1**

3 LBS.

ALL PURPOSE RUSSET

POTATOES **\$1.69**

20 LB. BAG

FROZEN FOODS

MORTON CHICK./TURKEY/SAL. STK./MEAT LOAF

DINNERS 11 OZ. BOX **69¢**

SHURFINE FROZEN HADDOCK

FILLET 16 OZ. BOX **\$1.69**

MRS. GOODCOOKIE ASSTD.

COOKIES 16 OZ. BOX **99¢**

ASSORTED TOTINO'S

PIZZA 12 OZ. BOX **99¢**

GORTON'S CRUNCHY FISH PORTIONS OR

FISH STICKS 12 OZ. BOX **\$1.49**

BELL QUALITY CHEKD

ICE MILK 1/2 GAL. **99¢**

DAIRY VALUES

BORDEN'S AMERICAN

SINGLES 16 OZ. PKG. **\$1.69**

WHIPPED MARGARINE

PARKAY 2-8 OZ. CLIPS **69¢**

HUNGRY JACK FLAKY BM./FLUFFY/BUTTER TASTIN/

BISCUITS 5 CT. CAN **29¢**

KRAFT ASSORTED

PARTY SNACKS 6 OZ. PKG. **69¢**

S & H GREEN STAMPS

EVERYDAY DOUBLE ON WED

SHELF SPECIALS

15' OFF LABEL

MINUTE RICE 14 OZ. BOX **79¢**

15' OFF LABEL PUREX

TOSS 'N SOFT 40 CT. BOX **\$1.19**

NABISCO GRAHAM

CRACKERS 1 LB. BOX **89¢**

SUNSHINE COOKIES

FIG BARS 16 OZ. PKG. **79¢**

SUNSHINE CINNAMON GRAHAM

CRACKERS 16 OZ. BOX **69¢**

SCHILLING PURE

VANILLA 2 OZ. BTL. **79¢**

FLOUR GLADIOLA 25 LBS **\$2.99**

FAMILY SIZE

WESSON OIL **\$1.89**

48 OZ. BTL.

10 PAGES! THRIFTWAY

PRICES EFFECTIVE MAR. 18-24, 1979

IN LOCKNEY

Delta Kappa Gamma
 Has Salad Supper

Floydada members of the Delta Kappa Gamma Chapter of the First United Methodist Church, Sunday, March 18, 1979, presented the business session. The business session was presided over by Mrs. Vada Meredith, chairman. Bettie introduced the evening program. "Surprise Each town's villain, and in as the nu

Goins Hostess To
 SS Class

Saved The Eye Of Jabesh. Denison directed game of questions. A refreshing cheese and chives, chips, individual cherry coffee were served. Lona Sparks, dith, Ola Warren, L. O. Garrett, Mild Cleo Goins, and guest Young.

NEWS 'N' NOT
 (by Sharon Hillis)

Colors For Spring ranging from bright, festive accents to soft, pastel shades. Fabrics in fabrics for luster, anything or shiny such as metallic. Popular fabrics in weight and clean fabric like voile, men and shantung, Agent point. Fabrics such as charmeuse and damask accompany polka dots in lightweight prints. Fabrics include crepe open mesh, dotted polyester georgette, blue linen and nylon. Neutrals are in as chanelle and carmine. Also, colors will feature pink and aqua, she

News & Review

FLOYDADA Baptist Church Media Center. Books have been about marital relationships, some helpful. Often the comes in volumes to fill this purpose. How Come It's So Long To Get Lane Adams is hope. As a new he was dismayed by many of the personal failures he conversion. Disguised, he was the New Testament growth taught by disciples. Above all, maturity is a process, with a systematic capacity-half territory. This truth applied, gradually to transform real life, his marriage ministry. In

WE WILL BE CLOSED
 Monday, March 19
 except For Telephone Orders
 652-2385
 Schacht's
 Flowers, Jewelry & Gifts

Delta Kappa Gamma
Has Salad Supper

Floydada members of the Delta Chapter of Kappa Gamma hosted a salad supper Monday, March 13 at the First United Methodist Church. Sandra Goin, president, presided over the business session.

Floydada members presented the melodrama, "Sob Story," starring Frances Mitchell as "Maw," Carol Bell as "Paw," Dale Tye as "Sweet Nell," Sunny McDonald as "Dudley Do-right," La Vada Garrett as the villain, and Roberta Hardin as the musician.

Goin's Hostess To Dorcas

SS Class

Sunday school at First Baptist Church met March 13 at 2 p.m. Mrs. Cleo Goin, hostess, presided over the monthly business and meeting.

A refreshment plate of cheese and chicken sandwiches, chips, pickles, olives, cheese puffs and individual cherry pies, tea and coffee were served to Mmes. Lona Sparks, Vada Meredith, Ola Warren, Valree Turner, L. Grimes, Ethel Warren, H.O. Cline, May Garrett, Mildred Fuqua, Cleo Goin, Beulah Denison, and guest Miss Peggy Young.

NEWS 'N' NOTES
(by Sharon Hillis)

Colors For Spring
Luster in spring colors—bright, festive, fun.

Wear wallpaper florals—ranging from tiny prints to the larger prints—alone or as accents to solids.

FABRICS
New in fabrics for spring, luster, anything shiny such as metallic.

For colors, the work is bright, festive, happy. Colors will lighten up the season with their own special high-voltage turning everything hot.

News & Reviews

FLOYDADA

Methodist Church
Wade Center
BETTER FRAT
Books have been about marital relationships, some helpful, some harmful. Often the help comes in volumes needed to fill this gap.

This book he shares his discoveries with all who struggle with the same needs. **The Intimate Marriage** by the Clinebells is an excellent look at the process of learning to live together. From their experience as marriage counselors and marriage partners, the Clinebells share basic principles of human relationships that build successful marriages. You find an emphasis on honest communication in contrast to artificial "role" playing and manipulative behavior advocated by some in this area. It is too bad that some of the worst books on this subject have been the most widely read due to catchy titles and "canned" answers. Do yourself a favor and read either of these books on building better relationships.

WEDDING ANNIVERSARY
Mr. and Mrs. John Walters will celebrate their silver wedding anniversary March 20.

The Social Scene



ENGAGEMENT ANNOUNCEMENT....Mr and Mrs. E.H. Harper of Lumberton, Texas, announce the engagement of their daughter Linda Gail to Verlyn Ratzlaff, son of Mr. and Mrs. Art Ratzlaff of Floydada. The bride-elect attended Lamar University in Beaumont and will graduate in May from the University of Texas Medical Branch in Galveston. Verlyn is a 1973 graduate of Floydada High School and a 1976 graduate of Lamar University where he received a BS degree. He is currently employed with J.C. Penney Company, Inc. The couple plan to be married June 2 in the Fletcher Emanuel Baptist Church in Lumberton.

El Progreso Hears History Of The Llano Estacado

The El Progreso Study Club met in the home of Dorothy Smith and Jeanette Marr for the annual visitors day. As guests arrived, they were served delightful refreshments by Marie Brock and Hazel Johnson.

With president Anna Dell Quebe presiding, each member introduced her guest. Mrs. Smith introduced her sister-in-law, Mrs. Howard (Ruth) Smith from Lubbock, who in turn introduced the speaker of the afternoon, Mrs. Lorene (John) Harding of the Heritage Ranch Museum of Texas Tech. Her subject "The Three W's" was a short history of the Llano Estacado Plains of West Texas. As the first settlers came to this part of the state, there was no wood, no water and no women. There was no wood to build with and to use as fuel, so the people dug under the ground for shelter and substituted cow chips for fuel. Windmills were soon erected to pull the water from under the ground.

Few men brought their families as they came to settle these wide bare plains. As houses were prepared, the women and children

came to make homes and to help establish schools and churches over wide areas of this land. They were few but mighty, enduring unbelievable hardships to be with their men and to help tame these wild prairies.

Sketches of the lives of several pioneer women were mentioned. Henrietta Marse Chamberlain, Sally Ann Reynolds Matthews who wrote a book, "Interwoven" which was a history of her family, Hank and Elizabeth Smith of near Crosbyton, Lissie Campbell whose husband managed the Matador Ranch in its beginning, Mrs. Dora Roberts whose family homesteaded land near Big Spring on which oil was discovered, and she used her wealth in many projects to benefit her fellowman. Mary and Andy Blankenship filed on ranch land west of Lubbock as the children became of school age they bought a tract of land where Town and Country Shopping Center is now, to move to town to send them for an education. Rachel Singer and her husband were the first family of Lubbock, establishing the first store. Many more interesting facts were given

The next meeting will be in the home of Dimon Schacht on March 28, 1979 with a program on education led by Marie Brock.

These visitors were Mrs. Lorene Harding and Mrs. Ruth Smith of Lubbock, Mrs. Annie Smith, Reeda Kay Smith and Tikka, Mrs. Maudie Lawson, Felicia Applewhite, Agnes Frizzell, Lucille

Harris, Rose Carthel, Bernice Barker, Laura Wilkes, Ruth Farish, Eva Whitfill, Bernice Reynolds, Velma Harrison. Members present were Katherine Ball, Ann Brock, Marie Brock, Faye Ferguson, Polly Gilbert, Faye Holmes, Juanita Jenkins, Cornelia Johnson, Hazel Johnson, Bobbie Kellison, Dimon Schacht, Dorothy Smith, and Josie Taylor.

Lone Star Homemakers Meet

Lone Star Extension Homemakers Club met in the home of Loraine Nance March 13 with nine members present.

After refreshments were served, a short business meeting was conducted by the club president, Mrs. Nance. Roll call was answered with "A favorite home I

have visited." Vera King read Titus 2:5 for the devotional. The program was conducted by Trudie Taylor with a silk flower demonstration. Poppies were made. Those attending were Loraine Nance, Helen Huffman, Elvira Stewart, Ruth Reeves, Sybil Teeple, Reed Lawson and Trudie Taylor.

Equal Housing

EQUAL HOUSING OPPORTUNITIES

SENIOR CITIZENS 62 YEARS OR OVER AND HANDICAPPED

We Are Now Accepting Applications For Plains Village Apartments 1 and 2 Bedroom Units.

AT THE TRAVEL LODGE MOTEL

800 Broadway - Room 118
Plainview, Texas

MARCH 21 AND 22 FROM 9 A.M. TO 4 P.M.

JEWELRY

We Now Have A Nice Selection Of

- ★ 14 Kt. Pierced Earrings
- ★ 14 Kt. Neck Chains
- ★ Gold Bracelets
- ★ Drop Necklaces

Many Other Lovely Pieces Of Jewelry

Come By And Let Us Show You These Items

Solomon Jewelry

983-3240
102 South Main Floydada

Floydada Rebekah Lodge

Go St. Patrick Green

Floydada Rebekah Lodge met Tuesday night March 13 for a regular meeting. Eula Parrack was admitted into the lodge by transfer from Abilene Rebekah Lodge No. 30. In observance of St. Patrick day everyone wore green.

Ruby Davis gave a history on how St. Patrick's day originated. Grace Grundy gave a reading on Oddfellowship.

Amanda Hart played the piano and led the group in singing "My Wild Irish Rose."

After a lodge closed a game of bingo was played and Willie Hill won box of candy, brought by Eula Parrack.

Refreshments of cookies, coffee and lime punch were served. All enjoyed the evening.

Mrs. S. G. Appling Honored

On 80th Birthday

Mrs. S.D. Appling was honored on her 80th birthday on Sunday, March 11, in the home of Mr. and Mrs. Joe Appling in Mt. Blanco Community. Dinner was served to about 45 relatives.

cher of Albuquerque, New Mexico. Also two cousins, Marie Affleck of Big Spring and Miss Flora Archer of Hermit, California; several nieces and nephews; all of Mrs. Appling's children; 11 grandchildren and seven great-grandchildren were able to attend.

It has been the custom in Mrs. Appling's family when one of the sister and brother reach their 80th birthday to have a family reunion. Mrs. Appling is the fifth one to receive this honor. All were present except Mrs. Eula Funk of Duncan, Oklahoma who injured her leg several months ago.

Mrs. Appling and her brothers and sisters were the descendants of the late Mr. and Mrs. J.R. Archer of Floydada.

Those present were Mrs. Floy Neece of Hemit, California; Mrs. Alpha Christian of Duncan, Okla.; Mrs. Elsie Latta of Lubbock; Mrs. Robbie Brady of Hermit, California; one brother Louie Ar-

In the afternoon a reception was held and about 40 friends dropped by to wish Mr. Appling a happy birthday. Hosts for the occasion were sons and daughters, Mr. and Mrs. Wayne Appling; Mr. and Mrs. Joe Appling, and Mr. and Mrs. Roy Miller.

Cystic Fibrosis Bike-A-Thon

May 19

Saturday, May 19, is the date which has been set for the Cystic Fibrosis Bike-A-Thon.

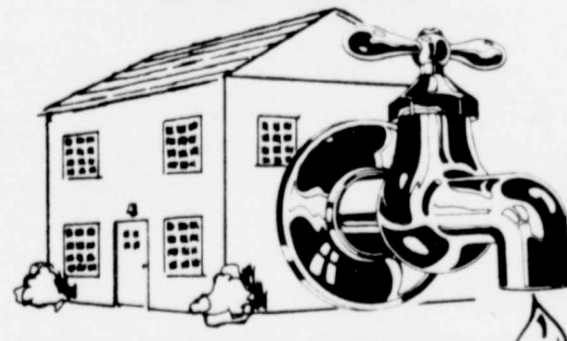
Businesses are being asked to donate prizes to be awarded to participants in various areas.

Persons of all ages are encouraged to participate. Participants should ask individuals or businesses to sponsor them. A sponsor will agree to pay his entrant whatever he wishes for each mile his entrant rides. Money earned by the riders will go to support the Cystic Fibrosis Foundation.

Any interested in helping with the Bike-A-Thon in any capacity is asked to call Jan Thayer at 983-2489.

Sponsor forms will soon be available at all the public schools. More details will be available soon. Watch the paper for the list of prizes to be given away.

is there an **energy leak**



in your house? shut it off with: storm doors, storm windows, insulation, caulking

Your home may be like this one... it's leaking. Energy leaks that you can't see that are wasting your valuable energy dollars. Inadequate ceiling insulation and ventilation are two of the biggest offenders. The lack of weatherstripping and caulking that seals cracks and joints tightly is another problem. And no storm doors and windows to cut down on heat loss or gain can waste even more energy. Call your local Southwestern Public Service Manager for suggestions on how you can shut off the energy leaks in your home. Make it more energy efficient and save!



WE WILL BE CLOSED Monday, March 19
except For Telephone Orders
652-2385
Schacht's
Flowers, Jewelry & Gifts
LOCKNEY

OW & SAVE
GS!
219
HEAVY GRAIN FEED
ROUND STEAK
\$2.39
LB.
CERY SAVERS
10 OZ. JAR \$3.99
46 OZ. CAN 59¢
32 OZ. BTL. 69¢
24 OZ. BOX \$1.19
QT. JUG \$1.39
79¢
A-D-C • REG
DRIP • ELEC.
AXWELL HOUSE
09
SPECIALS
14 OZ. BOX 79¢
40 CT. BOX \$1.39
1 LB. BOX 89¢
16 OZ. PKG. 79¢
16 OZ. BOX 69¢
2 OZ. BTL. 79¢
DIOLA LBS \$2.99
FAMILY SIZE
ESSON OIL
89¢
MAR. 18-24, 1979
LOCKNEY

RCA For The Best
Price & Service On RCA T.V.'s
See
MIZE PHARMACY & T.V.
102 S. MAIN LOCKNEY 652-2435

PRESTON MILK GALLON **\$1.90**
USDA Inspected Plant Custom Processing,
Wholesale and Retail Meats, Cut, Wrapped,
Frozen, and Fully Guaranteed.
Financing Available On Freezer Beef
Lockney Meat Co.
Hwy. 70 Lockney, Tx. 652-3305

The Cable & Regular Television Programs
Schedule Will Appear In This Newspaper
Each Sunday
Sponsored By The Merchants
On These Pages!!!

FLOYDADA
1
BETTER TV!

SUNDAY 03/18/79

AM	WTGG CH. 17 Atlanta Cable 4	KTXT CH. 5 Lubbock Cable 5	PTL CH. 6 Charlotte Cable 6	KMCC CH. 28 Lubbock Cable 7	WGN CH. 9 Chicago Cable 8	KTVU CH. 10 Oakland Cable 10	KCBD CH. 11 Lubbock Cable 11	KLBK CH. 13 Lubbock Cable 13
7:00	Three Stooges	Sesame Street	Hour of Power	Praise the Lord Club	News Buyer's Forum What's Nu	Jimmy Swaggart Day of Discovery	This is the Life Rebob	
8:00	Lost in Space	Mister Rogers Neighborhood Electric Company	Voice of Victory Oral Roberts	Jimmy Swaggart Prophecy Newsreel	Mass for Shut-Ins Church	Oral Roberts Methodist Church	James Robison Presents Amazing Grace	
9:00	Hazel	Studio See	Old Time Gospel Hour	Little Rescals I Love Lucy	Issues Unlimited Abbott and Castello	Westbrook Hospital Robert Schuller	Old Time Gospel Hour	
10:00	Wife's Rebob	PTL Club	Best of Donahue	Tarzan	Day of Discovery	Living Your Religion	Face the Nation	
11:00	Movie: 'The Band Wagon'	Baptist Church	Cisco Kid Lone Ranger	Oral Roberts Rex Humbard	Better Life Meet the Press	Hour of Power		
12:00	'Jumping Jacks'	Calvary Temple	Issues and Answers Animals	Movie: 'Chan in Sky Dragon'	It Is Written	NCAA Basketball Championships NBA	Challenge of the Sexes	
1:00	Movie: 'Rocky'	Amazing Grace High Adventure	Superstars	Movie: 'The Legend of Custer'	Tarzan	NCAA Basketball Championships	Basketball: San Antonio at Milwaukee	
2:00	Mountain	Rain	Dr. Scott on Hebrews	World Series of Auto	Movie: 'Mars Needs Women'	Mideast Regional	Doral Open Golf	
3:00	Movie: 'The Innocents'	American Pop: The Great	James Robison Presents	Wide World of Sports	Movie: 'Journey To The Center Of The Earth'	Homer Formby Porter Wagoner		
4:00	Singers	Club PTL	The Center Of The Earth	Homer Formby Porter Wagoner	Nashville Music NBC News Confidential	Last of the Wild CBS News		
5:00	Championship Wrestling	Amazing Grace High Adventure	Lay Witness ABC News	LPGA Golf				

MONDAY 03/19/79

PM	WTGG CH. 17 Atlanta Cable 4	KTXT CH. 5 Lubbock Cable 5	PTL CH. 6 Charlotte Cable 6	KMCC CH. 28 Lubbock Cable 7	WGN CH. 9 Chicago Cable 8	KTVU CH. 10 Oakland Cable 10	KCBD CH. 11 Lubbock Cable 11	KLBK CH. 13 Lubbock Cable 13
6:00	Carol Burnett and Friends Sanford and Son	Navy Now MacNeil- Lehrer Rept.	Gospel Music Hour of Power	News Bewitched	Dick Van Dyke Odd Couple	T.V. Powww with Tom and Jerry	News Sanford and Son	News Joker's Wild
7:00	Let's Go To The Races Dragnet	Bill Moyers' Journal: Mind at Large	Westbrook Hospital	Selvaige 1	Carol Burnett and Friends Hogan's Heroes	Captain Cosmic Gilligan's Island	Little House on the Prairie	Charlie Brown Jr. Olympics White Shado
8:00	Movie: 'The Deadly Game'	Evening at Symphony	PTL Club	How the West Was Won	Hee Haw Honeys Miss Illinois Beauty	Six Million Dollar Man	Movie: 'Fast Friends'	WKRP in Cincinnati
9:00	Austin City Limits	Pageant	Dating Game	News	Movie: 'Miss Sadie Thompson'	Tonight Show	Rockford Files	
10:00	Hogan's Heroes Movie: 'The Brides of Fu'	Dick Cavett Captioned ABC News	Abundant Living New Wine	News Newlywed Game	Police Story	Lance'	Movie: 'McMillan & Bible'	
11:00	Manchu	Sign Off	Power Praise	Sign Off	Nightbeat			
12:00								

FRIDAY

PM	WTGG CH. 17 Atlanta Cable 4	WGN CH. 9 Chicago Cable 8	KTVU CH. 10 Oakland Cable 10	KCBK CH. 13 Lubbock Cable 13
6:00	Carol Burnett and Friends Sanford and Son	Dick Van Dyke Odd Couple	T.V. Powww with Tom and Jerry	News Joker's Wild
7:00	Let's Go To The Races Dragnet	Bill Moyers' Journal: Mind at Large	Westbrook Hospital	Selvaige 1
8:00	Movie: 'The Deadly Game'	Evening at Symphony	PTL Club	How the West Was Won
9:00	Austin City Limits	Pageant	Dating Game	News
10:00	Hogan's Heroes Movie: 'The Brides of Fu'	Dick Cavett Captioned ABC News	Abundant Living New Wine	News Newlywed Game
11:00	Manchu	Sign Off	Power Praise	Sign Off
12:00				

SUNDAY 03/18/79

PM	WTGG CH. 17 Atlanta Cable 4	KTXT CH. 5 Lubbock Cable 5	PTL CH. 6 Charlotte Cable 6	KMCC CH. 28 Lubbock Cable 7	WGN CH. 9 Chicago Cable 8	KTVU CH. 10 Oakland Cable 10	KCBD CH. 11 Lubbock Cable 11	KLBK CH. 13 Lubbock Cable 13
6:00	Star Trek	American Pop Cont'd.	Dr. Scott on Hebrews	Osmond Family Show	Program Cont'd.	Greatest Heroes of the Bible	60 Minutes	
7:00	Movie: 'A Minute to Pray, A Second to Maestro'	Arthur Fiedler: Just Call Me Maestro	James Robison Presents	Battlestar Galactica	In Search of... Hee Haw	Movie: 'The Long Gray Line'	Wonderful World of Disney	All in the Family One Day at a Time
8:00	Die	Masterpiece Theatre: Lillie	PTL Club	Movie: 'The Jericho Mile'	Hee Haw Honeys		Alice Stockard Channing	
9:00	Dragnet	Ruff House	Grand Finale	Lawrence Welk	Weekend Channing	Mary Tyler Moore Hour		
10:00	Open Up	Calvary Temple	News Pop! Goes the Country	Movie: 'The Seven Little Sisters'	News Movie: 'The Seven Little Sisters'	News Movie: 'The Seven Little Sisters'	News Movie: 'The Seven Little Sisters'	News Movie: 'The Seven Little Sisters'
11:00		Today with Lester Sumrall	Praise the Lord Club	Foys'	List' Part 2	Movie: The Interns'		
12:00		ABC News Sign Off	Nightbeat					

TUESDAY 03/20/79

PM	WTGG CH. 17 Atlanta Cable 4	KTXT CH. 5 Lubbock Cable 5	PTL CH. 6 Charlotte Cable 6	KMCC CH. 28 Lubbock Cable 7	WGN CH. 9 Chicago Cable 8	KTVU CH. 10 Oakland Cable 10	KCBD CH. 11 Lubbock Cable 11	KLBK CH. 13 Lubbock Cable 13
6:00	Carol Burnett and Friends Sanford and Son	Navy Now MacNeil- Lehrer Rept.	Good News	Bewitched	Dick Van Dyke Odd Couple	T.V. Powww with Tom and Jerry	News Sanford and Son	News Joker's Wild
7:00	World at War	Up in Rosbud County	Insight	Laverne and Shirley	Carol Burnett and Friends Hogan's Heroes	Captain Cosmic Gilligan's Island	Citifhangers Part 3	Paper Chase
8:00	Movie: 'The Stooge'	Grand Jury: An Institution under Fire	PTL Club	Three's Company 13 Queens Blvd.	Movie: 'Under Ten Flags'	Love, American Style NBA Basketball:	Super Stunts II	Movie: 'Red Sun'
9:00		Economic Issues	Bizzare (PREMIERE)	Golden State at Denver				
10:00	NHL Hockey: Atlanta at Los Angeles	Dick Cavett Captioned ABC News	Harvest Temple Jewish Voice	Newlywed Game	Movie: 'Battle of Britain'	Movie: 'The Last Day'	News Best of Carson	News Barnaby Jones
11:00	Los Angeles	Sign Off	God Is Moving	Movie: 'That Man Bolt'	Britain'	Day'		Movie: Banacek
12:00				Sign Off			Tomorrow	Project Phoenix'

SATURDAY

AM	WTGG CH. 17 Atlanta Cable 4	WGN CH. 9 Chicago Cable 8	KTVU CH. 10 Oakland Cable 10	KCBK CH. 13 Lubbock Cable 13
7:00	Ci Howard Award For Partridge Family	U. S. Farm Report: Daniel Boone	Alvin and Chipmunk Fantasy Four	
8:00	Star Trek	Movie: 'The Beverly Hills Cop'	To Be Announced At Home with the Bible	Daffy De
9:00	Movie: 'The Magnificent Seven'	Income Tax Charlando	Asians Now Revisita de la Samana	Buford Lophop Fabulous Funnies
10:00	Movie: 'The Third Secret'	IHSAA Class 'AA' Basketball Tournament	Our Men in the Capital World Tomorrow	U.S. Farm Report: What's On
11:00	Movie: 'The Living Dead'	Discovery	Soul Train	NCAA Basketball
12:00				
1:00				
2:00				
3:00				
4:00				
5:00				

MONDAY - FRIDAY

AM	WTGG CH. 17 Atlanta Cable 4	KTXT CH. 5 Lubbock Cable 5	PTL CH. 6 Charlotte Cable 6	KMCC CH. 28 Lubbock Cable 7	WGN CH. 9 Chicago Cable 8	KTVU CH. 10 Oakland Cable 10	KCBD CH. 11 Lubbock Cable 11	KLBK CH. 13 Lubbock Cable 13
7:00	Leave it to Beaver Hazel	No Programs Weather	Varied Programs	Good Morning America	Ray Rayner and Friends	Today	Morning Show	
8:00	Lucy Show	Over Easy					Captain Kangaroo	
9:00	Green Acres	Dick Cavett Show			Family Affair			
10:00	Movie	Mister Rogers Neighborhood Varied Programs	Phil Donahue	Movie	Cartoon Town	People Place All Star Secrets	Sunshine Selly Price Is Right	
11:00	Love, American Style Movie	Sesame Street	\$20,000 Pyramid Morning Magazine	Phil Donahue	I Love Lucy Room 222	Password Plus Hollywood Squares	Young and the Restless Search for Tomorrow	
12:00		Sign Off	Varied Programs	All My Children	Bozo's Circus	Big Valley	News As the World Turns	
1:00	I Love Lucy		Praise the Lord Club	Bewitched	Phil Donahue	The Doctors	Guiding Light	
2:00	Speed Racer	Lillas, Yoga And You Villa Allegre	General Hospital	Medical Center	Another World	M*A*S*H		
3:00	Space Giants	Sesame Street	Edge of Night	Flintstones	Dialing for Dollars Movie	Match Game		
4:00	I Dream of Jeannie Lucy Show	Mister Rogers Neighborhood Electric Company	Brady Bunch	I Dream of Jeannie Soupy Sales	Gilligan's Island Beverly Hillbillies	My Three Sons Gunsmoke		
5:00	Andy Griffith My Three Sons	Studio See Introduction /Psychology	Herald of Truth Christopher Close-Up	ABC News Mary Tyler Moore	Andy Griffith My Three Sons	Woody Woodpecker	Get Smart NBC News	CBS News

WEDNESDAY 03/21/79

PM	WTGG CH. 17 Atlanta Cable 4	KTXT CH. 5 Lubbock Cable 5	PTL CH. 6 Charlotte Cable 6	KMCC CH. 28 Lubbock Cable 7	WGN CH. 9 Chicago Cable 8	KTVU CH. 10 Oakland Cable 10	KCBD CH. 11 Lubbock Cable 11	KLBK CH. 13 Lubbock Cable 13
6:00	Carol Burnett and Friends Sanford and Son	Navy Now MacNeil- Lehrer Rept.	Sound of the Spirit Rex Humbard	Bewitched	Dick Van Dyke Odd Couple	T.V. Powww with Tom and Jerry	News Sanford and Son	News Joker's Wild
7:00	Edward the King	Great Per- formances: Madama Butterfly	Pattern for Living	Eight Is Enough	Edward the King	Captain Cosmic Gilligan's Island	Billy Graham Singapore/ Poland/ Mannila Crusades	Married: The First Year
8:00	Movie: 'What Price Glory?'	PTL Club	Charlie's Angels	NBA Basketball: Chicago at Indiana	Six Million Dollar Man Odd Couple	Studs Lonigan' Conclusion	Jeffersons' Special	
9:00			20/20	Dating Game			Kaz	
10:00	Movie: 'Hell Drivers'	Dick Cavett Captioned ABC News	Changed Lives Dan Griffin Show	Newlywed Game	News	Edward the King	News Tonight Show	Rockford Files
11:00		Sign Off	Something Special	Police Woman	Movie: 'Soul Soldier'	Upstairs, Downstairs		Kojack
12:00				Mannix			Tomorrow	

SATURDAY

PM	WTGG CH. 17 Atlanta Cable 4	WGN CH. 9 Chicago Cable 8	KTVU CH. 10 Oakland Cable 10	KCBK CH. 13 Lubbock Cable 13
6:00				
7:00				
8:00				
9:00				
10:00				
11:00				
12:00				

Programs
Newspaper
Points
BETTER TV!

SHOP OUR BEAUTIFUL
ASSORTMENT
OF CLOTHING AND
GIFT ITEMS
Roy's Merle Norman
Cosmetics & Apparel

BUDDY'S
STORE HOURS
MON.-SAT. 8a.m. - 9p.m.
SUN. 9p.m. - 8p.m.
WE RESERVE THE RIGHT
TO LIMIT QUANTITIES

DOG CLINIC
Tuesday, March 20, 1979
4P.M. TO 6 P.M.
RABIES SHOT... \$4⁰⁰
CITY TAGS... \$2⁰⁰
DITEMPER SHOTS WILL BE AVAILABLE
C. H. OVERSTREET
VETERINARIAN
PLEASE BRING YOUR DOG TO THE
BACK DOOR OF THE FIRE DEPT.
CITY OF FLOYDADA

FRIDAY 03/23

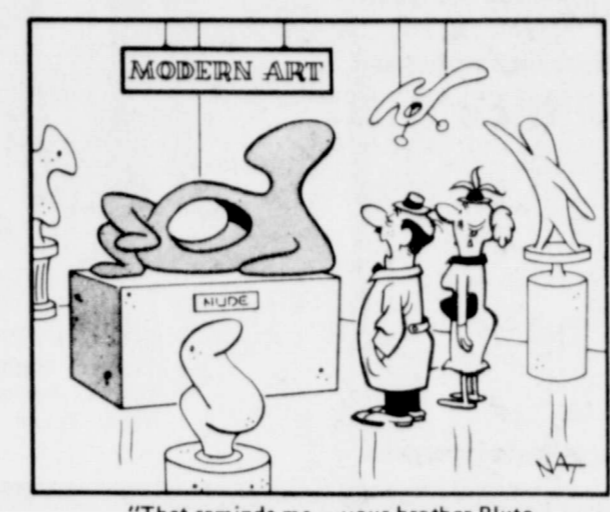
PM	WTCC CH. 17 Atlanta Cable 4	WGN CH. 9 Chicago Cable 8	KTVU CH. 10 Oakland Cable 10	KCBD CH. 11 Lubbock Cable 11	KLBK CH. 13 Lubbock Cable 13
6:00	Carol Burnett and Friends	TV: Powwow with Tom and Jerry	News	Sanford and Son	Joker's Wild
7:00	Night Gallery	Movie: The Wizard of Oz	Movie: The Wizard of Oz	Billy Graham Singapore/Poland/Maharaja Crusades	Movie: The Wizard of Oz
8:00	Atlanta at San Antonio	Six Million Dollar Man	Brothers and Sisters	Turnabout	
9:00	Love, Amen	Odd Couple	Sweepstakes	Dallas	
10:00	Hogan's Heroes	Movie: The Birds	News	Tonight Show	New Avengers
11:00	a Mobster	CIA			New Avengers
12:00		Midnight Special			

Marble Brothers Floydada Whozits

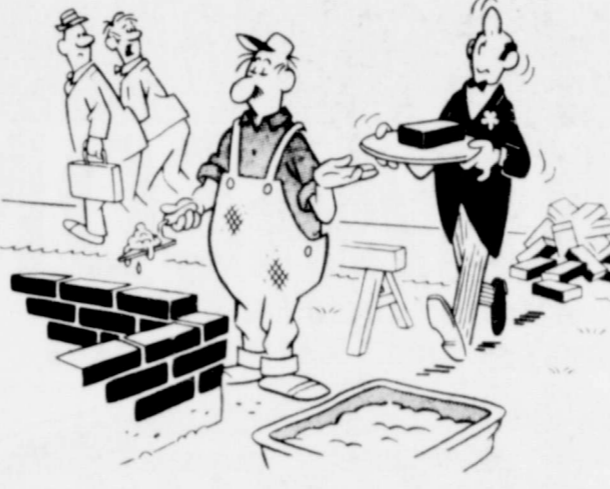
"The Marble Brothers" were the overwhelming public choice as the Floydada "Whozits" last week. The mystery personalities were Don, Fred, and Keith Marble. Making correct identifications were: C.W. Denison, Mrs. Leslie Nixon, Isabell Luna, Jerry Neeley, Mrs. C.O. Woody, Barney West, Robert Smith, Mrs. Manuel Vallejo, Irene Trujillo, Jerry Don Wilson, and Larry Bramlett. Shelby Calahan guessed the three Floydada and two Lockney Whozits. The mystery personalities from Lockney were Fanny Margaret Harpet Biggs and C.L. Record.



FLOYDADA WHOZIT — This photo of a well-known Floyd County resident was made in 1924, four years before he moved with his family to this county. Anyone who would like to guess at the person's identity is asked to contact our office [983-3737] Monday through Wednesday.



"That reminds me — your brother Pluto is dropping by for dinner tomorrow."



"THOSE BRICKLAYERS MAKE NICE MONEY!"

SATURDAY 03/24

AM	WTCC CH. 17 Atlanta Cable 4	WGN CH. 9 Chicago Cable 8	KTVU CH. 10 Oakland Cable 10	KCBD CH. 11 Lubbock Cable 11	KLBK CH. 13 Lubbock Cable 13
7:00	Cliffwood Avenue Kids	U.S. Farm Report	Alvin and the Chipmunks	Fantastic Four	All New Popeye Hour
8:00	Star Trek	Movie: The Beverly Hills Cop	Godzilla	Super 90	Bugs Bunny/Road Runner Show
9:00	Movie: Magnificent Ambersons	To Be Announced	Daffy Duck	Tarzan and the Super	
10:00		Voice of Agriculture	New Fred and Barney Show	Jetsons	
11:00	Movie: The Third Secret	Home Tax	Asians Now	Buford & Gallop	Space Academy
12:00		U.S. Farm Report	U.S. Farm Report	What's Going On	Ark II
1:00	Movie: Castle of the Living Dead	Discovery	Adam-12	Capitol Eye	
2:00		Soul Train	NCAA Basketball	Learning & Living	
3:00	Mission Impossible	Movie: Son of Dracula	Semi-finals	Doubleheader	Tournament Players Golf
4:00	Fishin' Hole	Movie: No Man is an Island			Ruff House
5:00	Championship Wrestling	Movie Cont'd			Hee Haw



Record, Biggs In Lockney Whozit

The Lockney mystery picture last week was of C.L. Record and Margaret Biggs. Neva Calahan knew it, as did G.B. Johnston. And both knew that the Floydada "Whozit" was the Marble Brothers. Josie Taylor recognized the Marble Brothers but thought the Lockney Whozit was "Happy" Gloyna.

LOCKNEY WHOZIT — The Lockney-area mystery picture this week is a graduation picture from several years ago. Call The Beacon office, 652-3318, if you can identify the subject.

MAKING LUBBOCK CO. SERVICE
FOYE THOMPSON
ELECTRIC
A SURROUNDING AREA

FAST DEPENDABLE SERVICE
745-1453

Maintenance,
Trouble Shooting,
New Wiring, Rewiring

Emergency Service
24 Hours A Day

P. O. Box 12107
Lubbock, Texas 79452

TEXAS PRESS
MEMBER 1979 ASSOCIATION

THE LOCKNEY BEACON [USPS 317-220]
BOX 187
LOCKNEY, TEXAS 79241

Published each Sunday and Thursday at 220 S. Main, Lockney, Texas 79241. Jim Reynolds, publisher; Jim Huggins, editor. Second-class postage paid at Lockney, Texas 79241. Subscription rates: Local \$10.50 per year, out of trade area \$11.50 per year. Postmaster: Send address changes to the above address.

SATURDAY 03/24

PM	WTCC CH. 17 Atlanta Cable 4	WGN CH. 9 Chicago Cable 8	KTVU CH. 10 Oakland Cable 10	KCBD CH. 11 Lubbock Cable 11	KLBK CH. 13 Lubbock Cable 13
6:00		Hee Haw	Lawrence Welk	Hee Haw	
7:00	Hee Haw Honeys	Movie: Guns of the Magnificent Seven	Curse of Dracula	Bad News Bears	Billy
8:00	NBA Basketball: Atlanta at Houston		BJ and the Bear	Movie: 'No Other Love'	
9:00		Dance Fever	Rockford Files		
10:00	Porter Rock Concert	Movie: 'Niagara'	News	News	WCT Tennis
11:00		Movie: 'Dead Heat on a Merry-Go-Round'			

RCA's new electronic Remote Scan Control

RCA ColorTrak 19"
diagonal

RCA The Symetra Model FC98R

Cost Plus 10% WITH TRADE

RCA 19" diagonal ColorTrak featuring ChannelLock electronic tuning with Remote Scan Control

- ColorTrak is RCA's most advanced, most automatic TV. And now RCA's new ChannelLock electronic tuning—the most accurate, most automatic tuning system in RCA history—makes it even better.
- New ChannelLock electronic tuning with Remote Scan Control turns set on and off, adjusts volume up or down and tunes in either direction through all 82 channels—all from across the room. Stops only at programmed channels. On-screen channel number and time display.
- 100% solid state XtendedLife chassis is designed for low power consumption, high efficiency and long life.
- Automatic Color Control and Fleshstone Correction.
- Automatic Contrast/Color Tracking lets you adjust contrast, color and brightness with one control instead of three.
- Automatic Light Sensor adjusts picture for changes in room light.
- RCA Super AccuFilter picture tube has tinted phosphors to help keep colors vivid, even in bright room light.
- Durable plastic cabinet with walnut-grain finish.

"WE SERVICE WHAT WE SELL"

JERRY'S T.V. & APPLIANCE

215 S. Main Phone 983-3481 Floydada

GRAND OPENING

B & D MARINE
3019 W. 7th PLAINVIEW

WELCOME TO OUR BIG GRAND OPENING

May we extend to you a special invitation to shop our outstanding selection of marine supplies.

FREE

- * DOOR PRIZES
- * COFFEE & COKE
- * COOKIES & DO-NUT HOLES

SHOP THESE GRAND OPENING SPECIALS — PLUS MORE...

JOHNSON OUTBOARD OIL.....CASE \$18⁰⁰ GOLD GRAPHITE RODS.....\$31⁹⁵

LOWRANCE GRAPH 1 DEPTH FINDER.....\$275⁰⁰

1978 CADDO BRAVE 55 H.P. JOHNSON.....\$3900⁰⁰

1979 CADDO WARRIOR 85 H.P. JOHNSON.....\$5995⁰⁰

FREE PRIZES

COME IN AND REGISTER

1st. Prize... Gold Graphite Rod and Johnson Sprite Reel

2nd Prize... Magnum Worm Box

No Purchase Necessary
Need Not Be Present To Win.

B & D MARINE

3019 West 7th * * * * SALES & SERVICE * * * * 293-4493

DON BARRICK, Manager BOB & DOROTHY TILSON, Owners

OBITUARY

Mrs. Dorman

Services for Lillian Lorene Dorman, 66, of Lockney were held Thursday afternoon in the First Baptist Church in Lockney with the Rev. John

Jenkins, pastor, officiating, assisted by the Rev. Bob Griffin, pastor of the Seth Ward Baptist Church in Plainview. Burial was in Plainview Memorial Park under the direction of Moore-Rose Funeral Home, Lockney.

Mrs. Dorman died early Tuesday morning in Central Plains Regional Hospital in Plainview.

Mrs. Dorman was born August 13, 1912 in Hollis, Oklahoma. She married F.L. Dorman on September 6, 1933 in Plainview. Mr. Dorman died December 16, 1977.

Mrs. Dorman moved to Floyd County from Hollis in 1923. She was a member of the Lockney First Baptist Church.

Survivors include her mother, Mrs. M.A. Clark; two sons, Bobby Dorman of Lubbock and Roger Dorman of Plainview; three daughters, Jolene Barnett and Donna Dollar, both of Plainview, and Lesca Dee McCandless of Stamford; three brothers, Johnny Clark of Hart, Bill Clark of Kress and R.L. Clark of Lamesa; a sister, Mildred Morrison of Plainview; 11 grandchildren and two great-grandchildren.

MR. FARMER
For insect and weed control
USE THE ELECTRONIC HARMONIC PROCESS
80% effective
Kill guaranteed
Minimum acreage treated
50 acre fields
Maximum acreage treated
160 acre fields
For further information
Call 806-983-2904
806-293-2201

APPRECIATION DINNER
Past - Present - Future
CUSTOMERS
of
PROVIDENCE GIN
7:00 p.m. Friday 3-23-79
Call for Reservations



LOCKNEY IS NUMBER ONE — Or is it? WT is number one? Lockney High School students were photographed indicating the number-one status of something during a recent visit to West Texas State University campus on "Senior College

Day." It must have been Lockney, because the lone Floydada High School student in the front row (just right of the center) isn't holding up a finger... [Staff Photo]

OBITUARY

C. Garcia

C. Garcia, 94, who was president of the Floyd County Home, died Sunday, March 18, 1979. She was moved to Moore-Rose Funeral Home in Plainview, Texas, for services. Burial will be at 10 a.m. at the Catholic Church in El Paso, Texas. She was born in Mexico, 1885, and was a Catholic.

Garcia was born in Mexico, 1885, and was a Catholic. She was president of the Floyd County Home, died Sunday, March 18, 1979. She was moved to Moore-Rose Funeral Home in Plainview, Texas, for services. Burial will be at 10 a.m. at the Catholic Church in El Paso, Texas. She was born in Mexico, 1885, and was a Catholic.



HELEN D. GARCIA

PRICES EFFECTIVE MARCH 19 THRU 24, 1979 WE RESERVE THE RIGHT TO LIMIT QUANTITIES

HOMASON
VENTURE GROCERY & MARKET
PHONE 652-3346 LOCKNEY, TEXAS

DOUBLE STAMPS ON WEDNESDAY

Venture FOODS

Meat Specials
USDA GRADE "A" COUNTRY PRIDE

Whole Fryers 59¢ LB.

Salad Fork 33¢
TWO BEAUTIFUL PATTERNS PER PIECE WITH EVERY \$3.00 PURCHASE

LOWER TOTAL FOOD PRICES

Fruit Drink 95¢ BELL GAL.

Jell-o 5 \$1 (30Z BOXES)
Tomato Juice 59¢ (46 OZ CAN)
Tomato Sauce 5 89¢ (8 OZ CANS)
Ice Cream or Sherbet \$1.09 (1/2 GAL. CTNS.)

ICEBURG HEAD Lettuce 39¢ LB.

California Sunkist Lemons 39¢ LB.
California Sunkist Oranges 3 LBS. \$1
Long Green Slicing Cucumbers 23¢ LB.
Portales Maryland Sweet Yams 29¢ LB.

20% OFF LABEL LIQUID Palmolive \$1.09 (32 OZ BTL)
Libby Vienna Sausage 39¢ (5 OZ CAN)

Health And Beauty Aids
Bufferin \$1.19 (100 CT. BTL)
Excedrin \$1.79 (100 CT. BTL)
Excedrin P.M. \$1.29 (30 CT. BTL)
Body-On-Tap \$1.29 (7 OZ BTL)
Tickle Roll-On \$1.59 (2 OZ BTL)
Vitalis Liquid \$1.29 (5 OZ BTL)

Grocery Specials
Snackin Cakes 87¢ (14 OZ BOX)
Peaches 59¢ (25 OZ CAN)
Dream Whip \$1.09 (6 OZ BOX)
Coffee Mate \$1.29 (16 OZ JAR)
Instant Tea \$1.99 (3 OZ JAR)

Shell Specials
Creamy Milnot 39¢ (13 OZ CAN)
Formula 409 89¢ (22 OZ BTL)
Honey Grahams 79¢ (6 OZ BOX)

SHORTENING FOR FRYING Bake-Rite \$1.39 (3 LB. CAN)
Kraft Velveeta \$2.49 (2 LB. BOX)
Mrs. Goodcookie Cookies 99¢ (1 LB. PKG.)
Cheese Singles \$1.59 (16 OZ PKG.)
Niblets Corn 79¢ (6 EAR PKG.)

Kidney Fund Volunteers To 'Knock On Doors'

Today is K-Day — "Kidney Day" — in Lockney and Floydada. Someone will be knocking on your door Sunday, March 18 through Saturday, March 31 to ask you to assist in providing funds for research to eradicate kidney disease.

The someone knocking will distribute information on the warning signs of kidney disease and provide organ donor cards.

Elaine Hardy of Lockney, Chairman of the 1979 Gift of Life Campaign, said that while the campaign officially starts today the volunteer workers may wait until after the school spring break to make their contacts, because many Floyd County residents will be out of town that week (March 18-24).

Volunteers who are calling on homes are invited to help in a way that can give life to a million Americans who are dying by kidney disease.

The 42,000 Americans who sustain life on the kidney machine are waiting a kidney transplant. In this area, the Department of Human Resources Commissioner Chapman is awaiting kidney donors. "Your contribution no matter how large can give life to someone today," officials said.



IN ALL STAR CAST -- Amy Shaw (left) and Karen Mathis were named to the district act play contest all star cast for their performances in the Lockney Junior High School play "Funeral Tea." (Staff Photo)

Major Food Stamp Reforms In Effect

Reforms in the Food Stamp Act will also improve the lives of elderly and disabled persons who are unable to get to the stamp office or find a way to go to it. It is that this provision will increase participation in the program, which has been a long time in the making.

Chapman noted the new rules will also improve the lives of elderly and disabled persons who are unable to get to the stamp office or find a way to go to it. It is that this provision will increase participation in the program, which has been a long time in the making.

Silverton YH Awards

Jerry Bean and Turner have been named Silverton's Outstanding Young Farmer and Homemaker. Award made during the 15th Awards Banquet.

Alton Riddell was named Outstanding Young Farmer and Homemaker. Award made during the 15th Awards Banquet.

MONTY'S AUTOMOTIVE
Will Be Open Full Time
Starting Monday, March 19
General Auto Repair
Well Motor Repair
652-3543
Highway 70 & Sandhill Highway
Lockney
Monty Bybee

MORTON BUILDINGS INC.
For Information Call or Write...
MORTON BUILDINGS INC.
Box 1928 Plainview, Texas
Phone 806-293-4386

"We can help save you money on taxes!"
Henry W. Block
Missouri
Floydada, Texas
893-5233
R BLOCK
INCOME TAX PEOPLE

Helen Dunlap Saluted As Floydada First Lady



HELEN DUNLAP

The reception for Helen Dunlap "First Lady of the Year," sponsored by Alpha Mu Delta and Alpha Sigma Upsilon Club members, was a great success. Over 200 people attended the reception in the new annex at First Baptist Church. Out of town guests included those from Plainview, Spade, Matador, Lubbock, Ralls, Lockney, Tahoka, Paducah, and Silverton.

In talking to Mrs. Dunlap this week, she said they were still celebrating. They were amazed in the response in getting so many cards, letters, and calls from former students, teachers, old neighbors, and life-long friends all across the country.

Helen was anxious to express her appreciation to everyone having any part in making this Special Occasion

Have a good week!

Courthouse NEWS

MARRIAGE LICENSE
Randy Leon Duke and Julie Lynn Brawley.
Jonathan Lyndal Propest and Janis Ann Sherrod.

PROBATE
H.E. Porter, will and appl. to probate.
Floyd Fuqua, will and appl. to probate.
Lydia Collins, will and appl. to probate.

WARRANTY DEEDS
R.B. Rosson to Alice Opal Rosson, All L-28, 29, B-71, Floydada.
Boyce and Inez Mosley to Ricky and Lisa Mosley, L-5, B-1, Carthel, Lockney.
Coral Orman etal to E.A. and Wanda Williams, All L-28, 29, B-71, Floydada.

DAVID JACKSON DRILLING
Repair all types pumps. Dealer for Simmons Submersible Pumps. For sale: Two good used 4" pumps complete with motor and switchbox; one 6" pump and one 8" pump, used.
DAY PHONE 652-2711
NIGHT PHONE 652-2768
(L4-12p)

BO BAR CO. THE ROPE APPLICATOR COMPANY



THE BO BAR ROPE APPLICATOR is a direct contact chemical applicator for control of certain annual and perennial weeds and grasses.

Contact —
Ansley & Son Welding
OR
Rick Kellison, Lockney

Shop Floyd County

Volunteers for Food Stamp Forms In Effect

many Floyd County families will be out of town this week (March 18-20)...

Silverton YF, YH Award Winners Told

Jerry Bean and Carolyn Turner have been chosen as Silverton's Outstanding Young Farmer and Young Homemaker. Awards were made during the 15th annual Awards Banquet.

Announcing the OPENING of NASH IRRIGATION SUPPLY

607 N. Second 983-5231 Floydada
Formerly Western Ag Sales
Featuring Underground Plastic Pipe
Parts & Supplies For Irrigation Systems

SEE US FOR A SPECIAL ON
Plastics Socks & Snap Rings
For Gated Pipe

PETE NASH-OWNER

BUDDY'S

220 S. 2ND
STORE HOURS
Mon.-Sat., 8 a.m. to 8 p.m. Sun., 9 a.m. to 8 p.m.
VALUES EFFECTIVE THRU WEDNESDAY MARCH 21, 1979
We Reserve The Right To Limit Quantities

WE GIVE S&H GREEN STAMPS

PLAY LUCKY STARS

<p>6-32 OZ. COKE OR TAB \$1.89 PLUS DEPOSIT \$2.00 VALUE</p>	<p>ORAL - B TOOTHBRUSH \$1.25 VALUE 3/\$1.00</p>
<p>46 OZ. HI C TANGERINE DRINK 79¢ VALUE 2/99¢</p>	<p>30 OZ. GEBHARDT TAMALES 99¢ VALUE 69¢</p>
<p>VALUES IN THIS AD IN ADDITION TO OUR THURSDAY AD</p>	
<p>15 OZ. RANCH STYLE PINTO BEANS 59¢ VALUE 2/79¢</p>	<p>2 LB. MARYLAND CLUB COFFEE \$3.99 \$5.77 VALUE</p>
<p>U.S.D.A. CHUCK ROAST \$1.89 LB. LONGHORN CHEDDAR CHEESE \$1.99 LB. FLORIDA GRAPEFRUIT 5/\$1.00</p>	<p>1 LB. CORN KING BACON \$1.49 1/2 LOIN PORK CHOPS \$1.79 LB. FIRM GREEN LETTUCE 49¢ HEAD</p>
<p>8 OZ. WHITE SWAN TOMATO SAUCE 6/\$1.00 25¢ VALUE 15 OZ. RANCH STYLE BEANS 3/89¢ 40¢ VALUE</p>	<p>4 1/2 OZ. HEINZ STRAINED BABY FOOD 6/\$1.00 25¢ VALUE 15 OZ. WHITE SWAN CUT GREEN BEANS 3/89¢ 45¢ VALUE</p>
<p>1/2 GAL BELL MELLORINE 89¢ \$1.39 VALUE 16 OZ. PILLSBURY READY TO SPREAD FROSTING 89¢ \$1.31 VALUE</p>	<p>3 OZ. FRUIT JELLO 5/\$1.00 30¢ VALUE 18 OZ. PILLSBURY LAYER CAKE MIX 59¢ 89¢ VALUE</p>
<p>6 1/2 OZ. CARNATION TUNA 69¢ \$1.09 VALUE</p>	<p>KEEBLER DOUBLE NUTTY COOKIES 69¢</p>
<p>GIANT 22 OZ. LIQUID PALMOLIVE 79¢ WITH COUPON 99¢ WITHOUT COUPON GOOD AT BUDDY'S EXPIRES 3-21-79</p>	<p>GIANT 49 OZ. FAB 99¢ WITH COUPON \$1.39 WITHOUT COUPON GOOD AT BUDDY'S EXPIRES 3-21-79</p>

Volunteers for Food Stamp Forms In Effect
many Floyd County families will be out of town this week (March 18-20)...

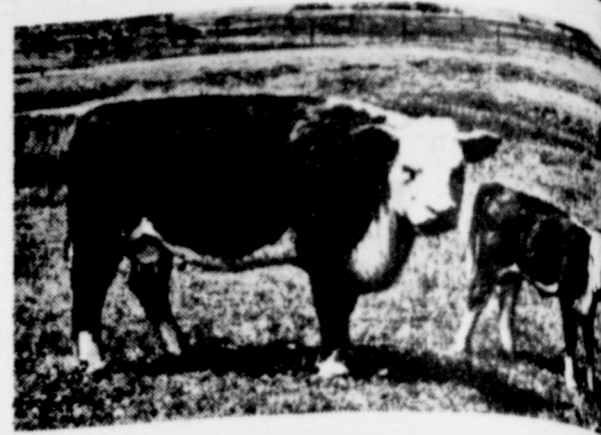
Silverton YF, YH Award Winners Told
Jerry Bean and Carolyn Turner have been chosen as Silverton's Outstanding Young Farmer and Young Homemaker. Awards were made during the 15th annual Awards Banquet.

Announcing the OPENING of NASH IRRIGATION SUPPLY
607 N. Second 983-5231 Floydada
Formerly Western Ag Sales
Featuring Underground Plastic Pipe
Parts & Supplies For Irrigation Systems

SEE US FOR A SPECIAL ON
Plastics Socks & Snap Rings
For Gated Pipe

PETE NASH-OWNER

FARM & RANCH NEWS



Controlling Weeds Can Save Farmers \$\$\$

New techniques for applying herbicides may save several million dollars for farmers on the Texas High Plains, a researcher with the Texas Agricultural Experiment Station (TAES) in Lubbock said.

"In some instances," Dr. John R. Abernathy said, "new techniques still being tested already have proven highly effective in controlling the six most troublesome perennial weeds in cotton at reduced costs to producers."

Abernathy is TAES weed scientist at the Texas A&M University Agricultural Research and Extension Center, Lubbock.

PERENNIAL WEEDS

The researcher said the six perennial weeds which cause most problems for cotton producers are silverleaf nightshade, johnsongrass, woollyleaf bur sage, yellow nutsedge, field bindweed and bermudagrass.

"Economically," Abernathy said, "silverleaf nightshade is most important because more than two million acres are infested." The conditions under which cotton has been grown for the past 10 or 15 years have provided an ideal climate for its spread, he

noted.

Control measures for it in cotton are being developed, he said. "However, many farmers have achieved best control with a spot-spraying technique using Roundup." They have found it cheaper and longer lasting than hand labor, he noted.

If the herbicide is applied in the fall at the proper stage of weed development, it will control the perennial the following year, he said.

JOHNSONGRASS PROBLEM

"Johnsongrass is a problem across the cotton belt," Abernathy said, "although infestations in the western part of the country are not as serious as

in the Mississippi Delta."

The most promising new control technique, using Roundup in a recirculating sprayer, spot-spraying and through a rope-type applicator, is providing excellent control of johnsongrass, he said.

"Another perennial weed that is causing problems in High Plains cotton production is woollyleaf bur sage," the TAES scientist said. Originally an inhabitant of playa lake bottoms, this perennial has been spread across cropland by tillage equipment dragging the weed's root system. This is how it became a problem, he said.

"Control of woollyleaf bur sage in

cotton is quite poor," he said. The herbicide MSMA is effective in burning it down and Roundup will control 60-70 percent of the weed, the scientist reported. "The most successful experimental control method is the use of a soil sterilant, whereby the land is fallow for four to five years," Abernathy said.

NUTSEGE NOT GRASS

"Yellow nutsedge is a problem across the Southwest and often is mistaken for a grass by many farmers," Abernathy said. It is spread by tillage implements dragging through it, distributing tubers across the field. "The weed gradually loses its competitiveness," said the TAES researcher, "but early season nutsedge is a serious threat and causes economic loss."

Control of yellow nutsedge in cotton consists of post-directed or tropical application of MSMA. Fluridone and Dual, experimental herbicides in cotton, also have performed well against the weed, he said.

Field bindweed has been a problem for many years on the High Plains and in New Mexico. "In the past, control measures in cotton have been lacking, but there are some new methods which may have potential," the TAES weed scientist reported.

Subsurface layering, he explained, is one procedure that has been investigated for several years. With this technique, a cotton crop could be grown while controlling the weed.

BINDWEED CONTROL

"Bindweed control remains a difficult procedure," Abernathy said. Suggestion would be to grow cotton into a small grain or sorghum which 2, 4-d or Banvel type herbicide can be used."

Bermudagrass is a problem in some areas that are often very spotty, he said. "The weed is a serious competitor in cotton. Control technique other than burning is difficult," the TAES scientist said.

The hooded or shielded type herbicide, he explained, is being very helpful, enabling post-directed applications of which has been proven effective in controlling bermudagrass in cotton crop, he said.

Restricted Pesticide Users Now Need License Before Purchase

As planting season nears, the Texas Department of Agriculture (TDA) reminds pesticide users that buying the chemicals is not as easy as it used to be. Thirty of these chemicals—mainly

agriculture-related pesticides—officially became "restricted use" on November 30, 1978. Only certified applicators or persons acting under this direct supervision may buy or use them.

"The regulations handed down by the federal government are safety precautions," said Agriculture Commissioner Reagan V. Brown. "Their intent is to promote the safe and effective use of pesticides while maintaining the high levels of production and the quality of American agricultural products."

Though the U.S. Environmental Protection Agency (EPA) has proposed another 14 chemicals for restricted use, household chemicals are not expected to be removed from general use.

TDA is the testing and certifying agent in a chain that includes the EPA and the Texas Agricultural Extension Service. Every month 12 TDA district offices test people applying for commercial and noncommercial applicator licenses.

The commercial applicators' category includes anyone who applies pesticides for fee or hire. Noncommercial applicators are generally research, regulatory or consultant personnel. By February TDA had licensed over 3,023 applicators in these categories.

Certification training material is available from the Texas Agricultural Extension Service district headquarters. Private applicators, usually farmers, may contact their county agent for testing information. TDA has licensed more than 109,000 private applicators to date.

The EPA published the first list of restricted use pesticides in February 1978, but the agency allowed an 11-month grace period to permit label revisions. Each restricted product now has the restricted use statement on the front panel of the pesticide label.

State law also requires dealers of restricted use pesticides to be licensed. Licensed dealers must keep records of restricted use pesticide sales giving the name, address and certified applicator number of the purchaser, date of sale, brand name, pesticide manufacturer and quantity of pesticide sold. Dealer licenses are also issued by TDA district offices.

Those who have passed the test and have not received their licenses or license renewals should write to Charles Rogers, Agricultural and Environmental Sciences Division, Texas Department of Agriculture, P.O. Box 12847, Austin, Texas 78711.

New Tests Reduce Cotton Costs And Raise Yields

Closely monitoring production inputs can mean the difference between a loss or a profit for a cotton producer, says a Cotton Incorporated research specialist.

While every area requires its own production system, costs per pound of yield can be reduced from present levels and cotton can compete with other crops throughout the Cotton Belt if there is close management of inputs used, reports Dr. William D. Eickhoff, director, agricultural research implementation.

This has been demonstrated, he says, by several on-farm demonstrations sponsored by Cotton Incorporated in various cotton-producing regions.

On-farm management practices that have brought lower costs and higher yields were discussed by Eickhoff in a report presented to the Western Cotton Production Conference.

He said a logical starting place for any producer seeking ways to reduce his costs is his use of herbicides, nitrogen, water and insecticides.

He pointed out that these four inputs account for one-fourth to one-half of the total cost of producing a bale of cotton—sometimes more than 50 per cent if cotton is irrigated.

"Research has shown that misuse of herbicides, nitrogen, water and insecticides can reduce yields and delay maturity," related Eickhoff. "Mismanagement in the use of all can cause a crop disaster."

It's been found, he added, that producers often use excessive amounts of all of these inputs, which many times will result in higher costs and lower yields.

Some of this misuse was attributed by the Cotton Incorporated researcher to the goal of some producers to produce the highest yield in the gin community, have weed-free fields and completely eradicate insects.

"This goal has been called coffee shop psychology," he noted. "Perhaps it makes for ideal coffee talk, but it contributes to excessive costs and economic loss."

Cotton Incorporated, he added, has been working with many other researchers, extension specialists and growers in various production systems with the

twin goals of cutting input costs and increasing yields.

In each demonstration, he said, management programs used included the following features:

—Preplant nitrogen is limited with the amounts incorporated dependent on soil tests and plant requirements. "Rule of thumb" applications are avoided.

—As the plant develops, additional nitrogen is applied by side dressing as required by the condition of the cotton plant and weather conditions. Where available, petiole analysis is used to determine additional nitrogen requirements.

—In all demonstrations, nitrogen use has been reduced by 30 per cent or more.

—Preplant herbicide is applied at minimum rates for soil types and expected weed pressure. All post-plant herbicide is applied with directed spray. Over-the-top spraying is avoided to hasten maturity and maintain yields.

—Earlier varieties are planted to reduce the length of the growing season. If earlier maturing varieties are unavailable for a particular area, the crop is managed to promote earliness.


—Insect control consists of good scouting, delayed spraying to allow control by beneficials for as long as

possible and delayed use of phosphate insecticides. Use of phosphate insecticides to enhance boll set and promote maturity. Demonstrations have been reducing the number of applications at both the beginning and the end of the growing season.

—The amount of irrigation reduced by 20 per cent or more. Reduction is a function of maturing varieties and irrigation.

In the various on-farm demonstrations, Eickhoff said inputs have been reduced by an average of 200 pounds of nitrogen per acre. Elimination of one irrigation during season has been shown to reduce costs by 10 per cent or more per acre. These reductions combined with increased yields of 200 pounds of lint mean a profit of \$150 or more per acre. Conversely, the average cost of a pound of lint is reduced by 10 cents.

Follow safe procedures during outdoor gardening and building repair.



Around the County
County Agent's Column

By Stephen R. Herber
Floyd County Extension Agent

SWINE SPECIALISTS TO SPEAK IN PLAINVIEW

Two noted Extension swine specialists from Minnesota and Indiana will join scientists and producers from Texas, Arizona and Iowa to conduct the annual Texas A&M University Swine Shortcourse in Plainview, Wednesday, April 4.

The course is designed to bring pork producers in West Texas and neighboring states up to date on the latest research and ideas in management and production.

The program at the Hale County Agricultural Center south of the city begins at 8 a.m. and adjourns at 4:15 p.m. It is organized and sponsored by the Texas Agricultural Extension Service. Cooperating are the department of animal science at A&M, Texas Agricultural Experiment Station, Texas Pork Producers Assn., and Texas Pork Producers Board. There is a \$7 registration fee for the course.

Among the featured speakers will be Dr. Allen Leman, Extension swine health specialist at the University of Minnesota, St. Paul, Minn.

Also featured will be Dr. Wayne Singleton, reproductive physiologist and Extension specialist at Purdue University, West Lafayette, Ind.

In the morning session of the course, Leman will discuss opportunities for improving reproductive efficiency. In the afternoon, he will discuss reproductive diseases and problems.

A specialist in swine reproduction, he joined the Minnesota staff in 1975. Prior to that he had served six years as an Extension veterinarian at the University of Illinois.

He is past president of the American Association of Swine Practitioners and has written two books on swine disease.

A native of Peoria, Ill., he earned both the D.V.M. and Ph.D. degrees at the University of Illinois.

Singleton will focus on management strategies for the breeding herd during the morning session of the shortcourse. After lunch, he will outline management strategies for the young board.

In addition to his duties as an Extension swine specialist, Singleton is an associate professor of animal sciences at Purdue. His outstanding educational programs for swine producers and Extension agents have earned him awards from the Purdue University Cooperative Extension Specialists Assn. and from the American Society of Animal Science.

The Purdue association honored him as outstanding specialist with less than 10 years of service. The ASAS presented him its Extension Award for the Younger Animal Scientists in recognition of his outstanding work.

A native of Vincennes, Ind., he holds a B.S. degree from Purdue and the M.S. and Ph.D. degrees from South Dakota State University.

He served as instructor of animal science at South Dakota State for a year before joining the Purdue staff in 1970.



COTTON TALKS
FROM PLAINS COTTON GROWERS, INC.

Large numbers of High Plains cotton producers look upon target price provisions of the current cotton law as a "joke" on a target price payment and we never will.

There is no argument with the first part of that comment says Donald Johnson, Executive Vice President of Plains Cotton Growers, Inc., Lubbock, "but if the market price of cotton doesn't improve considerably in the remaining months of 1979, the second part will be proven wrong."

Beginning with the crop of 1974, farm programs have established a target price on each covered commodity and provided for payments at the end of the year to make up any deficiency between the market price and target price. The target price and the weighted average price paid to all farmers for all cotton during the calendar year.

No payments have been made on cotton in the past because the calendar year average price received by farmers each year has been above the target. In 1974 and 1975 the target price was 38 cents; average prices received by farmers for those two years were 48.9 cents and 42.9 cents, respectively. For 1976 the target rose to 43.2 cents and the average price came to 60.6 cents. In 1977 and 1978 target prices were set at 47.8 cents and 52 cents, respectively, and corresponding market prices were 56.2 cents and 55.1 cents.

The target for 1979 has been announced, tentatively at 57.7 cents and nothing more than a slight revision, if any, is expected.

The average price paid to farmers at mid-January this year was 56 cents. By mid-February the average was down to 55 cents.

"We hope to see prices improve, of course," Johnson says, "because all producers would prefer to get their income from the market instead of a government payment. But if the market price keeps going down or even stabilizes in the 53 to 54-cent range, a three or four cent per pound payment as a supplement to producer income."

The law provides that target price payments will be the difference between the average price paid to farmers for the year or the Commodity Credit Corporation loan, whichever is higher. The loan for 1979 has been set at 50.23 cents per pound. Thus the maximum payment rate, assuming cotton sold at the loan level, would be a little over five cents.

Total amount of any payment would be the payment rate times the established payment yield for the farm. The acreage eligible for target price coverage.

Sponsored by the Following Interested Firms

<p>First National Bank Floydada</p> <p>Case Power & Equipment Floydada</p> <p>Floydada Cooperative Gins</p> <p>McDonald Implement Co. Floydada</p> <p style="text-align: center;">Sponsor Needed</p>	<p>Collins Implement Co. Floydada</p> <p>Russell's Equipment & Supply Floydada</p> <p>Wilson Electric Floydada</p> <p>Hi-Plains Gin Lockney</p> <p>Consumers Fuel Association Lockney</p> <p style="text-align: center;">Sponsor Needed</p>	<p>Floyd County Farm Bureau</p> <p>Perry Implement Lockney</p> <p>Ansley & Son Lockney</p> <p>Floydada Implement Co.</p> <p>Production Credit Association Floydada</p>
---	---	---

CL REAL ESTATE

SALE: 2 bedroom HOUSE down pa carry loa 983-3126

SALE: Three bedroom, FOR SALE Realty 65

SALE: Three bedroom, FOR SALE Realty 65

SALE: 2 bedroom room hou carpet, ce 652-3347

WANTED lifetime live on ty. 14 room 1/2 con., o ket Road or write be expe

Mus type a exper with g compu useful

BU SER

C-D-J IN help save information

C-D-J 667 wash, oil vice, U-hau on Matado

INSI Fire-R stalled and MARR I Lockney

WE DO Pa ling, house and remodel working Fild 352-9563

INTERIOR WALL Call Rena T man. 983-51

WANTED

ANTED SUBSCRIBERS to Amarillo Daily News, by and Sunday - \$4.00; ly Only \$2.75; Sunday \$2.00. Contact H.C. 983-5269. 5-3-18p

STORAGE SPACE

ENTS, FURNITURE, ANYTHING, ETC. BY THE MONTH 10% DISCOUNT.

WEST TEXAS MINI STORAGE 983-2151 OR 983-2151

Ranch in Tu Approx. 20 — farmabl potential ir face, lake, 50% min rights. Fin W.H. Nels Ranch Spee years Lub 8061 799-29

TREFLAN Check on our chemical prices, we now have available Liquid fertilizer

Lone Star Chemical, Inc. ce: 652-2761

mie Henderson: 652-3434 LTRC

LOST

LOST — 2 approximate brand on r Buster Terr Collect.

Unde PLASTIC

Water Pipe SILV META 806-82 823

CLASSIFIED ADS sure to get results

REAL ESTATE

HOUSE FOR SALE: Low down payment. Owner will carry loan. 208 W. Missouri. 983-3126. 4-1c

FOR SALE: Three bedroom and two bath house. Allison Realty 652-2134. Ltfc

FOR SALE: Nice two bedroom house in Lockney. New carpet, central air and heat. 652-3347 or 652-3432. Ltfc

WANTED: Retired Couple in good health with lifetime experience farming and ranching to live on and maintain ranch in Red River County. 14 miles northwest of Clarksville. 3 bedroom 1 bath, with central and heating air con., all modern conveniences on Farm Market Road. Contact Harry Igo 805-295-6321 or write Box 1747, Plainview 79072. Will not be expected to work cattle or bale hay. Ltfc

FOR SALE: Three bedroom brick home on J.B. New carpet fenced back yard. Call for appointment. Ltfc

FOR SALE: Three bedroom brick home on J.B. New carpet fenced back yard. Call for appointment. Ltfc

FOR SALE: Three bedroom brick home on J.B. New carpet fenced back yard. Call for appointment. Ltfc

FOR SALE: Three bedroom brick home on J.B. New carpet fenced back yard. Call for appointment. Ltfc

FOR SALE: Three bedroom brick home on J.B. New carpet fenced back yard. Call for appointment. Ltfc

FOR SALE: Three bedroom brick home on J.B. New carpet fenced back yard. Call for appointment. Ltfc

FOR SALE: Three bedroom brick home on J.B. New carpet fenced back yard. Call for appointment. Ltfc

FOR SALE: Three bedroom brick home on J.B. New carpet fenced back yard. Call for appointment. Ltfc

FOR SALE: Three bedroom brick home on J.B. New carpet fenced back yard. Call for appointment. Ltfc

FOR SALE: Three bedroom brick home on J.B. New carpet fenced back yard. Call for appointment. Ltfc

FOR SALE: Three bedroom brick home on J.B. New carpet fenced back yard. Call for appointment. Ltfc

FOR SALE: Three bedroom brick home on J.B. New carpet fenced back yard. Call for appointment. Ltfc

FOR SALE: Three bedroom brick home on J.B. New carpet fenced back yard. Call for appointment. Ltfc

FOR SALE: Three bedroom brick home on J.B. New carpet fenced back yard. Call for appointment. Ltfc

FOR SALE: Three bedroom brick home on J.B. New carpet fenced back yard. Call for appointment. Ltfc

FOR SALE: Three bedroom brick home on J.B. New carpet fenced back yard. Call for appointment. Ltfc

FOR SALE: Three bedroom brick home on J.B. New carpet fenced back yard. Call for appointment. Ltfc

FOR SALE: Three bedroom brick home on J.B. New carpet fenced back yard. Call for appointment. Ltfc

FOR SALE: Three bedroom brick home on J.B. New carpet fenced back yard. Call for appointment. Ltfc

FOR SALE: Three bedroom brick home on J.B. New carpet fenced back yard. Call for appointment. Ltfc

FOR SALE: Three bedroom brick home on J.B. New carpet fenced back yard. Call for appointment. Ltfc

FOR SALE: Three bedroom brick home on J.B. New carpet fenced back yard. Call for appointment. Ltfc

FOR SALE: Three bedroom brick home on J.B. New carpet fenced back yard. Call for appointment. Ltfc

FOR SALE: Three bedroom brick home on J.B. New carpet fenced back yard. Call for appointment. Ltfc

FOR SALE: Three bedroom brick home on J.B. New carpet fenced back yard. Call for appointment. Ltfc

FARM MACHINERY

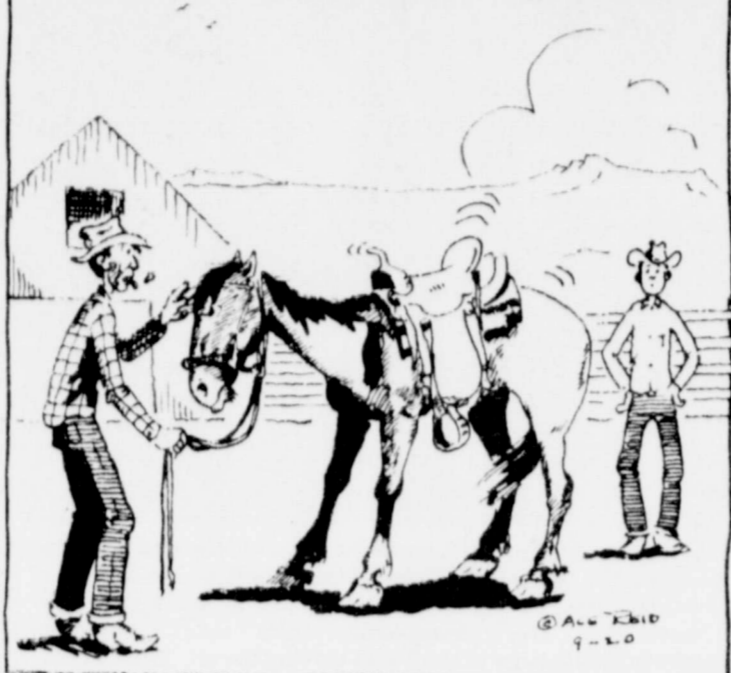
NORRELL TRACTOR PARTS for tractor and irrigation supplies and accessories. Ltfc

HELP WANTED

TAKING APPLICATIONS for LVN's. Crosbyton Care Center. See Shirley Stansell or Laverne Christian at Care Center. Ltfc

COW POKES

By Ace Reid



"Now, I ain't scared to get on him, I just don't like height!"

THIS FEATURE SPONSORED BY
Floydada Real Estate & Insurance Agency
AUTO, FIRE & FARM INSURANCE
Jim Word — — Phone 983-2360

BE A WINNER!

Call Producers on all your chemical needs.

30 Gal. Treflan	\$657.00
5 Gal Treflan	\$112.00
5 Gal. Tolban	\$110.00
5 Gal. Prowl	\$109.00

PRODUCERS COOPERATIVE ELEVATOR
Floydada 983-2821

TURNER REAL ESTATE

983-2635 Farms' Ranches Floydada, Texas

FARMS-RANCHES-CITY PROPERTIES-BUSINESS LEASES-LOANS

B. B. WILKES BROKER REAL ESTATE
100 S Main, Lockney Barry Barker, Solicitor
Barker Insurance Agency-652-2642

IF IT IS INSURANCE -SEE-

BARKER INSURANCE AGENCY
LIFE-FIRE-CASUALTY-HOSPITAL

ACCU-MEASURE

This distance and area monitor is a new and accurate method of measuring. Available in Vehicle (VM 1200) and Tractor (TM400) models.

TM400 — \$78⁰⁰
VM1200 — \$93⁶⁰

For a precise measurement of area you can rely on Accu-measure.

Collins Implement Co.
South of City Floydada 983-3732 TFC

J. P. WILLIAMS

Ph. 652-2326

WEED CONTROL

ON LAWNS

INSECT CONTROL

ON TREES AND SHRUBS

CONTROL OF BINDWEED, RAGWEED, BLUEWEED & JOHNSON GRASS

ON FARMS

C. A. LIC. NO. 22453 BUS. LIC. NO. 3100 LTFc

FOR SALE

FOR SALE: Drop leaf dining table, 6 chairs, and cradanza, gas range. 983-3656. 3-22c

FOR SALE: Country Club membership. 983-3451 Ltfc

FOR SALE: 140 ft. cattle trailer, see at Kaiser Truck Sales, Plainview. 3-18c

FOR SALE: Refrigerated air-conditioner in good shape \$50.00; Slim Jim exerciser, nearly new \$20.00. Phone 983-2386 after 5:00. 3-18p

Sears cabinet sewing machine, with zig-zag. 652-2622. Ltfc

FOR SALE — Corner unit couch with table that makes 2 half beds. Kenmore portable dishwasher, 2 rooms of gold tones shag carpet. Call 652-3573. Ltfc

FOR SALE — Very clean 14 ft. Camp trailer, refrigerated air, carpeted, 3 burner stove, oven, dinette, sink ice box, marine type toilet, sleeps four, ample closet and storage — \$1095.00. 229 W. Mississippi — Phone 983-2211. 3-18c

FOR SALE — 9 H.P. McCulloch Go cart engine, 14,000 R.P.M., Z cycle, 2 1/2 gallon gasoline tank. Changeable gear ratio. Positive traction rear axle. Call 983-3772 before 9 a.m. and after 5 p.m. Ltfc

FOR SALE — 1 three inch and 2 four inch Peerless pumps and panel boxes. Cecil Carthel 652-2136. L5-17c

DISPLAY SPECIAL Under dash F.M. 8-track Pioneer Super Tuner with radio eject fast forward repeat. Loud, mute and distance buttons, with two tri-axial Jensen speakers, only used 5 months. Call Randy Ford 983-2948. Ltfc

MUST SELL — Steel Building 48x72x14 — Never Erected. Immediate Delivery — At Tremendous Savings — (806)-647-4132. 3-22c

PETS

TO GIVE AWAY: 4 month puppy. Call Betty Goen after 5:00. 652-3180. Ltfc

TREFLAN APPLICATION AND PLOWING

Call Darell Dudley at 983-5320 or A.C. Carthel at 983-3200. S-tfc

VACUUM SALE

Want the very best and easiest to use? Get ELECTROLUX SUPER J with power nozzle or the new ELECTROLUX upright. Special prices on guaranteed rebuilt ELECTROLUX Filter Queens, Kirby's Eureka's, others. \$29 and up

ELECTROLUX

THE STANDARD OF EXCELLENCE IN HOME CLEANING. SUPPLIES, REPAIRS FOR MOST BRANDS 2403 Galveston 296-7655

Kirby

Vacuum cleaners, new and rebuilt, 1 yr. guarantee. Parts, sales and service. Prices begin at \$124.50.

Parker Home Furnishings in Lockney. 652-3315 Ltfc

WE WANT YOU TO KNOW

We sell all kinds of Good year tires...tractor, auto, truck, a good tire, good service. Best deals in West Texas. Truck winch and hauling service. BABE'S SERVICE CENTER, Floydada. Ltfc

FOR SALE

FOR SALE — 40 Horse Electric Motor, Six inch pump, 270 ft. setting. Joe Cunyus 652-3646. L3-29c

FOR SALE: Dempster pump jack, Model G-3, 2 H.P. motor, 230 ft. of 2 1/2 inch pipe and rod, one 30 H.P. switch box 320 ft. No. 6 Cable. 652-3182. Ltfc

FOR SALE — Crocheted afghans and other hand made items. Make nice gifts. Phone 652-2579. L3-18p

FOR SALE — Electric range, portable dishwasher. 983-2726. Ltfc

FOR SALE: shot gun, reloader, bench and accessories. Call City Auto 983-3767 from 8:00 to 6:00, after 6:00 call 983-3143. 3-25c

For Sale

FOR SALE — 40 Horse Electric Motor, Six inch pump, 270 ft. setting. Joe Cunyus 652-3646. L3-29c

FOR SALE: Dempster pump jack, Model G-3, 2 H.P. motor, 230 ft. of 2 1/2 inch pipe and rod, one 30 H.P. switch box 320 ft. No. 6 Cable. 652-3182. Ltfc

FOR SALE — Crocheted afghans and other hand made items. Make nice gifts. Phone 652-2579. L3-18p

FOR SALE — Electric range, portable dishwasher. 983-2726. Ltfc

FOR SALE: shot gun, reloader, bench and accessories. Call City Auto 983-3767 from 8:00 to 6:00, after 6:00 call 983-3143. 3-25c

DEALER WANTED

To handle a major line of pre-engineered steel bins and buildings. Lucrative opportunity for the right person. Aggressive farm operator considered. Call 1-800-255-2408 or 1-800-432-3902 (Kansas Residents) — Mr. Grainger. 3-18, 3-25, 4-1p

GARAGE SALE

PORCH SALE: March 22, 23 and 24. Nice curtains and drapes, men's clothes, and misc. 1 mile East of Cedar Hill on Flomot highway. Royce Bethel. 983-3010. 3-22p

Can You Use Some Extra Money Let Us Help!!!!

WE BUY SCRAP IRON, OLD JUNKERS, AND FREE PICKUP
Call 983-5277

Big Savings -Up to 25% discount-

Big Protection Farmers Texas Homeowners Policy

SAM A. SPENCE
112 W. MISSOURI
PHONE 983-2881

FOR BETTER CONCRETE

CALL **CALLOWAY READY-MIX** 652-2224 LOCKNEY PLAINVIEW HWY

ALSO WHITE CALICHE ROCK FOR SALE

Public Notices

TO WHOM IT MAY CONCERN:
This is to certify that a variance in the Floydada zoning ordinances has been granted to Ralph Casillas, permitting him to move a 8x30 trailer house to his lot at 401 West Ross for owner occupancy.
Effective Tuesday, March 20th. Zoning Commission City of Floydada 3-18c

Diamond Industrial Supply Co., Inc.

Phone Days 296-7418. Nights 296-1260 or 296-7828
1014 Broadway Plainview, Texas

Chain Sprockets V belts Shafts U joints Oil Seals O rings Wisconsin

SKF BCA Timken Bower Cotton Striper Brushes & Bats

"We Appreciate Your Business More" Ltfc

CLASSIFIED RATES

CLASSIFIED ADVERTISING RATE: 10 CENTS PER WORD FIRST INSERTION; 7 CENTS PER WORD EACH SUBSEQUENT INSERTION. MINIMUM CHARGE \$2.00. CLASSIFIED DISPLAY RATE: \$1.30 PER COLUMN INCH CARD OF THANKS: \$2.00.

AUTOMOTIVE

FOR SALE: 1969 Jeep Wagoneer, 50,000 miles. Excellent condition. 697-2433 nights 3-25p

FOR SALE: 1972 Plymouth Fury, low mileage, excellent condition. Don Bean 983-3570. Ltfc

FOR RENT

FOR RENT — In Lockney, one bedroom apartments. Come by 108 N. Main, or call 652-3813. Ltfc

BUSINESS OPPORTUNITIES

Have a highly profitable and beautiful Shoe Store of your own featuring over 50 nationally advertised brands with great savings to your customers. \$19,500.00 includes beginning inventory, fixtures and training. Open your store in as little as 10-15 days. Call any time for Mr. Wilkerson. (501) 329-8326. 3-18p

SLEEP WHILE YOUR WANT ADS WORK.

DAN'S AUTO SERVICE

DAN TUNTON, Owner
Specializing in Automatic Transmission, Motor Tune Ups, Auto Air Conditioning

General Repair We Have A BRAKE LATHE to handle all passenger car brake drums. See us for complete brake service.

Phone 652-2462

Auto Accidents DO Happen...

If one happens to you, be protected. Our car insurance offers coverage to meet your special needs — repairs to personal liability.

BAKER Insurance Agency

127 W. Calif. Ph. 983-3270

REAL ESTATE

HOUSE FOR SALE: Low down payment. Owner will carry loan. 208 W. Missouri. 983-3126. 4-1c

FOR SALE: Three bedroom and two bath house. Allison Realty 652-2134. Ltfc

FOR SALE: Nice two bedroom house in Lockney. New carpet, central air and heat. 652-3347 or 652-3432. Ltfc

WANTED: Retired Couple in good health with lifetime experience farming and ranching to live on and maintain ranch in Red River County. 14 miles northwest of Clarksville. 3 bedroom 1 bath, with central and heating air con., all modern conveniences on Farm Market Road. Contact Harry Igo 805-295-6321 or write Box 1747, Plainview 79072. Will not be expected to work cattle or bale hay. Ltfc

FOR SALE: Three bedroom brick home on J.B. New carpet fenced back yard. Call for appointment. Ltfc

FOR SALE: Three bedroom brick home on J.B. New carpet fenced back yard. Call for appointment. Ltfc

FOR SALE: Three bedroom brick home on J.B. New carpet fenced back yard. Call for appointment. Ltfc

FOR SALE: Three bedroom brick home on J.B. New carpet fenced back yard. Call for appointment. Ltfc

FOR SALE: Three bedroom brick home on J.B. New carpet fenced back yard. Call for appointment. Ltfc

FOR SALE: Three bedroom brick home on J.B. New carpet fenced back yard. Call for appointment. Ltfc

FOR SALE: Three bedroom brick home on J.B. New carpet fenced back yard. Call for appointment. Ltfc

FOR SALE: Three bedroom brick home on J.B. New carpet fenced back yard. Call for appointment. Ltfc

FOR SALE: Three bedroom brick home on J.B. New carpet fenced back yard. Call for appointment. Ltfc

FOR SALE: Three bedroom brick home on J.B. New carpet fenced back yard. Call for appointment. Ltfc

FOR SALE: Three bedroom brick home on J.B. New carpet fenced back yard. Call for appointment. Ltfc

FOR SALE: Three bedroom brick home on J.B. New carpet fenced back yard. Call for appointment. Ltfc

FOR SALE: Three bedroom brick home on J.B. New carpet fenced back yard. Call for appointment. Ltfc

FOR SALE: Three bedroom brick home on J.B. New carpet fenced back yard. Call for appointment. Ltfc

FOR SALE: Three bedroom brick home on J.B. New carpet fenced back yard. Call for appointment. Ltfc

FOR SALE: Three bedroom brick home on J.B. New carpet fenced back yard. Call for appointment. Ltfc

FOR SALE: Three bedroom brick home on J.B. New carpet fenced back yard. Call for appointment. Ltfc

FOR SALE: Three bedroom brick home on J.B. New carpet fenced back yard. Call for appointment. Ltfc

FOR SALE: Three bedroom brick home on J.B. New carpet fenced back yard. Call for appointment. Ltfc

FOR SALE: Three bedroom brick home on J.B. New carpet fenced back yard. Call for appointment. Ltfc

FOR SALE: Three bedroom brick home on J.B. New carpet fenced back yard. Call for appointment. Ltfc

FOR SALE: Three bedroom brick home on J.B. New carpet fenced back yard. Call for appointment. Ltfc

FOR SALE: Three bedroom brick home on J.B. New carpet fenced back yard. Call for appointment. Ltfc

FOR SALE: Three bedroom brick home on J.B. New carpet fenced back yard. Call for appointment. Ltfc

FOR SALE: Three bedroom brick home on J.B. New carpet fenced back yard. Call for appointment. Ltfc

HELP WANTED

TAKING APPLICATIONS for LVN's. Crosbyton Care Center. See Shirley Stansell or Laverne Christian at Care Center. Ltfc

HELP WANTED OFFICE

Must be Experienced, Must be able to type and use office machines. Bookkeeping experience preferred. Permanent position with good opportunities Will train to use computer Previous Computer experience useful but not required.

CONTACT Darrell Miller-Marble Bros. South Plains 983-3744

BUSINESS SERVICES

CDJ INSULATION can help save your dollars. For information call 983-2601.

NOTICE

NOW OPEN A-1 Pet and Grooming, professional all breeds no tranquilizers 821 Broadway, Plainview, Texas 293-3557 Ltfc

ATTENTION MR. FARMER

Amway all-purpose Spray adjuvant for better herbicide performance. Call 983-2904 or 795-4861. Ltfc

CARDS OF THANKS

We wish to thank each and every one for their prayers, flowers, phone calls, visits, cards, food and other kindnesses shown us at the death of our beloved wife and Mother, Lydia Collins. We are grateful for the love and tenderness shown her when she was in Floydada Nursing Home by all the personnel. We are thankful for the interest and kindness shown her in her last days by nursing staff at Caprock Hospital and for the constant concern and attention of Dr. Pedro Ochoa. May God bless each of you. Walter Collins Van Collins Wayne and Norma Collins Ersel and Mary Emma Collins

INTERIOR PAINTING WALL PAPERING

Call Rena Turner, Jan Sherman. 983-5130. Ltfc

WE DO PAINTING, floor leveling, house blocking, roofing and remodeling. We are now working Floydada Area. Contact Childress Bro. Collect 352-9563

WEST TEXAS STORAGE

Call 983-2677

TREFLAN

Check our special prices, we now have available Liquid Fertilizer

LOST & FOUND

LOST — 2 head of steers approximately 400 lb. with M brand on right hip. Contact Buster Terrell call 652-



Got Heating Or Plumbing Problems?
Call **HOLMES PLUMBING**
AUSTIN OR STEVE
983-2251
6:30 - 9:30 a.m. and 5:30 p.m. Until?



THEY WON — Lockney High School's "Learn and Live" team, composed of (left to right) Randy Davis, Brenda Williams and Kevin Stennett, were photographed Tuesday afternoon just after they returned from competing in the quarterfinal round of the area "Learn And Live" contest. The match, won by the LHS students, was videotaped for later broadcasting on KLBK Television. It will be shown on Saturday, but the exact broadcast date is not known yet. "Learn And Live" competition tests area high-school students' knowledge of the Texas driving laws. (Staff Photo)

Little

Dribblers

March 15 —
KNICKS 27, BULLETS 19
Kicks: Kelly Hayes 20, Jimmy Smith 7, Bullets: Doug Warren 11, Jerald Johnson 4, Frank Sanchez 4

CELTICS 16, NUGGETS 15
Celtics: Scott Poole, 9, Monty Teeter 4, Daniel Perales 3, Nuggets: Brent Hallmark 7, Jerry Mathis 4, Paul Moats 4.

LAKERS 24, HAWKS 11
Lakers: Ricardo Vasquez 10, Ritchie Thornton 6, Roberto Guerrero 6, Robert Reed 2, Hawks: John Torrez 7, Terry Mathis 4.

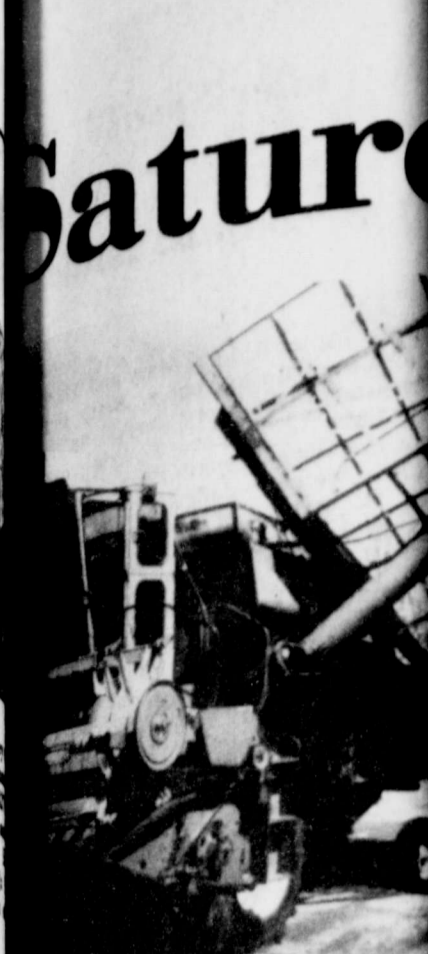
STANDINGS
Lakers 4-0
Celtics 2-2
Hawks 2-2
Kicks 2-2
Nuggets 1-3
Bullets 1-3



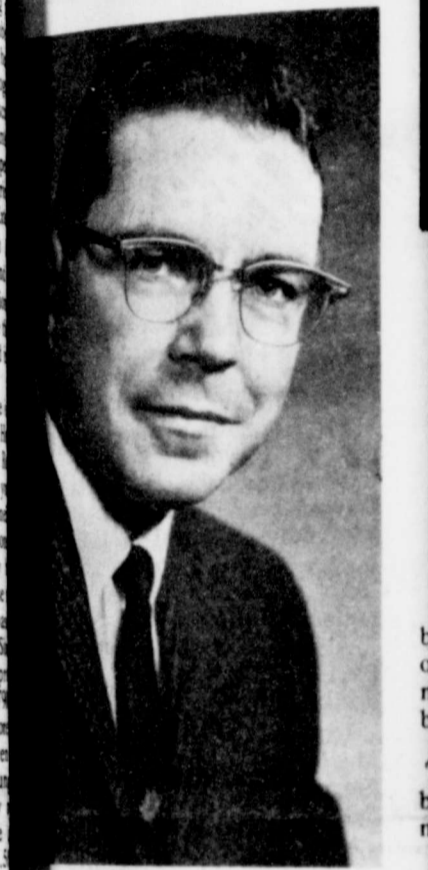
CALF SCRAMBLE WINNER — Kyle Brock of Lockney won in the Calf Scramble at the March 3 performance of the Houston Livestock Show and Rodeo. Kyle won a purchase certificate donated by the Houston Jaycees. He used it toward the purchase of a registered calf, together following the scramble are (left to right) Ed Webb, county agent; Kyle Brock and Ed Webb, Houston Jaycees.

Kyle Brock Is Calf Scramble Winner

Kyle Brock of Lockney wrestled a calf over the finish line at the 3-3-79 performance of the Houston Livestock Show and Rodeo to earn a \$275 calf purchase certificate. The certificate, donated by Houston Jaycees will enable Kyle to purchase a beef or dairy heifer which he will feed and groom during the coming year under the direction of Steve Herber. At next year's Livestock Show the youngster will return with his calf to compete in special show ring competition. The rough and tumble calf scramble takes place at each of the 15 Rodeo performances. Twelve calves and 24 youngsters are turned loose. Each contestant who manages to halter a calf and drag it across the finish line receives a purchase certificate donated by Houston area businesses and individuals. While the viewing sees only the scrambling events, the Calf Scramble provides the knowledge of the winners gain in the coming year. Close to a Vocational Agriculture Teacher or County Agent, each year accurate records are formed other obligations signed to underscore possibilities involving a calf. The Calf Scramble is one example of the Livestock Show and commitment to the Texas, and the best this one event can offer. Purchased with the future cattle herds, the calf scramble program began, more than \$1.5 million have been donated to Texas year. Each year the show some 260 purchase certificates worth \$718 scramble winners. The popular Calf Scramble event is only one of the exciting events which place during the Livestock Show and the show, which runs from 23 through 27 draws first-rate prize cowboys who compete world's largest rodeo of more than \$15 million features top names in entertainment.



Gene Collins's Funeral Today



GENE COLLINS JR.

Gene Collins Jr., 52, president of the First National Bank, died this morning at his home in Lockney. He was born April 18, 1926 in Floydada and graduated from Floydada School in 1943. He attended Texas Tech and graduated from West Texas State in 1949. He and Emma Young were married on June 6, 1949. He went to work at the First National Bank in Lockney in 1949 and advanced from cashier to executive vice-president in 1961. He was a member of the first graduating class of the Southwest Graduate School of Banking at Southern Methodist University.

Collins was active in the Lockney Chamber of Commerce and was a member of the First Baptist Church in Floydada and later in Lockney. He served as president of the Rotary Club and was one of the organizers of the Lockney General District and served on the local district's first board of directors. He was a member of the Saddle Tramps and Alpha Phi Club and an avid supporter of Tech. He was in the Salvation Army, he was a member of the Lockney Salvation Army for 15 years. He is survived by his wife, Emma; a son, James, at Princeton University; a daughter, Mrs. Gammage of Levelland; and a son, Jimmy Collins of Abilene.

Funeral services will be held at 10 a.m. today at the First National Bank. Burial will be in Floydada Cemetery. The funeral home is the direction of Gene Collins Funeral Home, Lockney.

PIGGLY WIGGLY

Each of these advertised items is required to be readily available for sale at or below the advertised price in each store, except as specifically noted in this ad. We reserve the right to limit quantities. None sold to dealers. Prices good 3/18 Thru 3/24, 1979.

STORE HOURS
DAILY 8 a.m. - 8 p.m.
SUNDAY 9 a.m. - 8 p.m.

HUNT'S WHOLE PEELED TOMATOES

3 14 1/2 oz. CANS **\$1**

REGULAR, ELEC. PERK or DRIP

MARYLAND CLUB COFFEE

SAVE 69% **2 29** LB.

COCA COLA

6 32 oz. **1 88**
Plus Deposit

BARNEY'S BUTCHER SHOP BARGAINS!
Be Satisfied with Piggly Wiggly Meat or Double Your Money Back!

COMBINATION 10 CHOPS — 6 CENTER, 4 END-CUT PORK CHOPS

1 48 A LB.

SWIFT'S BREAKFAST STRIPS SIZZLEAN

1 38 12 oz.

USDA HEAVY WESTERN BEEF BONELESS BOTTOM ROUND ROAST

1 68 A LB.

USDA HEAVY WESTERN BEEF BONELESS BOTTOM ROUND STEAK

1 78 A LB.

USDA GRADE A CHOICE BREASTS, LEGS or THIGHS FRYER PARTS

98c A LB.

BANQUET BEEF, CHICKEN or TURKEY POT PIES

SAVE 68% **4** 8 oz. For **\$1**

STAN'S PRODUCE SALE!
Be Satisfied with Piggly Wiggly Produce or Double Your Money Back!

ALL PURPOSE RUSSET BAKING POTATOES

20 LB. BAG **1 58**

BUTTERY SMOOTH AVOCADOES

5 FOR **98c**

BROCCOLI

48c A LB.

SWEET 'N JUICY ANJOU PEARS

38c A LB.

HUNT'S TOMATO JUICE

46 oz. CAN **58c**
SAVE 19%

GLEN PARK BATHROOM TISSUE

4 ROLLS **59c**
SAVE 20%

DOUBLE STAMPS EVERY WEDNESDAY

We give Double Gold Bond Stamps every Wednesday with any purchase of \$2.50 or more (excluding cigarettes).

Roll-A-Dikers AN ATTACHMENT USED BEHIND YOUR LISTER OR CULTIVATOR MAKES A DAM IN THE FURROW

LAWSON FARM SUPPLY
933-3940
503 E. Missouri
Floydada, Texas

M & N AUTOMOTIVE IRRIGATION SPECIALS

GOULD 2 YEAR BATTERY	\$29.00
FOR 292 CHEVROLET STARTERS	\$24.00
FOR 413 CHRYSLER STARTERS	\$38.00
FOR 292 CHEVROLET ALTERNATORS	\$25.00
FOR 413 CHRYSLER ALTERNATORS	\$31.00

ALL PARTS GUARANTEED
507 EAST MISSOURI FLOYDADA