

**KRAFT WINTER CARNIVAL**

**KRAFT VELVEETA**  
2 LB. BOX **\$2.49**

**PHILADELPHIA CREAM CHEESE**  
8 OZ. CTN. **59¢**

**SOFT PARKAY MARGARINE** 2-8 OZ. BOWLS **69¢**

**PILLSBURY CRESCENT DINNER ROLLS** 8 CT. CAN **59¢**

**KRAFT ASSTD. SQUEEZ-A-SNACK** 6 OZ. PKG. **69¢**

**PILLSBURY REFRIGERATED COOKIES** ASSTD. ROLLS **99¢**

**KRAFT MINIATURE M'MALLOWS** 3 10 1/2 OZ. PKG. **\$1.19**

**KRAFT POURABLE DRESSINGS** FRENCH CHUNKY BLUE 8 OZ. BTL. CREAMY ITALIAN **59¢**

**KRAFT MIRACLE WHIP** 32 OZ. JAR **\$1.09**

**KRAFT MARSHMALLOW CREME**  
7 OZ. JAR **39¢**

**Bake-Rite SHORTENING** 3 LB. CAN **\$1.29**

**6 BTL. CTN. COKES**  
32 OZ. **\$1.29**  
PLUS DEPOSIT

**HEALTH & BEAUTY AID SAVINGS**

**VICKS REG.-CHERRY COUGH DROPS** 2 BOXES **39¢**

**MENNEN MAGIC BABY LOTION** 9 OZ. BTL. **\$1.59**

**MENNEN SPEED STICK** 2.5 OZ. SIZE **\$1.39**

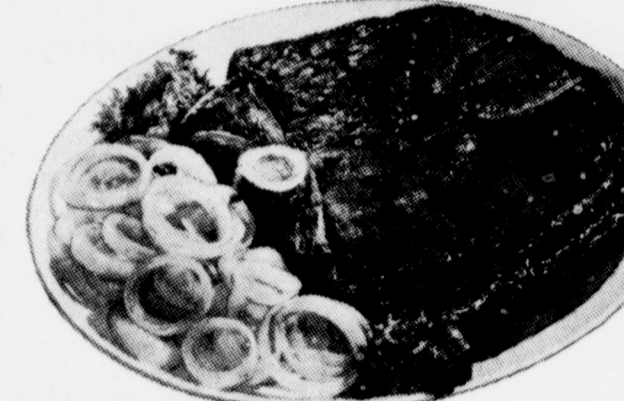
**BUTANE DISPOSABLE BIC LIGHTERS** EACH **49¢**

**FLICKER DISPOSABLE LADIES SHAVER** EACH **99¢**

**SUPER-REG.-SUPER PLUS TAMPAX TAMPONS** 40 CT. BOX **\$1.99**



**ADD UP THE SAVINGS**  
**SHOP THRIFTWAY FOR DAY-IN DAY-OUT VALUES!**



**HEAVY GRAIN FED BEEF ROUND STEAK** **\$1.69** LB.

**WILSON CERTIFIED REG/BEEF FRANKS**  
12 OZ. PKG. **89¢**

**WILSON CERTIFIED SLICED BACON**  
LB. **\$1.49**

**HEAVY GRAIN FED BEEF SIRLOIN STEAK** LB. **\$1.89**

**HEAVY GRAIN FED TENDERIZED CUTLETS** LB. **\$1.99**

**HEAVY GRAIN FED BONELESS SIRLOIN TIP STEAK** LB. **\$1.99**

**HEAVY GRAIN FED BONELESS SIRLOIN TIP ROAST** LB. **\$1.89**

**FRESH 73% LEAN GROUND BEEF** LB. **\$1.19**

**RUDY'S FARM HOT-REG. WHOLE HOG SAUSAGE** 2 LB. PKG. **\$3.39**

**WRIGHT'S HICKORY ENDS & PIECES SMOKED BACON** 3 LB. BOX **\$1.49**

**GOOCH BLUE RIBBON GERMAN SMOKED SAUSAGE** 12 OZ. PKG. **\$1.29**

**FOLGER'S FLAKED COFFEE**  
13 OZ. CAN **\$1.99**

**25¢ OFF LABEL TIDE DETERGENT** KING SIZE BOX **\$2.19**

**25¢ OFF LABEL FRESH START DETERGENT** KING SIZE JUG **\$2.09**

**PAPER HI-DRI TOWELS** JUMBO ROLL **39¢**

**TRAPPEY'S JALEPENO WITH BACON PINTO BEANS** 3 NO. 300 CAN **\$1.39**

**SUNKIST NEW CROP NAVAL ORANGES**  
3 LBS. **\$1.00**

**TEXAS STRAIGHT NECK YELLOW SQUASH** LB. **43¢**

**CALIFORNIA PURPLE TOP TURNIPS** LB. **39¢**

**GOLDEN YELLOW YAMS** LB. **29¢**

**TEXAS RUBY RED GRAPEFRUIT** LB. **25¢**

**CALIFORNIA SUNKIST LEMONS** LB. **33¢**

**FLORIDA FULL EARS CORN** 3 EARS **39¢**

**SPRING GARLAND-WATER CRESS-STRAWBERRY PATCH STONWARE DINNER PLATES**  
ONLY **69¢** PER PIECE WITH EVERY 3<sup>RD</sup> PURCHASE

**NOW IS THE TIME TO GET EXTRA S & H GREEN STAMPS FOR CHRISTMAS**

WE RESERVE THE RIGHT TO LIMIT.

**TOTAL GROCERY SAVERS**

**CORN-WHEAT-RICE CHEX CEREALS** ASSTD. BOXES **79¢**

**REG./DRIP/ELEC. SANKA COFFEE** 1 LB. CAN **\$3.29**

**V-8 JUICE** 6 PAK CANS **89¢**

**STRAINED FRUITS AND VEGETABLES GERBER'S FOOD** 4 1/2 OZ. JAR **19¢**

**SHURFINE ALL PURPOSE FLOUR** 5 LB. BAG **69¢**

**NABISCO NILLA WAFERS** 12 OZ. BOX **69¢**

**6 BTL. CTN. DR PEPPER**  
32 OZ. **\$1.29**  
PLUS DEPOSIT

**10 PAGES THRIFTWAY**

PRICES EFFECTIVE DEC. 3-9, 1978

*Social*  
Friends Of L...  
The Library met...  
Lockney...  
Floyd County...  
Janice Lloyd, chair...  
meeting to...  
Carolyn...  
discussed a his...  
library for the...  
County Historical...  
discussion was held...  
cost of...  
matter was...  
awaiting further in...  
announced...  
many chil...  
films available at the...  
upcoming event was...  
December 7...  
3:30 to 5 p.m. in the...  
Floydada, an auto...  
party for Mrs. Rex...  
to introduce her...  
Gabby's Christmas...  
All children are in...  
interest range 5-11...  
Refreshments will be...  
and Mrs. Dockery

*Nancy's*

CHOCOLATE NUT FUDGE...  
1/2 cups sugar and 1...  
evaporated milk -...  
boiling (full rolling...  
Cook over medium...  
for 6 minutes. Stir to...  
from sticking to pan...  
a large pan or mixing...  
put...  
pieces of plain Hershey...  
broken into small...  
in each package semi...  
chocolate bits...  
one jar marshmallow...  
and 1/2 teaspoon salt...  
teaspoon vanilla...  
hot sugar-milk mix...  
over this, one half at a...  
mixing thoroughly...  
each addition. Mix well...  
to suit taste. Pour...  
pans, let cool, cut into...  
squares or drop by spoonfuls...  
greased paper.

DATE LOAF CANDY...  
1/2 cups sugar...  
1 can evaporated milk...  
1/2 cup flour...  
1/2 cup white Karo...  
top

*Christmas*

**TAPES**

**GREAT GIFT IDEA!**

**BUY**

**ORIGINAL ARTISTS**

**Clear Hits of the 50's**

**2 FOR 5.00 RECORDS**

**Gene Autry's Christmas Classics**

## Social Events

### Friends Of Library Meet

Friends of the Library met Thursday in the Lockney branch of the Floyd County Library. Janice Lloyd, chairman, called the meeting to order. She reported Carolyn Marble had prepared a history of the library for the Floyd County Historical Society. A discussion was held regarding paying the cost of the page, and the matter was being awaited further information. It was announced there were many children's films available at the library.

The upcoming event was announced for December 7 from 3:30 to 5 p.m. in the library at Floydada, an auto-graph party for Mrs. Rex Johnson to introduce her book "Gabby's Christmas." All children are invited (interest range 5-11 years). Refreshments will be served, and Mrs. Dockery

will review her book.

Hazel Johnson of Lockney was elected reporter for Friends of the Library. The next meeting will be in Floydada, at 7 p.m. January 24. All people interested in the library are invited to attend.

A film, "Pysanka, the Ukrainian Easter Egg," was shown by Beth Pratt. The film shows the methods the people used to decorate the beautiful eggs that are typical of Europe. This film would make a very nice program just before Easter.

Those present were, from Floydada, Janice Lloyd, Judy Dunlap, Helen Dunlap, Diana Glover, Hester Moore, Beth Pratt and Thelma Crawford; and from Lockney, Lisa Mosley, Arla Copeland, Hazel Johnson, Helene Holt and Martha Sue Lusk.



MRS. JIM WORD AND MRS. W.M. STANIFORTH JR. are shown viewing donations to be given away in the Art for Heart drawing to be held Thursday December 7. Tickets on sale at Piggly Wiggly and Buddy's. (Staff Photo)

## Births

Lori Christian is happy to announce the arrival of her sister, Laci Alyne, who was born in Cleburne Memorial Hospital in Cleburne at 8:14 a.m. weighing seven pounds, four ounces. Lori and Laci

are the daughters of Mr. and Mrs. Joe Christian.

Grandparents are Mr. and Mrs. Greer Christian and Mr. and Mrs. Harry Reeves, all of Floydada.

### SKIN CARE TIPS

Buy some plants and keep your skin beautiful this winter.

A riddle? Not at all. Dermatologists will tell you that dry heat in buildings draws moisture from the skin in cold weather. To replace the needed moisture and prevent skin from drying out, buy plants and keep them well watered and misted. (Unless you're allergic to plants, of course). They add humidity to the environment.



Keep thermostats set to comfortable but not excessive temperatures in winter. Use a vaporizer or humidifier in rooms where you spend much time.

Take quick, warm baths not long hot ones. Hot water also removes moisture from the skin.

After bathing, moisturize your skin. One good product often recommended by dermatologists is Purpose Dry Skin Cream which contains lactic acid, an ingredient believed to help the skin hold water. In addition, its petroleum base helps hold in this moisture to prevent water loss. The product, available only at pharmacies, leaves the skin with a fine sheen after use.

Also use this moisture holding skin cream to minimize skin dryness from winter wind and cold, which intensify dry skin conditions.

# SAVINGS

## DAY-OUT VALUES!

WE RESERVE THE RIGHT TO LIMIT.

### TOTAL GROCERY SAVERS

- WHEAT-RICE 79¢
- ASSTD. BOXES
- WHEAT CEREALS 79¢
- DRIP/ELEC.
- FRANKA COFFEE 89¢
- 1 LB. CAN
- HOT OR COCKTAIL REG.
- 8 JUICE 89¢
- 6 PAK CANS
- FRUITED FRUITS AND VEGETABLES
- FRIBER'S FOOD 19¢
- 4 1/2 OZ. JAR
- REFINE ALL PURPOSE
- LOUR 69¢
- 5 LB. BAG
- WAFERS 69¢
- 12 OZ. BOX

6 BTL. CTN.  
**DR PEPPER**  
32 OZ.  
**\$1.29**  
PLUS DEPOSIT

**MENTHOL KING SIZE BOX**  
**\$2.19**

**KING SIZE JUG**  
**\$2.09**

**JUMBO ROLL**  
**39¢**

**NO. 300 CAN**  
**39¢**

BETTY CROCKER SUPER MOIST  
**LAYER CAKES**  
18 OZ. BOX  
**63¢**

FROZEN FOODS  
**NOT PIES**  
3 8 OZ. BOXES

WATER TOTS  
**89¢**

**HOLIDAY HARVEST**  
PRICES EFFECTIVE DEC. 3-9, 1978

### From Nancy's Kitchen

**CHOCOLATE NUT FUDGE**  
1/2 cup sugar and 1/2 cup evaporated milk - bring to boiling (full rolling boil). Cook over medium heat for 6 minutes. Stir to keep from sticking to pan. Pour into a large pan or mixing bowl put:  
8 ounces of plain Hershey's bars broken into small pieces.  
1/2 ounce packages semi-sweet chocolate bits.  
1 ounce jar marshmallow cream and 1/2 teaspoon salt  
1/2 teaspoon vanilla

Cook to soft ball stage. Add:  
1 pound pitted dates  
1 cup pecan halves  
Cook until a little dropped into cold water makes a firm ball. Remove from fire stir in 1 teaspoon vanilla. Stir until it becomes stiff and loses its gloss. Turn onto a piece of waxed paper on which a cup of finely chopped pecans have been sprinkled. Make candy into a roll - cover with chopped pecans and roll in a damp cloth until set. When firm slice and sprinkle with powdered sugar.

**DATE LOAF CANDY**  
1/2 cup sugar  
1/2 cup evaporated milk  
1/2 cup flour  
1/2 cup white Karo

**PEANUT BRITTLE**  
1 and 1/2 cups sugar  
3/4 cup water  
1/2 cup Karo Syrup  
Cook to soft ball stage, then add:  
1 and 1/2 cups raw peanuts  
Cook until slightly brown. Quickly add:  
1 teaspoon vanilla  
1/2 teaspoon soda  
Stir and pour out on well-buttered and salted surface. Pull as it cools to make it

**TEXAS MILLIONAIRES**  
1 cup brown sugar  
1 cup white sugar  
1 cup red karo  
2 sticks oleo margarine or butter  
2 cups canned milk  
2 teaspoon vanilla  
Mix all ingredients except 1 cup milk. Stir well. Let come to a good boil stirring constantly. Add the other cup of milk slowly (do not stop boil). Cook until it forms a soft ball (this takes a long time). Add 1 pound pecans halves. Pour into a large buttered pan and let stand in

**DIVINITY CANDY**  
3 cups sugar  
1/2 cup light corn syrup  
1/2 cup cold water  
2 eggs whites  
1 teaspoon vanilla flavoring  
1/2 teaspoon lemon flavoring  
1/4 teaspoon salt  
Cook sugar, water and syrup together. Beat egg whites until stiff. When syrup reaches soft ball stage pour about half of it over the beaten egg whites. (pour in a small stream). Continue cooking the remainder of the syrup until it reaches the crack stage then pour in a fine stream into the egg-syrup mixture. Add flavoring and fruit or nuts to suit taste. When cool enough to hold its shape drop by spoonfuls onto greased paper. NOTE: For variety a package of jello may be added to the beaten eggs for a fruit flavored divinity.

Use the basic four food groups as a yardstick for judging the nutritional adequacy of the diet of school children, advises Francis Reasonover, foods and nutrition specialist with the Texas Agricultural Extension Service, The Texas A&M University System.

ice box over night. Cut in squares, or drop by spoonfuls on greased surface, when cold dip in chocolate.

**DIP**  
12 ounces sweet chocolate  
1/2 pound paraffin  
Melted together over hot water

**CHOCOLATE MIX**  
(for dipping)  
2 packages semi-sweet chocolate chips (6 ounce packages)  
1 bar 1/4 pound paraffin - Melted together over hot water  
Stick toothpick in fondant and dip in chocolate mix  
Set on waxed paper to cool

**TAFFY**  
1 cup sugar  
1/4 cup white corn syrup  
1/2 cup water  
1 tablespoon vinegar  
1/2 teaspoon soda  
Combine sugar, and corn syrup; stir over low heat until sugar dissolves. Cook to light crack stage (270 degrees). Remove from heat add soda and vinegar; mix well. Pour onto a greased shallow pan. When cool enough to handle, pull until taffy is snow-white and porous. Fat may be used on hands to prevent sticking. Twist in rope of desired thickness. Cut with scissors, or cool and break in pieces.

Use the basic four food groups as a yardstick for judging the nutritional adequacy of the diet of school children, advises Francis Reasonover, foods and nutrition specialist with the Texas Agricultural Extension Service, The Texas A&M University System.

Cream or light cream must have at least 18 percent and less than 30 percent milkfat, reports Mrs. Gwendolyn Clyatt, consumer marketing information specialist with the Texas Agricultural Extension Service, The Texas A&M University System.

Heavy cream must have at least 36 percent milkfat, she says.

Health care costs are increasing more than 10 percent a year, reports Claudia Kerbel, consumer information specialist with the Texas Agricultural Extension Service, The Texas A&M University System.

This puts a strain on family budgets without adequate health insurance, she points out.

The holiday season is the perfect time to tell the angel in your life how heavenly she is. A gift that will make her feel divine all through the year is an elegant, comfortable robe for lounging.



**Perry's**  
104 E. CALIFORNIA 983-3510  
FLOYDADA

**Christmas TAPES AND RECORDS**

**NAME ARTIST Sale**

**BUY NOW WHILE THEY LAST**

**2 FOR 5.00 RECORDS**

**297¢ EACH TAPES**

**ALSO CASSETTE TAPES FOR ONLY \$3.97 EACH**

**Hundreds To Choose From**

Original Artists: *Gene Autry's Christmas Classics*, *Hit Explosion*, *The Kendalls*

\* GENE AUTRY'S CHRISTMAS CLASSICS \* RED SOVINE \* WILLIE NELSON \* BOBBY HELMS \* THE KENDALLS AND MANY MORE NAME ARTISTS.

Eating sage is believed by some to prolong life.

**ANDERSON'S**  
Pre-Christmas-Specials  
Sale Starts December 4th Ends December 9th  
Free Gift Wrapping

Special Mens and Boys <b>JACKETS</b> Asst Styles and Sizes Reduced 20% OFF Reg. Price	Special Infants-and-Girls <b>COATS</b> Sizes 1 Thru 14 Reduced 20% OFF Reg. Price
Special One Group of <b>LADIES SPORTSWEAR</b> Mix and Match Famous Brands Reduced 20% OFF Reg. Price	Special Ladies Pull-on and <b>FASHION PANTS</b> Sizes 6 Thru 20 Reg. 11.00 to 22.00 Values Reduced 20% OFF Reg. Price
Special Mens <b>BLUE JEANS</b> By Sedgefield and Wrangler Flare and Bell Bottoms Reg. 16.00 to 18.00 Values Now 12.88 Student Sizes 9.88 and 11.88	Special <b>LADIES BLOUSES</b> Asst-Styles Big Selection to Choose From Reduced 20% OFF Reg. Price

3 Ways To Buy: Cash-Layaway-Master Charge

**ANDERSON'S**  
DEPARTMENT STORE  
120 West California  
Floydada

## Coyote...Friend And Villian

LUBBOCK - Traditionally cast as a villian, the coyote stands condemned of killing cattle, sheep, goats, chickens

and desirable wildlife. However, studies have shown that the coyote is an effective rodent and rabbit control

which helps the landowner harvest and store more food and produce more meat for the table.

The abundance or scarcity of the coyote's natural food such as rabbits, rodents, and other prey determines how frequently a coyote will visit a chicken house or raid a sheep pen.

When times are hard, visits by the coyote may be often, but during times of high rabbit or rat populations, the coyote pays his way.

The coyote has been trapped, poisoned, shot, run-over, chased and harassed for many years. While this attempt to eradicate the coyote has failed to reduce his numbers, it has reduced the old, weak, and foolish from his ranks resulting in a swift and cunning animal producing more of their kind while expanding their range nationwide.

The coyote can add another determined hunter to the list of his pursuers as the price of coyote pelts continues to increase in value.

Hunting coyotes with sight dogs or trail dogs has been a

A significant chapter in the history of Soviet-U.S. agricultural relations was recorded recently when Dr. Delbert Hess, Director of Cotton Research for ACCO/Paymaster Seed, visited the U.S.S.R. with a team of leading U.S. cotton breeding specialists.

The trip was made as part of an agreement between the United States and the Soviet Union to exchange ideas and cooperate in agricultural research and development. The objective of this trip, which was arranged through the USDA Foreign Agricultural Service, was to study methods of cotton breeding and pest control.

"Cotton is one of the most important agricultural crops in the U.S.S.R.," reported Dr. Hess. "In fact, in recent years the Soviet Union has produced essentially the same amount of cotton as the United States. The value of the

export of cotton is important in the balance of trade, and Soviet officials are very interested in increasing cotton production."

Accompanying Dr. Hess on the three-week trip were Dr. P.A. Miller and Dr. Richard Ridgeway, Staff Scientists for USDA at the Beltsville Agricultural Research Center, Beltsville, Maryland; and Dr. Luther Bird, Cotton Plant Pathologist at Texas A&M University.

The U.S. emissaries were met in Moscow by officials of the U.S.S.R. Ministry of Agriculture. They then traveled to the Vavilov All-Union Research Institute of Plant Industry, the Institute of Plant Protection, and the U.S.S.R. Academy of Sciences Library, all in Leningrad.

In Tashkent, they met with officials at the All-Union Scientific Research Insti-

tute for Cotton, the Institute for Genetics and Breeding, and the Central-Asiatic Scientific Research Institute for Plant Protection. Their final stop was the Tadzhik Scientific Research Institute of Agriculture in Dushanbe.

"We feel this exchange of between the world's two leading producers was very productive," Dr. Hess. "We hope that it is just the beginning of a continuing relationship."

ACCOPaymaster Seed has been the cottonseed business since producing certified cottonseed for around the world. Rankings of the world's largest seed companies include ACCOPaymaster also markets sorghum, and forage hybrids

The coyote or predator call has improved over the years with many brands and varieties on the market. The new calls are not necessarily more effective, however.

Early predator hunters used converted duck calls or fashioned their own reeds to sound like a rabbit in distress.

The experienced predator caller is most successful when an area holding coyotes is found and scouted prior to the first call.

Ideal coyote country can be pastureland, river or creek bottoms, or even weed patches. Since the coyote hunts at night when the rodents are out feeding, it is hard for the predator hunter to find them at night.

Once an area is found, the hunter can pick a hill or mound overlooking a tract of land with cover and place himself along the side of the hill which breaks his outline.

Movement and sound are two things the coyote will

notice first. Do not make quick movements, the potential calling area for several minutes watching for movement in the area. Slowly move head scanning the brush, weeds in front behind you for a slipping up on the "nary" rabbit.

The coyote has an ability to come long directly to your location. Whether you are hunting photographing the coyote prepared before the gets into range.

The sound of coyote of destructive rodents insects, and the spot monetary value to the help compensate for damage he does.

Aside from being the coyote is one of the free self-reliant breed not here on earth BEG of man but IN SPITE

## Soviets-U.S. Exchange Cotton-Breeding Ideas



Tommy Assiter  
206 W. California  
Phone 806-983-2511

**Southwestern Life**  
Person-to-person service for 75 years.

# PROVIDE

**AFFILIATED**  
**W**  
FRESH - SOFT - SMOOTH  
TENDERCRUST  
BREAD IS BETTER

WE RESERVE THE RIGHT TO LIMIT QUANTITIES  
PRICES EFFECTIVE DEC. 4 THRU DEC. 9, 1978

# THOMASON

VENTURE GROCERY & MARKET  
PHONE 652-3346 LOCKNEY, TEXAS WEDNESDAY

**DOUBLE STAMPS**

**VENTURE FOODS**

### Meat Specials

FRESH FRYING CHICKEN

3 HIND QUARTERS  
3 FRONT QUARTERS  
WITH BACKS AND GIBLETS

## Fryers 45¢ LB.

Breasts 79¢ LB  
Thighs  
Drumsticks

COUNTRY PRIDE  
GRADE A BODY FRYERS  
WHOLE

## Fryers 49¢ LB

WRIGHT'S HICKORY SMOKED SLAB  
**Sliced Bacon \$1.29**

WRIGHT'S HICKORY SMOKED BALON  
**Ends & Pieces \$1.29**

SENIOR BLUE BEEF & BEAN  
**Burritos 1 LB. PKG. 99¢**

RAMIREZ FRESH CORN  
**Tortillas 32 OZ. PKG. 59¢**

TENDAMADE CHICKEN FRIED  
**Beef Fritters 1 LB. PKG. \$1.19**

SPRING COLLECTION STONEWARE PLATE  
**Dinner Plate WITH EACH \$3.00 PURCHASE 69¢**

32 Oz. 6 Pack  
**Cokes or 7 UP \$1.29¢**

Plus Deposit



FAMILY PACK CONSISTS OF  
3 HIND QUARTERS  
3 FRONT QUARTERS  
WITH BACKS AND GIBLETS

## Fryers 45¢ LB.

COUNTRY PRIDE  
GRADE A BODY FRYERS  
WHOLE

## Fryers 49¢ LB

CUT UP  
**Fryers 55¢ LB**

## LOW PRICES ARE SANTA HELPERS

RED DELICIOUS

## Apples 89¢

3 LB. POLYBAG

CALIFORNIA SUNKIST  
ORANGES NAVEL 3 LBS \$1.25

TEXAS GREEN  
CABBAGE 12¢

LONG GREEN  
CUCUMBERS 25¢

ALL PURPOSE RUSSET  
POTATOES 20 LB BAG \$1.59

SHURFINE LIGHT OR CARNATION  
**Chunk Tuna 6 1/2 OZ. CAN 69¢**

BEANS  
**Ranch Style 3 300 CANS \$1**

BETTY CROCKER  
**Cake Mixes ASSORTED BOX 69¢**

PERSONNA DOUBLE EDGE  
**Blades 5 CT. PKG. 79¢**

BAYER CHILDREN'S  
**Aspirin 36 CT. BTL. 39¢**

MRS SMITH'S FROZEN APPLE OR  
**Peach Pie 26 OZ. PKG. 89¢**

KRAFT CHEESE FOOD  
**Velveeta 2 LB. BOX \$2.59**

SOFT PARKAY  
**Margarine 2.8 OZ. TUBS 69¢**

### Grocery Specials

DOW SANDWICH 100 CT. PKG.  
**Ziploc Bags 99¢**

KRAFT CREAMY ITALIAN  
**Dressing 8 OZ. BTL. 59¢**

POPS RITE YELLOW  
**Popcorn 2 LB. BAG 59¢**

SANKA INSTANT  
**Coffee 2 OZ. JAR \$1.29**

TURKEY  
**Brown 'n Bags 2 CT. PKG. 59¢**

AMERICAN BEAUTY SHORT CUT  
**Macaroni 12 OZ. PKG. 43¢**

CAMPFIRE MINIATURE  
**Marshmallows 16 OZ. PKGS. \$1**

303 CAN SHURFINE  
**Spinach 3/\$1.00**

303 CAN LIBBY'S  
**Pumpkin 3/\$1.00**

303 CAN DELMONTE  
**Pears 2/79¢**

303 CAN SHURFINE  
**SLICES HALVES Peaches 2/89¢**

SHURFINE 303 Can  
**Tomatoes 2/79¢**

VIVA 140 Ct.  
**Napkins 2/\$1.00**

## Charles Stenholm Selected for Congressional Staff

Congressman-elect Charles Stenholm of Stamford announced his choices to serve on his staff recently. He will be employing two West Texans along with several Washingtonians with West Texas ties in his Washington D.C. office.

James Morgan, 30 De Leon attorney and farmer, will serve as Stenholm's legislative assistant in charge of agricultural affairs. Robert Dyer, 30-year-old rancher, of Cisco will serve as an aide concerned with energy-related matters. Stenholm remarked, "I am pleased to have these men going with me to Washington. They are young, hard-working, and will serve the people of the 17th District well."

Judith Curtis, formerly retiring Congressman Omar Burleson's Washington office manager, will be the new congressman's Administrative Assistant. She joined Burleson's staff 22 years ago and has worked and traveled extensively throughout the district.

Carlton H. "Sonny" Lee, formerly of Snyder and now a student at American University in Washington, will be a part-time employee in the office. His studies and interests are in foreign affairs, and will concentrate primarily on foreign agricultural

markets along with duties. Ken Walter, son of a former employee in the lesson office, will be a legislative assistant. "The District office congressman is his ear to the people," Stenholm said. "Members of the district must listen and be visible to the people of the District."

Bill Longley, who campaign manager for Stenholm, will be manager of the district office in Stamford. Dale King, Anson who worked in Burleson's district office, will be representative and B.F. III of Roscoe will be field representative. A schedule will be announced early next year for King Cain as the needs of the district become evident.

Elaine Talley, press secretary in Burleson's district office, will be in the Abilene branch to be located in the Burleson Federal Building. "The congressional extremely important in doing the work that me done by a congressman," Stenholm remarked. "I am proud to have these working with me to you, the people of the District."

THIS CHRISTMAS GIVE HIM HIS FAVORITE VAN HEUSEN

**Brown's**  
DEPARTMENT STORE  
104-06 North Main  
Lockney, Texas

**Post Office**  
The U.S. Postal Service is...  
The preferred area for site...  
is an area in or adjacent...  
township business district...  
is 30,000 square feet...  
dimensions of 150 by 200...  
Copies of the advertisement...

**SENIOR CITIZENS TO MEET**  
The Senior Citizens of Lockney...  
for their regular monthly...  
meeting at 10:00 o'clock...  
December 7 at Fellowship H...  
First United Methodist Church...  
is welcome.

**THE LOCKNEY BEACON**  
Box 187  
Lockney, Texas 79241  
Published each Sunday  
Thursday at 220 S. Main,  
Lockney, Texas 79241.  
Publication No. 317220.  
Randell Tooley, Publisher,  
James Huggins, Editor,  
Second Class Postage Paid  
Lockney, Texas 79241.  
Subscription Rates: Local  
\$11.50 per year. Out of state  
\$15.00 per year.

**LOOK!**  
HANDY ANDY!  
**PECAN SHELLERS**  
FOOLPROOF  
STRONG AND  
DURABLE  
SEE H.B. FOSTER  
552 2233  
LOCKNEY

**Las Mar**  
Now Open  
10 a.m.  
S...  
\*...  
\*...  
\*...  
Mr. & Mrs. Sil...  
Main & Locust

**SHURFRESH MILK**  
WE GIVE THESE  
**Oranges** LB.  
**Grapefruit** LB.  
ALL PURPOSE  
**Potatoes** 10 LB.  
YELLOW  
**Onions** LB.  
SHURFINE  
**Tuna** 6 1/2 OZ. 6  
PACKED IN WA...  
6-32 OZ. BT...  
**Cokes** \$1  
FR...  
GIF...  
WRAPPIN...  
Brown's  
DEPARTMENT STORE  
Lockney, Texas  
104-06 North Main  
PLUS DEPO





Dear Santa Claus,  
I enjoyed seeing you at the South Plains Mall. I look forward to seeing you every year. I hope you have been feeling well and your reindeers, too.  
I hope you elves have made enough toys for all the little boys and girls around the world. I thought I would tell you again what I would like to have for Christmas, if you have these: a tool box, and some tools, a dot-to-dot book and some trucks.  
Santa, take good care of yourself and don't get a cold.  
Love  
Alex

P.S. I have been very good & nice to my brother & my parents & my friends. My brother has a hurt leg and I help him.  
Dear Santa,  
My name is Cory Franklin Kemp and I am a little boy 5 years old. I am in Kindergarten and my teachers name is Mrs. Crader.  
I have tried to be a pretty good boy this year. If you think I have been, would you please bring me a big dump truck and a loader? Also please bring my big brother something and leave some surprises in our stockings.  
I will leave you some hot chocolate and cookies by our Christmas tree. Please remember boys and girls all over the world.  
Thank you Santa,  
I love you,  
Cory Kemp

Dear Santa,  
My name is Johnny Lamas and I am in fourth grade I think I have been a nice boy all these year.  
I want a mini bike for Christmas and a spider man xo.  
Sign  
Johnny Lamas

**FLOYD DATA**  
Mrs. Irene Dorrell, who is the mother of Florine Jarnagin, is a patient in Methodist hospital in Lubbock. She is undergoing surgery for a broken hip. Mrs. Dorrell was a longtime resident of Floydada and is currently a resident in a retirement home in Lubbock.

**FLOYD DATA**  
Mrs. C.E. Bartlett is a patient in Nichols Hospital in Lubbock. She is a resident of Heritage Homes.

**FLOYD DATA**  
Baird Bishop continues to be a patient in Methodist hospital in Lubbock.



The first recorded coffee houses, in 16th century Turkey, were known as 'mekteb-irfan,' meaning 'schools of the cultured.'

**Get Ready... to save**  
Truckload Prices



Where else can you buy an American made 7 gauge, 22" disk for \$14.50?  
We can fit most popular makes. Just give us the disk center hole size for the quote.



Brown-McMurtry Impl.  
Silverton, Texas  
808-823-2441

For The Finest In Men's Fashion,  
See Our New Lines From...  
**Curlee Brown's**  
DEPARTMENT STORE

**RCA** For The Best  
Price & Service On RCA T.V.'s  
See  
**MIZE PHARMACY & T.V.**  
102 S. MAIN LOCKNEY 652-2435

Robes 1/4 off  
Long Dresses 1/4 off  
5 Racks At 1/2 Price  
**Roye's**  
Cosmetics & Apparel  
204 S MAIN 983-50

**BUDDY**  
STORE HOURS  
MON.-SAT. 8a.m. - 9p.m.  
SUN. 9p.m. - 8p.m.  
WE RESERVE THE RIGHT TO LIMIT QUANTITIES

**THE CABLE & REGULAR TELEVISION PROGRAMS SCHEDULE WILL APPEAR IN THIS NEWSPAPER EACH SUNDAY SPONSORED BY THE MERCHANTS ON THESE PAGES!!!**

**SUNDAY 12/03/78**

AM	WTCH CH. 17 Atlanta Cable 4	KTXT CH. 5 Lubbock Cable 5	PTL CH. 6 Charlotte Cable 6	KMCC CH. 28 Lubbock Cable 7	WGN CH. 9 Chicago Cable 8	KCBD CH. 11 Lubbock Cable 11	KLBK CH. 13 Lubbock Cable 13
----	-----------------------------------	----------------------------------	-----------------------------------	-----------------------------------	---------------------------------	------------------------------------	------------------------------------

7:00	Three Stooges	No Programs	Sunday Celebration	Praise the Lord Club	News Buyer's Forum	Jimmy Swagart Jimmy Swagart	This Is the Life As We See It
8:00	Lost in Space		Rex Humbar	Jimmy Swagart Prophecy Newsreel	Mass for Shut-ins Heritage of Faith	Oral Roberts Religious Programs	James Robison Presents Amazing Grace
9:00	Hazel		Old Time Gospel Hour	Home Show Kids Are People Too	Issues Unlimited Abbott and Costello	Rex Humbar	Old Time Gospel Hour
10:00	The Top		Praise the Lord Club		Tarzan		Sunday School
11:00				Animals, Animals		Living Your Religion	Face the Nation
12:00				Baptist Church	Cisco Kid Lone Ranger	Better Life Sportscope	Tom Landry NFL Today
1:00					College Football '78 Fanfarria Felcon		NY Giants
2:00	Maverick		Amazing Grace	Si Se Puede!	Bachelor		
3:00	Movie: 'The Buster Keaton Story'		Service	Club PTL	Wrestling	NFL Football: 'New England at'	Mixed Team Championship
4:00			Firing Line		Pop! Goes the Country Issues and Answers		Dallas
5:00	Championship Wrestling	The Long Search: West Meets East	Larry Jones Ministry Human Dimension	Lay Witness	Fred Akers Show	Star Trek	Last of the Wild CBS News

**SUNDAY 12/03/78**

PM	WTCH CH. 17 Atlanta Cable 4	KTXT CH. 5 Lubbock Cable 5	PTL CH. 6 Charlotte Cable 6	KMCC CH. 28 Lubbock Cable 7	WGN CH. 9 Chicago Cable 8	KCBD CH. 11 Lubbock Cable 11	KLBK CH. 13 Lubbock Cable 13
----	-----------------------------------	----------------------------------	-----------------------------------	-----------------------------------	---------------------------------	------------------------------------	------------------------------------

6:00	Star Trek	Love and Marriage Victory Garden	James Robison Presents Kroeze Brothers	Hardy Boys	Program Cont'd Next Step Beyond	Wonderful World of Disney	60 Minutes
7:00	Movie: 'Rope of Sand'	Christmas Eve on Sesame Street	Ralph Wilkerson 10 Commandments	Battlestar Galactica	In Search of... Hee Haw	Bob Hope Special	All in the Family Alice
8:00		Masterpiece Theatre: Duchess of Duke Street	Praise the Lord Club	NFL Football: Denver at Oakland	Hee Haw Honey	'Centennial' Part 6	Kaz
9:00	Dragnet	G. E. D.			Lawrence Walk		Dallas
10:00	Open Up	U.S.A.	Calvary Temple		News	Movie: 'Beau Geste'	Bill Dance Outdoors
11:00			Happy Hunters Dan Griffin Show	Football Highlights Praise the		Horn'	Movie: 'Psych 59'
12:00				Lord Club	Nightbeat	News Sign Off	Sign Off

**WINTER SPECIALS**  
ANTI-FREEZE INSTALLED GAL \$4.00  
OIL FILTERS ALL MAKES AND MODELS REG \$5.95 \$3.50  
AIR FILTERS ALL MAKES AND MODELS REG \$8.90 \$4.85  
983-2168 **M&N AUTO** 507 E. Missouri

**JERRY ULMER'S TEXAS INSULATION SYSTEMS**  
"Insulation Doesn't Cost - It Pays!"  
RESIDENTIAL COMMERCIAL INDUSTRIAL AGRICULTURAL  
IN LOCKNEY CALL 652-3348  
IN FLOYDADA CALL 983-5377

**NICHOLS OIL CO.**  
Featuring  
Fina Products, DX Oils  
Safemark & Goodyear Tires  
Hours 7a.m. - 8p.m.  
Hwy. 70, Floydada, East 983-3144

**MONDAY - FRIDAY**

AM	WTCH CH. 17 Atlanta Cable 4	KTXT CH. 5 Lubbock Cable 5	PTL CH. 6 Charlotte Cable 6	KMCC CH. 28 Lubbock Cable 7	WGN CH. 9 Chicago Cable 8	KCBD CH. 11 Lubbock Cable 11	KLBK CH. 13 Lubbock Cable 13
7:00	Leave it to Beaver Hazel	No Programs	Accent on Music	Good Morning America	Ray Rayner and Friends	Today in Texas Today	CBS Morning News
8:00	Lucy Show	Over Easy	Varied Programs		Family Affair		Captain Kangaroo
9:00	Movie	Mister Rogers Neighborhood Varied Programs	Tammy Faye Show	Phil Donahue	Movie	People Place Jeopardy	Sunshine Sally Price Is Right
10:00			Praise the Lord Club	Happy Days Family Feud		High Rollers Wheel of Fortune	Love of Life
11:00	Love, American Style	Sesame Street		\$20,000 Pyramid Eleven-Thirty	Phil Donahue	America Alive	Young and the Restless Search for Tomorrow
12:00		Sign Off	Gerald Darstine Varied Programs	All My Children	Bozo's Circus	News	News As the World Turns
1:00	I Love Lucy			Praise the Lord Club	Bewitched	The Doctors	Guiding Light
2:00	Mickey Mouse Club Flintstones	Lilias, Yoga And You Villa Alegre	Dr. Scott on Hebrews	General Hospital	Flintstones	Another World	M*A*S*H
3:00	Space Giants	Sesame Street		Edge of Night		Hollywood Squares Gligan's Island	Joey and Redhawk All in the Family
4:00	I Dream of Jeannie Beverly Hills	Mister Rogers Neighborhood Electric Company	Good News	Little Rascals Brady Bunch	Gligan's Island I Dream of Jeannie	Beverly Hills Mayberry, R.F.D.	My Three Sons Gunsmoke
5:00	Andy Griffith My Three Sons	Varied Programs	Accent on Music	ABC News	Andy Griffith My Three Sons	Get Smart	NBC News CBS News

**MONDAY 12/04/78**

PM	WTCH CH. 17 Atlanta Cable 4	KTXT CH. 5 Lubbock Cable 5	PTL CH. 6 Charlotte Cable 6	KMCC CH. 28 Lubbock Cable 7	WGN CH. 9 Chicago Cable 8	KCBD CH. 11 Lubbock Cable 11	KLBK CH. 13 Lubbock Cable 13
6:00	Carol Burnett and Friends Sanford and Son	Introduction /Psychology MacNeil-Lehrer Regt.	Tammy Faye Show Adventures in Life	News	Dick Van Dyke	News	News
7:00	Let's Go To The Races Falcon Show	Evening at Symphony	Hour of Power	Barbie Doll for Xmas	Carol Burnett	Little House on the Prairie	The White Shadow
8:00	Movie: 'Arrivederci Baby'	Max Ellison	Praise the Lord Club	NFL Football: Chicago at San Diego	Movie: 'Far Horizons'	Movie: 'Suddenly, Love'	M*A*S*H One Day at a Time
9:00		Aloha Experiment Economically Speaking					Lou Grant
10:00	Love Experts	Dick Cavett	Good News	News	News	News	News
11:00	Movie: 'Saturday's'	Captioned ABC News	Abundant Living	News	Movie: 'Dead Reckoning'	Tonight Show	Rockford Files
12:00		Hero	Sign Off	Accent on Music	Grant Teaff Show Sign Off		Movie: 'McMillan &'

**TUESDAY 12/05/78**

PM	WTCH CH. 17 Atlanta Cable 4	KTXT CH. 5 Lubbock Cable 5	PTL CH. 6 Charlotte Cable 6	KMCC CH. 28 Lubbock Cable 7	WGN CH. 9 Chicago Cable 8	KCBD CH. 11 Lubbock Cable 11	KLBK CH. 13 Lubbock Cable 13
6:00	Carol Burnett and Friends Sanford and Son	Introduction /Psychology MacNeil-Lehrer Regt.	Tammy Faye Show Celebration	Bewitched	Odd Couple	Adam-12	Joker's Wild
7:00	World at War	Soundstage: Fifth Anniversary Special	You'll Love It Oral Roberts	Happy Days Laverne and Shirley	Carol Burnett	Secrets of Loving	Paper Chase
8:00	Movie: 'That Certain Feeling'	Session	Praise the Lord Club	Three's Company Taxi	Movie: 'Firecreek'	Movie: 'My Husband Is Missing'	The Kennedy Center Honors: A Celebration
9:00		Masterpiece Theatre: Duchess of Duke Street		ABC News Closeup			of the Performing Arts
10:00	Love Experts	Dick Cavett	Good News	News	News	News	News
11:00	Movie: 'Stopover'	Captioned ABC News	Christ Is the Answer	Best of Donahue	Movie: 'Wait Until'	Tonight Show	Barnaby Jones
12:00		Toyko	Sign Off	Accent on Music			

**WEDNESDAY**

PM	WTCH CH. 17 Atlanta Cable 4	KTXT CH. 5 Lubbock Cable 5	PTL CH. 6 Charlotte Cable 6	KMCC CH. 28 Lubbock Cable 7	WGN CH. 9 Chicago Cable 8	KCBD CH. 11 Lubbock Cable 11	KLBK CH. 13 Lubbock Cable 13
6:00	Carol Burnett and Friends Sanford and Son	Bewitched	Odd Couple	Adam-12	Joker's Wild		
7:00	Movie: 'Ulysses'		Family				
8:00	Movie: 'Ulysses'		Family				
9:00			Family				
10:00	Love Experts	Dick Cavett	Good News	News	News	News	News
11:00	Movie: 'Ulysses'		Family				
12:00			Family				

**THURSDAY**

PM	WTCH CH. 17 Atlanta Cable 4	KTXT CH. 5 Lubbock Cable 5	PTL CH. 6 Charlotte Cable 6	KMCC CH. 28 Lubbock Cable 7	WGN CH. 9 Chicago Cable 8	KCBD CH. 11 Lubbock Cable 11	KLBK CH. 13 Lubbock Cable 13
6:00	Carol Burnett and Friends Sanford and Son	Bewitched	Odd Couple	Adam-12	Joker's Wild		
7:00	Movie: 'Ulysses'		Family				
8:00	Movie: 'Ulysses'		Family				
9:00			Family				
10:00	Love Experts	Dick Cavett	Good News	News	News	News	News
11:00	Movie: 'Ulysses'		Family				
12:00			Family				

**FRIDAY 12/06/78**

PM	WTCH CH. 17 Atlanta Cable 4	KTXT CH. 5 Lubbock Cable 5	PTL CH. 6 Charlotte Cable 6	KMCC CH. 28 Lubbock Cable 7	WGN CH. 9 Chicago Cable 8	KCBD CH. 11 Lubbock Cable 11	KLBK CH. 13 Lubbock Cable 13
6:00	Carol Burnett and Friends Sanford and Son	Bewitched	Odd Couple	Adam-12	Joker's Wild		
7:00	Movie: 'Ulysses'		Family				
8:00	Movie: 'Ulysses'		Family				
9:00			Family				
10:00	Love Experts	Dick Cavett	Good News	News	News	News	News
11:00	Movie: 'Ulysses'		Family				
12:00			Family				

**SATURDAY**

AM	WTCH CH. 17 Atlanta Cable 4	KTXT CH. 5 Lubbock Cable 5	PTL CH. 6 Charlotte Cable 6	KMCC CH. 28 Lubbock Cable 7	WGN CH. 9 Chicago Cable 8	KCBD CH. 11 Lubbock Cable 11	KLBK CH. 13 Lubbock Cable 13
7:00	Ultraman						
8:00	Star Trek						

**Lockney Meat**  
Hamburger 99¢  
Inspected Plant Custom  
Frozen, and Fully Guarant  
Financing Available On Free  
Lockney, Tx.

**Robes**  
**Long Dresses**  
**Racks At**  
**Roye's**  
 1/4 off  
 1/4 off  
 1/2 Price  
 5 MAIN  
 Cosmetics & Apparel  
 983-5082

**BUDDY'S**  
 STORE HOURS  
 MON.-SAT. 8a.m. - 9p.m.  
 SUN. 9p.m. - 8p.m.  
 WE RESERVE THE RIGHT  
 TO LIMIT QUANTITIES  
 DOUBLE  
 WEDNESDAY

WGN CH. 9 Chicago Cable 8	KCBK CH. 11 Lubbock Cable 11	KLBK CH. 13 Lubbock Cable 13
Ray Rayner and Friends	Today in Texas	CBS Morning News
Family Affair	Captain Kangaroo	
Movie	People Place Jeopardy	Sunshine Price Is Right
High Rollers	Wheel of Fortune	Love of Life
America Alive	Young and the Restless Search for Tomorrow	
News	News	News
Days of Our Lives	As the World Turns	
The Doctors	Guiding Light	
Another World	M*A*S*H	
Hollywood Squares	Joey and Redhawk All in the Family	
Beverly Hillsbillies	My Three Sons	
Get Smart	Gunslinger	
NBC News	CBS News	
News	News	News
Adam-12	Joker's Wild	
Little House on the Prairie	The White Shadow	
Movie: 'Sudden Love'	M*A*S*H	
Lou Grant		
News	News	News
Tonight Show	Rockford Files	
Movie: 'McMillan & Wife: Blues for Sally M'		
News	News	News
Adam-12	Joker's Wild	
Secrets of Loving	Paper Chase	
Movie: 'My Husband Is Missing'	The Kennedy Center Honors: A Celebration	
of the Performing Arts		
News	News	News
Tonight Show	Barnaby Jones	
Movie: 'Cut Man'		
Tomorrow	Caper	

PTL CH. 6 Charlotte Cable 6	KMCC CH. 28 Lubbock Cable 7	WGN CH. 9 Chicago Cable 8	KCBK CH. 11 Lubbock Cable 11	KLBK CH. 13 Lubbock Cable 13
Tammy Faye Show	News	Dick Van Dyke	News	News
Gospel Hour	Bewitched	Odd Couple	Adam-12	Joker's Wild
Eight Is Enough	Carol Burnett	Dick Clark's Live Wednesday	Rudolph the Red-Nosed Reindeer	
Charlie's Angels	Movie: 'Fathom'	Movie: 'Steel Cowboy'	Bing Crosby: The Christmas Years	
Vega\$			Johnny Cash Christmas Show	
Good News	News	News	News	News
Festival of Praise	Bob Newhart	Movie: 'Chuka'	Tonight Show	Movie: 'The Love Boat'
Accent on Music	Police Woman			
S.W.A.T.			Tomorrow	Kojak
			Nightbeat	

PTL CH. 6 Charlotte Cable 6	KMCC CH. 28 Lubbock Cable 7	WGN CH. 9 Chicago Cable 8	KCBK CH. 11 Lubbock Cable 11	KLBK CH. 13 Lubbock Cable 13
Tammy Faye Show	News	Dick Van Dyke	News	News
Sharing	Bewitched	Odd Couple	Adam-12	Joker's Wild
Dig Time Gospel Hour	Teletown: United Negro College Fund	Movie: 'Toral Toral'	Project U.F.O.	Waltons
Praise the Lord Club	Barney Miller	Soap	Quincy	A Country Christmas
Family			David Cassidy Man Undercover	An All-Star Tribute to Jimmy Stewart
Good News	News	News	News	News
Rise and Be Healed	America 2Night	Movie: 'Streets of San Francisco'	Tonight Show	M*A*S*H
Accent on Music	Starsky & Hutch			Movie: 'Columbo: A Stitch in Crime'
S.W.A.T.			Tomorrow	
			Nightbeat	News/Sign Off

PTL CH. 6 Charlotte Cable 6	KMCC CH. 28 Lubbock Cable 7	WGN CH. 9 Chicago Cable 8	KCBK CH. 11 Lubbock Cable 11	KLBK CH. 13 Lubbock Cable 13
Tammy Faye Show	News	Dick Van Dyke	News	News
Happy Hour	Bewitched	Odd Couple	Night Before Christmas	Joker's Wild
Jewish Voice	Donny & Marie	Carol Burnett	Diff'rent Strokes	A Special Sesame Street Christmas
Transformed	Hogan's Heroes		Who's Watching the Kids	
Praise the Lord Club	Movie: 'Gift of Love'	Movie: 'The Bastard Part 1'	Rockford Files	Young and Foolish
			Eddie Capra Mysteries	Flying High
Good News	News	News	News	News
Revival Fires	America 2Night	Movie: 'One Eyed Jacks'	Tonight Show	New Avengers
Accent on Music	Baretta			
Sign Off			Midnight Special	Movie: 'Nightmare'
			Nightbeat	

PTL CH. 6 Charlotte Cable 6	KMCC CH. 28 Lubbock Cable 7	WGN CH. 9 Chicago Cable 8	KCBK CH. 11 Lubbock Cable 11	KLBK CH. 13 Lubbock Cable 13
Crossroads	Scooby's All-Stars	U.S. Farm Report	Galaxy Good-Byes Fantastic Four	All-New Popeye Hour
Let the Sunshine In		Ray Rayner and Friends	Gadzilla Super 90	Bugs Bunny/Road Runner Show
Adventure Club	Challenge of the	Movie: 'Bower to Baghdad'		

9:00	Movie: 'Son of Captain Blood'	Introduction / Psychology	Jot/Storyline Focus on Listen The Athletics	Superfriends		Daffy Duck	Tarzan and the Super
10:00			Praise the Lord Club	Fangface	Movie: 'Wilderness Journey'	Yogi's Space Race	Seven
11:00	Movie: 'Young Fury'			Weekend Special American Bandstand	Charlando	Fabulous Funnies U.S. Farm Report	Space Academy Fat Albert & Cosby Kids
12:00		Adams Chronicles	Joy in My Time To Live Holy Spirit in the Now	NCAA Football TBA	Movie: 'Arizona'	NFL Football: Baltimore at Pittsburgh	Ark II 30 Minutes
1:00	Movie: 'Aaron Slick from Punkin Crick'	G. E. D. Cinematic Eye					Capitol Eye Film Feature
2:00		Movie: 'L'Avventura'		Gerald Berstine			See How Honeys NFL Today
3:00	Movie: 'The Breaking Point'		Larry Lea Presents		Costello in Buck Privates Come	Grand Prix of Bowling	NFL Football: Minnesota at Detroit
4:00			Power Praise	ABC's Wide World of Sports	Soul Train		
5:00	Championship Wrestling	Aztlan Black Perspective	Dan Griffin Happy Hunters	Rays of Hope	Andy Griffith My Three Sons	Wild Kingdom	

PTL CH. 6 Charlotte Cable 6	KMCC CH. 28 Lubbock Cable 7	WGN CH. 9 Chicago Cable 8	KCBK CH. 11 Lubbock Cable 11	KLBK CH. 13 Lubbock Cable 13
Tammy Faye Show	News	Dick Van Dyke	News	News
Sharing	Bewitched	Odd Couple	Adam-12	Joker's Wild
Dig Time Gospel Hour	Teletown: United Negro College Fund	Movie: 'Toral Toral'	Project U.F.O.	Waltons
Praise the Lord Club	Barney Miller	Soap	Quincy	A Country Christmas
Family			David Cassidy Man Undercover	An All-Star Tribute to Jimmy Stewart
Good News	News	News	News	News
Rise and Be Healed	America 2Night	Movie: 'Streets of San Francisco'	Tonight Show	M*A*S*H
Accent on Music	Starsky & Hutch			Movie: 'Columbo: A Stitch in Crime'
S.W.A.T.			Tomorrow	
			Nightbeat	News/Sign Off

# TWO NIGHTS ON THE HOUSE

Nothing could cost less than the preview of Home Box Office on cable TV. This Tuesday and Wednesday, December 12 & 13, see the kind of movies, sports, entertainment and specials that Home Box Office is all about.

**TUESDAY, DECEMBER 12**  
**5 PM** "The Medusa Touch." Horror fills the screen when Richard Burton and Lee Remick star in this movie about the highly unnatural demise of a man with awesome supernatural powers.

**7 PM** "The Spy Who Loved Me." Nobody does it better than Roger Moore as Ian Fleming's James Bond 007. Watch this one—it's the biggest, the best, it's Bond and beyond.

**9:30 PM** SRO: "At the Fair." HBO's Standing Room Only brings you the unmatched and spectacular Minnesota State Fair. Taken from 50 hours of taping, "At the Fair" stars Pat and Debby Boone and Seals & Crofts.

**11 PM** "Thunder and Lightning." Powerful action as David Carradine and Kate Jackson bust up one of the biggest moonshine rackets in the country. Hilarious, sure shootin' all the way!

This December 12 & 13, look twice at what you're missing.

**WEDNESDAY, DECEMBER 13**  
**5 PM** "Old Yeller!" Puppy love takes over in the unequalled Walt Disney adventure for the whole family. Dorothy McGuire and Fess Parker star in the story of a frontier family who owe their lives to their dog "Old Yeller."

**7 PM** USC vs Duke. The Trojans of Southern California and the Blue Devils of North Carolina battle it out once again. The action's a sure thing, so get your seats now!

**9 PM** "Rollercoaster." Hang onto your seats for this suspense melodrama. A killer is on the loose, and no one knows when he will strike next. Full of fun and suspense, and starring Richard Widmark and George Segal.



## Courthouse NEWS

**WARRANTY DEEDS**  
 Floyd Co. Memorial Park to Lee Trice Lot 6 & 8, S-3, B-5, Garden No. 2.

I.W.A. Massie to John Key West, All L-7, 8, B-4, Texas Add., Floydada.  
 George R. Finley et al to Alpha Hill, L-1, B-46, Floydada.  
 E.A. Noland et al to Joe Richard Noland, NW 1/4, S-83, B-D-3, Floyd.  
 Theodore Hershel Carthel and Olga E. Tannahill to co-trustees: Amarillo Nat.; Chester F. Carthel, L-1, 2, B-4, Floyd.  
 Obe E. Durham et al to Juan Morales et al N.70 L-14, 15, 16, B-29 Lockney.  
 Earl Bishop et al to Willie Windom et al, L-4, B-56, Floydada.  
 L.J. Welborn et al to J.M. Willson Jr., L-3, B-138, Floydada.  
 James H. Robertson to Harold B. Robertson, 160 acres, Floyd.  
 Geraldine Massie Murray to A.C. Carthel, L-5 — 7, B-21, Floydada.  
 Hollis Bond and J.P. Moss, executors Massie Will, to A.C. Carthel, L-4, B-21, Floydada.  
 Mrs. Roddy Sims of Nash-

ville and Mrs. J.S. Tanner to A.C. Carthel, L-6, B-21, Floydada.  
 Opal D. Ashton and Clarence L. Ashton et al to Mable Laminack, L-6, B-14, Andrews add., Floydada.  
 Belinda Coats and Andy Coats to Ruben de Leon et al, L-14, 15, B-122, Floydada.  
 Higinio Garcia et al to Alejos De Hoyos et al, L-16, B-126, Floydada.  
 Faye Harston to H.B. Foster et al, L-1, 2, 3, B-7, Lockney.  
 J.M. Willson Jr. et al to Elmer Wayne Lipham et al, L-3, B-138, Floydada.  
**MARRIAGE LICENSE**  
 Raymond Anthony Spoth Jr. and Sheryl Denise Cates.  
 Ronald Dee Casey and Kimmie Jeanine Harden.  
 Jaime Cuellar and Maria Flores DeLa Fuente.  
 Roland Gerald Bennett and Jan Marie Samuels.

**PROBATE**  
 Ruby D. White, will and app. to probate.  
 Raymond H. Grubbs, will and app. to probate.  
 Peggy Yvonne Young appl. for guardianship.  
 CASES FILED  
 Mrs. E.E. Boothe vs. Bo Johnson. Suit for rent.

## Savings and loan businesses feel lending crunch

**AUSTIN** — Savings and loan associations, caught between rising interest rates for money they must borrow and buy to make home loans and a 10 percent usury ceiling, may not be in the lending business much longer.

Durward Curlee, executive vice president of the Texas Savings and Loan League, says Texas associations are being squeezed out of the home loan market by rising prime interest rates, and the fact that home loans currently fall under the 10 percent interest rate ceiling in the Texas Constitution.

The problem, Curlee notes, is that it's costing the associations more to get funds — including the cost of paying higher interest rates to savers on their funds, particularly for certificates of deposit.

Lending now is at 5.78 percent, which amortizes at 10 percent over the life of the loan, Curlee says.

**MONEY OBTAINED** by association earlier in the year is still "in the pipeline," he reports, but those funds aren't likely to last much longer — and probably will be gone by mid-December or early January.

In the meantime, he notes, there appears to be no slackening of demand for housing.

Some associations may continue making loans with money costing them more than 10 percent for a while, and might keep the practice up if they believed the tight money period is going to last only a short while, Curlee says.

However, he adds, lenders feel the high interest rates will have a "longer duration than in the past."

**THE SECONDARY market** — where associations sell loans to another buyer — is "dead in Texas" for "all practical purposes," he says, adding, "a Texas loan cannot be sold outside the state."

Part of the reason for that is that other states, such as California, are permitting higher interest rates — and Curlee says associations may ask lawmakers in January to permit them to make home loans at over 10 percent.

Apart from such secondary market sales and new savings (and borrowed funds), the only funds for savings and loan associations are from loan repayments — and those funds accounted for only 10-15 percent of the lending activity by associations last year, Curlee says.

"It could get really tough," he reports.

**IF THINGS STAY** "exactly as they are," there could be a 30-60 percent drop in home lending in Texas — with resulting problems for the home industry.

The result could be, he says, loss of billions of dollars to the Texas economy, and increased unemployment.

There may be some legislative and consumer resistance to the idea of allowing home loans by savings and loan associations to exceed 10 percent — but Curlee notes credit unions are allowed to make such loans at up to 12 percent, and national banks at up to 10.5 percent.

In California, demand dropped initially when rates paused 10 percent, Curlee says, but the demand has — and rates there are running 10.25 percent.

## Do You Know How Much Water You Are Really Using?

(UPI)—People are not aware of how much water they are really using, says Richard Weickart of the Water Quality Association.

Besides the eight ounces they drink in each glass of water, there's another 16 ounces that goes for washing and rinsing—a total of 24.  
 "But that's only the beginning," says Weickart. Pointing out that most household faucets deliver 400 to 600 ounces of water a minute—50 to 75 glassfuls, he adds, "If you let the water run for 15 seconds before filling your glass, it means you may actually be wasting 15 or 20 glassfuls for every glass you drink. Is it any wonder the average person uses 160 gallons of water a day? They're unaware of how much they're using—and how much they could save by exercising just a little care."

**HOLS OIL CO.**  
 Featuring  
 Products, DX Oils  
 Park & Goodyear Tires  
 7a.m.—8p.m.  
 East 983-3144

Preston  
**burger** lb. 99¢ Milk Gal. \$1.75  
 USDA Inspected Plant Custom Processing,  
 Wholesale and Retail Meats, Cut, Wrapped,  
 Frozen, and Fully Guaranteed.  
 Financing Available On Freezer Beef  
**Lockney Meat Co.**  
 Lockney, Tx. 652-3305

**HEO** HBO IS SOMETHING ELSE  
 WGN Chicago Now On Channel 8  
 CBN Is Temporarily On Channel 2  
**Cable T.V. Of Floydada**  
 Phone 983-2911 Floydada 119 E. Kentucky

# LOCKNEY GENERAL Hospital Report

Robert Peel, Ralls, adm. 11-11 - dis. 11-22.  
 Myrtle Allen, Lockney, adm. 11-12 - dis. 11-22.  
 Virgie Samford, Lockney, adm. 11-12 - dis. 11-16.  
 Iva Simpson, Floydada, adm. 11-13 - dis. 11-20.  
 Dudley Graham, Floydada, adm. 11-13 - dis. 11-24.  
 Thomas L. Graham, Floydada, adm. 11-13 - dis. 11-17.  
 Donna Hernandez, Lockney, adm. 11-14 - dis. 11-17.  
 Lucile Willis, Floydada, adm. 11-14 - dis. 11-21.  
 Flora Warren, Floydada, adm. 11-16 - dis. 11-22.  
 Margie Womack, Floydada, adm. 11-16 - dis. 11-24.  
 Ida Wilson, Lockney, adm. 11-16 - dis. 11-22.  
 Frederick W. Ayers, Lockney, adm. 11-17 continues care.  
 Faye Guerrero, Olton, adm. 11-16, baby boy Santos, born 11-16 - dis. 11-18.  
 Theresa Hallman, Lubbock, adm. 11-19, baby boy Terrod, born 11-19 - dis. 11-21.  
 Ivan Thompson, Lockney, adm. 11-19 - dis. 11-22.  
 George Thompson, Lockney, adm. 11-20 - dis. 11-23.  
 Maria Guadalupe Ruiz, Ralls, adm. 11-24, baby boy Francisco, born 11-24 - dis. 11-25.  
 Genoveva Rodriguez, Lockney adm. 11-25, baby boy Eugene, born 11-25 - dis. 11-25.  
 Ruby Muncy, Lockney, adm. 11-25 continues care.  
 D.D. Tate, Lockney, adm. 11-26, continues care.  
 Corina Gonzales, Lockney, adm. 11-27, baby boy Johnny Jr., born 11-27 - dis. 11-29.  
 Mabel Andrea, Aiken, adm. 11-27, continues care.  
 Lonnie Hernandez, Floydada, adm. 11-28, continues care.  
 Sarah Diaz, Plainview, adm. 11-28, continues care.  
 James Robert Scott, Tullia, adm. 11-29, continues care.  
 Anna Shugart, Lockney, adm. 11-29, continues care.  
 Clara Harris, Floydada, adm. 11-30, continues care.  
 Mary Torrez, Plainview, adm. 11-29, continues care.

## Quitaque News

The weatherman tried his best during November to make us forget the beautiful Indian Summer days that we had enjoyed earlier in the fall. During the month there was rain, fog, drizzles, frost and occasionally a few hours of sunshine. It all added up to EXCEEDINGLY POOR harvest conditions, and as a result very few crops have been harvested as we enter December. Under the Caprock the cotton is still much better than anyone thought it could be, and most of it is open and ready for harvest. The winter and pastures are also in excellent shape, so we will really need now to get things back on the right track as a good stretch of PRETTY WEATHER.

Ordinarily at this time of year the peanut harvest across the Valley has been completed, but this year the rainy weather stopped things right in the midst of harvest. A few growers managed to get their peanuts to the trading station before the bad weather hit, but most of them were caught with hundreds of sacks in the field, and this necessitated turning the sacks daily to keep the peanuts from molding. It is ALREADY EVIDENT that the grades won't be as good as they have been in years past, and everybody is just hoping they can finish the harvest before further damage is done.

The weather jinx continued for Aoudad sheep hunters again this year, for much of the bad weather occurred during the two week Aoudad hunting season in November. It seems that bad weather has a way of harrasing the Aoudad hunter, regardless of the time of year that the hunt is held. When the open hunting season was in January, hunters braved some bone-chilling zero temperatures, along with snow and bitter cold winds. Then after the season was moved to November, there was intermittent cold, mixed with fogs, drizzles and conditions



Facts from a pro on driving to survive.

**Q.** This past summer I saw a long line of army vehicles dominating one lane of the highway. Do they have a right to do this? E.B., El Paso

**A.** A Texas law calls for vehicles traveling in convoy to leave sufficient space between one another so that an overtaking car may enter and occupy that space without danger.

**Q.** Is the 55 m.p.h. speed limit really safer, or is it just a way to get us to use less gasoline? R.M., Buda

**A.** The death rate on highways in Texas and across the U.S. has fallen dramatically with the national adoption of a 55 m.p.h. limit. Impact in an accident at 55 is considerably less severe than it is at higher speeds. For most drivers, it is also easier to keep a vehicle under control in an emergency at 55 m.p.h. than at 65 or 70. But recently, with more Texas drivers ignoring the 55 maximum, the death rate has started to climb again.

**Q.** Can a car drive on the improved shoulder of a two-lane highway to pass another vehicle on the right? J.M., Vidor

**A.** This is a "gray area" under Texas law, especially as the statutes contain no definition of improved shoulder. The shoulder is not added to the road to increase its driving surface. It provides emergency parking and helps keep the edge of the road from washing away due to the effects of wet weather. Passing on the shoulder should best be considered an emergency maneuver. An example might be when a car ahead stops or turns left suddenly.

If you have a question on driving, send it to: Texas Office of Traffic Safety, P.O. Box 1165, Austin, Texas 78767

NEWS AND VIEWS—  
 (1) FIRST TRAIN—SMITH REES called us from Mount Pleasant a few days ago and told he had just read an article in a 1929 Turkey annual that he'd like to share with us. The article stated that FIFTY YEARS AGO, on November 20, 1928, the first trains came through Quitaque and Turkey. Five trains came through on that historic day, and the train to Lubbock began taking passengers at Estelline and by the first time it reached Quitaque no more seats were available. Smith said he was a passenger on that first train, and that bans and crowds gathered at every stop.

NEW HOUSING UNITS—the new housing units in the north part of Quitaque have been completed and are now ready for occupancy. These apartments were built primarily to relieve the critical labor housing shortage in this area, and government officials who have seen the apartments for the Texas Department of Health, said the labor units were the nicest he's seen in this part of the state, and he felt they were quite possibly "the nicest in Texas."

## TIPS FOR THE MOTORIST



**How To Deal With Highway Surprises**

Highway emergencies can happen to anyone, anywhere, anytime.

Think about the unexpected, from other drivers or your car. And be prepared to act. The "Driving Emergency" and "Emergency Repair" books can help you handle many highway surprises.

Panic is your enemy. It can kill you.

Example: brake failure. Pump the brake pedal. Use the parking brake (but don't jam it on hard if you're in a curve—that can cause a spin.) Shift into a lower gear (or lower range on your automatic.) The drag of the engine will slow you down.

As your last resort, sidestep something. Damaged metal is better than damaged people.

Other examples include blood, your vehicles coming at you, your lane, stuck accelerators, skids, sinking, and popped hoods. Each suggested reaction gives ideas for life-saving actions.

**Simple Fix-Ups For Breakdowns**

You can handle some common car problems yourself. You just have to know where to look for, and what to do when you find it.

Be prepared with an emergency kit. Pack it with jump cables, working flashlight, phon pump, distress flag, flare, duct tape, wire, paper clip, inflator, plastic water heater, screwdrivers, and adjustable pliers.



# PIGGLY WIGGLY HOLIDAY HARVEST OF SAVINGS

*Tis The Saving Season*  
 At Piggly Wiggly

"Each of these advertised items is required to be readily available for sale at or below the advertised price in each store, except as specifically noted in this ad."

PRICES EFFECTIVE DEC. 3 THRU DEC. 9, 1978

**JOY LIQUID**  
 22-OZ. BTL. **89¢**

**BOUNCE FABRIC SOFTENER**  
 60-CT. SHEETS **\$2.59**

U.S.D.A. GRADE 'A'  
**BOX-O-CHICKEN**  
 49¢ LB.

"A PIGGLY WIGGLY MONEY SAVER"

**BLUE BONNET OLEO** 1-LB. PKG. **59¢**

**LIBBY'S SAUSAGE VIENNAS** 5-OZ. CANS **2.89¢**

**PIGGLY WIGGLY CINNAMON ROLLS** 9 1/2 OZ. SIZE **49¢**

**GREEN GIANT NIBLETS CORN** 12-OZ. CANS **3 \$1.00**

**ORE-IDA SHOESTRING POTATOES** 20-OZ. SIZE **59¢**

**PIGGLY WIGGLY ASST. OR DECORATOR PAPER TOWELS** EA. **49¢**

**REG. OR UNSCENTED DEODORANT SECRET** 1.5-OZ. SIZE **99¢**

**LIQUID SHAMPOO PRELL** 16-OZ. SIZE **\$1.99**

**PURE VEGETABLE WESSON OIL** 24-OZ. BTL. **\$1.19**

**TIDE DETERGENT**  
 84-OZ. BOX **\$2.29**

**COCA COLA**  
 6 32-OZ. OR ONE 1 LITER BTL. **\$1.49** PLUS DEPOSIT

**PEANUT BUTTER** PETER PAN CRUNCHY OR SMOOTH 18-OZ. JAR **\$1.19**

**NILLA WAFERS** NABISCO 12-OZ. **69¢**

**RITZ CRACKERS** 16-OZ. **89¢**

**COCOA MIX** SWISS MISS 1-OZ. 12-CT. **\$1.25**

**PLANTERS SNACKS** CHEESE BALLS 69¢

**CAKE MIX** PILLSBURY PLUS ASST. FLAVORS 18-19 1/2 OZ. **79¢**

**KORBITE TRASH CAN LINERS** 40-CT. SIZE **\$2.59**

**HEFTY SUPER WEIGHT TRASH BAGS** 15-CT. SIZE **\$1.99**

**HEFTY TRASH CAN LINERS** 20-CT. SIZE **\$1.99**

**FROSTING** PILLSBURY READY TO SPREAD 16 1/2 OZ. **\$1.09**

**WAFFLES** AUNT JEMIMA COUNTRY BLUEBERRY BUTTERMILK 10-OZ. **69¢**

**CAT FOOD** CHEFS BLEND 3 1/2 OZ. SIZE **\$1.79**

**CORNBREAD MIX** PLANTERS 15-OZ. **45¢**

**COCKTAIL PEANUTS** PLANTERS 12-OZ. **\$1.29**

**PEANUT BRITTLE** KRAFT 12-OZ. **69¢**

**PIGGLY WIGGLY BATHROOM TISSUE**  
 4 ROLL PKG. **69¢**

...for fearful  
 you have  
 you're poor  
 Canyon, Texas--  
 got a good sense of humor  
 poor candidate for a cult, or  
 collections of people who  
 crime and terror, ac  
 psychologist.  
 who can see two sides, wh  
 able, who sees things in shad  
 candidate," said Dr. Tom Can  
 who wants to figure out for hi  
 to be when he grows up."

**BINGO**  
**\$5.00**

Chart  
 THE WEEK ENDING 3-11-1978  
 THE WEEK ENDING 12-3-1978

The After part Series Coll Rule Gam man awa tick

TO  
 4

TO  
 COCA COLA

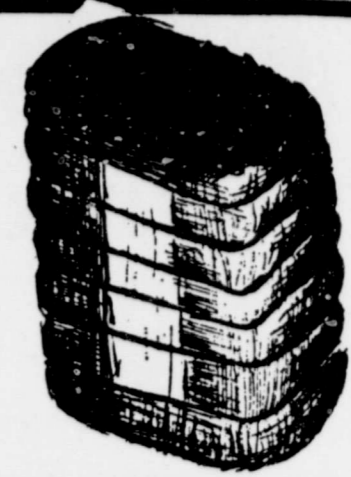
Stan's P  
 WAS RED DE  
 FRESH CELLO C  
 WESTERN RUSSET BU  
 POTATO







# FARM & RANCH NEWS



## Wheat, Barley Farmers To Receive \$650 - \$735 Million In Payments

Wheat producers will receive between \$585 and \$655 million and barley producers between \$65 and \$80 million in deficiency payments under the 1978 wheat and feed grain program, Ray Fitzgerald, administrator of the Agricultural Stabilization and Conservation Service (ASCS) said.

Payment checks will be mailed to eligible wheat and barley producers by

the ASCS county offices beginning in December. Corn and grain sorghum payments will be made in April.

The deficiency payment rate is the difference between the established (target) price of the commodity and the higher of either the national average loan rate or the national weighted average market price received by farmers during the first five months of

**TARGET PRICES**  
The per bushel 1978 target prices are \$3.40 for wheat and \$2.25 for barley and the national average loan rates are \$2.35 for wheat and \$1.63 for barley. The national average market prices

the marketing year for each commodity (for wheat and barley June through October).

## Arsenic Acid Use May Be Disallowed

The cotton industry will suffer a severe blow if the Environmental Protection Agency (EPA) disallows the use of arsenic acid as a harvest-aid chemical.

That's the concern voiced by Dr. Robert B. Metzger, cotton specialist with the Texas Agricultural Extension Service.

To prevent this from happening, cotton farmers are urged to respond immediately to a survey being conducted by the manufacturer of arsenic acid. Purpose of the survey is to obtain opinions from farmers regarding the benefits of the chemical for continued profitable cotton production.

According to Metzger, the survey stems from an Oct. 18 EPA decision to place all uses of inorganic arsenicals including arsenic acid on the Rebuttable Presumption Against Registration (RPAR) list. This does not mean automatic removal of arsenic acid from the market, but EPA will now demand more evidence that benefits of this compound outweigh risks before further registration is permitted. An assessment team has until Dec. 4 to respond with benefit comments concerning the value of arsenic acid to the cotton industry.

"The EPA decision to require further evaluation of the benefits vs. risks of arsenic acid as a cotton desiccant could have far-reaching effects on cotton producers," contends Metzger. "More than two million acres of cotton in the Southwest are treated annually with arsenic acid to prepare the crop for stripper harvesting. The chemical desiccates or dries the plant for stripper harvesting so that lint and seed quality can be preserved.

"Loss of the chemical could be devastating to a large segment of the cotton industry. First of all, it would cost producers millions of dollars in terms of lower lint and seed grade due to delayed harvest," explains the Texas

A&M University System specialist. "It would also prevent stalk destruction for insect and disease control and would mean higher ginning costs due to the reduced capacity and increased energy required for additional drying of cotton."

A change in cotton harvesting methods to cope with need for arsenic acid would cost the industry to the point producers would no longer believe the specialist.

## '79 Feed Grain Program Provisions Announced

Acting Secretary of Agriculture Carol Tucker Foreman has announced the 1979 feed grain program that is essentially the same as in 1978. Feed grain producers will be encouraged to remove from production an acreage equal to 20 percent of the acres they plant for harvest in 1979, a percentage identical to 1978, according to Foreman.

Corn and sorghum producers will again be offered a 10 percent set-aside and a 10 percent diversion program. There will be a 20 percent set aside program for barley in 1979, instead of a combination set-aside/diversion program.

The incentive to participate in the 1979 program totals \$2.30 a bushel for corn and \$2.40 a bushel for sorghum and barley. However, the corn target price will be \$2.20, instead of \$2.10 a bushel, and the diversion payment will be 10 cents a bushel, instead of 20 cents. The sorghum target price will be \$2.30 a bushel, and the

barley target price will be \$2.40 a bushel, Foreman said. **SET-ASIDE ESSENTIAL** Without a set-aside program feed grain producers would have faced sharply lower prices. At the same time taxpayers would have been forced to assume excess federal payments to farmers.

The 1979 feed grain program will protect producer return. It is expected to result in a modest increase in feed grain prices, but also to ensure livestock producers a foreign buyer has adequate feed grain supplies at reasonable prices.

It will result in higher earnings from feed grains. At the same time, feed spending in fiscal year 1979 should be lower than in 1978. Because our program balances producer consumer and payer interests fairly ensuring adequate, but not excessive grain supplies, will not be inflationary, Foreman said.

These values will be determined from the November crop report.

Deficiency payments for the 1978 wheat and barley crops are computed by multiplying the projected yield for the farm by the acreage planted for harvest times the payment rate. However, the payment may be adjusted downward by the allocation factor.

The allocation factor will be applied to deficiency payments on farms where producers have not reduced the 1978 acreage of wheat from the 1977 by 20 percent or the 1978 acreage of barley from 1977 by 20 percent. It is estimated the allocation factor will be 95 to 100 percent for wheat and 83 to 89 percent for barley.

## Pheasant Population Good

LUBBOCK -- Texas hunters should find about the same number of ring-necked pheasants during the Dec. 9-24 season as last year according to surveys and comments from Texas Parks and Wildlife Department personnel in the Panhandle.

A slight decrease in the number of birds counted on survey lines could be the results of heavy rains, hail storms, or failure of some hens to nest twice.

The daily bag limit of two cock (male) birds will be strictly enforced as will the restriction on pheasant hens. Hunters are reminded to leave the head and feet attached to the pheasant carcass until the bird is delivered to its final destination.

The three areas of high pheasant populations including the Hereford-Dimmitt-Friona region; Stratford-Dumas region; and the Plainview-Kress region, are again expecting large numbers of hunters. Many sportsmen are finding good bird hunting in the less publicized areas where grain, wheat and cover are available.

Most successful pheasant hunters bagged one bird during the 1977 season on the first day. Hunters that were successful on the second day or later in the two-week season hunted the heavy cover, fence rows and playa lakes.

Texas game wardens working the pheasant season are finding a larger number of pheasant hen violations

each successive year. Also, more complaints are being received from irate landowners as hunters continually hunt on posted land or private property without getting permission. Panhandle counties open to the Dec. 9-24 season include: Armstrong, Bailey, Briscoe, Carson, Castro, Childress, Collinsworth, Cottle, Dallam, Deaf Smith, Donley, Floyd, Gray, Hale, Hall, Hansford, Hardeman, Hartley, Hemphill, Hutchinson, Lamb, Lipscomb, Moore, Motley, Ochiltree, Oldham, Parmer, Potter, Randall, Roberts, Sherman, Swisher, and Wheeler. Hunters are reminded to

have their 1978 hunting license required by Texas information on hunting is available local Texas game P&W.D. represent your area.

**Got Heating Or Plumbing Problems Call HOLM PLUMBING**

**Mobile Homes**  
SALE: 14 x 65 mobile on good lot. Fenced lot, carpet, concrete. Small two-room and out back with good shelter, trees. Shown appointment only. Call 838-2826 L12-28c

## Western Ag. Sales Co. Inc. Invites You - - -

**TO TOUR OUR PLASTIC PIPE MANUFACTURING PLANT COME AND SEE THE PROCESS USED TO MAKE UNDERGROUND PLASTIC PIPE. OUR PIPE IS AS GOOD AND BETTER THAN MOST. GIVE US THE OPPORTUNITY TO LET YOU TRADE AT HOME AND HELP OUR LOCAL ECONOMY.**

**OUR OFFICE IS LOCATED AT 327 W. 24th St., IN PLAINVIEW, TEXAS.**

**COME BY AT YOUR CONVENIENCE. CALL OUR LOCAL SALES REPRESENTATIVE, RONNIE ROGERS, AT OUR FLOYDADA, OFFICE FOR ANY INFORMATION OR A QUOTATION ON PIPE BEFORE YOU TRADE WITH ANYONE ELSE. THE FLOYDADA OFFICE TELEPHONE NUMBER IS 983-5231 THE MOBILE UNIT FOR RONNIE ROGERS IS 621- OUR PLAINVIEW OFFICE NUMBER IS 296-6361.**



# WINTER FORECAST



# JOIN THE MOVE TO MICHELIN XM+S

FOR TIRES YOU CAN DEPEND ON



**CLOSE OUT SALE**

	Reg. Price	Sale Price
Monroe Matic	\$15.95	\$7.47
Super 500	\$26.95	\$12.95
Load Leveler	\$39.95	\$19.90



## RUCKER'S OK TIRE STORE

308 So. Main Floydada, Tex 983-3370

Re 11-1 M adm Vi adm Iv adm Dt dada 11-24

Tf dada 11-1 D ney Lu adm Fl adm Mi dada 11-24 Id 11-16 Fr ney care Fa adm born Th ock Jerro

The rest nake ndian ad e all. I vas r ind o f su o E larve esult een Decer ock t etter ould pen the w also if re hings s a g NEA' Ord ear cross ompl ain v ight i A few get t radir

Fa

C arn hig El A to le ove out

C or i R.N A the tion com mos con But may

C of f on A cial sho incr park was sing eme car

## It's a

**PROPERTIES FOR SALE**  
Several good three bedroom homes for sale. Call Floyd Write erian.

**FOR ACRES**  
LITTLE

**Three bedroom**  
Den, built-ins. Call 119 Mae Ave. tlc

**Two bedroom**  
new carpet, doors, half bath. Call 2603

**Two bedroom**  
house for Floydada. Needs Call after 3 p.m. LTFC

**FOR SALE: Five**  
bath, good condi 2401 525 W. Miss Floydada. 983-2573. tlc

**2 bedroom**  
partly carpeted, on lot. 1102 S. Main James Lee Nich 9846 or 983-3144 tlc

**2 bedroom**  
Fully carpeted, wall ready to live in. Call Frier Finley. 983-3871 tlc

**APPOINTMENT**  
Pike Hanna 1-14

**2 bed-**  
carpet, paneled. Call 20, night 983-2667. 12-3p

**Three**  
brick home on J.B. New carpet about, fenced back fruit trees, storage Call for appointment. tlc

**1975**  
brick, three bedroom, plus basement, two garage. Acreage available on paved road. Eight south of Lockney. Call 83-4785 12-17p

**3 bed-**  
2 bath, den with living and dining combination 983-3469 W. Miss. 12-30c

**SALE: 14 x 65 mobile**  
on good lot. Fenced lot, carpet, concrete. Small two-room and out back with good shelter, trees. Shown appointment only. Call 838-2826 L12-28c

**FOR SALE**  
by Elementary school in Lockney, paved 2-2468 12-14c

**Can You Use Some Extra Money Let Us Help!!!!**

**WE BUY SCRAP IRON, OLD JUNKERS, AND FREE PICKUP**

**Call 983-5277**

**WE WANT YOU, TO sell all kinds of Good tires...tractor, auto, service. Best deals in West Texas. Truck winch and service. BABE'S SERVICE CENTER. Floydada. tlc**

# If It's Results You Want-It's CLASSIFIED ADS You Need

## HOUSES FOR SALE

Several good three bedroom and Real Estate Bond, Bond, 983-3573. tfe

Two and a half bedroom homes for homes. Hale Insurance and Real Estate at 983-3261. tfe

Three bedroom, brick home, Den, built-ins. Call appointments. Doyle 119 Mae Ave. tfe

## FARMS AND ACREAGE

WANTED TO BUY irrigated or dryland farm in Floyd or surrounding area. Write Box XRO, c/o Hesperian, Box 700, Floydada. tfe

FOR SALE by owner-189 acres 2 1/2 mi. northeast of Littlefield, two 6-inch wells. 12-7p

## HELP WANTED

Addressers Wanted Immediately! Work at home-no experience necessary-excellent pay. Write American Service, 8350 Park Lane, Suite 127, Dallas, TX 75231 12-3p

Need Responsible lady to babysit newborn from 8 to 5 weekdays. References required. Call 983-2037 tfe

## COW POKES



By Ace Reid

## FOR SALE

FOR SALE: Stove and refrigerator, bed frame, box springs and mattress, dining room table and chairs. 983-2168 tfe

FOR SALE: Country Club membership. 983-5256 tfe

FEET TIRED? Try Mason Shoes with "Velvet-eez" air-cushioned innersoles. Keith Emerit, 652-3116. L5tfe

FOR SALE: Decorative baby bed, avocado and white. Good condition. 983-2316. 11-30p

Washer & Dryer Maytag, Avocado. Like new. Call 983-2607 tfe

CAMPER SHELL FOR SALE Excellent Condition \$390.00. Phone 298-4251, Abernathy after 6 p.m. 12-3p

SONY Reel to Reel SANSUI amplifier and two speakers PE 2040 turntable. 983-5289. 12-3p

## For Sale.

SALE Shelled pecans 3 lbs. For \$11.50 or 5 lbs. for \$19.00. Contact any 4-H member or Floyd County Extension Office. (983-2806) tfe

FOR SALE: 4 in. green pump complete. 240 ft. setting. Same as new Dorsey Baker. L12-28c

FOR SALE: Three Peerless pumps 3", 4" \$1200 each. 7 1/2 h.p. engine 250. Call 652-2136 or 652-2492. L12-28c

FOR SALE: 1 Country Club Share. Call 983-3975 after school. tfe

FOR SALE: Country Club Share and two chain saws. Joe R. Jones 983-3695 12-3c

## CLASSIFIED RATES

CLASSIFIED ADVERTISING RATE: 10 CENTS PER WORD FIRST INSERTION; 7 CENTS PER WORD EACH SUBSEQUENT INSERTION. CLASSIFIED DISPLAY RATE: \$1.30 PER COLUMN INCH CARD OF THANKS: \$1.50.

## AUTOMOTIVE

Reduced to Sell. 1976 Chevrolet Town Coupe. Auto. Air. Landeau. Call 983-2783 on weekends or after 5; or 983-3737 Tuesday thru Friday tfe

FOR SALE: 1972 Buick Limited, four door, good condition \$1395. 983-3700 or after 5: 983-3772. tfe

FOR SALE: 1975 Blue Monte Carlo, loaded low mileage. \$2995.00 983-3049 after 6 weekdays 12-3c

## Acid Use is allowed

A change in cotton harvesting methods to control and would increase energy costs due to the increased energy costs of drying of an acreage of the acres west in 1979, 1980, and 1981, man. In producers of a 10 and a 10 percent set barley in combination program. Participate in totals \$2.30 and \$2.40 a m and bar-corn target instead of the diver-20 cents a 1972 acreage of barley 30 percent. It is estimated factor will be 95 to 100 heat and 83 to 89 percent

## Feed Grain Program Provisions Announced

barley target price will be \$2.40 a bushel, Foreman said. SET-ASIDE ESSENTIAL. Without a set-aside program, feed grain producers would have faced sharply lower prices. At the same time taxpayers would have been forced to assume excessive federal payments to farmers. The 1979 feed grain program will protect producer returns. It is expected to result in a modest increase in feed grain prices, but also to ensure that livestock producers and foreign buyers have adequate feed grain supplies at reasonable prices. It will result in higher export earnings from feed grains, and at the same time, federal spending in fiscal year 1980 should be lower than in 1979. Because our program balances producer concern and taxpayer interests fairly by ensuring adequate, but not excessive grain supplies, it will not be inflationary, Foreman said.

## Got Heating Or Plumbing Problems? Call HOLMES PLUMBING

Call 983-2251 6:30 - 9:30 a.m. 5:30 p.m. until 10:00 p.m.

## Ag. Sales Co. Inc. invites You...

WE BUY SCRAP IRON, OLD JUNKERS, AND FREE PICKUP Call 983-5277

LOCATED AT 327 W. 24th St., PLAINVIEW, TEXAS. CONVENIENCE. CALL OUR LOCAL REPRESENTATIVE, RONNIE ROGERS. OFFICE FOR ANY INFORMATION. PIPE BEFORE YOU TRADE WITH THE FLOYDADA OFFICE TELEPHONE NUMBER IS 983-5231 FOR RONNIE ROGERS IS 296-6361. OFFICE NUMBER IS 296-6361.

## PETS

PUPPIES TO GIVE AWAY. half border collie. Call 983-2603 12-3c

## LOST & FOUND

Lost, Hearing Aid, Reward. Call C.L. Calloway 652-2224 L12-7c

## FARM MACHINERY

NORRELL TRACTOR PARTS for tractor and irrigation supplies and accessories. tfe

## GARAGE SALE

GARAGE SALE: Eddie Foster, 3 1/2 miles west of Lockney on Highway 70 and 1/4 mile north. L12-28p

## 24 Steel Cotton Trailers

24 Steel Cotton Trailers 4' long x 8' wide x 9' high Cobey and Big 12 Chassis. Call before: 7:00 a.m. after: 9:00 p.m. 745-1116 LTFc

## DAN'S AUTO SERVICE

DAN TEUTON, Owner Specializing in Automatic Transmission, Motor Tune-Ups, Auto Air Conditioning. General Repair We Have A BRAKE LATHES to handle all passenger car brake drums. See us for complete brake service. Phone 652-2462

## Big Savings -Up to 25% discount-

Big Protection Farmers Texas Homeowners Policy SAM A. SPENCE 112 W. MISSOURI PHONE 983-2881

## FOR BETTER CONCRETE

CALL CALLOWAY READY-MIX 652-2224 LOCKNEY PLAINVIEW HWY. ALSO WHITE CALICHE ROCK FOR SALE

## STORAGE SPACE

BOATS, FURNITURE, ANYTHING, ETC. BY THE MONTH OR SIX MONTH 10% DISCOUNT. WEST TEXAS MINI STORAGE 983-3573 OR 983-2151

## CARD OF THANKS

With grateful hearts we say Thanks to everyone for their concern when Henry had his recent surgery. For all the prayers, calls, cards and visits. May God bless all of you. The Henry Bloodworths



Auto Accidents DO Happen... If one happens to you, be protected. Our car insurance offers coverage to meet your special needs - repairs to personal liability. BAKER Insurance Agency 127 W. Calif. Ph. 983-3270

## LOTS FOR SALE

LOTS FOR SALE by Elementary school in Lockney, paved 652-2468 12-14c

THIS FEATURE SPONSORED BY Floydada Real Estate & Insurance Agency AUTO, FIRE & FARM INSURANCE Jim Word - - - Phone 983-2360

TT ENTERPRISES Custom Cabinet Work All kinds of shelves Remodeling Room Additions No job too small or too large Licensed and Bonded Call Ike Tickle, 652-3549 Lockney

RANGE CUBES '143.20 Ton-Plus Freight In The Barn. Will Contract Nov. Dec. Jan. 20% Nat. Protein 7% Fiber; 25,000 Vit. A. Call 806/348-3271 After 6: P.M. 348/3573 tfe

TURNER REAL ESTATE Farms' Ranches Floydada, Texas 983-2635

GROUND RIG AND AERIAL APPLICATION FOR COTTON DEFOLIATION ★ LONE STAR CHEMICAL INC. ★ 652-2761 RICK KELLSON 652-3504 DEANIE HENDERSON 652-3434 EVANS GIN 652-3765 L-tfe

FARMS-RANCHES-CITY PROPERTIES-BUSINESS LEASES-LOANS B. B. WILKES BROKER REAL ESTATE 100 S Main, Lockney Barry Barker, Solicitor Barker Insurance Agency-652-2642 IF IT IS INSURANCE -SEE- BARKER INSURANCE AGENCY LIFE-FIRE-CASUALTY-HOSPITAL

Diamond Industrial Supply Co., inc. Phone Days 296-7418 Nights 296-1200 or 296-7828 1014 Broadway Plainview, Texas Chain Sprockets V-belts Sheave: U-joints Oil Seals O-rings Wisconsin SKF RCA Timken Bower Cotton Stripper Brushes & Bats "We Appreciate Your Business More" L-tfe

Kirby Vacuum cleaners, new and rebuilt. 1 yr. guarantee. Parts, sales and service. Prices begin at \$124.50. Parker Home Furnishings in Lockney. 652-3315. L-tfe

## BUSINESS SERVICES

CD-J 66 7-day service, car wash, oil change, Gas service, U-haul rentals. Located on Matador hwy. 983-2601. CD-J INSULATION can help save your dollars. For information call 983-2601. INSULATION Fire-Resistant. Installed and Guaranteed. MARR Insulation Co. Lockney 652-3593. L-tfe

## WANTED

Year around farm job wanted. Would like to live in my own home. Experienced in 6-8-12 row equipment. Phone 983-2797 12-24p

WANTED: Year round farm hand, must be experienced and dependable. House and utilities furnished on pavement. Must furnish references. Phone 983-2740 tfe

SMALL JOBS WANTED Carpenter, painting, odd jobs Call 983-2294 after 6 p.m. tfe

WANTED Wheat Pasture 983-3445 1-21p



CHRISTMAS 1978 FIGHT LUNG DISEASE WITH CHRISTMAS SEALS

## WANT A GOOD BUILDING? CALL US

SHOP FLOYD COUNTY FIRST! NOW OPEN A-1 Pet and Grooming professional grooming, all breeds no tranquilizers 821 Broadway, Plainview, Texas 293-3557 tfe Give your house a fresh new look, for interior painting call Rena Turner, Jan Sherman 983-5130 12-10c

FLOYD COUNTY ABSTRACT CO. Abstracts Of Title Title Insurance Verna L. Stewart Owner, Manager 217 W. California 983-3728 Floydada, Texas

## NOTICE

FOR SALE OR TRADE FOR FARM LAND. Size 50 x 100 ft. Brick Building Fire Walls, Double Ceiling Refrigerated Air-7 years Remaining excellent lease. Cecil Hagood 983-2312 tfe

Do You Want To BUY, SELL OR TRADE Let me help you. Cecil Hagood, Real Estate Salesman, Warner Dale Goen, Broker. Phone 983-2312 708 N. 2nd tfe

## NOTICE

Buyer will be in Floydada on Saturdays beginning Nov. 25 through January, North Side Court House, 12 to 12:45. Red Veale Fur Co. Ken Hayden, Buyer 817-559-3624 Breckenridge, TX 12-13p

DO YOU NEED HELP TO PAY YOUR RENT? Call 983-3171 or come by 302 E. Tennessee 12-3c

WANTED Wheat Pasture 983-3445 1-21p

WANTED Wheat Pasture 983-3445 1-21p

WANTED Wheat Pasture 983-3445 1-21p

### AUCTION REAL ESTATE

REAL PROPERTY OF FLOYD COUNTY TIRE COMPANY FLOYDADA, TEXAS WILL BE SOLD ON THE STEPS OF FLOYD COUNTY COURT HOUSE 3:00 P.M. TUESDAY DECEMBER 5, 1978

PROPERTY DESCRIPTION  
1 CONCRETE BLOCK BUILDING ON 2-LOTS AT 315 SOUTH HOUSTON ST. FLOYDADA, TEXAS.

LEGAL DESCRIPTION  
All of Lots 15 and 16, Block 125, Original Town of Floydada, Floyd County, Texas, together with all permanent improvements situated thereon.

TERMS  
Cash: 10% in escrow, balance on delivery of trustee's deed.  
Property sold in accordance with the terms of the Small Business Administration.

### Butler & Faulks Auctioneers

TRAVIS BUTLER (806) 763-4919 T.G.S-019-0398 P.O. BOX 5701 JACK FAULKS T.G.S-019-0053 LUBBOCK, TX 79417

## Trying It On For Size



Sheer delight is shown by 9-year-old Chigusa Kawahara of Palisades Park, N.J., as she tries on the crown of Miss USA, Judi Lois Andersen of Hawaii. The petite and pretty Chigusa painted the 1978 Christmas Seal that represents New Jersey in the child-drawn Christmas Seals selected from all over the country. The blonde and beautiful Miss USA is a Christmas Seal Ambassador for the American Lung Association. They both say, "Give to Christmas Seals and support the work of your lung association."



**FREEDOM TO READ STATEMENT**

The freedom to read is essential to our democracy. It is continuously under attack. Private groups and public authorities in various parts of the country are working to remove books from sale, to censor textbooks, to label "controversial" books, or authors, and to purge libraries. These actions apparently rise from a view that our national tradition of free expression is no longer valid; that censorship and suppression are needed to avoid the subversion of politics and the corruption of morals. We, as citizens devoted to the use of books and as librarians and publishers responsible for disseminating them, wish to assert the public interest in the preservation of the freedom to read.

We are deeply concerned about these attempts at suppression. Most such attempts rest on a denial of the fundamental premise of democracy; that the ordinary citizen, by exercising his critical judgement, will accept the good and reject the bad. The censors, public and private, assume that they should determine what is good and what is bad for their fellow citizens.

We trust Americans to recognize propaganda, and to reject it. We do not believe they need the help of censors to assist them in this task. We do not believe they are prepared to sacrifice their heritage of a free press in order to be "protected" against what others think may be bad for them. We believe they still favor free enterprise in ideas and expression.

We are aware, of course, that books are not alone in being subjected to efforts at suppression. We are aware that these efforts are related to a larger pattern of pressures being brought against education, the press, films, radio and television. The problem is not only one of actual censorship. The shadow of fear cast by these pressures leads, we suspect to an even larger voluntary curtailment of expression by those who seek to avoid controversy.

Such pressure toward conformity is perhaps natural to a time of uneasy change and pervading fear. Especially when so many of our apprehensions are directed against and ideology, the expression of a dissident idea becomes a thing feared in itself, and we tend to move against it as against a hostile deed, with suppression.

And yet suppression is never more dangerous than in such a time of social tension. Freedom has given the United States the elasticity to endure strain. Freedom keeps open the path of novel and creative solutions, and enables change to come by choice. Every silencing of a heresy, every enforcement of an orthodoxy, diminishes the toughness and resilience of our society and leaves it the less able to deal with stress.

Now as always in our history, books are among our greatest instruments of freedom. They are almost the only means for making generally available ideas or manners of expression that can initially command only a small audience. They are the natural medium for the new idea and the untried voice from which come the original contributions to social growth. They are essential to the extended discussion which serious thought requires, and to the accumulation of knowledge and ideas into organized collections.

We believe that free communication is essential to the preservation of a free society and a creative culture. We believe that these pressures towards conformity present the danger of limiting the range and variety of inquiry and expression on which our democracy and our culture depend. We believe that every American community must jealously guard the freedom to publish and to circulate, in order to preserve its own freedom to read. We believe that publishers and librarians have a profound responsibility to give validity to that freedom to read by making it possible for the readers to choose freely from a variety of offer-

ings. The freedom to read is guaranteed by the Constitution. Those with faith in free men will stand firm on these constitutional guarantees of essential rights and will exercise the responsibilities that accompany these rights. We therefore affirm these propositions:

1. It is in the public interest for publishers and librarians to make available the widest diversity of views and expression, including those which are unorthodox or unpopular with the majority. Creative thought is by definition new, and what is new is different. The bearer of every new thought is a

rebel until his idea is refined and tested. Totalitarian systems attempt to maintain themselves in power by the ruthless suppression of any concept which challenges the established orthodoxy. The power of a democratic system to adapt to change is vastly strengthened by the freedom of its citizens to choose widely from among conflicting opinions offered freely to them. To stifle would mark the end of the democratic process. Furthermore, only through the constant activity of weighing and selecting can the democratic mind attain the strength demanded by times like these. We need to know not

only what we believe but why we believe it. Publishers, librarians, and booksellers do not need to endorse every idea or presentation contained in the books they make available. It would conflict with the public interest for them to establish their own political, moral, or aesthetic views as a standard for determining what books should be published or circulated. Publishers and librarians serve the educational process by helping to make available knowledge and ideas required for the growth of the mind and the increase of learning. They do not foster education by imposing as mentors the pat-

terns of their own thought. The people should have the freedom to read and consider a broader range of ideas than those that may be held by any single librarian or publisher or government or church. It is wrong that what one man can read should be confined to what another thinks proper.

3. It is contrary to the public interest for publishers or librarians to determine the acceptability of a book on the basis of the personal history or political affiliations of the author. A book should be judged as a book. No art or literature can flourish if it is to be measured by the political views or private lives of

**OBITUARY**

**Grace Byars**

Remember your loved ones and friends with a memorial to Lockney General Hospital Memorial Fund. These memorials go toward equipment to help serve our community in the best way possible.

its creators. No society of free men can flourish which draws up lists of writers to whom it will not listen, whatever they may have to

Services for Mrs. Grace Byars, 88, of Lockney were Friday afternoon in the First Baptist Church in Lockney with the Rev. John Jenkins, pastor, officiating. Burial was in the Lockney cemetery with Moore-Rose Funeral

say. There is no place in our society for efforts to coerce the taste of others, to confine adults to the reading matter

Home, Lockney, in the p.m. Wednesday at the Lockney Nursing Home. She was born Sept. 10, 1891 in Lee County, Virginia and was married to Walter Byars on Dec. 25, 1911. In Lockney she was a member of the Baptist Church.

Survivors include a son, Estelle Powers; a daughter, Norma; a brother, Norman; a sister, Mrs. Percy Hart of

deemed suitable for efforts of writers to artistic expression (to be continued)

**WIN WITH LUCKY STARS**

Must Be 18 Or Older No Purchase Required  
25 Winners Weekly

Recent Winners

Florence Simpson Purchase Free (\$24.40)  
Rosa De La Fuente Purchase Free (\$3.41)  
Ola Mae Sullivan 1200 S&H Green Stamps  
Margaria Romero 1200 S&H Green Stamps  
Marilyn Marler 1200 S&H Green Stamps  
Daniel Fonseca 1200 S&H Green Stamps  
Vel Darden 1200 S&H Green Stamps  
Ike Tikel 600 S&H Green Stamps  
Yolanda Martinez 600 S&H Green Stamps  
Joe Peck 600 S&H Green Stamps  
San Juan Ibarra 600 S&H Green Stamps  
Ray Nichols 600 S&H Green Stamps

**Mrs. Ed Muncy**  
\$100.00 Gift Certificate Winner

6-32 OZ  
**DR PEPPER**  
\$1.39  
\$2.09 VALUE PLUS DEPOSIT

1/2 GAL  
SLIM & TRIM  
**ICE MILK**  
99¢  
\$1.59 VALUE

**BUDDY'S**

STORE HOURS  
Mon.-Sat., 8 a.m. to 8 p.m. Sun., 9 a.m. to 8 p.m.  
VALUES EFFECTIVE THRU SATURDAY DECEMBER 9, 1978  
We Reserve The Right To Limit Quantities

<p><b>TURNIPS</b> 4 LBS \$1.00 PURPLE TOP</p> <p><b>CARROTS</b> 5 FOR \$1.00 1 LB BAG</p> <p><b>APPLES</b> 39¢ LB RED DELICIOUS</p> <p><b>ORANGES</b> 89¢ 5 LB BAG TEXAS</p> <p><b>ORNAMENTS</b> \$2.19 15 COUNT SHINNY BRITE \$2.99 VALUE</p> <p><b>BATTERIES</b> 59¢ TWIN PACK RAY-O-VAC C OR D SIZE \$1.00 VALUE</p> <p><b>TEA BAGS</b> \$1.49 100 COUNT WHITE SWAN \$2.09 VALUE</p> <p><b>APPLE EASY</b> 5/\$1.00 TRAIL SIZE</p> <p><b>CHILI MIX</b> 3/\$1.00 1 OZ. CHILI MAN</p> <p><b>TAB</b> \$1.49 6-32 OZ. \$2.09 VALUE PLUS DEPOSIT</p> <p><b>RAW SPANISH PEANUTS</b> 59¢ 12 OZ. FISHER 79¢ VALUE</p> <p><b>PEACHES</b> 59¢ 29 OZ. LIBBY'S 77¢ VALUE</p> <p><b>CHUNKY PEARS</b> 59¢ 16 OZ. LIBBY'S 75¢ VALUE</p>	<p><b>GROUND BEEF</b> 99¢ LB FAMILY PACK</p> <p><b>SIRLOIN STEAK</b> \$2.19 LB USDA BONELESS</p> <p><b>T-BONE STEAK</b> \$2.39 LB USDA</p> <p><b>CHILI MEAT</b> \$1.19 LB LEAN</p> <p><b>PORK BACKBONE</b> \$1.39 LB COUNTRY STYLE</p> <p><b>SOUR CREAM OR DIP</b> 2/79 BELL 65¢ VALUE</p> <p><b>WHIPPING CREAM</b> 2/79 BELL 65¢ VALUE</p> <p><b>MIXED NUTS</b> 99¢ 12 OZ. TOM SCOTT \$1.49 VALUE</p> <p><b>CHOCOLATE CHIPS</b> \$1.59 12 OZ. NESTLES \$2.69 VALUE</p> <p><b>GRAPE JUICE</b> \$1.29 40 OZ. WELCH</p> <p><b>PINEAPPLE</b> 59¢ 20 OZ. DEL MONTE 73¢ VALUE</p> <p><b>CUT GREEN BEANS</b> 3/\$1.00 16 OZ. GREEN GIANT 45¢ VALUE</p> <p><b>SYRUP</b> 59¢ 32 OZ. BLACKBURNS CRYSTAL WHITE 81¢ VALUE</p> <p><b>TENDERIZER</b> 59¢ 3 OZ. ADOLPHS 79¢ VALUE</p> <p><b>REYNOLDS FOIL</b> 89¢ 75 SQ. FT. \$1.33 VALUE</p>	<p><b>BACON</b> \$1.39 12 OZ. SIZZLE LEAN</p> <p><b>SIRLOIN STEAK</b> \$2.19 LB USDA BONELESS</p> <p><b>CHUCK ROAST</b> \$1.09 LB USDA</p> <p><b>HAM SLICES</b> \$1.99 LB LEAN</p> <p><b>PORK CHOPS</b> \$1.89 LB CENTER CUT</p> <p><b>PORK SAUSAGE</b> \$1.19 LB SHOP MADE</p> <p><b>QUICK BREAD MIX</b> 87¢ 16 OZ. PILLSBURY \$1.09 VALUE</p> <p><b>EGGS</b> 9¢ DOZ WITH PURCHASE OF 2 LB OWENS OR JIMMY DEAN SAUSAGE</p> <p><b>HOT ROLL MIX</b> 59¢ 13 OZ. PILLSBURY 73¢ VALUE</p> <p><b>CHEER</b> \$3.89 10 LB 11 OZ. FAMILY SIZE \$5.99 VALUE</p> <p><b>CRACKERS</b> 99¢ 2 LB KEEBLER \$1.43 VALUE</p> <p><b>CINNAMON CRISP OR HONEY GRAHAMS</b> 79¢ 14 OZ. KEEBLER 99¢ VALUE</p> <p><b>BAKING SODA</b> 3/\$1.00 1 LB ARM AND HAMMER 53¢ VALUE</p> <p><b>SNACK CRACKERS</b> 2/\$1.29 KEEBLER-OR-NABISCO 89¢ VALUE</p>
<p><b>HOLIDAY CORSAGE</b> 99¢ \$1.39 VALUE 25 SQ. FT.</p> <p><b>GIFT WRAP</b> \$1.39 \$1.99 VALUE 1 1/2 LB MRS BAIRD'S</p> <p><b>SPLIT TOP BREAD</b> 69¢ 83¢ VALUE 8 OZ. SNACK</p> <p><b>FIDDLE FADDLE</b> 2/89¢ 67¢ VALUE 15 OZ. OLD ELPASO</p> <p><b>REFRIED BEANS</b> 3/89¢ 39¢ VALUE 40 OZ. CHEF BOY-AR-DEE</p> <p><b>RAVIOLI</b> \$1.29 \$1.79 VALUE 40 OZ. CHEF BOY-AR-DEE</p> <p><b>SPAGHETTI AND MEAT BALLS</b> \$1.29 \$1.79 VALUE</p> <p><b>CHEX CEREAL</b> 77¢ \$1.09 VALUE 12 OZ. RALSTON</p> <p><b>CHILI</b> 77¢ \$1.15 VALUE 19 OZ. GEBHARDT'S</p> <p><b>TAMALES</b> 2/79¢ 59¢ VALUE 15 OZ. GEBHARDT'S</p> <p><b>TUNA</b> 59¢ 99¢ VALUE 6 1/2 OZ. CARNATION</p>		

Wendell Tooley  
Total of 208,000 ac  
Total in Floyd Coun  
acres will be ha  
bales will be  
is still anyone  
Bob Ha  
Employment O  
gin co  
estimated that  
across the se  
or still on  
determined.  
total of 68,900 ba  
ginners Tuesda  
of the crop, then  
may be expected  
year.  
Last year's cotton  
breaker with  
reported.  
Cotton farmers hav  
night and day for the  
made good prog  
harvested. So  
cotton stripper wit  
flow, and the fi  
ages from white  
might.

The High Plains  
when skies cl  
ending to Paul R  
Director at USDA's M  
Labbock.  
High Plains Marke  
graded 45,000 sa  
ing the season's  
compares to 1.8  
member 1 last year.  
Predominant High  
were grade 41 at  
accounted for 20 p  
ounted to 37 per  
20 percent. Two  
re reduced one g  
according to US  
Marketing Service.  
duced because of g  
staple lengths were  
20 percent, staple  
staple 33 account  
Micronaire was mo  
3.5 - 4.9 range at  
al. Twenty percent  
strength average  
square inch. Co  
ready to firm the we  
30  
Growers sold mixe  
grades 42 and bette  
3.5 - 4.9 aroun  
und. New crop lots  
and 53, staples 30  
brought about 54.  
Gins paid growers  
for cottonseed, m

The following stor  
Rev. Fred A. Myers,  
in the Atlanta Const  
"In a certain co  
thought it would be  
ives of some of the  
these women  
qualified and avail  
talities.  
The trustees did  
worked quite well fo  
Then they bega  
with pregnancies. W  
stant state all wante  
right up to the imme  
"So the board of  
rale. All wives were  
wall with their to  
baseboard. If they st  
harmies didn't tou  
could go on to teach  
"The wives accep  
they insisted it must  
faculty members as  
When the trustee  
test, they lost fir  
three department he

Little Susie, getti  
interrupted a fami  
living room to say,  
prayers now. Any  
"ing"  
Speechmaker's cl  
have a lot more to  
observe the first ru  
-nice guys finish