

TO BE INSTALLED AT BANQUET FEBRUARY 9

Chamber Officers Named

Chamber of Commerce directors and officers for 1978-79 will be installed at the annual Chamber Banquet, scheduled February 9 in the Lockney Elementary School Cafeteria. Lockney's Man

and Woman of the Year will also be announced at the 7-p.m. banquet. Speaker for the banquet will be John D. (Jack) Jackson, vice president in charge of public relations for American

Airlines, from Fort Worth. The officers, elected at a director's meeting Monday morning at Rogers' Restaurant, are David Frizzell, president; Paul Koonsman, vice president; Gayle Fortenberry, secretary; and J.D. Copeland, treasurer.

Newly-elected Chamber of Commerce directors are Gary Stennett, Lawson Rowell, Don Vernon, Margaret Schacht, and Mrs. Fortenberry.

Ending terms on the C of C board of directors are James Race (current president), Eleanor Schacht (current secretary), Paul Glasson, and Rainey Davis.

Carryover directors include Frizzell, Copeland, Koonsman, Chuck Wilson, Van Bradley, Omar Burleson, David Turbeville, John Tye, John Belt, and George Sparkman.

Boyce Mosley was reappointed West Texas Chamber of Commerce director from the Lockney Chamber. Roy Howell was selected for a second term as appointed director, and W.H. Hallmark was also appointed to the board.

Tickets to the February 9 banquet cost \$5 each and are available from the Chamber directors.

FLOYD FARMERS AND RANCHERS

Emergency Loans Available From FmHA



The Lockney Beacon

"Serving The Irrigation Belt"

15¢ Per Copy

Volume 77 Lockney, Floyd Co., Texas 79241 Thursday, January 19, 1978 12 Pages in One Section Number 6

Floydada Shuts Down For American Agriculture Day



FARM STRIKE BACKERS paraded through downtown Lockney Monday afternoon. One of the farmers said between 75 and 100 tractors, pickup trucks, and other farm vehicles were in the parade, which originated in Floydada as part of American Agriculture Day in that town. (Staff Photo)

There was plenty of excitement in Floydada all day Monday, American Agriculture Day, and the events began about 4 a.m. as 4-Hers arrived at the Massie Activity Center to prepare an omelet breakfast.

A big crowd attended the breakfast, then some 125 tractors, a cotton stripper, a combine, a fertilizer applicator rig, an old tractor pulling a trailer with a couple of small pickups, began a parade around the high school, then wound its way up and down the business streets of Floydada.

Downtown Floydada looked like ghost town as all the merchants had closed their doors for the day in sympathy with the striking farmers.

At noon the MAC was running over with people. However, the farmer's wives served plenty of good hot chili and delicious cake.

Farmers Parade

Through Lockney

Most of the parading vehicles went on to Lockney, where they wound through the streets. Although no Lockney businesses were asked to close, several did lock their doors while the "strikers" staged the parade.

There were rumors that American Agriculture planned a business shutdown in Lockney similar to the one in Floydada, but farmers who gathered on the south end of Main Street after the parade said they knew of no plans for such a move.

Emergency loans for farmers, ranchers, or aquaculture operators are available through county offices of the Farmers Home Administration (FmHA). Gary L. Brown, FmHA County Supervisor, said today.

Brown asked that those who need farm credit as a result of hail make their needs known at the Farmers Home Administration office at 107 W. California, Floydada, Texas.

Application for assistance in the disaster stricken counties will be accepted by Farmers Home until July 17, 1978 for physical losses and January 16, 1979 for production losses.

FmHA loans covering actual physical and production losses may be used to replace installations, equipment, or buildings, (including homes) lost through this disaster. Funds may be used to buy feed, seed, fertilizer, livestock, or to meet interest and depreciation payments on current real estate and chattel debts. Other loans, beyond actual losses, can be made for annual operating expenses or to make major adjustments in a farming or ranching operation.

"Funds can be used for essential operating and living costs," Brown said.

Loans covering actual losses are made at an interest rate of three and five percent and are scheduled for repayment as rapidly as feasible consistent with the applicant's reasonable ability to pay. Loans beyond actual losses have various maturities, depending upon the purpose of the loan.

The interest rate for short-term loans for farm operating purposes is 8 percent. Long-term loans are being made at an interest rate of 8 percent.

To be eligible for an emergency loan, an applicant must have suffered losses from the disaster and be unable to get credit from other sources.

Emergency loans can be used to help the farmer restore damaged farm operations and additional loans based upon the emergency designation can be used to reorganize the farm for greater efficiency and better production.

Gary L. Brown, FmHA County Supervisor for Floyd County states that there will be a county wide meeting on January 23, 1978 in the county court room in the Floyd County Courthouse. The meeting will be held

(See FHA page 10)

'Horns Win

Consolation

The Longhorn junior varsity team won the consolation trophy at the Valley JV basketball tournament last week. The 'Horns were defeated by Silvertown in their first game Thursday, but they beat Spur and Childress Saturday for the consolation title.

The score was Silvertown 48, Lockney 45 in the opener. In the scoring column for Lockney were Earlee Mathis, with 17 points; Raymond Guerrero with 12; Steve Warren and Bill McCarter with five each, Curtis Ford with four, and Roy Moody with two.

The Longhorns blasted Spur 54-24 Saturday morning to gain the consolation finals. Raymond Guerrero led the 'Horns with 12 points, followed by Kevin Evans (10), McCarter (nine), Ford (nine), Mathis (seven), Rigo Guerrero (five) and Craig Ellison (two).

In the Saturday-afternoon consolation finals, it was Lockney 40, Childress 23, with Mathis scoring 11; Warren 10; Evans, Raymond Guerrero, Ford and McCarter four each; and Moody two.

Lady Horns Beat Whirlettes In Thriller Longhorns Lose To Winds, Same Way

Lockney High School girls squeaked past Floydada 45-44 in a District AA basketball game last Friday, and Lockney coach Marsha Sharp said she thought the close score indicative of AA race this year. "Anyone can beat anyone else on a given night," she said, but added, "I just hope we have more given nights than the others."

The Lady Horns got behind in the first quarter (the Floydada girls led 8-8 at the end of that period) but regained the lead (22-21) at the half. Lockney was ahead 36-28 at the end of the third quarter, but the Whirlettes rallied, and they led by five points with a minute and 20 seconds left in the game.

The Lockney team came from behind at the free-throw route, sinking six charity tosses, and went ahead 45-44. Floydada had the ball with six seconds to play, and the Whirlettes managed to get off some shots, but none of them fell.

Sharp said "Floydada played extremely well and caused our people to make mistakes they don't usually make." Although free throws late in the contest might have won the game for Lockney, the Lady Horns made just 19 of 37 free-throw attempts for the whole game.

Rebecca Evans led Lockney in scoring with 22 points ("It was Evan's best effort of the year, by far," Sharp

said.) Lockney's usually high-scoring forward Sheila Hrbacek was double-teamed all night and scored "only" 19.

Stephanie Turner got four points for Lockney. Kim Curry, (14 points) was high for Floydada.

Floydada took a one-point victory in the boys' varsity game Friday night. The Longhorns came back from an

18-point deficit at one time in the game to a three-point lead, but the Whirlwinds closed to one, stalled for a late shot, and made a field goal with 17 seconds to play in the contest. The 'Horns missed a final shot with four seconds on the clock.

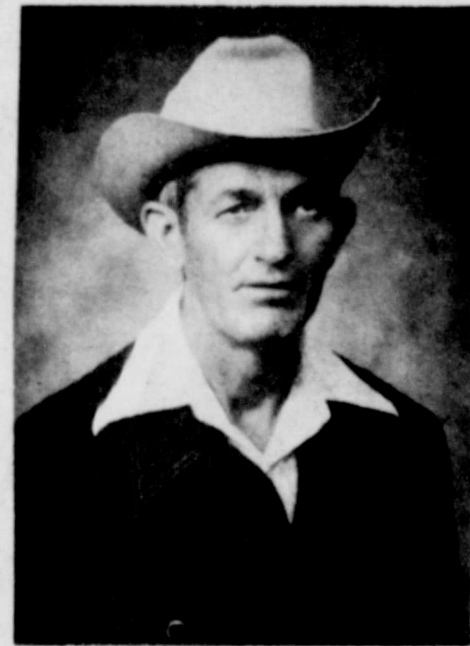
The 'Winds held a 12-4 lead at the first quarter's end and were ahead 30-16 at halftime and 44-37 after three periods of play.

"We didn't play well in the first half," Coach Mike Bellar said. "We did lots of things wrong. In the second half, we did the same things right...We got 15 turnovers on the press..."

'HORNS WIN JV GAME
Lockney was the winner (38-35) in the junior varsity boys' game. The JV's comeback bid was successful—they were behind 20-12 at halftime.

Earlee Mathis was the leading scorer for Lockney, netting 15 points. Raymond Guerrero scored eight, Bill McCarter four, Kevin Evans, four, Rigo Guerrero three, Curtis Ford two, and Steve Warren two.

C. L. McKay Announces For Sheriff



C.L. "MACK" MC KAY

C.L. "Mack" McKay of Floydada has authorized this newspaper to announce his candidacy for sheriff of Floyd County subject to the May Democratic Primary.

McKay has 15 years of law enforcement experience in Euless, Floydada, and Lockney, Texas. He has graduated from schools in accident investigation, narcotics, and family disturbance problems.

At present McKay is a truck driver.

In his announcement statement he said, "I will certainly appreciate your influence and vote. If elected I will devote my best efforts to upholding the law, work with other law officials in the county and treat everyone fairly."

JV Girls Cop Consolation

Lockney junior varsity girls' team took consolation honors in the Valley basketball tournament last Thursday, Friday and Saturday. Silvertown nudged the Lady Horns into the consolation bracket by defeating them 29-28 Thursday, but the Lockney girls "rebounded" with big wins over Motley County (45-14 on Friday) and Clarendon (45-20 Saturday) in the consolation finals.

Scoring for Lockney in the first-round loss were Donna Moats, nine points; Gay Frizzell, six, Julie Frizzell, five; Ronda Hayes, three; Kay Sherman, two; Rosalind Hill, two; Sheris Clark one. Neuhert was top Silvertown scorer with nine points.

Three Lady Horns shared high-point

honors in the victory over the Matador girls—Hayes, Sterling, and Julie Frizzell had eight points each. Irene Mariscal put in three, and Clark, Sherman, Hill and Gay Frizzell contributed two each. Matador's Bumpus managed eight points. Lockney got the ball numerous times on turnovers, a result of a well-executed full-court press.

Good outside shooting by Gay Frizzell helped the Lady Horns defeat Clarendon 45-20 in the tourney consolation finals. Gay scored 14 points. Julie Frizzell led the teams in scoring with 16, and Sterling added eight, Tammie Hayes three, Ronda Hayes two, and Mariscal two.

The JV girls left the tournament with a 9-4 season record.

Sheila Scores 46, Sets School Record

Sheila Hrbacek set a Lockney High School record for most points (46 of 60) scored by an individual in a girls' basketball game, Tuesday night at Lubbock, and the 81 points scored by the Lady Horns in that game was the highest since Coach Marsha Sharp has been here. Oh, yeah—Lockney won the game, too, 81-41 over Lubbock Christian High School. Hrbacek sank 21 field goals and four free throws in the record-breaking game.

Sharp said it was a good team effort, but kids realized at halftime that Hrbacek had a shot at the record and they went out and played really hard in the last half. The team was probably as excited about the record as they have ever been about any of our wins.

Hrbacek's one of the best set shooters I've ever seen. She's done a real job for us all year." Hrbacek's season total stands at 664 points. She's had 467 field-goal attempts and 147 free throws.

Other Lockney players scored 24. Stephanie Turner had 24,

Rebecca Evans eight, and Bonita McDonald three.



Hrbacek

JV GIRLS WIN, TOO

Lockney posted a 31-18 victory in the junior varsity girls' game. The Lady Horn JV was ahead at the end of every quarter—7-1, 19-8, 23-11, and the final 31-18.

Tammie Hayes, with 12 points, was high Lockney scorer. Penny Sterling chipped in with seven points, Donna Moats had six, Julie Frizzell got three, Julie Ferguson two, and Sheris Clark one.

TULIA HERE FRIDAY.....

JV BOYS' GAME STARTS 5 P.M.

Seventeen students from Lockney travelled to Dimmitt Saturday for the Class B-A-AA All Region High School Band tryouts. Twelve LHS students made the band and four were selected as alternates.

Those making the honor band were: Julie Ferguson—flute, 11th chair; Brenda Williams—clarinet, 10th chair; Kim McAda—alto sax, sixth chair; Melinda Wilson—baritone, first chair; Sharon Spencer—baritone, third chair; Virginia Mangum—baritone, fourth chair; Breck Record—trombone, second chair; Randy Davis—trombone, third chair; Ches Carthel—cornet, first chair; Kevin Stennett—cornet, 14th chair; Paula Ellison—tuba, fifth chair.

Making alternate positions were: Jill Whitfill—flute, first alternate; Roxanne Ford—bass clarinet, second alternate; Kay Sherman—tenor sax, first alternate; Vicky Ortegon—drums, second alternate.

Those making the band will leave for Lubbock on Thursday, January 26 for three days of rehearsals. They will play a concert on Saturday night (January 28).

Junior high all region band tryouts

will be held Saturday, January 21 at Littlefield. There will be 38 Lockney

students auditioning for positions in that band.



IN ALL REGION BAND...Left to right, front: Vicky Ortegon, Kim McAda, Virginia Mangum, Sharon Spencer. Middle row: Paula Ellison, Melinda Wilson, Brenda Williams, Jill Whitfill. Back: Breck Record, Randy Davis, Jana Noland, Ches Carthel, Kevin Stennett. (Staff Photo)

Interior Designer Presents Program For Study Club

The Athena Jr. Study Club met in the home of Sheree Cannon with Karen Koonsman as co-hostess. The program, "Grand Tour of Interior Decorating" was given by Pat Carthel, Interior Designer for Sears, Roebuck, and Co. Mrs. Carthel emphasized the importance of color in decorating. Color continuity from room to room will make a home seem larger. Choose from 2 to 4 colors to use throughout the house and then use 1 or 2 different colors for accent. Window treatment, especially draperies, can give the finished touch to a home more than any other item. Some new ideas for windows were open weave draperies, skinny blinds, verticle blinds, window shades, and woven wood shades. Mrs. Carthel illustrated her dis-

ussion with a variety of fabric and carpet samples. Following the program members and guest were served strudel cake. Plans for this years G.F.W.C. Caprock Convention were discussed. Kathy Hunter was chosen for Outstanding leadership in Athena because of her roll in organizing the cystic fibrosis bake-a-thon, pre-school clinic, and the ice cream booth at the fair. Jan Mize was selected as Outstanding Club Woman in Athena because of her state G.F.W.C. offices. These women will be entered in competition on out district level in their respective categories.

A program given to Athena by a drug investigator from Lubbock, will be nominated for outstanding club program. In this program,

the use of illegal drugs was discussed and the preventive measures being taken. Several teen-agers attended this program and because of this presentation an Athena member, Virginia Owens, was asked to present a program on drugs to the 5th graders at Lockney Elementary School.

After the benediction, club members were dismissed. The following women were present:

Rita Burleson, Sheree Cannon, Sally Carthel, Peggy Hallmark, Kathy Hunter, Janie Klein, Karen Koonsman, Martha Sue Lusk, Donnie Meriwether, Charlotte, Mitchell, Jan Mize, Virginia Owen, Shelia Poole, Sandra Turley, Lela Warren, Sue Zorger, D'Ann Belter, Ann Favor, and Judy Schacht.

Hobby Club Elects Officers

The Hook and Needle Hobby Club met Tuesday, January 17 in the home of Mrs. Woodrow Wilson for their first meeting of the year. Mrs. Glen White presiding.

Officers elected are: president, Mrs. J.B. Sue; vice

president, Mrs. Nolan Turner; secretary, Mrs. Willie Bunch; scrapbook, Mrs. Glen White; and reporter, Mrs. Johnnie Cates.

Mrs. Sue appointed a sunshine committee: Mrs. Foy Gooch and Mrs. Harry Reeves; and a project com-

mittee: Mrs. Nolan Turner, Mrs. Clarence Denton and Mrs. Woodrow Wilson.

Refreshments were served to Mmes. Earl Crawford, Clarence Denton, Foy Gooch, Johnnie Sue, Nolan Turner, Glen White and Johnnie Cates.



ENGAGED... Mr. and Mrs. Ted Carthel announce the engagement and approaching marriage of their daughter, Cathy, to Ronnie Lynn Adams, son of Mr. and Mrs. Johnny Adams of Lubbock. The couple plan a small family wedding on March 18th in Lubbock. The bride-elect was graduated from Lockney High School and is attending Texas Tech. The future bridegroom was graduated from Coronado High School of Lubbock and is a senior at Texas Tech. Grandparents are Mr. and Mrs. Hershel Carthel of Plainview and Mrs. Sally Miller of Gonzales.

COTTAGE HAIR STYLES

Would like to introduce Judy Ogle to Floydada. She will give a Free Hair-cut

with a shampoo & set this Thursday & Friday only, January 19th & 20th.

Call ins and drop ins encouraged

Call 983-3438

and ask for Judy.

Adult Singles Announce Meeting

The Adult Singles will meet at Edna Gilly's home January 21, at 6:30 p.m. for a stew and corn bread supper. All are invited to come and bring a friend. Games and fellowship will follow the supper.

Whirlers Club To Dance Friday

Floydada Whirlers Square Dance Club will continue to dance each month, but has changed the dance night for January only. They will dance Friday, January 20, at 8 p.m. at the Massie Activity Center with Herick Allen of Amarillo calling.

The following months, regular dance night will be the third Saturday night of each month at the MAC. Everyone interested in square dancing is welcome to attend.

Adult Oil Painting Classes Scheduled

Dwayne Franklin, Floydada Jr. High art teacher, will teach an oil painting class for adults. Pre class will be held in the Junior High School art room one day a week from 7:00 p.m. to 10:00 p.m.

One course will be 8 weeks long and the cost will be \$2.00 per lesson or \$16.00 for the entire course. Final enrollment date for the course is January 31. Classes will begin after that date. Call Kathy Green at the Floydada Multi-Purpose Center for further information, and for enrollment. One number is 983-3134.

Look Who's Here

Mr. and Mrs. Ernest Torrez are the proud parents of a son, Eric Arthur, born December 20, 7:30 a.m., weighing 6 lbs. 8 oz., at Lockney General Hospital. The new baby was named after his uncle, Arthur Torrez, of Hondo, Texas.

Mr. and Mrs. Deryl C. Evans are the parents of a baby girl, Mindy Deleen, born Wednesday, January 11, weighing 7 lbs. 4 oz. in Central Plains Hospital in Plainview, Texas.

Grandparents are Mr. and Mrs. Jim Dee Smith of Kress and Mr. and Mrs. Milton Evans, Floydada. Great grandparents are Mrs. Nora H. Smith of Blanco and Mrs. S.M. Ches-shir of Guanah.

To substitute for one cup of self-rising flour, use one cup of enriched flour plus one teaspoon baking powder and 1/2 teaspoon salt, says Mrs. Mickey Sweeten, foods and nutrition specialist with the Texas Agricultural Extension Service, The Texas A&M University System.

SAVE GAS, SHOP IN BIG FRIENDLY FLOYD COUNTY.

Society

"We Care About America"

1934 Study Club Theme

"We Care About America," was the theme of the January 17 meeting of the 1934 Study Club meeting in the home of Mrs. J. R. Turner with Mrs. George Springer and Mrs. Fred Stewart serving as co-hostesses.

Mrs. J. S. Hale, Jr. introduced the speaker, Mrs. Loy Wylie of Petersburg, who spoke on "Women, You and the Red, White, and Blue." The speaker came dressed in a patriotic costume of the Bi-Centennial Era and spoke on women, famous, and infamous, and their contribution to the United States of

America History during wars involving our country. Guests for the evening were Mmes. Glenn White, Pete Switzer, Earl Crawford, Guy Guinn, Dallas Ramsey, and Ted Bell.

Members attending were Mmes. Allen Bingham, Wilson Bond, Floyd Bradley, Dennis Dempsey, R. G. Dunlap, Leon Ferguson, Garland Foster, Kyle Glover, J. S. Hale, Jr., J. T. Huckabay, Floyd Lawson, J. P. Moss, W. O. Newberry, Vernon Parker, John Reue, George Springer, Fred Stewart, L. B. Stewart, W. W. Trapp, J. R. Turner and O. M. Watson, Jr.

Kitchen Shower Honors Miss Frizzell

Miss Melanie Frizzell, bride-elect of Rick Bixler of Watonga, Oklahoma, was honored with a kitchen shower in the Max Smith home in Lockney on Saturday afternoon, January 14.

Guests were served refreshments from a table covered with a white linen cloth with raised flowers in blue. The centerpiece was multi colored daisies. Other appointments on the table were of crystal. The honoree was presented a corsage made of feathered blue carnations and baby's breath.

Miss Frizzell and Bixler are students at Southwestern Oklahoma State University. Wedding vows will be exchanged March 12 in Lockney.

Guests present or sending gifts to the shower were: Misses Teresa Duvall, Marilyn Smith, Denise and Dineen Johnson, Jackie Carthel, Donna Spencer, Janis Marr, Kathy McCart-

er, D'Lyn Mathis, Tracy Wofford, Christy Hulcy, Dar Lee McPherson, Gay Frizzell; Also Mmes. Pat Frizzell, Sam Fortenberry, Dart Carthel, Robert Murdock, Clyde Farish, and Jimmy Glenn.

Hostesses for the courtesy were Mrs. Max Smith and Lana and Mrs. Jack Frizzell and Joy. A gift of pot plants was presented by Miss Frizzell to the hostesses.

HAPPY BIRTHDAY ...To You.

Happy Birthday To You . . . Happy Birth
MRS. ADAMS
Happy Birthday To You . . .
From Valerie & Penny

THE WAYNE BRISTOW CRUSADE



Around the world, people are crying for an abundance of Life, Liberty and Happiness.

Thousands of these people are daily discovering a full and meaningful Life that sets them free and results in real Happiness. They are finding this through a supernatural relationship with Jesus Christ.

You have heard others talk about trying almost everything and finally them speak of the satisfaction, joy and peace they have found.

You may have tried some form of traditional religion and failed to find the answer.

Wayne Bristow has made the discovery that mere religion will not satisfy. He has, however, found personal satisfaction through a relationship with God through Christ.

Now YOU can enter into this relationship and supernaturally receive the qualities of life you have been seeking.

Mr. Bristow has helped thousands of people on four continents experience LIFE IN A NEW DIMENSION and has shown them the turn from frustration to fulfillment.

Wayne Bristow can also help you get in touch with God. Hear his vital messages for generations to come!

TODAY YOU CAN EXPERIENCE **LIFE - LIBERTY - HAPPINESS**

Also hear exciting inspirational music featuring two of today's most popular personalities:

JIMMY HODGES soloist - composer - recording artist - youth spokesman

FELIX SNIPES internationally recognized music and choir director

YOU ARE CORDIALLY INVITED

FEBRUARY 5-12, 1978
7 P.M.
FIRST BAPTIST CHURCH
FLOYDADA

FALL ITEMS REDUCED FOR CLEARANCE

....DON'T...WALK...TO OUR JANUARY

CLEARANCE

ALTERATIONS EXTRA ON SALE MERCHANDISE JANUARY 19-28

CLEARANCE LADIES AND CHILDRENS COATS REDUCED 33 1/3% OFF REGULAR PRICE	CLEARANCE ON JR. HANG-TEN SPORTSWEAR -PANTS-TOPS-VESTS AND JACKETS- REDUCED 33 1/3% OFF REG. PRICE
CLEARANCE-RACK LADIES FALL PULL ON PANTS FALL TONES AND WEIGHTS REG. \$10 VALUES, NOW \$6.88 REG. \$13 AND \$14 VALUES, NOW----\$8.88	CLEARANCE ON ONE GROUP OF LADIES FALL DRESSES MISSES AND JUNIOR SIZES REDUCED 50% OFF OFF REG. PRICE
CLEARANCE ON MEN'S FALL JACKETS REDUCED 33 1/3% OFF REG. PRICE	CLEARANCE ON BOYS FALL JACKETS REDUCED 33 1/3% OFF REG. PRICE
CLEARANCE ON ONE-RACK OF LADIES AND JR. SWEATERS REDUCED 50% OFF REG. PRICE	CLEARANCE ON ONE RACK OF LADIES MIX AND MATCH SPORTSWEAR JANE COLBY AND MR. MENCH FALL COLORS REDUCED 50% OFF OFF REG. PRICE

SPECIAL COLOR BRIGHT SALE SHEETS-TOWELS-BATH SETS-PILLOWS- DRASTICALLY REDUCED

3 Ways To Buy: Cash - Layaway-Master Charge

ANDERSON'S

120 West California DEPARTMENT STORE
Floydada

Delta Kappa Hosts D...
The Iowa...
Delta Kappa...
Professional...
tion hosted a...
ing administ...
bands on Sat...
January 14...
Slaughter Ma...
ia, Plainview...
Following...
meal, guests...
were greeted...
Johnston, pres...
Ruth Adams...
er, LaVada...
McDonald, and...
Patterson...
trams program...
Don Holmes...
was adjourned...
of the club...
from Floydada...
Carol Bell...
rett, Roberta...
Johnston, Sara...
Frances Mink...
Reue...
The followin...
from Lockney...
Mary Dwyer...
ey, and Wilma...
acram...
Worthless...
"treatments" are...
costing about \$4...
year, reports Gay...
health education...
with the Texas...
Extension Serv...
as A&M Univers...
FAR...
TEX...
ACE...
1977...
ult of...
we o...
t's no...
Pro...
as a...
believ...
roduc...
rpluse...
w pri...
in in...
e pari...
low...
at De...
As I'...
spee...
te, I...
most...
the c...
exp...
pro...
hniq...
duct...
And...
ing...
ay to...
her...
chem...
ion...
quat...
pat, a...
ne fr...
the c...
It se...
it e...
pluse...
ex...
yin...
pover...
In a...
rson...
icult...
x a...
ricul...
ing in...
kets...
kn...
ply...
rid...
resen...
resen...
ce ce...
be...
Ve o...
he t...
ive...
e ar...
la. W...
ma...
ne...
edit...
ator...
are...
it leg...
easo...
roub...
M...
E...
I W...
98...



ERS TO WASHINGTON...Floyd County farmers Ed Warren, Buck Ford, Don Warren, Keith Stansell, Gail Wilson and Roland Watson left Saturday afternoon to join a California-to-Washington caravan of (Staff Photo)

And Crafts Each Tuesday And Wednesday

Let us get together each Tuesday and Wednesday from 2:30 to 3:30 p.m. to do Art and Crafts. We will meet at Della Plains multi-service Center January 24-25. This will be our first project.

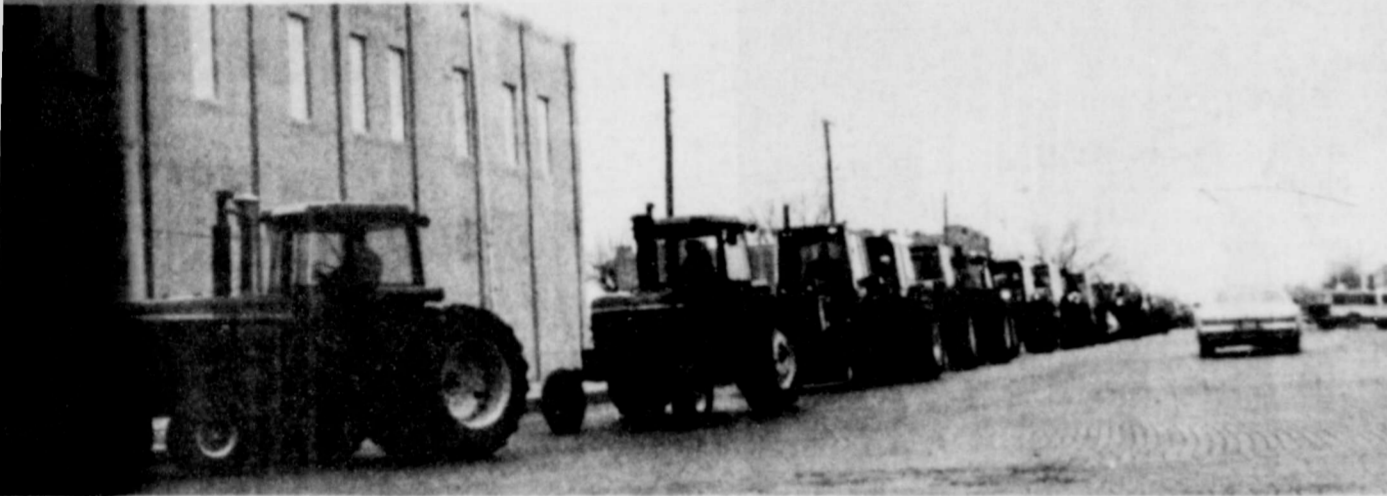
Everyone interested should come to Community Action Multi Purpose Service Center and join the fun. Each person must furnish their own material to work with. There will be no other expenses. For more information call KATHY GREEN 983-3134.

THE UPCOMING TEXAS ONION HARVEST is expected to be large this year, although production estimates are not yet available. We're hoping for a good harvest after onion growers ran into problems with wet weather last year. If the predictions are true, shoppers should find Texas onions to be excellent values in supermarkets. Look for them to start moving in volume around the end of this month.

Opaque white hose to match white ballerina slippers create a feminine look for Spring '78, says Margret Ann Vanderpoorten, clothing specialist with the Texas Agricultural Extension Service, The Texas A&M University System.



In 1814 a Harvard education cost about \$300 per year.



ARM STRIKE TRACTORCADE roars in to downtown Floydada Monday. (Staff Photo).

TEXAS AGRICULTURE FACES PROBLEMS in 1977, not all of them the fault of the producers. But, as we enter the New Year, we must not look back too long, but must look ahead.

OFFER GOOD FROM NOW TIL FEBRUARY 19TH

RCA'S DOUBLE SAVINGS SALE

SAVE DOLLARS SAVE ENERGY

on selected RCA color TV models with XtendedLife chassis

Money back direct from RCA

One of our greatest sales ever—designed to introduce you to RCA's most energy-efficient color TVs ever. Just buy one of the qualifying models, fill out the money-back coupon and send it to RCA with your sales receipt. You'll get a check direct from RCA.

LIMITED TIME ONLY!

SAVE \$65

Money back direct from RCA

On these ColorTrak Consoles with electronic tuning

Reg. price \$799.95
Money back from RCA \$65.00
YOUR COST \$734.95

Save energy with RCA's 100% solid state XtendedLife chassis

Uses only about the same amount of energy as a 100-watt light bulb. And it's designed to outperform and outlast any previous RCA color TV chassis.

SAVE \$30

Money back direct from RCA

Reg. price \$579.95
Money back from RCA \$30.00
YOUR COST \$549.95

Save dollars on Black & White TV too.

RCA Sportable Sale

SAVE \$10

Money back direct from RCA

Reg. price \$169.95
Money back from RCA \$10.00
YOUR COST \$159.95

Mize T.V. Floydada Mize Pharmacy & T.V. Lockney

JANUARY Specials Bealls



JUST ARRIVED
Special
Pantsuit
Selection
15⁸⁸

A special price for a special look. Short or long sleeve designs in a large selection, slightly flared. Pull on waistbands 8-18.

NOW ON SALE ENTIRE STOCK

Warm Winter Type
SLEEPWEAR
ROBES
LOUNGEWEAR
Values To \$30.00
1/2 PRICE

BRUSHED LOOKS, WARM FLEECE PLUS OTHERS FROM OUR HOLIDAY LINE OF BEST SELLERS GROUPED ON RACKS FOR EASY SELECTING. ASSORTED COLORS. . . MOST SIZES

LARGE GROUP Ladies
COORDINATES
CHOOSE FROM JACKETS PANTS-SKIRTS-BLOUSES

REDUCED TO **1/3 OFF**

Men's THERMAL UNDERWEAR SHIRT & BOTTOMS
SIZES S, L, & XL REGULAR \$3.49 **2⁸⁸**

Men's Corduroy SPORT COATS regular value \$24.88 **18⁶⁶**

ONE TABLE MENS SHIRTS VALUES TO \$16.00 REDUCED **7⁸⁸**



Ladies Easy-On Polyester Pants **5⁸⁸**

A fashion must for today, our 100% polyester knit pants with elasticized waistband and slight flared legs in the newest solids

ENTIRE STOCK REDUCED! LADIES FASHION BOOTS

REGULAR \$39.95-\$45.00 **29⁸⁸**

Regular \$34.00 **19⁸⁸**



"We can find ways the tax laws can save you money."

Henry W. Block

We are income tax specialists. We ask the right questions. We dig for every honest deduction and credit. We want to leave no stone unturned to make sure you pay the smallest legitimate tax. That's Reason No. 1 why we should do your taxes.

HENRY W. BLOCK
THE INCOME TAX PEOPLE

108 W. MISSOURI
983-5233
HOURS: 9-5 SAT. 9-5

PIZZA GOLD

GRAND OPENING

THURSDAY - FRIDAY - SATURDAY - SUNDAY



On the Wye in Floydada



Manager Jack Gregory, Helen Emert and Kristi Meyers

OPEN
10 A.M. - 10 P.M.
MONDAY - THURSDAY

10 A.M. - 11 P.M.
FRIDAY - SATURDAY

OPEN SUNDAY
10 A.M. - 10 P.M.

HAPPY HOUR
EVERYDAY 2 P.M.-4 P.M.
COFFEE & TEA
1/2 PRICE

FAMILY NIGHT
WEDNESDAY NIGHT
BUY 2 GET ONE
SAME SIZE FREE

\$1.99 NOON BUFFET \$1.99
11:30 - 1:30 EVERYDAY INCLUDING SUNDAY
ALL YOU CAN EAT
INCLUDES - SALAD - SOUP - SPAGHETTI - PIZZA AND
SUBMARINE SANDWICHES - DRINKS EXTRA

★ FREE FRISBIE
WITH PURCHASE
OF MEDIUM SIZE PIZZA

★ FREE BALLOON

DURING
OUR OPENING...

**BANANA
SPLITS 50¢**



FREE FROGURT CONES

ICE CREAM PARLOR

WE FEATURE TOP QUALITY PRODUCTS

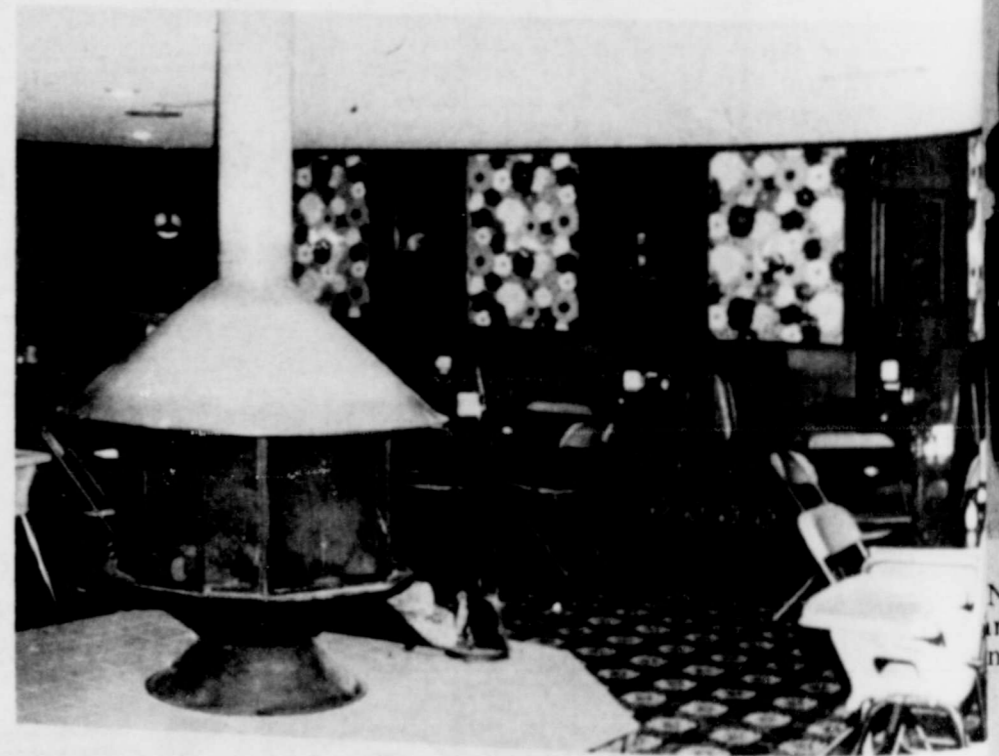


SUNDAES
FROGURT
MALTS
SODAS
FLOATS
FROSTED DRINKS

ICE CREAM
BANANA SPLITS
SHAKES



Rilla Woody in the Ice Cream Parlor



Dining Room

WE WOULD LIKE TO ACKNOWLEDGE THESE PEOPLE AND FIRMS THAT HELPED
WITH OUR BUILDING CONSTRUCTION AND INSTALLATION:

PARNELL AND FRANCIS POWELL
FLOYDADA, TEXAS
SAM HENRY-ATTORNEY
FLOYDADA, TEXAS
BOBBY JAMES
PLAINVIEW SAVINGS & LOAN
JERRY WOFFORD-CONTRACTOR
PLAINVIEW, TEXAS
PAT FARMER-CARPENTER
PLAINVIEW, TEXAS

JIMMY WILSON - BUILDERS MART
FLOYDADA, TEXAS
LEON SEELY - SEELY BROS. STUCCO
FLOYDADA, TEXAS
AL MANGUS - CARBONIC SALES
LUBBOCK, TEXAS
HIGGINBOTHAM - BARTLETT
FLOYDADA - PLAINVIEW
J. Q. LONG - ROOFING
PLAINVIEW, TEXAS

BILL DAY - DAY HEATING
FLOYDADA, TEXAS
RICHARD GREEN - GREEN PAINTING
PLAINVIEW, TEXAS
JAMES SON - SON CARPET
PLAINVIEW, TEXAS
JESSIE BREWER - BACKGROUND MUSIC
PLAINVIEW, TEXAS
RONNIE WRIGHT - PLUMBING
PLAINVIEW, TEXAS
BILLY MAULDIN - FENCE
PLAINVIEW, TEXAS

FRED LI PHAM - PAVING
FLOYDADA, TEXAS
HAROLD BENNETT - CONCRETE
FLOYDADA, TEXAS
RUDY BOWNS - BOWNS ELECTRIC
PLAINVIEW, TEXAS
TOM SIMMONS - CITY ELECTRIC
FLOYDADA, TEXAS
DARVIS FOSTER - FOSTER GLASS
PLAINVIEW, TEXAS
FRANKY MILLS - SIGNS
PLAINVIEW, TEXAS

SPORTING EVENTS



Shorthorns Third In Tourney

The Shorthorn eighth-grade basketball team took third place in a tournament at Olton last week. They defeated Olton's "B" team 50-7, lost 47-25 to Littlefield, and beat Tulia 38-29 in the game for third place, gaining a measure of revenge for a 29-25 loss to the Dobbers earlier in the week (Monday).

Lotsa 'Horns scored in that 50-7 debacle, including Jeffrey McCormick and Junior McDonald, ten points each; Ernest Galvan, eight; Phillip Kidd, six; Jeff Reecer and Eddie Peralez, four apiece; and, with two points each: Tyke Dipprey, Israel Guerra, Carl Burt, and Eddie Kinard. McDonald had four rebounds, Galvan and Kidd had three each, and Reecer and McCormick each hauled in one.

McCormick led Lockney in the contest with Littlefield, scoring 11 points and getting six rebounds. Kidd scored eight and rebounded eight times. McDonald scored four and picked 10 off the boards. And Dipprey got two points and one eorum.

Lockney Coach Steve Culwell described McDon-

ald's effort in the win over Tulia as "tremendous." McDonald shared the scoring title with McCormick (both had 14 points) and came

down with 15 rebounds (McCormick got two). Dipprey and Martin Tickle added two points apiece for the Shorthorn cause.

Shorthorns Slap Losses On Idalou Basketballers

Local junior-high boys' basketball teams posted a pair of wins over Idalou in the Lockney gym Monday evening. The seventh-grade Shorthorns won by a count of 32-22, and the Lockney eighth-graders beat Idalou for the first time ever (the Idalou team won three previous encounters, two of them last year in seventh-grade competition). The

score in that one was 37-27 Lockney.

Lockney seventh-grade players in the scoring column were Tony Rodriguez, 13 points; Kyle Brock and Steven Johnson, six each; Russell Warren, five; and Joey Davis, two.

It was the highest-scoring contest of the season for the Shorthorn seventh. Coach Lyndall Favor said "It was a

good effort, because Idalou has a good ball club. I think we're improving and will get still better."

Eighth-grade coach Steve Culwell praised his bunch for "keeping their heads up and starting to win again" after losses to Tulia and (in last week's Olton tournament) Littlefield.

Jeffrey McCormick led the Lockney team in scoring

with 15 points. Junior McDonald pulled down 19 rebounds to lead going away in that department, and scored eight points. Tyke Dipprey's six points, Phillip Kidd's five, and Ernest Galvan's three helped Lockney's cause. Kidd hauled in nine off the boards, and McCormick came down with two.

Henry Delgado scored for Lockney in the "fifth quarter" as the teams battled to a 2-2 deadlock.

The junior-high outfits venture to Floydada next Monday.

Idalou Blitzes Junior High Girls

Idalou defeated Lockney's eighth-grade girls' basketball team 24-16 Monday. Lockney coach Carol Helms said her team played "probably their best game of the year," even though they lost. They played excellent defense and showed lots of

hustle, Helms said, but were unable to score well.

Lisa Dipprey, Patricia Torres and Antonia Luna had good defensive efforts. Scoring for Lockney were Torres (six points), Tammy Williams (five), Virginia Wilson (three) and Melody

Burchfield (two).

Idalou notched a 31-10 victory in the seventh-grade girls' game. Lockney scorers included Kay Reay, who managed four points, and Connie Coffman, Elizabeth Mathis and Robin Hardy, each with two.

NEW SECRETARY

Mrs. Carrie Jo Howard has begun her duties as secretary at the United Methodist Church. According to Rev. Hugh Daniel, "We feel we are very fortunate in securing Mrs. Howard."

Carrie Jo is the wife of Terry Mac Howard, and she is the daughter-in-law of Mr. and Mrs. Mac Howard.

BLENDE ON PRESIDENT'S ROLL

AMARILLO—Mack Brad Blenden was recently named to the President's Honor Roll at the Mid-Continent Campus of Texas State Technical Institute, according to Lovell A. Pillow, General Manager of the Amarillo Campus. Membership to the President's Honor Roll is attained by maintaining a 4.0 grade average. Mack Blenden is majoring in Drafting and Design Technology and is the son of Mr. and Mrs. H.E. Blenden of Box 966, Lockney, Texas and is a graduate of Lockney High School.

Freshman Gals

Lose By Ten

Lockney High School ninth-grade girls lost a 38-28 basketball decision at Idalou Monday night. The Lockney girls narrowed Idalou's lead from 34-15 at the end of the third quarter to the final 10-point margin.

Scoring points in the Lady Horn effort were Penny Sterling, 13; Julie Frizzell, 10; Tammie Hayes, three; Sheris Clark, two.



LONGHORN FRESHMEN...Left to right, front: Johnny Rodriguez, Dwight Jackson, Joe David Gonzales, Mike Arellano. Middle row: Dee McPherson, Joe Reay, Alex Vasquez, Bryan Hayes. Back: David Balderas, Nolen Kell, John Cummings, Nick Christian, Kevin Belt. (Staff Photo)



In old Irish legend, the cats are ruled by a king cat the size of an ox.

Brown Supports Parity Goal Gained Through Free Market

AUSTIN—Agriculture Commissioner Reagan V. Brown has announced he supports the goals of the current farm movement, "if those goals can be achieved in the marketplace through the free enterprise system."

In a recent statement, Brown said, "The call for 100 per cent parity by many

farmers and ranchers is a position I can support if their goals can be achieved in the marketplace through the free enterprise system."

Brown said he had been assured by farmers and ranchers that this was their objective.

"Farmers and ranchers must have unimpeded access

to domestic and foreign markets. This means protection from embargoes, boycotts, restrictive legislation, price ceilings and other restrictions to free trade. We can achieve for the farmers and ranchers a fair share of this country's prosperity," he stressed.

"The American farmer and rancher is fighting for his very survival," he continued. "He has less control over the prices he receives than any other industry. The cost of production, compared with the prices agricultural producers receive today, places losses at Depression levels."

RECENT FIGURES SHOW CONSUMERS

are evidently not listening to the barrage of dietary misinformation about meat coming out of Washington, D.C.

According to these figures, per capita consumption of red meat last year is estimated to total a record 208 pounds per person, up one-and-a-half pounds from 1976. And indications are that the trend will continue in 1978, in spite of "scare" stories claiming we eat too much meat.

....

WASHINGTON TRIP DONORS ARE LISTED

These Lockney businesses and individuals donated money to finance farmers' trips to Washington:

Alton Barnes, Elmer Sandusky, Doug Meriwether, Hi Plains Gin, Webster Service and Supply, John Tye, Gene Collins, Glenn Watson, Dan Teuton, Baccus Motor Company, Lockney Oil and Butane, Wilbur Mize, Lockney Rotary Club, Macon Ulmer, Boot Hill Western Store, Page's Thriftway, Kelton Shaw, Johnson and Johnson, Dick's Automotive, John Bickley, H.E. Frizzell, Brown's Department Store, Perry Implement Company, Lockney Cooperative, Rainey Davis, Ansley and Son, Robert Daniels.

LOCKNEY LOCALS

Mrs. Sylvia Yeary was honored with a surprise party on her 75th birthday Saturday night January 14 in the home of Mr. and Mrs. R. H. Ford. Helping host the occasion were her granddaughters Mrs. Max Yeary, Mrs. Rex Yeary, Mrs. Bill Walker and Jacqueline Owen. The group enjoyed cake and punch, then played "42." Those attending were: Jewel Roberts, Emma Thomas, Mr. and Mrs. Harmon Handley, Bernice Barker, Tina Rexrode, Jim Pinner, Olive Myers, Mr. and Mrs. R. H. Ford, Mr. and Mrs. E. A. McLeod, Mr. and Mrs. Charles Huffman, Edna Cox, Ethel Knox, Lorene Dorman, Mrs. Max Yeary and Charla, Brenda Yeary, Jennifer Walker, and O. Bryan, Jacqueline and Trevor Owen of Lubbock and John Roberts and John Roberts Jr. also of Lubbock and the honoree Sylvia Yeary.

Mrs. Helen Huffman fell and broke her left arm Saturday January 7. She was hospitalized at Lockney General Hospital until Friday January 13 when she was able to come home.

Mrs. Mabel Perkins returned home Friday, January 13 after spending four weeks with her son Mr. and Mrs. Terry Perkins and family of Houston.

Elva Perry and Ada Stewart spent Saturday night January 14 with Joe and Brenda Foster.

Visiting in the home of Mr. and Mrs. Johns Cox Sunday were their daughters Max and Wanda Marble, Larry and Marlin of Hart and Mel and Marjorie Holcomb.

Mel Holcomb visited his mother, Mrs. Holcomb at Roaring Springs Monday.

Mrs. Nita Holland returned Tuesday of last week from Hallettsville, Texas where she had spent the last three weeks visiting with her son, and his family, Mr. and Mrs. Robert Holland

and children.

L. M. Readhimer returned home Monday from the Methodist Hospital where he had surgery the 6th of January. Mr. Readhimer is convalescing satisfactorily.

Mrs. T. H. Boedeker of Plainview has been hospitalized a week, and is still in the Central Plains Hospital. Mrs. Boedeker is a former resident of the Lockney area, and is the mother of Mrs. Helen McDonald and Charlie Boedeker.



"MISS AUSTIN"...Tracy Smith, a ninth-grade student at Austin School in Midland, was named "Miss Austin" Tuesday. Miss Smith, 14, attended Lockney schools until several years ago. She is the daughter of Mr. and Mrs. Dan Smith and the granddaughter of Mr. and Mrs. Bill Fewell and Mrs. Neva Smith of Lockney. (Staff Photo)

OPEN 24 HOURS

ALLSUP'S
CONVENIENCE STORES

SPECIALS GOOD JANUARY 19-22, 1978

SUPER FOOD SAVINGS EVERY DAY!

TURKEYS 39¢ LB.

BORDEN'S PREMIUM ICE CREAM \$1.19 1/2 GAL. RD. CTN.

PARTY NUTS 59¢

POT PIES 3/\$1.00 TURKEY, CHICKEN, BEEF

ALL WASHABLE KNIT CAPS \$2.39 EACH

QUEENS FANCY CELERY HEARTS PKG. 49¢

WOLF BRAND CHILI WITH BEANS 2/\$1.00

STAR KIST 6 1/2 OZ. TUNA 98¢

BORDEN'S BUTTER-MILK 89¢ 1/2 GAL. CTN.

POLAROID FILM
HALF PRICE

Main & College Lockney, Texas



NINTH GRADE LADY HORNS...Left to right, front: Julie Frizzell, Irene Mariscal, Sharon Spencer, Rosalind Hill, Darlene Prater. Back: Julie Ferguson, Penny Sterling, Sheris Clark, Tammie Hayes, Tonya Nance. (Staff Photo)



LOCKNEY ROTARY CLUB contributed \$100 to help finance farmers' trips to Washington, D.C. Rotary director Wilbur Mize presented the check to Lockney-area farmers (left to right) Keith Stansell, Roland Watson and Gail Wilson last Friday. The three were in a group which joined a Los Angeles-to-Washington caravan in Amarillo Saturday. (Staff Photo)

THE LOCKNEY BEACON
Box 187
LOCKNEY, TEXAS 79241
Published each Sunday and Thursday at 220 S. Main, Lockney, Texas 79241. Publication No. 317220. Wendell Taylor, Publisher, James Huggins, Editor. Second Class Postage Paid at Lockney, Texas 79241. Subscription Rates: Local \$2.50 per year. Out of trade area \$10.50 per year.



The women who served the American Agriculture meal in the MAC Monday

Learn To Listen

COLLEGE STATION—Learn to listen—and gain the basis for understanding others and strengthen relationships, says Jenny Reinhardt, family life education specialist with the Texas Agricultural Extension Service, The

Texas A&M University System.

Few people have mastered the art of listening with understanding, she continues.

"In fact, research shows that poor listening is a major family problem."

"In addition, experts often cite lack of communication as a reason for divorce and children running away," she says.

Ms. Reinhardt offers six steps to becoming a more effective and efficient listener.

1. Be interested in the other person. Thinking that each person has something helpful to say makes listening easier.

2. Accept "less than perfect" in others. Each person has something to offer regardless of age, dress, mannerism, or speech.

3. Learn to "act" not "react." Hear all of what a person has to say and view the entire idea rather than its specifics—and do not make assumptions.

4. Recognize that others may use words and convey thoughts that are outside our circle of knowledge. Use these experiences to expand knowledge. Some helpful responses are: "Oh, that is interesting," "I didn't know

that," "That is something I have often wondered about," "Would you explain?"

5. Try to understand what the individual is saying. Sometimes words do not tell the whole idea.

6. Pay attention. Faking attention is disrespectful and causes the communication process to break down.

Family History Deadline Moved To February

The deadline for submitting family histories for the Floyd County history book has been extended to February 28.

Each county resident, past or present, may send in 500-word (maximum length) stories of their families in Floyd

County. Histories should be submitted to Floyd County Historical Society, P.O. Box 100, Floydada, Tex. 79301.

The history books will be published at a cost of \$24.50 plus tax and shipping. After that date the price will be higher.

Grain Sorghum Price \$3.98

LUBBOCK, TX—Jan. 12 the White House officially announced the '77 target price for grain sorghum at \$4.07 per hundred weight. The '78 target price for sorghum will be \$3.96 cwt.

It is directly because of Grain Sorghum Producers Association's (GSPA) work with Congress that the 1977 Food and Agriculture Act contains a provision establishing sorghum target prices in relation to the cost of production.

When the bill became law in September, GSPA was lauded as having won a major battle for grain sorghum farmers. However, OMB influenced the White House to hold up on final announcement of the target price until now.

The \$4.07 target insures sorghum farmers of over \$300 million in deficiency payments on their '77 crop. Deficiency payments (the difference between the target price and the government loan level) are estimated at 68 cents cwt. for sorghum, with the exact amount to be determined by the average price received by farmers from Oct. 1 through Feb. 28.

Using the 68 cent figure, a sorghum producer will receive \$6,800 in deficiency payments for each million pounds—payments being paid on the "farm projected yield" times the planted acres (not to exceed allotted acres in 1977).

GSPA has expressed relief at the President's decision to abide by the law, but wonders why it took the President four months to verify the price supports when the law clearly states how they should be determined.

GSPA is also disappointed at the timing of the announcement. Coming only one month prior to planting in the southern sorghum

belt, this late decision does not give farmers enough time to prepare their plantings.

GSPA thanks Congressmen George Mahon, Jack Hightower, Bob Poage and Glenn English for their support in securing the sorghum target based on cost of production as a provision in the farm bill.

Pork Producers Plan Increase In Farrowings

AUSTIN—Recent higher pork prices and cheaper feed costs are good news to Texas producers, who plan to respond by stepping up breeding activity in the coming six months, Agriculture Commissioner Reagan V. Brown has said.

According to figures just released by the Texas Crop and Livestock Reporting Service, farmers indicated they intend to farrow 102,000 sows by May of 1978, Brown stated. This is a four-per-cent increase over the same period last year, he added.

"These farrowing intentions follow closely the trend of other pork producers throughout the country," Brown said. "Nationwide, farrowings are predicted to increase nine per cent over last year. With December inventories of both market and breeding stock five per cent above levels set in 1976,

Got Heat Or Plumbing Problems? Call HOLMES PLUMBING AUSTIN, TEXAS 983-2251 6:30 - 9:30 a.m. 5:30 p.m. - 10:00 p.m.

PRESCRIPTIONS



We Work With Your Doctor

We follow doctor's orders to the letter. Your prescriptions and your health depend on our reliable, accurate service. Call on us.

Byrd PHARMACY Phone 652-3353 109 MAIN Lockney, Texas

OPEN 7 A.M. TIL 11 P.M. 7 DAYS A WEEK

Minit Mart

FOR A SNACK OR A MEAL HOT FOOD LARGE SELECTION OF COLD DRINKS MINIT LAUNDRY SELF SERVE GAS REGULAR OR UNLEADED

PRICE EFFECTIVE THURSDAY-SATURDAY JANUARY, 21st.

102 SOUTH SECOND - FLOYDADA

SAVE on your POTATOES NOW!

POTATOES
U S No 1
Colo. Russett
10 Lb. Bag

69¢

DEL MONTE - CUT GREEN BEANS OR SWEET PEAS

303 CAN

4 FOR \$1.00

KLEENEX FACIAL TISSUE

100 CT BOX ONLY

35¢

SWIFT - LUNCHEON MEAT PREM

12 OZ. CAN

79¢

WHITE SWAN SALTINE CRACKERS

1-LB BOX

39¢

MINIT MART SPUD - CHIPS

9 OZ. BAG

49¢

BOUNTY PAPER TOWELS

JUMBO ROLL

59¢

PRESTONE ANTI-FREEZE

GAL. JUG

\$2.98

FROM OUR HOT FOOD DEPT CORN DOGS

2 FOR 39¢

ASS'T FLAVORS POP ROCK

2 FOR 15¢

We No Longer Need To Advertise

- * If We Do Not Have Anything To Sell -
- * If All Our Customers Know All Products Benefits -
- * If We Are Certain They Will Not Forget These Benefits -
- * If There Are No New Customers We Wish To Sell -
- * If There Is Nothing About Our Business That Needs Explaining
- * If We Have Nothing To Sell That Might Help Our Customers Plan For The Future -
- * If We Believe Our Trademark Will Remain Indelibly Fixed In The Memory Of Our Customers -
- * If No Competitor In The Meantime Continues To Advertise His Products -

The Lockney Beacon & The Floyd County Hesperian

County Agent pleased with... Floyd County... Monday, Jan... city Center... is program... County Pro... ee, Crops Su... cultural Ext... d programs se... rdless of se... color, sex... n.

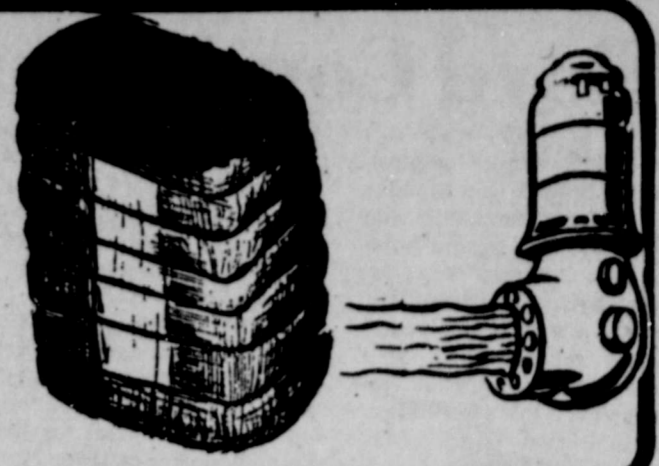
arvin Sart... agement TA... uss budgets... has worked... gets for cor... um at our... h is rather... high levels... omes Supak... on, TAEX-L... several year...

w Farn... essure... COLLEGE... combination... es, high ene... decreasing... in some a... ntially rec... cultural... ends an econ... Texas Agric... ion Service... xty percent... production... ated land, no... tson. Studie... unit costs of... irrigated... or Texas cre... pn, wheat, m... subantantia... lower yields... and above... ket as we... ram target... or example... indicates... ated cotton... Plains aver... pound and... costs avera... pound while... e for cotton... pound. Irrig... s average... nel; dryland... target price... s in the... ey on irriga... nated at... lred-weight... s are \$4.04... e for milo... announced... ed to be ab... nutson ex... er the 1977... iculture Ac... nent pays p... erence betw... price and... ket prices w... age market... w the target... prices are... ntially be... es for all... s except... es are base... age cost of... se costs con... et costs, s... overhead... to manag... ly labor... ent return... these cost... there is tr...

Wind... ine S... e Soil... ice in F... windbreak... igation an... ling appl... Texas For... e of the... green see... are Ariz... trian Pine... me of th... duous see... are the... erican Plum... Green Ag... ge Oran... le), Russi... eylocust... in quantiti... e and in... any one... rs must b...



FARM & RANCH NEWS



Great Program For Ag Info Day

County Agent Doyle Warren is associated with the program for the Floyd County Ag Information Day, January 23 in the Massie Center.

The program is sponsored by the Floyd County Program Building Committee, Crops Sub-Committee, Texas Agricultural Extension Service educational programs serve people of all ages regardless of socio-economic levels, race, color, sex, religion or national origin.

Marvin Sartin, Area Economist-Management TAEX-Lubbock, will discuss budgets for major crops. Marvin has worked out some comparison budgets for corn, cotton and grain sorghum at our normal yield levels, which is rather revealing compared to just high levels of cotton production.

James Supak, Area Agronomist, Cotton, TAEX-Lubbock, has worked for several years on putting together

information on cotton varieties and those varieties that perform well in our area.

Dr. Zoel Daughtrey, Area Agronomist, TAEX-Lubbock, will discuss weed control, especially high-lighting those hard to control weeds and some combinations of herbicides newly labeled that can better combat our normal weed problems.

Two local producers will also be on the program to discuss the insights and experience of working with cotton modulating and circular sprinkler systems. Laron Fulton has used the cotton modulating system and will discuss the use, advantages and disadvantages for cotton productions.

James Hinton, Dougherty farmer, has completed his investigation on sprinkler systems and is in the process of installing a circular system on the home farm. He will discuss some of the

problems including installations, and costs of sprinkler systems.

The program will be completed with talks about pest management, cotton profit and farm legislation.

Jim Leser, Area Entomologist, TAEX-Lubbock will discuss major crop pests, economic thresholds and controls.

We will try to wind-up the program with in-sights on how to produce cotton at a profit and the latest information on new farm legislation. At noon the Women's Division of the Floydada Chamber of Commerce will serve a Chili Luncheon to participants- sponsored by Floyd County Agri-businesses.



J. W. Becker introduces Mell Cherry At American Agriculture Program. (Staff Photo).

SAVE GAS, SHOP IN BIG FRIENDLY FLOYD COUNTY

Low Farm Prices, High Costs Put Pressure On Texas Agriculture

COLLEGE STATION--The combination of low farm prices, high energy costs, and decreasing water supplies in some areas could substantially reduce Texas agricultural production, contends an economist with the Texas Agricultural Extension Service.

Sixty percent of Texas crop production comes from irrigated land, notes Dr. Ron Knutson. Studies indicate that the costs of production from irrigated land for major Texas crops such as cotton, wheat, milo and corn are substantially higher than for yielding dryland crops and above current market prices as well as farm program target prices.

For example, the economist indicates that total irrigated cotton costs on the High Plains average 63 cents per pound and dryland cotton yields average 46 cents per pound while the target price for cotton is 52 cents per pound. Irrigated wheat costs average \$4.72 per bushel, dryland, \$3.39, and the target price is \$3. Milo costs on the Rio Grande Valley in irrigated land are estimated at \$5.26 per bushel, dryland \$4.04. The target price for milo has not yet been announced but is expected to be about \$4.

Knutson explains that under the 1977 Food and Agriculture Act, the government pays producers the difference between the target price and the average market price whenever the average market price falls below the target price. Market prices are currently generally below target prices for all major Texas crops except rice. Target prices are based on the U.S. average cost of production. Producers consider out-of-pocket costs, machinery overhead costs, a return on management and labor, and a 3.5 percent return to land.

Cost figures indicate there is trouble ahead

for many Texas producers, says Knutson. "While Texas production cost estimates cited here are not strictly comparable--and substantial cost variation exists among producers--a comparison of target price and average costs clearly indicates serious pressures exist on many producers to make ends meet financially."

A continuation of producer prices in the neighborhood of U.S. target prices over a period of years could result in a realignment of land values, increased risk of financial failure, increased consolidation of farm operations, conversion from irrigated to dryland production, and even a reversion from crop to ranching and cattle production in some areas of the state. The result could be an absolute reduction in Texas crop output, contends the economist. The magnitude of these effects is not known and must await further study. What is known is that a further increase in energy costs, wasteful use of water supplies, and continued low prices will increase the severity of the problem.

Research has shown that through the use of new crop production systems, it is often possible to produce crops at lower cost using less energy, water, fertilizer and chemicals. Some drought and disease resistant varieties are also available. However, this research is just beginning and has not yet been applied on an extensive basis.

Are there any current solutions to the farmers' dilemma?

Knutson suggests that potential policy solutions to the problem might lie in higher target prices for higher cost production areas, subsidies on input prices used in agriculture, or substantially increased research and extension support for discovery and implementation of cost-reducing production techniques.

Windbreak Trees And Seedlings Available

Soil Conservation in Floydada has the new price list for windbreak tree seedlings and for pine application from the Texas Forest Service.

of the species of seedlings available are the Chinese Elm, Black Plum, Black Walnut, Green Ash, Mulberry, Orange (Horse) Russian Olive, and Pecan. Orders must be in quantities of 100 or more in multiples of 50 for one species. All must be received by

February 11, 1978 by the Texas Forest Service. Shipments begin about mid-December and continue through the first week in March.

Other kinds of pine seedlings must be ordered in bales of 500 or more. Planting recommendations will be sent to the applicant. No trees are to be furnished for landscaping or ornamental purposes.

For more information and for application forms contact the SCS office in the Agriculture Building on the Court House Square or phone 983-2352.

All programs and services of the USDA and SCS are available to everyone without regard to race, creed, color, sex or national origin.



PIONEER

PIONEER HI-BRED INTERNATIONAL, INC. SOUTHWESTERN DIVISION

BOX 788 • PLAINVIEW, TEXAS 79072 • PHONE (806) 293-5231

An Open Letter To Our Farming Friends--

Charges are being made to the effect that Pioneer Hi-Bred International, Inc., is not sympathetic to the financial difficulties you are experiencing. I want to emphatically state that such is not the case. Nothing could be further from the true stand of Pioneer Hi-Bred International, Inc.

No company or organization is more aware of the contribution American farmers make to the economic health of the U.S. and to the survival of the world's population. In fact, Pioneer has spent untold manhours and dollars telling this story to the general public and to economic and governmental leaders...NOT for just the past four or five months, but from our company's earliest beginnings.

No company or organization is more aware of the economic pressures put on you, either. In fact, our success is directly tied to you. You're not just a customer. Many of you participate in the research that develops our products. Others of you help produce our seed. And then many of you also help market Pioneer brand seeds. To understand your problems is as basic to our business as is the research, production and marketing of our planting seed.

The man who founded Pioneer Hi-Bred International, Inc., dedicated his life to the welfare of the American farmer. It was our founder, Henry A. Wallace, who first produced and marketed hybrid seed on a large scale...which may be the greatest individual contribution in the history of agriculture. To suggest that the company he founded does not understand or support you, the farmer, is a serious error and a supreme injustice.

A letter written by an individual of the Garst and Thomas Hybrid Corn Company of Coon Rapids, Iowa--an independent company which distributes Pioneer brand products in Southwestern Iowa, Kansas, Nebraska, Colorado and Missouri--is being circulated among farmers. The comments in that letter do not reflect Pioneer policy and attitudes. The letter was NOT written by an official of Pioneer Hi-Bred International, Inc. It reflects ONLY the views of its writer.

I will not speculate about who is spreading this charge among you...or why it is being done. Farmers who know Pioneer, and the work we've done to support your cause, will know this charge is NOT true. If you don't know already, we hope you'll recognize that, through honest error or malicious intent, you are being misled if told that Pioneer Hi-Bred International, Inc., is not the farmer's friend.

Sincerely,

James W. Lindsey, President Southwestern Division

Floyd Counts Quarterly Sales

AUSTIN—State Comptroller Bob Bullock said Monday that Texas merchants and other sales tax permit holders reported gross sales totaling \$40.3 billion for the second quarter of this year. This represents a \$6.3 billion or 18.8 percent increase over the same three-month period (April, May and June) last year. Reported gross sales for the first three months of this year totaled just over \$36.8 billion, Bullock said. The number of reporting outlets also jumped to 246,347 for the second quarter of this year, up from 228,571 for the second quarter of 1976.

Bullock's office released computer analyses breaking down the reported gross sales by county and by Standard Metropolitan Statistical Area (SMSA). Harris County, the state's most populous, again led the state with reported gross sales totaling \$10.5 billion, up from \$8.1 billion for the second quarter of 1976. Sales tax permit holders reported sales totaling \$6.1 billion in Dallas County. Tarrant County registered the third highest gross sales with \$2.4 billion and Bexar County followed with \$1.8 billion. Swisher County for the

second quarter of 1977, ending Dec. 1, had 244 reporting outlets showing gross sales of \$14,534,862 and gross taxable sales of \$6,485,013. Deductions were \$2,996,101 and use tax purchases, \$31,432. Amount subject to tax was \$3,520,344. Castro County for the same period had 195 reporting outlets; gross sales, \$24,147,247; gross taxable sales, \$18,123,939; deductions, \$14,121,196; use tax purchases, \$132,367; and amount subject to tax, \$4,135,110. Floyd County had 198 reporting outlets; \$14,495,103 gross sales; \$4,710,121 gross

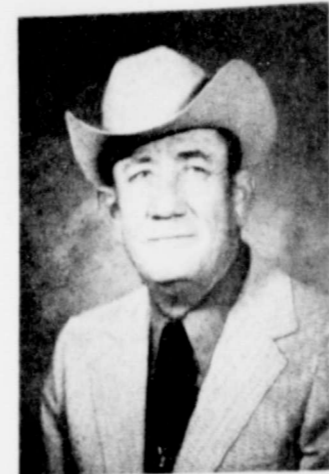
taxable sales; \$1,930,401 deductions; \$8,895 use tax purchases; and amount subject to tax, \$2,788,615. Bailey County had 180 reporting outlets; gross sales, \$17,937,213; gross taxable sales, \$8,381,331; deductions, \$4,892,022; use tax purchases, \$40,247; and amount subject to tax, \$3,529,556. Briscoe had 83 reporting outlets with amount subject to tax, \$674,861.

Nothing makes a person a worse driver than being behind the wheel of the car ahead of you.

CAPROCK HOSPITAL REPORT

Maydell Purnell admitted 1-12 dismissed 1-16. Lea Quellar admitted 1-13 continues care. Jimmy Viekers admitted 1-13 transferred 1-16. T.M. Whiteley admitted 1-16 continues care. David Talamentez admitted 1-15 continues care. Henry Hammons admitted 1-15 continues care. Carlos Herrado admitted 1-16 continues care. Gwen Cogdell admitted 1-16 continues care. Mark Jordan admitted 1-17 continues care.

Funeral services are set for 2 p.m. Friday at Lemons Memorial Chapel, Plainview, the Reverend Earl Cantwell of Rock Creek Church of Christ officiating. Burial will be at Plainview Memorial Park.



GERALD LACKEY
Gerald Lackey

Services for Gerald Dale Lackey, 57, of Floydada were at 2 p.m. Sunday in First Baptist Church with Dr. Floyd C. Bradley, pastor, officiating. Burial was in Floyd County Memorial Park under direction of Moore-Rose Funeral Home of Floydada. Lackey died Saturday in Methodist Hospital at Lubbock following a brief illness. The Lockney native was a member of the First Baptist Church here. He married Janette Bratton May 25, 1941 at Floydada. He was past master of the Floydada Masonic Lodge 712, and a member of the Eastern Star. He also served as president of the Lighthouse Electric Cooperative and as director of the soil conservation district. He was past president

Emergency Loans For Disaster-Hit Farmers

Congressman Omar Burleson announces that farmers in Baylor, Floyd and Stonewall Counties are eligible for emergency loans through the Farmers Home Administration to recover crop or property losses. Beginning June 1 until December 12, 1977, drought affected crops and damaged cropland in Baylor and

Stonewall Counties. Hail storms in May, 1977 caused damages and losses to crops in Floyd County, and reports also disclosed damaged farm homes. Farmers Home Administration emergency loans covering losses from designated disasters are made to farmers who cannot obtain necessary credit from other lenders in their local area.

The interest rate is three percent on loan amounts of up to \$250,000, offsetting actual production loss, with additional amounts for production purposes available at higher rates. On loans to restore damaged buildings and farm service buildings, the interest rate is one percent on the first \$10,000 borrowed,

three percent on the next \$30,000 and five percent on any amount exceeding \$40,000. Emergency loan applications may be filed at local Farmers Home Administration county offices. Applications based on physical losses will be taken in three counties until July 17, 1978 and for production losses until January 16, 1979.

In the winter, keep sleeping areas at lower temperatures than living areas, and at night keep all rooms at lower temperatures, advises Claudia Kerbel, consumer information specialist with the Texas Agricultural Extension Service, The Texas A&M University System. Think twice before bypassing boneless meat because of its higher price advises Mrs. Gwendolyn Clyatt, consumer marketing information specialist with the Texas Agricultural Extension Service, The Texas A&M University System. With no excess fat or bone in boneless meat, every bit of meat adds up to more servings from each pound, so it may be a thrifter choice, even though it costs more per pound, she adds.

OBITUARY

Russell King

Russell Clarence King, 65, a resident of the Bender Terrace Rest Home in Lubbock passed away January 18, 1978 at the rest home around 2 a.m. He was born in Floydada June 10, 1912. Services will be held this afternoon, January 19, at 3 o'clock at the Moore-Rose Funeral Chapel with the Rev. Ted Dotts, Pastor of St. John's United Methodist Church in Lubbock officiating. Interment, Floydada Cemetery. Mr. King was owner of a dry-cleaning business and was a member of the Pres-

byterian Church. He is survived by one son, Dennis King, Arlington; two brothers, Raymond King, Lubbock and W.A. King, Ft. Worth; two sisters, Mrs. John Hill, Ottawa, Kansas, and Mrs. Blanch Enos, Lubbock. Paulbearers will be Leonard Matisler, Keith Buhrman, Elton Goen, Ralph Rucker, Preston Watson, Dr. A. E. Guthrie and honorary: Brit Britton, Fred Warren, Grady Jenkins, Sam Fowler, and Carl Minor.

Mrs. McDonald

Mrs. John W. McDonald, 91, died at 12:20 a.m. Wednesday, January 18, in Central Plains General

The Floyd Philosopher In Big, Wild Burst Of Imagination, Thinks He Has Solved All World Problems

Editor's note: The Floyd Philosopher on his Johnson grass farm tackles all the world's problems in one letter this week.

Dear editor: Don't know if you remember it, but a few weeks ago I said I was going to solve the Mid East problem. Well, one thing and another kept coming up and I'm just now getting around to it. You know how it is, regardless of how large they are, very few world problems can get ahead are, very few world problems, like say a blizzard break down for you or, for me, a blizzard coming on and no hay in my barn and the water pipes busted. But I got to thinking, why solve just the Mid East problem and let it go at that? Why not roll up my sleeves and solve the South not roll up my sleeves and solve the South African problem, the Catholic-China problem, the South Korea North Korea problem, the Polish problem, the Panama Canal problem, and, just for good measure, throw in the farm problem, the school problem, the national debt, New York City and, well why not, go whole hog and throw in Congress too? I can hear you saying, that's a pretty large order, he must be off his rocker if he thinks he can get the whole world to unite at last. How in the world is he going to get the

nations of this earth to stop squabbling among themselves? Now I know it's true, wars before history began and despite the advances of civilization the world is basically, if you get right down to it, a bunch of tribes, each one fighting its own hunting grounds. As you know, Russia and the United States joined hands temporarily and then unclasped and backed up their guns against each other. It is something to get all nations, political and religious acts to unite and permanently and to find out what I believe is the only possible solution. What we need is a vastly stepped program to find some ground in the distant vastness of the universe then lead them into delectable Earth. With newspapers, television stations the world in all languages, ATTACK FROM OUTER SPACE, ENED, and I guarantee you the unite in 30 minutes. Were you outside last night and scrips Wasn't that a UFO circling just above the right of you?



FLOYD 4 HERS got up early to feed the farmers Monday morning opening event of American Agriculture Day.


of the Floyd County Fair Association, past president of the Floyd County Old Settlers Association and past board member of the Massie Activity Center. Survivors include his wife; two sons, Jay of the home and Jerry of Cedar Hill; a sister, Mrs. Jack

(Emogene) Stansell of Floydada; and two granddaughters.

Law Enforcement Officers Training In Floydada

COLLEGE STATION—West Texas law enforcement officers go into specialized training Monday, January 16, at Floydada. They will be in a six week basic certification course instructed by Stewart Dickson of the Texas Engineering Extension Service's Law Enforcement and Security Training Division. The 240-hour course equips rookie peace officers with basic skills and knowledge to carry out their duties. Instruction by Dickson and guest instructors will form a foundation on which trainees can build law enforcement careers through future training. Dickson, based at the Texas A&M Research and Extension Center at Floydada, will start them with information on basic law, criminal justice and law enforcement ethics. Subsequent sessions will add police procedures, criminal investigation and other law enforcement specialties including proficiency areas such as crowd and riot control and defensive tactics. Trainees successfully completing the course will meet requirements for officer certification under Texas law. The annual mission on Law Enforcement Standards and Culture. Training is a joint effort of the Texas Engineering Extension Service and Floyd County, which has been conducting such training by cities, departments and agencies. The program is a joint effort of the Texas Engineering Extension Service and Floyd County, which has been conducting such training by cities, departments and agencies. The program is a joint effort of the Texas Engineering Extension Service and Floyd County, which has been conducting such training by cities, departments and agencies.

IT'S TIME TO WORK ON NEXT YEAR'S CROP!



WE ARE PROUD TO BE ABLE TO HELP OUR AREA FARMERS BEGIN WORK ON ANOTHER YEAR'S CROP.

WE WANT YOU TO KNOW THAT WE HAVE THE PROPER EQUIPMENT AND THE RIGHT FERTILIZER FOR EACH CROP.....AND WE ENJOY "NEIGHBORING" WITH OUR FARMERS AS WE HELP THEM WITH THEIR PLANS....

- ★ Liquid FERTILIZER
- ★ Dry FERTILIZER
- ★ Anhydrous Ammonia

APPLICATORS AVAILABLE

WE WELCOME THE OPPORTUNITY TO MAKE CUSTOM APPLICATION FOR THE FARMER WHOSE SCHEDULE IS TOO TIGHT TO TAKE CARE OF THE JOB AT THE RIGHT TIME, CONSIDER OUR CUSTOM APPLICATION GROUND RIGS OR EITHER FERTILIZER OR HERBICIDES.


- ★ custom ground work
- ★ Herbicides
- ★ Fertilizer

COME IN TODAY, LET US ESTIMATE YOUR NEEDS, WE FEEL THAT WE ARE COMPETITIVE IN QUALITY, SERVICE AND PRICE.

DOUGHERTY FARM SUPPLY

LARRY BOSTICK
PHONE 983-2972
NIGHTS 983-2660

IN DOUGHERTY, TEXAS




built to save

ENERGY EFFICIENT HOME

CONSERVING DOESN'T MEAN HAVING TO DO WITHOUT...

There is a new concept in home construction that provides the utmost comfort and convenience yet saves-saves-saves on heating and cooling. The Energy Efficient Home... a Total Electric concept in home building that is as modern as tomorrow - it can save forty percent or more on heating and cooling costs when compared to previously accepted standards for Total Electric construction. AND YOU KNOW WHAT? YOU'LL BE FAR MORE COMFORTABLE TOO. GIVE US A CALL.



SPS
SOUTHWESTERN PUBLIC SERVICE

OUR GENERATION IS FOR YOU!

PROFIT RAISING EARTHWORMS

Can You Answer "YES" To These Questions?

1. Do you like raising livestock?
2. Do you want a business of your own?
3. Do you need retirement or extra income?
4. Do you have a back yard or other land?

PERHAPS YOU CAN BECOME A WORM RAISER!

IF ACCEPTED AS A PRODUCER, WE OFFER:

- Professional Guidance
- Marketing
- Exchange Membership
- Complete Support

ACT TODAY! SEND FOR YOUR FREE INFORMATION!

Send name, address, phone, description of facilities to:

Sleep your worms.

Floyd...
...ing...
...appen...
...y Dorothy...
...gs went...
...ek. Severa...
...our Rhyth...
...od start Mo...
...at the...
...its made...
...and "When...
...young Mag...
...We have lo...
...ercise clas...
...ig...
...day sever...
...its painte...
...with tri-cam...
...Green Bos...
...Agnes And...
...Hammonds...
...ernoon pla...
...sday was...
...iners were...
...and Hop...
...ith three G...
...Anderson...
...Willie Stam...
...eed with t...
...white fro...
...week made...
...wish she c...
...as again...
...residents...
...ons very...
...and scrips...
...just be...
...nk each on...
...their time...
...also to c...
...ek...
...ene Bred...
...ry, Mr...
...Davis, G...
...epherine S...
...rdie Sm...
...Davis, G...
...lo Ella Ja...
...rrell, Loc...
...Stewart...
...sch, Mr...
...art, Sain...
...becca Sp...
...rs, Jeff...
...Idaho, M...
...E. Da...
...ator F...
...ports...
...her F...
...Senator...
...pressed...
...market...
...s and ra...
...written...
...ary of...
...week...
...ent pro...
...public...
...many of...
...more than...
...can farm...
...feeding...
...world, a...
...ple in ag...
...share...
...for food...
...e stated...
...Berglan...
...nd Count...
...the annual...
...million de...
...tion spec...
...costs of...
...that inc...
...urts the...
...County...
...and Ar...
...ays the...
...has been...
...king this...
...product...
...agencies...
...ough par...
...get price...
...in improv...
...their fed...
...programs...
...be outl...
...which th...
...can an...
...provide...
...utilities...
...of produc...
...Increase...
...ance tax...
...increase...
...agricult...
...develop...
...A 6.6 per...
...Veterans...
...NAR—An...
...veteran...
...ing Semi...
...als will...
...Act of 197...
...A&M...
...0-31, not...
...with the...
...al Exten...
...seminar...
...ions an...
...on chang...
...on, insur...
...ng, trust...
...es, use...
...ze estat...
...ations...
...s...
...erans...
...als tre...
...ents ea...
...aily pat...
...72 hosp...
...of whic...
...vietnam...
...Sleep...
...your w...
...works...

dada
Home
nings

by Neff

at great this
rhythm Band off
Monday, with
the piano, our
made "Dixie
When you and I
raggie" sound
lots of fun in
classes every

several of our
ted decals on
Wednes-
Bostick, Ray
Anderson and
onds enjoyed
playing four-

as Bingo day,
ere Clara Will-
Hope Hamm-
e games, each
son, Pearl Car-
ambough and
with two games

rozen ground
de Mom Buch-
e could have
again.

our residents enjoy the
ollens very much. The
ing and scriptural read-
are beautiful, and
each one for shar-
time with us.
to our visitors

eeding, Gladys
r. and Mrs.
Otis Ander-
e Smith, Lock-
Smith, Mrs.
Otis Ander-
Jarboe, Doro-
Lockney, Mur-
rt, Lewis and
r. and Mrs.
inda and Sara,
Smith, Floyd-
e Smith, Poc-
r. and Mrs.
Davis, Clara

Farabee

upports

Prices

the State Senator Ray Farabee
aff P... support for
the market prices for
ranchers in a
er written to the U.S.
cretary of Agriculture
is week.

"Recent protests have
ought public attention to
st many of us have known
more than a decade.
merican farmers have
en losing this country
of the world, and it is time
people in agriculture to
a fair share of the dollars

ent for food and fiber,"
s for parables cited to Secretary
on set about England.
Texas (Floyd) county has an
Encourage annual income of
and \$27 million dollars from
minimum. He continued,
ten by means of production
to be possible. His income, it not
y bring the people of
vital part of the county, but it hurts
continue to grow in America, and
es are across the family farm
the which has been responsible
d require making this country the
ments

aining. Although parity and high-
in EES. Approved farm bill
or dival... federal Congress,
elp mak... outlined three
people benefit... and should do:
waste... provide for taxation of
rs, elec... land on the
s, elec... productivity.
municip... tax exemption.
(3) Increase State funding
r agricultural research and
al development.

PLANNING
An Estate
Seminar for Pro-
will be held at
M University,
notes an econo-
the Texas Agri-
Extension Service.
seminar will feature
changes in estate
insurance in estate
trusts, estate tax
use of gifts to
estate taxes, tax
ons and IRS pro-

Administration
treat 1.2 million
each year. Aver-
patient census in
hospitals is about
which 14 per cent
am-era veterans.

ep while
want ad
cks.

ep while
want ad
cks.

ep while
want ad
cks.

Fairview News

By Mrs. Clyde Bagwell

Following their marriage on Tuesday January 10, Mr. and Mrs. Walton Wilson took a tour of the Big Bend Country returning by Carlsbad where they went through the Caverns. They will return home for a few days, then they will go to Wichita Kansas to attend to business.
Becky Crabtree was among the group going from

here to Dimmitt to attend the all region band tryout on Saturday.
Friday afternoon, Mr. and Mrs. A.S. Mize visited Mr. and Mrs. Bill Beedy, Sunday afternoon Mr. and Mrs. Woodrow Wilson visited in the Bill Beedy home.
Anissa Crabtree spent Friday night with her grandmother, Mrs. Kate Crabtree. Jack Moore and children

visited Sunday night with Mr. and Mrs. E.W. Walls. Lee Burton visited Mr. and Mrs. Ray Cook Tuesday afternoon.
Mr. and Mrs. R.B. Hatley and Burl Huckabee visited during last week with Mr. and Mrs. Lindsey Graham.
January 13 was Mrs. Lindsey Graham's birthday and Jerry Pearson brought her a beautifully decorated cake with candles and a pantsuit.
Sunday afternoon Mrs. Ray Cook went to Matador to visit Mrs. Lewis Bostick who had recently returned home from the hospital in

Charles Denton Wise took his parents Mr. and Mrs. C.H. Wise and his aunt, Mrs. Doris Kitchens, to Silverton, Sunday afternoon where they visited a relative of Mrs. Kitchens, Mrs. Mae Vaughn.
J.P. Denton of Littlefield went to Pampa Sunday to visit his son, Jerry Don Denton and family, returning by way of Floydada where he visited and had supper in the home of his sister and family, Mr. and Mrs. C.H. Wise and Charles. Mr. and Mrs. J.W. Gilbreath and Mrs. Wendell Graham of Floydada and

Mrs. Leo Brown of Lubbock visited Mr. and Mrs. T.L. Perry, Sunday afternoon.
Mrs. Gracie Riggles returned to Methodist Hospital last Tuesday where she is having tests and treatment.
Mr. and Mrs. Milton Brown of Victorville California who had been here a month with her mother, Mrs. Gracie Riggles left Friday for their home.

Sergeant Dirk A. Campbell, whose wife, Nellene, lives at 1101 E. First, Petersburg, Tex., recently was assigned as a tank crewman with the 2nd Armored Cavalry Regiment in Amberg, Germany. Sgt. Campbell entered the Army in 1971.
He is a 1971 graduate of Floydada High School.
He is the son of Mrs. Dorothy Kerr, 509 E. Grover, Floydada.
Nearly 45 per cent of the nation's population are potential recipients of Veterans Administration benefits.

COKE 6-32 OZ. BOTTLE CARTON **\$1.59** PLUS DEPOSIT

TEXAS TOAST 1 1/2 LB MRS. BAIRDS **2 FOR 99¢** 62¢ VALUE

ICE CREAM 1/2 GAL. SQUARE CARTON **99¢** \$1.59 VALUE

Stainless Flatware only **25¢** for a 5 Piece Place Setting

Imagine a 40 piece service for only \$2.00
HERE'S HOW IT WORKS!
every week!

THESE VALUES GOOD THURSDAY JANUARY 19 THROUGH SATURDAY, JANUARY 21

BUDDY'S

220 South 2nd Street 983-3149
HOURS MON-SAT 8 A.M. - 7 P.M. SUNDAY 9 A.M. - 7 P.M.

WE RESERVE THE RIGHT TO LIMIT QUANTITIES

WE GIVE **DOUBLE ON WEDNESDAY**

OUR DELICATESSEN FEATURES GOLDEN FRIED CHICKEN TO GO

FIRM GREEN CABBAGE 12¢ LB.	BACON 1 LB TALL KORN \$1.29	FRANKS WESTERN STYLE WILSONS 1 LB \$1.09	COTTAGE CHEESE 24 OZ. CLOVERLAKE 97¢ \$1.33 VALUE
POTATOES US NO 1 10 LB BAG 89¢	GROUND BEEF FAMILY PAK 69¢ LB	BUTTERMILK 1/2 GAL. CLOVERLAKE 69¢ \$1.03 VALUE	CRISCO 1 LB FUNSIZE \$1.67 \$1.89 VALUE
AVOCADOS CALIFORNIA 3/\$1.00	HAM SAVORY BONELESS CENTER CUT \$1.89 LB	RANCH STEAK U.S.D.A. 89¢ LB	SNICKERS CANDY 1 LB FUNSIZE \$1.19 \$1.69 VALUE
TOMATOES RED RIPE 39¢ LB	CHUCK ROAST U.S.D.A. 7-BONE 99¢	ROUND STEAK U.S.D.A. BONELESS \$1.69 LB	PAN KITS MORRISONS MIX 8/\$1.00 21¢ VALUE
BANANAS GOLDEN RIPE 5 LBS \$1.00	FRIED CHICKEN 2 LB. BOX BANQUET \$2.29 LB	SPARE RIBS COUNTRY STYLE \$1.19 LB	MANDARIN ORANGES 11 OZ. GOOD DAY 3/\$1.00 43¢ VALUE
INSTANT TEA 3 OZ. LIPTON \$1.67 \$2.19 VALUE	PAPER 300 COUNT NOTEBOOK \$1.29 \$1.99 VALUE	CHICKEN BROTH 13 OZ SWANSONS 4/\$1.00 34¢ VALUE	STRAWBERRY PRESERVES 18 OZ. 7-FARMS 39¢ WITH COUPON
DINNER NAPKINS 50 COUNT KLEENEX 2/89¢ 69¢ VALUE	REYNOLDS WRAP 200 FT. \$2.09 \$2.91 VALUE	OVEN CLEANER 16 OZ ARM AND HAMMER \$1.09 \$1.59 VALUE	CHOCOLATE COVERED CHERRIES 12 OZ ROYAL ANNE \$1.19 \$1.49 VALUE
CAT CHOW 12 OZ. KEEBLER \$3.49 \$4.59 VALUE	GLUE 4 OZ. ELMERS 2/99¢ 79¢ VALUE	RUG CLEANER 24 OZ GLORY \$1.49 \$2.39 VALUE	CHOCOLATE CHIPS 12 OZ. NESTLES \$1.39 WITH COUPON
VANILLA WAFERS 12 OZ. KEEBLER 2/99¢ 69¢ VALUE	FLOOR WAX 27 OZ. FUTURE \$1.49 \$2.29 VALUE	POUND CAKE 17 OZ GLADIOLA 59¢ 79¢ VALUE	CHEER 12 OZ. NESTLES \$1.19 WITH COUPON
TEA BAGS 1 OZ. NESTLES \$6.99 \$9.99 VALUE	VIENNA SAUSAGE 5 OZ. ARMOUR BAR-B-Q 3/\$1.00 51¢ VALUE	CHOCLOX BLEACH 1/2 GAL. JOHNNY \$4.79 \$7.79 VALUE	CAT LITTER 49 OZ. \$8.99 \$1.19 VALUE
HOT COCOA MIX 1 OZ. NESTLES 6/39¢ 9¢ VALUE	DOG FOOD 8 LB. ALAMO \$1.89 \$3.89 VALUE	SWEETNER 8 OZ. SWEET AND LOW 87¢ \$1.19 VALUE	
	BONED TURKEY 5 OZ. SWANSONS 63¢ 85¢ VALUE	PEAS & CARROTS 10 OZ WESTPAK FROZEN 3/\$1.00 45¢ VALUE	

Lockney Swine Production Course Begins Monday

A Swine Production Short Course for adult farmers will be held January 23-26 under the sponsorship of the Lockney High School Vocational Agriculture Department according to Mr. W.H. Hallmark, Superintendent, and Mr. Monroe Shannon and Elvin Lyon, Teachers of Vocational Agriculture.

Dr. Robert S. Cohen, Swine Production Specialist with the Vocational Agriculture Division of the Texas Education Agency and the Department of Animal Science of Texas A&M University, will be the instructor for the course. He is headquartered at Texas A&M University.

Dr. Cohen received a B.S.

degree in Animal Science in 1965, and a M. S. degree in Animal Nutrition in 1972 from Texas A&M University. He has also received the Ph.D. degree in Animal Nutrition from Texas A&M University, 1975.

He was raised on a swine and beef cattle ranch in Southeastern Llano County, Texas, and was very active in FFA and 4-H programs. During the early 1960's, Dr. Cohen was employed at the Texas A&M University Swine Center. Between periods of formal training, he worked for the Texas Agricultural Extension Service in Williamson and Eastland Counties and completed active duty with the U.S. Air Force Reserve.

The short course at Lockney High School is scheduled to begin January 23 at 7 p.m. in the Vocational Agriculture Building. During the course, Dr. Cohen will be available to assist Swine Producers with individual problems and to provide on-the-farm instruction, according to Shannon and Lyon.

Producers interested in attending the short course should write or call the superintendent of schools, Mr. Hallmark, or the teacher of vocational agriculture, Mr. Shannon or Lyon. An enrollment fee of \$5 will be charged.

Swine Production Short Course certificates will be presented to each Swine producer who attends all the training sessions.

Dr. Cohen states that pork producers must make a serious effort to increase efficiency of production in the future. Increasing costs of equipment and services purchased, accompanied by fluctuating prices received at the market are contributing factors. The number of pigs produced per sow per year and the amount of weight gain from a pound of feed are two important measures of productivity to be evaluated. Dr. Cohen indicates the swine production short course will deal with methods to increase efficiency of production. He also states the course will include such important topics as swine selection and breeding programs, feeds and feeding, housing and equipment, herd health and sanitation, management for profitable production, marketing, and records.

"Short courses in swine production, as well as in other areas, are now available to farmers throughout the state under the cooperative program between the Texas Education Agency and Texas A&M University," states Bob Jaska, associate professor, Department of Agricultural Education at Texas A&M University, who coordinates the program for Texas A&M.



DR. ROBERT S. COHEN

ative program between the Texas Education Agency and Texas A&M University," states Bob Jaska, associate professor, Department of Agricultural Education at Texas A&M University, who coordinates the program for Texas A&M.

"This cooperative program," states Jaska, "is designed to make the services of specialists available to conduct short courses under the supervision of public schools. Such a program will enable teachers of vocational agriculture to provide improved educational services to farm people."

Specialists are now available in the fields of Swine Production, Beef Production, Farm Electric Wiring and Safety, Farm Electric Motors, Farm Arc Welding, Tractor Maintenance, Pasture, and Oxy-Acetylene Welding.

Max Cleland is the tenth Administrator of Veterans Affairs since the Veterans Administration was established in 1930.

The last Civil War veteran died in 1959, yet the Veterans Administration provides benefits for 285 widows and helpless children of veterans of the Civil War.

South Plains News

By Mrs. Murray Julian

South Plains, January 17. Grigsby Milton Jr. flew Stanley Burleson and his mother, Mrs. Burleson down to Austin on Saturday. The Burlesons went to visit with George Sherrill, who formerly was a Floydada native, who is ill in an Austin Hospital.

We extend sympathy to Mrs. Ruby Higginbotham and all members of the Lackey family in the death of Gerald Lackey, who passed away Friday morning in Methodist Hospital in Lubbock, after a short illness. Services for Lackey were held in Floydada at the First Baptist Church. Many from here were present for the funeral services.

Mrs. Bonnie Moore is home and was at services at the Baptist Church Sunday after spending several weeks in Jacksonville, Florida visiting with relatives.

George Ray Powell was home with his parents, Mr. and Mrs. Fletcher Powell over the weekend, and returned Sunday evening to Midland where he now resides, having moved there recently from Houston.

Kindergarten classes began this Monday, January 16, at the South Plains Elementary School, and kindergarten pupils registered for the coming term. Around six pupils are expected to attend. The new teacher for the pupils is Miss Shirley Huse, who will commute from Plainview, where she resides. We extend congratulations and best wishes to Mr. and Mrs. Robert Allen Cole, who were wedded on December 10th, 1977, at the Faith Baptist Church in Anchorage, Alaska, and will make their home there. Mrs. Cole is the

former Mary Ann Allen, daughter of Dr. and Mrs. John H. Allen of Anchorage, Alaska, who were former pastor and wife here at South Plains, and now Dr. Allen is head of the State Missions Board in Alaska.

Mr. and Mrs. Hansel Sanders were hosts at a birthday dinner in their home Sunday evening in honor of their daughter-in-law, Mrs. Gary Sanders. Guests were Mr. and Mrs. Gary Sanders and her parents, Mr. and Mrs. Don Stout of Dalhart, and hosts Mr. and Mrs. Hansel Sanders.

Mrs. J.E. Woodson of Snyder was a house guest here from Sunday to Tuesday with her sister and husband, Mr. and Mrs. Frank McClure.

Mr. and Mrs. I.H. Parks arrived home from Dahlonega, Georgia on Tuesday where they had been visiting with his mother, Mrs. Parks since before the Christmas holidays. They report the weather was bad while they were there, and although they planned to fly home on Monday, weather conditions held them up until Tuesday. The Parks went back to Georgia for Christmas, as his mother is in delicate health, and they wanted to share the holidays with her.

We are glad to hear that George West is able to be home, after a long stay of many weeks in the Central Plains Hospital at Plainview with a broken hip. Mr. West had stayed with his daughter Mr. and Mrs. Robt Lee Smith in Sterley for some three weeks before coming home, and is now home since last Monday. A nurse, Mrs. Ruby Allison, is

taking care of cooking and caring for Mr. West during his convalescence.

Visitors at the South Plains Baptist Church Sunday morning included Mrs. Annie Hicks, a cousin of Bill Thomas of Lockney. Mrs. Hicks is from Marysville, near Gatlinburg, Tennessee. Other visitors included Candy and Ronda Taylor of Amarillo with Mrs. Arby Mulder.

HOBBY CLUB ELECTS OFFICERS

The first Hobby Club meeting of the year met in the home of Mrs. E.J. Kinslow on Wednesday of this past week with an election of officers at the business meeting. President is Mrs. Harold Hamm; vice-president, Mrs. Leighton Teeple, secretary-treasurer, Mrs. Fred Marble, telephone committee, Mrs. Keith Marble, Mrs. Arby Mulder and Mrs. Kendall Cummings.

The members planned the program for the coming year, and the new books will soon be ready for distribution. Refreshments of finger sandwiches, fresh vegetable dips, and pumpkin bread roll with tea and coffee were served to guests and those who were present were Mmes. Arby Mulder, Grigsby Milton Jr., Leighton Teeple, Fred Blake, Kendall Cummings, Keith Marble, Harold Hamm, and Fred Marble.

The next Hobby Club meeting will be at the home of Mrs. Harold Hamm on February 8, at 2 p.m.

FHA from page 1

at 3:00 p.m.

Mr. Brown requests that all Plain County farmers who suffered a production loss on 1977 crops, by mail, come to the meeting. At this meeting additional information and needed forms will be distributed.

If FmHA's assistance is to be received by those who are eligible, the cooperation of each farmer is a must.

"NOTICE OF HEARING"

"Home Help Care, Inc. of Austin, Texas, represented by H. J. "Doc" Blanchard, 613 Brown Building, 708 Colorado Street, Austin, Texas 78701 (THFC File #AS77-1213-001) is scheduled to appear at a hearing at 9:00 A.M. on March 14, 1978, in the offices of the Texas Health Facilities Commission, 1600 West 38th, Austin, Texas 78731, to petition the Commission for a Certificate of Need to establish a home health agency to serve all counties in Health Service Area 2. The services to be offered include: skilled nursing care, physical therapy, medical social services, home health aides, occupational therapy, speech therapy, respiratory therapy, diabetic education, and nutritional counseling.

A notice of intent to become a party to the application may be made by filing a sworn affidavit of intent to do so with the Commission using the format prescribed by the Commission by no later than 5:00 P.M. February 14, 1978, and by forwarding a copy by certified mail return receipt requested to the applicant and all other formal parties.

Note: If no notice of intent to become a party is timely received and granted, the Commission may proceed without a hearing on an application for Certificate of Need at any time after February 20, 1978."

Our Sincere Thanks

To the people of this area for helping make this outstanding growth during 1977 possible.

	12-31-76	12-31-77	Growth	Growth%
Total Assets	\$24,071,215	\$32,349,005	\$8,277,790	34%
Total Savings	20,939,087	27,469,595	6,530,508	31%
Mortgage Loans	20,405,333	27,352,067	6,946,734	34%
Total Interest paid on Savings	1,248,532	1,665,707	417,175	33%

Our pledge of 1978 -- to continue our "More for Your Money" policy by giving the very best service possible, pay the highest rates on savings allowed under Federal Regulations and charge the lowest possible rates on loans consistent with sound management policies.

We extend a special invitation to others in this area to join the thousands already doing business with us and get "More for Your Money."

Central Plains Savings Association

2804 Olton Road
Plainview, Texas
293-2607

200 N. Maxwell
Tulia, Texas
995-3521

700 Main
Hale Center, Texas
839-2446

416 Main St.
Silverton, Texas
823-2056



Political
Calendar
Subject
Democratic
U.S. CONGRESS
Dusty E...
Charles...
Fike God...
STATE
TIVE
Bill Hale
(mary)
Glen Con...
Foster Wh...
Marry Mc...
DISTRICT
Mary Mc...
COUNTY
Parnell Pow...
G.B. John...
COUNTY
Fred Card...
COUNTY
C.L. McK...
COUNTY
Glenna Or...
COUNTY
Margaret...
COMMISSION
PRECINCT
Bob Jarret...
COMMISSION
PRECINCT
Jack Lark...
James Lee...
3446.
JUSTICE
Precincts
H.E. Porter...
FHA from page 1
at 3:00 p.m.
Mr. Brown requests that all Plain County farmers who suffered a production loss on 1977 crops, by mail, come to the meeting. At this meeting additional information and needed forms will be distributed.
If FmHA's assistance is to be received by those who are eligible, the cooperation of each farmer is a must.
FOR SALE:
one on Main
Ideal loca...
ms-large de...
ch, double p...
nt, carpeted...
n appliances...
tact R.C. 1...
6
FOR SALE:
and three...
uses Fond...
tact Wilson...
4 or 983-357...
R - SALE:
se, 1 3/4...
n, brick ve...
are, shown...
nt only. 983-...
ARGE 3 bed...
ble garage...
th 5th. Joe...
FOR SALE:
me house...
I walk in...
1 296-2040...
FOR SALE:
me; large ro...
ount of sto...
ating and all...
lligan wate...
ths. A nu...
r appliances...
use; also...
uble garage...
rry Morcke...
ri Street, P...
oydada, Tex...
FOR SALE:
wntown F...
cation. Bon...
all Wilson...
3-3573.
FOR SALE:
on brick hon...
tral heat...
It in applia...
basement...
age with...
ners, fene...
d, excell...
wly remode...
Lockney...
2324, or 98...
FOR SALE:
use, one bat...
rage room...
n and exc...
r schools...
Lockney...
onsman 65...
n and weel...
OR SALE:
wo bedroo...
rage. 652-2...
ekney.
NEW HOM...
bedroom...
uble garag...
en. Inquire...
nk in Lock

If It's Results You Want-It's CLASSIFIED ADS You Need

HOUSES FOR SALE

FOR SALE: New 3 bedroom and garage, two bath frame home. 325 West Missouri, Floydada, James Lovell 263-2633. tfe

SEVERAL nice two and three bedroom homes for sale. Loans can be arranged. Call Sam Hale at 983-3261. tfe

FOR SALE: New three bedroom, two and a half bath home. Double car garage and storage. 3,751 square feet. 983-3828. tfe

SPACIOUS LIVING for large family, 5 bedroom or 4 bedroom with TV room. 3 1/2 bath shown by appointment only. 983-2856 ask for Gene Arwine or 983-2393. tfe

FOR SALE: Red brick, two bedroom house 702 Spruce in Lockney, good location, near schools call 983-3448. tfe

FOR SALE: Nice brick duplex located at 308-A and 306-B SW 2nd St. in Lockney. Call Phyllis Reay, 652-3480. Ralph V. Graham Realtors, 504 Joliet, Plainview phone 253-4246. L tfe

HOUSE FOR SALE: 3 bedroom central air and heating, 1,200 square feet floor space on 8 lots, by owner, Matador, Texas. 806-347-2784. tfe

FOR SALE: Large 3 bedroom house, sun porch, room n back, big yard and trees. 09 S. Wall shown by appointment. 983-5202. tfe

FOR SALE: T.I. Mitchell home on Main Street, Lockney. Ideal location 3 bedroom large den, screened porch, double garage, basement, carpeted, draped kitchen appliances included. Contact R.C. Mitchell 652-1146. Life

FOR SALE: Several good two and three bedroom houses Bond Real Estate. Contact Wilson Bond, 983-2151 or 983-3573. tfe

FOR SALE: 3 bedroom house, 1 3/4 bath, utility room, brick veneer, single garage, shown by appointment only. 983-2748. 1-26c

LARGE 3 bedroom, 2 lots, double garage 583-3695. 602 South 5th. Joe Reid J ones. tfe

FOR SALE: 3 bedroom frame house with six lots and walk-in storm cellar. Call 296-2040 or 652-3806. tfe

FOR SALE: 3 bedroom home; large rooms and extra amount of storage. Central heating and air conditioning. Culligan water softener. 2 baths. A number of the major appliances go with the house; also good drapes. Double garage and car port. Harry Morcel 817 W. Missouri Street, Phone 983-2369 Floydada, Texas tfe

FOR SALE: store building, downtown Floydada, good location. Bond Real Estate. Call Wilson Bond 983-2151, 983-3573. tfe

FOR SALE: Three bedroom brick home, 1 1/2 baths, central heat and cooling, built in appliances, finished out basement, double car garage with electric door openers, fenced in back yard, excellent location. Newly remodeled. 517 S.W. 8th, Lockney, James Race, 652-2324, or 995-3367. L1-29c

FOR SALE: Two bedroom house, one bath, carport and storage room. Good condition and excellent location near schools 413 S.W. 7th St., Lockney Call Paul Koonman 652-3351 After 5 p.m. and weekends 652-3655. Life

FOR SALE: To be moved: Two bedroom house and garage. 652-2575 or 652-2462 Lockney. L tfe

NEW HOME FOR SALE: 3 bedroom, 2 bath, large double garage, built-in kitchen. Inquire First National Bank, Lockney. Life

Homes

For Sale: 2 bedroom house, good location, 918 S. Main, Floydada, call 983-3372. tfe

HOUSE FOR SALE, 3 bedrooms, 1 1/2 bath, large kitchen, dining area, built in appliances, double garage, fenced back; yard, good location. Call 983-5001 after 5. tfe

HAND HOUSE for sale. \$400.00. Call 983-2945. tf

MOBILE HOMES

For Sale: Double-wide Mobile home 24x60 - 1440 Square ft. 3 large bedrooms, livingroom, dining room, built-in kitchen, den, 2 full size baths; 3/2 ton refrigerator, are to be moved, must sacrifice for quick sale. Call 983-3345 after 5 p.m. Shown by app. only. tfe

AUTOMOTIVE

FOR SALE, 1970 Ford, Two door fastback mustang, good mechanical condition, low mileage, real clean. Call 652-3185 business, home 652-2182. Life

FOR SALE: 1974 Ford pick-up long wheel base, power steering, air-conditioner. Call 983-3029. 1-26c

FOR SALE: clean 1973 Polara Dodge 4 door sedan, good condition, power, air, cruise-o-matic, radial tires, white vinyl top, automatic drive, \$1195. Call Lubbock 799-6585. tfe

FOR SALE: new Buick AM radio, 1975 Mercury AM radio. Your choice \$25.00. Phone 983-3982. tfe

FOR SALE: good late model International Diesel tractor. Two used V 8 Mustangs. 1959 Edsel Ford \$1995 Call Hereford 258-7269. tfe

FOR SALE: 1975 Monte Carlo Landau, rally wheels, very good condition. \$3300 983-2038. tfe

FOR SALE: good late model International Diesel tractor. Two used V 8 Mustangs. 1959 Edsel Ford \$1995 Call Hereford 258-7269. tfe

FOR SALE: 1975 Monte Carlo Landau, rally wheels, very good condition. \$3300 983-2038. tfe

FOR SALE: store building, downtown Floydada, good location. Bond Real Estate. Call Wilson Bond 983-2151, 983-3573. tfe

FOR SALE: Three bedroom brick home, 1 1/2 baths, central heat and cooling, built in appliances, finished out basement, double car garage with electric door openers, fenced in back yard, excellent location. Newly remodeled. 517 S.W. 8th, Lockney, James Race, 652-2324, or 995-3367. L1-29c

FOR SALE: Two bedroom house, one bath, carport and storage room. Good condition and excellent location near schools 413 S.W. 7th St., Lockney Call Paul Koonman 652-3351 After 5 p.m. and weekends 652-3655. Life

FOR SALE: To be moved: Two bedroom house and garage. 652-2575 or 652-2462 Lockney. L tfe

NEW HOME FOR SALE: 3 bedroom, 2 bath, large double garage, built-in kitchen. Inquire First National Bank, Lockney. Life

BUSINESS SERVICES

PLUMBING REPAIR WORK Day or night, call 983-5103. tfe

FARM MACHINERY

NORRELL TRACTOR PARTS for tractor and irrigation supplies and accessories. tfe

FOR YOUR portable disc rolling needs call Lawson Lros, Welding and Equipment. 983-3940, Floydada. T tfe

FOR SALE: 24 foot John Deere trailer chassis, complete with good tires and wheels. Call or see Don Faulkenberry, Floydada Cop Gin. tfe

FOR SALE: 500 gallon propane tank. 983-2726. tfe

FARMS AND ACREAGE

WANTED TO BUY irrigated or dryland farm in Floyd or surrounding area. Write Box XRO, c/o Hesperian, Box 700, Floydada. tfe

WANT TO rent, buy or cash lease Floyd County farm. 883-2783 Arnold Ratheal. tfe

FOR RENT

FOR RENT: 4 bedroom house with 2 baths. Call after 5:30 p.m. 983-5260. tfe

FOR RENT: Duncan Plaza Apartments 1 and 2 bedrooms, Central Heat and Air Conditioning, Tapan Ranges, Adjacent to Duncan Elementary School. Contact 302 E. Tenn. or 983-2061. tf

FOR RENT: Apartments for rent. 1 bedroom-\$16.00 per week. 2 bedroom-\$18.00 per week. 3 bedroom-\$20.00 per week. Contact Jan Kelley, Plainview 293-5231, 8-5 Monday-Friday. tfe

FOR SALE: good late model International Diesel tractor. Two used V 8 Mustangs. 1959 Edsel Ford \$1995 Call Hereford 258-7269. tfe

FOR SALE: 1975 Monte Carlo Landau, rally wheels, very good condition. \$3300 983-2038. tfe

FOR SALE: store building, downtown Floydada, good location. Bond Real Estate. Call Wilson Bond 983-2151, 983-3573. tfe

FOR SALE: Three bedroom brick home, 1 1/2 baths, central heat and cooling, built in appliances, finished out basement, double car garage with electric door openers, fenced in back yard, excellent location. Newly remodeled. 517 S.W. 8th, Lockney, James Race, 652-2324, or 995-3367. L1-29c

FOR SALE: Two bedroom house, one bath, carport and storage room. Good condition and excellent location near schools 413 S.W. 7th St., Lockney Call Paul Koonman 652-3351 After 5 p.m. and weekends 652-3655. Life

FOR SALE: To be moved: Two bedroom house and garage. 652-2575 or 652-2462 Lockney. L tfe

NEW HOME FOR SALE: 3 bedroom, 2 bath, large double garage, built-in kitchen. Inquire First National Bank, Lockney. Life

COW POKES



"Mr. Tufernal, you said you wanted yer money ar my cows ... wul, here's my cows!"

THIS FEATURE SPONSORED BY
Floydada Real Estate & Insurance Agency
AUTO, FIRE & FARM INSURANCE
Jim Word --- Phone 983-2360

INSULATION
Fire-Resistant, Installed and Guaranteed
MARR INSULATION CO.
Tom Marr Owner 652-3593

DISCOUNT PRICES on PET FOODS
PURNIA, CO-OP BLDG. S.W. FIELD STATION.
Producers Cooperative Elevators

TURNER REAL ESTATE
FARMS RANCHES
983-2635 Floydada, Texas

Hollis R. Bond
Real Estate
PHONE 983-2151
107 S. 5th FLOYDADA

DR. O. R. McINTOSH
OPTOMETRIST
316 S. Main Telephone 983-3460
FLOYDADA, TEXAS

4 Shocks
For The Price of 3!
Free Insulation
Don's Muffler Shop
123 West California T-tfe

case
You, Mr. Farmer, can Lease. Purchase your next tractor. Can get fast dependable service.
FOR summer Sale Prices on new or used equipment. 43 to 300 H.P.
CASE POWER AND EQUIPMENT
983-2336
Robert Crawford, Manager. Residence 983-5315.
SILVERTON HWY.

PASTRIES OF ALL DESCRIPTIONS...
Homemade and delicious for any occasion. Roger's Pastries. 652-8893

ARTHUR B. DUNCAN ABSTRACT COMPANY
Abstracts - Title Insurance Agents for Stewart Title Guaranty Company
TELEPHONE 983-3167
Office on South East Corner public square. Corner California and Wall, Floydada, Texas.
"The Oldest Abstract Plant in Floyd County"

THRASHER & CO.
Redi-mix Concrete Sand & Gravel Excavation
call us:
983-2170
229 E. California TFC

By Ace Reid

TWO BRAND NEW Smith Corona typewriter carrying cases. \$10 each. Phone 983-3737. tfe

FOR SALE: Divan and matching chair. Excellent condition. Call 983-2282, 812 Mesquite Street. 1-22c

FOR SALE: 14.2 cubic foot GE refrigerator, electric Hot Point range-both white and in good shape. Also a Frigidaire washing machine. Call James Lee Nichols. 983-2626 or 983-3144. tfe

FOR SALE: Oak Firewood, \$80.00 a cord, Delivered and stacked. Call 983-3828. 1-22c

For Sale: Chest type 12' deep freezer \$65 or will trade for something. Joe Jones. 983-3695. tfe

FEET TIRED? Try Mason Shoes with "Velvet-eez" air cushioned insoles. Keith Emert, 652-3116 LStfe

For Sale: Five piece, drop leaf, dining table and chairs. Gibson 40" electric range, white. Early American hide a bed sofa and matching chair. Recently recovered. All items cheaply priced. Call 983-3180. tfe

FOR SALE: Velvet divan, copper tone. Call 652-2337. LTF C

FOR SALE: Good used gas cookstove with grill, call 652-2492, Lockney. L tfe

FOR SALE: 10 used side roll sprinklers 4 & 5' pipe 60 & 76 inch wheels all are I.R.C.O. sprinklers. Call 983-5231 daytime. 983-5367 night time. tfe

FOR SALE: Red and Orange Kalanchoes, \$1.98. Very full 4" pots Baby Jew, \$1.98. The Hanging Basket, 112 W. Missouri, 983-3441. 1-15c

MATTRESSES. New or renovated. For appointment call City Trim Shop. 983-2332, Floydada. T tfe

REMEMBER your loved ones with a living memorial to the Caprock Hospital Auxiliary Memorial Fund, Mrs. Ben Whitaker, Treasurer. T tfe

FOR SALE, pickup load of fire wood. H.B. Foster, 652-2233. L tfe

FOUR FAMILY garage sale Saturday only, 9-6 at 315 S.W. 6th in Lockney L1-19p

LOCKNEY PRINTING
ALL TYPES COMMERCIAL PRINTING
Phone 652-2184
We Appreciate Your Business.

Custom Application Of Pre-Emerged Chemicals.
BILLY WISDOM 652-3541
JOHN WISDOM 652-3544
TERRY HOWARD 652-2768
MAC HOWARD 652-3439

Kirby
Vacuum cleaners, new and rebuilt 1 yr. guarantee. Parts, sales and service. Prices begin at \$124.50.
Parker Home Furnishings in Lockney 852-3315 L tfe

For Sale

TWO BRAND NEW Smith Corona typewriter carrying cases. \$10 each. Phone 983-3737. tfe

FOR SALE: Divan and matching chair. Excellent condition. Call 983-2282, 812 Mesquite Street. 1-22c

FOR SALE: 14.2 cubic foot GE refrigerator, electric Hot Point range-both white and in good shape. Also a Frigidaire washing machine. Call James Lee Nichols. 983-2626 or 983-3144. tfe

FOR SALE: Oak Firewood, \$80.00 a cord, Delivered and stacked. Call 983-3828. 1-22c

For Sale: Chest type 12' deep freezer \$65 or will trade for something. Joe Jones. 983-3695. tfe

FEET TIRED? Try Mason Shoes with "Velvet-eez" air cushioned insoles. Keith Emert, 652-3116 LStfe

For Sale: Five piece, drop leaf, dining table and chairs. Gibson 40" electric range, white. Early American hide a bed sofa and matching chair. Recently recovered. All items cheaply priced. Call 983-3180. tfe

FOR SALE: Velvet divan, copper tone. Call 652-2337. LTF C

FOR SALE: Good used gas cookstove with grill, call 652-2492, Lockney. L tfe

FOR SALE: 10 used side roll sprinklers 4 & 5' pipe 60 & 76 inch wheels all are I.R.C.O. sprinklers. Call 983-5231 daytime. 983-5367 night time. tfe

FOR SALE: Red and Orange Kalanchoes, \$1.98. Very full 4" pots Baby Jew, \$1.98. The Hanging Basket, 112 W. Missouri, 983-3441. 1-15c

MATTRESSES. New or renovated. For appointment call City Trim Shop. 983-2332, Floydada. T tfe

REMEMBER your loved ones with a living memorial to the Caprock Hospital Auxiliary Memorial Fund, Mrs. Ben Whitaker, Treasurer. T tfe

FOR SALE, pickup load of fire wood. H.B. Foster, 652-2233. L tfe

FOUR FAMILY garage sale Saturday only, 9-6 at 315 S.W. 6th in Lockney L1-19p

LOCKNEY PRINTING
ALL TYPES COMMERCIAL PRINTING
Phone 652-2184
We Appreciate Your Business.

Custom Application Of Pre-Emerged Chemicals.
BILLY WISDOM 652-3541
JOHN WISDOM 652-3544
TERRY HOWARD 652-2768
MAC HOWARD 652-3439

Kirby
Vacuum cleaners, new and rebuilt 1 yr. guarantee. Parts, sales and service. Prices begin at \$124.50.
Parker Home Furnishings in Lockney 852-3315 L tfe

LOST & FOUND

LOST: 32 ft. cotton trailer expanded metal, Big 12 chassis. Marked Seab Washington No. 8, from Caprock Gin Yard, Flomot, Texas. Call 469-5278 or 469-5297. 1-22p

LOST: Boxer puppy from 720 S. Wall. Will give reward. Answers to name Oscar. Has tan collar with brads. Call 983-3896. 1-19c

FOR SALE: 18 month old male chihuahua, \$40.00. Phone 983-5115. tfe

FOR SALE: 18 month old male chihuahua, \$40.00. Phone 983-5115. tfe

L.V.N. AND NURSES aided needed. Top wages. Call 652-2502. Life

I will babysit in my home. Licensed babysitter. 983-5128. tfe

WANTED

WHO EVER HAS our Bar Stool Catalog, please return it. We are needing it. Thank you. Parker Home Furnishings, Lockney. L1-22c

Library

News

FLOYD COUNTY LIBRARY

NEW BOOKLIST:
FOR THE YOUNG:
Exciting Things to do with Wool and String, The Blue Whale, National Geo. Society, What Happens in the Spring, N.G.S., Babykins and His Family, Richard Scarry
FICTION:
Bleeding Sorrow, Marilyn Harris, Westfield, Roderick Thorp, The Nice Murders, David Selman, The Heir, Christopher Keans, The Girl, Catherine Cookson, I Heard My Sister Speak My Name, Thomas Savage
NON-FICTION:
The Possible Dream, Charles P. Conn, How To Take Charge of Your Life, Mildred Newman, How to Be Born Again, Billy Graham, Peters Quotations, Lawrence J. Peter, Dear Me, Peter Ustinov, All Things Wise and Wonderful, James Herriot

REMEMBER your loved ones with a living memorial to the Caprock Hospital Auxiliary Memorial Fund, Mrs. Ben Whitaker, Treasurer. T tfe

FOR SALE, pickup load of fire wood. H.B. Foster, 652-2233. L tfe

FOR SALE: 10 used side roll sprinklers 4 & 5' pipe 60 & 76 inch wheels all are I.R.C.O. sprinklers. Call 983-5231 daytime. 983-5367 night time. tfe

FOR SALE: Red and Orange Kalanchoes, \$1.98. Very full 4" pots Baby Jew, \$1.98. The Hanging Basket, 112 W. Missouri, 983-3441. 1-15c

MATTRESSES. New or renovated. For appointment call City Trim Shop. 983-2332, Floydada. T tfe

REMEMBER your loved ones with a living memorial to the Caprock Hospital Auxiliary Memorial Fund, Mrs. Ben Whitaker, Treasurer. T tfe

FOR SALE, pickup load of fire wood. H.B. Foster, 652-2233. L tfe

FOUR FAMILY garage sale Saturday only, 9-6 at 315 S.W. 6th in Lockney L1-19p

LOCKNEY PRINTING
ALL TYPES COMMERCIAL PRINTING
Phone 652-2184
We Appreciate Your Business.

Custom Application Of Pre-Emerged Chemicals.
BILLY WISDOM 652-3541
JOHN WISDOM 652-3544
TERRY HOWARD 652-2768
MAC HOWARD 652-3439

Kirby
Vacuum cleaners, new and rebuilt 1 yr. guarantee. Parts, sales and service. Prices begin at \$124.50.
Parker Home Furnishings in Lockney 852-3315 L tfe

CLASSIFIED RATES

CLASSIFIED ADVERTISING RATE: 10 CENTS PER WORD FIRST INSERTION; 7 CENTS PER WORD EACH SUBSEQUENT INSERTION. MINIMUM CHARGE \$1.50. CLASSIFIED DISPLAY RATE: \$1.20 PER COLUMN INCH CARD OF THANKS: \$1.50.

PETS

FOR SALE: 18 month old male chihuahua, \$40.00. Phone 983-5115. tfe

PERSONALS

ALCOHOL ANONYMOUS IS HERE. If you have a drinking problem and want to quit, that is our business. If you don't, that's your business. We are on call 24 hours a day. 983-5058. tfe

CARD OF THANKS

We will not be responsible for debts other than those made by us.
Farry and Shirley Stansell 2-2c

We want to thank everyone for the visits, gifts and prayers while we were in the hospital.
The Jerry Cawley family L1-18p

orous attempt to change our attitude toward discarding the wastes of our popular culture.
Morris, The Midget Moose, 8 min. Color, no date. Walt Disney Educational Media. Pre-El A lesson in cooperation and turning weakness into an advantage. Morris overcomes the ridicule directed at him because of his huge antlers and diminutive body.
No Tears For Kelsey, 28 min. Color, 1969. Paulist Productions about a successful but hardened man and his confrontations with his daughter who runs away from home and rejects his materialistic values.
North From Mexico: Exploration And Heritage, 20 min. Color, 1971. Greenwood Press. SH-A Traces the history of the Mexican-American people from the time of Coronado to the present, explores their culture and points out the contributions made by the Spanish. Examines the Chicano of today and his struggle to win long denied human rights.
Let Plat Du Jour, 13 min. Color, 1976? Carousel Films. Humorous view of the clientele of a Paris restaurant during a typical (?) noon hour.
Silver Blaze, 31 min. Color, 1976. Learning Corporation of America. JH-A A prize racehorse has disappeared and his trainer killed. Sherlock Holmes and Watson come into the case, and the classic detective deduces the unusual truth of what had happened. Christopher Plummer stars as Holmes.

orous attempt to change our attitude toward discarding the wastes of our popular culture.
Morris, The Midget Moose, 8 min. Color, no date. Walt Disney Educational Media. Pre-El A lesson in cooperation and turning weakness into an advantage. Morris overcomes the ridicule directed at him because of his huge antlers and diminutive body.
No Tears For Kelsey, 28 min. Color, 1969. Paulist Productions about a successful but hardened man and his confrontations with his daughter who runs away from home and rejects his

Free Washington Trips For Local Contest Winners

An all-expense-paid trip to Washington, D.C. next June will be awarded to two young people from this area by Lighthouse Electric Cooperative, according to Alton Higginbotham, manager of the rural electric system.

It's part of the National Rural Electric Cooperative Association's annual Rural Electric Youth Tour that brings around a thousand rural youth to the nation's capitol each year.

Winners of an oratorical contest sponsored by Lighthouse will be awarded the trip which begins June 7 and runs for 12 days. All high school juniors in the system's service area are eligible to enter the contest.

Contest entrants will be required to give a 5-8 minute speech on the subject: "The Energy Situation." Resource materials that may be helpful to contestants are available from the cooperative office, according to Kathy Burk, who is in charge of the contest for Lighthouse Electric Cooperative.

Essays will be judged on the basis of (1) knowledge of the subject—50%, (2) speaking ability—20%, (3) Poise—10%, (4) Personality—10% and (5) appearance—10%.

Deadline for submitting entries will be January 23. Each school — Crosbyton, Floydada, Lockney, McAdoo, Petersburg and Plainview — will hold a contest to choose the boy and girl finalists from their school. Finalists will give their speeches for a committee of judges on February 13.

This is the fourteenth year that Lighthouse Electric Cooperative has sponsored an oratorical contest. The last year winners were Janice Rigby of McAdoo and Doug Simpson of Floydada. Lisa Patterson of Petersburg also went on the trip as a Willie Kid.

As participants in the Lighthouse Electric Cooperative Youth Tour, local contest winners will travel with other winners by bus to Washington, D.C. where they will spend 3 days visiting places of historical interest, visiting members of Congress and getting a first hand view of the "Government in Action."

Silverton Young Farmer

Approximately 1,000 Youth Tour participants from across the nation will meet June 14 for a special program coordinated by the National Rural Electric Cooperative Association. The program will feature congressional leaders and high government officials, a visit to the White House and a fun-filled "Happening" will highlight the day's events.



PIGGLY WIGGLY BRAND SALE



WE GLADLY REDEEM USDA FOOD STAMPS

STORE HOURS

8 a.m. - 8 p.m. Weekdays

9 a.m. - 7 p.m. Sunday

"Each of these advertised items is required to be readily available for sale at or below the advertised price in each store, except as specifically noted in this ad."

Prices good thru January 21, 1978. We reserve the right to limit quantities. None sold to dealers.

Western Heavy Grain Fed Beef, Bottom

BONELESS ROUND STEAK

Lb. **\$1.49**



Western Heavy Grain Fed Beef

WHOLE BOTTOM ROUND

Lb. **\$1.09**

Western Heavy Grain Fed Beef, Rump

BONELESS ROAST

Lb. **\$1.49**

Western Heavy Grain Fed Beef, Bottom

Boneless Round Roast

Lb. **\$1.29**

Market Style

Sliced Bacon

Lb. **\$1.19**



All Vegetable

Piggly Wiggly Shortening

3-Lb. Can **99¢**

All Purpose

PIGGLY WIGGLY FLOUR

5-Lb. Bag **39¢**

FROZEN FOOD SPECIAL

Mix or Match, Broccoli Spears, Cauliflower, Brussel Sprouts or Whole Kernel Corn, Frozen

Piggly Wiggly Vegetables

8-oz. Pkgs. **3 \$1**

Piggly Wiggly Cut

GREEN BEANS

16-oz. Cans **4 \$1**

Piggly Wiggly Cream Style or Whole Kernel

GOLDEN CORN

16-oz. Cans **4 \$1**

Piggly Wiggly

Bath Tissue

4 Roll Pkg. **69¢**

Piggly Wiggly Quarters

Oleo Quarters

3 1-Lb. Pkgs. **\$1**



All Purpose

RUSSET POTATOES

10-Lb. Bag **79¢**



Lunch Box Treat

Golden Ripe Bananas

California, Large, Seedless

Navel Oranges

Smooth Skin

California Avocados



Lb. **19¢**

10 For **\$1**

3 For **\$1**

Extra Strength Tablets

TYLENOL

30-Ct. Pkg. **\$1.29**

Nighttime Cold Medicine

NYQIL

10-oz. Btl. **\$2.39**

IE STORY...
sketchball se...
Farmers...
Christmas...
16 at the...
After a...
pheasant...
played...
nobody...
were...
Stephens...
were it ha...
Fitzgerald...
any points

I START...
Beacon...
d where...
for Lo...
anybody...
Of co...
h't happe

YWAY, I...
looking for...
me interes...
ember 11...
L. KNOX

WAY RA...
county Sher...
of Sher...
alter Hol...
rdin...
TON M...
ATCHMA...
CKNEY...
PROVED...
school enr...
AA lev...
mission to...
Dimmit

Mercury...
thermo...
ir low...
Begin...
UNTY—...
BE SW...
Mrs. Lub...
inty sur...
clerk...
Mary...
W.H...
Kyoto...
Penang...
Bangkok...
precinct...
ice, pre...
Aiken an...
It will

Mercury...
thermo...
ir low...
Begin...
UNTY—...
BE SW...
Mrs. Lub...
inty sur...
clerk...
Mary...
W.H...
Kyoto...
Penang...
Bangkok...
precinct...
ice, pre...
Aiken an...
It will

THE A...
fee, 89...
cents a...
car, 10...
OWING...
REATRE...
n" with...
Monroe...
ry of fl...
ance, br...
Cinemas...
THE S...
2314 Ray...
ing, Cap...
D.C. 205...
inst thr...
s-he ha...
ed in la...
two-ree

AID AD...
IS: Bec...
-looking...
ed Nell...
didate f...
nmitt (w...
SHE sa...
kney in...
h Abern

D THA...
out girls...
Lockney...
record t...
ht was...
mings...
3 distri...
her Ster...
half tim...
Building...
23 in fav...
35 Lock...
arter. Th...
ed the "I...
to win

ERLING...
IELVED N...
nts in...
ies.

YBODY...
record