

The sixth grade boys will be playing at half time Friday night at the

Floydada vs. Lockney basketball games.

Beat Lockney !!!



Little Dribblers begins Monday, January 16. For information contact Vickie Rainer or Lavita Morren.

Weather

COURTESY OF ENER GAS		
DATE	HIGH	LOW
Jan. 4	61	32
Jan. 5	68	36
Jan. 6	59	39
Jan. 7	62	33
Jan. 8	58	36
Jan. 9	48	38
Jan. 10	46	25

The Floyd County Hesperian

© The Floyd County Hesperian

Thursday January 12, 1984

Volume 83

Number 2

25 cents



RESTORATION OF THE COURTHOUSE AND AGRICULTURAL BUILDING began this week as Karr Tuck Pointing of Iowa employees place a protective covering over all the windows.

a view from The Lamplighter

By Ken Towery

It will soon be time, gentle reader, for us to gird our loins and prepare for the battles ahead.

On February 7th the deadline for filing for a variety of elective offices will close, and on that date the "silly season" will officially be upon us. I don't know where the term came from; it's been around longer than I have. Generally speaking, in the news business, it's reserved for those times of the year when people tend to do strange things, like when the moon is full, or during extended periods of sub-freezing weather when people get cabin fever, or the political season, when politicians begin to think seriously about what they can promise the people in exchange for their votes.

All things aside, however, politics is serious business. Serious because it is the path to government in democracies, and it is government that now has such pervasive influence on the quality of all our lives, for good or ill.

It is only natural, one supposes, for the people to become cynical about politics and politicians, considering the promises made and kept. But actually there are many good men and women in politics and government, seeking to do good for the people. Mostly, it seems to me, these are found at the local level, where citizens serve as mayors and councilmen for little or no pay, and where they are in daily contact with those whom they serve. It is much less true when we throw Congress in the equation, where the pressures of party discipline and special interests combine with the worry of losing a lucrative income to produce a breed of public servants who are neither servants nor public.

I have long felt that politicians are somewhat like school teachers, in that we simply do not, indeed cannot, pay the good ones what they are worth to us, and the bad ones are paid too much at any level, and at any price. That is a problem, I suspect, that will be with us always. About all we can do, in the long haul, is try and sort them out as best we can.

This year we will be spared the full court press. Most of our statewide office holders are comfortably encounsed for another two years, so we don't hear Mark White promising us lower utility bills again, or Bill Hobby promising us again that he is going to do something about the water situation in West Texas, this time around. They will spend a good bit of time explaining to school teachers why they didn't get a pay raise last time the legislature met, and why they will definitely get it the next time. Whatever time they have left over will be spent in organizing and turning out the vote for Walter Mondale.

Between now and November we will all have to spend a good bit of time listening and deciding. Being an eternal optimist, I think the people will probably make the right decision. If they judge as wisely this time as they did four years ago, in most cases, the Republic will survive.



WENDY RUFF

A scholarship fund has been set up in memory of Wendy Ruff at the First National Bank, Floydada. Wendy was active in the speech department of Floydada High School for three years and excelled in debate.

This scholarship fund will go to a deserving Speech student. Anyone wishing to contribute to this fund may do so by contacting Mr. Joe Willis at Floydada High School, or by going by the First National Bank.

The amount of this fund will determine whether or not it will be a perpetual scholarship.

SOS food shower set Thursday and Friday

A food shower to stock the pantry of Floydada Spirit of Sharing (SOS) is set for today, (Thursday) and Friday, January 13 & 14 from 9 a.m. until 5 p.m. The SOS building is located on the corner at the 207-70 Y of the Silverton-Matador highways, 619 E. Houston.

Food coordinator, Peggy Medley said non-parishable foods are needed in order to have the shelves stocked by opening date, January 23.

Among needed items are canned vegetables and soups, snap-top canned products, canned meats/tuna, peanut butter, basic cereals to cook, dry (low sugar) cereals (small boxes), macaroni and cheese, rice, dried beans, and peas, powdered milk, instant potatoes, instant cocoa, sugar, flour, meal, bread, canned fruit, baby food, jello, butter or oleo, cooking oil, paper plates, paper cups, plastic forks and spoons, laundry detergent, toilet tissue, paper towels, juices, sample sizes of toothpaste, shampoo and deodorant, tooth brushed, small combs, wipes and disposable diapers. Anyone wishing to contribute beans, flour, etc in large bulk size, may do so and volunteer workers can re-sack in smaller bags.

Also needed are paper sacks, baggies and coffee cans, a deep freeze, small and large trash cans, and desk, typewriter, corner lamp table, lamp, child's table and chairs, children's books and educational toys, magazine rack and office supplies of all description. We will be happy to use your advertising pens, pencils and scratch pads.

Freezing temperatures dominate holidays here

For more than two weeks Floydada and surrounding area residents had been enveloped by ice and snow with temperatures below freezing for a record time and the bitterly cold wind chill factor keeping most residents inside. However, there were a few people that had to be out in the weather, among them were Lighthouse Electric, Southwestern Public Service and City employees. Busted water mains, frozen meters, and downed electrical lines kept these employees busy all through the holidays.

Southwestern Public Service manager Lewis McDaniel reported "We were very lucky, we only had one outage in the Barwise community which only cost us about 20 man hours. But if it had continued we would have had a lot more trouble."

Lighthouse electric employees worked three days in the freezing weather some 14 hours a day trying to maintain rural residents electricity. Claude Weathersbee reported the Lighthouse employees put in some 560 overtime hours costing the cooperative approximately \$8000.00.

City manager Bill Feuerbacher told city council members at Tuesday's regular meeting that the cold spell had cost the city approximately \$5000.00 to \$7500 for new meters and water lines alone. At that same meeting Feuerbacher reported that many Floydada residents had requested water leak adjustments who had broken water lines from the cold weather. After discussing the problem, council members agreed that the adjustment would be 50% of the amount used over the average usage.

"Heart month" designated

Volunteers for the American Heart Association will be calling on Floydada residents in February to ask for contributions for the 1983 Heart campaign. This year's campaign goal has been set at \$5,000. Currently, \$1,013 has been received. A business drive will be conducted during the month of February.

"The money raised during our campaign goes to support research, professional and public education and community service programs in Floyd County," said Sherry Hale, local chairman of this year's Heart Association campaign. "With costs rising everywhere and because of the tremendous toll in lives and money due to heart disease and stroke each year, it is absolutely essential that we reach our goal," she said.

"Heart disease, stroke and high blood pressure afflict more than 40 million Americans and are responsible for half of all deaths in this country," said Hale. Of the nearly one million deaths each year from heart disease and stroke, more than 200,000 occur before retirement age. "We need volunteers and contributions to help in the fight for your life and ask that you give generously when a volunteer calls on you," said Hale.

Other key campaign committee chairmen serving the American Heart Association of Floyd County division, are: Dr. S.K. Hong, president; Dr. Andy Hale, president-elect; Tom Farris, treasurer; Joy Fulton, secretary; Linda Hinsley, program chairman; and Olin Watson is in charge of memorials.

Candidates deadlines set

Opposed Candidates for political office are required by Article 14.07 of the Texas Election Code to file with the County Clerk the following campaign expense reports:

On April 5, 1984, report of all contributions received and expenses incurred through March 26, 1984.

On April 30, 1984, report of all contributions received and expenses incurred through April 25, 1984.

On May 29, 1984, report of all contributions received and expenses incurred through May 23, 1984.

On June 4, 1984, report of all contributions received and expenses incurred through May 30, 1984.

On July 2, 1984, report of all contributions received and expenses incurred through June 27, 1984.

ATTENTION: all basketball fans District play is here. The Mean Green teams have worked super hard all season and now the time to make it pay-off is here!!! We need everyone to come and cheer the teams to victory. Friday action starts here with Lockney at 6:30 with the Varsity girls, followed by the boys. Tuesday the teams will be traveling to Childress to take on the Bobcats.

Go Winds We Believe Cheerleaders
*The Varsity Cheerleaders will be selling "Pin on Whirlwind Pride" pins. These unique pins will be sold at schools and at the game Friday night or contact a Varsity Cheerleader. They will cost a quarter.

Ogle assigned to Hale Center

Paul Ogle has been appointed manager of the Energas office in Hale Center as of the early part of December.

He had participated in a manager's training program in Plainview for a year and a half prior to his appointment.

Ogle has also recently been made president of the Plainview toastmasters. Ogle is a Crosbyton native. He attended his entire school career there. He attended LCC for two years before being employed by Energas. He was employed by Higginbotham-Bartlett Lumber Company in Crosbyton for approximately four years.

Ogle and his wife Judy have two daughters, Amy, 9, and Angela, 7. They will be moving to Hale Center by the first of February.



FIRST BABY—Kerry Ray Polvadore was born January 5, 1984 at 5:41 p.m. in Caprock Hospital. Weighing in at 7 lbs. 6½ oz., Kerry was the first baby born in Floyd County for 1984. He is the son of Kerry and Vickie Polvadore of Crosbyton. Dr. Andy Hale and assisting nurse Myra Potec look on as Kerry meets his mother. Maternal grandparents are June and Johnny Davis of Crosbyton.

This Week

ENCHILADA DINNERS

St. Mary Magdalen Catholic Church will be selling Enchilada Dinners Saturday, January 14, from 11 a.m. until 2 p.m. The dinners will consist of one enchilada, one chalupa, rice, beans, two fresh flour tortillas, jalapeno peppers, and tea or coffee. Price of the dinner will be \$3.00 for adult plates and \$1.50 for a child's plate. Delivery or pick-up orders may be made by calling 983-2177 or you may eat at the church hall where tables will be set up. Proceeds go to the church Building Fund.

HOME EC MENU

The Della Plains Home Ec Class will serve a luncheon next Thursday, January 19 from 11:30 a.m. to 1 p.m. in the home ec room. The menu will feature roast beef, mashed potatoes, brown gravy, green salad, hot rolls, choice of cream pies, iced tea and coffee, for \$3 per serving.

STATE COMPTROLLER

State Comptroller Bob Bullock has announced that Gene Cannon from his Lubbock Field Office will be at the Floyd County Courthouse in room 104 on Tuesday, January 17, 1984 from 9:00 A.M. to 11:00 A.M. A Comptroller's representative is available to assist local residents at the Courthouse the third Tuesday of each month.

Bullock urges anyone with problems or questions concerning state taxes to contact Mr. Cannon at the Courthouse in person or call the Lubbock Field Office at (806) 795-0691. A toll-free number (1-800-252-5555) is also available to Texas taxpayers.

CATHOLIC CHURCH

St. Mary Magdalen Catholic Church will hold a Youth Dearyn Sunday, January 15, at 3:00 p.m. Diocesan Catholic Appeal will be Saturday, Jan. 14, from 9-10:30 a.m.; Scripture studies Tuesday, 9:30 a.m.; Estudio de Biblia Martes a.m. Estudio de Biblia, Tuesday, 9:30 a.m.

CONVENTION

The 80th Annual Convention of the Texas Farmers Union will be held at the Holiday Inn Civic Center in Lubbock, Thursday, January 12, through Saturday, January 14, 1984. The theme of this year's convention is "United and Strong: Farmers Union". It will focus attention on the successes of the past and the challenges of the future: to strengthen ranks, voice and impact at the grass roots level.

BOOSTER CLUB

Parents Booster Club for the Speech & Dramatic Department of FHS, the Backstage Voice will have a Salad Supper meeting at the High School Cafeteria, January 16, 1984 at 6:30 p.m. This is a very important meeting concerning the Speech Tournament. All interested persons are urged to attend!

TEXAS SOYBEAN ASSOCIATION

The Texas Soybean Association will hold its annual meeting at the Civic Center Holiday Inn in Lubbock on January 27, 1984. For more information contact: Rosalie Kalb, regional office at 913/382-4900 or LaMarr Ramsey, state president at 806/293-3806.

MOTHER'S DAY OUT

Mother's Day Out will be held again every week from 9:30-5:00 for infants thru pre-school at the First United Methodist Church.

ADULT ED. CLASS

Adult Education Classes for those wanting to prepare for G.E.D., or would like to have English as a second language, drivers ed., etc. will be offered at R.C. Andrews School Monday and Tuesday evenings from 6:30-9:00 p.m. For more information call 983-3134 or 983-3337 after 4 p.m.

COMPANIONS 'N' CARING

The next regular meeting of Companions 'n' Caring will be January 26 at 2:00 p.m. at the Home.

ATTENTION LOCKNEY!

The Lockney girls athletic boosters are sponsoring the Lockney Little Dribblers. The draft for team selections will be held Saturday, Jan. 14, at 2 p.m. in the Lockney High School gym. Those who have not pre-registered may sign up Saturday. Girls must be accompanied by a parent. Registration fee is \$15.00 which will be used to purchase team shirts and insurance. Use the north door entrance to the gym and bring shorts and tennis shoes. For more information please call Carla Josey at 652-2606 or Eddie Teeter at 652-3158.

GYMNASTICS, KARATE

Gymnastics and Karate classes are being held now in Floydada. Refer to Hesperian Sports page for details.

Computer on display at Floyd County Library

Floyd County residents of all ages will have the opportunity to familiarize themselves with the use of microcomputers at the Floyd County Library. Between now and February 29, 1984 an Apple computer system will be in the library for library patrons to use free of charge.

The computer system consists of an Apple II+ computer, color monitor, disk drive and dot matrix printer. A variety of programs to run on the computer is available, including a "word processing" program, an intro-

duction to the computer keyboard, spelling and counting games for young children, math games for older children and a typing instruction game.

Anyone wanting to know more about computers is urged to visit the library and try the Apple computer in the next two months. This would be an especially good opportunity for anyone considering the purchase of a microcomputer for home or business to try the library's computer.

The computer is being made available

to the library by the West Texas Library System, a state-funded program which provides services to 26 public libraries in West Texas. The computer system will travel to most of the smaller public libraries in the West Texas Library System in the coming years in order to demonstrate the use of microcomputers in public libraries.

Anyone wanting more information about the Apple computer at the Floyd County Library may call the librarian, Sandra Crawford, at 983-3578.

AUCTION

Thursday, January 19, 1984
Sale Time — 10:30 a.m.
Lon G. Emert, Owner

LOCATED: From Floydada, Texas, 14 miles east on Highway 70, then south 3 miles on Highway 28, then continue south on Dirt Road 3 miles — OR — From Dougherty, Texas, 1 mile west on Highway 28, then south 3 miles.

Mr. Emert is retiring from farming and will sell the following at Public Auction:

TRACTORS — COTTON STRIPPERS & COMBINE

- 1—1972 International 1066 Diesel Tractor - Hiniker Cab - Air Cond. - Radio & Heater - Weights - Hyds. - P.T.O. & 18.4-38 Rubber - S.N. 019758
- 1—1972 International 966 Diesel Tractor -Weights - Wide Front & 18.4-34 Rubber - w/I.H.C. 90 Cotton Stripper & Basket Mounted - S.N. 013250
Note: This 966 Tractor & 90 Cotton Stripper & Basket will be offered separate, then as a unit and will sell according to the high dollar bid.
- 1—1959 Ford 951 Power Master Butane Tractor - Wide Front
- 1—1957 International 650 Butane Wheatland Tractor w/P.T.O.
- 1—Farmall C - Gas Tractor - P.T.O. & 3 pt.
- 1—International 91 Cotton Stripper & Basket
Note: This stripper was mounted on Mr. Emert's 1066 Tractor.
- 1—1973 International 915 Diesel Combine - Hydro - Cab - Radio - Heater & Air Cond. - 20 ft. Grain Table - Pickup Reel - New Engine! & New Tires!

MODULE BUILDER & COTTON TRAILERS

- 1—Big 12 Cotton Module Builder - It's Nice - N/New!!
- 4—Big 12 & Kory - All Steel (3 - 8x9x24 & 1 - 8x8x24 ft.) Cotton Trailers - 11-5-L Rubber - They Are Nice!
- 3—4 Wheel Flat Bed Trailers
- 1—Shopmade 2 Wheel All Metal Trailer
- 1—Pickup Bed 2 Wheel Trailer

GOOSENECK GRAIN TRAILER — STOCK TRAILER & PICKUPS

- 1—Broadview 16 ft. - Gooseneck - All Metal Grain Trailer - Electric Dump & Brakes - Nice!!
- 1—Hale 16 ft. - All Metal Open - Top Tandem Axle Stock Trailer
- 1—1974 GMC Pickup - 350 Engine - Automatic - R&H - LWB
- 1—1971 GMC Pickup - 350 Engine - Automatic - R&H - LWB

EQUIPMENT

- 1—International 480 21 ft. Tandem Disc
- 1—Hamby 9 Shank Deep Ripper w/Gauge Wheels
- 1—Servis 4 Row Shredder
- 1—2 Row Drag Type Shredder
- 1—Hamby Triple Bar Chisel Rig w/Gauge Wheels & Good Sweeps
- 1—21 ft. Soil Mulcher for Above Plow
- 1—John Deere 6 Row 400 Rotary Hoe
- 1—Hamby 6 Row Triple Bar - Stiff Shank Cultivator w/Gauge Wheels
- 1—Hamby 6 Row Rod Weeder Mounted on Double 4x4 Tool Carrier - 1x3 Shanks & Gauge Wheels
- 6—IHC 184 Knife Opener - Bed Planters
- 1—Hamby 18 ft. Triple Bar Chisel Rig w/Gauge Wheels
- 1—Porter 8 Row Ropewick Applicator -N/New
- 1—Wylie Side Mount Spray Rig 200 Gallon Tanks - Ace Pump 6 Row Booms
- 1—150 Gallon Fiberglass Spray Tank w/6 Row Boom
- 1—IHC 14 ft. Tandem Disc - Cyl. Cont.
- 2—IHC 16-10 Grain Drills w/Packer Wheels

LIVESTOCK EQUIPMENT

- 10—All Metal Stock Panels
- 1—Round Bale Feeder
- 1—Shop Made P.T.O. Drive Wire Roller
- 1—Lot Electric Steel Fence Post

IRRIGATION & CENTER PIVOT

- 2—Chevrolet 292 Well Engines - N/Gas Carb.
- 1—Chrysler Big 6 Well Engine
- 1—Berkley 3 in. Lake Pump - Belt Drive w/Olds Power Unit
- 1—12 H.P. Horizontal Shaft - Electric Motor 110 or 220
- 1—Lot Tubes
- 1—Lot 6 in. Gated Pipe - 40 in. Rows
- 1—Lot Pipe Fittings & Ditch Stops
- 1—Kroy - Full 1/4 - 10 Tower - High Clearance - Air Driven - Center Pivot - Sprinkler System
Note: This system is located from Dougherty, Texas, north to Highway 70, then 1 mile east, then 5 miles north. It is disassembled and stacked. It will sell at the conclusion of the Auction. For inspection or information, call 806-347-2779 after 8:00 p.m.

TRACTOR & TOOL MAKE-UPS

- 1—Hiniker Tractor Cab for IHC Tractor
- 1—Fowler 6 Row Sunflower Att. for M.F. Combine
- 1—20 ft. Hume Pickup Reel - Good!
- 1—21 ft. 4x4 Double Bar Tool Carrier
- 1—Set Roll-A-Cone Row Markers
- 1—Hamby 6 Row 12 in. Bed Roller
- 1—Lot Hyd. Cylinders • Sweeps • Knives • Points • Cultivator Shanks • Disc • Clamps • Busters • Chisels • Trailer Tires • Wheels •

SHOP & MISCELLANEOUS

- 2—Electric Air Compressors
- 1—Measuring Wheel
- 1—300 Gallon Diesel Tank
- 1—Butane Filler Hose
- 1—Lot Hyd. Cylinders
- 1—Lot Bolts • Parts • Grease • Grease Guns • Oil • Hand Tools • Shovels • Hoes • Forks • Scrap Iron & Etc.
- SCHUMACHER'S DOUBLE "D" BAR-B-Q WILL SERVE LUNCH.

Center News

Political announcement

by Mrs. J.E. Green

Jan. 9, 1984:

The Calvary W.M.U. of 1984 was begun with a live meeting in the country. Mrs. Gary Hill as hostess for the covered dish supper. This was followed by the program, then the Christmas tree. There was 18 women present. A nice evening.

After several better days we have more cold, dark and dreary ones but no more snow yet. Good "stay at home weather".

Mrs. Ethel Warren visited Mrs. Leo Frizzell today.

Glenna and Millard Watson had dinner Saturday with her parents, Mr. and Mrs. Henry Brewer.

Mr. and Mrs. O.G. Mayfield spent the holidays in Henrietta visiting their sons and family, the Gene Mayfield.

Mrs. Fred Battey's company Sunday were Mr. and Mrs. Archie Huckabee and daughter of Lubbock and Mrs. Ola Warren, city.

Well, we Greens had our postponed Christmas get together Thursday nite till Sunday. The first arrivals were the Clyde Greens of Peralta, New Mexico. Thursday nite at 10 p.m. All my children were here but Jimmy. Half of my grandchildren and half of my "great grands." Also the Anthony Lattas. What a good time we have!

Margaret Ryman and daughter Beth of Hubbard were the last to go. Margaret suggested I go to Lubbock with her and go shopping them come back Sunday morning for church at Calvary. We spent the nite with her daughter after we toured Penny's and Sears. We made it for church.

Jan. 10, 1984:
Sure lonesome, but sweet memories.

FLOYD DATA

Juli Womack has been named to the Dean's List at Texas Tech University for the fall semester. She made the President's Academic Honor List, attaining a 4.0 grade average on 17 hours of study for the semester. She will be a May graduate with a certification in math.

Political announcement

THOMAS WARREN

Thomas Warren wishes to announce his candidacy for re-election for Floyd County Precinct 3 Commissioner. He has served three years as commissioner for that precinct and is beginning his fourth. He would appreciate the support of the people in his precinct and would like to "continue to serve the people of this county."

LARRY NOLAND

Larry Noland wishes to announce his candidacy for Precinct 3 Commissioner. He was born and reared in Floyd County. He is presently engaged in farming in the Cedar Hill Community. He and his wife Gail have two children Aaron, 8, and Jennifer, 4. He attended all 12 years of school in Floydada.

Noland said upon filing for the position, "I understand the problems in Floyd County and I want to do my part to make Floyd County a better place to live."

TO THE VOTERS OF PRECINCT ONE

I, Sam A. Spence, ask for your support for re-election to a second term as your County Commissioner subject to the action of the Democratic Primary. It has been a pleasure to serve you these past three years.

1¢ SALE

Over 5,000 Pairs Of Shoes
WOMEN'S - CHILDREN'S
ALL FAMOUS BRANDS

SALE STARTS THURSDAY, JANUARY 12

Open 8 A.M. To 7 P.M.
14 day sale

BATES SHOE STORE

TULIA, TEXAS

FAST N' HOT OWENS SAUSAGE, SCRAMBLE EGGS, THICK TEXAS TOAST.

BREAKFAST SANDWICH SPECIAL

REG. \$1.99 NOW **99¢**

ALLSUP'S NEW HOT

CHOCOLATE

8 OZ. CUP **30¢**

COME IN AND ENJOY FRESH HOT COFFEE ANY TIME

COOK FOOD SPECIAL AS FEATURED ON TV.

BURRITOS

FRESH-HOT & READY TO GO!

2 99¢ FOR

32 OZ. FOUNTAIN DRINK

39¢

ALLSUP'S REUSABLE PLASTIC CUP

BORDEN'S ASST. FLAVORS

ICE CREAM

1/2 GAL. CTN. **\$1 69**

BORDEN'S ORANGE

JUICE

QT. CTN. **99¢**

Grape Drink Wagner's

69¢

Kraft Marshmallow Creme

79¢

12 oz. cans 6 pack

RATH BOLOGNA, SALAMI, P & P LOAF, LUNCHEON LOAF

LUNCHEON MEATS

6 OZ. PKG. **69¢**

ALLSUP'S

MONEY ORDERS

29¢ EACH

Fresh Hot Cooked Food

- Corn Dogs **69¢**
- BBQ Sandwich **\$1 59**
- Sausage on a stick **\$1 49**
- Fried chicken quarters **\$1 39**

ALLSUP'S

CONVENIENCE STORES

- WHILE SUPPLIES LAST
- SELF SERV GAS
- OPEN 24 HOURS FOR YOUR CONVENIENCE
- PRICES EFFECTIVE JANUARY 12-14, 1984

DULIN, REAGAN & EVANS AUCTIONEERS

Route 2, Hale Center, Texas 78041
JACK DULIN TXS-014-0119 (806) 293-8781
BENNIE REAGAN TXS-014-0163 (806) 847-2213
MERVIN EVANS TXE-113-0678 (806) 293-8185

Hale Center, Texas
Silverton, Texas
Plainview, Texas

Summit Savings Money Rates

	MONEY MARKET CERTIFICATE	SMALL SAVERS CERTIFICATE	MONEY FUND	NOW OFFERING 1 YEAR CD
RATE	9.500%	10.50% COMPOUNDED DAILY	9.25%	10.750%
EFFECTIVE THRU	1-17-84	1-17-84	1-17-84	1-17-84
MINIMUM TERM	6 MONTHS	18 MONTHS	NONE	
MINIMUM DEPOSIT	\$500	500	\$2500	\$500
INSURANCE OF ACCOUNTS	\$100,000	\$100,000	\$100,000	\$100,000

NOTICE: As required by law, all certificates are subject to substantial penalty for early withdrawal.

We Invite You To "JOIN US AT THE TOP"

SUMMIT SAVINGS ASSOCIATION

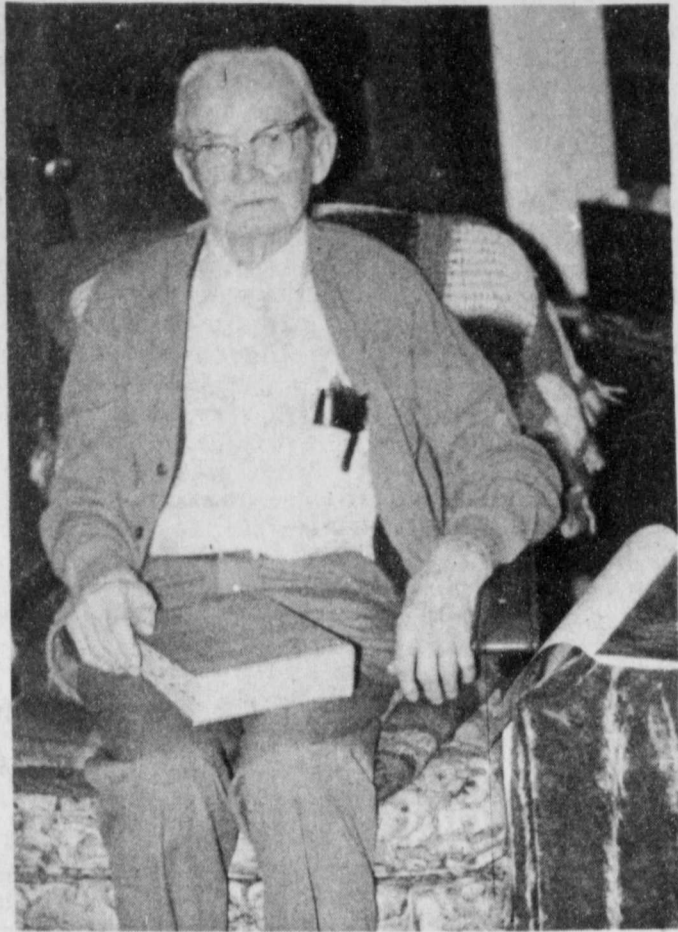
HOME OFFICE - 6th & BALTIMORE, PLAINVIEW
OTHER BRANCHES
3000 OLTON ROAD IN PLAINVIEW, FLOYDADA, HALE CENTER,
MULESHOE, LITTLEFIELD, FARWELL, PLANO, ALLEN, MATADOR and
FRIONA

217 W. CALIFORNIA
FLOYDADA, TEXAS 79235

983-3725

Member FSLIC

Long time Lamplighter resident remembers when.....



E.L. CORNELIUS, dictionary in hand, is one of Floydada's truly "self educated" men. An avid reader, Mr. Cornelius looks up every word he doesn't understand.

At the age of eight, E.L. Cornelius came to Texas from Blount County, Alabama to Ennis, Texas, in Ellis County. For years after that he and his family would travel back and forth between the two states.

His father died when he was six years old, but after a time, his mother married her late husband's younger brother. "He always seemed like my real dad, he was really all I had ever known," said Mr. Cornelius.

Farming for a while in Texas, his stepfather would get the "itch" to do something better and move back to Alabama. "He would open some kind of business while we were in Alabama. I remember he once purchased a place that made stove pipe. I was big enough by then that I could use the machine that crimped the pieces of metal together," laughed Mr. Cornelius.

World War I began and in 1918 Mr. Cornelius entered the Army. Due to a flu epidemic, after only two months of training, he was shipped to France. During his stay in France he assembled cars, trucks and motorcycles. "I even

got to see President Wilson drive by" he chuckled.

After the war, he came home to Texas and in July of 1932 moved to Floydada to take a job as nightwatchman at the compress. In 1933 he and his brother-in-law, Pierce King, opened a store near the present Perry's. "Roosevelt had declared a week's bank closing to change over to his 'New Deal'," said Mr. Cornelius. "We bought eggs and cream from the Floydada farmers and would sell it at Armor's Creamery across the street. Eggs then were about 12 cents a dozen.

Saturday was our big day. We would open at daylight and wouldn't close until midnight. Everyone came to town on Saturday."

After his brother-in-law's death Mr. Cornelius sold the store and went to work for Mr. Wester at Wester's Grocery & Market. He then purchased a grocery near the present day Donut Shop on the highway. He decided to retire after six years there.

Mr. Cornelius raised his two children, Don and Doris in Floydada. "At one time we lived on Kentucky Street in the

upstairs of the Hargrove home. They would wake the kids up and make sure they got to school. We lived in the old funeral home at one time," laughed Cornelius.

He sent both of his children to Texas Tech University, both of them attending the University at the same time.

"I didn't get much of an education as I was growing up as we moved so often. When I'm reading and I see the name of a town, I look it up on a map. When I see a word I don't know, I look it up in my dictionary," said Mr. Cornelius. His dictionary he said was "purchased from Alma Holnies in 1964."

In 1956 Mr. Cornelius moved into the Lamplighter Inn. "It wasn't always called the Lamplighter. The Dailys built the hotel in 1914. It has been called the Daily Hotel and Commercial Hotel. You know there aren't very many of these hotels left. There used to be the most beautiful trees out front and on Sunday over 100 people would come to eat in our dining room," remembered Mr. Cornelius.

When asked why he had lived at the

Lamplighter these 27 years, he said "I've never found a place any handier. I am in walking distance of most anything I need. Besides all that I wouldn't know what to do with all my junk."

Born October 12, 1894, Mr. Cornelius attributes his long life with "taking life one day at a time." "I used to like to work in the yard, and I still walk a great deal. And I take vitamins everyday," he laughed.

With his self education and his uncommon goal for life, Mr. Cornelius should have no trouble living another 90 years.

The opportunity of a lifetime is here Start your own business as a Meadow Fresh Distributor. Now accepting orders Call 983-2756

Nell Pritchett oils on display

Many of the works of artist Nell Pritchett of South Plains are on display the month of January at the First National Bank in Floydada.

Mrs. Pritchett began painting while recovering from surgery about 15 years ago. Since that time she had worked with many different kinds of paints including pen and ink.

After attending a workshop in Floydada presented by Connie Martin, who Mrs. Pritchett said has influenced her work more than anyone else, Mrs. Pritchett began taking art lessons. She has taken for some six years from Ruth Barnett whom she said "showed her the basics" and has attended workshops by Pat Krahn, and Mac Carowe of Lubbock, as well as workshops by William

Henry Earl and the late Raymond Froman of Cloudcroft, New Mexico.

"I really just paint for the fun of it" said Mrs. Pritchett. She has had exhibits in Floydada and at the Floyd County Fair. She will do requests but said "I paint something the way I want to paint it and if they don't like it they don't have to take it."

Living about 12 miles north of Floydada on the Silverton highway, Mrs. Pritchett said she "didn't really have a studio and uses her utility room, or the dining room or the snack bar...I'm just a 'Sunday Painter'."

Her paintings will be on display at the First National Bank the entire month of January. She welcomes everyone to go by and see her work.



THE PAINTING "SPANISH COURTYARD" PAINTED BY NELL PRITCHETT is a painting her son Steve asked her to paint. The picture was on record album cover that Steve had found.

"Old age is a good advertisement."
—Ralph Waldo Emerson

THE FLOYD COUNTY HESPERIAN [USPS 2026-8000]

Published weekly each Thursday at 111 East Missouri Street, Floydada, Texas 79235. Second class postage at Floydada, Texas 79235.

SUBSCRIPTION RATES: Local \$11.50 per year, out-of-trade area, \$12.50 per year.

POSTMASTER: Send address changes to the Floyd County Hesperian, 111 East Missouri, Floydada, Texas 79235.

Ken Towery Publisher
Carolyn Redding Editor/Gen Mgr.
Dana Brown Reporter
Rosemary Gonzales Photo/Comp Foreman
Evalene Boyd Bookkeeper
Carolyn Redding Advertising

"Please...DON'T DRIVE DRUNK"



A message from this newspaper and the Troopers of the Texas Department of Public Safety

OVERHEAD DOORS

Residential Doors, Commercial Doors & Electric Door Openers.

WOOD • FIBERGLASS • STEEL • ALUMINUM

RAYNOR

SALES • INSTALLATION • SERVICE

Walter N. Davis Construction

983-5550 or 983-5337

Caprock Aerobic Classes

Registration January 17 5:30 p.m.

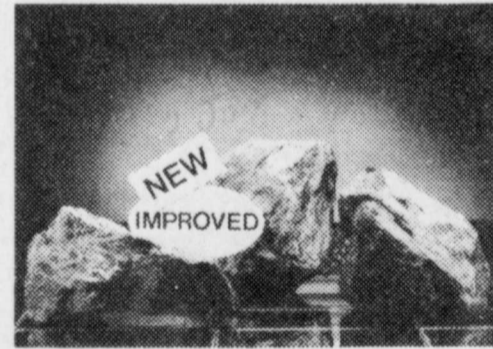
Classes begin January 17 at 6:00 p.m.

Registration in basement

For other information call Caprock Hospital

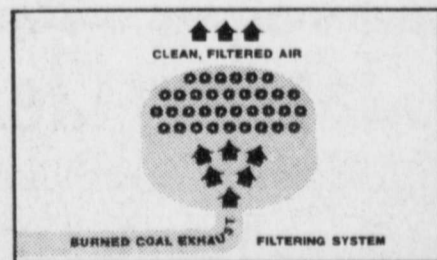


The ceiling fan has found new use.



So has the coal we use.

Some folks don't realize that one of our oldest forms of energy has a new and improved use. Southwestern Public Service Company uses coal to make electricity.



Improved use.

Use of low sulphur coal and filter systems helps prevent air pollution problems.

Now, our coal-fueled plants produce more than half the electricity you use. Because coal is plentiful and less expensive than natural gas, which we've used for years.

We say coal is new and improved because it's more efficient cost-wise, and because we're preventing air pollution problems with filter systems we've helped develop.

Coal helps us control your cost of electricity. And keeping your cost of electricity as low as possible is another way we're...

Working to justify your trust



SOUTHWESTERN PUBLIC SERVICE COMPANY

930.1

We're as near as your mailbox



Does the weather have you wanting to stay in the house? If so, let your mailman do your banking for you. Banking by mail will allow you to stay in out of the bad weather.

New Hours: 9-3 Monday thru Friday

"Helping you change things for the better"

THE FIRST NATIONAL BANK OF FLOYDADA

Member of F.D.I.C.

Accounts insured up to \$100,000

Miller-Brock engaged

Mr. and Mrs. William B. Miller of Corpus Christi wish to announce the engagement of their daughter, Anne to Richard H. Brock of Dallas, son of Mr. and Mrs. Harold Brock of Lockney. The couple plan to marry April 27, 1984.

Brock is the grandson of Melvin Brock of Lockney.

The bride-elect has received her bachelor of arts degree from Texas University and also graduated from

SMU with a master of arts degree. She is employed with a national firm in Dallas.

The prospective groom graduated from Texas Tech with a bachelor of arts degree and is presently vice president of the U.S. Corporate Division of InterFirst Bank of Dallas.

The bride's parents were hosts to an announcement party December 10 in their home. A buffet dinner was served.

Penny Ogden hosts Alpha Mu Delta regular meeting

The Texas Alpha Mu Delta chapter of Beta Sigma Phi held a regular meeting on January 3 in the home of Penny Ogden.

The meeting was led by Vice-President Abby Battey in the absence of Judy Lloyd, President.

Recording Secretary Julianne Cornelius called the roll and read the minutes from the December 20 meeting.

Corresponding Secretary Wendy Pierce read thank-you notes from the Senior Citizens, Floydada Nursing Home, Girlstown and herself.

Financial report was given by Treasurer Holly Hendrix.

Program chairman Wendy Pierce reported that the next meeting will be January 17 in the home of Donna Anderson. Hostesses will be Donna Anderson and Wendy Pierce. The

program will be given by Julianne Cornelius.

Ways and Means chairman Penny Ogden discussed plans for the Old Settlers dance.

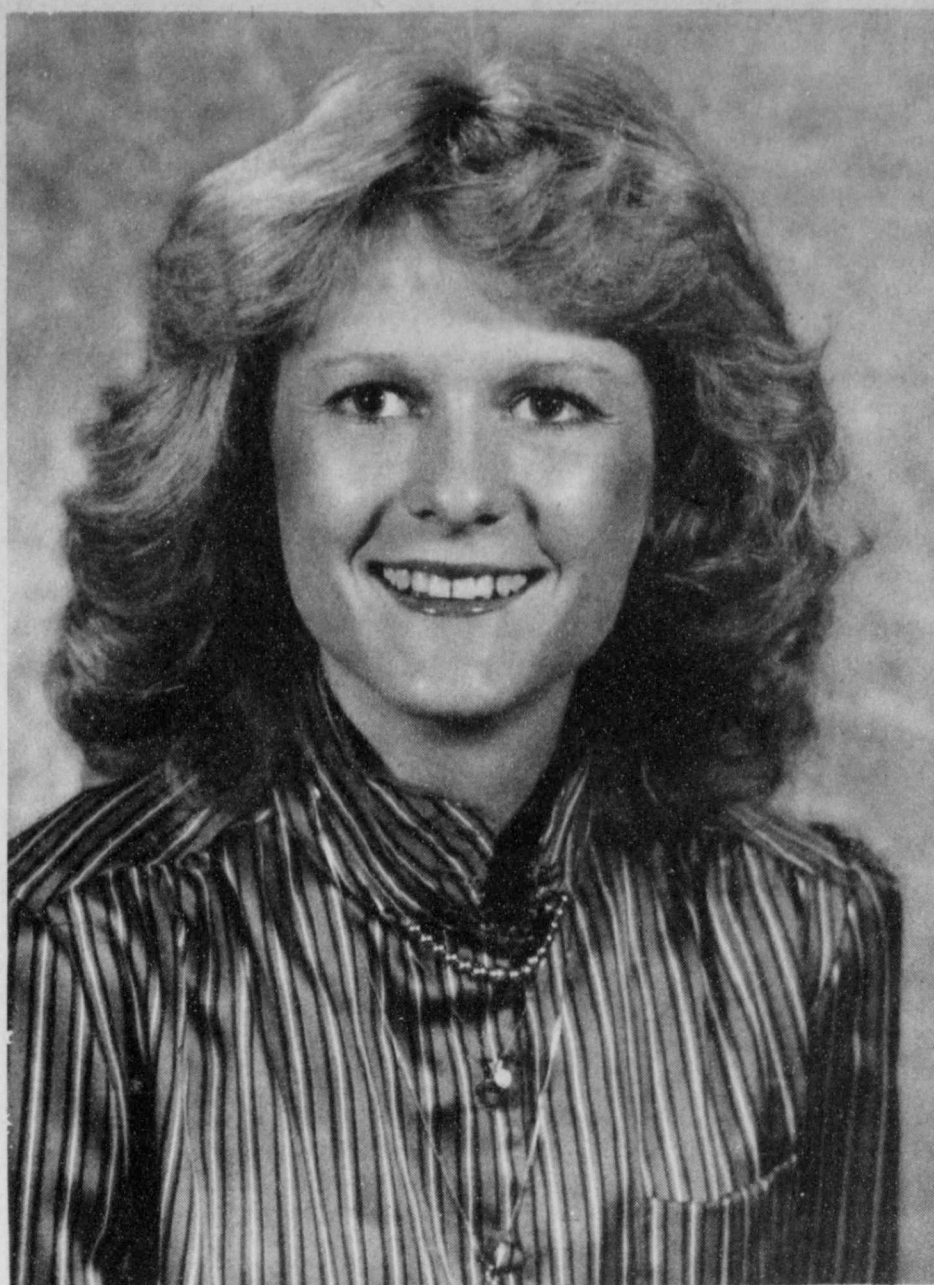
Service projects chairman Julianne Cornelius moved that the club donate \$25 to the Wendy Ruff Memorial Fund. It was approved.

The business meeting was then adjourned.

The program was given by Holly Hendrix on Service: The Need To Serve. Discussion followed.

Hostesses Penny Ogden and Barbara Anderson served sausage balls, cheese, carrots and celery tray, crackers, tea and coffee.

Everyone joined hands for the closing ritual and the mizpah.



ENGAGEMENT ANNOUNCED—Mr. and Mrs. Norman Muncy of Floydada, announce the engagement and approaching marriage of their daughter, Pamela Martelle to Russ Alan Jones, son of Mr. and Mrs. Coy Jones of Brownfield. Miss Muncy, a graduate of Texas Tech University, is employed by Brownfield Independent School District. Her fiancé attended South Plains College and Angelo State University, and is presently employed by Campbell Welding of Brownfield and South Plains College. The couple plan a March 10 wedding in the First Baptist Church of Floydada.

Look Who's New!



DEGGE

Kyle and Mollie Degge of Hammond, Louisiana wish to announce the birth of their daughter, Whitney Leigh, born December 10, 1983. She weighed 7 lbs. 7 oz. and was 20" long.

Grandparents are Mr. and Mrs. Douglas Degge of Lockney and Mr. and Mrs. C.L. Cox of Newnan, Georgia.

Mrs. Floyd Huff of Lockney is the child's great-grandmother.

FORD

Bernie and Cindy Ford are the proud parents of their first child, a daughter, Jenna Alisse, born December 22, 1983 at 7:45 at Lockney General Hospital.

Jenna Alisse weighed in at 6 lbs. 14 oz. and was 20 inches long.

Grandparents are Mr. and Mrs. Byron Ford of Lockney and Mr. and Mrs. Goldman Dryer of Dimmitt.

WHITIS

James and Jessye Whitis of Plainview became parents of their first child, a son, Sunday at 3:50 p.m. in Central Plains Regional Hospital.

Stuart Lynn Whitis weighed 7 lbs. 7 oz. at birth and was 18½ inches long.

The baby's father is band director at Lockney schools, and his mother is an assistant professor of music at Wayland Baptist University.

Maternal grandparents are Mr. and Mrs. Robert Streeter of Greenwood, Mississippi. Paternal grandparents are Mr. and Mrs. James Albert Whitis of Belton.

Great grandparents are Mrs. Maude Streeter of Mantee, Mississippi, and Hoyt Whitis of Belton.

Christmas meeting held by Bible Baptist ladies

Monday, December 19, was the date of the Bible Baptist ladies Christmas meeting. They met at the church at 7:30 p.m.

The meeting was opened with prayer led by Debra Jo Fawver followed by the singing of several Christmas hymns, also led by Mrs. Fawver. Business was then taken care of by Renie Chapman. Jaynette Harrison brought the lesson from Luke, Chapter 2. She presented

thoughts on this chapter from a mother's viewpoint. Renie Chapman closed the study with a word of prayer.

The ladies all enjoyed refreshments consisting of many different cakes, candies, cheese and other snacks. They then exchanged gifts.

Those attending were: Bonnie Palacios, Renie Chapman, Jaynette Harrison, Tracy Harrison, Margie Sue, Debra Jo Fawver, Lela Mae Burns and Lila Taylor.

"Laugh Lines"

BY DON AND SARA PROBASCO

Bits of Humor, Trivia, and an occasional Word of Wisdom

A first grader had an explanation for the fire at his school. "I knew it was going to happen," he told his parents. "We've been practicing for it all year."

The world is divided into those who do things and those who take the credit. Try to belong to the first group. There's a lot less competition.

Question: Who said "Growing old is a state of mind"? Answer: the same turkey that said, "The best things in life are free."

Whenever one person gets something without working for it, someone else has to work without just compensation.

You may not know when you're well off -- but the IRS does.

Sure the IRS tell us to file early. They want to get our money while the dollar is still worth something.

How can you tell which end of a worm is his head? Tickle him in the middle and watch where he smiles.

You'll make HER smile with a Valentine gift of lovely pressed flowers behind beveled glass. Call today to place your order for that special person. All colors of stained glass framing are available.

PRO-LOCK SHOP
24-hour Mobile
Locksmith Service

PROBASCO'S

STUDIO SOUTH
Stained Glass Art
Gifts & Supplies

983-3834

2 miles north of South Plains on the Silverton Highway (Hwy 207)

Attention Future Brides!

Beginning

Feb. 1, 1984,

a minimal fee of \$5⁰⁰ will be charged for

bridal pictures and an additional \$5⁰⁰ for a lengthy description.

Due to space and economics the paper reserves the right to size engagement pictures.

Floydada Jr. High

Honor Roll

2ND NINE WEEKS

7th Grade

7A—Travis Bishop, Anissa Crabtree, Tim Julian

7B—Nohemi DeOchoa

7C—Tiffany Gentry

8th Grade

8A—Angie Bertrand, Amy Burns, Chad Pernel

8B—Keith Hancock, *Ludustia Leatherman

8C—Chad Edwards

8D—*Pam Lockwood, *Ty Stovall

1ST SEMESTER

7th Grade

7A—Tammy Bertrand, Travis Bishop, Anissa Crabtree, Tim Julian

7B—Kristy Dawdy, Nohemi DeOchoa

7C—Tiffany Gentry

7D—Sharon Smith

8th Grade

8A—Angie Bertrand, Amy Burns, Chad Pernel

8B—Keith Hancock, Ludustia Leatherman

8C—Chad Edwards, Joey Thayer

8D—*Pam Lockwood, *Ty Stovall

3.5 points or better (based upon solid subjects)

*4.0

Floydada Nursing Home Happenings

By Florence VanHoose

I have been enjoying my new job as Activity Director of Floydada Nursing Home. The residents and staff have made me feel so welcome and are very supportive.

Monday we had Devotions with Trinity Church at 10:30. Shirley Varner, Sabrina, Ira Sullivan, Mildred Thrasher, and Dartha Westbrook and I, sang the hymns with the residents. Then I read the scripture, Ira, Dartha, and Shirley sang a special song. We did not have music therapy because it was a holiday.

Tuesday The Primitive Baptist Church, with Neeley Richardson led the Devotions. Neeley and his wife led the music, and he read the scripture. They brought bananas to all the residents and staff. We appreciate this generous giving. We started a Bible study in the afternoon, of the Women of the Bible and how they coped with crisis. We are studying the Book of Ruth. Then later in the afternoon, Mrs. Ed Muncy and Mrs. Clarence Guffee from the Sunshine Class of the First Baptist Church, brought bananas and cookies for all the residents. They visited in all the rooms as they handed out the bananas and cookies.

Wednesday the City Park Church of Christ brought the Devotions. Their singing was beautiful and the scripture so meaningful. Wednesday afternoon we played Bingo. The residents always enjoy playing this game. Emmitt Lawrence bingo'ed the most times and Sue Thompson and Ona Jameson both bingo'ed on the blackout game. It was fun.

Thursday we went on a bus trip to Plainview and got an ice-cream cone. It was a beautiful day for a drive and the residents were glad to be out after being in for so long during the cold weather. Those going on the bus trip were Emmitt Lawrence, Mrs. Bernie, Bennie Wilson, Addie Lindley, Lura Brashears and myself.

Friday Mary Corley and Nettie Adams led the Devotions. We certainly do appreciate all who donate their time

and energy helping make life better and more enjoyable for the residents. Emmitt Lawrence made his 281st owl this week. He sells these owls for \$12.50 each. Also on Friday the residents saw the movie "Country Coyote Goes Hollywood." They enjoyed the popcorn along with the movie.

We would like to welcome our two new residents to our Home. They are A.J. and Sarah Huckabee from Stephen, Texas. They are the parents of Wanda Williams. We hope the Huckabee's will be happy here in our Home.

Visitors were: Mrs. Watson Jones, Mr. and Mrs. Smith, Na Cole WyVett Smith, Eunice Hardy, Ozena Norris, Deotia Odum, Beulah Baker, Mary Spears, Lorene Lancaster, Matador, Frances Finch, Roaring Springs; Winnie Neil, Zella Raemer, Roaring Springs; Jess and Bessie Glover, Hazel Bradley, Dolores Cannon, Earl Edwards, Edd Neff, Dorothy Neff, Watson and Jean Jones, Otis, Dana and Jo Lee Ellis, Edna Patton, Lois Reynolds, Rita Thompson.

Look who's **50** today!

Love, Your family

Vesey passes nursing examination

Mrs. Pauline Bunch Vesey, formerly of Floydada and Plainview, was notified by the State of Nebraska Department of Health, Bureau of Examining Boards that she had passed the examination NCLEX-PN (Practical Nurse) which she took on October 18, 1983 in Lincoln, Nebraska, and will be duly licensed to practice in the state of Nebraska as a Licensed Practical Nurse.

Mrs. Vesey is a 1945 graduate of Floydada High School. She received her vocational nurse training at Lockney General Hospital under the program offered by Dr. W.J. Mangold and approved by the State of Texas. Mrs. Wynona Lusk R.N. of Plainview was her instructor and Mrs. Lucy Cozby, R.N. of Floydada was the Director of Nurses. Mrs. Vesey passed the Texas Board Examination in Austin, Texas, in August 1958.

After a successful twenty-three years in nursing, she retired in October, 1981. At that time she closed a sixteen year tenure as Charge Nurse on the South Wing of Heritage Convalescent Home in Plainview. She will be remembered as Pauline Wright, L.V.N.

In the early years of her career she was employed by Peoples Hospital in Floydada, the Crosbyton Hospital and the Medical Center Hospital in Plainview.

In the early 1970's she was offered employment at the Caprock Hospital in Floydada and accepted two eight hour shifts per week as an 11-7 relief nurse. After moving to Plainview she resigned from Caprock Hospital and accepted two 11-7 shifts a week at Central Plains Hospital in Plainview. She was the Charge Nurse relief for one year on the surgical floor and one year on the O.B. floor there in conjunction with her normal 40 hour work schedule at

Heritage Home.

She was married to Richard Vesey in August 1981 in Plainview and they moved to Norfolk, Nebraska, in July, 1982.

Mrs. Vesey does not plan to resume her nursing career in Nebraska but took the examination for her personal satisfaction and is secure in the knowledge that she has a current license in both Texas and Nebraska.

She is the mother of four: Mrs. Betty Lou Wright Kinslow of Coppell, Texas; Leon and Joe Wayne of Lubbock and Charlotte Wright of Waco, Texas. She is the grandmother of three and the stepmother of Mrs. Robin Liskear, Portland, Oregon, and Leslie Vesey of Omaha, Nebraska.

Wedding in your Future?

Williams Florist and Card Shop

is now booking weddings for spring and summer '84. So it is not too early to come in for a free estimate and see why MORE brides in 1983 trusted Williams Florist for this most special day in their lives.

Williams Florist
128 W. Calif. 983-5013
Send your thoughts with special care.

©1983 Florists Transworld Delivery Association.

Jim W. Guess, Pastor

All sunshine makes a desert

First Assembly of God
701 W. Missouri Floydada, Tx.

January Clearance

All ladies
Blouses and coordinated separates

1 rack of Blouses and jeans **1/2 off**

All felt hats By Resistol **1/3 off**

Western shirts Wrangler & Miller **20% off**

Sale continues on boots

THE LOFT
517 East Houston

Bridal selections available for Dana (Woody) and Rex Brown and Debbie and Joe Reid

Sue's Gifts

126 W. California 983-5312

SAVE SAVE SAVE SAVE SAVE

Hanes Anniversary Sale

on these Hosiery Styles

ALIVE Reg. \$6⁹⁵ Sale \$5⁷⁵

SHEER TOP CONTROL - 710 Sale \$3⁵⁵

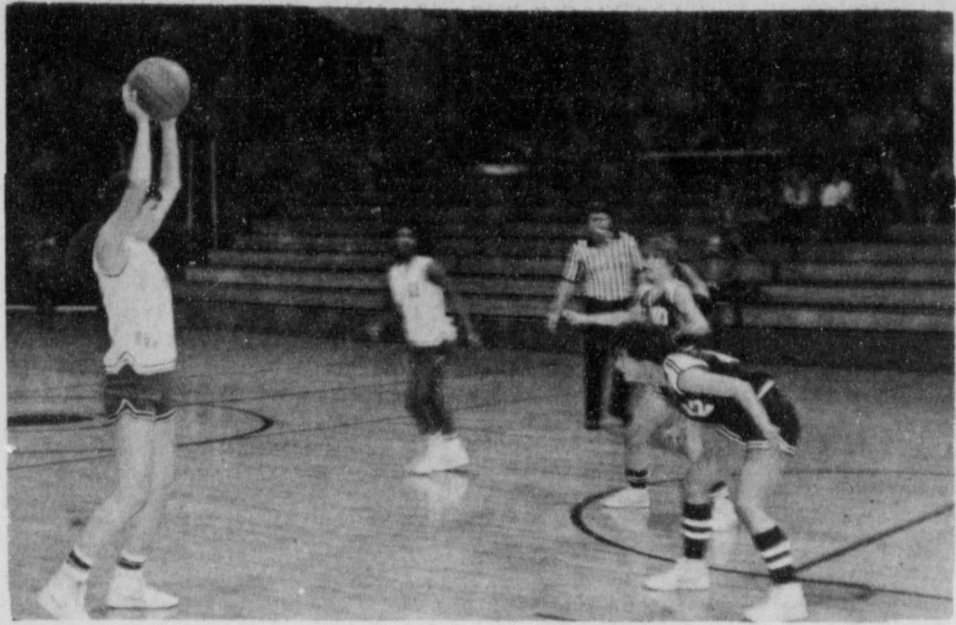
ULTRA SHEER 885-950 Reg. \$3¹⁵ Sale \$3¹⁰

STOCKINGS - 415 Reg. \$2⁷⁵ Sale \$2³⁰

Sale Dates - January 12-21

Hale's Dept. Store

SAVE SAVE SAVE SAVE SAVE



VARSITY WHIRLWIND BASKETBALL PLAYER SHERESE CANNON looks for an out against the Tulia Hornet's defense in last Friday night's game.

Varsity girls: Tulia & Olton

Floydada 46 Tulia 37
 Sheres Cannon, 10 points, 5 rebounds.
 Jill Willson, 6 points, 3 rebounds.
 Patsi Williams, 8 points, 3 rebounds
 LouAnnie Williams, 14 points, 10 rebounds
 Cheryl Goen, 6 points, 6 rebounds
 Cookie Jones, 1 point, 1 rebound
 Margie Cisneros, 1 point, 3 rebounds
 Season Record: 11-8

Open District Tuesday night in Idalou at 6:30.

Floydada 24 Olton 33
 Sheres Cannon, 8 points, 2 rebounds
 Jill Willson, 1 point, 0 rebounds
 ransi Williams, 6 points, 3 rebounds
 LouAnnie Williams, 2 points, 5 rebounds
 Cheryl Goen, 7 points, 4 rebounds

Slaton Tournament: J.V. girls

Thursday, Jan. 5:
 Floydada 29 Hale Center 35
 Leading Scorers: Mary Lloyd and Treva Ledbetter, 8 points each.
 Rebounders: Treva Ledbetter, 9; Paige Cannon, 5.

Saturday, Jan. 7:
 Freshman girls, season record: 6-1.

Junior Varsity boys

Dec. 30:
 Lubbock Roosevelt 67 Floydada 65
 In Overtime
 Scoring: Brad Rainer, 18 points; Rainer, 12.

Jan. 3:
 Floydada 45 Olton 33
 Scoring: F.L. Williams, 14; Brad Rainer, 12.

Varsity boys

Floydada 80 Tulia 74
 High pointers were: Derrick Jenkins with 20 points; Rabel Contreras, 18; Bobby Emert, 15; David Morren, 8; Joey Kemp, 11; Richie Mitchell, 6.
 Rebounds: Bobby Emert, 13; Rabel Contreras, 11; David Morren, 9.
 Coach Mike Cocanougher commented "This was the best game we played all year. The players hustled well and played good defense. This win made our record 10-8."

Womack named to Dean's List

Tracy Womack, a 1980 Floydada High School graduate, now attending Tarleton State in Stephenville, graduated in December with a degree in agriculture education and is now working on his masters.
 He was recognized for his high achievement in the school of agriculture.

Womack had a 4.0 grade for the semester to include him on the honor roll.
 Those attending the commencement exercises from Floydada were his parents, Mr. and Mrs. Bill Womack and his brothers Mr. and Mrs. Joe Womack and Jay Womack, who is teaching agriculture in Burkburnett, Texas.

Floydada Basketball Results

Tulia Tournament: 8th grade boys

January 5, 6, 7
1st game, Thursday, Jan. 5:
 Floydada 47 Tulia 14
 Leading scorers:
 Randy Enriquez 11
 Roel Cisneros 12
 Heath Robertson 6
 Chad Pernell 5
 Daniel Medrano 5
 Ralph Casillas 4
 Jason Brown 2

1st Quarter: Floydada 15, Tulia 2
2nd Quarter: Floydada 23, Tulia 10
3rd Quarter: Floydada 37, Tulia 10
4th Quarter: Floydada 47, Tulia 14

2nd game, Friday, Jan. 6:
 Floydada 54 Dimmitt 39
 Leading scorers:
 Ty Stovall 15
 Randy Enriquez 13
 Heath Robertson 9
 Rusty Rainey 9
 Chad Pernell 3

1st Quarter: Floydada 7, Tulia 5
2nd Quarter: Floydada 25, Tulia 11
3rd Quarter: Floydada 29, Tulia 17
4th Quarter: Floydada 37, Tulia 24

8th grade boys

Monday, Jan. 9:
 Floydada 43 Idalou 16
 Leading scorers:
 Rusty Rainey 12
 Randy Enriquez 9
 Heath Robertson 6
 Chad Pernell 4
 David Christian 4
 Ty Stovall 2
 Roel Cisneros 2

1st Quarter: Floydada 12, Idalou 1
2nd Quarter: Floydada 20, Idalou 7
3rd Quarter: Floydada 29, Idalou 12
4th Quarter: Floydada 43, Idalou 16

Season Record: 10-0

7th grade boys

Floydada 39 Idalou 23
 Leading scorers:
 Dana Cooper 10
 Rolando Cisneros 13
 Quisenberry 4

1st Quarter: Caballero 4
2nd Quarter: King 2
3rd Quarter: Gavaza 2
4th Quarter: Orman 2
 Mendoza 2

Slaton J.V. Tournament

Jan. 5, 6, 7:
 Floydada JV received 1st place.
 Floydada 60 Hale Center 16
 Scoring: Brad Rainer, 17; Alvin Cooper, 12
 Floydada 65 Post 37
 Scoring: Alvin Cooper, 30; Dale Minner, 10

Championship Game:
 Floydada 61 Idalou 46
 Scoring: Brad Rainer, 16; Alvin Cooper, 13; Haney Robertson, 10.
 Coach Dan Pair said, "Also doing an overall excellent job were Larry Smith, Terry King and F.L. Williams."

Floydada School Menu

January 16-20

Monday:
 Breakfast — Orange juice, toast, jelly, butter, milk
 Lunch — Spaghetti w/meat sauce, fried okra, peanut butter cookie, hot roll, milk
Tuesday:
 Breakfast — Grape juice, dry cereal, toast, milk
 Lunch — Oven baked chicken, green beans, mashed potatoes, peach half, hot rolls, milk
Wednesday:
 Breakfast — Pineapple juice, sausage, toast, jelly, milk
 Lunch — Chili beans, spinach, pear half, sugar cookie, corn bread, milk
Thursday:
 Breakfast — Apple juice, cinnamon toast, milk
 Lunch — Vegetable beef soup, pimento cheese sandwich, crackers, jello w/fruit, milk
Friday:
 Breakfast — Orange juice, pancakes, butter, syrup, milk
 Lunch — Char burgers, French fries, lettuce, tomato, pickle, apricot cobbler, milk

R.C. Andrews Honor Roll

SECOND NINE WEEKS

Fourth Grade
 "A" — Christy Benjamin, Shonda Guthrie, Katharine Davis, Nathan Whittle, Stacy Dawdy, Billy Villarreal, Amy Ogle, Tanner Smith
 "B" — Jennifer Crow, Fabian Torres (Bilingual), Misti Lobban, FaLiza De Hoyos, Irene Ovalle (Level I), Brad Wilson, Tiffany Bennett, Adam De La Cruz, Dirk Rainer, Marcey Espinoza (Resource), Sylvia Caballero, Kalli Hicks, Bertha Hernandez, Robin Gallo-way, Rhoda Hernandez, Steve Morales, Jenny Paty, Christie Rowan.

Fifth Grade
 "A" — Troy Peel, Ryan Burns, Angie Glasscock, Amy Hinsley, Trina Ogden, Melissa Strickland, Mike Pofinbarger
 "B" — Tonya Powell, Pat Vallejo, Jerry Wickware, Michael Aleman, Brent Gibbs, Becky Porter, Jennifer Shaut, Lupe Gonzales, Roy Nichols

Sixth Grade
 "A" — Amy McCormick, Tiffany Reams, Misty Avila, Delinda Jackson, Anita McCormick, Shannon Paty, Gracie Mercado, Stephanie Zimmerman
 "B" — Libby Anderson, Shayla Barbee, Robby Green, Misty Warren, Joe Cisneros, Cynthia De Hoyos, Roy Garcia, Cammy Hancock, Grant Stovall, Valency Zumwalt, Miki Schneider, Kim Perry, Jay Mendoza, Criselda Hernandez, Heather Henderson, Jo Lee Ellis, Mychelle Harris



THE FIGHTING WHIRLWIND JR. VARSITY BOYS BASKETBALL TEAM won first place at the Slaton JV Tournament this past weekend. Back row L-R Stacey Williams, Jeff Arney, Alvon Cooper, Dale Minner, Chuck Rowley, Brad Rainer, and Larry Smith. Front row L-R Tony Caballero, Damien Pleasant, Richard Rendon, Junior Morales, Haney Robertson, Gilbert Sadillo, and Terry King.

ENROLL NOW!

for Gymnastics & Karate Classes
 at with with Sue Hardy at 983-3774 or

Monday, January 16,
at Andrews Ward at 4:00 p.m.

Gymnastics instructor will be Doug Wilson;
 all ages welcomed Classes to be held on Mondays
 Karate classes offered from high school thru adult
 (If front door locked, please use south gym door for registration)

PUBLIC NOTICE

In proceedings pending before the Public Utility Commission of Texas (PUC), local exchange telephone companies are requesting authority to charge AT&T Communications of the Southwest, Inc., for use of their facilities. These proposed charges are higher than AT&T Communications can pay at current Texas long distance rate levels. To position itself to be able to implement rates that are sufficient to produce revenues that will recover the costs facing the company, AT&T Communications must now file for rate relief to be able to implement rates that reflect the costs of access that are ultimately imposed on the company.

While AT&T Communications does not want to increase its Texas rates, an increase would be required to recover the increased access charges AT&T Communications will have to pay to the local exchange telephone companies under several proposals pending before the Commission. These access charges at the proposed increased levels represent more than 80 percent of AT&T Communications' operating expense in Texas.

Accordingly, AT&T Communications, in accordance with the Public Utility Regulatory Act and the rules of the PUC, hereby gives notice of the company's intent to implement a new schedule of rates for long distance calls within Texas. The proposed rates will be effective January 28, 1984, unless otherwise determined by the Commission. All customers and classes of customers would be affected by AT&T Communications' proposed rates.

If higher access charges are ordered, AT&T Communications has no recourse but to pay these charges and recover the costs from its customers as a cost of providing long distance service within Texas. AT&T Communications has filed rates which would mean a maximum overall increase in adjusted test period revenues of \$301.4 million, or 27.85 percent. This amount would help recover cost increases due to the proposed level of access charges now pending before the PUC.

A complete copy of all tariffs and rate schedules is on file with the Texas Public Utility Commission at Austin, Texas, and with every municipality in Texas.

Persons who wish to intervene or otherwise participate in these proceedings should notify the Commission as soon as possible. A request to intervene or participate or for further information should be mailed to the Public Utility Commission of Texas, 7800 Shoal Creek Boulevard, Suite 400N, Austin, Texas 78757. Further information also may be obtained by calling the Public Utility Commission Consumer Affairs Division at (512) 458-0223 or (512) 458-0227 or (512) 458-0221 teletypewriter for the deaf.

AT&T Communications

Try our new oil from GM

30 wt. OIL \$1.15 qt.

10W30 OIL \$1.25 qt.

15W40 OIL \$1.25 qt.

CITY AUTO INC.

Tel 983-3767
 201 E. Missouri
 Floydada, Texas 79235
 Lubbock 765-6143

Keep That Great GM Feeling With Genuine GM Parts
 GM QUALITY SERVICE PARTS
 GENERAL MOTORS PARTS DIVISION

Ask the Land Bank about...

money to buy land or improve your farm.

Farmers today are looking at ways to increase their productivity... buying or improving land... building or remodeling facilities. Whatever way you choose to grow, the Federal Land Bank can provide long-term credit to help.

So when you're looking to buy or build, stop in and talk to the long-term farm credit specialists at your Land Bank Association.

Caprock-Plains FLBA of Plainview
 P. O. Box 130
 105 S. Wall, Floydada
 983-2480

Tommy Ogden, Vice President

The Land Bank

RED X

FUEL STOP

6 pack 16 oz. bottles
 Pepper Free & Sugar Free
Dr. Pepper \$1.29
 while supply lasts

6 pack 12 oz. cans
Coke \$1.59

Nachos 79¢

1/4lb. Chili Dog 99¢

1/4lb. Hot Dog 79¢

1/8lb. Hot Dog 49¢

1/8lb. Chili Dog 65¢

BBQ Sandwich 79¢

Sit Down Dining Available
520 East Houston New Store Hours 6 am to 11 pm 983-3028

OBITUARIES

VERA CLARY

Services for Vera Anita Clary, 41, of Lubbock were at 2 p.m. January 9 in Franklin-Bartley Chapel with the Rev. Glenn Harlin officiating.

Burial was in Peaceful Gardens Memorial Park under direction of Franklin-Bartley Funeral Home.

A former Lockney student, she died at 10:15 p.m. Saturday, January 7, in St. Mary's Hospital after a short illness.

The Quitaque native was a Texas Instruments employee. She moved to Lubbock six years ago from Plains. She was a Baptist.

Survivors include a brother, Johnnie Clary of Lubbock; step-parents, Mr. and Mrs. E.R. "Bear" Wauson of Plains; three step-brothers, Wayne Wauson of Muleshoe, Gene Wauson and Robert Wauson, both of Plains; four step-sisters, Pauline Deen of Lubbock, Priscilla Herington of Farwell, Gloria Compton of Plains and Theada Wauson of Lubbock.

Pallbearers were Shelton Teeter, Eddie Bilbrey, Harry Bilbrey, Steve Barnes, Reggie Pearl and Eddie Pearl.

The family suggests memorials be made to the American Heart Association.

VADA WYNN HARRIS

Services for Vada Wynn Harris, a former resident of Floydada, were at 10 a.m. January 2, 1984 at the Cahoma Church of Christ in Cahoma, Texas. Graveside services were held at Dodson Cemetery in Dodson, Texas. Frank Duckworth of Lockney officiated.

Mrs. Harris died in a Big Springs Hospital after a brief illness.

She was born March 3, 1898 in Grayson County, Texas. She married Henry Elliott Wynn February 28, 1921. He preceded her in death December 5, 1960.

In March 1963, she married B.C. Harris. He died in September 1968.

Mrs. Harris lived most of her life in the Wellington and Dodson area. She had lived in Floydada for 10 years until October of 1983 when she moved to Cahoma.

Survivors include one son, Phillip A. Wynn of Cahoma; one daughter, Mrs. Newell (Fara) Burk of Lubbock; three sisters, Dema Justice of Clarendon, Viola Richters of Phoenix, Arizona, Jessie Stovall, of Chickasha, Oklahoma; one brother, Lowell Savage of Muleshoe; five grandchildren; and seven great-grandchildren.

FONZO SHAW

Services for Fonzo Gardner Shaw, 88, of Dickens were at 10:30 a.m. January 9 in the First Baptist Church, Dickens, with the Rev. C.L. Atkinson, pastor, officiating, assisted by the Rev. Billy Whitaker of Matador.

Burial was in the Dickens Cemetery under direction of Campbell Funeral Home of Spur.

He died at 2:30 p.m. Saturday at Methodist Hospital in Lubbock after an illness.

Born in Dickens County, he married Vivian Hadaway November 11, 1917, in Dickens. He was a veteran of World War I and a member of the VFW. He was a trucker and a cement contractor.

He was a member of the Church of Christ.

Survivors include his wife; six sons, Tom, Dean, and Donald, all of Dickens, Darrell of Weatherford and Carl and Dennis of Vega; five daughters, Gustine Beaver of Yucaipa, California, Lillie Mae Griffin of McAdoo, Flora Lee Pernell of Vega, Marie Byrd of Meadow and Corene McDowell of Amarillo; a brother, John Shaw of San Diego, California; a sister, Lottie Stewart of Lockney; 31 grandchildren; 44 great-grandchildren; and two great-great-grandchildren.

The family requests memorials to the Dickens Ambulance Fund.

RICHARD F. STOVALL

Services for Richard F. Stovall, 73, of Plainview were at 2 p.m. January 5 in First United Methodist Church with Dr. R.L. Kirk, pastor, officiating. Burial was in Floyd County Memorial Park in Floydada by Wood-Dunning Funeral Home of Plainview.

The Plainview attorney died at 4:23 p.m. January 3 in Central Plains Regional Hospital where he was admitted December 28 after suffering an apparent heart attack.

Mr. Stovall was born May 10, 1910 in Hill County and moved to Floyd County in 1920. He lived in Floydada until 1963, practicing law and farming there. In

1963 he moved to Plainview where he continued his law practice until his death.

He was a member of First United Methodist Church, was a past president of Plainview Country Club and a member of Plainview Rotary Club.

Mr. Stovall was a member of the American Bar Association, the Texas Bar Association and the Hale County Bar Association. He served as a director of the Texas Bar Association in 1956-59 and as a director of the Texas Trial Lawyers Association from 1956 until 1966.

Mr. Stovall was district attorney of

the 110th Judicial District in 1943-47. He served as president of the District Attorneys Association in 1946. He was on the Board of Regents of State Teacher Colleges from 1957 until 1963.

Survivors are his wife, Evonne; three sons, Frank Stovall and Van Stovall, both of Houston, and Robert Stovall of Floydada; five sisters, Mrs. J.R. (Ailee) Williams of Roswell, New Mexico, Mrs. Marvin (Polly) Gilbert of Lockney, Mrs. H.C. (Genell) Sullivan of Wichita Falls, Mrs. Lindsey (Virginia) Vinsel of Medford, Oregon and Mrs. Hart (Dorothy Dell) Shoemaker of Abilene; and eight grandchildren.

EVA TAYLOR

Services for Eva Taylor, 73, of Plainview were at 2 p.m. Saturday, January 7, in Lemons Memorial Chapel with Dr. Fred Meeks, pastor of First Baptist Church, officiating. Burial was in Parklawn Memorial Garden. She died January 5.

Miss Taylor was born in Hamilton County. She lived in Whitfield Community in Swisher County and attended schools there. She moved to Plainview and was manager of a ladies style shop. She moved to Salem, Oregon in 1949 and was manager of a Vogue shop. She moved back to Plainview in 1982. She

was a member of First Baptist Church. Survivors include a brother, M.T. Taylor of Lubbock, and five sisters, Julia Clements and Marvena Reinken, both of Plainview, Ruby Ratjen of Floydada, Versie Foster of Tulia and Murial Stark of Lubbock.

EULA WILLIAMS

Services for Eula Myrtle Williams, 87, of Floydada were at 2 p.m. January 10 at First United Methodist Church, Floydada, with the Rev. Earl Blair, pastor, officiating.

Burial was in Floydada Cemetery under direction of Moore-Rose Funeral Home.

She died at 6:15 p.m. Friday, January 6, at Caprock Hospital following a lengthy illness.

The Jacksboro native moved to Floyd County in 1899 and married Norbitt W. Williams September 9, 1967, in Lubbock. He died April 21, 1980.

She was a Methodist, a past matron of the Eastern Star and a member of the lodge for 42 years.

Survivors include three daughters, Katie Lee Riley and Dorothy Bernice Rodgers, both of Harlington, and Mary Louise Fulkerson of Lubbock; three grandchildren; and four great-grandchildren.

JANUARY CLEARANCE SALE

Criterion Wrist
WATCHES
\$399
EACH
Men's-Ladies-Children

Ferrari Fold-up
SUNGLASSES
\$399
Case included

Assorted Brands
WRIST WATCHES
Men's-Ladies-Children's
\$30⁰⁰-560⁰⁰ values
\$19⁹⁹
EACH!!!!



BONELESS WASTE FREE
CHUCK ROAST LB.....
\$149

EXTRA LEAN BONELESS
STEW MEAT LB.....
\$169

T.V. - 1 LB.
BACON
\$139

BUTT PORK
ROAST LB.....
\$119

PORK
STEAK LB.
\$129

WE WILL HAVE A PHOTOGRAPHER WEDNESDAY, JAN 18 10 a.m.-4 p.m. Come by for a FREE 5x7 picture

RENT A MOVIE OVER 90 TITLES TO CHOOSE FROM
MOVIES
\$3⁰⁰ PER DAY
PLAYERS
\$5⁰⁰ PER DAY

5 lb. sugar
Imperial
\$199

T.V. - 4 ROLL PKG.
BATHROOM TISSUE
79¢

Fresh From Our Produce Department
GREAT FOR COOKING ROME BEAUTY
APPLES
3 LB S. **\$100**

CALIF. SUNKIST
LEMONS 10 FOR **\$1**

32 OZ. - 6 PAK
DR PEPPER OR
7-UP
\$229 plus deposit

Fresh Baked
Glazed Donuts
\$209 Dozen
All frosted donuts
\$379 dozen

MUSTARD - COLLARD TURNIP GREENS
3 FOR **\$100**
US NO. 1 RUSSET 5 LB. BAG
POTATOES
79¢

8-PIECE - REG. PRICE \$3.69
BROASTED CHICKEN
\$299

PRICES GOOD THRU WED. JAN. 18, 1984

buddy's
SUPERMARKET
WE RESERVE THE RIGHT TO LIMIT QUANTITIES!

220 S. 2nd
Store Hours
8 a.m.-9 p.m.
Monday thru Saturday
9 a.m.-8 p.m.
Sunday

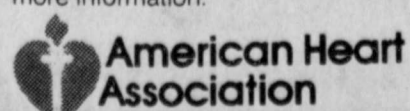
WE GIVE GREEN STAMPS DOUBLE ON WED.

Heart Answers



WHAT ARE HEART MURMURS?

Heart murmurs are extra heart sounds produced by the circulation of the blood through the valves and chambers of the heart. There are different kinds of murmurs. A doctor can recognize them and determine whether a murmur is harmless or indicates a heart condition requiring medical care. Innocent, or functional, murmurs are common in children. A large percentage are likely to have had one at some time. Contact your local American Heart Association for more information.



WE'RE FIGHTING FOR YOUR LIFE

Lakeview News

By Joyce Williams

Mrs. Roy Teague returned to her home near Dallas last Thursday after staying several days with her mother-in-law, Mrs. Riley Teague and for the funeral of Earl Bishop the previous Monday. Shirley's sister, Elya Turner, and grandson of Abernathy came over to visit Thursday afternoon and took Shirley to the Lubbock Airport to catch her plane that evening. Besides Roy Heflin Teague, the grandson and great grands who were pallbearers at Earl Bishop's funeral included grandsons: Howard, Dwin, Jimmy and Donnie Bishop; Mariou B. Howard, and James Earl, Rodney and Keith Teague. Great grandsons were: Michael, Greg, Lance, Brent, Randy and Sharon Bishop, Earl Bodie, Tim, Kent and Ryan Teague; also Joe Mack and Scott Tilson; Trip and Tye Taylor, Jack Howard and Mike Samihi. Little great, great grandsons

who accompanied the men in the family were: Jason, Charlie and Cody Tilson. Mr. and Mrs. Don Harrison braved the icy streets for Christmas in Lubbock with their son and family, Mr. and Mrs. Jerry Bob Harrison. Max and Jeanette Harrison and daughter were also present. Ruth was supposed to bake the turkey, but Jerry got worried she wouldn't be able to drive over and cooked another turkey. Everyone had plenty to snack on while they were snowed in. The William Bertrand home was the gathering place for all their children and also the Orville Newberry's for Christmas. Ronald and Betty Bertrand and Shelly were there from Vernon, Texas. Jill and Martin Warren from Tahoka were there with their three, Lezlie, Will and Rebecca. Randy and Connie Lu, Angie

and Misty Bertrand and from our community were present. The Newberrys included Lorene and Orville from Floydada. Their children and families were Dale and Pat Newberry and children of La Mesa, and Deanne Jones, Ken and Rexanne Jones of Midland. All arrived at Fay and Williams on Christmas Eve day for a big family dinner. Then on Christmas Day, Faye and Williams went to the Newberrys for dinner with their families. Bad weather caused the family, of the late Mr. and Mrs. R.C. Smith to delay their Christmas get-together. But at last on Saturday, January 7, they all met at Milton and Jo Harrison's. Everyone brought covered dishes and had a good time. Present were Don and Ruth Harrison of Lakeview, Roy and Sunshine Smith of Plainview, Mona and Jean Dunn from Hale Center, Bill and Lillian Smith of Floydada, Max and Jeanette Harrison of Floydada, and Foy and Jesse Smith of Levelland. Max Harrison and daughter, Tracy, came out to Ruth and Davis for dinner Monday. The college students will return back to their campuses this week. Tracy Harrison and Jody Smith

and others of the 1983 high school graduating class have had a sad holiday with two of their classmates, Dusty Burleson and Wendy Ruff dying in accidents within a few weeks of each other. So much sadness for the families and friends of the two young people who were so popular. Mrs. Q.D. Williams visited Mrs. Riley Teague Monday for lunch. While the sky was grey with clouds and cold winds, they shared hot soup and cornbread around the kitchen table. Remember when families used to make a meal of cornbread and sweetmilk for supper. An old Southern favorite brought to the Southwest, and still served around many a Floyd County table when everyone's tired of rich, elaborate food. Riley Teague is still in Caprock Hospital. His children call daily to inquire for his health. Mr. and Mrs. Jerry Fowler and son, Brodey of Lubbock came over Friday before Christmas to stay with her parents, Mr. and Mrs. Odell Breed, until Tuesday. Her brother, Mike and family, arrived Thursday and stayed until Tuesday also. They all went to Bob

and Francis Hambright's home on Friday for the Hambright family Christmas. Then on Monday, December 26, all went to Ella and Ray Lloyd's house for the Breed family Christmas party. On New Years Eve, Shirley and Jerry Fowler entertained them in their home for a farwell to the old year. The Bobby Kendrick's big farm house was nearly bursting at the seams during Christmas when all the Kendricks met to celebrate together. Byron and Eileen Kendricks and daughter came from Colleyville the week end before Christmas for their visit, and returned home. On Friday, December 23, Becky and Rick Sterling and children, Ginger, Jana and Andrea arrived from El Darado, Texas. Saturday afternoon Sandy Stewart and her two boys, Ben and Jed, arrived from Oklahoma City. Sandy's husband is a colonel in the Air Force and is presently in Saudi Arabia. Sunday morning saw Linda and Wayne Mixon, Todd, Cindy, Nancy, Jay and Keith arrive from Seminole and Lubbock. They returned home that evening. Other Sunday guests at the Kendricks included Cheryl Crawford Simmons of Dallas and Max Crawford of Montana,

SENIOR CITIZENS MENU

January 16-20
 Monday — Swiss steak, blackeyed peas, fried okra, cornbread, butter, chocolate chip cookie, milk
 Tuesday — Lasagna, green beans, slaw, garlic toast, orange-banana cup, milk
 Wednesday — Beef stew with vegetables, harvard beets, tossed salad with dressing, cornbread and butter, peach cobbler, milk
 Thursday — Luncheon
 Friday — Barbequed chicken, potato salad, buttered broccoli, roll and butter, spice cake, milk

who were visiting their parents, the Earl Crawfords, Max, who authored the novel, "Waltz Across Texas", is writing another book. This one about the Indians who roamed the Illano Estacado, the Stake Plains.

FARM NEWS

Landscape & Gardening

by Benny Butler

DEALING WITH COLD-DAMAGED LANDSCAPE PLANTS
 Record-breaking cold temperatures have caused devastating damages to ornamental plants over much of Texas. Excessively low temperatures over a prolonged period with little or no accompanying moisture cause damages and losses that will be remembered for many years.

Culled dairy cows to be slaughtered

COWS TO IMPACT BEEF MARKET
 A new law encouraging cutbacks in milk production is probably going to send a lot of extra culled dairy cows to slaughter, possibly lowering cattle prices significantly during 1984. The potential number of culled dairy cows is probably close to 1.5 million head over and above the normal dairy cow slaughter, notes a livestock marketing economist with the Texas Agricultural Extension Service, Texas A&M University System. This large cow kill could lower 1984 fed Choice steer prices by \$1.25 to \$1.50 per hundredweight, and salvage cow prices by \$4 to \$6 per hundredweight. Feeder cattle prices could also be forced downward about \$3 to \$4 per hundredweight. In addition, such lower prices could cause some "panic selling" of beef cows, further depressing prices.

Got Heating or Plumbing Problems?

CALL Holmes Plumbing Austin or Steve Call Day or Night 983-2251



Here are some of the most frequently asked questions about freeze-damaged plants and the best courses of action for homeowners:

- Should I cut back plants that appear dead?
 Herbaceous plants that appear dead probably are and can be cut back or removed immediately. Woody shrubs, broadleaf evergreens and trees that appear damaged are best left unpruned until they leaf out in the spring or when a definite assessment can be made.
- Why can't I prune off the apparently dead growth now?
 Pruning tends to stimulate new growth which could be easily damaged again by typical winter cold spells.
- The leaves are all falling from my live oaks—are they dead?
 Probably not. Live oaks often lose their foliage in mid- to late-winter just before new growth appears. This bare, dormant period likely will be longer than usually this year but not permanent!
- Can I replace my dead plants now?
 Yes, but look for split bark and other freeze damage on plants in containers. Plants in containers are more susceptible to damage than those in the landscape, and if they have not received cold protection, their roots systems may be damaged or killed. Texas nurserymen have sustained severe damages and are making a concerted effort to restock with healthy, undamaged plants for winter and spring planting.
- When will I know for sure if my plants are dead or alive?
 It may be next summer or even later before all damage is evident. Damaged roots and stems may have sufficient conductive tissue to maintain a plant until it comes under stress from excessive heat or lack of water during the summer growing season.
- What can I do to help my injured plants?
 Be sure they have adequate moisture. This may mean irrigating plants in mid-winter. Our current moisture status is OK, but unless we receive some snow or rain in January, plants may have to be watered in February. Also, you may want to fertilize any freeze damaged trees and shrubs in late February or early March to help promote new growth and healing of damaged tissues. Educational programs conducted by the Texas Agricultural Extension Service serves people of all ages regardless of socioeconomic level, race, color, sex, religion, handicap or national origin.

High Plains Water District will hold election Jan. 21

Voters in eight High Plains Water District counties will go to the polls on January 21 this year for the annual election of a slate of District Directors and County Committeemen. The ballots will list three Board members for re-election, and positions for 24 county committeemen. District Directors Gilbert Fawver of Floydada, James Mitchell of Wolfforth, and Mack Hicks of Levelland, will seek re-election. Fawver is seeking his second two-year term. Mitchell will seek his fifth term of office and Hicks a third term. Directors may serve an unrestricted number of two-year terms, while committeemen are elected for four years and may not serve more than two consecutive terms. County committeemen for re-election in the Floyd county district are Cecil Jackson, Precinct 1, D.R. Sanders, Precinct 3, and John Lee Carthel, at large. Floyd county residents may vote at the Floyd county courthouse in Floydada, or Barker Insurance in Lockney, at Main and Locust. Hale county residents may vote at the Petersburg

Community Center in Petersburg. Elections will be held only in those counties or portions of counties comprising District Director Precincts One, Two and Five. These include eight

southern counties of the High Plains. Precinct One includes Crosby, Lubbock and Lynn counties. Precinct Two includes Cochran, Hockley and Lamb counties, while Precinct Five encompasses Floyd and Hale counties.

Payment proposed for 1984 PIK

The number of acres a wheat farmer can enroll in the U.S. Department of Agriculture's 1984 payment-in-kind program will be limited so that no farmer will receive more than \$50,000 in benefits, a USDA official said. Everett Rank, administrator of USDA's Agricultural Stabilization and Conservation Service, said payment limitation is a ceiling imposed by law on the total amount of payments a farmer can receive for participation in USDA's production stabilization programs. Generally, a farmer can receive no more than \$50,000 a year. However, price support loans, special disaster assistance and/or cost-sharing for approved, enduring conservation practices

are not subject to this limitation. Rank said. "Because the 1984 wheat loan rate was reduced from the statutory \$3.55 per bushel to \$3.30 per bushel to maintain our domestic and export markets, a portion of the deficiency payment rate may not be subject to the \$50,000 payment limitation," Rank said. "The amount of deficiency payment not subject to the \$50,000 limit will be the amount that the deficiency payment rate exceeds the difference between the old \$3.55 loan rate and the \$4.45 target price. This will ensure that the total returns to participating farmers will be the same as if the adjustment in the loan level had not been made," he said. "We do not believe the payment limitation statute applies to PIK commodities and we did not apply the limitation to last year's PIK program," said Rank. "This view has now been challenged by the General Account Office and some members of Congress. "We continue to believe we are correct, but the issue must be put to rest so that we can get on with implementation of the 1984 PIK program for wheat. Therefore, we have decided, as a matter of administrative policy, that a farmer will not be allowed to receive a combination of PIK compensation and cash payments for participating in production stabilization programs that exceed \$50,000, using the 1984 county wheat loan rate to determine the value of the PIK." Rank said a proposal to make the necessary changes in the PIK program regulations will be published soon in the Federal Register and that final action on the changes would be completed before the sign-up period for the 1984 program ends February 24.

Water level less than in past

The 1983 decline in the water level in the Ogallala aquifer in Floyd County is expected to be less than the past ten year average of -1.98 feet. The High Plains Underground Water Conservation District maintains a network of 97 wells it measures in January of each year in the county. All of the wells are privately owned and these landowners generously allow the Water District's staff to measure their wells to keep the public informed on changes in water storage. It is believed by Water District officials that less water was pumped from the aquifer in 1983 due primarily to the large number of acres placed in the Federal Payment-In-Kind (PIK) program, reduced pumpage resulting from the high cost of energy to pump water, and the better conservation techniques being utilized by the farmers. Comparing last year's water level measurement to this year's measurement could be compared to comparing last year's bank statement to this year's bank statement. The water levels indicate the quantity of water taken from the water bank as well as the

quantity remaining in the water bank. Historically more water has been withdrawn than has been deposited by nature each year. Fortunately, the rate of depletion has decreased in recent years due to an increase in conservation efforts by area farmers. Conservation practices contributing to the decreased rate of decline include: furrow dikes, underground pipeline, tailwater return systems, drop-line sprinkler systems, and general improvements in efficiency of all kinds of existing irrigation systems. The Water District's staff will place a sticker with the current water level measurements on each well in the network when it is measured, and will contact news services with its findings on water-level changes for the county when they are tabulated in mid-February.

BRETT R. GILL
 TAX SERVICE
 Tax Returns and Bookkeeping Service
 CALL: 847-2563

Farm Bureau members: We have your tire, battery and tillage tool needs.



TOP KICK Quality American Made Products To Fit Your Everyday Needs

TOUGHEST! High productivity tillage tools for Farm Bureau Members.

Sponsored by Floyd County Farm Bureau. See your local Safemark dealers:

Tipton Oil Company 119 E. Houston Floydada, Texas Phone 983-3144

Jackson Tire Company 101 South Main Lockney, Texas Phone 6652-3366

YOU ARE LIVING WITHIN 200 MILES OF LUBBOCK AND WANT A NEW HOME?

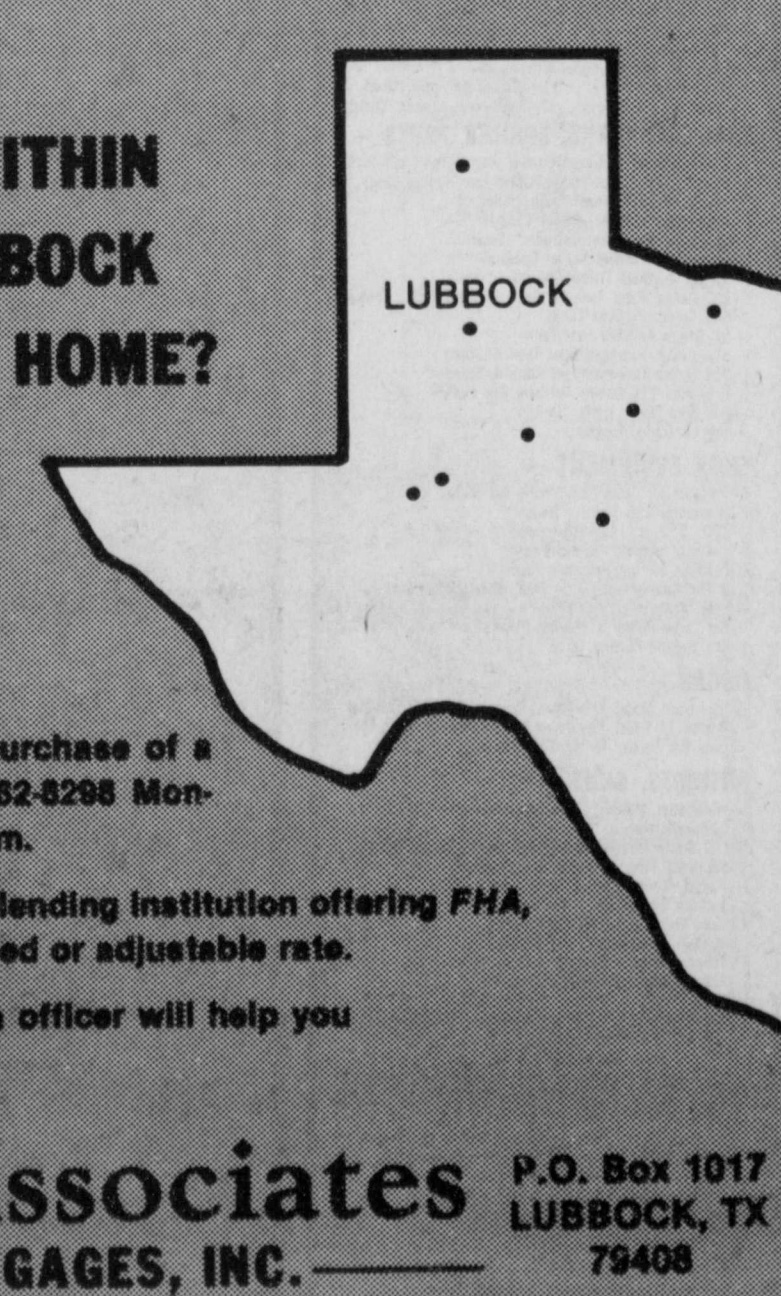
We Can Help You!

If you are contemplating the purchase of a new or existing home, call 808/762-8298 Monday through Friday, 9 a.m. to 4 p.m.

We are a full service mortgage lending institution offering FHA, VA or Conventional loans with fixed or adjustable rate.

A competent, experienced loan officer will help you qualify.

Maxey Associates P.O. Box 1017 LUBBOCK, TX 79408
 REALTY MORTGAGES, INC.



FIRST NATIONAL BANK OF FLOYDADA
 Floydada 983-3717

RUSSELL'S EQUIPMENT & SUPPLY
 Russell's
 Floydada 983-3751

FLOYD COUNTY IMPLEMENT
 Floydada 983-3732

PATTERSON GRAIN CO.
 Lockney 652-3393 Lone Star

FLOYDADA COOPERATIVE GINS INC.
 COOP
 Floydada 983-2884

MARTIN & COMPANY
 Floydada 983-3713

FEDERAL LAND BANK ASSOC. OF FLOYDADA
 Federal Land Bank Association
 Floydada 983-2480

ADAM'S WELL SERVICE
 Floydada 983-5003

PRODUCTION CREDIT ASSOC.
 Floydada 983-2454

FLOYD COUNTY FARM BUREAU
 Texas FB
 Lockney 652-2242
 Floydada 983-3777

FLOYDADA IMPLEMENT CO.
 MF
 Floydada 983-3584

PUBLIC NOTICES

LEGAL NOTICE

On September 14, 1983, the Federal Communications Commission designated for consolidated hearing the applications of Lilly Amador and Billy D. Pirtle for new FM station at Floydada, Texas, on Channel 237A. The hearing will take place in Washington, D.C., 2001 L Street, N.W., beginning at 8:30 AM, on March 5, 1984.

The issues in the proceeding as of December 7, 1983, are:

- 1.) To determine whether Lilly (Lily) Amador has reasonable assurance of the availability of her proposed transmitter site;
- 2.) To determine whether one Dr. Soho has an ownership interest in the FM application of Lilly (Lily) Amador, and whether Lilly (Lily) Amador has been lacking in candor with the Commission concerning such ownership;
- 3.) To determine which of the proposals would, on a comparative basis best serve the public interest;
- 4.) To determine, in the light of the evidence adduced pursuant to the foregoing issues, which of the applications should be granted, if any.

A copy of the application of Billy D. Pirtle is available for public inspection during normal business hours at 208 South Main Street, Floydada, Texas.

1-12c

PUBLIC NOTICE

REVENUE SHARING HANDICAPPED REGULATIONS

This notice is published pursuant to the requirements of Section 51.55 of the Revenue Sharing Regulations, as published in the Federal Register on October 17, 1983. Section 51.55 prohibits discrimination against qualified individuals because of their handicapped status.

Floyd County Commissioners Court, Floydada, Texas advises the public, employees and job applicants that it does not discriminate on the basis of handicapped status in admission or access to, or treatment or employment in, its programs and activities.

Floyd County Commissioners Court has designated the following (person or office) as the contact to coordinate efforts to comply with this requirement. Inquiries should be directed to:

Name Judge Choise Smith
Office County Judge
Address Floyd County Courthouse
Phone Number 806/983-2244
Hours 8:00 a.m. - 5:00 p.m.

1-12c

PUBLIC NOTICE

Notice is hereby given by the Parks and Wildlife Department that a public hearing will be held at 7:00 P.M. on February 6, 1984 at the County Courthouse at Floydada for the purpose of gathering information concerning proposed hunting and fishing regulations for Floyd County.

As the result of action by the Texas Legislature, the Texas Parks and Wildlife Commission, under the authority of the Wildlife Conservation Act of 1983 (previously the Uniform Wildlife Regulatory Act), Chapter 61, Texas Parks and Wildlife Code, is responsible for the setting of seasons, bag limits, means, and methods for taking the wildlife resources in Floyd County. All interested persons are urged to attend and comment upon the proposed regulations.

Additional information concerning the public hearing may be obtained by calling our Toll Free Number 1-800-792-1112 or 512-479-4974.

PUBLISHED IN THE Floyd County Hesperian Thursday, Jan. 12, 1984, Page 8

AUCTION

Friday, January 20, 1984 - Sale Time: 10:00 a.m.

LOCATED: From Barwise, Texas, 1/4 mile West on F.M. Highway 784, OR From Floydada, Texas, 11 1/4 miles West on F.M. Highway 784, OR From Petersburg, Texas, 8 1/2 miles North on F.M. Highway 789 then 4 miles East on F.M. Highway 784, OR From Lockney, Texas, 11 miles South on Highway 378 then 3 1/4 miles West on F.M. Highway 784, OR From Plainview, Texas, 4 miles East on Highway 70 then 1 3/4 miles South on F.M. Highway 789 then 4 miles East on F.M. Highway 784.

MAC SMITHERMAN & NEIGHBORS - Owners
Telephone: (806) 983-2084

The following will be sold at Public Auction:

- TRACTORS** -
 - 1-1976 John Deere 4430 Diesel Tractor, S.G. Cab, A/C, Htr., Radio, D.H. W.F. Weights, S.R. Trans., 18 1/2 X 38 Rubber
 - 1-1977 Farmall 985 Diesel Tractor, Cab, A/C, Htr., Radio, W.F. Weights, T.A. D.P.T.O., D.H., 18 1/2 X 38 Rubber
 - 1-1974 Farmall 966 Diesel Tractor, W.F. Weights, Fenders, D.P.T.O., S.H., 18 1/2 X 38 Rubber
 - 1-1968 John Deere 4020 L.P.G. Tractor, Cab, W.F. Weights, D.L., D.H., 16 1/2 X 34 Rubber
 - 1-1961 John Deere 3010 L.P.G. Tractor, Tricycle Front, S.H., 15 1/2 X 38 Rubber
 - 1-International W9 Gas Wheeland Tractor
- COMBINES, CORNHED, GRAIN CART, GRAIN TRAILERS, ROOD HARVESTER** -
 - 1-1982 John Deere 8820 Diesel Combine, Cab, A/C, Htr., Stereo, 30" Platform, M.B.R., Bin Ext., Straw Spreader, 30 S&S Rubber, 525 Hours
 - (This Combine Belongs To Glenn Bertrand, Phone: (806) 983-3100)
 - 1-1977 John Deere 7700 Diesel Combine, Turbo, Hydro, Cab, A/C, Htr., Radio, 224 Header, Straw Spreader, Bin Ext., M.B.R., Big Rubber, 1215 Hours
 - 1-1976 Massey Ferguson 510 Diesel Combine, Cab, A/C, Htr., 20" Header, M.B.R., 23 1/2 X 38 Rubber
 - 1-Massey Ferguson 44 Cornhead
 - 1-Phares-Wilkins Grain Cart
 - 1-Broadview 18" T.A. Grain Trailer, With Electric Hoist
 - 1-22" S.A. All Metal Grain Trailer, With Grain Traps, Single Front Axle, With Pull Hitch
 - 1-Road 2 Row Cotton Harvester
- TRUCKS** -
 - 1-1967 Ford F-850 Tandem Axle Grain Truck, 534 Engine, 5 Sp.-2 Sp., 10.00X20 Rubber, Budd Wheels, 22" Grain Bed, With Hoist
 - 1-1965 International F-2000 Diesel Tandem Axle Grain Truck, 671 Detroit Engine, 10 Speed Road Ranger Trans., 10.00X20 Rubber, 22" Grain Bed, T/C Hoist. (Inframe Overhaul Less Than 10,000 Miles)
- TRAVEL TRAILER, PICKUPS, BOAT** -
 - 1-1973 Mobile Scout 18" Travel Trailer, Self Contained, Only Pulled 45 Miles
 - 1-1967 Chevrolet 1/2 Ton S.W.B. Pickup, New 350 Engine, A/C, Butane, With Booster Setup
 - 1-1964 Ford 1 Ton Service Truck, Dual Wheel, With Utility Bed, Chain Hoist Rack, Hesse Hornet Air Compressor, With Tank
 - 1-1958 18' Ciscraft Inboard Boat, With Custom Motor, With Custom T.A. Trailer
 - 1-Cab For 1974 Ford 1/2 Ton Pickup, With Doors, Glass
- EQUIPMENT** -
 - 1-Big Ox V-9 Chisel Plow, D.G.W.
 - 1-King 14" Offset Disc Plow
 - 1-John Deere 400, 6 Row, 3-pt. Rotary Hoe
 - 1-John Deere B.W.A. 14" Tandem Disc Plow
 - 2-John Deere 825, 3-16" Spinner Mouldboard Plows
 - 1-John Deere 3-pt. 6 Section Gang Rotary Hoes
 - 1-John Deere 6 Section, D.T. Gang Rotary Hoe
 - 1-Case 18' D.T. Sweep/Chisel Plow, H.C. C.C.
 - 1-Crustbuster 3-pt., 21" Spring Shank Field Cultivator
 - 1-Porter 6 Row, F.M. Rowspick Applicator
 - 1-Servis 2 Row, D.T. Shredder
 - 1-Mohawk 2 Row, 3-pt. Shredder
 - 1-International 6 Row Rolling Cultivator
 - 1-International 16-10 Grain Drill, L.W.R.
 - 1-Hamby 12' 6 Row Bed Roller
 - 1-Rails 9 Row, D.T. Sandblaster, With Carrier Wheels
 - 1-Krause 18" Oneway, With Swivel Tail Wheel
 - 1-Eversman 10' D.T. Float - SM 3-pt. Disc Ditch Filler
 - 1-Noble 18 Lift Mulch Harrow Unit
 - 2-Byrd R.O.C. 7 Lift Mulch Harrow Sections
 - 1-Graham Homee Plow, 12' D.T., L.C. C.C.
 - 1-Graham Homee Plow, 7, 3-pt., L.C.
 - 1-Ford 6 Row, 3-pt. Cultivator
 - 1-SM 8 Row, 3-pt. Rowspick Applicator
 - 1-Wylie 6 Row Recirculating Sprayer
 - 1-John Deere 3 Section Drag Harrow
 - 4-Drag Harrow Sections - 1-Handley 3-pt., 5' Blade
 - 1-John Deere 2 Up-2 Down D.T. Mouldboard Plow
 - 1-Caldwell 6 Row, D.T. Seed Packer
 - 1-Burch 4 Section Rotary Hoe
- HAY EQUIPMENT** -
 - 1-New Holland 284 P.T.O. Hay Baler, Wire Tie

CHURCH DIRECTORY

- | | | | |
|---|---|--|--|
| <p>CEDAR HILL ASSEMBLY OF GOD CHURCH
Rev. Vance Mitchell</p> <p>Sunday School 10:00 a.m.
Morning Worship 11:00 a.m.
Evangelistic Service 6:00 p.m.
Wednesday Bible Study 7:00 p.m.</p> <p>ASSEMBLY OF GOD CHURCH
Rev. Robert Ryan Lockney</p> <p>Sunday School 10:00
Morning Worship 11:00
Evening Worship 7:00
Prayer Service Wed. 7:00</p> <p>LOCKNEY LATIN ASSEMBLY OF GOD
Manuel Rendon, Pastor</p> <p>Sunday School 9:45
Morning Worship 11:00
Evening Worship 7:30
Men's Fellowship, Tuesday Evening 8:00
W.M.C. Thursday 8:00
Christ's Ambassadors, Saturday Evening 7:30</p> <p>SPANISH ASSEMBLY OF GOD TEMPLO GETSEMANI
308 E. Mississippi
A.C. Botello, Pastor</p> <p>Sunday School 10:00
Morning Worship 11:00
Evening Evangelistic Service 6:00
Wednesday, Family Night 7:30</p> <p>CARR'S-CHAPEL
Rev. Jerry Kunkel
Petersburg Pastor
Services Every Sunday</p> <p>Morning Worship 9:30 a.m.
Sunday School 10:30 a.m.
No Evening Services</p> <p>FIRST ASSEMBLY OF GOD CHURCH
Floydada
Pastor Jim Guess</p> <p>Sunday School 9:45 a.m.
Morning Worship 10:50 a.m.
Service 5:00 p.m.
Sunday Evening Evangelistic 6:00 p.m.
Wednesday Night Service 7:00 p.m.
Thursday Womens Missionary 9:00 a.m.</p> <p>SAN JOSE CATHOLIC CHURCH
Pastor: Father Jack Gist</p> <p>Liturgy - Mon.Fri. at 8pm
Saturday - 7:30pm.
Vigil Mass of Sunday</p> <p>Sunday - 12:30pm. Mass</p> <p>ST. MARY MAGDALEN CATHOLIC CHURCH
Floydada
Father Terry Burke</p> <p>Sunday Mass 12:00 noon
Monday Mass and Ultreva 6:30 p.m.
Saturday Mass 7:00 p.m.</p> | <p>CITY PARK CHURCH OF CHRIST
Floydada
Perry Zumwalt, Minister</p> <p>Sunday Bible Study 9:30 a.m.
Morning Worship 10:30 a.m.
Evening Worship 6:00 p.m.
Wednesday Bible Study 7:30 p.m.
Ladies Bible Study, Wednesday 9:30 a.m.</p> <p>LATIN AMERICAN CHURCH OF CHRIST
Lockney</p> <p>Bible School 9:45
Morning Worship 10:45
Evening Worship 6:00
Wednesday Service 8:00</p> <p>CHURCH OF CHRIST
Lockney
Ray Starnes</p> <p>Bible Study 9:30
Morning Worship 10:30
Evening Worship 6:00</p> <p>WEST COLLEGE CHURCH OF CHRIST
West College & Third, Lockney
Frank Duckworth, Evangelist</p> <p>Sunday Morning Worship Services 10:30
Sunday Evening Worship Services 6:00
Wednesday Evening Prayer Services 8:00</p> <p>WEST SIDE CHURCH OF CHRIST
Floydada</p> <p>Sunday Morning Worship 10:30 a.m.
Sunday Evening 6:00 p.m.
Wednesday Evening 7:00 p.m.</p> <p>CHURCH OF THE NAZARENE
Lewis Shapp, Pastor</p> <p>Sunday School 9:15 a.m.
Morning Worship 10:45 a.m.
Evening Worship 6:00 p.m.
Wednesday Bible Study 5:30 p.m.</p> <p>FIRST CHRISTIAN CHURCH
[Disciples of Christ]
Minister, Karl Bunjes</p> <p>Sunday 9:45 a.m.
Worship 11:00 a.m.</p> <p>TRINITY LUTHERAN CHURCH
Providence Community
Gary Kleypas, Pastor</p> <p>Sunday School & Adult Bible Class 10:00
Worship Service 11:00</p> <p>FIRST UNITED METHODIST CHURCH
Lockney
Rev. Michael O'Connor</p> <p>SUNDAY</p> <p>Sunday School 9:45
Worship Service 10:55
UMY 5:00
Evening Worship 6:00
United Methodist Women, First Tuesday of Month Circles, Monday (2nd & 4th Monday nights) Tuesday & Wednesday mornings.</p> | <p>FIRST UNITED METHODIST CHURCH
Floydada
Earl Blair, Pastor</p> <p>Sunday School 9:45 a.m.
Morning Worship 11:00 a.m.
Youth Fellowship 5:00 p.m.
Sunday Evening Worship 6:00 p.m.</p> <p>EVANS CHAPEL BAPTIST CHURCH
Rev. Bennie Anderson
Pastor</p> <p>Sunday School 10:00 a.m.
Morning Worship 11:00 a.m.
Training Union 6:00 p.m.
Evening Worship 7:00 p.m.
Wednesday Prayer Meeting 7:00 p.m.
Sunday Afternoon Worship 2:00 p.m.</p> <p>PRIMER IGLESIA BAUTISTA
Rev. Agustin Rey</p> <p>Sunday School 9:45 a.m.
Worship Service 11:00
Training Union 5:00 p.m.
Evening Worship 7:00 p.m.
Prayer and Study Group Monday 7:30 p.m.
Mid-Week Service Wednesday 7:30</p> <p>TEMPLO BAUTISTA SALEM
Lockney
Pedro Reyes</p> <p>Sunday School 9:45
Worship Service 11:00
Christian Training Time 5:00
Evening Worship 6:00
Wednesday Prayer Meeting & Choir Practice 7:30</p> <p>BIBLE BAPTIST CHURCH
Floydada
Bob Chapman</p> <p>Sunday School 10:00 a.m.
Morning Worship 10:45 a.m.
Sunday Evening Prayer Meeting 6:00 p.m.
Sunday Evening Services 6:30 p.m.
Wednesday Evening Services 7:30 p.m.</p> <p>FIRST BAPTIST CHURCH
Lockney
Murle Rogers, Pastor</p> <p>Sunday School 9:45 a.m.
Morning Worship 11:00 a.m.
Church Training 6:00 p.m.
Evening Worship 7:00 p.m.
Prayer Meeting, Wednesday 7:00 p.m.
Adult Choir, Wednesday 8:00 p.m.
High School Youth (B.Y.F.) Wednesday 7:00 p.m.
G.A. and Mission Friends Wednesday 4:00 p.m.
R.A.'s Sunday 5:00</p> <p>CEDAR HILL BAPTIST CHURCH</p> <p>Sunday School 10:00 a.m.
Morning Worship 11:00 a.m.
Evening Worship 7:30 p.m.</p> | <p>SOUTH PLAINS BAPTIST CHURCH
Rev. Cecil Osborne</p> <p>Sunday School 10:00 a.m.
Morning Worship 11:00 a.m.
Training Union 6:00 p.m.
Evening Worship 7:00 p.m.</p> <p>CALVARY BAPTIST
Floydada
Rev. Hollis Payne</p> <p>Sunday School 9:45 a.m.
Morning Worship 11:00 a.m.
Bible Study 6:00 p.m.
Evening Worship 7:00 p.m.
Wednesday Evening 7:00 p.m.</p> <p>MT. ZION BAPTIST CHURCH
Floydada
Otis Cook, Jr., Pastor</p> <p>Sunday School 10:00 a.m.
Morning Worship 11:00 a.m.
Bible Study 4:00 p.m.
Evening Worship 5:00 p.m.
Wednesday Prayer Meeting 8:00 p.m.</p> <p>AIKEN BAPTIST CHURCH
Bruce Kirby</p> <p>Sunday School 10:00
Morning Worship 11:00
Training Union 6:00
Evening Worship 7:00
Prayer Service Wed. 7:30
Brotherhood, W.M.U. and Auxiliary Wednesday 7:30</p> <p>FIRST BAPTIST CHURCH
Floydada
Floyd C. Bradley, Pastor</p> <p>Sunday School 9:45 a.m.
Morning Worship 10:55 a.m.
Church Training 6:00 p.m.
Evening Worship 7:00 p.m.
Wednesday Evening 6:45 p.m.</p> <p>LONE STAR BAPTIST CHURCH
Rev. Darwin Barnett</p> <p>Sunday School 10:00
Morning Worship 11:00
Training Union 5:00
Evening Worship 6:00
Prayer Service, Wednesday Evening 6:30
Brotherhood, First Saturday Morning of Every Month.</p> <p>VICTORY BAPTIST CHURCH
Floydada
Gary Grant, Pastor</p> <p>Sunday School 10:00 a.m.
Morning Worship 11:00 a.m.
Evening Worship 7:00 p.m.
Wednesday Services 7:00 p.m.</p> <p>NEW SALEM PRIMITIVE BAPTIST CHURCH
Floydada
Joe M. Jackson</p> <p>Sunday Congregational Singing 10:00 a.m.
Morning Worship 10:30 a.m.
Evening Worship 6:30 p.m.</p> <p>SPANISH BAPTIST MISSION
Floydada
Eloy Felan, Pastor</p> <p>Sunday School 9:45 a.m.
Morning, Worship 11:00 a.m.
Church Training 5:00 p.m.
Evening Worship 6:00 p.m.
Wednesday Evening 7:00 p.m.</p> <p>TRINITY CHURCH
Pastor: G.A. Van Hoose</p> <p>Sunday School: 10:00 a.m.
Morning Worship: 11:00 a.m.
Sunday Evening: 6:00 p.m.
Cottage Prayer Meeting: Wednesday 7:00 p.m.
Now meeting in the Senior Citizens' Building.</p> |
|---|---|--|--|

If you appreciate your church directory, please let your sponsors know.

- Adams Well Service**
720 N. 2nd 983-5003
- Brown's Department Store**
106 N. Main 652-3831
- Byrd Pharmacy**
320 N. Main 652-3353
- City Auto**
201 E. Missouri 983-3767
- Consumer's Fuel**
210 E. Missouri 983-3394
- Davis Lumber Co.**
102 E. Shubert 652-3385
- Bill Gilbreath Exxon**
101 N. 2nd 983-3323
- Jackson Tire Co.**
101 S. Main 652-3366
- Lee's White Auto Store**
119 W. College 652-2145
- Lockney Coop Gin**
W. of City 652-3377

- Martin & Co.**
216 S. Main 983-3713
- Moore-Rose Funeral Home**
402 S. Main, Lockney 652-2211
329 W. California, Floydada 983-2525
- Oden's Chevrolet-Olds.**
221 S. Main 983-3787
- Pay-N-Save**
210 N. Main 652-2293
- Plains Electric Co.**
106 S. Main 652-2133
- Reed Ford**
Ralls Hwy. 983-3761
- Schacht's Flowers & Jewellery**
112 W. Poplar 652-2385
- Thompson Pharmacy**
200 S. Main 983-5111
- Willson & Son**
111 N. Wall 983-3113

Automotive

EAKIN CARLOT Wholesale
 80 Chevy Diesel, LWB \$2650.00
 79 Impala, 4 Dr. \$2850.00
 78 Plymouth, 4 dr. \$1250.00
 77 Impala, 4 dr. \$1850.00
 75 Nova, 4 dr. \$1650.00
 75 Pinto, 2 dr. \$1750.00
 73 Monte Carlo \$1050.00

Financing Available
 983-3616
 Floydada, TX

FOR SALE: Clean 1979 Monte Carlo. Good condition, excellent school car. Call 652-2654 after 5 p.m.
 1-19c

1981 Chevrolet Luv pickup, 4 wheel drive, 16,000 miles. \$5800. Mud flaps, tool box, new shock, excellent condition. Call 823-2242 after 6:00 p.m.
 L-1-12-c

CAR FOR SALE: 77 Bonneville Pontiac. New tires and runs good. 652-3697.
 1-12c

FOR SALE: 1982 T1000 Pontiac H. Blue. 15,000 miles. \$4350. Call 983-2039.
 1-19c

Farm Equipment

FOR SALE: 320 acres, one well, 4 miles south of Cedar Hill and 2 miles east. Call 983-2772.
 1-12p

Farm Services

WE CUSTOM MAKE & FIT hydraulic hose for all types of machines. Brown's Implement 983-2281.
 TFN
 Portable disc rolling

Lawson Farm Supply Inc.,
 Floydada 983-3940

personals

HAVE CREDIT PROBLEMS? Obtain a major credit card (M/C or Visa), guaranteed, even if you have bad credit, no credit, bankrupt or divorced. For free brochure send S.A.S.E. to 1st Capitol Credit P.O. Box 9620, #217, Ft. Worth, Texas 76107, or call 1-817-457-5581. Anytime.
 1-12c

Wanted

WANTED TO BUY irrigated or dryland farm in Floyd or surrounding area. Write Box XRO, c/o Hesperian, 111 E. Missouri, Floydada. tfn

ADAMS WELL SERVICE

Complete irrigation service
 5 years warranty, domestic pump
 720 N. 2nd
 983-5003

Spring sewing needs

All dress patterns...\$1.00
 Special priced materials.
 All Cotton & Knits
 Beautiful Drapery Fabric
 Bargain Priced
 Antiques...Collectables
 Colonial House
 Open
 Thurs. & Fri. 1/2 block W. of V.F.W.



Floydada Iron & Metal
 We buy scrap iron, junk cars, aluminum cans, and batteries. We have new and used steel for sale.
 Location - East Ross
 Call 983-2305 Bus.
 983-5277 Home

For Rent

INSIDE, boat storage or car or pickup or whatever. 215 S. Main. tfn
 OFFICE FOR RENT: Newly remodeled with an interoffice. Combined floor space of 720 sq. feet. Call 983-3737. tfn

SKIING is great. Save \$\$ Nice 2 bedroom Ruidoso house, cable TV. Bob Allredge. 983-2912.
 FOR RENT: 1 bedroom furnished apartment. \$150 month. Individual only. Phone 983-3979. tfn

FOR RENT: one and two bedroom mobil homes reasonable rent. Call 983-3504. tfn

HOUSE FOR RENT: Nice 3 bedroom, 2 bath, 1 car garage. Carpet, fenced, drapes, central heat. \$250.00+ deposit. 983-5522 Friday, Saturday and Sunday. tfc

FOR RENT: 1 bedroom apartments. Call 983-3393. tfc

3 BEDROOM HOUSE for rent. New carpet. Garage. 983-5147. 1-12c

RENTING? Need a place to live in Floydada, Lockney and surrounding communities? Call the "Housing Hotline". Ask for (L.T.) collect 763-5319. 2-2c

ECONOMICAL STORAGE TRY BARKER'S Jewel Box-Mini Storage and save your time and money. Phone 982-2642. Corner Main & Locust - Lockney, Texas. Barker Building

STORAGE SPACE
 West Texas Mini Storage
 c/o Assiter Insurance
 206 W. California
 983-2511

Employment

CAPROCK TEMPS: RN's and LVN's
 CAPROCK TEMPS
 RN's and LVN's needed to work in temporary staffing pool. RN's salary up to \$12/hr., LVN's salary up to \$8.50/hr. Please contact Carol Smallwood. RN. 806-983-2875 ext. 39. tfn

SALES HELP WANTED

SALES AGENT WANTED
 Nationally known calendar manufacturer and specialty advertising company offers an opportunity for an industrious self-starter for full or part-time work. We need a sales oriented person to present our exclusive calendars, business gifts and extensive advertising specialty assortment to firms within the business community. The Thos. D. Murphy Co. is a pioneer in the advertising field since 1888, so you know we're here to stay. If you can organize your own time and determine your own success, write: Richard E. Fisher, The Thos. D. Murphy Co., P.O. Box 382, Red Oak, Iowa 51566 or call 712-623-2591, ext. 12. 2-2p)

"When business is good it pays to advertise; when business is bad you've got to advertise."
 Anon.

DAN'S AUTO SERVICE
 DAN TEUTON, Owner
 Specializing in Automatic Transmission, Motor Tune-Ups, Auto Air Conditioning.
 General Repair
 We Have A BRAKE LATHE to handle all passenger car brake drums. See us for complete brake service.
 Phone 652-2462

ALTERNATOR & STARTER REPAIRS
 Norrell Tractor Parts,
 215 S. Main
 983-3417

CUSTOM EXHAUST WORK
 Bruce Williams
 Specializing in Glass Packs and Turbo Mufflers
 At
 DANDS AUTO SERVICE
 652-2462

Professional Services

TREE TRIMMING
 Keith Emert
 652-3116

"WE SELL SLEEP"
 Direct Mattress Co. New or renovated, for appointment call City Trim Shop. 983-2332. Floydada. tfn

HOUSE CLEANING. \$5 per hour. Call 652-2155. 1-19c

LEAK REPAIR
 No job too small or large. Pit digging, concrete and plastic, sewer and gas line repair, cesspool.
JUAREZ BACKHOLE SERVICE
 983-3393
 9-27c

Miscellaneous

PECAN TREES and fruit trees packaged. Ready to plant. Gain extra spring growth. Plant these fresh dug trees now. Emert's Nursery & Tree Service, Lockney, 652-3116. tfc

FOR SALE: New floor safes and fire safes. All kinds. Don Probasco. 983-3834. tfc

WOOD FENCE stays 35 cents each. Fireplace kindling \$2.00 bundle. East Hwy 70 in Lockney. 652-3322. tfc

FOR SALE: 1-25" RCA with new picture tube diagonal; 13" diagonal with new picture tube. Mize Pharmacy, 652-2435. tfn

TWO WHITE FRENCH provincial twin beds with mattress. \$100. Call 983-5284. tfp

FOR SALE: 8 foot pool table and accessories. Call 983-3268 after 5 p.m. tfc

FOR SALE: Couch and chair, piano and full size bed. 983-5143. 1-12c

MUST SELL charter membership in Roaring Springs Ranch Club. Must have cash. Phone 806-762-2238, Lubbock, TX. Ask for Chuck. 1-12p

FOR SALE: Firewood, mesquite, 702 SW 4th, Lockney. Call 652-2151. 1-19p

FOR SALE: Used washer and dryer. Good condition. \$150.00. 983-3964. 1-12p

FOR SALE: Camper shell, \$200. Car seat \$25.00. T.V.-Disk player and Atari \$500.00. 983-2636. 1-12c

MAYTAG washer and dryer pair for sale cheap! Brown color. 983-2162. tfc

Script Printing & Office Supply
 *Commercial Printing
 *Office supplies & Furniture
 *Business Machines
 108 S. Main
 Floydada
 983-5131

Mary Kay COSMETICS
 Sue Williams
 Independent Beauty Consultant
 983-5166
 Floydada

RAINBOW CARPET DYEING & CLEANING
 CLEANING, TINTING & DYEING
 RESIDENTIAL & COMMERCIAL
 Eldon & Nelda Fortenberry, Owners
 Mike McCathern, Manager/Certified Operator
 Plainview, Texas Phone 293-3532

Diamond Industrial Supply Co., Inc.
 Phone Days 296-7418
 Nights 296-1200 or 296-7828
 1014 Broadway
 Plainview, Texas
 SKF BCA Timken Bower
 Cotton Stripper Brushes & Bats
 Chain Sprockets
 V belts
 Sheave
 U joints
 Oil Seals
 O rings
 Wisconsin
 "We Appreciate Your Business More"

FOR SALE

One sofa, one love seat that makes bed, one Stereophonic record player, one baby bed. Call after 5:00 p.m. 652-3866. L1-19p

ELECTRIC RANGE, 15 cubic ft. refrigerator, washer, dryer, and evaporative air conditioner used 1 year. Call 652-2426 a.m. only. tfc

REDUCE! Eat all you want! Burn off excess fat - take Glucomannan. Thompson Pharmacy 1-12p

FOR SALE OR LEASE Swifty office and warehouses. Contact Lyndell Roberts 983-3721 tfc

Pets

PUPPIES FOR SALE: four toy Fox Terriers and 2 Standard Fox Terriers Call Rex 983-2382

FREE PUPPIES - ready now - Solid black or black and white. All males. Call 983-2273 or nights 983-2265. 1-19p

Lost & Found

LOST: Four mixed breed steers wearing yellow tag in left ear bearing the figure 222 and branded with figure 2 laying down on left side. Call H.E. Frizzell at 652-3788. tfc

LOST: Solid white cat answers to name of Pearl. Last seen at 206 E. Hallie. Reward! Call the Hesperian or 983-5244 after 6 p.m. tfc

LOST at Shop Rite: Four keys to steel warehouse on heavy holder. Reward. 983-3237. 1-12c

Card of Thanks

We would like to express our deepest thanks to all who made our sorrow easier to bear in the loss of our dear mother, Grandmother and Great-Grandmother.
 Thank you Lee, Bobbie and Shawnda for the songs and music.
 Thank you Bro. Blair and Bro. Smith for a beautiful memorial service for our mother.
 May God Bless each of you.
 Mr. & Mrs. Otho Sanders
 Mr. & Mrs. R.V. Bartlett
 Mr. & Mrs. Curtis Sanders & family
 Mr. & Mrs. Roger Sanders & family
 Mr. & Mrs. Raymond Sargent
 Mr. & Mrs. Richard Sanders & family

The Jewel Norman family would like to express our heartfelt thanks to all who extended comforting sympathy and help in our recent sorrow. For the floral offerings, beautiful service, and other kindnesses, we are deeply grateful.
 Weims Norman family
 Kinnier children

BISHOP PEST CONTROL
 Tree & Lawn Spraying
 Termites: Pier & beam or sub-slab injection
 Household insect control
 Mike Bishop, M.S.
 (806) 983-2198
 TX. Bus. Lis. 5021
 PCL Lis. 26855

RAINBOW CARPET DYEING & CLEANING
 CLEANING, TINTING & DYEING
 RESIDENTIAL & COMMERCIAL
 Eldon & Nelda Fortenberry, Owners
 Mike McCathern, Manager/Certified Operator
 Plainview, Texas Phone 293-3532

Thanks to our many customers and friends over the many years for doing business with us. We are very grateful. Am closing Darden Machine and Welding, because of Bill Darden death. Thanks Vel Darden 1-12p

To our friends, neighbors, relatives, doctors and nurses. One and all that gave us moral, spiritual and physical support in our time of greatest need. We would like to try and express to just what extent we did appreciate all of your concern and sympathy. The many memorial gifts, food, cards, visits, phone calls, we are very grateful. To our many friends that served food to our family. Thank you to Dr. Floyd Bradley for his words of comfort, for the beautiful music and songs. To Moore-Rose Funeral Home for the arrangements. God Bless all of you. The Bill Darden Family 1-12p

With deepest gratitude we extend this word of thanks for the many kind acts of sympathy, expressed by thoughtful friends. Your kindnesses have meant so much to us. Special thanks to the Reverend Earl Blair and all of Wendy and Bart's friends and classmates. Such kindness and neighborly thoughtfulness can never be forgotten.
 Wayne and Linda Tipton
 Mike and Tim Ruff
 Kevin and Pam Tipton
 Chris Tipton
 Bart and Mr. & Mrs. Keith Patzer
 Gary Ruff 1-12c

We would like to thank each dear friend for sympathy expressed during our time of sorrow. All the cards and flowers were so beautiful. Thank you to all those who prepared and served food and to our friends and neighbors for all the things done to make our days easier. Thank you all for your love and help and most of all for sharing our sorrow. Evonne Stovall Frank Stovall & family Robert Stovall & family Van Stovall & family 1-12p

WANTED: Pictures of Ranch Rodeo. Contact Barbara McCollum after 4. 347-2738. 2-2c

WANTED

WANTED: Pictures of Ranch Rodeo. Contact Barbara McCollum after 4. 347-2738. 2-2c

LOG HOME SALES SKY-ROCKET
 1 BILLION DOLLARS IN LOG KIT SALES PROJECTED FOR 1983
 Manufacturer taking applications for a dealer in this area Dealer can average \$4,500 on a log kit sale alone.
 FEATURING -
 8" solid, uniform, treated logs
 Flat or round interior walls
 Hand-hewn exterior look
 Custom, commercial and contemporary buildings available
 Protected territory
 Two-day free training school
 Now introducing to the industry pre-assembled log walls (1-day shell erection on most models)
 UNLIMITED Income Potential
 REQUIREMENTS -
 Must be capable of purchasing a \$13,275 model home
 Meet our high standards
 Desire to succeed
 Call Mr. Taylor COLLECT for an application (704) 932-0137. Yesteryear Log Homes, P.O. Box 1046, Mooresville, N.C. 28115.

LOG HOME SALES SKY-ROCKET

WANTED: Pictures of Ranch Rodeo. Contact Barbara McCollum after 4. 347-2738. 2-2c

WANTED

WANTED: Pictures of Ranch Rodeo. Contact Barbara McCollum after 4. 347-2738. 2-2c

LOG HOME SALES SKY-ROCKET
 1 BILLION DOLLARS IN LOG KIT SALES PROJECTED FOR 1983
 Manufacturer taking applications for a dealer in this area Dealer can average \$4,500 on a log kit sale alone.
 FEATURING -
 8" solid, uniform, treated logs
 Flat or round interior walls
 Hand-hewn exterior look
 Custom, commercial and contemporary buildings available
 Protected territory
 Two-day free training school
 Now introducing to the industry pre-assembled log walls (1-day shell erection on most models)
 UNLIMITED Income Potential
 REQUIREMENTS -
 Must be capable of purchasing a \$13,275 model home
 Meet our high standards
 Desire to succeed
 Call Mr. Taylor COLLECT for an application (704) 932-0137. Yesteryear Log Homes, P.O. Box 1046, Mooresville, N.C. 28115.

Tuesday: cake donuts
 Reg. \$3.00 doz. \$2.00
Wednesday: glazed donuts
 Reg. \$2.50 doz. \$1.89
Thursday: cookies
 doz. \$1.75 - \$2.00
Friday: brownies
 doz. \$2.50
Saturday: glazed donuts
 Reg. \$2.50 doz. \$1.89
 Special orders for all occasions
 2 days notice on cake orders
The Donut Shop
 315 S. 2nd (on Plv. Hwy.)
 983-2627

Houses

FOR SALE: Several nice two and three bedroom houses. Loans can be arranged. Contact Sam Hale at Hale Ins. & Real Estate 983-3261. tfn

3 BEDROOM, BRICK HOME. 1 1/2 bath. Refrigerated air. 105 J.B. Ave. 983-3288. tfc

FOR SALE: Two bedroom, 1 bath house. Newly remodeled inside and out. Fenced in yard, fireplace and garage. Call 983-3172 after 5 p.m. and weekends. tfn

HOUSE FOR SALE: 3 bedroom, 1 bath, brick. Gas grill and chain linked fence. Backyard. 309 E. Kentucky. 915-573-3777. tfn

TWO BEDROOM, den/dining or 3rd bedroom. Corner. Fruit trees. Near school. 102 E. Jeffie. \$15,000.00. Hunter. 817-592-4661. 1-19p

FOR SALE, LEASE OR RENT: 3 bedroom, brick home on 5 1/2 acre tract in McCoy Community. Call 983-3234. tfc

Real Estate

5 ACRES bordering city limits. House interior completely remodeled. Can be 3 bedroom. R.L. Giesecke, 793-2575. Ellison-Scott REALTORS. tfc

COMMERCIAL BUILDING, 117 W. Calif. 37x75, shop, Quonset hut, R.L. Giesecke, 793-2575. Ellison-Scott REALTORS. tfc

REMODEL the outside of your home with brick or stone, also fireplace construction. Thirty-five years experience. Complete turnkey bids. J.R. Martin, 296-5320, Plainview. tfc

Auto Parts & Accessories

RIDER SHOCKS by Monroe, Buy 3 and the 4th is FREE. Free Installation. Don's Muffler Shop, 210 W. California, Floydada, Texas. tfn

NOW OPEN!

Joe's Restaurant
 under new management
 414 West Houston

BOND LANDS, INC.

107 South Fifth
 983-2151
 OWNER DESPERATE! Quick sale needed. Roomy three bedroom with playroom and cheery kitchen. Flexible financing at a bargain. \$26,000.
 LOOKING FOR LOTS OF ROOM? This three bedroom home features large rooms with formal dining and an excellent corner lot location for kids. Also features a separate apartment for rental or mother-in-law! \$25,950.
 NO COMPARISON! One of the best two bedroom homes around for the price. Large living room and an appealing kitchen make this home an unbeatable buy at \$24,950.
 OWNER WILL FINANCE! No better terms can be found to purchase this two story three bedroom home with steel siding and storm windows. Come see me! \$17,000.
 YOUR FIRST HOME could be this newly paneled home with earth-tone carpet and featuring formal dining and stucco exterior with storm windows and storm door. \$14,000.
 FLOYD COUNTY! 481 acre irrigated farm southeast of Floydada with five wells, underground tile, three bedroom home, barns, and a good cotton base. And other fine homes and lots available.
 Frances Ashton
 Office Manager
 Larry Jones
 Broker

Spring sewing needs
 All dress patterns...\$1.00
 Special priced materials.
 All Cotton & Knits
 Beautiful Drapery Fabric
 Bargain Priced
 Antiques...Collectables
 Colonial House
 Open
 Thurs. & Fri. 1/2 block W. of V.F.W.

ALTERNATOR & STARTER REPAIRS
 Norrell Tractor Parts,
 215 S. Main
 983-3417

CUSTOM EXHAUST WORK
 Bruce Williams
 Specializing in Glass Packs and Turbo Mufflers
 At
 DANDS AUTO SERVICE
 652-2462

ONE STOP DOES IT ALL!

PRICES EFFECTIVE JANUARY 12-14, 1984

WE RESERVE THE RIGHT TO LIMIT QUANTITIES

NOT LESS THAN 70% LEAN



GROUND BEEF

\$1¹⁹ LB.

HEAVY GRAIN FED BEEF
SIRLOIN STEAK \$2⁴⁹ LB.

HEAVY GRAIN FED BEEF
T-BONE STEAK \$2⁹⁹ LB.

Center Cut, 7-Bone Heavy Grain Fed Beef
BEEF STEAK LB. \$1⁹⁹

Center Cut Heavy grain Fed beef
7-BONE ROAST \$1⁸⁹ LB.

Combination Pac 4 ends, 6 centers
PORK CHOPS LB. \$1³⁹

Country Style Pork
SPARE RIBS LB. \$1⁴⁹

REGULAR OR POLISH
HILLSHIRE FARM SMOKED
SAUSAGE LB. \$1⁹⁹

THE REFRIGERATED PICKLE
CLAUSSEN'S WHOLE CHILL DILL
PICKLES QT. JAR \$1⁴⁹

GREAT FOR A QUICK MEAL
HORMEL'S HAM
PATTIES 12 OZ. CAN \$1⁵⁹

CLAUSSEN'S OLD FORMULA
SAUERKRAUT QT. JAR \$1⁵⁹

BLADE CUT
CHUCK ROAST LB. \$1⁶⁹



RUDY'S FARM WHOLE HOG
PORK SAUSAGE 1 LB. ROLL \$1⁶⁹
2 LB. ROLL \$3³⁷

BETTY CROCKER ASSTD. READY-TO-SPREAD FROSTING 1 LB. CAN \$1¹⁹

BETTY CROCKER SUPER MOIST ASSTD. CAKE MIXES 18 OZ. BOX **79^c**

Hunt's Ketchup

THICK TOMATO HUNT'S KETCHUP 32 OZ. BTL. **99^c**

Bounty

ASSTD.-DEC. PAPER BOUNTY TOWELS JUMBO ROLL **79^c**

Charmin

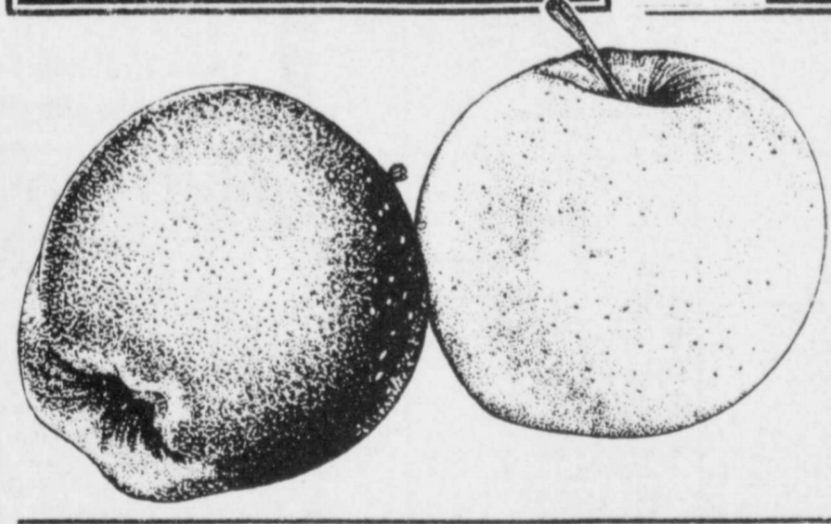
ASSTD. BATHROOM CHARMIN TISSUE 4 ROLL PKG. **\$1⁰⁹**

COKE 32 oz. \$2²⁹ plus deposit

GLADIOLA CORNBREAD YEL. WHITE MIXES 6 OZ. PKGS. **4⁸⁹**

SUNSHINE KRISPY CRACKERS 16 OZ. BOX **69^c**

PAMPER'S EX. ABSORBENT 90 CT. NEWBORN-60 CT. DAYTIME-48 CT. TODDLERS DIAPERS BOX **\$8³⁹**



RED OR GOLDEN DELICIOUS APPLES

45^c

LB.

CALIFORNIA SUNKIST ORANGES LB. **45^c**

CRISP GOLDEN CARROTS 1 LB. PKG. **3/\$1**

YELLOW SWEET ONIONS LB. **39^c**

FROZEN & DAIRY SPECIALS

HALF MOON HORNS COLBY OR CHEDDAR KRAFT CHEESE 16 OZ. PKG. **\$2²⁹**

SHURFRESH COTTAGE CHEESE 24 OZ. CTN. **\$1²⁹**

SHURFINE FROZEN CUT CORN 10 OZ. PKGS. **2⁹⁹**

SHURFINE WHOLE BABY OKRA 10 OZ. PKG. **69^c**

KRAFT AMERICAN STACK SINGLES 1 LB. PKG. **\$2⁰⁹**

COUNTRY ST. BUTTERMILK PILLSBURY BISCUITS 6 4 1/2 OZ. CANS **89^c**

FOR DISHES DAWN LIQUID 22 OZ. BTL. **\$1²⁹**

LAUNDRY DETERGENT KING BOLD-3 84 OZ. BOX **\$3⁵⁹**

LAUNDRY DETERGENT ERA LIQUID 32 OZ. BTL. **\$1⁷⁹**

SHURFINE SMOOTH OR CRUNCHY PEANUT BUTTER 18 OZ. JAR **\$1¹⁹**

HEALTH & BEAUTY

VICK'S VAPO-RUB 1.5 OZ. JAR **\$1⁴⁹**

MINTY FRESH SCOPE MOUTH-WASH 24 OZ. BTL. **\$2⁴⁹**

GROCERIES

DINTY MOORE BEEF STEW 24 OZ. CAN **\$1³⁹**

HORMEL NO BEANS CHILI 15 OZ. CAN **99^c**

RAGU QUICK PIZZA 13 OZ. JAR **\$1³⁹**

SHURFINE KITCHEN TALL BAGS 15 CT. BOX **99^c**

MEDIUM WIDE-EXTRA WIDE SKINNERS NOODLES 12 OZ. PKG. **79^c**



SHOP RITE



NEW STORE HOURS: Monday thru Saturday 8 a.m. - 8 p.m.

Sunday 9:00 a.m. - 7:00 p.m.