

GO WINDS!

Friday night the Mighty Winds take on the Slaton Tigers. This is our last game of the season so everyone come out to Wester Field and show the Winds you're behind them. The game starts at 7:30 and the pep rally at 3:15. Let's cheer the Winds to a victory by being at both the game and pep rally.

Go Winds!!
Varsity Cheerleaders

Polls will open at 8 a.m. Tuesday November 8

and will close at 7 p.m.

VOTE

ABSENTEE VOTING
OCT. 19 - NOV. 4
For more information regarding absentee voting contact the County Clerk's Office

VOTE

Consult page 3 for your precinct information.

Be watching for the upcoming

Meet the Floydada Whirlwind

Basketball teams !!!!!

Weather

COURTESY OF ENERGAS		
Date	High	Low
Oct. 26	58	51
Oct. 27	71	47
Oct. 28	69	50
Oct. 29	68	54
Oct. 30	72	54
Oct. 31	71	56
Nov. 1	65	62

The Floyd County

© The Floyd County Hesperian Thursday November 3, 1983 Volume 87 Number 44

Hesperian

25 cents

Heavy turnout expected Tuesday

Voting turnout should be heavy Tuesday, November 8, as our citizens use their right to vote in an election that they will be deciding on 11 proposed Constitutional Amendments.

In addition, in Floyd County the issue of the tax assessor-collector position may be what entices many out to the polls who would otherwise stay at home.

This issue came about when the population of Floyd County dropped below 10,000. At that time it became necessary to decide whether the citizens of the county wanted to retain the office as an elected position or, as stipulated by the Texas Constitution, the sheriff would be the tax-assessor-collector.

In an effort to present both sides of this issue, we present the following for your careful study. We urge every voter to not only read both sides presented here, but to personally take it upon themselves to do everything necessary to make a final decision that is the way you want to vote.

Pros

Several points are to be taken into consideration when considering voting for the Tax-Assessor-Collector office. That office is responsible for the handling and management of over a half million dollars a year, more than any other in the courthouse with the exception of the Floyd County Appraisal District Office.

\$230,000 of the total monies received by that office goes into the road and bridge fund; \$30,000 is collected in fees; the remainder of the money is sent to the state in sales tax or license fees.

If the sheriff was made Tax-Assessor/Sheriff, he could not handle that position personally with so many other duties and responsibilities. Others would have to be appointed to carry out that duty. How often can employees be hired to do as efficient a job as if the one that is elected to do the job has to be directly responsible to the public and

the commissioners' court? Will employees without direct supervision be as dedicated, show as much interest, and put in as many hours as when they have someone in the office to make direct contact on all matters.

The sheriff, with his many and sundry responsibilities, has a full time job, which he does well in our way of thinking. And some of the other duties will and should take priority over the assessor's duties.

If the sheriff should control the assessor's office, the office would be maintained in the courthouse as is. All of the reports to the county and to the state would remain the same—regular reporting would be required as often and accurately as has been required in the past. The only change might be more training time and maybe more employees to work their "designated" hours. The elected people seem to be more concerned and aware of the people's needs than if hired.

If this elected position is voted down, what would it take to have it voted back in if the people should decide that they preferred the office to be added again? We, the people, need to be involved in our county government, and this is one way that we can do that. After all, that is what our U.S. government is based on—democracy.

With the impact and the accuracy that is required for this office, the position should be kept for the better management of this amount of funds. Why have two of our neighboring counties, Swisher and Crosby, retained their assessor's position?

Please take time to study both sides of this issue and vote the way you truly believe will be the best for the county. Don't let your vote be a blind, uneducated vote or one that is voting on personalities.

Cons

The Texas Constitution, Article 8, Section 16, provides that in any County in Texas having a population of less than 10,000 as determined by the last preceding United States Census, the Sheriff shall be the Assessor and Collector of Taxes, in addition to his other duties, but further provides in Section 16a of the same Article that in such a county, if a majority of the voters, in an election called for that purpose by the Commissioners Court, vote to add the office of Assessor-Collector of Taxes to the list of authorized county officials, an Assessor-Collector of Taxes shall be elected at the next general election.

The population of Floyd County having dropped below 10,000 in the 1980 United States Census, the office of Assessor-Collector of Taxes will cease to exist upon expiration of the term of office of the present incumbent in 1984, and the Sheriff will at that time become ex-officio Assessor-Collector of Taxes in addition to his other duties, unless the voters of the County on November 8, 1983 vote to add the office of Assessor-Collector of Taxes to the list of authorized county officials.

It is obviously inaccurate to say that the issue in the election is whether the Assessor-Collector of Taxes shall be elected by the people or appointed by the Sheriff; if the voters vote not to add the office of Assessor-Collector of Taxes to the list of county officials, the Sheriff, himself a duly elected official, will become the Assessor-Collector of Taxes in addition to his other duties.

It is reasonable to assume that any Sheriff having, in addition to his duties as Sheriff, the duties of the office of Assessor-Collector of Taxes, would appoint a deputy or deputies to assist in the performance of such additional duties, just as the Assessor-Collector of Taxes has always done, but, in view of the fact that the responsibilities of Assessor-Collector of Taxes have been reduced by a least one-half by the transfer in 1982 of all duties of assessment and collection to taxes to the Floyd County Tax Appraisal District, leaving the Assessor-Collector of Taxes with only the functions of registration and transfer of motor vehicles, and voter registration, it is not reasonable to assume that the deputy or deputies appointed by the Sheriff to assist in performance of those functions would necessarily receive the same salaries as the present incumbent of the office and her deputy, whose salaries were fixed at a time when the major function of the office was the assessment and collection of taxes.

The decision is one to be made by the voters, but that decision should be made in the light of the actual facts as they exist.

County Judge explains confusion

TO THE VOTERS OF FLOYD COUNTY:

On Tuesday, November 8th, you will have two ballots in Floyd County, to-wit:

(a) The ballot with the 11 proposed constitutional amendments, and
(b) A SPECIAL BALLOT FOR FLOYD COUNTY, which will state "For" or "Against" THE ADDITION OF ASSESSOR-COLLECTOR OF TAXES

This special ballot is confusing, and this explanation is made to assist you. The Texas Constitution states, that when the population of a county is below 10,000 according to last census, that the Tax Assessor-Collector shall be the Sheriff of the county, unless an election is held and the voters elect to "add the office of Tax Assessor-Collector to the list of elective offices". Floyd County dropped below 10,000 population this last census for the first time since 1930. Therefore, the commissioners court is giving the voters the right to decide if the office of Tax Assessor-Collector will be filled by appointment made by the sheriff or will the office be filled by vote of the people.

A vote "for" adding tax assessor-collector, simply gives to the voters the right to decide who will hold this office, as an elected official, as it has been for the last 50 years.

A vote "against" the addition of Assessor-Collector of taxes, means that the Sheriff will be the Assessor-Collector of taxes, and that he will appoint deputies to do the work.

CHOISE SMITH - COUNTY JUDGE

This Week**ONE ACT PLAYS**

The Floydada Speech and Drama Club will present two one act plays, Touch the Bluebirds Song, and At a Beetle's Pace, on November 5th at 7:00 p.m., and on November 6th at 2:00 p.m. These one acts will be presented in the High School Auditorium.

The cost will be \$2 for adults and \$1 for students. You can buy tickets from any Speech and Drama Club member, or Mr. Willis. So support the Speech and Drama Club member by purchasing your tickets today!

CHILI SUPPER

Chili just seems to go along with cold weather so before you attend the big football game between Floydada and Slaton come to the Floydada Chamber of Commerce chili supper Friday, November 4. The supper will be from 5:30 until 7:30 in the Jr. High school cafeteria. The menu will include chili, beans, cornbread, relishes and cobbler. Ya'll come now ya' hear!!

DINNER THEATER

Tickets for the Floydada Chamber of Commerce dinner theater the "Saga of Katy and the Gambler Lady" to be presented Nov. 12 and 15, will be on sale beginning Friday, November 4. Tickets may be purchased from any cast member or at the Chamber office.

Tickets are \$10.00 for Saturday night which will consist of a steak dinner with all the trimmings plus the play and vaudeville entertainment. Tickets for Tuesday night are \$6.00. Tuesday night's guest will be served dessert and coffee. There will be advance ticket sales only. No tickets will be sold at the door.

LUNCH

The Della Plains Home Ec. class will serve lunch again Thursday, November 3, from 11:30 to 1 p.m. Taco quiche, frioles, avocado salad, cornbread, lemon bars, iced tea and coffee will be served for \$3 a plate. Call your friends and have them meet you for lunch.

MOTHERS DAY OUT

Mothers Day Out has changed its hours to 9:30-5:00 every Tuesday at the First United Methodist Church.

OLD PHOTOS

Floyd County Railroad Station photos are needed at the museum, especially those of South Plains and Lockney QA&P, Ft. Worth and Denver and Santa Fe lines that ran through Floydada.

PUBLIC DANCE

The Plainview Chapter of Parents Without Partners is sponsoring a public dance at the Plainview VFW building on Saturday, November 5 starting at 8:30 p.m. They will have a live band. Charge will be \$3.00 per person.

WOMEN'S CHAMBER

Women's Chamber of Commerce will hold their regular meeting Monday, November 7 at 5:00 at the school administrators office, 226 W. California.

AMERICAN AG MEETING

American Ag. Texas state meeting is slated at the Holiday Inn in Plainview for November 4-5. Registration will be at 9 a.m. Friday, Jim Hightower, Texas Commissioner of Agriculture, will be the luncheon speaker on Friday. Also present for the two-day event will be the National Chairman of the AAM, the National Director of AAM and the national president.

Randall Sims**wins football contest**

This past week's football contest was a tough one. There were a lot of games missed and the first place winner was no exception.

Randall Sims won the contest missing six of the games. This was the smallest number of games missed.

Tiffany Gentry placed second missing seven of the games. She chose Idalou to win with a total of 35 points.

Dariynn Hambright placed third also missing seven but guessing 49 points on the tie breaker with Idalou to win.

Dwayne Wilson, Tommy Cathey, Jr., and Althea Campbell all missed seven also but missed on the tie breaker.

This week's contest will be the last one so get those entries in by 5 p.m. Friday to get a chance at the money.



THESE DUNCAN ELEMENTARY STUDENTS were part of the Halloween program presented Monday Halloween.

Fingerprinting session to be held in November

More than two million children are reported missing each year in the United States. Of this number 1,850,000 are runaways. While many eventually return home, others are never heard from again by their parents.

100,000 are kidnapped by divorced or separated parents. 50,000 are abducted by strangers or simply wander off by themselves. It is estimated that only 5,000 of this group are found alive and returned to their families; 3,000 are murdered by strangers each year; 2,000 more are slain and remain unidentified.

This fall the NBC Television Network has presented two programs designed to inform the public about missing children. One of these programs was the movie "Adam," the true story of the experiences of John and Reve Walsh of Hollywood, Florida, after the disappearance of their six-year-old son in 1981.

The other program was the September 7th airing of the weekly series, "Real People". During the program these practical suggestions were offered to parents:

*Do not leave your child alone in the car, yard, store or other public place. Know where your child is at all times.

*Don't put your child's name on his or her clothes or books. That name tag puts an abductor on a first name basis with your child.

*Teach your children how to use the telephone. Make sure they know your number (including area code) and are able to call the police in case of emergency.

***Fingerprint your child and keep the print for identification purposes.**

*Choose a secret code word with your child which can be used in case of emergency. Tell your child never to go with anyone who does not know the code word.

*Teach your child who is a stranger. Make sure your child knows not to get involved with any stranger in any way.

*Encourage your neighbors to participate in a neighborhood self-help program. Establish a safe home where children can go for help.

*Make sure the school notifies your immediately if your child does not report to school.

*Watch your children closely at all times and ask your neighbors to do the same.

Steps can be taken to reduce abductions of children. It is important to talk with children about the dangers and to teach them specific skills to handle them.

As parents of this community become increasingly aware of the problems and dangers that exist for children, steps must be taken to prevent the possibility of this happening in this area.

On November 15th, the Alpha Mu Delta chapter of Beta Sigma Phi will sponsor a fingerprinting session from the hours of 4 to 8 p.m. at the Courthouse Agriculture Building. All children in the community are welcome to come with their parents and receive a record of their fingerprints. There will be no charge for this service and you are urged to attend.

Advisory Council to meet**Juita de Concilio Consejero**

The PAC (Parent Advisory Council) will meet on Monday, November 7, at the Lockney Elementary Cafetorium. Parents are urged to attend this very important meeting for the election of officers to be held for the local PAC group.

If you have a child in any of the following programs: Title I Reading, Compository Math, EFL, or migrant. Everyone is encouraged to attend.

A door prize will be given away to a lucky winner, and refreshments will be served.

Teachers and aides will be there to visit with parents.

Guest speaker will be Jose Rodriguez, director of health provider.

Se llevara a cabo una junta del Concilio de Padres el dia Lunes 7 de Noviembre en la cafeteria de la escuela elemental a las 8 p.m.

Esta junta sera de mucha importancia ya que habra elecciones de oficiales del concilio consejero de padres.

Si usted tiene un niño en alguno de los siguientes programas como son: Titulo I en Lectura, Matematica Compositoria, EFL, de Migrante le urgimos que atienda a esta junta.

Tendran un premio para la persona agraciada, y se serviran refrescos.

Abra algunas maestras y ayudantas presentes para visitar con los padres de familias.

Jose Rodriguez hablara en esta junta.

Constitutional Amendments 1-4

Amendments 5-11 appear in other section of your paper-page 2

The following proposed Constitutional Amendments are presented to you through the combined efforts of this newspaper and the League of Women Voters of Texas Education Fund to provide as much information as was available.

and not more than eight justices of the peace and constable precincts. Each precinct must have one justice of the peace (JP) and one constable. Any precinct that contains a city with a population of 8,000 or more must have two JPs. To sum up, at present a county must have four to eight constables and from four to 16 JPs. Currently 102 Texas counties have fewer JP and constable precincts than are required by the constitution.

This proposition would amend the constitution to permit counties with a population of less than 30,000 to have fewer than four constable and JP precincts. Counties with a population of less than 30,000 but more than 18,000 could have from two to five precincts. Counties with a population of 18,000 or under, could have from one to four precincts. Each precinct would have one JP and one constable unless the precinct contained a city of 18,000 or more in which case two JPs would have to be elected. Texas has 254 counties—146 with less than 18,000 inhabitants and 39 with more than 18,000 but less than 30,000.

The proposition also provides that in the event of any precinct boundary changes the incumbent JPs, constables, and county commissioners would serve out the terms to which they had been elected.

*** FOR ***
• Many counties have no need for four JPs and four constables, and the requirement creates an impossible financial burden.

• Allowing variation to fit the needs of the individual counties will contribute to more effective local government and will save the taxpayers money.

• Minority rights will be protected by the requirement for approval of boundary changes by the U.S. Justice Department.

*** AGAINST ***
• Reducing the number of elected officials sets a bad precedent and might lead to cutting the number of county commissioners.

• It might dilute representation of minorities in counties where the number of constables and JPs is reduced. Each boundary change would have to be cleared with the Justice Department, a cumbersome process not worth the potential hassle.

• If the number of justices and constables were reduced people would be burdened with longer and more inconvenient trips to receive the services of a JP or constable.

★ AMENDMENT 2 ★

FOR AGAINST
(Worded on Ballot)
THE CONSTITUTIONAL AMENDMENT REPLACING THE LIMITATION ON THE VALUE OF AN URBAN HOMESTEAD WITH A LIMITATION BASED ON SIZE.

*** EXPLANATION ***
The Texas Constitution exempts a person's homestead from forced sale to pay off creditors except under specific circumstances. Homestead protection is available for either rural or urban property. Rural homesteads may not exceed 200 acres and an urban

homestead lot or lots may not exceed \$10,000 when first designated a homestead. In both cases homestead protection applies to the improvements on the property.
The proposed amendment makes no change in rural homesteads but would replace the \$10,000 urban homestead limit with a one-acre limit, together with any improvements on the land. The new definition would apply retroactively to all urban homesteads in Texas.

*** FOR ***
• Homestead protection is a Texas tradition but because of rising land values in urban areas fewer homesteads are protected.
• Basing the urban homestead exemption on land area rather than land value would make constitutional revisions unnecessary.

• It is important for the amendment to be retroactive because the number of Texas homes which are really protected from forced sale under current law has dwindled.

*** AGAINST ***

• A one-acre exemption is too generous, a half-acre limit would be sufficient.
• The one-acre limit treats homesteaded owners in different locations inequally. An acre is worth much more in affluent areas of large cities than in poor sections of small towns.

• The homestead exemption's purpose is to provide family home security, not to avoid payment of debt. The current exemption of a \$10,000 lot or lots plus an unlimited amount of improvements is sufficient to provide for an adequate home.

★ AMENDMENT 1 ★

FOR AGAINST
(Worded on Ballot)
THE CONSTITUTIONAL AMENDMENT AUTHORIZING FEWER JUSTICE OF THE PEACE AND CONSTABLE PRECINCTS IN COUNTIES WITH A POPULATION OF LESS THAN 30,000 AND PROVIDING FOR CONTINUOUS SERVICE BY JUSTICES OF THE PEACE, CONSTABLES, AND COUNTY COMMISSIONERS WHEN PRECINCT BOUNDARIES ARE CHANGED.

*** EXPLANATION ***

Article V, Section 18 of the Texas Constitution requires each county in Texas to have at least four

★ AMENDMENT 3 ★

FOR AGAINST
(Worded on Ballot)
THE CONSTITUTIONAL AMENDMENT PROVIDING FOR THE ADVANCEMENT OF FOOD AND FIBER PRODUCTION AND MARKETING IN THIS STATE THROUGH RESEARCH, EDUCATION, AND PROMOTION FINANCED BY THE PRODUCERS OF AGRICULTURAL PRODUCTS.

*** EXPLANATION ***
Legislation passed in 1967 allows Texas producers of a specific crop to create and elect Producers Boards that promote sales of the crop and support research programs for such purposes as control of disease and predators. Seven boards now operate in all or part of the state for the following commodities: corn, grain sorghum, mohair, peanuts, pork, soybeans, and wheat. (Rice, flax, and cattle products

are specifically excluded by the statute authorizing the commodity boards.)

At present, activities of the Producers Boards are financed by fees that are collected when the commodities are processed or sold. The maximum amount of the fee is set when the Board is created. Payment of the fee is voluntary. A farmer or rancher who does not wish to pay the fee may file a request for an exemption, or may apply for a refund within two months after payment.
By authorizing "refundable assessments" this amendment and its enabling legislation would allow a Producers Board to prohibit exemptions from fee payments. Refunds would still have to be allowed.

*** FOR ***
• Uniform collection of fees will yield additional revenue and will enable the Producers Boards to do a more effective job of marketing and research. Revenues have dropped because the processors who collect the fees (such as grain-elevator operators) dislike this task and encourage producers to apply for exemptions.

• Agricultural producers strongly support the boards. All of the Producers Boards now operating were approved by wide margins in votes of the affected farmers and ranchers. An individual producer who does not wish to support a Board's activities can still get a refund of any fee.

• Mandatory contributions will help ensure that all producers of a commodity who benefit from the promotional programs help pay for them.

*** AGAINST ***

• The paperwork of applying for a refund will discourage producers from trying to get their money back. The exemption option, which this amendment would abolish, is much more convenient. Payment of production fees should remain voluntary.

• Activities of the Producers Boards often duplicate services of the Texas Department of Agriculture, Texas A&M University, and private organizations that promote the same commodities.
• Texas voters rejected a similar amendment in 1977.

★ AMENDMENT 4 ★

FOR AGAINST
(Worded on Ballot)
THE CONSTITUTIONAL AMENDMENT AUTHORIZING STATUTORY PROVISIONS FOR SUCCESSION OF PUBLIC OFFICE DURING DISASTERS CAUSED BY ENEMY ATTACK, AND AUTHORIZING THE SUSPENSION OF CERTAIN CONSTITUTIONAL RULES RELATING TO LEGISLATIVE PROCEDURE DURING THOSE DISASTERS OR DURING IMMEDIATE THREAT OF ENEMY ATTACK.

*** EXPLANATION ***

Article III, Section 62 of the Texas Constitution, approved by the voters in 1962, requires the legislature to provide for succession to public office, except members of the legislature, in case of disaster caused by enemy attack. This amendment is designed to fill a perceived gap, and to provide for other emergency measures. Article III, Section 58 of the constitution declares Austin to be the seat of government and requires the legislature to hold its sessions there. Article IV, Section 8 permits the governor to convene the legislature at a different place if Austin is "in possession of the public enemy or in case of prevalence of disease threat." However, the Constitution makes no explicit provision for convening the legislature at a location other than Austin in the event of a nuclear attack.

The proposed amendment would require the legislature to provide for emergency interim successors to replace legislators who become "unavailable" due to enemy attack and would allow the House and Senate to suspend constitutional rules governing actions of the legislature for up to two years by concurring with a proclamation by the governor to that effect. The suspension may be renewed with another proclamation and concurrence. It would also permit the governor to keep the

time and place of the meeting of the legislature secret. Implementing legislation, HB 1216, provides that emergency successors would be chosen from former state senators or representatives living in the district where the legislators had become "unavailable." The lieutenant governor and Speaker of the House would choose successors from a list of seven names submitted by the executive director of the Employees Retirement System.

*** FOR ***
• The state government lacks crucial powers to respond to enemy attack or the threat of enemy attack. The authorities would need an orderly plan for bypassing the usual restrictions which could become a hindrance during an emergency.

• Proper civil defense planning such as this could save lives and ensure continuance of our democratic form of government.

• The advanced weaponry likely to be used could

isolate the state and prevent reliance on the federal government.

*** AGAINST ***
• In the event of a nuclear attack the federal government will most likely assume total control of governmental functions, making this amendment unnecessary.

• This proposal is an exercise in futility. Even if some governmental authorities could survive a nuclear attack, they might not be those designated to issue emergency edicts and to choose successor legislators. Possibly all the "qualified" substitute legislators in a given district would also be "unavailable."

• This amendment would give the governor dangerous and unprecedented powers under "the threat of immediate attack." Determination of "an immediate threat" could possibly aggravate an international crisis by precipitating exercising emergency powers.

OFFICIAL BALLOT

No.0000

SPECIAL ELECTION
ELECCION ESPECIAL

ADDITION OF ASSESSOR-COLLECTOR OF COUNTY TAXES
ADICION DE ASESOR-COLECTOR DE IMPUESTOS DEL CONDADO

FLOYD COUNTY, TEXAS
CONDADO DE FLOYD TEXAS

November 8, 1983
8 Noviembre de 1983

OFFICIAL BALLOT
BALOTA OFICIAL

INSTRUCTION NOTE:

Place an "X" in the square beside the statement indicating the way you wish to vote.

NOTA DE INSTRUCCION:

Marque con una "X" el cuadro al lado de la frase que indica la manera en que usted quiere votar.

- FOR
A FAVOR
- AGAINST
EN CONTRA DE

The addition of Assessor-Collector of Taxes
La adición de Asesor-Colector de Impuestos

No.0000

CONSTITUTIONAL AMENDMENT ELECTION
(ELECCION PARA ENMENDAR LA CONSTITUCION)

(Condado de) FLOYD County, Texas

November 8, 1983 (8 de noviembre de 1983)

OFFICIAL BALLOT
BALOTA OFICIAL

INSTRUCTION NOTE: (NOTA DE INSTRUCCION:)

Place an "X" in the square beside the statement indicating the way you wish to vote. (Marque con una "X" el cuadro al lado de la frase que indica la manera en que usted quiere votar.)

- No. 1 FOR (A FAVOR DE)
 AGAINST (EN CONTRA DE)

"The constitutional amendment authorizing fewer justices of the peace and constable precincts in counties with a population of less than 30,000 and providing for continuous service by justices of the peace, constables, and county commissioners when precinct boundaries are changed." ("La enmienda a la constitución autorizando menos precintos de juez de paz y de constable en condados con menos de 30,000 habitantes, y disponiendo el servicio continuo de jueces de paz, constables, y comisionados del condado cuando cambian los límites de precintos.")

- No. 2 FOR (A FAVOR DE)
 AGAINST (EN CONTRA DE)

"The constitutional amendment replacing the limitation on the value of an urban homestead with a limitation based on size." ("La enmienda a la constitución reemplazando la limitación sobre el valor de un hogar urbano con una restricción sobre el tamaño.")

- No. 3 FOR (A FAVOR DE)
 AGAINST (EN CONTRA DE)

"The constitutional amendment providing for the advancement of food and fiber production and marketing in this state through research, education, and promotion financed by the producers of agricultural products." ("La enmienda a la constitución disponiendo el adelanto de la producción y mercadearía de alimento y fibra en este estado por medio de investigación, instrucción y promoción financiada por los productores de productos agrícolas.")

- No. 4 FOR (A FAVOR DE)
 AGAINST (EN CONTRA DE)

"The constitutional amendment authorizing statutory provisions for succession of public office during disasters caused by enemy attack, and authorizing the suspension of certain constitutional rules relating to legislative procedure during those disasters or during immediate threat of enemy attack." ("La enmienda a la constitución autorizando disposiciones estatutarias para la sucesión a un puesto oficial público durante desastres causados por un ataque por enemigos, y autorizando la suspensión de ciertos reglamentos constitucionales perteneciendo a procedimientos legislativos durante esos desastres o durante la amenaza inminente de un ataque por enemigos.")

- No. 5 FOR (A FAVOR DE)
 AGAINST (EN CONTRA DE)

"The constitutional amendment authorizing use of the permanent school fund to guarantee bonds issued by school districts." ("La enmienda a la constitución autorizando el uso del fondo escolar permanente para garantizar bonos emitidos por distritos escolares.")

- No. 6 FOR (A FAVOR DE)
 AGAINST (EN CONTRA DE)

"The constitutional amendment allowing the legislature to provide for additional remedies to enforce court-ordered child support payments." ("La enmienda a la constitución permitiendo que la legislatura disponga más remedios para exigir pagos para el mantenimiento de hijos por orden de corte.")

- No. 7 FOR (A FAVOR DE)
 AGAINST (EN CONTRA DE)

"The constitutional amendment for financial assistance to veterans and to authorize the issuance of \$800 million in bonds of the state to finance the Veterans' Land Program and the Veterans' Housing Assistance Program." ("La enmienda a la constitución para ayuda económica para veteranos y para autorizar la emisión de 800 millones de dólares en bonos del estado para financiar el Programa de Terrenos de Veteranos y el Programa de Ayuda de Viviendas Para Veteranos.")

- No. 8 FOR (A FAVOR DE)
 AGAINST (EN CONTRA DE)

"The constitutional amendment to authorize taxing units to exempt from taxation property of certain veterans' and fraternal organizations." ("La enmienda a la constitución para autorizar a entidades para exentar de impuestos la propiedad de ciertas organizaciones de veteranos y organizaciones fraternales.")

- No. 9 FOR (A FAVOR DE)
 AGAINST (EN CONTRA DE)

"The constitutional amendment providing for assignment of judges of statutory probate courts to other statutory county courts with probate jurisdiction and to county courts." ("La enmienda a la constitución disponiendo la asignación de jueces de cortes testamentarias establecidas por ley a otras cortes de condado estatutarias con jurisdicción testamentaria y a cortes de condado.")

- No. 10 FOR (A FAVOR DE)
 AGAINST (EN CONTRA DE)

"The constitutional amendment to permit a city or town to expend public funds and levy assessments for the relocation or replacement of sanitation sewer laterals on private property." ("La enmienda a la constitución para permitir que una ciudad o pueblo gaste fondos públicos y recalde tasaciones para colocar de nuevo o reemplazar los tubos laterales de drenaje sanitario sobre propiedades particulares.")

- No. 11 FOR (A FAVOR DE)
 AGAINST (EN CONTRA DE)

"The constitutional amendment to change the Board of Pardons and Paroles from a constitutional agency to a statutory agency and to give the board the power to revoke paroles." ("La enmienda a la constitución para cambiar la Junta de Absoluciones y Libertades Condicionales de una agencia constitucional a una agencia estatutaria, y para darle a la junta la autoridad de revocar libertades condicionales.")

ATTENTION VOTERS!

DOES FLOYD COUNTY REALLY NEED THE ELECTIVE OFFICE OF TAX ASSESSOR-COLLECTOR WHEN IT NO LONGER ASSESSES OR COLLECTS TAXES???

THINK TWICE BEFORE YOU VOTE!

REPORT OF CONDITION

Consolidating domestic subsidiaries of the

First National Bank of Floydada, Texas

In the state of Texas, at the close of business on September 30, 1983 published in response to call made by Comptroller of the Currency, under title 12, United States Code, Section 161.

Charter number 7045 National Bank Region Number 11

Statement of Resources and Liabilities		Thousands of dollars	
ASSETS			
Cash and due from depository institutions		9,532	
U. S. Treasury securities		4,670	
Obligations of other U. S. Government agencies and corporations		5,991	
Obligations of States and political subdivisions in the United States		4,684	
All other securities		21	
Federal funds sold and securities purchased under agreements to resell		6,710	
Loans, Total (excluding unearned income)	13,580		
Less: Allowance for possible loan losses	395		
Loans, Net		13,185	
Lease financing receivables		None	
Bank premises, furniture and fixtures, and other assets representing bank premises		336	
Real estate owned other than bank premises		None	
Intangible assets		None	
All other assets		1,074	
TOTAL ASSETS		46,203	
LIABILITIES			
Demand deposits of individuals, partnerships, and corporations		4,357	
Time and savings deposits of individuals, partnerships, and corporations		31,515	
Deposits of United States Government		30	
Deposits of States and political subdivisions in the United States (State of Texas = \$365,)		2,638	
All other deposits		None	
Certified and officers' checks		85	
TOTAL DEPOSITS		38,625	
Total demand deposits	5,453		
Total time and savings deposits	33,172		
Federal funds purchased and securities sold under agreements to repurchase		758	
Interest-bearing demand notes (note balances) issued to the U. S. Treasury and other liabilities for borrowed money		228	
Mortgage indebtedness and liability for capitalized leases		None	
All other liabilities		915	
TOTAL LIABILITIES (excluding subordinated notes and debentures)		40,526	
Subordinated notes and debentures		None	
MEMORANDA EQUITY CAPITAL			
Preferred stock	No. shares outstanding	None	(par value) None
Common stock	No. shares authorized	2,000	
	No. shares outstanding	2,000	(par value) 200
Surplus		500	
Undivided profits and reserve for contingencies and other capital reserves		4,977	
TOTAL EQUITY CAPITAL		5,677	
TOTAL LIABILITIES AND EQUITY CAPITAL		46,203	
Amounts outstanding as of report date:			
Standby letters of credit, total		25	
Time certificates of deposit in denominations of \$100,000 or more		5,213	
Other time deposits in amounts of \$100,000 or more		365	
Average for 30 calendar days (or calendar month) ending with report date:			
Total deposits		39,125	

We, the undersigned directors, attest to the correctness of this statement of resources and liabilities. We declare that it has been examined by us, and to the best of our knowledge and belief has been prepared in conformance with the instructions and is true and correct.

Richard Harris
John Zimmerman

C. J. Payne
Senior Vice President & Cashier

of the above-named bank do hereby declare that this Report of Condition is true and correct to the best of my knowledge and belief.
October 21, 1983



PETE MORENO

Commissioners and Voting Precinct lines change

The following is believed to be a substantially correct summary of the recent major changes made in Commissioners' and Voting Precinct lines in Floyd County as such changes bear on the forthcoming elections. There are additionally certain minor changes in boundaries, in most instances apparently due to inadvertence on the part of the draftsman, but detailing such minor changes would require too much space for this brief summary.

Baker No. 13 and Southeast Floydada No. 23: The area of the former Lakeview Precinct No. 15, previously added to Southeast Floydada, has now been shifted to Baker Precinct No. 13.

Southeast Floydada No. 23 and Southwest Floydada No. 1: Within the City limits of Floydada, the area South of Virginia Street and East of 3rd Street as far South as Crockett Street has been detached from Southwest Floydada and added to Southeast Floydada.

Southwest Floydada No. 1 and McCoy No. 22: The area of the former Starkey Precinct No. 2, previously added to Southwest Floydada, has now been shifted to McCoy No. 22.

Southwest Floydada No. 1 and Northeast Floydada No. 24: The area of the former Northwest Floydada No. 19 North of Virginia Street, West of 3rd Street, and West of U.S. Highway 70, has been added to Southwest Floydada; the remaining area of Northwest Floydada, lying North of Virginia Street, and East of 3rd Street and East of Highway 70, has been added to Northeast Floydada, in effect abolishing Northwest Floydada No. 19.

East Lockney No. 5, West Lockney No. 18, and Lone Star No. 8: East Lockney has been drastically reduced in size, and, as so reduced, has been transferred from Commissioner's Precinct No. 2 to Commissioner's Precinct No. 3. Except for an enclave extending East from Main Street to include Lockney General Hospital, and a similar enclave one block wide North and South, extending East from Main Street to include the West half of the City Hall, Main Street remains the boundary between East Lockney and West Lockney from the North City limits South to Shurbet Street; all that part of East Lockney South of Shurbet Street, West of the Lone Star Highway, and South and West of the Santa Fe Railway, has been added to West Lockney. All that part of East Lockney North of the Flomot Highway, and East of the Lone Star Highway, plus an enclave on the West side of the Lone Star Highway to include the County Machinery Barn, has been added to Lone Star No. 8.

The boundaries of the following precincts appear to be substantially unchanged: Dougherty No. 20, Harmony No. 16, Allmon No. 3, Sandhill No. 4, Providence No. 7, South Plains No. 9, Cedar Hill No. 11, and Goodnight No. 17. Because the changes in lines other than those affecting East Lockney and West Lockney can have no possible impact on any contest race within the County, election officials in other precincts can safely exercise reasonably discretion in determining the residence of voters in view of the unavoidable confusion resulting from the brief time between the changes and the elections,

all along the fence posts. The entrance hall table was decorated with pumpkins and apples and my Aunt would dress as a fortune teller and tell fortunes as the guest arrived," she reminisced.

She said all of the older people dressed up too and her Uncle dressed as a ghost would hide in the magnolia trees beside the house and jump out and scare the kids as they came in.

"Everyone bobbed for apples and pulled taffy and listened to my Aunt play the pump organ," she said.

"I remember one costume I wore in particular. I came as a 'flapper'. Most folks don't even know what that is now days. That was what they called the girls who danced the 'Charleston' back in the early twenties...of course that was before my time...I never really did that," she laughed.

There was one cake that was present at every special occasion and Halloween was no exception. Her stepmother always made a fresh coconut cake to take to any social gathering.

The cake recipe passed down to Mrs. Woody from her stepmother has always been a favorite of Mrs. Woody's entire family.

Fresh Coconut Cake

1 cup butter
2 1/2 cups sugar
4 cups flour, sifted
2 1/2 tsp. baking powder
1/4 tsp. salt
1 tsp. vanilla
1 cup ground fresh coconut
1 cup coconut milk, water added to make one cup
6 egg whites, beaten stiff
Cream butter and sugar. Add coconut and coconut milk. Sift dry ingredients and beat together until blended. Add egg whites last. Bake in layers in 300 degree oven.



EUNICE WOODY

Local cook reminisces

Almost everyone has memories of Halloween as they were growing up and the cook of the week this week is no exception.

Eunice Woody grew up in a small community in southern Arkansas in the twenties. There in the woods of Arkansas people celebrated Halloween in a grand manner.

Although Mrs. Woody has lived in Floydada the last 50 years she still remembers Halloween in Arkansas vividly.

Mrs. Woody lived with her Aunt and Uncle then in a large white house in the woods. She recalls that in those days all the neighbors came from miles around to their house to celebrate.

"The front yard and front porch of the house were aglow with lighted jack-o-lanterns and carbide lights were hung

Local artist featured at bank

The First National Bank, Floydada, is happy to present the watercolor paintings of Lubbock artist, Pete Moreno, through the month of November.

A native Texan, born in Brownfield, Moreno has grown to appreciate the beauty of the state and this area in particular. "I have lived in Texas and New Mexico," said the artist, "and have sketched or painted wherever I have been; but, my greatest love is for this West Texas area." The vast landscape and the windmill have always held a particular interest for him.

Other than attending a few classes, one under Leo Smith, a teacher in the Lubbock schools, and workshops, Moreno considers himself a self-taught artist. He has tried other art media, but the watercolor art is what he prefers. "I have a goal of becoming as professional as I can in the one medium. I want to concentrate on developing my own

technique in this very special medium of expression," said Pete.

Moreno has been employed at Butler's Framing Studio in Lubbock for ten years. He has had the opportunity to view the very finest works of art brought there for framing. He has learned to appreciate and detect the best in art; he understands, also, what professional and creative framing does to complete a fine work of art.

In addition to his display at the First National Bank here, Moreno has work displayed in Snyder and the surrounding area. Through purchases, his work has found its place in several western states, even as far away as California and Washington state.

Through November, the public is invited to view the paintings of Pete Moreno during regular banking hours: Monday, 9:00-5:00 p.m.; Tuesday through Friday, 9:00-3:00 p.m.



ELAINE GALLOWAY, WANDA WILLIAMS (on chair), VEL SIMPSON (costume committee), SARA PROBASCO (director), AND PHIL LEMONS (kneeling) practice for upcoming Chamber Dinner Theater, the "Saga of Katy and the Gambler" Lady.

Fantasy begins

Three Floydada residents will be participating in Ralls Fall Fantasy. Jo Goen will exhibit her award winning western paintings; Darlean Stovall will offer baskets, handmade items, and embroidered dresses from Mexico; and Nancy Hagood will show Hawaiian jewelry, eel skin bags and billfolds, and silk embroideries.

The arts and crafts extravaganza will be held at the Ralls Elementary School Cafeteria, 16th Street and Avenue P, from 10 a.m. - 6 p.m. on Saturday, November 5, and from 1 p.m.-5 p.m. Sunday, November 6. Admission is \$1.00 for persons 12 years of age and over.

THE FLOYD COUNTY HESPERIAN [USPS 2026-8000]

Published weekly each Thursday at 111 East Missouri Street, Floydada, Texas 79235. Second class postage at Floydada, Texas 79235. SUBSCRIPTION RATES: Local \$11.50 per year, out-of-trade area, \$12.50 per year. POSTMASTER: Send address changes to the Floyd County Hesperian, 111 East Missouri, Floydada, Texas 79235.

Baker Road to receive repair

Last June, Judge Choise Smith, Commissioners Bob Jarrett, Jack Lackey, and Thomas Warren traveled to Austin to present a proposal to the State Highway and Public Transportation Commission for the construction of the road from US 70, 1.0 miles east of FM 602, south to FM 1958, or better known to Floyd county residents as Baker road.

October 26 the State Highway and Public Transportation Commission authorized the construction of the approximately 8.1 miles.

Judge Smith said that Floyd County had not had any FM road work done in over 10 years so he felt like the county would receive the authorization.

State Representative Foster Whaley and Texas State senator Ray Farabee

met with Judge Smith and the commissioners when they went to Austin. Representative Whaley also gave a presentation in the county's behalf.

Judge Smith said he was "satisfied with the proposal" and that he was "real proud for the county to get it."

Actual construction of the \$846,400.00 roadway must await the accrual of necessary right of way which is the responsibility of the county commissioners.

The money for the new construction comes from the State's General Fund. A decrease in inflation in the last three years has allowed the Highway Department to get more miles of work with its budget.

Duncan Elem. sells cookies

Duncan Elementary's annual fundraising drive begins today, Nov. 3. Students will be selling cookies in pretty, colorful tins and an assortment of spices.

The profits will be used for PTA Projects. In the past, because of your generosity, the PTA has been able to help buy a laminating machine, a playground black top, ceiling fans, a copy machine, playground equipment, and air conditioners for Duncan.

The Duncan teachers, students and PTA appreciate your support - past and present - and hope you will continue to support their efforts to improve Duncan school for our children.

Frosting
1 1/2 cups sugar
2 egg whites
1 tablespoon light corn syrup
1/2 tsp. cream of tartar
1/4 cup plus 1 tablespoon cold water
1 tsp. vanilla

Combine sugar, egg whites (at room temp.), syrup, and cream of tartar in top of a large double boiler; add water and beat on low speed of electric mixer for 30 seconds or until blended.

Place over rapidly boiling water; beat constantly on high speed of electric mixer about 7 minutes or until stiff peaks form. Remove from heat. Add vanilla; beat 2 to 3 minutes or until frosting is thick enough to spread. Spread on cooled cake.

Sprinkle coconut in between layers and on top.

Get In The Swing With Aerobics

Sponsored by Caprock Hospital

CLASSES: Tuesday & Thursdays

TIME: 6:00 p.m. to 7:00 p.m.

FEE: \$20⁰⁰ Senior Citizens \$15⁰⁰

Sign up is November 8 from 5 to 6 p.m. in Caprock Hospital lobby

Classes will begin November 15 to be held in basement of Hospital



Who's that man and what's he doing in our alley?

It could be Rickey Gonzalez from Energas' Floydada office.

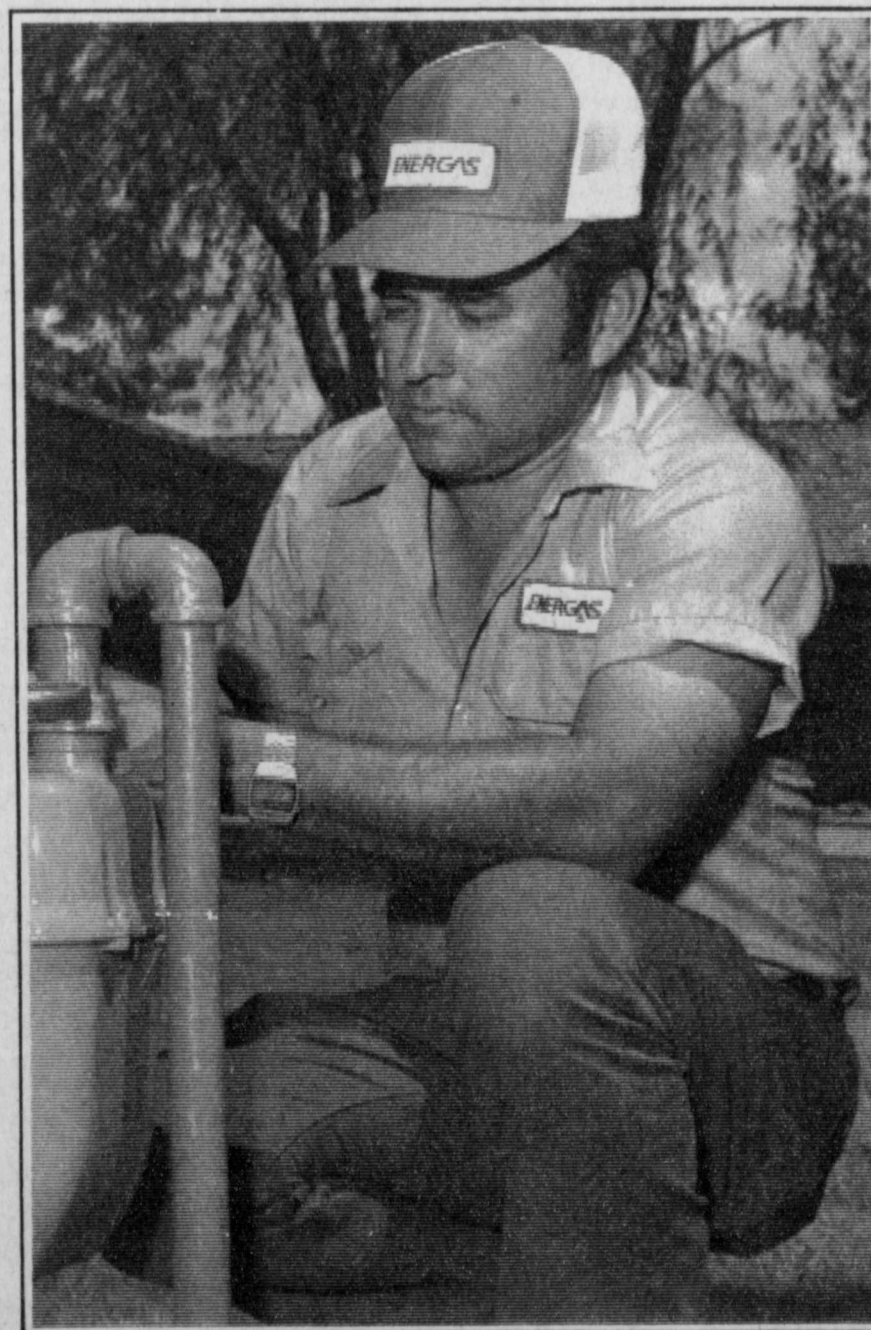
You are apt to find him in a lot of places. His job is to check out gas equipment and lines to assure you of a dependable, safe supply of natural gas. Like in your alley. Besides carefully reading your meter, he checks for leaks and for any needed repairs or replacement.

So, when you see an Energas man in your alley... or in the heart of town, you can be sure he is there for a good reason.

Energas people can do and want to.

ENERGAS

"It's great to have the people of the Floydada office represent Energas. I am proud of the job they are doing and the spirit in which they are doing it."
Charles Vaughan
President, Energas Company



Rickey Gonzalez
Service Technician

Letter to the Editor

October 31, 1983

Dear Editor:

There seems to be confusion concerning the upcoming election FOR or AGAINST THE ADDITION OF ASSESSOR & COLLECTOR OF TAXES.

According to the County Judge's article "the only issue here is shall the office be elective by the voters as in the past, or shall the sheriff appoint a person to fill this job." According to the law "when the population of a county is below 10,000, the Tax Assessor-Collector shall be the Sheriff of the County." If the voters vote AGAINST this proposal the voters will still have the right to elect the official as in the past. The only difference being the official will be Sheriff & Assessor-Collector.

The main duties of this office now are voter registration, motor vehicle registration and titles. The Sheriff & Assessor-Collector may hire a deputy (salaried as other clerical deputies) to perform these duties, resulting in a savings to the taxpayer.

All tax assessing and collecting has been consolidated into the Central Appraisal District office. This District was created to save tax dollars; however, this has not resulted as there has been no reduction of personnel in any office.

We now have the opportunity by our vote, on November 8, to eliminate some excess personnel, save tax dollars, and still retain voter discretion.

Yours truly,
/s/ C.J. Payne
Box 206
Floydada, Texas

Krizan-Scott Baughman married October 15

Scott Baughman and his bride, the former Betsy Krizan, are at home at 2601 Linda Circle in Amarillo. They were married in a double ring ceremony Saturday, Oct. 15, in the First United Methodist Church of Groom.

Parents of the couple are Mr. and Mrs. John L. Krizan of Groom and Mr. and Mrs. Charles L. Baughman, 6409

Alpine, Amarillo. The groom, a former Lockney resident, is the grandson of Mr. and Mrs. Willis Reynolds and Mrs. Grace Baughman, all of Lockney.

Baughman was graduated from Canyon High School and attended West Texas State University. He is employed at American Equipment and Trailer Company. Mrs. Baughman is a

graduate of Groom High School and also attended WTSU. She is employed at Dillard's of Amarillo.

The wedding service was directed by the Rev. Steven F. Campbell, pastor of First United Methodist Church of Booker.

The altar area of the Groom church was decorated with two fan-shaped candelabra holding white tapers and trimmed with dusty rose and burgundy bouquets of gladiolas, carnation, baby's breath and ming fern. Pews were marked with burgundy bows.

Music for the ceremony was provided by organist Mrs. Wayne Stroope, pianist Leslie Crowell, and vocalist Mrs. Jerry Crowell. In addition, Erin Kate Eschle, pianist, and Steve Hutsell, brother-in-law of the bride, guitarist, accompanied the vocalist. All are from Groom.

Guests were registered by Cyndy Bichsel of Groom and seated by ushers Paul Bell of Canyon and Kent Johnson of Amarillo.

Candlelighter was the groom's sister, Jamie Baughman of Amarillo. She wore a formal-length dress of burgundy that was styled identical to the attendant's dress of dusty pink. Matron of honor was Mrs. Dale Brooks of Groom, and bridesmaids were Sheryl Ester of Mobeetie, Terri Baughman of Amarillo, sister of the groom, and Kim Howard of Amarillo. Each carried a long-stemmed burgundy rose and wore a tiara of miniature carnations, daisies and baby's breath. The flower girls, Nicole Krizan of Canyon and Mary Elizabeth Hutsell of Groom, nieces of the bride, carried candlelight baskets and also wore dresses of dusty pink.

Best man was Monty Crawford of Amarillo, and groomsmen were Randy Reynolds of Snyder, cousin of the groom, Barry Watson of Canyon, and the bride's brother, John Krizan Jr. of Canyon. They wore long tail burgundy tuxedos and dusty rose carnation boutonnieres. Ring bearer was the bride's nephew, John T. Ayers of Canyon, who wore an ivory tuxedo. The groom's tuxedo was of candlelight and his boutonniere was a burgundy rose with

baby's breath.

The bride was given in marriage by her father. For her wedding she chose a formal gown of candlelight satin designed with a high, sheer Victorian neckline of English net. Alencon lace formed the neckline and was encrusted with pearls. Her closely-fitted bodice was overlaid with Alencon lace. Her long, sheer sleeves formed lace scallops over her hands. Her softly-gathered stain skirt fell into a lace-edged hemling which swept to back fullness and extended into a chapel-length train. Her fingertip veil was of candlelight illusion and was held by a wreath of candlelight satin roses. Her bouquet was a cascade of white roses, carnation, baby's breath and stephanotis.

Attendants at the bride's table at the reception in the church fellowship hall were Marua Bichsel of Amarillo, Donna Barnett of Groom, Sherri Wieberg of Groom and Rita Poor of White Deer. The table was covered with an ivory lace cloth over burgundy. A floral centerpiece, crystal appointments and the four-tier wedding cake decorated with dusty rose and burgundy roses and carnations completed the table decor.

Serving at the groom's table were Rhonda Reynolds of Lubbock, cousin of the groom, and Sharla Crawford of Amarillo. The table was laid with an ivory lace cloth. The centerpiece of dusty pink and burgundy roses, carnations, baby's breath and ming fern matched the centerpiece on the bride's table.

Floyd Data

Mrs. W.A. Lovell has just returned from a two month visit in east Texas and Louisiana, visiting a sister, Mrs. W.H. Bates in Terrell, Texas and a sister-in-law, Mrs. Amon Creed in Celeste, Texas where she did a lot of fishing. The two ladies flew on the New Orleans, Louisiana for sight seeing trip and a boat ride in the gulf. She also visited with two daughters, Mrs. R.A. Fitch and Margaret Savadeler of New Orleans.



MRS. BLAKE KITCHENS

Galyon-Blake Kitchens exchange wedding vows

Tonia Delene Galyon and Randal Blake Kitchens recently exchanged wedding vows in a double ring ceremony at Highland Baptist Church in Lubbock.

Parents of the bride are Mr. and Mrs. Vic Chandler of Dalhart. The groom is the son of Mr. and Mrs. Ronald Kitchens of South Plains.

Given in marriage by her father, the bride wore a crepe de chine dress with an overlay of sheer dotted Swiss. The long sleeves were sheer with satin button trim. The neckline featured a satin collar and a ruffle. Ruffles outlined the floor length skirt and the chapel length train. A satin cummerbund completed her attire. She wore a veil of illusion secured by a cap covered with dotted Swiss.

The bride carried a cascade of blue and white rose buds, baby's breath, ivy and carnation covering a white Bible given to her by Mrs. Jim Roberts.

Something old were rings belonging to the groom's grandmother and the bride's grandmother; something borrowed were her shoes. A blue garter completed tradition.

Maid of honor was Tammie Galyon of Lubbock, sister of the bride. Bridesmaids were Ronette Kitchens of Killeen, sister of the groom, Liz Chapman and Shere Pierce of Lubbock. Attendants wore floor length dresses of blue designed with a fitted bodice. A scoop neckline and a self ruffle highlighted the groom. Short full sleeves

and a pleated cummerbund accented the dress. They carried blue and white rose wraps.

Flower girl was Anna Whitfill of Memphis.

Jeff O'Conner of Austin served as best man. Male attendants were Anthony Whitfill of Memphis, uncle of the groom; Brett Marble and Mike Hill of Lubbock. Seating guests were Danny Minter of Dalhart, brother of the bride; and Les Miller of Levelland. Candlelighter were Vince Whitfill of Memphis and Valeri Neff of Dalhart.

A reception was held in fellowship hall of the church. The bride's table was covered with white lace. Crystal appointments were used. The four-tier cake was accented by a ceramic bride and groom.

The groom's table was covered with ecru lace over dark blue. Silver appointments were used.

Assisting at the reception were Meredith Kitchens, sister of the groom, Audra Whitfill of Memphis, Mrs. Gary Newton of Lubbock, aunt of the groom and Marin Dixon of Phoenix, Arizona.

The groom's parents hosted a rehearsal dinner in Lubbock.

The bride is a graduate of Coronado High School and attended Texas Tech. She is employed in the computer room of the Coca-Cola Co. The groom is a graduate of Floydada High School and attended South Plains College. He is employed by an investment firm in Lubbock where they are making their home.



MRS. SCOTT BAUGHMAN

Pate-Clark repeat marriage vows in Lubbock

Cynthia Pate and Jacky Clark exchanged wedding vows Saturday October 22, 1983 at 7:00 p.m. in Faith Temple in Lubbock, Texas. The Rev. Don Messer officiated.

The bride is the daughter of Willie and Earlene Pate of Lubbock and the granddaughter of Mrs. Elsie Pate of Lockney.

The groom is the son of Bill and Georgia Clark of Lubbock.

The bridegroom's sister Kim Torsi was the maid of honor and Shannon Daily was the best man.

Bridesmaids were Dana Biggerstaff and Tracy Warren both of Lubbock.

Groomsmen were Scott Pate, brother of the bride and Troy Coatney both of Lubbock.

Candlelighters and ushers were Kent Bacon and Bruce Tilliam both of Lubbock.

The flower girl was Crystal Andrews of Lubbock.

The ring bearer was Ricky Bacon III of Wichita Falls.

Pianist for the program of music was Esther Warren. Vocal arrangements were provided by Elvin and Wanda Andrews.

The arch was decorated with bou-

quets of fall flowers and greenery flanked on each side by spiral candelabras entwined with greenery and fall flowers.

A unity candle was lighted by the bride and groom. Candles on each side were lighted by the mothers of the couple.

Presented in marriage by her father the bride wore a magnificent gown styled in white silk organza and lavishly trimmed in Chantilly lace. The Queen Anne neckline featured a stand-up ruffle of soft organza. The bodice was styled with an empire waistline and was overlaid with appliques of the Chantilly lace, lavishly embroidered with seed pearls. Further lace appliques circled the waistline. The back of the bodice featured a soft circled yoke, and was outlined with lace. The full sleeves were of Chantilly lace, ending in fitted cuffs and narrow ruffles of organza. The cuffs were embroidered with seed pearls. The full skirt featured two rows of Chantilly lace and six rows of ruffled organza which formed a cascade from the center of the skirt to the floor in front. The back of the skirt featured twelve rows of Chantilly lace and ruffled organza which swept into a full chapel train.

Her fingertip veil of illusion featured a lovely cap which was covered in Chantilly lace to match her dress. Clusters of seed pearls adorned the cap, and a silk flower with pearl loops was at one side of the cap. Double rows of pearls outlined the cap. The veil had two tiers, each of which was outlined in Chantilly lace to match her dress.

For something old, borrowed and blue the bride wore the garter her mother wore at her wedding. For something new she wore a string of pearls a gift from the groom.

She carried a bouquet of spice and white silk roses with streamers of white lace ribbons.

Her bridesmaids wore gowns styled in spice silk organza. The floor-length dresses had a circled neckline which was outlined with a double row of organza ruffles. The fitted waist featured a satin ribbon bow and sash. The long full sleeves were gathered to the wrist in elastic band, and the cuffs featured a ruffle of the organza. The full skirt featured three rows of organza ruffles at the bottom front, and a satin bow was at the top of the upper ruffle. The back of the skirt featured one ruffle at the bottom. They wore spice circlet halos of silk sweetpeas and forget-me-nots in varied shades of spice, with green silk leaves intertwined. Six streamers of narrow ribbon completed the back of the circlets.

They carried bouquets of spice and apricot silk flowers with apricot streamers.

The flowergirl wore a dress also styled in spice silk organza. The sweetheart neckline featured a narrow turned-up ruffle of the organza which also formed the outline of the high yoke on the dress. The bodice featured a fitted waistline. The full sleeves were also of organza, and were gathered at the wrist in an elastic band, and the cuffs featured a ruffle of the organza over her hands. The full skirt featured a wide ruffle of organza around the bottom, and an additional ruffle began at the right side front and swept up the skirt, ending at the waist. She also wore a circlet of silk sweetpeas and forget-me-nots in varied shades of spice, with green silk leaves intertwined. Six streamers of narrow ribbon completed the back of the circlet.

She carried a basket filled with spice and apricot silk flowers.

A reception hosted by the parents of

Floyd Data

Bonnie Graham, Euna Bradford, and Nattiebell Fawver flew to Nashville, Tenn. Wednesday to attend the Grand Ole Opry. They toured the County Music star's homes and visit the Hermitage, home of President Andrew Jackson, and Tulip Grove Plantation. They also took a Riverboat Cruise down the Cumberland River. Saturday they went to Opryland for the day and returned home Sunday night.

the bride was held immediately following the ceremony.

Following the ceremony in the fellowship hall of the church. The serving table was covered with a lace tablecloth. An arrangement of spice and apricot silk flowers complimented by crystal candle holders imported from Germany was the center of attraction.

The three-tier cake, accented with spice and apricot flowers supported by crystal pillars was served by Joni Bills and Lisa Hilton. Kathy Murdock, Roberta Neel and Sandy Harrison also assisted at the bride's table.

The bride graduated from Dunbar Struggs High School and attended Texas Tech. She is currently employed by Dr.'s King Shannon and Ratcliff. The bridegroom, a graduate of Coronado High School, is an employee of B&M Vending Co.

After a wedding trip to Dallas the couple will make their home in Lubbock.



TIERCE

Kenneth and Rue Nita Robertson are proud to announce the birth of their second granddaughter, Cayla Renea was born October 29 in Lockney. She weighed 6 lbs. 9 ozs.

Cayla has a sister, Crystal, age 2. Her parents are Dennis and Holly Tierce of Dougherty.

Paternal grandparents are Donna Dyer and Pete Lumpkins of Plainview

Look Who's New!

and Dale Tierce of Dennison, Texas.

Great grandparents are Pearl Carter and Hugh L. Seely of Plainview, Mr. and Mrs. R.D. Holly, Floydada, and Mr. and Mrs. J.R. Robertson, Dougherty.

DEWEBER

Roger and Brenda Deweber are the proud parents of a daughter, Heather Elaine. She weighed 6 lbs 12 1/2 oz. and was 19 inches long.

Heather is the sister of Shannon, age 5, and Jason, 3 1/2 years old.

Grandparents are Mr. and Mrs. Robert Edinger Jr. and Mr. and Mrs. William Deweber, Sr., all of Albuquerque, New Mexico.

Great grandparents are Mr. and Mrs. John Deweber of Albuquerque, New Mexico, Mrs. Pearl Vanderford of Capitan, New Mexico, Mrs. Agatha Froese of Canada and Mr. Dorian Weckerly of North Dakota.



MRS. JACKY CLARK

Robert's
TREE HOUSE
NURSERY AND GARDEN CENTER

You are cordially invited to our
Christmas Wonderland Open House
this Saturday, November 5th
from 9 a.m. — 5 p.m.

Register for F.R.C.E. door prizes.
Refreshments will be served.

Located Next To The Hospital
2503 DIMMITT ROAD • PLAINVIEW, TEXAS




OBITUARIES

RUEL W. FANNING

Services for Ruel W. Fanning, 86, of Earth were at 2 p.m. last Thursday in Earth United Methodist Church with the Rev. Sam Estes, of Lubbock and the Rev. Jimmy Nunn, pastor, officiating.

Masonic graveside services were at Earth Cemetery under direction of Parsons Funeral Home in Earth.

He died at 10:30 p.m. Tuesday at his home. Justice of the Peace Beulah Newton ruled the death due to natural causes.

The Maypearl native had been an Earth resident 47 years, moving from Hereford. He married Ola Mealer on Dec. 23, 1919, in Floydada. He was a retired farmer, a 32nd degree Mason, a member of the Scottish Rite Temple and served in World War I. He was a Presbyterian.

Survivors include his wife; a daughter, Naomi Wood of Earth; three sons, Raymond of Richardson, O.A. of Lubbock and T.L. of Enid, Okla.; seven grandchildren; and 10 great grandchildren.

His family suggests memorials to the Scottish Rite Crippled Childrens' Fund.

CLAY HART

Services for Clay Hart, 70, of Matador were at 3 p.m. Friday at the First Baptist Church with the Rev. Reed Harris, interim pastor from Plainview, officiating.

Burial was in the East Mound Cemetery in Matador under the direction of Seigler Funeral Home.

He died at noon Wednesday in Methodist Hospital in Lubbock after a lengthy illness.

Born May 18, 1913, in Haskell County, he was a resident of Matador since the late 1920's. He married Allie Barton Dec. 24, 1943, in Matador, and he worked for the Matador Ranch for a number of years. He was a retired rancher and farmer.

Hart was a Baptist.

Survivors include his wife, Allie of Matador; a son, Buddy of Floydada; a daughter, Judy Renfro of Matador; two sisters, Dora McGaugh of San Antonio and Faye Stewart of Shreveport, La.; and five grandchildren.

The family suggest memorials to a favorite charity.

Mr. and Mrs. Will Martin of Floydada; a brother, Jesse Marion of New Deal; and a sister, Carolyn Ann Sue of Lockney.

Pallbearers were Chris Sue, Jesse Martin, Ricky Martin, Phillip Martin, Brian Martin and Ed Jones.

FLOIE ROGERS

Services for Floie Rogers, 83, of Sherman were at 11 a.m. Friday in Lemons Memorial Chapel in Plainview with the Rev. Lester B. Griffin, pastor of Date Street Baptist Church, officiating.

Burial was in Plainview Cemetery under direction of Lemons Funeral Home of Plainview.

She died at 9:30 a.m. Wednesday in Wilson-Jones Hospital in Sherman after a three-week illness.

Born Jan. 26, 1900, in Dallas County, she was raised in Gainesville. She moved to the Lockney area in 1941 from Lubbock. In Lockney, she worked for Golden's Restaurant for a number of years. In 1979, she moved to Sherman. Her husband, James, died in Plainview in 1967.

She was a Methodist.

Survivors include two daughters, Muriel Holmes of Lindale and Betty Hurlly of Plainview; two sons, Roy Huckaby of Modesto, Calif., and Robert Huckaby of Sherman; seven grandchildren; eight

great grandchildren; and a great-great grandchild.

NANCY TUCKER

Services for Nancy Lorene Tucker, 55, of Plainview will be at 2 p.m. today in the Happy Union Baptist Church with the Rev. Sammie Holloway, minister of Evenis Baptist Chapel of Lockney, officiating.

Burial will be in Plainview Memorial Park under the direction of Wood-Dunning Funeral Home.

Mrs. Tucker died at 7 a.m. Monday in Central Plains Regional Hospital after a lengthy illness.

She was a native of Frogsville, Oklahoma, and came to Plainview in 1979 from Lockney, where she had lived for 21 years. She was a member of Evenis Baptist Chapel in Lockney.

Survivors include her husband, Earnest Tucker of Plainview; two stepsons, Earnest Tucker, Jr. of Denton and Clarence Tucker of Dallas; a daughter, Renee Sparkman of Plainview; a stepdaughter, Agnes Lyons of Smyer; five sisters, Corene Brown of Lockney, Beatrice Lee Espy of Leonard, Ruby Lee Bush of Trenton, Annie Meril Cravens of Floydada, and Lula B. Robinson of Paris, Texas; two brothers, H.C. Brown of Leonard and John Henry Simmons of Lubbock; several grandchildren and several great-grandchildren.

Reggie Gross presents program

Alpha Sigma Upsilon chapter of Beta Sigma Phi held its regular meeting October 18 at 7:00 p.m. at Lighthouse.

President Janice Poteet called the meeting to order. All members stood for the opening ritual.

Recording Secretary Vicki Ware called roll and minutes of the previous meeting were read and approved.

Treasurers report was given by Adeanna Campbell. Motions were made to pay all outstanding bills.

Adeanna Campbell made a suggestion for their Ways and Means project but nothing is set.

Program for the night was by Sheryl Derryberry on Human Relations. She had a guest speaker, Reggie Gross who

gave the program on Child Negligence and Abuse.

Social for the month was a Halloween Carnival October 29 from 4:00-6:00 at the old ASC office.

Their next meeting was on November 1. Hostess was Gail Thompson. Program was by Barbara Edwards on "It's An Art".

Meeting was adjourned all members stood and repeated the closing ritual and held hands for the Mizpah.

Those present were Adeanna Campbell, Sheryl Derryberry, Gail DuBois, Barbara Edwards, Rhonda Guthrie, June McGaugh, Jan Nichols, Janice Poteet, Vicki Ware, Vikki Yeary, Gail Thompson, and guest were Reggie Gross and Karen Elliott.

Hanna hosts DAR meeting

Buffalo Grass Chapter DAR met at 7:30 p.m. October 25, in the home of Mrs. Walter Hanna with Mrs. Silas Wheeler as co-hostess. Regent Anne Swebston presided at the business meeting. Plans were made to make complete cemetery records of graves in area cemeteries. Plans also were made to copy early Funeral Home records for Floyd County Historical Museum. These type records are very useful to people doing family research, and prove our heritage.

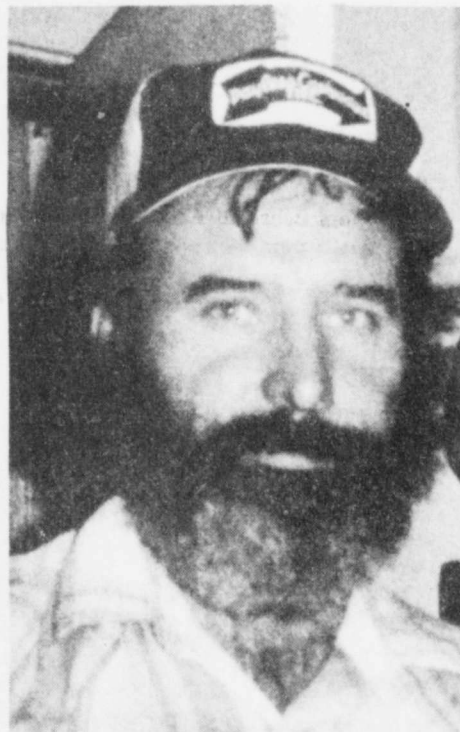
A very interesting and enlightening program was given by Mrs. Frank Potts on "Accurate Cemetery Recording."

Members and guests enjoying lovely refreshments and fellowship included, Mmes. Henry Bollman, Ralph Johnston, C.C. Jones, Kendis Julian, Fred Marble, Don Marble, B.P. Neff, Euell Norris, Frank Potts, Silas Wheeler, Ben Whitiaker, Raymond Williams, Tom Yeates, S.C. Burleson, Anne Swebston and the hostess Mrs. Walter Hanna.

Next meeting is Nov. 15, 1983, 7:30 p.m. at Lighthouse Electric. The program will be on National Defense by Reece Airforce Base.



TELEVISION SERVICE
111 W. CALIFORNIA
FLOYDADA, TX 983-5712
Now you don't have to leave your home town to get your T.V. fixed.
Come in and see us.
Let us be your T.V. man.



BOBBY D. MARTIN

Services for Bobby Don Martin, 37, of Route 4, Lubbock, were at 10 a.m. Friday in the Sanders Chapel.

Burial followed in the Floydada Cemetery under the direction of Sanders Funeral Home.

He died Tuesday afternoon at Presbyterian Hospital in Dallas where he was attending a school for Southwestern Bell Telephone employees.

A native of Floydada, he moved to Lubbock in 1974. He married Marsha Roberts on May 8, 1958, in Plainview. He was a veteran of the Vietnam War and had worked for Southwestern Bell Telephone Company for 15 years.

Survivors include his wife, a son, Bobby Don, Jr.; two daughters, Angelic Gale and Tristica Brook; his parents,

Rebekahs hold Halloween open house

On Tuesday night, October 25, the Rebekah Lodge held an open house Halloween party for the members and their families and friends.

A delicious stew dinner was served at 7 p.m. with salads, cakes, cookies, coffee, tea and lemonade. Eula Parrack gave the invocation.

The hall and the program that followed were carried out in a Halloween motif.

Eula Parrack was in charge of the program.

Games were played by all the group, then Artie Webb acting as a society reporter for Station K.O.R.N. giving news of what all her girlfriends were up to lately.

At the end of her program, she gave a ghost story about Halloween for the

youngsters. With the lights turned low a witch came through the door on a broom. She told the children she had to ride a broom since her camel had died. Then she showed her picture of her on a camel.

She presented each attending with a dollar bill and read them a Halloween story. Then she rode off on her broom. As she started out the door, Michael Gilliland said "Thank you Valree." He had recognized her, even though she was ver well disguised in a halloween mask and black robe.

The guests were Allen and Kathy Fondy and daughters, Amy and Heather; Bob Gilliland and sons, Michael and Brandon and his mother Ruth Gilliland; Evalene Boyd, Valree Turner's sister; Amanda Hart and Mabel Price brought their husbands, Fay and Henry. Mabel

Price was winner of the cake that was given as a door prize.

The Harts sang a few songs for the group.

Everyone enjoyed the evening very much, especially the children. The girls came dressed as witches and the boys in clown suits with painted faces. They sang songs for everyone to enjoy.

FLOWERS

to soften the sorrow
to comfort the living
to honor loved ones

SPRAYS
\$10.00-\$25.00

STANDING
SPRAYS
\$25.00 up

BASKET FOR THE SLUMBER
ROOM. \$25, \$35, \$50, \$75. After
hours calls accepted.

Floral Designs by Cyndi Williams
& Ozena Norris

WILLIAMS FLORIST
and CARD SHOP

128 W. California 983-5013

Il Penseroso meets in Lockney

Il Penseroso recently held a meeting in the home of Kathy Kellison. Sandra Cummings and Jeanette Workman co-hosted the gathering.

The group discussed their second annual bridge tournament and craft show.

Members present were Charlanne Burson, Sandra Cummings, Lesca Durham, Cindy Ford, Kelly Fortenberry, Lynda Gant, Julie Hickerson, Judy Jackson, Jerry Johnson, Kathy Kelli-

son, Linda Marr, Kay Martin, Ginger Mathis, Rhonda McCain, Sherry McDonald, Lisa Mosley, Patti Purser, Karen Quebe, Robin Stoerner and Janette Workman.

REMEMBER your loved ones with a living memorial to the Caprock Hospital Auxiliary Memorial Fund Mrs. Ben Whitaker, Treasurer.

Great American FOOD SALE

<p>GRANULATED SHURFINE SUGAR 5 LB. BAG \$1.49</p>	<p>VAC-PAC REG.-DRIP-ELEC. SHURFINE COFFEE 1 LB. CAN \$1.89</p>
<p>SHURFINE CUT GREEN BEANS 3 16 OZ. CANS \$1</p>	<p>SHURFINE WHOLE KERNEL GOLDEN CORN 3 17 OZ. CANS \$1</p>
<p>KRISPY SALTINE CRACKERS 16 OZ. BOX 59¢</p>	<p>49 oz. box detergent \$1.99 Tide</p>
<p>SHURFINE- IN NATURAL JUICE- CRUSHED PINE-APPLE 15 1/2 OZ. CAN 59¢</p>	<p>SHURFINE FANCY TOMATO JUICE 46 OZ. CAN 79¢</p>
<p>SHURFINE EARLY HARVEST SWEET PEAS 2 17 OZ. CANS 89¢</p>	<p>Shurfine Chunk style Tuna 2/\$1 cans</p>
<p>SHURFINE FROZEN ORANGE JUICE 12 OZ. CAN 69¢</p>	<p>SHURFRESH HALFMOON- LONGHORN- COLBY OR CHEDDAR CHEESE 10 OZ. PKG. \$1.29</p>
<p>COKE 16 oz. Btl. COCA COLA 6 pack \$1.99</p>	<p>BUTR. MILK-SWT. MILK SHURFRESH BISCUITS 6 8 OZ. CANS \$1</p>
<p>Nice & Soft Toilet Tissue 4 Roll 99¢</p>	<p>CLOVER CLUB LA FAMOUS REG. #119 TORTILLA CHIPS BAG \$1.29</p>
<p>Allsup's Bread 2/\$1.00</p>	<p>BORDEN'S BUTTER MILK 1/2 GAL. CTN. 99¢</p>
<p>Shurfine Sandwich Bags 3/99¢</p>	<p>Del Monte Fruit Cocktail 2/\$1</p>
<p>Shurfine Aluminum Foil 69¢</p>	<p>Del Monte Sliced Peaches 2/\$1</p>
<p>TV COOKED FOOD SPECIAL CORN DOG 2 FOR 89¢</p>	<p>Kraft Macaroni & Cheese Dinners 8/\$1.00</p>
<p>ALLSUPS ASST. ICE CREAM 1/2 GAL. CTN. \$1.59</p>	<p style="text-align: center;">FALL-WAREHOUSE SALE</p>
<p>SHURFINE FLOUR 5 LB. BAG 69¢</p>	<p>OSCAR MAYER-SLICED BOLOGNA 8 OZ. PKG. 69¢</p>

★ WHILE SUPPLIES LAST! ★

ALLSUP'S

★ SELF SERVE GAS ★

OPEN 24 HOURS FOR YOUR CONVENIENCE

CONVENIENCE STORES

PRICES EFFECTIVE OCT. 30-NOV. 5, 1983

Prepare for the future with our IRA plan and save money this and every year

If you don't have a qualified retirement plan, the Federally-approved Individual Retirement Annuity (IRA) plan from Farm Bureau Insurance can give you that good feeling of security.

IRA MEANS:

- Tax deductible savings this and every year until retirement.
- A supplement to Social Security income.
- A qualified retirement plan.

Call your Farm Bureau Insurance agent...
He can give you that good feeling of security.

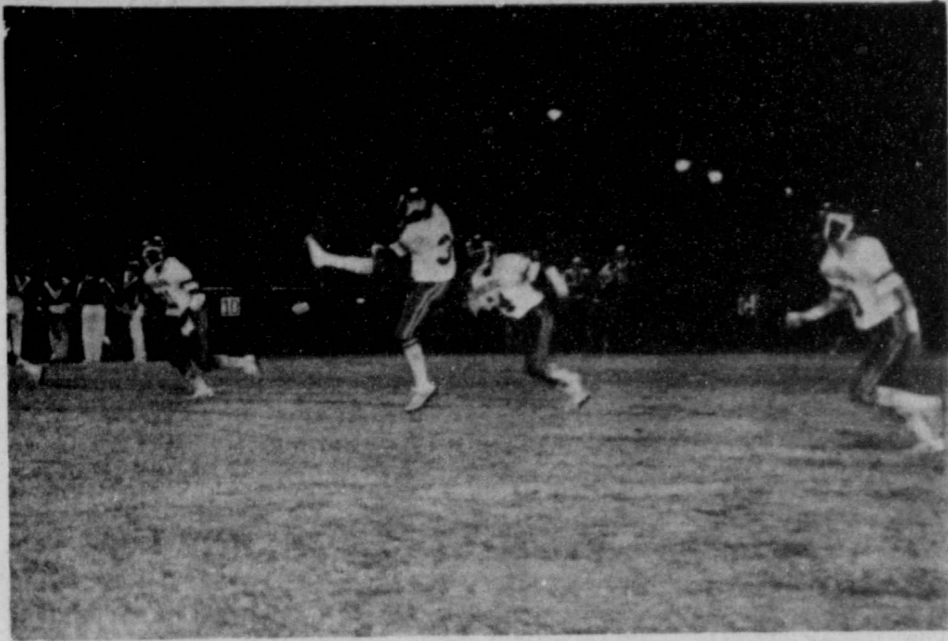
Texas Farm Bureau Insurance

101 S. Wall, Floydada TX
Floydada 983-3777 Lockney 652-2242

Clar Schacht
Career Agent
652-3449

James Race
Agency Mgr.
983-5095 652-2638

Bud Rainey
Career Agent
983-5225



ALVIN COOPER kicks off to the Cats in last Friday night's football game in Idalou.

Freshman clobber Cats

Whirlwind James Toney started out right with a 50-yard touchdown run in the first quarter for the Whirlwinds. Clay Lowrance added the extra two points to the score.

The score remained Floydada 8, Idalou 0 until the beginning of the fourth quarter when Idalou scored a touchdown. Their extra point was not good.

The last few minutes of the ball game, Clay Lowrance scored on a pass from Cornelius Campbell. Leif Younger made the extra point making the final score Floydada 16, Idalou 6.

Coach Mike Cocanougher named Troy Faulkenberry and Clay Lowrance outstanding players. They both intercepted Idalou passes.

On defense F.L. Williams and Steven Garza were named outstanding players.

Outstanding offensive players were Clay Lowrance, James Toney, Leif Younger, Noe Soliz, and Shannon Barbee.

Coach Cocanougher said "It was a

good ball game" and that he was "proud of the boys."

The Freshman play at Slaton this Thursday beginning at 5 p.m.

JV held to 8 pts.

The Floydada Whirlwind Jr. Varsity scored only 8 points against the Idalou Wildcats last Thursday night.

Toney Caballero scored on a 12-yard run in the fourth quarter to put the first points Floydada had in the game.

Haney Robertson caught a pass from J.D. Wilson for the extra point try.

Final score was Idalou 46, Floydada 8.

Offensive standouts: Danny Degollado, Hector Cevera, Peter Morales, and Brad Rainer.

Defensive standouts: Jeff Matsler, David Coronado, Toney Caballero, and Coy LaBaume.

The Jr. Varsity play Slaton at Slaton this Thursday night.

Coaches Comments

This game wasn't one of our better performances, to put it mildly. We didn't play well at all. Our defense played pretty good at times, we stopped them inside the 10 yd. line on 3 occasions. Overall I was disappointed in our play; we didn't execute, block, or tackle well at all. And that is the basics of the game. I do believe a part of this could be attributed to the number of injuries we had last week. Michael Saens was out with an ankle injury and didn't play at all. Mark Hatley had a real sore shoulder and was only about 50% ready for the game, and when Mark, Fernando, Derrick got hurt that was a tremendous blow to us defensively and offensively. Gilbert Flores as also injured at the last of the game but none of the injuries were real serious and hopefully all will be able to play this Friday night against Slaton.

Our final game with Slaton is a most important game for us, and finishing the year on a positive note would be real

good for all of us. It's not going to be easy, Slaton has a real good football team. They have their entire backfield back from last year and were one of the pre season picks to win District this year. They have had a lot of injuries and have had a slow start, but most will be back in the line up this Friday night.

They have a real strong running game led by Sr. running back Gerald Lacy. All three QB's have been hurt but Garrett Gamble should be ready to go this week. They have good size and strength in the line and play a tough odd or "S" defense with a lot of stunts. We will have to play well and be "heads up" to beat Slaton this Friday. I do believe our kids are not the type to go down without a fight, they have too much pride to do otherwise. I believe we will have a good game with Slaton. We do need a victory and I believe you will see the Whirlwinds scrapping and giving what it takes to beat Slaton this Friday night.



FLOYD COUNTY CHAMPS the Floydada Whirlwind varsity football team.

7th grade outscored by Idalou Cats

Floydada and Idalou proved to be closely matched the first quarter of this ball game as neither team scored the first quarter.

Second quarter Floydada scored on a 1-yard run by Danny Caballero. The pass for the extra points failed.

Later on in that same quarter, Idalou scored on a 60-yard run. Their run for the extra points was good making the score at the end of the half Floydada 6, Idalou 8.

The third quarter was also scoreless, but in the fourth quarter, Idalou scored on a 25 yard pass play. Their run for the extra point failed.

Floydada had possession of the ball on the Idalou 5 yard line when time ran out.

The final score was Floydada 6, Idalou 14.

Coach Lee Hurt named Chad Quisenberry and Danny Caballero as outstanding offensive players and Leonard King and Fernando Gonzales as outstanding

defensive players.
The 7th grade plays here Thursday beginning at 5 p.m.

8th grade dominates Idalou game Thursday

The Floydada eighth grade scored 28 points against Idalou and held them to only 8 points in a Floydada dominated game last Thursday night. Floydada scored on a 30 yard pass from Ty Stovall to Randy Enriquez in the first quarter to put Floydada's first points on the board. The pass for extra points failed.

In the second quarter, Idalou had a sudden burst of energy scoring on a 35 yard pass play and ran in for their extra two points making the score 6 to 8 in Idalou's favor.

It didn't take Floydada too long to make sure the Cats were going to be kept well in hand.

A 67 yard run by David Medrano and a pass for extra points from Ty Stovall to Chad Pernell put the Breezers ahead of

the Cats 14-8.

Floydada scored again before the half was over on a 43 yard pass from Ralph Casillas to Chad Pernell. Their run for extra points failed.

It took the third quarter to get warmed up again but in the fourth quarter Floydada scored on a 75 yard pass from Ty Stovall to Ralph Casillas.

On the ensuing kick off, Floydada scored a safety bringing the final score Floydada 28, Idalou 8.

Outstanding offensive players named were Ty Stovall, Ralph Casillas and David Medrano.

Outstanding defensive players named were Julio Flores and Chad Pernell.

The eighth grade plays here Thursday beginning around 5 p.m.

R. C. Andrews expresses thanks for strong support

The faculty and students of R.C. Andrews Elementary School wish to thank the parents and friends of our school for the excellent reception given to our Halloween Carnival last Saturday night.

We feel that it is a worthwhile activity since it offers a safe place for children to enjoy Halloween and the proceeds from the carnival are used for improvements in our school.

Special thanks to Thompson Pharmacy, Moore-Rose Funeral Home, High School Student Council, Bill Race, Kirk & Sons, and Sears for donating and lending us props and prizes.

Financial report is shown below.

1983 Halloween Carnival	
Gross	\$1615.37
Snack Bar	485.08
Country Store	207.80
Tickets, etc.	922.49
(Carnival)	
Expenditures	302.86
Net Profit	1312.41

Preston Watson, Principal



THEY FLOYDADA VARSITY CROSS-COUNTY TEAM won their district last week at Lubbock. Pictured are back l-r Danny Degollado, Steve Garza, Alvin Cooper, Leif Younger and Noe Soliz. Front l-r Jimmy Espinoza, Ralf Espinoza, Alfred Medrano, and Able Nolan. Not pictured Manuel Suarez.

BRETT R. GILL
TAX SERVICE
Tax Returns and Bookkeeping Service
CALL 847-2563

DIANNA AND MARY ENRIQUEZ
Countryside Flea Market & Diner
101 N. 12th, Floydada 983-5856

Medicare has holes in it.
CATES & DAWSON
210 W. Houston 983-5322
TIME INSURANCE COMPANY

Don't you know cats hate water?
You're going for a swim, Kitty!
Cats like fish, but not those kind.
SPELLO
AUSTIN EDWARDS

RED X YOU SAVE MORE HERE
FUEL STOP 6 pack 12 oz. cans Pepsi \$1.49
Steak sandwich basket \$1.49
Smokie link on bun 89¢ Nachos 69¢
(10' extra sauerkraut or chili)
Bar-B-Q sandwich 75¢ Hot steak plate \$1.99
(fries—toast—gravy)
Sit Down Dining Available
520 East Houston New Store Hours 6 am to 11 pm 983-3028

Summit Savings Money Rates

	MONEY MARKET CERTIFICATE	SMALL SAVERS CERTIFICATE	MONEY FUND	NOW OFFERING 1 YEAR CD
RATE	9.250%	10.50% COMPOUNDED DAILY 11.070% YIELD	9.25%	10.750%
EFFECTIVE THRU	11-9-83	11-9-83	11-9-83	11-9-83
MINIMUM TERM	6 MONTHS	18 MONTHS	NONE	
MINIMUM DEPOSIT	\$2500	\$1,000	\$2500	\$500
INSURANCE OF ACCOUNTS	\$100,000	\$100,000	\$100,000	\$100,000

NOTICE: As required by law, all certificates are subject to substantial penalty for early withdrawal.

We Invite You To "JOIN US AT THE TOP"
SUMMIT SAVINGS ASSOCIATION
HOME OFFICE - 6th & BALTIMORE, PLAINVIEW
OTHER BRANCHES
3000 OLTON ROAD IN PLAINVIEW, FLOYDADA, HALE CENTER, MULESHOE, LITTLEFIELD, FARWELL, PLANO, ALLEN, MATADOR and FRIONA
Member FSLIC

Alpha Sigma hosts carnival

Alpha Sigma Upsilon Chapter of Beta Sigma Phi used their powers on the old ADC office Saturday October 29 to transform it into a "hairsting" Halloween setting for their children. A variety of goolish characters, including hobos, Dart Vader, vampires, Raggedy Anns, rabbits, flappers, old women, cowgirls, angels, hula dancers, and cowboys.

Guest all enjoyed playing games such as throwing darts, spook house, milk can game, ring toss, tin can game, and bobbing for apples.

Everyone voted for the best costumes. David (Rastus) Ware won the

men's competition. Rhonda Guthrie won in the women's category. Shonda Guthrie won in the girls and Cody Nichols won in the boy's competition.

Large spooks attending were Rhonda and Larry Guthrie, Sheryl and Dale Derryberry, David and Vicki Ware, Jan Nichols, Gail DuBois, Barbara Edwards, Gail Thompson, Janice Potet, and Michelle Potet.

Smaller spooks were Regina and Shannon Ware, Shane Derryberry, Shonda and Chad Guthrie, Cody and Brynn Nichols, Cole and Christie DuBois, and Rusty and Tyson Edwards.

Refreshments consisting of decorated cookies and punch were served.



ALLSUP'S EMPLOYEES decorated their store for a Halloween contest between area Allsup's. Pictured are Jose Lopez and Olivia Bueno.

Trio attend area convention

Alpha Sigma Upsilon chapter of Beta Sigma Phi had the three members attending the Northwest Area Convention in Vernon, Texas October 22-23.

Those attending were Adeana Campbell, Rhonda Guthrie, and Vicki Ware.

There were around 265 sisters of Beta Sigma Phi attending the convention. The Vernon chapters held a banquet Saturday October 22 at 6:30 where supper was served, consisting of smoked turkey, ham, fruits, vegetables, cheeses, breads, punch with a flowing fountain and an ice carving of a swan as the centerpiece for the dessert table. After dinner everyone enjoyed a skit of the Roaring Twenties of "Franklin and Johnnie".

They also had a Charleston contest where a lady from Amarillo won.

Rhonda Guthrie won the centerpiece from the local group's table and Adeana Campbell won the balloon arrangement and a door prize.

Sunday, October 23 they all had "Brunch at the Gatsby". International guest speaker from Kansas City, Missouri was Brenda Evans, who gave a good speech and answered questions about Beta Sigma Phi. They had entered their scrapbook and yearbook but did not receive an award. Rhonda Guthrie won the door prize for Sunday. They also all received an area convention theme charm. Bids were made on where the convention would be next year and Pampa won the bid. Everyone said their goodby's and were on their way home.

Floydada Nursing Home Happenings

The residents appreciated the flowers which were shared by the Potet, Duke and Corley families. They were all so lovely.

Bro. Guess and our friends from Assembly of God Church were here Monday for devotion time. Janice was here Monday afternoon. Some of the residents did drawings again. This time they drew a picture of a pleasant experience. The afternoon developed into an afternoon of sharing experiences of the past, with one another.

We are reading a part of the twenty-third Psalm each morning at coffee time with discussion of Charles Allen's interpretation of these inspiring words of David. The Richardson's were here right after coffee time with devotion time and "the banana break". Tuesday afternoon there were ten residents who attended Bible Study.

On Wednesday morning our friends from City Park Church of Christ were here with devotion time and singing for the residents. We received a letter from Wendy Jackson who moved to a Nursing Home in San Saba a few weeks ago. Wendy is very happy there and is doing fine. She said that she does miss her friends here and she especially misses the delicious hot rolls which Dorothy Kerr, Annie Mergrone and Maria Segura make. She also said the food was not as good there as the food which Dorothy, Annie and Maria prepare here. We have some very good cooks!

Sue, Una, Ruth, Lura, Hallie, Emmitt, Bell, Ona, Addie, Bennie, and Mrs. Bernie played bingo Wednesday afternoon. Lura and Sue won the most games and Lura was the black-out winner.

Thursday morning Jessie Stewart joined the residents at "coffee time". The residents enjoy sharing their "coffee time" with visitors.

Thursday afternoon Addie, Emmitt, Sue, Lura, and Iva journeyed out on the bus trip. Evelyn took us around the countryside looking at all the lakes. Everyone enjoyed this so much. They could not imagine so much water...or so many lakes.

The companions n' caring volunteers came Thursday afternoon and decorated for the Halloween party which they are

Sheriff Fred Cardinal is presently in the Methodist Hospital in room 678 due to a bacterial infection in one eye. Mrs. Cardinal said he should be able to come home in a few days and that he was doing fine.



SHANNON EDWARDS, DIANA KAY WILSON, JOEY KEMP, JANA LAWSON AND JAMIE THAYER presented the skit for the pep rally before the Floydada-Idalou football game.

CAPROCK HOSPITAL NEWS

October 24-31
Earl Bishop, Floydada, adm. 10-9, dis. 10-21, Hong
Enoch Wickware, Floydada, adm. 10-10, dis. 10-25, Hale
Nannie Gafford, Floydada, adm. 10-13, dis. 10-24, Hong
Juanita Holly, Floydada, adm. 10-17, dis. 10-28, Hale
Mariana Polenda, Quitaque, adm. 10-21, continues care, Hong
Leona McNeil, Floydada, adm. 10-21, dis. 10-31, Jordan
Hong twin boys, Lubbock, born 10-21, dis. 10-27, Hong
Tom Ross, Floydada, adm. 10-22, dis. 10-27, Hale
Paula Porter, Floydada, adm. 10-24, continues care, Jordan
Opal Threadgill, Floydada, adm. 10-24, dis. 10-31, Hale
Cardellia Dixon, Matador, adm. 10-24, continues care, Hong
Sam Spence, Floydada, adm. 10-25,

dis. 10-28, Hale
Virginia Holland, Floydada, adm. 10-25, dis. 10-29, Jordan
Tommy Cathey, Jr., Floydada, adm. 10-26, dis. 10-31, Hale
Tom Emert, Floydada, adm. 10-26, dis. 10-31, Hong
Orland Howard, Floydada, adm. 10-26, continues care, Hong
Hattie Sanders, Floydada, adm. 10-27, continues care, Jordan
Frank Saenz, Idalou, adm. 10-27, dis. 10-28, Hong
Jake Watson, Floydada, adm. 10-28, dis. 10-31, Jordan
Faye Fry, Floydada, adm. 10-28, continues care, Jordan
Armond Cardinal, Lockney, adm. 10-28, dis. 10-31, Hong
Nicholas Rosales, Plainview, adm. 10-29, continues care, Hong
Audrey Aguilar, Floydada, adm. 10-30, continues care, Hong

Joyce Lloyd is in the intensive care unit of St. Mary's Hospital in Lubbock. Relatives said Tuesday that Mrs. Lloyd was progressing well and doing fine.

Senior Citizen Menu

November 7-11

Monday: Fried fish, catsup, tartar sauce, squash casserole, buttered peas, roll, butter, apple crisp and topping, milk

Tuesday: Enchiladas, pinto beans, Spanish rice, cornbread, butter, pineapple-banana-orange cup, milk

Wednesday: Lasagna, Italian vegetable tossed salad and dressing, garlic toast, apricot cobbler, milk

Thursday: Beef stew and vegetables, buttered broccoli, pineapple and cheese salad with mayo, cornbread and butter, spice cake, milk

Friday: Ground steak, mushroom gravy, Lyonnaise potato, cole slaw with carrots, hot biscuit and butter, peanut butter cookie, tomato juice, milk



Lakeview News

BY JOYCE WILLIAMS

The Lakeview oil well had reached a drilling depth of 7880 feet on Monday. A coliche road has been spread from the pavement to the rig. Water has been in the lake are starting to lower the supply dumped by rains.

Out in the farming area, the sun and wind have dried wheat fields enough that they can be planted. Cotton and milo fields are still to wet to support machinery for harvest. A light sprinkle fell over parts of the community Monday evening.

Mr. and Mrs. Martin Warren and children, Lelie, Will and Rebecca of Tahoka, arrived last Wednesday for a visit with her parents, Mr. and Mrs. William Bertrand, Jill and Faye and the children visited, while Martin attended the Floydada Livestock Auction.

Mrs. Viola Brown spent Sunday afternoon with her daughter and family, Mrs. Alene Hambricht, Billy Joe also their children, Kathy and Jerry Green and daughter, Heather, from Lubbock.

Mr. and Mrs. Blanton Hartsell and Mr. and Mrs. Don Harrison went to Flomot Monday morning to buy a supply of sweet potatoes. They returned home through Silvertown, where they stopped for a Mexican dinner.

Monte Westfall called from Alaska Sunday to invite his uncle, Williams Bertrand for a visit. Monte has made a career in the Air Force. He said it was snowing there and advised them to visit during another season.

Mr. and Mrs. James Williams and Mr. and Mrs. Monte Williams took their children, Austin, Ashleigh and Amanda, trick or treating among Lakeview neighbors Monday evening including stops by the Howard Bishops, Dee Arkanis and Q.D. Williams.

Miss Mary Ann Quilantan helped at the Halloween Carnival Saturday evening. On Sunday Mary Quilantan's sister called from Lubbock that they were driving over while the weather was pretty. So Mary got busy and cooked the

a big dinner. Guests included Rafaela and Joe Ramon and their little granddaughter, Janet.

Mrs. Harold Bertrand has been painting and freshening the trim on the outside of her house last week.

Roy Smith of Plainview visited Saturday with the Don Harrison.

Mrs. Rex Harrison helped with her son, Brandon's, Halloween party Monday. Jason is improving everyday, using a wheelchair at school and crutches at home, since his encounter with a riding lawn mower a few weeks ago.

Skys are grey this Tuesday, but no rain. Farmers naturally are hoping for sunshine to dry out the fields. The Progressive Farmer Magazine predicts colder and drier than normal for November in our area.

One-act plays to be presented

by Jana Lawson

Saturday and Sunday the Speech and Drama Club will perform their fall one-act plays at the high school auditorium.

In "At a Beetle's Pace" will star Matt Griffin and Teresa Franklin. "Touch The Bluebird Song" will be performed by Karen Lloyd and Stacey Williams. The entire performance with an intermission between plays will be approximately an hour and a half.

The crew consists of Rusty Galloway, Cindee Davis, James Fannon, Kevin Carter, and Laron Cheek. Jill Willson is in charge of publicity assisted by Lorie Knight and Steven Galloway.

The plays will be presented Saturday at 7:00 p.m. and Sunday afternoon at 2:00 p.m. Both performances will be presented at both times.

The costs will be a dollar for students K-12 and \$2 for adults. Children under school age will be admitted free.

Floydada School Menu

November 7-11

Monday:
Breakfast — Orange juice, toast, jelly, butter, milk

Lunch — Fish w/catsup, potato salad, early June peas, crushed pineapple cup, hot roll, milk

Tuesday:
Breakfast — Grape juice, pancakes, syrup, butter, milk

Lunch — Ham, mashed potatoes, green beans, fruit cup, hot roll, milk

Wednesday:
Breakfast — Pineapple juice, sausage, toast, milk

Lunch — Lasagna casserole, corn, cole slaw, peanut butter cookie, hot roll, milk

Thursday:
Breakfast — Apple juice, dry cereal, toast, milk

Lunch — Vegetable beef soup, pimento cheese sandwich, crackers, jello w/fruit, milk

Friday:
Breakfast — Orange juice, cinnamon toast, milk

Lunch — Char burgers, French fries, lettuce, tomato, pickle, peach cobbler, milk

SPECIAL SPECIAL SPECIAL

Antifreeze
Coupon good til 10-31-83

10% discount
with this coupon

COOP All sales cash

Consumer Fuel Assn.
Floydada

210 E. Missouri 983-3394

SPECIAL SPECIAL SPECIAL

★ ★ ★

KFBA

The Voice Of The
Caprock Country

900 AM Radio
Floydada, Texas

★

Your Clear Channel
Country Music Station

Complete News 7 Days A Week

DO IT NOW winterize your home and save...save...save

We have weatherstrip, caulking, insulation

10% Off
with this coupon

WILLSON & SON — BUILDERS MART

111 N. Wall 983-3113

FREE
To say thank you for your patronage this year,

we will check your anti-freeze thru the month of November at no charge!

SPECIAL THRU November
Genuine GM heavy duty shocks (most GM cars and 1/2 cars and 1/2 ton pickups)
\$12⁰⁰ each plus tax & labor

CITY AUTO INC.

Tel: 983-3767
201 E. Missouri
Floydada, Texas 79235
Lubbock 765-6143

Keep That Great GM Feeling With Genuine GM Parts.
GM QUALITY SERVICE PARTS
GENERAL MOTORS PARTS DIVISION

Great American

FOOD SALE



WE RESERVE THE RIGHT TO LIMIT QUANTITIES

WITH TENDER TIMER
U.S.D.A. GRADE 'A' SHURFRESH
10-14 LBS. AVG. SELF-BASTING

TURKEYS
69¢
LB.



SHURFRESH U.S.D.A. GRADE 'A'
BAKING 4-6 LBS. AVG.
HENS
LB. **59¢**

SHURFRESH BONELESS FULLY COOKED
HALF OR WHOLE

HAMS
\$1.99
LB.

EXTRA FANCY WASHINGTON RED OR
GOLDEN MIX OR MATCH
APPLES
LB. **49¢**

OSCAR MAYER SLI. MEAT
BOLOGNA 8 OZ. PKG. **69¢**
SHURFRESH PORK
SAUSAGE 1 LB. ROLL **99¢**
SHURFINE KIDNEY DARK
RED BEANS 3 15 OZ. CANS **\$1**
FRENCH SLICED OR
SHURFINE CUT GREEN
BEANS 3 16 OZ. CANS **\$1**
SHURFINE SLICED
BEETS 3 16 OZ. CANS **\$1**

SHURFRESH MEAT
FRANKS 12 OZ. PKG. **89¢**
SHURFRESH MEAT
BOLOGNA 12 OZ. PKG. **99¢**
SHURFINE C.S. W. K. GOLDEN
CORN 3 17 OZ. CANS **\$1**
SHURFINE SLICED
CARROTS 3 16 OZ. CANS **\$1**
SHURFINE
SPINACH 3 15 OZ. CANS **\$1**

SHURFRESH FULLY COOKED
HAMS CANNED 3 LB. CAN **\$6.29**
SHURFRESH THIN SLI. SMOKED
MEATS ASSTD. 2 1/2-3 OZ. PKG. **39¢**
FRESH SHELL
SHURFINE BLACKEYED
PEAS 3 16 OZ. CANS **\$1**
SHURFINE WH.-SLI. IRISH
POTATOES 3 16 OZ. CANS **\$1**
SHURFINE
SAUERKRAUT 3 16 OZ. CANS **\$1**

ALL PURPOSE RUSSET
POTATOES 10 LB. BAG **\$1.19**
SWEET
POTATOES LB. **29¢**
CALIFORNIA RED EMPEROR
GRAPES LB. **59¢**
OCEAN SPRAY 12 OZ.
CRANBERRIES PKG. **89¢**
GOLDEN SWEET PIE
PUMPKINS LB. **19¢**
CALIFORNIA HEARTS
CELERY PKG. **79¢**
SWEET YELLOW
ONIONS LB. **19¢**

GRANULATED SHURFINE SUGAR
\$1.49
5 LB. BAG

ALL PURPOSE SHURFINE FLOUR
69¢
5 LB. BAG

SHURFINE R.T.S. VANILLA FUDGE
FROSTING 16 OZ. CAN **99¢**
ASSTD. SHURFINE
CAKE MIXES 18 1/2 OZ. BOX **59¢**

ALL GRINDS SHURFINE COFFEE
\$1.89
1 LB. CAN

SHURFINE MACARONI AND CHEESE
DINNERS 4 7 1/2 OZ. BOXES **\$1.00**

SHURFINE WHITE-GOLDEN
HOMINY 4 15 OZ. CANS **\$1.00**

SHURFINE TOMATO
CATSUP 32 OZ. BTL. **99¢**

32 OZ. **COKE,**
Diet, Caffeine Free
\$1.45 plus deposit

GROCERIES
BLUE OR ALL PURPOSE SHURFINE POWD.
DETERGENT 49 OZ. BOX **\$1.29**
SHURFINE
BLEACH GAL. JUG **79¢**
SHURFINE CHUNK STYLE
DOG FOOD 25 LB. BAG **\$3.99**
SHURFINE MANDARIN
ORANGES 2 11 OZ. CANS **\$1**
SHURFINE TALL KITCHEN
BAGS 15 CT. BOX **99¢**
SHURFINE WHITE BATHROOM
TISSUE 8 ROLL PKG. **\$1.39**
SHURFINE FABRIC SOFTENER
SHEETS 40 CT. BOX **\$1.39**
SHURFINE WATER SOFTENER
PELLETS 40 LB. BOX **\$2.99**
SHURFINE EVAPORATED
MILK 2 13 OZ. CANS **89¢**
SHURFINE COFFEE
CREAMER 16 OZ. JAR **99¢**
SHURFINE PANCAKE
MIX 32 OZ. BOX **79¢**

SHURFINE ALUMINUM
FOIL 2 12" x 25' ROLLS **\$1**
SHURFINE INSTANT
RICE 28 OZ. PKG. **\$1.59**
SHURFINE GLASS
APPLESAUCE 25 OZ. JAR **69¢**
CRUSH-CHUNK-SLICED
SHURFINE NAT. JUICE
PINEAPPLE 15 1/4 OZ. CAN **59¢**
SHURFINE FANCY TOMATO
JUICE 46 OZ. CAN **79¢**
SHURFINE E. H. SWEET
PEAS 2 17 OZ. CANS **89¢**
SHURFINE AU-GRATIN-SCALL.
POTATOES 5 1/2 OZ. BOX **69¢**

FROZEN & DAIRY
SHURFINE FRO. ORANGE
JUICE 12 OZ. CAN **69¢**
SHURFINE ASSTD. SQUARE
ICE CREAM 1/2 GAL. CTN. **\$1.29**
SHURFINE FRO. GRAPE
JUICE 12 OZ. CAN **69¢**
SHURFINE FRO. CHOPPED
BROCCOLI 10 OZ. PKGS. **2 \$1.00**

SHURFINE WH. PEELED
TOMATOES 2 16 OZ. CANS **89¢**
SHURFINE TOMATO
SAUCE 5 8 OZ. CANS **\$1.00**
SHURFINE PINK
SALMON 15 OZ. CAN **\$1.79**
SHURFINE GRAPE
JELLY 18 OZ. JAR **79¢**
SHURFINE CRNCHY-CRMY PEANUT
BUTTER 18 OZ. JAR **\$1.19**
SHURFINE LIGHT CORN
SYRUP 32 OZ. BTL. **89¢**
SHURFINE MARASCHINO RED
CHERRIES 6 OZ. JAR **59¢**

SHURFINE FRO. CUT
CORN 2 10 OZ. PKGS. **\$1.00**
SHURFINE FRO. MIXED 10 OZ.
VEGETABLES 2 PKG. **\$1.00**
SHURFINE HASH BROWN
POTATOES 2 LB. PKG. **89¢**
SHURFINE FRO. VEGETABLE
SOUP MIX 16 OZ. PKG. **89¢**
SHURFINE BTRMILK-SWT.
BISCUITS 8 OZ. CANS **6 \$1.00**

SHURFINE STUFFED MANZ. THROWN
OLIVES 7 OZ. JAR **89¢**
SHURFINE CUCUMBER
CHIPS 16 OZ. JAR **79¢**
SHURFINE HAMBURGER SLICED
DILLS 32 OZ. JAR **99¢**
SHURFINE
MUSTARD 2 16 OZ. JAR **\$1.00**
SHURFINE ASSTD. SIZES
CANDY 2 PKGS. **\$1.00**
SHURFINE IMITATION
VANILLA 6 OZ. BTL. **49¢**
SHURFINE APPLE
BUTTER 28 OZ. JAR **89¢**
COLBY LONGHORN OR CHEDDAR
SHURFINE HLFMOON
CHEESE 10 OZ. PKG. **\$1.29**
SHURFINE CINNAMON
ROLLS 9 1/2 OZ. CAN **99¢**
SHURFINE IND. SLI. AM.
CHEESE 12 OZ. PKG. **\$1.39**
SHURFINE CREAM
CHEESE 8 OZ. PKG. **79¢**
SHURFINE FRENCH ONION
DIP 8 OZ. PKG. **39¢**

SHURFINE COTTON
SWABS 180 CT. PKG. **79¢**
SHURFINE 5 GRAIN
ASPIRIN 100 CT. BTL. **59¢**
SHURFINE NAIL POLISH
REMOVER 4 OZ. BTL. **49¢**
SHURFINE SKIN CARE
LOTION 16 OZ. BTL. **99¢**

NEW STORE HOURS: Monday thru Saturday 8 a.m. - 8 p.m.
Sunday 9:00 a.m. - 7:00 p.m.

PRICES EFFECTIVE
OCT. 30-NOV. 12, 1983.



SHOPRITE

309 South Wall
Floydada, Texas



Landscape & Gardening

by Benny J. Butler

ENVIRONMENTAL FACTORS AFFECTING INDOOR PLANTS

Success with plants in the interior landscape depends on the need to choose the right plant for the environment in which it is placed and the care and maintenance they will receive. The environmental factors having the greatest influence on plant survival in the home are light, air, humidity, soil, soil mixture, temperature, and fertilizer. We will address the first three this week and take up the rest next week.

Most plants failures in the home are due to the use of the wrong plant or failure to provide the proper environment for the plant.

Factors Affecting Plant Growth

1. Light—Without light, green plants cannot manufacture food, and soon die. The first step in growing good house plants should be to choose the right plant for the available light, and then adjust other growth factors accordingly. Many houses shut out much of the sunlight, and as a result, only shade loving plants can be grown there. For a variety in house plants, sunny as well as shady windows are needed.

House plants are generally classified according to their light intensity requirements as follows — direct-sun, partial-shade, or shade.

Direct-sun plants are chiefly and flowering plants such as geranium, Christmas cactus, poinsettias, wax begonias, and kalanchoe. Some of the foliage plants, cacti, and succulents which do well in the direct sun are the Wandering Jew, snake plant, sedum, Moses-in-the-Bullrushes, cactus, and the artillery plant.

These direct-sun plants should be located so that the sun shines directly on the leaves. They grow well in south windows, but may be placed in east or west windows providing they get several hours of direct sun each day. No flowering plant should ever be put in shade for more than a short time if the plant is to remain in good condition.

Partial-shade plants include flowering and foliage plants which grow best in a few hours of direct sun in winter, but do better in light shade in other seasons. These are suited to east and north windows. Examples are African violet, gloxinia, caladium, orchid, and tuberous begonia. The Boston fern, Chinese evergreen, croton, dracaena, dumbcane, grape ivy, peperomia, and rubber plant also do well in partial shade.

The **shade tolerant plants** are chiefly the foliage plants which will grow in north windows. A few such plants are the Chinese evergreen, fiddle leaf fig, grape ivy, peperomia, rubber plant, snake plant, and the dumbcane.

In poorly lighted areas of the home, plants can be grown by supplementing daylight with artificial light. Supplementary lighting can be provided by using recessed spotlights in hallways, planters, and room dividers, or by placing the plants under reading lamps for four or five hours at night. Daylight type fluorescent light provide a good light source for plants and are easily concealed in bookcases, unused firepla-

ces, etc.

2. Humidity — Most house plants will tolerate a relative humidity of 40 to 60 percent. There are several ways to increase the humidity. Plants can be put in shallow-water-tight trays filled with a few inches of crushed stone or sand, and the stone or sand material kept constantly moist. The plants, however, should not be sitting in water. Evaporating pans of water placed on radiators will help. Humidifying devices on hot air furnaces should be kept filled with water. Plants that require excessively high humidity should be grown in a terrarium.

3. Air — Carbon dioxide, essential for food manufacture by plant, is seldom a limited factor in the atmosphere of the home. Good ventilation is essential in the winter time, however, because most house plants are very sensitive to gas fumes evolved from stove and heaters that do not burn properly. Avoid drafts.

Air is most usually a limited factor around the roots of house plants. (Refer to next week's comments under soil mixtures.)

Educational programs conducted by the Texas Agricultural Extension Service serve people of all ages regardless of socioeconomic level, race, color, sex, religion, or national origin.

Home Economics Today

By Mary True

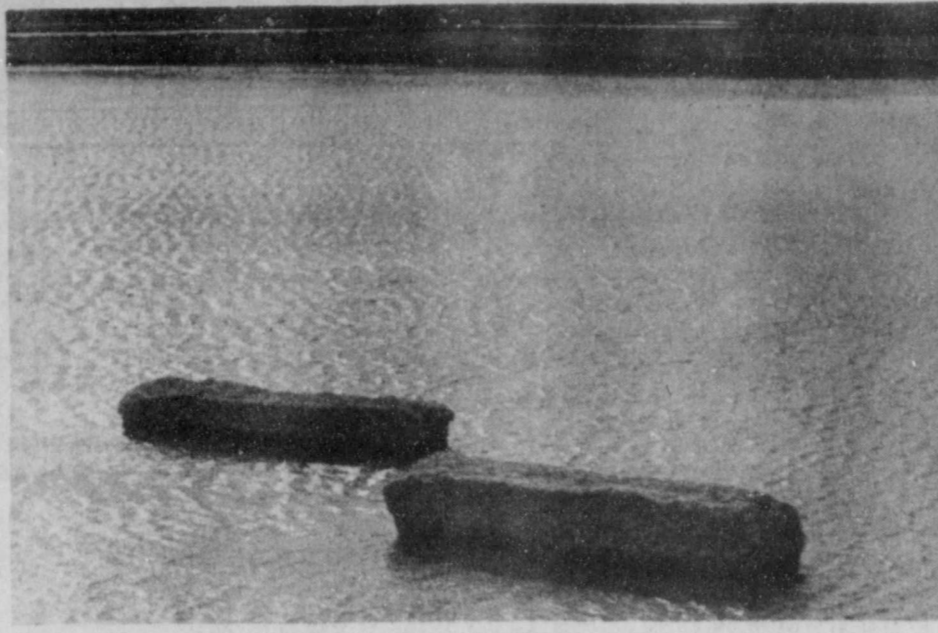
Thrifty consumers know that comparison shopping can save money. But, until recently, it was not easy for shoppers to compare energy efficiencies and operating costs for home appliances.

Now, by using the ENERGYGUIDE label, you can quickly compare the energy efficiencies and estimated annual operating costs for major appliances (those which use a large amount of energy). These labels to be attached to the appliances, will be in plain view in showrooms and at retail outlets. Similar information on efficiencies and estimates for operating costs will be

Meat, poultry hotline now available

How long can meat, meat products and poultry be stored? Can thawed meat be re-frozen? What is the difference between government inspected and government graded beef?

According to Texas A&M University Agricultural Extension Service home economists, the answer to these and other questions about the wholesomeness and safety of meat can be provided by calling the Meat and Poultry Hotline. The hotline is a service provided by the USDA's Food Safety Inspection Service. The telephone number (202-472-4485) is not toll-free. But long-distance callers can leave their name and number and the government representative will call back.



THIS AERIAL VIEW SHOWS modules of cotton about 8 miles north of town are just a bit water logged from the rains Floyd County received in October. There is about 2 feet of the modules of cotton protruding from the flooded cotton field.

TSTI representative to speak at FHS

Georgette Pond, Admissions Representative for Texas State Technical Institute in Amarillo, will be at the Floydada High School on Thursday, November 17. She will be talking to students about the programs and training offered at TSTI-Amarillo.

Those programs include: Auto Body Repair, Aircraft Mechanics, Auto Mechanics, Boot and Shoe Operations,

Commercial Art in Advertising, Computer Science Technology, Construction Technology, Cosmetology, Drafting and Design Technology, Diesel Mechanics Technology Electronics, Interior Design, Industrial Instrumentation Technology, Machine Shop Operations, Mechanical Electrical Technology, Meat Processing and Marketing, Professional Truck Operations, Saddle and Tack Making, Technical Office Training, Transport Refrigeration Mechanics, and Welding and Fabrication.

Pond will give her presentation in TSTI's Mobile Career Center which seats 25 students comfortably and is equipped with a video tape playback unit and screen.

South Plains News

By Mrs. Murray Julian

South Plains, October 31:

Today is Halloween, October 31, and around the nation the spooks and the goblins will be out. It is a cold, foggy and gray day, and just the setting for the little hobgoblins. Here at the South

Plains School there will be a Halloween Carnival at night with lots of games, eats, and fun for everyone. Everyone will be coming masked. The party will start at 6:00 p.m. and go on until 9:00 p.m. Everybody should watch out for little ones on the roads or sidewalks this time of year!

Sunday visitors at the South Plains Baptist Church included Keith Marricle of Lubbock and Mrs. Bernice Sandusky of Denver, Colorado. There were around fifty who gathered Sunday morning for High Attendance Day Sunday, October 30. After preaching services Rev. Cecil and Joyce Osborne and the church people gathered in Fellowship Hall where a bountiful turkey dinner with dressing and gravy and every kind of delicious food was served to everyone.

Remember it is a privilege to be able to vote on Tuesday, November 8, and you will want to study the two ballots we will have in Floyd County. Read the explanation given on the front page of the Hesperian for October 27, so you will know how to vote. But please do vote.

Rev. and Mrs. Cecil Osborne went to Muleshoe to spend Saturday with Mrs. Osborne's mother, Mrs. Corda Taylor, and they enjoyed a gathering of relatives who came to spend the day.

G.A.'s of the South Plains Baptist Church will have their first meeting on November 6, Sunday evening at 5:30 p.m. before church services. Any little girl from 1st grade to 6th grade will be eligible to become a G.A. Mrs. Kay Bethel will be the GA leader, and Mrs. Connie Johnson will be the assistant G.A. Leader. Please bring your little girl and become a part of this wonderful organization.

Daylight Saving Time officially ended at 2:00 a.m. Sunday morning, and clocks were turned back one hour in this time zone. Central Standard Time will prevail until the last Sunday in April.

The Baptist General Convention will meet in Amarillo this Tuesday, Wednesday and Thursday at the Civic Center. S.M. Lockridge of California will be one of the great speakers at the meeting. The South Plains Baptist Church people will go to the Convalescent Home in Lockney on Sunday, November 13, at 3:00 p.m. to hold services for all those in the home.

Several of our farmers here have cotton dry enough in their fields so that they may be able to strip some this week. Some fields are still very wet from the hard rains which we had two weeks ago.

Mrs. Letha Mulder will be hostess to the South Plains Hobby Club at Floydada on November 9th, Wednesday at 2:00 p.m. There will be a Food Demonstration by Mary True, and she will be demonstrating cookies and foods for November and December holiday goodies. Mrs. Lillie Mae Milton will be bringing Thought For The Day.

Newlywed couple Mr. and Mrs. Blake Kitchens of Lubbock spent the weekend here in South Plains with their parents, Mr. and Mrs. Ronald Kitchens and Meredith. The couple were united in marriage on October 15, at the Highland Baptist Church in Lubbock and we wish them happiness in their wedded life. Blake is associated with an investment firm in Lubbock and the young couple make their home there.

Mr. and Mrs. Bruce and Janet Julian, Clay and Wade of Perryton came to Clarendon Wednesday night of last week, and they met Mr. and Mrs. Kendis and Janis Julian and Tim, and Mrs. M.M. Julian and Mrs. B.E. Sandusky of Denver, Colorado there, and all enjoyed a delicious dinner together at Mrs. Bromley's Dining Room where they visited together.

FLOYDADA COOPERATIVE GINS INC. Floydada 983-2884
FIRST NATIONAL BANK OF FLOYDADA Floydada 983-3717
FLOYD COUNTY IMPLEMENT Floydada 983-3732
RUSSELL'S EQUIPMENT & SUPPLY Floydada 983-3751
PATTERSON GRAIN CO. 652-3393 Lockney Lone Star
MUNCY ELEVATOR Lockney 652-3100
MARTIN & COMPANY Floydada 983-3713
MORTON BUILDINGS HAROLD JOHN R. HUNTER RT. 1, BOX 1988, 127 SOUTH PLAINVIEW, TEXAS RESIDENCE (806) 295-6530 OFFICE (806) 293-4288
FEDERAL LAND BANK ASSOC. OF FLOYDADA Floydada 983-2480
ADAM'S WELL SERVICE Floydada 983-5003
PRODUCTION CREDIT ASSOC. Floydada 983-2454
FLOYD COUNTY FARM BUREAU Lockney 652-2242 Floydada 983-3777
FLOYDADA IMPLEMENT CO. Floydada 983-3584

Cotton Perspective

by Benny Butler

The United States has produced its smallest cotton crop in 16 years, about three million bales less than in 1982. Total 1983 production is coming in at just under 16 million bales, much less than anticipated earlier in the season.

With foreign production up, the United States is left bearing the burden of reducing world cotton stocks. Because of the U.S. decline, the world crop will stay about the same as last year's, falling only slightly.

The September estimate for Texas cotton production was 2.35 million bales, the smallest upland crop since 1946. Texas growers harvested about 3.5 million acres of cotton, which is less than half of their farm program base of more than 8 million acres.

Prospects clearly indicate that American farmers will increase planted acreage in 1984. With the national acreage base exceeding 15 million, it's hard to foresee a 1984 cotton program strong enough to considerably reduce planted acreage. Assuming favorable weather, the 1984 crop will probably add to stocks and weaken market prices. So pricing a

large part of next year's crop early, probably well before planting, seems advisable. Only adverse weather in the United States, China or Russia is likely to reduce 1984 global production below consumption.

BISHOP PEST CONTROL

Tree & Lawn Spraying

Termites: Pier & beam or sub-slab injection

Household insect control

Mike Bishop, M.S.

(806) 983-2198

TX. Bus. Lis. 5021

PCL Lis. 26855

Morrison Spraying Co.

Drawer 208 Petersburg (806)667-2277

Aerial Application

Acid defoliation \$5⁰⁰ per acre applied

Paraquate defoliation \$8⁰⁰ per acre applied

All work guaranteed

Find the best advertised price in the area and we will meet or beat that price

Top Quality Products and Service At A Fair Price

"We serve agriculture and agriculture serves everyone."

Farm Bureau members: We have your tire, battery and tillage tool needs.

TOP KICK

Quality American Made Products To Fit Your Everyday Needs

TOUGHEST

High productivity tillage tools for Farm Bureau Members.

SAFEMARK

Sponsored by Floyd County Farm Bureau. See your local Safemark dealers:

Tipton Oil Company
119 E. Houston
Floydada, Texas Phone 983-3144

Jackson Tire Company
101 South Main
Lockney, Texas Phone 6652-3366

Hardy Cotton, Inc.

675-2313 "Striving to serve our West Texas Farmer" 762-6237

To serve you better, we have changed to a rotary number. Our Lubbock telephone number remains the same...

762-6237.

Our new Crosbyton number is 675-2313

PUBLIC NOTICES

NOTICE OF HEARING

On 16 Jan. 84 at 8:30 A.M. at the Federal Commissions Commission, 1919 "M" Street, NW, Washington, DC 20554, there will be a hearing to determine whether Lilly Amador or Billy D. Pirtle should be awarded a construction permit to build a new FM radio station on channel 237A (95.3 MHz) at Floydada, Texas. The issues of the hearing will be: 1) to determine which of the proposals would, on a comparative basis, best serve the public interest and 2) to determine which of the applications should be granted, if any. A copy of the application and related material for the applicant Lilly Amador are on file for public inspection at the Floydada Chamber of Commerce, 107 West California, Floydada, Texas 79235, during normal business hours.

NOTICE TO BIDDERS

The City of Floydada, Texas will receive sealed bids at the office of the City Secretary at 114 W. Virginia Street until 5:00 P.M., November 8, 1983 and then opened and publicly read at a Regular Meeting of the City Council at 7:30 P.M., in the City Council meeting room at the City Office for the following:

Computer System and Software capable of the following municipal government applications:
 1. Budgetary Accounting
 2. Utility Billing
 3. Payroll/Personnel

INSTRUCTIONS:

- Information concerning the above applications may be obtained from the City Secretary, 114 W. Virginia St. Floydada, Texas
- Bids will be opened on November 8, 1983 and will be awarded at that date or at a subsequent meeting of the City Council.
- The City Council of the City of Floydada, Texas reserves the right to accept or reject any or all bids submitted.

Parnell Powell
Mayor

Attest:
Jimmie Lou Stewart
City Secretary

PUBLIC NOTICE

The City of Floydada has completed the 1983 Survey of Local Government Finances Municipal and Townships as required by the Office of Revenue Sharing. Such report has been filed with the Bureau of the Census. This report is now available in the office of the City Secretary and may be examined by the general public during regular office hours.

/s/ Jimmie Lou Stewart
City Secretary
11-3c

PUBLIC NOTICE

The report on the uses of General Revenue Sharing Funds for fiscal year 1982 has been submitted as required by U.S. Department of Commerce. The report is available for public inspection on weekdays at the County Auditors office at the Floyd County Courthouse, Room 102, between the hours of 8:30 a.m. to 5:00 p.m.



PROCLAMATION

WHEREAS, the average age for the first use of the illegal drug, marijuana, by our youth is now only twelve years of age; and

WHEREAS, two out of three American youth experiment with illicit drugs before graduation from high school; and

WHEREAS, drug and alcohol abuse have become a way of life for, affected the future of, and directly caused the untimely deaths of many young Texans; and

WHEREAS, strong State laws and dedicated efforts by Federal, State and local law enforcement officers can only scratch the surface of a well-organized drug network; and

WHEREAS, only through awareness and education of citizens of all ages will we be able to effectively battle the chemical epidemic; and

WHEREAS, a unique and powerful two-part drug and alcohol abuse program called "The Chemical People" will be televised throughout Texas and the nation over all public broadcast stations at 7 p.m. on November 2nd and 9th.

NOW, THEREFORE, I, Parnell, Powell, Mayor of Floydada, do hereby designate the month of November, 1983, as

CHEMICAL PEOPLE MONTH

in Floydada and urge all citizens to view this timely and most important public service program and to participate in community meetings and panel discussions designed to develop local plans of action to turn the tide against illicit drug and alcohol abuse by the young people of this city.

Parnell Powell
10-28-83

A-1 MOBILE HOMES

Don't Rent - Invest in your own home.
 Low Easy Payments - Low Low Down
 Just Married, Retired, Transferred, Lake or
 Vacation Homes
 NEW—USED—REPOS

WE NEED TRADES
 CALL FOR DETAILS
 AND FREE APPRAISAL

L. T. COOPER Housing Consultant

Free Delivery - Set Up - Anchoring

2000 N. UNIVERSITY
 LUBBOCK, TX 79415

CALL COLLECT [L.T.]
 (806) 763-5319

NOW RENTING — 62 and older



Mid-Tule Village
 321 S.E. 7th Street, Tulia, Texas
 1 and 2 bedroom

Your rent will be 30% of your adjusted income.

CHURCH DIRECTORY

CEDAR HILL ASSEMBLY OF GOD CHURCH

Rev. Vance Mitchell
 Sunday School 10:00 a.m.
 Morning Worship 11:00 a.m.
 Evangelistic Service 6:00 p.m.
 Wednesday Bible Study 7:00 p.m.

ASSEMBLY OF GOD CHURCH

Lockney
 Sunday School 10:00
 Morning Worship 11:00
 Evening Worship 7:00
 Prayer Service Wed. 7:00

LOCKNEY LATIN ASSEMBLY OF GOD

Manuel Rendon, Pastor
 Sunday School 9:45
 Morning Worship 11:00
 Evening Worship 7:30
 Men's Fellowship, Tuesday Evening 8:00
 W.M.C. Thursday 8:00
 Christ's Ambassadors, Saturday Evening 7:30

SPANISH ASSEMBLY OF GOD TEMPLO GETSEMANI

308 E. Mississippi
 A.C. Botello, Pastor
 Sunday School 10:00
 Morning Worship 11:00
 Evening Evangelistic Service 6:00
 Wednesday, Family Night 7:30

CARR'S CHAPEL

Rev. Jerry Kunkel
 Petersburg Pastor
 Services Every Sunday
 Morning Worship 9:30 a.m.
 Sunday School 10:30 a.m.
 No Evening Services

FIRST ASSEMBLY OF GOD CHURCH

Floydada
 Pastor Jim Guess
 Sunday School 9:45 a.m.
 Morning Worship 10:50 a.m.
 Service 5:00 p.m.
 Sunday Evening Evangelistic 6:00 p.m.
 Wednesday Night Service 7:00 p.m.
 Thursday Womens Missionary 9:00 a.m.

SAN JOSE CATHOLIC CHURCH

Lockney
 Father Terry Burke, Pastor
 Sunday morning Mass 9:00
 Saturday Evening Mass 8:00
 Wednesday Evening 8:00 p.m.
 Friday Evening 8:00 p.m.
 Confessions Saturday 6:30

ST. MARY MAGDALEN CATHOLIC CHURCH

Floydada
 Father Terry Burke
 Sunday Mass 10:30 a.m.
 Monday Mass and Ultreya 9:00 p.m.
 Thursday Mass 9:00 p.m.

CITY PARK CHURCH OF CHRIST

Floydada
 Perry Zumwalt, Minister
 Sunday Bible Study 9:30 a.m.
 Morning Worship 10:30 a.m.
 Evening Worship 6:00 p.m.
 Wednesday Bible Study 7:30 p.m.
 Ladies Bible Study, Wednesday 9:30 a.m.

LATIN AMERICAN CHURCH OF CHRIST

Lockney
 Bible School 9:45
 Morning Worship 10:45
 Evening Worship 6:00
 Wednesday Service 8:00

CHURCH OF CHRIST

Lockney
 Ray Starnes
 Bible Study 9:30
 Morning Worship 10:30
 Evening Worship 6:00
 Wednesday Ladies Bible Class 9:30
 Bible Study 8:00

WEST COLLEGE CHURCH OF CHRIST

West College & Third, Lockney
 Frank Duckworth, Evangelist
 Sunday Morning Worship Services 10:30
 Sunday Evening Worship Services 6:00
 Wednesday Evening Prayer Services 8:00

WEST SIDE CHURCH OF CHRIST

Floydada
 Sunday Morning Worship 10:30 a.m.
 Sunday Evening 6:00 p.m.
 Wednesday Evening 7:00 p.m.

CHURCH OF THE NAZARENE

Lewis Shapp, Pastor
 Sunday School 9:15 a.m.
 Morning Worship 10:45 a.m.
 Evening Worship 6:00 p.m.
 Wednesday Bible Study 5:30 p.m.

FIRST CHRISTIAN CHURCH [Disciples of Christ]

Minister, Karl Bunjes
 Sunday 9:45 a.m.
 Worship 11:00 a.m.

TRINITY LUTHERAN CHURCH

Providence Community
 Gary Kleypas, Pastor
 Sunday School & Adult Bible Class 10:00
 Worship Service 11:00

FIRST UNITED METHODIST CHURCH

Lockney
 Rev. Michael O'Connor
 SUNDAY
 Sunday School 9:45
 Worship Service 10:55
 UMY 5:00
 Evening Worship 6:00
 United Methodist Women. First Tuesday of Month Circles. Monday (2nd & 4th Monday nights) Tuesday & Wednesday mornings.

FIRST UNITED METHODIST CHURCH

Floydada
 Earl Blair, Pastor
 Sunday School 9:45 a.m.
 Morning Worship 11:00 a.m.
 Youth Fellowship 5:00 p.m.
 Sunday Evening Worship 6:00 p.m.

EVANS CHAPEL BAPTIST CHURCH

Rev. Bennie Anderson
 Pastor
 Sunday School 10:00 a.m.
 Morning Worship 11:00 a.m.
 Training Union 6:00 p.m.
 Evening Worship 7:00 p.m.
 Wednesday Prayer Meeting 7:00 p.m.
 Sunday Afternoon Worship 2:00 p.m.

PRIMER IGLESIA BAUTISTA

Rev. Agustin Rey
 Sunday School 9:45 a.m.
 Worship Service 11:00
 Training Union 5:00 p.m.
 Evening Worship 7:00 p.m.
 Prayer and Study Group Monday 7:30 p.m.
 Mid-Week Service Wednesday 7:30

TEMPLO BAUTISTA SALEM

Lockney
 Pedro Reyes
 Sunday School 9:45
 Worship Service 11:00
 Christian Training Time 5:00
 Evening Worship 6:00
 Wednesday Prayer Meeting & Choir Practice 7:30

BIBLE BAPTIST CHURCH

Floydada
 Bob Chapman
 Sunday School 10:00 a.m.
 Morning Worship 10:45 a.m.
 Sunday Evening Prayer Meeting 6:00 p.m.
 Sunday Evening Services 6:30 p.m.
 Wednesday Evening Services 7:30 p.m.

FIRST BAPTIST CHURCH

Lockney
 Murle Rogers, Pastor
 Sunday School 9:45 a.m.
 Morning Worship 11:00 a.m.
 Church Training 6:00 p.m.
 Evening Worship 7:00 p.m.
 Prayer Meeting, Wednesday 7:00 p.m.
 Adult Choir, Wednesday 8:00 p.m.
 High School Youth (B.Y.F.) Wednesday 7:00 p.m.
 G.A. and Mission Friends Wednesday 4:00 p.m.
 R.A.'s Sunday 5:00

CEDAR HILL BAPTIST CHURCH

Sunday School 10:00 a.m.
 Morning Worship 11:00 a.m.
 Evening Worship 7:30 p.m.

SOUTH PLAINS BAPTIST CHURCH

Rev. Cecil Osborne
 Sunday School 10:00 a.m.
 Morning Worship 11:00 a.m.
 Training Union 6:00 p.m.
 Evening Worship 7:00 p.m.

CALVARY BAPTIST CHURCH

Floydada
 Rev. Hollis Payne
 Sunday School 9:45 a.m.
 Morning Worship 11:00 a.m.
 Bible Study 6:00 p.m.
 Evening Worship 7:00 p.m.
 Wednesday Evening 7:00 p.m.

MT. ZION BAPTIST CHURCH

Floydada
 Otis Cook, Jr., Pastor
 Sunday School 10:00 a.m.
 Morning Worship 11:00 a.m.
 Bible Study 4:00 p.m.
 Evening Worship 5:00 p.m.
 Wednesday Prayer Meeting 8:00 p.m.

AIKEN BAPTIST CHURCH

Bruce Kirby
 Sunday School 10:00
 Morning Worship 11:00
 Training Union 6:00
 Evening Worship 7:00
 Prayer Service Wed. 7:30
 Brotherhood, W.M.U. and Auxiliary Wednesday 7:30

FIRST BAPTIST CHURCH

Floydada
 Floyd C. Bradley, Pastor
 Sunday School 9:45 a.m.
 Morning Worship 10:55 a.m.
 Church Training 6:00 p.m.
 Evening Worship 7:00 p.m.
 Wednesday Evening 6:45 p.m.

LONE STAR BAPTIST CHURCH

Floydada
 Sunday School 10:00
 Morning Worship 11:00
 Training Union 5:00
 Evening Worship 6:00
 Prayer Service, Wednesday Evening 6:30
 Brotherhood, First Saturday Morning of Every Month.

VICTORY BAPTIST CHURCH

Floydada
 Gary Grant, Pastor
 Sunday School 10:00 a.m.
 Morning Worship 11:00 a.m.
 Evening Worship 7:00 p.m.
 Wednesday Services 7:00 p.m.

NEW SALEM PRIMITIVE BAPTIST CHURCH

Floydada
 Joe M. Jackson
 Sunday Congregational Singing 10:00 a.m.
 Morning Worship 10:30 a.m.
 Evening Worship 6:30 p.m.

SPANISH BAPTIST MISSION

Floydada
 Eloy Felan, Pastor
 Sunday School 9:45 a.m.
 Morning Worship 11:00 a.m.
 Church Training 5:00 p.m.
 Evening Worship 6:00 p.m.
 Wednesday Evening 7:00 p.m.

If you appreciate your church directory, please let your sponsors know.

Adams Well Service

720 N. 2nd 983-5003

106 N. Main 652-3831

Byrd Pharmacy

320 N. Main 652-3353

City Auto

201 E. Missouri 983-3767

Consumer's Fuel

210 E. Missouri 983-3394

Davis Lumber Co.

102 E. Shubert 652-3385

Bill Gilbreath Exxon

101 N. 2nd 983-3323

Jackson Tire Co.

101 S. Main 652-3366

Lee's White Auto Store

119 W. College 652-2145

Lockney Coop Gin

W. of City 652-3377

Martin & Co.

216 S. Main 983-3713

Moore-Rose Funeral Home

402 S. Main, Lockney 652-2211
 329 W. California, Floydada 983-2525

Oden's Chevrolet-Olds.

221 S. Main 983-3787

Pay-N-Save

210 N. Main 652-2293

Plains Electric Co.

106 S. Main 652-2133

Reed Ford

Ralls Hwy. 983-3761

Schacht's Flowers & Jewelry

112 W. Poplar 652-2385

Thompson Pharmacy

200 S. Main 983-5111

Willson & Son

111 N. Wall 983-3113

Automotive

78 LTD, 4 dr., blue	\$2150
76 LTD, 4 dr., white	\$2350
78 Plymouth, 4 dr., yellow	\$1400
76 Cordoba, 2dr., white	\$650
75 Monza, 2dr., red	\$950
79 Pinto, 2 dr., 23,000 miles	\$2950
74 Mercury with new overhaul	
78 Luv Pickup	\$1650
75 Pinto, 43,000 miles	\$1850

W.B. Eakin Car Lot
Ralls Hwy. 983-3616

Farm Services

WE CUSTOM MAKE & FIT hydraulic hose for all types of machines. Brown's implement 983-2281. TFN

Portable disc rolling

Lawson Farm Supply Inc.,

Floydada 983-3940

Wanted

WANTED TO BUY irrigated or drvland farm in Floyd or surrounding area. Write Box XRO, c/o Hesperian, 111 F. Missouri, Floydada. tfn

VEGETABLES

The Lloyd's Tomatoes
are ready!
Call 983-2671

SWEET POTATOES, peanuts - roasted and salted or raw. 6 miles north of Flomot on farm road 599. Call 469-5389. L11-3c

Garage Sales

GARAGE SALE - 814 W. Georgia. Saturday only.

GARAGE SALE! 12 1/2 North of Lockney on HWY 378. November 4th, 5th, 8 a.m-6 p.m. 11-3p

GARAGE SALE. \$500 Sleepaire King-size set 300. Refrigerator, cook top, vacuum, small appliances, dishes, clothing, antiques, tools and misc. 6th house east of Lighthouse Electric. Saturday and Sunday.

Farm Equipment

GOOD 3-ROW ROOD, 1 module machine, 1 boll buggy, tractors optional. Machines are field ready. Call 405-726-3383. 11-10c

Something New
Shop & Browse
9 a.m. till 8 p.m.
Thursday, November 3rd

COLONIAL HOUSE
515 Ross St.
1/2 blk. west of VFW

Floydada Iron & Metal

We buy scrap iron, junk cars, aluminum cans, and batteries. We have new and used steel for sale.
Location - East Ross
Call 983-2305 Bus.
983-5277 Home

For Rent

INSIDE, boat storage or car or pickup or whatever. 215 S. Main. tfn

OFFICE FOR RENT: Newly remodeled with an interoffice. Combined floor space of 720 sq. feet. Call 983-3737. tfn

FOR RENT: Two bedroom house. 6 miles in the country, 1/4 mile off pavement. Call 983-5084 or 983-2722. tfc

NICE FURNISHED RUIDOSO CABIN. Now booking for November. Call 983-2912 for details. 11-10c

FOR RENT: Floydada 3 bedroom brick home carpet, fireplace, dishwasher, stove, central air, heat, 1 bathroom, fenced backyard, and patio. Available now deposit, references required. Call 296-9511 for Darlene. 11-3p

FOR RENT: 1 bedroom furnished apartment. \$150 month. Individual only. Phone 983-3979. tfn

ECONOMICAL STORAGE

TRY BARKER'S
Jewel Box-Mini Storage
and save your time and money.
Phone 652-2642.
Corner Main & Locust - Lockney, Texas.
Barker Building

STORAGE SPACE

West Texas Mini Storage
c/o Assiter Insurance
206 W. California
983-2511

Employment

CAPROCK TEMPS: RN's and LVN's
CAPROCK TEMPS
RN's and LVN's needed to work in temporary staffing pool. RN's salary up to \$12/hr., LVN's salary up to \$8.50/hr. Please contact Carol Smallwood, RN, 806-983-2875 ext. 39.

HELP WANTED: Need person who can announce on local radio station 4 hours daily, and sell radio advertising 4 hours daily. Call Mr. Bruce 983-5704 between 4 p.m. and 6 p.m. only.

GOOD PAY processing mail from home! No experience. Start immediately. Information, send self-addressed, stamped envelope. W.S. Distributors, Box 1587, Rahway, New Jersey 07065. 11-3c

GOVERNMENT JOBS - Thousands of vacancies must be filled immediately. \$17,634 to \$50,112. Call 716-842-6000, Ext. 32302.

Auto Parts & Accessories

E-Z RIDER SHOCKS by Monroe. Buy 3 and the 4th is FREE. Free Installation. Don's Muffler Shop, 210 W. California Floydada, Texas. tfn

DAN'S AUTO SERVICE

DAN TEUTON, Owner
Specializing in Automatic Transmission, Motor Tune-Ups, Auto Air Conditioning.
General Repair
We Have A BRAKE LATHE to handle all passenger car brake drums. See us for complete brake service.
Phone 652-2462

ALTERNATOR & STARTER REPAIRS

Norrell Tractor Parts
215 S. Main
983-3417

CUSTOM EXHAUST WORK

Bruce Williams
Specializing in Glass Packs and Turbo Mufflers
At
DANS AUTO SERVICE
652-2462

Professional Services

MONOGRAMMING
Zahn Turner 983-3355
Sweaters, shirts, jeans, towels, robes etc.

TREE TRIMMING

Keith Emert
652-3116

SIGNS AND ENGRAVING

Call 983-2603 11-10p

LET MOTHER HUBBARD'S Cleaning Service clean your home or business. Call now for appointment 983-5465 or 983-3010. tfn

"WE SELL SLEEP"

Direct Mattress Co. New or renovated. for appointment call City Trim Shop, 983-2332, Floydada. tfn

BILL'S SEWER SERVICE. Cleaning and installation. No mileage charge. 293-7740.

WILL DO BABYSITTING IN MY HOME. Any age, before school and after. 316 W. Tennessee, 983-5734. Call or come by.

CLASSIFIED RATE

The Hesperian - 983-3737
or
The Beacon - 652-3318

Per word	20 cents
First Insertion	15 cents
Minimum Chg. 1st Insertion	\$2.50
Second Insertion	\$1.50
Card of Thanks	\$3.00
Legal Notices	\$2.66 per column inch

Miscellaneous

FOR SALE: Floydada Country Club membership. Nite call 652-3129. Day call 652-2462. L11-3p

FOR SALE: 1979 Kawasaki 650. Call Dub Dippery at the First National Bank 652-3355. L11-17c

BARBIE DOLL CLOTHES. Write Box 67, Plainview, Texas 79072 for price list or call 806-296-9483. 11-10c

FOR SALE: New floor safes and fire safes. All kinds. Don Probasco. 983-3834. tfc

FOR SALE: 3-25" used RCA TVs, new picture tube. 2-portable RCA's Call Mize Pharmacy. tfn

B&R SECONDHAND stove, 2507 E. 5th, Lockney Hwy., Plainview, Texas. Stoves, refrigerators, bedroom and living room, washers, dryers, T.V. and misc. 78 Plymouth, 72 Cadillac, 78 Ford LTD, 72 Ford pickup and camper. 11-3p

SPINET PIANO FOR SALE good as new. Call 983-2272. 11-10c

FOR SALE: Red-X Fuel Stop, Warehouse, offices, property, equipment and stock. Sell or trade. Owner retiring after 35 years. Call 983-3028. 11-10c

GOSPEL SINGING
The Thomas Singers
First Assembly of God
Sunday, Nov. 13 6 p.m.
Jim W. Guess, Pastor

Houses

3 BEDROOM, BRICK HOME. 1 1/2 bath. Refrigerated air. 105 J.B. Ave. 983-3288. tfc

HOUSE FOR RENT Good Neighborhood: 3 bedroom, 1 bath, garage, fenced backyard, refrigerated air, central heat. Interested party should call 675-2940. 10-13c

FOR SALE: Six room house. Small utility house in back and unattached garage. Owner would consider finance with down payment and good references. Call 1-995-4249.

HOUSE WITH 5 ACRES of land. Borders city limits. Interior completely remodeled. Call 983-5708 after 7 p.m. tfc

FOR SALE: Several nice two and three bedroom houses. Loans can be arranged. Contact Sam Hale at Hale Ins. & Real Estate 983-3261. tfn

FOR SALE: Two bedroom, 1 bath house; central air and heat, carpet, panelling; fenced backyard, carport, storage room. 983-3362. tfn

FOR SALE: 3 bedroom, 2 bath trailer house. \$1500 down and take up payments. For more information call John or Elinor Rodriguez at 983-3329 after 7 p.m. 11-3c

HOUSE - 212 West Third. 2 bedroom, 1 bath, living room, dining room, storage house in back. Phone 293-2058 or 293-2837. L-tfn-c

FOR SALE
Completely remodeled, new roof, all fixtures new, new carpets throughout. Ideal for couple or small family. 983-2855. tfc

Remodel to your hearts content - Oversized rooms. Owner finance. Call Ilona Goen 765-5271 or 795-5506. Nita Kiesling Realtors tfc

FOR SALE: Duplex 308 S.W. 2nd St. Lockney. Newly decorated - Nice. Priced to sell - will finance. L11-3p

Business Opportunities

FULL TIME, PART TIME-Unusual opportunity for Sales Representative in this area. We offer both full time and part time sales positions. High income and opportunity for advancement. Knowledge of farm and industrial machinery helpful--special training when hired. Call collect 1-214-638-7400, 8:30-4:30 CST. 11-3p

\$100 PER WEEK PART TIME AT HOME. Webster, America's favorite dictionary company needs home workers to update local mailing lists. Easy work. Can be done while watching TV. All ages, experience unnecessary. Call 1-716-842-6000, Ext. 18269. 11-3p

SATELLITE ANTENNA dealerships available. No experience required. Dealer cost for complete unit as low as \$757. Retail \$1395. Call 303-574-4988. 11-3p

Card of Thanks

The family of Vera Ruth Duke would like to thank each and everyone for your expressions of love and sympathy at the time of our loss of our loved one. Special thanks are to Dr. Hong the nursing staff of Caprock Hospital and the staff of the Floydada Nursing Home. God bless each and everyone.

Gene Baird and families
Jackie & Edna Duke and families
Howard & Wanda Davenport & families
Billy Duke and families
Jimmy and Freddie Duke and families
Leonard & Babe Baird and families
11-3p

We want to thank each one of you who sent flowers, cards and abundance of food. Thanks to the ones who helped in the kitchen, and to those who attended services at Lubbock and here at Floydada and for my other kindness shown at the passing of our loved one. May God bless each of you is our prayer.

Will and Bea Martin
Huford and Carolyn Sue and family
Jesse Martin and family
Marsha Martin and family
11-3p

The family of Mary Ellen Wilson Burns would like to acknowledge the appreciation for everyone sympathy, their prayers, and food in our time of sorrow.

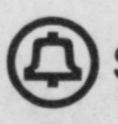
thank you
Her children
Brothers and sisters
L-11-3p

I would like to thank everyone that sent flowers and cards during my recent stay in Caprock Hospital and Lubbock Methodist Hospital. Your words expressing concern meant so much. My thanks also to the doctors and nurses of the hospital staffs for their care.

Juanita Holly
11-3c

Public Notice

Southwestern Bell, in accordance with rules and orders of the Public Utility Commission of Texas, hereby gives notice of its intent to re-file evidence and appropriate tariff(s) in support of a request to establish rates for the use of certain complex inside telephone wiring in the amount of \$54.5 million annually. This request was previously a part of the considerations in Docket 5141 and now has been re-docketed as Docket 5420. Customers who do not own the Complex Inside Wire associated with their Customer Premises Systems (such as PBX and Key Systems), and who utilize Southwestern Bell's wiring after January 1, 1984, could be affected by this request. On January 1, 1984, all of the Customer Premises Systems presently provided by Southwestern Bell Telephone Company will be transferred to a subsidiary of AT&T and that subsidiary of AT&T will be almost exclusively responsible for the charges pursuant to the proposed tariff on January 1, 1984. After January 1, 1984, customers who purchase their Complex Customer Premises Equipment and do not purchase, but continue to use, Southwestern Bell Telephone Company's inside wire will be subject to the charges proposed in the tariff. The proposed effective date for these new rates is January 1, 1984. Persons interested in intervening in this matter should file a written motion expeditiously with the Public Utility Commission of Texas, 7800 Shoal Creek Boulevard, Austin, Texas 78757, as the Hearing on the Merits in Docket 5420 is set for November 21, 1983.

 **Southwestern Bell**

All Types Interior & Exterior Painting

Acoustic ceilings
Wiley Griggs
983-3912 520 W. Virginia

Mary Kay COSMETICS
Sue Williams
Independent Beauty Consultant
983-5166
Floydada

Script Printing & Office Supply
*Commercial Printing
*Office supplies & Furniture
*Business Machines
108 S. Main
Floydada
983-5131

RAINBOW CARPET DYEING & CLEANING

CLEANING, TINTING & DYEING
RESIDENTIAL & COMMERCIAL
Eldon & Nelda Fortenberry, Owners
Mike McCathern, Manager/Certified Operator
Plainview, Texas Phone 293-3532

Diamond Industrial Supply Co., Inc.

Phone Days 296-7418
Nights 296-1200 or 296-7828
1014 Broadway
Plainview, Texas
SKF BCA Timken Bower
Cotton Stripper Brushes & Bats
"We Appreciate Your Business More"

U joints
Oil Seals
O rings
Wisconsin

BOND LANDS, INC.

107 South Fifth
983-2151

LOOKING FOR LOTS OF ROOM? This three bedroom home features large rooms with formal dining and an excellent corner lot location for kids. Also features a separate apartment for rental or mother-in-law! \$25,950.

LOCATION PLUS VALUE! Lots of potential in this warm three bedroom with large living area and good landscaping. Where else can you get a washer and dryer included for only \$20,000?

OWNER WILL FINANCE! No better terms can be found to purchase this two story three bedroom home with steel siding and storm windows. Come see me! \$17,000.

HISTORY HAS A PRICE and it is amazingly low for this uniquely large two bedroom home with ceiling fans. It's in very good condition and has commercial potential for only \$17,000.

YOUR FIRST HOME could be this newly paneled home with earth-tone carpet and featuring formal dining and stucco exterior with storm windows and storm door. \$14,000.

FLOYD COUNTY! 481 acre irrigated farm southeast of Floydada with five wells, underground tile, three bedroom home, barns, and a good cotton base.

FLOYD COUNTY! 320 acre dry land farm located just north of Floydada with established cotton and wheat bases. And other fine homes and lots available.

Frances Ashton
Office Manager

Larry Jones
Broker

SUBMERSIBLE PUMPS 5-YEAR PROTECTION PLAN

Goulds submersibles are the finest quality—so we can offer 5 years protection against damage due to abrasion, corrosion, even lightning! Call us.



Adams Well Service
Exclusive Dealer!
720 N. 2nd 983-5003



Football Contest

CONTEST RULES
 Any local residents above the age of 7 except employees of the Hesperian may enter. Three cash prizes are given each week-ties will split prize money. Members of the sports department are sole judges of the contest and their decision is final. It is not necessary to indicate scores on all the games...But total score (scores of both teams) of the tie breaker must be indicated at right.
 Simply circle the team you choose to win in each of the footballs. Deadline for submitting entries is 5 p.m. Friday - winners will be announced the following week. Enter one entry per person per week, print name and address plainly on blank below and mail or bring entire page to the Hesperian office.
 Tie breaker game will be considered only in case of ties.

**HAVE FUN...
 WIN PRIZES...**

**DEADLINE FOR ENTRIES - 5 P.M. FRIDAY
 IN HESPERIAN OFFICE OR POSTMARKED**

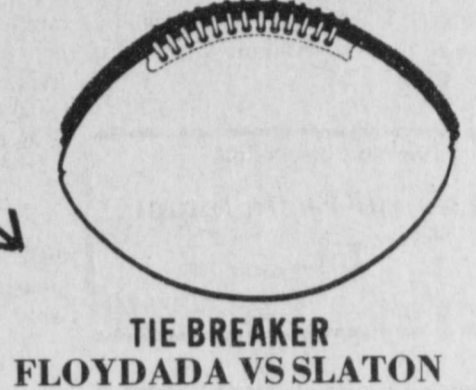
HESPERIAN \$20⁰⁰

**In Cash
 Prizes
 Each Week**

**TIE BREAKER-Guess Total Points
 AND CIRCLE WINNER**

NAME
ADDRESS
CITY

1ST PRIZE \$10⁰⁰
 2ND PRIZE \$6.00
 3RD PRIZE \$4.00



<p>City Auto, Inc. Tullia vs. Muleshoe</p>	<p>Script Printing Idalou vs. Post</p>	<p>Cornelius Conoco Dallas vs. Philadelphia</p>	<p>Buddy's Food Abernathy vs. Dimmitt</p>
<p>Martin & Co. Texas vs. Houston</p>	<p>Pizza Gold Rice vs. SMU</p>	<p>Hale Insurance Crosbyton vs. Petersburg</p>	<p>Ernie's Body Shop Tahoka vs. Frenship</p>
<p>Floydada Implement Ralls vs. Spur</p>	<p>Federal Land Bank Bovina vs. Olton</p>	<p>KFBA Radio TCU vs. Texas Tech</p>	<p>Thompson Pharmacy Palo Duro vs. Monterey</p>
<p>Floyd County Implement Odessa vs. Permian</p>	<p>Willson & Son Shallowater vs. New Deal</p>	<p>Floydada Auto Parts Roosevelt vs. Denver City</p>	<p>Allen's Dixie Dog Hale Center vs. Lorenzo</p>
<p>Producer's Coop Roosevelt vs. Denver City</p>	<p>Floydada Coop Gins Springlake-Earth vs. Kress</p>	<p>Moore-Rose Funeral Home Lockney vs. Childress</p>	<p>Shop Rite Littlefield vs. Friona</p>
<p>Brown Implement Inc. O'Donnell vs. Morton</p>	<p>Floyd County Farm Bureau Tahoka vs. Frenship</p>	<p>Consumer's Fuel Asso. San Diego vs. Pittsburgh</p>	<p>Don Hardy Truck & Car Wash Coronado vs. Hereford</p>
<p>My-T-Burger Cincinnati vs. Houston</p>	<p>Gene's Cleaners Los Angeles Raiders vs. Kansas City</p>		