

HEY WHIRLWINDS FANS:

The Winds take on the Idalou Wildcats this week. The Winds are gonna be giving every thing they have, so everyone come and show your support. There will be a bonfire tonight at the fieldhouse so come back the Winds!

Voo-Doo Idalou
Varisty Cheerleaders

Volunteer Firemen sponsor show

Advanced ticket sales began this week for "The Magic of Christmas" to be presented in December. The 7:00 p.m. show will consist of clowns, puppeteers, a magic show, and Santa Claus. Tickets may be purchased from members of the Volunteer Fire Department or some merchants in town. A drawing for a video game will be

conducted at the presentation.

Prizes will be drawn for children 12 and under attending. The December 3 fund-raising presentation will be made available to underprivileged children courtesy of the Fire Department.

Proceeds will be used for educational schools sponsored in the area for the volunteer firemen.



WHO IS THAT STRANGER SITTING ON THE FRONT PORCH? This new member of the Sam Charles family was made by Mary Charles and her four daughters. The pumpkin scarecrow is stuffed with weeds pulled from the yard. Pictured from left to right are Lisa, Jessica, Daisy Lee and Cindy Charles. Lisa and Jessica attend Duncan Elementary.

Weather

COURTESY OF ENER GAS		
DATE	HIGH	LOW
Oct. 19	78	63
Oct. 20	62	60
Oct. 21	51	48
Oct. 22	61	50
Oct. 23	70	48
Oct. 24	75	51
Oct. 25	78	55
Oct. 26	58	51

The Floyd County Hesperian

© The Floyd County Hesperian Thursday October 27, 1983 Volume 87 Number 43

25 cents

County Judge explains confusion

TO THE VOTERS OF FLOYD COUNTY:

On Tuesday, November 8th, you will have two ballots in Floyd County, to-wit:

- The ballot with the 11 proposed constitutional amendments, and
- A SPECIAL BALLOT FOR FLOYD COUNTY, which will state "For" or "Against" **THE ADDITION OF ASSESSOR-COLLECTOR OF TAXES**

This special ballot is confusing, and this explanation is made to assist you.

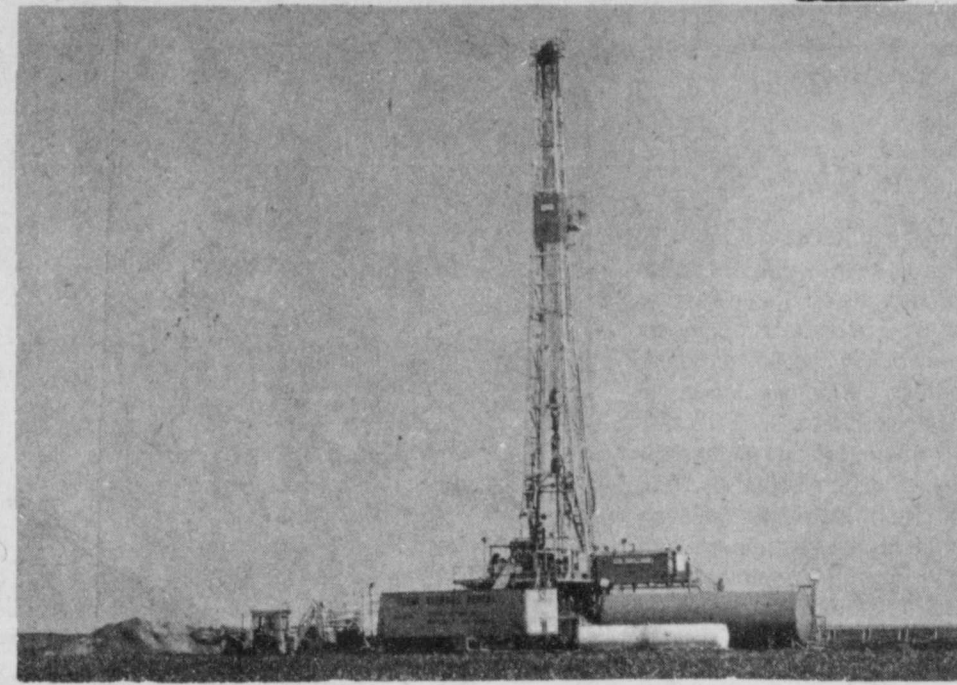
The Texas Constitution states, that when the population of a county is below 10,000 according to last census, that the Tax Assessor-Collector shall be the Sheriff of the county, unless an election is held and the voters elect to "add the office of Tax Assessor-Collector to the list of elective offices". Floyd County dropped below 10,000 population this last census for the first time since 1930. Therefore, the commissioners court is giving the voters the right to decide if the office of Tax Assessor-Collector will be filled by appointment made by the sheriff or will the office be filled by vote of the people.

A vote "for" adding tax assessor-collector, simply gives to the voters the right to decide who will hold this office, as an elected official, as it has been for the last 50 years.

A vote "against" adding tax assessor-collector, simply gives to the sheriff of Floyd County the right to appoint a person to fill this position.

A vote "for" adding tax assessor-collector, will not add any new employee and will not cost the taxpayers extra. The office of Floyd County Tax Assessor-Collector will continue regardless of how this vote may turn out, and the only issue here is shall the office be elective by the voters as in the past, or shall the sheriff appoint a person to fill this job.

CHOISE SMITH - COUNTY JUDGE



BILLY JOE HAMBRIGHT WILDCAT being drilled East of Floydada.

Floyd County has an oil well in it!

Black Gold...Texas tea...in Floyd County? There is something new in Floyd County. The Lakeview community has an oil well, or should we say the Billy Joe Hambrights have an oil well. The Wildcat which was started October 7 is being drilled by D&B Drilling Company of Abilene for the Polk and Patton Oil Company.

38-year veteran oilmen Mickey Bachman and Bobby Platt are the overseers of the operation.

The wildcat runs a four man three shift crew working eight hour shifts. They work six days on and two days off.

As of Monday the well had reached a 6349 ft. depth.

Bachman, who has spent the last several years drilling on offshore rigs in Europe and Africa, said he hopes to have the oil well drilled down to around 10,500 feet in about 20 more days.

The drillers started out with a 17 1/2 inch hole down to about 500 feet with 13 3/8 inch casing. The hole size was then decreased to 12 1/4 inches until they reached around 5125 feet where 9 5/8 inch casing and cement was laid. The hole will be finished out with an 8 1/2 inch hole.

Hale wins contest again

Missing only four of the football games listed in the contest this week, Dr. Andy Hale won the Hesperian football contest once again.

There were a lot of upsets this last week making the contest a little harder than usual.

Sam Green placed second missing five of the games and guessing 43 points on the tie breaker choosing Floydada to win.

Micheal Beedy came into third place guessing a total of 35 points on the tie breaker and choosing Post to win.

Brent Sanders is still hanging in there but didn't quite make it. He missed only five of the games featured but missed on the tie breaker choosing a total of 60 points.

There are only two more weeks of football contest left so be sure and enter this week for a chance at winning \$10.00, \$6.00 or \$4.00.



THE LOCAL CHAPTER OF THE HEART ASSOCIATION will be selling tickets for a chance to win a portable color TV. Santa will be drawing the winning ticket December 23. Tickets are \$1.00 and may be purchased from any member of the association. Phyllis Harris, public information chairman will be selling tickets at the First National Bank. Board members Jan and Jerry Thompson will have tickets at Thompson Pharmacy also. Pictured are left to right: Sherry Hale, developmental chairman, Phyllis Harris, public information chairman, Jan and Jerry Thompson, board members.

Bazaar planned Saturday at First Methodist Church

The fifth annual Old-Fashioned Church Bazaar, sponsored by the First United Methodist Church of Floydada will be Saturday, October 29.

The Bazaar and Bake Sale will be from 10:00-11:30 a.m. followed by a turkey and dressing dinner served from 11:30-1:00 p.m. The auction will begin at 1:00 p.m.

The Bazaar items will consist of crafts made and donated by the talented church members. This gives everyone an opportunity to buy unique Christmas gifts.

The Bake Sale will be filled with a variety of treats for the holidays or any day.

Tickets for the turkey and dressing dinner are on sale now by many of the

church members and in the church office, or may be purchased at the door. Carry out meals will be available for pick-up from 11:30-12:30. The prices will be \$3.75 for adults and \$2.00 for children under 12.

Tom Assiter, II will be the auctioneer this year. All items not sold in the Bazaar and Bake Sale will be auctioned. A beautiful double wrench quilt will also be auctioned at this time. Special items will be given away during the auction to those picking up auction cards, so be sure and plan to stay for the auction. Admission to the Bazaar, Bake Sale and Auction is free.

One half of the proceeds for the days events will be used for various church projects. The other half will go to the field of missions.

Salvation Army fund drive started

The Floydada Unit of The Salvation Army began its fund drive with a "Kick-off Coffee" Tuesday, October 25. Volunteer workers received their work material and will be calling on the local people asking for their support.

Anyone having any questions concerning the local fund drive should call Mrs. Kathy Green, Chairman of the fund drive or C.J. Payne, Service Unit Chairman. Mrs. Green's phone number is 983-3134 and Mr. Payne can be reached at 983-3777 or 983-5379.

The Salvation Army offers Texans a variety of statewide services. For

example, the Army maintains a fleet of 16 emergency canteens strategically located across the state. Each canteen is stocked with supplies and kept on alert 24 hours a day. When disaster strikes anywhere in Texas, one or more of the canteens can be dispatched to the scene immediately. Each canteen is staffed by trained, experienced Salvation Army officers and volunteers who perform many disaster related functions.

In addition to serving food and coffee to disaster victims, rescue workers and emergency personnel, The Salvation

Water delivery date revised

On July 21, 1983 the Mackenzie Municipal Water Authority received word from the Engineers, Freese and Nichols, Inc., stating a water availability date of November 1, 1983 for the start of service to the member cities. This date was based on information supplied from the General Contractors and construction progress at that time.

Each city was notified by the Water Authority of this date so that they could make proper preparations for the delivery of water to their respective water systems. As we approach this estimated water availability date it is apparent

that all facilities will not be completed, tested and the water ready for delivery by the November 1st date.

The Contractor for the Tulia, Rock Creek and Lockney pump station has had problems in getting their electrical panels built and delivered by the manufacturer. Part of these panels were received last week and the remaining ones are due for shipment during the first week in November. It is possible that water could be treated and ready for delivery to member cities in December, but the Engineers have now set January 1, 1984 as the probable date to start delivery of water to member cities.



JULA BAKER, ETHEL HINSON, LORENE MCKINNEY, BENNIE LEIBFRIED, ELIZABETH ARMSTRONG AND DINAH GLOVER display the quilt that will be auctioned at the First United Methodist Church Bazaar that will be held from 10 a.m. until 11:30 a.m. October 29. These and seven other ladies pieced the quilt especially for the bazaar. Ladies not pictured are Janeta Henry, Helen Solomon, Jewel Martin, Ann Smith, Ruth Trapp, Helen Holt, and Lena Mae Watson.

This Week

HALLOWEEN CARNIVAL

A Halloween Carnival is slated at R.C. Andrews Elementary for October 29 from 6 til 9 p.m. They will have a spook house, booths and games, a Country Store and cake walk. The cafeteria will be open with food for sale. The public is invited. Proceeds will go for school improvements.

FARM COMPUTER WORKSHOP

A workshop on "Computers in Agriculture" will be held tonight at 7:30 p.m. at the Texas A&M Engineering Extension Center in Floydada, south of Lighthouse Electric. The workshop is being co-sponsored by the Floyd County Extension Program Building Committee and Ag. Computer Service in Amarillo. Topics will include a general overview of farm computers, hardware, and software, crop planning, budgets, farm accounting, field records systems, livestock planning, and more.

PRESCHOOL PROGRAM

First Methodist Church preschool program is presenting their first program of the year on Halloween Day, October 31, at 10:45, upstairs in the Youth Dept. Parents, grandparents and friends are all invited to attend.

GIFT ITEMS

The Floyd County Museum invites everyone to come by and see their handmade gift items for sale. They have some Christmas ornaments. Shop early for your Christmas gifts. All proceeds go to benefit your museum.

CHILI SUPPER

The Floydada Chamber of Commerce will be sponsoring a chili supper Friday, November 4, before the Floydada vs. Slaton football game. The supper will be from 5:30 until 7:30 in the Floydada Jr. High School cafeteria. The menu will include chili, beans, cornbread, relishes and cobbler.

ONE ACT PLAYS

The Floydada Speech and Drama Club will present two one act plays, Touch the Bluebirds Song, and At a Beetle's Pace, on November 5th at 7:00 p.m., and on November 6th at 2:00 p.m. These one acts will be presented in the High School Auditorium.

The cost will be \$2 for adults and \$1 for students. You can buy tickets from any Speech and Drama Club member, or Mr. Willis. So support the Speech and Drama Club member by purchasing your tickets today!

FFA FRUIT SALES

The annual FFA fruit sales have begun. This year's products are oranges, apples, grapefruit, turkeys and hams. The prices are \$12 for a full box of fruit and \$6 for half a box. The smoked turkeys are \$18 and the hams are \$1.98 per lb.

The sales began October 1 and will end Oct. 31. Everyone needs to know that there will be no late orders.

For your order contact any FFA member or call 983-2340 and ask for Tommy Hancock or Rodney Purswell.

WRAPPING PAPER

The Jr. class of Floydada High School is selling all occasion gift wrapping paper. There are 22 kinds of paper, 12 different colors of yarn and 6 different kinds and several colors of ribbon to choose from. Anyone interested should contact any member of the Jr. Class.



Remember to set your clock back one hour Sunday.

TEST RESULTS

Results are now in for standardized tests given in September to students grades 7 thru 12.

Individual reports will be given to students next week. Parents are urged to read the reports and call the school principals or counselor if more explanation or results is needed. Numbers to call are Floydada Jr. High, 983-2161; High School, 983-2340; or the Counselor at 983-3916.

DOUGHERTY CARNIVAL

A Halloween Carnival will be held at the Dougherty School Monday, October 31, from 8 til 10 p.m. Costume judging will begin at 6:30 p.m. with a chili supper following.

HOME EC. CLASS LUNCH

The Della Plains Home Ec. Class will serve lunch Thursday, October 27, from 11:30 to 1 p.m. The menu will feature chicken and dumplings, buttered vegetables, salad a la Floyd, hot rolls, pumpkin cake roll, iced tea and coffee, at \$3 a plate. Lunch will be served each Thursday for this school semester. Come and be our guest.

SINGING SERVICE

The Calvary Baptist Church invites everyone to join them in a singing service and fellowship following Sunday, October 30, from 7 p.m. til 8 p.m.

LIONS ARTS & CRAFTS

There are still a few booth spaces available for the Floydada Lions Club Arts & Crafts Festival, to be held at the Massie Activity Center in Floydada on November 19, 1983. For more information, please call Bill Gray at 983-5440 after 7:00 p.m.

BAND BOOSTERS

Band Boosters will meet Monday October 31 at 7:30 at the high school cafeteria for a pot luck supper.

4-H PECANS

The 4-H Pecans are here! Floyd County 4-H now has pecans available. They are currently \$4/pound in 1 pound bags. The pecans are fancy halves from Irish Acres in Lubbock and are of excellent quality. The pecans are available at the Floyd County Extension Office and at the Lockney Coop.

COMPANIONS 'N' CARING

Companions 'n' Caring will hold their regular monthly meeting today, October 27, at 2 p.m. at the Floydada Nursing Home. The group will decorate the Home and will plan a Halloween party for the residents.

The party will be held Monday, October 31, at 2:30. Each member is asked to dress in costume and to bring a cream pie for refreshments. Also the residents will be prepared for any little Trick-or-Treaters who might want to come by the Home between 6:00 and 6:30 p.m.

MOTHERS DAY OUT

Mothers Day Out has changed its hours to 9:30-5:00 every Tuesday at the First United Methodist Church.



Chamber Clips...

By Susan Garms

If we're going to complete our airport renovation project in October, we're gonna have to hurry! We still need about \$800 and those of you who have made pledges need to get them in, please!

Tickets are now on sale for the Chamber's Prefootball Game Chili Supper. This supper will take place before the Slaton football game Friday week on November 4 from 5:30 to 7:30. The menu consists of chili, beans, cornbread, relishes and cobbler. Mmmmm-chili and beans and warm cobbler before a cold football game...The Women's Division of the Chamber and the wives of many of the members and Board of Directors are providing the food and the Board of Directors will pull kitchen duty. This is just another way the Chamber of Commerce Board of Directors serves you! The tickets cost \$3.00 for adults and \$2.00 for children under 12 and may be purchased from any Director, at the Chamber office or at the door.

Another project coming soon will be the Chamber sponsored Dinner Theater which will consist of two performances. Adult Night will be Saturday, November 12 and Family Night will be Tuesday, November 15. Saturday's "Dinner Part" of the Dinner Theater will be a steak dinner with all the trimmings and Tuesday's will be a lighter and less expensive fare soon to be decided upon by that committee.

The play is the Saga of Katy and the Gamblin' Lady and it is being directed by Sara Probasco. The vaudeville entertainment portion of the evening is being coordinated by Joann Cagle. Assistant to the Director is Stella Benjamin. Costume Chairman is Jackie Walls, Prop Chairman is Lou Burleson and Set Construction Chairman is Gary Brown. These dedicated people are hard at work to provide an evening's entertainment for the community that won't soon be forgotten. Also working hard to learn lines, show up for rehearsals, remember stage movements and bring to life the old West characters (who really are characters) are: Leah Lackey as Katy, the owner of the C Bar C, Nancy Willson as Sally, a bubbly headed saloon girl, Wanda Williams as Flo, her only slightly saner companion and fellow worker, Tommy Ogden as Charlie the bartender, Phil Lemons as Aces, a frisky cowboy, George Finley as Cactus Jack, Aces best friend, with a twinkle in his eye, Cass McDaniel as Casper, the Flam-Flam idea man.

Elaine Galloway as Little Nell, Miss Sweetness and Light herself, Jack Robertson as the Narrator of the Saga, Dana Woody as Diamond Lil and the Gamblin' Lady is played by... "me? I'm Lou, that's who!"

The play takes place back in the days when the West was young and the locale is the C Bar C Saloon. Tickets will go on sale soon, y'all come!

The retail Trade Committee of the Chamber met with several of the merchants Monday afternoon to plan their Christmas promotion. After much discussion, the promotion entitled "Something for Nothing" was decided upon. The particulars are as follows: member merchants will be contacted and will donate items for auction in value of \$25.00 or more. These gifts or services donated will be put on display in the Chamber offices. Then, as individuals in town make purchases, they save their cash register tapes and bring them by the Chamber office

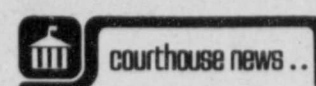
where each person will have their own tally sheet. At the end of the promotion in December, an auction will be held downtown, auctioning off the items donated by the participating merchants, and each person will use as his "money" a letter of credit issued by the Chamber in the amount, dollar for dollar, that they have accumulated on their tally sheet. For example, Mrs. A buys a 3.00 item from Perry's, a \$20 item from Sears, has \$40 worth of plumbing work done, and each of these businesses is participating in the promotion, then she will have a total of \$63 on her letter of credit with which to purchase auction items. For more details, if you have not been contacted, call the Chamber offices, 983-3434.

Ballots will be mailed this week in the Newsletter with the nominating Committee's recommendations for the new Board of Directors of the Chamber who will take office in March. These new directors will be representing you and your business in 84 and 85 and deserve your careful consideration and support. Please mail your ballots back in early.

Four high-school boys, afflicted with spring fever, skipped morning classes.

After lunch, they reported to the teacher that their car had had a flat tire. Much to their relief, she smiled and said: "Well, you missed a test this morning, so take seats apart from one another and get our your notebooks." Still smiling, she waited for them to settle down. Then she said, "First question: Which tire was flat?"

Pity the poor politician. If you are a liberal you are a leftist; if you are a conservative you are a rightist; if you are a Republican, you are antipeople; if you are a democrat you are a big welfare spender; if you go along with the party leadership you are a political hack; if you don't, you are labeled a maverick. If you vote with the majority, you are a rubber stamp, and if you don't you are independent and unreliable. If you try to please the people you are a demagogue; if you don't you are a poor public servant. If you aspire to higher public office you are ambitious; if you don't you have no brains and no ability. If you get notices in the press you are a publicity hound and headline hunter, and if you don't you are a "do nothing" public official. If you speak up and express your views you are a show-off; if you don't you aren't aware of what's going on.



Deeds

Edna May Furrow Golden, et al, to O.G. Outlaw, Jr., et ux, 2 tracts

Jerry Perry, et ux, et al, to Jerry Johnson, et ux, tract 10' north and south by 93' east and west out of J.D. Burleson Survey 158 acre Homestead Survey.

Will D. Griffin to George Griffin, et ux, 2 tracts.

Delilah O. Gearhart, et al, Executrices, to Kevin Nelson, et ux, all of Lot "C", all Lot 1, Blk. "D", Andrews Addn., Floydada

Lucile Custer to J.R. Evers, Lot 4, Blk. 18, Bartley Heights Addn., Floydada

Louis Pyle, et ux, to Veterans' Land Board of Texas, tract of 25 acres out of NW part of N.E. 1/4 of Sur. 63, Blk. 1.

Johnnie P. McKinney to Wilbur Mize, W/2 of Lots 8, 9, 10, Blk. 30, original Lockney.

Wilbur Mize to Kelton Shaw, et ux, W/5 of Lot 9, all of Lot 10, E/30' of Lot 11, Blk. 2, Sims Addn., Lockney.

Floyd County Memorial Park, Inc. to Aaron Carthel, Garden No. 2, Sec. 4, Blk. No. 5, Lot 1-3-5-7.

Ira Baker, Jr. to Bettye Jene Baker, 1/2 undivided interest of Lot 4, Blk. 79, original Floydada.

Kathrine Fae Edwards to Frances Barnett, W. 15' of Lot 4, E. 3' of Lot 3, Blk. 128, original Floydada.

Marriage Licenses

Oscar Garza Jr., Dolores Gonzales Joe Louis Coleman, Mary Alice Coleman

Fredi Chan Castillo, Sonia C. Ovalle

Probate

Gladys Howard, will & appl. to probate, 10-19-83.

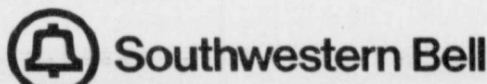
Public Notice

Southwestern Bell, in accordance with rules and orders of the Public Utility Commission of Texas, hereby gives notice of its intent to re-file evidence and appropriate tariff(s) in support of a request to establish rates for the use of certain complex inside telephone wiring in the amount of \$54.5 million annually. This request was previously a part of the considerations in Docket 5141 and now has been re-docketed as Docket 5420.

Customers who do not own the Complex Inside Wire associated with their Customer Premises Systems (such as PBX and Key Systems), and who utilize Southwestern Bell's wiring after January 1, 1984, could be affected by this request. On January 1, 1984, all of the Customer Premises Systems presently provided by Southwestern Bell Telephone Company will be transferred to a subsidiary of AT&T and that subsidiary of AT&T will be almost exclusively responsible for the charges pursuant to the proposed tariff on January 1, 1984. After January 1, 1984, customers who purchase their Complex Customer Premises Equipment and do not purchase, but continue to use, Southwestern Bell Telephone Company's inside wire will be subject to the charges proposed in the tariff.

The proposed effective date for these new rates is January 1, 1984.

Persons interested in intervening in this matter should file a written motion expeditiously with the Public Utility Commission of Texas, 7800 Shoal Creek Boulevard, Austin, Texas 78757, as the Hearing on the Merits in Docket 5420 is set for November 21, 1983.

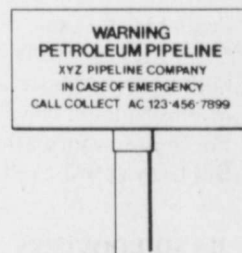


Pipelines... make good neighbors

America has over 220,000 miles of petroleum pipelines carrying crude oil and products to refineries and storage terminals across the United States. Each day, more than 1.5 billion ton/miles of crude oil and products move through this network. These pipelines have a safety record second to none in the transportation industry... and we want you to help us keep it that way.

liquids on or a mist above the ground in the area of a pipeline.

- Flames originating from an opening in the ground.
- If you become aware of a pipeline leak...
- LEAVE THE LEAK AREA IMMEDIATELY.
- Avoid driving into vapor clouds.
- Avoid direct contact with the escaping liquids.



GROUND MARKER



GROUND MARKER



CASING VENT



AERIAL MARKER

When you see signs like those shown above, they tell you that there's a pipeline nearby. If it's underground, you can't see it, of course. But it's there, working quietly to provide energy for you and other consumers throughout this nation.

Some of these signs list the commodity transported in the pipeline, the name of the operator, and a telephone number where the operator's representative can be reached at all times.

Although pipelines have an exceptionally good safety record, once in a while a leak can occur. Indications of a leak might include:

- A strange or unusual odor in the vicinity of a pipeline.
- A hissing or roaring sound (caused by petroleum or product escaping from a pipeline).
- A dense white cloud or fog.
- A spot of dead or discolored vegetation.
- An accumulation of petroleum

• Avoid creating sparks or sources of heat which could cause the liquids or vapor to ignite and burn. If you find yourself in a suspected vapor area, do not light a match, start an engine or even switch on an electric light.

• Notify the pipeline operator as soon as you reach a safe area. Call collect. Give your name, a description of the leak and its location. If you do not know who the pipeline operator is, call your local fire, police or sheriff's department, or the state police. Advise them of the nature and location of the emergency.

If you see someone digging near a pipeline or doing other construction work... or if you plan to do such work near a pipeline yourself... please call the telephone number shown on the sign and let the pipeline company know so damage can be avoided. It's in your interest... and the nation's.

America's Petroleum Pipelines

Pipelines are the safest way to move petroleum and products and you can help keep it that way!

HALLOWEEN FOOD TREATS



SHOP FOR YOUR HALLOWEEN PARTY NEEDS: *ICE *SNACKS *CHIPS *SOFT DRINKS & MORE!



HALLOWEEN BAG CANDY
INDIVIDUALLY WRAPPED CANDY BARS

BABY RUTH & BUTTERFINGERS 1 LB. PKG. **\$2.39**

MILKY WAY-SNICKERS & 3 MUSKATEERS 10 OZ. PKG. **\$1.99**

JACK-O-LANTERN SIZE HALLOWEEN PUMPKINS EACH **\$1.19**

BORDEN'S ASSORTED FLAVORS ICE CREAM 1/2 GAL. CTN. **\$1.69**

PURE PORK RATH SAUSAGE 1 LB. ROLL **79¢**

RATH COOKED HAM 5 OZ. PKG. **\$1.69**

SYLVANIA 60-75-100 WATT LIGHT BULBS 2 CT. PKG. **79¢**

KLEENE-X DISPOSABLE HUGGIES DIAPERS BOX **\$2.99**

WASHINGTON EXTRA FANCY APPLES 4/\$1

Fresh Grade A Medium EGGS Limit 4 per customer **69¢ doz.**

All Pot Pies 20% off **Del Monte Sliced Fruit Cocktail or Peaches** 69¢ ea.

TV COOKED FOOD SPECIAL

CORN DOGS 2 FOR **89¢**

ENTER THE "NAME THE CUP CONTEST" & WIN \$500
PICK UP YOUR RE-USEABLE 32 OZ. CUP FILLED WITH YOUR FAVORITE FOUNTAIN DRINK
SEE YOUR LOCAL ALLSUP'S STORE FOR DETAILS! ONLY **89¢** NO PURCHASE NECESSARY!

Lettuce 39¢ per head

Kraft Macaroni & cheese DINNERS 6/\$1

BORDEN'S HI-PRO MILK 1/2 GAL. CTN. **99¢**

COCA-COLA 12 oz. cans 6 pack **\$1.79**

ALLSUP'S CONVENIENCE STORES

WHILE SUPPLIES LAST! SELF SERVE BAS
OPEN 24 HOURS PRICES EFFECTIVE
FOR YOUR CONVENIENCE OCT. 27-29, 1983



HAPPY HALLOWEEN! Come see us at the South Plains Elem. School Halloween Carnival. Pictured are Carol Arnold- witch in curlers, Connie Johnson-green headed clown, Helen Teeple-blond headed clown, Keith Teeple-vampire, Tracey Johnson-dracula, Troy Johnson-frankenstine, Ruben Chavarria-devil, Layne Sanders-space bat, Kevin Staples-Darth Vader.

Rape Crisis Center open in Hale County

October 1 was the opening date for the new Hale County Rape Crisis Center in Plainview. Begun with a grant from S.P.A.G. coupled with community donations, services of the Rape Crisis Center are available free of charge to the residents of Hale County and the surrounding area.

Services include: a 24 hour crisis hotline, hospital accompaniment at Central Plains Emergency Room for rape examinations, follow-up counseling for victims and their families, referral and information, and group presentations on rape prevention and sexual assault.

Citizens from the Floydada area are asked to undergo crisis intervention training to aid the center in expanding services outside the Plainview area. The training is to begin in November, lasting for two weeks, and is under the direction of Pam Parrott Moore, M. Ed., Community Counselor, director of the center. Applications for training may be obtained by calling the Plainview City Manager's office at 293-4171.

Groups wishing to schedule presentations should call Mrs. Moore at the business office number of 293-9772.

Contributions are being accepted at City National Bank in Plainview, and are tax deductible.



THE PLAYA PLAYBOY BAND, a Floydada country-rock group, travelled to the KAMC-TV studios in Lubbock recently to record a video tape of two of their songs to be broadcast on a television benefiting Texas Boy's Ranch. The two numbers by the Playa Playboy Band will be aired between 8:00 and 10:00 p.m. on October 29. Members of the group are Harvey Allen, harmonica; Richard Burton, piano; Tom Farris, bass guitar; Kelly Turner, lead guitar; Alex Torrez, drums; and Susan Turner, vocalist.

Carnival slated Monday

South Plains Elementary School annual Halloween Carnival is to be held on Monday, October 31, at 6:00 p.m. to 9:00 p.m. The costume contest starts at 6 p.m. in the auditorium. Each child that participates in the costume contest will receive tickets for the carnival and a grand prize will be awarded for each class. Also classroom pumpkin art contest will be judged and ticket prizes awarded. The judges will be Mr. and Mrs. Rance Young and Mr. and Mrs. E.J. Kinslow.

Each ticket will cost .25 cents to participate in the game booths in the

gym. Booths in the gym will be as follows: Spook House, Ping Pong Toss, Bowling, Pick a Duck, Black Widow Spider, Darts, Cake Walk, Bingo, Sucker Tree, and Archery.

Pecans for \$4.00 per pound will be sold and personalized Trick or Treat bags will be sold for 1 ticket.

The school cafeteria will have on the menu: Frito pie, \$1.00; Nachos, \$1.00; a slice of homemade pie, .75 cents; coffee, 25 cents; tea, 25 cents; kool-aid, 25 cents.

Everyone is invited to join in on the fun and have a safe Halloween night!



CHAMBER DINNER THEATRE GROUP rehearses. Pictured left to right seated are Elaine Galloway-Little Nell, Susan Garms-Lou [Gambling Lady], Phil Lemons-Aces, Leah Lackey-Kathy. Standing left to right are Nancy Willson-Sally, Wanda Williams-Flo, Tommy Ogden-Charlie [Bartender], Stella Benjamin-Asst. Director and Prompter.



Got Heating or Plumbing Problems?
CALL
Holmes Plumbing
Austin or Steve
Call Day or Night
983-2251

"Laugh Lines"

BY DON AND SARA PROBASCO
Bits of Humor, Trivia, and an occasional Word of Wisdom
A completely planned society assures that when no bacon is delivered, no eggs are delivered at the same time.

There is more to life than increasing its speed.
Our Great Dane recently went to a canine convention. The main topic of discussion was "What to do with a car when you catch it."

Overheard: "When I prays fo' the Lawd to sen' me a turkey, nothin' happens. But when I prays for the Lawd to send me AFTER a turkey, den do the Lawd gits results."

King Arthur: "I hear you've been misbehaving." Sir Galahad: "In what manor, Sir?"

The most common exercises that some people pursue today are: running down their friends, jumping to conclusions, side-stepping responsibility, and pushing their luck.

Money earned by blood, sweat, and tears is seldom spent like water.

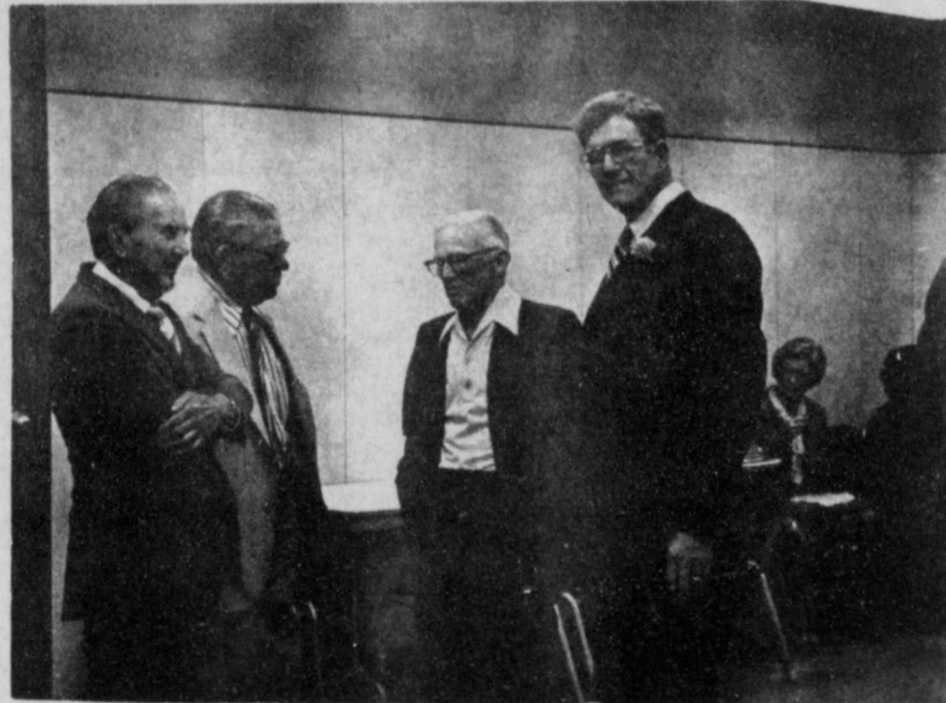
Protect your valuables with a safe in your home or office. We have a wide variety available. All sales are strictly confidential.

PRO-LOCK SHOP
24-hour Mobile
Locksmith Service
983-3834
2 miles north of South Plains on the Silverton Highway (Hwy 207)
Visa and Mastercard Welcome

PROBASCO'S
STUDIO SOUTH
Stained Glass Art
Gifts & Supplies



THE FLOYD COUNTY HESPERIAN
(USPS 2026-8000)
Published weekly each Thursday at 111 East Missouri Street, Floydada, Texas 79235. Second class postage at Floydada, Texas 79235.
SUBSCRIPTION RATES: Local \$11.50 per year, out-of-trade area, \$12.50 per year.
POSTMASTER: Send address changes to the Floyd County Hesperian, 111 East Missouri, Floydada, Texas 79235.
Carolyn Redding Publisher/Editor
Dana Woody Reporter
Rosemary Gonzales photo/comp foreman



RETIRED POSTAL EMPLOYEES meeting with dozens of well-wishing friends attended a reception honoring Doyle Turner (far right). Standing from left to right were Bill Baker, Wayne Finley and 42 yr. retired postal employee.

Please come by and meet one of our new employees, Lisa Rose

"Helping you change things for the better"

THE FIRST NATIONAL BANK OF FLOYDADA

Member of F.D.I.C. Accounts insured up to \$100,000

Frozen Dinner Specials
Prices good Thurs. thru Wed. October 27-Nov. 2

Swanson Hungry Man 17 oz. SALISBURY STEAK Night Hawks 12 oz. STEAK N TATERS Night Hawks 12 oz. TASTE OF TEXAS Swanson Hungry Man 18 1/2 oz. TURKEY DINNER	Reg. \$2.99 Special \$2.29 Reg. \$1.99 Special \$1.49 Reg. \$1.99 Special \$1.59 Reg. \$2.99 Special \$2.39	Swiftly FOOD MART CHICKEN PIE Swanson 16 oz. Reg. \$1.65 Special \$1.39 FRIED CHICKEN Swanson Hungry Man White portions 16 oz. Reg. \$2.99 Special \$2.39 BEEF PIE Swanson 16 oz. Reg. \$2.99 Special \$1.69 MEXICAN DINNER El Charrito 14 oz. Reg. \$1.79 Special \$1.49
--	--	--

Hours: 7 a.m. to 11:00 p.m.
102 S. Second, Floydada
Specials good while supply lasts.

South Plains News

By Mrs. Murray Julian
South Plains, Monday, October 24:
Soaking, dashing rains fell in torrents from Sunday night, October 16, to Thursday night, October 20, with flooding in many areas, and amounts totaling 10 1/2 inches which fell in the southeast part of the South Plains community. 1 1/2 inches fell that Sunday night, and we didn't really see the blessed sun until Friday when it came peeping through light clouds. Rural roads could only be navigated with jeeps or other 4-wheeled vehicles. This Monday, after two glorious days of sunshine, the roads and fields are beginning to dry.

Mr. and Mrs. Raymond Upton visited their son, Mr. and Mrs. Jimmy Upton and children in Bartlesville, Oklahoma on October 15, for several days and enjoyed being with them and seeing the lovely countryside.

Thursday, October 13, at the Annual Caprock Associational Meeting for the Baptist Churches of this area at Matador were several from the South Plains Baptist Church who attended the meeting which began at 3:00 p.m. with Bill Webb, speaker. Dr. Strauss Atkinson was honored by the churches as he resigned from Area Missionary of the Caprock Plains area. The evening meal was served at 6:00 p.m. and preaching was at 7:00 p.m. The Rev. and Mrs. Cecil Osborne, Mrs. Mamie Wood and Mrs. Ruby Higginbotham from South Plains attended the meeting.

Ray Harvey, psychologist from Wayland College at Plainview, was a speaker at the South Plains Baptist Church, Sunday, October 9, in the absence of Rev. Cecil Osborne, and this Sunday, October 23, Darrell Tapp from the Gideons International was an interesting and meaningful speaker at morning services at the church. Visitors Sunday were Mrs. Bernice Sandusky of Denver, Colorado and Keith Marrison of Lubbock.

The Missions Offering for the Mary Hill Davis work reached its goal of \$257.00 and offerings went over the goal, at the South Plains Baptist Church.

There will be a special day next Sunday, October 30, at the South Plains Baptist Church as this is High Attendance Sunday, with a dinner on the grounds given for everyone present for the meeting. Please come and join everyone at the happy occasion.

Kenneth Wayne Powell, his wife and Jennifer and Phillip who are now in Germany with the Armed Services, are scheduled to be home by Christmas, and he will be reassigned to Ft. Sill, Oklahoma, and is a drill sergeant with the army.

Mrs. Bernice Sandusky from Denver, Colorado arrived via plane in Lubbock, Saturday evening, and will be with her sister, Mrs. Bonnie Julian here at South Plains for two weeks, and is also visiting the Kendis Julian family. She reported the scene from the air as she came in Saturday was something to see, as

thousands of lakes were spread over this part of the country from the recent rains.

We offer our sympathy to Mrs. Dot Cummings in the death of her sister, Mrs. Mary Ellen Burns, 76, of Pasadena, who passed away Sunday, October 16, in Green Forest, Arkansas, after a short illness. Burial was here at Lockney, after services on Thursday at 2:00 p.m. in the First Baptist Church in Lockney with Rev. Cecil Osborne and Rev. John C. Truett officiating. South Plains Baptist Church ladies, and others of the vicinity brought food to have at the family dinner in Lockney Thursday noon, October 20th.

Mrs. Alvin Nichols and daughter, Mrs. Ruby Jewel Whitfill of Sweetwater arrived here Wednesday night during all the rain, and were guests of Mr. and Mrs. Sylvan and Bobbie Kinnibrugh and the next day they visited members of their family in Lockney. They reported later as they went home to Sweetwater that Sweetwater had a big rain also.

We extend birthday greetings to Mrs. Ernest Smitherman (Ruth) who on Sunday, October 23rd celebrated her birthday, with telephone calls from Sacramento, California from Mr. and Mrs. Virgil and Kathe Orman and other members of her family here in Texas, and among her callers Sunday afternoon were Mr. and Mrs. Bill Beedy, Mr. and Mrs. Philip and Mildred Smitherman, and Mrs. Letha Mulder.

Hobby Club members of South Plains remember the November Hobby Club will meet in Floydada at the home of Mrs. Letha Mulder, with Mrs. M.M. Julian assisting. Time will be 2:00 p.m. with Mary True bringing a demonstration for food preparation for the holidays, both Thanksgiving and Christmas. Time is 2:00 p.m. on Nov. 9th on Wednesday. Roll call is for a good dip recipe. Mrs. Juanita Teeple as hostess for the Oct. 12th meeting in her home, as she took the meeting assigned to Mrs. Sterling Cummings, since she is working. There were just a few present for the Art Show of local artists.

Over the weekend of Oct. 14-16th guests at the home of Mr. and Mrs. Sylvan Kinnibrugh were relatives from Odessa, Mr. and Mrs. Naylan Dencil of Odessa and Allison Copeland, also of Odessa, Mr. and Mrs. W.H. Simmons of Truscott, Mr. and Mrs. Edith and Ray Dillard of Lockney and their granddaughter Melissa Horne.

The South Plains School Halloween Carnival will be held at the school house on Monday, October 31, from 6:00 to 9:00 p.m. Frito pies and nachos will be served with homemade pies for dessert with coffee and Kool-Aid. The costume contest will be judged and prizes given in pre-schoolers and kindergarten class; 1st, 2nd grades, 3rd, 4th grades, 5th and 6th grades; and High School and adults. Tickets will be given to any student who comes in costume. There will be a cake walk and different games.

There are plenty of pecans at the PTA for sale, and they have just come in, so come and stock up for your winters use



THE ALPHA MU DELTA CHAPTER OF BETA SIGMA PHI sorority gave the Caprock Hospital Ambulance Service fund \$100.00 to purchase a new medipulse used for an automatic read out of blood pressure. The blood pressure and pulse rate is determined and verified automatically by the micro-computer. A cuff is placed on the arm and the computer completes the entire test cycle in no more than 30-35 seconds. An error display will indicate excessive disturbance or improper application to prevent erroneous readings. Pictured from left to right are: Francis Miller, Julianne Cornelius, Molly Stringer, Russell Sargent, and Bettye Baker.

Whirlwind Sams attend Annual Fall Samboree and tour park

Fourteen vehicles of the Floydada Whirlwind Sams Club journeyed to Perdaneals Falls State Park for a three day campout on October 15, prior to a meeting in San Marcos on October 18th for the Twelfth Annual Texas Fall Samboree.

Those making the trip to Perdaneals Falls State Park were Mr. and Mrs. Boone Adams, A.L. Wylie, Floyd Lawson, W.B. Cates, Paul Westbrook, John Cockrell, Claude Weathersbee,

Orville Newberry, J.W. Gilbreath, Wayne Russell, George Miller, Vernon Parker and new members, Mr. and Mrs. Pete Roe and W.H. Bunch. They were joined later by the Fred Thaxtons.

Sunday morning worship services were led by Boone Adams, Dorothy Westbrook, organist, and song leader, Paul Westbrook, after which the club spent a busy afternoon touring the Lyndon Baines Johnson State Park and Ranch and President Johnson's boy-

Social Security in Floyd County

By Terry J. Clements
One of the less-publicized changes of the 1983 Social Security Amendments has to do with uncashed Social Security checks. In the past, money was transferred from the trust funds to the general fund each month, to cover benefit checks for the month. The amounts transferred for checks that were never cashed were never returned to Social Security, because there was no cut-off point after which the Treasury Department stopped payment on uncashed checks. Thus, since 1940, there was a kind of "subsidy" payment to general revenues from the trust funds. The new law provides for a lump-sum payment to the Social Security trust funds from the general funds, representing the amount of all uncashed Social Security checks which have been issued in the past. It also provides that the trust funds be credited for all future Social Security checks not cashed within

6 months.
Before the 1983 Amendments, the States were allowed to deposit the Social Security contributions they withheld from State and local employees on a monthly basis, a significant advantage over private employers, who must deposit more frequently. Beginning January 1984, States will be required to deposit Social Security contributions twice a month, and this will produce \$1.1 billion in additional trust funds revenues over the next six years.

These two changes in the law might appear to be insignificant, but when one considers the size of the Social Security program, minor changes can result in important savings to the trust funds.

If you have a question concerning the 1983 Amendments or any Social Security question please call us at 293-4371. If you need to visit our office our address is 1401-B West 5th in Plainview.

hood home in Johnson City. The club divided into separate groups on Monday with some touring the Capital Building and Archives in Austin, while others explored Fredericksburg and surrounding area.

The Roes and Bunches were unable to accompany the club on to San Marcos; however, club members, Mr. and Mrs. J.W. Day, Harry Reeves and Fay Gooch met the Floydada Whirlwind Sams at the Samboree, making a total of sixteen rigs present from Floydada.

Activities enjoyed by the group included a trip to San Antonio to tour the Alamo and Riverwalk area, Aquarena Springs in San Marcos, golf, bridge and dominoe tournaments, with entertainment by several area bands and musical groups. Fay Gooch of the Whirlwind Sams won first place in the first flight of the golf tournament.

The highlight speaker for the Samboree was Dr. Charles W. Jarvis. Over 1,000 trailers and motor vehicles registered at the Samboree.

Caprock Hospital Report

Oct. 17-Oct. 24

Joe Rodriguez, Floydada, adm. 10-8, dis. 10-20, Jordan
Earl Bishop, Floydada, adm. 10-9, continues care, Hong
Enoch Wickware, Floydada, adm. 10-10, continues care, Hale
Clara Williamson, Floydada, adm. 10-11, dis. 10-21, Jordan
Paulita Moreno, Crosbyton, adm. 10-12, dis. 10-18, Hong
Nannie Gafford, Floydada, adm. 10-13, continues care, Hong
Joyce Speer, Floydada, adm. 10-13, dis. 10-19, Jordan
Maude Galloway, Floydada, adm. 10-14, dis. 10-21, Jordan
Simona Garza, Floydada, adm. 10-15, baby boy born 10-15, dis. 10-17, Hong
Sue Wineland, Floydada, adm. 10-17, dis. 10-20, Hale
Juanita Holly, Floydada, adm. 10-17, continues care, Hale
Martina Alonzo, Floydada, adm. 10-17, dis. 10-17, Hong

Dorothy Neff, Floydada, adm. 10-17, dis. 10-21, Jordan
Emmitt Lawrence, Floydada, adm. 10-19, dis. 10-20, Hale
Travis Corley, Floydada, adm. 10-19, expired 10-21, Hong
Thomas Warren, Floydada, adm. 10-20, dis. 10-22, Hale
Felix Riojas, Floydada, adm. 10-20, dis. 10-22, Hong
Mariana Polendo, Quitaque, adm. 10-21, continues care, Hong
Leona McNeil, Floydada, adm. 10-21, continues care, Jordan
Lila Collum, Floydada, adm. 10-21, dis. 10-24, Hong
Miroo Hong, Lubbock, adm. 10-21, dis. 10-23, twin boys born 10-21, continue care, Hong
Delton Watts, Floydada, adm. 10-22, dis. 10-24, Hong
Tom Watts, Floydada, adm. 10-22, continues care, Hale
Paula Porter, Floydada, adm. 10-24, continues care, Jordan

Library News

The following 16mm films will be available through November 11 at the Floyd County Library:

- The Art of Ceramic Decorating.** 16 min. Color, 1968. BFA Educational Media. SH-A
- A Bear in Hot Water.** 16 min. Color. 1975. FilmFair. Pre-El
- Blind Sunday.** 31 min. Color. 1976. Time-Life. El-A
- Caterpillar.** 16 min. Color. 1971. Learning Corp. of America. El-JH
- Benjamin Franklin.** Encyclopedia Britannica. B&W. 1959. 17 min. JH-SH
- Ferdinand the Bull.** 8 min. Color. 1969. Walt Disney. Pre-El
- Foxfire.** 21 min. Color. 1974. McGraw-Hill films. JH-A
- If You're a Horse.** Xerox Films. Color. 1975. 8 min. Upper El-SH
- Let's Be Friends.** 6 min. Color. 1977. Encyclopedia Britannica. Pre-El
- Mexican-American Culture, Its Heritage.** 18 min. Color. 1970. Communications Group West. SH-A
- Matrioska.** 5 min. Color. 1970. National Film Board of Canada. Pre
- Of Cats And Men.** 13 min. Color. 1968. Walt Disney. El-JH
- Organic Gardening: Composting.** 11 min. Color. 1972. Bullfrog Films. JH-A
- Rio Grande: Where Four Cultures Meet.** 16 min. Color. 1971. BFA Educational Media. El-A
- Six Billion \$\$\$ Sell.** 15 min. Color. 1976. Films, Inc. Upper El-A
- Steering Clear Of Lemons.** 16 min. Color. 1975. Consumers Union. JH-A

Where Timber Wolves Call. 25 min. Color. 1974. Wombat Productions, Inc. SH-A

The Wyeth Phenomenon. 26 min. Color. 1967. BFA Educational Media. JH-A

Young Women In Sports. 16 min. Color. 1974. BFA Education Media. JH-A

The Big Thicket--A Vanishing Wilderness. 21 min. Color. 1972. Coronet. JH-A

Kathy. 27 min. Color. 1981. Film Ideas. JH-A

Taleb And His Lamb. 16 min. Color. 1975. Barr Films. El-A

NOW OPEN!

All diesel work welcome,
All Work Guaranteed!
SMITH TRACTOR & AUTO REPAIR
4th & East Kentucky
983-5432



Morrison Spraying Co.

Drawer 208 Petersburg (806)667-2277
Aerial Application

Acid defoliation \$5.00 per acre applied
Paraquate defoliation \$8.00 per acre applied
All work guaranteed

Find the best advertised price in the area and we will meet or beat that price

Top Quality Products And Service At A Fair Price

"We serve agriculture and agriculture serves everyone."

New Shop

Pamela's Barber Shop

1611 Main, Petersburg
667-3701

Please make appointment.

men and women

Let's talk.

Information about your changing telephone service from Jim West, Community Relations Manager

A look at the future

When Southwestern Bell is divested from AT&T next January and becomes a separate company, you can be sure that your local telephone service will continue working the way it always has. We're committed to providing high quality, dependable local service at affordable rates.

But there will be some changes in the way you do business with us... from how to handle telephone repairs to the way you're billed. Here's a quick look at what will and won't change:

Local service
As mentioned, Southwestern Bell will continue to be responsible for providing local telephone service. To start, stop, change or move service, you will do the same as you do now — call your Southwestern Bell business office.

Long distance service
Beginning January 1, Southwestern Bell will still provide long distance service within your surrounding area. However, calls outside this area will be handled by AT&T or other long distance companies. Since there will be more competition in the long distance market, there will be more choices for you as a customer.

Telephone sets
Between now and the first of the year, all single-line customers have the option of buying the telephones that they currently lease on a monthly basis from Southwestern Bell. If you decide to continue leasing your telephone sets, ownership of this equipment will be transferred to AT&T January 1. Of course, you'll still have the option of purchasing new telephone equipment from a variety of other suppliers. Pending agreement from the Federal Communications Commission, Southwestern Bell may also offer telephone equipment for sale, beginning in 1984.

Telephone repair
If you continue to lease the

Bell-owned telephones, repairs will be handled by AT&T beginning January 1. There will be no charge for repair of these phones, provided you either mail your leased phone or return it in person to designated AT&T locations. However, if you wish to have a service technician repair your phone on your premises, there will be a charge for this service.

Telephones purchased from Southwestern Bell before the end of the year also will be serviced by AT&T, but you'll be charged for those repairs if your set is out of warranty. Of course, repairs of telephones purchased from companies other than Bell should be referred to the store they were purchased from or the manufacturer.

Billing
You'll continue to receive one bill for all services provided today by the Bell System, except for purchases of new equipment from AT&T. This single bill — to be produced by Southwestern Bell — will list Southwestern Bell's charges separately from AT&T charges. In the future, Southwestern Bell may serve as a billing agent for other long distance companies as well. Toll-free telephone numbers of each company will be featured on your statement in case you have questions about your bill.

We want you to know
At Southwestern Bell, we want you to know about these and other changes that will affect the way we do business with you. Watch for more details in the months ahead — both in this column and in your bill insert.

Remember, if you have something to talk about, don't hesitate to drop me a line.

Jim West
Southwestern Bell
916 Denver
Plainview, TX 79072

Southwestern Bell

Lone Star Enterprises

Home Satellite Systems

opening November 1

in Edgemere Shopping Center
Plainview, Texas

Complete financing available with **no Down Payment** for
Qualified Buyers

Several systems on display

Edgemere Shopping Center
296-7653 Plainview

SPECIAL SPECIAL SPECIAL

OIL

Coupon good til 10-31-83

10% discount

with this coupon

All sales cash

Consumer Fuel Assn.

Floydada

210 E. Missouri 983-3394

SPECIAL SPECIAL SPECIAL

Floydada Nursing Home Happenings

By Winona Jackson

On Monday Artie Webb joined the "coffee time" group. Ray Macha brought the devotional message and Ruth McIntosh, Doloras Cannon, and Leona Neff were busy fixing the ladies' hair. Kim was here on Monday afternoon with Music Therapy. We learned the difference between violin and fiddle music. All of Kim's music is fun!

Jean Baird brought to us the biggest pumpkins we have ever seen. The pumpkins brought the feeling of Halloween to us. Thank you, Jean. The Bible Study group met on Tuesday afternoon with Irene, Addie, Francis, Ona, Una, Bennie, Mrs. Birnie, Sue, and Iva. Una missed most of the session because she was visiting with her grandson, Dane Clark, who was here visiting. Una enjoyed all of Dane's visits this week.

Ona was the black-out winner during the bingo games on Wednesday afternoon. Addie, Una, Ona, Ruth, Mrs. Birnie, Lura, Hallie, and Bennie all son games with Sue winning the most games. The prizes were bananas or candy sticks...mostly bananas!

Thursday was the last day for Karl Bunjes to be with the residents for devotions in the morning. Everyone here enjoyed Karl so much. He really cared about the residents and the messages that he brought to them were always "just what we needed." We wish him well in his new ministry...but we will miss him.

Henry and Beatrice Bloodworth were able to return to their home this week. This is a happy time, when residents can return to their homes...but we still certainly miss the Bloodworths here.

The rain prevented us from taking our bus trip on Thursday afternoon so Addie, Lura, Bennie, Ona, Irene, and Iva made book-marks for their Bibles. Thursday was a good day to stay inside and be creative!

On Friday, Nettie Adams led singing

for devotion time with Ruth McIntosh playing the piano. The Rev. Earl Blair brought the message to everyone. Our thanks to each of them for being here when we needed them. Sandra pleased everyone with another good Walt Disney film which the movie fans watched on Friday afternoon...with popcorn!

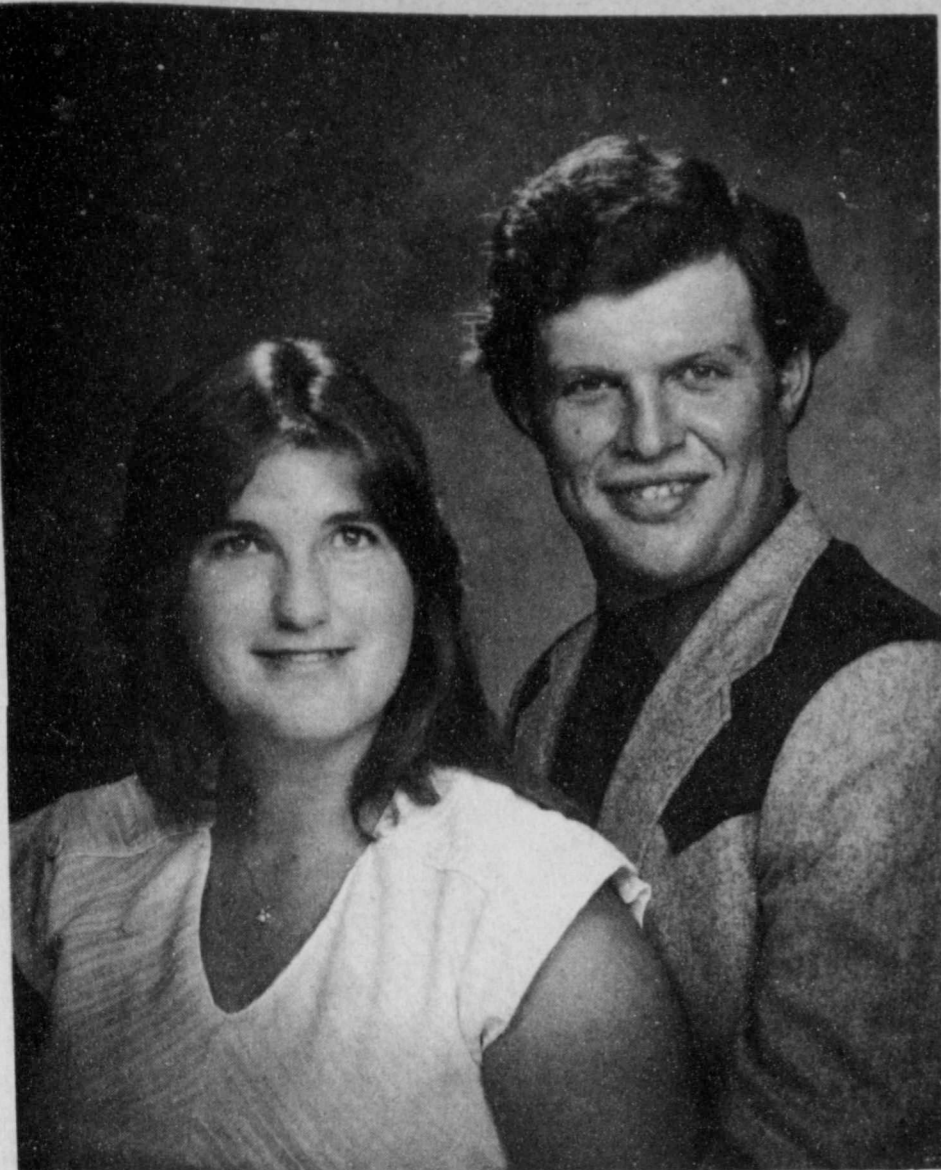
We were saddened this week by the deaths of two of our residents, Travis Corley and Vera Duke. Our love and sympathy are with the families of these sweet people. Their families have been

so loving and attentive while Travis and Vera have made their home here.

The residents would enjoy having children come out to "their home" on Halloween evening about 6:00 p.m. There will be treats for the "Trick or Treaters."

With the rain falling this week, our visitors and volunteers were especially appreciated: Cecelia Martinez, Frances Badgett, Don and Jeanie Lloyd and Cheryl and Tracy, Abernathy; John and Laura Campbell, Graham; Lois Jones, Tammy Lloyd, Lubbock; Mr. and Mrs.

Eugene Fuller, Midland; Mrs. R.L. Lackey, Lockney; M.E. and Vertie Powser, Crosbyton; Bill and Tenia Cooper, Crosbyton; Elder and Mrs. Joe Jackson, Cone; Charley L. Berry, Sr., Dorothy Kerr, Thelma Givens, Allene Henry, Nola Bishop, Laura Turner, Jess Glover, Anne Swepston, Hazel Swepston, Sherry Colston, Kay Cage, Dane Clark, Linda Gayle Waller, J.E. Waller, Nola K. Bishop, Ann Reddy, Wayne Bloodworth, Ana Lee Brown, Watson and Jean Jones, Hazel Bradley, Doloras Cannon and Zella Palmer.



ENGAGEMENT ANNOUNCED—Mrs. James B. Davis would like to announce the engagement and approaching marriage of her daughter, Judy Pauline to Kenneth E. Griggs, son of Mr. and Mrs. Wiley E. Griggs of Floydada. The couple is planning a November 24 wedding.

Sew Smart seminar slated Thursday, November 3

Do your clothes have that "loving hands at home" look? Do your collars have "bumps" at the front edges? Do your facings play "peek-a-boo" and have lumps at the tops of zippers?

Sewing enthusiasts, whether novice or veteran, will have an opportunity to receive practical coaching from one of the nations leading sewing experts, Clotilde.

A day-long "Sew Smart" seminar will be held at the Texas A&M University Agricultural Research and Extension Center Thursday, November 3. It will be from 9:00 a.m. to 4:00 p.m. "Sew for the \$500 Look" and "Smart

Tailoring" will be the topics for the day. Tuition is \$12.00 and you must preregister as space is limited to 250. If interested, call the Extension Office at 983-2806 or come by.

If you are unable to make this seminar, two others will be offered. One at the Fine Arts Auditorium of West Texas College in Snyder (November 5) and one in the Llano Estacado Museum of Wayland Baptist University in Plainview (November 8).

Educational programs conducted by the Texas Agricultural Extension Service serve people of all ages regardless of socioeconomic level, race, color, sex, religion, or national origin.

Domestic Guidelines

by Mary True

Add a big bonus to your food dollar by shopping for ground beef. Special sales on ground beef are important money savers. Before buying, review how to get the most for your money.

Consider which lean to fat category of ground beef will be the best buy. The three categories of leanness are stated on the label:

- Not less than 70 percent lean—lower price
- Not less than 75 percent lean—medium price
- Not less than 85 percent lean—higher price

One recent study compared 75 percent lean to 85 percent lean ground beef. Both lost the same amount of weight, but the 75 percent lean lost more fat and the 85 percent lean lost more water. The 75 percent lean patty, or least costly one, was judged the more juicy and flavorful.

Anticipate how you will be preparing the ground beef. If you are using the meat in a recipe without browning first, or in a low calorie recipe, then you will prefer the 85 percent lean ground beef. Leaner meat creates a firm product which cooks slower than the one with higher fat content.

The 75 percent lean ground beef is also recommended for recipes in which the meat does not have to be browned before adding other ingredients. It reduces the cost of preparing meat loaf or meat balls.

Use ground beef with high fat content in recipes where the meat is browned and then dripping poured off, such as tacos or chili. This will provide a moist juicy product which cooks faster.

Let ground beef be a real bonus for you. Remember it when considering cost, versatility and just plain good flavor.

Brent Bullock graduates from Arizona Institute

Brent Bullock was a member of the fall graduation class of the De Ury Institute of Technology in Phoenix, Arizona October 21. Commencement exercises were held at the North Phoenix Baptist Church. Brent is the son of Mr. and Mrs. Jerry

Bullock of Hobbs, New Mexico and formerly of Floydada.

Attending the graduation exercises from Floydada were Mr. and Mrs. Ray Smith, grandparents, and Brad Bullock, his brother.

"Laughter is sunshine in a house." Wm. M. Thackeray

Mrs. J.C. Odam visits in Arizona

Mrs. J.C. Odam returned Thursday of last week accompanied by Mary Ann Viramonte of Wickenburg, Arizona where Mrs. Odam had visited since the first week of October with Mary Ann and Ralph.

While in Arizona she also visited a grandson, Kevin Viramonte of Avondale. Mrs. Odam accompanied Gary and Cathy Hill and Jeremy to Arizona the first week of October. The Hills remained in Arizona.

On the way home Mrs. Odam and Mary Ann spent Wednesday night in Lubbock in the home of Mrs. Odam's sister, Mrs. Odessa Cage. Friday Mrs. Odam and Mary Ann visited in Hale Center in the Stanley Waits home. Mrs. (Bill) Deborah Rushing and children of Plainview were also visiting in her parents home.

Saturday, Mary Ann left Floydada to return home.

The recent floods in southern Arizona were before Mrs. Odam left home. The weather in Arizona was ideal and the scenery in the mountains beautiful. The Texas Canyon in New Mexico is another very beautiful "wonder of the world" and could well have been called "The Beautiful Rock Canyon." There are

giant rocks, big rocks and small rocks of every description as far as one can see in any direction even to the top of the mountains.

On the way home they traveled in rain

from Las Cruces, New Mexico to Floydada, even through flooded Lubbock, but not in the bad part. Much hail and rain damage to crops was noted in the Brownfield-Lubbock area.

The Very Newest

WELBORN

David and Drew Ann Welborn are the proud parents of their first born baby boy.

David Ryan Welborn was born Saturday October 22 at Methodist Hospital. He weighed 7 lbs. 2 oz. and was 21 inches long.

His grandparents are Mr. and Mrs.

Bobby Welborn of Floydada and Mr. and Mrs. Jay Johnson of Tulsa. Great grandparents are Mr. and Mrs. Henry Hammonds of Floydada, Mr. and Mrs. A.C. Carthel of Floydada, Mr. and Mrs. Jack Johnson of Floydada. He has one great great grandmother, Mrs. C.C. Wade of Ringling, Oklahoma.

Baptist Women II meet for mission and Bible study

The Baptist Women II of the First Baptist Church met in the chair room October 12 for Mission Study. Mrs. Floyd Bradley presided over the business session and all coming events were announced.

Mrs. W. H. Bunch led the group in prayer for all the missionaries and closed the prayer time with a thought of the day, "Walking in Truth". Mrs. G.W. Switzer had charge of the recording music, entitled, "It's a small, small world". Mrs. Anthony Latta brought an informative study on "Partnership - Going Global" with each lady participating. Others present were Mmes. T.L. Holland, Lisa Howard, R.A. Garrett, H.O. Cline, O.G. Mayfield, C.M. Meredith, Nettie Adams, W.B. Parrack and a visitor, Mrs. Tom Emert.

On October 19, the Baptist Women II of the First Baptist Church met in the home of Mrs. Floyd C. Bradley. As the group arrived, refreshments of cheese wafers, banana nut bread, fruit cake, coffee and apple juice were served.

Mrs. Bradley presided over a short business session. Mrs. R.A. Garrett offered prayer and special prayer was offered for so many that are ill.

Mrs. Earl Crawford led the group in Bible study. The subject was taken from the Royal Service "missions impossible," "Servants and partners". The Scriptures taken from the book of Acts. Mrs. Anthony Latta spoke on "Jesus, the model-up front". Mrs. J.R. Turner's subject was "Motivation and Power". "Getting Started" was discussed by Mrs. W.B. Parrack. Mrs. Crawford closed the study using challenging questions on "How to be good servants for Christ". Lisa Howard read the calendar of prayer for missionaries

and worded the closing prayer. Others present were Mmes. Nettie Adams, T.L. Holland, H.O. Cline, C.W. Denison, and C.M. Meredith.

We have bridal Bridal Selections for
Judy Davis
bride-elect of
Kenny Griggs
All Oneida Stainless flatware patterns
still on sale **33 1/2% to 40% off**
Sue's Gifts
983-5312 126 W. Calif.

Visit our shop or call for all your floral, jewelry and gift needs.
Check our half price or less table \$20
Pfaltzgraff dinnerware service for 4
Franciscan Dinnerware sale continues until December 30
Selected patterns of Oneida Stainless flatware
33 1/3 to 40% off regular price
SCHACHTS
Flowers, Jewelry & Gifts
LOCKNEY, 652-2385

Anderson's Weekend Specials
3 days - Thursday, Friday, and Saturday

Special on Jr. and Ladies Jeans Sizes 3 thru 13 Reduced 20% off reg. price	Special on Girls Jeans Girls Size 3-6X - 7-14 Reduced 20% off reg. price
Special on Jr. size Colored Jeans and Pants Sizes 3-13 Reduced 20% off reg. price	Special on Men's Long Sleeve Sport and Western Shirts All sizes Reduced 20% off reg. price Also boys-Knit-Sport Shirts
Special on Ladies Pants Fashion and pull-on styles Sizes 6-20 Reduced 20% off reg. price	Special on Men's Suits and Sport Coats Reg. and Longs Reduced 20% off reg. price
Special on Ladies & Jr. size Blouses and Tops Reduced 20% off reg. price	Special on Men's and boys' Jackets Reduced 20% off reg. price

Layaways - Mastercard-VISA
ANDERSON'S
DEPARTMENT STORE
120 West California Floydada

Garrett spoke in Houston

[Editor's Note: The following article is taken from the Saturday, October 8, 1983 issue of the Houston Chronicle and is being printed for those who know Bravada Garrett.]

By Stephen Johnson
Chronicle Staff

Mental health experts have traditionally diagnosed people as either retarded or emotionally ill when the individuals sometimes needed treatment for both disorders, according to a psychologist. Therapists have also misdiagnosed people and mistakenly labeled them as retarded when they were actually suffering from some form of psychosis or another form of emotional illness, says Bravada M. Garrett, a psychologist at the Big Springs State Hospital near Midland. She also says mentally ill have been diagnosed as being retarded. Ms. Garrett spoke this week at a meeting of the American Association on Mental Deficiency.

"For years, people were diagnosed as either mentally ill or retarded," she says. "Now we are seeing that people have been diagnosed incorrectly and that sometimes people are both retarded and in need of help for a psychiatric problem."

According to a study, says Ms. Garrett, 30 percent to 40 percent of the United States 2.5 million retarded persons also have psychological problems of some type.

Difficulty in communicating with a mentally retarded person is the main cause of confusion when a therapist attempts to determine their psychological condition, says Ms. Garrett.

"A retarded adult may be functioning at a 6-year-old's level and may not be able to communicate how he feels," she says. "If you ask a person of normal intelligence if they hear voices and have hallucinations and they say they do you can deduce that they are possibly schizophrenic."

"However, if you ask a retarded person who has a low I.Q. if they hear voices they will probably say 'Yes.' The therapist will then conclude the person is schizophrenic when the voices they are hearing are those of the people around them. They think you are asking about real voices."

Ms. Garrett says young children must be examined carefully because they will sometimes mimic the retarded behavior of someone in their family and fool an experienced therapist.

"I had one child who acted retarded but when I looked at his background I found out he was imitating the behavior of his retarded aunt," she says. "He was normal, but that was his way of playing."

"One study done among college students asked them what they considered signs of retardation," says Ms. Garrett. "The students said they considered inappropriate social contact, strange facial expressions, rumpled clothes, bizarre behavior and slowness of movement to be indicators of mental retardation."

Under those type of indicators, she says, most of America's population could be classified as retarded.

There is a lack of data, she says, to indicate what actually is retarded behavior. "More research needs to be done in that area," she says.

She says there is also a need for research on what methods are most effective for treating the emotional problems of the retarded.

"There are indications that hypnotherapy, used very successfully with children, is a very successful tool to use with retarded adults," she says.

"Children are very cooperative in hypnotherapy and also are willing to let their imaginations run loose. This is important in hypnosis because it allows them to experience certain emotions."

Among the retarded, she says, there is a similar willingness to cooperate and to utilize their imagination.

She says that retarded children could have more than mental illness and retardation problems.

"I was working with one youth who



BRAVADA GARRETT was retarded due to a head injury he suffered when he was three," says Ms. Garrett. "He had intermittent explosive behavior and possibly had an alcoholism problem. He was arrested once because of anti-social behavior."

"He had a lot of problems but it is hard to say which one is caused by brain damage, emotional problems or the retardation. It's extremely complex. I just don't have all the answers, no one does."

She says mental health experts need to "look at the whole picture" when dealing with retarded people to determine what their needs are.

comfort the bereaved, ride in ambulances with the injured, and try to ease the burdens on survivors and rescue workers alike.

Another area of endeavor that is beneficial to all Texans is the Corrections Services performed by The Salvation Army. The Army provides counseling for the prisoner and his family. The purpose is to maintain communication in order to keep the family together while the prisoner, usually the breadwinner, completes his sentence.

The counseling process is a continuing one, preparing the prisoner for his return to his family as well as society. The Army also has programs for parolees, offering employment counseling and assistance. In addition, The Salvation Army operates a prisoner visitation program. Nominal fees are charged for the families of inmates to travel by bus to various Texas correctional facilities for visits. Here again is an example of the Salvation Army commitment to keeping families together.

The Salvation Army is involved with young people all over the state by sponsoring character building youth activities in a variety of forms. The Army has a fully equipped 380 acre camping facility near Midlothian. Through its various camping programs, the Army invites some 4,000 deserving kids to Camp Hoblitzelle every year. They received instruction in craft classes, participate in athletics, and get to know others their own ages from around the state. Other programs designed for young people include boys' and girls' clubs and Boy Scout activities. The Salvation Army is well acquainted with the needs, desires, and problems facing young people today and strives to prepare them to be good citizens.

Another public service offered by The Salvation Army is the Missing Persons Bureau. Through its worldwide organization, the Army is in an excellent position to conduct searches on behalf of people seeking missing relatives. The Army has been instrumental in reuniting many families, finding run-aways, and assisting refugees.

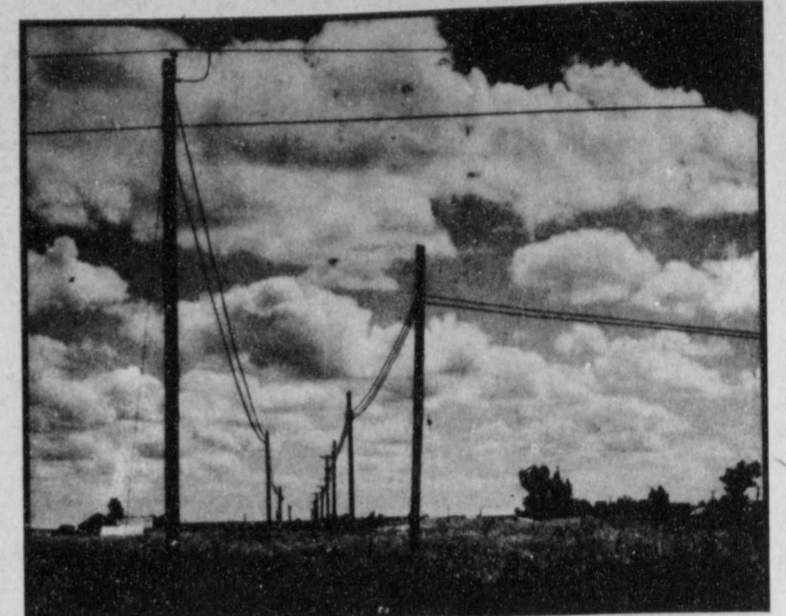
Professional nursing available

Patients discharged from hospitalization, yet requiring intermittent professional nursing care and treatment now have an alternative to the full time attention of a nurse. Total Home Health Care, Inc. has been established to serve residents of Hale, Floyd, Swisher, and Lamb counties with skilled nursing service in the home. Nursing services will be provided following the medication and treatment schedule prescribed by the attending physician. This allows the patient the benefit of nursing care administered by a qualified professional, and convalescence in comfortable, familiar surroundings.

or national origin. Total Home Health Care, Inc. offices are located at 410 Broadway in Plainview, central to the four county service area. For information, phone 806-296-2767.

BRETT R. GILL

TAX SERVICE
Tax Returns and Bookkeeping Service
CALL 847-2563



2 million miles later

After putting up more than 2 million miles of line, America's 1,000 rural electric systems are going strong, providing reliable electric service to more than 25 million people across the countryside.

It's as much of a challenge today as it was when that first mile of line was energized nearly 50 years ago. We still have fewer than five families per mile of line on the average nationwide. We still must invest a lot per consumer to provide electric service across some of the most difficult, remote terrain in the country. Our average gross annual revenue is still the lowest in the utility industry, less than 10 percent of what the power companies collect per mile of line.

And, the demand for electric service continues to grow in rural America, as nearly a million people each year move into areas served by the rural electric network, as business and industry find new homes in the countryside.

We're on the job—2 million miles later—doing our best for the people we serve—our consumer-members.

Lighthouse Electric Cooperative, Inc.

Highway 70 East

Floydada



Medicare has holes in it.

Medicare was never intended to cover total healthcare costs. And it doesn't. In fact, it currently pays less than 40% of the average healthcare bill. That's why you may need the Senior Protector from Time Insurance. It helps fill the holes in Medicare by providing broad supplemental coverage for both Medicare Part A and Medicare Part B. You may be eligible for this valuable coverage. Call us for full details.

CATES & DAWSON

210 W. Houston 943-5322
TIME INSURANCE COMPANY



Once upon a time gasoline was cheap.



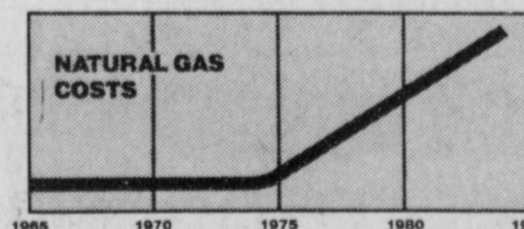
So was natural gas.

Some folks remember cheap gasoline prices. Natural gas prices used to be cheap for power plants at Southwestern Public Service Company, too.

Today, it's different. Natural gas costs continue to increase, and since we don't own any gas wells, we don't have much to say about natural gas prices... just as you don't about gasoline.

We've brought coal into the picture to help keep costs down. Electricity made from coal costs much less.

Another way we're...



Not any more. Natural gas prices have increased dramatically.

Working to justify your trust



SOUTHWESTERN PUBLIC SERVICE COMPANY

RESULTS START WHEN YOU DO!

Six Months Special **\$360 value**
SAVE \$100 You pay only **\$260**

3 Months Special, \$180 value \$144

- Exercise in complete privacy
- Firm and tone even if you don't need to lose weight
- Exercise on exclusive "Symmetricon Unit"
- Increase circulation - look and feel younger

205 W. Missouri
Floydada



983-2112
Monday thru Friday

Fat Walker's

FIGURE PERFECTION SALONS INTERNATIONAL

Call or come by today for your FREE visit

Summit Savings Money Rates

	MONEY MARKET CERTIFICATE	SMALL SAVERS CERTIFICATE	MONEY FUND	SUPER NOW FUND
RATE	9.250%	10.50% COMPOUNDED DAILY	9.25%	6.750%
EFFECTIVE THRU	10-31-83	11.070% YIELD	10-31-83	UNLIMITED CHECKS
MINIMUM TERM	6 MONTHS	10-31-83	NONE	10-31-83
MINIMUM DEPOSIT	\$2500	18 MONTHS	\$2500	NONE
INSURANCE OF ACCOUNTS	\$100,000	\$1,000	\$100,000	\$2500
	\$100,000	\$100,000	\$100,000	\$100,000

NOTICE: As required by law, all certificates are subject to substantial penalty for early withdrawal.



We Invite You To "JOIN US AT THE TOP"

SUMMIT SAVINGS ASSOCIATION

HOME OFFICE - 6th & BALTIMORE, PLAINVIEW
OTHER BRANCHES

3000 OLTON ROAD IN PLAINVIEW, FLOYDADA, HALE CENTER,
MULESHOE, LITTLEFIELD, FARWELL, PLANO, ALLEN, MATADOR and
FRIONA

Member FSLIC

217 W. CALIFORNIA
FLOYDADA, TEXAS 79235

983-3725

OBITUARIES

EDITH BADGETT

Services for Edith Badgett, 75, of Hurst were at 2 p.m. Tuesday at the Geo. C. Price Funeral Chapel with the Rev. Prentis McGee and the Rev. Shannon Allsup officiating.

Burial was in the City of Levelland Cemetery under direction of Geo. C. Price Funeral Directors.

She died at 7:45 p.m. Saturday in H.U.B. Harris Hospital in Hurst after a lengthy illness.

The Texas native moved to Levelland in 1958 from California. She moved to Hurst in 1979. She married Samuel Washington Badgett on June 15, 1944. He died March 16, 1978.

She was a member of First Baptist Church in Floydada.

Survivors include a daughter, Mrs. Erdie Phay Allsup of Hurst; a brother, Carroll Peck of Levelland; three sisters, Esther Peck of Floydada, Mrs. Erdie Phay Griffith and Ruby Griffith, both of Abilene; and two grandchildren.

Pallbearers were Bill Russell, James Griffith, Duane Griffith, Clyde Allsup, Ken Williamson and Russell Peck.

MARY ELLEN BURNS

Services for Mary Ellen Burns, 76, of Pasadena were at 2 p.m. Thursday, October 20, in First Baptist Church in Lockney with the Rev. Cecil Osborne and the Rev. John C. Truett officiating.

Burial was in Lockney Cemetery under the direction of Moore-Rose Funeral Home of Lockney.

She died at 1:20 p.m. Sunday in Green Forest, Arkansas, after a sudden illness.

The Goliad native married Thomas Wilson on March 16, 1924, in Marquez. She moved from Marquez to Floyd County in 1928 and to Pasadena in 1958. She was a homemaker and a Baptist.

Survivors include three daughters, Ava Kuykendoll of Pasadena, Dean Harrison of Green Forest, Arkansas, and Hazel Alexander of Plainview; a son, J.T. Wilson of Plainview; two brothers, Herman Wieland of Houston and Milton Dutch Wieland of Carlisle, Arkansas; six sisters, Agnes Gips of Yorktown, Thelma Johnson of Bay City, Margaret Hill of Lakewood, California, Anna Bell Tumbison of Pasadena, Gladys Moore of Bay City and Dorothy Cummings of Lockney; 14 grandchildren; 18 great-grandchildren; and a great-great-grandchild.

TRAVIS CORLEY

Services for Travis Robert Corley, 80, of Floydada were at 4 p.m. Saturday at First Baptist Church here with Dr. Floyd C. Bradley, pastor, officiating.

Burial was in Floydada Cemetery under direction of Moore-Rose Funeral Home.

He died Thursday at Caprock Hospital in Floydada after a lengthy illness.

He was born Feb. 1, 1903, in Lamesa and moved to Floyd County in 1927. He

married Mary Ann Fawber May 28, 1927, in Floydada. He was a bookkeeper.

He was a member of First Baptist Church in Floydada.

Survivors include his wife; a daughter, Betty Weems of Port Aransas; a brother, Dan of Lamesa; a sister, Ruby Myers of Lamesa; three grandchildren; and four great-grandchildren.

VERA RUTH DUKE

Services for Vera Ruth Duke, 74, of Floydada were at 3 p.m. Sunday at City Park Church of Christ in Floydada with Perry Zumwalt, minister, officiating.

Burial was in Floydada Cemetery under direction of Moore-Rose Funeral Home.

She died Friday at Floydada Nursing Home after a brief illness.

She was born July 31, 1909, and moved from Stonewall County to Floyd County in 1948. She was married to D.H. Duke, who died in July 1973.

She was a member of City Park Church of Christ.

Survivors include three daughters, Imogene Baird of Floydada, Margie Baird of Alamogordo, N. M.; and Wanda Davenport of Paoli, Okla.; three sons, Jackie of Floydada, Jimmy of Littlefield and Billy of Lovington, N. M.; 20 grandchildren; and 21 great-grandchildren.

KENNETH GRIFFITH

Services for Kenneth S. Griffith, 63, of Plainview were at 2 p.m. last Friday in Lubbock and Amarillo Street Church of Christ with Earl Cantwell of Rock Creek and W.A. Marshall, elder, officiating.

Burial was in Lockney Cemetery under direction of Wood-Dunning Funeral Home in Plainview.

He died about 4 p.m. Tuesday, October 18, on his farm. Municipal Judge Jim Davis ruled the death was due to natural causes.

The Floyd County native grew up in the Lone Star community and married Maurine Lester on July 27, 1941, in Lockney. They moved to Plainview in 1945 and he operated Griffith's Garage in Plainview for many years, later farming.

He was a member of the Church of Christ, and served as a lay minister for many churches in the area.

Survivors include his wife; a son, Kenneth Wayne of Liberal, Kansas; a daughter, Caroline Wieland of Plainview; three sisters, Leona Nall and Dorene Harbin, both of Lubbock and LaNell Webber of Fort Worth; four brothers, Harold of Lockney, Elton and Herbert, both of Lubbock, and Chester of Dallas; and four grandchildren.

LELA JONES

Services for Lela Louise Jones, 62, of Odessa were at 3 p.m. Tuesday in Westside Church of Christ in Lockney

with Frank Duckworth, minister, officiating and Boyce Mosley assisting.

Burial was in Plainview Memorial Park under direction of Moore-Rose Funeral Home in Lockney.

She died at 7 a.m. Monday in Odessa Medical Center after a lengthy illness.

The Abernathy native married Ed N. Jones. He died in 1974. They moved to Floyd County in 1937 from Abernathy. She worked in the Heritage Home in Plainview for two years and was a member of the Church of Christ.

Survivors include two sons, Nolan of Odessa and Edward of Lubbock; four daughters, Lela Turner, Letha Hooper, and Edna Lyle, all of Odessa and Gayle Titus of Plainview; three brothers, Elton Wylie of Lockney, Price Wylie of Plainview and Oscar Wylie of Dimmitt; four sisters, Annie Pinner of Lockney, Clydie Robertson of Dumas, Helen Bynum of Kingston, Okla., and Bessie Young of Plainview; and nine grandchildren.

CALVIN W. POTEET

Services for Calvin W. Poteet, 77, of Henrietta were at 2:30 p.m. Saturday at New Salem Primitive Baptist Church in Floydada with Elder Joe Jackson officiating.

Burial was in Floydada Cemetery under direction of Moore-Rose Funeral Home.

He died Thursday at the Henrietta Hospital.

Poteet was born Aug. 23, 1906, in Beaumont. He married Ollie Elliott July 16, 1923, in Roaring Springs.

He moved to Floyd County in 1942 from Crosbyton. He was a retired farmer.

Survivors include his wife; four daughters, Mrs. LaVern McCarty of Lockney, Mrs. LouRita Ellis of Henrietta, Mrs. VeraDean Powell of Van Alstyne and Mrs. Barbara Wages of Portland; a son, Curtis of Nara Visa, N. M.; 15 grandchildren; and 26 great-grandchildren.

REAMER RAINER

Services for Reamer C. Rainer, 76, of Floydada were at 3 p.m. Tuesday at Floydada First Baptist Church with Dr. Floyd C. Bradley, pastor, officiating.

Burial was in Floydada Cemetery under direction of Moore-Rose Funeral Home.

He died at 5:30 p.m. Sunday at his home, Justice of the Peace Walter Hollums ruled his death the result of natural causes.

He was born Oct. 8, 1907, in Merkel. He married Mable Milks June 18, 1945, in Little Rock, Ark. She died Jan. 29, 1970. He moved to Floyd County in December 1938, from Crosby County.

He was a veteran of World War II. He was a retired employee of Lighthouse Electric Coop and a member of Floydada First Baptist Church.

Survivors include a stepson, Ronald Reynolds of Hampton, S.C.; a stepdaughter, Cathy Williams of Freeport; two daughters, Shirley Martin of Crowley and Linda Blasutta of Arlington; five sisters, Opal Rogers, Zalma Richardson and Frances Powell, all of Floydada, Hazel Powell of Ralls and Viola Burrows of Bay St. Louis, Miss.; three brothers, Kenneth Rogers of Bosque Farms, N.M., D.F. Rogers of Temple and Wiley Rogers of Floydada; and nine grandchildren.

ENRIQUE SALAZAR

Enrique (Hank) Salazar, age 81, of San Marcos, Texas, died Monday, October 17, 1983, at the Hillside Manor Nursing Home in San Marcos. Funeral services were held Wednesday, October 19, at St. John's Catholic Church in San Marcos under the direction of Los Angeles Funeral Home.

Mr. Salazar was born June 18, 1902 in Muzquiz Coahila, Mexico. He married Juanita Llamas in 1924 in San Marcos. The Salazars moved to Floydada in 1954 where Mr. Salazar was a farm worker for L.D. Smith. He retired in 1978 and moved back to San Marcos in 1980.

Survivors include his wife of San Marcos; three sons, Pete and Blackie Salazar of Floydada, Pete, Jr. of San Marcos; four daughters, Lupe Hinojosa of San Marcos, Tila Perez of San Antonio, Pauline Baca of New Mexico, and Ninfa Martinez of Floydada; 25 grandchildren, and 17 great-grandchildren.

FLOWERS


to soften the sorrow
to comfort the living
to honor loved ones

SPRAYS
\$10.00-\$25.00

STANDING
SPRAYS
\$25.00 up

BASKET FOR THE SLUMBER
ROOM. \$25, \$35, \$50, \$75. After
hours calls accepted.

Floral Designs by Cyndi Williams
& Ozena Norris



WILLIAMS FLORIST
and
CARD SHOP

128 W. California 983-5013

Cedar Hill News

BY GRACE LEMONS

Some of our gauges measured 12 inches of rain and one lake was over the road. The other two were up to the black top. We asked for rain and we got it all at once. Some cotton is still in the field.

The roads had dried enough that people were able to get out to go to church and services at the Baptist and Assembly of God churches were able to conduct regular services. Mabelle and Terry Harris of Floydada were visitors at the Assembly of God Church Sunday morning.

Mabelle and Terry Harris visited their grandparents, Cephus and Imogene Fortenberry over the week-end.

Mrs. Peat Kelley and Norma Welch visited Mr. and Mrs. Cephus Fortenberry and Junior and Martha Taylor Sunday evening.

We were sorry to hear of the death of Gail DuBois' grandfather, Calvin Poteet, 77, of Henrietta whose funeral was held at the Primitive Baptist Church in Floydada Saturday, 22nd. He is survived by his wife, Ollie of Henrietta. Burial was in the Floydada Cemetery.

Virginia Mitchell was among the members of the Floydada Band who participated in the Marching Festival at Tech in Lubbock, Tuesday.

Edna Gilly, Craig and Trudi Gilly, Amy and Tara were dinner guests in the home of Johnnie and Delise Harrison and family Sunday.

Norma Welch and her mother, Mrs. Peat Kelley went to Amarillo Monday

on business and also visited Connie and Steve Pritchett.

Chips and dip, cookies and punch was served to around twenty guests who attended the House of Lords party in the home of Mr. and Mrs. Durrel Fortenberry Saturday evening. Cindy Fortenberry hosted the party. Others who attended were: John Fortenberry, Karla and Bryan Fortenberry, Edna Gilly, Martha Taylor, Imogene Fortenberry, Grace Lemons, Peat Kelley, Norma Welch, Kay Bethel, Linda Lemons, Duffy Hinkle, Bernice Mitchell and the sponsor.

Grace Keeter began her series of treatments at the M.D. Hospital in Houston Friday and it is reported that she is receiving the treatments satisfactorily and has several more to take. You can write her in c/o Jim Carlton, Box 1301, Bellaire, Texas 77401. We trust that she will soon be in remission and will be back home.

Twyla Lemons accompanied Kay Shackleford of Plainview to see the concert, Alabama in Lubbock Friday.

Mr. and Mrs. Durrel Fortenberry, Cindy and John Fortenberry, Karla and Bryan Fortenberry, Tonya Powell and Traca Lemons went to White Lake Sunday night.

Edna Lackey, Carolyn Jones and Dorothy Merrell returned home Tuesday after attending the shower of Freddie and Barbara's daughter in Fort Worth.

Mr. and Mrs. Marvin Lemons, Jessica, Diana and Cory visited Mr. and Mrs. Carl F. Lemons and Mrs. Belle Lemons Friday evening.

Happy Birthday to Gladys Fortenberry on Friday October the 21st.

True contentment is the power of getting out of any position all that there is in it.

OVERHEAD DOORS

**Residential Doors, Commercial
Doors & Electric Door Openers.**

WOOD • FIBERGLASS • STEEL • ALUMINUM


RAYNOR

SALES • INSTALLATION • SERVICE

Walter N. Davis Construction
983-5550 or 983-5337

UNIQUE WATERBEDS

FREE
setup and delivery in
Floyd County
on beds bought now
thru November 5



**SALE
OF WATER BEDS**

Complete king size bed
\$25⁰⁰ down

\$20⁵³ per month with
approved credit

Layaway a bed now
for 90 days and receive
FREE setup and delivery

A beautiful
California Rose

\$70⁰⁰ down


\$35⁰⁵ per month with
approved credit

FREE fitted
mattress pad with
waterbed purchase

UNIQUE WATERBEDS

(806) 296-9555
Edgemere Shopping Center
Plainview

...gives a
man a good
feeling...



COOPERATIVES
BUILDING A BETTER AMERICA

To Know He's Dealing
With Folks Who Care

All our customers are
our friends and neighbors

as well. Many of them we know on a first name
basis, and when people are that close, it's next
to impossible to think of them as
just "accounts."

COOP

CONSUMERS FUEL ASSN

983-3394
210 E. Missouri

Post Antelopes prove too much for the Whirlwinds

The rain seemed to dominate all of the Floydada football games last week as none of the teams played their games except the Varsity team. The game which was played at Post was needless to say a little muddy. The Post football field had to have water pumped off the field before the two teams could play.

Post's Milton Williams scored five touchdowns against the Whirlwinds to lead the Antelopes to a 35-8 win Friday night.

Floydada scored 8 points in the last quarter. Fighting Whirlwind Derrick Jenkins caught a 36-yard pass from Mark Hatley to put Floydada's first points on the scoreboard.

John Foley then ran around the end to add the additional two points to their score.

Floydada had a total of 115 yards passing compared to Post's 58 and had no interceptions.

Floydada will now travel to Idalou this week to face the Wildcats. The game begins at 7:30.

THE BOX SCORE

Post	Floydada
16	9
353	82
58	115
411	197
1	1
1	0

Floydada School Menu

October 31-November 4

Monday:
Breakfast — Orange juice, toast, jelly, butter, milk

Lunch — Chicken fried steak w/ gravy, green beans, mashed potatoes, peach half, hot roll, milk

Tuesday:
Breakfast — Pineapple juice, cinnamon toast, milk

Lunch — Green chili pie, corn, fried okra, hot roll, crushed pineapple, milk

Wednesday:
Breakfast — Apple juice, toast, bacon, milk

Lunch — Hot cheese and pepperoni sandwich, tator tots, pickle spears, mixed fruit, milk

Thursday:
Breakfast — Grape juice, dry cereal, toast, milk

Lunch — Bar-b-que hot links, pinto beans, mixed greens, cornbread, wild cherry cake, milk

Friday:
Breakfast — Orange juice, pancakes, syrup, butter, milk

Lunch — Hamburgers, tomato, pickle, lettuce, French fries, apple cobbler, milk

Andrews Honor Roll

1st NINE WEEKS

Fourth Grade

"A" — Tanner Smith, Rhoda Hernandez, Robin Galloway, Jennifer Crow, Shonda Guthrie, Christy Benjamin, Kathrine Davis, Billy Villarreal, Stacy Dawdy, Alan Livingston, Amy Ogle

"B" — Nathan Whittle, Sylvia Caballero, Melanie Covington*, Kallie Hicks, Bertha Hernandez, Lyn Moore, Adam De La Cruz, Faliza De Hoyos, Tiffany Bennett*, Irene Ovalle*, Florence Arellano*, Brad Wilson, Misti Lobban, Jason Outlaw, Elizabeth Juarez*, Christi Rowan, Jenny Paty, Steve Morales, Alex Gregory, Julio Cervera. *Remedial Reading, Bilingual, Resource.

Fifth Grade

"A" — Tammy Pleasant, Ryan Burns, Angie Glasscock, Amy Hinsley, Trina Ogden, Tonya Powell, Melissa Strickland

"B" — Refugio Barrientos, Step-

nie Carr, Janet Himes, Robert Medina, Cody Nichols, Troy Peel, Deanna Watson, Michelle Torres, Pat Vallejo, Jerry Wickware, Michael Aleman, Brent Gibbs, Becky Porter, Linda Suarez, Lupe Gonzales, Stacy Hinsley, Veronica Juarez, Clint Lamb, Roy Nichols, Elsa Hearon, Kerrie Pitts, Becky Poole, Alicia Vargas

Sixth Grade

"A" — Shayla Barbee, Amy McCormick, Tiffany Reams, Misty Warren, Misty Avila, Anita McCormick, Shannon Paty, Valency Zumwalt, Kim Perry, Nelda Morales, Heather Henderson, Jo Lee Ellis, Mychelle Harris, Stephanie Zimmerman, Roxene Brown

"B" — Libby Anderson, Roy Garcia, Gracie Mercado, Grant Stovall, Eric Stringer, Miki Schneider, Tonia Marley, Criselda Hernandez, Ray Garcia, Shay Hearon, Julian Rocha, JoAnn Cavazos, Eliseo Guerra



7th AND 8th GRADE ART CLASSES Back: Christina Martinez, Pricilla Zuniga, Yolanda Garza, Kim Watts, Eddie Ramirez, Jesse Cervera. Front: Lanny McMurrain, Cory Jones, Blanca Medrano, Rene Soliz, Dwayne Franklin.

Jr. High Honor Roll

1st 9 Weeks

7A — Travis Bishop, Anissa Crabtree
7B — Kristy Dawdy, Dina Livingston
7C — Tiffany Gentry
7D — Mark Thompson

8A — Angie Bertrand, Chad Pernel

8B — Keith Hancock, Ludusia Leatherman
8C — Joey Thayer
8D — Pam Lockwood

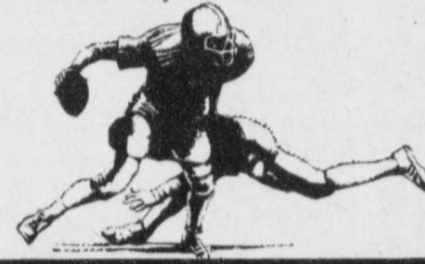
Coaches Comments

Post has an excellent football team. They played well and made some big plays to beat us. Even though the score was one-sided the game was much better than the final score. I was very pleased with our intensity and attitude on the field. Our kids fought hard and played pretty good defensively. Post has a real quick defensive team that kept us in check for most of the game. I can't fault our kids they play hard and with much more intensity and enthusiasm.

I would like to commend our players for their "gutty" effort last Friday night especially Mark Hatley, Mike Ruff, John Wayne Foley, Rickey Poole, Michael Saens, David Morren, Clarence Pope, Quint Anderson, Gilbert Flores, Derrick Jenkins, Richie Mitchell, Fernando Arvizu, Carlos Baker, Adolfo Garcia, Johnny Jones, Larry Smith, Alvin Cooper and Joe Faulkenberry.

Our next game with Idalou will be a tough game. Idalou is coming off a loss to Childress in a real close game. I expect Idalou to come out with "fire in their eyes," they were the pick at the beginning of the year to win district. They have an outstanding ball club, we will have to play a good game to stay with them. On offense they are led by Jeff Rogers, Jimmy Marmolejo, Stacy Phillips and Isaac Jackson. In the backfield, on Defense they are led by

Jay Harmon, Adam Guzman, Joe Tom Sisk, and Thomas Lozoya. We expect a hard fought contest and I believe our kids will be ready this week.



Capada Theatre

October 28-29-30

\$6.00 carload every night

"A whole lot of fun!"

— GOOD MORNING AMERICA

WRIGHT ZONE THE MOVIE

"GENUINELY FRIGHTENING. SUSPENSEFUL AND SCARY."



TOWNSPEOPLE met at the Capada Drive-In Friday to wish the Whirlwinds well and cheer them on as they left for Post.

Money Market Account Checking with interest \$2500 Minimum - Limited transactions	9.25%
6-Month Money Market C.D. \$500 Minimum Deposit	9.19%
18-Month C.D. \$500 Minimum Deposit	10.55% Compounded daily
	11.25% Yield
Jumbo C.D. 30 Day	6 Month 10.25%
60 Day 10%	12 Month 11%
90 Day	
\$100,000 minimum deposit	
Bonus Plan: For 250,000 deposit add .25% to these rates For 500,000 deposit add .5% to these rates	
(Rate may change daily. Call for quote.)	
All certificates are subject to substantial penalty for early withdrawal.	



Central Plains Savings



DIMITT TULIA HALE CENTER PLAINVIEW CANYON FORT WORTH

October Renewals

In-county: \$11.50

Out-of-county: \$12.50

The following is a list of subscribers whose subscription to the Floyd County Hesperian expires in September. Rate for in-county residents is \$11.50 for a year; if you live outside of Floyd County it's \$12.50. Payments may be mailed or brought to: 111 E. Missouri, Floydada, TX 79235.

Adam's Well Service
Nettie Adams
Jimmy Allensworth
Kerwin Baxter
Waldo Baxter
Odell Breed
Virginia Breit
Ricky Burns
Billy Don Colston
Mrs. Sylvia Davis
Dennis Dempsey
Dessie Dennison
Wm. H. Dougherty
W.B. Eakin
Geneva Elliott
Floyd Co. Abstract Co.
Floyd County Library
Gary Fuller
Wayne Fuller
Lavada Garrett
Nancy Hagood
Richard M. Hale
Dr. S.A. Hale, Jr.
Jim Hall
Roger Hammonds
Dolan Hanna
J.W. Hendricks
Mrs. T.C. Hollums
Carl Hopper
A.J. Huckabee

Larry Irby
W.F. Jackson
Mrs. W.M. Jackson
MMC J.M. Jarnagin
Acie Johnson
Ada Lee Jones
Kelly Marble
Dr. A.G. McCulley
Jerry McGuire
Robert L. McGuire
J.L. Nichols
Jimmy Nichols
Mrs. Jewel Norman
Plainview Daily Herald
Doris Preston
Don Rainer
Reed Ford Sales
A.H. Robertson
Bob Ross
Zant Scott
Sue Sue
Leslie Surginer
Wayne Tipton
Doyle Turner
E. Berniece Walters
Edwin Warren
J.A. Welch
Johnny West
Cleo Whittle
Rex Yeary
Travis Young

SPECIAL SPECIAL SPECIAL

Antifreeze
Coupon good til 10-31-83

10% discount
with this coupon

COOP All sales cash

Consumer Fuel Assn.
Floydada

210 E. Missouri 983-3394

SPECIAL SPECIAL SPECIAL

Now, You Don't Have to Catch Your Cottonseed . . .



Buy Certified Cottonseed At Less Than 1975 Prices

You can take advantage of this revolutionary new pricing program if you Book Your Seed Now or before December 1. When you put down your \$4 per bag deposit before December 31, you will be assured of all of the certified Growers brand cottonseed you want next spring at a 35% savings.

This program from GroAgri will make it unnecessary and uneconomical for you to catch your own seed. Think of all the advantages. Certified seed. No fuss. No bother.

See your GroAgri dealer today and take advantage of this price. Don't wait, the offer will not be made in the spring.

Subject to change without notice

GroAgri



GroAgri Seed Company
P.O. Box 1656
Lubbock, Texas 79408
806/747-6225

S.P. varieties also available at discount.

THE DONUT SHOP

315 South 2nd (on the Plainview Highway)

983-2627

Open Tuesday thru Saturday 6:00 a.m. — 12 noon

Halloween Special

Saturday only 1 doz. glazed doughnuts **\$1.89**
Reg. \$2.50



Taking orders for holiday cookies and cupcakes

RED X

FUEL STOP

6 pack 12 oz. cans

Pepsi **\$1.49**

Hamburger Basket **\$1.49**

Cheeseburger Basket **\$1.69**

Bar-B-Q sandwich **79c** Nachos **69c**



Sit Down Dining Available

520 East Houston

New Store Hours 6 am to 11 pm

983-3028



KAY HALE
COOK OF THE WEEK

Cook of the week

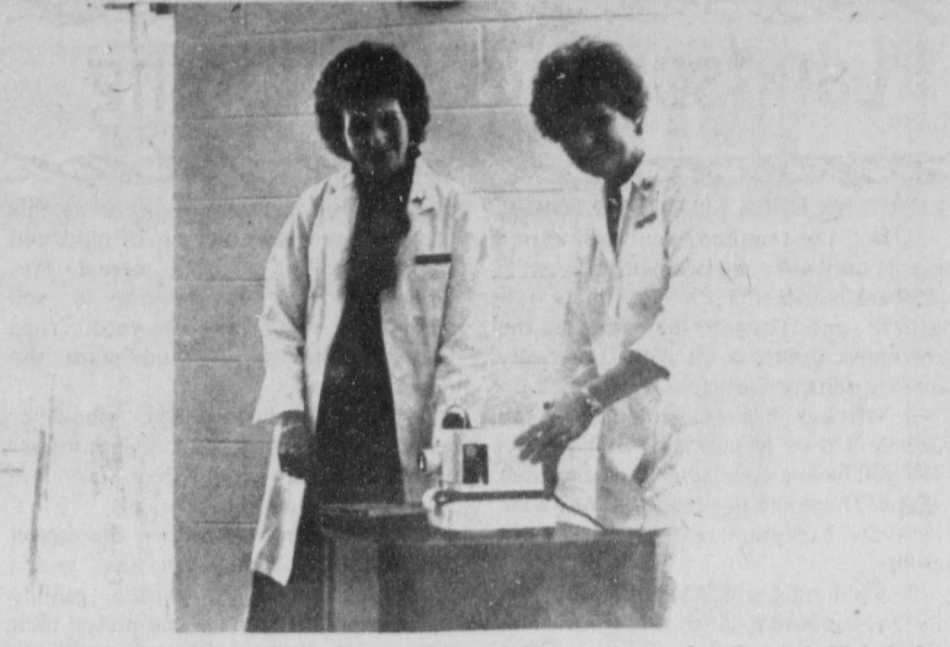
Prune Cake
Cream: 1/2 cup shortening
1 cup sugar
Beat in one at a time:
2 eggs
Beat in 1 cup prune pulp (1 large jar prune baby food)
Sift: 1 1/2 cups flour
1 1/2 tsp. soda
1 tsp. cinnamon
1/2 tsp. salt
Add alternately with:
1/2 cup sour milk
Stir in: 1/2 cup chopped nuts
Bake in two layers 25 minutes at 375 degrees.

Icing
1 stick oleo
3/4 cup sugar

2 Tbs. flour
1/2 cup evaporated milk
Cook until thick, then add 1 can coconut and 1/2 cup chopped nuts.
This recipe was given to Kay Hale by the late Emma Louis Johnston and is one of Mrs. Hale's most prized possessions.

The handwritten recipe is her daughter, Kathy's favorite cake. Mrs. Hale made the cake for every special occasion while Kathy was growing up.

A mother of two, Mrs. Hale said her son Kent didn't like the cake and she said she didn't know whether she liked it because Mrs. Johnston gave it to her or because it was just a good cake. She said the cake is an easy cake to make and stays very moist.



R.N. MOLLY STRINGER is shown with new film projector for Caprock Hospital. The Floydada Caprock Hospital Auxiliary has donated a new film projector to the hospital staff at Caprock Hospital. The staff always had to borrow a projector from one of the local schools until the recent donation. The projector will be used to train nursing staff and be used to show films at in-service programs.

Lakeview News

A 6350 foot depth had been drilled at the oil well on the Billy Joe Hambricht's land by Monday afternoon. The crew cemented in the second string casing last Wednesday during the pouring rain. Over eight inches of rain on our community was reported in about thirty six hours. The oil well's mud pump was running on the land belonging to Ona Ruth Neff and farmed by her brother, Verlon Wright. The leary rain isolated the pump and a caterpillar tractor had to be brought in Wednesday to pull the well pump out of the lake. The tractor got stuck and another caterpillar had to be brought in to get them both out. The crew had everything going and drilling again by the week end.

Mrs. Choise Smith and other Floydada teachers of the gifted and talented program left Sunday morning to attend a school meeting in Austin.

Mr. and Mrs. Riley Teague sat at Cassie, of Nacogdoches, Texas spent Thursday night with his grandparents, Mr. and Mrs. Riley Teague, while attending a youth ministers meeting last week at Broadway Church of Christ in Lubbock. Brad lived in Floydada with his parents, Roy and Shirley Teague, when he was a child.

Bob Alldrege, principal of Plan A school system at Della Plains attended a school meeting at Austin, Thursday through Saturday, the 36th Annual Conference of Teacher Education.

Mrs. Randy Bertrand took cupcakes and cokes to school Wednesday during the rain, for the birthday party of her daughter, Misty and she was seven years old. The first grader is in Mrs. Sue Crow's room.

The Dean Watsons enjoyed Sunday dinner at the Henry Brewers. The Brewer's niece and family from Wichita Falls were guests of honor, Mr. and Mrs. Claude Draper and their son and family. Mr. and Mrs. Tommy Draper and girls. The Watsons went to Brenda's parents, Mr. and Mrs. Tom Arore, for supper. Tom's mother, Mrs. W.T. Moore of Matador is visiting for a few days. Other guests included Mr. and Mrs. Rick Fuller, Mike Moore's wife, Pam, was recently appointed as head of the Crisis Center in Plainview and was the subject of a feature article in the Plainview paper.

Mrs. Billy Joe Hambricht visited in Lubbock Saturday with her daughter, Kathy Green and family, and her son, Todd of Texas Tech.

The area Home Economics teachers meeting in Canyon was attended Saturday by Mrs. Q.D. Williams, who accompanied Mrs. Alice Baker and Miss Stout of Floydada High School. They also saw Miss Nancy Herring of Vega, who said she'd left her guest, Steve Moore, to attend the meeting.

Miss Debra Hardy spent Friday night with Amanda Watson.

Mr. and Mrs. Brad Teague and baby, Caprock Hospital Sunday with her father, Earl Bishop, who does not want to eat and is growing very frail, but whose mind is sharp and clear as ever. The Teagues attended the retirement reception for Doyle Turner in the Lighthouse Community Room Sunday afternoon. Doyle is retiring from the Post Office.

Mrs. Smoky Quilantan canned tomatoes last week, salvaged from the ruined fields. Tomatoes are so water logged they burst open on the vines. Vines are still heavy with fruit, but most is unharvestable.

Miss Tiffany Gentry was selected Citizen of the Nine Weeks for 7th grade at Junior High.

Mrs. Lucille Custer visited Ester Peck Sunday.

Mr. and Mrs. Earl Edwards braved the heavy rain Wednesday to attend to business in downtown Floydada. "Better than going out in a dust

storm," said Mrs. Edwards.

Mr. and Mrs. Verlon Wright visited Randy and Sherri Burk in their new mobile home near Acuff Friday. Other supper guests included Mike and Carol Burk and children, Jennifer and Justin.

Mona and Jean Dunn of Hale Center and a cousin, Sandra Jones, Hogerman, New Mexico, were house guests of Ruth and Don Harrison last week during the rain. They returned home Saturday.

Greg Bishop visited Monte and Kellie Williams Friday, and watched the John Wayne movie, "The Searchers," based on the life of Cynthia Ann Parker, on taped TV.

Mrs. Howard Bishop was honored Saturday on her birthday with a family dinner at the Lubbock home of Mr. and Mrs. Bob Teal. Other relatives present included: Mr. and Mrs. Pete Calloway of Floydada, Mr. and Mrs. Monte Williams and Amanda, Floydada, Mr. and Mrs. Speck Brian, Christy, Mr. and Mrs. Weristid Brown, Robert Teal and Brandon, Sheryl Smith, Jimmy Smith and Tammy, all of Lubbock; also Mr. and Mrs. Gary Tatch, Marv, Kimberly and Ryan of Pueblo, Colorado; Mr. and Mrs. Mike Bishop, Greg and Howard Bishop of Floydada.

Mr. and Mrs. Randy Bertrand and daughters, attended the concert by "Alabama" at the Coliseum Friday evening. They all dined at the Santa Fe Station before showtime.

Mrs. Georgia Mount of Vernon and daughter, Darlene and a friend, Ed Case, also of Vernon, visited the Howard Bishops Sunday afternoon after visiting Mrs. Mount's sister, Mrs. VOLLIE McNIEL, who is a patient in Caprock Hospital.

Carl and Pearl Moosberg drove to Duncan, Oklahoma recently, Carla (Mrs. Donny) Winslow and Zade accompanied them to Carl's high school reunion at Wills Point, Texas. They were guests of one of Carl's childhood neighbors, Mrs. Opal Morgan, in Union Grove community. Over 600 people ate BBQ on Saturday evening before the program. They also went on the "Tour of Interesting Sights of the Town."

En route to Wills Point the Moosbergs stayed at Holiday Inn in Greenville, Texas. Carl's cousins from Ft. Worth area met them and visited on Sunday afternoon. Sunday morning the Moosbergs attended church in Greenville where they worshipped when they lived there 35 years ago.

SYF plan Thanksgiving gathering

Silverton Young Farmers met on Thursday, October 13, at the Silverton High Vocational Agriculture Department with Dale McWaters presiding over the meeting.

Calvin Shelton reported on the tables and chairs purchased for the Community Barn by the Young Farmers and the Silverton Volunteer Fire Department.

A Thanksgiving party was discussed and the date will be decided at the next meeting.

The 30th annual convention of Texas Young Farmers was discussed. The convention will be held in Austin January 19-21 and will be held at Palmer Auditorium. One of the highlights of the convention will be state award winners. The Silverton chapter is entered in Outstanding Publicity and a local member, Jerry Baird will be recognized as Area I Outstanding Associate Member. Guest speaker during one of the sessions will be Dan Baker.

Next regular meeting will be October 27.

Seed deterioration could be result of bad weather

During the past two weeks high winds, hail, and heavy rains have hit Floyd County, resulting in substantial yield losses and causing some reduction of fiber quality to this year's cotton crop. In addition, the cloudy, damp, relatively warm weather that followed the storms could result in some cotton seed deterioration.

According to Dr. James R. Supak, Extension Agronomist-Cotton in cottonseed, "oil" constitutes the major energy source that keeps the seed alive during storage and enables it to germinate and develop into a strong healthy seedling. Premature breakdown of this oil can occur in the field or during seed cotton storage (modules) if the seeds are exposed to excessive moisture and warm temperatures. This breakdown is signaled by an increase in the free fatty acid content of the seed. These acids are the building blocks for—and the breakdown products of—cottonseed oil.

The normal concentration of free fatty acid is well matured, dry cottonseed is generally below 1%. Higher levels (1 to 1.5%) indicate the seed has undergone some deterioration. Generally, seed with free fatty acid levels below 1% make acceptable planting seed (assuming they develop and mature properly), seed with 1 to 2% free fatty acid are questionable and seed with

more than 2% are not suitable for planting purposes.

Dr. Supak states that farmers who are planning on saving seed for planting purposes from yet to be harvested cotton fields should plan on testing this seed for both germination and free fatty acid content before the seed is delinted.

Most delinting plant operators will provide these test on request or they can be obtained from private labs such as A&L Plains Agricultural Laboratories in Lubbock.

Above all, farmers should be aware of potential problems with seed quality, work closely with your delinter and others in assessing the quality of the seed and start thinking about lining up planting seed supplies as soon as possible. Presently, most seed companies have good quality certified planting seed on hand at reasonable prices. Later on the supplies may be less certain and the cost may be higher.

Reference to commercial products or trade names is made with the understanding that no discrimination is intended and no endorsement by the Cooperative Extension Service is implied. Educational programs conducted by the Texas Agricultural Extension Service serve people of all ages regardless of socioeconomic level, race, color, sex, religion, or national origin.

Domestic Guidelines

By Mary True

Most everyone, at one time or another, has purchased something and not been satisfied with it. Either the product did not do what it was supposed to, or the services rendered were not satisfactory, or perhaps the product or service cost more than was expected. This is very upsetting for the consumer. Listed below are some hints to help consumer avoid losing money through typos, frauds and unwise spending.

Before Buying By Mail:
*Check for possible better deal at local stores.

*Be suspicious of mail that offers "get rich at home" deals or "bargain" retirement resorts.

*Check with the local postal inspector, your lawyer or the Legal Aid Society if you have doubts about a company's reliability.

Before Buying On Credit:
*Understand how much those "low monthly payments" will actually cost.

*Find the total amount you will have to pay. When you buy on credit, the law requires the seller to tell you exactly how much more you pay for using credit.

*Check other sources of credit if the seller's credit charges are too high.

*Save the amount you would be paying each month and pay for the item

in cash.
Before Buying At The Door:
*Check for identification of the salesperson.

*Beware of "gimmicks" or "free" gift offers.

*Think about your needs before you buy even if you are interested in the seller's merchandise. Ask him to come back tomorrow.

Before Agreeing to Home Repairs:

*Make sure the repairs are really needed.

*Get other estimates.

*If you agree to the repair and sign a contract, **read it all!** Make sure you are not mortgaging your home for a few dollars worth of repairs.

Before Buying Beauty Aids:

*Don't be fooled into believing products are capable of making hair grow, preventing baldness; or preventing, correcting or removing wrinkles. Massages, creams, belts, girdles and sweat baths do not permanently reduce weight.

*Check with your doctor for diet and exercise plans.

Educational programs conducted by the Texas Agricultural Extension Service serve people of all ages regardless of socioeconomic level, race, color, sex, religion, or national origin.

Have a Safe and Happy Halloween!



DO IT NOW winterize your home and save...save...save

We have weatherstrip, caulking, insulation

10% Off with this coupon

WILLSON & SON — BUILDERS MART

111 N. Wall 983-3113

Time to fill up!

WRISTWATCHES only **\$4.95** ea. (when you fill up on gas)

All sales cash

Now's the time to drive into our CO-OP Service Center and fill your car with CO-OP gasoline. With a fill-up of 10 gallons or more, you'll receive a smart new quartz digital DISPOSABLE WRISTWATCH for only \$4.95 (man's or woman's).

This handsome and durable watch displays hours, minutes, seconds, month and date. It can be worn at work or play or anywhere. Battery life is warranted for one year. When it quits, just "throw it away."

If it's time for a fill-up, it's time to drive into our CO-OP Service Center for CO-OP gasoline... and a "DISPOSABLE" WRISTWATCH.

You'll like the performance of high-quality CO-OP gasoline, and you'll enjoy your new watch.

COOP

CONSUMERS FUEL ASSN. 210 E. Missouri Floydada 983-3394

★ ★ ★

KFBA

The Voice Of The

Caprock Country

900 AM Radio

Floydada, Texas

Your Clear Channel

Country Music Station

Complete News 7 Days A Week

Stucco Frame

All Types Interior & Exterior Painting

Kenny Griggs

Paint Contractor

All Work Guaranteed

(806) 983-5668 Rt. 3, Box 138 Floydada 79235

Landscape & Gardening

BENNY BUTLER

GARDEN CHECK LIST OF OCTOBER

1. Don't be tempted to cut back canna plants until after the first killing frost. If cut back before this it may promote new growth and possible damage to the rhizomes. Just put up with the trashy looking foliage for a few more weeks.
2. October through November is an excellent time to purchase bulbs while you still have a good selection of garden shops. They may be planted at any time with the exception of tulips and hyacinths.
3. Chill tulip and hyacinth bulbs in the refrigerator until mid or late December before planting.
4. Plant bulbs in well prepared beds so the base of the bulb is at a depth that is three times the diameter of the bulb. In sandy soil, set slightly deeper and in clay soil less deeply.
5. Start collecting those leaves for the compost pile. Be sure to have extra soil available so that each 6 inch layer of leaves may be covered with several inches of soil. Always wet the layer of leaves thoroughly before adding the soil.
6. Add about one pound of a complete lawn or garden fertilizer to each layer of leaves to provide the necessary nitrogen for decomposition.
7. In addition to bulbs, check your nursery or garden center for started plants of snapdragons, pinks, Sweet William, poppy and Calendulas. Planted now they will usually provide a riot of spring color.
8. If you have room to adequately care to them, cuttings of geraniums, alternanthera, begonias and impatiens should be taken within the next few weeks before frost has damaged the plants.
9. Year end specials of container grown nursery stock are frequently offered at this time of the year to make room for Christmas merchandise. Be sure you have a need for the item and check the condition of the plant before buying. Unless you have a need or if the plant is in poor condition, it is no bargain at any price. Good buys on power tools are often available at this time.
10. Watch lawn areas for brown patch. Areas with a previous history should be treated with Terracot (PSNB) at the rates shown on the container.
11. Keep that Christmas Cactus in a sunny spot where the night temperatures can be kept below 65°F. Buds will drop if you allow night temperatures to go above 70°F or if you allow the plant to become excessively dry. They should also be kept in total darkness from 5:00 p.m. until 8:00 p.m. or about 30 days in October to initiate flower buds.
12. If you have saved seed of your favorite plants, allow them to become air dry then place in an air tight container and store in the refrigerator. Be sure to label each packet carefully. Remember seed from Hybrid plants will seldom resemble the parent plant.
13. If African Violet leaves are tending to curl up around the edges, the humidity in your growing area is probably too low.
14. Prepare beds for planting pansies as soon as they become available at the garden centers. They need a well-drained soil. Best to use started plants as seed is difficult to handle.
15. If you are planning to save caladium tubers for another year you had better dig them in late October, and allow to dry in a well ventilated but shady area. After 7 to 10 days, remove leaves and dirt, then pack in dry peat moss, vermiculite or similar material for storage. Pack tubers so they don't touch each other. Dust with all-purpose fungicide as you pack. Place container in an area where temperatures won't drop below 50°F.
16. If twig girdlers have worked over your trees so that many twigs and branches are dropping, make sure these are collected and destroyed as the eggs are deposited in that portion of the branch that drops to the ground.
17. Leaves that fall in shrub borders can be allowed to remain to serve as a mulch.
18. If you are planning a new ground cover bed for flower bud, consider treating the soil first with Vapam to get rid of grass roots and unwanted seeds. The added expense will save many hours of hand labor later. Follow instructions on container.
19. Still time to divide and reset such perennials as phlox, violet, hollyhock, iris, day lily and Shasta daisy.
20. In newly developed yards, it is too

- late to plant permanent grass at this time. To prevent tracking in mud and sand consider planting cereal rye, wheat or oats to provide a soil stabilizing effect in the yard. Turn under in the spring and plant the desired grass.
 21. When planting rye grass for winter cover use at least 5 pounds per 1000 square feet to get a thick stand and to prevent clumping.
 22. Good time to reduce the insect and disease potential in next year's garden. Clean-up the garden, pulling up all annuals that have completed their life cycle. Remove the tops of all herbaceous perennials that have finished flowering or as soon as frost has killed the leaves.
 23. Continue insect and disease control sprays on roses if maximum beauty and blooms are desired.
 24. Chrysanthemums require ample moisture for optimum bloom so don't forget to water adequately.
 25. Holly plants with a heavy set of fruit often suffer a fertilizer deficiency. An application of complete fertilizer late this month can be helpful and provide a head start next spring.
 26. The attractiveness of ornamental gourds can be prolonged with proper curing. Remove from vine by cutting so a short portion of stem remains on the fruit. Wipe fruit with cloth dipped in rubbing alcohol or dip fruit into a bath of 1 part Clorox and 9 parts water. Lay the gourds in open trays spacing so they don't touch each other. Dry for 3 to 4 weeks inspecting and discarding any that start to spoil. When well dried apply several coats of white shellac to enhance color and preserve beauty for several months.
 27. Make plans for needed landscape improvement.
 28. Don't let landscape chores interfere with your favorite football game. Give the wife a break, however, by doing a few chores between games. The exercise will be good for you.
- References to commercial products or trade names is made with the understanding that no discrimination is intended and no endorsement by the Cooperative Extension Service is implied.
- Educational programs conducted by the Texas Agricultural Extension Service serve people of all ages regardless of socioeconomic level, race, color, sex, religion or national origin.

Farm Bureau

Here in Floyd County, Farm Bureau members bought a total of \$145,129.68 of Farm Bureau's Safemark products during 1982, according to Warren Mitchell of Lockney, county president.

This represents an average purchase per member of \$160.36, based on the county's 905 members in fiscal 1982, Smith said.

Mitchell pointed out that 280 members participated in the Safemark program in 1982, representing 30 percent of the total membership. He also noted that the average purchase per participating member was \$518.32.



TRACY WOMACK, son of Mr. and Mrs. Bill Womack, who is attending Tarleton State in Stephenville, Texas, won an agriculture scholarship award. He is a 1980 graduate of Floydada High School and will be graduating Tarleton in December 1983 with a B.A. degree in agriculture. He has an average grade point of 3.0. Tracy is now doing his student teaching in the Abilene High School Ag Dept. He will be working on his masters degree after graduation. He is also employed part time by Anderson Feed and Fertilizer Store, Stephenville.

Hardy Cotton, Inc.

675-2313 "Striving to serve our West Texas Farmer" 762-6237

To serve you better, we have changed to a rotary number. Our Lubbock telephone number remains the same... 762-6237.

Our new Crosbyton number is 675-2313

BISHOP PEST CONTROL

Tree & Lawn Spraying

Termites: Pier & beam or sub-slab injection

Household insect control

Mike Bishop, M.S.

(806) 983-2198

TX. Bus. Lis. 5021

PCL Lis. 26855



TEXAS 4-H COUNCIL members, Earl Broseh of Floyd County and Chris Caddel of Lubbock County, are pictured with H.T. Davison, State 4-H Program Leader, Texas Agricultural Extension Service, cutting cake at the reception commemorating the 75th anniversary of 4-H in Texas. The activity was held in the Hall of State at the State Fair of Texas in Dallas recently.

Use caution when feeding ammoniated hay

By Richie Crow & Benny Butler
County Extension Agents

Last week we ran an article on the potential of increasing the feeding value of low quality forages by treating them with ammonia. Since that time we have learned of some possible dangers associated with this process. If you are thinking of using this on sorghum-type forage, we recommend that you wait until further testing has been done.

Interest in ammoniation of low quality roughage materials to improve feeding value has increased dramatically as cattlemen look at current supplemental feed costs. Numerous research trails in foreign countries and the U.S. have indicated that feeding value and animal performance can be improved when anhydrous ammonia (3% by weight) is used to treat low quality roughage materials such as grain stubble, small-grain straws, corn cobs, and grass hays. Typically, crude protein values can be increased from 4-6% to 10-14%, digestibility improved by 10 to 15% and forage intake increased 15 to 20% resulting in significant improvements in animal performance. Ammonia treatment of cereal grain straw or low quality hay can increase its feeding value to approximately equal that of average quality grass hay except for minerals and vitamin A.

There are cautions which need to be considered. First, ammoniation of a very low quality roughage does not improve its feeding value enough for such feeds to make up the total diet of the animal, especially growing cattle or young mother cows. Certain levels of energy are necessary in the diet for conversion of the ammonia nitrogen to bacterial protein in the cow's rumen. Without adequate energy, non protein nitrogen (NPN) toxicity is a possibility, but this is not likely if recommended feeding practices are followed. In many, but not all cases, some grain or high quality forage will have to be fed along with the ammoniated product, with the amount depending on the quality of the roughage source and the type of cattle being fed. Proper mineral supplementation, vitamin A, and possibly some natural protein supplementation will have to be considered for certain classes of cattle.

Secondly, four separate cases have been reported where cattle developed problems when fed ammoniated sorghum hay. In these cases, nervous, irritable, wild, convulsive behavior has been observed in cows and young calves. Death has resulted in a small percentage of the animals affected. In some cases, euthanasia was necessary when animals physically injured themselves during fits of wild behavior. When taken off ammoniated hays, cattle have displayed no further symptoms. At this time, the cause of the problem has not been determined. Evidence is mounting that under certain conditions, ammonia reacts with sugar in sorghum plants to produce a toxin which adversely affects the cattle. At this time, no problems of this nature have been reported where low-sugar materials such as small-grain straw, corn stubble, or bermuda grass hay have been ammoniated and fed.

Producers who have ammoniated, or have plans to ammoniate, sorghum type materials are encouraged to put their plans on hold for the next 2 to 3 weeks until researchers have time to fully

identify the nature of the problem. Ammoniated straws have been used for years in Europe and considerable research and field usage has taken place in the U.S. during the last three years. The nutritional benefits of ammoniation appear to be significant. However, caution is suggested since many questions remain unanswered at this time, particularly where sorghum materials are involved. At this time, the ammoniation of sorghum materials, or any high sugar material, can not be recommended.

One last precaution; ammonia is very dangerous if used improperly or by untrained personnel. Ammonia can form flammable and explosive mixtures with air within the limits of 16 to 27% of ammonia by volume. Forage treatment should be conducted in well ventilated areas (outside) as opposed to inside barns, etc. and downwind from confined livestock or residences. Locate tank and controls upwind from hay stacks and stay upwind when uncovering stacks. Operators should wear goggles or full face shield, respirator and rubber gloves. Have at least 5-10 gallons of water upwind to wash any part of the body exposed to ammonia. Check all hoses and valves for damage prior to operation, turn valves on slowly and remember when determining application rates that many gauges are not very accurate.

References to commercial products or trade names is made with the understanding that no discrimination is intended and no endorsement by the Cooperative Extension Service is implied. Educational programs conducted by the Texas Agricultural Extension Service serve people of all ages regardless of socioeconomic level, race, color, sex, religion or national origin.

SPECIAL SPECIAL SPECIAL SPECIAL

Stripper belts, belts & brushes

Coupon good til 10-31-83

10% discount

with this coupon

COOP All sales cash

Consumer Fuel Assn.

Floydada

210 E. Missouri 983-3394

SPECIAL SPECIAL SPECIAL SPECIAL

Farm Bureau members: We have your tire, battery and tillage tool needs.

TOP KICK Quality American Made Products To Fit Your Everyday Needs

TOUGHEST! High productivity tillage tools for Farm Bureau Members.

Sponsored by Floyd County Farm Bureau. See your local Safemark dealers:

Tipton Oil Company 119 E. Houston, Floydada, Texas Phone 983-3144

Jackson Tire Company 101 South Main, Lockney, Texas Phone 6652-3366

AROUND THE COUNTY

By Richard Crow

With all the rain Floyd County has been receiving, I want to tell you about some information concerning harvesting and desiccation of cotton after wet weather, especially cotton to be harvested for planting seed next year.

Producers should be cautious about returning to the field too quickly after a wet spell. Harvesting and storing "wet" cotton (generally greater than 12 percent moisture) is detrimental to both lint and seed quality because of rotting heating.

To avoid problems with excessive moisture, all plant components—lint, seed, burs, stems—going into a module must be dry. A good way to check to see if the cotton is dry enough to store is to squeeze a handful. If the cotton sticks together in a ball, it is too wet.

Temperatures within modules should be monitored with a long stem thermometer. Daily readings should be obtained and recorded for each module until it becomes apparent that temperatures have stabilized. Records may prove useful later in helping you and your delinor decide whether to save seed from a given module for planting purposes or to send it to the oil mill.

Normally, the temperatures within a module rise 15 to 20 degrees F. during the first three to five days as moisture within the module reaches a balance. Thereafter, if the module stays dry, temperatures will tend to remain fairly stable, fluctuating slightly with changes in air temperatures.

Usually, a module with excessive moisture will show a rapid temperature rise, often as much as 30 to 50 degrees F within the first few days. Thereafter, the temperatures usually remain fairly high for several days before the module begins to "cool".

The cut-off temperature for sending a module to the gin as quickly as possible is around 110 to 120 degrees F. Seed from modules that reach these temperatures could be damaged and shouldn't be saved for planting seed without careful and testing.

The recent rains will encourage regrowth and cotton will be harder to kill with harvest-aid chemicals. Generally, arsenic acid at the highest labeled rate 1.5 qt/acre is the most effective and cheapest desiccant to use on cotton with new growth. If Paraquat is to be used on such cotton, use the highest labeled rate of 2 pt./acre. Accelerate may enhance the effectiveness of both chemicals. A leaflet can be obtained at the County Extension Agent's Office for additional information about these chemicals.

The information given herein is for educational purposes only. Reference to commercial products or trade names is

made with the understanding that no discrimination is intended and no endorsement by the Cooperative Extension Service is implied.

FLOYDADA COOPERATIVE GINS INC.

COOP

Floydada 983-2884

FIRST NATIONAL BANK OF FLOYDADA

1ST

Floydada 983-3717

FLOYD COUNTY IMPLEMENT

JOHN DEERE

Floydada 983-3732

RUSSELL'S EQUIPMENT & SUPPLY

Russell's

Floydada 983-3751

PATTERSON GRAIN CO.

652-3393

Lockney Lone Star

MUNCY ELEVATOR

Lockney 652-3100

MARTIN & COMPANY

Floydada 983-3713

MORTON BUILDINGS

HAROLD JOHN R. HUNTER

RT. 1, BOX 1388-127 SOUTH PLAINVIEW, TEXAS

RESIDENCE (936) 298-6639 OFFICE (936) 293-0386

FEDERAL LAND BANK ASSOC. OF FLOYDADA

Federal LAND BANK Association

Floydada 983-2480

ADAM'S WELL SERVICE

Floydada 983-5003

PRODUCTION CREDIT ASSOC.

Floydada 983-2454

FLOYD COUNTY FARM BUREAU

TEXAS FB

Lockney Floydada 652-2242 983-3777

FLOYDADA IMPLEMENT CO.

MF Massey Ferguson

Floydada 983-3584

Football Contest

CONTEST RULES
 Any local residents above the age of 7 except employees of the Hesperian may enter. Three cash prizes are given each week-ties will split prize money. Members of the sports department are sole judges of the contest and their decision is final. It is not necessary to indicate scores on all the games...But total score (scores of both teams) of the tie breaker must be indicated at right.
 Simply circle the team you choose to win in each of the footballs. Deadline for submitting entries is 5 p.m. Friday - winners will be announced the following week.
Enter one entry per person per week. print name and address plainly on blank below and mail or bring entire page to the Hesperian office.
 Tie breaker game will be considered only in case of ties.

**HAVE FUN...
 WIN PRIZES...**

**DEADLINE FOR ENTRIES - 5 P.M. FRIDAY
 IN HESPERIAN OFFICE OR POSTMARKED**

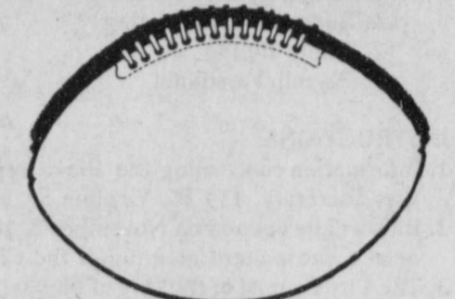
HESPERIAN \$20⁰⁰

**In Cash
 Prizes
 Each Week**

**TIE BREAKER-Guess Total Points
 AND CIRCLE WINNER**

NAME
ADDRESS
CITY

1ST PRIZE \$10⁰⁰
 2ND PRIZE \$6.00
 3RD PRIZE \$4.00



**TIE BREAKER
 FLOYDADA VS IDALOU**

**W.B. Eakin
 Car Lot**
 Monterey vs. Plainview

**Moore-Rose
 Funeral Home**
 Houston vs. Cleveland

**Martin &
 Company**
 Dallas vs. New York Giants

**Baker
 Insurance**
 Borger vs. Dunbar

**Caprock
 Hospital**
 Abernathy vs. Littlefield

Buddy's Food
 Muleshoe vs. Friona

City Auto, Inc.
 Levelland vs. Dumas

**Floydada
 Auto Parts**
 Pampa vs. Canyon

**Floyd County
 Farm Bureau**
 Dimmitt vs. Tulla

**Brown
 Implement
 Inc.**
 Frenship vs. Roosevelt

**Federal Land
 Bank**
 Denver City vs. Seminole

Gene's Cleaners
 Cooper vs. Tahoka

My-T-Burger
 Lockney vs. Post

**Floydada
 Implement**
 Childress vs. Slaton

**Floyd County
 Implement**
 Petersburg vs. Hale Center

**Floydada
 Coop Gins**
 Morton vs. Seagraves

Pizza Gold
 Lorenzo vs. Spur

**Thompson
 Pharmacy**
 Olton vs. Farwell

**Consumer's
 Fuel Asso.**
 Crosbyton vs. Ralls

**Allen's
 Dixie Dog**
 Hart vs. Springlake-Earth

**Ernie's
 Body Shop**
 Kress vs. Bovina

Shop Rite
 Shallowater vs. O'Donnell

**Don Hardy
 Truck & Car Wash**
 Midland Christian vs. Silverton

KFBA Radio
 Green Bay vs. Cincinnati

Willson & Son
 Minnesota vs. St. Louis

**Cornelius
 Conoco**
 Tampa Bay vs. Pittsburgh

PUBLIC NOTICES

NOTICE OF HEARING

On 16 Jan. 84 at 8:30 A.M. at the Federal Commissions Commission, 1919 "M" Street, NW, Washington, DC 20554, there will be a hearing to determine whether Lilly Amador or Billy D. Pirtle should be awarded a construction permit to build a new FM radio station on channel 237A (95.3 MHz) at Floydada, Texas. The issues of the hearing will be: 1) to determine which of the proposals would, on a comparative basis, best serve the public interest and 2) to determine which of the applications should be granted, if any. A copy of the application and related material for the applicant Lilly Amador are on file for public inspection at the Floydada Chamber of Commerce, 107 West California, Floydada, Texas 79235, during normal business hours.

NOTICE TO BIDDERS

The City of Floydada, Texas will receive sealed bids at the office of the City Secretary at 114 W. Virginia Street until 5:00 P.M., November 8, 1983 and then opened and publicly read at a Regular Meeting of the City Council at 7:30 P.M., in the City Council meeting room at the City Office for the following:

- Computer System and Software capable of the following municipal government applications:
1. Budgetary Accounting
 2. Utility Billing
 3. Payroll/Personnel

INSTRUCTIONS:

1. Information concerning the above applications may be obtained from the City Secretary, 114 W. Virginia St. Floydada, Texas
2. Bids will be opened on November 8, 1983 and will be awarded at that date or at a subsequent meeting of the City Council.
3. The City Council of the City of Floydada, Texas reserves the right to accept or reject any or all bids submitted.

Parnell Powell
Mayor

Attest:
Jimmie Lou Stewart
City Secretary

NOTICE TO BIDDERS

The Lockney Independent School District is now accepting bids for the purpose of closing in existing windows in the Junior High and High School buildings. Specifications are available at the superintendents office. Contact W.H. Hallmark. Bids must be submitted no later than 4:00 p.m., November 8th.

A regular meeting of the Board of Directors for Floyd County Central Appraisal District will be held on November 2, 9 A.M., in the Appraisal Office Board Room, Room 107, County Courthouse.

10-27c

I will no longer be responsible for debts incurred by Ernest Vick.
Linda Vick

NO. 4682

IN THE MATTER OF THE ESTATE OF HERMAN R. KING, DECEASED

IN THE COUNTY COURT OF FLOYD COUNTY, TEXAS

NOTICE TO ALL PERSONS HAVING CLAIMS AGAINST THE ESTATE OF HERMAN R. KING, DECEASED

Notice is hereby given that Original Letters Testamentary upon the estate of HERMAN R. KING, Deceased, were issued to the undersigned on the 18th day of October, A.D., 1983, in the proceedings indicated below my signature hereto, which is still pending, and that I now hold such letters. All persons having claims against said estate which is being administered, in the county below named, are hereby required to present the same to me at the address below given, before such estate is closed, and within the time prescribed by law.

/s/ Lorene W. King

LORENE W. KING, ROUTE 1, BOX 61,
LOCKNEY, FLOYD COUNTY, TEXAS, EXECUTRIX
OF THE ESTATE OF HERMAN R. KING,
DECEASED, CAUSE NO. 4682, IN THE
COUNTY COURT, FLOYD COUNTY, TEXAS

Tires

Coupon good til 10-31-83

10% discount

with this coupon



All sales cash

Consumer Fuel Assn.

Floydada

210 E. Missouri 983-3394

A-1 MOBILE HOMES

WE NEED TRADES
CALL FOR DETAILS
AND FREE APPRAISAL

Don't Rent - Invest in your own home.
Low Easy Payments - Low Low Down
Just Married, Retired, Transferred, Lake or
Vacation Homes

L. T. COOPER
Housing Consultant

NEW—USED—REPOS Free Delivery - Set Up - Anchoring

2000 N. UNIVERSITY LUBBOCK, TX 79415 CALL COLLECT [L.T.] [806] 763-5319

NOW RENTING — 62 and older

Mid-Tule Village
321 S.E. 7th Street, Tulia, Texas
1 and 2 bedroom

Your rent will be 30% of your adjusted income.

CHURCH DIRECTORY

CEDAR HILL ASSEMBLY OF GOD CHURCH
Rev. Vance Mitchell
Sunday School 10:00 a.m.
Morning Worship 11:00 a.m.
Evangelistic Service 6:00 p.m.
Wednesday Bible Study 7:00 p.m.

ASSEMBLY OF GOD CHURCH
Lockney
Sunday School 10:00
Morning Worship 11:00
Evening Worship 7:00
Prayer Service Wed. 7:00

LOCKNEY LATIN ASSEMBLY OF GOD
Manuel Rendon, Pastor
Sunday School 9:45
Morning Worship 11:00
Evening Worship 7:30
Men's Fellowship, Tuesday Evening 8:00
W.M.C. Thursday 8:00
Christ's Ambassadors, Saturday Evening 7:30

SPANISH ASSEMBLY OF GOD
TEMPLO GETSEMANI
308 E. Mississippi
A.C. Botello, Pastor
Sunday School 10:00
Morning Worship 11:00
Evening Evangelistic Service 6:00
Wednesday, Family Night 7:30

CARR'S CHAPEL
Rev. Jerry Kunkel
Petersburg Pastor
Services Every Sunday
Morning Worship 9:30 a.m.
Sunday School 10:30 a.m.
No Evening Services

FIRST ASSEMBLY OF GOD CHURCH
Floydada
Pastor Jim Guess
Sunday School 9:45 a.m.
Morning Worship 10:50 a.m.
Service 5:00 p.m.
Sunday Evening Evangelistic 6:00 p.m.
Wednesday Night Service 7:00 p.m.
Thursday Womens Missionary 9:00 a.m.

SAN JOSE CATHOLIC CHURCH
Lockney
Father Terry Burke, Pastor
Sunday morning Mass 9:00
Saturday Evening Mass 8:00
Wednesday Evening 8:00 p.m.
Friday Evening 8:00 p.m.
Confessions Saturday 6:30

ST. MARY MAGDALEN CATHOLIC CHURCH
Floydada
Father Terry Burke
Sunday Mass 10:30 a.m.
Monday Mass and Ultreya 9:00 p.m.
Thursday Mass 9:00 p.m.

CITY PARK CHURCH OF CHRIST
Floydada
Perry Zumwalt, Minister
Sunday Bible Study 9:30 a.m.
Morning Worship 10:30 a.m.
Evening Worship 6:00 p.m.
Wednesday Bible Study 7:30 p.m.
Ladies Bible Study, Wednesday 9:30 a.m.

LATIN AMERICAN CHURCH OF CHRIST
Lockney
Bible School 9:45
Morning Worship 10:45
Evening Worship 6:00
Wednesday Service 8:00

CHURCH OF CHRIST
Lockney
Ray Starnes
Bible Study 9:30
Morning Worship 10:30
Evening Worship 6:00
Wednesday Ladies Bible Class 9:30
Bible Study 8:00

WEST COLLEGE CHURCH OF CHRIST
West College & Third, Lockney
Frank Duckworth, Evangelist
Sunday Morning Worship Services 10:30
Sunday Evening Worship Services 6:00
Wednesday Evening Prayer Services 8:00

WEST SIDE CHURCH OF CHRIST
Floydada
Sunday Morning Worship 10:30 a.m.
Sunday Evening 6:00 p.m.
Wednesday Evening 7:00 p.m.

CHURCH OF THE NAZARENE
Lewis Shapp, Pastor
Sunday School 9:15 a.m.
Morning Worship 10:45 a.m.
Evening Worship 6:00 p.m.
Wednesday Bible Study 5:30 p.m.

FIRST CHRISTIAN CHURCH
[Disciples of Christ]
Minister, Karl Bunjes
Sunday 9:45 a.m.
Worship 11:00 a.m.

TRINITY LUTHERAN CHURCH
Providence Community
Gary Kleypas, Pastor
Sunday School & Adult Bible Class 10:00
Worship Service 11:00

FIRST UNITED METHODIST CHURCH
Lockney
Rev. Michael O'Connor
SUNDAY
Sunday School 9:45
Worship Service 10:55
UMY 5:00
Evening Worship 6:00
United Methodist Women, First Tuesday of Month Circles, Monday (2nd & 4th Monday nights) Tuesday & Wednesday mornings.

FIRST UNITED METHODIST CHURCH
Floydada
Earl Blair, Pastor
Sunday School 9:45 a.m.
Morning Worship 11:00 a.m.
Youth Fellowship 5:00 p.m.
Sunday Evening Worship 6:00 p.m.

EVANS CHAPEL BAPTIST CHURCH
Rev. Bennie Anderson
Pastor
Sunday School 10:00 a.m.
Morning Worship 11:00 a.m.
Training Union 6:00 p.m.
Evening Worship 7:00 p.m.
Wednesday Prayer Meeting 7:00 p.m.
Sunday Afternoon Worship 2:00 p.m.

PRIMER IGLESIA BAUTISTA
Rev. Agustín Rey
Sunday School 9:45 a.m.
Worship Service 11:00
Training Union 5:00 p.m.
Evening Worship 7:00 p.m.
Prayer and Study Group Monday 7:30 p.m.
Mid-Week Service Wednesday 7:30

TEMPLO BAUTISTA SALEM
Lockney
Pedro Reyes
Sunday School 9:45
Worship Service 11:00
Christian Training Time 5:00
Evening Worship 6:00
Wednesday Prayer Meeting & Choir Practice 7:30

BIBLE BAPTIST CHURCH
Floydada
Bob Chapman
Sunday School 10:00 a.m.
Morning Worship 10:45 a.m.
Sunday Evening Prayer Meeting 6:00 p.m.
Sunday Evening Services 6:30 p.m.
Wednesday Evening Services 7:30 p.m.

FIRST BAPTIST CHURCH
Lockney
Murle Rogers, Pastor
Sunday School 9:45 a.m.
Morning Worship 11:00 a.m.
Church Training 6:00 p.m.
Evening Worship 7:00 p.m.
Prayer Meeting, Wednesday 7:00 p.m.
Adult Choir, Wednesday 8:00 p.m.
High School Youth (B.Y.F.) Wednesday 7:00 p.m.
G.A. and Mission Friends Wednesday 4:00 p.m.
R.A.'s Sunday 5:00

CEDAR HILL BAPTIST CHURCH
Sunday School 10:00 a.m.
Morning Worship 11:00 a.m.
Evening Worship 7:30 p.m.

SOUTH PLAINS BAPTIST CHURCH
Rev. Cecil Osborne
Sunday School 10:00 a.m.
Morning Worship 11:00 a.m.
Training Union 6:00 p.m.
Evening Worship 7:00 p.m.

CALVARY BAPTIST
Floydada
Rev. Hollis Payne
Sunday School 9:45 a.m.
Morning Worship 11:00 a.m.
Bible Study 6:00 p.m.
Evening Worship 7:00 p.m.
Wednesday Evening 7:00 p.m.

MT. ZION BAPTIST CHURCH
Floydada
Otis Cook, Jr., Pastor
Sunday School 10:00 a.m.
Morning Worship 11:00 a.m.
Bible Study 4:00 p.m.
Evening Worship 5:00 p.m.
Wednesday Prayer Meeting 8:00 p.m.

AIKEN BAPTIST CHURCH
Bruce Kirby
Sunday School 10:00
Morning Worship 11:00
Training Union 6:00
Evening Worship 7:00
Prayer Service Wed. 7:30
Brotherhood, W.M.U. and Auxiliary Wednesday 7:30

FIRST BAPTIST CHURCH
Floydada
Floyd C. Bradley, Pastor
Sunday School 9:45 a.m.
Morning Worship 10:55 a.m.
Church Training 6:00 p.m.
Evening Worship 7:00 p.m.
Wednesday Evening 6:45 p.m.

LONE STAR BAPTIST CHURCH
Sunday School 10:00
Morning Worship 11:00
Training Union 5:00
Evening Worship 6:00
Prayer Service, Wednesday Evening 6:30
Brotherhood, First Saturday Morning of Every Month.

VICTORY BAPTIST CHURCH
Floydada
Gary Grant, Pastor
Sunday School 10:00 a.m.
Morning Worship 11:00 a.m.
Evening Worship 7:00 p.m.
Wednesday Services 7:00 p.m.

NEW SALEM PRIMITIVE BAPTIST CHURCH
Floydada
Joe M. Jackson
Sunday Congregational Singing 10:00 a.m.
Morning Worship 10:30 a.m.
Evening Worship 6:30 a.m.

SPANISH BAPTIST MISSION
Floydada
Eloy Felan, Pastor
Sunday School 9:45 a.m.
Morning Worship 11:00 a.m.
Church Training 5:00 p.m.
Evening Worship 6:00 p.m.
Wednesday Evening 7:00 p.m.

If you appreciate your church directory, please let your sponsors know.

- Adams Well Service**
720 N. 2nd 983-5003
- 106 N. Main 652-3831
- Byrd Pharmacy**
320 N. Main 652-3353
- City Auto**
201 E. Missouri 983-3767
- Consumer's Fuel**
210 E. Missouri 983-3394
- Davis Lumber Co.**
102 E. Shubert 652-3385
- Bill Gilbreath Exxon**
101 N. 2nd 983-3323
- Jackson Tire Co.**
101 S. Main 652-3366
- Lee's White Auto Store**
119 W. College 652-2145
- Lockney Coop Gin**
W. of City 652-3377

- Martin & Co.**
216 S. Main 983-3713
- Moore-Rose Funeral Home**
402 S. Main, Lockney 652-2211
329 W. California, Floydada 983-2525
- Oden's Chevrolet-Olds.**
221 S. Main 983-3787
- Pay-N-Save**
210 N. Main 652-2293
- Plains Electric Co.**
106 S. Main 652-2133
- Reed Ford**
Ralls Hwy. 983-3761
- Schacht's Flowers & Jewellery**
112 W. Poplar 652-2385
- Thompson Pharmacy**
200 S. Main 983-5111
- Willson & Son**
111 N. Wall 983-3113

Automotive

78 LTD, 4 dr., blue \$2150
 76 LTD, 4 dr., white \$2350
 78 Plymouth, 4 dr., yellow \$1400
 76 Cordoba, 2dr., white \$650
 75 Monza, 2dr., red \$950
 79 Pinto, 2 dr., 23,000 miles \$2950
 74 Mercury with new overhaul
 '78 Luv Pickup \$1650
 75 Pinto, 43,000 miles \$1850

W.B. Eakin Car Lot
 Ralls Hwy. 983-3616

For Rent

INSIDE, boat storage or car or pickup or whatever. 215 S. Main. tfn
OFFICE FOR RENT: Newly remodeled with an interoffice. Combined floor space of 720 sq. feet. Call 983-3737. tfn
FOR RENT: Two bedroom house, 6 miles in the country, 1/4 mile off pavement. Call 983-5084 or 983-2722. tfc
TRAILER HOUSE for rent. 504 S. Wall. 10-27c

Farm Services

WE CUSTOM MAKE & FIT hydraulic hose for all types of machines. Brown's Implement 983-2281. TFN

Miscellaneous

FOR SALE: Floydada Country Club membership. Nite call 652-3129. Day call 652-2462. L11-3p
 FOR SALE: 1979 Kawasaki 650. Call Dub Dippery at the First National Bank 652-3355. L11-17c
BARBIE DOLL CLOTHES. Write Box 67, Plainview, Texas 79072 for price list or call 806-296-9483. 11-10c
FOR SALE: 1964 electric Frigidaire cook stove. 40" top. Excellent condition. \$50.00. 823-2287 or see Vinson Smith, 983-3753. 10-13c
FOR SALE: New floor safes and fire safes. All kinds. Don Probasco, 983-3834. tfc
FOR SALE: 3-25" used RCA TVs, new picture tube. 2-portable RCA's Call Mize Pharmacy. tfn
B&R SECONDHAND stove, 2507 E. 5th, Lockney Hwy., Plainview, Texas. Stoves, refrigerators, bedroom and living room, washers, dryers, T.V. and misc. 78 Plymouth, 72 Cadillac, 78 Ford LTD, 72 Ford pickup and camper. 11-3p
REDUCE! Eat all you want! Burn off excess fat - Take Glucomannan. Thompson Pharmacy. 10-27p

Lost & Found

LOST: one blue metallic, fiberglass, saddlebag lid for motorcycle. \$20 reward. Call 823-2250. L10-27p

BOND LANDS, INC.

107 South Fifth
 983-2151
 PICTURE YOURSELF relaxing in your own newly remodeled 3-2-2 with all new kitchen appliances, fireplace, built-in desk and shelves, super storage, storm cellar, storm windows, and side entry garage for \$69,950!
LOCATION PLUS VALUE! Lots of potential in this warm three bedroom with large living area and good landscaping. Where else can you get a washer and dryer included for only \$20,000?
OWNER WILL FINANCE! No better terms can be found to purchase this two story three bedroom home with steel siding and storm windows. Come see me! \$17,000.
HISTORY HAS A PRICE and it is amazingly low for this uniquely large two bedroom home with ceiling fans. It's in very good condition and has commercial potential for only \$17,000.
YOUR FIRST HOME could be this newly paneled home with earth-tone carpet and featuring formal dining and stucco exterior with storm windows and storm door. \$14,000.
FLOYD COUNTY! 481 acre irrigated farm southeast of Floydada with five wells, underground tile, three bedroom home, barns, and a good cotton base.
 And other fine homes and lots available.

Frances Ashton
 Office Manager
 Larry Jones
 Broker 10-27c

1969 VOLKSWAGON, 9 passenger van, clean. 1970 Ford, shortwide pickup, 6 cylinder standard. Call 983-5130. 10-27c
 FOR SALE: 1979 Chev. Malibu station wagon, extra clean \$2700. 983-5643. 11-3c
 1979 FORD PINTO. Good condition. 24,000 miles. \$2700. Call 983-5375.

ECONOMICAL STORAGE

TRY BARKER'S Jewel Box-Mini Storage and save your time and money. Phone 652-2642. Corner Main & Locust - Lockney, Texas.
Barker Building

Professional Services

Portable disc rolling
Lawson Farm Supply Inc.,
 Floydada 983-3940

MONOGRAMMING
 Zahn Turner 983-3355
 Sweaters, shirts, jeans, towels, robes etc.

TREE TRIMMING

Keith Emert
 652-3116

SIGNS AND ENGRAVING
 Call 983-2603 11-10p

VEGETABLES

The Lloyd's Tomatoes are ready!
 Call 983-2671

STORAGE SPACE

West Texas Mini Storage
 c/o Assiter Insurance
 206 W. California
 983-2511

Employment

SWEET POTATOES, peanuts - roasted and salted or raw. 6 miles north of Flomot on farm road 599. Call 469-5389. L11-3c

CARPENTER'S ALTERNATOR SERVICE

Most types of alternators in stock. Rebuilt brushless alternators in stock.
 Phone 983-3444
 224 W. Marivena 10-27c

LET MOTHER HUBBARD'S Cleaning Service clean your home or business. Call now for appointment 983-5465 or 983-3010. tfn

"WE SELL SLEEP"

Direct Mattress Co. New or renovated. for appointment call City Trim Shop. 983-2332. Floydada. tfn

SEWING and alterations. Also quilting. Call Beverly Towler, 652-3503. L10-27p

Garage Sales

CAPROCK TEMPS: RN's and LVN's CAPROCK TEMPS
 RN's and LVN's needed to work in temporary staffing pool. RN's salary up to \$12/hr., LVN's salary up to \$8.50/hr. Please contact Carol Smallwood, RN, 806-983-2875 ext. 39.

Card of Thanks

The expression of friendship that has been shown to me during the time I was in the hospital for my surgery and since I've been home has been overwhelming. Thank you to all who has sent cards, flowers, brought food and called. I really appreciate everything.
 Elaine LaBaume 10-27p

LCC ASSOCIATES GARAGE SALE AND BAKE SALE: Saturday only, October 29. Baccus Motor Co, Lockney. 9:00 a.m. til 5:00 p.m. Lots of misc. items and clothing. 10-27p
 GARAGE SALE 4 families, some furniture clothes and nick-nacks. Thursday and Friday 9 to 5. 702 S.W. 2nd in Lockney. L10-27c

HELP WANTED: Need person who can announce on local radio station 4 hours daily, and sell radio advertising 4 hours daily. Call Mr. Bruce 983-5704 between 4 p.m. and 6 p.m. only.

The family of Hank Salazar would like to express their gratitude for the many acts of kindness shown by the people in this area at the time of our loss. We know that your prayers were with us.
 The Pete Salazar Family
 The Blackie Salazar Family
 Ninfa Martinez & Children 10-27p

3 FAMILY GARAGE SALE: 806 W. California. Saturday only. 8:30 til 5:00. 10-27c
 YARD SALE Saturday and Sunday October 28-29. Children clothes and men shirts and pants, cash register and adding machine. 1200 St. Third. 10-27p

Wanted

RAINBOW CARPET DYEING & CLEANING

CLEANING, TINTING & DYEING
 RESIDENTIAL & COMMERCIAL
 Eldon & Nelda Fortenberry, Owners
 Mike McCathern, Manager/Certified Operator
 Plainview, Texas Phone 293-3532

FOUR FAMILY GARAGE SALE. Saturday, 8-5, 1112 South 3rd. Bedsprad, curtains, sheets, coats, children's clothes and shoes. Ladies size, 8 clothes, men's medium shirts and 32x36 pants, maternity clothes, size 10-12, and large size ladies clothes. Exerciser, AM/FM, 8-track car stereo, bean bag chair, double bed with headboard, rocking horse, bookcase headboard with bookcase night stands, new timing light, toys and baby bed. Lots of misc. Everything priced low!

GOOD PAY processing mail from home! No experience. Start immediately. Information, send self-addressed, stamped envelope. W.S. Distributors, Box 1587, Rahway, New Jersey 07065. 11-3c
 GOVERNMENT JOBS - Thousands of vacancies must be filled immediately. \$17,634 to \$50,112. Call 716-842-6000, Ext. 32302.

Auto Parts & Accessories

Zirconian earrings Reg. \$9.95 beautifully boxed 3 pr \$6.98
 More Hallmark Cloisonne collectors spoons
 One group of strapless bras \$3.50
 Lots of new merchandise added
 Sale on previously advertised merchandise still in progress
COLONIAL HOUSE
 515 Ross St.
 1/2 blk. west of VFW

WANTED: Mechanic work, 2 year Vo-Tech graduate in diesel engines. Also have experience in gasoline engines. Have resume and references. Call 983-5527.
 WANTED TO BUY irrigated or dryland farm in Floyd or surrounding area. Write Box XRO. c/o Hesperian, 111 F. Missouri, Floydada. tfn

Time To Use

ferti-lome Winterizer
 Notice the difference next spring
 ferti-lome PRODUCERS CO-OP ELEVATOR

Script Printing & Office Supply
 *Commercial Printing
 *Office supplies & Furniture
 *Business Machines
 108 S. Main
 Floydada
 983-5131

Mary Kay COSMETICS
 Sue Williams
 Independent Beauty Consultant
 983-5166
 Floydada

CLASSIFIED RATE
The Hesperian • 983-3737
 or
The Beacon • 652-3318
 First Insertion Per word 70 cents
 Second Insertion 15 cents
 Minimum Chg. 1st Insertion \$2.50
 Second Insertion \$1.50
 Card of Thanks \$3.00
 Legal Notices \$2.66 per column inch

Floydada Iron & Metal

We buy scrap iron, junk cars, aluminum cans, and batteries. We have new and used steel for sale.
 Location - East Ross
 Call 983-2305 Bus.
 983-5277 Home

DAN'S AUTO SERVICE

DAN TEUTON, Owner
 Specializing in Automatic Transmission, Motor Tune-Ups, Auto Air Conditioning.
 General Repair
 We Have A BRAKE LATHE to handle all passenger car brake drums. See us for complete brake service.
 Phone 652-2462

ALTERNATOR & STARTER REPAIRS
 Norrell Tractor Parts,
 215 S. Main
 983-3417

CUSTOM EXHAUST WORK

Bruce Williams
 Specializing in Glass Packs and Turbo Mufflers
 At
DANS AUTO SERVICE
 652-2462

Diamond Industrial Supply Co., Inc.

Phone Days 296-7418
 Nights 296-1200 or 296-7828
 1014 Broadway
 Plainview, Texas
 SKF BCA Timken Bower
 Cotton Stripper Brushes & Bats
 U joints
 Oil Seals
 O rings
 Wisconsin
 "We Appreciate Your Business More"

JUST REDUCED to \$39,000. 3 bedroom, 2 bath, owner finance. Call Ilona Goen, 765-5271; 795-5506 Nita Kiesling. tfc

FOR SALE: Duplex 308 S.W. 2nd Lockney. Newly decorated, nice. Priced to sell - will finance. L11-3p

Farm Equipment

GOOD 3-ROW ROOD, 1 module machine, 1 boll buggy, tractors optional. Machines are field ready. Call 405-726-3383. 11-10c

NEW CROP OF PEANUTS ARE HERE.

On sale at the AAM office in Quitaque.
 Raw peanuts roasted & salted, cocktail hot and spicy in different sizes also pure peanut butter no additives. Salted or unsalted and peanut oil.
 Satisfaction guaranteed.
 Open from 8:30 to 5:00 Mon. thru Fri.
 On call Sat. 455-1156.

J.P. WILLIAMS

Ph. 652-2326
WEED CONTROL
 ON LAWNS
INSECT CONTROL
 ON TREES & SHRUBS
 Control Of
 BINDWEED, RAGWEED, BLUE WEED & JOHNSON GRASS
 ON FARMS
 Joe Charles 652-2594 C.A. Lic. No. 22453 Bus. Lic. No. 3106

SUBMERSIBLE PUMPS 5-YEAR PROTECTION PLAN

Goulds submersibles are the finest quality—so we can offer 5 years protection against damage due to abrasion, corrosion, even lightning!
Adams Well Service
 Exclusive Dealer!
 720 N. 2nd 983-5003



HALLOWEEN FOOD BUYS

PRICES EFFECTIVE
OCTOBER 27-29, 1983

WE RESERVE THE RIGHT TO LIMIT QUANTITIES



(3 LBS OR OVER)
NOT LESS THAN 70% LEAN
GROUND BEEF

99¢ LB.

MEAT SPECIALS

- PORK LINK HORMEL LIL' SIZZLERS SAUSAGE 12 OZ. PKG. **99¢**
- LOUIS RICH SLI. TURKEY BOLOGNA 1 LB. PKG. **99¢**
- OSCAR MAYER SLI. CHOPPED HAM 8 OZ. PKG. **\$1.39**
- OSCAR MAYER SLI. COOKED HAM 6 OZ. PKG. **\$1.49**

HEAVY GRAIN FED BEEF
CHUCK ROAST BONELESS **\$1.49** LB.

BONELESS HEAVY GRAIN FED BEEF
ARM ROAST **\$1.89** LB.

HEAVY GRAIN FED BEEF
CHUCK STEAK BONELESS **\$1.59** LB.

BONELESS HEAVY GRAIN FED BEEF
ARM STEAK **\$1.99** LB.

USDA GRADE A
WHOLE CUT-UP
FRYERS **69¢** LB.

CENTER CUT RIB OR LOIN
PORK ROAST 3 LB. AVG. **\$1.79** LB.



ARMOUR'S STAR SLICED
BACON 1 LB. PKG. **\$1.39**

[Comb. Pak] 4 ends and 6 centers
PORK CHOPS **\$1.39**
LOTS OF MEAT
COUNTRY STYLE PORK
RIBS **\$1.39** LB.

3 MUSKETEERS-SNICKERS-MILKY WAY
FUN SIZE
CANDY BARS
\$1.99
16 OZ. PKG.

Cornbread MIX
GLADIOLA
MIXES
5 6 OZ. PKGS. **\$1**

12 CT. TODDLER
-24 CT. NEWBORN
-18 CT. DAYTIME
-14 CT. OVERNITE
DISPOSABLE
HUGGIES
DIAPERS
\$2.99 BOX

40¢ OFF LABEL
DOWNY
SOFTENER
\$1.99
64 OZ. BTL.

CHICKEN OF THE SEA CHUNK
TUNA
79¢
6 1/2 OZ. CAN WATER-OIL PAK

WOLF PLAIN
CHILI
89¢
15 OZ. CAN

DIET CAFFEIN FREE
COKE
\$1.18
12 OZ. CANS 6 PACK

FAMILY SIZE
FAB
\$6.99
10 lb. 11 Oz. BOX

TEXAS RUBY RED
GRAPEFRUIT LB. **4/\$1**

CALIFORNIA
CARROTS 1 LB. PKG. **3/99¢**

COMET LONG GRAIN
RICE 28 OZ. BOX **\$1.09**

DETERGENT
JOY LIQUID 22 OZ. BTL. **\$1.29**

CALIFORNIA VALENCIA
ORANGES LB. **29¢**

YELLOW SWEET
ONIONS LB. **4/\$1**

LUNCHEON MEAT
SPAM 7 OZ. CAN **89¢**

SCHILLING CHILI
POWDER 1 1/2 OZ. PKG. **89¢**

OCEAN SPRAY
CRANBERRIES
12 OZ. PKG. **99¢**

HEALTH & BEAUTY
DECORATOR BOTTLE
JERGEN'S LOTION 15 OZ. BTL. **\$2.29**

FROZEN & DAIRY
SHURFRESH QUARTERS
OLEO 2 1 LB. BOX **89¢**

KRAFT MILD SHREDDED
CHEESE 8 OZ. PKG. **\$1.29**

HUNGRY JACK BUTTERMILK-BUTTER TASTIN'-FLUFFY
BISCUITS
3 99¢
5 CT. CANS

TABLETS
SINE-OFF 24 CT. BTL. **\$2.29**

SHURFRESH ASSTD.
ICE MILK 1/2 GAL. CTN. **\$1.19**

SLICE 'N BAKE
PILLSBURY ASSTD.
COOKIES 15 OZ. ROLL **\$1.49**

CO-TYLENOL CHILDREN COLD
FORMULA 4 OZ. BTL. **\$3.19**

CORN ON THE COB
NIBLETS 4 EAR PKG. **\$1.19**

KRAFT GRATED PARMESAN
CHEESE 8 OZ. PKG. **\$2.19**

CHOC. CHIP LOVER SIZE
PILLSBURY
COOKIES 27 OZ. ROLL **\$2.09**

SHOP RITE

STORE HOURS Monday - Saturday 8 a.m. - 9 p.m. Sunday 9 a.m. - 8 p.m.