



Hoppy Easter

All little dribblers games will start at 5:30 beginning today

Vote Saturday



Weather		
Courtesy of Energas		
DATE	HIGH	LOW
March 23	44	36
March 24	68	39
March 25	68	48
March 26	58	40
March 27	57	38
March 28	64	35
March 29	67	46

The Floyd County Hesperian

April Fool's Day

© The Floyd County Hesperian Thursday March 31, 1983 Volume 87 Number 13

25 cents

Floyd County farmers follow trends in PIK

Floyd County farmers followed the national and state trends and signed the payment-in-kind provision in large numbers.

A total of 200,054 acres of Floyd County farmland will be left unproductive in 1983 through the Conservation Use Acreage and PIK, according to figures released from the Floyd County ASCS office.

Of the 1406 cotton farms in the county with 259,227 acres of land total cotton base, 1378 farms enrolled with 256,106 acres of the base representing 99 percent of the cotton acreage enrolled. Acres that will not be planted include 51,221 acres in the Conservation Use Acreage (CUA) and 68,511 acres in PIK, total leaveout of 119,732 or a 46 percent leaveout.

Wheat farms in the county showed a

98 percent enrollment with 1021 of the 1068 farms participating. Of the 128,458 acres in these farms, 125,907 acres are enrolled. A 45 percent leave out of wheat acres consists of 25,182 acres CUA and 35,464 PIK acres, a total of 60,646 acres.

Of the 689 corn and grain sorghum farms with 41,734 acres, 503 farms participated with 39,279 acres, a 94 percent enrollment. A 45 percent leave out of corn and grain sorghum acres includes 7,856 CUA acres and 11,819 PIK acres, a total of 19,675 acres.

Participating farmers were required to have 20 percent of their land idled in another land diversion program. After that they had the option of enrolling another 10-30 percent of their land in PIK. A third option was offered, idling their whole base on a bid system. With

the good response in the PIK sign up in cotton, only wheat and feed grain whole base bids were opened.

One hundred ten wheat whole base bids were accepted; 51 bids were rejected because of acreage limitations. Seventy-seven corn and grain sorghum bids were accepted; 16 were not accepted because of acreage limitations.

Although no cotton bids were opened because participation exceeded the 45 percent limit. The crop had to have less than 45 percent before any whole base bids were opened. One hundred sixty-five cotton whole base bids were submitted representing 28,305 acres.

Nationally, more than one-third of the land devoted to these crops will be idled. In Texas almost one-half of the acreage devoted to these same crops will be idled.

According to Agriculture Secretary John Block, 187 million acres has been enrolled in the program with 82 million acres to be idled. In Texas farms, 87.2 percent of the land was enrolled -- 20.7 million of a possible 23.7 million acres. Of that total, 9.3 million or 45 percent will be idled.



SOME OF THE MODELS and fashions seen at the Fashion Show were Kimber Williams, daughter of Sue and Leon Williams; June Ware; Roberta Russell; Carol Cochran; Carrie Emert, daughter of Mary and Weldon Emert; Jill Golden with little Mysti Cochran, daughter of Mrs. Sudie Cochran in the background; and Carmen Hopper.

Proclamation

WHEREAS, the 1983 Week of the Young Child will be celebrated April 3-9 by the National Association for the Education of Young Children, and all its state and local affiliates, and

WHEREAS, each year during this special week, agencies and programs serving young children throughout the country sponsor activities that focus on the needs of children and renew their commitment to improve the quality of life for all children and their families, and

WHEREAS, organizations concerned with young children as well as state agencies are encouraged to participate in the display (at the state capitol) to highlight the state's programs for young children, and

WHEREAS, the Texas Association for the Education of Young Children will sponsor a Children's Day on April 9;

THEREFORE, in appreciation, love, and admiration for our youth, I, Parnell Powell, Mayor of Floydada, do hereby proclaim the week of April 3-9, 1983, as Week of the Young Child in Floydada. And in issuing this proclamation, call upon all of its citizens, its organizations, and schools to recognize this special week and to join in its observance. "Hug a child today."

PARNELL POWELL, MAYOR Floydada, Texas



MAYOR PARNELL POWELL signs the proclamation for the Week of the Young Child April 3-9 in the presence of Ricky Gonzales, regional member of the Child Welfare Board, and Roger Garms, member of the Floyd County Child Welfare Board.

Week of Young Child set for next week

The 1983 Week of the Young Child, a week dedicated to reviewing the needs of children and renewing commitments to improve the quality of their lives, gets under way April 3. Events planned to mark the week include a display in the Capitol rotunda, a special Texas Children's Day, and local activities promoting awareness of children.

The special week is celebrated annually nationwide.

Sponsoring the week in Texas is the Texas Association for the Education of Young Children (TAEYC), which is encouraging state agencies and organizations concerned with young children to participate by presenting an exhibit at the Capitol April 4-8 to make legislators and Capitol visitors aware of programs and services for children in Texas.

April 9, the last day of the Week of the Young Child, is set by TAEYC in cooperation with the Corporate Child Development Fund for Texas as Texas Children's Day, a day community agencies can celebrate the week with special local projects and activities.

Week of the Young Child Chairperson Jeannette Watson says 28 groups affiliated with the National Association for the Education of Young Children are planning events to focus community attention on the young child. The chairperson said local programs may want to hold an open house for local officials, sponsor a public display of children's work, or have children participate by writing letters to their legislators.

Watson says that April 3-9 should be "an exciting week of activities that will ultimately benefit young children throughout Texas."

TAEYC is a statewide organization of over 2,000 parents, teachers, and other professionals who work with or for children.

Floyd County's program will be sponsored by Floyd County Child Welfare Board. Participants will be Duncan Elementary, Floydada Day Care, Texas Migrant Council, Child Development Rural Program, Lockney Elementary and Dougherty school. Any-one wanting more information may contact Regi Gross at 983-2280.

School board absentee voting heavy

A weak turnout for absentee voting in the City Official and Caprock Hospital board elections was not reflected in the number of absentee votes in the school board race. Only nine absentee votes came in for the city council race, eight for hospital board. For the school board election, 255 absentee votes poured in.

The low voter response to the city and hospital absentee voting was attributed to lack of campaigning for the offices and publicity of the elections. The apparent new interest in school policies could have influenced the school board election.

These three elections will be conducted Saturday. Hospital board ballot boxes will be available in Floydada, Dougherty and South Plains. Voting for two city councilmen and one mayor may be done at City Hall. School board voting may be done at the Floyd County Courthouse. Sample ballots appear elsewhere in this issue.

Running the three positions on the Caprock Hospital board of directors are incumbents Don Bean, Louis Anderson and Jo Wester. T.M. Whitley has also filed for the position.

School board hopefuls are Bud Rainey, Hulon Carthel, Lynn Marler, Craig Edwards, Fred Zimmerman III and incumbents Robert Stovall and Don Hardy. Three positions will be filled. In the City Council race all candidates are incumbents, Wayne Russell and Frank Breed. Parnell Powell is incumbent for the mayor slot.

Burglary prevention meeting to be held

A meeting to inform local residents of practical steps to prevent burglary of their homes and theft of their property will be Monday at 7 p.m. at Lighthouse Electric Coop in Floydada. There will be a presentation on making your house, apartment or mobile home less susceptible as a target for criminals.

Some residents may be inviting crime against their property and not know it. This meeting will show what can be done to protect yourselves. Rural crime is increasing faster than urban crime. Rural residents of Floyd County are being forced to confront this problem.

Because crime is changing, farmers, ranchers and other rural residents must also change to protect themselves. Rural residents must assume an increasing responsibility for home protection that will protect their home, their property and even their lives from uninvited intruders. Everyone is invited to attend.

Turnout good for fashion show

By Carolyn Redding

"Up, up and away" was the theme of Monday night's spring fashion show and salad supper. It was well attended, with some 180 ladies eager with excitement to take in the annual event sponsored by the women's division of the Chamber of Commerce.

After a meal of some of the best salads made by so many good cooks, the fashion extravaganza got underway. 19 local models donned the in fashions for spring from the best lines from the local merchants in town: Anderson's, Stitch-in-Pretty, Hale's, Sears, and The Loft.

Modeling for the merchants were Carrie Emert, Carmen Hopper, Carol Cochran, Gail Hale, Kimber Williams, Mary Lloyd, Janice McCandless, Sally Lyles, Mysti Younger, Lee Battey, Jill Golden, Mysti Cochran, Debbie Bertrand, Christy Hale, June Ware, Roberta Russell, Darolyn Williams, Lindy Probasco, and Edna Cochran.

Penny Giesecke furnished the music for the evening. Decorations, done by Janet Lloyd and her hot air committee, consisted of spring-time colored balloons which gave a lift to the already vibrant evening.

Jo Ann Cagle, narrator of the show, introduced the models and gave a brief description of their outfits. Doris McClain was in charge of her script, assisted by Ressie Bigham.

The different fashions showed styles good for dress-up to sports, for the busy, working woman to the very young. Black and white was prominent, as was gray, especially when combined with pink. Bright, clear colors were good with some muted pastels. A distinct contrasting look of asymmetrical patterns made for an interesting, different look. Clean modern sweeping lines with the man-tailored look were shown. Also a take-off from men's fashion, were the fuller blazers. A favorite mood was set by some of the spring fashions by the french country look, which means layers and ruffles done in vibrant colors.

Pat Zimmerman served as general chairman and also was in charge of the merchants and models.

Free gifts were furnished on the tables by Sear's, Energas, Mary Kay, and Stitchin' Pretty.

Louise Turner was in charge of publicity. Working as the kitchen committee was Vickie Rainer, Nettie Ruth Whittle, Dorothy Turner, Tommie Perry, and Reciee Bigham.

Steve Cartledge, music and youth director at the First Baptist Church, entertained the audience of ladies for a short while about midway through the evening's activities.

Helping with the presentation of door prizes given at intervals throughout the viewing were four cute clowns: Kim Zimmerman, Jeanie Jackson, Alissa Hambright, and Tammy Cocanougher. Sally Galloway, Laura Lloyd, and Regi Gross collected the door prizes from the 58 merchants for the give-away.

Participating were: Buddy's, Bishop

Ramsey, Builders Mart, City Auto, Mary Kay (Sue Williams), Sherre West, Script Printing, Shop Rite, Thompsons, Arwines, Hesperian, Brooks Oil Co., My-T-Burger, Brown's Impl., Reed Ford, Red X, Ann Glasscock, Olde White House, Parnell Powell, Light-house, Oden's, Sue's Gifts, Dairy Queen, Stitchin' Pretty, King's Restaurant, Ginger's Beauty Salon, Azteca, Williams Florist, Anderson's, Ponderosa, FNB, Kirtley's, Cornelius Station,

Evelyn's Beauty Salon, Caprock Hardware, Judy's Beauty Nook, Dixie Dog, Higginbotham-Bartlett, Darlene Stovall, Kirk & Sons, Sears, Leonard's Cafe, Robertson's Studio, Producers Coop Farm Supply, Consumer's, Our Place, Perry's, Probasco's Stained Glass, Dyson's, Elayne Reid, Lovell-Collins, Davis Farm Supply, Gene's Cleaners, Guy's and Gals, Park Florist, Hale's Dept. Store, Vivian's Creative Ceramics and The Loft.

This Week

Bake Sale

An AFS bake sale will be Saturday at 10 a.m. at Buddy's and Shop Rite Food Stores. Proceeds go to help support our AFS student. Buy some Easter goodies and help a worthy cause.

Whirlers

Whirlers will meet at the MAC Friday at 8:00.

Holy Week

Schedule for Holy Week at St. Mary Magdalen Catholic Church is as follows: Thursday, March 31, Mass of the Lord's Supper at 8:30. 6-8th graders celebrate first Communion; Friday, April 1, Way of Cross at 3:00 p.m.; Passion, Veneration of Cross and Communion at 8:30 p.m.; Saturday, April 2, K-8th grade CCD classes at 10:00 a.m., Easter Vigil at 10:00 p.m.; Sunday, April 3, Mass of the Resurrection at 11:30 a.m.

Social Security

A representative of the Social Security Administration will be at the Floyd County courthouse annex on April 13 and April 27 from 9:30-11:30 a.m.

Golf

Floydada Ladies Golf Association welcomes all new members. Come and join them for luncheon and play day, Thursday, April 7th.

Volleyball

The junior class at Valley High School in Quitaque is sponsoring a volleyball tournament April 7, 8 and 9 at Valley gym. Entry fee is \$18 per team plus admission. Entry deadline is April 4. This is men's and women's teams, no mixed teams. For more information call Mrs. Betty Tiffin at (806) 455-1411.

Little Dribblers

Due to several conflicts, the girls Little Dribblers schedule has been changed. All games scheduled for April 7 will be played April 8 in this order: 6 p.m. Anderson vs. Hanna; 7 p.m. L. Hinsley vs. Willson; 8 p.m. S. Hinsley vs. Henderson.

The games scheduled for April 8 will be played on April 7 in this order: 6 p.m. L. Hinsley vs. Ratliff; 7 p.m. Anderson vs. S. Hinsley; 8 p.m. Willson vs. Hanna.

Band Boosters

There will be a Band Boosters meeting and potluck supper Monday, April 4, at 7:30 p.m. in the high school cafeteria.

TSTI

Georgette Pond, Admissions Representative for Texas State Technical Institute in Amarillo, will be in Floydada, on Thursday, April 7th from 10 a.m. to 12 noon, at the high school. She will be talking to high school students about the programs and training offered at TSTI-Amarillo.

Womens Chamber

A meeting of the Women's Division of the Chamber of Commerce will be held Monday, April 4 at 5:30 p.m. in the school office at 226 W. California. All members are urged to attend and any interested persons or visitors are invited to attend.

One Act Play

April 5 at 7:00 p.m. the Floydada High School drama department will present "The Woodshed." The one-act play will be performed at the high school auditorium. Tickets will be sold by drama students and may also be purchased at the door.

Fire Department Spotlight

Larry Guthrie, second assistant chief of the Floydada Volunteer Fire Department, is the parts manager at City Auto, Inc.

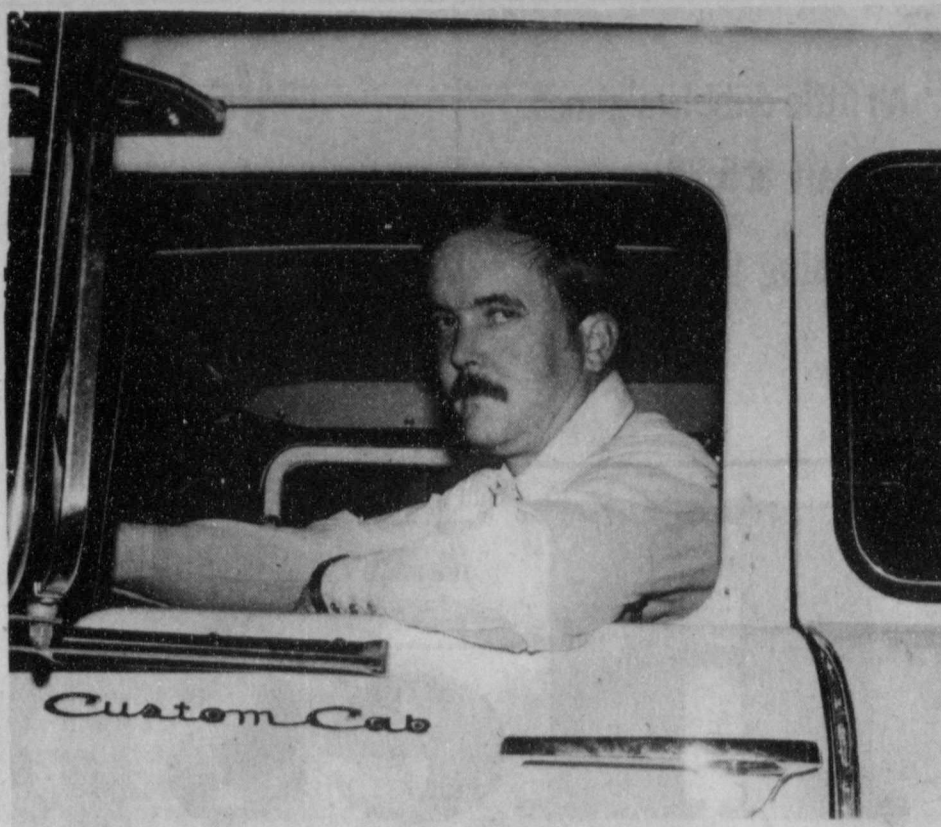
Duties of the second assistant chief are to be under the orders of the chief. In the chief's absence and in the absence of the first assistant chief, the second assistant chief assumes the duties and authority of the chief at the scene of the fires and at meetings.

Larry and his wife, Rhonda, have two children -- a daughter, Shonda, 9, and Chad, who is four. Rhonda is a secretary at City Auto.

Larry has been with the Floydada Fire Department ten years. He has his basic certification and is working on his

intermediate certification. "Our fire department is one of the best departments around the state. It is a fine, well machined department with some of the best firefighters."

"I joined the department like most other people did, to help my community, but there is nothing like knowing you are going to the aid of someone who needs help as fast as anyone can get there. It gives me the challenge to see if I can match my training and skills to overcome a raging fire. The flashing lights and the sound of the siren with the adrenalin flowing is something that no one else knows. That pretty well sums up the true reasons I joined the Floydada fire department."



LARRY GUTHRIE

Letter to the Editor

Dear Editor:

Never before has the community of Floydada responded to the Floydada Lions Radio Day any better than this past Saturday.

To the 84 merchants who purchased advertising time, we extend a large THANK YOU. Without you the Lions could not continue to function.

To Bill Pirtle and KFBA radio, we owe the whole day. Your generosity is appreciated. Scott Smith, Melissa Bigham and Brent Sanders, the Lions thank you for putting up with us.

To those who brought in old eyeglasses for others to use and to those who brought in bikes for identification, we also want to thank you.

To all who listened to the all day commotion, we encourage you to tell the merchants you appreciate them and the Lions promise next year will be better.

Floydada Lions
Gary Brown, Lion Boss

Synopsis of housing program proposed

Geographic Area

Mortgage loans will be made on single family residences located within the geographic limits of the Housing Finance Corporation, including Bailey, Cochran, Crosby, Dickens, Floyd, Garza, Hale, Hockley, Lamb, Lubbock, Lynn, Motley, Terry and Yoakum Counties and the City of Plainview.

Type of Property

Newly constructed or previously occupied single family residences (including a unit in a condominium project or planned unit development, but excluding mobile homes) which are or will be used as the principal residence of the owner and which are not used, and are not intended to be used in a trade or business.

Maximum Purchase Price

The maximum purchase price of a qualifying residence will be 110% of the average area purchase price for the type of residence being purchased (currently \$70,620 for a newly constructed residence and \$60,500 for an existing residence). The maximum purchase price of a qualifying residence in a targeted area (as defined by Federal Law) will be 120% of the average area purchase price for the type of residence being purchased (currently \$77,040 for a newly constructed residence and \$66,000 for an existing residence). These amounts are based on data published by the Federal Government and are revised every year.

Types of Loans

It is anticipated that the mortgage loans will be 30-year conventional, fixed rate, single family mortgages.

Eligible Borrowers

The amount of adjusted annual income specified by the Housing Finance Corporation, and as revised from time to time thereafter by the issuer.

Income tax returns from the most recent year will be evidence supporting eligibility.

All borrowers will be evaluated for credit worthiness in accordance with FNMA and/or FHLMC underwriting standards.

Assumptions

If a mortgage is assumed, on the date of assumption, the principal residence requirement, new homeowner rule and purchase price limits must be met. The maximum purchase price will be the price for existing residences determined as of the date of assumption.

Mortgage Loan Down Payment

The minimum down payment for the loans will be five percent (5%).

Private Mortgage Insurance

All mortgagors will be required to have private mortgage insurance in an amount so that the uninsured portion of such mortgage loan does not exceed 72% of the remaining principal amount of the loan.

Pledged Account

The program may be structured to allow the optional use of Pledged Account Mortgage ("PAM") loans. The PAM loans result in a buy down on the interest rate, where a portion of the mortgage payment due under the mortgage loan during the first few years is payable from a fund pledged by the builder, mortgagor or some other third

Continued on page 3

Sample Ballots

Floydada ISD

OFFICIAL BALLOT: Vote for the candidate of your choice in each race by placing an "X" in the square beside the candidate's name.

BOLETA OFFICIAL: Vote por el candidato de su preferencia por poniendo una "X" en el cuadro al lado del nombre del candidato.

Caprock Hospital District

OFFICIAL BALLOT: Vote for the candidate of your choice in each race by placing an "X" in the square beside the candidate's name.

BOLETA OFFICIAL: Vote por el candidato de su preferencia por poniendo una "X" en el cuadro al lado del nombre del candidato.

South Plains ISD

OFFICIAL BALLOT: Vote for the candidate of your choice in each race by placing an "X" in the square beside the candidate's name.

BOLETA OFFICIAL: Vote por el candidato de su preferencia por poniendo una "X" en el cuadro al lado del nombre del candidato.

City Officer Election

OFFICIAL BALLOT: Vote for the candidate of your choice in each race by placing an "X" in the square beside the candidate's name.

BOLETA OFFICIAL: Vote por el candidato de su preferencia por poniendo una "X" en el cuadro al lado del nombre del candidato.

Dougherty ISD

OFFICIAL BALLOT: Vote for the candidate of your choice in each race by placing an "X" in the square beside the candidate's name.

BOLETA OFFICIAL: Vote por el candidato de su preferencia por poniendo una "X" en el cuadro al lado del nombre del candidato.

Courthouse News

Deeds
Amarillo National Bank, Trustee, to L.R. Hamner, Jr., west 320 acres of Sur. 78, Blk. D-2
E.W. Boedeker, trustee, et al, to E.H. Boedeker, N. 2,474 ft. of W. 1/2 of Sur. 86, Blk. D-2
Billy Maurice Fulton, et ux, to Billy W. Fulton, et ux, 3 tracts
Edward George Cunningham, to Gus Hammonds, et ux, 800 acres.
Ruth E. Mitchell, Executrix, et vir, to Dale Galloway, et ux, Lots 5 & 6, Blk. 7, Walling Addn., Lockney
C.O. Spence, et ux, to Langston Williams, et ux, S. 1/2 of Lot 16, Blk. 55, Floydada
William Eugene Hopper, et ux, to Lee Roy Crutchfield, Blks. 18, 19, 22 and 23, Farris & Childers Addn., Floydada
William R. Daniel Jr., et ux, to W.R.

Daniel, et ux, 5.45 acre tract out of SE corner of NE/4 of Sec. 9, Blk. G.
Domingo Irlas, to Isabelo Irlas, et ux, Lot 6, Blk. 57, Floydada
Nora E. Norris to C.M. Norris, Lot 14, Blk. 42, Floydada
Gordon Lynn Bryant, et al, Executors, to Leroy Burns, et ux, 120 acres, being all of W. 120 acres of S 1/2 of Sur. 31, Blk. 1
Jon Parkey, et ux, to John C. Moss, all of S. 65 feet of Lots 7, 8, and S. 65 ft. of E. 28.75 ft. of Lot 6, Blk. 4, Bartley Heights Addn., Floydada
Marriage Licenses
William Eugene Hopper, Elena Clarice Hopper
Charles Lee Toles, Claudia Ray Perez
Johnnie Ray Pointer, Tami Michelle Hinkle

Farming has changed.
And so has Federal Crop Insurance.



It's time to consider All-Risk Crop Insurance. Let our computer give you coverages for your farms.

TODAY'S FEDERAL CROP INSURANCE
Protecting your way of life.

Tommy Assiter
983-2511

We're Doing Our Best to Lower Your Food Costs!

FOR YOUR EASTER DINNER!

Shurfresh Boneless Half or Whole HAMS \$1.99 lb

Grade A 10-14 lbs TURKEYS 59¢ lb

Grade A Large Doz EGGS 69¢

6-32 oz. Bottle Carton plus deposit COCA COLA \$1.89

Del Monte 303 Can GREEN BEANS 2/89¢

Del Monte 303 Can Cream CORN or Whole 2/79¢

Brown & Serve ROLLS 2/89¢

Utility 10 lb bag POTATOES 99¢

Fresh Ground HAMBURGERS lb \$1.19

Kraft 32 oz. Jar BBQ SAUCE 89¢

Bell 1 Gal. Jug ORANGE DRINK \$1.29

Folgers 1 lb Can COFFEE \$2.19

Country Pride FRYERS lb 55¢

Delsey 4 Roll Pkg TOILET TISSUE 99¢

Shurfresh 1 Gal MILK \$2.19

Nice Firm Heads LETTUCE Ea. 39¢

Large Size AVOCADOES Ea. 25¢

Shurfresh 1 lb Pkg. BACON \$1.49

KEETERS GROCERY
7:30 a.m. - 7:30 p.m. 652-2191

We Redeem Food Stamps & WIC Cards.
We Reserve The Right To Limit Quantities

We Give Circle Blue Stamps Double on Wednesday

Summit Savings Money Rates

	MONEY MARKET CERTIFICATE	SMALL SAVERS CERTIFICATE	MONEY FUND	SUPER NOW FUND
RATE	9.000%	9.950% COMPOUNDED DAILY	9.000%	7.000%
EFFECTIVE THRU	4-4-83	3-31-83	4-4-83	4-4-83
MINIMUM TERM	6 MONTHS	30 MONTHS	NONE	NONE
MINIMUM DEPOSIT	\$2500	\$1,000	\$2500	\$2500
INSURANCE OF ACCOUNTS	\$100,000	\$100,000	\$100,000	\$100,000

NOTICE: As required by law, all certificates are subject to substantial penalty for early withdrawal.

We Invite You To "JOIN US AT THE TOP"



SUMMIT SAVINGS ASSOCIATION

217 W. CALIFORNIA
FLOYDADA, TEXAS 79235
983-3725

HOME OFFICE - 716 BROADWAY, PLAINVIEW
OTHER BRANCHES

3000 OLTON ROAD IN PLAINVIEW, FLOYDADA, HALE CENTER, MULESHOE,
LITTLEFIELD, FARWELL, PLANO, ALLEN, MATADOR and FRIONA

Member FSLIC

How could you help the children of Floyd County?

A child sometimes needs a temporary home with temporary parents because his own parents are unable to care for him.

The child needs love, attention and security during this time in order to grow into a healthy and happy human being.

The Texas Department of Human Resources is looking for good temporary parents to share their good homes with these children in need.

Could Your Home Be A Foster Home?

Foster homes should provide love, protection and understanding as well as food, shelter and clothing.

Foster homes are licensed by the Department of Human Resources. A representative from the agency visits your home to answer questions, explain the basic requirements and determine what type of child would best suit your home.

Fire and health inspections are made of your home. All family members must have tuberculin skin tests. The mother should also have a statement from her physician stating she is free of communicable diseases.

Our agency is ready to help you with the professional help and guidance you may need. Foster parents receive an orientation and fifteen hours of annual training.

All foster parents receive financial assistance for things like board, clothing, medical and dental care for the foster child.

Clearing Up The Confusion

If you are like most people, you still have some questions about foster parenthood. Here are some of the most

MHMR children services offered

The Eleanor Griffin Children's Development Center, special education unit of the Central Plains Mental Health and Mental Retardation Center in Plainview, provides care, treatment and rehabilitation for physically and/or mentally handicapped children from birth to age ten.

Services include diagnosis and evaluation, infant stimulation programs, individual educational plans, speech therapy, physical therapy, occupational therapy, parent training and parent counseling.

Each child's Individual Educational Plan is based on a child's needs, and covers these areas of development: daily living skills, gross motor skills, fine motor skills, language, science class, cognitive skills, and sensory training. Other training may be added to meet a child's needs. This service is free to eligible children and parents.

For more information, contact Floydada Counseling Center, 983-2584 or come by and visit with Mary Ann Juarez, caseworker, in Room 200 of the Courthouse.

deposits will equal at least six months' debt service on the bonds, which reserve shall be available to pay principal of and interest on the bonds.

Mortgage Loan Reserve - initially funded with bond proceeds in an amount equal to 2% of the sum of the unpaid principal amount of all mortgage loans to be purchased, which reserve shall be available only to pay principal of and interest on the bonds, servicing fees and extraordinary expenses of the administrator, the Trustee and the bond paying agent.

THE FLOYD COUNTY HESPERIAN

[USPS 2026-8000]

Published weekly each Thursday at 111 East Missouri Street, Floydada, Texas 79235. Second class postage at Floydada, Texas 79235.

SUBSCRIPTION RATES: Local \$11.50 per year, out-of-trade area, \$12.50 per year.

POSTMASTER: Send address changes to the Floyd County Hesperian, 111 East Missouri, Floydada, Texas 79235.

Carolyn Redding Publisher
David Cates Advertising Manager
Wes Brown Editor

TIME TO PLANT

BEDDING PLANTS:
Vegetables - Petunias - pansy - Geraniums - Caladiums - Marigolds
Tomato - Pepper - Hanging Baskets
Ivy - Fern - Cactus - Potting Soil - Peat Moss - Spannum Moss

PARK FLORIST
"Gardening Headquarters"
Visit Our Greenhouses
Browse Around

commonly asked questions and their answers.

1. What are the children like?
A foster child may be a newborn infant or a teenager. He may be bright or a slow learner. Foster children are not delinquent children. They are neglected, abused or abandoned children, children whose parents are temporarily unable to care for them.
2. Can I decide which child I take?
Very definitely. The age, sex and number of children placed in your home is decided by you.
3. How long will the child stay?
It could be a few days or it could be much longer. It depends upon the situation of the particular child. Some children are reunited with their own families after problems at home are resolved. Some go to relatives homes. Some are later adopted.
4. Can both parents work?

Yes, as long as one is at home when the child is there, or other arrangements for care of the child can be made.

5. Do you have to be married to be a foster parent?
Most children in foster care have not lived in a home where there are two parents. These children need to have the opportunity to see both a mother and father and learn to identify their separate roles in the home. For this reason, we prefer married couples. Singles can become foster parents, however.

Make Your Next Child One of Ours

If you would like to help us, we would like to hear from you. Not everybody wants to be a foster parent - we know that. But if you think being a parent and friend to a child who needs you more than you may ever know is something you would like to try, give us a call. It could make all the difference in the

world to a child.

We would like to help you help us. If you would like to learn more about becoming a foster parent, contact us. We will help you get started on one of the best things that ever happened in your life.

- Are you willing to:
- share your home with a child who needs you
 - let him be a part of your family for awhile
 - provide the love and understanding he needs

You Don't Have To Be A Foster Parent To Help A Foster Child

Some foster children have never been to a restaurant to eat out, seen a movie, been swimming in a swimming pool, or been to a beauty parlor. Their foster parents can't always afford these luxuries for the children.

People and organizations can help foster children by providing some of the "extras" foster parents cannot provide such as: school pictures, Scout and Brownie uniforms, birthday gifts, Christmas gifts, money for school projects, curricular activities at school, class rings, class dues, clothing for special occasions, hair cuts, recreational expenses and many, many more.

There are other ways you can help. Find out how by giving us a call. For additional information, call or write: Regi Gross at 983-2280.

This local child could be helped

Floyd County Child Welfare Board was established January, 1980. There are fifteen members representing the Floyd County area. The Board's purpose is:

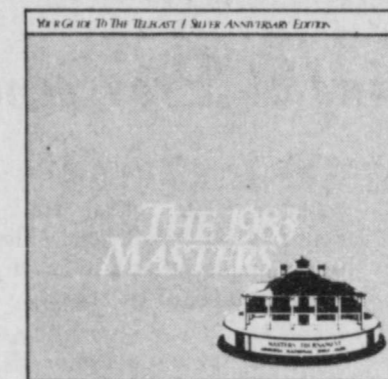
- (a) To provide social service and care to children in need of such services within the limit of its budget and the availability of professional staff.
- (b) To develop a program for the protection and well being of the dependent and neglected children of Floyd County.
- (c) To encourage and engage in activities which will assist all children within its jurisdiction to experience emotional security, physical health and the opportunity to develop fully their own capacities for happiness and good citizenship.

There is a Senior student, from Floyd County, who is living at Cal Farley's Boys Ranch, under the guardianship of Texas Department of Human Resources. He has been living there for several years and no relatives have been located. The youth is planning to go to college and has applied for scholarships. He is an outstanding student and has a lot of potential.

After he turns 18, government funds will no longer be available to him. Since he has been living at the Ranch, linens and personal items have been provided, but when he goes to college, these items will be needed.

If you can help by giving linens, towels or personal items such as soap, toothpaste, deodorant, etc., please come by the Department of Human Resources office, 125 E. California, or call 983-2280. Or you might prefer to

THE 1983 MASTERS GUIDE TO THE TELECAST... FREE!



(Silver Anniversary Edition)
Yours for greater enjoyment of The Masters Golf Tournament on CBS TV April 9th and 10th

Representing
The Travelers

The Travelers Companies; Hartford, Connecticut 06115

Cates & Dawson
231 W. Calif.
983-5322

Ask us for your free guide to follow the top golf pros in action. As your local insurance pros, we're ready to help in planning your personal and business insurance needs.



Worship Together at Easter

As we once again reflect on the miracle of this special holiday, may the true meaning of Easter bring you closer to those you love.

"Helping You Change Things For The Better"

THE FIRST NATIONAL BANK OF FLOYDADA

Accounts Insured up to \$100,000

Member FDIC

Housing program

party. The escrowed funds will reduce the mortgage payments required to be paid by the mortgagor in the first few years enabling the mortgagor to participate on a lower monthly payment.

Prepayment Penalty

A prepayment penalty may be required on each loan during the first three to five years of the program, however not to exceed 3%.

Purchase Price of Loan

100% of the unpaid principal balance remaining on the mortgage loan and accrued interest on the loan.

Origination Period

All mortgage loans must be originated and purchased within one year.

Eligible Lenders

All qualified lenders (savings and loan associations, mortgage bankers and commercial banks) who have had an operating office in the area covering the Housing Finance Corporation since July 1, 1982 would be invited to participate in the program. Qualified lenders shall mean those who are approved as mortgagees by FHA and VA and approved as sellers and servicers by FNMA and FHLMC.

Acceptance of Offer

Lenders' offers will be accepted by the public offering date. Lenders may begin accepting applications when their offers have been accepted.

Commitment Fee

Commitment fee to be paid by the participating lender to the Issuer shall be in an amount not to exceed 5% of participating lender's allocation. This fee is required to be paid before the public offering date. The fee can be recovered from the builders or sellers, however cannot be passed on to the homebuyer in the form of points.

Allocations

The maximum proceeds from the sale of the bonds available to purchase qualified mortgage loans will be approximately \$30,000,000. The actual amount will be based on demand from the lenders requests. Originally, allocations will be made based on the population of the municipality in proportion to the total population of the Housing Finance Corporation. If requests do not equal the amount based on a proportionate share of available funds, the funds could be used for another municipality participating in the program.

The participating lenders are required to submit with their request for funds the following information:

1. The origination history of single family mortgages of the institution for the past three calendar years;
2. The servicing history for the same period;
3. Requested total amount of allocation and a breakdown of the amount for each builder (if any) and the location of the projects;
4. For every builder for whom the lender intends to originate loans, the builder's construction and sales activity (number of units built, type of units and total sales price) for the past three calendar years and the average sales price for each such year must be submitted with the request. If such figures are not available, the figures for years which are available must be submitted; and
5. For a builder to receive a reservation through a lender, proof of construction financing, conditioned only to the availability of permanent financing provided by this program, must be provided.
6. The municipality in which the lender will use the funds.

BRETT R. GILL

TAX SERVICE
Tax Returns and Bookkeeping Service
CALL 847-2222

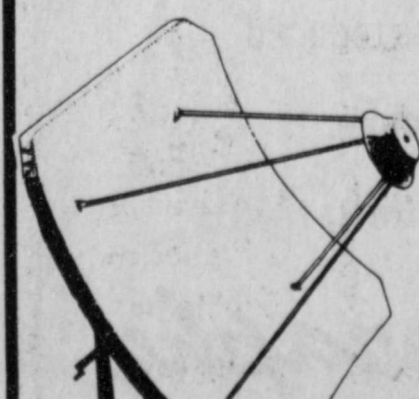
NOW FOR THE FIRST TIME EVERY FARMERS & RANCHERS CAN HAVE IT BETTER THAN THEIR CITY COUNTERPARTS

OVER 60 Channels On Your Own TV!!! Including 24 hour Sports Programming, Several Religious Networks, Uncut Movie Channels with no commercials, Commodities & Stock Market Reports (making the total purchase price tax deductible), Best of Network Programming and Much, Much More!

Total Systems Begin at \$1995⁰⁰

STAR TRACK SATELLITE EARTH STATIONS

FOR MORE INFORMATION CALL: (AFTER 6PM)
983-2676 - 983-2316 - 983-2422



* 1 only - All EQPT Demonstration Models - installation extra.



SHEILA HRBACEK, KEVIN ROBERTS

Sheila Hrbacek, Kevin Roberts plan May 21 wedding at Providence

Mr. and Mrs. Paul Hrbacek of Lockney and Mr. and Mrs. Bill Roberts of St. Vrain, New Mexico wish to announce the engagement and forthcoming marriage of their children, Sheila and Kevin. The couple plan to be married May 21, 1983 at Trinity Lutheran Church in the Providence Community.

Miss Hrbacek is a graduate of Lockney High School and attended South Plains Jr. College. She is presently employed as a teller at the First National Bank of Lockney.

Roberts is a graduate of Melrose High School. He has also attended South Plains Jr. College and Eastern New Mexico. He is engaged in farming and ranching.

Hoffman honored in the Barry Barker home with bridal shower March 26th

The home of Mrs. Barry Barker was the site for a bridal shower given in honor of Miss Christine Hoffman, bride-elect of Mark Odam of Abilene, on March 26, 1983.

The couple plan April 16, 1983

wedding at the Lockney First United Methodist Church. Along with Mrs. Barker and the honoree in the receiving line were Mrs. Charles Huffman, mother of the bride-elect, and her grandmothers, Mrs.

Campus Chapel setting for nuptial service for Fincher, Dorris March 26th

Joseph A. Hill Memorial Chapel on the campus of West Texas State University was the site as double ring wedding vows were exchanged Saturday evening by Tammy Le Fincher and Robert Glenn Dorris.

Tammy is the granddaughter of Le Ray and Bettye Chowning of Floydada. She is the great-granddaughter of Mr. and Mrs. W.B. Eakin of Floydada and Mrs. A.W. Chowning of Bowie.

Rev. Tommy Thompson of First United Methodist Church at Wellington officiated at the nuptial exchange. Mr. and Mrs. Kenneth Fincher of Canyon are the bride's parents and the bridegroom is the son of Laverne Dorris, Amarillo, and the late Glenn Dorris of Canyon.

Entrance to the chapel was lit with hurricane lamp posts, accented with peach bows. Pam Hinds attended the guest registry table which was decorated with tall peach tapers in brass holders. Large green pot plants in wicker baskets and wicker wedding bells, accented with peach and navy ribbon and flowers, accented the sanctuary entrance.

A white wrought iron folding screen and candelabras with green plants in wicker baskets decorated the altar area. Focal point of decor was a silk arrangement of navy poppies, peach roses and grapevine. Peach tiger lilies in a brass bucket accented the organ and brass hurricane lamps with peach candles highlighted the sanctuary. Navy and white gingham checked bows with baby's breath marked family pews.

Selections were the "Hawaiian Wedding Song" and "Twelfth of Never" presented by the vocalist, Jeannette Garcia of Canyon, with accompaniment by the pianist, Kyle Maxwell of Tulia.

Ushering were the bride's brother, Todd Fincher of Canyon, and Kent Killion of Amarillo with Dustun Chowning of Graham, the bride's cousin, as junior usher.

Delinda Riley of Canyon served as maid of honor with Connie Shaw as bridesmaid. They wore dark peach formal length high-waisted dresses styled with pleated skirts and elbow length capes of sheer organza. They carried woven wicker baskets filled with peach-colored silk roses.

Tim Van Valkenburg of Amarillo served as best man and Jim Nicks of

Denton was groomsman. The bridegroom and his attendants wore brown western styled tuxedos with western string ties.

Ring bearer was Michael Dorris of Amarillo. He carried a pillow made with geese down from geese raised by the bride's great-great grandparents almost 100 years ago. The ivory eyelet pillow also held a doily which had been crocheted by the bride's maternal great-great grandmother.

Escorted by her father, the bride wore a white gown with Victorian neckline with bodice and sleeves of English net trimmed with deep Alencon lace ruffles and pearl buttons. The high collar featured applique lace and satin trim. The deeply flounced hemline was edged with re-embroidered Chantilly lace. She wore a wide-brimmed lace bridal hat with wide satin band and cascading back streamers. Her cascade bouquet was styled of white and peach-colored silk flowers with miniature peach satin rosebuds. Satin and lace ribbon streamers complemented the bouquet with matching flowers from the bouquet and wedding bands belonging to her grandmothers and great-grandmother tied on as "Something old" for traditions. Along with her "new" wedding dress and hat, she "borrowed" a lace handkerchief from her great-grandmother and wore a "blue" wedding garter, which was a gift from her maid of honor. She completed her ensemble with a lucky sixpence in the bridal shoe.

A reception for the newlyweds followed in Cousins Hall on campus where a navy floor length cloth with white dotted swiss overlay, edged with eyelet, covered the wedding table. Connie Bolding served the four tiered satellite cake, decorated with peach and ivory silk flowers, and Isabell Garcia served the apricot slush punch. Brass appointments and a small bride doll in the bride's chosen colors completed the table.

A navy floor length cloth with gingham checked overlay covered the groom's table tended by Donna Whitten. The traditional German chocolate cake, surrounded with a small grapevine wreath, was served with iced tea. The table was complemented with a pair of small brass cowboy boots and brass champagne bucket.

Centering the adjacent food table was a hurricane lamp as a vegetable tray, cheese ball and finger sandwiches were served. A block of cheddar and basket filled with assorted crackers completed the table.

Members of the houseparty were Jan Keeling, Debbie Conner and Mary Harrison, all of Canyon; Paula Shelley and Lea Kirby, both of Amarillo and Elaine McDowell of Miami. Bobbie Gene Dorris of Amarillo distributed navy and white gingham rice gabs during the reception.

Highlighting reception decor was a wicker trunk shaped basket where the couple's wedding and engagement photos, the wedding invitation and nostalgic photos from childhood were

displayed. The bride is a May graduate of Canyon High School, where she is a member of the HECE and HERO Clubs. She is employed as bookkeeper with Dorris Garage.

A graduate of Canyon High School and the Department of Public Safety, Highway Patrol Academy in Austin, the bridegroom is the owner of Dorris Garage & Wrecker Service in Canyon.

Prior to the wedding service, a rehearsal dinner was given Friday evening in the home of Mrs. Fred Axe, 1009 Cimmaron Trail in Canyon.

The newlyweds departed on a honeymoon trip to Santa Fe and Albuquerque, New Mexico and will be establishing their home in Canyon on return.



MRS. ROBERT GLENN DORRIS

Wilkinson, Gilbert engagement announced

Mr. and Mrs. Tom Wilkinson announce the engagement of their daughter, Gina to Greg Gilbert, son of Mr. and Mrs. Orland Gilbert.

Vows will be exchanged July 16 in St. John's United Methodist Church, Lubbock.

Gilbert is the grandson of Mr. and Mrs. Marvin Gilbert and Mr. and Mrs. Ike Johnson.

The couple was graduated from Monterey High School and Tarleton State University.

Miss Wilkinson is employed by the

Herman Huffman, Lockney, and Mrs. Winnie Irmon of Paris, Texas.

They wore corsages of yellow daisies, ming fern and purple statice tied with orchid satin.

The registration table was draped with a floor length, off white lace cloth.

Corpus Christi Independent School District where she is a physical education instructor in Chula Vista Academy of Fine Arts.

Gilbert is employed in San Angelo by Eckert, Ingram, Tinkler and Oliphant, Certified Public Accountants.

Trava Gentry feted with bridal shower in Turner home

A bridal shower for Miss Trava Gentry, bride-elect of Tim May, was held Saturday, March 26, in the home of Mrs. Nolan Turner. Special guests attending the shower included Mrs. S.B. Gowens, grandmother of the bride-elect, Mrs. Jerry Gentry, and Lisa Gentry, aunt and cousin of the bride-elect.

honoree by Mrs. Turner. Silver and china appointments were used to serve the spiced tea, coffee, sausage balls, and the assortment of sweet breads.

The serving table featured a spring-time silk flower arrangement set into fern, which was presented to the

A 10-piece Silverstone cookware set was presented to the honoree by hostesses: Rena Turner, Barbara Willis, Wilma Colston, Anne Carthel, Linda Heflin, Nina Sanders, Joy Assiter, Melba Vickers, and Carolyn Smith.

The couple plan to be married April 2 in the First Baptist Church in Floydada.



Today's Baby

STONE

SSgt and Mrs. Chuck Stone of Biloxi, Mississippi are the proud parents of a baby daughter, Sarah Elizabeth. She was born March 19 and weighed 8 lb. 2 oz.

Her maternal grandparents are John and Yvonne Owen of London, England.

Sarah's paternal grandparents are Elmer Stone of Noble, Oklahoma and Rose Enslow of Floydada, Texas.

Send a celebration of spring.
Easter is Sunday, April 3.
The FTD® Glory of Spring™ Bouquet.
Easter Lillies also available.
SCHACHIS
Flowers, Jewelry & Gifts
LOCKNEY 652-2385
Send your thoughts with special care.™
®Registered trademark Florists Transworld Delivery Association.
©1983 Florists Transworld Delivery Association.

Through Popular Demand
we are proud
to announce
we have the new line of
Mikasa Dinnerware, Flatware and Crystal
We also have many new and pretty patterns
in our other dinnerware.

Sue's Gifts
Floydada
126 W. Calif. 983-5312

LOVELL-COLLINS
JEWELRY
806/983-3240 102 S. Main

Sale Continues...

Attention Graduating Seniors!

Cap & Gown SPECIAL

1 - 8 x 10
2 - 5 x 7
8 - wallets

ONLY \$24⁹⁵
Sitting Fee - \$8⁰⁰

Buy one 11 x 14 at regular price and get second one for only 99¢

All frames in stock are reduced **50% and more.**
Make your appointment today.

R. Photography
121 W. California Phone: 983-5063 Floydada, Texas

Floydada Nursing Home Happening

By Winona Jackson
Relationships built within the walls of a nursing home are relationships of deep, caring concern for one another. This week everyone was saddened by the death of Artie Newell, a dear lady, who had just celebrated her 85th birthday on the 7th of this month. Mrs. Newell was a gracious and talented person. This poem, which she wrote, expresses the faith which her life reflected.

This I Know

I know not by what methods rare,
But this I know, God answers prayer
I knew that He has given His word
Which tells me prayer is always heard,
Whose will is answered, soon or late,
And so, I pray, and calmly wait.

I know not if the blessing sought,
Will come in just the way I thought,
But leave my prayer with Him alone,
Whose will is wiser than my own,
Assured that He will grant my quest,
Or send some answers, for more blest.

by Artie Newell

Another dear lady, Ruth Benson, is in Caprock Hospital and our thoughts and prayers are with her. Ruth is an inspiration for so many of us.

On Monday Jim Guess led our devotions, with Ernestine Pleasant singing a special hymn for us. Everyone enjoyed hearing Ernestine sing.

Walter enjoyed having his daughters, Bonnie Spann and Nita Adams visiting most of the day. Bonnie played the piano for everyone. We all enjoyed having her play. It is so beautiful to have friends and relatives share their talents with each of us, when they visit the residents.

Monday afternoon was a special movie day as the ceramics teacher was on vacation.

On Tuesday Addie Lindley, Bessie Griffin, Susie Mooney, Hallie Bertrand, Irene Fuller, Alta Probasco, Bennie Wilson, Una Clark, Clara McNeely, and Lura Barshear shared their wisdom in Bible study.

Wednesday was bingo day. Una Clark, Emmitt Lawrence, Sue Thompson, and Vera Duke, the regular bingo players, were joined by Lura Barshear, Addie Lindley and Bennie Wilson. These new fans had fun. They will be

back for bingo again next week. Sue and Emmitt were the top winners with Addie the black out winner.

Thursday afternoon the ladies from City Park Church of Christ hosted their monthly birthday party for all the residents. Punch and a beautifully decorated birthday cake was served to 30 residents in the dining room, with others served in their rooms. "Party Day" is a very special day. Everyone enjoyed singing "Happy Birthday" to Hallie Bertrand, Wendy Jackson and Ethel Collins. These ladies were so pretty-dressed up and wearing the lovely corsages sent to them by Williams Florist. James and Cynthia always remember the birthday party and send flowers for this special day. "Thank You", James and Cynthia and "Thank You", to the friends from City Park Church of Christ for giving everyone such a nice day.

Friday was movie and popcorn day. This week we had a very good movie. Everyone really enjoyed seeing the animals, plants, flowers and scenery of the desert in this film...and of course the popcorn is always enjoyed!

There were so many visitors this week. Everyone here enjoys visitors... and look forward to the visits of their families and friends. The Companions "N" Caring volunteers are special visitors to each of the residents and the friends who come each day to lead devotions always visit with everyone. We all appreciate these friends so much.

The visitors who signed the register this week were: Rita Thompson, Lubbock; Bonnie Spann, Lubbock; Nita Adams, Lucille Sisson, Ruby Ledbetter, Estelle Hinkle, Cathy Langley, Christine Robertson, Mrs. Woodrow Hill, Burmah Probasco, Merel Freeman, Hazel Bradley, Lucille Lobban, Helen Breed, Lucille and Tom Daniel, Mary Poole, Dolores Cannon, Aimee Green, Lockney; Marie Jones, Letha Ledbetter, Dana Ellis, Becky Tidwell, Hereford; Jason, Justin, Jeremy and Arron Tidwell, Jo Lee Ellis, Misty Avila, Lella Palmer, Dorothy Neff, Angie and Mitchell Stevens, Morton; Betty Shirey, Louis Newell, Marilyn Smith, Willie Windom and Ira Sullivan.

Each of us here at the Home are anxiously awaiting the more definite signs of spring...like warmer days...and no wind!

On Monday, Bro. Jim Guess led devotions. Ray Macha was very nice to share his personal testimony with us. Thank you, Ray. Jim's lively song leading is always a hit with the residents. On Monday afternoon Kim was here for music therapy with "her" lively music. Twenty-five residents participated in her rhythm band, filling the lobby with rumba music.

On Tuesday, Neely Richardson was here to lead devotions. Neely brought his usual large bag of bananas for our "banana break". Tuesday afternoon Vera Duke, Irene Fuller, Lura Barshear, Clara McNeely, Una Clark, Emmitt Lawrence, Hallie Bertrand, Addie Lindley, and Bennie Wilson shared their faith and wisdom in Bible study.

On Wednesday, Bro. Perry Zumwalt led devotions for nineteen residents. Bro. Zumwalt always brings so many volunteers from City Park Church of Christ. Everyone enjoys the music...and love they bring to us. Each day, right after devotions we do exercises. I am surprised at the exercises one can do while sitting. Wednesday afternoon, Emmitt Lawrence, Lura Barshear, Sue Thompson, Hallie Bertrand, Vera Duke, Bennie Wilson, Addie Lindley and Una Clark played bingo. Emmitt and Vera were the bingo winners. Emmitt was the black-out winner. The prizes for winning the bingo games are...you guessed it...BANANAS!

On Thursday, Bro. Karl Bunjes and our friends from First Christian Church led devotions. The residents appreciate Carl's coming to their rooms after devotions to talk and pray with them. Thursday afternoon we had another Spelling Bee...by popular demand. The runner-up last time, Bennie Wilson, was the spelling champ this week. Her trying harder was worth it.

On Friday, Mary Corley led devotions. Everyone enjoys the stories Mary shares with us as she brings her message.

Friday afternoon was "Movie Day". As usual, the lobby was full. This week, Una Jameson, Vera Troutman, Addie Lindley, and Bennie Wilson joined our movie group. The film we saw, was a tour of America. Everyone enjoyed seeing the familiar sights of Texas. I am still not sure if it is the movie...or the popcorn that makes Movie Day so special.

Shortly after the movie, and as we were all watching the rain storm, Artie Muncy and Mrs. Clarence Guffee, representing the Sunshine Sunday School Class from First Baptist Church, brought cookies and bananas for everyone. Thank you, Sunshine Class, for choosing the perfect day to bring "your" sunshine to us.

Emmitt Lawrence made his 243rd owl wall hanging. This one is so pretty, with soft shades of blue and brown.

We wish Efford Parrish a quick recovery. He is in Caprock Hospital for a few days.

A special "thank you" to all the visitors and volunteers who make the time in their days for friends and family.

Some of the visitors were: Mr. and Mrs. Harlan Hartness, Denver, Colorado; Mr. and Mrs. M.H. Hartness, Hazel Bradley and Kim, Nelda and

Arnold and Jay Tomison, Matador; Mrs. Jinks Wilson, Matador; Mr. and Mrs. Eugene Fuller, Midland; Weims Norman, Tonia Marley and Jimmy Marley, Corky Marshall, Jeff Cannon, Brian Cannon, Dalores Cannon, Christine Robertson, Estelle Hinkle, Lucille Lobban, Karl Bunjis, Burmah Probasco, Tene Baird, Mr. and Mrs. Luther Lancaster, Matador; Otis, Dana, Kim and Jo Leigh Ellis, Deoeta Odam, Beady Owens, Charley L. Berry Sr. Ruby Gooch, Bob Copeland, Beulah Denison, Eunice Hardy, Lucille Sisson, Pam Rogers and Kallie, Helen Breed, Zella Palmer, Matador; Mr. and Mrs. Stewart, Vertie Powell, Crosbyton; Teniu Cooper, Crosbyton; Nealey and Zelma Richardson.

Buffalo Grass Chapter

DAR meets March 22

at Casa Del Sol

The Buffalo Grass Chapter, National Society of the Daughters of the American Revolution met in Blanco Canyon at the home of Mrs. Georgia Mae Erickson Tuesday at 5 p.m. After the Chapter was called to order, Mrs. Erickson conducted a tour through her solar energy powered home, explaining in detail the method of heating and cooling the house, as well as the pool area.

Ozena Norris, regent, presided over the meeting. She and Miss Anne Swepton attended the State Conference at Galveston March 13-15. They reported a very informative meeting. The Chapter won several awards as follows: Yearbook award, Subscriptions to DAR Magazine Award, Program on Indian Heritage Award, Service to Veteran Patients Award and Award for 100% payment of dues by January 1. Margaret Wheeler read the President General's message from the DAR magazine. Two new members were elected to membership: Mrs. Eugenia Bethard and Mrs. Sherry Lynn Smith.

The hostesses, Margaret Wheeler and Jeanette Wilson served refreshments to four visitors, Georgia Mae Erickson, Marisue Potts, Liza Jones, Rachel Taylor; and eleven members, Susan Dunavant, Nova Dee Evans, Janis Julian, Emily Johnston, Ona Ruth Neff, Anne Swepton, Billie Hanna, Emma Lou Whitaker, Ozena Norris, Mary Lou Bollman and Loretta Denning.

The next meeting will be April 26 in the home of Miss Anne Swepton. Mrs. J.M. Willson, Jr. will be in charge of the patriotic program: "Washington Walked Here."

Homebuilders Extension meet

The Homebuilders Club met at the county extension meeting room on March 22 with Lela Mae Burns as hostess.

The president opened the business with the roll call "What our flag means to me." Members expressed their feelings of being thankful that the flag flies over a free country, proud to be an American and freedom of worship. They all were worried that our nation is not taught patriotism as it should.

Glady's Widener, a member of the Family Life committee, gave a report on grandparents and parents problems in handling grandchildren when living in the same home.

Members were asked to save the magnetic marks from groceries and other items to give towards a doctor's bill for a child on a dialysis machine. 700 marks will take \$300 from the bill.

The club appreciated the "thank you" notes from 4-H clubs for donations for the stock show concession stand.

Ruth Trapp gave the program on "Red, White and Blue" a history of our flag.

Members read such songs as "Your A Grand Old Flag," "Columbia the Gem of the Ocean," and "The Star Spangled Banner."

Hostess served refreshments to Glady's Widener, Blanch Williams, Lillian Smith, Muri Mayfield, Ruth Trapp, Renie Chapman and Barbara Willis.

St. Partricks social held by

Texas Alpha Sigma Upsilon

Texas Alpha Sigma Upsilon met March 19, 1983 at 8:00 p.m. in the home of Janice and Wayne Potteet. A St. Patrick Day social with the tradition of green was carried out.

Each member was to bring some chips and dips. Husbands and wives enjoyed snacking and visiting. After eating Vikki Yearly divided everyone up to four tables for table games. Prizes were given to the highest man score and woman score, also the lowest scoring couple.

The highest man was Dale Derryberry, the highest woman was Janice Potteet, and lowest scoring couple was Vicki and David Ware. Thanks goes to Vicki Ware.

Those who attend were: Sherly and Dale Derryberry, Rhonda and Larry Guthrie, Nancy Jarnagin, Jan and Jimmy Nichols, Janice and Wayne Potteet, Vicki and David Ware, Vikki and Max Yearly. Guest where Mary Derryberry and Ronnie and Sally Potteet.

Easter Flowers

To brighten your home or to give to the Church as a memorial - Beautiful
Easter Lily Plant, Geranium Plants, Violets, & Mums \$12⁵⁰ & Up

FTD's "Glory of Spring" Bouquet or
Teleflora's "Easter Bunny" - colorful Fresh
Flowers arranged in Easter containers - **\$15⁰⁰ & Up**

Easter Corsages Long Lasting Easter Cymbidium Orchids - \$7⁵⁰

Easter Corsages in Daisies or Carnations - **\$5⁰⁰**



Park Florist

"Open Easter Sunday Until Noon"

983-2867 312 W. Georgia 983-2868

Easter is this Sunday




can make your Easter "EGG-CITING" with one of these Easter Specials

- Easter Cards & Perk-ups - from 60¢ up
- Easter Corsages - from \$6⁰⁰ up
- Easter mixed bouquets - \$12⁵⁰
- FTD "Glory of Spring" bouquet - \$16⁵⁰
- Easter lily - \$13⁵⁰

128 W. California 983-5013

The New Looks in Pumps

by **andiamo**
MADE IN U.S.A.



NEWPORT \$34.00





SECRET \$34.00

When it comes to pumps, we've got it all—color, styling, comfort and quality. Take a fashionable step ahead of the rest—invest in footwear that is stylish season after season. Stop in and see our new looks in pumps.



Brown's
DEPARTMENT STORE
106 NORTH MAIN LOCKNEY

Easter Sale



Happy Easter
from all of us
at **Anderson's!**
Men's and Boys
KNIT SHIRTS
20% Off

MEN'S SUITS
20% Off



LADIES DRESSES
20% Off

On Any 3 or 4 Piece Group of Ladies
SPORTSWEAR
20% Off

Layaways - Mastercard-VISA

ANDERSON'S

DEPARTMENT STORE
120 West California Floydada

Lakeview News

By Joyce Williams

The rain and hail Friday caused the Junior High track meet at Idalou to be called off until Tuesday. Angie Bertrand, daughter of Mr. and Mrs. Randy Bertrand competed in the 100 meter hurdle race and placed in the finals. She will compete in the finals Tuesday.

Mrs. Joy Finley of Midland arrived here for the week and to wish a Happy Birthday to her mother, Mrs. W.H. Bunch. They enjoyed a birthday dinner at Kings' Sunday after church. Mamie's granddaughter and family, Kristi and Wendell Law and son James Robert, sent a bouquet of flowers.

Mr. and Mrs. Craig Hambricht visited his grandparents, last Sunday and showed pictures of their recent wedding.

Mr. and Mrs. Don Harrison were in Lubbock Friday during the hail storm and the rain that lasted all the way home.

Mr. and Mrs. Q.D. Williams traveled to Idalou, Oklahoma Friday to spend the week-end with their daughter and family, Nancy and Andy Goodwin and daughter Hillary. Everything was green and pretty there, with good wheat fields around Duncan and the Lawton area.

Mr. Earl Bishop was admitted to Caprock Hospital Saturday and is about the same, according to his daughter, Mrs. Riley Teague.

Mr. and Mrs. Dwayne McClintock, visited in Morton over the week-end with his brother and family, the Derwood McClintocks.

Mrs. Buell Neff has been helping the ladies quilt at the Primitive Baptist church. Others helping have included Mrs. Joe Jackson of Cone, Rachel Nance, Mrs. Fred Clark, Clara Mae Hicks, Linnie Jones, Naomi Marr, Mary Wright and Stella Faye Brints of Crosbyton. Everybody brings their own quilt tops to be worked on. So far they have completed three and hope to put in the fourth one this week. Everyone brings a lunch and Thursdays just fly by with work and fellowship.

Roy and Shirley Teague of Hurst, Texas came by Sunday night to stay with his parents, the Riley Teagues. They went on to Brownfield Monday to be with Shirley's sister, Joyce Womack Cotham, whose husband, Bud Cotham died of a heart attack in his home Saturday. Mrs. Cotham worked at the CPA office that morning and came home about 2 p.m., and they had planned to go look at a camper to purchase to take to the Womack family reunion and found him dead. Bud had a heart flare up about ten years ago but was in good health. His sudden death

was a shock to all. He had worked for the city gas company for many years. Their four children are all married. He was fifty three years old. Burial was to be on Tuesday.

Mrs. Roy Fawver took Mrs. Iva Benson to lunch at Kings Sunday after church. Then they made several Sunday afternoon visits. They called upon Mr. and Mrs. William Anderson, Mr. and Mrs. Albert Mize, Mr. and Mrs. Faye Hart, Mary Willson and Ethel Warren, also Mrs. Vada Meredith who is a patient at Caprock Hospital.

Miss Angie Hinsley accompanied Miss Angie Bertrand and Randy Bertrand to Plainview Saturday. The girls swam at the Y, while Randy played racquetball. Mrs. Randy Bertrand attended the District Federated Woman's Club Convention in Lubbock Friday and Saturday, held at the Granada Royale. Connie Lu helped with the skit she had written as her report for the department of Home and Family life. Other Floydada club ladies who helped included Mrs. Judy Dunlap, JenniSu Smith, and Donna McClendon. They stayed overnight for the evening portion of the convention and the luncheon and style show on Saturday.

Mrs. Buell Neff attended a Neff clan bridal shower in Lubbock recently. Guests of honor were newlyweds, Mr. and Mrs. Mark Woody, son of Mr. and Mrs. Paul Woody. Mrs. Woody is a sister to the late Buell Neff.

Mr. and Mrs. Carlton Fawver came by Saturday to visit his mother Mrs. Roy Fawver. They had many beautiful pictures of their recent trip to Europe. They vacationed in Paris, France; Frankfurt, Germany; Lucerne, Switzerland among many other places. In Switzerland they drove to an Alpine restaurant when they were entertained with a concert by local musicians who played the Alpine horns.

Mrs. Becky Fawver and children, Ty and Cassie, of Lubbock, visited Mrs. Roy Fawver Monday afternoon.

Miss Misty Bertrand attended Chad Hinsley's sixth birthday party Saturday afternoon at the home of his parents, Mr. and Mrs. Michael Hinsley.

Mrs. Bobby Kendrick attended an Eastern Star friendship dinner at the Masonic Lodge Saturday evening.

Mrs. Cynthia Chambers of Lubbock visited her parents, the Fred Lloyd's last week.

The Grady Dunavants have been hosts to several sets of relatives the past few weeks. Mr. and Mrs. Truman Dunavant and Mr. and Mrs. Rick Hahn and son Marshall, arrived from Colorado. Also Mr. and Mrs. True Kirk and

children arrived from Durango, Colorado on Spring Break, from Tuesday thru Thursday.

Mr. and Mrs. John Davis of Ruidoso, New Mexico recently spent the week-end with her sister, Mrs. Verlon Wright, and family.

Miss Cindy Burk, daughter of Mr. and Mrs. Verlon Wright, played in the school tennis tournament at Plainview and Snyder, and plans to play in the tournament at Denver City this week.

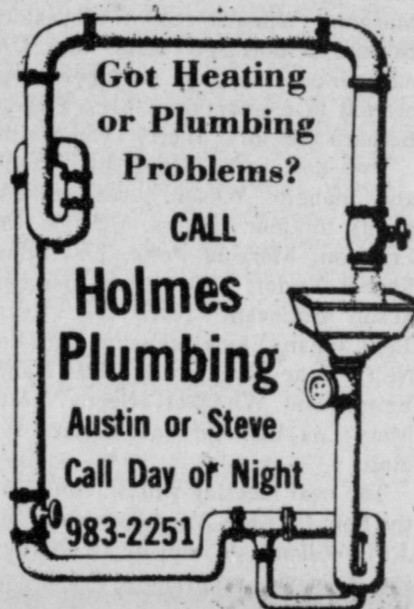
Mrs. Dee Adams visited her father Walter Craft, at the rest home Monday.

Bobby Kendrick has been pre-watering his fields for sunflower planting.

Floydada competes in tournament

The Floydada Speech Tournament was February 26. Ten schools competed, accounting for approximately 150 participants. Placing in the sweepstakes were: Shallowater - first with 337 points, Lubbock Cooper - second with 327 points and Abernathy - third with 290 points.

This tournament is the only money-raising project for the Speech and Drama Club and the money goes to buy Speech jackets and to finance other activities. The club would like to express their appreciation to the teachers, the administration, those who served as judges, and the students who worked for all their help. The tournament was conducted efficiently and was concluded thirty minutes ahead of schedule.



Grape vineyard started in Floyd County

By Wes Brown

Grape vineyards usually stir up images of long rows of trellises with vines laden with plump juicy grapes in California or Italy. But, not all grapes are grown in California or Italy.

One of the few commercial vineyards in Floyd County was planted last week about one mile south of Lakeview. The property is owned by Dr. Rhoades of Crosbyton and is farmed by Louis Pyle of Floydada. Pyle said that this is an experiment to see if a grape crop would be a feasible crop to raise in the county.

Plans for the grape vineyard were considered about two years ago. The grape cuttings were bought from a nursery in Madera, California. The Chenin Blanc grape, a variety of white grapes, are being grown on the ten-acre tract of land.

Grapes offer a good return in the operating investment, but it takes three years before grapes are produced and another year before a profit can be made from the crop.

A grape vineyard is initially expensive to maintain, about \$4,000 an acre must be spent before a crop is harvested. This includes building the trellises and cutting back the vines.

However, not much fertilization or irrigation is needed. The grapes only need two irrigations in the summer and one in the winter. Weed control in a vineyard is fairly easy.

Pyle and his son, Robert, built a planting rig to be operated from a

tractor. Spacing between the plants was marked with plastic soda straws. After the plants get larger the soda straws will mark the location of the stakes for the trellises. If everything goes well, Pyle plans to expand the vineyard next year.



TAKING A BREAK from planting grape cuttings are (L-R) Robert Pyle, Louis Pyle, Sylvia Valdez and Frank Bueno. Behind the tractor is the planting rig Pyle and his son, Robert, built.

PIK COTTON

If you have PIK cotton for sale, we can help you obtain the best price when you decide to sell.

We can provide you up-to-the-minute quotations on PIK cotton prices.

We offer a sound contract with several special features that may be of benefit to you.

We want to work with you to get you more money.

Contact the gin of your choice for complete information.

PROVIDENCE GIN CO.

296-5088

LOCKNEY GIN CO.

652-3388

ELANCO

After PIK....What?

We in Elanco would like to say thanks to all the farmers in West Texas for using TREFLAN® in 1983. Your reception of our price reduction and grower refund has been excellent.

We have had many farmers say that they plan to treat their set-aside acreage with TREFLAN because it will be less expensive than running equipment through the field this summer. Others plan to plant cover crops to help rebuild their soil for 1984.

Whatever your decision, we would like for you to consider the many different options and opportunities that you have for: 1) Working your set-aside as inexpensively as possible in 1983, and, 2) Reaping the most gains in 1984.

Let's look at the different options individually to see which best fits your needs and farming operation:

Option 1: Mechanical - The initial cost is less than other methods and most farmers have more than adequate equipment. The disadvantages of this method are moisture loss, continuous need for controlling weeds and grasses, a potential increase in weed seed for next season, increased labor cost and wear and tear on equipment. Overall, this could be the most expensive way of all.

Option 2: Grasses and Hay Grazer - This is a very good option for building organic matter back into your soil, giving a quick cover and protection against wind erosion. This option would be best on clean fields where Johnsongrass and other hard to kill weeds will not have a chance to take over. The disadvantages are potential grass buildup, high use of moisture and the opportunity to clean up fields in 1983.

Option 3: TREFLAN - Farmers who used TREFLAN on their set-aside in 1982 reported excellent results and many more are talking about using TREFLAN in 1983. TREFLAN has been used on about all the

cotton farmed in West Texas over the past 18 years, so you know that it is one of the best and most economical ways to control seedling Johnsongrass, Kochia, Russian Thistle, and many other grasses and weeds. This option should reduce the need to plow, saving wear and tear on equipment, labor expense, help conserve moisture, reduce weed seed buildup, allow a chance to knock out those resistant weeds with other chemicals and keep the landlords and neighbors happy.

An extra for those farmers who have a problem with Rhizome Johnsongrass...the double rate TREFLAN® program offers an excellent opportunity to clean up the land.

Option 4: TREFLAN/Legumes - More farmers every day are talking about TREFLAN/Legumes on their set-aside acreage as a way of cleaning up and building their soil. This option offers all the benefits discussed under the TREFLAN option plus the Legumes offer a chance to increase the nitrogen 30-50# per acre, build up the organic matter in your soil, reduce disease, reduce erosion, break up hard pans and increase future yields.

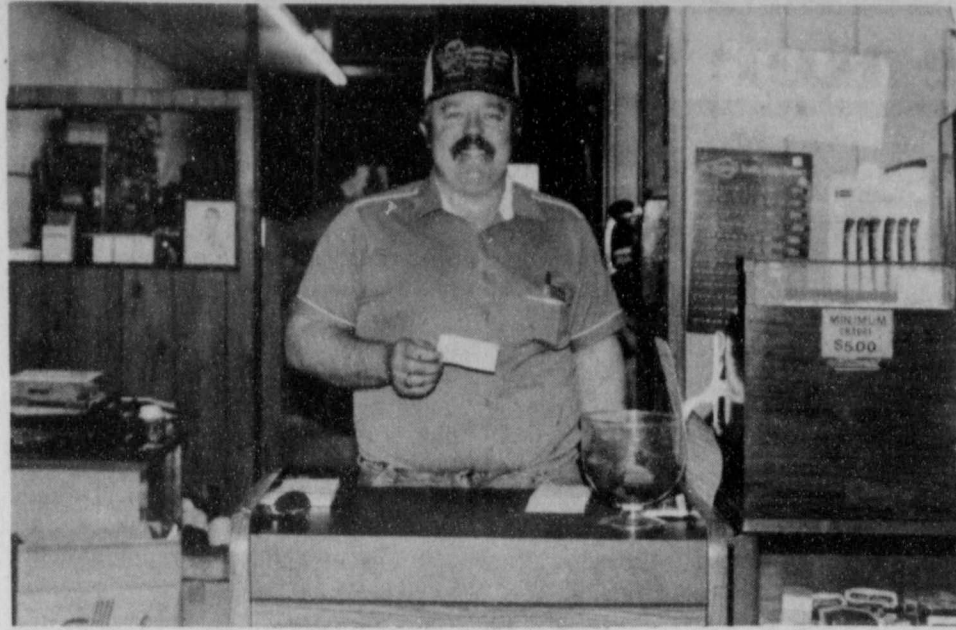
We have given a brief preview of the advantages and disadvantages of several options for working your set-aside in 1983. We ask that you consider TREFLAN or TREFLAN/Legumes as one of your major options. We ask that you try at least half of your set-aside acreage under this program. You have an excellent chance to clean up and build up your soil and increase your established yield for 1984.

We want and need your business!

Sincerely,

Elanco Area Representative

np



MR. BOB GILLILAND, of Floydada, won a raffle drawing March 18, 1983. His ticket was drawn at a meeting of the American Agriculture Movement, in Cotton Center, and won the prize of a whole beef, processed and packaged and ready for his freezer. The calf, weighing about 1300 lbs., was donated by Ponderosa Meat Co. of Floydada. Congratulations to Bob, from the American Agriculture Movement.

Floyd County Farm Bureau attends Amarillo meeting

Floyd County Farm Bureau was represented by six persons at the area Texas Farm Bureau Safemark meeting March 28, 1983 in Amarillo. Attending from this county were: Mr. and Mrs. Dan Smith, Mr. and Mrs. Richard Wiley, and Mr. and Mrs. Wayne Tipton. Area meetings are held each spring to give county Farm Bureau leaders and Safemark servicing agents an opportunity to meet with management and representatives of suppliers of the Farm Bureau group purchase programs, according to Dan Smith of Lockney, president of the local farm organization. "The purpose of the Texas Safemark program is to provide Farm Bureau members with high quality tires, batteries and tillage tools at the lowest possible cost through volume buying and low-cost distribution," he said. The meeting was one of eight area meetings

Floyd Co. Junior Livestock Show Assn. holds annual meeting

The Floyd County Junior Livestock Show Association will hold its Annual Membership meeting on Thursday, April 7, 1983 at the Lighthouse Electric Coop on the Matador Highway in Floydada, beginning at 7:30 p.m. This meeting is open to all Floyd County residents and businesses that paid individual and/or business membership dues to the association prior to the 1983 Floyd County Livestock Show. All members are invited to attend the open meeting to discuss any suggestions they might have for changing and/or improving Floyd County's Junior Livestock Show. Following the open meeting, the association will hold a Board of Directors Meeting to elect officers and select directors for the next year to discuss proposals made during the open meeting. All directors are encouraged to attend this meeting and also help encourage association members residing in the area of the county they represent to attend the annual membership meeting. A list of the directors and the areas they

in Texas. Representatives from tire, battery and tillage tool suppliers were on the program, as well as state FB Safemark staff and a representative from the American Farm Bureau Federation. They gave presentations and answered questions. According to Travis McMorrough, manager of the Texas Safemark program, Texas is one of 42 states currently participating in the program and accounted for one third of the national sales last year. In 1982, Texas Safemark sales totaled \$35 million. The Safemark group purchasing concept began with the South Carolina Farm Bureau in the early 1960s. Texas joined the service-to-member program in 1965, and since that time, sales in Texas total \$368 million with savings to members estimated at \$100 million.

serve is outlined below:
Precinct 1: Ed Nutt-83; Bill Hendrix-84; Weldon Pruitt-85
Precinct 2: Jerry Williams-83; Warren Mathis-84; Albert Scheele-85
Precinct 3: Roger Dawdy-83; Stanley Burlison-84; Harold Bennett-85
Precinct 4: Kent Covington-83; Leslie Nixon-84; Michael Hinsley, 85
Lockney: Paul Glasson-83; Eddie Joe Foster-84; Kenneth Brose-85
Floydada: Gary Brown-83; Eugene Beedy-84; Larry Barbee-85
At Large: Bob Ross-83; George Sparkman-84; Craig Edwards-85
Advisors: Michael Mowrey, Tommy Hancock, Rodney Purswell, Benny Butler, Richie Crow

Animal Health Commission changes locations

The Texas Animal Health Commission is now located at 210 Barton Springs Road, Austin, TX. The official mailing address remains the same: Texas Animal Health Commission, Box 12966, Austin, TX 78711. The telephone number also remains the same: 512/475-4111.



Landscape & Gardening

INVEST GARDEN FUNDS WISELY

Interest in gardening is at its peak in Texas in the early spring months. Garden centers, nurseries and other retail outlets are now well stocked with quantities of seed, plants, fertilizers, pesticides, garden tools, supplies, and equipment. If gardening is to be economical, yet enjoyable, many important decisions will need to be made, and your gardening dollar invested wisely.

Here are some tips for investing your gardening dollar wisely. Consider them before reaching for your wallet. **Seed.** Small seed packets may be offered at a discount. Often packets which sell for 39 to 59 cents each are offered at three for \$1. Whether this is a good investment will depend on the quality of the seed and if it will produce a good crop.

Several hundred seeds can sometimes be included in a single seed packet, so be sure that you need three or more packets before spending that buck. Make sure that the seeds on sale are varieties which are recommended for our area. I have a list of recommended varieties for Floyd County, and a list of sources to obtain them available to anyone interested.

Plants. If you prefer to purchase plants, be sure to obtain recommended varieties. When purchasing vegetable plants the largest plant is not always the best buy. When selecting plants such as tomatoes, peppers, and eggplants for your garden, try to select plants which are about as tall as they are wide. They should be dark green in color, vigorous looking and free of insects or disease

Avoid plants which are tall and leggy and that are either blooming or perhaps have even set small fruit. Purchase only the exact number of plants that you will need.

Fertilizer. When purchasing fertilizer, the decision always comes up as to what type to buy and what amount. Fertilizer for the garden is sold under many trade names and may be found packaged in bags from 5 to 50 pounds.

All fertilizer is sold under an analysis. This is a series of three numbers--10-20-10, 12-8-6, 13-13-13, etc. -- which indicates nitrogen, phosphorus and potassium in that order. These analysis numbers are percentages. Generally, the larger the total of the three numbers the better deal you'll have.

Pest control chemicals. You don't need an arsenal of garden insecticides and other pesticides in order to successfully grow a garden. One or perhaps two general purpose insecticide and fungicide materials are all that is usually needed. When purchasing pest-control chemicals, purchase only what you will need for this year's garden.

Garden tools. Home gardening can be closely related to fishing. You can have an expensive boat, fancy rod and reel, and even an electronic fish finder, or you can get by with a cane pole, piece of string, and fish hook. The same is true for gardening. The basic tools needed for gardening include a spading fork, shovel, garden rake and garden hoe. Many other tools may be purchased to make gardening easier but should not be considered absolutely necessary for successful gardening.

Check soil temps before planting 1983 crops

In many cases the early bird does get the worm. But when it comes to spring planting, farmers may want to use a little restraint and take a look at soil temperatures before cranking up their planters.

Soil temperatures have shown to have an important effect on how well seed germinate. Planting in cool soils often leads to poor seed germination and poor crop stands. Plants that do come up often lack vigor for early growth and this opens the door to early season disease and insect attacks. You should begin planting only after the danger of a late frost is past and the soil has warmed to temperatures favorable to the intended crop.

Just when is it safe to plant what crop? Average minimum temperatures (at the four-inch depth) for planting are as follows: corn, 50 degrees; sorghum, 55 degrees; cotton, 65 degrees; and

soybeans, 70 degrees. Hardy vegetables range between 45 and 50 degrees, while warm-season vegetables need to wait until the soil temperature is in the 60's.

With early season planting, particularly when soil temperatures are still marginal, farmers need to pay particular attention to using high quality seed, fungicides and other seed protectants, and adjusting seeding rates.

Soil temperatures are taken daily at various locations throughout Texas. These reports can be obtained by listening to farm radio and television shows, newspapers, and the Weather Service Center.

Keeping tabs on the weather and soil conditions can help farmers get off to a good start with spring planting. With the high cost of farm inputs, it's information that should be put to good use.

Beckham wins essay contest

Lori Beckham, Floydada High School student was revealed as the first place winner in the senior contest of the Texas Soil and Water Conservation Awards Program. The contest was sponsored by the Floyd County Soil and Water Conservation District, the first five place winners were presented their cash awards Wednesday during an assembly program at Floydada High School, R.G. Dunlap, director of the

Floyd County SWCD presented the awards.

Miss Beckham received \$25 for her first place award and the essay has been sent to the state contest for judging, the judging will be for an area of the South Plains and Panhandle area which consist of 51 counties, these winners will be announced in April.

The winner of the second place \$20

award was Lillian Polanco, last years winner and regional winner.

Tammy Boothe was the third place \$15 winner with Jeanine Gray the 4th place winner and she received \$10. The fifth place winner was Tammy Reams and she received \$5.00.

The prize money was donated by the Floyd County Soil and Water Conservation District.

April Weed conference planned

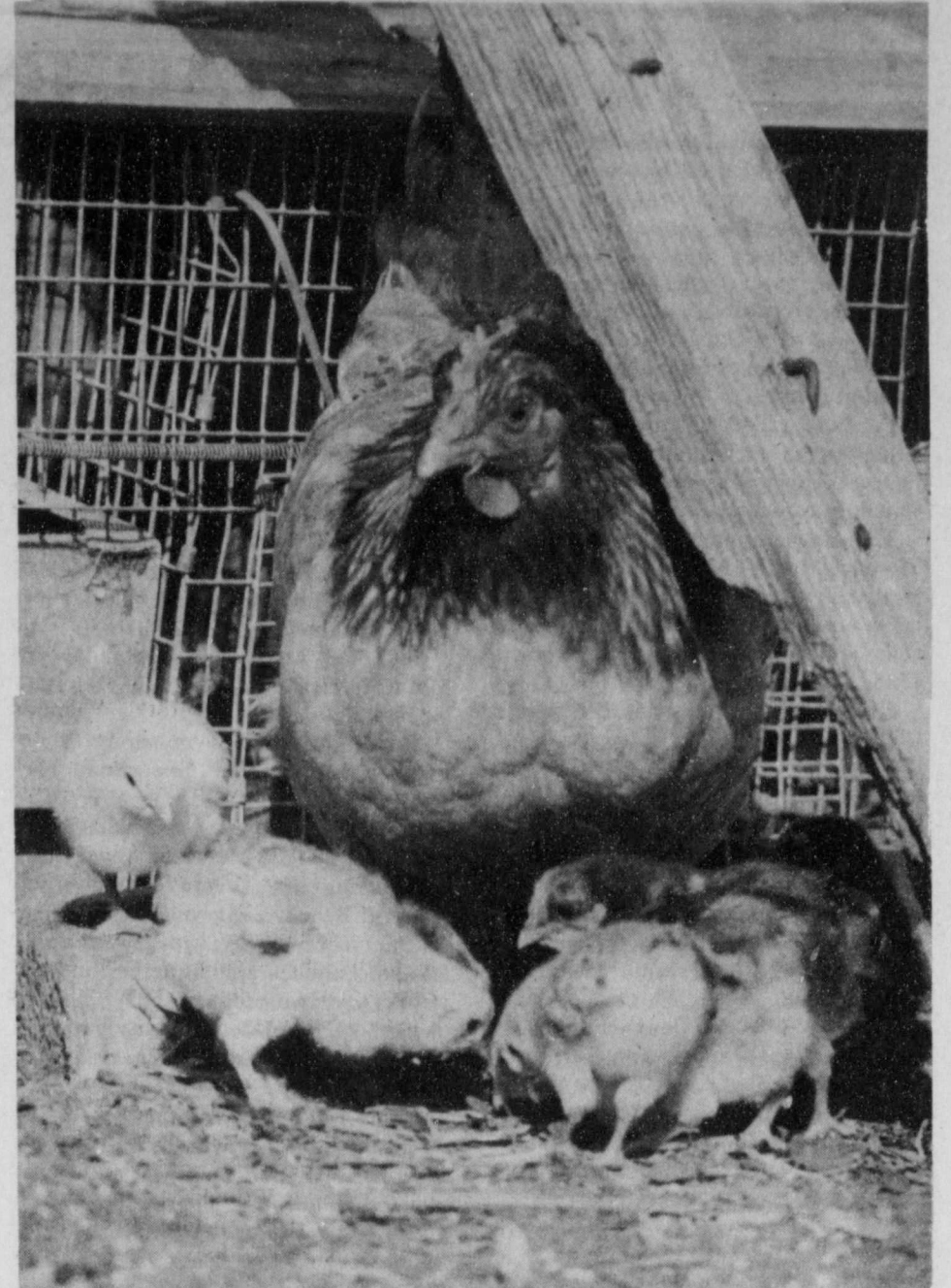
A weed conference on Hard to Kill Weeds will be April 4 announced Flip Calhoun, Chairman of the Hale County Soil and Water Conservation District. This meeting will be at the Hale County Agricultural Center on Business 87, south of Plainview at 9:30 a.m. The main objective of this conference is to inform local producers on what is

available to them in their efforts to control problem weeds.

"Our program will consist of two parts", Calhoun said, "the first part will consist of presentation by Dr. John Abernathy, Dr. James Supak and Dr. Paul Unger, and the other part will be a series of presentations by a number of chemical and equipment dealers."

The Hale County Soil and Water District sees this conference as an excellent opportunity for all producers to see and learn about new chemicals and spray equipment, such as the new Micro-Max and Electro-Dyne.

For more information contact the Hale County Soil and Water Conservation District at 806-296-2149.



"AND YOU THINK YOUR KIDS GET UNDER YOUR FEET!?" This mother chicken knows how you feel. With the coming of Easter comes spring and the renewal of life is all around us. From the Lockney Beacon and the Hesperian staffs, we wish you a happy Easter. Photo by Nancy Barker

Think weed control when you pick PIK acres

Farmers who participate in the government's Payment in Kind (PIK) program this season will be inclined to idle their less productive acres.

When making that decision, Dr. Allen Wiese, Extension weed control specialist at Texas A&M University, says farmers can "improve their longterm profitability by diverting those acres most severely infested with problem perennial weeds.

"There are a number of weeds that offer growers the opportunity for significant population reduction while the land is idle," says Dr. Wiese. "These include johnsongrass, shattercane, field bindweed, barnyard grass and several more."

Must control weeds

Under PIK rules, growers must control weeds on idled acres. The rules state: A farm operator shall, in a timely manner, use needed control measures for erosion, insects, weeds and rodents on the conservation use acreage."

Mechanical weed control could include clipping or tillage. Clipping does not kill weeds but can prevent them from setting seed and increasing future weed control problems. In the case of perennial weeds, clipping will not control growth of underground rootstock.

Tillage poses a number of problems. First, it's expensive in terms of equipment, fuel and labor. Second, it often compounds the problem by spreading the perennial's reproductive root systems and by turning up annual weed seeds so they can germinate. Third, it enhances the opportunity for wind and water erosion, which must be controlled to comply with PIK regulations. A cover crop, which is required to protect the soil from erosion unless a farm requests and receives ASCS permission to leave the ground as stubble from the previous crop, will not usually provide adequate suppression of weed growth. Tillage as a means of weed control would only serve to destroy the soil conservation benefits of the cover crop or stubble.

Chemical control is ideal

It should be a farmer's goal to keep expenses to a minimum on PIK-idled acres, according to the university weed control specialist. Complying with the erosion and weed control requirements of the program will incur some costs, so examine each expense carefully. While there's no return on tillage costs, an investment in chemical weed control can pay dividends for several years to come.

By diverting acres with severe weed problems and making a small investment in a sound herbicide program, growers can bring the weeds under

control so the land can be returned to maximum production in future years. And since the land is idle, farmers have maximum flexibility in both herbicide choice and application timing.

Planning a program


While the treatment season is still months away, a grower needs to plan now to set aside those fields, or portions of fields, with severe weed problems, advises Dr. Wiese.


"Then a good herbicide program can accomplish significant reduction of the problem. For johnsongrass you'll probably want to use Roundup. Field bindweed, redvine, trumpet creeper, pepperweed, milkvine and silverleaf nightshade can best be controlled with either Banvel or Banvel plus 2,4-D," advises Dr. Wiese.


Dr. Wiese says that treating while the land is idle offers growers an excellent opportunity to reduce the population of many problem weeds, with the payoff coming in future crop yields.

CASE POWER & EQUIPMENT	
	
Floydada	983-2836

FEDERAL LAND BANK ASSOC. OF FLOYDADA	
	
Floydada	983-2480

ADAM'S WELL SERVICE	
	
Floydada	983-5003


PRODUCTION CREDIT ASSOC.	
	
Floydada	983-2454

FLOYD COUNTY FARM BUREAU	
	
Lockney	652-2242
Floydada	983-3777

FLOYDADA IMPLEMENT CO.	
	
Floydada	983-3584


MUNCY ELEVATOR	
Lockney	652-3100


SUN-VUE FERTILIZER	
	
Lockney	652-3362


CONSUMERS FUEL ASSOC.	
	
Lockney	652-3336


MARTIN & COMPANY	
Floydada	983-3713

MORTON BUILDINGS	
	
Floydada	983-3751

RUSSELL'S EQUIPMENT & SUPPLY	
	
Floydada	983-3751

FLOYD COUNTY IMPLEMENT	
	
Floydada	983-3732

FIRST NATIONAL BANK OF FLOYDADA	
	
Floydada	983-3717

FLOYDADA COOPERATIVE GINS INC.	
	
Floydada	983-2884

R.C. Andrews Elementary Honor Roll

THIRD NINE WEEKS Fourth Grade

"A" — Angie Glasscock, Ryan Burns, Amy Hinsley, Becky Porter, Elsa Amador

"B" — Cody Nichols, Stacy Hinsley, Jerry Wickware, Lupe Gonzales, Becky Poole, Freddy Martinez, (RR), Olga Gonzalez, Mary De La Fuente (RR), Michael Aleman, Tammy Pleasant, Michelle Torres, Harvey Espinosa (I).

5A — Kerrie Pitts, Refugio Barrientos, Troy Peel, Tonya Powell, Tony Zuniga (I), Brad Emert, Deanna Watson, Arnulfo Morales (RR), Janet Himes, Blanca Coss, Aric Hendricks (R), Pat Vallejo, Melissa Strickland, Kenny Reed, Trina Ogden

Fifth Grade

"A" — Delinda Jackson, Nelda Morales, Anita McCormick, Grant Stovall, Stephanie Zimmerman, Amy McCormick, Shannon Paty, Kim Perry, Tiffany Reams

"B" — Roxene Brown, Jay Mendoza, Ray Garcia, Robby Green, Michelle Harris, Heather Henderson, Robert Ramirez, Miki Schneider, Misty Avila, Roy Garcia, Michael Goen, Miles Meredith, Randell Sims, Eric Stringer, Misty Warren, Rose Marie Martinez, Shayla Barbee, Eliseo Guerra, Shay Hearon, Valency Zumwalt

Sixth Grade

"A" — Travis Bishop, Tiffany Gentry, Kristy Dawdy, Sharon Smith, Rusty Edwards

"B" — Sue Hong, Blanca Medrano, Nohemi De Ochoa, Tammy Bertrand, Laurie Garcia, Sandra Pesina, Chad Quisenberry, Bryan Thomas, Anissa Crabtree, Jim Bob Hambright, Dianah Coronado, Mary Rodriguez, Dina Livingston, Tricia Hanna, Leonel Longoria, Armando Morales

South Plains News

By Mrs. Murray Julian

South Plains, March 28:

The Parks Oil Company and Farm Supply, with L.H. and Maurine Parks of South Plains are retiring and their auction was held on Saturday, March 26, beginning at 9:45 a.m. There was selling going on until late Saturday evening, with a large crowd on hand throughout the day, despite dust and windy weather. This was a sad time for us, to see the oil station close.

Visitors at Sunday morning Baptist Church services were Mrs. Donita Powell with her parents, Grigsby and Lillie May Milton, and Keith Maricle from Floydada.

The Grigsby Miltons and their children, the Jerry Chappells, Mrs. Donita Milton, and the Bud Edwards family both of Floydada, enjoyed Sunday dinner together and a time of fellowship Sunday afternoon in Plainview.

We were saddened to hear of the death of an old friend, Mrs. Nancy Morckel, 82, of Lubbock, where she had lived in John Knox Village. She was many years in Floydada where she helped us all with our cooking and food problems, and plans. She passed away Wednesday of last week in Methodist Hospital, and then Friday, March 25, her services were held in Floydada at the First Christian Church, with burial services held in Lubbock.

Melissa Horne of Plainview, granddaughter of the Sylvin Kinnibrughs is

doing fine this week, after having a tonsillectomy the week before the past one.

Mrs. Raymond Upton (Nina) went to Plainview to the eye doctor in Plainview last Tuesday where she underwent eye surgery. She came home Wednesday and is doing well at this time, we are glad to hear.

Mrs. Cecil Osborne and her mother, Mrs. Corda Taylor of Muleshoe left last week-end for Dallas, where they will spend this coming week with Mrs. Osborne's granddaughters, while they are out of school on their spring break. Mrs. Osborne and mother are at Louisville, at the home of the Rev. and Mrs. Ron Somers, Jennifer and Jaime, and they will also visit Mrs. Karen Mauney.

Mrs. Lon Colvin (Lois) wife of the South Plains Lockney Coop manager is in the Central Plains Hospital in Plainview, having gone there Friday, after being ill. She is still in the hospital this Monday, and they are running tests to find what is the trouble. We hope they soon can know and she gets to come home.

Mr. and Mrs. Sylvin and Bobbie Kinnibrugh went to Truscott and Vera over the week-end where Friday night they visited her sister, Mr. and Mrs. Sybil and Hewitt Simmons, and another sister, visiting there from Odessa, Mrs. W.H. Smith. Saturday they went to be with Sylvin's father, J.A. Kinnibrugh and spent Saturday and Sunday with him. He is getting along extra well at this time. They reported rain there Friday night, and also say the wheat looks beautiful down that way.

At the home of Mr. and Mrs. Doc and Martha Botkin in Floydada on Saturday night Mrs. Nathan Johnson's mother's sister, Mrs. Sue Binder and husband Randy and son, Stacy from Benjamin, came and spent the night. Mrs. Botkin's other sister, Bobbie Ratliff of Littlefield and Connie's brother, Rick Botkin from Amarillo arrived and all of the family had Sunday dinner at the home of Mr.

and Mrs. Doc Botkin, including Nathan and Connie Johnson and boys, Troy and Tracy.

It is very cold this Monday, March 28, with a reading of 28 degrees according to thermometers here.

There will be a school Trustee Election held at the South Plains school house on Saturday, April 2nd, with Rogene Bethel filing for the trustee place of Oliver Clarke who moved away recently; Carlton Johnson filing for the trustee place of Kendis Julian, who is retiring this year, since Tim will be in Floydada schools next term. Nathan Mulder is to be elected in Saturday's election. School will close here at South Plains at 2:30 Friday for the Easter weekend, and take up at the regular time Monday morning, April 4th, after Easter. There will be just eight weeks more of this year's school term.

South Plains Hobby Club will meet on Wednesday, April 13, at 2:00 p.m. at the home of Mrs. Fred Marble in South Plains, with a program on Genealogy. Roll call: Show an antique that you have. Navolia Kinslow will have Thought for the Day.

South Plains PTA members went last Tuesday to spend the day in Plainview where they shopped for curtains for the office and library for the South Plains School, and all enjoyed lunch together at Furr's, after getting materials, etc. They will get together at Mrs. Rogene Bethel's to cut and sew the curtains for the school--this will be after the Easter-week-end.

Jamie Bethel was ill Sunday morning, and was kept home from Sunday School and church services, but she is doing fine this Monday, and is able to be back in school. She is the younger daughter of Royce and Kay Bethel.

There will be a big Easter egg hunt at the South Plains School on Friday, April 1, and at 1:00 p.m. all the pre-schoolers of the community are invited to come to the school, and bring six wrapped candy eggs, or eggs with cellophane on them, and take part in the egg hunt.

Floydada Jr. High Honor Roll

3rd NINE WEEKS

7A - none.
7B - *Ludusia Leatherman
7C - none.
7D - Chad Pernel, Jill Smith, Ty Stovall.

8A - Cynthia Covington.
8B - Rickey Benjamin, Matthew Redding, Darolyn Williams.
8C - none.
8D - Jana Davis, Paige Cannon.
* - 4 points

Floydada School Menu

April 4-8

Monday:
Breakfast-Orange juice, toast, jelly, butter, milk
Lunch-Fish w/catsup, English peas, peanut butter cookie, mixed fruit, hot roll, milk
Tuesday:
Breakfast-Pineapple juice, pancakes, butter, syrup, milk
Lunch-Frito pie, pinto beans, apple sauce, sugar cookie, corn bread, milk
Wednesday:
Breakfast-Grape juice, sausage, toast, milk

Lunch-Pig in blanket w/mustard, buttered spinach, corn, jello, milk
Thursday:
Breakfast-Apple juice, cinnamon toast, milk
Lunch-Oven Baked chicken, whipped potatoes, green beans, peach half, hot roll, milk
Friday:
Breakfast-Orange juice, rice, butter, toast, milk
Lunch-Char burgers, French fries, lettuce, tomato, pickle, apricot cobbler, milk

SENIOR CITIZEN MENU

April 4-8

Monday - Tomato soup, cheese-burger, lettuce, tomato, onion, pickle, mustard-mayonnaise, pineapple upside down cake, milk
Tuesday - Fried chicken, cream gravy, mashed potatoes, turnips and greens, roll-butter, oatmeal cookie, milk
Wednesday - Meat loaf, black eyed

peas, tossed salad, dressing, hot biscuit butter, apricot cobbler, milk
Thursday - Baked ham with raisin sauce, candied yams with marshmallows, green beans, butter, chocolate brownie with nuts, milk
Friday - Fried fish, tartar sauce, catsup, au gratin potatoes, carrot, cabbage slaw, corn bread, butter, apple crisp, milk

Cedar Hill News

By Grace Lemons

We are having cold windy days which is very typical for March.

Norma Welch and Mrs. Peat Kelley visited Marcia and Keith Phillips and Tyler in Lockney Thursday.

Edna Gilly attended to some business Tuesday in Lubbock and visited her daughter, Delise Harrison and girls.

Mr. and Mrs. A.S. Mize proudly announce the arrival of their great granddaughter, Callie Elizabeth Mize born March 27th in Ruidoso, New Mexico. Her parents are Sally and Danny Wimberly and grandparents, Betty and George Mize of Ruidoso.

Visitors in the home of Clara and Albert Mize Sunday afternoon were Iva Benson, Flora Fawver, and Mr. and Mrs. W.N. Anderson. Clara is improving rapidly after undergoing eye surgery and returned to Lubbock for check up Monday.

Jackie Hayhurst arrived at the home of Tom and Gladys Fortenberry from Amarillo Thursday to spend the week-end with them and Pam Hayhurst and Trevor. The Hayhursts visited their grandparents, Mr. and Mrs. M.A. Boone in Plainview Saturday. Pam's parents, Mr. and Mrs. Lafayette Boone of Lubbock were also present.

Mr. and Mrs. Jim Conner and Mr. and Mrs. Stanley Bursleson were among those who attended the funeral services of Nancy Morckel held Friday in the First Christian Church in Floydada at 11:00 A.M. Friday.

Linda Lemons and Kay Bethel attend-

ed a CPR training in Plainview Friday.

Mrs. Belle Lemons had lunch in the home of her son, Carl F. and Grace Lemons Sunday.

Jay and Thada Fowler of Silverton visited her parents, Mr. and Mrs. W.E. Lackey Sunday.

Janie Lemons of Seagraves announces the engagement of her daughter, Jenese K. to Clinton Lesinbee, son of Mr. and Mrs. Delbert Lesinbee of Denver City. The wedding will be in the First Baptist Church in Seagraves April 1st. She is the granddaughter of Mr. and Mrs. Carl F. Lemons and great granddaughter of Mrs. Belle Lemons of Cedar Hill.

Phyllis Harris and children, Todd, Mychelle, and Terry had dinner Sunday with Cephus and Imogene Fortenberry.

Todd is visiting them this week as he is out for Spring Break. Pauline and John D. VanHoose visited them in the afternoon.

Robin and Ruth Fortenberry of Hereford attended the funeral of Mr. Henry in Floydada Friday and later visited Cephus and Imogene Fortenberry.

Martha and Junior visited their daughter, Shelia and Charlie Joiner and Nick in Irving last week-end and helped celebrate their grandson's birthday. They brought Nick home with them to stay a week.

The rung of a ladder was never meant to rest upon, but only to hold a man's foot long enough to enable him to put the other foot somewhat higher.

CAPROCK HOSPITAL NEWS

March 21-28

H.O. Ginn, Floydada, adm. 2-11, continues care, Hong

Rendora Winstead, Floydada, adm. 2-27, dis. 3-26, Hong

Charles Epps, Floydada, adm. 2-28, continues care, Acar

Oran Self, Floydada, adm. 3-4, continues care, Hong

Ruth Ray, Odessa, adm. 3-8, continues care, Hong

Bertha Anderson, Matador, adm. 3-9, continues care, Acar

Nadine Cooper, Roaring Springs, adm. 3-12, continues care, Hong

Juan Rodriguez, Floydada, adm. 3-14, dis. 3-22, Hong

Ruth Benson, Matador, adm. 3-14, continues care, Hong

James Taylor, Matador, adm. 3-14, continues care, Hong

Vada Meredith, Floydada, adm. 3-16, continues care, Hong

Vastie Sanchez, Floydada, adm. 3-17, dis. 3-25, Hong

Ava Jackson, Floydada, adm. 3-18, dis. 3-25, Hong

Selia Casillas, Floydada, adm. 3-18, dis. 3-24, Hong

Jamie Garcia, Floydada, adm. 3-18, dis. 3-23, Hong

Bill White, Floydada, adm. 3-20, dis.

3-26, Acar
Jeremy Jones, Roaring Springs, adm. 3-20, continues care, Jordan

Sonia Cox, Floydada, adm. 3-21, baby girl Lamar Eve born 3-21, dis. 3-23, Hong

Crencio Rodriguez, Floydada, adm. 3-19, dis. 3-24, Hong

Lenore DeLaCruz, Floydada, adm. 3-20, continues care, Hong

Linda Jones, Floydada, adm. 3-21, dis. 3-23, Jordan

Frances Mitchell, Matador, adm. 3-21, dis. 3-25, Hong

Amy Hollums, Floydada, adm. 3-23, dis. 3-27, Jordan

Frances Staniforth, South Plains, adm. 3-23, continues care, Hong

Jane Smith, Floydada, adm. 3-23, continues care, Hong

Roy Hill, Floydada, adm. 3-24, dis. 3-26, Jordan

Gregoria Santos, Floydada, adm. 3-24, continues care, Acar

Betty Baker, Floydada, adm. 3-24, dis. 3-27, Jordan

Minnie Calderoni, Floydada, adm. 3-24, continues care, Hong

Efford Parrish, Floydada, adm. 3-24, continues care, Hong

Stanislada Pesina, Floydada, adm. 3-25, continues care, Acar

Dora Miller, Floydada, adm. 3-26, dis. 3-27, Hong

J.P. Neasbitt, Lorenzo, adm. 3-26, continues care, Jordan

Joe Garza, Floydada, adm. 3-26, continues care, Acar

Earl Bishop, Floydada, adm. 3-26, continues care, Acar

Joe Falcon, Floydada, adm. 3-27, continues care, Hong



An adult African elephant needs 300 to 400 pounds of fodder every day.



THESE VARIETIES
HAVE PROVEN
THEMSELVES IN

FLOYD COUNTY

PR80 Outstanding micronaire and yield record. Storm resistance to survive tough conditions. Excellent disease protection.

Lockett 77 Outstanding lint yield and excellent gin turnout. Very good early season growth and seedling disease escape. Very good fiber length and good fiber strength.



Ed Warren
Route 3
Floydada, Texas
806-983-3037

Employee of the Week

MARTIN RIOS



Striving to give you the best in Farm Fresh Produce at everyday low prices.

People Pleasing Produce Picks

- CARROTS** California Cello Bag 5/\$1⁰⁰
- California Fresh **GREEN ONIONS** 5 Bunches /\$1⁰⁰
- PEARS** Washington State Dan Jou 49¢ lb.
- POTATOES** 5 lb. Bag Colorado Fresh 59¢
- New Crop **MUSHROOMS** 8 oz. Cello Package 99¢
- ORANGES** California Fresh Navel 4 lbs. /\$1⁰⁰

Buddy's Food

220 S. 2nd Floydada, Texas

AUCTION

**Dickens County Jr. Livestock Show Association's
Annual Farm Equipment Sale**

Time: Saturday, April 2, 1983

Location: West City Limits, Dickens, Texas on Highway No. 82

Persons receiving consignments for this sale:

- Greg Arnold-Spur, Texas 806-271-4530
- Shorty Clark-Kalgary, Texas 806-263-4227
- Jim Perryman-Afton, Texas 806-689-2251
- Denny Graham-McAdoo, Texas 806-697-2455

Personnel will be at the auction site to receive sale items on Thursday afternoon, March 31st and all day Friday, April 1st.

All consignments must be received by 5:00 p.m., Friday, April 1st.

Cars, pickups and trucks can also be consigned for this sale.

Cruce & Long of Plainview, Texas, experienced in farm equipment sales, will be Auctioneers for this sale.

Library News

Air Is Life. 15 min. Color. 1977. International Film Bureau. JH-A

The three major culprits of air pollution—automobile exhaust, domestic heating, and industry—are examined. Air pollution is a world-wide problem with grave consequences.

Blaze Glory. 11 min. Color. 1968. Pyramid Films. E1-A

In this spoof of the Western film and the traditional Western hero, stylized acting and stop motion techniques combine to provide a comedy of hero and stagecoach robber.

A Boy and A Boa. 13 min. Color. 1975. Phoenix Films. E1-JH

When 11-year-old Martin sees that his pet boa constrictor, Nigel, is sick, he brings the snake to a reptile program at the library. We get a snake-eye view of library facilities, when Nigel escapes from the program.

The Cactus: Adaptations From Survival. 11 min. Color. 1973. Encyclopedia Britannica. E1-JH

How does our cactus of the Southwest stay alive in its dry environment? Often using time-lapsed photography, this film studies the propagation, adaptation, and survival of the many species of cacti in the Southwest and around the world.

Casey Jones. 11 min. Color. 1971. BFA Educational Media. Pre-EI

Using illustrations rather than live action or animation, this film presents the legend of that determined railroad man. Narrated by a youth with a Tennessee drawl.

Easy Street. 27 min. Color. 1917. CCM Films. Pre-JH

A comedy following Charlie Chaplin as a hobo who is reformed by a sermon, becomes a policeman, and tames the toughest street in town.

The Fable of He and She. 11 min. Color. 1974. Learning Corp. of America. E1-A

Creative clay animation by filmmaker Eliot Noyes, Jr. depicts the amusing tale of the "Handibars" and "Mushamels," who discover that traditional male and female roles can indeed be discarded.

The Gold Rush and The 49'ers. 20 min. Color. 1976. BFA Educational Media. JH-A

Tells of the time when the west was truly wild. The search for gold was hard, but an adventure. Great Photography.

B.J. and Eddie-Outward Bound. Communications Park Video. Color. 1973. 27 min. SH-A

Outward Bound is a challenging program designed to develop self-confidence, self-discovery and an expanded capacity for achievement. The film follows two teenagers as they go through the program by participating in such activities as a daily mile run, rock climbing, rappelling and longboat rowing.

Mexico: Sun and Silver. 29 min. Color. 1973. University of Arizona. JH-A

A film for either the tourist or the armchair traveler. Sophisticated Mexico City, colonial Taxco, and romantic Acapulco are visited.

Cold Blooded Penguin. Walt Disney. Color. 10 min. Pre-EI

Because he can't stand the cold weather of his native South Pole, Pablo Penguin sets off for warmer climes. After an exciting journey along the coast of South America, he finds his paradise in the Galapagos Islands.

First Steps. Screenscope, Inc. Color. 1981. 12 min. SH-A

First Steps is an informative and reassuring film for parents-to-be, would-be parents and families with small children. Characterized by a humorous narration and creative animation, the film takes a positive, common-sense approach to pregnancy, childbirth, infant development and parenting.

Smiley. 20 min. Color. 1979. Third Eye Film. E1-JH

Based on a true story of how "Smiley" a lost dog comes to live with Jesse, a ten-year-old boy. Jesse finds a lost dog one day, and names her Smiley. His parents agree to let Smiley stay only if Jesse makes an effort to locate Smiley's owners. On a trip to another neighborhood, Smiley jumps from the car and disappears. Jesse is heart-broken and turns away from his family and friends. But Smiley is returned, brought by the original own-

ers who cannot keep her, and boy and dog are happily reunited.

Nell and Fred. 29 min. B & W. 1971. McGraw-Hill. SH-A

Nell, an 81-year-old widow, and her 90-year-old boarder, Fred, investigate a new Senior Citizen's Home. They reject its aura of conformity and decide to remain living in Nell's house.

Run Dick, Run Jane. 20 min. Color. 1971. Brigham Young University. Adult Based on Kenneth Cooper's popular book, *The New Aerobics*, the film shows how regular exercise can be valuable against heart disease. A great film to inspire a group or individual toward a healthier life.

Santa Fe. 12 min. Color. 1974. National Audiovisual Center. JH-A

Non-verbal photographic essay of one of the favorite tourist spots in the American West. Panoramic view with night photography throughout. Interesting.

Sara's Summer of The Swans. 33 min. Color. 1974. Time-Life Films, Inc. E1-A

Sensitive treatment of problems common to teenagers. Sara, a skinny 14-year old wearing braces is enduring what she believes to be the worst summer of her life. During the course of the summer when several personal crisis occur, Sara is forced to do a bit of self-examination; the result is a new found view of herself and others. She then decides it was a wonderful summer after all.

The Spirit Of America With Charles Kuralt. Part 7: Texas, Oklahoma, Kansas, Nebraska. 20 min. Color. 1975. 1976. BFA Educational Media. E1-A

Focus on the contemporary Texas Cowboy's work on a Ft. Stockton area ranch; Sequoia, the genius Cherokee chief of Oklahoma; Alf Landon, Presidential candidate from Kansas; and settlers on the once harsh central plains of Nebraska.

Wings and Things. 18 min. Color. 1973. Phoenix Films. JH-A

Features model aircrafts from lighter-than-a-feather, rubber-band-powered balsa wood gliders to electronically-controlled, diesel-engined full-scale models competing against each other and nature. No narration. Captivating and lyrical.

Who Do You Tell? 11 min. Color. 1978. Motorola Teleprograms, Inc. Upper E1-A

A film that speaks directly to young people about fears and problems situations. Combines the simple magic of "animation" and the "live" footage of real kids talking openly and honestly about what they would or would not do in sample uncomfortable or scary situations. Previewing before showing recommended.

The Zoo. 6 min. Color. 1970. BFA Educational Media. E1

Portrays the varied personalities of animals and people at the zoo. Sprightly Anglo-Saxon music adds to the film.

Spider. Films, Inc. Color. 1975. 7 min. JH-A

He is called Spider because of his size and the speed of his hands, which fly as we watch him fry eggs and bacon and make sandwiches. He apparently makes pickles come from nowhere to garnish plates.

The following filmstrips are now permanently in the Library's collection:

- Could Anything Be Worse? Doctor For a Wooden Horse (Japanese Stories of Magic)
- The Goblin's Invisible Cloak (Japanese Stories of Magic)
- The Green Man
- Henny Penny (Stories for Joining In)
- Little Red Hen (Stories for Joining In)
- Mysterious Tadpole
- Peterkin and the Rabbit (Magic Changes I)
- Rainbow Fish (Magic Changes I)
- The Simple-Hearted Man (Magic Changes II)



The deepest lake in the world is Lake Baykal in the Soviet Union. At some points it is more than a mile deep.

CHURCH DIRECTORY

CEDAR HILL ASSEMBLY OF GOD CHURCH
Rev. Vance Mitchell
Sunday School 10:00 a.m.
Morning Worship 11:00 a.m.
Evangelistic Service 6:00 p.m.
Wednesday Bible Study 7:00 p.m.

ASSEMBLY OF GOD CHURCH
Lockney
Sunday School 10:00
Morning Worship 11:00
Evening Worship 7:00
Prayer Service Wed. 7:00
Eddie Kendall, Pastor

LOCKNEY LATIN ASSEMBLY OF GOD
Manuel Rendon, Pastor
Sunday School 9:45
Morning Worship 11:00
Evening Worship 7:30
Men's Fellowship, Tuesday Evening 8:00
W.M.C. Thursday 8:00
Christ's Ambassadors, Saturday Evening 7:30

SPANISH ASSEMBLY OF GOD
TEMPLO GETSEMANI
308 E. Mississippi
A.C. Botello, Pastor
Sunday School 10:00
Morning Worship 11:00
Evening Evangelistic Service 6:00
Wednesday, Family Night 7:30

CARR'S CHAPEL
Rev. Jerry Kunkle
Petersburg Pastor
Services Every Sunday
Morning Worship 9:30 a.m.
Sunday School 10:30 a.m.
No Evening Services

FIRST ASSEMBLY OF GOD CHURCH
Floydada
Pastor Jim Guss
Sunday School 9:45 a.m.
Morning Worship 10:50 a.m.
Service 5:00 p.m.
Sunday Evening Evangelistic 6:00 p.m.
Wednesday Night Service 7:00 p.m.
Thursday Womens Missionary 9:00 a.m.

SAN JOSE CATHOLIC CHURCH
Lockney
Father Terry Burke, Pastor
Sunday morning Mass 9:00
Saturday Evening Mass 8:00
Wednesday Evening 8:00 p.m.
Friday Evening 8:00 p.m.
Confessions Saturday 6:30

ST. MARY MAGDALEN CATHOLIC CHURCH
Floydada
Father Terry Burke
Sunday Mass 11:30 a.m.
Monday Mass and Ultreya 9:00 p.m.
Thursday Mass 9:00 p.m.

CITY PARK CHURCH OF CHRIST
Floydada
Perry Zumwalt, Minister
Sunday Bible Study 9:30 a.m.
Morning Worship 10:30 a.m.
Evening Worship 6:00 p.m.
Wednesday Bible Study 7:30 p.m.
Ladies Bible Study, Wednesday 9:30 a.m.

LATIN AMERICAN CHURCH OF CHRIST
Lockney
Bible School 9:45
Morning Worship 10:45
Evening Worship 6:00
Wednesday Service 8:00

CHURCH OF CHRIST
Lockney
Bible Study 9:30
Morning Worship 10:30
Evening Worship 6:00
Wednesday Ladies Bible Class 9:30
Bible Study 8:00

WEST COLLEGE CHURCH OF CHRIST
West College & Third, Lockney
Frank Duckworth, Evangelist
Sunday Morning Worship Services 10:30
Sunday Evening Worship Services 6:00
Wednesday Evening Prayer Services 8:00

WEST SIDE CHURCH OF CHRIST
Sunday Morning Worship 10:30 a.m.
Sunday Evening 6:00 p.m.
Wednesday Evening 7:00 p.m.

CHURCH OF THE NAZARENE
Lewis Shapp, Pastor
Sunday School 9:15 a.m.
Morning Worship 10:45 a.m.
Evening Worship 6:00 p.m.
Wednesday Bible Study 5:30 p.m.

FIRST CHRISTIAN CHURCH
[Disciples of Christ]
Minister, Karl Bunjes
Sunday 9:45 a.m.
Worship 11:00 a.m.

TRINITY LUTHERAN CHURCH
Providence Community
Gary Kleypas, Pastor
Sunday School & Adult Bible Class 10:00
Worship Service 11:00

FIRST UNITED METHODIST CHURCH
Lockney
Rev. Michael O'Connor
SUNDAY
Sunday School 9:45
Worship Service 10:55
UMY 6:00
Evening Worship 7:00
United Methodist Women, First Tuesday of Month Circles, Monday (2nd & 4th Monday nights) Tuesday & Wednesday mornings.

FIRST UNITED METHODIST CHURCH
Floydada
Jim Smith, Pastor
Sunday School 9:45 a.m.
Morning Worship 11:00 a.m.
Youth Fellowship 5:00 p.m.
Sunday Evening Worship 6:00 p.m.

EVANS CHAPEL BAPTIST CHURCH
Rev. Bennie Anderson
Pastor
Sunday School 10:00 a.m.
Morning Worship 11:00 a.m.
Training Union 6:00 p.m.
Evening Worship 7:00 p.m.
Wednesday Prayer Meeting 7:00 p.m.
Sunday Afternoon Worship 2:00 p.m.

PRIMER IGLESIA BAUTISTA
Rev. Agustin Rey
Sunday School 9:45 a.m.
Worship Service 11:00
Training Union 5:00 p.m.
Evening Worship 7:00 p.m.
Prayer and Study Group Monday 7:30 p.m.
Mid-Week Service Wednesday 7:30

TEMPLO BAUTISTA SALEM
Lockney
Sunday School 9:45
Worship Service 11:00
Christian Training Time 5:00
Evening Worship 6:00
Wednesday Prayer Meeting & Choir Practice 7:30

BIBLE BAPTIST CHURCH
Floydada
Bob Chapman
Sunday School 10:00 a.m.
Morning Worship 10:45 a.m.
Sunday Evening Prayer Meeting 6:00 p.m.
Sunday Evening Services 6:30 p.m.
Wednesday Evening Services 7:30 p.m.

DOUGHERY BAPTIST CHURCH
Richard Rhodes
Sunday Services 10:00 a.m.
Morning Worship 11:00 a.m.

FIRST BAPTIST CHURCH
Lockney
Murlie Rogers, Pastor
Sunday School 9:45 a.m.
Morning Worship 11:00 a.m.
Church Training 6:00 p.m.
Evening Worship 7:00 p.m.
Prayer Meeting, Wednesday 7:00 p.m.
Adult Choir, Wednesday 8:00 p.m.
High School Youth (B.Y.F.) Wednesday 7:00 p.m.
G.A. and Mission Friends Wednesday 4:00 p.m.
R.A.'s Sunday 5:00

CEDAR HILL BAPTIST CHURCH
Sunday School 10:00 a.m.
Morning Worship 11:00 a.m.
Evening Worship 7:30 p.m.

SOUTH PLAINS BAPTIST CHURCH
Rev. Cecil Osborne
Sunday School 10:00 a.m.
Morning Worship 11:00 a.m.
Training Union 6:00 p.m.
Evening Worship 7:00 p.m.

CALVARY BAPTIST CHURCH
Floydada
Rev. Hollis Payne
Sunday School 9:45 a.m.
Morning Worship 11:00 a.m.
Bible Study 6:00 p.m.
Evening Worship 7:00 p.m.
Wednesday Evening 7:00 p.m.

MT. ZION BAPTIST CHURCH
Floydada
Otis Cook, Jr., Pastor
Sunday School 10:00 a.m.
Morning Worship 11:00 a.m.
Bible Study 4:00 p.m.
Evening Worship 5:00 p.m.
Wednesday Prayer Meeting 8:00 p.m.

AIKEN BAPTIST CHURCH
Sunday School 10:00
Morning Worship 11:00
Training Union 6:00
Evening Worship 7:00
Prayer Service Wed. 7:30
Brotherhood, W.M.U. and Auxiliary Wednesday 7:30

FIRST BAPTIST CHURCH
Floydada
Floyd C. Bradley, Pastor
Sunday School 9:45 a.m.
Morning Worship 10:55 a.m.
Church Training 6:00 p.m.
Evening Worship 7:00 p.m.
Wednesday Evening 6:45 p.m.

LONE STAR BAPTIST CHURCH
Sunday School 10:00
Morning Worship 11:00
Training Union 5:00
Evening Worship 6:00
Prayer Service, Wednesday Evening 6:30
Brotherhood, First Saturday Morning of Every Month.

VICTORY BAPTIST CHURCH
Floydada
Gary Grant, Pastor
Sunday School 10:00 a.m.
Morning Worship 11:00 a.m.
Evening Worship 7:00 p.m.
Wednesday Services 7:00 p.m.

NEW SALEM PRIMITIVE BAPTIST CHURCH
Floydada
Joe M. Jackson
Sunday Congregational Singing 10:00 a.m.
Morning Worship 10:30 a.m.
Evening Worship 6:30 p.m.

SPANISH BAPTIST MISSION
Floydada
Eloy Feian, Pastor
Sunday School 9:45 a.m.
Morning Worship 11:00 a.m.
Church Training 5:00 p.m.
Evening Worship 6:00 p.m.
Wednesday Evening 7:00 p.m.

If you appreciate your church directory, please let your sponsors know.

Adams Well Service
720 N. 2nd 983-5003

Brown's Department Store
106 N. Main 652-3831

Byrd Pharmacy
320 N. Main 652-3353

Cates & Dawson
231 W. California 983-5322

City Auto
201 E. Missouri 983-3767

Consumer's Fuel
210 E. Missouri 983-3394

Davis Lumber Co.
102 E. Shubert 652-3385

Bill Gilbreath Exxon
101 N. 2nd 983-3323

Jackson Tire Co.
101 S. Main 652-3366

Lee's White Auto Store
119 W. College 652-2145

Lockney Coop Gin
W. of City 652-3377

Martin & Co.
216 S. Main 983-3713

Moore-Rose Funeral Home
402 S. Main, Lockney 652-2211
329 W. California, Floydada 983-2525

Oden's Chevrolet-Olds.
221 S. Main 983-3787

Pay-N-Save
210 N. Main 652-2293

Plains Electric Co.
106 S. Main 652-2133

Producer's Cooperative Elev.
301 E. Missouri 983-2821

Reecer's Master Cleaners
121 S. Main 652-2262

Reed Ford
Ralls Hwy. 983-3761

Schacht's Flowers & Jewellery
112 W. Poplar 652-2385

Sun-Vue Fertilizers
E. Hwy 70 652-3326

Thompson Pharmacy
200 S. Main 983-5111

Willson & Son
111 N. Wall 983-3113

At H&R Block we guarantee our work.

This year with over 100 changes in the tax laws and forms, you have more chances of making a mistake. And that could mean an IRS audit. If H&R Block prepares your taxes and you're audited, we go with you at no added cost. Not as your legal representative, but to explain how your taxes were prepared. If we make a mistake and you owe additional tax, you pay only the tax. We pay the penalty and interest.

106 W. Missouri
Floydada, Texas
The new tax laws.
This year's number one reason to go to H&R Block.

H&R BLOCK 983-5233



Buddy's SUPERMARKET



DOUBLE STAMPS ON WEDNESDAY WITH \$5.00 PURCHASE OR MORE

220 SOUTH 2nd • 983-3149
STORE HOURS:
MON. THRU SAT. 8 A.M. 'TIL 9 P.M.
SUNDAY 9 A.M. 'TIL 8 P.M.

WE RESERVE THE RIGHT TO LIMIT QUANTITIES

These values in this advertisement are effective through Wednesday, April 6, 1983

FARM-FRESH PRODUCE

Fresh California Navel
ORANGES
4 lbs. / \$1.00

FRESH GREEN BUNCHES
ONIONS..... 5/\$1.00
WASHINGTON
PEARS Lb. 49¢
5 lb. Bag Colorado
POTATOES..... 59¢



2 lb. Jimmy Dean Pure Pork
SAUSAGE \$3.39

Loin End Cut
PORK CHOPS \$1.49 lb.

8 oz. 1/2 Moon Harvest Moon Cheddar
CHEESE
\$1.19



USDA Ranch
STEAK \$1.69 lb.

16 oz. Fisher Boy
FISH STICKS
\$1.19

USDA English Cut
ROAST \$1.89 lb.

USDA Arm Cut
ROAST \$1.89 lb.

The Best Meat in Town!

DOUBLE COUPONS SUNDAY ONLY

Manufactures Coupon on Product Purchased

IMPERIAL POWDERED OR BROWN
SUGAR 2 Lb. 99¢

KRAFT DINNER
MACARONI & CHEESE 2/79¢
MAZOLA CORN OIL
MARGARINE 1 Lb. 89¢

7 1/4 OZ.
WHIPPING CREAM 2/89¢
SUNSHINE VANILLA
WAFERS 11 OZ. 89¢

DUNCAN HINES ANGEL FOOD
CAKE MIX



14.5 OZ.
\$1.09

5 lb. Gold Medal
FLOUR
99¢



Light Crust Pouch
MIXES

4/\$1.00

FROZEN FOOD

1/2 Gallon Borden's Round Carton
ICE CREAM \$1.69

12 oz. White Swan Frozen
ORANGE JUICE \$89¢

2 lb. White Swan Crinkle Cut
POTATOES 89¢

Down Home Savings!

7 oz. Laundry Detergent FREE
FAB

With Purchase of 20 oz. FAB at Regular Price



CAMPBELLS CREAM OF MUSHROOM
SOUP 10.5 OZ. 2/69¢



1 lb. White Swan Soft
MARGARINE 2/99¢

16 oz. White Swan Cut
GREEN BEANS 3/\$1.00

28 oz. Bonus Pack French's
MUSTARD 89¢



Farmers Pride Grade A Medium
EGGS 19¢ Dozen
With One Filled S&H Special Saver Book 69¢ Without Book

42 oz. BakeRite
SHORTENING 59¢
With One Filled S&H Special Saver Book \$1.09 Without Book

7 oz. Luncheon Meat
SPAM 49¢
With One Filled S&H Special Saver Book

99¢ Without Book



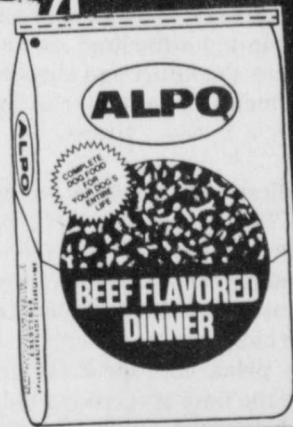
MAXWELL HOUSE ALL GRINDS

COFFEE
\$2.19



1 Lb.

25 lb. Purina or Alpo
DOG FOOD
\$6.99



5 lb. White Swan
SUGAR
\$1.59

Double S&H Green Stamps
Thursday, Friday, & Saturday
with purchase of \$5.00 or more.

46 oz. Texsun
GRAPEFRUIT JUICE 77¢

15 oz. Honey Boy Chum
SALMON \$1.49

2 lb. Welch Grape
JAM OR JELLY \$1.49

16 oz. Stokley Can
PUMPKIN 4/\$1.00

PUBLIC NOTICES

PUBLIC NOTICE

A regular meeting of the board of directors for the Floyd County Appraisal District will be held on April 6 at 9:00 a.m. in the Appraisal Office board room, Room 107 in the Floyd County Courthouse.

3-31c

NOTICE TO BIDDERS FOR SALE

The City of Floydada, Texas will receive sealed bids at the office of the City Secretary, City Hall, 114 W. Virginia, Floydada, Texas until 5:00 P.M., April 12, 1983 and then publicly opened and read at its regular meeting at 7:30 P.M., at its meeting room at the City Hall for the following equipment:

1. 1966 118 B Galion Motor Grader
2. 1963 Chevrolet pickup chassis

INSTRUCTIONS:

1. The above equipment may be inspected at 114 W. Virginia, Floydada, Texas.
2. The above items will be bid separate. The bids will be sealed in an envelope marked (motor grader or pickup bid) and addressed to the Mayor and City Council.
3. The City Council of the City of Floydada, Texas reserves the right to accept or reject any or all bids submitted.

Parnell Powell
Mayor

Jimmie Lou Stewart
City Secretary

NOTICE OF TRUSTEE ELECTION (AVISO DE ELECCION DE REGENTES)

The Lockney Independent School District Board of Trustees hereby gives notice of an election to be held on April 2, 1983, for the purpose of Electing 3 Trustees for full 3 year terms.

(Por la presente la junta de regentes del distrito escolar independiente da aviso que se llevara a cabo una eleccion el dia Abril 2, de 1983 con el proposito de elegir 3 regentes por un termino de 3 años.

ABSENTEE VOTING by personal appearance will begin on Monday, March 14, 1983, and continue through Tuesday, March 29, 1983, from 8:30 a.m. to 4:30 p.m. on each day which is not a Saturday, Sunday or an official state holiday. (VOTACION POR AUSENCIA en persona comencera el lunes de Marzo 14, de 1983 y continuara hasta el martes de Marzo 29 de 1983 desde las 8:30 a.m. hasta las 4:30 p.m. en todos los dias que no sean sabado, domingo, o dia oficial de vacaciones estatales.)

Absentee voting in person shall be conducted at Administrative Offices - 416 W. Willow, Lockney. Applications for absentee ballots by mail should be mailed to Box 428, Lockney, Texas 79241.

The POLLING PLACE(S) designated below will be open from 7:00 a.m. to 7:00 p.m. on the day of the election. (Los sitios de votacion indicados abajo se abriran desde las 7:00 a.m. to 7:00 p.m. el dia de la eleccion.)

Pct. No. (Num. de precinto) Location (Colocacion)
Lockney High School

NOTICE TO BIDDERS

Sealed proposals addressed to the Honorable Mayor and City Council of Lockney, Texas, will be received at the office of the City Secretary, City Hall in Lockney, Texas, until 9:00 A.M., C.S.T., April 7, 1983, for furnishing all necessary materials, machinery, equipment, superintendence and labor for placing a seal coat, consisting of one application of asphalt covered with aggregate on approximately 47,600 square yards of street pavement. The estimated quantities are:

- 14,300 gallons of asphalt
- 400 cubic yards of aggregate

Bidders shall submit their bid on the forms attached to the specifications and must submit therewith a Certified Check issued by a bank satisfactory to the Owner, or a Proposal Bond from a reliable Surety Company, payable without recourse to the order of the City of Lockney, Texas, in an amount not less than five percent (5%) of the largest possible bid submitted on the project as a guaranty that the Bidder will enter into a contract and execute bond and guaranty in the forms provided within fifteen (15) days after notice of award of contract to him.

Information for bidders, proposal forms, specifications and plans are on file at the office of the City Secretary, Lockney, Texas, and copies can be secured at the office of the Consulting Engineer, A.C. Bowden, 1716 Avenue M, Lubbock, Texas, upon deposit of \$10.00 as a guarantee of the safe return of the plans and specifications. The full amount of the deposit will be returned to the Bidder on submission of a bonafide bid on the work, with such plans and specifications, or upon returning the plans and specifications immediately after examination of same, but before the time of receiving bids and advising the Engineer that a bid will not be submitted. Otherwise, the deposit shall be forfeited. Suppliers may secure copies of the plans and specifications as outlined above, but will be given five (5) days after bids have been received to return said documents to the Engineer's office before the deposit shall be forfeited. No obligation is assumed to return the deposit under other conditions.

CITY OF LOCKNEY

Owner

By: J.D. Copeland, Mayor

ATTEST:

Erma Lee Duckworth, City Secretary

3-31

J.P. WILLIAMS

Ph. 652-2326

WEED CONTROL

ON LAWNS

INSECT CONTROL

ON TREES & SHRUBS

Control Of

BINDWEED, RAGWEED, BLUE WEED & JOHNSON GRASS

ON FARMS

Joe Charles 652-2594 C.A. Lic. No. 22453 Bus. Lic. No. 3106

ESTATE SALE

To liquidate the estate of Sam A. Lide, Deceased, the undersigned Executors offer for sale, and invite written bids on or before March 31, 1983 for purchase of the following described real estate, property of such estate:

Lots "C" and 1, Block "D", Andrews Addition to Town of Floydada, Floyd County, Texas, 740 Grover. Asbestos siding, 2 bedrooms, 1 bath, large living room, kitchen, attached single garage, central heat & air., storm windows and doors.

Terms of sale cash, but reasonable time will be permitted, under contract of sale with suitable escrow, for responsible purchaser to procure loan in aid of purchase; insurance and 1983 taxes will be prorated to date of closing of sale; possession of premises will be delivered on closing of sale.

Residence will be shown by appointment only.

Right is reserved to reject any and all bids.

February 22, 1983.

Daphne D. Chance
Delilah O. Gearhart
c/o Mrs. L.H. Blum
122 W. Houston
Floydada, Texas 79235
(806) 983-2518

VA NEWS

Some Vietnam-era veterans may obtain extensions of eligibility for Veterans Administration education benefits.

Public Law 97-306 now allows the VA to extend the eligibility period of certain Vietnam-era veterans (August 5, 1964 - May 7, 1975) beyond the usual 10-year delimiting date, said the Director, Waco VA Regional Office.

The extension may be granted to veterans who still have some months of entitlement to VA benefits remaining, but who have been discharged for more than 10 years, he explained. Eligible veterans who don't have a high school diploma, or the equivalent, may receive an extension to attend that level of training. However, only tuition and fees are paid for high school or GED training.

Further, unskilled veterans may receive an extension in order to pursue vocational, apprenticeship, or on-the-job training. But extensions cannot be granted for veterans to pursue university or college-degree programs.

A previous law provides extensions to veterans who were determined to be unable to enter education or training during their original 10-year eligibility period because of physical or mental disabilities. Those veterans may receive an extension equal to their period of disability. Extensions under that earlier law may include those for university or

college-degree programs.

For more information on provisions of the two laws, visit, write, or telephone the Waco VA Regional Office toll-free number listed in your local telephone directory under "U.S. Government" or "Veterans Administration."

WANT ADS

the Inexpensive Way to Shop

"Laugh Lines"

BY DON AND SARA PROBASCO

Bits of Humor, Trivia, and an occasional Word of Wisdom

Discretion is forgiving your enemies, especially those you can't lick.

Specialist: A doctor whose patients are expected to confine their ailments to office hours.

There's only a slight difference between keeping your chin up and sticking your neck out, but it's worth knowing.

A minister told his congregation: "So now, let us give freely, generously, in accordance with what you reported as 'contributions' on your income tax."

Just to see how many of you out there are reading our column, anyone who calls and can tell us the correct number of words in this sentence will receive 10% off on any keys, deadbolts, or other goods ordered at the time of the call.

Moments in History: A frontier coroner once gave the following verdict: "The deceased man came to his death by an act of suicide. At a distance of a hundred yards he opened fire with a six-shooter upon a man armed with a rifle."

Once there was a Congressman who had a terrible nightmare. He dreamed that all the money he was spending was his own.

The only thing more expensive than an education, these days, is ignorance.

Don't forget our special offer, mentioned above. This special will end at midnight, April 6.

PROBASCO'S

Pro-Lock Shop
24-hour Mobile
Locksmith Service

Studio South
Stained Glass Art
Gifts & Supplies

2 miles north of South Plains on the Silverton Highway (Hwy 207)
983-3834

Visa and Mastercard Welcome



Save On GASOLINE or DIESEL

Use our key pump. Main Street Lockney

For Information or Prices- Call COLLECT

DOUGLASS OIL CO.

Phone 293-1579 Plainview, Texas

Dist. Gulf Oil Products

Plainview Radiator Works

Factory Distributor

Complete Rebuilding and Recoring



Business Appreciated

Plainview Radiator Works

2315 West 5th
Plainview, Texas
293-9611



Donice Casey
Career Agent
652-3414



NO MATTER HOW IT FALLS
IT SPELLS
DISASTER
To Growing Crops

It's so easy to obtain hail insurance for your growing crops at low net cost—a dividend has been paid to Crop Hail Policyholders eight of the past twelve years, and for 1983—15% DEVIATION OFF OF TEXAS CROP HAIL RATES.

Just call your Texas Farm Bureau Insurance Companies Agent.

Texas Farm Bureau Insurance

101 S. Wall, Floydada TX

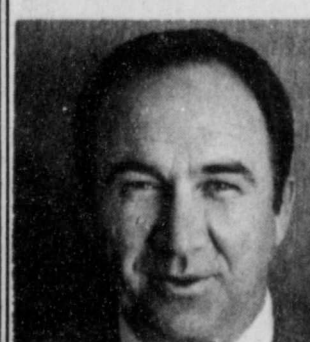
Floydada 983-3777 Lockney 652-2242



James Race
Agency Mgr.
983-5095 652-2638



Clar Schacht
Career Agent
652-3449



Bud Rainey
Career Agent
983-5225

BUY, SELL, TRADE OR RENT THROUGH THE CLASSIFIED ADS

Card of Thanks

Mr. and Mrs. Nino Garcia would like to thank the people of Lockney for all the help and donations and prayers for our daughter, Diana Garcia, when she was in the hospital in Dallas.

We are very thankful that she is back home with us.

May God Bless you.

Mr. & Mrs. Nino Garcia
L3-31p

Dear Lockney Businessmen,

Thanks for buying my pig at the Floyd County Stock Show.

Thanks to all the people who worked on this project.

Keith Owens
L3-31p

Thank you for the food, attendance, donations and help to everyone involved with auxiliary luncheon on Sunday.

Lockney Hospital Auxiliary
L3-31c

Farm Equipment

ELEVATOR LEG CUPS. \$2.00 each. PRODUCERS. tfn

FOR SALE OR RENT: Forklift 6000 lb. capacity, rough terrain 983-2836, after 6:00 p.m. 983-5538. tfn

Employment

SALES REPRESENTATIVE

National Company, leading manufacturer of custom-made lubricants, has immediate opening. Prefer person with knowledge of heavy equipment or sales background. Duties involve calling on commercial, industrial and agricultural buyers. Complete training, high commissions, advancement potential. Call Collect 1-214-638-7400. C.S.T. 4-7p

SALES

Career opportunity exists with National Company. Ideal candidate must be ambitious. Self-motivated and have knowledge of heavy equipment; sales experience a plus. Position involves supplying industrial, commercial and agricultural buyers with custom-made lubricants. Complete training, high commissions, advancement potential. Call Collect 214-638-7400, 8:30 a.m. to 4:30 p.m. C.S.T. 4-7p

HELP WANTED for elderly woman. Not bed fast. Room or apartment available. Work light. Call 983-3437 or apply at 301 W. Georgia. 3-31c

JOBS OVERSEAS - Big money fast. \$20,000 to \$50,000 plus per year. Call 1-216-494-2900, Ext. 428. L3-31p

Automotive

FOR SALE: 1974 Datsun pickup. 983-5322 or 983-3273. tfn

1981 SILVERADO. Loaded. Short wheel base. Low mileage. Douglas Campbell. 347-2357. 3-24c

'74 HONDA. 550-4. 11,000 miles. Runs great. 983-5115. 3-31c

'78 CHEVY PICKUP, 350 auto, PS, long wide, solid truck. James. 215 S. Main. 983-3417. 3-31p

1979 Ford Custom	\$2,850
1979 Impala, 4 dr.	3,500
1978 Plymouth, 4 dr.	\$1,650
1977 Malibu, 4 dr.	1,850
1976 Catalina, 4 dr.	2,350

W.B. Eakin
No down payment
983-3616 night 983-2941

Lost & Found

A STEER HAS STRAYED on our property. To claim call 983-2670. 4-7c

\$5.00 REWARD for return of large dark green gas cap with vinyl across center. No questions asked. Call 983-2855. 3-31c

Business Opportunities

"SUCCEED"

And supplement your Business income by up and over \$50,000 per year selling steel buildings for big profits--contracting, subcontracting, and consulting. Acquire a Dealership from Wedgco Steel Building factory. "No Middle-man". To Be Chosen--Applicant must qualify for area available. Call 1-800-525-9240. 4-21p

For Rent

FOR RENT: 2 bedroom mobile home. Clean, rent reasonable. 983-3504. tfn

UPSTAIRS APARTMENT for rent. Contact Wilbur Mize. 652-2435 TFN

HOUSE FOR RENT in Lockney. 814 W. Poplar. 293-3517. L3-31c

FOR RENT: 3 bedroom, 2 bath farm house. Call 652-2455. L3-31

SINGLE FURNISHED garage apartment for rent. Bills paid. Reasonable. 983-8100. tfc

FOR RENT: 1 bedroom apartment. Call Lockney Housing Development. 652-2334 or go by 108 N. Main. L4-14c

ECONOMICAL STORAGE

TRY BARKER'S Jewel Box-Mini Storage and save your time and money. Phone 652-2642. Corner Main & Locust - Lockney, Texas. Barker Building

STORAGE SPACE

BOATS. FURNITURE. ANYTHING. ETC. BY THE MONTH OR SIX MONTH 10% DISCOUNT. West Texas Mini Storage
CALL WILSON BOND
983-3573 OR 983-2151

Garage Sales

GARAGE SALE: April 1st, 3:00 p.m.-til ? and April 2nd, 8:30 a.m. - til ? 910 W. Jackson. Furniture, children's items and misc. 3-3c

BIG GARAGE SALE
10:00 a.m.-5:00 p.m. Wednesday and Thursday, April 6th and 7th. 510 SW 5th, Lockney
Garage back of house, next to alley in Lockney. L4-7p

Pets

3-PUPPIES - Mother mixed/father chow. 2 females - 1 male. Come by Beacon office Friday or call 652-2660 after 6:00.

Professional Services

LET US PLOW your garden plot. All type lawn work. We have garden seed in the bulk. Seed potatoes, baby and started chicks. Carmack Feed & Seed. 213 E. Missouri. 3-31c

LET ME TRIM your fruit, nut and shade trees. Keith Emert. 652-3116. L-TFN
LET MOTHER HUBBARD'S Cleaning Service clean your home or business. We also specialize in all summer lawn needs. Call now for appointment. 983-5465 or 983-3010. tfc
ADAMS WELL SERVICE Complete Irrigation Service. All sizes submergible pumps in stock. One day service. 983-5003. tfn

MITCHELL TAX SERVICE
Income Tax professionally prepared.
Reasonable Rates
983-3692

Script Printing & Office Supply
*Commercial Printing
*Office supplies & Furniture
*Business Machines
108 S. Main
Floydada
983-5131

Mary Kay COSMETICS
Sue Williams
Independent Beauty Consultant
983-5166
Floydada

Miscellaneous

"WE SELL SLEEP"
Direct Mattress Co. New or renovated. for appointment call City Trim Shop. 983-2332. Floydada. tfn
1972 STARCRAFT pop up camper. Call 983-5509 after 6. 3-31p

LIKE NEW PARK TOOL CHEST with tools included. 983-5169. tfn
6 VHF HIGH BAND Walkie Talkie radios. 983-5169. tfn

1981 SHASTA 16 ft. camping trailer. Air, bath, fully self contained. \$4,800. 983-5775 after 6 p.m. tfn

FIREWOOD. Seasoned Pinon and Juniper \$150 cord; Oak \$130. Delivered and stacked. 983-5320, 652-2492. tfn
BED, mattress and springs. Full size. Vanity dresser, white. Call 652-2367. Lfc

FOR SALE: Housefull of good used furniture in Lockney. GE washer, 2 GE dryers, refrigerator, couch that converts to bed, 2 bedroom suites, 1 double bed, filing cabinet, sewing machine, maple drop leaf dining table with 6 chairs, 4 odd chairs. Shown by appointment only. Call 652-3446. L3-31c

REDUCE! Eat all you want! Burn off excess fat - take Glucomannan. Thompson Pharmacy. 4-14p

LATE MODEL G.E. Frostfree refrigerator/freezer with ice maker. Excellent condition. Early American love seat and gold leather easy chair. Good condition. Call 652-2379. L3-31c

STORM WINDOWS, shower door, TV, riding lawn mower. 983-2175. 4-28p

PIANO for sale. 983-3780. 4-7c

30 INCH ELECTRIC RANGE. Almond. One only. \$259.95. Sears, Floydada. 983-2862. tfn

WATERBED, complete with frame, mattress and heater. \$175. 983-5115. 3-31c

FOR SPECIAL decorative birthday or holiday cakes, call Jodie McGuire at 983-3646. Call immediately for Easter orders. 4-7c

PIANO IN STORAGE
Beautiful spinet-console stored locally. Reported like new. Responsible party can take at big saving on low payment balance. Write Joplin Piano, Inc., Joplin, Missouri 64801. Include home phone number. 3-31p

FOR SALE: Used furniture. 1 bedroom suite, 2 living room suites, 2 dining tables with matching chairs, 1 occasional chair, 1 recliner, 2 large desks, 1 set of drums, and many misc. items. Call to see by appointment after 5:00 p.m. weekdays. 652-3866 in Lockney. L4-7p

Auto Parts & Accessories

E-Z RIDER SHOCKS by Monroe. Buy 3 and the 4th is FREE. Free Installation. Don's Muffler Shop. 210 W. California. Floydada, Texas. tfn

ALTERNATOR & STARTER REPAIRS
Norrell Tractor Parts
215 S. Main
983-3417

CUSTOM EXHAUST WORK
Bruce Williams
Specializing in Glass Packs and Turbo Mufflers
At
DANS AUTO SERVICE
652-2462

DAN'S AUTO SERVICE
DAN TEUTON, Owner
Specializing in Automatic Transmission, Motor Tune-Ups, Auto Air Conditioning.
General Repair
We Have A BRAKE LATHE to handle all passenger car brake drums. See us for complete brake service.
Phone 652-2462

Houses

FOR SALE: Nice, remodeled, 2 bedroom house and 1 bath. 1 car garage and 2 storage buildings. Large 5 ft. Chain Link fenced yard, nice location - on corner lot. Call Hale Insurance & Real Estate 983-3261. tfn

HOUSE FOR SALE: Brick. Excellent neighborhood. 983-3772 after 7:00 p.m. tfn

NICE 2 BEDROOM HOUSE; attached garage; good location; large rooms, closets, and storage. Call 374-0540, 376-4811 or 652-3451. tfn

FOR SALE BY OWNER 3-2-2, unbelievable storage. Attached shop. Call 983-2049 after 4 p.m. and weekends. TFN

MUST SELL: 3 bedroom, 2 bath. With large shop. Must see to appreciate - 983-2636. tfn

FOR SALE: Several nice two and three bedroom houses. Loans can be arranged. Contact Sam Hale at Hale Inc. & Real Estate 983-3261. tfn

INVESTMENT OPPORTUNITY! Affordably priced, this spacious 1700 sq. ft. home offers two or three bedrooms and one bath. Excellent rental potential. Call Larry S. Jones, Broker. 983-2052 4-7p

2 BEDROOM HOUSE. Enclosed garage, good location. Large lot. Storage. 983-3562 TFN

3 BEDROOM BRICK HOME, 1 1/2 bath, refrigerated air. 105 J.B. Avenue. 983-3288. 2-24p

TWO BEDROOM HOUSE at 129 W. Jeffco. Call 983-2633. TFN

2 two bedroom houses. West of the highway on Tennessee. 983-2633. tfn

FOR SALE: 3 bedroom home at 316 W. Mississippi. Exclusive listing. Randall King Real Estate. 983-2707. 3-24c

FOR SALE: Two bedroom, 1 bath house; central air and heat, carpet, panelling; fenced backyard, carport storage room. 983-3362. tfn

HOUSE FOR SALE: 2 bedroom, fireplace, carpeted, backyard storage in good condition, near schools. 652-2249. L p

2 BEDROOM, 1 1/2 bath. Central air, single garage. Has duplex apartments in rear with double garage. Corner lot. 983-2391, 983-5135. tfn

Eight of Our Best Listings

Price Reduced
but still good country living. 3 bedroom brick on 2 acres. 5 m/n Lockney on paved road at intersection to Lockney, Plainview and Rockcreek. Excellent condition, N/ paint, carpet, ref. air and central heat. 2 car garage, nice service porch, Mackenzie water tap paid, SWPS-Energas. Adult pecan and walnut trees, garden and recreation space galore. \$75,000 and owner finance available. Barn not included. Shown by appointment.

Sprinkler Farm
640 Acres, with 320 acre sprinkler. Good barn and corrals. Ideal stock and crop farm. \$500 per acre. Par owner finance available.
\$72,000.00

Large 3 bedroom, brick, 2 car garage with automatic door openers, 3 ceiling fans, ref. air & central heat. New roof. Would take trade for smaller home.

Large 2 Bed Room
\$25,000.00

Extra large rooms with tree row. Service room with garage - super cabinet and kitchen space and big walk-in closets. You will like this home and location.

\$35,000.00
A deluxe 2 bedroom brick (den could convert to a 3rd BR). Large living room, good kitchen and services. Garage attached, super carpet, paint and nice and clean throughout. Large lot.

Modern Frame Home
\$49,500.00

Large lot with trees and garden space - 3 bdrm - new comp. roof-cellar-very clean and newly remodeled home, den and living room combination.

For Rent
One person. Efficiency apartment.

For Rent
2 bedroom duplex.

Barry Barker, Broker 652-2642

R. D. Baccus, Salesman
652-3395

Diamond Industrial Supply Co., Inc.

Phone Days 296-7418
Nights 296-1200 or 296-7828
1014 Broadway
Plainview, Texas
SKF BCA Timken Bower
Cotton Stripper Brushes & Bats

"We Appreciate Your Business More"

2 BEDROOM HOUSE near Andrews school. Call after 6 p.m. 983-5509. 3-31p

IDEAL BUSINESS LOCATION: Three corner lots on highway with house to be remodeled or moved. Phone 983-2275. 4-14p

FOR SALE: Nice 3 bedroom, two story home. 2 baths, one-car garage, storage building, all carpeted, chain link fence on corner lot. Call Connie Wideman. 983-5252. 230 W. Mississippi. tfn

3-2-1, fenced yard, steel siding, new roof, carpet, drapes, 1564 sq. ft. \$21,950. 983-5522. tfc

3 BEDROOM, 2 bath brick home on five acres of land. Joining city limits. Call 983-2175. 4-28p

3 BEDROOM, 2 bath with concrete cellar. 1 car garage on large lot. 107 N.E. 4th, 652-2622. Lffc

Houses To Be Moved

FOR SALE - 3 bedroom, 1 bath - 1 1/2 story house to be moved. \$4,000.00 or best offer. Call 983-3736 after 5:00 p.m.

Public Notices

NUMBER 1 in the West Texas Mini Storage has furniture in it. If this is your merchandise, you need to claim it or it will be sold for cost against it. 983-3573. tfc

Wanted

FARM WORK wanted. Call 983-5349. Right away. 3-31p

WANTED TO BUY irrigated or dryland farm in Floyd or surrounding area. Write Box XRO, c/o Hesperian, 111 F. Missouri, Floydada. tfn

Farm Services

WE CUSTOM MAKE & FIT hydraulic hose for all types of machines. Brown's Implement 983-2281. TFN

Portable disc rolling
Lawson Farm Supply Inc.,
Floydada 983-3940

Multiple Peril AllRisk Crop Insurance
Certified by F.I.C.I.
To Serve the Farmers of Floyd & Surrounding Counties.
Dorothy Terrell
Floydada, Texas 79241
983-652-3711

CUSTOM SPRAYING
Wheat - \$2.00 per acre plus chemical.
Treflan tandem or spring tooth - \$4.00 per acre.
Call nights
Darrell Dudley 983-5320
A.C. Carthel 983-3200
3-24c

WILLING TO SPRAY:
Noxious weeds - Yards
Fence rows - Alleys
Bindweed spots - Trees
Cattle - Insects
Let us fertilize your lawn.
Contact Cecil or Charlie
Carthel, license No. 2915,
at 652-2136 or 652-2492.

CONSIGNMENT AUCTION
Saturday, April 2, 1983 Time: 7:00 p.m.
117 East 6th, North of Courthouse

Partial Listing

- 1-5 hp gas air compressor w/B&S. Engine twin cyl. pump
- 1-3/4 hp electric air compressor, twin cyl.
- 1-1/2 hp electric compressor, single cyl., portable
- 1-1/2 ton Walker bumper jack, hyd.
- 1-1/2 ton Sears floor jack hyd.
- 1-1/2 ton American hyd. floor jack
- 1-Sears air sand blasting gun w/pot and hose
- 2-Bench vises
- 1-New bolt bin - fully stocked
- 1-3 1/2 hp lawnmower 22" cut. New motor
- 1-Montgomery Ward, 11 hp electric start 36 in. cut riding lawnmower
- 1-John Deere electric start, 8 hp, 32 in. cut. w/grass catcher. Good clean machine
- 2-25' log chains
- 1-175 watt security light. New
- 1-Fold up attic ladder. New
- 1-Metal office desk.
- 1-Metal filing cabinet w/key
- 1-Lot butcher goats
- 1-Large lot pocket knives, watches, new tools

Used tools and much more too numerous to mention.

Sale Conducted By
Mogg and Fortenberry Auctioneers

Rex Mogg
TXS-112-0902
Bus: 293-9106
Home: 296-5787

Sam Fortenberry
TXS-024-0937
Bus: 652-3305
Home: 652-3650

John Fortenberry
TXSA-024-5203
Home: 652-2586

3-31c

Hollis R. Bond Real Estate
PHONE 983-2151
107 S. 5th FLOYDADA

7th-8th grade track win 1st

8th Grade
400 Meter Relay: 1st, Alfred Medrano, Leif Younger, Clay Lowrance, Johnny Davis
800 Meter Dash: 1st Alfred Medrano, 3rd Noe Soliz
110 Meter Hurdles: 1st Leif Younger, 4th Tommy Cathey
100 Meter Dash: 1st Johnny Davis, 2nd Clay Lowrance
400 Meter Dash: 4th, F.L. Williams, 5th Jorge Alaniz
300 Meter Hurdles: 3rd Tommy Cathey, 6th Cornelius Campbell
200 Meter Dash: 1st Johnny Davis

1600 Meter Run: 6th Noe Soliz
1600 Meter Relay: 1st Leif Younger, F.L. Williams, Clay Lowrance, Alfred Medrano
Long Jump: 1st Johnny Davis, 4th Cornelius Campbell
Shot Put: 1st F.L. Williams
High Jump: 2nd Clay Lowrance, 6th Shannon Barbee
Team Standings
 1st Floydada, 143
 2nd Tulia, 92
 3rd Friona, 68½
 4th Dimmitt, 60½
 5th Littlefield, 56

400 Meter Relay: 2nd, Joe Suarez, Ralph Casillas, Ruperto Jimenez, Albert Garza
800 Meter Dash: 1st David Medrano, 2nd Daniel Medrano, 3rd Ty Stovall
110 Meter Hurdles: 6th Chad Pernel
100 Meter Dash: 3rd Ralph Casillas, 5th Albert Garza
400 Meter Dash: 1st David Medrano, 6th Shad Morris
300 Meter Hurdles: 1st Chad Pernel
200 Meter Dash: 3rd Ralph Casillas, 5th Albert Garza
1600 Meter Run: 1st Daniel Medrano, 5th Bradley Saens

1600 Meter Relay: 3rd, Daniel Medrano, Simon Hernandez, Joe Suarez, David Medrano
Pole Vault: 2nd Lionel Salazar
High Jump: 3rd Daniel Medrano, 4th David Medrano, 5th Julio Flores
Shot Put: 1st Rusty Rainey, 3rd Fernando Gonzales
Team Standings
 1st, Floydada, 138
 2nd, Tulia, 108½
 3rd, Littlefield, 82
 4th Dimmitt, 49½
 5th, Roosevelt, 45



FLOYDADA JUNIOR HIGH winners of the science fair in Levelland are: [Front L-R] Richie Porter, Shana Seymour, June Willson, and Jay Hollums. [Back L-R] Teresa Hollums - sponsor, Greg Lawson, James Fannon, Kenny Linch, Cathy Langley and Biran Keho - sponsor.

Jr. Hi wins in science fair

By Cathy Langley

Eight junior high students, accompanied by Teresa Hollums and Brian Keho, participated in a science fair at Levelland March 25 and 26.
 On the 25th, the group traveled to Levelland to set their projects up before lunch. Afterwards, they were judged. They went back the 26th to the award ceremony.
 Jay Hollums won a first division with the effect of light on a hydra. His project also got a 3rd place trophy in the biological division.
 Shana Seymour's project was "How many grams of dust fall on your lawn in one month." Her project got a third division.
 Cathy Langley also got a third division with a solar cooking device. Both girls were the only ones in the group who participated in the physical division. All the others were in the biological division.
 June Willson received a 2nd place

ribbon with an interesting project containing fruit flies and light.
 Kenny Linch received a 2nd division ribbon on a project about "The effect of antihistamines on regeneration of earthworms."
 James Fannon received a 2nd place ribbon with a project on "the conditioning and regeneration on parts of a Planaria."
 Richie Porter received a 2nd division on the "Effects of vitamin A on newts and how they regenerate."
 Greg Lawson received a 1st with a project with "Crickets and mazes and the importance of smell of other crickets over food."
 All of these students did very well in the fair. Mrs. Hollums and Mr. Keho were very proud of them. All of the students were grateful to both teachers for their help. Mrs. Hollums and her students are planning a science fair in Floydada in the future. They hope it will be a success.

Ladies golf has play day

Floydada Ladies Golf Association met for their first luncheon and play day in March.
 New officers for the coming year were elected as follows: President, Pat Battey; Vice President, Glenna Ross; Secretary, Barbara Covington.
 They will have play day each first Tuesday of each month for a luncheon and meeting, due to boys and girls district play on Tuesday, April 5th and 12th, they will change their day to

Thursday, April 7th and 14th only.
 All new members are welcome to take a salad and join the group for luncheon and play day on April 7th.
 A new association has been formed consisting of, Floydada, Spur, Springs Ranch and Paducah, with play to be the second Monday of each month at one of the courses starting in May in Floydada and June, July and August at one of the other courses which will be announced at a later date.



MEMBERS OF the Mean Trotters girls little dribblers team are: [Back L-R] Angie Anderson - coach, Cammy Hancock, Angie Cortinas, Isabell Vasquez and Libby Anderson. [Front L-r] Melissa Strickland, Miki Schneider and Jennifer Martinez.



MEMBERS OF the Blue Monarchs girls little dribblers team are: [Back L-R] Charlene Brown - coach, Sandra Pesina, Kim Perry, Nohemi DeOchoa, Heather Henderson and Donna Henderson - coach. [Front L-R] Michelle Torres, Trina Ogden and Roxene Brown.

Sams travel to Florey, Texas

Floydada Whirlwind Sams Travel Club held their second campout for 1983 in the Andrews County Campground at Florey, Texas, on March 18, with visiting, games, and potluck lunch on the agenda.

Attending were: Mr. and Mrs. Bill Baker, Randy Hollums, Boone Adams, Arthur Wylie, Claude Weathersbee, Fred Thaxton, W.B. Cates, Wayne Russell, J.W. Gilbreath, Vernon Parker, Paul Westbrook and George Miller.
 All but the Bakers and Hollums trailed on through Big Bend National Park to Terlingua and spent the next

two days exploring the park. Walking tours included the Santa Elena Canyon and the Window in the Basin, as well as Hot Springs.

The third day saw the Sams en route along El Camino del Rio to Presidio and then across the border to Ojinaga, Mexico by taxi, for sightseeing and shopping. Returning to Floydada by way of the Davis Mountains State Park, the Whirlwind Sams toured the McDonald Observatory and the Fort Davis National Historic Site, one of the best preserved forts in the Southwestern.

Day care centers offer safety

What could possibly be wrong with leaving your child in an unregistered babysitter's home? The sitters must love children or they wouldn't advertise their services. They would surely take every precaution to see that your child would be supervised at all times. Many parents have left their children in an unregistered home assuming that the home was safe and that the care would be similar to the standards in their own home only to find out later that this is not always the case.

In order to protect the sitter, the child, and the parents, anyone caring for even one child, unrelated to them, on a regular basis (more than two days a week) or for a period not exceeding five weeks is subject to regulation under the Child Care Licensing Law of 1975 incorporated in the Human Resources Code Chapter 42.

Unlike day-care centers, registered family homes are not licensed by the state and state inspectors do not make periodic inspections. Registration of the family homes is done by mail. When a person is interested in keeping children in the home on a daily basis they may contact the local DHR office and request that a self-explanatory registration packet be sent to them. The person will complete the forms and return them to the DHR office. No fee is involved in the registration process.

A mother stopped by the sitter's home to pick up her two year old child and found that the sitter had run to the grocery store for just a few minutes leaving three children under the age of five alone in the house. The mother

promptly called the DHR office and the licensing representative conducted an investigation. The sitter's home was not registered. The representative explained the seriousness of leaving small children unattended for even a few minutes. It was also discussed that 15 pre-school children were kept by the woman, too many to insure their safety. Usually the sitter is told of the problem and is given a deadline for correcting it. However, the home may be closed immediately if a life threatening situation is discovered.

Parents frequently do not spend as much time choosing a place to leave their children as they would selecting a new car. All complaints about child care should be reported to the local DHR office.

Floydada tennis teams place 3rd in Plainview

The Floydada tennis team finished third as a team behind Plainview and Borger in the Plainview invitational team tennis tournament. Christi Norrell and Cindy Burk won first in girls doubles. Robert Galvan and Justin Nolan won first place in boys doubles. The next best finish from Floydada was Kamala Ford and Angie Anderson with a fifth place tie in girls doubles.
 Floydada is the two-time defending champion in the Region I regional tournament. This tournament will be in Denver City Friday and Saturday. It is an invitational team tournament for the top eight AAA teams in Region I.

Team standings for the tournament in Plainview were: Plainview - first with 81 team points, Borger - second with 64 team points, Floydada - third with 59 points, Lubbock Dunbar - fourth with 43 team points, Shallowater fifth with 38 team points and Petersburg sixth with 37 team points.

Individual results for Floydada
 Michael Bearden placed seventh in boys singles. He defeated Rex Hegi of Petersburg 6-3, 7-6 in the first round. In the quarterfinals he lost to Truitt Garland of Shallowater 6-0, 6-0. In the semifinals, he lost to Mike Rushing of Dunbar 7-6, 6-2. He defeated Ted Matthews of Petersburg 6-3, 6-4.

R.T. Bean placed 11th in boys singles. He lost to Benny Valdez of Dunbar 6-1, 6-0 in the first round. He lost to Chad Woodruff of Shallowater 6-4, 7-6 in the second round. He came back to defeat Tom Strick of Borger 6-0, 6-3.

The boys doubles team of Robert Galvan and Justin Nolan won first place in boys doubles. They defeated the team of Charlton-Long of Dunbar 6-1, 6-2 in the first round. In the quarterfinals, they defeated the team of Neeley-Guajardo of Plainview 7-6, 7-5. They defeated the team of Haag-Hood of Borger 6-2, 6-3 in the semifinals. In the finals, they defeated the team of Hill-Trotty of Dunbar 6-4, 7-6.

Bill Staples and Roger Alldredge placed seventh in boys doubles. They defeated the team of Hunt-Irwin of Borger 6-2, 6-4 in the first round. In the quarter finals, they lost to the team of Gregory-Sell of Petersburg 6-4, 6-3. In the semifinals, they lost to the team of Havenhill-McKinney of Plainview. They defeated the team of Swopes-Rodriguez of Petersburg 6-4, 6-4 in the finals.

Christine Wilson placed ninth in girls singles. In the first round, she lost to Sheila Landry of Plainview 6-3, 6-0. She defeated Jane Rogers of Petersburg 6-2, 6-3. She will play Diana Wilson of Floydada at a later date.

Diana Wilson placed ninth in girls singles. In the first round she lost to Mendi Pair of Shallowater 7-5, 0-6, 6-0. In the quarter finals she defeated Amy Garcia of Dunbar 6-4, 6-1. She will play Christine Wilson of Floydada at a later date.

Christi Norrell-Cindy Burk won first in girls doubles. They defeated the team of Burgess-Gentry of Dunbar 6-0, 6-0. They then defeated the team of Pundty-Thomas of Borger 6-4, 6-1. They finally defeated the team of Andrews-Igo of Plainview 6-1, 6-2.

The doubles team of Kamala Ford and Angie Anderson placed fifth in girls doubles. In the first round they lost to the team of Blake-Shelton of Borger 7-5, 6-2. Next they defeated the team of Thompson-Davis of Petersburg 6-3, 6-2. Finally they defeated the team of Higdon-Dobbins, of Plainview 6-1, 6-3.

INVESTMENT OPPORTUNITY

Exclusive franchise in America's most profitable and dynamic industry is being offered for the first time in this area. International company will place qualified individual in "Turn Key" business, train key people, provide inventory, finance your customers, and pay you thousands of dollars "up front" on orders where your customers pay only on future energy savings. Existing customers of our franchises reads like "Who's Who" of Fortune 500.

If you qualify, you will be flown to Los Angeles for a tour of installations and personal interview. Minimum investment of \$25,000 cash required.

Call president at 1-800-323-6556, ext. R-37.

THIS IS NOT AN OFFERING TO SELL

Does Your
CROP HAIL INSURANCE POLICY
 Cover You Against Losses From



- ✓ Drought!
- ✓ Freeze!
- ✓ Flood!

→ **OURS DOES** ←

Ask Dale or Laverne at **GOEN & GOEN**
 102 E. California Floydada, TX 79235
 983-3524

For The Details About Our
***Comprehensive Crop Insurance Policy (35-70)**

*Multi-Peril Crop Insurance With Our 35-70 Hail Endorsement

PIK COTTON

If you have PIK cotton for sale, we can help you obtain the best price when you decide to sell.

We can provide you up-to-the-minute quotations on PIK cotton prices.

We offer a sound contract with several special features that may be of benefit to you.

We want to work with you to get you more money.

Contact the gin of your choice for complete information.

Brown Gin - 983-3359

Cone Coop Gin - 657-4468

Paymaster-Aiken - 652-3333

Blanco Gin - 697-2631