

AY  
AR  
mented  
rown -  
Gor-  
r, and

Rotary Donkey Game  
Tuesday, Aug. 1

# RANGER TIMES

Cheerleader Car Wash  
This Saturday

Volume 49

Price 10 Cents

RANGER, TEXAS 76470 — THURSDAY, JULY 27, 1967

NUMBER 19



In this corner,  
with  
**COLLINS**

Had a call Monday morning from Gene Taft manager of the Teddy and Five singing group. Plans have been made for a concert to be held here Thursday night Aug. 3 at the Ranger Junior College Campus.

Noticed Ben Franklin store is nearing completion. The store has expanded some 13 to 15 feet and has a new glass front which looks very attractive. Several Ranger stores are getting a face lifting which gives the city main street a good appearance.

We talked with W. T. Eaton at Lone Star Gas Co. about the Scouting activities in Ranger. He said the Scouts are in need of an Explorer Advisor and a Cubmaster. With all the fine boys here Scouting is a good program for them to be in.

The local police were on a hot chase over the weekend. The siren wiring started smoking and soon the siren stopped working. After examining it they found a short in the wiring.

My son came in the other day and asked "Dad if athletes get astronaut feet what does astronauts get?" Since I had no idea I asked "What?" He replied "Mistletoe". How about that?

## Cheerleaders To Sponsor Second Car-Wash Saturday

Ranger High School cheerleaders sponsored a car-wash Saturday, July 22 at Ogden's Car-Wash, Highway 80 West. It was reported to be a success. The girls, along with several members of the Bulldog football team, made approximately \$57.

The cheerleaders are working to make enough money so they can attend a Cheerleader's school at S.M.U. in Dallas.

It was reported that it would cost \$45 per girl to attend the school.

Another car-wash will be held Saturday, July 29 at Ogden's Car-Wash for those who failed to get their autos clean-

### For Operation of School . . .

## Ranger Schools Have Decrease In Tax Money

Ranger Public Schools will have some decrease in tax money available for operation of schools due to decrease in assessments Supt. James R. Clark reports.

The 1966 tax roll for the school showed \$81,065.10 was due to be collected if 100 per cent of the taxes had been collected. The roll just completed shows only \$79,046.55 will be collected after Oct. 1, if all taxes are paid in full.

Only 91 per cent of the taxes for the past year have been paid at this time Clark said.

Based on 91 per cent collections the public school can expect to collect \$85,147 for local maintenance and \$16,784 for the interest and sinking fund to pay for school bonds in 1967-68.

The reason for the decrease in tax money expected is that Ranger has lost from the tax rolls such property as J. C. Penny, Anderson Chevrolet Co., the Joseph Apartments, Railway Express and less production on one oil company which lowered the rendered roll over \$14,000. All cars and trucks are lowered this year due to a new formula used by the State.

A decrease in State aid will in a sense take place since the teacher pay raise will cost the district over \$52,000 next term.

Ranger will pay \$16,910 next months on old school bonds out of a bond account that has \$31,102.17 in it to date. The bonds are payable once a year Sept. 1st. The following year the school will pay \$16,789. Payments will go over \$17,000 some years.

Mr. John David McLean has been accepted as Biology instructor at Ranger Junior College as announced by the president, W. E. Mince.

Mr. McLean holds the Bachelor of Science and Master of Science from Texas Tech College and has done graduate work at the University of New Mexico, Texas A&I, SMU, Texas Tech, and Texas A&M.

He has been instructor of Botany at Texas Tech College for three years, Chairman of Science at Crane High School and Chairman of Science Co-ordination for Crane Ind. Schools for 15 years.

He served in the USAF from Sept. 1942 to Jan. 1946 and Air Force Reserves from 1949 to 1954.

Mr. McLean and wife, Gladys, have a daughter, Sharon, who will be a freshman in high school and a son David, who will start first grade.

## Band To Add 3 Majorettes

Mr. Richard Helmscamp, Ranger High School band director, announced try-outs for three new positions in the High School Band Majorette line.

Positions needed is one majorette for each file of band members. Mr. Helmscamp said the size of the band and the style of marching he will be teaching, six majorettes are needed.

Any girl interested in performing in the majorette line may contact Richard Helmscamp at 647-1516 before August 1.

## Teddy Neely Five To Appear In Ranger Thursday, Aug. 3

Special arrangements have been made between Capitol Records and the Ranger Times to have the Teddy Neely Five to appear in Ranger in an all free concert Thursday, Aug. 3. The one-night show will be held at the Ranger Junior College Campus starting at 8 p. m. There will be two 45 minute shows according to release by Gene Taft, manager of the singing group.

Among the group is Teddy Neely, organizer of the group and Bill Patton, guitarist, both musicians former Rangerites.

Teddy and Bill started the group several years ago in teen-agers and were known for their singing county wide.

Their group was first known as The Teddy Bear. After much practice and hard work the group were called on to do shows at Farm Bureau meetings, Teen-Tow meetings and jamborees.

After graduation from high school the group left for the West Coast where they made records and made personal appearances. They had to change the name of the singing group since they were not yet in the profession field.

Teddy and Five have recently appeared on several net-work TV shows and it is reported Teddy has signed a movie contract and will be on Broadway in New York.

Teddy and Five will appear in Ranger August 3 at the Ranger Junior College campus. Pictured, left to right, are Paul Talbot, Teddy Neely, a disc jockey of California, Bill Patton, Lynn Reedy and Jerry Lemair.

Photo by Capitol Records, Inc., Hollywood, Calif.

## John D. McLean To Instruct Biology At RJC

Mr. John David McLean has been accepted as Biology instructor at Ranger Junior College as announced by the president, W. E. Mince.

Mr. McLean holds the Bachelor of Science and Master of Science from Texas Tech College and has done graduate work at the University of New Mexico, Texas A&I, SMU, Texas Tech, and Texas A&M.

He has been instructor of Botany at Texas Tech College for three years, Chairman of Science at Crane High School and Chairman of Science Co-ordination for Crane Ind. Schools for 15 years.

He served in the USAF from Sept. 1942 to Jan. 1946 and Air Force Reserves from 1949 to 1954.

Mr. McLean and wife, Gladys, have a daughter, Sharon, who will be a freshman in high school and a son David, who will start first grade.

Positions needed is one majorette for each file of band members. Mr. Helmscamp said the size of the band and the style of marching he will be teaching, six majorettes are needed.

Any girl interested in performing in the majorette line may contact Richard Helmscamp at 647-1516 before August 1.

Mr. Richard Helmscamp, Ranger High School band director, announced try-outs for three new positions in the High School Band Majorette line.

Positions needed is one majorette for each file of band members. Mr. Helmscamp said the size of the band and the style of marching he will be teaching, six majorettes are needed.

Any girl interested in performing in the majorette line may contact Richard Helmscamp at 647-1516 before August 1.



TEDDY AND FIVE will appear in Ranger August 3 at the Ranger Junior College campus. Pictured, left to right, are Paul Talbot, Teddy Neely, a disc jockey of California, Bill Patton, Lynn Reedy and Jerry Lemair.



RAY NEWNHAM

## Ray Newnham Finishes Course In Management

BENTON HARBOR, Mich.—Attending an intensive vocational course in appliance retail business management at the Whirlpool Educational Center in Benton Harbor, Mich. was Morris "Ray" Newnham, son of Mr. and Mrs. Morris L. Newnham, Box 34, Ranger, Texas.

The Whirlpool Educational Center presents workshop courses in all aspects of appliance selling and retail management to sons or daughters of Whirlpool dealers from throughout the nation. Far more than product training, the Educational Center courses cover all phases of selling including financial management, advertising, personnel practices, service and merchandising and scores of other subjects. The seminar, entitled "Am I my father's successor?" is designed to give a practical look at the appliance retail business as a possible career for young men and women whose parents are already in the business.

## Ranger Rotary Club Will Sponsor Donkey Ball Game

Tuesday night, Aug. 1, the Ranger Rotary Club will stage their annual Donkey Ball game to be played at Little League Park at 8 p. m. according to an announcement by Luther Gohlke.

The local Rotary Club will play members of the Ranger Volunteer Fire Department.

Proceeds from the game will be used to improve the city parks. It was reported the club will purchase playground equipment for both parks. The Club has recently replaced nets on the tennis courts at Willow Park and have placed cement tables at both parks in the city.

Tickets for the ball game will be \$1 for adults and 50 cents for children. A complete line-up for both teams will be announced at a later date.

## Local Golfers In Lakeside Pro-Am

A team led by J. L. Stafford of Cisco fired a 66 to win over an eight-team pro-am tournament at Lakeside Country Club in Eastland last Saturday afternoon.

Tied for second place, each with 68s, were teams captained by Tom Bennie and Paul Moseley, also both of Cisco.

Golf balls were awarded to the three winning teams and Club Manager Mrs. C. C. Brown reported that the club is tentatively planning to hold a pro-am each month.

On Stafford's winning team were Judy Smith of Abilene, G. P. Micham of Cisco, Joe Cahill of Breckenridge, Dick McNabb of Baird, and Pat Owens of Cisco.

On Bennie's team were Bill Stephenson, Pitt Slate, Dick Hardy, Jack Greiger and Jerry Cates.

Playing on Moseley's crew were Vickie Spoon, Joe Stephens, E. P. Crawford, Randall Ivy, Fuzzy Varner and William Holden.

Other team chiefs were Benny Skinner, Mike Miller, and Norman Rhodes, all of Eastland; F. P. Shackelford of Putnam, and Roy Pearson of Ranger.

## ASCS Measuring Peanut Crops

The Agricultural Stabilization and Conservation Service Office is in the process of measuring 1967 peanut crops where measurements are required.

James G. Meredith, office manager, has announced that Bill C. Caraway, Roddy M. Carter, Kenneth Foreman, Don Griffin, Gary Harris, Mike Moseley, Landon Reynolds, Danny Schaefer, Bobby Simpson, Macky Williams, David Rogers, Larry Snyder, and Bobby Little are helping with the measuring.

Mr. Meredith also said there are indications that this will be the last year for the crops to be measured. He said the farmers would go under a Producers Certification.

## Auto Loans At Low Bank Rates

COMMERCIAL STATE BANK  
Ranger, Texas

## Salt Water Pits To Be Studied At Austin Hearing

A not-too-clear report out of Austin this week indicates that a public hearing will be held on Aug. 7 concerning salt water disposal pits in Eastland County, but not locally would comment on the hearing.

The report said: "The elimination of all salt water disposal pits from oil and gas fields in Eastland County will be the subject of a Railroad Commission hearing Aug. 7."

"The hearing is set for 2 p. m. in the Commission's hearing room in the Ernest C. Thompson Building here."

"The Railroad Commission has ordered a halt on all oil field brine disposal pits — unless specific exemptions are written — as of Jan. 1, 1968. But dozens of earlier no-pit deadlines have been drawn such as that to be proposed Aug. 7 on Eastland County operations."



WORKING THEIR WAY through school are the Ranger High School Cheerleaders. They sponsored a car-wash Saturday, July 22, to earn money to attend the cheer leader's clinic at SMU in Dallas. Shown in the picture, left to right, are Ann Ratliff, Shelia Truesdell, Karen Mince, Johnny Graham, member of the Bulldog football team, Peggy Graham and Brad White, member of the football team. Not present for the picture was Margret Williams.



ENJOYING THE DAY CAMP were these boys who were playing "Kick Ball". Front row, Frank Pearson, Ron Butler, Gary Don Christian; Second row, Brad Collins, Mark Bethany, Richard Whitmore and back row instructors Armando Renteria and Andy Hamilton.

## WEATHER

THURSDAY - Sunrise 4:52, set 7:28, Blustery.  
FRIDAY - Sunrise 4:53, set 7:19, Stormy.  
SATURDAY - Sunrise 4:54, set 7:18, Windy.  
SUNDAY - Sunrise 4:55, set 7:17, Clearing.

9c  
5c  
5c  
9c  
5c  
9c

25c  
10c  
4c

IGER

# RANGER TIMES

4th Street, Ranger, Texas 76778 — Established June 1, 1919  
Entered as second class matter at the post office at Ranger,  
Texas under the act of Congress of March 3, 1879.

Published Semi-Weekly — Sundays and Thursdays  
By Eastland County Newspapers, Inc.  
PAT COLLINS, Editor

One week by carrier in city	15
One month by carrier in city	85
One year by mail on Ranger RFD Routes	3.50
One year by mail in county	4.95
One year by mail in state	4.95
One year by mail out of state	8.95

**NOTICE TO PUBLIC** — Any erroneous reflection upon the character, standing or reputation of any person, firm or corporation which may appear in the columns of this newspaper will be gladly corrected upon being brought to the attention of the publishers.

## CLASSIFIED

### For Sale

**FOR SALE:** 37 barrel storage tank and tower. Morton Valley. Phone MA 9-2757.

**THE SINGER COMPANY** — Sales and service on all makes of machines. Have two re-processed and sew machines. Also new machines. Call Mrs. John Tibbels, MI 7-1322.

**FOR SALE:** Heavy-duty trailer suitable for peanuts and water hauling, extra large tires. Also 80 Gallon tank. Call MA 9-698 after 5 p. m.

**FOR SALE:** Road material, driveway material, concrete block, sewer line rock and agriculture limestone. Call King Aggregate Materials, Power Plant Road, Eastland (was H. I. Zachary Company). Phone Eastland MA 9-1816, Cisco HI 1-1111.

**FOR SALE:** We are offering or lease Lynn's Lake Lodge at Lake Cisco, south shore. You can buy it as going business or we will accept bids on the individual cabins. Each compact, furnished, two bedrooms, bath, A-frame setting. You can leave on recent lots or move cabins to suit your location. Invited to call Mrs. E. Jackson, Chem.

**FOR SALE:** Good, clean used 3-inch tires — 600x13s and 50x13s, \$3 each. See these and many more at Horton Tire Co. Eastland.

**FOR SALE:** Lake Leon cabin. Call MA 9-2757 in Eastland.

**FOR SALE CHEAP:** Nice three-bedroom house, immediate possession. Good location, close to school, mostly finished. 1102 Young St. Phone 47-3109.

**FOR SALE:** Household furniture at 214 S. Marston St and other used furniture & household goods. Contact Arnold's, 605 Walnut St.

**FOR SALE:** Will sell my 1962 Opala, 4-door sedan, 327 engine, radio, heater, white with red interior, good tires. One owner car. Call Ralph Sittler, 19-2641.

**FOR SALE:** 150 acres land, 3 room house with bath, well & 90-gallon tanks, net fence, 10 trees, coastal bermuda, 500 saring pecan trees, apple and such trees. Located one mile off highway. Also 706 acres land, 130 in coastal bermuda, 43 1/2 acres peanut allotment 1200 pecan trees, well of tanks, good 3 room house, crals, utilities, one school bus route, net fences, steel ch. Tom B. Stark, phone 2-1144, Cisco.

**FOR SALE:** Three bedroom house, two baths, double garage, 808 W. Main. Phone 647-33.

- SEIBERLING
- FIRESTONE
- COOPER

The Reliable One

### HORTON Tire Service

Eastland

### ELECTROLUX Factory Authorized Sales & Service

Free Home Demonstrations — No charge for service calls.

**JACK BEDFORD**  
Box 72, Cottingham, Texas 79504

**FOR SALE:** Two bedroom house with 3 acres of land, two miles on highway 80 East. C. A. Strong, tel. 647-3452.

**FOR SALE:** 1-1952, 36 passenger Chevrolet school bus and one 1962 48 passenger Dodge school bus. Send bid to Supt. James Clark, Ranger Schools, Ranger, Texas, in envelope marked "BID ON BUS." Bids to be opened August 8. Board reserves right to accept or reject any or all bids. Buses may be seen and driven.

### Notice

**GARAGE SALE:** Saturday at 9:30. Next door to police station in Ranger. All items for sale.

**NEED responsible party in Ranger to take over payments on late model Singer sewing machine, automatic zig-zag, per, blind stitches, fancy patterns, etc. Assume four payments at \$6.12, discount for cash. Write Credit Manager, 23225 Pine, Abilene, Texas. If**

**NOTICE — Learn to fly in Cab J-3 two Piper tri-pacers, and Cessna Skylane. Charter tips, airplane rentals, Commercial pilot, flight instructor or on duty. Cisco Flying Service, Cisco Municipal Airport.**

**NOTICE — Call or see us for rubber stamps. The Ranger Times.**

**NOTICE:** Learn a profession in just a few short months. Complete training. Low tuition, easy terms. Part time students welcome. Texas Barber College, 455 Pine, Abilene. Phone OR 4-5891.

**NOTICE:** If you want to drink that's your business. If you want to stop, that's ours. Trichloroethylene Anonymous, Box 542, Eastland, Tex. 500 N. Seaman.

**NOTICE:** Arthritis, rheumatism sufferers, try Alpha Tablets. Relief lasts for hours. Only \$2.49. Swaney's Pharmacy.

### Lost

**LOST:** One lady's Elgin watch. Lost Sunday morning. Reward. If found, please call 647-1845.

### Rentals

**FOR RENT:** Four room unfurnished house, three miles northwest of Ranger. Call 647-1321.

**FOR RENT:** Unfurnished duplex apply at 200 East Valley.

**IF YOU WANT work but cannot give full time we have just the thing you need. Write Avon Mgr. Box 13446, Ft. Worth**

**FOR RENT:** Four room unfurnished apartment, utilities paid. Prefer elderly lady or elderly couple. Charles Bobo. Tel. 647-1671.

### Wanted

**WANTED:** Waitress. Apply Ranger Hill Cafe, Highway 80 East.



JOE SAYS:

Life is a game the child plays — the parent is coach.

**JOE CULPEPPER** of Hood King Motor Co., also says: "See me for the best automobile deal."



**AWARDED DEGREE** — Donald T. Moore (second from right) received the doctor of theology degree during summer commencement exercises at the Southwestern Baptist Theological Seminary in Fort Worth, Friday. He is former pastor of Cisco Baptist Mexican Mission.

With his wife Rev. Moore is a mission appointee of the Southern Baptist Home Mission Board for Puerto Rico.

Others included are, left to right, Dr. Jesse Northcutt, dean of the school of theology; Dr. Robert Baker, chairman of graduate studies in theology; and Dr. Robert E. Naylor, seminary president.

## MEMO for MODERNS

by Julia Hunter, Home Economics Director  
Lone Star Gas Company

Barbecue is a part of the southwest. Spanish explorers were enthusiastic about the cooking West Indian natives did on a wooden framework over a bed of coals. The name the natives gave the framework was "barbacoa." As the method of cooking spread, the word for the framework came to mean the type of cooking. The word changed to "barboka" and finally, with the help of French explorers along the Mississippi Valley, the modern term "barbecue" emerged.

Barbecue equipment has become much more sophisticated but the method remains basically the same, a grill and a good fire. With conventional grills, allow about 45 minutes after the fire is started in the grill to be sure of a good bed of coals. Too frequently the cooking is finished when the coals have reached perfection. If you are using a gas-fired outdoor barbecue grill, there is only a few minutes to wait since gas grills heat almost instantly and maintain controlled temperature through the cooking period. Follow the directions that come with the unit.

**Peppered Steak** — Try Peppered Steak for a change from the usual barbecued steaks. Have a 4-pound chuck steak cut at least 2 inches thick. Slash fat edges of steak. Apply instant meat tenderizer according to package directions working in with long-tined fork at one-half-inch intervals. Press 2 to 3 tablespoons cracked or coarsely ground pepper on both sides of steak. Cover loosely and refrigerate 1 hour. Grill 30 to 45 minutes, turning frequently with tongs. To serve, slice diagonally across grain at about a 30 degree angle. Cut in thin slices. Makes 6 to 8 servings.

**Beef-On-A-Skewer** — Beef-On-A-Skewer has an unusual flavor added by anise in the marinade. Place 2 pound boneless chuck, cut in 1 one-half-inch cubes, in a shallow baking dish. Combine 1 crushed garlic, 1 tablespoon Worcestershire sauce, one-third cup red vinegar, 1/4 teaspoon ground anise, 1 tablespoon instant minced onion, 1/4 cup salad oil, and 1/4 cup water. Pour marinade over cubed chuck and refrigerate, covered, about 1 hour, turning occasionally. Remove chuck from marinade and thread on 6 skewers. Grill 5 to 6 inches from coals or over medium setting 6 minutes on each side. Combine remaining marinade and 1/4 cup chili

sauce in sauce pan and bring to boil over low flame. Reduce flame and simmer 5 minutes. Brush sauce over meat during last few minutes of grilling and serve rest of sauce with meat. Makes 6 servings.

**Barbecued Pork Ribs** — Barbecued Pork Ribs are basted with a quick and easy sweet and sour sauce. Cut 3 pound of meaty pork ribs into serving pieces. Sprinkle with salt. Grill, bone side down, over low coals or setting 20 minutes. Turn and grill until brown, about 8 minutes. Turn meat side up and continue grilling 20 minutes. Combine 1 cup chili sauce, 1 cup pineapple preserves and one-third cup vinegar. Brush on meat and continue cooking 20 to 30 minutes or until well done, basting occasionally.

**Herbed Chicken** — Herbed Chicken has a basting sauce "built in." Split 2 small broilers into halves or quarters. Combine 1/2 cup softened butter or margarine, 1/4 cup chopped chives, 1/4 cup chopped parsley, and 1 teaspoon tarragon. With a pointed paring knife, separate the chicken skin from flesh to make a small pocket. Insert herb mixture under skin of each piece of chicken. Place on grill, skin side up. Sprinkle with salt and pepper and brush with melted butter or margarine. Grill 12 to 15 minutes. Turn and brush with melted butter or margarine. Continue grilling 12 to 15 minutes. Makes 4 servings.

**Barbecue Sauce** — For a true Texas flavor, use this Barbecue Sauce to baste meat or poultry when grilling foods. In a saucepan combine 1/2 cup of butter, margarine or vegetable oil, 1 1/2 cups hot water, 2 tablespoons vinegar, 1/4 teaspoon salt, dash black pepper, dash red pepper, 1/4 teaspoon paprika, 1/4 teaspoon chili powder, 1 teaspoon sugar, 2 teaspoons prepared mustard, 1/4 teaspoon Worcestershire sauce, few drops liquid hot pepper seasoning, 1 teaspoon chopped onion and 1 clove garlic. Bring to boil over medium flame. Remove garlic. Makes approximately 2 cups.

Write "Memo for Moderns", Lone Star Gas Company, 301 South Haywood Street, Dallas 1, Texas.

## HOSPITAL NEWS

Patients in Ranger General Hospital Wednesday morning were:

Mary Tucker, Mrs. J. E. Bryan, Mrs. H. B. Dawson, Mrs. Allie Langford, Mrs. H. C. Vandever, Mrs. George Stewart, Mrs. L. L. Womack, Mrs. Alma Ball, Mrs. Ruth Honea, Mrs. Marie Midkiff, Mrs. Earl Horton, Mrs. Ann Kincaid, Mrs. Lyndell Stover, and baby girl, Wayne Hale, Mr. W. E. Bradshaw, Charles O'Steen, Mr. Nobel Robertson, Burt Banks, Lee Roy Nipp, Mr. Jimmy Fox, Mr. Jack Gilbert, Mr. H. E. Langford, Mr. Lether Buckbee.



He's never:  
written to his Congressman,  
visited an historic  
place of interest,  
voted in an election,  
written to an editor,  
tuned in a public-affairs  
TV program,  
participated on local  
citizen committees,  
read the Bill of Rights.  
He's Goofy.  
But you're not.

Yet chances are you haven't done some of the things on this list. That shouldn't be. That's why the Walt Disney organization lent us one of his most famous characters. We figure he'd help you remember how completely goofy it is not to exercise every advantage the American heritage offers. So look that list over. They're not big things, really. But have everyone do everyone of them and you've got a big thing going. For freedom.

FREEDOM: THE MORE YOU USE IT, THE LONGER IT LASTS.

Get your "Freedoms Handbook" today.  
Freedoms Foundation, Valley Forge, Pa. 19481  
Yes, I want to help preserve our American Way of Life and pass it on intact to future generations.  
 Please send my free copy of "Freedoms Handbook."  
 Please use this contribution of \$ \_\_\_\_\_ to further your work.  
Name \_\_\_\_\_  
Address \_\_\_\_\_  
City \_\_\_\_\_  
State \_\_\_\_\_ Zip Code \_\_\_\_\_

## LACASA NEWS

Mrs. Fanny Mitchell of San Antonio has been visiting the past week with her sister, Mrs. Mary Herrington and brother, Grover Jennings, who is staying with Mrs. Herrington.

Mr. and Mrs. James Raney of Houston came Thursday to visit his parents, Mr. and Mrs. D. B. Raney. They came by their sisters, Mrs. J. H. Gorrell and spent Wednesday night, bringing Jimmy, who had been visiting the Gorrells the past ten days. The other two sons, Dean and Brian, had been with the grandparents while James and wife were in Florida visiting his brother, Charles and family. The family left for Austin Sunday morning where they will visit her parents, Mr. and Mrs. Dean Whiffen enroute home.

Mr. and Mrs. Sid Whitley of Mineral Wells visited her parents, Mr. and Mrs. Cecil Stuard Sunday.

Rev. Ted Maas of Fort Worth preached at New Hope Baptist Church Sunday. His wife and children, Sharyl, Scott, Sandra, Richard, and Gary were with him. Other visitors were their friends, Becky Partan and Mr. and Mrs. Sam Gray and children, Shirley, Linda, Cathy, and Curtis, also from Fort Worth. The group was on a camping trip to Possum Kingdom Park.

Shirley Jackson, who underwent a tonsillectomy at Stephens Memorial Hospital Friday came home Monday. She is alright, probably has a sore throat.

A revival meeting will begin at New Hope Baptist Church Sunday evening, July 30, with Rev. Bill Wiggins of San Antonio preaching. Rev. Wiggins is pastor of the Mexican Mission of Castle Hills Baptist Church. He was formerly an oil well driller in this vicinity. The pastor of Castle Hills Baptist Church, Rev. Jack Taylor, who was assistant pastor at New Hope Church, plans to be here one day of the revival, announcement to be made later.



### LAND GIFT TO UNIVERSITY

The University of Houston has been authorized by the Texas Legislature to accept a gift of 50 acres of land to be used as the site of the university's Clear Lake City Center. Friendswood Development Company, a subsidiary of Humble Oil & Refining Company, will donate the land, which is near NASA's Manned Spacecraft Center southeast of Houston. John B. Turner, left, president of Friendswood, and Dr. Philip G. Hoffman, president of the university, examine the site on a photographic map. The University of Houston plans to construct a \$3 million building on the property in 1969 to serve personnel of NASA and aerospace firms, as well as other residents of the area.

## Personals

Mrs. E. C. Hatley of Tucson, Arizona and Dick England of Fort Worth, have been visiting their cousin, Mrs. Acalea Woods.

Mr. and Mrs. Edgar D. King, Eddie, two years old and Lisa, one, are among Ranger's new residents.

Mr. King will attend Ranger Junior College this fall. He has recently returned from military service in Germany and plans to be associated with his mother, Mrs. Jesse Brown, of paper routes in Ranger.

Mr. and Mrs. Thelma Herrington visited Sunday with their son, Bill, and family at Snyder and her brother, at Lubbock.

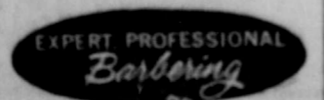
## NOTICE

CISCO STEAM

LAUNDRY

now has answering service in Ranger. Pickup and delivery every day. For fast service call

647-1380



**BILL'S Barber Shop**

Mrs. Ora Holder visited her mother, Mrs. Alice Williams of Hereford recently. Mrs. Williams is at home with another daughter, Mr. and Mrs. Buster Cofer of McLean.

# State Capital News

AUSTIN, TEXAS — Newspaper readers throughout Texas soon will be seeing long columns of type about important issues as Secretary of State John Hill begins to advertise the six proposed constitutional amendments to be voted on Nov. 11.

Fourteen additional amendments will be on the 1966 ballot. Eight of the 20 amendments are of interest mainly to special groups, (eg; legislators or state employees). Eight others would provide local governments with new powers or duties. Only four of the group directly affect most Texans.

Amendments to be voted on this year will appear on the ballot in this order: No. 1, House Joint Resolution 3, to permit counties to put all tax money in a single general fund rather than dividing income in specified amounts among separate funds for earmarked purposes as is now required.

No. 2, HJR 37, allowing cities and other governmental units within hospital districts to levy taxes for participation in mental health and mental retardation community centers.

No. 3, HJR 47, reviving the veterans land program and authorizing a total of \$400,000,000 in bonds to finance continued purchase of farm and ranch land by veterans, including those who have served in Southwest Asia during present hostilities.

No. 4, HJR 6, authorizing counties to pay medical, doctor and hospital bills of county law enforcement officers injured in line of duty.

No. 5, HJR 12, authorizing a \$75,000,000 state revenue bond issue for the development of state parks and recreational areas. Bonds are expected to be financed by a small admission fee.

No. 6, HJR 27, permitting state officers and employees to hold non-elective positions under the state or U. S. governments where there is no conflict of interest and where the state might benefit.

That's all for '67. Top interest in these amendments doubtless will center on the park bond proposal and the veterans land amendment.

Hospital mental health and mental retardation groups will emphasize the importance of Amendment No. 2 to the new community center approach of treating mental patients close to home.

Gov. John Connally is the principal backer of the parks bond issue. Last December he unveiled a 10-year plan for acquiring and developing 150,960 acres of recreational lands and historical sites. This would more than triple present state park acreage and open a variety of new facilities for outdoor recreation.

Only opposition to the amendment to date has been based on the \$1 a car parking fee, initially proposed by Connally to finance the vast program; and scattered complaints that facilities included in the governor's master plan do not adequately serve some areas of the state.

He is expected to spearhead an intensive fall campaign—supported by parks, recreational and outdoor groups—to put over the bond issue.

The veterans land amendment would add another \$200,000,000 to state bonds previously authorized and through which 35,300 veterans have purchased farm and ranch properties at low interest rates spread over a 40-year pay period.

This amendment would raise the amount which could be borrowed under the program from \$7,500 to \$10,000. The program was initiated in 1949. Additional bonds were approved by voters in 1951 and 1956. Amendments to

enlarge the bond authorization were rejected at elections in 1963 and 1965. Oppositions came mainly from Dallas and Houston.

Proponents emphasize that, while thousands of veterans have benefited from the program, it has cost the state no money and actually has turned a profit of \$2,500,000 a year while providing an expanded land market.

Opposition has adopted the argument that it is not the function of the state government to engage in the loan business and that veterans had plenty of time to

participate. Some also contend that "cheap money" invites purchases of land not needed and which will not be put to productive use.

Amendment No. 2 specifies that the legislature, in providing for creation of hospital districts, does not have to require that the districts assume full responsibility for community mental health and retardation centers and services. It would permit cities and counties to levy taxes and issue bonds for such services. Subdivisions within existing districts would be authorized to do so unless

statutes creating the districts expressly prohibit.

An attorney general's opinion held that the constitution does not allow political subdivisions within the boundary of a hospital district to levy taxes for medical and hospital service. Under that ruling, cities and counties, located in such districts were restricted from participating in establishment of community health centers. Therefore, only hospital districts could establish such centers, a key part of the mental health program. Amendment No. 6 is aimed

are self explanatory and apparently non-controversial. Amendment No. 6 is aimed primarily at permitting educators, who are paid from funds, to serve on federal advisory boards.

The soil of Eastland County is largely sandy and sandy loam, some black and gray.

Mesquite, post oak, black-jack and cedar are on the hills of Eastland County and pecan and elm are in the bottoms. Eastland County population, in 1960 Federal Census, was 19,526.

**NEED HEARING HELP?**  
**IF YOU HAVE THE SLIGHTEST DOUBT ABOUT YOUR HEARING** — If you think people mumble if you don't hear in church — if you turn the TV too loud for others — if you hear but do not understand — if you feel "left out of things"—OR **YOU WEAR A HEARING AID BUT ARE NOT SATISFIED WITH ITS PERFORMANCE—**

THEN WRITE  
**McELYEA HEARING SERVICE**  
 2034 Cedar Crest Dr. Abilene, Texas 79

LUNCH MEAT  
**SPAM**

12 OZ. CAN **49¢**

Bathroom Tissue  
**SCOTT TISSUE**

1000 SHT ROLL **10¢**

FOOD KING  
**MARGARINE**

LB. 3 LB. LIMIT **10¢**

**SLICED PICNICS** ..... DECKER'S SMOKED LB **39¢**  
**COOKED HAM** ..... Decker's Boneless Ranch Style 2 to 4 LB AVG. LB **1 29**  
**CHUCK ROAST** ..... FLAVOR FED BEEF LB **49¢**

**SAUSAGE** Shop Made LB **49¢** **CHEESE** Kraft Longhorn 10 Oz. Pkg **59¢**  
**SLAB BACON** Neuhoff by the Piece LB **59¢** **PATTIES** Hamburger Pkg. of 10 **99¢**  
**SLICED BACON** Neuhoff LB **65¢** **STEAKS** Beef & Veal Pkg of 10 **\$1**

DECKER'S SMOKED  
**PICNICS**  
 lb. .... **35¢**  
 6 to 8 LB. WHOLE

DEL MONTE Fruit Cocktail 4 303 CAN <b>\$1 4</b>	DEL MONTE Green Beans 4 303 CAN <b>\$1 4</b>	SHURFINE Canned Milk 7 TALL <b>\$1 3</b>	White or Ass'd Colors Scott Towels 3 BIG ROLL <b>\$1 3</b>	CARNATION Inst. Breakfast 6 PAK ENV <b>69¢</b>	SHURFINE Red Salmon TALL CAN <b>79¢</b>
---	--	--	--	--	---

**CLEANSER** Ajax 2c Off 2 14 Oz Can **25¢** **HAIR SPRAY** Suave 13 Oz Can **49¢**  
**BLEACH** Energy Luiquid 1/2 GAL **23¢** **SHAMPOO** Head & Shoulders Med Size **69¢**

**MIX OR MATCH**

DEL MONTE FRUIT DRINKS 3 46 OZ Cans <b>\$1</b>	DEL MONTE GOLD CORN 4 No 303 Cans <b>\$1</b>	DEL MONTE NEW POTATOES 5 No 303 Cans <b>\$1</b>
CARNATION TUNA 3 No 1/2 Cans <b>\$1</b>	DEL MONTE VEG ALL MIXED 4 No 303 Cans <b>\$1</b>	DEL MONTE TOMATOES 5 No 303 Cans <b>\$1</b>
SHURFINE CATSUP 3 20 OZ Btls <b>\$1</b>	MIXED VEGETABLES 4 No 303 Cans <b>\$1</b>	HOMEFOLKS BLACK EYE PEAS 6 No 300 Cans <b>\$1</b>
	V-8 COCKTAIL 4 24 OZ Cans <b>\$1</b>	FRANCO AMERICAN SPAGHETTI 6 No 303 Cans <b>\$1</b>

**J.R.B. SUPER MARKETS**  
**BONUS STAMP CARD**  
 THIS CARD IS WORTH 1000 STAMPS IF COMPLETELY PUNCHED OUT BY (SAMPLE CARD) 196 (Date Card Expires)

**FROZEN FOOD VALUES**

WHIPPING CREAM 1/2 pt. ctn. <b>29¢</b>
FROZEN DINNERS FOREMOST <b>39¢</b>
FISH STICKS BANQUET <b>\$1</b>
SEA STAR 4 8 OZ Pkg <b>\$1</b>

Get Your J.R.B. S&H Green Stamp Bonus Cards Today - Worth 1,000 FREE Stamps If Punched Out Within One Month.

*Garden Fresh Produce Features!*

LARGE SIZE AVOCADOS	lb	19¢
LARGE PASCAL CELERY	stalk	10¢
GARDEN FRESH BELL PEPPERS	each	10¢
FRESH AND CRISP CUCUMBERS	lb	15¢

**J.R.B. SUPER MARKETS**  
 S&H GREEN STAMPS WITH EVERY PURCHASE  
 PRICES GOOD IN RANGER  
 Quantity Rights Reserved - No Sale To Dealers

## 'Women of Texas' Is Theme Of New Historical Marker Series

AUSTIN—The Texas State Historical Survey Committee and its private affiliate, the Texas Historical Foundation, working in cooperation with the Texas Federated Womens Clubs have initiated a new official state marker series to commemorate the "Outstanding Women of Texas." The announcement was made by Charles R. Woodburn, president of the Texas State Historical Survey Committee.

Woodburn pointed out, "There isn't an organization in the state of Texas better qualified than the Texas Federated Womens Clubs to spearhead the program needed to bring recognition, long past due, to the women who made Texas great."

The goal of the program by the three agencies is to mark, preserve and restore the birthplaces, homes and scenes of accomplishments of Texas women who have contributed to the economic, cultural, political and social life of their community, area and state.

Woodburn stated, "We don't have a county in Texas that doesn't have at least one woman who should be honored for the part she had in making that county a better place in which to live."

"While the old saying 'the hand that rocks the cradle is the hand that rules the world' may be slightly exaggerated, the women of Texas played a part in guiding the destiny of our great state."

Mrs. B. F. Seay of Andrews, president of the Texas Federated Womens Clubs of Texas said, "We are deeply gratified to have this opportunity to work with the Survey Committee on this important project and are pleased that the Committee sees fit to so honor Texas women."

**BATTERY**

TROUBLES?

CALL **HORTON TIRE CO.**

628 - 1420  
 \$8.95 and up plus tax

**JOYDRIVEN**  
 Show Starts At Dusk  
**WED - THURS - FRI**  
**the FLIGHT of the PHOENIX**  
 COLOR BY NINE

SAT - SUN - MON.  
 Also Matinees Palace Saturday Afternoon 2:00

The new... Flint adventure...  
**UNLIKE FLINT**  
 A SAUL DAVID PRODUCTION  
**JAMES COBURN**  
 COMING SOON

THE CITY THAT BECAME A TORCH — THE TORCH THAT FIRED THE WORLD!

CHARLTON HESTON LAURENCE OLIVER  
 RICHARD JOHNSON RALPH RICHARDSON  
 A JULIAN BLAUSTEIN PRODUCTION  
**Khartoum**

# CAMP MURAL, POSTMASTER FEATURED IN WOMAN'S DAY

Eastland Post Office mural and its creator, postmaster Marene Johnson, featured prominently in August issue of Woman's Day, a major home-interest magazine, distributed nationwide through super market outlets.

Designed and submitted by Eastland Librarian Mrs. A.E. Johnson, the article is accompanied by a black and white photo of Mrs. Johnson with her mural, and is featured in the "What Goes On" section.

The article says in part: "It was, literally, a dream come true for Marene Johnson to see her post-office mural in the August issue of Woman's Day. The morning she found herself in the Eastland Post Office, she found herself in the August issue of Woman's Day. The morning she found herself in the Eastland Post Office, she found herself in the August issue of Woman's Day. The morning she found herself in the Eastland Post Office, she found herself in the August issue of Woman's Day."

Mr. and Mrs. Eugene Henson of Houston visited his mother, Mrs. Marnie Henson, over the weekend. Mrs. Clem Ratliff and Charlotte Burrage of Artesia, N.M. are visiting Mrs. Henry Davenport for several days. Visiting Mr. and Mrs. A.N. Bradford Sunday was Rev. Ted Masz of Fort Worth, Mrs. Truman Lawler and son Norman, Mrs. A. L. Stiles and Mrs. Lacy Kendrick of Ranger. Visiting Mrs. Callie Ainsworth this week is her son, Mr. Lonnie Ainsworth and family.



**VICTOR'S FAMILY** — Mrs. Don January, the former Pat Rushing, plays with children Cherie, 9, and Richard, 5, in the home of her parents, Mr. and Mrs. Herman Rushing. The family saw Don win the PGA Golf Tournament in Denver, Colo., Monday, via television in the Rushing home. Son Tim is in Brownwood.

## PGA Champion Don January Has Big, Enthusiastic Eastland Gallery

Denver, Colo., is known as the Mile-High City and the excitement was ever bit that high in the Herman Rushing home at 303 S. Oaklawn, Eastland, Monday evening as the televised playoff of the PGA Tournament unfolded. In Denver, Don January, a veteran Dallas pro who has played courses in this area many times, was breaking a 11-year playoff jinx in beating Neighbor Don Massengale, by two strokes in the 49th PGA Golf Championship. January shot a three-under par 69 and Massengale, 71. Mrs. January, the former Pat Rushing, her children, Tim, 12, Cherie, 9, and Richard, 5, were joined by her parents, Mr. and Mrs. Rushing, her sister and family, Mr. and Mrs. Darwin Miller for the exciting playoff round. January, 37, and Massengale, 40, jumped over giants like Nicklaus and Palmer Sunday to tie for the crown, each with 281.

joining the PGA champion after he's to play in Minneapolis this weekend and in Chicago the following weekend, before he comes home for a visit. He's affiliated with Great West Life Insurance Co. in Dallas. Many others followed the play with interest in this area. Mrs. January graduated from Eastland High School in 1949 and from North Texas State University in 1953 — the same year she and Don married. Don called Monday night, about an hour and a half after the play ended. Pat said, "It took him that long to get out of the press room, but we didn't mind. I'm so glad he won and that they wanted him there that long."

The Rushing den-side television crowd cheered as "their Don" overcame a two-stroke deficit on the eighth and go ahead to stay on the 10th. January lost a PGA playoff title in 1961 and the victory Monday netted him \$100,000 in prize money and some \$50,000 in endorsements. Tuesday, Mrs. January and the two younger children, Cherie and Mike Miller, were going to Brownwood where older brother Tim and Mike will compete in a golf tournament. Mrs. January and children made the June portion of the tour, but dropped off during July so the youngsters could visit their grandparents and cousins. They'll be re-

quite a number were in De Leon Monday afternoon to attend the funeral for Charlie Browning who passed away Sunday afternoon in the Gorman Hospital following a long illness. He was a brother-in-law of Mrs. Ray Guthery.

### Civil Court

The following proceedings were had in the Court of Civil Appeals, Eleventh Supreme Judicial District of Texas:

**AFFIRMED**  
Tom Brown Drilling Company et al v. Emil Nieman. (Opinion by Judge Collings); Dawson.

**Reformed and Affirmed**  
Ralph W. Gossett et al v. The State of Texas et al. (Opinion by Judge Collings); Howard.

**Reversed and Remanded**  
Lex L. Penix v. Victor Truman Spoon. (Opinion by Judge Walter); Jones.

**Motions Submitted**  
Missouri Pacific Railroad Company v. Whittburg & Alston. Appellant's motion for rehearing; Nueces.  
Missouri Pacific Railroad Company v. Whittburg & Alston. Appellee's motion for rehearing; Nueces.

**Motions Overruled**  
Missouri Pacific Railroad Company v. Whittburg & Alston. Appellants motion for rehearing; Nueces.

**Motions Overruled**  
Missouri Pacific Railroad Company v. Whittburg & Alston. Appellants motion for rehearing; Nueces.

**Motions Overruled**  
Missouri Pacific Railroad Company v. Whittburg & Alston. Appellants motion for rehearing; Nueces.

**Motions Overruled**  
Missouri Pacific Railroad Company v. Whittburg & Alston. Appellants motion for rehearing; Nueces.

**Motions Overruled**  
Missouri Pacific Railroad Company v. Whittburg & Alston. Appellants motion for rehearing; Nueces.

**Motions Overruled**  
Missouri Pacific Railroad Company v. Whittburg & Alston. Appellants motion for rehearing; Nueces.

**Motions Overruled**  
Missouri Pacific Railroad Company v. Whittburg & Alston. Appellants motion for rehearing; Nueces.



**JUST BEFORE A COOL DIP** in the Willow Park Swimming Pool these students of the Day Camp posed for the Times Photographer. Shown on the bottom row is Kelly Scruggs, Chuck Smith, Mary Ellen Hodges; Second row left to right is Billy Bordeau, Michael Butler and Gary Bagwell. Standing is one of the instructors of the Day Camp, Jane Pearson.

Mrs. Estell Davenport of Fort Worth is visiting Mrs. C. E. May for several days. Mrs. H.T. Lane has returned home from Temple where she had gone for a check-up.

### Garage Sale

Clothes, household goods, Drapries, records, Misc. Bargains Galore. Most items 50¢ or less. Everyone welcome.

**E. L. NORRIS**  
Eastland, Hill

### NEW GADGET

**DUPLICATES and ADDRESSES**  
Prints 5 colors at once

**DUPL-ADDRESS**

See it at **THE RANGER TIMES**

# VACATION BIBLE SCHOOL

**JULY 31 TO AUGUST 4**

\*\*\*

## CHURCH OF CHRIST

MESQUITE and RUSK

9:00 - 11:00 A. M.

**ALL ARE INVITED**

### DESEMONA NEWS

Mr. and Mrs. S. E. Carter enjoyed their 50th year of married life Sunday when their children held open house for them at the home of a daughter, Mr. and Mrs. Doyle Johnson.

The Adult Training Union Church sponsored an ice cream supper Friday night under the huge cottonwood tree that stands in the church yard.

Hugh Abel remains a house patient at his home following an accident when he fell from a ladder.

The C.A. Skippings of Goldthwaite were here Sunday to visit Mrs. Docy William and also with the Jesse Sparkmans.

Quite a number from here attended the Conference held at the First Baptist Church in Eastland Monday night.

Mr. and Mrs. Bob Koonce visited her brother, Colman Wier, who is a patient in the hospital.

Mabron Wilcoxen of Odessa spent a few days here last week.

Mr. and Mrs. Stanley Baker are moving into the parsonage by the Methodist Church. Mr. Baker is an oil field purser.

Mr. and Mrs. James Riggs and children and his mother, Mrs. Ethel Riggs attended services at the First Baptist Church Sunday.

The Wayne Ily's of Fort Worth were here for the weekend and visited her mother, Mrs. Hattie Davis.

The annual "Homecoming" and the "School Homecoming" will be held here Saturday, August 12. There will be an entertainment committee to see that we have a good program ready. Come and meet your "Old Friends" and former school mates.

Mr. and Mrs. Paul Arnold and daughter, Debbie, of Midland spent the past weekend with his parents, Mr. and Mrs. John Arnold.

## FINAL JULY Clearance Sale

THESE PRICES FOR LIMITED TIME ONLY

ENTIRE STOCK MEN'S SWIM SHORTS And Matching Jackets NOW <b>1/2 Price</b>	ENTIRE STOCK LADIES WOOL SKIRTS NOW <b>1/2 Price</b>	ENTIRE STOCK MEN'S WALK SHORTS NOW <b>1/4 Price</b>	GROUP MEN'S SUMMER SUITS NOW <b>1/2 Price</b> Alterations Extra
---	--	---	--

### FLORSHEIM FINAL REDUCTION

selected styles regularly \$19.95 to **24.95**

# \$15

Save on selected Florsheim Shoes from our regular stock. Broken lots—not all sizes in every style. Hurry in!

## THE MAN'S STORE

Clisco  
**BOB ELLIOTT**  
"your business IS appreciated"

GROUP MEN'S SPORT SHIRTS And White Dress Shirts NOW <b>1/2 Price</b>	GROUP Famous Name LINGERIE NOW <b>1/2 Price</b> Slips - Gowns - Pajamas	GROUP Ladies Seamless HOSE 1.50 - 1.60 Values NOW <b>98¢</b>	GROUP No Refunds All Sales Final
---	--	---	--

## NEW SELECTIVE SERVICE RULE AFFECTS STUDENTS

New amendments to the Selective Service regulations affect students in three categories, according to Colonel Morris S. Schwartz, state Selective Service director.

Scholastic deferment of undergraduate college students under 24 years of age and satisfactorily pursuing a full-time course of instruction toward a baccalaureate degree is mandatory upon the request of the student. Also mandatory is deferment of graduate students in medicine, dentistry, veterinary medicine, osteopathy, or optometry.

Students taking commercial or vocational courses not leading to a baccalaureate degree may still be deferred for their activity, but this deferment is not mandatory. Schwartz said, "Deferment will be by local board judgment of the merits in each individual case and may be denied on the basis that it is not in the national interest."

### WEDDING SET

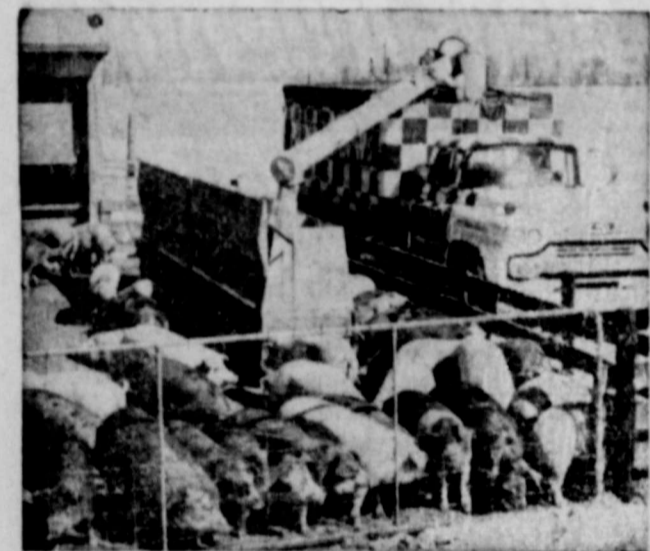
All friends and relatives are cordially invited to attend the wedding of Miss Jeralyn Anderson and Lanny Sledge. Vows will be recited Saturday Aug. 5, 8 p. m. in the First Baptist Church.

Lynda and Tommy Anderson, children of Mrs. Dorothy Anderson, are spending two weeks with Mrs. Anderson's mother, Mrs. Otis Landis of Monahan.

Mrs. Flake Turner has as her visitors over the weekend Mr. and Mrs. Frank Johnson and children of Dallas. Mr. and Mrs. Johnson also visited his parents, Mr. and Mrs. J. A. Johnson.

Visiting Mr. and Mrs. J. L. Smith were their daughter and husband, Mr. and Mrs. Terry Townsen of Louisville and Mr. Bob Hedspeath over the weekend.

Want a good SHOPPING GUIDE? Read the Advertisements in the RANGER TIMES



## BULK DELIVERY to save you time and money

Why waste your valuable time and money taking grain to be ground, waiting until it's ready, then taking it home?

Just call us. We'll bring you a Purina Check-R-Mix ration in bag or bulk. If it's bulk, we'll blow it into your tank or right into the feeders if they're close to the lane.

We'll also pick up your grain for exchange. Or you can bring it to our mill at your convenience.

We're in business to serve you with good Purina Concentrates, quick mixing service, delivery, and Purina Health Aids to mix into your rations when you need them.

Give us a ring or drop in.

### RATLIFF FEED & SEED

Ranger

LOW COST PRODUCTION... the reason more cattlemen feed PURINA



## LASSIE QUEEN



### SANDY WARLICK

Miss Sandy Warlick, 19-year-old daughter of Mr. and Mrs. Foy Warlick of Rising Star, was elected the new Shorthorn Lassie Queen of Texas at the annual meeting of the Texas Shorthorn Lassies Association held in Waco. She will represent Texas in the 1967 National Lassie Queen Contest held in Chicago in November. During the year, she will award the prizes and make numerous public appearances at the major livestock shows in Texas on behalf of the Shorthorn breed. Miss Warlick raises Shorthorn cattle, shows throughout Texas, and has been active in Shorthorn activities. She is a student at Cisco Junior College.

## Miss Joy Weeks Is Honored On Sixth Birthday

Miss Joy Weeks, daughter of Mr. and Mrs. Joe Weeks, was honored on her sixth birthday, with a party held Saturday morning, July 22, from 9 to 11.

Refreshment of birthday cake, dixie cup ice cream and orange drink was served. Those attending and receiving favors of soap bubbles were the following: Greta Gohlke, Mitch Riffle, Mike Riffle, Chuck Smith, Karrel Williams, Richard Williams, Bill Johnson, Gena Swafford, Gary Bagwell and Ken Bell.

### LOOK WHOS NEW

Mr. and Mrs. Paul Free of Odessa announce the birth of a baby daughter, Stacy Alyce, born July 21 at 7:30 a. m. in an Odessa Hospital.

Grandparents are Mr. and Mrs. Fred Lamb of Fort Worth and Mr. and Mrs. C. C. Free of Colorado City.

Great-grandparents are Mr. and Mrs. W. E. Calvert of Ranger, Mrs. Annata Lamb of Breckenridge and Mrs. Pickle of Colorado City.

The Frees also have a son, Scott, age three and one-half. Mr. and Mrs. Free are former residents of Ranger, both attended Ranger Schools. Mrs. Free is the former Freda Lamb.

James Childress, Ranger High School principal, has returned home from TCU where he was enrolled in a chemistry course.

Recent guests of Mr. and Mrs. Jesse White was Mr. White's uncle, Mr. W. W. Bagwell of Odessa and Mrs. White's sisters, Mrs. Frank McCormack of Leighton, Ala. and Mrs. Mary Burke and daughter, Beverly of Garland. Also visiting were Mr. and Mrs. James Blair and children, Jeb and Gigi of Huntsville.

Mr. and Mrs. Jesse White visited in the home of Mr. and Mrs. Alvin Woody of Abilene Saturday night.

Mrs. Helen Hagaman has returned to Ranger after visiting numerous places of interest. She visited her sister, Mrs. Sam Randolph, of Shreveport, La.; another sister, Mrs. J. K. Johnson in Jacksonville, N. C., a daughter, Mrs. E. L. Markman, Jr. and her family in Dallas; her son, John Hazaman and his family and another daughter, Mrs. T. R. Douclet and family, all of Houston. She also visited in Washington, D. C. and St. Louis, Missouri.

Visiting Mr. and Mrs. H.G. Adams over the weekend was Mrs. Swan Cramer of Colorado City and Mrs. Billie Childers of Coahoma.

Denise and David Neil Ice of Abilene are visiting their grandparents, Mr. and Mrs. Bud Blackwell.

Mrs. B. E. Stephen will accompany Mr. and Mrs. Allan Johnson of Levelland to Baker, La. to visit Mr. and Mrs. Sammy Elder and family this weekend.

## MISS ELLEN COZART HONORED WITH WEDDING SHOWER

Miss Ellen Cozart, bride-elect of Ray Kanady of Fort Worth, was honored with a wedding shower in the home of Mrs. R. V. Robinson Tuesday, July 25, from 9:30 to 11 a. m., with Mrs. Bob Revels, Francis Revels, Mrs. W. F. Aishman, Kay Aishman, Mrs. H. E. Ewing and Dorothy Ewing serving as co-hostesses.

The table was decorated with white milk glass and a center piece of lovely Sweetheart roses.

Guests were registered by Miss Francis Revels and Miss Dorothy Ewing. Receiving guests were Mrs.

R. V. Robinson, Ellen Cozart, and Mrs. Delbert Cozart, mother of Ellen.

Kay Aishman served mocha punch and cookies to the guests.

Gifts were displayed and showed by Mrs. Revels, assisted by Mrs. Ewing.

A number of friends attended and many lovely and useful gifts were received.

Miss Derinda Elder, daughter of Mr. and Mrs. Sammy Elder, former residents of Ranger, is attending cheer-leader school in Lubbock. She has been visiting her grandmother, Mrs. R. E. Stephen.

## Mrs. Ernen Haby Is Honored With Coffee Tuesday

Mrs. Ernen Haby was honored Tuesday morning 9:30 to 11:30 with a come and go coffee in the home of Mrs. E. W. Mince.

Co-hostesses for the occasion were Mrs. James Ratliff, John Wylie, Bruce Golemon, and Edwin Lammus.

Mr. and Mrs. Haby will be leaving Aug. 1, for Wharton, where Mr. Haby has accepted a position as Director of Admission and Registrar at Wharton County Junior College.

Approximately 32 guests attended the coffee.

## RANGER DRY CLEANERS

NOW OPEN IN NEW LOCATION 115 RUSK ST.

North of Tibbels Hardware

PHONE 647-1129

OFFERING SANITONE DRY CLEANING

# WE'VE CLOBBERED HIGH PRICES!

Quality Foods at a Saving

**SUGAR**  
5 lbs ..... 39c  
With Purchase of \$5.00 or More  
Excluding Cigarettes  
LIBBY'S VIENNA - 4 OZ. CAN  
**SAUSAGE 5 cans - \$1**

HI-C - 46 OZ.  
**Fruit Drink ..... 4 cans \$1**  
SHURFINE - TALL  
**Milk ..... 4 cans 59c**  
DEL MONTE - 303 CANS  
**Sugar Peas ..... 5 cans \$1**

Reg. - Junior or Super  
**KOTEX ..... 33c**

NABISCO - 12 OZ  
**Vanilla Wafers ..... 29c**

INSTANT - 1 OZ.  
**NESTEA ..... 39c**

GEBHART'S JUMBO - No 2 1/2 Can  
**TAMALES ..... 39c**

**SURE JELL ..... 2 for 25c**  
SCOTT  
**TISSUE ..... 3 rolls 33c**  
**CHARCOAL ..... 5 lbs 29c**  
LUX BATH SIZE  
**SOAP ..... 4 for 49c**  
ENERGY - LARGE SIZE  
**DETERGENT ..... 23c**

## DAIRY FOODS

FOOD KING  
**OLEO ..... 2 lbs 29c**  
SHURFINE FROZEN - 6 Oz. Cans  
**Orange Juice ... 2 cans 25c**  
MORTON'S APPLE or PEACH  
**PIES ..... 4 for \$1**

**PRODUCE**

**CABBAGE ..... lb 3c**  
**LETTUCE ..... lb 19c**  
SANTA ROSA  
**PLUMS ..... lb 25c**  
SEEDLESS  
**GRAPES ..... lb 25c**

**3 MONTH ANNIVERSARY 3 FREE - FREE**

400 Gold Bond Stmps with Purchase of \$50.00 in Groceries.  
1,000 Gold Bond Stamps with Purchase of \$100.00 in Groceries.  
All you have to do is SAVE YOUR CASH REGISTER Tapes until the amounts above are reached - Period ending August 1st - START JUNE 19th.

**MEATS**

CHOICE HOME KILLED MEATS

**SIRLOIN STEAK ..... lb 85c**  
**VEAL CUTLETS ..... lb 99c**  
**RUMP ROAST ..... lb 69c**  
GOOCHES  
**RIDER BACON ..... lb 55c**  
GOOCHES - 12 OZ PKG  
**ALL MEAT FRANKS ..... 49c**  
HORMEL 1 1/2 LB CANNED  
**HAMS ..... 1.79**

WE ARE NOW HANDLING HEAVY CHOICE BEEF

**Compare! BEST FOOD BUYS HERE**

WE RESERVE THE RIGHT TO LIMIT QUANTITIES  
FREE CUSTOMER PARKING  
Across From The Store  
On Our New Parking Lot on The Corner of Main and Austin

**Quality**  
FOOD MART

301 WEST MAIN Phone 647-3206 RANGER

# THE GORDON SPOT

By DeMarquis (Dee) Gordon  
Eastland County Extension Agent



The Annual State Pecan Growers Association's Conference was held at the Green Oaks Inn in Fort Worth July 16-17. I attended part of the conference. The Pecan Queen Pageant and State Pecan Show was held during the conference.

Susie Morgan, Eastland County Pecan Queen, represented this county very well in the queen pageant. All those attending from Eastland County were very proud of Susie. The Coryell County Pecan queen was winner of the pageant.

We were also very proud of the pecan entries from Eastland County in the state show. Eastland County growers had twenty-four entries in the show. You might like to know how an entry of pecans get into the state show. The pecans must first place in the top three places among its variety in the county show. These winners are then sent to one of three regional shows. Our winners go to the Abilene regional show. Next the top three winners in each variety at the regional shows go to the state show.

Brown County won a nice trophy for 20th most points at the state show. Eastland and San Saba Counties tied for second place in this contest. All three of these counties competed with each other at the Abilene regional show last December.

B. B. Freeman of Ranger received a rosette for the Re-

serve Champion shelling pecan at the state show. The variety that won was Ranger.

Last December when we were getting entries for the county pecan show, I ask C. L. Rodgers and Collin Campbell, Courthouse custodians to get some pecans from the Courthouse trees and enter in the show. They collected an entry of Western Schleys and an entry of Comanches. Both entries placed among the top three at the county show and were sent to the regional

show. The Comanches won first at the regional and were sent to the state. At the state show the entry placed second among the top nine Comanches from all over the state.

There were many other winners from Eastland County in the show. Mr. Freeman also won first place with his entry of Choctaws. C. E. Smith of Rising Star won four ribbons. He had the first place known cross, the second place Apache, second place Choctaw, and second place McCulley. W. V. Fenter of Rising Star won second place with an entry of Altman's. M. Parmer of Cisco won third with Apaches. Cisco growers had the top three winners of the Market Special. They were R. W. Merket, Roy Campbell, and C. E. Moates. The Leon Valley Pecan Company at Scranton had the second place Variety Seedling. This pecan has not been officially named but is much better than many of the named varieties. It is now called the Texas 60. The nut is large and shelled 61 percent kernel.

## Fort Griffin Centennial Program Is Planned At State Park Saturday

ALBANY—A troop of mounted riders, representing members of the U. S. Cavalry who in 1867 established the frontier outpost of Fort Griffin, still stand at attention for a reenactment of the event when the centennial of the founding is celebrated at Fort Griffin State Park, Saturday, July 29. A detail of Airmen from Dyess Air Force Base, representing the present day armed forces, will raise the flag.

The centennial celebration is being sponsored by the Shackelford County Historical Association which is issuing an open invitation to the public to attend the late afternoon events and to be the association's guests at a barbecue supper afterwards.

Beginning at 4 p. m., the association is offering conducted tours of the old Army Fort and the site of The Ghost Town of Fort Griffin, 15 miles

### CARD OF THANKS

We extend heartfelt gratitude to our many friends and neighbors who have been so kind to us during the illness and death of our loved one. We thank you for your prayers, the beautiful floral offerings, and food. We especially thank Dr. Bulgerin and Dr. Alexander, the staff of Eastland Memorial Hospital, and Arrington - Hamner Funeral Home. May God bless each one of you.

The family of Tom Sharp



- 81 x 108 FULL FLAT or FULL FITTED BOTTOM SHEETS — REG. 2.19
  - PKG. OF TWO PILLOW CASES - Reg. 1.09 — 2/81c
  - BLEACHED PERCALE 72x108 Twin Flat or Twin Fitted Bottom Sheets — Regularly 2.39
  - 81x108 Full Flat or Full Fitted Bottom Sheets — Regularly 2.59
  - Pkg. Of Two Pillow cases — Reg. 1.39
  - SOLID COLOR PERCALE 81x108 Full Flat or Full Fitted Bottom Sheets — Reg. 3.19
  - Pkg. of Two Pillow Cases — Reg. 1.59
- SAVE! SAVE! SAVE! ON Electric Blankets and Bedding**



### Social Security Aids In Injuries Lasting 12 Months

Thousands of working Americans suffer serious illness or injury each year. Many of these workers recover within a short time and return to their jobs. Others cannot return to work for as long as a year and some are never able to work again. What happens to the families of workers whose earnings stop? Fay Grant, Social Security Field Representative for Eastland County has these answers:

Social security disability insurance is the answer for employees, and a self-employed people who have paid security for at least 5 years out of the 10 years before their disability began. Individuals who became blind before age 31 may be insured with less than five years of work.

In addition, benefits are payable only if a worker has a disability that prevents him from doing any substantial gainful work. This disability must have lasted or is expected to last for at least 12 months.

The amount of your monthly benefit depends on your average yearly earnings. For example, if your average earnings under social security are \$4,200 a year, your disability benefit will amount to \$124.36 each month. Monthly benefits also go to dependents. A wage earner, his wife and two children, with the above average earnings would be entitled to a total of \$280.80 each month. It is important to remember that social security benefits are not paid automatically. Application should be made as soon as it seems likely the disability will prevent work for a year or longer. A representative of the Abilene social security office will be at Ranger on July 26 at 10 a. m. at the City Hall to help you in any way possible on any social security matter.

# GOOD YEAR 72-HOUR SALE

THURSDAY, FRIDAY AND SATURDAY ONLY!

## DON'T MISS THESE OLD FASHIONED BARGAIN DAY PRICES! BARGAIN SHEET

HURRY ONLY 12 IN STOCK !!  
**WHITE WALL**  
All-Weather 650x13 Tubeless  
**\$13.97**  
plus Fed. Tax 1.56

HURRY ONLY 10 IN STOCK !!  
**BLACK WALL**  
All-Weather 800x14 Tubeless  
**\$14.00**  
plus fed tax \$2.09

HURRY ONLY 8 IN STOCK !!  
**White Wall Tubeless**  
All Weather Nylon 775x15  
**\$15.00**  
plus fed. tax 2.23

HURRY ONLY 20 IN STOCK !!  
**White Wall Tubeless**  
775x15 Safety All-Weather Nylon  
**\$20.00**  
plus fed tax 2.23

HURRY ONLY 10 IN STOCK !!  
**White Wall Tube Type**  
845x15 Safety All-Weather Nylon  
**\$20.00**  
plus fed. tax 2.88

HURRY ONLY 18 IN STOCK !!  
**White Wall Tube Type**  
670x15 6 ply Hi-Miller Rayon  
**\$20.00**  
plus fed tax 2.43

HURRY ONLY 8 IN STOCK !!  
**White Wall Tube Type**  
700x15 Nylon Hi-Miller  
**\$15.00**  
plus fed tax 2.88

HURRY ONLY 10 IN STOCK !!  
**Black Wall 6 Ply**  
600x16 Hi-Miller Rayon  
**\$13.00**  
plus fed tax 2.40

Odds and Ends, Closeouts, Discontinued Designs...  
Now at Spectacular Savings to You!  
**HURRY...STOCKS ARE LIMITED!**  
**EASY TERMS FREE MOUNTING**

**WANTED PROSPECTS FOR**

- Vinyl Insulating Windows
- Plastic and Insulating Siding
- Aluminum Replacement Windows
- Aluminum and Steel Siding
- Fry Roofing
- Fiberglass Insulation

**J. H. TURNER**  
Home Improvement Company  
412-3262 — Cisco

### Enjoy No Frost... At Low Cost!

Only 29" Wide!

No Defrosting Ever in refrigerator or freezer!  
Zero-degree freezer holds up to 82 lbs!  
Freezer door shelf for ice cream cartons  
2 Mini-cube ice trays under package shelf for easy removal  
Huge, vegetable bin  
Slide-out shelf  
Bottom door shelf is deep enough for 1/2 gallon milk cartons, tall bottles  
Shaded Coppertone or White

**\$239.95** EXCHANGE

Model TBF-1208  
11.5 cu. ft.

**New General Electric 'no frost 12'**

**fastest ice freezing! giant freezer!**

Up to twice as fast as leading comparable models tested!

Model TBF-16SB

**General Electric 'no frost 16' Big, All New 15.6 cu. ft.**

- Exclusive Jet Freeze Ice Compartment
- Fastest ice freezing because sub-zero air is blown over ice trays first
- Giant Zero-Degree Freezer— Holds up to 147 pounds of frozen foods
- Mobile cold for ideal temperatures
- Slide-out shelf
- Separate temperature controls
- Protective door stops
- No coils on back
- New Avocado, Shaded Coppertone, White

**\$329.95** EXCHANGE

**20 GAL. GARBAGE CAN**

Price Break Special

20 GAL. POLY-PLASTIC

1.79

Small Parts Cabinet  
15 Clear Plastic Drawers  
**\$239**

Keeps small items neat and orderly. Sturdy metal frame. Metal handle lets you tote it safely. Compact & stackable.

# GOOD YEAR

SERVICE STORE EASTLAND

306 — 308 E. MAIN 629 9-2662

## JOTTINGS 'N DOTTINGS



Mrs. Wanda Chilton  
Assistant County  
Home Demo. Agent



Mr. Bob Cohen  
Assistant County  
Agricultural Agent

4-H  
Club

News  
Prepared

By

The Eastland County Dress Revue was a big success, Friday night, July 21. Forty-two girls modeled their garments before a large audience of parents, friends, and relatives, in a circus atmosphere.

The subjunior division — ages 9 to 12 — consisted of Marilyn Bibb, Saralyn Butler,

Bobbi Callaway, DeLynn Chambers, Dottie Chambers, Taronna Chambers, Marilyn Clark, Sharon Clark, Janna Hubbard, Nancy Medford, Debbie Nunally, Inell Teague, Nelda Teague, Judy Underwood, Billie White and Jerilyn Winfrey, all of Rising Star. Others were Teresa Browder, Gorman; Pam Cla-

born, Jo Ann Green, Sicily Heysler, Caddy Lee, and Carolyn Lee of Cisco.

Subjuniors from Morton Valley were Mila Kincaid, Becky Miller, Thersa Tankersley and Elaine Skinner. Renee Pierson, Patti Young, and Susan Young from Olden were subjunior also.

The Junior Division was made up of girls 12-14. They were Brenda Browder, Gorman; Donna Callaway, Martha Callaway, Dobbie Chambers, Brenda Coker, Cynthia Housel, Mary Jane Kizer, Cindy McCutchen, Barbara Risher, and Carol Strobel, all of Rising Star. Others were Katie Copers and Suzanne Harbin of Eastland; and Patsy Kincaid of Morton Valley.

Girls ages 14-19 are Seniors. 4-H Club members. Those participating in the Dress Revue were Kay Green, Sandy Ingram, and Lynne Pippin of Cisco; Sharon Steddum of Eastland; Barbara Williams of Gorman; and Kathy Kincaid of Morton Valley.

Miss Brenda Browder of Gorman, first place junior division, and Miss Kathy Kincaid, first place senior division will represent Eastland County at the District Dress Revue, Thursday, July 27, in Stephenville. Lynne Pippin of Cisco was runner-up in the Senior division and will serve as hostess at the District Dress Revue.

Other winners were Caryn Lee of Cisco, first place subjunior Sicily Heysler, Cisco, runner-up subjunior, and Patsy Kincaid junior runner-up.

This has been a good year for our clothing projects. The success is due to the hard work of the trained adult leaders. Thank you, adult leaders for all of your work and time.

Where do juicy tender pork chops come from? Ask any Eastland County 4-H'er working on a swine project and he will tell you that they come from the back of the hog. The 4-H'er will tell you further that the hog provides three kinds of chops: loin, rib, and shoulder. These boys and girls know that pork chops from properly fed hogs today have less fat and therefore fewer calories than ever before.

But that's not the complete story. In a swine breeding

## IN THIS AREA Results Are Showing From Neighborhood Youth Corps

What is the Neighborhood Youth Corps program?

The Rev. Dr. Billy Graham said, in an address to a Congressional luncheon in June, "It is not a live-away program. What it is doing is helping people help themselves."

Tip Arther, area coordinator for the program, said, "It is an opportunity for some 160 students from 22 high schools in Eastland, Palo Pinto, Shackelford, Throckmorton, Stephens, and Young Counties, to work while they are attending school."

But perhaps the best explanation of the program comes from a young girl who is employed on the first job which offers her a chance to gain experience in a trade. She said, "NYC is a job. I don't know if I'll become a fulltime office worker or not. But if I choose to do so, I will have some training and experience. I know now, for the first time in my life, what it is to get to work on time and do a job once I'm there."

"I am treated as any other worker. They expect me to do a job and maybe master it for this reason, I do it. And they pay me. The money is very important to me, but the job is also important. I know that I would not have gotten this job any other way."

Perhaps the girl is right. Only school, government, and other nonprofit organizations are eligible to hire NYC workers, who are paid with a fe-

deral grant. If the office budget had included salary for an additional employee, some one other than the girl might have been hired. The question is not really important, because "might have" is in the past.

And the future is what holds importance, for the girl, for the county.

Here is what the girls employer said: "We're asking for a full time office clerk in next year's budget. And if we get it, if we can hire someone through regular channels, this girl will be hired. She has shown us she can handle the job and she has a wonderful attitude toward life and toward work."

## Cong. Burleson Expects Delay On Crop Transfer Bill

The following is a copy of a letter received from Cong. Omar Burleson, sent to Farm Bureau President Jack Cozart:

"Your telegram has just been received, regarding H.R. 6383, the original bill for the 89c and transfer of peanut allotments. This bill has been superseded by H. R. 14222, and even this measure may be substituted before it leaves the Agriculture Committee.

"The bill was up in the Committee today, but no action was taken on the insistence of some of us that it not be brought out under present conditions."

"Whatever measure is voted will be limited to transfers or sale within the county, based, not on acreage, but history of production, and probably a limit on the amount that can be transferred by one or to any one person. Other changes are also possible, but it will not be brought out of the committee within the next few days.

"Thanking you again for writing me, and with good wishes, I remain Sincerely yours, Omar Burleson

Eastland County was organized Dec. 2, 1873.

## Large Group Attends Firemen's Convention In Cisco Saturday

Some 140 persons attended the quarterly North Central pace in both the men's and Texas Firemen's Association women's pumper races. Convention in Cisco Saturday. Results of the men's race night, July 22. Mr. St. John were as follows: Cisco set of Breckenridge, the associate, Eastland, 25 seconds; first, Eastland, 25 seconds; 2nd, Weatherford, 31 seconds; and in the absence of president, 3rd, Mineral Wells, 37.2 seconds. Ranger had no time (blew off).

Results of the ladies' race Cisco set pace with 40 tim (blew off); 1st, Weatherford 32.5 seconds; and 2nd, Mineral Wells, 39 seconds.

Norvell Terry of Weatherford, president of the Firemen's and Fire Marshall Association of Texas, was present at the meeting, as spoke briefly to the group.

The next convention will be held in Eastland in October

# Been waiting for your favorite Olds to go on sale? It just did.



Clever you! You held off on a youthful new Olds till you could get the biggest savings of the year. And they're here—at your Olds Dealer's annual Year End Sale! So check him today. He's saying Y.E.S. to your kind of price. Y.E.S. to your kind of trade-in. Take your pick of Olds Toronado, Ninety-Eight, 88, Cutlass, Vista-Cruiser, 4-4-2 or F-85—the extra-value cars that are priced for extra savings, right now.

Go Oldsmobile at your nearest transportation center



## PIPKIN OLDS-CADILLAC

314 W. MAIN — EASTLAND — MA 9-2636

**DIXIE Drive-In**  
EASTLAND RANGER HIGHWAY  
Admission 50c — Children Under 12 FREE — Each  
Wednesda & Thursday art Bargain Night — Adults 25c

WEDNESDAY — THURSDAY  
IN COLOR  
**LET'S KILL UNCLE**  
NIGEL GREEN

FRIDAY — SATURDAY  
JULY 28 — 29

**Texas Across The River**  
DEAN MARTIN JOEY BISHOP

**RANGER DRIVE-IN THEATRE**  
ADULTS 60c — KIDDIES UNDER 11 FREE  
SHOW STARTS AT DUSK Boxoffice Closes 9:30

EACH WEDNESDAY IS BARGAIN NIGHT **25c** PER PERSON

THE MURPHY CORPORATION  
THE DAVID SWIFT PRODUCTION  
OF  
**HOW TO SUCCEED IN BUSINESS WITHOUT REALLY TRYING**  
THE PULITZER PRIZE WINNING COMEDY  
ROBERT MORSE  
MICHELE LEE  
RUDY VALLEE  
"THE ONLY MOTION PICTURE THAT GUARANTEES YOU A BETTER POSITION!"  
PARAMOUNT COLOR BY DeLuxe  
UNITED ARTISTS

THURSDAY — FRIDAY — SATURDAY  
JULY 27 - 28 - 29  
Double Feature Program — Each Feature Shows One Time Nightly

GLORIOUS ASTORIAN COLOR  
**A ROADSHOW MUSICAL**  
WEBB PIERCE  
MARTY ROBBINS  
JIMMY DICKENS  
JIM REEVES  
and the WORLD FAMOUS CAROLINA CLOGGERS  
ERNEST TUBB · CARL SMITH · MINNIE PEARL  
RAY PRICE · LONZO & OSCAR · CHET ATKINS · GOLDIE HILL  
JORDANAIRE · JUNE CARTER · BENNY MARTIN · RITA FAYE  
PLUS OUR SECOND FEATURE

**SHE FANNED THE FLAMES OF THE WICKEDEST HELL-HOLE IN THE WEST!**

COLUMBIA PICTURES  
**FRONTIER HELLCAT**  
STEWART GRANGER  
ELKE SOMMER  
GOTZ GEORGE · PIERRE BRICE  
Produced by ROBERT WHITFIELD — Directed by ALFRED HITCHCOCK

WHEN IN CISCO  
EAT AT THE  
**COLLEGE INN**  
located on Lake Road

Open 10:30 - 2 — Noon  
Lunches — 5-8 p. m.  
Closed on  
Sunday and Monday

DATES TO REMEMBER:  
July 27—District 4-H Dress Revue  
Aug. 5 — 4-H Beef Cattle Field Day  
Aug. 9-11—County-wide 4-H Camp.

## INTERSTATE'S MAJESTIC

FRIDAY and SATURDAY  
FRIDAY OPEN 4:45. SHOWS 5, 7:05, 9:10  
SAT. OPEN 12:45; SHOWS 1, 3, 5, 7:05, 9:05

OF HIS KIND HE'S THE BEST THERE IS. AT FIGHTING, AT LOVING AND WHEN IT HAD TO BE—AT KILLING!

PARAMOUNT PICTURES  
Presents  
**ROD TAYLOR**  
ERNEST BORGNINE  
JOHN MILLS  
He's a man called **Chuka** and you don't forget it!  
A RODOLFO Production  
PALAZZO WHITMORE GORDAN HARWARD  
ROD TAYLOR · JANE JASON · GORDON DOUGLAS

SATURDAY ONLY  
SPECIAL LATE SHOWING  
OPEN 11:00 — SHOWS 11:15  
ALL SEATS \$1.00

**CORNERED!**  
...An innocent girl is first prize in the dirtiest game ever played!  
**BORN LOSERS**  
TOM LAUGHLIN · JOHN RUSSELL  
ORIGINAL SOUND TRACK RECORDING ON TOWER RECORDS

**Bray's DEPARTMENT STORE**  
EASTLAND & RANGER  
Eastland County's Family Store

**DOG DAYS BARGAINS GALORE**

<p>Men's Straw HATS One Group Western Dress Reg. \$2 <b>\$1</b></p> <p>WOMEN'S DRESSES Ass't. Styles Ass't. Colors Ass't. Fabrics Reg. Reg. Reg. \$5-6 \$7-10 12-15 <b>\$4 \$5 \$6</b></p> <p>WOMEN'S SHOES Further Reductions Reg. Reg. Reg. 5-6 8-9-10 12-15 <b>\$3 \$5 \$9</b></p> <p>BOY'S Summer Sport SHIRTS Reg. Reg. 1.50-2 2.50-3.50 <b>\$1.50 \$2</b></p>	<p>MEN'S SPORT SHIRTS Solids · Plaids Reg. \$3-3.50 <b>\$2</b></p> <p>WOMEN'S Sportswear Ass't. Colors Ass't. Fabrics Ass't. Styles Reg. Reg. Reg. \$3-4 \$5-6 \$7-8 <b>\$2 \$4 \$6</b></p> <p>SUMMER FABRICS Plaids · Prints Reg. 1.00-1.19 <b>58c yd</b></p> <p>CHILDREN'S SUMMER SHOES Whites Reg. \$7-8 <b>\$5</b></p>	<p>MEN'S SUMMER TROUSERS Reg. \$7 Reg. \$8-9 <b>\$5 \$6</b></p> <p>GIRLS Sportswear Many Items Ass't. Colors Ass't. Fabrics Reg. Reg. \$2-3 \$4-6 <b>\$1.50 \$2</b></p> <p>GIRL'S SUMMER BLOUSES Entire Stock Reg. \$2-4 now <b>\$1</b></p> <p>VISIT OUR BARGAIN TABLE</p>
---	--	--

## Countians Plan To Attend State AMERICAN LEGION CONVENTION

Mr. and Mrs. J. D. Collier and Mr. and Mrs. E. L. Jackson plan to attend the 49th convention of The American Legion, Department of Texas, to be held in Dallas July 27-30.

Mr. Collier is commander of the local post, and Mr. Jackson is adjutant. Mrs. Collier is president of the Cisco

Auxiliary. Some 2,000 delegates and alternates are expected for the American Legion convention, and the Auxiliary anticipates approximately 1,000, according to C. K. "Cap" Lawson, general convention chairman.

Department Commander Jack W. Flynn of Dimmitt will preside over the Legion con-

clave. Heading The American Legion Auxiliary will be his wife, Mrs. Jack W. (Mary) Flynn.

U. S. Senator John G. Tower is scheduled to deliver the key note address during the joint session on Friday afternoon.

Outstanding speakers on Saturday will include the National Oratorical Contest Champion, Alan L. Keyes of San Antonio, who will deliver his winning oration, and Texas' Boys State Governor Samuel Hopkins of Richmond.

Both were delegates to Boys Nation in Washington, D. C. The second annual "Carl L. Estes Outstanding Citizen of Texas Award" will be presented Friday.

Friday at 5 p. m. the Parade of Champions Contest for Uniformed organizations, J. C. (Jake) Mann, chairman, will take place at the Memorial Auditorium. More than \$3,000 in prizes will be awarded the winners of the colorful contest. This will be follow-

ed by a barbecue for registered delegates and guests. A bathing beauty pageant will follow where Miss American Legion of 1967 will be crowned.

Aside from the color and excitement the Legion and Auxiliary have mapped out a full four-day program of serious business pertaining to the vast Texas programs of the Legion and Auxiliary. The Executive Committee, Board of Trustees and key standing committees and commissions

will be busy throughout the convention. The Memorial Service, under the direction of Rev. M. L. McNabb of Fort Worth, Department Chaplain, is scheduled for 9 a. m. Sunday. The election of Department Officers for the ensuing year will conclude the convention.

Eastland County was named in honor of Captain William M. Eastland, who participated in the battle of San Jacinto.

RAWLINS SINCE 1888  
**Monuments**  
WEATHERFORD PHONE LY 42724

IF WE MAY ASSIST YOU, CALL US COLLECT OR MAIL THIS AD

NAME \_\_\_\_\_ PHONE \_\_\_\_\_  
DRESS \_\_\_\_\_ CITY \_\_\_\_\_

# YOU CAN COUNT ON SAFEWAY MEAT FOR MORE VALUE and PERFECT EATING



**P. S.** You might think all this means that Safeway meats are expensive. Not so. Safeway meats are always reasonably priced and we have specials every week that offer additional money savings on selected popular cuts. Come in and check the values!

**FRYERS** 29¢  
USDA Inspected... Grade A. Everyday Low Price. (Cut-up... Lb. 35¢) Whole—Lb.

**Canned Ham** \$3.98  
Samuel's Mohawk. — 5-Lb. Can

**Sliced Bacon** 69¢  
Capitol. Fresh and lean. — 1-Lb. Pkg.

**Rib Roast** 75¢  
USDA Choice Grade Heavy Beef. — Lb.

**Boneless Roast** \$1.19  
Beef, Bone or Bottom Round. USDA Choice Heavy Beef—Lb.

**Round Steak** 98¢  
Full Cut. USDA Choice Grade Heavy Beef—Lb.

**Lunch Meat** 3 for \$1  
Sliced. Safeway. 3 varieties—8-oz. Pkg.

**Smorgas Pack** 89¢  
Eckrich—1-Lb. Pkg.

**Hamburger Steak** 65¢  
Ready to cook and serve—Lb.

**Beef Cube Steaks** \$1  
Manor House—20-oz. Pkg.

**All Meat Franks** 47¢  
Safeway or Armour's. 12-oz. Pkg.

**Fryer Thighs** 5 for \$1.99 } **Fryer Backs** 5 for 49¢

**STEAKS** 79¢  
Rib. — Lb.

USDA Choice Grade Heavy Beef. Stock the freezer at this low price.

USDA Choice Grade Heavy Beef

**Chuck Steak** 65¢  
USDA Choice Grade Heavy Beef—Lb.

**Swiss Steak** 79¢  
or Roast. Arm Cut. USDA Choice Grade Heavy Beef—Lb.

**Boneless Roast** 89¢  
Chuck or Shoulder. USDA Choice Grade Heavy Beef—Lb.

**Chuck Roast** 59¢  
Blade Pot Roast. USDA Choice Grade Heavy Beef—Lb.

## ...and here's why we are able to make our famous money-back guarantee

Every day, the meat cases at every Safeway store are stocked with top quality meats. All day long, as our customers make their selections, the displays are replenished with meats of the same fine quality. This is the only kind of meats we have — the best!

When your reputation has been built on perfect-eating meats, you don't compromise methods that assure top quality. These are the reasons we know every cut will be right and why we can back every sale with our guarantee of complete satisfaction.

**GUARANTEE**

If ever a purchase of Safeway Meat fails to please for any reason whatsoever, just tell us. We will refund your money promptly, courteously. There's no need to return the meat.

**EXPERT MEAT CUTTING AND TRIMMING**

Our method of trimming meat gives you more good eating meat on the table for your money, because excess fat and bone are cut off before the meat is weighed. In preparing meats for sale, we also make sure that each cut will be just right for its cooking method. The meat on every Safeway steak, for example, is all steak meat. The less tender end portion has been trimmed off to be sold at a lower price per pound. Similarly, a Safeway roast is roast meat.

**USDA CHOICE BEEF & LAMB**  
(Only top grades, too, in pork and baby beef)

At Safeway, every steak, every chop, every roast of beef and lamb is of USDA Choice grade. This is meat graded by U. S. Department of Agriculture experts who judge strictly and impartially. USDA Choice is awarded only to meat that will deliver tender, juicy, flavorful cuts. It is the most popular grade of beef.

In order to feature lower prices, some other stores buy meat of lower grades. Some others mix USDA Choice and lower grades. Some coin fancy names for the lower grades they sell. But at Safeway every cut of beef and lamb is USDA Choice.

**SCIENTIFIC MEAT AGING**

Even the finest quality beef and lamb reach peak flavor only after proper aging. In vast air-conditioned aging rooms, Safeway holds meats under controlled temperature and humidity the exact time required to assure full tenderness and flavor.

Extra storage space with expensive air-conditioning equipment is required to do this job correctly. Some stores which claim to age meat do not even have the facilities to do meat aging.

**Jell-O Desserts** 10 for 89¢  
Safeway Special! Gelatin, Assorted Flavors—3-oz. Pkg.

**Pork & Beans** 10¢  
Safeway Special! Highway—16-oz. Can

**Crisco Oil** 79¢  
Safeway Special! For cooking, baking, salads. (10¢ Off)—48-oz. Bottle

**Span Lunch Meat** 49¢  
Safeway Special! From Hormel. 12-oz. Can

**Dairy-Delicatessen Values!**

**Cole Slaw** Lucerne—1-Lb. Carton 39¢

**Breeze Cheese** 2 lb pkg 59¢

**Cottage Cheese** Lucerne. All Styles—16-oz. Carton 29¢

**Biscuits** Mrs. Wright's. Sweet Milk & Buttermilk. Box. Can 8¢

**Bakery Values!**

**Jewish Rye** 19¢  
Safeway Special! Skylark. —1-Lb. Loaf

**White Bread** Mrs. Wright's. Regular or Sandwich—1 1/2-Lb. Loaf 29¢

**Black Bread** Skylark. Old World—1-Lb. Loaf 29¢

**SPECIAL**

Imperial **CANE SUGAR**  
—5-Lb. Bag

**49¢**

**SPECIAL!**

Libby **VIENNA SAUSAGE**  
—4-oz. Can

**5 for \$1**

**SPECIAL!**

Manor House **MEAT PIES**  
★ Beef ★ Turkey ★ Chicken ★ Tuna  
—8-oz. Pkg.

**6 for 89¢**

**Fresh Produce Always At Safeway!**

**Watermelon** 69¢  
Charleston Grey. 74 to 28-Lb. Average — Each

**Crisp Lettuce** Large Firm Heads. Each 19¢

**Potatoes** Russet. (Premium... 3 Lbs. 39¢) 5 lb Bag 45¢

**Fresh Corn** Full Ears. Tender. 3 Ears 29¢

**Lemons** 6 for 35¢

**Apples** Del-Lb 33¢

**ORANGE JUICE** Pure. Safeway or Tropicana. Quart 3 for \$1 { Half Gallon 59¢

**Low Prices on Frozen Foods!**

**STRAWBERRIES** 25¢  
2-lb. Sliced. Safeway Special! —10-oz. Pkg.

**Cream Topping** Lucerne—4 1/2-oz. Can 49¢

**Banquet Dinners** Assorted. Regular Pkg. 39¢

**Popsicles** Eskimo. ★ Orange ★ Cherry. 4-Count Pkg. 33¢

**Green Peas** Bel-air—10-oz. Pkg. 5 for \$1

**Lemonade** Bel-air. ★ Pink ★ Regular. 8-oz. Can 14¢

**Cheese Sale!** 10¢ OFF

★ Safeway Longhorn  
★ Safeway Nippy Longhorn  
★ Safeway Mild Cheddar  
★ Safeway Sharp Cheddar

Per Pkg. (12-oz. or More)  
Safeway Chunk Cheese

Prices Effective Thurs., Fri. and Sat., July 27, 28 and 29, in Eastland.

We Reserve the Right to Limit Quantities. Not to be used to Dealers. Eastland.

**SAFEWAY**

**Discount Prices on Non-Foods!**

**Lustre Creme** Cream Body. For Face & Body. 49¢

**Pacquin Lotion** For Face & Body. 59¢

**Hair Spray** Miss Branch. ★ Top. ★ Bottom. 65¢