

NEW CHEVROLET — Leading the beauty parade of 1965 cars is the elegant Chevrolet Impala Sport Coupe with new flowing lines, new roominess and a distinctive new profile. The Chevys will go on display at Anderson Chevrolet Thursday.

CHEVROLET

(Continued from Page One)
For 1965, Chevrolet is keeping pace with the public's growing preference for prestige transportation with the widest possible choice of options and features to fit individual needs," he said.

Following are highlights of the five members of Chevrolet's "family" for 1965:

REGULAR CHEVROLET

The top selling line is an entirely new automobile for 1965. It is the most luxurious car ever offered by Chevrolet.

Fifteen models in four series stress a bigger car concept. The new Chevrolet is longer by more than three inches (213.1 inches), wider by 1-1/2 inches (79.5 inches) and one inch lower (to a sport coupe height of 54.1 inches) than 1964 models.

CORVAIR

Chevrolet's popular small, sports-type car makes the first major styling change since its introduction in the 1960 model year. For 1965, Corvair is longer, wider and lower while offering increased engine power. It retains its 108-inch wheelbase plus the air-cooled, V-type engine and frame integral body which make it unique among American built cars.

A new top-of-the-line series, the Corsa — available in either convertible or sport coupe — replaces the Spyder models. The turbocharged engine, available only in Corsa models, is increased from 130 to 180 horsepower.

CHEVELLE

Chevrolet's newest car was a quick favorite with the motorist, recording 300,000 sales in its first model year. For 1965, the Chevelle line of Atlanta.

is expanded to 12 models in four series, including a new economy series, the "300." The car will continue its 115-inch wheelbase. It receives a longer, more graceful look by the addition of 2.7 inches for an over-all length of 196.6 inches (201.4 inches for station wagons). Width continues at 74.6 inches but some models are more than an inch lower — sport coupe height is 52.8 inches.

Annual Tour Pecan Growers Set For Friday

The Eastland County Pecan Growers Association will have their annual tour of pecan orchards Friday, Sept. 25, starting from the El Rancho Cafe in Ranger at 9 a. m. and visiting six orchards.

The first stop will be at the B. B. Freeman orchard in the Cheaney Community, 10 miles south of Ranger. Other stops include the E. A. Walker orchard and the Joe Bob Brown orchard south of Gorman, the Charley Underwood orchard, Les Wallace and C. D. Simmons orchards.

All members of the association as well as other interested persons have been invited to make the tour.

VISIT HERE

Mr. and Mrs. David Allsup, Brenda and David visited her parents, Mr. and Mrs. F. E. Loper of Atlanta over the weekend and attended the funeral of the baby daughter of Mr. and Mrs. Otis Loper of Atlanta.

CHEVY II — New styling refinements and a wider range of optional power is offered in the Chevy II, entering its fourth year of attracting the motorist who wants tasteful styling economy and ease of handling.

Chevy II will be available in seven models in three series. It will continue its 110-inch wheelbase, its 182.9 inch length (station wagons 187.6 inches) and its 69.9 inch width. The sport coupe height is 54 inches.

For 1965, Chevrolet offers its customers 15 colors — 13 of them new — on Chevrolets, Chevilles, Chevy IIs and Corvairs with up to nine two-tone combinations, depending on the model. Corvettes are offered in a choice of eight distinctive colors.

New on all models will be a two-key lock system as added protection against vehicle theft. With it will be the addition of a four-position ignition switch to all models.

Extended lubrication is again a feature of all Chevrolets for 1965. Recommended chassis lubrication is every 8,000 miles or six months and engine oil change each 8,000 miles or 60 days.

Courthouse Records

- Oil & Gas Leases
- Court Proceedings
- Property Transfers

Car Registrations

Gus H. Frossard, Chevrolet, Gorman.
Willis Morrow, Chevrolet, Gorman.
Chester L. Allen, Jr., Chevrolet, Cisco.
James Hendricks, Oldsmobile, Eastland.
Mrs. John Garrett, Chevrolet, Eastland.
Rufus Lewis, Chevrolet, Eastland.
Ruby Whaley, Chevrolet pickup, Eastland.
J. T. Berry, Ford, Eastland.
J. O. Earnest, Ford pickup, Eastland.
James Horton, Ford pickup, Eastland.
T. M. Alford, Chevrolet, Eastland.
Gulf Gas Company, Chevrolet pickup, Eastland.

Suits Filed

Diantha Wilson vs. Joe Wilson, divorce and child custody.
Jerry Don Hamilton vs. Hardware Mutual Casualty Company, compensation.
Bryon Davis vs. J. N. Ellison, damages.
Marriage License
Eddie Wayne Baker to Barbara Ann Kinsler.
Kenneth Eugene Smith to Alma Lorraine Shelton.
Mr. Clint Thomas to Mrs. Gertrude Wilson.

Instruments Filed

Kenneth Archer, et ux, to B. E. Hanson, warranty deed.
Fred Brizendine to Sadie Brizendine, power of attorney.
Harriett Boatman et al, to Eugene Keel et ux warranty deed.
Laura Viola Boles et vir, to B. E. Hanson, warranty deed.
I. B. Brandon to Nick Duggan et ux, release of lien.
First National Bank, Cisco et ux, to Kenneth Harvey, release of lien.
First Federal Saving and Loan, Ranger et ux, to D. D. Allen, release deed of lien.
First Federal Saving and Loan Association, Ranger et ux, to Francis Worden, Partial release of deed of trust.
Franklin Life Insurance Company et ux, to Oakland Development Corporation, release deed of trust.
W. T. Guy to the Public, affidavit.
W. T. Guy et ux, to B. E. Hanson, warranty deed.
W. T. Guy et ux, to Southern Saving and Loan Association, agreement.
Raymond Gray et ux, to W.

E. Tyler, warranty deed.

Elsie Glenn et ux, to Joe Martin Barton, warranty deed.
Edith Hulin to Julie Townsend, warranty deed.
B. E. Hanson to C. M. McCain et ux, deed of trust.
Lucie Harrell to the Free Press Publishing Corporation, warranty deed.
Kenneth Harvey et ux, to George Kinard et ux, warranty deed.
B. E. Hanson to W. T. Guy, deed of trust.
Allan Heggedahl et ux, to B. E. Hanson, warranty deed.
Hattie Boatman et al, to Otto Spratt, oil, gas, and mineral lease.
H. C. Bowers et ux, to Mrs. Cordie Wolf, warranty deed.
Rhoda Boatwright, deceased, to the Public, affidavit.
Vernon Bosworth et ux, to Texas Building Material Inc., mechanic v. materialman's lien.
Ruth Callerman et al, to Donald Callerman et al,

agreement.

H. W. Clifton et ux, to N. D. Chancellor et ux, warranty deed.
N. D. Chancellor to the First Federal Saving and Loan Association, Ranger deed of trust.
Wallace Cantrell et ux, to Elsie Glenn, warranty deed.
Nick Duggan et ux, to B. E. Hanson, warranty deed.
Nick Duggan et ux, to State of Texas, state tax lien.
Eastland Independent School District et al, to Armstedd West, warranty deed.
First Federal Saving and Loan Association, Ranger et ux, to William B. Eaves, release of lien.
J. P. Herbert, et ux, The Public, Proof of Heirship.
B. E. Hanson, et ux, The Public, affidavit.
B. E. Hanson, et ux, Southern Saving and Loan Association, Deed of Trust.
J. E. Dickman estate of the Public letters testamentary.
J. E. Dickman, estate of

The Public, Certified Copy.

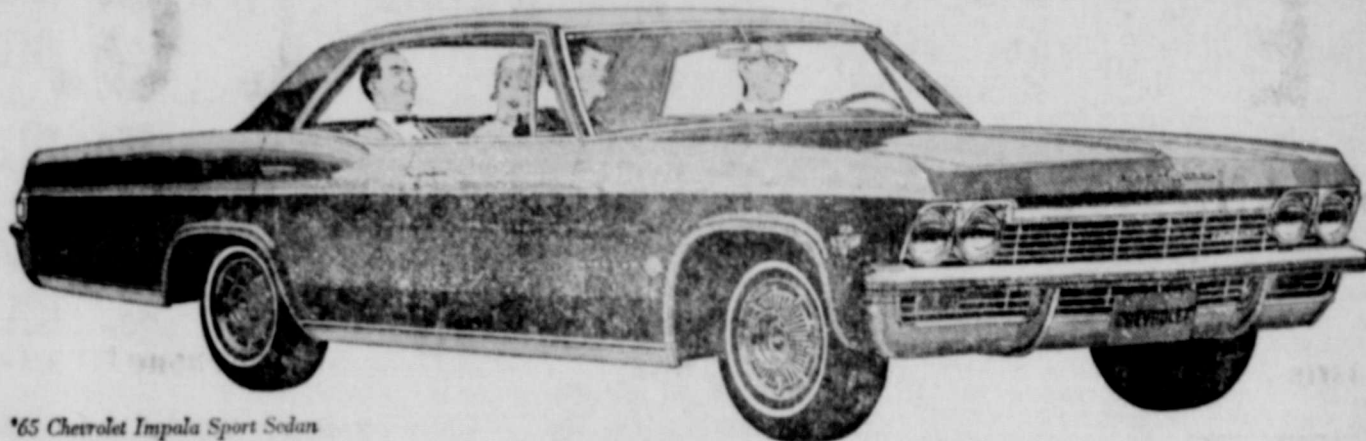
Will.
J. E. Dickman, estate of The Public, Certified Copy, Probate.
Nettie Hickman, to Otto Spratt, Warranty Deed.
Dora Faye Harris, et vir, to J. B. Bailey, Warranty Deed.
Gracie Viola Harris to Nina Eaker, Warranty Deed.
Jim Walter Corporation to Mid-State Home Inc., mechanic v. materialman lien.
D. J. Jobe to O. B. Rone et ux, release deed of trust.
George Jones to Elsie Glenn, warranty deed.
Ben Jackson to Floyd Shelton, release deed of trust.
J. S. Nursing Home Inc. to the State of Texas, state tax lien.
Lone Star Gas Producing Company to Odessa Smith Childers et al, release oil, gas, and mineral lease.
Everett Martin et ux, to B. E. Hanson, warranty deed.
John Morgan to the Pan American Petroleum Corpora-

Page Four

tion, depository.
E. V. McCright et al, to the First National of Fort Worth, amend oil, gas, and mineral lease.
C. M. McCain et ux, to B. E. Hanson, warranty deed.
E. V. McCright to Lone Star Gas Company, gas purchase contract.
Dell Norton et vir, to Charles P. Marshall, warranty deed.
Cleo Rice to Leo Phagan, warranty deed.
Ranger Peanut Inc. to the Commercial State Bank, Ranger, extension of deed of trust.
Virgil Seaberry Jr., et al, to E. V. McCright et al, amend oil, gas, lease.
Seabony Corporation to O. P. Leonard, extension agreement.
Security Life and Accident Company to Ranger Public College District, warranty

deed.
Mrs. Briggs Terry to Otto Spratt, oil, gas, and mineral lease.
United States of America to Nick Duggan et ux, release deed of trust.
Veteran's Land Board of Texas to Everett Womack, deed.
V. and J. Producing Company Incorporated to Floyd Shelton et al, release deed of trust.
Everett Womack et ux, to T. E. Weathersbee, warranty deed.
W. B. Wright et al, to the Public, affidavit.
Frances Warden to J. G. Gilliam et ux, warranty deed.
James Webster et ux, to Marie Hill et ux, warranty deed.
T. C. Williams to E. E. Maples, warranty deed.
Linnie Zellars to Lane B. Wells, warranty deed.

now! the beautiful shapes for '65

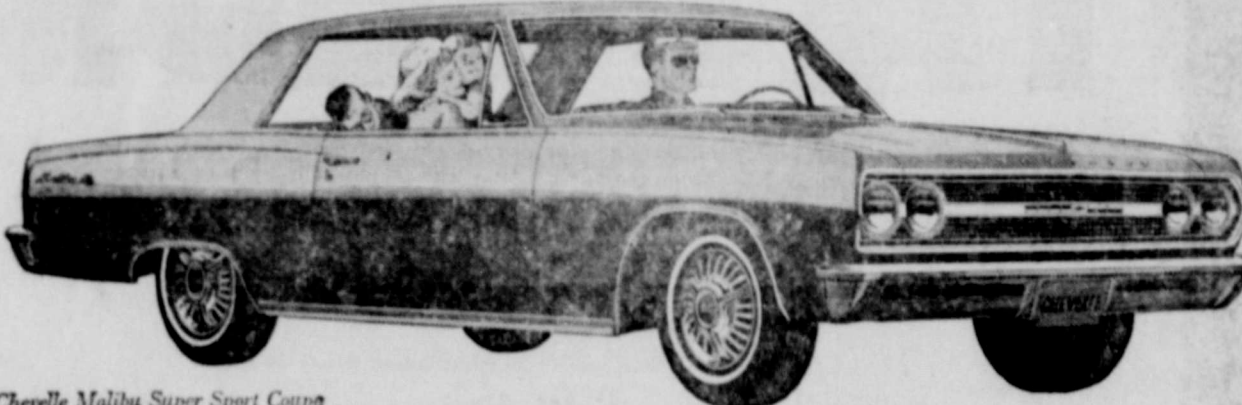


'65 Chevrolet Impala Sport Sedan

Chevrolet Impala '65

It's longer, lower, wider—with comforts that'll have many an expensive car wondering why it didn't think of them first. More shoulder room, more leg room up front. Curved side windows, an

instrument panel that's a conversation piece. In fact, just about everything's new right down to the road. And even that'll seem newer because the Jet-smooth ride is smoother than ever.



'65 Chevelle Malibu Super Sport Coupe

Chevelle Malibu '65

Here's all that made Chevelle America's most popular new-sized car—plus some new surprises. Like those cleaner, bolder lines. Like the silky way its new ride skims over the choppiest roads. Like

V8 power that'll make you think we stole some of Corvette's stuff—which we did. All told, five engines are available from a quieter six to a V8 that comes on 300 horses strong.



'65 Chevy II Nova 4-Door Sedan

Chevy II Nova '65

It may be the expensive-est looking thrift car you've laid eyes on. But thrifty it is. The big difference being that Chevy II's marvelous mechanical efficiency now wears a debonair new look. And

offers a new range of engines, including a new 300-hp V8. You could get the idea that saving you money was the last thing we had in mind—if it weren't for that price sticker on the window.



Next top-of-the-line Corvair Corsa Sport Coupe

Corvair Corsa '65

How's this for sport with an international flair? The longer, wider design gives all closed models a hardtop roof, along with more shoulder and entrance room. And to go with the racier look,

there's up to 180 hp available in the new Corsa series, up to 140 hp in the Monza and 500 series. Also a flatter riding independent suspension, more responsive steering and a wider road stance.

See 3 beautiful shapes for '65—Chevrolet, Chevelle, Chevy II, Corvair & Corvette—at your dealer's

ANDERSON CHEVROLET COMPANY

111 S. AUSTIN

RANGER, TEXAS

RANGER DRIVE-IN
Highway 80 — East on Ranger Hill
ADULTS 50c KIDDIES UNDER 11 FREE
SHOW STARTS AT DUSK

Thursday, Sept. 23

The most gruesome day in the calendar!
BORIS KARLOFF starring in **Black Sabbath**
-PATHECOLOR

PATRONIZE ONE OF THE FOLLOWING LEADING MERCHANTS AND RECEIVE A GUEST TICKET GOOD EACH

THURSDAY NITE

You Must Have a Ticket or Pay Regular Admission

WESTERN AUTO ASSOCIATE STORE
THE GLOBE CLOTHIERS
FRIGID QUEEN
RANGER FROZEN FOOD CENTER
RANGER DRY CLEANERS
PORKEY PIG

Friday and Saturday
SEPT. 25 - 26

A lone U. S. Astronaut Space-Ship Wrecked On Mars!

ROBINSON GRUSOE ON MARS
-PATHECOLOR

THE 1965 CHEVYS ARE HERE!

Dazzling New Models on Display Today

AT RANGER'S FRIENDLY

ANDERSON CHEVROLET CO.

EASTLAND COUNTY'S OLDEST CHEVROLET DEALER

Authorized Sales and Service Since 1933

111 South Austin

RANGER, TEXAS

Phone MI 7-1161

A PERSONAL INVITATION...



W. J. (Bill) ANDERSON

Yes, we want to take this opportunity to personally invite you to visit our showroom and see America's greatest line of fastest-selling cars!

Never before in the 31-year history of this pioneer dealership have we been privileged to introduce such a fine line of new Chevrolets with so many superior features. We know you'll find a size and model to please you in the wide array of 1965 Chevrolets.

Come in today and see for yourself. The latch-string's out . . . and we'll be expecting you!

W. J. (Bill) Anderson

ALL THE FRIENDLY FOLKS AT ANDERSON CHEVROLET APPRECIATE
SERVING MOTORISTS OF RANGER AND SURROUNDING AREA!

You get a real deal on a new car or a good used car — backed by a reputation built upon confidence, integrity and friendship. You get dependable, expert workmanship and genuine parts in our service department. And you get the best of everything from all of us who are privileged to faithfully serve a growing number of satisfied motorists. We join the boss in his invitation — come see us!

Beauford Anderson - Bill Eyley - Doyle Gentry
Hubert Anderson - Raymond Hart - Gene Falls
M. L. Hart - Johnny Morris - Joe Gomez and
Carlos Martinez

GO... CHEVROLET
FOR '65

FREE FAVORS

- Cigars for the Men
- Perfume & Potholders for the Ladies
- Balloons and Candy for the kiddies

Setting the Pace!

- CHEVROLET
- CORVAIR
- CHEVELLE
- CHEVY II
- CORVETTE

You'll find what you want
and what you like at
Anderson Chevrolet!

Get the Anderson Chevrolet "Deal"

LIBERAL TRADE-IN

ECONOMICAL
FINANCING

31 Years of Honest
Dealings

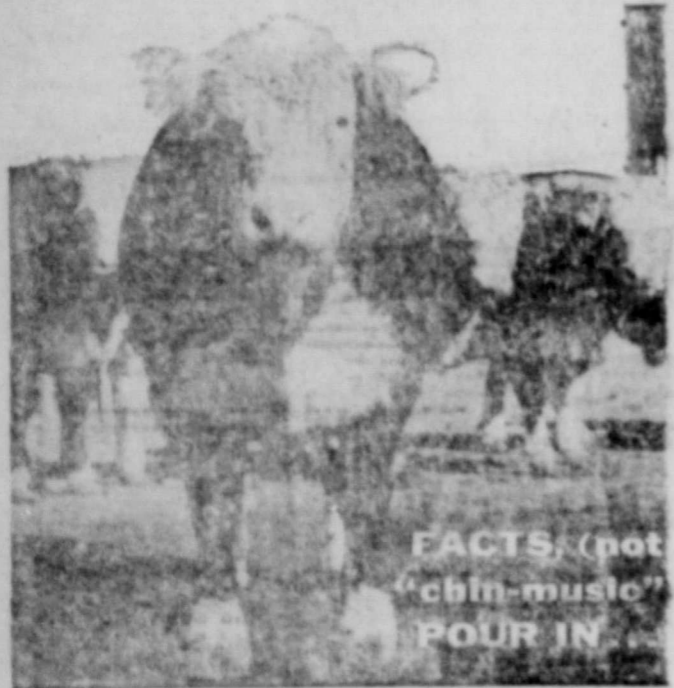
A complete service department - Big stock of parts - Expert, experienced mechanics - 24-hour wrecker service!





Checkerboard News

RATLIFF FEED & SEED
Highway 80 East - Phone MI 7-1260
RANGER, TEXAS



...about Purina's "Built-in Roughage" Cattle Program

Wherever cattle are fed, cattlemen sing the praises of Purina's "Built-in Roughage" Self-Feeding Program.

They didn't take to this new idea overnight. Cattlemen, like all good business men, buy on FACTS. And that's exactly why "Built-in Roughage" feeding keeps on winning friends among cattle feeders... they keep getting FACTS from cattle fed in Purina Demonstrations.

They note the gains and efficiency of "Built-in Roughage"-fed cattle. They see how this program works with self-feeders, which offers big savings in labor and equipment.

Purina Special Steer Fatena is the original "Built-in Roughage" supplement. It holds the secret to this giant step forward in cattle feeding. Is it for sale at our store? You bet! Order it today.

LOW COST PRODUCTION...
the reason why more farmers feed Purina



How to get a nice red, white and blue feeling —and pocket a little green

Buy U. S. Savings Bonds, and you can be proud of yourself twice.

One, you do something good for your country. (And that can make you feel pretty good inside.) Uncle Sam makes good use of your Bond dollars to strengthen the cause of freedom.

Two, you do something good for yourself. You save some of your hard-earned cash, and put it to work earning more cash. (Come maturity time, you'll get back \$4 for every \$3—guaranteed!)

Why not get started soon and feel better fast.

Quick facts about Series E Savings Bonds

- You get 3 1/2% more money at maturity (7 years, 9 months)
- You pay no state or local tax and can defer the federal tax until the Bonds are cashed
- You can get your money when you need it
- Your Bonds are replaced free if lost, destroyed or stolen

Keep freedom in your future with **U.S. SAVINGS BONDS**

U.S. Government does not pay for this advertisement. The Treasury Dept. thanks the Advertising Council and this newspaper for their patriotic support.
ORDER NO. 550-2474-S-3 COL. X 138 LINES—NEWSPAPERS—APRIL, 1964

Miss Sullivan To Attend Meet

Miss Sanya Sullivan, director of student personnel at Ranger Junior College, will be in Corpus Christi, October 1-3, to attend the Texas Personnel and Guidance Association convention.

On the morning of Friday, the 2nd, she will attend a breakfast given by the American College Testing (ACT) Program.

Ranger Junior College has this year, made the ACT test compulsory for entrance requirements.

Miss Sullivan will return to Ranger by way of Wharton where, on Saturday night, the 3rd, she will attend the football game between the RJC Rangers and Wharton Junior College.

FBC Group Has Hayride-Picnic

Members of the Intermediate Department of the First Baptist Church enjoyed an outing last Saturday evening.

The group left the church at 6:30 p.m. for a hayride to Quarles Dock, Lake Leon. The sudden shower did nothing to prevent an hour of fun and fellowship, nor did it dampen the appetite for sandwiches, cold drinks, cookies, and homemade ice cream.

Approximately thirty young people are grateful to Pete Brashier for the use of the truck, Wilson Watson for the hay, and adult sponsors: Mr. and Mrs. J. W. White, Mrs. Ruby Springer, Mr. and Mrs. R. V. Robinson, and Mr. and Mrs. Wilson Watson, who accompanied them.

Rummage Sale Friday, Saturday

Ladies of the First Christian Church will hold a rummage sale beginning at 9 a.m., Friday and Saturday at 318 Main Street.

There will be lots of good clean clothing and a number of good men's suits, according to the ladies.

Proceeds from the sale will go to help purchase the new organ at the church.

VISIT PARENTS

Mrs. Marlin Lufkin and daughter Christina spent the weekend in the home of her parents, Mr. and Mrs. E. E. Ford.

Ranger United Fund Contributions Benefit Local Community Library

Another of the seven local agencies that benefit from the United Fund contributions is the Ranger Community Library.

SOCIAL CALENDAR

TUESDAY
The Columbia Study Club will meet Tuesday at 3 p. m. in the home of Mrs. A. N. Larson.

Mrs. Stanley McAnnally will give the Re-assembly meeting.

FRIDAY
The Ranger Garden Club will get their new year underway with a patio party in the home of Mr. and Mrs. Robert Allen on Friday at 7:30 p. m. Guest speaker, Jack Allen, will use as his topic, Conservation Is Beautification.

Members are urged to bring their husbands or guests.

SATURDAY
Style Show and luncheon sponsored by the 1920 and 1947 Clubs will be held at Lone Cedar Country Club at noon.

Morton Valley HD Has Supper

Friday evening, Sept. 18, members of the Morton Valley Home Demonstration Club and their families met at the club house for supper and an evening of visiting and games.

The large tabled filled with the many dishes of delicious foods, cake and pies was a delightful thing to see, Mrs. Charles T. Brockman said.

After supper the remainder of the evening was spent in conversation and games of "42"

Methodist Men To Meet Friday For Breakfast

The Methodist Men's program and breakfast will be held at 6:30 a.m. in the basement of the Methodist Church, Friday, September 25.

Gaston Dixon will lead the singing and John Wiley will give the devotion. Following the devotion, a film on the Ranger Junior College - New Mexico Military Institute football game last Saturday, will be shown.

All men of the church and any other men who would like to attend the meeting, will be welcome.

Minister Group Assembly Set For Sept. 28

Ranger Junior College will hold the Annual Assembly for the Ranger Ministerial Association on September 28, at 9:30 a.m. with Dean Ernen Haby presiding.

Dean Haby will introduce the Reverend David Downing, president of the Association, who will in turn introduce all the members. Each minister will issue an invitation to the students and faculty to attend their respective churches in the City of Ranger.

The public is invited and urged to attend this meeting at which time it is expected that the students at RJC, here for the school year, will meet the ministers of the different denominations and select the church for their attendance during this time.

WEEKEND GUESTS

Mrs. Lela Quinn had as her weekend guests her son, Ron F. Quinn of Fort Worth and her other son and his family, Mr. and Mrs. Russell Quinn and boys of Dallas.

VISIT'S PARENTS

Mr. and Mrs. J. A. Lenzini visited his parents, Mr. and Mrs. Frank Lenzini of Mingo last weekend.

WATCH REPAIR SERVICE

DON ERVIN

Jeweler
Diamonds - Watches
GIFTS

307 Main Ranger

We Buy Old Coins

The Library's request for funds for this year is \$600.

A good library is one of the most basic assets of a town and a reading public is a contented public. The library habit is a fine one to form and it can't be done without a good library. Without the help of the United Fund, the Library could not purchase the new and current books or replace the worn out editions so popular with so many.

The Community Library is open thirteen days a month and there is no time limit on the time each person spends browsing through the books and reading. Any child or adult can come in as the doors open and stay until the doors close three hours later. Parents may leave their children

while they shop or visit and find a happy child when they return, as books seem to fascinate all ages from 2 to 5.

Grandparents have found the library a happy solution for the in-between hours, with small fry and not so small fry. Each summer around ten grandparents have either brought or permitted their grandchildren to take out cards and books. This offers one of the most economical pleasures to date. A child in the lower grades may have a card for 25 cents for three months and read as many books as he or she wishes. They may take two books every other day all summer. For High School students the cost is 50 cents on the same

plan and an adult may read for six months for \$1. A family card costs \$3 per year regardless of the size of the family. Two weeks is the limit for holding books and if you live outside the city limits, three weeks. Over this period a fine of 2 cents per book, per day, excluding Saturdays and Sundays, is charged.

Libraries are a wonderful place to start friendships as those involved have the same interest — books. Several made friends this way at the Ranger Community Library this past summer. Also sharing books with visiting cousins was in evidence at the Library during the summer. Many of the readers caught up with school required lists, and made the most of their free time. Quite a few of the students can tell you all about Texas as they have gone

through the library books with a fine tooth comb. Each reader had time to pursue the subject he or she was most interested in and the Librarian was taught a lot this past year as the young as well as adults like to share their new found knowledge.

Approximately 6,240 books are issued by the Ranger Community Library per year. There is an average of 40 books issued each day.

Mrs. H. S. Perry is Librarian and the library is open from 2 p.m. until 5 p.m. each Monday, Wednesday, and Friday.

GOLD BOND Redemption Center
at
THE GIFT SHOP
518 E. Conner
Eastland MA 9-2386



LIBRARY PATRONS — Mrs. Isa Swoveland, age 75, and little Keith Hobbs, 2, and Joy Weekes, 3, are shown enjoying one of the many books available for all ages at the Ranger Community Library, which is aided in supplying new books and replacing worn out editions by the contributions of the United Fund.

Pictured below are youngsters of all ages enjoying the books at the Library where they may spend as much time during the hours that the library is open as they wish. Many boys and girls, as well as adults, found the library a wonderful place to meet friends and share their interest in books.



big discounts now!

Lone Star Gas cuts prices on all gas heating units during the **GAS Housewarming SALE!**



What'll you care about a Blue Norther ...if you modernize now with gas heat [at a discount]!

The smart buy now is modern gas heating—while prices are down during the Housewarming Sale. Improve your comfort with any of these modern units: thermostat-controlled floor and wall furnaces, big automatic central gas systems that let you add gas cooling later, bathroom heaters, economical room heaters. Now's the time to buy —and just let sneaky ol' Blue Norther blow.



Heating Contractors and Lone Star Gas

Desdemona News

Mrs. Iva Buchan was rushed to the Stephenville Hospital by an ambulance...

Early last week Mrs. Annie Rainey underwent surgery. She remains a patient in the Eastland Hospital.

Gorman NEWS

The Excelsor Club held their first meeting in the Wyatt, Hodge cabin at Lake Leon for a covered dish luncheon...

Those taking part in the days work were Mrs. O. T. Shell, Mrs. M. Sutton, Mrs. George Blackwell...

Weekend visitors with the Genoways and the Ott Raglands were Mr. and Mrs. Morris Nance, Don and Steve of Midland...

Royce, son of Mr. and Mrs. Neldon Shipman of Strawn underwent surgery in Fort Worth last Tuesday...

Mrs. G. D. Riley returned home Friday from a weeks visit with her sister-in-law, Mrs. Bailey P. Smith...

Mrs. Lonnie Williamson returned home Sunday following surgery in the DeLeon Hospital last week.

Rev. and Mrs. Derrel Dossey and children spent the weekend in Hobbs visiting with relatives and friends.

Mrs. George Whitlock spent the week in Olen with her son, Wayne Whitlock.

Recent guests in the home of Mr. and Mrs. Curley Craig were their daughter, Mr. and Mrs. Curtis Cornwell of Arlington.

Weekend visitors with the Genoways and the Ott Raglands were Mr. and Mrs. Morris Nance, Don and Steve of Midland...

Mrs. Maggie Quinn was buried Tuesday at Alameda.

Mrs. Emma Quinn remains with her sister, Lena, who has been quite ill in Pampa.

Little Darrell Blankenship, who is in a school for children at Mexia, spent the weekend here with his parents, Mr. and Mrs. Bryant Blankenship.

Guests in the home of Mrs. Omata Lewis the past weekend were all her children and grandchildren.

Mr. and Mrs. R. C. Boswell were recent visitors in the home of her brother, Mr. Perry St. Clair in Comanche.

Recent guests in the home of Mr. and Mrs. T. G. Gray were their daughters, Mr. and Mrs. A. C. Maddocks of Denton and Mr. and Mrs. Preston Lightfoot of Sweetwater.

Mr. and Mrs. J. Howry of California visited Tuesday through Thursday with his parents, Mr. and Mrs. D. Howry. Friday morning they received word that a grandson had been killed in a traffic accident near Canyon...

Leaving Thursday for a short visit is Mrs. Ed Wyatt.

who plans to visit Mrs. Effie Bright in Vernon and on to Altus, Oklahoma for a week's visit with her sister and husband, Mr. and Mrs. O. G. Colens.

Those attending the Rebekah Lodge in DeLeon Tuesday, Sept. 15, were Mrs. Reynolds, Pulley, Gilmere, Caldwell and the candidate, Mrs. Celest Pree who received the Rebekah degree.

The revival closed at the First Baptist Church Sunday following a weeks series of services. Quite a large crowd was present each night. Visitors from DeLeon, Abilene, Gorman, Eastland and other places were present at different times.

The John Grahams, Wayne Davis and the Mitchell family were present Saturday night

from Abilene and brought special music, Jimmy Mohon of DeLeon brought special music one night also; the singer mother Mr. Mohon and Mrs. Pearl Duncan of DeLeon visited Saturday night.

Mrs. H. H. Williams, who spent a few days last week in the Gorman Hospital is now a patient in the DeLeon Hospital undergoing a series of tests.

Labor Day weekend visitors in the home of the D. E. Wisloms family and the Bobbie Wisloms family were Mrs. Joyce Kimbrough and daughter of Odessa and Mr. and Mrs. Bill Harris of Lubbock.

Mrs. Myrtle Reed and Mrs. Cora Sparks are home after having spent Labor Day weekend in the hospital at Gorman. Tuesday, Sept. 15, Mrs. Ann

Rainey underwent surgery in the Eastland Hospital.

Visitors Monday, Labor Day, in the home of Mrs. Ollie Feinwer Mr. and Mrs. Fred Keith and Mrs. Edward Keith of Fort Worth.

Mrs. Lonnie Williamson underwent surgery at the DeLeon Hospital last week.

The John Grisham family of Abilene spent the weekend with her parents, Mr. and Mrs. Bennie Belyeu.

Mr. and Mrs. L. P. Hammonds and son, Dean, are in Nebraska and will visit his Grandmother Hohn who will be 94 years old this week. They will also visit in Oklahoma on their way home.

Guy Owens and Mr. and

Mrs. I. H. McMaster of Lamesa are here this weekend to visit relatives and friends.

Mr. and Mrs. James Riggs of Fort Worth spent the weekend here visiting relatives.

Sunday, Mrs. Bill Norris of Dublin visited with her sister and brother-in-law, Mr. and Mrs. Curley Craig.

Weekend visitors in the home of Mr. and Mrs. Bob Lewis were their daughter and grandson, Mrs. Glenn Thisboud of Kilgore.

Mrs. Georgie Whitlock and son and Mr. and Mrs. Wayne Whitlock and sons spent the weekend in Fort Worth and visited Ervil Quinn, son of Mr. and Mrs. J. P. Quinn who underwent surgery there last week.

Visiting relatives here Sunday were Mr. and Mrs. Leo Williams and children of Grayford.

Mr. and Mrs. Walter Greenhaw are in Petersburg visiting their son, Mr. and Mrs. Ford Greenhaw.

Visitors in the home of Mr. and Mrs. Sam Powers Saturday were his sister, Mr. and Mrs. U. O. Watson. Visiting the Powers on Sunday were Mr. and Mrs. Luther McMillan of Stephenville.

Frank Genoway and Mr. and Mrs. Ott Ragland spent Sunday in Breckenridge visiting Mr. and Mrs. Whit Richards and Billie.

Critically ill in the Roby Hospital with a broken hip is Mrs. Maggie Quinn. Cards would be appreciated.

GRADE 'A' FRYERS No finer quality available. Includes Fryer Parts, Canned Picnic, Quick Steaks, Pork Roast, Sliced Bacon, Backbone, Chuck Steak.

SAFeway 10,000 FREE Gold Bond Stamps! Includes a list of stamps and a coupon for a gift book.

LOOK OLD FASHIONED STONWARE FREE at Safeway!

FREE! DINNER PLATE. Redeem this coupon for an Old Fashioned Stoneware Dinner Plate with the purchase of \$5.00 or more.

Coffee Maker \$5.39. Check These Values... Airway Coffee 69¢, Cragmont Beverages 10¢, 3-Minute Oats 23¢, Flour 10.99¢.

BAKERY VALUES... Multi-Grain Bread 19¢, French Rolls 21¢, Pecan Ring 45¢, Profile Bread 25¢.

SAFeway FRESH PRODUCE! LETTUCE 15¢, Tomatoes 19¢, Tokay Grapes 2.29¢, Fresh Corn 3.19¢.

Free Gold Bond Stamps. This coupon worth 200 Free Gold Bond Stamps.

FROZEN FOODS! Orange Juice 3.79¢, Strawberries 2.49¢, Ice Cream 79¢.

Potato Salad 29¢, Half & Half 53¢, Fresh Eggs 2.81¢, Detergent 60¢, Lux Liquid 61¢, Pepto-Bismol 97¢.

Paper Towels 37¢, AJAX VALUES... Cleanser 33¢, Floor Cleaner 31¢, Liquid Cleaner 34¢, Detergent 75¢.

Shampoo 60¢, Alberto VO-5 1.65, Room Deodorant 54¢, Giant Tide 59¢, Pinto Beans 4.39¢, Sliced Peaches 4.25¢, Baby Foods 10.99¢, Prunes 2.45¢, Tomato Soup 3.33¢.

FOOD IS A BARGAIN AT SAFeway! Includes a coupon for a gift book.

Folger's Coffee 87¢, Chunk Tuna 3.00, Margarine 31¢, Vanilla Extract 39¢, Shortening 69¢, Cheese Ravioli 31¢, Beefaroni 29¢.

GREAT SONGS OF THE 60s. NEW! VOLUME 2 LIMITED EDITION COLLECTOR'S ALBUM. Only at SAFeway.



MOVING? THINK OF personal extension phones. Moving time is ideal for putting in those convenient time-savers... Personal Extension Phones.

SAFeway logo and address information.

FREE
Coca-Cola

Come Early
For Best
Selections!

NO MONEY DOWN - NO PAYMENT UNTIL NOVEMBER



BUDGET TERMS - TIRES & BATTERY

TENT FLAPS OPEN
9 AM SHARP!

TENT SALE

On The WAGON YARD

200 Block East Main St.
(1 Block from Square)
IN EASTLAND

4 BIG DAYS

WED. - THURS. - FRI. & SAT.

Sept. 23, 24, 25 and 26

OPEN 'TIL 9 P.M. Wed. thru Fri.
Sat. 'Til 6 P.M.



APPLIANCES, TV's, STEREOS
AND MANY OTHER ITEMS
AT LOWEST PRICES EVER!

**NEVER BEFORE
SUCH VALUES!!**

HUGE 1964 REFRIGERATOR

- Dial Defrost • Family Size
- Full Width Freezer
- Chiller Tray
- 2-Door Shelves

Pay Only \$1.75 Weekly

TENT SALE PRICE **\$148⁸⁸**

Yellow, Green or Coppertone.



White Slightly Higher.

**FREE
COKES
HOT DOGS
11c
FREE
BALLOONS
FOR
THE
CHILDREN**



EXAMPLES REG. NOW

Portables ... 21.95 16.95
Table Model . 15.95 12.95

STACKS & STACKS
OF
ODDS & ENDS
POPULAR MERCHANDISE
VAL. TO **1.00** EACH
3.69
WHILE THEY LAST

GENERAL ELECTRIC
**12-LB.
PORTABLE
11-in. TV**



\$98⁸⁸

PAY ONLY \$1.80 WEEKLY

- Brightest—40 Sq. Inches
- Lightest—Just 12 Lbs.
- Best—Finest Warranty on the Market

For Outdoor
Living —



**19-inch G.E.
PORTABLE TV**

- Famous "Daylight Blue" Picture
- Illuminated Channel Selector
- Automatic Brightness Control
- Full Power Transformer
- Slim Silhouette Styling

Value Priced **167⁸³**
Pay Only \$2.50 Weekly



Deluxe Filter-Flo Washer
3 CYCLE
Big 12-Lb. Capacity

- Exclusive Filter-Flo Lint Trap
- Big Capacity Activator
- Safety Lid Switch
- Commercial Use Tested for Proven Dependability

Matching Hi Speed
Dryer
TENT PRICE
\$136⁶⁶
\$1.65 Weekly

TENT SALE **\$166⁶⁶**
\$2.15 Weekly



**HURRY FOR THESE BIG
BARGAINS UNDER
THE BIG TENT!!**

16" G. E. Portable TV
Rollaway Base FREE . . . TENT PRICE **\$138⁸⁸**

FREE!

CASE OF 24 COKES
WITH EVERY MAJOR
APPLIANCE SOLD
DURING THIS SALE

Plus Deposit on Bottles

MINI-CUBE
ICE TRAYS **88c**
WHILE THEY LAST

Regular \$2.49 Value



**Jet Wagon
FREE!**

with the purchase of a NEW

NORGE

WRINGER WASHER

99⁹⁵
ONLY 1.25 WEEKLY

- 8-position safety wringer
- triple action agitator
- rust resistant finish
- famous Borg-Warner transmission
- 1-year warranty



**TAPPAN
WORLD'S
FAIREST
VALUES**



**TEFLON[®]
COATED GRIDDLE**
NO-STICK COOKING
WITH NO SCOUR
CLEANING

YOUR CHOICE OF 30 INCH OR 36 INCH MODELS
IN EITHER COPPERTONE OR WHITE!

REMOVABLE CHROME
OVEN LINERS
Snap out for cleaning
at the sink

PRICES START AT JUST
\$159⁹⁵

EASY RELASTING
100 MAJOR APPLIANCES

Refrigerators, Televisions, Stereos, Washers, Dryers
TO CHOOSE FROM



1964 Model TV
CUSTOM STYLED 23-INCH CONSOLE

- Famous GE Daylight blue-sealed beam picture tube
- Full power transformer
- Set and forget volume control
- Front controls

TENT SALE PRICE **\$198⁸⁸**
Pay Only \$2.50 Weekly

Tent Sale on Tires!
NOT Seconds!—NOT Retreads!

7.50 x 14 Nylon

Brand New **\$9⁸⁸**
With
TUFSYN

WHITEWALLS Only \$2 MORE

Add \$2.00 to above price if trade-in is not recappable.

Nation-Wide, No Limit Guarantee!

No fine print. Complete, simple to understand, on miles, no limit as to roads, no limit as to Guarantee has no limit on months, no limit speed, for the entire life of the tread.
ALL NE GOODYEAR AUTO TIRES ARE GUARANTEED against defects in workmanship and materials and normal road hazards, except repairable punctures.
IF A GOODYEAR TIRE FAILS UNDER THIS GUARANTEE any of more than 30,000 Goodyear dealers in the United States and Canada will make allowance on a new tire toward its original tread depth component and amount "Goodyear Price."



BROWSING with BEV....

By BEVERLEY NICHOLSON
Home Demonstration Agent
Eastland County

One of the most popular flowers for a colorful garden is the zinnia. To get your gardening program into full swing next spring, start planning now and consider this annual as a "must" for color. Zinnias are easily grown from seed and bloom in only six to eight weeks. They continue to produce showy blooms during the entire summer.

Since zinnias can be sown outdoors with great success, they can be planted in the ground where they are to grow as soon as the soil becomes warm in the spring. A warm sunny location is best.

Seeds should be planted

about one-fourth inch deep and about four inches apart. Keep the soil moist but not wet, and do not let it dry out until the seedlings emerge. Then keep the soil rather dry and thin out the seedlings, leaving them eight to 18 inches apart depending upon the type plant being grown.

As soon as the first flower bud is produced, pinch it off so that the plant will develop lateral shoots and produce a bushy plant with numerous flowers.

Since zinnias require large quantities of water, soak the soil well, watering below the foliage to keep the leaves dry and to avoid mildew.

There are many kinds and

types of zinnias in a wide range of colors and varieties. While the horticultural forms are myriad, the average gardener will have a general knowledge of what is available from the following groups.

Cupid zinnias are the dwarfest and most compact type, seldom growing more than 12 inches tall.

However, Mexican zinnias grow slightly taller, reaching from 12 to 15 inches. Flowers range from double to semi-double to single and are small, usually never more than 1 1/2 inches in diameter. "Old Mexico" and "Persian Carpet" are All American winners in this class.

Liliput zinnias are compact, freely branching plants that grow 15 to 18 inches high and are very useful for bedding and low flower borders. They have small double flowers about two inches across.

Pumila types are sometimes called Cut-and-Come-Again zinnias. They produce long stems on plants that grow about two feet tall, the flowers being two and one half to three inches in diameter. Some widely grown varieties are Peppermint Stick which has striped petals and Salmon Rose which has deep salmon pink flowers.

Another type is the Cactus-flowered zinnia which grows three to four feet high in Texas gardens. It produces shaggy flowers reaching four to five inches in diameter with the quilled tubular petals curled upward.

Tetra Giant Double zinnias produce very large flowers six to seven inches in diameter. They reach a height of about two feet and are excellent bedding plants.

The most common and widely grown zinnias are perhaps the Giant Double Type. They produce giant double flowers on plants about three feet tall. Some of the most favored varieties are Scarlet Flame, Golden Dawn, Canary Bird (yellow), Enchantress (pink) and Purity (white).

Taller types provide a good background in the garden. Those of medium height provide good color in sunny spots in flower borders while shorter kinds are effective as large-sale ground covers or for edgings.

All the various types of zinnias, small, medium or large, are excellent for use as cut-flowers and will last for at least five or six days with proper care. However, the flowers should be well opened before they are cut.

Zinnias are dependable and will produce quantities of flowers all season long.

Buicks For '65 Display Thurs. At Muirheads

The influence of Riviera styling, featuring more sloping roof lines, longer, lower hoods, shortened rear decks and high-crown rear fenders, dominated the theme of the new line of 1965 Buicks unveiled here today.

The new models will be introduced to the public Thursday at Muirhead Motor Co. in Eastland, Jack Muirhead has announced.

Buick's trend towards sportiness in design, as exemplified in its Riviera, is more evident in two-door models in the Wildcat and LeSabre series, with their long, sloping roof lines. However, the classic Riviera styling is very evident throughout the entire 1965 line.

The Wildcat, with a three-inch longer wheelbase, is less than an inch longer overall than its last year's counterpart. Yet it looks much longer due to its lengthened hood and front fenders, lowered roof lines and repositioned front wheels.

Muirhead said the new Buicks represented "a year of forward movement for us in design, notably in our Electra, Wildcat and LeSabre series, and a year of engineering refinement in our Special, Skylark and Riviera models."

He pointed out that the new styling lines were influenced by Riviera because of the outstanding success of this sports car introduced by Buick in 1963.

All rear-view models — Electra 225, Wildcat and LeSabre — have all-new, wider bodies with curved side glass. By repositioning the rear wheels in these models several inches of additional passenger room has been gained, both front and rear.

There are many 1965 innovations in the Buick line, such as the disappearing headlamps used in the Riviera. When not in operation, the headlamps disappear behind



BUICK FOR '65 — Long horizontal lines accentuate the length of this 1965 Electra 225, Buick's luxury series. The new Buicks will be seen at Muirhead Motor Co. showrooms Thursday and at the Twilight

the fender grilles. The Skylark and Electra series introduce "wall to wall" tail-lamps — a wide horizontal strip running the width of the car.

LeSabre, Wildcat and Electra convertibles have a rear window of solid plate safety glass to maintain clear vision. The top may be lowered with the glass in place.

A new "notch back" seat, combining the appearance of bucket seats with the utility of bench seats, is available in Wildcat and Electra models. Instrument panels and interior features are new on all series.

Each series has its own grille, bumper and other identification to give it its own individuality.

All models have frameless glass. Power operated radio antennas are located on the rear fenders of the LeSabre, Wildcat and Electra models. Buick will market 39 models in its 1965 line, including six in the Special and Special deluxe series; four in the Skylark; seven different LeSabres; ten Wildcats; seven Electras, and the one Riviera model.

In addition, there will be two six-passenger and two nine-passenger versions of the new sportwagon, featuring the panoramic sky roof.

Dept. Reports 29 Accidents

No fatalities were reported in Eastland County during the month of August in the monthly traffic accident summary issued by the Department of Public Safety.

There were eight personal injury accidents resulting in 15 persons injured and 21 property damage accidents with damage totaling \$13,875.

A comparison of accidents for the first eight months of 1964 with the same period last year showed five fatalities this year and six last year; 49 personal injury accidents with 70 persons injured, compared with 38 personal injury accidents with 67 injured last year; and 95 property damage accidents totaling \$162,130 compared to 90 last year totaling \$74,355.

DIXIE Drive-In
EASTLAND RANGER HIGHWAY

Box Office Opens 7:45; Show starts 8:15; Box Office closes 9:30. Admission: Adults 60c, Children under 12 Free Each Wed. - Thurs. — Bargain Nights (Adults 25c)

Wednesday & Thursday, Sept. 23 & 24
'Young and Willing'
Virginia Maskell — Paul Rogers

Friday & Saturday, Sept. 25 and 26
'The Incredible Mr. Limpet'
Don Knotts — Jack Weston — Carole Cook
IN COLOR

MAJESTIC
IN EASTLAND

NEVER CAN BE SEEN AGAIN HERE OR ANYWHERE ELSE

Exactly as performed on Broadway....
2 Days - 4 Performances only - Sept. 23, 24

An ELECTROVISION Production
ALEXANDER H. COHEN Presents

RICHARD BURTON
in JOHN GIELGUD'S
PRODUCTION OF
HAMLET

TICKETS NOW ON SALE \$2.20

... star cast of the hit Broadway play!

AN INTERSTATE THEATRE
MAJESTIC
FRIDAY - SATURDAY

Fri. Open 5:15 — Shows 5:45 - 7:40 - 9:35
Sat. Open 1:15 — Shows 1:45 - 3:40 - 5:35 - 7:30 - 9:25

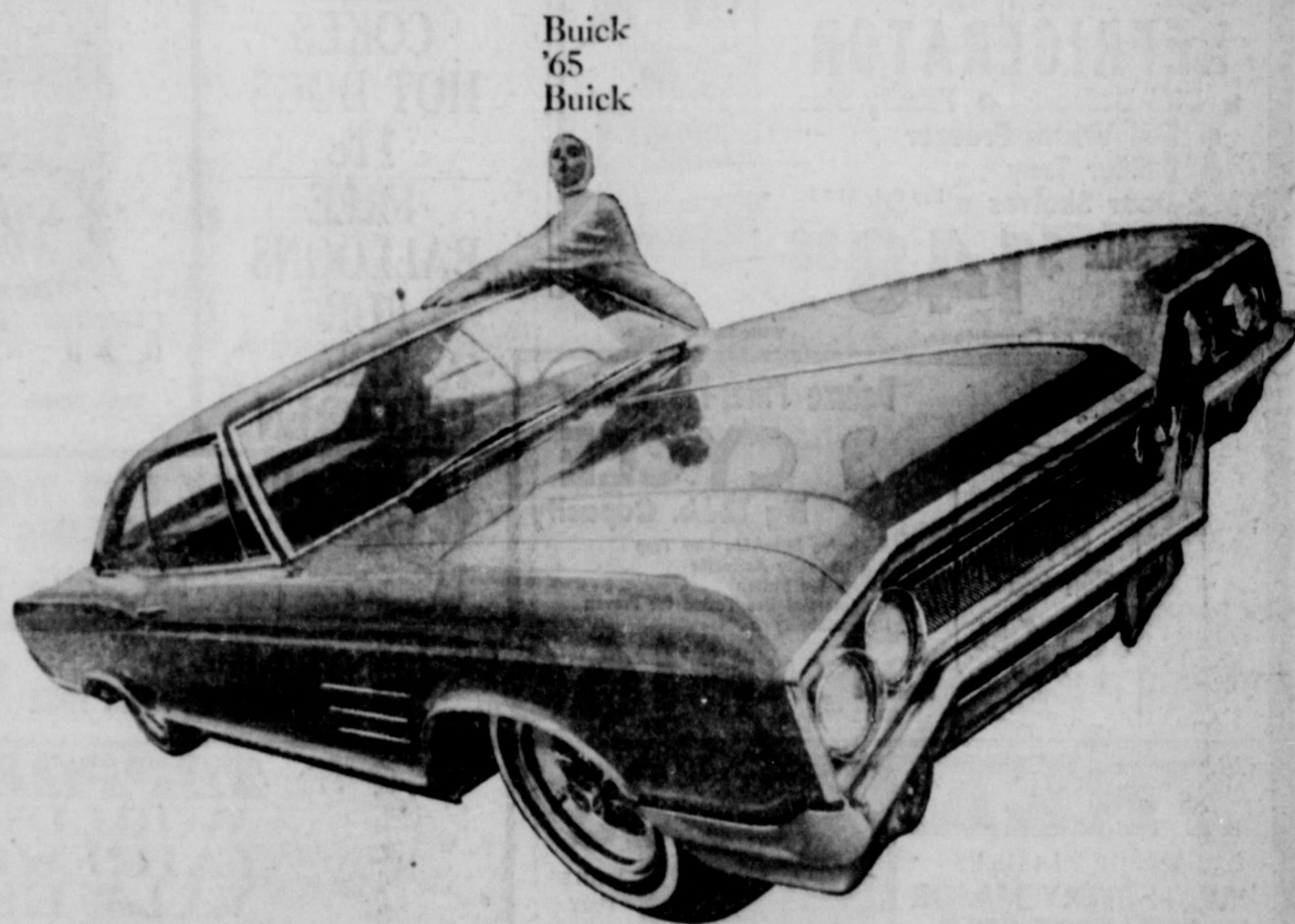
Ernest Hemingways
The **Killers**

There is more than one way to Kill a Man!

LEE MARVIN · ANGIE DICKINSON
JOHN CASSAVETES and RONALD REAGAN

STARTS SUNDAY

A SHOT IN THE DARK



We changed the Buick a lot this year. And you may never be the same again yourself!

We doubt you'll want to be the same. Not once you set eyes on our new Buicks, On the Buick Special and the Skylark. The LeSabre, Electra 225, Riviera. And on the sleek, modified fastback of the wild, wilder, Wildcat in the picture, True, there's a new high-style touch. But that's hardly all. Engineering still has the emphasis. It's a Buick tradition. So are the extras Buick spends a little extra on. Like finned brake drums that do a little better, And smoother drivelines. A tuned suspension to smooth ribcage roads. Now add Buick's Super Turbine transmissions—and you have an idea of what Buick owners have always liked about Buick. We think you'll feel the same.



Wouldn't you really rather have a Buick

SEE YOUR LOCAL AUTHORIZED BUICK DEALER, AUTHORIZED BUICK DEALER IN THIS AREA:

MUIRHEAD MOTOR CO.
301 WEST COMMERCE STREET EASTLAND, TEXAS

OLD day fire tivel, new light '65 Ok new 1965 new 1965 displ in E: anno Pipki en th fr H B Rac Pas str low mal acc Dec CC I

TWILIGHT AUTO SHOW ON THE SQUARE IN EASTLAND

FREE

SATURDAY 1 P.M. 'Til Dark:30

FREE

SEE ALL THE NEW '65s AT ONE TIME - ONE PLACE



OLDSMOBILE FOR '65 — This is the impressive new Oldsmobile Jetstar 88 Holiday Sedan at top with its roomier, strikingly styled body, re-designed chassis, Jetfire Rocket engine and optional Jetaway transmission. At bottom is the distinctive new 1965 Delta 88, a deluxe companion to the Dynamic 88. The beautiful new Oldsmobiles will be at Pipkin Motor Co. in Eastland Thursday and at the Twilight Auto Show on the Square Saturday.

'65 Oldsmobiles Show Thursday At Pipkin Motors

Oldsmobile is introducing a new full-size product line for 1965 called the Delta 88. The new 88, along with all other 1965 Oldsmobiles, will be on display at Pipkin Motor Co. in Eastland, Thursday, it was announced today by James Pipkin.

Disclosing details of the new Oldsmobiles, Pipkin quoted Harold N. Metzel, Oldsmobile's general manager and a vice president of General Motors as saying: "The Delta 88 is a glamorous new companion to the Dynamic 88, and these models, along with the Jetstar I, Starfires and 98's, are powered by our recently developed 425 cubic inch Super Rocket engine teamed with a brand new Turbo Hydra-Matic transmission, for the most instantaneously responsive performance in the division's history."

"Furthermore," said Metzel, "the completely new and roomier bodies of all our full-size Oldsmobiles, including the Jetstar 88, are dramatically restyled with curved side window glass and new roof-lines in all models."

"Series identification in the entire line of 1965 Oldsmobiles, from the F-85's on up to the 98's — all 32 models," Metzel added, "is more pronounced than ever. Our dealers will display them, publicly on Thursday, September 24."

Metzel described the new Super Rocket as a bigger, more powerful engine of light-weight cast-iron design. "Engine displacement has been

increased by 8 per cent," Metzel said, "yet engine weight has been substantially reduced. Teamed with the new Turbo Hydra-Matic transmission, the performance of the 425 cubic inch Super Rocket is sensational. With horsepower ratings from 310 to 370, the new engine will greatly enhance the outstanding reputation Oldsmobile has already earned in the performance field. Alert, effortless response to even a slight increase in throttle opening is the most significant engineering advancement in our new cars and is immediately apparent to the driver."

He said the new transmission is equipped with a variable vane for alert performance at every driving speed and to eliminate part-throttle downshift. It retains the Hydra-Matic's dual range feature for added safety in downhill braking.

"In addition to the availability of the Turbo Hydra-Matic transmission," said Metzel, "Oldsmobile for the first time is offering in all 88's, Jetstar I and Starfire models a floor-mounted four-speed manual transmission, fully synchronized in all gears."

He noted that other mechanical design changes include a new frame for increased rigidity and improved stability. Front and rear suspensions are newly designed for better ride and handling. The new chassis also features wider front brakes on the Dynamic and Delta 88's, Jetstar I and Starfires for greater brake life. On the 98's, both front and rear brake widths have been increased.

"An especially important change for the benefit of our customers," Metzel said, "is the extra roominess built into all full-size Oldsmobiles for 1965. Most of the interior dimensions have increased, with shoulder room for example, nearly four inches greater."

"And too," he continued, "the design of these new cars has permitted us to increase luggage capacity in the trunk by up to 3.9 cubic feet."

Metzel also reported that fuel tank capacity had been increased in 28 models to permit longer intervals between refueling stops during modern turnpike travel.

RANGER TIMES
Thursday, September 24, 1964 Page Three

State Capital NEWS

AUSTIN. "Interbasin diversions," the process of moving water from where it is to where it is needed, is being talked about more and more in Texas where half of the state's water supply is centered in the eastern one-seventh of the state.

It will be the topic of three speakers at the Association of Western State Engineers in Austin on September 21.

Gov. John Connally has asked the Texas Water Commission to speed up water planning to seek alternatives to the Bureau of Reclamation's forthcoming proposal. But the commission is strapped by the bounds of a budget inadequate for such a study, unless the 1965 Legislature increases its funds.

out the State Board of Insurance order requiring a minimum charge of six per cent interest on insurance premiums paid by installments has failed.

Board said it found nothing in the hearing to change its mind. It reported that abuses of Texas laws, prohibiting inducements to prospective policyholders and prohibiting discrimination between policyholders, were taking place under deferred payment plans.

State government ended its 1963-1964 fiscal year on August 31 with a fat general revenue fund balance of \$73,000,000.

It was the brightest year-end figure since 1949.

"It looks better than it has for a long time," beamed State Comptroller Robert S. Calvert. Five years of deficits

its still are fresh in his memory. One year the State ran \$110,000,000 in the red.

Calvert declined to speculate on the amount of surplus which will be available for legislative appropriation.

Governor Connally predicted earlier that the general revenue surplus may reach \$80,000,000 next year. Despite the abundance of money, the Governor said the Legislature likely will have to pass a new tax bill or amend the existing rates in 1965. This because of demands for more spending in education and other areas.

Calvert noted three factors in the favorable fiscal 1964 close-out: a \$24,000,000 increase this year over 1963 in general sales tax revenues; an \$8,000,000 jump in the auto sales tax; and a \$3,000,000 crude oil tax increase.

Comptroller's report showed state revenue collections during 1964 were more than \$1,000,000,000, compared with \$1,500,000,000, compared with \$1,500,000,000 in 1963. Expenditures totaled \$1,500,000,000, compared with \$1,400,000,000 the previous year.

An effort by the Allstate Insurance Company to knock

WE PAY
YOU
TO SAVE
WITH US



Piggy banks are a good place to save — if you're saving small change. But when that change grows into dollars, it's time to put your money in one of our savings accounts. Here, it will not only be safely insured up to \$10,000, but your money will also earn for you at a big 4 1/4% rate of interest. OPEN YOUR SAVINGS ACCOUNT TODAY AT

1st FEDERAL SAVINGS & LOAN ASSN.

204 Main RANGER MI 7-1611

Today... enter the Super Rocket Age... at your Olds Dealer's... where the action is!

Introducing the Rocket Action Cars!

OLDSMOBILE FOR 1965



All-new from every view... Great new Olds Dynamic 88!

Notice its longer, lower, wider proportions and impressive new lines. Inside, new luxuries and comforts everywhere you look. Even rides new, thanks to smoother-than-ever, four-coil-spring suspension. And just wait till you action-test its 425-cubic-inch, 310-h.p. Super Rocket V-8! Pick from all the Dynamic 88s, including three new top-of-the-series deluxe Delta 88 models.

Plus a whole new Olds Rocket Action lineup!

There's plenty to get excited about in Olds for '65! The Ninety-Eight series is more elegant than ever. The Starfire and Jetstar I boast a fiery new 370-h.p. Starfire V-8 that makes going Olds an even sportier proposition! Jetstar 88, Vista-Cruiser, F-85 — whatever you liked about them before you'll like even better now. See your Oldsmobile Dealer — where the action is!



JETSTAR 88 HOLIDAY SEDAN



3-SEAT CUSTOM VISTA-CRUISER



F-85 HOLIDAY COUPE

SEE YOUR LOCAL AUTHORIZED OLDSMOBILE QUALITY DEALER... WHERE THE ACTION IS! HEADQUARTERS FOR NINETY-EIGHT, STARFIRE, DYNAMIC 88, JETSTAR I, JETSTAR 88, VISTA-CRUISER, F-85

PIPKINS MOTOR CO.

314 W. Main Street

Eastland, Texas

BINOCULARS

7 X 35

Suggested Retail 34.95 — Now Only

\$25.95 WITH CASE

7 X 50

Suggested Retail 48.95 — Now Only

\$32.95 WITH CASE

7 x 35 Lightweight

WIDE ANGLE MAGNESIUM FRAME

SUGGESTED RETAIL \$58.95 — NOW ONLY

\$37.95 WITH CASE

SPORT CENTER

304 E. MAIN EASTLAND MA 9-1610



Ranger Junior College

RANGER FOOTBALL 1★9★6★4

Ranger High School

The Globe Clothiers
JOHN WYLIE

Porkey Pig
GOOD SPORTS MEET HERE!

Mr. and Mrs.
J. Floyd Killingsworth
RANGER

L & J Supply Co.
MR. AND MRS. JIMMY SMITH

Law's Service Station
MR. AND MRS. MAX LAW

Ranger Floral Company
MR. AND MRS. R. V. MATHENA

Betty's Flower Shop
MRS. OPAL MARSH

Curtis Blackwell's
Gulf Service Station
OPEN 24 HOURS A DAY

Ranger
Frozen Food Center
MR. AND MRS. MORRIS NEWMAN

Commercial
State Bank
MAKE OUR BANK YOUR BANK!

Morris Campbell
Humble Service Station
MR. AND MRS. MORRIS CAMPBELL

C. E. Maddocks & Co.
MARJORIE MADDOCKS

David D. Pickrell
MAY INSURANCE AGENCY
RANGER

Athletic Repair
& Manufacturing Co., Inc.
RANGER

Dr. Pepper
Bottling Company
RANGER

First Federal Savings
& Loan Association
RANGER, TEXAS

Ranger
Lumber & Supply Co.
CALVIN BROWN — EARL BROWN

Ranger General Hospital
Gerald Dugan
DISTRIBUTOR GOOD GULF PRODUCTS

Ranger Clinic

C. P. Cloud & Son
and Rippy Brothers
BILLY AND OREN RIPPY

First
Methodist Church
REV. B. L. McCORD, PASTOR

Ranger Junior College RANGERS

Sept. 19 — RJC (12) vs. NEW MEXICO MILITARY INSTITUTE (19) — Roswell, N. M.
Sept. 24 — RJC vs. TYLER — here.*
Oct. 3 — RJC vs. WHARTON — there*
Oct. 10 — RJC vs. KILGORE — here.* (Homecoming Game).
Oct. 17 — RJC vs. CISCO — Peanut Bowl, Eastland.*
Oct. 22 — RJC vs. TEXARKANA — here.*
Oct. 31 — RJC vs. HENDERSON — at Athens.*
Nov. 5 — RJC vs. NAVARRO — here.*
Nov. 12 — RJC vs. BLINN — at Brenham.*
Nov. 27 — RJC vs. MONTERREY TECH — Monterrey, Mexico.

(*Denotes Texas Junior College Football Federation Contests)
Colors: Purple & White
Coaches: Gerald Williams, Ronald Butler, Chuck Malone.

Ranger High School BULLDOGS

Sept. 4 — RANGER (8) vs. CISCO (34) — there.
Sept. 11 — RANGER (6) vs. DUBLIN (18) — here.
Sept. 18 — RANGER (23) vs. GORMAN (0) — there.
Oct. 2 — RANGER vs. BAIRD — here.*
Oct. 9 — RANGER vs. CLYDE — there.*
Oct. 16 — RANGER vs. RISING STAR — here.
Oct. 23 — RANGER vs. EASTLAND — here.*
Oct. 30 — RANGER vs. DeLEON — there.*
Nov. 6 — RANGER vs. CROSS PLAINS — here.*
Nov. 13 — RANGER vs. ALBANY — there.*

(*Denotes District 10A Conference Games)
Colors: Maroon & White
Coaches: Jack Duvall, Jerry Trice, Leroy Duke

Watch 'Em Every Week! THIS WEEK'S ACTION: Support 'Em Every Week!

See the Purple and White's Home Debut of the 1964 Season!

RJC'S RANGERS VS. TYLER JC APACHES COLLEGE STADIUM --- RANGER THURSDAY, SEPT. 24

OPENING KICKOFF AT 7:30 p. m. SHARP!

In their season opener against the powerful New Mexico Military Institute Broncs out at Roswell, N. M., last weekend, the fighting Rangers of '64 showed great promise — offensively and defensively. In their first game in the new College Stadium, the Purple & White will be gunning to defeat the Tyler Junior College Apaches, one of the most potent junior college elevens in the Texas Jr. College Football Federation. Don't miss this great contest in Ranger Thursday night, Sept. 24!

RANGER BULLDOGS

Idle This Week . . . Preparing For 10-A Conference Opener with
BAIRD BEARS -- FRIDAY, OCT. 2
AT BULLDOG STADIUM — RANGER

Good Sports

SEE A GOOD
MOVIE THIS
WEEKEND
AT YOUR
POPULAR

**RANGER
DRIVE-IN
THEATER**

RANGER BOOSTERS CLUB

Proudly Supporting the Battling Bulldogs
and the Fighting Rangers

Meet Again

Monday, September 23

At 7 p. m. in the Ranger Junior
College Cafeteria.

See Movies of the Ranger JC-Tyler JC Game!

Be a Booster — Join the Boosters!



Ranger Furniture
Exchange
Dearborn Stoves
123 N. Rusk — MI 7-1404
Ranger, Texas



Go, GO, Fans... See 'Em All This Fall!



DIRECTORS of the Eastland County Water Supply District have arranged for a broadcast three times weekly over WFAA-620, Dallas, giving sportsmen conditions at Lake Leon.

The Lake Leon summary will be included in a report on area lakes and will include weather conditions: wind velocity and direction, sky cloudy or clear, and condition of water—clear murky or muddy.

The Lake Leon report, to be furnished by James H. Johnson, lake custodian, will be broadcast Friday at 4:40 p. m., Saturday at 6:40 and 11:40 a. m. and 3:30 p. m., and Sunday morning at 9:40.

With arrival of cooler weather, fishermen report that bass are more active out at Lake Leon and several nice catches have been reported the past week.

One football fan to another: We may be in for a pleasant surprise out at new College Stadium Thursday night when Coach Gerald Williams' 1964 Rangers go into action in their first home appearance against the Tyler Jr. College Apaches, one of the toughest J.C. pigskin aggressions in Texas.

Could be — after winning only three games in three past years — that we may have an RJC powerhouse this fall.

Anyway, let's keep our fingers crossed — and here! Kickoff time, 7:30 p. m.

IF YOU might have been wondering about the happier-than-usual countenances of the five-member Don Yarbrough family, the answer is simple. Don, his wife Audrey, and their three youngsters, Donna, Don and Kim attended the West Texas Fair at Abilene last Friday night and won the daily \$1,000 cash award given during the annual event. Don proudly deposited the check for that amount in Commercial State Bank Tuesday. Don is cashier of the institution. Weekend precipitation in the Ranger area totaled about 4 inches, varying as usual from one section to another. Emery (Continued on Page 2)

'65 Auto Show On Eastland Square Open Saturday

All that's new in the 1965 automobiles will be on display Saturday in Eastland at the Twilight Auto Show, sponsored by the Eastland New Car and Truck Dealers Association in conjunction with the Eastland Chamber of Commerce.

The show is free and will be held on rope-off streets around the central square. The Eastland High School Maverick Band will open the show with a presentation at 1:30 p. m., and the shiny new autos are to be on display until about dark, it is reported.

To be seen will be 1965 model Chryslers, Plymouths, Valiants, Ramblers, Oldsmobiles, Cadillacs, Buicks, Pontiacs, Corvets, Falcons, Mercurys, Fords, Chevrolets, pickups and trucks.

Hood King, twice nominated as the state's outstanding new car dealer, is president of the Eastland association of dealers. He and Chamber President James Smith urge residents throughout the county to take advantage of the opportunity to see the new autos at one time and at one place, in Eastland Saturday.

Ranger Idle, Baird Tests Rotan Friday

The battling Baird High Bears are whetting their claws for their important District 10-A conference duel with the Ranger High Bulldogs here next week — on Friday, Oct. 2 — at Bulldog Stadium.

The Bears lead the seven-member schoolboy grid circuit with a perfect record — three victories in three starts. And they'll be going for No. 4 against Rotan Friday night at Rotan.

Despite Baird's unblemished record, however, Albany continues to be rated as the top club in the 10-A loop. The weekly Dallas News poll over the weekend and after scores were reported places Albany fourth in the state. Hull-Daisetta ranked first, Petersburg, second, and Ingleside, third.

In the meantime, Coach Jack Duvall & Company (Jerry Trice and Leroy Duke) continue to invest heavily in workouts for their 1964 Bulldog crew.

They'll wind up this week's rugged drills Friday afternoon, it'll be more of the same Monday through Wednesday of next week with a light workout Thursday afternoon prior to the zero hour.

In other 10-A action this week, Albany hosts Winters, Cross Plains journeys to Rising Star for a Saturday tussle, DeLeon goes to Comanche and Eastland treks to Dublin to try for an upset over the powerful Lions.

Here are the season standings:

DISTRICT 10-A			
Team	w	l	pct.
Baird	3	0	1.000
Cross Plains	1	0	.750
DeLeon	2	1	.667
Clyde	2	1	.667
Albany	1	2	.333
Ranger	1	2	.333
Eastland	0	3	.000

Heavy Rains Fill Lakes and Leon River

Rains in drought-breaking amounts fell throughout this region over the weekend, leaving stock tanks full, lakes in good condition, and farm and pasture land under water in many Eastland County areas.

The rain measured from about three inches to 16.5 inches in the county.

Lake Leon is full and was expected to go over the spillway Tuesday afternoon. Filtration Plant Superintendent Jesse White reported. Rains over the weekend and Monday measured some three inches at the lake he said and running into the lake, raised the water level two feet and one inch, bringing the depth to 74.2 feet.

Tuesday morning, water was some 11 inches from the top (Continued on Page 8)

BREAD of Life
My God, my God, why hast thou forsaken me?—Matt. 27:46

Jehovah lifted up His rod—O Christ I fell on Thee! Thou wast forsaken of Thy God No Distance now for me.

Tickets on Sale For Luncheon, Style Show

Tickets for the luncheon and style show to be held at the Louie Cedar Country Club Saturday are still available to the general public. Tickets are \$2.25 and may be reserved by calling Mrs. Pete Brashier at MI 7-3142 or Mrs. G. B. Rush at MI 7-1543.

The style show is being sponsored by the 1920 Club and the 1947 Club. Back to School and Fall Fashions for 1964 will be the theme of the show presented by Mrs. Audrey Yonker, owner of The Smart Shop. Commentator will be Mrs. Koscoe Hopper.

Possibility of Master Development Plan For Ranger Is Under Study

The Ranger City Commission is negotiating with a nationally-known firm of consulting planners and engineers to survey Ranger and assist in outlining a master development plan.

The project was discussed during a meeting of the Commission held at City Hall last Thursday night.

Mayor Morris Newnham said the plan would include a new base map of the city, including lots and blocks, and a street map.

Base studies, he explained, would relate to economics and population. Also covered would be existing land use, including general neighborhood analysis and future land use.

Community facilities included in the extensive survey would include thoroughfares and street system, waterworks, sanitary sewage system and drainage.

Financial studies, capital improvements and capital budget also would be a part of the plan, the mayor said.

Administrative ordinances, too, would include a zoning ordinance and district map and subdivision regulations and pro rata.

Bruce Clark, planning consultant in association with Henningson, Durham & Richardson, Inc., met with the Commission during its Thursday night session and explained the procedures of preparing a master development plan.

Mayor Newnham said that the Commission has been studying the matter for several months. This is the second firm to confer with the Ranger city head and members of the municipal governing body.

The cost of such a master development plan, he added, has not yet been determined. Since state and federal aid is available for such projects, Mayor Newnham explains, the city would pay only one-third of the cost. In other words, financing would be made possible by use of local funds as available.

Mayor Newnham also announced Wednesday that the city purchased for 66 and two-thirds cents on the dollar \$2,840 worth of Ranger bonds, paying 3 per cent interest, which will mature in 1970. The latest bond buy, he said, is in keeping with a program initiated by the City Commission several years ago to effect savings through discount purchases.

He said the city was continuing to operate with a \$25,000 surplus and added that he hoped the city would be able to continue also to continue to bond Ranger municipal bonds when available at discount rates.

Present at the Thursday night Commission meeting were the Mayor; Fred Bennett, street commissioner; W. J. Van Bibber, finance commissioner; Grover C. McGowan, water commissioner, and George Falls, police and fire commissioner.



REV. AVERY SULLIVAN

Rev. Sullivan Joins Ranger Jr. College Faculty

Rev. Avery J. Sullivan, pastor of Ranger First Baptist Church has joined the faculty of Ranger Junior College as teacher of Bible.

Rev. Sullivan is a graduate of Wayland Baptist College and of Southwestern Baptist Theological Seminary, where he is now doing graduate study, toward the Th. M. degree.

He has been active in civic affairs since coming to Ranger and has served as president of the Ranger Ministerial Alliance.

Cabinet work takes up much of his spare time and his hobby has served him well, both in his home and in his church.

Hearing For Ranger Man Is Due Soon

A charge of altering U. S. currency against Paul E. Fonville, 41, Route 1, Ranger, will be deliberated in early October by a federal grand jury in Wichita Falls.

Secret Service agents, acting on behalf of the U. S. Treasury Department filed the charge with U. S. Commissioner Bill Atkins in Fort Worth on Sept. 9 after the Ranger man had been arrested. He allegedly passed the altered currency at a Ranger food store and service station and had a "doctored" bill in his possession at the time he was apprehended by a Secret Service man.

He is free under a \$5,000 personal appearance bond.

Assistant U. S. Attorney Robert Travis of Fort Worth said that Fonville is accused of making spurious \$20 bills by altering bills of smaller denomination.

The charge, the U. S. attorney said, carries a possible five-year prison sentence upon conviction.

Survivors include his wife, two sons, Catharine of Detroit, Michigan, David of San Antonio; one stepson, Carlos Macias of San Antonio; two daughters, Mrs. Alfred B. Guzman and Miss Mary Nevarez of San Antonio; and four grandchildren.

VISITS DAUGHTER
Mr. and Mrs. C. C. Bearden returned home Wednesday night from a weeks visit with their daughter and family, Mr. and Mrs. LeRoy Parr, Michael and Mitchell of Baird.

1964 Rangers in Home Debut Against Tyler JC Here Thursday Night

A capacity crowd of grid fans is expected to pack the new stadium on the Ranger Junior College campus Thursday night to watch the 1964 Rangers battle the Tyler Junior College Apaches in a Texas Junior College Football contest.

Opening kickoff is set for 7:30 p. m. Admission is \$1.00 for adults, 50 cents for students and youngsters.

The invading Apaches, paced by a sensational quarterback, Vidal Carlin, are favorites to cop their third straight triumph here during the Thursday night contest. Carlin, 170 and 6-3, is rated as one of the top passers in junior college football this season.

The Apache offense has been moving effectively via the air route. Tyler opened its season two weeks ago with an 18-14 win over the Henderson County Jr. College Cardinals and last week they humbled Blinn Jr. College 14-0.

The Rangers opened their fall grid wars out at Roswell, N. M. Saturday night with a non-conference loss to the New Mexico Military Institute Broncos, 12-6.

Coach Gerald Williams and his assistants, Chuck Malone and Ron Butler, put the Purple & Whites through rugged prep sessions Monday and Tuesday and tapered them off with a light drill Wednesday in preparation for the Thursday night tilt. The conference battle will be the first RJC football game to be played in the newly completed college stadium which has a seating capacity in excess of 2,500.

This will be the sixth meeting of the Ranger and Tyler junior collegiate grid machines.

The Rangers have won but one of the five prior contests — that was in 1959 when the Purple & White barely scalped the Apaches, 26-23. In 1955, first meeting between the two schools, Tyler won, 27-6. In 1956 it was Tyler again by a top-heavy 40-0 count. In 1958, the Apaches again dumped the Rangers, 36-6, and in the last meeting of (Continued on Page 8)

Type 2 Vaccine To Be Given Sept. 26

Type II Polio Vaccine will be given here Saturday, September 26, at the Fine Arts Building, (formerly the National Guard Armory) on the RJC campus U. S. Highway 80 West, beginning at 9 a. m.

The sugar cubes, saturated with the highly effective deterrent to the dreaded disease, will be available to men, women, and children of Ranger and the surrounding area, according to Dr. W. F. Watkins, city health officer.

Dr. Watkins also added that persons failing to receive Type I or Type III also partake of the vaccine. All three complete the immunization against polio.

Dr. Luther Gohike, local pharmacist, and nurses will assist Dr. Watkins in the drive against the crippling disease.

Public Invited to See the New 1965 Chevrolet Line in Ranger Thursday

The new 1965 Chevrolet line of quality passenger cars will be unveiled in Ranger at Anderson Chevrolet Co. Thursday, Sept. 24.

The public is cordially invited to attend the showing and favors will be given to visitors who drop by the firm's showrooms at 111 South Austin. There'll be free cigars for the men, perfume and pot holders for the ladies, and candy and balloons for the youngsters.

"Chevrolet takes its longest stride into the fine car field with its '65 cars," Bill Anderson, owner of the 31-year-old Ranger authorized Chevy dealership, said Wednesday. "Plus offering the widest variety of luxury models and product features in its 54-year history."

The 1965 line, Anderson said, includes 45 models in five distinctive lines of new Chevrolets. Of these, he added, 20 will be "sport models" — convertibles and hardtops.

There are all-new cars in two lines:

— The regular Chevrolet, long-time industry sales leader, moves to a new prestige plateau with the greatest comfort and luxury ever offered.

— The Corvair makes a dramatic advance with its first major styling change in five years.

Customer approved design, with significant styling refinements, is continued for the Chevrolet, Chevy II and Corvair also becomes the fire American car to provide four-wheel disc brakes as standard equipment.

Among approximately 400 accessories and optional features available on 1965 Chevrolets is the first FM stereo system offered by an auto maker. Another is a telescoping steering column to give greater driving comfort for Corvairs and Chevies.

With its new models, Chevrolet hopes this year to establish its third successive industry sales mark. T. M. Pullen declared. (Continued on Page 4)

M. A. Wade Dies; Rites Wednesday

Funeral services for Matthew Hendricks Wade, 80, of Kermit, the father of a Ranger resident, Mrs. W. C. Nichols, were conducted at the First Baptist Church in Lingleville, Wednesday at 2:30 p. m. Ralph Ehrew, Baptist preacher of Fort Worth, officiated. Interment followed in the East End Cemetery at Lingleville.

Mr. Wade passed away at the Ranger General Hospital Tuesday morning at 11:30 following an illness for the past several months. He and his wife had resided in Ranger with their daughter and her husband since June when he became seriously ill.

Born in Caldwell County, he married the former Miss Sallie Louann Whitefield of Lingleville on July 21, 1906. They were the parents of five sons and one daughter whom they raised in the Lingleville area before moving to Kermit 28 years ago. Mr. Wade was a retired laborer.

Survivors include the wife; one daughter, Mrs. W. C. Nichols of Ranger; four sons, Bill Wade of Farinneton, N. M., H. E. Wade of Kermit, Herman Wade of Kermit, and Harlan Wade of Richmond. Another son, Hurst L. Wade, was killed on Leyte during World War II while serving with the U. S. Navy. Other survivors include six grandchildren and six great grandchildren.

Funeral services were held at 2 p. m. Monday in Macedonia Cemetery near Ranger with Ed E. Bryant, minister of the Church of Christ, Abernathy, officiating.

Mrs. Gardenhire died Sunday, Sept. 20, in Brownwood. She was born Nov. 6, 1883 in Stephens County.

Survivors include one son, Harless Gardenhire of Ranger; four daughters, Mrs. Erma Sparks, Jeff Chisum, and Martin Whisenant all of Lingleville.

Services For Mrs. Gardenhire, 77, Held Monday

Funeral services for Mrs. Allie E. Gardenhire, 77, were held at 11 a. m. Monday in the David - Morris Funeral Home in Brownwood with the Rev. Brown, pastor of Central Methodist Church of that city, officiating.

Graveside rites were held at 2 p. m. Monday in Macedonia Cemetery near Ranger with Ed E. Bryant, minister of the Church of Christ, Abernathy, officiating.

Mrs. Gardenhire died Sunday, Sept. 20, in Brownwood. She was born Nov. 6, 1883 in Stephens County.

Survivors include one son, Harless Gardenhire of Ranger; four daughters, Mrs. Erma Sparks, Jeff Chisum, and Martin Whisenant all of Lingleville.

Funeral services for Mrs. M. A. Wade were held at the First Baptist Church in Lingleville, Wednesday at 2:30 p. m. Ralph Ehrew, Baptist preacher of Fort Worth, officiated. Interment followed in the East End Cemetery at Lingleville.

TEST for fun

Said one fellow: "I was once in love with a twin."
Asked the other: "Didn't you ever kiss the wrong one by mistake?"
"Oh no," was the reply. "Her brother had a mustache."

WEATHER

THURSDAY—Plentiful, Sun rises 5:45, sets 5:53. Moon rises 3:00 p. m. Fishing good.

FRIDA Y—Sunny, Sun rises 5:50, sets 6:53. Moon rises 6:30 p. m. Fishing fair.

SATURDAY—Overcast, Sun rises 6:51, sets 6:52. Moon rises 9:55 p. m. Fishing poor.

FREE

1775 BONUS

GREEN STAMPS

When You Redeem These Coupons and Make Purchases Indicated

Prices Effective Thursday thru Saturday

WORTH

FOOD

MART

The SURE SIGN OF QUALITY!

\$100.00 MONEY TREE WINNERS

- Hertine Somerford
- MRS. A. W. WARFORD
- Mrs. Clifford Cozby
- J. B. Dever
- CECIL T. REDBEARN
- ROBERT V. COLLIER
- MRS. J. B. WALKER
- BARBARA SMITH
- MR. TED J. ROWIN
- MRS. JIM HILL
- MRS. J. E. JENNINGS
- Eastland Ranger
- Mrs. Loyce P. Barnes
- MR. J. S. STYLES
- CAROL LOFFER
- MRS. J. B. WALKER
- ROBERT V. COLLIER
- CECIL T. REDBEARN

DINNERWARE SCRAMPBLE COUPON

Your Choice of One Item - White Supply Lasts - Quantities Are Limited (Accessory Pieces - Not Included)

WEDGWOOD & CO. LTD.
Hedgecroft English Dinnerware
(Accessory Pieces - Not Included)
SCRAMPBLE COUPON
Your Choice While They Last
With this coupon and purchase of item on menu
or coupon, for each \$10.00 purchase.

WE GIVE GREEN STAMPS

HAMS
Neuhoff's Preferred 12-16 Lb. Avg. Wt. SHANK HALF or WHOLE
1 lb. 45¢

BACON
W. C. G. Heavy Beef
1 lb. Pkg. 53¢

ROUND STEAK
Kamp or Ribes Peak
1 lb. Pkg. 79¢

ROAST
W. C. G. Heavy Beef
1 lb. Pkg. 79¢

CHEESE SPREAD
Cher's Delight
2 lb. Pkg. 59¢

PICKLES
Green Beauty
27-oz. Jar 33¢

BISCUITS
Holland or Pillsbury
3 Cans 29¢

ORANGE DRINK
Hormel Devised
1/2 Gal. 49¢

SPAM SPREAD
2 3-oz. cans 39¢

EGGS
Kendrick's Ungraded B line Carton
8 Eggs 39¢

HAMS
Neuhoff's Preferred 12-16 Lb. Avg. Wt. BUTT HALF
1 lb. 49¢

SMOKIES
Neuhoff's
12-oz. Pkg. 59¢

FISH STICKS
Taste O'Sea
3 3-oz. Pkg. \$1.79

SHRIMP
Breaded Tid-Bits
1 lb. Pkg. 59¢

CRACKERS
Nabisco
1 lb. box 31¢

DOG FOOD
Worth
1 lb. can 10¢

PIES
Apple, Custard, or Cherry
Large 79¢

PIZZA
Columbo's Frozen
6-in. 49¢

LANOLIN PLUS
Egg Shampoo
99¢

APPLES
Delicious Washington State Extra Fancy Reds
Lb. 23¢

LEMONS
Sunkist, Large Calif.
6 For 29¢

PEARS
Hartlett Extra Fancy Pears
Calif. 19¢

ONIONS
Yellow, U.S. No. 1 Idaho
3 Lbs. 19¢

CABBAGE
Fresh Firm Heads Colorado Green
Lb. 6¢

50 BONUS S&H Green Stamps
With this coupon & purchase of
A 6-oz. Box of Textile Laundry
FLUFF RINSE
Void After Sept. 26, 1964

50 BONUS S&H Green Stamps
With this coupon & purchase of
2 1-lb. Cans of Fleischmann's
MARGARINE
Void After Sept. 26, 1964

50 BONUS S&H Green Stamps
With this coupon & purchase of
2 15-oz. Cans - Plain or with Beans
HORMEL CHILI
Void After Sept. 26, 1964

50 BONUS S&H Green Stamps
With this coupon & purchase of
2 No. 15 Cans of Carnation
CHUNK TUNA
Void After Sept. 26, 1964

100 BONUS S&H Green Stamps
With this coupon and purchase of
1 Sack of Regular or Medium
ARMOUR'S VENTAGEEREN
Void After Sept. 26, 1964

50 BONUS S&H Green Stamps
With this coupon & purchase of
A 2-lb. Box of Washburne
SALAD DRESSING
Void After Sept. 26, 1964

50 BONUS S&H Green Stamps
With this coupon & purchase of
A 24-ct. Box of Sanitary Napkins
SCOTT CONFIDENTS
Void After Sept. 26, 1964

50 BONUS S&H Green Stamps
With this coupon and purchase of
2 No. 203 Cans of Del Monte
FRUIT COCKTAIL
Void After Sept. 26, 1964

50 BONUS S&H Green Stamps
With this coupon & purchase of
A No. 212 Orchard
SWEET GREEN BROOM
Void After Sept. 26, 1964

50 BONUS S&H Green Stamps
With this coupon & purchase of
A 13-oz. (39¢ plus tax) Pkg. of
HAIR SPRAY
Carol Richards "Just Wonderful"
Void After Sept. 26, 1964

50 BONUS S&H Green Stamps
With this coupon & purchase of
A 1-oz. Jar of Lipflox
INSTANT TEA
Void After Sept. 26, 1964

50 BONUS S&H Green Stamps
With this coupon & purchase of
4 Rolls of Bathroom Tissue
SCOT TISSUE
Void After Sept. 26, 1964

50 BONUS S&H Green Stamps
With this coupon and purchase of
2 16-oz. Cans Pineapple - Grapefruit
DEL MONTE DRINK
Void After Sept. 26, 1964

50 BONUS S&H Green Stamps
With this coupon & purchase of
A 2-oz. Can of Armour's
BEEF STEW
Void After Sept. 26, 1964

100 BONUS S&H Green Stamps
With this coupon & purchase of
2 13-oz. Pkg. of Puffs
ENCHILADA DINNERS
Void After Sept. 26, 1964

50 BONUS S&H Green Stamps
With this coupon & purchase of
6 Extra Large California
SUNKIST LEMONS
Void After Sept. 26, 1964

50 BONUS S&H Green Stamps
With this coupon & purchase of
2 19-oz. Pkg. of Betty Crocker
CAKE MIXES
Void After Sept. 26, 1964

50 BONUS S&H Green Stamps
With this coupon and purchase of
2 No. 203 Cans of Del Monte
CUT GREEN BEANS
Void After Sept. 26, 1964

50 BONUS S&H Green Stamps
With this coupon and purchase of
A 32-oz. Bottle of Clifton
LIQUID DETERGENT
Void After Sept. 26, 1964

50 BONUS S&H Green Stamps
With this coupon & purchase of
4 8-oz. Pkg. Meat - Turkey
BANGUET MEAT PIES
Void After Sept. 26, 1964

50 BONUS S&H Green Stamps
With this coupon & purchase of
A 2-lb. Cello Bag
FRESH CARROTS
Void After Sept. 26, 1964

50 BONUS S&H Green Stamps
With this coupon & purchase of
3 3-oz. Pkg. Taste O' Sea
FISH STICKS
Void After Sept. 26, 1964

100 BONUS S&H Green Stamps
With this coupon and purchase of
A 2-lb. 6-oz. Pkg. of Turkey Roast
or TURKEY BREAST
Void After Sept. 26, 1964

25 BONUS S&H Green Stamps
With this coupon and purchase of
A 1-lb. Pkg. of Herb Blackhawk
FRANKFURTERS
Void After Sept. 26, 1964

50 BONUS S&H Green Stamps
With this coupon & purchase of
2 Lbs. or More of Any
BEEF ROAST
Void After Sept. 26, 1964

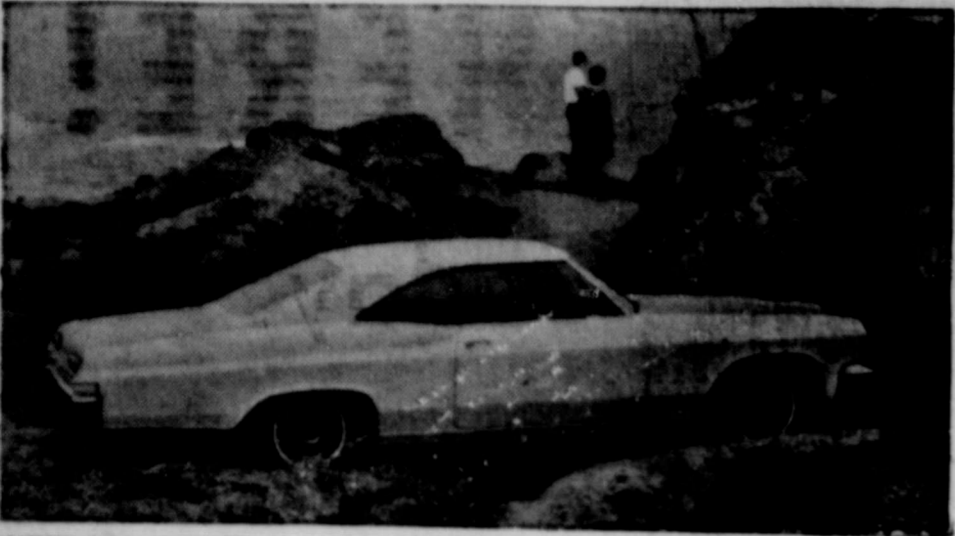
50 BONUS S&H Green Stamps
With this coupon & purchase of
A Quart Jar of Kraft's
MIRACLE WHIP
Void After Sept. 26, 1964

50 BONUS S&H Green Stamps
With this coupon and purchase of
2 19-oz. Pkg. of Betty Crocker
CAKE MIXES
Void After Sept. 26, 1964

50 BONUS S&H Green Stamps
With this coupon and purchase of
2 No. 203 Cans of Del Monte
CUT GREEN BEANS
Void After Sept. 26, 1964

50 BONUS S&H Green Stamps
With this coupon and purchase of
A 32-oz. Bottle of Clifton
LIQUID DETERGENT
Void After Sept. 26, 1964

50 BONUS S&H Green Stamps
With this coupon & purchase of
4 8-oz. Pkg. Meat - Turkey
BANGUET MEAT PIES
Void After Sept. 26, 1964



NEW CHEVROLET — Leading the beauty parade of 1965 cars is the elegant Chevrolet Impala Sport Coupe with new flowing lines, new roominess and a distinctive new profile. The Chevys will go on display at Anderson Chevrolet Thursday.

CHEVROLET

(Continued from Page One)

"For 1965, Chevrolet is keeping pace with the public's growing preference for prestige transportation with the widest possible customer choice of options and features to fit individual needs," he said.

Following are highlights of the five members of Chevrolet's "family" for 1965:

REGULAR CHEVROLET

The top selling line is an entirely new automobile for 1965. It is the most luxurious car ever offered by Chevrolet.

Fifteen models in four series stress a bigger car concept. The new Chevrolet is longer by more than three inches to (213.1 inches), wider by 1-1/2 inches to (79.8 inches) and one inch lower (to 55 sport coupe height of 54.1 inches) than 1964 models.

CORVAIR — Chevrolet's popular small, sports-type car makes the first major styling change since its introduction in the 1960 model year.

For 1965, Corvaire is longer, wider and lower while offering increased engine power. It retains its 108-inch wheelbase plus the air-cooled, rear-mounted engine and frame integral body which make it unique among American built cars.

A new top-of-the-line series, the Corsa — available in either convertible or sport coupe — replaces the Spyder models. The turbocharged engine, available only in Corsa models, is increased from 150 to 180 horsepower.

CHEVELLE — Chevrolet's newest car was a quick favorite with the motorist, recording 300,000 sales in its first model year.

For 1965, the Chevelle line of Atlanta.

is expanded to 12 models in four series, including a new economy series, the "300." The car will continue its 115-inch wheelbase. It receives a longer, more graceful look by the addition of 2.7 inches for an over-all length of 196.6 inches (201.4 inches for station wagons). Width continues at 74.6 inches but some models are more than an inch lower — sport coupe height is 52.8 inches.

Annual Tour Pecan Growers Set For Friday

The Eastland County Pecan Growers Association will have their annual tour of pecan orchards Friday, Sept. 25, starting from the El Rancho Cafe in Ranger at 9 a. m. and visiting six orchards.

The first stop will be at the B. B. Freeman orchard in the Cheaney Community, 10 miles south of Ranger. Other stops include the E. A. Walker orchard and the Joe Bob Browning orchard south of Gorman, the Charley Underwood orchard, Les Wallace and C. D. Simmons orchards.

All members of the association as well as other interested persons have been invited to make the tour.

VISIT HERE

Mr. and Mrs. David Allsup, Brenda and David visited their parents, Mr. and Mrs. F. E. Loper of Atlanta over the weekend and attended the funeral of the baby daughter of Mr. and Mrs. Otis Loper.

CHEVY II — New styling refinements and a wider range of optional power is offered in the Chevy II, entering its fourth year of attracting the motorist who wants tasteful styling economy and ease of handling.

Chevy II will be available in seven models in three series. It will continue its 110-inch wheelbase, its 182.9 inch length (station wagons 187.6 inches) and its 69.9 inch width. The sport coupe height is 54 inches.

For 1965, Chevrolet offers its customers 15 colors — 13 of them new — on Chevrolets, Chevilles, Chevy IIs and Corvairs with up to nine two-tone combinations, depending on the model. Corvettes are offered in a choice of eight distinctive colors.

New on all models will be a two-key lock system as added protection against vehicle theft. With it will be the addition of a four-position ignition switch to all models.

Extended lubrication is again a feature of all Chevrolets for 1965. Recommended chassis lubrication is every 6,000 miles or six months and engine oil change each 6,000 miles or 90 days.

Courthouse Records

- Oil & Gas Leases
- Court Proceedings
- Property Transfers

Car Registrations

Gus H. Frossard, Chevrolet, Gorman.
Willis Morrow, Chevrolet, Gorman.
Chester L. Allen, Jr., Chevrolet, Cisco.
James Hendricks, Oldsmobile, Eastland.
Mrs. John Garrett, Chevrolet, Eastland.
Rufus Lewis, Chevrolet, Eastland.
Ruby Whaley, Chevrolet pickup, Eastland.
J. T. Berry, Ford, Eastland.
J. O. Earnest, Ford pickup, Eastland.
James Horton, Ford pickup, Eastland.
T. M. Alford, Chevrolet, Eastland.
Gulf Gas Company, Chevrolet pickup, Eastland.

Suits Filed

Diantha Wilson vs. Joe Wilson, divorce and child custody.
Jerry Don Hamilton vs. Hardware Mutual Casualty Company, compensation.
Bryon Davis vs. J. N. Ellison, damages.
Marriage License
Eddie Wayne Baker to Barbara Ann Kinser
Kenneth Eugene Smith to Alma Loraine Shelton.
Mr. Clint Thomas to Mrs. Gertrude Wilson.

Instruments Filed

Kenneth Archer, et ux, to B. E. Hanson, warranty deed.
Fred Brizendine to Sadie Brizendine, power of attorney.
Harriett Boatman et al, to Eugene Keel et ux warranty deed.
Laura Viola Boles et vir, to B. E. Hanson, warranty deed.
I. B. Brandon to Nick Duggan et ux, release of lien.
First National Bank, Cisco et ux, to Kenneth Harvey, release of lien.
First Federal Saving and Loan, Ranger et ux, to D. D. Allen, release deed of lien.
First Federal Saving and Loan Association, Ranger et ux, to Francis Worden, Partial release of deed of trust.
Franklin Life Insurance Company et ux, to Oakland Development Corporation, release deed of trust.
W. T. Guy to the Public, affidavit.
W. T. Guy et ux, to B. E. Hanson, warranty deed.
W. T. Guy et ux, to Southern Saving and Loan Association, agreement
Raymond Gray et ux, to W.

E. Tyler, warranty deed.
Elsie Glenn et ux, to Joe Martin Barton, warranty deed.
Edith Hulin to Julie Townsend, warranty deed.
B. E. Hanson to C. M. McCain et ux, deed of trust.
Lucie Harrell to the Free Press Publishing Corporation, warranty deed.
Kenneth Harvey et ux, to George Kinard et ux, warranty deed.
B. E. Hanson to W. T. Guy, deed of trust.
Allan Heggedahl et ux, to B. E. Hanson, warranty deed.
Hattie Boatman et al, to Otto Spratt, oil, gas, and mineral lease.
H. C. Bowers et ux, to Mrs. Cordie Wolf, warranty deed.
Rhoda Boatwright, deceased, to the Public, affidavit.
Vernon Bosworth et ux, to Texas Building Material Inc., mechanic v. materialman's lien.
Ruth Callerman et al, to Donald Callerman et al,

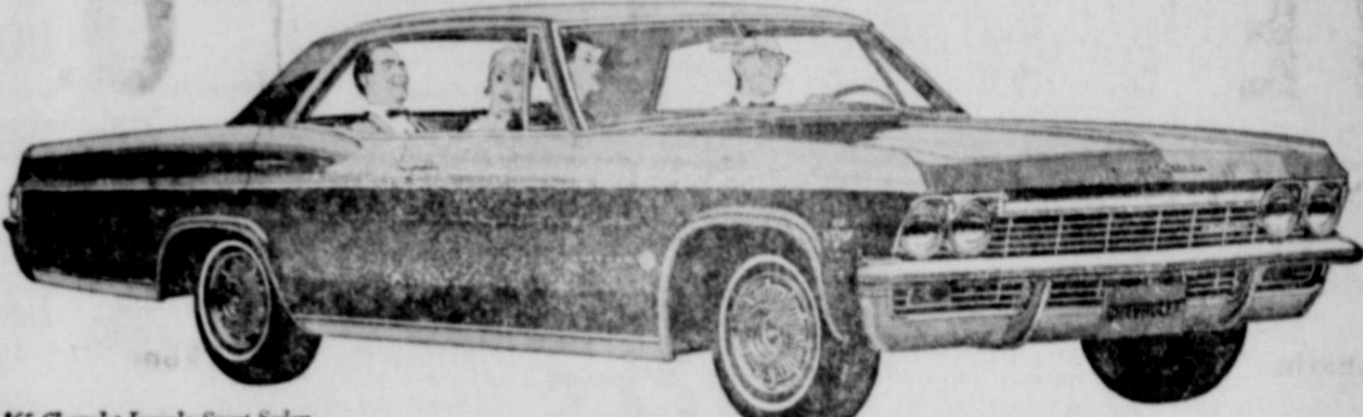
agreement.
H. W. Clifton et ux, to N. D. Chancellor et ux, warranty deed.
N. D. Chancellor to the First Federal Saving and Loan Association, Ranger deed of trust.
Wallace Cantrell et ux, to Elsie Glenn, warranty deed.
Nick Duggan et ux, to B. E. Hanson, warranty deed.
Nick Duggan et ux, to State of Texas, state tax lien.
Eastland Independent School District et al, to Armstedd West, warranty deed.
First Federal Saving and Loan Association, Ranger et ux, to William B. Eaves, release of lien.
J. P. Herbert, et ux, The Public, Proof of Heirship.
B. E. Hanson, et ux, The Public, affidavit.
B. E. Hanson, et ux, Southern Saving and Loan Association, Deed of Trust.
J. E. Dickman estate of the Public letters testamentary.
J. E. Dickman, estate of

The Public, Certified Copy, Will.
J. E. Dickman, estate of The Public, Certified Copy, Probate.
Nettie Hickman, to Otto Spratt, Warranty Deed.
Dora Faye Harris, et vir, to J. B. Bailey, Warranty Deed.
Gracie Viola Harris to Nina Eaker, Warranty Deed.
Jim Walter Corporation to Mid-State Home Inc., mechanic v. materialman lien.
D. J. Jobe to O. B. Rone et ux, release deed of trust.
George Jones to Elsie Glenn, warranty deed.
Ben Jackson to Floyd Shelton, release deed of trust.
J. S. Nursing Home Inc. to the State of Texas, state tax lien.
Lone Star Gas Producing Company to Odessa Smith Childers et al, release oil, gas, and mineral lease.
Everett Martin et ux, to B. E. Hanson, warranty deed.
John Morgan to the Pan American Petroleum Corpora-

tion, depositary.
E. V. McCright et al, to the First National of Fort Worth, amend oil, gas, and mineral lease.
C. M. McCain et ux, to B. E. Hanson, warranty deed.
E. V. McCright to Lone Star Gas Company, gas purchase contract.
Dell Norton et vir, to Charles P. Marshall, warranty deed.
Cleo Rice to Leo Phagan, warranty deed.
Ranger Peanut Inc. to the Commercial State Bank, Ranger, extension of deed of trust.
Virgil Seaberry Jr., et al, to E. V. McCright et al, amend oil, gas, lease.
Seabony Corporation to O. P. Leonard, extension agreement.
Security Life and Accident Company to Ranger Public College District, warranty

deed.
Mrs. Briggs Terry to Otto Spratt, oil, gas, and mineral lease.
United States of America to Nick Duggan et ux, release deed of trust.
Veteran's Land Board of Texas to Everett Womack, deed.
V. and J. Producing Company Incorporated to Floyd Shelton et al, release deed of trust.
Everett Womack et ux, to T. E. Weathersbee, warranty deed.
W. B. Wright et al, to the public, affidavit.
Frances Warden to J. G. Gilliam et ux, warranty deed.
James Webster et ux, to Marie Hill et ux, warranty deed.
T. C. Williams to E. E. Maples, warranty deed.
Linnie Zellars to Lane B. Wells, warranty deed.

now! the beautiful shapes for '65

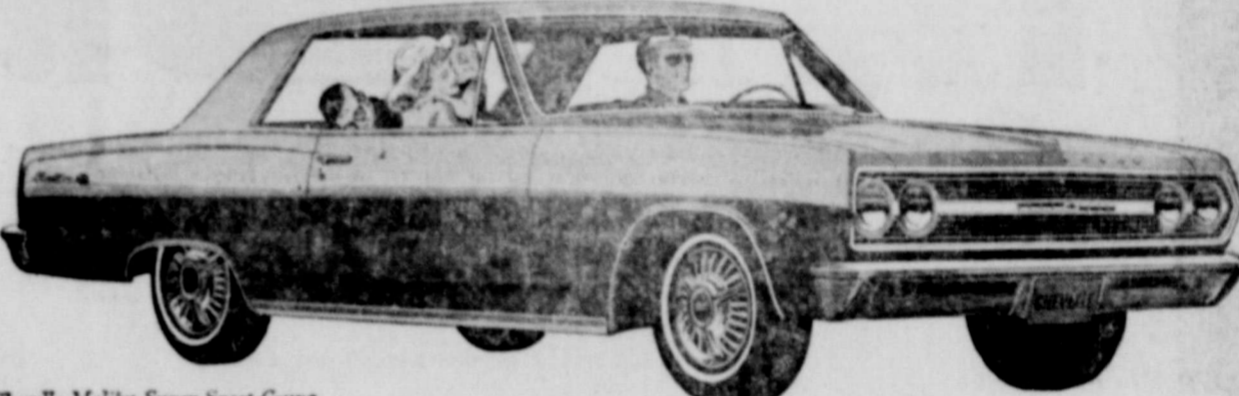


'65 Chevrolet Impala Sport Sedan

Chevrolet Impala '65

It's longer, lower, wider—with comforts that'll have many an expensive car wondering why it didn't think of them first. More shoulder room, more leg room up front. Curved side windows, an

instrument panel that's a conversation piece. In fact, just about everything's new right down to the road. And even that'll seem newer because the Jet-smooth ride is smoother than ever.



'65 Chevelle Malibu Super Sport Coupe

Chevelle Malibu '65

Here's all that made Chevelle America's most popular new-sized car—plus some new surprises. Like those cleaner, bolder lines. Like the silky way its new ride skims over the choppiest roads. Like

V8 power that'll make you think we stole some of Corvette's stuff—which we did. All told, five engines are available from a quieter six to a V8 that comes on 300 horses strong.



'65 Chevy II Nova 4-Door Sedan

Chevy II Nova '65

It may be the expensive-est looking thrift car you've laid eyes on. But thrifty it is. The big difference being that Chevy II's marvelous mechanical efficiency now wears a debonair new look. And

offers a new range of engines, including a new 300-hp V8. You could get the idea that saving you money was the last thing we had in mind—if it weren't for that price sticker on the window.



New top-of-the-line Corvair Corsa Sport Coupe

Corvair Corsa '65

How's this for sport with an international flair! The longer, wider design gives all closed models a hardtop roof, along with more shoulder and entrance room. And to go with the racier look,

there's up to 180 hp available in the new Corsa series, up to 140 hp in the Monza and 500 series. Also a flatter riding independent suspension, more responsive steering and a wider road stance.

See 5 beautiful shapes for '65—Chevrolet, Chevelle, Chevy II, Corvair & Corvette—at your dealer's

ANDERSON CHEVROLET COMPANY

111 S. AUSTIN RANGER, TEXAS

RANGER DRIVE-IN
Highway 80 — East on Ranger Hill
ADULTS 50c KIDDIES UNDER 11 FREE
SHOW STARTS AT DUSK

Thursday, Sept. 23
The most gruesome day in the calendar!
BORIS KARLOFF starring in **Black Sabbath**
in PATHECOLOR

PATRONIZE ONE OF THE FOLLOWING LEADING MERCHANTS AND RECEIVE A GUEST TICKET GOOD EACH
THURSDAY NITE
You Must Have a Ticket or Pay Regular Admission
WESTERN AUTO ASSOCIATE STORE
THE GLOBE CLOTHIERS
FRIGID QUEEN
RANGER FROZEN FOOD CENTER
RANGER DRY CLEANERS
PORKEY PIG

Friday and Saturday
SEPT. 25 - 26

A lone U.S. Astronaut Space-Ship Wrecked On Mars!
ROBINSON CRUSOE ON MARS

THE 1965 CHEVYS ARE HERE!

Dazzling New Models on Display Today

AT RANGER'S FRIENDLY

ANDERSON CHEVROLET CO.

EASTLAND COUNTY'S OLDEST CHEVROLET DEALER

Authorized Sales and Service Since 1933

111 South Austin

RANGER, TEXAS

Phone MI 7-1161

A PERSONAL INVITATION...



W. J. (Bill) ANDERSON

Yes, we want to take this opportunity to personally invite you to visit our showroom and see America's greatest line of fastest-selling cars!

Never before in the 31-year history of this pioneer dealership have we been privileged to introduce such a fine line of new Chevrolets with so many superior features. We know you'll find a size and model to please you in the wide array of 1965 Chevrolets.

Come in today and see for yourself. The latch-string's out . . . and we'll be expecting you!

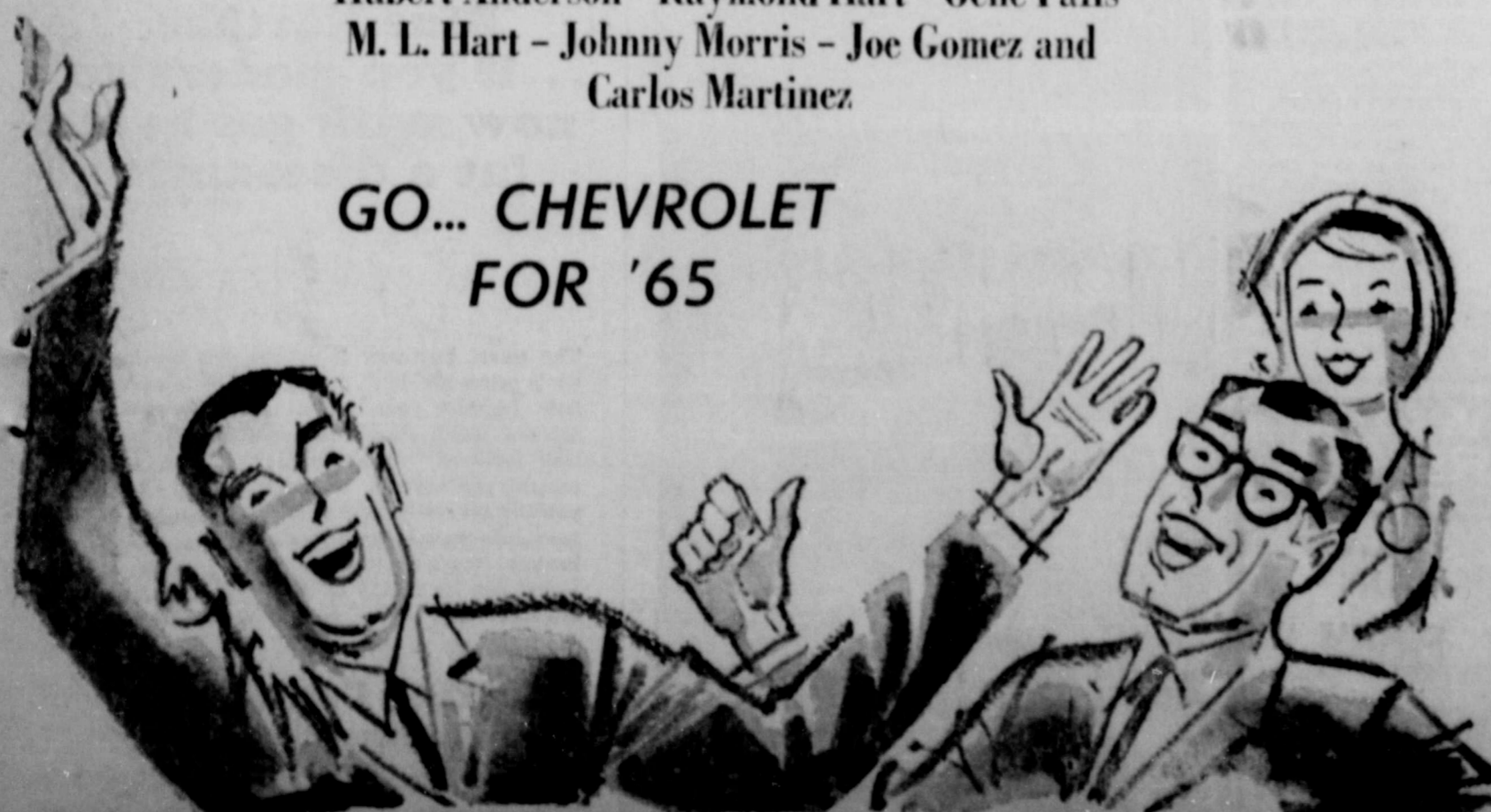
W. J. (Bill) Anderson

ALL THE FRIENDLY FOLKS AT ANDERSON CHEVROLET APPRECIATE
SERVING MOTORISTS OF RANGER AND SURROUNDING AREA!

You get a real deal on a new car or a good used car — backed by a reputation built upon confidence, integrity and friendship. You get dependable, expert workmanship and genuine parts in our service department. And you get the best of everything from all of us who are privileged to faithfully serve a growing number of satisfied motorists. We join the boss in his invitation — come see us!

Beauford Anderson - Bill Eyley - Doyle Gentry
Hubert Anderson - Raymond Hart - Gene Falls
M. L. Hart - Johnny Morris - Joe Gomez and
Carlos Martinez

GO... CHEVROLET
FOR '65



FREE FAVORS

- Cigars for the Men
- Perfume & Potholders for the Ladies
- Balloons and Candy for the kiddies

Setting the Pace!

- CHEVROLET
- CORVAIR
- CHEVELLE
- CHEVY II
- CORVETTE

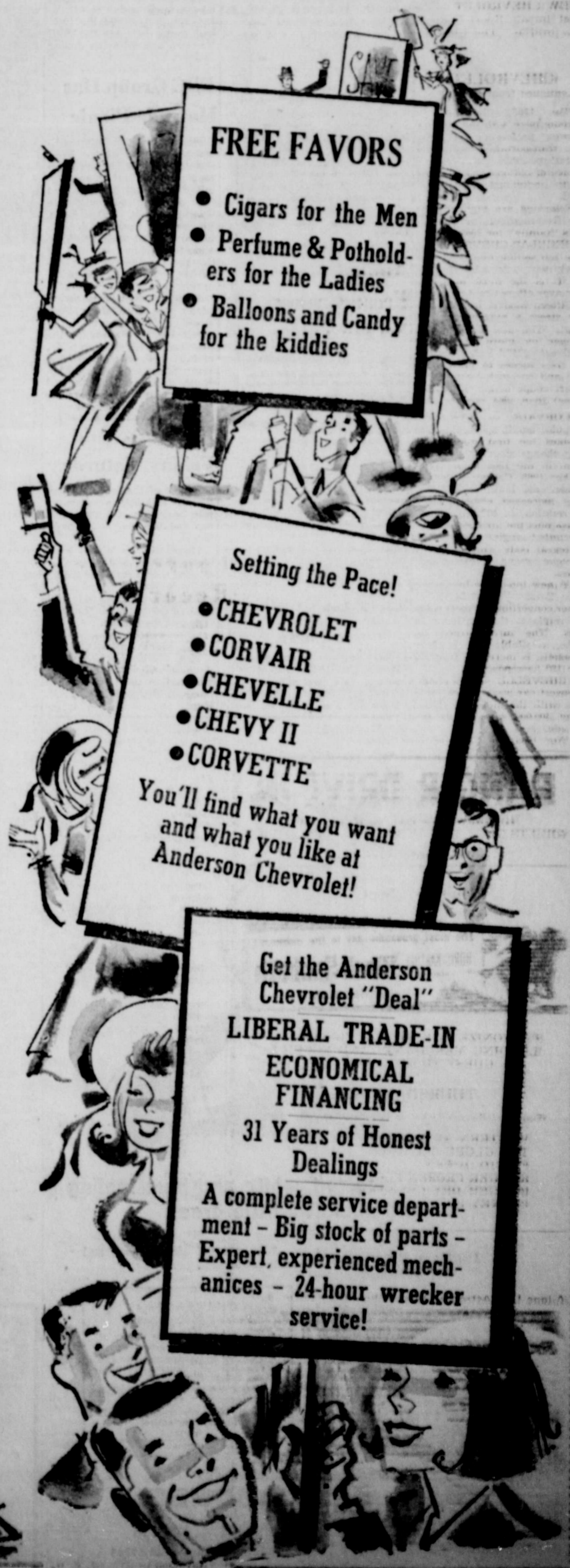
You'll find what you want
and what you like at
Anderson Chevrolet!

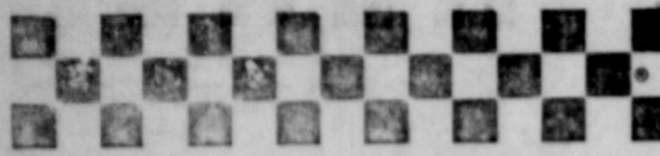
Get the Anderson Chevrolet "Deal"

LIBERAL TRADE-IN
ECONOMICAL
FINANCING

31 Years of Honest
Dealings

A complete service department - Big stock of parts - Expert, experienced mechanics - 24-hour wrecker service!





Checkerboard News

RATLIFF FEED & SEED
Highway 80 East - Phone MI 7-1260
RANGER, TEXAS



FACTS, (not
"chin-music")
POUR IN.

...about Purina's "Built-in Roughage" Cattle Program

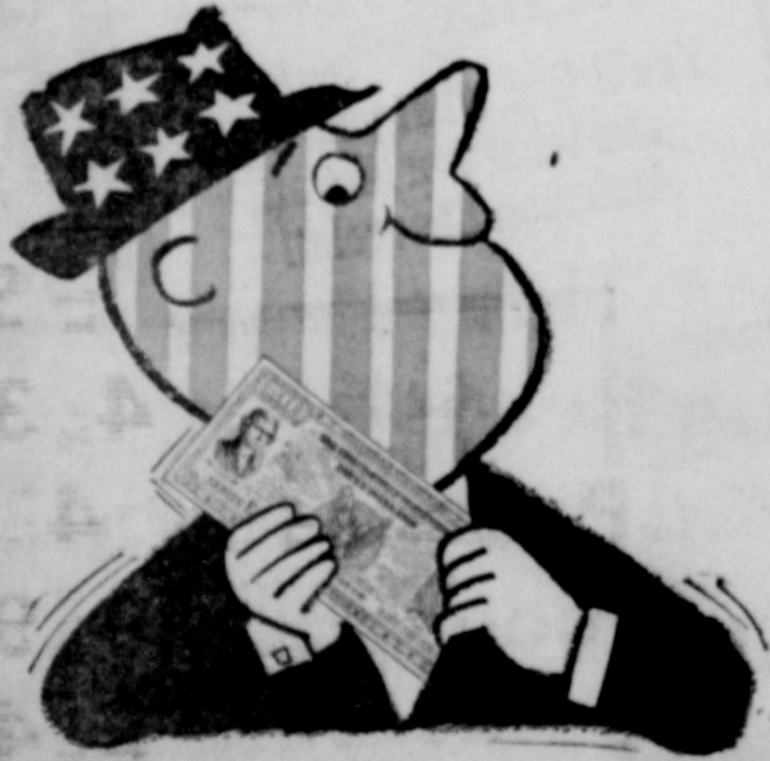
Whenever cattle are fed, cattlemen sing the praises of Purina's "Built-in Roughage" Self-Feeding Program.

They didn't take to this new idea overnight. Cattlemen, like all good business men, buy on FACTS. And that's exactly why "Built-in Roughage" feeding keeps on winning friends among cattle feeders... they keep getting FACTS from cattle fed in Purina Demonstrations.

They note the gains and efficiency of "Built-in Roughage"-fed cattle. They see how this program works with self-feeders, which offers big savings in labor and equipment.

Purina Special Steer Fajena is the original "Built-in Roughage" supplement. It holds the secret to this giant step forward in cattle feeding. Is it for me at our store? You tell! Order it today.

LOW COST PRODUCTION...
the reason why more farmers feed FURINA.



How to get a nice red, white and blue feeling —and pocket a little green

Buy U. S. Savings Bonds, and you can be proud of yourself twice.

One, you do something good for your country. (And that can make you feel pretty good inside.) Uncle Sam makes good use of your Bond dollars to strengthen the cause of freedom.

Two, you do something good for yourself. You save some of your hard-earned cash, and put it to work earning more cash. (Come maturity time, you'll get back \$4 for every \$3—guaranteed!)

Why not get started soon and feel better fast.

- Quick facts about Series E Savings Bonds**
- You get 3 1/2% more money at maturity (7 years, 9 months)
 - You pay no state or local tax and can defer the federal tax until the Bonds are cashed
 - You can get your money when you need it
 - Your Bonds are replaced free if lost, destroyed or stolen

Keep freedom in your future with
U.S. SAVINGS BONDS

Buy U. S. Savings Bonds and pay for this advertisement. The Treasury Dept. Bonds, the Advertising Council and this newspaper for their patriotic support.
ORDER NO. 583-2478-3 COL. X 138 LINES—NEWSPAPERS—APRIL, 1964

Miss Sullivan To Attend Meet

Miss Sanya Sullivan, director of student personnel at Ranger Junior College, will be in Corpus Christi, October 1-3, to attend the Texas Personnel and Guidance Association convention.

On the morning of Friday, the 2nd, she will attend a breakfast given by the American College Testing (ACT) Program.

Ranger Junior College has this year, made the ACT test compulsory for entrance requirements.

Miss Sullivan will return to Ranger by way of Wharton where, on Saturday night, the 3rd, she will attend the football game between the RJC Rangers and Wharton Junior College.

FBC Group Has Hayride-Picnic

Members of the Intermediate Department of the First Baptist Church enjoyed an outing last Saturday evening.

The group left the church at 6:30 p.m. for a hayride to Quarles Dock, Lake Leon. The sudden shower did nothing to prevent an hour of fun and fellowship, nor did it dampen the appetite for sandwiches, cold drinks, cookies, and homemade ice cream.

Approximately thirty young people are grateful to Pete Brasher for the use of the truck. Wilson Watson for the hay, and adult sponsors: Mr. and Mrs. J. W. White, Mrs. Ruby Springer, Mr. and Mrs. R. V. Robinson, and Mr. and Mrs. Wilson Watson, who accompanied them.

Rummage Sale Friday, Saturday

Ladies of the First Christian Church will hold a rummage sale beginning at 9 a.m., Friday and Saturday at 318 Main Street.

There will be lots of good clean clothing and a number of good men's suits, according to the ladies.

Proceeds from the sale will go to help purchase the new organ at the church.

VISIT PARENTS

Mrs. Marlin Lufkin and daughter Christina spent the weekend in the home of her parents, Mr. and Mrs. E. E. Ford.

Ranger United Fund Contributions Benefit Local Community Library

Another of the seven local agencies that benefit from the United Fund contributions is the Ranger Community Library.

SOCIAL CALENDAR

TUESDAY

The Columbia Study Club will meet Tuesday at 3 p. m. in the home of Mrs. A. N. Larson.

Mrs. Stanley McAnnelly will give the Re-assembly meeting.

FRIDAY

The Ranger Garden Club will get their new year underway with a patio party in the home of Mr. and Mrs. Robert Allen on Friday at 7:30 p. m.

Guest speaker, Jack Allen, will use as his topic, Conservation Is Beautification.

Members are urged to bring their husbands or guests.

SATURDAY

Style Show and luncheon sponsored by the 1920 and 1947 Clubs will be held at Lone Cedar Country Club at noon.

Morton Valley HD Has Supper

Friday evening, Sept. 18, members of the Morton Valley Home Demonstration Club and their families met at the club house for supper and an evening of visiting and games.

The large tabled filled with the many dishes of delicious foods, cake and pies was a delightful thing to see, Mrs. Charles T. Brockman said.

After supper the remainder of the evening was spent in conversation and games of "42"

Methodist Men To Meet Friday For Breakfast

The Methodist Men's program and breakfast will be held at 6:30 a.m. in the basement of the Methodist Church, Friday, September 25.

Gaston Dixon will lead the singing and John Wiley will give the devotion. Following the devotion, a film on the Ranger Junior College - New Mexico Military Institute football game last Saturday, will be shown.

All men of the church and any other men who would like to attend the meeting, will be welcome.

Minister Group Assembly Set For Sept. 23

Ranger Junior College will hold the Annual Assembly for the Ranger Ministerial Association on September 23, at 9:50 a.m. with Dean Ernen Haby presiding.

Dean Haby will introduce the Reverend David Downing, president of the Association, who will in turn introduce all the members. Each minister will issue an invitation to the students and faculty to attend their respective churches in the City of Ranger.

The public is invited and urged to attend this meeting at which time it is expected that the students at RJC, here for the school year, will meet the ministers of the different denominations and select the church for their attendance during this time.

WEEKEND GUESTS

Mrs. Lela Quinn had as her weekend guests her son, Roton F. Quinn of Fort Worth and her other son and his family, Mr. and Mrs. Russell Quinn and boys of Dallas.

VISITS PARENTS

Mr. and Mrs. J. A. Lenzini visited his parents, Mr. and Mrs. Frank Lenzini of Mingus last weekend.

WATCH REPAIR SERVICE

DON ERVIN

Jeweler
Diamonds - Watches
GIFTS

307 Main Ranger

We Buy Old Coins

brary. The Library's request for funds for this year is \$600.

A good library is one of the most basic assets of a town and a reading public is a contented public. The library habit is a fine one to form and it can't be done without a good library. Without the help of the United Fund, the Library could not purchase the new and current books or replace the worn out editions so popular with so many.

The Community Library is open thirteen days a month and there is no time limit on the time each person spends browsing through the books and reading. Any child or adult can come in as the doors open and stay until the doors close three hours later. Parents may leave their children

while they shop or visit and find a happy child when they return, as books seem to fascinate all ages from 2 to 5.

Grandparents have found the library a happy solution for the in-between hours that they had forgotten exist, with small fry and not so small fry. Each summer around ten grandparents have either brought or permitted their grandchildren to take out cards and books. This offers one of the most economical pleasures to date. A child in the lower grades may have a card for 25 cents for three months and read as many books as he or she wishes. They may take two books every other day all summer. For High School students the cost is 50 cents on the same

plan and an adult may read for six months for \$1. A family card costs \$3 per year regardless of the size of the family. Two weeks is the limit for holding books and if you live outside the city limits, three weeks. Over this period a fine of 2 cents per book, per day, excluding Saturdays and Sundays, is charged.

Libraries are a wonderful place to start friendships as those involved have the same interest — books. Several made friend this way at the Ranger Community Library this past summer. Also sharing books with visiting cousins was in evidence at the Library during the summer. Many of the readers caught up with school required lists, and made the most of their free time. Quite a few of the students can tell you all about Texas as they have gone

through the library books with a fine tooth comb. Each reader had time to pursue the subject he or she was most interested in and the Librarian was taught a lot this past year as the young as well as adults like to share their found knowledge.

Approximately 6,240 books are issued by the Ranger Community Library per year. There is an average of 40 books issued each day.

Mrs. H. S. Perry is Librarian and the library is open from 2 p.m. until 5 p.m. each Monday, Wednesday, and Friday.

GOLD BOND Redemption Center
at
THE GIFT SHOP
518 E. Conner
Eastland MA 9-2386

big discounts now!

Lone Star Gas cuts prices on all gas heating units during the GAS Housewarming SALE!



LIBRARY PATRONS — Mrs. Isa Swoveland, age 75, and little Keith Hobbs, 2, and Joy Weekes, 3, are shown enjoying one of the many books available for all ages at the Ranger Community Library, which is aided in supplying new books and replacing worn out editions by the contributions of the United Fund.

Pictured below are youngsters of all ages enjoying the books at the Library where they may spend as much time during the hours that the library is open as they wish. Many boys and girls, as well as adults, found the library a wonderful place to meet friends and share their interest in books.



What'll you care about a Blue Norther ... if you modernize now with gas heat [at a discount]!

The smart buy now is modern gas heating — while prices are down during the Housewarming Sale. Improve your comfort with any of these modern units: thermostat-controlled floor and wall furnaces, big automatic central gas systems that let you add gas cooling later, bathroom heaters, economical room heaters. Now's the time to buy — and just let sneaky ol' Blue Norther blow.



Heating Contractors and Lone Star Gas

Desdemona News

Mrs. Iva Buchan was rushed to the Stephenville Hospital by an ambulance. She suffered from breathing difficulty and is quite ill at the present.

Early last week Mrs. Annie Rainey underwent surgery. She remains a patient in the Eastland Hospital.

Gorman NEWS

The Excelsior Club held their first meeting in the Wyatt Hodge cabin at Lake Leon for a covered dish luncheon. Mrs. Gene Baker presided in the absence of the president, Mrs. Dora Moorman who was unable to attend due to the death of her mother, Mrs. Burkhardt, who passed away in Calif.

Theme for the year for the Excelsior Club is "Peace With Understanding."

Those taking part in the days work were Mrs. O. T. Shell, Mrs. M. Sutton, Mrs. George Blackwell, Mrs. Fannye Burkett, Mrs. Maude Underwood, Mrs. Nell Raney, Mrs. Check Smith, Mrs. Edna Kirk, hostess, Mrs. Ed Wyatt and co-hostesses, Mrs. G. D. Riley, Mrs. Maude Foster, associate member; and two visitors, Mrs. Jo Polnac of Gorman and Mrs. James Martin of DeLeon.

They report a day of progress with a wonderful fellowship and a delicious luncheon.

Mrs. G. D. Riley returned home Friday from a weeks visit with her sister-in-law, Mrs. Bailey P. Smith and a niece, Mr. and Mrs. Joe Whitington of Thacherville, Oklahoma. Mrs. Smith accompanied her to Marietta, Oklahoma where they visited in the home of Mr. and Mrs. Carl Tanner. She also visited with her daughters, Mrs. Perry Perdue and Mr. and Mrs. Tony Iammatteo and her grandsons and families, Mr. and Mrs. Neal Crossan and Mr. and Mrs. Gene Crossan.

Mrs. Lonnie Williamson returned home Sunday following surgery in the DeLeon Hospital last week.

Rev. and Mrs. Derral Dosey and children spent the weekend in Hobbs visiting with relatives and friends.

In the absence of our pastor the pulpit was filled Sunday morning by Rev. Gregory of Fort Worth; and Rev. Bob Sheppard of Stephenville supplied on Sunday night at the First Baptist Church.

Miss Ulend Roberts, daughter of Mr. and Mrs. Morgan Roberts, spent the weekend in Grandbury visiting her grandmother Roberts.

Recent visitors in Clyde were Mr. and Mrs. Pugh Guthery and girls and Mrs. Ethel Keith who visited Mr. and Mrs. Bernard Keith and girls. They also attended the Stork Shower given for Mr. Keith at the home of Mrs. Mary Allen.

Mrs. George Whitlock spent the week in Olen with her son, Wayne Whitlock.

Recent guests in the home of Mr. and Mrs. Curley Craig were their daughter, Mr. and Mrs. Cutiss Cornwell of Arlington.

Weekend visitors with the Genoways and the Ott Raglands were Mr. and Mrs. Morris Nance, Don and Steve of Midland and Mr. and Mrs. Whit Richards and Billie of Breckenridge.

Royce, son of Mr. and Mrs. Nelson Shipman of Strawn underwent surgery in Fort Worth last Tuesday. Royce swallowed a paper clip two or three years ago.

Mrs. Maggie Quinn was buried Tuesday at Alameda.

Mrs. Emma Quinn remains with her sister, Lena, who has been quite ill in Pampa.

Little Darrell Blankenship, who is in a school for children at Mexia, spent the weekend here with his parents, Mr. and Mrs. Bryant Blankenship.

Guests in the home of Mrs. Ometa Lewis the past weekend were all her children and grandchildren.

Mr. and Mrs. R. C. Boswell who plans to visit Mrs. Effie Bright in Vernon and on to Altus, Oklahoma for a week's visit with her sister and husband, Mr. and Mrs. O. G. Collins.

Those attending the Rebekah Lodge in DeLeon Tuesday, Sept. 15, were Mrs. Reynolds, Pulley, Gilmore, Caldwell and the candidate, Mrs. Celest Petree who received the Rebekah degree.

The revival closed at the First Baptist Church Sunday following a weeks series of services. Quite a large crowd was present each night. Visitors from DeLeon, Abilene, Gorman, Eastland and other places were present at different times.

The John Gramms, Wayne Davis and the Mitchell family were present Saturday night

from Abilene and brought special music. Jimmy Mohon of DeLeon brought special music one night also; the singer mother Mr. Mohon and Mrs. Pearl Duncan of DeLeon visited Saturday night.

Mrs. H. H. Williams, who spent a few days last week in the Gorman Hospital is now a patient in the DeLeon Hospital undergoing a series of tests.

Labor Day weekend visitors in the home of the D. E. Wisdoms family were Mrs. Joyce Kimbrough and daughter of Odessa and Mr. and Mrs. Bill Harris of Lubbock.

Mrs. Myrtle Reed and Mrs. Cora Sparks are home after having spent Labor Day weekend in the hospital at Gorman. Tuesday, Sept. 15, Mrs. Ann

Rainey underwent surgery in the Eastland Hospital.

Visitors Monday, Labor Day, in the home of Mrs. Ollie Fein were Mr. and Mrs. Fred Keith and Mrs. Edward Keith of Fort Worth.

The John Grisham family of Abilene spent the weekend with her parents, Mr. and Mrs. Bennie Belyeu.

Mr. and Mrs. L. P. Hammonds and son, Dean, are in Nebraska and will visit his Grandmother Horn who will be 94 years old this week. They will also visit in Oklahoma on their way home.

Guy Owens and Mr. and

Mrs. I. H. McMaster of Ladness are here this weekend to visit relatives and friends.

Mr. and Mrs. James Riggs of Fort Worth spent the weekend here visiting relatives.

Sunday, Mrs. Bill Norris of Dublin visited with her sister and brother-in-law, Mr. and Mrs. Curley Craig.

Weekend visitors in the home of Mr. and Mrs. Bob Lewis were their daughter and grandson, Mrs. Glenn Thiboud of Kilgore.

Mrs. Georgie Whitlock and son and Mr. and Mrs. Wayne Whitlock and sons spent the weekend in Fort Worth and visited Ervil Quinn, son of Mr. and Mrs. J. P. Quinn who underwent surgery there last week.

Critically ill in the Roby Hospital with a broken hip is Mrs. Maggie Quinn. Cards would be appreciated.

Visiting relatives here Sunday were Mr. and Mrs. Leo Williams and children of Grayford.

Mr. and Mrs. Walter Greenhaw are in Petersburg visiting their son, Mr. and Mrs. Ford Greenhaw.

Visitors in the home of Mr. and Mrs. Sam Powers Saturday were his sister, Mr. and Mrs. U. O. Watson. Visiting the Powers on Sunday were Mr. and Mrs. Luther McMillian of Stephenville.

Frank Genoway and Mr. and Mrs. Ott Ragland spent Sunday in Breckenridge visiting Mr. and Mrs. Whit Richards and Billie.

GRADE 'A' FRYERS

No Finer Quality Available

Fancy Whole, U. S. Government Graded "A" and Inspected for Wholesomeness. Plump, meaty birds. **27¢** lb.

Pork Roast Lean End or Rib Half **49¢** lb. Serves with apple sauce.

Sliced Bacon Safety Thick Sliced, Old Fashioned Flavor **2 95¢** lb. Pig

Backbone Country Style Port. Delicious boiled, baked or barbecued. **49¢** lb.

Chuck Steak U.S.D.A. Choice Grade Heavy Beef. Serves Seven Great tonight. **69¢** lb.

Canned Picnic **3 99¢** 3-1/2 lb. Can

Quick Steaks Made From Selected Beef. Tender, quick and easy. **79¢** lb.

FRYER PARTS! Some parts include skin, others may include skin. U.S. Grade "A" Fryers.

Breasts	All weight	69¢
Thighs	On legs, lots of meat	49¢
Wings	Meaty and economical	29¢
Backs	For soups, stews, broths	15¢
Livers	From tender and healthy	53¢

SAFAWAY 10,000 FREE Gold Bond Stamps!

Given Away at each Safeway Store. Enter today... you could be a winner—no obligation, no purchase necessary. Simply register at your Safeway. At the close of business on Saturday, Sept. 26, each Safeway Store will have a drawing for 10,000 FREE Gold Bond Stamps. You Could Win:

1st	3500 Gold Bond Stamps
2nd	2000 Gold Bond Stamps
3rd	1000 Gold Bond Stamps
4th	750 Gold Bond Stamps
5th to 15th	250 Gold Bond Stamps

AT EACH SAFAWAY STORE... Separate Drawings

FREE FOR YOUR OWNED NEW GOLD BOND GIFT BOOK the world's most extraordinary gifts
IT'S BIGGER, BETTER, MORE VALUED THAN EVER! 12 GIFT BOOKS IN ONE!

LOOK OLD FASHIONED STONWARE

FREE at Safeway!

FREE! Bring in your FREE coupons on the dates shown. With these coupons and a purchase of \$5.00 or more, the couponed item is yours absolutely FREE! At the end of 10 weeks you'll have two 3-piece Place Settings, two Mixing Bowls and two Individual French Casseroles of Old Fashioned Stoneware. Additional coupons, worth \$10.00, will help complete your service. Outstanding offer, isn't it? Just our way of saying thanks to all of our good friends.

This Coupon Worth 200 Free Gold Bond Stamps

For your regular amount of Gold Bond Stamps with the purchase of:

Any Bone-in or Boneless HALF or WHOLE HAM

Coupon Expires September 26, 1964.

FOOD IS A BARGAIN AT SAFAWAY!

This weekend, choose the finer parts your family enjoys... meaty drumsticks, tender thighs and more... all specially priced! And you can get all the fun of Safeway—where food is always a bargain!

This Coupon Worth 25 Free Gold Bond Stamps

For one regular amount of Gold Bond Stamps with the purchase of:

24-Oz. Bottle No. 10 SALAD OIL

Coupon Expires September 26, 1964.

FREE!

Old Fashioned Stoneware DINNER PLATE

With this coupon and a purchase of \$5.00 or more (including this plate).

Good 2 weeks, Sept. 27 thru Oct. 3, 1964.

FROZEN FOODS!

Orange Juice **3 79¢** 6-oz. Cans

Mix or Match

Bel-air Greens **5 89¢** 12-oz. Pkg.

Strawberries **2 49¢** 8-oz. Pkg.

Ice Cream **2 79¢** 8-oz. Pkg.

Folger's Coffee	All grade, rich smooth. 1 lb. 87¢
Chunk Tuna	Franklin Light Meat 3 110¢
Margarine	Kraft Milder Flavored. 1 lb. 31¢
Vanilla Extract	Admiral Best. 4-oz. 39¢
Shortening	Pfizer Golden. All purpose. 3 lb. 69¢
Cheese Ravioli	Chief Boy. All purpose. 10-oz. 31¢
Beefaroni	Chief Boy. All purpose. 10-oz. 29¢

Check These Values...

Airway Coffee	1 lb. Bag 69¢
Cragmont Beverages	12-oz. Bottle 10¢
3-Minute Oats	18-oz. Box 23¢
Flour	10 lb. Bag 10 99¢

BAKERY VALUES...

Multi-Grain Bread	14-lb. Loaf 19¢
French Rolls	12-oz. Pkg. 21¢
Pecan Ring	12-oz. Pkg. 45¢
Profile Bread	12-oz. Pkg. 25¢

SAFAWAY FRESH PRODUCE!

LETTUCE

Iceberg, U.S. No. 1, Crispy-fresh. Most popular salad vegetable. Specially Priced! **15¢** Head

AJAX VALUES...

Cleanser	All purpose. 2 14-oz. 33¢
Floor Cleaner	And Wall Remover. 18-oz. 31¢
Liquid Cleaner	All purpose with ammonia. (1/2 Oz. Label) 18-oz. 34¢
Detergent	All purpose laundry. 8-oz. 75¢

Potato Salad	1-lb. Can 29¢
Half & Half	1/2 Gallon 53¢
Fresh Eggs	1 Doz. 2 81¢
Detergent	18-oz. Box 60¢
Lux Liquid	12-oz. Bottle 61¢
Pepto-Bismol	8-oz. Bottle 97¢
Paper Towels	24's (2 Pk.) Assorted Colors. Giant Handkerchief Towels—soft or dry. Roll 37¢
Shampoo	8-oz. Jar 60¢
Alberto VO-5	Hard-to-Mold Hair Spray. Stick Up! (Fits. Top Use) 9-oz. 51¢
Room Deodorant	Cologne Product. 7-oz. 54¢

SPECIAL VALUES!

Giant Tide	All purpose detergent. For laundry and dishes. (10¢ off label) Giant Box 59¢
Pinto Beans	Town House. Serve with Franks and Brown Bread. 4-lb. Bag 39¢
Sliced Peaches	On Halves. Highway. Yellow Cling. A real treat! 4 2 1/2 Can \$1
Baby Foods	Cartier's Strained Fruits and Vegetables. 4 1/2 Oz. Jars 10 99¢
Prunes	Town House. Dried Prunes. Full-bodied flavor. 2-lb. Bag 45¢
Tomato Soup	Camden's. Serve with Bay Biscuits. 3 No. 1 Cans 33¢



MOVING? THINK OF personal extension phones

Moving time is ideal for putting in those convenient time-savers... Personal Extension Phones. Put 'em in the kitchen, bedroom, workshop—everywhere you need them. Choice of wall, table and Princess® models, available in an array of popular colors perfect for your home.

This Coupon Worth 25 Free Gold Bond Stamps

For your regular amount of Gold Bond Stamps with the purchase of:

10-lb. Bag No. 10 POTATOES

Coupon Expires September 26, 1964.

This Coupon Worth 50 Free Gold Bond Stamps

For your regular amount of Gold Bond Stamps with the purchase of:

POPE or L-14. CAN PARD DOG FOOD

Coupon Expires September 26, 1964.

This Coupon Worth 50 Free Gold Bond Stamps

For your regular amount of Gold Bond Stamps with the purchase of:

5-Oz. Baggie SCRUB SOAP

Coupon Expires September 26, 1964.

SAFAWAY

RJC FOOTBALL (Continued from Page One)

the two clubs — in 1960 — Tyler again was victor, 29-25.

The Apaches, according to pre-season ratings, are favorites to cop the 1964 Texas Jr. College Football federation title.

The showing of the Rangers in Thursday night's contest will give local and area pigskin fans a comprehensive preview of what may be expected during the remainder of the Purple & White's 1964 campaign.

On the basis of Ranger's initial outing in New Mexico last Saturday, it appears that Thursday night's skirmish with Tyler could turn out to be a passing duel between Ranger's classy pass-flinger, Quarterback Bill Clary, who completed 9 of 11 heaves in his debut as a Ranger, and Tyler's highly-rated Vidal Carli.

In other TJCF circuit action last week Texarkana dumped Casco, 14-0; Wharton rolled over Navarro, 18-0; Henderson thumped Kilgore, 20-13.

Probable offensive starters for the undefeated Tyler

Junior College Apaches: Vidal Carlin, 170, Gordon Sewell, 180, Ronnie Davis, 170, and Robert Griswold, 190, backs; Larry Haning, 215, Bill Spencer, 240, Butch Kennedy, 235, Ralph Brillhart, 225, Benton Barnette, 220, Eddie Markette, 187, and Roy Lee Fry, 185.

Starting offense for the RJC Rangers: Bill Clary, 165, quarter; Tony Pietoso, 190, and Joe Fitzgerald, 175, halves; John DeMaria, 220, full; Skipper Voss, 180, and Larry Lee, 185, ends; Dickie LeDoux, 235, and Dale Fruge, 222, tackles; Lawrence Helton, 210, and Arnold Stevens, 195, guards; and Tony Jackson, 230, center.

And the defensive eleven: Don Carter, 180, Larry Lee, 185, Sterling Pike, 175, and Phil Wiggins, 145, defensive backs; Rudy Ramirez, 225, and Johnny Sarabia, 180, ends; Jerry Jones, 225, and Bob Taylor, 216, tackles; Leon Tice, 225, and Arnold Jasso, 230, guards; and Byron White, 185, linebacker.

SHOP RANGER FIRST!

Penalties Are Costly As RJC Eleven Bows to Broncs 19-12, in Season Opener

Coach Gerald Williams' 1964 Ranger Junior College Rangers were impressive in their debut of the fall season at Roswell, N. M., Saturday night, despite the fact that they were outpointed by the New Mexico Military Institute Broncs, 19-12.

After holding a 12-6 lead at the half, the Rangers were held scoreless in the final two periods while the Broncs jammed across 13 points in the third quarter.

Penalties wiped out much Ranger offensive yardage. The Purple & Whites were penalized on nine occasions — most of the calls coming in the last half — for a total of 129 yards. These miscues most likely cost the RJC machine an opening victory.

In contrast the Broncs were penalized 5 times for 75 yards.

Highlight of the offensive play was a potent Ranger passing attack. The RJC crew scored both TDs on aerials and completed a total of 11 of 14 attempts. Two were incomplete and one toss was intercepted. The Broncs, paced by Jim Lawrence, 175-pound halfback and former California all-stater and All-American high schooler, tried to connect on 13 passes but all were incomplete. Lawrence personally accounted for 137 of New Mexico's total ground yardage.

The Broncs struck for six points midway in the opening quarter to jump into the lead. Launching a ground offensive from midfield, the New Mexicans powered down to the RJC 10 and from there Terry Shelton, halfback, went around left end on a power sweep. Try for the point-after-touchdown failed.

Only little later in that quarter with about 5 minutes remaining, Coach Williams' peppy stalwarts launched an all-out attack from their own 12-yard stripe. Highlight of the 88-yard scoring jaunt was a pass connection — Quarterback Bill Clary to End Skipper Voss — which covered sixty long yards. Halfback Joe Fitzgerald hit End Larry Lee with a jackpot pass good for 15 yards and Ranger's first tally. Rudy Ramirez attempted to annex the extra point with a kick from placement, but his boot was wide of the uprights.

Midway in the second quarter, the Purple & Whites were on the move again. They pulled down a punt from the Broncs and it was first and 10 from their own 40. They slashed 40 yards via the ground with Halfbacks Tony Pietoso and Fitzgerald and Fullback John DeMaria grinding out gains. Then down at the Broncs' 20, halfback Fitzgerald again hit End Lee who scampered across the double stripes for the Rangers' second and final touchdown. Ramirez try for the extra point from placement again missed the uprights.

Halfback Fitzgerald had a perfect night on his flinging — completing 2 of 2, both for TDs. Quarterback Clary, who did a great job in the maneuver slot, connected on nine of his 11 tosses and sub-qbck Tommy Daugherty launched one pitch but it was intercepted.

The Broncs tallied twice in the third quarter. All-American Lawrence shot around right end from the Rangers' 10, capping a 45-yard march.

GAME AT A GLANCE	
Ranger JC	New Mexico
8 First Downs	14
121 Yds. Gained Rushing	239
121 Yds. Gained Passing	0
11 of 14 Passes Comp	0 of 13
0 Opp. Passes Int.	1
1 Opp. Fumbles Rec.	1
4 for 36 — Punts	6 for 36
9 for 129 — Penalties	5 for 75
Score by Quarters:	
RANGER	6 6 0 0 — 12
NEW MEX.	6 0 13 0 — 19

Kick for the point by Sam Sloan, however, missed the target.

Later in that period the New Mexicans moved the oval down to the Ranger 6 for a first down and goal to go. The Purple & White forward wall held for three downs then a power play over the left side of the RJC line clicked for six yards. Sloan added the extra point from placement.

Standout in the Rangers' defense during the night was Ranger's stellar linebacker, Byron White, who handled or assisted on 45 tackles. Other aggressive RJC defenders

were Don Carter, Leon Tice and Ramirez.

The alertness and strength of the Purple & White defense is noted in the fact that their foe were unable to complete even one pass.

Coach Williams was highly pleased with the showing of his yet inexperienced Ranger aggregation. Eight of the 11 starters were freshmen. "Freshmen mistakes, to be expected at this time, plus heavy penalties snatched victory from our grasp," the RJC athletic director and head coach commented Monday morning.

"However," he added, "we've got a hustling bunch of lads with plenty of spirit and determination and they showed lots of promise in their initial combat Saturday night."

RJC's Pietoso carried the oval 16 times for 50 yards, Calvin Bolton gained 23 yards on six carries. Clary gained 18 on six trips, Fitzgerald garnered 14 yards on four stabs, DeMaria gained seven on three carries, and Johnny Sarabi lugged the leather once for a gain of four yards.

HEAVY RAINS (Continued from Page One)

of the spillway but continued run-off, particularly waters cascading from Eastland Lake which was full and topping its spillway by some three or four inches, was expected to overflow the county's big lake by mid-afternoon.

Ringling Lake, north of Eastland, was also reported full.

Eastland's rainfall measured .257 through Monday morning with a shower at midmorning dumping about three tenths of an inch.

Up to 11 inches were reported in the south part of the county, particularly in the Gorman area.

Leon River, south of Eastland, was bank full Tuesday and spilling over to the south and east of Highway 6, it was reported.

Gorman reported the most rain — a total of 10.3 inches in town and 16.5 inches south of town. Schools were forced to close there Monday.

VISIT DAUGHTER

Mr. and Mrs. Leonard Pounds and L. H. Lewis spent Sunday in Nacona with their daughter and family, Mr. and Mrs. Wayne Gooch and daughter.

WEEKEND VISITOR

Mrs. Lottie Davenport had as her weekend guest her cousin, Mrs. L. Q. Sparks of San Angelo.

Primitive rotary flour mills originated in Syria and were improved greatly in Greece about 300 B. C.

Two Killed In Auto Collision East Of Ranger

Two persons were killed instantly and a third died three hours later in a hospital following a head-on collision between two automobiles on rain-swept U. S. Highway 80, 6.2 miles east of Ranger, Monday at 6 a.m.

Highway patrolmen said that a 1962 Ford, driven by Mrs. Arthur Grant, 39, of Abilene, apparently spun out of control on the slick pavement and careened into the eastbound two-lane strip of pavement and slammed head-on into a 1959 Pontiac.

Driver of the Pontiac, Alton Lee Dulaney, 32, and his wife, Mary Clark Dulaney, 17, of Midland were killed instantly in the crash.

Mrs. Grant died of fatal injuries at Ranger General Hospital Monday at 9:07 a.m.

Her three sons — Neal, 10, Charles, 8, and Mark, 6, also received injuries in the accident. The youngest son received minor cuts, the other two serious head injuries. The Grant boys were transferred to St. Joseph Hospital, Fort Worth, Monday afternoon.

Funeral services for the Midland couple were held Wednesday afternoon at 2 o'clock in Avery, Texas. They were interred in the Woodmen's Cemetery, DeKalb.

Mrs. Grant was buried in Rose Hill Cemetery, Fort Worth, Wednesday following funeral services. Rev. Leon Birnbaum, pastor of the Zion Lutheran Church, Abilene, officiated during the rites.

FROM NORTH TEXAS

Mr. and Mrs. Maurice Owen had their son Butch, who is a student at North Texas, home for the weekend.

COMPLETE STOCK OF BEAUTIFUL BLAZERS! TAILORED BY HARDWICK As Seen in PLAYBOY Magazine!

SIZES 34-44 FROM 24.95 REGULAR AND LONG

NEW FALL SLACKS - ALL FABRICS FROM 8.95 WASH & WEAR TO 22.50 IMPORTED SHARK SKIN.

SPORT SHIRTS & SHIRT JACS TO SUIT YOUR TASTE SOLIDS! PLAIDS! STRIPES!

While in Town, Stop By and Look at the New BRASS WAX LOAFER BY NUNN-BUSH

COMPLETE STOCK OF BOYS JEANS SIZES 6-16 - PRICED FROM 2.98

The GLOBE CLOTHIERS "Quality Men's Wear at Reasonable Prices" 218 MAIN STREET RANGER, TEXAS

EVERYDAY SAVINGS AT CRAWFORD-DOSS IN RANGER

McLEAN'S Tooth Paste Reg. 59c only **52c**

CASCADE Cellophane Tape Reg. 39c only **29c**

SAVE ON GERITOL Reg. 5.99 Size **4.49**

Safeguard Medicated Spray-On BANDAGE Reg. 1.50 only **99c**

COLOR-TONE SHAMPOO Concentrate Reg. 2.50 only **1.50**

Medicated Derma-Fresh Skin & Complexion Lotion Reg. 1.00 size **79c**

Glycerine & Rose Water by Lanolin-Plus Reg. 1.50 size **99c**

MEN — SAVE 28c! GILLETTE Stainless Steel BLADES Two Pkgs., Six Blades Each — Reg. 1.78 Value **1.50**

CRAWFORD-DOSS REXALL DRUG STORE 113 Main MI 7-1115 RANGER, TEXAS

We've Got 'Em! SEE SAMPLES OF OUR BIG LINE OF BEAUTIFUL, PERSONALIZED GREETINGS

NAME-IMPRINTED CHRISTMAS CARDS

ORDER NOW AND SAVE

Order Early! COME IN TODAY!

Christmas Will Be Here Sooner Than You Think!

RANGER TIMES 211 Elm Phone MI 7-1101

TRY THE WANT ADS FOR FAST ACTION!

"You'll Like the Way We Do Business!" WE BUY WOOL & MOHAIR BUY AND SELL LIVESTOCK Veterinary Supplies FEEDS - SEEDS C. P. CLOUD & SONS & RIPPY BROTHERS Oren Rippy - Billy Rippy 210 S. Rusk St. RANGER, TX. MI 7-1717

PCA Meeting At Stephenville Stephenville Production Credit Association will hold its annual meeting Saturday, Sept. 26 at the city recreation hall in Stephenville. That meeting will mark the 30th annual meeting of the SPCA. All stockholders of Eastland County are expected to attend, Fieldman C. A. Wesson said. Registration will begin at 9 a.m. followed by the business meeting at 10 a.m., General Manager W. M. Irwin announced. An election of two members of the board of directors, an address by W. Ray Smith of Hillsboro and presentation of the annual attendance trophy will be features of the business meeting.

Nominated for re-election to the board of directors for three year terms are C. M. McCain of Eastland and T. W. Winters of Evant. Both are prominent stockmen and long-time board members.

Guest speaker at the meeting, W. Ray Smith, is one of the state's leading authorities on agricultural financing and has been a field credit examiner for the Credit Bank for more than 20 years.

Since its organization in Jan., 1934, the association has loaned more than \$20,000,000 to farmers, ranchers and dairymen in its 10-county area.

"We have but one business," Irwin explained, "and that is to provide a dependable source of agricultural credit at the lowest possible cost."

SHOP RANGER FIRST!

Lacasa Johnny Joe Baker of Fort Worth has been visiting his grandparents, Mr. and Mrs. John Caraway for the past few weeks. He left for Stephenville where he will attend Tarleton State.

Mr. and Mrs. R. L. Miller and children, Randy, Kathy, and Kenneth of Euless, Texas visited his parents, Mr. and Mrs. R. E. Miller last Sunday. In the afternoon they all visited the Bill Harrison and Howard Bradford families at Eastland.

Mr. and Mrs. Truman Newnam of McCarney visited her parents, Mr. and Mrs. Frank Bargsley last weekend.

Last week, Mrs. Jack Pockrus enjoyed a short visit from her brothers, Mr. and Mrs. Jewel Eudy of Odessa and were served grilled hamburgers, cookies, and punch. Attending were Cheryl and Diane Mitchell, Sharon Jones, Wayne and Nancy Bradford, Melba McNabb, Darlene, James and Joel Boone of Bullock, and Brad and Brett Stuard of Fort Worth. Sponsors were the pastor and wife, Mr. and Mrs. Riley Eudy of Coleman.

The Juniors of New Hope Baptist Church and their friends enjoyed a Hamburger Cookout on the church yard Saturday afternoon. They gathered at 4 p.m. to play baseball, gossip, and other games. About 6 o'clock they

Rev. and Mrs. James Smith, Mrs. G. V. McGowen, Junior Training Union Leader, Mrs. D. B. Raney, Junior Sunday School Teacher, and Mr. Raney.

Mr. and Mrs. Raymond (Bob) Stuard, Brad and Brett of Fort Worth spent the weekend visiting his parents, Mr. and Mrs. Martin Stuard and his sister and family, the Robert Bradfords.

Robbie Nickels of Caddo was a Sunday night visitor at New Hope Baptist Church.

The WMS of New Hope Baptist Church are observing their Mary Hill Davis Week of Prayer this week with the emphasis, "Lord, Make Me Aware" under the leadership of the Prayer Chairman, Mrs. A. N. Bradford. There will be a special Prayer Retreat Wednesday night with the whole church participating. Sunday night, September 20, the WMS will sponsor a special program for the church at the Training Union Hour, 7:15 p.m.

Mmes. Mable and Joe Jackson, and D. Z. Herrington are attending the state THDA meeting at Houston this week. Miss Thelma Smith, sister of Mrs. Mable Jackson accompanied them.

Attending the Associational Rally Program at the First Baptist Church at Ranger Tuesday evening were Mr. and Mrs. A. N. Bradford, Mr. and Mrs. G. V. McGowen, and Mrs. D. B. Raney.

Congratulations to Anderson Chevrolet Co. on the formal premiere showing of their great new line of Chevrolet passenger cars. Best wishes for the greatest sales volume year in your history!

WE WANT TO FINANCE YOUR CAR!

Yes... we'd like the opportunity to finance your next car — new or used. Prompt, friendly service. Interest rates and payments that will please. Choose what you want... and we'll finance it!

LOW INTEREST RATES COMMERCIAL STATE BANK MEMBER FDIC RANGER, TEXAS

FREE
Coca-Cola

Come Early
For Best
Selections!

NO MONEY DOWN - NO PAYMENT UNTIL NOVEMBER



TENT FLAPS OPEN
9 AM SHARP!

TENT SALE

On The WAGON YARD

200 Block East Main St.
(1 Block from Square)
IN EASTLAND

4 BIG DAYS

WED. - THURS. - FRI. & SAT.

Sept. 23, 24, 25 and 26

OPEN 'TIL 9 P.M. Wed. thru Fri.
Sat. 'Til 6 P.M.



APPLIANCES, TV's, STEREOS
AND MANY OTHER ITEMS
AT LOWEST PRICES EVER!

**NEVER BEFORE
SUCH VALUES!!**

HUGE 1964 REFRIGERATOR

- Dial Defrost • Family Size
- Full Width Freezer
- Chiller Tray
- 2-Door Shelves



Pay Only \$1.75 Weekly
TENT SALE \$148.88

PRICE Yellow, Green or Coppertone.

White Slightly Higher.

**FREE
COKES
HOT DOGS
11c**

**FREE
BALLOONS
FOR
THE
CHILDREN**



EXAMPLES REG. NOW

Portables . . . 21.95 16.95
Table Model . 15.95 12.95

STACKS & STACKS
OF
ODDS & ENDS
POPULAR MERCHANDISE
VAL. TO **1.00** EACH
3.69
WHILE THEY LAST

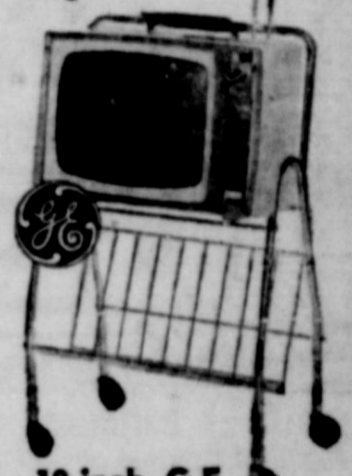
GENERAL ELECTRIC
**12-LB.
PORTABLE
11-in. TV**



\$98.88

PAY ONLY \$1.50 WEEKLY
• Brightest—40 Sq. Inches
• Lightest—Just 12 lbs.
• Best—Finest Warranty on the market

For Outdoor
Living—



**19-inch G.E.
PORTABLE TV**

- Famous "Daylight Blue" Picture
- Illuminated Channel Selector
- Automatic Brightness Control
- Full Power Transformer
- Slim Silhouette Styling

Value Priced **167.83**
Pay Only \$2.50 Weekly



Deluxe Filter-Flo Washer
3 CYCLE
Big 12-Lb. Capacity

- Exclusive Filter-Flo Lint Trap
- Big Capacity Activator
- Safety Lid Switch
- Commercial Use Tested for Proven Dependability

\$136.66

TENT SALE \$166.66
\$2.15 Weekly



**HURRY FOR THESE BIG
BARGAINS UNDER
THE BIG TENT!!**

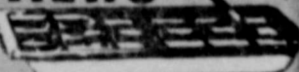
16" G. E. Portable TV
Rollaway Base FREE . . . **TENT PRICE \$138.88**

FREE!

CASE OF 24 COKES
WITH EVERY MAJOR
APPLIANCE SOLD
DURING THIS SALE

Plus Deposit on Bottles

MINI-CUBE
ICE TRAYS **88c**



WHILE
THEY
LAST

Regular \$2.49 Value



**Jet Wagon
FREE!**

with the purchase of a NEW
NORGE
WRINGER WASHER

99.95

ONLY
1.25
WEEKLY

- 8-position safety wringer
- triple action agitator
- rust resistant finish
- famous Borg-Warner transmission
- 1-year warranty



TAPPAN
WORLD'S
FAIREST
VALUES



**TEFLON®
COATED GRIDDLE**
NO-STICK COOKING
WITH NO SCOUR
CLEANING

YOUR CHOICE OF 30 INCH OR 36 INCH MODELS
IN EITHER COPPERTONE OR WHITE!

REMOVABLE CHROME
OVEN LINERS
Snap out for cleaning
at the sink

PRICES START AT JUST
\$159.95

EASY BUDGETING

100 MAJOR APPLIANCES
Refrigerators, Televisions, Stereos, Washers, Dryers
TO CHOOSE FROM



1964 Model TV
CUSTOM STYLED 23-INCH CONSOLE

- Famous GE Daylight blue-sealed beam picture tube
- Full power transformer
- Set and forget volume control
- Front controls

TENT **\$198.88**
SALE Price **198**

Pay Only
\$2.50
Weekly

Tent Sale on Tires!
NOT Seconds!—NOT Retreads!

7.50 x 14 Nylon

Brand New **\$9.88**
With
TUFSYN

WHITEWALLS Only \$2 MORE

Add \$2.00 to above price if trade-in
is not recappable.

Nation-Wide, No Limit Guarantee!

No fine print. Complete, simple to understand, on miles, no limit as to roads, no limit as to guarantee has no limit on months, no limit speed, for the entire life of the tread. ALL NEW GOODYEAR AUTO TIRES ARE GUARANTEED against defects in workmanship and materials and normal road hazards, except repairable punctures. IF A GOODYEAR TIRE FAILS UNDER THIS GUARANTEE any of more than 50,000 Goodyear dealers in the United States and Canada will make allowance on a new tire based on original tread depth remaining and current "Goodyear Price."





BROWSING with BEV.....

By BEVERLEY NICHOLSON
Home Demonstration Agent
Eastland County

One of the most popular flowers for a colorful garden is the zinnia. To get your gardening program into full swing next spring, start planning now and consider this annual as a "must" for color. Zinnias are easily grown from seed and bloom in only six to eight weeks. They continue to produce showy blooms during the entire summer. Since zinnias can be sown outdoors with great success, they can be planted in the ground where they are to grow as soon as the soil becomes warm in the spring. A warm, sunny location is best. Seeds should be planted about one-fourth inch deep and about four inches apart. Keep the soil moist but not wet, and do not let it dry out until the seedlings emerge. Then keep the soil rather dry and thin out the seedlings, leaving them eight to 18 inches apart depending upon the type plant being grown. As soon as the first flower bud is produced, pinch it off so that the plant will develop lateral shoots and produce a bushy plant with numerous flowers. Since zinnias require large quantities of water, soak the soil well, watering below the foliage to keep the leaves dry and to avoid mildew. There are many kinds and

types of zinnias in a wide range of colors and varieties. While the horticultural forms are myriad, the average gardener will have a general knowledge of what is available from the following groups.

Cupid zinnias are the dwarfest and most compact type, seldom growing more than 12 inches tall.

However, Mexican zinnias grow slightly taller, reaching from 12 to 15 inches. Flowers range from double to semi-double to single and are small, usually never more than 1 1/2 inches in diameter. "Old Mexico" and "Persian Carpet" are All American winners in this class.

Lilliput zinnias are compact, freely branching plants that grow 15 to 18 inches high and are very useful for bedding and low flower borders. They have small double flowers about two inches across.

Pumila types are sometimes called Cut-and-Come-Again zinnias. They produce long stems on plants that grow about two feet tall, the flowers being two and one half to three inches in diameter. Some widely grown varieties are Peppermint Stick which has striped petals and Salmon Rose which has deep salmon pink flowers.

Another type is the Cactus-flowered zinnia which grows three to four feet high in Texas gardens. It produces shaggy flowers reaching four to five inches in diameter with the quilled tubular petals curled upward.

Tetra Giant Double zinnias produce very large flowers six to seven inches in diameter. They reach a height of about two feet and are excellent bedding plants.

The most common and widely grown zinnias are perhaps the Giant Double Type. They produce giant double flowers on plants about three feet tall. Some of the most favored varieties are Scarlet Flame, Golden Dawn, Canary Bird (yellow), Enchantress (pink) and Purity (white).

Taller types provide a good background in the garden. Those of medium height provide good color in sunny spots in flower borders while shorter kinds are effective as large-scale ground covers or for edgings.

All the various types of zinnias, small, medium or large, are excellent for use as cut-flowers and will last for at least five or six days with proper care. However, the flowers should be well opened before they are cut.

Zinnias are dependable and will produce quantities of flowers all season long.

Buicks For '65 Display Thurs. At Muirheads

The influence of Riviera styling, featuring more sloping roof lines, longer, lower hoods, shortened rear decks and high-crown rear fenders, dominated the theme of the new line of 1965 Buicks unveiled here today.

The new models will be introduced to the public Thursday at Muirhead Motor Co. in Eastland. Jack Muirhead has announced.

Buick's trend towards sportiness in design, as exemplified in its Riviera, is more evident in two-door models in the Wildcat and LeSabre series, with their long, sloping roof lines. However, the classic Riviera styling is very evident throughout the entire 1965 line.

The Wildcat, with a three-inch longer wheelbase, is less than an inch longer overall than its last year's counterpart. Yet it looks much longer due to its lengthened hood and front fenders, lowered roof lines and repositioned front wheels.

Muirhead said the new Buicks represented "a year of forward movement for us in design, notably in our Electra, Wildcat and LeSabre series, and a year of engineering refinement in our Special, Skylark and Riviera models."

He pointed out that the new styling lines were influenced by Riviera because of the outstanding success of this sports car introduced by Buick in 1963.

All regular-sized models — Electra 225, Wildcat and LeSabre — have all-new, wider bodies with curved side glass. By repositioning the rear wheels in these models several inches of additional passenger room has been gained, both front and rear.

There are many 1965 innovations in the Buick line, such as the disappearing headlamps used in the Riviera. When not in operation, the headlamps disappear behind



BUICK FOR '65 — Long horizontal lines accentuate the length of this 1965 Electra 225, Buick's luxury series. The new Buicks will be seen at Muirhead Motor Co. showrooms Thursday and at the Twilight

Auto Show Saturday on the Square. Buick's Super Turbine torque converter transmission and the 401-cubic inch V-8 engine comprise the standard power train for the Electra 225.

the fender grilles.

The Skylark and Electra series introduce "wall to wall" tail-lamps — a wide horizontal strip running the width of the car.

LeSabre, Wildcat and Electra convertibles have a rear window of solid plate safety glass to maintain clear vision. The top may be lowered with the glass in place.

A new "notch back" seat, combining the appearance of bucket seats with the utility of bench seats, is available in Wildcat and Electra models. Instrument panels and interior features are new on all series.

Each series has its own grille, bumper and other identification to give it its own individuality.

All models have frameless glass. Power operated radio antennas are located on the rear fenders of the LeSabre, Wildcat and Electra models.

Buick will market 39 models in its 1965 line, including six in the Special and Special Deluxe series; four in the Skylark; seven different LeSabres; ten Wildcats; seven Electras, and the one Riviera model.

In addition, there will be two six-passenger and two nine-passenger versions of the new sportwagon, featuring the panoramic sky roof.

Dept. Reports 29 Accidents

No fatalities were reported in Eastland County during the month of August in the monthly traffic accident summary issued by the Department of Public Safety.

There were eight personal injury accidents resulting in 15 persons injured and 21 property damage accidents with damage totaling \$13,875.

A comparison of accidents for the first eight months of 1964 with the same period last year showed five fatalities this year and six last year; 49 personal injury accidents with 70 persons injured, compared with 38 personal injury accidents with 67 injured last year; and 95 property damage accidents totaling \$102,130 compared to 90 last year totaling \$74,355.

DIXIE Drive-In
EASTLAND RANGER HIGHWAY

Box Office Opens 7:45; Show starts 8:15; Box Office closes 9:30. Admission: Adults 60c, Children under 12 Free Each Wed. - Thurs. — Bargain Nights (Adults 25c)

Wednesday & Thursday, Sept. 23 & 24
'Young and Willing'
Virginia Maskell — Paul Rogers

Friday & Saturday, Sept. 25 and 26
'The Incredible Mr. Limpet'
Don Knotts — Jack Weston — Carole Cook
IN COLOR

MAJESTIC
IN EASTLAND

Your ONLY opportunity NEVER CAN BE SEEN AGAIN HERE OR ANYWHERE ELSE!

Exactly as performed on Broadway....
2 Days - 4 Performances only - Sept. 23, 24

An ELECTROVISION Production
ALEXANDER H. COHEN Presents

TICKETS NOW ON SALE \$2.20

RICHARD BURTON
in JOHN GIELGUD'S PRODUCTION OF
HAMLET

with... star cast of the hit Broadway play!

AN INTERSTATE THEATRE
MAJESTIC
FRIDAY - SATURDAY

Fri. Open 5:15 — Shows 5:45 - 7:40 - 9:35
Sat. Open 1:15 — Shows 1:45 - 3:40 - 5:35 - 7:30 - 9:25

Ernest Hemingways
The **Killers**

There is more than one way to kill a Man!

LEE MARVIN · ANGIE DICKINSON
JOHN CASSAVETES and RONALD REAGAN

STARTS SUNDAY

A SHOT IN THE DARK



Buick '65 Buick

We changed the Buick a lot this year. And you may never be the same again yourself!

We doubt you'll want to be the same. Not once you set eyes on our new Buicks, On the Buick Special and the Skylark. The LeSabre, Electra 225, Riviera. And on the sleek, modified fastback of the wild, wilder, Wildcat in the picture, True, there's a new high-style touch. But that's hardly all. Engineering still has the emphasis. It's a Buick tradition. So are the extras Buick spends a little extra on. Like finned brake drums that do a little better. And smoother drivelines. A tuned suspension to smooth ribcage roads. Now add Buick's Super Turbine transmissions—and you have an idea of what Buick owners have always liked about Buick. We think you'll feel the same.



Wouldn't you really rather have a Buick

SEE YOUR LOCAL AUTHORIZED BUICK DEALER, AUTHORIZED BUICK DEALER IN THIS AREA.

MUIRHEAD MOTOR CO.

301 WEST COMMERCE STREET

EASTLAND, TEXAS

TWILIGHT AUTO SHOW ON THE SQUARE IN EASTLAND

FREE

SATURDAY

1 P.M.
'Til Dark:30

FREE

SEE ALL THE NEW '65s AT ONE TIME - ONE PLACE



OLDSMOBILE FOR '65 — This is the impressive new Oldsmobile Jetstar 88 Holiday Sedan at top with its roomier, strikingly styled body, re-designed chassis, Jetfire Rocket engine and optional Jetaway transmission. At bottom is the distinctive new 1965 Delta 88, a deluxe companion to the Dynamic 88. The beautiful new Oldsmobiles will be at Pipkin Motor Co. in Eastland Thursday and at the Twilight Auto Show on the Square Saturday.

'65 Oldsmobiles Show Thursday At Pipkin Motors

Oldsmobile is introducing a new full-size product line for 1965 called the Delta 88. The new 88, along with all other 1965 Oldsmobiles, will be on display at Pipkin Motor Co. in Eastland, Thursday, it was announced today by James Pipkin.

Disclosing details of the new Oldsmobiles, Pipkin quoted Harold N. Metzel, Oldsmobile's general manager and a vice president of General Motors as saying: "The Delta 88 is a glamorous new companion to the Dynamic 88, and these models, along with the Jetstar I, Starfires and 96's, are powered by our recently developed 425 cubic inch Super Rocket engine teamed with a brand new Turbo Hydra-Matic transmission, for the most instantaneously responsive performance in the division's history."

"Furthermore," said Metzel, "the completely new and roomier bodies of all our full-size Oldsmobiles, including the Jetstar 88, are dramatically restyled with curved side window glass and new roof-lines in all models."

"Series identification in the entire line of 1965 Oldsmobiles, from the F-85's on up to the 96's — all 32 models," Metzel added, "is more pronounced than ever. Our dealers will display them publicly on Thursday, September 24."

Metzel described the new Super Rocket as a bigger, more powerful engine of light-weight cast-iron design. "Engine displacement has been

increased by 8 per cent," Metzel said, "yet engine weight has been substantially reduced. Teamed with the new Turbo Hydra-Matic transmission, the performance of the 425 cubic inch Super Rocket is sensational. With horsepower ratings from 310 to 370, the new engine will greatly enhance the outstanding reputation Oldsmobile has already earned in the performance field. Alert, effortless response to even a slight increase in throttle opening is the most significant engineering advancement in our new cars and is immediately apparent to the driver."

He said the new transmission is equipped with a variable vane for alert performance at every driving speed and to eliminate part-throttle downshift. It retains the Hydra-Matic's dual range feature for added safety in downhill braking.

"In addition to the availability of the Turbo Hydra-Matic transmission," said Metzel, "Oldsmobile for the first time is offering in all 88's, Jetstar I and Starfire models a floor-mounted four-speed manual transmission, fully synchronized in all gears."

He noted that other mechanical design changes include a new frame for increased rigidity and improved stability. Front and rear suspensions are newly designed for better ride and handling. The new chassis also features wider front brakes on the Dynamic and Delta 88's, Jetstar I and Starfires for greater brake life. On the 88's, both front and rear brake widths have been increased.

"An especially important change for the benefit of our customers," Metzel said, "is the extra roominess built into all full-size Oldsmobiles for 1965. Most of the interior dimensions have increased, with shoulder room for example, nearly four inches greater."

"And too," he continued, "the design of these new cars has permitted us to increase luggage capacity in the trunk by up to 3.9 cubic feet."

Metzel also reported that fuel tank capacity had been increased to 35 gallons to permit longer intervals between refueling stops during modern turnpike travel.

RANGER TIMES
Thursday, September 24, 1964 Page Three

State Capital NEWS

By Vern Sanford

AUSTIN — "Interbasin diversions," the process of moving water from where it is to where it is needed, is being talked about more and more in Texas where half of the state's water supply is centered in the eastern one-seventh of the state.

It will be the topic of three speakers at the Association of Western State Engineers in Austin on September 21.

Gov. John Connally has asked the Texas Water Commission to speed up water planning to seek alternatives to the Bureau of Reclamation's forthcoming proposal. But the commission is strapped by the bounds of a budget inadequate for such a study, unless the 1965 Legislature increases its funds.

An effort by the Allstate Insurance Company to knock

out the State Board of Insurance order requiring a minimum charge of six per cent interest on insurance premiums paid by installments has failed.

Board said it found nothing in the hearing to change its mind. It reported that abuses of Texas laws, prohibiting inducements to prospective policyholders and prohibiting discrimination between policyholders, were taking place under deferred payment plans.

State government ended its 1963-1964 fiscal year on August 31 with a fat general revenue fund balance of \$73,000,000.

It was the brightest year-end figure since 1949.

"It looks better than it has for a long time," beamed State Comptroller Robert S. Calvert. Five years of defici-

ties still are fresh in his memory. One year the State ran \$110,000,000 in the red.

Calvert declined to speculate on the amount of surplus which will be available for legislative appropriation.

Governor Connally predicted earlier that the general revenue surplus may reach \$200,000,000 next year. Despite the abundance of money, the Governor said the Legislature likely will have to pass a new tax bill or amend the existing rates in 1965. This because of demands for more spending in education and other areas.

Calvert noted three factors in the favorable fiscal 1964 close-out: a \$24,000,000 increase this year over 1963 in general sales tax revenues; an \$8,000,000 jump in the auto sales tax; and a \$3,000,000 crude oil tax increase.

Comptroller's report showed state revenue collections during 1964 were more than \$1,600,000,000, compared with \$1,500,000,000 in 1963. Expenditures totaled \$1,400,000,000, compared with \$1,400,000,000 the previous year.

WE PAY YOU TO SAVE WITH US



Piggy banks are a good place to save — if you're saving small change. But when that change grows into dollars, it's time to put your money in one of our savings accounts. Here, it will not only be safely insured up to \$10,000, but your money will also earn for you at a big 4 1/4% rate of interest. OPEN YOUR SAVINGS ACCOUNT TODAY AT

1st FEDERAL SAVINGS & LOAN ASSN.

204 Main RANGER MI 7-1611



Today... enter the Super Rocket Age... at your Olds Dealer's... where the action is!

Introducing the Rocket Action Cars!

OLDSMOBILE FOR 1965



DYNAMIC 88 HOLIDAY COUPE

All-new from every view... Great new Olds Dynamic 88!

Notice its longer, lower, wider proportions and impressive new lines. Inside, new luxuries and comforts everywhere you look. Even rides new, thanks to smoother-than-ever, four-coil-spring suspension. And just wait till you action-test its 425-cu-inch, 310-h.p. Super Rocket V-8! Pick from all the Dynamic 88s, including three new top-of-the-series deluxe Delta 88 models.

Plus a whole new Olds Rocket Action lineup!

There's plenty to get excited about in Olds for '65! The Ninety-Eight series is more elegant than ever. The Starfire and Jetstar I boast a fiery new 370-h.p. Starfire V-8 that makes going Olds an even sportier proposition! Jetstar 88, Vista-Cruiser, F-85 — whatever you liked about them before you'll like even better now. See your Oldsmobile Dealer — where the action is!



JETSTAR 88 HOLIDAY SEDAN



3-SEAT CUSTOM VISTA-CRUISER



F-85 VISTA-CRUISER

SEE YOUR LOCAL AUTHORIZED OLDSMOBILE QUALITY DEALER... WHERE THE ACTION IS! HEADQUARTERS FOR NINETY-EIGHT, STARFIRE, DYNAMIC 88, JETSTAR I, JETSTAR 88, VISTA-CRUISER, F-85

PIPKINS MOTOR CO.

314 W. Main Street

Eastland, Texas

OLDS BRINGS YOU IN AT ITS BEST! "BOULEVARD" AND "WENDY AND ME" — ABC-TV • CHECK LOCAL LISTINGS FOR THIS AND OTHERS

enjoy a thrilling free Hour of Beauty

Receive the famous "3 Steps to Beauty" complexion care demonstration... free! Learn make-up secrets to accent your own type of beauty and receive a professional make-up... all free! Phone now to arrange for your free Hour of Beauty!

MERLE NORMAN COSMETICS STUDIO

Lucille Taylor
403 S. Lamar
Eastland, Texas
Ph. MA 9-2168

BINOCULARS

7 X 35

Suggested Retail 34.95 — Now Only **\$25.95** WITH CASE

7 X 50

Suggested Retail 48.95 — Now Only **\$32.95** WITH CASE

7 x 35 Lightweight

WIDE ANGLE MAGNESIUM FRAME

SUGGESTED RETAIL \$59.95 — NOW ONLY **\$37.95** WITH CASE

SPORT CENTER

304 E. MAIN EASTLAND MA 9-1610



Ranger Junior
College

RANGER FOOTBALL 1★9★6★4

Ranger High
School

H. G. Adams
Grocery & Market
CHOICE MEATS — FINE FOODS

Anderson
Chevrolet Company
MRS. AND MRS. BILL ANDERSON

Southern Television
Systems Corporation
EASTLAND — RANGER — CISCO

Arnett's Texaco
Service Station
MR. AND MRS. CHARLES ARNETT

Texas Electric Service
Company
BILL COLLINGS, MANAGER

Lone Star Gas
Company
W. T. EATON, MANAGER

Social Science
Laboratories, Inc.
A. W. WARFORD — HALL WALKER

J. C. Penney Co.
JOHN SMITH, MANAGER

The Smart Shop
"ESPECIALLY FOR YOU"
MRS. AUDREY YONKER

Featherlite
Corporation
RANGER, TEXAS

Ranger Dry Cleaners
MR. AND MRS. JESS WEAVER
RANGER

Ogden's Coin Laundry
MR. AND MRS. BILL OGDEN

First
Baptist Church
REV. AVERY SULLIVAN, PASTOR

Ranger Auto Parts
GASTON DIXON

Ranger Garage
ED BLACK

Ranger Hill Cafe
COURTS — SERVICE STATION
EMORY AND OVELLA FORD

Swaney's Pharmacy
WILLARD SWANEY



Ranger Junior College RANGERS

Sept. 19 — RJC (12) vs. NEW MEXICO MILITARY INSTITUTE (19) — Roswell, N. M.
Sept. 24 — RJC vs. TYLER — here.*
Oct. 3 — RJC vs. WHARTON — there*
Oct. 10 — RJC vs. KILGORE — here.* (Homecoming Game).
Oct. 17 — RJC vs. CISCO — Peanut Bowl, Eastland.*
Oct. 22 — RJC vs. TEXARKANA — here.*
Oct. 31 — RJC vs. HENDERSON — at Athens.*
Nov. 5 — RJC vs. NAVARRO — here.*
Nov. 12 — RJC vs. BLINN — at Brenham.*
Nov. 27 — RJC vs. MONTERREY TECH — Monterrey, Mexico.
(*Denotes Texas Junior College Football Federation Contests)
Colors: Purple & White
Coaches: Gerald Williams, Ronald Butler, Chuck Malone.

Ranger High School BULLDOGS

Sept. 4 — RANGER (8) vs. CISCO (34) — there.
Sept. 11 — RANGER (6) vs. DUBLIN (18) — here.
Sept. 18 — RANGER (23) vs. GORMAN (0) — there.
Oct. 2 — RANGER vs. BAIRD — here.*
Oct. 9 — RANGER vs. CLYDE — there.*
Oct. 16 — RANGER vs. RISING STAR — here.
Oct. 23 — RANGER vs. EASTLAND — here.*
Oct. 30 — RANGER vs. DeLEON — there.*
Nov. 6 — RANGER vs. CROSS PLAINS — here.*
Nov. 13 — RANGER vs. ALBANY — there.*
(*Denotes District 10A Conference Games)

Colors: Maroon & White
Coaches: Jack Duvall, Jerry Trice, Leroy Duke

Watch 'Em Every Week! THIS WEEK'S ACTION: Support 'Em Every Week!

See the Purple and White's Home Debut of the 1964 Season!

RJC'S RANGERS VS. TYLER JC APACHES COLLEGE STADIUM --- RANGER THURSDAY, SEPT. 24

OPENING KICKOFF AT 7:30 p. m. SHARP!

In their season opener against the powerful New Mexico Military Institute Broncos out at Roswell, N. M., last weekend, the fighting Rangers of '64 showed great promise — offensively and defensively. In their first game in the new College Stadium, the Purple & White will be gunning to defeat the Tyler Junior College Apaches, one of the most potent junior college elevens in the Texas Jr. College Football Federation. Don't miss this great contest in Ranger Thursday night, Sept. 24!

RANGER BULLDOGS

Idle This Week . . . Preparing For 10-A Conference Opener with
BAIRD BEARS -- FRIDAY, OCT. 2
AT BULLDOG STADIUM — RANGER

Good Sports

SEE A GOOD
MOVIE THIS
WEEKEND
AT YOUR
POPULAR

**RANGER
DRIVE-IN
THEATER**

RANGER BOOSTERS CLUB

Proudly Supporting the Battling Bulldogs
and the Fighting Rangers

Meet Again

Monday, September 28

At 7 p. m. in the Ranger Junior
College Cafeteria.

See Movies of the Ranger JC-Tyler JC Game!

Be a Booster — Join the Boosters!



**Ranger Furniture
Exchange**
Dearborn Stoves
123 N. Rusk — MI 7-1404
Ranger, Texas

The Globe Clothiers
JOHN WYLIE

Porky Pig
GOOD SPORTS MEET HERE!

Mr. and Mrs.
J. Floyd Killingsworth
RANGER

L & J Supply Co.
MR. AND MRS. JIMMY SMITH

Law's Service Station
MR. AND MRS. MAX LAW

Ranger Floral Company
MR. AND MRS. R. V. MATHENA

Betty's Flower Shop
MRS. OPAL MARSH

Curtis Blackwell's
Gulf Service Station
OPEN 24 HOURS A DAY

Ranger
Frozen Food Center
MR. AND MRS. MORRIS NEWNHAM

Commercial
State Bank
MAKE OUR BANK YOUR BANK!

Morris Campbell
Humble Service Station
MR. AND MRS. MORRIS CAMPBELL

C. E. Maddocks & Co.
MARJORIE MADDOCKS

David D. Pickrell
MAY INSURANCE AGENCY
RANGER

Athletic Repair
& Manufacturing Co., Inc.
RANGER

Dr. Pepper
Bottling Company
RANGER

First Federal Savings
& Loan Association
RANGER, TEXAS

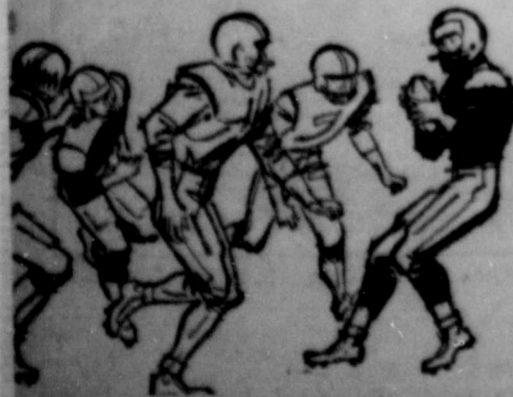
Ranger
Lumber & Supply Co.
CALVIN BROWN — EARL BROWN

Ranger General Hospital
Gerald Dugan
DISTRIBUTOR GOOD GULF PRODUCTS

Ranger Clinic

C. P. Cloud & Son
and Rippy Brothers
BILLY AND OREN RIPPY

First
Methodist Church
REV. B. L. McCORD, PASTOR



Go, GO, Fans... See 'Em All This Fall!

