

THE RANGER TIMES

Home Of
Ranger Junior College

Gateway To
Famed Lake Leon

A Small City with Big Industry -- A Bright Spot for New Industry

VOLUME 43

PRICE 10 CENTS

RANGER, TEXAS, THURSDAY, NOVEMBER 14, 1963

NUMBER 23

PLANS ARE COMPLETED FOR 1963 FALL FLOWER SHOW

Novel features of the 1963 fall flower show of the Ranger Garden Club Friday are its western theme, the artistic arrangement class planned for husbands of members, the guest arrangement section for children of members, and western music provided between 5:00 and 6:00 p. m. by Dan Mitchell, vocalist and guitarist.

The show, called "Fall Roundup," will be presented by the garden club Friday, November 15, from 3:00 to 7:00 p. m., at the Ranger Community Club House. The Western motif, carried out in the schedule for arrangements and compositions in the Artistic Division, also lends flavor to the focal point in the foyer, according to Flower Show Chairman, Mrs. L. H. Kay, and her co-chairman, Mrs. L. R. Gohlke.

The schedule for artistic arrangements and compositions is as follows: Class 1: "Desert Sunset." A mass arrangement using fresh material, featuring blended fall colors.

Class 2: "Round the Bend" A curved line mass arrangement using predominantly dried and/or treated material. (A minimum of sprayed material allowed.)

Class 3: "Hired Hands" Husbands of members. Exhibitor's choice.

Class 4: "The Blizzard" An all-white arrangement of fresh cut material, using a minimum of sprayed material. A minimum of green permitted.

Class 5: "West of the Pecos" An arrangement using dried and/or treated material. Dried and/or treated material permitted.

Class 6: "Roundup" A mass arrangement using predominantly fresh cut plant material.

Class 7: "Little Dogie" (miniature) An arrangement not to exceed 5 inches in height, width, or depth, using fresh cut material.

Class 8: "Home on the Range" A candle and fruit and/or fresh cut plant material. Artificial grapes permitted.

Guest arrangement for children of members, ages 1 to 18, to exhibit their arrangements. To encourage interest in the young. Exhibitor's choice.

Choice of entries in the Artistic Division must be made and given to the Entries Chairmen two days prior to the show. Entries Chairman is Mrs. David B. Allsup, and Entries Co-Chairman is Mrs. E. J. Gilbert.

Entries in the Horticulture Division should be given to Mrs. W. A. Lewis, Entries Chairman, Mrs. Charles Milldays prior to the show.

Other committee chairmen of the "Fall Roundup" are the following: Judges Clerk Chairman, Mrs. Charles Milliken; Judges Clerk Co-Chairman, Mrs. Beverly S. Dudley, Sr.; Publicity Chairman, Mrs. R. L. Hamrick; Classification Chairman, Mrs. A. W. Brazda; Ticket Chairman, Mrs. R. E. Henderson; Ticket Co-Chairman, Mrs. D. E. Pulley; Closing Chairman, Mrs. E. N. Varner; Closing Co-Chairman, Mrs. Jesse White, Mrs. W. J. Van Bibber, and Mrs. George F. Williams; Guest Division Chairman, Mrs. W. H. Marslander; Focal Point Chairman, Mrs. Bill Collings; Focal Point Co-Chairman, Mrs. R. L. Allen; Staging Chairman, Mrs. Joe Jackson; and Staging Co-Chairman, Mrs. Theodore Nickrick, Jr., and Mrs. R. V. Robinson.

Door prizes will be given. Drawing for the door prizes, which were donated by merchants and individuals of Ranger, will be at 6:00 p. m., Friday afternoon, according to Mrs. R. L. Hamrick, president of the Ranger Garden Club. Winners do not have to be present, but must sign their names on their tickets when they present them at the door.

Tickets may be purchased from Ranger Garden Club members. They will also be available at the door.

The public is invited to attend the show.

HIGHLIGHTS OF THE RJC HOMECOMING PARADE

A Story in Pictures . . .



DAYS GONE BY — The 1920 Club entry took first place honors in the car division.



THE RANGER EXPRESS — Phi Theta Kappa's unique float took a prize for its originality.



"THE TORCH WILL LIGHT THE WAY" — Rho Phi chapter's float placed first in its division.

Rangers Bow To Wharton Play Navarro There Next

The Ranger Junior College Rangers fell to the hard charging, nationally ranked Wharton team, before a large homecoming crowd at Bulldog stadium Saturday night.

Capitalizing on the Rangers mistakes, the Pioneers were able to build up an early lead that was to go unscathed for the remainder of the game.

Midway in the first quarter, the Rangers, their backs to the goal, had a punt go astray giving Wharton possession on the seven yard line. From that point, two plays later, Wharton had cracked the score board.

Still playing on the Rangers end of the field, Wharton climaxed a 41 yard drive with a scoring pass — Witwiski to Franks. The conversion made it 14 to 0, Wharton at the end of the second quarter.

Early in the second quarter, Wharton drove from the Rangers 1 to score their third touchdown of the evening.

Wharton was to score again before the end of the half, on a 5 yard runback by Wharton's Walter Syler. From five yards out, the Pioneers were forced to use three plays before Fullback Allen crashed over from the three yard line for the score. Wharton took a 28 to 0 lead into half time.

With their back to the wall for the entire first half the Ranger defenders fought valiantly, to no avail, as they were under constant pressure from the beginning.

The Rangers received the second half opening kickoff. (Continued on Page Seven.)

County Votes For Poll Tax, Trapper; Says No To Permits

HOW THE COUNTY VOTED

Poll Tax	Welfare		Jefferson		Vet. Ld.		Doe Permits		Trapper		Total		
	F Agn.	F Agn.	F Agn.	F Agn.	F Agn.	F Agn.	F Agn.	F Agn.	F Agn.				
EASTLAND	112	315	270	158	125	230	199	205	116	298	280	152	437
RANGER	117	194	215	73	102	148	146	124	113	181	191	108	316
OLDEN	31	32	47	15	19	36	40	21	26	36	39	23	65
GORMAN	37	148	91	91	31	139	72	105	57	114	57	120	186
CARBON	20	62	52	24	29	36	39	30	36	40	27	52	83
DESEMONA	3	67	44	24	15	45	44	18	28	35	39	30	70
KOKOMO	8	8	12	5	7	8	13	5	6	12	12	5	19
RISING STAR	46	129	111	57	45	93	73	52	77	30	109	32	141
NIMROD	6	14	13	8	5	14	14	9					21
CISCO	229	394	455	161	217	358	344	264	185	426	367	231	640
ABSENTEE	4	3	7	0	5	2	5	2	4	3	5	2	7
INCOMPLETE UNOFFICIAL													
TOTALS	613	1366	1317	616	600	1109	889	825	648	1175	1135	755	1985

1,995 Votes Cast In This County

Eastland Countians patterned the state trend in demanding that the poll tax be retained as a requirement for voting in Saturday's special state constitution amendment election.

In the same election, voters, by almost a two-to-one majority, expressed their desire to retain a county trapper, and were almost as a decisive in their rejection of continuing the unlimited issuance of doe permits in the county.

The two county referendum propositions had stirred quite a bit of interest and probably accounted for the vote turnout — which, while it wasn't large, was greater than is generally expected for an amendment election.

Incomplete county returns showed a vote of 1,995. Votes from Scranton and Pioneer hadn't reported early in the week, but with only an estimated 24 votes at Scranton, these returns weren't expected to change the results.

The ten-box total showed that county voters prefer the poll tax as a voting requirement by 1,366 to 613. The proposition read in part: "FOR or AGAINST amending the constitution to make the poll tax a voting requirement; so the voters voted against the amendment."

A total of 1,175 voters, from ten boxes, are against the issuance of an "unlimited" number of permits to kill doe in the county. In favor of continuing the practice were 648.

The program wherein the county assists in the employment of a trapper to help control the county of predatory animals was endorsed by 1,135 voters compared to 755 against the program.

One of the other three state constitutional amendments was defeated in the county, with 600 in favor of the proposition concerning the Jefferson County Welfare program, with 1,109 against. The No. 2 welfare amendment carried handily, 1,217 for, 616 against.

State Representative Wayne Gibbons has assured Eastland County voters that he will introduce a bill asking that the county be placed under the management of the Parks and Wildlife Commission if the vote indicated that the majority of the people were opposed to the present unlimited issuance of doe permits.

It is assumed that the county commissioners will adopt an order continuing the county's participation in the trapper program in view of the mandate by the voters.

Cisco, as usual, polled the heaviest, with 640 voters turning out, compared to 437 in Eastland, and 316 in Ranger. Estimates were that the turnout was about a third of average, or total voting strength.



And what ever happened to football season?

The Ranger Athletic Booster Club is sponsoring a pancake supper Monday, November 18. Tickets may be purchased from any member of the club or at the door. Serving will commence at 5:30 p. m.

New Status symbol... A pickup is not complete without gun racks in the back. On a trip to Austin this past week we saw one with the racks but no gun. In place of a gun there was a walking cane on the rack and a black snake whip on the other. I am sure there must be some message in that but I am not sure what it is.

The deer season formerly opened the morning of November 16.

Many Eastland county sportsmen will be heading for the fields to catch the sunrise of this opening day.

In the northern part of the county, and adjoining counties to the north have reported numerous deer in good shape in spite of the dry weather.

Locker operators in all cities have geared their plants to meet the rush that will be brought on.

There are many things that should be kept in mind by the hunter as pointed out by the National Rifle Association. The most important and to some, mainly the novice, the least adhered to is to be sure of your target.

Many lives are lost, many domestic animals are erroneously slaughtered by careless hunters throughout the nation due to those who "shoot first and ask questions later."

It is most tragic when a day of fun turns into a day of tragedy as occasionally happens to the careless hunter who fails to handle his equipment properly. This happens not only to the novice but to the seasoned hunter as well.

Crossing a fence with a rifle is one sure way of inviting a mishap if not done in a safe manner. What happens if dirt gets into the rifle muzzle?

Just be careful, keep your powder dry and have your friends over for venison steaks, not to pay their last respects.

And what ever happened to football season?

The Ranger Athletic Booster Club is sponsoring a pancake supper Monday, November 18. Tickets may be purchased from any member of the club or at the door. Serving will commence at 5:30 p. m.

New Status symbol... A pickup is not complete without gun racks in the back. On a trip to Austin this past week we saw one with the racks but no gun. In place of a gun there was a walking cane on the rack and a black snake whip on the other. I am sure there must be some message in that but I am not sure what it is.

The deer season formerly opened the morning of November 16.

Many Eastland county sportsmen will be heading for the fields to catch the sunrise of this opening day.

In the northern part of the county, and adjoining counties to the north have reported numerous deer in good shape in spite of the dry weather.

Locker operators in all cities have geared their plants to meet the rush that will be brought on.

There are many things that should be kept in mind by the hunter as pointed out by the National Rifle Association. The most important and to some, mainly the novice, the least adhered to is to be sure of your target.

Many lives are lost, many domestic animals are erroneously slaughtered by careless hunters throughout the nation due to those who "shoot first and ask questions later."

It is most tragic when a day of fun turns into a day of tragedy as occasionally happens to the careless hunter who fails to handle his equipment properly. This happens not only to the novice but to the seasoned hunter as well.

Crossing a fence with a rifle is one sure way of inviting a mishap if not done in a safe manner. What happens if dirt gets into the rifle muzzle?

Just be careful, keep your powder dry and have your friends over for venison steaks, not to pay their last respects.

And what ever happened to football season?

The Ranger Athletic Booster Club is sponsoring a pancake supper Monday, November 18. Tickets may be purchased from any member of the club or at the door. Serving will commence at 5:30 p. m.

New Status symbol... A pickup is not complete without gun racks in the back. On a trip to Austin this past week we saw one with the racks but no gun. In place of a gun there was a walking cane on the rack and a black snake whip on the other. I am sure there must be some message in that but I am not sure what it is.

The deer season formerly opened the morning of November 16.

Many Eastland county sportsmen will be heading for the fields to catch the sunrise of this opening day.

In the northern part of the county, and adjoining counties to the north have reported numerous deer in good shape in spite of the dry weather.

Locker operators in all cities have geared their plants to meet the rush that will be brought on.

There are many things that should be kept in mind by the hunter as pointed out by the National Rifle Association. The most important and to some, mainly the novice, the least adhered to is to be sure of your target.

Many lives are lost, many domestic animals are erroneously slaughtered by careless hunters throughout the nation due to those who "shoot first and ask questions later."

It is most tragic when a day of fun turns into a day of tragedy as occasionally happens to the careless hunter who fails to handle his equipment properly. This happens not only to the novice but to the seasoned hunter as well.

Crossing a fence with a rifle is one sure way of inviting a mishap if not done in a safe manner. What happens if dirt gets into the rifle muzzle?

Just be careful, keep your powder dry and have your friends over for venison steaks, not to pay their last respects.

And what ever happened to football season?

The Ranger Athletic Booster Club is sponsoring a pancake supper Monday, November 18. Tickets may be purchased from any member of the club or at the door. Serving will commence at 5:30 p. m.

New Status symbol... A pickup is not complete without gun racks in the back. On a trip to Austin this past week we saw one with the racks but no gun. In place of a gun there was a walking cane on the rack and a black snake whip on the other. I am sure there must be some message in that but I am not sure what it is.

The deer season formerly opened the morning of November 16.

Many Eastland county sportsmen will be heading for the fields to catch the sunrise of this opening day.

In the northern part of the county, and adjoining counties to the north have reported numerous deer in good shape in spite of the dry weather.

Locker operators in all cities have geared their plants to meet the rush that will be brought on.

There are many things that should be kept in mind by the hunter as pointed out by the National Rifle Association. The most important and to some, mainly the novice, the least adhered to is to be sure of your target.

Many lives are lost, many domestic animals are erroneously slaughtered by careless hunters throughout the nation due to those who "shoot first and ask questions later."

It is most tragic when a day of fun turns into a day of tragedy as occasionally happens to the careless hunter who fails to handle his equipment properly. This happens not only to the novice but to the seasoned hunter as well.

Crossing a fence with a rifle is one sure way of inviting a mishap if not done in a safe manner. What happens if dirt gets into the rifle muzzle?

Just be careful, keep your powder dry and have your friends over for venison steaks, not to pay their last respects.

And what ever happened to football season?

The Ranger Athletic Booster Club is sponsoring a pancake supper Monday, November 18. Tickets may be purchased from any member of the club or at the door. Serving will commence at 5:30 p. m.

New Status symbol... A pickup is not complete without gun racks in the back. On a trip to Austin this past week we saw one with the racks but no gun. In place of a gun there was a walking cane on the rack and a black snake whip on the other. I am sure there must be some message in that but I am not sure what it is.

The deer season formerly opened the morning of November 16.

Many Eastland county sportsmen will be heading for the fields to catch the sunrise of this opening day.

In the northern part of the county, and adjoining counties to the north have reported numerous deer in good shape in spite of the dry weather.

Locker operators in all cities have geared their plants to meet the rush that will be brought on.

There are many things that should be kept in mind by the hunter as pointed out by the National Rifle Association. The most important and to some, mainly the novice, the least adhered to is to be sure of your target.

Many lives are lost, many domestic animals are erroneously slaughtered by careless hunters throughout the nation due to those who "shoot first and ask questions later."

It is most tragic when a day of fun turns into a day of tragedy as occasionally happens to the careless hunter who fails to handle his equipment properly. This happens not only to the novice but to the seasoned hunter as well.

Crossing a fence with a rifle is one sure way of inviting a mishap if not done in a safe manner. What happens if dirt gets into the rifle muzzle?

Just be careful, keep your powder dry and have your friends over for venison steaks, not to pay their last respects.

Tonia Arnold Chosen As 63 RJC Homecoming Queen

Tonia Arnold, a sophomore student from Strawn, was crowned Ranger Junior College Homecoming Queen in halftime ceremonies at the Ranger Junior College-Wharton Junior College football game played Saturday night, November 9. She was chosen from three finalists in a student election held at the college for the queen.

Runners-up were Gracie Tankersley of Eastland and Imogene Jones of Brownwood.

Mrs. Herbert Williams of Ranger was crowned Coming-Home Queen. She was chosen to represent the ex-students of the college by the executive committee of the Ex-Students Association.

Richard Bonney of Ranger, president of the Ex-Students Association, crowned Mrs. Williams, and Wayne Thrasher, president of the RJC Student Council, crowned the Homecoming Queen. Vera Angela Alford, daughter of Mr. and Mrs. Kenneth E. Alford, both associated with the college, was crown bearer, and Jim Lewis, Jr., son of the college Athletic Director, Jim Lewis, and Mrs. Lewis, was flower bearer.

The 66-piece RJC Band under the direction of Roger C. Martin formed a giant crown in centerfield for the crowning ceremonies.

Preceding the game the Bomberettes from Farmers Branch gave an exhibition of twirling and precision drill. Also a part of the pre-game festivities was the formal presentation of the RJC Band Sweetheart, Ginger Gooden of Colorado City. The band formed Cinderella's shoe for (Continued on Page Seven.)

Arthur Lockhart Dies In Eastland Nursing Home

A retired mechanic and a Ranger resident for the past six years, Arthur Lockhart died at 6:55 Monday morning in the Sunrise Manor Nursing Home in Eastland.

Retired Baptist preacher, K. C. Edmunds officiated at the funeral services which were held Wednesday at 2 p. m. in Killingsworth Funeral Home.

Mr. Lockhart, 68, was born in Hamilton August 20, 1885, moving to the Alameda Community in 1910. He had resided in Eastland County most of his life.

He was married to Elnora Bennett in Denver, Colorado in 1925 and she died in Florence, Colorado, March, 13.

Survivors include a sister, Mrs. Harry E. Deal of Ranger; a half sister, Mrs. Pearl Stewart of Lockhart, and a number of nieces and nephews.

Funeral services were Ray Williams, Reed Campbell, J. E. Adkins, C. E. Gallagher, Edgar Ward, and T. L. Brown.

Tom L. Watson To Be Buried In California

Funeral services were pending Wednesday for Tom L. Watson, 53, of Sacramento, California.

Mr. Watson, son in law of Mr. and Mrs. E. H. Mills of Ranger died Tuesday.

Survivors are his wife, the former Mertle Lucile Mills of Ranger, now residing in Sacramento, two sons, Tom and Bill Watson.

Five RHS Band Members In First Band, District

Twenty-seven schools, with a representation of 300 band students, were in Dublin Saturday for the District Band Meet.

At the conclusion of the mornings try-outs, five Ranger High School students made the First Band and six placed on the Second Band.

Those winning places in the First Band were: Don Buntion, trombone; Sarah Cooper, French Horn; Denise Huling, French Horn; Joe Pete Miller, Bass; Betty Estes, Clarinet.

Making the Second Band were Peggy Ceeley, Saxophone; Stephen Lang, Bass; Susan Woods, Flute; Pat Jamison, Coronet; Connie Gilbert, French Horn.

The next District Band meeting will be held March 14, 1964, at the Ranger High School auditorium. The band performing will be First Band only. Members will practise all day and present a concert that night.

"This 85 piece band, formed together, will be the cream of the crop from 27 schools," remarked Bill Auvenshine, director of the Ranger bands.

Services Held Sunday For L. Z. Melton

Funeral services for L. Z. Melton, 59, were held at 2:30 p. m. Sunday at the First Baptist Church in Ranger. Rev. Dixie Clements of the Long Branch Baptist Church officiated and was assisted by Rev. J. C. Tankersley, pastor of the Cheaney Baptist Church. Interment was in the Alameda Cemetery under the direction of Killingsworth's Funeral Home.

Continued on page seven

Services Held Sunday For L. Z. Melton

Funeral services for L. Z. Melton, 59, were held at 2:30 p. m. Sunday at the First Baptist Church in Ranger. Rev. Dixie Clements of the Long Branch Baptist Church officiated and was assisted by Rev. J. C. Tankersley, pastor of the Cheaney Baptist Church. Interment was in the Alameda Cemetery under the direction of Killingsworth's Funeral Home.

Continued on page seven

Services Held Sunday For L. Z. Melton

Funeral services for L. Z. Melton, 59, were held at 2:30 p. m. Sunday at the First Baptist Church in Ranger. Rev. Dixie Clements of the Long Branch Baptist Church officiated and was assisted by Rev. J. C. Tankersley, pastor of the Cheaney Baptist Church. Interment was in the Alameda Cemetery under the direction of Killingsworth's Funeral Home.

Continued on page seven

Services Held Sunday For L. Z. Melton

Funeral services for L. Z. Melton, 59, were held at 2:30 p. m. Sunday at the First Baptist Church in Ranger. Rev. Dixie Clements of the Long Branch Baptist Church officiated and was assisted by Rev. J. C. Tankersley, pastor of the Cheaney Baptist Church. Interment was in the Alameda Cemetery under the direction of Killingsworth's Funeral Home.

Continued on page seven

Services Held Sunday For L. Z. Melton

Funeral services for L. Z. Melton, 59, were held at 2:30 p. m. Sunday at the First Baptist Church in Ranger. Rev. Dixie Clements of the Long Branch Baptist Church officiated and was assisted by Rev. J. C. Tankersley, pastor of the Cheaney Baptist Church. Interment was in the Alameda Cemetery under the direction of Killingsworth's Funeral Home.

Continued on page seven

Bulldogs Take Mavs 16-14 End Season At Baird Friday

In a nip-and-tuck District 10A grid skirmish which kept a homecoming crowd of 2,000 super-charged with suspense, the Ranger High Bulldogs pulled the fat from the fire only two fleeting minutes before the final gun here Saturday afternoon to squeak by the Eastland High Mavericks, 16-14, in a cliff-hanger.

The underdog Mavericks stunned the Bulldogs in the first quarter when they struck for two touchdowns to jump into a 14-0 lead. Failure to convert after their second tally gave Ranger its third conference win of the season.

The Bulldogs roared back in the second period to score from the Eastland 10 on a payoff pass play — Quarterback Johnny McGee to End Ronnie Hinds. The TD pitch was sprung following a 42 yard drive. Halfback L. H. Pounds swept around left end for the bonus two points.

The visiting Red Black charges held a 14-6 lead at halftime and protected their important 6-point cushion until the final two minutes of the hard-fought scrap.

The Mavericks were on the move five plays after the opening kickoff when they took possession of the oval on their own 48-yard stripe. Ted Martin sliced over center for three. Gary Graham picked up four on two tries before he punted from the Ranger 45. Bulldog Jimmy Drennan bobbed the punt and Eastland's Mike Miller recovered on the Ranger one. From there Quarterback Jerry McCullough ripped a through center to score. McCullough knifed through left tackle to add the extra two points.

Later in the first period, Gaylon Griffin intercepted a pass thrown by Ranger's Quarterback Johnny McGee and the Mavericks took over on their own 35. Jim Moylan picked up two over center, Joe Cooper cracked left guard for five, then on the next play, originating on his own 42, Cooper gained a yard over right guard, Jim Moylan moved for two over center and his left tackle for one, then on fourth down at the nine, McCullough hit End Stanley Underwood with a pass good for Eastland's second touchdown. McCullough, however, was stopped short of the double stripe on his attempted gallop to convert.

Early in the fourth quarter, the Bulldogs launched a drive from their own 28.

Bulldogs Take Mavs 16-14 End Season At Baird Friday

In a nip-and-tuck District 10A grid skirmish which kept a homecoming crowd of 2,000 super-charged with suspense, the Ranger High Bulldogs pulled the fat from the fire only two fleeting minutes before the final gun here Saturday afternoon to squeak by the Eastland High Mavericks, 16-14, in a cliff-hanger.

The underdog Mavericks stunned the Bulldogs in the first quarter when they struck for two touchdowns to jump into a 14-0 lead. Failure to convert after their second tally gave Ranger its third conference win of the season.

The Bulldogs roared back in the second period to score from the Eastland 10 on a payoff pass play — Quarterback Johnny McGee to End Ronnie Hinds. The TD pitch was sprung following a 42 yard drive. Halfback L. H. Pounds swept around left end for the bonus two points.

The visiting Red Black charges held a 14-6 lead at halftime and protected their important 6-point cushion until the final two minutes of the hard-fought scrap.

The Mavericks were on the move five plays after the opening kickoff when they took possession of the oval on their own 48-yard stripe. Ted Martin sliced over center for three. Gary Graham picked up four on two tries before he punted from the Ranger 45. Bulldog Jimmy Drennan bobbed the punt and Eastland's Mike Miller recovered on the Ranger one. From there Quarterback Jerry McCullough ripped a through center to score. McCullough knifed through left tackle to add the extra two points.

Later in the first period, Gaylon Griffin intercepted a pass thrown by Ranger's Quarterback Johnny McGee and the Mavericks took over on their own 35. Jim Moylan picked up two over center, Joe Cooper cracked left guard for five, then on the next play, originating on his own 42, Cooper gained a yard over right guard, Jim Moylan moved for two over center and his left tackle for one, then on fourth down at the nine, McCullough hit End Stanley Underwood with a pass good for Eastland's second touchdown. McCullough, however, was stopped short of the double stripe on his attempted gallop to convert.

Early in the fourth quarter, the Bulldogs launched a drive from their own 28.

Bulldogs Take Mavs 16-14 End Season At Baird Friday

In a nip-and-tuck District 10A grid skirmish which kept a homecoming crowd of 2,000 super-charged with suspense, the Ranger High Bulldogs pulled the fat from the fire only two fleeting minutes before the final gun here Saturday afternoon to squeak by the Eastland High Mavericks, 16-14, in a cliff-hanger.

The underdog Mavericks stunned the Bulldogs in the first quarter when they struck for two touchdowns to jump into a 14-0 lead. Failure to convert after their second tally gave Ranger its third conference win of the season.

The Bulldogs roared back in the second period to score from the Eastland 10 on a payoff pass play — Quarterback Johnny McGee to End Ronnie Hinds. The TD pitch was sprung following a 42 yard drive. Halfback L. H. Pounds swept around left end for the bonus two points.

The visiting Red Black charges held a 14-6 lead at halftime and protected their important 6-point cushion until the final two minutes of the hard-fought scrap.

The Mavericks were on the move five plays after the opening kickoff when they took possession of the oval on their own 48-yard stripe. Ted Martin sliced over center for three. Gary Graham picked up four on two tries before he punted from the Ranger 45. Bulldog Jimmy Drennan bobbed the punt and Eastland's Mike Miller recovered on the Ranger one. From there Quarterback Jerry McCullough ripped a through center to score. McCullough knifed through left tackle to add the extra two points.

Later in the first period, Gaylon Griffin intercepted a pass thrown by Ranger's Quarterback Johnny McGee and the Mavericks took over on their own 35. Jim Moylan picked up two over center, Joe Cooper cracked left guard for five, then on the next play, originating on his own 42, Cooper gained a yard over right guard, Jim Moylan moved for two over center and his left tackle for one, then on fourth down at the nine, McCullough hit End Stanley Underwood with a pass good for Eastland's second touchdown. McCullough, however, was stopped short of the double stripe on his attempted gallop to convert.

Early in the fourth quarter, the Bulldogs launched a drive from their own 28.

Bulldogs Take Mavs 16-14 End Season At Baird Friday

In a nip-and-tuck District 10A grid skirmish which kept a homecoming crowd of 2,000 super-charged with suspense, the Ranger High Bulldogs pulled the fat from the fire only two fleeting minutes before the final gun here Saturday afternoon to squeak by the Eastland High Mavericks, 16-14, in a cliff-hanger.

The underdog Mavericks stunned the Bulldogs in the first quarter when they struck for two touchdowns to jump into a 14-0 lead. Failure to convert after their second tally gave Ranger its third conference win of the season.

The Bulldogs roared back in the second period to score from the Eastland 10 on a payoff pass play — Quarterback Johnny McGee to End Ronnie Hinds. The TD pitch was sprung following a 42 yard drive. Halfback L. H. Pounds swept around left end for the bonus two points.

The visiting Red Black charges held a 14-6 lead at halftime and protected their important 6-point cushion until the final two minutes of the hard-fought scrap.

The Mavericks were on the move five plays after the opening kickoff when they took possession of the oval on their own 48-yard stripe. Ted Martin sliced over center for three. Gary Graham picked up four on two tries before he punted from the Ranger 45. Bulldog Jimmy Drennan bobbed the punt and Eastland's Mike Miller recovered on the Ranger one. From there Quarterback Jerry McCullough ripped a through center to score. McCullough knifed through left tackle to add the extra two points.

Later in the first period, Gaylon Griffin intercepted a pass thrown by Ranger's Quarterback Johnny McGee and the Mavericks took over on their own 35. Jim Moylan picked up two over center, Joe Cooper cracked left guard for five, then on the next play, originating on his own 42, Cooper gained a yard over right guard, Jim Moylan moved for two over center and his left tackle for one, then on fourth down at the nine, McCullough hit End Stanley Underwood with a pass good for Eastland's second touchdown. McCullough, however, was stopped short of the double stripe on his attempted gallop to convert.

Early in the fourth quarter, the Bulldogs launched a drive from their own 28.

Bulldogs Take Mavs 16-14 End Season At Baird Friday

In a nip-and-tuck District 10A grid skirmish which kept a homecoming crowd of 2,000 super-charged with suspense, the Ranger High Bulldogs pulled the fat from the fire only two fleeting minutes before the final gun here Saturday afternoon to squeak by the Eastland High Mavericks, 16-14, in a cliff-hanger.

The underdog Mavericks stunned the Bulldogs in the first quarter when they struck for two touchdowns to jump into a 14-0 lead. Failure to convert after their second tally gave Ranger its third conference win of the season.

The Bulldogs roared back in the second period to score from the Eastland 10 on a payoff pass play — Quarterback Johnny McGee to End Ronnie Hinds. The TD pitch was sprung following a 42 yard drive. Halfback L. H. Pounds swept around left end for the bonus two points.

The visiting Red Black charges held a 14-6 lead at halftime and protected their important 6-point cushion until the final two minutes of the hard-fought scrap.

The Mavericks were on the move five plays after the opening kickoff when they took possession of the oval on their own 48-yard stripe. Ted Martin sliced over center for three. Gary Graham picked up four on two tries before he punted from the Ranger 45. Bulldog Jimmy Drennan bobbed the punt and Eastland's Mike Miller recovered on the Ranger one. From there Quarterback Jerry McCullough ripped a through center to score. McCullough knifed through left tackle to add the extra two points.

Later in the first period, Gaylon Griffin intercepted a pass thrown by Ranger's Quarterback Johnny McGee and the Mavericks took over on their own 35. Jim Moylan picked up two over center, Joe Cooper cracked left guard for five, then on the next play, originating on his own 42, Cooper gained a yard over right guard, Jim Moylan moved for two over center and his left tackle for one, then on fourth down at the nine, McCullough hit End Stanley Underwood with a pass good for Eastland's second touchdown. McCullough, however, was stopped short of the double stripe on his attempted gal

The Ranger Times

"Seeking Community Betterment Since 1919"
4th Street—Ranger, Texas Established June 1, 1919
Entered as second class matter at the postoffice at Ranger, Texas under the act of Congress of March 3, 1879.

Published Semi Weekly—Thursdays and Sundays
By Eastland County Newspapers, Inc.
JAY BETHANY, Editor

One Week by carrier in city	.15
One month by carrier in city	.65
One year by mail on Ranger RFD Routes	3.50
One year by mail in county	4.95
One year by mail in state	6.95
One year by mail out of state	6.95
One year by mail out of state	6.95

NOTICE TO PUBLIC—Any erroneous reflection upon the character, standing or reputation of any person, firm or corporation which may appear in the columns of this newspaper will be gladly corrected upon being brought to the attention of the publishers

CLASSIFIED

FOR SALE
FOR SALE: Model "A" with mounted wood saw. Will buy 100 cords of fire wood. Contact M. E. Offield, MI 7-3871. tf

FOR SALE: SPECIAL—Short sleeve sport shirts, various patterns, \$1.95; two for \$3.50. Army Surplus Store, Eastland, Texas.

FOR SALE—Chicken brooder and a chick finisher, both for \$38.00. R. D. Pruitt, Strawn, Texas. tf

FOR SALE: Minnows, worms, fishing tackle. Just south of school buildings. Strawn. Call 4251. TF

FOR SALE: A double compartment electric Coca-Cola box. A real bargain at \$300. Come and see it at R. D. Pruitt's, Strawn, Texas. TF

HAVING A PARTY? Come by the Ranger Times office and pick up your Party Napkins.

FOR SALE: C 60 Wichtex double drum pulling machine with spudding attachment. 4" to 7" tools. 3300 ft. drilling line on 55 Dodge truck. H. H. Daniels, phone F-J 2-2459, Albany, Texas. tf

FOR SALE: Every family can own a GE home freezer. Upright models and chest type. Prices start at \$189.95. Use your credit at Goodyear Service Store, 725 E. Main, Eastland.

FOR SALE: Top values on 1963 GE filter-dry washers and matching dryers. Big 12-pound load capacity. These must go before October 9th, when the 1964 models will be shown. See these "wartz thru washday" bargains at Goodyear Service Store today. tf

FOR SALE: We have 10 new 1963 General Electric refrigerators in stock which must be sold before the 1964 models are introduced. Prices start at \$179.95. Come in and let's talk trade at your Goodyear Service Store, Eastland. tf

FOR SALE: See the new, 1964 General Electric TVs at Goodyear Service Store. Prices start at \$99.90. Large selection to choose from. Easy budget terms. Your TV trade-in will make the down payment. Payments as low as \$2 weekly. 308 E. Main, Eastland. tf

FOR SALE or Trade—Modern six-unit motel with three bedroom residence. Located U. S. Highway 80, Eastland, phone MA 9-1328.

FOR SALE: 2 large bedroom house. Cooper addition on paved street. Servant quarters and double garage. MI 7-1586.

FOR SALE—Newly decorated stucco house, 4 rooms, bath, attached garage. Real bargain. Phone after 3 p. m., MI 7-1495. tf

TRUCKS For Sale—City Block of Used Trucks, Trailers, New International Scouts, Pickups, Trucks. Used Truck and Trailer Parts, Winches, Axles, Wheels, etc. Johnston Truck and Supply, 725-2181, Box 638, Cross Plains. 78

RUMMAGE SALE—Biggest and best one yet. Good clothing from the wealthier families of Fort Worth and Dallas. Prices you can afford. Saturday, Oct. 26 at Alexander's Bargain House, 6th and Ave. A, in Cisco. Across from Crowder's Swap Shop.

FOR SALE: Border Collie Pups. Age, 6 months. Contact Johnny King, MI 7-1510. 23

FOR SALE: New 63 4 Wheel drive Scouts at cost plus \$25, while they last. Johnson Truck & Supply, Cross Plains. 22 Phone MI 7-1080. 22

NOTICE—Carpenter and general repair work. Free estimates. Contact M. E. Offield, Phone MI 7-3671 after six o'clock. tf

HELP WANTED: For household work. One day a week. MI 7-1080. 22

NOTICE: Your Electrolux representative. See A. J. Lindsey, Rt. 2, Ranger, Texas. MI 7-1485. 26

NOTICE—Now's the time to select your Masterpiece Christmas Cards at our office. Come see the complete lines, from the budget series to the executive classics. Values and beauty with Masterpiece. Ranger Times. tf

FOR RENT

FOR RENT: 5 room house, unfurnished, clean. 433 Hunt Street. 22

FOR RENT: Apartment, Large, clean. Bills paid, 309 Elm. 22

FOR RENT: 2 and 3 bedroom cottages with living room, kitchen and bath. \$30 per month and up. Inquire on premises. Park Cottages. tf

FOR RENT: Two bedroom unfurnished apartment. Call MI 7-3149. tf

FOR RENT: Newly papered unfurnished five room house. \$45 per month. Two bedrooms, fenced yard. 1413 South Seaman. MA 9-2526. tf

FOR RENT—Nice, large 6-room house, 900 Cypress. Phone MI 7-1791. tf

FOR RENT: Nice 4 bedroom house, 1200 Young St. Kitchen, dining room, living room. Bath and half. Phone MI 7-1481.

FOR RENT: Dandy two bedroom furnished cabins with kitchenettes. Ideal for weekends during winter. Good rates. Lynn's Lake Lodge, Lake Cisco. Phone HI 2-2064

STANTON KENTUCKY BOURBON WHISKY—BE PROUD TO DRINK IT! SEE THE BOTTLE! DRINK IT!

FOR SALE OR TRADE: 1957 Chevrolet, 2 door station wagon. Air and power. Automatic. Runs good. Garland Greenlee. Phone MI 7-1914. tf

FOR SALE OR TRADE: 1959 Ford Fairlane, \$500. 2 door hardtop; automatic. Radio and heater. Really sharp and runs perfect. Garland Greenlee. Phone MI 7-1914. tf

FOR SALE—Insulated hunting boots, \$14.95; insulated underwear, \$7.95 up; 30-30 shells, \$2.95 box; 30-06 shells, \$3.95; Hooded sweatshirts and all types gear, guns and ammo. Get ready now. We trade guns. Bruce Pipkin Sport Center, Eastland. tf

FOR SALE: 1951 Dodge, good condition, \$100. O. R. Criswell, Highway 2461. Phone MI 7-3612, Ranger. 73

HELP WANTED: Latin American, peon pickers and thrashers. Housing furnished. Apply Southwestern Nut Co., Gordon, Texas, Phone 2751. tf

GOOD OPPORTUNITY
If you have \$150 to invest, you can make up to \$500 per month or more in your spare time with no selling. Simply by locating individuals, businesses, farmers and ranchers who need financing. Write at once to NATIONAL EQUITY, Inc. Box 20520, Dallas 20, Texas, for interview in your area.

WANTED: 3 boys to deliver Ranger Times. Good routes. For more information call MI 7-1101 or come by Times Office. tf

WANTED: 3 boys to deliver Ranger Times. Good routes. For more information call MI 7-1101 or come by Times Office. tf

WANTED: 3 boys to deliver Ranger Times. Good routes. For more information call MI 7-1101 or come by Times Office. tf

WANTED: 3 boys to deliver Ranger Times. Good routes. For more information call MI 7-1101 or come by Times Office. tf

WANTED: 3 boys to deliver Ranger Times. Good routes. For more information call MI 7-1101 or come by Times Office. tf

WANTED: 3 boys to deliver Ranger Times. Good routes. For more information call MI 7-1101 or come by Times Office. tf

WANTED: 3 boys to deliver Ranger Times. Good routes. For more information call MI 7-1101 or come by Times Office. tf

WANTED: 3 boys to deliver Ranger Times. Good routes. For more information call MI 7-1101 or come by Times Office. tf

WANTED: 3 boys to deliver Ranger Times. Good routes. For more information call MI 7-1101 or come by Times Office. tf

WANTED: 3 boys to deliver Ranger Times. Good routes. For more information call MI 7-1101 or come by Times Office. tf

WANTED: 3 boys to deliver Ranger Times. Good routes. For more information call MI 7-1101 or come by Times Office. tf

WANTED: 3 boys to deliver Ranger Times. Good routes. For more information call MI 7-1101 or come by Times Office. tf

WANTED: 3 boys to deliver Ranger Times. Good routes. For more information call MI 7-1101 or come by Times Office. tf

WANTED: 3 boys to deliver Ranger Times. Good routes. For more information call MI 7-1101 or come by Times Office. tf

It's Time To Act

(An Editorial)

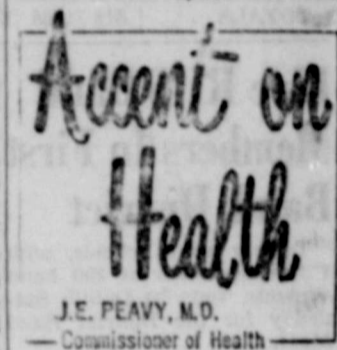
Communities that face loss of business revenue through the re-routing of Highway 80 in the Interstate 20 program have little choice in the matter as everything is covered by law. But the communities can appeal to the authorities to delay the action as long as possible. The Highway 80 section from Fort Worth to Abilene has a lot of miles of roads that need attention far worse than the 35 miles or so through Eastland County. With the completion next year of the six mile stretch from Cisco west to the county line, Eastland County will be completely crossed by a four-lane road.

Weatherford with its five traffic lights and courthouse circle presents much more to delay and slow down traffic than Cisco, Eastland and Ranger combined. And the stretch of highway from Weatherford to Ranger Hill certainly should be rebuilt before anything more is done elsewhere on the busy road.

It makes good sense for the work to be done first where it is needed most; regardless of which highway district is involved. This plan probably would result in no changes in the Eastland County re-routing of cities for at least five years. Working first where work is needed most would make especially good sense if something happened to delay or end the over-all program. The bad bottlenecks would be eliminated. Eastland County, with its four-lane traffic, couldn't be classed as a very bad situation.

It might not be a bad idea for the three cities of the county to send a committee to Austin to appear before the State Highway Commission to request a "let's work first where it's needed most" approach. Eastland County has nothing to lose, and something might be gained.

A weekly public service feature from the Texas State Department of Health



Obesity—resulting from over-eating—is a major health problem in the nation today. Statisticians estimate that 20 percent of the adults over 30 years of age are obese, and scores more are overweight.

What harm is there in being fat? Each pound of excessive weight whittles down your lifetime. If you are overweight by 25 per cent or more, you may expect to live only half as long as a person of normal weight according to some researchers.

How you become overweight is a matter of simple mathematics. Consume 500 calories more per day than your body burns and another pound of fat is tucked away in those embarrassingly conspicuous rolls around your mid-section. Tossing those 500 unneeded calories down the hatch isn't at all difficult. Three martinis, a quarter pound of fudge or a cup of macaroni and cheese will do the trick.

We know how we get fat, but we often don't know why. Childhood eating habits frequently develop into a adult obesity. The old concept of a fat child being a healthy, happy one has long since been refuted. Parents are primarily obligated to provide, as well as teach, their children to consume diets well balanced in both quality and quantity.

We may overeat to satisfy psychological needs that we haven't learned to handle in more satisfactory ways. Unfortunately, eating is seldom a matter of stoking the furnace to keep the fires burning.

Mechanically speaking, there are two ways to lose weight. One is to reduce total food intake to the point where body fat is called upon to supply calories. The other method is to increase physical activity to the point that calories expended exceed calories consumed in food. As a rule, a combination of the two works best.

Avoid crash and fad diets for losing weight. They are

Free Estimates

On A New ROOF
Or Repair your old Roof Residential & Commercial
Eastland - Ranger Roofing Co.
Noble Squires
Ph. MA 9-2370 Eastland.

MADE TO ORDER
Decorated cakes for any occasion. A variety is displayed in the old Central Drug building. Phone Mrs. Fred Brown, MA 9-1823.

seldom successful, and may prove harmful to the body. Special foods are unnecessary as well.

Simply eat each day from the four basic food groups—milk products, meat, fruit and vegetables, breads and cereals. And adjust your total food intake to maintain or reduce weight, depending on your goal.

Channel 8

Channel 11

THURSDAY
6:30 Con. Class 2:00 Fr. Child
7:00 Today 2:00 L. Young
8:30 Circus 3:30 Rm to Dad
9:30 Word for W 4:00 Price is Right
10:30 Miss Links 4:30 Pa. Knows
11:30 Tr. or Con 5:00 News, Wea.
11:55 News 5:30 Hunt. Hwy.
12:00 News 6:00 News, Wea.
12:15 Garden Time 6:30 Rpts. News
12:25 Devotions 7:30 Dr. Kildare
12:30 Cartoons 8:30 Hazel
1:00 P. Talk 9:00 Jack Paar
1:25 NBC NEWS 10:30 TONIGHT

FRIDAY
6:30 Con. Class 2:00 L. Young
7:00 You: 1:30 The Drs.
9:30 Say When 2:30 I Don't Say
9:30 Word for W 4:00 Price is Right
10:30 Miss Links 4:30 Pa. Knows
11:30 Tr. or Con 5:00 Bid & Buy
11:55 News 5:30 Hunt. Hwy.
12:00 News 6:00 News, Wea.
12:15 Garden Time 6:30 Rpts. News
12:25 Devotions 7:30 Dr. Kildare
12:30 Cartoons 8:30 Hazel
1:00 P. Talk 9:00 Jack Paar
1:25 NBC NEWS 10:30 TONIGHT

SATURDAY
8:30 Ruff n' Red 4:00 NFL High
9:30 H. H. Hotheat 4:30 Cap. Gal.
9:30 Fireball XL 5:00 Film. Fm.
10:00 Dennis 5:30 Cartoons
10:30 Fury 5:45 NBC News
11:00 Sgt. Preston 6:00 Hennessey
11:30 Tech. Kns. 7:30 My 3 Some
12:00 Exploring 7:30 J. Bishop
1:00 Mr. Wizard 8:00 Movie
1:30 Movie 10:15 News, Wea.
3:30 AFL High 10:30 Movie

THURSDAY
6:45 Devotional 2:00 Treatmaster
6:45 Norvell Sla. 4:00 Movie
8:15 King & O.G. 5:45 R. C. News
9:30 Movie 6:00 N. W. News
10:00 Price Right 6:30 Flintstones
11:00 Ten. Ernie 7:00 Donna Reed
11:30 Ten. Ernie 7:30 My 3 Some
12:00 Gen. Hosp. 8:00 J. Dean Sho
12:30 J. Benell 9:00 Rita Casner
1:00 Day in Court 9:30 Hayden Fry
1:30 Day in Court 10:00 Hayden Fry
1:55 Wom. News 10:30 M. Martin
2:00 Queen Day 10:40 Chickadee
2:30 Wm. - Trust 11:40 Late 5 News
11:45 FBI's 10 W.

FRIDAY
6:45 Norvell Sla. 2:00 Treatmaster
7:00 Mr. Pepper 4:00 Movie
8:15 King & O.G. 5:45 R. C. News
9:30 Movie 6:00 N. W. News
9:30 Julie Benell 6:30 S. E. Strip
10:00 Price Right 7:30 Burke's La.
10:30 J. Keys 8:30 Farm. Dau.
11:00 Ten. Ernie 9:00 Fight of W.
11:30 Faith. Kns. 9:15 Jon Gnagy
12:00 Gen. Hosp. 9:45 Make Space
12:30 J. Benell 10:00 8-Reports
1:00 Day in Court 10:30 M. Martin
1:30 Day in Court 10:40 W. Movies
1:55 Wom. News 10:30 M. Martin
2:00 Queen Day 10:40 Chickadee
2:30 Wm. - Trust 11:40 Late 5 News
11:45 FBI's 10 W.

SATURDAY
6:45 Norvell Sla. 2:45 Music
7:25 Devotion 3:00 Sportsman
7:25 Fire Dept. 3:25 AFL High
7:30 Top Cat 4:00 SPORTS
8:00 Theater 5:30 8-Reports
8:00 Dep. Dav 6:00 CH 8-Report
9:30 Jettison 6:30 Hootenaw
10:00 Cartoons 7:30 L. Welk
10:30 Benny & C. 8:25 J. Lewis
11:00 Bugs Bunny 10:30 8-Reports
11:30 Magic Land 11:00 G. Movies
12:00 Friend. Fm 12:45 Wm's Movies
12:30 Am. Band. 1:30 Late News
1:30 Movie 2:35 FBI's 8 O

Browsing With Bev

Selecting a man's dress shirt with the right collar, sleeve, body style and fabric to suit his needs and taste is a challenging shopping assignment—although not an easy one.

Most manufacturers and retailers of men's shirts develop their own patterns and specifications, and hundreds of each are required to make a range of sizes of just one brand available to consumers.

A consumer finds the dress skirt most acceptable to his needs in style, quality, fabric, care and cost by shopping, comparing and trying until he finds the right combination in cut and fabric.

What does one look for when shopping for a shirt? These are some points to consider:

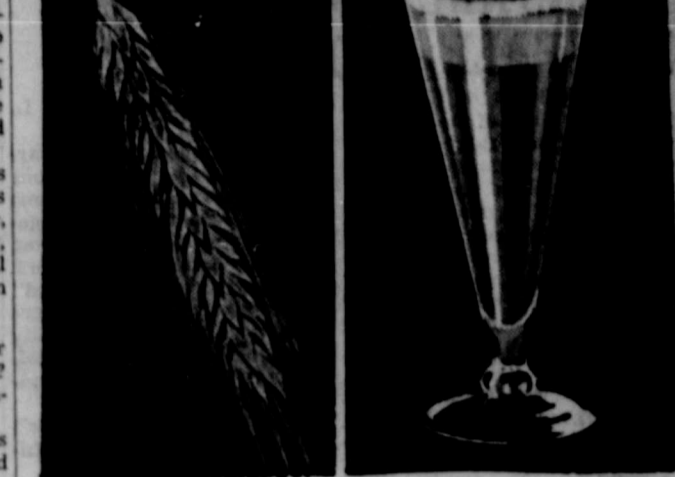
The shirt collar style. This is the part of the shirt viewed by others and it reflects personal knowledge of line. Selection should be based on the shape of one's face, plus personal preference.

Sleeves. Long sleeves feature French, barrel and convertible cuffs. Present consumer choice indicates that convertible cuffs are the most popular since they can be buttoned or used with cuff links. Consumer demand for short sleeves has increased the number and styles available. Four popular sleeve finishes are vented, placket, cuff and hemmed.

Body styles. The conventional straight cut shirt is still

available, but the slim look on men's suits has created a demand for slim styling in shirts. This tapered styling eliminates excess fabric around the waist, thus giving a neat, smartly tailored, slim appearance.

Fabrics. The most popular fabrics are fine combed cotton and cotton oxfords. Next in importance are fabrics of 65 percent dacron polyester and 5 percent cotton.



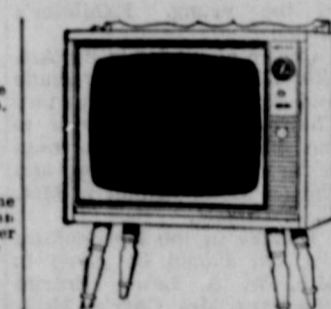
BEER IS A NATURAL

From nature's light grains comes sparkling, light beer—Texas' traditional beverage of moderation—its light, sparkling, delicious.

And naturally, the brewing industry in Texas considers it noteworthy that it contributes more than twenty million dollars to the state in excise taxes each year plus additional millions in licenses and permit fees. These millions of dollars help support our public schools, farm roads, old age pensions, teacher retirement funds and help needy children and blind citizens.

UNITED STATES BREWERS ASSOCIATION, INC. TEXAS DIVISION

FOR YOUR VIEWING PLEASURE



ADMIRAL
The CLINTON Model C3305
Quality 23" TV

(23" overall diag.; 22 1/2 sq. in. view. area)

Early American lowboy console. Unsurpassed picture quality in 23" TV with 23,000-volt precision crafted chassis, "Super Span" turret tuner to insure greater "fringe" area reception (UHF adaptable, opt. extra). 31 1/2" h., 27 1/2" w., 15 1/2" d. C3305—Maple. Grained finish on hardboard.

Available with Admiral Full Function Sonar Wireless Remote Control—Model C3305.

- Turns TV Set On
- Turns TV Set Completely Off
- Changes Channels
- Adjusts to 3 Volume Levels

ROBINSON
FURNITURE & TV

Jack Robinson
403-405 Main St.
Phone MI 7-3122
RANGER

Channel 4

THURSDAY
6:28 Sign On 2:30 Edge of Night
6:50 Sunrise Sem. 2:55 NEWS
7:00 NEWS 3:00 Sec. Storm
7:15 Dr. Christ 3:30 Lv. to Beau.
7:30 Of. Friendly 4:00 Dec. Bride
8:00 Capt. Kang 4:30 Miss Brooks
9:00 CBS News 5:00 Love Bob
9:30 I Love Lucy 5:30 Cronk News
10:30 Pete & G 5:45 Funny War
11:00 Love of L.L. 6:00 News
11:25 NEWS 6:10 Weather
11:30 Search for 6:15 H. R. News
11:45 Gold. Light 6:30 Password
12:00 NEWS 7:00 Rawhide
12:15 Weather 7:30 Rawhide
12:30 Newsweek 8:00 King Crosby
12:35 As World 9:00 The Nurse
1:00 Password 10:00 News
1:30 Houseparty 10:15 Weather
2:00 Tell Truth 10:30 Steve Allen
2:28 D. Edw.

FRIDAY
6:28 Sign On 2:00 Tell Truth
6:50 Sunrise Sem. 2:30 Edge of Night
7:00 NEWS 3:00 Sec. Storm
7:30 Of. Friendly 3:00 Sec. Storm
8:00 Capt. Kang 3:15 Secret Story
9:00 CBS News 3:30 Lv. to Beau.
9:30 I Love Lucy 4:30 Miss Brooks
10:30 Pete & G 4:50 Dec. Bride
11:00 CBS News 6:00 News
11:30 Sr. for To. 6:15 H. R. News
11:45 Gold. Lite 7:00 Great Adv.
12:00 News 7:30 Route 66
12:15 Fashions 8:30 Twi. Zone
12:30 World Tur 9:00 A Hitchcock
1:00 Password 10:00 NEWS
1:30 House Party 10:15 Weather
1:55 Steve Allen

SATURDAY
6:30 Sun. Sem. 5:30 Scoreboard
7:00 C. Kangaroo 6:15 Tom Landry
8:00 Alvin Show 5:30 Wrestling
8:30 Ten. Tuxedo 6:00 News
9:00 Q. D. McJ. 6:15 Polite Re.
9:30 Mity Mouse 6:20 Weather
10:00 Rin Tin Tin 6:30 J. Gleason
10:30 NCAA Basketball 10:00 DV. Days
11:15 T. Territory 10:30 NEWS
12:45 Gourmet 11:30 Read Form
1:15 Wrestling 10:45 Weather
1:45 Of. Pt. View 10:55 Sports
2:15 NCAA game 11:00 Steve Allen

CHANNEL 5

THURSDAY
6:55 Con. Miles 4:00 Mlc. Mous
7:00 Today 4:30 Action 5
9:00 Say When 5:30 Hu. Br.
9:25 NEWS 6:05 News Wea
9:30 Word for W 6:15 Weather
10:00 Concentra'n 6:25 Sportfollo
10:30 Miss Links 6:30 Tr. Houston
11:00 Tr. or Con 7:30 Dr. Kildare
11:30 Tr. or Con 8:30 Hazel
11:55 News 9:00 Suspense Th
12:00 News 10:00 N. W. s
12:35 Dateline 10:25 TONIGHT
1:00 P. Talk 12:00 News
2:00 Sp. for W 12:10 Movie
2:00 Match G'm 12:25 Milestones
3:25 NEWS 12:10 Mid. Myst.
3:30 Room for

FRIDAY
6:55 Con. Miles 2:30 U Don't Say
7:00 Town & C. 2:30 Trails West
7:30 Club Car 4:00 Football III
8:30 Ruff n' Red 4:30 Action 5
9:00 Say When 5:30 Hu. Br.
9:25 NEWS 6:05 News Wea
9:30 Word for W 6:15 Weather
10:00 Concentra'n 6:25 Sportfollo
10:30 Miss Links 6:30 Tr. Houston
11:00 Tr. or Con 7:30 Dr. Kildare
11:30 Tr. or Con 8:30 Hazel
11:55 News 9:00 Jack Paar
12:00 News 10:00 N. W. s
12:35 Dateline 10:25 TONIGHT
1:00 P. Talk 12:00 News
1:30 The Drs. 12:00 News
1:35 NBC News 12:05 Milestones

SATURDAY
9:00 H. H. Hotheat 4:00 NFL High
9:30 Fireball XL 4:30 Cap. Gal.
10:00 Dennis 5:00 Action Five
10:30 Fury 5:45 NBC News
11:00 Sgt. Preston 6:15 News
11:30 Buttwink 6:25 Weather
12:00 Exploring 6:30 J. Bishop
1:00 Cartons 7:30 J. Hishop
1:30 Place. Tom. 8:00 Nat. Moww.
2:00 Touchdown 10:15 Texas News
2:30 News 10:30 Weather
3:30 Trail West 10:45 Nat. Fiction

Channel 8

THURSDAY
6:40 Devotional 2:00 Treatmaster
6:45 Norvell Sla. 4:00 Movie
8:15 King & O.G. 5:45 R. C. News
9:30 Movie 6:00 N. W. News
10:00 Price Right 6:30 Flintstones
11:00 Ten. Ernie 7:00 Donna Reed
11:30 Ten. Ernie 7:30 My 3 Some
12:00 Gen. Hosp. 8:00 J. Dean Sho
12:30 J. Benell 9:00 Rita Casner
1:00 Day in Court 9:30 Hayden Fry
1:30 Day in Court 10:00 Hayden Fry
1:55 Wom. News 10:30 M. Martin
2:00 Queen Day 10:40 Chickadee
2:30 Wm. - Trust 11:40 Late 5 News
11:45 FBI's 10 W.

FRIDAY
6:45 Norvell Sla. 2:00 Treatmaster
7:00 Mr. Pepper 4:00 Movie
8:15 King & O.G. 5:45 R. C. News
9:30 Movie 6:00 N. W. News
9:30 Julie Benell 6:30 S. E. Strip
10:00 Price Right 7:30 Burke's La.
10:30 J. Keys 8:30 Farm. Dau.
11:00 Ten. Ernie 9:00 Fight of W.
11:30 Faith. Kns. 9:15 Jon Gnagy
12:00 Gen. Hosp. 9:45 Make Space
12:30 J. Benell 10:00 8-Reports
1:00 Day in Court 10:30 M. Martin
1:30 Day in Court 10:40 W. Movies
1:55 Wom. News 10:30 M. Martin
2:00 Queen Day 10:40 Chickadee
2:30 Wm. - Trust 11:40 Late 5 News
11:45 FBI's 10 W.

SATURDAY
6:45 Norvell Sla. 2:45 Music
7:25 Devotion 3:00 Sportsman
7:25 Fire Dept. 3:25 AFL High
7:30 Top Cat 4:00 SPORTS
8:00 Theater 5:30 8-Reports
8:00 Dep. Dav 6:00 CH 8-Report
9:30 Jettison 6:30 Hootenaw
10:00 Cartoons 7:30 L. Welk
10:30 Benny & C.

FREE • 1625



PRICES EFFECTIVE THURSDAY THRU SATURDAY

BONUS S & H GREEN STAMPS

WHEN YOU REDEEM THESE COUPONS AND MAKE THE PURCHASES INDICATED!

- STEAK** Round or Sirloin Thrifty Cut Baby Beef Lb. **75¢**
- T-BONE STEAK** Thrifty Cut Baby Beef Lb. **95¢**
- SLICED BACON** Rath Blackhawk Lb. Pkg. **49¢**

PREMIUM PRODUCE FEATURES!

- APPLES** Extra Fancy-Washington State Red Delicious or Winesaps Lb. **15¢**
Golden Delicious-Extra Fancy Lb. 19¢
- ORANGES** Mexico-Fancy Valencia Lb. **15¢**
- COCOANUTS** Large Honduras Each **15¢**

- CHEF'S DELIGHT**
- Cheese Spread** 2 Lb. Box **59¢**
- DOLE - Fancy Hawaiian Sliced Pineapple** Sliced - No. 1 1/4 Can **25¢**
- PLAIN (Without Beans)**
- El Chico Chili** No. 300 Can **43¢**
- EL CHICO - Frozen**
- Enchilada Dinner** 12 oz. Pkg. **49¢**
- PET RITZ - Frozen**
- Pie Shells** 10 oz. Pkg. **39¢**
- Gold Hill Waffles** Frozen 6 5 oz. Pkgs. **69¢**
- ECONOMY SIZE**
- Gleem Tooth Paste** Tube **69¢**

RUMP ROAST
Or Pike's Peak - Thrifty Cut
Baby Beef Lb. **75¢**

Breaded Oysters
KAPTAIN KRUSTY
Frozen - 7 oz. Pkg. **49¢**

Frozen Shrimp
KAPTAIN KRUSTY - Frozen
Peeled and Deveined
8 oz. Pkg. **69¢**

Colombo Pizza
Cheese-Sausage or Pepperoni
12 Inch Size - Ea. **89¢**

Plain Chili
El Chico - No. 300 Can **43¢**

OXYDOL DETERGENT
Large **33¢**



You'll Love Those Extra Christmas Gifts You Can Get With S&H GREEN STAMPS



clip this coupon

FREE!
MONTESSORI STAINLESS SOUP SPOON

WITH COUPON AND PURCHASE OF \$10.00 OR MORE
ADDITIONAL COUPON 50¢ AND \$2.00 PURCHASE
REQUIRED FOR EACH ADDITIONAL FEATURED PIECE

VOID AFTER SAT., NOV. 16, 1963

- RUTABAGAS** WAXED Lb. **5¢**
- CRANBERRIES** OCEAN SPRAY Lb. Cello Bag **29¢**
- PEANUTS** Raw - Bulk - Packed Lb. **29¢**
- MODERN SANITARY**
- Napkins** 12 Ct. Box **35¢**
- FOR AUTOMATIC WASHERS**
- DASH Detergent** Giant Box **75¢**
- HOMEFOLK**
- Peas** 2 No. 300 Cans **29¢**
- PILLSBURY OR BALLARD**
- Biscuits** 3 10 Ct. Cans **29¢**

CLIP AND SAVE!

50 Bonus S&H Green Stamps with this coupon & purchase of Three Lbs. Any Variety Apples

VOID AFTER SAT., NOV. 16, 1963

WORTH FOOD MART

CLIP AND SAVE!

50 Bonus S&H Green Stamps with this coupon & purchase of A 10 Lb. Cello Bag U.S. No. 1 Red Potatoes

VOID AFTER SAT., NOV. 16, 1963

WORTH FOOD MART

CLIP AND SAVE!

50 Bonus S&H Green Stamps with this coupon & purchase of An 18 oz. Jar of Kraft's Peach or Strawberry Preserves

VOID AFTER SAT., NOV. 16, 1963

WORTH FOOD MART

CLIP AND SAVE!

50 Bonus S&H Green Stamps with this coupon & purchase of A 1 Lb. Pkg. of Kraft's PARKAY MARGARINE

VOID AFTER SAT., NOV. 16, 1963

WORTH FOOD MART

CLIP AND SAVE!

50 Bonus S&H Green Stamps with this coupon & purchase of A 16 oz. Pkg. Pillsbury Instant Mashed Potatoes

VOID AFTER SAT., NOV. 16, 1963

WORTH FOOD MART

CLIP AND SAVE!

50 Bonus S&H Green Stamps with this coupon & purchase of An 18 in. x 25 Ft. Roll of H. D. Kaiser Alum. Foil

VOID AFTER SAT., NOV. 16, 1963

WORTH FOOD MART

CLIP AND SAVE!

50 Bonus S&H Green Stamps with this coupon & purchase of Two Jars or More Any Ass't. Heinz Baby Food

VOID AFTER SAT., NOV. 16, 1963

WORTH FOOD MART

CLIP AND SAVE!

100 Bonus S&H Green Stamps with this coupon & purchase of A \$1.15 4-Pk. Sego Liquid Diet Food

VOID AFTER SAT., NOV. 16, 1963

WORTH FOOD MART

CLIP AND SAVE!

50 Bonus S&H Green Stamps with this coupon & purchase of A 30 oz. (1 1/2 Quart) of Pet Instant Milk

VOID AFTER SAT., NOV. 16, 1963

WORTH FOOD MART

CLIP AND SAVE!

50 Bonus S&H Green Stamps with this coupon & purchase of An 11 oz. Jar of CoffeeMate

VOID AFTER SAT., NOV. 16, 1963

WORTH FOOD MART

CLIP AND SAVE!

50 Bonus S&H Green Stamps with this coupon & purchase of A Giant Size Box of Surf Detergent

VOID AFTER SAT., NOV. 16, 1963

WORTH FOOD MART

CLIP AND SAVE!

50 Bonus S&H Green Stamps with this coupon & purchase of A 25 oz. Bott. of Sol-O-Off Cleanser

VOID AFTER SAT., NOV. 16, 1963

WORTH FOOD MART

CLIP AND SAVE!

50 Bonus S&H Green Stamps with this coupon & purchase of A 15 Ct. Pkg. of Chi-Net Paper Compartment Plates

VOID AFTER SAT., NOV. 16, 1963

WORTH FOOD MART

CLIP AND SAVE!

100 Bonus S&H Green Stamps with this coupon & purchase of A 7 oz. Spray Can of Lysol Disinfectant

VOID AFTER SAT., NOV. 16, 1963

WORTH FOOD MART

CLIP AND SAVE!

50 BONUS S&H Green Stamps With this Coupon & Purchase of A 16 oz. Pkg. of Dromedary PITTED DATES

VOID AFTER SAT., NOV. 16, 1963

WORTH FOOD MART

CLIP AND SAVE!

50 BONUS S&H Green Stamps With this Coupon & Purchase of A 13 1/2 oz. Can of Planter's COCKTAIL PEANUTS

VOID AFTER SAT., NOV. 16, 1963

WORTH FOOD MART

CLIP AND SAVE!

50 BONUS S&H Green Stamps With this Coupon & Purchase of Eight (8) 3 oz. Pkgs. of ROYAL GELATIN

VOID AFTER SAT., NOV. 16, 1963

WORTH FOOD MART

CLIP AND SAVE!

50 BONUS S&H Green Stamps With this Coupon & Purchase of Any Two (2) Boxes of 2 Pkgs. of LIPTON'S SOUP MIXES

VOID AFTER SAT., NOV. 16, 1963

WORTH FOOD MART

CLIP AND SAVE!

100 BONUS S&H Green Stamps With this Coupon & Purchase of A 10 Oz. Jar of Chase & Sanborn INSTANT COFFEE

VOID AFTER SAT., NOV. 16, 1963

WORTH FOOD MART

CLIP AND SAVE!

50 BONUS S&H Green Stamps With this Coupon & Purchase of A 3 oz. Jar of LIPTON'S INSTANT TEA

VOID AFTER SAT., NOV. 16, 1963

WORTH FOOD MART

CLIP AND SAVE!

50 BONUS S&H Green Stamps With this Coupon & Purchase of Two (2) 8 oz. Bottles of Wishbone Italian or French LOW CALORIE DRESSING

VOID AFTER SAT., NOV. 16, 1963

WORTH FOOD MART

CLIP AND SAVE!

50 BONUS S&H Green Stamps With this Coupon & Purchase of An 18 oz. (12 Ct. Pkg.) of Keathley PECAN PIES pkg. 49¢

VOID AFTER SAT., NOV. 16, 1963

WORTH FOOD MART

CLIP AND SAVE!

50 BONUS S&H Green Stamps with this Coupon & Purchase of A 1 Lb. Pkg. of Swiss Miss INSTANT COCOA MIX

VOID AFTER SAT., NOV. 16, 1963

WORTH FOOD MART

CLIP AND SAVE!

25 BONUS SH GREEN STAMPS With this Coupon & Purchase of A 1-Lb. Pkg. Rath's Blackhawk FRANKFURTERS

VOID AFTER SAT., NOV. 16, 1963

WORTH FOOD MART

CLIP AND SAVE!

50 BONUS S&H Green Stamps With this Coupon & Purchase of Four (4) No. 303 Cans of Any Style Del Monte White or GOLDEN CORN

VOID AFTER SAT., NOV. 16, 1963

WORTH FOOD MART

CLIP AND SAVE!

50 BONUS S&H Green Stamps With this Coupon & Purchase of Two (2) No. 3 1/2 Cans - Any Style DEL MONTE PEACHES

VOID AFTER SAT., NOV. 16, 1963

WORTH FOOD MART

CLIP AND SAVE!

50 BONUS S&H GREEN STAMPS With this Coupon & Purchase of Two (2) No. 303 Cans of DEL MONTE SPINACH

VOID AFTER SAT., NOV. 16, 1963

WORTH FOOD MART

CLIP AND SAVE!

50 BONUS S&H Green Stamps with this Coupon & Purchase of Three (3) No. 1/2 Cans of Del Monte CHUNK TUNA . . . 3 cans \$1.00

VOID AFTER SAT., NOV. 16, 1963

WORTH FOOD MART

CLIP AND SAVE!

50 BONUS S&H GREEN STAMPS With this Coupon & Purchase of A \$1.00 Size Bottle of Normal or Dry BRECK SHAMPOO

VOID AFTER SAT., NOV. 16, 1963

WORTH FOOD MART

Courthouse Records

- Oil & Gas Leases
- Court Proceedings
- Property Transfers
- Marriage Licenses

Suits Filed
Adrian Swindle vs. Pallack
ow et al vs. Gorman Ind.

Paper Co., a corporation, damages.
State of Texas vs. Southwestern Peanut Growers Assn. et al, a suit to escheat personal property and/or monies to the State of Texas said monies being held by Southwestern Peanut Growers Assn. et al.
Mrs. Floy Morrison, a widow et al vs. Gorman Ind.

RAWLINS
MONUMENTS
WEATHERFORD PHONE LY 4-2724

RANGER DRIVE-IN

ADULTS 50c KIDDIES UNDER 11 FREE
Box Office Opens 6:30 Show Starts 7:00

THURSDAY - FRIDAY - SATURDAY
NOVEMBER 14 - 15 - 16

THE DEADLIEST OIL EMPIRE OF THEM ALL!!!
BLACK GOLD
From WARNER BROS.
CAREY MCBAIN BEST SPAIN AKINS

PLUS OUR SECOND FEATURE
The voice of JUDY GARLAND
Gay Purpée
ROBERT GOULET • RED BUTTONS • HERMIONE GINGOLD • PAUL FREEE

SUNDAY - MONDAY - TUESDAY
NOVEMBER 17 - 18 - 19

THE YOUNG RACERS
FOR DAMON - WILLIAM CAMPBELL - EDNA ANDERS

School District, Gorman, Texas, et al, for Declaratory Judgment and injunction.
Gerald W. Gunn et ux and next Friend for Gerald Anthony Gunn, a minor, vs. Wallace Doyle Johnson, damages.
A. W. Walden et ux vs. Joe Coats, damages.

Marriage License
Leandrew Tyson and Lue Evelyn Washington.
John Wesley Graham and Dianna Jean Robertson.

Probate
Geddes E. Black to W. B. Wright, application to probate will.
J. Joe Lawton to W. B. Wright and Joann E. Cochran, application to probate will.

Instruments Filed
John J. Boen to Helen Coalsen Boen, quit claim deed.
Jimmie Bates et ux to James H. Parrack, warranty deed.

H. C. Bowers et ux to Higginbotham Bros. and Co., material mechanics lien.
T. E. Bucy to The Public, affidavit.

W. J. Brittain et ux to C. M. Brittain, mineral deed.
A. P. Broiles et ux to E. J. Capers et ux, warranty deed.
City of Cisco to H. A. Bible, cemetery deed.

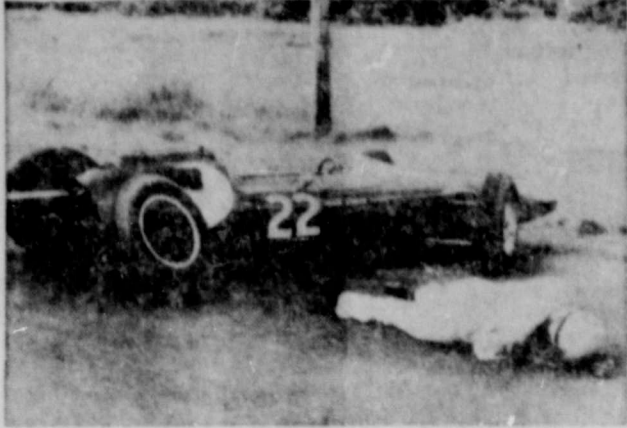
City of Gorman to L. B. Richards, cemetery deed.
Dewey Cox, Jr., to Lessie G. Chilton, quit claim deed.

Georgia Crossnoe to United Southern Contractor Inc., material mechanics lien and assignment.
Celtic Oil Corporation to Lico Petroleum Corporation, quit claim deed.

Celtic Oil Corporation to Lico Petroleum Corporation, quit claim deed.

Billy J. Gregg et ux to

RACING COLOR ON RANGER SCREEN



Mark Damon lies unconscious on Grand Prix track after a dramatic accident in the color thriller "The Young Racers" playing Sunday through Tuesday on your Ranger Drive-In Theater screen.

City of Ranger to Ranger Jr. College, warranty deed.
Florence Delaney to C. R. Tyler, release deed of trust.

Mayme Estes to H. A. Bible, warranty deed.
First National Bank, Gorman to Gorman Peanut Company, partial release deed of trust.

First Federal Savings and Loan Assn., Ranger to Bill Johnston et ux, release deed of trust.

Federal Land Bank, Houston to W. E. Cooper et ux, release deed of trust.
Eddie L. Grisham et ux to Dale E. Trout, deed of trust.
A. L. Grice et ux to Roy D. Blair et al, warranty deed.
Whit L. Graham to J. C. Caraway, Jr., grazing assignment lease.

Donovan Jenkins et ux to City of Rising Star, warranty deed.

Bell W. Johnston et ux to Danny Eavens, warranty deed.
R. M. Johnson et ux to First National Bank, Cisco, assignment oil, gas, lease.

Alvin Kitchens et ux to Federal Land Bank, Houston, deed of trust.

C. R. Krapf et ux to Olbie Fein, warranty deed.
Mary S. Moseley et al to Lessie G. Bearden, warranty deed.

Maggie Murray et vir to Clifford Seabous, warranty deed.

Gladys Phippen et al to Henry E. Burrell et ux, warranty deed.

F. P. Pratt to Bryan Parks, warranty deed.
B. R. Rodgers et ux to Clifford J. Harter, warranty deed.
J.F.A. Schlueter to Jarbe Oil Co., assignment oil, gas lease.

Bruce Stovall to B. T. Stovall et ux, release deed of trust.

H. H. Tompkins et ux to S&M Supply Company, warranty deed.

H. H. Tompkins et ux to SM Supply Company, bill of sale.

H. H. Tompkins et ux to The Public, designation of trust.

Rosa Tarver to Delbert R. Tarver, assignment lease.
Dale E. Trout et ux to Eddie L. Grisham et ux, warranty deed.

Texas Pacific Coal and Oil

A SAD STORY
FOR SALE

Behind many "For Sale" signs there is a sad story: A family borrowed more than they could afford to pay for a home, or payments and interest rates were too high; the home had to be sold, often at a loss. This tragedy could often be avoided if the families would seek help from a home loan specialist, such as our Association.

We work with you to arrange for a loan that's as easy to handle as monthly rent.

FIRST FEDERAL SAVINGS & LOAN ASSOCIATION
204 Main Ranger, Texas MI 7-1611

Company to Joseph E. Seagram and Sons, Inc., conveyance.

O. A. Thackerson et ux to Austin Flint, trustee for AMB J Investments, deed of trust

Estate of Mrs. Virginia Wood, deceased to the Public, certified copy probate.

O. F. Walker et ux to E. L. Dennis, quit claim deed.
O. F. Walker et ux to Eulan L. Dennis, warranty deed.

O. J. Weiser et ux to Earl Scott et ux, warranty deed.
C. B. Webster to Joe Webster et al, assignment oil, gas lease.

Hall Walker to Nolah Hubbard, quit claim deed.
Jerry L. Wilson et ux to First Federal Saving and Loan Assn., Ranger, deed of trust.

E. D. Ware et ux to C. R. Tyler, warranty deed.
Mack White et ux to Amicable Life Insurance Company, assignment vendors lien and deed of trust.

Estate of Charles S. B. Woodruff, deceased to the Public, certified copy probate.
Wesley Walker to E. H.

Services -
Continued from Page 1.
City: one daughter, Mrs. Leon C. Fisher of White Oak; two sisters, Miss Carrie Gatlin and Mrs. R. J. Campbell, both of Fort Stockton; 15 grandchildren and 18 great-grandchildren.

Funeral services were held at the home of Mrs. Leon C. Fisher, White Oak, Texas, Monday, November 11, 1963, at 2:00 p.m.

Interment was in the Lone Star Cemetery, Fort Stockton, Texas.

Read The Classifieds

Mills, deed of trust.
Estate O. P. Weiser, deceased to O. J. Weiser Indv.

& Ind. Exr. to Federal Land Bank, Houston, assignment vendors lien.

MAJESTIC
LAST DAY
L Shaped Room 5:00 - 9:15
Sundays at 7:05

"Sex is not a forbidden word!"
L SHAPED ROOM
"A CINEMATIC MIRACLE!"
Sundays and Cysile

AUDIENCE DESIGNATION BY TEXAS MOTION PICTURE BOARD OF REVIEW AS ADULT ENTERTAINMENT NO CHILDREN'S TICKETS ALLOWED

FRIDAY - SATURDAY
Shows Friday - 5:00 - 8:00 Shows Sat. - 1:15 - 4:45 - 7:15

HE HAD THE POWER TO SEE THROUGH CLOTHES... FLESH... and WALLS!

RAY MILLAND
THE MAN WITH THE X-RAY EYE
Friday at 6:20 - 9:30 PLUS Saturday at 3:10 - 6:15

THE MOST VICIOUS KILLER THE WEST HAS EVER KNOWN!
TERROR AT BLACK FALLS
Distributed by BEGAMAN FILM CORPORATION

'64 Jet-smooth Luxury CHEVROLET

Chevrolet Impala 4-Door Sport Sedan



Now how are the high-priced cars going to explain this!

Here are looks, luxury and comfort that you'd expect to get you back plenty—if they came from anybody but the people at Chevrolet.
Fresh-minted styling with clean uncluttered lines that give the '64 Jet-smooth Chevrolet its feeling of new length and lowness. Rich new interiors with stipple fabrics. Foam-cushioned front and rear seats and door-to-door carpeting—now standard in all models, including the modestly priced Biscaynes. And, of course, the niceties of Body by Fisher craftsmanship.
You've got a wealth of power to pick from—engines from a peppery 140-hp 6 to a 425-hp V8! And you've got the '64 Jet-smooth ride to cushion you from road noise and vibration.
Been promising yourself luxury like this someday? Your someday is here, as your dealer will gladly show you.

Ask about a SMILE-MILE Ride and the Chevrolet Song Book at your Chevrolet dealer's

FULLEN MOTOR COMPANY INC.
305 E. Main EASTLAND Phone MA 9-2676

PLAN NOW
BRING YOUR FAMILY & FRIENDS

SUNDAY BUFFET DINNER
11:30 to 2:00 P.M.

— Menu —
CHOICE of MEATS
Turkey & Dressing
Roast Beef - Ham
and Other Meat Dishes
Two Vegetables
Soup or Salad
Dessert Drink
Hot Rolls
1.25
Childs Plate — 75c

VICTOR HOTEL COFFEE SHOP
Cisco, Texas

ON SALE NOW
GAS RANGE DEALER FAIR

What can this modern gas range do that a comparable electric model can't? Plenty!

Even women who cook on electric ranges admit they don't have the controllability that Gas gives you. When you turn the gas flame "on", it's "on" instantly... turn it "off", it's "off" instantly. There's no hangover-heat to cause boil-overs and no pot-shuffling necessary with gas. Another gas exclusive is smokeless broiling — the flame eats up smoke so you can keep the broiler door closed. This means a cooler, smoke-free kitchen — only with gas! How about flame-kissed flavor for steaks and burgers? Only a gas flame does it. But the big plus is economy... another reason why 8 out of 10 homemakers prefer cooking with gas! See the beautiful new automatic gas ranges on sale at the Gas Range Dealer Fair at Gas Appliance Dealers and Lone Star Gas!

CLEAN, MODERN GAS COOL, AUTOMATIC

ENTERS HOSPITAL
Mr. W. G. Pounds entered Methodist Hospital in Dallas Tuesday afternoon.

Parks & Wildlife Reports On Deer In Edwards Area

Demonstrating the services performed by the State Parks and Wildlife Department is a report just released on the deer population in the Edwards Plateau.

The report is as follows: Rod Marburger, Wildlife Biologist, reports that the recent deer census indicates an overall increase in the deer population for the county Edwards Plateau District.

Because of the findings during this year's census, antlerless deer hunting permits are being issued for the 1964 hunting season in greater numbers than were issued for the 1962 season.

Marburger also reports the deer generally will reach the hunting season in only fair condition. Many deer in the granite county, where the dry weather was prevailed over most of the growing season, are in less desirable condition than those in the limestone area.

Wider Bridges Being Made In State Program
AUSTIN — The headlights of two automobiles hurtling toward each other at an aggregated 140 miles an hour pierced the night on a lonely stretch of highway in East Texas.

Hospital News . . .

Patients in Ranger General Hospital Wednesday morning included Mrs. Eva May Silvers, Mrs. Willie McCullum, Mrs. C. E. Wheat, Mrs. Mattie Marshall, Mrs. Ida Callaway, Mrs. Madge Zeigler, Mrs. R. H. West, J. D. White, Mrs. H. W. Brown, Elmer Abernathy, Mrs. Mary Fullum, Mrs. Letha Buckley, Miss Eunice Toome, Mrs. Emma Green and Lawrence baby boy.

Wider Bridges Being Made In State Program

AUSTIN — The headlights of two automobiles hurtling toward each other at an aggregated 140 miles an hour pierced the night on a lonely stretch of highway in East Texas.

Run-of-the-mill as such an episode may seem — it occurs thousands of times each day and night — an accident has never been prevented. It has been prevented by the widening of the bridge to allow cars an additional measure of meeting room.

The widening of narrow bridges, and many another measure to make Texas highways safer, is part of the State Highway Safety and Betterment Program of the Texas Highway Department.

A \$20 million installment in this program to make \$4.5 billion worth of existing Texas highways better and safer was approved today by the Texas Highway Commission.

The Commission authorized the \$20 million expenditure during the coming year to improve about 2,300 miles of U.S. and State highways under the 1964 State Highway Safety and Betterment Program.

For safety and convenience, the annual program systematically upgrades the 65,000 mile Texas highway network, construction of which has cost \$4.5 billion since the Highway Department's inception in 1917.

Work will be done on about 45 projects in some 150 Texas counties in the 1964 program. The projects include such improvements as reconstruction, resurfacing, widening of traffic lanes, replacement and widening of bridge and drainage structures and approaches, base strengthening, and rebuilding of shoulders.

Such items are counted a significant factor in a decrease of more than 25 percent in the fatality rate on primary highways in Texas during the last decade.

VISIT PARENTS

Mr. and Mrs. Wayne Gooch of Nocona visited in Ranger over the weekend with her parents, Mr. and Mrs. Leonard Pounds.

PERSONALS

Mr. and Mrs. W. O. McMillen were in Galveston over the weekend to visit with their son, Charles McMillen, student at John Sealey Medical School there.

SAN ANTONIO VISITORS
Mr. and Mrs. Richard W. Hanberry have been house guests of her aunt and uncle, Mr. and Mrs. Albert Hise.

Miss Patricia Eschberger, who is attending Rutherford Metropolitan School of Business in Fort Worth, visited this week in the home of her parents, Mr. and Mrs. J. J. Eschberger.



YOUR Independent AGENT
We Are Now Double-Dame

SCHOOL PHOTOS NOT GOOD? PACKAGE OF 24 BILFOLDS 4 Pos. With Proofs

PHOTO STUDIO
We Are Now Double-Dame

Our I.Q. is not in Genius class, nor do we sign our name with Ph.

Earl Bender & Company
Eastland, Texas

FURNITURE CARPET APPLIANCES
Quality Merchandise at Every Day Low Prices
FREE DELIVERY—NO CARRYING CHARGES ON FURNITURE and CARPETS FOR 1 FULL YEAR

May Insurance Agency
INSURANCE—REAL ESTATE
W. J. Sipes Phone MI 7-3582

SAFEWAY 13,000 WINNERS IN "THE PRICE IS RIGHT"
THE BRIGHTEST, NEWEST FUN GAME OF THE YEAR
Over 13,000 Winners
You May Win \$500.00
BIG WINNERS IN "THE PRICE IS RIGHT"
\$100.00 WINNER WILLIE CLEMMERS, JR.

Lux Soap, Febuoy Soap, Wisk Liquid Detergent, Lux Liquid Detergent, Wisk Liquid Detergent

Grade 'A' Eggs, Wheat Bread, Orange Rolls, French Rolls, Texas Toastin' Bread

Facial Tissue, Apple Jelly

THE LIFE BOOK OF CHRISTMAS
Complete Set \$5.96
Cream Corn, Applesauce, Tamales, Chili

Surf All-Purpose Detergent, Enriched Flour, Baby Food, Cling Peaches

100 FREE GOLD BOND STAMPS
This Coupon Worth 100 FREE GOLD BOND STAMPS
This Coupon Worth 100 FREE GOLD BOND STAMPS

Lucerne Tortillas, Party Dips

Delicious Apples, Oranges
Red Delicious, Washington State, Extra Fancy, Perfect for school lunches.
Mexican Hamlin
Oranges 2.25

All Detergent, All Extra Fluffy, Breeze Detergent, Rinso Blue Detergent, Surf Detergent, Silver Dust Detergent, Mr. Clean Cleaner

Safeway Baby Beef Sale!
Chuck Roast 39¢
Round Steak 69¢
T-Bone Steak 79¢
Short Ribs 29¢
Chuck Steak 49¢
Rump Roast 69¢
Rib Steak 69¢

Instant Rice, Parkay Margarine, Starkist Tuna, Planter's Peanuts
This Coupon Worth 50 FREE GOLD BOND STAMPS
This Coupon Worth 50 FREE GOLD BOND STAMPS
This Coupon Worth 50 FREE GOLD BOND STAMPS

Baptist GA's In Presentation Service, Here

"Following the Star" was the theme of the Junior Girls Auxiliary Presentation Service held in the First Baptist Church Wednesday at 7:30 p. m. Various sized stars decorated the auditorium. One large star hung in the baptistry and below it was written the theme in large letters. Stars hung from the balcony and across the choir loft. In front of the platform were five large stars with the Star Ideals of the GA's written on them. Mrs. F. P. Brasher opened the program by playing "Following the Gleam." Mrs. Alvin Hutchins gave the opening comments followed by a reading, "Following the Star"

by Mrs. Pete Miller. The eight Maidens, dressed in green skirts and white blouses, entered to the music of "Jesus Shall Reign." They took their places behind the Five Star Ideals and were questioned by Mrs. Avery Sullivan. Each girl told one part of the Maiden step. Mrs. Alvin Hutchins gave the girls their charges and pinned a green octagon on each of them. The Lady-in-Waiting, Brenda Miller, was dressed in green skirt, white blouse, and gold sash, and entered to the strains of "Footsteps of Jesus." She quoted the first twelve verses of Matt. 5 before she was presented her green octagon with a white star on it. Following the benediction by Avery Sullivan, pastor of the First Baptist Church, the girls were presented with charm bracelets as gifts of the WMU. The

charms on the bracelet represented the steps they had passed. A reception in Fellowship Hall completed the evening.

Girls Auxiliary is an organization of Woman's Missionary Union for girls from nine to sixteen years old. The GA director is Mrs. Avery Sullivan and the Junior GA leader is Mrs. Hutchins, assisted by Mrs. Jettye Ballinger. The Maidens are Linda Anderson, Karen Sue Bryan, Meekie Ruth Herrington, Renee Huff, Vickie Highes, Kathy Myers, Coda Pennington, and Donna Yarbrough. Brenda Miller is the Lady-in-Waiting. Other members of the auxiliary who acted as ushers are Melba Caryle, Sandra Lewis, Gracia Haby, Elva Gomez, and Candy Anderson. The Carolyn Bell Circle sponsors this group.

Ladies Taught Book Of Jude In Bible Class

The Ladies Bible Class of Mesquite and Rusk Church of Christ studied the book of Jude at their 9:30 meeting Tuesday morning. L. E. Carpenter, preacher, taught the class.

Cards were sent to the following: Walter Weatherford of Cleburne, Mrs. L. E. Robison of Colorado City, and Mr. and Mrs. Garland Greenlea, congratulating them upon the arrival of a baby daughter, Patricia.

Present for the class study were Mmes. Maggie Heard, L. E. Carpenter, Reed Campbell, Buck Read, A. G. Langley, Neil Griffith, H. M. Barton, Leila Quinn, H. R. Smith, Tolle Norton, C. D. Ervin, Arlie Woods, George Minnick, Ben Howard, Winston Squyres, O. G. Lanier, Kenneth Brown and Dorothy, Emma Moore, M. H. Offield, Mammie Frye, Myrtle Reddell, D. M. Lee, Miss Rosa Williams, and Mr. Carpenter.

P. H. Williams Observes 91st Birthday, Friday

P. H. Williams, 517 South Austin Street, celebrated his 91st birthday on Friday, November 8.

Mr. Williams, who was employed by Service Pipe Line Company before his retirement, was born in Both County, Kentucky, in 1872. He lived in Ranger from 1921 to 1926, when he moved to Grafrod and later to Mineral Wells. He has been in Ranger since September, 1962.

A daughter and two sons were present for the birthday celebration.

Bible Class Meets With Mrs. A. E. Dawson

The Ladies Bible Class of the Merriman Baptist Church met in the home of Mrs. A. E. Dawson Tuesday, November 5.

Mrs. Martha Vinson led in prayer. A class discussion followed with the reading of Esther 3. Mrs. Dawson led the closing prayer.

Lacasa News

Leroy Kerby was a visitor to New Hope Baptist Church, October 27. Leroy, who lives at Stamford, has not missed Sunday School for several years. He with his parents visited his aunt and uncle Mr. and Mrs. Walter Bradford.

Mr. and Mrs. Jack Eddleman and Stevie of Fort Worth visited his parents, Mr. and Mrs. Frank Eddleman over the weekend.

Mr. and Mrs. D. B. Raney took Mrs. James Raney and sons, Jimmy and Dean to Goldthwaite Sunday afternoon to meet her parents, Mr. and Mrs. Dean Whiffen of Austin. They will visit in Austin this week, returning to their home in Houston. The group visited Mrs. Addie C. Davis, sister of Mrs. D. B. Raney, White in Goldthwaite.

The WMS of New Hope Baptist Church met for their mission program from Royal Service Tuesday afternoon, with Mrs. G. V. McGowen, program chairman in charge. A Japanese Tea was served after the program. Attend were Mmes. G. V. McGowen, A. N. Bradford, Mary Herrington, A. E. Howton, D. B. Raney, and J. W. Veale with little Lilli McDonald as a visitor.

Martha Dorcas Class Has Noon Luncheon; Study

The Martha Dorcas Class of the First Methodist Church met Thursday, November 7, in the church dining room for their November luncheon.

Invocation was given by Mrs. B. H. Peacock after which Mrs. Ollif Lewis, vice president, conducted the business session. The secretary's report was read and accepted. The class had made 253 visits and sent 40 cards. The December party will be held at the Mills cabin at Lake Leon Thursday, December 13. Mrs. Ethelgn Deffebach brought the devotional, "Paths of Shining Light." "Happy Birthday" was sung to three members who have November birthdays.

Those present were Mmes. Deffebach, Johnson, Peacock, A. J. Ratliff, J. T. Killingsworth, C. P. Ashcraft, Nora Roush, C. R. Shawfield, H. G. Ramsey, J. F. Donley, M. P. Williams, F. Williamson and sister, Mrs. Warren, Mrs. J. W. Harmon, O. R. Criswell, J. L. Turner, J. C. Hagar, E. H. Mills, E. L. Danley, Ed Keller, F. S. Pearsall, Alice Landers, G. A. Fyffe, G. O. Strong, J. D. Drennen, D. E. Pulley, Roscoe Hopper, Vernon Deffebach, and Misses Dorothy Peacock, Mary Kohler, Beulah Harrison, and David and Douglas Umberson.

HOUSE GUESTS
Mr. and Mrs. J. E. Adkins had as their house guests Mr. and Mrs. H. H. Johnson of Kansas City, Missouri. Mrs. Johnson is a sister of Mr. Adkins.

Lacasa HD Club Makes Plans For Chili Supper

The Lacasa Home Demonstration Club met Thursday, November 7, 2 p. m.

Mrs. Robert Jackson, president, opened the meeting by leading the group in the club prayer. Roll call was answered with "Have I Made a Will?" Mrs. Joe Jackson, secretary-treasurer, read the minutes and gave the financial report. She also rendered a report from the Yearbook Committee, asking that each member give a suggestion for the next year books. The Gold Bond Premium plan is still being used.

The members voted to have their Thanksgiving supper, a chili supper, on Friday, November 22. Each family is asked to bring crackers and a pie. The chili will be furnished.

Mrs. Mary Herrington gave a demonstration of "Lighting in the Home", stressing the importance of proper lighting for the protection of the eyes.

Mrs. R. E. Miller, recreation leader, requested the reading of a poem.

Mmes. V. L. Jones, Robert Jackson, Joe Jackson, A. O. Templeton, D. Z. Herrington, Wilson Watson, H. A. Pockrus, Kenneth Mitchell, J. F. Eddleman, Wesley Dempsey, and Bill Echols had attended an Accessory Workshop in Breckenridge Tuesday, November 7, and took part in the art of hat making. Mrs. Frank Shaw had instructed the group and the Home Demonstration Agent, Miss Barbara McNelly, was also present.

The next home demonstration meeting will be November 22, 10 p. m., at which time Mrs. Francis Rooney will give a demonstration on "Food Gifts as a Christmas Gift Suggestion". Members should bring their suits and accessories at that time for the style Show which will be presented the next day, November 22.

Dorcas Class Honors Teacher, Mrs. Robinson

The Dorcas Class of the First Baptist Church held its Thursday, November 7, 3 p. m., in the home of Mrs. Helen Julius of the Marston Building.

Mrs. Bessie Judy presented the devotional, "The Worth of Singing in the Church" after Mrs. Mae Kirkpatrick led the opening prayer. Business matters were disposed with and Mrs. Jane Adamson closed this portion with a prayer.

The social hour, in form of "This Is Your Life", honored the teacher, Mrs. Lillie Robinson, on her birthday.

A refreshment plate was served to Mmes. Robinson, Kirkpatrick, Judy, Irene Mitchell, Ethel Adams, Mary Crabb, Jessie Baker, Doshie Robinson, Winnie Mitchell, Gussie Tankersley, Jane Adamson, Jeanie Elrod, Cora Presslar, Marie Gafner, Ethel Adams, and the hostess, Mrs. Julius.

Lasting Impressions . . .

by WRONG FONT

We know there must be millions of happily married people. But we just don't happen to know any of 'em.

One of our most appreciated printing accounts is the Commercial State Bank, Ranger. They keep our presses humming and we certainly strive to give those fine folks our best in quality and service. Commercial State Bank is a good place to do business and truly is a pillar of our community.

I wouldn't say we were paupers, but when I was a boy my family couldn't afford to buy me new shoes. They just painted my feet brown and laced my toes.

Congratulations to Ranger Junior College and the hundreds of exes who came back for this weekend's big Homecoming. We are enjoying meeting and greeting so many RJC students of former years. Come back often, friends!

An optimist is a man who idles the motor in front of the house while he waits for his wife.

RANGER TIMES
COMMERCIAL PRINTING DEPT.
Hale Dunson
Phone MI 7-1101
RANGER

READ THE CLASSIFIEDS

Brady Rites Held For Dick Wilcox


Funeral services for James Edmond (Dick) Wilcox, 50, were held at 3 p. m. Sunday in Brady in Wilkerson Funeral Home with Rev. Lamar Leifeste, pastor of the First Methodist Church, officiating. Burial was in Rest Haven Cemetery, Brady.

Mr. Wilcox died Saturday morning in Stamford. An oil well driller, he was born Dec. 9, 1912, in Hamilton and reared in Brady.

Survivors include a son, Billy James, Abilene, his father, Richard T. Wilcox, Stamford; two sisters, Mrs. D. A. Herkridger, Brady, and Mrs. Mrs. Georgia Douglas, Sanatorium.

Helps Heal And Clear Itchy Skin Rash!

Zemo—liquid or ointment—a doctor's antiseptic, promptly relieves itching, stops scratching and so helps heal and clear surface skin rashes. Buy Extra Strength Zemo for stubborn cases!



SEND YOUR LAUNDRY TO US

Take washday out of your home. Our professional service. So easy — so convenient — so inexpensive!

CISCO
Steam Laundry
MI 7-1491 — RANGER

DEER - BEEF - PORK PROCESSING

WE SELL WHOLE HOG SAUSAGE

NANTZ & ROBINSON

PROCESSING PLANT
Hwy. 80 West — 2 Miles
RANGER, TEXAS

PREPARE NOW FOR WINTER DRIVING!

We have an ample supply of permanent type antifreeze . . . and are ready to service your car.

PRESTONE or ZEREX Per Gal. \$1.95

PEAK ANTI-FREEZE Per Gal. \$1.69 (Cash & Carry)

Browder Service Station
Highway 80 East Ranger, Texas

PENNEY'S
ALWAYS FIRST QUALITY
PRE-HOLIDAY CLEAN-UP



REDUCED!

OUR FAMOUS 100% ACRYLIC ELECTRIC BLANKET REDUCED!

reg. \$15 NOW **11.83** single control

double bed size 72"x84"
twin bed size 63"x84"

Dual Control, Double Bed Size 80" x 84" reg. \$20 NOW 15.88

2-YEAR REPLACEMENT GUARANTEE! The blanket used by over a million happy sleepers, now softer, more beautifully machine washable with Supermap, 9 warmth settings. Nylon binding. Snap-fit corners.

peacock • rosebeige • pink • cherry red
lavender • blue • green • primrose gold

HOLIDAY DECORATING ZING! COLOR-RICH ACCENT RUGS!



27" x 48" **4.41**

Special savings on the liveliest accents a room can have! Scatter them boldly . . . they'll bring new color dimensions to your rooms! Thick, luxurious viscose rayon pile in lots of vibrant colors! No-slip latex back!

SPECIAL! PRINT COTTON FLANNELS



4 yards for \$1.36 wide

Plenty of prints with renowned Penney virtues . . . they're color-fast, machine washable in lukewarm water.

MONTGOMERY WARD

407 MAIN STREET
RANGER, TEXAS
PHONE MI 7-3224

FREE BEEF


\$40.00 Worth of Beef of Your Choice

WITH THE PURCHASE OF ANY REFRIGERATOR OR FREEZER (Chest or Upright)

THURSDAY FRIDAY - SATURDAY
3 DAYS ONLY! NOV. 14-15 16

NO MONEY DOWN!
NO PAYMENT 'TIL FEBRUARY, 1964 . . . UP TO 36 MONTHS TO PAY THE BALANCE!

...it's always a pleasure!



You can see I.W. Harper's rich tradition in these rare bottles . . . taste its pleasure in every glass.

I.W. HARPER
THE GOLD MEDAL BOURBON

SOCIAL CALENDAR

November 1
The 1947 Club will hold its regular meeting Tuesday, Nov. 1 in the home of Mrs. Luther R. Gohlke. The program on "Federation Views on Recent Legislation" will be given by Mrs. James Townzen and Mrs. James Morris will speak on "Guarantees of Freedom".

Each member is asked to bring toys for Child Welfare to be distributed at Christmas time.
Hostesses for the event are Mrs. John Foster and Mrs. Gohlke.

RETURN HOME

Sgt. and Mrs. Guy Davis returned home to Route 2, Waynesville, Mo., after attending the funeral of her mother, Mrs. Julia McCleskey.
Sgt. Davis is presently stationed at Fort Leonard Wood, Mo., with the U. S. Army. He will retire in January at which time he and Mrs. Davis will return to Ranger to make their home.

READ THE CLASSIFIEDS

Around The Campus

The Masquers Club of Ranger Junior College has chosen the play "Good Night Caroline", by Conrad Seiler as their first presentation, after organizing last month.



LARRY VOWELL

Larry Vowell of Fort Worth is president of the club and Miss Sanya Sullivan, a 150 from Fort Worth, is the club sponsor. Mike Phillips from Weatherford is student director and Mrs. Charles Milliken, English and speech instructor in the college is production advisor.

A tentative date of between December 10-20 has been set for the first performance at the college. It is being discussed in the club, as to the feasibility of presenting the play in surrounding towns.

The play has a four-character cast and chosen for these parts are: Butch Owen of Ranger as "Alfred", Sandra Allsup of Ranger as "Caroline", Larry Vowell as "The burglar", and Helen Gilbert from Fort Worth, as "Selma" the maid.

Mary Rhoads and Vowell will superintend the lighting and Owen and Ronnie Smith, Fort Worth, will assemble the properties. Helen Gilbert and Sandra Allsup will be in charge of makeup.

Stage managers are T. C. Collier and Robert Smith, both from Fort Worth and co-chairmen of publicity are James Henry and Denny Ewing, both of Ranger.

The Masquers, one of the oldest clubs on the campus had been inactive for several years and was reorganized by Miss Sullivan.

Many band students had their parents here for homecoming weekend.

Here from Del Rio were Dr. and Mrs. W. J. Wibbert, parents of Dale and Darryl Wibbert; Mr. and Mrs. Willard Henderson, parents of Jim Henderson; Major and Mrs. John Rice and family, parents of John Rice and Msgr. and Mrs. James R. Lawson, parents of Harry Lawson.

Parents here from Ft. Worth included Mr. Robert W. Smith whose son is Robert Smith; Mrs. Ted Carrigan and family visiting Glen Carrigan. Mr. and Mrs. J. T. Gilbert, parents of Helen Gilbert; Mr. and Mrs. W. T. McCarthy, parents of David and Mark McCarthy; Mr. and Mrs. Flories, parents of Jerry Flories; Mr. and Mrs. J. H. Kyle, parents of Jerry Cooper. Mr. and Mrs. W. B. Vowell, parents of Larry Vowell; Mr. and Mrs. J. L. Smith, parents of Ronnie Smith; Mr. and Mrs. Malvin Collier, parents of T. C. Collier; Mr. and Mrs. H. O. Buckfield, parents of Ken Buckfield.

From Weatherford were Mr. and Mrs. Lee Phillips, parents of Mike Phillips; and Mr. and Mrs. T. J. DeBeauford, parents of Larry Prather.

Ginger Gooden Is Band Sweetheart



Others here were Mr. and Mrs. W. E. Tankersley of Eastland, parents of Gracie Tankersley, Mr. and Mrs. H. C. Jones of Brownwood, parents of Imogene Jones; Mr. and Mrs. Wood Broyles of Breckenridge, parents of Wayne Broyles and Mr. and Mrs. J. E. Brown of Hamlin, parents of Tommy Brown.



DON BARKER

Don Barker, sophomore from Electra, was installed as president of Delta Tau Chapter of Phi Theta Kappa of Ranger Junior College.

Dr. Theodore Nicksick, Jr., president of the college and an honorary member of Delta Tau, was installing officer.

Other officers are Larry Reck, Electra, vice-president; Sandra Allsup, Ranger, secretary-treasurer; and Judy Wright, Ranger, student council representative.

After the installation Barker directed the initiation of Ed Callarman, sophomore from Cisco. He was assisted by the other officers and another Delta Tau member, Alvin Iverson.

Phi Theta Kappa is a national honorary scholarship society for junior colleges. To be eligible for membership, first-term freshmen must have a 2.5 grade point average on fifteen hours of work, and second-term freshmen and sophomores are admitted on a 2.2 grade point average. Eligibility is based on the average of all the college work done by the student previous to membership. To maintain active membership, the student must maintain a 2.0 average.

After the initiation refreshments were served from a table centered with an arrangement of yellow chrysanthemums flanked by gold candles.

Guests attending were Mr. and Mrs. David B. Allsup, Mrs. R. L. Hamrick, Miss Sanya Sullivan, and Dean Ernen Baby.

Services - (Continued from Page 1)

Mr. Melton was born in the Cheaney Community on June 7, 1913 and married the former Miss Lois Wilson in Gorman, May 17, 1935. He had lived in Eastland County all of his life and lived in Ranger for the past seven years. The family resided at 703 Summit. He was a member of the Cheaney Baptist Church. Mr. Melton suffered a fatal heart attack at 4:30 Friday afternoon while he was at his job at Graham Motor Company in Cisco. He had worked there the last two months.

Survivors include his wife, Lois; three sons, Lonnie of Fort Worth and Terry and Jackie of the home; parents, ton of the Cheaney Community; two sisters, Mrs. H. E. Carr of Stephenville and Mrs. L. E. Crouch of Athens; three brothers, Curtis of Lamarque, J. P. of Ranger, and Odis of Mr. and Mrs. Lanzo Mel-Cisco; two grandchildren, Alexica Joe Melton and Debra K. Melton, both of Fort Worth, and a number of nieces and nephews.

Funeral services were held at 10:30 a.m. Saturday at the Starlite Motel, the group enjoyed dinner before the business session.

Mr. and Mrs. Don Yarbrough were in Abilene Saturday night for the West Texas convention of NABAC of which Mr. Yarbrough is secretary and treasurer. Hosted by the Starlite Motel, the group enjoyed dinner before the business session.

Mr. Yarbrough is cashier at Commercial State Bank.

ATTEND CONVENTION

Mr. and Mrs. Don Yarbrough were in Abilene Saturday night for the West Texas convention of NABAC of which Mr. Yarbrough is secretary and treasurer. Hosted by the Starlite Motel, the group enjoyed dinner before the business session.

Mr. Yarbrough is cashier at Commercial State Bank.

Circle 2 Meets In McAnelly Home For Program

Circle No. 2 of the Women's Society of Christian Service met at 9:30 Tuesday morning, November 5, in the home of Mrs. S. M. McAnelly.

Mrs. Archie Robinson, circle chairman, opened the meeting with a prayer. During the short business session the group reported making 62 visits during the last month. A Christmas project was discussed.

Mrs. Jack Sledge presented a most interesting program, "The Methodist Family". She was assisted by Mmes. Robinson, Nora Roush, Ted Nicksick, J. A. Johnson, Neas Brinneman, and Houston Moore. Following a group discussion, the meeting was closed with a prayer by Mrs. Sledge.

Delicious refreshments were served to the following members, Mmes. Roush, Robinson, Nicksick, Moore, Brinneman, Sledge, Johnson, Marian Thomas, Frank Pearsall, Charles Ashcraft, A. H. Powell, and the hostess, Mrs. McAnelly.

RANGERS -

(Continued from Page 1) only to fumble on third down, giving the Pioneers the ball on the 12 yard line.

The Ranger defensive team manned the barriers, holding the Wharton club to no gain in three tries. On fourth down, Curtis Gayton kicked a field goal to put them out in front, 31 to 0.

Midway in the third quarter, the Pioneers were once again given the ball deep in home town territory, as they recovered a fumble on the Ranger's 15 yard line. Three plays later, Syer knifed through a hole off right guard to score. Guyton kicked his fifth conversion point of the evening to make it 8 to 0 final score in favor of Wharton.

Wharton, the sixth ranked team in the nations Junior Colleges has been defeated once this season as Navarro downed them on their season opener.

The Rangers will close out the 16 season as they journey to Corsicana next Thursday night for the return match with Navarro.

MOTHER VISITS

Visiting this past week in the John Foster home was Mrs. Foster's mother, Mrs. Helen H. Johnson, of Holly Springs, Miss.



Weldon Cunningham

Cunningham New President Ex-Students

Weldon Cunningham of Ranger was elected president of Ranger Junior College Ex-Students Association at the meeting held in the college cafeteria at 6 p. m. Saturday, November 9, as part of the Homecoming activities.

Cunningham is employed by Lone Star Gas Company and is the son of Mr. and Mrs. O. D. Cunningham, who live west of Ranger.

B. J. Perrin of Fort Worth also a graduate of North Texas State University, and the son of Mr. and Mrs. B. P. Perrin of Ranger, was elected vice-president and I. G. Wright of Gordon, secretary-treasurer.

Richard Bonney of Ranger is the out-going president and presided at the election.

A Homecoming Dance in the fine arts building of the college, following the football game, drew a crowd of 300 students, ex-students and guests. The college stage band played for dancing.

Kennedy Visit Includes Several Historic Firsts

AUSTIN - The whirlwind visit of President Kennedy to Texas Nov. 21-22 will include a number of historic firsts:

1) It will be the first time Mrs. Kennedy has accompanied the President on an official trip since the death of her infant son in August.

It will be the first time the First Lady has been to Texas, and the first time she has ever accompanied the President on a political tour.

2) It will be the first time in Texas history that the President, Vice President and Governor have all appeared on the same program.

3) The \$100-a-plate dinner Nov. 22 in Austin will mark the first time a President of either party has helped raise funds in the state with a personal appearance.

Tickets to the dinner at Austin's Municipal Auditorium are being sold by 62 members of the State Democratic Executive Committee. They also can be purchased by mail from the SDEC Office at 1010 Lavaca Street in Austin.

The President and Vice President will dedicate new facilities at the School of Aerospace Medicine in San Antonio before attending a Houston dinner honoring long-time Congressman Albert Thomas in Houston on Nov. 21.

The next day, he and his party will breakfast in Fort Worth and appear at a luncheon in Dallas before coming to Austin.

COURT OF CIVIL APPEALS

The following proceedings were had in the Court of Civil Appeals, Eleventh Supreme Judicial District of Texas:

Reversed and Remanded
Kermit Wholesale Lumber Company, Inc. v. Billy Stanfield. (Opinion by Judge Collins.)

Reversed and Remanded with Instructions
Odell Nelson et al v. Manuel Enriquez. (Opinion by Judge Walter.)

Motions Submitted
Callihan Interests, Inc. et al v. Natalie K. Halepeska et al. Appellants' motion for oral argument.

Virgil C. Moore v. Marie E. Mathis et al. Appellant's motion to stay issuance of mandate.

C. W. Newsom v. Minnie L. Newsom. Appellee's motion for rehearing.

Ima Ruth Adams et al v. Calvin Truett Simmons et al. Appellants' motion for extension of time to file briefs.

Motions Granted
Virgil C. Moore v. Marie E. Mathis et al. Appellant's motion to stay issuance of mandate.

Ima Ruth Adams et al v. Calvin Truett Simmons et al. Appellants' motion for extension of time to file briefs.

Motions Overruled
Callihan Interests, Inc. et al v. Natalie K. Halepeska et al. Appellants' motion for oral argument.

C. W. Newsom v. Minnie L. Newsom. Appellee's motion for rehearing.

Martha Circle Meets In Home Of Mrs. Sallee

The Martha Circle of Christian Womens Fellowship of the First Christian Church met Monday, November 11, in the home of Mrs. George Sallee.

Mrs. J. W. Watson, circle chairman, called the meeting to order, with Mrs. Ray Cameron giving the opening prayer.

During the business session plans were made for the Thanksgiving Dinner which will be November 25. A Christmas Bazaar will follow the dinner.

The group voted to meet one week earlier, so as to not conflict with the Thanksgiving dinner. This meeting will be in the home of Mrs. R. L. Carpenter on November 18.

Mrs. Harvey Drake gave the lesson on "Pioneer Souls", assisted by Mrs. A. D. Webb.

Mrs. Sallee served pimento cheese sandwiches, cake, potato chips, coffee and coleslaw to the 15 members present.

Those present were Mmes. E. E. Neal, Porter Woods, A. D. Webb, J. W. Watson, M. S. Cartwright, Ray Cameron, E. A. Beskow, Henry Fergell, Harvey Drake, R. I. Malone, N. T. Johnson, J. H. Evtatt, Joe Tow, George Sallee, and Guy Robinson.

EXPERT TELEVISION REPAIR SERVICE

IN RANGER ON TUESDAYS & FRIDAYS
All Makes and Models
Reliable Workmanship
Quality Replacement Parts

Whitenton TV SERVICE

Stephenville
CALL
L&J Supply Co.
Ranger - MI 7-1377

Compare for yourself... if you can find a better diamond ring value than this gorgeous Encore... take it!

FULL CARAT OF DIAMONDS... (total wt. gts)
\$275.00
Breathtaking beauty... in this exciting 7-diamond wedding set... distinctively crafted in original 14k gold setting.

Encore
by the makers of STARFIRE Diamond Rings

1/5 Carat \$107.50
3/4 Carat \$212.50

Congratulations to Ranger Junior College!

D. E. PULLEY JEWELRY
203 MAIN - RANGER, TEXAS

SALE

GAS RANGE DEALER FAIR

SALE

Caloric
Model C56GT

NOW \$195.50 plus tax
you'll save \$34.50

What a price!—the lowest possible on this feature-packed, top quality Gold Star Award gas range. Caloric's new Compact is a full 36 inches wide and offers more cooking conveniences for the money than other comparably priced ranges... including the Keep-Warm oven system with the new 140° temperature setting. Keeps foods serving-hot for hours without over-cooking or drying out. Burner-with-a-Brain makes all your pans automatic. Removable oven and broiler doors simplify cleaning. Spacious storage compartment, handsome clock and control center and easy-to-clean porcelain finish are pluses. Available in pink, yellow, turquoise, coppertone or black at slight additional cost.

BUY NOW AND SAVE

LONE STAR GAS COMPANY

NEWSPAPERS ARE TOP SALESMEN

Television, like radio before it but to a far greater degree, has brought about major changes in the advertising picture. It has been an aggressive competitor with the other media, and its appetite for the advertising dollar, with the cost of producing even Grade B programs running to comparatively astronomical sums, seems insatiable.

But the power of the written word still gets top recognition.

An announcement from Sears, Roebuck and Company will interest those who like to read as well as to stare. Last year the figure was \$58 million, which represented 71.2 per cent of Sears' total retail media expense. The balance went to advertising through circulars, magazines, radio and television, and other media.

A spokesman tells the story: "This is tangible evidence of our continuing faith in the potency of newspaper advertising. From the day Sears opened its first retail store, the company has made greater and greater use of newspapers. It is obvious that Sears store managers continue to regard the newspaper as their major medium for more than historical reasons. Their evaluation is based on the day-to-day results in their stores."

Television advertising is a catch-as-catch-can affair - you have to be looking at the set at the moment and it's gone in an instant. Print is durable and the prospective buyer can scan and consider it at his leisure.

THE RANGER TIMES

READ THE CLASSIFIEDS

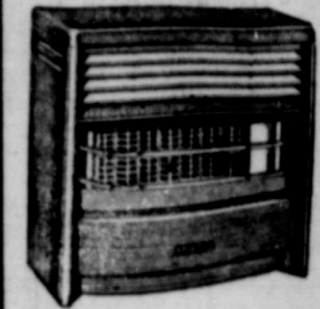
THE TEAM BEHIND THE TEAMS

Get More Out of Life . . .
See A Good Movie
At Your
**RANGER
DRIVE-IN**
Thurs. - Fri. - Sat.
"Black Gold"
plus
"Gay Puree"
Sun. - Mon. - Tues.
"The Young Racers"

**WE'RE
BACKING
YOU**



**ALL
THE
WAY**



**Ranger Furniture
Exchange**
Dearborn Stoves
123 N. Rusk — MI 7-1404
Ranger, Texas

<p>Ranger Lumber & Supply Co Calvin and Earl Brown</p>	<p>Commercial State Bank Member F.D.I.C.</p>	<p>C. P. Cloud & Son Buyers of Wool, Mohair, Cattle Sheep and Goats Billie and Oran Rippey</p>	<p>Swaney's Pharmacy</p>
<p>Campbell's Humble Service Sta. Highway 80 and Main Street Crossing</p>	<p>First Baptist Church "You Are Always Welcome"</p>	<p>J. C. Penney Co. John Smith, Mgr.</p>	<p>Anderson Chevrolet Co. W. J. (Bill) Anderson</p>
<p>Jack Blackwell Marketer Sinclair Ref. Co. Goodyear Tires and Batteries Phone MI 7-1788</p>	<p>SARCO Southwest Athletic Repair Co. Ranger Phone MI 7-3274</p>	<p>Maddox Fina Service Station Hwy 80 West Mr. and Mrs. Gid Maddox</p>	<p>First Federal Savings and Loan Association 204 Main Dial MI 7-1611</p>
<p>El Rancho Coffee Shop L. N. Bryan — Raymon Bryan Hwy. 80 West Ranger</p>	<p>Porkey Pig Hwy. 80 East Mac McGowen</p>	<p>Crawford-Doss Rexall Drug In Business for Your Health</p>	<p>City Plumbing Co. U. E. Westmoreland Phone MI 7-3175</p>
<p>Ranger Clinic</p>	<p>Ranger General Hospital</p>	<p>Social Science Laboratories</p>	<p>Arnett's Texaco Service Station Charles Arnett Main & Commerce MI 7-1515</p>
<p>Featherlite Corp. Lightweight Aggregate Ranger</p>	<p>Ogden's Maytag Coin Laundry Mr. and Mrs. B. J. Ogden 908 Blackwell Road MI 7-1181</p>	<p>Killingsworth's Funeral Home Killingsworth Life Insurance Company Mr. and Mrs. J. Floyd Killingsworth</p>	<p>Ranger Peanut Co. T. C. Wylie MI 7-3286</p>
<p>May Insurance Agency W. J. SIPES Insurance — Real Estate</p>	<p>Texas Electric Service Co. Bill Collings, Mgr.</p>	<p>Capps Studio Mr. and Mrs. Delbert Capps</p>	<p>Ranger Hill Cafe, Courts, Texaco Station Hwy 80 East MI 7-3177</p>
<p>Ranger Dry Cleaners Mr. and Mrs. Jess Weaver</p>	<p>Ranger Auto Parts Gaston Dixon 319 Main Phone MI 7-1606</p>	<p>Mildred's Beauty Shop Phone MI 7-1784</p>	<p>Frigid Queen Hwy 80 East MI 7-1733</p>
<p>Bulldog Grill Peggy Bennett</p>	<p>Craig's Grocery & Mkt. Mr. and Mrs. J. B. Craig</p>	<p>Herweck's Ranger Mattress Co. Mr. and Mrs. Milard Herweck</p>	<p>Hoover Food Market Mr. and Mrs. Randal Hoover Phone M 17-3530</p>



J. C. Carter Insurance
Area Representative
State Farm Insurance Co.
Auto — Fire — Life — Phone MI 7-1177

SOUTHERN TELEVISION SYSTEMS CORP.

CISCO — EASTLAND — RANGER — USE OUR TELEVISION CABLE FOR BETTER FOOTBALL VIEWING —

**BULLDOGS
VS
BAIRD**

THERE NOVEMBER 15

BULLDOG SCHEDULE

- Sept. 6 — Cisco 16, Bulldogs 0.
 - Sept. 13 — De Leon 6, Bulldogs 0.
 - Sept. 20 — Bulldogs 12, Gorman 0
 - Sept. 27 — Open
 - Oct. 4 — Dublin 24, Bulldogs 14
 - Oct. 11 — Bulldogs 16, Jacksboro 7
 - Bulldogs 36, Cross Plains 6
 - Oct. 25 — Bulldogs 26, Clyde 21
 - Nov. 1 — Albany 44, Ranger 12
 - Nov. 8 — Bulldogs 16, Eastland 14
 - Nov. 15 — Baird — There*
- * Denotes Conference games



**RANGERS
VS
NAVARRO**

THERE NOVEMBER 23

RANGERS SCHEDULE

- Sept. 14 — Cisco 20, Rangers 12.
 - Sept 19 — Ranger 0 — Blinn 14
 - Rangers 12, ACC 'B' 6
 - Oct. 5 — Wharton 28, Rangers 6
 - Oct. 10 — HUS "B" 35, Rangers 24
 - Cisco 36, Rangers 0
 - Oct. 26 — Blinn 35, Rangers 0
 - Oct. 31 — Navarro 27, Ranger 0
 - Nov. 9 — Wharton 38, Rangers 0
 - Nov. 23 — Navarro — There*
- *Denotes Texas Jr. College Conference games