

# THE RANGER TIMES

Home Of  
Ranger Junior College

A Small City with Big Industry — A Bright Spot for New Industry

Gateway To  
Famed Lake Leon

VOLUME 43

PRICE 10 CENTS

RANGER, TEXAS, THURSDAY, SEPTEMBER 26, 1963

NUMBER 8



THINKING OUT LOUD  
BY JAY BETHANY

The Bulldogs have a week off following their victory over the Gorman Panthers last Friday night.

This will give them an opportunity to look back and try to figure out what went right.

James Stewart, who lives about ten miles north of Ranger, brought into town a rattlesnake that is without a doubt the grand daddy of all rattlesnakes.

This giant measured five and one half feet in length with an eight inch girth.

How many years did this fellow have to live in order to attain such size? Quite a few I am sure.

The Park and Wildlife Commission has issued corrections to their recently published hunting guide.

Previously they had Eastland County's deer season starting November 16 and running through December 8. This has now been corrected to read November 16 to December 15.

For the past three years Ranger has worked for and held the annual Pecan Growers Association show here. This has been possible through the sale of memberships to area residents.

Each year about this time, the selection of the town to hold the show is made.

This is done by a vote from the membership.

At a meeting which will be held this Thursday, towns in the county wanting the show will extend their invitation to the association for the show to be held in their towns.

The association will then mail ballots to each member of the association with the request that they vote for the town of their choice. The names of each town wanting the show will be listed on the ballot.

For the past three years it has been a contest between Ranger, Eastland and Cisco. Ranger has won each of the three years. Last year by a narrow margin over Cisco.

If by this time you have not been approached by a member of the committee for your membership then you may still be able to get one by going by the Chamber of Commerce no later than nine o'clock Thursday morning, Sept. 26. Those of you who are members — vote for Ranger.

## BOOSTER CLUB TO SPONSOR BOTH FOOTBALL TEAMS

The Ranger Booster Club held its third meeting at the College Cafeteria Monday evening.

Films of the Bulldogs and Ranger's games were shown to those present and coffee was served.

Leonard Pounds, president, has announced that the club voted to sponsor both the high school and college football teams. He further stated the purpose of the club was to get the Ranger citizens behind the two teams and the benefit of the schools and the enjoyment of the spectators and added, "This is the second year our club has embraced both school teams, and this is as it should be."

No dues will be paid this year. Finances will be provided through the sale of stadium pillows at the games and a pancake supper to be held in the college cafeteria, time and date to be announced later.

Present for the meeting were Mr. and Mrs. H. S. Perry, Mr. and Mrs. M. W. Herweck, Mr. and Mrs. T. L. Browning, Mr. and Mrs. H. H. Sutton, Mr. and Mrs. Leonard Pounds, Mr. and Mrs. Billy E. Guess,

## T. D. Stewart Is Again Rough Fish Winner

T. D. Stewart of Ranger has again been named winner of Lake Leon's Rough Fish Contest for the week of September 16-22.

He caught a total weight of 60 pounds, 13 ounces, including the largest fish weighing seven pounds, 13 ounces; seven pounds, six ounces; and seven pounds, four ounces. He won last month with a total of 244 pounds and four ounces.

D. L. Kennard of Eastland caught one weighing two pounds, 12 ounces; and D. H. Moss caught two fish totaling two pounds and eight ounces.

The Rough Fish Contest will continue through this month and all of the month of October, coming to a close on Sunday November 3.

## Jaycee-Ettes To Be New Club In Ranger

A meeting was held at the National Guard Armory Tuesday night for the purpose of organizing a chapter of Jaycee-Ettes in Ranger.

Members of the Cisco Jaycee-Ettes were on hand to explain the purpose and function of the organization.

Only wives of Jaycees are eligible for membership in the Jaycee-Ettes.

A minimum of ten members and three meetings are necessary before a charter will be issued to a new club.

In order to get the fledgling club rolling, temporary officers were elected Tuesday night. They are: Audrey Yarborough, Chairman; Nancy Bethany, Secretary; Constitution and by-laws, Jo Rippey; Nominating committee, Betty Fletcher and Ethel Crawford; Notice chairman, Joy Gum.

Members of the Cisco club present were: Charlene Stevenson, Annita Ritchie, Pearl Station, Sue Witzache, Pat Sanders, Carolyn Webster, and LaNelle Anderson.

Prospective members of the Ranger club are: Phyllis Shinn, Loresta Veale, Jo Rippey, Ethel Crawford, Bonnie Stewart, Betty Fletcher, Aubrey Yarborough, Joy Gum, and Nancy Bethany.

The Ranger club will have its next meeting with the Cisco club October 8.

## Hospital News —

Patients in the Ranger General Hospital Wednesday morning were Mrs. J. B. Baker, George Hamilton, Karen Boles, Mrs. R. C. Fuller, Mrs. Ruth Rucker, Mrs. Mamie Ledbetter, Raymond Long, Mrs. Bertie Obel, Mrs. Conrad Buchanan and baby boy, Mrs. Arrie Marlowe, Mrs. H. S. Brown, Mrs. Letha Buckbee, Mrs. Emma Green, Mrs. Jess Carter, Ira Uttz, and Elmer Abernathy.

## BOOSTER CLUB TO SPONSOR BOTH FOOTBALL TEAMS

The Ranger Booster Club held its third meeting at the College Cafeteria Monday evening.

Films of the Bulldogs and Ranger's games were shown to those present and coffee was served.

Leonard Pounds, president, has announced that the club voted to sponsor both the high school and college football teams. He further stated the purpose of the club was to get the Ranger citizens behind the two teams and the benefit of the schools and the enjoyment of the spectators and added, "This is the second year our club has embraced both school teams, and this is as it should be."

No dues will be paid this year. Finances will be provided through the sale of stadium pillows at the games and a pancake supper to be held in the college cafeteria, time and date to be announced later.

Present for the meeting were Mr. and Mrs. H. S. Perry, Mr. and Mrs. M. W. Herweck, Mr. and Mrs. T. L. Browning, Mr. and Mrs. H. H. Sutton, Mr. and Mrs. Leonard Pounds, Mr. and Mrs. Billy E. Guess,

## BOOSTER CLUB TO SPONSOR BOTH FOOTBALL TEAMS

The Ranger Booster Club held its third meeting at the College Cafeteria Monday evening.

Films of the Bulldogs and Ranger's games were shown to those present and coffee was served.

Leonard Pounds, president, has announced that the club voted to sponsor both the high school and college football teams. He further stated the purpose of the club was to get the Ranger citizens behind the two teams and the benefit of the schools and the enjoyment of the spectators and added, "This is the second year our club has embraced both school teams, and this is as it should be."

No dues will be paid this year. Finances will be provided through the sale of stadium pillows at the games and a pancake supper to be held in the college cafeteria, time and date to be announced later.

Present for the meeting were Mr. and Mrs. H. S. Perry, Mr. and Mrs. M. W. Herweck, Mr. and Mrs. T. L. Browning, Mr. and Mrs. H. H. Sutton, Mr. and Mrs. Leonard Pounds, Mr. and Mrs. Billy E. Guess,



CHEER LEADERS — To be on hand Thursday night at Bulldog Stadium to help the team better things will be the girls leading the yells for Ranger Junior College. They are, left to right: back row, Shirley Schwesig, Barbara Bledsoe and Tonia Arnold. Front row, Sharon Allard, Judy Wright and Linda Bryson. (Photo by Capp's Studio).

## Rites Held For Plane Crash Victim Monday

Funeral services for Mary Gene Ferrell, 36, were conducted Monday afternoon at two o'clock in the First Baptist Church here with Rev. J. C. Tankersley, pastor of the Cheaney Baptist Church, officiating.

Burial was in the Alameda Cemetery under the direction of Killingsworth's Funeral Home.

Survivors include her parents, Mr. and Mrs. Gene E. Ferrell of Eastland; two brothers, Frederick M. of Delta Junction, Alaska, and Lester T. of Olden; one sister, Mrs. Frank Forry of Fort Worth; her paternal grandmother, Mrs. Lizzie Melton of De Leon, and her maternal grandmother, Mrs. J. T. Walton of Ranger.

## Ranger Riding Club Organized, Officers Named

About 40 people were present at the Ranger Riding Club meeting Monday night at the Ranger Sales Barn.

Election of officers was held with Dickie Fletcher heading the group as Captain. Other officers are First Lt. Bill Rippey, Second Lt. Jim Stewart, Secretary Betty Fletcher, Treasurer Jo Rippey, Reporter Bonnie Stewart, Corral Boss John Robertson, First Wrangler Wayne Stewart, Second Wrangler C. F. Chesnut. Directors are Clyde Bond, Bill Cagle, T. C. Fambro, Eddie Langford, Roger Kerry, and Jim Casey.

The club will go to DeLeon Saturday to participate in the De Leon Rodeo. Members are asked to be at the De Leon Rodeo grounds by 6 p. m. The Rodeo will get underway at 7:30. There will be no parade.

The next scheduled meeting of the Riding Club will be Monday night at 8 p. m. at the rodeo arena. Should the weather be rainy, the members will meet at the Ranger Sales Barn. Everyone is welcome to attend.

## Four Desdemona Students At RJC

Ranger Junior College has four students from Desdemona, three graduates of Desdemona High School and one who lives in Desdemona but graduated from Gorman High School.

Tommy Fonville, Curtis Lewis, Carman Gene Grimshaw, and J. Grimshaw are all full-time students at RJC. J. Grimshaw is the Gorman graduate.

Land owners of zone 5 of the Upper Leon Soil Conservation District in Eastland County will meet in the courthouse at 7:30 p. m. on Tuesday night, Oct. 1, to elect a farmer or rancher as their supervisor to serve on the District Board for the next five years.

C. M. McClain, Eastland rancher, is presently serving on the board from Zone 5. It is possible that he may be re-elected, it was said.

The meeting in the courthouse will be in the Commissioners Courtroom on the second floor. Prior to the balloting E. E. McAllister of the Eastland Soil Conservation Service office will hold a discussion and a demonstration of some of the more common range grasses of the area.

Zone 5 of the Upper Leon Soil Conservation District is

bounded on the west and south by the MKT Railroad that runs through Cisco, Mangum, and Gorman; by the Callahan County line on the west and northwest; by the old railroad bed of the Jake Hammond railroad that formerly ran through Ranger and Desdemona and by the Comanche County line.

All landowners in this area are urged to attend this meeting and to vote for a supervisor. Those attending are urged to use the east door of the courthouse.

Coffee and doughnuts will be served, it was said.

Improving after Surgery  
Mrs. W. E. Herweck has returned to her home here after eye surgery in Dallas. She reports she is improving and doing fine but will return to Dallas the later part of the week.

## Rev. Dan Royall And Family New Ranger Citizens

Rev. Dan Royall and family have moved to Ranger where he has taken the work as pastor of the Merriman Baptist Church.

He attended Hardin-Simmons University in Abilene and Baptist Bible College of Springfield, Missouri.

The family comes to Ranger from Temple Baptist Church in Stamford. He has also pastored at the Central Baptist Church in Abilene for three years.

The Royalls have three children, Linda, 13, David, 10, and Karen, 7.

## Church of God Of Prophecy To Start Revival

The Church of God of Prophecy at the corner of Oak and Hunt Street will begin a revival Monday, September 30, at 7:30 p. m.

R. B. Helcelet of Ada, Oklahoma, who served as pastor here several years ago, will be the evangelist. Services will be held nightly at 7:30.



WAYNE DAVIS

## Revival Begins At Merriman Baptist Church

The Merriman Baptist Church will begin a revival September 2 (Sunday) and it will end October 6.

Wayne Davis, pastor of the Temple Baptist Church in League City, will be the evangelist. He was a former rodeo star before becoming a minister. Mr. Davis spent three years with the Calvary Baptist Church in Merkel.

Schedule for the Merriman Church is as follows: Sunday School at 10 a. m., worship at 11 a. m., prayer service at 7:15 p. m., and worship at 7:30 p. m. Services will begin each night at 7:15 with prayer service and worship will be at 7:30 p. m.

Rev. Dan Royall extends a cordial invitation to the public to attend.

## 150 Attend 2nd Annual Sheep and Goat Field Day

About 150 ranchmen, business men and citizens attended the second annual sheep and goat field day in Ranger, Friday, September 20, and at least six counties were represented.

Dr. John W. Foster, local veterinarian, was master of ceremonies and the program included talks on most every phase of the sheep and goat industry, by experts.

The Ranger Chamber of Commerce co-sponsored the event with County Agent J. M. Cooper, and the group was served a barbecue luncheon at noon, courtesy of the Chamber of Commerce.

Jim Gray of San Angelo, sheep and goat specialist A&M College, told the group that breeds are just as important in the livestock field as varieties of crops are in the plant world. "Ranchers need to consider what kind of conditions as to forage, climate and area of Texas is a fine wool country and is able to withstand these problems. Fine wool breeds are not seasonal in their breeding habits," he told the group. Also that fine wool breeds withstand the heat better.

John G. McHaney, economist of the A&M Extension Service, presented the group with a mimeographed booklet on past prices of sheep and wool and mohair. The number of sheep in the United States has declined from a high of 52 million in 1940 to a low of 30 million on January, 1963, he said.

McHaney told the gathering that sheep are on about one-tenth of the farms and ranches in the United States today. Per capita consumption of lamb and mutton has decreased in recent years and the per capita consumption of beef has increased from 59 pounds in 1920 to 89 pounds in 1962. Imports of lamb and mutton increased from three million pounds in 1950 to 143 million pounds in 1962.

Dr. C. M. Patterson, A&M College Extension Service, who formerly practiced veterinary medicine in Eastland County, stated that with sheep and goats you may have internal parasites that you wouldn't have in cattle. Rotation of sheep and goats in different pastures keeps down internal parasites. "Drugs cannot take the place of management for control of internal parasites," he said.

Dr. J. B. Henderson, Texas Animal Health Commission, told the group that in 1958 and 1959 the screwworm fly was eradicated in Florida and started the thinking in Texas of the possibility and feasibility of attempting the elimination of screwworms in Texas. Over three million dollars were raised by livestock producers in Texas to initiate the program.

Jack Groff of Kerrville, sheep and goat specialist, A&M College Extension Service, talked on the selection of sheep and goat breeding stock for greater flock profit. He

included will be the industry's only all-new car for 1964 — the Chevelle. This much discussed combination of beauty, quality, performance and distinction is sized between the regular Chevrolet and Chevy II.

All Chevrolet's five lines of 1964 cars have styling and engineering improvements that teamed with the increase in models and options — allow the customer to tailor a car to his particular requirements as never before.

REGULAR CHEVROLETS — Extensive new styling is evident in the regular Chevrolet line, again stressing the big car luxury which has made it so popular.

The 1964 Chevrolet models feature new interior trim styling and materials, yet retain the built-in comfort, convenience, luxury and durability traditional with Body by Fisher.

All of Chevrolet's advanced 119 inch wheelbase chassis features are continued for 1964, including X-built Safety Girder frame, Full Coil suspension, self-adjusting Safety Master brakes, high capacity electrical system with Delcotron generator and long-life exhaust system.

CHEVELLE — Chevrolet's new automobile line for 1964 embodies a distinctive styling and will be offered in 11 models in three series — the top-of-the-line Malibu Super Sport, the Malibu and the 300.

Quality and vehicle width are stressed in the front end design which makes use of dual headlights and horizontal grille bars. Side treatment is clean and a peak line which carries throughout the car gives a look of length.

A special feature of the Chevelle body is the use of curved side windows to give a lower look. A strikingly wide instrument panel is part of the distinctive interior styling which includes trim styles and materials color-keyed to the new exterior colors.

CHEVY II — In its third year on the market, the Chevy II continues its popular blend of small car handling, roominess, economy and good taste in a total of 6 models in two series — the Nova and the 100 series.

The basic styling personality of the Chevy II is continued in 1964, but there is added beauty through refinements in the grille, side moldings, emblems and hub caps and more luxurious interiors.

CORVAIR — Entering its fifth year, the Corvaire will continue its important place in the Chevrolet lineup by appealing to a group of buyers who like something sportier and less conventional in a small car.

Corvaire styling for 1964 retains the clean, classic theme with new identification through emblems and ornamentation. All models except Green-brier feature a slender front body molding with colorful plastic emblem insert.

The word "Corvaire" extends across luggage and engine compartment lids in bright block letter.

Canteen To Be Open Friday, Saturday

The Canteen will be open Fridays after all home games or close to home games. It will be open from 7:30 to 11 p. m. on Saturday nights.

humidity," he states. "This recently returned from an European tour where he studied the market for mohair in England, France, Germany and some of the Scandinavian countries. He stated that the big complaint of the mill owners was the shortness of the staple of our Texas mohair.

He stated that the demand for mohair in the foreign countries depends on the whim of the fashion world.

There are approximately 50,000 head of goats in Eastland county and the industry makes a sizable contribution to our economy, stated County Agent J. M. Cooper.

## Public Invited To See New Chevrolets Here Sept. 26-28

CORVETTE — This sports car — fresh from its most successful year in 1963 — continues the famed design of its two Sting Ray models, the convertible and the sport coupe for 1964.

Offering broader appeals to more kinds of buyers, the 1964 Corvette combines the driving and handling enjoyment of a genuine sports car with the luxury and convenience most fine car owners want.

Services Held Sunday For Mrs. Mary Eva Rice

Last rites for Mrs. Mary Eva Rice, 69, were held at the First Baptist Church Sunday, at 2 p. m. Burial was in the Evergreen Cemetery with Rust Funeral Home of Cisco in charge.

Mrs. Rice died 10 p. m. Friday in the Eastland Memorial Hospital after a short illness.

She was born in Palo Pinto County August 23, 1894, and married A. C. Rice in Ranger March 10, 1919. Mr. Rice preceded her in death two years ago. She had lived in Ranger most of her life and was a member of the Baptist Church.

Survivors include one daughter, Mrs. Clifton Miller of Atlanta, Georgia; one brother, C. Y. Brown of Ranger; one sister, Mrs. Josie Blackmon of Los Angeles, California; five grandchildren, and two great grandchildren.

Nephews and grandsons served as pallbearers.

## R. F. Hill Dies In Odessa After Brief Illness

Funeral services for Robert Frederick Hill, 52, and a resident of Odessa, were held in Killingsworth Funeral Home Monday morning at 10 o'clock with Rev. John Brothers, pastor of the East Side Baptist Church, officiating. Interment was in the Evergreen Cemetery.

Mr. Hill was born in West, November 5, 1910 and married Lanning Batchelor in San Angelo, July 12, 1959. He was a painter. He died Saturday morning in Odessa after he had been ill a short while.

Survivors include his wife; one daughter, Mrs. Dianne Phillips of Odessa; two brothers, W. C. of Ranger and H. T. of Oxnard, California; three sisters, Mrs. Bernice Taylor of Amarillo, Mrs. Mildred Hancy of Sweetwater, and Mrs. G. E. Whitehead of Ranger; and one half-sister, Mrs. Lou Dickinson of Waco.

## Gary Hames Is RHS Bulldog Band President

Monday afternoon members of the Ranger High School band selected their officers for the current season.

Gary Hames will serve the band's president. Betty Estes was elected secretary-treasurer and Peggy Neeley is the reporter.

They also selected three girls as nominees for band sweetheart. They are Betty Estes, Peggy Neeley and Celeste Scott. A secret ballot election will be held later on to determine who the sweetheart will be.



# The Ranger Times

"Seeking Community Betterment Since 1919"  
1001 Street—Ranger, Texas Established June 1, 1919  
Entered as second class matter at the postoffice at Ranger, Texas under the act of Congress of March 3, 1879.

Published Semi Weekly—Thursdays and Sundays  
By Eastland County Newspapers, Inc.  
JAY BETHANY, Editor

One Week by carrier in city	.15
One month by carrier in city	.65
One year by mail on Ranger RFD Routes	3.50
One year by mail in county	4.95
One year by mail in state	4.95
One year by mail out of state	6.95
One year by mail out of state	6.95

**NOTICE TO PUBLIC**—Any erroneous reflection upon the character, standing or reputation of any person, firm or corporation which may appear in the columns of this newspaper will be gladly corrected upon being brought to the attention of the publishers.

## CLASSIFIED

### Misc. For Sale

FOR SALE: Model "A" with mounted wood saw. Will buy 100 cords of fire wood. Contact M. E. Offield, MI 7-3671. tf

FOR SALE: SPECIAL — Short sleeve sport shirts, various patterns, \$1.95; two for \$3.50. Army Surplus Store, Eastland, Texas.

FOR SALE: A chicken brooder and a chicken finisher, both for \$38.00. R. D. Pruitt, Strawn, Texas. tf

FOR SALE: Minnows, worms, fishing tackle. Just south of school buildings. Strawn, Call 4251. TF

FOR SALE: A double compartment electric Coca-Cola box. A real bargain at \$300. Come and see it at R. D. Pruitt's, Strawn, Texas. TF

### HAVING A PARTY? Come by the Ranger Times office and pick up your Party Napkins.

FOR SALE: C 60 Wichtex double drum pulling machine with spudding attachment. 4" to 7" tools, 3300 ft. 3/4" drilling line on 55 Dodge truck. H. H. Daniels, phone PO 2-3459, Albany, Texas. tf

FOR SALE OR RENT: Three bedroom frame house on paved street. Contact M. E. Offield at MI 7-3671. tf

FOR SALE: Automatic washer, 12-pound load, filter flow. Slightly used. First-class merchandise. Guaranteed. Payments as low as \$2.50 weekly. See this and other bargains at your Goodyear Service Store, 308 E. Main St., Eastland. tf

FOR SALE: Slightly used GE dishwasher. Fully automatic. Fully guaranteed. Payments as low as \$2.25 weekly. Total price \$139.50. See at Goodyear Service Store, Eastland. tf

FOR SALE: GE television sets. One 19" portable; one 23" console with base. Slightly used. Going at a bargain. Easy Budget Terms. Goodyear Service Store, Eastland. tf

FOR SALE: Americana GE Electric Range. Upright, eye-level oven, rotisserie, slightly used, first class, guaranteed. \$5 weekly. Goodyear Service Store, Eastland. tf

FOR SALE: 4 room house with furniture 108 Sue St. \$1,500.00. See Julia Sheppard at 805 Elm Street. 60

FOR SALE: For work and hunting pleasure, start with a pair of famous Cedar Crest Boots that assure you comfort and sure footedness all day long. Wellington slip on boots, black, tan and rough out. Eight inch top Sportman insulated and not insulated, from \$8.95 to \$12.95. Register for a new gas operated automatic shotgun value \$145.00. Nothing to buy. Army Surplus Store, Eastland, Texas. 14

FOR SALE or Trade — Modern six unit motel with three bedroom residence. Located U. S. Highway 80, Eastland, phone MA 9-1328.

FOR SALE — 1/2 ton 1954 Ford pickup. See after 5 p. m. 84 Cherry St. 13

FOR SALE — Six room house, two lots, on Hwy. 80 East. Leola Lawrence, 410 Glenn Drive, Weatherford. 13

FOR SALE: 2 large bedroom house. Cooper addition on paved street. Servant quarters and double garage. MI 7-3588. tf

FOR SALE — House trailer. Two bedroom fully equipped. Good condition. Ideal for lake home. Can be seen at Muirhead Motor Co., Eastland. 9

### FOR SALE: House, 6 rooms and bath, 431 Walnut. Priced to sell. Call James Townzen, MI 7-1939. 16

### FOR SALE — 1958 Chevy with winch, 5th Wheel and Rolling Tail Board, 1959 Chev. Rig Up Bed, 21 Tulsa Winch, Gin Poles. Both look and run real good. L185 with Winch, Gin Poles, and Rig Up Bed. Johnston Truck, Cross Plains. 13

### FOR SALE: Multiplying onion sets. 515 North Marston. Joe Roper. 8

### FOR SALE — Property at 518 Alice Street. Two houses, one furnished. MI 7-1091. Bob Johnson. 8

### FOR SALE — 5 hand push lawn mowers. Call at Housing Authority from 8 a. m. till 5 p. m. 8

### FOR SALE: 1953 Chevrolet. \$175. MI 7-1169. 10

### FOR SALE — Console type Esey electric chord organ with bench. MI 7-1169. 10

### FOR SALE — Insulated hunting boots, \$14.95; Insulated underwear, \$7.95 up; 30-30 shells, \$2.95 box; 30-06 shells, \$3.95; Hooded sweatshirts and all types gear, guns and ammo. Get ready now. We trade guns. Bruce Pipkin Sport Center, Eastland. tf

### FOR SALE — 200 kid goats and 265 nannies, age 2-3-4 and 5. Kids sheared 2 1/2 lbs. John Reck, Mingus, Texas. 12

### FOR SALE — Gas cook stove, \$25. Sink cabinet, \$5.00. Phone MI 7-3612. tf

### FOR SALE — Newly decorated stucco house, 4 rooms, bath, attached garage. Real bargain. Phone after 5 p. m. MI 7-1495. tf

### FOR SALE Refrigerators Used — All Makes — All Sizes Best buys in town Also Freezers, Washers, Dryers RANGER FROZEN FOODS

### Notice WANTED — Ceiling fans, old oil lamps, telephones, flat irons, metal figures, iron banks, bells, wash bowls and pitchers, iron kettles, clocks, tea kettles, tobacco cutters, wood stoves, corn shellers, coffee mills, etc., etc. Poe Floral. Phone MA 9-1711, Eastland. tf

### WANTED — Ceiling fans, old oil lamps, telephones, flat irons, metal figures, iron banks, bells, wash bowls and pitchers, iron kettles, clocks, tea kettles, tobacco cutters, wood stoves, corn shellers, coffee mills, etc., etc. Poe Floral. Phone MA 9-1711, Eastland. tf

### WANTED — Ceiling fans, old oil lamps, telephones, flat irons, metal figures, iron banks, bells, wash bowls and pitchers, iron kettles, clocks, tea kettles, tobacco cutters, wood stoves, corn shellers, coffee mills, etc., etc. Poe Floral. Phone MA 9-1711, Eastland. tf

### WANTED — Ceiling fans, old oil lamps, telephones, flat irons, metal figures, iron banks, bells, wash bowls and pitchers, iron kettles, clocks, tea kettles, tobacco cutters, wood stoves, corn shellers, coffee mills, etc., etc. Poe Floral. Phone MA 9-1711, Eastland. tf

### WANTED — Ceiling fans, old oil lamps, telephones, flat irons, metal figures, iron banks, bells, wash bowls and pitchers, iron kettles, clocks, tea kettles, tobacco cutters, wood stoves, corn shellers, coffee mills, etc., etc. Poe Floral. Phone MA 9-1711, Eastland. tf

### WANTED — Ceiling fans, old oil lamps, telephones, flat irons, metal figures, iron banks, bells, wash bowls and pitchers, iron kettles, clocks, tea kettles, tobacco cutters, wood stoves, corn shellers, coffee mills, etc., etc. Poe Floral. Phone MA 9-1711, Eastland. tf

### WANTED — Ceiling fans, old oil lamps, telephones, flat irons, metal figures, iron banks, bells, wash bowls and pitchers, iron kettles, clocks, tea kettles, tobacco cutters, wood stoves, corn shellers, coffee mills, etc., etc. Poe Floral. Phone MA 9-1711, Eastland. tf

### WANTED — Ceiling fans, old oil lamps, telephones, flat irons, metal figures, iron banks, bells, wash bowls and pitchers, iron kettles, clocks, tea kettles, tobacco cutters, wood stoves, corn shellers, coffee mills, etc., etc. Poe Floral. Phone MA 9-1711, Eastland. tf

### WANTED — Ceiling fans, old oil lamps, telephones, flat irons, metal figures, iron banks, bells, wash bowls and pitchers, iron kettles, clocks, tea kettles, tobacco cutters, wood stoves, corn shellers, coffee mills, etc., etc. Poe Floral. Phone MA 9-1711, Eastland. tf

### WANTED — Ceiling fans, old oil lamps, telephones, flat irons, metal figures, iron banks, bells, wash bowls and pitchers, iron kettles, clocks, tea kettles, tobacco cutters, wood stoves, corn shellers, coffee mills, etc., etc. Poe Floral. Phone MA 9-1711, Eastland. tf

### WANTED — Ceiling fans, old oil lamps, telephones, flat irons, metal figures, iron banks, bells, wash bowls and pitchers, iron kettles, clocks, tea kettles, tobacco cutters, wood stoves, corn shellers, coffee mills, etc., etc. Poe Floral. Phone MA 9-1711, Eastland. tf

### WANTED — Ceiling fans, old oil lamps, telephones, flat irons, metal figures, iron banks, bells, wash bowls and pitchers, iron kettles, clocks, tea kettles, tobacco cutters, wood stoves, corn shellers, coffee mills, etc., etc. Poe Floral. Phone MA 9-1711, Eastland. tf

### WANTED — Ceiling fans, old oil lamps, telephones, flat irons, metal figures, iron banks, bells, wash bowls and pitchers, iron kettles, clocks, tea kettles, tobacco cutters, wood stoves, corn shellers, coffee mills, etc., etc. Poe Floral. Phone MA 9-1711, Eastland. tf

### WANTED — Ceiling fans, old oil lamps, telephones, flat irons, metal figures, iron banks, bells, wash bowls and pitchers, iron kettles, clocks, tea kettles, tobacco cutters, wood stoves, corn shellers, coffee mills, etc., etc. Poe Floral. Phone MA 9-1711, Eastland. tf

### WANTED — Ceiling fans, old oil lamps, telephones, flat irons, metal figures, iron banks, bells, wash bowls and pitchers, iron kettles, clocks, tea kettles, tobacco cutters, wood stoves, corn shellers, coffee mills, etc., etc. Poe Floral. Phone MA 9-1711, Eastland. tf

### WANTED — Ceiling fans, old oil lamps, telephones, flat irons, metal figures, iron banks, bells, wash bowls and pitchers, iron kettles, clocks, tea kettles, tobacco cutters, wood stoves, corn shellers, coffee mills, etc., etc. Poe Floral. Phone MA 9-1711, Eastland. tf

### WANTED — Ceiling fans, old oil lamps, telephones, flat irons, metal figures, iron banks, bells, wash bowls and pitchers, iron kettles, clocks, tea kettles, tobacco cutters, wood stoves, corn shellers, coffee mills, etc., etc. Poe Floral. Phone MA 9-1711, Eastland. tf

### WANTED — Ceiling fans, old oil lamps, telephones, flat irons, metal figures, iron banks, bells, wash bowls and pitchers, iron kettles, clocks, tea kettles, tobacco cutters, wood stoves, corn shellers, coffee mills, etc., etc. Poe Floral. Phone MA 9-1711, Eastland. tf

### WANTED — Ceiling fans, old oil lamps, telephones, flat irons, metal figures, iron banks, bells, wash bowls and pitchers, iron kettles, clocks, tea kettles, tobacco cutters, wood stoves, corn shellers, coffee mills, etc., etc. Poe Floral. Phone MA 9-1711, Eastland. tf

### WANTED — Ceiling fans, old oil lamps, telephones, flat irons, metal figures, iron banks, bells, wash bowls and pitchers, iron kettles, clocks, tea kettles, tobacco cutters, wood stoves, corn shellers, coffee mills, etc., etc. Poe Floral. Phone MA 9-1711, Eastland. tf

### WANTED — Ceiling fans, old oil lamps, telephones, flat irons, metal figures, iron banks, bells, wash bowls and pitchers, iron kettles, clocks, tea kettles, tobacco cutters, wood stoves, corn shellers, coffee mills, etc., etc. Poe Floral. Phone MA 9-1711, Eastland. tf

### WANTED — Ceiling fans, old oil lamps, telephones, flat irons, metal figures, iron banks, bells, wash bowls and pitchers, iron kettles, clocks, tea kettles, tobacco cutters, wood stoves, corn shellers, coffee mills, etc., etc. Poe Floral. Phone MA 9-1711, Eastland. tf

### WANTED — Ceiling fans, old oil lamps, telephones, flat irons, metal figures, iron banks, bells, wash bowls and pitchers, iron kettles, clocks, tea kettles, tobacco cutters, wood stoves, corn shellers, coffee mills, etc., etc. Poe Floral. Phone MA 9-1711, Eastland. tf

### DON'T JUST SIT, Learn to Knit: 3 knitting classes beginning October 1. Morning, afternoon and evening classes will continue for six weeks with a charge of \$10. For reservations call Mrs. Dave Downing, 549 Pine or Phone MI 7-3598. 9

### HELP WANTED — Lady to live in home and care for elderly couple. Salary and room and board. Contact MI 7-1364. tf

### FEMALE HELP WANTED AVON CALLING: A lady to become an Avon representative in Olden. Christmas selling starts in September. Write Avon Manager, P. O. Box 2264, Abilene, Texas or phone OR 2-6250. 9

### For Rent FOR RENT: 2 and 3 bedroom cottages with living room, kitchen and bath. \$30 per month and up. Inquire on premises. Park Cottages. tf

### FOR RENT: Two bedroom unfurnished apartment. Call MI 7-3149. tf

### FOR RENT — Apartments, refurnished, neat, bills paid, 309 Elm. 8

### FOR SALE: House, 6 rooms and bath, 431 Walnut. Priced to sell. Call James Townzen, MI 7-1939. 16

### FOR SALE — 1958 Chevy with winch, 5th Wheel and Rolling Tail Board, 1959 Chev. Rig Up Bed, 21 Tulsa Winch, Gin Poles. Both look and run real good. L185 with Winch, Gin Poles, and Rig Up Bed. Johnston Truck, Cross Plains. 13

### FOR SALE: Multiplying onion sets. 515 North Marston. Joe Roper. 8

### FOR SALE — Property at 518 Alice Street. Two houses, one furnished. MI 7-1091. Bob Johnson. 8

### FOR SALE — 5 hand push lawn mowers. Call at Housing Authority from 8 a. m. till 5 p. m. 8

### FOR SALE: 1953 Chevrolet. \$175. MI 7-1169. 10

### FOR SALE — Console type Esey electric chord organ with bench. MI 7-1169. 10

### FOR SALE — Insulated hunting boots, \$14.95; Insulated underwear, \$7.95 up; 30-30 shells, \$2.95 box; 30-06 shells, \$3.95; Hooded sweatshirts and all types gear, guns and ammo. Get ready now. We trade guns. Bruce Pipkin Sport Center, Eastland. tf

### FOR SALE — 200 kid goats and 265 nannies, age 2-3-4 and 5. Kids sheared 2 1/2 lbs. John Reck, Mingus, Texas. 12

### FOR SALE — Gas cook stove, \$25. Sink cabinet, \$5.00. Phone MI 7-3612. tf

### FOR SALE — Newly decorated stucco house, 4 rooms, bath, attached garage. Real bargain. Phone after 5 p. m. MI 7-1495. tf

### FOR SALE Refrigerators Used — All Makes — All Sizes Best buys in town Also Freezers, Washers, Dryers RANGER FROZEN FOODS

### Notice WANTED — Ceiling fans, old oil lamps, telephones, flat irons, metal figures, iron banks, bells, wash bowls and pitchers, iron kettles, clocks, tea kettles, tobacco cutters, wood stoves, corn shellers, coffee mills, etc., etc. Poe Floral. Phone MA 9-1711, Eastland. tf

### WANTED — Ceiling fans, old oil lamps, telephones, flat irons, metal figures, iron banks, bells, wash bowls and pitchers, iron kettles, clocks, tea kettles, tobacco cutters, wood stoves, corn shellers, coffee mills, etc., etc. Poe Floral. Phone MA 9-1711, Eastland. tf

### WANTED — Ceiling fans, old oil lamps, telephones, flat irons, metal figures, iron banks, bells, wash bowls and pitchers, iron kettles, clocks, tea kettles, tobacco cutters, wood stoves, corn shellers, coffee mills, etc., etc. Poe Floral. Phone MA 9-1711, Eastland. tf

### WANTED — Ceiling fans, old oil lamps, telephones, flat irons, metal figures, iron banks, bells, wash bowls and pitchers, iron kettles, clocks, tea kettles, tobacco cutters, wood stoves, corn shellers, coffee mills, etc., etc. Poe Floral. Phone MA 9-1711, Eastland. tf

### WANTED — Ceiling fans, old oil lamps, telephones, flat irons, metal figures, iron banks, bells, wash bowls and pitchers, iron kettles, clocks, tea kettles, tobacco cutters, wood stoves, corn shellers, coffee mills, etc., etc. Poe Floral. Phone MA 9-1711, Eastland. tf

### WANTED — Ceiling fans, old oil lamps, telephones, flat irons, metal figures, iron banks, bells, wash bowls and pitchers, iron kettles, clocks, tea kettles, tobacco cutters, wood stoves, corn shellers, coffee mills, etc., etc. Poe Floral. Phone MA 9-1711, Eastland. tf

### WANTED — Ceiling fans, old oil lamps, telephones, flat irons, metal figures, iron banks, bells, wash bowls and pitchers, iron kettles, clocks, tea kettles, tobacco cutters, wood stoves, corn shellers, coffee mills, etc., etc. Poe Floral. Phone MA 9-1711, Eastland. tf

### WANTED — Ceiling fans, old oil lamps, telephones, flat irons, metal figures, iron banks, bells, wash bowls and pitchers, iron kettles, clocks, tea kettles, tobacco cutters, wood stoves, corn shellers, coffee mills, etc., etc. Poe Floral. Phone MA 9-1711, Eastland. tf

### WANTED — Ceiling fans, old oil lamps, telephones, flat irons, metal figures, iron banks, bells, wash bowls and pitchers, iron kettles, clocks, tea kettles, tobacco cutters, wood stoves, corn shellers, coffee mills, etc., etc. Poe Floral. Phone MA 9-1711, Eastland. tf

### WANTED — Ceiling fans, old oil lamps, telephones, flat irons, metal figures, iron banks, bells, wash bowls and pitchers, iron kettles, clocks, tea kettles, tobacco cutters, wood stoves, corn shellers, coffee mills, etc., etc. Poe Floral. Phone MA 9-1711, Eastland. tf

### WANTED — Ceiling fans, old oil lamps, telephones, flat irons, metal figures, iron banks, bells, wash bowls and pitchers, iron kettles, clocks, tea kettles, tobacco cutters, wood stoves, corn shellers, coffee mills, etc., etc. Poe Floral. Phone MA 9-1711, Eastland. tf

### WANTED — Ceiling fans, old oil lamps, telephones, flat irons, metal figures, iron banks, bells, wash bowls and pitchers, iron kettles, clocks, tea kettles, tobacco cutters, wood stoves, corn shellers, coffee mills, etc., etc. Poe Floral. Phone MA 9-1711, Eastland. tf

### WANTED — Ceiling fans, old oil lamps, telephones, flat irons, metal figures, iron banks, bells, wash bowls and pitchers, iron kettles, clocks, tea kettles, tobacco cutters, wood stoves, corn shellers, coffee mills, etc., etc. Poe Floral. Phone MA 9-1711, Eastland. tf

### WANTED — Ceiling fans, old oil lamps, telephones, flat irons, metal figures, iron banks, bells, wash bowls and pitchers, iron kettles, clocks, tea kettles, tobacco cutters, wood stoves, corn shellers, coffee mills, etc., etc. Poe Floral. Phone MA 9-1711, Eastland. tf

### WANTED — Ceiling fans, old oil lamps, telephones, flat irons, metal figures, iron banks, bells, wash bowls and pitchers, iron kettles, clocks, tea kettles, tobacco cutters, wood stoves, corn shellers, coffee mills, etc., etc. Poe Floral. Phone MA 9-1711, Eastland. tf

### WANTED — Ceiling fans, old oil lamps, telephones, flat irons, metal figures, iron banks, bells, wash bowls and pitchers, iron kettles, clocks, tea kettles, tobacco cutters, wood stoves, corn shellers, coffee mills, etc., etc. Poe Floral. Phone MA 9-1711, Eastland. tf

### WANTED — Ceiling fans, old oil lamps, telephones, flat irons, metal figures, iron banks, bells, wash bowls and pitchers, iron kettles, clocks, tea kettles, tobacco cutters, wood stoves, corn shellers, coffee mills, etc., etc. Poe Floral. Phone MA 9-1711, Eastland. tf

### WANTED — Ceiling fans, old oil lamps, telephones, flat irons, metal figures, iron banks, bells, wash bowls and pitchers, iron kettles, clocks, tea kettles, tobacco cutters, wood stoves, corn shellers, coffee mills, etc., etc. Poe Floral. Phone MA 9-1711, Eastland. tf

### WANTED — Ceiling fans, old oil lamps, telephones, flat irons, metal figures, iron banks, bells, wash bowls and pitchers, iron kettles, clocks, tea kettles, tobacco cutters, wood stoves, corn shellers, coffee mills, etc., etc. Poe Floral. Phone MA 9-1711, Eastland. tf

### WANTED — Ceiling fans, old oil lamps, telephones, flat irons, metal figures, iron banks, bells, wash bowls and pitchers, iron kettles, clocks, tea kettles, tobacco cutters, wood stoves, corn shellers, coffee mills, etc., etc. Poe Floral. Phone MA 9-1711, Eastland. tf

### WANTED — Ceiling fans, old oil lamps, telephones, flat irons, metal figures, iron banks, bells, wash bowls and pitchers, iron kettles, clocks, tea kettles, tobacco cutters, wood stoves, corn shellers, coffee mills, etc., etc. Poe Floral. Phone MA 9-1711, Eastland. tf

### WANTED — Ceiling fans, old oil lamps, telephones, flat irons, metal figures, iron banks, bells, wash bowls and pitchers, iron kettles, clocks, tea kettles, tobacco cutters, wood stoves, corn shellers, coffee mills, etc., etc. Poe Floral. Phone MA 9-1711, Eastland. tf

### WANTED — Ceiling fans, old oil lamps, telephones, flat irons, metal figures, iron banks, bells, wash bowls and pitchers, iron kettles, clocks, tea kettles, tobacco cutters, wood stoves, corn shellers, coffee mills, etc., etc. Poe Floral. Phone MA 9-1711, Eastland. tf

### WANTED — Ceiling fans, old oil lamps, telephones, flat irons, metal figures, iron banks, bells, wash bowls and pitchers, iron kettles, clocks, tea kettles, tobacco cutters, wood stoves, corn shellers, coffee mills, etc., etc. Poe Floral. Phone MA 9-1711, Eastland. tf

### WANTED — Ceiling fans, old oil lamps, telephones, flat irons, metal figures, iron banks, bells, wash bowls and pitchers, iron kettles, clocks, tea kettles, tobacco cutters, wood stoves, corn shellers, coffee mills, etc., etc. Poe Floral. Phone MA 9-1711, Eastland. tf

### WANTED — Ceiling fans, old oil lamps, telephones, flat irons, metal figures, iron banks, bells, wash bowls and pitchers, iron kettles, clocks, tea kettles, tobacco cutters, wood stoves, corn shellers, coffee mills, etc., etc. Poe Floral. Phone MA 9-1711, Eastland. tf

### WANTED — Ceiling fans, old oil lamps, telephones, flat irons, metal figures, iron banks, bells, wash bowls and pitchers, iron kettles, clocks, tea kettles, tobacco cutters, wood stoves, corn shellers, coffee mills, etc., etc. Poe Floral. Phone MA 9-1711, Eastland. tf

## CRIME MARCHES ON

Crime — every kind of crime, from muggings to purse snatching to bank robbery to juvenile delinquencies to murder — constantly feeds the headlines and the news reports. It vies for space and attention with the other great problems that bedevil the world we live in, all the way from wars to what to do about the tax problem. But few of us are prepared to answer the specific questions: Is crime really seriously on the increase, or is it simply being more effectively dramatized and noticed? What kind of crime is most prevalent? Who and what are responsible? What, in the view of experts, should be done to expose and control it?

U. S. News & World Report recently devoted a lengthy feature article to matters such as these, and presented findings and possible solutions. It is a sad and ominous account. For, as the magazine puts it, "By every measure, America is on the brink of a major crisis in crime. Rise in crime far outstrips population increase. It shows across the board — in crimes against property and in vicious assaults on persons." And it is a truly national problem, in which the smaller communities and the great cities share. Actually, crime is rising faster (comparing 1962 with 1961) in towns of 25,000

more than in cities of over a million, where the rise is an even 6 per cent. Biggest increase — 10.9 per cent — is in the 500,000 to one million population centers. Name any crime, as U. S. News makes it clear, and you'll find it prevalent. City streets are unsafe to walk on in city after city; armed robbery becomes a comparative commonplace; the upturn in bank robberies is "sensational"; and "The rise in crime by youths spreads across the whole range of criminal offenses."

What underlies this grave situation, and what needs to be done? U. S. News reporters sought answers from the FBI and from police officials here and abroad and found general agreement on four points. In summary, they amount to this:

1. As more and more people, mostly strangers to each other, crowd into the cities each individual must be held more strictly accountable for his conduct.
2. The public at large must take more interest in and give more support to law enforcement, and to the punishment of criminals.
3. Juveniles guilty of serious crimes must pay a full penalty. They must not be treated as errand children.
4. The courts must show more interest in protecting the law abiding population from the criminal element, rather than in zealously guarding the

## PAINT SALE

One coat LATEX paint Reg. \$4.59 value

Now \$3.69

## HOUSE of COLOR

Jack Williams Ranger Hwy. 80 E.

FOR RENT: 2 and 3 bedroom cottages with living room, kitchen and bath. \$30 per month and up. Inquire on premises. Park Cottages. tf

FOR RENT: Two bedroom unfurnished apartment. Call MI 7-3149. tf

FOR RENT — Apartments, refurnished, neat, bills paid, 309 Elm. 8

FOR SALE: House, 6 rooms and bath, 431 Walnut. Priced to sell. Call James Townzen, MI 7-1939. 16

FOR SALE — 1958 Chevy with winch, 5th Wheel and Rolling Tail Board, 1959 Chev. Rig Up Bed, 21 Tulsa Winch, Gin Poles. Both look and run real good. L185 with Winch, Gin Poles, and Rig Up Bed. Johnston Truck, Cross Plains. 13

FOR SALE: Multiplying onion sets. 515 North Marston. Joe Roper. 8

FOR SALE — Property at 518 Alice Street. Two houses, one furnished. MI 7-1091. Bob Johnson. 8

FOR SALE — 5 hand push lawn mowers. Call at Housing Authority from 8 a. m. till 5 p. m. 8

FOR SALE: 1953 Chevrolet. \$175. MI 7-1169. 10

FOR SALE — Console type Esey electric chord organ with bench. MI 7-1169. 10

FOR SALE — Insulated hunting boots, \$14.95; Insulated underwear, \$7.95 up; 30-30 shells, \$2.95 box; 30-06 shells, \$3.95; Hooded sweatshirts and all types gear, guns and ammo. Get ready now. We trade guns. Bruce Pipkin Sport Center, Eastland. tf

FOR SALE — 200 kid goats and 265 nannies, age 2-3-4 and 5. Kids sheared 2 1/2 lbs. John Reck, Mingus, Texas. 12

FOR SALE — Gas cook stove, \$25. Sink cabinet, \$5.00. Phone MI 7-3612. tf

FOR SALE — Newly decorated stucco house, 4 rooms, bath, attached garage. Real bargain. Phone after 5 p. m. MI 7-1495. tf

FOR SALE Refrigerators Used — All Makes — All Sizes Best buys in town Also Freezers, Washers, Dryers RANGER FROZEN FOODS

Notice WANTED — Ceiling fans, old oil lamps, telephones, flat irons, metal figures, iron banks, bells, wash bowls and pitchers, iron kettles, clocks, tea kettles, tobacco cutters, wood stoves, corn shellers, coffee mills, etc., etc. Poe Floral. Phone MA 9-1711, Eastland. tf

WANTED — Ceiling fans, old oil lamps, telephones, flat irons, metal figures, iron banks, bells, wash bowls and pitchers, iron kettles, clocks, tea kettles, tobacco cutters, wood stoves, corn shellers, coffee mills, etc., etc. Poe Floral. Phone MA 9-1711, Eastland. tf

WANTED — Ceiling fans, old oil lamps, telephones, flat irons, metal figures, iron banks, bells, wash bowls and pitchers, iron kettles, clocks, tea kettles, tobacco cutters, wood stoves, corn shellers, coffee mills, etc., etc. Poe Floral. Phone MA 9-1711, Eastland. tf

WANTED — Ceiling fans, old oil lamps, telephones, flat irons, metal figures, iron banks, bells, wash bowls and pitchers, iron kettles, clocks, tea kettles, tobacco cutters, wood stoves, corn shellers, coffee mills, etc., etc. Poe Floral. Phone MA 9-1711, Eastland. tf

WANTED —







## Around The Campus

The introduction of the Ranger Junior College Band continues with the presentation of the clarinet section.

The freshmen of the clarinet section, like those of the trumpet section, have a predominant eye color, hazel. Even though the eye color may be the same, they have a distinct difference, that of height. Between the shortest at five feet one inch and the tallest at six feet one inch is a tall twelve inches.

Towering above the freshmen clarinetists at six feet one inch is Jim Henderson of Del Rio High, Del Rio, whose major is engineering.

A close second at six feet is Howard Starling of Smiley High, Houston, who plans to become a music teacher.

Next in height at five feet ten is Jerry Flories of Brewer High, Fort Worth, whose planned profession is pharmacy.

Grouped around the five-foot-seven level are Lavern Hensley of Eastland High, Eastland, who plans to become a foreign language interpreter, Barry Martin of Smiley High, Houston, who plans to become either a band director or an engineer; and Kay Smith of San Saba High, San Saba, who plans to major in the field of business.

The shortest of the freshman clarinetists at five feet one inch is Elizabeth Myers of Tolson-Midway High, Corpus Christi, who plans to be a secretary.

The mellow-toned, veteran clarinetists include Kenneth Burchfield, Ronnie Smith, and James Loven of Fort Worth; Johnny Creager of Breckenridge; and T. C. Collier of

Mansfield and Ginger Gooden of Colorado City, sophomore transfers from T.C.U. and Howard County Junior College respectively. Burchfield is an education major; Smith, Creager, and Loven, music majors; and Collier and Miss Gooden, Business majors.

The Ranger College 65 piece band, under the direction of Roger C. Martin, will be the guest of the Texas State Fair on October 6. They will present a concert on the outdoor Mobil stage on the grounds at 3 p. m. and will participate in the Fair parade at 6:15, which will also be held on the fair grounds.

The band will be on a return trip from Wharton where they will go when the football team of RJC will meet Wharton Junior College in a conference game on October 5. At the conclusion of the game, the band will spend the night.

The band and the team will travel by chartered buses bearing distinct "RANGER COLLEGE" markings on each side.

Martin said the band is set for a busy season. Their first appearance of the year was at the Fourth Annual Peanut Bowl game in Eastland.

## Chevrolet's Chevelle Malibu SS Coupe



Newest member of the growing Chevrolet fine car family is the Chevelle. Although 16 inches shorter and 2.4 inches narrower than comparable Chevrolet models, the Chevelle offers virtually all the interior roominess and smooth

include: Hank Sims, Eastland, Vice President, and directors B. B. Freeman, Route 1, Ranger, W. V. Fenter, Rising Star, Joe Philpott, Cisco, and C. T. Barton, Pioneer.

Pecan growers from adjoining counties are also invited to participate on the tour, McKinnis said.

A small blower-mist type sprayer will be demonstrated at the F. O. Hilburn orchard during the morning part of the pecan tour. Mr. Hilburn's orchard is the second stop on the tour.

This sprayer is being brought from the manufacturing plant in Jackson, Mississippi, just for this demonstration upon invitation. A tractor-implementation house in Eastland is cooperating with us on this demonstration.

## ANNUAL FALL PECAN TOUR IS PLANNED FOR THIS WEEK

The annual fall tour of the Eastland County Pecan Growers Association will be held Friday, Sept. 27, according to C. E. Smith, Rising Star, president of the group. Five orchards will be inspected during the day, according to Ben McKinnis, Eastland, secretary.

Leaving the Spot Cafe in Cisco, at 9:15 o'clock on the above date, the group will visit the Earl Walker, the F. O. Hilburn, and the W. D. and J. C. Thurman orchards before noon. After lunch and a business meeting at the Victor Hotel in Cisco, the group will

visit the H. W. Cole and the Dale Carille orchards in the afternoon.

A large crowd from several counties is expected to attend the annual affair, it was said. The tour is one of the activities sponsored by the Pecan Growers Association. Others include the annual county pecan show, the mid-winter meeting, and the spring field day.

Other officials of the group

## READ THE CLASSIFIEDS



Which Twin Is Enjoying The Game More on an ATHLETIC BOOSTER CLUB PILLOW? Rent One at Every Home Game — Only 15c

## Read The Classifieds

### FALL LEAGUES ORGANIZING FREE GAMES TO NEW LEAGUE BOWLERS

(If you have never bowled in a league & sign up for a fall league, fill out this coupon and bring to the Fiesta Bowl for FREE GAMES).

NAME \_\_\_\_\_  
ADDRESS \_\_\_\_\_ TEL. NO. \_\_\_\_\_  
NOTICE: Very Special Prices for Parties!



Enjoy-

OUR TOP QUALITY CHAR-GRILLED STEAKS

Plan a Party For Your Family or Friends

Birthdays, Anniversaries, Special Occasions

You will be delighted with our Stereophonic background music and our candlelit

**Black Cat STEAK ROOM**

Victor Hotel Coffee Shop Cisco, Texas (Evenings Except Sunday)

Reservations If You Wish Call HI 2-1555

**DIXIE Drive-In** EASTLAND RANGER HIGHWAY

Box Office Opens 7:45 — Show Starts 8:15

Box Office Closes 9:30

Adm. 60c (children under 12 Free) — Each Wed. - Thurs. Bargain Nights 25c

THE EASTLAND TELEGRAM WEDNESDAY - THURSDAY - SEPTEMBER 25 - 26 SUSAN HAYWARD — JEFF CHANDLER "THUNDER IN THE SUN" IN COLOR

FRIDAY - SATURDAY — SEPTEMBER 27 - 28 ROCK HUDSON "A GATHERING OF EAGLES" IN COLOR

**RANGER DRIVE-IN** HIGHWAY 80 EAST ON RANGER HILL ADULTS 50c KIDDIES UNDER 11 FREE

— NOTICE —

For the benefit of those who want to retire early or must study, we now open our box office at 6:45 and the picture starts at 7:00.

THURSDAY — FRIDAY — SATURDAY SEPTEMBER 26 - 27 - 28

Please do not reveal the middle of this picture!



What does he do? What kind of monster? **JERRY LEWIS** as **THE NUTTY PROFESSOR** (A Jerry Lewis Production)

STELLA STEVENS, DEL MOORE, KATHLEEN FREEMAN **ISLAND OF LOVE** (A Paramount Release)

SUNDAY — MONDAY — TUESDAY SEPTEMBER 29 - 30 — OCTOBER 1



"ISLAND OF LOVE" ... AND LAUGHS AND LAUGHS!

ROBERT PRESTON TONY RANDALL **ISLAND OF LOVE**

GEORGIA MOLL WALTER MATTHAU BETTY BRUCE **MAURICE CHEVALIER** (A Metro-Goldwyn-Mayer Picture)

## Read The Classifieds

**MAJESTIC**

NOW THRU SATURDAY

Open Thurs. - Fri. 5:30 2 Shows Only — 6:15 - 9:00

Open Sat. 12:45 Shows 1:00-3:40 6:25-9:10

Audience Designation: Adult. No Student Nor Child Tickets Sold



A story of passion, bloodshed, desire and death, everything, in fact, that makes life worth living

THE RICH COMPANY... EDWARD L. ALPERSON

**THE SHIRLEY ARMON MacLAIN** All Seats 75c

**IRMA LE DOUCE** "TECHNICOLOR" PANAVISION

MIDNIGHT SHOW

SATURDAY

Box Office Open 11:45 Show at 12:00

All Seats 75c

**PAUL NEWMAN** **JOANNE WOODWARD**

From any angle it's love...

**A NEW KIND OF LOVE**

THELMA RITTER / EVA GABOR **MAURICE CHEVALIER**

ALSO SUNDAY - MONDAY - TUESDAY

# GREATEST GIFT SHOW OF THE YEAR!

FEATURING

## 8 GREAT GIFT BOOKS IN ONE!

## NEW GOLD BOND GIFT BOOK!

PLUS EXCLUSIVE

## GOLD BOND WORLD IMPORT GIFT BOOK

(on display at our store)

Excitingly different, your new Gold Bond Gift Book opens to the greatest gift show of the year. Choose your gift from 8 Great Gift Books in One. You'll find a whole world of the greatest gift values for Home, Family, Kitchen, Vacation, Hobbies, Toys, Hostess, World Imports... all yours FREE for Gold Bond Stamps.

HEY KIDS! HAVE FUN! WIN PRIZES! Enter **GOLD BOND** Nursery Rhyme **COLORING CONTEST!** Easiest contest ever... Nothing to Buy! See other ad in this paper for details.

Get your **FREE COPY** today at

# SAFEWAY



## Desdemona News

This community was saddened early Saturday upon receiving word that Ronald Clark, youngest son of Jessie Clark of Electra, had been killed in a car wreck near Nacona. Funeral services were held Monday at Electra. Ronald is the grandson of Mr. and Mrs. L. E. Clark of Desdemona.

H. L. Gantz of Dallas, field editor of the Farm and Ranch magazine, was here Wednesday visiting with his sister, Mrs. Pinky Eaton.

B. V. Martin spent several days recently in the hospital at Gorman.

Mr. and Mrs. Sam Burney of Hico spent Monday last week with Mrs. Ethel Keith. They are schoolmates.

Mrs. Ethel Riggs returned to her home here Friday from an extended visit in Oklahoma with relatives.

Mr. and Mrs. John Arnold returned home Saturday following a weeks fishing trip near Junction. They reported a wonderful time and lots of fish.

Mr. and Mrs. Bill Maupin of Denton spent the weekend here with their parents, Mr. and Mrs. John Allen and Joe.

The Robert Brown family of Gainsville spent the past weekend here with his parents, Mr. and Mrs. Anse Brown.

Mr. and Mrs. Charles Nicks, Diane and Cindy visited here Sunday with her parents, Mr. and Mrs. J. D. McMasters.

Mr. and Mrs. H. T. Lane spent last week in Big Spring and Andrews visiting with relatives.

Mr. and Mrs. Raymond Sparkman of Freer, Mr. and Mrs. Jesse Sparkman, Mr. and Mrs. Joe Murrell and Mr. and Mrs. Elmer Hughes spent Sunday in Weatherford visit Edwards House.

Mrs. Myrtle Collins of Comanche is here visiting with her brother, Mr. and Mrs. Hugh Abel.

## SOCIETY CALENDAR

**September 26**  
The Ranger Branch of the American Association of University Women will open the year with a covered dish dinner at p. m. Thursday, September 2, in the home of Mrs. E. H. Lobo. Co-Hostess is Mrs. D. L. Penny. Mrs. L. and Mrs. J. D. McMasters.

**September 28**  
The reassembly meeting for the 1920 Club will be a luncheon held in Fort Worth, September 28. Further details and information will be published at a later date.

**SEPTEMBER 23**  
Zi Zeta Nu Chapter of Beta Sigma Phi which was to have met September 16 in the home of Mrs. Howard Oliver will meet Monday, September 23. The ritual of exemplar degree will be given to two new members, Mrs. Jack Rawls and Mrs. David Allsup.

**September 28**  
Reassembly meeting for the 1920 Club will be a luncheon at Neiman-Marcus in Fort Worth on September 28. Members are asked to phone

Hagaman will speak on "Woman Looks at Texas Laws and Texas Legislation". All members are urged to attend.

**September 23**  
Zi Zeta Nu Chapter of Beta Sigma Phi which was to have met September 16 in the home of Mrs. Howard Oliver will meet Monday, September 23. The ritual of exemplar degree will be given to two new members, Mrs. Jack Rawls and Mrs. David Allsup.

**September 28**  
Reassembly meeting for the 1920 Club will be a luncheon at Neiman-Marcus in Fort Worth on September 28. Members are asked to phone

reservations and names to Mrs. J. B. Craig by September 23.

**Saturday, Oct. 5**  
1947 Club will meet October 5 at Lone Cedar Country Club for its opening luncheon. Reservations must be called in by Tuesday, Oct. 1 to Mrs. James Townzen, president.

ing junior college.  
Jasso, 6' 3", is a freshman from Roy Miller High School of Corpus Christi. Besides playing football there, he was a member of the concert and marching bands. An education major, he plans to be a teacher.

Tice, a six-footer weighing 215 pounds, is from Dundee and graduated from Holliday High School. He has no positive plans for his work after graduating from junior college.

Two of the guards on the 1963 team are George Geldard and Mike Clark. Geldard, a Hermit High School graduate, is a freshman majoring in pre-med work. He plans to attend Lamar Tech in Beaumont after he finishes J.C. and then later enter medical school in Galveston.

Clark, a Polytechnical High School product from Fort Worth, is a sophomore physical education major. He wants to be a coach after finishing college.

## Meet The Rangers

Among the 1963 Rangers are three six-foot tackles: Wayne Thrasher, Arnold Jasso, and Leon Tice.

Thrasher, a 225-pound sophomore, is a returning letterman. This 6' 1 1/2" tackle is from Hawkins. He also plans to play basketball and enter track. He is majoring in business administration, but has no definite plans after finishing junior college.

## PENNEY'S

ALWAYS FIRST QUALITY

### BIRTHDAY BUYS



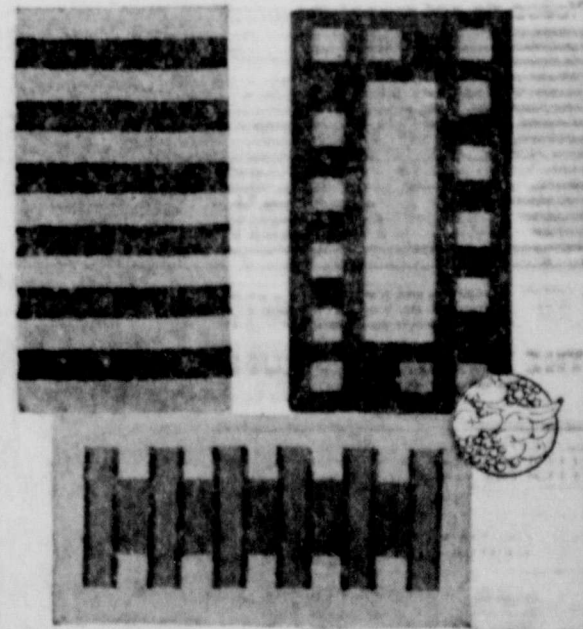
**3 days only!**  
**Big Mac**  
**Shirts 'n**  
**Pants**  
**Reduced!**

REG. 3.98 REG. 3.49  
PANTS NOW SHIRTS NOW  
**3<sup>33</sup> 2<sup>81</sup>**

SAVE 1.33 ON EVERY SET!  
All Combed Cotton Twill Pants... are rugged 2 ply construction for extra strength with heavy boatstail drill pockets and sturdy brass zipper. The 2 front 12" pockets are stitched, turned and stitched again for maximum strength and bar-tacked at all points of strain.

8.2 Combed Cotton Twill Shirts... are long tailed for tuck in comfort with two button through flap pockets and extra convenience of pencil slot in pocket.

REG. 2.98 REG. 2.49  
PANTS NOW SHIRTS NOW  
**2<sup>66</sup> 2<sup>15</sup>**



BOSSA NOVA AREA RUGS  
NEWEST, LIVELIEST ACCENTS!

dramatic combinations of blues, greens, browns, oranges **\$7.00** Only 3' x 5'

Hurry... they'll dance off our floors! The styling is exciting... colors are dramatic... the quality is fabulous... the price incredible! Colors individually inlaid! Deep viscose rayon pile. Skid resist back.



BIG CHOICE OF FINEST CUTS! SAVE ON YOUR FAMILY'S FAVORITES!

# MEAT SALE



Choice Heavy Beef!  
**Round Steak 79¢**  
Full Cut, U. S. D. A. Choice Grade Heavy Beef, Naturally Aged. Serve Round Steak Smothered in Onions and Gravy tonight.

**Pork Roast 29¢**  
Fresh Picnic Cut, Tender and flavorful, economical too.

**Sausage 3 \$1.00**  
Wingate Pure Pork, Regular or Hot, 1 Lb. Roll 35¢ or... 1 Lb. Roll

**Pork Spareribs 39¢**  
Pork Ribs loaded with meat, 3 to 5 Lb. Average.

**Skinless Franks 49¢**  
Safeway All Meat Franks, Perfect eating guaranteed.

**Beef Brisket 33¢**  
U. S. D. A. Choice Grade Heavy Beef.

**Lunch Meats 89¢**  
3 Cans  
\* Pickle, Pimento  
\* Spiced Luncheon  
\* Jumbo Bologna

**Canned Ham \$1.99**  
3 Cans  
Armour's Star, Boneless, No Waste.

**Profile Bread 25¢**  
Perfect for toast or sandwiches, 1 Lb. Loaf

**Soda Crackers 19¢**  
Melrose, Stay crisp to the last cracker, 1 Lb. Box

**Chicken of Sea Tuna 44¢**  
Chunk Light Meat, Family Size, 8 1/2 Oz. Can

**Admiration Coffee 65¢**  
Regular or Dip Grind, 1 Lb. Delicious brewed coffee, Can

**Puffin Biscuits 29¢**  
Sweet milk or Buttermilk or Buttermilk, 3 Cans

**Shortening 59¢**  
Snowdrift, The premium shortening, 3 Lb. Can

**Gold Medal Flour 57¢**  
All-Purpose, (Self-Rising, 5 Lb. Bag 57¢)

**Biscuit Mix 53¢**  
Flour, Perfect blend of ingredients, 2 1/2 Oz. Box

**Biscuits 39¢**  
Mrs. Wright's, Sweet milk or Buttermilk, No mix, no butter, 6 8-Oz. Cans

**Whole Fryers 27¢**  
lb.

**Peaches \$1.00**  
4 No. 2 1/2 Cans  
Sundown Yellow, Freestone Halves, For quick desserts.

**Canned Milk 10¢**  
14 1/2 Oz. Can  
Lucerne Evaporated, No finer milk in a can.



**GUARANTEE**  
If ever a purchase of Safeway Meat fails to please for any reason whatsoever, just tell us. We will refund your money promptly, courteously. There's no need to return the meat.

**Lipton's Soup Mix 37¢**  
Onion Soup, Easy to prepare, 2 Pack Size

**Lipton's Tea Bags \$1.23**  
Orange Pekoe, Delicious hot or iced, 100 Cans

**Instant Tea 89¢**  
Lipton's Refreshing Instant, 3 Oz. 40

**Lipton's Tea 43¢**  
Orange Pekoe, (1 1/2 Lb. Package... 85¢), 7 1/2 Lb. Tea

**Powdered Dry Milk 29¢**  
Borden's, Sterilized, (12 Oz. Size 29¢), 3 Oz. Size

**Comet Rice 39¢**  
Long Grain, Perfect for puddings, 2 12-Oz. Pkg. (4 1/2 Oz.)

**Northern Tissue 37¢**  
White or Assorted Color, 4 Roll Pkg.

**Diet Foods!**

**Metrecal Wafers 99¢**  
Spiced Wafers, 24 Oz. 99¢

**Metrecal Liquid \$1.00**  
Chocolate Flavor, 6 2-Oz. Cans

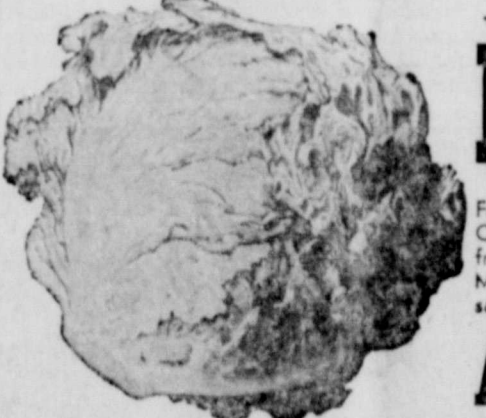
**Metrecal Soup \$1.17**  
Cream of Tomato, 3 2-Oz. Cans

Redeem Your Valuable "Corona" Pattern Milmac Coupons!

**THIS COUPON WORTH 50¢**  
Save the value of 50¢ on a 3-Piece Place Setting (Dinner Plate, Cup & Saucer) in Corning's Pattern Milmac, whenever you buy a regular price... \$1.00  
OFF With this coupon... \$1.99  
Good only September 23 to September 28, 1963

**THIS COUPON WORTH 50¢**  
Save the value of 50¢ on a 3-Piece Eggset (Egg, Spoon, Dish) in Corning's Pattern Milmac, whenever you buy a regular price... \$1.00  
OFF With this coupon... \$1.99  
Good only September 23 to September 28, 1963

**Preserves \$1.00**  
Tree ripened flavor, Apricot - Peach, 4 10-Oz. Jars



**Lettuce 25¢**  
2 Large Heads  
Fresh Iceberg, Crisp, cracking fresh heads. Most popular salad vegetable.

**Apples 19¢**  
Jonathan Family Grade, U. S. No. 1, All purpose apples, lb.

**Melons 39¢**  
Honeydew, U. S. No. 1, Large Size, California's Finest, Each

**Onions 29¢**  
Yellow, U. S. No. 1, lb.

**Peppers 29¢**  
Bell Peppers, U. S. No. 1, Each

**Cucumbers 29¢**  
U. S. No. 1, Each

**This Coupon Worth 50¢ FREE GOLD BOND STAMPS**  
Plus your regularly earned Gold Bond Stamps with the purchase of TWO - Dozen Breakfast Eggs LARGE GRADE "A" EGGS  
Coupon Expires September 28, 1963

**This Coupon Worth 50¢ FREE GOLD BOND STAMPS**  
Plus your regularly earned Gold Bond Stamps with the purchase of Economy Size COLGATE DENTAL CREAM  
Coupon Expires September 28, 1963

**This Coupon Worth 50¢ FREE GOLD BOND STAMPS**  
Plus your regularly earned Gold Bond Stamps with the purchase of Any Heavy Beef or Baby Beef BEEF ROAST  
Coupon Expires September 28, 1963

**This Coupon Worth 50¢ FREE GOLD BOND STAMPS**  
Plus your regularly earned Gold Bond Stamps with the purchase of TWO - 25-Pc. Rails Kitchen Craft ALUMINUM FOIL Heavy Duty.  
Coupon Expires September 28, 1963

**Campbell's Soup \$1.00**  
6 No. 1 Cans  
\* Chicken Noodle  
\* Cream of Mushroom  
\* Vegetable Beef

**Sweet Peas \$1.00**  
5 No. 303 Cans  
Green Giant Fancy Peas, Delicious with Hot Meals or Cool Salads.

**Baby Food 59¢**  
6 4 1/2 Oz. Jars  
Gerber's Fruits and Vegetables, Strained for easy feeding.

**Dried Prunes 29¢**  
1 Lb. Cello Bag  
Tops House Large Prunes, Rich in vitamins and minerals.

**Bakery Features!**

**Italian Bread 19¢**  
Skyline (Regular 27¢) In stay-fresh poly bag, 1 1/2 Lb. Loaf

**Coffee Cake 33¢**  
Mrs. Wright's, (Regular 35¢), 11 Oz. Pkg.

**Cinnamon Rolls 35¢**  
Mrs. Wright's, Swedish, Fresh 'n' tasty, 13 Oz. Pkg.

**Sliced White Bread 25¢**  
Mrs. Wright's, Regular or Sandwich, 1 1/2 Lb. Loaf

**Frozen Food Values!**

**Meat Pies \$1.00**  
6 8-Oz. Pkg.  
Meat House Pies, \* Beef \* Chicken \* Turkey

**Cream Pies 39¢**  
14 Oz. Pkg.  
Morton's Pies, \* Lemon \* Raspberry \* Chocolate \* Banana \* Caramel

**Ice Cream 59¢**  
1 1/2 Oz. Cans  
Sno-Tops Assorted Flavors.

**Lemonade 29¢**  
12 Oz. Cans  
Bel Air Lemonade, 12 Oz. Cans.

Redeem this Coupon for **100 FREE GOLD BOND STAMPS**  
with purchase of \$10.00 or more (Excluding cigarettes).  
One per family - Coupon Expires September 28, 1963.

**This Coupon Worth 50¢ FREE GOLD BOND STAMPS**  
Plus your regularly earned Gold Bond Stamps with the purchase of THREE - No. 2 Cans LA LANI PINEAPPLE Canned  
Coupon Expires September 28, 1963.

**GREATEST GIFT SHOW OF THE YEAR!**

**8 GREAT GIFT BOOKS IN ONE!**

**NEW GOLD BOND GIFT BOOK!**

**HEY KIDS! Enter Big Coloring Contest!**  
Send Best Nursery Rhyme Coloring Contest! Entitled Contest over 1000... Nothing to Buy... Eleven Prizes Weekly at each Safeway Store.  
First Prize - Amazing new camera takes all 7... color, black and white, color slides.  
Prizes... 10 Winners. Complete set of 8 Nursery Rhymes in full color.  
Come in Today for your FREE Entry Blank!  
1st Contest Sept. 26 to Oct. 5.

**SAFeway**

**Comet Cleanser 33¢**  
2 14-Oz. Cans  
Brushes as it cleans.

**Joy Liquid Detergent 61¢**  
For dishes and fine fabrics, 22 Oz. Pkg.

**Instant Coffee 89¢**  
Maxwell House, Good to the last drop, 4 Oz. Jar

**Dove Beauty Bar 49¢**  
2 Bars  
White or Pearl pink.

**Dry Dog Food 61¢**  
4 Lb. Bag  
Best Meal, Completely balanced meal.

**Armour's Vertagreen \$3.48**  
100 Lb. Bag  
Complete plant food.





**GRACIE TANKERSLEY**  
**Miss Tankersley**  
**New President**  
**For RJC DEBS**

Officers were elected Friday at a 9:45 meeting for the DEBS, a social club for girl students at Ranger Junior College.

Gracie Tankersley from Eastland is the new president and Sandra Allsup of Ranger is the vice president. Judy Wright of Ranger is secretary-treasurer and Shirley Schwesig of Strawn is the reporter. Elected to representative on the Student Council is Tonia Arnold of Strawn.

The DEBS will hold open house Tuesday evening, September 24, from 7:30 to 9:30 p. m. in Mary Frances Jameson Hall. The occasion will honor RJC students, faculty and staff members, board members and husbands and wives of these groups.

The club officers will alternate in receiving guests and in serving refreshments. They will be assisted by their sponsor, Mrs. R. L. Hamrick, chairman of the department of humanities at RJC, and Mrs. Lillie Anderson and Mrs. Snowie Nix, dormitory directors.

**Future Teachers**  
**Elect Officers**

The Ranger Chapter of the Future Teachers of America met Wednesday morning for the first meeting of the school year.

The following officers were elected: Cookie Falls, president; Barbara Dawson, Vice-President; Carol Drennan, Secretary; Linda Noth, treasurer; Sherry Sullivan, Historian and Donald Bunton, Sergeant at Arms.

The club will meet the second Tuesday of every month.



**Ministers Invite**  
**RJC Students To**  
**Attend Services**

Ranger Junior College held an assembly for the students and faculty at the regularly scheduled activities period, Monday, September 23 at 9:45 in the auditorium with Dean Ernen Haby presiding.

The occasion was the introduction of the pastors of Ranger churches to the assembly and each one extended an invitation to the students and faculty to attend the church of his choice.

Rev. Avery J. Sullivan, pastor of the First Baptist Church was first to speak and assured the students that "we are not as bad as you think and I'm sure we are not as good as we think we are."

Pastors present and their respective churches are: L. E. Carpenter, Church of Christ, Rev. B. L. McCord, First Methodist, Frank Brooks, Second Baptist and instructor of Bible at the college, Rev. David Downing, First Christian, R. D. Ashcraft, Church of God, and Father Joseph L. Van Winkle, St. Rita's Church.

"The churches of Ranger have a special interest in you and your activities. We are interested in your church life, your social life and your academic progress. We are the biggest boosters your football team has." These statements were the gist of the short talks made by the church pastors. Ranger's churches have always cooperated with the college in making the students and faculty members feel "at home" in Ranger and have made special efforts to get the young people affiliated with their churches here. Different churches entertain the students annually.



**IDELADA GARCIA**  
**Miss Garcia**  
**Will Wed**  
**Mr. Castens**

Mr. and Mrs. A. Garcia have the honor of announcing the engagement and approaching marriage of their daughter, Idelada, to R. W. Castens of Dallas.

The wedding will take place on the 5th day of October at 10 a. m. at St. Rita's Catholic Church with the Rev. Joseph L. Van Winkle officiating.

READ THE CLASSIFIEDS

**Bridal Gift**  
**Party Fetes**  
**Miss Halbrooks**

Miss Sandra Halbrooks, bride-elect of Charles Edwin Garrett, was honored with a bridal shower Saturday, September 21, 7:30 til 9:30 in the home of Mrs. I. D. Johnson.

Miss Halbrooks is the daughter of Mr. and Mrs. Wendell Halbrooks, 321 East Main Street and Charles (Chuck) is the son of Mr. and Mrs. Charlie Garrett of 709 Paige.

Mrs. Johnson greeted the guests and presented them to Miss Halbrooks, Mrs. Garrett and Mrs. Halbrooks.

The guests were ushered into the various bedrooms where the many lovely gifts were displayed.

Color decor was in blue and

white. The serving table, covered with a blue cloth and overlaid with a three tiered white tulle, held an arrangement of white asters and entwined with blue tulle. White tapered candles in silver candle holders, centered with an umbrella of tulle and white wedding bells, were on the buffet.

Miss Donna Drennen of Denton ladled the punch and Miss Glenda Rains of Fort Worth served the cake squares.

Mrs. Jack Hilliard was at the registry table which was centered with a cupid vase holding an arrangement of white carnations.

Mrs. Johnson was assisted by the following hostesses: Mrs. Robert Cantwell, G. M. Graham, O. L. Cantrell, Howard Oliver, J. D. Drennen, Edwin Lumms, Charlie Rose, Roscoe Hopper, Iris Hummell, Joe Weeks, J. A. Lenzini, Leon Treece, C. F. Chesnut, and G. F. Williams.

Miss Halbrooks and Mr. First Methodist Church. Garrett will be married September 28 at 8 p. m. in the church. Friends and relatives are invited.



Behind many "For Sale" signs there is a sad story: A family borrowed more than they could afford to pay for a home, or payments and interest rates were too high; the home had to be sold, often at a loss. This tragedy could often be avoided if the families would seek help from a home loan specialist, such as our Association.

We work with you to arrange for a loan that's as easy to handle as monthly rent.

**FIRST FEDERAL SAVINGS & LOAN ASSOCIATION**

204 Main Ranger, Texas MI 7-1611

**HOOVER'S**  
**FOOD MARKET**

FRIDAY AND SATURDAY  
Phone MI 7-3530 125 N. Rusk  
FREE DELIVERY  
It's a Pleasure to Serve YOU!

PARADE  
**PEACHES** No. 2 1/2 Can 4 for \$1.00

BORDEN'S - All Flavors  
**MELLORINE** 1/2 gallon 3 for \$1.00

SWEETHEART  
**BREAD** 2 for 45c

GOOD  
**BANANAS** lb. 10c

**LOIN STEAK** lb. 79c

**ROUND STEAK** lb. 89c

**Fresh Ground Meat** 2 lb. 89c

**CHUCK ROAST** lb. 49c

**BIG D OLEO** lb. 16c

GLADIOLA or BALLARD'S  
**BISCUITS** 3 for 25c

**We Give Scottie Stamps**

**PLAN NOW**  
**BRING YOUR**  
**FAMILY & FRIENDS**

**SUNDAY**  
**BUFFET**  
**DINNER**

11:30 to 2:00 P. M.

— Menu —  
CHOICE OF MEATS  
Turkey & Dressing  
Roast Beef - Ham  
and Other Meat  
Dishes  
Two Vegetables  
Soup or Salad  
Dessert Drink  
Hot Rolls

**1.25**

Childs Plate — 75c

**VICTOR HOTEL**  
**COFFEE SHOP**  
Cisco, Texas

**WE'RE MOVING!**

We are pleased to announce that we are moving our store from 113 South Lamar to 111 West Main Street (next door to Altman's).

Our decision to move was based on our desire to have a more modern center from which to continue serving you. We hope to complete the move by October 7th with a minimum of inconvenience for our customers and friends.

Be assured that we appreciate your patronage and that we will try hard to continue to merit it.

**THE MEN'S SHOP**

MA 9-2648 EASTLAND 113 S. Main

Expect great things from Chevrolet again-for '64

Today...Jet-smooth Luxury '64 CHEVROLET

'64 Chevrolet Impala Sport Sedan—one of 13 Jet-smooth luxury Chevrolets.

Chevrolet was luxurious before, but you should see it now. With smart new styling, the '64 Chevrolet looks even longer (but isn't). There's even a whole new series this year—the Impala Super Sports—with front bucket seats as standard equipment. (The new Impalas and Bel Airs are more luxurious, too. Even the lowest priced Biscaynes have new foam-cushioned seats front and rear and are fully carpeted.) Of course, you expect more than just luxury from Chevrolet. A choice of 16 power teams, for instance—a 6 and six V8's up to 425 hp (optional at extra cost). And quieter transmissions. Jet-smooth ride with Full Coil suspension. Flush-and-dry rocker panels, Delcotron generator, self-adjusting brakes and other low-upkeep features. If you've ever wondered how luxurious Chevrolet could get—with all the extra-cost options there are to choose from—that seems to be entirely up to you.

Take your first look at the first CHEVELLE!

**CHEVELLE!** by Chevrolet

New Chevelle Malibu Super Sport Coupe—one of 11 models in three great series.

You've never seen anything like this totally new line of cars before. Chevelle is new in everything but Chevrolet quality. Chevelle is a good foot shorter than the big cars, so it parks easily. Yet the interior dimensions of its Body by Fisher provide a generous amount of head, leg and shoulder room. (Chevelle's trunk is big and roomy, too.) The ride is surprisingly smooth with a rugged coil spring at all four wheels. And not so surprisingly for Chevrolet, the new Chevelle offers a choice of engines ranging from an economical 120-hp 6 to a 220-hp V8 (optional at extra cost.) Choose the Chevelle you like best from the three series—the Malibu Super Sport, the Malibu and the 300 Series, eleven models in all—at your Chevrolet dealer's. (Like this good-looking Malibu Super Sport, maybe?)

**THERE'S 5 IN 64**

**CHEVROLET, CHEVELLE!, CHEVY II, CORVAIR and CORVETTE**

**ANDERSON CHEVROLET COMPANY**

111 S. AUSTIN RANGER, TEXAS MI 7-1611



# THE TEAM BEHIND THE TEAMS

Get More Out of Life . . .  
See A Good Movie  
At Your

## RANGER DRIVE-IN

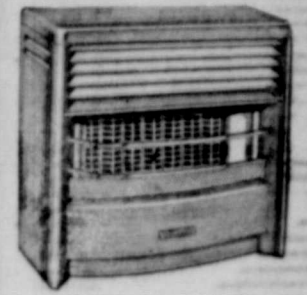
THURS. - FRI. - SAT.  
"The Nutty Professor"

SUN. - MON. - TUES.  
"Island of Love"

## WE'RE BACKING YOU



## ALL THE WAY



Ranger Furniture  
Exchange  
Dearborn Stoves  
123 N. Rusk — MI 7-1404  
Ranger, Texas

**Ranger Lumber & Supply Co**  
Calvin and Earl Brown

**Commercial State Bank**  
Member F.D.I.C.

**Campbell's Humble Service Sta.**  
Highway 80 and Main Street Crossing

**First Baptist Church**  
"You Are Always Welcome"

**Jack Blackwell**  
Marketer Sinclair Ref. Co.  
Goodyear Tires and Batteries  
Phone MI 7-1788

**SARCO**  
**Southwest Athletic Repair Co.**  
Ranger Phone MI 7-3274

**El Rancho Coffee Shop**  
L. N. Bryan — Raymon Bryan  
Hwy. 80 West Ranger

**Porkey Pig**  
Hwy. 80 East Mac McGowen

**Ranger Clinic**

**Ranger General Hospital**

**Featherlite Corp.**  
Lightweight Aggregate Ranger

**Ogden's Maytag Coin Laundry**  
Mr. and Mrs. B. J. Ogden  
908 Blackwell Road MI 7-1181

**May Insurance Agency**  
W. J. SIPES  
Insurance — Real Estate

**Texas Electric Service Co.**  
Bill Collings, Mgr.

**Ranger Dry Cleaners**  
Mr. and Mrs. Jess Weaver

**Ranger Auto Parts**  
Gaston Dixon  
319 Main Phone MI 7-1606

**Bulldog Grill**  
Peggy Bennett

**Medical Assistance Schools**  
Dr. S. J. Jones, Jr., Director

**C. P. Cloud & Son**  
Buyers of Wool, Mohair, Cattle  
Sheep and Goats  
Billie and Oran Rippy

**Swaney's Pharmacy**

**J. C. Penney Co.**  
John Smith, Mgr.

**Anderson Chevrolet Co.**  
W. J. (Bill) Anderson

**Maddox Fina Service Station**  
Hwy 80 West  
Mr. and Mrs. Gid Maddox

**First Federal Savings and Loan  
Association**  
204 Main Dial MI 7-1611

**Crawford-Doss Rexall Drug**  
In Business for Your Health

**City Plumbing Co.**  
U. E. Westmoreland  
Phone MI 7-3175

**Social Science Laboratories**

**Arnett's Texaco Service Station**  
Charles Arnett  
Main & Commerce MI 7-1515

**Killingsworth's Funeral Home**  
**Killingsworth Life Insurance  
Company**  
Mr. and Mrs. J. Floyd Killingsworth

**Ranger Peanut Co.**  
T. C. Wylie  
440 Melvin MI 7-3286

**Capps Studio**  
Mr. and Mrs. Delbert Capps

**Ranger Hill Cafe, Courts,  
Texaco Station**  
Hwy 80 East MI 7-3177

**Mildred's Beauty Shop**  
Phone MI 7-1784

**Frigid Queen**  
Hwy 80 East MI 7-1733

**Herweck's Ranger Mattress Co.**  
Mr. and Mrs. Milard Herweck

**Hoover Food Market**  
Mr. and Mrs. Randal Hoover  
Phone M 17-3530



**J. C. Carter Insurance**  
Area Representative  
**State Farm Insurance Co.**  
Auto — Fire — Life — Phone MI 7-1177

## SOUTHERN TELEVISION SYSTEMS CORP.

CISCO — EASTLAND — RANGER

— USE OUR TELEVISION CABLE FOR BETTER FOOTBALL VIEWING —

### BULLDOGS VS DUBLIN

There October 4

### BULLDOG SCHEDULE

Sept. 6 — Cisco 16, Bulldogs 0.  
Sept. 13 — De Leon 6, Bulldogs 0.  
Sept. 20 — Bulldogs 12, Gorman 0  
Sept. 27 — Open  
Oct. 4 — Dublin — There  
Oct. 11 — Jacksboro — There  
Oct. 18 — Cross Plains — Here\*  
Oct. 25 — Clyde — Here\*  
Nov. 1 — Albany — There\*  
Nov. 8 — Eastland — Here\*  
Nov. 15 — Baird — There\*  
\* Denotes Conference games



### RANGERS VS ACC "B"

Here September 26

### RANGERS SCHEDULE

Sept. 14 — Cisco 20, Rangers 12.  
Sept. 19 — Ranger 0 — Blinn 14  
Sept. 26 — ACC "B" — Here  
Oct. 5 — Wharton — There\*  
Oct. 10 — HSU "B" — There  
Oct. 17 — Cisco — Here\*  
Oct. 26 — Blinn — There\*  
Oct. 31 — Navarro — Here\*  
Nov. 9 — Wharton — Here\*  
Nov. 23 — Navarro — There\*  
\*Denotes Texas Jr. College Conference games



## Courthouse Records

- Oil & Gas Leases
- Court Proceedings
- Property Transfers
- Marriage Licenses

**Marriage License**  
Joe Edward White to Miss Linda Mae Cagle.

**Probate**  
Cora Alice Spencer, deceased, application to probate will.

**Instruments Filed**  
L. J. Alexander to M. E. Offield, release of vendors lien.  
R. C. Bowman et al to A. J. Martin, warranty deed.  
B. and W. Drilling Co. et al to Welx, material mechanics, lien affidavit.

Mrs. Tempest Brandon to Ross Wilson, release vendors lien.

H. C. Bowers et ux to C. A. Hayles et ux, warranty deed.

H. M. Bagwell et ux to Theodore Nicksick Jr., warranty deed.

H. L. Cawthron to Philip Petroleum Co., deed of trust.  
Jessie Carter et al to Pat Agnew, warranty deed.

James Coursey et al to William Baldwin, warranty deed.  
J. W. Evtatt et al to James Harris et ux, release vendors lien.

Eastland National Bank to H. N. Sherman, release of vendors lien.

First Federal Savings and Loan Association to C. E. Altom, et ux, release deed of trust.

E. E. Freyschlag et al to the public, affidavit.

First Federal Savings and Loan Association to R. T. Carroll, release deed of trust.

C. H. Freeman to First State Bank, deed of trust.

Gilmar and Gilmar to J. R. Rector et ux, release of vendors lien.

A. L. Green to Conley E. McGuire, release of vendors lien.

Whitlow G. Graham to J. C. Caraway et ux, agreement.

C. W. Harris to W. H. Hoffman, warranty deed.

T. H. Hennington to Florence Moates, deed of trust.

Celtny Hedges vs. C. W. Deaton, abstract of judgment.

W. M. Jarrell to J. F. A.



**LOOK AT THE FORDS** — New luxury styling to match its total performance gives a bright, new look to the lineup of Ford cars for 1964, to be on display at Hood King Motor Co. in Eastland Friday. The top-selling Ford Galaxie 500 series offers three eye-catching new roof lines including the 4-door sedan (top photo). The distinctive styling theme of the new Fords for 1964 is carried out in both the 6-and-9 passenger Country Squire station wagons with simulated wood trim that is both attractive and durable (bottom photo).

Schlueter, abstract overriding royalty.  
E. L. Key to First State Bank, deed of trust.  
S. R. Miller et al to Drucilla Eberhart, warranty deed.  
W. L. Moates deceased to the public, proof of heirship.  
C. E. McGuire et ux to Higginbotham Brothers Co., deed of trust.  
Theodore Nicksick to United States of America, deed of trust.  
Nueva Operating Co. to J. W. Courtney, release oil and gas lease.  
Olden Independent School District to B. D. McGraw et ux, warranty deed.  
M. E. Offield et ux to Carey Harrison, warranty deed.  
Pioneer Savings Association to L. B. Hirst et ux, release of material mechanics, lien.

W. J. Prange to E. A. Prange, warranty deed.  
H. S. Reed to Jack Lane, partial assignment of oil and gas lease.  
J. E. Rutherford to Rutherford Steel Co., Material, Mechanics Lien.  
N. L. Sudderth et ux to Investors Syndicate Corp., material, mechanics, lien.  
R. H. Slaughter to Ruth McKinnon, Warranty deed.  
Mary Anne Spearman et al to W. M. Jarrell, oil gas mineral lease.  
State Reserve Life Insurance Co. to Forrest Boone et ux, release deed of trust.  
United States of America to W. A. Richburg, notice of tax lien.  
Veterans Land Board to Henry Bihrey, contract of sale and purchase.

## State Capital NEWS

AUSTIN — Finance companies which hope to operate in the State under the new Texas Regulatory Loan Act must be licensed by November 21.

The so-called "Loan-Shark" law, passed by the 58th Legislature, allows a much higher rate of interest for lenders. But it saddles them with stiff licensing requirements.

Regulatory Loan Commissioner Frank Miskell predicted that 2,000 loan offices would come under the act. Already he has received more than 2,000 letters of intention to file application for a license. And letters still are flowing in at the rate of 30 or more a day.

One reason for the big response is that many automobile financing companies want to up their interest rates, too. Question of whether they are eligible to operate under the act has not been settled. But they are signing up just in case.

House General Investigating Committee will explore possible scandals in nursing home construction according to its chairman, Rep. Bob Fairchild of Center.

Investigation was requested by Speaker Byron Tunnell after a series of stories on substandard nursing homes for people appeared in the Fort Worth Star-Telegram.

A separate check by the State Department of Public Safety has been ordered by Gov. John Connally.

Atty. Gen. Waggoner Carr also has promised support.

Land Commissioner Jerry Sadler thinks the State should have an official rainmaking agency. He says he has discussed the subject with the Governor and hopes to soon have a "concrete proposal to offer."

W. W. Wright to Jimmie L. Lorenz, warranty deed.  
D. E. Webb to the public, homestead designation.

Roy L. Young to B. H. Clifton, warranty deed.

A weekly public service feature from the Texas State Department of Health

## Accent on Health

J. E. PEAVY, M.D.  
Commissioner of Health

AUSTIN — Are cataracts catching? Is it safe to look directly at the sun while wearing dark sunglasses? Will a child eventually outgrow crossed-eyes?

Medical scientists know the answers to these questions. Do you know them? September, Sight-Saving Month, serves as an annual reminder to check your eyesight and your eye I.Q.

You may be going blind and not realize it. Chronic glaucoma, often called the "sneak thief of sight," may cause permanent loss of sight very slowly and without symptoms noticeable to the patient, especially those over 40 years of age. The best defense against glaucoma is a medical eye examination at least every two years.

Are cataracts catching? Cataract, the clouding of the lens within the eye, cannot spread from one eye to the other. It is not contagious. It may, however, develop independently in each eye.

Surgery is the only known, effective treatment for cataract at present. Claims that magic salves or drops will dissolve the cataract are false.

Is it safe to look directly at the sun while wearing dark sunglasses? No, never look directly at the sun while wearing sunglasses. Tinted lenses will provide relief from the sun's glare but not from the harmful infra-red rays that can penetrate the dark glasses and damage the delicate retina of the eye.

Is blindness preventable? One of every two cases of blindness could be avoided, according to the National Society for the Prevention of Blindness, by diligent use of sight-saving knowledge.

Can glaucoma be cured? Glaucoma, or hardening of the eyeball, can usually be controlled if discovered in time. Increased pressure causes the

eyeball to harden. The eye doctor ophthalmologist — can usually control the pressure so that vision is preserved. Since glaucoma symptoms may be absent while the disease is present, health authorities advise a periodic eye examination.

Can eyes indicate bodily disease? Sometimes the eyes act as a barometer and foretell the coming of bodily ailments. Such conditions as hardening of the arteries may first be detected in this way. Periodic examinations enable your physician to detect the signs.

Will a child eventually outgrow crossed-eyes? Children do not outgrow crossed-eyes. Visual defects such as crossed-eyes and amblyopia — dimness of vision — can lead to permanent loss of vision in the affected eye. Treatment should be initiated at least by six years of age. Eye exercises, glasses or surgery may be required.

## Special Subjects To Be Brought By Preacher

There will be special services at the Rusk and Mesquite Street church of Christ, Sunday, September 29.

The Sunday morning subject will be "The Second Coming of Christ, the 1,000 years Reign, and the Binding of Satan". L. E. Carpenter, preacher for the church, stated, "You hear a lot about these things, what does the Bible say about them?"

The Sunday night subject at 7 p. m. will be a special lecture on "The Holy Lands." Mr. Carpenter, who will do the presentations, spent three months in a special study of the Holy Lands.

Many pictures and relics from the Old World will be shown.

The fall revival will be from October 9-16 with A. G. Hobbs of Fort Worth doing the preaching. Mr. Hobbs is nationally known for the many tracts he has written.

**ALL PURPOSE 3-IN-ONE OIL Oils Everything Prevents Rust**  
REGULAR — OIL SPRAY — ELECTRIC MOTOR  
C. E. MADDOCKS & CO.  
Insurance - Real Estate  
Phone MI 7-1171

## RJC Pep Rally To Be Thursday

The Ranger Junior College pep rally "Under the Tree" will be held Thursday morning 10:15 till 10:45 instead of Wednesday morning.

The public is invited to attend and join the cheerleaders, band, other students, and faculty members is giving the Rangers a good send-off for their game Thursday night against the ACC "B" team.

## READ THE CLASSIFIEDS



You don't buy a suit in 3 stores

No. Because you want the coat, vest and pants to match. You buy 'em all at the same place.

Likewise, well planned personal and family and home and car insurance should "match up"—should be bought of one agent.

We can suggest complete America Fore insurance protection for you with "tailor-made" combination policies that save you money while fitting your particular needs perfectly.

C. E. MADDOCKS & CO.  
Insurance - Real Estate  
Phone MI 7-1171

## The '64s from Ford are here: The Year of the Test Drive starts today!

Ford cars have changed. Only a test drive can tell you how much. Races and rallies, economy runs, braking and acceleration tests have bred into our 1964 models the kind of total performance you just can't create on the test track alone. They are hard-muscled, fast-moving, sure-footed. Open competition helped make them that way. They offer you substantially more car than anything at their price. You don't have to take our word for it. We're willing to rest our case on our cars.



**1964 SUPER TORQUE FORD**  
Strongest, smoothest, steadiest car in its field—by hundreds of pounds... More steel in frame and suspensions... Unique suspension lets wheels move backward as well as up and down to flatten bumps... Distinctive new rooflines.

**1964 FAIRLANE**  
Unique combination of family-size room, sports car feel and modest price... Optional 289-cubic inch V-8 so lively it was adapted for famous Cobra sports car... Five engine choices, six transmission choices, eight different models.

**1964 FALCON**  
All new except the economy that made Falcon famous... Falcon's Six still holds all-time Mobil Economy Run record for Sixes or Eights... Plushiest ride ever built into a compact car... 14 models—plus 5 extra-duty wagons.

**HOOD KING MOTOR CO.**  
100 E. MAIN EASTLAND PHONE MA 9-1786

## We're Ticked Pink . . .

### With our new PAPER TREE

and invite you to

Come by — see the many beautiful

## PARTY NAPKINS and ACCESSORIES

we have on display

We have received 480 packages of the most beautiful assortment of NAPKINS, PLACE MATS, and COASTERS, that you have ever seen. Come by soon and make your selections.

- 19 Designs Luncheon Napkins
- 12 Designs Guest Towels
- 6 Designs Place Mats
- 21 Designs Beverage Napkins
- 17 Designs Drip Coasters
- 1 Design Dinner Napkins

Also . . . Wedding and Baby Shower Napkins

## The Ranger Times

211 ELM — RANGER  
Dial MI 7-1101