



**The Best of Texas
is My Best
BETWEEN
US...**
by
Ginger Lee

Wife (as husband staggers in at 3 a.m.): "Well, you're home at last! Home is the best place after all — isn't it?"

Hobby: "It's the only place that's open at this hour."

Some of the names in the coming string of automobiles of 50-60 years bring memories even from this young buck. So you old-timers should be able to remember many of these cars of long ago —

Genovese, Peerless, Thomas Flyer, Chalmers, Rex Standard — Dayton, Abbott-Detroit, Alco, Stewart-Duryea, Star, Jeffery, Lafayette, Duesenberg, Anderson, Empire, Saxon, Fargo, Emerson, Paige, Winton, Jordan, Marmon, Whippert, Ajax, Westcott, Oakland, Regal, Rickenbacker, Kissel, Kar, Fairchild, Little Kar, F. E. Stearns, Bantam, Elcar, Columbia, Lozier, Parma, Overland, Durbin, Franklin, Haynes, Dorris-Flyer, National, Eskine, Cole, Roamer, Mitchell, King '88, Continental, Locomobile, Knox, Gladys, American Underdunk, Metz, Elgin, Brush, Terraplane, LaSalle, Moline-Knight, Peerless, Pathfinder, Hollis, Gardner, Tourist, Baker Electric, Stanley Steamer ... and maybe some more ... From Bart J. Fraser, the poultryman: There were 15 per cent fewer chicks hatched in February this year than for the same month in '52. Texas hatch was off more — and Eastland County hatch was lower still. For all that, time in 28 days the egg output in February fell below January. Fewer layers here this year than 10 years ago — and several more million folks to eat eggs. Egg shortage in late summer and early fall? Maybe! ... Lots of people get credit for having personality when they're just proud of their teeth ... A member of the Ranger Country Club says that the trouble with most golf beginners is that they stand too close to the ball after they hit it.

The college boy wrote his Ranger papa: "Dear Dad: Guess what I need most. Send some more, Best! Wish you'd see me, Sammy."

He got this reply by return mail:

"Dear Sammy: NOthing 'N'ovel or new here. NO one left. Write us aNother letter aNOn. NOW we must say goodbye. Dad."

The St. Landeves are back from a highly-enjoyable vacation jaunt to Pennsylvania and New York. "We had a wonderful time," Mrs. Landev reported to friends. She said the weather up East 'way was wintery — and wet ... The late Hank Williams was once asked how he wrote a song. He replied humbly, "I just sit down for a few minutes, do a little thinking about things, and God writes them for me" ... Attention U. S. GIs: A Russian private draws 12 cents per day — enough to buy seven cigarettes. Oh, yes — another 12 cents is kept in Moscow and put in "cold war bonds" ... Speaking of traveling as we were earlier in this paragraph, A. W. Warford of the Social Science Laboratories is a guy who really gets around. "I've been in 27 of the 48 states," he told us casually today, "and I wouldn't be surprised if I don't eventually wind up having visited every state in the union" ... Gov. Adlai Stevenson, the defeated Demo presidential candidate, is still a pretty popular fellow. Since Nov. 4, the fateful day he was toppled by Ike, he has received about 80,000 letters and telegrams — including messages from Europe, Mexico, South America, Canada, Britain and Australia ... Gene Baker, the genial publisher of The Gorman Progress was in Ranger bright and early Monday morning beaming brightly over the swell week end rains ... John (Junior) Hillerich, boss man of the Bousville Slugger bat factory, reports that 55 per cent of the major leagues are now using a 35-inch bat. Twenty-six per cent go for 34-inch, 12 per cent use 35-inch clubs, and six per cent swing a 35-inch bludgeon. Maximum size bat was 42 inches and the smallest was 42 inches and the smallest

(Continued On Page 8)

T&P Officials Open Abilene Station Today

Fifty Texas & Pacific railway officials, headed by W. G. Vollmer of Dallas, president, are in Abilene for the formal opening and dedication of the remodeled passenger station.

After a luncheon at which Vollmer will be the main speaker, the dedication program will take place at the station, remodeled at a cost of \$50,000.

T&P's first depot, a box car, was opened in Abilene Feb. 25, 1881, and the company held the first sale of Abilene tickets March 15, the same year.

The remodeled Abilene station was originally built in the early 1900s.

RJC Fine Arts Dept. Schedules Recital Series

The Fine Arts Department of Ranger Junior College today announced a series of recitals which will be presented during the next six weeks. The public is cordially invited to attend any of the events.

Individual announcements will be made immediately prior to each recital regarding the time of performance and all programs will be presented in the Fine Arts Building on the college campus in Ranger.

Miss Florence Ashcraft, Ranger student, will play the initial program in the series next Monday night, April 13th.

Other recitals and recitalists include: April 19th, Bob Doyntain; April 23, preparatory students of Miss Patterson; April 26th, Nella Colvin; April 26th, preparatory students of Mr. Baumgardner; April 30th, High School students of Mr. Baumgardner; May 2nd, Lorain Burdette Bonney; May 5th, Polly Hibdon and Bill Blackstone; May 7th, Joyce Cude and Don Bryson; May 10th, Maxine and Bill McCotter. The recital of Mr. Kiker's students will be announced at a later date.

Runoff Vote To Determine Cisco's Mayor

A runoff election will be held at Cisco on Tuesday, April 28, to determine who will be mayor of Cisco.

Although nearly every eligible voter turned out Tuesday in the city election, the mayor's race ended in a tie.

Incumbent Mayor G. C. Rosenthal and Police Commissioner Joe Britain each received 401 votes in the race for mayor. The total votes, considered to be unusually heavy, was 804.

City officials agreed Wednesday morning to hold the runoff election later this month.

Britain is an incumbent city commissioner with one year left to serve — if he does not win the mayor's race.

If Britain wins the mayor race, it will be up to the City Commission to appoint someone to fill his unexpired commission term.

Community Nite At Olden Is Set For April 14th

The Community Night program in Olden this month will be in charge of Mrs. Dick Yielding, and will be held on April 14th, at the high school auditorium.

The public is invited to attend, and a pleasant evening is promised.

Farm Bureau Meet Set For Next Thursday

A county-wide meeting of the Eastland County Farm Bureau will be held next Thursday, April 14, at the Seranton high school gymnasium, it was announced today.

Time for the session has been set at 7:30 p.m., and all board members and their families are urged to attend. Farm Bureau members also are invited to bring guests to the meeting.

HEADS UP! Here comes the New Rocket OSBORNE MOTOR COMPANY Eastland, Texas

100 'Ranger Bucks' Offered— Many Shoppers Due Saturday

Hundreds of thrifty shoppers are expected to swarm into friendly Ranger Saturday for the city's weekly Trades Day.

Highlight feature of the afternoon will be the usual 3 p.m. drawing during which five enticing awards of "Ranger Bucks" certificates will be awarded to lucky registrants.

Top offering of the afternoon will be 50 "Ranger Bucks," second, 25, third and fourth 10 each, and fifth, five "Ranger Bucks."

The new certificates, issuance of which was begun last week by the Ranger Trades Day Assn., are good for \$1 worth of goods or services from Ranger firms who participate in the weekly drawing.

Here is a list of the firms which sponsor this popular weekly event:

Commercial State Bank, C. D. Hartnett Co., Texas Electric Service Co., Hatliff Feed Store, Tip Top Feed Store, Law's Premier Service Station, Cantrell & Sons Service Station, Ward Service Station, Montgomery Ward & Co., J. C. Penney Co., Joseph Dry Goods Co., E. L. Martin & Sons, The Globe Clothiers, Sweetbriar, The

Smart Shop, Sary-Q Shop, Bell's Young Moderns, L & J Supply Co., Burton-Lingo Lumber Co., Leveille Motor Co., Clarke Motor Co., Anderson Chevrolet Co., Crawley Motor Co.,

Ranger Furniture Exchange, Killingsworth's, C. E. May Insurance Agency, Ranger Insurance Co., C. E. Maddocks & Company, Owen Implement Company, Crawley - Tibbles Hardware, Western Auto Associate Store, Johnson Appliances Store, Ben Franklin Store, Trader's Grocery, Aishman Grocery, Adams Grocery, Piggly Wiggly, Swaney's Pharmacy, Crawford's Drug Store, Texas Drug Store, F & B Snack Bar, Beck's Cafe, Porky Pig Drive-In, King's Dixie Grill, Paramount Hotel and Coffee Shop.

Ranger Dry Cleaners, West Texas Hospital, Brazda Clinic, Ranger Clinic, Ranger Jewelry Co., Pulley Jewelry Co., Don Ervin Jeweler, Gray's Barber Shop, Young's Beauty Shop, Page Plumbing Co., Frozen Food Lockers, Morris Funeral Home, Tower Theatre, American Aggregates Co., Capps Studio, Dr. Pepper Bottling Co., and Morris George, Gulf Agt.

NEW GAS PIPELINE FOR AREA PROPOSED BY FORT WORTHIAN AT CONFERENCE IN ABILENE

Proposal for a new gas pipeline in this area was revealed today by J. W. Bartlett, Fort Worth representative of Fort Worth Basin Gas, following a conference in Abilene Wednesday with 49 oil and gas producers in the West Central Texas sector.

Bartlett said his company is a subsidiary of Smith Contracting Co., a pipe line contracting firm of Fort Worth and Odessa.

The company wants to buy some 500 million cubic feet of gas per day in the West Central Texas area, to be piped to the Fort Worth-Dallas area for industrial consumption, he said.

A main line is to be built from the Novice area in Coleman County, to the Fort Worth-Dallas area. He said the line will probably start at the Schine production (the Williams Field) immediately south of Novice.

From there the line will run to the Grosvenor area in western Brown County, will cross Lake Brownwood in the Byrd's Store area, and will run into Comanche County to the J. K. Wadley-D. Breeding production, and thence to Duster and Fort Worth.

Gathering systems will be built from the main line to take care of dry gas, and flare gas that the company can contract for, he said.

Present plans call for gathering gas in Coleman, Brown, Runnels, Coke, Comanche, part of Eastland and possible South Taylor County, representative said.

Bartlett said the company need to contract 200 million cubic feet of gas before applying to the Federal Power Commission for a permit. Pipe is available for the line and it will start within 30 days of granting of the permit, he said.

The company representative said a price of eight cents a thousand will be paid, with the price to be increased a half cent every two years until the price reaches 10 cents in 1962.

The firm will agree to take one-quarter of the lease allowable Bartlett said. He explained that to mean one-quarter of the allowable for wells producing and later completed as producers.

He said the company plans to build three plants of 100 million cubic feet per day capacity to process flare gas.

Gas will be taken into the main line at a minimum pressure of 500 pounds, and a maximum of 750 pounds, the representative said. There will be a two-cent compressing charge for gas not over 500 pounds pressure.

Flare gas contracts will be on an individual basis. Bartlett said the company is interested in buying the flare gas and said, "We're going together with the producer."

TO HONOR PERRY NEWPORT, R. I. — This year's special programs this year in observance of the 100th anniversary of the opening of Jamestown to world trade. That significant event was commemorated by a Newport native, Commodore Matthew C. Perry.

District P-TA Meet Opens At Cisco Today

More than 300 delegates registered at Cisco Thursday morning for the 42nd annual conference of the First District of the Texas Congress and Parent Teachers.

The convalescence is being held Thursday and Friday. Headquarters for the conference is the First Methodist Church. Registration began there at 9:30 a.m.

The convention proper will get underway at 1 p.m. Thursday with the general assembly. Mrs. W. S. Kemp of Brownwood, First District president, will call the meeting to order, and Dr. H. M. Ward, pastor of the First Baptist Church at Cisco, will give the invocation.

E. L. Jackson, president of the Cisco Chamber of Commerce will give the welcoming address, and Mrs. A. E. Urub, district vice-president of the Texas Congress Parent-Teachers, will give the response.

Following a musical program, B. M. Dinmore of Wichita Falls, vice president of the Texas Congress, will be the principal speaker.

Tonight, school superintendents will be honored with Arlie Hint, superintendent of the Cisco Schools, introducing the visiting school administrators.

Dr. James N. Perea, president of Midwestern University, Wichita Falls, will give the principal address at 8:30 p.m. His topic will be "Family Life Contributes to World Peace."

Eastland Ready For Song Meet Over Weekend

Singers from all over Texas will begin flocking into Eastland Saturday in order to make it possible for them to attend all sessions of the Eastland County Singers Convention, first of which will be held Saturday night at the Eastland high school auditorium.

Judge R. L. Rust has received replies from several individuals, from distant points, and many are planning to be here. A message from Austin today stated that two cars of singers from that city will be present, and that at least one of the cars will arrive Saturday afternoon. There are two excellent quartets there, and it is possible that both will be in Eastland.

There have been a number of acceptances from Dallas and Fort Worth. Young county will likely have a delegation, as well as many other nearby counties.

Nothing has been left undone to assure the success of the convention.

The Eastland County Convention has always been popular, and some wonderful conventions have been held. If you enjoy good singing you'll want to be present.

In order to care for Eastland church-goers, the noon-day meal will be spread just as soon as they have time to get home, grab their baskets and reach convention headquarters. It is to be an all-day affair, with dinner on the ground.

It is highly probable that the Robert Arnold quartet will be on hand. Also two Eastland quartets are expected to take part.

MASONIC RECORD FALMOUTH, Mass. — Joseph R. Hall of Falmouth has missed a meeting of the Marine Lodge of Masons in 24 years. Once when Hall was hospitalized, the lodge cancelled a scheduled meeting so that he could keep his record intact.

HEADS UP! Here comes the New Rocket OSBORNE MOTOR COMPANY Eastland, Texas

Former Ciscoan Will Be Buried in San Antonio

Funeral rites for Mrs. J. A. Boatman, a former resident of Cisco, will be held Friday morning in San Antonio.

Mrs. Boatman died Tuesday in a San Antonio hospital.

She will be buried in a San Antonio cemetery by the side of her late husband.

Survivors are two sons, Rev. Clarence Boatman of San Antonio, and Rev. Louis Boatman of Kansas City, Mo.

New City Officials Assume Duties May 1



FOR TENTH YEAR—Marie Wilson, for the tenth consecutive year, has won an award for her shape. The American Physical Culture Association said Miss Wilson has "the most provocative and exciting figure of any woman in the public eye." On being presented with the group's annual award, the actress said, "I've learned that a small sweater can do big things for a girl."

Commissioner Koenig will handle the city's financial affairs. Rushing will serve as police and fire commissioner, Carrrell will be the city's new water commissioner, and Penn will serve as commissioner of streets and parks.

Nearly 700 votes were cast in the Tuesday election.

Mayor-elect Harris was elected without opposition. He succeeds Mayor Price Crawley who was not a candidate for re-election.

Commissioner Koenig will handle the city's financial affairs. Rushing will serve as police and fire commissioner, Carrrell will be the city's new water commissioner, and Penn will serve as commissioner of streets and parks.

Nearly 700 votes were cast in the Tuesday election.

Share-The Fun Winners Named

Miss Agnes Baylor, Cisco 4-H Club girl and Robert Bell, of the Seranton 4-H Club won top honors in the 4-H Share-the-Fun Festival held Saturday in the Eastland high school auditorium before more than 350 cheering spectators.

Those two youngsters will represent Eastland County at the District Festival in Stephenville on May 16, in an effort to reach the State Finals at A&M in June.

Miss Baylor's act, a reading called "The Three Stories" won the blue rosette by scoring 285 of a possible 300 points. Robert Bell's "I Need a Shave" scored 269 points.

The McKinney Trio, Nancy, Donald, and Beryl, of Rising Star was third with a score of 255 points.

Other blue ribbon winners were a Ministerial Act by Ray Rodgers, and J. T. and Marcus Horn of Olden; a Negro play by Don Jobe and Robert Bell of Seranton; and "A Record of Wild Bill Hiccup" by Madeline Justice, Lavonda Jordan, and Beba Campbell of Carbon.

Red or Class B Ribbons were given to the following: Robert and Ronnie Burdick; Betty Weaver, Robert Bell, Anna Jean Whitte, Sandra Taylor and Dot Gibbs, Judy Chick, Alvin Rodgers, Druella Townsend and Maedeen Collins, Jay Dunlap, Clyde Rankin and Jamie Etamie.

Class C Ribbons went to Paula Douglas, Elizabeth Fox, Betty Ann Laird and Carolyn Moore, Wanda Martin, Marcell Underwood, Ann Mangum, Corynnie Benton, and Nancy Norris, Jerry Anderson and Kenneth Welch, Cindy Fox and Nicki Nelson, Carol Phillips and Gay Ann Daskewitch, Joyce Ann Redwine and Jean Elaine Lisenbee, Gatha Sue Thompson, and Judy Carylyn Pate, and Jerry Douglas and Day-Jobe.

Partly cloudy and cooler weather was forecast for the Eastland County area today by the U. S. Weather Bureau.

A slight dip in temperature was expected for tonight and cooler weather was due for Friday, according to the report.

This afternoon's top mercury reading is slated around 80 degrees, and Friday's high will be in the bottom 70s.

Tonight's low — between 45 and 50.

Although possible showers for East Texas and the South Central region of the state were forecast by weather me, no hint of rain in this vicinity was given in the current weather communication.

The West Texas forecast: "Partly cloudy and cooler Thursday night and in all except the Del Rio-Eagle Pass area Thursday, Friday partly cloudy and cool."

City Election Vote Canvas Next Tuesday

Ranger's new mayor-elect, Dr. Calvin W. Harris, and four new members of the Ranger City Commission will take office on May 1, Lester Crossley, city manager, said today.

Mayor-elect Harris and the new commissioners—A. G. Koenig, L. T. (Lem) Rushing, O. L. Carrrell and E. F. (Frank) Penn—were elected Tuesday during the annual city election.

Vote of the Tuesday referendum will be canvassed by members of the city commission during a session at the City Hall next Tuesday night.

During the May 1 installation, City Manager Crossley will administer the oath of office to the city's new mayor, and then the newly-elected city head will swear in the four new commissioners.

Mayor-elect Harris was elected without opposition. He succeeds Mayor Price Crawley who was not a candidate for re-election.

Commissioner Koenig will handle the city's financial affairs. Rushing will serve as police and fire commissioner, Carrrell will be the city's new water commissioner, and Penn will serve as commissioner of streets and parks.

Nearly 700 votes were cast in the Tuesday election.

Final Report Given— MOD Campaign Totals \$8,415

Eastland Counties contributed a total of \$8,515.71 to the 1952 March of Dimes drive, according to a final report issued early Thursday by Mrs. J. A. Bates of Ranger, county chairman of the recently staged fund-raising effort.

Total expenses for literature and supplies — including \$126.45 carried over from the 1952 drive — totaled \$393.61, Mrs. Bates said.

The net proceeds, after all expenses were deducted is \$8,022.10. Half that amount — \$4,011.05 — is retained in the county for the use of the Eastland County group, and the other half is being sent to the national headquarters of the Foundation for Infantile Paralysis.

"I want to take this opportunity," Mrs. Bates said, "to thank everyone who made a contribution to this highly worthy cause and also to express my appreciation to the various community chairmen and volunteer workers for the wonderful job they accomplished during this drive."

FRANK CASTLEBERRY NAMED AS COUNTY COMMISSIONER

Frank Castleberry of Eastland, brother of County Commissioner, Ed Castleberry, who passed away in the Eastland Memorial hospital Sunday, was appointed by the court late Wednesday to serve the unexpired term of his brother as Commissioner of Precinct 1, Eastland County.

Mrs. Castleberry has accepted the appointment and is today engaged in the new work. So far as the writer has been able to determine, no changes in personnel will be made by the incumbent.

Frank Castleberry has been a resident of the county for more than 50 years, and has many friends who will be pleased to know that he has been named to the post as successor to his brother.

For many years Mr. Castleberry conducted a feed and seed business in Eastland, and only a few months ago sold the business and announced his retirement. He is well acquainted with the needs of this county and is well qualified to fill the office.

Cloudy, Cooler Weather Due Eastland Area

Partly cloudy and cooler weather was forecast for the Eastland County area today by the U. S. Weather Bureau.

A slight dip in temperature was expected for tonight and cooler weather was due for Friday, according to the report.

This afternoon's top mercury reading is slated around 80 degrees, and Friday's high will be in the bottom 70s.

Tonight's low — between 45 and 50.

Although possible showers for East Texas and the South Central region of the state were forecast by weather me, no hint of rain in this vicinity was given in the current weather communication.

The West Texas forecast: "Partly cloudy and cooler Thursday night and in all except the Del Rio-Eagle Pass area Thursday, Friday partly cloudy and cool."

Keeble Bites Held At Mings This Afternoon

Funeral services for Mrs. Lucille Tennie Keeble, 42-year-old Mings resident, were held at the Methodist Church in Mings this afternoon at 2 o'clock.

Rev. C. A. Wilkerson, pastor of the First Methodist Church, Strawn, officiated, and interment was in the Old Gordon Cemetery with Trappett Funeral Home in charge of arrangements.

Mrs. Keeble's survivors include the husband of Mings; her parents, Mr. and Mrs. Ed Harrison of Mings; two brothers, Leonard Harrison of Gordon and J. D. Harrison of Mings; three sisters, Mrs. Mabel Heatherington of McCombs, Mrs. Frank Korbha of Kermit, and Mrs. Lois Byler of Kermit; and several cousins, including Mrs. Lilly Applegate of Ranger.

Mrs. Keeble, who died early Wednesday morning in a Ranger hospital, was born north of Gordon on April 15, 1910. She had been a member of the Methodist Church since girlhood.

She and her husband, Walter Keeble, were united in marriage 23 years ago.

J. A. Littleton To Be Buried

J. A. (Jim) Littleton, for many years a resident of Eastland, but more recently of Rising Star, passed away in San Angelo at 8 p.m. Thursday, following a severe stroke.

Mr. Littleton was formerly connected with the Citizens National Bank here, and has many friends in this city. He also has a brother, Leff Littleton, who lives here at this time.

Deceased was a former member of First Baptist Church in Eastland.

The funeral will be in charge of the Hammer Funeral Home, and they have gone to San Angelo today for the body. Funeral services will be conducted from the funeral chapel Friday afternoon at 4 p.m. after which burial will be made in Eastland cemetery.

FRANK CASTLEBERRY NAMED AS COUNTY COMMISSIONER

Frank Castleberry of Eastland, brother of County Commissioner, Ed Castleberry, who passed away in the Eastland Memorial hospital Sunday, was appointed by the court late Wednesday to serve the unexpired term of his brother as Commissioner of Precinct 1, Eastland County.

Mrs. Castleberry has accepted the appointment and is today engaged in the new work. So far as the writer has been able to determine, no changes in personnel will be made by the incumbent.

Frank Castleberry has been a resident of the county for more than 50 years, and has many friends who will be pleased to know that he has been named to the post as successor to his brother.

For many years Mr. Castleberry conducted a feed and seed business in Eastland, and only a few months ago sold the business and announced his retirement. He is well acquainted with the needs of this county and is well qualified to fill the office.

Cloudy, Cooler Weather Due Eastland Area

Partly cloudy and cooler weather was forecast for the Eastland County area today by the U. S. Weather Bureau.

A slight dip in temperature was expected for tonight and cooler weather was due for Friday, according to the report.

This afternoon's top mercury reading is slated around 80 degrees, and Friday's high will be in the bottom 70s.

Tonight's low — between 45 and 50.

Although possible showers for East Texas and the South Central region of the state were forecast by weather me, no hint of rain in this vicinity was given in the current weather communication.

The West Texas forecast: "Partly cloudy and cooler Thursday night and in all except the Del Rio-Eagle Pass area Thursday, Friday partly cloudy and cool."

HARRISBURG, Pa. — A deputy game warden became suspicious recently when he noted two bear cubs staggering through the woods in a south central county. He found a small quantity of moonshine, and was on a stream bank nearby.

SOCIETY

Mrs. R. Pruet Reviews Book For 1947 Club

The 1947 Club met Wednesday, April 8 at 4:00 p.m. in the home of Mrs. A. P. Thomas, Jr. The business meeting was presided over by the president, Mrs. Lowell Rainwater. The minutes were read by the secretary, Mrs. A. Kirk.

The program was turned over to Mrs. Ronald Pruet, who reviewed the book, "The Woman with the Whip", by Maria Flores—the story of Eva Peron.

Refreshments were served to the following members: Misses, Dean Crawley, Marshall Jolly, Kirk, Pruet, Rainwater, James Ratliff, Paul Rogers, James Townsend, Buford Waggoner, W. P. Watkins, S. B. Zuccaro, Ted St. Clair, Luther Fambro, Joe Nussle, Walter Arterburn, Bill Anderson, and the hostess, Mrs. Thomas.

CALL 284 FOR ASSIFIED AD SERVICE

Personalized Hair Trims

Have your hair cut just the way you like it—not too long, not too short.



L. E. GRAY Barber Shop

3 Chairs for Prompt Service

WMU Meets At Second Baptist

The W. M. U. of the Second Baptist Church met Monday for their regular business meeting, carrying out Youth Week. Miss Patsy Perrin presided as president, in Mrs. H. H. Sutton's place.

The minutes were read by Mrs. Bob Gore. The devotional was given by Mrs. Jasper Massee. Mrs. Gore gave a report of mission work in Korea, which was given by Rev. Merrifield at the Workers' Conference in Albany Thursday, April 2.

Kenny Moseley Has Birthday

Kenny Moseley was honored on the occasion of his seventh birthday with a party at his home on April 2.

Birthday cake and ice cream were served as refreshments. The following children were present: Cockle Falls, Shirley Offield, Sue Woods, Brenda Sue Weaver, Patricia White, Richard Herweck, Smokey Vincent, Charles Ferguson and Bobby Ferguson.

Intermediate GAs Meet On Monday

The Intermediate Girl's Auxiliary met Monday, April 6 at the Second Baptist Parsonage, with Mrs. D. D. Brian as leader.

The coronation services at Cisco were discussed and plans made to attend. "Our Best" was sung by the group, after which the devotional on "Stewardship" was given by Mrs. Brian. The closing prayer was given by Sherry Baker.

Those present were: Dorothy Joyner, Dorothy and Sonja Stagner, Sherry Baker, Betty Miller, Mary Keener, Corinne Sutton, Gail Brian and Mrs. Brian.

Rebekahs Meet Tuesday Night

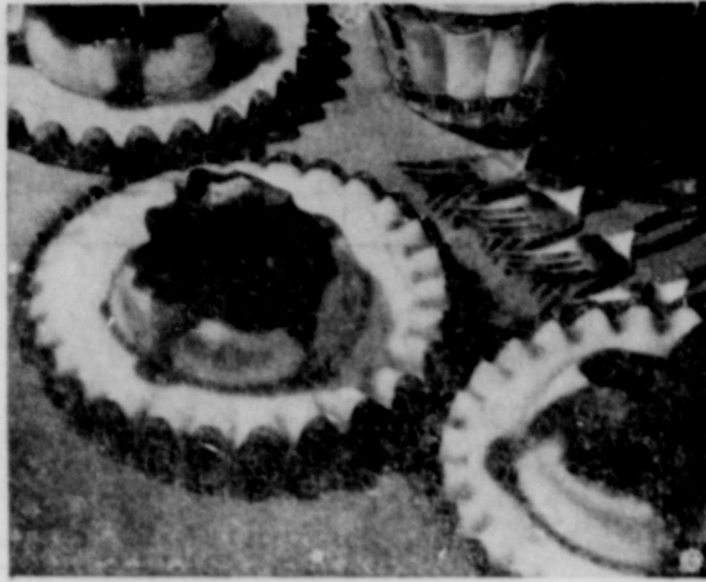
The Ranger Rebekah Lodge No. 244 met Tuesday, April 7 at 7:30 p.m. at Oddfellows Hall for their regular business meeting, which was presided over by Noble Grand, Edna Huffman.

Sick reports were given. An invitation to the association meeting on April 30, was received from Gorman. Plans are being made for the Ranger lodge to give part of the program.

Ethel Wright gave her report on the assembly meeting in March in Fort Worth. The penny prize was furnished by Ethel Johnson and won by Ruby Greer.

There were eighteen members present.

New Shortcake Treat



To keep the wonderful appetite appeal of perfect strawberries, serve them whole in shortcake dainties, with a juice and glaze made by crushing just a few berries.

One quart of berries serves eight this way. The shortcake dainties, made from a favorite cook book recipe, are at your grocer's ready-to-eat cake department, four to a package, heat sealed for freshness in a "suspaper" wrapper.

Try this delicious shortcake idea for a family dessert, and for spring company dinners.

Glazed Strawberry Shortcake

- 1 quart strawberries
 - 1 cup sugar
 - 1 cup water
 - 1 1/2 tablespoons cornstarch
 - 3 shortcake dainties
 - whipping cream, if desired
- Sprinkle 1/2 cup sugar over 5 cups of cleaned berries and let stand one hour. Cook remaining berries with the water until tender (about 10 minutes). Press through sieve. Combine remaining 1/2 cup sugar with cornstarch and add to strained strawberry juice. Heat to boiling, and boil until clear (1 to 2 minutes). Add red food coloring if needed. Cool. Fill shortcake dainties with berries, and pour cooled strawberry sauce over berries. Top with whipped cream if desired.

Youth Week Is Observed At Second Baptist

Officers for Youth Week at the Second Baptist Church are being sponsored by the following young people: Pastor, Jackie Heath; Sunday School Supt., Ray Falk; Training Union, Charles Massee; Sunday School Secretary, Ollie Earl Rogers; Training Union Secretary, Shirley Wynner; Music Director, Corinne Sutton; Young People's Supt., Tom Moody; W. M. U. President, Patsy Perrin; Deacon's leader, Fred Seay; Prayer Meeting leader, Sherry Baker; Pianist, Gail Brian; Ushers, Dalton Brian and Jimmy Boyce.

We, the young people of the Second Baptist Church cordially invite each and every young person to attend the services this week.

Hospital News

New patients admitted to the Ranger General hospital include Mrs. E. L. Laird, a surgical patient from Cisco, and Dr. Harris' brother, C. L. Harris, of Dallas, a medical patient.

PERSONALS

Mr. and Mrs. J. R. Anderson and daughters of Plains, Texas, Mr. and Mrs. Lee Roy Neal of Dallas, Mr. and Mrs. Buster Kennedy, of Killeen, Texas, and Mr. and Mrs. Earl McCallan of Dallas, were recent visitors in the home of Mr. and Mrs. A. N. Anderson.

Mrs. Della Chandler and son, Roy of Fort Worth, were recent guests of Mrs. Chandler's parents, Mr. and Mrs. V. A. Galloway.

Little Gregg Slaughter, son of Mr. and Mrs. John D. Slaughter, is visiting his grandparents, Mr. and Mrs. M. Slaughter, in Cisco

this week.

Mrs. E. A. Carruth of Kellerville, Texas, is visiting in the home of her sister, Mrs. A. B. Crabtree. The Crabtrees also have as their guest, their grandson, Allison Lee Murphy, of Quilkin, Tex.

Word has been received from Abilene that the condition of S. L. Wyn Leedy, nephew of Mrs. Frank Arrendale and Mrs. Joe Tullos, is still very critical.

Mrs. Bertha Richardson, of Strawn has been visiting her cousin, Mrs. Charles Ashcraft and family the past few days.

Miss Billie Jean Crawley, who teaches school in Arlington Heights in Ft. Worth, visited her parents, Mr. and Mrs. A. E. Crawley, over the Easter weekend.

Mrs. Harland Phillips and her family spent last week in San Angelo, where Mr. Phillips is doing construction work. They returned to Ranger for the Easter week-end and Nancy, who is attending TCU in Ft. Worth, joined them here.

Mr. and Mrs. R. V. Robinson and Robbie have been in Hamlin for the past few days visiting Mr. and Mrs. R. E. Kenney, formerly of Ranger.

Mrs. Steve Neal and baby returned to their home in Benevise, Tex., yesterday, after a visit with Mrs. E. L. McMillan.

Betty Lou Hagaman, who is attending Stephens College in Columbia, Mo., and her roommate, Mary Shuster, of Albany, N. Y., are spending the Easter holidays with the Leslie Hagamans.

Mrs. Saunders Grege and Mrs. John Thurman are visiting in Fort Worth.

Mrs. Madrine Quinn and Mrs. John M. Gholson are visiting Mrs. Gholson's daughter and family, Mr. and Mrs. Alton Cherry, in Dallas.

Mr. and Mrs. Clifton Morris, who were injured in a wreck near Ranger Sunday, have returned to their home in Fort Worth. Morris is Dr. Kuykendall's cousin.

Mrs. R. E. Johnson has returned from Seattle, Washington, where she had accompanied her daughter, Mrs. Donald Eaton, who sailed for Anchorage, Alaska on April 1, to join her husband, who is employed by the U. S. Army in the personnel department.

Charles Osteen has returned to Galveston Medical School after spending a few days with his parents, Mr. and Mrs. C. B. Osteen.

H. C. Herweck, of Kermit, spent the week-end in the home of Mr. and Mrs. W. M. Herweck.

Mr. and Mrs. W. E. Herweck recently visited their daughter and family, Mr. and Mrs. G. B. McElroy, in Wichita Falls, and also visited Mr. Herweck's mother, Mrs. W. M. Herweck, in Ardmore, Okla.

Mr. Jack Rayfield and children, Paul and Ginny, are in Winters this week to be with Mr. Rayfield.

Mr. and Mrs. Gorman Morton had as week end guests, their daughter, Julie Ann, who is attending Texas Tech in Lubbock. June Ann had as her guest, Boyce Bryan, of Dallas. Other guests in the Morton home were their other daughter, Mrs. and Mrs. J. L. McKelvin, of Waco.

Mr. and Mrs. C. D. Brantley, son, Lennie and infant daughter, Alberta, of Houston have been visiting in the John Usery home this week.

Mr. and Mrs. LeRoy Smith and sons Stanley and Mike and daughter, Renee, of Levelland, visited his parents, Mr. and Mrs. Jessie Smith and her parents, Mr. and Mrs. John Ivy, both of Lone Star Plant 108-2, over the weekend. They also attended the funeral of Mrs. Jane Sparger, who is Mrs. LeRoy Smith's grandmother.

MOTLEYS GRO. & MARKET

SPECIALS FRI. - SAT. and SUN.

FRESH GROUND MEAT	lb. 45c
LARGE HEAD LETTUCE	12c
NEW POTATOES	3 lbs. 25c
FRESH—Carton TOMATOES	19c
Large Box CRACKERS	23c
CALIFORNIA SUNKIST ORANGES	lb. 15c

save up to **25¢** per pound

... yet enjoy the richest coffee of all.

Smart housewives know that the true cost of coffee is measured by the number of cups a pound of coffee makes... not by the price they pay for it in the store.

Good coffee today costs at least two cents per cup. But with Maryland Club, because of extra richness, you can use less coffee for a flavorful cup... that's why you can

NOW... NOW... NOW
it's more important than ever to use the coffee that gives you 10 to 15 more cups per pound **MARYLAND CLUB!**

as certified by Southwestern Laboratories



Duncan's Maryland Club Coffee

more cups per pound

IF YOUR CAR GETS IN A "SCRAP"

Would your savings take the rap? Let us tell you how Metna Automobile Insurance would protect you against claims for injuries and property damage.

C. E. MAY
Real Estate
All Kinds Insurance
214 Main Phone 478

They grow so fast...



But you can keep their cherubic babyhood through the years in professional photographs. After-naptime appointments at your convenience.

CAPPS STUDIO
106 South

BUY SEVEN-UP BY THE CARTON



A NEW DRINK FLAVOR DERIVED FROM REAL ORANGES



BOTTLED BY **AN OLD COMPANY SEVEN-UP BOTTLING CO.**

No Trays to Fill! No Trays to Spill! No Trays to Empty! — or Forget to Refill!



Servel world's First and Only Refrigerator that **MAKES ICE CUBES WITHOUT TRAYS**



and puts 'em in a basket **AUTOMATICALLY!**

Greatest Refrigerator Advance of All Time!

Continuous Supply!
You take cubes out—Servel puts 'em back! Keeps refilling the basket as long as you need cubes! All automatically!

Just Pick 'Em Out!
Take one or a handful—cubes are loose! No messy ice trays!

Super-Cubes!
Dry, super-cold IceCircles! Extra-big—longer lasting! Won't stick together—even during automatic defrosting!

It's 3 Appliances in 1!
REFRIGERATOR plus FREEZER plus ICE-MAKER
Amazing value! Defrosts automatically! Stores 80 lbs. of frozen food! Gives you the exclusive Automatic Ice-Maker—plus extra features by the score! See it today!

Extra big trade-in allowances NOW!

SEE THIS SENSATIONAL VALUE TODAY AT

Ranger Furniture Exchange
119, 121, 123 N. Rusk RANGER, TEXAS Telephone 242

NEWS FROM OLDEN

The Olden High School banquet sponsored by the P-TA, was held on the roof garden of Hotel Connelley in Eastland, last Wednesday evening. Something more than 40 young people attended. Mr. and Mrs. Jack Norton of Dallas, were recent visitors in the home of his parents, Mr. and Mrs. O. E. Norton.

Visitors last Wednesday evening in the home of Mrs. Dick Yielding were Mrs. J. Langdon, Brockridge, Mrs. Oral Fox and son of Kermit, and Mrs. Philley, mother of Mrs. Langdon, of Abilene.

Mrs. W. L. Baker left Monday morning for Temple, where she went through the clinic on Tuesday.

Mrs. Lou Crank, who has been staying with her sister, Mrs. Dufferon, visited Mrs. Nettie Fox last week.

The first, second, third and fourth grades, along with their teachers, Miss Allman and Mrs. Day, enjoyed an Easter egg hunt last Thursday afternoon, at the home of Mrs. Truman Bryan, with the PTA sponsoring. Refreshments of cold drinks, cookies and ice cream were served.

Mr. and Mrs. Dick Yielding have as their guests this week, their daughter, Mrs. Joe Crawford and Jody, from Ulysses, Kan.

Visitors over the week end in the D. O. Moffett home were their children, Mr. and Mrs. Tommy Thompson, and Mike, of Eula, Mr. and Mrs. Billie Rae Elders and son of Oklahoma, and Johnny Marlow of Electra.

Mrs. Guy Hendricks, Dorothy and Marjorie, visited in the home of Mr. and Mrs. T. B. Marlow, last Friday afternoon.

Mr. and Mrs. Carl Berch and daughter spent the holidays in Electra with relatives.

Storm Warning No Reason For Public Panic

A tornado warning does not necessarily foretell an actual twister, the Atlanta Weather Bureau advises.

Noting that "considerable unnecessary concern" has been shown over tornado warnings in the South, the bureau said some clarification was in order.

Two types of warnings are released by forecasters. The first is announced when weather conditions are ripe for tornado development. A second warning is released when an actual twister is spotted.

"There is no reason for persons to become panic-stricken when an initial warning is issued," the bureau spokesman said, "but certain precautions should be taken."

These include taking occasional glances at the western sky, since tornadoes usually move in from the west, and keeping tuned to a local radio station.

Mr. and Mrs. Max McCotter and family attended the Easter pageant in Dallas Sunday. They also visited relatives while there.

Mr. and Mrs. J. E. Denney and son spent the week end in Electra, with relatives. They joined Mrs. Denney's sister and family, Mr. and Mrs. Clarence LaBuff from Piedmont.

Mr. and Mrs. C. B. Rogers of Pampa, spent several days with Mrs. Rogers' sister, Mr. and Mrs. J. D. Harrell.

Mr. and Mrs. Billie Crone and son, of Breckenridge, were guests in the Carl Crone home Sunday.

Mrs. Dick Yielding and daughter, Mrs. Joe Crawford and son, left Monday morning by train for Grand Prairie, for a visit with Mrs. Granvel Nabors and children.

Mr. and Mrs. Eddie Whatley of Burk Burnett, visited Mr. and Mrs. Bob Sellers, Sunday.

APRIL SHOWERS AT PIGGLY WIGGLY!
WE'VE DROWNED HIGH PRICES WITH THIS FLOOD OF RAINY DAY SPECIALS!



WE GIVE

D. H. GREEN STAMPS

MARYLAND CLUB COFFEE Pound Can **89c**

KLEENEX 3 200 Count Boxes **37c**

ZESTEE STRAWBERRY PRESERVES 12 Oz. Tumbler **29c**

CINCH CAKE MIX Pkg. **36c**

Alka Seltzer 60c Size **55c**

HYLO'S JOY Bubble Suds 16 Oz. Box **29c**

PRELL Shampoo Large Size **85c**

UNCONDITIONALLY GUARANTEED!

FRESH GROUND BEEF lb. **39c**

MEATS ANY KIND AT PIGGLY WIGGLY

Money-saving coupon **WORTH 10c**

on purchase of 1 package of **ROCKWOOD CHOCOLATE WAFERS** **35c**

GERBER'S BABY FOOD STRAINED OR JUNIOR 3 Cans **28c**

SWANSON'S Chicken Ala King 10 1/2 Ounce Can **56c**

DELCO TOMATOES 2 No. 303 cans **25c**

MAYFIELD CORN 2 No. 303 cans **25c**

JUS-MADE ORANGE DRINK half gallon **36c**

HUNT PEARS No. 2 1/2 can **37c**

LUCKY LEAF PIE APPLES No. 2 Can **25c**

PICNICS ARMOUR'S STAR lb. **49c**

SLICED BACON lb. **45c**

Fresh Fruits & Vegetables

FRESH Tomatoes Ctn. **19c**

CALIFORNIA Oranges 2 Lbs. **29c**

SUNKIST Lemons Lb. **19c**

IVORY SOAP Large **13c** Medium **8c**

Personal Size 4 FOR 20c

NEW RADIANT ACTION IVORY FLAKES LARGE BOX **25c**

FOR SPEEDIER DISHWASHING IVORY SNOW For soap-white hands! **25c**

SOFTER, SMOOTHER SKIN WITH CAMAY Bath Size **2 for 23c**

LAVA SOAP REGULAR SIZE **2 for 19c**

FOR WHITE WHITE WASHES WITHOUT RED HANDS

DUZ Large **25c**

OXYDOL Large **25c**

TIDE'S IN DIRT'S OUT TIDE Large BOX **25c** GIANT BOX **61c**

PROCTER & GAMBLE'S cheer Lg. Box **25c**

DREFT Lg. Box **25c**

JOY Lg. Size **25c**

SPIC AND SPAN NO RINSING—NO WIPING Lg. Box **25c**

IT'S DIGESTIBLE **CRISCO** 3 Lb. **89c** 1 Lb. **34c**

SALE SALE

FERTILIZER PRICES REDUCED

We have sold all machinery out of our fertilizer plant, delivery to start on May 1, 1953.

In order to move all the fertilizer by this deadline we are reducing prices to the following:

PABAK

4-15-4 \$40.80 per ton
 5-10-5 \$42.00 per ton

80 or 100 pound multi-wall paper bags

These prices are the cash prices to the consumer, f.o.b. our plant in Gorman, Texas.

Available in 80 or 100 pound cotton print bags at \$2.00 per ton extra. These prices are limited to our present supply.

SAME HIGH QUALITY

GORMAN PEANUT COMPANY
 Gorman, Texas

AUTOMATIC DEFROSTING IN THIS NEW G-E REFRIGERATOR

NEW ROTO-COLD REFRIGERATION!

New defrosting method—the Frost-Limitor—completely defrosts only when your refrigerator needs it—automatically! And amazing new Roto-Cold refrigeration assures you of more even temperature distribution in fresh-food section.

Model LD-87K 8.7-cu-ft capacity

New De Luxe Roto-Cold REFRIGERATOR

AS LITTLE AS **\$4.00 PER WEEK** AFTER SMALL DOWN PAYMENT

SEE OUR NEW LINE OF G-E REFRIGERATORS with ROTO-COLD TODAY!

Authorized Dealer
GENERAL ELECTRIC APPLIANCES

Crawley and Tibbels Hardware
 114 MAIN PHONE 808

PIGGLY WIGGLY

This Ad Effective Friday and Saturday Only

COMPLETE RELIGIOUS FREEDOM IS CHIEF TENET OF BAPTISTS

An indomitable belief in religious liberty is one of the most distinctive features of the Baptist faith, according to Dr. William Lippard, prominent Baptist writer and editor.

In an article, "What Is a Baptist?" appearing in the issue of Look magazine out today, Dr. Lippard states that, throughout their history, Baptists have contended for full, complete, un-

restricted religious freedom. This freedom applies not only to themselves, but to all other religions, whether Catholic, Moslem, Hindu, Jewish or pagan. Atheists also are entitled to their views, and to persuade others to accept them, provided their convictions do not interfere with the right of others to do likewise, according to the Baptist belief.

"The papacy contention is not

for mere 'tolerance' but for absolute liberty," Dr. Lippard continues. "Tolerance means concession and expediency; liberty means inalienable right."

He adds that Baptists do not believe that legislation, force or persecution, whether by church or state, can ever suppress religious error.

Having no centralized control, no hierarchy and no single, official creed, the Baptists do not regard themselves as a "church," but as a denomination. The local parish church is the sovereign, all-powerful ecclesiastical unit, Dr. Lippard says in the Look article. Thus, there is no official registra-

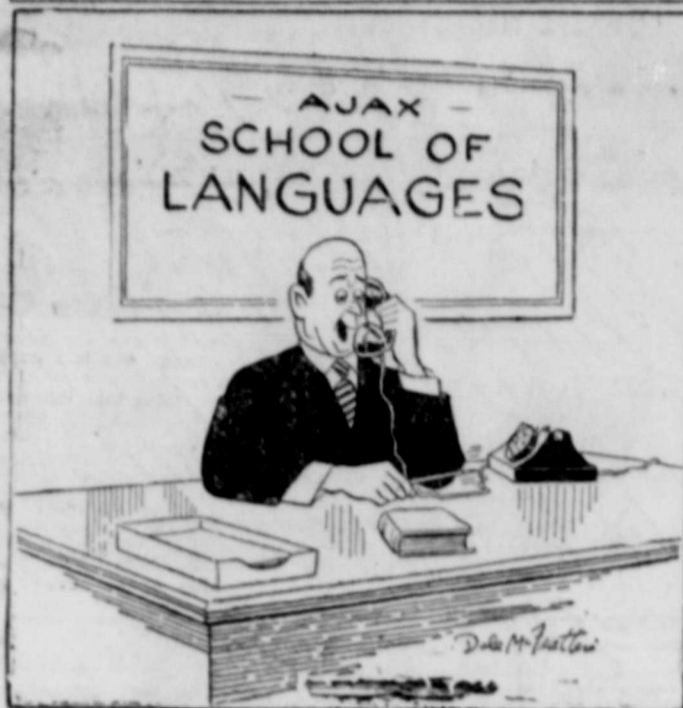
tion among Baptist churches on such matters as divorce and birth control. Any resolutions on birth control would be resented and repudiated by most Baptists as an unwarranted intrusion into the private life of husband and wife, Dr. Lippard declares.

The Baptists form the largest Protestant group in the United States. The World Almanac for 1953 records 17,500,000 members, of whom about 7,000,000 are Negroes. This is approximately one-half of the entire Negro population of the United States.

CALL 224 FOR CLASSIFIED AD SERVICE

STRICTLY BUSINESS

by McFeatters



"Yes, Dear... oui, Dear... si, Dear... ja, Dear...!"

Research Will Aid Control Of Lung Cancer

Lung cancer now leads all other diseases of the respiratory tract as a cause of death among white men in the United States, taking a higher toll than either respiratory tuberculosis or pneumonia, Metropolitan Life Insurance Company statisticians report.

The 1950-1951 death rate from

respiratory cancer for males among the company's industrial policyholders was 25.7 per 100,000; the rate for respiratory tuberculosis 21.9 per 100,000, and that for pneumonia 14.6. The excess of the cancer rate over that for tuberculosis and pneumonia is most marked at the older ages.

Twenty years ago, the statisticians point out, lung cancer mortality among males was far below that for tuberculosis. At that time the lung cancer death rate for men aged 65 to 74 was less than one third the tuberculosis rate; today's rate at those ages is nearly double

the tuberculosis rate.

The death rates from respiratory cancer, the statisticians observe, vary widely over the United States, and are generally highest in the Northeast and lowest in the South, the maximum rates being approximately six times the minimum figures. These geographic variations reflect, in part at least, differences in the age, sex, and color composition of the population, as well as differences in resources for finding new cases.

"In the present state of knowledge," the statisticians note, "it is difficult to account for the recorded increase in the mortality and morbidity from respiratory cancer, or even to determine how much of the rise is real. Improved techniques for diagnosis and the greatly increased frequency of their use have resulted in many cases being detected and reported which, in the past, would have been overlooked."

Whatever success can be achieved in the control of respiratory cancer, the statisticians point out, depends mainly upon continuing popular education in the symptoms of the disease and the promotion of measures for early detection and treatment. Periodic medical and X-ray examinations are set forth as the most productive means of detecting cases early.

ed in the control of respiratory cancer, the statisticians point out, depends mainly upon continuing popular education in the symptoms of the disease and the promotion of measures for early detection and treatment. Periodic medical and X-ray examinations are set forth as the most productive means of detecting cases early.

ATTEND CHURCH SUNDAY

Costs No More Than Ordinary Soft Drinks

Welch's FROZEN GRAPE JUICE

It's Better for You! LESS THAN 5¢ A GLASS

it's packed with VIEWING PLEASURE because it's packed with POWER



Brings you TV's sharpest, clearest picture!

Get set for TV viewing pleasure beyond compare! Picture perfection—sparked by Zenith's new jam-packed-with-power "K-53 Chassis"—sharpens your enjoyment of television to undreamed-of peaks. Vivid, striking contrasts of velvet-like blacks and pure whites... sterling knife-edge detail. These are yours to enjoy now—and for years to come—whether you live in the easiest or the most difficult reception areas. Come in today and SEE for yourself why Zenith's picture is unequalled!



THE TUDOR—Model K1813R
17 in. (148 sq. in.) picture screen. Rugged, good-looking Pyrolytic covered cabinet in rich Mahogany color. New Reflection-Proof Cylindrical Picture Screen, only.

\$199.95

F. E. Tax and Parts and Tube Warranty Included



THE STAFFORD—Model K1844R
17 in. (148 sq. in.) picture screen. Exquisitely simple lines beautifully incorporated in a smart Mahogany finish. New Reflection-Proof Cylindrical Picture Screen, only.

299.95

\$25.00 Down... 24 Months To Pay

L. & J. Supply Company

403 W. Main St.

Phone 202

Ranger, Texas

Now... a 12-Bottle Carton



So easy to take home. So welcome when it gets there.

BOTTLED UNDER AUTHORITY OF THE COCA-COLA COMPANY BY TEXAS COCA-COLA BOTTLING COMPANY

"Coke" is a registered trademark.

© 1951, THE COCA-COLA COMPANY

THANK YOU, FRIENDS!

We Are Indeed Grateful For The Wonderful Reception Accorded Our Completely Remodeled Furniture Store.

A FINAL REMINDER

There are only two days left (Friday and Saturday, April 10 and 11) to take advantage of our great Formal Opening Specials!

When Thinking Of Furniture, Think Of.... Ranger Furniture Exchange

"THE BRASHIERS"

CHURCH NEWS

Good Crowds Attending First Baptist Meeting

The plain "Gospel Messages" delivered by Rev. Charles Myers, visiting evangelist at the First Baptist Church, continue to draw good crowds into both the morning and evening services.

to attend both morning and evening services. The morning services begin promptly at 7:00 and a full breakfast is served. The morning worship begins in the lower auditorium at 7:20, and the benediction at 7:50.

Boys and girls are attending and then going on to school. Men and women come ready for the work day and go directly to the labors of the day. The gospel music led by Bill Robbins continues to thrill the hearts of those who sing and listen.

The Junior Carol Choir, and the

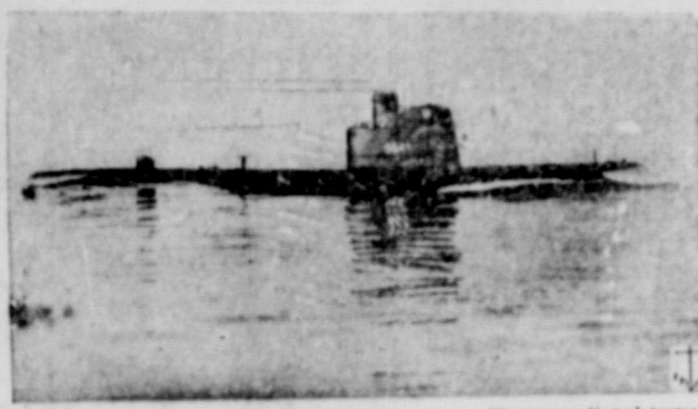
Large Crowds Attending First Baptist Meeting

The revival at the First Baptist Church is moving into the last days and services. Only one more week-day service and breakfast. There will be no Saturday morning services, but there will be a Saturday night service. The attendance has continued to increase and great spiritual feasts have been enjoyed by many hundreds of people.

Visitors from out of the city and from many other denominations have attended both morning and evening services. Increasing the spiritual tempo of the Christians of any city will just naturally make for a better city or community.

Intermediates and Young People meet at 7:15 for a song fest.

The revival will continue through Sunday evening. The "Revival for Ranger and Ranger for the Revival" is a slogan that is well placed and is for all of Ranger. Visitors from all faiths are welcome without any attempt towards "Proselyting."



THE LATEST THING in post-war submarines with conventional power plants is the USS Tang. She is a guppy snorkel boat. Guppy means "greater underwater propulsion power." The "y" is added for euphony. The snorkel is a breathing tube that enables the submarine to gulp air for her engines when cruising submerged. (Official U. S. Navy Photograph—13077)

Mr. Bill Robbins, assisted by Mr. Bullock, Keitz, Langford, Mrs. Pete Brasher, Miss Lida Jane Smith and Miss Le-ke have furnished special music for the Juniors, Young People and Intermediates, and the worship services.

The deep spiritual messages of Dr. Myers are presented in such a plain and simple manner that all age groups are able to comprehend and completely understand the "Gospel Message."

Thursday evening's message, "Not Now", and for Friday morning theme, "Fruit Trees." Those in the city who have not attended these services are invited to both morning and evening services. The nursery is open for both services.

Cancer Check Urged To Curb Fatal Disease

Many people put off seeing their physician, when they suspect cancer, because they are afraid. And yet, this fear, resulting in delay, causes many deaths from cancer. One-half of the lives now being lost to cancer could be saved if sufferers would see their doctors in time, declares Dr. Geo. W. Cox, State Health Officer. The sooner cancer is found, the less likely it is to have spread to other parts of the body, making cure impossible.

HAVE YOU ATTENDED?

YOU ARE CERTAINLY MISSING A JOY

Attend Tonight 7:45

Attend in the Morning 7:00

FIRST BAPTIST CHURCH

YOU ARE ALWAYS WELCOME

SPTV

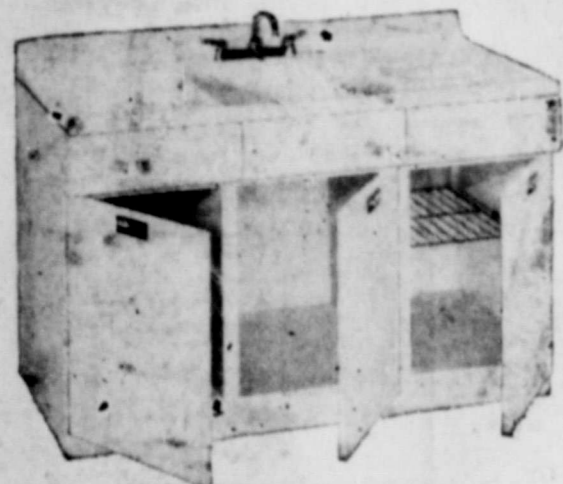
407 MAIN

Montgomery Ward

PHONE 447

FIX UP—PAINT UP NOW—AT LOW COST

Buy Wards Quality Paints, Plumbing and Building Needs



STEEL CABINET SINK

Reg. 107.84

With fittings 94.88 10% down on Terms

24" porcelain enameled top resists household acids. Convenient double drainboard; 2 drawers and 3 compartments for storage. Recessed doors for toe, knee space. With faucet, strainer, faucet hole cover.

BUY ON FHA TERMS—UP TO 3 YEARS TO PAY

3-PIECE BATH SET

Steel tub, lavatory and closet. Priced less fitting. Reg. selling at 116.50. Save now 102.88

COLORLED POWDER ROOM SET

Includes colored lavatory and closet. Priced less fitting. Reg. 68.95. 57.88

PISTON-TYPE PAINT SPRAYER 63.95

1/2 H.P. compressor displaces 2.8 cu. ft. air at 35 lbs. pressure. Complete with gun, hose.

WARDS SUPER FLOOR ENAMEL Qt. 1.27

Gives worn floors new color, gloss. Withstands hard wear. Gallon..... 4.55

WARDS NEW TILE-GLO Qt. 1.39

New finish for asphalt, rubber or vinyl tile. Seals, protects. Gives lustrous non-slip surface.

MEDICINE CABINET 6.55

14x20" window glass mirror in stainless steel frame. White enameled steel cabinet.

FLAT-RIM STEEL SINK 43.64

32"x21", 7 1/2" deep basin. Two basins with porcelain enamel top. Faucet, sprayer, strainers.

SOLID PLASTIC CLOSET SEAT 10.95

Exclusive Wards design. Solid molded plastic. Comes in blue, beige, black, white, green.

1.98 COPPER LANTERN 1.79

Solid copper at an extra low price. For porch or playroom. Clear glass globe. UL approved.

REGULAR 12.95

FLUORESCENT

10.88

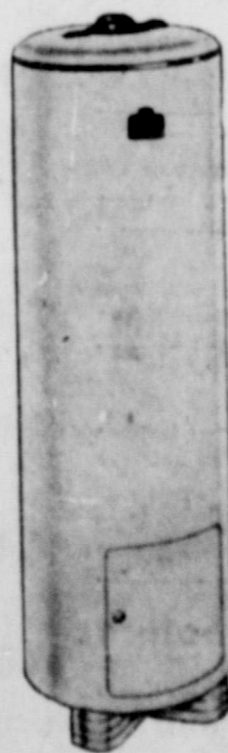
2 circular tubes — 22 and 32W — give soft, clear light. Gleaming chrome base, crystal center piece. UL approved.



REG. 107.50 WATER PUMP

No money down* 96.98

*FHA Terms—up to 3 yrs. to pay. Shallow well jet pump. Complete water system. Delivers 300 to 500 GPH on lifts to 25'. 1/4 HP motor, 20 gallon tank. Reg. 132.50 Pump. 500 to 900 GPH, 1/2 HP. 119.98



AUTO. GAS WATER HEATER

Reg. 86.50 79.88

20-Gal. tank — heavily galvanized. Heats large amounts of water at low cost. Fast recovery capacity—plenty of hot water always on tap; heavy Fiberglas insulation keeps water hot. AGA approved. Covered by Wards 10 year Protection Plan. 30-GAL. size... 89.88

FLAT-RIM STEEL SINK

Reg. 11.25 9.88

Lightweight, yet gives many years of wear. Easy to install. Porcelain enamel finish. Fittings are priced extra.

Most persons are familiar with the danger signs, such as a small sore on the skin, lip, or tongue that does not heal quickly, a mole, wart, or birthmark that suddenly changes in appearance; a painless lump or thickening, especially in the breasts, lip, or tongue; persistent indigestion; or radical changes in normal bowel habits; any unusual bodily discharge or bleeding; and persistent hoarseness lasting more than a few weeks. When any of these symptoms show up between physical check-ups, go quickly to see your doctor. They are common indications that cancer may be starting.

You cannot tell if you have cancer without seeing a doctor. A regular thorough physical check-up by your family physician is your best guard against cancer, plus an examination when one of the danger signals, or warnings appear.

is usually a late symptom, and when it comes, the growth is often far advanced.

CALL 601 FOR TELEGRAM CLASSIFIEDS



For Over Sixty-Nine Years

It has been our privilege to render a service to this community as monument builders.

ALEX RAWLINGS & SONS
Weatherford Phone 24 Texas

O. K. Grocery Market

501 W. Main I. G. A. Phone 214

INDEPENDENT GROCER'S ALLIANCE OF AMERICA

LIGHT CRUST FLOUR 10 Pound Bag 83c	SWIFT JEWEL SHORTENING 3 Pound Carton 75c	AMERICAN BEAUTY CUT MACARONI CUT SPAGHETTI ELBO MACARONI 7 oz. box 10c
---	--	--

CAMPBELL'S—Can Tomato Soup 12c	BAMA—12 Oz. Glass Red Plum Jam 23c
DEL MONTE—No. 2 Can Crushed Pineapple ... 29c	BAMA—12 Oz. Glass Cherry Preserves 26c
DEL MONTE—2 1/2 Can Melba Peaches 33c	BAMA—12 Oz. Glass Apricot Preserves 23c
DEL MONTE—1 Pound Large Prunes 31c	CHICKEN OF SEA—Can Tuna 34c
DEL MONTE—No. 2 Can Sliced Pineapple 33c	DEL HAVEN—No. 2 Can Tomatoes 15c

NIAGARA INSTANT COLD WATER STARCH pkg. 19c

PARD or DASH DOG FOOD 2 Tall Cans 29c	IMPERIAL SUGAR 10 lbs. 95c	CASCO PORK - BEANS 3 303 Size cans 25c
--	---	---

MONARCH—1 Lb. Jar Sweet Relish 33c	MONARCH—Tall Jar Fruit Salad 33c
MONARCH JUMBO—Pint Can Ripe Olives 37c	MONARCH GO. Cream S 33c
MONARCH—300 Size Can Green Asparagus 33c	MONARCH—300 Okra & 1 33c
MONARCH CHOPPED—No. 303 Can Turnip Greens 15c	MONARCH—P Cucumber Stick 33c

WELCH'S GRAPE JUICE Large 24 oz. bottle 36c

BONELESS—Cello PERCH lb. 33c	DONALD DUCK—Pkg. CORN 23c
COLD KING—Pkg. Strawberries 31c	DONALD DUCK FORD HOCK—Pkg. Lima Beans 27c

O. K. QUALITY CHUCK ROAST pound 49c

EXTRA SPECIAL 100% PURE GROUND MEAT .. lb. 49c	OK QUALITY TENDER LOIN STEAK lb. 79c
CERTIFIED—Top Grade SLICED BACON .. lb. 63c	OK QUALITY T-BONE STEAK ... lb. 79c

LARGE FANCY LETTUCE lb. 10c

BUNCH Green Onions 5c	FANCY—Bunch Radishes 5c
FANCY—Cello Bag Carrots 10c	YELLOW—Pound Squash 15c
FANCY—Carton Tomatoes 18c	FRESH New Potatoes ... 3 lbs. 25c

Fresh Beets, English Peas, Fresh Squash, Ky. Beans, Okra Cucumbers, Fresh Corn, Fresh Blackeye Peas

Ranger Daily Times

ELM STREET—RANGER, TEXAS
Joe Dennis, Manager Grover Lee, Editor
TIMES PUBLISHING COMPANY
Joe Dennis and O. H. Dick, Publishers

Entered as second class matter at the postoffice at Ranger, Texas under the act of Congress of March 3, 1879.
Published Daily Afternoons (except Saturday and Monday) and Sunday Morning.

One week by carrier in city20
One month by carrier in city85
One year by mail in state4.95
One year by mail out of state7.50

NOTICE TO PUBLIC—Any erroneous reflection upon the character, standing or reputation of any person, firm or corporation which may appear in the columns of this newspaper, will be gladly corrected upon being brought to the attention of the publishers.

CLASSIFIED

Advertising Rates—(Minimum Ad Sale 70c)
1 Time per word 3c
2 Times per word 5c
3 Times per word 7c
4 Times per word 9c
5 Times per word 11c
6 Times per word 13c
7 Times per word 15c
8 Times per word 17c

(This rate applies to consecutive editions. Skip runs ads must take the one-time insertion rate).

FOR SALE

NEED a new waste-paper basket for your office? We have them. All metal, medium size. Green. Ranger-Daily Times Office.

HOW IS YOUR supply of carbon paper? We carry a complete stock. Ranger Daily Times.

IS YOUR pen getting short? Better drop by the Times office and get a new supply.

DO YOU DOODLE? If so we have lots of scratch pads. Good for figuring too. Ranger Daily Times.

FOR SALE: Piano and household furniture. Phone 9013-F-4.

FOR SALE: Four-room modern house. Two acres of land. \$1,500. See 728 So. Austin.

FOR RENT

FOR RENT: Two and four room furnished or unfurnished apartments. Phone 521. If no answer call 315. Joseph's Fireproof Apartments.

NOTICE

ALCOHOLICS ANONYMOUS: Strictly confidential. Phone 831, Box 14-L.

DOES YOUR pencil sharpener irritate you when you try to get a good point on your pencil. Stop by the Times Office and get a new one . . . the price won't irritate you!

ARE YOU FORGETFUL? Better drop by the Times office and get a memo pad with calendar attached. Remember those important dates.

\$25.00 Down

HELP WANTED

HELP WANTED: Experienced waitress wanted. \$25 per week—Manhattan Cafe, Eastland.

Soothe Itching, FIERY PILES

Don't let sore, itchy, painful, itching piles drive you crazy. In 15 minutes CHINABOIL starts giving you wonderful cooling, soothing relief—making relief from pain, burning and itching. Money back guaranteed. CHINABOIL costs only \$1.00 at drugstore.

Nearly 400 Grapes in every bottle!
Watch's pure Concord GRAPE JUICE
SO BIKI! SO PURI! SO GOOD!

EVERY THURSDAY
Single vision | Double Vision
Glasses | Glasses
As Low As | As Low As
13.95 | 16.95
Includes Examination
DRS. FINN & FINN
Optometrists
Specs cleaned, Glasses fitted
310 S. Rush Street



"It's a Lovely Day Today"
Saw Dr. Jolly going up the steps of the post office Lee Cantrell busily washing a green Cadillac
Lou Williams carrying a pan of something up the street—meat, maybe? James Ratliff standing in front of the bank talking to three friends Vera Cooper maneuvering her car down main street
Bill Levere, the loafing, I mean talking to the men at the Texaco Service Station Fred Harper and friend, making the turn at the hospital O. M. Franklin making his rounds on main street
Janie Bullock coming out of Montgomery Ward, looking very cool in a summer dress
Marcel Harris driving a big, black Cadillac Sarah Cantrell crossing the street in front of Capps Studio, very deep in thought
M. L. King and Nick Crawford discussing things in general
One in Halbrook talking to a friend in front of the drugstore with the new front Polly and Sid Harton making the turn where the derrick used to be
Dr. Harris (our new mayor) drinking coffee and chatting with friends at the Oil City Pharmacy
Mrs. Callie Lee riding up the street with a friend Lawrence Bryant backing his blue Chevy out on Main Street—delivering parcels, no doubt
Mary Jo Stie hurrying into Duke and Avers—a little late to work, maybe?



Baking mixes have improved the egg market.
MINNEAPOLIS, MINN.—Who buys your eggs? Certainly the housewife of America is the farmer's largest egg buyer. But facts released here recently show that one outfit pays a large share of the farmer's egg check. Pillsbury Mills, Inc. revealed purchases through suppliers for a twelve-month period totalled 549,218,400 individual eggs. This means that out of every 120 eggs sold by farmers each day, this company buys one of them.
The sudden importance of egg buying has resulted from the recent great expansion in the use of baking mixes containing processed eggs for both bakers and housewives alike. "Fortunately for us," the nationally famous milling company says, "egg production went up along with the expansion in the mix market. Even so, when we go in to buy eggs we are careful lest we start to disturb the egg market." Company officials stated they had no positive proof that they are the world's largest single purchaser of eggs—"However," they said, "if we are not the world's largest, we are one of the world's largest egg buyers."

thority is J. E. Farr, executive vice president of Schenley Distributors Inc., who makes it his business to trace American vacationers and their holiday dollars. He knows that vacationing families will spend, in the first three months of this year, at least \$235,039,350 for beverages, food and lodging. From these surveys, and others, his company builds its seasonal advertising and sales campaign.
"Texas' famous cities, historical sights and Gulf Coast resorts will be visited by many additional thousands of vacationers in 1953," Farr believes. "In the past decade there has been almost 100 per cent increase in winter vacations alone. This has provided resort and allied industries with almost \$187,000,000 of tourist dollars in the first three months of this year."
Farr attributes the vacation boom, proven by the more than 100 per cent increase in touring Americans over the 7,000,000 who went sightseeing during the winter a decade ago, to two important factors:

Lone Star State Up With Top Ten Vacation States
Texas, one of the 10 top vacation states in America, can expect its biggest tourist year in state history in 1953.
Predictions are that Texas will attract a substantial share of the 21,023,000 American families who will this year spend their vacations away from home.
These are not reports from native chambers of commerce or convention bureaus. Rather, the au-

THE MAYTAG AUTOMATIC GETS CLOTHES CLEANEST!
• Famous Gyrafoam washing action \$309.95
• Fully automatic Liberal trade-in Easy terms
• No bolting down
See it today at . . .
Johnson Appliance Company
305 MAIN ST. PHONE 46

Salads sing
MADE WITH
"HE GIVE AND ONLY"
Miracle Whip

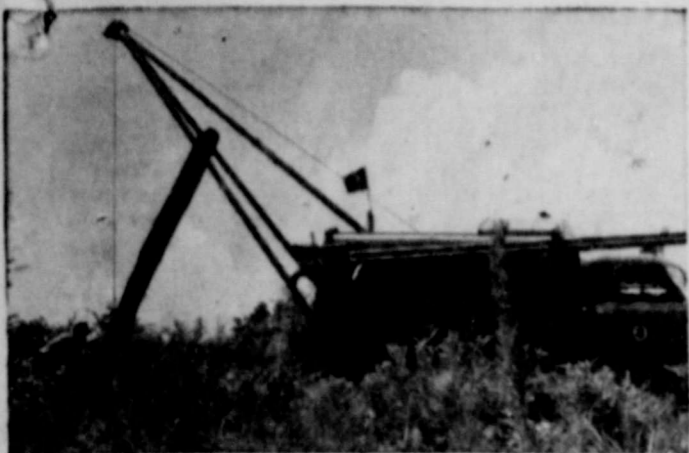
AISHMAN'S Food Market
Where Your Food \$\$\$ Goes Further
FRIDAY AND SATURDAY
LARGE HEAD
LETTUCE 10c
CELLO CARROTS 10c
FRESH SQUASH lb. 12c
BANANAS - CA's lb. 14c
ADMIRATION
Coffee Lb. 89c
300 KLEENEX 21c
SURF 2 Boxes 42c
WITH COUPON
Crisco 3 Lbs. 79c
COD or PERCH
BONELESS FISH lb. 33c
1 LB. FROZEN
STRAWBERRIES 47c
BATTERY FED
Fryers Lb. 55c
PLATE RIB STEW 29c
FRESH GROUND MEAT . . lb. 45c
CHUCK ROAST lb. 49c

Montgomery Ward
427 MAIN PHONE 447
Ranger, Texas
Week End SPECIALS
Reg. 98c Boys Crew Neck Shirt 67c
Colorful stripes in boys sizes 6 to 16. Wide selection of colors in short sleeve styles. Save now
Reg. 35c Girls Anklets 19c
White crew sock for school or work. Sturdy reinforced heels. Save plenty on these
Reg. 98c Womens Hose 67c
New styles and colors at a real saving. Save on these now and stock up
Reg. 2.98 Mens Sport Shirts 2.37
Colorful California styles in spring colors. Rayon faille poplin that's so easy to wear. Size S-M-L
Reg. 4.98 Chenille Spreads 3.97
Six beautiful colors to choose from. Fringe bottoms and right style for any home. Stock up now and save
Reg. 5.79 Solid Glass Fishing Rod 4.44
Square glass rod for greatest strength. Big ones will stay with you on these
Reg. 39.95 Tank Cleaner 33.88
Sturdy construction makes this an excellent buy. Cleans in all the hard to get places. Save 6.00 now
Reg. 39.95 Mattresses 31.88
Heavy ticks and good innerspring styles. Made to sell for much more. Save on these and get a good rest besides
Reg. 229.95 Living Room Suite 169.88
2-piece frieze in new styles. Grey, red and beige colors. All fully spring constructed. Save 160
Cup and Saucer Sale
Final cleanup on these reg. 10c cups and saucers. Save on these. Stock up now as this sale will clean them up Each 5c
USE WARDS TIME PAYMENT PLAN FOR ALL YOUR NEEDS

For the Men Who Succeed—
and for those who will some day succeed them, our suggestion is that they invest part of their earnings in real estate. Wise investments in real properties have yielded fortunes to many people. And those who succeed in this venture never gamble on the title. They buy only quality abstracts made by those who have themselves invested wisely—in their plant—in their personnel—and in their responsibility to the public.
Earl Bender & Company
Eastland (Abstracting since 1923) Texas

BIG TIRE SALE
Firestone CHAMPIONS
Now you can save on Champion tires with the famous Lifetime Guarantee. Here's your chance to get greater blowout protection, longer mileage, more non-skid safety at big savings! Don't wait—equip today at these low prices!
Reg. Price \$16.95
SALE PRICE 14.95 PLUS TAX
Reg. 14.60
Reg. 12.95
SIZE 6.70-15
With your old tire
PLUS TAX
YOUR OLD TIRES WILL COVER THE DOWN PAYMENT . . . SET OF 4 FOR AS LITTLE AS \$2.75 A WEEK
SPRING VALUES IN Firestone SEAT COVERS
NOW 15.95
Famous Velon PLASTIC COVERS 24.95
29.95 Values—Sedan or Coach
SAVE ON CAR CLEAN-UP SPECIALS
Auto Polish Cloth 4 YDS. 65c
FIRESTONE Liquid Cleaner and Glaze 89c
FIRESTONE Chromium Polish 49c
Reg. 2.99
Chamois 15x20 1.59 SALE
Tip-on Toothbrush Auto Luggage Tube 1.00
O-Cal-O Cellulose Sponge Low as 19c
PREMIER GASOLINE:
Regular 22c Gal. - Ethel 24c Gal.
Premier Oils, Gulf, Texaco, Quaker State and Humble
SOS Motor Oils.
H.H. Vaughn
HIGHWAY 80, EAST PHONE 23 RANGER

Pole Planter in Action



THIS VERSATILE NEW TELEPHONE TRUCK can dig a hole, pick up a 20-foot pole and plant it in position faster than a man can set a fence post. This is one of many new technical developments that are helping us push telephone lines out into farming areas at a record-breaking pace. In just seven years we have set 256,000 poles in a construction program that has increased the number of Southwestern Bell rural telephones in Texas six times. And this year we hope to extend service to many more families and businesses in rural areas.

SOUTHWESTERN BELL . . . A TEAM OF 28,000 TEXAS TELEPHONE PEOPLE . . . AT YOUR SERVICE.



April 30th is the deadline on which social security payments for household workers for the first quarter of 1953 are due at the office of your Collector of Internal Revenue.

The federal law brings household workers under the old-age and survivors insurance system went into effect January 1, 1951. However, lawyers say that many persons who employ help in their homes are still in the dark about requirements of the law.

Here are some provisions everyone should know. Household workers covered by the law include maids, laundresses, housekeepers, cooks, nursemaids, gardeners, handymen, waiters, footmen, grooms chauffeurs of privately owned cars, practical nurses, and others.

Whether or not a household worker is included in the law depends on how many days she works and how much money she is paid. If the person works 24 days and earns \$50 during any one of the three month periods into which the calendar year has been divided a tax report must be filed and payment made.

Only cash wages are considered, which includes bus fare if paid in cash, but does not include bus tokens, clothing, room and board, or other non-cash items furnished the employee. A domestic worker does not have to put in a full day to count on the 24 day rule—any portion of the day worked counts as a full day.

The rule is different for domestic workers on farms operated for profit. In such cases the domestic is considered a farm worker and is covered only if he or she meets the test for farm labor.

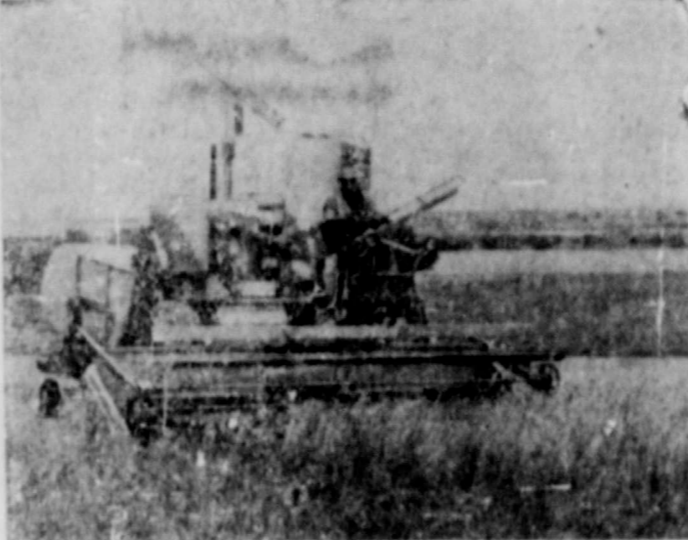
The tax in all amounts to 3 percent of the cash wages paid. You, as an employer, must deduct 1 1/2 percent which is the employer's contribution. After the close of each specified three-month period you should send the tax, with

Husbands! Wives! want new pep and vim?

Thousands of people are weak, worn-out, exhausted, and unable to enjoy life. They are looking for a way to get their energy back. They are looking for a way to get their vim and vigor back. They are looking for a way to get their pep and vim back.

At all drug stores everywhere—In Ranger at Crawford Rexall.

New Power Steering Makes Harvesting Safer and Easier



Now, for the first time full power steering is available for a self-propelled combine.

A new and exclusive power steering feature for combines gives a faster steering response, safer handling, and easier operation even over the roughest terrain. It automatically absorbs the shocks and jolts that ordinarily jar combines while traveling over rough fields. Immediate response of the steering wheel is assured as hydraulic steering begins the moment the wheel is turned by the operator. This means quick and easy turning.

An added safety feature is a special by-pass relief valve that protects the steering mechanism from damage in case of hydraulic overload.

Power steering is standard equipment on all 1953 production models of the "S" and "SR" Self-Propelled Harvesters manufactured by the Minneapolis-Moline Company.

Dr. Morton J. Rodman of Rutgers University is waging a one-man war against household poisoning that will take the lives of 600 children during 1953.

The College of Pharmacy professor said there were hundreds of household preparations not meant for internal use which are left constantly within reach of children. Rodman said frantic calls for a chemical analysis of some product the college. "Sometimes the answer is given in time, sometimes not," he said.

Among household items which have brought sudden illness and death to children are metal polishers, paint removers and insect repellents. Ingredients or antidotes of such products are seldom listed on the label, Rodman said.

Rodman hopes to cut the needless deaths through poison by compiling a list of the chemical constituents of many commercial products which have poisoned children in the past. He also is compiling a list of antidotes—a slow and painstaking process.

Rodman feels that if his efforts save only a single life, the extra work will be worth it.

HARTFORD, Conn. — Forty motorists, charged with going through red lights, had something else in common. All were arrested by Officer William M. O'Brien.

Poisonings In Homes Object Of Big Study

Dr. Morton J. Rodman of Rutgers University is waging a one-man war against household poisoning that will take the lives of 600 children during 1953.

The College of Pharmacy professor said there were hundreds of household preparations not meant for internal use which are left constantly within reach of children. Rodman said frantic calls for a chemical analysis of some product the college. "Sometimes the answer is given in time, sometimes not," he said.

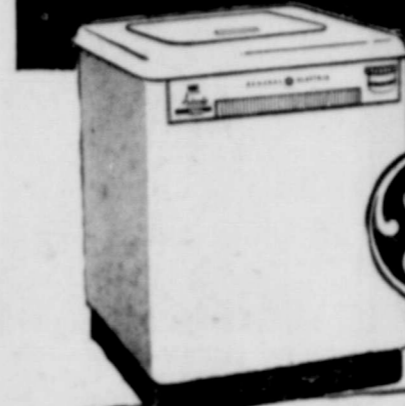
Among household items which have brought sudden illness and death to children are metal polishers, paint removers and insect repellents. Ingredients or antidotes of such products are seldom listed on the label, Rodman said.

Rodman hopes to cut the needless deaths through poison by compiling a list of the chemical constituents of many commercial products which have poisoned children in the past. He also is compiling a list of antidotes—a slow and painstaking process.

feared said there were hundreds of household preparations not meant for internal use which are left constantly within reach of children. Rodman said frantic calls for a chemical analysis of some product the college. "Sometimes the answer is given in time, sometimes not," he said.

Among household items which have brought sudden illness and death to children are metal polishers, paint removers and insect repellents. Ingredients or antidotes of such products are seldom listed on the label, Rodman said.

Rodman hopes to cut the needless deaths through poison by compiling a list of the chemical constituents of many commercial products which have poisoned children in the past. He also is compiling a list of antidotes—a slow and painstaking process.



ACTIVATOR-AUTOMATIC WASHER

DOES ALL YOUR WASHING WITH "HAND-DONE" PERFECTION!

ONLY 299.95 per month 3.38 per week after down payment

- * Activator® Washing Action
- * Fast Spin-Out Drying
- * New Small-Load Selector
- * New "Fabri-Flex" Control
- * 1-yr warranty or entire washer plus additional 4-yr warranty on scaled-in transmission.

Here's the washer that will give you extra time for leisure. It's completely automatic—just put in your clothes, set the dial—and forget it. Your G-E Washer will do the work!

Each piece is done like careful washing-by hand, passing through 3 zones of washing—vigorous, medium, light. And clothes come out looking and smelling clean—and almost completely dry!

COME IN TODAY FOR A FREE DEMONSTRATION!

Crawley and Tibbels Hardware

114 Main Ranger Phone 808

Authorized Dealer GENERAL ELECTRIC AUTOMATIC WASHERS



How to flavor your kitchen

WITH A DASH OF SMART NEW COLORS YOU CHOOSE RIGHT AT HOME!

Once you select the color, the next step is simple. Accurate directions enable you at your Devco dealer to custom-mix the paint quickly and without guesswork right on the spot.

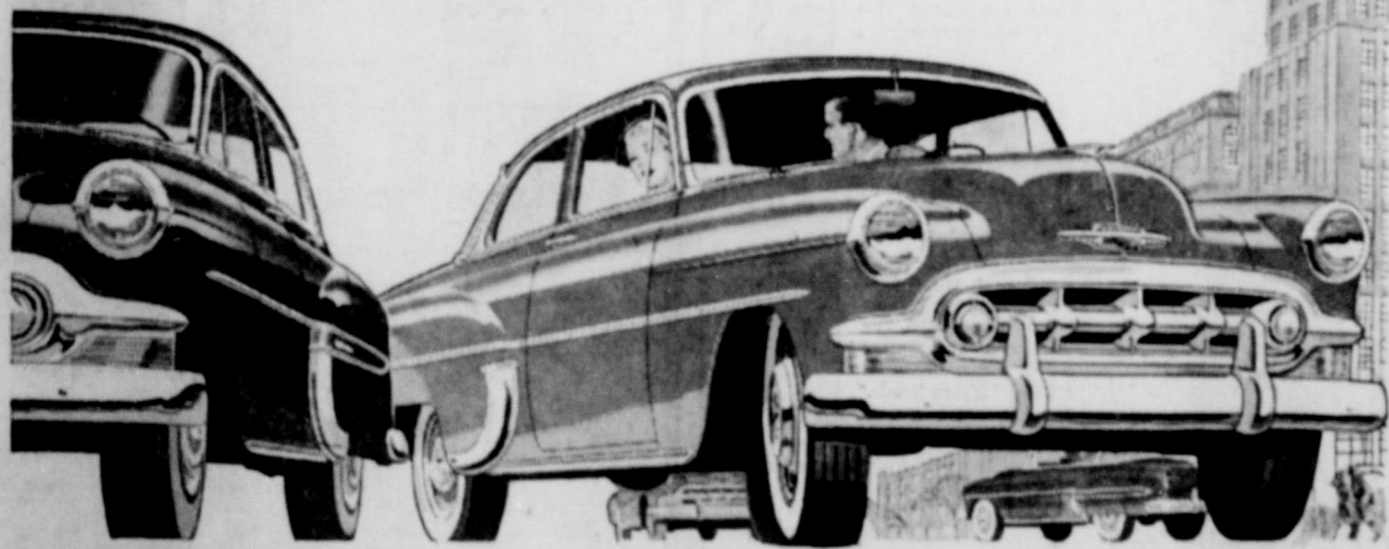
THE DEVOE LIBRARY OF COLORS is a complete set of color swatches for choosing new colorful paint schemes for any room in the house. Easiest and quickest way to match colors right on the spot! Over 200 new, decorator colors! Available in 4 interior finishes: flat, semi-gloss, gloss, Mirrolac enamel — AND ALSO in outside House Paint! Pick up your Devco Library of Colors today!

L. & J. SUPPLY CO.

403 W. Main St. Ph. 202 Ranger



Chevrolet is the only low-priced car to offer... Extra-Easy Power Steering



The Bel Air 4-Door Sedan (above) and the "Two-Ten" 2-Door Sedan (right)—two of 16 beautiful models in 3 great new series.

You park and steer with finger-tip ease, yet the familiar feel of the road is still there. Driving is easier—and safer than ever!



MORE PEOPLE BUY CHEVROLETS THAN ANY OTHER CAR!

ANDERSON CHEVROLET COMPANY

111 SO. AUSTIN STREET

RANGER, TEXAS

PHONE 14

Power Steering! It's yours in Chevrolet for 1953 and in no other low-priced car!

This wonderful new feature, optional on all models at extra cost, marks the most important advance in driver convenience and safety since the automatic transmission, which Chevrolet also introduced into its field.

Power Steering makes steering virtually effortless on all roads and at all speeds. It permits you to park, even in a tight space, with finger-tip ease. It cuts steering effort approximately 80%; reduces driver fatigue; makes driving simpler, safer and more enjoyable than ever before.

But come in! See and drive Chevrolet for 1953 with Power Steering and all its other exclusive advantages!

Continuation of standard equipment and trim as illustrated is dependent on availability of material.



"There's more time for fun with an Electric Range in my kitchen!"

"Cooking electrically saves more time for fun. Electric cooking is so clean, it saves hours of extra work cleaning in the kitchen. And no running to the range to see when foods are done. Accurate temperature controls take the guesswork out of cooking." You'll enjoy more leisure time when you cook electrically, too. For finer flavor . . . meals prepared in a jiffy . . . cakes baked to an even brown . . . cook electrically.



WOMEN WHO KNOW... COOK ELECTRICALLY!

Your favorite electric appliance dealer has an electric range in the right size and price for your family. See him soon.

TEXAS ELECTRIC SERVICE COMPANY

A. N. LARSON, Manager

WEED KILLER FOR LAWNS

SPRAY EQUIPMENT

FERTILIZER

WE WANT TO BUY

YOUR EGGS

RATLIFF FEED AND SEED

PHONE 109
RANGER, TEXAS



SNOW QUEEN—Ileana Satterlee, of Honolulu, won out over 18 other University of Hawaii co-eds for the title of Snow Queen. She will reign over the Waikiki Snow Festival when the cold white stuff is brought to the famous beach from the top of Mauna Loa, famed volcano.

IMPROVEMENTS NEEDED IN PEANUT PRODUCTION

COLLEGE STATION — Increased yields of high quality nuts can make peanut production in the state a more profitable farm crop, says E. A. Miller, agronomist for the Texas Agricultural Extension Service. Acreage allotments are low, therefore, yields must be increased in order to get the most from the limited acres. But, says Miller, quality must also be improved along with the yield per acre.

Several years ago a 7-step program was outlined by a group of successful peanut growers, processors and research and extension workers. Miller reports that progress has been made but dry weather and unfavorable growing conditions have handicapped the program for the past two or three years. Moisture conditions are generally favorable now in most of the heavy peanut producing counties and the specialist suggests that growers take another look at the 7-step outline.

Peanuts should be grown in combination with other crops, pastures and livestock for balanced farming. Poor distribution of labor, depleted soil fertility and organic matter and increased wind erosion result from one crop peanut farming, says Miller.

High yields—they're the profitable ones—are produced from fertile and well managed soils. The use of legumes in the rotation, applying barnyard manure, leaving or plowing under all crop residues, and using commercial fertilizers, points out Miller, are practices which will improve the soil and increase production.

Plant only the best seed of the recommended varieties and if the seed nuts have not been chemically treated by the seller, treat them and also being produced seed to get better germination and stands, says Miller. From 35 to 40 pounds of shelled peanuts should be planted per acre, and research done at the Stephenville Experiment Station shows that stands can be improved by as much as 50 percent and yield increased from 7 to 12 bushels an acre by chemically treating the planting seed.

Growers are advised by Miller to consult the local county agent for information on controlling the diseases and insects which attack their crop.

The specialist says using practices which increase yields will also lower production costs. Using modern machinery will reduce the amount of labor needed to produce the crop and cut costs. Peanuts should be harvested as

soon as the nuts are mature, especially if southern blight is present. If windrowed, thresh as soon as the plants are dry enough to reduce splitting of the kernel during the shelling. Cure the nuts in sacks, says Miller, either in ricks or artificially. A good threshing job is a must for the grower is docked for the dirt, sticks and trash left in the peanuts.

Miller believes that many of the peanut production and marketing problems can be solved through the application and use of the practices recommended under the 7-step program. Fit peanuts into balanced farming; take care of the soil; plant good seed properly treated; make labor count; control diseases and insects; harvest and thresh for high grade and sell for grade and variety value.

Ozarks Boast Grandma Moses

Mrs. Laura Ann Turner, 82-year-old widow, painter and writer of folklore, is known as "the Grandma Moses of the Ozarks," at Mountain View, Mo.

Mrs. Turner signs all her verses and paintings, "Hillbilly Ann." Unlike Grandma Moses, Hillbilly Ann began painting as a girl. She started writing verse during World War I when her two sons were in military service.

A native of Illinois, Mrs. Turner has lived in this Ozark region for more than 50 years. She moved to the outskirts of Mountain View with the first of her five husbands, a traveling optometrist who fitted her with a glass eye to replace the eye she lost in a childhood accident.

Hillbilly Ann's paintings are primitive but strong in line and color. They have a personal quality that appeals to many tourists looking for an inexpensive memento of the Ozarks.

Using ordinary household enamel and a piece of cardboard, she disdains brushes and employs a finger technique. Her rural landscapes, log cabins, and ocean front scenes come out of her imagination rather than from reality.

Living alone since the death of her last husband, a preacher, Hillbilly Ann manages to do all the odd chores around the house despite a partially paralyzed left leg. She is best known for her mimeographed booklet, "Meditations of Life, the Poetical Works of Hillbilly Ann."



TAKES TAYLOR'S JOB—Lt. Gen. Anthony J. McAuliffe, above, has been named Deputy Chief of Staff for Operation and Administration of the A.M.P. He succeeds Lt. Gen. Maxwell D. Taylor, now Eighth Army commander, in Korea.

German Hunting Not What It Was

MUNICH, Germany — There's still good hunting in Germany, but the free and easy days of the early occupation are over.

A German hunting license now costs \$10, a wood-bbe hunter has to pass a stiff test in German hunting rules, and, to top it all off, he has to pay by the pound, if he wants to take home his bag of game.

The first class of U. S. army hunting instructor has graduated, prepared to teach GI sportsmen to hunt the German way. Baron Kurt von Egloffstein and a staff of 3 German woodsmen trained the Army instructors. Courses for GI's will not be set up in recreation areas across southern Germany.

The toughest rule of all is that the hunter must pay for the game before he can take it home. A rabbit costs about 50 cents, a pheasant 80 cents and a small deer 35 cents a pound.

Portuguese Movie Men In Campaign To Change Law

LIBSON — The theatre owners association here has asked the Portuguese government to ease a controversial new law stringently restricting the types of movies and plays that may be seen by children and adolescents.

The exhibitors say the law, which went into effect last Jan. 1

"to safeguard the moral interests of youth," has seriously slashed their revenue. Leaders of the opinion favoring the law include the Catholic League, Catholic circles generally and university student groups.

READ THE CLASSIFIEDS

Dixie Drive - In

Wednesday - Thursday
April 8 - 9

Show Time 7:30 - 9:30
Admission 40c. Children Under 12 Free.

BUGLES IN THE AFTERNOON
RAY MILLARD
CARTER MARLOWE TUCKER
ALSO SELECTED SHORT SUBJECTS

AT YOUR RANGER THEATRES

TOWER

Tonight Is Bargain Night
KIDDIES 9c ADULTS 35c
Helen Walker in
PROBLEM GIRLS

RANGER DRIVE IN

LAST TIMES TONIGHT
Technicolor - M.G.M.'s
MILLION DOLLAR MERMAID

Between Us ...

(Continued from Page 1)

est ever used was 2 1/2 inches. It was used by Willie Koeler, the 3-4's, 140-pounder who coined the famous crack, "Hit 'em where they ain't."

Two drunks staggered onto a bus. One tried to give the nearest uniformed person their fare.

"Garry, I can't take it," the man said. "I'm a naval officer."

"Hey!" shouted the drunk. "Lash got offa here—we've hearded a bloomin' battle-ship!"

On behalf of many appreciative

Eastland County folks we'd like to say "Thank you, neighbor!" to Mrs. J. A. Bates of Ranger for her splendid work in staging the 1953 March of Dimes drive. Mrs. Bates and other citizens who work tirelessly in raising funds for worthwhile causes are unsung heroes. They give time, effort, energy—and money—in drives to help their fellow men. And what more noble work can there ever be since the Good Book does tell us that we are our "brother's keeper."

Mrs. Bates issued a financial report of the MOD campaign this morning and listed \$276.16 in expenses (and this figure included a carry-over of \$125.45 from the 1952 drive) which was used to finance literature and supplies. That figure certainly doesn't include the great expense of Mrs. Bates personally. She spent many

hours, many of her own dollars, and drove hundreds of miles at her own expense to carry on this important campaign. In addition, we know she made a sizable donation from her own purse. We salute Mrs. Bates for the fine service she has rendered to her neighbors and to public victims all over the country and again, on behalf of all say to her—sincerely—"Thank you, neighbor!"

Heavy says if a man has his nose broken in two places—well, he ought to keep it out of those places!

FOR SALE

Nice home in Abilene to trade for Ranger property or acreage.

Joe Roper home on Caddo Highway.

New house in Snyder, Texas. Sale or trade.

8 room home, Strawn, Texas.

4 room home, Eastland, Texas.

C. E. MADDOCKS & COMPANY

Mrs. James Higdon Mgr. Real Estate
INSURANCE & REAL ESTATE

MAJESTIC

TUESDAY - WEDNESDAY - THURSDAY, APRIL 7-8-9
Admission: Adults 50c—Children 14c

THEY'RE OFF! ON THEIR MOST HILARIOUS ADVENTURE!
ALL NEW!
Ma and Pa KETTLE ON VACATION
with RAY COLLINS BOOHL MILLER

The Choice Above All Others



Keepsake DIAMOND RINGS



D. E. PULLEY Jeweler
Diamonds - Watches
Jewelry - Silverware
Price includes Federal Tax

Keep of California
Stephanie Korset designs **PEBBLETIX PAIR-OFFS** to give you freedom for the country—fashion for the city. These oh-so practical **PAIR-OFFS** combining Pebbletex with Koranite are truly the most wearable wardrobe in the world!
"PEBBLETIX" (TM): Textured woven sweater guaranteed washable—Sanforized—color-fast.
KORANITE: Mercerized cotton knit—color-fast—guaranteed hand washable.

as soon in - **GLAMOUR** and **McCall's**
(L) Playsuit with Flare Skirt
(R) Sun Weskit

YOU can get all the painting accessories that you need—and many more helpful tips—at our store. Why not stop in very soon. We'd be delighted to see you.

WE GIVE S & H GREEN STAMPS
E. L. MARTIN and SONS
THE FRIENDLY STORE

DEVOLVE POINTERS for home painters

What to do with paint leftovers—don't throw away. If full of lumps, strain through old nylon or silk stocking before using again.

How to apply varnish or enamel quickly—use a roller coater and finish by smoothing lightly with tip of brush.

Easy way to wipe up paint spatter—slip a pair of old socks over your shoes and "skate-up" paint drops on floor.

Tip for painting chairs and tables—Drive a nail part way into each leg-end. This prevents smearing the floor.

How to keep can clean while painting—Drive several nail holes into lip of can so paint flows back when brush is wiped on can edge.

For painting masonry surfaces—use a nylon brush for longer wear. Better ask for a "Super-kleen" Nylon brush.

If paint runs down brush handle when painting ceiling, you're dipping brush too deep. Also don't "press" too hard—use tips of bristle.

How to keep window screens from staining house—paint copper or galvanized screens with Devolve Zinc Dust Paint. One coat prevents staining for years.

YOU can get all the painting accessories that you need—and many more helpful tips—at our store. Why not stop in very soon. We'd be delighted to see you.

L & J SUPPLY CO.
403 W. Main St. Phone 202

PENNEY'S

ALWAYS FIRST QUALITY!



BREEZE-FRESH ORGANDIES!
Permanent Finish
ORGANDY PRISCILLAS
82x99 Size
8-inch French Headed Ruffles. Picot one side. Whites and pastels.
3.98
156x90 SIZE 7.90

Terrific At This Price
THEY'RE CHROMSPUN
Colors fast to sunlight, atmospheric fumes, — washing, immune to mildew & moths. Slow to soil—Easy to clean. Quick drying.
98" wide 90" long
4.49

17x81 Size
Chromspun Panels 1.49

SAVE! VAT-DYED DRAPERY PRINTS
New colors & patterns for slipcovers or drapes. Beautifully blended colors on popular grounds. Also solid colors.
36" wide Yd.
98c

While They Last
WATER SOILED
RAYON PANELS **ORGANDY PRISCILLAS**
50c **2.66**
each

TIP TOP HAS IT
IF SEED ... OR FERTILIZER. We have it!
IF FEED ... CALL FOR RED CHAIN SUPERIOR FEED — There is none better. We have complete stock.
IF CHICKS ... WE HATCH NOTHING BUT THE BEST Certified Eggs. Book Your Order Now!

TIP TOP FEED & HATCHERY
Your One-Stop Feed & Hatchery Service
RANGER, TEXAS