

Rangers End Season Against Schreiner Saturday

Stiff daily drill sessions out at Ranger Junior College practice acres were underway this week at Coach Boone, Yarbrough and Assistant Mentor H. C. Henderson readied their Purple & White Rangers for their final battle of the 1952 campaign.

The Rangers, who've enjoyed a better-than-average season this fall, nearly traveled down the glamour-paved trail to the 1952 PC championship. Enroute, however, they were tipped, 7-6, by Tarleton State and later were tied, 13-13 by Arlington State.

The charges of Coaches Yarbrough and Henderson are slight favorites to cop the Saturday night contest at Kerrville.

A victory there might help bring them a cinch for second spot in the loop windup standings for '52. That is, if Arlington State defeats Tarleton in Saturday's championship classic at Stephenville.

He's Gene Henderson, Ram quarterback, who now leads the Conference in kick-off returns and running a-d ranks second in punting, punt returning, and scoring.

Henderson has returned seven kick-offs for 208 yards, an average of 29.3 yards per return; and in rushing he has 64 carries for 515 yards, an average of 8.05 yards per carry.

In addition he's punted 40 times for 1,466 yards, returned 12 punts for 365 yards, and scored 8 touchdowns for 48 points.

scoring with six touchdowns and 26 conversions for 62 points.

RANGER DAILY TIMES

34TH YEAR RANGER, TEXAS, THURSDAY, NOVEMBER 20, 1952 PRICE FIVE CENTS No. 122

Stab Victim Is Out Of Danger, Will Recover

Angel Renteria, 37-year-old Ranger Latin American resident and victim of an early Sunday morning stabbing late, Wednesday was reported out of danger and on the road to recovery in a Ranger hospital.

James Varner Enlists In Army

James E. Varner, 20, son of Mr. and Mrs. E. N. Varner, 715 Cypress St., in Ranger, has been enlisted in the US Army, it was announced today by T-Sgt. James Hendrick of the Eastland Recruiting Station.

Jurors Urge Audit Of County's Books

The Eastland County grand jury, in session for three days and released by District Judge George L. Davenport, returned six indictments, it was reported today.

A no-bill was returned in one case. During the jurors' three-day session a total of 21 witnesses were examined.

In their report to the court, the jurors stated that they had visited the Eastland County jail and found it sanitary and efficiently operated.

RMA Finances Committee Is Asked To Report

Mrs. Mae Belle Oylor, secretary-manager of the Ranger Retail Merchants Association, today asked that all members of the organization's Christmas finance committee turn in their funds at the earliest possible moment.

Ranger's Jail Is Empty, Quiet During Long Lull

Spiders interested in new locations for cobwebs might try the two tanks in the municipal jail at City Hall.

Many Fans Fear Indian Victory At Comanche

Ranger hasn't beaten Comanche, and the Bulldogs haven't won that District 10-AA championship—not yet.

Many Fans Fear Indian Victory At Comanche

In a brief, to-the-point poll of 10 football fans, 17 men and three women, in downtown Ranger early this morning, opinion stacked up like this:

Baby Norther' Sneaks In, Puts Nip In Area Air

The air over Eastland County had a nip in it early Thursday, following a "baby norther" which moved in the area late Wednesday.

Ranger Ready For Comanche

Out at Bulldog Stadium this afternoon Coach O. C. (Stubby) Warden and Sam Aills are driving their 1952 Ranger High Bulldogs through their final pre-battle drill in preparation for the Maroon & White's set-to with the Comanche Indians at Comanche Friday night.

Bulldogs Paced Through Final Workout Today

The Bulldogs, who'll be 1952 District 10-AA champions about 10:30 p.m. tomorrow night if they can turn back a determined band of Comanche Indian competitors over on the enemy gridiron, were lashed through stiff drill workouts Monday, Tuesday and Wednesday.

Bulldog Fans Invited To Pep Rally Sessions

All fan followers of the 1952 Ranger High Bulldogs are invited to attend two big final pep rallies which windup a week of spirit-building effort for the Ranger-Comanche game at Comanche Friday night.

James Varner Enlists In Army

James E. Varner, 20, son of Mr. and Mrs. E. N. Varner, 715 Cypress St., in Ranger, has been enlisted in the US Army, it was announced today by T-Sgt. James Hendrick of the Eastland Recruiting Station.

Protein Content of Plants Has Doubled

Protein content of plants has been doubled and the vitamin content substantially changed in recent research work at Michigan State College.

Protein Content of Plants Has Doubled

Protein content of plants has been doubled and the vitamin content substantially changed in recent research work at Michigan State College.

Is Elected Group

Members of the Ranger Community Chest in addition to White, president, and Miss Maddocks, secretary, are W. F. Creager, vice president; Wilson Guest, treasurer.

Bake Sale Set For Saturday

A bake sale will be staged in downtown Ranger at the Piggly Wiggly Store on Main Street all day Saturday, beginning at 9:30 a.m., it was announced today.

WINNER OF SATURDAY'S \$50 AWARD THANKS MERCHANTS

It was really thrilled, to say the least. That was a portion of the elated comment in a letter from Mrs. Roy W. Parish of Wichita Falls to Mae Belle Oylor, secretary-manager of the Ranger Retail Merchants Assn.

Irene Hanna, 68, Will Be Buried Friday, 10 A. M.

Mrs. Irene Hanna, 68, passed away at 11 p.m. Wednesday evening at her home at 507 West Patterson, following a severe heart attack. Funeral services will be conducted from the Church of Christ at 10 o'clock tomorrow (Friday) morning, with interment in Eastland cemetery.

Two Eastlanders Join Air Force

Donald R. Walker, 20, son of Mr. and Mrs. Monroe Walker, 507 W. Patterson St., Eastland, and Gerald W. Ables, 20, son of Mr. and Mrs. H. C. Ables, 1308 S. Bassett St., have been accepted for enlistment in the US Air Force, it was announced today by T-Sgt. James Hendrick of the Eastland Recruiting Station.

Nine Eastland Men Inducted Into Army, AF

Nine Eastland Countians are among the 64 registrants from the six draft board areas who were processed for induction at the U. S. Army - U. S. Air Force Recruiting-Induction Station, Abilene Tuesday and Wednesday, it was reported today.

Drive An Oldsmobile Before You Buy! OSBORNE MOTOR CO.

Drive An Oldsmobile Before You Buy! OSBORNE MOTOR CO. 1007 E. 11th St., Eastland, Texas.

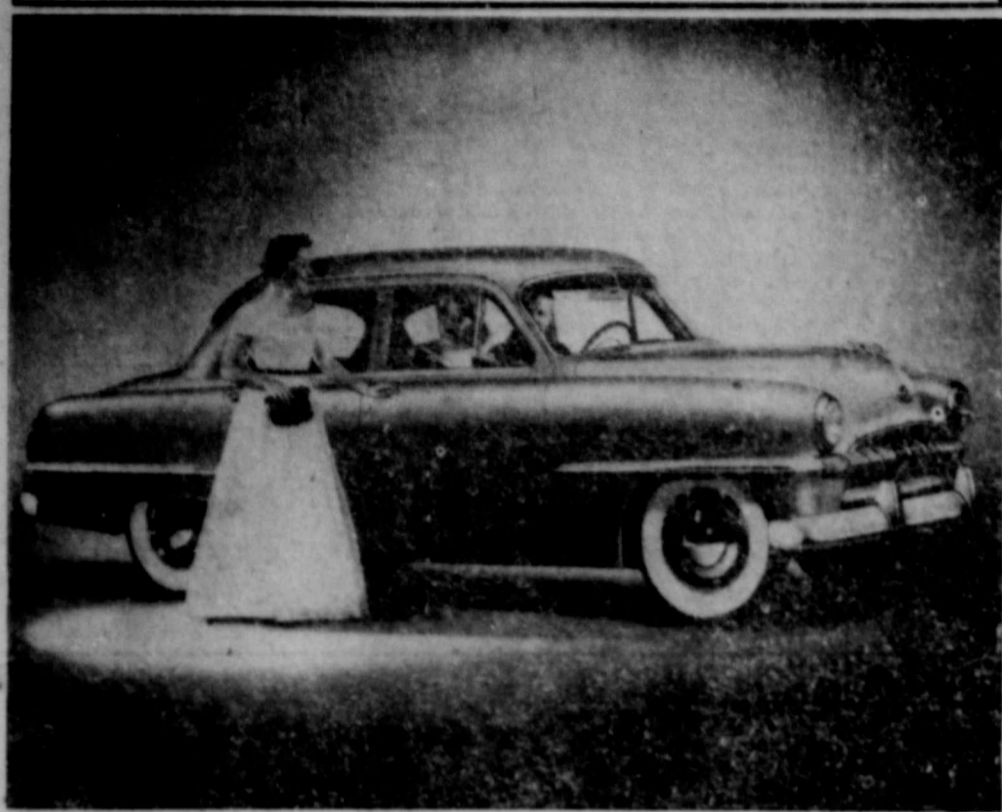
1,000 SEATS ARE RESERVED FOR RANGER FANS

The entire north side of the Comanche Stadium, the usual area reserved for home fans, has been reserved for Ranger High Students and Bulldog fan followers who will trek to Comanche Friday night to witness the Ranger-Comanche District 10-AA football battle, local school officials announced late Wednesday.

Drive An Oldsmobile Before You Buy! OSBORNE MOTOR CO.

Drive An Oldsmobile Before You Buy! OSBORNE MOTOR CO. 1007 E. 11th St., Eastland, Texas.

Plymouth's '53 Cranbrook Features Styling



Chrome trim is integrated as part of the design to further enhance the long, low, wide appearance of the 1953 Plymouth. This Cranbrook Four-Door Sedan shows also the horizontal character lines that are incorporated into the sheet metal of front and rear fenders. Box type seat trim gives both front and rear seats a smart appearance. Upholstery, interior molding and trim are available in a wide variety of harmonizing hues to blend with the "choice of exterior body colors."

CALL 224 FOR CLASSIFIEDS

When the gang gets together...

A Lift...for Life!



No other drink picks you up like **Dr. Pepper**

The special sparkle of Dr. Pepper adds to everybody's fun, everywhere you go. Enjoy it in the six-bottle carton or the 12-bottle carton; buy it by the case... and look for it at soda fountains and vending machines, too.

At 10, 2 and 4!

Maintenance Of Tractor Should Get Attention

Tractor fuel worth \$24 million is wasted annually because of poorly adjusted carburetors. Poor carburetor adjustment can cost the operator \$2 every day the tractor is used. Failure to winterize equipment properly can depreciate a tractor 30 percent in a single year.

These are only a few of the reasons why the 4-H tractor maintenance program is one of the nation's fastest growing youth movements, according to an article in Capper's Farmer. The program was organized in 1945 in 14 Mid-west states. Now tractor clubs are common from coast to coast with a total of 209,564 4-H members and 21,545 farmer-instructors.

The 4-Hers learn to spot trouble early so a skilled serviceman can prevent a costly breakdown. They also practice safety rules in the field and on public roads. Eight oil companies sponsor the program which is encouraged by agriculture, industry and government to cut the cost of mechanized farm power.

Key objective of the tractor club member is to learn to adjust a carburetor so the fuel mixture isn't too lean or too rich. The year-round program also trains him to service the air cleaner, cooling and ignition systems and other parts to prevent waste of power.

The three-year course is featured by tractor demonstration contests in many localities. Club members compete for county, state and national honors. They are judged on their record books as well as reports from leaders and county agents.

WOMEN WITH IDEAS...
SHOP HERE FOR THE BEST MENU SUGGESTIONS!

SERRA MISSION
Peaches No. 2 1/2 Can **25c**

MAXWELL HOUSE
Coffee Pound Can **79c**

SUNSHINE CRACKERS
Hi - Ho One Pound Box **29c**

Wizard—6 Oz. Bot. **WICK** 36c

Prell—60c Size **SHAMPOO** 53c

Vel **BEAUTY BAR** 19c

Red Heart—Can **DOG FOOD** 15c

Hartz—Pkg. **DOG YUMMIES** 17c

7 Oz. Pkg. **CORN KIX** 17c

12 Oz. Pkg. **COMET RICE** 15c

Sunshine—1 Lb. Box **CRACKERS** 25c

Walker-Austex—15 oz. can **PLAIN CHILI** 43c

Time to Order ... TURKEY FOR THANKSGIVING

Picnics

TENDERIZED Hormel Half or Whole Lb. **49c**



U. S. HEAVY CALF **Chuck Roast** Lb. **65c**

HORMEL or MIDWEST **Bacon** Lb. **49c**

HORMEL TENDERIZED **Hams** Half or Whole Lb. **59c**

Softex **Tissue**

3 rolls for **29c**

Diamond **Napkins**

3 pkgs. 80 count **29c**

YOUR CHILDREN'S TABLE MANNERS ARE SHOWING...

If this problem is handled like a game of fun, future dividends are sure to be good.

NOVEMBER **EVERYWOMAN'S**



Phillip Morris Metal Package Holders and matches FREE when you buy a package or a carton of Phillip Morris.

Light Crust

Flour

10-Lb. Bag ... **79c**

SUGARPE MEDIUM **Peaches** 1-Lb. Bag **44c**

DROMEDARY PITTED **Dates** Loose 16 oz. Pack Pkg. **37c**

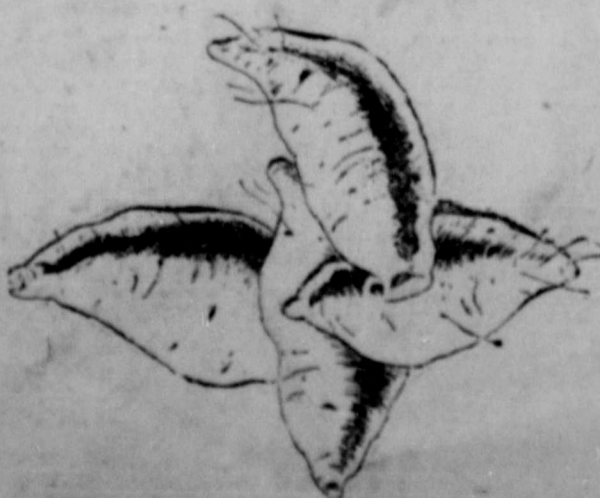
NONE SUCH **Mince Meat** 9-Oz. Pkg. **25c**

DIAMOND **WAX PAPER** roll **25c**

KAISER ALUMINUM **FOIL** roll **29c**

LISTERINE

HOME GROWN **Mustard Greens**



GIVE YOUR GREETING A Personal TOUCH!

NAME IMPRINTED

Now Is The Time To Order imprinted Christmas Cards

Don't wait till the last minute to order your Christmas cards! Come in today and select from our new and clever collection. Have your signature printed on each one at little extra cost. Mail early this year!

Christmas Cards

ORDER NOW!

RANGER TIMES
 PHONE 224

RANGER DAILY TIMES

ELM STREET—RANGER, TEXAS
Joe Dennis, Manager Grover Lee, Editor
TIMES PUBLISHING COMPANY
Joe Dennis and O. H. Dick, Publishers

Entered as second class matter at the postoffice at Ranger, Texas under the act of Congress of March 3, 1879.
Published Daily Afternoons (except Saturday and Monday) and Sunday Morning.

One week by carrier in city .20
One month by carrier in city .85
One year by mail in state 4.95
One year by mail out of state 7.50

NOTICE TO PUBLIC—Any erroneous reflection upon the character, standing or reputation of any person, firm or corporation which may appear in the columns of this newspaper, will be gladly corrected upon being brought to the attention of the publishers.

CLASSIFIED

Table with 2 columns: Advertising Rates (Minimum Ad Sale 70c) and Rates per word for various durations (1-8 times).

(This rate applies to consecutive editions. Skip run ads must take the one-time insertion rate).

FOR SALE

FOR SALE: 4 1/2 room modern house, 1/2 block Young School. By owner. Phone 170-J.

FOR SALE: Famous Dearborn Cool Safety Cabinet Gas Heaters. Killingsworth's.

FOR SALE: Goodyear Tires and tubes. Use Lifeguard Safety Tubes and forget about blowouts. See Pat Thomas your Sinclair Agent or Phone 91.

FOR SALE: Five room modern house, 1302 Spring Road. Call 72.

FOR SALE: 4 room house to be moved. Mrs. L. C. Archer, 912 Young Street.

HOUSE, 24x26. Porch, good floors, windows, roof. 565-J or Box 409.

FOR SALE: Cut flowers for all occasions. Also azaleas, cyclamens, mums and other pot plants. Mathena's Flower Shop, near corner of South Marston and Alice Street. Phone 144. We deliver.

LOST

LOST: Female Cocker Spaniel, Florida, answers to the name of Suzy, finder please call Bill Neck, phone 422.

HELP WANTED

HELP WANTED: Woman with car to give Stanley Demonstrations full or parttime—\$50 to \$150 per week. Write P.O. Box 891, Fort Worth.

SALESMAN WANTED: Wanted at once man with car for Raleigh business in Eastland County. No capital needed. Write immediately to Rawleigh's, Dept. TXJ-1225-JLK, Memphis, Tenn.

HEAVY EQUIPMENT MEN ARE being selected in this area to be trained for high pay jobs as Diesel Mechanics, tractor, bulldozer and crane operators, Marine Diesel, parts men and other jobs in this rapidly expanding industry. If you are mechanically minded and not making \$90 per week, you owe it to yourself to find out whether or not you can qualify. For free information without obligation write Box 118, Ranger Times.

CHOKED with GAS?

THANK HEAVENS! Most attacks are just acid indigestion. When it strikes, take Bell-and tablets. They contain the fastest-acting medicines known to doctors for the relief of heartburn, gas and similar distress. 26c.

ALEX RAWLINS & SONS
Weatherford Phone 24 Texas
For Over Sixty-Eight Years
It has been our privilege to render a service to this community as monument builders.

FOR SALE
4 room modern house with two lots in Highland Park. Beautiful location. \$2500.00. \$500.00 will handle.
C. E. MADDOCKS & COMPANY
Mrs. James Higdon Mgr. Real Estate
INSURANCE & REAL ESTATE

BEHIND THE WALLS OF TEXAS STATE HOSPITALS



NOTE: This is the first of a series of articles on our State Hospital System, prepared under the supervision of Dr. George W. Jackson, Medical Director of the Board for Texas State Hospitals and Special Schools, and sponsored by the Hogg Foundation for Mental Hygiene, University of Texas.

Mary L. was a pretty girl. Her dark hair was always freshly brushed, and there was an excited look that often sparkled in her eyes and made her look like a kid at a pony ride.

Her eyes had that look the day she got the job with the social service department of a Texas State Hospital. She hadn't hoped to find work the week after she graduated from college.

She sat in the kitchen the night before her job started, watching her mother roll pie crusts, tasting the sugared cherries, and talking. "I'm so excited, Mom," she said. "This is just the kind of job I wanted. I like to feel useful and helpful to people."

That's what Mary thought. It took her a month to realize that the feeling of usefulness was soon mixed with a sense of frustration. The social service department numbered eight—eight workers and a director. Nine workers. That meant that 340 patients looked to Mary for help in working out their problems of adjustment, for aid in getting furloughed, for help in placement work after discharge.

As Mary recognized how much training was necessary to do her job well, she enrolled for several courses at the University School of Social Work. She soon learned that willingness and desire could not replace professional training.

This case load was more than the social workers could handle adequately, but Mary tried—just as all of them did. She made her little office as pretty as she could; she tried to see patients and relatives, tried to keep her records of contacts with patients, families and community agencies up to date. The one secretary used all her time writing the required histories and letters.

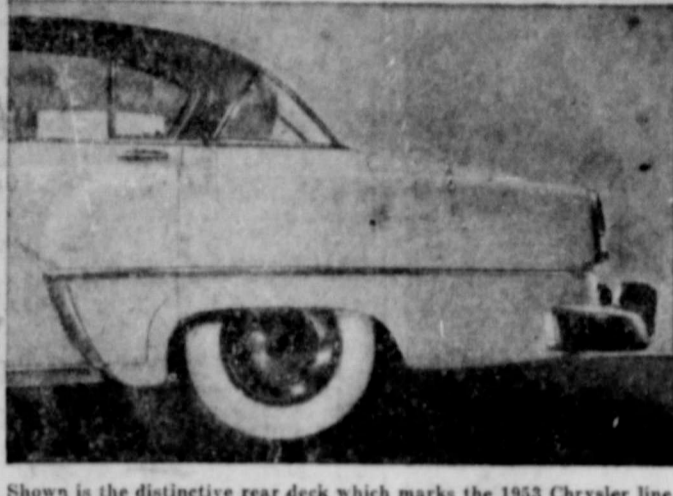
Mary worked with Herman R., the fellow with baby curls and football shoulders, the man whose liquor bottle had become a crutch. She was delighted the day the doctor permitted Herman to take the job she had found for him, stricken the day they brought him back to the police station too drunk to know her. And Mary blamed herself for Herman's relapse. She had known he would need encouragement on his new job, but she had not had time to keep in touch with him.

Mary wrote careful notes about Willie J., the sixteen-year-old kid whose dark eyes spoke to her of hidden fears and deep, shaking misery. In the interviews with Willie, she could see him looking at her with hope and pleading. She thought of Willie often. He was the boy to whom grown-up terrors and horrible delusions had come with the first fuzzi of manly beard. When he should have been thinking of footballs and girl friends and square dances, Willie was fighting his phantom miseries behind the walls of nightmare.

Mary's supervisor helped her understand Willie and his problems, and Mary spent a lot of time with him. It was she who wrote his father when the doctor said Willie was well enough to be

Keepsake DIAMOND RING
Give the Present with a Future
\$200 LAURENS Ring Kings enlarged to show details
Wedding Ring \$87.50 Prices include Federal tax
The gift that lives forever is a Keepsake Diamond Ring. Selected by experts from the world's finest quality gems, Keepsake is guaranteed PERFECT by this store and Good House-keeping.

1953 CHRYSLER FEATURES DISTINCTIVE REAR DECK



Shows is the distinctive rear deck which marks the 1953 Chrysler line. The rear fenders have long, low sweeping lines which blend into the rear doors. The long rear deck emphasizes the new over-all lowness. New this year is the "K" type outline of the rear door.

NEWS FROM CHEANEY Mrs. Bill Tucker

Mrs. Bertha Strickler stated Sunday that Mrs. Emma Green and Mrs. Sula Walter helped her enjoy her fiftieth birthday Tuesday. The day was spent piecing quilts with time out at noon for a delicious luncheon. Mrs. J. P. Strickler stated that she always enjoyed visiting with friends.

Mrs. Beanie Perrin was able to visit the John Tucker family one day last week. She is looking forward to a visit here with her daughter, Maxine, and husband, Dale Warren of Baltimore, Maryland, in the near future. The Warrens lost their infant son at birth quite recently. This was their only child.

Here from Bismack, South Dakota, last week were Mr. and Mrs. Jim Hector and children, Nancy and Gary who were guests of her aunt, Mrs. Ben Freeman and Mr. Freeman.

Mrs. Dequil-Cozart returned to Breckenridge Monday after spending the weekend here with her

DEAD STOCK
CENTRAL HIDE & RENDERING CO.
For Immediate Service
Phone Collect
53 RANGER, TEXAS

MANY FANS-

(Continued from Page 1)
10AA championship.
A report from Comanche early this morning indicates that the Indians were drilled hard and long Monday, Tuesday and Wednesday, strengthening their defense and readying some new offensive strategy for the crucial Friday night clash. Ranger has been well accounted, an informant said, and the Comanche squad is highly keyed for the contest and they'll be busting in their play to stage an upset.

CALL 224 FOR CLASSIFIED AD SERVICE

Husbands! Wives! Want new Pep and Vim?

Thousands of copies are being sent out... Buy a case today!

Burroughs Adding Machines and Cash Registers
Your choice of 15 models of new machines.
Stephens Typewriter Co.
417 S. Lamar St.
Eastland Phone 639

BUY A CASE TODAY!
7
Stephens Typewriter Co.

What's the Use of an Abstract—
Earl Bender & Company
Eastland (Abstracting since 1923) Texas

PRE-CHRISTMAS SALE OF FINE JEWELRY
FOR THE NEXT 10 DAYS WE WILL GIVE 10% DISCOUNT ON ALL GIFT ITEMS.
Costume Jewelry, Ceramics, China, Pottery, Bill Folds and Many Other Gift Items.
USE OUR CONVENIENT LAY-A-WAY PLAN
We Give S&H Green Stamps
Ranger Jewelry Co.
J. R. and Ethel Ervin
PARAMOUNT HOTEL BUILDING

Dry Clothes Fast... AT YOUR OWN CONVENIENCE
Texas Electric Service Company
A. N. LARSON, Manager
'GET ALL 3' AND SEE HOW EASY WASHDAY CAN BE!

Plymouth's New Belvedere Hardtop for 1953



A new concept of automobile design in the low-priced field co-ordinates superb styling with advanced engineering developments in Plymouth's line of 1953 models. Here is the dashing Belvedere Hardtop. Interior tailoring and appointments blend harmoniously with its two-tone exterior colors. Even the steering wheel is color co-ordinated. Powered by the lively and dependable Plymouth engine with its increased rating of 100 horsepower and 7.1 to 1 compression ratio, the Belvedere is one of nine body styles offered in the 1953 line. Wire wheels shown are optional at extra cost.

Roast Whole Turkey Appropriate As Timely Recipe Of The Week

Miss Mildred Daniels, Eastland County Home Demonstration agent is stressing the Recipe of the week, Roast Whole Turkey and Turkey prepared in many delicious ways. Turkey steaks are a different way to prepare a choice meal. The meat must be legderied before trying however, to be good. Then for turkey left overs for Turkey A La King, Salad, Gumbo, Grouquets and Chow Mein. Then there is a neat way to cook turkey for two, take the Drumstick with the skin off the thigh left attached so that it might be filled with toothsome dressing. Miss Daniels suggested that all wings be set back for barbecue. The foods and nutrition specialists have set up a time table for cooking which will be helpful.

Start with a ready to cook turkey. Salt inside of turkey. Fill body and neck cavities loosely

with stuffing. Stuffing swells as it cooks, so give it room to expand. Fold neck skin toward back and fasten with skewer or a few stitches. For stitching use clean white wrapping cord and large needle. Tuck legs under band of skin at tail or tie down. To do this wrap cord around legs and under tail. This will hold legs close to the body. Fold the wing tips back on the wings. This will help to hold the neck skin in place. Grease skin of turkey with melted or softened fat. Place breast down on rack in shallow pan. Do not add water, and do not cover. Place in preheated oven set at proper temperature indicated on time table. Baste with fat from bottom of pan during baking, and turn from one side of the breast to the other, then breast up. Or cover the top and sides of bird with a loosely woven cloth which has been

moistened in fat. Moistan cloth with fat from bottom of pan if cloth dries during cooking. Timetable for Roasting Whole Bird Ready to cook Wt. Temp. Time Pounds OF Hours

5-7	325	2 1/2-3
8-11	300	3 1/2-4 1/2
12-15	275	5-6
16-20	250-275	6 1/2-7 1/2
21-25	250	8-9

Bread Stuffing
1 cup fat
1 cup chopped onion
4 cups chopped celery
9 cups cornbread crumbs
7 cups bread cubes
1 tablespoon salt
1/2 teaspoon pepper
2 teaspoons poultry seasoning
1 1/2 to 2 cups broth, milk or water
4 eggs, raw or hard cooked
Use two to four day old light bread for bread cubes, or dry out bread in the oven. Cut into cubes. Cook onion and celery in fat over low heat until onion is soft but not browned, stirring occasionally. Meanwhile, blend seasonings with bread cubes. Add the onion, cel-

ery and fat. Pour liquid and beaten egg (if used raw) gradually over the surface, stirring lightly. Add more seasonings as desired. Stuffing for a 14-18 pound turkey.

Giblet Gravy
3 tablespoons pan drippings
3 tablespoons flour
2 cups water, broth or milk
Salt and pepper
Chopped giblets
Sliced hard cooked eggs, if desired
Cover giblets with water and simmer in a covered saucepan until tender. Drain the giblets and chop. Pour the pan drippings into a bowl leaving the brown residue in the roasting pan. Let the fat rise to the top and skim off. The meat juice under the fat should be used as part of the liquid. Place 3 tablespoons of the fat back in the roasting pan. Add flour and blend well. If desired, brown the fat and flour slightly to give additional color and flavor. Add liquid all at once. Cook, stirring constantly until uniformly thickened. Season to taste. Add chopped giblets and sliced hard cooked eggs.

Let's Eat This For One Day
Breakfast
Orange Juice, Scrambled Eggs, Bacon, Whole Wheat Toast, Milk, Coffee.

Dinner
Roast Turkey and Dressing, Giblet Gravy, Cranberry Sauce, Buttered Green Beans, Celery Sticks, Fruit Salad, Rolls, Butter or Margarine, Pumpkin Pie, Coffee.

Supper
Cold Sliced Turkey, Potato Salad, Cranberry Sauce, Milk.

Timely Tips
1. The proportion of cornbread and light bread may be varied to suit taste. Light bread and biscuit or cornbread and biscuit may be combined.
2. Giblet stuffing: Simmer giblets until tender. Chop and brown in the fat before adding onion and celery.
3. Parsley stuffing: Add 1/2 cup finely chopped parsley to the bread with seasonings.
4. Oyster stuffing: Cook 1 to 2 pints of oysters in the oyster liquid until edges curl. Add to bread with seasonings. Include oyster liquid as part of liquid in stuffing. Chop oysters if they are

CAPITALISM IS NEW WORLD FORCE, SAYS C-C LEADER

What is the most revolutionary force in the world today—communism, socialism or a t o m i c energy?
Most people would say communism, or perhaps the terrible power of the atom bomb. But Clem D. Johnston of Roanoke, Va., a vice president of the Chamber of Commerce of the United States, believes none of these answers the question. Next to Christianity itself, he said in a recent radio address, competitive capitalism is the world's greatest revolutionary force.

Johnston summarized his reasoning this way:
Capitalism is relatively new in the world. It is basically American. Europe distrusts capitalism and restricts its practice by gov-

ernment-sanctioned cartels. A cartel is an elaborate combination of independent enterprises in the same branch of production. It is designed to regulate prices and restrict competition. The inefficient or high-cost operator and the inefficient and high-cost worker are thus protected. The basic aim is security.
Capitalism has a radically different aim. It is free competition, governed only by the laws of demand and supply. It offers the greatest reward to him who makes or sells the best products at the lowest price.

This conflict between the old established order and America's competitive capitalism, Johnston said, explains in part why this country is in difficulty here and abroad. Capitalism contains the seeds of revolution. It threatens the old established order.

large.
5. Pecan stuffing: Add 2 cups pecans to bread and seasonings.

cally, Johnston said, is the opposition to capitalism even in America. While we preach free enterprise, a startlingly large number of people in government and out of it, oppose capitalism. They too, prefer security to individual enterprise. Like the peoples of the old world they argue that government can do more for a man than he can do for himself; that security can be guaranteed by planned economy.

To show how misleading are these beliefs, Johnston told the following anecdote:

Once upon a time, two fleas settled down on a large, healthy dog. With an abundance of food and shelter, the fleas multiplied prodigiously. Finally, the dog, unable to maintain this extra tax on his system, crawled away and died. The fleas were panicked. They ran from the tip of his nose to the tip of his tail shouting, "The economic system is broken down." The fat, hairy ones were so overcome that they laid down and died. Some of the more enterprising fleas tried to thumb a ride on the back of a passing dog. But they had no luck.



IN TRIM—Don McAuliffe, captain and halfback, gets the feel of the turf keeping in trim for the upcoming campaign by maneuvering Michigan State's Macklin Field. (NEA)

PENNEY'S
ALWAYS FIRST QUALITY!

Gift Worthy

4 Reasons

WHY PENNEY'S IS YOUR SANTA!

Glamour gift that's practical, too!

SLIPPER SATIN
acetate robe with quilting touches

5.90

Rich, gleaming acetate slipper satin (with a crepe-back finish—quality touch a woman appreciates!) styled with scalloped, quilted collar, pocket, cuffs. Luxury gift in melon, aqua, pink, royal! 12-20.

Velvety-soft... and most becoming to her!

Grand gift idea!

CHENILLE ROBES

3.98

Full, wide-wrap-around robe in corduroy-like chenille... yes, it's washable and practical... but oh, how good-looking too! Big bow and scroll design adds extra glamour to the skirt. Many colors, sizes 12-20.

Gay print has an Early American charm and femininity!

Warm, colorful robe in QUILTED COTTON

7.90

Such a young-in-heart, pretty style! Big-pocketed, full-skirted cotton quilt robe... perfect gift from Penney's because it's sure to please! Many color combinations, sizes 12-20.

Fireside warmth... plus luxurious looks!

QUILTED SATIN
acetate gift robes

8.90

Shimmering, lustrous acetate satin robes... softly quilted, beautifully tailored, wonderfully gift-appealing! And see Penney's color selection: you choose from rich shades of fuchsia, peacock, royal! 12-20. Buy today!

407 Main *Montgomery Ward* Phone 447

Exciting New Electric and Wind-Up Trains
\$1 DOWN ON LAY-AWAY HOLDS TRAIN TILL DEC. 15

WIND-UP DIESEL FREIGHT SET
A perfect "First Train Set." Train includes twin diesel locomotive with bell, caboose, box car and grocery car. 2 straight and 8 curved track sections—102 in. of track in all. Train is 36 3/4" long. Powerful clock-spring motor. 3.59

WIND-UP SPARKLING FREIGHT
B Steam-type locomotive has brake, bell—emits harmless sparks. Included are coal and water tender, high side gondola, box car, caboose. 4 straight, 8 curved track sections—full 10' of track in all. 120" track circumference. 37 1/2" long train 3.98

ELECTRIC REMOTE CONTROL SET
C Low-priced Electric Train Set. Steam-type locomotive, tender, tank car, gondola, caboose. 10 track sections. Underwriters' approved transformer. Oval track—102 in. of track in all. Train is 35 1/2" long. For hours of play fun. 10.69

COMPLETE ELEC. FREIGHT SYSTEM
D 2-unit Diesel locomotive, box car, high-side gondola, caboose. 6 telephone poles, automatic crossing gate, 3 railroad signs, transformer, crossover, track connector, swinging arm gate, crossing sign, 16 track sections. 12.49

Alcoholish May Get Attention Of Major Group

"Men of the cloth and members of the medical profession should unite in powerful and harmonious team to stem the mounting epidemic of anxiety and frustration which is filling countless of thousands of hospital beds with mental and emotional cases," Dr. Andrew S. Tomb, a member of the American Medical Association's Committee on Alcoholism and a director of the Texas Committee dealing with the same problem, told the Texas Federation of Women's Clubs at its annual convention in Austin.

"Mental and emotional disturbances, including alcoholism, represent probably the most serious health problem in our nation today," Dr. Tomb declared. "Because of their nature the preacher and the priest should march side by side with the doctor and the psychiatrist in combatting them and in the rehabilitation of their victims."

"There is nothing in the science or the art of medicine which is in conflict with the spiritual,"

YOUR BLOOD — IF YOU WERE A DONOR



Here's the other end of the story when you contribute blood. Naval Hospital Corpsman Donald J. Capots of West Pittsburgh, Penna., administers whole blood to a U. S. Marine after recent fighting at Bunker Hill. Capots is attached to the First Medical Battalion of the First Marine Division, a long time front line outfit. (Official U.S. Navy Photograph)

Texas Farm Youth Bid For Garden Awards

AMHERST, Mass. — A Texas boy or girl may be the nation's 1952 national junior vegetable growing champion and win the top share in a \$6,000 scholarship fund. Officials of National Junior Vegetable Growers Association Headquarters in Amherst, Mass., announced today that 13 of the state's farm youth are enrolled in the organization's 1952 production-marketing contest.

Entrants in the 46-state competition for boys and girls aged 12-21, vie for a \$500 national championship, four \$200 regional awards and a number of sectional and state awards. The fund is provided by A&P Food stores as part of its program of farm youth sponsorship.

Winners, selected by a panel of leading national agricultural authorities, will be announced on the final day of the association's 1952 convention which will be held in New York City, Dec. 7-11.

The NJVGA program, according to its chief adult advisor, Prof. Grant B. Snyder of the University of Massachusetts, is designed to encourage farm boys and girls to master more efficient methods of producing and marketing vegetables.

"Texas boys and girls have always made a commendable showing in our national contests," Snyder said, "I feel sure this year they will again claim high contest honors."

In the last year, U. S. homes were equipped with an additional 2,000,000 washing machines, according to the American Magazine.

Texas Is New Head Of Polled Hereford Group

John Trenfield of Pollett, Texas was named president of the American Polled Hereford Association at the annual business meeting in Tulsa, Okla. Trenfield succeeded A. B. Freeman, New Orleans, La., the retiring president. R. A. Halbert of Miller, Mo., was selected as the new vice-president, succeeding Trenfield.

In the election of directors three new names were added to the board, bringing the total directorate to 12 members. Each of the members represents a different district or zone. A year ago it was decided at the business meeting in Louisville, Ky., to divide the entire country into 12 districts, with members in each district to elect a director, each to serve a four-year term.

John Trenfield, Pollett, Tex.; R. A. Halbert, Miller, Mo.; Joe Lyons, Somers, Wash.; E. E. Moore, Senatobia, Miss.; Paul V. Patridge, Golden, Colo.; John H. Royer, Jr., Woodbine, Md.; W. C. Grover, Anderson, Calif. and Gentry Adams, Allendale, Ill.

Does that tell-tale look on your face say change of life?

A great many women suffer "change of life" after forty. They tire easily, have "nerves", sleep poorly, are hard to live with. Their eyes and face get that "change" look. Cardui has helped thousands of women to lose that "change" look. Cardui acts to (1) improve appetite, (2) tone build strength and resistance, (3) ease tension and nervousness—many better. Let triple-action Cardui help you feel better, look better and be your normal, cheerful self again. Get Cardui today. (Says "card-goo-ee").

CARDUI MONTHLY CRAMPS CHANGE OF LIFE

Hand Picking Down In Cotton Fields

Mechanical pickers are taking over California's cotton fields. Edward F. Hayes, chief of

farm labor placement for the state, said that while cotton average is up five per cent this year, labor requirements for hand pickers is down 26 per cent. Last year, during the picking season, California was 21,000

men shy of filling its labor requirements in the cotton fields. This season, the state lacked only 4,000 workers to clean up the harvest.

ATTEND CHURCH SUNDAY



LAST CALL FOR FREE MEADOLAKE MARGARINE AND \$100 PRIZES

TEST! TELL! WIN!

Write a short letter to ANY friend or relative as a DIFFERENT address from yours. Tell WHY she should use Meadolake Margarine. Enclose a Meadolake cartoon END FLAP with the "Tested and Guaranteed" seal on it. Then, if she mails your letter on to Mrs. Tucker, Sherman, Texas, along with TWO Meadolake END FLAPS—the one you sent and ANOTHER just like it—you will both receive a Card good for a pound of Meadolake FREE!

NOV. 30 IS LAST DAY! Just one more week after this one! Write AS MANY different folks as you can before midnight Nov. 30, and TELL them HOW GOOD Meadolake is. Just 2 more Contests—\$100. for the BEST letter and \$100. for the one who mails the letter in. Decisions of Judges final; duplicate awards in case of ties; all letters become property of Mrs. Tucker.



Mrs. Tucker MAKES IT BETTER AND DELIVERS IT FRESHER!

Mrs. Tucker's - THE CREAMIEST SPEED MIX SHORTENING IN THE WORLD

a Physical Check-up too!



If your present insurance Program no longer provides the protection you need, see me about bringing it "up to date".

Southland Life
ACCIDENT • HEALTH • LIFE INSURANCE

Dr. Tomb insisted, "In fact, the psychiatrist and the general practitioner will often find the chaplain or minister an excellent and sometimes an invaluable association in handling some of the emotional disturbances of our fact-moving civilization."

Dr. Tomb referred to an article in the Oct. issue of the Current Medical Digest in which he had condensed a bulletin from the Menninger Clinic which dealt with an exceptionally successful case of teamwork between a doctor and a naval chaplain.

"The physician and an understanding minister, as a team, may effectively solve a problem which neither could handle alone, and for the alcoholic patient the fellowship of Alcoholics Anonymous is indispensable," Dr. Tomb concluded.

Dr. George A. Constant, a psychiatrist formerly with the John Sealy Hospital in Galveston and now practicing in Victoria, Texas, endorsed Dr. Tomb's views.

"It is my personal opinion, based on my own experiences, that there are strong spiritual factors involved in many cases of alcoholism and other mental and emotional disturbances, and that a minister or priest could often prove a valuable ally of the psychiatrist in the treatment of the patient," he told the club members.

The Texas Committee on Alcoholism is making surveys of professional, industrial, business, political and labor groups to gather material to present to the Governor's Committee on Alcoholism which plans to make recommendations for legislation to provide for the care and rehabilitation of the estimated 200,000 sick alcoholics in the state.

DOG HOUSE GONE
CHARLESTON, S. C.—E. C. Whiteley reported to police that someone stole an aluminum dog house valued at \$30 from his back yard.

107 Main

Montgomery Ward

Phone 447



SALE—THESE PRICES SAVE YOU 14% TO 34%

For This Weekend Only—Buy for Yourself and for Christmas Gift-Giving

MEN'S RAYON SPORT SHIRT

Special purchase—sells elsewhere for 3.95. Rich, solid colors, gift boxed. **2.98**

"DAN RIVER" CHAMBRAYS

Regular 2.98 polished "Wrinkished" combed cottons. Sister-styles. 3 to 6X. **1.97**

"DAN RIVER" CHAMBRAYS

Regular 3.98 polished "Wrinkished" combed cottons. Sister-styles. 7 to 14. **2.97**

WOMEN'S TRIMMED SLIPS

Regular 2.98. Acetate and nylon. Lavish trims. White, pink, sea foam. 32-40. **2.44**

WOMEN'S TRIMMED GOWNS

Regular 1.98. Acetate tricot knit. Lace, nylon net trims. Many colors. 34-42. **1.68**

SHEER 60-GAUGE NYLONS

Regular 98c. Carol Brent, 15 denier. Regular or dark seams. Sizes 8 1/2 to 11. **84c**

37' PINWALE CORDUROY

Regular 1.29. Fine-ribbed, rich-textured. Choose from many lovely shades. **1.09**

45" ACETATE TAFFETA

Regular 89c. Chromipun, 100% color-fast. Plains, iris, deserts, nailheads. **74c**

45" BLENDED GABARDINE

Regular 79c. Crisp, fine-quality sports-weight rayon and acetate blend. **64c**

100% PURE WOOL BLANKET

Regular 11.98. Five-year guarantee against moths. 5 shades. 72 x 90". **9.98**

WARMLY-LINED OPERAS

Regular 3.98 blonde leather Slippers for men. Leather soles. 6 to 11. **3.33**

TOAST-WARM SLIPPERS

Regular 3.98 blue capeskin Moccasins for women. Leather soles. 4-9. **3.33**

With Super DX-53 Long Distance Chassis!

Admiral 21" TV CONSOLE

for only

Model 222DX155—Walnut

\$349.95

Fed. tax and warranties included

Enjoy the extra wide angle, glare-free viewing of a big 24 1/2 sq. in. picture in Admiral's beautiful walnut, mahogany or blonde 21" TV console. And enjoy a saving of as much as \$100 over other name brand TV! It's powered by Admiral's sensational new Super "DX-53" Long Distance Chassis, with Cascade Turret Tuner that guarantees UHF... plus new "DX" Range Finder... Tone Control... convenient casters... and many other advanced 1953 features. Come in—compare! You'll agree there's no finer picture at any price!

Big 24 1/2 sq. in. anti-reflection picture



The complete Antenna System can be included with any TV Set with only 10% down and up to 24 months to pay balance.

L&J SUPPLY CO.

403 W. Main St. Ranger, Texas Phone 202



FIRST DOWN



ILLEGAL USE OF HANDS AND ARMS



DEFENSIVE HOLDING



ILLEGAL POSITION OR PROCEDURE



DELAY OF GAME



UNSPORTSMANLIKE CONDUCT



OFFSIDE



ILLEGAL MOTION OR SHIFT



Here's the

KICK-OFF!

Football Season's Open!



Coaches: "Stubby" Warden
Sam Aills

FRIDAY, NOV. 21

Bulldogs

vs.

Comanche

8:00 p.m. at Comanche

High School Schedule

- SEPT. 12—Jacksboro 18, Ranger 7
- SEPT. 19—Stamford 19, Ranger 7
- SEPT. 26—Eastland 0, Ranger 47
- OCT. 3—Winters 7, Ranger 13
- OCT. 10—Hamilton 6, Ranger 27
- OCT. 17—Brewer 6, Ranger 26
- OCT. 24—Open
- OCT. 31—Diamond Hill 13, Ranger 7
- NOV. 7—Cisco 14, Ranger 28
- NOV. 14—Stephenville 13, Ranger 14
- NOV. 21—Comanche, There

*Conference Games

Junior College Schedule

- SEPT. 13—Decatur 0, Rangers 26
- SEPT. 18—Midwestern 0, Ranger 21
- SEPT. 27—Allen Academy 6, Ranger 21
- OCT. 4—Navarro 12, Ranger 0
- OCT. 11—San Angelo 7, Ranger 12
- OCT. 16—NTEC "B" 7, Ranger 12
- OCT. 25—Tarleton State 7, Ranger 6
- NOV. 1—Open
- NOV. 8—Arlington 13, Ranger 13
- NOV. 15—Henderson 6, Ranger 12
- NOV. 22—Schreiner Institute, There

*Conference Games—*Homecoming

Coaches: Boone Yarbrough
Dick Henderson

SATURDAY, NOV. 22

Rangers

vs.

Schreiner Institute

8:00 p.m. at Kerrville



INTENTIONAL GROUNDING



CRAWLING, HELPING THE RUNNER OR INTERLOCKED INTERFERENCE



BALL DEAD; IF HAND IS MOVED FROM SIDE TO SIDE: TOUCHBACK



INELIGIBLE RECEIVER, DOWN FIELD ON PASS



ILLEGALLY PASSING OR HANDING BALL FORWARD



PERSONAL FOUL



FORWARD PASS OR KICK CATCHING INTERFERENCE



ROUGHNESS AND PILING ON

First Methodist Church
Garland T. Lavender, Pastor
"The Church With A Warm Heart"

Paramount Hotel & Coffee Shop
Robert Eddins

Ranger Steam Laundry
Mr. and Mrs. L. T. Rushing

Southern Ice Co.
Joe Fabry, Manager

Texas Electric Service Co.
A. N. Larson, Manager

Community Public Service Co.
DEPENDABLE GAS SERVICE
Lee Dockery, Manager

Page Plumbing Company
Mr. and Mrs. Carl Page

Ranger Dry Cleaners
Mr. and Mrs. Jess Weaver

Art's Tool & Supply Co.
Mr. and Mrs. E. F. Arterburn

Burton - Lingo Company
J. D. Nichols, Manager

Anderson Chevrolet Co.
Sales—CHEVROLET—Service

Ranger Transfer & Storage Co.
A. L. Wood

F & R Oil Company
C. O. Phillips, Manager

Crawford's Rexall Drugs

First Baptist Church
Ralph E. Perkins, Pastor
"You Are Always Welcome"

Commercial State Bank
Member Federal Deposit Insurance Corp.

Clarke Motor Co.
CHRYSLER - PLYMOUTH
Sales - Service

Young's Beauty Shoppe
Phone 56

King's Dixie Grill
Mr. and Mrs. Brownie King

Betty's Flower Shop
FLOWERS FOR ALL OCCASIONS
210 Main Phone 640

Ussery Refrigeration & Electric
Phone 129-R

Mathena's Flower Shop
FLOWERS FOR ALL OCCASIONS
420 Alice—Phone 144

Texas Service Station
Deane Crawley

Ranger Insurance Agency
C. B. Pruet

Cantrell & Sons Texaco Serv. Sta.

Leveille Motor Co.
Sales—FORD—Service

E. L. Martin & Sons
The Friendly Department Store

Texas Drug Store
Phone 264
George D. Nicholson

Social Science Laboratories
A. W. Warford

The Dairy Bar & H. O. Foster Service Station
Highway 80 and Blackwell Road

Regal Restaurant
Mr. and Mrs. J. L. Jones

A. L. Stiles Service Station
LET US SINCLARIZE YOUR CAR FOR WINTER DRIVING

Buck Wallace
WELDING - FABRICATING

Porkey Pig
RAYMOND BRYAN

A. H. Powell Grocery & Market
Phone 103

L. & J. Supply Co.
Mr. and Mrs. James Smith

H. P. Earnest
Consignee The Texas Co.

White Auto Store
HOME OF BETTER VALUES

Moffett Electric
106 Main — Phone 98

Dr. Pepper Bottling Co.

Law's Premier Service Station
Highway 80, West
Your Friendly Service Station

D & D Sign Service
Dave McMeekan, Mgr.
NEON SALES & SERVICE

Phone 831 Box 131

Anderson Grocery & Market
Eastland Hill Phone 651-R

Joseph's
Ranger's Foremost Department Store

Winnie's Beauty Shop
Mrs. Nath Pirkle, Owner - Operator
Phone 784

Western Auto Associate Store
Joe Froley

Meroney's Gulf Service
24 Hour Service—Tires, Batteries, Accessories
Phone 9520

Ranger Lumber & Supply Co.
Calvin Brown

The Smart Shop
Especially For You

Vance Blauser
Distributor Mrs. Beard's Bread
Stays Fresh Longer

Bowens Cafe
Mr. and Mrs. Lee W. Bowen

F & B Snack Shop and Taxi
Mr. and Mrs. Floyd Rogers

Swaney's Pharmacy



OUT



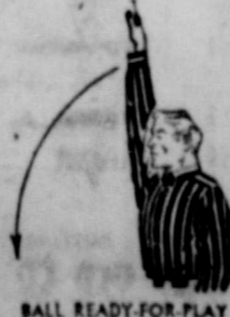
SAFETY



ROUGHING THE KICKER



TOUCHDOWN OR FIELD GOAL



BALL READY-FOR-PLAY



START THE CLOCK OR NO MORE TIME-OUTS ALLOWED



CLIPPING



INCOMPLETE FORWARD PASS, PENALTY DECLINED, NO PLAY OR NO SCORE



BALL ILLEGALLY TOUCHED, KICKED OR BATTED

W. H. Mullings Be Buried Friday

W. H. Mullings, 80, pioneer resident of Eastland, passed away at the family home on West Main Street Wednesday night following an illness of many months duration. Funeral services will be conducted from the Hamner Funeral Chapel in Eastland, at 2 p. m. Friday, with Rev. Morris Bailey, Methodist pastor, in charge. Interment will be made in Eastland Cemetery.

Deceased was well and favorably known in Eastland, a carpenter by trade, but a tireless worker in the Methodist Church. He was born March 24, 1872 at Emory, Texas, but had spent many years in this county.

Eddie Haines Is Building Record

Eddie Haines from Eastland will be on McMurry College's traveling squad going to Kingsville, Nov. 22, in an effort to bring home a part of the Texas Conference crown.

If the Indians beat the A&I Javelinas and Howard Payne happens to upset undefeated Abilene Christian College Nov. 26, then McMurry and ACC will have an equal share of the Texas Conference championship. The Indians will take second place in the conference with A&I, each with a 2-2 record if they lose to the

Javelinas, while Howard Payne will wind up in third place if beaten by the Wildcats.

Coach Wilford Moore and a squad of 30 will leave Abilene Friday morning to journey to Kingsville for their last game of the season.

The McMurrans have a 2-1 record for conference play, having won over Austin College and Howard Payne, while losing to Abilene Christian College. In non-conference play they beat New Mexico A&M, managed a tie with Eastern New Mexico but lost to Sul Ross, Midwestern and West Texas.

7 Eastlanders On SMU Alumni

DALLAS — Seven Eastland residents, active members of the Southern Methodist University Alumni Association, have been extended personal invitations to attend SMU's annual homecoming celebration Nov. 21-23.

More than 18,000 former students of SMU throughout the nation have been invited back to the Dallas campus for the event, and the university is looking for its biggest group of visitors yet to these yearly affairs.

New Varieties Spring Wheat Resist Rust

Agronomists are working at a feverish pace to increase new varieties of spring wheat which will reduce the ravages of race 15B of stem rust.

Plains states agronomists are obtaining two crops a year by using southern California and Arizona for a winter crop and shutting seed back and forth, according to a progress report.

Despite the high-priority tactics, it will take at least three years before new varieties resistant to 15B are available in sufficient quantities.

Meanwhile, wheat growers may profit by making wider use of Rushmore, say South Dakota agronomists J. E. Grafius and V. A. Dirks. Rushmore, developed by the two Dakotans, has proven tolerant to 15B when rust was severe.

Farmers with good seed of Rushmore should keep it for seed purposes, Dirks advises. He expects

there will be a demand for seed even in North Dakota and Minnesota.

Rust readings made in 1951 and 1952 show that Rushmore had less rust than Mida, Rival and Lee. In terms of total stem area covered, Rushmore had 8 percent rust, Lee 15, Mida 17 and Rival 20.

Rushmore also outyielded Mida and Rival under heavy stem rust conditions in the eastern area of South Dakota in 1952. Rushmore produced 18.6 bushels an acre compared with 14.4 for Mida.

Test weight for Rushmore averaged 58 pounds a bushel, Mida only 55. The difference was caused by stem rust, says Dirks.

DRS. FINN & FINN

Eye Examined—Glasses Fitted Office Day Thursday 110 S. Ross St.

FREE POSTAGE PAID MAILING CARTONS FOR BROKEN GLASSES AT CAPPS STUDIO

FRECKLES AND HIS FRIENDS

By Merrill Blosser



VIC FLINT

By Michael O'Malley and Ralph Lane



ALLEY OOP

By V. T. Hamlin



Special Today and every day

★ Special satisfaction with Chevrolet's exclusive advantages.

★ Special savings with our low prices. Don't buy until you see us!

★ Be sure you get the deal you deserve!

Stop in and get our deal on a new Chevrolet. See how Chevrolet offers you more. See how much less it costs you. That way, you can be sure of getting the deal you deserve. So come in soon for special satisfaction and special savings on a beautiful new Chevrolet!

THERE'S NO VALUE LIKE CHEVROLET VALUE!




SEE WHAT YOU GAIN WITH THESE EXCLUSIVE CHEVROLET FEATURES

More Powerful Valve-in-Head Engine with Powerglide Automatic Transmission (optional on De Luxe models at extra cost) • Body by Fisher • Center-poise Power • Safety Plate Glass all around, with E-Z-Eye plate glass (optional at extra cost) • Largest Brakes in its field • Unitized Knee-Action Ride.

SEE WHAT YOU SAVE WITH THE **Lowest-Priced Line in its Field!**

ANDERSON CHEVROLET COMPANY

411 SO. AUSTIN STREET RANGER, TEXAS PHONE 14

The three-day celebration, to be the most ambitious and colorful in the school's history of reunions, will have a circus motif. George E. Bushong, executive secretary of the SMU Alumni Association, says that this homecoming is intended to be "the greatest show on earth."

The program begins Friday noon, Nov. 21, with registration at the Student Union, and continues through noon Sunday, closing with a special homecoming convocation at the Highland Park Methodist Church on the SMU campus.

Over the big week-end, exes will

PLAN FOR CHRISTMAS NOW!
buy your gifts on our **LAY-AWAY PLAN TODAY!**

BULOVA

MISS AMERICA 17 jewels expansion bracelet \$35.75

DIRECTOR expansion band \$35.75

YOUR CHOICE ONLY \$35.75

\$1.00 DOWN WILL HOLD YOUR GIFT UNTIL CHRISTMAS

LADIES' DIAMOND RING 35.00

D. E. PULLEY
Jeweler
Diamonds - Watches
Jewelry - Silverware
Price includes Federal tax

MINNOWS
J. L. WHISENANT
Olden, Texas

A NEW DRINK
FLAVOR DERIVED FROM REAL ORANGES



BOTTLED BY AN OLD COMPANY SEVEN-UP BOTTLING CO.

O. K. Grocery Market

501 W. Main I. G. A. Phone 214

INDEPENDENT GROCER'S ALLIANCE OF AMERICA

FOLGERS Coffee Maryland Club Lb. 87c Lb. 89c

KUNNER'S — 303 Can Fancy Tomatoes 19c	DEL MONTE—12 Oz. Bottle Chili Sauce 23c
KUNNER'S — 303 Can Sliced Beets 15c	KUNNERS—303 Can Cut Green Beans 21c
DEL HAVEN—303 Can Sauerkraut 12c	COMPSTOCK—No. 2 Can Pumpkin Pie 24c

CASCO **PORK & BEANS** No. 1 Can 3 cans 25c

SUN-SWEET—Quart Prune Juice 35c	DEL MONTE—211 Can Pineapple Juice . 2 for 25c
LUCKY-LEAF—Quart Apple Juice 28c	DONALD DUCK—46 Oz. Can Grapefruit Juice 29c
DONALD DUCK—46 Oz. Can Orange Juice 31c	DONALD DUCK ORANGE AND—46 Oz. can Grapefruit Juice 29c

SCOTTIE DOG FOOD 2 cans 15c

CHOICE—1 Lb. Bag PINTO BEANS 15c	SMALL—1 Lb. Bag NAVY BEANS 18c
LARGE—1 Lb. Bag LIMA BEANS 21c	1 Lb. Bag BLACK EYE PEAS 21c
LARGE—1 Lb. Bag NAVY BEANS 15c	CHOICE—Bag PINTO BEANS .. 2 lbs. 29c

DOESKIN **TOILET TISSUE** Assorted Colors 2 rolls 25c

DEL MONTE—Pound Large Prunes 29c	CHOICE—Cello Bag Dried Apples 23c
DESERT—Cello Bag Dried Peaches 36c	DROMEDARY—1 Lb. Pitted Dates 39c
HIGHLAND—Cello Bag Dried Apricots 49c	DEL MONTE—15 Oz. Box Seedless Raisins 23c

TENDERIZED **PICNIC** 6 to 8 lb. avg. 39c

BABY BEEF SIRLOIN STEAK ... lb. 98c	BABY BEEF T-BONE STEAK lb. 98c
BANNER SLICED BACON .. lb. 49c	DECKER TALL KORN BACON lb. 49c

BABY **CHUCK ROAST** lb. 65c

JUST FRESH ARRIVED ANGLUS **MARSH MELLOWS** 10 oz. bag 23c

CELLO WRAPPED **COD FISH** lb. 39c CELLO WRAPPED **BONELESS PERCH** lb. 39c

- COTTON SEED PELLETS
- RANGE PELLETS

Plenty Of Both

RATLIFF FEED AND SEED

PHONE 109
RANGER, TEXAS

ATTEND THE CHURCH OF YOUR CHOICE EVERY SUNDAY



the portrait that's fun to make... is the Portrait You'll Be Proud to Show!

We thoroughly enjoy making photographs of babies... capturing all that frisky personality in portraits for the year! Make your appointment now.

CAPPS STUDIO
104 Rusk Ranger

TOO MUCH GODLINESS

KNOXVILLE, Tenn.—The Rev. Cecil Atchley resigned his pastorate and filed for divorce when his wife, whom he described as a "germ fanatic" forced him to wash before permitting him inside the home.

SUGAR AT ITS BEST!



Dixie Drive-In

Eastland-Ranger Highway
ADMISSION:
Adults 40c. Tax Inc.
Children Under 12 Free
Wednesday - Thursday



KATIE DID IT!
and wasn't FUN!
ANN BLYTH - MARK STEVENS
Also Selected Short Subjects



OES Honor High Officials

The Eastland Chapter of the Order of Eastern Star, No. 280 honored the new officials in this section with a tea at the Woman's Club Sunday, Nov. 16, three to five p.m.

Mrs. R. L. Carpenter of Eastland who recently received her appointment as Deputy Grand Matron, Section 4, Dist. 3, and Mrs. Agnes Lee Howard of Albany who was elected Grand Examiner of District 3. Both received their offices at the Grand Chapter of Texas meeting recently held in Amarillo.

In the receiving line Mrs. D. E. Flency, treasurer of the Eastland Chapter presented the guests to the worthy Matron Mrs. Archie Campbell of Olden and the honorees' next in line.

Miss Christine Garrard was at the mixer. The tea table had decor of the chapter colors, yellow and gold chrysanthemums with green candles. Mrs. Carl Timmons and Mrs. Pebble Boles alternated at the tea service. The hospitality committee who served plates were Mrs. Hannah Lindsey, Mrs. J. V. Cox, Mrs. Geneva Howell, Mrs. Corrine Weatherby, Mrs. L. J. Lambert, Mrs. Mildred Amos.

Musical interlude was beautiful and inspiring and the artists were Mrs. Donald Kinnaird, piano, Mrs. Eldress Gattis violin and Mrs. Christine Boskov, piano.

The honorees wore matching dresses of Amythest Satin and Nylon tulle, leaf antique velvet and sequins. The Chapter Jewel colors are Amythest, Emerald and Te'az.

District 3 has fourteen chapters most of which were represented on this occasion. They are Ranger, Cisco, Strawn, Gorman, DeLeon, Albany, Clyde, Moran, Baird, Rising Star, Dublin, S'pe Springs, and the hostess chapter, Eastland.

When painting a stairway that must be used constantly, paint every other step. When those are done, the alternate steps can be painted.



HOPPE UP—Nineteen-year-old Jo Hoppe, in regal regalia, smiles happily after being crowned "Miss Chicago." She will compete in the annual Atlantic City beauty pageant.

Ladies Club To Have Dinner Saturday Nite

Members of the Lone Star Ladies Club will meet November 21 at 7:00 p.m. at the Community Club house for the annual Thanksgiving dinner. All club members are urged to attend.

Royce Koerner Has Birthday

Mr. and Mrs. R. C. Koerner complimented their son, Royce, on his eighth birthday with a party Saturday night, Nov. 15. Cake and hot chocolate were served to the following: Nonie C. J. Roy, Billie and Suzie Koerner, Joyce Johnson, Larry Arlerson, Kenny Wheeler, and Betty Koerner.

Miss Martin Wed To Mr. McFarland

Miss Elwina Martin, daughter of Mrs. C. C. Martin of Olden, became the bride of Mr. Eugene McFarland son of Mr. and Mrs. Paul McFarland of Eastland, Saturday 4:30 p.m. in the home of Rev. J. Morris Bailey, pastor of the First Methodist Church.

The groom's brothers were his attendants, Roland as best man and Pete as groomsmen who escorted Miss Charline Black as bridesmaid. Following the ceremony they left immediately for Denton where they will make their home. Mrs. McFarland is a graduate of Olden high school and was formerly employed by the Bell Telephone Co. Mr. McFarland is a graduate of Eastland high school and is salesman for Armour & Co., Ft. Worth office.

U. S. MUNY TAXES AVERAGE \$61 PERSON
Municipal taxes in the nation's 41 cities of 250,000 or more population averaged \$61 per person. But in the District of Columbia where Congress is the taxing body, the average was \$128.61—highest in the nation, the Chamber of Commerce of the United States reports.

Personalized Hair Trims

Have your hair cut just the way you like it—not too long, not too close.



3 Chairs for Prompt Service
L. E. GRAY
Barber Shop

COSTS LESS HEATS BEST!



Less to install, less to operate yet gives you more heat and comfort! Come by and let us tell you about Dea-born Area Heat!

Ranger Furniture Exchange
123 No. Austin Phone 242



Mr. S. J. Stewart of Strawn was in Ranger yesterday in her Lincoln. She was being chauffeured around the town by Lee Aguirre, also a Strawn resident. Saw Carl Labredo standing behind the desk at the Globe carefully scanning some tickets. Noticed Leonard Slater of Mineral Wells in town delivering cigarettes and candy. Half the populace of Ranger boarded the west bound train yesterday. Wonder where they were going. Congratulations today go to young Royce Koerner who celebrated his eighth birthday November 15, Patter late than never. Saw Mrs. Tor Woods standing on the front porch enjoying the air and the scenery. Noticed Mrs. Aarza Bell on the business end of a broom early this morning. Mrs. Bell was attempting to clean the sidewalk in front of Bell's Young Modern.

Raymond Bryan was seen waiting on customers at the Porky Pig. Lee Cantrell making a run for the gas pump to service a car. Ed Freeman, local "cop" standing in front of the police station wishing for something to break the monotony. Jess Weaver beginning his work at the Ranger Dry Cleaners. Noticed James Ratliff walk into the Crawley Motor Co. The mayor was at the door to greet him. Young Miss Rosemary Joseph walking sedately down the street. The

Rev. Garland Lavender rushing down the Post Office steps and looking at his watch at the same time. Late for an appointment maybe. F. C. Tye driving a truck loaded with something that looked like cement. Mrs. M. H. Hagaman driving on Cypress early this morning accompanied by a colored woman. Saw Jack Mace on North Marston today. That guy gets around. Clara Mae Jacoby sitting in front of the Post Office in her Mercury. Ted St. Clair was seen walking down the street chatting with two friends. saw young Bob Downtain headed toward another day at school. Richard (Tater) West turning his Plymouth around on Main Street. Haven't seen him in a long while. Joe Stie ambled across the street with an armload of groceries. Royce Phillips was another Rangerite out on the street early to lay. Mr. and Mrs. D. E. Pulley driving by the high school on the way to work. Bill Brasda leaving home clad in a plaid shirt and carrying some books. We wandered by the Ranger General hospital at 8:30 a.m. today and saw 13 cars parked there. Also saw the Tom's Toasted Peanut wagon which practically said that Earle Pittman was around close. Jimmy Centrell sitting in a friends car waiting for school to begin. Also saw Ronnie Carter walking across the street tightly clutching the hand of a girl dressed in a white coat. Well, the traffic was heavy. Tex Herrraves parking his pickup in front of the Elks Club. Saw Mrs. Wyatt Jacobs energetically cleaning out the display window at the Suzy-Q. See you tomorrow!



A BURNING QUESTION

If your property should burn, how much of it and its contents could you replace with your present Fire Insurance? Better increase it before a fire occurs.

C. E. MAY
Insurance & Real Estate
214 Main Phone 418

PERSONALS

Mrs. W. P. Woods of Gordon is a guest today in the home of her sister-in-law, Mrs. Tom Woods.

Mr. and Mrs. V. L. Rowe returned from Sherman Wednesday where they were called to the bedside of Mrs. Rowe's brother, Loyd W. Waggoner who is a patient in a Sherman hospital. Mr. Waggoner was severely burned Saturday in an explosion at the Kumble Co. in Sherman.

Mr. and Mrs. Corvis L. Peck have as guests in their home, Mrs. Peck's brother, Bill Carney and Mrs. Carney of El Monte, Calif. The Carneys are newlyweds and are honeymooning in Ranger.

Mrs. Saunders Gregg has returned from Trinity and Waco, where she visited relatives.

Mrs. James P. Morris and Mrs. P. M. Kuykendall were in Eastland Wednesday night where Mrs. Morris reviewed "The Giant" by Edna Ferber at the home of Mrs. C. W. Hoffmann.

Mr. and Mrs. Paul Bullock and sons, Joe and Jimmie, visited Mr. and Mrs. A. J. Bullock and Mr. and Mrs. C. W. Price in Graham Wednesday night.

CALL 224 FOR CLASSIFIED AD SERVICE

PERSONALS

Mrs. Saunders Gregg has returned from Trinity and Waco, where she visited relatives.

Mrs. James P. Morris and Mrs. P. M. Kuykendall were in Eastland Wednesday night where Mrs. Morris reviewed "The Giant" by Edna Ferber at the home of Mrs. C. W. Hoffmann.

Mr. and Mrs. Paul Bullock and sons, Joe and Jimmie, visited Mr. and Mrs. A. J. Bullock and Mr. and Mrs. C. W. Price in Graham Wednesday night.

CALL 224 FOR CLASSIFIED AD SERVICE

JUILLCORD



Blue-Ribbon Winner California State Fair...

in the BLOCK

H. and L. BLOCK tailors the soft luxury of Juillcord by Juillard into the easy lines of a leisure-wear sportcoat. Lightweight, with two comfy patch pockets and fully lined — it's corduroy at its finest plus the distinctive BLOCK California-casual look! **27.50** Others 18.95

The Globe Clothiers
Saule Perlstein

JOSEPH'S

Ranger, Texas

DRASTIC REDUCTION ON FALL & WINTER COATS SUITS DRESSES!!

FABRICS:	WERE	NOW
Wools, Crepes, Jerseys, Rayons, Acetates, Failles, Tissue Failles, Taffetas, and Gabardines!	10.95 to 12.95	6.95 to 7.95
TYPES: Daytime, Street and Casuals... unusual and distinctive costume suit!	14.95 to 17.95	9.95 to 11.95
SIZES: Misses' sizes... Women's sizes... half sizes and some junior sizes!	22.95 to 29.95	15.30 to 19.95
	35.00 to 39.95	23.35 to 26.65

SUITS

In Rothmoor, Joselli and Louis Marcus. Sizes: Juniors, 9 to 17. Womens Sizes: 10 to 44 and 14½ to 24½.

REGULAR 19.95 to 94.95
\$13.95 to \$69.95

REGULAR 16.95 TO 94.95—NEW FALL COATS

Rothmoors, Josellie and Louis Marcus Featuring the season's newest colors, styles and trims. Select from a gala choice of Gabardines, Woolens and other mixtures.

\$12.95 to \$79.95

Ladies Shoes

FOUR BIG GROUPS BROKEN SIZES — VALUES TO 11.95
1.00 — 1.88 — 2.66 — 0 oz. bag **23c**

CH lb. 39c

MAJESTIC
Thursday Only

THEY WRECKED THE NIGHT OF THE SPANISH MAIN!

YANKEE BUCCANEER
Technicolor

Starring
JEFF CHANDLER · SCOTT BRADY · SUZAN BALL

Part of Thursday's Proceeds Go To Eastland High School Annual.

Plus Surprise Picture

RANGE CATTLE FEED

Red Chain Vita Brand Range Cubes will solve the problem. Properly balanced in protein, fats, grains, vitamins and minerals. Has all you need in a feed.

Red Chain MO Fat Brand Creep Feed. Best calf feed on the market.

All Kinds of Feed, Grain and Seed

TIP TOP FEED & HATCHERY

Your One-Stop Feed and Hatchery Supply
Ranger, Texas