

Pellagra Causing Many Deaths Each Year In the State

AUSTIN, Texas — "Pellagra, while not a communicable disease

is of concern to the State Department of Health since many people die of it each year in Texas. Pellagra is a disease that is caused by the lack of proper foods. It comes on slowly and may not be recognized until the victim begins to have a sore mouth, stomach trouble, and reddening and scaling of the skin. When these symptoms appear, the disease has been pres-

As Son Jimmy Recovers



The President, his lady, the doctor, and hundreds of townspeople waited anxiously in Rochester, Minn., as Jimmy Roosevelt came through the critical hours following an operation at Mayo Brothers Clinic for removal of a gastric ulcer. Mr. and Mrs. Roosevelt clearly show the strain of the ordeal in their pictures. Shown with them is Dr. Howard K. Gray, who operated on their eldest son. Lower photo shows crowds outside the hospital.

ent for some time," stated Dr. Geo. W. Cox, State Health Officer. The longer a person has pellagra the harder it is to cure, so one should be on the lookout for the early symptoms, such as nervousness, indigestion and burning of the feet and hands. The disease may become so severe as to affect the mind. Pellagra is not contagious. As long as a person eats enough of the right kind of food and is not otherwise diseased, he is in no danger even if he lives with a pellagra patient. The prevention of pellagra de-

Initial Scratchers Ruining Records Of Archeologists

AUSTIN.—Modern name and initial scratchers are ruining important records left by early inhabitants of Texas. A. T. Jackson, field archaeologist of the University of Texas, reported today. He advocated creation of state parks at the principal sites of pictographs and petroglyphs in order that they may be preserved. There are 195 sites in the state where picture writings now exist. They are found in 44 of the states' 254 counties. Twenty-three counties have only pictographs, which are paintings on flat surfaces. Fourteen have both pictographs and the rock carvings known as petroglyphs. Seven have petroglyphs only. Most of the picture-writings are found in the semi-arid portions of the state. These are better preserved and likely were more numerous to start with, as guides to water supplies. Red, black, yellow and white are used in the pictographs. Red appears in many shades. Most of the petroglyphs appear to have been pecked out with a sharp stone implement, but carvings are found in sandstone and soft limestone formations. Sizes of the pictures vary greatly. Human figures have been found under three inches in height. Some are 10 feet tall. Animal figures range in length from two inches to seven feet; pictures of insects from an inch to seven feet. Indian picture-writings have been responsible for the names of many Texas communities and localities. Paint Rock draws its name from pictographs on a bluff near the townsite on the Concho river. Turkey Bluff has its name from a turkey painted on the wall of a

shelter in Val Verde county. Other examples are Indian Hand Bluff in Nolan county, Black Hand Cave in Terrell county and Bloody Handprint Bluff in San Saba county.

HEN EGG DUCK SHAPED RICE LAKE, Wis. — We Stef's hen is suspected of being freak. Stef is exhibiting an egg laid by the hen. It is shaped like a duck, even to the bill and

Delicacies at Your Home Bakery . . .

Fresh PUMPKIN PIES . . . 30c
Assorted CREAM PIES . . . 30c
CREAM PUFFS, ECLAIRS, SWEET ROLLS, DOUGH.

NUTS, CUP CAKES!
2 Dozen COOKIES . . . 25c
FULL LINE OF PACKAGE CAKES!
SCHOOLEY'S BUTTERFLAKE BREAD

• Ask Your Grocer

SCHOOLEY'S BAKERY
Phone 7 122 N. Austin St.

FOR School

- Art Papers
- All kinds of Loose Leaf Paper
- Fountain Pens
- Pencils
- Compasses
- Protractors
- Typing Paper

WE NEED THESE

SPECIAL!
Special! . . . Binder With Bulldog Imprint!
ALL COLORS OF INK!
HOT LUNCHES AND COLD DRINKS!
A. H. POWELL GROC. & MKT.
PHONE 103—WE BUY CATTLE and HOGS

DINE • DANCE

PEACOCK CLUB

- AIR CONDITIONED •
- Nominal Cover Charge
- CISCO, TEXAS

Chicken-Steak Dinners-Dutch Lunches
Monday Nites Open to Private Parties.

By Reservation — Tel. 9518

ON ACCOUNT OF MONDAY, SEPT. 26 BEING A JEWISH HOLIDAY

This store will remain closed all day.

GLOBE
SAULE PERLSTEIN, Manager

GIVE IT DEEP THOUGHT

Financing a home—like making a business change or getting married—is an event that should have your serious deliberation. Many wise home owners choose our plan for its proved economy and SAFETY. When refinancing your present loan demand the economies of our plan.

Directors:
A. J. Railiff, Pres.
G. D. Chaastin, Vice President
J. F. Killingsworth
C. B. Pruet
E. E. Crawford
D. Joseph

FIRST FEDERAL SAVINGS AND LOAN ASSOCIATION OF RANGER
C. E. MAY, Sec'y. PHONE 418

WE EXTEND THIS INVITATION---TO YOU

TO ATTEND OUR DRESS-UP SALE

We are through re-modeling our store and are indeed proud of the new fixtures, that display our large stocks to advantage. Being a Ranger institution for nearly twenty years, and justly prideful of the service we have rendered the men and boys of the city and surrounding territory. We believe in the future of Ranger, and with this faith have expended several thousand dollars in this re-modeling to carry on the tradition that, at The Globe, you will find what you want in the "Only Exclusive Men's Store in Ranger." This sale is store-wide, every item is marked down. Make a list of your needs, come in and let us show you what you SAVE! Remember this house warming party is on us. If you have never been a customer at this store, come in, we want to meet you. Our old friends know that it pays to buy Nationally Advertised Goods, and that's what we carry!

MENS' SUITS

Authentic Styles of the New 1938 Season! For smartness . . . more colorful and more pronounced . . . see the new showing for fall! Complete line of sizes.

\$39.50 SUITS Now Going at **\$33.85**
\$35.00 SUITS Now Going at **\$28.75**
\$30.00 SUITS Now Going at **\$25.65**
\$25.00 SUITS Now Going at **\$20.85**

TOPCOATS

We have the model you want. Single breasted, half belt or full belt with regular sleeves. Double breasted, 1-2 or belt all around, either set in or regular sleeves. The very latest styles.

Alpagona Coats
Nationally advertised and known throughout the world. Made of Llama and Camel's hair.

\$35.00 COATS—During this Sale **\$28.85**
\$30.00 COATS—During this Sale **\$25.85**
\$25.00 COATS—During this Sale **\$20.85**

FELT HATS

Men's and Young Men's

New Dress and Sport Hats in the very latest styles for Fall and Winter. Complete line.

\$5.00 HATS NOW **\$3.95**
\$3.95 HATS NOW **\$3.50**

All other Hats in stock will be sold at a discount of 10 per cent.

SUEDE JACKETS

Just received one lot of SUEDE LEATHER JACKETS

We are offering to you one lot of Suede Leather Jackets that we bought on special purchase—just passing the saving on to you.

\$7.45

Extra Special!
Extra Values in **SWEATERS**

One group of Sweaters in coat, zipper or button styles. The very latest in materials. Your size is here. Values from \$3.45 up to \$5. NOW **\$2.95**

Boys' and Students' Department!

Parents attention — we call special attention to our boys and students department. You can find everything that you need here for the school boys whether he be large or small and at substantial savings that it will be well worth the time of all parents to come to the GLOBE and see what you can buy for the school boys.

Kaynee Suits
In our line of Kaynee Suits for boys you will find just the suit for that rough and tumble youngster and at prices you can afford to pay.

Regular \$2.95 SUITS This Sale **\$2.25**
Regular \$2.50 SUITS This Sale **\$1.95**
Regular \$2.00 SUITS This Sale **\$1.70**

Extra Special!
BOYS' SWEATERS
One group of Boy's Sweaters, extra special during this sale. \$1.95 VAL. FOR **\$1.00**

EXTRA SPECIAL!
BOUGHT FOR THIS EVENT! ONE GROUP OF **SHIRTS** **\$1.65**

LADIES' PHOENIX HOSE 89c VALUE **69c**
10% OFF ON ALL OTHERS!

EXTRA SPECIAL!!!
LACE BOOTS
14-inch Lace Boots, Elk tanned leather, a real boot that gives real service and stands plenty hard wear.
\$5.95 values—**\$3.95**
Extra Special at

LUGGAGE
A very complete line for men and women in all kinds of luggage and hand bags. During this sale we will give
15 Per Cent Discount

This sale is held at the very beginning of the buying season so that The Globe may give to the people of the territory some real values and at the same time let the public know about the recent improvements and new fixtures put in! This sale means money to the people and all are invited to come in and participate.

THE GLOBE, INC.

CORRECT DRESS FOR MEN AND BOYS
SAULE PERLSTEIN, Manager RANGER, TEXAS

ONE GROUP OF **Trousers and Slacks**
Here is a real buy — save a whole \$ on any pant or slacks in this lot.
\$4.95 and up

CORDUROY SUITS
We have just received a shipment of Corduroy Suits bought specially for this sale. Ages 2 to 7. A real money saving value.
Extra Special at \$2.95!

ERN CAFETERIA
at YOUNG SCHOOL
Mrs. YEAGER'S CAFETERIA

tion of her place and will appreciate your business.
MRS. YEAGER'S CAFETERIA
Plate lunches, sandwiches, hamburgers, home made pies, candy and ice cream.

NOTICE OF WATERWORKS SYSTEM
REVENUE BOND ELECTION
THE STATE OF TEXAS
COUNTY OF EASTLAND
CITY OF RANGER, TEXAS

General Laws of the State of Texas, and only qualified electors, who own taxable property in the City and who have duly renewed the same for taxation, shall be qualified to vote.

Life Saving Job
On Roads Starts
With Busy Routes
The further motorists get away from the borders of cities, the safer they travel, according to Varnum B. Steinbaugh, deputy highway commissioner of Michigan.

there was but eight per cent of the trunk line mileage, there was 21 per cent of the fatal accident total."
He adds, "A planned and purposeful program to head off this persistent increase in fatal accidents on the rural trunk lines accordingly must be based upon the location of hazards as expressed by the location and number of mishaps, and upon the types of hazards, as attested by the types of mishaps. The accident pattern should serve as a guide in a planned program of designing for highway safety."



Alton and Alice Kaye in a scene from Irving Berlin's "Alexander's Ragtime Band," 20th Century-Fox's sensational musical cavalcade which is showing at the Aradia Saturday night at 11:15 and Sunday and Monday.

Special for Friday and Saturday!
BANANAS, Golden 9c
Apples—DOZ 17c
POTATOES Irish 17c
BERRANDA—3 Lbs. 10c
POSTIES, Large 9c
Box - Best 9c
Fresh CATFISH 19c
L.B. 19c
Fresh GULL 29c
SHRIMP—Lb. 29c
FLOUR, Best grade 22c
6 LBS. 22c
STARCH 4c
Faultless—Pkg. 4c
SALT BACON 13c
L.B. 13c

RESOLUTION AND ORDER
BY THE CITY COMMISSION OF THE CITY OF RANGER, TEXAS, CALLING AN ELECTION ON THE QUESTION OF THE ISSUANCE OF EIGHTY THOUSAND (\$80,000) DOLLARS REVENUE BONDS FOR THE PURPOSE OF MAKING CERTAIN REPAIRS, EXTENSIONS AND IMPROVEMENTS TO THE WATERWORKS SYSTEM OF SAID CITY.

That a copy of this resolution and order, signed by the Mayor of said City and attested by the City Secretary, shall serve as proper notice of said election.
The Mayor is authorized and directed to cause this notice of the election to be posted in at least three public places within said City, one of which shall be at the City Hall, and in the City of Ranger, Texas, and the other two at public places within the City limits, for at least fourteen full days prior to the date of said election.

And those opposed to the proposition to issue the said bonds shall have written or printed on their ballots the following words:
"AGAINST THE ISSUANCE OF WATERWORKS REVENUE BONDS, AND THE FLEETING OF THE REVENUES OF THE WATERWORKS SYSTEM TO THE PAYMENT THEREOF."

That a copy of this resolution and order, signed by the Mayor of said City and attested by the City Secretary, shall serve as proper notice of said election.
The Mayor is authorized and directed to cause this notice of the election to be posted in at least three public places within said City, one of which shall be at the City Hall, and in the City of Ranger, Texas, and the other two at public places within the City limits, for at least fourteen full days prior to the date of said election.

THREE GOOD FEEDS
MADE IN RANGER
OUR OWN COW FEED.
OUR OWN HEN SCRATCH.
OUR OWN EGG MASH.
We have many satisfied customers using our feeds! ... Do not forget ... they are MADE IN RANGER!
A. J. Ratliff
FEED SEED FLOUR
Phone 82 Ranger

RESOLUTION AND ORDER
BY THE CITY COMMISSION OF THE CITY OF RANGER, TEXAS, CALLING AN ELECTION ON THE QUESTION OF THE ISSUANCE OF EIGHTY THOUSAND (\$80,000) DOLLARS REVENUE BONDS FOR THE PURPOSE OF MAKING CERTAIN REPAIRS, EXTENSIONS AND IMPROVEMENTS TO THE WATERWORKS SYSTEM OF SAID CITY.

That a copy of this resolution and order, signed by the Mayor of said City and attested by the City Secretary, shall serve as proper notice of said election.
The Mayor is authorized and directed to cause this notice of the election to be posted in at least three public places within said City, one of which shall be at the City Hall, and in the City of Ranger, Texas, and the other two at public places within the City limits, for at least fourteen full days prior to the date of said election.

You buy ONE
You get all Four!
FIRE-CHIEF GASOLINE
Remember this about Fire-Chief—at its price you can get no better gasoline anywhere. Literally it is unexcelled.
Now read about the services listed below that go with Fire-Chief. Then you will agree this is the way to get more for your gasoline money!

SIG'S NU-WAY STORE
Trades Day Specials
COME AND GET 'EM -- THEY'RE HOT!
Telephone 21 We Deliver
SUGAR 10 Lb. Bag 49c
GRAPES 2 Lbs. Tokays 15c
GRAPEFRUIT JUICE 2 No. 2 Cans 15c
FIRM GREEN CABBAGE 5 Lbs. 9c
FINE FOR CHOW CHOW 5 for 9c
NEW CROP DROMEDARY DATES 1 1/2-Oz. Pkg. 15c 1 3/4-Lb. Pkg. 25c
DRY ONIONS 3 Lbs. for 10c
Pure Maid TAMALES 2 No. 2 Cans 25c
Fresh TOMATOES 3 Lbs. for 10c
SHORTENING 4 Lb. Carton 43c 8 Lb. Carton 83c
FRESH CARROTS 3 Large Bunches 10c
Market - - Specials
Decker's Sliced BACON 1 Lb. Pkg. 25c
7-Pound Picnic HAMS Per Lb. 19c
Salted JOWLS Per Lb. 10c
Chuck Beef ROAST Per Lb. 14c
Bologna SAUSAGE Per Lb. 10c
Plenty Live or Dressed HENS & FRYERS

Circle Service
This complete free servicing covers many important needs in one quick trip around your car. Your windshield, rear window and light lenses are cleaned. Oil and water checked. Inflation of tires noted. It is a "specialty" with us.
REGISTERED REST ROOMS
We pledge you spic-and-span cleanliness... complete rest room equipment. This pledge is backed up by our "White Patrol" inspection service. You'll find it always... wherever you see the sign.
COURTESY... a gentleman to serve you
Cheerfulness and courtesy come first with us. We're glad to do extra services... even go to "school" to learn how. We're proud of our products... proud to be Texaco Dealers.
TEXACO DEALERS
Deffebach Garage
Boatwright Service Station
Texas Service Station
Al Tune Service Station
H. P. EARNEST, Consignee, RANGER, TEXAS

CO-EDS PROVE SUPERIORITY
By United Press
DE LAND, Fla.—Scholastically, co-ed top male students at Stetson College. Dean Charles G. Smith said that of the latest semester honor roll, 44 of the 62 honor students were girls. Of six students who received straight "A" grades, four were co-eds.

PIGGLY WIGGLY
TAKE A TIP FROM Piggly Wiggly on how to cut your food bill without sacrificing quality! We believe in bigger total sales achieved by very low markup on items. That means every day low prices on 2,000 items! And THAT means real savings to you!
GRAPES Tokays—Per Lb. 5c
Potatoes 10 Lbs. 19c
LETTUCE Per Head 5c
CABBAGE 2 Lbs. 5c
BEETS and Carrots 3 BUNCHES 10c
ONIONS 3 Lbs. 10c
Tomato Juice 50 Oz. Cans 23c
Pet MILK 3 tall or 6 small 19c
SOAP P. & G. Crystal White 5 Big Bars 19c
Tomatoes 4 No. 2 Cans 25c
SUNBRITE CAN 5c
Pipkin's Special COFFEE 2 Lbs. 27c
Folger's COFFEE Per Pound 26c
Gold Medal Tamales 2 Cans 25c
Red Pitted Cherries 2 Cans 25c
Amita Fruit-Mix 2 Cans 23c
Staff-of-Life Spinach 2 No. 2 Cans 15c
Delightful Ovaltine Large Size 65c
Wheaties 2 Pkg. 23c Pickles Qt. 15c
VEAL STEAK Per Lb. 17c
Chuck Roast Per Lb. 13c
Veal Stew Per Lb. 10c
Smoked Bacon 5 Lb. \$1
GROUND MEAT 2 Lbs. 15c
Kraft Sale! 2 Lb. LOAF CHEESE 47c
LARGE BOLOGNA Per Lb. 10c
Brooms Each 25c
Meal 10 Lbs. 20c
Spry 3 Lbs. 55c
PINTO BEANS 3 Lbs. 17c
PEACHES GRAPE JUICE
Rosedale Texas Special Hominy 3 Large Cans 25c Pint Bottle 14c
Widmark
BAKING POWDER Health Club 25c Size 15c
PEAS Shriver's Small Sieve No. 1 Can 10c Fancy Grade No. 2 Can 18c

RANGER TIMES

TIMES PUBLISHING COMPANY, Publishers
211-213 Elm Street, Ranger, Texas. Telephone 224

NOTICE TO THE PUBLIC

Any erroneous reflection upon the character, standing or reputation of any person, firm or corporation which may appear in the columns of this paper will be gladly corrected upon being brought to the attention of the publisher.

Published every afternoon (except Saturday and Sunday) and every Sunday morning.

Obituaries, cards of thanks, notices of lodge meetings, etc., are charged for at regular advertising rates, which will be furnished upon application.

Entered at second class matter at the postoffice at Ranger, Texas, under Act of March, 1879.

WALTER MURRAY, Publisher.

SUBSCRIPTION RATE

ONE YEAR BY MAIL (In Texas) \$3.00

Local Contests Determine the National Issues

All of this talk about the presidential party "purge" may be turning into something of a bore, but it ought to have one useful by-product; it is emphasizing anew the importance of the various state elections.

Although we do about as much talking about politics as any people alive, we Americans really don't pay a great deal of attention to it. Our four-year presidential contests are gaudy three-ring circuses, and so we give them a lot of our time. But between these elections we have a way of getting back and forgetting about politics, elections, candidates, and all the rest.

This works out beautifully for the politicians and the pressure groups and badly for everyone else.

One of the most obvious but little-understood facts of American politics is that all of these state elections are fundamentally more important than the presidential elections.

Presidents, after all, must work through their Congresses; governors must work through their legislatures. And although a candidate for the presidency or for a governorship may expound a platform and stir up sentiment on an issue, in the end the fate of his platform and his issue will be settled by Congress and legislature. Men who were elected in contests that drew very little public attention are usually the final arbiters of state and national programs.

So a people that really wants its governing bodies to be fully responsive to public sentiment can never afford to let these off-year, local contests go by default. Unless it stays interested in them and searches out their hidden issues and sub-surface meanings with all the care it denotes the presidential elections, it is apt to find itself saddled with a great number of elected representatives who represent someone's selfish interest rather than the general good.

That is precisely what has been happening in this country for many a weary decade. It explains why lobbyists have such power at Washington and in the state capitals. It explains why political machines are able to keep their grip on certain regions despite perennial revelations of their corruption. It explains why Congress contains so many men who represent vested interests rather than the plain people.

In other words, we pay a very high price for our lazy habit of letting ordinary elections take care of themselves. And it is here—to repeat—that all of this talk about the "purge" may do us some good.

This talk helps to focus attention on the importance of these elections. It is a reminder that the citizen's responsibility is not simply a matter of going to the polls once in four years, but is a continuing thing which calls for an alert, unflagging interest and energy.

Comes news that the latest dodge in Germany is making synthetic woolen rugs out of fish. Oh, hooked rugs!

WORLD-FAMOUS SCIENTIST

Horizontal and Vertical crossword puzzle clues and answers. Includes a small portrait of a man.

Large crossword puzzle grid with a portrait of a man in the center.

"OUT OUR WAY"

By Williams

Comic strip "OUT OUR WAY" showing a man and a woman talking. The man says, "THAT LUMMOX SEZ - 'NO BOY O' MINE IS GONNA WORK IN NO SHOP, IF I KIN HELP IT' - AN' LUCKY 'IM MAKIN' HIS KID COME 'TMEET HIM EVERY DAY AN' CARRY HOME HIS LUNCH BOX AN' OVERALLS. WHY, THAT BOY IS BEIN' TRAINED RIGHT FOR TH' SHOPS! 'AS A TWIG IS BENT SO SHALL IT GROW!'"

ALLEY OOP

By Hamlin

Comic strip "ALLEY OOP" showing a man and a woman talking. The man says, "OH, WHEN CAN I SEE YOUR DINOSAUR? IS HE A BIG FIERCE ONE LIKE MISTER OOPS?"

SERIAL STORY

HIT-RUN LOVE BY MARGUERITE GAHAGAN

Yesterday, Larry appears in a new car; hints Pat could influence traffic court officers. CHAPTER VII ENVELOPED in one of her mother's big aprons Pat added another place at the table; made an extra salad, sliced Mrs. McGraw's rich, moist chocolate fudge cake on a best plate—company touches since Larry had accepted the invitation to stay for dinner. Even while she hurried around the warm kitchen sniffing the tantalizing odors of cooking food, listening to the voices of the boys discussing the latest automotive news with Larry, broken fragments of her own conversation with him on the way home kept beating a refrain in her brain. "Those boys in the know could fix just about anything—," "Judges and prosecutors can be influenced by the right powers—," "Even a pretty pair of eyes like yours—," Subtle remarks, innocent enough yet charged with a hidden meaning. The next two hours passed dully. Even Larry's early leave-taking failed to arouse her from her inner concentration. It was on the bus crowded with office workers bound for town that she saw a morning paper over a man's shoulder. Automatically her eyes scanned the lead stories. Then she stood out, headlines seemingly written in fire, isolated words leaped at her. "Hit-runner caught—," "Witness returning from week-end away gives police necessary clue—," "Salesman arrested—," "Car traced by loosened fender—," "Kent refuses to discuss charge."

WIFE COLLECTS BUTTONS CHARLOTTE, Mich.—If buttons are missing on W. R. Brott's shirts here, it is not because his wife has run short of them. Mrs. Brott, whose hobby is collecting them, has more than 1,500 buttons. One is from a Civil War uniform.

DR. R. C. FERGUSON 208 Exchange National Bank Building — Eastland, Texas Diseases of Children and Infant Feeding Office Hours: 9:30 to 12—2:30 to 5 Office Phone 191 Residence Phone 196

Large advertisement for "THE CIRCUS IS COMING" featuring a cartoon of Jerry of the Circus and Mrs. Baird's Bread. Text includes: "FOR BOYS AND GIRLS - ON THE RADIO Starting on WFAA - WBAP - Monday, Sept. 26 EACH WEEK DAY, EXCEPT SATURDAY, AT 5:15 P. M." and "MRS. BAIRD'S BREAD The Freshest Loaf in Your Grocer's Store".

BROWN'S
Transfer and Storage
FOR MOVING & STORAGE
Agents for T. & P. TRANSPORT

Will Your Battery Start Your Car This Winter?

DEFFEBACH GARAGE
ONE AND RUSK STREETS
You Want Ads

Save Money Time Regret!
CALL IN FRIGIDAIRE!
On Any Size Refrigeration Job
ANDERSON REFRIGERATOR CO.
Phone 60 or 40 214 E. Wall
BRECKENRIDGE, TEXAS

State Police Urge Traffic Safety for School Children

AUSTIN, Texas.—State police school warnings today to parents and others charged with the safety of children to provide for their safe transportation to and from school.

Safety officials particularly urged that drivers of vehicles transporting school children use caution in discharging their passengers. Never permit them to alight from automobiles or buses except at the curb nearest the school or other destinations, they warned.

Capt. Homer Garrison Jr., assistant division of state police, declared that precautions should be taken this school year to avoid the occurrence of tragic accidents that, last year, killed 106 children between the ages of five and fourteen and injured 1,987.

He urged that teachers instruct their students in safety particularly as to their conduct while

walking or riding to and from classes. Capt. Garrison said parents and instructors alike should be able to forestall many school traffic accidents by warnings to:

Cross streets only at intersections, and then only after making sure that no vehicles are approaching.

Be guided by school patrols and others who direct school traffic.

Not play games while walking to and from school and walk only on sidewalks.

Be particularly careful when retrieving footballs, baseballs and other paraphernalia from streets as most accidents to children happen at those times.

A number of Texas schools have adopted traffic safety subjects as a requirement for their students, Capt. Garrison said. The state safety education bureau, through its safety education bureau, is assisting them with this type of instruction.

Oil Industry Has Opportunities for Industrious Youths

AUSTIN.—The oil industry in Texas is an expanding occupational field and offers increasing opportunities for employment to Texas young men according to conclusions set forth in a survey entitled "Employment Opportunities in the Oil Industry in Texas," released by the National Youth Administration in Texas, J. C. Kellam, state NYA director, said.

Young people entering at the bottom of the industrial order have ample opportunity to work their way up in the oil industry since during recent years at least 25,000 temporary or permanent new jobs have been created each year, and there is no indication at this time that a reduction in employment in the industry is likely, the survey reveals.

It is the first of a series of industrial studies to be made by the Texas NYA for the purpose of presenting information which may help determine the number and character of Texas young people

Caught Cold?

To relieve distress—rub throat, chest, back with **VICKS VAPORUB**
USED BY 3 MILLIONS OUT OF 5

T. C. U. Has Six Letter Ends for 1938



Coach Dutch Meyer of Texas Christian ought to get the job well done at ends. He is better fortified with lettermen for the wing positions than at any other spot. These six "T" wearers are all hot contenders for the first-string call, and all of them are likely to see considerable action before the season ends. Hensch, Jordan, Snow and Williams are all seniors; Horner and Looney are juniors.

This study was made by Ray E. state director for the National Emergency Council, under the supervision of Dr. Mary H. S.

Hayes, director of guidance and placement for the NYA in Washington, D. C., and in cooperation with several recognized leaders in the oil industry in Texas. The work was reviewed by a committee composed of Dr. George W. Stocking, Dr. Ruth Allen and Dr. Emmette S. Redford, members of the faculty of the University of Texas, and by Harry C. Weiss, a prominent oil man of Houston, Texas.

This industrial study surveys employment in Texas in the drilling and production, pipeline, refining, and distributive branches of the oil industry. It was prepared as a source book for instructors in occupational study and vocational guidance and as a guide for youth seeking information about job opportunities in the oil industry. In the main, the data presented in the book are limited to Texas, but the main facts regarding the nature of employment and the work to be performed are of wider significance since they are applicable to the industry throughout the nation.

Mr. Kellam said that mimeographed copies of this book are available for distribution to interested persons through the NYA office at Austin.

MUSIC CLASSES
Mrs. **Weldon Webb**
STARTS THURSDAY, SEPT. 15th
STUDIO GHOLSON HOTEL
PHONE 549W

ICE CREAM
10c Pint
Delmonte
That Good Kind!
MRS. HIGDON'S CAFE

Chiropractic Service
By Aid of the New Radio-Cast Instrument!
We can easily find and measure perfectly your trouble; also what organism involved. No guess-work, but everything is scientifically measured.
E. R. GREEN
Chiropractor
209 MAIN STREET

666 Malaria
in 7 days and relieves COLDS
Liquid, Tablets first day
Salve, Nose Drops, Headache, 20 Minutes
Try "Rub-My-Thim"—World's Best Lintiment

USED TIRE BARGAINS!
Used Tires and Tubes of all sizes and prices... a new low price on all Tires. Also low price on all Auto Parts—spark plugs, fan belts, armatures, brake lining, spindle bolts and many other parts at—
BILL WALKER'S TIRE EXCH.
105 NORTH AUSTIN ST. RANGER, TEXAS

Plan, Economize with this **FOOD** *Shopping Guide*

Headquarters for QUALITY MEATS

We carry only the best of meats, yet our prices are the same as ordinary meats. You'll find any cut you are looking for in our selection.

DELIVERY! FREE

SMOKED BACON SQUARES Per Lb. 15c

BEEF CHUCK ROAST Per Lb. 15c

Swift's Stamped Grain Fed Beef

Prime **ROAST** Per Lb. 28c

Choice **ROAST** Per Lb. 20c

Swift's Choice Veal **CHUCK ROAST** Per Lb. 18c

Fore **STEAK** Per Lb. 19c

SMALL CHOPS Per Lb. 19c

Genuine **CUTLETS** Per Lb. 32c

Folgers COFFEE lb. 26c

SUGAR 10 lb. bag 49

Swift's Jewel **SHORTENING** 4 Lbs. 45c

CRISCO 3 lb. 52

Kraft American **CHEESE** 2 Lb. Loaf 45c

PARD DOG FOOD 3 for 25c

TOMATOES No. 2 Cans 3 for 20c

Pineapple Tidbits 3 for 23c

Swift's Corn Beef Can 23c

SWIFT RABBIT **SYRUP** 2 1/2 Can 21c

SPUR SYRUP Gal. 59c

GRAPEFRUIT No. 2 Can 15c

Grapefruit Juice No. 2 Can 3 for 25c

CATSUP Large Bottle 12c

End Cuts Cured **HAM** Per Lb. 29c

Pork **SAUSAGE** Per Lb. 15c

X-Brand **BACON** Per Lb. 33c

Swift Premium **BACON** Per Lb. 39c

LIGHT CRUST - GOLD CHAIN FLOUR

48 LBS. \$1.45 24 LBS. 75c 12 LBS. 45c

WORTHMORE FLOUR

48 LBS. \$1.05 24 LBS. 59c

Small Dressed **HENS** Per Lb. 17c

Monarch **PEAS** No. 2 Telephone Can 15c

Monarch **PRUNES** No. 2 1/2 Dry-Pack Can 29c

Yacht **DILL PICKLES** No. 2 1/2 Club Can 17c

Monarch **ASPARAGUS** No. 1 All-Green Can 19c

Monarch **APPLE SAUCE** No. 2 Can 12c

MONARCH TELEPHONE **PEAS**, No. 1 Can 3 for 25c

MONARCH FRESH FITTED **PRUNES** 2 1/2 Can 19c

MISSION **ASPARAGUS** No. 1 Can 15c

Eversweet **BACON** Per Lb. 29c

Salt **JOWLS** Per Lb. 12c

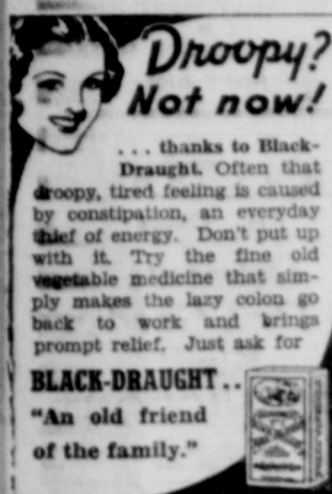
Texas **Grapefruit** 6 for 25c

Protect Your Health With Government Inspected **O. K. GROCERY & MARKET** SATURDAY IS TRADES DAY - COME TO RANGER TO DO YOUR SHOPPING!

201 W. MAIN ST. PHONES 214 - 215 RANGER, TEXAS

Power Customers Wonder About Colorado Deal

By United Press
AUSTIN. — Electric light and power consumers are wondering



... thanks to Black-Draught. Often that droopy, tired feeling is caused by constipation, an everyday chief of energy. Don't put up with it. Try the fine old vegetable medicine that simply makes the lazy colon go back to work and brings prompt relief. Just ask for BLACK-DRAUGHT... "An old friend of the family."

where they come in as Lower Colorado River Authority and Texas Power and Light company indulge in pot and kettle blacking one another.

The river authority accuses the private corporation of high rates and an attempt to block cheap power. T. F. & L. says the river authority will make continued rate reductions impossible if it muscled into T. F. & L. territory and takes part of its distribution areas.

T. F. & L. has offered a division of territory but LCRA officials say they are buying no "pig in a poke" and that the offer by T. F. & L. President John Carpenter has a string to it—he is to refer the deal to the directors.

Colorado River authorities thought the "offer" was largely a lecture to the Authority and only to a small extent a valid tender of facilities at cost. They answered it with an agreement to investigate, and lectured the T. F. & L. in turn with a statement that the river authority could not refrain from offering communities a chance to save 30 to 50 per cent on consumer charges.

Home-Made Submarine Navigates Lake Michigan



Byron "Barney" Connett, of Chicago, pictured above in his one-man "tin can" submarine, navigated the fish-like underwater craft from Michigan City, Ind., to the Chicago downtown waterfront in 10 hours and 50 minutes. Trained by a sloop carrying two professional divers, Connett came to the surface only once, when he ran out of oxygen.

The consumer, however, looks in vain for any cost reduction clause in sales of power from the public dams. In fact, the river authority cannot stipulate resale prices. There is no such requirement in the contract made with the city of Austin where light and power income admittedly is used as a source of city revenue.

That officials of other cities will take the same position as Austin's is indicated by their past attitude on rate regulating bills presented to the legislature. Repeatedly the municipalities have defeated bills that would include regulation of rates of municipal plants.

Austin officials say that the power charges are a means to make non-property owners share in the cost of city government. Legislators, so far, have taken the position that if citizens cannot force their own officials to reduce rates, it's no business of the legislature to do it for them.

Whether the new controversy will hob up at the state senate's investigation of the Lower Colorado River Authority was not apparent. The investigation is scheduled for resumption on Sept. 13. It was ordered to determine if the Colorado River flood damage in July was aggravated by the power dam erection between Llano and Burnet, or if improper handling of the dam resulted in increasing the flood in the lower parts of the river valley.

River authorities have hinted that interest in the flood hearing was stimulated by private power interests.

Earlier hearings indicated that the river authorities lacked adequate information about weather

Three Districts Will Play New Six-Man Game

By United Press
AUSTIN, Texas — Three districts have been organized officially for playing of six-man football in the University of Texas Inter-scholastic League, and approximately 100 schools have indicated that they are interested in the sport. Rodney T. Kidd, athletic director of the league, has announced.

Following the example of the smaller schools in other states, Texas schools rapidly are adopting the game as their own.

"In Texas there were 1,500 high schools playing basketball last year," Kidd said, "and only about 600 playing 11-man football. This leaves 900 schools without a fall sport, which, we believe, every school needs. The small high school needs an inexpensive athletic contest in early fall."

Substituting action for words, Kidd has helped organize these three districts:

District 1—(Southeast Texas): Beasley, Blessing, Crescent, conditions over the enormous drainage area of the Colorado river. Steps to correct this have been taken. Contracts have been made for approximately 50 additional stream gauges to be placed in tributary streams and on the upper reaches of the Colorado river.

Cooperating with the U. S. Weather Bureau arrangements have been made by which the Bureau's observers will report to the river authority also.

Louise, Hungerford, La Ward, Markham and Wharton.

District 2—(Southwest Texas): Asherton, Big Wells, Catarina, and LaPryor.

District 3—(Central-South Texas): Dale, Dripping Springs, Kyle, Lytton Springs, Martindale, Prairie Lea, Umland and Wimberly.

Other districts are expected to

Cattle Shipments Are Slightly Smaller

AUSTIN, Texas—Shipments of cattle and calves from 17 western cattle area states including Texas from August to December, 1938, will be about 550,000 head, or 9 per cent smaller than in 1937's same period, the U. S. Department of Agriculture's Bureau of Agricultural Economics has reported here.

Shipments of sheep and lambs, aided by 22 per cent of the total in Texas, will be about 500,000

Man Takes A Chance

Use **AMERICAN BEAUTY FLOUR** THAT MELTS IN YOUR MOUTH

... ask your grocer for American Beauty Flour, the favorite of three generations of good cooks.



"Man Takes A Chance" said the waitress when her customer ordered hash. You take a chance every time you drive a car without Insurance!
C. E. MAY Nothing But Insurance!

FOR TENDER PASTRY
THAT MELTS IN YOUR MOUTH

Use **AMERICAN BEAUTY FLOUR**
"It Blossoms in Your Oven"

Avoid costly baking failures—ask your grocer for American Beauty Flour, the favorite of three generations of good cooks.

FREE From this receipt on proper card, write plainly your name and address on card and mail to Standard Flour Co., Dept. AF, Dallas, Texas, and we will send you free folder of Recipes used by housewives who won first prize awards at Texas State Fair.

YOU ARE INVITED TO ATTEND . . .

STAR in my KITCHEN

COOKING SCHOOL PICTURE SHOW AT THE

ARCADIA THEATRE

TUES., WED., THURS.
SEPT. 27, 28, 29
AT 9:30 A.M.
ADMISSION FREE!

STAR IN MY KITCHEN

A FULL LENGTH TALKING MOTION PICTURE AT THE

ARCADIA THEATRE

RANGER, TEXAS

TUES., WED., THURS.
SEPT. 27, 28, 29,
Daily Gift Awards of
SPRY .. RINSO .. LUX .. LIFEBOUY HEALTH SOAP LUX TOILET SOAP

LUX Toilet Soap 3 For 19c	Spry 3 Lb. Can 55c 1 Lb. Can 22c	LUX Reg. 10c Large 24c
Admission FREE To All!	Rinsol Regular Size 2 for 17c Large Size 22c	LIFEBOUY HEALTH SOAP 3 for 19c

FREE GIFTS DAILY

SOLD IN RANGER BY Piggly Wiggly A. & P. Store Traders Grocery Sig's Nu-Way Store Woods Grocery & Market

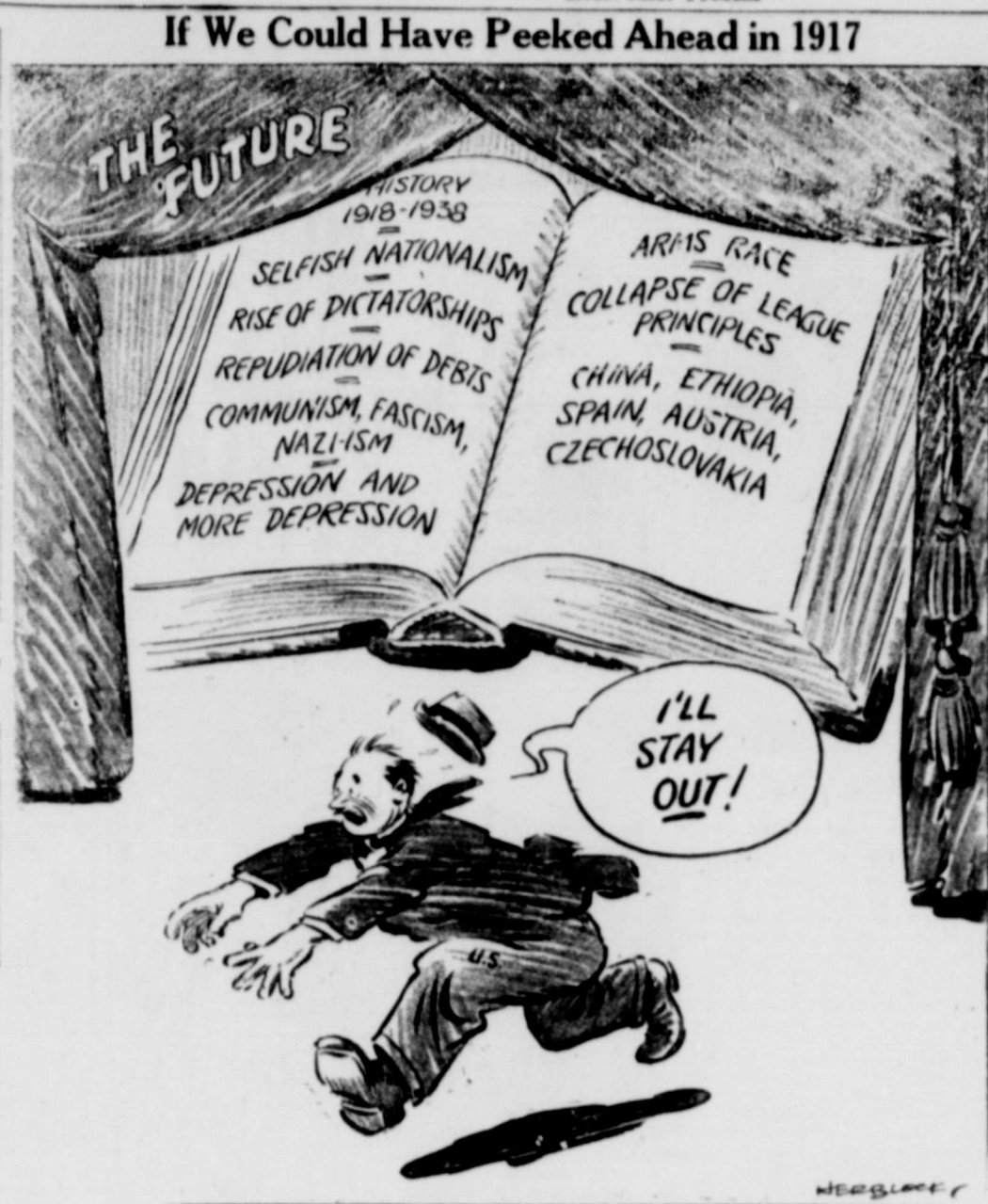
SOLD IN EASTLAND BY Piggly Wiggly

SOLD IN OLDEN BY H. C. Nix Grocery

FLOUR Gold Medal 24 Lbs. 75c Gold Chain - Hillbilly 24 Lbs. 79c Home Queen 24 Lbs. 49c Supreme Cream CORN MEAL 5 Lbs. 15c 10 Lbs. 25c 20 Lbs. 45c MARSHMALLOWS 1 Box 12c BULK RICE 3 Lbs. 15c LIPTON'S TEA 1/4 Lb. 19c Stokely's Finest CATSUP 2 14 Oz. Bottles 25c Betty Brand - Sour or Dill PICKLES 2 Qt. 27c PEANUT BUTTER QUARTS 25c PINTS 15c MINCE MEAT 3 Pkg. 25c Phillip's PORK & BEANS 3 Cans 25c 1 Lb. Can 5c	QUALITY You Demand PRICES YOU CAN AFFORD Fresh Country BUTTER Lb. 25c Sugar Cured Smoked Bacon BACON Lb. 23c FRESH CALF BRAINS AND TONGUES PORK LIVER PORK SAUSAGE LARGE WEINERS—LB. 15c Fed Beef CHUCK ROAST—LB. 17c Fed Beef SHORT RIB ROAST 2 Lbs. 25c Maximum MILK Tall Cans 5c Navy Beans 3 Lbs. 19c BULK GINGER SNAPS 1 lb. 15c VANILLA WAFERS 1 lb. 15c BOTH FOR 25c KRAUT, GREEN BEANS, ROYAL GEM CORN, SPINACH 2 NO. 2 CANS 15c	SUGAR 10 Lb. 49c 10 Lb. Paper Bags 45c SHORTENING 4 Lbs. Merit 37c 4 Lbs. Wilson's Advance 42c REX JELLY 5 Lb. Bucket 39c Lone Star - Extracted Pure HONEY Per Gal. 89c 1/2 Gal. 49c STEAMBOAT SYRUP Gal. 49c 1/2 Gal. 27c Wilson's Certified CHILI - HOT TAMALES 2 1 Lb. Cans 29c MEAT CAN Potted 3c SAUSAGE Vienna 6c STOKELY'S FINEST GRAPEFRUIT JUICE 3 No. 2 Cans 25c Red Kidney BEANS 3 No. 2 Cans 27c Country Gentleman CORN 2 No. 2 Cans 23c Early June PEAS 2 No. 2 Cans 29c	
RINSO PAINTED HANDLE Brooms, Rope Mops . . . 2 for 35c LARGE 23c REGULAR 25c SUNBRITE CLEANSER 6 Cans 25c STEEL WOOL - 10 Balls 2 Boxes 15c	LUX FLAKES LARGE 23c REGULAR 25c LIFEBUOY SPRY 2 FOR 13c SHORTENING 3lb. CAN 55c 1lb. CAN 21c Crystal White SOAP 4 Giant Bars 15c	LUX TOILET SOAP 2 FOR 13c SUNKIST LEMONS 2 Doz. 25c New Eatmor CRANBERRIES 1 Lb. 17c Seedless NECTARINES 3 Doz. 25c New Texas GRAPEFRUIT 6 FOR 25c New Jonathan Fancy Eating APPLE DOZEN 30c Delicious APPLE DOZEN 30c Yellow ONIONS 2 LBS. 5c Fresh Rutabaga LB. 3c	
GRAPES Tokay's Doz. 15c Thompson Seedless Per Lb. 6c California ORANGES 4 Lb. 29c New Jonathan Fancy Eating APPLE DOZEN 35c New Texas GRAPEFRUIT 6 FOR 25c New Jonathan Fancy Eating APPLE DOZEN 30c Delicious APPLE DOZEN 30c Yellow ONIONS 2 LBS. 5c Fresh Rutabaga LB. 3c	YELLOW YAMS 5 Lb. Bag 10c 10 Lb. Bag 18c California Slicing TOMATOES LB. 7c One Kellogg's CORN FLAKES One Tin-Top PUFFED WHEAT BOTH FOR 15c	YELLOW SQUASH 2 Lb. 15c GREEN CABBAGE Per Lb. 2c MUSTARD and TURNIP GREENS 3 For 10c FRESH EGG PLANT, BRUSSEL SPROUTS, COCOANUT, OKRA.	Colorado No. 1 Cobbler POTATOES 10 Lb. Bag 21c California Iceberg LETTUCE 2 HEADS 9c BELL PEPPERS LB. 6c 1 Box Reg. Kotex One Box 500 Panels TISSUE BOTH FOR 42c

TRADERS GROCERY & MARKET
We Deliver Phone 191 Cor. Walnut & Rusk Sts. Be Sure and Visit Our Store Trades Day!

RECKLES and HIS FRIENDS—By Blosser



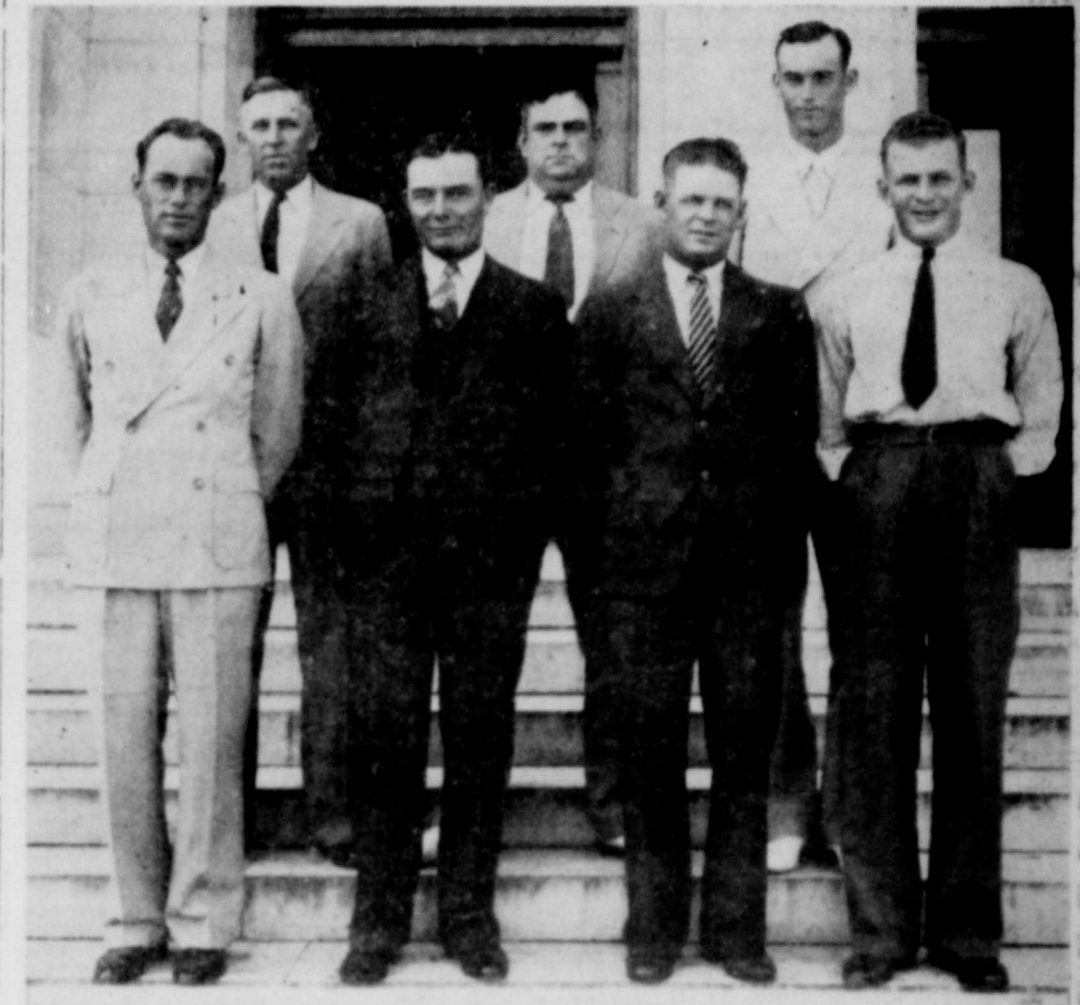
Governor Earle and Son Both Pilots

By United Press
HARRISBURG.—When it comes to flying, it's a matter of like father, like son in Gov. George H. Earle's family.

George Earle, IV, eldest son of the chief executive, recently made his first solo flight at the state airport here.
The governor's son won his wings in a four-place state cabin ship. The governor, however, learned to fly and soloed in his own autogiro.

Accompanied by Mrs. Earle and Capt. A. M. Banks of the Pennsylvania Motor Police, the chief executive recently made a 10,000-mile "vacation flight" to Latin America.
The son serves as one of the governor's secretaries, being paid by his father rather than by the state. He formerly was employed by a Philadelphia newspaper.

Members of Tesco Transmission Crew



Top row: left to right, G. W. Jackson, D. T. Brinkley, J. L. Brown; bottom row: L. D. Williams, W. E. Lewis, A. K. Garrett, and H. E. Peppard.

ELECTRIC FIRM CREW'S SAFETY WORK WILL BE NOTED AT PARK PICNIC

Recognition of 10 years service without a disabling accident will be given members of a Texas Electric firm company transmission crew, of which Frank T. Hightower is foreman, tonight at a picnic in the City Park at Eastland.

O. S. Hockaday of Fort Worth, transmission superintendent of the Texas Electric Service company, will present a gold watch to Hightower in recognition of the achievement.

Crew Foreman



Frank T. Hightower
Frank T. Hightower is head of the Texas Electric Service company transmission crew which will be recognized for its safety work tonight at a picnic in the City Park at Eastland.



FILL EMPTY SOCKETS TO MAKE YOUR LIVING ROOM MORE ATTRACTIVE

It is the mark of a good housekeeper to have all light fixture sockets filled with lamps that will burn. Dead lamp globes or empty sockets are as noticeable as a window without a shade.

Fixtures with all sockets filled give you better light, too, showing your living room to the best advantage and creating an atmosphere of cheerfulness and hospitality.

PUT LAMP BULBS ON YOUR SHOPPING LIST

Almost every grocery store, drug store, as well as electric appliance stores, have lamps for sale. Buy them in assortments so that you'll have a globe of the right size when one burns out.

Be sure to get Globes that are large enough to give you all the light you need

CLEAN FIXTURES GIVE More LIGHT

Reddy Kilowatt Says:
Light fixtures collect dust which absorbs as much as one-third of the light you should be getting. Wipe all lamp globes, glass shades and diffusing bowls on portable lamps occasionally with a damp cloth to remove the thin film of dust they collect. Then you'll get ALL the light you pay for.



FOR TABLE LAMPS
You'll find that lamp bulbs of 100-watt or 150-watt size will give the best light for reading or studying under a table lamp.

FOR I.E.S. BETTER SIGHT LAMPS
Be sure to use the same size and type of lamp bulb in I. E. S. lamps that they originally contained to give you the best lighting results.

BRIGHTEN Your KITCHEN
You need a good light in the kitchen, and a 100-watt or 150-watt size will provide enough light to make seeing easier and to speed your work.

TEXAS ELECTRIC SERVICE COMPANY

SISTER MARY'S KITCHEN

BY MRS. GAYNOR MADDOX
NEA Service Staff Writer
BREAD pudding can be a Cinderella. From humble origins it often becomes the princess of desserts. The first wears a crown of jelly.
Frosted Jelly Pudding (Serves 4 to 6)
One cup 1-2 inch bread cubes, 1 egg and 2 egg yolks slightly beaten, 1-3 cup sugar, 1-4 teaspoon salt, 1 teaspoon vanilla, 2 cups milk scalded, 2 tablespoons butter, 1 cup plum jelly or any other red jelly, 2 egg whites, 4 tablespoons sugar.
Place bread cubes in greased baking dish. Combine egg and egg yolks with sugar, salt and vanilla. Add milk slowly, stirring constantly. Add butter and pour over bread. Place in pan of hot water, and bake in moderate oven (350 deg. F.) 30 minutes. Spread with jelly.
Beat egg whites until foamy throughout. Add sugar, 2 tablespoons at a time, beating after each addition until sugar is blended. Then continue beating until mixture will stand in peaks. Pipe lightly on pudding. Return to oven and bake 15 minutes longer or until delicately browned. Decorate with melted jelly.
Chocolate Bread Pudding (Serves 4 to 6)
For years this rich chocolate

Monday's Menu
BREAKFAST: Canned cranberry juice, hot cereal, sausage cakes, buttered toast, coffee, milk.
LUNCHEON: Corned beef hash, chili sauce, soft rolls, apple sauce, tea, milk.
DINNER: Liver and bacon, creamed potatoes, grilled tomatoes, lettuce and green pepper salad, frosted jelly pudding, coffee, milk.
dessert has fooled my guests. No one ever suspects its bread pudding origin.
Two cups stale bread crumbs, 4 cups scalded milk, 3 1-2 square bitter chocolate, 1 cup sugar, 1-cup melted butter, 5 eggs, 1-teaspoon salt, 1 teaspoon vanilla, 1-2 teaspoon almond extract, tablespoon finely chopped pistachio nuts.
Shave chocolate and add to cold milk. Scald milk. Beat thoroughly. Then pour over bread crumbs. Stand 1-2 hours. Beat eggs slightly, add sugar, and beat again.
Combine all ingredients, stir well, and pour into buttered baking dish. Bake for 1 hour 1 moderately slow oven (325 deg. F.). Serve hot with hard sauce, or well chilled with whipped cream. It's a Cinderella!

THIS CURIOUS WORLD By William Ferguson



AN ANT COLONY MAY EXIST FOR FORTY YEARS, OR LONGER, RULED BY SUCCESSIVE GENERATIONS OF ONE ROYAL ANT FAMILY.
Kinky Koiner
HOW MANY HUMPS HAS A DROMEDARY?
ANSWER: A dromedary has one hump. The Bactrian, or Asiatic, camel has two. The dromedary is bred for speed and the two-humped camel for strength, as a carrier of freight.

Humble to Broadcast Two College Games

The 1938 football broadcasting season gets under way Saturday with broadcasts of two games scheduled for Texas listeners under the sponsorship of the Humble Oil & Refining company. Both games are inter-sectional contests. The first is the game between the University of Texas and the University of Kansas at Lawrence, Kansas; the second is the annual meeting between the Horned Frogs of Texas Christian University and the Centenary Gentlemen to be played this year at Fort Worth.
In the Texas-Kansas game Kern Tipton will handle the play-by-play account of this game and Gene Wyatt the color. Game time is 2:00 p. m., and Humble's broadcast will begin at 1:50 p. m.
The T. C. U.-Centenary game begins at 2:30 p. m. and the Humble broadcast at 2:20 p. m.

Advertisement for Wabash Train. It features a large illustration of a blue bird in flight. The text says 'Ride The Blue Bird Wabash New Afternoon Train St. Louis to CHICAGO'. It lists the schedule: 'Effective Sept. 25', 'Leave St. Louis, Union Station 4:25 pm', 'Arrive Chicago, Dearborn Station 9:35 pm'. It also includes a 'Look at This Fast Schedule' table and a note: 'Why not stop-over during the day in St. Louis and yet reach Chicago that same evening?'.

