

THE WEATHER
West Texas—Partly cloudy, colder. Freezing in north portion tonight. Thursday fair; colder in south portions.

Ranger Times

UNITED PRESS SERVICE BRINGS LATEST NEWS OF THE WORLD TO TIMES READERS

RANGER, TEXAS, WEDNESDAY EVENING, MARCH 27, 1935

PRICE FIVE CENTS

No. 263

In his book, "The Curse of Bigness," Supreme Court Justice Brandeis holds that anything big is bad. You've never, for instance, heard of a little bad wolf.

COLD WAVE DUE TO SWEEP OVER THE STATE

Public Is Warned Of Itinerant Gold Buyers In the City

Chief of Police Jim Ingram today issued a warning to the housewives of Ranger to beware of the itinerant gold buyer, as many reports have been received of these gold buyers purchasing old gold at or below its actual worth.

Several instances of prices offered for old gold were given to the Times today, including \$1 for a watch that was valued at about \$10, 20 cents for a ring that was estimated to have at least \$1 in value for its gold alone and \$1 for another ring that contained about \$4 to \$4.50 in gold.

Mexican Is Killed In Hunting Mishap Near Wiles Tuesday

Angelo Escorza, a Mexican, was fatally shot in a hunting accident near Wiles Tuesday afternoon, dying before he reached the operating table at the West Texas Clinic and Hospital in Ranger.

Bullock School Is Selling Ads For a New Stage Curtain

Ernest Parks of the Bullock community was in Ranger today, soliciting advertising for the Bullock school curtain.

Real Struggle Comes After Dust Passes On



Half-buried beneath the huge heaps of dust covering the field, this tractor presented a rescue problem to the Wilburton, Kan., farmer shown prepared to dig it free, after the latest dust storm had passed on.

JAPAN LEAVES THE LEAGUE OF NATIONS TODAY

GENEVA, March 27.—Japan left the League of Nations today, giving the world two problems of inestimable importance:

Mother of Six Is Freed of Murder Charges By Jury

CHICAGO, March 27.—Mrs. Anna Erickson, mother of six children, was acquitted last night of charges that she murdered a 19-year-old boy to murder her husband so she might marry another man.

Invites to Meet Being Accepted, Says H. C. Davis

Six towns have accepted invitation of the Eastland Chamber of Commerce to the meeting Thursday afternoon at 2 o'clock in Eastland for planning of a celebration on the opening highway 89 at Weatherford, H. C. Davis, chamber secretary, said today.

Mothers of Three Desperados Are Released from Jail

DALLAS, March 27.—The mothers of three of the southwest's most feared criminals were released from jail here today after serving federal sentences for harboring the fugitives from justice.

10,000 Housewives Go On Meat Strike

LOS ANGELES, March 27.—More than 10,000 Los Angeles housewives went on a meat strike today. They prepared to bombard Secretary of Agriculture Henry A. Wallace, demanding federal aid in lowering the high cost of living.

Striking Women Cited For Contempt

DALLAS, March 27.—Thirty-eight striking women garment workers were cited for contempt of court today by District Judge Towne Young for alleged violation of an injunction issued early this week prohibiting any acts of violence at a plant here.

WARNING FOR NRA CHISLERS IS ISSUED

WASHINGTON, March 27.—Increasing nation-wide disinterest of business firms in obeying NRA laws appeared today to have provoked President Roosevelt's sharp warning to "chislers" they had "no excuse whatsoever" for failure to support the ends.

PROJECTS STOP ON THURSDAY SAYS DRISCOLL

All work projects will close down Thursday night, H. E. Driscoll, county administrator, announced today.

Milk Producers Remove Pickets

DALLAS, March 27.—Striking milk producers seeking higher prices from processors and distributors here, withdrew pickets from Dallas milk plants today and activities which for a time assumed serious proportions, came to a standstill.

Credit Association Gets Queer Inquiries

DEL RIO, Texas.—The Retail credit association here is called upon to perform all kinds of services.

Subsoiling Takes Place As Ranking Phase in Eastland County Farming

Subsoiling has taken its place as an important phase of farming in Eastland county during the past year, according to information from the county farm agent's office.

KING GEORGE TO GET DOPE ON ARMAMENT

LONDON, March 27.—Prime Minister Ramsay MacDonald will report to King George on the armament situation late today, it is known, and apparently will tell the kind the British-German conversations at Berlin failed to provide any basis for negotiations.

Meeting Called to Plan Celebration Of Opening of 89

R. V. Galloway, secretary of the Chamber of Commerce, has received a letter from H. C. Davis, secretary of the Eastland Chamber of Commerce, calling attention to a meeting to be held in Eastland on Thursday afternoon, March 28, for the purpose of planning a celebration of the opening of Highway 89.

Dog Continues Search For Master

DEL RIO, Texas.—When his master, W. A. Milbur, died, a black and tan collie dog sat disconsolately on the corner of the postoffice building eagerly gazing into the faces of passing pedestrians.

Dogs Chase Dinner But Nearly Starve

BLEND, Texas.—Two dogs, Ned and Scraps, got the worst of it when they chased a rabbit.

BLUE SKY LAW ON SECURITIES PASSES HOUSE

AUSTIN, March 27.—Rigid scrutiny will be given securities offered for sale in Texas under a new blue sky law passed by the house of representatives today by the overwhelming vote of 135 to 0.

Legionnaires Are Urged to Express Views On Bonus

G. E. Robinson, Post Commander of Carl Barnes Post No. 69, has received a letter from National Executive Committee Geo. E. Broome of Amarillo, asking that every ex-service man in this community be asked for his expression on the bonus bill now pending in congress.

Conoco Decorated Car Visits Ranger

H. D. Hamilton, district salesman for the Continental Oil company, visited in Ranger Tuesday with one of the Conoco decorated cars, of which there are 10,000 in the United States.

Dave Wolf Elected Vice President of B'nai Brith Group

Dave Wolf of Eastland was elected vice president of the West Texas B'nai Brith when the group and the Hadassah lodge met at the Cisco Country club Sunday.

Retail Sales Are Still Favorable

AUSTIN.—Retail sales in Texas during February made favorable comparisons both with the previous month and with February last year, according to the University of Texas Bureau of Business Research.

Thompson Says Thomas Bill Is Not Necessary

WASHINGTON, March 27.—The Thompson bill for federal regulation of state oil production would throw the oil industry into chaos, according to E. O. Thompson, member of the Texas railroad commission.

His Bonus Bill Up to Senate



When the House passed the Patman soldier-bonus bill by the scant margin of three votes, it was the third time Representative Wright Patman (Dem., Texas) had seen his measure approved by his colleagues. In slightly different form, his bill passed the House in 1932 and 1934 only to be killed in the Senate. Here is Congressman Patman in a new picture.

Warning Issued On All-Night Parking

At the meeting of the city commission, held Tuesday night, it was ordered that the police enforce the parking ordinance in the future.

Family Lives to Ripe Old Ages

PLEMONS, Texas.—Edward F. Page, 71, of Plemons, is one of a family of six brothers whose combined ages total 444 years.

Texas Masons to Have Centennial

BRAZORIA.—Texas Masons will celebrate the centennial of the founding of the lodge in the state.

Prisoner Eats Up All the Evidence

TEMPLE, Texas.—Prisoners in the city jail defeated the law by eating up the "evidence."

NEAR FREEZING IS EXPECTED BY THURSDAY

Dust Storms Being Followed By Colder Weather, Bureau Warns.

KANSAS CITY, Mo., March 27. Cold winds swept down from the north today, ending a period of warm temperatures and threatening the early buds which had been brought to premature bloom.

Germany Tries To Stop Execution Scheduled, Memel

BERLIN, March 27.—The German government, spurred by popular indignation over the condemnation to death of four Germans in Memel, considered urgent action today to prevent the execution and force a thorough showdown on the rights of Germans in Memel.

Family Lives to Ripe Old Ages

PLEMONS, Texas.—Edward F. Page, 71, of Plemons, is one of a family of six brothers whose combined ages total 444 years.

Texas Masons to Have Centennial

BRAZORIA.—Texas Masons will celebrate the centennial of the founding of the lodge in the state.

Prisoner Eats Up All the Evidence

TEMPLE, Texas.—Prisoners in the city jail defeated the law by eating up the "evidence."

TIMES PUBLISHING COMPANY, Publishers
RANGER TIMES

211-213 Elm Street, Ranger, Texas Telephone 224

Published every afternoon (except Saturday and Sunday) and every Sunday morning

NOTICE TO THE PUBLIC

Any erroneous reflection upon the character, standing or reputation of any person, firm or corporation which may appear in the columns of this paper will be gladly corrected upon being brought to the attention of the publisher.

Obituaries, cards of thanks, notices of lodge meetings, etc., are charged for at regular advertising rates, which will be furnished upon application.

Entered as second-class matter at the post office at Ranger, Texas, under Act of March, 1879.

Member Advertising Bureau — Texas Daily Press League

F. D. HICKS, Business Manager — W. H. MAYES, Jr., Editor

SUBSCRIPTION RATES

Single copies \$.05 Three months \$1.25
One week, by carrier \$.10 Six Months 2.50
One month45 One Year 5.00

ALL SUBSCRIPTIONS PAYABLE IN ADVANCE

Person's Social Value Not Set By Gain

Mrs. Roosevelt made a nice point when she named the 11 women who have been "a constant inspiration and a help" to her. By drawing up such a list it is possible to get a new line on the kinds of human conduct which have the most social value.

What sort of women got into Mrs. Roosevelt's list, anyway? Well, there were two suffragists, three social workers, two flyers, a business executive, a novelist, and two women—Frances Perkins and Josephine Roche—who could be classified roughly as being in "public service."

Now the interesting thing to notice about those women is that nearly all of them have been devoting their lives to other people rather than to themselves.

Perhaps that isn't entirely true of the business woman and the two flyers. Yet from Mrs. Roosevelt's viewpoint it is; for by making notable successes in their callings, these women have opened new fields for other women, and have made possible a wide extension of the wield of feminine activities.

And it is unquestionably true of the others. No one whose first thought was for her own ease and comfort would dream of following a career like that of Jane Addams, for instance, or of enduring the public criticism that early workers for woman suffrage had to endure.

In general, then, it may be said that these women, who most strongly aroused Mrs. Roosevelt's admiration and provided her with inspiration in the building of her own career, were women who possessed the capacity of self-forgetfulness to a rare degree.

And the value of a list like this lies precisely in the fact that it reminds us that the really valuable members of the race are not the self-seekers, but the self-forgetters.

The chief prizes of this world, of course, go to the self-seekers. It always has been that way and probably it always will be. But when we sit down to name the people who have seemed to us to be most worthy of emulation, we use a different standard of value.

They are the ones who help to bring the real world into line with the world we see in our dreams.

FRECKLES and HIS FRIENDS—By Blosser



"OUT OUR WAY" ————— By Williams



The DARK BLOND

By CARLETON KENDRAKE © 1935 NEA SERVICE, INC.

BEGIN HERE TODAY
Millicent Graves, secretary to George Drimgold, finds her employer in his office dead. In panic she rushes away and registers at a hotel under an assumed name.
Jarvis Happ, distinguished looking stranger, recognizes Millicent and offers to help her. He sends her to a beauty parlor where she is transformed into a brunette. Happ takes her home, introducing her as his secretary. His son, Norman Happ, warns Millicent against his stepbrother, Robert Case, and tells her a mysterious woman in black ermine has some power over his stepmother.
Millicent falls asleep. A noise awakens her and she finds a note under her door reading, "The woman in black ermine is here."
New Go On With the Story

CHAPTER XII
Millicent stood staring at that fateful typewritten note. She had no means of knowing who had sent it, nor could she tell whether the steps she had heard in the corridor were those of a man or a woman.
She wondered if Norman had sent her this message. Surely he was the only one who knew of her interest in the woman in the black ermine coat. But how about Jarvis Happ? Jarvis was very, very shrewd, and it was apparent that he knew more about what was going on in the house than he let on. Moreover, he, above all others, knew of her connection with George Drimgold's murder.
But how about Robert Case? He, too, must know something of the woman in black.
Millicent shrugged her unclad shoulders and, with the gesture, realized that she was chilled. She ran to the closet, found a robe and flung it about her. She went to the window and looked out.
It was, she saw, commencing to rain. Drops were beating against the window and, as she looked, she saw the rain grow in intensity until, within a few minutes, a rising wind was driving it in torrents.
She turned once more to study the note. Why had she been informed of the presence of the mysterious woman? What was she supposed to do? Was it Jarvis Happ who had left the message and who had expected she would perhaps hunt up the woman in the black ermine coat, accuse her directly of complicity in Drimgold's murder?
Millicent knew only one thing. No matter who had sent the note or what was expected of her, she was determined to try to find out something about the woman in black.
Having reached this decision, Millicent Graves flung off her dressing gown and started dressing hastily.
Millicent, donning her fur coat, slipped out into the hallway.
The heat in the house was low, and the corridors felt chill and gloomy. A night light burned at one end of the corridor, giving sufficient illumination to enable her to see objects, although not as distinctly as would have been the case had there been more illumination.
Now that she was in the corridor she realized the immensity of the house, realized something of the nature of the task with which she was confronted. It was going to be necessary for her to find a mysterious woman in a black ermine coat who was somewhere in the house.
Where?
She remembered Mrs. Happ had proudly exhibited the suite which she occupied, and Millicent felt

into the other corridor.

Gen Foods	33 1/2	Westing Elec	33
Gillette S R	14 1/4	Worthington	13
Goodyear	17 1/2	Curb Stocks	
Gt West Sugar	29	Cities Service	1 1/2
Houston Oil	12	Humble Oil	4 1/2
Int Cement	24	Lone Star Gas	5
Int Harvester	37	Niag Hud Pwr	3
Johns Manville	42 1/2	Outboard Motors Banned at Key West	
Kroger G & B	27	By United Press	
Liq Carb	23 1/2	KEY WEST, Fla.—The city council has taken another step to preserve this quaint island city as a unique and quiet resort place for visitors.	
Marshall Field	7 1/2	Key West is surrounded by water—either that of the Gulf, Atlantic—but its waters are a menace for the outboard motorists who may disturb the peace.	
Montg Ward	23 1/2	The city council passed an ordinance prohibiting use of outboard motors "in the waters of the harbor of Key West and waters surrounding the municipality of Key West."	
Nat Dairy	13 1/2	The ordinance prohibits outboard motors, or the like having an attainable speed of more than 2,000 revolutions per minute.	
Ohio Oil	9 1/2		
Penney J C	62 1/2		
Phelps Dodge	13 1/2		
Pure Oil	6		
Purity Bak	9 1/4		
Radio	4 1/2		
Sears Roebuck	34 1/2		
Shell Union Oil	5 1/2		
Socony Vac	12 1/2		
Southern Pac	13 1/2		
Stan Oil N J	17 1/2		
Studebaker	2 1/2		
Texas Corp	17 1/2		
Tex Gulf Sul	30 1/2		
Tex Pac C & O	3 1/2		
Union Carb	54		
United Air & T	46 1/2		
United Corp	2 1/2		
U S Gypsum	42 1/4		
U S Ind Ale	36 1/4		
U S Steel	29 1/4		
Vanadium	14 1/2		

Skylines and Style Lines!



As modern as the skyscrapers. The refrigerator shown above in this unusual photo is built along the latest style lines and offers the utmost in efficiency and performance. It will be featured during Ward Week in Wards 488 stores from Thursday, March 28 to Saturday, April 6 inclusive.

MARKETS

By United Press

Closing selected New York stocks:

Am Can	116
Am P & L	7 1/2
Am Rad & S S	11 1/2
Am Smelt	3 1/2
Am T & T	102 1/2
Anaconda	10 1/4
Auburn Auto	17
Avn Corp Del	3 1/2
Barnsdall	6 1/4
Beth Steel	24 1/2
Byers A M	12 1/2
Case J I	50 1/4
Chrysler	34
Comw & Sou	1 1/2
Cone Oil	7
Curtiss Wright	2 1/4
Elec Au L	41
Elec St Bat	11
Freeport Tex	28 1/4
Gen Elec	22 1/2



Truck owners know economy THAT'S WHY THEY BUY CHEVROLET TRUCKS

CHEVROLET TRUCKS
World's Lowest Prices
ANDERSON-PRUIT, Inc.
Phone 14 Sales—CHEVROLET—Service
Ranger, Texas

MEN who study haulage costs know that Chevrolet trucks are as outstanding in economy and durability as they are in price. Chevrolet trucks handle tough hauling jobs day after day at small operating cost, because they are built to Chevrolet's own high standards of quality in every part. The powerful six-cylinder valve-in-head engines are truck motors, especially designed to give sustained pulling power. Features that assure stamina and long life are evident in every detail of the precision-engineered chassis. Chevrolet trucks offer maximum capacity, economy and quality—because Chevrolet is the world's largest builder of trucks.

CHEVROLET MOTOR COMPANY, DETROIT, MICH.
Compare Chevrolet's low delivered prices and easy C.M.A.C. terms. A General Motors Value.

SEDAN DELIVERY (107" Wheelbase)	\$515	3 1/2-TON CHASSIS AND CAB (137" Wheelbase)	\$605
HALF-TON CANOPY EXPRESS (112" Wheelbase)	\$555	3 1/2-TON STAKE (131" Wheelbase)	\$660
HALF-TON PICK-UP WITH CANOPY (112" Wheelbase)	\$495	3 1/2-TON OPEN EXPRESS (131" Wheelbase)	\$655
HALF-TON PANEL (112" Wheelbase)	\$560	3 1/2-TON STAKE (137" Wheelbase)	\$720
3 1/2-TON CHASSIS (131" Wheelbase)	\$485	3 1/2-TON PLATFORM (131" Wheelbase)	\$630

These are list prices of commercial cars at Flint, Michigan. Special equipment extra. *Dual wheels and tires \$20 extra. Prices subject to change without notice.

ALLEY OOP - - - - - By HAMLIN



The Newfangles (Mom 'n' Pop) By Cowen



Ethiopian Ruler

A crossword puzzle titled 'Ethiopian Ruler'. The puzzle grid is 15x15. The clues are as follows:

HORIZONTAL

1 Ethiopian ruler.

12 Heaven sent food.

13 Constellation.

14 Smell.

16 Rubber tree.

17 Nullified.

20 Pen point.

21 To embroider.

22 Beer.

23 Owned.

24 Eye tumor.

25 Neuter pronoun.

26 To soak flax.

28 To deem.

31 Trap.

34 Decorative mesh.

35 Fairy.

36 Pastage.

38 To make.

39 To cut.

40 Toward.

41 Conjunction.

42 Rick.

45 To cut branches.

48 Native metal.

ANSWER TO PREVIOUS PUZZLE

CHARLES DICKENS
OLEA OBIT ALE
PLAT STED ALL B
ID I N E I S I D O
CADR CHARLES NOISILY
KNEE END RAH
WEE S S LENO
CISAMT S CEN TO
KTADART RAVEL S
KKNIT ASIDE ES
DANA ISE SEDIA
ENGLISH WRITERS

15 This country also is called.

18 Deity.

19 Organs of hearing.

25 Torpid.

27 Covered with tape.

29 Lump of butter.

30 Frozen water.

32 Corded cloth.

33 Before.

35 Metal joiner.

38 Challenge.

39 Peg.

41 Weaver's frame.

44 Fold of thread.

46 Either.

47 Nobleman.

48 To leave out.

49 Gutter.

50 To lay a road.

53 Measure of area.

55 Myself.

56 Southeast.

59 You and me.

60 Paid publicly.

3 Within.

4 Woolly.

5 Wise.

6 Epoch.

7 Thin strip of wood.

8 To become sorrowful.

9 Senior.

10 Electrified particles.

11 To eject.

12 — now threatens his rule.

13 Mineral spring.

14 Hawaiian bird.

15 Visionary.

16 Father.

17 Large deer.

18 Silk worm.

19 Tropical tree.

20 He is called — by the Ethiopians.

21 Agreed upon a meeting.

22 VEHICAL

23 Healthy.

24 Afresh.

25 Within.

26 Woolly.

27 Wise.

28 Epoch.

29 Thin strip of wood.

30 To become sorrowful.

31 Senior.

32 Electrified particles.

33 To eject.

34 VEHICAL

35 Healthy.

36 Afresh.

37 Within.

38 Woolly.

39 Wise.

40 Epoch.

41 Thin strip of wood.

42 To become sorrowful.

43 Senior.

44 Electrified particles.

45 To eject.

46 VEHICAL

47 Healthy.

48 Afresh.

49 Within.

50 Woolly.

51 Wise.

52 Epoch.

53 Thin strip of wood.

54 To become sorrowful.

55 Senior.

56 Electrified particles.

57 To eject.

58 VEHICAL

59 Healthy.

60 Afresh.

61 Within.

62 Woolly.

63 Wise.

64 Epoch.

65 Thin strip of wood.

66 To become sorrowful.

67 Senior.

68 Electrified particles.

69 To eject.

70 VEHICAL

71 Healthy.

72 Afresh.

73 Within.

74 Woolly.

75 Wise.

76 Epoch.

77 Thin strip of wood.

78 To become sorrowful.

79 Senior.

80 Electrified particles.

81 To eject.

82 VEHICAL

83 Healthy.

84 Afresh.

85 Within.

86 Woolly.

87 Wise.

88 Epoch.

89 Thin strip of wood.

90 To become sorrowful.

91 Senior.

92 Electrified particles.

93 To eject.

94 VEHICAL

95 Healthy.

96 Afresh.

97 Within.

98 Woolly.

99 Wise.

100 Epoch.

101 Thin strip of wood.

102 To become sorrowful.

103 Senior.

104 Electrified particles.

105 To eject.

106 VEHICAL

107 Healthy.

108 Afresh.

109 Within.

110 Woolly.

111 Wise.

112 Epoch.

113 Thin strip of wood.

114 To become sorrowful.

115 Senior.

116 Electrified particles.

117 To eject.

118 VEHICAL

119 Healthy.

120 Afresh.

121 Within.

122 Woolly.

123 Wise.

124 Epoch.

125 Thin strip of wood.

126 To become sorrowful.

127 Senior.

128 Electrified particles.

129 To eject.

130 VEHICAL

131 Healthy.

132 Afresh.

133 Within.

134 Woolly.

135 Wise.

136 Epoch.

137 Thin strip of wood.

138 To become sorrowful.

139 Senior.

140 Electrified particles.

141 To eject.

142 VEHICAL

143 Healthy.

144 Afresh.

145 Within.

146 Woolly.

147 Wise.

148 Epoch.

149 Thin strip of wood.

150 To become sorrowful.

151 Senior.

152 Electrified particles.

153 To eject.

154 VEHICAL

155 Healthy.

156 Afresh.

157 Within.

158 Woolly.

159 Wise.

160 Epoch.

161 Thin strip of wood.

162 To become sorrowful.

163 Senior.

164 Electrified particles.

165 To eject.

166 VEHICAL

167 Healthy.

168 Afresh.

169 Within.

170 Woolly.

171 Wise.

172 Epoch.

173 Thin strip of wood.

174 To become sorrowful.

175 Senior.

176 Electrified particles.

177 To eject.

178 VEHICAL

179 Healthy.

180 Afresh.

181 Within.

182 Woolly.

183 Wise.

184 Epoch.

185 Thin strip of wood.

186 To become sorrowful.

187 Senior.

188 Electrified particles.

189 To eject.

190 VEHICAL

191 Healthy.

192 Afresh.

193 Within.

194 Woolly.

195 Wise.

196 Epoch.

197 Thin strip of wood.

198 To become sorrowful.

199 Senior.

200 Electrified particles.

201 To eject.

202 VEHICAL

203 Healthy.

204 Afresh.

205 Within.

206 Woolly.

207 Wise.

208 Epoch.

209 Thin strip of wood.

210 To become sorrowful.

211 Senior.

212 Electrified particles.

213 To eject.

214 VEHICAL

215 Healthy.

216 Afresh.

217 Within.

218 Woolly.

219 Wise.

220 Epoch.

221 Thin strip of wood.

222 To become sorrowful.

223 Senior.

224 Electrified particles.

225 To eject.

226 VEHICAL

227 Healthy.

228 Afresh.

229 Within.

230 Woolly.

231 Wise.

232 Epoch.

233 Thin strip of wood.

234 To become sorrowful.

235 Senior.

236 Electrified particles.

237 To eject.

238 VEHICAL

239 Healthy.

240 Afresh.

241 Within.

242 Woolly.

243 Wise.

244 Epoch.

245 Thin strip of wood.

246 To become sorrowful.

247 Senior.

248 Electrified particles.

249 To eject.

250 VEHICAL

251 Healthy.

252 Afresh.

253 Within.

254 Woolly.

255 Wise.

256 Epoch.

257 Thin strip of wood.

258 To become sorrowful.

259 Senior.

260 Electrified particles.

261 To eject.

262 VEHICAL

263 Healthy.

264 Afresh.

265 Within.

266 Woolly.

267 Wise.

268 Epoch.

269 Thin strip of wood.

270 To become sorrowful.

271 Senior.

272 Electrified particles.

273 To eject.

274 VEHICAL

275 Healthy.

276 Afresh.

277 Within.

278 Woolly.

279 Wise.

280 Epoch.

281 Thin strip of wood.

282 To become sorrowful.

283 Senior.

284 Electrified particles.

285 To eject.

286 VEHICAL

287 Healthy.

288 Afresh.

289 Within.

290 Woolly.

291 Wise.

292 Epoch.

293 Thin strip of wood.

294 To become sorrowful.

295 Senior.

296 Electrified particles.

297 To eject.

298 VEHICAL

299 Healthy.

300 Afresh.

301 Within.

302 Woolly.

303 Wise.

304 Epoch.

305 Thin strip of wood.

306 To become sorrowful.

307 Senior.

308 Electrified particles.

309 To eject.

310 VEHICAL

311 Healthy.

312 Afresh.

313 Within.

314 Woolly.

315 Wise.

316 Epoch.

317 Thin strip of wood.

318 To become sorrowful.

319 Senior.

320 Electrified particles.

321 To eject.

322 VEHICAL

323 Healthy.

324 Afresh.

325 Within.

326 Woolly.

327 Wise.

328 Epoch.

329 Thin strip of wood.

330 To become sorrowful.

331 Senior.

332 Electrified particles.

333 To eject.

334 VEHICAL

335 Healthy.

336 Afresh.

337 Within.

338 Woolly.

339 Wise.

340 Epoch.

341 Thin strip of wood.

342 To become sorrowful.

343 Senior.

344 Electrified particles.

345 To eject.

346 VEHICAL

347 Healthy.

348 Afresh.

349 Within.

350 Woolly.

351 Wise.

352 Epoch.

353 Thin strip of wood.

354 To become sorrowful.

355 Senior.

356 Electrified particles.

357 To eject.

358 VEHICAL

359 Healthy.

360 Afresh.

361 Within.

362 Woolly.

363 Wise.

364 Epoch.

365 Thin strip of wood.

366 To become sorrowful.

367 Senior.

368 Electrified particles.

369 To eject.

370 VEHICAL

371 Healthy.

372 Afresh.

373 Within.

374 Woolly.

375 Wise.

376 Epoch.

377 Thin strip of wood.

378 To become sorrowful.

379 Senior.

380 Electrified particles.

381 To eject.

382 VEHICAL

383 Healthy.

384 Afresh.

385 Within.

386 Woolly.

387 Wise.

388 Epoch.

389 Thin strip of wood.

390 To become sorrowful.

391 Senior.

392 Electrified particles.

393 To eject.

394 VEHICAL

395 Healthy.

396 Afresh.

397 Within.

398 Woolly.

399 Wise.

400 Epoch.

401 Thin strip of wood.

402 To become sorrowful.

403 Senior.

404 Electrified particles.

405 To eject.

406 VEHICAL

407 Healthy.

408 Afresh.

409 Within.

410 Woolly.

411 Wise.

412 Epoch.

413 Thin strip of wood.

414 To become sorrowful.

415 Senior.

416 Electrified particles.

417 To eject.

418 VEHICAL

419 Healthy.

420 Afresh.

421 Within.

422 Woolly.

423 Wise.

424 Epoch.

425 Thin strip of wood.

426 To become sorrowful.

427 Senior.

428 Electrified particles.

429 To eject.

430 VEHICAL

431 Healthy.

432 Afresh.

433 Within.

434 Woolly.

435 Wise.

436 Epoch.

437 Thin strip of wood.

438 To become sorrowful.

439 Senior.

440 Electrified particles.

441 To eject.

442 VEHICAL

443 Healthy.

444 Afresh.

445 Within.

446 Woolly.

447 Wise.

448 Epoch.

449 Thin strip of wood.

450 To become sorrowful.

451 Senior.

452 Electrified particles.

453 To eject.

454 VEHICAL

455 Healthy.

456 Afresh.

457 Within.

458 Woolly.

459 Wise.

460 Epoch.

461 Thin strip of wood.

462 To become sorrowful.

463 Senior.

464 Electrified particles.

465 To eject.

466 VEHICAL

467 Healthy.

468 Afresh.

469 Within.

470 Woolly.

471 Wise.

472 Epoch.

473 Thin strip of wood.

474 To become sorrowful.

475 Senior.

476 Electrified particles.

477 To eject.

478 VEHICAL

479 Healthy.

480 Afresh.

481 Within.

482 Woolly.

483 Wise.

484 Epoch.

485 Thin strip of wood.

486 To become sorrowful.

487 Senior.

488 Electrified particles.

489 To eject.

490 VEHICAL

491 Healthy.

492 Afresh.

493 Within.

494 Woolly.

495 Wise.

496 Epoch.

497 Thin strip of wood.

498 To become sorrowful.

499 Senior.

500 Electrified particles.

501 To eject.

502 VEHICAL

503 Healthy.

504 Afresh.

505 Within.

506 Woolly.

507 Wise.

508 Epoch.

509 Thin strip of wood.

510 To become sorrowful.

511 Senior.

512 Electrified particles.

513 To eject.

514 VEHICAL

515 Healthy.

516 Afresh.

517 Within.

518 Woolly.

519 Wise.

520 Epoch.

521 Thin strip of wood.

522 To become sorrowful.

523 Senior.

524 Electrified particles.

525 To eject.

526 VEHICAL

527 Healthy.

528 Afresh.

529 Within.

530 Woolly.

531 Wise.

532 Epoch.

533 Thin strip of wood.

534 To become sorrowful.

535 Senior.

536 Electrified particles.

537 To eject.

538 VEHICAL

539 Healthy.

540 Afresh.

541 Within.

542 Woolly.

543 Wise.

544 Epoch.

545 Thin strip of wood.

546 To become sorrowful.

547 Senior.

548 Electrified particles.

549 To eject.

550 VEHICAL

551 Healthy.

552 Afresh.

553 Within.

554 Woolly.

555 Wise.

556 Epoch.

557 Thin strip of wood.

558 To become sorrowful.

559 Senior.

560 Electrified particles.

561 To eject.

562 VEHICAL

563 Healthy.

564 Afresh.

565 Within.

566 Woolly.

567 Wise.

568 Epoch.

569 Thin strip of wood.

570 To become sorrowful.

571 Senior.

572 Electrified particles.

573 To eject.

574 VEHICAL

575 Healthy.

576 Afresh.

577 Within.

578 Woolly.

579 Wise.

580 Epoch.

581 Thin strip of wood.

582 To become sorrowful.

583 Senior.

584 Electrified particles.

585 To eject.

586 VEHICAL

587 Healthy.

588 Afresh.

589 Within.

590 Woolly.

591 Wise.

592 Epoch.

593 Thin strip of wood.

594 To become sorrowful.

595 Senior.

596 Electrified particles.

597 To eject.

598 VEHICAL

599 Healthy.

600 Afresh.

601 Within.

602 Woolly.

603 Wise.

604 Epoch.

605 Thin strip of wood.

606 To become sorrowful.

607 Senior.

608 Electrified particles.

609 To eject.

610 VEHICAL

611 Healthy.

612 Afresh.

613 Within.

614 Woolly.

615 Wise.

616 Epoch.

617 Thin strip of wood.

618 To become sorrowful.

619 Senior.

620 Electrified particles.

621 To eject.

622 VEHICAL

623 Healthy.

624 Afresh.

625 Within.

626 Woolly.

627 Wise.

628 Epoch.

629 Thin strip of wood.

630 To become sorrowful.

631 Senior.

632 Electrified particles.

633 To eject.

634 VEHICAL

635 Healthy.

636 Afresh.

637 Within.

638 Woolly.

639 Wise.

640 Epoch.

641 Thin strip of wood.

642 To become sorrowful.

643 Senior.

644 Electrified particles.

645 To eject.

646 VEHICAL

647 Healthy.

648 Afresh.

649 Within.

650 Woolly.

651 Wise.

652 Epoch.

653 Thin strip of wood.

654 To become sorrowful.

655 Senior.

656 Electrified particles.

657 To eject.

658 VEHICAL

659 Healthy.

660 Afresh.

661 Within.

662 Woolly.

663 Wise.

664 Epoch.

665 Thin strip of wood.

666 To become sorrowful.

667 Senior.

668 Electrified particles.

669 To eject.

670 VEHICAL

671 Healthy.

672 Afresh.

673 Within.

674 Woolly.

675 Wise.

676 Epoch.

677 Thin strip of wood.

678 To become sorrowful.

679 Senior.

680 Electrified particles.

681 To eject.

682 VEHICAL

683 Healthy.

684 Afresh.

685 Within.

686 Woolly.

687 Wise.

688 Epoch.

689 Thin strip of wood.

690 To become sorrowful.

691 Senior.

692 Electrified particles.

693 To eject.

694 VEHICAL

695 Healthy.

696 Afresh.

697 Within.

698 Woolly.

699 Wise.

700 Epoch.

701 Thin strip of wood.

702 To become sorrowful.

703 Senior.

704 Electrified particles.

705 To eject.

706 VEHICAL

707 Healthy.

708 Afresh.

709 Within.

710 Woolly.

711 Wise.

712 Epoch.

713 Thin strip of wood.

714 To become sorrowful.

715 Senior.

716 Electrified particles.

717 To eject.

718 VEHICAL

719 Healthy.

720 Afresh.

721 Within.

722 Woolly.

723 Wise.

724 Epoch.

725 Thin strip of wood.

726 To become sorrowful.

727 Senior.

728 Electrified particles.

729 To eject.

730 VEHICAL

731 Healthy.

732 Afresh.

733 Within.

734 Woolly.

735 Wise.

736 Epoch.

737 Thin strip of wood.

738 To become sorrowful.

739 Senior.

740 Electrified particles.

741 To eject.

742 VEHICAL

743 Healthy.

744 Afresh.

745 Within.

746 Woolly.

747 Wise.

748 Epoch.

749 Thin strip of wood.

750 To become sorrowful.

751 Senior.

752 Electrified particles.

753 To eject.

754 VEHICAL

755 Healthy.

756 Afresh.

757 Within.

758 Woolly.

759 Wise.

760 Epoch.

761 Thin strip of wood.

762 To become sorrowful.

763 Senior.

764 Electrified particles.

765 To eject.

766 VEHICAL

767 Healthy.

768 Afresh.

769 Within.

770 Woolly.

771 Wise.

772 Epoch.

773 Thin strip of wood.

774 To become sorrowful.

775 Senior.

776 Electrified particles.

777 To eject.

778 VEHICAL

779 Healthy.

780 Afresh.

781 Within.

782 Woolly.

783 Wise.

784 Epoch.

785 Thin strip of wood.

786 To become sorrowful.

787 Senior.

788 Electrified particles.

789 To eject.

790 VEHICAL

791 Healthy.

792 Afresh.

793 Within.

794 Woolly.

795 Wise.

796 Epoch.

797 Thin strip of wood.

798 To become sorrowful.

799 Senior.

800 Electrified particles.

801 To eject.

802 VEHICAL

803 Healthy.

804 Afresh.

805 Within.

806 Woolly.

807 Wise.

808 Epoch.

809 Thin strip of wood.

810 To become sorrowful.

811 Senior.

812 Electrified particles.

SOCIETY

ARRITTA DAVENPORT, Editor
Office Phone 224 Residence Phone 668-W

Ranger Man Marries
Olney Girl
Miss Louise Lasater and Eston Todd of Ranger, were married on March 24, in Olney.
The young couple are well known in Ranger and Olney and have friends who have extended congratulations. They are to make their home in Ranger.

Central Baptist Holds Prayer Looking to Revival
Mid-week prayer service at Central Baptist church from now until the revival the first of June will be devoted to preparing all hearts for the revival.
The prayer service held last Wednesday night was used in discussing the Old and New Testament.
Tonight the pastor will be in charge of the prayer service and he will use as his subject phrase, "Concentration." He requests all bring their Bibles and come in the spirit of prayer.
All departments have organized and are getting ready for a great revival in the church.

Just a Bit Personal
Herman Dodson of Fort Worth transacted business in Ranger, Tuesday.
Mrs. C. A. Smith will be at home Thursday afternoon at 2:30 o'clock to members of the Martha Dorcas class, Methodist church, for a business session which brings the election of new officers. It is important that members be present.

Where Women and Laws Were Scarce



Richard Dix and Maria Alba in EKO-Radio's "West of the Pecos," a romantic story of the Southwest in the days when the gun was the law and life was a dangerous pastime. The fast-moving story is from the novel by Zane Grey. Now showing at the Arcadia Theatre.

Interesting Talk Presented Today At Rotary Meet

C. E. May had charge of the Rotary club program today and presented an interesting talk on safety and insurance. C. E. May, Jr., entertained the club during the meal with piano selections, which were enjoyed by all.
The beginning of the talk was in keeping with the cleanup campaign, the speaker showing charts of how trash can cause a menace to health, form a fire insurance risk and be a menace to safety, as it might set a house on fire and cause a fatality.
He stated that there were 36,000 killed annually in the United States in automobile accidents, and 954,000 were injured. In the past nine years the death toll has been 290,000 with 11,000,000 injured, making the automobile, an invention of man, worse than the average war.
He said that speed was considered necessary in an automobile, but speed in stopping was more important than the speed of the machine.
He said that 31 per cent of the accidents were caused by exceeding the speed limits, 16 per cent by driving on wrong side of the road and 12 per cent by recklessness.
He said that many persons driving cars along the highways paid no attention to the signs, thinking that they knew more about the roads than the highway department. He stressed the danger of being a road hog or a jay-walker, and said that one policeman in Illinois had decreased automobile casualties 80 per cent by enforcing all the traffic laws in his town.
In speaking of drinking and driving, he said it was much safer to do your drinking one day and your driving the next, or your driving one day and your drinking the next, but never to mix the two.
In 1925 automobiles were driven at a speed of 35 miles an hour, he said, while in 1934 they were driven at 55 miles an hour, and that automobile accidents cost \$2,500,000,000 annually, while the school children of the nation got but \$2,000,000,000. He urged cutting down the cost of accidents and giving more to the school children.
M. V. Witbeck of Abilene was the only visitor at the meeting.

Ward Week Will Be Celebrated By the Ranger Ward Store

Montgomery Ward's Ranger store, together with the other Ward stores over the entire nation, will begin the celebration of "Ward Week" on Thursday, March 28 and ending on Saturday, April 6th.
A large staff of Ward buyers has been scouring the country in an effort to get the best possible bargains for this special week, which will be offered along with the regular line of Ward's high quality merchandise, with prices drastically reduced on regular items for the duration of the sale.
The Ranger store has been completely remodeled inside within the past few weeks, with an idea of better display of merchandise, so that the shopper will find the arrangement of the store much more adapted to his inspection of the articles on display throughout the store.
Carl Jansing, manager of the Ranger store, said Wednesday in an interview, that he was expecting a big business during Ward Week, because of the many attractive bargains that are being offered in every line of merchandise.

Fort Worth Elks To Visit Ranger

A delegation of Elks, representing the publicity committee of the Texas Elks State association, will visit the Ranger lodge tonight, it has been announced by W. N. McDonald, exalted ruler.
Dr. C. H. Robinson, exalted ruler of Fort Worth Lodge No. 124, will be the spokesman at the meeting of the Ranger lodge tonight. He will give the outline of the tentative program the visiting Elks may expect when the state association meets in Fort Worth next May.
Dr. Robinson is a splendid speaker and all Elks are urged to be present to hear him at the meeting tonight. Visiting Elks are cordially invited to be present, also.

ARCADIA
NOW
RICHARD
WEST OF THE PECOS

— as a fighting man in a land of fighting men!

ZANE GREY'S
heroic romance
WEST OF THE PECOS

The following of the Ranger first six weeks. The honor roll for three A's and the high honor A's and two B's and one C's those of the average are: Ernest Green, Ernest Smith, F. B. Montgo, Mildred Moore, Mavis Murray, H. P. Ball, W. J. May Jr., W. J. Margaret Norris, High Honor, Juanita Thomas, T. J. Rita Gallighe, Jim Galloway, Strong, Leat, Chastain, L. Montgomery, Jack Morris, Porter, Mau Weeks, Conne Ervin, Inez Katie Pace, erett Donaw Ernest Glanz, Inez Baker, Donawho, M. Fred F. Mital, Bobbie Lee I man, Letha I Honor Rol Robinson, Vi Kribbs, Julia dine Miller, Wanzelle Ha Bruce, F. P. Raymond La brough, Vol phie Phillip, Dorothy Am Hazel Barke Billie Mae I thers, Mar Rodacker, Robert Ray son, Clois ston, Home Bourdeau, I Hughes, B. Nell Gideon, Jane Ray, Junior Meri Priscilla Mil

THREE DAY FINAL Anniversary Feature Values
Thursday - Friday - Saturday
SHOP! COMPARE! BUY!

It's Time to Stock Up! Tea Aprons
An Anniversary Selling!
2 for 25¢
You're right! One half dollar will buy four smart tea aprons! Several cheery styles in the newest Spring patterns of Nature Vat prints. Novelty bindings!

A Rip-Roaring Value! STANDARD Prints
All Fast Colors!
12 1/2¢ yard
This is one way to celebrate our ANNIVERSARY—so we're doing it! Plaids, stripes, checks and florals in the newest of patterns. Don't miss this buy!

IT IS ONE GRAND VALUE PRINTED BROADCLOTH
VAT DYE — MERCERIZED FINISH
12 1/2¢
FAST TO WASHING — MANY PATTERNS
36 inches Wide — Your Opportunity!

STITCHED By HAND Porto Rican GOWNS
29¢
Imagine—at this price! Every stitch by hand—the daintiest of applied trims! Come—celebrate with us—buy lots of them! White and flesh. Sizes 16 and 17. Also EXTRA SIZES, 18 to 20, 22.

27x27 Birdseye DIAPERS
Exceptionally low priced at **6 for 47¢**
Fine, soft, non-irritating Birdseye... famous for wear under constant laundering... adds to the value of this feature! 27x27 in., hemmed, a Buy quantities!

A SPECIAL FEATURE THURSDAY MORNING—10 o'clock
7¢ Priced by the Piece
1 to 4 yard Lengths 40¢ Yards
Short Lengths of Vat Dye Prints of Standard and 90 Square Quality—Close Outs from Regular Stock

PENNEY'S
J. C. PENNEY COMPANY, Incorporated

CONVERTIBLES GET SPRING CALL

There is an early demand for convertibles this year, according to sales officials of the Hudson Motor Car Company who report that ever this far south sales have begun so in this sport type of car. One of the early birds to take advantage of the first spring sale is Patricia Ellis, Detroit High, who has appeared in several prominent Warner Brothers pictures, such as "The St. Louis Kid" in which she has left with her convertible for Hollywood to start work on the Warner Brothers picture "Hold 'Em Yale", shortly to appear. Miss Ellis is the only girl appearing in this picture.

twice as many graduates of M. I. T. in 1934 as they did in 1933, Dean Lobdell said. One company which had not employed college graduates for four years, announced it would hire 100.
Dean Lobdell interpreted this as a definite sign of business revival. Technical schools should work along a carefully planned line in preparing students for the business world, Dean Lobdell added. He would advise schools to:
Give students a fundamental education if they seek technical training, so they may more easily change their occupation later on if they wish to do so.
Use selective methods in accepting students to insure getting those deserving an education.
Hold output of students to the number of graduates needed by the business world.
Operate the school along business lines in order to prepare the student for the wide transition from college to the business world.

Among Ranger persons attending the Lake Circus dance presenting Hask O'Hara and his orchestra Tuesday evening were: Mr. and Mrs. Harry Henry, Misses Barla Jane Kohn, Opal Snyder, Mary Leq Throver, Arritta Davenport, and Messrs Brann Garner, Floyd Killingsworth, Ray Trammell and Frank Russell, and Harry Hiteboeck of Minneapolis, Minn.

Funeral Services For Mrs. Pettitt Held Wednesday

Short funeral services for Mrs. N. E. Pettitt, 62, who died at her home, 506 Pine street, were conducted at the Killingsworth, Cox funeral chapel Wednesday afternoon at 1 o'clock, after which the body was taken to De Leon, where funeral services were conducted from the First Methodist church, with Rev. J. M. Bond of Ranger conducting the services. Interment was in the De Leon cemetery.
The decedent was born and raised in Comanche county and was married in 1881 to J. A. Pettitt. Five children were born to this union, three of whom are living. Those who have died were Eugene Pettitt, a son, and Mrs. I. P. Trache.

The divisions, and those in charge, were as follows:
Hodges Oak Park association: West Main street north to Wayland road, including Eastland Hill.
High School association: Main street south and west of the T. & P. tracks.
Cooper association: East of the T. & P. tracks to East Main street, including all of Cooper addition.
Boy Scouts: West of the T. & P. tracks, including Main street to Hodges and north to the edge of town, North of Strawn road and East of Hundell, including Lackland.
Young association: From Ham on Kell railway tracks, south of Strawn road to East Main and Hundell streets.
"Chick" Usery was appointed as director of the Cooper association territory.

Those present at the meeting were Mrs. E. L. McMillen, Mrs. H. H. Durham, Mrs. O. B. Denny, Mrs. Louis Pitcock, P. O. Hatley, and G. A. Murphy.

SIMPLICITY PATTERNS
Every Pattern Guaranteed
HASSEN COMPANY, Inc.
Ranger, Texas

Joseph Dry Goods Company
Ranger's Foremost Department Store
208-10 Main St. Ranger

H. H. VAUGHN SERVICE STATION
100% Texaco Products
PINE AT AUSTIN
Washing—Greasing—Storage

ELECTRICAL APPLIANCES
Texas Electric Service Co.

George's Cafe Is Robbed Third Time

For the third time in the past 30 days George's cafe, South Rusk street, was robbed, though on each occasion only a few cents was secured and a little food and a few packages of cigarettes taken. The last robbery occurred Tuesday night.
Shortly after the robbery a man was arrested when he was apparently trying to break into the Horn Palace on Main street, and officers said that he would likely be charged with attempted burglary late today.
A second man was arrested on suspicion, though it was not known whether or not he had a part in the cafe robbery.

Itchiness and Soreness of HEMORRHOIDS
Grateful relief follows the use of Resinol. Nurses recommend it because its medication is so safe and soothing to tender parts.

Resinol

C. Bender, a daughter. Surviving children are W. R. Pettitt of Crystal City, B. H. Pettitt of Corpus Christi and Miss Mittie Pettitt of Ranger. She is also survived by two brothers, one sister and one half sister. They are R. R. Smith of De Leon, W. W. Smith of Beattie, west of De Leon, Mrs. J. H. Welch of Beattie and Mrs. Gussie Head. Her grandchildren are W. R. Pettitt, Jr., and B. H. Pettitt, Jr.

CLASSIFIED

6—LODGE NOTICES
CALLED meeting Ranger Lodge No. 738, A. F. & A. M., Thursday, March 28, 7:30 p. m. Educational program. All Master Masons invited. Refreshments.
R. E. HARRELL, W. M. C. H. SUITS, Secretary.

7—SPECIAL NOTICES
CUSTOM HATCHING — Bring your eggs any Monday, 105 South Marston st.
MONEY—Automobile loans. Your present note refinanced. Payments reduced. New cars financed. Money advanced on most anything of value. Immediate service. Confidential. D. E. Pulley, 209 Main st., phone 629.

BROWN'S BONDED TRANSFER & STORAGE CO. 111 So. Marston, Ranger.

AUTO LOANS—No delay; small payments. C. E. Maddocks & Co.

12—WANTED TO BUY
WANTED TO BUY—Work stock. J. B. Ames, Gholson hotel, Ranger.

13—For Sale, Miscellaneous
FOR SALE—Registered English bulldogs. Onos Mills, Texas Service Station.
PRACTICALLY New Battery Radio Set, used only short time. Will sell at a bargain. See it and hear it play at Exide Battery Co., Ranger.

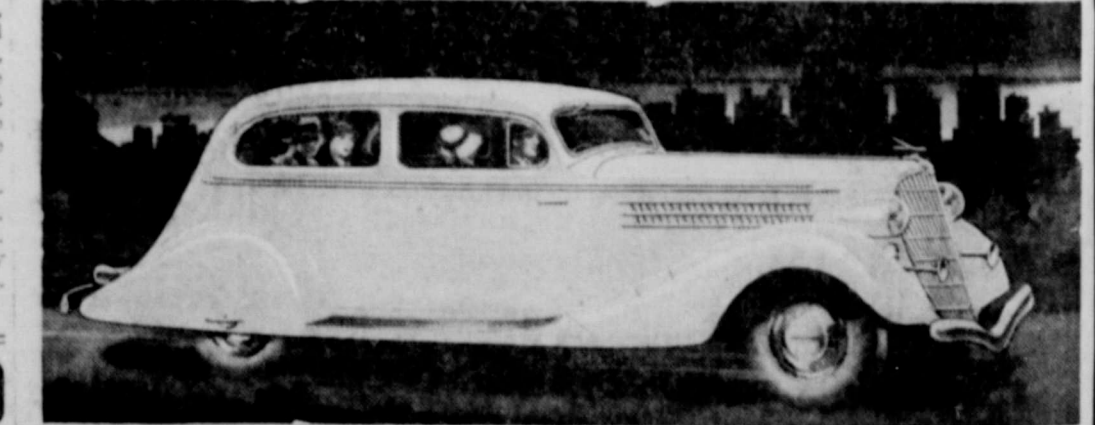
FOR SALE—Jersey cow 3 years old. Fresh. Reasonable. Mrs. J. F. Troit, Lone Star Plant No. 3.

AMBULANCE SERVICE
"Watch Our Windows"
Killingsworth, Cox & Co.
Phone 29, Night 303-J
Ranger, Texas

You'll Appreciate THE SPEEDY SANITARY BARBER SERVICE AT LOVE BROS. BARBER SHOP

It PAYS To Look Well!
Try us for your next Haircut, Shave, Shampoo, Massage, and all kinds of scalp treatments.
Gholson Barber Shop
L. E. GRAY, Owner

AMERICA'S only BODIES all OF STEEL!
GO! Ruggedness and safety ride with you



Steel All Around You... Sides, Floor and the First Steel Roof!

In 1935 there is one subject, at least, on which every automobile engineer agrees—steel bodies, for greatest strength, greatest ruggedness, greatest safety! Steel—more steel!
But when you look at 1935 cars you find only one manufacturer who gives you bodies all of steel. Hudson, in the new Hudsons and Terraplanes! You want complete protection in your car. You get it in the 1935 Hudsons and Terraplanes. No compromise here! Front and back of steel. Floor of steel. Sides of steel. Steel doors, steel pillars, steel bulkhead in front—and the first steel roof—sound-deadened, solid, permanent. Not a single bit of wood in any structural part.
And how these cars do go! How they keep on going! Visit any Hudson and Terraplane dealer's showroom and try this new motoring experience.
THE ELECTRIC HAND
Easier, safer driving—faster, smoother shifting, with both hands always on the wheel. An exclusive feature, standard on Hudson Custom Eight; optional (for small amount extra) on all other 1935 Hudsons and Terraplanes.
AND LOOK AT THE PRICES!
and up for Hudson-built Terraplane (50 or 100 horsepower)
Hudson Six \$695 and up (92 or 100 horsepower)
Hudson Eight \$740 and up (113 or 124 horsepower). All prices f. o. b. Detroit for closed models.

\$585

HUDSON and TERRAPLANE
C. J. MOORE AUTO MART
SALES and SERVICE
Ranger, Texas EASTLAND COUNTY DEALER Phone 473
TUNE IN ON HUDSON "NEW STAR REVUE" featuring Kate Smith—Every Monday evening 8:30 E. S. T. 7:30 C. S. T., 9:30 M. S. T., 8:30 P. S. T.—Columbia Broadcasting System

West To night and south and

VOL. XVI

HIGH SCHOOL HONOR IS AN

The following of the Ranger first six weeks. The honor roll for three A's and the high honor A's and two B's and one C's those of the average are: Ernest Green, Ernest Smith, F. B. Montgo, Mildred Moore, Mavis Murray, H. P. Ball, W. J. May Jr., W. J. Margaret Norris, High Honor, Juanita Thomas, T. J. Rita Gallighe, Jim Galloway, Strong, Leat, Chastain, L. Montgomery, Jack Morris, Porter, Mau Weeks, Conne Ervin, Inez Katie Pace, erett Donaw Ernest Glanz, Inez Baker, Donawho, M. Fred F. Mital, Bobbie Lee I man, Letha I Honor Rol Robinson, Vi Kribbs, Julia dine Miller, Wanzelle Ha Bruce, F. P. Raymond La brough, Vol phie Phillip, Dorothy Am Hazel Barke Billie Mae I thers, Mar Rodacker, Robert Ray son, Clois ston, Home Bourdeau, I Hughes, B. Nell Gideon, Jane Ray, Junior Meri Priscilla Mil

Tuesday, election day citizens of ed to vote i a mayor ar are to be e Monday, the last dat the city tie missioners i nonced fo Since the done some in the past through s tructive n of the city has been u rive them the work t The pre posed of E mayor, W. Brashier, E S. Adamso nouncement Times, and ties of the published f der that ti might be k the work t

City El Be F