

REGARDING THE High Cost of Living

AT OUR STORE WE SELL

| | |
|--|--------|
| Granulated Sugar 16-lb | \$1.00 |
| Nigger Head Tomatoes, 2-lb cans, 10c, 3 for | .25 |
| Blue Ridge or World's Favorite Corn, 2-lb 10c, 3 for | .25 |
| Apex Peas, 2 cans for | .25 |
| Lye Hominy, 3-lb can | .10 |
| Eggs per dozen | .25 |
| Bonita Butter | .40 |

No matter what kind of butter you are using change and use Bonita, every pound guaranteed to be fresh. We need more customers—you need to reduce your living cost without sacrificing the quality you have been accustomed to, you may be figuring on buying quite a nice bill of groceries at one time about pay day time or the first of the month or today. We want you to see our stock—come to see us—you may have known this place before but you should see it now. We are prepared in every way to serve you.

Lowery Grocery Co.

GROGERS 728 Indiana Ave. BAKERS

ANOTHER BIG BARGAIN

70X150 lot on the corner of Scott avenue and 14th street. Known as No. 1401 Scott avenue. Call at our office for particulars.

Anderson & Patterson

Exclusive Agents 616 8th Street

IN ORDER TO INTRODUCE OUR Storm Cellars and Cisterns MADE IN WICHITA FALLS

We Will Sell Them On The INSTALLMENT PLAN For The Next 30 DAYS They are guaranteed to be perfectly tight; will not crush in under any load and will last a lifetime.

Cor. Ind. and 10th St.



Wichita Falls Texas

LARD -- LARD -- LARD

As we have a large quantity of pure Hog Lard on hand we offer it for the balance of this month, in 50 pound lots at 14c. In less quantities 15c per pound.

THIS LARD is GUANANTEED to be the BEST

Phone 168 THE FILGO MARKET 726 Indiana

People's Lecture Course

LECTURE NO. 2 "THE JEW" By Rev. R. E. Farley

First Methodist Church, Thursday Evening, February 17, at 8 O'clock

Admission—Adults 25c Children under 14, 15c

Corner 7th and Lamar Ave.

Books, Stationery and School Supplies

We also handle periodicals and newspapers of all kinds. Books to sell or rent.

J. H. MARTIN

704 Ohio Ave. Phone 10.

Your attention is also invited to the fact that we have a complete line of books, stationery and news of all kinds. Having recently enlarged our stock in every respect, we feel sure we can take care of your wants. If not in stock we will gladly order. Books to rent at very reasonable cost.

Our Business is Good

Better, in fact than we had expected. The reason for this is that

Users of Natural Gas

have discovered that it is not only more convenient and more comfortable, but it is more economical, both for Lighting, Heating and Cooking purposes. If you are not a patron of natural gas, it is to your interest as well as ours to become one.

CLAYCO OIL & GAS CO.

613 Ohio Ave. Phone 217

THE ST. JAMES HOTEL

Under management of J. M. Hunt Contracting Company. Located in the heart of the city.

AMERICAN PLAN

\$2.50 Per Day.

The County Judges' Convention.

To the citizens of Wichita Falls:

As announced by our press, the next session of the County Judges' and County Commissioners' Association will be held in this city in August of this year. That you may the better comprehend the honor conferred upon us by the selection of this place, I desire to say a few words concerning this assembly and its purposes, and say, in my opinion, its next meeting will be the largest and most important session ever held by it. This opinion is shared by the institution itself, as is evidenced by the fact that it will be a three day's session, instead of two. Coming as it does, near the close of our administration and the beginning of another, its main purpose will be to winnow the thoughts that will help to cure the evils resulting from past legislation and safeguard the people's interests in future legislation in so far as same affects this institution. Another purpose will be to discover a way by which the people's money shall not be wasted on the public roads. In fact, every phase of county government and its relations to the state government will be exhaustively discussed with a view to making it more efficient.

This assemblage will be composed largely of young men, as county judges and old and middle-aged men as county commissioners. The judges are, as a rule, graduates of the state university; the commissioners are, as a rule, tillers of the soil, or graduates from it—a school which emphasizes the subjects of common sense. These are the men who expend the people's money that the blessings of the government may exist. That they may expend it still more wisely, is another purpose of this association. If it could be known how much in the aggregate they do expend, the amount would stagger one and be almost beyond comprehension. I apprehend, however, that in a measure, they do comprehend it, for they are a sober, earnest and self-sacrificing body of men, anxious above all things that the trust shall be faithful, honestly and wisely executed by them.

These are the men whom the people have chosen to execute, in their behalf, a great trust, and these, together with the wives of many of them, are the ones who will be with us in next August.

They have been told the degree of warmth that the invitation made by the Chamber of Commerce carries; that its membership is made up largely of those citizens of Wichita Falls who pay one dollar per month dues; that its monthly income is twelve hundred dollars; that the voting strength of Wichita Falls is about twelve hundred, and that practically the entire citizenship of Wichita Falls is behind the invitation; that the atmosphere of civic pride here is so healthful that no other than a generous welcome could be extended to said association. I believe this—they believe it, hence, they are coming and it is now up to us to make good.

M. F. YEAGER, County Judge.

CATARRH WILL GO.

Relief in Two Minutes; Complete Cure Soon.

Don't go on hawking yourself sick every morning; it's cruel, it's harmful and it's unnecessary.

If after breathing Hyomel, the wonder-worker, you are not rid of vile catarrh, you can have your money back. No stomach dosing—just take the little hard rubber pocket inhaler that comes with each outfit, and pour into it a few drops of Hyomel. Breathe it according to directions. In two minutes it will relieve you of the stuffed up feeling. Use it a few minutes every day, and in a week you will be entirely free from catarrh.

Get an outfit today; it only costs \$1.00; it's worth \$1,000 to any catarrh sufferer. For sale by druggists everywhere and by Water-Walker Drug Co., who guarantee it to cure catarrh, coughs, colds, sore throat and bronchitis. An extra bottle of Hyomel liquid if needed, costs but 50c. The little hard rubber pocket inhaler you get with each outfit will last a life time.

There is nothing pertaining to poultry that requires more careful attention than does the incubator. The lamp should be trimmed regularly. Do not expect good results if you allow the thermometer to register 95 degrees one day and 165 the next.

No matter what the weather may be you can have drug store goods at any time by taking advantage of our free delivery service. Do not hesitate to call us up by phone.

20321 THE PALACE DRUG STORE.

Small chickens should never be turned out in the morning until the sun is up and the dew is partially, if not wholly, dried off. Your time and feed will be lost if the young chickens are allowed to get wet with the dew and frost.

Build You a Brick Home.

I am prepared to build you a brick home on good terms. Will furnish lot or build on your own lot. W. H. McABER, Office 617 8th street. 231-60.

WICHITA THEATRE

One Night, Tuesday February 15th

Wm. A. Brady Offers the Young Romantic Actor MR. WRIGHT LORIMER

And Over 100 People In The Largest Dramatic Spectacle Ever Staged

"THE SHEPHERD KING"

Note what the following prominent people say after seeing The Shepherd King

"An intellectual and entertaining performance." W. H. Taft.
"A better play than Ben Hur."—W. J. Bryan.
"Every man, woman and child in Denver should see it."—Father Malone.

PRESS OPINION

New York Papers:
"Lorimer was a triumph; another Ben Hur."—Sun.
"A marvelous success."—Herald.

San Francisco Papers:

"The play of the year, a revelation."—Examiner.
"Like Ben Hur, sincerely recommended."—Chronicle.
"A beautiful story well told."—Call.

Denver Papers:

"Most artistic performance."—Post.
"Audience held spell-bound."—Republican.
"Most worthy success."—News.

PRICES--25c, 50c, 75c, \$1.00 and \$1.50 SEATS ON SALE SATURDAY

The Big Lace, Muslin, Underwear and Shirt Waist Sale

CONTINUES FOR

SIX MORE DAYS

Unprecedented bargains—all French Vals—Imported Torchon real linen laces and Normady Val lace at special prices for 6 days. Also all new Spring Shirt-Waists and Muslin Underwear at Special Prices.



EXTRA SPECIAL

500 pieces French Vals, Normady Vals, Torchon Lace, real linen Lace, 10c and 15c values, sale price...5c

EXTRA SPECIAL

500 pieces French, Normady and Ruby Vals, Torchon and real Linen Lace. 15c, 20c and 25c values, sale price.....10c



SHIRT WAISTS

Our entire line at reduced prices:
\$1.50 and \$1.75 Shirt-Waists, Sale Price... \$1.25
\$1.25 and \$1.35 Shirt-Waists only..... 98c

MUSLIN UNDERWEAR

Entire Line at Cut prices for 6 Days:
65, 75 and 85c Drawers, Gowns and Skirts... 48c
85c and \$1 Drawers, Gowns and Skirts... 69c
\$1.25 and \$1.50 Drawers, Skirts and Gowns 98c

A. R. DUKE

The Coffee You've Always Longed For

There is a difference between good coffee and coffee that really satisfies. Satisfactory coffee must have flavor; it must be uniform in quality, and be properly roasted and blended. These merits are found in all the coffees of the Chase and Sanborn line. Seal Brand, the highest grade, is a blend of the finest coffees the world's market affords. Q Blend is the best twenty-five-cent value you can get, and the 20-cent and 33 1-3-cent grades are worth the price and then some.

We also handle Chase and Sanborn's high grade teas. If you wish to look through our line of teas and coffees, phone 56 and we will send a man to your house to show you samples.

Phone 56

J. L. LEA, JR.



WE ARE LAYING FOR YOU

And the way we are doing it is keeping the best wire fencing in stock.

Before deciding on the wire fencing most suitable to our particular trade, we investigated all the leading makes. Our object was to get the strongest fencing; fencing that would stretch up the easiest; would not sag when run over uneven ground; was animal proof and so constructed as to best withstand the ravages of time.

The fencing that we found to most nearly combine all these desirable qualities was the Pittsburg Perfect Welded Wire Fencing. So this is the fence we not only offer you, but advise you to take. It costs no more than other fencing of inferior quality.

MOORE & RICHOLT, Lumber and Building Material

A DOLLAR SPENT FOR CRESCENT CANDY

means all of it stays in Texas, seventy-five cents in Wichita County, while imported candy, all that stays in Wichita is the Retailer's profit.

BUY CRESCENT CANDY IT IS THE BEST

PHONE 130

When your Clothes Need Cleaning Pressing or Repairing

Our Work is Satisfactory

LADIES WORK A SPECIALTY THE CITY TAILOR SHOP

715 W. 7th St. P. E. WILLIS, Proprietor 715 W. 7th St.

Your Electric Light Bill

Now, just a moment—it is not my intention to be disagreeable, but I believe that I can cause it to be much more satisfactory. How would you like to have twice as much light or the same amount of light, twice the number of hours, or twice the number of lights the same hours, at less than the present cost? Isn't that fair enough? Make a suggestion.

W. C. STINGER

Fred Mahaffey Place.

THE FREE PASS.

From the Waco Tribune.

Discussing the matter of railroad advertising in newspapers and more specifically the interchange—between railroad and publisher—of advertising space for transportation, the McGregor Mirror expresses its entire satisfaction with existing conditions, as regulated by Texas laws. That means that the Mirror prefers to pay for railroad travel—when the editor or anyone connected with the paper desires to travel—and to be paid in cash by the railroad company, when the latter desires advertising space in the Mirror. The McGregor contemporary points out, too, that under the old system of interchange of mileage and space the railroads were often imposed on by publishers, who managed to get an amount of mileage by no means justified by the circulation or influence of the paper. Also, that publishers were often held up by the railroad, in requiring an amount of space that is worth many times the amount of mileage the railroad was willing to accord. In a word, the situation had gravitated to a point where the "nerve" and willingness of the publisher to misrepresent his circulation cut a big figure and real merit was at a disadvantage.

In these views the Tribune concurs, and right cheerfully, and is free to say that so far as its interests are concerned it is well content to see the present law stand, albeit we regard that law as unwise and impolite because of its interference with the right of contract—which, after all, is the old law of barter—as old as human civilization. It was on that ground that the Tribune in common with so many of the Texas papers, deprecated the passage of the Texas law that prohibited railroads from exchanging transportation for advertising space in newspapers. It is an innovation, the abrogation of the right of contract, that may be fraught with tendencies of mischievous character, and on that account we oppose it. If the right of publisher and railroad to barter their wares is assaulted it is but a question of time when the assault may be made in some other way, on some other interest. That we freely admit.

But as to the matter of intrinsic impairment of the newspaper's interests by the Texas law, speaking for itself, the Tribune is in thorough accord with the McGregor contemporary. We shall be well content to see the law stand as it is for it does not work loss or injury to the reputable newspaper, whose space is worth the price it charges therefor, or to the railroad, and its operation certainly makes the publisher feel more self-respecting and independent than under the old system. He well knew, if he was dealing honestly with the railroad, that he never received a "free" pass—as the public was wont to speak of it. He paid the railroad well for what he got in return, yet in the eye of the public he was a man who always traveled on a "free pass" and decent people suspected that he sold his views as well as his advertising space for the railroad mileage. Of course, he didn't do anything of the kind, as every honest publisher knows, but the public did not understand the system and made up its own theory about it—and the theory was not overly flattering to the publisher. The present system will become more and more satisfactory to newspapers, and we believe, to railroads as well. The newspaper with circulation and influence will get railroad advertising at fair prices. There need be no fear about that. The publisher who is really able to travel at times will do so, and if he is not able he ought to stay at home.

It is true that the Tribune, speaking for itself, has reason to be content with the changed conditions, for it gets the railroad advertising that its circulation and standing warrant, but the thoughts here expressed are from a general and not an isolated viewpoint. They would not be modified if this paper lost all the railway advertising it now enjoys, and, finally, there is great satisfaction in the reflection that that even if the anti-pass law worked more loss to the newspaper than it does, it has compensatory features that must be wholesome in their general bearing and application.

The "free pass" had become an evil, a menace to society. The newspaper and its enjoyment or use of the privilege, was but an incident and of minor importance. Held up, on every

hand, by the demand for the pass, the railroads in self-defense and out of the general trend of human nature, too, were utilizing it in a way that was not good for society. The judge on the bench, before whom the corporation might any day be arraigned, carried its favors in his pocket. So did the officials—state, county, city and precinct—who made the laws or in any way controlled public affairs. One never knew which man or how many in the jury box had a free pass in his pocket. These conditions existed and we all know it and the influences, the tendencies could not be wholesome. If the old system never comes back we shall not complain and on many accounts we shall regard its disappearance as on the whole of benefit to society.

Storks in Europe.

In the Baltic provinces and throughout northern Germany and Denmark the stork is met with everywhere during the summer months. While traveling the other day from Danzig to Marienberg I saw several in the fields and on nests upon buildings quite close to the railway. In Denmark, however, it is less numerous since the draining of the morasses was begun. It is still fairly common in Holland and Belgium, but in France, owing to its being persecuted and the fact of none of the original race surviving, it is seen only as a bird of passage. In Alsace and Lorraine its better treatment is rewarded by a certain number remaining during the summer to breed.

In passing through Savoy in April and in the early autumn, it meets with heartless persecution, especially on its return to the south, when the young birds are often much fatigued. It occurs generally throughout Turkey and is fairly common in Greece. It is met with occasionally in central Italy and Sicily and is plentiful in some parts of Andalusia.

It is believed that on one of their migrations which took place a little after the middle of the last century the white storks experienced some sort of catastrophe, as they returned in greatly reduced numbers and since then they have been considerably less numerous than before. The periods of migration with the storks are very regular. They arrive in central Europe generally between March 20 and 25 and prepare to depart at about the end of August, first congregating in large bands, which break up as the adult individuals come and collect the young together to conduct them southward. It appears that they migrate in large flocks, flying mostly by night.

The males and females, it is supposed, migrate separately, the former undoubtedly arriving a week before the latter to take charge of the old nest or to settle on a favorable spot for nidification.

Wherever the stork is met with in Europe, excepting in parts where its occurrence is rare, where it meets with the common fate of rarity, it is protected. The peasants mostly hold it as sacred and consider it as a sort of protector or house god to the house on which it nests, and one will sometimes sell a nest to a neighbor to bring him luck, in which case the bird will discover the new situation of his nest and continue to occupy it. Often an old wheel or something else inviting is fixed on a roof to induce a stork to build. The nest itself is constructed of branches and twigs, neatly lined with grass, straw or any other suitable materials. It takes up much space and every year it is added to, so that the peasant upon the roof of whose house it nests is obliged sometimes, when the bird is absent, to remove a portion of it in order to lessen its weight.—Westminster Gazette.

Card of Thanks.

We desire to express a word of thanks to our friends and neighbors who assisted us during the illness and after the death of our little child. Such kindnesses will be ever remembered by us. We especially wish to thank Mrs. K. B. Dodge in this connection.

Sincerely,
MR. and MRS. JACK WILLIAMS.

Feed! Feed! Feed!
Phone 437 for coal and feed of all kinds.

MARICOLE COAL Co

A cup and saucer with each three-pound can of W. S. Coffee. Phone 261.
KING'S 223-11c

Fresh vegetables arriving daily at Sherrod & Co. 233-11c

Attention Horsemen!

Dr. C. E. Robinson is located at the Exchange Livery Barn, thoroughly qualified to the latest methods of the scientific treatment of horses, dogs, cattle and livestock of any kind. Office and hospital at Exchange Stable. Calls answered day or night.
TELEPHONE 83

Exchange Livery Stable

J. W. WITT & SON, Proprietors.
Corner 5th and Ohio Ave.
Open Day and Night.
Phone 23.
We solicit your patronage and guarantee the best of service.

PROFESSIONAL ADS

ATTORNEYS.

Robert E. Huff
ATTORNEYS.
Attorney at Law.
Prompt attention to all civil business.
Office: Rear of First National Bank.

Cruff, Barwise & Bullington
ATTORNEYS AT LAW.
Rooms 13 and 15 City National Bank
Wichita Falls, Texas.

T. B. GREENWOOD,
ATTORNEY AT LAW.
County Attorney Wichita County and Notary Public.
Office: Over Farmers' Bank and Trust Company.

A. A. HUGHES,
ATTORNEY AT LAW
Rooms over W. B. McClurkin's Dry Goods Store
Wichita Falls, Texas

L. H. Mathis. W. F. Weeks.
Mathis & Weeks
ATTORNEYS-AT-LAW.
Office: Rooms 3 and 4, First National Bank Annex.
Wichita Falls, Texas.

J. T. Montgomery. A. H. Britain.
Montgomery & Britain
Attorneys at Law.
Office over Farmers' Bank & Trust Co.
Wichita Falls, Texas.

S. M. FOSTER
ATTORNEY AT LAW.
Civil and Criminal Practice. Notary Public. Abstracts Examined.
City National Bank Building.
Phone 512.

GEO. A. SMOOT
ATTORNEY AT LAW
Room 1, City National Bank Building
Wichita Falls, Texas.

T. R. (DAN) BOONE
ATTORNEY AT LAW
Rooms 2 and 4 over City National Bank Building.

ARCHITECTS.

Boller & Von der Lippe
ARCHITECTS.
Moore-Bateman Building.
Room 9. Phone, 316.

JONES & ORLOFF
Architects and Superintendents.
709 SEVENTH STREET.
First National Bank Building Annex.

ACCOUNTING.

A. E. MYLES,
ACCOUNTANT
Room 7, Postoffice Building
Phones: Office 543; Residence 519.

MATILDA M. THUMAN
GRADUATE NURSE
Room 909 Seventh St. Telephone 998
Can be reached through any physician.

T. B. LEACH
BRICK, STONE AND CEMENT CONTRACTOR.
820 Indiana Ave.
Estimates cheerfully furnished. All work guaranteed to be first-class in ever respect.

Ed. B. Corstine
Real Estate and Auctioneer.
Property Bought, Sold and Exchanged
Office room with Moore & Stone, corner 7th and Indiana Avenue.
Office Phone 83 Residence Phone 163

E. M. WINFREY
—Dealer In—
Fire Arms, Sporting Goods
Bicycles and Sewing
Machine Supplies.
Gemsmith and Locksmith Expert
General Repairing a Specialty
26 Ohio Ave. Phone 43

PHYSICIANS AND SURGEONS.

G. R. YANTIS, M. D.
City National Bank Building.
Women, Children, Obstetrics and General Practice.
Hours—9-11 2-5 Telephone 619
Wichita Falls, Texas.

S. H. Burnside. Wade H. Walker.
DRS. BURNSIDE & WALKER.
Surgery and General Practice.
Phones:
Dr. Burnside's Residence.....No. 12
Dr. Walker's Residence.....No. 267
Office Phone.....No. 117
Office Hours—7 a. m. to 7 p. m.
Office on Seventh street, next door to
Wichita Falls Sanitarium.

DRS. SWARTZ & OLSON
PHYSICIANS and SURGEONS
Office—Room 1 and 2 First Nat. Bank annex, Seventh street. Telephone—office 557, residence 558.
Wichita Falls, Texas.

DR. M. H. MOORE,
PHYSICIAN AND SURGEON
Rooms 4 and 5 Over Nutt, Stevens & Hardeman's Dry Goods Store.
Phones: Office, No. 547; Res., No. 329.
Wichita Falls, Texas.

Drs. Miller, Smith & Walker
Offices—Rooms 7, 8, 9 and 10,
Postoffice Building.

DR. J. C. A. GUEST
PHYSICIAN AND SURGEON.
Phones:
Residence.....No. 214
Office.....No. 289
Office over E. S. Morris & Co.'s Drug Store, 710 Indiana avenue.

DR. L. MACKECHNEY
PHYSICIAN AND SURGEON.
Rooms 2 and 3 in Vreeland Building.
Office Phone.....No. 322
Residence Phone.....No. 462

DR. A. L. LANE,
PHYSICIAN AND SURGEON.
Office over Nutt, Stevens and Hardeman's Dry Goods Store,
Rooms 4 and 5.
Office phone 547. Residence phone 467

DR. L. COONS
PHYSICIAN AND SURGEON.
Office—718 Ohio Ave.
Phone, Residence, No. 11. Office, 137.

EVERETT JONES, M. D.
PHYSICIAN and SURGEON.
Office over E. S. Morris & Co.'s Drug Store.
Day and Night Phone, 289.

DENTISTS.

DR. BOGER,
DENTIST.
Office in Kemp & Lankor Building.
Hours: From 8 a. m. to 12 m., and
From 1 p. m. to 5 p. m.

DR. W. H. FELDER,
—DENTIST—
Southwest Corner 7th Street and Ohio Avenue.
Wichita Falls, Texas.

Dr. H. A. Waller
DENTIST.
Dental rooms over First National Bank Building—Phone 49

DR. J. S. NELSON.
DENTIST.
Rooms—1-2 Moore-Bateman Building.
PHONES
Office547
Residence423
SPECIALISTS.

CHAS. S. HALE, M. D.
Practice Limited to Diseases of
EYE, EAR, NOSE AND THROAT.

Office Hours—9 to 12 a. m. 1:30 to 5:30 p. m.
Room 12, over E. S. Morris & Co.'s Drug Store.
710 Indiana Avenue.

Dr. F. E. Rushing
Practice Limited to Diseases of
STOMACHE AND INTESTINES.
Flatiron Building. Fort Worth, Texas.

Cement Work

L. H. Roberts

General Contractor

Walks, Curbing, Steps,
Floors, Foundations,
Street Crossings,
Phone 504.

WICHITA DAILY TIMES

Published at
Times Building, Indiana Avenue.
Published Daily Except Sunday.
By—
The Times Publishing Company.
(Printers and Publishers.)

Officers and Directors:
Frank Kell.....President.
R. E. Huff.....Vice President.
Ed Howard.....General Manager.
G. D. Anderson.....Sec'y. and Treas.
T. C. Thatcher, J. A. Kemp, Wiley Blair

Subscription Rates:
By the week (mail or carrier).....15c.
By the month (mail or carrier).....50c.
By the year (mail or carrier).....\$5.00.

Entered at the Postoffice at Wichita Falls, as second-class mail matter.

Ed Howard.....General Manager.
John Gould.....City Editor.

Wichita Falls, Texas, Feb. 14th, 1910.

ANNOUNCEMENTS

For Judge 30th Judicial District
P. A. MARTIN.
R. F. ARNOLD.

For District Attorney, 30th Judicial District.
S. M. FOSTER.

For County Judge,
C. B. FELDER.
M. F. YEAGER.

For County Attorney.
T. B. GREENWOOD.
T. R. BOONE.

For Sheriff and Tax Collector.
J. W. WALKUP.
PETE RANDOLPH.
W. E. SKEEN.

For County and District Clerk,
W. A. REID.

For County Tax Assessor.
JOHN ROBERTSON.
J. M. HURSH.

For County Treasurer.
T. W. MCHAM.

For Constable, Precinct No. 1,
H. E. STEARNS.
F. J. SEELY.
J. D. JONES.

For Mayor.
JOHN T. YOUNG.
T. B. NOBLE.

The difference between the prosperity of Wichita Falls and that of most progressive cities is that ours is built on a maximum of home effort and capital, with a minimum of outside assistance.—Wichita Times.

It is a mighty important difference, and the more you think of it the more important it seems. There is double advantage in building up home towns with home capital, it helps the town and the growing town helps the investor by marking up all values. When we go from home for capital with which to build improvements we often do what we must instead of what we would prefer, but, too often, we make the very first appeal for funds for investment to persons of whom we know nothing and who know nothing of us. Maybe we fancy it seems like asking favors instead of doing straight business when we seek capital at home, but that is a false idea and is tinged with false pride. There is home capital in almost every town to be had for the proper asking. It should be sought first of all.—Austin Statesman.

When you hear a man say the valentine custom is silly, it's safe to bet the only kind he ever got were comic ones, making pointed references to the hue of his nose.

THE CRY, 'BACK TO THE FARMS.'

With increasing prices for farm products there comes the advice that people who have moved to the cities should return to farms. High prices for farm products are not disturbing farmers, and that they are getting fair returns for labor is not distressing them.

People are paying too much for the necessities of life, but this does not mean that farmers are getting too much for products. Prices for cattle are low, compared with prices for dressed beef; prices for wheat are not too great, but prices of flour are. Prices for raw products are low, compared with prices for manufactured articles.

This would lead to the conclusion that farmers do not need more competition, and do not need to be forced to sell at less than cost, as they have been doing in many cases for years; but would justly lead to the conclusion that "protection" which enables the manufacturers to levy taxes upon the hunger and needs of the poor should be released.

Complaint is not directed to causes of high prices. To blame farmers is wrong; it would be better to recognize truth, and to aim blows at robber tariffs. "Protection" which enables one man to take the earnings of another is reaching people so harmfully that we might begin to hope for relief.

When there is need for more people on farms they will go to farms. When compensation for farm labor, and returns from farm investments, reach a profitability which will justify people returning from cities to farms, then the number of farmers will be increased.

Meanwhile, those who must live by farm labor will either continue on farms, or will remove to cities, as shall appear best, and learned advice of Mr. J. J. Hill, and of philanthropists like him, will be unheeded.—Farm and Ranch.

Halley's comet, astronomers say, is traveling at the rate of 17 miles per second; that its tail is 20,000 miles long and that it will reach the earth, and that when this occurs neither animal nor vegetable life can exist on account of the intense heat. That means that if the astronomers are to be relied on that between now and the date fixed for this awful event, will be a very good time to prepare for the next world. The Times will arrange to hold open its accounts against delinquent subscribers up to within 20 minutes of the time set for the tail of the comet to strike the earth.

A planing mill employing forty men and costing twenty thousand dollars, is the latest addition to Wichita Falls industries; and nineteen ten only six weeks old.

As we understand it, the Burgess-Hardy scrap is about trying to put a speech that was never delivered in Congress into a book that is never read.

Whatever may be the result of Mr. Colquitt's campaign for gubernatorial honors, no one can truthfully deny that his start is to be beyond criticism.

The editors in session at New Orleans have been discussing waterways. Wouldn't that scare the mice out of your whiskers?

As long as this weather continues, it will make little difference to Wichita Falls whether spring ever comes or not.

The county judges and county commissioners of the state, in selecting Wichita Falls as their next meeting place, displayed a discriminating intuitive judgment that is worthy of emulation.

Up to this writing, two new wholesale groceries, a new planing mill and several other new concerns have asked Wichita Falls to "be their valentine" and the young lady will accommodate them all.

The question of paved streets is distinctly up to you this week, property-owner. See to it that not only your votes but the vote of all the others you can reach, is properly recorded.

Dispatches from Washington state that the president "may" appoint a democrat to succeed Judge Bryant. That word "may" ought to be in double-lead italics.

Fifteen more of Wichita Falls' citizens are shortly to acquire automobiles, and even us common people who can't afford them can ride on the street cars for five cents.

If O. B. Colquitt is not elected governor, his defeat cannot be charged up to the fact that he failed to make the best possible selection of a city to open his campaign in.

In publishing the bank deposits Saturday, the Times got the figures several hundred thousand dollars too small. They grow so rapidly that we can't keep up with them.

The Poultry Yard.
Egg shells are largely lime. The hens can't make good shells unless you furnish plenty of lime.

You can not feed hens that lay colored eggs, so that they will lay white ones. If you want white eggs, get the kind of hens that lay them.

A nest egg makes a nest more attractive to most hens, especially of the smaller breeds. We like the china eggs. An egg eater will pick at them for a little bit and give it up as a bad job.

Here is a new plan for killing mites on poultry roosts: Take two pieces to make a roost seven-eighths of an inch thick and two inches wide; bevel the edges a little and nail together, not too close, and set up on the edge. The mites will congregate in the seam between the two pieces. Pour kerosene in the groove formed by the bevel, on top and you have them dead.

Many who keep poultry overlook the importance of grit. Lack of grit means poor digestion and few eggs. A load of gravel near the chickens' home would improve the health and increase the egg yield on many a farm. It is claimed that the grit of commerce is the best, but the gravel is good enough grinding material. If you have never tried it, you will be surprised how fast it will disappear when placed in a box where the hens can help themselves.

Once in a Lifetime
That you have a chance to buy a nice present at the prices I am offering them.) Call and see me at 609, Eighth street. Kennedy, the up to date jeweler. 232-47c

Cab Service.
New cab at the Exchange Livery Stable. Calls answered day or night. Phone 53. Corner 6th and Ohio. J. W. WITT & SON, Props. 231-10tp

Pop-Pop-Pop-corn at Sherrad & Co., only 5c per pound. 223-17c

PENNINGTONS GREAT HALF PRICE SALE

For Men is drawing large crowds of eager purchasers. Don't fail to visit our Clothing Department today. Your choice of any suit or overcoat at half price.

| | | |
|--------------------------|-----|---------|
| \$35 00 Suit or Overcoat | - - | \$17 50 |
| 30 00 Suit or Overcoat | - - | 15 00 |
| 27 50 Suit or Overcoat | - - | 13 75 |
| 25 00 Suit or Overcoat | - - | 12 50 |
| 22 50 Suit or Overcoat | - - | 11 25 |
| 20 00 Suit or Overcoat | - - | 10 00 |
| 18 50 Suit or Overcoat | - - | 9 25 |
| 15 00 Suit or Overcoat | - - | 7 50 |
| 10 00 Suit or Overcoat | - - | 5 00 |

PENNINGTON'S

THE PLACE MOST PEOPLE TRADE

HICKMAN LUMBER COMPANY

-Dealers in-
High Grade Lumber and Building Material

Get our prices on lumber and building material before you build. No bill too small for us to figure on. We make deliveries to any part of the city.

CORNER OHIO AVE. AND 12th OFFICE AND YARD CORNER OHIO AVE. AND 12th
PHONE 597

Buy Your FLORAL HEIGHTS Lots From Us

IT WILL BE TO YOUR INTEREST TO INVESTIGATE THE BARGAINS IN THIS AD.

- No. 1. A bargain; 10-acre tract adjoining Floral Heights, 8 room house, storm cellar, windmill, tank, 1200 grapes and 100 fruit trees. Price \$10,000; 1-3 cash, balance 5 years.
- No. 2. 6-room house on Austin, right at the car line; lights, bath, city water, cement walks. Price \$2350; 1/2 cash, 1, 2 and 3 years on balance.
- No. 3. Vacant lot 50x200 on Bluff between 8th and 9th. A bargain, best section of city. Price \$2000 cash.
- No. 4. One 4, one 5-room house on same lot, close in, lot 50x150. Electric lights city water, cement walk, rents for \$55 per month. Price \$3800; 1-3 cash, balance monthly, \$50.
- No. 5. 1-story brick building, 50x110, lot 50x150, well and city water, gas and electric lights. Price \$16,500; \$10,000 cash, balance to suit.
- No. 6. 3-room house on 8th street, 1 block from Convent, lot 45x150, good well. Price \$1,000; 1-3 cash.

- No. 7. New 5-room house on 7th street, lot 50x150 close in, electric light, city water, storm house, cement walks. Price \$1600; 1-2 cash, balance 1 and 2 years.
- No. 8. New 5-room cottage on 11th street, lot 50x165. A bargain. Price \$2650, cash \$1560.
- No. 9. 4-room house and bath on Lamar, close in, gas, city water. Price \$1250; \$250 cash, balance \$50 every 3 months, 2 years insurance free.
- No. 10. 4-room house on 5th street, lot 50x140, electric lights, city water. Price \$1160, 1-3 cash.
- No. 11. A bargain, close in, 5-room house and bath, lot 50x150, gas, city water, cement walk, 2-story barn, everything new. Price \$2000; 1-3 cash.
- No. 12. 5 rooms and bath on Seventh, close in, all modern conveniences. Price \$2200; 1-3 cash.

- No. 13. A bargain, close in on Lamar street, 5-room cottage, lot 85x100, gas, electric lights, city and well water, sewerage connections, cement walks. Price \$3300; 1-3 cash, balance 1 and 2 years.
- No. 14. A rare bargain on Burnett street, 5-room house, lot 100-150. Price \$3000; 1-3 cash.
- No. 15. 5-room house, bath and hall, city water cistern, gas, electric lights, on 11th and Burnett. Price \$2750; \$500 cash, balance \$40 per month.
- No. 16. 5-room house on Indiana, between 11th and 12th, lot 70x150, city water, cement walks. Price \$2500; cash \$1500.
- No. 17. 4-room cottage on Austin between 17th and 18th str ets, lot 70x150; city water. Price \$1500; 1-3 cash.
- No. 18. 100 acres of land 5 miles from town, 100 acres in cultivation, balance in pasture, 1-3 crop goes with this place at \$31 per acre.

- No. 19. 273 acres land 6 miles from city, 175 acres in cultivation, balance in pasture, nice orchard, 25 acres in wheat, 30 acres in volunteer oats, thrown in with deal. New 4-room house, dug-out and barn and other buildings. Price \$27.50 per acre; 1-3 cash.
- No. 20. 1608 acre farm, 14 miles up Wichita River; 350 acres in cultivation 125 acres in wheat, balance all good pasture and plenty of water. This farm has three sets of improvements and is equipped with the following stock and machinery: 4 wagons, 2 buggies, 4 cultivators, 4 sulky plows, 2 disc plows, 2 disc harrows, 2 listers, one 2-row planter, 7-foot Deering binder, 1 good drill, 2 harrows and 9 sets of harness; also 90 head of cattle, 12 horses and 10 mules; for \$29 per acre, one-half cash, balance on easy terms, including stock and machinery. No trade taken.

Phone 692
Wichita Falls, Texas

STEHLIK & JOEHRENDT

Office—
First National Bank Annex

NEW TODAY

The Sanitary Turban Hair Pad with the Coronet Braid

Turban Pads..... 35c, 50c and 60 cents
BRAIDS 30 inches \$3.00
 36 inches \$4.00

We have them in all shades

Nutt, Stevens & Hardeman

Dry Goods Phone 198 Wichita Falls, Texas
 SEE OUR WINDOWS

Upholstering

We are prepared to do all kind of Upholstering, Repairing and Refinishing. All work guaranteed to give perfect satisfaction or will gladly refund the price. We also carry a good line of upholstery goods. Will appreciate your work.

W. A. Freear

THE ONLY THING FATHER TIME BUILDS



DOLLARS GROW WHEN PLACED IN OUR BANK
 Copyright 1909, by C. E. Zimmerman Co., No. 1

There is only one thing Father Time adds to—that's money in the bank. He tears down most everything else, but keeps building up money. Be prepared, so that he may add to yours. Give us part of your business. We believe you will be pleased with the way we handle it. We are a growing Bank in a growing town, and appreciate any business entrusted to us.

The Wichita State Bank

"THE GUARANTY FUND BANK."

Moved to 623 VREELAND BUILDING, 8th Street
H. J. BACHMAN
 Insurance all Kinds—Real Estate. Phone 157

WANT ADS.

Placed under this head will bring satisfactory results. One Cent the Word for an insertion; Half Cent the Word each following insertion.

MISCELLANEOUS.

The Asiatic Oil Painting is being taught at our studio, room 5, Guggenheim Building. If you wish to learn this work, see Prof. Pollard, at the studio. 234-3tp

SITUATIONS WANTED.

WANTED—To do general housework in good family by refined German girl. Address Box 674, Wichita Falls. —234-3tc

WANTED.

WANTED—At once a courteous, energetic boy or young man. See FRED MAHAFFEY. 236-1tc

WANTED—Sewing to do. Satisfaction guaranteed. 803 Scott avenue. Mrs. HALL. 233-6tp

WANTED—50 young men as supers for Wichita Theatre Tuesday night. See Strickland at stage door Tuesday at 4 p. m. 235-3tc

FOR SALE.

FOR SALE—15 Jersey milch-cows, at O. K. Wagon Yard. DAN OSTER. —234-6tp

FOR SALE—Remington typewriter, Model No. 7, good as new. A rare bargain. Call at Chamber of Commerce, or phone 390. 233-4tc

FOR SALE—Select and hand-shelled seed corn. Phone, write or see FRANK JENNE, Route 4, Wichita Falls. —236-13tc

FOR SALE—Several head of young mares and one gentle horse for family use. JOHN SCHRADER, Huff, Texas. —235-3tp

FOR SALE—The Farmers' Wagon Yard, 100X150 feet on Indiana avenue, between 6th and 7th streets. For further particulars call on J. S. Beard. —231-26tp

FOR SALE—Will sell at a bargain the stock of goods known as the "Nickle Store." For particulars, see J. E. Balts, proprietor. Will take Wichita Falls Real estate. 235-2tc

FOR SALE—Two lots, corner Brooke and 7th streets, two blocks from car line and beautifully located. \$600; \$340 cash; balance on long time. Apply to BRIDWELL & JACKSON. 233-4tc

FOR SALE—100 pounds beautiful, white, clean rice, delivered in double sacks, freight prepaid to your railroad station, \$5.85. J. Edward Cabanias, Rice Farmer, Katy, Texas. 233-8tc

A BARGAIN—Lots 1 and 2, block 100, and 15 and 16, block 101, Floral Heights; two corner and two inside lots. Very small cash payment; balance \$1.00 a week. 617 8th street. Phone 358. 234-3tc

ANOTHER BIG BARGAIN—70X150 lot on the corner of Scott avenue and 14th street. Known as No. 1401 Scott avenue. Call at our office for particulars. ANDERSON & PATTERSON, exclusive agents, 616 8th street. —228-1tc

FOR RENT—FURNISHED ROOMS

FOR RENT—Furnished rooms with gas heat at 907 Travis. 234-4tc

FOR RENT—Two nicely furnished rooms for light housekeeping. 808 Travis. 236-3tp

FOR RENT—Two furnished rooms for light housekeeping. 911 10th street. —236-3tp

FOR RENT—Neatly furnished room, close in; conveniences. 609 Lamar. —234-3tp

FOR RENT—Desirable furnished rooms, close in. Bath, lights and phone. 811 Indiana. Phone 145. —229-1tc

FOR RENT.

FOR RENT—Five-room cottage east of Denver track. Phone 391. 235-3tc

FOR RENT—One nicely furnished front room, two blocks from First National Bank. 508 Scott avenue. —235-6tc

FOR RENT—903 acres; 300 in cultivation and balance in grass, at Iowa of Jolly. Good four-room house and out building; plenty of water; also one two room house. Address P. B. JOLLY, 215 West 79th street, New York City. —224-26tc

The Times is authorized to announce W. A. Reid as a candidate for re-election to the office of County and District Clerk of Wichita County, subject to the action of the democratic primary. Mr. Reid has held the office for the past six years, succeeding his father. He is well qualified for this very important position; is clever and accommodating and by attending strictly to the work of the office has made it so that the people of the county are so well satisfied with his work that he has never had an opponent for the office, nor is he likely to have this time. The Times takes pleasure in presenting his claims for re-election to this office to the voters of the county, whom it feels confident will be glad of the opportunity of re-electing him.

The poultry house should be frequently cleaned. The dropping boards should be sanitary and the hay or straw used to line nests, should be frequently changed.

Feed! Feed! Feed!

Phone 437 for coal and feed of all kinds. 122-4f MARBLE COAL Co.

Try a can of W. S. Lima Beans for a change. Phone 381. KING'S. —229-4tc

Guests at the St. James.
 W. H. Raymond Dallas; J. H. Scales, Dallas; A. E. Jaegle, Stamford; D. G. Mackenzie, Dallas; S. C. Mikon, Electric; Jas. M. Cholwell, Jr., Oklahoma; Miss M. Thomas, Bowie; J. D. Newton, Waco; F. F. Covey, Louisville, Ky.; See Woods, Sherman; John F. Witherspoon, Hickory; V. B. Hayes, Durant Okla.; W. W. Moran, Roswell, New Mexico; W. T. Bush, Fort Worth; F. M. Wilson, Louisville; H. Schmidt, Palestine; R. A. Brown, Fort Worth; Wm. Mooney, Waxahachie; E. D. Prince, Waxahachie; J. B. Vogel, Chickasha; Allen Dunn, Childress; A. B. Hager, Boston; Mrs. F. M. Gates, and children, Ardmore; L. S. Greene, Houston; J. L. Kelley, Henrietta; H. A. Whittemore, Henrietta; W. L. Hutt, K. C. Mo.; G. W. Byers, K. C. Mo.; J. Ashton, Dallas; J. F. O'Donohoe, Beaumont; R. L. Taylor, Henrietta; G. E. McKinley, Oklahoma City; Norris D. Leen, Cincinnati; A. G. Aridan, Mangum, E. H. Bretherton, Dallas; Glen Randlett, Ok.; W. E. Shell, Denver; Wilson, Huff, Tex.; Allen Rutledge, L. L. Mann, Archer City; A. L. King, Devol, Ok.; Bertha Whitlock, Devol, Ok.; Myrtle Whitlock, Devol, O.; D. King, Temple; W. B. Anrman, Fort Worth; P. A. Bloomer, Fisher, La.; F. F. Hill, and wife Quanaa; Ed. E. Long, Dallas; H. F. Robey, Hillsboro; J. S. Roby Hillsboro; F. V. Cook, Denver; F. D. Wheritt, Fort Worth; C. W. Sphrivens, Angel Island, Calif.; W. H. Lovers, Chicago; Care Crow, Fort Worth; Will W. Brown, Electric; G. C. Wodruff; Miss Blanch Ferguson, Electric; Miss Pansy Ferguson, Electric; J. L. Kennedy, Oklahoma City; Ward Byers, Byers, Tex.; Leo J. Curtis, Byers, Texas; R. Walsh, Sherman; E. M. Hopper, Lincoln, Neb.; R. C. Combs Fort Worth; R. E. Clark, Amarillo; Geo. A. Sprague, Dallas; J. P. Hunter, Dallas; S. P. Vittiro, Sherman.

2034 THE PALACE DRUG STORE
 A good New Year resolution will be to resolve to let us furnish all your drugs this year.

RAILWAY TIME TABLE



Fort Worth and Denver City.

| Northbound— | Arrives | Leaves |
|-------------|-------------|-------------|
| No. 1 | 1:45 p. m. | 1:50 p. m. |
| No. 3 | 12:15 p. m. | 12:25 p. m. |
| No. 5 | 11:45 p. m. | |
| No. 7 | 2:15 a. m. | 2:25 a. m. |
| Southbound | Arrives | Leaves |
| No. 2 | 1:50 p. m. | |
| No. 4 | 11:15 a. m. | 11:25 a. m. |
| No. 6 | | 2:25 a. m. |
| No. 8 | 2:25 a. m. | 2:35 a. m. |

Wichita Falls and Northwestern South Bound—Train No. 1.

| | |
|----------------------|-------------|
| Leave Mangum | 6:45 a. m. |
| Arrive Altus | 8:05 a. m. |
| Leave Altus | 8:05 a. m. |
| Arrive Frederick | 9:25 a. m. |
| Leave Frederick | 9:25 a. m. |
| Arrive Wichita Falls | 10:02 p. m. |

North Bound—Train No. 2.

| | |
|---------------------|------------|
| Leave Wichita Falls | 2:00 p. m. |
| Arrive Frederick | 4:25 p. m. |
| Leave Frederick | 4:40 p. m. |
| Arrive Altus | 6:00 p. m. |
| Leave Altus | 6:00 p. m. |
| Arrive Mangum | 7:20 p. m. |

Wichita Falls and Southern. South Bound—Train No. 11.

| Leave Wichita Falls | 2:20 p. m. |
|--------------------------|-------------|
| Arrive Olney | 5:20 p. m. |
| Leave Olney | 5:30 p. m. |
| Arrive Newcastle | 6:30 p. m. |
| North Bound—Train No. 12 | |
| Leave Newcastle | 6:30 a. m. |
| Arrive Olney | 7:30 a. m. |
| Leave Olney | 7:30 a. m. |
| Arrive Wichita Falls | 10:15 a. m. |

Wichita Valley.

| | |
|--------------------------|-------------|
| No. 1, to Abilene—Leaves | 2:00 p. m. |
| No. 5, to Abilene—Leaves | 12:05 a. m. |
| No. 2, From Abilene—Ar. | 12:15 p. m. |
| No. 6, From Abilene—Ar. | 3:15 a. m. |
| No. 8, to Byers—Leaves | 8:00 a. m. |
| No. 10, to Byers—Leaves | 2:20 p. m. |
| No. 7, From Byers—Ar. | 11:30 a. m. |
| No. 9, From Byers—Ar. | 6:00 p. m. |

Missouri, Kansas and Texas.

| | |
|--------------|-------------|
| From Dallas | 10:35 p. m. |
| To Dallas | 6:30 a. m. |
| From Denison | 12:30 p. m. |
| To Denison | 1:30 p. m. |

McFALL & STINSON

General transfer, moving and storage. We move, pack, crate and ship household goods, furniture, pianos and all kinds of merchandise.

Telephone 444 J.W. McFall Manager

Something Real Good

Is a dish of genuine Sockeye Salmon. This fish is bright red in color, is full of rich red, deliciously flavored oil. The meat is firm and very rich and sweet. Serve it just as it comes out of the can, or, if you wish to cut the taste of the oil a little, serve it with good vinegar, catsup or other relish. Makes a beautiful appearance on the table when garnished with either parsley or lettuce leaves. Our Monarch brand of Sockeye Salmon, in 1 pound cans, is 25 cents.

Nutt, Stevens & Hardeman

432 PHONES 232

J. A. KEMP, President
 FRANK KELL, Vice President P. P. LANGFORD, Cashier
 WILEY BLAIR, Vice President W. L. ROBERTSON, Asst. Cashier

City National Bank

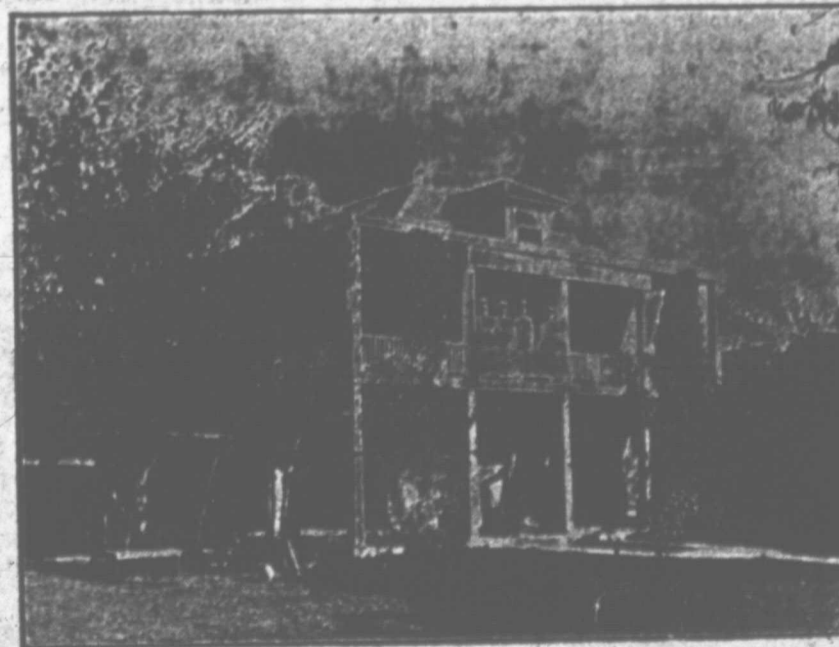
Capital \$150,000.00
 Surplus and Undivided Profits 130,000.00

We offer to the business public the services of a reliable and conservative banking institution, that is at all times prepared to grant any favor consistent with sound banking. Call and see us.

WICHITA FALLS, TEXAS

THE WICHITA FALLS SANITARIUM

714 7th STREET—PHONE 12



RATES—Ward \$2 per day. Private room \$2.50 to \$5.00 per day. Compe- tent-nurses in charge. Every courtesy extended to members of the medical profession.

T. T. FELDER W. F. TURNER M. L. BRITTON

702 Seventh Street—Phone 661

Guarantee Abstract & Title Co.

A Complete Abstract of All Lands in Wichita County.

"Carefulness and Promptness Our Motto"

Money loaned on farms, ranches and business property. Wichita Falls, Texas.

5 per cent. MONEY 5 per cent. MONEY 5 per cent. MONEY
 NOTICE NOTICE NOTICE

SOMETHING TO SET YOU THINKING--READ IT

WHY NOT OWN YOUR HOME

FOR LESS MONEY THAN YOU ARE PAYING FOR RENT



The Laboring and Salaried Man's Plan

We will loan you

| | |
|---------------------------------|---------|
| \$1,000 monthly payment equated | \$ 9.64 |
| per month. | |
| 2,000 monthly payment equated | 19.28 |
| per month. | |
| 3,000 monthly payment equated | 28.92 |
| per month. | |
| 4,000 monthly payment equated | 38.56 |
| per month. | |
| 5,000 monthly payment equated | 48.20 |
| per month. | |

The above Table includes interest and Principal.



- 1 Money to buy dwellings or to buy the lots and build upon them.
- 2 Money to buy business places or to build them.
- 3 Money to take up mortgages on either.
- 4 Easy payments, small interest and no "trimmings."
- 5 Cancellation of loans without unearned interest and at borrower's option.
- 6 Safe and profitable investment of savings.
- 7 Extension of maturing payments in cases of necessity by written terms of the contract.
- 8 The young peoples' opportunity for future welfare by saving present earnings.
- 9 Death of the Rent Receipt and birth of the Homestead.
- 10 Saving of from \$300 to \$500 interest on each \$1,000 borrowed over the plan and methods used by the Building & Loan Associations, as well as private money lenders.
- 11 The encouragement of salaried and laboring people in saving their hard earnings, and thereby stopping the payment of rent. Nobody but a "landlord" loves a rent bill.
- 12 The placing of men and women in their homes, who do not own a foot of land.

Loans may be repaid at any time, also additional payments may be made over and above the Company's requirements, which will shorten the time of payments. A DISCOUNT OF 5 PER CENT will be allowed on all notes paid in advance if as many as 12 notes are paid at one time.

SIX MONTHS GRACE WITHOUT FINES IS ALLOWED AFTER A LOAN IS MADE, during which time the borrower has time to recuperate and protect his interest, or he would have time in which to rent or sell his property.

For further particulars call on or write the Agent.

Standard Real Estate Loan Company, Inc.

W. F. ASHBY, District Agent

Suite 1 Vreeland Building

W. J. LUMBLEAU, Special Agent

AMUSEMENTS

"THE SHEPHERD KING."

(From the Chicago Evening Post, Feb. 14th, 1916.)

Mr. Wright Lorimer's pictorial presentation of "The Shepherd King" is holding Chicago enraptured. Scenically, it is one of the highest class productions ever housed, five massive pictures being utilized in the course of the play. The story is that of King David, adapted from the scriptural version of that monarch's interesting career. Mr. Lorimer is the dramatist, as well as the personator of the leading role. One of the dramatic episodes in the story of David which has effective representation in the play, is that of the trouble with Goliath. In the management of this scene, King Saul is upon his throne in his camp in the Vale of Elah and banded around him are his slaves and soldiers. In the distance the voice of Goliath is heard taunting the king with insults and challenging him or any of his chieftains to single combat. Volunteers are asked for, but none would take a chance until David, the shepherd boy with long curls and a hat, asks the king to send him. This the king does, and David running to an eminence in the background, where he can have a good aim at Goliath, fires his sling shot. He disappears and in a few minutes comes back, bearing the giant's sword in token of his triumph.

Primrose Minstrels.

Something so far a departure as to bring fresh vitality into the function

of negro minstrelsy is said to have been accomplished by George H. Primrose, whose triumph entry into a new field of black-face comedy and pictorial effect ought to fill the Wichita Theatre on Thursday, February, 17. Money, money, money is said to jingle over everything, even the expensive kind of voices employed and the costumes, scenery, huge and successful attempt in the matter of stage production, and the fine polish on everything from Prim's patent leathers to the touching portraits of great men and the alk of the melody in the new tenor's tones.

The feeble attempts in days gone by to lift minstrelsy out of the nineteenth-century despondency it reached when the old-timers began to wane and disappear, was tolerably ludicrous, although well-meant, and only now, after years of fumbling, has one of the survivors—and he about the fittest—made a stunning base, for George Primrose and his great minstrel company are this year credited with about as exceptional and brilliant an entertainment as could be gotten together with money and brains.

Everything, from the rise of the curtain on the beautiful first part, until the grand finale in the closing act, is touted of great magnificence and of the costly variety. Money has been spent in large bundles, it is said, on this year's production and it is safe to assume that local theatre-goers will be treated to a genuine surprise in both talent and production; in fact, the name, Primrose, has never been identified with anything but the best in minstrelsy and this year's production far surpasses himself.

The famous Ward brothers, two of the

youngest and best-known minstrel boys on the American stage today, are said to be immensely funny in the George Primrose minstrel production, where they are playing the two principal comedy parts in the closing burlesque.

Church is Not Declining.

The church, in the liberal sense, is not dying and its power is not declining. A community of any size can not be maintained without its church, writes a contributor in the Delineator for March.

The people who seek the amusements of the athletic field and the parks on Sunday may, of course, not attend church on that day, but great hordes of them are church members and expend goodly amounts each year to help support the churches to which they belong. They want the church in their community. They are proud to have it there and to be members of it, and to maintain it in a creditable, if not fairly luxurious, fashion.

They like to feel that they can go there if they care to, and that they have a personal interest in it, and that, like the traditional birch in the corner of the school room, it is always a wholesome reminder that keeps them from the extremes to which they are attracted by the exigencies of the present day commercial life and the attractions of modern sensational amusements.

I believe that even the attendance of the church's own members could be bettered if the church services and general church activities were brought into closer touch with the peculiar tendency of the times. Let there be ladies' aids and sewing societies and ladies' clubs for the study of things of church and secular interest. Let there

be kindergartens and sewing and cooking classes and similar practical attractions. Let the men have church clubs and brotherhoods and church suppers where they can enjoy themselves and incidentally discuss matters of church and community interest.

Seed oats and all kinds of grain and feed stuffs at

WICHITA GRAIN & COAL CO. Phone 33-232-tfc

NORTH TEXAS FURNITURE CO. UNDERTAKERS, PHONES 84 and 225 152-tf

Notice.

I wish to announce that I am not in business with any one and any one so stating misinforms you.

I make this announcement in view of the fact that many of my friends and customers have inquired of me as to my going in with some other electrical firm—anyway; I am not, and phone 622 and you have the right number. -227-tfc W. L. KEMPER.

Feed! Feed! Feed. Phone 437 for coal and feed of all kinds.

MARBLE COAL CO. 152-tf

BATHS!

YOU DON'T HAVE TO WAIT

LAWLER'S BARBER SHOP

FIVE NEW BATH ROOMS AT

BATHS—Salt Glow, plain, hot or cold; good rubbers in attendance. Call and see me.

L.H. LAWLER PROP

T. J. TAYLOR, President.
T. C. THATCHER, Cashier.

J. T. MONTGOMERY, First V. P.
J. F. REED, Second V. P.

First State Bank & Trust Co.

WICHITA FALLS, TEXAS

CAPITAL \$75,000.00
SURPLUS \$ 5,000.00

With total resources of more than ONE QUARTER OF A MILLION DOLLARS we are in a position to meet the reasonable needs of all customers.

Wanted-1000 Men and Women

AS WALKING, TALKING ADVERTISEMENTS

We want them and are paying liberally for them. We are getting them fast. HOW? The secret of our success is in selling lots in

FLORAL HEIGHTS

at rock bottom prices. We can afford to sell lots until March 1st for \$200 to \$400, but if you want to get in on the ground floor you will have to go and make your selection at once. Over \$50,000 worth of lots have been sold in the last ten days and many beautiful and costly homes are going to be erected. Buy in beautiful Floral Heights where you can have more fresh air and room to build a modern residence.

Remember—That on March 1st all prices advance 25 per cent.

Remember—That the property is a superb scenic tract, high and sightly, affording a magnificent view in every direction.

Remember—That every modern convenience will be at your command.

Remember—That the purchasers are some of the best people in the city, which guarantees always a high grade, refined neighborhood.

Remember—That when you buy a lot of us you are dealing with a real estate corporation with ample financial standing.

Remember—That every purchaser is given not only an abstract but an attorney's opinion certifying the title is perfect.

Call at our office today—let us show you why it is to your advantage to buy some of these lots

Floral Heights Realty Company

617 8TH STREET

Any Suit in the House

ONE-HALF OFF

Walsh & Clasbey

SHERIFF'S SALE.

THE STATE OF TEXAS,
County of Wichita.
By virtue of a certain order of sale issued out of the Honorable District Court of Wichita County, on the 29th day of January, 1916, by W. A. Reid, Clerk of said Court, against L. H. Mathis, for the sum of Fifty-Three Dollars and Twenty-five cents (\$53.25) and costs of suit in cause No. 3791 in said court, styled City of Wichita Falls, Texas versus L. H. Mathis and placed in my hands for service; I, J. W. Walkup, as sheriff of Wichita County, Texas, did on the 7th day of February, 1916, levy on certain real estate situated in Wichita County, described as follows, to-wit: Lots Nos. 6, 7 and 8, in Block No. 216, of the City of Wichita Falls, Wichita County, Texas, and levied upon as the property of said L. H. Mathis, and on Tuesday, the first day of March, 1916, at the Court House door of Wichita County, in the City of Wichita Falls, Texas, between the hours of ten a. m. and four p. m., I will sell said real estate at public vendue for cash to the highest bidder as the property of said L. H. Mathis, by virtue of said levy and said order of sale.

And in compliance with law I give this notice by publication in the English language, once a week for three consecutive weeks immediately preceding said day of sale, in the Wichita Daily Times, a newspaper published in Wichita County.

Witness my hand this, the 7th day of February, 1916.

J. W. WALKUP,
Sheriff Wichita County, Texas.
—D-230-226-242-248

Mabledean Budget.

Mabledean, Tex., Feb. 14.—Mr. and Mrs. Waggoner entertained the young people last Saturday night with games and music until a late hour. About sixty were present and everyone had a delightful time.

The telephone boxes have not been put up yet, but will be soon.

Miss Anna Farmer is spending the week in Mabledean.

Mrs. Clark and daughter, Kathryn, were shopping in Wichita Falls on Thursday of last week.

Dr. Reesor will move to Mabledean soon to make this his future home.

Rev. Finley preached at Mabledean Saturday night, Sunday morning and Sunday evening.

There was a Valentine party at the home of Mack Heck Saturday night.

Call up 33 when you want coal or feed. WICHITA GRAIN & COAL CO.

First National Bank

ESTABLISHED 1884

Will give you all accommodations consistent with sound banking and will appreciate your patronage

Ornamental Sheet Metal

WORK OF EVERY DESCRIPTION.

Roofing, Skylights, Ventilators, Guttering and first class Tin Work.

REPAIRING A SPECIALTY

Wichita Falls Sheet Metal Works

PHONE 571

W. A. FREEAR, Successor to JOB BARNETT

Furniture and Undertaker

W. A. FREEAR, Licensed Embalmer. JESSE DOLMAN, Licensed Embalmer

Day Phone 136.

Night Phone 665

The Palace Drug Store

Yours for Prompt and Accurate Service

GIVE US A TRIAL

Everything in the Drug Line

Prescriptions promptly and accurately compounded

Free Delivery Phone 341

on his return home from a business trip to Frederick, Okla.

Dr. J. C. A. Guest has returned from New Orleans, where he has been for the past six weeks taking a post-graduate course in medicine.

Mrs. Harry Lee Suttlemeyer of Toyahvale, Texas, after a two weeks visit with Mrs. Ziegler of this city, returned to her home this afternoon.

Mrs. C. A. Souter, who has been visiting her brother, F. A. Crumpley and family, of this city, returned to her home at Fort Worth this evening.

W. B. Beach, a prominent business man from Hereford, who has been in the city visiting his cousin, Mrs. E. A. Hughes and family, left for his home this evening.

Route Agent H. Schrieber for the Wells-Fargo Express Company, with headquarters in this city, has been transferred to the agency at Amarillo. Mr. Schrieber's successor, whose name cannot be learned at this writing, is expected to arrive here tomorrow.

SHORT ITEMS OF INTEREST

Prof. O. C. Payne of Greenville, has wired President R. E. Huff of the Chamber of Commerce that he will be here tomorrow to close the deal for the boys' school, for the construction of which stock to the amount of \$40,000 has been subscribed.

The city council will be in session tonight to give attention to several matters that have been pending for some time.

Born—To Mr. and Mrs. R. L. Frizell at 1103 Indiana avenue, on February 11, a girl.

Born to Mr. and Mrs. J. L. Brownlee this morning a nine-pound baby girl.

The Floral Club will meet tomorrow afternoon with Mrs. Clyde Thatcher.

Our hot soda makes the day brighter and the heat lighter. A dozen delicious beverages to choose from.

Success with poultry depends upon the care time and money expended. Do not expect some thing for nothing in the poultry line.

There are no better drugs than ours, nor can more careful service or more reasonable prices be had.

If you have not prepared the fence of the poultry yard and garden, do not be surprised to see the early vegetables injured by the fowls.

Patronize Pond's Up-to-Date Laundry. It sews your buttons on.

Miller's Drug Store

Corner Ohio Ave and 8th Street

We thank you for the generous patronage given us for the year 1909, and trust by fair dealing to merit a continuance of your patronage for the year 1910.

We carry a full and complete line of Drugs, Stationery and Toilet Articles

Miller's Drug Store

PHONES:

Store 261 KING'S

Dr. Miller's Residence 222-tfc

J. O. Smith's Residence 222-tfc

For something better than ordinary syrup, try our California Fruit Blend Syrup. Phone 261. KING'S 222-tfc

Art Valentines

In fact a complete line including cupid hearts.

We guarantee our prices to please. Call and we will be pleased to show you.

All packages delivered promptly.

The WEEKS DRUG CO.

Successor to Mater-Walker
702 Indiana avenue.

THE MARKETS BY TELEGRAPH

Cotton—Liverpool Spots.
Liverpool, Feb. 14.—Spot cotton \$1.10. Sales, 12,000 bales. Receipts, 16,000 bales.

Cotton—Liverpool Futures.
The market for future cotton opened steady and closed barely steady.

| | Open | High | Close |
|-----------|----------|----------|----------|
| Feb-April | 7.94 | 7.97 1/2 | 7.90 1/2 |
| May-June | 7.89 1/2 | 7.93 | 7.86 1/2 |
| June-July | 7.84 1/2 | 7.88 1/2 | 7.81 1/2 |

Cotton—New York Spots.
New York, Feb. 14.—The market for spot cotton opened quiet, price unchanged. Middling, 15.15; no sales.

Cotton—New York Futures.
The market for future cotton opened very steady and closed steady.

| | Open | High | Close |
|------|-------|-------|------------|
| Feb | 14.97 | 14.97 | 14.70-a 80 |
| May | 15.05 | 15.05 | 14.87-a 89 |
| July | 14.88 | 14.88 | 14.66-a 67 |

Cotton—New Orleans Spots.
New Orleans, Feb. 14.—The market for spot cotton opened quiet and steady with price unchanged. Middling, 15 1-16; sales, 250 bales; to arrive, none.

Cotton—New Orleans Futures.
The market for future cotton opened and closed steady.

| | Open | High | Close |
|------|-------|-------|------------|
| Feb | 15.11 | 15.11 | 14.98-a 99 |
| May | 15.31 | 15.31 | 15.15-a 16 |
| July | 15.42 | 15.42 | 15.26-a 27 |

Chicago Grain Market.

| Wheat— | Open | High | Close |
|--------|---------|---------|---------|
| May | 111 1/2 | 112 1/2 | 112 1/2 |
| July | 102 1/2 | 103 1/2 | 103 1/2 |
| Sept | 97 1/2 | 98 1/2 | 98 1/2 |
| Corn— | Open | High | Close |
| May | 66 1/2 | 67 1/2 | 67 |
| July | 67 | 67 1/2 | 67 |
| Oats— | Open | High | Close |
| May | 47 | 47 1/2 | 47 1/2 |
| July | 43 1/2 | 44 | 44 |

Texas News Service Special.
Fort Worth Cattle.
Fort Worth, Tex., Feb. 14.—Cattle, 3,000; hogs, 2,500. Steers, steady, tops \$5.50; cows, steady, tops \$4.25; calves, steady, tops \$5.50; hogs, higher, tops \$5.75.

Our prescription department has the approval of your physician and should be patronized whenever you have prescriptions to be compounded.

"Best Ever Beans," in cans, are just what the brand implies. Phone 261. KING'S. 222-tfc

Yes you can get all kinds of nut meats at Sherrod & Co. 233-tfc

NORTH TEXAS FURNITURE CO.
UNDERTAKERS, PHONES 84 and 225

SPECIAL SALE ON CLOTHING

For a few days only at \$9.00 and \$14.75



Men's Trousers COST at less than



DESIGNED BY SPERO, MICHAEL & SON NEW YORK

NEW KAHN'S STORE
CORNER 8th AND INDIANA AVE.

Dr. J. W. Du Va

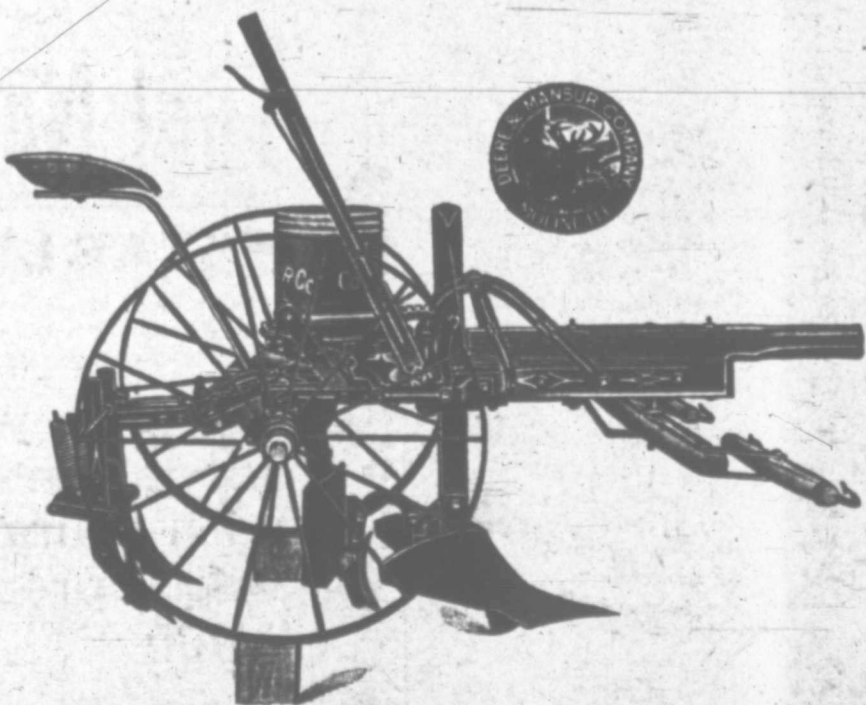
General Medicine and Surgery,

—including—

EYE, EAR, NOSE and THROAT.

First National Bank Building

Wichita Falls, Texas.



Cultivate

with best implement on earth—John Deer and Rock Island plows and cultivators, and a good crop will certainly be the result.

Avis-Rountree & Company
718 Indiana Ave.

A BIG SUCCESS

Our Canned Goods Combinations are meeting with such favor that we are going to call your attention to them again.

No. 1. Six cans No. 3 Peerless Tomatoes, three No. 3 Rebers Kraut, two No. 3 Rebers Hominy, one No. 3 Golden Crown Beets, \$1.25
No. 2. Three No. 3 Peerless Pie Apples, three No. 3 East Texas Pie Peaches, three No. 3 Empsons Pumpkin, three No. 3 Pine Apple, \$1.40.

No. 3. Four each California Table Peaches, Apricots and New York Pears, \$2.00.
No. 4. Two each Bishops' Preserved Royal Anne Cherries, Damson Plums, Sliced Peaches, Cuthbert Raspberries, York State Mince Meat, Sov. Hawaiian Pine Apple, \$3.00.

No. 5. Two No. 2 Peerless Tomatoes, three No. 2 Dexter Corn, two No. 2 Peerless String Beans, two No. 2 Empsons Apex Peas, one No. 2 G. C. Lima Beans, one No. 2 Van Camps Kidney Beans, one No. 2 Speckled Peas and Pork, \$1.25.

No. 6. Four each Peerless Blackberries, Peerless Gooseberries and Battleship Strawberries \$1.25.
No. 7. Six each No. 2 Dexter Corn and Peerless Tomatoes.
No. 8. Six each No. 1 Alaska Salmon and No. 1 Corned Ham, \$1.25.

We can't run this ad. all the time, but will supply the above combinations at these prices until further notice. If you can't find the ad. ask us about them at any time.

608-610 Ohio Avenue. O. W. BEAN & SON GROCERS AND COFFEE ROASTERS
PHONE 35