

Nathan Files, Tommy Beck Share Top Show Honors

Show Is Termed Big Success by Sponsors



MITT THE PRESS—Detroit Tigers' top catchers Harry Chiffi and Dick Brown team up with some trick photography to display mammoth tusk. The pair were in training sessions at Lakeland, Fla. For camera buffs a 21mm lens was used to make the shot.

A little rain didn't dampen any spirits Saturday at the Eastland County Livestock Show and especially it failed to dim the spirits of Nathan Files, 17-year-old Gorman FFA member, who showed the grand champion steer of the show. Files had to share the spotlight with an Eastland 4-H club member, Tommy Beck, who showed the reserve champion steer and the grand champion breeding beef female.

With more than 600 entries the show turned out to be a huge success. Four-H and FFA boys and girls sold their stock for premium prices Saturday night at the annual sale at Eastland Auction Co.

The grand champion was bred by young Files' father, V. L. Files. Both the reserve champion steer and the champion breeding beef female were bred by H. H. Durham of Eastland.

- Here are results of the show:
- Fat Pigs**
 - Grand champion—Olen Odum, Cisco
 - Reserve champion—Kathryn Caraway of Carbon
 - Fat Lambs**
 - Champion fine wool—Larry Morrow of Carbon
 - Champion medium wool—Richard Kurkin of Cisco
 - Champion southdown and south-down cross—Kathryn Caraway of Carbon
 - Steers**
 - Champion—Nathan Files of Gorman
 - Reserve champion—Tommy Beck of Eastland
 - Breeding Hog Classes**
 - Champion Duroc Female—Darwin Pharr of Scranton
 - Champion of other breeds—Terry Geyer

April 4 Is Deadline to Release Peanut Acreage

The final date for releasing and reassignment of peanut allotment acreage in Eastland County by the County Committee ASC Office, is April 4, according to Emmett Powell, office manager. Eastland County stands to lose between 1,000 and 5,000 acres of its peanut allotment; if the required portion of the county's allotment is not planted this year, Powell said.

Although the figure is an estimate, he said, it accurately reflects the seriousness of the situation. Once acreage is lost it cannot be regained. It goes into a state pool for reassignment to other areas. Farmers who have peanut acreage for this year should intend to plant it this year to retain it to the ASC office for reassignment, however, Powell said that at least 75 percent of the allotment of each grower must be planted and harvested at least once in a three-year period to retain the allotment on that particular farm.

He warned farmers to consult the history of his planting over the past two years in order to determine whether or not he can still release his acreage and still retain his allotment. If there were no plantings on the farm in 1959 and 1960 and no peanuts planted in 1961 or the acreage released, the farm's allotment will be cut in half for the next year. A farmer who has not planted 75 percent of his allotment in the past two years must do so this year to retain his acreage.

The report stated that the ASC Office had 1,170.8 acres released for re-assignment so far this year and applications for 5,054 acres on additional allotment. The county received an additional 1,100 acres in allotment last year and lost something over 400 acres due to expired allotments, a net gain of 600 acres.

Powell said that with the increase in peanut prices this year, it was important to the economy of the county to plant all of the peanut allotment.

Special music for the meeting will be furnished by Gaston Dixon as he sings a solo, "The Holy City", accompanied on the piano by Mrs. Lively Brown.

Guest speaker for the program will be Mrs. James P. Morris.

Mrs. Morris is an instructor of government and literature at Ranger Junior College. During the summer of 1960 she spent three months studying at London University and touring fifteen European countries. Among the highlights of the trip was attendance at "The Passion Play" in Oberammergau, Germany. This most celebrated dramatization of Christ's crucifixion and resurrection has been presented in the small Bavarian village every ten years since 1633. Mrs. Morris will show colored slides of the drama which she brought back.

Mrs. Peggy Theberge will project the slides to illustrate Mrs. Morris' talk.

This religious pageant, which reenacts the crucifixion story, has been presented every ten years since 1633. In the beginning it was meant to be an offering to God by the Bavarian people to thank Him for sparing their lives from the plague.

The play has twenty tableaux and is divided into three parts: Jesus' entry into Jerusalem to his arrest; His arrest to His condemnation by Pilate; and the Condemnation to the Crucifixion. In it one actually sees the three men hanging from the cross. The play is spoken and sung entirely in German, but one can buy translations.

Given in an open air amphitheatre which seats 6000 people, The Passion Play has a cast of sixty with a chorus and an orchestra of one hundred. The play is a community project, and usually the parts in it are handed down through the generations to another member of the family. The performance lasts from 8:00 a.m. to 6:00 p.m. with a two-hour intermission for lunch. Over 500,000 saw it this past year when it played from May to September.

Some of the things that stood out most in Mrs. Morris' mind were the fact that none of the characters wore theatrical make-up and that all the actors wore vivid and expensive costumes. She was also impressed by the fact that the play was more dramatic than religious and that there were still some traces of the Nazi philosophy, which she didn't like. The most fiery and dramatic part was that of Judas.

There is no other industry in the Bavarian Alps town except the tourist shops. The people distribute the money they make from the play around the community, and it lasts them for the nine-year between plays.

The Passion Play is the largest theatrical production put on in the world, and Mrs. Morris considers it one of the most inspiring and stirring plays she has ever seen. "It makes one think seriously for a change," she said.

Production Credit Assoc. Given Special Week

The Stephenville Production Credit Association, serving this area as a source of agricultural credit for its farmer - rancher stockholders for nearly three decades, will be saluted, along with the 35 other PCAs serving Texas, with a special week, March 26-April 1.

The week has been designated as Production Credit Association Week in Texas in a proclamation by Gov. Price Daniel. In addition (Continued on Page Two)

Junior Class Presents Annual Play Production

The Junior Class of Ranger High School will present their annual three act play at the High School Auditorium on Thursday, March 30, at 7:30 p.m.

The production will be "The Skeleton Walks", a comedy mystery in three acts by Felicia Metcalfe.

The characters in the play are portrayed by Butch Owen as Dr. Harold Kerag; Shellen Scott as Elaine Haire; Jill Watkins as Mrs. Madge Embrey; Bill Patton as Bobby Embrey; Sandy Halbrooks as Kathleen (Kinks) Embrey; Doyle Penney as Bill Clayton; Elaine La Voie as Anne Howell; Mr. and Mrs. X as Mrs. Eliza Hubbard and Ollie Hubbard; and Elaine Barrett as Mrs. Lilla Donahue.

The Junior Class is proud to announce the date of their play and invite everyone to attend the production. They assure everyone a thrilling and exciting evening.

Tickets may be purchased from and Junior class member or at the door of the auditorium on Thursday night.

Methodist Men's Club to Meet Thursday Night

The regular monthly meeting of the Methodist Men's Club will be held Thursday night at the Fellowship Hall of the Methodist Church. Refreshments and fellowship will begin at 6:30 p.m. and dinner will be served at 7.

Special music for the meeting will be furnished by Gaston Dixon as he sings a solo, "The Holy City", accompanied on the piano by Mrs. Lively Brown.

Guest speaker for the program will be Mrs. James P. Morris.

Mrs. Morris is an instructor of government and literature at Ranger Junior College. During the summer of 1960 she spent three months studying at London University and touring fifteen European countries. Among the highlights of the trip was attendance at "The Passion Play" in Oberammergau, Germany. This most celebrated dramatization of Christ's crucifixion and resurrection has been presented in the small Bavarian village every ten years since 1633. Mrs. Morris will show colored slides of the drama which she brought back.

Mrs. Peggy Theberge will project the slides to illustrate Mrs. Morris' talk.

This religious pageant, which reenacts the crucifixion story, has been presented every ten years since 1633. In the beginning it was meant to be an offering to God by the Bavarian people to thank Him for sparing their lives from the plague.

The play has twenty tableaux and is divided into three parts: Jesus' entry into Jerusalem to his arrest; His arrest to His condemnation by Pilate; and the Condemnation to the Crucifixion. In it one actually sees the three men hanging from the cross. The play is spoken and sung entirely in German, but one can buy translations.

Given in an open air amphitheatre which seats 6000 people, The Passion Play has a cast of sixty with a chorus and an orchestra of one hundred. The play is a community project, and usually the parts in it are handed down through the generations to another member of the family. The performance lasts from 8:00 a.m. to 6:00 p.m. with a two-hour intermission for lunch. Over 500,000 saw it this past year when it played from May to September.

Some of the things that stood out most in Mrs. Morris' mind were the fact that none of the characters wore theatrical make-up and that all the actors wore vivid and expensive costumes. She was also impressed by the fact that the play was more dramatic than religious and that there were still some traces of the Nazi philosophy, which she didn't like. The most fiery and dramatic part was that of Judas.

There is no other industry in the Bavarian Alps town except the tourist shops. The people distribute the money they make from the play around the community, and it lasts them for the nine-year between plays.

Action Taken On Several Proposals

The Ranger Chamber of Commerce spent a busy two hours Monday night at their regular directors meeting as several committees reports were given and the directors voted on a number of proposals.

Charles Milliken, chairman of a committee which has been studying the possibility of a re-organization of the Chamber's policy of electing directors, gave a recommendation of a new plan for the directors to be elected.

Here-to-fore directors have been selected by the City Commission from a list of names submitted by the Chamber.

The recommendation of the committee was to ask the City Commission to change the City Ordinance whereby the Chamber could elect their own directors by a membership vote. Also a clause in the recommendation would state that no director could succeed himself. The recommendation of the committee was passed by a vote of the directors and will be presented to the City Commission for their discussion.

Milliken also gave a report of the Civic Committee of which he is chairman. His report on this committee's activities stated that water had been installed at the Main Street crossing in conjunction with their plans to landscape the Main Street entrance to Ranger. He also showed the directors a sample of some street markers and asked that the directors study a plan to get the city streets marked.

Dick Henderson gave the Sports and Recreation Committee report. His report stated that plans for the building of a track at Ranger Junior College were nearing actual stage. He said that arrangements had been made for everything for the track except curbing. The materials had been promised, machinery for dirt work and transportation was available. The directors approved of the plans for the track and made several suggestions for types of curbing which might be used. The directors instructed Henderson to investigate the prices of curbing materials and find out the most economical route to take in completing this

present at the meeting were W. J. Sipes, president, R. V. Galloway, manager, B. A. Tammell, C. B. Pruet, David Pickrell, Wilson Guest, W. J. Herrington, T. C. Wylie, Charles Milliken, D. I. C. Henderson, Joe Dennis and Gene Townsend.

Present at the meeting were W. J. Sipes, president, R. V. Galloway, manager, B. A. Tammell, C. B. Pruet, David Pickrell, Wilson Guest, W. J. Herrington, T. C. Wylie, Charles Milliken, D. I. C. Henderson, Joe Dennis and Gene Townsend.

Present at the meeting were W. J. Sipes, president, R. V. Galloway, manager, B. A. Tammell, C. B. Pruet, David Pickrell, Wilson Guest, W. J. Herrington, T. C. Wylie, Charles Milliken, D. I. C. Henderson, Joe Dennis and Gene Townsend.

Present at the meeting were W. J. Sipes, president, R. V. Galloway, manager, B. A. Tammell, C. B. Pruet, David Pickrell, Wilson Guest, W. J. Herrington, T. C. Wylie, Charles Milliken, D. I. C. Henderson, Joe Dennis and Gene Townsend.

Present at the meeting were W. J. Sipes, president, R. V. Galloway, manager, B. A. Tammell, C. B. Pruet, David Pickrell, Wilson Guest, W. J. Herrington, T. C. Wylie, Charles Milliken, D. I. C. Henderson, Joe Dennis and Gene Townsend.

Present at the meeting were W. J. Sipes, president, R. V. Galloway, manager, B. A. Tammell, C. B. Pruet, David Pickrell, Wilson Guest, W. J. Herrington, T. C. Wylie, Charles Milliken, D. I. C. Henderson, Joe Dennis and Gene Townsend.

Present at the meeting were W. J. Sipes, president, R. V. Galloway, manager, B. A. Tammell, C. B. Pruet, David Pickrell, Wilson Guest, W. J. Herrington, T. C. Wylie, Charles Milliken, D. I. C. Henderson, Joe Dennis and Gene Townsend.

Present at the meeting were W. J. Sipes, president, R. V. Galloway, manager, B. A. Tammell, C. B. Pruet, David Pickrell, Wilson Guest, W. J. Herrington, T. C. Wylie, Charles Milliken, D. I. C. Henderson, Joe Dennis and Gene Townsend.

Present at the meeting were W. J. Sipes, president, R. V. Galloway, manager, B. A. Tammell, C. B. Pruet, David Pickrell, Wilson Guest, W. J. Herrington, T. C. Wylie, Charles Milliken, D. I. C. Henderson, Joe Dennis and Gene Townsend.

Present at the meeting were W. J. Sipes, president, R. V. Galloway, manager, B. A. Tammell, C. B. Pruet, David Pickrell, Wilson Guest, W. J. Herrington, T. C. Wylie, Charles Milliken, D. I. C. Henderson, Joe Dennis and Gene Townsend.

Present at the meeting were W. J. Sipes, president, R. V. Galloway, manager, B. A. Tammell, C. B. Pruet, David Pickrell, Wilson Guest, W. J. Herrington, T. C. Wylie, Charles Milliken, D. I. C. Henderson, Joe Dennis and Gene Townsend.

Present at the meeting were W. J. Sipes, president, R. V. Galloway, manager, B. A. Tammell, C. B. Pruet, David Pickrell, Wilson Guest, W. J. Herrington, T. C. Wylie, Charles Milliken, D. I. C. Henderson, Joe Dennis and Gene Townsend.

Present at the meeting were W. J. Sipes, president, R. V. Galloway, manager, B. A. Tammell, C. B. Pruet, David Pickrell, Wilson Guest, W. J. Herrington, T. C. Wylie, Charles Milliken, D. I. C. Henderson, Joe Dennis and Gene Townsend.

Present at the meeting were W. J. Sipes, president, R. V. Galloway, manager, B. A. Tammell, C. B. Pruet, David Pickrell, Wilson Guest, W. J. Herrington, T. C. Wylie, Charles Milliken, D. I. C. Henderson, Joe Dennis and Gene Townsend.

Present at the meeting were W. J. Sipes, president, R. V. Galloway, manager, B. A. Tammell, C. B. Pruet, David Pickrell, Wilson Guest, W. J. Herrington, T. C. Wylie, Charles Milliken, D. I. C. Henderson, Joe Dennis and Gene Townsend.

Present at the meeting were W. J. Sipes, president, R. V. Galloway, manager, B. A. Tammell, C. B. Pruet, David Pickrell, Wilson Guest, W. J. Herrington, T. C. Wylie, Charles Milliken, D. I. C. Henderson, Joe Dennis and Gene Townsend.

Present at the meeting were W. J. Sipes, president, R. V. Galloway, manager, B. A. Tammell, C. B. Pruet, David Pickrell, Wilson Guest, W. J. Herrington, T. C. Wylie, Charles Milliken, D. I. C. Henderson, Joe Dennis and Gene Townsend.

Courthouse News And Records

INSTRUMENTS FILED

- County Clerk's Office
- A. D. Adams, deceased to The Public, c/o probate.
- Helen K. Algeo, et al vs. Hall Walker, et al to The Public, c/o judgment.
- W. L. Andrus to The Public, affidavit.
- E. B. Allen to The IbeX Co., Inc., pooling agreement.
- Raymond Bryan to Jack Sayles, et al, trustee, contract of extension.
- Jerry M. Bailey to Norman Gusew, warranty deed.
- R. E. Boucher to J. L. Mauney, release of vendor's lien.
- W. O. Browning, et ux, deceased to The Public, proof of heirship.
- Raymond Bryan to First Federal S & L Assn. of Ranger, extension agreement.
- W. E. Butler to Federal Land Bank of Houston, assignment of MML.
- Continental Oil Co. vs. Ansel R. Davis, abstract of judgment.
- Certain-Seed Prod. Corp. vs. Welborn A. Garrett, indv. and d/b/a Garrett Lumber & Supply Co., abstract of judgment.
- Mary Coffman to Price Crawley, warranty deed.
- City of Eastland to Mrs. Carl Johnson, cemetery deed.
- Eunice Bates Crabtree to Virgie E. Gibson, deed of trust.
- W. T. Casey to First Federal S & L Assn. of Ranger, deed of trust.
- J. L. Dickey to Donnie Self, release of vendor's lien.
- Eastland National Bank to First Federal S & L Assn. of Ranger, transfer of vendor's lien and deed of trust.
- Aubrey Exater to Federal Land Bank of Houston, correction agreement.
- A. B. Edwards to Producers Supply & Tool Co., deed of trust.
- Samuel Ellis, deceased to The Public, proof of heirship.
- First Federal S & L Assn. of Ranger to G. P. Mitcham, release of deed of trust.
- Frank Flores to The IbeX Co., Inc., pooling agreement.
- First National Bank of Gorman to J. W. Ryon, release of vendor's lien and deed of trust.
- Edward C. Fritz to H. L. Bilhartz, revoking power of attorney.
- Johnnie Mae Finley to Federal Land Bank of Houston, assignment of lien.
- Mack Gray to Gilman & Gilman, deed of trust.
- Gregory Tractor & Tract Co. vs. D. E. Stewart, abstract of judgment.
- Clara Griffin to Ethel Reed, warranty deed.
- Hendrick Memorial Hospital to M. L. King, release.
- Higginbotham Bros. & Co. to Donnie Self, release of MML.
- W. E. Hallenbeck to Truman Maynard, warranty deed.
- Neil Hartsfield to Elmo G. Boyett, warranty deed.
- W. E. Hallenbeck to Herman Don Hall, warranty deed.
- Huffakes, Inc. vs. W. A. Garrett, indv. and d/b/a W. A. Garrett Lumber Co., abstract of judgment.
- B. E. Hanson to Veterans Land Board of Texas, warranty deed.
- Ed Hunsell, The IbeX Co., Inc., pooling agreement.
- Bene Hernandez to George Smith, warranty deed.
- IbeX Co., Inc. to The Public, designation of unit.
- E. F. Joiner to J. L. Dickey, release of vendor's lien.
- Carl Jones to Commercial State Bank of Ranger, deed of trust.
- Anthony F. Johnson to Herbert Ekert, warranty deed.
- M. L. King to Raymond Bryan, easement.
- Irma Wildering King to Raymond Bryan, agreement.
- M. L. King to Raymond Bryan, warranty deed.
- M. L. King to Jack Sayles, transfer of vendor's lien.
- Cleo Kofner to Elmer B. Hall, warranty deed.
- Hulon Laester to The Public, affidavit.
- L. W. Lovell to J. H. Childers, warranty deed.
- J. D. Lauderdale, trustee to I. D. Russell, trustee's deed.
- Lumbermans Sash & Door Co. vs. S. J. Chapman, abstract of judgment.
- J. L. Mauney to L. N. Koeh, warranty deed.
- Mrs. Cora Mayer to Mrs. Olive M. Green, warranty deed.
- Carl B. McGeough to Woodrow Carson McGeough, warranty deed.
- W. B. Norton to First National (Continued on page two)

Womens Club To Present Freedom Speaker

The 1947 Club will sponsor a program on "The Dangers of Communism" Tuesday, April 4 at 4 p.m. at the Community Club House.

John Pennington, of Wichita Falls, chairman of the American Citizenship training program will be the speaker for the program. Pennington, along with nine other men in Wichita Falls, donate their services to clubs and organizations for programs against communism.

Pennington recently presented a program to the Ranger Lions Club and was well received by the members. He is a forceful and dynamic speaker and is highly recommended and well informed on the dangers of communism.

The 1947 Club meeting is open to all women in Ranger interested in the communist threat to America.

The car collided with another (Continued on page two)

Don Hazard In Harris Hospital After Accident

Don Hazard, young Ranger Junior College student from Eastland, who was injured in an automobile collision Friday in Cisco, underwent surgery Monday morning in Harris Hospital in Fort Worth and a family spokesman said Monday he is "doing fine."

Hazard suffered a broken leg in the mishap. He is in room 755 at Harris Hospital.

Don was a passenger in a car driven by Martin Day, another RJC student from Eastland. The car was owned by Denny Jack Fugh of Dallas.

The car collided with another (Continued on page two)



DELBERT E. GRANDSTAFF, history and political science teacher in the West Columbia school system, has his daughter, Kathryn Grandstaff Crosby (Kathy Grant) as campaign manager. Miss Grant is accompanying her dad on a bus tour of the entire state of Texas, to help in his senate race. They stopped in Ranger Saturday at the Paramount Hotel Coffee Shop. Election is Tuesday, April 4.

Mrs. Lester Brown Dies Sunday, Burial Today

Mrs. Lester Brown, 41, Cisco resident, died Sunday at 5:40 p.m. in the Ranger General Hospital. She had been ill for only a short time.

Mrs. Brown was born Marie Joyce Ingie, Dec. 1, 1919, in Thurber and married Lester Brown Oct. 27, 1933 in Palo Pinto. She had lived in Ranger most of her life, having moved to Cisco Jan. 2, 1961. She was a member of the Assembly of God Church.

Funeral services were held at 3 p.m. today (Tuesday) in Killingsworth Funeral Chapel with Miss Thelma Hostetter, pastor of the Ranger Assembly of God Church, and Edward Way, pastor of the Cisco Assembly of God Church, officiating.

Survivors include her husband of Cisco; five sons, Adran of Ranger, Douglas Joe of Topeka, Kan., and Roy Don, Lester David and Larry D., all of Cisco; five daughters, Mrs. David Anderson of Ranger, Mrs. Donald W. Boyd, Wanda Marie, Gayle Ann and Debbra D., all of Cisco; her mother, Mrs. Winnie Ingie of Caddo; five brothers, James Roy Ingie of Caddo, Joel Ingie of Mineral Wells, A. A. of Oklahoma City, Gerald of Midland and Perry of Mo.; three sisters, Mrs. Alice Howard of Midland, Ark., Mrs. John Hunt of Breckenridge and Mrs. W. A. Gaenther of Mineral Wells; and four grandchildren.

Palbearers were Thomas Hickman, J. D. Laviole, Earnest McLaugh, J. W. Vinson, C. W. Blacklock and Mickey Kitchens.



Zac Henderson Baptist Speaker Wednesday Night

Zac Henderson, Breckenridge High School coach and an active member of the Breckenridge First Baptist Church will speak to the Sunday School Officers and Teachers meeting Wednesday evening, March 29, at 7:45 at the First Baptist Church.

The covered dish supper will be served at 7 p.m. with the Intermediate Department serving. Mrs. Ruby Springer is superintendent of the department. It is requested that all officers and teachers of the church be present for the meeting.

All types bookkeeping supplies, filing cabinets, pencils, paper, etc. Call the Ranger Times, MI 7-1101.

Killingsworth
 Stationery
 Serving Ranger since 1918
 Phone MI 7-1133



Alla Rae Morris

The Ranger Times

"Seeking Community Betterment Since 1919"
ELM STREET—RANGER, TEXAS ESTABLISHED JUNE 1, 1919
Listed as second class matter at the postoffice at Ranger, Texas under the act of Congress of March 3, 1879.

TIMES PUBLISHING COMPANY
Published Tri-Weekly—Tuesdays - Thursdays - Sundays
JOE DENNIS and ONOUS DICK, Publishers
GENE TOWNSEND, Editor

One week by carrier in city	15
One month by carrier in city	65
One year by mail on Ranger RFD Routes	3.95
One year by mail in county	4.95
One year by mail in state	4.95
One year by mail out of state	6.95

NOTICE TO PUBLIC—Any erroneous reflection upon the character, standing or reputation of any person, firm or corporation which may appear in the columns of this newspaper will be gladly corrected upon being brought to the attention of the publishers.

CLASSIFIED

PHONE MI 7-1101

All Classified Ads Must Be Paid For In Advance

Misc. For Sale
GARDEN SEED—Special variety for freezing. Ranger Frozen Food, 214 North Austin. Phone MI 7-2281.
FOR SALE: Lawnmowers. Contact 897-1590.

For Rent
FOR RENT: Furnished apartments 3 and 4 room. Phone MI 7-9345. Paramount Hotel.

Notice
BABY SITTING wanted. Reasonable. MI 7-1657.
MARRIED COLLEGE student needs weekend jobs or weeknights except Tuesday and Thursday. Jerry Kilgore, MI 7-3523.

Lost & Found
NEED THAT CHAIR or divan upholstered? Jones Mattress & Upholstery of Breckenridge. Call Robinson Furniture & TV. Phone MI 7-3122, Ranger.

WOMEN'S, Men's and children's raincoats, 1/2 price, Women's over-shoes, 1/2 price. 300 Main Street, MARY JIM'S.

FOR SALE: New three piece bedroom suite. Bookcase, bed, double dresser and mirror, chest of drawers, bed damage slightly. Retail value \$123.95, sale price \$85.00. Contact M. E. Offield, MI 7-3241.

FOR SALE: Long lasting work shoes with cork and rubber sole, oxfords with oil resistant sole, work boots, rough outside boots, from \$8.95 to \$12.95. New and used work pants and shirts, comfort blankets, coats, jackets, tarpaulins, tool boxes, foot lockers, rain coats, rain suits, garden tools, hoses and spades, gas cans. Hundreds of other items, all at LOW-LOW prices. Army Surplus Store, Eastland.

FOR SALE: Bookkeeping supplies, post binders, indexes, receipt books, ledger sheets, storage files, sale book, order books, and many other items... at the Ranger Times office.

WANTED: Lady to stay in home and care for elderly lady. Light house work. Write 1209 West Dyer, Breckenridge.

FOR SALE: Late model used Automatic Wagon, two speed, excellent condition. Reg. price \$29.95. NOW \$25.00. Ranger Farm Store, Ranger.

FOR SALE: Good 6 room modern house on Pine Street, Kenneth Kirk, Route 2, Ranger.

FOR SALE: Two used 8 and 10 disk John Deere one-way plows. Priced to sell. Both on rubber. One John Deere Model A tractor with new engine, new paint and tires, with row equipment. One Tandem Disk Harrow for Ford or John Deere 3-point hitch. One new John Deere model 430 row crop tractor with 3 point hitch, 1960 model. Regular price 2650.00. To make room for 1961 models we offer this tractor for 1750.00. Ranger Farm Store, Ranger.

GOOD HOUSE for sale to be moved. Mrs. Grant's Grocery.

FOR SALE: International W-30 Tractor on steel and 4 disc breaking plow, both in good condition, priced to sell. Mrs. O. T. Hazard, Phone MA 9-2777, Staff.

FOR SALE: 29 acre farm with modern house and conveniences, plenty of water, 10 acre peanut allotment. Contact T. L. Jay, Phone RE 4-5316, Gorman.

Golden Age Nursing Home
Mr. and Mrs. Pat Pamplin, Owner and Administrator
State Licensed, 24 hour nursing
104 E. 4th, Ph. Hillcrest 2-3458
Cisco, Texas

SEE O. G. LANIER FOR OIL AND GAS LEASES AND REAL ESTATE WE BUY AND SELL
Ph. MI 7-3450 - 113 S. Ross
Ranger, Texas

SUNNYDALE REST HOME
211 West Fifth St.
Breckenridge
24-hour care for elderly or convalescent men or women. Private and semi-private rooms. Bedfast or ambulatory patients. Excellent meals—comfortable—reasonable rates.
Visit Us, Write P. O. Box 90, or Call Hickman 9-2990 Collect
For Further Information

At Majestic Tue. and Wed.



Belinda Lee, star of "Goddess of Love" was killed in an auto accident last month out west. Second feature "Legions of Nile" stars Linda Cris-tac.

P-TA Elects Officers Thursday

Ranger Parent-Teacher Association held the regular meeting Thursday, March 23 at 7:30 p.m. in the high school auditorium. The following officers were elected for the 1961-62 session: president, Mrs. Jack Gibson; 1st vice president, Mrs. Charles Milken; 2nd vice president, Mrs. Glenn Covington; 3rd vice president, Mrs. W. J. Sipes; recording secretary, Mrs. Leon Treece; corresponding secretary, Mrs. James Townzen; treasurer, Mrs. Wesley Poyner; parliamentarian, Mrs. L. G. Kennedy; and historian, Mrs. J. D. Drennan. The program was presented by the 2nd grades.

VISITS HERE

Jimmy Swinney of Denton, son of Mr. and Mrs. John Swinney spent the weekend in Ranger.

Court News—

(Continued from page one)
Bank of Cisco, deed of trust.
Franklin T. Patterson Perkins to L. A. Warren, oil and gas lease.
F. H. ark to W. E. Butler, MML.
F. H. Park to Federal Land Bank of Houston, deed of trust.
L. R. Pearson to Luther Woodruff, quit claim deed.
Roger I. Parker, trustee to J. D. Lauderdale, trustee, trustee's deed.
Everett E. Parker to Charles F. Harding, ratification of oil and gas lease.
S. S. Powers to The Public, affidavit.
J. W. Parrish to William I. Taylor, warranty deed.
Willie O. Parr to Charlotte O'Neal, warranty deed.
J. W. Ryan to James S. Ryan, warranty deed.
Tom Stamey to First Federal S & L Assn. of Ranger, deed of trust.
Mrs. Donnie Self to Southern Savings & Loan Assn., deed of trust.
W. E. Tyler to Wm. Fleming, oil and gas lease.
Wm. E. Seeliger to L. A. Warren, oil and gas lease.
J. M. Sauls to The Ibox Co., Inc., pooling agreement.
George C. Smith to Annie Lee Smith, warranty deed.
James H. Turner to The Ibox Co., Inc., pooling agreement.
W. E. Tyler to Wm. Fleming, assignment of oil and gas lease.
United Interchange, Inc. to M. L. King, release.
United States of America to Alton L. Rogers, release of deed of trust.
Arnell Underwood to B. E. Hanson, release of vendor's lien.
United States of America to Jess Brown, notice of tax lien.
United States of America to Eunice Bates, release of tax lien.
United States of America to Eunice Crabtree, release of tax lien.
Euel Vestal to Mrs. Laueman Thornburg, mineral deed.
Veterans Land Board of Texas to Roy E. Snyders, contract of sale and purchase.
A. C. Wolf, deceased to The Public, proof of heirship.

Mitchum At His Best On Drive In Screen



Anne Heywood and Robert Mitchum in a scene from "The Night Fighters" playing Thursday thru Saturday at the Ranger Drive In Theatre.

Show—

(Continued from Page One)
first; Gary Hanes, Ranger, second; and Richard Kurkin, Cisco, third.
Champion Ram—David Scatterwhite, Breckenridge.
Champion Ewe—Joe Paul May, Carbon.
Angora Goat Division
Two Tooth and Under Does—Johnny Cantwell, Ranger, first; Willie Cantwell, Ranger, second; and Mark Kirkin Cisco, third.
Four Tooth and Over Does, Richard Kurkin, Cisco, first; Johnny Cantwell, Ranger, second; and Willie Cantwell Ranger, third.
Two Tooth and Under Bucks—Richard Kirkin, Cisco, first; Jane Bradford, Ranger, second; and Toni Horton Eastland, third.
Four Tooth and Over Bucks—Toni Horton, Eastland, first; David Satterwhite, Breckenridge, second; and Toni Horton Eastland, third.
Champion Doe—Johnny Cantwell, Ranger.
Champion Buck—Toni Horton, Eastland.

Hospital News

Patients in Ranger General Hospital are:
Mrs. Florence Roan, Cisco, medical.
Mrs. W. C. Harris, Ranger, medical.
Bunice Toome, Ranger, medical.
Mrs. Mary Hamilton
Baby Roy Gene Hill
Lon Warner, Ranger
Mrs. Mary Curington, Ranger
Dave Stagner, Ranger, medical
Mrs. Mary Thurman, Ranger
W. C. Harris, Ranger, surgical
Paul Smith
H. E. Calhoun, Mingus
David Abney, Strawn
Mrs. W. C. Nichols, Ranger, surgical
Thomas Cagle, Rising Star
Dismissed:
Miss Emma Green, Ranger
C. L. Cantwell
J. D. Lagrone
Mrs. Lee, Ranger
Mrs. F. L. Meredith, Baird
Delores Smith, Eastland
Mrs. W. C. Simmons, Cisco
Mrs. Annie Stephenson
Mrs. Tommy Morrow and baby boy, Cisco
Arthur Doss, Ranger

Don Hazard—

(Continued from Page One)
car driven by Mrs. Lewis McGough of Cisco. Mrs. McGough and infant daughter were treated for injuries at Eastland Hospital and released the same day. They were not seriously injured. Another passenger in the car, Mrs. Joe Custer of Cisco, was treated for bruises at Graham Hospital in Cisco and released Saturday morning.
Hazard was rushed by ambulance to Eastland Hospital and later was transferred to the Fort Worth Hospital. A pin set was necessary to repair the broken leg.
Both vehicles were heavily damaged in the accident, which occurred at the corner of Avenue H and 14th Street.

Production—

(Continued from Page One)
to statewide recognition, local honors will also be paid the Stephenville PCA, which, as a home-owned and operated agricultural credit organization, has joined the 35 other PCAs, serving all 254 Texas counties, to provide \$3 billion to Texas farmers, ranchers and dairymen since their organization in 1952.
The Stephenville PCA, chartered under the Farm Credit Act of 1933, serves an area composed of Eastland, Erath, Comanche, Hood, Somerville Johnson Tarrant Parker Wise and Hamilton counties. The central office is in Stephenville. Field offices are operated in Eastland, Comanche, Cleburne, Ft. Worth and Decatur.
"We have but one reason to be in business," explained General Manager W. M. Irwin, "and that is to provide adequate and dependable credit for our stockholders. Through our basic and thorough knowledge of agricultural conditions and problems in this area, we can provide sufficient and proper credit and credit counseling."
From its humble beginning of a handful of stockholders and a minimum of capital, the Stephenville PCA had a loan volume of \$8,000,000 in 1960.
Now serving on the board of directors are President R. Cal McCurdy of Decatur, Vice President James W. Crouch of Burleson, T. W. Winters of Evand, C. M. McCain of Eastland and Tom Masarek of Comanche.

Edwin Dittrich

from FRANK'S TV Service of Stephenville will be at
L & J Supply Co.
Main & Rusk Sts.
Ranger — Ph. MI 7-1377
Each Tues. & Sat. for complete TV Service

For service in Strawn and Gordon area leave word at or call So-Lo Service at Gordon, Phone 4711.

The Barbecue Pit

Serving Complete Barbecue Meals
Meat — Beans and Potato Salad

IDEAL PICNIC LUNCHES

1²⁵ Packed To Go
Call Phone MI 7-9390
To Place Order
The Barbecue Pit
Hwy 80 East Ranger

Around The Campus

The faculty of Ranger Junior College have varied plans for their spring vacation, some staying in Ranger and working, others visiting relatives in various parts of Texas, and some spending their time in leisure. The following plans were revealed by the teachers interviewed:
Mrs. Hamrick with her mother plans to visit her daughter, Mrs. G. A. Rhodes, and family in Van Horn.
The Harold Bilderbacks plan to spend their vacation at Lake Texoma fishing.
Dr. and Mrs. Gene Emert will tour the South Bend country.
Harold Little plans to visit his brother and family in Amarillo.
Mrs. Walton intends to spend most of her time with her children as well as remodeling her house.
Ermen Haby and family plan to visit relatives in the Uvalde area.
The David Allisups are going home to Cass County on business and will return to finish some work on their home here.
The Aches and their families plan to spend their spring vacation visiting relatives, the Clyde Evatts going to West Texas, (and the Jim Puryears to Tyler.
Mrs. Marjorie TheBerge will do some shopping and rest up for the last nine weeks of school.
David Flinn is going to Greenville to visit his family.
Nina Heiler plans to work and entertain company.
Mrs. James P. Morris has some rather different plans—sleeping, grading papers, and sleeping some more.
Dr. Theodore Nickick Jr. and his family plan to stay in Ranger for their spring vacation.
The Judson Hardys plan to spend their holiday in Ranger as do the James P. Andersons.



REV. FRANCIS DuBOSE



O. M. KEMP

Youth Rally to Be Held Sat. at Cisco Church

The Youth Rally of the Cisco Baptist Association will meet Saturday night, April 1 in the East Cisco Baptist Church at 7:30 p.m. More than 500 are expected.
Rev. Francis DuBose of Breckenridge will be the inspirational speaker and O. M. Kemp of Breckenridge will direct the music at the 11th annual Rally sponsored by the Youth Rally Organization and the Training Union Departments of the Cisco Baptist Association.
Rudy Frambrugh is president of the Youth Association and H. K. Neely Jr., is Training Union director.
The roll call of churches, awarding of banners, and the election of officers is the agenda for the evening.
Refreshments and fellowship will close the evening's program. An official count will be made of the following groups: churches, pastors, young people, intermediates, youth sponsors, and all others who attend.
A welcome is extended to all groups.

Charles Martin Is Stationed in Hanau, Germany

PFC Charles W. Martin III, whose parents live in Eastland recently completed the four-week organizational maintenance wheel-vehicle course at the Army European Engineer - Ordnance School in Murnau, Germany.
Martin is regularly assigned as a mechanic in the 182d Ordnance Company in Hanau.
He entered the Army in September 1955, completed basic training at Fort Ord, Calif., and arrived overseas last September.
The 20-year-old soldier is a 1959 graduate of Eastland High School.

HOME FOR WEEKEND

John Swinney, who is working in Texas City spent the weekend in Ranger with his family, Mrs. Swinney and children

COLDS

Relieve aches and pains of colds with STANBACK Tablets or Powders. Also use as gargle for sore throat due to colds. STANBACK'S S. A. (Synergistic Action) reduces fever, brings faster, more complete relief. Remember... Snap back with STANBACK!

DIXIE Drive-In

EASTLAND RANGER HIGHWAY
Boxoffice Opens 6:45 Show Starts 7:15
Boxoffice Closes 9:15
Admission 50c — Children Under 12 Free
Each Wednesday Is Bargain Night — Adults 25c

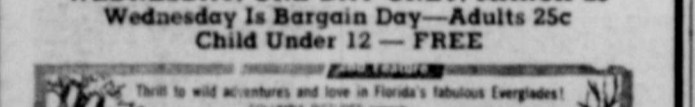
SUNDAY, MONDAY, TUESDAY, MARCH 26, 27, 28

THE NEW HIGH AND MIGHTY ADVENTURE THRILLER!

THE CROWDED SKY

starring DANA ANDREWS - RHONDA FLEMING
ERREM ZIMBALIST - JOHN KERR - ANNE FRANCIS - KEENAN WYNN
TROY DONAHUE from WARNER BROS. TECHNICOLOR
PLUS: Two Color Cartoons

WEDNESDAY, ONE DAY ONLY, MARCH 29
Wednesday Is Bargain Day—Adults 25c
Child Under 12 — FREE



PLUS: Color Cartoon and Sports Reel

MAJESTIC

Adults 60c Family Entertainment
Student 40c
Children 25c

TODAY AND WEDNESDAY

BELINDA LEE IN AN AGE OF TITANS SHE WAS HISTORY'S GREATEST TEMPTRESS!



THE GODDESS OF LOVE

CINEMASCOPE COLOR by DE LUXE
Belinda Lee - Jacques Sernas - Massimo Girotti
PLUS 2ND BIG HIT FEATURE—

LEGIONS OF THE NILE

CINEMASCOPE COLOR by DE LUXE

RANGER DRIVE-IN

HIGHWAY 80 EAST ON RANGER HILL MI 7-1101
Adults 50c—Kiddies Under 11 Free
Boxoffice Opens 6:45 — Show Starts at 7:00

LAST TIMES TUESDAY

KIRK DOUGLAS - KIM NOVAK
ERNIE KOVACS - BARBARA RUSH
They're in Love... They're married... BUT NOT TO EACH OTHER!

STRANGERS WHEN WE MEET

WALTER MATTHIAS - VIRGINIA BRUCE
KENT SMITH
A COLUMBIA PICTURE

EVERY WEDNESDAY IS BARGAIN NITE 50¢ CASH LOAD

3 Girls...who wanted to slay one man— WITH LOVE!

3 COLOR by DE LUXE

MURDERESSES

Starring ALAIN DELON
MYLENE DEMONTEOT - PASCALE PETIT - JAQUELINE SASSARD

INGROWN NAIL HURTING YOU? Immediate Relief!

A New Group of OTC's... bring instant relief to the millions of people who suffer from ingrown nails. The only relief that is safe and effective. Available at all drug stores.

WEEKEND GUEST

Mrs. P. C. Long and Clayton Long had as their weekend guests Mrs. Rex C. Outlaw, Dallas, Miss Beulah Howies, Mrs. Vernon Richardson and Stacy, of Denton, Judge and Mrs. George W. Outlaw of Sweetwater, Mr. and Mrs. J. H. Conine of Midland, Mr. and Mrs. Charlie Black and Carla, Mr. and Mrs. J. B. Speece, Mr. and Mrs. Don Johnson and Lisa of Fort Worth, and Mrs. R. S. Black of Houston.

RETURNS HOME

Mr. and Mrs. Jimmy Rogers and Dennis Keith returned to their home in Lubbock Sunday after visiting Mr. and Mrs. Joe Dennis, Mr. and Mrs. C. F. Jones and Mr. and Mrs. Dwaine Dennis, Pam and Joe Wayne. Mrs. Rogers and Dennis Keith had been visiting in Ranger for the past two weeks.

VISITS HERE

Mr. and Mrs. Lloyd McCann Jr. of Neosho, Missouri have been visiting in the home of their grandparents, Mr. and Mrs. C. M. Martin.

OVERNIGHT GUESTS

Overnight guests recently in the home of Mr. and Mrs. A. E. Ernst were Mr. and Mrs. H. A. Lavery of El Paso, Mr. and Mrs. Lavery were on their way to Chicago.

READ THE CLASSIFIEDS

Dirt Distributor
SAND, GRAVEL & DRIVEWAY MATERIAL
Calvin Ainsworth
PHONE MI 7-3531

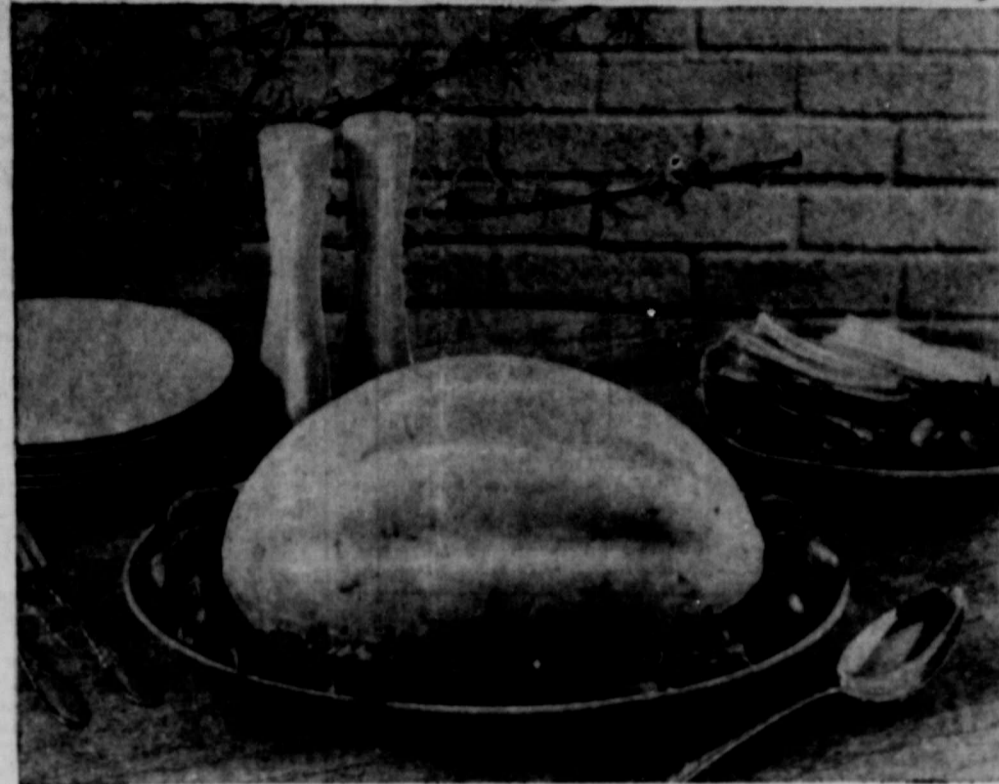
Income Tax Return?
SEE
Ruby Springer

for careful analysis. DON'T TAKE A CHANCE of paying too much, or failing to qualify for SOCIAL SECURITY protection. Farmers Ranchers, all Self-employed, the young and those approaching retirement age—ARE YOU QUALIFIED? Let's talk it over.

RUBY SPRINGER
Ranger, Texas MI 7-3230



Mousse Is Just the Thing for the Card Party



This chicken mousse can be the center attraction at a spring luncheon.

BY DOROTHY MADDOX

For your early spring bridge or canasta luncheon party, this delicate chicken mousse is ideal. It can be prepared the afternoon before the party and kept in the refrigerator. With the mousse, serve asparagus vinaigrette, warm rolls, and a strawberry-rhubarb pie.

Chicken Mousse
(Serves six)

One envelope unflavored gelatin, 1 1/2 cups cold chicken stock or bouillon, divided; 1 tablespoon lemon juice, 1/2 teaspoon Tabasco, 1 1/2 cups diced cooked chicken, 1/2 cup diced celery, 1 cup heavy cream, whipped. Sprinkle gelatin on 1/2 cup of the chicken stock in saucepan to soften. Place over

medium heat, stirring constantly, until gelatin is dissolved. Remove from heat; add remaining 1 cup chicken stock, lemon juice and Tabasco. Chill until mixture is the consistency of unbeaten egg white. Mix in chicken and celery; fold in whipped cream. Turn into a 4-cup mold or individual molds. Chill until firm. Unmold on salad greens. Serve with tomato wedges and olives.

Bridal Shower Honors Carolyn Rose Friday

Miss Carolyn Rose, bride elect of Terry Ford of Abilene, was complimented with a bridal shower March 24 from 7:30 to 9 p.m. in the home of Mrs. F. E. Caraway.

Hostesses with Mrs. Caraway were Meses, Bob Wymer, Walter Mitchell, Bill Peavehouse, Bill Kirkpatrick, Willie Joyner, James Ryne, Wanda Guest, Eddie Squiers, Faye Bargsley and H. H. Sutton.

The dining table was covered with a white cloth. The centerpiece was a miniature bride and groom on a reflector which was surrounded by a double ruffle of white net entwined with silver lace ribbon. White tapers in silver holders and white spring flowers flanked the reflector. The white napkins were adorned with silver.

Refreshments of lime punch, white net entwined with silver served to the guests.

UNDERGOES SURGERY

Mrs. Jerry Rushing underwent surgery at Bethania Hospital in Wichita Falls Friday, March 24. She is now recuperating at the home of her parents, Mr. and Mrs. J. C. Price of Holiday.

Mrs. Lem Rushing was with her daughter-in-law at the time of surgery. She returned home Sunday.

Wed. Services Announced for First Baptist

Choir rehearsal for the First Baptist Adult Young People, and Intermediate Choirs will be held Wednesday evening at 6:15. All choir members will need to be in their places for this important practice.

Immediately following the rehearsal the choir will attend the covered dish supper in the lower auditorium.

Zac Henders of Breckenridge will be the speaker for the Sunday School meeting. Those who wish to hear Henders and are unable to attend the supper may join the group at 7:45 p.m.

The youth officers will need to be present for the entire evening's program.

Final announcements and plans for the Easter services and the revival will be made.

ATTENDS FUNERAL
Mr. and Mrs. A. E. Ernst of 815 Cypress attended the funeral of Mr. A. H. O'Donnel in Mineral Wells Sunday.

Chiropractor
DR. E. R. GREEN
115 South Rusk Street
Mon., Wed., Fri.—1 to 5 p.m.

CALL MI 7-3175
For All Your PLUMBING NEEDS
★
City Plumbing
SPRING ROAD
LICENSED PLUMBER
U. E. WESTMORELAND

The Man Who Borrows Money—

... must have good security to offer the lending agency or individual before he can expect a loan. There is no better collateral than real estate provided the title is good. More money is loaned on real estate than any other commodity of value. The careful lender always insists on an abstract for the abstract reveals the condition of the title and upon the title rests the applicant's eligibility for the loan.

EARL BENDER & COMPANY

Eastland, (Abstracts since 1923) Texas

IF FIREMEN have to fight their way through to a blaze in your home, every swing of their axes will mean a hole in your pocketbook... unless you have adequate insurance.
DON'T WAIT for that blow to fall!
GET YOUR Fire Insurance today from...

An Expensive Cut
DEFECTIVE WIRING, APPLIANCES caused 13 percent of all home fires last year and 4 percent of all home fire fatalities!

May Insurance Agency
INSURANCE — REAL ESTATE
W. J. Sipes Phone MI 7-3582
GIVE YOUR HOME A SAFETY CHECK-UP

Wards Stores Now Have Air Express Service

Women's sportswear fashions made in New York today will be offered to Montgomery Ward customers in more than a hundred Wards retail stores as far away as Grand Junction, Colo., and Albuquerque, New Mexico, day after tomorrow, Robert B. Maloney, Wards' assistant general traffic manager announced today in New York.

Three of the nation's major airlines, Trans World Airlines, United Airlines, and American Airlines, began airlifting the first fashions today from Wards' manufacturing sources in New York City to Wards' major distribution centers in Denver, Fort Worth and Kansas City. Wardfleet, the company's largest, private carrier trucking system, will relay the air freight merchandise to 149 retail stores served by the centers.

"This new service will place up-to-the-minute fashions in our retail stores as much as a week earlier than before," Maloney said. "Initially, the program will serve only the company's south central region, but later will be expanded to other areas and will include other fashion merchandise. Besides bringing the latest fashions to our stores almost as soon as they are available at the manufacturers, we will maintain a lower level of inventory in stores because of the speed of replenishment we now have. In addition, we will get quicker indications of the acceptance of particular style trends," he said.

The new system works this way: New York manufacturers deliver merchandise marked for a particular store in the south central region to Wards' air freight assembly point in mid-Mississippi. The merchandise is assembled by groupings of stores serviced by each distribution center, then is combined into large bulk shipments for each center. The assembled shipment is delivered to the airline terminals by truck and flown that same day to Denver by United Airlines, to Fort Worth by American Airlines, and to Kansas City by Trans World Airlines.

The air shipments are picked up at the airport by a Wards truck

and rushed to the distribution center. There the shipment is reloaded onto Wardfleet trucks which will make deliveries to individual stores.

WOMEN'S ACTIVITIES

Tuesday, March 28
The Columbia Study Club will meet Tuesday, March 28 in the home of Mrs. C. E. May at 3 p.m.

Wednesday, March 29
The Child Welfare Club will meet with Mrs. Charles Gann at 3 o'clock Wednesday.

All members are urged to attend.

--- READ THE CLASSIFIEDS ---

POSTPONES MEETING

The Lone Star Ladies Club will not meet Thursday, March 30 but will meet April 27. This will be a business meeting and all members are urged to be present.

FARMERS INSURANCE GROUP
...all your insurance needs
AUTO - TRUCK - FIRE - LIFE - BUSINESS
EXTENDED COVERAGE BOATS
All your insurance needs "Dividend Savings"
RUBY SPRINGER
Ph. MI 7-3230 320 W. Main

Robinson Food Market
SPECIALS FOR
Wednesday Only, March 29, 1961
121 North Rusk St. Phone MI 7-3530

Armours Banquet Sliced	
BACON	1 Lb. 49¢
Tender	
ROUND STEAK	Lb. 85¢
Maxwell House	
COFFEE	Lb. 59¢
Mortons Frozen Family Size	
PIES Peach or Coconut	Each 39¢
Fresh	
GREEN ONIONS	Bunch 5¢
Fresh Stalk	
CELERY	Stalk 15¢
Chicken of Sea Green Label	
TUNA	2 Flat Cans 55¢
Light Crust	
MEAL	10 Lbs. 48¢
Light Crust	
FLOUR	5 Lbs. 45¢
Mrs. Tuckers	
Shortening	3 Lb. Can 59¢

NOW!
You Can Buy
SPREAD SATIN
At The
HOUSE OF COLOR
Highway 80 East Jack Williams

FLAMELESS ELECTRIC COOKING IS COOL COOKING

WOMEN WHO COOK ELECTRICALLY KNOW!

Flameless electric cooking is cool cooking because an electric range keeps heat waste to a minimum. Electric range surface units transfer heat to utensil bottoms by direct metal-to-metal contact. The heat goes into the utensils and the food, not into the kitchen air. And because the electric oven requires no oxygen to operate, it is insulated on all four sides, top and bottom, keeping heat locked inside where it belongs. See your electric range dealer soon. Cook the clean, cool, electric way and Live Better... Electrically!

TEXAS ELECTRIC SERVICE COMPANY

READ THE CLASSIFIEDS

YOUR Independent AGENT
 "SERVES YOU FIRST"
 Let me see! Let me see!

There's only one thing to do about a hurricane

Sometimes you can put out a fire, but you can't put out a hurricane.

The only thing to do is to be sure you have plenty of windstorm insurance. Then just wait the thing out and don't worry.

Hurricanes, cyclones and tornadoes used to confine themselves to certain areas. But now they roam anywhere, and one may blow your property to toothpicks or smash it in with a big tree ... any minute.

An Extended Coverage endorsement added to your Fire policies will insure you against loss by windstorm and six other perils as well.

C. E. MADDOCKS & CO
 Insurance - Real Estate
 207 Main Phone MI 7-1171

NEWS FROM OLDEN

Mr. and Mrs. J. D. Sprawls of Paducah spent Saturday in the C. B. O'Brien home. He is the brother of Mrs. O'Brien.

Mr. and Mrs. Gene Rowch and family of Holiday spent the weekend with his mother, Mrs. Ethel Rowch.

Mr. and Mrs. Dee Cooper and Darla were in Fort Worth Saturday on business and while there they visited with Mrs. Cooper's brother and wife, Mr. and Mrs. Hob Langston.

Mr. and Mrs. Harrison Curtis of Eastland visited for a while Sunday afternoon in the Travis Reese home.

Mr. and Mrs. C. B. O'Brien spent Sunday in Mineral Wells visiting in the home of their daughter, Mr. and Mrs. Charles Verrier and son Charles Wade.

Mr. and Mrs. John Cooper and Susan of Mineral Wells visited Sunday with the Dees Coopers.

Helps Heal And Clear Itchy Skin Rash!
 Zemo—liquid or ointment—a doctor's antiseptic, promptly relieves itching, stops scratching and so helps heal and clear surface skin rashes. Buy Extra Strength Zemo for stubborn cases!

See Us For FURNITURE • APPLIANCES CARPETS
 Every Day Low Prices Means Savings For You!
 No carrying charges on furniture for 1 full year
 FREE DELIVERY
Ranger Furniture Exchange
 "BRASHIER'S"
 123 N. Rusk Ranger Phone MI 7-1404

Roy Lester of Ahlens visited with his mother, Mrs. Lula Lester, Wednesday.

Marseta Tussy of Dallas was the house guest of her grandparents, Mr. and Mrs. J. D. Tussy, this week.

LeRoy Yarborough, who is a member of the Armed Forces is taking his basic training at Fort Hood.

LACASA LINES

Mrs. Tryphena Pockrus had as visitors last week her brother, Riley Eady, of Coleman, her daughter, Mr. and Mrs. Truman Dempsey and Bobby Dale and Billy Matthews of Ranger, and her son and family, Hubert Pockrus and Mrs. R. E. Miller and Mrs. Melmoth Lassiter.

Mr. and Mrs. James Raney of Austin have a new son, born March 18. He has been named James Dial.

Rev. and Mrs. Bob Estes and Mrs. Gailard McGowan, and Mrs. Cordia Lambert attended the Baptist Workers Conference at Carbon, Tuesday evening.

The young people enjoyed a Weiner Roast and hay ride Saturday night, sponsored by Fat Herrington and wife and the pastor, Bob Estes and wife. Visitors were George and Jerry Graham of Strawn and Melinda Echols of Cadde.

Mrs. Will Gray is visiting her daughter in Fort Worth this week.

Ticklers By George



"The boys at the office gave me this birthday present—a cushion to save wear on my pants."

AUSTIN REPORT
 By SCOTT BAILEY
 REP. OF 76th DISTRICT

Taxes were the main topic of discussion in Legislature 1 a 1 week. At this early stage of the Session it is apparent that additional taxes to retire the general revenue fund deficit will be very difficult to pass. This was evident by the fact that three of the key financial plans all failed on second reading last week.

This week should bring a renewal of the effort to retire the general fund deficit. Many of the members feel that the general fund deficit should be retired and our deficits paid before undertaking any more spending programs. I personally share this view because it is only a matter of justice to pay your debts before becoming further obligated. Also, our Texas Constitution provides that we should operate strictly on a "pay-as-you-go" basis. There are 55 new members serving this Session and these 55 new members had nothing to do with creating the state deficit; so therefore some of them are a little bit hesitant about voting for extreme tax legislation to pay deficits they did not help create.

House Bill No. 3, by Representative Dungan of McKinney, has made its way through the Committee and passed the House with no damaging Amendments. This Bill limits municipal annexation and provides that in the event an area is annexed by a municipality that such municipality must provide adequate city services to the annexed area within a three-year period or the area can be annexed by order of a District Judge. If House Bill No. 3 is passed by the Senate, it will go a long way towards bringing about stability in municipal government.

Sometime this week House Bill No. 2 should make its way to the House Calendar. This Bill, as I understand it, would settle a long standing controversy between rural electric cooperatives and privately owned electric companies. This Bill seems to be the object

of intense interest on both sides. Members of The Legislature have been subjected to a barrage of letters, apparently dictated by some person who has a financial interest in the outcome of this Bill. It will be very interesting to await the outcome.

Veterans who have applied for loans under the Texas Veteran's Land Program will be interested in a Bill introduced by Senator Wardlow Lane of Center. This is Senate Bill 290, which will appropriate money to a special fund of the Veteran's Land Program to pay salaries and costs so as to speed up sale of lands to Veterans. There has been considerable inter-

est in this program within the last few months.

The Texas Farm Bureau held a legislative workshop in the Capitol early this week. It was certainly a pleasure for me to visit with some of the Eastland County folks who came down for this meeting.

I had a nice visit and discussion with Mr. John Love and Mr. Mitchell Campbell, both of Eastland County. They were kind enough to accompany me to a meeting of the Game and Fisheries, of which I am a member. It is always a pleasure to have folks drop in and witness the proceedings of government.

Having trouble with winter weeds in your lawn? They can be eliminated with chemicals, says George McBee, extension pasture specialist of College Station.

The chemicals should be applied when the weeds are growing and before seed are formed. To control upright or prostrate annual weeds such as burclover, henbit and rescue grass, McBee says the chemicals should be applied when the plants are no more than three inches tall. If they are above this height, he advises a close mow and then waiting for three or four days of regrowth before making the application.

Law-growing plants such as carpet burweed should be treated when the plants are young and before they bloom. Thorough coverage of the leaves and stems with the chemical is a must for all weed control.

McBee says the most commonly used chemicals are 2,4-D and endosulfan. Disodium methylarsenate and amine methylarsenate can be used for spot treatment. Naptha and ammonium nitrate are other chemicals often used. Lawn grasses will be killed by naptha but the spots should cover over in a few weeks.

The specialist warns that care should be exercised when using any chemical and that the manufacturer's recommendations should be followed closely. He suggests that you visit your local county agent or home demonstration agent and pick up a copy of L-425, "Chemical Weed Control in Lawns." Each of the recommended chemicals along with spray or spot treatment solutions is discussed. The leaflet also contains other suggestions for lawn care and maintenance.

Governor Recommends Driver Education for Safer Traffic

Governor Price Daniel recently congratulated "State and local officials traffic safety organizations, groups and millions of Texas drivers who, in 1960, helped to produce the State's best traffic safety record in eleven years."

The Governor, referring to official report for 1960 released recently by the Department of Public Safety, said the records show 199 fewer traffic deaths than in 1959 and 357 fewer deaths than in 1956, the worst traffic year in Texas history. "This was an 8 percent reduction in traffic deaths as compared to 1959 and 13.67 percent less than the 1956 death toll," Daniel said.

The Governor said the all-out, Statewide effort in 1960 "climaxes four years of a traffic safety crusade that began as soon as I took office and will continue at least as long as I am Governor. We have now proven that it is possible to get the attention of enough Texas drivers to make a significant improvement in saving lives, reducing injuries and cutting down the number of crashes.

"We can save even more lives each year," the Governor continued, "if the Legislature will enact the additional laws which I have recommended. These include driver education, stronger driver licensing provisions, additional highway patrolmen and better salaries for patrolmen, chemical test law for DWI cases, and a system of traffic courts.

"Now that we know it is possible to do a better job of saving lives by reducing the number of crashes, the Governor said, "I

hope the Legislature will be encouraged to take decisive action on our legislative program. The Members can now do this with full knowledge that their action will be accepted by all law-abiding

Texans and that such action will effectively save more lives.

The Governor pointed out that 1960 statistics are "almost sensationally good when they show an eight percent reduction in deaths, 10 percent reduction in injuries, 14 percent reduction in total crashes and 30 percent reduction in estimated economic losses" over 1959.

SINCE 1884
 quality workmanship and efficient service, approved throughout this area.
Alex Rawlins & Sons
 Designers and Builders of Monuments Since 1884
 Weathford, Texas Phone LY 4-2726

SALE
 21-INCH DUMONT
Picture Tubes
 2-Year Guarantee. Completely Installed For Only **\$44.95**
 Free Pick-Up and Delivery—SAVE FROM \$15.00 to \$23.00—
 SALE RUNS FROM MARCH 10 TO APRIL 1
Vinson T. V. Service
 115 S. Rusk Phone MI 7-3466

DON'T BE A STRANGER! COME IN AND GET ACQUAINTED . . .

We know that you will be pleased with our service and that you'll like the performance of our products in your car. We'd like to have you shift the care of your car to our shoulders. You'll find our service complete, our men carefully trained, and eager to greet you with a friendly smile. We'd like to be the station you can rely on for all your automobile needs and would be mighty pleased to have you as a regular customer.

WE GIVE S & H GREEN STAMPS OPEN 7 A.M. to 10 P.M.
CAMPBELL'S
HUMBLE STATION
 Highway 80 & Main Ranger, Texas

DON'T BE PREHISTORIC!
 Trade your old watch in for a **BULOVA** and be up-to-date!

D. E. PULLEY
 Diamonds - Watches
 Jewelry
 Phone MI 7-1616

Free Estimates On A New ROOF
 Or Repair your old Roof Residential & Commercial
Eastland - Ranger Roofing Co.
 Noble Squires
 Ph. MA 9-2370 Eastland

FURNITURE for the Entire Home
 * **Carpet - Rugs All Prices**
 * **Be Sure To Check With Eastland**
Coats FURNITURE

TODAY... IT IS EASIER TO OWN A HOME THAN YOU THINK

Our years of experience in planning mortgage loans, plus reasonable interest rates, make it possible for anyone who can pay rent to own a place of their own. If you would like to buy, build or refinance a home, stop in. Get the latest information without the slightest obligation.

First Federal Savings & Loan Association of Ranger
 204 Main Ranger, Texas Phone MI 7-1611

Let Us Make You An Estimate of the Cost

DON'T MOVE IMPROVE WITH LUMBER

ADD ON

Make sure that new add-on living area does increase the beauty and value of your home! Choose from quality lumber and building materials. Depend on us to have the best of what you want, at lowest prices.

Ranger Lumber & Supply Co.
 Calvin Brown—Earl Brown
 Phone MI 7-1481 Ranger

Local AND LONG DISTANCE MOVING STORAGE

A carton or a carload . . . we move it promptly, carefully. Storage facilities and service are the finest. Low rates. Insurance available.

FREE ESTIMATES! Ranger Transfer and Storage
 M. D. Underwood, Mgr.
 Phone MI 7-1344

TRY OUR FAMILY PICNIC SPECIAL
ONE WHOLE FRIED CHICKEN
 • Loads of French Fries • Hot Rolls **\$1.75**
 BOXED TO GO
 —Fried To A Delicious Golden Brown—
PHONE MI 7-9340 FOR QUICK SERVICE
CHICK-IN-SHACK
 DINING ROOM AND CURB SERVICE
 Hwy. 80 East Ranger

—Call MI 7-1101 for Classifieds—

ATTEND THE CHURCH OF YOUR CHOICE EACH SUNDAY

GOSPEL MEETING

EASTSIDE CHURCH OF CHRIST

APRIL 2-9

SERVICES 7:30 P. M.

LEFTON HESTER of Orange, Texas Will Be the Speaker

AS IT LOOKS FROM HERE

WASHINGTON, D. C.—Most observers agree that the Kennedy Administration is moving, whether they approve or disapprove of the direction. Both on the foreign and domestic front the Administration is in motion with positive action. Thus far, it is definitely a "do-something" Administration.

Notably and commendably, the Executive Department is moving to bolster our defense forces to make as certain as possible that these important steps have been taken:

(1) Accelerated our entire missile program.

(2) Ordered earlier production of more nuclear-powered submarines carrying sixteen Polaris solid-propellant missiles each.

(3) Increased training and personnel for Army Special Forces for guerrilla warfare.

(4) Ordered greater airlift capacity.

(5) Initiated studies and evaluations to be made of every aspect of our defense program.

One item not yet definitely settled is the development and production of the B-70 Bomber, but thus far the Pentagon has recommended against it.

As of the last few days the White House made the decision to not place a nuclear-powered airplane in the top priority position.

The President now has on his desk certain recommendations in changes from the Eisenhower Administration defense budget. The Secretary of Defense McNamara has made several important recommendations which, if approved the President, should further strengthen national security.

Important in the recommendations is one calling for increased emphasis on conventional forces to cope with what has commonly been referred to as "limited" or "brush fire" type of war. For the last several years the emphasis has been on nuclear weapons, which in the judgment of those whose opinion is highly respected, was necessary under the circumstances. It is believed now by many of these experts that we may have reached a point of stalemate and that we must be ready to meet the type of conflict which is more likely to occur—that is, the conventional type of war.

The idea of preparing totally or only for a nuclear war leaves our Country with little or no choice in meeting enemy aggression with these types of weapons. As to where the emphasis on defense should be placed has been an extremely knotty question since the end of World War II. The cost of defense has been high because of the necessity of preparing for less than an all-out war, while at the same time, it would have been imbecilic not to have had the greatest possible strength of nuclear deterrent weapons in this period.

The fact remains, however, that since World War II there have been 21 limited wars in various hot spots around the world. We can not safely put our selves in the dangerous position of having to respond to any limited aggressive action with nuclear or thermonuclear weapons which would touch off a holocaust which could destroy great parts of the human race.

Other recommendations in the making by the Secretary of Defense include:

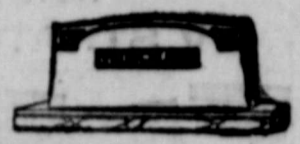
(1) A better alert program for the Strategic Air Command.

(2) Increase in the solid-propellant Minuteman intercontinental ballistic missile.

(3) An immediate start toward production of certain component parts of the Nike Zeus anti-missile.

To put all these things into effect will cost more money unless reductions are made in other places. No doubt reductions can be made, and it is hopeful they will be to bring about the strongest and most efficient military force in the world.

Thought of the week: No matter what happens, there is always someone who "knew it would."



SINCE 1884

... quality workmanship and efficient service, approved throughout this area.

Alex Rawlins & Sons

Designers and Builders of Monuments Since 1884
Weatherford, Texas Phone LY 4-2726

CALL MI 7-3175
For All Your PLUMBING NEEDS
★
City Plumbing
SPRING ROAD
LICENSED PLUMBER
U. E. WESTMORELAND

Local AND LONG DISTANCE MOVING STORAGE

A carton or a carload... we move it promptly, carefully. Storage facilities and service are the finest. Low rates. Insurance available.
FREE ESTIMATES!
Ranger Transfer and Storage
M. D. Underwood, Mgr.
Phone MI 7-1344

Free Estimates
On A New ROOF
Or Repair your old Roof Residential & Commercial
Eastland - Ranger Roofing Co.
Noble Squires
Ph. MA 9-2370 Eastland

TODAY... IT IS EASIER TO OWN A HOME THAN YOU THINK

Our years of experience in planning mortgage loans, plus reasonable interest rates, make it possible for anyone who can pay rent to own a place of their own. If you would like to buy, build or refinance a home, stop in. Get the latest information without the slightest obligation.

First Federal Savings & Loan Association of Ranger
204 Main Ranger, Texas Phone MI 7-1611

SALE 21-INCH DUMONT Picture Tubes

2-Year Guarantee. Completely Installed **\$44.95** For Only

Free Pick-Up and Delivery —SAVE FROM \$15.00 to \$23.00—
SALE RUNS FROM MARCH 10 TO APRIL 1

Vinson T. V. Service
115 S. Rusk Phone MI 7-3466

Happy Easter from Safeway



EASTER EGG SPECIALS!

Large "A" Eggs 2.89¢

Large "AA" Eggs 49¢

Food Coloring 23¢

Corn 2.39¢

Jelly 2.39¢

HAMS

SMOKED SHANK PORTION 29¢

Butt Half 47¢

Center Slices 89¢



Imported Plymrose Hams
Canned. Extra lean. Ready-to-eat.
1.25 2.25 3.13

Hemet Spiced Peaches 25¢

Jell Well Gelatin 19¢

Whole Chicken 89¢

Del Monte Beans 49¢

Hen Turkeys 39¢
Yearling Ready-to-cook. U.S.D.A. Inspected and Grade "A." 12 to 16-Lb. average.

Leg-O-Lamb 69¢ Pork Roast 45¢ Hams 27¢

- Zippy Sweet Pickles 39¢
- Fluffiest Marshmallows 29¢
- Ice Cream 75¢
- Pillsbury Best Flour 25¢
- Baker's Coconut 21¢
- Hydrox Cookies 37¢
- Reddi-Starch 69¢
- Blossom Time Milk 93¢

Safeway Produce

Lettuce 10¢

Tomatoes 19¢

Texas Yams 25¢

Fresh Radishes 5¢



Strawberries 39¢
Michigan Peat 100¢

- Rinso Blue Detergent 65¢
- Silver Dust Detergent 33¢
- Breeze Detergent 33¢
- Surf Detergent 35¢
- All Detergent 29¢
- Fluffy All Detergent 75¢
- Liquid Lux 61¢
- Liquid Wisk 39¢
- Niagara Starch 21¢
- Handy Andy Cleaner 39¢
- Room Deodorant 79¢
- French Dressing 27¢
- Banquet Dinner 55¢
- Chicken Pie 25¢

Safeway Easter Values!

Salad Dressing 39¢

Safeway Flour 5.43¢

Cane Sugar 5.51¢

More Safeway Values!

Ladies' Hose 2.19

Aluminum Foil 59¢

Apple Butter 29¢

Cottage Cheese 2.49¢

Lipton Tea Bags 67¢

Instant Lipton Tea 53¢

Lipton Tea 43¢

Pineapple 3.49¢

Potatoes 2.29¢

Strawberries 2.49¢

Bakery Special of the Week!
HOT CROSS BUNS
25¢

Slenderway Bread 19¢

Club Rolls 21¢

Barbecue Bread 25¢

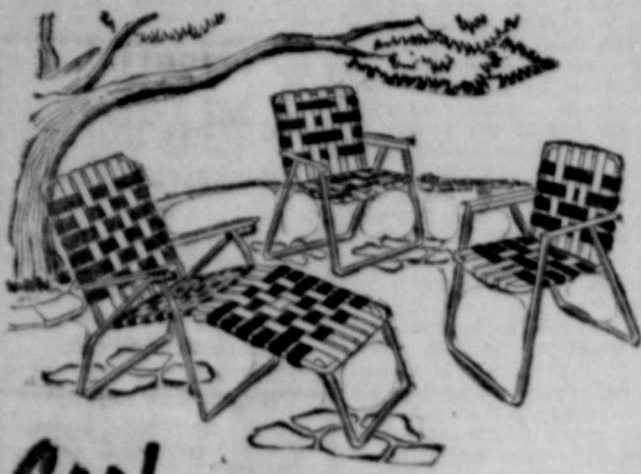
SAFEMAY Gives these Valuable **GOLD BOND STAMPS** your nearest Redemption Center is 443 Walnut, Abilene

SAFEMAY
Conveniently Located to Serve you at 504 E. Main

SALE BEGINS

FRIDAY MARCH 31 RUNS THROUGH APRIL 8

BRASHIER'S



Cool comfort from

Practical durable comfort . . . perfect for outdoor lounging or indoor T.V. viewing. The folding chaise lounge and the chair of 100% Saran strips and mirror-polish aluminum construction are completely weatherproof. Chair and lounge both feature the patented telescopic "slide action" arms for greater sturdiness and easier folding.

• Two Chairs
• One Chaise Lounge
ALL THREE PIECES . . . \$20⁴⁰

METAL SET Glider and Two Chairs



Choice of Red, Green or Yellow

REGULAR 17.95
GLIDER 16.15
REGULAR 5.95
CHAIR or ROCKER 5.40

7 PIECE DINETTE SUITE



36-Inch Round Table
Extends to 60 Inches
6 Matching Chairs
89⁴⁰

5-Piece Dinette **\$49⁴⁰**

30 x 48-Inch Table
5-Piece Dinette **\$69⁴⁰**

Regular 109.50
9-Piece Dinette **\$79⁴⁰**

72-In. Table, 8 Matching
Chairs, Reg. 109.50



new-style
TV STRATORESTER
FREE!

**NOTHING TO BUY
JUST COME IN
REGISTER YOUR NAME TODAY**

A fabulous new reclining chair . . . and to introduce it we're making it possible for you to win one, free! Just come in, register . . . if your name is drawn, this luxurious new recliner by the makers of the famous Stratolounger is yours, free. Don't wait. Come in today!

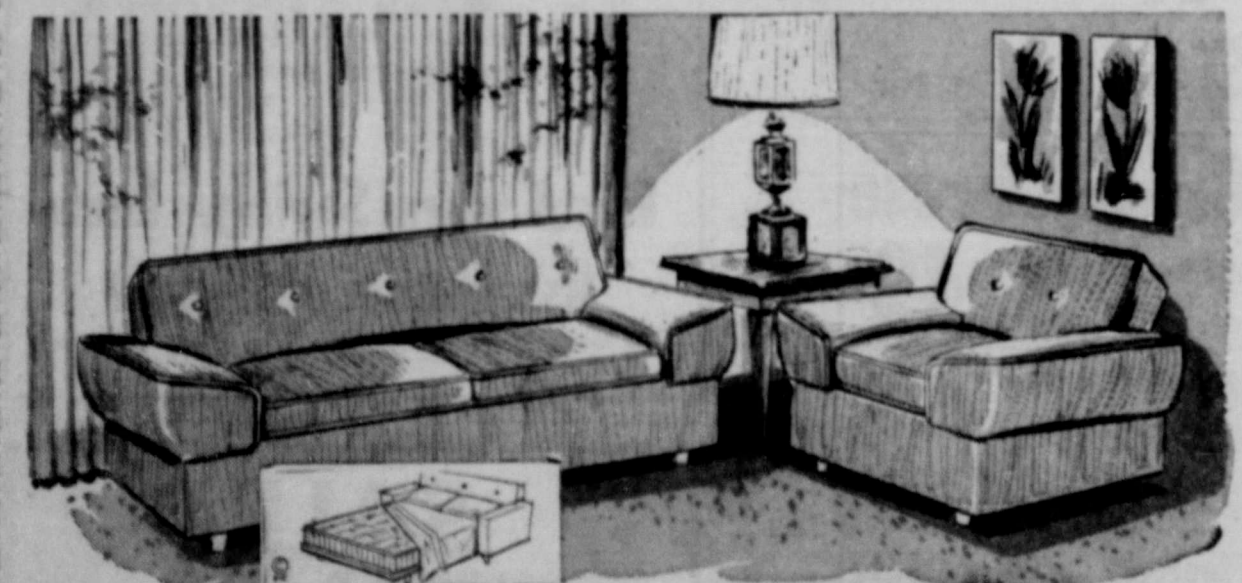


Save on this chair now... and if you're a winner... we'll refund your purchase price.

Stunning new straight-line styling . . . the famous chair that automatically goes from closed to special TV position to fully reclined! Gorgeous colors in Vinelle—the more durable, glove-soft, more luxurious covering that whisks magically clean in an instant.

special introductory low price
\$59⁴⁰

New Beauty For Double Duty



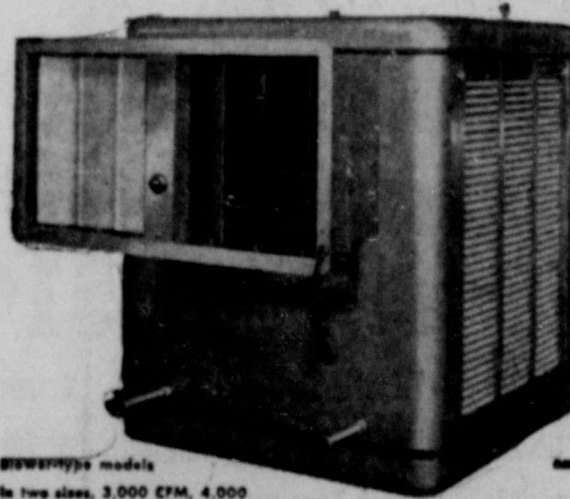
2 PIECE SLEEPER VALUE

• Foam Cushions
• Innerspring Mattress
• Matching Chair
• Choice of Fabric and Color
REGULAR 249.95
\$189⁴⁰



Dearborn EVAPORATIVE COOLER

Here's the wise buy for thrifty families! Dearborn Evaporative Coolers will keep your home highland cool . . . and keep cooling costs down. Costs less to buy, less to operate, gives you all the cool dust and pollen free air your home needs for comfortable, healthful living.



and it's loaded with quality features

- Smart copper-tone finish
- Flush mounted — fits any standard double-hung window
- Adapter kit available for installation in casement window
- Recirculation pump standard equipment
- Two-speed motor . . . one knob control
- Coals or Ventilates
- Galvanized and Banderized to prevent rust or corrosion
- Tier-drop water distribution
- Directional air-flow louvers

NEWEST type models in two sizes, 3,000 CFM, 4,000 CFM. Also Fan-type in 2,700 CFM size

Dollar-Wise it's Dearborn

\$114⁴⁰

Reg. 134.95 - Plus 3% Tax

10% TO 40% ON ALL MER During Our 40th A Entire Stock—Nothi

KING SIZE

- 78 x 80 Inch Foam Mattress
- Two 39 x 80 Inch Box Springs
- Two Bed Frames
- One 78 Inch Brass Headboard

BUNK BED

- Two 3' 3" Bunk Beds
- Two Link Springs
- Two Innerspring Mattresses
- One Guard Rail • One Ladder

27" Foam Mattress Rollaway Bed 19.40

FREE DOOR FIRST PRIZE ST SECOND PRIZE BAR THIRD PRIZE WESTIN

No obligation. You do not have

GOLD SEAL AND ARMSTRONG VINYL LINOLEUM

- 12 Foot Width
- Regular 1.69 Sq. Yd. **129** Sq. Yd.

10 PIECE STUDI

- 1 Sofa
- 1 Coffee Table
- 2 Platform Rockers
- 2 Lamps
- 2 Step Tables
- 2 Pillows

LIVING ROOM

TWO-PIECE LIVING ROOM SI

- Foam Cushions
- Choice of Colors

10% to 40% Discount During Thi

No Carring Charge On Furniture

RANGER, TEXAS
123 N. Rusk Street
Phone MI 7-1404

RANGER FURNITURE

IER'S 40TH ANNIVERSARY SALE

**TO 40% DISCOUNT
ALL MERCHANDISE
Our 40th Anniversary Sale!
Stock—Nothing Held Back**

NG SIZE BED

Mattress
Box Springs
Headboard
Reg. \$229.50
\$179⁴⁰

IK BED SPECIAL

Mattresses
• One Ladder
Reg. \$89.50
\$74⁴⁰

Mattress
Bed
10
Throw Pillows
Reg. 1.00 Each Now 79¢
2 For 1⁴⁰

E DOOR PRIZES

..... STRATALOUNGER CHAIR
E BAR-B-CUE GRILL & CART
..... WESTINGHOUSE DOG-A-MATIC

ARMSTRONG
IOLEUM
129
Sq. Yd.
PLATFORM ROCKER
• Sturdy Construction 2 for 33.00
• Foam Seat
• 24.95 Value
Each **17⁴⁰**

IECE STUDIO SUITE

• 1 Coffee Table
• 2 Lamps
• 2 Pillows
CHOICE OF COLORS
\$114⁴⁰

NG ROOM SPECIAL

LIVING ROOM SUITE
Reg. \$189.50
\$139⁴⁰ With Trade

**40% Discount On All Merchandise
During This Sale**

Charge
Free Delivery
Terms To Suite

Don't just dream about them. Have them!

... those heavenly carpets by LEES



100% WOOL SOLIDS OR TWEED, REGULAR 7.95 SQUARE YARD **6.40**
100% FILAMENT NYLON IN HEAT SET PATTERN, REG. 8.95 SQUARE YARD **7.40**
70% WOOL, 30% NYLON REGULAR 4.45 SQUARE YARD **4.95**
100% WOOL WILTON EXTRA VALUE, REGULAR 11.95 SQUARE YARD **8.95**
ALL PRICES INCLUDE TACKLESS INSTALLATION OVER 40-OZ. RUBBERIZED PADDING

Now '40 off!

FOR YOUR OLD STOVE IN TRADE ON THIS NEW

1961
GAS RANGE **TAPPAN**



Reg. 199.50
169⁴⁰
With Trade

Open Stock Maple



9-PIECE SUITE **\$149⁴⁰**
• SIX CHAIRS
• FORMICA TOP TABLE
• BASE
• HUTCH

**BIG DISCOUNT
ON ALL USED**

FURNITURE



**HOOVER
Constellation**
This is the canister that has everything. Walks on air, has double stretch hose, ten second bag change, powerful motor, and the most efficient rug and floor nozzle. **19⁴⁰**
Only Reg. \$9.50



**HOOVER
POLISHER**
Scrubs, waxes, polishes even shampoos rugs.

Hoover Representative

Will Be In
Our Store
To
Demonstrate and
Handle any Service
Problems.

Only **\$54⁰⁰**

2 PIECE BEDROOM SUITE



Similar To Illustration **\$69⁴⁰**
Regular 89.50 NOW

GREAT BUY FOR BIG FAMILIES

New Cold Injector **WESTINGHOUSE** Frost-Free



REFRIGERATOR
with Separate
Home Freezer

**CHILLS FASTER
THAN ANY OTHER!**

Refrigerator space plenty . . . plus a terrific separate freezer! 32 STORE-AND-SERVE UNITS go to table or counter! Child-safe **MAGNETIC DOOR** opens at a touch . . . has Ceramline magnet with lifetime guarantee. **GLIDE-OUT SHELVES**. New **CUBE EJECTOR** shows non-stick cubes into **CUBE SERVER**. 11 exclusive Color Panels combine with 5 refrigerator colors for choice of 55 **COLOR COMBINATIONS** . . . give choice of a little or a lot of color.

Reg. 529.95
With Trade **399⁴⁰**

12 Ft. Upright Freezer Reg 289.95 **224⁴⁰**

15 Ft. Chest Freezer Reg 319.95 **239⁴⁰**

TURE EXCHANGE

RANGER, TEXAS
123 N. Rusk Street
Phone MI 7-1404

READ THE CLASSIFIEDS

YOUR Independent AGENT
SERVES YOU FIRST

There's only one thing to do about a hurricane

Sometimes you can put out a fire, but you can't put out a hurricane.

The only thing to do is to be sure you have plenty of windstorm insurance. Then just wait the thing out and don't worry.

Hurricanes, cyclones and tornadoes used to confine themselves to certain areas. But now they roam anywhere, and one may blow your property to toothpicks or smash it in with a big tree . . . any minute.

An Extended Coverage endorsement added to your Fire policies will insure you against loss by windstorm and six other perils as well.

G. E. MADDOCKS & CO
Insurance - Real Estate
207 Main Phone MI 7-1171

ABOUT YOUR HEALTH

Diphtheria managed to strike down 95 young Texans in January and February, State Health Department records show, despite the fact that measures for controlling it are well-known and effective.

The 1960 toll reached 239. That's 76 cases above the 5-year median, and 63 cases more than were reported during the previous year.

While worrisome to state and local health officials, the 1360 figure is by no means a record, even for recent years, but it is highly significant when individual cases are studied: 164 of the victims had had no immunizing shots whatever, and 38 had been inadequately immunized. Only 16 had received the full course of protective shots.

Therein lies a basic truth concerning communicable diseases and their control: out breaks are products of neglected immunizations.

Other parts of the world are having similar flare-ups. An outbreak is reportedly in progress in Santiago, Chile.

Income Tax Return?

SEE **Ruby Springer**

For careful analysis. DON'T TAKE A CHANCE of paying too much, or failing to qualify for SOCIAL SECURITY protection. **Farmer Ranchers, all Self-employed, the young and those approaching retirement age—ARE YOU QUALIFIED?** Let's talk it over.

RUBY SPRINGER
Ranger, Texas MI 7-3230



See Us For FURNITURE • APPLIANCES CARPETS

Every Day Low Prices Means Savings For You!

No carrying charges on furniture for 1 full year

FREE DELIVERY

Ranger Furniture Exchange

"BRASHIER'S"

123 N. Rusk Ranger Phone MI 7-1404

In diphtheria dangerous? Certain types can be quickly lethal. In some epidemics the death rate may reach as high as 12 percent, but it is more commonly two to five percent.

In communities where immunizations have been neglected, studies show that about one fourth of all cases and one-half of all deaths are among children under five. On the other hand, when childhood immunizations have been adequate but reinforcing shots neglected, older persons are more often the victims.

Diphtheria today is probably the same disease which cut down great numbers of children in Egypt during the second century and faithfully described by learned men of that early day.

Its germs characteristically in the body's mucous membranes—usually in the throat. They remain localized but grow and multiply and exude a poison which produces typical symptoms.

Recovery from one attack of diphtheria usually, but not always, confers an immunity against a second attack.

The only effective control against the disease is active immunizations of whole populations, on schedules advised by family physicians. Reinforcing shots are essential during pre-school years, desirable on entrance into school, and optional throughout school life and early adulthood. (A weekly feature of the Health Education Division, Texas State Department of Health.)

Soil Temperature Important At Planting Time

In this age of mechanized cotton production, a uniform stand with desirable plant spacing is a must. Since such a stand requires precise planting operations, both equipment improvements and planting practices are important. It is also important to take full advantage of the growing season by obtaining a satisfactory stand the first planting.

One guide to use in aiming for maximum germination of the first planting is soil temperature. Temperature is a major factor in seed germination and cottonseed germinates poorly at temperatures lower than 70 degrees F. It has also been proven that seedlings grow more slowly and less vigorously at the lower temperatures.

In order to determine the accuracy of soil temperature as a guide to planting dates, the Texas Agricultural Experiment Station conducted a series of tests at the Lubbock station. One of the findings was that minimum soil temperatures at an eight-inch depth for the ten-day period preceding planting were useful as planting guides.

It was also found that cotton seedlings emerged in five to nine days from the preplanting soil temperatures at eight-inch depth averaged 60 degrees F. or above for ten days. But up to fifteen days were required for seedling emergence when the average soil temperature was lower.

Another advantage of using soil temperatures instead of currently recommended dates as a planting guide is that it allows earlier or later planting, depending on current weather conditions.

Anyone desiring more information on the tests conducted by the Experiment Station should write the Agricultural Information Office, College Station, Texas, and request a copy of MP 465, "Soil Temperature—A Guide to Timely Cotton Planting."

Gorman Gatherings

Mrs. T. A. Thompson left Friday for San Diego, Calif., to be at the bedside of her brother, Roland Pritchard, who is critically ill.

Mrs. G. D. Riley and Mrs. R. E. Boucher were in Wichita Falls Thursday visiting with Mrs. Riley's brother, Roy Duke.

Mr. and Mrs. Gene Ellison of Abilene were supper guests Saturday in the home of his parents, Mr. and Mrs. J. N. Ellison. They also purchased a new Chevrolet from Smith Bros.

Mr. and Mrs. Marvin Nix were in Fort Worth Friday and Saturday. Mr. Nix was there on business.

Rev. A. D. Kyle has been in a revival in DeLeon for the past week. Dr. A. J. Quinn of Howard Payne College filled the pulpit Sunday morning and evening in the absence of the pastor. His wife was a visitor.

Mr. and Mrs. T. G. Gray had as their guest over the weekend their daughters, Mrs. Preston Lightfoot of Sweetwater and Mr. and Mrs. A. C. Maddocks of Denton.

Mrs. Shell Logan of Corpus Christi brought her mother and sister home Sunday. Mrs. Angie Pritchard and Ethel have been visiting with her through the winter. She will return home Friday but Mrs. Pritchard and Ethel will be home through the spring and summer.

Mr. and Mrs. Dan Martin of Eastland were visiting in the home of his brother and wife, Mr. and Mrs. E. F. Martin, they also visited with Mrs. Gay Underwood, who is a patient in the Reid Nursing Home.

Mrs. G. D. Riley left Wednesday for a visit with his sisters, Mrs. Bailey Smith of Gainville, Mrs. Ada Morgan in Thackeraville, Okla., and then to Ardmore, Okla., to visit with his sister, who is critically ill at her home.

Rev. A. D. Kyle was called to the bedside of his father who is critically ill in the John Sealey Hospital in Galveston.

Word was received this morning that Mrs. Sim Bennett had passed away at the home of her son, Bobby Bennett, in Fort Worth. She is the mother of Mrs. Dean Bennett, who with her husband, left early this week for Fort Worth. The body will be brought here for burial. Services are pending at this time.

Wright Attends Veterans Service Officer Meeting

James Wright, veterans county service officer for Eastland County, attended a Regional Rehabilitation Clinic for Veterans Service Officers which was conducted in Mineral Wells, March 23 - 24.

This Regional Clinic was conducted by the Veterans Affairs Commission, in cooperation with the various Veterans Organizations and the Veterans County Service Officers Association of Texas. The purpose of the Clinic was to offer Service Officers first-hand knowledge of recently enacted legislation dealing with

benefits to veterans, their dependents, and survivors. Topics discussed during the two-day clinic included compensation, pension, government insurance, GI loans, education and training for veterans and war orphans, veterans employment and re-employment rights, and hospital and outpatient treatment for veterans.

Conducted annually, these clinics serve as in-service refresher training courses for County, Post and Chapter Veterans Service Officers. Five such clinics are to be conducted over the State during this spring.

AUTO - TRUCK SERVICE
• Motor Tuneup
• Motor Overhaul
• Wheels Balanced
• Hydraulic and Dyna-flow Transmission Repair
★
Authorized International Harvester Parts and Service
Ranger Garage
Hwy. 80 West - Ph. MI 7-3297
RANGER

IF FIREMEN have to fight their way through to a blaze in your home, every swing of their axes will mean a hole in your pocketbook . . . unless you have adequate insurance.

DON'T WAIT for that blow to fall!

GET YOUR Fire Insurance today from . . .

An Expensive Cut

DEFECTIVE WIRING, APPLIANCES caused 13 percent of all home fires last year and 4 percent of all home fire fatalities!

May Insurance Agency

INSURANCE — REAL ESTATE
W. J. Sipes Phone MI 7-3582
GIVE YOUR HOME A SAFETY CHECK-UP

TRY OUR FAMILY

PICNIC SPECIAL

ONE WHOLE FRIED CHICKEN

• Loads of French Fries
• Hot Rolls

\$1.75

BOXED TO GO

—Fried To A Delicious Golden Brown—
PHONE MI 7-9340 FOR QUICK SERVICE

CHICK-IN-SHACK

DINING ROOM AND CURB SERVICE
Hwy. 80 East Ranger

DON'T BE A STRANGER!
COME IN AND GET ACQUAINTED . . .

We know that you will be pleased with our service and that you'll like the performance of our products in your car. We'd like to have you shift the care of your car to our shoulders. You'll find our service complete, our men carefully trained, and eager to greet you with a friendly smile. We'd like to be the station you can rely on for all your automobile needs and would be mighty pleased to have you as a regular customer.

WE GIVE S & H GREEN STAMPS OPEN 7 A.M. to 10 P.M.

CAMPBELL'S

HUMBLE STATION

Highway 80 & Main Ranger, Texas

We'll take any old watch in trade . . . regardless of make, model or condition!

DON'T BE PREHISTORIC!
Trade your old watch in for a **BULOVA** and be up-to-date!

YOUR CHOICE ONLY \$99.50 \$1 (9 week)

D. E. PULLEY
Diamonds - Watches
Jewelry
Phone MI 7-1616

Let Us Make You An Estimate of the Cost

DON'T MOVE IMPROVE WITH LUMBER

FOR THE EXTRA ROOM YOU NEED

ADD ON

Make sure that new add-on living area does increase the beauty and value of your home! Choose from quality lumber and building materials. Depend on us to have the best of what you want, at lowest prices.

Ranger Lumber & Supply Co.

Calvin Brown—Earl Brown
Phone MI 7-1481 Ranger

Model for model . . . there are 18 Chevrolets lower priced than any other full-sized car!

Leave it to these Jet-smooth Chevies to go easy on your family budget! All told there are 18 Chevrolets—V8's and 6's—priced lower than comparable competitive models*.

one of them has a road-gentling Jet-smooth ride. Body by Fisher refinements and dozens of engineering details you'd expect only in the most expensive makes. Look them over at your Chevrolet dealer's one-stop shopping center and see how easy it is to drive out in just the one you want!

*Based on comparison of manufacturers' suggested retail prices (including Federal tax) for models with 118-inch wheelbase or above.

IMPALAN Impala V8 Convertible	BEL AIR Bel Air V8 2-Door Sedan	Bel Air V8 4-Door Sedan
Impala V8 Sport Sedan	WAGONS Nomad Six 4-Dr. 9-Pass. Station Wagon	Nomad V8 4-Dr. 9-Pass. Station Wagon
Impala V8 Sport Coupe	Nomad V8 4-Dr. 6-Pass. Station Wagon	Nomad Six 4-Dr. 6-Pass. Station Wagon
Impala V8 2-Door Sedan	Parkwood Six 4-Dr. 6-Pass. Station Wagon	Parkwood V8 4-Dr. 9-Pass. Station Wagon
BISCAYNES Biscayne V8 4-Door Sedan	Parkwood Six 4-Dr. 9-Pass. Station Wagon	Parkwood V8 4-Dr. 6-Pass. Station Wagon
Biscayne V8 2-Door Sedan	Brookwood Six 4-Dr. 6-Pass. Station Wagon	Brookwood V8 4-Dr. 6-Pass. Station Wagon

See the new Chevrolet cars, Chevy Corvettes and the new Corvettes at your local authorized Chevrolet dealer's

ANDERSON CHEVROLET COMPANY

111 S. AUSTIN STREET RANGER PHONE MI 7-1161

1st YE
Sch
And
Elec
The R
Board at
lege Hon
elections
Board m
Three
two posi
Melvin J
ion, Aar
Warford
for the
ton, pres
seeking
There
The Calh
election,
and three
election,
are Rose
las Mims
ing the
Page w
election.
The cl
School,
tion Bu
from 8 a
judge is
Mrs.
Buri
In S
Mrs.
away in
pital Th
ing a lo
Mrs. B
County i
Married
1915 in
Straw
was pro
husband
Rosar
Friday
recited
Church
25, with
officially
Marion
Funera
rangeme
Surviv
Johnny,
Erwin,
Edie of
ghters,
Mrs. K.
Mrs. E.
brothers
olph No
Stephen
Mheral
Bee Jo
Joe Hol
grandchi
"Talbe
wak, G
mann, F
les Now
Carl
Chur
Begi
Carbo
gin a S
ning an
ue thr
will be
Rev.
do the p
song dir
services.
A ch
everyon
services
Firs
Th
"The
Mrs. Ra
ented S
in the P
graded c
the chur
Holy La
the "Tris
Resurrec
Jesus."
Leo Ri
al numb
the vario
choirs.
Narrat
chir co
David
Sandy V
Specia
Mrs. F.
Brashier,
King and
colored s
Perkins,
F. P. Br
Miss Jill
Hodges,
Wilson G
don.
Musie
membres
Begini
Mrs. Ric
"Jesus C
Bella."
Prima