

As I See Ranger

By Gene Townsend

The score of the Del Mar-Ranger College football game last Saturday night might indicate that the Rangers really got a licking, but actually the game was a lot better than the score indicated.

Rangers Defeated By Del Mar Vikings

The Ranger College Rangers ran into the tough Del Mar Vikings at Corpus Christi in their first road trip Saturday night and was handed a 30 to 8 defeat.

Table with 2 columns: Ranger, DelMar. Rows include First Downs, Yards Rushing, Yards Passing, 42 of 56 Passes completed, Passes intercepted, 5 for 39 Punts Average, 2 for 10 Penalties, Fumbles Lost.

The Rangers played a tough defense through the entire game, but could never get their offense operating.

Roland Jacoby Participates in Army Exercise

Army PFC Roland L. Jacoby, 18, son of Leroy Jacoby, Ranger has participated with other personnel from the 101st Airborne Division's 327th Infantry in a special STRAC (Strategic Army Command) alert at Fort Campbell, Ky. The alert was scheduled to end Sept. 30.

The 101st Airborne Division, a major STRAC unit, constantly maintains an immediate readiness force for airborne deployment to any area in the world.

Jacoby, whose mother, Mrs. Bonita S. Jacoby, lives at 1004 Berry dr., Hobbs, N. M., is a driver in the 327th Company A at the fort. He entered the Army in December 1959 and completed basic training at Fort Chaffee, Ark.

FHA Officials Meet to Study New Policies

Thirty county Farmers Home Administration committeemen along with the county supervisors from the 10 counties of Area 12 which has headquarters in Eastland, met Thursday in the Texas Electric meeting room to study new FHA policies and authorities which went into effect Oct. 1.

The major changes being put into operation is the expansion of previous authorities to permit the making of loans to those farmers who are carrying on their farming operations and working off the farm to supplement their incomes.

Another change which will be very helpful to both the borrower and the personnel handling the program is the streamlining of procedure to permit more speed in handling of loan applications and bring FHA procedure in line with other changing times.

Rev. Holland Appointed to Ranger Church

Rev. W. T. Holland, recently arrived in Ranger where he is taking over the pastorate of the Church of Prophecy.

SVGP to Hold Annual Barbecue Monday Evening

The Sabano Valley Game Preserve will have their annual barbecue and "get together party" Monday evening at 6:30 p.m. in the Center Point Community House, five miles south of Carbon.

until the last quarter of play. Del Mar took the opening kickoff and returned it to their own 33 yard line and was forced to punt after failing to make a first down. The Rangers took over and began to move the ball, picking up a first down only to have the drive stopped by an intercepted pass, which was returned to the Rangers 26 yard line. From there the Vikings seems determined to push the ball over for a score, but the Ranger defense tightened up on the ten yard line and Marvin Agnew charged through the Viking line and hit the quarterback as he was handing off. Pat Blakely was on hand to grab the ball out of the air when Agnew knocked the quarterback loose from the ball. Blakely returned the ball to the 45 yard line, but the Rangers again bogged down and were forced to punt.

The Vikings came charging back after the half and intercepted a Ranger pass and returned it to the Ranger 19 yard line. This time the Rangers couldn't hold the Viking's ground attack and C-Aer again went into the end zone for a score. McClain's kick was good and the Vikings led 16 to 0 with one minute and 50 seconds in the third quarter.

The Vikings went to the air ways again midway in the third quarter for a score as Elliott hit end Sammy Garza with a pass that was good for 54 yards and the score. McClain again made the conversion good with a kick.

The Ranges offense began to pick up a little in the fourth quarter as they mounted two good drives only to have them stopped on the 20 and 35 yard lines.

The Ranges score came with one minute and 21 seconds left in the game. A pass to Dick Stephenson and runs by Jerry House moved the ball from the Ranger 37 down to the Vikings 8 yard line. From there quarterback Button Humphrey hit end Richard Fuller with a pass in the end zone for the score. House raced around end for the extra points.

New Buick for '61 At Muirhead Motor Company

The new 1961 Buick automobile will be shown at the Muirhead Motor Company in Eastland Tuesday.

Muirhead's will introduce for the first time a special sized Buick Special. Smaller than the regular sized cars and bigger than the small car, it features a combination of savings and ease with Buick comfort and luxury. For an all-day ride there is more total head, leg and hip room than in a smaller compact.

It also features the all new aluminum V-8 and aluminum Dual-Path turbine drive, which gives twice the power per pound of most compacts. Buick will again offer three full size cars, the LeSabre, Invicta and the Electra. The full-size Buick is new clear through from its big comfort zone right down to the ground. Doors are wider and the dog leg's smoothed away. A new Hide-Away driveshaft gives more flat space in the floor. A new safety-X frame lowers the door sills. A new control arm suspension smooths the bumps and the new Wildcat V-8 engine, streamlined from within for more go on less gas, and its gas-saving New Turbine Drive are added features to the 1961 model. Standard finish can be obtained on all full-size Buicks.



MAKING TRACKS—Railroad worker Birger Sandman rides to the job on a special tricycle in Kiruna, Sweden. The town, 90 miles north of the Arctic Circle, depends completely on the railroad to bring in supplies.

Mail Service Volume Reaches Record High

A new all-time high in the national volume handled per man-hour of employment—excluding city carriers—has been increasing since 1953. In that year the total handled by one man was 132,000 pieces of mail. For 1960 the corresponding figure was 157,000.

"It is, of course, true that all the additional service has made it necessary to take on many new employees and that our total increased from 596,520 in 1953 to 562,868 on June 30, 1960, but as pointed out in the original 1960 report figures, the workload increases during this same period was nearly 25 percent.

Locker Room Quips

By Russ Ward and Theodore Yap. The Ranger Rangers played the Del Mar Vikings of Corpus Christi in the Roy Miller Stadium at Corpus Christi Saturday night, Oct. 1. The Rangers fought a tough fight, but gave up a 30-8 loss to the Vikings, who competed in a Junior Rose Bowl last year.

"They hit harder than any team I've ever played," Marvin Agnew said. "I'd like to play them again at Ranger." Don Hazard: "They were real tough." Jerry House: "We hit them hard but they hit us harder." Richard Fuller: "They had too much depth for us."

Coach Puryear commends the boys highly on the spirit and effort shown in the game. He says, "If we continue to battle as we did against Del Mar, we can hold our heads up proudly even in defeat."

Courthouse News And Records

Foy O. Brooks to V. R. Blake, oil, gas and mineral lease. Mrs. Dell S. Berry to Ned L. Morris, warranty deed. Katharine L. Berry to Eldon Callahan, release of vendor's lien.

Eastland County Democrats hope to have at least 1,000 persons at their giant barbecue political rally at the Eastland Park tonight.

The Ranger Booster Club met Monday night in the College Cafeteria for a business session and program.

A nominating committee consisting of Wesley Poyner, Leonard Arterburn and M. L. King, that had been appointed to nominate a member for president to replace Wilson Guest who resigned due to conflicting civic obligations, submitted to the club the nomination of Dr. W. P. Watkins for president. The suggestion of the committee was put in form of a motion and seconded and carried a unanimous vote of the club.

Other committee reports were given. The committee for installing a device at the football field to sound the end of quarters reported the project completed. The Bonfire Committee reported progress for the bonfires was being made.

The club also voted to buy jerseys for the seventh grade football team. There is 17 seventh graders and the club decided to purchase 20 jerseys for the team. The jerseys will be maroon with white numbers on one side.

Next meeting will be Monday, Oct. 10.

Final Rites Are Held Sunday for Mrs. Garrett, 83

Final rites were held Sunday at 3:30 p.m. in the Hamner Funeral Home Chapel for Mrs. Rodie Ann Garrett, 83, resident of Eastland for 60 years.

Mrs. Garrett died at her home in Newwood Addition about noon Saturday following a heart attack which she suffered two hours earlier.

Rev. Henry Littleton, pastor of the Bethel Baptist Church, officiated at the services with burial in the Staff Cemetery, nine miles southeast of Eastland.

Thousand Expected For Big Demo Rally

Eastland County Democrats hope to have at least 1,000 persons at their giant barbecue political rally at the Eastland Park tonight.

The event—the first political rally of this kind in years here—will feature Cong. Jim Wright as main speaker. Visiting dignitaries will include Randall Jackson, member of the State Democratic Executive Committee, of Baird; Mrs. Randall Jackson, chairman of the Women's Activities of the 17th Congressional District; Wiley Connally of Abilene; Virgil Murrice, co-chairman of the 17th District's Democratic campaign, of Abilene; French Robertson, Democratic Executive Committee member of Abilene; and others.

Services To Be Held Wednesday For Mrs. Green

Funeral services will be held Wednesday at 2:30 p.m. in the Little Flock Baptist Church for Mrs. Ruby Mae Green, 52, of Eastland who suffered a fatal heart attack Friday while riding in a car in Ranger.

Mrs. Green was brought to Hamner Funeral Home by Killingsworth of Ranger. Rev. E. M. Smith will officiate at the services.

The deceased was born Oct. 9, 1907.

She is survived by her father, Sam Ross; two sons, Clyde and Grady Ross of Eastland; one daughter, Mrs. Lois E. Wilson of Eastland; two stepdaughters Mrs. Amelia Govan and Mrs. Freddie Mae Turner of Eastland; three brothers, Burnett Ross, stationed with the Army in California; Harvey Ross of Nebraska and Lonnie Ross of Kaufman; three sisters, Mrs. Elsie Henderson of Kansas City, Mrs. Besie McNeal and Mrs. Arabella Robinson, both of Dallas.

Surviving are two sons, John and Coe of Eastland; one daughter, Mrs. Sam Robinson of Brownwood; three stepsons, Lee, Eastland; one stepdaughter, Mrs. Josie Helm of Corpus Christi; six grandchildren and four great-grandchildren.

Boosters Club To Buy Seventh Grade Jerseys

The Ranger Booster Club met Monday night in the College Cafeteria for a business session and program.

A nominating committee consisting of Wesley Poyner, Leonard Arterburn and M. L. King, that had been appointed to nominate a member for president to replace Wilson Guest who resigned due to conflicting civic obligations, submitted to the club the nomination of Dr. W. P. Watkins for president. The suggestion of the committee was put in form of a motion and seconded and carried a unanimous vote of the club.

Other committee reports were given. The committee for installing a device at the football field to sound the end of quarters reported the project completed. The Bonfire Committee reported progress for the bonfires was being made.

Local Police Make Three Arrests Monday

Police Chief Bob Patterson reported today that the Police Department apprehended Ray Wallace, alias J. C. Long, formerly manager of the Village Hotel Coffee Shop in Eastland, on suspicion of burglary.

Wallace is wanted in Garden City for a felony, and is being held here for the sheriff's department of Garden City.

Patrolman J. W. Vinson and Constable Ralph Neal arrested two teenagers Monday night for attempted car theft. The teenagers were apprehended while trying to steal a pickup at the Lone Star Garage. They were charged with attempted theft in Judge Ruby Springer's Justice Court and transferred to the Eastland County jail.

The Ranger Booster Club met Monday night in the College Cafeteria for a business session and program.

A nominating committee consisting of Wesley Poyner, Leonard Arterburn and M. L. King, that had been appointed to nominate a member for president to replace Wilson Guest who resigned due to conflicting civic obligations, submitted to the club the nomination of Dr. W. P. Watkins for president. The suggestion of the committee was put in form of a motion and seconded and carried a unanimous vote of the club.

Other committee reports were given. The committee for installing a device at the football field to sound the end of quarters reported the project completed. The Bonfire Committee reported progress for the bonfires was being made.

The club also voted to buy jerseys for the seventh grade football team. There is 17 seventh graders and the club decided to purchase 20 jerseys for the team. The jerseys will be maroon with white numbers on one side.

Next meeting will be Monday, Oct. 10.

Rev. Henry Littleton, pastor of the Bethel Baptist Church, officiated at the services with burial in the Staff Cemetery, nine miles southeast of Eastland.

Surviving are two sons, John and Coe of Eastland; one daughter, Mrs. Sam Robinson of Brownwood; three stepsons, Lee, Eastland; one stepdaughter, Mrs. Josie Helm of Corpus Christi; six grandchildren and four great-grandchildren.

FILING CABINETS

All steel construction. For office or home. Letter or legal size; one, two, three and four drawer. Locks optional.

THE RANGER TIMES

THE RANGER TIMES

BULLDOG BARK

By Janice Thompson

Last week wasn't too good for the Bulldogs although they played a hard and fast game. I am sure as hard as they played last week everyone will go to the Cross Plains game to see the Bulldogs take on the Buffaloes. Everyone be sure and come to all the pep rallies this week and stay with the Bulldogs.

The first devotional was held Monday morning at 8:30 a.m. and was a very successful start. Hope everyone continues to go to all the devotionals.

Current Occurrences

Soe G. who did you call Monday a git? James did you really have a big blue pine from riding in a trailer? Kay did you have fun Saturday night, seems Norman did? It seems like Terry H. forgot to play his saxophone Saturday night on one of the songs. Am I right or wrong? Betty E. has a new coat in her wardrobe, thanks to Frank. Teddie what is this about no more haunted house business?

This week's motto—East Coast Plains.

OFFICE CHAIRS Enjoy the comfort and relaxation a posture chair can give you. THE RANGER TIMES

Killingsworth's Serving Ranger, Jan. 1918 Insurance - Birth to 90 years Phone MI 7-3222

The Ranger Times

"Building Community Betterment Since 1919"
ELM STREET—RANGER, TEXAS ESTABLISHED JUNE 1, 1919
Entered as second class matter at the postoffice at Ranger, Texas under the act of Congress of March 3, 1919.

TIMES PUBLISHING COMPANY
Published Tri-Weekly—Tuesdays - Thursdays - Sundays
JOE DENNIS and ONOUS DICK, Publishers
GENE TOWNSEND, Editor

One week by carrier in city	15
One month by carrier in city	45
One year by mail on Ranger RFD Routes	8.95
One year by mail in county	4.95
One year by mail in state	4.95
One year by mail out of state	6.95

NOTICE TO PUBLIC—Any erroneous reflection upon the character, standing or reputation of any person, firm or corporation which may appear in the columns of this newspaper will be gladly corrected upon being brought to the attention of the publishers.

CLASSIFIED

PHONE MI 7-1101
All Classified Ads Must Be Paid For In Advance

MISC. FOR SALE
FOR RENT in Olden, 2 bedroom house, city water, \$25 per month. Contact C. E. Bridge.

BEDROOM FOR RENT, Private entrance, connecting bath. Phone MI 7-3268.

SPECIAL NOTICES
GOLDEN AGE NURSING HOME... home atmosphere... care for all types of patients... special diet, 24 hour nursing care... doctor on call 24 hours. Phone MI 2-2579 Cisco, Texas

FOR SALE: All steel cabinet-type cupboards, 22 x 30 inches. Four drawers to unit, with steel frame and half bearing rollers. \$20.00 per unit. Not sold separately. Ranger Times Office Supply.

FOR SALE: Bookkeeping supplies, post binders, indexes, receipt books, ledger sheets, storage files, slide books, order books, and many other items... at the Ranger Times Office.

FOR SALE: Modern house for sale or rent. Call E. F. Arterburn.

FOR SALE: Two good house trailers, modern. W. D. Harper, Gorman.

LADIES of the First Christian Church are sponsoring a Runway Sale each Wednesday and Saturday, 399 Main Street. We have a lot of children's winter clothing.

SPECIAL SALE old lot Goodyear dry charge batteries, 20 percent discount with old battery. Ranger Garage, Highway 80 West.

WANTED responsible party in this area to assume attractive balance on a small upright piano. Also one small Grand Upright only. Credit. Mr. Whisler, Broad Plains, 1363 E. Main, Broad Plains, Texas.

FOR RENT
THREE ROOM unfurnished apartment across street from High School, to couple or single woman. Phone MI 7-1471. Mrs. Charles Hobbs.

TWO BEDROOM house for rent, partially furnished, or will sell my equity. 712 West Main. For information contact Mrs. Frances Blackwell, day MI 7-1129, after 6, MI 7-1536.

SEE O. G. Lanier FOR OIL AND GAS LEASES AND REAL ESTATE WE BUY AND SELL Ph. MI 7-3450 - 113 S. Rusk Ranger, Texas

Local AND LONG DISTANCE MOVING STORAGE

A carton or a carload... we move it promptly, carefully. Storage facilities and service are the finest. Low rates. Insurance available.

FREE ESTIMATES! Ranger Transfer and Storage M. D. Underwood, Mgr. Phone MI 7-1344

SINCE 1884... quality workmanship and efficient service, approved throughout this area.

ALEX RAWLINS & SONS Designers and Builders of Monuments Since 1884 Weatherford Phone LY 4-3726 Texas

Barber Shop IT PAYS TO LOOK WELL Courteous Service

TONY'S BARBER SHOP 223 1/2 Main - Ph. MI 7-1126

GOING STEADY? Pledge Her with a Storfire Diamond "Friendship" Ring by famous Keepsake

Yours for \$19.75 Here's a real friendship ring... with a genuine Storfire diamond in a beautiful heart design created for you by famous Keepsake Diamond Rings.

While in our store be sure to pick up your copy of the new "Art of Dating" book (reg. \$2.50 in hard cover) for only... 50¢

D. E. PULLEY Diamonds - Watches Jewelry Phone MI 7-1616

STATEMENT OF OWNERSHIP, MANAGEMENT, CIRCULATION, ETC., REQUIRED BY THE ACT OF CONGRESS OF MARCH 3, 1911, AND MARCH 3, 1933.
PUBLISHED AT RANGER, TEXAS OCTOBER 4, 1960
STATE OF TEXAS, County of Eastland.
Before me, a notary public, in and for the state and county aforesaid, personally appeared Joe Dennis, who, having been duly sworn according to law, deposed and says that he is business manager of the Ranger Times and that the following is, to the best of his knowledge and belief, a true statement of the ownership, management (and if a daily paper), the circulation, etc., of the aforesaid publication for the date shown in the above caption, required by the Act of Postal Laws and Regulations.
That the names and addresses of publisher, editor managing editor, and business manager are:
Publisher—Joe Dennis, Ranger, Texas.
Editor—Gene Townsend, Ranger, Texas.
Business Manager—Joe Dennis, Ranger, Texas.
That the owners are:
1. Joe Dennis, Business Manager, Ranger, Texas; O. H. Dick, Eastland, Texas; (Owners).
2. That the known bondholders, mortgagees and other security holders, owning or holding 1 per cent or more of total amount of bonds, mortgages, or other securities, are Eastland National Bank, Eastland, Texas.
3. That the known bondholders, mortgagees and other security holders, owning or holding 1 per cent or more of total amount of bonds, mortgages, or other securities, are Eastland National Bank, Eastland, Texas.
4. That the two paragraphs next above, giving the names of the owners, stockholders and security holders, if any, contain not only the list as they appear upon the books of the company at the date of the filing of this statement, but also that the said two paragraphs contain statements embracing affiant's full knowledge and belief as to the circumstances and conditions under which the stockholders and security holders who do not appear upon the books of the company as trustee, hold stock and securities in a capacity other than that of a bona fide owner, and that affiant has no reason to believe that any other person, association, or corporation has any interest, bond, or other securities than as so stated by him.
5. That the average number of copies of each issue of this publication sold or distributed through the mails or otherwise, to paid subscribers during the 12 months preceding the date shown above is 2774.
Joe Dennis, Business Manager
Sworn to and subscribed before me this 4 day of October, 1960
Wilton Grant
My Commission expires June 1, 1961



WHO'S THE FAIREST?—There is little doubt that Nancy Anne Fleming, of Montague, Mich., is the fairest in the land. The girl at right is the reflection of Miss America.

Court News -

(Continued from Page One)
Morris Woods to George Clark, oil and gas lease.
Morris Woods to George Clark, oil and gas lease.

MARRIAGE LICENSES

Esma Ann Smith vs. Everett A. Smith, divorce.
Texeramics, Inc. vs. Lone Star Mining Co., Inc., et al, injunction and damages.

Mail Service-

(Continued from Page One)
We have no apologies to make and no regrets to express. What has been done was once said to be impossible. Now it is history. Those are also my sentiments.

Veterans to Meet Wednesday In Eastland

Veterans of World War I and their wives will meet at the Legion Hall, Wednesday, Oct. 5th at 7:30 p.m. in Eastland, Texas.

Barber Shop

IT PAYS TO LOOK WELL
to LOOK WELL
Courteous Service

TONY'S BARBER SHOP

223 1/2 Main - Ph. MI 7-1126

GOING STEADY?

Pledge Her with a Storfire Diamond "Friendship" Ring by famous Keepsake

Yours for \$19.75
Here's a real friendship ring... with a genuine Storfire diamond in a beautiful heart design created for you by famous Keepsake Diamond Rings.

Is Change-of-Life Making You Only Half a Woman?

Special women's medicine can relieve "hot flashes", weakness, nervousness... then you can enjoy life fully again!

Don't despair! Lydia Pinkham's Compound can relieve both tension and physical distress! In doctor's tests, Pinkham's gave dramatic help—without costly shots! Irritability is soothed. "Hot flashes" subside. "Then most women can go "smiling through" change-of-life without suffering!

If change-of-life has left you only "half" a woman, get Lydia Pinkham's Vegetable Compound from drugstore. See how fast you can feel "all woman" again!

SLEEP & HUNGER - MAKE UP YOUR MIND!
When due to simple iron-deficiency anemia, take Pinkham Tablets. Rich in iron, they start to strengthen your blood in one day!

Two Businesses Burglarized Sunday Night

No arrest has been made concerning the two burglaries in Eastland Sunday night. Burglars entered McGraw Motor Co. and MacMoy's Super Save.

McGraw Motor Co. was entered through the south door of the building, the knob knocked off the safe and the cash drawer removed. Larry McGraw, owner of McGraw Motor Co., estimates less than \$20 damage to the safe.

Ray Laney, chief of police, found the drawer in Eastland Cemetery with \$100 in cash and \$346 in checks missing. Five or seven nickles, 31 pennies, a few trinkets and some keys were found in the drawer, says McGraw.

J. V. Cox, service manager for McGraw, discovered the break-in when he opened the business at 7 a.m. Monday.

MacMoy's Super Save Grocery, owned by H. B. MacMoy, was also entered apparently by the same burglars. An undetermined amount of cash and cigarettes were taken.

MacMoy said the amount of cash would not be very great. Maurice Hazard, store butcher, discovered the break-in when he opened about 7 a.m. MacMoy said very little damage was done to the front door, where entrance was made.

MAJESTIC IN EASTLAND Today & Wednesday

Marlon BRANDO - WILD ONE

Marlon BRANDO ON THE WATERFRONT

ORDERS AND JUDGMENTS

J. W. Whitehead vs. State Farm Casualty Co. of Bloomington Ill. order of dismissal.
Ellen Oliver vs. J. J. Oliver, judgment.

Hubert D. Hollis vs. Standard Accident Insurance Co., judgment.
Texeramics, Inc. vs. Lone Star Mining Co., Inc., et al, order.

Verla L. Ward and husband E. C. Ward vs. Glenn Leroy Clark, judgment.

FURNITURE

for the Entire Home
★ Carpet - Rugs All Prices
★ Be Sure To Check With Eastland

Coats FURNITURE

Earl Bender & Company

Eastland, (Abstracts since 1923) Texas

RANGER DRIVE-IN

Highway 80 East on Ranges Hill
Boxoffice Opens 6:45 - Show Starts at 7:00
Adults 50¢ - Kiddies Under 11 Free
Only Eastland County Drive-In Open All Year
LAST TIMES TUESDAY

THE FIRST EXPERIENCES OF A YOUNG MAN IN THE MYSTERIES OF WOMAN!

JERRY WALD'S production of

"Sons and Lovers" D. H. LAWRENCE'S
TREVOR HOWARD - DEAN STOCKWELL
WENDY HILLER - MARY URE - HEATHER SEARS

EVERY WEDNESDAY IS BARGAIN NITE 50¢ CAN LOAD

Today THE SCREEN GROWS A LITTLE BIGGER AND A LOT BOLDER!

Take a Giant Step JOHNNY NASH - ESTELLE HEMSLEY

Call MI 7-1101 for Classifieds

SAVE NOW! FINEST USED CARS IN TOWN

Priced To Sell

1959 Rambler 4-Dr. Radio & Heat- 1695.00
er. White tires, real clean

1956 Olds 88 4-Door. Air conditioned, power steering and brakes. One owner. 995.00
Clean car.

1959 Olds 98 4-Dr. Air conditioned, 2995.00
power windows, seats. Real clean

1957 Chevrolet 2-Dr. 6 Cyl. Standard shift. Radio and heater 895.00

PIPKINS OLDS - CADILLAC
314 W. Main EASTLAND Ph. MA 9-2636

DIXIE Drive-In

EASTLAND RANGER HIGHWAY
Box Office Opens 7:00 Show Starts 7:15
Box Office Closes 9:15
Admission 50¢ - Children Under 12 Free
SUNDAY - MONDAY - TUESDAY, OCT. 2, 3, 4

THE #1 COUNTRY SINGERS AGAINST THE WAR CRAZED NATION! ROBERT STICKLER, BOB COLLINS and introducing PALMER LEE - A UNIVERSAL INTERNATIONAL PICTURE. PLUS: Color Cartoon and Sports Reel

WEDNESDAY, ONE DAY ONLY, OCT. 5
Wednesday is Bargain Day—Adults 25¢
Child Under 12—FREE

ETHER THE PARSON SPOKE... OR HIS PISTOLS DID... M.G.M. presents ONE OF THE FINE FAMILY PICTURES OF THE YEAR "STARS IN MY CROWN" JOEL MCCREA - ELLEN DREW - BEAR STICKWELL PLUS: Two Color Cartoons

TELEPHONE TALK

by Arthur H. Marx, Jr., Manager

FIRST PHONE CALL VIA SATELLITE!

The day isn't too far off when you and your family, relaxing in your home right here in Ranger, may watch a royal wedding in Europe or a tennis match in Australia by live television. Or you may place a call to Singapore or Calcutta—by way of man-made satellites thousands of miles in the sky.

These things were only dreams a few years ago. Now they are much closer to reality, all because of "Project Echo." It was the first successful attempt to "bounce" a voice off a satellite.

Perhaps you've seen the silvery "Echo" satellite orbiting the earth. To think of "bouncing" a phone call off it staggers the imagination. But that's what happened when a Bell Telephone Laboratories engineer in New Jersey talked by way of outer space with an engineer in California. They said they could hear each other as clearly as if they were talking across town.

Project Echo relied heavily on telephone science and technology. Bell Laboratories scientists not only participated in the first test of voice communications via satellite, but Bell Labs provided the guidance system that directed the satellite into its selected orbit.

This test opens a new era of worldwide communications. The Bell System has already proposed a plan for using satellites as relay stations to carry telephone calls and television programs throughout the world.

HOW TO "HOLD THE PHONE"
You and your family may be among the many that believe the color wall phone is the handiest thing in your kitchen.

You probably realize how it brightens up the room and saves you time and steps. You probably like the way it saves space—doesn't take up valuable room on a kitchen counter or table.

But did you know there is a handy way to keep the receiver from dangling if you are called away from the phone for a minute?

A number of people have told me they were surprised to learn they can hook the receiver over a notch on the top of their color wall phones until they return to the phone. The illustration shows how it works.

I thought you might be interested in hearing about this added convenience of wall phones in color.

Call by number. It's twice as fast.
SOUTHWESTERN BELL TELEPHONE COMPANY

Hospital News

Patients in Ranger General Hospital are:

J. W. Hanson, Ranger, medical
 Mrs. Florence Roan, Cisco, medical
 Mrs. Linda Zellers, Rising Star, medical
 W. B. Drake, Strawn, medical
 Mrs. T. J. Fuller, Ranger, medical
 Mrs. Johnny Hayes, Ranger, medical

J. G. Cassell, Ranger, medical
 Mrs. W. C. Harris, Ranger, surgical
 Mrs. Jess McGaha, Ranger, medical
 Mrs. John Harris and baby girl
 Mrs. Lyle Mace, Graham, medical
 Mrs. Etura Glen, Ranger, medical
 Mrs. Velma Henson, Azle, medical
 Carl Bousstead, Olden, medical
 Mrs. Julia Brown, Ranger, medical

Dismissed:
 Frank Keener, Ranger
 Danny Arnold, Carbon

RETURNS HOME
 Mrs. L. D. Tankersley returned home last week after a visit with her daughter and family, Mr. and Mrs. C. M. Jackson of Denton, her sister and brother-in-law Mr. and Mrs. L. B. Hill in Frisco and her son and family, Mr. and Mrs. E. E. Paschal of Fort Worth, who have recently moved into their new home.

Youth to Hold Bake Sale Sat.

The youth of the First Christian Church will conduct a bake sale Saturday, October 8 beginning at 9 a.m. on Main Street with tables located near the Worth Food Mart and the Gholson Hotel. Proceeds are to help the local Christian Church do its part in aiding the Foreign Division of Foreign Missions of the Disciples of Christ in covering the losses sustained to mission work in the Congo as a result of the report political crisis there.



CINDER ELLAS—Queens of the track world are athletic sisters Irina, left, and Tamara Press of Leningrad. They are shown in Moscow after both scored world record triumphs. Irina equalled the world mark for 80-meter hurdles; Tamara set a shotput record of 57 feet, 1 1/4 inches.

David Rogers New President Of FFA Club

The Future Farmers of America of Ranger High School met Thursday, Sept. 29 and elected a new slate of officers for the coming year. They are as follows:

President, David Rogers; vice-

president, Roy Gene Almaraz; 2nd vice-president, Dwight Squibbs; 3rd vice president, Tommy Joyner; secretary, Richard Guest; treasurer, Johnny Bob King; reporter, Doyle Penney; sentinel, Mike Fisher; historian, Milard Herweck; parliamentarian, Dilard Jacoby.

Many activities and projects have been planned for these officers to carry out.

Subscribe for

The Abilene Reporter-News Fall Bargain Offer

Regular	1 Year	\$13 ⁷⁵
\$18.00	Daily	
Price	And	\$12 ⁷⁵
Now	Sunday	

7 Days Weekly

WORLD'S POPULAR COMICS
 Dick Tracy, Sam Sawyer, Etc.
DAILY ONLY

SUNDAY COMICS IN COLOR
 You Read More Exclusive West Texas News
 Plus more West Texas Sports in The Reporter-News
 See Your Local Agent to Subscribe

SEE US FOR FURNITURE • APPLIANCES CARPETS

Every Day Low Prices Means Savings For You!

No carrying charges on furniture for 1 full year

FREE DELIVERY

Ranger Furniture Exchange

"BRASHIER'S"

123 N. Rusk Ranger Phone MI 7-1404

First Meeting Of FHA Held Thurs., Sept. 29

The Ranger chapter of the Future Homemakers of America met Thursday, September 29 for the first meeting of the school year. Following the opening ceremony, reports were given by chairmen of the membership, program, project and entertainment committees and the treasurer.

The following committees were

appointed for the year: Program, Wilma Mendoza, chairman, Sharon Sutton, Bernita Galey, and Linda Warford; Entertainment, Sarah Johnson, chairman, Diana Cantwell, Rachel Rhodes, Elaine Barrett, Sissy Blackwell, and Brenda Weaver; Projects, Sandy Vinson, chairman, Janey Adams, Loreeta Love, Kay Hopper, Gay Nell Blackwell, Janice Smith and Sharon Browning;

Finance, Joyce Joyner, chairman, Alyce Pounds, Pat White, and Linda Clark, Publicity, Jerilyn Anderson, chairman, Jan Falls, Barbara Bledsoe, Letric Hill, and Sue Graham, Public Relations, Linda Rushing, chairman, and Barbara Vandergriff, Membership, Rachel Rhode, Cella Mender, Phyllis Miers, Glynda Wilson, and Judy Jolly.

Plans were made for the group to attend the State Fair of Texas. The meeting was adjourned by the president, Joyce Spindle.

WE BUY AND SELL NEW AND USED FURNITURE

We Always Have Bargains

UNCLAIMED FREIGHT STORE

112 Main St. Ranger

The House Of COLOR

Your 'DISCOUNT' PAINT STORE

Hwy. 80, East Jack Williams Phone MI 7-1378

WELCOME TO BROWDER PREMIER SUPER SERVICE STATION

Highway 80 East — Ranger, Texas

HIGHEST OCTANE

Totally New Premier

DETERGENT ACTION GASOLINE

Served By Qualified Attendants

★ ★

SPECIAL!

670 x 15 Armstrong Tires — \$10.95

Plus Tax and Recapable Tire

Complete Line of Tractor Tires

Dewey Evans, Mgr. Jackie Williams, Asst. Mgr.

Here Now!
 General Motors and Buick introduce

THE CLEAN LOOK of action

the special-size **BUICK SPECIAL**



Now! Full size living in two new-size surprises



the full-size '61 **BUICK**

THE BEST OF BOTH WORLDS

Now! The room, ride, go, pride of the costliest cars plus the savings and ease of the small

Look at this gem—then look at the full-size Buick below. Can you doubt the Special's all Buick, too? Combining savings and ease with Buick comfort and luxury! For an all-day ride you get more total head, leg and hip room than in the compacts... the same kind of Control Arm suspension as the full-size '61 Buicks. And for get, its new aluminum V-8 and aluminum Dual-Path Turbine Drive* give you twice the pow per pound of most compacts (more even than many full-size cars)! But, the biggest news is that all this is yours for just a whisper above the compacts! *Optional at extra cost

AS FINE, AS NEW, AS YOU CAN GO

Now! Full comfort, full luxury, in a new trimmer full-size car!

Now there's more easy-living room for all of you—up, down, all around. For this full-size Buick is new clean through from its big Comfort Zone right down to the ground. Doors are wider and the dog leg's smoothed away. A new Hide-Away driveshaft gives far more flat floor space. A new Safety-X frame lowers the door sills. New Control Arm suspension smooths the bumps. And wait till you try its new Wildcat V-8, streamlined from within for more go on less gas... and its gas-saving new Turbine Drive, standard on every full-size Buick! And, there's plenty more to see and be proud of. See your Buick Dealer today, see why... '61 IS BUICK'S YEAR!

I THINK I PAID THAT BILL TWICE!

KNOW WHAT YOU PAID! PAY BILLS BY CHECK!

A checking account is the safest and most convenient way to keep up with what you have paid... cancelled checks are legal proof of payment. Checks are easy to carry, easy to cash, and safer than currency. Open your checking account here now!

COMMERCIAL STATE BANK

Member F. D. I. C.

OUR QUALITY BUICK DEALER IN EASTLAND IS: **MUIRHEAD MOTOR COMPANY: 301 W. Commerce**

ATTENDS FUNERAL

Mrs. A. J. Ratliff and James Ratliff attended the funeral Wednesday in Sterling City of Mrs. Ratliff's nephew, Mr. J. C. Conner of McCamey.

Chiropractor DR. E. R. GREEN

115 South Rush Street Mon., Wed., Fri.—1 to 5 p.m.

WOMEN'S ACTIVITIES

Tuesday, Oct. 4 Columbia Study Club will meet Tuesday, Oct. 4 at 3 p.m. in the home of Mrs. Lee Roy Pearson.

Wednesday, Oct. 4 The Child Welfare Club will meet Wednesday, Oct. 4, at 3 p.m. in the home of Mrs. P. M. Kuykendall with Mrs. Alla Ray Morris as hostess.

Thursday, Oct. 6 The Dorcas Sunday School Class of the First Baptist Church will meet Thursday, Oct. 6 at the church for a covered dish lunch.

Members are asked to be at the church by 11:30 a.m.

Monday, Oct. 10

Ranger Chapter No. 275, Order of the Eastern Star will meet Monday, Oct. 10 at 7:30 p.m. at the Masonic Hall. Officers are urged to be present and visitors are welcome.

TO VISIT PARENTS

Mr. and Mrs. Walter Pruet, Celeste and Allan of Midland are visiting in the home of her parents, Mr. and Mrs. O. G. Lanier this week. Mr. and Mrs. O. G. Lanier Jr., of Midland, will arrive in Ranger Wednesday to spend the remainder of the week with his parents.

— READ THE CLASSIFIEDS —

Lone Cedar Country Club Is Scene Of 1947 Club's Reassembly Luncheon

The 1947 Club met Saturday, October 1 at Lone Cedar Country Club for the annual Reassembly Luncheon.

Hostesses in charge of the arrangements were: Mmes D. C. Arterburn, Edwin Lummas, and Glynn Covington.

An autumn motif was used in the table decorations. The head table was centered with a ceramic container of chrysanthemums arranged in color from yellow to bronze and flanked by ceramic peacocks. Other tables were decorated with pyracantha berries and goal oak leaves placed on brown satin runners.

Mrs. Joe Collins, president, greeted members and guests. Mrs. Carl Black gave the invocation and Mrs. James P. Morris, program chairman, announced that the year's study will be entitled "Invitation to Thought". She introduced Mrs. J. B. McLaughlin who reviewed the book, "Kelly Blue" by William Weber Johnson.

Mrs. Luther Gohlke and Mrs. Harry Weldon were introduced as new members.

Guests present were Mrs. Jim Brothers, Burlison, Mrs. Jack Smith, Mrs. H. W. Lee, and Mrs. Tom Field of Abilene, Mrs. Alex Hudgens, of Wharton, Mrs. Milton Fuller and Mrs. James Pipkin of Eastland, Mrs. Robert Anderson Breckenridge, Mrs. Randle Jack-

Ladies Club Meets Friday At Clubhouse

The Lone Star's Ladies Club held its regular meeting Friday, September 30 at 2 p.m. at the Community Club.

Hostesses were Mrs. W. A. Robinson and Mrs. George Wright. Games of 42 and bridge were

enjoyed by the group. Mrs. L. J. Burnett won high score in 42 and Mrs. R. W. Gordon won high score in bridge.

Cookies and punch were served to the following: Mmes. Burnett, G. M. Hargus, J. J. Stevens, Bill Flowers, Joe Frances, J. A. Bates, Gordon, and the hostesses, Mrs. Wright and Mrs. Robinson.

The next meeting will be held October 28 with Mrs. J. A. Bates and Mrs. L. J. Burnett as hostesses.

— READ THE CLASSIFIEDS —

CALL MI 7-3175 For All Your PLUMBING NEEDS City Plumbing LICENSED PLUMBER U. E. WESTMOBLEND



NEED A GOOD LAWYER?

You might need one very badly if someone—injured on your property—should bring suit. Aetna Comprehensive Liability Insurance provides legal defense, pays court costs and judgments up to the policy limits.

May Ins. Agency 214 Main St. Ph. MI 7-3582 Ranger

PROMPT ACTION



on your Home Loan Application

Because we are specialists in home-financing, your application gets prompt attention here... from experienced loan people who know and understand local conditions. We'd like to work out a monthly-payment plan to fit your needs. When you're ready to buy or build, see us about the financing.

First Federal Savings & Loan Association of Ranger

204 Main Ranger, Texas Phone MI 7-1611

Free Estimates On A New ROOF

Or Repair your old Roof Residential & Commercial

Eastland - Ranger Roofing Co.

Noble Squires Ph. MA 9-2370 Eastland

NEWS FROM OLDEN

Mrs. Rufus Abbott and son, Stanley, of Globe, Ariz. visited in the home of Mr. and Mrs. C. B. O'Brien Sunday.

Mr. and Mrs. Roy Lester of Abilene visited in the home of his sister and family, Mr. and Mrs. Walter Colburn. While here they also visited his mother who is ill.

Mr. and Mrs. Phil Hilliard of Commerce spent the weekend with their parents, Mr. and Mrs. Travis Hilliard and Mrs. W. F. Edwards. Mrs. C. C. Martin, Rosie and Donna Kay, all of Ft. Worth visited with Mr. and Mrs. Jim Everett Sunday.

Mrs. Travis Reese, Kenneth and Sandra Reese were in Abilene on business Wednesday.

Mr. and Mrs. Gaylon Ashton and little daughter are new Olden residents. They moved into the house owned by Bill Hoffman. Mr. Ashton is employed by Eastland Supply Co.

Visitors in the Carey Hightower home Sunday were Mrs. Hightower's mother and brothers, Mrs. Tom Strickland, Mr. and Mrs. Jack Strickland and Eddie Strickland of Burkett.

House guests of Mr. and Mrs. Joe Bond are Mr. and Mrs. Guy B. Swan of Gale, Okla. Mr. Swan is a retired Magnolia employee. The Bonds and their company were dinner guests of Mr. and Mrs. Joe Lawrence one night this week in Eastland.

Mr. and Mrs. C. J. Langlitz and Mr. and Mrs. O. H. Dick met Mr. and Mrs. Kenneth Williamson and Kay and Miss Nannie Allmon in Colorado City, Sunday. Miss Allmon returned home after a three weeks stay with the Williamson in Ardmore.

Mr. and Mrs. Robert Bond and children of Austin were guests in the Travis Bond home over the weekend.

Mr. and Mrs. Ott Horn of El Paso left Thursday after a visit in the Jeff Woods home. Mrs. Woods and Mrs. Horn are sisters. Mr. and Mrs. Jessie Pitman spent a couple of days with relatives in Ft. Worth.

Mr. and Mrs. Carey Hightower honored their little niece, Cindy Rhodes of Breckenridge, with a party on her first birthday Friday night. Mrs. E. H. Everett took pictures of the occasion. Those present were the following: Mr. and Mrs. Hightower, Mrs. Everett and Mr. and Mrs. Allen Rhodes and Randy of Breckenridge.

ONLY \$45 Will Repaint Your Auto

This applies to all passenger cars and is a complete Duco Enamel paint job. Car will be repainted original color. Tutone is \$12.50 extra.

We do all types of body work, windshield and door glasses replaced.

Anderson Chevrolet Company

111 S. Austin RANGER Phone MI 7-1161

GET THE BEST

AID TO TRAVELERS



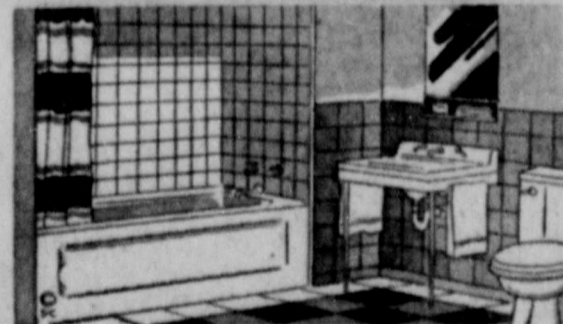
We Give S & H GREEN STAMPS

Our courteous attendants are always happy to extend aid to the traveling public. We have full information about the best highway routes in all directions. Also we have other information that we pass on to our patrons cheerfully. And don't forget, when you stop at Campbell's Humble Station, you are able to get the top quality in everything for the car or truck. Besides Humble gas and motor oils we have Atlas tires, batteries and every known kind of accessories. Get all your needs here for your car or truck.

CAMPBELL'S HUMBLE SERVICE STATION

Ranger Highway 80 East Phone MI 7-9397

IMPROVE · PREPARE · REPAIR YOUR HOME for WINTER



Up to 60 Months To Pay \$3,500 Is The Limit

Well, if money is all you need, don't delay a minute more. It's easy and quick... obtaining one of our low-cost homeloans. Like-rent monthly payments are tailored to suit your budget and needs. Call or come in!

Ranger Lumber & Supply Co.

Calvin Brown—Earl Brown Ranger Phone MI 7-1481

Electric drying is sunshine-clean!

You can be sure your freshly-washed clothes will dry sparkling clean when you dry them electrically. Flameless electric heat is as clean as summer sunshine. It adds nothing but moisture-removing warmth to the air inside the dryer, so white clothes stay white, colored clothes stay bright. And electric

heat is so gentle and so precisely controlled that even the most delicate fabrics can be dried with complete safety. See your favorite appliance dealer soon for an electric clothes dryer that will save time, work and money... help you live better... electrically.



TEXAS ELECTRIC SERVICE COMPANY

A. N. Larson, Mgr. — Phone MI 7-1107



GOIN' HUNTING?



GET ACCIDENT INSURANCE FOR YOUR TRIP!

Whether you're away from home one day or longer, up to 6 months, you can have continuous protection on land, sea and in the air with Trip Travel Accident insurance. Rates are low.

For slight additional cost you can have insurance protection for your hunting equipment and other personal belongings you take with you.



C. E. MADDOCKS & CO Insurance - Real Estate 207 Main Phone MI 7-1171



SUMMER TRAINING, Alaska. Infantrymen of Company C, 1st Battle Group, 23d Infantry, Fort Richardson, on a seven day hike through 60 miles of rugged mountains and glaciers in Alaska's Kenai Peninsula south of Anchorage.

Hints Offered On Getting Most From Pastures

Are you getting maximum returns on your pasture investment? If not, chances are you are violating one or more of the cardinal rules of pasture planning and use.

A. M. Meekma, extension agent, says:

1. Plan. In the test, ten men guess at 100 times the production of 15 different cows.

Only twice in 154 guesses do an estimated weight agree exactly with the scale weight. Fifty-five guesses were over by 11 percent, and 43 guesses were under by 11 percent. The total of the 154 guesses was only 9 percent over the total scale weight. The variance of 8 percent under to 14 percent over, however, would make it impossible to feed cows correctly by guessing at milk weights.

Results of this test strengthen Carpenter's conviction that dairy men who do a good job of feeding cows by guess would do a better job with —

lairy husbandman, of College Station.

These rules are: 1. Plant a productive forage crop in combination of crops so there will be an adequate pasture all year.

2. Use the best cultural practices, including fertilizing, to insure pasture growth.

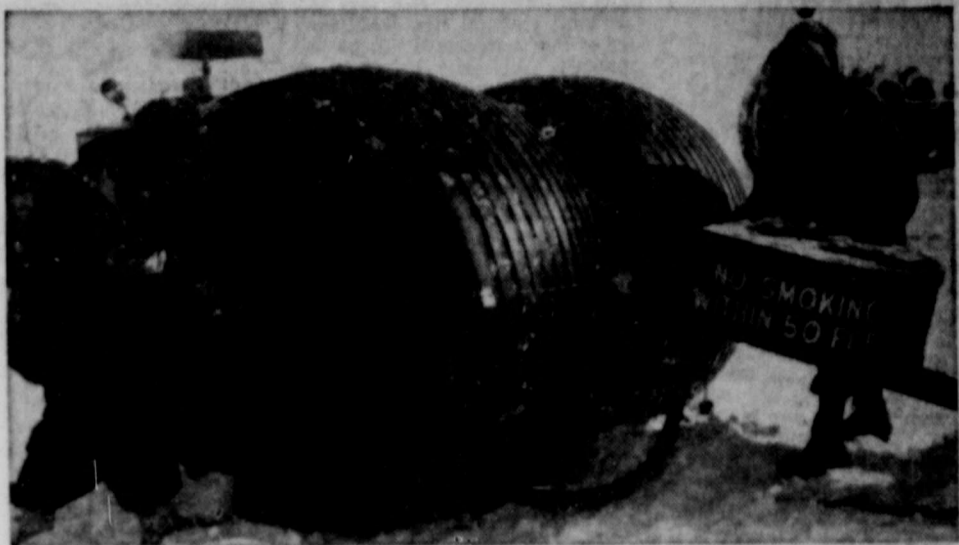
3. Keep waste to a minimum during grazing, harvesting and feeding.

4. Do not damage soil by trampling or overuse.

5. If you don't have a productive herd, this plan for future stocking need to be made, Meekma concludes.

Pastures now available can be made more productive by proper use of fertilizer, which is simply spreading off an area and then allowing it to grow out again, prevents pasture to come plants, the expert explains. Feeding pasture as green-chopped forage has similar advantages, but under certain conditions, green chopping may be too expensive. Green chopping is, however, beneficial to hays such as alfalfa and oats.

Production of some pasture plants would not be greatly improved by extra irrigation or erosion



ROLLING LIQUID TRANSPORTER (RLT) carries fuel at Project "Lead Dog", U. S. Army Polar Expedition, Greenland Ice Cap. The 1,000-gallon RLT, a Transportation Corps development, consists of two wheels with necessary pumps and connections. Project "Lead Dog" is an 1,800-mile expedition to establish two safe overland routes from the crest of the Greenland Ice Cap to the ice free coast of Northeast Greenland.

Scales Better Than Guessing

How many times have you heard a dairy farmer say he didn't need

to keep milk records because he could guess the amount of milk each cow gave? Shannon Carpenter, area extension dairy specialist, reports he has heard this many times, but that he had serious

doubts about this professed ability. In order to determine the accuracy with which milk weight was guessed, Carpenter set up a guessing test at the Tyler Experiment



GAS OVEN WITH A BRAIN

Amazing new gas oven control assures precision accuracy down to 140°. For the first time you have complete oven temperature accuracy from "high" to "new low" ... and with absolutely no fluctuation because it's GAS! If you have to delay, you can keep foods serving-hot ... no "warmed over" taste, no over-cooking, no drying. Delay serving ... warm dishes ... thaw frozen foods, all in the all-new gas oven!

LETS YOU COOK AN ENTIRE MEAL READY TO SERVE HOURS BEFORE SERVING TIME

See all-new Gold Star gas ranges now! Get high trade-ins during **RANGE ROUNDUP** at your gas range dealers or **LONE STAR GAS COMPANY**



More than 6,000 friendly people working together to serve our communities better.

the best pasture is "Remember," he concludes, "the best pasture is available when the forage is in its growing state. Once plants begin to bloom, the quality will decrease and milk production will fall."

Clipping the pasture after the herd has grazed it will remove unwater forage, promote new, more nutritious growth, and help control weeds.

According to Meekma, the use of inefficient pasture use are overgrazing and spot grazing.

— READ THE CLASSIFIEDS —

BARBER SHOP
IT PAYS to LOOK WELL
Courteous Service
TONY'S BARBER SHOP
223 1/2 Main - Ph. MI 7-1126

FURNITURE for the Entire Home
* **Carpet - Rugs All Prices** *
Be Sure To Check With Eastland
Coats FURNITURE

The House Of COLOR
Your 'DISCOUNT' PAINT STORE
Hwy. 80, East Jack Williams Phone MI 7-1378

SEE US FOR FURNITURE • APPLIANCES CARPETS
Every Day Low Prices Means Savings For You!
No carrying charges on furniture for 1 full year
FREE DELIVERY
Ranger Furniture Exchange
"BRASHIER'S"
123 N. Rusk Ranger Phone MI -1404

PROMPT ACTION

Can you Home Loan Application
Because we are specialists in home-financing, your application gets prompt attention here ... from experienced loan people who know and understand local conditions. We'd like to work out a monthly payment plan to fit your needs. When you're ready to buy or build, see us about the financing.
First Federal Savings & Loan Association of Ranger
204 Main Ranger, Texas Phone MI 7-1611

AROUND THE CAMPUS

Why I Like To Read Novels
-Mike Herrington

I like to read novels because they are an escape into an excitingly different world. In novels of an earlier era it is possible to turn back the pages of time. I can imagine myself about to lead the Virginia reel with a pretty Southern belle or find myself serving a gallant knight on a medieval battlefield. But reading is not all past history; much of it is current history in the making. In science fiction the novel is a little more exaggerated, but I can still visualize myself being the first man to land on Mars. In the more realistic modern novel I am able to see myself in a variety of occupations: a Wyoming rancher, an African game warden, a Hollywood star, or a presidential cabinet member. Because novels open this door to another world and shut out the worries of the realistic one, I enjoy reading them immensely.

Among the Ranger fans attending the Ranger-Del Mar game in Corpus Christi Saturday night

were Mr. and Mrs. Neil Day of Eastland; Mr. and Mrs. Bill Brashers of San Antonio; Mr. and Mrs. Clarence Shoelitz of Corpus Christi; Cheerleaders Beth Key, Rita Sipes, Sandy Taylor, Nellie Sue Vinson, and Nancy Kelley; Mrs. R. L. Hamrick; and Homer Montgomery, a Ranger High graduate now playing football for the University of Corpus Christi.

NEWS FROM STAFF

Mrs. Rodi Ann Garrett was buried in the Staff Cemetery Sunday afternoon following services in the Hanner Funeral Home. Mrs. Garrett formerly lived near Staff. Our sympathy is extended to the family.

Mrs. Toby Smith attended church at the United Pentecostal Church in Ranger Sunday. Mr. and Mrs. Steele Hill of Fort Worth spent the weekend at their lakeside home. Mr. and Mrs. Albert Seay were visitors in the O. T. Hazard home Saturday evening. Mr. and Mrs. Chester Henderson Sr. were business visitors in

Eastland Saturday. Among friends of the Garrett family attending the funeral of Mrs. Garrett from Eastland were Mr. and Mrs. Albert Seay, Mr. and Mrs. Buster Hazard, and daughter, Miss Marie Johnson, Mr. and Mrs. Guy Robertson, Mr. and Mrs. Spencer Hazard, A. D. Stewart and Rev. Littleton. Mr. and Mrs. Larry McGraw

of Eastland spent the weekend at their lake side home. A. D. Stewart of Eastland has been fishing on Lake Leon over the weekend. He reports a catch of one five pound Bass and a few catfish about one pounder. Mr. and Mrs. Merrill Miller were callers at the O. T. Hazard home Saturday evening. To friends concerned about the

condition of O. T. Hazard we will say that he is still in critical condition but at this writing Mrs. Hazard reports that he is slightly better. Mr. and Mrs. Roy White of Caddo were recent visitors with his sister, Mr. and Mrs. O. T. Hazard and his brother, Mr. and Mrs. Wayne White. Rev. Lively Brown of Ranger

was out at his place on Staff Village Saturday.

Chiropractor
DR. E. R. GREEN
115 South Rusk Street
Mon., Wed., Fri.—1 to 5 p.m.



Redeem this Coupon for
50 FREE GOLD BOND Stamps
with the purchase of \$5.00 or more.
SAFeway
This Coupon Expires October 8, 1960.

SAFeway SILVER

- GRAPE JUICE** Welch's — A refreshing beverage. **3** 24-Oz. Bottles **1**
- GRAPEFRUIT JUICE** Town House Natural. **4** 46-Oz. Cans **1**
- DEL MONTE DRINK** Pineapple-Grapefruit. **4** 46-Oz. Cans **1**
- TOMATO JUICE** Del Monte. **3** 46-Oz. Cans **1**
- PIE CHERRIES** Town House — Red sour pitted. **5** No. 303 Cans **1**



Safeway Meats

GROUND BEEF

Economical — A Safeway Guaranteed Product. Made from U.S. Government Inspected Beef. **Lb. 39¢**

Hen Turkeys

New Crop — 8 to 14-lb. avg. U.S.D.A. Inspected for wholesomeness and Grade "A" Ready-to-Cook, Whole. **Lb. 39¢**

- "Dollar Days" Buys!*
- Whipping Cream Lucerne — Delicious with Strawberries. **2** 9-Pk. Cans **29¢**
 - Spaghetti Dinner With mushroom. Chef Buy-A-Doz. **11** 2-Oz. Cans **45¢**
 - Chicken Noodle Dinner Kraft. **8** 4-Oz. Pkgs. **41¢**
 - Instant Coffee Always — High in flavor, low in price. **12** 1-Oz. Jars **139¢**
 - Instant Coffee Safeway — 100% pure coffee. **10** 1-Oz. Jars **139¢**
 - Instant Cocoa Baker — Children can make Hot Chocolate themselves. **1** 1-Lb. Pkg. **43¢**

Pork Spareribs

3 to 5-Lb. Avg. Delicious fried or barbecued. **Lb. 29¢**

"Naturally Aged" Safeway Beef!

Round Steak

Full Cut — U.S.D.A. Choice Grade Heavy Beef. **Lb. 79¢**

- Veal Cutlets Manor House. Delicious fried. **Lb. 69¢**
- Sliced Bacon Safeway. Thick Sliced. **2** 7-Pk. **89¢**
- Pork Sausage Bulk — Delicious breakfast treat. **3** Lbs. **1.00**
- Pork Roast Boston Butt. **Lb. 45¢**
- Rump Roast U.S.D.A. Choice Grade Beef, "Naturally Aged." **Lb. 75¢**

- More Values!*
- LaLani Pineapple Crushed. For topping cakes. **2** No. 1 Cans **31¢**
 - Empress Honey Strained — Golden sweet, energy packed. **24** Oz. Jar **63¢**
 - Pancake Mix Kitchen Craft — Sweet cream buttermilk. **1** 1-Lb. Pkg. **19¢**
 - Pillsbury Best Flour For baking. **5** 5-Pk. **55¢**
 - Nu Made Salad Oil For salads or cooking. **1** Quart Bottle **49¢**
 - Golden Keen Shortening — (12 oz. label). **3** 1-Lb. Cans **57¢**

FLOUR

Harvest Blossom. **5** Lb. Bag **37¢**

For baking or frying. (10-lb. Bag—67¢)

CORN MEAL

Kitchen Craft. **5** Lb. Bag **35¢**

White enriched. (10-lb. Bag—69¢)

1 LB. LOAF 19¢ Bakery Special of the Week Regular Price 25¢

BLACK BREAD Mrs. Wright's Old World **1** 1-Lb. Loaf **27¢**

PROTEIN BREAD Styltek Power Pack. 4-Lyons added. Regular 27¢ value. **1** 1-Lb. Loaf **19¢**

Raisin Bread Styltek loaf. **1** 1-Lb. Loaf **27¢**

Twin Rolls Styltek Brown and Serve. Regular 22¢ value. "2¢ off." **12** 1-Oz. Pkgs. **21¢**

Buttermilk Bread Mrs. Wright's **1** 1 1/2-lb. Loaf **26¢**

- More Safeway Values!*
- PEANUT BUTTER** Nu Made — Creamy or Chunky. (New at Safeway). **3** 12-Oz. Jars **1**
 - PRESERVES** Empress — Apricot, Grape, Peach or Strawberry. **4** 10-Oz. Jars **1**
 - TEMPEST TUNA** Grated Light Meat. **5** 6-Oz. Cans **1**
 - POOCH DOG FOOD** Regular or Liver Flavored. **13** 1-Lb. Cans **1**
 - DIAMOND MATCHES** Regular Kitchen Matches. **2** 6-Pack Ctns. **1**

SAFeway

GOING STEADY?

Pledge Her with a Stere Fire Diamond "Friendship" Ring by famous **KIMMEL**

Years for **ONLY \$19.75**

While in one store he was to pick up your copy of the new "Set of Questions" book (reg. \$2.50 in hard cover) for only **50¢**

D. E. PULLEY
Diamonds - Watches Jewelry
Phone MI 7-1616

YOUR Independent AGENT
"SERVES YOU FIRST"

GOIN' HUNTING?

GET ACCIDENT INSURANCE FOR YOUR TRIP!

Whether you're away from home one day or longer, up to 6 months, you can have continuous protection on land, sea and in the air with Trip Travel Accident Insurance. Rates are low.

For slight additional cost you can have insurance protection for your hunting equipment and other personal belongings you take with you.

G. E. HADDOCKS & I
Insurance - Real Estate
207 Main Phone MI 7-1171

Farmers Can Improve Yields With Good Seed

"What farmers can take two simple steps to improve their yield of this important cash crop," says

R. J. Hodges, Extension Service Agronomist. "First, they can plant the recommended variety. Secondly, they should plant high quality seed of the recommended variety." Hodges said. "Certified and Registered seed is high quality planting material."

A survey of four Texas counties — Deaf Smith, Haskell, Ochiltree, and Lipscomb — was made recently by the Texas Agriculture Extension Service. "Purpose is to learn if farmers are planting pure varieties of good bread-making quality, or if seed are mixed with other varieties,"

said. Two-pound samples were taken from the drill boxes and sent to the State Department of Agriculture in Austin. Samples from drill boxes of Deaf Smith farmers were planted in a demonstration on the Harold Sheer farm. "The results of this effort would be helpful in improving the

wheat output in Deaf Smith County," said J. W. Thomas, County Agent. "Thus far, the survey showed that too few farmers are planting the recommended varieties. Although farmers in Deaf Smith planted 76.4 per cent of their wheat acreage to recommended

varieties, such as Concho, Comanche, Crockett, Westar and Ponca, the other three counties planted only 15 per cent. Hodges explained that the recommended varieties make more profit since they have the best baking qualities and have produced highest yields in exper-

imentation tests. They also have advantages as early maturity. Varieties such as Triumph and Wichita mature early, thus insuring the hot winds and run less risk of being hulled out, but generally do not produce as high yields as other recommended varieties. Also, they do not have the baking

qualities which make them preferred in their wheat. A new variety, Tasson, recently released by the Texas Agricultural Experiment Station — the qualities wheat farmers are looking for, Hodges said. "It shows high test weight, high yielding ability, strong straw and outstanding baking quality. And it is only slightly later than the present early maturing varieties. Millers will like its high test weight, strong gluten, good flour yield, good absorption and good loaf volume," Hodges said.

The use of certified seed is equally important in obtaining good yields. Hodges said. The survey showed that wheat producers in those counties tend to use their own seed for planting. "We recommend that growers use certified seed of a recommended variety. However, if a farmer has clean, fertile land, can harvest without the danger of mechanical mixtures, and has ideal storage conditions he may be safe in planting a few acres of certified seed each year for seed purposes," Hodges said. "It should be pointed out that all farmers do not have the conditions to grow good planting seed," cautioned Hodges.

READ THE CLASSIFIEDS

The MODERN Pest Control
Offers FREE Estimates on Termites and Pest Control. Scientific methods. We have a complete line of insecticides.
302 Main Ph. MI 7-1922
Ranger

AUTO - TRUCK SERVICE
• Motor Tuneup
• Motor Overhaul
• Wheel Balancing
• Hydraulic and Dynamometer Transmission Repair.
Authorized International Harvester Parts and Service
Ranger Garage
Hwy. 80 West - Ph. MI 7-3279
RANGER

WE ARE NOW EQUIPPED TO STEAM CLEAN
Auto and Truck Motors and any type of Heavy Equipment
Caraway Truck & Tractor
Hwy. 80 East
Ranger

Free Estimates On A New ROOF
Or Repair your old Roof Residential & Commercial
Eastland - Ranger Roofing Co.
Noble Squires
Ph. MA 9-2370 Eastland

NEED A GOOD LAWYER?
You might need one very badly if someone — injured on your property — should bring suit. **Atina Comprehensive Liability Insurance** provides legal defense, pays court costs and judgments up to the policy limits.
May Ins. Agency
214 Main St.
Ph. MI 7-3582
Ranger

DOLLAR DAYS

SAFEGWAY

Prices and Coupons Effective Thurs., Fri., and Sat., Oct. 6, 7 and 8 in Eastland
We Reserve the Right to Limit Quantities.
No Sales to Dealers.

Peaches
Highway Sliced. **4** No. 1
Yellow Cling sliced. Perfect for desserts. 2 1/2 Cans

Strawberries
Bel-air Frozen. **3** 16-Oz. Pkgs. No. 1
Sliced. Delicious on short cakes.

Fish Sticks
Captain's Choice. **3** 8-Oz. Pkgs. No. 1
Frozen precooked. Rich in proteins.

GREEN BEANS Gardenside Cut. Tender and succulent. **8** No. 1
303 Cans

PORK & BEANS Highway — Or Large Dry Lima Beans or Dry Blackeye Peas. **12** No. 1
300 Cans

GOLDEN CORN Highway Whole Kernel. Golden nuggets of goodness. **7** 12-Oz. Cans No. 1

SPINACH Gardenside. Rich in iron and vitamin content. Has a flavor all its own. **9** No. 1
303 Cans

TOMATOES Gardenside. For casseroles or delicious in soups and stews. **7** No. 1
303 Cans

Safeway Produce

Delicious Apples **19**¢
Washington State Extra Fancy. New crop. Perfect for out-of-hand eating. **Lb.**

POTATOES **10**-Lb. **49**¢
U.S. No. 1 Red — Ideal all-purpose potatoes. bag

Cranberries 1-Lb. Bag **29**¢
Cape Cod. Tart and tangy.

Bartlett Pears 1-Lb. **19**¢
For easy salads.



Values Galore!

Orange Drink **37**¢
Pack Train Syrup **25**¢
Sandwich Spread **39**¢
Italian Dressing **63**¢
Cheese Dressing **49**¢
Sno White Salt **9**¢

More Values!

Angel Flake Coconut **63**¢
Roxbury Candy **39**¢
Fluffiest Marshmallows **35**¢
Busy Baker Fig Bars **29**¢
Busy Baker Fig Bars **49**¢

PICKLES **23**¢
Fanning's Bread and Butter. A Tasty Treat. 15-Oz. Jar

CATSUP **49**¢
Highway. Delicious on meats. 3 14-Oz. Bottles

"G" is for Galago
Do you know what this is?
This unusual animal is explained on page 559, Volume Six, in your Golden Book Encyclopedia now on sale at your Safeway Store. Be sure to get yours this week.

Volume 1 **49**¢
Volume 2 through 6 **99**¢

Dollar Day Values!

Margarine Coldbrook — An economical spread. **2** 1-Lb. Ctns. **29**¢

Edwards Coffee All Grinds. (2-Lb. Can) 1-Lb. Can **69**¢
(\$1.37)

Mellorine Joyett — Vanilla, Chocolate, Strawberry or Neapolitan. 1/2-Gal. Ctn. **49**¢

Beverage Cragmont — Cola, Lemon-Lime, Strawberry, Root Beer, Fruit Punch, Cream Soda, Orange Soda or Grape Soda. (Plus Deposit.) Quart Bottle **10**¢

3-Minute Oats Perfect breakfast cereal. 18-Oz. Box **19**¢

SAFEGWAY
504 East Main, Eastland

Fall is Just Around the Corner-

... and there are many indications that business conditions will improve even though this is an election year. A good business climate will insure a revival in real estate trading and leasing and now would be a good time to get the abstract ready for any emergency. Many trades are lost because the landowner waits until the last minute to order his abstract brought to date. Order now so your abstractor will have plenty of time to do you a good job.

EARL BENDER & COMPANY

Eastland, (Abstracts since 1923) Texas

**WE BUY AND SELL
NEW AND USED FURNITURE**
We Always Have Bargains
UNCLAIMED FREIGHT STORE
2 Main St. Ranger



Barbeque-Pit

Now Open - Hwy. 80 East

Special Barbeque Sat. & Sun.
SAUSAGE TO GO

69¢ Per Pound

Other Barbeque To Go

Whole Chicken 1.50
Beef, per pound 1.25
Boneless Beef, per pound ... 1.65

THE BARBEQUE PIT

Highway 80 East



VOTING REGISTRATION PROCEDURES are explained to Pfc. Marvin G. Morse of Fresno, California (left) and to Pfc. Friedrich H. Klein of Seattle, Washington. Both men are members of the 2d Logistical Command, Fort Ord, California. Anxious to cast their ballots for the first time, the soldiers toured Monterey voting facilities to learn more about their newly attained privilege. Voting, the heritage of all U.S. citizens, was not always a privilege extended to members of the Armed Forces.

Quail Season In Some Areas Still Uncertain

There is still a big question as to how good the 1960 quail season will be, according to the assistant executive secretary of the Game and Fish Commission in Austin.

Biologists are now checking conditions in regulatory areas for recommendations at the Oct. 7 meeting of the Game Commission.

At the July meeting it was suggested that quail season be opened Nov. 1 in most of the counties under regulatory authority. However, there was a strong protest on the part of dog owners and many others. It was decided to delay decision on the opening date. Since then, there is evidence that the quail crop in some areas isn't up to expectations.

The general quail season in Texas is Dec. 1-Jan. 16, inclusive. There are a few counties where the season opens two weeks earlier, and a few where it extends until Jan. 31.

Season for Texas shooting resorts opened Oct. 1, and will continue through February on both quail and pheasant. These are pen-raised birds, released for shooting over dogs. Eight resorts this year also are offering duck shooting. Information on these resorts can be obtained from Joe B. Davidson, representing the Sportsmen's Service Bureau, Box 661, Tyler, Texas.

— READ THE CLASSIFIEDS —



Everyone knows that wood will burn. By contrast, steel is non-combustible. Although wood is stronger than steel, weight for weight, its combustibility has for years prevented its use for many types of buildings, such as schools and hospitals. Improved material testing methods now disclose that heavy wood timbers have certain advantages over steel for many construction purposes.

When exposed to the extreme heat of severe fire conditions, thick, wooden beams will char slowly from the outside. Because wood is a poor conductor of heat, when the outer surface is afire the inner core of the beam will be too

cool to burn. The beam will retain its strength for prolonged periods. Steel, on the other hand, is a good conductor of heat. When subjected to the same severe fire conditions, steel quickly becomes hot throughout. As a result it bends, loses its supporting capacity, and collapses much sooner than wooden timbers of equal strength.

In view of this natural safety factor of wood, building codes are being revised and many schools are now being made of wood with a substantial reduction in construction costs.

VISITS IN TALPA

Mr. and Mrs. Joe Dennis visited Sunday in Talpa with his father, J. F. Dennis and his sister and brother-in-law, Mr. and Mrs. Clarence Horton.



KEEPS ROLLIN' ALONG—The last of the old stern-wheelers plying the inland rivers of the U.S., the Delta Queen recaptures a page out of the past as she cruises majestically down the Ohio River, near Cave in Rock, Ill. The ship saw service as a troop vessel in the Pacific during World War II.

**freshest
taste
in bread**

**MRS. BAIRD'S
ENRICHED BREAD**

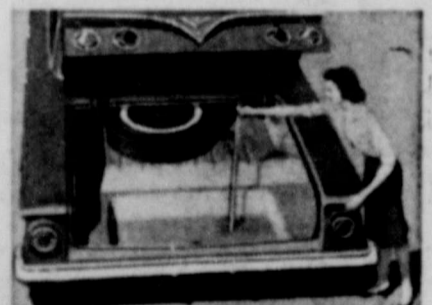
STAYS FRESH LONGER

FRIDAY! THE GREATEST SIXTY-ONE DERFUL CHEVROLET

Here's the car that reads you loud and clear—the new-size, you-size '61 Chevrolet. We started out by trimming the outside size a bit (to give you extra inches of clearance for parking and maneuvering) but inside we left you a full measure of Chevy comfort. Door openings are as much as 6 inches wider to give feet, knees, and elbows the undisputed right of way. And the new easy-chair seats are as much as 14% higher—just right for seeing, just right for sitting.

Once you've settled inside you'll have high and wide praises for Chevrolet's spacious new dimensions (in the Sport Coupes, for example, head room has been upped as much as 2 inches, and there's more leg room, too—front and rear). Chevy's new trunk is something else that will please you hugely—what with its deep-well shape and bumper-level loading it holds things you've never been able to get in a trunk before.

Yet, generously endowed as this car is with spaciousness and clean-etched elegance, it holds steadfastly to all the thrifty, dependable virtues Chevrolet buyers have come to take for granted. Your dealer's the man to see for all the details.



There's never been a trunk like it before! The floor's recessed more than half a foot and the loading height is as much as 10½ inches lower.

INTRODUCING THE '61 CHEVY BISCAYNE 6

the lowest priced full-sized Chevy with big-car comfort at small-car prices!

Chevy's new '61 Biscaynes—6 or V8—give you a full measure of Chevrolet quality, roominess and proved performance—yet they're priced down with many cars that give you a lot less! Now you can have economy and comfort, too!



IMPALA 4-DOOR SPORT SEDAN—one of five Impalas that bring you a new measure of elegance from the most elegant Chevrolets of all.



NOMAD 9-PASSENGER STATION WAGON. You have a choice of six Chevrolet wagons, each with a cave-sized cargo opening nearly 5 feet across.



BEL AIR 2-DOOR SEDAN, like all '61 Chevrolets, brings you Body by Fisher newness—more front seat leg room.



Biscayne 4-Door Sedan

See the new Chevrolet cars, Chevy Corvairs and the new Corvette at your local authorized Chevrolet dealer's

ANDERSON CHEVROLET COMPANY

111 S. AUSTIN STREET

RANGER

PHONE MI 7-1161

PUT YOUR IDLE DOLLARS TO WORK FOR YOU We Pay You To SAVE!

Our Current Dividend Is **4¼%** Per Annum
Payable June 30th and December 31st.



**ACCOUNTS ARE INSURED
UP TO \$10,000.00**

A man and wife can have \$30,000 in insured accounts.

Ask for our financial statement and literature on insurance of accounts. Open an account by mail - your inquiries will be answered promptly.

- * Our assets are now over One and One-Fourth Million (\$1,250,000.00) Dollars.
- * Your accounts are insured by The Federal Savings & Loan Insurance Corporation, an Agency of The Federal Government.
- * We are member of The Federal Home Bank Loan System.
- * We operate under a Federal Charter dated December 14, 1934. We invite you to open an Investment Account or a Savings Account with us.

First Federal Savings & Loan Association

204 Main Street

RANGER, TEXAS

Phone MI 7-1611

Hunters Asked to Cooperate With Wildlife Service

Daniel H. Janzen, Director of the Bureau of Sport Fisheries and Wildlife, at Washington, D. C., today urged all waterfowl hunters

who have received registration cards with the purchase of their Federal duck stamps to cooperate with the Fish and Wildlife Service of the U. S. Department of the Interior by filling out and promptly returning the indicated portion of the form.

This year more than 1400 post offices throughout the country

have been furnished with double postcard forms which are handed to purchasers of duck stamps at these particular post offices.

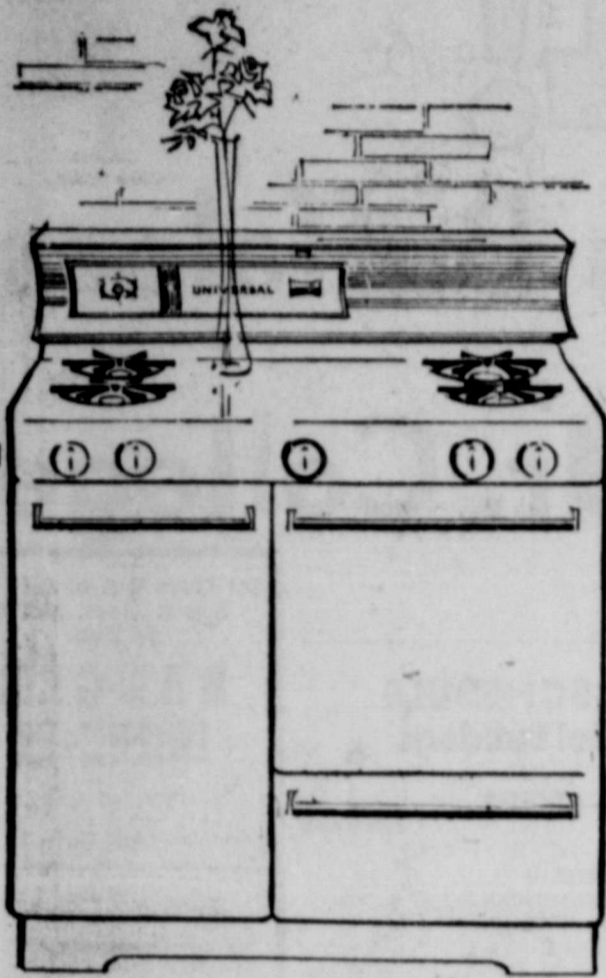
One-half of the card is to be filled out by the hunter and returned at once to the Bureau. The other half is to be retained as a sort of scorecard on which the numbers and kinds of waterfowl

which he bags during the coming season, and the number of days he hunted.

"This sample of hunters who return the cards," said Director Janzen, will receive questionnaires at the end of the hunting season in which they will be asked to report their seasonal hunting success. It is highly important that

all duck stamp purchasers receiving registration cards fill them out and mail them promptly. Cards from everyone contacted are necessary to make our sample representative of the entire hunting population."

The chief purpose of the survey is to determine as accurately as possible the extent of the water-



\$199⁹⁵

with trade-in
Special Range Roundup Price

WASTE-KING UNIVERSAL GAS RANGE MODEL 6061 AJ New fashion-styled

36" deluxe gas range has amazing burner-with-a-brain* / 4-hour timer / fresh-air gas oven / smokeproof porcelain broiler / New obedient burners give fast flexibility, complete control / giant storage compartment / no hangover heat / smart, full-width oven door handle / as little as \$6.56 a month / during

RANGE ROUNDUP

LONE STAR GAS COMPANY

more than 6,000 friendly people working together to serve our communities better.

*AGA Trademark

SHOW ON WORTH! CHEVROLET

NEW '61 CHEVY CORVAIR

More space . . . more spunk and wagons, too!



The newest car in America: the CORVAIR 700 LAKEWOOD 4-DOOR STATION WAGON.



CORVAIR 700 CLUB COUPE. Like all coupes and sedans, it has a longer range fuel tank.



CORVAIR 700 4-DOOR SEDAN. Provisions for heating ducts are built right into its Body by Fisher.



Spare tire is in the rear in coupes and sedans—leaving more luggage space up front.



Even middle-seat passengers sit pretty, thanks to Corvair's practically flat floor.

Now in production—the GREENBRIER SPORTS WAGON with up to twice as much room as ordinary wagons (third seat optional at extra cost).

Here's the new Chevy Corvair for '61 with a complete line of complete thrifty cars. To start with, every Corvair has a budget-pleasing price tag. And Corvair goes on from there to save you even more. With extra miles per gallon . . . quicker-than-ever cold-start warmup so you start saving sooner . . . a new extra-cost optional heater that warms everyone evenly. Riding along with this extra economy: more room inside for you, more room up front for your luggage (sedans and coupes have almost 12% more usable trunk space).

And our new wagons? You'll love them—think they're the greatest thing for families since houses. The Lakewood Station Wagon does a man-sized job with cargo, up to 68 cubic feet of it. The Greenbrier Sports Wagon you're going to have to see—it gives you up to 175.5 cubic feet of space for you and your things.

Corvair's whole thrifty lineup gets its pep from a spunkier 145-cu.-in. air-cooled rear engine. Same rear-engine traction, same smooth 4-wheel independent-suspension ride. See the polished and refined 1961 Corvair first chance you get at your Chevrolet dealer's.

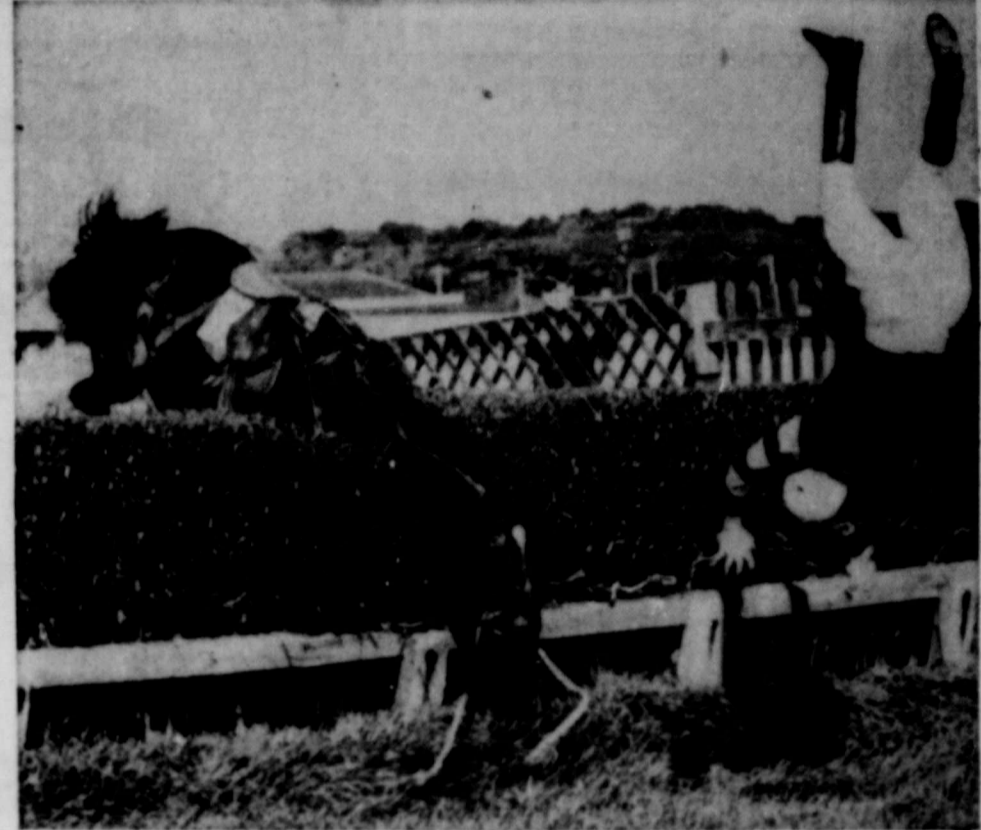
See the new Chevrolet cars, Chevy Corvairs and the new Corvette at your local authorized Chevrolet dealer's

ANDERSON CHEVROLET COMPANY

111 S. AUSTIN STREET

RANGER

PHONE MI 7-1161



SAILING THIS ONE OUT—Jockey Bill Rees is still in the race, after a fashion. His mount had different thoughts about a hurdle at a race track in Plumpton, England.

In order that a proper balance between the harvest of these birds and the hunting regulations may continue to be maintained.

This annual mail survey was inaugurated on a national basis during the 1951 hunting season when 150 post offices cooperated with the Service in handing out the card forms. According to Director Janzen, it was one of the most progressive steps ever taken by the Fish and Wildlife Service in the matter of estimating the annual harvest of waterfowl.

years and has been a professional Scouter the past 20 years serving in Toledo, Ohio and for the past 13 years has been on the National Staff with headquarters in New Brunswick, New Jersey. At one

time he was director of Exploring.

— READ THE CLASSIFIEDS —

WELCOME TO BROWDER PREMIER SUPER SERVICE STATION

Highway 80 East — Ranger, Texas

HIGHEST OCTANE

Totally New Premier

DETERGENT ACTION GASOLINE

Served By Qualified Attendants

★ ★

SPECIAL!

670 x 15 Armstrong Tires — \$10.95

Plus Tax and Recapable Tire

Complete Line of Tractor Tires

Dewey Evans, Mgr. Jackie Williams, Asst. Mgr.

National Cub Scout Director To Visit October 11

O. W. Bennett of New Brunswick, New Jersey, the National Director of Cub Scouting of the Boy Scouts of America will conduct a clinic on Cubbing Tuesday, Oct. 11 in Brownwood at Hotel Brownwood at 7:30 p.m.

"All leaders of Cub Scouts and potential leaders throughout the eight counties served by Comanche Trail Council are invited to be present" according to Dr. H. H. Hargrove of Brownwood, Chairman of Leadership Training.

Bennett is a native of Redfield, South Dakota. He was a Boy Scout volunteer leader in Scouting ten

I THINK I PAID THAT BILL TWICE!



KNOW WHAT YOU PAID! PAY BILLS BY CHECK!

A checking account is the safest and most convenient way to keep up with what you have paid . . . cancelled checks are legal proof of payment. Checks are easy to carry, easy to cash, and safer than currency. Open your checking account here now!

COMMERCIAL STATE BANK

Member F. D. I. C.



KICK OFF TIME!



Bulldogs vs Cross Plains Buffaloes

There Friday, October 7

Ranger Rangers vs Tyler Jr. College

There Saturday, October 8

Ranger Furniture Exchange
Dearborn Stoves
123 N. Rusk Ph. MI 7-1404

1960 FOOTBALL SCHEDULE Ranger College Rangers

Date	Team	Location
Sept. 10	Murray State 20, Rangers 12	
Sept. 17	Rangers 9, Wharton Jr. College 9	
Sept. 24	Rangers 13, Cisco Jr. Col. 0	
Oct. 1	Del Mar Jr. Col. 30, Rangers 8	
Oct. 8	Tyler Junior College	Tyler
Oct. 13	McMurry "B"	Here
Oct. 20	Eastern Oklahoma	Wilburton
Oct. 29	Navarro Junior College	Here
Nov. 5	Open Date	
Nov. 10	Blinn Junior College*	Brenham
Nov. 19	Cameron	Lawton, Okla.
Dec. 3	Monterrey Mexico	Monterrey
Dec.	Texas Junior College Conference Games	

1960 FOOTBALL SCHEDULE Ranger High School Bulldogs

Date	Team	Location
Sept.	Rotan 22, Bulldogs 20	
Sept. 9	Mineral Wells 40, Bulldogs 0	
Sept. 16	Bulldogs 20, Eastland Mavericks 8	
Sept. 23	DeLeon Bearcats 20, Bulldogs 0	
Sept. 30	Dublin Lions 12, Bulldogs 0	
Oct. 7	Cross Plains Buffaloes	There
Oct. 14	*Winters Blizzards	Here
Oct. 21	*Cisco Lobos	Here
Oct. 28	*Ballinger Bearcats	There
Nov. 4	*Coleman Bluecats	There

Get More Out of Life...
See A Good Movie
At Your

RANGER DRIVE-IN

HWY. 80 EAST
Adm. 50c - Child Under 11 Free

Sunday - Monday
Tuesday
ORSON WELLS
in
CRACK IN THE MIRROR

THIS FOOTBALL PAGE IS MADE POSSIBLE THROUGH THE COOPERATION OF THE BUSINESS AND PROFESSIONAL MEN AND WOMEN OF RANGER

ATTEND OUR BALL GAMES

WARDS
MONTGOMERY WARD

Killingworth's

WESTERN AUTO Associate Store
Home Owned by Betty and Ken Lewis

SHOP RANGER AND SAVE

Ranger Lumber & Supply Co.
Calvin Brown Earl Brown

Arterburn's Hardware and Furniture
Mr. and Mrs. D. C. Arterburn

Campbell's Humble Service Station
Highway 80 & Main Street Crossing

Jack Blackwell
Marketer Sinclair Ref. Co.
Good Year Tires and Batteries
Phone MI 7-1788

El Rancho Coffee Shop
L. N. Bryan - Raymon Bryan
Hwy. 80 West Ranger

Ranger Clinic

Featherlite Corporation

May Insurance Agency
Insurance - Real Estate
Phone MI 7-3582

Ranger Dry Cleaners
Mr. and Mrs. Jess Weaver

Ranger Plumbing Co.
Gene Gourley
Phone MI 7-1881

Compliments of
Mr. and Mrs. R. W. Gryder
Agent for Fort Worth Star-Telegram
Phone MI 7-1157

EVINRUDE
quiet outboard motors
L & J Supply Co.

Robinson Food Market
Mr. and Mrs. R. V. Robinson

Art's Tool & Supply Co.
Mr. and Mrs. E. F. Arterburn

The Globe Clothiers
The Best in Men's and Boy's Wear
Phone MI 7-1130

Commercial State Bank
Member F. D. I. C.

Buck Wallace
Welding - Fabricating

First Baptist Church
Ralph E. Perkins, Pastor
"You Are Always Welcome"

Page Plumbing Co.
Mr. and Mrs. Carl Page

Law's Premier Service Station
Mr. and Mrs. Maxie Law

Betty's Flower Shop
Your Flower Problem Is Our Pleasure
Phone MI 7-1811

SARCO Southwest Athletic Repair Company
Ranger Phone MI 7-3274

Ogden's Maytag Coin Laundry
909 Blackwell Road Phone MI 7-1181

Texas Electric Service Co.
A. N. Latson, Mgr.

Ranger Machine Co.
J. E. Fletcher

Ranger College
Dr. Ted Nicksick, President

Dr. Pepper Bottling Co.
Maurice Owens, Mgr.
Phone MI 7-3238

Johnson Appliance Co.
Radio, T. V. and Refrigeration Service
Phone MI 7-3480

Ranger Auto Parts
Gaston Dixon
319 Main Phone MI 7-1606

J. C. Carter
Area Representative
State Farm Insurance Co.
Auto - Fire - Life

Funderburg Ford Sales
Sales - FORD - FALCON - Service
Phone MI 7-1555



Modern Pest Control
Ralph Veal Phone MI 7-3422

Moffett Electric
Mr. and Mrs. D. O. Moffett

King's Cafe
On Main Street
Mr. and Mrs. Brownie King

J. C. Penney Co.
John L. Smith, Mgr.

Ranger Farm Store
John and Ann Tibbels
John Deere Implements - G. E. Appliances
Compliments of
Ford & Jones
Ranger Hill Cafe - Texaco Station
Modern Courts

Penn Texaco Service Station
Mr. and Mrs. Frank Penn
Mr. and Mrs. Harry Weldon
Main & Commerce Phone MI 7-1515

Caraway Paint & Body Shop
Highway 80 West - Phone MI 7-1280
Mr. and Mrs. F. E. Caraway

Ranger Flower Shop
Flowers for All Occasions
401 Main Phone MI 7-1622
Mr. and Mrs. R. V. Mathena

Crawford-Doss Rexall Drug
In Business for Your Health

Porkey Pig
Raymon Bryan

Capps Studio
Mr. and Mrs. Delbert Capps

Times Publishing Co.
Publishers
Ranger Times - Eastland Telegram

R. J. (Buck) Caraway
Consignee Texaco, Inc.
Phone MI 7-1861

A. H. Powell Grocery & Market
Phone MI 7-3240 We Deliver

Social Science Laboratories

Lloyd L. Bruce
Life Insurance Service

Ranger Transfer & Storage Co.
M. D. Underwood, Mgr.

Burton-Lingo Co.
J. D. Nichols, Mgr.

Stiles Youth Shop
Mr. and Mrs. A. L. Stiles

Blackwell Gulf Service Station
Washing - Greasing - Gulf Products
Mr. and Mrs. Curtis Blackwell

El Rancho Motel
Highway 80 West
Mr. and Mrs. O. L. Cantrell

Young's Beauty Shoppe
Phone MI 7-1357

Herweck's Ranger Mattress Co.
203 North Austin Phone MI 7-1822

Swaney's Pharmacy

Anderson Chevrolet Company
Bill Anderson