

As I See Ranger

By Gene Townsend

This is Boy Scout Week, and next week we will have Farm Bureau Week. Then February 14 is Valentine Day, and the last of February will be Public School Week. In fact it is getting to where almost every day is some special day or some national or state day or week or month or even season. There is so many special events that they have had to be overlaid. In fact, according to the Publisher's Auxiliary, there is 3603 special national days, counting days, weeks, months and seasons. This includes 10 seasons, 63 months, 146 weeks, and 91 days.

February is the beginning of three national seasons. May has eleven national months, and April has 23 national weeks. October has 13 national days. Everyone considers February to be the shortest month of the year, but according to the national days and weeks, August is the shortest. August has two national months, two national weeks, and six national days. Where February is quite a bit longer with three national seasons, four national months, 18 national weeks and 12 national days.

There are some real quaint national events, there is a national pickle day, national economy size week, national Colorado beef week, Louisiana yam supper season and there is even a national Bachelor's Day and an Old Maid's Day. There is even a coffee day and a national foot health week. For the sportsman there is let's go fishing week, golf week and hunting month. And of course there is mother-in-law and father-in-law days. In fact, there is a day, week, month, or season to just about cover everything.

Archer Marx, manager of Southwestern Bell Telephone Company district, said a few days ago that the actual switching over from the old type switchboard to the new dial system would take less time than it would take to tell about it, but that it took months of intricate and hard work to get the dial system ready to operate. If there is any doubt in your mind that this is not so, just go by the new Telephone Building. They are in the process of installing the dial equipment. It would take a month of Sundays to count all the hundreds of little wires that have to be spliced together in the installation of the new equipment. Each circuit has to be checked to see that it is in right and each new number corresponds to the old number will have to be checked. The March 20 deadline is going to be hard to meet.

For the first time this season the Ranger High School student body turned out in numbers Tuesday night to see the basketball team play a home game. That was the fifth and final home game this season. The reason that there were so many students out—wasn't the old school spirit to support the team—win or lose—but to observe the presentation of the basketball queen. The band came to play at the halftime ceremonies and most of them stayed around and saw the rest of the game.

The question has been asked many times, what has happened to the crowds at the Bulldogs' games in both football and basketball? Well, how can anyone expect a good crowd to attend a game if the school spirit has dropped to such a point that the student body and faculty fail to show up at the gym on the night the team plays.

This little plug doesn't only apply to the high school, but to Ranger College, which is possibly even worse.

It should be compulsory for a member of the faculty to attend at least one sports activity each month in order to show some resemblance of school spirit.

Bowling enthusiasts will welcome the news that Breckenridge is getting a new bowling alley. The building was started this week, and in a few months they will have a fine bowling alley.

Here is a bit of news that will be interesting to several people in Ranger. It is reported that golf is no longer a rich man's game... there is quite a few poor golfers on the course these days.



FARM BUREAU "WEEK" PROCLAIMED—Governor Price Daniel is shown signing a proclamation designating February 14-20 as "Farm Bureau Week" in Texas. Looking on are (left to right) J. H. West, Bishop, president of Texas Farm Bureau; Millard Shivers, Waco, TFB Director of Organization; and George K. Marshall, Leander, president of the Travis County Farm Bureau. Farm Bureau membership enrollment activities will be concentrated during this special "Week." County Farm Bureau's across the state have set quotas totaling more than \$3,000. The 1959 membership of the TFB was 79,414.

Farm Bureau Week Is Proclaimed By Gov.

Governor Price Daniel has cited agriculture as "the well-spring of our social and economic vitality" and set a statewide week-long observance in recognition of agriculture's contribution to Texas life.

In a proclamation signed Jan. 25, the Texas governor designated the week of Feb. 14-20 as "Farm Bureau Week" in Texas and urged all citizens "to cooperate in the recognition and observance of this week in an effort to publicize this important phase of our Texas life."

The special week coincides with the annual membership campaign of the Texas Farm Bureau, largest general farm organization in the state. The 1960 drive will be kicked off with a big Chairman's Rally Feb. 11 in Waco attended by county FB presidents, and county and community membership claimants. About 125 counties are planning intensive membership drives during the next two months.

County Farm Bureaus across the state have set individual county quotas totaling more than \$3,000 members for 1960. This would be a gain of some 4,000 over the 1959 membership of 79,414. The fast growing farm organization has had a gain in membership for seven consecutive years and has almost doubled its membership in the past ten years.

Governor Daniel, who is a Farm Bureau member in Liberty County where he owns farm property,

cited the need for an educated, prosperous, and organized agriculture in Texas. He said farmers and ranchers of Texas, through their various organizations, have worked for improvements in the economy and government of Texas.

Here is the text of the governor's proclamation: "Greetings: Agriculture has long been recognized as the well-spring of our social and economic vitality. A vast number of Texans derive their principal income from farming and ranching activities.

"The farmers and ranchers of Texas, through their various organizations, have crusaded by democratic procedures for a voice in the affairs of the State and for improvements in the economy and government of Texas.

"These groups recognize the necessity and supreme importance of having an educated, prosperous, and organized agriculture in our state.

"Therefore, I, as Governor of the State of Texas, do hereby proclaim February 14-20, 1960, as 'Farm Bureau Week' in Texas, and urge our citizens to cooperate in the recognition and observance of this week in an effort to publicize this important phase of our Texas life.

Ranchers Confuse Court By Asking Higher Bounty

You couldn't blame Eastland County commissioners if they seem a little confused over what to do about killing out bobcats and wolves in the county.

Two weeks ago a group of ranchers from various parts of the county met with the Commissioners Court and requested more assistance in fighting predatory animals. The Court, which has been paying \$135 a month for some time now to help pay the cost of hiring a government trapper, agreed with the group and voted an additional \$100 a month to help hire a second trapper. The Court also agreed to pay the Eastland County Trappers Association \$500 as a lump sum to help defray expenses. The Association has incurred in the past five months by hiring the second trapper.

Thus, pledged to pay \$235 a month until June 1, the Court thought they had settled the matter.

The week the situation cropped up anew, however. Several ranchers from the south part of the county near Rising Star attended the commission meeting and declared they would prefer a higher bounty on wolves and bobcats instead of paying the \$100 a month for the second trapper.

Led by Oscar Schaefer and Bob Shultz, the ranchers—most of who

had attended the first meeting—declared that "down in our country what's been done for us hasn't been worth a nickel."

Johnny Reitz Orchestra at Country Club

Johnny Reitz and his orchestra will play for the Lone Cedar Country Club Valentine Dance Friday night at which time the club's Valentine Sweethearts will be named.

The event will be a return engagement for the dance band which has recently toured the West Coast where they appeared at the Oregon Centennial Exposition and the Sherman-Portland Hotel.

"The Fabulous Alberto," comic dancer, choreographer and singer, will be featured with the orchestra as will the Coronets, young singing and dancing team.

Among places the show has appeared are the San Souci in Las Vegas, the Rosy Theatre in New York, the Moulinette in Havana, and the International Film Festival in Cannes.

Methodist Youth Banquet Planned Friday Night

The Year Division of the First Methodist C. M. S. is planning a Youth Banquet to be held at the Church Friday, February 12 at 7 p.m.

The banquet will follow an oriental theme, with the program printed in oriental fashion, reading from the right to the left, and several oriental musical numbers will be presented.

Alice Pounds will act as the master of ceremonies. Richard Wilhelm will lead the opening invocation, followed by "The Children's Marching Song" by the Intermediate Band.

Dinner will be followed by two musical numbers, "Wing Foo" by Miriam Paynor, and "China Town" by Glynda Wilson.

Three musical numbers will be presented following the skit, "Autumn Leaves" by Becky Brown, "Japanese Sandman" by Karen Killingsworth, and "How Great Thou Art" by Jimmie Mae Miller.

Theodore Yap will bring the address, and Chuck Garrett will give the closing benediction.

Storm Damage Here Is Reported Heavy

Violent Winds Rip Ranger Area Tues.

Wednesday morning Ranger citizens were climbing out from under a thick coat of dust and examining their roofs and televisions antennas for damages, following one of the worst wind storms that has struck Ranger in many years.

Winds estimated at over 70 mph clawed at roofs, whipped telephone and electric lines and blasted at buildings for approximately 11 hours in Ranger Tuesday. Beginning around noon the wind blew continuously until after 11 p.m. Tuesday.

Temperatures ranged from a high of 82 degrees to 25 degrees late that night. The barometer reading at 5:30 p.m. was 29.05 inches, reduced to sea-level. Normal reading for this area is slightly above 30 inches. The weatherman warned that readings in the range of 29.4 to 29.6 often occur during the tornado season. An extremely low humidity of 22 percent is believed to have kept storm clouds from forming.

Traffic at Lake Leon was probably heavier Tuesday afternoon than it has been in many weeks, as people were going out to check on their boat docks and boats. With all the concern there wasn't much that could be done except to stand and watch the wind and waves tear at the hapless docks and boat houses. Waves as high as five and six feet made it hazardous for anyone to attempt to get on a dock or enter a boat house. Several people attempted to remove their boats from the boat houses but the waves were so high that it couldn't be done.

Ed Richardson, Lake Leon warden, reported that considerable damage was caused by the wind at the lake. Three boat docks were completely destroyed. The docks belonged to Dave Barker of Ranger, Wayne Jackson and Curtis Koen of Eastland. Docks belonging to Brownie King, Charles and Morris Campbell, Lloyd Bruce and Arthur Deffebach, all of Ranger, were badly damaged. Also, the O. J. Quarles dock at Frank and Earl's Lodge, was badly damaged. Many more docks were damaged to a lesser degree. Several boat houses had one or more anchoring cables broken. Property on the island and around the open part of the lake

suffered the majority of the damage.

Texas Electric Service Company's Leon Power Plant reported wind up to 70 miles per hour.

The winds were generally reported from all over the state. Abilene reported winds at 75 mph and Lubbock reported wind up to 100 mph.

Mrs. Putnam, Longtime Ranger Resident, Dies

Mrs. Ollie Putnam, 78, a Ranger resident for the past 39 years, died at 1:30 a.m. Wednesday at the Ranger General Hospital, where she had been a patient since Saturday.

Mrs. Putnam was born Dec. 13, 1881 in St. Joseph, Mo., she moved to Ranger from Missouri in 1921.

Funeral services were held at 2 p.m. Thursday at Killingsworth Funeral Chapel with the Rev. W. S. Buntun, pastor of the Caddo Baptist Church, officiating.

Burial was in Evergreen Cemetery.

Survivors include her husband, Charles C. Putnam of Ranger; one son, Albert V. Keller of Houston; one sister, Mrs. C. O. Little of Ranger; three brothers, Charles Dunham of Caddo, J. A. Dunham of Rich Hill, Mo., and George Dunham of Russellville, Ark.; six grandchildren and 10 great grandchildren.

Funeralbearers were John F. Harty, Ray Williams, Joe H. Fonville all of Ranger, Gail D. Keller of Houston.

Gifts Committee Deposits \$300 In Dimes Fund

Carl Black, chairman of the Big Gifts Committee of the Ranger March of Dimes campaign, announced today that the committee was closing out their campaign.

He reported that the committee had turned into the March of Dimes fund a total of \$300.00 from contributions from Ranger business firms.

Contributions donated through the Big Gift Committee include:

| | |
|--------------------------|----------|
| Lone Star Gas Co. | \$10.00 |
| Texas Electric Service | 10.00 |
| Crawford Drug | 10.00 |
| Swaney's Drog | 25.00 |
| Featherlite Corp. | 50.00 |
| White's, Inc. | 25.00 |
| Commercial State Bank | 25.00 |
| Worth Food Market | 10.00 |
| H. G. Adams Gro. | 10.00 |
| Anderson Chevrolet Co. | 15.00 |
| Campbell's Hamble Sta. | 12.50 |
| Ranger Lumber & Supply | 10.00 |
| SARCO | 25.00 |
| Ranger Auto Parts | 10.00 |
| Lloyd Bruce Insurance | 5.00 |
| C. E. Maddocks Insurance | 5.00 |
| O. G. Lester, Accountant | 2.50 |
| Ranger Bus Station | 5.00 |
| Barton Lingo Lumber Co. | 15.00 |
| Hugwell Motor Co. | 10.00 |
| Mrs. Hattie Bragg | 5.00 |
| TOTAL | \$300.00 |

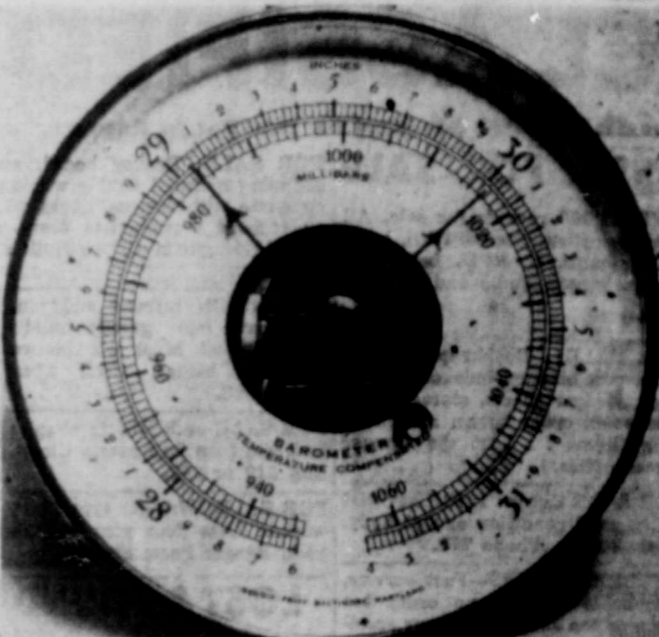
Veal, who conducted the investigation reported that the cigarettes were identified by Worth Food Mart by a number stamped on the cartons. The suspects were also identified as having been in the store by store employees.

It was learned later that the Negro have records at Fort Worth for theft and dope addiction. They are also wanted in Albany for investigation.

Clothes were found in the possession of the four that had false legs in the trousers where they could be used to hide items. Veal termed the four as professional shoplifters.

They were placed in the Eastland County Jail under \$1,000 bond.

FILING CABINETS
All steel construction. For office or home. Letter or legal size; one, two, three and four drawer. Locks optional.
THE RANGER TIMES



HERE'S PROOF—No one will deny that Eastland County had high wind and dust Tuesday afternoon, and here's proof of just how big a drop the barometer took. The picture was snapped at 5:30 p.m., during the height of the wind storm, which was clocked in the vicinity of 76 miles per hour. Needle at left shows barometer to be at what is believed to be an all-time low of 29.05 inches, reduced to sea-level. Normal reading for this area is shown by needle on right.

Linda Drennan Crowned Queen

Bulldogs Overran in Last Minute of Game

The Ranger Bulldogs made a fine third quarter come-from-behind effort Tuesday night, but couldn't hold on to their lead as they went down at the hands of the Ballinger Bearcats 52 to 48 in their final home game of the season.

The Bulldogs matched the Bearcats point for point in the first quarter that saw it end at 11 all. The second quarter the Bearcats went ahead, scoring 15 points to the Bulldogs' six, with the half ending with Ballinger out front 26 to 17. Following the half the Bulldogs closed the gap quickly, scoring 18 points and going ahead at the end of the third quarter 35 to 32. They couldn't keep up the torrid pace and the Bearcats overtook them in the final minutes of the game on a 20-point last quarter splurge.

Johnny Bigby of the Bearcats was high point man in the game, scoring 18 points. Dean Richey led the Bulldogs with 17 points. Charles White hit 14, James Henry nine, Jerry Wilson four, Charlie De Lee Santos two and Don Chatham two.

The Bulldog B team defeated the Ballinger B team 34 to 28. The Bulldogs took a 15 to 12 first quarter lead and held it through-

out the game.

Don Chatham was high in the game with 15 points. Jimmy Hogan hit eight, Tommy Robinson six, and David Lockwood five. Eugene Halfmann dropped in 11 for Ballinger.

Miss Linda Drennan was presented as the 1960 basketball queen at halftime in the A team game. She was escorted to the center of the court, where the team was waiting, by seniors Charles White and Jerry Wilson and was crowned Miss Basketball of Ranger High School for the year 1960. The Ranger High School Band participated in the half-time ceremonies.

The Bulldogs will travel to Coleman Friday night to close out the season. Eastland will play Ballinger and Cisco and Winters will battle for the District championship, each having 8-1 records in district play. Cisco downed Coleman Tuesday night 58 to 37 while Winters was having their trouble with Eastland in a game they won 35 to 33 in the third overtime.

Youth Banquet Set At Baptist Church Thursday

"Aloha Sweetheart" will be the greeting as the First Baptist Church opens its annual Sweetheart Banquet on Thursday evening.

The entire banquet will follow a Hawaiian theme and will feature such items as leis and palm trees. Preregistration indicates that this will be one of the best attended banquets in the history of the church, according to Glenn West, Training Union director.

Miss Elaine Barrett and her committee with the assistance of the two Departmental Directors, Mrs. E. V. Robinson and Mrs. Jesse White, have turned the lower auditorium into a tropical isle.

Jim Pfaffin of Abilene will be the featured entertainer for the evening.

This banquet climaxes the contest between the Intermediate and Young People's departments to see who can elect the king and queen for the year. The candidates are Miss J. J. Watkins and Richard Guest from the Intermediate department and Miss Mollie Mitchell and Jim Robinson from the Young People's department. The winners will be announced at the banquet on Thursday evening. The winners will be crowned by Glenn West, Training Union Director.



MAN AND MACHINE—The feet of a man crushed to death are visible beneath the wheels of a big trailer truck. The vehicle backed over the man in Rockville Centre, N.Y., pinning him with four of the rear wheels.

The Ranger Times

"Seeking Community Betterment Since 1919"
ELM STREET—RANGER, TEXAS ESTABLISHED JUNE 1, 1919
Entered as second class matter at the postoffice at Ranger, Texas under the act of Congress of March 3, 1879.

TIMES PUBLISHING COMPANY
Published Tri-Weekly—Tuesdays - Thursdays - Sundays
JOE DENNIS and ONOUS DICK, Publishers
GENE TOWNSEND, Editor

| | |
|---------------------------------------|------|
| One week by carrier in city | .15 |
| One month by carrier in city | .65 |
| One year by mail on Ranger RFD Routes | 3.95 |
| One year by mail in county | 4.95 |
| One year by mail in state | 4.95 |
| One year by mail out of state | 6.95 |

NOTICE TO PUBLIC—Any erroneous reflection upon the character, standing or reputation of any person, firm or corporation which may appear in the columns of this newspaper will be gladly corrected upon being brought to the attention of the publishers.

CLASSIFIED

All Classified Ads Must Be Paid For In Advance.

MISC. FOR SALE

OVER 1,000 records for sale. All popular artists. Stereo, Hi-fi, long-play albums. 45 RPM. Latest releases. Vinson Radio and TV Service.

FOR SALE: Bookkeeping supplies, post binders, indexes, receipt books, ledger sheets, storage files, note book, order books, and many other items . . . at the Ranger Times office.

FOR SALE Cheap: 1948 Chevrolet all in good condition except body. G. O. Strong, Phone 772.

RUBBER STAMPS—Fast service, reasonable prices, no order too large or too small to get our special attention. Ranger Times.

FILING CABINETS—We have all kinds. Letter size, legal size, one, two, three and four drawer. For home or office use. Ranger Times Office Supply, Phone 224.

PRACTICALLY new 760-16 white sidewall tire. Less than 300 miles. Phone 299 after 5:30.

FOR SALE

Nice 3 bedroom rock home, garden, pecan trees, fruit trees, landscaped. Price reasonable.

Two-bedroom, 2 lots, partly finished. Cheap.

78 acres grass, some minerals, good house, close in.

Other good buys. See us for buying and selling.

C. E. MADDOCKS & CO.
207 Main Street

Within Your Means

HOMES!

Small down payments . . . rest like rent!

Call 167

C. B. PRUET



Visit Our Display Yard in EASTLAND before you choose your

MONUMENT

Located across street from Coats Furniture Co. Ph. MA 9-1091 — Eastland Willard Griffin, Dealer Bu. It by: Riley-Gardner Memorial Co., Hamilton, Texas

Local AND LONG DISTANCE MOVING STORAGE



FREE ESTIMATES! A carload or a carload . . . we will estimate promptly, carefully. Storage facilities and service the finest. Low rates. Insurance available.

Longer Transfer and Storage
C. E. Maddock, Mgr. Phone 167

Political Announcements

The Ranger Times has been authorized to announce candidates for public office in the Democratic first primary election May 7 as follows:

FOR SHERIFF:
J. B. Williams, re-election
Lee Horn
W. E. (Bill) Reid
Oscar M. (Hop) White

FOR TAX ASSESSOR-COLLECTOR:
J. C. Allison (re-election)

FOR STATE REPRESENTATIVE 76TH DISTRICT:
Paul Brashear (re-election)
Don Kincaid
Scott Bailey

FOR COUNTY COMMISSIONER PRECINCT NO. 1:
J. B. (Tip) Arthur
E. W. (Bud) Griffin
O. R. (Ott) Ervin

FOR STATE SENATE 22ND DISTRICT:
Tom Creighton, Palo Pinto Co.

FOR CONSTABLE, PRECINCT NO. 2:
Ralph Veal (re-election)
J. W. Vinson

FOR CONGRESS 17TH CONGRESSIONAL DIST.:
Roy Skaggs of Abilene

Go To Church This Sunday

MAJESTIC IN EASTLAND

TODAY - FRI. & SAT.

GLENN DORRIS
FORD REYNOLDS
IN THE YEAR'S GREAT COMEDIES



THE GAZEBO
CARL REINER JOHN MCGIVER
CHENNAI 1954

STARTS SUNDAY



HELL BENT FOR LEATHER
STEVE MCQUEEN
STOPAN MURRAY
CHENNAI 1955

YOUR Independent AGENT
"SERVES YOU FIRST!"
I love nice silverware
Ha Ha - so do I!

REAL ESTATE For Sale

FIVE room modern house, carport. Priced for quick sale.
NICE modern 3 bedroom house, double garage. Phone 841 after 5:30.

COMPLETE BODY SERVICE

Painting and Body repairing on all makes cars and trucks.
GLASS CUT & INSTALLED
• Custom Made Seat Covers

Caraway Paint & Body Shop

BARBER SHOP

IT PAYS to LOOK WELL

Courteous Service
TONY'S BARBER SHOP
223 1/2 Main - Phone 109

Plant Disease Of The Week

"Plant Disease of the Week"
Leaf Spots Of Magnolia and Ligustrum
Harlan E. Smith, extension plant pathologist

Many people notice leaf spots on magnolia, ligustrum euonymus, gardenia, holly, photinia and other broadleaf evergreens at this time of year, especially in areas of high rainfall. These fungal leaf spots may be of different sizes and colors. They lower the aesthetic value of trees and shrubs; however, the plants are damaged little since the damage is on one year old leaves that are about ready to naturally fall from the tree or shrub. Several different fungi or molds may cause these leaf spots.

If the value of the shrub or shade tree is high enough to justify the cost, a preventive spray program is effective in reducing the damage by leaf spots. Use 2 tablespoons of captan or 2 tablespoons of zineb per gallon of water. Add a spreader-sticker to the spray. A combination of zineb and captan may be more effective. Zineb or captan may be used with safety during any part of the year. It is more important to have plants protected during times of above average rainfall or high humidity. With bacteria leaf spots, it may

be necessary to spray with a fixed or insoluble copper such as Copper A Compound or Tri-basic Copper Sulfate. Bordeaux mixture may also be used. Use fixed copper or Bordeaux with care since they may damage leaves to some extent. The use of a spreader-sticker and avoiding hot weather will tend to lessen the spray damage.

Leaf spots may occur during the growing season. Continued premature loss of leaves may weaken a tree or shrub so that it is more susceptible to other troubles. A good spray program plus proper fertilization and watering will help improve health of trees and shrubs. Avoid wetting foliage while watering as this tends to spread leaf spots.

RANGER DRIVE-IN

HIGHWAY 80 EAST ON RANGER HILL

Box Office Opens 6:30 — Show Starts 7:00
Adults 50¢ — Kids Under 11 Free
Only Eastland County Drive-In Open All Year
THURSDAY - FRIDAY - SATURDAY

Presented International presents
TONY CURTIS
JANET LEIGH
The Perfect Furlough
CINEMA-SCOPE COLOR

KEENAN WYNN • ELAINE STRITCH
LES TREMAINE
MARCEL DALIO and LINDA CRISTAL

Freevue Every Saturday Nite

SUNDAY - MONDAY - TUESDAY

CHANDLER IN TEN SECONDS THOUSANDS WILL BE BLOWN TO HELL! MARTINE CAROL
JACK PALANCE
TEN SECONDS TO HELL

POLITICAL CALENDAR

Here are some important dates on the 1960 political calendar:
April 16—Former non-residents or minors who shall have since become eligible to vote must obtain exemption from county tax collector by this date.
April 17 to May 3—Absentee voting for first primary.
May 7—First primary election and precinct conventions.
May 14—County convention.
May 15-31—Absentee voting for second primary.
June 4—Second primary.
June 14—State convention.
July 11—National Democratic Convention.
Oct. 19 to Nov. 4, 1960—Absentee voting for general election.

EASTLAND'S New Oldsmobile Dealer PIPKIN MOTOR CO.

314 W. Main Eastland, Texas Phone MA 9-2636



"We're here to serve you and see that you're satisfied!"

Come in and get acquainted . . . we'll really make you welcome!

The welcome mat is out, and you are cordially invited to drop in to look over our sales and service facilities. We're proud of them—as well as of our recent appointment as your Authorized Oldsmobile Dealer.

We would like to show you all there is to see—our modern showroom . . . the new and complete service department. Most of all, we'd like to have you meet the people—the salesmen and service men—who make this an outstanding organization. Drop in soon . . . you'll be glad you did.



COME IN FOR A RIDE IN A ROCKET!

Take a demonstration drive in a new Olds for 1960 with Quadri-Balanced Ride . . . safe, stable, silent, smooth.

OLDSMOBILE FOR '60

THE FINEST THE MEDIUM-PRICE CLASS HAS TO OFFER!



Nice things call for burglary insurance

The fun of owning nice things is spoiled if you fear burglars, robbers and thieves.

The fun can be made complete if you'll let us abolish fear with an America Fore policy to protect you against losses. And holdup and theft away from home are covered too—at very low cost.

Get this enjoyable protection for your household goods, personal effects, clothing, jewelry, silverware, furs, etc. Ask us.

C. E. MADDOCKS & CO
Insurance - Real Estate
207 Main Phone 252

Call 224 for Classified Ads



"Pipe Dreams" Take Shape with REGULAR SAVING

That home of your own... a start in business... or some other "pipe dream" can become a reality when you open an insured savings account here and add to it regularly. Our good earnings, added twice yearly, and compounded, help you get the things you want. Start saving now with a convenient amount.

First Federal Savings & Loan Association of Ranger
 ONLY 3% DOWN ON FHA LOANS
 204 Main RANGER, TEXAS Phone 820

VINSON RADIO & TV SERVICE

ANTENNAS 116 S. Rusk St. — Phone 77 RADIOS
 DU MONT AND EMERSON TELEVISIONS Sales and Service

Hospital News

Patients in Ranger General Hospital are:
 Warren Hill, medical
 Mrs. R. D. Cooper, Ranger, medical
 J. S. Hatton, Ranger, medical
 J. W. Barnes, Ranger, medical
 Mrs. Charles Putnam, Ranger, medical
 Mrs. Doshie Conner, Ranger, medical
 Mrs. R. C. Fuller, Strawn, medical
 Mrs. Kenneth Bullard and baby girl, Eastland
 Mrs. J. J. McDowell and baby boy, Ranger
 Discharged were:
 Mrs. Jim Young, Ranger
 Mrs. W. N. McGinnis, Gordon

— READ THE CLASSIFIEDS —

Free Estimates

On A New ROOF
 Or Repair your old Roof Residential & Commercial
Eastland - Ranger Roofing Co.
 Noble Squires Phone 733 Eastland

YOU SAVE 3 WAYS!

- Highest Quality** Price Without Quality Is Never A Bargain. Health is Important!
- Lowest Prices** Make the 30-Day Shopping Test and See How MUCH YOU SAVE at WORTH!
- 'S & H' Green Stamps** America's First and Foremost Cash Discount Stamps!



A Sweetheart of a Sale!

Prices Effective Thursday, Friday & Saturday — Limit Rights Reserved

CAKE MIXES

PILLSBURY DELUXE

- White • Golden
- Spice • Pineapple
- Orange •
- Chocolate Fudge

3 Pkgs. **79¢**



TUNA

Del Monte Chunk Style SAVE 32c

4 No. 1/2 Cans **1.00**

PEAS

Trellis Early June

No. 303 Can **10¢**

CLOROX

Bleach SAVE 8c

1/2-Gal. Jug **29¢**

VIENNAS

Hygrade Reliable, All-Beef

SAVE 17c

6 4-Oz. Cans **1.00**

BAMA DELICIOUS

Red Plum Jam 2 -Lb. Jar **35¢**

PETER PAN, SAVE 23c
Peanut Butter 3 12-Oz. Jars **1.00**

COOKED PICNICS

Lb. **33¢**

SWIFT'S ORIOLE

SLICED BACON

Lb. **35¢**

Shoulder Roast Lb. **59¢**

WORTH CONTROLLED QUALITY FINE HEAVY BEEF

CHUCK ROAST

Lb. **49¢**

Ground Beef Lb. **45¢**

MRS. CHESSER'S FROZEN

FRYER BREASTS

Lb. **69¢**

Neuhoff's Smokies 12-Oz. Pkg. **59¢**

U. S. NO. 1 IDAHO RUSSET

POTATOES

10 Lb. Cello **79¢**

TISSUE
 Zee, Family-Pack White or Colors

Delicious Apples

Crisp, Red

Lb. **19¢**

Tender Carrots

Young, Crisp

2 -Lb. Cello **12¢**

Yellow Onions

U. S. No. 1 Spanish

Lb. **5¢**

4 -Roll Pkg. **29¢**

EL CHICO FROZEN (SAVE 20c)

Enchilada Dinners

12-Oz. Pkg. **39¢**

BEEF TACOS El Chico Frozen

13 1/2-Oz. Pkg. **49¢**

EGG

SHAMPOO

Helene Curtis

\$1.89 Value **99¢**

WORTH FOOD MART

Don't Forget! "S & H" Green Stamps Are EXTRA Savings

CHANNEL 9 (KRBC, Abilene)

| THURSDAY | FRIDAY | SATURDAY |
|--|--|---|
| 4:30 Cont. Class 7:00 Today 8:00 Today 9:00 Dough Be Mi 9:30 Play Tr. Hanch 10:00 Price Is Right 10:30 Concentration 11:00 Truth or Con. 11:30 Could Be You 12:00 News, Wthr. 12:15 Devotions 12:30 Air Force 12:35 3 Stages 1:00 Queen for Day 1:30 Loretta Young 2:00 Dr. Malone 2:30 From Roots | 4:30 Cont. Class 7:00 Today 8:00 Today 9:00 Dough Be Mi 9:30 Play Tr. Hanch 10:00 Price Is Right 10:30 Concentration 11:00 Truth or Con. 11:30 Could Be You 12:00 News, Wthr. 12:15 Devotions 12:30 Air Force 12:35 3 Stages 1:00 Queen for Day 1:30 Loretta Young 2:00 Dr. Malone 2:30 From Roots | 4:00 Com. Pre. 4:30 Danger Is Out 4:30 Bonanza 4:30 Man & Chd. 8:00 Deputy 8:30 World Wide 9:30 Man from Ind. 10:00 News 10:10 Weather 10:15 Com. Pre. |

CHANNEL 11 (KFJZ, Fort Worth)

| THURSDAY | FRIDAY | SATURDAY |
|--|--|--|
| 8:29 Sign On 9:00 Little Rascals 9:30 Jack Le Lane 10:00 Mike Wallace 10:30 Resound 12:15 Ann Alden 12:30 Ranger Jim 1:00 Matinee 2:30 I Mar'd Jean 4:00 Begg Banny | 4:00 Begg Banny 4:30 Popeye 5:00 Amos 'N Andy 6:00 H. Hound 6:30 Stagecoach 7:30 Rescue 8 8:00 Mon Dawson 8:30 Trunkdiggers 9:00 Phil Silvers 9:30 Paul Coates 10:00 Theatre | 7:30 Silent Service 8:00 Mon-west Gun 8:30 Dial 999 9:00 Night Court 9:30 Int. Detective 10:00 Theatre 12:30 Posthouse |

CHANNEL 4 (KRLD, Dallas)

| THURSDAY | FRIDAY | SATURDAY |
|--|--|--|
| 7:29 Sign On 7:30 Cartoons 8:00 News 8:15 Cop. Kangaroo 9:00 Red Raws 9:30 On the Go 10:00 Love Lucy 10:30 Dec. Bride 11:00 Love of Life 11:30 Search for Tom 11:45 Guiding Light 12:00 News 12:15 Newsweek 12:30 As Wild Turns 1:00 Better or Worse 1:30 House Party 2:00 Millionaire 2:30 Verdict is Yrs. | 2:30 Verdict is Yrs. 3:00 Bright Day 3:15 Secret Storm 3:30 Edge of Nile 4:00 Movie 4:15 Party Time 4:30 News 4:45 Weather 5:15 News 5:30 Tell the Truth 6:00 Betty Hutton 7:30 San Hunt 8:00 Zone Gray 8:30 Markham 9:30 Revalon Rev. 10:00 News 10:15 Weather 10:20 Piz & Pize 10:30 MovieTime | 4:00 The Gourmet 4:30 Com. Pre. 5:00 Wrestling 5:00 News 5:15 Police Rept. 6:30 Weather 6:30 Party Mason 7:30 Wanted 8:00 Mr. Lucky 8:30 Have Gun 9:00 Gunsmoke 9:30 D. Valley Days 10:00 News 10:15 Weather 10:20 Piz & Pize 10:30 MovieTime |

CHANNEL 8 (WFAA, Dallas)

| THURSDAY | FRIDAY | SATURDAY |
|--|--|--|
| 7:25 Devotional 7:30 Cartoons 8:00 Margie 8:30 Romper Rm. 9:30 Life of Riley 10:00 Julie Beall 11:00 Hour of Stars 11:15 News 12:00 Restless Gun 12:30 Love That Bob 1:00 About Faces 1:30 Movie 2:00 Day in Court 2:30 Gale Storm 3:00 Beat Clock 3:30 Who Do Ya 4:00 Amer. Band 5:00 Robin Hood | 5:00 Robin Hood 5:30 Cartoon Strip 6:00 Newsweek 6:10 News 6:15 Weather 6:22 Sports 6:30 Glee Stars 7:00 Donna Reed 7:30 Red McCoys 8:00 Pat Boone 8:00 77 Sunset Strip 9:00 The Detectives 9:30 Stock Saddle 10:00 Newsweek 10:10 News 10:15 Weather 10:22 Sports 10:30 Hwy. Patrol 11:00 Theatre | 5:00 Golf 6:00 Luck Up 6:30 Dick Clark 7:00 High Road 7:30 L'Ve It to B'v. 8:00 L. Walk 9:00 Jubilee USA 9:30 Tombstone 10:00 Newsweek 10:10 News 10:15 Weather 10:22 Sports 10:30 Theatre 12:00 News |

CHANNEL 5 (WBAP, Fort Worth)

| THURSDAY | FRIDAY | SATURDAY |
|--|--|--|
| 5:55 Newsweek 6:00 Cont. Cl'r/m. 7:00 Today 7:25 Weather 8:25 News 9:00 Dough Be Mi 9:30 Play Tr. Hanch 10:00 Price Is Right 10:30 Concentration 11:00 Tr. or Conseq. 11:30 Could Be You 12:00 Noon News 12:30 Great Life 1:00 Queen for Day 1:30 Loretta Young 2:00 Dr. Malone 2:30 From Roots 3:00 Con. Theatre 3:30 Adv. Theatre 4:00 Fam. Theatre | 5:30 Dawsbeat 5:55 Newsweek 6:00 News 6:15 Weather 6:15 Hantley Rept. 6:30 Platoon 7:00 But Materson 7:30 J. Staccato 8:00 Mr. Lincoln 8:30 Ernie Ford 9:00 Gruesome Mors 9:30 Lawless Years 10:00 Teen News 10:15 Weather 10:25 News Final 1:00 Queen for Day 1:30 Loretta Young 2:00 Dr. Malone 2:30 From Roots 3:00 Con. Theatre 3:30 Adv. Theatre 4:00 Fam. Theatre | 5:00 Sgt. Showens 5:30 Challenge 6:00 The Deputy 6:30 World Wide 9:30 Man from Ind. 10:00 Teen News 10:15 Weather 10:25 News Final 10:30 Sports 10:35 Theatre |

CALL 224 FOR CLASSIFIEDS

COME IN AND SEE OUR COMPLETE SELECTION OF FINE **CARPET'S**

★ Prices to fit every budget
★ We do our own installation



Ranger Furniture Exchange

"BRASHER'S" RANGER Phone 242
123 N. Rusk

Court of Civil Appeals

Affirmed
3485 Members Mutual Insurance Company v. Orval Carroll et al. (Opinion by Judge Walter Wharton)
3489 F. Scott Glover et al v. William Glover. (Opinion by Judge Grissom) Harris

Clara Jacoby Watson

Income Tax Returns
Bookkeeping
300 Main Street
Phone 366

3492 Catholic Charities of the Diocese of Galveston, Inc., v. Judith Ann Harper et vir. (Opinion by Judge Grissom) Harris
3501 M. Allen Banks v. Caroline Realty Company. (Opinion by Judge Grissom) Harris
3514 H. J. Jippen v. Charles V. Brown (Opinion by Judge Collings) Eastland
3515 American Employers Insurance Company v. O. T. White. (Opinion by Judge Walter) Eastland

Reversed and Remanded
3478 Houston Belt and Terminal Company v. Estelle Chance (Opinion by Judge Collings) Harris

Motions Submitted
3480 Texas Reserve Life Insurance Company et al v. Marion C. Adams. Appellee's motion for rehearing. Harris
3483 J. L. Stokes et ux, v. Guy A. Thompson, Trustee, et al. Appellants' motion for rehearing. Harris
3491 Ruth Fay Bayer v. Herman C. Bayer. Appellant's motion for rehearing. Harris
3503 Commercial State Bank v. Helen K. Algeo et al. Appellant's second motion for rehearing. Palo Pinto
3538 Herman L. Sanders et al v. M. H. Worthington. Agreed motion to file Appellants' brief. Harris
3548 Leona Williams v. Jessie T. Williams. Appellant's motion for extension of time to file the record. Stephens
Motions Granted
3538 Herman L. Sanders et al v. M. H. Worthington. Agreed motion to file Appellants' brief. Harris
3548 Leona Williams v. Jessie T. Williams. Appellant's motion for extension of time to file the record. Stephens
Motions Overruled
3480 Texas Reserve Life Insurance Company et al v. Marion C. Adams. Appellee's motion for rehearing. Harris

DRIVE RIGHT IN... **SERVICE IS OUR BUSINESS!**



Reliable Scientific **Wheel Alignment**

Front End Alignment

Set Camber, and caster, adjust toe-in, steering controls, front end.

Reynolds Ford, Inc.

RALPH REYNOLDS
Authorized Test Station
Corner Pine & Rusk Phone 954 Ranger

SAFETY INSPECTION CENTER

UNDERSTAND THE BIBLE

Write for free Correspondence Course

Christadelphian Bible Study League
10413 Tolman
Houston 17, Texas

SCIENTISTS' CONQUEST OF RADIO WAVES

Marconi and Space
FOR MARCONI'S FIRST TRANS-ATLANTIC RADIO MESSAGE IN 1901—RADIO WAVES WERE BOUNCED OFF THE IONOSPHERE, 200 MILES ABOVE THE EARTH

Split-Second Journey
USAF EXPERTS OF MIT'S LINCOLN LAB SENT MESSAGES BY BOUNCING RADIO WAVES OFF MOON. MESSAGE TRAVELS 1/4 MILLION MILE ROUND TRIP IN 2 1/2 SECONDS!

Radar Saved Britain
RADAR MEASURES DISTANCE OF OBJECT BY RADIO ECHOES. BRITAIN COULD NOT HAVE SURVIVED GERMAN BOMBARDMENT WITHOUT IT.

Locating Spacemen
RADAR IS USED TO STUDY BIRDS' MIGRATIONS, FORECAST WEATHER, TRACK SPACE ROCKETS. ONLY RADAR WILL "KNOW" POSITION OF FIRST ASTRONAUT AT ALL TIMES.

These science features will be shown on CBS-TV program "CONQUEST", sponsored by Monsanto Chemical Company.

CALL 224 FOR CLASSIFIEDS

A Lot of Coverage

Complete **INSURANCE Service**

THAT'S what you get when you protect your investment in personal property (furniture, luggage, sports equipment, clothing, cameras, etc.) with a Personal Property Floater. This BIG insurance policy covers against fire, theft, most any peril you can think of... whether you're at home, out shopping or away on a trip. Ask us about this policy now.

MAY INSURANCE AGENCY
INSURANCE - REAL ESTATE
W. J. Sipes Opal King
DON'T GIVE FIRE A PLACE TO START!

3483 J. L. Stokes et ux v. Guy A. Thompson, Trustee, et al. Appellants' motion for rehearing. Harris
3491 Ruth Fay Bayer v. Herman C. Bayer. Appellant's motion for rehearing. Harris
3503 Commercial State Bank v. Helen K. Algeo et al. Appellant's second motion for rehearing. Palo Pinto
3517 W. H. Johnson Drilling Company et al v. Robert E. Lacy et ux. Coleman
3518 Odessa Harris Shaw et vir v. H. V. Williams et al. Stephens
3519 L. R. Thompson et al v. D. E. McAlister Graham et vir. 3520 Gib Callaway et al v. B. A. Duffy et al. Taylor
Cases Set for Submission Feb. 19
3522 Dixon Management Corporation v. M. H. Montfort et al. Stephens
3523 George Steakley v. W. C. Williams et al. Howard
3524 Argonaut Underwriters Ins. Company v. Cecil Ellis. Nolan
3525 W. E. Glenn et al v. Agness Daniel et al. Erath

READ THE CLASSIFIEDS

O. K. Gro. & Mkt.

501 W. Main Ranger Phone 214

SIMPLE SIMON FROZEN FRUIT **PIES** Large Size **39¢**

APPLE — PEACH — CHERRY

| | |
|---|--|
| Van Camp—300 Can Pork & Beans 2 for 29c | Del Monte—303 Can Spinach 2 for 29c |
| Mile-Hi—303 Can Sliced Beets 2 for 29c | Fleishmann's Corn Oil Margarine lb. 43c |

Stokley's Frozen
★ GREEN PEAS
★ SWEET CORN
★ PEAS & CARROTS
★ SPINACH

5 Pkgs. **1.00**
Your Choice

| | |
|--|--|
| Banner Oleo 2-lbs. 33c | Nabisco Ritz Crackers lb. 36c |
| Patio Mex. Dinner pk. 59c | Underwood Barbecue Sandwich Each 59c |

FRESH MEDIUM **EGGS** Doz. **39¢**

| | |
|---|---|
| Brookfield Country Roll Butter lb. 75c | Brookfield Pork Link Sausage lb. 49c |
|---|---|

Pangburn's Candy

For Your 'True-Love'

60c to 6.00

LOVE AT FIRST BITE

FEBRUARY 14th VALENTINE'S DAY

Crawford-Doss Rexall Drg
Main Street Phone 24

SELECTED RUBY RED **GRAPEFRUIT**

Large Size **5 For 29¢**

FROZEN — STOKLEY **PIES** Ea. **23¢**
CHICKEN—TURKEY—BEEF

SUPREME CHOCOLATE VANILLA **COOKIES** 2 Lb. **59¢**

HONEY CUP **MELLORINE**
1/2-gal. . 39c **3** 1/2-Gal. Cartons **1.00**

SELECTED Chuck **Roast** Lb. **49¢**

SEMI-BONELESS **PORK ROAST** Lb. **39¢**

SELECTED **SIRLOIN STEAK** Lb. **69¢**

SELECTED **ECONOMY-STEAK** Lb. **59¢**

PORK STEAK Lb. **39¢**

FRESH FROZEN **TONGUE** Lb. **19¢**

FRESH GROUND **HAMBURGER** Lb. **49¢**

Now...4-way NORGE
with longest guarantee of all at special low price



NORGE AUTOMATIC GAS DRYER
MODEL NO. DGU-60

The Norge Gas Dryer gives you 4-way drying! Dries all fabrics faster, safer and more economically: tumble-dry with heat and air — tumble-dry with heat, no air — heat-and-air dry, no tumbling — or air-dry, no heat, no tumbling. You get a full 5-year warranty on all working parts, and 1 year on the motor. Made of specially treated steel, the Norge cabinet is guaranteed rust-proof! Dependable gas gives safe, gentle drying. No element to burn out. No expensive wiring needed. Just \$1.00 down. 36 months to pay. **\$179.95** (cash price)

GAS dries best for so much less!

LONE STAR GAS COMPANY

NOTICE

The Williams Fixit Shop

Located at 114 Main Street in Ranger, is **NOW OPEN FOR BUSINESS**

Under the management of A. J. WILLIAMS and MILEY WILLIAMS.

We can now give you prompt REPAIR SERVICE on any kind of Typewriter, Adding Machine, Safes, Guns, Bicycles, Washing Machines, Refrigerators, and general lock smith work, etc. We also make keys.

We invite you to come in and see our complete line of NEW 1960 NORGE APPLIANCES.

WILLIAMS FIXIT SHOP
Mrs. Addie Williams, Owner
114 Main Street Ranger

NOTICE
VIE'S BEAUTY SALON
 Will be closed Monday, Feb. 15
FOR THE NATIONAL ALL-STATE BEAUTY SHOW IN DALLAS.
 Mrs. Vie Chesnut will specialize in the latest permanents, cuts and hair styling.
Shop Will Re-Open Tuesday For Appointments

Mrs. Charles Milliken Is Speaker At Sorority Meeting February 9

The Xi Zeta Nu Chapter of Beta Sigma Phi Sorority met in the home of Misses Norma and Eva Mills Tuesday, February 9, at 7:30 p.m.
 Mrs. Dwayne Dennis, chapter president, presided at the short business meeting. Mrs. D. C. Arterburn introduced Mrs. Charles Milliken, guest speaker, who spoke on "Civil Responsibilities."
 Following the program, refreshments of cherry pudding, ice cream and coffee were served.

Mrs. Capers Is Hostess at Bible Study Meeting

The Ladies Bible Study Group of the Merriman Baptist Church met in the home of Mrs. Dorothy Capers Tuesday afternoon at 1:45 for their weekly Bible study.
 Mrs. Sybil Whitehead opened the meeting with a prayer. The devotional, taken from the first chapter of Isaiah, was given by Mrs. C. N. Ellis. Mrs. A. E. Dawson led the closing prayer.
 Refreshments were served to the following: Mmes. G. D. Falls, Owen Falls, C. J. Cole, A. E. Dawson, M. A. McGee, C. N. Ellis, Jim Vinson, Bobby Green, W. E. Vinson, J. W. Vinson, J. E. Cas-

WOMEN'S ACTIVITIES

Friday, February 12
 The Ranger Garden Club will meet Friday, February 12, at the Community Club House for a business meeting and a corsage workshop. Mrs. Betty Wolford will be the speaker.
 Hostesses for the meeting will be Mrs. P. M. Kuykendall and Mrs. J. A. Bates.
Monday, February 15
 The Royal Neighbors will meet Monday, Feb. 15, at 6:30 p.m. for the birthday supper. All members are urged to attend.
Monday, February 15
 The Woman's Society of Christian Service of the First Methodist Church will meet Monday, February 15, at 3:30 p.m. at the church.
 Mrs. James Ratliff, and Mrs. J. D. Drennan, secretaries of Youth and Student Work, will conduct the program.
Wednesday, February 17
 The 1947 Club will meet Wednesday, February 17, at the Community Club House. Hostesses will be Mrs. Sybil Whitehead, and the hostess, Mrs. Capers.

Community Club House. The program will be a book review by Mrs. Leslie Hagaman. Hostesses will be Mmes. Ernen Haby and Charlie Murr.
 The meeting was originally scheduled for Feb. 16. Members please note the change in date.

TRADE WITH YOUR HOMETOWN MERCHANTS

SEE O. G. Lanier FOR

OIL AND GAS LEASES AND REAL ESTATE WE BUY AND SELL
 Phone 410 - 113 So. Rank
 Ranger, Texas

PENNEY'S
 ALWAYS FIRST QUALITY!



SAVE NOW ON COTTON TWILL MATCHED SETS!

They're comfort-cut to rigid Penney standards... reinforced for longer wear! You get an action-free proportioned fit! Machine washable, a snap to dry!

SHIRT 2.49
 neck sizes 14 to 17, sleeve sizes short, medium, long.
 PANTS 2.98
 waist sizes 29 to 50.



SPECIAL BUY ON SPORT SHIRTS
1.66



BLUE CHAMBRAY WORK SHIRTS
1.00
 Men's sizes 14 to 17

Just look at this fabulous assortment... dobbies, solids, fashion trims, conversationals, many, many more! All tailored to Penney's rigid standard!

They're Sanforized to keep that full cut Penney fit! Extra! Long tuck-in tails, lined collar for shape retention and a double shoulder yoke. Save!



BUDGET PRICED 60-GAUGE SHEERS
49¢ pr.
 sizes 8 1/2 to 11



EMBOSSED COTTON DUSTERS
2.00

Look how little you pay for Penney's first quality, full-fashioned 60-gauge, 15- denier Gaymode dress sheers? Self-color or dramatic dark seams.

Large trimmed, cotton prints... in fashion-fresh colors. Machine wash at medium setting, touch with the iron, it's ready to wear. Sizes 12 to 42.



FANCY ORLON ACRYLIC SLACK SOCKS FOR MEN
2 prs. for 1.00
 sizes 10 to 13

Nylon reinforced heel, toe! Machine washable at medium setting, too!



Snowballs of Values!

DETERGENT 59¢
 White Magic... More Satisfying at Any Price.

SCAMPER 49¢
 Liquid Detergent... Perfect for Washing Dishes.

WHITE MAGIC ALL PURPOSE CLEANER
 Liquid—Cleans Fast, Yet Gentle! Can't harm woodwork or floors.

15-Oz. Bottle 29¢
 28-Oz. Bottle 49¢

COFFEE 59¢
 Maxwell House or Edward's All Grinds. Good to the Last Drop!

CORN MEAL 29¢
 Yellow. Kitchen Craft... Perfect for Cornbread or Muffins.

GOLDEN CORN 25¢
 Highway Whole Kernel of Delicious Goodness.

WHITE HOMINY 27¢
 Highway... Perfect Compliment to All Pork Dishes.

STRAWBERRIES 3 \$1.00
 Balise Frozen... Sliced Berries. Perfect for Shortcakes.

SUNDAY, FEBRUARY 14, IS VALENTINE'S DAY...

Angel Food Cake 39¢
 Cookbook's Delicious tender textured.

Ice Cream 69¢
 Many Flavors... Cherry, Vanilla and other Flavors.

Bisquick 49¢
 10-Oz. Pkg. (24¢)

Puffin Biscuits 29¢
 or Biscuits... Sweetroll or Butterroll.

Crisp, Fresh Produce!

ROME APPLES 12¢
 All-Purpose Apple. Delicious for Pie. Perfect for Baking.

Carrots 12¢
 Tasty! Crisp and Crunchy.

Tomatoes 19¢
 Firm. Ripen Perfect for Slicing.

ANJOU PEARS 17¢
 Dessert Fruit Supreme.

AVOCADOS 4 29¢
 Perfect Tasty When Added to Salads.

Carnival of Values!

TOMATO JUICE 29¢
 Del Monte... Low in Calories and High in Nutrition.

KLEENEX TISSUE 49¢
 Facial Tissue... Assorted Colors.

WHOLE BEETS 10¢
 Town House... Family Delight the Whole Family with Buttered Beets.

SPICED PEACHES 19¢
 Homet Whole... Luscious Peaches with Just the Right Spices.

DILL PICKLES 49¢
 Zippy Whole Dill. Ideal for the Kasha Dish.

Enjoy Cherry Pie!

Cherry Pie 39¢
 Baked Fresh... Oven Ready.

Pie Cherries 35¢
 Two Home... Baked, Sour, Filled.

Soap Powder 59¢
 White Magic... Washes and Bleaches all in one!

Su-Purb Blue 59¢
 White Magic... Washes and Bleaches all in one!

Cleanser 23¢
 White Magic... Contains Chlorine Bleach.

Brocade Soap 29¢
 Regular Size. Complete Soap... Assorted Colors.

Brocade Soap 39¢
 Bath Size for Economy. Assorted Colors.

Green Beans 59¢
 Balise... Frozen. Cut Well. Steam or Cook. Great Beans.

Crisco 31¢
 A truly dependable shortening.

Safeway Thick Sliced BACON
 Delicious Breakfast Treat. Makes Wonderful Bacon-Tomato Sandwiches. These Thick Slices Retain the Perfect Flavor of that Wonderful Smoked Bacon.

2-Lb. Pkg. 69¢



THICK, JUICY STRIPS OF BACON CALL FOR...

Grade 'A' Eggs 42¢
 Breakfast Eggs. Grade 'A' Quality. Large Size.

Large 'AA' Eggs 45¢
 Cream of the Crop. Grade 'AA' Quality. Large Size.

U.S. Good Grade Calf

Sirloin Steak 85¢
 U.S.D.A. Good Grade Calf.

Pork Spare Ribs 25¢
 3 to 5-Lb. Avg.

T-Bone Steak 95¢
 U.S.D.A. Good Grade Calf.

Bakery Special of the Week

1-Lb. Loaf 19¢

Shylark BALLERINA BREAD

Iced Raisin Bread 27¢
 Delicious... Raisin Tarts. Loaf.

Jelly Snails 25¢

Winter Specials!

WOLF TAMALES 25¢
 Perfect Treat on a Cold Winter Evening.

FRITO CHILI 1.00
 With Beans... Taste Tempting Served with Tamales.

PORK & BEANS 25¢
 Van Camp... Nourishing and Full of Wonderful Flavor.

HIGHWAY CATSUP 29¢
 Wonderful Blend of Tomatoes and Spices.

SAFeway
 Conveniently Located to Serve you at 504 E. Main, Eastland

TEXAS RESIDENTS ONLY Hospital-Surgical Insurance AGES 60 to 100

REGARDLESS OF PAST OR PRESENT HEALTH

- No Physical Examination
- 10-Day Money-Back Guarantee
- Good in Any Hospital
- Covers Both Sickness and Accidents
- Costs Only \$7.00 Per Month—Men and Women

YOU GET THESE FINE BENEFITS FROM LIFE & ACCIDENT OF AMERICA—

AN OLD LINE LEGAL RESERVE INSURANCE COMPANY

1. Up To \$10 Per Day For Room and Board For as Long as 31 Days. For the Actual Cost of Your Room.
2. PAYS SURGEONS FEES FROM \$4.00 to \$300.00 Covered Sickness and Accident. Operation Will Be Paid Regardless Where Performed—HOME — HOSPITAL — DOCTOR'S OFFICE. Fractures Considered Operations Also.
3. You Receive These Other Fine Benefits

| | |
|------------------------------------|----------|
| Operating Room | NO LIMIT |
| Surgical Dressings | NO LIMIT |
| Casts | NO LIMIT |
| Medicines and Hypodermics | \$25.00 |
| Blood Transfusions | \$15.00 |
| Oxygen | \$15.00 |
| Anesthetics | \$10.00 |
| X-Ray (Both Sickness and Accident) | \$10.00 |
| Laboratory Services | \$10.00 |
4. Ambulance Service Up To \$25.00 To and From the Hospital, In or out of City
5. Plus These Dismemberment Benefits Due to Accidental Loss—From \$500.00 to \$1,000.00
6. YOU ARE GUARANTEED—Immediate Protection For Accidents Which Occur or Sickness Which Originates After the Date of Your Policy.
7. YOU ARE ALSO GUARANTEED PROTECTION For Conditions You Had BEFORE You Took Out This Policy. Provided The Hospital Confinement Begins. Surgical Operation Is Performed or Ambulance Service Is Used After Your Policy Has Been in Force Only Six Months. A Few Months Ago this was Unheard of in Insurance Circles.

THIS SENIOR HOSPITAL SECURITY POLICY GUARANTEES YOU:

LIFE & ACCIDENT OF AMERICA guarantees that under no circumstances can your policy be cancelled because of the number of times or the amount of benefits you may collect! In this respect, your SENIOR HOSPITAL SECURITY POLICY is much like group insurance in that it cannot be cancelled nor can the premium be increased unless such action is taken on ALL Senior Hospital Security Policies (Form SHS10) in your state!

John L. Tyson
President

Life & Accident of America

Charles E. Murr Phone 374 Ranger, Texas

One of America's Fine Companies An Old Line Legal Reserve Stock Company

APPLICATION FOR SENIOR HOSPITAL SECURITY POLICY OF LIFE & ACCIDENT OF AMERICA

Mail This Application Today To:

Senior Hospital Security Dept. 9027 Life & Accident of America First National Bldg. Abilene, Texas

NAME (PLEASE PRINT FIRST NAME - MIDDLE NAME - LAST NAME)

ADDRESS

CITY COUNTY

YOUR BIRTH DATE AGE

MALE FEMALE Enclose \$7.00 To Cover First Month's Premium

YOUR SIGNATURE POLICY SHS-10

DATE



MRS. JOHN P. KOUVELIS
... formerly of Eastland

Mary Halkias and John Kouvelis Repeat Vows in January Ceremony

The First Methodist Church of Wichita Falls was the scene of an impressive candlelight wedding ceremony uniting Miss Mary Halkias, formerly of Eastland, and John Pete Kouvelis of San Angelo Sunday, January 24, at 3 p.m.

Rev. Efram Karas, pastor of the Saint Demetrius Church of Fort Worth, performed the ceremony amid a nuptial setting of floor baskets of white gladioli flanked with silver candelabra holding white burning tapers. Palms completed the wedding scene. White satin bows marked the bride and groom.

Mr. and Mrs. Ernest Halkias of 1821 Pearl Avenue, Wichita Falls are the parents of the bride and Mr. and Mrs. Pete C. Kouvelis of 808 W. Highland, San Angelo are the parents of the bridegroom.

Dr. Nita Akin, organist, accompanied Ray Davidson, soloist, as he presented the nuptial selections.

The bride, given in marriage by her father, was attired in a white bouquet taffeta wedding gown. The princess silhouette gown styled with a full out-swept back ending in a chapel train was fashioned with a re-embroidered Alencon lace bodice, featuring petal point long sleeves buttoned from the elbow down, accented with seed pearls and sequins. Small lace covered buttons descended from the square neckline to the waist in the back. She wore white satin, rinstone-trimmed pumps. Her three-tiered veil of illusion was attached to a crown of Alencon lace and seed pearls. A white orchid surrounded by lilies of the valley and white pearl hearts formed the bride's bouquet.

Mrs. Charles Q. Simpson of Wichita was matron of honor. Other attendants were Mrs. Chris P. Kouvelis of San Angelo, the bridesmaid and Miss Panayota Kallas of Lubbock as junior bridesmaid.

The bride's attendants wore identically styled dresses of turquoise chiffon taffeta fashioned square cuffed neckline featuring small dior bows and panel front and back skirts with large inverted box pleat sides. Large picture hats of turquoise tulle and velvet complimented the attendants' attire. They wore turquoise satin pumps to match. The attendants carried crescent bouquets of feathered carnations designed with turquoise satin streamers and tulle.

Etes Halkias of Harlingen and John Halkias of Ft. Worth brothers of the bride, were candlelighters for the ceremony. Dee Adair of Lubbock was the crown bearer and Peter and Chris Kouvelis of San Angelo, nephews of the groom, were the ring bearers. Elayne Halkias of Ft. Worth, niece of the bride, was the flower girl.

Alex Zotos of Odessa acted as best man for the groom. Ushers were John Halkias of Ft. Worth and Etes Halkias of Harlingen, brothers of the bride, John J. Kalaitzas of San Angelo, cousin of the groom, John Kallas of Lubbock and Christos Dixie of Dallas.

Chris P. Kouvelis of San Angelo brother of the groom, was the groomsman and Lee Halkias of Wichita Falls, brother of the bride, was the junior groomsman.

Immediately following the ceremony, the bridal party and guests attended the reception which was held in the mezzanine of the Kemp Hotel. Reception assistants were Mrs. Alex Zotos of Odessa, sister of the groom; Mrs. John Halkias of Ft. Worth; Miss Lorene Michalopoulos of New York City; Mrs. Weaver Adair of Lubbock; Mrs. Wallace Parker of

Denton. Mrs. Al Chakos, Misses Bea Athanas and Pamela Chakos of San Antonio, Mrs. J. B. Parfish and Misses Gin Owens, Becky Stath and Kay Anagnos of Wichita Falls.

The reception table held the five-tiered wedding cake topped with the miniature bride and groom under a rainbow of lilies of the valley and pearls. Gracing the table were arrangements of white pom poms. Plate favors were sugar coated almonds in little net bags tied with ribbon and sprays of lilies of the valley.

Previous to the ceremony, Mr. and Mrs. Alex Zotos of Wichita Falls were host and hostesses to the rehearsal dinner held in the Zodiac Room of the Kemp Hotel in Wichita Falls. Approximately 50 guests attended.

The Zodiac Room was decorated with arrangements of white carnations. A dinner dance followed at 7:30 p.m. in the Terrace Room of the hotel. It was hosted by the brides parents. The music was provided by Clint Cozart's orchestra. Floral arrangements were of white and turquoise carnations. Approximately 225 attended.

For the wedding trip to New Orleans, La., the bride chose a brick red wool sheath with matching jacket. She wore the orchids from her bridal bouquet. Her hat was of white satin and she wore black patent accessories.

The bride was graduated from Eastland High School and Texas Women's University. She also attended the Texas University.

The bridegroom was graduated from San Angelo High School and Hardin-Simmons University. He served with the U. S. army in Korea and Japan.

The couple will make their home at 1812 Jade Drive, Apartment 6, San Angelo.

Out of town guests attended from San Angelo, Eastland, Breckenridge, Ft. Worth, Dallas, Lubbock, Odessa, Houston, Vernon, Robert Lee, Jackboro, Cisco, Abilene, Midland, Henryetta, Oklahoma and New York City, N. Y.

Second Baptist WMU Meets for Royal Service

The Women's Missionary Society met at the Second Baptist Church Monday, February 8, at 3 p.m. for the regular weekly meeting. Mrs. Bob Wymer, program chairman, was in charge of the Royal Service program, "In Word and Speech and Deed."

As an introduction to the program on missionary work in Panama, five members gave scripture readings and drew pictures to illustrate them. Mrs. Charlie Beck read Jeremiah 25:14 and drew a crown and clasped hands. Others were Mrs. Mary Wheat, Proverbs 15:4, a tree and a smiling woman; Mrs. Marcus Matthews, "Yule Routes"; Mrs. Carl White, "In Speech, the Mission Advances"; and Mrs. G. P. Rose, "In Deed, Action Bring Results."

The closing meditation was given by Mrs. F. E. Caraway. The group sang one verse of a hymn, "Take My Life and Let It Be." Mrs. Caraway, prayer chairman, read the names on the Call to Prayer for the day and led the prayer for the missionaries.

The following members were present: Meses. Wymer, Caraway, Williams, Matthews, White, J. D. Nichols, Betty Bush, Everett Noth, Rose, Squires, Beek Mae Rodgers, Verna Hartfield, Tim Edwards, Clyde Rodgers, Joe Calder, W. B. Crabtree, J. B. Baker, Wheat, Walter Mitchell, H. H. Sutton, R. B. Needham, and Edgar Ward.

Are You **LOOKING AHEAD?**
TOMMY GUESS
Northwestern National Life Insurance Co.
Phone 843 Ranger

Robinson Food Market

SPECIALS FOR FRIDAY & SATURDAY, FEBRUARY 12-13, 1960

WE DELIVER 121 North Rusk Street Phone 162

DECKER'S TALL KORN

FRANKS 1-Lb. 39¢
Pkg.

FRESH HOMEMADE

Sausage 2 Lbs. 89¢

FRESH GROUND

MEAT 2 Lbs. 1.00

LOIN

Steak Lb. 69¢

FRESH

Carrots 2 Cello Bags 15¢

GLADIOLA

FLOUR 5 Lb. Bag 49¢

KRAFT MINIATURE

Marshmallows 6 1/4-Oz. Pkg. 17¢

FANCY WHITE SWAN—303 Can

PEAS 2 For 29¢

The Time Is Always Right... To Finance

Your New Automobile OR LATE MODEL USED CAR

... through our easy budget Auto Loan. You can buy that new car now and pay for it in easy monthly payments to suit your income.

CHECK THESE ADVANTAGES...

- You may place the insurance with the agent of your choice!
- You are establishing valuable Bank Credit!
- You are dealing at home with your neighbors!

Commercial State Bank

Member Federal Deposit Insurance Corporation

We Have 1960 Auto License Tags

- ★ PASSENGER CARS
- ★ PICK UPS
- ★ BOETAILED TRUCKS
- ★ TWO-WHEEL TRAILERS
- No Transfers

MAY INSURANCE CO.

214 Main St. Ranger

Mary Ellen Deffebach, Bride-Elect, Honored by Gift Coffee February 6

Miss Mary Ellen Deffebach, bride-elect of Jimmie Alton Cribbs of Big Spring, was honored at a gift coffee in the Community Club House from 9:30 to 11 Saturday morning, February 6. Hostesses were Meses J. A. Bates, E. H. Bobo, V. V. Cooper, Jr., W. F. Creager, Vernon Deffebach, Gas-

ton Dixon, Beverly Doolittle, Floyd K. Hingworth, A. J. Ratliff and W. A. Robinson. Guests were greeted by Mrs. Ratliff; Mrs. Bates; the honoree, Miss Deffebach; Mrs. Arthur Deffebach, mother of the bride-elect; and Mrs. A. N. Cribbs of Floydada, mother of the future bridegroom.

The refreshment table was laid with a white cutwork and lace cloth. The honoree's chosen colors of blue and white were used in the centerpiece of white stock and blue maline in a silver compote. A miniature bride doll on a silver mounted reflector was also on the table. Silver appointments were used.

Mrs. William R. Horton and Mrs. Cooper alternated at the coffee service.

An arrangement of white stock in a silver bowl was used on the registry desk. Mrs. Cooper registered the guests.

A large array of gifts of linen, crystal, and china were presented the honoree by a host of friends. Piano music was presented during the morning by Meses Becky Brown and Karen K. Hingworth. The hostesses' gift was a silver tray.

Patricia Gallagher, Gene Grabber Will Be Married Here February 27

Mr. and Mrs. C. D. Gallagher of 808 Fosh Street, Ranger, have announced the engagement and approaching marriage of their daughter, Miss Patricia Ann Gallagher, to Eugene A. Grabber son of Mr. and Mrs. Frank Grabber of Umbarger, Texas.

The couple will be married at 1:00 noon Saturday, February 27, in St. Rita's Catholic Church. A reception will be held at the Community Club House following the ceremony. Relatives and friends are invited.



MRS. PATRICIA GALLAGHER to wed February 27

Dutch Club Has Meeting Wed. In King's Cafe

The Dutch Club met Wednesday, February 10, at 8 a.m. in King's Cafe for breakfast and business meeting. Mrs. H. C. Edwards gave the prayer of thanks. Mrs. Marvin Wilson, club president, presided at the business meeting, at which time the group decided to change the regular meeting time from the second Wednesday in each month to the second Thursday. The club made a donation of \$5.00 to the March of Dimes. Mrs. Fary Wallace and Mrs. Earl Horton were reported sick.

Eastland County CWF Meets In Eastland Monday

The Eastland County Christian Women's Fellowship met in Eastland Monday, February 8, for the County Council meeting. The Ranger, Cisco and Eastland County Council meets every three months in one of the cities. The next meeting will be June 11 in Cisco.

The program began with an organ prelude by Mrs. Ruth Lightfoot. After the opening prayer, the welcome was given by Mrs. Joe Tow, president of the Eastland CWF. The program on "Be Ye Doers of the Word and Not Hearers Only" was taken from James 1:22. Mrs. Ray Pool was reader.

A hymn was sung by Meses Yarger Daniel, Curtis Young, and Ray Heckendorf, accompanied by Mrs. Lightfoot at the organ.

Mrs. L. E. Huckabay, president, presided at the business meeting. The meeting was closed with a missionary song, "O Zion Haste."

Refreshments were served. Those who attended from Ranger were Mrs. L. D. Keith, president of the Ranger CWF; a host of Meses R. H. West, O. R. Ervin, B. S. Dudley, Sr., Richard Russell, and Lottie Davenport.

WSCS Meets For Program On Supply Work

The Woman's Society of Christian Service met at the First Methodist Church Monday afternoon, February 8, at 3:30. Mrs. R. H. Feasick opened the meeting with a prayer.

Mrs. A. J. Ratliff, president, presided at the short business meeting. The minutes of the last meeting were read and approved. Mrs. W. F. Creager gave the treasurer's report. Reports were also given by all officers and circle chairmen. Sick reports were made.

The program on "Supply Work" was conducted by Mrs. J. A. Bates, secretary of supply work. Mrs. Turner stated that the first supply work began in 1880. She led the closing prayer. Fifteen members were present.

FARMERS INSURANCE GROUP
 AUTO - TRUCK - FIRE - LIFE - BUSINESS
 ... all your insurance needs ...
 AUTO - TRUCK - FIRE and EXTENDED COVERAGE BOATS
 All your insurance needs "Dividend Savings"
RUBY SPRINGER
 Phone 1082 320 W. Main

BEAUTIFUL COLORS
 at **House of Color**
 HIGHWAY 80 EAST
Ranger's DISCOUNT Paint Store



NOW GOING ON! EVINRUDE "HORSE-TRADING" DAYS

- 1 Bring in your old outboard motor—get the highest trade per horsepower ever!
- 2 Trade up to a big new Evinrude—at the lowest cost per horsepower ever!

Come in and make a date to performance-test a new Evinrude Starlite II or Lark II. Get our big trade-in appraisal on your present motor. See why right now is the best possible time to make the best possible deal on a 1960 Evinrude.

EVINRUDE SALES AND SERVICE

L & J Supply Company

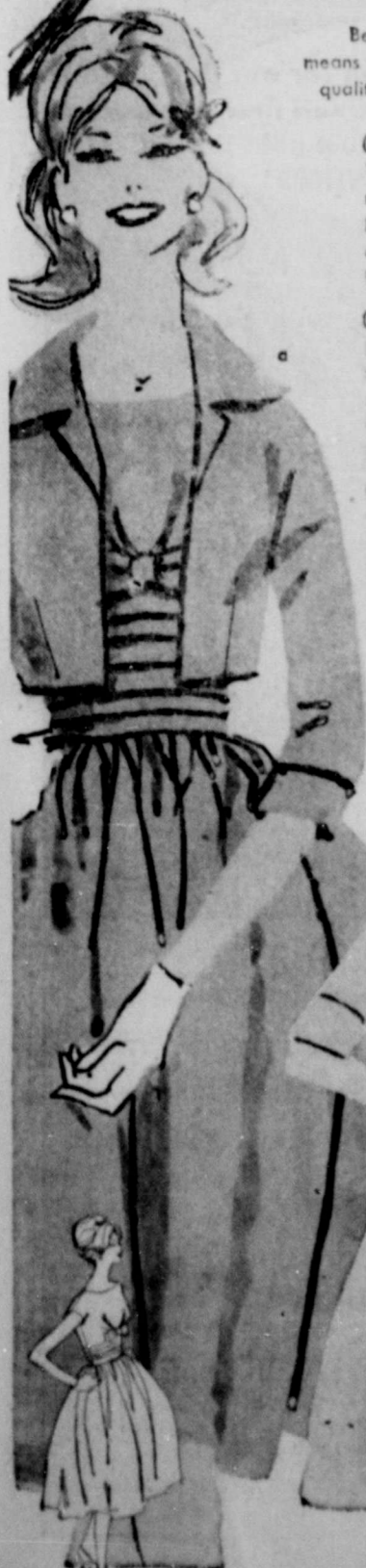
402 Main Street RANGER Phone 202

WARDS MONTGOMERY WARD

You pay so little for the best!

Spring's Brentshire Fashions

Better buys... Brentshires... the name that means the new in fashion... that means superb quality and value. Shop for your Brentshires today!



(a) An outstanding value! Wards hand-washable cummerbund jacket dress looks like linen, yet is rayon-and-cotton blend. Sizes 5-13 in beige, mint and blue. **8⁹³**

(b) Wash 'n wear skirts! White pleater, Arnel® triacetate sharkskin. Soft pleater, Wamsutta cotton; green, blue, brass, lilac, beige, black, brown, coral. Both 8-18. **5⁹³**

(c) No-iron automatic wash 'n wear shirt in Wamsutta cotton. Green, blue, brass, lilac, beige to match skirt. Also white. 32-38. (d) Guy crop-tops. 32-38. **2⁹⁸**



Shopping's easy, fun with a Wards credit plan.

SINCE 1884
 ... it has been our privilege to render a service to the community as monument builders ...
ALEX RAWLINS & SONS
 Weatherford Phone LY 4-2726 Texas



Who Discovers the Discoverers?

"A professor can never better distinguish himself in his work than by encouraging a clever pupil, for the true discoverers are among them, as comets amongst the stars."
 CARL LINNAEUS

Somewhere in this mighty land of ours, a gifted youth is learning to see the light of tomorrow. Somewhere, in a college classroom or laboratory, a dedicated teacher is gently leading genius toward goals of lofty attainment. Somewhere the mind of a future discoverer—in science, engineering, government, or the arts—is being trained to greatness.

Our nation has been richly rewarded by the quality of thought nurtured in our colleges and universities. The caliber of learning generated there has been responsible in no small part for our American way of life. To our college teachers, the selfless men and women who inspire our priceless human resources, we owe more than we will ever be able to repay.

Yet how are we actually treating these dedicated people?

Today low salaries are not only driving gifted teachers into other fields, but are steadily reducing the number of qualified people who choose college teaching as a career. At the same time, classrooms are beginning to get overcrowded. In the face of this, college applications are expected to double by 1967, if not sooner.

This is a severe threat to our system of education, to our way of life, even to our very existence as a nation. Our college need help—and they need it now!

If you want to know more about what the college crisis means to you and what you can do to help, write for a free booklet to: HIGHER EDUCATION, Box 36, Times Square Station, New York 26, New York.

Zemo Great for Minor Burns, Cuts

ATTEND THE CHURCH OF YOUR CHOICE EACH SUNDAY

Chiropractic Service
 1:00 to 5 p.m.
 Monday - Wednesday - Friday

DR. E. R. GREEN

455 Pine Ranger Texas

Zemo, a doctor's formula, liquid or ointment, soothes, helps heal minor burns, cuts, bruises. Family antiseptic, eases itch of surface rashes, eczema, teen-age pimples, athlete's foot. Stops scratching, so aids faster healing. For stubborn cases, get Extra Strength Zemo.

Nelly Don

City edition—beautifully cut, softly tailored dress and jacket in textured rayon spiced with a polka-dot tie. Avocado, toast, navy. 12 to 40 and custom sizes for the shorter figure. 12c to 22c. **19.95**

THE SMART SHOP
 Especially for You
 209 Main Phone 498

RETURN FROM VISIT
Mrs. J. W. Elder returned home Monday from a visit with her son and family, Mr. and Mrs. J. W. Elder, Jr., Mike, and Karen in Houston; another son and family, Mr. and Mrs. Dean Elder and boys in Hardin; and her sister and husband, Mr. and Mrs. Herman Smith in Alvin, Texas.

Mrs. Elder was accompanied by her daughter and granddaughter, Mrs. Bob Mara and Taw-

ana of Eldorado.

RECENT VISITORS
Recent visitors in the home of Mr. and Mrs. C. W. Blacklock were their daughter and family, Mr. and Mrs. R. H. Blair, Linda, and Gary of Abilene.

— READ THE CLASSIFIEDS —



SAFARI FOR SOULS
WITH BILLY GRAHAM IN AFRICA
by TOM McMAHAN, Religion Editor, The State, Columbia, S. C.

Next fall they will haul the union jack down from the towering pole in front of the imposing mansion where Billy Graham lunched with the Governor General of Nigeria last Saturday.

From the window, American Evangelists and the British rearguard of a vanishing empire could look out on ships of many nations unloading at West Africa's most important port.

"With independence will come increased responsibility to Nigerians", Graham told crowds of twenty thousand and fifty thousand at two services on the broad greenward of the race course surrounded by beautiful government buildings.

"The emerging free nations of Africa will have a special need for people of personal integrity and

dedication to the common good", said Graham. "These and other vital virtues flow from a personal encounter with God in Christ", he declared.

Right on island and swamp, Lagos is in an area once known as the "White man's grave". Now, the skyline is being pierced by office buildings. But the rhythmic beat of talking drums is still heard in the land, and village life is duplicated in open air markets and ten thousand tiny shops.

If you like the bazaar, Nigeria is a gold mine. You can find snake worshippers; medicine men who still compound dosages of feathers, mice and bats. In some remote areas, drivers are warned never to stop if they hit a pedestrian lest local tribesmen chop them to pieces. In one region, adults play cowboy with great gusto.

Far more sign of the past is the quiet reverence for the better side of the British colonial policy and an outlook for continued freedom which make Nigeria perhaps the most hope-inspiring nation on this fast changing continent.

More important, too, are hundreds of churches where songs of praise mingle with a note of concern for the spiritual welfare of fellow Nigerians. Christian leaders hope this will be increasingly true in the wake of Graham's whirlwind tour of five Nigerian cities, his third in a series of annual African campaigns. Already the devotion of some of these people puts the average American Christian to shame.

"Color bar", or segregation, just doesn't exist in Lagos which is probably the world's most relaxed city with respect to race-consciousness. The five thousand Europeans mingle freely with three hundred thousand Africans; invite them to their parties and dance with them in night clubs.

In nearby Ghana, a campaign is in full swing to condemn wholesale all aspects of colonialism and to build up a cult of African personality centered around Prime Minister Nkrumah. Not so here. Instead of one strong man, Nigeria has three or four, and sectional and tribal differences tend to strike a balance and dictate a moderate course.

Relations between Nigeria and Ghana cooled noticeably when Nkrumah deported several well-heeled Nigerians and confiscated their property. But the thirty-five million Nigerians want no part in Pan-Africa Federation led by six million Ghanaians. Nigerians are demanding for their country a place in the sun in keeping with her size and importance.

A British newspaper reported that Nigeria was the only African country which extended a wholehearted welcome to Prime Minister MacMillan last month. There is probably less bitterness and more political sophistication here than anywhere else in West Africa.

In this context Billy Graham challenged educated Nigerians to find true freedom under God. The great crowds, the singing and the preaching thrilled Africans who had never before seen anything attempted on this scale by Evangelical Christians. A city counselor who had not been to church for ten years quietly rededicated himself to Christ at the race course without going forward. Three policemen came to help handle the crowd and stayed to seek the Lord. People actually pushed their way to the front one night as the rush became a crush. Some jumped barriers to join the inquirers who numbered some five thousand in a week of campaigning, including the preparatory services led by Associated Evangelist Grady Wilson.

Graham's messages which were simple enough for children to grasp, also cut like a sword as he drove home Christ's demand for a complete break with last, craft, lies, gossip, selfishness and all the rest.

Later after the evangelist returned to his hotel, little clusters of seekers sat on the grass or stood in circles as patient counselors explained how to become a Christian and live like one.

"It was like modern Pentecost", commented the sweet National Chairman of Graham's Nigerian campaign, Doctor James T. Ayorinde, Baptist Pastor and Board Chairman of Nigerian Broadcasting Corporation.

"It has stirred the spirit and conscience of the people and has shown us that there is a hunger and thirst after righteousness," said the Right Reverend A. W. Howells, Anglican Bishop of Lagos, and, like Ayorinde, an African.

"This has shown that we can work together," said Dr. E. J. Jones, Chairman of one of two Nigerian Methodist Synods. "Lagos has been hit harder than ever before by this united Protestant Witness," he added.

Back in the hotel lobby a hefty African auto parts dealer wearing cloth resembling leopard's skin, listened to a rebroadcast of the service over a transistor radio. "Billy Graham's message is for the whole wide world," he exclaimed.

— READ THE CLASSIFIEDS —

INGROWN NAIL HURTING YOU?
Immediate Relief!
A few drops of OUTGROW bring blessed relief from embarrassing pain of ingrown nail. OUTGROW toughens the skin underneath the nail, forces the nail to be cut and then cuts further pain and discomfort. OUTGROW is available at all drug counters.

Grade A MILK 60¢ GAL.
5 TO 8 DAIRY
Olden, Texas

The Steak House

FINE STEAKS
FRIENDLY SERVICE

Highway 80 East - Ranger

VERNE PETERSON NURSERY

Landscaping and Pest Control Service

Hwy. 80 West Phone 441

Watch for insects, now is the time for them to start working. Call us at 441 for information. We kill any kind of insects inside or outside. Free estimates.

We have all kinds of shrubs in containers ready to be planted. SEE US NOW.

**Financing New Homes
Remodeling and Repair**

LOANS
Finance All Needed
Improvements With A
Single Low-Cost Loan



It will pay you to see us first if you're planning to modernize, add living space, make repairs, paint or put any other improvements or additions into your home!

No need to put it off! See us today for a low-cost home improvement loan, and start work tomorrow! Have better living on a monthly budget basis.

Free and Accurate Estimates On All
Building Needs

Ranger Lumber & Supply Co.


Calvin Brown — Earl Brown
Ranger
Phone 138

— READ THE CLASSIFIEDS —

Your Income Tax Return
Receives
PERSONAL ATTENTION
and ANALYSIS
when you see
RUBY SPRINGER
320 W. Main Ranger
Phone 1082

ATTEND THE CHURCH OF
YOUR CHOICE EACH SUNDAY

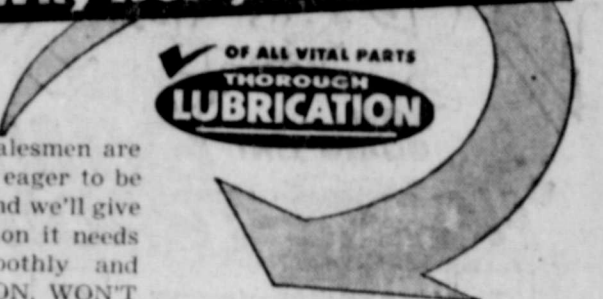
Our station is conveniently located, and well equipped with the latest in service equipment and quality products. Our salesmen are courteous, well-trained, and eager to be at your service, and you'll find we'll give your car the kind of attention it needs to keep it performing smoothly and looking good. VISIT US SOON, WON'T YOU?



OPEN 7 A. M. to 10 P. M.
**CAMPBELL'S
HUMBLE STATION**
Highway 80 and Main Ranger, Texas

Why Worry - Rely On Us!

OF ALL VITAL PARTS
THOROUGH
LUBRICATION



OPEN 7 A. M. to 10 P. M.
**CAMPBELL'S
HUMBLE STATION**
Highway 80 and Main Ranger, Texas

WARDS
MONTGOMERY WARD

**Hottest
CLEARANCE OF THE YEAR**

FIRST LINE NYLONS
Riverside
Super Deluxe

Now Only **15⁸⁸** 6.70-15 black tube-type plus excise tax and trade-in tire

Rugged DuPont nylon cord resists harmful impacts, moisture penetration. 20-month guar.

| SIZE | TUBELESS BLACKWALLS | | TUBE-TYPE BLACKWALLS | |
|---------|---|--|---|--|
| | List price each before trade-in plus excise tax | Sale price with trade-in plus excise tax | List price each before trade-in plus excise tax | Sale price with trade-in plus excise tax |
| 6.70-15 | 27.15 | 17.88 | 24.00 | 15.88 |
| 7.10-15 | 29.75 | 19.78 | 26.65 | 17.68 |
| 7.40-15 | 32.60 | 21.68 | 29.10 | 19.28 |
| 7.90-14 | 27.15 | 17.88 | | |

Riverside TYREX TIRES
New tire safety at economy prices. 12-month guarantee.
6.00-16 10.88*
7.10-15 13.88*
*Tyrex is the certification mark of Tyrex Inc. for viscose tire yarn and cord. *Plus excise tax and trade-in tire

11⁸⁸ 6.70-15 black tube-type

DRIVE NOW...PAY LATER on Wards convenient terms!

See The Dinah Shore Chevy Show in color Sundays, NBC-TV—the Pat Boone Chevy Showroom weekly, ABC-TV.



LOOK AT THE LOWER PRICES

List prices as much as \$76.05 lower on popular models with popular equipment

The '60 Chevrolet models most people buy, equipped the way most people want them, are actually priced lower than last year's models. This two-tone Bel Air V8 sedan, for example—with Turboglide, push-button radio and de luxe heater—lists for a whole \$76.05 less! Prices are lower for all comparable V8 models throughout the line. Also for all comparable 6-cylinder models with Powerglide. Yet Chevy's loaded with more of the things that put pleasure into owning a car. (Just look at the list!) It's the greatest year yet to get into a Chevy!

Big brakes for quicker, surer stops. Rivetless bonded linings mean they last longer, too.

More room to relax in. Chevy sedans offer roomier seating than any car in their class. Lower, narrower transmission tunnel means more foot room.

Only full wraparound windshield among the leading low-priced cars.

Electric windshield wipers keep sweeping even when you speed up to pass.

Vent windows crank open and closed. So much simpler than fighting those tricky little catches.

Keyless locking of all doors. Quick and easy. The same key opens door, glovebox, trunk and starts the car.

Economy Turbo-Fire V8. Or how to get up to 10% more miles per gallon of regular and still have lots of "git."

Thriftest 6 in any full-size car. It's the '60 version of the engine that got 22.38 miles per gallon in the 1959 Mobilgas Economy Run.

Widest choice of power teams. 24 engine-transmission teams in all, with output up to 335 h.p.

A trunk that's made for long trips with up to 22.5% more actual luggage space. Still's lower for easier loading.

Fisher Body craftsmanship. Look at the finish, the fabrics, the detail work. You'll see the difference.



Drive it—it's fun-tastic! See your local authorized Chevrolet dealer for fast delivery, favorable deals.

ANDERSON CHEVROLET COMPANY

111 S. AUSTIN ST. RANGER PHONE 14

NOW A 30-Month guarantee

Riverside Battery...

For only **11⁸⁸**

6-V, 30-month guarantee TYPE 1, 2L WITH TRADE

12-V, 24-month guarantee **14⁸⁸** Type 24 S—with trade

INSTALLATION FREE

Drive in today for the best battery buy in America! Riverside high quality, economy priced batteries—for the power you need!

