

Courthouse News And Records

INSTRUMENTS FILED County Clerk's Office

Wyndle L. Armstrong to First Federal S & L Assn., deed of trust.

Doss Alexander to Graridge Corp., oil and gas lease.

Doss Alexander to Graridge Corp., oil and gas lease.

Ada Alexander to The Public, proof of heirship.

James D. Alexander to Graridge Corp., oil and gas lease.

Doss Alexander to The Public, affidavit.

Doss Alexander to The Public, affidavit.

A. W. Adkinson to Graridge Corp., oil and gas lease.

Doss Alexander to The Public, affidavit.

D. E. Alwood to Otto Spratt, oil and gas lease.

Ray Agnew to William Franklin Agnew, cor. deed.

Cecil Bostick to State of Texas, right of way.

Joe Britain to C. Y. Owings, warranty deed.

Buda B. Butler to W. H. (Bill) Hoffmann, oil and gas lease.

H. M. Bagwell to O. H. Oakley, warranty deed.

Lloyd L. Bruce to Howard P. Flowers, assignment.

Marvin A. Bell to Horace L. Geyer, warranty deed.

Na Dean Bell vs. Marvin Bell, cor. judgment.

Frances Na Dean Bell to Horace L. Geyer, quit claim deed.

Ollie L. Box to The Public, proof of heirship.

W. M. Baber to Jay Herring, warranty deed.

C. P. Brannin to Graridge Corp., oil and gas lease.

Hattie Boatman to Graridge Corporation, oil and gas lease.

J. W. Brooks to Graridge Corp., oil and gas lease.

Bonnie Brooks to Otto Spratt, oil and gas lease.

R. E. Browning to Graridge Corp., oil and gas lease.

Witt Bowden to Ray Agnew, cor. deed.

Witt Bowden to William Franklin Agnew, cor. deed.

County of Eastland to State of Texas, right of way.

Mrs. T. E. Clark to State of Texas, right of way.

Catherine Cunningham to The Public, right of way.

Lee Crawford to H. M. Bagwell, warranty deed.

M. K. Clark to Graridge Corp., oil and gas lease.

Sam L. Clark to Graridge Corp., oil and gas lease.

Aaron Cohen to The Public, proof of heirship.

Bianche L. Clinkcales to Graridge Corp., oil and gas lease.

W. H. G. Chambers to Graridge Corp., oil and gas lease.

Mary S. Courtney to Graridge Corp., oil and gas lease.

M. K. Clark to Graridge Corp., oil and gas lease.

Sam L. Clark to Graridge Corp., oil and gas lease.

Thelma Collier to Graridge Corp., oil and gas lease.

C. M. Caldwell to The Public, affidavit.

Clyde Cockrum to Graridge Corp., oil and gas lease.

Clyde Cockrum to Graridge Corp., oil and gas lease.

Cleve Calloway to Graridge Corp., oil and gas lease.

J. H. Childers to J. R. Hill, release of vendor's lien.

Commercial State Bank, Ranger to Robert B. Pitchford, release of vendor's lien.

Iona Davenport to State of Texas, right of way.

B. F. Dunn to The Public, cor. probate.

Autha Eaker to May Speer, warranty deed.

Myrtle Merrill Figus to State of Texas, right of way.

Estate of C. H. Fee to State of Texas, right of way.

First Federal S & L Assn. to Lee Crawford, release of deed of trust.

Howard P. Flowers to M. A. Treadwell, deed.

First Federal S & L Assn. to E. A. Falls, release of deed of trust.

First Federal S & L Assn. to H. L. Jackson, release of deed of trust.

First State Bank, Rising Star to Graridge Corporation, oil and gas lease.

G. W. Ford to The Public, affidavit.

J. W. Foster to Graridge Corp., oil and gas lease.

Robert C. Foulston to Graridge Corp., oil and gas lease.

First National Bank, Cisco to J. H. Childers, transfer of vendor's lien.

James Fox to Henry E. Wilson, release of oil and gas lease.

James Fox to Glynis A. Wilson, release of oil and gas lease.

General Land Office to Mrs. Alice Boyd, grass lease.

Jeanette Beck Goodman to (Continued on page three)



"Battle Border"

Little known facts about Texas boundaries.

(Editor's Note: This is the last in a series of twelve articles outlining the numerous boundary conflicts dating back to 1716, pointing up little known facts which shaped the Texas of today.)

One stormy chapter in the history of our Texas boundaries was written with the unsolicited help of Oklahoma's blustery, colorful Governor William J. "Alfalfa Bill" Murray.

Murray, governor of the Sooner state from 1931-35, figured prominently in the "Bridge War" of 1931 between Texas and Oklahoma.

"The Bridge War" grew out of the differences of opinion between Alfalfa Bill and Texas officials concerning the opening of three "free bridges" spanning the Red River, Attorney General Will Wilson explains.

Built as a joint effort of Texas and Oklahoma they were intended to provide highway travelers with toll-free passage over the river.

In the spring of 1931 three of the new bridges were nearing completion — the Ringgold-Terrel bridge near Wichita Falls; another crossing the river north of Gainesville; and a third span between Denison and Durant, Oklahoma.

By mid-summer the bridges were still not in use and Alfalfa Bill, long a champion of free bridges, grew impatient with the continued delay.

In spite of the fact that half of each bridge lay within the Texas borders, the Oklahoma government ordered the bridges open. He was also conspicuously unimpressed with the fact that the Gainesville bridge was still under construction on the Texas side while the Denison free bridge had been ordered by the Federal Court in Houston not to open until settlement of certain legal disputes between the owners of the nearby toll bridge and the Texas Highway Commission.

Traffic, swelled by thousands of curious sightseers, began to flow across the bridges.

Crossing the Gainesville bridge a large truck found the Texas side impassable, couldn't back off the bridge and so remained appended over the Red River until morning.

The Ringgold-Terrel free bridge operated without incident.

At Denison, however, Alfalfa Bill's action defied both the State of Texas and the federal judiciary. Governor Ross S. Sterling promptly ordered the bridge closed. Texas Rangers rushed to the scene, ordered barriers rebuilt of heavy logs and beams to be guarded indefinitely.

Alfalfa Bill responded by throwing up a barrier across the Oklahoma side and ordered highway workers to plow up 200 feet of the road approaching the toll bridge. He then declared the bridge under martial law.

The Texas legislature passed an urgent resolution exhorting representative Sam Rayburn to press for passage of Federal legislation aimed at breaking the deadlock.

Meanwhile Gov. Murray moved troops to the Denison bridge and appeared in person from time to time to review his men, wearing a campaign hat and packing an old pistol.

After a few tense days, an uneasy truce was effected.

By fall a flurry of legal actions were under way. The toll bridge company obtained an injunction against further interference with the operation of their bridge.

The Bridge War was brought to a final end when the toll bridge company's suit against the State of Texas was won by the state, represented by the late James V. Allred, then Attorney General.

So Texas had fought over practically all of her boundaries — with Louisiana, Oklahoma, New Mexico and Old Mexico. But the most persistent and aggressive of the land biters had been the federal government.

Attorney General Will Wilson's present case with the Federal government is one more battle in a century old war to maintain Texas territory.

"Will there be more? Probably so. Of one thing you can be certain, Texas will fight. By now, she knows how," Wilson emphasized.

SPACE AGE TERMS

(Editor's Note: This is the fifth in a series of articles taken from an Air Force Glossary that will help you to understand the space age terminology.)

Circumlar Rocket — Rocket-propelled vehicle designed and operated to take off from Earth, travel to the moon's orbit, circle the moon, and return to Earth.

Outer Space — Space around the Earth beyond the outermost reaches of the terrestrial atmosphere and within the orbit of the moon.

Comet — Nebulous body that revolves about the sun in elongated orbits.

Component — Term loosely given to a part, subassembly, or system, when considered as part of a larger assembly or system.

Console — Master instrument panel from which rocket and missile launches are controlled.

Constellation, Stellar — Arbitrary groups into which stars are divided for reference and identification; in most constellations there is no relation between members, they seem close together merely as a result of perspective.

Contraorbit Missile — Missile sent backward along the calculated orbit of an approaching spaceship, satellite, or space weapon for the purpose of destroying it in a head-on collision with an explosive warhead or by missiles.

Contraorbit attacks are considered much easier to accomplish than orbital attack; the antisatellite missile is one of these weapons.

Controller — Device which receives a measured value of a variable from a sensor, compares that value with some reference value, and supplies a control element to maintain the value of the variable within a certain range about the reference value.

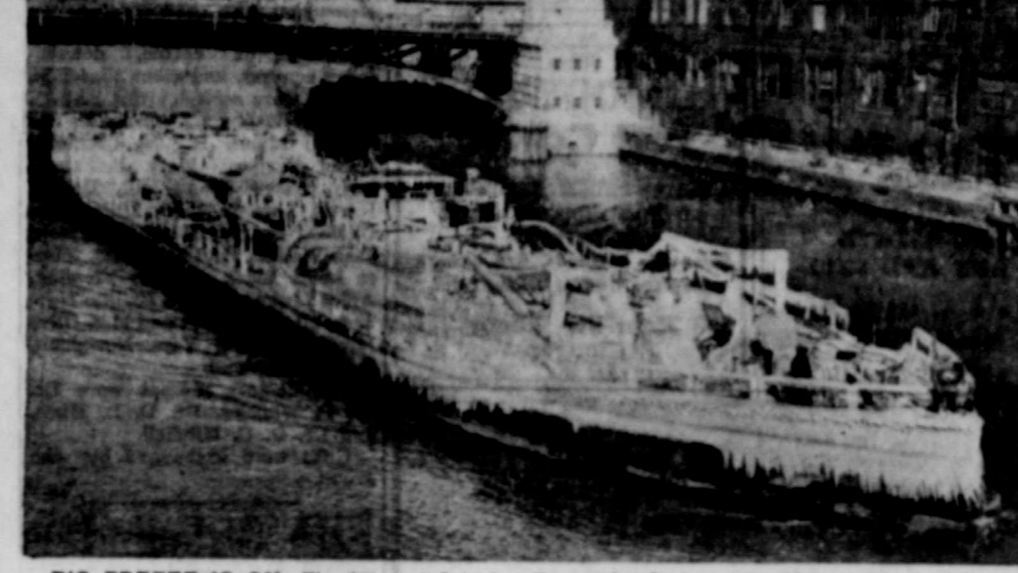
Coriolis Force — Deflection of a projectile during its flight across the surface of the Earth, caused by the rotation of the Earth.

Cosmic Rays — Extremely fast particles continually entering the upper atmosphere from interstellar space; atomic nuclei which have very great energies because of their enormous velocities; potentially dangerous to humans experiencing extended exposure.

Cosmonautics — Word coined in recent years to describe the science, as well as merely academic, of travel beyond the solar system by using radically new forms of propulsion.

Countdown — Series of events that take place from the start of rocket-launching operations until the rocket lifts off the launch stand. Countdown starts with a missile in the ready condition, progresses through loading of propellants and pressurization gas, activation of the circuits, last-minute checkout of components, starting the rocket engines, and building up the thrust to the required force for liftoff.

FREE HOME TRIAL on RCA Whirlpool Appliances RANGER PRIZEN FOOD CENTER



BIG FREEZE IS ON—The ice-coated tanker Taurus heads down the Chicago River in that city after a cold, windy trip on the Great Lakes. The record cold wave slowed iron ore carriers on the lakes as they raced to the steel mills before winter locked the ports.

FROM OUR FILES

Thirty Years Ago This Week
Dec. 30, 1929
A knife and gun affray in the elevator lobby at the rear of the Cisco Banking company building sent two negroes to the hospital with serious wounds and came very near proving of serious consequences to Forrest Dean Jr., well known citizen of Ranger, a bystander who had gone into the building to go upstairs to his father's offices by the elevator.

December 29, 1949
Ben Whitehouse, vocational agriculturist of Ranger was chosen as one of the 12 outstanding vocational teachers of Texas recently in a "master teacher" contest. E. H. Varnell of Cisco also was selected as one of the 12 most capable.

December 26, 1929
Flying at the rate of almost two and one-quarter miles a minute, a Douglas 62-K stopped at the Ranger-Haughland field Thursday morning. The plane piloted by Lieut. Fish, who was enroute from Brooks Field, San Antonio to Fort Sill, Okla.

Twenty Years Ago This Week
December 28, 1939
Friends here Thursday pointed out that C. S. Slattery, appointed recently to the commission of appeals of the Texas supreme court is a native of Scranton, Eastland County.

December 28, 1939
Proposal to consolidate the Flatwood and Carbon school districts thus forming the Carbon Independent School District, will be decided at an election set by commissioners court for January 13.

December 31, 1939
At a special directors' meeting of the Commercial State Bank of Ranger, held Dec. 30th, the directors declared a ten percent dividend. The year of 1939 has been the best business year the bank has enjoyed since it has been organized.

Ten Years Ago This Week
December 28, 1949
Dr. G. C. Boswell, Superintendent of Ranger Public Schools,

O. H. Doss Injured Saturday In Accident

O. H. Doss, manager of the Crawford-Doss Drug Store, was injured in an automobile accident East of Cisco Saturday.

Doss, on his way home at Cisco Saturday following the closing of the store, was involved in an automobile accident just east of Cisco. He is in the hospital in Cisco and is expected to remain there the rest of this week. He is in room 17 of the Graham Hospital.

J. B. Williams To be Candidate For Re-Election

Sheriff J. B. Williams today announced that he will be a candidate for re-election in the coming Democratic primary election.

In announcing his intentions to seek another term of office as sheriff, Williams said he would make his formal announcement at a later date.

"I want to thank everyone for their support in the past, and I want them to know I am seeking their continued backing."

New Auto Insurance Plan Is Explained

AUSTIN (Special) — Approximately 73 percent of Texas motorists have had spotless driving records for the past three years. When this is related to insured automobiles, 57 percent of the insured automobiles will qualify for at 20 percent reduction on their automobile insurance when the Texas Safe Driving Insurance Plan becomes effective January 1, according to a statement issued today by Penn J. Jackson, Chairman, State Board of Insurance.

An analysis of the records of 40,365 Texas drivers showed that 88.5 percent of the drivers were not convicted of moving traffic violation offenses during the same period. The study also disclosed that 72.92 percent of all drivers had neither motor vehicle offenses nor accidents in their records.

"The vast majority of Texas drivers will be looking forward with great enthusiasm to this new Plan which puts the burden of insurance costs on the careless driver, while giving a just and fair reward to those who have not had accidents or convictions. The Texas Safe Driving Insurance Plan was adopted after repeated requests from State motorists who felt that their safe driving records, and the safe driving records of the other members of their family, entitled them to a reduction in their insurance rates," Jackson said.

The Safe Driving Insurance Plan applies to all automobiles eligible for insurance under the Family Automobile Policy and provides for a 20 percent discount from the regular insurance rates when each member of the household has driven without an accident or a conviction for a moving traffic violation for the past three years.

An estimated 57 percent of all automobiles, now insured under the Family Automobile Policy, will become eligible for a 20 percent discount after January 1. Approximately 16 percent of the automobiles will continue to be insured at present rates, as some member of the household will have received one point under the Plan.

"A study of Texas accident records has demonstrated that a relationship exists between highway accidents and convictions for moving traffic violations. A driver who runs up a record of convictions has a much greater chance of being involved in a serious accident than the motorist who drives his car in a lawful manner. The group of drivers with three motor vehicle offenses in their record had six times as many accidents as drivers with no traffic violations. Drivers whose record contains six or more motor vehicle offenses had nine times as many accidents as those drivers without any moving traffic violations," Jackson concluded.

Under the Texas Safe Driving Insurance Plan four points are assigned for convictions of any of the following moving traffic law violations:

1. Driving while intoxicated;
2. Hit and run;
3. Negligent homicide involving a motor vehicle.

One point is assigned for other moving traffic violations, but no points are assigned for defective lights, defective mufflers, parking

Highway 80 Improvements Due In 1960

A total of \$130,000 in special traffic safety improvement funds has been appropriated to improve Highway 80 between Eastland and Cisco during 1960, Robert J. Milligan, District 23 engineer, has announced.

The money will be used to improve the highway from 0.9 miles east of Cisco east to Hillcrest Street in Eastland, a distance of approximately 6.9 miles. The money is in addition to the regular construction and maintenance program.

At the December meeting of the State Highway Commission \$450,000 was appropriated exclusively for safety improvements designed to give Texans safer traveling on high traffic volume roads. The new program was formed from an engineering study of accident rates.

Those spots that had high accident rates were set up for work under this program. One hundred sixteen and nine-tenths miles of state and U. S. highways in District 23 will be improved under this program of work.

Narrow pavements will be widened and shoulders improved. Dangerous intersections will be changed and slick and uneven surfaces leveled up and non-skid surfaces applied.

"We expect to get all work underway on this traffic safety program during the calendar year of 1960," Milligan stated.



WILT'S LONG BRETCH—Philadelphia Warrick Will "The Still" Campbell, stretches his entire length toward the Cincinnati Royals basket, in Philadelphia.

The Ranger Times

"Seeking Community Betterment Since 1919"
ELM STREET—RANGER, TEXAS ESTABLISHED JUNE 1, 1919
Entered as second class matter at the postoffice at Ranger, Texas under the act of Congress of March 3, 1879.

TIMES PUBLISHING COMPANY
Published Tri-Weekly—Tuesdays - Thursdays - Sundays
JOE DENNIS and ONOUS DICK, Publishers
GENE TOWNSEND, Editor

One week by carrier in city .15
One month by carrier in city .65
One year by mail on Ranger RFD Routes 3.95
One year by mail in county 4.95
One year by mail in state 4.95
One year by mail out of state 6.95

NOTICE TO PUBLIC—Any erroneous reflection upon the character, standing or reputation of any person, firm or corporation which may appear in the columns of this newspaper will be gladly corrected upon being brought to the attention of the publishers.

CLASSIFIED

All Classified Ads Must Be Paid For In Advance.

MISC. FOR SALE SPECIAL NOTICES

OVER 1,000 records for sale. All popular artists. Stereo, Hi-Fi, long-play albums. 45 RPM. Latest releases. Vinson Radio and TV Service.

1956—FORD pickup, light green, large bumper-hitch, 8-ply nylon tires. Clean. Anderson Chevrolet Company, 111 South Austin.

FOR SALE: 8 foot gas refrigerator. Call 695-J-3.

HELP WANTED

RAWLEIGH Business now open in Eastland County or Ranger. Excellent opportunity. See C. S. Eldredge, Box 67, Desdemona, or write Rawleigh's Dept. TXK-1024, Memphis, Tenn.

REAL ESTATE

FOR SALE: Two story office building formerly owned by Magnolia, located at Olden, Texas. This building is to be moved. 19 rooms downstairs, 5 rooms upstairs, two bathrooms. Bids will be accepted until Jan. 1, 1960. Any and all bids may be refused. Mail your bids to Box 29, Eastland.

Free Estimates On A New ROOF

Or Repair your old Roof Residential & Commercial

Eastland - Ranger Roofing Co.
Noble Squires
Phone 733 Eastland

We Carry A Complete CARPET Selection

★ Prices to Fit Every Budget
★ We Do Our Own Installation

RANGER FURNITURE EXCHANGE

123 N. Rusk Phone 42 RANGER

Local AND LONG DISTANCE MOVING STORAGE

FREE ESTIMATES! A cart or a carload... we move it promptly, carefully. Storage facilities and service available. Finest. Low rates. Inquiries available.

Ranger Transfer and Storage

Mr. and Mrs. Charles D. Campbell and Mona of Irving are spending the Christmas holidays with his parents, Mr. and Mrs. Charles A. Campbell.

Ranger General Hospital Doctors And Staff Hold Annual Party

The doctors and staff of Ranger General Hospital held their annual Christmas party in the dining room of the hospital Tuesday afternoon, December 22. The entire room was beautifully

HERE FROM ILLINOIS
Mr. and Mrs. L. W. Trevena and daughters Lou Ann and Lynn from Morris, Illinois, are visiting her parents, Mr. and Mrs. R. W. Gordon, before leaving for Frankfurt, Germany.

HERE FROM DUMAS
Visitors in the home of Mr. and Mrs. Sammie Elder during the Christmas holidays are her parents and brother, Mr. and Mrs. B. E. Stephen and Edward Lee of Dumas.

Chiropractic Service
12:00 to 5 p.m.
Monday - Wednesday - Friday
DR. E. R. GREEN
455 Pine Ranger, Texas

SEE
O. G. Lanier
FOR
OIL AND GAS
LEASES
AND
REAL ESTATE
WE BUY AND SELL
Phone 410 - 113 So. Rusk
Ranger, Texas

The
MODERN
Pest Control
Offers FREE Estimates
on Termites and Pest
Control.
Scientific methods. We have a
complete line of insecticides.
302 Main St. Phone 911
Ranger

decorated in the Christmas theme, including a large Christmas tree. The refreshment table was covered with a cloth of white Irish linen, and centered with a large white lighted candle and Santa Claus, surrounded with greenery, Christmas balls, and pine cones. Refreshments of coffee, donuts, fudge squares, and other chocolate candies were served.

The following staff members attended: Misses E. V. Arnold, Mabel Barnes, Mary Bollinger, Bess Green, Leona Hill, Dortha Harris, Lora Mitchell, Lillie Ogle, Clifford Searcy, Mary Thompson, Jean Walker, Pauline Gomez, Misses Linda Black, Dorothy Fleming, Anice Locke, and Mr. Calisto Novarez, all of Ranger; and Mrs. Olive Love and Mrs. Vera Newnam, both of Eastland.

The doctors present were Dr. W. P. Watkins, Dr. D. L. Mims, and Dr. O. C. Mitchell. Gifts were exchanged by the group.

SEE... TOMMY GUEST

TIME FOR A HOME OF YOUR OWN
When Baby comes home from the hospital, let it be to a home of your own... financed with the help of our monthly-payment home loan plan. Ask us how we can arrange payments to fit the family budget on the home you want to buy or build. Let our financing help you to a brighter future for the whole family—in your own home.

First Federal Savings & Loan Association of Ranger
ONLY 3% DOWN ON FHA LOANS
204 Main RANGER, TEXAS Phone 820

FHA Girls And Faculty Are Guests at Tea

The Senior FHA girls of Ranger High School served at a tea Sunday afternoon, Dec. 20, in the Homemaking Department of the School. Christmas decorations were used throughout the rooms.

Honor guests were faculty members, their husbands and wives; and FHA members and their mothers. Refreshments of punch and cookies were served. Mary Kay Rush, Glenda Rains, and Rita Sipes alternated at the punch bowl. Sandra Cooper, Linda Brennan, Marinell Shockey, Barbara Crabb, Rozelle Hatton, Nancy Cantwell, and Karen Killingsworth registered the guests and assisted in serving the refreshments.

Approximately forty guests called during the afternoon.

BARBER SHOP
IT PAYS to LOOK WELL
Courteous Service
TONY'S BARBER SHOP
223 1/2 Main - Phone 108

Robinson Food Market
SPECIALS FOR Tuesday, Wednesday, Thursday, Dec. 29, 30, 31
WE DELIVER
121 North Rusk Street Phone 162
FRESH DRESSED Fryers Cut or Whole Lb. 39¢
FRESH HOME MADE Sausage 2 Lb. 89¢
SALT Jowl Lb. 12¢
FOR YOUR NEW YEAR'S BLACKEYED PEAS
Picnics Lb. 32¢
WHITE SWAN Coffee 2 Lb. Ctn 1.19
BORDEN'S Mellorine 1/2-Gal. 39¢
Carrots Keith's Frozen Blackeyed Peas 2 Cello Bags 15¢ 2 Pkgs. 39¢
GLADIOLA—Yellow or Devil Food Cake Mix Pkg. 19¢
NORTHERN COLORED Tissue 3 Rolls 25¢

YOUR Independent Insurance AGENT
"SERVES YOU FIRST"
My fur coat is more fun since I got it insured

NOW she's really covered
Worry-proof your furs with America Fore fur insurance. If you can afford a fur coat you can surely afford to insure it against loss by fire, theft, hold-up or damage by water... and certain other risks... while worn, or in storage, or at home.
There's no point to wearing beautiful furs to keep you warm, and then shivering with fear as to what may happen to them.
C. E. MADDOCKS & CO
Insurance - Real Estate
207 Main Phone 252



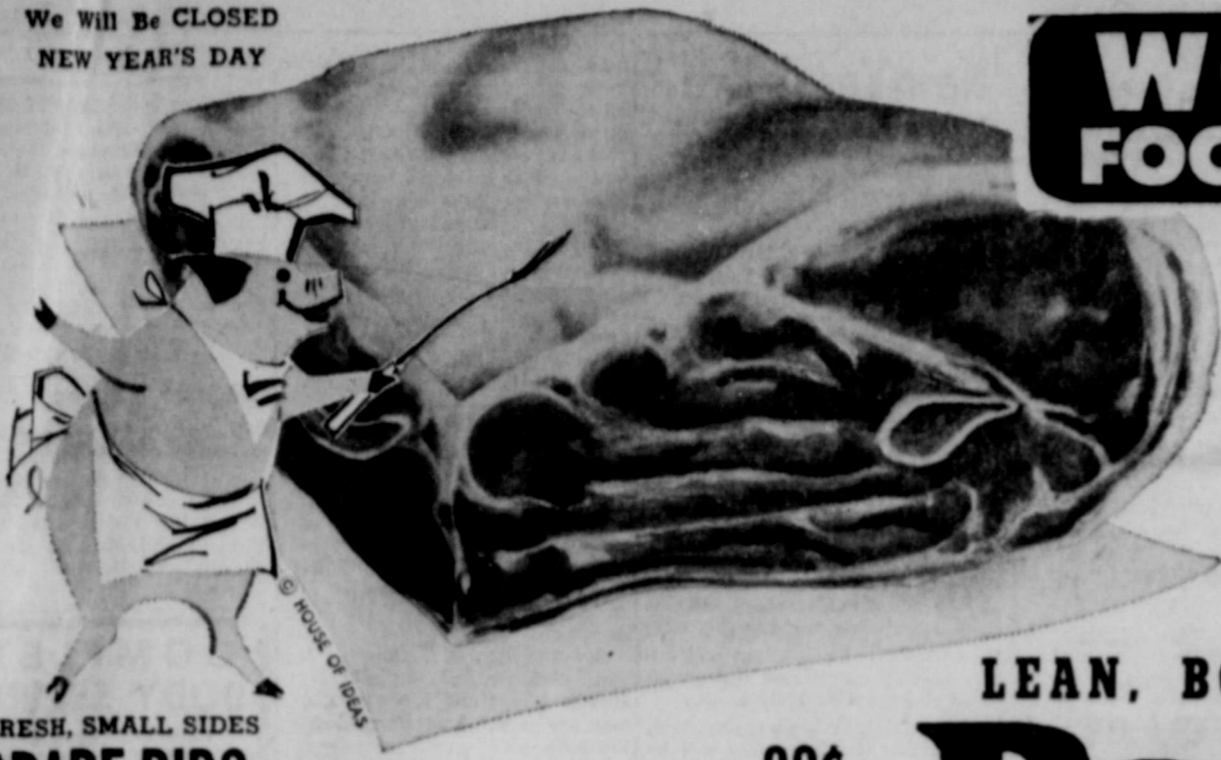
WARDS
Wards famous
2 for \$5
dress sale

Gives you so much more for your money!
• Gives you so much more styling!
• Gives you so much more selection!
• Gives you so much more quality!
• Gives you so much more value!
Bright gay Spring prints... the prettiest you've ever seen!
Washable cottons and washable Arnel® triacetate-and-cottons.
Styles galore for misses and half sizes... all with pockets!
Hurry to Wards. Shop today! Each, \$2.79

SPECIAL! New spring cottons at spectacular prices!
2 for 3⁵⁰
USUALLY 3.98 EACH
Terrific values! Full-skirt dresses in newest spring colors. See plaids, prints, stripes, many others. All washable. We expect a sell-out, so rush in! 3-6x.
SPECIAL! New spring cottons for girls
2 for \$5
USUALLY 3.98 EACH
Terrific values! Full-skirt dresses in newest spring colors. Loads of styles. All washable. Hurry in today! 7 to 14.
USE WARDS CONVENIENT CREDIT PLANS!

Give "that BULOVA difference"
As little as \$1 a week
D. E. PULLEY JEWELRY
Main Street - Ranger

We Will Be CLOSED
NEW YEAR'S DAY



WORTH FOOD MART

The perfect main course for a Post-Holiday change of pace. Delicious and Nutritious, and oh so Economical!

Serve Fresh Pork from WORTH FOOD MART for New Year's!

LEAN, BOSTON BUTT

Roast

33¢

Fresh Pork Lb.

TASTE O'SEA
Perch Fillets Lb. 39¢

10¢

FRESH, SMALL SIDES
SPARE RIBS Lb. 39¢

SWIFT'S ORIOLE
SLICED BACON Lb. 33¢

SWIFT'S PREMIUM
SLICED BOLOGNA Lb. 49¢

DRY SALT
JOWLS Lb. 10¢

BLACKEYED
PEAS Lb. 10¢

CHEF'S PRIDE Lb. 10¢

Cheez-Whiz Lb. 29¢

KRAFT'S 8-Oz. Jar 29¢

COCA-COLAS Regular Size Plus Deposit 12 Bott. Ctn. 49¢

HI-C ORANGE DRINK SAVE 34c 4 Big 46-Oz. Cans \$1.00 HILLS-O-HOME FROZEN PEAS Blackeyes 2 10-Oz. Pkgs. 49¢

PIZZA PIES

Oh, Boy! With Cheese 7-Oz. Pkg. 49¢

Oh, Boy! With Sausage 9-Oz. Pkg. 59¢

WILD-ROOT CREAM OIL Hair Tonic, Med. Plus 6c tax Size 47¢

ALL FLAVORS Cream Pies 16-Oz. Pkg. 49¢

PINEAPPLE-GRAPEFRUIT Libby's Drink 6-Oz. Can 10¢

Light Crust Meal WHITE or YELLOW 2 -Lb. Box 15¢

Dixieland Chow-Chow HOT or SWEET 16-Oz. Jar 25¢

KLEENEX FACIAL TISSUES White or Colored 3 400-Cnt. Boxes 69¢

Avocados

4 For 29¢

CRISP RED RADISHES YOUNG, TENDER Cello Pkg. 5¢

GREEN ONIONS 2 Large Bchs. 15¢ GRAPEFRUIT Fancy, Texas Ruby-Red 2 Lbs. 15¢

Prices Effective Monday, Tuesday, Wednesday, Thursday and Saturday

301 MAIN STREET
RANGER

WORTH FOOD MART

RANGER TIMES, TUESDAY, DECEMBER 29, 1959

Hospital News

New patients in Ranger General Hospital are:
Rebekah Jean Rodgers, Ranger, medical.
Mrs. J. E. Hallmark and baby girl, Eastland.
Mrs. Roddy Carter and baby girl, Ranger.
Dismissed were:
Mrs. Rosie Boyett, Ranger.
Pat Moseley, Ranger.
Mrs. Bill Heinlen, Ranger.
Mrs. J. F. Jeffries, Ranger.

HERE DURING HOLIDAYS

Visiting in the home of Mr. and Mrs. G. H. Falk during the Christmas holidays are their daughter and family, Mr. and Mrs. A. B. Lassiter and sons of Carbon; their son and family, Mr. and Mrs. Gene Falk and children of Eastland; their son and family, Mr. and Mrs. James Falk and son of Dallas; and another son and his wife, Mr. and Mrs. Ray Falk of Austin.

VISITING PARENTS

Mr. and Mrs. L. C. Floyd, Larry, and Gary of Fort Comfort, Mr. and Mrs. Jack Akers and Janet of Fort Worth, and Mr. and Mrs. Doyle Gentry and Jackie of Ranger spent the Christmas holidays with their parents, Mr. and Mrs. Lynn Gentry.

HERE FOR HOLIDAYS

Visiting in the home of Mr. and Mrs. L. A. Hinds during the holidays are their son Paul of Hardin-Simmons University; their daughter and husband, Mr. and Mrs. Bill Horton of Fort Bliss, El Paso; and their son and family, Mr. and Mrs. Leonard L. Hinds and children of Burleson.

VISITING SISTER

Mrs. Lois Fyfe left last week for Ashville, Kentucky, to be with her sister, Mrs. M. D. Myers.

Court News-

(Continued from Page One)

Henry Cohen, quit claim deed. Graridge Corp. to National Cooperative Ref. Assn., deed of trust.

J. F. Guy to May Speer, deed of trust.
Harvest Queen Mill & Elevator Co. to Flora Shaddy, release of oil and gas lease.

W. H. Hand to Coastal States Gas Prod. Co., oil and gas lease.
Y. G. Hughes to Graridge Corp., oil and gas lease.

Nettie Hickman to Graridge Corp., oil and gas lease.
Houston Bank & Trust Co. to Graridge Corp., oil and gas lease.

Daisy H. Bassett Harrison to Graridge Corp., oil and gas lease.
Lurich C. Hampton to Veterans Land Board, warranty deed.

J. Roy Haynes to Bennie Steel, warranty deed.
J. R. Hill to John D. Taylor, warranty deed.

Bill Johnson to Lee Crawford, release of vendor's lien.
Mamie Joyce to Graridge Corp., oil and gas lease.

Margaret Jobe to Graridge Corp., oil and gas lease.
Tom N. Jackson to Graridge Corporation, oil and gas lease.

Tom N. Jackson to The Public, affidavit.
Marion E. Jolly to L. E. Robinson, Jr., warranty deed.

Kenneth Jameson to First Federal S & L Assn., deed of trust.
Roy C. King to Graridge Corp., oil and gas lease.
C. A. Livingston to State of Texas, right of way.
Limpia Royalties, Inc. to Graridge Corp., oil and gas lease.

HERE FROM NEW BOSTON

Mr. and Mrs. M. E. Crossley of New Boston are visiting her mother, Mrs. M. V. Crossley, and his sister and brother-in-law, Mr. and Mrs. C. W. Blacklock.
Other visitors in the Blacklock home are their son, Don Blacklock of Odessa; and their daughter and family, Mr. and Mrs. R. H. Blair and children of Abilene.

AUTO-TRUCK SERVICE

- Motor Tuneup
- Motor Overhaul
- Wheel Balanced
- Hydraulic and Dyna-flow Transmission Repair

Authorized International Harvester Parts and Service

Ranger Garage
Hwy. 80 West Phone 430
RANGER

VERNE PETERSON NURSERY

Landscaping and Pest Control Service

Hwy. 80 West Phone 441

Watch for insects, now is the time for them to start working. Call us at 441 for information. We kill any kind of insects inside or outside. Free estimates.

We have all kinds of shrubs in containers ready to be planted. SEE US NOW.

This Is Why SERVICE
Is Our First Name

We Give S & H Green Stamps

We believe service to the driver is more than just servicing his car! We offer every facility and aid to make motoring pleasant.



OPEN 7 A. M. to 10 P. M.

CAMPBELL'S HUMBLE STATION

Hwy. 80 & Main Ranger, Texas



NOW IS THE TIME TO MAKE THOSE NECESSARY HOME IMPROVEMENTS!

A little "fixin'" can make a "no place" into a "show place" — and this is the time to do it. Don't delay because you lack the ready cash. We can help you. You can borrow up to \$2500 and take as much as three years to pay. Make your plans now.

Ranger Lumber & Supply Co.

Phone 138

Calvin Brown — Earl Brown

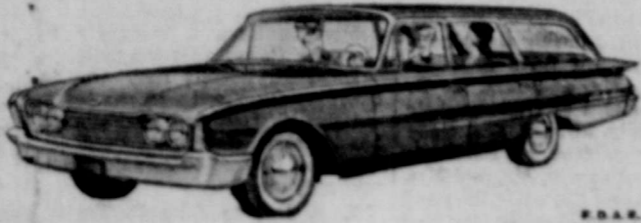
Ranger

FORD...the wagon champ has done it again!

From any point of view—from every point of view—Ford's again the Wagon Master, with five new husky, handsome beauties. There's a new "limousine" ride with new 5-foot-long rear springs. Wide-Tread Design with non-squall, soft-tread tires. You corner "on the level" wherever you go. Built for people as

never before—with wider doors (easier to enter with the "dogleg" eliminated)—greater visibility than you ever enjoyed—55% more sky-to-road vision from front seat alone. One hand easily opens liftgate and tailgate. Come in and see all our Wonderful New World of Fords—models for every purse and purpose.

COME SEE THE WONDERFUL NEW WORLD OF FORD WAGONS



Campbell Ford Sales, Inc.

RALPH REYNOLDS
Corner Pine & Rusk Phone 954

Ranger

MAJESTIC IN EASTLAND Today & Wednesday A SUMMER PLACE

RICHARD EGAN - DOROTHY McGUIRE SANDRA DEE
Adults 75c Child 25c

VISITING PARENTS

Mr. and Mrs. Tony Lewis and Kay of Fort Worth are spending the Christmas holidays with his parents, Mr. and Mrs. W. A. Lewis.

VISIT PARENTS

Mr. and Mrs. Will's Clarke and daughters of Abilene and Mr. and Mrs. Horace Hostick and sons of Snyder spent Christmas with their parents, Mr. and Mrs. W. H. Clarke.

New Year's Eve Watch Party Set At First Baptist

The First Baptist Church is planning their annual New Year's Eve watch party, which will be held Thursday evening beginning at 6:30 with a covered dish supper. All church members, their families, and friends are invited. There is a welcome for anyone who wants to attend.

Sponsored by the Sunday School department and co-sponsored by all other departments of the church, there is a full evening's entertainment planned for every age group.

Planning meetings for Training Union and Sunday School will be conducted early. During this time those not in the meetings will enjoy playing games and seeing colored slides of the Holy Land.

Rev. Ralph Perkins, pastor, said, "Refreshments and games will be featured until 11:15, at which time there will be the sacred hour wherein at the close of this year

our members will be on their knees in prayer, thanking God for all He has given us and asking for divine leadership for 1960.

Church members and all Christians ought to make the New Year's Eve service Christ centered and Holy Spirit bathed. There is no place for the ungodly in our plans and programs today."

An invitation is extended to all to come and worship during this year. You will be most welcome. Bring your children. The nursery will be open.

HOLIDAY VISITORS

Mr. and Mrs. O. A. Ramsey of Morenci, Arizona, are spending the holidays with her mother, Mrs. Mary Capps, and her brother and family, Mr. and Mrs. Delbert Capps and sons. Their son and wife, Mr. and Mrs. James Ramsey of Austin, will also spend the holidays here.

Mr. and Mrs. O. A. Ramsey Jr., and children and Mr. and Mrs. Hubert Capps and Lucie of Coleman are expected sometime during the holidays.

HERE FROM DALLAS

Guests in the home of Mr. and Mrs. Floyd Killingsworth during the holidays are her sisters and their families, Mr. and Mrs. Stephen A. Pounds, Jr. and Dianne and Mr. and Mrs. W. W. Phillips, Sherry and Carolyn, all of Dallas.

VISITING PARENTS

Visitors in the home of Mr. and Mrs. H. C. Croom during the Christmas holidays are their children, Mr. and Mrs. M. H. Brewer of Marlin; Mr. and Mrs. Lionel Croom, Sanda, and Pave of Odessa; Mr. and Mrs. Larry Griffith, Jan, and Pam of North Carolina; Mr. and Mrs. A. C. Yeaker of Ft. Worth; and Mr. and Mrs. Lewis Croom, Wayne, and Donna of Dallas.

HOLIDAY VISITORS

Visitors in the home of Mr. and Mrs. Roy Crawley during the Christmas holidays are their daughters and their families, Mr. and Mrs. Bobby Pharis and Robby of Midland and Mr. and Mrs. Dean Tindall and Beverly of Fort Worth.

COMPLETE BODY SERVICE

Painting and Body repairing on all makes cars and trucks. GLASS CUT & INSTALLED • Custom Made Seat Covers

Caraway Paint & Body Shop

SAFEWAY winds up a big year of savings with a...

"BEST of '59" Sale

The specials you "judged" best by your purchases throughout the year are offered again for this year-end value event!

4 BIG DAYS of Values

SUGAR "BEST"

Cane Sugar

Domino or Imperial. It Flavors as it Sweetens.

5 49¢ 1-lb. Bag

Skylark Rye Bread (Reg. Price 24¢) 1-lb. 19¢
 Skylark Party Rye Bread 1-lb. 25¢
 Skylark Protein Bread Party Pack 1-lb. 29¢
 Bread Mrs. Wright's Regular Loaf, Delicious Toasted Loaf 1-lb. 24¢

DETERGENT "BEST"

Giant Tide

Or White Magic Detergent. Finest Detergent You Can Buy!

75¢ Giant Box

Salad Dressing (Reg. Price 45¢) 1-lb. 35¢
 Tea Timer Crackers Just a Whisker Crisp 1-lb. 29¢
 Sandwich Spread (Reg. Price 70¢) 1-lb. 70¢
 Homogenized Milk (Reg. Price 90¢) 1-gal. 89¢



SAFEWAY STORES will be CLOSED all day NEW YEARS DAY, Jan. 1, 1960

COFFEE "BEST"

MAKE THAT ONE-FOR-THE-ROAD... COFFEE

Edwards Coffee

Rich and Full-Bodied. Enjoy Coffee at its Best. (All Grinds.) (2-Lb. Can \$1.29)

67¢ 1-lb. Can

Orange Juice (Reg. Price \$1.00) 6 1/2-cup Cans 29¢
 Cragmont Mixers (Reg. Price 25¢) 2 1/2-cup Cans 25¢
 Party Pride Sherbet Assorted Flavors 15-oz. Cans 59¢
 Lucerne Egg Nog Mix Perfect for Holiday Entertaining 10-oz. Cans 59¢

SHORTENING "BEST"

Velkay Shortening

Guarantees Perfect Baking or Frying.

3 61¢ 1-lb. Can

Large "AA" Eggs (Clean of the Case, Grade "AA" Quality, Large Size) 12-Cans 53¢
 Frozen Blackeye Peas (Reg. Price 23¢) 15-oz. Cans 23¢
 Dry Blackeye Peas (Reg. Price 23¢) 2-lb. Cans 23¢
 Blackeye Peas (Reg. Price 25¢) 3-lb. Cans 25¢

CANNED MILK "BEST"

Cherub Milk

Perfect for Cooking, Coffee, or Baby.

3 40¢ 14 1/2-Oz. Cans

King Size Fritos (Reg. Price 29¢) 4-lb. Cans 29¢
 Pizza Pie Mix (Reg. Price 42¢) 15-oz. Cans 42¢
 Cream Cheese (Reg. Price 10¢) 3-lb. Cans 10¢
 Instant Coffee (Reg. Price 11¢) 10-oz. Cans 11¢

SMOKED MEAT "BEST"

Slab Bacon

An Old Southern Tradition—Blackeye Peas with Dry Salt Jowl.

For Good Luck throughout 1960, serve Blackeye Peas and Salt Jowl on New Years.

25¢ lb.

Spiced Luncheon Meat (Reg. Price 29¢) 5-oz. Cans 29¢
 Roth Canned Hums (Reg. Price 34¢) 2 1/2-lb. Cans 34¢
 Chicken Hums (Reg. Price 39¢) 1-lb. Cans 39¢

NEW YEAR "BEST"

Dry Salt Jowl

10¢ lb.

SAFEWAY BEEF STEAKS
 U. S. D. A. CHOICE GRADE HEAVY BEEF.

Sirloin Steak (SafeWAY Trimmed) 1-lb. 89¢
 T-Bone Steak (Or Club... "Waste-Free" Trimmed) 1-lb. 99¢

PRODUCE "BEST"

Red Potatoes

U. S. No. 1... Ideal All Purpose Potatoes. Good Every Meal... Serve Fried, Boiled, or Hash Browned.

10 39¢ 10-lb. Bag

Ruby Grapefruit (Reg. Price 29¢) 5-lb. 29¢
 Avocados (Reg. Price 15¢) 2-lb. 15¢
 Fresh Limes (Reg. Price 19¢) 1-lb. 19¢



SINCE 1884

... It has been our privilege to render a service to this community as monument builders.

ALEX RAWLINS & SONS
 Weatherford Phone LY 4-2726 Texas

RANGER DRIVE-IN
 HIGHWAY 60 EASY ON RANGER HILL

Box Office Opens 6:30 — Show Starts 7:00
 Adults 50¢—Kiddies Under 11 Free
 Only Eastland County Drive-In Open All Year

LAST TIMES TUESDAY

CURT JURGENS AND MAY BRITT
 AS "the BLUE ANGEL"

COLOR BY DE LUXE CINEMASCOPE

EVERY WEDNESDAY IS BARGAIN NITE **50¢** CAR LOAD

THE SAVAGE
 CHARLTON HESTON

INSURANCE
 How ADEQUATE Are Your Present Policies?

Come in for a free check... there is absolutely no obligation on your part. We keep a constant check on our client's policies according to changing values and prices. It costs only slightly more to be fully protected and it's so important. Come in now.

PHONE 418

OUR POLICY SERVICE FOR YOUR POLICY

MAY INSURANCE AGENCY
 INSURANCE - REAL ESTATE
 W. J. Bipes Opal Ring
 Ranger, Texas