

Bulldogs to Host Mays to Game of Rivals Rangers to Face Blinn Jr. College/Buccaneers

Bulldogs Will Try To Brand Mavericks

ROAMING THRU RANGER WITH RON... By Ronald Waters

BEAT EASTLAND... Subliminal advertising is a coming thing in TV and the movies.

Rangers Are After Conference Crown

This is the one that counts! Ranger College Rangers will be playing the Blinn Junior College Buccaneers tonight in Brenham for first place standings in the Texas Conference.

coming face to face with the top team in the nation—Texarkana Junior College.



Ready To Brand The Mavericks—Here are the 1958 Ranger Bulldogs. On the back row, from left to right, are: Head Coach Harold Barrett, Terry Towson, Richard Wilhelm, Edward Mendez, Alex Eakin, "Chuck" Garrett, Maurice "Butch" Owen, David Pickrel, Dean Richey, Tommy Robinson, Richard Guest and Joe Barker.

SPORTS CORNER By DRAYTON HEADEN

These really isn't much to comment on pertaining to the game played N.M.M.I. last week. The boys played a fine game.

Table with 4 columns: Player, Pos., Wt., and Probable Starters. Lists names like James Pope, Dean Faulkenberry, Jessie Prestridge, etc.

Injuries have hurt the Rangers so badly that they have been forced to give up the two-unit system, Slaughter indicated.

Pecan Show Plans Near Completion

Plans are rapidly nearing completion for the Sixth Annual Eastland County Pecan Show to be held in Ranger, Dec. 12-13, according to Oscar Schaefer of the Cook Community, president of the Eastland County Pecan Growers Association.

All-District Band Meet Will Be Set Here

A second meeting of the all-district band will be held in Ranger at a date to be selected, with 150 students from area bands participating.

Santa's Letters Available Here

Santa Claus is sending out letters for a change, this season. (Usually it's Old Saint Nick who gets all the tons of mail from children all over the world.)

Wycliff Chorus Will Present Service Sunday

A service in song program will be presented by the Wycliff School Chorus of Fort Worth this Sunday night at 7 in the First Methodist Church.

FFA Class Elects Officers

Class officers of the Greenhoad Class of the Ranger Chapter of Future Farmers of America were elected in a meeting Tuesday morning.

PAGE ONE MUST

Pop rally and bon fire to be held near Bulldog Stadium tonight at 8.

Teen Town will be open from 7:30 to 10 tonight.

No classes will be held at Ranger College tomorrow, following the football game with Blinn Junior College tonight.

Tired of a Gas Hood?

Try and buy the popular, smart new Rambler, truly a teeny-weeny get burner. Famous for fun, value, quality and economy.

FREE HOME TRIAL on RCA Whirlpool Appliances

Call Coody, song leader of the date.

Sammy Baugh Will Speak at Fellowship

Sammy Baugh, head football coach at Hardin-Simmons University, will present two trophies to the outstanding back and lineman of the Bulldogs at a Victory Fellowship to be held at the First Baptist Church Friday night at 10:30, following the football game.



SAMMY BAUGH, H-SU Coach

When the Eastland Mavericks come to town Friday they will mean business and they're going to be determined to stay out of District 7-AA's cellar.

But when those Bulldogs come face to face with the tough Mavericks on the football field, they won't have but one thought in mind: to brand a big "R" on the team.

Both teams, with a 1-3 conference record, will be fighting to stay out of the cellar Friday night in Bulldog Stadium.

But when those Bulldogs come face to face with the tough Mavericks on the football field, they won't have but one thought in mind: to brand a big "R" on the team.

Coach Harold Barrett has extended his thanks to the public, including the students, for turning out to support the Bulldogs this season.

Coach Barrett had some doubt that the Bulldogs would be ready for the game. He indicated that they usually wait until the last minute to get ready.

Stephen is replacing Jake-Basham in the line-up due to the fact that Basham has had the influenza this week.

Probable Line Up

Table with 4 columns: Position, Name, Weight, and Position. Lists players like Dean Richey, Ronnie Daskevich, Tommy Ford, etc.

that will go on record. But the team that want to win the most will walk away with a win Friday night.

A reunion of the Ranger High School class of '53 is set this Friday and Saturday, according to a report received here.

Ira Wolford Has Lived by Clock

(Editor's Note: The following story is reprinted from the current issue of the "Blue Blaze", Ira Wolford, a retired clerk for the Ranger Pipe Line District, attended a dinner at the Petroleum Engineer Club in Dallas last month as guest of Department Superintendents of the Lone Star system.

Saying he has "lived by the clock or the sun most of my life," C. Ira Wolford, Clerk A in the Ranger Pipe Line District of Lone Star, was getting ready to do pretty much as he pleases following retirement Oct. 31.

Stephen is replacing Jake-Basham in the line-up due to the fact that Basham has had the influenza this week.

Stephen is replacing Jake-Basham in the line-up due to the fact that Basham has had the influenza this week.

Insurance advertisement for RFA Whirlpool Appliances and Insurance Agency.

Advertisement for Kalamazoo with a logo and text.

The Ranger Times

"SERVING COMMUNITY SETTLEMENT SINCE 1919"
 601 STREET—RANGER, TEXAS ESTABLISHED JUNE 1, 1911
 Refers as second class matter at the postoffice at Ranger, Texas under the act of Congress of March 3, 1879
 TIMES PUBLISHING COMPANY
 Published Tri-Weekly—Tuesdays - Thursdays - Sundays
 JOE DENNIS and ONOUS DICK, Publishers

One week by carrier in city	.18
One month by carrier in city	.48
One year by mail in county	3.50
One year by mail in state	4.75
One year by mail out of state	6.75

NOTICE TO PUBLIC—Any erroneous reflection upon the character, standing or reputation of any person, firm or corporation which may appear in the columns of this newspaper will be gladly corrected upon being brought to the attention of the publishers.

CLASSIFIED

All Classified Ads Must Be Paid For In Advance.

MISC. FOR SALE

RUBBER STAMPS—Fast service, reasonable prices, no order too large or too small to get our special attention. Ranger Times.

FOR SALE: 1159 Atwoods H. and N. English pullets, 8 months old, 85% production. \$1.75 each. Melba Love, Route 1, Ranger. Call 193-2-2.

FOR SALE: New shipment of Steel Filing Cabinets now in stock at the Ranger Times Office. Several numbers on display for you to choose from.

FOR SALE: Bookkeeping supplies, Post binders, indexes, receipt books, ledger sheets, storage files, sales books, order books and many other items . . . at the Ranger Times Office.

ARMY STORE in Eastland. Work pants, 80c each, 2 pair, \$1.50. Field jackets, \$2.00 each. Also overcoats. Northeast corner of squares.

HAVE house, will sell. Call 59.

TWO old refrigerators. Ideal for lake-cabin. \$20.00 each. Both working. Paramount Hotel.

FOR RENT

FOR RENT: 2 bedroom house. 500 Curtis Street, Phone 817.

APARTMENT: Neat, clean and well furnished. Bills paid. 309 Elm.

NOTICE

COME in and see the new Steel Filing Cabinets for the home. With lock compartment. Ranger Times Office.

SPECIAL! RUBBER BASE PAINT

Washable
Gallon \$3.89
The House of Color
Hwy. 80 East - Ranger

Free Estimates On A New ROOF

Or Repair your old Roof Residential & Commercial
Eastland - Ranger Roofing Co.
Noble Squires Eastland
Phone 733

CARPET YOUR ENTIRE HOME

NO DOWN PAYMENT
36 MONTHS TO PAY
Ranger Furniture Exchange
123 N. Rusk - Phone 242

SINCE 1884

It has been our privilege to render a service to this community as monument builders.
ALEX RAWLINS & SONS
Weatherford Phone LY 4-2726 Texas



Mr. and Mrs. F. C. Williamson Celebrate Golden Anniversary

Mr. and Mrs. F. C. Williamson were honored on their fiftieth wedding anniversary with an open house from two until six o'clock p.m. Sunday, November 9, in their home at Lake Leon. Their sons and daughters-in-law, Mr. and Mrs. Eddie Williamson of Wichita Falls, Mr. and Mrs. F. C. Williamson of Carlsbad, New Mexico, and Mr. and Mrs. Terrell Williamson of Ranger, were hosts and hostesses.

Mrs. Williamson wore a corsage of gold and bronze chrysanthemums. Mr. Williamson and his three sons wore bronze Boutonnieres.

Guests were greeted by Mrs. Vonelle Hopper of Ranger, Mrs. Blanche Heinlen of Odessa, and Mrs. Johnny White of Gorman.

Beautiful arrangements of bronze and yellow mums were used throughout the house. Mrs. Leon Bourland of Eastland and Mrs. Betty Butler of Dallas alternated at the registry table, which was centered with an arrangement of bronze and gold pom-poms and green fern in a small container.

The table was laid with a white cutwork cloth and centered with an arrangement of bronze mums and pom-poms in a bronze epergne. Refreshments consisted of cake squares, punch, and mints. The cake-squares—were topped with white icing and gold rosettes. Red, yellow and green fruit bits were in the gold-colored punch. Yellow napkins imprinted with "Frank and Earle" were used.

Mrs. Luther Pierson of Pampa, Mrs. Dwayne Dennis of Ranger, and Mrs. Charles White of Abilene alternated at the punch bowl. Cake was served by Mrs. Robert Warren of Crane, Mrs. Bobby Williamson of Ranger, Mrs. Vera Darr of Cisco, and Mrs. Ralph White of Burk Burnett.

Jan and Kay White of Abilene and Mrs. Ghent White of Freeport assisted in opening the lovely gifts, which were displayed in the bedroom.

Over two-hundred relatives and friends called during the afternoon.

The couple were married November 9, 1908, in Breckenridge, Texas. She is the former Miss Elina Earle White. They are owners and operators of Frank and Earle's Lodge on Lake Leon.

He is an active member of the K. P. Lodge of Eastland and a D. D. Temple of Abilene. She is a member of the Pythian Sisters. Both are long-time members of the First Methodist Church in Ranger.

Revival Services To Start Sunday

Rev. Larry Pirkle of Fort Worth will conduct revival services at the Assembly of God Church, 602 Clay St., beginning this Sunday at 7:15 p.m.

Services will continue nightly at the same time.

Pirkle is a graduate of Baylor University.

Rev. David Anderson, former pastor of the church, resigned Wednesday night. He may be on hand, however, for revival services.

MARLAND VISITORS

Mrs. Grace Adams and her granddaughter, Nancy Lee Campbell, of Marland are here visiting with Mr. and Mrs. R. L. Campbell in the Mangum community. Nancy Lee is attending school in Carbon.

First Baptist WMU Meets for Service Program

The WMU of the First Baptist met at the church Tuesday morning for a Royal Service program. The meeting was opened with a hymn, "O For A Thousand Tongues."

Mrs. Earle Pittman read the names on the prayer calendar for the day. Mrs. Walter Arterburn led a prayer for the missionaries on the calendar.

The Vivian Benitez circle was in charge of the program on "Taiwan—The Ransomed Shall

Keep This Ad!
Over 25,000 Arthritic and Rheumatic Sufferers have taken this Medicine since it has been on the market. It is inexpensive, can be taken in the home. For free information give name and address to P. O. Box 824, Hot Springs, Arkansas.

Come With Songs.
Those taking parts on the program were Mmes. James Blair, Walter Arterburn, Carl Black, Kenneth Hardy, Wilson Guest and Roy Barrett. Mrs. Blair led the closing prayer.

Refreshments were served to the twenty-one members present.

Trade With Your Hometown Merchants

JOHNSON MOTORS
ALL TYPE BOATS
Power Lawn Mowers
Factory Trained Motor Mechanic
SPORT CENTER
Eastland Phone 525

PULLEY INSURANCE AGENCY
"Complete Insurance Service"
TO SERVE YOUR INSURANCE NEEDS.
IS OUR PLEASURE
203 Main Phone 33

IT'S WINNING TEXAS—
as it won the Fashion-Wise at the Brussels World's Fair!

You never had it so beautiful and so all-out new...

59 FORDS

AWARDED THE GOLD MEDAL for beautiful proportions by the Comité Français de l'Équipement at the Brussels World's Fair

Expect to be dazzled when you see the Thunderbird elegance of these totally new Fords! And they all bring you something wonderful in savings, too! Ford's new aluminum mufflers—standard equipment—last twice as long as conventional mufflers. Ford's standard V-8 and Six save up to 5¢ a gallon because they require only regular gas. Ford cars need oil changes only every 4000 miles. And Ford's new super enamel never need waxing. You'll find newness everywhere . . . but don't just take our word for it! Let your Ford Dealer show you. You've never had it so new!

F.O.D.A. **FORD DEALERS OF TEXAS**

Campbell Ford Sales Inc.
PINE & RUSK RANGER PHONE 954

Round-up STAMPS With Every Purchase

SOFA PILLOWS
Wide Selection Of Patterns **79¢**

Lane Cedar Chest
Values to 48.88
69.50

Metal Utility Cabinet
Double Door **12.88**

DOUBLE DRESSER Bookcase Bed
Tilt Mirror Center Guides **68.88**

Stratoresters
Plastic and Fabric Upholster **59.88**

3 Dinette Suites
In Bronze Legs
Values to 119.50
YOUR CHOICE **69.50**

FOAM RUBBER SCFASLEEPER
Complete with 220 Coil Innerspring Mattress
Beige and Brown **169.00**
Regular 219.00

FREE 15,000 Round-Up Stamps
To be given away on Nov. 19th. Nothing to buy. You do not have to be present to win.

Tweed Covered PLATFORM ROCKER
Red, Green, Brown **12.88**

T. V. SERVING TRAYS
Large Size with Rack
Reg. 9.95 **6.88**

Travel Iron
Dominion **4.99**

9 x 12 RUGS
Linoleum. Assorted Patterns **3.99**

220 COIL Innerspring Mattress
Reg. 39.95 **26.88** NOW

Bolster Back Sofa
Makes Single Bed **24.88**

COMPLETE Maple Twin Bed
Mattress Bed Springs **44.00**

2-PIECE FOAM RUBBER Living Room Suite
3 Colors
Values to 229.00
With Trade **169.00**

YOUR CHOICE 99¢

Coats Furniture Ltd.
305 So. Seaman Phone 585

MELLORINE
Honey Cup 49¢
1/2-Gal.

LOIN STEAK
Selected Lb. **79¢**

FRYERS
No. 1 Fat Lb. **39¢**

PORK ROAST
Lb. **49¢**

Supreme Creme Sandwich COOKIES
2-lbs. . . . **59¢**

Cedar Farm Thick Sliced Bacon
2-lbs. . . . **1.15**

Calf Tongue
Fresh Lb. **29¢**

Jean's Froen—24 Count
Silver Bell **29c**

Lotus—303 Can
Pie Apples .. **16c**

Brick Chili lb. 59c

Fresh Pact French Cut—Pkg.
Green Beans **21c**

Fresh Pact Baby—Pkg.
Lima Beans .. **21c**

Fresh Pact Square Pkg.
Broccoli . . . **21c**

Fresh Pact Leaf—Pkg.
Spinach . . . **21c**

O. K. Gro & Mkt I. G. A.
501 W. Main Ranger Phone 214

FROZEN PIES
Large Apple, Cherry, Peach, Coconut Each **49¢**

Fresh Country EGGS
Medium Dozen **45¢**

McCormick Ground BLACK PEPPER
4-Oz. Can **29¢**

CAMPBELL'S SOUPS
Minestrone Chicken with Rice Vegetable Beef **3 for 53¢**

Bake-Rite SHOTENING
3-lb. can . . **74¢**

Economy Steak
Barbecue or Chicken Fry Lb. **59¢**

HENS
Large Fat Lb. **39¢**

HAMBURGER
Fresh Ground Lb. **49¢**

BACON
Corn King, Cello Lb. **59¢**

Wesson Oil
Quart **59¢**

Pacific Gold No. 2 1/2 Can PEARS
3 for . . . **1.00**



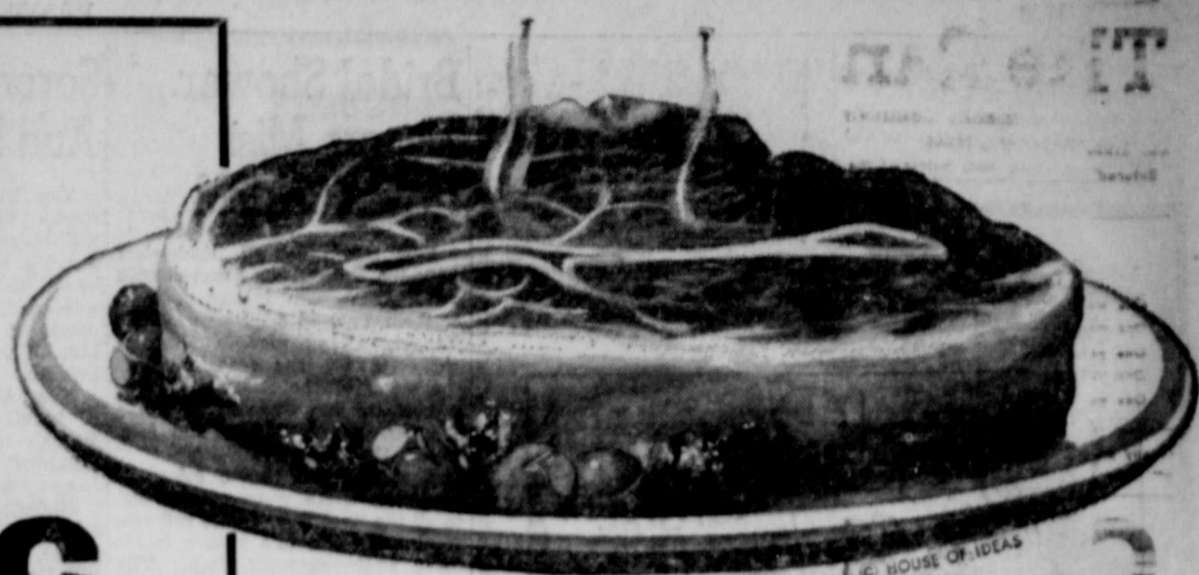
Roast

Worth Controlled Quality
Heavy Beef-Chuck Blade

At Worth

Lb.

49c



Prices Effective Thursday, Friday and Saturday
We Reserve the Right to Limit Quantities

Pork Sausage	RATH'S BLACKHAWK	Lb. Roll	39c
Medium, White Shrimp	5	-Lb. Box	3.29
Family Fish Sticks	TASTE O'SEA	1-Lb. Pkg.	59c
Flounder Fillets	TASTE O'SEA	1-Lb. Pkg.	59c

TURKEY HENS	Sunco Fancy, Tender	10 to 14 Lbs. Average	Lb.	45c
PREMIUM BACON	Swift's Sliced		Lb. Pkg.	59c

Extra Savings with "S&H" Green Stamps

Meat Pies	SWANSON'S—CHICKEN, BEEF OR TURKEY	3	8-Oz. Pkgs.	89c
Beef Tacos	EL CHICO FROZEN		13 1/2-Oz. Pkg.	49c
Enchilada Dinners	PATIO FROZEN		14-Oz. Pkg.	55c

Spiced Peaches	Hemet Whole	4 No. 2 1/2 Cans	100
Mayonnaise	Kraft's Famous—"Kitchen-Fresh"	Pint Jar	39c
Whole Green Beans	Campfire	2 No. 303 Cans	25c
Custard Pumpkin	Libby's	2 No. 303 Cans	25c

ORANGE JUICE	Garden Gate Big 12-oz. Can	51c	BELL PEPPERS	Holloway House Stuffed	14-oz. Pkg.	65c	
ONION RINGS	Taste O'Sea French-Fried	2 Pkgs.	49c	BABY OKRA	Trappey's Whole	2 10-oz. Pkg.	39c

Take Your Choice—Save Either Way—Libby's or Silverdale!

BROCCOLI SPEARS	LIBBY'S	10-Oz. Pkg.	27c	SILVERDALE	8-oz. Pkg.	21c
FROZEN CORN	LIBBY'S CUT OR CREAM STYLE	10-Oz. Pkg.	21c	SILVERDALE CUT	10-Oz. Pkg.	19c
SWEET PEAS	LIBBY'S TENDER	10-Oz. Pkg.	21c	SILVERDALE	10-Oz. Pkg.	17c
CAULIFLOWER	LIBBY'S	10-Oz. Pkg.	27c	SILVERDALE	10-Oz. Pkg.	23c
GREEN BEANS	LIBBY'S CUT OR FRENCH STYLE	9-Oz. Pkg.	25c	SILVERDALE CUT	9-Oz. Pkg.	19c
FROZEN SPINACH	LIBBY'S LEAF OR CHOPPED	10-Oz. Pkg.	21c	SILVERDALE LEAF	10-oz. Pkg.	17c

RED PLUM	PEACEMAKER	DRIP or REGULAR
JAM	FLOUR	Coffee
Bama 20-oz. Tumbler	5 -Lb. Bag	Hixon's Lb. Can
29c	29c	65c

Whole Potatoes	Homefolk	3 No. 303 Cans	29c
Welchade	Grape Drink Made With Welch's Juice	3 Quart Cans	89c

Gleem Tooth Paste Large Size 39c

Tonight Try Delicious
MARSHMALLOW CREME FUDGE

• **MARSHMALLOW CREME**

HIP-O-LITE Pint Jar 23c

• **NESTLE'S MORSELS**

SEMI-SWEET CHOCOLATE 6-Oz. Pkg. 25c

ELLIS—PIECES

Pecans 12-Oz. Cello 89c



APPLE SALE!

Washington State Delicious Extra Fancy Red Lb. 15c
Rosy-Red ROME BEAUTY 2 Lbs. 27c

Pascal Celery CRISP STALKS Lb. 12c

Low, Low Prices - Everyday Savings!

BISCUITS SWEET MILK OR BUTTERMILK 3 Cans 29c	HAWAIIAN PUNCH 48-Oz. Can 39c	TAMALES No. 300 Can 27c	SALAD DRESSING Quart Jar 39c
FOOD MART SALT 28-Oz. Pkg. 10c	OVALTINE Large 14-Oz. Jar 79c	BEEF STEW No. 300 Can 35c	WORTH DOG FOOD 1-Lb. Can 10c
HAMBURGER RELISH 11-Oz. Jar 33c	PEANUT BUTTER 16-Oz. Ref. Jar. 49c	RANCH STYLE BEANS 2 No. 300 cans 29c	COCOA MARSH With Pump 24-Oz. Jar 10c
SKINNER'S RAISIN BRAN 24c	PRE-FLUFFED RICE 12-Oz. Pkg. 19c	PINTO BEANS 2 No. 300 cans 25c	COPPER CLEANER 15-Oz. Can (N&H) 39c
LIBBY'S 'VIM' 12-Oz. Can 29c			IRELAND'S BARBECUE No. 300 Can 39c

WORTH FOOD MART

WEEKEND VISITOR

Jim Littlefield of Texas A & M College visited his parents, Mr. and Mrs. Onis Littlefield, over the weekend.

SATURDAY GUESTS

Mr. and Mrs. Leon Baker of Milap visited in the home of her brother and wife, Mr. and Mrs. Onis Littlefield, Saturday.

Bridal Shower Honors Miss Helen Carroll

Miss Helen Carroll, bride-elect of Ralph Frank, was honored with a bridal shower Thursday, Nov. 6, from 7:30 to 9:30 p.m. at the Ranger Community Clubhouse. Hostesses for the occasion were the ladies of the Eastside Church of Christ, Sue Garrett, Carolyn Weaver, Sherry Baker, and Mrs. Roddy Carter.

The honoree's chosen colors of pink and white were carried out in all the decorations. The refreshment table was laid with a hand-made white cutwork cloth. The centerpiece of pink roses was flanked with pink candles.

Mrs. Carter and Mrs. Onita Halbrooks laded punch. The pink and white cake squares were served by Mrs. Julia Hill and Miss Baker. Miss Weaver presided at the guest book. Musical selections were furnished by Sherry Baker. About fifty guests called during the evening.

Sorority Holds Pledge Ceremony And Ritual of Jewels Tuesday

The Rho Pi Chapter of Beta Sigma Phi held a pledge ceremony and ritual of jewels Tuesday evening at the Community Clubhouse. The candlelight ceremony was conducted by Miss Eva Mills, president. Miss Helen Dawley and Mrs. Richard Bonney lighted the candles.

Mrs. Allen Rushing was ritual of jewels candidate. Pledges are Mmes. Raymon Bryan, Morris Campbell, David Allsup and James Blair.

Refreshments of coffee and cake were served to the following: Mmes. D. C. Arterburn, Bonney, Bill Bourdeau, Norman Huffman, Fred Lamb, H. H. Oliver, Charlie Rose, Rushing, Jack Sledge, Misses

Eva Mills, Norma Mills, Helen Dawley and the new pledges, Mmes. Bryan, Campbell, Allsup, and Blair.

Hostesses were Mmes. Kenneth Hardy and Calvin Warren.

Hospital News

New patients in Ranger General Hospital are: Harvey Clark, Cisco, surgical; Mrs. Edward Lester and baby boy, Ranger; Mrs. Pauline Rodriguez, and baby girl, Ranger; A. W. Lester, Ranger, medical; Mrs. C. E. Mitchell, Ranger, medical; and Mrs. Rosa Boyette, Ranger, medical.

Songs of Satisfaction

TIME DOESN'T WORRY ME NOW

PENNEY'S
ALWAYS FIRST QUALITY!

you always get **MORE** from every dollar you spend at Penney's!

FULL PENNEY CUT!

4.6 OUNCE SANFORIZED COTTON SUEDE PRINTS!

More new patterns specially picked for Penney's Birthday party! Warm, durable and generously proportioned over our own patterns in a full range of sizes.

1.00

boys' sizes 4 to 18

MORE TO CHOOSE FROM!

Towncraft Sport Shirts
FABRICS! STYLES!

University and regular models! Find wash 'n wear, little or no iron cottons, iridescents, textured acetates, many more! Towncraft tailored with every extra!

PENNEY PLUS VALUE

\$2 small, medium, large, extra-large

Special Purchase
MEN'S UNDERWEAR

SHORTS
T-SHIRTS
U-SHIRTS

2 for 1⁰⁰

Eastland Steam Laundry
Service in Ranger

Pickups Daily
Call Eastland Collect
PHONE 584

SINGER
SEWING MACHINES
and
VACUUM CLEANERS
New and Used

Call
D. L. MORTON
Eastland County Representative

Phone Eastland 985-W-1
or Write
Route No. 2, Eastland

Sweetbriar's pre-thanksgiving
special

Sale

special groups of fall and winter
DRESSES AND COATS
reduced for clearance

We're making room for our many beautiful Christmas Gift items arriving daily... your opportunity to SAVE on fine fashions to wear now and right on into the Spring Season... shop early for best selection!

special groups of fall
MILLINERY
reduced to
1/2 price

Sweetbriar

217 MAIN PHONE 779

Katherine Howell GA's Meet for Mission Program

The Katherine Howell GA's of the First Baptist Church met Monday, Nov. 10, at the church. Janice Stevens called the meeting to order, and Dorothy Ewing led the opening prayer.

Cathy Covington called the roll. Members answered with their favorite colors.

The GA hymn, "We've A Story to Tell," was led by Patty Perkins. Denise Huling read the scripture, Matthew 25:34.

The GA watchword was repeated in unison. Jeaneene Eaton read the list on the prayer calendar, and pointed out places where missionaries are working. Cathy Covington led a prayer for the missionaries.

The secretary, Regina Fawcett, read the minutes.

The following took parts on the program on "Taiwan": Jan Watkins, "Meeting the Needs of the People"; Kay Perkins, "A Baptist Church in a Buddhist Temple."; Charlene Montgomery, "Churches Grow Fast"; and Patty Perkins, "Wanted Workers."

Mrs. David Fawcett led the closing prayer. All members were present.

WEEKEND GUESTS

Mr. and Mrs. Weaver Aishman and Kay of Andrews were weekend visitors in the home of Mrs. Matt Robinson.

Our Gift TO YOU PARENTS...
A Santa Letter for your children. Officially postmarked Santa Claus, Indiana.

SANTA CLAUS
DEC 15 7AM '58
IND.

COME IN TODAY...select from 4 Beautiful Letters!

Thrill your child with a letter from Santa Claus officially postmarked Santa Claus, Indiana

FREE! come in today for your selection

4 Beautiful Letters to choose from!

ANDERSON CHEVROLET CO.
Phone 14 Ranger, Texas

SPORT MATES
by *Jayson* for guys and gals for Christmas

A terrific twosome for leisure pleasure... a man's handsome sport shirt in colorful cotton...doubled in a smart adaptation for a lady. Both feature Jayson's "fit to perfection" tailoring, and striking, colorful new patterns. Available in Misses sizes. Each \$5

See them today at **The Globe Clothiers**

—NEW CHARGE ACCOUNTS INVITED—
218 Main Street RANGER Phone 539

Buy It At Home ... Finance It At Home ...

The "Bank Way" is the best way to finance your New or Used Car.

Auto Financing

Select the new or used car you want from your local dealer... and then see us for financing! REMEMBER... TO DO IT THE "BANK WAY" CALL OR COME IN AT ANY TIME!

Buy your new or used car at home! Benefit yourself and your community! Put dollars in circulation where they'll work for all of us!

Commercial State Bank
Member F. D. I. C.

Funeral Services For Mrs. Doyle Still Pending

Mrs. Frances Doyle, a resident of Eastland since 1947, died this morning at her home and funeral services were still pending at noon today.

was born March 12, 1895 in Graham and lived in Olney most of her life. In 1947 the Doyles moved to Eastland and built Vista Motel. Survivors include her husband; her mother, Mrs. M. B. Goode; one son, Don of Eastland; two daughters, Mrs. Brent Ballio of Victoria and Sister Anita Goode of Saint Louis, Mo.; two sisters, Mrs. Fritz Timmons of Cuyahoga Falls, Ohio and Mrs. Naomi Towell of Dallas; one brother, Rankin Goode of Fort Worth, and five grandchildren.

Veterans Day Program Held

In a Veterans Day program held at the American Legion Hall Tuesday night, a Young School group presented a musical program under the direction of Mrs. Addie Harris.

Bulldogs-

(Continued from Page One) Eastland 39, Dublin 12, Eastland 8, DeLeon 6, Eastland 28, Cross Plains 6, Albany 37, Eastland 14

Coleman 24, Eastland 19, Eastland 12, Winters 0, Cisco 28, Eastland 6, Ballinger 33, Eastland 0, RANGER Ranger 26, Gatesville 12, Mineral Wells 30, Ranger 22, Diamond Hill 14, Ranger 12, Ranger 14, DeLeon 12, Ranger 26, Dublin 6, Ranger 20, Winters 14, Cisco 36, Ranger 7, Ballinger 48, Ranger 14, Coleman 22, Ranger 14

Sammy-

(Continued from Page One) he made after Baugh's speech. Baugh is generally considered as an outstanding football player and coach. He has led the Hardin-Simmons Cowboys into one of their most successful seasons this year, with a 4-4 record.

to such strong powers as Baylor, A & M on Friday, Nov. 28, both LSU, Mississippi and Arkansas, to be played at Abilene. Games remaining on the schedule are with West Texas State this Saturday and with New Mexico.

Trade With Your Hometown Merchants

PERSONALIZED SERVICE

We invite your continued patronage and extend to you our "Personalized Service" and quick claim payments. Come in and talk over your insurance needs with us... we will be happy to serve you.

MAY INSURANCE AGENCY

INSURANCE - REAL ESTATE

W. J. Sipes

Opal King Ranger, Texas Wanda Jones

Be Secure...

INSURE AND SAVE \$\$

Ruby Springer

FIRE * LIABILITY * AUTO

Farmers Insurance Group

Phones: Day 167 Night 695-J-2

DIXIE Drive-In EASTLAND RANGER HIGHWAY

Box Office Opens 6:30 Show Starts 6:45 Box Office Closes 9:00

HEATED PATIO NOW OPEN - Don't Let the Rain and Cold Keep You Home Admission Never Over 50c Adults 50c-Child Under 12 FREE

WEDNESDAY - THURSDAY, NOVEMBER 12 - 13

ERNEST K. GANN'S MIGHTIEST BEST SELLER SINCE "THE HIGH AND THE MIGHTY" ROCK HUDSON CYD CHARISSE WILIGHT FOR THE GODS

ARTHUR KENNEDY LEIF ERICSSON CHARLES MCGRAW ERNEST TRICKER RICHARD HAYDN NORTH EVELYN WALLACE FORD

PLUS: Two Color Cartoons

FRIDAY & SATURDAY, NOVEMBER 14 - 15

THE DEADLIEST THUNDER THAT EVER ROLLED ACROSS THE WEST WAR DRUMS

PLUS: Color Cartoon and Sports Reel

RANGER DRIVE-IN HIGHWAY 80 EAST ON RANGER HILL

Adults 50c-Kiddies Under 11 Free Box Office Opens 6:30 - Show Starts 7:00

LAST TIMES THURSDAY

The market place of crime! WELL ON DEVIL'S ISLAND

Plus Our Second Feature

a connubial comedy Jose Ferrer in The High Cost of Loving

FRIDAY AND SATURDAY

HE HAD STOOD ON BOTH SIDES OF THE LAW... AND THIS WAS THE SHOWDOWN! THE LAW AND JAKE WADE

PLUS: Freevue Every Saturday Night

Big Meat Buy of the Week!



Smoked Hams 49¢ to 43¢

Sausage 2.69¢ Poppy Bacon 63¢ Pot Roast 55¢ Safeway Franks 55¢

Order Your Thanksgiving Turkeys Now! Your Safeway Stores Are Now Taking Orders. Be Assured of the Exact Size You Will Want.

TIPS ON BUYING HAMS: Mams Are Sold Several Ways. You Can Buy Whole Ham, Shank Half, Butt Half, Center Slice, Center Roast, Butt Portion, Shank Portion.

Sweet Potatoes 2.29¢ Niblets Corn 3.49¢ Bartlett Pears 3.100

Applesauce 3.39¢ Sweet Peas 2.29¢ Pineapple 15¢ Lima Beans 2.29¢ French Mustard 15¢

COFFEE SALE! Edwards 2.147 79¢ Maxwell House 82¢ Truly Fine HOSIERY 99¢ 89¢

U.S. No. 1 RUSSET Potatoes 10.45¢

Red Rome Apples 13¢

SAFEWAY GIFT ORDER \$5.00

Liquid Starch 19¢ 37¢ Lemonade 2.25¢ Sandwich Cookies 49¢ Applesauce Cookies 41¢

Chow Mein Noodles 19¢ Whole Cloves 21¢ Bib Orange Juice 35¢ Supreme Club Crackers 37¢ Bisquick 45¢ 25¢ Crisco Shortening 3.87¢ Gaines Dog Food 2.31¢

Joyett Dessert 49¢ Vel Beauty Bar 39¢ Fab Detergent 32¢ Supersuds Detergent 33¢ Vel Detergent 32¢

Breakfast Gems Eggs 49¢ Vel Liquid Detergent 35¢ Clorox Bleach 19¢ Ajax Cleanser 27¢ Colgate Deodorant 75¢



Prices effective Thursday, Friday and Saturday, Nov. 13-15, in Eastland. We reserve the right to limit quantities. No sales to dealers.



TIME FOR THE BIG
KICK-OFF!

Bulldogs vs. Eastland

Here Friday Nite November 14

Rangers vs. Blinn Jr. College

There Thursday Nite November 13

This Fall We Invite You to Ranger... Attend our Ball Games... Visit our Town... Do Your Shopping Here

MAJESTIC
Thurs. - Fri. and Sat.
Adults 75c - Children 25c

THE BIG COUNTRY

1958 Bulldog Schedule

Date	Opponent	Location
Sept. 5	Bulldogs 26, Gatesville 12	
Sept. 12	Mineral Wells 30, Bulldogs 22	
Sept. 19	Diamond Hill 14, Bulldogs 12	
Sept. 26	Bulldogs 14, DeLeon 12	
Oct. 3	Bulldogs 26, Dublin 6	
Oct. 10		Open
Oct. 17	Bulldogs 20, Winters 14	
Oct. 24	Cisco 36, Bulldogs 7	
Oct. 31	Ballinger 48, Bulldogs 14	
Nov. 7	Coleman 24, Bulldogs 14	
Nov. 14	Eastland	Here

Last Five Games Are Conference Games



Save Today At **WESTERN AUTO Associate Store**
Home Owned by Betty and Ken Lewis

1958 Rangers Schedule

Sept. 13	Rangers 15, Paris Jr. Col. 0	
Sept. 19	Cameron 27, Rangers 0	
Sept. 27	Navarro 26, Rangers 6	
Oct. 4	Rangers 14, Murry State 6	
Oct. 11		Open
Oct. 18	Rangers 18, Henderson 8	
Oct. 25	Rangers 39, Cisco 6	
Oct. 30	Tyler 36, Rangers 6	
Nov. 8	NMMI 47, Rangers 21	
Nov. 13	*Blinn Jr. College	There
Nov. 22	*Texarkana Jr. College	There

* Denotes Conference Games
** Denotes Conference and Home Coming

RANGER DRIVE-IN
HWY. 80 EAST
Adm. 50c - Child Under 11 Free
Box Office Opens 6:30
Show Starts 7:00

Last Times Thursday
HELL ON DEVILS ISLAND

Plus Our Second Feature
HIGH COST OF LOVING

Friday and Saturday
LAW AND JAKE WADE
Plus Freevue Every Saturday Night

Lilley Rexall Drug
Ray D. Lilley
Prescriptions Our Specialty

Texas Electric Service Co.
A. N. Larson, Mgr.

R. J. (Buck) Caraway
Consignee The Texas Company
Phone 153

Ranger College
Dr. Price R. Ashton, President

Moffett Electric
Mr. and Mrs. D. O. Moffett

Anderson Chevrolet Company
T. J. Anderson Bill Anderson

Royce R. Phillips
Marketer Sinclair Ref. Co.
Good Year Tires and Batteries
Phone 91

Young's Beauty Shoppe
Phone 56

Ranger Lumber & Supply Co.
Calvin Brown Earl Brown

Capps Studio

Ussery Refrigeration and Electric
Mr. and Mrs. John Ussery Phone 161

Betty's Flower Shop
Your Flower Problem is Our Pleasure
Phone 640

Page Plumbing Co.
Mr. and Mrs. Carl Page

King's Cafe
Mr. and Mrs. Brownie King
107 Main Street

Vinson Radio & TV Service
116 S. Rusk Phone 77

Burton - Lingo Company
J. D. Nichols, Manager

El Rancho Coffee Shop
L. N. Bryan - Raymon Bryan
Hwy. 80 West Ranger

Law's Premier Service Station
Mr. and Mrs. Maxie Law
Your Friendly Service Station
Ranger, Texas

Glenn Hamner Tire Co.
Dunlop Tires - Wholesale - Retail
Best Buy In Town Phone 771

Swaney's Pharmacy

Ranger Transfer & Storage Co.
M. D. Underwood, Mgr.

Killingworth's

Mathena's Flower Shop
Flowers for All Occasions
420 Alice Phone 144

Dr. Marshall E. Jolly
Optometrist

Buck Wallace
Welding - Fabricating

Featherlite Corporation

May Insurance Agency
Insurance - Real Estate
Phone 418

Roy McCleskey Mobil Service Station
Giving Friendly Services for 22 Years
At The Same Location
Highway 80 East Phone 567
Your Business Always Appreciated

Gulf Oil Corporation
Morris George, Distributor

Ranger Auto Parts
Gaston Dixon Phone 243

Ranger Clinic

A. H. Powell Grocery & Market
Phone 103 We Deliver

Ranger Peanut Co.
T. C. Wylie, Mgr.
We Want To Buy Your Peanuts

Ranger Dry Cleaners
Mr. and Mrs. Jess Weaver

Caraway Paint & Body Shop
Highway 80 West—Phone 55
Mr. and Mrs. F. E. Caraway

Art's Tool & Supply Co.
Mr. and Mrs. E. F. Arterburn

J. C. Penney Co.
John L. Smith, Mgr.

Blackwell Gulf Service Station
Washing - Greasing - Gulf Products
Mr. and Mrs. Curtis Blackwell

Gid Maddox Steam Laundry
908 Blackwell Rd. Phone 342
Wet Wash - Rough Dry - Finish
Help Your Self

Brazda Clinic

Arterburn's Hardware and Furniture
Mr. and Mrs. D. C. Arterburn

First Baptist Church
Ralph E. Perkins, Pastor
"You Are Always Welcome"

Penn Texaco Service Station
Mr. and Mrs. Frank Penn

Ranger Farm Store
A. E. Crawley - John Tibbels
John Deere Implements G. E. Appliances

Robinson Food Market
Mr. and Mrs. R. V. Robinson

Porkey Pig
Raymon Bryan
Compliments of...
Ford & Jones
Ranger Hill Cafe - Texaco Station
Modern Courts

Ranger Iron Works
Ornamental and Wrought Iron
Hwy. 80 East—Ranger
L. D. Summers Phone 405

Commercial State Bank
Member F. D. I. C.

Premier Oil Refining Co.
David D. Pickrell, Supt.

Social Science Laboratories

Campbell's Humble Service Station
Highway 80 & Main Street Crossing

Compare anywhere!
 you'll find more quality
 for less money



at **WARDS**
 MONTGOMERY WARD

Compare! Our finest
 passenger tire **NYLON 64**
27% OFF
 FIRST TIME EVER!



Guaranteed 24 months against road hazards

No cash down payment... just your trade-in tire

Mounted free in minutes... free wheel balance check

JUST LOOK HOW YOU SAVE AT WARDS

6.70-15 tube-type blackwall that lists for 28.25 is now specially priced at

19⁹⁹ plus excise tax and trade-in

"Nylon 64" is a premium quality tire in every respect... in mileage... traction-wise... safety-wise... for non-premium prices! Permalized too—eliminates groove cracking, improves tire wear, tire balance and total tire performance. 14 and 15 inch tubeless and whitewalls on sale.

Here's the size:	Here's the reduction:	Here's all you pay:
6.70-15 tubeless blackwall that lists for 31.95	\$8.67	\$23.25
6.70-15 tubeless whitewall that lists for 36.95	\$10.07	\$26.95
7.50-14 tubeless blackwall that lists for 33.45	\$9.07	\$24.35
7.50-14 tubeless whitewall that lists for 38.95	\$10.57	\$28.45
8.00-14 tubeless blackwall that lists for 36.55	\$9.87	\$26.75

*Plus Excise Tax and trade-in *tire

SALE! *Special-*
purchase . . . lowest price ever!



7⁹⁹*
 6-Volt

9⁹⁹*
 12-Volt

WARDS

2 year guarantee

POWER-SPECIAL BATTERY IN GROUP 1, 2L and 24S ONLY

- Save 50% over other leading national brands
- Sale lasts 10 days only . . . limited quantity — hurry!

ONLY WARDS GREAT BUYING POWER CAN GIVE YOU THIS FABULOUS BUY . . .

You get . . . Wards exclusive "Power-gard" protection that prevents plate corrosion, cause of 85% of all battery failure . . . extra electrolyte for greater power protection, greater dependability . . . plenty of starting power for cold mornings!

Free installation, free electrical check

*with battery in trade

WSCS Meets For Study on Middle East

The WSCS of the First Methodist Church met Monday, Nov. 10, at the church for a business meeting and a continuation of the study on "The Middle East." Mrs. A. W. Brazda was in charge of the program.

Mrs. A. J. Ratliff, president, gave the opening prayer and presided at the business meeting. The minutes were read and approved, and the officers gave their reports.

Mrs. Stanley McAnelly presented the devotional and explained what the Moslem can accept from the apostles' creed. She quoted scripture from Psalm 122. The group sang "Forward Through the Ages."

Mrs. O. B. Poynor gave an interesting talk on "Saudi Arabia." She showed several articles that she had purchased in the Middle East countries.

Mrs. B. H. Peacock gave "The Call to Prayer," and discussed the things that religion means to the Moslem.

Mrs. C. E. May Sr. dismissed the meeting with a prayer.

Women's Activities

November 13

There will be a district meeting of the WSCS in Olney on November 13. Cars will be furnished for those who wish to attend.

November 15

The 1920 Club Thanksgiving dinner party which was scheduled for Nov. 15 has been postponed indefinitely.

November 22

The Columbia Study Club meeting which was originally scheduled for Saturday, Nov. 15, with Mrs. E. E. Crawford has been postponed to Saturday, Nov. 22.

CARD OF THANKS

We wish to express our most heartfelt appreciation to everyone who so generously gave to us after the loss of our home and furniture.

The Johnny H. Hodges family

— READ THE CLASSIFIEDS —

Shower Honors Hodges Family

A miscellaneous shower was held Friday, November 7, at 7:30 p.m. at the Lacasa Community Clubhouse for the family of Johnny Howard Hodges, whose home

and furniture were recently destroyed by fire. Refreshments were served by the ladies of the Lacasa Community. Cakes were auctioned, with the proceeds going to the family.

Gifts were received from Baker, Necessity, Caddo, Lacasa and Frankell.

ATTEND THE CHURCH OF YOUR CHOICE EACH SUNDAY

Are You in Orbit Now?

. . . is another way of asking, are you on the right track? The way we vote reflects our thinking and the way we think reflects our whole character. And by this standard, what a confused and careless people we sometimes appear to be! For example, the person who loses his abstract is careless, and the one who buys real estate without an abstract what about his thinking? The moral is, stay in orbit and out of trouble!

EARL BENDER & COMPANY
 Eastland, (Abstracts since 1923) Texas

TERMITES?

Let us check your property now. Free estimates. No obligation. SEE US FOR ALL TYPES PEST CONTROL

MODERN PEST CONTROL

Ralph Veal
 Day Ph. 919 - Nite Ph. 911



Who? Where? What'd you say?

STAMPEDES, MASSACRES, GUN SMOKE needn't mess up your phone conversations. With conveniently located extension telephones around the house, you just shut a door and shut out noise. Choose from nine beautiful decorator colors or standard black. For color, there's a one-time-only charge. Call the telephone business office.

End "One-Phone" Problems. Handy Additional Telephones Are Just \$1.00 A Month (plus tax and installation)

COAST TO COAST ONLY 1 1/2 CENTS PER MILE FOR GAS!

Pontiac's new Tempest 420E V-8 sets the year's most important economy mark—Here's the story and what it means to you!

PONTIAC COAST-TO-COAST ECONOMY RUN
 San Diego, California to Savannah, Georgia
 COMPLETED OCTOBER 17, 1958

DISTANCE 2,442.7 MILES
 DRIVING TIME 60.72 HOURS
 FUEL CONSUMED 112.5 GALLONS
 FUEL COST \$35.79
 MILES PER GALLON 21.7 Average for entire trip
 AVERAGE SPEED 40.2 MILES PER HOUR
 COST PER MILE 1.465 CENTS

We asked one of America's most respected car testers—"Uncle Tom" McCahill—to put a standard Pontiac Catalina Sedan with our new economy V-8 to the test.

And with only one specification—that the run would be exactly like you would drive coast to coast yourself—in mountains, in city traffic, across deserts, buying gas wherever the tank ran low.

And here's the phenomenal story in every complete detail—all officially certified by NASCAR, America's top automobile competition authority.

What does it mean to you?

Simply—and very importantly—this: For the first time, you can get deep-chested V-8 pep with better mileage than from many smaller so-called "economy cars" . . . and get it on regular fuel!

If you owned a Pontiac with this new Tempest 420E V-8 you'd be saving up to 5 cents a gallon on regular fuel. This new economy V-8 is optional at no extra cost on any Hydra-Matic Pontiac!

See your Pontiac dealer soon—and discover the newest in V-8 performance and economy!

PONTIAC!

America's Number 1 Road Car

3 Totally New Series • Catalina • Star Chief • Bonneville

SEE YOUR LOCAL AUTHORIZED PONTIAC DEALER



THE ONLY CAR WITH WIDE-TRACK WHEELS

BAGWELL MOTOR COMPANY
 HIGHWAY 80 EAST RANGER, TEXAS

Ira -

(Continued from Page One) entire second floor of a building back of the Gholson Hotel that had been converted to hotel rooms. "We called it the Wagon Yard and most of the out-of-town job-

lows stayed there . . . including Lester Potter." Since Wolford was an older man than most of the others they let him look after things and collect the rentals . . . \$15 a month per room.

Married in 1933 by Wolford and the former

Betty Davenport, whose father worked for the Lone Star Producing Company at one time as a plant detective, were married in December, 1933. They have a daughter, Anna Lee Kim, a son, Charles, and two grandchildren.

Charles, now 17, is an all-star football player who graduates from Ranger high school this year.

Keeping a scrapbook of publicity clippings on Charles' football accomplishments is one of his dad's favorite hobbies. He also keeps posted on bridge although he doesn't play as much as he used to. Chess was explored but, as he puts it, "that game is too slow."

Fishing, Outings
He recently joined the new Lone Cedar Country Club at Lake Leon for fishing and family outings.

In good health, Wolford says he has "no imaginary or real aches and pains or worries. I don't take time to have them," he says, adding that the only time he ever needed a doctor was when he had the measles as a lad.

"I'd like to say that my work with Lone Star has been wonderful and that this insurance and retirement program is wonderful too."

VISIT IN GORMAN

Mr. and Mrs. Onis Littlefield visited friends in Gorman Sunday.

Trade With Your Hometown Merchants

HAVING TREE TROUBLE?

LET ALEXANDER AND SON SOLVE YOUR PROBLEM

Tree Service and Pest Control

"Forty Years Experience" - ALL WORK GUARANTEED - 300 West Main, Ranger P. O. Box 506 Henry Alexander

LIVE with JEAN

By Jean Getts

This is the last week for the Bulldogs to show their strength. The boys sure seem to be losing the skill of winning.

The band is going to crown the football sweetheart this week, in a clever show planned for you.

The First Baptist Church revival is going strong.

T. H., how is S. B. getting along? Have you heard from her lately?

The B. S. sure is a busy place on Sunday morning. Everyone is running around with droopy eyes, and everyone is talking about the night before. You sure can learn lots of things—you don't know.

Our old car hop Doris Pennington (White) is back in town. Maybe she will make the Porkey Pig give some more.

Cindy—I'm glad you made it to the dorm in time. I would hate to see you stay at the dorm too long.

Rev. Charles Masseege is going to speak at the pep rally Thursday night at 8.

Next week is six-week's test time again. That will mean everyone is going to have to bury their heads in books in order to pass.

Don B.—how do you like Linda's body guard? He's really very little—don't you think. He's really a dog, not a horse, altho' he is as big as a horse.

A baby shower is being held in the honor of Mrs. Bob Lockwood. It will be held this Thursday at 8:30 p.m.

Bulldogs—are you going to let the Eastland Mavericks conquer you? I hope you wake up in time to prevent this disgrace. Soon we will learn whether you are Bulldogs or Puppies.

Pep rallies were held Wednesday and Thursday. Friday's rally will be held at 10:30 a.m.

Bobby, did you get to work on time, Wednesday morning?

I would like to say happy birthday to Murt Vinson!

All-District-

(Continued from Page One)

Selected to play in the first band of 72 members were: Mollie Mitchell, fourth chair flute; Linda Durham, fifth chair third clarinet; Linda Black, first chair alto clarinet; Carol Sue Montgomery, second chair french horn; Emma Lou Montgomery, fourth chair french horn; Jay Dell Baker, second chair baritone; and Dayle Penney, fifth chair bass.

Members of the all-district band will receive patches at the second meeting.

Rangers-

(Continued from Page One) Cromer at left, c-l.

Ranger College Rangeans will take the trip to Blinn to perform at half-time activities. Many of the students are also planning to attend.

Elinn holds a 1-5 season record, but has not lost to any team by a large score. The Buccaneers lost to Victoria 7-0, to Sam Houston's "B" team by 7-6, to Navarro 20-14, Paris 26-6, and to Henderson 9-7.

Slaughter only wants to win

this ball game to complete what he will consider a very successful season. With a Blinn win, it appears that the conference might end up in a three-way tie.

Slaughter added that they would "try to patch up and play a good ball game."

Dr. H. Hampton OPTOMETRIST Office Hours 8:30 a.m. to 11--1 to 4 p.m. Closed Saturday Afternoon 247 N. Graham Street - STEPHENVILLE, TEXAS

Cold or Hot - it hits the spot!

Boswell's

Chocolate Milk!



You'll like Boswell's Chocolate Milk cold or hot. The quick and easy way to make delicious Hot Chocolate is to heat and serve Boswell's Chocolate Milk. It's made from nourishing whole Boswell's Milk.

WARDS MONTGOMERY WARD

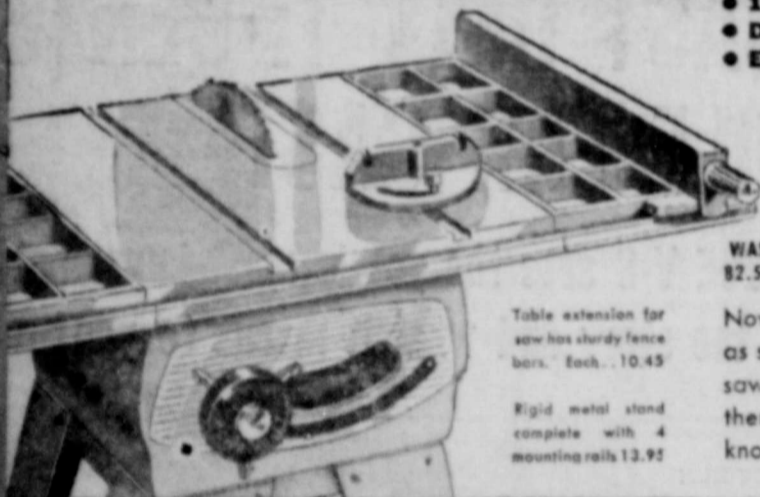
POWER TOOL SALE

Free 7 day home trial plus Wards famous 1 year POWR-KRAFT guarantee

BUY NOW ON WARDS LAY-AWAY

Only \$2 to \$5 down holds any tool until December 15.

SAVE 12⁶² on a POWR-KRAFT 9" bench saw

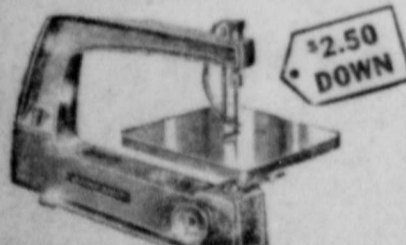


- 1 knob control tilt arbor model
• Double row of ball bearings
• Extra big 3 1/4" depth of cut

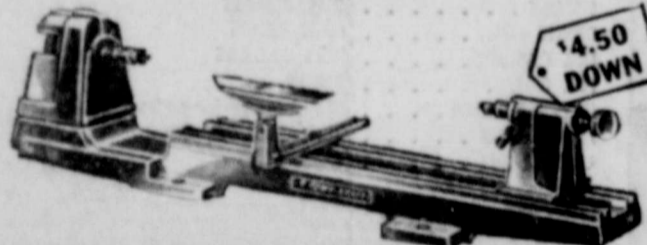
69⁸⁸ \$5 down \$5 a month

Table extension for saw has sturdy fence bars. Each . . . 10.45
Rigid metal stand complete with 4 mounting rails 12.95

Now you can have as much cutting capacity as some 10" saws for the price of most 8" saws. Ask for your FREE 7 day home trial then test every feature on this saw. We know you'll like this fine quality power tool.

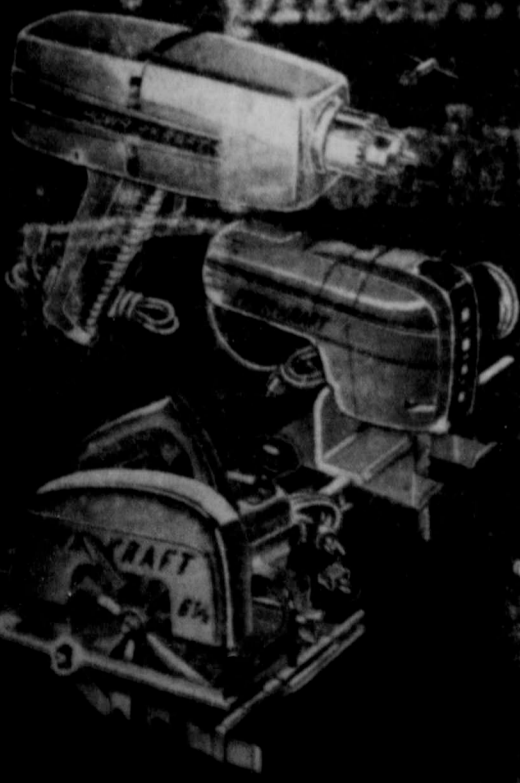


POWR-KRAFT 12 1/2" jig saw 2 in 1 tool converts to unlimited capacity sabre saw. Jig saw cuts to center of 2 1/2" circle, to 1 1/2" deep. \$17⁸⁸ \$5 a month



POWR-KRAFT 30" lathe Large 30" capacity between centers for turning long table legs—12" gap bed for turning 12" plates or bowls. Precision ball bearing construction. Stand 22.50 \$36⁸⁸ \$5 a month

Best for do-it-yourselfers—a POWR-KRAFT portable tool



SALE! 31.50 two speed drill

This heavy duty drill has high speed for drilling in wood or steel. With a flick of the switch you have double the power for drilling in masonry or polishing.

26⁸⁸ \$3 DOWN \$5 A MONTH

SALE! 27.50 utility sabre saw

A POWR-KRAFT saw that will handle all home requirements. Large 2" cutting depth, 45" adjustable shoe, sawdust blower, plus 3 blades.

19⁸⁸ \$2 DOWN \$5 A MONTH

POWR-KRAFT 6 1/2" heavy-duty saw

This saw tackles your work with power. Full 1 HP motor with "safety clutch" to protect you and the motor. All ball and needle bearing construction.

44⁹⁵ \$4.50 DOWN \$5 A MONTH

Best yet of the best sellers! New Might, New Models, New Money-Saving Power!

Chevrolet Task-Force 59

Take trucks that have shown themselves to be the biggest savers and biggest sellers. Add important engineering developments that mean still greater efficiency and endurance. You've got trucks that promise unparalleled reliability and economy. Here's how Task-Force 59 solidly backs up that promise to stay and save on your job!

Advertisement for Chevrolet Task-Force 59 featuring V8 POWER, BUILT-TO-LAST BODIES, POWERMATIC FIRST FULLY AUTOMATIC HEAVY-DUTY TRUCK TRANSMISSION, and positraction.



See your local authorized Chevrolet dealer

ANDERSON CHEVROLET COMPANY

111 S. AUSTIN ST.

RANGER

PHONE 14