

# Go to the Polls and Vote Early Saturday

Home of Ranger College

# THE RANGER TIMES

Gateway To Famed Lake Leon

39TH YEAR PRICE FIVE CENTS A Small City with Big Industry - A Bright Spot for New Industry RANGER, TEXAS, THURSDAY, JULY 24, 1958

## Ranger Team Prepares To Meet Amputees Here

Preparing for the biggest baseball battle in a year, the Ranger Dads, coaches and others, went to their second work-out session Tuesday night, getting ready to meet the Fort Worth Amputee Ball Club face-to-face next Saturday at 8 p.m. in Little League Park.

Donations will be taken at the ball park. The club is made up of players who have lost either a leg or an arm, or both. They tour the country giving benefit games. Organized by Barney Capshaw of Fort Worth, who lost a leg in a train accident, the group has been playing since 1950.

The local group is made up of dads of Little League players, team coaches, and others who are interested in playing. They will play their third practice session Thursday night, following the Little League games.

## ROAMING THRU RANGER WITH RON...

By Ronald Waters

**BEST-READ BOOK** in Ranger is the new telephone directory. It contains 11 white pages and 16 yellow pages.

A survey of the book revealed these interesting items:

If your last name starts with "H", you are among the majority of telephone owners in Ranger. Close behind are people whose last name begins with "S" (only seven Smiths listed), and "B".

No one is listed whose last name begins with "X" or "Z". And the only "Q" is ALMA QUINN.

K, C, and M are the next most popular letters.

**ARTIE and MORRIS CAMPBELL** are back in the car business, after buying out Elliott Motor Co. all set to sell Ford.

Understand that **BEFORE ANDERSON**, head bookkeeper at Anderson Chevrolet, is trying to start a new fad, a new fashion—or something.

**SCORE KEEPERS** who deserve recognition almost as much as the baseball players should receive more appreciation.

**TINY GOODWIN**—for service beyond the call of duty in keeping score for junior league games.

**TERRY TOWNZEN**—for outstanding support and score-keeping of senior league (Rangers) games.

**CHARLES MAHAFFEY**—for well done score-keeping in Minor League games.

**MRS. DEWEY COX**—for an excellent job in Little League games.

**NOTE:** Ranger Rogues—should you be able to obtain a score-keeper who will report to the Times, the coverage of your games would be 100-percent better.

Any volunteers?

Lots of people called us to identify our second cut—as **DAVID WHARTON**. This third one may give you some trouble, because it is a little older.

Anyways—here it is...

That's all for now.

## July Rainfall Best in 8 Years

Eastland County farmers have long maintained that if they could get some good rain in July and August they would make a bumper peanut crop.

August hasn't rolled around yet, but many a prayer has been answered this July.

In Ranger the rain measurement during the period has been about 4.08 inches so far this month. That's the most rain in July since 1950 when 4.50 inches was recorded.

Records have been kept here since 1911 and only in 1950, 1938 and 1926 has more rain fallen in July. The wettest July came in 1926 when 6.84 inches fell. In 1926 4.38 inches was recorded.

Much more rainfall than the 1.08 recorded here has been reported in some sections of the county. The results have been that peanuts are looking the best they have in many years.

Average rainfall for Eastland County for a year is 25.83 inches. That means that 6.56 inches must fall in 1958 to have an average year. Farmers could use more than that, however.

## More 'Saints' Are Needed for Benefit Game

Recruiting of "Saints" will start next week in Ranger, as the Ministerial Alliance begins signing up volunteers for their baseball game scheduled with the "Sinners" (Rogues) on Tuesday, Aug. 12.

Rev. Ralph Perkins announced Thursday that a team roster of "Saints" consisting of members of the Ministerial Alliance and recruits, would probably be made next week. Several substitutes will be on the roster.

Donations received at the game, will go toward the Jimmy Arrenlaye Fund Drive, now in progress.

Donations received at the game, will go toward the Jimmy Arrenlaye Fund Drive, now in progress.

Donations received at the game, will go toward the Jimmy Arrenlaye Fund Drive, now in progress.

Donations received at the game, will go toward the Jimmy Arrenlaye Fund Drive, now in progress.

Donations received at the game, will go toward the Jimmy Arrenlaye Fund Drive, now in progress.

Donations received at the game, will go toward the Jimmy Arrenlaye Fund Drive, now in progress.

## PAGE ONE MUST

Indians vs. the Giants and Dodgers vs. the Yankees tonight in Little League Park.

Rangers play Clyde senior leaguers, there, tonight at 8.

Ranger Dads and others prep for game with Ft. Worth Amputees, set Saturday in Little League Park.

Clyde junior leaguers play here in Teen-Age League play Friday night.

Minor League game set Friday evening in Little League Park.

Central Texas Turkey Growers meet in Eastland courthouse tonight.

## WTCC Meeting Set in Abilene

ABILENE (Sp.) — Members of the board of directors of the West Texas Chamber of Commerce, who live in this area, will meet here July 25 in the Abilene Museum of Fine Arts, 760 Cedar St. WTCC offices at 1:30 p.m. to discuss and approve the WTCC's program of work for the coming year, according to Grady Pipkin of Eastland, WTCC vice-president for this area.

Pipkin said plans call for the regional chamber's president, H. E. Godfrey of Fort Worth, the WTCC executive vice-president, Fred H. Husbands of Abilene, to present the tentative program of work for the directors' suggestions, additions, and approval.

The work program was developed in recent sub-committee meetings, includes the West Texas Chamber's activities in the fields of agriculture and livestock, public information, industrial development, state affairs, water resources, national affairs, community services and member relations.

In addition to planning last year's work, the board will also hear a brief review of the organization's activities last year.

The district meeting is one of a series of similar meetings being held this week throughout the 132-county area served by the WTCC. In addition to the 150-plus members of the board who are expected to attend one of the meetings, local chambers of commerce managers have also been invited.

The counties to be represented in the district meeting for this area include Callahan, Eastland, Fisher, James, Mitchell, Nolan, Scurry, Shackelford, Stephens and Taylor.

## Surplus Food Program Is Renewed Here

One thing is now certain about the surplus food program. Commissioners of the County have renewed the program for a year on a unanimous vote. That means that Eastland County citizens who are eligible to receive the food will do so for the coming year. The program is renewable on a yearly basis.

## Key Posts at Stake In Primary Saturday

### Precinct Conventions To Name Delegates

Delegates to the county convention in Eastland, set Aug. 2 in the Courthouse, will be elected in Precinct conventions to be held in Ranger Saturday at 2 p.m.

Both democratic precinct conventions will determine whether they will vote in a unit or individually, by separate ballot in the county convention.

At the county convention, delegates will meet to select delegates for the state convention. A national committeeman and national committee woman will be selected at the state convention to represent the Texas Democratic Party on the National level (as part of the state executive committee).

Both precinct conventions will pass resolutions, probably endorsing certain candidates.

Members of the Sabanna Valley Game Preserve Association played host to almost all Eastland County candidates Tuesday night, and a large crowd was on hand to listen to the politicians talk and eat barbecue.

It was a typical old-time political gathering, and TV apparently didn't keep anyone away.

H. R. (Pop) Garrett served as master of ceremonies for the night and Ted Underwood was timekeeper. Each of 12 candidates gave five minute talks.

Omar Burkett, seeking the state representative seat now held by Paul Brashear, stressed the fact that he stands for economy in state government. He said he would stand on his record, and said his record would show that his kind of economy was the kind that balanced the budget.

### Six Thousand Expected To Vote In This County

An estimated 6000 Eastland County citizens will go to the polls Saturday to vote in the Democratic primary election. They will help select Democratic flag bearers for United States senator, and a number of key state, district, county and precinct offices.

Interest in the primary is high, due both to a heated contest in the Senate race and the county judge's race, and several other contested races.

Eastland County has long been a stronghold of W. Lee O'Daniel, candidate for governor, and the outcome of the county gubernatorial race is attracting some statewide attention. Gov. Price Daniel is generally conceded as the odds-on favorite in the race, but he has two opponents, O'Daniel and Henry Gonzales.

Political observers here classify Eastland County as one of the counties which could go either way in the Senate race. Sen. Ralph Yarborough, seeking his first full term, has drawn a strong opponent in William Blakley. Yarborough, in races with Allen Shivers and Price Daniel for governor, carried the county in some elections and lost it in others. Conservatives have worked hard to swing the county into the Binkley column, and Sen. Yarborough spoke in Eastland in behalf of his candidacy.

There is also considerable interest in the lieutenant governors race here. Ben Ramsey, seeking an unprecedented fifth term, has met unexpected strong opposition from George Nokes.

Attorney General Will Wilson is unopposed, but three men are seeking the Supreme Court associate justice, Place 1, post. They are Robert W. Hamilton, Wilmer E. Hart and J. Edwin Smith.

Frank P. Culver is unopposed in his race for associate justice of Place 2 and Ruel C. Walker has no opposition in his bid for place 3.

Sarah T. Hughes is challenging Joe Greenhill for the place 4 Supreme Court seat, however. Kenneth K. Woodley is unopposed for his seat on the Court of Criminal Appeals after winning a fight to bar the name of his only opponent from the ballot because of too little experience as an attorney.

And Olin Culbertson again has no opposition in his race for railroad commissioner. Also unopposed are Robert S. Calvert, comptroller of public accounts, a nd...

## Candidates Speak At Political Meet

Members of the Sabanna Valley Game Preserve Association played host to almost all Eastland County candidates Tuesday night, and a large crowd was on hand to listen to the politicians talk and eat barbecue.

It was a typical old-time political gathering, and TV apparently didn't keep anyone away.

H. R. (Pop) Garrett served as master of ceremonies for the night and Ted Underwood was timekeeper. Each of 12 candidates gave five minute talks.

Omar Burkett, seeking the state representative seat now held by Paul Brashear, stressed the fact that he stands for economy in state government. He said he would stand on his record, and said his record would show that his kind of economy was the kind that balanced the budget.

Members of the Sabanna Valley Game Preserve Association played host to almost all Eastland County candidates Tuesday night, and a large crowd was on hand to listen to the politicians talk and eat barbecue.

It was a typical old-time political gathering, and TV apparently didn't keep anyone away.

## Where To Vote

- Precinct 1 (Eastland) — H. P. Pentecost.
- Precinct 2 (Eastland) — Herman Hassell.
- Precinct 3 (Ranger) — W. Mitchell.
- Precinct 4 (Ranger) — A. H. Powell.
- Precinct 5 (Cisco) — W. A. Huestis.
- Precinct 6 (Cisco) — J. V. Heyster, Jr.
- Precinct 7 (Rising Star) — Raymond Gray.
- Precinct 8 (Rising Star) — M. B. Shook.
- Precinct 9 (Pioneer) — Don Alexander.
- Precinct 10 (Alameda) — Mrs. John Love.
- Precinct 11 (Kokomo) — J. C. Donaldson.
- Precinct 12 (Carbon) — Henry Collins.
- Precinct 13 (Gorman) — George Hollifield.
- Precinct 14 (Long Branch) — Tom Poe.
- Precinct 15 (Okra) — P. O. Burns.
- Precinct 16 (Scranton) — Arthur Bailey.
- Precinct 17 (Nimrod) — Ed Townsend.
- Precinct 18 (Olden) — Mrs. O. H. Dick.
- Precinct 19 (Dothan) — D. L. Dunaway.
- Precinct 20 (Pleasant) — John Gehardt.
- Precinct 22 (Pleasant Hill) — Roy Tucker.
- Precinct 23 (Staff) — Wayne White.
- Precinct 24 (Cook) — Joe Weiss.
- Precinct 26 (Desdemona) — L. E. Clark.
- Precinct 27 (Sabanno) — W. E. Lusk.

## Rainfall Totals 36 of an Inch

Rainfall in the Ranger area has totaled over one-fourth of an inch since Monday morning.

Official reading for early Monday and Tuesday mornings was .36 with .20 falling Tuesday. Widely scattered showers fell in the area Wednesday morning and afternoon.

More thundershowers were forecast for the area Thursday. Abilene received 1.33 inches of moisture Tuesday morning. Eastland, Rising Star and Winters reported one inch of rain.

## Ranger Yards Bright With Flowers & Shrubs

Even an old bachelor who doesn't have a "green thumb" nor scarcely recognize one flower from another can be highly impressed with the yards in Ranger at this time of year.

Roaming thru Ranger, one can see an array of fresh, well-kept yards with that "All-American" appearance, giving a feeling of contentment.

With such a wide selection, it seems hazardous to point out a few of the fine yards. But an attempt to describe a few should be made.

Particularly impressive is the 800 and 900 block of Cypress, parts of Pine and Cherry Streets—all giving an impressive display of shrubs, flowers, and trees. Prominent throughout Ranger, too, are the many fine fruit trees (particularly pecan and promegranite) and the flowering Memos.

Up the street, at 704 W. Main, at the home of Nick Crawford, is another well-arranged yard noted for its shrubs.

Roscoe Hopper has an expansive and impressive yard (in front and back) at 120 Homer. A hedge surrounds the yard, and large trees set off the pleasant atmosphere of a well-arranged landscape.

At 702 W. Main, the home of Felton Braslier, are blooming crepe myrtles in shades of pink. Particularly impressive in this yard is the placement of trees and shrubs, with scattered roses and gladioli.

At 816 Cypress is the Lloyd Bruce home, with a hedge, fence, well-placed coles and shrubs, oaks and fruit trees—all set in a pleasing atmosphere.

Other impressive homes on Cypress were found at 651, 802, and at 804. These yards display pink perennial phlox, shrubs, zinnias, roses, yellow cannas and (Continued On Page Three)

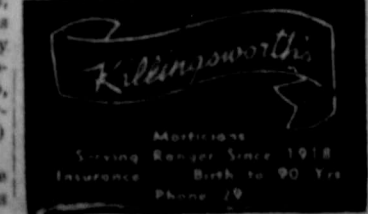
**LONE STAR COMPRESSOR STATION NO. 3** — is our third cut of Ranger's businesses and industries (from our files) to run here. Located on the Breckenridge Highway, the station is one of a network operated by Lone Star in its conveying of natural gas all over Texas. (Photo by Capps Studio).

See The **RCA WHIRLPOOL APPLIANCES** at **RANGER FROZEN FOOD CENTER**. **FREE HOME TRIAL** on RCA Whirlpool Appliances. **RANGER FROZEN FOOD CENTER**.

**Insurance At A Savings** Fire - Casualty - Automobile. **M. L. KING INSURANCE AGENCY** Phone 75, 808 Main St.



David is a recent graduate of Ranger High School, where he served as president of the student council. An outstanding football player, he played fullback for the Bulldogs.



Kilinsworth's nursery, featuring a variety of plants and flowers.



# The Ranger Times

"SERVING COMMUNITY BETTERMENT SINCE 1919"  
 ESTABLISHED JUNE 1, 1919  
 Second class matter of the postoffice at Ranger, Texas under the act of Congress of March 3, 1879  
 PUBLISHED WEEKLY—TUESDAYS—THURSDAYS—SUNDAYS  
 JOE DENNIS and OMOUS DICK, Publishers

One week by carrier in city . . . 15  
 One month by carrier in city . . . 45  
 One year by mail in county . . . 3.50  
 One year by mail in state . . . 4.75  
 One year by mail out of state . . . 6.75

NOTICE TO PUBLIC—Any erroneous reflection upon the character, standing or reputation of any person, firm or corporation which may appear in the columns of this newspaper will be gladly corrected upon being brought to the attention of the publishers.

## CLASSIFIED

All Classified Ads Must Be Paid For In Advance.

### MISC. FOR SALE

**AIRPLANE**—Would like to meet three people to join in buying a clean biplane and all learning to fly. Investment, \$375 each. Can get terms. Call Norman Guess, 802 or 7029, Eastland.

**RUBBER STAMPS**—Fast service, reasonable prices, no order too large or too small to get our special attention. Ranger Times.

**FOR SALE**: Young rabbits. Frank Miller, Phone 206-J.

**FOR SALE**: Pheasants, white guineas, eggs, chicks, mature birds. Also frozen, oven-ready birds. Also some chukars. All white meat birds. B. G. Pirkle and Son, Phone 211.

**FOR SALE**: New shipment of Steel Filing Cabinets now in stock at the Ranger Times Office. Several numbers on display for you to choose from.

**FOR SALE**: 6 room modern house and one acre land on South Blundell Street. See Mrs. J. D. Howard.

**FOR SALE**: We will receive bids on a 4 room modern house to be moved. Can be seen across street from First Baptist Church. Will make an ideal home. Phone 11 or 179, First Baptist Church.

**FOR SALE**: Bookkeeping supplies, fast binders, indexes, receipt books, ledger sheets, storage files, sales books, order books and many other items . . . at the Ranger Times office.

**NOTICE**

**CHIROPRACTIC SERVICE**  
 Open Mon. - Wed. - and Friday.  
 Dr. E. R. Green  
 455 Pine Street, Ranger

COME in and see the new Steel Filing Cabinets for the home. With lock compartment. Ranger Times Office.

## COURTHOUSE NEWS AND RECORDS

Real Estate Transfers, Marriages, Suits Filed  
 Court Judgments, Orders, Etc.

**INSTRUMENTS FILED**  
 County Clerk's Office  
 R. A. Bearman to Magnolia Petroleum Co., assignment of oil and gas lease.  
 R. A. Bearman to Magnolia Petroleum Co., assignment of oil and gas lease.  
 S. G. Baird to The Public, proof of heirship.  
 Mittle Odessa Bibbee to H. E. Murray, oil and gas lease.  
 J. B. (Bert) Bennett to The Public, affidavit.  
 Mitchell Campbell to Magnolia Petroleum Co., oil and gas lease.  
 Luther Cunningham to Magnolia Petroleum Co., oil and gas lease.  
 Continental National Bank of Ft. Worth to H. M. Park, release of deed of trust.  
 Citizens State Bank to H. D. Dickey, release of lien.  
 LaVie H. Chisholm to Frank M. Hicklin, release of lien.  
 C. R. Day to Magnolia Petroleum Co., oil and gas lease.  
 H. D. Dickey to Veterans Land Board, warranty deed.  
 Eastland National Bank v. Neil M. Day, abstract of judgement.  
 First National Bank, Cisco to Wallace E. Simpson, release of vendor's lien.  
 Henry F. Ferrall to Mrs. Jennie B. Wallace, special warranty deed.  
 First Bancredit Corp. to A. R. Huffman, release of MML.  
 First National Life Ins. Co. to Nathan T. Mulloy, cancellation of agreement.  
 Jennie Dey Gordon to E. P. Crawford, warranty deed.  
 Seth P. Gilbert to H. H. Murray, rat. of oil and gas lease.  
 Owen Hamilton to Grace Hamilton, warranty deed.  
 Doyle J. Jobe to Magnolia Petroleum Co., oil and gas lease.  
 J. O. Jackson to Magnolia Petroleum Co., oil and gas lease.  
 Cecil H. Joyce to Citizens State Bank, Cross Plains, deed of trust.  
 Terry Rupert Johnson to J. E. Morris, Jr., release of deed of trust.  
 J. R. Lanier to Eastland National Bank, assignment of lien.  
 H. H. Murray to Carolyn R. Ross, assignment of oil and gas lease.  
 H. H. Murray to H. A. Hedberg, assignment of oil and gas lease.  
 H. B. MacMoy v. Neil M. Day, abstract of judgement.  
 Bessie Marie McCullum to Coastal St. Gas Prod' Co., oil and gas lease.  
 E. D. McCollum to Coastal St. Gas Prod. Co., oil and gas lease.  
 E. D. McCollum to Coastal St. Gas Prod. Co., oil and gas lease.  
 W. B. Notgrass to R. A. Bearman, oil and gas lease.  
 J. E. Norris, Jr. to Terry Rupert Johnson, warranty deed.  
 Russell J. Nolan to William E. Hart, warranty deed.  
 William W. Paschall to Ranger Libr. & Supply, M.L. & assignment.  
 T. B. (Stoker) Richards to H. H. Murray, oil and gas lease.  
 L. B. (Stoker) Richards to H. H. Murray, oil and gas lease.  
 Republic National Life Ins. Co. to H. S. Shouse, special warranty deed.  
 Republic National Life Ins. Co. to The Public, resolution.  
 Elmer J. Stanford to Veda Howell, warranty deed.  
 W. C. Spoon to R. A. Bearman, oil and gas lease.  
 T. O. Shelley to Magnolia Petroleum Co., oil and gas lease.  
 J. Frank Sparks to H. A. Tyrone, quit claim deed.  
 H. S. Shouse to Republic National Life Ins. Co., deed of trust.  
 C. R. Tyler to The Public, affidavit.  
 United States of America to John H. Yeaman, release of deed of trust.  
 Veterans Land Board to James C. Cloud, contract of sale.  
 J. E. Walker to Magnolia Petroleum Co., oil and gas lease.  
 Woodley Petroleum Company to Premier Oil Ref. Co., assignment of oil and gas lease.  
 W. A. Wallace to The Public, proof of heirship.  
 Wilson Manufacturing Company, Inc. v. Jack Hailey, abstract of judgement.  
 K. L. Williams to J. L. Erwin, release of vendor's lien.  
**MARRIAGE LICENSES**  
 Sam Garland Miller and Barbara Nance Hightower.  
 Tim David Woods and Kay Lou Williams.  
 Francis Edward Dittmott and Patricia Elizabeth Mayer.  
 Charles Herman Nowak and Elizabeth Joyce Seymour.

## Robinson Food Market

Friday and Saturday Specials  
 WE DELIVER  
 121 North Rusk Street Phone 162

FRESH DRESSED  
**Fryers** Cut or Whole Lb. **45¢**

WILSON'S THICK SLICED  
**BACON** . . . . . 2-lb. pkg. 1.39

FANCY HOME KILLED CALF  
**LOIN STEAKS** Lb. **79¢**  
**CHUCK ROAST** Lb. **49¢**

WHITE SWAN  
**Coffee** Lb. **77¢**

WHITE SWAN  
**TEA** . . . . . 1/4-lb. 29c

FRESH COUNTRY  
**EGGS** Large Whites Doz. **39¢**

GLADIOLA—Pound, White, Yellow, Devil Food  
**CAKE MIXES** . . . . . 3 boxes 89c

FULL DRESS  
**DOG FOOD** . . . . . 13 cans 1.00

Billy Glen Jackson and Peggy La Rue Willingham.  
**SUITS FILED**  
 91st District Court  
 Betty Wolford v. Jerry Anderson, et al, damages.  
 H. L. Bilhartz & Associates, et al v. J. E. Odell, et al, receiver-ship.  
 George McLynn Peery v. Mary Elizabeth Peery, divorce & child custody.  
 Velma Faircloth v. Sig Faircloth, divorce.  
 Ramona Jean Evans v. Donald A. Evans, divorce & child custody.  
 Gorbett Bros. Tank Company of Abilene, Inc. v. Marshall Pipe & Supply Company, et al, verified account.  
**ORDERS AND JUDGEMENTS**  
 91st District Court  
 H. L. Bilhartz & Associates v. J. E. Odell, et al, order.  
 Merlene Whitt v. James T. Whitt, judgement.  
 Eastland National Bank v. Neil M. Day, et al, judgement.  
 Zeta Alberta Johnson v. Woodie A. Johnson, judgement.  
 J. D. Lauderdale, Trustee v. J. W. Bartlett, Jr., order.  
 A. V. Cozart v. M. L. Cozart, order of dismissal.  
 Bonnie Lee Elam v. Jasper H. Elam, order.  
 George McLynn Peery v. Mary Elizabeth Peery, order.  
 Melvin Crouch v. Jerry Ann Crouch, judgement.  
 Elliott Motor Company v. Ronald Carroll, et al, judgement.  
 Elliott Motor Company v. Owen Hamilton, judgement.

**JOHNSON MOTORS**  
 ALL TYPE BOATS  
 Power Lawn Mowers  
 Factory Trained Motor Mechanic

**SPORT CENTER**  
 Eastland Phone 525

Re Elect  
**JOHN C. WHITE**  
 TEXAS  
**COMMISSIONER OF AGRICULTURE**  
 EXPERIENCED  
 QUALIFIED  
 DEMOCRAT  
 He made Texas  
 "FIRST IN THE SOUTH"  
 In Modern Farm Laws  
 and Services!  
 (Pd. Pol. Adv.)

## CALL 224 FOR CLASSIFIEDS

### One Thing After Another—

... can and may, happen to land titles in the passing of moments. During the time it takes you to read this ad something could happen to your title that would change your whole financial structure, or indeed it could alter your plans and aspirations for generations to come. The abstractor in a sense is your land title guardian, for he keeps the records day by day as you or others make them. Advise with him often about your title.

**EARL BENDER & COMPANY**  
 Eastland, (Abstracts since 1923) Texas

## DIXIE Drive-In

EASTLAND RANGER HIGHWAY

Box Office Opens 7:45 Show Starts 8:15  
 Box Office Closes 10:15

ADMISSION NEVER OVER 50c  
 WEDNESDAY - THURSDAY, JULY 23 - 24  
**MICKEY ROONEY**  
 the **FBI's**  
**BABY FACE NELSON** Public Enemy No. 1!  
 DON'T SEE IT—UNLESS YOUR NERVES ARE BULLETPROOF!  
 PLUS: Two Color Cartoons

FRIDAY - SATURDAY, JULY 25 - 26

**RAIDERS and RAVAGERS!**  
 The shock-hot saga of night-riding terror!  
**QUANTRILL'S RAIDERS**  
 AN ALLIED ARTISTS PICTURE  
**STEVE COCHRAN**  
 DIANE BREWSTER - LEO GORDON - GALE ROBBINS  
 Produced by BEN SCHWALB - Directed by EDWARD BERNDG - Written by POLLY JAMES  
 PLUS: Two Color Cartoons

**RANGER DRIVE-IN**  
 HIGHWAY 80 EAST ON RANGER HILL  
 Adults 40c Kiddies Under 11 Free  
 LAST TIMES THURSDAY  
**UNDERWATER WARRIOR**  
 DAREDEVIL EXPLOITS OF THE UNDERWATER DEMOLITION TEAM!  
 DAN DAILEY, JAMES GREGORY, ROSS MARTIN, RAYMOND BAILEY, CLAIRE KELLY  
 Plus Color Cartoon  
 FRIDAY & SATURDAY

**COLE YOUNGER**  
**GUNFIGHTER**  
 COLDEST, CRUELEST OF ALL THE GREAT OUTLAWS!  
 FRANK LOVEJOY  
 JAMES BEST - ABBY DALTON - JAN MCELIN  
 Produced by BEN SCHWALB - R. G. SPRINGSTEEN - DANIEL RAINBOWING  
 FREEVUE EVERY SATURDAY NITE

You Can't Argue With **FACTS**  
 It Doesn't Take Two Columns of Type To Tell This Story  
 YOUR DOLLARS TALK!  
 When I took office as County Judge, our county had in cash \$240,675.00  
 On January 1, 1958 \$336,684.21  
 This is a **FACT** — NOT A PROMISE!  
 It Is Your Money!  
 When I took office our county owed \$708,190.00  
 On January 1, 1958, it owed \$270,336.60  
 Almost **HALF A MILLION PAID** is a **HARD CASH FACT!** NOT A Promise  
 It Is Your Money!  
 When I took office we owed on the Court House \$150,000.00  
 We have paid and have money to pay all but \$ 10,000.00  
 \$140,000 is a **HARD CASH FACT!**  
 NOT A PROMISE! It is Your Money!  
 DON'T TAKE A CHANCE! VOTE FOR PERFORMANCE!  
 Re-Elect  
**JOHN HART**  
 Your **COUNTY JUDGE**  
 On His Record  
 (Paid for by Friends who appreciate John Hart's Work)

VOTE FOR  
**Ralph Yarborough**  
**U. S. SENATOR**  
 FOR RE-ELECTION  
**Service Record Of A People's Senator**  
 ★ EDUCATION: Taught 3 years in Henderson County Rural Schools, and briefly in The University of Texas Law School. General Attorney, Texas State Teachers Association, 1946-1952.  
 ★ MILITARY: Three years in the 36th Division, Texas National Guard; 3 1/2 years in World War II, with 97th Infantry Division under Patton in Europe and in Occupation of Japan under MacArthur; From private to Lt. Colonel.  
 ★ GOVERNMENTAL: Four years Assistant Attorney General of Texas under Jimmie Allred; served five years as District Judge at Austin, 3 1/2 years of this as presiding administrative judge over 33 Central Texas Counties; member State Board of Legal Examiners 1947-1951; United States Senator, April 1957 to present.  
 ★ CIVIC: General Director, Austin Community Chest Drive; General Director Travis County Red Cross Drive; Served on Travis County Honor Council, Boy Scouts of America.  
 ★ Religious: Former Trustee and Former Sunday School Teacher, First Baptist Church of Austin.  
 ★ Legal: Served as President of the Travis County Bar Association; Director (1940) State Bar of Texas; Member American Bar Association and American Law Institute.  
 (Pol. Adv. Paid for by A Friend)



**Ranger Guard-**

(Continued From Page One)  
 crape myrtle.  
 More crape myrtle is impressive at 539 Pine St., and a beautiful weeping willow is in evidence at 517 Pine.  
 The J. A. Johnson home, at 602 Pine, displays shrubs, pecan trees, fruit trees and a hedge—all in an attractive arrangement.  
 At 561 Pine St., the shrubs, plants, and trees are outstanding. Here one cannot help but stop to pause and gaze at the large and unusual potted plants—among the most impressive in Ranger.  
 Dr. Jolly's house on Pine, is set off with red and yellow cannas, ferns in a window box, and zin-

nias.  
 At the Melody Gardens Green House, 808 Young, a bright array of flowers brightens up a side yard. The brilliant rain-bow of colors is set near some large trees.  
 Other impressive yards include those of Dr. A. W. Brazda at 200 Walnut, J. W. Elder at 461 Pine, Floyd Killingsworth at 805 Cherry, J. E. Matthews at 224 Hunt, and T. J. Anderson at 922 Strawn Rd.—to mention only a few.  
 Ranger's flowers, shrubs and trees will impress any visitor to the city and keep a bright atmosphere amongst "home folks."

**Farm Bureau to Hold Tour of County Tuesday**

The Farm Bureau sponsored farm tour will be held Tuesday and everyone is urged to attend, a spokesman said today.  
 The tour will begin at the Don Kincaid turkey ranch east of Cisco on Highway 80. A tour of the leading farms and ranches in the county will be made. Everyone wanting to make the trip is asked to bring their own lunch.

ATTEND THE CHURCH OF YOUR CHOICE EACH SUNDAY

TRADE WITH YOUR HOMETOWN MERCHANTS



Stays fresh longer

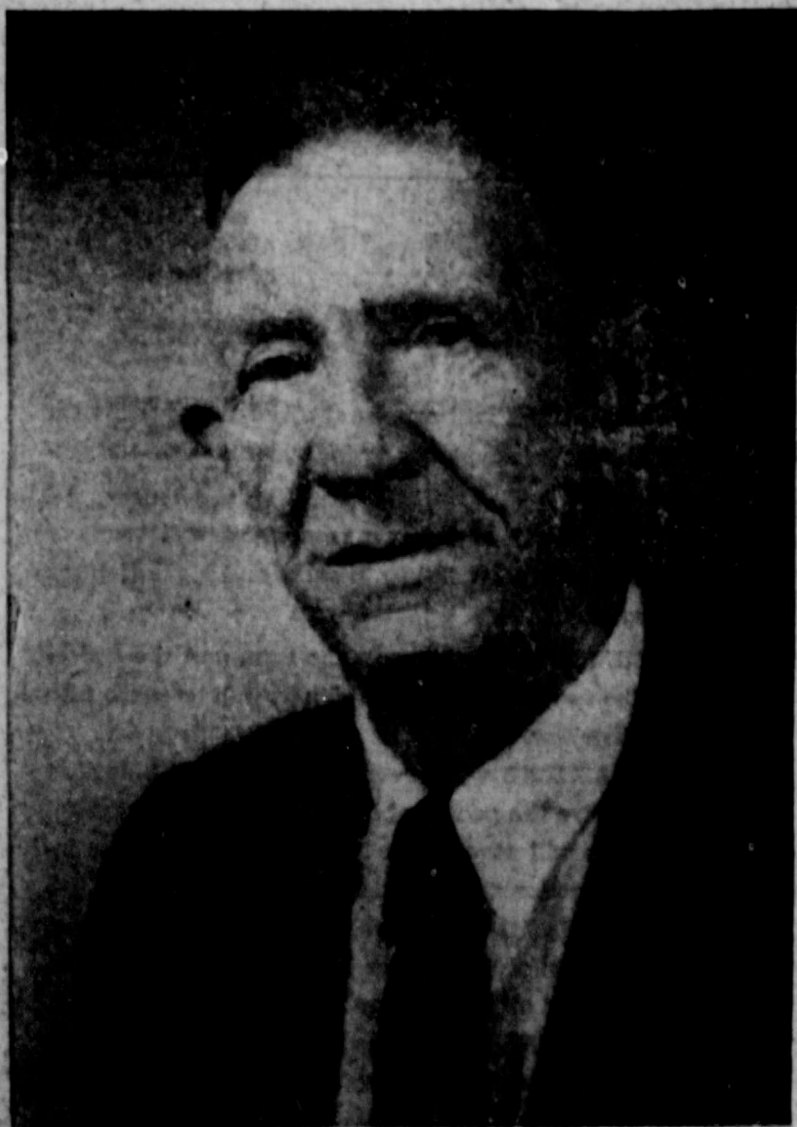
**Charles H. Dawson**

—Candidate For—

**State Representative**

76th District

Eastland, Callahan and Shackelford Counties



FOR

Landowners and Farmers having prior rights to all water on their land to use as they see fit without getting permit.  
 More farm to market roads and other farm legislation.

AGAINST

Retail Sales Tax — State Income Tax — Foreign Oil Imports.

**CHARLES H. DAWSON**

Farmer — Real Estate Broker  
 Veteran World War I

(Pd. Pol. Adv.)

**FLOUR MORRISON'S PEACEMAKER SAVE 36c** **25 -Lb. Bag 1.49**

**Summertime Special Sale SHERBETS**



Orange, Lime or Pineapple  
 SAVE 36c  
 Taylor's Delicious

**5 Pint Ctns. Only 89¢**

**CAKE MIXES**

BETTY CROCKER ASSORTED

SAVE 32c **4 20-oz. Pkgs. \$1.00**

SWIFT'S PREMIUM

**COOKED PICNICS** Lb. **49¢**

SWIFT'S PREMIUM **FRANKFURTERS** Lb. Pkg. 55c

GUARANTEED FRESH! **GROUND BEEF** Lb. 49c

YOUNGBLOOD'S FROZEN **PULLEY - BONES** Lb. Pkg. 99c

SWIFT'S PREMIUM **SLICED BOLOGNA** Lb. 49c

WORTH CONTROLLED QUALITY **BEEF CHUCK ROAST** Lb. 49c

KRAFT'S AMERICAN, PIMIENTO, SWISS **DELUXE CHEESE SLICES** 8-Oz. Pkg. 33c

**SLICED BACON** SWIFT'S ORIOLE Lb. Pkg. **63¢**

**LEMONS** SUNKIST Large Juicy **2 Lbs. 25¢**

**RED POTATOES** U. S. NO. 1 TEXAS **5 Lbs. 23¢**

**SEEDLESS GRAPES** THOMPSON SWEET, JUICY Lb. **19¢**

CALIFORNIA LONG-GREEN **CUCUMBERS** 2 for 15c

CRISP STALKS **PASCAL CELERY** Lb. 12c

LARGE HEADS, CRISP **FRESH LETTUCE** Lb. 12c

**CALAVOS**

California Haas

2 for 25c

CALIFORNIA VALENCIAS

**SUNKIST ORANGES** Lb. 19c

FIRM-RIPE

**SLICER TOMATOES** Lb. 19c

TEXAS MILD-FLAVOR

**WHITE ONIONS** 2 Lb. 15c

**Shortening** SWIFT'S JEWEL 3 -Lb. Can **69¢**

**Swift's Prem** LUNCHEON MEAT 12-Oz. **43¢**

**Swift's Pard** DOG FOOD 4 1-Lb. Cans **55¢**

**Allsweet** SWIFT'S MARGARINE 2 1-Lb. Pkgs. **45¢**

**Green Beans** DEL MONTE CUT No. 303 Can **19¢**

**NIBLETS CORN** WHOLE KERNEL 2 12-Oz. Cans **27¢**

LIBBY'S FROZEN—FRUIT

**PIES**

APPLE, PEACH, PINEAPPLE

24-Oz. Pkg. **49¢**

**ROLLS**

JEAN'S FROZEN 24-Cnt. Pkg. **25¢**

**Hair Tonic**

Vaseline Giant Plus 7c Tax Size **57¢**

ASPIRIN

**BAYER** 100-Tablet Bottle **55¢**

**WORTH FOOD MART**

Prices Effective Thursday, Friday & Saturday—Reserve Right to Limit



**Montgomery Ward**  
**WEEK END SPECIALS**

4000 C.F.M.

**EVAPORATIVE COOLER**

1-Speed  
 Was 129.50  
 NOW ..... **99.88**

2-speed was 139.95 .. Now 109.88

**18-INCH LAWN MOWER**

Was 54.95  
 NOW ..... **35.88**

**PAINT-PAINT**

Was 4.95 Gal.  
 NOW ..... Gal. **1.00**

**78 RPM PHONO RECORDS**

Friday and Saturday Only

**30 for 1.00**

**CHARCOAL BRAZIER**

Reg. 29.95  
 NOW ..... **14.88**

**NYLON GOWNS and P. J's**

Were 3.98  
 NOW ..... **1.97**

40 Watt

**LIGHT BULBS**

**10 for 1.00**

**3-PC. BEDROOM SUITE**

NOW ..... **89.88**

**CHECK OUR FURNITURE  
 AND APPLIANCE FLOOR  
 FOR MANY BARGAINS!**

**BUY ON CONVENIENT  
 TIME PAYMENT PLAN!**

**Game Preserve-**

(Continued From Page One)  
 by implies that I am keeping it rural."  
 All three candidates seeking the Precinct 2 (Gorman) commissioners post spoke. A. M. Thurman said he favored keeping School Buses and rail routes in good shape above all other roads and the incumbent, B. M. Bennett, said weather controls what a commissioner can do as much as finances. The other candidates, Buck Foster, just argued Precinct 2 citizens to give him their vote.  
 Clarence Dill, seeking the Precinct 4 (Cisco) commissioners seat also was on hand.  
 Johnson Smith, running for re-election as county clerk, pointed out that during his administration 35,000 birth certificates have been permanently recorded on microfilm. He also said when he took office eight years of cross index-

ing needed to done, and pointed out that it has now all been taken care of.  
 Arlton E. Smith, the other candidate for county clerk, said that if elected he would do his best "to cut all unnecessary spending that might be going on in the office."  
 Roy Lane, incumbent in the district clerk's race, vowed he would continue to render the "most most efficient service that can be given." He pointed with pride to the fact that during his administration not one mistrial had resulted because of failure of the clerk's office.  
 Richard Cox, Lane's opponent, declared he would eliminate the assistant from the district clerk's office, and do "all the work myself." He asked voters to give him a promotion.  
 Clyde Garrett, running for county judge, said his opponent hadn't given all the facts about the county financial condition. He said the general fund has only \$8000 in it although it had \$66,000 when his opponent took office eight years ago. He also pointed to a \$14,000 overdraft in the officers salary fund.  
 John Hart, seeking re-election as county judge, pointed to the fact that the county now has

**SIX-**

(Continued From Page One)  
 school superintendent, is unopposed in his race, as is Earl Conner Jr. for county attorney, Mrs. Ellen Justice for county treasurer and T. H. Landon for county surveyor.  
 John S. Hart and Clyde L. Garrett are seeking the post of county judge. Hart now holds the post and Garrett formerly served as county judge and U. S. representative.  
 District Clerk Roy L. Lane is opposed by Richard C. Cox in the county treasurers contest Cox is presently county treasurer.  
 Two of the Smith boys are running for county clerk, Johnson Smith seeks re-election and is op-

posed by Arlton E. Smith.  
 There are two county commissioners posts at stake in the primary. In Precinct 4 (Cisco) six men are seeking the post now held by J. E. McCanlies. Candidates are Clifford R. Phippen, Carl Lamb,

Don Rupe, Carl D. Gorr, J. J. (Jake) Honea and Clarence B. (Runt) Dill.  
 In the Precinct 2 (Gorman) race B. M. (Froggie) Bennett is opposed in his bid for re-election by A. M. Thurman and Buck Foster.

Charles Bobo is opposed by Mrs. Ruby Stone Springer for justice of the peace, Precinct 2, and Calvin Brown and A. H. Powell are unopposed for precinct chairman of Precincts 3 and 4, respectively.



Next Judge Sarah T. HUGHES To Supreme Court

**BILL BLAKLEY**



Texans like a public official who is independent in his thinking and doesn't have to account for his actions to anyone except the voters themselves.  
 William A. Blakley is such a man. Of his race for U. S. Senate, the Fort Arthur News says: "He entered this race by his own decision. He is beholden to nobody. He doesn't have to promise special interest groups anything and he wants to represent all of Texas, not any political splinter or fragment or faction above the rest."  
 A vote for Bill Blakley on July 26 is a vote for returning to Washington a man who will truly represent Texas.

**BILL BLAKLEY for U.S. SENATE** (Pol. Adv. Paid for by Jim Shedd)

**Political Announcements**

The Ranger Times has been authorized to publish the following announcements of candidates for public offices, subject to the Democratic primaries in July, as follows:

- For State Representative: PAUL BRASHEAR, OMAR BURKETT
- County Judge: CLYDE L. GARRETT, JOHN S. HART (Re-election), C. B. DAKAN
- County Clerk: JOHNSON SMITH (Re-Election), ARLTON E. SMITH
- County School Superintendent: H. R. (Pop) GARRETT (Re-Election)
- District Clerk: ROY L. LANE (Re-Election), RICHARD COX
- For Justice of the Peace Precinct 2: CHARLES BOBO (Re-Election), RUBY STONE SPRINGER

**O. K. GROCERY MARKET**  
 501 W. Main I. G. A. Phone 214  
 We Reserve Right To Limit Friday and Saturday Specials

<b>Ice-Cream</b> ..... Pint <b>19¢</b>	
Chocolate — Strawberry — Banana Nut — Vanilla	
FRESH <b>HAMBURGER</b> Lb. <b>49¢</b>	
GROUND	
SILVER <b>Oleo</b> Lb. <b>23¢</b>	
BELL	
MILD <b>LONGHORN CHEESE</b> Lb. <b>49¢</b>	
HEARTS DELIGHT—303 Can <b>Nectarized Prunes</b> .... <b>29c</b>	HOME FOLKS—303 Can <b>Blackberries</b> ..... <b>23c</b>
MARSHALL CUT—303 Can <b>Green Beans</b> ..... <b>15c</b>	CAMPFIRE—Can <b>Vienna Sausage</b> ..... <b>10c</b>
KUNERS—303 Can <b>Kraut</b> ..... <b>15c</b>	NIBLETS—12-Oz. Can <b>Mexi-Pep Corn</b> ..... <b>19c</b>
SELECTED <b>CHUCK ROAST</b> Lb. <b>49¢</b>	
SELECTED <b>Sirloin Steak</b> .... lb. <b>79c</b>	CORN KING—Lb. Cello <b>Bacon</b> ..... <b>69c</b>
ALL MEAT <b>Bologna</b> ..... lb. <b>49c</b>	WILSON'S READY-TO-EAT <b>PICNIC</b> ... 4-lb. can <b>2.59</b>
FRESH <b>EGGS</b> Dozen <b>33¢</b>	
COUNTRY	
ALL PURPOSE <b>LIGHT CRUST FLOUR</b> 5 Lbs. <b>49¢</b>	
RUFFY <b>Dog Food 6</b> Cans <b>49¢</b>	
SWIFT'S Assorted Flavors <b>Sherbet</b> Pint <b>19¢</b>	
Home Grown <b>Peaches 2</b> Lbs. <b>25¢</b>	
ELBERTA	
LARGE <b>Fresh Lettuce</b> .... lb. <b>10c</b>	WHITE—Cello Bag <b>Potatoes</b> ..... <b>10-lbs 49c</b>

**HAVE WE FORGOTTEN?**

**THE RANGER TIMES**

RANGER, TEXAS, THURSDAY, FEBRUARY 26, 1953

**Bulletin!**

**BILL TO KILL 91st COURT PASSED BY HOUSE!**

Rep. Omar Burkett's House Bill No. 269 to abolish Eastland County's 91st District Court at Eastland was passed by the House of Representatives at Austin this Morning by a vote of 89 to 12, it was learned here at 1:10 p. m. today.

House action on the bill, earlier this morning reported deferred until early next week, came as a surprise here.

The vote totaled: FOR 89. AGAINST:12. NOT VOTING: 22.


THE BULLETIN REPRODUCED ABOVE APPEARED IN THE FEBRUARY 26, 1953 ISSUE OF THE RANGER TIMES.

(Political Advertisement paid for by friends of the 91st District Court)

**VOTE FOR PAUL BRASHEAR**

for STATE REPRESENTATIVE 76th District

Composed of Callahan, Eastland and Shackelford Counties



**A Vote for Paul Brashear Is a Vote for Good Government**

- ★ PAUL BRASHEAR will represent all of the people with special favors to no groups or individuals—fair and impartial to all.
- ★ PAUL BRASHEAR is a young man whose two terms of experience add to his ability to serve and his usefulness as a Legislator.
- ★ PAUL BRASHEAR grew up on the farm and he understands the needs of rural residents as well as those who live in the cities.
- ★ PAUL BRASHEAR will never introduce local bills that would deprive the people of his district of their rightful services. He will never allow his personal feelings to influence his actions as a Legislator.
- ★ PAUL BRASHEAR is a native of the District he serves. He is a veteran of World War II, active in clubs, lodges, the church and all community affairs.
- ★ PAUL BRASHEAR invites a careful investigation of his record, both as a citizen and as a member of the Legislature. He stands ready at any time to discuss any phase of his record with anyone interested.

**BE SURE TO VOTE SATURDAY, JULY 26**

**DEMOCRATIC FIRST PRIMARY**

(Paid for by Friends of Paul Brashear)



On Saturday, July 26 the citizens of Ranger will have the opportunity to promote a resident of their city to the office of District Clerk.

# Richard C. Cox Seeking Promotion To District Clerk

★ VETERAN WORLD WAR II    KOREAN CONFLICT    ★ GRADUATE STUDENT    RANGER HIGH SCHOOL    RANGER JUNIOR COLLEGE    HARDIN-SIMMONS UNIVERSITY  
★ BORN — RANGER, TEXAS — RESIDENT    ★ COUNTY TREASURER TWO TERMS

(Pd. Pol. Adv.)

## Bridal Shower Honors Recent Bride Thursday

Mrs. Dale Cozart, the former Miss Carol Phillips, was honored with a bridal shower Thursday, July 17, from 9 to 11 o'clock a.m. in the home of Mrs. L. J. Arterburn.

Hostesses with Mrs. Arterburn were: Meses Kenneth Hardy, Jesse White, Wilson Guest, Marshall Jolly, Wright Emfinger, Onis Warden, Mildred Rains, Harold Bafrett, and Miss Marinell Shockey.

## Mrs. D. B. Cozart Is Hostess to WMU Circle Mon.

The Bonnie Moore Circle of the WMU of the Second Baptist Church met Monday at 3:00 p.m. in the home of Mrs. Delbert Cozart.

Meeting with a prayer. The scripture reading was taken from Psalms 46. Mrs. Verna Hartsfield read the minutes of the last meeting. Mrs. R. B. Weaver presented the devotional on "Prayer."

## Women's Activities

July 25  
The Friendship Sunday School Class of the First Methodist Church will meet at 6:30 p.m. Friday, July 25, at Frank Wil-

liamson's Cabin at Lake Leon. Each one is asked to bring a picnic supper. Drinks and dessert will be furnished.

RECENT VISITORS  
Recent visitors in the home of Mr. and Mrs. G. P. Rose were her nephew and family, Mr. and Mrs. Jack Lane and children of Fairbanks, Alaska; and their daughters and families, Mr. and Mrs. Carl Burleson and children of Graham and Mrs. Barbie Brummett and children of Ozark, Alabama.

FOR ATHLETE'S FOOT USE KERATOLYTIC ACTION  
BECAUSE—it sloughs off affected skin. Exposes deepest infection to its killing action. Get instant-drying T-4-L liquid, a keratolytic, at any drug store. FAST relief or your 48c back. Use T-4-L FOOT POWDER too—gives a film of antiseptic protection. NOW at Swaney's Pharmacy.

**UPHOLSTERING**  
Furniture and Automobile  
Also Canvas and Tarpaulin Repairs  
We Cover Boat Seats  
**EDGAR'S**  
309 Main Ranger

SEE  
**O. G. Lanier**  
FOR  
OIL AND GAS LEASES  
AND  
REAL ESTATE  
WE BUY AND SELL  
Phone 410 - 113 So. Rusk  
Ranger, Texas

**DUBLIN RODEO**  
Toughest rodeo of them all  
Same acts and livestock used in Madison Square Garden Rodeo.  
Parades daily at 5 p.m.; Performances nightly at 8 p.m.  
Adults \$2; Children \$1  
Reserved Boxes \$2.50  
L. R. KELLER  
TICKET CHAIRMEN  
DUBLIN RODEO ENTERPRISES  
DUBLIN, TEXAS

They grow so fast...  
But you can keep their cherubic babyhood through the years in professional photographs. After-naptime appointments at your convenience.  
**CAPPS STUDIO**  
Ranger, Texas

# WARDS home furnishings Sale

EXTRA BIG SAVINGS  
July Values  
EVERYDAY AT WARDS

## Sale Starts July 23rd

Furnish Your Entire Home For Only 10% Down. We Can Furnish Your Entire Home Needs At Wards.

**TRIPLE DRESSER—55x19x32 IN.**  
**RICH MAHOGANY VENEERS**  
**\$5 Down**  
\$11 monthly on terms

## SALE!

Wards most wanted Bassett triple dresser, bookcase bed  
**\$149**  
Most wanted because of the large size triple dresser with the deluxe 44x28" plate glass mirror, the handy bookcase headboard. Workmanship you'll be proud to own—dovetailed, center-guided drawers, ginger brown mahogany veneers with DuPont "Dulux" finish. Get extra value—extra quality—shop Wards now!  
Matching Bassett 4-drawer chest (shown above) now... \$54

## Save \$150<sup>95</sup> Big 12.1 cu. ft. TRU-COLD 2-Door Combination

**\$299 WITH TRADE**  
National list price 449.95  
5 yr. Warranty  
NO DOWN PAYMENT WITH TRADE

GIANT 101-LB. SEPARATE TRUE ZERO FREEZER  
AUTOMATIC DEFROST  
ADJUSTABLE GLIDE-OUT SHELVES  
EGG RACKS, BUTTER-CHEESE KEEPER  
DOOR HOLDS 1/2 GAL. MILK CARTONS  
FULL-WIDTH CRISPER

Big 12 cu. ft. refrigerator National list price 279.95  
Giant full-width freezer stores 59 lbs. of food. Handy adjustable storage shelves. Storage door, full crisper. **\$199 WITH TRADE**

13.7 cu. ft. TRU-COLD combination, National list price 589.95  
Big 161-lb. True Zero freezer on the bottom! Cycle Cold automatic defrost. Glide-out shelves, twin crispers. **\$399 WITH TRADE**

## SALE! 7-pc. banquet size bronze or chrome dinette

Extends to a big 72" with two 12-inch leaves. Comfortable foam padded chairs are covered in easy-care plastic. Bronze set comes in light or dark woodgrain plastic top. Chrome set has Wards exclusive gold-flecked "Mikado" pattern plastic table top.  
Shop Wards today—get better values for less!

149.95 quality!  
**\$99**  
**\$5 Down**  
\$9 a month on terms

## SALE! 8-pc. adult size bunk bed in "Salem" brown finish

Includes: 2 mattresses, 2 springs, 2 beds, ladder, and a safety guard rail! Solid hardwood construction, rigid ps bunk bed or twin beds.  
**\$88**



**RETURNS TO DEER PARK**

Miss Phyllis Hale has returned to her home in Deer Park, Texas, after a visit with her grandparents, Mr. and Mrs. T. E. Hale, and friends.

**RETURNS HOME AFTER VISIT**

Mrs. J. E. Adams, Donna and Mike of Tivola, Mrs. Tom Stevens of Long Beach, California, and

**Mr. and Mrs. N. P. Stockmier of Dallas**

have returned to their homes after a visit with Mr. and Mrs. O. R. Gafner.

**RETURN TO MISSOURI**

Mr. and Mrs. Clyde E. Henderson have returned to their home in Independence, Missouri, after

**a week's visit with Mr. and Mrs. A. H. Henderson, 432 Pine St.**

**Gorman Gatherings**

By Mrs. R. E. Boucher

Mrs. W. H. Rhodes of Eureka, Ark., and W. E. Cooper of Houston visited with old friends and neighbors, Mrs. T. F. Morrow and Miss Dora Jane Baskin, last Friday. Mrs. Rhodes is the former Miss Lula May of here, and she also taught in our public school. Mr. Cooper is head coach of the Houston school system.

Mr. and Mrs. E. W. Underwood of Fort Worth visited in the home of Mrs. T. F. Morrow and other relatives.

Mrs. C. O. Alsbrook and daughter, Mrs. T. E. Jarman of Fort Worth, are in Mineral Wells at Baker Hotel for a few days.

Mr. and Mrs. W. M. and Diane of Breckenridge were weekend guests in the home of her parents, Mr. and Mrs. J. E. Walker.

Judge and Mrs. T. M. Collie of Eastland visited relatives here Sunday. Judge Collie is a brother of Mrs. J. E. Walker and Mrs. T. F. Morrow.

Mrs. J. E. Whiteside of Brownwood was visiting friends here Monday.

Mr. and Mrs. Horace Belliew of Albany visited with her uncle and aunt, Mr. and Mrs. W. L. Andrews.

Mr. and Mrs. G. D. Riley had as their guests over the weekend their grandson, Gene Crosson of Fort Worth.

Mrs. Vera Hamerick left Saturday for Round Rock where she will visit her sister and brother-in-law, Mr. and Mrs. A. C. May.

Mrs. Lona McKnight of Breckenridge is visiting her brother and wife, Mr. and Mrs. H. H. Pullig and her sister, Mrs. Fanny Burkett.

Mrs. Millie Slaton of Breckenridge was guest in the home of her sister, Mrs. E. C. Sutton over the weekend.

Mrs. Aubrey Griffin, Michael of Phillips and P.F.C. James Lewis of Fort Campbell, Kentucky, were weekend guests in the home of Mrs. Griffin's parents, Mr. and Mrs. W. L. Andrews.

Mr. and Mrs. Gene Kinnison of Moran were Sunday visitors in the home of his uncle and aunt, Mr. and Mrs. W. B. Hooker.

Mrs. J. C. Patterson of Albany was in Gorman Monday visiting with friends and also visiting in the home of her sister-in-law, Mrs. Drake.

**RETURN TO LUBBOCK**

Mr. and Mrs. E. F. Arterburn Jr. of Lubbock returned home Monday after a two-week visit with his parents, Mr. and Mrs. E. F. Arterburn Sr.

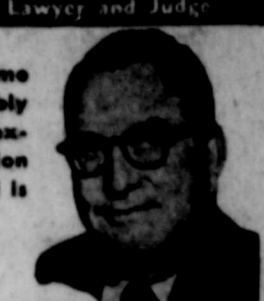
**VISITS HERE**

David Thomas, son of Mr. and Mrs. Pat Thomas of San Angelo, is visiting his grandparents, Mr. and Mrs. L. L. Bruce this week.

**Dr. H. Hampton**  
OPTOMETRIST  
Office Hours  
8:30 a.m. to 11—1 to 4 p.m.  
Closed Saturday Afternoon  
247 N. Graham Street  
STEPHENVILLE, TEXAS

31 Years' Experience as Lawyer and Judge

"My candidacy for the Supreme Court of Texas is offered humbly and sincerely on the basis of experience. Your consideration and comparison of my record is invited."



**ROBERT W. HAMILTON**  
FOR PLACE ONE  
**Supreme Court**  
Now Serving CHIEF JUSTICE 9th Court Civil Appeals



**Prices start lowest...capacity goes highest in Chevy pickups!**

You have your choice of the fast-stepping Stepsides, featuring America's lowest priced popular pickup, or the Best new Fleetsides, offering more load space than any comparable popular models.

Look over Chevrolet's lineup of 12 different models—and pick the pickup that suits your job best. For cutting costs, there are the fast-

working Stepsides, which include America's lowest priced popular pickup. For hauling bigger loads, there are the handsome new Fleetsides—with pickup boxes a full 6 feet wide—offering more cargo space than any comparable low-priced models.

Your dealer's got all the facts on why no other pickup brings you such rock-ribbed dependability at Chevy's rock-bottom price.

First in heavy profession since 1937



See your local authorized Chevrolet dealer

**ANDERSON CHEVROLET COMPANY**

111 S. AUSTIN ST. RANGER PHONE 14

**ANNOUNCING: A New Farm Service**

LET US BRING OUR NEW

**Daffin**  
**Feedmobile**  
TO YOUR FARM TO  
DEMONSTRATE  
**ADVANTAGES**  
Of Our New 'On The Farm' Service

1. Saves labor—no scooping.
2. Eliminates long, expensive trips to town.
3. Saves time. Will grind and mix up to 10 tons per hour.
4. You see your feed ground and mixed right on your farm.
5. Liquid molasses "hot" blended into feed accurately metered in any amount.
6. Thorough grinding and mixing guaranteed.
7. Grinds cobs, hay, fodder, grain, and mixes for your greater feeding economy and more profitable production.
8. Scientific formulas furnished for utilizing your own grain and roughage.



**For Your Convenience . . .**

Our Complete Mobile Mill will be accompanied by a feed service truck carrying supplements, concentrates, salt, minerals, and farm supplies.  
CALL US!

**Phone for a FREE Trial!**

Our new Daffin Mobile Feed-U-Nit will grind and mix your first batch of feed FREE OF CHARGE!  
JUST CALL US!

**Note! We Can Auger Your Feed Directly to Your Bulk Bins.**

. . . And . . . Our Daffin Mobile Unit is equipped with a powerful Magnet to keep metal and nails from going into feeds.

**KINCAID FEED STORE**

Phone Cisco HI 2-1200

303 North Seaman  
Eastland Phone 73

Phone Ranger No. 1



**VISIT HERE**

Mr. and Mrs. Fozza Brawner of Sonoma, Calif., and Mr. and Mrs. Leslie Brawner of Edinburg, Texas, are visiting in the home of Mr. and Mrs. A. E. Dawson.

**Free Estimates**

**On A New ROOF**

Or Repair your old Roof Residential & Commercial

**Eastland - Ranger Roofing Co.**

Noble Squires Eastland Phone 733

**TERMITES?**

Let us check your property now. Free estimates. No obligation. SEE US FOR ALL TYPES

PEST CONTROL

**MODERN PEST CONTROL**  
Ralph Veal Phone 911

**CARPET YOUR ENTIRE HOME**

NO DOWN PAYMENT  
36 MONTHS TO PAY

**Ranger Furniture Exchange**  
123 N. Rusk - Phone 242

**Junior RA Camp Will Begin at Lueders July 28**

Rev. Rudolph Russell, missionary to Thailand, will be camp missionary for the Junior Royal Ambassador camp at Lueders Baptist Encampment grounds July 28-31. Rev. Grady Allison, pastor of the First Baptist Church at Monday and district RA leader, will be in charge of the camp. Rev. Hyron Bryant, pastor of the First Baptist Church at Breckenridge and president of the Encampment, will be camp pastor. Boys from 9 through 12 years of age will be in camp from all over the district. The program classes, ranking classes, worship services, missionary service, sports, and crafts, Rev. Mr. Allison said. Sports will include swimming, baseball, track, horse shoes, table tennis, volley ball, and other sports. Jerry Henson of Abilene will be sports director. The buddy system will be used in organization of the camp by chapters. Herb Barker of Rochester will be music director and Edwin Peoples of Abilene, pianist. Mission book teachers will be Milton Thompson of Hawley; Jake Armstrong, Tye; Bill Williams, Jayton; P. L. Davis, Cisco; A. H. Williams, Trent; Marvin Burgess, Gillespie; and Bill Beatty, Anson. Ranking class instructors will be Gene Bruck of McCauley, Ed Thomas of Rochester, Calvin Bailey of Hemlin, and Fred Blake of Roby. Approximately 550 boys are expected in camp next week. Registration for the Intermediate RA camp Monday had reached 105 from 28 churches.

**MRS. L. N. BRYAN RETURNS FROM UTAH**  
Mrs. L. N. Bryan and her sister Mrs. Homer Woods of Gorman, returned Monday from a two-week vacation in Morgan, Utah, where they visited their aunt, Mrs. Zouela Lewis.

They attended a family reunion July 13, and met many relatives whom they had not seen in 15-30 years.

**VISIT IN DUBLIN**  
Mr. and Mrs. A. A. Daniels spent Tuesday in Dublin visiting Mr. and Mrs. B. C. Lauderdale.

**First Baptist WMU Honors Mrs. Benitez**

The WMU of the First Baptist Church met Tuesday, July 22, at 10 a.m. in the home of Mrs. Wilson Guest. Mrs. Lloyd Kennedy presided over the meeting, and introduced Miss Anice Locke, who gave the devotional on "A More Abundant Life." Mrs. Kennedy presented Mrs. Richard Henderson, who reviewed the book, "God's Wealth and Ours," by W. A. Bowen. After the book review, committee meetings were held. At 12:00, a covered dish luncheon was served. Following the luncheon, Mrs. R. L. Hamrick made a presentation speech, which was followed by a miscellaneous pink and blue shower honoring Mrs. Mario Benitez, wife of the pastor of the Mexican Mission. Twenty-eight members were present.

**Hospital News**

New patients in the Ranger General Hospital are: C. D. Chancey, Abilene, medical; Mrs. J. W. Burch, Ranger, medical; Mrs. Maud House, Ranger, medical; and Mrs. L. H. Kay, Ranger, medical.

**VISITING HERE**

Mrs. Mary Loper of Eastland is visiting in the home of Mr. and Mrs. W. E. Matthews.

**Eastland Steam Laundry**

Service in Ranger  
Pickups Daily  
Call Eastland Collect  
PHONE 584

**WEEKEND VISITORS**

Weekend visitors in the home of Mrs. P. C. Long were her two brothers and their families, Mr. and Mrs. Rex C. Outlaw of Dallas and Judge and Mrs. George W. Outlaw of Sweetwater; Mrs. Long's sister-in-law, Mrs. M. C.

Outlaw of Ontario, California; and Mrs. Mrs. Grace Stevens of Kerrville.

**VISITING IN GAFNER HOME**  
Visiting in the home of Mr. and Mrs. O. R. Gafner this week are their daughter, Mrs. W. H. Pettit and three children of Oklahoma City, and Mrs. Gafner's sister, Mrs. Dave Wiegand of Marlin.

**HOMES PRICED TO SELL**

**AT \$200 TO \$1,000 DOWN**  
5 ROOMS, very neat, with garage and 2 lots. In Gholson Addition \$65 per mo.  
6 ROOMS, well built, with garage, on nice street near the college \$60 per mo.  
3 BEDROOM, 5 lots, excellent soil for lawn, shrubs, or garden Only \$55 per mo.

See us for other listings. We may have just the home you are looking for, with suitable terms and financing.

**PEACOCK REALTY**  
"NOTHING BUT REAL ESTATE"  
420 Main Phone 608-J

**HOME VALUES**

Large 2 bedroom completely completed home, located on paved street near High School. Well landscaped yard \$850.0.  
2 Bedroom house, excellent condition, large lot on paved street, Young Addition. \$6,500.00  
4 Room home in good condition. Paved Street \$2750.  
4 Room Home, South Oak Street, 3 lots. \$250 down, balance like rent.

**C. E. MAY**

INSURANCE - REAL ESTATE



Come in today and ... prove to yourself the extras you get from

**TEXACO Sky Chief SU-PREME**

**GREATER ECONOMY!** More miles per gallon, because Petrox in Sky Chief Su-preme gasoline cuts power loss by reducing harmful engine deposits. Greater life-mileage for your car, because Petrox cuts engine wear.

**GREATER POWER!** Octane is way up in Sky Chief Su-preme - guarantees you all the knock-free power your engine can deliver.

**100% CLIMATE-CONTROLLED!** Specially blended for climate and altitude in this area and wherever you fill 'er up in all 48 states. You get quicker, easier starts ... freedom from stalling. Fill up at our TOWER OF POWER!

**SAFETY SERVICE!** As members of Texaco's 48-state dealer family, we are trained to give you better service - always with an eye to your safety. Come in!



**R. J. "Buck" CARAWAY**  
CONSIGNEE  
Ranger and Strawn, Texas

**E. F. PENN TEXACO STATION**  
125 South Austin Ranger, Texas  
**RANGER HILL STATION & COURTS**  
Highway 80 East Ranger, Texas



**SAFEWAY**

**"Sweet Pickins"**  
We're Loaded with Luscious Summer Fruit!

**Seedless Grapes 19¢**  
Plump and juicy. Tangy sweet. Jumbo clusters, crisp to bite into.

**Watermelons 59¢**  
Red, ripe and juicy. Special week-end buy. Charleston Grey

**Fresh Peaches 10¢**  
Firm and large. Perfect for shortcake. 50-Lb. Bushel, 4.49

**Cantaloupes 5¢**  
Home grown. Truly a breakfast treat

**Salad Dressing 43¢**  
No Made - Adds Zest to Your Salads

**French Rolls 19¢**  
Slightly Poppy Seed  
**Bread 23¢**  
**Bread 25¢**

**Shortening 69¢**  
Kern White  
**Edwards Coffee 83¢**  
Regular Dip or Fine Grinds  
**Flour 10 75¢**  
Kitchen Craft  
**Joyett Dessert 39¢**  
Delicious Meringue Assorted Flavors  
**Breakfast Gems Eggs 51¢**  
Grade A Quality Large Size Doz.

*Safeway's Your Best Place to Buy Meats!*

**SMOKED HAMS 55¢ 89¢ 39¢**  
Half or Whole, 10 to 16 Pounds. Average - No Centers Removed Lb. Center Slices Box-In Lb. Shank End Cut Lb.

**LUNCHEON MEAT Large Cooked Salami 35¢**  
Sliced - 8 Oz. - 35¢

**Chuck Roast 55¢**  
U.S.D.A. Good Grade Lb.  
**Crown Roast 59¢**  
U.S.D.A. Good Grade Lb.

*Summertime Good Buys!*

**Empress Preserves 39¢**  
Empress - Blackberry - 20-Oz. Jar  
Made From Finest Ingredients

**Boysenberries 29¢**  
Stillwell - For That Special Sunday Dessert 303 Cans

**Pinto Beans 20¢**  
Town House - Take Advantage of This Special Buy 2 Lb. Cello

**Important Announcement from Safeway!**

**Save-A-Tape Plan to be Discontinued in Favor of a New Program!**

Over a year ago Safeway introduced in this area the Save-A-Tape plan which has been the source of many useful and desirable gifts for our customers. We believe that the time has come to change promotional plans ... for this reason, we now announce that ...

Since Saturday night, July 19, we no longer issue green register tapes for premiums. You have a full four weeks beyond this time - until Saturday, August 16, to be exact - in which to redeem the tapes you hold for valuable premiums.

Complete details on redeeming your tapes at Safeway.

**Fancy Fresh Fryers 30¢**  
Whole Only - Ready To Cook. Delicious with Ocean Spray Cranberry Sauce. Lb.





Dear Voter:  
I have earnestly endeavored to see and personally solicit the vote of every voter. That, of course, was impossible. Therefore, if I have not seen you, please take it as my earnest solicitation of your vote on Saturday, July 26th. I will greatly appreciate it and pray you to render courteous and efficient service when elected.  
Yours very sincerely,  
**CLYDE L. GARRETT**  
Candidate for County Judge  
(Pol. Adv.)

TRADE WITH YOUR  
HOMETOWN MERCHANTS

**NEED TV SERVICE?**  
CALL  
**David Duncan**  
Phone Ranger 9526  
Phone Olden 2761

## Rat Control Campaign Is Slated For County

August 5-8 has been designated as the dates for the first Eastland county rat control campaign. In several years it was announced this week.  
The rat killing campaign will be sponsored jointly by the Eastland County Farm Bureau and the County Agricultural Agent.  
"There has been a tremendous increase of rodents over the coun-

ty, especially rats, and we need to eliminate them before peanut harvest", said John Love, Chairman, President of the County Farm Bureau in commenting on the campaign.  
"The campaign will be waged not only on rats but also on mice, rabbits and ground squirrels."  
"To be the most effective it is necessary that we get as many people as possible, urban as well as rural, to participate at the same time, otherwise the rats will just shift from one place to another", according to County Agent J. M. Cooper.

Fumagin, an anti-blood coagulant will be used. It is said to be similar to the first anti-coagulant used in rat control. It has no odor, smell or taste and will be mixed with ground whole corn, ground whole oats, sugar and vegetable oil. After several meals on this the rat begins either an external or internal hemorrhage.  
Thousands of dollars worth of damage will be done to stored grains and hay this fall or winter unless the rats are kept under control.

A man from the Rodent Control Service, Ft. Worth, will assist in the campaign. Demonstrations will be held at different places over the county in the use of the new type bait.

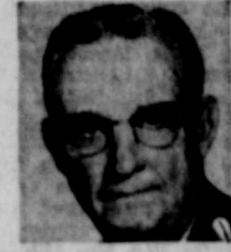
## Cubs Down Pirates 26-7

Cubs revenge an earlier 31-12 loss by over-running the Pirates 26-7 in Minor League action Tuesday night.  
Outstanding player for the cubs was Milton Kennedy, short stop, who made five runs in the four-inning game. Winning pitcher was Johnny Williams, and losing pitchers were D. Swinney and David Whitefield.

runs, with five times at bat, and Wayne Bennett made three runs, five times at bat. Others running for the Cubs were Williams, D. Dabbs, Ricky Squyres, Dwight Dunn, R. Jimenez—with two runs each. Also scoring were Pat Culpepper, J. Garrett, Joe Jimenez and Benny Elder.

Whitefield scored two runs and three hits for the Pirates. Others running were David Dunson, Jimmy Battle, Joel Whitefield, Rudy Mendoza and Dowell Hartsfield. Umpires were Bill Matthews, Tommy Lenzini, Ronnie Hinds, Terry Arterburn, and Johnny Canachio.

Promote  
Judge Wilmer B.  
**HUNT**  
OF HARRIS COUNTY  
To Associate Justice  
SUPREME COURT  
OF TEXAS



19 YEARS IN THE PRIVATE PRACTICE OF LAW IN TEXAS

11 years as judge of the 133rd District Court of Harris Co.; Re-elected three times without opposition.

**YOUR VOTE ON JULY 26 WILL BE GREATLY APPRECIATED**

(Pd. Pol. Adv.)

**STOP THAT ITCH!**  
IN JUST 15 MINUTES,  
Your itch MUST stop or your face back at any drug store. Apply ITCH-ME-NOT to deaden itch, burning in minutes, speed healing. For externally caused itch, get ITCH-ME-NOT today at Swaney's Pharmacy.

**YOUR Independent AGENT**  
Insurance "SERVES YOU FIRST"

**CAPITAL STOCK COMPANY INSURANCE**  
Standard protection

**THE SEAL THAT MEANS PEACE OF MIND**

You'll find this symbol—with white letters on red background—on display in our office.

We're proud to display it, because it's your guarantee of dependable insurance. For more than a century, the Capital Stock companies we represent have been the "Standard of Protection" wherever insurance is sold.

Be sure when you insure. Let us survey your insurance needs. We'll be glad to suggest the kind of protection you need for real peace of mind—and we'll place it, of course, only in reliable Capital Stock companies.



**C. E. MADDOCKS & CO**  
Insurance - Real Estate  
207 Main Phone 252

## Mr. Tax Payer



CLYDE GARRETT

Let us look for a moment at our County's financial condition, particularly the general (the County's operating fund). That is the fund in which you are primarily interested.

My opponent says "you can't argue with facts". To which I agree, but you should not get the 'facts' from him or from me. Get them from the right source—the County Auditor.

MR. TAX-PAYER, when my opponent took office eight years ago, \$66,651.00 was in the General Fund. During the eight years he has been in office you have paid more than one half million dollars in taxes into the General Fund. Furthermore, to increase receipts in the General Fund, the General Fund rate was increased approximately 60 percent for the year 1957 over 1956. In spite of this enormous amount which has gone into the General Fund during the eight years my opponent has been in office. There was only \$8276.00 in the General Fund after the bills and accounts for June were paid. But, at the same time, the officer's salary fund was in the red (overdrawn) \$14,363.00. It is the policy, when the officer's salary fund is overdrawn, to transfer funds from the General Fund to cover such overdraft. Since there are not enough funds in the General Fund to cover the overdraft in officer's and salary fund, including my opponent's while making this race, it is evident that officer's salaries, are now being paid, out of other funds which are not in the red, such as bond, interest and sinking fund, jury, road and bridge, etc. Payments out of which funds are not authorized by law. However, such payments will no doubt continue until they are paid. It should be pointed out that during the eight years my opponent has been in office \$85,000.00 was brought into the officer's salary fund through the efforts of two capable sheriffs, our efficient highway patrol, hard-working justices of the peace and constables, to whom my opponent gives no credit whatever.

In view of the enormous amount which came into the General and officer's salary funds during the eight years my opponent has been in office, you will not wonder why, in his financial accounting, he failed to tell you how much was in the ten or twelve various accounts instead of lumping all the accounts together to arrive at "cash in bank". Again I say, I agree with my opponent's motto: "You can't argue with fact". But let's get them from the County Auditor—his records are open to the public.

My opponent takes credit for paying \$140,000.00 court house bonds during his eight years in office. Who paid these bonds, Mr. Tax-Payer. You paid them. You paid them when you plunked down your taxes each year for the last eight years. You are entitled to credit for paying them. No county official should claim it.

Mr. Voter, my opponent asks you to 'continue his financial program and have the county out of debt in the near future and without raising taxes'. Since it will be twelve years before all of our bonds mature, had it occurred to you, Mr. voter, that my opponent would only need to be county judge for three more four year terms? In which to "complete his financial program"? In fact, he has never told us just what his financial program is. As to freeing the county of debt without 'raising taxes' it should be pointed out that our county is now, and has been for sometime, operating under the minimum tax rate authorized by the constitution.

As stated in my original announcement, I favor continuing the government's Surplus Food Program. I have repeatedly said that I would rather see our aged and needy people have such food than for it to be sent abroad to our enemies or dumped into the ocean as has been done in the past. But I promise one thing certain, I will never be guilty of using the program to further my political interests. Nor will I jeopardize the food program by permitting its employees, who are paid by the county, to make a political football out of the program.

MR. VOTER, ON THE BASIS OF MY QUALIFICATIONS AND PAST RECORD, I VERY EARNESTLY SOLICIT YOUR VOTE ON JULY 26th.

**CLYDE GARRETT**

CANDIDATE FOR

**County Judge**

YOUR VOTE AND INFLUENCE MOST EARNESTLY SOLICITED

(Pol. Ad Paid for by Friends of Clyde Garrett)

## STOCK MARKET REPORTS

Hogs—steady, choice 23-23 1/2.  
Sheep—steady; good to choice lambs, 21-2.  
Cattle—steers weak, good to choice steers, 24-26.5; fat cows 17-20.5; good and choice calves, 24-28.  
Wheat—\$2.09 3/4 to \$2.21 3/4.  
Corn—No. 2 yellow, \$1.67 3/4 to \$1.69 3/4, nominal.  
Oats—No. 2 white, 80 1/2c to 82c nominal; No. 2 red, 74c to 78c nominal.

### SUNDAY VISITORS

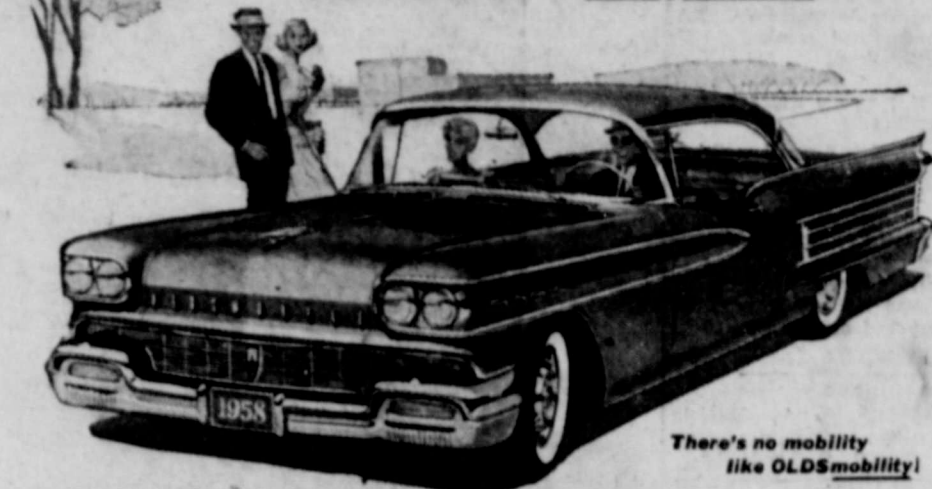
Sunday visitors in the home of Mr. and Mrs. E. L. Danley were Mr. and Mrs. K. D. Danley of Archer City, Mr. and Mrs. J. R. Hale and Mr. and Mrs. Barnett Hale of Ranger, Mr. and Mrs. J. D. Drennon of Baird, Mr. and Mrs. Maxwell of Canyon, and Mr. and Mrs. Lavoise Hale of Ranger.

SINCE 1884



**ALEX RAWLINS & SONS**  
Weatherford Phone LY 4-2726 Texas

You don't have to look twice to tell it's a 55... but you will!



There's no mobility like OLDSmobility!

So many smart people have looked at Olds and decided to buy, that Olds is first in sales nationally in the medium-price class! So it's no wonder Olds leads in resale value, too!  
Come in and see how easy it is to own one of these sparkling beauties. There's a Resale price for every pocket... and generous July appraisals at your Oldsmobile dealer's!

YOU'RE ALWAYS WELCOME AT YOUR LOCAL AUTHORIZED  
**OLDSMOBILE**  
QUALITY DEALER'S

DON PIERSON OLDS - CADILLAC, 314 West Main Street, Eastland, Texas

NEXT BEST THING TO A NEW OLDSMOBILE IS A LOW-MILEAGE ROCKET TRADE-IN!

IS YOUR HOSPITAL POLICY NON-CANCELLABLE LIFETIME RENEWABLE?

Or could it be taken away from you just when it is needed most?  
Look at your policy, you may need help!

**NOW!**

OVER 5,000 DISEASES  
And thousands of accidents cost the citizens of Eastland County thousands of dollars in...  
Hospital Expense — Doctor's Expenses — Nurses Expenses — Medical Expenses  
**68 PEOPLE EACH MINUTE FACE THIS PROBLEM**  
When health fails, Be Financially Able to Pay!

## For Citizens Of Eastland County THE NON-CANCELLABLE VOLUNTARY HEALTH PLAN

**ENROLLMENT FROM JULY 25th TO AUGUST 10th ONLY!**

This Non-Cancellable Plan Accepted in All Local Hospitals and Good Anywhere in the World. Look for the Enrollment Officer to Call at Your Home... Ask to See His Identification as Enrollment Officer.

**PLEASE NOTE:**

Our Enrollment Officers are instructed to make only one call to each home. They are expected to make a thorough explanation of "Your Community Health Plan" and assist to enroll you if you can qualify. Please do not ask him to call back as this only deprives some other family in your community of enrolling in the plan. Your cooperation in this will be appreciated... THANK YOU!

UNDERWRITTEN BY

**GENERAL LIFE INSURANCE**

Chartered in 1919

OVER \$1,000,000.00 IN CLAIMS PAID TO CITIZENS OF WEST TEXAS