

THE SUDAN NEWS
Entered as second class mail matter July 2, 1925, at the Postoffice at Sudan, Texas, under the Act of March 3, 1879

Published every Thursday by
H. H. Weimhold & Son
At Its Office In Sudan, Texas

H. H. Weimhold Editor

\$2.00 PER YEAR, IN ADVANCE

Reading Notices, Obituaries, Card of Thanks, Resolutions of Respect, Etc., 10c per line. Dis

POLITICAL ANNOUNCEMENTS

The Sudan News is authorized to announce the following persons as candidates for offices under which their names appear, subject to the action of the Democratic Primary July 23rd, 1932.

- FOR COUNTY JUDGE—**
A. H. McGavock.
- FOR COUNTY CLERK—**
F. Z. (Zeb) Payne, Sudan.
J. W. (Jake) Hopping, Littlefield.
Stanley A. Doss
- FOR SHERIFF—**
A. A. Anderson, Littlefield.
J. L. (Len) Irvin
Bob Miller.
- FOR TREASURER—**
Miss Bessie Bellomy, Second Term.
- FOR TAX COLLECTOR—**
Gaston Patterson, Second Term.
- COMMISSIONER PRECINCT 2—**
C. A. Daniel. Re-election.
- PUBLIC WEIGHER PRCT. 5—**
F. M. Shelton.
- TAX ASSESSOR—**
Roy Gilbert
- NEW UTILITY PLOT DISCOVERED**

It has remained for a writer in a new periodical to discover and explain to a breathless world a hitherto unsuspected

plot of the electric utilities to milk the public dry of its hard-earned cash. The utilities accomplish this through the strange mediums of prize fights and bridge games!

Says the writer: "Someone has estimated that when a prize fight of prominence is held at night, it increases the utility revenue in greater New York by \$18,000 because the people will sit up later than usual to hear the description of the fight broadcast. . . . Maybe the utilities promote some of these things just to make your meters run faster and longer."

Reaching the subject of the bridge games, the writer observes: "Bridge games also keep people up later at night, and keep the lights burning, and for fear that there would not be enough of this you can learn to play bridge by radio. . . . The general public has but little conception of the 'load-building' schemes that the utilities can think of."

In conclusion the writer asks passionately: "Is it any wonder that we are in dire need of adequate regulation?"

There are a good many people—including some more or less prominent—who are pleased to believe anything, no matter how childish it is, that would seem to reflect on the industry. Our more conservative citizens will feel rather foolish now that they have found that they don't listen to prize fights or play bridge because they want to, but because the octopus-like utility industry has inveigled them into doing so in order to increase its ill-gotten revenues!

If the national birth rate happens to rise the electric companies would probably be accused of having a hand in the matter in order to increase use of electricity for night lights, heating milk, water, etc.

Seriously speaking, the critics of the electric industry are going to overplay their hand if they don't look out.

Appreciation

We sure do appreciate the nice business that we are having here at our new location.

If we haven't had the opportunity of meeting you, we want you to come in and let's get acquainted.

Sudan Produce

Phone 85
H. B. Teal, Mgr.
Back of "M" System

THE FAMILY NEXT DOOR



ODD BUT TRUE

THE POPULAR NOTION, IN IRELAND, IS THAT WHEN SAINT PATRICK WAS PREACHING THE DOCTRINE OF THE TRINITY TO THE PAGAN IRISH HE ALWAYS USED THE SHAMROCK, BEARING THREE LEAVES ON ONE STEM, AS A SYMBOL OR ILLUSTRATION OF THE GREAT MYSTERY; HENCE THE CONNECTION OF THE SHAMROCK WITH SAINT PATRICK'S DAY

NINE OUT OF TEN WOMEN IN SOUTH AFRICA ARE NOW WEARING AMERICAN MADE SILK STOCKINGS

HIM GOOD PONY? WANTUM BACK!

WHEN CHIEF LOUIE OF THE PUTE INDIANS REPORTED THE THEFT OF HIS HORSE RECENTLY, IT WAS DISCOVERED BY QUESTIONING THAT THE ANIMAL HAD BEEN STOLEN 12 YEARS AGO

A LITTLE ISLAND, KNOWN AS TRISTAN DA CUNHA LOCATED IN THE SOUTH ATLANTIC OCEAN HAS A POPULATION OF 150 PEOPLE WHO HAVE ABSOLUTELY NO CONNECTION WITH THE OUTSIDE WORLD

Use Gas

For Water Heating

West Texas Gas Co.

CHICKS

and

Custom Hatching

We now have baby chicks on hand and can supply most any breed. Our prices are in line with the times.

Custom Hatching \$2.00 per hundred eggs. With prices so low chicks are within reach of all.

Come in and visit the Hatchery. Our flocks are standard bred and blood tested.

SUDAN CHICK HATCHERY

Garden Theatre

SATURDAY—

Buck Jones In
"BRANDED"

Zazu Pitts and Thelma Todd In
"The Pajama Party"

1st Episode of "Danger Island"

Big Double Program Saturday afternoon The Price of One

2 Complete shows 2 1-2 hours entertainment.

SATURDAY PREVIEW, SUN. MON—

"THE CUBAN LOVE SONG"

With Lawrence Tibbett, Lupe Velez, and Earnest Terrence

Comedy Ruth Etting In "OLD LACE"

TUESDAY & WEDNESDAY—

Greta Garbo and Clark Gable in
"SUSAN LENOX"

And Adventures in Africa
"THE WITCH DOCTOR"

Anton 32 Piece Band will be here with this show Tuesday night.

Saturday's Specials

For This Day Only—MARCH 5th.
CHEAPEST PRICES IN 20 YEARS.

36 INCH PRINT
4 1-2c yd.

9-4 Garza Sheeting 25c yd. | 36" Dark Outing 11c yd. Heavy Quality

Brown Domestic 5c Yd. | 3 lb. Cotton Batts 29c Unbleached

RAYON UNDERWEAR
15c
Panties and Bloomers

MEN'S ATHLETIC UNIONS
29c
Cut Full

MEN'S DRESS SHIRTS
49c
Blue, Tan, Green Broadcloth. Sizes 14 to 16

MEN'S OVERALLS
69c
Good Denim. Blue or Stripe

MEN'S PANTS
79c
One Lot of Khaki and Fancy Coverts

New Spring lines of shoes and merchandise throughout the whole store—Priced Right.

GET ADVANTAGE OF THESE PRICES NOW.

Salem Dry Goods COMPANY

"QUALITY GOODS FOR LESS"

SUDAN, TEXAS

LIGHT POWER ICE

Texas Utilities Co.

R. E. McCASKILL, Manager
Littlefield, Texas

BAYER ASPIRIN

is always **SAFE**

BEWARE OF IMITATIONS

Demand this package

Genuine Bayer Aspirin, the kind doctors prescribe and millions of users have proven safe for more than thirty years, can easily be identified by the name Bayer and the word genuine.

Genuine Bayer Aspirin is safe and sure; always the same. It has the unqualified endorsement of physicians and druggists everywhere. It doesn't depress the heart. No harmful after-effects follow its use.

Bayer Aspirin is the universal antidote for pains of all kinds.

Headaches, Colds, Sore Throat, Rheumatism, Neuritis, Neuralgia, Lumbago, Toothache

Aspirin is the trade-mark of Bayer manufacture of monoaceticacidester of salicylicacid.

Know The Facts

Authentic Information Relative to the Proposal to Move the County Seat to Littlefield

THE LEASE BETWEEN CITY OF LITTLEFIELD AND LAMB COUNTY

The State of Texas
County of Lamb
Know All Men By These Present: That the City of Littlefield a municipal corporation Lamb County, Texas, acting herein by and through its legally elected and qualified Mayor and Commissioners; viz T. S. Sales, Mayor, and Homer Hall and Pat Boone, Commissioners, and likewise acting here in under and by virtue of a certain order made and passed by the said Mayor and Commissioners of the said City of Littlefield, Texas, at its regular monthly meeting held in said City on the 2nd day of February, A. D. 1932, which order in duly recorded in Vol. 2, page 137-138 of the Minutes of the City of Littlefield, here referred to, and for and in consideration of the sum of Ten (\$10.00) Dollars to be paid hereinafter set out and stipulated, have this day and do hereby lease, give and grant unto Lamb County, and to Simon D. Hay, County Judge, thereof, and to his successors in office, for the use and benefit of Lamb county, Texas, the use of and the right and privilege to use and occupy for courthouse purposes in conjunction with the said City, the City Hall located on the public square in the City of Littlefield, in Lamb County, Texas, for the period of ten (10) years from the date hereof.

...It is further provided that the said City Hall, consisting of court room and offices, shall be used and occupied jointly, by the county officers and the City officials during the period of this lease.

It is further provided that for and in consideration of the amount of money above specified, the county shall have and is hereby given the right to use the jail located over the fire department in said City, Hall, as a county jail, during such time as the main part of the City Hall may be used for courthouse purposes by Lamb County through its duly elected and qualified officials.

It is further provided that the above recited consideration shall be paid at such time with in the period of this lease as the county officials may begin to use said City Hall for courthouse purposes.

In testimony whereof witness the hand of the Mayor and City Commissioners of the said city of Littlefield, Texas, and the seal of said City, attested by the City Secretary, on this the 3rd day of February, A. D. 1932.

T. S. Sales, Mayor.
Pat Boone
Homer Hall
Commissioners.
Attest: (City Seal).
W. G. Street, City Secretary.

The State of Texas County of Lamb

Before me, T. Wade Potter, a Notary Public, in and for Lamb County, Texas, on this day personally appeared T. S. Sales, Mayor, Homer Hall and Pat Boone, all known to me to be persons whose names are subscribed to the foregoing instrument, and each acknowledged to me that he signed the same for the purpose and consideration therein expressed and in the capacity therein stated.

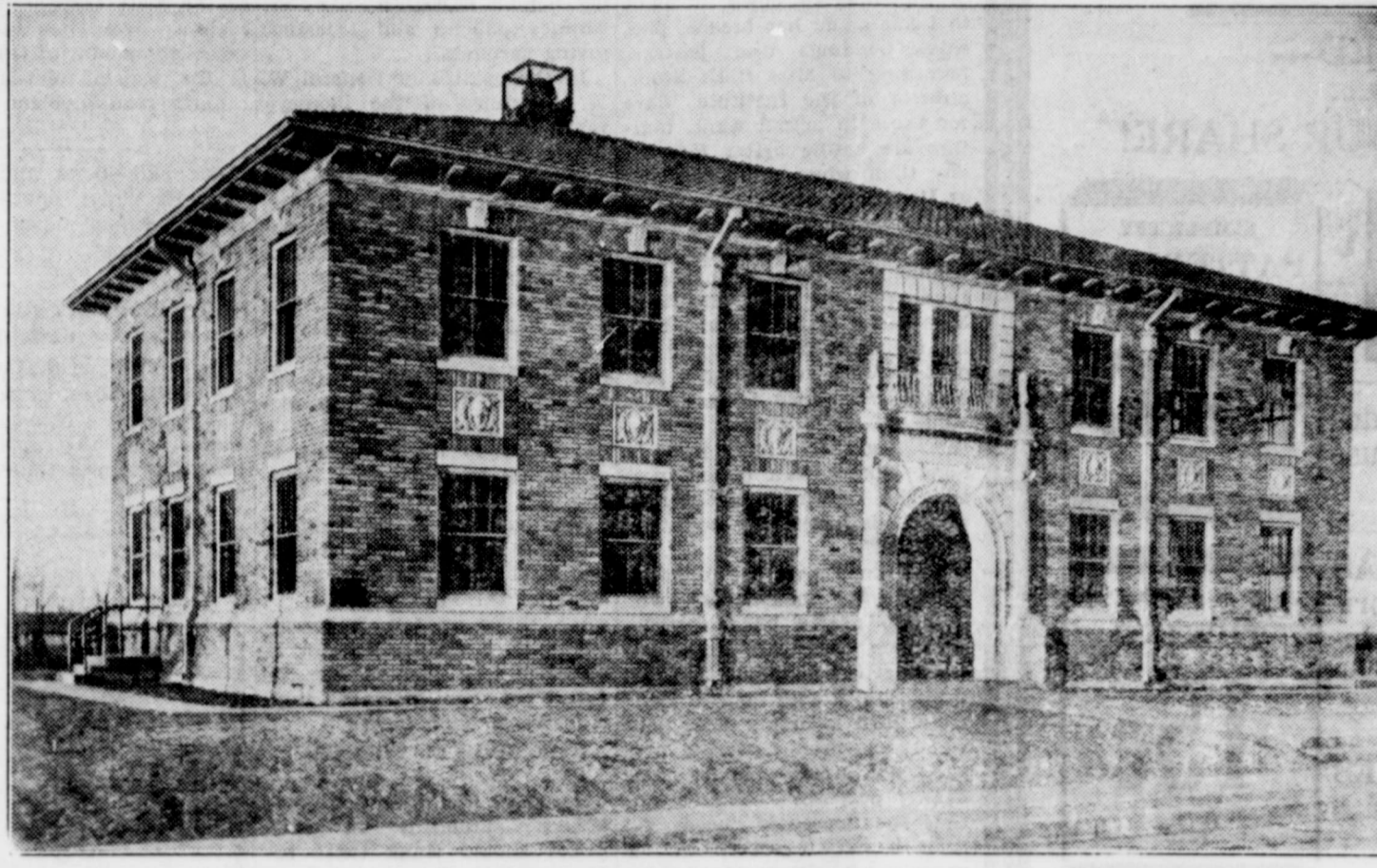
Given under my hand and seal of office this the 8th day of February, A. D., 1932.

T. Wade Potter, Notary in and for Lamb County, Texas. (Seal).

State of Texas County of Lamb

We the undersigned, County Judge and County Commissioners of Lamb County, Texas, acting herein for and on behalf of Lamb County, and under and by virtue of a certain order passed on this date at a regular meeting of the Commissioners' Court of Lamb County Texas, which order is duly recorded in Vol. 2, Page 603, Minutes of the Commissioners' Court, do hereby accept

FRONT VIEW LITTLEFIELD CITY HALL



SIDE VIEW OF THE LITTLEFIELD JAIL



The Facts Concerning The Littlefield City Hall

The Littlefield City Hall is a new and modern two-story brick building which was completed in 1930 at a cost of \$50,000. (The Court House at Olton was completed in 1923 at a cost of only \$23,774.)

The Littlefield City Hall is a spacious structure with a frontage of 70 feet and a total depth of 72 feet. The main section of the building is 70 feet by 40 feet, and the rear portion of the structure, which is given over to a fire station on the ground floor and a jail on the second floor, with the exception of a small portion, is 40 feet wide and 32 feet deep.

The Littlefield City Hall, including the Court Room and Fire Station, has 14 rooms, as against 12 rooms in the Court House at Olton, and every one as large as the rooms in the Court House and the majority of them very much larger. If the County should need the room, it will be an easy matter for the City of Littlefield to find other accommodation for the fire trucks.

Except the above and foregoing lease, provided the county seat of Lamb County, Texas should at any time during the ten (10) year period set out in said contract be located in the City of Littlefield, Texas.

In testimony whereof witness the hands of the county Judge and the members of the commissioners' court, and the seal of said court, on this the 8th day of February, A. D., 1932.

Simon D. Hay, County Judge, Lamb County Texas (Seal).
C. A. Daniel
C. E. Strawn
E. J. Foust
County Commissioners.
Attest:
A. H. McGavock, Clerk. (Comr. Court Seal).

The State of Texas
County of Lamb.

Before me, the undersigned authority, a Notary Public in and for Lamb County, Texas, on this day personally appeared

Simon D. Hay, County Judge of Lamb County, Texas, C. A. Daniels, C. E. Strawn and E. J. Foust, County Commissioners of Lamb County, Texas, and each acknowledged to me that he signed the foregoing instrument for the purpose and the capacity therein stated.

Given under my hand and seal of office this the 8th day of February A. D. 1932.

Roy Granberry, Notary Public, Lamb County Texas (Seal).
The State of Texas
County Of Lamb

I, A. H. McGavock, Clerk of the County Court in and for Lamb County, Texas, do hereby certify that the above and foregoing Lease Contract, is a true and correct copy as same appears on record in Vol. 48, page 571, Deed Records of Lamb County, Texas.
Given under my hand and

seal of office this the 9th day of February, A. D. 1932

A. H. McGavock, County Clerk, Lamb County, Texas. (Seal).
County Court.

How the Commissioners' Court stands in the matter of issuing warrants or bonds for the building of a Court House or Jail, without the people first approving such action by a majority vote, is set out in a document reads as follows:

**THE STATE OF TEXAS
COUNTY OF LAMB.**
We, the undersigned members of the Commissioners' Court of Lamb County, Texas, do hereby state to the citizens of Lamb County that we will vote against the issuance of any warrants or bonds by the Commissioners' Court for the purpose of building either a Court House or a Jail in Lamb County, unless the question shall have first been submitted to a vote of the people, and a majority voting at such election shall have voted in favor of the issuance of such warrants or bonds.
SIMON D. HAY, County Judge
C. A. DANIEL, Commissioner
C. E. STRAWN, Commissioner
E. J. FOUST, Commissioner
Precinct No. 4.

NO LIEN AGAINST LITTLEFIELD CITY HALL
**THE STATE OF TEXAS
THE COUNTY OF LAMB
THE CITY OF LITTLEFIELD**
I, W. G. Street, Secretary and Treasurer of the City of Littlefield, Texas, do hereby certify that there are no liens of any sort, kind or description against the City of Littlefield, leased to Lamb county for Court House purposes. And that the \$50,000 of bonds issued by the City to build the said City Hall are due by the municipality as a

whole and are not against the City Hall itself.
I further certify that all interest on said City Hall bonds has been paid to January 15, 1932, and that the first City Hall bonds does not mature until January 15, 1943. I further certify that the said City of Littlefield has paid all its interest and maturing bonds up to this date.

The records disclosing the above facts are open to investigation by any interested citizen of Lamb county, and any statements made to the contrary are absolutely false.
Witness my hand and official seal at Littlefield, Texas, this 26th day of February, 1932.
W. G. STREET, Secretary and Treasurer, City of Littlefield, Texas.

THE STATE OF TEXAS THE COUNTY OF LAMB THE CITY OF LITTLEFIELD

We, T. S. Sales, Mayor, and Pat Boone and Homer Hall, Commissioners, of the City of Littlefield, do each of us hereby certify that we have examined the foregoing statement of the City Secretary and Treasurer, and find that same is true and correct and it is hereby approved.
Witness our hands and official seal at Littlefield, Texas, this 25th day of February, 1932.
T. S. Sales, Mayor, City of Littlefield, Texas.
Pat Boone, Commissioner, City of Littlefield, Texas.
Homer Hall, Commissioner, City of Littlefield, Texas. (Seal)

NEW LAW PROTECTS TAXPAYERS AGAINST BOND ISSUES

Legislation passed at the last session of the legislature known as the "Bond and Warrant Law of 1931," safeguards the taxpayers of a county against the issuance of bonds for construction purposes, without their consent.
Outstanding sections of the law are herewith published for the information of voters:
Excerpts from Art. No. 2368-A, revised civil statutes of Texas, commonly known as 'bond and warrant law of 1931,' being an act passed by the Forty-Second Legislature of the State of Texas, effective May 28th, 1931.
Section 2 of said article provides:
"That no county or city in this State shall make or enter into any contract for the construction of any public building requiring an expenditure in excess of \$2,000.00, and there by create an obligation of any nature upon such county or city, without first submitting such proposed contract or agreement to competitive bids. That notice of the time and place when and where such contract shall be let shall be published in such county once a week for two consecutive weeks prior to the time set for letting such contract, the date of the first publication to be at least fourteen (14) days prior to the date set for letting of such contract and that such notice shall be given by posting notices at the courthouse door for at least fourteen days prior to the time for the letting of such contract.
Section 4 of said article provides: "That if, by the time set for the letting of the contract as many as ten (10) per cent in number of the qualified voters of the county, petition the Commissioners' Court in writing to submit to a referendum vote the question as to the issuance of bonds for such purpose, then such Commissioners' Court shall not be authorized to make any expenditure, nor to award any construction contract unless the proposition to issue bonds for such purpose is sustained by a majority of the votes cast at such election." Said article further provides "that, in the absence of such petition of ten ((10) per cent of the qualified voters of the county, the Commissioners' Court may at its discretion also submit the foregoing statement of the City Secretary and Treasurer, and find that same is true and correct and it is hereby approved.
Witness our hands and official seal at Littlefield, Texas, this 25th day of February, 1932.
T. S. Sales, Mayor, City of Littlefield, Texas.
Pat Boone, Commissioner, City of Littlefield, Texas.
Homer Hall, Commissioner, City of Littlefield, Texas. (Seal)

LITTLEFIELD VOTERS OPPOSE BOND ISSUES

The voters of Littlefield and district are strongly opposed to any bond issues so long as the present distressing financial condition exist. Here is a document to which hundreds of signatures have been affixed:
"We the undersigned citizens of Littlefield, Texas, wish to state that under present conditions we consider the burden of taxes too heavy, and that we would strongly oppose any additional taxation at this time. Our property is taxed not only for state and county and school purposes, and to retire outstanding county warrants and bonds, but in addition thereto we pay taxes for the city government and expenses, and to retire bonds issued for paving, for municipal sewer system, and a City Hall.
In case the county seat of this county should be moved to Littlefield, we think the City Hall is amply sufficient to serve the purpose of a courthouse for a number of years, under normal conditions, and that the erection of a new building would be foolish and an unnecessary expense.
And we hereby pledge ourselves that we would oppose and vote against the issuance of any bonds or warrants for the purpose of building either a courthouse or a jail at Littlefield or any other place in Lamb county so long as the present depressed financial conditions continue to exist."

LITTLEFIELD VOTERS OPPOSE BOND ISSUES

The voters of Littlefield and district are strongly opposed to any bond issues so long as the present distressing financial condition exist. Here is a document to which hundreds of signatures have been affixed:
"We the undersigned citizens of Littlefield, Texas, wish to state that under present conditions we consider the burden of taxes too heavy, and that we would strongly oppose any additional taxation at this time. Our property is taxed not only for state and county and school purposes, and to retire outstanding county warrants and bonds, but in addition thereto we pay taxes for the city government and expenses, and to retire bonds issued for paving, for municipal sewer system, and a City Hall.
In case the county seat of this county should be moved to Littlefield, we think the City Hall is amply sufficient to serve the purpose of a courthouse for a number of years, under normal conditions, and that the erection of a new building would be foolish and an unnecessary expense.
And we hereby pledge ourselves that we would oppose and vote against the issuance of any bonds or warrants for the purpose of building either a courthouse or a jail at Littlefield or any other place in Lamb county so long as the present depressed financial conditions continue to exist."

whole and are not against the City Hall itself.
I further certify that all interest on said City Hall bonds has been paid to January 15, 1932, and that the first City Hall bonds does not mature until January 15, 1943. I further certify that the said City of Littlefield has paid all its interest and maturing bonds up to this date.

The records disclosing the above facts are open to investigation by any interested citizen of Lamb county, and any statements made to the contrary are absolutely false.
Witness my hand and official seal at Littlefield, Texas, this 26th day of February, 1932.
W. G. STREET, Secretary and Treasurer, City of Littlefield, Texas.

THE STATE OF TEXAS THE COUNTY OF LAMB THE CITY OF LITTLEFIELD

We, T. S. Sales, Mayor, and Pat Boone and Homer Hall, Commissioners, of the City of Littlefield, do each of us hereby certify that we have examined the foregoing statement of the City Secretary and Treasurer, and find that same is true and correct and it is hereby approved.

Witness our hands and official seal at Littlefield, Texas, this 25th day of February, 1932.
T. S. Sales, Mayor, City of Littlefield, Texas.
Pat Boone, Commissioner, City of Littlefield, Texas.
Homer Hall, Commissioner, City of Littlefield, Texas. (Seal)

THE STATE OF TEXAS COUNTY OF LAMB CITY OF LITTLEFIELD

I, W. G. Street, Secretary and Treasurer of the City of Littlefield, Texas, do hereby certify; That the first of the City Hall Bonds does not mature until January 15th, 1943; and that all interest on said City Hall Bonds has been paid to January 15th, 1932; and that on this date there is enough money on deposit in the Sinking Fund, (which can only be used to pay interest and Bonds), to pay interest on the City Hall Bonds, that will be due on January 15th, 1933. And any statement made to the contrary are absolutely false.
I further certify that all bonds, interest, salaries and expenses owed by said City and due to and including March 1st, 1932 have been paid.
The records disclosing the a-

bove facts are open to investigation by any interested citizen of Lamb County.
Witness my hand and official seal at Littlefield, Texas, this 25th day of February, 1932.
W. G. STREET
Secretary and Treasurer, City of Littlefield, Texas. (Seal)

TAXATION

School Tax \$1.00 per \$100.00
City Tax \$1.50 per \$100.00
State and County Tax \$1.50 per \$100.00.

It is REASONABLE with the above taxation that the residents of Littlefield and District would be seeking to assume an additional burden of taxation?

The records disclosing the a-

LITTLEFIELD VOTERS OPPOSE BOND ISSUES

The voters of Littlefield and district are strongly opposed to any bond issues so long as the present distressing financial condition exist. Here is a document to which hundreds of signatures have been affixed:
"We the undersigned citizens of Littlefield, Texas, wish to state that under present conditions we consider the burden of taxes too heavy, and that we would strongly oppose any additional taxation at this time. Our property is taxed not only for state and county and school purposes, and to retire outstanding county warrants and bonds, but in addition thereto we pay taxes for the city government and expenses, and to retire bonds issued for paving, for municipal sewer system, and a City Hall.
In case the county seat of this county should be moved to Littlefield, we think the City Hall is amply sufficient to serve the purpose of a courthouse for a number of years, under normal conditions, and that the erection of a new building would be foolish and an unnecessary expense.
And we hereby pledge ourselves that we would oppose and vote against the issuance of any bonds or warrants for the purpose of building either a courthouse or a jail at Littlefield or any other place in Lamb county so long as the present depressed financial conditions continue to exist."

A VOTE FOR THEREMOVAL OF THE COUNTY SEAT TO LITTLEFIELD IS A VOTE FOR ECONOMY

(THIS PAGE PAID FOR BY THE LITTLEFIELD COUNTY SEAT COMMITTEE)

BANKRUPT STOCK SALE!

HUNDREDS HAVE ATTENDED---
HUNDREDS HAVE SAVED---
DON'T FAIL TO GET YOUR SHARE!

Men's Heavy
OVERALLS
57c
Pair

SHEETINGS
Per Yard ---- **1c**
BUTTONS
Per Dozen ---- **1c**

SIMPLICITY
PATTERNS
Regular 15c
4c
each

Values like these don't come your way just everyday!

Blue Covert
PANTS
94c
Pair

NEW GOODS HAS BEEN ADDED and prices lowered in many instances.

8 oz. Feather
TICKING
15c
yard

NEW SPRING COATS and DRESSES WILL ARRIVE FRIDAY To Be Sold at BANKRUPT PRICES SEE THESE B-4-U BUY

Next Door To P. O. **McLARTY'S SUDAN**

Free Culling Service on your Poultry

Write me a card or phone me your location and when you want them culled.
PHONE 28 J. C. HOLDEN, MISELTOE CREAMERIES

formerly were given nickels and dimes to buy goodies and sweets now find the home cookie jar bulging, and thousands of husbands sit down at night to home-made hot breads, pies, cakes, puddings and pastries, according to Miss Ruth Stone, director of the Institute. Save for those in actual want, families are eating better fare today than when prosperity was at its height, she states.

"The home maker who turns to home baking as a means of balancing a reduced budget is heading in the right direction," Miss Stone stated. "Home baking is usually from 20 to 40 per cent cheaper even after a reasonable allowance is made for value of one's time." Besides, there are thrills and joys in home baking, that cannot possibly be known to the woman who feeds her family on 'store' products."

Miss Stone gives the following "hints" to homemakers who wish to create baked articles of which they can be proud: 1. Use self-rising flour. 2. Avoid using low grade flour. Self-rising flour is simply plain flour which has been especially prepared and preleavened for home baking purposes. This means that the housewife need not concern herself with selecting, measuring and mixing baking powder to the flour, nor with adding salt or soda. The saving of baking powder explains its economy. It is also easy to use and a great time saver because it need be swiftd by once and little stirring is required. All this applies, of course, only to the high grades of flour. There may be a difference of a few cents between a 24-pound sack of lowgrade and high grade flour, but the good quality flour not only makes superior products but is actually more economical as less shortening is required.

"By using a high grade flour instead of low grade plain flour the housewife saves an appreciable amount in shortening, and by selecting self-rising flour instead of plain she saves the cost of baking powder. salt—about 50 cents on each small sack of flour," declares Miss Stone. "Thus, baking with high grade self-rising flour instead of low grade plain flour will save about 37 cents on the dollar and give much better results in the bargain."

THE PUBLIC'S INTEREST IN RAILROADS

The public has a far greater interest in the railroads than it realizes. Nearly three billion dollars of life insurance funds are invested in railroad securities, and mutual savings banks account for \$1,650,000,000 more. This makes a total of \$4,600,000,000, one fourth of the total

net capitalization of all American railroads. Thus, the safety of the rails is intimately related to the protection standing behind 68,000,000 life insurance policies and 14,000,000 saving accounts.

In the opinion of General W. W. Atterbury of the Pennsylvania Railroad, the joint benefits to be anticipated from the Railroad Credit Corporation, the wage adjustment and the Reconstruction Finance Corporation should be extremely helpful in preventing further defaults on railroad bonds this year. But, this being the case we must not lose sight of the railroads' fundamental difficulties, largely brought on by regulation and taxation which is not made to apply equally to competing transportation agencies.

The outcome of the railroad problems will be up to the public. If it demands fair treatment for the rails—which is the same thing as fair treatment for itself—the situation can be remedied. If it does not, the future of our greatest single industry is dark indeed.

THE LOGICAL SOLUTION

Rural communities with road building problems on their hands should think twice before constructing single-lane pavements which can take care of only an extremely limited amount of traffic. Any saving in first cost on such a road is more than offset by extra cost for widening as traffic grows.

A still greater objection to the single-lane highway is its tendency to increase accidents. It is said that the average driver on such a road will be on the pavement most of the time. But it is when he is getting off or on the pavement or "in the rough," that accidents happen. As the amount of traffic increases, the single-lane highway is extremely dangerous.

By using the modern, inexpensive, waterproof surfaces, communities can build wealth-

erproof, year-round roads, of full width, for \$5,000 a mile or less. Maintenance cost is low and such roads are as satisfactory as the most expensive type of highway save when there is an excessive amount of traffic. This is the logical solution to the country road problem.

For Sale—Sows and pigs.—Wm. H. White, one half mile East and four miles North of Sudan.

NEW DISCOVERY REACHES CAUSE OF STOMACH GAS

Dr. Carl found that poisons in the UPPER bowel cause stomach gas. His simple remedy Adlerika washes out the upper bowel, bring out all gas. Ramby's Pharmacy.

When in need of Lines, Bridles, or Collars, Mattresses, or Shoe repairing CALL AT

PATTERSON'S SHOE SHOP

BILLS & HAZEL

Attorneys at Law

Sudan Littlefield

Consider Well the Many Advantages

No man is ever too big or too strong to be immune to having troubles his strength itself may attract. Matters cannot be grasped singly if the perception is intent on many things.

In planning ahead for your business, consider well the benefits derived from doing business with a bank offering your financial requirements the strongest organization service.

First National Bank

W. H. FORD, M. D.
Phone, Office and Residence, 11

DR. G. A. FOOTE
PHYSICIAN and SURGEON
GLASSES FITTED
Office phone 45
Residence Phone 33
Office At Sudan Drug

HARD TIMES BRING GOOD EATING
Housewives Revive Art of Home Baking in Budget Saving Program

A marked revival in home cooking and especially home baking throughout the entire South, is reported by the Household Science Institute following an investigation of food standards in relation to the economic situation in many communities like Sudan. Hundreds of little boys who

DR. C. C. STARLING
Dentist
Office In Higginbotham—Bartlett Bldg. Sudan Texas

Lubbock Laundry Co.
MODERN DRY CLEANING IN Connection with All Classes of LAUNDRY
Here Tuesdays and Fridays
Arthur Syfrett



Public Sale

Thursday, March 10, 1932
Beginning at 1:00 P. M. I will sell at Public Auction at Luther Ragsdale farm, 6 miles south of Baileyboro on Baileyboro-Watson Highway.

—FARM STOCK—

- 1 Bay Horse, 7 years old. Weight 1100.
- 1 Black Mare, Smooth mouth, weight 900.

—COWS—

- 1 Blue Jersey Cow, 3 yrs. old, Heifer calf at side.
- 1 Fawn Colored Jersey, 8 yrs. old. fresh soon.
- 1 Black Jersey, 6 years old, heifer calf at side
- 1 Yearling Jersey Heifer.
- 3 Yearling Jersey Bulls.

—HOGS—

- 2 Gilts.
- 1 Boar

—FARM IMPLEMENTS—

- 1 1-Row Oliver Lister.
- 1 1-Row John Deere Cultivator.
- 1 1-Row Godevil.
- 1 Set Leather Harness.
- 1 Set Chain Harness.

—MISCELLANEOUS—

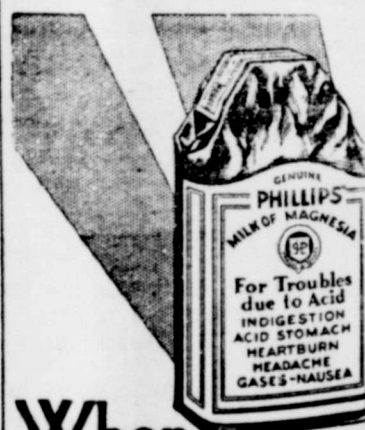
- 1 American Cream Separator.
- 1 Oil Cook Stove, 5 burner.
- Model T Ford Truck.
- 1 4-Burner Winsdor Oil Stove.
- 1 2-Eye Batchlor Heater.
- 1 8-Gallon Cream Can.
- 1 3 1/4 inch Wagon, Motor.
- Close Line Posts.
- Chicken Coops and many other thing too numerous to mention.

TERMS OF SALE: CASH. No property to be removed until settled for.

C. G. COFFMAN, Owner

COL. JACK ROWAN, Auctioneer,

Joe D. West, Clerk



When PAIN Comes

WHAT many people call indigestion very often means excess acid in the stomach. The stomach nerves have been over-stimulated, and food sours. The corrective is an alkali, which neutralizes the acids instantly. And the best alkali known to medical science is Phillips' Milk of Magnesia.

One spoonful of this harmless, tasteless alkali in water neutralizes instantly many times that much acid, and the symptoms disappear at once. You will never use crude methods when you learn the efficiency of this. Go, get a small bottle to try. Be sure to get the genuine Phillips' Milk of Magnesia prescribed by physicians for 50 years in correcting excess acids. 25c and 50c a bottle—any drug store.

Our Prices Are Low

Bell of Tulia
FLOUR
89c 48 Lb. Bag

SYRUP Pure East Texas Ribbon Cane, Per Gallon **75c**

CHILI-POWDER, Dr. Phillips, 1-2 lb. 25c

ONION SETS, Per Gallon, 32c

CHERRIES, Red Potted, No. 2 Can 19c

LARD

Swift's Jewell **69c** 8 Pound Rail

CHEESE, Long Horn, lb. 25c

BACON, Dry Salt lb. 11c

ROAST, Beef, Nice and Tender, lb. 10c

'M' SYSTEM