

THE SUDAN NEWS

Entered as second class mail matter July 2, 1923, at the Postoffice at Sudan, Texas, under the Act of March 3, 1879. Published every Thursday by H. H. Weimhold & Son At Its Office in Sudan, Texas H. H. Weimhold . . . Editor

\$2.00 PER YEAR, IN ADVANCE

Reading Notices, Obituaries, Card of Thanks, Resolutions of Respect, Etc., 10c per line. Display rates on Rate Card, which may be secured on request.

FORREST FIRES

We hope the basketball tournament to be held here Thursday Friday and Saturday of this week will be a big success and we see no reason why it shouldn't. We are welcoming all outside teams.

While wandering around town New Year's Day, the writer of this column, was called to the F. E. Miller Land Office, by Earl Ladd. A conversation was started, so we thought we would sit down and be sociable. The nails on the bench were charged with electricity, you can guess the rest.

Francis is always playing kid tricks, and we wonder if he will ever grow up.

The rain and snow, the first of the week has made our streets almost impassable, of course you can go up and down them, but look out for the holes.

Sudan is in need of an organization such as a Chamber of Commerce, or some other organization to put over co-operative projects. There are several projects that could be put over here, if there were only a co-operative organization.

The committee appointed to arrange for free lodging for the visiting team and coaches that qualify for Saturdays games in the local tournament, are still in need of several beds. Mr. Davis will appreciate your cooperation in this matter, and if you can furnish a bed, please notify Mr. Butts, who is chairman of the above committee.

WHATEVER HAPPENS HOLD THE FARM IS LAND BANK URGE

(John Fields, President Federal Land Bank Wichita, in the Agricultural Review.)

With prices of farm products extremely low, and their purchasing power 38 per cent under par, farmers are faced with the problems of making short returns from this year's crops go as far as they will.

Buying much is out of the question. Prices of things farmers buy have not come down in proportion to the drop in prices of farm products.

The first problem of owner-operator farmers is to work out a proper distribution of returns from crops among their creditors.

If all of them cannot be paid now, payments should be made to insure continuance of possession of facilities for production so that all debts may be paid later.

Payments necessary to continue in possession of the farm home should be made first. With it gone, the possibility of paying anything is, in many cases, gone also.

If the farm is clear of mortgage debt, taxes constitute the one debt which must be paid to retain ownership. Failure to pay taxes when due results in the addition of high penalties which make it still more difficult to pay. Provision for payment of taxes should be made in all cases. The county treasurer does not maintain a force of salesmen and collectors calling on farmers. He does not need to do so. Ultimately, if taxes are not paid, the county will sell the farm.

If the farm is mortgaged, and the owner wishes to continue living there with his family he will make definite provisions for the payment of interests on the mortgage debt when it is due. Failure to make payment of interest will not result in immediate dispossession. Redemption laws are liberal to borrowers. But as delinquencies accumulate, their payment becomes more difficult and the final outcome of continued delinquencies in interest due on farm loans is dispossession, as with delinquent taxes.

Taxes have the first call on the proceeds of crop production be they little or much.

Interest and principal payments due on farm mortgages have the next call on the proceeds of crop production. These loans make it possible to obtain and retain farm homes, and the facilities for production of crops and livestock which they provide. The extent to which investors in such loans may share in the proceeds of production is definitely limited by the mortgage contracts but, to that extent, they are justly entitled to preference over all other creditors.

It is not expected that all other creditors will agree to this. They are driven by their personal necessities to make collections, in whatever manner they can. They are on the ground, and driving hard to collect what is due them, and many farmers who have not carefully considered their financial situation pay out to such creditors funds which they should conserve for the purpose of making sure of continuance of possession of their farm homes.

Many farm families may not realize it, but they are now making the choice between keeping the farm home and losing it—between letting things bought on the installment plan go back to those who sold them,

and keeping up the payments on farm loans accumulate delinquencies.

Thousands out of employment in industry are seeking ways whereby they may get back to the country and establish homes on farms. Those who have farms should make personal application of the experiences of these unfortunates and realize that the thing of first importance is to keep the farm home.

With interest on farm mortgages and taxes paid when due, farmers will ultimately pay other creditors in full from the proceeds of production. The way out promises to be long and difficult, but it will be less difficult with a farm and a home than without either, and that, unfortunately, is the alternative being faced by many farmers.

The situation now is different from what it was in 1893. Then the Cherokee Strip in Oklahoma was opened to settlement and there was somewhere else for farm families to go.

During the next 20 years the remaining homesteads were occupied. What is now left isn't worth much. The United States is well supplied with towns and cities. No attractive "Promised lands" are left.

In such a situation, the best that folks generally can do is to stay where they are and hold fast to what they have whether it be good or bad. Almost literally, there is no place else to go.

With the productive capacity of farming communities sustained, a way out will be found. With it gone, all will be gone.

COLLEGE HAS 2300 STUDENTS

Lubbock, Texas, Dec.—Texas Technological College, seven years old with an enrollment of 2,300 students, ranking third in enrollment in the big state of Texas, may get into an athletic conference in January.

Officials of the college will attend a meeting at Albuquerque, New Mexico, Jan. 9-10, at which time it is possible that the Tech will be admitted to membership in the Border Conference, now composed of the following schools: University of New Mexico, University of Arizona, Tempe Teachers, Arizona State Teachers, and New Mexico A. & M. College.

The Tech has a standing appeal to be admitted to the Southwestern Conference. Last year the Texas Conference refused the school admission on the theory that within a year or more, Tech would be too strong, and an effort to organize a West Texas—Eastern New Mexico conference two years ago failed.

With a winning season this year with a sophomore team, Texas Tech has arranged the most difficult schedule for 1932 that any West Texas team ever faced. It follows:

Sept. 17 Abilene Christian College at Lubbock.

Sept. 23 Texas A. & M. College at Amarillo.

Sept. 30 Southern Methodist University at Dallas.

Oct. 15 Attempting to schedule game with Austin College, Trinity University or Southwestern University.

Oct. 21 University of Arizona at Lubbock.

Oct. 28 "B" team of Notre Dame at Lubbock.

Nov. 4 Louisiana Tech. Place either Lubbock or New Orleans.

Nov. 11 Baylor University at Lubbock.

Nov. 18 University of New Mexico at Albuquerque.

Nov. 25 Simmons University at Lubbock.

—Garnet Reeves, Publicity Manager, Lubbock Chamber of Commerce.

Mr. and Mrs. R. W. Mitchell returned the latter part of last week from a business trip to Fort Worth, Dallas and Gainesville.

LIGHT POWER ICE

Texas Utilities Co.

R. E. McCASKILL, Manager
Littlefield, Texas

A Safety-Plus Investment Earning 7 p. c.

Careful investors are placing their surplus funds in Guardian Full Paid Certificates and are receiving dividends every three months at 7 per annum.

Their money is fully secured and protected by

- (1) First mortgage liens on good homes
- (2) Careful and intelligent management
- (3) Strict supervision by Banking Department
- (4) Permanent Capital Stock of Association.

Mail the coupon for full information about this safe and profitable investment.

Coupon

GUARDIAN SAVING & LOAN ASSOCIATION
Dallas Bank & Trust Building,
Dallas, Texas

Please send me information about the safe and profitable plan of investing advertised in...

Name _____
Address _____

Welcome Basketball Teams and Fans to Sudan and Our Store

NOTICE!

ALTMAN'S QUITTING BUSINESS

SALE

Will Continue Thru January

LOOK

At these Closeout Prices. Every Article in our store is Marked Down to a Real Bargain Price.

NEW GOODS

Mr. Altman has been away on a buying trip. Come in and see the new merchandise. It is being offered at very attractive prices.

Men's Dress Suits, 2 Pants.....	4.95 to 13.35
Men's Overcoats and Topcoats.....	4.48 to 8.95
Men's Packard Shoes and Oxfords.....	4.85
Men's Overalls and Jumpers, Special.....	69c
New Fast Color Dress Prints, yard.....	12c
Ladies' New Silk Service Weight Hose.....	89c
Children's All Leather Shoes.....	89c to 1.49
Boy's Dress Suits, Long and Short Pants.....	1.00 to 4.48
Men's Heavy All Wool Coat Sweaters.....	2.48
Heavy Blue Work Shirts, A New Number.....	69c
Special Bargain Table, Choice any Article.....	15c

Altman Dry Goods Co

SUDAN, TEXAS

AMBULANCE

Day Phone 76 Night Phone 14

DR. G. A. FOOTE

PHYSICIAN and SURGEON

GLASSES FITTED

Office phone 45
Residence Phone 33
Office At Sudan Drug

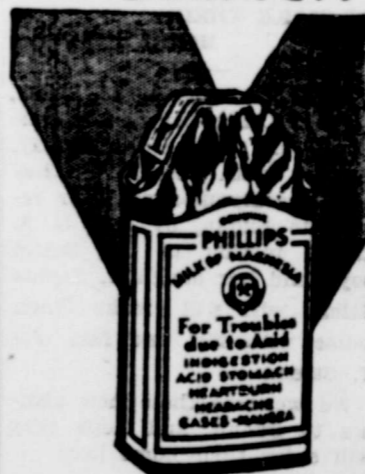
DR. C. C. STARLING

Dentist

Office In

Higginbotham—Bartlett Bldg.,
Sudan, Texas

ACID STOMACH



EXCESS acid is the common cause of indigestion. It results in pain and sourness about two hours after eating. The quick corrective is an alkali which neutralizes acid. The best corrective is Phillips' Milk of Magnesia. It has remained standard with physicians in the 50 years since its invention.

One spoonful of Phillips' Milk of Magnesia neutralizes instantly many times its volume in acid. Harmless and tasteless, and yet its action is quick. You will never rely on crude methods, once you learn how quickly this method acts. Be sure to get the genuine.

The ideal dentifrice for clean teeth and healthy gums is Phillips' Dental Magnesia, a superior toothpaste that safeguards against acid-ity.

Garden Theatre

FRIDAY-

Edmund Lowe, Lois Moran &

E. L. Brendel In

"THE SPIDER"

8th Episode Vanishing Legion Fri.

SATURDAY-

Buck Jones in

"THE FIGHTING SHERIFF"

Comedy

Charlie Chase in

"The Panic Is On"

Saturday Nite Preview, Sunday, Monday

Warner Baxter, and Janet Gaynor in

"DADDY LONG LEGS"

TUESDAY & WEDNESDAY-

Sally Eilis and Harry Trock

"QUICK MILLIONS"

Coupons Nites, Admission 20c

Fox News

40 POUND

White Gln Run Cotton MATTRESS

\$5.00

PATTERSON'S SHOE SHOP

W. H. FORD, M. D.

Phone, Office and Residence, 11

GENERAL AUCTIONEERING

Farm and Stock Sales

COL. JACK ROWAN

Licensed Auctioneer

BILLS & HAZEL

Attorneys at Law

Sudan Littlefield

BAYER ASPIRIN



is always **SAFEL**

beware of imitations

Unless you see the name Bayer and the word genuine on the package as pictured above you can never be sure that you are taking the genuine Bayer Aspirin that thousands of physicians prescribe in their daily practice.

The name Bayer means genuine Aspirin. It is your guarantee of purity—your protection against the

imitations. Millions of users have proved that it is safe.

Genuine Bayer Aspirin promptly relieves:

- Headaches
- Neuritis
- Colds
- Neuralgia
- Sore Throat
- Lumbago
- Rheumatism
- Toothache

No harmful after-effects follow its use. It does not depress the heart.



We Welcome You To

SUDAN

TO PARTICIPATE IN ONE OF THE LARGEST AND BEST
BASKETBALL TOURNAMENTS

FOR BOTH BOYS AND GIRLS EVER HELD ON THE SOUTH PLAINS

We Invite You Both
BOYS and GIRLS
 Including Your Coaches
TO VISIT OUR
FOUNTAIN
SUDAN DRUG
 Everything in the Drug Line

WELCOME TO THE
SUDAN HOTEL

Special Rate On
 Regular Meals ----- 25c
 to basketball teams and their coaches
 We will be glad to wait on you at any hour.

Rooms and Beds at Reasonable Rates
 Especially Short Orders
 Open Day and Night

SUDAN HOTEL
 Mr. and Mrs. King, Props.

PROGRAM

THURSDAY

6 p. m. Bula vs. Baileyboro in Girls Game.
 7 p. m. Fairview vs. Fieldton in Boys game.
 8 p. m. Sudan vs. Fairview, Girl's game.
 9 p. m. Sudan vs. Baileyboro, Boy's game.
 10 p. m. Amherst vs. Muleshoe, Boy's game.

FRIDAY

9 a. m. Littlefield vs. Circleback, Boy's game.
 10 a. m. Anton vs. Fieldton, Girl's Game.
 11 a. m. Anton vs. Spade, Boy's game.
 12 a. m. Dimmitt vs. Spade, Girl's team.
 1 p. m. Leveland vs. Dimmitt, Boy's game.
 2 p. m. Petersburg vs. Littlefield, Girl's game.
 3 p. m. Hale Center vs. Rogers, Boys game.
 4 p. m. Muleshoe vs. (Winner Bula vs. Baileyboro) Girls.
 5 p. m. Lubbock vs. Bula, Boy's game.
 6 p. m. Monroe vs. (Winner of Fairview vs. Fieldton), Boy's.
 7 p. m. (Winner Sudan vs. Baileyboro) vs. (Winner of Amherst vs. Muleshoe), Boy's game.
 8 p. m. (Winner Sudan vs. Fairview) vs. (Winner Anton vs. Fieldton), Girls game.
 9 p. m. (Winner of Littlefield vs. Circleback) vs. (Winner of Anton vs. Spade), Boy's game.

SATURDAY

10 a. m. (Winner Littlefield vs. Petersburg) vs. (Winner Dimmitt vs. Spade), Girl's game.
 11 a. m. (Winner of Friday's 7 p. m. game) vs. (Winner of Friday's 9 p. m. game) Boy's team.
 1 p. m. (Winner of Sudan vs. Fairview and Anton vs. Fieldton) vs. (Winner of Bula vs. Baileyboro ad Muleshoe), Girls.
 2 p. m. (Winner of Friday's 10 p. m. game) vs. (winner of Saturday's 9 a. m. game.) Boys, Boy's team.
 8 p. m. (Winner of Littlefield vs. Petersburg and Dimmitt vs. Spade) vs. (Winner of Sudan vs. Fairview and Anton vs. Baileyboro and Muleshoe), Girl's Finals.
 9 p. m. (Winner of 11 a. m. Saturday) vs. (winner of 2 p. m. Saturday's game), Boy's Finals.
 10 a. m. TROPHIES WILL BE AWARDED WINING TEAMS.

May Your Visit In
SUDAN

be pleasant and one that you will never
FORGET

C. H. NICHOLS
 WELCOMES YOU

IMPORTANT NOTICE!

BASKETBALL PLAYERS
AND FANS

Whenever you are not playing, or watching the game

Come Around and Loaf With Us

We Welcome You to Our Store
Salem Dry Goods Co.

"Your Headquarters"

We Invite
 You
 To Eat
 At The
SUDAN CAFE
 While In
 SUDAN
 D. L. Payne, Prop

We Invite
 You
 To Eat
 And Sleep
 At The
GAY HOTEL
 Mrs. D L Payne, Prop

LOWERY'S
GROCERY
 Welcomes
 You To Sudan
 And Invites
 You To
 Visit Their
 Store
 While In
 SUDAN

We Invite
 You
 To Visit
 Barber Shop
 While In
 SUDAN
EVANS &
HOLLIS
 Hair Cut 25c

We Invite
 You To Eat
 At Our
CAFE
 While You Are
 In Sudan
 Special Prices
 On
 Short Orders
RAY'S CAFE

We Will
 Appreciate
 Your
 Business
 While In
 SUDAN
PALACE
BARBER
SHOP

KEEP
 Your Car In
 Our Garage
 While Attending
 The Basketball Tournament.
WELCOME
CITY
GARAGE
 JOE W. WYATT, Prop

WE
 WELCOME
 YOU
 Special Dinner
 Rates To
 Teams
 And Their
 Coaches
CLUB CAFE.
 RALPH DAVIS, Prop.

WHILE
 IN
 SUDAN
 VISIT
 THE
 DOSS
 CASH
 GROCERY

The
HI-WAY GARAGE
 WELCOMES YOU
 TO SUDAN
 They Do All Kindds
 of Automobile re-
 pairing, and solicits
 your patronage.

WELCOME
 TO SUDAN'S
FIRST BASKETBALL
TOURNAMENT
THE SUDAN NEWS

We Welcome You To
 SUDAN
 And Invite You to Visit Our
FOUNTAIN AND STORE
 While Here
RAMBY'S PHARMACY

We Will Expect You to Call
 To See Us While in
 SUDAN
 Hardware and Implements
SUDAN MERCANTILE
 L. E. Slate, Prop.

FARM CENSUS TO BE MADE BY ASSESSOR
New Law Requires Farmers To Make Out Annual Report

Roy Gilbert, Tax Assessor of Lamb County, issued a request the latter part of last week for all farmers in the county to cooperate with him during the next few months in assuring this county of a correct report for the newly required, annual State Farm Census. Mr. Gilbert stated that he would only be obeying when he requested the necessary information from Lamb county farmers. A new law enacted by the State legislature provides for an annual farm census, to be made by the County Tax Assessors each year as they make the regular assessments. Information will be held confidential, and farmers are assured of the fact that none of it will be released to newspapers or put on file at the courthouse by the fact that it will all be sent to Austin. Mr. Gilbert stated that it would impose about three times as much work on him and his office force as was necessary before the census was required and asked that all farmers cooperate in answering the questions on the census blank.

Information given the tax assessor will not be used for taxation or speculative purposes and each farmer should give his full acreage and yields under the correct headings. Taxpayers, for tax purposes, often understate the value of their property. Farmers should use care to see that the facts they give to the census taker are correct. The information yielded by the county reports will be compiled by the Texas Commissioner of Agriculture and the United States Department of Agriculture as the regular Federal Farm Census is done every five years. The more progressive agricultural states of the union are compiling annual farm census, and Texas is following in the lead. The figures and conditions revealed by the census will enable state officials to keep in closer touch with farm problems, and the information can be used in many ways by the farmers of the state.

Penalties Given
The law requiring farmers to make annual reports of their yields and acreage is new. Ranchers will also be required to fill in a report blank. Each blank will require the name and address of each farmer and 28 questions are to be answered. Officials have provided for the enforcement of the act in two sections of it as follows:

"Section 6—Any person, firm, or corporation who shall furnish an assessor or his deputies any information knowing the same to be incorrect, or any person, firm, or corporation who shall refuse to furnish information shall be deemed guilty of a misdemeanor and upon conviction thereof shall be fined not less than twenty-five dollars (\$25) and not more than one hundred dollars (\$100).

"Section 8—Any assessor who shall fail or refuse to perform wholly or in part the service required by the act shall be deemed guilty of a misdemeanor and upon conviction thereof shall be fined, a sum not less than one hundred dollars (\$100) and not more than five hundred dollars (\$500).

MAKING THE FARM A MEAT FACTORY
R. W. Snyder, Extension Meat

Specialist.
Bill Smith sold a choice, live hog weighing 200 pounds for \$12.00. His neighbor just across the road sold a litter mate weighing exactly the same for \$22. In fact he received almost twice as much for his pig. Mr. White sold his hog made up in hams, bacon, sausage, lard, and the choice loin was cut into chops and roasts. He produced from his 200 pound pig two cured hams weighing 12 pounds each, two cured bacon weighing nine pounds, and two shoulder butts weighing eight pounds each. The lower parts of the shoulders were ground into sausage with the other lean meat trimmings, making 20 pounds of sausage. Two choice 12 pound loins were sold as pork roasts and chops. All the fat was rendered making 24 pounds of lard.

Quality pigs fed a good ration, such as corn, grain sorghum, wheat or barley, with some protein supplement as cotton seed meal and tankage in equal parts, will produce a quality of fresh and home cured meats that will be in demand, especially if properly handled when killed and cured. Many times more cured meat could have been sold at the Lubbock Meat Show than was available for sale.

To produce a high standard quality cured product, hogs should be killed on a clear, cold day. They should be allowed to hang over night to allow to cool out well, thus making the carcass firm before cutting. The most attractive and best shaped hams, bacon, shoulders, and loins can be cut by splitting the hog down the center backbone. The pieces to be cured should be trimmed free of all excessive fat and made to look very smooth.

The cure White used was the famous old sugar cure method. Eight pounds of salt, two pounds of sugar, and two ounces of salt peter was used for each 100 pounds of meat cured. The cure was mixed well and then one-half rubbed on the meat. For best keeping the meat was then packed in a barrel with the skin side down. In just a week the bacon was

taken out, but the remaining meat was rubbed with the rest of the cure. In just 30 days from the time the hams were salted, they were taken out of the cure and soaked in water to remove the surface salt. These hams were cured just 2 1-2 days for each pound in the piece as they weighed just 12 pounds.

Pican wood was the handiest wood that Smith's neighbor had, so he used that to smoke his cured meat. His smokehouse was almost crack-proof so that flies and dirt could not get on the meat. For attractiveness the meat was almost perfect. It smelled most appetizing with the rich reddish brown color.

Bill's neighbor proved to many of his near-by friends that it paid to sell his hogs as prepared meat rather than as live hogs.

MANY FOLKS HAVE VISITED US!

We are glad to announce that we have had many of the Poultry and Cream Producers visit us during the past two weeks and wish to state that we will always be ready to render and assistance possible in our line. Courtesy, Fair Dealing and Prompt Service at all times. Call in to see us. We want to buy your Produce.

SUDAN PRODUCE

Herbert Teal, Mgr.
In Furneaux Building Back of 'M' System

SPLINTERS

Volume One Number Four
Published weekly for our friends and customers by
FOXWORTH-GALBRAITH LUMBER CO.

Why are you so unkind to nurse?
"Don't you like her?"
"No I hate her. I'd like to punch her cheeks like daddy does."

The way to judge a business is by its customers. Judge us by ours.
Frequent appearance of the stork may bring a visit from the wolf.
When you become old, about the only good you can get out of a pile of rent receipts would be, that they might be good to start a fire on a chilly day.

She: Just saw your sister going down to the beach with her costume over her arm.
He: Good heavens! Is that the latest fashion?
We understand the hatchery is to open this month. Don't forget we have a complete line of Celoglass, wire, etc. to fix up that brooder house.

Isn't enough original conversation to go round.
He (soulfully): Do you think a married woman should work for a living?
She: Of course. I don't see why she should go hungry because she's got a husband.

Wag (who thought he'd have a joke at the expense of the provision dealer): Can you supply me with a yard of pork?
Butcher (to boy): Mac, give this gentleman three pigs, feet.

Buying from your local lumber dealer is like eating at a cafeteria, you can see that the stuff is good before you use it and pay for it.

Bob: Two can live as cheaply as one.
Bill: "That depends upon how much the wife is making."

For Rent—Modern, three room apartment with bath—Foxworth-Galbraith Lumber Co.

Folks must repeat. There

POULTRY WANTED

At all times we are in the market for your Produce.

Producers Produce

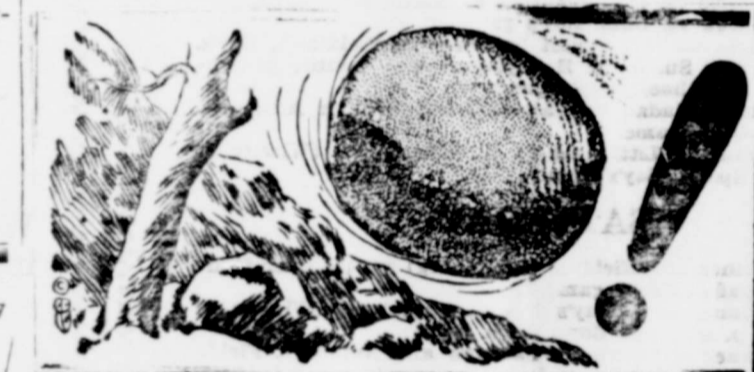
ROY COWAN, Mgr.

Chiropractic — Physiotherapy



DR. A. S. CRAVER
CHIROPRACTOR

Muleshoe, Texas
Piles Successfully Treated.



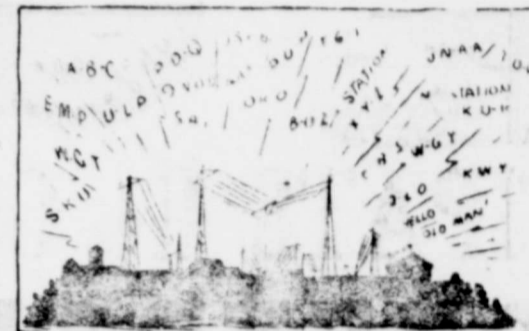
-of course, YOU KNOW ..

The saying....."a rolling stone gathers no moss." It points a lesson. The "moss of Adversity" never gets a grip on to a happier future.

First National Bank
"Home of the Thrifty"
SUDAN, TEXAS

Odd--BUT TRUE

DURING THE CHRISTIAN ERA MANY DAYS HAVE SHARED THE HONOR OF BEGINNING THE NEW YEAR WITH THE FIRST DAY OF JANUARY = IT WAS LATE IN THE 16th CENTURY THAT THE FIRST OF JANUARY WAS UNIVERSALLY ACCEPTED AS THE FIRST OF THE YEAR == AND MAY THIS ONE BE A PROSPEROUS AND JOYFUL YEAR FOR YOU!!



CAMERAGRAPHS



TURN'S WINTER INTO SUMMER
Clarence Birdseye, official of General Foods, and inventor of quick-freezing process which keeps fruit, meat and vegetables fresh indefinitely, in season and out.



GETTING IN FORM for new honors are Miss Jackie Mitchell, (below), pitcher for Chattanooga and only girl in Class A baseball; and Miss Helene Madison, (right) swimming champion. They keep in trim by getting plenty of sleep and avoiding such things as sweets, tea and coffee. And are they fit? Waiter, make me a cup of cereal, please.



SKI PILOT: Oscar Helstad, working out at a northern resort, shows some tricks—and the picture proves there is snow—some places.

The Family Next Door



Blasted Hopes

JANUARY CLEARANCE SALE

Starts Friday, January 8th



We used a gross of blue pencils marking down prices. Regardless of cost, our stock **MUST** get into new hands. And to get some action on it, price-cutting offered the only way out.

You "just think" you've seen big Values before.

Ladies New Felt Hats Up To \$4.95 Values \$1.49	Assortment of Boys' Pants Values \$1.19 at 79c	Infant's Tan Kid Shoes Values to \$1.75 at \$1.39	Ladies' Fancy Tams Turbaus Value \$1.75 At - \$1.39	Ladies' Fancy Tams Turbaus Value \$1.39 At 98c	Ladies' Fancy Tams 98c Value At 75c	Men's Heavy Work Shirts Values 79c At - 69c
--	---	--	--	---	---	---

Wow . . . Ever See More Value For A Dollar?

KOTEX

VALUE
45c

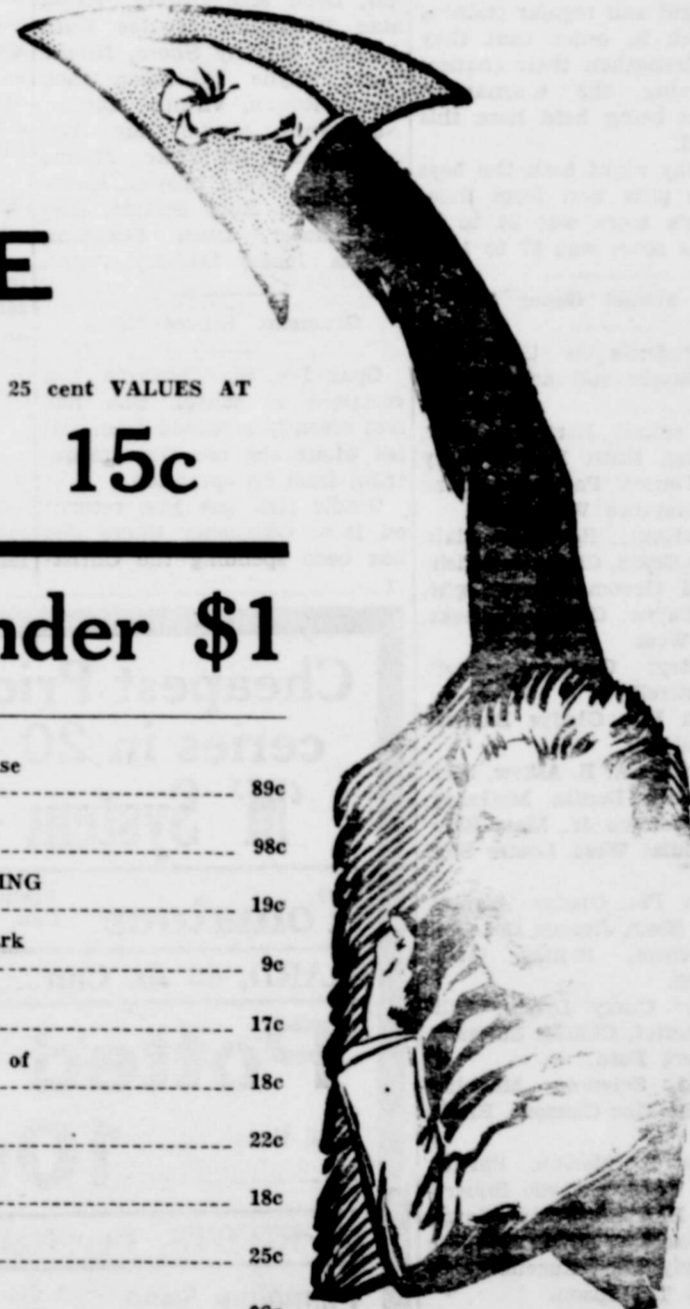
3 for \$1

Many
Other
Special
Values
Worth
Considering:

Girls
Mercerized
HOSE

45 cent VALUES AT 25 cent VALUES AT

29c 15c



Allen A Hose

\$1.00 Grade at 89c
\$1.50 Grade at \$1.25
\$1.95 Grade at \$1.49

Ladies' Spert Coats

Values \$10.75 to \$16.50 at
\$7.89 and \$9.85

NEW SPRING

Silk Dresses

Priced at
\$4.95

Bias Tape

All Colors—15c Grade 10c
All Colors—10c Per Cale 7c

Fast Color Prints

19c Value at 15c
15c Value at 12 1-2c

Black Satin

Value \$1.69 at
\$1.29

BOY'S AND GIRL'S

Underwear

All Sizes
69c

Priced Under \$1

- One Assortment of Ladies House DRESSES at 89c
- One Assortment of Ladies House DRESSES at 98c
- One Lot of Fancy Flowered OUTING 25c values at 19c
- Big Assortment of Light and Dark OUTING, per yard 9c
- Solid Color VOILES at 17c
- Indian Head CLOTH, Assortment of Colors, Per Yard 18c
- Peter Pan PRINTS, Value 45c at Per Yard 22c
- PILLOW CASES, Each 18c
- 6 Spools Clark's O. N. T. THREAD for 25c
- Flat CREPE, All Colors, Values \$1.29 98c
- School TABLET, value 5c and PENCIL, value 5c, both for05
- Fancy Checked GINGHAM Per Yard 19c

A Bargain Event You
Just Can't Pass Up!

SAVINGS AS HIGH AS 50 PER CENT

If we were to tell you your dollar would buy more than 150 cents worth, you'd probably say "bunk." Just the same, it's a fact. A few minutes' look at the Bargains we've put up in this Clearance will convince you of it!

McLARTY DRY GOODS CO.

Mrs. D. R. McLarty, Prop.

Sudan, Texas

