



See What We Mean?

By RAY SWINDELL Times Editor

THE POLITICAL scene in Texas has suddenly become as active as a cat on a hot tin roof—and as noisy—as the May 8 deadline for filing nears. And, as usual, the picture will be the same, between the liberals and the conservatives.

SENATOR RALPH Yarborough stands on one side and GOVERNOR PRICE DANIEL is on the other, and the people are between the two.

THROUGH ONE of the limbs of the grapevine, we understand that JAMES SEWELL, judge of the Thirtieth Judicial District in Navarro County, is considering tossing his hat into the ring. That is, of course, if Governor Daniel seeks a second term, and from various gestures, we assume that he will.

AND, SHOULD Sewell enter the race, indications are that Senator Yarborough will seek re-election to the senate.

AND, IF both should win, which is not likely, the Texas government would be in the hands of the liberals.

WE WOULD, if we may, like to advance a few theories pertaining to Judge Sewell that should be in as one man's opinion—and being more. We became close friends with the judge during our return on the editorial staff of the Corsicana Daily Sun.

But we would like to point out that we became friends with the man and not with the politician. There is a difference. Sewell is a liberal, a new dealer. We term ourselves liberal but we use Webster's interpretation of the word instead of a liberal politician's.

Webster defines a liberal as a person free from prejudice or bigotry, and a person who is tolerant.

Sewell falls into the category of the professional politician. And we have no earthly use for them. He is a brilliant man, there is no doubt of that. We have witnessed his actions in juvenile court and in district court and marveled at his ability.

We have chatted with him for hours on various subjects from sex to segregation and tried to comprehend his remarkable abilities.

As a man, he is what Rudyard Kipling wrote about in his poem, "If." But as a politician, he is a professional. And professionals in that field tend to serve themselves and not the people.

Assuming that Sewell announces for governor, he will have a strong right arm in the voice of Senator Yarborough. Both men go hand in hand in the liberal party of Texas, if we are right in calling it a party.

THE SENATOR, in our opinion, lucked out in being elected to the position he now holds. Too many people were interested in defeating him and everybody tossed their hat in the ring in the effort. Result: the voting was split up so badly that nobody actually won the election.

A NOD from Ralph Yarborough would cause scores of people to cast their vote for Sewell. But we do not think Sewell can win. He has not achieved enough statewide publicity yet. In a couple of years, he may have become a part of everyday conversation, but at present, he is not.

In any case, we consider Sewell the man, as a person who can attain any goal. He has already overcome a couple of obstacles that the average man believes to be unpassable. But, Sewell the politician, is not for

seems rather strange that the last governor from the Corsicana area was a chap named Jester, an ultra-conservative. And now the next candidate from that area is an ultra-liberal.

Such a thing can lead one to believe that the politicians of that area are not very stable with their politics. One might say they move with the wind.

Sewell is a member of the Joe Chapman School of Segregation. Chapman, you may recall, has backed every bill in the state legislature that will combat the 1954 Supreme Court ruling. And he has not with some success. But he talks too loud and too long, and such men lose their effectiveness.

(Continued on Page Eight)

Pioneer Loop Nears Finish, Cameron Tops

Cameron State at Lawton, Oklahoma, looks more invincible by the day in the Pioneer Conference basketball race following three comfortable victories, two of them conference matches, last week.

The Aggies from Lawton now have tabbed 17 season victories without defeat and are 4-0 at midpoint in the loop schedule. They shelved Arlington State, 69-53, at Arlington last week, breaking up a tie game in the last six minutes with a scoring burst.

Then they coasted past Ranger 100-37, Saturday for their second conference win of the week. Sandwiched in between was a 68-49 victory over Tyler JC in a non-conference game.

Tarleton State's Plowboys, undefeated in three loop starts and 12-3 for the season, are given the best chance of stopping the Aggies, but they won't meet for another week. The Plowboys showed power last week in thumping San Angelo, 72-63, at San Angelo.

Tuesday night, the Plowboys eased by Arlington to keep in the running for the conference crown. The Rebels take a final shot at Cameron for the season Saturday night at Lawton, with a capacity crowd in prospect for the 1,754-seat fieldhouse.

Ranger absorbed its fifth conference setback Tuesday night 74-56 from San Angelo at Ranger. The Rangers now sport an 0-13 season win-loss mark.

Table with columns: Team, W, L, Pct. Rows include Cameron, Tarleton, San Angelo, Arlington, Ranger, and Season Standings.

Recent Games: Cameron State 69, Arlington State 53; Tarleton State 72, San Angelo 63; Cameron State 68, Tyler 49; Cameron State 100, Ranger 37; San Angelo 66, Arlington State, 61; San Angelo 74, Ranger 56.

This Week's Schedule: Saturday: Arlington State vs. Ranger

For February 22...

Guard Unit Set For Celebration

A large number of entries are expected in the Battery Sweetheart contest to be staged February 22 at the local National Guard Armory, according to Jess Cole, officer in charge of the annual event.

The 648th Armored Field Artillery will join other state National Guard units in observance of "Muster Day" with an open house at the armory.

Muster Day will be observed in connection with Washington's birthday by Army and Air National Guard units throughout the United States, Alaska, Hawaii, and Puerto Rico.

A parade of local judges will select the Battery Sweetheart, a single girl between the ages of 17 and 24. Winner will participate in the battalion contest to be held in April.

Each of the girls will be entered in the contest by a member of the local guard unit, Cole said. Jeannie Pittman was selected battery sweetheart, went on to win the battalion contest and received an honorable mention in the state contest.

The open house will start at 5 p.m. and continue through until 9 p.m., according to Captain Cecil C. Carr, commanding officer of the 648th. The cake cutting ceremony across the state will take place at 8:30 p.m.

Olden won the District 32-B title Tuesday night as they whipped the Gorman Panthers in Gorman 48-40.

It was the seventh consecutive victory for Olden in district play and left them with only one more game. They now have a 17-9 season record.

Jack Hilliard topped Olden scoring with 22 points and Eddie Munn had 15. Warren topped Gorman with 21. Gorman girls won the opener, 57-27, with Annye Kate Blair hooping 21 points. Wilma Edwards led Olden with 23.

NEW 1958 RAMBLER: 2-Door sedans, six passenger, for only \$1895 delivered. 35 miles per gallon. Easy to park. Ever so comfortable, fun to drive. Trade - Cash - Terms. TOM'S SPORT CARS, Eastland



BLUE PANICUM GRASS—Introduced to this country from Australia this grass is well adapted to heavy moist fertile soils in this area. Stems have large nodes and bony internodes, much like small bamboo. Leaves are especially high in protein and very palatable. Rotation system of grazing is desirable with blue panic to keep high production and a good quality of grazing.

WEATHER

High 31, Low 17, Snow 2 inches, Forecast Possible Showers

SOIL CONSERVATION NEWS

Grass Planting Time Only Weeks Off; Seed Plentiful

(Editor's Note: This is another in a series of articles prepared by Soil Conservation unit workers.)

In a few weeks it will be grass planting time again. A good many farmers plan to seed grass this spring.

We have in this area thousands of acres of cropland no longer used for crop production. Much of this land is idle because of an agricultural trend which has been going on for many years—Farmers are changing from row crop and peanut farming to livestock farming.

Each year we have more acres of often good cropland being left idle for economic reasons. In addition we have acres and acres left idle because the soil is eroded away and the land is no longer suitable for farming. Our better-land could be used very intensively in a grass farming program. The poorer land if established to permanent grass could at least pay its taxes.

Farmers with reasonably good land to be established in grass should under present conditions use one of the introduced grasses known to be adapted to this area. Species generally recommended for this purpose are blue panic, weeping love grass, Johnson grass, sorghum alnum, King Ranch blue-

stem, and native Indian grass. With the exception of King Ranch bluestem and Indian grass seed supplies of these grasses are relatively plentiful and they can be planted at a very reasonable cost per acre. King Ranch bluestem seed are in short supply and at present time high in cost. Only a small supply of locally harvested Indian grass is available. Indian grass seed from Oklahoma are available, but are not generally recommended for planting in this vicinity.

Land planted to any of the above introduced grasses should be considered as tame pasture. As such certain management and cultural requirements are essential for profitable forage production. While native grasses require only sound grazing management for their maintenance, introduced grasses usually need some cultivation, fertilization, mowing, etc., if they survive for a period of time. Best production is obtained with introduced grasses the first few years after planting. After production declines the grass will have to be reseeded or the land used once more for crop production.

Land not suitable for farming because of erosion should be established in a mixture of native grass species. At present time seed for this purpose is practically unavailable. Experience indicates native grasses should not usually be planted over about one hundred and fifty miles from their point of origin. For this reason the Oklahoma bluestem mixtures which were harvested on the native hay meadows of Oklahoma and are on the market do not fulfill our general needs, although they have given good results in a few plantings.

Blue grass seed is in plentiful supply and reasonable in price. Some blue grass seed could be included in hard land seed mixtures. Side oats grama seed is scarce and high in price. Several improved strains of side oats grama are now available commercially which should be planted in this area for trial and possible seed increase.

Some of this land abandoned because of erosion could be planted to introduced grasses for temporary cover until local native seed is again commercially available. When seeding grass in this vicinity best stands have been obtained by seeding in a dead sorghum or sudan cover. Results are usually poor from direct seeding in volunteer small grain, annual needle grass, or other growing competition because of moisture competition while grass seedling are small. Grass seed rates should be determined from an analysis of the seed lot for purity and germination by a reliable seed laboratory. Seeding rates for both mixtures and pure stands are customarily calculated from the seed analysis to give a minimum of ten "pure live seed" per square foot of the

area to be seeded. Native species should be planted in late winter or early spring—Corn planting time or earlier. Introduced species should wait until the ground is warmer for quick germination and emergence.

Cost sharing assistance for grass planting is available at the local A.C.P. office through both the A.C.P. and conservation reserve program. The local Soil Conservation Service work unit renders technical assistance to district cooperators in seeding grass. In addition the Upper Leon Soil Conservation District has a special grass seed drill located in this area for the use of cooperators in seeding grass.

Ashton, Newnham Attend Conference

Two Ranger men returned this week from Austin where they attended the seventeenth annual Junior College Conference sponsored by the University of Texas.

Attending the convention from Ranger were Dr. Price Ashton, president of Ranger College, and Morris Newnham, a member of the board of regents.

The conference was directed by Dr. C. C. Calvert and was held at the Stephen F. Austin Hotel in Austin.

Following the registration on Monday morning, Dr. P. W. Malone, regent of Howard County Junior College, spoke on "Shall we organize a junior college board association?"

This address was followed by a discussion period in which both administrators and regents took an active part.

Four main fields were explored in the junior college conference. They were the college budget, planning and executing a building program, guidance in the junior college, and in-service training programs for the college faculty.

Other outstanding addresses of the conference were made by the following: Dr. Andrew Edington of Schreiner Institute who spoke on "An Educator's Challenge in Higher Education", and Dr. Lawrence L. Jarvie, executive dean for institutions and community colleges, who spoke at the dinner on "Educational Pressures and Junior Colleges".

Mrs. Betty Harkrider of Eastland, mother of two former Eastland men and the grandmother of Mrs. Don Doyle of Eastland, died Tuesday in Carthage after a long illness.

Survivors include five sons, Noble of Rankin, J. E. of Fort Worth and B. C. of Carthage, K. Troy of Carthage and Mike of Marshall; and one daughter, Mrs. Luther McCrea of Cisco. Noble and J. E. formerly lived here.

Coronation ceremonies will be held at the three banquets to crown the king and queen. Glen Harrington of Dallas will be the featured speaker at the First Baptist Church. The program will start at 7 p.m.

The WMU ladies will prepare the meal at the Second Baptist Church. A program has not been announced for the event.

Mr. and Mrs. Raymond Thompson will be in charge at the Eastside Baptist Church banquet. Program plans are incomplete.

Killingworth's Moving and Storage. Serving Ranger Since 1918. Phone 29.

BOB GRIMES TO SPEAK AT BANQUET

Bob Grimes from Water Valley, Texas, will be the guest speaker at the Valentine banquet at the First Methodist Church Friday night.

The banquet, which begins at 7 p.m., will be for the intermediate, senior, and college age groups of the church. One girl from each department will be crowned sweetheart.

Don Deffebach will be master of ceremonies. Highlights of the program will be a solo by Miss Vivian Simmons, a trio by Alice Pounds, Karen Killingsworth, and Kay Hopper, the address by the guest speaker, and the crowning of the sweethearts.



Two Ranger men returned this week from Austin where they attended the seventeenth annual Junior College Conference sponsored by the University of Texas.

Attending the convention from Ranger were Dr. Price Ashton, president of Ranger College, and Morris Newnham, a member of the board of regents.

The conference was directed by Dr. C. C. Calvert and was held at the Stephen F. Austin Hotel in Austin.

Following the registration on Monday morning, Dr. P. W. Malone, regent of Howard County Junior College, spoke on "Shall we organize a junior college board association?"

This address was followed by a discussion period in which both administrators and regents took an active part.

Four main fields were explored in the junior college conference. They were the college budget, planning and executing a building program, guidance in the junior college, and in-service training programs for the college faculty.

Other outstanding addresses of the conference were made by the following: Dr. Andrew Edington of Schreiner Institute who spoke on "An Educator's Challenge in Higher Education", and Dr. Lawrence L. Jarvie, executive dean for institutions and community colleges, who spoke at the dinner on "Educational Pressures and Junior Colleges".

Mrs. Betty Harkrider of Eastland, mother of two former Eastland men and the grandmother of Mrs. Don Doyle of Eastland, died Tuesday in Carthage after a long illness.

Survivors include five sons, Noble of Rankin, J. E. of Fort Worth and B. C. of Carthage, K. Troy of Carthage and Mike of Marshall; and one daughter, Mrs. Luther McCrea of Cisco. Noble and J. E. formerly lived here.

Coronation ceremonies will be held at the three banquets to crown the king and queen. Glen Harrington of Dallas will be the featured speaker at the First Baptist Church. The program will start at 7 p.m.

The WMU ladies will prepare the meal at the Second Baptist Church. A program has not been announced for the event.

Mr. and Mrs. Raymond Thompson will be in charge at the Eastside Baptist Church banquet. Program plans are incomplete.

Killingworth's Moving and Storage. Serving Ranger Since 1918. Phone 29.



LLOYD L. BRUCE Receives Honor

Ranger Man Gets Honor

A Ranger insurance man received high recognition this week, according to an announcement made by the vice president of the Southland Life Insurance Company.

Lloyd L. Bruce, who has been an agent for the Southland Company in Ranger since 1949, was one of the five leaders in paid business for the company during the month of January.

The announcement was made by Kenneth B. Skinner, CLU, vice president and agency director of Southland Life Insurance Company.

Southland operates in the southwest, east coast, and the northwest parts of the United States.

SURVEY REVEALS TEXANS PAID \$3.5 MILLION TAXES

In 1956 Texans paid a total of \$3.8 billion in taxes, a sum equal to one-fourth of their personal income for that year. Federal taxes amounted to \$2.6 billion, or 68 per cent of the total. State taxes were \$619 million, or 17 per cent; local taxes were \$507 million, or 15 per cent.

These facts are contained in the first research staff report made for the Texas State Tax Study Commission to provide it with facts upon which to base its report to the 1959 Legislature. This Commission was created by the 1957 Legislature to conduct a comprehensive study of the entire state and local tax structure. Other salient facts brought out in the report are:

- 1. The total 1956 tax bill averaged \$420 for each man, woman and child in Texas.
2. State and local taxes in Texas totaled \$1.2 billion in 1956, as compared with \$1.85 billion in 1946 and \$2.53 billion in 1950.
3. In 1946 the average per person was \$28.90 in state taxes and \$24.70 in local taxes. By 1956 the per person average was \$69.30 of state taxes and \$60.20 of local taxes.
4. Property tax collections account for about 90 per cent of Texas local revenues. The state, however, has in recent years shifted

ed toward greater reliance on selective sales taxes (gasoline, cigarettes, alcoholic beverages, motor vehicles, etc.), severance taxes (on oil, gas and sulphur), a 1/2 per cent of state tax revenue comes from property.

Over the past 25 years, the Texas tax structure has changed significantly. In 1932, local governments raised two-thirds of the combined state and local revenues. By 1940, the state, local division was equal. When World War II ended, state government was collecting 64 per cent and local governments 46 per cent. This ratio has continued unchanged.

Senator William S. Fly of Victoria is Chairman of the Tax Study Commission. Representative Frates Seelgron of San Antonio is vice-chairman, John McKee of Dallas is secretary. Other members are Senators Otis Lock, Luffkin and David Ratliff, Stamford; Representatives John A. Huebner, Sr., Bay City, and Richard Slack, Pecos; and Hugo Lovewestern, Amarillo, and John R. Stockton, Austin. Six members of the Texas Research League's professional staff have been made available to form the Commission's own staff.

Superintendents Are Named For Livestock Show

Superintendents have been named for the various divisions at the annual Eastland county livestock show to be held at the Eastland airport, March 28 and 29 according to Bob Presley, Cisco, president of the Livestock Raisers Association, sponsors of the annual show.

C. M. McCain, Eastland rancher was again named as general superintendent. Johnny Aaron, another Eastland rancher and K. E. McDonald, Ranger feed store man, were chosen as McCain's assistants. N. B. Eaves, Carbon, who served as swine superintendent for the 1957 show was voted the annual job agent. David Mastigale, Eastland, was selected to be the assistant swine superintendent.

FIRST SALE TO START AT 12 NOON

Livestock buying and selling will resume Monday in Ranger with the opening of the Ranger Livestock Commission Company.

The finishing touches were being put on the barn this week to ready it for operation Monday.

Bill White of Wichita Falls and his son, Wilford White, of Mountain Creek, Oklahoma, will operate the auction each Monday. The two men presently operate barns in Nacona and Stamford.

Wilson Guest, president of the chamber of commerce, has been negotiating for the re-opening of the auction barn since it closed October, 1957. Its re-opening will be a large economic boost for Ranger, he noted.

Sales will begin each Monday at 12 noon, the elder White said. He indicated that the turnout is expected to be large for the first sale providing that the weather proves suitable.

He said several ranchers in this area have contacted him and told him they would bring their livestock to the barn Monday.

The barn is located on U. S. Highway 80 east. All types of livestock will be sold at the barn including cattle, hogs, sheep, horses, and goats.

The re-opening of the barn is part of the over-all program of the chamber of commerce for the coming year. The trade extension committee of the chamber recently voted to hold a Dollar Day with the co-operation of local merchants on the first Monday of each month.

This Dollar Day will start March 3. This event, coupled with the auction barn sale each Monday, is expected to bring a large number of people into Ranger.

Insurance At A Savings Fire - Casualty - Automobile M. L. KING INSURANCE AGENCY Phone 75 608 Main St.

See The RCA WHIRLPOOL APPLIANCES AT RANGER FROZEN FOOD CENTER

FREE HOME TRIAL on RCA Whirlpool Appliances RANGER FROZEN FOOD CENTERS

The Ranger Times

"SEEKING COMMUNITY BETTERMENT SINCE 1917"
 1211 N. STREET—RANGER, TEXAS ESTABLISHED JUNE 1, 1917
 Entered as second class matter at the postoffice at Ranger, Texas under the act of Congress of March 3, 1879
 TIMES PUBLISHING COMPANY
 Published Tri-Weekly—Tuesdays - Thursdays - Sundays
 JOE DENNIS and ONOUS DICK, Publishers
 RAY SWINDELL, Editor

One week by carrier in city . . . 15
 One month by carrier in city . . . 45
 One year by mail in county . . . 3.50
 One year by mail in state . . . 4.95
 One year by mail out of state . . . 6.95

NOTICE TO PUBLIC—Any erroneous reflection upon the character, standing or reputation of any person, firm or corporation which may appear in the columns of this newspaper will be gladly corrected upon being brought to the attention of the publishers.

CLASSIFIED

All Classified Ads Must Be Paid For In Advance.

MISC. FOR SALE

RUBBER STAMPS—Fast service, reasonable prices, no order too large or too small to get our special attention. Ranger Times.

FOR SALE: Our 10th anniversary sale continues on everything in our big nursery stock. 20 to 50% discounts on roses, paper shell pecans, fruit trees, evergreens, shrubs, grape vines, berry plants, everything in the nursery line. Special prices on small trees for commercial planting. **TENNYSON NURSERY**, 1003 West 16th Street, Cisco, Texas.

FOR SALE: 1950 Champion Studebaker car and cook stove. Call 239-M.

FOR SALE: 5 room modern house. Phone 945 or 419 after 5:30.

REAL ESTATE For Sale

FOR SALE or Trade for farm. Five room house, 3 1/2 miles West Highway 101. Double garage, barn and out building.

FOR SALE: Nice home at 900 Snelair Ave. Corner lot, paved streets, 2 bedrooms with plenty of closet space, Panelray heating throughout, hardwood floors, lifetime redwood fence around back yard. Bill Anderson, Phone 14 or 398.

TWO bedroom home, \$30.00 month, 700 South Austin. Phone 608-J.

FOR RENT FOR RENT

NOW—completely reconditioned 3 and 4 room furnished and unfurnished apartments. Low rent, utilities included. Also transient rooms in the heart of Ranger. **GHOLSON HOTEL**, Phone 9506

HELP WANTED

WANTED: Waitress. Apply in person. Jody's Coffee Shop.

COLD SUFFERERS

Get **STANBACK**, tablets or powders, for relief of **COLD DISCOMFORTS**. The **STANBACK** prescription type formula is a combination of pain relieving ingredients that work together for **FASTER RELIEF OF HEADACHE, NEURALGIA AND ACHING MUSCLES** due to colds. **STANBACK** also **REDUCES FEVER, SNAPS BACK** with **STANBACK**.

E. E. COCKERELL, M. D.

Rectal, Skin and Colon Specialists
 Office Phone 2-0027 118 Victoria Street
 Res. Phone 4-4938 Abilene, Texas

PILES TREATED WITHOUT SURGERY
 Fissure Fistula and Other Rectal Diseases
 Successfully Treated . . .

RANGER, TEXAS — GHOLSON HOTEL
SATURDAY, JANUARY 16
 From 1 P. M. to 6 P. M.



SHE'LL TELL YOU

that accidents can be mighty expensive as well as painful. Accident Insurance now hospital and surgical bills and protects income. The cost for this important protection is small.

C. E. MAY

INSURANCE - REAL ESTATE

'Uncle Fate' Fox Is Honored with Birthday Dinner

J. L. (Uncle Fate) Fox, Eastland pioneer, was honored with a surprise birthday dinner, celebrating his 89th birthday at his home in Ranger Sunday.

Uncle Fate was born in Hill County in 1869 and moved to Eastland with his parents and nine brothers and sisters at the age of six. He attended the first school in Eastland County located near Old Providence crossing on the Leon River. The school, a log cabin with split log table and benches, was built by the people of the community. The first teacher was Clark Chandler hired by the people to teach school three months out of the year only.

At the age of eight Uncle Fate moved to Hamilton County with his family. They traveled on horse back and in the covered wagons and he walked, driving the livestock.

In 1894 he returned to Eastland and three years later married Miss Roxie Ann Gullett.

In 1912 "Uncle Fate and "Aunt Roxie" as they are fondly known by family and friends bought land on the Leon River where they lived and reared three sons and two daughters until the family home was destroyed by fire in 1950.

The children, Woodrow Fox of Grand Prairie, Lloyd Fox of Clyde, Adea L. Fox of Olden, Mrs. Hazel

Reese of Fort Worth, and Mrs. Ruley Hughes of Ranger were all present at the surprise dinner. There are also 16 grandchildren and four great-grandchildren.

RETURNS FROM DALLAS

Mrs. Izetta Smith returned Wednesday from a visit in Dallas and Denton. She attended an all state beauty show in Dallas Sunday and Monday.

She visited her son and family, Mr. and Mrs. R. C. Smith of Denton, Monday night and Tuesday.

TRADE WITH YOUR HOMETOWN MERCHANTS

Political Announcements

The Ranger Times has been authorized to publish the following announcements of candidates for public offices, subject to the Democratic primaries in July, as follows:

State Representative
PAUL BRASHEAR

County Judge
JOHN S. HART (Re-election)

CLYDE L. GARRETT
 County Clerk

JOHNSON SMITH
 (Re-Election)
 County School Superintendent

H. R. (Pop) GARRETT
 (Re-Election)

District Clerk
ROY E. LANE (Re-Election)

TENNYSON'S TENTH ANNIVERSARY NURSERY STOCK SALE!



20 to 50 per cent off on every item in our big stock of Roses, Shrubs, Evergreens, Fruit and Shade Trees, Berries, and so forth. We have the most complete stock of Nursery Goods to be found in this section! You can get what you need at big savings during this Sale!

TENNYSON NURSERY

1003 W. 16th Cisco, Texas

NOTICE

CHIROPRACTIC SERVICE
 Open Mon. - Wed. - and Friday.
 Dr. E. R. Green
 455 Pine Street, Ranger

I Can Save You From 20 to 40% on **GOOD PAINT and BEAUTIFUL WALL PAPER.**
 Jack Williams, Hwy. 80 East

MATRESSES
 By Western Mattress Company. Renovated, 50 per cent savings, leave address at Robinson Furniture Co. Phone 232. FREE Pickup and delivery.

RADIO AND T. V. Service. Antenna repair. Call 1049.

MASONIC NOTICE
 Call meeting Ranger Masonic Lodge No. 738, A. F. & A. M., 7:30 p. m., Thursday.

February 14. All members urged to attend. Visitors welcome. A Masters Degree will be conferred. E. E. Ford, W. M. Robert Bailey, Sec.

JOHNSON MOTORS ALL TYPE BOATS

Factory Trained Motor Mechanic

SPORT CENTER

Eastland Phone 525

CARPET YOUR ENTIRE HOME

NO DOWN PAYMENT

36 MONTHS TO PAY

Ranger Furniture Exchange
 123 N. Rusk - Phone 242



Cutest child on the street lives at your house

All your pride in her shows in a good portrait. It tells the world why she's the greatest on earth! Let us make that priceless portrait for you now. Come in or phone for an appointment.

Capps Studio

104 N. Rusk RANGER

WARDS

SEA KING

BOAT and MOTOR SALE



\$5.00 DOWN
 Holds any Boat, Motor or Trailer 'til May 15th . . . at these sale prices

SEA KING GIVES YOU MORE HP PER DOLLAR THAN ANY OTHER OUTBOARD MOTOR!



FREE BOOKLETS on boats, motors, and trailers. Illustrated.

SEA KING DELUXE 5—SAVE \$21
 FULL 1 1/2 TO 12 M.P.H. SPEEDS

REG. \$191 **\$168** \$19 DOWN \$12 A MONTH

Combines zip of high speed with quiet trolling smoothness. Shift from neutral to forward or reverse for complete maneuvering control. Automatic rewind starter.

12 HP DELUXE reg. \$317 **\$299**
 Smooth acceleration. Speeds 2 to 22 m.p.h.
BIG! DELUXE 25 reg. \$419 **\$372**
 Surging power with speeds 2 to 30 m.p.h.
NEW! DELUXE 35 **\$585**
 The biggest and most powerful. 1 1/2 to 33 m.p.h.

USE WARDS TIME PAYMENT PLAN!
 Buy now, pay later. 10% down on easy terms.

SEA KING MEANS TOP QUALITY AT LOW WARD PRICES

Sea King, a Ward exclusive...made to fit your needs



sale \$178

boat only

12-FT. ALUMINUM AUTOTOP BOAT

Lightweight—easy to transport. Only at Wards can you find a boat so well made, priced so low! It's speedy and maneuverable — semi-V bottom. Styrofoam flotation for extra safety. Non-slip floor walk. 3 wood seats.

See Wards 1958 Line of Sea King Outboard Motors!

Sea King, a Ward exclusive...made to fit your needs



sale \$218

boat only

14-FT. "OPEN" COCKPIT RUNABOUT

A real sporty, lightweight aluminum runabout with 54-inch beam. Styrofoam flotation for extra safety, 3 seats, non-skid floor. It's built for heavy duty on rough water . . . ideal for lake-to-lake fishing or sports.

Come in and see our all new SKI BOATS— Some aluminum with fibre glass deck — some with all fibre glass — PRICED TO SELL!
5.00 DOWN HOLDS ANY BOAT, MOTOR, OR TRAILER AT PRE-SEASON SALE PRICES!

WORTH FOOD MART



Worth Quality Calf Sale!

The Very Finest Quality Calf at WORTH'S LOW PRICES
Get FREE SAVINGS with Famous *J.N.* GREEN STAMPS

ROUND STEAK Worth Quality Calf Lb. **89¢**

SIRLOIN STEAK Worth Quality Calf Lb. **89¢**

CALF RIB CHOPS Worth Quality Calf Lb. **79¢**

CHUCK ROAST Worth Quality Calf Blade Cut Lb. **53¢**

SHOULDER ARM Worth Quality Calf Roast Lb. **63¢**

Premium Bacon SWIFT'S SLICED Lb. Pkg. **69¢**

FRESH BOSTON BUTT

PORK ROAST Lb. **49¢**

KRAFT DELUXE—AMERICAN, PIMIENTO, SWISS

Cheese Slices 8-Oz. Pkg. **35¢**

KRAFT'S NATURAL CHEDDAR CHEESE—MELLOW

Cracker Barrel 8-Oz. Pkg. **39¢**

JELLO

ASSORTED FLAVORS (Limit 6)

Pkg. **5¢**

COOKING MAGIC

Second Book

The French Cook Book

Now On Sale
New Book Each Week

PER COPY **29¢**



Preserves

GARDEN CLUM STRAWBERRY

4 18-Oz. Jars **\$1.00**

PIE APPLES

COMSTOCK SLICED

2 No. 2 Cans **35¢**

PINTO BEANS

CHEF'S PRIDE

4 -Lb. Cello **39¢**

KRAFT SALAD OIL

Fine For Frying

Quart Botl. **59¢**

Worth Mart Eggs

Large Grade A

Doz. **49¢**

FROZEN DINNERS

Banquet - Beef, Chicken, Turkey

12-Oz. Pkg. **49¢**

Libby's Frozen Juice Jubilee

Orange Juice LIBBY'S **2** 6-Oz. Cans **39¢**

Orange Drink LIBBY'S NEW **4** 6-Oz. Cans **49¢**

LIBBY'S GRAPE JUICE **3** 6-Oz. Cans **49¢**

GRAPEFRUIT JUICE
TANGERINE JUICE
ORANGE-GRAPEFRUIT YOUR CHOICE **5** 6-Oz. Cans **89¢**

COOK BOOK **ORANGE CHIFFON CAKE**

Reg. 59c **39¢**

Freshest Produce in Town!

Delicious Apples WASHINGTON RED EXTRA FANCY Lb. **19¢**

GRAPEFRUIT LARGE TEXAS RED BLUSH Lb. **10¢**

Oranges SUNKIST CALIFORNIA NAVEL Lb. **19¢** **Carrots** CRISP, TENDER 2 1-Lb. Pkgs. **25¢**

Celery CRISP, TENDER PASCAL Lb. **14¢** **Potatoes** WASHED RED McCLURE **7¢**

Ranger Garden Club Sponsors Games Tourney February 11

The Games Tournament sponsored by The Ranger Garden Club Tuesday, Feb. 11, at the Community Club House was a very successful affair. Over one hundred tickets were sold, and a large crowd attended.

After a dessert course consisting of cherry tarts and coffee was served, bridge and forty-two were enjoyed. High prizes were plants donated by the florists of Ranger: Betty's Flower Shop, Mathena's Flower Shop, and ABC Floral and Garden Shop. Mrs. Virgil Elliott made high score in bridge; Mrs. Joe Weekes, in forty-two; and Mrs. R. A. Jamason, in bingo. Prizes for second high score, garden calendars, were

awarded to Mrs. W. F. Creager in bridge and Mrs. O. G. Lanier in forty-two. The door prize, a box of caladium bulbs, went to Mrs. Joe Weekes.

Two cakes donated by Mrs. W. J. Van Bibber and Mrs. J. T. Robinson were sold to add to the fund being raised by the Garden Club to buy draperies for the club room.

The civic and budget committees have announced that a second games benefit tournament will be held on Friday evening, February 21, for men and women. The tickets will go on sale this week, will be seventy-five cents each. The affair will be at 7:30 in the Community Club House.

The Ranger Garden Club mem-

bers wish to express appreciation for the gratifying response made by the women of the community in supporting this, their first fund-raising project, and invite the cooperation of the community in making the tournament on the twenty-first a success.

WSCS Officers Are Elected at Meeting Monday

The WSCS of the First Methodist Church met at the church Monday, February 10, for the election of new officers.

Mrs. A. J. Ratliff, president, presided over the business meeting. The opening prayer was led by Mrs. E. H. Peacock. Mrs. Gaston Dixon presented the devotionals on "Silent Meditations." The scripture reading was taken from Psalms 46:10. All officers and circle leaders made reports.

Officers were elected as follows: president, Mrs. A. J. Ratliff; vice-president, Mrs. A. W. Brazda; secretary and reporter, Mrs. Beverly Dudley, Jr.; treasurer, Mrs. W. F. Creager; secretary of missionary education, Mrs. Stanley McAnelly; secretary of Christian Social relations work, Mrs. J. E. Matthews.

Secretary of student work, Mrs. James Ratliff; secretary of youth work, Mrs. Frances Graham; secretary of children's work, Mrs. C. E. May, Jr.; secretary of spiritual life work, Mrs. James Ellison; secretary of supplies, Mrs. J. A. Bates.

Secretary of literature and publications, Mrs. F. S. Fearsall; secretary of promotion work, Mrs. Archie Robinson; and status of women, Mrs. Arthur Deffebach.

Circle leaders are Mmes. J. A. Johnson, W. A. Robinson, Gaston Dixon, and James Townsen. Mrs. Ratliff led the closing prayer.

SPRUCE UP ACCESSORIES FOR:

LOW-COST LUXURY



(Courtesy of Kimberly-Clark Corporation)

Give your home a "luxury" look this year. It's easy and fun with the distinctive new patterns now available in materials for re-covering old lamps, baskets and other accessories. Illustrated is a new high-style pattern in the Marvulon family of decorative coverings. It's called Galaxy and features a gold foil design. The material is washable and you can get it with an adhesive backing which is simple to apply. The new pattern also is obtainable in shelf and drawer linings and an extra wide width. Background colors available are black, turquoise, pink, yellow and white.



REV. ED SCARBROUGH
Heads Group Training School

Group Training School to Begin At First Baptist

A Sunday school Group Training School will be held in the First Baptist Church beginning February 17 and continuing through February 21 from 7 to 9 o'clock p.m.

Principal of the school is Rev. Ed Scarbrough, pastor of the Second Baptist Church.

Teachers of the adult department are as follows: "The Faith We Share," Rev. Scarbrough; "The Way Made Plain," Rev. Ralph Perkins; and "Jesus the Teacher," Jesse Sutton.

Other teachers are: Intermediates, Frank Brooks; Juniors, Mrs. Frank Brooks; Primary, Mrs. K. C. Edmonds; Beginner Nursery, Mrs. L. C. Stephens; Primary workers, Mrs. Ralph Perkins; and Beginner workers, Mrs. Jesse Sutton.

Each night there will be two 45-minute teaching periods, followed by a 30-minute evangelistic emphasis period.

Speakers for the 30-minute period are as follows: Monday, Frank Brooks, "Evangelism"; Tuesday, Rev. Perkins, "Demonstration of Evangelism"; Wednesday, Rev. Edmonds, "Evangelism"; Thursday, Rev. Scarbrough, "Sunday School and Evangelism"; and Friday, Jesse Sutton will show a film on soul winning.

Hospital News

New patients in the Ranger General Hospital are: Mrs. H. G. Weatherly, Eastland, medical; N.

L. Moore, Ranger, surgical; Mrs. Tom Laselle, Odessa, medical; Jim Lovelle, Eastland, medical; Claude Kline, Eastland, medical; Mrs. Carl Martinez, Ranger, medical; and Mrs. Betty Stevens and baby girl, Ranger.

COY'S PLUMBING COMPANY

For Your Plumbing Repairs
Call 225-W . . . Day or Night

COY NICHOLS — EASTLAND HILL
We Will Appreciate Your Patronage

PENNEY'S

WHY SPEND MORE?
SHOP PENNEY'S

CURTAIN, DRAPERY SHOW!



SAVE!
PREMIUM BUY!

SAVE! ON NO-IRON FIBERGLAS DRAW DRAPES

Why spend more for beautifully tailored, full width drapes . . . in heavy textured fabric with subtle lustre threads? Just wash, never iron, rehang in 7 minutes.

5.99

52-In. wide
90-In. long

Viscose Rayon Slim Jim Scatter Rug

24 x 72" Size
Rubberized Jute Back—
Skid Resistant

100

Mens Sanforized Blue Chambray Work Shirts

Sizes 14½-17
Full Cut - Long Tails
Double Shoulder Yoke

288

Cotton Flannel Shirts Reduced

166

Mens Army Twill Shirts

2 Flap Pockets
Khaki Colors

175

NEW PHILCO 21" HTV CONSOLE



Record Low Price!
\$249.95 FULL PRICE.

\$24.95 Down
11.06 Month
2 Yrs. to Pay

L & J SUPPLY COMPANY

403 Main RANGER Phone 202

SINCE 1884

It has been our privilege to render a service to this community as monument builders.

ALEX RAWLINS & SONS
Weatherford Phone 4-2726 Texas

Hearts Beat Faster With

PANGBURN'S
Western Style CHOCOLATES

BE MY VALENTINE means MORE when you say it with a box of Pangburn's Milk and Honey Chocolates in beautiful heart packages . . . an inspired creation whose beauty and taste match the sentiment of the day.

SELECT FROM OUR BETTER CANDY DEPARTMENT

LILLEY REXALL DRUG

TRADE WITH YOUR HOMETOWN MERCHANTS

Members of the Ranger Rebekah Lodge No. 244 met at the Odd Fellows Hall Tuesday afternoon.

Plans were made to have a chili supper at the hall Tuesday evening, February 18, at 6:30 p.m. for members and their friends. At 7:30 a business session will be held upstairs.

After the business meeting, games of Forty-Two and Dominos will be played.

Mrs. Bonnie Rodgers was hostess to the Merriman Baptist Bible study group Tuesday afternoon at 1:45. The devotionals, taken from the 30th chapter of Exodus, was presented by Mrs. A. E. Dawson.

Refreshments of cookies and coffee were served to Mmes. W. S. Vinson, Jack Walker, G. D. Falls, C. J. Cole, A. E. Dawson, Ruby Ainsworth, P. T. Falls, J. W. Vinson, and the hostess, Mrs. Rodgers.

Mrs. Rodgers is Hostess to Bible Study Tuesday

Mrs. Rodgers is Hostess to Bible Study Tuesday

Mrs. Rodgers is Hostess to Bible Study Tuesday

TRADE WITH YOUR HOMETOWN MERCHANTS

HOME MAKERS Views and News

Home Edition
Sun. Nov. 4th
Baby Feature
Sat. Nov. 1st, 8th, 15th, 22nd, 29th

Any weight watchers in your family? If so, you, the cook, can be a big help by planning and preparing foods to cut calories.

Here are some suggestions:

Use non-fat, dry milk solids for cooking. Reconstituted dry milk solids heated and combined with vegetable liquors are good in soups.

Keep desserts simple—Serve fresh fruits or canned and frozen fruits packed in water or juice—not syrup.

Roast or oven or pan broil meats, poultry and fish instead of frying in fat. Avoid "breading" and use of egg batters on foods. Trim extra fat from meat.

Serve salad materials plain—or use low-calorie seasonings or salad dressings. These can be made with tomato, juice, herbs and lemon juice or vinegar.

Prepare food without added fat, sugar or flour whenever possible. Tempt appetites with herbs and spices instead of rich seasonings, sauces and gravies.

Serve low-calorie items for nibbling or appetizers. Try celery, cabbage wedges, carrot sticks, or other low-calorie vegetables or fruits.

Avoid high fat foods such as cream, butter, gravies, sauces, nuts, potato chips, oil, pastries, rich salad dressing; sweet foods, such as cakes and cookies; rich puddings, candies, fountain drinks and sundaes, carbonated drinks and alcoholic beverages; and starchy foods, such as macaroni, dry peas and beans.

Try new tricks with apples and make them real treats. Leave the bright red peel on apples, cut into wedges and use to decorate a meat dish. The color adds appeal and primes the appetite. The tartness and crispness of the raw apple bring out the flavor of the meat.

A good eye-opener for breakfast features diced raw apples covered with chilled apple juice. This is tasty eaten as a side dish with bacon, ham or pork chops. You can vary this recipe by using pineapple or grapefruit juice.

Apples make an ideal extender for leftover ham, roast turkey or roast chicken. Dice the apples and meat in bite sizes and bind together with mayonnaise, adding celery, nuts and other ingredients as you like. For an appealing sandwich tray, core apples and slice crosswise into circles. Spread with bacon crumbs, cottage cheese, deviled ham or cold cuts. Be adventurous and inventive when you use apples. They combine well with almost any food.

Women's Activities

March 13
The Cisco District Conference will convene at the First Methodist Church in Cisco March 13 at 10:00 a.m. All those attending are asked to bring a sack lunch.

February 13
The Ranger Garden Club will meet Thursday, Feb. 13. Mrs. W. A. Lewis will present the program, "Roses and Their Culture."

February 13
The Iho Pi Chapter of Beta Sigma Phi will meet in the Community Club House February 13. Mrs. Mary Covington will be hostess.

February 17
The Royal Neighbors of America will meet Monday, Feb. 17. All members are urged to be present, to ballot on a new member.

Mr. and Mrs. Bob Duke of Burbank, California, announce the birth of a baby daughter. They have one other child, Sandra Kay, age 14.

Grandparents are Mr. and Mrs. W. E. Herweck of Ranger and Mr. and Mrs. Claude Duke of Dallas.

RETURNS FROM JACKSBORO
Mrs. L. D. Tankersley returned Tuesday from a visit with Mr. and Mrs. S. B. Paschall and family in Jacksboro.

Mr. and Mrs. Roy McCleskey and Bob and Mrs. M. G. Mixon spent the weekend in Dallas visiting Mr. and Mrs. Glenn McCleskey and their new granddaughter.

New Arrivals

Mr. and Mrs. Bob Duke of Burbank, California, announce the birth of a baby daughter. They have one other child, Sandra Kay, age 14.

Grandparents are Mr. and Mrs. W. E. Herweck of Ranger and Mr. and Mrs. Claude Duke of Dallas.

RETURNS FROM JACKSBORO
Mrs. L. D. Tankersley returned Tuesday from a visit with Mr. and Mrs. S. B. Paschall and family in Jacksboro.

Mr. and Mrs. Roy McCleskey and Bob and Mrs. M. G. Mixon spent the weekend in Dallas visiting Mr. and Mrs. Glenn McCleskey and their new granddaughter.

W. R. (Bill) Bollinger
CISCO STEAM LAUNDRY
Announces
FREE
Daily Pick-up and Delivery
Service In Ranger
Ranger Phone 1048

HIGH FIDELITY by PHILCO

PHILCO 1908

The Incomparable Phonorama IV

NEW PHILCO 21" HTV CONSOLE

Record Low Price!
\$249.95 FULL PRICE.

\$24.95 Down
11.06 Month
2 Yrs. to Pay

L & J SUPPLY COMPANY
403 Main RANGER Phone 202

Choose a gas CLOTHES DRYER because you can dry clothes 7 YEARS with GAS for what it costs to dry them 1 YEAR with ELECTRICITY so why pay more when you can do better for less with GAS?

Be sure and see the new UNIVERSAL AUTOMATIC GAS CLOTHES DRYER

Special low sale price EASY TERMS 169.95 as low as 5.54 monthly

LONE STAR GAS COMPANY



SAFeway's STAR STUDDED FESTIVAL of FAMOUS FOODS!

Libby Fruit COCKTAIL
Five Fruit Flavor
3 2 1/2 Cans **\$1.00**

Welch Grape JELLY
or Grapelede
2 10-Oz. Jars **39¢**

Del Monte PINEAPPLE AND GRAPEFRUIT JUICE
46-Oz. Can **37¢**

Del Monte PRUNE JUICE
32-Oz. Bot. **37¢**

BUY NOW

SAVE

Green Giant PEAS
Extra Tender
2 303 Cans **35¢**

Del Monte Orange Juice
Unsweetened
46-Oz. Can **27¢**

PORK & BEANS
Campbell's
2 300 Cans **25¢**

PARTY PRIDE ICE CREAM
Assorted Flavors
1/2-Gal. Ctn. **69¢**

SPAM
A Hormel Product
12-Oz. Can **39¢**

STOCK UP

TODAY

Join Safeway's SAVE-A-TAPE PLAN Today!

In Eastland

Check These Buys!

- Shady Lane Butter Creamy Smooth 1-Lb. Pkg. **69¢**
- Sliced Peaches Del Monte or Halves 2 1/2 Cans **29¢**
- Del Monte Pears Ideal for Salads 303 Can **31¢**
- Crushed Pineapple Del Monte No. 1 16¢
- Lima Beans Del Monte Early Garden 303 Can **27¢**
- Del Monte Corn Cream Style Golden 2 303 Cans **29¢**
- Whole Tomatoes Del Monte 303 Can **25¢**

Safeway Good Buys!

- Airway Coffee Rich Flavored 1-Lb. Pkg. **75¢**
- Instant Coffee Safeway 2-Oz. Jar **45¢**
- Skylark Bread Butter and Egg 16-Oz. Loaf **19¢**
- Slenderway Bread Skylark 16-Oz. Loaf **24¢**
- Half and Half Lucerne Pt. Ctn. **28¢**
- Cake Mixes Betty Crocker Assorted Flavors 20-Oz. Box **33¢**

Roxbury Candies

- Sugar Hearts Valentine Special 4-Oz. Pkg. **29¢**
- Assorted Chocolates Dorothy Dunce 1-Lb. Box **89¢**
- Assorted Chocolates 2 1/2-Lb. Box **\$1.69**

Lipton Soup Mixes!

- Chicken Noodle 3 2 1/2-Oz. Pkg. **42¢**
- Tomato-Vegetable 3 2 1/2-Oz. Pkg. **42¢**
- Beef-Vegetable 1 1/2-Oz. Pkg. **19¢**
- Onion Soup 1 1/2-Oz. Pkg. **17¢**
- Green Pea 2 4-Oz. Pkg. **29¢**

Libby Cut Green Beans
Fresh Garden Flavor
2 303 Cans **29¢**

Libby Vienna Sausage
Lunch Box Favorite
2 No. 1/2 Cans **35¢**

Alka Seltzer Regular 55¢

Garden Hose 50"-3-Year Guarantee, Lightweight, Durable, 100% Vinyl Plastic, 3/4" Coupling, Green Only. \$2.79 Value Now Only **\$1.88**

Instant Coffee Airway New Arrival at Safeway 2-Oz. Jar **39¢**

Cloverleaf Rolls Skylark 6&6 Brown & Serve Regular 23¢ 12-Oz. Pkg. **19¢**

Breakfast Gems Eggs Grade A Quality Large Size Doz. **53¢**

OUR OWN BRANDS MEAN QUALITY FOODS AT EXTRA SAVINGS
Along with other quality foods we offer you a wide selection of products that are Safeway's own brands... products that we highly recommend. You can't beat them for value!

Week-End Special Buys!

- Pitted Cherries Town House Red Sour 303 Can **22¢**
- Post Toasties Family Favorite 18-Oz. Box **33¢**
- Pillsbury Best Flour 10 lb. Bag **99¢**
- Scotties Tissues White, Pink or Yellow Facial 400-Oz. Box **29¢**

Safeway's Your Best Place to Buy Meats!

Fancy Turkeys

HENS 10 to 16 Pound Average Lb. **45¢**

TOMS 16 to 24 Pound Average Lb. **35¢**

Capitol Sliced Bacon Fries So Evenly 1-Lb. Cello **49¢**

Somerset All Meat Franks Lb. **49¢**

Somerset Brick Chili Lb. **49¢**

Boston Butt Pork Roast Lb. **49¢**

Niblets Mexicorn Special Treat 2 12-Oz. Cans **37¢**

Starkist Tuna Chunk Style No. 1/2 Can **33¢**

Niblets Corn Extra Tender 2 12-Oz. Cans **35¢**

Cheez-It Crackers Sunshine 4 1/2-Oz. Pkg. **19¢**

Swift Prem Ideal for Sandwiches 12-Oz. Can **45¢**

Gladiola Biscuits Sweetmilk or Buttermilk 2 3-Oz. Cans **23¢**

Pet Ritz Pies Frozen Cherry 24-Oz. Pkg. **63¢**

Bisquick Baking Mix 40-Oz. Box **45¢**

Safeway's Your Best Place to Buy Produce!

Delicious Large Calavos Large Size - Perfect for a Tempting Salad 2 for **25¢**

Juicy Texas Oranges Sweet and Delicious Loaded with Juice 5 Lb. Bag **29¢**

Tangy Winesap Apples Washington State - Gleaming Red and Full of Flavor Tang 1 Lb. **13¢**

Flavorful Anjou Pears Sweet and Firm at Just Right Flavor 1 Lb. **13¢**

Hot House Rhubarb Fresh from Washington State Adds Variety to Your Menus 1 Lb. **23¢**

Fresh Green Onions Ready For Your Favorite Salad 2 Bunches **15¢**

Kraft Mayonnaise Smooth 16-Oz. Jar **47¢**

Milk Amplifier Bounce 12-Oz. Jar **39¢**

Kraft Salad Oil Pairs up Salads 16-Oz. Bot. **69¢**

Lux Liquid Detergent 12-Oz. Can **39¢**

Kraft Cheez Whiz Creamy Smooth 16-Oz. Pkg. **55¢**

Wax Paper Kitchen Charm 100' Roll **20¢**

Sliced Cheese Kraft American, Pimento or Swiss 1/2-Lb. Pkg. **35¢**

Dash Dog Food Rich in Vitamins 2 1-Lb. Cans **31¢**

Karo Syrup Red Label 1 1/2-Lb. Bottle **25¢**

Rinso Detergent Blue Giant Pkg. **75¢**

Instant Coffee Chase and Sanborn 20¢ off Label 4-Oz. Jar **\$1.03**

Breeze Detergent For a Whiter Wash Large Pkg. **33¢**

Lux Toilet Soap Blue, Green, Pink or Yellow Reg. Bar **10¢**

Modess Napkins Regular or Super 12-Oz. Box **35¢**

Prices effective Thursday, Friday and Saturday, February 13-14-15
No Sales to Dealers.



SAFeway



we always bend over backwards to serve you

- Children Under 14 Free!
- 800 Car Garage
- And Air-Conditioned

Extraordinary service need not be requested, At the Worth . . . it's to be expected!

Jack Farrell, Manager

worth hotel FORT WORTH, TEXAS

COURTHOUSE NEWS AND RECORDS

Real Estate Transfers, Marriages, Suits Filed Court Judgments, Orders, Etc.

INSTRUMENTS FILED

County Clerk's Office
 Lynn W. Adams to J. D. Barker, warranty deed.
 B. C. Adams to Ray A. Adams, warranty deed.
 Dominant Anderson to David F. Hauer, assignment.
 William J. Anderson to Stephen Sav. & Loan Assn., deed of trust.
 H. Brady Bailey to Ralph F. Hamilton, oil and gas lease.
 E. F. Branton to Ralph F. Hamilton, oil and gas lease.
 J. A. Beed to Ralph F. Hamilton, oil and gas lease.
 C. W. Blacklock to Ralph F. Hamilton, oil and gas lease.
 W. F. Butler to Mrs. Ida Joyce, deed of trust.
 Zan Burrough to W. J. Foxworth, deed of trust.
 Vern W. Bailey to A & W Tank Company, ML affd.
 James M. Brown to Jack S. Brown, deed.
 Rosie Boon to G. H. Turner, warranty deed.
 E. L. Burkhead to Ward Cox, oil and gas lease.
 G. O. Cate to Ralph F. Hamilton, oil and gas lease.
 Willie Bell Clark to Ralph F. Hamilton, oil and gas lease.
 Travis Crutchfield to S & N Supply Co., deed of trust.
 Thomas Ray Coleman to J. A. Putnam, warranty deed.
 A. W. Cartledge to First Federal S&L Assn., transfer of MML.
 C. B. Crutchfield to S. A. Olive,

warranty deed.
 Elwin Jack Chambliss to Carlos J. Turner, assignment of contract.
 George V. Cooke to R. Fred Booth, assignment of oil and gas lease.
 George V. Cooke to Earl H. Doan, assignment of oil and gas lease.
 Caraston Oil Company to McCullough Tool company, ML affd.
 Mary M. Cunningham to The Public, ce probate.
 Helen R. Crawford to C. H. Stephens, warranty deed.
 S. R. Cochran to F. M. Davis, release of vendor's lien.
 F. L. Caudle to First National Bank, Gorman, warranty deed.
 Little Mae Chambliss to E. R. Fenley, warranty deed.
 Commercial State Bank, to Stephenville Sav. & Loan Assn., assignment.
 Elliott & Waldron Abstract Co., Inc to E. H. Mills, transfer of judgment.
 First National Bank, Gorman to Thursday Lee Jay, Jr., transfer of vendor's lien.
 Werette L. Foster to Mina Robinson, warranty deed.
 C. D. Fonville to Victoria H. May, warranty deed.
 First City National Bank, Houston to Ada Oil Company, partial release of deed of trust.
 R. E. Grantam to Ralph F. Hamilton, oil and gas lease.
 Mrs. W. C. Gorman to Ralph F. Hamilton, oil and gas lease.
 W. A. Garrett to John W. Spier, warranty deed.
 Callie Jo Hill to Ralph F. Hamilton, oil and gas lease.
 Herman Harrison to Hall Walker, release of judgment.
 E. W. Harris to F. T. Caudle, release of deed of trust.
 Higginbotham Bros. & Co. to M. R. Henry, release.
 J. O. Jolly to First Federal S&L Assn., deed of trust.
 William F. Kelly to Earl H. Doan, assignment of oil and gas lease.
 H. P. Kitchens to John Comgys, release of vendor's lien.
 Lower Lease Company to Oil Company, assignment.
 M. L. Lawson to Calvin Brown, assignment.
 Elizabeth McCracken to Ralph F. Hamilton, oil and gas lease.
 Rebecca White Morris to Ralph F. Hamilton, oil and gas lease.
 Dan O. Martin to Horace E. Hyton, lease.
 C. W. Marsh to E. N. Marsh, warranty deed.
 E. H. Mills to Hall Walker, release of judgment.
 Viola McClane to Ralph F. Hamilton, oil and gas lease.
 Luther T. McClang to Postal

DO-IT-YOURSELF ROOM IN DENIM



Mother and son keep busy on household projects in hobby room decorated with practical cotton denim. Studio couch cover, pillows and table curtains are made from Advance patterns in blue denim trimmed with gold. Mother and son wear denim too.

H. C. Adams, Longtime T&P Employee Retires

Jan. 15.
 ATTEND THE CHURCH OF YOUR CHOICE EACH SUNDAY

STORE LAST YEAR'S RECORDS
 Easily and Conveniently
 USE THE BIG BEN OR THE GIANT CAP EASY CLASP STORAGE FILES
 Ranger Times Office Supplies

H. C. Adams, a longtime employee of the Texas and Pacific Railway Co., retired this month and plans to continue to make his home in Olden.

Adams first moved to Eastland County in 1925. It was on July 1 when he first arrived in Olden to serve as station agent, having been transferred from the T&P's Eastern Division. Since that time he has lived in Olden continuously, with the exception of two years when he transferred to Roseme as joint agent for the T&P and R&P railroads. From there he returned to the county to Eastland as agent. For the past 10 years he worked at Ciso and Ranger, continuing to live at Olden.

His retirement was effective

A GOOD BUY! PRACTICALLY NEW 2-BEDROOM HOME

907 Cypress, Hardwood Floors, Automatic Heat. No down payment. 4% Note. \$6900.00. \$65.00 month.

PEACOCK REALTY - Phone 608-J

HAMILT O FRUIT MARKET

Hwy. 80 West - Ranger Friday & Saturday Specials

- RUSSET POTATOES 10-lbs. 39c
- ROME BEAUTY APPLES lb. 9c
- DELICIOUS APPLES lb. 9c
- RUBY RED GRAPEFRUIT 20-lb. bag 89c
- TEXAS ORANGES 20-lb. bag 89c

WARDS

AUTO-DAYS SALE!

Riverside Deluxe



MOUNTED FREE!

14⁴⁵ 6.70-15 tube type blackwall '6 DOWN buys a set of 4

- Super strength, bruise-resistant rayon cord body.
- Long mileage because of multi-row cold-rubber tread.
- Now with Wards 20-month road hazard guarantee.
- Guarantee honored in all retail stores, catalog offices.

DELUXE TUBE-TYPE TIRES					
Blackwalls			Whitewalls		
SIZE	No-Trade List Price**	Trade-in Sale Price*	SIZE	No-Trade List Price**	Trade-in Sale Price*
6.70-15	17.75	14.45	7.00-15	22.75	18.45
7.00-15	19.95	15.95	7.30-15	27.45	22.25
7.30-15	21.95	17.75	7.60-15	29.45	24.25
8.00-16	33.45	27.25			

DELUXE TUBELESS TIRES					
Blackwalls			Whitewalls		
SIZE	No-Trade List Price**	Trade-in Sale Price*	SIZE	No-Trade List Price**	Trade-in Sale Price*
6.70-15	20.45	16.95	7.00-15	25.45	21.95
7.00-15	22.45	18.95	7.30-15	27.45	23.95
7.60-15	24.45	20.95			

*Plus Dealer Fee and Trade-in Tax **See Extra Tax



Battery booster cable Battery failure! Twin cables connect service battery to yours for quick, easy starting. 12' ft. long. A "must" for cars with automatic transmissions. 4⁴⁴



SALE! Winter King standard batteries

6 volt types 1 & 2L **10⁴⁴** with your old battery

Save dollars on a dependable battery equal to national brands priced at up to \$15.

12-V WITH OLD BATTERY 15.44

*Fits these 6-volt cars Plymouth and Dodge '32-55 (without powerflite) Chevrolet '29-54 Ford and Mercury '39-55, Nash '50-55

SEE O. G. Lanier FOR OIL AND GAS LEASES AND REAL ESTATE WE BUY AND SELL Phone 410 -- 113 So. Rusk Ranger, Texas

RCA VICTOR HAS TV THAT ROLLS—



The Langston, New TV that rolls from room to room 262 sq. in. viewable area. New "Mayer-Sharp" picture. "Lean, Clean" styling. Mahogany- or teak-wood grained finishes. 21TS-40.

279.95

ARTERBURN'S HARDWARE & FURNITURE
 120 Main Phone 945



"THE MIGHTY MIDGET" THE WANT AD Will Do the Job for You

FOR JUST 80¢

You can run a seven word classified ad in this newspaper for THREE times. In this day and time that's really a bargain.

PHONE 224 TODAY THE RANGER TIMES

I GIVE YOU TEXAS

By BOYCE HOUSE

... lunch recently with the man who made Sam Bass famous. Bass has always been famous in Texas but not until Wayne Gard wrote the outlaw's life back in the 1930's did the "Robin Hood of Texas" become nationally known. Since then, Bass has been the subject of a dozen motion pictures. Gard's next book — (it will be out in the Spring) — is the biography of a horse: Steedust, the old-time racer that has become almost a legend.

"Cap" Curry of Fort Worth who lived in Breckenridge during the oil boom and afterward, recalls a wagon going through the streets with a sign reading: "Water or oil, \$1 a barrel; take your choice."

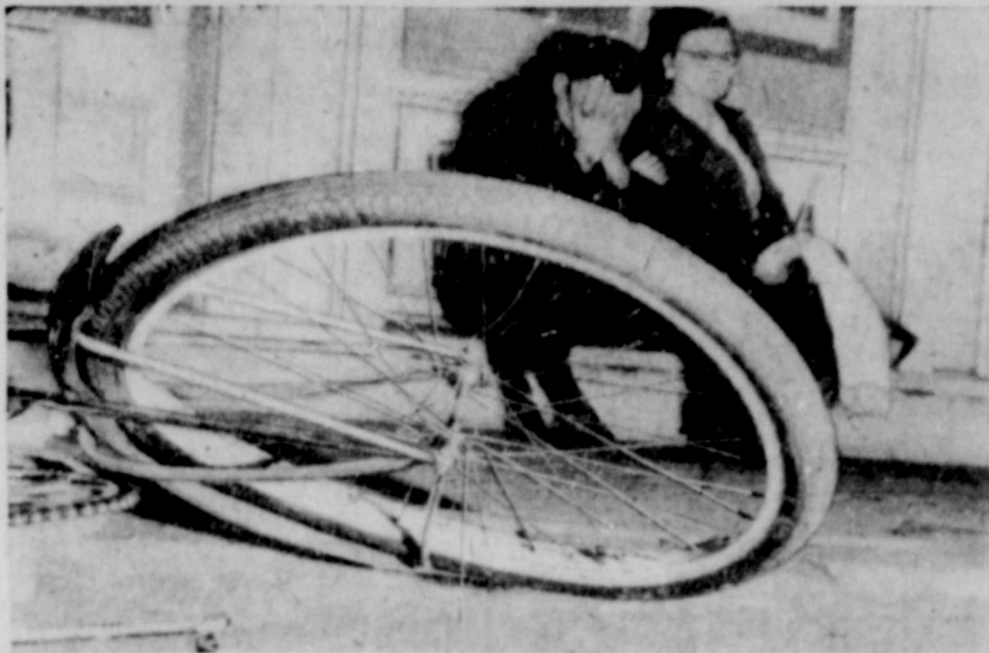
There was a rock-and-roll song which, when it came out, I thought had reached the absolute limit in simplicity of words. It went like this:

"Jim Dandy to the rescue"

(Thump-de-thump by the drum)
"Jim Dandy to the rescue"
Thump-de-thump)
But one has come along since then that makes Jim Dandy's words complicated. The words of this later song are just two and they are as follows, to-wit:
"He's mine."
This is said over and over with now and then, "Yes", thrown in for good measure.
I am planning to write a song of only one word—a one-syllable word and then sit back and watch the royalties from the juke box records roll in—you might say, rock-and-roll-in.

A young newspaperman was going to go from Fort Worth to San Angelo but decided to see something of the country by going by way of Amarillo. At Wichita Falls, he went by the newspaper office on the chance that he might earn a little travel money by a few days work and found that the owner had been trying to call him by long distance in Fort Worth to effect him a job.

He accepted the job—temporarily; and remained with the paper the rest of his life, which spanned many years. He was B. D. Donnell, who was editor for a long time. He was one of the most gentlemanly men it has been my privilege to know.



WHEEL OF BAD FORTUNE—Hunched on a stoop in Memphis, Tenn., C. B. Monroe, 38, buries his face in his hands to bar the sight of the broken, twisted bicycle wheel lying on the pavement. Monroe's car struck and killed young cyclist James McCarroll in what witnesses described as an unavoidable accident. It was Memphis' first 1958 traffic fatality. Beside Monroe is Mrs. Roberta Cohen, a passenger in his car.

In Times Like These—

... we need to keep cool and not be blustered into moods of hysteria by scare propaganda put out by politicians and do-gooders who would lead us to believe that we are now spending our last days on this earth unless we do what they say. We need to do our own thinking for awhile, for better results. We may go down even then but let's be a realistic, thinking group of patriotic Americans, workers and fighters. Write your Congressmen today.

EARL BENDER & COMPANY

Eastland, (Abstracts since 1923) Texas

MOTOROLA... LOWEST PRICE ANYWHERE FOR BIG CONSOLETTA TV

With all these advanced features

Never before so many important advances... all in one fine set

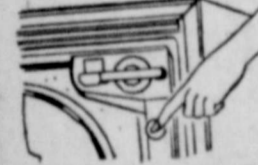


Exclusive Tube Sentry ends warm-up power surge in chassis... the chief cause of TV failure. Tube Sentry triples TV life expectancy... is engineered to eliminate 3 out of 4 service calls.



20,000-Volt Picture Power gives the brightest, clearest picture in TV.

4-Wafer Cascade Tuner pulls in sharp pictures locally or at long distances without fiddling with fine tuning control.



Touchbutton On-Off Tap the button, TV's on—picture and sound come in automatically fine tuned just the way you left them. Touch button again, TV's off.



BIG SCREEN VIEWING... LOW, LOW PRICE... AND WHAT FEATURES

America's biggest TV buy! Tube Sentry triples life expectancy of every tube. Touchbutton On-Off. Right-up-front controls. Power M chassis. Charcoal or Blond finish. Model 21T39 Console. **209.95**

All TV is not alike... Compare before you buy!

FEATURE	IS IT AVAILABLE ON MOTOROLA?	IS IT ON COMPETITIVE SET? (CHECK BELOW)
Tube Sentry	Yes	<input type="checkbox"/>
Touchbutton On-Off	Yes	<input type="checkbox"/>
4-Wafer Cascade Tuner	Yes	<input type="checkbox"/>
Right-Up-Front Controls	Yes	<input type="checkbox"/>
Color TV Hi-Voltage Tube	Yes	<input type="checkbox"/>
20,000-Volt Picture Power	Yes	<input type="checkbox"/>
Aluminized Picture Tube	Yes	<input type="checkbox"/>
New Shorty Picture Tube	Yes	<input type="checkbox"/>
Picture Pilot Lifetime Focus	Yes	<input type="checkbox"/>
Thin Line Styling	Yes	<input type="checkbox"/>
Golden Voice Speaker	Yes	<input type="checkbox"/>
Horizontal Chassis	Yes	<input type="checkbox"/>

Johnson Appliance Co.

305 Main Street

Phone 46



Some people find confusing our different state and national laws dealing with the same things. Income tax laws for example.

Surely, they say, you can have no real justice, unless there is some one "best way" to do each thing—to hold property, to manage traffic, to pay taxes, or to enforce contracts.

So it bothers them. Why should Englishmen drive on the left side of the street? Why should married couples hold title under community property laws in some states and not in others?

Is law merely a man-made contraption?

It is true that like good manners much law is man-made, growing out of custom or local problems? In card games you can play many different games with one deck. You merely change the rules. But as with cards and all games, the law goes deeper than convention into man's basic needs for order, for a grasp of the part he is to play, and for a way to settle disagreements.

Law provides an orderly way to do things so that people can make

long-range plans and work together. Its rules help you to find out where you stand—your rights and duties. And last, law has binding ways of settling disputes if need be, first to keep the peace, and then win people over by dealing with them in ways that satisfy their sense of fairness.

You can find these traits of law in most groups from the most primitive to the civilized.

As man finds out more and more about himself and his world, as his experience and wisdom grow, the law may get better. For example, as the psychological laboratories find out more about man's reaction times, his fears and faults, our laws about driving, for example, may improve.

And here is another purpose the different kinds of laws may serve. You may look upon each as a sort of experiment. Some turn out badly, and some well.

But in the give and take of public discussion, these efforts may yet bring us more nearly to the "one best way"—if any such thing exists.

(This column, prepared by the State Bar of Texas, is written to inform—not to advise. No person should ever apply or interpret any law without the aid of an attorney who is fully advised concerning the facts involved, because a slight variance in facts may change the application of the law.)

CALL 224 FOR CLASSIFIED ADVERTISEMENT



TELEPHONE TALK

By W. H. McNally, Manager

If you are an average person, and most people are, you do not care too much about statistics. I read a few statistics the other night that interested me. By the time you're 65 years old, the statisticians tell us, you'll have eaten 71,265 meals and slept about 190,000 hours. And if you're like most folks, you'll have spent 8,760 hours—a full year—talking on the telephone. That is approximately 135 hours a year.

When you stop to consider, you will probably spend 135 hours this next year talking on the telephone and if your telephone is located in a hall—it means you are going to be standing there. I have a good suggestion—move that telephone near a comfortable chair. And connect an additional talking outlet in the bedroom. It may be more convenient to talk from the bedroom a lot of those 135 hours.

AT YOUR SERVICE

Some friends of mine are high in their praise of the telephone for its dependability in practically any kind of weather, day and night. They're happy with their telephone service and we're glad they are. But we're not content to rest on our laurels.

To improve their and your service, new ideas to improve telephone equipment are constantly tested by the telephone scientists. New methods are continually put to work to help experienced telephone employees work "around the clock" to give you the best in telephone service.

These three reasons, new ideas, new methods, and experience, are why telephone service never stops improving, yet remains easy on the family budget.

OUT OF THE PAST

I was thumbing through some old magazines the other day and found some household hints that had been published during the war years. One column suggested using an egg-timer to limit your Long Distance calls to three minutes.

I started wondering if anyone is still using an egg-timer out of a force of habit. I hope not because you certainly don't need to.

Today, there are plenty of Long Distance lines. You can talk as long as you like and as often as you like. In fact, it's wiser to take your time on Long Distance calls and say everything you want to say. One six-minute call always costs less than two three-minute calls. The longer you talk, the less it costs on a per-minute basis. And, you save an additional one-third when you call station-to-station.

Call by number. It's twice as fast.

SOUTHWESTERN BELL TELEPHONE COMPANY



Lacasa Lines

Mrs. D. B. Raney

Mrs. Norman Morrison of Fort Worth, daughter of Mr. and Mrs. H. L. Caraway is ill in the Ranger General Hospital. Mrs. Caraway is keeping Mrs. Morrison's baby, Glenda Jo.

Visitors to Mr. and Mrs. Jack Pockrus, were Rev. and Mrs. Frank Brooks, Jimmy Wells, Mr. and Mrs. R. E. Miller, Mr. and Mrs. Carson McNabb and daughters, Mr. and Mrs. Truman Dempsey and son, Mr. and Mrs. H. A. Pockrus, and Mrs. Walter McBay of Breckenridge. Also Mrs. Pockrus' sister, Mrs. Dick McCollum and Mr. McCollum of Arizona came for a visit the past week. Mr. and Mrs. McCollum went on to Mineola to visit her mother, Mrs. L. A. Eudy at Mineola.

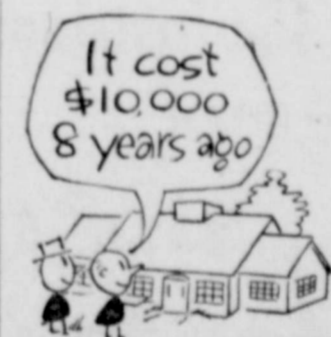
Mr. and Mrs. A. O. Templeton spent Sunday visiting their son, Carleton Templeton and family at Abilene.

In the report of the death of Lou Venie, the place was erroneously reported as Texas Children's Home. It should have been Texas Children's Hospital, the hospital in which Lou had received treatment a number of times.

Bud Stuard, brother of Martin Stuard, Mrs. Frank Eddleman, and Mrs. Marlow Langford, is very ill at Abilene.

Stop pain of piles today at home —or money back!

3 doctor's tests, amazing new Stainless Pazo* instantly relieved piles! Gave internal and external relief! Medically-proved ingredients including Triolyte, relieve pain, itching instantly! Reduce swelling. Promote healing. You sit, walk in comfort! Only stainless pile remedy. Stainless Pazo* Suppositories or Ointment at drugstore. *Trademark of Grove Laboratories, Inc. Ointment and Suppositories.



But how much would it cost to REPLACE IT?

The average home owner today carries only 40% enough fire insurance. He's thinking backward to what his property cost, instead of forward to what it would cost to REPLACE IT.

Face the facts. Your home or place of business (and contents) may burn tonight. Is your fire insurance big enough to enable you to start to rebuild and refurnish or restock tomorrow?

Quit kidding yourself that you won't have a fire or that you are fully protected. It's no fun to be half-ruined.

C. E. MADDOCKS & CO

Insurance - Real Estate

207 Main Phone 252

Political Calendar

- May 5—Deadline for candidates to get name on primary ballot.
- July 6-22—Absentee voting for First Primary.
- July 26—Precinct conventions and first primary election.
- August 2—County Convention.
- August 3-19—Absentee voting for second primary.
- August 23—Second primary.
- Sept. 9—State convention.
- Oct. 14-21—Absentee voting for General election.
- Nov. 4—General election.

SPEND WEEKEND IN DALLAS

Mr. and Mrs. Fluke Turner and Mr. and Mrs. J. A. Johnson spent the weekend in Dallas with Mr. and Mrs. Frank Johnson and Mark to celebrate Mark's third birthday. They also attended the annual Valentine Banquet of the Anniversary Sunday School class of the Tyler Street Methodist Church in Oak Cliff.

INGROWN NAIL HURTING YOU?
Immediate Relief!
A few drops of OUTGROW bring blessed relief from tormenting pain of ingrown and OUTGROW toughens the skin underneath the nail, allows the nail to be cut and then grows back further pain and discomfort. OUTGROW is available at all drug counters.

EASTLAND STEAM LAUNDRY SERVICE IN RANGER

• Courteous Service

• Quality Work

• Free Daily Pick-Up

PHONE 909 - RANGER

SPECIAL INTRODUCTORY OFFER!

on the **HOOVER** Convertible



The modern cleaner with automobile styling beats, as it sweeps, as it cleans! PLUS-50% more power for attachments

Only 89.95

FOR A LIMITED TIME ONLY we can give you FREE a set of CLEANING ACCESSORIES! model 3100

Supply is limited - Stop soon at:

RANGER FURNITURE EXCHANGE
123 N. Rusk RANGER Phone 242

Robinson Food Market

Friday and Saturday Specials

WE DELIVER

121 North Rusk Street

Phone 162

Fresh Dressed Fryers . . . lb. 47c

Grayson's Oleo	2-lbs. 45c	Crisco	3-lb. can . . . 89c
----------------	--------------------	--------	---------------------

WILSON'S THICK SLICED BACON 2-lb. Pk. 1.25

FRESH HOME KILLED PORK

Fresh Ham, sliced	lb. 75c
All Pork Sausage	lb. 55c
Pork Roast	lb. 49c

Maryland Club Instant Coffee	6-oz. size . . 93c	Reg. Size Ajax	2-cans 23c
------------------------------	--------------------	----------------	--------------------

HUDSON—400 Count—Pink, White, Yellow FACIAL TISSUES . . 2 boxes 45c

Gladiola Frozen Rolls	pk. of 24 . . . 29c	Fancy Red Delicious Apples	lb. 15c
-----------------------	---------------------	----------------------------	-----------------

LIGHT CRUST FLOUR 5-lbs. 45c

MAJESTIC FRIDAY AND SATURDAY



VIRGINIA MAYO provides the love interest with CLINT 'Cheyenne' WALKER in Warner Bros. rugged western adventure, 'FORT DOBBS' See 'Cheyenne' Your T. V. Favorite On A 'Big Screen'

Carbon School News

By LINDA COLLINS
Telegram School Reporter

It has been a long time since I have written anything but here goes for the "News from C.H.S." The past two or three weeks have been busy weeks for us. We juniors are hard at work on our play plus the books that have to be read and reported. The seniors are writing on their autobiographies.

As I said we juniors are getting ready to present our play on Feb. 28. The tickets are on sale as probably you have seen on the posters that have been distributed to various stores in Carbon and surrounding towns.

We have been practicing but more practice is in store. We will probably begin practicing more nights a week since basketball season is finished.

"Two Dates for Tonight" sounds exciting doesn't it? Well that is right. We think it is going to be a great play and you will think the same after you see it on Feb. 28 in the Carbon auditorium at 8 p.m. Admission for the play is 50c for adults and 25c for students.

Characters for our play are as follows: Anne Mayfield, Mary Butler, Sally Mayfield, Kathy Underwood, Mrs. Vera Mayfield, Maxine Stacy, John Mayfield, 'Pa' Guy, Miss Gallop, Sandra Lester, Mrs. Chandler, Betty Bond, Mr. Chandler, Eldon Maynard, Sylvia Chandler, Mittie Rome, Tony Abbott, Don Underwood, Freddie Buchanan, Mickey Rodgers, Diana Wells, Zelma Hendricks, Larry Randolph, Gene Wood, Mrs. Westgate Jones, Wags Thompson, Bradford Carter Jones, Jerry Clower. That is the list of characters. Watch for the story for a article which will give more information about our play.

The seniors have already begun writing their autobiographies. We entered our rings. Of course we will not receive them until September. The seniors also ordered their invitations for the graduation.

Basketball season is over for C.H.S. They played their last game Tuesday night. At the time of this writing I did not know the scores of the game so I will wait and give a summary of the basketball season in the next write up. That is about all for this week. See you next week in the same column.

NEWS FROM DESDEMONA

Mrs. H. T. Lane spent Friday in Abilene with a sister, Mrs. W. E. Koonce.

Mr. and Mrs. J. P. Quinn of Goldsmith and Mr. and Mrs. Frank Quinn spent the weekend here with their parents, Mr. and Mrs. Joe Quinn.

Mrs. Lora Abel and Mrs. Ethel Leigt spent the past weekend in Kermit and other parts of the West visiting with their children.

Bill Hunter of Eastland and other relatives with Mrs. Olessa Abernathy Sunday.

Mrs. Howard Wade went to Carter Field Monday to meet his niece, Miss Elonora Wade of Hollywood, La. Miss Wade will spend the week with the Wades.

Mrs. Howard Wade attended the reading conference in Austin recently.

Mrs. Ethel Patterson left for Wilson, Okla. Sunday for an indefinite time.

Mrs. Agnes Owens was in Ranger one day last week on business.

Mr. Don Abernathy and Mrs. Eva Williams visited recently in Dublin with friends.

Mrs. Eva Northcutt was in Gorman one evening last week visiting with friends.

Mrs. E. W. McDonnell visited one day last week with her mother and sister, Granny Northcutt and Eva.

Mrs. Dora Abernathy and Mrs. Eva Williams attended church in De Leon on Sunday night of last week.

Melvin Harrison of Wichita Falls was in Desdemona Sunday.

Rev. H. D. Martin of Denton, former pastor of the First Baptist Church here was buried Monday at Mineral Wells. He had suffered a stroke.

Mr. and Mrs. Jimmy Burison of Athens spent the weekend here with her parents, Mr. and Mrs. E. G. Lewis, and his parents, Mr. and Mrs. Leroy Burison.

Mrs. Sally Huffman spent part of last week in Stephenville with her daughter, Mr. and Mrs. Elbert Wall.

The Scottie Lemasters of Dallas were weekend visitors with his parents, Mr. and Mrs. Scott Lemaster.

Mr. and Mrs. Dalton Anderson and children of Dublin spent the weekend here with his mother, Mrs. Sally Huffman and her mother, Mrs. Marrel Foyville.

Miss Francis Worden, teacher in the public schools at Ranger spent the weekend with her parents, the W. W. Wordens.

George Anderson is in the Gorman Hospital suffering from a stroke.

Mr. and Mrs. Bill Norris of Snyder spent the weekend here with her mother Mrs. Ida Wilhite.

Attending the funeral services of Rev. H. D. Martin in Mineral Wells were Mr. and Mrs. B. E. Hejren, Mr. and Mrs. H. H. Williams, Mrs. Lora Abel, Mrs. Nora Lane, Doris Bryan, Mrs. Stalle Joiner and Bob Koonce Monday afternoon.

The new operators of the Coffee Cup Cafe are Mrs. Doey Williams and daughter, Mrs. Dorothy Roberts.

Eastland Boxers Champions at Fort Worth

The Abilene Regional Golden Gloves team left Wednesday for Fort Worth with two Eastland champions aboard.

Heavyweight Don Slotton and lightweight Jimmy Jimenez will

fight for Eastland. Slotton was open division champion at Abilene and Jimenez won the novice division. Jimmy went to Fort Worth as an alternate for Glen Carter of Wylie, runner-up to Bennie Pippet of Cisco in the lightweight open division. Pippet did not get to make the trip because of illness.

The team worked out in Fort Worth Wednesday afternoon at Will Rogers Coliseum. They are staying at the Loring Hotel. Coach Jack Turner said official weigh-

ins and physical examinations are planned by Thursday morning. Fights are scheduled for Thursday, Friday and Saturday nights with the tourney finals Monday night.

Other champions representing this area are light-heavyweight Arlen Hyman of Abilene, middleweight Ted Pacey of Cisco, welterweight Lester Smith of Coleman, featherweight Joe Valdez Jr. of San Angelo, bantamweight Charles Hiburn of Abilene and flyweight Gary Allen of Abilene.

DIXIE Drive-in EASTLAND RANGER HIGHWAY

Box Office Opens 6:45
First Show 7:00
Box Office Closes 8:45

THURSDAY - FRIDAY - SATURDAY, FEB. 13-14-15



THIS WAS THE DAY THE REBEL THE YANKEE AND THE SIOUX SMASHED HEAD-ON... IN THE BLOODIEST THREE-WAY BATTLE IN HISTORY!
REVOLT AT FORT LARAMIE
COLOR by De Luxe
JOHN DENVER GREGG PALMER FRANCES HELM DON GORDON
ROBERT KEYS WM. BILLY PHILLIPS GLEN WALTON ROBERT KNAPP
ROBERT C. DENNIS LEO BARTER
HOWARD W. KOCH LESLEY SELANDER A. BEL AIR
PLUS: Color Cartoon

Williams Steam Laundry
formerly Ranger Steam Laundry
Call 173-W
RANGER for FREE pick-up and delivery service
Pick-up On Monday - Wednesday and Saturday

GET MORE OUT OF LIFE
MAJESTIC
GO OUT TO A MOVIE
FRIDAY & SATURDAY
'Cheyenne' Comes To THE MOVIES...

CLINT 'CHEYENNE' WALKER His First Big Motion Picture!
FORT DOBBS
VIRGINIA MAYO - BRIAN KEITH - RICHARD EYER

Fresher when you serve it
MRS BAIRD'S ENRICHED BREAD
MRS BAIRD'S ENRICHED BREAD

O. K. GROCERY MARKET
Friday and Saturday Specials
501 W. Main I. G. A. Phone 214
We Reserve The Right To Limit

DEL HAVEN Sliced or Halves Peaches No. 2 1/2 Cans 4 Can \$1.00
TEXSUN-46-Oz. Can Grapefruit Juice 29c
DEL MONTE-46-Oz. Can Pineapple-Grapefruit . 38c
DEL MONTE-46-Oz. Can Tomato Juice 34c
ADAMS-46-Oz. Can Orange Juice 32c
BAKE-RITE Shortening 3 Lb. Can 79c
HOME MADE- All Pork SAUSAGE lb. 39c
SEMI-BONELESS PORK ROAST lb. 49c
PIG LIVER lb. 28c
SWIFT'S Premium FRANKS lb. 49c
MRS. BAIRD'S DELICIOUS Cinnamon Rolls Extra Special 25c
Dr-Pepper Plus Deposit On Bottles 6 For 19c
PKG. BREADED SHRIMP 69c
PKG. FISH STICKS 39c
CAMPBELL'S-Can PEA & HAM SOUP 25c
MEXICAN DINNER ea. 59c
FROZEN PIES APPLE - PEACH Large Size Each 59c
Fresh Daily LARGE Cream of Crop WHITE EGGS Doz. 49c
TEXAS ORANGES lb. 10c
LARGE LETTUCE lb. 10c
Smoked-Cured-Picnic 6 to 8-Lb. Avg. 39c
KUNER'S-303 Can Cut Green Beans 25c
KUNER'S-303 Can Yellow Corn 17c
KUNER'S-303 Can Kraut 15c
KUNER'S-309 Can Whole New Potatoes . 14c

AUCTION
Ranger Livestock Commission Co.
Hwy 80 East Ranger, Texas
SALE STARTS Monday, Feb. 17 AT 12 O'CLOCK
Sale Every Monday Thereafter
CATTLE - HOGS - SHEEP - GOATS - HORSES
BRING YOUR LIVESTOCK... WE PLAN ON HAVING PLENTY OF BUYERS. WE WILL DO OUR BEST FOR YOU.
Tell everyone about our sale. We want your business and it will be appreciated.
Call for any information day or night. We have years of experience in auction and livestock business.
AUCTIONEER'S - MANAGER'S
BILL WHITE Phone 723 - 4982 WICHITA FALLS, TEXAS
WILFORD C. WHITE Phone 58 MT. PARK, OKLAHOMA
YOU ARE ALWAYS WELCOME

Free Estimates On A New ROOF
Or Repair your old Roof Residential & Commercial
Eastland - Ranger Roofing Co.
Noble Squires Phone 733 Eastland

BARBER SHOP
IT PAYS to LOOK WELL
Courteous Service
TONY'S BARBER SHOP
223 1/2 Main - Phone 108