

TIMES SPECIAL SET SATURDAY

The Ranger Times will publish a special Christmas edition December 22. The special edition will carry greetings from Ranger business firms and professional men and women. Anyone desiring an ad in the special edition may do so by calling 224. There will be no publication on December 24 in order for the Times employees to observe the Christmas holidays.



See What We Mean?

By RAY SWINDELL
The Times received a very interesting letter addressed to Santa Claus this week. We thought we would single this one out because it says so much. It is signed, A Grown-up child.
Dear Santa:
It has been a long, long time since I have written to you. I have now moved from the old home on Happy Street to a house of loneliness and doubt, which stands at the end of Disillusion Avenue.
All of the gloriously bright little baubles that I had in years gone by are now either broken or tarnished and tear-stained.
Please bring me a few of those precious toys that I once had—the shining bubbles of joy; the tinkling bells of cheer that rang in my voice; the candles of faith that show in my eyes; the frankincense and myrrh of steadfast hope that strengthened my soul and the lone star of universal love that gleamed in my eyes.
In the years past, I realize I did not appreciate those priceless treasures as I should have—but now I repent my carelessness and humbly ask you to remember me with another supply this Christmas.
I will hang my empty heart right by the chimney, Santa, and, please, this is what I want:
Give me a large basket of forgetfulness, with which to cover up all bitterness for those who robbed me of laughter and filled my eyes with tears; leave me enough of the cement of hope to mend the shattered fragments of joy; tuck in a little song of cheer, and, please, Santa, leave quite a lot of plain old-fashioned faith, understanding, unselfishness and tolerance that I can share freely with my neighbors.
A Grown-up Child
—jrs—
YOU MIGHT make a note of this. We had a telephone installed in our home recently. So, in case you are unable to reach us at the Times office, you might try our home. That number is 1045.
Regardless of whether you have a news item or not, just give us a ring. We would like to get acquainted with everyone here.
—jrs—
A NEWSPAPER is as much a part of the community as the corner drug store. The citizens of a town make the corner drug what it is, and the citizens of the town make the newspaper what it is.
THE EDITOR is merely a tool. He is a center point for all of the news to meet in order for it to go into the paper.
If you should ever have a news item, regardless of what it is, just call us. Perhaps you think, at first glance, that what you have in mind is not news. But anything that pertains to Ranger or to the people living in and around Ranger is news. So give us a buzz on it.
If we had the words, we would try to tell you how much we would appreciate it. In the short time we have been here, the people have certainly been nice about phoning in news. Let's hope they continue that.
—jrs—
From 1775 to 1956, a total of 1,130,393 Americans died in all of the U. S. Wars. From 1900 to 1956, a total of 1,189,414 Americans died in U. S. Highway accidents.
You might keep these figures in mind when you start on your Christmas trip. You sometimes read statistics pertaining to deaths on the highways, and you mutter to yourself, "This could never happen to me."
Don't be a fool. It can happen to you.



Ranger 'Dogs' Reach Gorman Semi-Finals

Finals Scheduled Saturday Night

The Ranger Bulldog basketball team, with a .500 season average, enters the semi-finals round of the annual Gorman tournament Saturday afternoon when they meet the winner of the De Leon-Comanche game.
The captain of Harold Barrett

Former Bulldog Named Furman Head Coach

A 1932 graduate of Ranger high school and former star Bulldog grid player has been named head football coach at Furman University, effective February 1, 1958.
He is Robert B. "Bob" King, who for the past 11 seasons, has been end coach at the University of Illinois. King played four years of football for the Bulldogs before entering college on a football scholarship.

earned the right to the semi-finals in the annual tourney by dumping Class B Blanket 24-31 Tuesday night.
A victory Saturday afternoon would push the local crew into the final round scheduled for Saturday night in the Gorman gymnasium. And a defeat would knock them out of competition.
Other teams competing in the tourney are Dalhart, De Leon, Comanche, Blasket, Scranton, and host team, Gorman.
The winner of the tournament will be presented a trophy and an all-tournament team will be selected and each member of the team will be presented a small trophy.
In Tuesday night's game, Lee King was high-point man for the local Bulldogs. But King was forced to bow out to F. Edgar of Blasket for high-point man among both teams. King recorded 14 points in the game while Edgar posted 16.
David Wharton came in second in the scoring department for the Bulldogs with eight points.
Barrett's eagerness took an early lead in the game and held to it. At the half time intermission, the locals held a comfortable 21-12 lead.

BOX SCORE

	FG	FT	F	TP
Ranger	2	1	0	5
Wharton	2	2	3	8
King	5	4	0	14
Cidwood	0	0	3	0
Jowers	1	3	2	5
Warford	0	2	3	2
Totals	11	12	11	34
	FG	FT	F	TP
Blanket	4	0	4	8
J. Edgar	0	1	2	1
P. Edgar	6	4	4	16
Bybee	1	0	0	2
Harndick	2	0	2	4
Totals	13	5	12	31

COLLEGE CHOIR—Another active organization at Ranger College this year is the chorus. This fine group of students is under the sponsorship of Mr. H. A. Lotspeich, dean of music at the college. The chorus has regular rehearsals Monday and Wednesday evenings at six, and the group is working hard on numbers for future performances. Accompanying the chorus is pianist, Mrs. H. A. Lotspeich, who is an accomplished musician. The college chorus includes the following: of Ranger are Paula Angus, Elpidia Gonzales, Mary Hinds, Barbara Nichols, Sherry Baker, Jimmie Mae Miller, Gay Nell Loper, Sue Garrett, Deanne Hazard, Jo Nell Penny, Mary Lou Wright, Joe Charles Lawson, and Patsy Shaffer. Wanda Payne, of Carbon; Dorothy Daws, Woodson; Charlotte and Charles Clark, Mosquero, New Mexico; Gail Bagley, Rusk; Doris Nabers, Desdemona; Barbara Mauldin, Abilene; Forrest Hall, Sinton; Doug Roark, Keith Hodo, and George Bynton, Quanah; Roger Flowers, Ralls; Kenny Wells, Sudan; Jerry Fancher, Haskell; Butch Kalneec, Granger; Bill Johnson, Big Spring; Dan Blanton, New Castle; Ray Dell Fowler, Dalhart; and Gilbert Barnett, El Paso.

Santa Claus Letters Reach Peak As Yule Season Nears

The following letters were written by Mrs. Anita Barrett's second grade students at Hodges Oak Park School:
Dear Santa:
My name is Rickey Lee Bryan. I want a chemistry set and some American bricks and soom tracks for my train, and don't forget my sister.
Dear Santa Claus:
I want a Tiny Tears Doll and a Bassinette and a Typewriter and a ring and some Records for my Brother, a chemistry Set and some moccasins
Thank you Santa Kay Wilhelm
Jane Ann Bradford
p. s. I also want a bride doll.
Dear Santa Claus:
I want a bicycle and a top. I hope everybody gets a toy. Eddie Ray Herrington
Thank you for my toy last year.
Dear Santa Claus:
I want a Lone Ranger suit and a watch. I want them for my self. Thank you Santa Claus.
My best friend is Rickey Lee and God.
Jerry Thomas Falls
Dear Santa Claus:
I want a doll and a real watch. Thank you for the things you brought me last year. I want them for my self.
Dianna Lee Casey
Dear Santa Claus:
I would like a rocket ship monorail, and some American bricks, and I would like to have a American flier. Thank you very much. Santa Claus, my name is Jerry Arterburn.
Dear Santa Claus:
I want a pom-pom gun. My brother wants a crane. I want a train to and B-B gun. My sister wants a doll.
Randall Mahaffey.
Dear Santa Claus:
I want a middle sized bicycle.
Please bring my little brother a rocky horse. Thank you Santa Claus
Dear Santa Claus:
I want a .30 caliber Machine gun replica, and a Electric Radior Canon. 8 pecl archery set.
Dear Santa Claus:
I want buggy and 2 dolls. Thank you and a hair clamps. I would go for the toys. This is Charlotte McCain
Dear Santa Claus:
I want a Tiny Tears doll and a dicyolee and dishes and a little wagen table and chiers Teddy bear and a little teddy bear murry big teddy bear. Maria.
Thank you for the toys Alle Ray Gomez
Dear Santa Claus:
I want these things for myself middle-sized bicycle Lone Ranger suit and a pony B-B gun water gun scooter tennis set John Stokes
Dear Santa Claus:
I want a Lone Ranger suit and (Continued on Page Eight)

Holidays Start Here Friday For School Students

Ranger's school population, an estimated 1,334 from grade schools through junior college, start the Christmas holiday vacation period when classes are dismissed Friday.
Ranger College's 534 students will have the longest holiday period—December 21 to January 6, inclusive. Classes at the college will resume January 6, 1958, according to Dr. Price Ashton, college president.
The holiday period for the 800 public school students will last through January 1. Classes are to resume at all Ranger public schools January 2.

Garrett Urges Safe Driving Over Holidays

County School Superintendent H. R. (Pop) Garrett has joined the crusade to attempt to hold down traffic deaths over the Christmas and New Year Eve holidays.
At the request of Gov. Price Daniel and Commissioner of Education J. W. Edgar, Garrett today urged sane driving.
"During December of last year, 252 people were killed in traffic accidents on our streets and highways. Of this number, 108 were killed during the Christmas holiday season. Unless every child and every family does something to stop this slaughter, the Desert west of Public Safety predict that 113 people will be killed in traffic accidents during this year's holiday period.
"This terrific loss of human lives can be reduced if Texas school children will warn their families of the special traffic dangers during the holidays and if all Texans will cooperate in obeying our traffic laws and driving with special care."
FHA "BEAU"—Jimmy Swinney has been named head of Ranger high school for the 1957-58 school year. The junior student is the son of Mr. and Mrs. John C. Swinney, 712 Sixth Street, Ranger. In his past years at high school, young Swinney has been chosen as class favorite, class treasurer, and has been a member of the Ranger football team.



Postoffice Will Remain Open Sat. Afternoon
The Ranger postoffice will remain open all day Saturday, according to Postmaster Ella White.
Closed at noon Saturday usual hours. White said the postoffice would remain open Saturday to handle the rush of last minute Christmas cards and packages.
The following Saturday the postoffice will return to its Saturday closing hours.
WEATHER
Partly cloudy, not much change in temperature. High Thursday 70-75, low near 50; high Friday 65-70.

Geological Study Completes County History

(Editor's Note: This is the 55th and last in a series of articles taken from the book, "History of Eastland County, Texas" written by Mrs. George Langston in 1904.)
Geology of Eastland County
The geology of Eastland County is very simple, as the strata belong to only two of the great geological series, the carboniferous and cretaceous. The carboniferous is found only along the southern border of the county. This formation forms no very great nor conspicuous area in the county, and consists principally of "sand roughs." The areas were once covered by beds of limestone, which has long since been eroded and the sands are the remnants of a once continuous bed that covered the whole county to the foot of the mountains west of the Texas River.
The beds belong to the Trinity sand formation, and forms a part of the catchment area that supplies with water the great artesian water belt lying to the southward. This area was originally covered with a dense growth of low oak. The surface is generally level, very applicable to this strata of topography. A friable and of variable thickness deposited upon a hard floor of Paleozoic rocks, and subjected to the action of the prevailing atmospheric agencies, has given this character of topography.
The remainder of the county belongs to the carboniferous period. In describing the carboniferous in Texas I divided the strata into these divisions:
1. Cisco. 4. C. nyan. 5. Strawn.
2. Milby. 1. Bend.
The Cisco division is the highest and most recent of the divisions. One traveling westward along the Texas and Pacific Railroad goes off the cretaceous onto the Milby division of the carboniferous about two miles east of the carboniferous Putnam. The Bend Division does about half way between Baird and not occur at the surface anywhere in this part of the State, but has been found in deep wells at Thurber and Fort Worth.
It is unnecessary to give a description of any of the divisions except that of the Canyon and Cisco. The Canyon division occurs in the eastern part of the county, and was so named from the prominence with which some of the strata are seen at Canyon, in the western part of Palo Pinto County, along the line of the Texas and Pacific Railway. This division is composed very largely of massive limestone, and may be easily recognized by this fact, the limestone in the other divisions being much thinner bedded.
The beds of the Cisco division are well exposed in the vicinity of Cisco, and the division was so named for this reason. The strata are mostly composed for conglomerates, sandstones, clays and shales. This division extends from northeast to southwest through the entire county. It is distinguished by its stratigraphic position below, it being found always in the heavy beds of the Canyon division.
The strata of the cretaceous dip to the southeast, while the strata of the carboniferous dip to the northwest, in an exactly opposite direction. The dip of the carboniferous is at the rate of about 60 feet to the mile. This fact will preclude the notion that flowing artesian water can be found at Cisco or vicinity, the recurring r a s being lower than any point to the westward, and water will not rise higher than its source.
There are nine coal seams in the carboniferous formations in Texas. When I made my report on the coal fields of Texas, the first section of the coal measures ever published in Texas, I numbered these beds from one to nine inclusive. Only two of these seams are thick enough to be of any commercial value. These are numbers two and seven. Number two is found at Thurber, Rock Creek and Bridgeport. Number seven is found in Eastland, Young, Jack and Montague Counties. Some attempts have been made to develop the coal in the vicinity of Cisco in Eastland County, but without any very great success. The outcrops of this seam in the northern portion of this county are numerous. The seam is 20 inches thick, with a band of slate above it, followed by a seam of coal four inches thick between the coal seams. At another place where I examined this seam are nine inches of coal and 20 inches of bituminous shale. This shale will burn when put on the fire but loses none of its bulk in burning, and is absolutely worthless as a fuel. The difficulty in working this seam of coal in this vicinity is the fact of the thinness of the seam, and the further fact that if both seams are mined the stratum of bituminous shale will have to be taken out of the mine, for it is so highly impregnated with sulphuretted iron that when the material is exposed to the atmosphere and it slacks, the sulphuric acid escaping will set the whole mass on fire.
There are no other minerals in this county of any economical value. Gold and silver have been reported at several places, but the amount has always been so small that it would not pay to develop. Iron occurs in many places in several forms, but it is a ways of too small a percentage of metallic iron to be of any commercial value.

Don't Forget Your Old Toys For Needy Children Take Them Now To Chamber of Commerce

FREE HOME TRIAL on RCA Whirlpool Appliances RANGER FROZEN FOOD CENTER

See the RCA WHIRLPOOL APPLIANCES at RANGER FROZEN FOOD CENTER

WHAT DO YOU SEE AT CHRISTMAS?

There are a lot of things about Christmas that everybody sees. The colored lights. The Christmas trees. The store decorations. The counters filled with dazzling gifts. Homes decorated, streets decorated.

Everybody sees Christmas cards, bells, and street corner Santas. There are carol singers, mistletoe, holly and evergreen wreaths. We see hurrying crowds of shoppers, enlarged toy departments in stores, overloaded mail trucks, express packages piled high beside the trains.

We see fires in the hearth, stockings hung with care, tables laden with good things to eat. And they are all a part of Christmas.

But all of these things are often too easy for us to see. Perhaps this year we should look extra hard for the "Spirit of Christmas."

Let's look for the great amount of good in all people; it shines best at Christmas time.

Let's look at the faces of little children for the real happiness of Christmas.

Let's look out for the needs of less fortunate people, the shut-ins, the lonely, the unfortunate.

And this year, let's try once again to see the real meaning of Christmas—its religious significance. Its message of peace and hope for the world.

Let's really see Christmas this year.

Local Citizens Get Hot Check Warnings

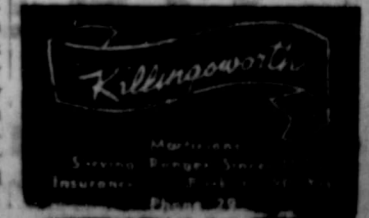
It just seems to go with Christmas. Police Chief W. G. "Pop" Pounds issued his usual warning to local citizens today. "Hot checkers and shop lifters are working the Ranger area right now." The Christmas season is the "best season for these people," Chief Pounds warned. He explained local police are working the downtown area harder than ever, and asked the cooperation of merchants in giving quick tip offs when they suspect a person of trying to give a hot check or shop lift.
Chief Pounds issued a 10 point citizens use program that he suggests local citizens use:
1. Don't let anyone hurry you.
2. Don't cash a check for a stranger without positive identification. Social security cards and auto licenses are easily forged.
3. Don't cash checks signed with a rubber stamp, written in pencil, or showing any signs of alterations.
4. Beware of out-of-county checks.
5. Be extra careful when cashing checks while banks are closed. This is a favorite time for the check crook to operate.
6. Don't cash checks for juveniles. They are designed for use only in the banks issuing them.
7. Don't cash bank counter checks. They are designed for use only in the banks issuing them.
8. Do not accept pre-endorsed checks. Have all checks endorsed in your presence, and place the presenter's address of the check.
9. Don't cash checks for considerably more than the amount of the purchase. It may be an attempt to defraud you of cash in addition to merchandise.
10. Make sure all checks are the checks of existing persons or concerns, and that the check is drawn on an existing bank. Completely fictitious checks are top favorites with check operators.

Garrett Urges Safe Driving Over Holidays

County School Superintendent H. R. (Pop) Garrett has joined the crusade to attempt to hold down traffic deaths over the Christmas and New Year Eve holidays.
At the request of Gov. Price Daniel and Commissioner of Education J. W. Edgar, Garrett today urged sane driving.
"During December of last year, 252 people were killed in traffic accidents on our streets and highways. Of this number, 108 were killed during the Christmas holiday season. Unless every child and every family does something to stop this slaughter, the Desert west of Public Safety predict that 113 people will be killed in traffic accidents during this year's holiday period.
"This terrific loss of human lives can be reduced if Texas school children will warn their families of the special traffic dangers during the holidays and if all Texans will cooperate in obeying our traffic laws and driving with special care."
FHA "BEAU"—Jimmy Swinney has been named head of Ranger high school for the 1957-58 school year. The junior student is the son of Mr. and Mrs. John C. Swinney, 712 Sixth Street, Ranger. In his past years at high school, young Swinney has been chosen as class favorite, class treasurer, and has been a member of the Ranger football team.

Ranger Library To Close Friday For Inventory

The Ranger Community Library will close December 20 through January 2 for inventory purposes, it was announced today by Mrs. R. A. Jameson, librarian.
At the same time, Mrs. Jameson urged all persons who have books checked out of the library to return them by Friday in order that a complete inventory might be made.
The library will re-open January 3.



The Ranger Times

"SEEKING COMMUNITY BETTERMENT SINCE 1917"
 ESTABLISHED JUNE 1, 1919
 Entered as second class matter at the postoffice at Ranger, Texas under the act of Congress of March 3, 1879
 TIMES PUBLISHING COMPANY
 Published Tri-Weekly—Tuesdays - Thursdays - Sundays
 JOE DENNIS and ONOUS DICK, Publishers

One week by carrier in city15
 One month by mail in city45
 One year by mail in city3.50
 One year by mail in state4.75
 One year by mail out of state6.75

NOTICE TO PUBLIC—Any erroneous reflection upon the character, standing or reputation of any person, firm or corporation which may appear in the columns of this newspaper will be gladly corrected upon being brought to the attention of the publishers.

CLASSIFIED

All Classified Ads Must Be Paid For In Advance.

MISC. FOR SALE

FOR SALE: We have two repossessed small pianos for sale in this area. One late model spinet, and one studio upright. Responsible parties may assume balance for cash or reasonable terms. For information, write credit department, Fort Worth Piano Sales Inc., 2100 E. Rosedale, Fort Worth, Texas.

RUBBER STAMPS—Fast service, reasonable prices, no order too large or too small to get our special attention. Ranger Times.

WING NECK Pheasants Live or dressed. Chuckle partridges. Now ready. B. G. Pirkle and son. Phone 417-1011.

The Perfect Family Gift
 So easy to buy on our Lay-Away Plan

L & J SUPPLY CO.
EVINRUDE
 Sales & Service
L & J Supply Co.

NOTICE
 This year give a years subscription to The Times to members of the family and friends for Christmas. Phone 224 and place your order now. Ranger Times.

FOR RENT
 NOW—completely reconditioned 3 and 4 room furnished and unfurnished apartments. Low rent, utilities included. A 150 transient rooms. In the heart of Ranger. **GHOLSON HOTEL** Phone 9506

FOR RENT: Small house. Winsett Spring Road. R. C. Wilson.

TWO MODERN furnished apartments. Jones Courts. Highway 80 E. Phone 1038-W.

HELP WANTED
 NEED MORE MONEY TO LIVE DON'T Increase your weekly income \$35 to \$50 or more in spare time. Supply Rawleigh Products to consumers in Ranger. See R. O. Lewis, Route No. 1, Deadeona or write Rawleigh's, Dept. TXL-1024-DD, Memphis, Tenn.

HELP WANTED: Lady to live in home and care for elderly lady. Room, board and good salary, no heavy work, no laundry. Phone 490, ask for Mr. Tibbets.

THAT'S what you think
 —but just wait until you have a fire!

All your clothes, bedclothes, linens, silverware, dishes, furniture, etc., go up in flames. The loss will probably be several times what you expected.

You see, you accumulate these things one at a time. You don't realize their total value.

Ask us for a form on which to make a complete inventory of your household possessions, and let us tell you how little it costs to insure them adequately with a good American Fore policy against fire loss.

C. E. MADDOCKS & CO
 Insurance - Real Estate
 207 Main Phone 252

BARBER SHOP
 IT PAYS to LOOK WELL
 Courteous Service
TONY'S BARBER SHOP
 223 1/2 Main - Phone 108

COLD SUFFERERS
 Get STANBACK, tablets or powders, for relief of COLD DISCOMFORTS. The STANBACK prescription type formula is a combination of pain relieving ingredients that work together for FASTER RELIEF of HEADACHE, NEURALGIA and ACHING MUSCLES due to colds. STANBACK also REDUCES FEVER. SNAP BACK with STANBACK.

SINCE 1884
 . . . it has been our privilege to render a service to this community as measurement builders.

ALEX RAWLINS & SONS
 Weatherford Phone 4-2728 Texas

AROUND RANGER COLLEGE CAMPUS

By Ranger College Journalism Class

The American history class of the Ranger Evening Division of the college were guests in the home of Mr. and Mrs. David R. Allsup during the history hour December 9. Mr. Allsup is teacher of the class.

The house carried out the Christmas theme being names famous in American history. A chicken dinner was served to the group. After the dinner music and games were enjoyed.

The following students attended the dinner: Bill Calvert, Dickie Fletcher, Billy Medley, Jerry Sharp, Gene Ashcraft, Windell Reed, Rondal Hodges, Jean Coleman, Annette Sims, and Dorothy Stagner.

VISITS RELATIVES

Sgt. and Mrs. Roy Newcom have been visiting her grandparents, Mr. and Mrs. Nugt Sudreth; her aunt, Mrs. Bobby Joe Johnson and Billy; and her great-grandmother, Mrs. Tempia Wheat.

Sgt. Newcom, who is in the Air Force, has been stationed in England for the past 18 months, and after January 3, he will be stationed at Topeka, Kansas.

Women's Activities

December 18
 The Julia Alexander Grove No. 1954 will have a luncheon in the home of Mrs. Thelma Bott Wednesday, December 18. Each member is asked to bring food for a charity basket.

December 19
 The Martha Dorcus Sunday school class of the First Methodist Church will have a Christmas party in the home of Mrs. J. A. Johnson, 602 Pine, at 3 o'clock p.m. Thursday, December 19. Everyone is reminded to bring canned foods for shut-in members. Gifts will be exchanged.

SEE O. G. Lanier FOR OIL AND GAS LEASES AND REAL ESTATE WE BUY AND SELL
 Phone 410 - 113 So. Rusk Ranger, Texas

Your Problems are our Business—
 . . . or at least they are related as we all must share in each other's ups and downs. Problems are not necessarily a disgrace nor a reflection on one's ability or character but a natural consequence of activity and growth. For example, if one owns land he is sure to have title problems sooner or later. While the abstract may not solve all title problems, within our knowledge and experience it has saved our customers thousands of dollars and its value cannot be estimated in dollars and cents.

EARL BENDER & COMPANY
 Eastland, (Abstracting since 1923) Texas

DEPENDABLE PROTECTION
 Motorists and football players both need dependable protection. Make sure that you are never thrown for a loss—see us for the best in Automobile Insurance.

C. E. MAY
 INSURANCE - REAL ESTATE

25% DISCOUNT ON WATCHES...
Christmas Special

• Gent's HAMILTON 19J	\$71.50	\$54.50
• Gent's HAMILTON 17J	64.00	47.50
• Gent's BULOVA	49.50	37.50
• Ladies BULOVA	49.50	37.50
• Ladies BULOVA 21J	71.50	54.50

ALSO ELGINS AT 25% OFF
 "Gifts That Last A Lifetime"

D. E. PULLEY JEWELER
 DIAMONDS * WATCHES * JEWELRY
 203 Main Street Telephone 33



LAZY DAY—Providing an interesting study in light and shadow, pretty Angela Malone takes her ease on a convenient beach chair in Nassau, Bahamas. Angela was brightening the scenery at a Nassau hotel.

Mrs. Mitchell Is Hostess To Dorcas Class

The Dorcas Sunday school class of the First Baptist Church met in the home of Mrs. Lee Mitchell Tuesday evening at 7:00 for a Christmas social. Mrs. Luther Kirkpatrick and Mrs. Mabel Williams were co-hostesses.

Mrs. Ralph Perkins told a Christmas story. Cards were sent to the sick. Members of the class exchanged gifts, and presented gifts to the teacher; Mrs. George Robinson. The class sent a gift to the class pal.

Those present were: Mmes. W. S. Adamson, Hugh Dawley, Mary Crab, R. E. Barker, Ralph Parkins, Lee Mitchell, W. W. Mitchell, Lula Powell, Williams, Kirkpatrick Robinson, L. D. Tankersley, J. F. Byas and T. O. Rawls.

First Baptist WMU Has Meeting Tuesday

The WMU of the First Baptist Church met Tuesday morning, December 17, for a regular monthly business meeting.

The meeting was opened by singing the hymn, "Lead On O King Eternal." Mrs. Lon Tankersley led the opening prayer.

Mrs. A. W. Wafford, WMU president, presided over the business meeting and introduced Mrs. Ralph Perkins, who led the Bible study. Mrs. W. A. Reuver led the closing prayer.

Those present were: Mmes. W. H. Clem, Tankersley, Earl Horton, Reuver, Wafford, J. B. Houghton, Perkins, Earle Pittman, L. L. Bruce, and R. L. Hamrick.

CARD OF THANKS
 We wish to express our sincere thanks and appreciation to our many friends and neighbors for the many kind deeds, beautiful floral offerings, and food, during the illness a death of our beloved Daddy and Husband. To Dr. and Mrs. Kuykendall for all their services rendered. May God's richest blessings be on all of you.
 Mrs. Edgar Brown
 Louise Brown
 Mrs. D. G. Perry
 E. O. Brown

PENNEY'S COME SAVE
 ALWAYS FIRST QUALITY!

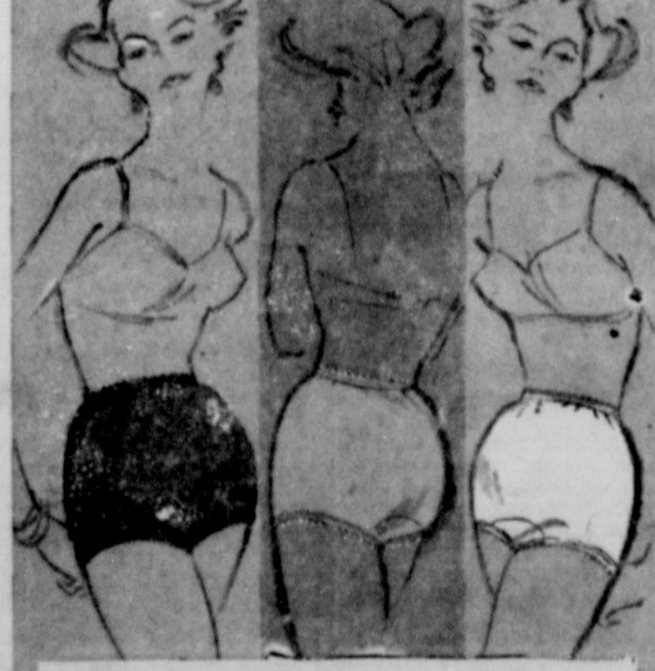
PRE-HOLIDAY CLEAN-UP!



RUGGED RAYON NYLON WASHABLE GABARDINES
 498
 Styled smart for dress, built rugged for work. A full 14 1/2 ounce fabric fortified with 15 per cent nylon! Yes, machine washable in luke-warm water . . . wrinkle resistant too!
 Sizes 30 to 42 Ready cuffed



PIMA, PLUS 7 TOWNCRAFTS
 298
 100 percent world famous Pima cotton broadcloth with Penney's custom-like 7-point contour tailoring for disciplined fit. Top styles in super-wear collar 'n cuffs. Sanforized.
 Sizes 14 to 17



PROPORTIONED TO FIT QUALITY ADONNAS
 Feather soft acetate tricot . . . more absorbent . . . run-proof! Fashions favorite because they proportion fit your hips! Eight shades machine wash in lukewarm water!
 59¢



MARATHON FUR FELTS
 5.95

Here's versatility, Marathon style! This hat goes from town to country without a stop. It won't droop or wilt . . . for it's crafted of the finest of fur felts, factory blocked!



END-ON-END WOVEN MADRAS
 2.98
 Sizes 14 to 17

The soft shadings of Penney's combed madras are always top style. And now, they come with Towncraft's new "plus 7" contour tailoring for the finest fit ever! Sanforized.



SEAMLESS FOR BARE-LEG BEAUTY
 98¢ pr.

sizes midge, norm, long Penney's fashions a beautiful bare-leg look for a festive holiday season with Seamless Gaymodes. Conventional or non-run micro-mesh styles.



SAVINGS NOW! NYLON TRICOT!
 2.00
 sizes 32 to 40 Graceful full-lengths! Nylon lined and embroidered. A bevy of necklines . . . fitted elasticized backs. Pick your pastel: pink, blue, mint, maize!

BEAT THE CROWDS SHOP NOW FOR YOUR

Christmas Treats

TURKEYS

Sunco Grade "A" Fancy
14 to 22 Lb. Avg. - Select

37¢

Turkey Hens

SUNCO FANCY GRADE "A"
10 to 14 Lb. Avg.

Lb. **45¢**

Chicken Hens

PLUMP, TENDER,
3 to 5 Lb. Avg.

Lb. **43¢**

Armour★Hams

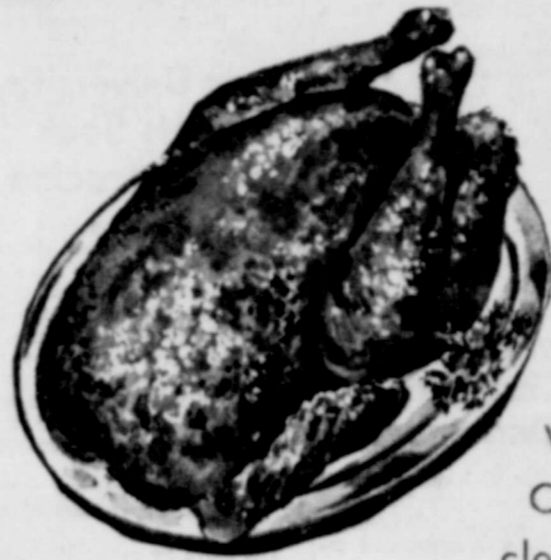
WHOLE OR
SHANK HALF

Lb. **55¢**

Long Island Ducklings

SUCCULENT
FLAVOR

Lb. **59¢**



Shop this week-end, and avoid the big rush. Save money, time and trouble. You get the BEST FOR LESS at Worth Food Mart - CHRISTMAS-TIME OR ANYTIME.

Prices Effective Thursday, Friday & Saturday - We Reserve Rights to Limit - NO SALES TO DEALERS.

We will close at 6 p. m. Christmas Eve and will be closed all day Christmas Day



Fresh Oysters Eastern Standards Lb. **\$1.09**

Cooked Hams Rath's Blackhawk 3 -Lb. Can **\$3.29**

Cooked Picnics Swift's Premium Lb. **49¢**

Sliced Bacon Swift's Oriole Lb. **49¢**

Philadelphia Cream Cheese for Holiday Party Dips 2 3-Oz. Pkgs. **29¢**

Cracker Barrel Kraft's Mellow Cheddar 13 1/4-oz. 65¢ Sharp 13 1/4-Oz. **69¢**

"Musts" For Your Christmas Feast

OCEAN SPRAY WHOLE OR STRAINED

Cranberry Sauce

No. 300 Can **19¢**

HOMEFOLKS

Whole Sweet Potatoes

No. 3 Sgt. Can **19¢**

DEL MONTE

Early Garden Peas 2

No. 303 Cans **35¢**

Fruit Pies Libby's Apple, Mince or Pumpkin 24-Oz. Pkg. **49¢**

Lima Beans Libby's Frozen Baby or Fordhook 2 10-Oz. Pkgs. **49¢**

Finest Selection-Holiday Nuts!

DIAMOND WALNUTS MEDIUM OR EMERALD BABY Lb. **39¢**

PAPERSHELL PECANS NEW CROP-BULK Lb. **39¢**

NEW CROP WALNUTS CALIFORNIA MEDIUM-BULK Lb. **49¢**

SELECT MIXED NUTS No. 1- BULK Lb. **45¢**

BRAZIL NUTS 1-Lb. Pkg. **49¢**

PEERLESS ALMONDS 1-Lb. Pkg. **39¢**

Finest Feast Fixin's

McCormick Poultry Seasoning 7.4 Oz. Can **15¢**

McCormick Rubbed Sage 1/2-Oz. Can **17¢**

McCormick Pumpkin Pie Spice 1 1/2-Oz. Can **25¢**

McCormick Celery Salt 2-Oz. Can **17¢**

Dromedary Pitted Dates 8-Oz. Pkg. **23¢**

Powdered or Brown Sugar 2 1-Lb. Pkgs. **27¢**

Dromedary Date Nut Roll 8-Oz. Can **23¢**

Greenham Loaf Fruit Cake 1-Lb. Loaf **59¢**

Jane Martini Fruit Cake Ring 1-Lb. 12-Oz. Pkg. **98¢**

All Varieties Cinch Cake Mixes 17 Oz. Pkg. **23¢**

Comstock Pumpkin Pie Mix No. 2 Can **25¢**

PUMPKIN LIBBY'S OR DEL MONTE

MARGARINE PANTRY MAIDE COLORED QUARTERS

BLACK PEPPER McCORMICK

FRUIT COCKTAIL DEL MONTE

SWEET PICKLES GREEN BEAUTY FLAIN

KRAFT OIL 16-Oz. Jar **35¢**

RITZ CRACKERS 1-Lb. Box **37¢**

MARSHMALLOWS 10-Oz. **21¢**

TEA BAGS LIPTON'S 16-Ct. Pkg. **25¢**

CANDY Lone Star Ribbon Mix 8-Oz. Pkg. **29¢**

CORN Del Monte Golden Cream Style 2 No. 303 cans **35¢**

PIE APPLES White House No. 2 Can **25¢**

CHERRIES Towle Red Maraschino 8-Oz. Jar **31¢**



Oranges Sunkist Large Navels 2 Lbs. **29¢**

Apples Rome Beauty All-Purpose Lb. **15¢**

OCEAN SPRAY Cranberries 1-Lb. Pkg. **23¢**

LARGE FRESH HONDURAS Coconuts Each **15¢**

FANCY ITALIAN Chestnuts Lb. **49¢**

WASHINGTON'S FINEST D'Anjou Pears Lb. **17¢**

IDAHO U. S. NO. 1 Yellow Onions Lb. **6¢**

WASHINGTON EXTRA FANCY Winesap Apples Lb. **15¢**

LARGE RED DELICIOUS Apples Washington Extra Fancy 2 Lbs. **25¢**

CRISP STALKS Pascal Celery Lb. **10¢**

IDAHO U. S. NO. 1 LARGE Russet Potatoes Lb. **8¢**

EAST TEXAS KILN-DRIED Sweet Potatoes Lb. **15¢**

2 No. 303 Cans **25¢**

2 1-Lb. Pkgs. **35¢**

4-Oz. Can **25¢**

5 No. 303 Cans **100**

16-Oz. Jar **25¢**

You'll Need These!

Fruit Cake Mix LYONS 16-Oz. Pkg. **49¢**

Zantee Currants SUNMAID 11-Oz. Pkg. **23¢**

Seedless Raisins SUNMAID 15-Oz. Pkg. **25¢**

DOLE FANCY HAWAIIAN Crushed Pineapple No. 2 Can **27¢**

CAMPBELL'S Tomato Soup 3 No. 1 Cans **35¢**

HEINZ SOUP Cream of Mushroom 2 No. 1 Cans **35¢**

DEL MONTE BLEND Early Garden Asparagus No. 303 Can **37¢**

DEL MONTE Whole Green Beans No. 303 Can **27¢**

Don't Forget!

SWEET SIXTEEN Margarine 1-Lb. Pkg. **23¢**

DEL MONTE Early Garden Limas No. 303 Can **27¢**

KAISER Broiler Foil 20-Ft. Roll **41¢**

SCOTKIN Dinner Napkins 50-Ct. Pkg. **27¢**

Save as You Spend with **S.N.** Green Stamps

Officers Elected At Association Meeting Monday

Officers were elected to head the Central West Texas Water and Sewage Association at a meeting December 16 in Clyde, Texas.

A. H. Williams of Ranger, was chosen as president of the organization. D. C. Goforth of Strawn was selected as vice president; J. W. White of Ranger was selected as secretary - treasurer, and L. L. Todd of Albany and Carol Waggoner of Abilene were named in the program committee.

An estimated twenty-five members and guests enjoyed a chicken dinner furnished by the Reigge-Weaver Machinery Company represented by Sam Wellhausen of Abilene.

Todd presented a film, "Clean Waters" at the meeting. The film showed how important clean and pure water was to humans, animals, flower and plant life.

The film also showed what great progress has been made in the treatment of polluted waste and water before it is dumped into the streams over the United States.

College Groups Entertain At Albany Branch

The Ranger College Chorus, band, and Rangeans entertained at the annual Christmas party of the Albany Branch of Ranger College Tuesday.

An estimated 375 people were present to enjoy refreshments, a visit from Santa Claus, and the musical entertainment.

The chorus sang four carols with the audience and pianist, Mrs. H. A. Lotapeich.

The chorus, under the direction of H. A. Lotapeich, sang "Christmas is Coming", "The Twelve Days of Christmas", and "Carol of the Bells".

The college band played two selections, "Satan Takes a Holiday", and "Temptation".

A colorful routine, "Hernando's Hideaway", was presented by the Rangeans.

Also accompanying the group were Dr. and Mrs. Price R. Ashton, Mrs. R. F. Webb, Glenda and David Webb.

R. F. Webb is director of the Albany Branch.

Nuessle Resignation Is Effective Jan. 5

Joe Nuessle, Eastland County and district attorney, has resigned effective Jan. 5, to accept the post of city attorney at Midland.

Nuessle's resignation will be acted upon Monday when county commissioners will hold their regular semi-monthly meeting. Nuessle expressed regret Wednesday that a report announcing his resignation was published before he could meet with the Court and before any county newspaper could announce his resignation.

County Judge John Hart said he hated to see the Ranger attorney leave the county, but said he was pleased to see Nuessle gain the advancement. Nuessle will succeed Bill B. Hart, who resigned to enter the Baptist seminary at Fort Worth in January. Bill Hart is a son of Judge Hart.

Nuessle has made his home in Ranger for the past 10 years. He is serving his third term as county and district attorney, having more than three unexpired years. He was appointed by the Commissioners Court for his first term, won re-election in 1954 and again in 1956. In the 1956 voting he was elected by a margin of just 11 votes. His opponent in that election was Earl Conner Jr., who held the post before Nuessle.

"This is the hardest step I have had to take since I was shipped overseas in World War II," Nuessle told a reporter. "I certainly will hate to leave Eastland County. We have enjoyed every moment that we have made it our home."

Funeral Services This Afternoon For S. J. Laney

Funeral services for S. J. Laney, 43, will be held this afternoon at 2:30 at the First Baptist Church

with Rev. Harvey Kimbler, pastor of the church, officiating.

Mr. Laney died Tuesday in the Veterans Hospital at Big Spring. Burial will be in Eastland Cemetery under direction of Hanner Funeral Home.

He was born Nov. 24, 1912 in Eastland. Survivors include his parents, Mr. and Mrs. George W. Laney of Eastland; two brothers

Police Chief Ray Laney of Eastland and L. G. Laney of Crane, Midland, and two sisters, Lola Laney of Eastland and Mrs. Dale Kirk of Midland.



READ THE CLASSIFIEDS

DIXIE Drive-In

EASTLAND RANGER HIGHWAY

Box Office Opens	6:30
Show Starts	6:45
Box Office Closes	8:45

THURSDAY - FRIDAY - SATURDAY, DEC. 19-20-21

PLUS: Color Cartoon



BEST FAMILY IDEA EVER HAD!

More and more Santas who know how to get the most out of life are giving an Evinrude. Now it's so easy to launch your family on a wonderful new boating adventure with our easy payments or Lay-Away Plan. Find out about it and see the new Evinrudes today!

L & J Supply Co.
Phone 202 Ranger
EVINRUDE SALES & SERVICE

Premier Employees Plan Christmas Party December 21

The Premier Club members will hold a Christmas party December 21 at the Ranger Community Clubhouse, it was announced today.

Families of the members, all employees of the Premier Oil Refining Company, will be present.

Assisting in arrangements for the party are Mr. and Mrs. W. A. Halbrook, Mr. and Mrs. S. B. Harton, Mr. and Mrs. C. J. Offield, and Mr. and Mrs. J. B. Weekes.

Other assistants are H. L. Gibbs and Mrs. H. E. Augus.

The dinner is scheduled to get started at 6 p.m. On the menu will be turkey, dressing, ham, green peas, cranberry sauce, fruit salad, pumpkin pie, pecan pie, coffee and tea.

Card of Thank

We wish to thank each and every one for the kindness and help during the illness and death of our loving husband and father. Also for the food and flowers. May God bless each one of you.

Mrs. Willie Goentker
Mrs. M. R. Mahan
Mrs. L. J. Williamson

Texas University Chemists Seek Cancer Vaccine

AUSTIN University of Texas biochemists have turned to plant extracts in their search for a possible anti-cancer vaccine.

Dr. Alfred Taylor, of the University's Biochemical Institute, and his assistants are testing more than 1,000 extracts of plants from all over the world in their attempt to ferret out a plant juice that will destroy or retard cancerous tissue growth.

The plant extracts are supplied by the U. S. Department of Agriculture.

The move by cancer fighters to develop a vaccine results from research findings of a decade ago. Those findings indicated that cancer may be caused by a virus. If cancer is caused by a virus, then it follows logically that a vaccine would be the method to use in attacking the "cancer virus," Dr. Taylor said.

"We know certain tumors are caused by virus, and a lot of data supports the belief that a virus causes cancer," he added. However, up to now only a small smattering of work has been done on developing an anti-cancer vaccine by scientists over the world.

All through history plants have supplied medicines for man. Antibiotics came from molds, and it is possible that some plant may furnish an anti-cancer extract, Dr. Taylor observed.

In testing the anti-cancerous capacity of plant extracts, Dr. Taylor is injecting the extracts into mouse tumors grown in incubating eggs. That method of growing live cancerous tissue was originated at the University's Biochemical Institute.

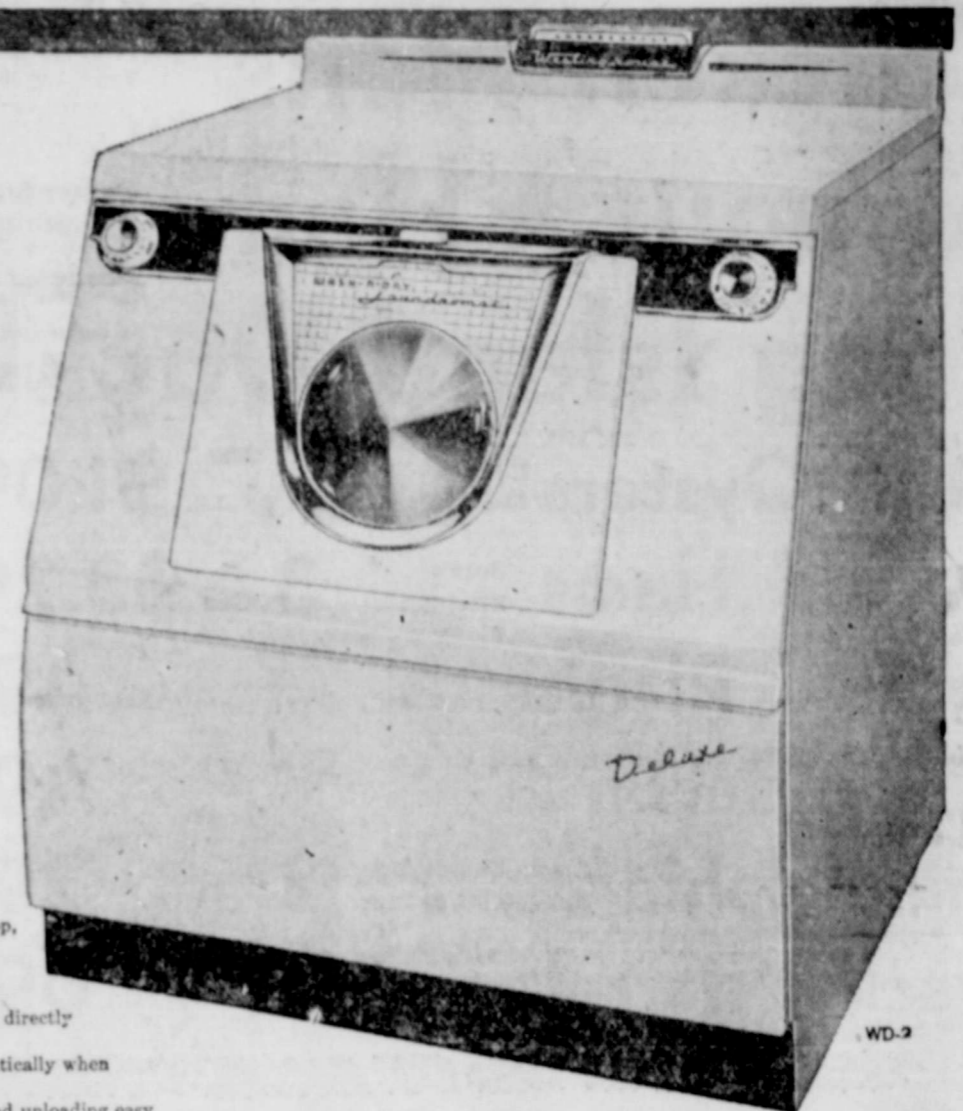
Cancer research at the University is being attacked not only by biochemists, but also by a geneticist, Dr. Clarence P. Oliver, and two bacteriologists, Drs. Orville Wyss and Jackson Foster.

WESTINGHOUSE WASH 'N' DRY LAUNDROMAT

the complete home laundry for complete economy; saves money on every load

MODEL WD-2 WITH ALL DELUXE FEATURES ONLY...
Regular \$529.95

NOW- 359.95
And Your Old Washer



- *New Revolving Agitator eliminates old center-post with its jerk-jerk motion. Clothes are placed inside the agitator, are lifted, turned, plunged 50 times a minute. It's the New Way to Wash—and years ahead!
- *Soap 'N' Water Saver measures detergent and water to the last drop, saves half the detergent, up to 10 gallons of water each load.
- *Wright-Save Door is an actual scale; shows where to set the Soap 'N' Water Saver.
- *Direct Air Flow Dryer is fastest, thriftiest; blows fresh, warmed air directly on clothes—not through machinery.
- *Automatic Dry Dial works better than any timer; shuts off automatically when load is dry. Heat Selector Dial gives proper heat for every fabric.
- *Slant-Front Construction saves stooping, kneeling; makes loading and unloading easy.

COME IN TODAY AND SEE THIS WASH 'N' DRY WONDER IN ACTION. TERMS AS LOW AS \$6.00 PER WEEK

WATCH WESTINGHOUSE WHERE BIG THINGS ARE HAPPENING FOR YOU!



TELEPHONE TALK

by W. H. McAnally, Manager

Do you have your Christmas tree up and decorated? We can't help you put the tree up, but we sure can help with some of the decorations. That is, the decorations that go under the tree.

A lot of presents under a Christmas tree cannot be disguised. Folks know what it is by the shape of the package. That isn't true when that package contains a telephone. Yes, you can now put that telephone under the tree and we will connect it after Christmas. Telephones are made in color, as well as black and white.

A kitchen telephone will make "Mom" happy all year. She can still talk to her friends over the telephone and watch the stove at the same time. A man told me he got out of the "Doghouse" with his wife by having a kitchen telephone installed for her.

More and more homes are now having two and three talking outlets in the home. They are being located for convenience in answering. So if you want your home to be up-to-date, have your telephones located for your convenience. For the utmost in convenient living, have a telephone in each of the three main areas in your home—living area, sleeping area, and working area.

Since this is the last "Telephone Talk" column I will be writing this year, I would like to take this opportunity to wish you and yours a very Merry Christmas and a Happy and Prosperous 1958.

Speaking of Christmas, there are several people, and more than likely one special person, that would like to hear your voice for a Christmas present. So why not call them? If you don't know the telephone number, we can get it for you. Just jot it down—your call will go through twice as fast if you know the telephone number. Christmas Day is always a busy one around the telephone company. So place that call early—a day or two ahead of time won't hurt.

Call by number. It's twice as fast.

SOUTHWESTERN BELL TELEPHONE COMPANY

7-pc. DINING GROUP



7995 and your Old Suite

7-PIECE CHROME DINETTE SUITE
Foam Cushions, 72-inch Table

9995 and your Old Suite

BIGGEST CHOICE IN TOWN



EVEN BLINDFOLDED YOU GET PERFECT TUNING!

New Westinghouse TV with Electronic Automatic Tuning!
Model Shown 249.95 — Prices start from 199.95, plus state tax

RANGER FURNITURE EXCHANGE

123 NORTH RUSK STREET "BRASHIER'S" Phone 242



Season's Best SAFEWAY

TURKEYS

Number 1 Top Quality — U. S. D. A. Inspected Broad Breast — Baby Beef Variety Ready to Cook

HENS 45¢ | **TOMS 37¢**
 Plump, Tender Lb. Special Buy Lb.

Mrs. Wright's Stuffing Bread For Your Holiday Dressings **24 Oz. 23¢**

Chicken Hens U. S. D. A. Inspected Ready to Cook 4 to 6 Pound Average Lb. **39¢**

Smoked Hams Neuhoff Preferred or Mohawk Half or Whole Over 12 Pounds Lb. **55¢**

Small Turkeys Ready to Cook, Perfect Eating Under 8 Pounds Lb. **59¢**

Roasting Ducks Long Island Ready to Cook Lb. **55¢**

Canned Hams Armour's or Hormel 6 1/2 Lb. Can **\$6.25**

Eastern Oysters Standard Pint Can **99¢**

Wingate Sausage Pork—Reg. or Hot 2 Lb. Roll **69¢**

Pork Roast Boston Butt Lb. **45¢**

SAVE SAFEWAY'S GREEN CASH REGISTER TAPES AND GET VALUABLE PREMIUMS FREE!

Poultry Seasoning Crown Colony 1-Oz. Can **17¢**

Pie Spice Crown Colony—Pumpkin 1 1/2-Oz. Can **23¢**

Ground Nutmeg Crown Colony 1 1/2-Oz. Can **41¢**

Ground Sage Crown Colony 1 1/2-Oz. Can **17¢**

Aluminum Foil Alcoa or Reynolds 25 x 12 Roll **29¢**

Cottage Cheese Lucerne—Dry Curd 2 Lb. Box **48¢**

Season's Best Buys at Safeway

Sliced Pineapple Libby—Perfect for Pies and Cakes No. 2 Can **29¢**

Whole Green Beans Del Monte 303 Can **23¢**

Highway Corn Whole Kernel Golden 2 12-Oz. Cans **25¢**

Busy Baker Crackers Salted Just Right 1-Lb. Box **23¢**

Lucerne COTTAGE CHEESE
 Regular, Firm, Chive or Low Calorie
Holiday Special Buy 16-Oz. Can **23¢**

BARTLETT PEARS
 Town House Ideal for Salads 303 Can **20¢**

Chocolate Covered Cherries
 Roxbury, Light or Dark Chocolate 12-Oz. Box **49¢**

Sunnybank Margarine
 Creamy Smooth Perfect for Holiday Baking 1-Lb. Pkg. **25¢**

Special Buy for the Big Feast

Egg Nog Mix
 Treat Your Guests to Delicious Lucerne Egg Nog Qt. Ctn. **49¢**

Ice Cream
 Party Pride Assorted Flavors A Perfect Dessert Anytime 1/2-Gal. Ctn. **69¢**

Bel-Air Strawberries
 Frozen, Sliced 16-Oz. Pkg. **37¢**

Bel-Air Green Peas
 or Cut Whole Kernel Corn—Frozen Fresh from the Garden Flavor 2 8-Oz. Pkgs. **29¢**

Safeway Fresh Produce

Delicious Apples 64's and 72's Gleaming Red, Extra Fancy Washington State Lb. **13¢**

Navel Oranges Sun-kist, Juicy, Sweet Perfect to Fill the Stockings Lb. **13¢**

Pascal Celery Crunchy-Sweet, Perfect for Your Holiday Dressing Lb. **8¢**

Russet Potatoes Premium Bulk, Specially Selected for Baking Lb. **8¢**

Crisp Lettuce Crispling Fresh Arizona's Finest 2 Heads **21¢**

Cranberries Late Harvest, Firm, Tangy, Plump, Rise Berries Lb. **21¢**

Libby Pumpkin Ideal for Pies 2 303 Cans **23¢**

Bakers Coconut Moist 4-Oz. Can **19¢**

Shortening Royal Satin 3 Lb. Can **85¢**

Spiced Crabapples In Heavy Syrup, Stated/Glass 2 1/2 Lb. Cans **35¢**

Cranberry Sauce Ocean Spray Jellied or Whole 300 Can **18¢**

Roxbury Satin Mix 14-Oz. Pkg. **33¢**

Stocking Mix Roxbury—Christmas 6-Oz. Pkg. **29¢**

Old Fashion Candy Mix—Roxbury 14-Oz. Pkg. **39¢**

Edwards Coffee Regular, Drip or Pulverized 1-Lb. Can **88¢**

Holiday Special!
Canned Biscuits
 Top Flite, Biggick or Borden 8-Oz. Can **10¢**

Kitchen Craft Flour 5-Lb. Bag **47¢**

White Corn Meal Kitchen Craft 5-Lb. Bag **45¢**

Spring House Butter 1-Lb. Pkg. **83¢**

Mince Meat Little Cook 1-Oz. Pkg. **19¢**

Bouillon Cubes Stearns Instant 2 1/2-Oz. Pkgs. **35¢**

Wesson Oil Perfect for Pie Crusts Qt. Bottle **65¢**

Fluffo Shortening 3-Lb. Can **91¢**

Sugarine Liquid Sweetener 4-Oz. Can **59¢**

Mortons Salt Fine Flaking or Iodized 2 16-Oz. Boxes **25¢**

Razor Blades Pal Injector 20-Ct. Pkg. **69¢**

Black Walnuts Funsten's 4-Oz. Can **47¢**

Safeway Holiday Special Buys!

Del Monte Peas Early June, Extra Tender 2 303 Cans **35¢**

Fruit Cocktail Town House, All Your Favorite Fruits 303 Can **19¢**

Sliced Peaches or Halves—Town House or Castle Crest, Extra Heavy Syrup 2 1/2 Can **29¢**

Mixed Nuts Perfect for Fruit Salad 1-Lb. Cello **49¢**

Marshmallows Fluffiest 1-Lb. Cello **35¢**

Brazil Nuts Washed—Large and Medium 1-Lb. Cello **41¢**

Baby Walnuts Emerald Long Type 1-Lb. Cello **49¢**

Roast Beef Hash Mary Kitcher 15 1/2-Oz. Can **43¢**

Chunk Tuna Chicken of Sea Green Label No. 1/2 Can **33¢**

Trend Detergent Ideal for Dishes, Too 4 1/2-Oz. Box **45¢**

Northern Tissue Assorted Colors 3 Rolls **27¢**

Maryland Club Coffee, Regular, Drip or Pulverized 1-Lb. Can **92¢**

Salad Dressing Kraft Miracle Whip Jar 16-Oz. **37¢**

French Dressing Kraft Miracle 8-Oz. Bot. **25¢**

Cheese Spread Kraft Pimento, Olive Pimento or Pineapple Jar 5-Oz. **25¢**

Kraft Cheese Cracker Barrel Sharp 8-Oz. Pkg. **43¢**

Sliced Cheese Kraft American, Pimento or Swiss 1/2-Lb. Pkg. **35¢**

Kraft Caramels Delightfully Fresh Flavored 1-Lb. Pkg. **39¢**

Safeway Holiday Specials!

Velkay Shortening For Flaky Pie Crusts 3-Lb. Ctn. **65¢**

Breakfast Gems Eggs Grade A Quality Medium Size Doz. **59¢**

Mince Meat Snails Thurs., Fri., Sat. Only Regular Price 23¢ Curtsy 7-Oz. Pkg. **19¢**

Pecan Pieces Woody's 1-Lb. Pkg. **95¢**

Vel Beauty Bar Toilet Soap Reg. Bar **21¢**

Ivory Snow Soap Powder Large Box **33¢**

Vel Detergent For a Whiter Wash Large Box **32¢**

Pecan Halves Woody's 1-Lb. Pkg. **99¢**

Ad Detergent Economical Size 10-Lb. Box **12.99**

Delsey Tissue White, Pink or Yellow 2 Rolls **27¢**

Vigo Dog Food Beef or Hammed 1-Lb. Can **11¢**

Prices effective Thursday, Friday and Saturday, Dec. 19-20-21. No Sales to Dealers.



In Eastland

COY'S PLUMBING COMPANY

For Your Plumbing Repairs
Call 225-W ... Day or Night

COY NICHOLS — EASTLAND HILL
We Will Appreciate Your Patronage

ADVERTISEMENT
READ THE CLASSIFIEDS

FREE

Folding Steel Typewriter Stand with every New Portable. All makes. Also Corona Electric Portables.

**Stephens
Typewriter Co.**
417 S. Lamar - Phone 639
Eastland, Texas

WSCS Meets for Annual Christmas Program Monday

The WSCS of the First Methodist Church met at the church December 16. Hostesses were Mrs. F. S. Fearsall, O. B. Poyner, A. J. Ratliff, and G. A. Townson. The table was laid with a white cutwork cloth and centered with an arrangement of mums. Mrs. Ratliff, president, presided. The meeting was opened with a song, "O Little Town of Bethlehem." Mrs. Archie Robinson led the opening prayer. Mrs. W. F. Creager, treasurer, presented a life membership pin and certificate to the Rushing baby and an adult membership pin to Mrs. P. M. Kaykendall.

For the annual Christmas program, Mrs. Arthur Deffenbach gave the unique origin of the Christ child and the importance of man's opinion in regard to same.

Mrs. James Ellison read the scripture reading, Romans 2:10. Miss Vivian Simmons sang a solo, "Jesu Bambino," accompanied by Mrs. D. T. Wier at the piano. Mrs. Pat Thomas gave a Christmas story, "A Little Angel Who Refused to Sing." Two songs, "Joy to the World" and "Silent Night" were sung.

There will be no more meetings of the WSCS until the first Monday in January, when they will meet in circles. The locations will be announced later.

Ladies Meet For Bible Study and Christmas Party

The ladies of the Merriman Baptist Church met in the home of Mrs. Ruby Ainsworth for their weekly Bible study, Tuesday, December 17, at 1:45 p.m.

The devotional, taken from the 24th chapter of Exodus, was presented by Mrs. A. E. Dawson. Mrs. Ainsworth led the opening prayer.

Refreshments of cake and coffee were served to: Misses Bonnie Rogers, W. S. Vinson, Jack Walker, G. D. Falls, C. J. Cole, Dawson, J. W. Vinson, and the hostess, Mrs. Ainsworth.

Rebekah Lodge Has Christmas Party Tuesday

The Ranger Rebekah Lodge No. 244 met in the Oddfellows Hall Tuesday night at 7:15 for a short business meeting and Christmas program.

Noble Grand Eula Blackwell presided over the business meeting.

Dressed in red and white Christmas costumes, the third and fourth grade students of Young school presented the program. The students danced, told stories, and sang songs.

After the Christmas program, members exchanged gifts. Mrs. Laura Todd presented bags of Christmas candy to the children. Refreshments of coffee and cake were served to about 75 members and guests.

ATTEND THE CHURCH OF YOUR CHOICE EACH SUNDAY

O. K. GROCERY MARKET

Specials for Friday - Saturday - Monday and Tuesday

501 W. Main I. G. A. Phone 214
We Reserve The Right To Limit Quantity

WITH THE PURCHASE OF \$5.00 OR MORE OF MERCHANDISE

Ladies Rain Bonnet Free

Fresh Dressed Hens Medium Size Lb. 29¢

STOKELY'S FROZEN—Box CAULIFLOWER 29¢ DEL HAVEN

STOKELY'S FROZEN—Box BRUSSEL SPROUTS 35¢ PEACHES

STOKELY'S FROZEN—Box ENGLISH PEAS 21¢ Sliced or Halves

STOKELY'S FROZEN—Box CREAM STYLE CORN 18¢ No. 2 1/2 Can 29¢

WILSON'S or ARMOUR'S Cured Hams 10 to 12-Lb. Whole Only Average Lb. 59¢

DEL MONTE—2 1/2 Can Fruit Cocktail 39¢ DEL MONTE—303 Can Early Garden Peas 21¢

DEL MONTE—2 1/2 Can Pears 43¢ DEL MONTE—303 Can Whole Green Beans 28¢

DEL MONTE—No. 2 Can Sliced Pineapple 35¢ DEL MONTE—303 Can Cream Style Corn 17¢

DEL MONTE Mary Washington—303 Can Asparagus 39¢ DEL MONTE—303 Can Crushed Pineapple 29¢

No! Fancy-Fryers Lb. 39¢

NONE-SUCH—Pkg. Mince Meat 28¢ MONARCH—Tall Can Jumbo Ripe Olives 43¢

GOLD COAST—2 1/2 Can Spiced Peaches 29¢ MONARCH—8-Oz. Jar Fruit Salad Dressing 35¢

MONARCH—16-Oz. Jar Pic-L-Joy 48¢ OCEAN-SPRAY—Can Cranberry Sauce 23¢

SELECTED SIRLOIN STEAK lb. 59¢ Wilson's Corn King

SEMI-BONELESS PORK ROAST lb. 49¢ SLICED

SELECTED ROUND STEAK lb. 79¢ BACON

SELECTED VEAL CUTLETS lb. 79¢ Lb. 49¢

Selected Chuck Roast Lb. 39¢

Small Meaty Spare Ribs lb. 49¢ SMOKED CURED

Smoked Bacon Squares lb. 37¢ PICNICS

CALF LIVER lb. 59¢ 6 to 8 Lb. Avg.

SILVER BELL OLEO lb. 23¢ Lb. 35¢

Delicious Apples Large Red Lb. 15¢

CENTRAL AMERICAN BANANAS Lb. 12¢ EGG NOG MIX Quart 49¢

Assortment Candy Cello Bags 29¢

Bonnie Moore Circle Meets With Mrs. Ward

The Bonnie Moore Circle of the Second Baptist Church met in the home of Mrs. Edgar Ward Monday, December 16. The program theme was "There's A Star in the Sky."

Mrs. Verna Hartsfield led the opening prayer. The devotional was presented by Mrs. Ward, circle chairman.

Mrs. Bob Wymer gave a number of scripture readings on the "Light the World Needs." Mrs. F. E. Caraway read two missionary letters.

After a season of prayer, Mrs. Alice Crabtree led the closing prayer.

Hospital News

New patients in the Ranger General Hospital are: Mrs. Troy Eaves, Abilene, surgical; and Mrs. Virginia Poe, Eastland, surgical.

For Christmas...

IF YOU CARE ENOUGH TO GIVE THE BEST

Choose a... Keepsake



CASALOMA Also 125 Wedding Ring 75.00 300



CAMERON Also 100 to 2475 Wedding Ring 12.50 200

Other Sets priced from 29.50 to 1000.00 and up

D. E. PULLEY JEWELER

Diamonds - Watches
203 Main Phone 33

Cub Scout Den Has Meeting

Cub Scout Den No. 6 met in the home of Mrs. John Swinney Tuesday, December 17.

Those present were: Daryl Swinney, Bruce and Ricky Thomas, Gary Hise and Benny Harris.

The next meeting will be at 3 p. m. December 27.

CALL 224 FOR CLASSIFIED ADVERTISEMENT

CARPET YOUR ENTIRE HOME

NO DOWN PAYMENT
36 MONTHS TO PAY

Ranger Furniture Exchange
123 N. Rusk - Phone 242

GIFTS

FOR YOUR CHRISTMAS KNIGHT!



For Men, Boys and Women



Men's Sport SHIRTS

By Arrow, Jayson, and McGregor
4.00 to 6.95
Full Size Range



Men's Fine Lauer GLOVES

3.95 to 6.00
Of Fine Imported Leather in Selections of Colors



Men's Hats by
★ STETSON
★ DOBBS
★ BORSALINO
10.95 to 100.00

Men's Smartest NECKTIES

By Wembley and Damon
1.50 to 6.50
New Slender Styles



FOR BOYS

- ★ Boys Suits
- ★ Sport Coats
- ★ Sport Shirts
- ★ Dress Shirts
- ★ Shoes ★ Socks
- ★ Slacks ★ Belts
- ★ Jackets ★ Caps
- ★ Bow Ties ★ Pajamas
- ★ Boy Scout Gifts



SAMSONITE LUGGAGE

O'nite Case \$17.50
Train Case \$17.50
Ladies Wardrobe \$25.00
Ladies' O'nite \$19.50
VIP Case \$19.50
Men's Two Suiter \$25.00
Pullman Case \$27.50
Men's Quick Tripper \$19.50
Men's Journeyer \$27.50
Hat Box \$15.00
Hang-It-All Case \$25.00
all prices plus existing taxes

Smartest in Men's JEWELRY
By Swank
1.50 to 5.00



Pendleton SHIRTS

When it comes to all wool shirts... nothing comes up to Pendleton.
11.95 to 13.95

—Use Our Lay-Away—

For Your Convenience We Will Be Open Friday thru Tuesday to 7 p. m.

The Globe Clothiers



USE OUR CONVENIENT LAY-AWAY

218 Main RANGER Phone 559

The men in my life

wear Comfy Slippers by Daniel Green 8.50 Others from 3.50



Letters to the Editor...



Dear Mr. Swindell:
Soon it will be Christmas Eve in Ranger, bringing memories of past scenes, and people.
The derrick, aglow with a myriad of lights. The top crowned by four flood lights. Then the derrick in neon, the only lighted derrick in the world. A Christmas tree nestling at its feet.

The Elk's Club Christmas dances with such artists as Vincent Lopez, and Jack Gardener.
Memories of the great and near-great who once walked the street of Ranger.
Tangible evidence of these memories is lacking, but their intrinsic value is coupled with Ranger's wish for a greater tomorrow.

Sincerely,
Ethel Brookes Gilmore
NOTE: The derrick stood where the Santa Claus is now standing. It was an 80 foot derrick, given to the Ranger Chamber of Commerce by the Clay Boiler Works in 1927.

It was a land mark until it fell during a rain and wind storm the night of Oct. 22, 1951. Winds ranged up to 80 miles an hour. Pilots could see it for miles, helping them to keep on their course.

County Highway Bid Is Accepted

John F. Euckner and Sons of Cebuene were successful bidders on some seven miles of highway work slated for Comanche and Eastland counties.

Euckner's bid of \$160,754 has been accepted by the State Highway Department.

Work will include grading, structures and paving from Duster to the Eastland County line and from there to the Farm Market Road 8 junction in Gorman. All work will be on FM Road 588.

American Legion And Auxiliary Has Christmas Party

Members of the American Legion and Auxiliary met at the Legion Hall Monday night, December 16, for a Christmas party. Games were played, and gifts were exchanged.

Refreshments of sandwiches, potato chips, cake, cookies and coffee were served.

The next meeting will be January 6, at 7 o'clock p.m.

TRADE WITH YOUR HOMETOWN MERCHANTS

1/2 PRICE

New... Tussy Wind and Weather Lotion



Now... it works 5 ways!

Heals! Contains Allantoin to help heal chapped, dry skin.

Protects! Contains silicones to fight off effects of harsh soap and detergents.

Softens! Contains emollients to help soften your skin.

Fights infection! Contains Hexachlorophene to reduce risk of infection.

Stops Odor! Your skin is protected against food odors.

Limited time... save 50%

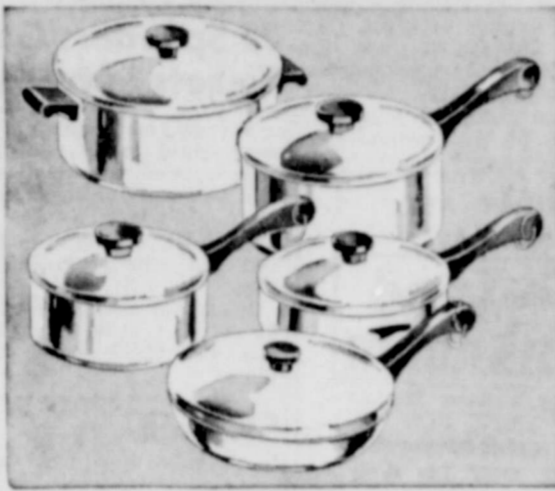
Prices plus tax.

TUSSY

REXALL DRUG LILLEY

WARDS Bell-ringer Values

BUY NOW! USE WARDS CREDIT PLANS! WARDS BIG ASSORTMENTS! ALL FIRST QUALITY! ALL TOP VALUES!



5-PC. MAGIC SEAL SET. REG. 18.95 THICK 10-GAUGE ALUMINUM

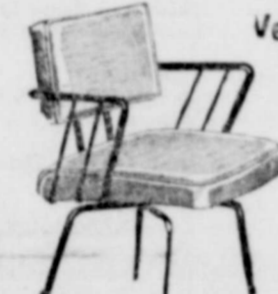
16⁹⁹ Wards best! 4 times thicker than ordinary aluminumware. Seals in food flavors. Get 1, 2, 3-qt. pans, 5 1/2-at. Dutch oven, 9" skillet.



5-pc. bridge set Reg. Price 21.95

SALE PRICE 18⁸⁸

Use as gift or for yule time parties! Sturdy steel construction... plastic seats and top.



Versatile swivel chair... fine for TV!

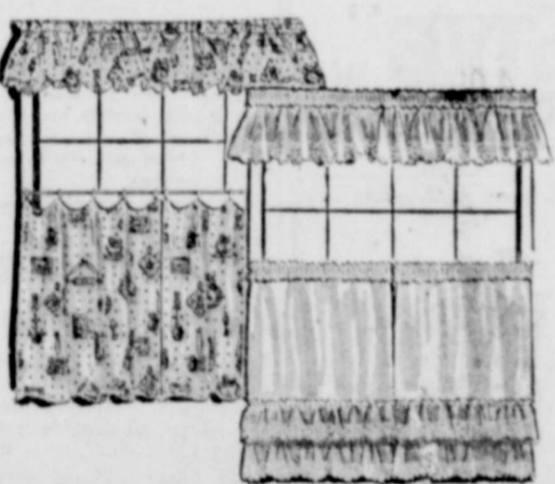
Reg. 13.95 COLOR CHOICE 10⁸⁸

Utility and comfort at Wards low price. Tubular steel legs, brass trim. Plastic seat cover.



Men's tie-bar, cuff-link set

Sterling silver and cultured pearl tie-bar sets. Ideal gift. 3.50 BOXED



One Table Of CURTAINS Values To 2.98 NOW 1.00

ONLY FOUR DAYS 'TILL CHRISTMAS

VISIT OUR TOY Department Today



Iron Board Reg. 1.98 Now 1.44



Talk Telephone Reg. 1.98 Now 1.44



Tree Light Reg. 1.98 Now 97c

Bow & Arrow Set

Reg. 4.95 Now 2.88



Pink or White Snow Reg. 98c Now 66c

SHOES - SHOES

One Group Shoes Now 1.00

Flannel Material Reg. 59c Yard Now 3 yards 1.00

GIRLS HATS Reg. 1.98 Now 97c

FOAM RUBBER PILLOWS Reg. 7.95 Now 4.88

12 H. P. Outboard Motor Reg. 269.95 Now 199.00



Shooting Gallery Reg. 2.98 Now 2.00



Block Set Reg. 4.95 Now 2.88



Jeep and Trailer Reg. 3.29 Now 2.88

Gun & Holster Set

Reg. 4.95 Now 2.88



Picture Magic Set Reg. 98c Now 66c

LADIES

Flannel Gowns Reg. 2.98 Now 2.00

ONE-POUND BOX Chocolates Reg. 89c Box Now 2 for 1.00

TOY Stick Horses Reg. 98c Now 66c

Football Helmets

Reg. 4.88 Now 88c

Girls Bikes ONLY 4 LEFT Reg. 59.95 Now 19.88



Folding snack table—ideal gift Sale Priced

Only 4 to a customer! Use for light snacks, TV dinners. Colorful 17 1/2 x 13" tray. Black tubular steel stand with rubber floor protectors on all legs. 99c SALE PRICE



\$20 quality Airline radio An outstanding value! Unbreakable leather-like Texon case. 18.95 GIFT IDEA



Airline 2-speaker portable Hi-Fi

77⁹⁵ \$5 DOWN

Plays all sizes automatically! Entire set turns off after last record has played.



7.95 Trail Blazer Air rifle set 6.99

Complete with 850-shot rifle, canteen, bell-ringing target & 25 paper targets, 2-pks. BBs.



SALE! Regular 1.29 brass magazine rack

99c

Helps keep room neat! Sturdy steel rod construction. Smart brass finish. Floor protectors.



Men's nylon stretch socks Many handsome designs and colors. Regular 9 1/2-11, large 11 1/2-14. 69c PERFECT FIT

CHRISTMAS SPECIALS

HAMILTON FRUIT MARKET

Hwy. 80 West - Ranger

BRAZIL NUTS ALMONDS WALNUTS lb. 39[¢]

ROME BEAUTY

APPLES LB. 8[¢]

GOLDEN RIPE

BANANAS LB. 8[¢]



Brass Finished WASTE BASKETS Only a few left Now 1.00 each



9 x 12-Ft. Axminster Rug Reg. 59.95 49.88

Exciting Christmas special! The rugs are plush-pile Axminsters — a durable blend of wool and carpet-rayon. Graceful foliage patterns so much in fashion right now! And smart modern textures, too!

UST 10% DOWN, \$6 A MONTH

Special Buy!

AUTO SEAT COVERS

Only a limited supply left. Values to 18.00

Now 9.88

Four Groups Plan to Study Area Schools

Eastland County citizens rolled up their sleeves at the first meeting of the County Committee on Education yesterday afternoon in the courthouse in Eastland and prepared for a united effort to improve area schools.

The citizens group, which over-represents all nine Eastland county school districts, will make a local study so that they can re-

port back to the Hale-Aiken Committee of Twenty-Four on Education. That committee will in turn file a statewide report with the next Legislature.

Delegates immediately elected Mrs. Joseph M. Perkins of Eastland as permanent chairman, then selected Johnny Bates of Ranger as vice-chairman and Mrs. Richard Donovan of Cisco as secretary.

Mrs. Perkins previously served five years as a member of the State Board of Education.

H. R. (Pop) Garrett, county school superintendent, served as temporary chairman and helped bring the group together. He, and district superintendents will serve as consultants for the group.

Following a pattern presented by the state committee, the county

group divided themselves into four committees.

Tom Wilson of Eastland will head the Finance Committee (to study finances, not to raise money) and others on the committee will be Glynn Kirk of Gorman, vice-chairman; Wilson Guest of Ranger, secretary; and J. H. Denton of Cisco, Robert Browder of Carbon, Charles Freyschlag of Eastland, J. C. Everett of Olden, S. N. Pierce of Cisco and Dr. W. P. Watkins of Ranger.

Chairman of the Classroom Facilities Committee is W. C. Browning of Gorman. Mrs. M. A. Treadwell Jr., of Eastland will serve as secretary and others on the committee will be Mrs. E. V. Stacy of Carbon, C. E. May, Ranger, Z. W. Cook of Olden, L. E. Clanz of Deadmona; J. T. Hooper of Rising Star, E. L. Jackson of Cisco and Mrs. Delmer Johnston of Cisco.

J. Floyd Killingsworth of Ranger is chairman of the Teachers Supply Committee. Other members are Jimmy Hughes of Eastland, Mrs. Gay Everett of Olden, J. P. McCracken of Cisco, Mrs. Dorothy Donovan of Cisco, Mrs. Neil E. Evans of Carbon and Sam Jones of Rising Star.

Wendell Siebert of Eastland is chairman of the Program Com-

mittee and G. B. Rush of Ranger is secretary. Others on the committee are Charlie L. Garrett of Ranger, Arin Hint of Cisco, F. D. Boggs of Rising Star, C. B. Midkiff of Cisco, Mrs. W. M. Brogdon of Gorman, Ross Wilson of Gorman, Mrs. Ed F. Willman of Carbon and Mrs. V. Fox of Olden.

The entire group will meet again when further material is received from the state committee.

Yuletide Music... Set By Humble

Christmas music and features will be shown the week of December 23 on The Humble Company's weekly TV program, Texas in Review.

The 44-voice Humble Glee Club will sing "Jingle Bell", "Jesus Bambino", and "We Wish You a Merry Christmas." Other features will show unusual Christmas toys, decorations made from tumbledweed, and decorations made by inmates in the State Prison at Huntsville.

Texas in Review can be seen over KRBB-TV, Channel 9.

Christmas music and features will be shown the week of December 23 on The Humble Company's weekly TV program, Texas in Review.

The 44-voice Humble Glee Club will sing "Jingle Bell", "Jesus Bambino", and "We Wish You a Merry Christmas." Other features will show unusual Christmas toys, decorations made from tumbledweed, and decorations made by inmates in the State Prison at Huntsville.

Texas in Review can be seen over KRBB-TV, Channel 9.

WE WILL GIVE \$5 TO \$20 FOR YOUR OLD WATCH IN TRADE ON A NEW WATCH

MOST WANTED... MOST WELCOME...

GIFT WATCHES

FOR HIM **FOR HER**

20% Discount on all Diamonds UNTIL CHRISTMAS

15 to 25% Discount On

- * Ballerina Pottery
- * China
- * Electric Razors
- * Bracelets
- * Necklaces
- * Earrings
- * Milk Glass
- * Dirilyte Flat and Holloware
- * Stainless Steel Flatware

Come in and make your selections while our stock is complete. This Jewelry Sale continues until Christmas

Ranger Jewelry Co.

220 Main Street RANGER Phone 778

MAJESTIC IN EASTLAND **SUNDAY AND MONDAY**

A LOST WORLD **The Land Unknown**

GET MORE OUT OF LIFE GO OUT TO A MOVIE!

MAJESTIC **TUESDAY ONLY**

A RURAL RIOT OF LAUGHS! **Family Night**

The KETTLES ON OLD MACDONALD'S FARM

Marjorie MAIN Parker FENNELLY

CHRISTMAS DAY AND THURSDAY

NO HOME... NO PARENTS...

these are the wonderful kids who live a true and incredible adventure!

"ALL MINE TO GIVE"

GLYNIS JOHNS CAMERON MITCHELL REX THOMPSON PATTY McCORMACK

TECHNICOLOR

74 Speeders Get Tickets Saturday

Seventy-four speeding tickets were issued Saturday night by state highway patrolmen six miles east of Ranger on U. S. Highway 80.

The cases were filed in Ranger with Justice of the Peace Charles Bobo.

radar was used Saturday night by Sgt. C. A. Cockrell and Patrolmen Les Strawn and Alfred White.

St. Nick-

(Continued From Page One)

a pony Thank you my best friend: that is all

I am Victor Huerta

Dear Santa Claus
I like you Santa Claus. I want pump gun. Dear santa. Do not forget me.
Larry Gene Moore

Dear Santa Claus
I would like to have a bassette and I would like a tiny tears and a pom-pom gun. One tiny tears doll for Diana and for me, and a pom-pom gun for Don.
Thank you
Kathy Sharp

Dear Santa Claus
I want a big bride doll for Christmas, and a teddy bear for my little brother, and a doll for litter sister, and a typewriter for my big sister.
Thank you Santa Claus
Love Sandra Jean Parsons

Dear Santa Claus
I want a big bicyel. I want a gun. I want a watch. I want a doctor cit.
Ricky Sutyres Thank You

Dear Santa Claus
My name is Joe Gilbert. I wood like a typewriter, and I wood like a middle six bicycel. I wint it for my self.

Dear Santa Claus
I want a bride doll and a bassette. I would also like a bicycel and a ring, some records also for my Brother a chemistry set. Thank you Santa Claus
Cheryl Ann Huffman

Dear Santa Claus
I want a B-B gun, and my Baby brother wants a American blocks, and I want a Wyatt Easy suite middle sized to and that is all. Thank you for it.
Glynn and my baby brother
Rt. 2 Ranger Texas

Robinson Food Market

Friday and Saturday Specials

WE DELIVER

121 North Rusk Street Phone 162

Arterburn's Hardware & Furniture

120 Main Street RANGER Phone 945

LAST MINUTE GIFT HEADQUARTERS

Free Estimates

On A New **ROOF**

Or Repair your old Roof Residential & Commercial

Eastland - Ranger Roofing Co.

Noble Squires Eastland
Phone 733

Turkey calls for hot rolls

Roast turkey and golden brown hot rolls are natural companions. And, the better the hot rolls... the better your turkey tastes. But why wait for holidays? You can have freshly browned rolls hot from the oven at every meal... For "something special" several times a week... serve the best quick hot rolls... Mrs. Baird's

MRS BAIRD'S HomeBake ROLLS

Robinson Food Market

Friday and Saturday Specials

WE DELIVER

121 North Rusk Street Phone 162

Fresh Dressed Hens lb. 43c
3 to 5 Lb. Average

Decker's Smoked 6 to 8 Lb. Picnics	Grayson's Oleo
lb. 39c	2-lbs. 45c

Good Supply Hormel Hams

14 to 17 Pounds Ready To Serve

MARYLAND CLUB

COFFEE lb. 89c

Gladiola White, Devil Food or Marble	Imperial Pure Cane Sugar
box 19c	10-lbs. 97c

FRESH—Big Stalk

CRISP CELERY ea. 15c

Keith's Frozen CUT CORN or Green Peas	Jean's Frozen Rolls
2 pkgs. 29c	2-doz. pkg. 39c

WHITE POTATOES 10-lb. bag 49c

Charmin Cleaning Tissue 19c	Fresh Coconuts 2 for 35c
Box of 400	Nice Size