

Home of Ranger College

# THE RANGER TIMES

Gateway To Famed Lake Leon

Ranger Manufacturing Co. • Ranger Peanut Co. • Lone Star Gas • Service Pipe Line Co. • Social Science Laboratories • Brazda Clinic • Ranger Clinic • West Texas Clinic & Hospital • Ranger General Hospital

88TH YEAR PRICE FIVE CENTS A Small City with Big Industry - A Bright Spot for New Industry RANGER, TEXAS, THURSDAY, NOVEMBER 14, 1957

## Bulldogs Must Win for Undisputed Title

### Rangers Vow to Beat Rebels Saturday Night

#### Wont Be Satisfied With Co-Champion

The Ranger High School Bulldogs, who pulled the impossible feat of blasting into "has-beens" two of the roughest Class AA football teams in the State on consecutive Friday nights, will not be satisfied to represent District 7-AA in the state play-offs as co-champions. They want the whole hog and are out to get it Friday night at Winters.

If Winters should beat Ranger Friday night, and if Coleman should beat Cisco, Ranger and Coleman would be co-champions and that would be bad, even though Ranger would be the district representative in the finals.

Good Place for Upeet

And the Winters game is just one of those spots where an upset could occur without too much trouble. Even though the Blizzards have won only one game all year, after all, they still have a ball club with 11 returning lettermen on it and two All-District players from last year, and they were originally picked to be a dark horse. They're bound to have something and whatever it is could very well explode all over creation if Ranger isn't careful.

The Bulldogs were thoroughly scouted by a whole bevy of Winters scouts during the Ballinger and Coleman games, and the Blizzards are not going into the contest blind, or without talent. They are in about the same spot that the Bulldogs were in, once, where they had everything to gain and

#### Ranger - Hamilton Playoff Date Set; Bulldogs Now 3rd

The Ranger Bulldogs and Hamilton Bulldogs will play the Class AA bi-district football game at Tarleton State College Stadium at Stephenville on Saturday, Nov. 23, at 8 p.m.

Supt. G. B. Rush and Supt. E. D. Stringer of Hamilton met at Stephenville Wednesday and made the decision by flipping a coin.

Coaches of both schools were also present.

Meantime, Ranger jumped to 3rd place in the Class AA ratings of the Abilene area with Coleman, No. 1 all this year, dropping to No. 4. Seymour is first in the ratings this week with Stamford second.

Stephenville is almost equal distance between Ranger and Hamilton and the stadium at the college is a good one. It will be in easy access to all Ranger.

#### Coleman Tried To Borrow Bulldog Film from Eastland

It has been learned here on undisputed authority that Coleman tried to borrow from the Eastland coaching staff the film that Eastland had made of the Maverick - Bulldog football game.

Coleman representatives tried to borrow the film for study before the Coleman-Ranger game.

It is reported that Coach Carroll Shelton of Eastland told the Coleman representatives that he did not think it would be right to release the film to them, and therefore refused.

Eastland filmed their game with Ranger, as they had every right to do, for the purpose of studying their own mistakes and improving their own play, and the Eastland coaching staff is to be congratulated for not releasing the film to some other outside school.

The same photographers from Coleman who filmed the Ranger-Ballinger game were back filming the Ranger - Coleman game and were in the press box asking if it would be all right for them to get on top of the press box.

Insurance At A Savings  
Fire - Casualty - Automobile  
M. L. KING  
INSURANCE AGENCY  
Phone 75 808 Main St.



#### What's cookin'?

By NORMAN WRIGHT  
RANGER RETURNS TO STATE SCENE!

Those headlines looked like a million dollars in one of the larger state newspapers the other day following the Bulldog's great victory over Coleman. And Ranger has been in the state papers ever since.

Maybe it is just the spot that Ranger needs to wake everybody up again. It was about this time last year when Ranger began to stir for the first time in years. It all started with a spirited 1950 Club Civic Banquet and for the next six months the town was going like a house on fire. Everybody was doing something.

We had the dirtiest clean-up campaign ever held anywhere and a city-wide shrub-planting campaign that is going to look mighty beautiful come next spring. Everybody was enthusiastic about Ranger and there was a new spirit and new enthusiasm about the place that was straining at the bit to do something.

Came the Chamber of Commerce Clinic and folks turned out in droves to do just about everything anybody had asked of them to do. The town was ready for action and would have gone all the way to do anything for Ranger.

In the meantime we had had some big Turkey Meetings around here, and had put over a big March of Dimes program, and a big Lions Club Luncheon Supper, and even the preachers were talking about Ranger from the pulpits. State newspapers were phoning in here wanting to know "what have you folks got cooking now?"

What happened we don't know. All of a sudden something got into the drive wheel and the wagon stopped. But even at that, so big was the momentum that was built up, Ranger is still coasting along on it, and it is the same wonderful old town.

The same fine, wonderful people are still here, the same good payrolls are still here, business has been pretty good, and whether you believe it or not, in the face of this rain and bad weather, there is still a whole of a peanut crop scattered around over this countryside that isn't hurt a bit—not a single bit—but greatly improved, according to the reports we get.

One farmer was telling us just today that some of those early peanuts that had put on have begun to sprout, but he said there were no peanuts there to start with. Plenty of more peanuts have put on since the rains began, and that is the

(Continued on Page 7)

#### Reserved Seats Available Here For Winters Game

The school office wishes everyone to know that there are reserved seats available here for the Winters - Ranger game and are \$1.25. Get tickets before leaving town. You won't have to arrive early.

Student tickets are 25c and are available at High School.

#### Weather Reports

Clear to partly cloudy Thursday and Friday, not much change in temperature. Low Thursday night 50. High Friday 70.

Tenny Wenny Gas Burners! Largest selection of new sodas, hardtops, convertibles in this area. Prices start at \$1095. TOM'S SPORT CARS Eastland



#### Donna Blackwell is Homecoming Queen At College

Miss Donna Blackwell, daughter of Mr. and Mrs. Earl Blackwell, Sr., of Crane, has been chosen Homecoming - Ex-Students who will be in the city for a week-end of festivities beginning Thursday night.

And whether the Rangers know it or not, that was a pretty fair sized vow because the Rebels haven't been beat all season by anybody, whether in the conference or out.

Arlington, meantime, is planning to put on quite a Homecoming themselves because they are running a special train to Ranger. It is a 4 r College Homecoming Queen of 1957.

Although Miss Blackwell's home is now in Crane, she was born in Ranger where she continued to make her home until the second semester of her junior year in high school.

While in Ranger High, as well as in Crane, Miss Blackwell received many honors, among which were P.F.A. Sweetheart, Band Sweetheart, Miss Most Likely to Succeed, Most Beautiful of Crane High School and Class Beauty.

In high school she belonged to several organizations including the bands of both schools where she was a majorette in Ranger as well as in Crane, and she was a member of the Sub-Debs, the Future Business Leaders of America and F.H.A.

During her first year in college, Miss Blackwell became a member of the Phi Theta Kappa and the Debs, and was secretary of the Freshman class. She was elected sweetheart of the 1956-57 Ranger College basketball team.

She has been in the Rangeams for two years and is serving the troupe as both a majorette and a lieutenant this year. She is a co-business manager of The Ranger, college year book, and is a new member of the Masquers, dramatic club.

Miss Blackwell is a very pretty brunette with dark brown hair and sparkling grey-green eyes. She has a sweet, friendly disposition and a keen sense of humor—a Queen in every sense of the word.

(Editor's Note: This is the 41st in a series of articles taken from the book, "History of Eastland County, Texas," written by Mrs. George Langston in 1904.)

#### Early Gorman Boaster 'Most Productive Land'

It is the proud boast of this people that they are surrounded by the most productive soil that can be found west of the Brazos river, and with a thoroughly up to date lot of businessmen the little city is gradually but surely forging its way to the front.

#### Special Train Coming Here From Arlington

The luckless Ranger College Rangers who have played their season through without a win, held a meeting one night this week and took an oath which they signed with blood. They vowed to beat the Arlington State Rebels next Saturday night at Bulldog Stadium for benefit of the hundreds of Homecoming - Ex-Students who will be in the city for a week-end of festivities beginning Thursday night.

And whether the Rangers know it or not, that was a pretty fair sized vow because the Rebels haven't been beat all season by anybody, whether in the conference or out.

Arlington, meantime, is planning to put on quite a Homecoming themselves because they are running a special train to Ranger. It is a 4 r College Homecoming Queen of 1957.

Although Miss Blackwell's home is now in Crane, she was born in Ranger where she continued to make her home until the second semester of her junior year in high school.

While in Ranger High, as well as in Crane, Miss Blackwell received many honors, among which were P.F.A. Sweetheart, Band Sweetheart, Miss Most Likely to Succeed, Most Beautiful of Crane High School and Class Beauty.

In high school she belonged to several organizations including the bands of both schools where she was a majorette in Ranger as well as in Crane, and she was a member of the Sub-Debs, the Future Business Leaders of America and F.H.A.

During her first year in college, Miss Blackwell became a member of the Phi Theta Kappa and the Debs, and was secretary of the Freshman class. She was elected sweetheart of the 1956-57 Ranger College basketball team.

She has been in the Rangeams for two years and is serving the troupe as both a majorette and a lieutenant this year. She is a co-business manager of The Ranger, college year book, and is a new member of the Masquers, dramatic club.

Miss Blackwell is a very pretty brunette with dark brown hair and sparkling grey-green eyes. She has a sweet, friendly disposition and a keen sense of humor—a Queen in every sense of the word.

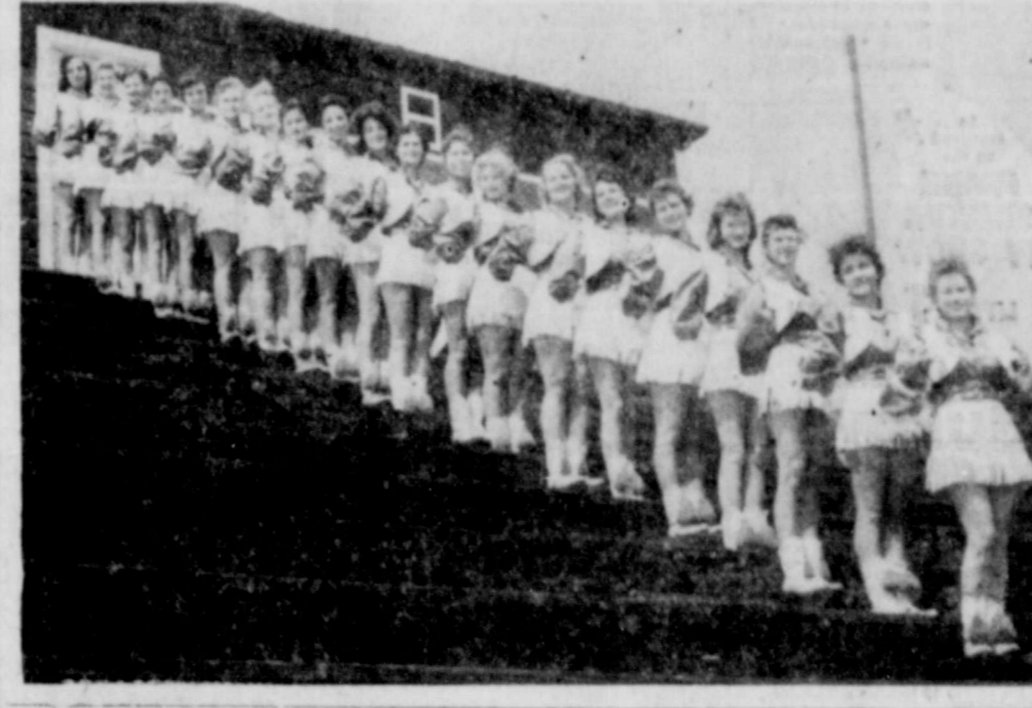
(Editor's Note: This is the 41st in a series of articles taken from the book, "History of Eastland County, Texas," written by Mrs. George Langston in 1904.)

#### Early Gorman Boaster 'Most Productive Land'

It is the proud boast of this people that they are surrounded by the most productive soil that can be found west of the Brazos river, and with a thoroughly up to date lot of businessmen the little city is gradually but surely forging its way to the front.



THE RANGER COLLEGE RANGERS, above, have vowed and signed it in blood to beat the Arlington State Rebels in the Homecoming game at Bulldog Stadium Saturday night of this week, and the colorful Rangeams, below, have worked for weeks on a set of brand new precision drills to thrill the spectators. Arlington State is also bringing a special drill team to take part in the halftime activities and the whole show will be worth coming miles to see. Photos by Capps.



Boosters Dinner Tonight Ranger Hall - 8 p.m. For all Ex-Students and Friends of Ranger College, \$1.00 per plate, everybody invited. Dance at Union Building 9 p.m. No Admission

#### County to Repair Ranger Hospital

Eastland County Commissioners Tuesday were told by County Attorney Joe Nussle that they had full authority to invest money in

repairing Ranger General Hospital if they so desire.

With that assurance commissioners voted to go ahead with some of the work members of the Hospital Board of Directors had requested. They said some work which couldn't wait would be done immediately. Commissioners debated contracting the rest of the work out, and indicated they would request an outline of what repairs are needed.

Nussle was called in to report on his telephone conversation with an assistant attorney general. He said it was his opinion and the opinion of the state attorney that the county could invest money out of the county permanent improvement fund for hospital repairs, although the county has only half interest in the hospital.

Ranger General Hospital is jointly owned by the City of Ranger and the County. Both name half of the members of the governing board.

Nussle was asked if he didn't think it would be better if the City gave up their power of control over the hospital to the County, if the county spends an additional \$5000-\$6000. He replied that legally it wouldn't make any difference, but said that he would naturally recommend such action strictly from a business standpoint.

"Legally," he declared, "you have no control over the hospital, except that you can cut off the flow of county money."

#### Public Invited To Homecoming Assembly At College Friday, 11 A. M.

The public is again reminded and urged to attend the very highly entertaining and enjoyable program to be held in the Auditorium at Ranger College at 11 o'clock Friday morning, Nov. 15.

Mrs. Price Ashton has charge of the Assembly and it will be of such interest to every citizen of Ranger, as well as to all students and Ex-Students who will have arrived by that time.

Ranger College Assembly Programs are works of art and all are highly entertaining and enjoyable and well worth the time it takes to attend them. The one tomorrow is extra special as it has been prepared especially for the big Homecoming Week-end.

All members of the faculty and all students invite the public to join them in this very extraordinary event.

The time is 11 a.m. to 12 noon.

BE SURE—SEE Don Pierson Olds-Cadillac Eastland Quality Cars at Lowest Prices

FREE HOME TRIAL on RCA Whirlpool Appliances RANGER FROZEN FOOD CENTER

#### Bulldogs Ranked Eighth In State

The Ranger Bulldogs, who, heretofore, have not even been mentioned with any rank at all in the Fort Worth Star Telegram's ratings of top high school football teams, are now ranked eighth in the state in Class AA.

The ratings follow, with their ratings last week in parentheses, and their won-loss record:

1. Terrell (1) 8-1
2. Lockney (3) 9-0
3. Seymour (10) 8-0
4. Gilmer (5) 9-1
5. Mayfield (6) 9-0
6. Hamilton (8) 9-0
7. New London (9) 9-0
8. Ranger (-) 7-2
9. Coleman (4) 8-1
10. Stamford (2) 8-2

Editor's Note: There is one thing about these classifications that is not clear to us, yet: We lived and worked in Terrell before coming to Ranger, and Terrell is a city of approximately 15,000 people, yet it has the same Class AA rating as Ranger, a city of 4,000. And there is only one high school in Terrell.

#### Thirteen Days Till Christmas Lights Go On

Just to show you its later than you think, there are only 13 more days starting tomorrow and counting Saturdays and Sundays before the Christmas decorations and Christmas lights are supposed to be up and turned on all over the downtown Ranger Streets.

They are supposed to be up and turned on Thanksgiving night which is Nov. 28, and there is only one Thanksgiving this year, for which everybody is happy.

Following November 28, which is actually a little late in the season, the rat race will be on in full swing for Christmas.

According to previously made signs by merchants meeting at the Chamber of Commerce, all display windows are also supposed to be decorated for Christmas by Thanksgiving night, so that everything can be turned on at once.

Change Vacant Windows Merchants who have had displays in the vacant show windows are supposed to change them, or add Christmas merchandise and decorations to them so as to make the Main Street displays as attractive as possible.

It was also hoped that some other outstanding attraction could be provided for downtown Ranger, such as the widely discussed and (Continued On Page 7)

Kilgusworth

Real Estate

1008 Main St. Phone 75



# The Ranger Times

"SEEKING COMMUNITY BETTERMENT SINCE 1919"  
 114M STREET—RANGER, TEXAS ESTABLISHED JUNE 1, 1919  
 Entered as second class matter at the postoffice at Ranger, Texas under the act of Congress of March 3, 1879  
 TIMES PUBLISHING COMPANY  
 Published Tri-Weekly—Tuesdays - Thursdays - Sundays  
 JOE DENNIS and ONOUS DICK, Publishers  
 NORMAN WRIGHT, Editor

One week by carrier in city .15  
 One month by carrier in city .45  
 One year by mail in county 3.50  
 One year by mail in state 4.95  
 One year by mail out of state 6.75

NOTICE TO PUBLIC—Any erroneous reflection upon the character, standing or reputation of any person, firm or corporation which may appear in the columns of this newspaper will be gladly corrected upon being brought to the attention of the publishers.

## CLASSIFIED

All Classified Ads Must Be Paid For In Advance.  
**MISC. FOR SALE NOTICE**

FOR SALE: Deer rifle model 99 Savage 250-3000 cal. with K4 Weaver scope, gun case, box shells, (retail value \$192), \$130. Sport Center, Phone 525, Eastland.

FOR SALE: The Barker place, Ranger Heights. Also living room suite, dining table, and buffet. All priced to sell. Mrs. R. E. Barker, 312 Walnut St., Phone 675.

RING NECK Pheasants. Live or dressed. Chucker partridges. Now ready. B. G. Pirkle and son. Phone 211.

### FOR RENT

FOR RENT NOW—completely reconditioned 3 and 4 room furnished and unfurnished apartments. Low rent, utilities included. Also transient rooms. In the heart of Ranger. **GHOLSON HOTEL** Phone 9506

FOR RENT: Small house. Winnett Spring Road. R. C. Wilson.

### HELP WANTED Female

FEMALE HELP WANTED: Middle aged woman without dependents to live in. Must be dependable. Phone 677.

### LOST & FOUND

LOST, strayed or stolen: Female Pekingese dog. Reddish brown color. Reward. Call 172-W.

### SEE O. G. Lanier FOR

OIL AND GAS LEASES AND REAL ESTATE WE BUY AND SELL  
 Phone 410 - 113 So. Rusk Ranger, Texas

### 16-BED LICENSED NURSING HOME

For elderly people, men or women. All new elevating beds. Attendant on duty 24 hours a day. Good meals. Good care. Good companionship. Reasonable rates.

### KIRK'S NURSING HOME

Phone 25-J Gorman

### FOR SALE

5 ROOM home, near College, paved street. \$4,000.  
 5 ROOM home, Spring Road. \$3,150.00.  
 80 x 140 excellent residential vacant lot, HOP. \$750.00.  
 150 x 140 business corner lot, paved streets, \$1,200.00.  
 100 ACRES, near Cheaney, on paved highway. No improvements. \$25.00 per acre. Good abstract title.  
 3 BEDROOM home, 5 blocks from business section.  
 3 BEDROOM home, Hodges Oak Park Addition.

**C. E. MAY**  
 INSURANCE - REAL ESTATE

## Letters to the Editor...



Editor's Note: It has long been a policy of the Times not to publish any kind of poetry, and we discourage people sending it to us. Our only exception is the publication of prize-winning poems written by High School English students that have received special recognition. Out of sympathy we are printing the one following, but ask that no more be sent to us.  
**WHEN WE GO HOME**  
 Joe A. Tullos, Nov. 10, 1955  
 When we go home think you 'tis true  
 That we shall know as once we knew  
 You speak with me and I with you  
 When we go home.

### TV LOG

**KRBC-TV FRIDAY**  
 6:55—Daily Devotions  
 7:00—Today  
 7:25—News  
 7:30—Today  
 7:55—News  
 8:00—Today  
 8:00—Ariene Frances  
 8:30—Treasure Hunt  
 10:00—Price is Right  
 10:30—Truth or Conseq.  
 11:00—Tic Tac Dough  
 11:30—It Could Be You  
 12:00—Tex & Jinx  
 12:30—Howard Miller  
 1:30—Bride and Groom  
 2:00—NBC Matinee  
 3:00—Queen for a day  
 3:45—Modern Romances  
 4:00—Comedy Time  
 4:30—Command Perf.  
 6:00—News  
 6:10—Weather  
 6:15—NBC News  
 6:30—Frontier Dr.  
 7:00—Sheriff of Cochise  
 7:30—Life of Riley  
 8:00—Town and Country Time  
 8:30—By Line  
 9:00—Cavalade of Sports  
 9:45—Red Barber's Corner  
 10:00—News  
 10:10—Weather  
 10:15—Command Perf.  
 11:30—Sign off

**AMERICAN GIRL**  
 Watch and bracelet combined in one glamorous ensemble • 17 jewels • unbreakable mounting \$59.50

As featured on the **FRANK SINATRA TV SHOW** AS LITTLE \$1 DOWN AS **BULOVA!** buys the finest...  
**ROYAL CLIPPER**  
 17 jewels • self-winding, waterproof • unbreakable mounting • shock-proofed, anti-magnetic • radium hands and dial • sweep second hand • expansion band • distinction and color of natural gold \$59.50  
**D. E. PULLEY**  
 JEWELER  
 Diamonds - Watches  
 Jewelry - Silverware

**WRAP-TV FRIDAY**  
 6:30—Sunup  
 7:00—Today  
 9:00—Ariene Francis Show  
 9:30—Treasure Hunt  
 10:00—The Price is Right  
 11:00—Tic Tac Dough  
 11:30—It Could Be You  
 12:00—High Noon News  
 12:30—Margret McDonald  
 12:45—Eddie Williams Show  
 1:00—Howard Miller Show  
 1:30—Bride and Groom  
 2:00—Matinee Theater  
 2:00—Queen for a Day  
 3:45—Modern Romances  
 4:00—Comedy Time  
 4:30—Drama Time

## DIXIE Drive-In

Box Office Opens 6:30  
 Show Starts 6:45  
 Box Office Closes 9:00  
**WEDNESDAY - THURSDAY, NOV. 13 - 14**



PLUS: Color Cartoon and Sports Reel  
**FRIDAY - SATURDAY, NOVEMBER 15 - 16**



PLUS: Color Cartoon and Sports Reel

1:00—Kitty's Wonderland  
 5:40—News and Weather  
 5:45—News  
 6:00—Claco Kid  
 6:30—Saber of London  
 7:00—Court of Last Resort  
 7:30—Life of Riley  
 8:00—M-Squad  
 8:30—Thin Man  
 1:00—Cavalade of Sports  
 9:45—Red Barber's Corner  
 10:00—Texas News  
 10:15—Weather Telefacts  
 10:25—Southwest News  
 10:40—World of Sports  
 10:50—World Newscast  
 11:00—Tonight  
 12:00—Sign off

**RECENT GUESTS**  
 Mr. and Mrs. L. T. Rushing had as guests her mother, Mrs. Lula Brannon of Vernon, and her sister, Mrs. E. O. Galloway, also of Vernon.

**READ THE CLASSIFIEDS**  
**CARPET YOUR ENTIRE HOME**  
 NO DOWN PAYMENT  
**36 MONTHS TO PAY**  
**Ranger Furniture Exchange**  
 123 N. Rusk - Phone 242

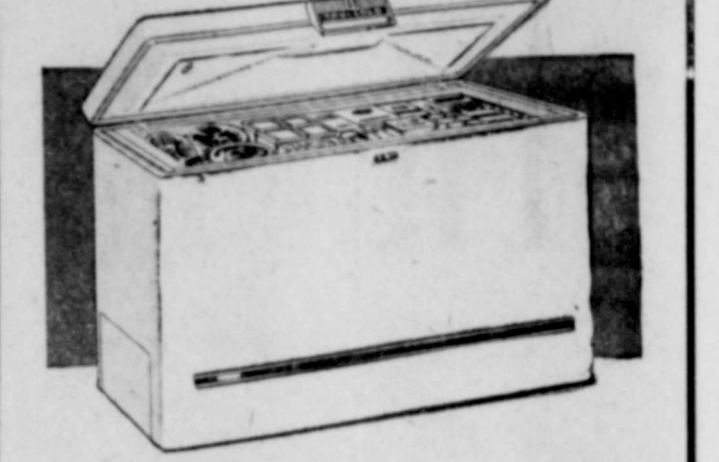
**COY'S PLUMBING COMPANY**  
 For Your Plumbing Repairs  
 Call 225-W . . . Day or Night  
 COY NICHOLS - EASTLAND HILL  
 We Will Appreciate Your Patronage

**Brain Insurance for Your Business?**  
 Why not? You wouldn't dream of operating your business without fire or accident insurance. Or liability insurance. Then why not insure your company's greatest future asset—educated brains!  
 There's only one place where business and industry can get the trained brains so vital to future progress. That's from our colleges and universities. Today these institutions are doing their best to cope with a mushrooming demand for educated men and women. But they face a crisis. For the pressure of applications keeps mounting, and faculty salaries must be expanded, and faculty salaries must be raised to a respectable level. Insure your company's, and your country's, future assets by helping the colleges or universities of your choice—now! The returns will be greater than you think.  
 If you want to know what the college crisis means to you, write for a free booklet to: **HIGHER EDUCATION**, Box 36, Times Square Station, New York 36, New York.  
**—WRECK THE REBELS!—**  
**C. E. Maddocks & Co.**  
 Insurance - Real Estate Phone 252

to make a fine portrait of your child... we use **Photography and Fun**  
  
 No child looks like himself when he feels shy or bored. So a necessary ingredient in a truly fine portrait is a pleasant bit of fun to bring out the bright and lively expression that IS your child. Then, when your child is entirely at ease — our skillful camera work begins... and ends with a portrait the family will treasure for years!  
 Make your child's appointment now.  
**Capps Studio**  
 104 RUSK RANGER

**Montgomery Ward**  
 407 Main RANGER Phone 447

# SALE PRE-HOLIDAY SALE



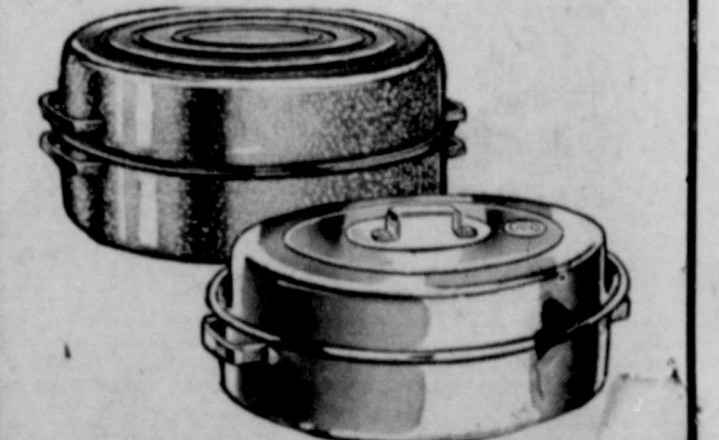
**15 cu. ft. Tru-cold Chest Freezer**  
 No monthly payments until March  
 Holds 525 lbs. of frozen food. Straightline design. Fast-freeze section, tote-tray, tilt-up basket. Safety signal light.  
**269<sup>88</sup>**  
 \$10 DOWN



**139.95 Quality 7-PC. Deluxe Dinette** NOW **99.88**



**25% off entire stock imported china**  
**18 patterns—open stock guaranteed!**  
 66-pc. Maytime, 17 others now 25% less than usual! All white, translucent. Serves 8; 4 extra cups. 100 pcs. for 12, sale . . . . .44.88 REG. 39.95



**Sale! Large roasters, reg. 2.49 ea. Blue speckled enamel or aluminum**  
 Self-basting—cook to juicy perfection! Enameled holds 20 lb. fowl, 25-lb. roast. Aluminum holds 9-lb. fowl, 15-lb. roast.  
**1.88**



This Space Always Bears Watching!

**SPECIAL**

100% Paraffin Base Motor Oil

5-QUART CAN **75¢**

**BROWDER SERVICE STATION**

Highway 80 East — Ranger  
Invites Your Patronage and Merits Your Confidence.  
Honest Values and Capable Service... Says Tommy, Joe and Shorty.

**WEEKEND GUESTS**  
Mrs. Beulah Mae Johnson and Mrs. Ethel Thiels of Fort Worth visited Mr. and Mrs. J. D. Johnson over the weekend.

**HERE FROM ABILENE**  
Mr. and Mrs. Willis Clarke and family of Abilene visited his parents, Mr. and Mrs. W. H. Clarke, over the weekend.

Be Sure To Read This One—

... if you are interested in the title to the property you own now or may hereafter acquire. Buying good titles is just as important as buying good food, good medicine or any other quality product. If you have spent your money for a farm or home in town without an abstract you are one of the very few who have. Better be safe than sorry. Always depend on an abstract for guidance when buying any kind of real estate.

**EARL BENDER & COMPANY**  
Eastland, Texas (Abstracting since 1923)

**Women's Activities**

**November 14**  
The Ranger Garden Club will meet Thursday, Nov. 14, at the Community Club House. Guest speaker will be Wilma Ray Reeves of Grand Prairie.

**November 15**  
Mrs. Arthur Deffebach will be hostess to the AAUW Friday, Nov. 15. "Glamorous Stones" will be the theme of the program. Mrs. Walter Daniels will speak on "The Art of Personality Development."

**November 18**  
The WSCS of the First Methodist Church will meet at 11 a. church Monday, Nov. 18, at 3:30 p.m. for the fourth session in a series of mission studies on Japan. Mrs. Stanley McAnelly will be in charge of the program.

**November 19**  
The 1947 Club will meet Tuesday, November 19, at 4 o'clock p.m. in the home of Mrs. Ray Lilley.

**November 21**  
The program will be "Operation Deep Freeze," with Mrs. James Townsend in charge.

The regular meeting of the Rho Pi Chapter of Beta Sigma Phi has been postponed until November 21.

**VISITS IN FORT WORTH**  
Mrs. Hugh Dawley and Helen Dawley visited R. L. Dawley of Fort Worth over the weekend.

**Grapefruit Gobblers For Thanksgiving**



Be sure to have plenty of fresh Florida grapefruit on hand for Thanksgiving Day. The last juicy sections and halves are ideal appetizers to precede an otherwise heavy meal.

In addition, plump round sunnyday grapefruit can be made into turkey gobblers for centerpieces or individual places that will delight young and old. Here's how:

**Grapefruit Turkeys**  
Cut four rows of deep slits for fanned-out tail. Insert rhododendron leaves for tail feathers, placing smallest leaves in front, longest in back, and iron tips with scissors. Make two deep slits on sides for wings; insert two small leaves in each. Make head of shelled Brazil nuts with pin inserted in bottom to hold in place. Use pimento for wattle. Cut scallops with tip of apple corer bending them outward; to reattach breast feathers. Insert three toothpicks in grapefruit for legs.

# PRE-THANKSGIVING SALE!!

Stock-Up Now — Save Time and Money



**WHOLE YAMS** No. 3 Sqt. Can **19¢**

**PUMPKIN** LIBBY'S OR DEL MONTE No. 303 Cans **25¢**

**GREEN BEANS** DEL MONTE CUT No. 303 Can **19¢**

Prices Effective Thru Saturday, Nov. 16, Reserve Right to Limit No Sales to Dealers

SWIFT'S ALLSWEET OLEO	1-Lb. Pkg.	29¢
LIPTON'S TEA BAGS	16-Ct. Pkg.	25¢
BETTY CROCKER ASSTD. CAKE MIXES	20-Oz. Pkg.	31¢
QUAKER YELLOW CORN MEAL	2 1/2-Lb. Box	27¢
UNDERWOOD'S DEVILED HAM	2 1/4-Oz. Can	19¢
FABLUM MIXED CEREAL	8-Oz. Pkg.	21¢
SWIFT'S EGG YOLKS OR MEATS FOR BABIES	3 1/2-Oz. Jar	23¢

<b>BROWN SUGAR</b> Or Powdered Imperial or Domino	2 1-Lb. Boxes	25¢
<b>SPICED PEACHES</b> Pratt-Low Whole	3 No. 2 1/2 Cans	69¢
<b>ROYAL GELATIN</b> Assorted Flavors	Pkg.	5¢
<b>BAMA APPLE JELLY</b>	20-Oz. Tumbler	19¢
<b>SWIFT'S JEWEL</b> Shortening	3 Lb. Can	69¢

Order Holiday Poultry & Hams Now For Best Selections, Lowest Price!

<b>PUFFIN BISCUITS</b> HORMEL	2 Cans	25¢
<b>CHILI WITH BEANS</b> NABISCO	16-Oz. Can	35¢
<b>RITZ CRACKERS</b>	1-Lb. Pkg.	37¢
<b>NEW PINK DRETT DETERGENT</b> MAPLE-FLAVORED	Giant Pkg.	75¢
<b>WORTH SYRUP</b> DETERGENT	Quart Botl.	45¢
<b>JOY LIQUID</b>	22-Oz. Can	69¢

**BANANAS** SELECT QUALITY GOLDEN-RIFE Lb. Only **10¢**

• Swift's Frozen Meats •

SWIFT'S PREMIUM HAMBURGER PATTIES	12-Oz. Pkg.	59¢
SWIFT'S PREMIUM SANDWICH STEAKS	12-Oz. Pkg.	89¢
SWIFT'S PREMIUM BUTTERED BEEF STEAKS	8-Oz. Pkg.	49¢
SWIFT'S PREMIUM FRENCHED VEAL CUTLETS	12-Oz. Pkg.	99¢
SWIFT'S PREMIUM LOIN LUNCHEON STEAKS	8-Oz. Pkg.	59¢

• Frozen Food Special!

OLD SOUTH FROZEN ORANGE JUICE	2 6-Oz. Cans	29¢
CHUN KING FROZEN CHINESE DINNER	12-Oz. Pkg.	75¢

**Roast** WORTH CONTROLLED QUALITY BEEF-CHUCK BLADE Lb. only **39¢**

<b>LISTERINE</b> ANTISEPTIC	7-OZ. BOTL.	49¢
<b>CREAM OIL</b> WILDROOT MEDIUM SIZE	PLUS TAX	49¢

<b>ROUND BONE ROAST</b> "W.C.Q." BEEF Arm Chuck	Lb.	49¢
<b>PREMIUM BACON</b> Swift's Sliced	Lb. Pkg.	59¢
<b>NEUHOFF'S SMOKIES</b> Smoked Sausage	12-Oz. Pkg.	59¢
<b>DRY SALT BACON</b> Swift's Oxford	1 lb.	39¢

Miss Worth Invites You to Play "MARKO" SATURDAYS, 7 to 8 p.m. KFJZ-TV channel 11 Free MARKO Cards only at WORTH FOOD MART



This Week's Cards Must Have "Yellow" Bands

Vol. 11 Also 1-10 New On Sale!

**ENCYCLOPEDIA OF PICTURED KNOWLEDGE** For The Entire Family

WORTH \$2.00 PER VOLUME VOL. 11 \$4.95



**SAVE 60% AND MORE!**

12" Hi-Fi 33 1/3 RPM Records Highest Quality—Famous Music This Week's Specials

- Che-Cha & Mambo
- The King and I

HEAR 'EM PLAYED BY THE "TRIO" ON KFJZ-1270 Guaranteed \$3.78 Value **\$1.49** Each



with many other delegates traveled by Delta Air Lines out of Dallas to Miami and back to Dallas.

Mrs. Ramsey is the daughter of Mrs. Beatrice Hellums of Rising Star. Before becoming an assistant to Dr. Jolly Mrs. Ramsey was dental assistant to her husband, Dr. E. H. Ramsey, Sr., in Rising Star, worked in the Rising Star Hospital two years and one year in the Eastland Memorial Hospital.



PAULINE RAMSEY  
Pauline Ramsey Attends A.D.A.A. Meeting in Fla.

**FREE**  
Folding Steel Typewriter Stand with every New Portable. All makes. Also Corona Electric Portables.

**Stephens Typewriter Co.**  
417 S. Lamar - Phone 639 Eastland, Texas

Here's a check for your loss



When you really like us

You buy insurance because you're smart — not because you get a kick out of it at the time.

When we deliver an insurance policy, nobody ever says: "Oh boy, what a beautiful policy!"

But when somebody has a fire or a robbery or a lawsuit or a loss of some other kind, and we deliver a check from the insurance company —

—THAT is when people really like us. It happens frequently.

Bear with us when we try to get you to carry the insurance you should—but love us when we help you meet your loss. That's all we ask.

**C. E. MADDOCKS & CO**  
Insurance - Real Estate  
207 Main Phone 252

**Freedom Needs Educated People**

In every business, every industry, the need for college-educated people mounts year by year. In a world that becomes constantly more complex, brains are a prime necessity.

That's why all of us have a vital stake in our colleges and universities. Today these institutions are doing their utmost to meet the growing demand for educated manpower. But they are handicapped by lack of funds.

More money is needed each year to expand facilities, bring faculty salaries up to an adequate standard and provide a sound education for the young people who want and deserve it.

As a practical measure to protect the future of your business, help the colleges or universities of your choice—now! The returns will be greater than you think.

If you want to know what the college crisis means to you, write for a free booklet to: HIGHER EDUCATION, Box 36, Times Square Station, New York 36, New York.

—Bonfire and Pep Rally Friday at 7—

**LLOYD L. BRUCE**  
Insurance Service Phone 252

Save as You Spend with S.N. Green Stamps



# PENNEY'S

ALWAYS FIRST QUALITY!

## Advance Spring Fashinos



### over 85 brand new prints! RONDO PERCALE

Pick Rondo for fashion, freshness, easy-care! Watch it bloom into cafes, skirts, dresses! Toss this high-count cotton in your washer . . . see it emerge fresh for another round of hardy wear.

**39¢**  
Yard



### a flower-land of hand-picked NEEDLEN THREAD PRINTS

Diminutive or giant . . . Penney's prints look fresh and exhilarating in fashionable flower hues! All in Penney's Sanforized\* high-count broadcloth that machine washes to perfection.

**49¢**  
Yard



### Decorate with "RAMONA" Cloth

**59¢ yard**

Color-cued prints and solids for a charming decor. Machine-washable, sunfast, full-bodied cotton for easy-care! Outstanding value at Penney's low price!



### "REGULATED" COTTONS

**79¢ yard**

A mixed bouquet of proud Penney perfectionist prints and go-to-gather solids — unmatched at this low price! Such easy care . . . sunfast\* machine-washable, crease-resistant! Pattern illustrated.

### WELCOME EXES

TO RANGER COLLEGE HOMECOMING  
SATURDAY, NOVEMBER 16



## AROUND RANGER COLLEGE CAMPUS

By Ranger College Journalism Class

Arlington State College plans to run a special train to Ranger Saturday afternoon for the Arlington State and Ranger College football game Saturday evening.

The Ranger College campus is buzzing this week with preparations for Home-Coming. Home-Coming begins Thursday evening with a booster's banquet and continues through Saturday night. Many ex-students are planning to come to Ranger for Home-Coming, and with the delegation from

### Elizabeth Brown, Ronald Bush Are Married Nov. 6

Miss Elizabeth Brown, daughter of Mr. and Mrs. Earl Brown of Ranger, became the bride of Ronald Bush, son of Mrs. Elizabeth Bush, Wednesday evening, November 6, in a single ring ceremony. The Rev. Ed Scarborough, pastor of the Second Baptist Church, officiated.

The bride wore a grey suit, with black accessories and a pink corsage. Both the bride and groom attended Ranger High School. After the first of the year, they will make their home in San Diego, California, where he is stationed with the U. S. Navy.

Arlington State College there should be good attendance at Saturday night's game between the Rebels and the Rangers.

Among Exes to be here for Home-Coming include Dub and Diane White with Debbie, their new daughter, Tommy and Dorothy Beck Wood, and their new daughter; and Dalton Bleker and his wife and baby.

Campus students took advantage of the Rangers open date last week-end and went home. The campus was almost deserted Saturday and Sunday. In fact, the following thirteen students were the only dormitory students in Ranger: Donna Blackwell, Gail Bagley, Charlotte Clark, Charles Clark, Charles Smith, Louis Cavness, Ken Chandler, Ronnie McPherson, James Holt, Jimmy Gordon, Forrest Hall, Bud Remyne, and J. R. Senkel.

### Ranger Ladies Attend District Meeting Tuesday

The Cisco District Conference convened at the First Methodist Church at Mineral Wells Tuesday, November 12, at 10 o'clock a.m. Mrs. Joe Rogers of Caddo, district Superintendent, presided. A hymn, "Christ, for the World We Sing," was sung. The invocation was given by the Rev. C. B. Cole of Mineral Wells. The meditation was given by Rev. Gordon Dennis of Cross Plains.

"Motivation" was discussed by Mrs. Doyle Birchfield. Mrs. Roy Pate and Mrs. Irvin Lewis discussed membership, which included the three goals.

Mrs. A. J. Ratliff discussed the supply work. A song, "In Christ There is No East or West," was sung.

The local society was represented by Meses. J. A. Bates, T. G. Stewart, A. J. Ratliff and G. O. Strong.

The program was closed by the reading of the following poem: If He had seen me walking — By Blue Galilee, Would He have stopped, I wonder, And said, "Follow Me."

And if He had, I wonder, When I think it through, How could I have followed Him With so many things to do?

### Hodges Oak Park P-TA Has Meeting Tuesday Evening

The Hodges Oak Park P-TA met Tuesday night, Nov. 12, at 7:00 o'clock in the auditorium of the school.

After a short business meeting, Dr. George Bushon spoke on "Father's Place in Partnership," concerning a father's relationship with his children in the field of learning and development.

Miss Frances Warden and Mrs. Nell Ragland's rooms presented the program. Miss Warden's class won the room count award for having 34 parents present. Mrs. J. C. Carter won the \$5.00 award for having the most P-TA members in her room.

TRADE WITH YOUR HOMETOWN MERCHANTS

## MANPOWER FOR THE FUTURE

YOU CAN DO SOMETHING ABOUT IT NOW!

In every field of business, the demand for educated men and women grows bigger year by year. And the supply is already falling behind the demand.

As businesses grow more complex they need more intelligent employees at all levels — people who have learned to think — people with college degrees. The colleges are doing their best to turn out more educated men and women. But they are hampered by lack of funds. They not only need added physical capacity for the mounting pressure of applications. They need stronger, better-paid facilities. Businessmen who look ahead know they must give their aid now if they expect their manpower needs to be met in the future.

Help the colleges or universities of your choice. The returns will be greater than you think. If you want to know what the college crisis means to you, write for a free booklet to: HIGHER EDUCATION, Box 36, Times Square Station, New York 36, New York.

### The Globe Clothiers



USE OUR CONVENIENT LAY-AWAY

218 Main RANGER Phone 539

### WCS Has Third Lesson on Japan At Meeting Mon.

The WCS of the First Methodist Church met in the church Monday, November 11, for the third session of Mission studies on Japan. Mrs. James Ellison led the opening prayer. Mrs. A. J. Ratliff, president, presided over the short business session. All officers and circle leaders gave their reports.

Mrs. Stanley McAnelly presided over the program. Mrs. Beverly Dudley, Jr., presented the devotional taken from the 26th chapter of Matthew. A song, "Jesus Is All the World to Me," was sung. Mrs. C. E. May, Jr., presented some of the children from the Beginner's Department of the church in a quiz on "The Habits and Customs of Children of Japan."

Mrs. O. B. Poyner spoke on "Japanese Art," and displayed pictures, bowls, a cup and saucer, a vase, and hand-painted handkerchiefs made by these people. Mrs. Vernon Deffebach reviewed the chapter from the text. The main theme was "Enlarging Our Goals in Japan." Mrs. Dudley led the closing prayer.

The next meeting will be Monday, Nov. 18, at 3:30 p.m. at the church, at which time Mrs. McAnelly will present the next session of the series of lessons on Japan.

### First Baptist WMU Meets At Church Tuesday

The WMU of the First Baptist Church met Tuesday, Nov. 12, at 9 o'clock a.m. at the church. The meeting was opened with a song, "We Would See Jesus," and a prayer by Mrs. W. A. Reuser. Mrs. J. B. Houghton, vice-president, presided over a brief business meeting and introduced Mrs. Reuser, chairman of the Carolyn Bell Circle, who had charge of the Royal Service program.

The program was entitled, "Three Knocks in the Night," and was about medical missions and their needs in foreign countries. Mrs. R. F. Webb discussed Africa. "Work in South America and Paraguay" was discussed by Mrs. Houghton. Mrs. C. B. Pruet discussed "Work in the Orient." Mrs. Frank Arrendale led the closing prayer.

Refreshments were served to the following ladies: Meses. Lloyd Bruce, Arrendale, Lon Tankersley, Reuser, Webb, Earl Horton, V. A. Galloway, Walter Arterburn, Tommy Huling, Pruet, Rayneal Raze, Houghton, Earl Pittman and Gorman Morton.

### S. S. Class Has Meeting Monday

The 10th Grade Girls' Sunday school class of the First Baptist Church met in the home of Mrs. Marshall Jolly Monday night for a hamburger supper.

Those present were: Nancy Cantwell, Barbara Crabb, Norma Gals Eminger, Fat Graham, Carol Phillips, Sue Rodgers, Marjell Shockey, Marilyn Warden, Kathy Rogers and Glenda Rains.

### CARD OF THANKS

We wish to express our heartfelt thanks to everyone who gave so much in expressions of sympathy and kindness during the illness and death of our husband and father, may God bless all of you is our prayer.

Mrs. Lillian Smith Windell and Family

READ THE CLASSIFIEDS

### Mrs. R. E. Barker Is Hostess To S. S. Class Tues.

The Dorcas Sunday School Class of the First Baptist Church met in the home of Mrs. R. E. Barker Tuesday, Nov. 12, at 7 o'clock p.m. for the regular monthly social.

The president of the class, Mrs. Jane Adamson, presided. The meeting was opened with a prayer by Mrs. Luther Kirkpatrick. The devotional, the 23rd Psalm, was repeated in unison by the class members. An inspiring poem, taken from this theme, was written by Mrs. Barker and read by Mrs. Lee Mitchell.

All officers gave their reports. Cards were sent to the sick members. E. F. Hood and his mother were selected as class friends for the month. A Bible contest and a game, "Going to Jerusalem," were played.

Refreshments were served to the following: Meses. Mary Crabb, Jane Adamson, W. F. Powell, Matt

Robinson, L. D. Tankersley, Hugh Dawley, Mabel Williams, Luther Kirkpatrick, J. F. Byas, Lee Mitchell, Miss Nettie Sudderth, and the hostess, Mrs. Barker.

## Your Future Depends on Our College

Today our country needs college-educated men and women as never before. Disciplined minds are our greatest asset in an increasingly complex and challenging world.

Every American has a vital stake in our colleges and universities. These institutions are striving valiantly to meet their increasing obligations to our society, but they are seriously handicapped by lack of funds. More money is needed to expand facilities, to bring faculty salaries up to an adequate

standard, and to provide a sound education for the increasing millions of young people who want and deserve it.

To protect your own future, and the future of your children, help the colleges and universities of your choice. The returns will be greater than you think.

If you want to know what the college crisis means to you, write for a free booklet to: HIGHER EDUCATION, Box 36, Times Square Station, New York 36, New York.

Ex-Students' Booster Banquet Nov. 14, 8 p.m.  
**Ranger Dry Cleaners**  
Phone 452

## Pretty As A Picture . . . Neat As A Pin!

## Party Napkins

- Cocktail Napkins All Colors
- Silver Wedding Bell Fan Shape
- Silver Bride and Groom Cocktail Size
- Spiral Stork Pink
- Trellis, Sunburst, Floral and Dot Fan Shape

30c to 1.20

Cello Packages of 20 to 100

IMPRINT IF DESIRED

## THE RANGER TIMES

Phone 224

making room for christmas gift merchandise . . .

## PRE-THANKSGIVING FASHION CLEARANCE . . .

special groups of fall

## COATS and DRESSES . . . reduced

selected from our regular stocks of fine new Fall and early

Winter fashions — shop early for best selection.

## special group of fall MILLINERY . . .

formerly 3.98 to 5.00	formerly 5.98 to 7.98	formerly 8.98 and up
<b>\$3</b>	<b>\$5</b>	<b>\$7</b>

217 main street . . . ranger, texas . . .







In Eastland

# SAFeway CITRUS SALE

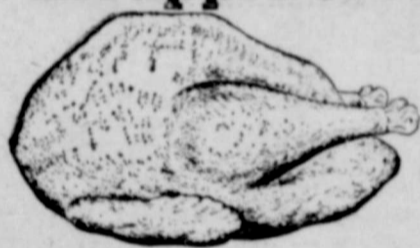
Put "Sunshine" in your fall meals during Safeway's Great Citrus Sale.

## Bel-air Frozen Orange Juice

Bel-air orange juice is actually fresher than fresh. The fruit is tree-ripened and processed within 24 hours after picking.

12-Oz. Can **25¢**

- |   |                            |               |            |
|---|----------------------------|---------------|------------|
| <b>Natural Grapefruit Juice</b>         | Town House                 | 2 46-Oz. Cans | <b>41¢</b> |
| <b>Sweetened Orange Juice</b>           | Town House                 | 46-Oz. Can    | <b>25¢</b> |
| <b>Orange &amp; Grapefruit Juice</b>    | Town House or Blend O'Gold | 46-Oz. Can    | <b>23¢</b> |
| <b>Pineapple &amp; Grapefruit Juice</b> | Del Monte                  | 46-Oz. Can    | <b>29¢</b> |



## CHICKEN HENS



Manor House, U.S.D.A. Inspected. Ready to Cook 3 1/2 to 6-lb. Avg.

Nice to Fricassee, Stew or Roast **Lb. 37¢**

- |                                  |                          |                 |               |
|----------------------------------|--------------------------|-----------------|---------------|
| <b>Canned Picnics</b>            | Pear Shaped Ready to Eat | 4 1/2 -Lb. Cans | <b>\$2.49</b> |
| <b>Hormel Canned Hams</b>        | Pear Shaped Ready to Eat | 4 -Lb. Cans     | <b>\$3.99</b> |
| <b>Wingate Pure Pork Sausage</b> | Reg. or Hot              | 2 -Lb. Roll     | <b>69¢</b>    |
| <b>Somerset All Meat Franks</b>  |                          | 1 -Lb. Roll     | <b>53¢</b>    |

- |                             |                            |                |            |                             |   |                |               |
|-----------------------------|----------------------------|----------------|------------|-----------------------------|---|----------------|---------------|
| <b>Zee Napkins</b>          | Colored or White           | 2 80-Ct. Pkgs. | <b>29¢</b> | <b>Razor Blades</b>         | Gillette Blue - Reg. Pack                             | 5-Ct. Pkg.     | <b>25¢</b>    |
| <b>Zee Tissue</b>           | Assorted Colors Family Pak | 4 Roll Pak     | <b>35¢</b> | <b>Zest Beauty Bar</b>      | Deodorant Toilet Soap                                 | 2 Reg. Bars    | <b>29¢</b>    |
| <b>Zee Lunch Bags</b>       | Perfect Size               | 2 20-Ct. Pkgs. | <b>25¢</b> | <b>All Detergent</b>        | Ideal for Automatics                                  | 10 -Lb. Box    | <b>\$2.39</b> |
| <b>Colgate Dental Cream</b> | Large Tube                 | 29¢            |            | <b>All Detergent</b>        | Extra Fluffy  | 3 -Lb. Box     | <b>75¢</b>    |
| <b>Pablum Cereals</b>       | Assorted Pack              | 6-Pkg. Ctn.    | <b>31¢</b> | <b>Liquid Detergent</b>     | Wisk  | 16-Oz. Can     | <b>43¢</b>    |
| <b>Kraft Mustard</b>        | Horseradish or Salad       | 4-Oz. Jar      | <b>10¢</b> | <b>Liquid Detergent</b>     | Joy   | 32-Oz. Can     | <b>99¢</b>    |
| <b>Crisco Shortening</b>    | For All Your Baking        | 3 -Lb. Can     | <b>91¢</b> | <b>Dog Food</b>             | Red Heart Assorted                                    | 2 1-Lb. Cans   | <b>31¢</b>    |
| <b>Fluffo Shortening</b>    | For Lighter Cakes          | 3 -Lb. Can     | <b>91¢</b> | <b>Dog Food</b>             | Champ YF Horsemeat                                    | 15 1/2-Oz. Can | <b>18¢</b>    |
| <b>Kraft Caramels</b>       | Fresh, Chewy               | 1-Lb. Pkg.     | <b>39¢</b> | <b>Soft Weve Tissue</b>     | Assorted Colors                                       | 2 Rolls        | <b>27¢</b>    |
| <b>Frozen Rite Rolls</b>    | Pariser House              | 22-Oz. Pkg.    | <b>39¢</b> | <b>Skylark Raisin Bread</b> |   | 1-Lb. Loaf     | <b>25¢</b>    |
| <b>Cheez Whiz</b>           | Kraft                      | 16-Oz. Jar     | <b>55¢</b> | <b>Biscuits</b>             | Skylark Brown and Serve 12-Count Buttermilk           | 8-Oz. Pkg.     | <b>18¢</b>    |
| <b>Velveeta Cheese</b>      | Kraft                      | 2 -Lb. Box     | <b>79¢</b> | <b>Danish Whirls</b>        | Curtis - 1 count                                      | 10-Oz. Pkg.    | <b>39¢</b>    |
| <b>Shaving Cream</b>        | Gillette Foams             | 4 1/2-Oz. Can  | <b>79¢</b> | <b>Bread</b>                | Skylark Buttermilk - Made with Sweet Cream Buttermilk | 1 1/2-Lb. Loaf | <b>27¢</b>    |
|                             |                            |                |            | <b>Ponds Cold Cream</b>     | Tax Incl.   | Small Jar      | <b>40¢</b>    |

## Florida Oranges 8 -Lb. Bag **45¢**

Keep Plenty on Hand for Juice... Sweet and Delicious...

## Ruby Red Grapefruit 8 -Lb. Bag **45¢**

Plump Fragrant

## White Grapefruit 8 -Lb. Bag **45¢**

Fresh in from the Groves

## Fresh Lemons Lb. **15¢**

Loaded with Juice

- |                        |                                 |                 |            |
|------------------------|---------------------------------|-----------------|------------|
| <b>Powdered Milk</b>   | Caration - Instant Makes 8 Ozs. | 25 1/2-Oz. Pkg. | <b>69¢</b> |
| <b>Cranberry Sauce</b> | Ocean Spray Jelly or Whole      | No. 300 Can     | <b>23¢</b> |
| <b>Airway Coffee</b>   | Full Flavored                   | 1-Lb. Pkg.      | <b>73¢</b> |
| <b>Nob Hill Coffee</b> | Rich Flavored                   | 1-Lb. Pkg.      | <b>79¢</b> |
| <b>Edwards Coffee</b>  | Regular, Drip or Pulverized     | 1-Lb. Can       | <b>83¢</b> |
| <b>Instant Coffee</b>  | Edwards                         | 2-Oz. Jar       | <b>45¢</b> |

Your Old Broom is worth 50¢ toward the purchase of a brand new Safeway or Aladdin Broom

REGULAR PRICE	.....	<b>\$1.79</b>
50¢ ALLOWANCE	.....	<b>.50</b>
YOU PAY ONLY	.....	<b>\$1.29</b>

## Del Monte Early June Peas 2 No. 303 Cans **35¢**

## Austex Beef Stew and Vegetables No. 300 Can **29¢**

## Empress Preserves Apricot, Apricot Pineapple, Grape, Peach, Red Plum and Peach Pineapple 3 20-Oz. Jars **\$1.00**

## Velkay Shortening Creamy Smooth 3 -Lb. Ctn. **65¢**

## Parade Detergent Plastic Pail, Reg. \$6.28 Value - While It Lasts 10-Lb. Pail **\$3.98**

## Revlon Clean and Clear Cleansing Lotion 5 1/2-Oz. Bottle **89¢**

## Breakfast Gems Eggs Grade A Quality Large Doz. **67¢**

### COMBINATION OFFER

<b>Ground Black Pepper</b>	Crown Colony 4-Oz. Can	<b>19¢</b>	Both For <b>29¢</b>
<b>Sno White Iodized Salt</b>	Free Lumping 26-Oz. Box	<b>10¢</b>	

Our unconditional guarantee protects your every purchase.

Buy with confidence! You take no chances when you shop here. Everything you buy is backed by our guarantee to refund the full purchase price on any item that does not please you.

**GREEN CASH REGISTER  
SAVE SAFEWAY'S  
TAPES AND GET  
VALUABLE PREMIUMS  
FREE!**

- |                         |  |                |            |
|-------------------------|--|----------------|------------|
| <b>Biscuits</b>         | Ballard or Pillsbury Sweetmilk or Buttermilk   | 2 8-Oz. Cans   | <b>25¢</b> |
| <b>Biscuits</b>         | Gladiola, Sweetmilk, Buttermilk or Whole Wheat | 2 8-Oz. Cans   | <b>25¢</b> |
| <b>Cream Cheese</b>     | Kraft, Philadelphia Pimento or Chive           | 2 3-Oz. Pkgs.  | <b>31¢</b> |
| <b>Baby Okra</b>        | or Blackeye Peas Bel-air Frozen                | 2 10-Oz. Pkgs. | <b>45¢</b> |
| <b>Bel-air Spinach</b>  | Chopped  | 2 12-Oz. Pkgs. | <b>29¢</b> |
| <b>Bel-air Waffles</b>  | Frozen   | 2 5-Ct. Pkgs.  | <b>25¢</b> |
| <b>Lucerne Milk</b>     | Homogenized                                    | 1/2-Gal. Ctn.  | <b>47¢</b> |
| <b>Fritos King Size</b> | Delicious for dips                             | 4-Oz. Pkg.     | <b>29¢</b> |
| <b>Chunk Style Tuna</b> | Chicken of Sea Green Label                     | No. 1/2 Can    | <b>32¢</b> |
| <b>Dial Toilet Soap</b> | Bath Size                                      | 2 Bars         | <b>37¢</b> |



Prices effective Thursday, Friday and Saturday, Nov. 14-15-16. No sales to dealers.



CALL 224 FOR CLASSIFIEDS

**HOW IS YOUR ROOF?**

- Is It Leaking?
- Has it been hail damaged?
- Is It Getting Old?
- Does It Need Repairing?

FREE INSPECTIONS—FREE ESTIMATES

Finest workmanship. All work guaranteed. References from people you know. Let us figure with you for a new roof or repairs.

RESIDENTIAL AND COMMERCIAL

**Eastland - Ranger Roofing Co.**

Phone 733 NOBLE SQUIERS Eastland, Texas

To Get ALL the News . . . All the Time . . .

**You Need A Big State DAILY NEWSPAPER**

The Fort Worth Star-Telegram  
AMON CARTER JR., President

**IS YOUR BEST BUY!**

NOW ON REDUCED BARGAIN DAYS RATES

EFFECTIVE A SHORT TIME

Daily and Sunday  
7 days a week

WAS ..... \$18.00 Per Year  
NOW ..... \$13.95 By Mail

Daily Without Sunday  
6 days a week

WAS ..... \$15.00 Per Year  
NOW ..... \$12.60 By Mail

Fill out coupon below, mail direct or hand to your nearest Home Town Agent.

NAME .....

LOCAL ADDRESS .....

TOWN ..... STATE .....

**Ranger Hospital—**

(Continued from Page One)

county a FM road from Alameda to Desdemona.

Commissioners approved the purchase of \$22,000 worth of county road and bridge bonds, retiring the bonds before their maturity and saving interest. The Road and Bridge fund still is in remarkable good shape, having \$147,000. It has grown to that amount from a \$20,000 balance in 1950.

The County also purchased \$19,000 worth of Graham School District bonds out of Permanent School Fund money. The bonds were purchased as an investment and mature in 1972.

Commissioners also canvassed votes of the special amendment election and payed monthly bills.

**Farmers Say Only Earliest P-Nuts Sprouting**

Many farmers are saying around town that the reason their peanuts are not suffering on account of the wet weather is because only those that put on at the very first are sprouting, and there were not enough of them to matter.

They say that since the rains first started, more peanuts have put on to the extent of several more bushels to the acre, and these new nuts are not hurting in the least.

Many of the farmers were quite enthusiastic about their crop and said the condition prevailed over all parts of the county. Those who have been prone to look down their nose about the peanut crop are looking too soon because a week's sunshine could make all the difference in the world, and it is altogether too early to write the crop off the books, yet.

Although the crop is not expected to be any kind of a record-breaker as was once hoped, it will be better than in a long time, and besides, other offsetting advantages have been gained by the rains.

**Early Gorman—**

(Continued from Page 1)

with organized lodges, chartered clubs and business men's organizations, foster and keep in close touch the religious and social life with the commercial advancements.

Everything considered, the town stands without a rival in many respects in this section of the State, and offers special inducements to the home seeker.

(Next: "F. B. Winters")

**La Retama library is in the**

**INGROWN NAIL HURTING YOU?**

Immediate Relief!

A few drops of OUDORO being placed on the offending nail, of ingrown nail, OUDORO loosens the nail underneath the skin, allows the nail to be cut and then grows back further pain and discomfort. OUDORO is available at all drug stores.

**I GIVE YOU TEXAS**

By BOYCE HOUSE

In Corpus Christi, the weather forecast—instead of flatly naming a high temperature—will give a range such as, "High today will be between 89 and 94." Of course, it being Texas and summer, (when I was there) you knew it was going to reach 94—but doesn't "between 89 and 94" sound more cooling?

A bluff divides the downtown section of Corpus Christi. There are three ways for the pedestrian to get to the top of the bluff. One is by a walkway which curves around beside the street. Another is a picturesque flight of steps which has a white sculptural design in front of it. The third way is by means of a tunnel—yes, you reach the top by going through a tunnel. But there is a slope and then a flight of steps. I know of no other city with three-way method.

On my arrival in Corpus Christi, I heard a terrific voice which sounded as though it was coming over a loud-speaker turned as high as it would go. On entering the tunnel, I perceived the source: a crippled beggar who was preaching. The acoustical power of the tunnel is amazing.

signs on the outside, but the entire bus. One, for example, looks like a huge loaf of bread. Another looks like a package of butter. I wonder if the citizens instead of speaking of such-and-such a bus route (such as North Beach) don't say, "You catch Jones Butter-milk and transfer to Smith's Baked Beans."

Putting out into the bay are two long piers, each with a double line of sail boats and cabin cruisers rocking at anchor.

Palm trees, cape jasmines (or is it jessamine?), a church with towers and a tiled dome, the pink Princess Louise Hotel on the beach, the immense Robert Driscoll Hotel on top of the bluff—the bay, deep blue in the late afternoon and rippled by a wind, the water stretching to the rim of the world—these are a few of the features that make Corpus Christi highly attractive.

**COLD SUFFERERS**

Get STANBACK, tablets or powders, for relief of COLD DISCOMFORTS. The STANBACK prescription type formula is a combination of pain-relieving ingredients that work together for FASTER RELIEF OF HEADACHE, NEURALGIA and ACHING MUSCLES due to colds. STANBACK also REDUCES FEVER. SNAP BACK with STANBACK.

**To the Parents of a Genius**

If your child is blessed with a brilliant mind, you probably plan to send him to one of the country's finest colleges. And you should. He deserves the best education our system has to offer. Yet, even with his rare gift, can you be sure that the college of his choice will be ready for him?

Today the pressure of college applications is mounting fast. It's expected to double by 1967. Our colleges and universities are doing their best to meet the challenge, but they are hampered by lack of funds. Not only expanded facilities are needed, but more and well-paid professors and instructors to maintain scholastic standards.

America needs, in addition to its quota of geniuses, intelligent, educated people as never before. For the sake of your children and the future of your country, help the colleges and universities of your choice—now!

If you want to know what the college crisis means to you, write for a free booklet to HIGHER EDUCATION, Box 36, Times Square Station, New York 36, New York.

—See You At Homecoming—

**Ranger Furniture Exchange**  
"Brashiers"

**Perhaps it's later than you think!**

Before you know it he'll be ready for college. But will the college or university you choose be ready for him?

Already there's a mounting pressure for applications that will double in the next ten years. Hampered by lack of funds, the colleges are making a valiant effort to meet the challenge. They need not only more classrooms, laboratories and dormitories but more professors and instructors. Well-qualified teachers are turning to industry for better pay.

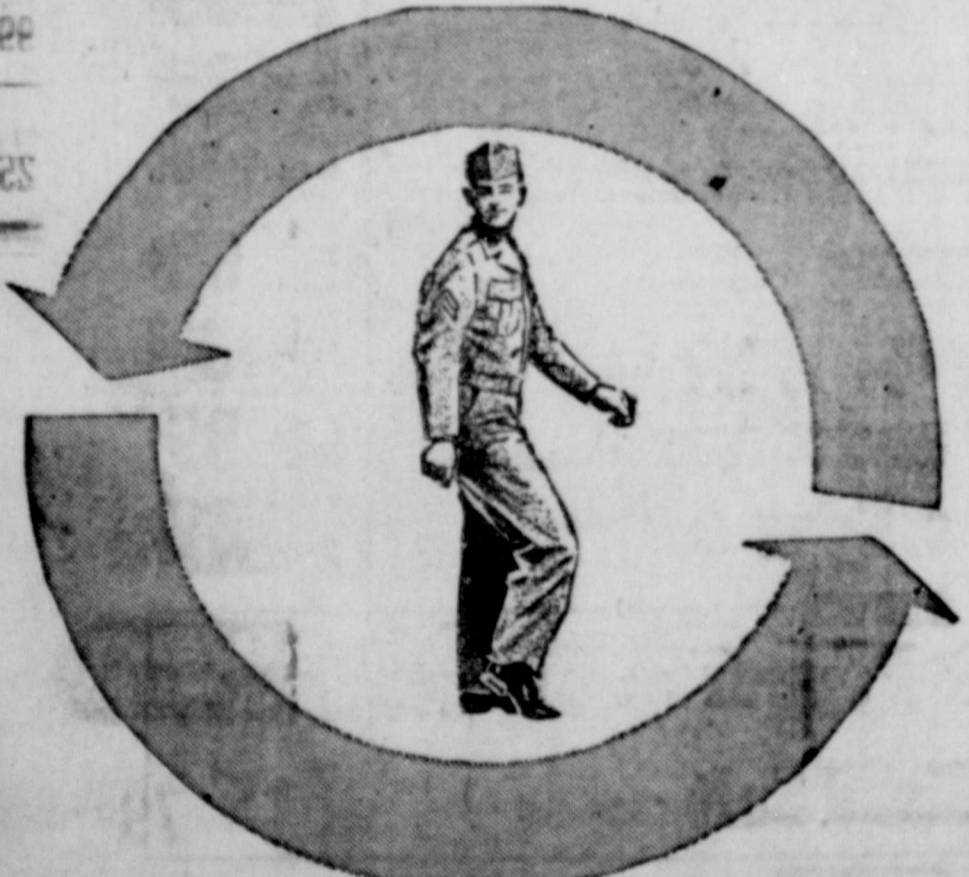
Yet the country needs educated people as never before. For the sake of your children and America's future, help the colleges and universities of your choice—now!

If you want to know what the college crisis means to you, write for a free booklet to HIGHER EDUCATION, Box 36, Times Square Station, New York 36, New York.

—Rangers vs. Rebels Saturday, Nov. 16—

**C. E. MAY**

Insurance - Real Estate Phone 418



**UNIT ROTATION**

The U. S. Army's Unit Rotation Plan assigns selected units to specific stateside and foreign duty stations and tells in advance when the units will rotate (exchange duty stations). This unique plan LETS YOU CHOOSE a famous Army unit whose history and traditions you'll be proud to share. You'll know WHERE you'll go and WHEN. You'll make new friends and, more important, keep them. You'll have job security no soldier ever dreamed of before. To seize the best opportunity the U. S. Army has ever offered—join a ROTATION unit!

**U. S. ARMY**

*Too early?*

Well, perhaps, if you want to be strictly literal. And yet, when she reaches college age will she be too late? Too late to get the kind of higher education so vital to her future and to the future of her country?

*It all depends.*

There is in the United States today a growing threat to the ability of our colleges to produce thinking, well-informed graduates. That threat is composed of several elements: an inadequate salary scale that is steadily reducing the number of qualified people who choose college teaching as a career; classrooms and laboratories already overcrowded; and a pressure for enrollment that will double by 1967.

The effects of these shortcomings can become extremely serious. Never in our history has the need for educated leadership been so acute. The problems of business, government and science grow relentlessly more complex, the body of knowledge more mountainous. The capacity of our colleges—all colleges—to meet these challenges is essential not only to the cultural development of our children but to the intellectual stature of our nation.

In a very real sense, our personal and national progress depends on our colleges. They must have more support in keeping pace with their increasing importance to society.

Help the colleges or universities of your choice. Help them plan for stronger faculties and expansion. The returns will be greater than you think.

If you want to know what the college crisis means to you, write for a free booklet to HIGHER EDUCATION, Box 36, Times Square Station, New York 36, New York.

Sponsored as a public service, in cooperation with the Council for Financial Aid to Education, by  
—See Homecoming Queen Crowned November 16—

**RANGER TIMES**





**SINCE 1884**



... it has been our privilege to render a service to this community as monument builders

**ALEX RAWLINS & SONS**  
Weatherford Phone 4-2726 Texas

**CARD OF THANKS**

Words cannot express the gratitude in our hearts for every kindness shown us in our hour of sorrow in the passing of our loved one.

The lovely floral offerings, the food brought to our home, and every expression of sympathy helped us to erase the heartache and grief. May life's richest blessings be yours is our prayer.

Mrs. Bill Tucker  
Billy Alvin Tucker and family  
Malcolm Tucker  
Mrs. Mabel Owen

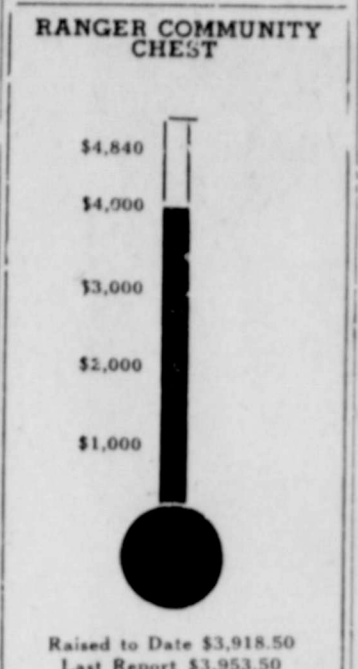
ATTEND THE CHURCH OF YOUR CHOICE EACH SUNDAY

**Chest Drive Gets Only \$25 Since Last Week**

Twenty-five dollars was turned in to Mrs. H. E. Angus Wednesday and that is every penny the Community Chest Drive has picked up since last week. The total now stands at \$3,978.50, which is \$861.50 less than the goal of \$4,840. The present shortage represents just about what it will take the Child Welfare Organization to care for the suffering families

during the winter season and to provide them with a few groceries and toys for Christmas.

The Times would even go so far as to suggest that another meeting be held of all the workers and arrangements made for everybody on the list to be contacted again, because the money is going to have to be raised, and it ought to be done before Thanksgiving, when the Christmas Shopping season starts.



**What's Cooking-**

Continued From Page One: harvest they're waiting for.

Ranger should be one of the proudest towns in the state for its opportunities. We've got more people here than we had a year ago, and we've got a bigger payroll. Everything is here if we will only look after it and be thankful for it, and as we begin to approach the time of Thanksgiving, we should everyone thank our lucky stars that we are in a place like Ranger—rather than in some other place that doesn't stand a ghost of a chance.

Ranger is in the position of getting her fiscal matters straightened out and getting a few bills paid, something that should have been looked after years ago, and it will not be very long before the town can show some visible signs of progress such as better streets and better living for everybody.

Ranger must never again allow herself to get in the dumps she once was, and anytime somebody rises up and wants to take the bull by the tail, there are plenty around here who will help twist it and we'll have the train rolling at full speed again—you can bet your bottom dollar on that.

The Christmas season is right now on us—the Christmas lights must be up by Thanksgiving—all the pretty Christmas windows should be in and we've got one more Bargain Day coming

up. We suggest that everybody concerned get to work and make the most of the time remaining, and you can expect the ultimate in support from us.

**Legion Enjoys Turkey Dinner Veterans Day**

The American Legion Hall in Ranger was packed and jammed with Legionnaires and their families Monday evening for a full course turkey dinner that was given in observance of Veterans Day. It was reported to be one of the most successful social events the Legion has held here in many months.

The Legion furnished the turkey, which was the main dish, and members of the Auxiliary all brought assorted covered dishes to round out the feast.

Following the banquet there were present played dominoes, forty-two, and other games.

**BARBER SHOP**

IT PAYS to LOOK WELL

Courteous Service

**TONY'S BARBER SHOP**  
223 1/2 Main - Phone 108

**Robinson Food Market**

Specials for Fri. and Sat. Only

WE DELIVER

121 North Rusk Street Phone 182

NEUHOFFS PICNIC — Lb. Pkg.

**FRANKS** ..... 45c

Smoked Pork Sliced or in Piece	Gladiola or Puffin
<b>Pork Jowl</b>	<b>Biscuits</b>
lb. .... 32c	3 cans ..... 35c

EXTRA NICE

**FRESH PORK THIS WEEK**

HAM - RIBS - BACKBONE - SAUSAGE

White Swan Milk	Wilson's BAKERITE Shortening
2 tall cans . 25c	3-lb. can .. 79c

MARYLAND CLUB

**COFFEE** ..... lb. 89c

Jeans	Ruffy Dog Food
<b>Frozen Rolls</b>	<b>13 cans ... 1.00</b>
pkg. of 24 . 39c	

GLADIOLA WHITE OR DEVIL FOOD

**CAKE MIX** ..... 4 boxes 99c

NORTHERN COLORED

**TISSUE** ..... 3 rolls 25c



**Firestone De Luxe Super Champion TIRE SALE**

100 Down per tire

**1640** Plus Tax and Recappable Tire

SIZE 6.70-15 BLACK

**All These Features**

- The only tire in this low price range with the original seven-rib Bladed Tread Design.
- Super-safe cord body engineered with high-speed racing tire construction principles.
- Nationwide Lifetime Guarantee. No time or mileage limit. See us for complete details.

ALL SIZES ON SALE

SIZE	TUBED-TYPE		TUBELESS	
	BLACK*	WHITE*	BLACK*	WHITE*
6.40-15	\$15.85			
6.70-15	16.40	\$20.10	\$18.55	\$22.75
7.10-15	18.40	22.55	20.55	25.20
7.60-15	20.15	24.70	22.55	27.60
8.00-15		27.05		30.75

\*Plus tax and recappable tire

**Hurry! We're Expecting A Quick Sellout!**

**H. H. VAUGHN**

Highway 80 East RANGER Phone 23

**Thirteen Days-**

(Continued from Page One)

enjoyed Hobby Fair of last year which was sponsored by the Green Door Ceramics.

Santa Claus is also going to have to be put in place at the end of Main Street and it takes a winch truck to move that gentleman around and such trucks are not right handy every day of the week.

**Use Lay-Away Now**

Ranger merchants extended an invitation to all Ranger shoppers and everyone else who comes here to trade, to take advantage of their Lay-Away method of shopping if they wish. Make selections now to avoid the rush and to be sure of getting exactly what you want, pay a small deposit, and get the things later.


All stores are ready now with much of their new merchandise, and with more new things being added every day.

There will be many hundreds of people in and out of Ranger between now and Christmas Eve and every effort should be made to fill their needs in a way to make them want to send their friends here. This should be one of the best fall seasons in many years for every business in town.

**Hospital News**

New patients in the Ranger General Hospital are: J. R. Langham, Eastland, medical; Mrs. L. D. Yancey, Eastland, medical; Feggy Lynn Yancey, medical, Eastland; C. J. Jackson, Eastland, medical; Mrs. Mabel Owen, Eastland, surgical; Mrs. L. R. Conn, Amarillo, surgical; Mrs. A. H. Straback, Gordon, medical; Mrs. Lee Crawford and baby boy, Ranger; Lottie Wright, Ranger, medical; and Tom Hennington, Eastland, medical.

CALL 224 FOR CLASSIFIED ADVERTISEMENT



**BRAINPOWER**

IS OUR MOST VITAL RESOURCE!

You can't dig education out of the earth. There's only one place where business and industry can get the educated men and women so vitally needed for future progress. That's from our colleges and universities.

Today these institutions are doing their best to meet the need. But they face a crisis. The demand for brains is increasing fast, and so is the pressure of college applications.

More money must be raised each year to expand facilities—bring faculty salaries up to an adequate standard—provide a sound education for the young people who need and deserve it.

As a practical business measure, help the colleges or universities of your choice—now! The returns will be greater than you think.

If you want to know what the college crisis means to you, write for a free booklet to: HIGHER EDUCATION, Box 36, Times Square Station, New York 36, New York.

**M. L. Lawson**  
"Building Better Homes"  
Phone 124

**Wards carload purchase chair sale**

109.95 quality 79.88

SMALL DEPOSIT HOLDS YOUR LAYAWAY UNTIL DEC. 15...OR \$5 DOWN ON TERMS

**LUXURY RECLINER A COMFORT TREAT** 79.88  
Recliner adjusts automatically. Foam rubber padded seat. Nylon and Duran plastic cover for long wear. \$5 DOWN

**SWIVEL ROCKER IN FRIEZE WITH FOAM** 69.88  
Smart new design with pillow-back and reversible foam-latex seat-cushion. Deep pile frieze. Color choice. \$5 DOWN

**SWIVEL ROCKER IN BISCUIT-TUFT STYLE** 49.88  
Attractive modern lines and lots of comfort. Nubby frieze in choice of colors. Light or dark wood legs. \$5 DOWN

89.95 quality 69.88

59.95 quality 49.88





### A day to remember!

The day you send your son or daughter off to college will be one of the proudest in your life. Ask the parent who's done it.

Trouble is, no matter how well you've planned for your child's education, there's a crisis shaping up that could make it tough for him to get into any college.

By 1967 our college population will double. There simply may not be room enough for everyone who wants to go to college—no matter how capable they are.

Here's where you can help—right now. Our colleges and universities are doing their best to expand their facilities and to provide for larger and better-paid faculties. They need your help!

America needs educated people. For the sake of your child—and your country—help the colleges and universities of your choice—now.

If you want to know what the college crisis means to you, write for a free booklet to: HIGHER EDUCATION, Box 36, Times Square Station, New York 36, New York.

**PAGE PLUMBING CO.**

118 Main Phone 210

### Rangers—

(Continued from Page One)  
Rebels out of a bid to the Little Rose Bowl by landing them a surprise 21-14 defeat.

The Rangers, who looked like they had everything under the sun at the beginning of the season have had more than their share of injuries and sickness and have been hard put to field a sound

team during any of their games. For this homecoming affair, however, they are in tip top condition and have sworn a victory regardless.

The Rangers lost a hard-fought decision last week to the San Angelo Rams to the tune of 18-6. Their spirit was at an all-time high when quarterback Dick Maxwell ripped over the Ram's goal for the first touchdown of the

game. San Angelo tied the score 6-6 in the second quarter but was unable to penetrate the Ranger line until the last quarter for any more scoring. In the last quarter, the Rams got two straight breaks, one being when they recovered a fumble on the rain-soaked turf on Ranger's end of the field and turned it into a touchdown.

Playing their last games for the

purple and white are Doug Jordan, quarterback of Rusk, Glenn Schmanke, full back of Topeka, Kansas; Lawrence Clayton, half-back of Rusk; Bud Remynse, end of Arlington; Don Mitchell, end of DeLeon; Clyde Evert, end of Eastland; Mickey Poteet, tackle of Cooper; Charles Smith, center of Itaska; Bo Nicholson, guard of Denver City; and Butch Kallio, guard of Granger.

Backing up the sophomore gridmen are twenty freshmen: At quarterback, Dick Maxwell of Austin, Dan Blanton of New Castle and Bill Johnson of Big Spring. In the backfield are Wayne Smith from Rynum, Kenny Wells of Sudan, Jerry Ingram of Quanah, Marvin Crawford of Guthrie, George Boynton of Quanah, Leon Walker of Holliday and Lewis Caviness of Rusk. Linebackers are: Jerry Cantrell, end of Ranger, Gerald Cross, tackle of Guthrie, Wyley Wyman, tackle of Axtell, Keith Hodo, guard of Quanah, Doug Roark, guard of Quanah, Jerry Fancher, tackle of Baskell, Carl Sims, tackle of McGeezor, Jimmy Clark, end of Newcastle.

Coach Tom Hestand is hopeful about this week's season-end despite the fact that it is difficult to find a place to work out.

Line Coach Barrett was overheard in the dressing room saying "one thing for sure, any team can be beaten on any given night."

Veteran Rangers, Butch Kallio, Bud Remynse, Bo Nicholson, Mickey Poteet and Charles Smith feel sure that this is the Rebels given night, and that the ready-to-go-Rangers are just the squad that can set the Arlington apricot.

Coach Hestand indicated that some position changes were being made to strengthen the Rangers offense. This is the last chance and Coach Hestand is confident that his Rangers will be out there with a do or die spirit for the Homecomers.

CALL 224 FOR CLASSIFIED ADVERTISEMENT

### Bulldogs—

(Continued from Page 11)  
... a clear title to the championship.

From the talk going on around town practically everybody in the city is planning to make the hundred-mile trip, more or less, and back the team to the hill in its last regular season game. There is no question but what the support of Ranger fans in recent games has done much to help put the Bulldogs where they are today.

The Bulldogs are unquestionably the most talked-about Class AA team in the state right now, at least among sports writers. Many of them still don't believe it. But these gentlemen of the press still have a lot of surprises coming to them because none of the so-called experts have ever once seen the Bulldogs play. All of their wise sayings and prognostications have been made solely on the basis of little figures of little pieces of paper and they have never seen Ranger's backfield and Ranger's line in action.

Have'n Seen Nothing Yet

Before it is over the Bulldogs are going to prove themselves to be a hard bunch for anybody to beat. They have more ways to score than a farmer can count a mule. It would be a night's work for an opposing team to keep track of King's passes to his ends. Not only that but every man in the backfield can catch a pass and has and does all the time. And led by All-Stater David Wharton, every man in the backfield is a balloting deamon. When King himself goes the ball from Hutchins, the opposing team doesn't know whether to drop dead or go blind—they have no idea in the world what he is going to do with the ball.

Every man in the Ranger line is an All-Stater in our estimation. Seldom has a high school football line played such air tight impenetrable defense. And the backfield

can throw some of the most vicious tackles we have ever seen, and seems to thrive on them. Little 138-pound Jake Basham glories in doubling up a 180-pound full-back and he makes it look easy.

May Be Ranger's Greatest

All 14 boys are just a rough, tough, well-conditioned, highly trained, confident, enthusiastic bunch of lads and they may be one

of the greatest teams Ranger has ever had because, after all, they are playing in Class AA company this year, and one 1-A.

Ranger fans should take advantage of every opportunity offered to see them play because they have something to be proud of in the Bulldogs of 1957.

CALL 224 FOR CLASSIFIED



FRESHER WHEN YOU SERVE IT

MRS BAIRD'S ENRICHED BREAD

# WARDS TIRE SALE

## SAVE ON NYLONS

6.70-15 tube-type blackwall  
no trade list price 22.60

# 16<sup>95</sup>\*

**RIVERSIDE DELUXE WITH NYLON CORD FOR ADDED SAFETY**

- Nylon cord means added protection against rupture or bruise, the chief cause of blowouts.
- Flat, multi-row cold rubber tread gives you more miles of driving in all kinds of weather.
- Variable pitch tread design reduces humming. Guaranteed nation-wide . . . MOUNTED FREE.

7.10-15 tube type blackwall **19.25\***

No trade list price 25.70

7.60-15 tube type blackwall **20.95\***

No trade list price 28.15

\*Plus excise tax and trade-in tire

**SAVE ON WARDS RIVERSIDE DELUXE RAYON**

6.70-15 tube type blackwall

# 14.95\*

No trade list price \$20.  
Quality equal to national brand tires now on new 1958 cars. Strong, safer super rayon cord body.  
\*Plus excise tax and trade-in tire.

**6-VOLT WINTER KING 2-YR. GUARANTEE**

Equals or exceeds original equipment batteries . . . fully charged . . . ready to go . . . guar. nation-wide. 12 volt with trade **14.98**

**EXTRA PUNCH FOR COLD WEATHER STARTING**

**INSTALLED FREE**

# O. K. GROCERY MARKET

SPECIALS FOR FRIDAY & SATURDAY

501 W. Main I. G. A. Phone 214

We Reserve The Right To Limit Quantity

DEL HAVEN DELICIOUS PEACHES No. 2 1/2 Cans	4	98¢
BOX Maito-O-Meal	36c	
SMALL BOX 3-Minute Oats	19c	
PET—9 1/2 Oz. Jar Powder Milk	36c	
SKIPPY—Glass Peanut Butter	45c	
KOHINOR—303 Can Cream Style Corn	18c	
FRANCO-AMERICAN—303 Can Spaghetti	16c	

<b>No! Fancy Fryers</b>	Lb.	<b>36¢</b>
Semi-Boneless Pork Roast	lb.	49c
Raths All Meat FRANKS	lb.	49c
Silver Bell OLEO	lb.	23c
Gladiola BISCUITS	2 for 25c	
<b>MILD-LONG HORN-CHEESE</b>	Lb.	<b>49¢</b>
CRACKER JACK—Lb. Bag Pop Corn	19c	
DEL MONTE—2 1/2 Can Whole Apricots	38c	
QUART Wesson Oil	69c	
DURANDS—2 1/2 Can Sweet Potatoes	28c	

<b>Red Delicious Apples</b>	Lb.	<b>15¢</b>
STOKELY'S—Pkg. SPINACH	19c	
STOKELY'S ENGLISH PEAS	2 pkgs. 35c	
STOKELY'S—Pkg. BROCCOLI SPEARS	25c	
STOKELY'S CREAM STLYE CORN	2 pkgs. 35c	
RUBY RED <b>Grape Fruit 5</b>	Lb. Bag	<b>39¢</b>
<b>RUSSETT POTATOES 10</b>	Lb. Bag	<b>45¢</b>
<b>Delicious Oranges 5</b>	Lb. Cello Bag	<b>35¢</b>
400 COUNT PINK <b>KLEENEX</b> TISSUES		<b>28¢</b>