

# Only 9 More Days For Gift Buying!

**WHAT'S...**



**COOKING?**

By NORMAN WRIGHT

Contractor M. L. Lawson, the man who is going to build the GI Homes in Ranger, is slowly but surely getting around to talking to all the people who want to see him.

Although there were eleven prospective builders on the list to start with, he had only managed to see six of them in two days of talking. It seems as though picking out a house is a little more complicated than going into a store and buying a shirt.

But everything is going along beautifully with everybody wanting to start their first. Lawson is telling them all the same thing: that no matter in what order they talked to him, the houses will start up in the order that papers are approved by the loan companies.

Lawson said it was possible that some small technicians would hold up the papers of some of the first men on the list while he would be sitting around with a fist full of approved contracts waiting for the technical difficulty to be cleared. Houses will be erected in the order that contracts are approved.

Enthusiasm among eligible GI's is high. You would be surprised to know the names of some of these builders, and they will be released a little later on. One man is contemplating a \$30,000 home with a year-round air conditioning system. All of the homes picked out so far run considerably over the \$9,000 mark as GI's are buying nicer and bigger homes while they have the opportunity.

It is felt that an initial order for ten houses will be reached, and that by the time they are finished there will be at least ten more added to the list for a total of 20 brand new homes in Ranger—nice, beautiful homes that will be a pride and joy of their owners as well as the city itself.

At the rate they are running, 20 homes will cost in the neighborhood of \$250,000, and when a quarter of a million dollars is turned loose in one place in a relatively short while, some of it is going to rub off on a lot of different people.

Lawson has said he intends to buy all of the construction materials here that he can. There will be a need for a lot of skilled and unskilled labor, and all kinds of allied products such as concrete, plumbing, pipe, paint, glass, brick, and the jillion and one other things connected with building.

The impact of the new building program is also having its effect on owners of other property who have announced improvement plans. Even right here at the Ranger Times we have had several "for rent" ads taken out of the paper because the owners were getting ready to have some improvement done on their properties.

We also know of several citizens who are not eligible for GI Loans who have been "bit by the bug" and are straining at the leash to build on the FHA Loan plan. These people have said that while the construction is going on and while the labor is here and the tools are here and everything else, they could probably get a much better deal than at any other time at—

(Continued on Page 7)



F. Z. BEANBLOSSOM



MISS SADIE HATFIELD

## "MAN AND WOMAN OF YEAR" NAMED IN TEXAS AGRICULTURE

A man and a woman from College Station, whose works have been felt on every farm in Eastland County as well as throughout the state, have been named "Man and Woman of the Year in Texas Agriculture."

The Man is F. Z. Beanblossom, who was cited for his conspicuous service in poultry marketing, and the woman is Miss Sadie Hatfield who has brought "more than a million dollars worth of beauty to Texas farmsteads."

Beanblossom, poultry marketing specialist for the Texas Extension Service, Texas A&M College System, has made big contributions to the poultry industry since he began working in Texas shortly after World War II. Seeing the greatest need was for improvement in poultry marketing, Beanblossom began working to improve quality. He talked with farmers, poultry dealers, hatcherymen, poultry breeders, feed salesmen and processors explaining that "consumers will buy quality products."

One result of his promotional work was in the field of graded eggs. Ten years ago, there were practically no eggs sold in Texas on a graded basis. In 1955, over 40 million dozen were sold on a graded basis and Texas egg producers were paid over 2 million dollars more for their product.

Beanblossom has sold the idea of quality from the farm to the table. He has pushed chicken of tomorrow contests for better broilers, processors for cleanliness and attractiveness of dressed turkeys and broilers, restaurants to serve more eggs and poultry meat, truckers to be more careful in handling, feed men for better feed, handlers for more efficiency in their operations, etc. But whatever his job, you can be sure of one thing—he's trying to help Texans sell more Texas poultry.

"Woman Of Year"

As extension specialist in home-stead improvement, Miss Hatfield has worked closely with the state department of health, Texas Forest Service, Texas Association of Nurserymen and Texas Garden Clubs. Hundreds of beautifully landscaped rural homes stand as testimonials of Sadie Hatfield's service.

Miss Hatfield extends her services further by training a new and recognizing rural leaders. During 1955, 1,490 leaders gave method demonstrations to 28,914 club members and gave individual help to 18,788. In 1955 the physical accomplishments of this work were valued at \$1,380,840.

To help Texas 4-H'ers learn to identify shrubs and trees and learn their proper use, Miss Hatfield started the shrub identification contest in 1951.

Miss Hatfield has held offices of responsibility in State Garden Club, Texas Folklore Society, Pan-American Roundtable, Brazos County Folklore Society, and Texas Chapter of the Epsilon Sigma Phi, fraternity of extension workers.

## RJC Christmas Formal Set For Friday Night

The Ranger Junior College student body and faculty will be entertained Friday evening with the annual Christmas party and dance. Mrs. Frances Jamison, faculty chairman, and residents of the girls' dormitory will be hostesses to the occasion.

Festivities will begin at 7:30 o'clock with dancing to the music of Al Lospicehes' Rhythm Aires. From nine until nine-thirty refreshments will be served in the girls' dormitory followed by a variety show. Dancing will be resumed from ten until eleven o'clock.

## Night Students At RJC To Be Treated

Students of the Ranger Junior College evening program will be treated to pie and coffee Monday evening in the new Ranger Hall, it was announced today by Pat Thomas, director of the Ranger Evening School.

This will be the last night of classes before the Christmas holidays.



Whether he comes by land, sea or air... byoxen or whirlybird, kiddie car or surfboard, fear not: SANTA SHALL RETURN!



## Big Turkey Meet Awarded Ranger

Ranger has been awarded one of the four big turkey meetings to be held in Texas during the early part of next year by the Extension Service of Texas A&M College, and the date has been set as April 4, according to word received here by R. V. Galloway from County Agent J. M. Cooper.

There will be only four such meetings in the State, to be known officially as the Turkey Production and Marketing Clinic, with the theme being "What Are You Going to Do With the Poults You Buy."

The other three clinics will be held at Temple, Cuero and Burnet. F. Z. Beanblossom (whose picture, incidentally, is in column two of today's Times as the "Man of the Year in Texas Agriculture," will have charge of the clinic here, and will be assisted by other poultry experts from A&M.

It is said that turkey growers, processors, county agents, vocational ag teachers and feed dealers from a 15-county area surrounding Ranger will be here for the clinic.

Getting this meeting is a feather in Ranger's hat because actually it had already been scheduled and set for another near-by town. Due to some hard work on the part of the Chamber of Commerce with an assist from Hardy Tidwell of Desdemona and several other members of the Central Texas Turkey Growers Association, and the county agent, the clinic was transferred to Ranger which is making a strong bid to play a leading part in the development of the turkey industry in this section of the county.

Secretary Galloway of the Chamber of Commerce said Ranger had pledged to help in every way in the advertising and promotion of the clinic, and a barbecue will be served to all those attending at noon on April 4.

## Holiday Dates Announced By School, College

Ranger High School will dismiss for the Christmas holidays at 3:45 p.m., Friday, December 21, and will not resume classes again until Wednesday, January 2, it is announced by the school office.

Ranger Junior College will take a little longer vacation, turning out on the afternoon of Tuesday, December 18, and taking up again on Wednesday, January 2.

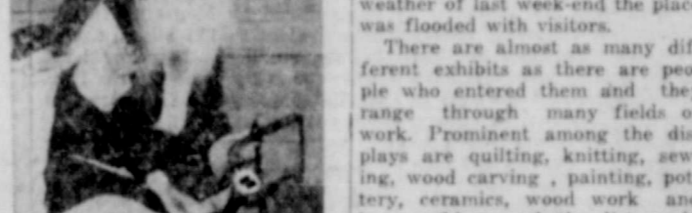
## Hobby Fair to Be Open Again Friday, Saturday

Ranger's Hobby Fair, sponsored by the Green Door Ceramic Studio, will be open to the public again Friday and Saturday, and is worth a special trip to Ranger just to go through this exhibit and see all of the things made by local people strictly as "hobbies."

The exhibit is located in the old Traders Grocery Building across while on-lookers held their breaths. State Bank, and despite the severe weather of last week-end the place was flooded with visitors.

There are almost as many different exhibits as there are people who entered them and they range through many fields of work. Prominent among the displays are quilting, knitting, sewing, wood carving, painting, pottery, ceramics, wood work and lamp-making, and the list could go on for many paragraphs.

The ladies in charge of the exhibit expect one of their biggest crowds this weekend, and if anybody has a "hobby" they would like to put on display, an invitation is extended to them to bring it on down and room will be made for it.



## Mad Rush From People Wanting Orphan Puppies

After a short piece appeared in the Times last Tuesday afternoon stating that Walter Arterburn had four orphan puppies he was trying to find a home for, Arterburn called the paper early Wednesday morning crying for help.

He said he could have given away 50 puppies, and the four he had were gone a few minutes after the paper was circulated. A fifth puppy, which Arterburn's little boy had decided to keep for himself, was also given away because another little boy was so heart-broken because he didn't get there in time to get one.

The puppies were three weeks old and became orphans when somebody killed the mother dog with a car.

## KIDDIES! WILL YOU PLEASE WRITE SANTA A LETTER TONIGHT AND SEND IT TO THE RANGER TIMES

The driver of a huge truck from an out-of-town oil field supply company, loaded with a lofty piece of dirt scooping equipment, decided rather than to drive over one block where there were no obstructions, he would just make Main Street in Ranger where it was impossible to pass under the Christmas lights strung across the street.

Entering the street from the depot end, the driver managed to get under the first two or three strings of lights with a man on top of the truck holding up the wires and tearing off handfuls ofinsel. He had a good opportunity to turn off at the Bank corner, but was evidently having too much fun to quit. He elected to go all the way while on-lookers held their breaths.

Several of the spectators recalled last year when a truck actually did go down the street, taking the lights along with it.

## Xmas Lights On Main Barely Escape Truck

Students at Ranger Junior College have been given notice that if any of them try to sneak off home a day early before the holiday recess or get back a day late, they will be given "Double Cuts" for the days missed. That could go hard on somebody's grades.

School dismisses on the 18th, and takes up January 2.

## College Means Business No Cless Cutting!

Students at Ranger Junior College have been given notice that if any of them try to sneak off home a day early before the holiday recess or get back a day late, they will be given "Double Cuts" for the days missed. That could go hard on somebody's grades.

School dismisses on the 18th, and takes up January 2.

## Big Week-End Expected As Time Is Short

Tempus has fugit!

Something has happened to all those shopping days until Christmas and now they are down to nine as everybody is beginning to line up for the final rush and push.

Merchants are expecting this weekend to be perhaps the biggest of all since it is really the only full week-end left. Friday and Saturday of next week will be December 21 and 22, and that is so close to Christmas Eve that most everybody will be through by then.

Storekeepers have therefore made arrangements to offer their best services this week in order to help everybody along their merry way with as much promptness and dispatch as possible.

Again Saturday will be a free parking holiday and all the parking meters will be covered with paper sacks. This is made possible through the cooperation of the City of Ranger which is playing parking host to everybody who comes to town Saturday, Christmas Eve, December 24, will also be a parking holiday.

Business has been good in Ranger all this week as the town has been full of cars with shoppers taking advantage of the pretty weather. And that is another good reason why shopping should be done as quickly as possible because the weather may not hold out. Weather reports say the entire northern half of the country is in the grip of a blizzard with temperatures being 15 degrees below zero at the Canadian line and in such northern states as Montana, North Dakota and Minnesota.

Some of that weather invariably trickles down into Ranger, Texas, and the long-range 5-day report now calls for much colder weather in this section of West Texas throughout the coming week.

Regardless of what line of merchandise a shopper might be interested in, it can be found in Ranger except in perhaps one case out of a thousand. Merchandise costs much less when it is bought at home, and the ultimate in satisfaction can be derived from it whether it is a simple exchange or replacement of the entire article if it does not give satisfaction.

Ranger merchants are prepared to extend lay-away courtesies, and if financing is needed on the purchase of major appliances or sizeable bills of furniture, that also can be quickly and easily arranged.

Most all merchants offer gift-wrapping services that are second to none, each of them featuring their own distinctive wraps which were picked out months ago to make your packages look lovely. Most all of them are prepared to wrap packages for mailing, and this year there is also an exclusive gift wrapping service in town, specializing in nothing but wrapping packages.

Most every school, college and university in the country will turn out next week and kids will be flocking home from the four corners, which is another good reason to get Christmas shopping completed this week, if at all possible.

## Rev. & Mrs. Boyd To Hold Open House Sunday

The Reverend and Mrs. Herman Boyd will hold Open House at the First Methodist Church parsonage on Sunday afternoon, December 16, from 3:00 to 5:00 o'clock, it has been announced.

No formal invitations are being sent out, but all members of the First Methodist Church are cordially invited to attend, and are asked to drop by at the time most convenient for them, during the Open House hours.

## Don't Forget Your Old Toys For Needy Children

Take Them Now To Chamber of Commerce

## Valuable Income Tax Tips Speed Returns

This is the first in a series of 12 articles prepared by the Internal Revenue Service to assist taxpayers in avoiding tax errors that cause "Pre-Refund Audits." Every year when income tax returns are filed, approximately 60 per cent of the taxpayers are due a refund check from Uncle Sam. However, some of these tax returns must be audited before the taxpayers can receive their refund checks. These audits are called "Pre-Refund Audits" and are necessary because the returns contain questionable items. The "Pre-Refund Audits" begin in January and go through September 30th. If your return has questionable items, then you will probably be notified that your return must be audited before your refund check can be mailed to you. Many of the "Pre-Refund Audit" returns were examined because of erroneous dependency deductions. Here are the 13 most common reasons for the Internal Revenue Service having to disallow a dependent:

- (1) The dependent had gross income of \$600.00 or more during the year and was not the taxpayer's child, who was either a full

## Letters to Santa

Dear Santa, I am Beverly Sledge. I am 6 years old. Want a Baby doll, Bible, doll bed.

Dear Santa, I am Richard Alan Sledge. I am 4 years old. I want a horse, monkey, single shot rifle, truck, and boy baton.

Rick

Dear Santa, I am a little boy five years old. Please bring me a rodeo set and a train. My brother, Terry would like a zipper note book and an Army set.

Love  
Jacky Melton

Dear Santa, I am 4 years old. I want a bride doll and a big tricycle and a guitar. My sister is going to write a letter to you.

Peggy Montgomery

Dear Santa, I am ten years old. I want you to bring me a bicycle and birthstone and marinate doll.

(Continued On Page 7)

## Eastland Ball Game to Be Broadcast

Editor's Note: At press time today we were informed that three Eastland Mavericks are down with the virus. Halfback P. A. Cox, the man who sparked the Mavericks into their winning ways several weeks ago, halfback Jimmy Martin, their leading point maker, and tackle Jimmy Phillips, a potential all-star, are all piled up in the bed today.

Ranger citizens and others in this area will have an opportunity to hear a broadcast of one of the last football games of the season when Eastland meets Stinnett Saturday afternoon at Childress.

KERC, the Eastland radio station, will broadcast the game from the field beginning at 2:50. The game is a semi-final in Class A football with the winner taking on the victor in the Humble-Huldo game for the state championship.

In addition to a large segment of Eastland's population who will drive to the game in their private cars, two chartered buses will make the trip with their occupants paying \$6.50 a head in addition to the \$1.50 charged for tickets.

Although Stinnett is an overwhelming favorite to win the game, the Eastland rosters are just going to have to be shown as three play-off teams in a row have also been overwhelming favorites and these teams are not playing football any more.

Eastland has a very unusual team this year. There is not a man on it who could make an All-State Team and few, if any, who could make an All-State Second Team. There might be a few players who could get Honorable Mention, but the team as a whole has not even been ranked among the top ten by the experts on the big daily newspapers. They weren't even supposed to have won their district, a feat which had been reserved for (Continued On Page Seven)

## TV HEADQUARTERS

RCA, Admiral, Philco, Zenith  
Free Delivery and Convenient Terms. Good Trade-In, too!  
L & J SUPPLY CO.

## FOR

Fine Furniture, Floor Coverings, G.E. Appliances, W's Casts Furniture & Carpet, Ltd., Eastland.

## BE SURE—SEE

Don Pierson Olds Cadillac Eastland  
Quality Cars at Volume Prices

## BOATS & MOTORS

Evinrude, Lone Star, Cadillac, Chevrolet Boats  
L & J SUPPLY CO.

## Weather Reports

Clear and cold Thursday, turning much colder Thursday night and early Friday with low about 25 degrees. High Friday in low 50's, and partly cloudy.

**SERVICE**  
Pamper your car with quality service from our experienced mechanics. All cars—fast, efficient, economical. Call 802 today.  
Don Pierson Olds Cadillac Eastland

# The Ranger Times

514 STREET—RANGER, TEXAS ESTABLISHED JUNE 1, 1919  
 Reincorporated as second class matter at the postoffice at Ranger, Texas under the act of Congress of March 3, 1879  
 TIMES PUBLISHING COMPANY  
 Published Tri-Weekly—Tuesdays - Thursdays - Sundays  
 JOE DENNIS and CHAS. DICK, Publishers  
 NORMAN WRIGHT, Editor

One week by carrier in city . . . . . 15  
 One month by carrier in city . . . . . 45  
 One year by mail in County . . . . . 3.50  
 One year by mail in State . . . . . 4.75  
 One year by mail out of State . . . . . 6.95

NOTICE TO PUBLIC—Any anonymous reflection upon the character, standing or reputation of any person, firm or corporation which may appear in the columns of this newspaper, will be gladly corrected upon being brought to the attention of the publishers.

## CLASSIFIED

All Classified Ads Must Be Paid For In Advance.

### FOR RENT

RANSIENT ROOMS and 3 room apartments. Gholson Hotel. Home 9506.

### MISC. FOR SALE

OR SALE or Trade: Small equity in 5 room house and two lots, located on Eastland Hill. Contact one Falk, Rt. 2.

YPEWRITER Ribbon worn in? We carry a complete stock of ribbons. \$1.25. Ranger Times. Home 224.

USTITCH Desk Model Stapler. Handy, durable and compact. Only \$85. Ranger Times. Phone 224.

HY DELAY! Use our convenient terms, repair or modernize now, pay later. Burton-Lingo Co.

ANDY LETTER FILE. Handy for keeping track of daily correspondence. \$1.35. Ranger Times. Home 224.

FFICE Waste Baskets. \$1.85. Ranger Times. Phone 224.

OR SALE: 250 Gallon Butane Tank. Cheap. Call 387.

OR SALE: Small red Indian motorcycle, model 55. Excellent condition. Would make good Christmas present. Call 9533.

OR SALE: Bedroom suite, consisting of double bed, mattress and springs, vanity and bench. Good condition. Also Duncan. Phyllis. Shagun coffee table. Phone 56.

### MISC. WANTED

WANTED FINISH HIGH SCHOOL graduate school of home repair work. Books furnished. Diploma awarded. Start where you left school. Write: Columbia School, 1206 Abilene.

HIGH SCHOOL DIPLOMA. We now have study way in your own time, on a home way you can find. Write for free bulletin. Southwestern High School, 3520 Mansfield Place, Fort Worth, Texas.

MASONIC NOTICE  
 Call meeting Ranger Masonic Lodge No. 738, A. F. & A. M., 7:30 p. m., Friday, December 14. All members urged to attend. Visitors welcome. A Fellowship Degree will be conferred.  
 Robert Bailey, W. M.  
 E. C. Weaver, Sec.

## 16-Million Lbs. Aspirin Taken Annually In U.S.

Monsanto Chemical Company produced at St. Louis on November 28, 1956, its 100 millionth pound of aspirin. The company is the world's largest producer of the compound and was its first independent producer in the United States, beginning in April, 1917. (Bayer's U. S. patent on aspirin expired February 27, 1917, but the German company had established captive production of aspirin in the U. S. prior to that date.)

Aspirin (acetylsalicylic acid) is the most widely used drug in the world and, at approximately one-half cent per tablet, is also the cheapest. The United States consumed an estimated four million pounds of aspirin in 1955. Its current annual consumption of aspirin is at the rate of 16 million pounds. This is equivalent to almost 50 million 5-grain tablets daily.

Retail sales of aspirin and aspirin compounds as internal analgesics (not including cold remedies) in 1955 added up to \$197,110,000. This was approximately 20 per cent above 1954's total of \$163,890,000. The wet, severe winter of 1955-56 is partly attributable for this marked increase.

Over recent years, consumption of aspirin in the United States has been increasing at an average rate of approximately 10 per cent each year. This is almost twice as rapid as the nation's rate of population growth.

The 100 million pounds of aspirin produced by Monsanto to date is equivalent to 115 billion aspirin tablets, sufficient to cure headaches for every person in the United States every day for more than one year.

## Quick Relief of HEADACHE

EASE PAINS OF HEADACHE, NEURALGIA, NEURITIS with STANBACK TABLETS or POWDERS. STANBACK combines several medically proven pain relievers. The added effectiveness of these MULTIPLE ingredients brings faster, more complete relief, easing away and tension usually accompanying pain.

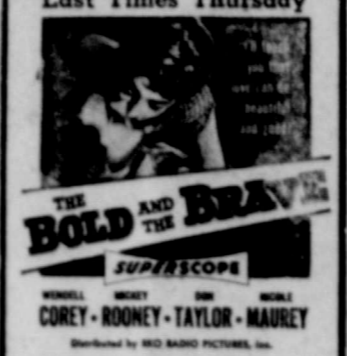


Figuring a cup of water to each two tablets, all of the water that flows over Niagara Falls in 35 hours would be needed to wash down that many aspirin tablets.

Laid out in single file, the tablets from 100 million pounds of aspirin would reach a distance equal to one and one-half round trips to the moon.

In granular form, that much aspirin could blanket in white the entire state of Rhode Island.

## POWDER



Last Times Thursday  
**THE BOLD AND THE BRAVE**  
 SUPERSCOPE  
 MURRAY CLOSE  
 COREY - ROONEY - TAYLOR - MAUREY  
 Distributed by MGD RADIO PICTURES, Inc.

Friday - Saturday  
**RICHARD WIDMARK** THE LAST WAGON  
 CINESCOPE

## "Best Family Gift I ever thought of"



## AN Evinrude for fun together

Santa is so right! Here's the gift that gives with the promise of fun-filled holidays to come. . . . years of them . . . family boating with a brand new '57 Evinrude. Drop in and find out how easily it can be arranged. Delivery for Christmas, or an Evinrude Gift Certificate to hang on the tree. A complete line of great new '57 Evinrudes to choose from. Call on us!

**L & J Supply Co.**  
 403 Main Phone 202

# GIFTS for him!

## FROM THE GLOBE CLOTHIERS

### for Both Men and Boys

## Arrow Shirts

None Finer  
 Always Welcome  
 3.95  
 5.00



### Men's Style Rite ROBES

Trimmed with Earl-Glo Rayon & Satin  
**6.95 to 15.95**  
 In Rayon or Flannel Gift Boxed

When you give an Arrow Shirt you give the very best! Always in tip top style and always perfect. We have a tremendous stock for your selection.



**STRETCH SOX**  
 And Argyle Sox  
**1.00 to 1.50**  
 By Holeproof and Inter-Woven



**Men's Smartest NECKTIES**  
 By Damon  
**1.50 to 5.00**  
 New Slender Styles



**Men's Hats By STETSON**  
**10.95 to 15.00**



### FOR BOYS

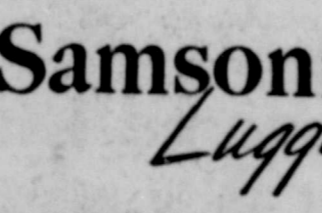
- Boys Suits
- Sport Coats
- Sport Shirts
- Dress Shirts
- Shoes
- Socks
- Slacks
- Belts
- Jackets
- Caps
- Bow Ties
- Pajamas
- Boy Scout Gifts



**Men's Sport SHIRTS**  
 By Arrow, Jayson and Wilson  
**3.95 to 6.95**  
 Full Size Range

**Men's Leather BELTS**  
**1.50 to 3.50**

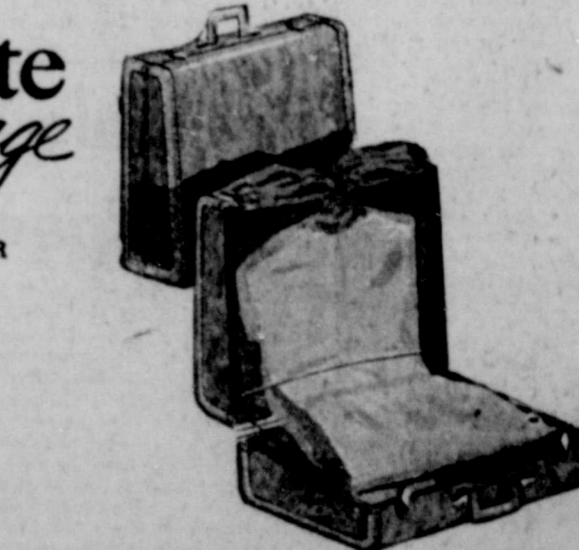
**Men's Fine Lauer GLOVES**  
**3.95 to 6.00**  
 Of Fine Imported Leather in Selections of Colors



### GIFT CERTIFICATE



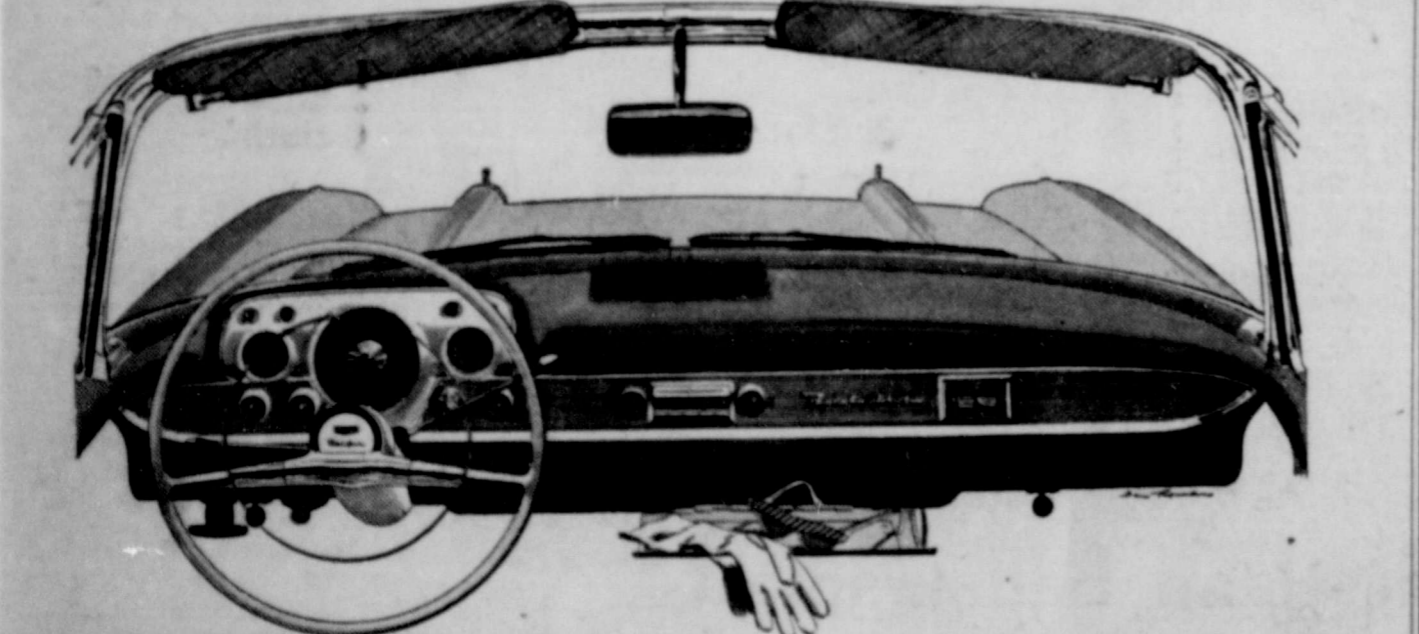
**Men's Sport COATS**  
**25.00 - 35.00**  
 Very Smartest Styles  
**SLACKS**  
**8.95 - 19.95**  
 Patterns and Colors to Please Him



**Samsonite Luggage**  
 SPECIAL PRICES FOR THE HOLIDAYS  
 O'nite Case . . . . . \$17.50  
 Train Case . . . . . 17.50  
 Ladies Wardrobe . . . . . \$25.00  
 Ladies' O'Nite . . . . . \$19.50  
 Hand Wardrobe . . . . . \$35.00  
 VIP Case . . . . . \$19.50  
 Men's Two Suiter . . . . . \$25.00  
 Pullman Case . . . . . \$27.50  
 Men's Quick Tripper . . . . . \$19.50  
 Men's Journeyer . . . . . \$27.50  
 Hat Box . . . . . \$15.00  
 Hang-It-All Case . . . . . \$25.00  
 all prices plus existing taxes

## THE GLOBE CLOTHIERS

**USE OUR LAY-AWAY**  
**Ask About Our Gift-Wrap Service** 218 Main RANGER Phone 539  
 —New Charge Accounts Invited—

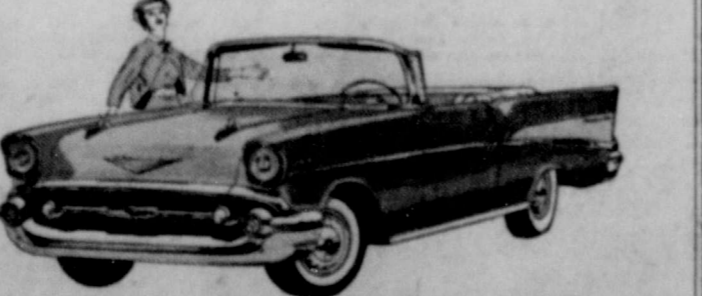


## You get better looking in a '57 Chevrolet!

There's a whole new outlook behind the wheel—a bigger view of the road over that sassy hood. And isn't that new instrument panel a honey!

Look through that '57 Chevrolet windshield and you see how its new, deeper design gives you better, safer vision. Glance down—just a bit—and your eyes rest on the sweetest instrument panel a car ever had.

Then, take the wheel and you'll find the going's even better than the looking! (Horsepower ranges up to 245.\* Come in and see.



Sweet, smooth and sassy! The Bel Air Convertible with Body by Fisher.

AIR CONDITIONING—TEMPERATURES MADE TO ORDER—AT NEW LOW COST. LET US DEMONSTRATE!

Only franchised Chevrolet dealers **CHEVROLET** display this famous trademark  
**ANDERSON CHEVROLET CO.**  
 Sales—CHEVROLET—Service  
 111 S. Austin Street RANGER Phone 14

# WORTH FOOD MART

## DOLLAR DAYS!



CHRISTMAS GIFT SUGGESTION:

Redeem "S & H" Green Stamps  
for Gifts for All the Family!

PRICES EFFECTIVE:  
Thursday, Friday  
and Saturday in  
Fort Worth, Weatherford,  
Ranger, Eastland, Cisco,  
Coleman and Graham

**WHOLE GREEN BEANS** Renown Vertical Pack **6** No. 303 Cans **\$1.00**  
**BALLARD OVEN-READY BISCUITS** At The Dairy Case **10** 8-Oz. Pkgs. **\$1.00**  
**FRUIT COCKTAIL** HUNT'S FANCY **3** No. 2 1/2 Cans **\$1.00**

**All-Green Asparagus** Niblet Cut **5** No. 1 Cans **\$1**  
**MIRACLE WHIP** Salad Dressing **3** Pint Jars **\$1**  
**None Such Mince Meat** Borden's **4** 9-Oz. Pkgs. **\$1**  
**PARD DOG FOOD** Be A "Pard" To Your Dog **8** 1-Lb. Cans **\$1**  
**REYNOLDS WRAP** Aluminum Foil **4** 25-Ft. Rolls **\$1**

**DESSERT RECIPE**  
Here is a New Idea For a  
Happy Holiday Dessert  
**FRUIT COCKTAIL EGGNOG PIE**



Drain fruit cocktail thoroughly; measure 1/2 cup of the syrup. Stir gelatine into syrup; place over boiling water and stir until gelatine is dissolved. Remove from heat, stir into eggnog. Add salt and flavorings. Chill until mixture mounds when dropped from a spoon. Whip cream; fold into gelatine mixture along with 1 1/2 cups well drained fruit cocktail. Chill again 5 to 10 minutes, until mixture mounds. Heap into baked and cooled pastry shell. Chill 2 to 4 hours. Decorate with remaining fruit cocktail. Makes one 9-inch pie.

1 envelope Knox Gelatine  
1 1/2 cups commercially prepared eggnog  
1/2 teaspoon salt  
1/4 teaspoon almond flavoring  
1 cup whipping cream  
1 9 inch baked pie shell (directions on Betty Crocker's Homogenized Pie Crust Mix package)  
**EGGNOG** qt. Cr. **55c**  
**KNOX FLAVIN**  
**Gelatine** 1-Pkg. **23c**

- grocery values**
- LUNCHEON MEAT
  - ARMOUR'S TREET 12-Oz. Can **41c**
  - ARMOUR'S CHOPPED HAM 12-Oz. Can **53c**
  - ARMOUR'S CHOPPED BEEF 12-Oz. Can **37c**
  - ARMOUR'S BEEF STEW 24-Oz. Can **41c**
  - ARMOUR'S CORNED BEEF 12-Oz. Can **45c**
  - ARMOUR'S ROAST BEEF 12-Oz. Can **47c**
  - ARMOUR'S VIENNA SAUSAGE 4-Oz. Can **19c**
  - ARMOUR'S CORNED BEEF HASH 16-Oz. Can **33c**
  - ARMOUR'S POTTED MEAT 3 1/4-Oz. Can **9c**
  - ARMOUR'S CLOVERBLOOM '99' 1-Lb. **32c**
  - DETERGENT CHIFFON LIQUID 12-Oz. Can **39c**
  - DETERGENT CHIFFON LIQUID 22-Oz. Can **69c**
  - CHICKEN-OF-SEA CHUCK STYLE TUNA No. 1/2 Can **31c**

**LIBBY'S FROZEN CAULIFLOWER** 10-Oz. Pkg. **25c**  
**LIBBY'S PEAS** 2 10-Oz. Pkgs. **31c**  
**FOLGER'S COFFEE** All Grinds **2** -Lb. Can **\$1.99**  
**SHORTENING** Wilson's Bakerite **3** -Lb. Can **75c**  
**MELLORINE** FOREMOST 1/2-Gal. Ctn. **39c**  
**NESTLE'S MORSELS** Chocolate Treat **5** 6-Oz. Pkgs. **\$1**

**FROZEN FOODS!**  
**FROZEN CREAM STYLE LIBBY'S CORN EL CHICO** 2 10-Oz. Pkgs. **35c**  
**FROZEN TAMALES** 14-Oz. Pkg. **35c**

Give Us Your Order Early For The Best Selection of Holiday Poultry at WORTH FOOD MART LOW PRICES!

**roast**

**BEEF CHUCK** lb. **35c**

Worth Controlled Quality

- SWIFT'S PREMIUM SLICED BACON 1-Lb. Pkg. **49c**
- RATH'S BLACK HAWK FRANKFURTERS 1-Lb. Pkg. **39c**
- WORTH CONTROLLED QUALITY BEEF **ROUND BONE ROAST** Lb. **43c**
- SWIFT'S PREMIUM BRICK CHILI 1-Lb. **55c**
- NEUHOFF'S SMOKIES 12-Oz. Pkg. **49c**
- LOIN OR RIB END **PORK LOIN ROAST** Lb. **39c**
- LEAN CENTER CUTS **PORK CHOPS** Lb. **59c**
- UNDERWOOD'S FROZEN **BAR-B-Q BEEF** 1-Lb. Ctn. **79c**
- TASTE O' SEA FROZEN **CATFISH FILLETS** 1-Lb. Pkg. **49c**

**Freshest Fruits & Vegetables!**

FANCY, JUICY NAVELS  
**SUNKIST ORANGES** Lb. **15c**

**SUNKIST LEMONS** Large and Juice Lb. **19c**

**D'ANJOU PEARS** Ripe and Mellow Lb. **19c**

**PASCAL CELERY** Crisp Stalks Lb. **15c**

**YELLOW ONIONS** Mild Flavor Lb. **6c**

**APPLES** Rome Beauty, Rosy Extra Fancy **19c**

**POTATOES** U.S. No. 1 Large Red McClure Lb. **5c**

**LETTUCE** Firm Heads Lb. **19c**

**SWEET POTATOES** Select Baking Size Lb. **15c**

**CARROTS** Crisp, Tender **2** 1-Lb. Cello Bags **19c**

Save as You Spend with S. & H. Green Stamps

### Handy Jim's FIXIN-UP TIPS For the Home

**Look: A Small Workbench**  
EVEN a simple table can be made into a workbench. If there's limited space, a small table, of the right height, will serve, or build a table just the size you want. It isn't difficult with framing lumber, shiplap boards for a top and a working surface of Masonite. Tempered Preswood.



Any way you look at it, the bulky workbenches of yesterday have given way to a more compact variety. Many are less than two feet wide, for example, and some aren't over three feet long. Lots of good home workshop projects can be carried out just as successfully on a small workbench, or table fixed up like one. One ingredient most of them have in common—a tough, durable working surface, usually Masonite Tempered Preswood, which is popular for this use because it's been found so satisfactory in industrial workbenches. If and when it wears out, just remove it and attach another sheet of the material, available at most lumber yards. Even an apartment can have a workbench of the type illustrated. A portable one, which fits over a kitchen table when needed, is made by framing a panel of Tempered Preswood with 1 by 2-inch lumber (on edges), so it will slip over the table. For padding, use an old blanket. Store the portable workbench top in a closet or utility room when it's not being used.

### Royal Neighbors Have Christmas Dinner, Party

The Royal Neighbors of America No. 9059 met Monday evening at 6:30 at the IOOF hall for a Christmas party and dinner. The invocation was led by Geo. R. Hull of Eastland after which the audience sang "Silent Night." Following the dinner a short program was held. Rev. Hull gave a scripture reading and Mrs. Hull told a Christmas story. Readings were given by Pauline Hugo and Mrs. Callie Lee. The seasonal decorations were used throughout the hall, the main attraction being a lighted Santa Clause. Each table was centered with a candle and holly berries. Gifts were exchanged from a gaily decorated tree. Thirty-one members and guests attended.

### Mary Jo Duck Honored At Coffee, Saturday

Mary Jo Duck, bride-elect of Forrest Walker of Texas City, was honored at a coffee Saturday morning. Miss Vivian Simmons was hostess in her apartment. The couple will be married Dec. 22 at the First Presbyterian Church in Texas City. Centerpiece for the coffee table was an arrangement of pink carnations and silvered leaves with a pink satin streamer. Presiding at the coffee table was Miss Inez Harrell. Mrs. R. L. Hamrick assisted in serving. Hostess gift was Revere ware. Guests were Misses J. P. Morris, Mrs. P. M. Kaykendall, F. E. Langston, Ermen Haby, Frances Jameson, Alford, Floyd Killingsworth, Al Lotspeich, George Rush-ton, and Arthur Deffebach.

**VISITING SON**  
Mr. Anthony Lewis is in Ranger spending the winter with his son and wife, Mr. and Mrs. W. A. Lewis.

### Cantata To Be Presented At First Baptist

"The Holy Birth," a Cantata written by Haydn Morgan, will be presented by the Sanctuary Choir of the First Baptist Church Sunday evening at 7:30 p.m. Mrs. F. P. Brasher, Jr. will be at the organ, and Miss Ann Eshinson at the piano. Mr. Jesse Sutton, Minister of Music, will direct the presentation. The text which tells of the birth of Jesus is taken from the Old and New Testaments. The music is major, minor, and modal. The choir has worked long and hard to make this program a tribute to our Saviour. The entire city is invited to hear this lovely service in song. Bring your family, come enjoy the truths of Christianity. The Nursery will be open for the little ones.

### Announcing First Methodist Family Night

The First Methodist Church will have a Family Night covered dish supper Friday night at the church at 7:00. All members are urged to attend and bring a covered dish. A program will follow the supper.

### Look Who's New

Mr. and Mrs. Winston Squyers are the parents of a 9-pound 5-ounce girl, Tressia Maxine, born at 12:30 a.m. Nov. 13, in the West Texas Clinic.

### RETURNS FROM AMARILLO

Bobbie Culpepper has returned from a two weeks visit in Amarillo.

take a  
**"MILK  
BREAK"**  
*Boswell's Milk*  
good all the time  
YOU NEVER OUTGROW YOUR NEED  
FOR VITAMINS AND MINERALS IN MILK



### Gift Special! Huge Assortment of Leather Gloves—USUAL 3.98-4.98

A terrific value on men's lined and unlined gloves. Select from capeskin, pigskin, buckskin, and suede. Buy several now—save!

**2.99**



### Wards Quality Corduroy Shirts—fine 16-wale Now cut-priced!

**3.48**

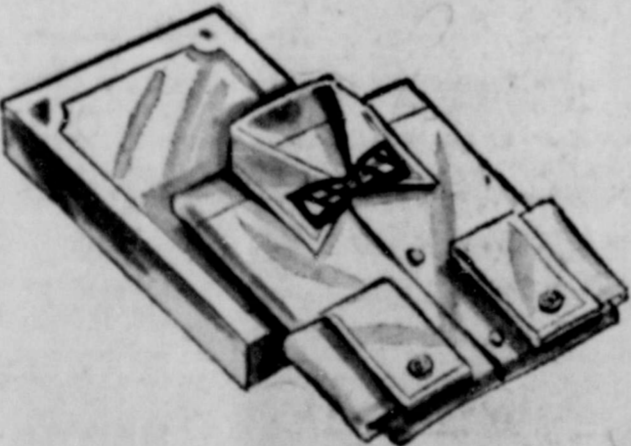
**COMPLETELY WASHABLE**  
Corduroy means "corded-cloth of the king". And he'll look and feel like a king in Wards pin-wale shirts with satiny yoke, button-through pockets, spread collar.



### SAVE \$2—Reg. 17.98 Capeskin Leather Motorcycle JACKET

**15.88**

**WARM QUIET LINING**  
First quality selected black capeskin leather. Wind resistant, durable. Diagonal front zipper with genuine rabbit's foot pull. Snap-down lapels, zip cuffs. 8 20.



### Reg. 1.98 Shirt Set with bow tie, and cuff links . . . GIFT-BOXED

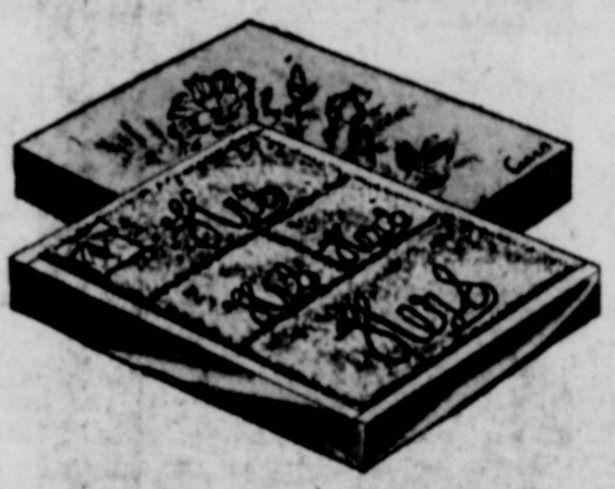
Handsomely tailored French cuff dress shirt just like Dad's! Sanforized cotton broadcloth in white or pastels. Sizes 4-12

**1.78**

It's Christmastime at **Montgomery Ward** Better  
for the price you

### BUY NOW AND SAVE ON THESE GIFT SUGGESTIONS

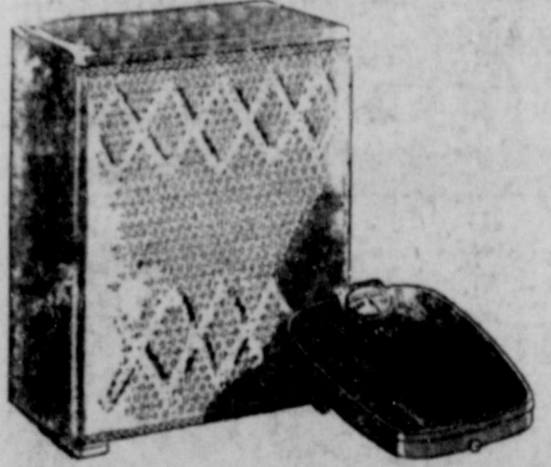
	Reg.	NOW
Mens Weestern Ties . . . . .	1.00	25c
Waste Baskets . . . . .	1.49	1.00
China Cup and Saucer . . . . .	1.00	66c
Charcoal Grill . . . . .	39.95	19.88
Lamps . . . . .	5.95	3.88
Lamps . . . . .	4.95	2.88
Pillows . . . . .	7.95	5.00



### His-Hers Embroidered 4-Pc. Towel Set Cannon towels—Regularly 2.98

Contrasting embroidered letters, dramatic on fluffy terry. Buy for Christmas and showergifts. Two 20x40" towels, two washcloths.

**2.66**



### Sale! Decorator bathroom pieces both in "Co-ordinated colors"

Reg. 8.95 upright Hamper—self-ventilating, enameled narrow fiber. WARDS 6.98 Bath Scale—extra large dial, magnifying lens. . . . .

**7.88**

Come in . . . see  
**WARDS complete  
selection NOW!**



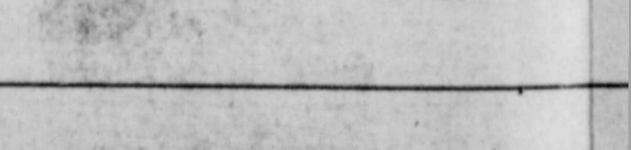
3.29 Women's Pink Capeskin. Soft padded soles.



2.98 Child's red corduroy, with crepe soles.



2.98 Men's Tan Elk Opera, with padded soles.



4.4 Men's Kid shoe.



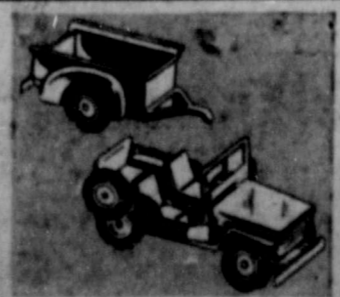
20' bike . . . . . 25.88  
24' bike . . . . . 34.88



All-Steel Wheelbarrow—rolled edge, 33" long. **1.88**



16" Boy's "Hawthorne"—coaster brake, balancers. Reg. 29.95 **21.88**



Reg. 3.29 steel Jeep and Trailer—w/electric lights. **2.88**

### SPECIALS

Boys Uranium Detector Set . . . . .	1.00
Wonder Car . . . . .	3.00
Tinker Toy . . . . .	66c
Gun Set . . . . .	98c
Xylophone . . . . .	1.00

**BUY NOW AND  
WARDS CO  
TIME PAYM**

# Better Gift Values than planned to pay

## Colorful GIFT SLIPPERS for all the FAMILY

**2.29**  
Women's Blue Rayon-Satin, platform soles.

**1.98**  
Child's Red Corduroy, with crepe soles.

**4.49**  
Men's Brown Kid Opera, leather lined.

There may be more expensive gifts you can buy your family, but few will add as much contentment and pleasure to their leisure hours. Alluring slippers for her, handsome styles for him, bright and sturdy step-ins for the youngsters—Wards selection of cozy, colorful styles are now most complete. For first choice—come in now!

**BUY NOW AND SAVE ON THESE GIFT SUGGESTIONS**

	Reg.	NOW
Electric Rotisserie ..	54.95	26.88
Coaster Set .....	1.00	66c
Ladies Sweaters .....	5.00	2.00
Acrilon Blankets .....	15.95	8.88
Cannister Set .....	1.19	88c
Dart Game .....	3.75	2.99
Childrens Felt Hats ..	1.79	1.00

**Teenagers' Portable plays ALL 4 speeds**

**SALE PRICE 19.88**

Protecto-arm pickup saves records, needle, 4" speaker. Volume, tone control. Only 7 lbs.

**9 x 12 Cotton Carpet 19.88**

A practical gift at a reasonable price.

**10 Monthly Payments till March on Refrigerators and Freezers 229.88**

**13 CU. FT. CHEST FREEZER**  
525-lb. capacity! Waist high cabinet with spring lift lid, 2 utility baskets, safety light.

16.95\* Pullman  
12.95\* Overnite  
11.95\* Train Box

**GIVE HER WARDS FINEST LUGGAGE TAN OR RAWHIDE**

**\$4 Down On Terms 14.88**

Long wearing vinyl plastic. Add 10% Fed. Tax.

**No Monthly Payments till March 17 on Refrigerators and Freezers**

**11.1 CU. FT. REFRIGERATOR**  
52-lb. Freezer Chest. With door shelves, vegetable crisper, butter keeper, porcelain interior.

**199.00**

**Sale Priced Supreme Electric Warder**  
5 drying actions, 9-lb. capacity

**\$5 DOWN ON TERMS 169.88**

Wards finest—5 drying actions for every fabric. Special insulation keeps heat in. Safety door.

**Modern Wrought Iron TV Swivel Chair 10.88**

Turns completely around. Black satin finish with washable plastic upholstery in modern colors.

**Men's Jewelry sets A terrific gift! PLUS TAX 2.50**

Cuff links and tie-bars in classic and modern designs. No-tarnish metal finish.

## AND SAVE ON CONVENIENT PAYMENT PLAN

**SPECIALS**

Girls Bracelet Set .....	1.00
Walking Elephant .....	3.00
Pot and Pan Set .....	50c
Cowgirl Suit .....	1.00
Set of 8 Cars .....	1.00

**Reg. 13.95 Folding Tables, Chairs—enamelled steel. 10.88**

**21" All-Steel Wagon—built for lots of hard play! 1.98**

**35" Green Steel Wagon—plated railing, hubcaps. 9.88**

### Don Davis Chosen Mr. RJC

Don Davis, son of Mr. and Mrs. J. H. Davis of Route 1, Troy, Texas, was elected Mr. RJC at Ranger Junior College last week.

Don is a sophomore this year. He is vice-president of the Delta Tau Chapter of Phi Theta Kappa, and is a resident of Newell Hall. Don is a physical education major and his vocational plans are to be a coach. While attending Troy High School, Don participated in football, basketball, and baseball.

On Friday night, December 7, Don was given the Jimmy Crawley Memorial Award for outstanding sportsmanship with Mrs. Mamie Ruth Hamrick making the presentation.

Don is a member of the Baptist Church.

### HOSPITAL NEWS



Mrs. T. O. Simmons, Eastland, surgical, is a new patient in the Ranger General Hospital.

### Mrs. Peacock Presents WSCS Devotional

The WSCS met Monday afternoon at the First Methodist Church. Mrs. A. W. Brazda presided over the business meeting and also led the opening prayer. Reports were made by the officers and circle leaders. The minutes were read by the secretary, Mrs. Gaston Dixon. The treasurer, Mrs. W. F. Croager, gave a report. Mrs. Herman Boyd reported on the Business Women's Circle.

An announcement was made that a Bible Study would begin January 21.

Mrs. E. H. Peacock gave the devotional, taking the scripture from Psalms 146. The main theme of her talk was our individuality toward Christ and to not put ones trust in man but in God.

The closing song was "Joy to the World" and the closing prayer was led by Mrs. Arthur Deffebach.

### Rebekah Lodge Has Meeting

The Rebekah Lodge No. 244 met Tuesday night at 7:30 at the IOOF Hall with Noble Grand, Viola Law presiding.

Sick visits were reported. District deputy president, Mrs. Lena McKee and Mrs. Alma Reed of Breckenridge lodge No. 97 were introduced as visitors, after which Mrs. McKee gave a short school of instructions. Several talks were made for the good of the order.

There will be a Christmas party and gift exchange next Tuesday night for the Rebekahs their families and the Odd Fellows. Pie and coffee will be served and there will be a short program.

Several Rebekahs met Wednesday afternoon for a quilting. The penny prize was furnished by Ruby Greer and won by Ellen Jones.

There were 15 members and 2 guests present.

**TO MAKE A FINE PORTRAIT OF YOUR CHILD**

WE USE PHOTOGRAPHY AND FUN



A necessary ingredient in a truly fine child's portrait is a pleasant bit of fun to bring out the lively expression that IS your child.

Our skillful work begins and ends with the portrait you will treasure for years!

### CAPPS STUDIO

104 Rusk Ranger

## Robinson Food Market

Specials for Fri. and Sat. Only

WE DELIVER 121 North Rusk Street Phone 162

FRESH DRESSED—PRIME FED FRYERS ..... Lb. 43c

Morrell's Cured, 6 to 8 lb. Picnics ..... 35c  
Homemade All Pork Sausage 2-lbs. .... 95c

**FANCY HOME KILLED CALVES**  
Loin or T-Bone Steak .. lb. 55c  
Chuck Roast ..... lb. 39c  
Calf Ribs ..... lb. 25c

Mrs. Tucker's Shortening 3-lb. ctn. .. 65c  
Supreme Salad Wafer Crackers lb. .... 28c

"KING SIZE" DR. PEPPER 2 6-bottle Ctns plus deposit 39c  
WHILE THEY LAST

Heinz Cream of Tomato Soup can ..... 10c  
Pickwick Coffee lb. can .... 85c

WHITE POTATOES ..... 10 Lb. Bag 45c

Donald Duck Orange Juice 2 6-oz. cans 35c  
Jean's Frozen Rolls 2-do. pkg. . 39c

EAST TEXAS GOLD RUSH YAMS ..... 2 Lbs. 25c

CALL 224 FOR CLASSIFIEDS

ATTEND THE CHURCH OF YOUR CHOICE SUNDAY

### MAGNETIC DOOR

opens at a touch of your toe, closes automatically, silently

### REVOLVING SHELVES

put all foods at your fingertips



ROOMY 11-CUBIC-FOOT COMBINATION

Here's a real value... Budget priced Brand new 1956 General Electric refrigerator-freezer combination with automatic defrosting refrigerator section and a big 70-pound low-temperature freezer. Wonderful convenience with Revolving Shelves and Magnetic Door that has foot pedal opening, self-closing, quiet closing, and a more efficient seal. Deluxe features, G-E quality and dependability... come in today for the best refrigerator buy in town!



**BIG  
VALUE  
SALE**

only **399<sup>95</sup>**

AND YOUR OLD REFRIGERATOR

EASY TERMS... REAL BARGAIN PRICES... WHY NOT GET A NEW G-E TODAY!

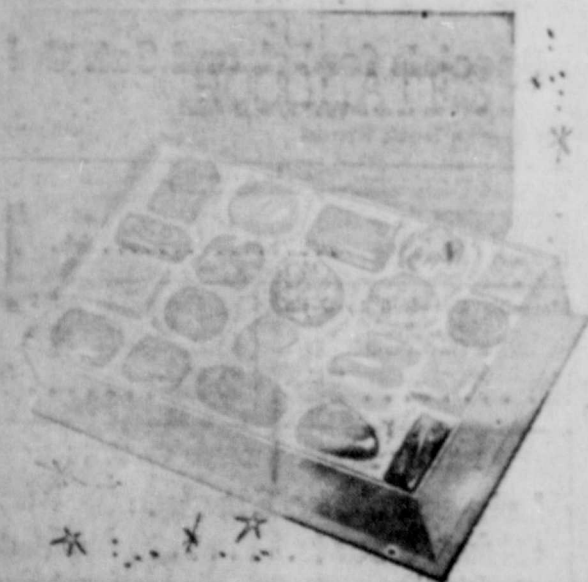
## Ranger Farm Store

Pine and Rusk

JOHN TIBBELS  
Ranger

Phone 808

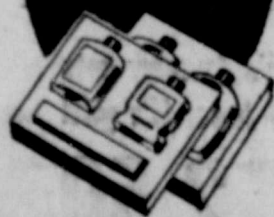
## Gifts from Crawford's



### Pangburn's Candy

A Sirevra Gift Hit that Never Misses! One of our finest and biggest selections in all size boxes and all price ranges!

### MEN'S TOILETRY GIFTS



### Shaving Kits and other beautiful Toiletry Sets

for men on your gift list  
You can never go wrong, when you select men's toiletries. Something he will use and enjoy everyday.

#### • Christmas Decorations

Highest Quality Light Cords and other Christmas Trimmings.

#### • Finest Perfumes

The ladies always expect perfumes at Christmas. They are a Christmas must for everybody—and we have plenty of them.

#### • Kodak Outfits

For any member of the family. Fine flash outfits that give professional results.

#### • Christmas Toys

Plenty of toys and games for children. We think you might find something different here.

#### • How About A Clock?

Christmas is a good time to give somebody a good clock and we have some dandies for you.

## Crawford's Rexall Drug

110 30min

RAY LILLEY

Phone 24

### How to Light Outdoor Holiday Displays

Everyone becomes an electrician of sorts during the Christmas season, with the usual tree lights and possibly porch, lawn, or roof decorations.

If you are planning an ambitious outdoor holiday lighting display, the December issue of Better Homes & Gardens magazine says there are easy ways to save yourself the frustration of faulty

wiring, blown fuses, bulbs that won't burn, and switches that fail. An article advises preparing your equipment now.

The first step is to unpack your Christmas light strings and test for loose connections and defective bulbs. Wiggle the string at each lamp socket so any breaks in the line or in the bulb will show up clearly.

An idea used by commercial displayers is to use in hard-to-reach strings located in hard-to-reach places such as high on the tree or on the roof. Bulbs get old and weak; new ones are less likely to burn out.

Strings of tiny, series-wired (Code type C-6) bulbs should not be used outdoors, advises the article. The slightly larger C-7 1/2 bulbs can be used indoors or out and require no hunting for burn-outs. The C-9's bulbs, larger yet, work the same way and give the most brilliant of outdoor displays.

Usually the manufacturer states on the box how many strings of the bulbs can be plugged together. Your concern is not about overloading the house circuit, but overloading the low-capacity wire. When you connect a number of strings, the first one carries the current for all the others. So, if you wish to have more than the recommended number of bulbs, simply use more than one extension cord, says the magazine.

For outdoor floodlights to illuminate Christmas displays, your best bet is to stick to the 150-watt PAR-38 bulbs. These are the weatherproof reflector type, like the kind used to light driveways. You can obtain 300- and 500-watt reflector bulbs for outdoor use, but those are likely to explode in a cold rain or snow unless protected by expensive fixtures. So just use two or more of the PAR-38s when you wish more light. Indoors, you can use the 150-watt R-40 or 75-watt R-30 reflector spots and floods.

### Women's Activities

**Dec. 14**  
The Hope, Faith and Charity Sunday school class Christmas social will be held in the home of Mrs. Kenneth Hardy Friday at 7:30.

**Dec. 13**  
The AAUW will meet Thursday, Dec. 13 at 7:00 p.m. with Mrs. R. L. Hamrick as hostess and Mrs. Jettie Ballenger and Miss Mary Jo Duck as co-hostesses.

**Dec. 13**  
There will be a regular meeting of the Members of the Carl Barnes unit No. 69 of the American Legion Auxiliary at the Legion Hall on Thursday, Dec. 13.

**Dec. 13**  
The Rho Pi Chapter of the Beta Sigma Phi Sorority will meet with Mrs. Betty Huffman Thursday, Dec. 13 at 7:30.

**Dec. 14**  
The Dorcus Sunday School class will meet at 6 p.m. Friday Dec. 14 for a Christmas Dinner in the home of Mrs. Mat Robinson. Gifts, not to exceed \$1, will be exchanged.

**Dec. 18**  
The Priscilla Sunday school class of the First Baptist church will meet with Mrs. Jessie White, Tuesday, Dec. 18. Each one is to bring a \$1 gift for exchange.

### Young People To Present Xmas Pageant

The Young People's department of the First Christian Church will present their Christmas pageant at the church Sunday night, Dec. 16 at 7 p.m.

The pageant, under the direction of Mrs. B. G. Firkle, is entitled "Unto Us A Child" and is the Christmas story in scripture and song.

The public is cordially invited to attend this pageant.

### Youth Crusade To Have Hay Ride

The Youth Crusade will enjoy a "hay-ride" and wiper roast Saturday night. The group will meet at the church and with a truck padded with hay, the group will ride off in the "blue yonder" and enjoy an evening of fun, food and fellowship.

Old fashioned lanterns will furnish the light "out yonder in the dark" and games will be part of the program for the evening.

All the young people and intermediates are invited to this party. Come on time and be assured of a ride and a lot of fun.

### WMU Circles Meet For Mission Study

The WMU circles met Tuesday morning for the study of the third chapter, mission study book, "Adventuring with God" by Eva R. Inlow.

The Katherine Howell Circle met in the home of Mrs. Earl Horton with Mrs. A. W. Wainford, circle chairman, presiding. Mrs. E. L. Hamrick brought the mission study. Refreshments of cake and coffee were served to Meses. Hamrick, Warford, Raynell Baze, H. C. Montgomery, John Roper, Ethel Adams, A. G. Brooks, F. E. Langston, P. C. Long and Mrs. Horton.

Mrs. Loyd Kennedy was hostess to the Eva Nell Kimbler Circle with Mrs. Raymon Bryan teaching the lesson study.

Refreshments were served to Meses. Bryan, A. W. Reuver, B. M. Medley and Mrs. Kennedy.

The Helen Jean Parks Circle met in the home of Mrs. Clayton Stanton with Mrs. Walter Arterburn teaching the lesson study. Those attending were: Meses. Arterburn, Wilson Guest, and Mrs. Stanton.

The Carolyn Bell Circle met in the Church Library. Mrs. J. B. Houghton gave the lesson study. Those attending were Meses. J. B. Houghton, Jimmy Jones, Sammie Elder and Frank Arrendale.

#### WEEKEND GUEST

Tennis Merrick had as her guest her cousin, Mrs. Doshia Patterson of DeLeon last week.

TRADE WITH YOUR  
HOMETOWN MERCHANTS

### Lone Holly Tree May Not Bear Berries for Yule

Planting a single holly tree isn't the berries if you hope to grow your own Christmas decorations.

Unless there are both male and female hollies (staminate and pistillate trees) on your grounds or nearby, the greenery will be unadorned by fruit in the Fall. Many nurseries offer hollies of proven types that will produce an abundance of bright berries if pollinated. Pleasing forms of the male

plants are available too and these can be relied on to produce quantities of the needed pollen, according to E. I. Kabel, field representative of the Davey Tree Expert Co. Such male trees should be planted closely enough to the berry-bearers to assure active interest of bees and other insects important to pollination. Experts estimate there should be one staminate tree for every ten pistillate ones.

Annual shearing is good for hollies after they pass their infant stages. This helps keep them dense and attractive. So the cuttings you bring into the home for the Yuletide have double benefits. Hollies

are rated a close second to yews as choice foundation plantings.

Appropriately, the popular modern kinds boast appealing holiday names. These include Cheerful, Merry Christmas, Old Heavy Berry and Mrs. Santa.

#### HOME FOR WEEKEND

Bob Downtain was home from St. Edwards University over the weekend.

CALL 224  
FOR CLASSIFIED ADS

## O. K. GROCERY MARKET

FRIDAY AND SATURDAY

501 W. Main I. G. A. Phone 214

RUBY Grapefruit NICE 5 For 29c  
RED SIZE

MARSHALL—303 Can Red Pitted Cherries .. 23c

LOTUS—303 Can Pie Apples ..... 23c

FRANCO-AMERICAN—300 Can Spaghetti ..... 16c

BROWN BEAUTY—Can Spanish Rice ..... 21c

MARSHALL—300 Can Pork & Beans ..... 10c

YACHT CLUB—303 Can Cut Green Beans ..... 18c

ALLEN—No. 2 Can Blackberries ..... 24c

ALLEN—300 Can Spinach ..... 10c

Russets Potatoes 10 Lb. Cello 43c  
Bag

WELCH—24 Oz. Bot. Grape Juice ..... 39c

SUN-SWEET—Quart Prune Juice ..... 38c

LUCKY LEAF—Quart Apple Juice ..... 31c

REALEMON—46 Oz. Can Orange Juice ..... 23c

TEXAS Oranges 5 Lb. 33c  
JUICY Bag

Selected CHUCK ROAST .. lb. 39c

SMOKED SPARE RIBS ..... lb. 39c

PICNIC 6 to 8 Lb.

PORK ROAST ..... lb. 39c lb. .... 29c

NATIONAL BISCUIT CRACKERS ..... 1 LB 28c

DELICIOUS APPLES 3 Lb. Cello 49c WINESAP APPLES 3 Lb. Cello 49c  
Bag Bag

MONARCH Coffee Lb. Can 79c

YACHT CLUB Coffee Lb. Can 79c

#### FRUIT CAKE INGREDIENTS

Citron Peel .. 4-Oz. Glass 4-OZ. GLASS Cubed Pineapple ..... 28c

Orange Peel .. 19c 4-OZ. GLASS Whole Red Cherries .. 32c

Lemon Peel .. 10-OZ. PKG. White Raisins ..... 28c

LYON'S FRUIT CAKE MIX ..... lb. pkg. 49c

SILVER BELL OLEO ..... LB 23c

sweetbriar's own fine

# NYLONS

special! 3 pair 2.79 99 pair

60 gauge, 15 denier nylons in regular or dark grays - seamless or stretch ... the finest at any price...

nylon slips ... 3.98 to 5.98  
girdle coats ... 2.98 to 5.98  
panties ... 49¢ to 1.00  
brides ensemble - gown and negligee 10.98

217 Main  
PHONE 779

**INCOME TAX-**

(Continued from Page 1)

from all the other persons who contributed over 10 per cent of the total support of the dependent.

(8) The dependency credit was not allowed under the multiple support provision of the Internal Revenue Code since the taxpayer did not furnish over 10 per cent of the total support of the dependent.

(9) The dependent was not allowed because another taxpayer furnished more than 50 per cent of the dependent's total support for the year.

(10) The dependent was neither a citizen of the U. S. nor a resident of the U. S., Canada, Mexico, Panama Canal Zone or the Republic of Panama.

(11) The taxpayer did not furnish information to substantiate the dependency credit even though he was given ample opportunity to do so.

(12) The dependency credit was claimed on the return of another taxpayer. Two taxpayers may not be allowed the dependency credit for the same person.

(13) The amount contributed by the taxpayer may not be considered as support for the dependent only, because the contribution

was made to the family of which the dependent is a member. The total contribution would be considered to have been contributed to each member of the family on a pro-rata basis. Therefore, it could not be concluded that the taxpayer contributed more than 50 per cent of the support of any one member of that family.

These 13 errors were made by thousands of taxpayers. The Internal Revenue Service was required by law to correct the taxpayer's return by disallowing the dependent, and to reduce the refund claimed by the appropriate amount. Read your tax instructions carefully before you file your return.

In the next article in this series we discuss the reasons for disallowing travel and transportation expenses claimed by taxpayers.

READ THE CLASSIFIEDS

**COLD SUFFERERS**

Get STANBACK, tablets or powders, for relief of COLD DISCOMFORTS. The STANBACK prescription type formula is a combination of pain relieving ingredients that work together for FASTER RELIEF of HEADACHE, NEURALGIA and ACHING MUSCLES due to colds. STANBACK also REDUCES FEVER. SNAP BACK with STANBACK.

**EASTLAND-**

(Continued from Page 1)

Albany. But here they are in the semifinals and there has not been a "fluke" or accidental victory among any of the games they have won. They have won them decisively by playing hard, straight, head-up football, and by playing together as a team.

That has been the secret of their success. Although there may not be any All-State players on the roster, their team play has made up for it. Each boy knows what the other one can do. Each man knows where every other man is going to be at any given time during the running of a play.

They have had their long ground gainers, and they have had the men that could be counted on for the last two or three yards needed for a first down. They have had some good pass catchers and they have had some terrific tacklers and blockers from end to end.

Every man has wanted to play football. They have had backfield men called out of the game for one reason or another only to hound the coach to let them back in so they could play in the line until they were needed in the backfield again.

They have had a genuine will to win, and whether they win, lose or draw at Stinnett Friday, they have already come much farther than anybody ever dreamed of, and Ranger wishes the Mavericks luck.

**What's Cooking-**

(Continued from Page 1)

tempting to build a lone house by themselves, all of which is mighty true.

If it does turn out that Ranger comes up with 20 brand new homes next spring, along with everything else that is happening around here and is due to happen, this town is going to feel that it has fallen into the Fountain of Youth and become suddenly rejuvenated.

There are just a whole lot of things in the wind that can't be talked yet, and we don't know of any town anywhere within many miles of here that has anything like the future of Ranger looming up in front of it.

We ought to be proud we are sticking around for a while.

**Santa Letters-**

(Continued from Page 1)

Dear Santa, This is what I want for Christmas, a doll with a pony tail and a tricycle and a doll bed make that a hospital doll bed, a broom, washing machine, electric iron, some glass and tin dishes, a sewing machine, ironing board, a bill fold, and a small chair.

Barbara

**Decorate With Nature's Gifts**

You don't have to look very far to find lovely Christmas decorations for your home. And they won't cost much more than the price of your time and efforts.

Wherever you live in the United States you'll find natural materials that lend themselves to handsome treatment, says the December issue of Better Homes & Gardens magazine.

An artistic touch with corn-stalks, husks, and wheat straws combined with sticks, stones, and several household items can produce a beautiful nativity scene at little expense. Tumbleweed, spray-painted silver, makes a distinctive decoration trimmed with red Christmas bells. Among other items that can form unusual holiday decorations are branches, fruits, nuts and seashells, says the magazine.

**ENGINEERS SITTING PRETTY**

Young engineers today live better, make more money, and can find the work of their choosing in comparison with the way their 1936 engineering brethren started out. Engineers in the class of '36 of Manhattan College, New York, went to work, if they could find jobs, at \$1300 to \$1500 per year. Engineering News - Record, McGraw - Hill publication, reports that Manhattan's engineering graduates of last June found, without much difficulty, jobs with annual starting salaries of \$4500 to \$6700.

**Quick Relief of PAIN**

FOR PAINS OF HEADACHE, NEURALGIA, NEURITIS, STANBACK TABLETS OR POWDERS. STANBACK is not a one ingredient formula. STANBACK combines several medically proven pain relievers into one easy to take dose. The added effectiveness of these MULTIPLE ingredients brings faster, more complete relief, saving anxiety and tension usually accompanying pain.

Test STANBACK Against Any Preparation You've Ever Used. **STANBACK** Stop Pain with STANBACK

**The Lord Helps Pedestrians Who Help Selves**



TEMPLE TOP—A woman's hat is her temple, according to French milliner Svend. Modeled in Paris, this topper is fashioned along the lines of an Indochinese temple. Hat and matching coat, designed by Jacques Heim, are done in lamb fur.

"The Lord helps pedestrians who help themselves!"

By giving the old saying this new twist, E. C. McFadden of Dallas, Vice President of Employers Casualty Company and President of the Texas Safety Association, today pointed up the walker's responsibility for his own safety in traffic. McFadden was discussing the pedestrian phase of the holiday hazards program which the Texas Safety Association is now conducting.

"Many walkers show a complete disregard for their own safety," McFadden said. "They seem to have a childish belief that, no matter what they do, drivers will watch out for them."

He said that walkers become more careless than ever during the holiday season. They get caught up in the excitement of holiday planning, shopping and partying and become so preoccupied that they give scant attention to safety.

McFadden listed two of the most dangerous pedestrian practices as dashing out into the street without looking, and crossing against the lights at intersections.

"And at this time of year pedestrians often hide behind umbrellas or stacks of packages," McFadden said. "They can't see where they're going and they become a menace to motorists and other pedestrians."

McFadden warned pedestrians

to be especially cautious in bad weather. "Snow and rain reduce visibility, making it difficult for you to see vehicles and making it more difficult for drivers to see you," he said. "These conditions also make roadways and sidewalks slippery. Cars are likely to skid, and pedestrians are unsafe of their footing."

**KEEP THIS AD!**  
Over 20,000 Arthritic and Rheumatic Sufferers have taken this Medicine since it has been on the market. It is inexpensive, can be taken in the home. For Free information, give name and address to E. O. Box 522, Hot Springs, Arkansas.

**Our New Schedule of Prices**

... effective January 1, 1957 are as follows:  
(1) Certificate \$5.00. (2) Pages up to 10, \$1.00 per page.  
(3) Pages from 10 up to 25, \$1.50 per page. (4) Pages from 25 up to 100, \$1.25 per page. (5) Pages over 100, \$1.00 per page.

These increases are unavoidable brought on and aggravated by high State and Federal taxes. You can cut down on future costs by keeping your abstracts in a safe place. Don't lose your abstracts or loan them to others without a cash replacement deposit.

**EARL BENDER & COMPANY**

Eastland (Abstracting since 1923) Texas

**PENNEY'S**  
ALWAYS FIRST QUALITY

LIVE BETTER...  
GIVE BETTER ON A BUDGET

Now!  
Towncraft®  
PIMA...  
Plus



**PENNEY'S ADDS 7-POINT CONTOUR TAILORING TO LUXURY COTTON... IN ALL-NEW CUSTOM-FIT DRESS SHIRT!**

ADVERTISED IN LIFE!

Now get famous Pima cotton, in a silk-like "220" broadcloth... in a Penney Towncraft shirt that sets brand new standards of comfort and good grooming, because it's designed the way you are!

2<sup>98</sup>

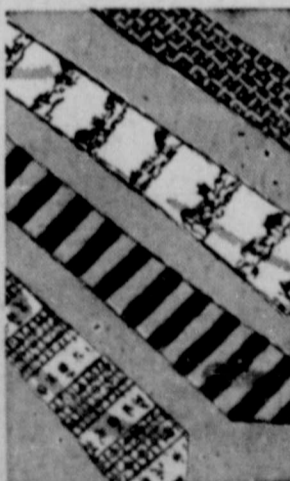
- extra deep yoke
- natural shoulders
- contour sleeve heads
- deepened armholes
- low-front neckline
- proportioned lengths
- graduated form fit



**BETTER!** more mileage Gaymodes  
**DOUBLE LOOP SHEERS**

Full fashioned Gaymode nylons at a budget price... 2-thread knit for longer wear! Proportioned, 8 1/2-11.

98c  
Pair



Towncraft Silk 'n' Rayon Woven

**Jacquard Ties**

are balance-blended for rich lustre, full body, smooth easy knotting. In Penney's neat, tasteful "pick-of-the-crop" gift patterns.

1.49

**Press Days At Ft. Worth Stock Show Scheduled**

FORT WORTH — Representatives of press, radio and TV will be honored at the Southwestern Exposition and Fat Stock Show.

Instead of designating a single day, however, the Stock Show several years ago instituted the practice of observing four days so as to fit the convenience of the guests of honor. This practice will again be followed, President Manager W. R. Watt announces. The dates will be Monday, Tuesday, Wednesday and Thursday, Jan. 28, 29, 30 and 31. Important livestock judging events are scheduled for each of those days and the visitors will attend the afternoon performance of the rodeo in Will Rogers Memorial Coliseum.

TRADE WITH YOUR HOMETOWN MERCHANTS

**Watch**

Montgomery Ward...FOR Extras!

407 MAIN PHONE 447

end of the year **TRADE-IN SALE**

TRADE AND SAVE ON WARD'S FINEST RAYON TIRES... RIVERSIDE DELUXE

6.70-15 Tube-Type blackwall sale priced **14.95**

6.70-15 Tubeless blackwall sale priced **16.95**

QUALITY... equal to that of original equipment tires. Strong bruise-resistant Super Rayon cord body, cold-rubber tread. Deep, flat multi-row tread puts more rubber in contact with the road—gives longer mileage, better traction, quicker stopping action. Tubeless has special inner liner to convert potentially dangerous blow-outs into safer slow-outs.

\*Plus excise tax and trade-in tire. Satisfaction guaranteed nationwide. All sizes sale priced.

STOP 10% DOWN ON TERMS



**IT'S THE LAW**  
in Texas  
A public service feature  
of the State Bar of Texas

**TRUST ARRANGEMENTS EXPLAINED**

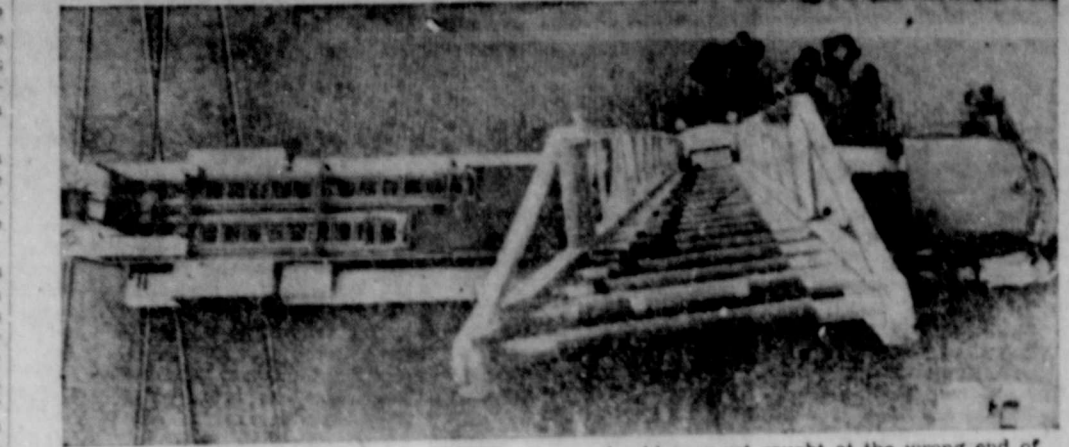
When property is placed in trust it is turned over to a trustee who will see to it that it is properly managed for the benefit of a person or persons you name as beneficiaries. It is a method of disposing of your property and may be used in conjunction with a will.

income for persons unable to support themselves, to provide funds for a child's education, as a means of establishing an annuity, or to provide a gift for a charitable institution.

In these days of high taxes, a trust may be utilized to minimize the tax burden. If carefully planned, a trust may decrease income and inheritance taxes.

A trust arrangement works roughly in this manner. A person who desires to create a trust is called a grantor. The grantor chooses a trustee. The trustee may be a bank, an individual, or a trust company. The grantor through a trust instrument tells the trustee how to distribute the trust property or income. The trustee will then manage and distribute the trust proceeds or property in whatever manner the grantor desires.

A very common arrangement is to place the property in trust with directions to pay the income from the property to a wife for her life, and on her death the trust is to end and the property is to be distributed to the grantor's children.



**THIS WAY AND WATCH YOUR STEP**—If you should ever get caught at the wrong end of a fire, you could have this sight confronting you. It's a victim's view of a rescue ladder, provided in this overhead shot of new fire equipment in St. Louis, Mo. The 100-foot ladder is easing up to the 80-foot level.

**Texas University To Explore Indian Ruins**

AUSTIN — Early-day Indian ruins near Jafferton, Texas, will be investigated by a University of Texas archeologist, Dr. Edward Mott Davis, early next year.

Arrangements to investigate the site have been made with the National Park Service, which has a Congressional appropriation for salvaging archeological ruins.

The Jefferson site, soon to be destroyed in the construction of Ferrell's Bridge Dam, already has yielded potsherds indicating the area was inhabited sometime after 500 A.D., Dr. Davis said. Potsherds are fragments of pottery vessels which archeologists regard as one of the best indices of time differences in culture.

Dr. Davis, who will be assisted by a graduate student, says he hopes to get a history of the area, learning more about the occupations and way of life of early inhabitants in that region.

Detailed notes and photographs will be taken as the site is dug so that Dr. Davis can recreate the site in his laboratory for further studies.

Dr. Davis joined the University staff in September as a research scientist in anthropology. He previously taught at the University of Nebraska and engaged in archeological research in Canada for a historical research foundation.

**SALLY Says...**

*It's quite taking a job before Christmas you too will need a social security card to show your boss.*



For full INFORMATION go to your nearest SOCIAL SECURITY OFFICE

month. But in December, many schools begin vacations before that date. So that veterans won't have to go on vacation without funds, VA is making a special effort to mail the checks beforehand, Mr. Harrington said.

The Dallas VA regional office is speeding up steps to authorize GI allowance payments for veterans and is making arrangements with Treasury Department Disbursing Offices—which usually issue the GI checks for earlier-than-usual mailings.

Veterans and their schools can cooperate in this effort by getting monthly certifications of trailing status to VA promptly after the end of November, Mr. Harrington said.

"There may be exceptional cases in which it may not be possible to make the payments ahead of time," Mr. Harrington said, "but in most cases veterans will receive their checks before going home for Christmas."

**GI Allowances For School Vets Are Due Early**

Veterans in school under the Korean GI Bill most likely will get their monthly GI Allowance before they go home for the Christmas vacation, Scott B. Harrington, manager of the Veterans Administration Regional Office in Dallas, said today.

Normally, GI allowance checks are mailed around the 20th of the

**PUT PHEASANTS**  
On Your Christmas Shopping List... PHONE 211.  
B. G. PIRKLE

**SINCE 1884**  
... it has been our privilege to render a service to this community as monument builders.  
**ALEX RAWLINS & SONS**  
Weatherford Phone 4-2726 Texas

Like anything else, Automobile Insurance should properly fit the needs of the owner. Aetna's nationwide service is important to the motorist who wants and needs the best.  
**MAKE SURE IT FITS**  
**C. E. MAY**  
INSURANCE - REAL ESTATE  
214 Main Phone 418

**NOTICE**  
**FRIGID QUEEN**  
**WILL REOPEN**  
**Wednesday, Dec. 12 - 10 a.m.**  
After Vacation  
**WE WILL BE SERVING...**  
Delicious Hamburgers, Superdogs, Malts, Shakes and Sandwiches.  
**Located On Highway 80 East**

to place the property in trust with directions to pay the income from the property to a wife for her life, and on her death the trust is to end and the property is to be distributed to the grantor's children.

An interesting type of trust is that which is sometimes called a spendthrift trust. This is an arrangement whereby one sets up a certain sum of money to be given out to another at a definite rate per month or per year, or under definite restrictions.

This type of trust is generally used in wills where a person desires to leave money to an individual, but feels that the individual is not capable of properly caring for the money and that if left to them in full that the party receiving the money will spend and waste the money and not receive the maximum benefit from it.

Trust property quite often consists of securities. The law regulates the type of property in which trust funds may be invested. However, the grantor may designate the type of investments to be made by the trustee.

The effectiveness of a trust is dependent largely on its proper creation. To avoid the pitfalls and dangers of lawsuits and ineffective trust operations, a trust instrument should be properly prepared. A poorly planned or carelessly drawn trust instrument can not only defeat the objectives of its creator, but may prove costly as well.

Your lawyer can advise you whether a trust arrangement will be advantageous in your particular situation, and is qualified by

education and experience to prepare properly the legal papers necessary to set up a trust. If you have in mind some bank or trust company to act as trustee, that firm's trust officer will be glad to discuss the matter in a conference with you and your attorney.

(This column, prepared by the State Bar of Texas, is written to inform — not to advise. No person should ever apply or interpret any law without the aid of an attorney who is fully advised concerning the facts involved, because a slight variance in facts may change the application of the law.)

**HOLIDAY LIGHTING TIPS**

If your garage is attached to your house, here's a novel idea for a new way to decorate it for the holidays. Transform the garage door into a giant December calendar page with numbers cut from dark green oilcloth. Cross off each day with strips of red oilcloth, and outline December 25 with bright, shiny tinsel. Finish off with a frame of greens and illuminate with a 150-watt weatherproof projector spotlight.

TRADE WITH YOUR HOMETOWN MERCHANTS

**BARBER SHOP**  
IT PAYS to LOOK WELL  
Courteous Service  
**TONY'S BARBER SHOP**  
223 1/2 Main - Phone 108

**County Purchases \$20,000 Worth of Courthouse Bonds**

County commissioners Monday voted to purchase \$20,000 worth of outstanding bonds on the courthouse.

The bonds would have matured in March 1957 and March 1959. The county was able to purchase the bonds at par rate and thus saved approximately \$500 in interest.

Following the purchase of the bonds only \$45,000 will be owed on the courthouse.

Commissioners also paid bills at the regular semi-monthly meeting.

**Cotton Allotment To Increase Here**

Emmett Powell, head of the ASC office in Eastland, said today that the county's cotton allotment would be increased this coming year and not decreased as reported in this paper Thursday. Powell said the increase would come since 1600 acres have been allotted for hardship cases in this county. That would push the county's allotment up to 7094 acres as compared to 6818 in 1956.

**NOW!**  
just in time  
for  
**Christmas!**

**SPECIAL PRICE!**  
**WAS \$369<sup>95</sup>**  
**NOW ONLY**  
**\$269<sup>95</sup>**  
**WITH OLD REFRIGERATOR**



**YOU SAVE \$100<sup>00</sup>**  
**ON ALL NEW 1957**  
**Servel**  
**gas**  
**REFRIGERATOR**  
(FOR LIMITED TIME)

**ONLY \$1 DOWN**  
**\$1<sup>60</sup> a week -- payable monthly**

- **10 YEAR GUARANTEE** Servel's freezing system has a guarantee twice as long as for any other refrigerator. Serviced by Lone Star Gas.
- **NO MOVING PARTS** Nothing to wear out and cause repair expenses — no motor or compressor!
- **CONTINUOUS COLD** No temperature ups and downs. Uses dependable gas — no interrupted service due to bad weather!
- **QUIET OPERATION** Runs on a tiny jet flame of gas. Operating costs stay low, efficiency stays high!

See these exclusive Servel features  
at your **SERVEL DEALER** or **LONE STAR GAS COMPANY**

**MAKE IT A WHITE CHRISTMAS**

**GIVE HER A REALLY MODERN gas APPLIANCE**

**NAME YOUR OWN DOWN PAYMENT**

**UP TO \$100 TRADE-IN**  
No gift can be more appreciated than this amazing Servel Gas Ice Server Refrigerator. All the ice cubes you need — automatically, without trays. Come in today and SAVE... at Lone Star Gas Company.

**NAME YOUR OWN DOWN PAYMENT**

**HUGE CHRISTMAS TRADE-IN ALLOWANCE**  
Give her a new automatic gas range. So many new cooking features... and she'll be cooking with dependable flame-fast gas. Trade in her out-dated range... get huge trade-in allowances at Lone Star Gas Company.

**NAME YOUR OWN DOWN PAYMENT**

**\$25 SPECIAL CHRISTMAS DISCOUNT**  
A gas clothes dryer will make her work easier and lighter... and clothes last longer, look — feel — small cleaner and softer. Buy Now! Big \$25 discount at Lone Star Gas Company.

**... AND SAVE AT LONE STAR GAS COMPANY**  
Here are gifts that really express your admiration... gifts that keep giving "her" pleasure and extra leisure, year after year.  
Gas appliances are practical — they bring convenience and economy; modern — they incorporate every automatic feature; desired — gas appliances have lasting efficiency, speed and flexibility.

**LONE STAR GAS COMPANY**