

Fair to partly cloudy Friday and Saturday. High both days, 100. Low both nights, about 70. Widely scattered showers. Lake Leon level was 71.20 at week's end.

# THE RANGER TIMES

LAKE LEON  
"A FISHERMAN'S PARADISE"

SEEKING COMMUNITY BETTERMENT SINCE 1919

38TH YEAR

RANGER, TEXAS, THURSDAY, AUGUST 23, 1956

PRICE FIVE CENTS

## HIGHWAY 80 TO BY-PASS RANGER

### Graduation Requirements are Listed by Board of Education

The board of education, through the superintendent's and principal's office, this week announced some changes in graduation requirements beginning with the 1957 school year.

Students now may graduate with three credits in English; three in mathematics (any three units will count); one unit in general science; two units in social studies (at least one unit in American history or civics), and seven electives.

For students who feel certain that they are going to college, the following plan is recommended: Four units in English; three units in applied mathematics; two units in natural science; two units in foreign language; two units in social studies, one of which must be American history or civics, and three electives.

### Daniel Praised by TUPA President for Increasing Pensions

AUSTIN—Sen. Price Daniel, candidate for governor, today won praise from the president of the Texas United Pension Association for sponsoring a successful amendment in congress that gave old age pensioners a \$3 per month increase.

month on that date, which was the expiration date of the last temporary increase voted by congress. He is pledged also to work for a cost-of-living increase at the state level.



### First Baptist TU Director Is Glenn West

Glenn West has been elected training union director of the First Baptist church for 1956-57. Glenn assumed his duties as of Aug. 19.

Daniel, leader by 165,500 votes in the first Democratic primary, urged the voters to go to the polls Saturday and "tell the world that Texas can run its own affairs without outside interference."

### Homemakers To Hold Achievement Day on Friday

Mrs. Richard Henderson, homemaking teacher, announces that Achievement day will be held Friday, Aug. 24.

Some 25 girls are enrolled in the class and during the month of June, the group worked out a furniture refinishing school.

Air Condition any Car, 3 Hours. Reg. \$400 with 4-cyl. compressor. Elect. clutch \$28 extra. SPECIAL FACTORY PRICE \$273.00

### Cheaney Club In Second Meet Monday Night

The second meeting of the Cheaney Community club was held Monday night of this week with 26 present.

E. E. Blackwell, chairman, announced that the club is not a Cheaney organization exclusively, but also includes Alameda, Salem, Cross Roads and neighboring communities.

A contest for a club name is being staged. Deadline for entries is 8 p.m. Sept. 10. Winner will receive a prize of \$6.

Bill Logan, James Hart and John Love were appointed to locate a permanent meeting place.

### Drouth Program In County Gets New Extension

Walter T. McKay, state director of Farmers Home administration, today advised Homer P. Cole, county supervisor, of the extension of the emergency feed grain program in Eastland county.

### Where's the Fire?

A grass fire at 10:45 a.m. Wednesday, Blundell and Hwy. 80, No. damage.

### Labor Day

No announcement was made at press time as to the number that would close, giving their employees a long weekend.



PRICE DANIEL



RALPH W. YARBOROUGH

Saturday, Aug. 25, is the date for the run-off between Price Daniel and Ralph Yarborough for the governor's chair of Texas.

### Rush To Head Deacons of First Baptist Again

G. B. Rush was elected as chairman of the deacons of the First Baptist church to serve the church year ending Sept. 30, 1957. This is the second year he has served as chairman.



G. B. RUSH

Arterburn as secretary. These three men have served the past year in these positions.

### Final Rites for T. R. Motley

Funeral services for Thomas R. Motley, 67, who died at a Ranger hospital Tuesday at 5:20 a.m. were held at St. Rita's Catholic church at 9:00 a.m. Thursday.

### Drunk In Car

Andres Garcia, 20, Colorado City, was arrested at 1:11 a.m. Thursday by a Ranger city patrolman for being drunk in his car.

### Morris Pitches No-Hitter In Jacksboro Win

Playing their first game in the tournament at Jacksboro, Wednesday night, the Ranger American Legion baseball team defeated the Montague nine, 10-0.

Gene Morris, on the hill for the Rangers, hurled a no-hit, no-run game. Gene struck out 12 and issued no free passes as he spun a real neat game.

### Stephens To Serve SS of First Baptist

Lonnie Stephens has been elected to serve as Sunday school superintendent of the First Baptist church for the coming year.



LONNIE STEPHENS

### Syd Gaines Addresses Local Rotary Club

"The Ships of Rotary" was the theme of an address by Sydney A. Gaines of Wichita Falls, governor of district 186, Rotary international, at the Ranger Rotary club yesterday.

Stressing the need of increasing understanding and good will between the United States and other countries of the world, Gaines pointed out that Rotary international has spent more than two million dollars in recent years in its program of student fellowships.

### Discoveries Are Highlight Of Area Oil News

An Eastland County oil strike and three discoveries by an Eastland drilling Co. highlighted county oil news this week.

The No. 1 Dan J. Harrison was completed as a line discovery three miles east of Eastland in Section 4, Block 6, ETRR Survey. Daily potential is 50 barrels of 39 gravity oil and one percent water, flowing through a half-inch choke with 700 pounds on casing and 500 on tubing.

### Boats & Motors

Evinrude, Lone Star, Cadillac, Crusade Boats

L & J SUPPLY CO.

### Eight Lane Highway Would Skirt Cities

Plans for a 15 million dollar highway building program in Eastland county were outlined this week for representatives of Eastland, Ranger and Cisco and members of the county commissioners court.

District Engineer Bob Milligan of the Brownwood office of the State Highway department told city and county representatives in an executive meeting held in Eastland that all three cities would be bypassed by the new super freeway—an eight-lane, controlled access, coast-to-coast lifeline of the nation.

Milligan reportedly said that the route selected by the federal government would skirt the three cities on the south. He ruled out the possibility of continuing use of present routes through the three cities, saying, "That would mean we would have to buy the courthouse in Eastland."

The proposed route for the highway, presented by Milligan, follows the old base line road all the way across Eastland county, except through the three cities.



EDITOR—Bozo—first name, last name, take your choice—bills himself as an assistant editor of the "Bovary News," a publication which concerns itself with news of the gentlemen of the road, particularly those members who make up New York City's hobo colony.

Interchanges in the plans for Ranger, according to reports will be eastward, below Ranger Hill, where the four-lane undivided highway becomes the four-lane divided road. An interchange will be westward of Ranger at Staff road. Two other interchanges at Farm-to-Market road 571 and at Deadmons road.

These interchanges will have overpasses and service passes, it was stated.

TV HEADQUARTERS  
RCA, Admiral, Philco, Zenith  
L & J SUPPLY CO.

### Local Students to Register Aug. 29-31 Seniors Top of List

Supt. G. B. Rush and Principal C. L. Garrett released registration data for the school year, 1956-57.

Registration gets under way Wednesday morning, Aug. 29, 8 o'clock. The schedule follows: Wednesday, 8 to 12—all seniors. Wednesday, 1 to 4 p.m.—all juniors. Thursday, 8 to 12—all Sophomores. Thursday, 1 to 4 p.m.—all freshmen.

### Story of Eastland County Makes Good Reading for All

Eastland county was created Feb. 1, 1858, and was organized Dec. 2, 1873. The act creating the county was enacted by the 7th legislature of Texas. The county was named in honor of Capt. William M. Eastland, the first white man to draw a black bean at Rancho Salado, Mexico.

county didn't have forty men with the area of eighteen and forty-five at this time.

Several days after Lee's surrender a detachment of Gilbert's company went to Fort Blair to report for duty with the Confederate forces. They heard the news and returned home and disbanded.

Prior to 1868 Eastland, Shackelford, and Callahan counties were under the jurisdiction of Comanche county, but after 1868 Eastland county was under the jurisdiction of Palo Pinto county.

1873 was marked by a slow growth due largely to several rather violent Indian raids upon existing settlements. The Ellison Springs Indian fight on Aug. 8, 1864, was one of these incidents. In this encounter five white settlers were killed and twelve Indians went to their reward.

The cottonwood fight in November 1868 was another of these incidents which hindered the growth of the area.

FOR—  
Fine Furniture, Floor Coverings, G.E. Appliances, It's Coats Furniture & Carpet, Ltd., Eastland. Free Delivery and Convenient Terms. Good Trade-Ins, too!

LIBRARY, \$1.50 each semester (Junior high \$1.)  
General science, 50 cents.  
Biology, \$1.  
Chemistry, \$1.  
Typing, \$4.50.

These fees should be paid at time of registration, the principal said.

under the jurisdiction of Comanche county, but after 1868 Eastland county was under the jurisdiction of Palo Pinto county.

1873 was marked by a slow growth due largely to several rather violent Indian raids upon existing settlements. The Ellison Springs Indian fight on Aug. 8, 1864, was one of these incidents. In this encounter five white settlers were killed and twelve Indians went to their reward.

The cottonwood fight in November 1868 was another of these incidents which hindered the growth of the area.

FOR—  
Fine Furniture, Floor Coverings, G.E. Appliances, It's Coats Furniture & Carpet, Ltd., Eastland. Free Delivery and Convenient Terms. Good Trade-Ins, too!

LIBRARY, \$1.50 each semester (Junior high \$1.)  
General science, 50 cents.  
Biology, \$1.  
Chemistry, \$1.  
Typing, \$4.50.

These fees should be paid at time of registration, the principal said.

### Story of Eastland County Makes Good Reading for All

Eastland county was created Feb. 1, 1858, and was organized Dec. 2, 1873. The act creating the county was enacted by the 7th legislature of Texas. The county was named in honor of Capt. William M. Eastland, the first white man to draw a black bean at Rancho Salado, Mexico.

The county contains 909 square miles, and is approximately on longitude 95 west and latitude 31 north. Its altitude ranges from 1421 feet at Eastland to 1429 feet at Ranger, 1435 at Gorman and 1608 at Cisco.

surface of the county is towards the southeast, its drainage is in all directions through the sandy creeks and small rivers which ribbon the county.

The soils of the county range from the heavy clays to the deep sands, the clays being the most fertile in almost all instances.

who settled near the present town of Cisco along the Leon River. Many white men began to enter the area for settlement soon after W. H. Mansker, from Arkansas set up a small ranch at what is now called Mansker's lake. James Bexas and San Patricio counties, it represented the frontier of Texas civilization.

The first man to come into the new county after its creation was a Mexican named Frank Sanchez.

Ellison, from Georgia, established a small settlement near a natural spring which today is called Ellison Springs.

The early settlement of the county could easily be marked as a movement of ranchers who established small ranches around available sources of water.

time roamed this portion of the country. It was not until after the Civil War and in the early seventies that the threat of the Indian was entirely removed from the area.

Early in the Civil War since the Confederate government would not provide sufficient forces for frontier defense, the state legislature passed an act authorizing each of the 37 frontier counties to organize a company of "Minute Men," not to exceed forty. Practically all of the counties were quick to institute the organizations. These forces furnished the major portion of the frontier defence during the

war, especially in the part of West Texas.

Gilbert's company was organized in Eastland county with Sing Gilbert in command as first lieutenant. This company had its headquarters at Mansker's lake and was composed of men of Eastland, Shackelford, and Callahan counties, together with four men from Comanche county. Men were recruited from several counties to form the company as Eastland

county didn't have forty men with the area of eighteen and forty-five at this time.

Several days after Lee's surrender a detachment of Gilbert's company went to Fort Blair to report for duty with the Confederate forces. They heard the news and returned home and disbanded.

Prior to 1868 Eastland, Shackelford, and Callahan counties were under the jurisdiction of Comanche county, but after 1868 Eastland county was under the jurisdiction of Palo Pinto county.

1873 was marked by a slow growth due largely to several rather violent Indian raids upon existing settlements. The Ellison Springs Indian fight on Aug. 8, 1864, was one of these incidents. In this encounter five white settlers were killed and twelve Indians went to their reward.

BE SURE—SEE  
Don Pierson Olds-Cadillac  
Eastland  
Quality Cars at Volume Prices



# The Ranger Times

ESTABLISHED JUNE 1, 1919  
Published 10 weeks - Tuesdays - Thursdays - Sundays  
JOE DENNIS and GONOUS DICK, Publishers  
ED JOHNSON, Editor

One year by carrier in city . . . 45  
One year by carrier in county . . . 5.00  
One year by mail in State . . . 4.95  
One year by mail out of State . . . 6.75

NOTICE TO PUBLIC—Any straggling reflection upon the character, standing or reputation of any person, firm or corporation which may appear in the columns of this newspaper will be gladly corrected upon being brought to the attention of the publishers.

## CLASSIFIED

All Classified Ads Must Be Paid For In Advance.

### REAL ESTATE -

FOR RENT: Apartment 2 blocks from Main, Hills paid. 399 Elm.

FOR RENT: Four room house. Call 785.

FOR QUICK SALE: Four room bungalow near Young School. Large living room, very nice kitchen, fenced in back yard and garage. Small down payment. Call 408-J.

FOR SALE or rent, my place, 1201 Blackwell Street, R. L. Wilson.

FOR SALE: 3 bedroom home, 1122 Desdemona Blvd. See after 4:30 p.m.

### MISC. FOR SALE -

TYPEWRITER Ribbon worn thin? We carry a complete stock of ribbons \$1.25. Ranger Times. Phone 524.

FOR SALE: 45 power takeoff Bailer, like new, 2 Hammer mills, several used Tractors, agent for Marlow Milking Equipment, Gorman Implement Co. Phone 154, Gorman, Texas.

DANDY LETTER FILE. Handy for keeping track of daily correspondence. \$1.85. Ranger Times. Phone 524.

FOR SALE: Cheap! Ideal Laundry doing good business. Our health is the reason for selling. 316 Hunt Street.

**BABY CHICKS**  
Only \$2.95 per 100  
Rocks, Reds, Hamps, Leghorns  
Our Choice  
No C.G.D.'s Please.

**BUD'S CHICKS**  
11 Montgomery Ave.  
Greenville, S. C.

FOR SALE: We will have in this vicinity one used small Spinnet Piano and one used small upright piano which responsible parties may assume with low monthly payments. Write Credit Dept., Fort Worth Piano Sales, 2100 E. Rosedale, Fort Worth, Texas.

FOR SALE: Man's 17 jewel Kigin pocket watch, prism-cut glass punch bowl, 8 cups. 435 Hunt. Phone 624-J.

FOR SALE: Four buildings to be moved, sheet iron, thirty pullets, 150-lb. gilt, at Lonnie Baker's Used Car Lot. Phone 330.

## DIXIE Drive-In

Box Office Opens 7:45  
First Showing 8:00  
Second Showing 10:00

WEDNESDAY - THURSDAY, AUG. 22 - 23

**VISTAVISION**  
**BOB HOPE**  
**MILLY VITALE**  
**ANGELA CLARKE**  
**THE SEVEN LITTLE FOYS**  
Color by TECHNICOLOR  
PLUS: Color Cartoon

FRIDAY - SATURDAY, AUG. 24 - 25

**MAN OF VIOLENCE - WOMAN OF COURAGE!**  
**MITCHEM**  
**MAN WITH THE GUN**  
PLUS: Color Cartoon and 2 Real Comedy

### HITS and MISSES

By ED JOHNSON

The football schedule for A&M college is kicking off this time:  
Sept. 22 - Villanova at College Station, 2 p.m.  
Sept. 29 - LSU at Baton Rouge, 8 p.m.  
Oct. 6 - Tech at Dallas, 8 p.m.  
Oct. 13 - Houston at Houston, 8 p.m.  
Oct. 20 - TCU at College Station, 2 p.m.  
Oct. 27 - Baylor at Waco, 8 p.m.  
Nov. 3 - Arkansas at College Station, 8 p.m. (Regional TV).  
Nov. 10 - SMU at Dallas, 2 p.m.  
Nov. 17 - Rice at College Station, 2 p.m.  
Nov. 29 - Texas at Austin, 2 p.m. (Regional TV).

### WOMEN OF EASTLAND COUNTY:

LET'S ELECT a great Texan to be Governor of this state.  
LET'S ELECT PRICE DANIEL, a man of integrity and devotion to family — a man believing in constitutional government, states rights, and the importance of the individual.  
Counting on you,  
LORAIN J. DUDLEY  
(Mrs. Dudley, former State President of Texas Federation of Women's Clubs, is State Coordinator of Women's Activities for Price Daniel. This ad is submitted and financed by Eastland County women.)

You can own the only COMPLETELY MODERN REFRIGERATOR for as low as **\$2.80 weekly** \*payable monthly

**SERVEL gas REFRIGERATOR** makes ICE CUBES WITHOUT TRAYS

Always Plenty of Ice \* Trouble-Free  
\* No Fuses — No Muzz \* 10-Year Guarantee on Freezing System  
\* Economical \* Always Silent

NOW ONLY **\$469.95**

ONLY \$1 DOWN at **LONE STAR GAS COMPANY**

you, I need you in my business. I shall be glad to have you report at my office tomorrow morning at eight."  
"Many men with career wives believe that home cooking is where their wives should be."

### The Beags Open Cafe Monday

Johnny Beags, Jr., and his wife, Jo Ann, are operating the cafe formerly known as Vickie's. They opened for business Monday morning, and will remain open six days a week, 6 a.m. to 8 p.m. They plan to re-name the cafe, Jo's cafe. After school opens they will specialize in fried banana pies and foot-long hot dogs. The Beags are from Borger.

### Story of -

(Continued from Page One)

In April 1865, Captain Whiteside, stationed a detachment of Texas Rangers in a small gulch. One mile from the present townsite of Ranger. This detachment was for the purpose of rounding up small bands of marauding Indians. It is believed that the city of Ranger received its name from this Ranger headquarters.  
In 1872 Rev. C. Brashears wrote of conditions of the times in his diary in which he listed the population of the county as follows: six families, McGough springs; three families, Mansker lake; one settlement, Flanagan ranch; two families, Elison springs; four families, Desdemona settlement. In 1873 the entire county could scarcely find seventy-five voters which were needed to legally organize the county.

When Silas Buck, a young lawyer, came to live in the home of Peter Davidson in 1872, he discovered that the time had come when Eastland county should be organized. The Davidson ranch was in the northeastern part of the county and bordered Palo Pinto county. Buck had been appointed deputy county clerk of Palo Pinto county, to which Eastland county was attached for judicial purposes. He circulated a petition through the county asking that an election be held in Eastland county for the purpose of organization. The law required seventy-five names of qualified voters be on the petition, but when Buck had secured 65 it was presented to the presiding officer of the police court of Palo Pinto county. The court ordered that such an election be held. The court was divided into five precincts for the election. The election was held Dec. 2, 1873, and Eastland county became organized.

Three young men in a Dallas land office in 1874 were destined to greatly influence the newly formed county. The three young lawyers were Jack Daugherty, C. U. Connelley, and J. B. Ammerman. The three men bought what was called the Betts survey which was to become the site of the city of Eastland, the present county seat.  
In 1874, when our three young lawyers journeyed out west to locate their new purchase five years passed through Merriman, the county seat. They noticed that no apparent effort was being made to develop it. There was a small rawhide lumber building, used only as a place to hold court. The officials of the county lived in all parts of the county and kept their real estate dealers also noticed that the seat of government of some was distance from the center of the county.  
The three men set out to build the new town of Eastland upon their property, the Betts survey. They offered a deed to a lot to anyone who would put up a residence or business house. This offer of a free lot enticed many new settlers to the area. In the summer of 1875 the three founders of Eastland proposed to move the county seat from Merriman to Eastland. An election was held on Aug. 2, 1875, and the new town of Eastland became the county seat. The three men had agreed to erect a two story stone building in Eastland and donate the second floor to the county if the voters

would approve the move. The three men also offered the Texas and Pacific railroad one fourth of the lots in town if they would bring their tracks through Eastland.  
The new county seat tried to bring the Texas Central railroad which was building through South Texas at this time to Eastland. This effort failed and the settlement of Red Gap became the leading stage and railway terminal of the county by 1891. The name of the town was changed from Red Gap to Cisco the same year. Cisco which was blessed with both the Texas and Pacific and the Texas Central grew rapidly. Cisco constantly challenged Eastland's claim to hold the seat of government of the county.  
Other towns in the county grew up along these two railroads. The towns of Carbon, Gorman, and De Leon along the Texas Central and the towns of Eastland, Cisco, and Ranger along the Texas and Pacific.

In 1882 a frame courthouse was erected in the city of Eastland by the county. This court house was erected in 1882. The county seat was moved to Eastland by the county as such. The county lost this building by fire in 1896. Cisco immediately demanded that an election be held to move the county seat from Eastland to Cisco. The election was held on Jan. 21, 1897 to settle the matter. Cisco received 548 votes and Eastland 553 votes. Eastland retained the county seat by five votes.  
It might be added that Cisco contested the election, to no avail, as twelve of their qualified voters had been intoxicated and didn't vote. If this catastrophe had not occurred the county seat of Eastland county might be in Cisco today.

The county erected two more court houses prior to the present structure which was completed in 1928. When the court house which was erected in 1897 was torn down the famous horned frog "Old Rip" was found imprisoned within the cornerstone. "Old Rip" was still alive after 31 1/2 years within the stone.  
The frog was exhibited in many cities of the United States and made a personal appearance before President Coolidge. The frog died of pneumonia and its embalmed body now lies in the lobby of the present court house.  
Before 1892 there were no primary elections in Eastland county. Anyone who desired to do so announced his candidacy for the office of his choice. All ran through to the November election when the candidate received a majority or plurality of the votes cast and counted was declared the winner.

In 1892 the Populist party placed a ticket in the field for all county and precinct offices. The Democrats, as a matter of protection, followed the Populist example.  
In 1892 the Populist candidate for sheriff was their only candidate to win. The Populist party elected five of their candidates in 1894, but lost two of these in 1896. In 1898 the Populist candidates had a banner year in electing their candidates for sheriff, tax collector, treasurer, county judge, representative and three commissioners. The tide turned strongly in 1900, and that was the last year candidates bearing the Populist label appeared on the ballot for county offices.

County Occupants  
During the Civil War the Texas cattle industry, as such, became badly overstocked owing to the loss of outside markets. This condition continued to exist for some years after the war. In 1873 cattle brought only what could be had for the hides, horns, hoofs and tallow. Among the early cattlemen of the county you can list the Gilbert boys, W. M. Allen, John Flannigan, W. H. Mansker and W. C. McGough. These men all came to the county before 1800.  
Early attempts to improve the cattle of the county met with failure. High bred stock seldom survived the first summer due to "acclimation fever." This has been removed, however, by dipping cattle in an arsenical solution. The county today and during World War II has been a leader in beef production.  
Goats and Sheep  
Eastland county has recently assumed an importance from the commercial production of sheep and goats. In the early settlement

of the county there were a few Spanish goats and several flocks of sheep. It has been only in comparatively recent times that the angora breed has assumed an important role in the production of mohair. In 1950 the Texas Agricultural bureau stated that the county had 3200 head of sheep and goats. This is a relatively small number to be sure, but most sources feel that this section of the livestock industry will continue to grow in Eastland county.

Petroleum  
It is probable that the first effort to find oil in Eastland county, which had a reasonable chance of success, was made by the Central Texas Oil Co. in 1909. They drilled a well to the depth of Caddo lime, had a show of oil, but never made a producer.  
Oil was found in Shackelford county in 1913 and in Palo Pinto county in 1915. Each of these discoveries was closer to Eastland county. Lease play increased in the county during 1916 and 1917. The Texas and Pacific Oil company's McCleskey No. 1 blew in at Ranger. This well reached a daily production of 1700 barrels a day. This started what has been the most spectacular oil boom ever to have occurred in the United States.  
The county experienced other smaller plays at Desdemona, in 1918, Rising Star in 1919 and Pioneer in 1922. The peak of production in the county is said to have been in June of 1919 when 75,933 barrels per day was reported.  
The demand was great and the price ranged from \$3 to \$4 a barrel. This meant that Eastland county alone produced \$70,000,000 worth of oil in 1919. Production, however, rose and declined rapidly and although oil is a major economic factor in the county today, it is but a fraction of the 1919, 1920 and 1921 yearly production.

Colorful Past  
Eastland county's history during its first half century or so was not lacking for excitement. In a brief survey in this paper we have seen this exhibited from time to time. The turn of the century until 1917 was a period of relatively rapid growth for the county. This was in preparation for the boom

## Robinson Food Market

Specials For Fri. and Sat. Only  
WE DELIVER Phone 162  
121 North Rusk Street

FRESH DRESSED—PRIME FED  
**FRYERS** . . . . . Lb. 47c

Wilson's Thick Sliced **BACON** . . . . . 2-lb. pkg. . . 98c  
Wilson's Certified—All Meats **FRANKS** . . . . . lb. . . . . 47c  
FANCY FED CALF

**CHUCK ROAST** . . . . . Lb. 43c  
**CLUB STEAK** . . . . . Lb. 59c  
**RIBS** . . . . . Lb. 25c

Imperial Pure Cane **SUGAR** . . . . . 5-lb. bag . . 49c  
Giant Economy Size **BREEZE** . . . . . 3 Lb. 76c  
Cannon Kitchen Towel Free

ARMOUR'S VEGETOLE **SHORTENING** . . . . . 3 Lb. 69c

BORDEN'S—SQUARE CTN. **MELLORINE** . . . . . 1/2 Gal. 49c

ARMOUR'S DASH **DOG FOOD** . . . . . 2 For 29c  
Jean's **Frozen Rolls** . . . . . 2-doz. . . . . 43c  
Frontier Frozen **COD FISH** . . . . . 1-lb. pkg. . . 39c

BLACK DIAMOND **WATERMELONS** . . . . . Hot — Lb. 1 1/2c  
C O L D . . . . . 2c Lb.

**LOOK! What a Bargain**

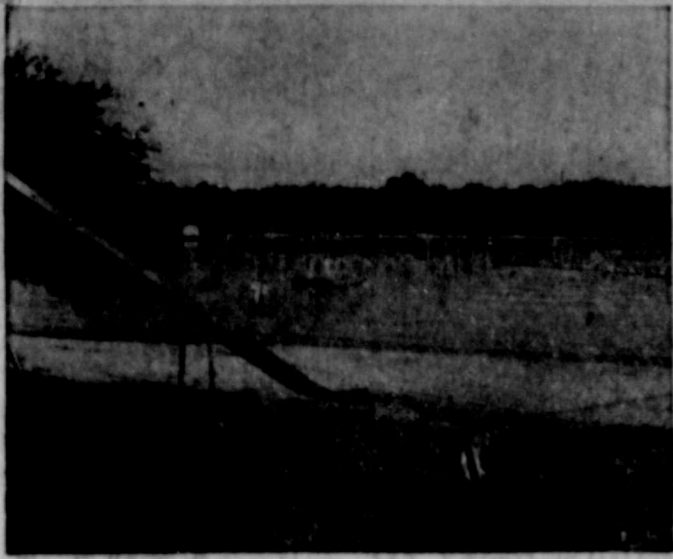
**EXPERT Body Repairs**

SAVE HERE ON CUSTOM SEAT COVERS  
Beautiful plastic in your choice of colors . . . . . \$32.50

• Work on All Makes and Models  
• Wrecker Service  
• All Work Guaranteed

**Caraway Paint & Body Shop**  
Highway 80 West Phone 55





LAKE CORPUS CHRISTI STATE PARK on U. S. Highway 59 near Mathis has a fine sandy swimming beach protected from motor boats by a barrier. There is a playground between the beach and bath houses.

**Lake Corpus Christi Is Popular Fresh Water Playground Near Gulf**

(Editor's Note — This is the second in a series of articles concerning state parks in Texas.)

Lake Corpus Christi State Park is a popular fresh water playground on the Nueces River. It is near enough to the Gulf Coast to make good headquarters for those who wish to alternate fresh and salt water fishing.

**Story of —**

(Continued From Page 2)

millions of dollars were made and lost. With the terrific boom over the county had a bond issue passed for \$4,500,000 for the construction of roads in the county. This has been reported to be the second largest issue of bonds for roads

The park takes its name from a lake of 11,676 surface acres behind a dam built to provide a water supply for Corpus Christi. A new dam, 20 feet higher, is under construction. It will increase the lake area but reduce the park's ground area of 2,400 acres.

Situated four miles southwest of Mathis on U.S. Highway 59, the park is reached also by turning west on San Patricio Street in Mathis and then south on "Lake Road" to the park entrance.

Lake Corpus Christi State Park is one of the most heavily patronized day use state parks. It has no cabins but many people camp in its groves.

A lagoon, protected from rough water, has double boat docks, rental boats and a launching ramp. The lagoon is also the site for the park's "safety first" swimming beach. This sandy shore is protected by a barrier which keeps swimmers in safe water and motor boats at a safe distance.

On week ends, trips about the lake on a pleasure boat can be taken.

land one night around the courthouse and it was estimated that 2000 klansmen participated. These, of course, were not all from Eastland, but many came from other towns in the county. There is no absolute proof of any violence by the Klan but they played a large part in the politics of the county for several years.

The boom came and three years later it was gone. The county suffered its aftermath in many ways until the second world war.

**The White Sheets**  
When the oil era began the county had its first real contact with the outside world. The old timers did not like it. They endured it while they made money, but with the fall of oil hard feelings began to show.

Such were the feelings of the county into which the seeds of the Klu Klux Klan fell. The Klan had an appeal to the pre-boom inhabitants because it took in only white members, protestants, and native born Americans. Many of the oil field workers who came with the boom were immigrant workers. The citizens of the county were either for or against the Klan as there was no middle of the road policy in the county. An individual was forced to take one side or the other. The Klan organized quietly but soon they were meeting at night on hilltops around Eastland and Ranger where they burned crosses which were visible for miles. They held a parade in East-

land one night around the courthouse and it was estimated that 2000 klansmen participated. These, of course, were not all from Eastland, but many came from other towns in the county. There is no absolute proof of any violence by the Klan but they played a large part in the politics of the county for several years.

**Depression to War**  
The county emerged from the boom to face the worst depression

the nation has yet encountered. It hurt the people of the county more as they had just tasted prosperity. Ranger's population dropped from around 30,000 to 5000, Eastland's from 27,000 to 6000, and so it went throughout the county. Eastland county was no different from the rest of the country in the thirties except that it might have been a little more bitter. The county supported the New Deal policies and received

their share of federal aid in many forms.

This was the condition of the county at the outset of the second world war. Conditions were improving in the county prior to the war, but only at a snail's pace. The war brought a demand for the county's produce and with this upsurge of the market the county prospered. The county, however, didn't experience a large financial or population increase during the

war as many parts of the nation did. The county didn't have any army installations, war plants or government operations within its borders. Old Timers, who now compose the populace of the county, got back on their feet, but no millionaires were born as in the booms of the past.

CALL 224 FOR CLASSIFIED ADS

SCHOOL OPENS SOON... HURRY IN

**SCHOOL DAYS SAVINGS** at **Montgomery Ward**

WATCH WARDS FOR Extras! EVERY ITEM SALE PRICED FOR THIS EVENT



**Boys' Regular 2.59 Cotton Twill Pants**

Mercerized for luster Sanforized for permanent fit

**2.24**

Without pleats for the new "slim-look"! Strong 8.2 oz. army-type cotton twill... outstanding for long rugged wear. Sturdily stitched throughout, bar-tacked at strain points. Zipper fly, cuffs. 6-14. Reg. 2.89 Twill Pants, waist sizes 28-32... 2.54

**Boys' Reg. 1.98 Dan River Sport Shirts**

Scoop them up for school! Bright woven gingham plaids with Wrinkle-Shed finish. Easy fitting, handsomely tailored. Long sleeves. 6-18.

**1.74**



**Exclusive with Wards! Usual 4.98 School Dresses**

Original styles made for Wards in new fall cotton plaids created by Galey & Lord. 7-14. USUAL 3.98 School Dresses, 3-6x... 2.99

**3.99**

**Boys' 98c Washable Knit Shirts... Need No Ironing**

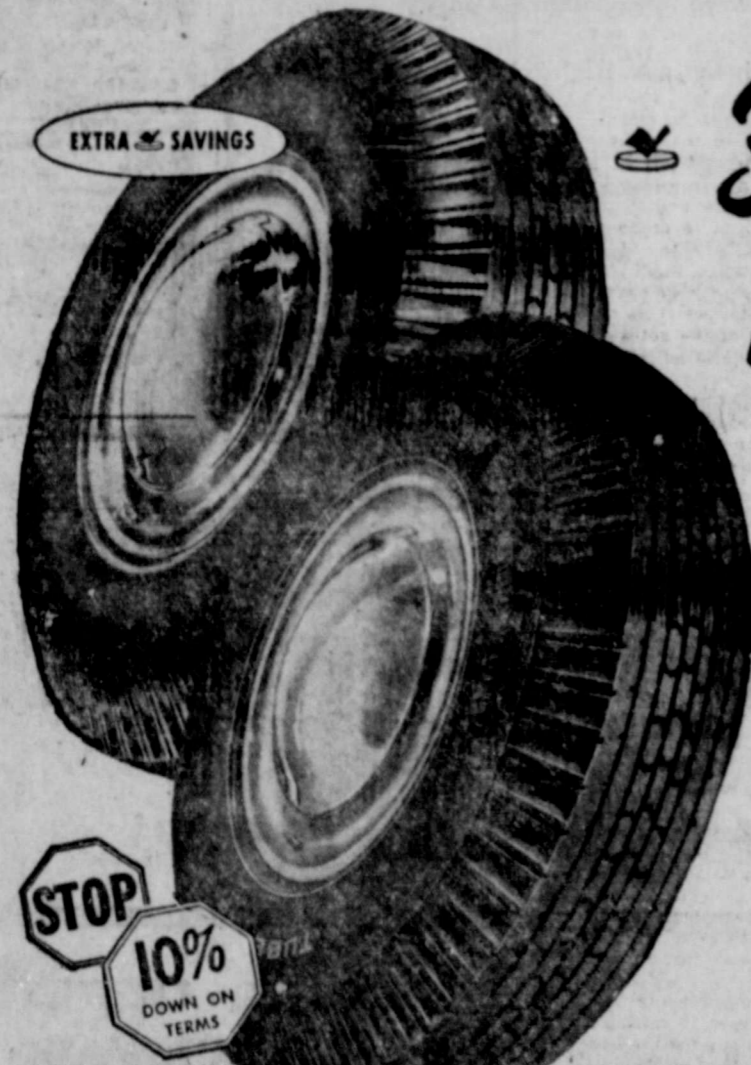
Attractive, color-bright novelty stripes in fine combed cotton knits. Reinforced neck and shoulder seams, crew neck, short sleeves. 6-18.

**78c**

USUAL 2.39 Saddle Pants—Guaranteed! A new pair FREE if seams rip! Extra sturdy 13 3/4 oz. Sanforized denim. Tapered legs, zipper fly. 6-16.

**1.99**

Watch **Montgomery Ward** ...FOR Extras!



**30% Off List Price**

SAVE on Riverside Deluxe—Ward's Finest Rayon passenger tires

**13.70\***

6.70-15 Blackwall

Deluxe Tube-type equals original equipment tires

Bruise resistant super rayon cord body. Cold rubber tread for longer mileage. Non-skid tread for added safety.

**15.50\***

6.70-15 Blackwall

Deluxe Tubeless has a special safety "extra"

Same quality as the tire above, plus an inner liner that clings to puncturing objects turning blow-outs to slow-outs.

Ward tires mounted free. Satisfaction guaranteed nation-wide.

| TIRE SIZE                   | 6.70-15 | 7.10-15 | 7.60-15 | 6.00-16 |
|-----------------------------|---------|---------|---------|---------|
| No Trade-in List Price      | 19.60   | 21.70   | 23.75   | 17.55   |
| Deluxe Blackwall**          | 13.70   | 15.20   | 16.60   | 12.25   |
| YOU PAY ONLY*               |         |         |         |         |
| No Trade-in List Price      | 24.00   | 26.60   | 29.10   | 21.50   |
| Deluxe Whitewall**          | 16.80   | 18.60   | 20.35   | 15.05   |
| YOU PAY ONLY*               |         |         |         |         |
| No Trade-in List Price      | 22.15   | 24.25   | 26.60   | —       |
| Deluxe Tubeless Blackwall** | 15.50   | 16.95   | 18.60   | —       |
| YOU PAY ONLY*               |         |         |         |         |
| No Trade-in List Price      | 27.15   | 29.70   | 32.60   | —       |
| Deluxe Tubeless Whitewall** | 19.00   | 20.80   | 22.80   | —       |
| YOU PAY ONLY*               |         |         |         |         |

\*Plus Excise Tax and your trade-in tire. \*\*Plus Excise Tax.



**Winter King Standard... 2 1/2 Year Guaranteed! Free Installation!**

42 to 66 plates, 45-100 amp. hr. cap. Dependable zero-weather starting. High quality plastic separators. Rubber case resists heat, and cold. Save on original equipment capacity at Wards.

IMPORTANT! 2526 sq. inches of plate area insures plenty reserve power to handle car accessories. 30 month guaranteed performance. \*Plus old battery in trade.



**SPEND SUNDAY IN GOLDTHWAITE**

Mr. and Mrs. J. R. Ervin and Dianne spent Sunday with his sisters, Misses Abbie and Ruth Ervin, and his brother, J. P. Ervin in Goldthwaite.

**90% of all cage owners in the South and Southwest**



**Feed Purina Cage Layena**



Almost 3 million hens now are producing eggs in cages in the South and Southwest—and 90% of them eat Purina Cage Layena.

There is only one reason—these cage operators are making more money the Purina Way. They make more money because they get more eggs per bag of food than on other rations they have used. Let us show you what other cage owners are doing with Purina. Drop in or give us a call.

**RATLIFF FEED and SEED**  
PHONE 109

**Woman's World**  
society, clubs, churches

**Janet Rodgers Named Eastland County Farm Bureau Queen**

Miss Janet Rodgers, 19, daughter of Mr. and Mrs. Dee Rodgers of Route 1, Ranger, was chosen Queen of the Eastland County Farm Bureau at the elimination contest held at the Legion Hall in Eastland Thursday night. Miss Arlene Bint of Cisco was named runner-up and will alternate to represent the county should the district elimination scheduled for Thursday night, August 30, at the Brady Country Club in Brady.

Other contestants who participated were Miss Merita Webb, Cisco; Miss Sue Garrett, Gorman; Miss Sylvia Hagan, Cisco; Miss Louise Seltern, Gorman; Miss Betty Yancey, Rte. 1, Ranger; and Miss Martha Sue Clark, of Gorman. Two other contestants did not appear for the finals.

Master of ceremonies, A. Z. Myrick, of Cisco, propounded the list of questions to each young lady in a very informal manner, giving each one the opportunity to be at ease and poised before the judges. County Agent Gressett and Mrs. Gressett, from Breckenridge, and Mrs. Nelida Roth, AEC office, in Breckenridge, used score-sheets to determine the winner. In the absence of Mitchell Campbell, president ECFB who could not attend, the crowns were

placed by Ray Norris, secretary ECFB.

Miss Rodgers upon being crowned was presented a bouquet of red roses and a handsome piece of luggage. The other contestants each received a gift of costume jewelry.

Mrs. Andy Taylor played impromptu music during the ceremonies and accompanied Miss Lou Ann Corbell in a song number.

Miss Linda Pirtle did a tap dance number, accompanied by Miss Linda Benney at the piano, following the coronation program.

Flower girls were Sharon Tucker, Barbara Perrin, Shirley Joan Reid, and Liz Leveridge.

Ladies in waiting were Gaynell Blackwell, Loresta Love, Charlene Blackwell, Kathryn Wallace, Helen Blackwell, Jo Ann Leveridge, and Joy Love.

Miss Rodgers was sponsored by the Cheaney Community Club and Miss Yancey represented Alameda Community.

**Study Course Attendance Continues to Grow**

Interest in the "Back-Yard Study Course" has continued to grow and the closing nights, Thursday and Friday bid fair to have the largest in attendance.

Thursday night at 7:30 the following meeting places: Adult II, J. C. Carter; Adult I, Dallas Hutson, 422 Pine; Young People, H. A. Shokey; Intermediate, G. B. Rash; Juniors, W. W. Jowers; Elementary both nights on church lawn.

Friday night at 7:30, Adult II, F. R. King, 803 Blundell; Adult I, Bill Swink, 109 Travis; Young People, R. J. Rains; Intermediate, Ralph Perkins, Juniors, Dave Fawcett, Spring rd.

The back-yard study course is directed by the training union department under the Director Glenn West, and associate, Lewis Green.

The newly-elected general officers took over on Aug. 19, and will give leadership in this department until October 1957.

**TO SPEND WEEK IN BRASHIER HOME**  
Mr. and Mrs. Pete Brashier will have as their guests next week Joel Shannon of Wharton.

**FOR SALE**  
Several 1 to 3 bedroom homes, conveniently located, no down-payment, easy terms; \$2,500 to \$4,000.

**B. H. PEACOCK**  
Phone 608-J

**EXCITING NEW RCA VICTOR SWIVEL TV**

"aims" picture and sound anywhere in the room!  
289.95



This new console swivels to face you! Has "High-Sharp-and-Easy" tuning... new "Living Image" picture... Balanced Fidelity Sound... Finishes: mahogany grained or walnut grained; lined oak grained, (extra). Come in—see the *Enfield* today!

**ARTERBURN'S HARDWARE AND FURNITURE**  
120 Main Phone 945



**LAVERNE TROUT**  
... future bride ...

**Lavern Trout, Elbie Moore To Marry Sept. 16**

Mr. and Mrs. Lester Trout of Breckenridge, formerly of Eastland, have announced the engagement and approaching marriage of their daughter, Laverne, to Elbie Moore, son of Mr. and Mrs. A. L. Moore of Marlin.

The couple will be married in the home of the bride-elect's sister and brother-in-law, Mr. and Mrs. James M. Sherrill, 619 South Mulberry, Eastland, September 16.

Miss Trout attended Eastland High School and at present is employed in Breckenridge.

Moore is a graduate of Marlin High School and was employed by the A&P Store in Eastland before being transferred to Waco with that company where the couple will make their home.

**Mrs. Underwood Celebrates 90th Birthday**

Mrs. Eva Preston Underwood celebrated her 90th birthday Aug. 20, with a family dinner in the home of her grandson, Mr. and Mrs. Milton Underwood.

Mrs. Underwood, a resident of Eastland county for 52 years, recently moved from the Alameda community to Ranger, where she is living with her grandson.

**Women's Activities**

**August 23**  
The American Legion Auxiliary will have their regular meeting Thursday evening at 8 p.m. New officers will be installed. Installing officer will be Mrs. R. N. DeFord of Eastland.

The Willing Workers Sunday school class of the Second Baptist church, will meet in the home of Mrs. E. J. Nuth, 713 S. Rank, Thursday afternoon at 2. All class members are urged to be present.

**TO HOUSTON**  
Mr. and Mrs. B. G. Salter, former employees of the Ghelson hotel, left Wednesday morning for Houston where he will enter management of the Milner hotel chain.

**Miss Yarbrough Becomes Bride of Weldon Curbo**

Miss Janice Ruth Yarbrough, daughter of Mr. and Mrs. W. F. Yarbrough of Breckenridge, became the bride of Forest Weldon Curbo, son of Mr. and Mrs. Jack Curbo of Whiteface, on Aug. 17, 1956 at 8 p.m.

Robert Oglesby, minister of the Church of Christ, read the double ring ceremony in the home of the bride's parents.

Given in marriage by her father, the bride wore a white lace dress with matching accessories.

Following the ceremony a reception was held in the home of the bride's parents for close friends and relatives.

For the wedding trip to Colorado, the bride wore a cornflower blue cotton dress with black accessories.

The couple plan to make their home in Fort Worth.

Mr. and Mrs. Curbo both attended Ranger Junior college.

**Bible Study Meets With Mrs. Rodgers**

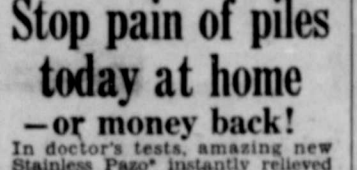
The ladies of the Merriman Baptist church met in the home of Mrs. Reese Rodgers Tuesday afternoon for their weekly Bible study.

The devotional was taken from the 17th chapter of Genesis.

The opening prayer was led by Mrs. Jack Walker.

The following were present: Mrs. C. J. Cole, A. E. Dawson, W. S. Vinson, G. D. Falls, Ruby Ainsworth, J. W. Vinson, Jack Walker, and Mrs. Rodgers.

**LOOK WHO'S NEW**



Mr. and Mrs. G. D. Jackson of Olden are the parents of a 7 pound, 8 ounce baby boy born at 6:30 p.m. Aug. 22 in the Ranger General Hospital.

**Call 224 For Classified Service.**

**Stop pain of piles today at home —or money back!**

In doctor's tests, amazing new Stainless Pazo® instantly relieved piles' torture! Gave internal and external relief! 6 medically-proved ingredients including Triolyte, relieve pain, itching instantly! Reduce swelling. Promote healing. You sit, walk in comfort! Only stainless pile remedy. Stainless Pazo® Suppositories or Ointment at drug stores. *Trademark of Green Laboratories, Inc. Ointment and Suppositories.*

**NOW at Ferguson Watch Repair**

**THE NEW SENSATIONAL SUC**  
ROCKET CYLINDER WATCH CRYSTAL  
EXPERTLY FITTED FOR YOU BY US!

Unconditionally GUARANTEED TO YOU BY US! FOR ONE YEAR AGAINST

- Pulling Out
- Breaking
- Leaking Dust
- Chipping
- Discoloring

**QUICK, RELIABLE SERVICE ON ALL WATCH REPAIRS**  
**FERGUSON Watch Repair**  
300 W. Main St.



**Mr. and Mrs. W. E. Coleman . . . married 50 years**

**Golden Wedding Anniversary To Be Celebrated By W. E. Colemans**

Mr. and Mrs. W. E. Coleman of Waco, formerly of Eastland, will celebrate their golden wedding anniversary Sunday in their home at 1909 Lyle Avenue in Waco.

The couple was married August 26, 1906 at the Peden Community near Fort Worth. They lived and educated their six children in Eastland, where Coleman was employed by the Arab Gasoline Corporation, before moving to Waco.

Their children are Mrs. O. D. Stover, Mrs. James F. Flynn, Miss Ila Mae Coleman and Terrell Coleman all of Waco; Marshall Coleman of Laurel, Mississippi and Reagan Coleman of Jackson, Mississippi. They have seven grandchildren. All of their children and grandchildren will be present for their anniversary.

Mrs. Coleman's ten brothers and sisters and Coleman's two sisters and two brothers plan to attend the celebration. "We extend a cordial invitation to all Eastland county friends to be present if possible," Mrs. Coleman emphasized.

**VISITING FROM LOUISIANA**  
Mrs. Tom J. Seale of Lake Charles, La. visited last week with her sister and family, Mr. and Mrs. Judson Hardy.

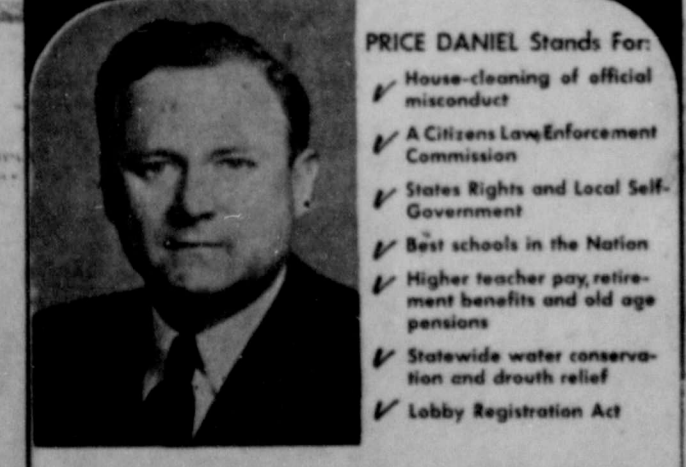
**FOR SALE**  
2 Bedroom home, den, carpeted, Hodges Oak Park, financed. Shown by appointment only.  
3 Bedroom home, near High School on paved street, financed.  
Small business with large living quarters. Have a home with an income. For sale or trade.  
\*\*\*  
**C. E. MAY**  
INSURANCE & REAL ESTATE  
214 Main Phone 418

Mr. and Mrs. Bill Bradshaw and sons, Gary and Perry, and Mrs. Azalea Woods have returned from a vacation trip to California. While on the trip they visited Mr. and Mrs. Jim England at El Centro and Mr. and Mrs. Melvin Wood of San Diego.

**BARBER SHOP**  
IT PAYS to LOOK WELL  
Courteous Service  
**TONY'S BARBER SHOP**  
223 1/2 Main - Phone 108

**BULOVA**  
America's No. 1 Gift Watch  
MISS AMERICA 17 jewels, ultrashock resistant, expansion bracelet \$35.75  
SENATOR 17 jewels, ultrashock resistant, expansion bracelet, heavy expansion band, \$35.75  
**Ranger Jewelry Co.**  
J. R. & Ethel Ervin  
220 Main - Phone 778

**First Choice of Texas Voters**  
**PRICE DANIEL**  
OF LIBERTY COUNTY  
FOR  
**GOVERNOR**



**PRICE DANIEL LED IN THE FIRST PRIMARY BY 165,000 VOTES**

Here's how the candidates rated among those who know them best:

|                     | DANIEL | OPPONENT |
|---------------------|--------|----------|
| DANIEL'S HOME BOX   | 781    | 115      |
| OPPONENT'S HOME BOX | 911    | 321      |

**THE PRICE DANIEL RECORD**  
The Price Daniel record is the most amazing in the history of Texas politics. In the first primary he led by 165,000 votes. In the general election he won by 1,000,000 votes. He has been elected Governor of Texas three times.

**LIVE MODERN THIS WINTER**  
...Install healthful, conditioned-air gas heating!  
**SPECIAL OFFER!**  
on NEW, AUTOMATIC Brilliant Fire Wall Furnace  
UP TO \$35 TRADE-IN ALLOWANCE on your old space heater  
**ONLY \$1 DOWN**  
36 Months to Pay... No Payments 'Til October!  
Take 48 months to pay on 2 or more units.  
**NEW! AUTOMATIC! SPACE SAVING!**  
So compact... flush wall installation saves valuable floor space. So get set for winter now. Get Brilliant Fire... designed to fit your needs... priced to fit your budget!  
Modernize your heating system now with the newest in space-saving, money-saving automatic Wall Furnaces!  
Now! Before the cold season, take advantage of extra-big trade-in allowances! Just a small amount down is all it takes to enjoy the wonderful warmth and comfort of really modern gas heating. Automatically maintains that "just-right" temperature. Positive circulation gently nudges heat downward, outward... helps assure you of draftless, uniform, wall-to-wall, ceiling-to-floor comfort. Give your family the modern comfort of conditioned-air heating!  
Modernize with gas in '56  
**Buy now and save at LONE STAR GAS COMPANY**



### Lola Williams and Donald R. Webb Exchange Vows August 12

Miss Lola Williams, daughter of Mrs. Dike Williams of Saint Jo, became the bride of Donald R. Webb Sunday, August 12 at 6 p.m. in the home of the bridegroom's parents, Mr. and Mrs. Raymond Webb.

Rev. Richard R. Smith, pastor of the First Methodist Church, performed the double ring ceremony. The bride, given in marriage by Robert Johnson, wore a dress of white lace over blue satin, with white accessories and a carnation corsage.

John McAlister served as best man. Musical selections were "Because" and the "Wedding March."

Juanita Sweeden, Dorilene Batteas and Donnie Batteas assisted in the reception immediately following the wedding. The house was decorated with white carnations and gladioli with blue trim.

Following a week's honeymoon in Ruidosa, New Mexico, Mrs. Webb will return to her home in Abilene where she is employed by the Texas Employers Insurance Company of Abilene, and the bridegroom will resume his duties in the U.S. Navy in San Diego, California. Both attended Tarleton State College.



Mr. and Mrs. Donald R. Webb . . . newly weds

### Progressive Neighbors Club Meets Monday

A community center, gate signs and improving church grounds were some of the suggestions given to improve the Cheaney, Salem, Alameda and Crossroads communities by E. E. Blackwell, chairman, at a meeting of the newly organized Progressive Neighbors Club at Cheaney Monday.

Blackwell outlined some of the things which the communities can accomplish through an organized effort on the part of the citizens. Some of the things that would contribute greatly to a community would be a community center, home improvement, pasture im-

provement, eliminating blind corners on brush-covered right-of-ways on rural roads, gate signs, improving church grounds, cemetery improvement, markers to graves in cemeteries and many, many more projects that would be for the betterment of the communities as a whole and for better understanding of one neighbor to another through working together.

Committees appointed to carry out some basic requirements are, place of meetings or center, Bill Logan, Junior Hart, John Love; enrollment of families, Jack Rogers, Ben Freeman and John Love; name contest judges, Mrs. Jack Rogers, Mrs. Kay Hart and Mrs.

A. H. Dean. The prize for naming the club is six dollars and any community person eight or eighty may submit a name between August 23 and the closing date. The next meeting will be September 10.

### RANGER CLINIC

5371  
Announces the association of  
D. L. MIMS, M. D.  
general practice

**SINCE 1884**

... it has been our privilege to render a service to this community as monument builders.

**ALEX RAWLINS & SONS**  
Weatherford Phone 4-2726 Texas

**THANKS FOLKS, WE GOT ELECTED —**

... and it's a nice tribute to be favored with the confidence and good-will of one's neighbors and friends. Getting elected, however, may apply to business as well as politics. I doubt if we could get very far in a political race, but when it comes to making quality abstracts a host of customers far and near have for more than 33 years favored us with a vote of confidence, and still do. And for that we are deeply grateful.

**EARL BENDER & COMPANY**  
Eastland (Abstracts since 1923) Texas

**Daniel —**  
(Continued from Page One)

equal schools in districts where a majority of the people want that system maintained," Daniel said.

"New support has come to my campaign because I have conducted my part of the race on a high plane, worthy of the dignity of the office of governor, and because I have run on my own platform of progress and good government for Texas.

"That platform includes honesty and integrity, and the restoration of public confidence in our state government. I will urge the legislature to authorize a citizens' law enforcement commission, created from the grass roots through our grand jury system, to investigate all allegations of wrongdoing in public office.

"As governor, I will work for positive aid to our farmers and ranchers — with a statewide water and soil conservation program and a state drought relief program that will help protect our family-size farmers and ranchers from the twin disasters of drought and mortgage foreclosure."

**WATCH FOR ...**

**OPENING DATE**  
**EASTLAND AUTO PARTS**  
**WHOLESALE AND RETAIL**

**COMPLETE LINE OF AUTO PARTS**

**Quality and Service**

**COMPLETE AUTOMOTIVE SHOP**

**W. F. DEATON** Owner  
**DOYAL RHODES** Manager  
Eastland, Texas

**Easier Operation!**  
**Better Performance!**

**New, Deluxe**  
**Revere**  
"35" 8mm PROJECTOR

**\$124.50**  
Complete with Case

Sensationally new! Superbly modern! Luxuriously beautiful! The new Revere "35" is completely deluxe from top to bottom, inside and out. Magnificent, stream-lined slip-over case of rich russet-brown plastic with bright chrome trim is the ultimate in modern convenience. Just whisk it off and you're ready for action . . . snap it on for instant portability or storage.

Unique two-reel storage compartment is built into projector base! Many other features, including F1.6 coated lens, 500-watt lamp, 300-ft. reel. Come in today for a thrilling demonstration!

**CAPPS STUDIO**  
104 Rusk Ranger

**Montgomery Ward**

**Wards LOWEST PRICE EVER!**  
**complete white bath outfit**

First Quality—with  
4½ or 5-ft. Steel  
"Space-Saver" Tub

**\$99**

With Chrome Fittings!  
Regularly 129.00

Modernize your bathroom now—take advantage of this exciting saving! Fixtures were especially selected to cut the cost to you—without cutting quality. Outfit includes porcelain-enameled tub, 18 by 15" china lavatory, efficient washdown china closet with white molded wood seat, and all chromed brass trim. See it today!

**Big Savings on 3-Pc. Color Outfit**

**159<sup>00</sup>**

SAVE \$30—Reg. 189.00  
With Chromed Fittings

Your Choice of 5-ft. Steel or "Space-Saver" Cast-Iron Tub

So much luxury for so little more! Complete ensemble includes porcelain-enameled tub, large 19 by 17" china lavatory, and quiet reverse-trap closet with matching plastic seat. Stain-resistant surfaces stay new-looking for years. In decorator shades of blue, green, coral and gray.



**Why people who used to buy higher priced cars are changing to Chevrolet**

Sales and official registration figures show that the higher priced cars are losing more and more buyers to Chevrolet. And it isn't just because a Chevrolet costs less, either!

If you buy a higher priced car instead of a Chevrolet, what do you get in return for those extra hundreds of dollars?

More room? No, because the difference in room is usually measured in fractions of inches—often in Chevrolet's favor! Better roadability? Not with Chevy's wedded-to-the-road stability and sure-footed cornering ability. Better performance? Well, Tom McCahill, automotive expert for Mechanix Illustrated, called Chevrolet "the greatest performance buy ever offered at any time in America!" Result: more buyers are deciding they'd rather drive a sweet-handling Chevrolet even if it didn't cost less! Wouldn't you?



America's largest selling car—2 million more owners than any other make!

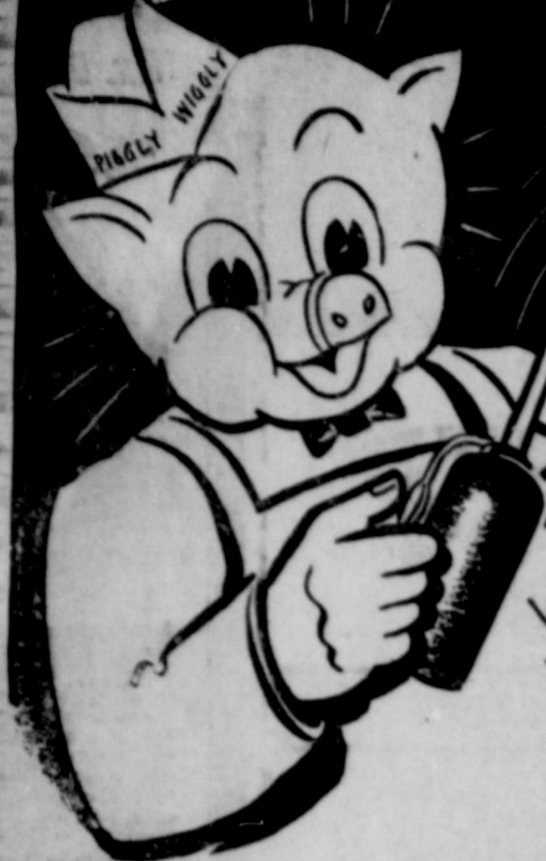
Only franchised Chevrolet dealers **CHEVROLET** display this famous trademark

**ANDERSON CHEVROLET CO.**  
Sales—CHEVROLET—Service  
RANGER

111 S. Austin Street Phone 14



# For a SMOOTH RUNNING BUDGET...



|  |  |   |   |
|--|--|---|---|
| LIBBY'S<br>Fresh Frozen<br><b>Strawberries</b><br>10-oz. Pkg. <b>26c</b> | HUNT'S<br>Solid Pack<br><b>TOMATOES</b><br>200-Size Can <b>17c</b> | FRESH<br>FROZEN ORANGE<br><b>JUICE</b><br>2 6-oz. cans <b>35c</b> | CAL-TOP<br>Elberta<br><b>PEACHES</b><br>2 1/2-Size Can <b>34c</b> |
|--|--|---|---|

**SHOP - PIGGLY WIGGLY**

AUNT JEMIMA **FLOUR** 10 Lb. Bag **85c**

**MEADOW LAKE OLEO** 2 Lbs. **45c**

WHITE BEAUTY **SHORTENING** 3 Lb. Can **79c**

IMPERIAL PURE CANE **SUGAR** 10 Lb. Bag **95c**

12-BOTTLE CARTON **Coca-Cola or Dr. Pepper** Plus Deposit **49c**

STAR KIST **GREEN LABEL TUNA** Can **29c**

GERBER'S STRAINED **BABY FOOD** 4 Cans **35c**

FOREMOST **MELLORINE** 1/2-Gallon **59c**

**BANANAS** 2 Lbs. For **25c**

FRESH CALIFORNIA **TOMATOES** Lb. **23c**

FRESH CRISP **LETTUCE** Head **18c**

SUNKIST **LEMONS** Lb. **19c**

CELLO BAG **CARROTS** 2 for **19c**

**BELL PEPPER** Lb. **23c**

WESTEK **Grape or Apple Jelly** 3 for **\$1**

**WE GIVE S&H GREEN STAMPS**  
Open Til 8 P.M. Saturday for Your Shopping Convenience

These Prices Effective Thurs. 23, Fri. 24, and Sat. 25

FRESH DRESSED **FRYERS** Whole or Cut-Up, Lb. **39c**

SWIFT'S PORK **SAUSAGE** Lb. **39c**

BEEF **SHORT RIBS** Lb. **29c**

SWIFT'S SWEET RASHER **BACON** Lb. **45c**

**CHUCK ROAST** Lb. **43c**

BABY BEEF **CLUB STEAK** Lb. **69c**

**LOIN STEAK** Lb. **65c**

**Picnics** SWIFT'S COOKED Lb. **53c**

SWIFT'S BROOKFIELD **CHEESE SPREAD** 2 Lb. Box **79c**

Armour's Dash **DOG FOOD** 2 for **29c**

Rab-O **CLEANSER** 2 for **25c**

Niblets **MEXICORN** can **20c**

**PUREX** qt. bottle **20c**

Zee **TOWELS** roll **20c**

Zee **NAPKINS** 2 for **27c**

Zee **WAX PAPER** 25 ft. roll **20c**

Green Giant **CREAM STYLE CORN** ..... **19c**

Plastic **HOT CUPS** ..... **6 for 25c**

All 5c Candy **BARS** ..... **6 for 25c**

All Flavors **GUM** ..... **6 pkgs. 25c**

French's **PARAKEET SEED** ..... **pkg. 23c**

Arrow **DRIED APPLES** ..... **8-oz. pkg. 29c**

Salad Bowl **SALAD DRESSING** ..... **qt. 49c**

**KOOL AID** ..... **6 pkgs. 25c**

French's **BARBECUE SAUCE** ..... **18-oz. 47c**

Austex Plain **CHILI** ..... **300 can 40c**

**HIXSON'S COFFEE** Pound **81c**