

Bulldogs Shoot For Regional Crown

THE RANGER TIMES

36TH YEAR

RANGER, TEXAS, SUNDAY, DECEMBER 4, 1955

PRICE FIVE CENTS

Explosive Halfbacks May Set Tilt's Trend

The all-important key that could be the winners pass- port into the state finals will be tuned here Saturday afternoon at 2 p.m. when the Ranger Bulldogs meet the Mc-Camey Badgers in a dispute to settle the regional race in the state's Class A high school football playoffs.

Both teams entering the regional contest have impressive season and district records. McCamey's season record of nine wins and one loss outshines that of the Bulldogs who have posted seven wins, a loss and a tie. This does not include bi-district competition.

Records Vary

On the other hand, the Bulldogs conference record is slightly brighter than that of the Badgers. McCamey allowed district opponents 19 points while they amassed 212 in seven loop games. The Bulldogs were not scored on in five district encounters and romped to 195 points.

Both Ranger's and McCamey's misfortunes have come at the hands of Class AA teams. McCamey lost to Crane 39-2 while Ranger tied Mineral Wells 13-13 and later in the season fell before Winters, 19-13.

Crane will battle Breckenridge Saturday for regional honors in the 2-A flag race.

Explosive Halfbacks

The opposing teams both feature an explosive halfback in their backfield. McCamey's halfback Byron Ritchie was an all-district selection last year and a big point earner as well as the heaviest back on the McCamey starting squad.

Right half, Jerry Wharton, who has scored 24 touchdowns for the Bulldogs, has been the most consistent threat and point maker for Ranger.

Fullback Tommy Sutton, who hit his finest stride toward the end of the season, has been ripping enemy defenses in the past five contests. David Wharton, more of a power runner than his brother Jerry, has also come in for his share of the glory as has Quarterback Paul Hinds, who seems to stockpile his running for the pinches.

Making room for the Bulldog backs, are a herd of ponderous linemen, who have held highly rated backfieldmen to only scant yardage in some of this season's top contests. The Bulldog linemen will be outweighted, however, in Saturday's tussle.

Leading the pack up front are seniors Tommy Young, tri-captain, Pete Jameson and Archie Robinson, both tackles. Juniors Joe Haganam, Dan Cruise and Jerry Cantrell have also been giant power, as has Robert Young, end who turned eligible with a beginning of the conference race.

Ranger's previous opponents have taken their worst punishment on the right side of their line which is manned from the Bulldog's left by Young, Jameson and Cantrell from guard to center in that order.

In last week's conquest of Albany, the Bulldogs ran more than half of their plays over their own left tackle.

Loss 17 Starters
McCamey, who lost 17 starters from last year's championship squad, had trouble getting out of their conference. They nudged the number two team, Wink, 7-0 and squeezed by the number three team, Big Lake, 14-7.

The Badgers also disposed of Iran, 54-6, Marfa, 26-0, Sander- son, 39-6, Tabor, 26-0 and Fort Stockton, 46-0, in district play. They added Ozona to their 11-1-1 winning list last Saturday with a 14-7 victory in their post-season, bi-district clash.

Mainstays in the Badger line are 225 pound all-state guard, Shelby Hudson, Bobby Schuler, 186 pound center, 205 pound Raeford McIlhenny, a guard, and 155 pound end, Kenneth Wallace.

McCamey's starting line will average about 185 pounds per man while that of Rangers is slightly smaller, though possibly slightly better balanced. The Badgers are probably deeper in talent than the Bulldogs, however.

Starting Lineup
J. Cantrell... E... T. Stephens
R. Watson... E... A. Cranford
P. Jameson... T... K. Wallace
A. Robinson... T... S. Hudson
T. Young... G... D. Reynolds
D. Cruise... G... R. McIlhenny
J. Haganam... C... B. Schuler
P. Hinds... QB... J. Nichols
D. Wharton... HB... G. Martine
J. Wharton... HB... B. Ritchie
T. Sutton... FB... R. Patterson

The Childs Welfare has started its annual drive to collect used Christmas toys for needy children, who otherwise would possibly never realize any semblance of the year's favorite celebration.

The group has placed baskets in the Chamber of Commerce building for used toy donations that yet remain in shape good enough for re-use.

There was both good and bad news in the Bulldog camp. John Swinney, backfield defensive ace, was back in the full swing of the rough practice sessions, but Fullback Tommy Sutton, nursing a slight sprain in his left shoulder from the Albany tilt last week, missed Thursday's scrimmage with a cold, backfield coach Harold Barrett, said.

Bennie Robinson had the cast removed from his broken leg Tuesday but will not begin practice again until next week. He will definitely not see action in Saturday's tilt.

For the most part, Ranger's starting team has shaken off the

brui- ses countered in their bi-district tussle and with the exception of Robinson are expected to be at full strength.

However, with the return of the sun Thursday the Bulldogs returned to their pads for a heavy scrimmage but tapered off to lighter but conditioning exercises Friday.

There was both good and bad news in the Bulldog camp. John Swinney, backfield defensive ace, was back in the full swing of the rough practice sessions, but Fullback Tommy Sutton, nursing a slight sprain in his left shoulder from the Albany tilt last week, missed Thursday's scrimmage with a cold, backfield coach Harold Barrett, said.

Bennie Robinson had the cast removed from his broken leg Tuesday but will not begin practice again until next week. He will definitely not see action in Saturday's tilt.

For the most part, Ranger's starting team has shaken off the

"Messiah" Scheduled December 11th

Famed Organist To Appear

Dr. E. Edwin Young, dean of the Hardin-Simmons University school of music and professor of piano and organ, will appear as organist for the 1955 Ranger Junior College presentation of Handel's "Messiah" on Sunday, Dec. 11 in the Ranger First Methodist Church.

Dean Young has studied with leading musicians both in this country and abroad. He has done graduate study in London with Tobias Matthay, in addition to receiving his graduate degrees from the Eastman School of Music in Rochester, New York.

He has given concerts in Australia, New Zealand, and in the British Isles, in addition to appearances in many American and Canadian cities. He is founder and president of the American Piano Guild which has chapters in every section of the United States. His appearance in Ranger will mark a return visit, since he has served as organist for the "Messiah" presentation here for many years.

The long look provides one with a vision of God. Blessed is the person who lives with this vision strong in his heart. There is no person in all of this world who can get along without God. In Him we live our being. All of the provisions of life come from the hand of God. To live in the will of God is real seeing and abundant living.

Such a look brings to one's heart a vision of others. Miserable is the life which has no thought and care for others. Jesus Christ was fully dedicated to the task of providing peace for every soul. When we say others, we do not mean a select group, but all people everywhere for whom Christ died. In the years ago when God came in the flesh, He came not only for Americans but for the whole world.

When He faced the death on the cross He was not thinking of Himself but instead He was thinking of others. There was not anything that could stop Him from giving Himself for others. Our Lord said, "For this cause came I to this hour." Happy is the person who follows in the steps of the Master.

Looking beyond brings release from self. A self-centered life is one of worry, unhappiness, and fret. One of our worst enemies is self. To prison bars for many people are not made of steel but of self.

The only release from such a prison is out beyond self. In looking to Him one shall be set free. To live beyond self into the realm of God's glorious will, dedicated to the service of others, and letting self find his place in God's service is life indeed. Look up and live, this is God's will for our lives.

These Negro singers are widely known for the excellence of their performance in presenting both hymns and spirituals. During the past two years they have made appearances before more than one million people in practically every state and Canada. They are also experienced radio and television artists.

The public is cordially invited to hear their performance.

BE SURE—SEE Don Pierson Olds-Cadillac Eastland

BE SURE—SEE Don Pierson Olds-Cadillac Eastland

BE SURE—SEE Don Pierson Olds-Cadillac Eastland

BE SURE—SEE Don Pierson Olds-Cadillac Eastland

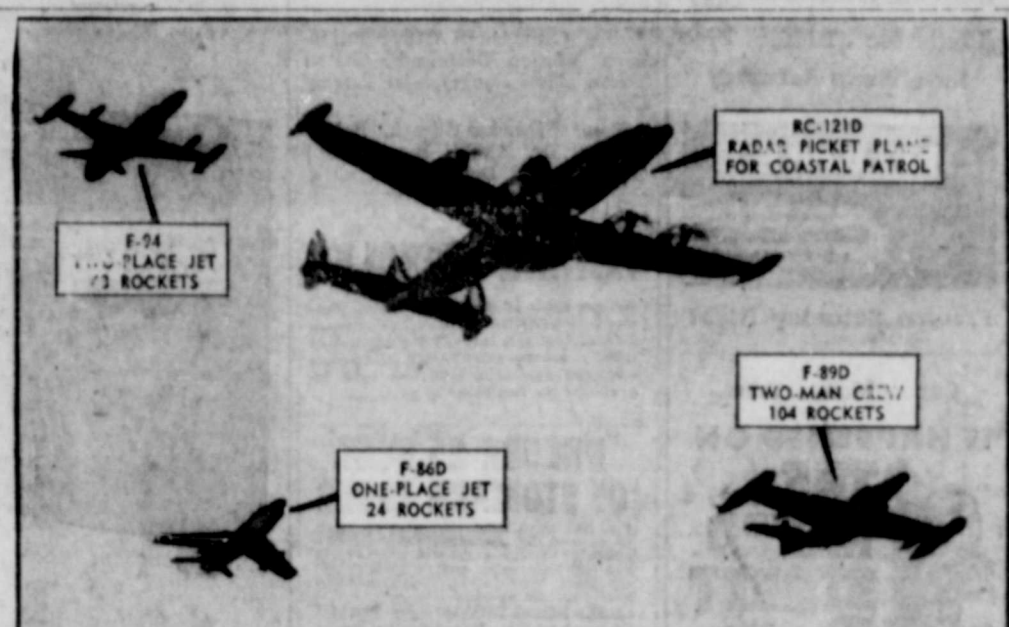
BE SURE—SEE Don Pierson Olds-Cadillac Eastland

BE SURE—SEE Don Pierson Olds-Cadillac Eastland

BE SURE—SEE Don Pierson Olds-Cadillac Eastland

BE SURE—SEE Don Pierson Olds-Cadillac Eastland

BE SURE—SEE Don Pierson Olds-Cadillac Eastland



... AND THE ROCKETS' RED GLARE...—Francis Scott Key had a vastly different type of rocket—the signal rocket—in mind when he penned the words to the "Star-Spangled Banner." Then they "gave proof thro' the night that our flag was still there." Today, supersonic rockets, deadly air-to-air missiles, give jet-propelled proof that the Air Defense Command is prepared to keep our flag flying should the need arise. Pictured, above, are the four major aircraft of the Command. Humps on top and belly of the RC-121D picket patrol ship are jam packed with radar and other electronic detection devices.

Dallas Garment Factory To Start Move December 14th

Gene Boeding, director of the manufacturing division for Higginbotham-Bailey, reasserted in a visit here Thursday, that his company would move first portions of their operation to Ranger Dec. 14.

Higginbotham - Bailey, a garment manufacturing and wholesale concern known throughout the Southwest, is planning to begin operation here Jan. 2. Headquarters in Dallas, the concern eventually plans to move a large part of its entire factory operation here.

Boeding said that the sport shirt line would be the first department to be moved here which consists of about 27 machines and 35 working women. "We know that we building that we will occupy (old

City Hall building) and we hope to eventually consume the entire portion of the block that is available," he said.

The Chamber of Commerce, the representatives of the company will hold interviews for experienced persons in the new city hall building Dec. 9-10. Boeding said that all applicants would be reviewed before selections were made.

First shipments of the company's equipment will begin to arrive here Dec. 14.

"We are enthusiastic about the (Continued on Page 2)

Rangers Drop Hoop Opener To Weatherford

Coach Stan Burnham's Ranger Junior College Rangers opened their basketball season here Thursday night with a 60-75 loss to the Weatherford Junior College Coyotes.

The Rangers jumped to a 14-13 first quarter lead but dropped 23 behind at halftime and were never able to touch the Coyotes throughout the remaining portion of the contest.

Dude Woodruff, fast and accurate guard for the Coyotes, took high scoring honors for 14 of eight as he bucketed 10 field goals and five free throws for 25 points. George Peel also amassed 17 points for the Coyotes.

Weldon Carbo was high pointer for the Rangers with three field goals and eight free tosses, a total of 14 markers. Ronald Darnell, three field goals and five free throws for 11 points.

The Rangers have had less than two weeks of practice since their closing football date with Schreiner Institute Nov. 19, while the Coyotes, who do not field a grid squad have had months to shape up for their hoop schedule.

Heart Attack Fatal To Thad L. Parkes

Thad L. Parkes, 53, 300 Blackwell Rd., died in a local hospital where he suffered a heart attack Thursday afternoon.

He had complained most of the day of stomach pains and indigestion. He died 42 minutes after being taken to the hospital.

Services will be held at First Methodist Church, Ranger at 2 p.m. Sunday. Rev. Bruce Weaver, pastor, and Rev. Garland Lavender of Fort Worth, will conduct the services.

Mr. Parkes was employed as a mechanic for Lone Star Producing Co.

He lived in Brownwood for several years before moving here in 1942. He was born at Vicksburg, Miss., May 2, 1902.

Survivors include his wife; a son, Donald Gene Parkes of Fort Worth; a daughter, Mrs. Daniel D'Genzo of Hawaii; two brothers, John Parkes of Cleburne, W. R. Parkes, Morgan; three sisters, Mmes. W. E. Ellison, Dublin, H. M. Benson, Hereford, Dean Jordan of Klamath Falls, Ore., and three grand children.

Killingworth Funeral Home was in charge of arrangements.

Services Sunday For Former Ranger Resident

Services will be held at 2 p.m. Sunday at the First Methodist Church for Henry Lyon, 95, a former Ranger resident, who died Friday morning at Manor, Texas.

He was a member of the Methodist Church.

Rev. Bruce Weaver, pastor of the First Methodist Church, will officiate at the services.

Killingworth's is in charge of arrangements.

He was born Oct. 13, 1860 at Fomir, Ga., and came to Texas in about 1880 and settled in Bell County. He was married to Eliza A. Head in 1894 and they lived in Brown County until 1930 before moving to Ranger.

Mrs. Lyon preceded him in death in 1951 and Mr. Lyon has been residing with a daughter at Robert Lee.

He is survived by six sons, including Roy Lyon of Ranger, five daughters, 22 grandchildren and 10 great-grandchildren.

BE SURE—SEE Don Pierson Olds-Cadillac Eastland

BE SURE—SEE Don Pierson Olds-Cadillac Eastland

BE SURE—SEE Don Pierson Olds-Cadillac Eastland

BE SURE—SEE Don Pierson Olds-Cadillac Eastland

BE SURE—SEE Don Pierson Olds-Cadillac Eastland

BE SURE—SEE Don Pierson Olds-Cadillac Eastland

BE SURE—SEE Don Pierson Olds-Cadillac Eastland

BE SURE—SEE Don Pierson Olds-Cadillac Eastland

SPiritual SYNOPSIS

THE LONG LOOK

Pastor, Second Baptist Church. All of us are interested in our eyes. When our vision becomes blurred we immediately become interested in the person who has been carefully trained to make the correction which we need.

This is important. The ability to see the beauties of the earth and sky bring joy to the human life.

This is only half of the picture. There are many things which the human eye can never see. It is altogether possible to have perfect vision but still not be able to see.

Jesus said of some people, "They have eyes but see not." From God's viewpoint one can see the real things of life even if his physical eyes have never seen in all of the handiwork of the great and loving God. Blessed are those who see out beyond where the physical sight ends.

The palmist brings this thought to our hearts. For said he, "I will lift up mine eyes unto the hills." To me this is the long look, looking beyond where we are, as joy which no scene in all of this world can offer the human heart.

When He faced the death on the cross He was not thinking of Himself but instead He was thinking of others. There was not anything that could stop Him from giving Himself for others. Our Lord said, "For this cause came I to this hour." Happy is the person who follows in the steps of the Master.

Looking beyond brings release from self. A self-centered life is one of worry, unhappiness, and fret. One of our worst enemies is self. To prison bars for many people are not made of steel but of self.

The only release from such a prison is out beyond self. In looking to Him one shall be set free. To live beyond self into the realm of God's glorious will, dedicated to the service of others, and letting self find his place in God's service is life indeed. Look up and live, this is God's will for our lives.

Lions Appalled At Spirit Of Pep Rally Here

On the most "enthusiastic and spirited pep rally" ever witnessed here was held during the regular weekly assembly at Ranger High School Friday morning, visitors at the gathering said.

Guests at the school's rally were members of the Lions Club and business men from the city. The Lions decided to meet with the group in force at their regular weekly meeting Thursday.

Speakers of the informal program were Harold Barrett, assistant coach, Pete Braisher, Dr. Price Ashton, president, Ranger Junior College, A. N. Larson and Dr. M. E. Jolly.

Bennie Robinson, injured Bulldog tri-captain acted as master of ceremonies before relinquishing his position to Braisher.

BE SURE—SEE Don Pierson Olds-Cadillac Eastland

BE SURE—SEE Don Pierson Olds-Cadillac Eastland

BE SURE—SEE Don Pierson Olds-Cadillac Eastland

BE SURE—SEE Don Pierson Olds-Cadillac Eastland

BE SURE—SEE Don Pierson Olds-Cadillac Eastland

BE SURE—SEE Don Pierson Olds-Cadillac Eastland

BE SURE—SEE Don Pierson Olds-Cadillac Eastland

BE SURE—SEE Don Pierson Olds-Cadillac Eastland



E. EDWIN YOUNG

Rules of Pecan Show For County Are Told

Growers from adjoining counties are eligible to enter their pecans in the third annual Eastland County Pecan Show at Cisco, December 9 and 10, it was recently announced at the county agent's office.

The show held in the Reynolds Building, in Cisco, will again be sponsored by the Cisco Chamber of Commerce, according to Paul Braashers, manager, actively assisting in holding the show.

Growers from Comanche, Brown and Stephens Counties had entries in 1954.

Each entry must constitute enough nuts to weigh at least a pound. All first place entries in the show will have their pecans entered in the state show at A. & M. College.

Entries may be left at either the Cisco Chamber of Commerce office or at the county agent's office in Eastland.

Cash premiums and ribbons will be awarded winners.

Varieties of nuts may be native or improved pecans such as Burkett, Mahan, Stuart, Texas Prolific, Western Schley, John Garner, Halbert, San Saba and others. The Freeman Pecan Nursery, Ranger, will give a budged tree to the winners of the Burkett, Western Schley and Mahan varieties.

A bake show featuring pecan pies, cakes, candies and cookies will also be held in connection with the show.

The county pecan show for the past two years has been the only one of its kind in Texas.

BE SURE—SEE Don Pierson Olds-Cadillac Eastland

BE SURE—SEE Don Pierson Olds-Cadillac Eastland

BE SURE—SEE Don Pierson Olds-Cadillac Eastland

Rules of Pecan Show For County Are Told

Growers from adjoining counties are eligible to enter their pecans in the third annual Eastland County Pecan Show at Cisco, December 9 and 10, it was recently announced at the county agent's office.

The show held in the Reynolds Building, in Cisco, will again be sponsored by the Cisco Chamber of Commerce, according to Paul Braashers, manager, actively assisting in holding the show.

Growers from Comanche, Brown and Stephens Counties had entries in 1954.

Each entry must constitute enough nuts to weigh at least a pound. All first place entries in the show will have their pecans entered in the state show at A. & M. College.

Entries may be left at either the Cisco Chamber of Commerce office or at the county agent's office in Eastland.

Cash premiums and ribbons will be awarded winners.

Varieties of nuts may be native or improved pecans such as Burkett, Mahan, Stuart, Texas Prolific, Western Schley, John Garner, Halbert, San Saba and others. The Freeman Pecan Nursery, Ranger, will give a budged tree to the winners of the Burkett, Western Schley and Mahan varieties.

A bake show featuring pecan pies, cakes, candies and cookies will also be held in connection with the show.

The county pecan show for the past two years has been the only one of its kind in Texas.

BE SURE—SEE Don Pierson Olds-Cadillac Eastland

BE SURE—SEE Don Pierson Olds-Cadillac Eastland

BE SURE—SEE Don Pierson Olds-Cadillac Eastland

BE SURE—SEE Don Pierson Olds-Cadillac Eastland

BE SURE—SEE Don Pierson Olds-Cadillac Eastland

BE SURE—SEE Don Pierson Olds-Cadillac Eastland

BE SURE—SEE Don Pierson Olds-Cadillac Eastland

BE SURE—SEE Don Pierson Olds-Cadillac Eastland

BE SURE—SEE Don Pierson Olds-Cadillac Eastland

Premier'd In Dublin, Ireland

The combined choirs of First Methodist Church and Ranger Junior College, under the direction of Fred D. Baumgardner, will present Handel's "Messiah," a sacred oratorio, Sunday, Dec. 11 at 7:30 p.m. at the First Methodist church.

Dr. E. Edwin Young will be guest organist for the presentation and Mary Ellen Duffelbach will be pianist. Featured soloists will be Miss Jo Ann Crigdy, soprano, Miss Vivian Simmons, soprano, Mrs. Richard Bonney, soprano, Mrs. Maxine McCotter, alto, Mrs. A. Paulsoid, alto, and H. A. Lotz, bass.

The first part of the oratorio depicts "The Prophecies and the Fulfillment" and the last part is the symbolic of "The Pastoral Symphony."

John Frederick Handel composed "The Messiah" when he was 56 years of age during a period of 24 days from Aug. 22, 1741 until Sept. 14. The first performance of the oratorio took place at noon on April 13, 1742 in Dublin, Ireland where it was enthusiastically received.

Following is the actual review printed in Faulkner's Journal, the Dublin Gazette and the Dublin News Letter, which evidently shared the same critic: "The best judges allowed it to be the most finished piece of music. Words are wanting to express the exquisite delight it afforded to the admiring, crowded audience. The sublime, the grand and the tender adapted to the most elevated, majestic and moving words, conspired to transport and charm the ravished heart and ear."

London first heard "The Messiah" at Covent Garden in 1743. It was on this occasion that the reverent and still existing custom of standing during the "Hallelujah" chorus was inaugurated by King George II, who was so moved by the sublimity that he rose to his feet, allowed by the entire audience.

"The Messiah" was performed thirty-four times during Handel's lifetime and his last public act was to direct it on April 6, 1759, only a week before his death.

The public is cordially invited to attend this year's performance of Handel's immortal sacred classic.

Daily potential was 31.50 barrels of 44 gravity oil, pumping from 24 perforations at 1,892-98 feet, where formation was ruptured.

Staked as a new regular field project was Tabor, Coleman and Carr of Midland No. 1 Bill Morton, three miles northeast of Eastland.

Slotted for 1,800 feet with rotary, it spots 234 feet from the north and 890 feet from the east lines of Section 6, Block 6, ETRR Survey.

BE SURE—SEE Don Pierson Olds-Cadillac Eastland

BE SURE—SEE Don Pierson Olds-Cadillac Eastland

BE SURE—SEE Don Pierson Olds-Cadillac Eastland

BE SURE—SEE Don Pierson Olds-Cadillac Eastland

BE SURE—SEE Don Pierson Olds-Cadillac Eastland

BE SURE—SEE Don Pierson Olds-Cadillac Eastland

BE SURE—SEE Don Pierson Olds-Cadillac Eastland

BE SURE—SEE Don Pierson Olds-Cadillac Eastland

BE SURE—SEE Don Pierson Olds-Cadillac Eastland

BE SURE—SEE Don Pierson Olds-Cadillac Eastland

BE SURE—SEE Don Pierson Olds-Cadillac Eastland

Near Perfect Weather In Sight This Afternoon

The general weather picture appears highly favorable for clear skies and a crisp fall breeze for the Ranger-McCamey regional grid clash here this afternoon.

However, the picture is not as pretty for the entire weekend. A fairly severe cold front is expected to move into this area late Saturday afternoon pushing the temperatures down to around 20 degrees during the night.

The sun broke through dark clouds here Thursday afternoon after nearly two days of intermittent showers, drizzle and sleet, that brought .55 inches of moisture to the area.

Temperatures should hover around 68 degrees for the kickoff Saturday and become cooler as nightfall approaches. No effects of the new front are expected before the contest terminates.

Child Welfare Begins Annual Xmas Toy Drive

The Childs Welfare has started its annual drive to collect used Christmas toys for needy children, who otherwise would possibly never realize any semblance of the year's favorite celebration.

The group has placed baskets in the Chamber of Commerce building for used toy donations that yet remain in shape good enough for re-use.

Two Regular Field Projects Set In County

Completed as a regular field well in Eastland County was H. M. Goble of Abilene No. 1 Lone Star Producing Co., five miles north of Deselemona in J. H. Work Survey, Abstract 550.

Daily potential was 31.50 barrels of 44 gravity oil, pumping from 24 perforations at 1,892-98 feet, where formation was ruptured.

Staked as a new regular field project was Tabor, Coleman and Carr of Midland No. 1 Bill Morton, three miles northeast of Eastland.

Slotted for 1,800 feet with rotary, it spots 234 feet from the north and 890 feet from the east lines of Section 6, Block 6, ETRR Survey

Church of God Services Set

The following is the weekly schedule of services for the Church of God, Strawn Road and First St. as announced by the pastor, Rev. C. A. Starks.

Sunday School 10 a.m.; Morning Services, 11 a.m.; Evening Evangelistic, 7 p.m.; Y.P.E., 7:30 p.m. Wednesday; and Bible Study, 7:30 p.m. Friday.

Youth Rally Will Meet In Eastland Sat.

The Youth Rally of the Cisco Baptist Association will meet Saturday night, December 3, at 8:30 in the First Baptist Church of Eastland.

The Youth Rally will find a great thrill in the religious drama entitled, "Empty Hands." The play will be under the supervision of the dramatic club of Howard Payne College of Brownwood.

The Cisco Baptist Youth Rally will meet at 7:30 for the choir rehearsal and immediately followed by the drama.

Refreshments and fellowship will follow the production.

There is a "welcome" extended to all the youth in this area regardless of faith, a Christian fellowship will be enjoyed by the group.

Church of Christ 225 South Rusk Announcements

A cordial invitation is extended to everyone to attend the services at 225 South Rusk. The schedule is, Sunday: Bible classes 9:45 a.m., worship 10:45 a.m. and 7:00 p.m.

Wednesday: Ladies Bible Class 9:30 a.m. and mid-week service 7:30 p.m.

Final Programs for Week of Prayer Are Held Thursday and Fri.

"Week of Prayer" for the First Baptist Church, met Thursday with the Carolyn Bell Circle in charge of the program entitled "Haste, for Thousands are Still Waiting."

The devotional was given by Mrs. J. B. Houghton.

The opening song was "Ozium Haste." The opening prayer was given by Mrs. B. L. Swink.

Mrs. Lee Mitchell was in charge of the program and gave the part, "Europe and the Near East."

Prayer was given by Mrs. W. A. Reuwer. Mrs. Glen West's topic was "Difficulties of Christian Faith."

Mrs. Roy McCleskey gave a part on "The People in Israel."

Mrs. Ralph Perkins gave a prayer. Mrs. W. A. Warford's topic was entitled "Prayer for These Needs."

The group sang "Joy to the World," and closed the meeting with a prayer by Mrs. Alvis Wood.

The following were present: Mmes. R. F. Webb, J. B. Houghton, Lee Everheart, Lee Mitchell, A. W. Warford, Glenn West, W. A. Reuwer, B. L. Swink, L. D. Tankersley, Jimmy Jones, Alvis Wood, Earl Horton, Ralph Perkins and Roy McCleskey.

Last Program of Week

The last program of the "Week of Prayer" was held Friday, with the Louella Beddoe Circle in charge of the program entitled, "Day of Prayer Around the World."

Mrs. R. F. Webb was in charge of the program. The opening song was, "Cry for the Whole World."

The opening prayer was given by Mrs. Lee Everheart. The devotional was given by Mrs. W. A. Reuwer. Mrs. R. F. Webb gave a part entitled "Entering into God's Presence."

"Recruiting and Appointing New Missionaries," was given by Mrs. A. W. Warford. Mrs. J. B. Houghton gave a part on "Missionaries and Their Field."

Mrs. Lee Everheart gave a part entitled, "Ways of Reaching Hearts, Preach, Teach and Heal."

Mrs. R. F. Webb gave a part on "Rejoicing in Hope."

Mrs. Wilson Guest closed the meeting with a prayer.

The following were present: Mmes. Wayland Jowers, L. D. Tankersley, Earl Horton, B. L. Swink, J. B. Houghton, R. F. Webb, A. W. Warford, W. A. Reuwer, Lee Everheart, Roy McCleskey, Lee Mitchell, Jimmy Jones, Wilson Guest, Ronald Pruet, Walter Arterburn.

Christian Science

The completeness and integrity of God's creation including spiritual man will be argued out at Christian Science services this Sunday.

The Lesson - Sermon entitled "God the Only Cause and Creator" will include the following verse from the King James Version of the Bible (Matt. 7:18):

"A good tree cannot bring forth evil fruit, neither can a corrupt tree bring forth good fruit."

Among the correlative passages to be read from "Science and Health with Key to the Scriptures" by Mary Baker Eddy will be the following (539:19-22):

"It is false to say that Truth and error commingle in creation. In parable and argument, this falsity is exposed by our Master as self-evidently wrong."

The Golden Text is from Isaiah (45:18):

"Thus saith the Lord (that created the heavens: God himself that formed the earth and made it; he hath established it, he created it not in vain, he formed it to be inhabited: I am the Lord; and there is none else."

Church of Christ Announcements

The services of the church are as follows: Sunday; Bible study 9:45 a.m., worship 10:45 a.m. and 7:30 p.m., visiting shut-ins 4:30 p.m., Young people's meeting 6:00 p.m., Monday: Men's training class 7:30 p.m., Ladies' Bible class 10:00 a.m., Wednesday worship and Bible study 7:30 p.m., Saturday Young People's meeting 6:00 p.m.

According to Carey B. Looney, minister, the sermon subjects for this Sunday will be, morning: "A Job For You," and evening: "Joy, A Duty."

A special service Wednesday night is to be followed by a singing presented by a group from Southwestern Christian College, Terrell, a school for colored.

All are given a cordial invitation to attend.

Nazarene Church Weekly Schedule

The weekly schedule for the Church of the Nazarene, as announced by the pastor, Rev. B. L. Hagar, is as follows: Sunday School, 10 a.m., J. L. Jones, superintendent; Morning Worship, 11 a.m.; NYPS, 7:15 p.m.; and Evening Worship, 8 p.m.

Prayer meeting is held at 7:30 each Wednesday evening. Everyone is invited to attend these meetings.

Is scarcely a pork dish where apples are not pertinent.

ATTEND THE CHURCH OF YOUR CHOICE EACH SUNDAY

First Baptist Announcements

Sunday is "Budget-Day" for the First Baptist. At the morning service the 1956 Budget will be presented to the church for approval or ratification. Each Sunday school teacher will be expected to contact their members to secure the signing of the tithe-pledge cards.

Special visitation will be conducted during the next several days until each member has been contacted.

Sunday school beginning at 9:45 with departmental assembly programs and followed by the Bible study and then the worship hour. The pastor will bring the morning message using the theme, "The Bible and The Baptist."

Jesus took the guess work out of each question that doubting man might raise concerning any and all phases of Christianity.

Training Union meeting at 6:30 p.m. with special assembly programs and each union studying the theme: "Be Strong In The Truth." "God, Creator and Father," is the theme for Sunday evening.

The pastor will bring the message at 7:30 on the theme, "God Warns His Children," take heed lest ye fall. Each generation is faced with the problem of going with the world or going against the world. Certainly the worldly, evil elements and the followers of "world philosophy" would be directly opposed to Christianity and all her teachings and her disciples as well. One has said, "Jesus is trying to get the Church into the world, while satan is trying to get

the world into the Church." There is a big difference. Visitors are always welcome, there is always a warm Christian greeting. Come worship with us. Bring your family to church this Lord's Day.

VISITING IN RANGER

Mr. and Mrs. E. L. Brummett had as their guests Wednesday and Thursday their son and family, Minister and Mrs. Bobby Brummett of Morgan Hill, where he is regular minister at the Church of Christ.

Merriman Baptist Announcements

The Merriman Baptist Church schedule for the week is as follows: Sunday school 10:00 a.m.; preaching 11:00 a.m.; prayer meeting 7:00 p.m.; preaching 7:30 p.m.

The pastor, Rev. Jack Walker, will do the preaching at both services.

TRADE WITH YOUR HOMETOWN MERCHANTS.

See It Now!

The New BULOVA "23"

- 23 JEWELS
- SELF-WINDING
- CERTIFIED WATERPROOF
- UNBREAKABLE MAINSPRING
- SHOCK RESISTANT • ANTI-MAGNETIC



Also available with black dial

Out-Performs, Out-Styles Any Watch Ever Created!

D. E. PULLEY

JEWELER Jewelry - Silverware Diamonds - Watches

Each and every BULOVA Waterproof Watch is Certified Waterproof by the U. S. TESTING CO. after being Scientifically Tested ... tests accord government specifications.

*Waterproof as long as crystal is intact and unscratched. Only a professional jeweler should re-set crystal of close case.

It Was Just An Accident—

... that Columbus discovered America, or was it luck? He himself said that his journey would be hazardous and he didn't know where he was going. But he had faith that he would discover a great land and he did. Likewise, the person who buys land without an abstract is embarking on a dangerous course. Like Columbus he must have faith that he won't lose his all and plenty of luck to avoid financial disaster.

EARL BENDER & COMPANY

Eastland (Abstracting since 1923) Texas

Here's a Family Christmas Gift THEY'LL TURN TO LOOK AT!

GIVE NEW! RCA VICTOR SWIVEL TV

You Can Watch from Anywhere in the Room

Here's the perfect family Christmas gift—new RCA Victor Swivel TV! Turn it right or left... watch TV from anywhere in the room! You get other great advances, too—brought to you by RCA Victor's Big Change in TV! New "4-Plus" picture quality... New Balanced Fidelity Sound... new "High-and-Easy" tuning... and the most beautiful styles and finishes you've ever seen! Give your family new RCA Victor Swivel TV—you'll always be glad you did!

For UHF—New High Speed UHF tuning covers 70 UHF channels in 2 1/2 seconds! Optional, extra, at new low cost!

New "4-Plus" Picture. Four vital factors give you extra brightness, extra contrast, without jump or jitter.

New Balanced Fidelity Sound. Re-creates in your home the entire range of sound sent out by TV networks.

New "High-and-Easy" Tuning. "Hidden Panel" (top) "High-Side" (lower left). "Up-Front" (lower right).

RCA Victor Pickwick 21. It has two speaker! New "4-Plus" picture quality. Lined oak grained finish. Model 2116257. **269.95**

IT SWIVELS!

RCA Victor Bittenhouse 21 Deluxe. Two speakers. Choose from three finishes: 2 in blond tropical hardwood with natural walnut; one in 2-tone birch. Model 21D648. **349.95**

IT SWIVELS!

RCA Victor Heverton 24 Deluxe. Biggest man-life "4-Plus" picture. Two speakers. Finishes: Natural walnut—blond tropical hardwood or natural birch. Model 24D658. **399.50**

IT SWIVELS!

Killingworth's
Phone 29 Ranger

The Churches Of Ranger Welcomes You

CORNERSTONE OF MATCHLESS VALUE

UNTU YOU THEREFORE WHICH BELIEVE HE IS PRECIOUS... I PET 27

THIS SERIES OF CHURCH ADS IS BEING PUBLISHED THROUGH THE COOPERATION OF THE LOCAL MINISTERIAL ALLIANCE AND SPONSORED BY THE UNDERSIGNED INDIVIDUALS AND BUSINESS FIRMS:

- Ranger Dry Cleaners**
Mae and Jess Weaver
WE LIFEZE ALL GARMENTS
PHONE 462
- Ranger Lumber & Supply**
Calvin Brown - Earl Brown
Go To The Church of Your Choice
Every Sunday
- Anderson Chevrolet Company**
- First Methodist Church**
R. Bruce Weaver, Pastor
The Church Where Everyone Is Welcome
- Clarke Motor Company**
Chrysler - Plymouth
- First Baptist Church**
Ralph E. Perkins, Pastor
You Are Always Welcome
- Mathena's Flower Shop**
Flowers For All Occasions
420 Alice - Phone 144
- Winnie's Beauty Shoppe**
611 Breckenridge Road
Phone 784
- Ranger Times**
Phone 224

BARBER SHOP
Modern Quality Facilities

Don't forget, to look your best at all times. You need to visit Tony's at least every 10 days. "Keep your appearance up."

TONY'S BARBER SHOP
223 1/2 Main - Phone 108

Schedule For Second Baptist Announced

Rev. Calvin Bailey, pastor of the Second Baptist Church states, "As we approach this glorious season of the year, let each of us be faithful in our worship to God. The Lord has done great things for us."

Sunday school begins at 9:45 a. m., there is always a place for every person in the study of God's word. The morning worship starts at 11.

Training Union awaits to bless the hearts of those who come at 6:15. The evening worship service begins at 7:30 p. m. Every person is invited to worship God on this Lord's Day. If you do not have a church home you will find a warm welcome awaiting you in our church.

Woman's World
society, clubs, churches

The 1920 Club Meets Thursday

The 1920 Club met Thursday, Dec. 1 at 3:30 p. m. at the Community Club House.

Mrs. R. L. Hamrick presided over a short business session and then introduced Mrs. James P. Morris, who gave an interesting review of "The Healer" by Frank Slaughter.

The following members were present: Meses. T. J. Anderson, Price R. Ashton, M. H. Hagaman, Judson Hardy, Charles Hummel, R. A. Jameson, M. L. King, A. N.

First Methodist Announcements

Rev. Bruce Weaver, pastor of the First Methodist Church, will preach on "A Christian's Commitment" at the morning worship service Sunday. The Chancel Choir will sing an anthem entitled "Twenty Third Psalm" by Jacob Church School classes for all age and interest groups will meet at 9:45 a. m. Nursery facilities for all pre-school children are available during the worship services and church school classes of the church.

The evening worship service beginning time will change from 7:30 to 7:00 p. m. Rev. Weaver will preach the sermon and conclude the service with Holy Communion.

Child Welfare Meets Nov. 30

The Child Welfare met in the home of Mrs. C. E. May, Sr. Wednesday, Nov. 30 at 3:00 p. m.

Mrs. M. L. King presided over the business meeting. Reports were given by various committees. Mrs. King announced the following committees to work on the Christmas baskets: grocery committee, Meses. P. M. Kuykendall, L. R. Pearson; basket committee, Meses. B. A. Tunnell, A. W. Brazda, C. B. Pruet; toy committee, Meses. D. D. Pickrell, James Ratliff, Walter Murray, E. L. McMillan; meat committee, Meses. Bob Earnest, A. N. Larson; candy and fruit committee, Meses. W. L. Downtain, Saunders Gregg, T. C. Wylie.

Mrs. King also named the nominating committee, Meses. L. R. Pearson, Walter Murray, P. M. Kuykendall.

The next meeting will be held in the home of Mrs. A. N. Larson in January.

The following members were present: Meses. A. W. Brazda, Saunders Gregg, M. L. King, S. M. McAnelly, E. L. McMillan, C. B. Pruet, T. C. Wylie, D. D. Pickrell, James Ratliff, E. A. Tunnell, and the hostess, Mrs. C. E. May, Sr.

4-H Club Girls To Have Social

The 4-H Club girls will have a party Friday, December 9 at 6:30 p. m. at the Young School.

Merriman Church Bible Study Has Meeting

The Women's Weekly Bible study of the Merriman Baptist Church met last week in the home of Mrs. Reese Rogers.

The following were present: Meses. Ladio Dawson, Ira Ainsworth, Will Vinson, Maxine Cole, George Falls, Joe Eschburger, and the hostess, Mrs. Reese Rogers.

Next week's Bible study will be held in the home of Mrs. George Falls, 403 Mountain View Rd., Tuesday at 1:45 p. m.

GUEST FROM DALLAS

Mrs. June Lallue of Dallas visited Mr. and Mrs. Henry Rasmus and Mr. and Mrs. C. R. Williams and children over the weekend.

RETURN HOME

Mrs. Alex Roberson has returned from visiting her daughter and family, Mr. and Mrs. Ralph Rider in Cisco.

4-H Club Has Meeting Thurs.

The 4-H Club met in the sixth grade room of Young School, December 1. The club discussed safety at home. Safety contest blanks were received, and a new representative was elected.

VISITING SISTER IN RANGER

Mr. George Lauderdale of San Antonio is visiting his sister, Mrs. H. G. Burch and family.

VISITING IN NEW MEXICO

Mr. and Mrs. George Beck will leave Monday for Hobbs, New Mexico, where they will visit their son and daughters.

ATTEND SHRINE CEREMONIES

Mr. and Mrs. W. H. Clem spent Saturday in Sweetwater, at tending the Shrine ceremonies.

SPEND WEEK IN WICHITA FALLS

Mrs. E. C. Ewing and Mrs. Don Cook spent last week in Wichita Falls, visiting Mr. and Mrs. Jim Ewing.

VISIT IN OKLAHOMA

Mr. and Mrs. E. F. Arterburn attended the Oklahoma University-Oklahoma A&M game in Norman, Oklahoma, Saturday. They spent Saturday night in Oklahoma City, with Mr. Arterburn's nephew and wife, Mr. and Mrs. R. W. Arterburn, from there they went to Albuquerque, New Mexico, to visit their son and family, Mr. and Mrs. E. L. Arterburn.

VISIT IN RANGER

Mrs. J. T. Killingsworth had as her guests recently, her sister, Mrs. J. T. Cross, her daughter and son-in-law, Mr. and Mrs. O. E. Murphy of Granite, Okla., and her brother, Mr. C. A. Arrington of Aldard, Texas.

Hospital Report

Mrs. M. B. Squyers of Ranger is a new patient in the West Texas Clinic. Mrs. W. L. Reasoner of Gordon, was recently dismissed.

Look Who's New

Mr. and Mrs. Bill Bullock of McCook, Mississippi, announced the birth of a baby boy named Paul William Bullock, born at 6:30 a. m. Dec. 3. They have two other boys.

Around the Town At Olden
By Mrs. Dick Yielding

Mr. and Mrs. I. E. Talley and her father, Mr. Alford, spent last Thursday in Haskell with her sister.

Mr. and Mrs. Joe Crawford and children of Wilson, Okla., spent last week with his parents, Mr. and Mrs. Pit Crawford, in Beckville, and with her parents, Mr. and Mrs. Dick Yielding of Olden.

Mrs. J. D. Harrell received a telephone call last Tuesday evening from her mother in Shamrock, telling her to meet her in Abilene Wednesday. She visited there in the home the rest of the week.

A double-header ball game was played here last Tuesday with Rising Star. The Olden boys won and the girls lost.

Mrs. Burley Patterson and daughter, Elenora, spent the Thanksgiving holiday with relatives in Abilene.

Holiday guests in the home of Mr. and Mrs. J. M. Fox were her parents, Mr. and Mrs. B. A. Highsmith of Lone Cedar, Mr. and Mrs. Shorty Fox and children of Staff and Mr. and Mrs. Blacky Fox and children of Olden.

Word came from the Shelby Cox family of Fort Worth early Thursday morning that a baby girl had arrived and that mother and daughter were doing fine. Her mother and father, Mr. and Mrs. O. T. Grubbs, have been spending several days there.

Mr. and Mrs. Ray Howell and son, David, of Breckenridge spent the week-end here with her mother, Mrs. Annie Wilkerson. They also visited in the Bob Sellers home.

Mr. and Mrs. Leo Potter of Olney were week-end guests of her parents, Mr. and Mrs. Clarence Brock.

Mrs. Ethel Rouch and son, Freddy, spent the holidays in Holiday, Tex., with Mrs. Rouch's children.

Gerald Renfro and family of Fort Worth were week-end guests in the C. J. Renfro home and in the home of his sister, Mrs. Jessie Lee Holiday.

Mr. and Mrs. Dale Norton of Fort Worth were here visiting his mother, Mrs. Ruth Norton. They spent Thanksgiving in Abilene.

New Automobile Registrations

- George Green, Ranger, Chev. Klup.
- C. W. Schaeffer, Cisco, Ford 2 dr.
- Glen Hamner, Ranger, Pont. 4 dr.
- F. B. Ellis, Eastland, Chev. 4 dr.
- W. C. Neil, Eastland, Chev. 4 dr.
- Nettie Faye Gardner, Eastland, Chev. 4 dr.
- L. W. Hopkins, Eastland, Chev. 4 dr.
- Arther S. Deffebach, Eastland, Ford 4 dr.
- J. M. McMath, Eastland, Ford 2 dr.
- Winnie Wynne, Eastland, Ford 2 dr.
- E. Pullis, Gorman, Chev. Klup.
- Sledge & Son Well Serv., Ranger, Chev. Klup.
- Don C. Butler, Olden, Chev. 2 dr.
- I. E. Talley, Olden, Chev. 4 dr.
- Mrs. Lucy Robinson, Moran, Chev. 4 dr.

Weekly Schedule For St. Rita's Catholic Church

The following is the weekly schedule for St. Rita's Catholic Church:

Holy Mass every Sunday morning at 8 o'clock.

Evening devotions on Sundays at 7 p. m.

Study club for the high school students Wednesday evening at 7 p. m.

Choir practice Wednesday evening at 7:45 p. m.

Study club for the Junior College students Wednesday evening at 8 o'clock.

Religion class for the grade school students at 6:30 p. m. Thursday.

Rev. Fr. Boesmans, pastor of St. Rita's Catholic Church, is always available to give information and to explain the Catholic faith to those who want to know more about it. This information is given without any obligation whatsoever and without prejudice against any other religion.

with his sister, Mrs. David Daugreen.

Mr. and Mrs. Edwin Davidson of Wichita Falls called her parents, Mr. and Mrs. Ed Munn, early Monday to announce the arrival of a baby girl. Mother and baby were doing nicely although the baby weighed only a little over 5 pounds. Mrs. Munn will visit in the Davidson home the next week.

Miss Wanda Yielding has accepted employment in the Ranger Texas Electric Service Company office as clerk and cashier.

Mr. and Mrs. Charlie Gladden of Albany and Mr. and Mrs. Joe Bond of Gainesville have been visiting in the Joe Lawrence home.

Week-end visitors in the home of Mrs. Ezina Hamilton were Virgil Hamilton of Odessa and a niece, Mrs. John L. McKelvain, and her husband, Mr. McKelvain, and their son, Ken, of Waco.

Mr. and Mrs. Charlie Mitchell spent the week-end in Dallas with her son, Boyce Whitmore.

Mr. and Mrs. Will Stark left Tuesday for Comanche to visit with his sister, Mrs. Homer Roberson, and T. Stark.

Week-end guests in the home of Mr. and Mrs. L. S. Hamilton were a brother, Wood Hamilton, and Mrs. Hamilton of Stephenville; nephew, John Hamilton, of Lamesa. Miss Mollie Green of Mineral Wells and Miss Laura Simer of Wichita Falls were a dinner guest Sunday.

Monday evening the home of Mrs. C. C. Martin caught on fire in the ceilings, from the chimney, but little damage was done, as men of the town rushed to the scene and extinguished the blaze.

Mr. and Mrs. O. T. Hunt had as guests in their home over the week-end Mr. and Mrs. S. A. Simmes and children, Mr. and Mrs. D. Armstrong and family and Mr. and Mrs. Buck Weeks, all of Midland.

Mr. and Mrs. J. C. Simmes had as guests in their home Sunday Mr. and Mrs. Whitney Butler of Eastland. Mr. and Mrs. Earl Simms and family of Kermit, Mr. and Mrs. Aubrey Poyner and family of Cisco and Charlie Butler of Midland.

Mr. and Mrs. Jack Collins of Abilene spent Sunday with Mr. and Mrs. J. A. Sapulver. Mr. Collins is a nephew of Mrs. Sapulver and is dean at Hardin-Simmons in Abilene.

HELLO THERE...

(Editor's Note: The Ranger Times wishes to extend a hearty welcome to the newcomers to our community. We hope your stay is long and pleasant. May we suggest that you attend the church of your choice next Sunday.)

Mr. and Mrs. A. L. Robbins and daughter, Retha of New Mexico, new owners of the Ben Franklin are now living in the Gholson Hotel.

Mr. and Mrs. W. R. Black and their three children of Waco are now living at 443 South Rusk. Mr. Black is employed by the Waco Sand and Gravel Company.

Mr. James Taylor of Bowie has moved to Ranger and is employed by the Sinclair Pipe Line Company.

MEET DAUGHTER IN FORT WORTH

Mrs. V. V. Cooper met her daughter, Mrs. James Horton and children of Tulsa, Okla., in Fort Worth Friday morning at the air terminal. Mrs. Horton and children returned home with Mrs. Cooper for a visit.



CAT NIP—Fluffy takes to the bottle—naturally. The kitten has been trained by the Frank De Pasquales family, of Cleveland, Ohio, to take her nourishment from a doll's bottle.

Gift of Hope



The Christmas Seals you buy are gifts of hope—a future for your children free of the shadow of tuberculosis. Support your tuberculosis association in its determined efforts to eradicate TB.

BUY AND USE CHRISTMAS SEALS

BUY NOW for EASIER SHOPPING GREATER SELECTIONS OUTSTANDING VALUES

ELIZABETH
17 jewels
Unbreakable mainpring
\$29.75

MINUTE MAN
17 jewels
Unbreakable mainpring
Shock resistant
\$29.75

MISS AMERICA
17 jewels
Unbreakable mainpring
Expansion bracelet
\$35.75

Use Our Convenient Lay-A-Way Plan
Ranger Jewelry Co.
J. R. and Ethel Ervin
220 Main Phone 778
Price includes Federal Tax

IN PERSON

Hank THOMPSON
and his BRAZOS VALLEY BOYS

AMERICA'S FAVORITE FOLK ARTIST
NATION'S No. 1
Capitol Western Swing Band
HEAR HIM ON CAPITOL RECORDS

APPEARING AT THE TRIO CLUB SUNDAY NIGHT, DEC. 4 MINGUS, TEXAS

Magnificent Light Oak for modern living



Brand New 1956 **PHILCO** 21-in. Swivel Console with TOP TOUCH TUNING

Just a touch turns the set on. Just a touch changes stations automatically. Just a touch turns it off. Dramatic new swivel console in Finestriped Oak finish with contrasting French Walnut finish legs and control panel.

22 BLOND MODELS TO CHOOSE FROM

As Low As \$2.75 A Week
L&I SUPPLY Co.
200 WEST MAIN - PHONE 202 - RANGER, TEXAS
TV HEADQUARTERS

For Over Seventy-One Years

It has been our privilege to render a service to this community as monument builders.

ALEX RAWLINS & SONS
Weatherford Phone 4-2726 Texas

REDCHAIN DRY-CO

IS NOW HIGHLY FORTIFIED WITH PROTECTIVE LEVELS OF **VITAMIN D**

Increase Your Milk Profits Control Milk Fever

TIP TOP FEED & HATCHERY
Four One-Stop Feed & Hatchery Service
RANGER, TEXAS

With good care, every pound of flesh you put on during the dry period enables the cow to produce 25 lbs. more milk during the lactation period.

The "Blond" requirement for individual animals vary considerably, therefore it is advisable to provide RED CHAIN STOCK MINERAL. Free Choice in Self-Feeders.

Belle of The Ball Gowns
our collection... 16.95 to 29.95

illustrated nylon net over rayon satin - multi ruffled side panels - nylon net detachable stole... sparkled with twinkling silver stardust... 19.95

Sweetbriar
217 Main Street
Phone 779

SOIL CONSERVATION AID EXAMS ARE ANNOUNCED
The U.S. Civil Service Commission has announced examinations for the position of Soil Conservation Aid at \$2960 and \$3415 a year, for employment with the

Soil Conservation Service, U.S. Department of Agriculture, in the states of Texas, Oklahoma, Arkansas, and Louisiana.
Full information and applications may be obtained from the Post Office, or from the Executive Secretary, Board of U.S. Civil Service Examiners, U. S. Department of Agriculture, P. O. Box 1898, 3608 McCart Street, Fort Worth, Texas.

INGROWN NAIL HURTING YOU?
Immediate Relief!
A few drops of OTCOROL bring instant relief from the burning pain of ingrown nail. OTCOROL loosens the skin around the nail, allows the nail to be cut and then provides further care and protection. OTCOROL is available at all drug counters.

CALL 224 FOR CLASSIFIED ADS

CHRISTMAS SALE... NOW ON
-10% DISCOUNT ON ALL FIREWORKS-

15.50 Chenille Bedspreads	11 95	18.50 Chenille Bedspreads	12 95
---------------------------	-------	---------------------------	-------

ALSO CHENILLE ROBES AND BATH SETS

2.25 Planter, Ashtrays with artificial plants	1 79	30 Inch Plush Teddy Bears, Each	3 45
Lone Ranger & Tonto on their horses, Each	3 95	Beaded Cowhide Belts, Each	98
Dale Evans & Roy Rogers on their horses - Each	3 95		

AND MANY OTHER GIFT BARGAINS
Visit our enlarged showroom and save on CHRISTMAS BUYING
\$1 down will hold any \$10.00 purchase until Christmas

HARRISON NOVELTIES
Highway 80 & Blackwell Road Ranger

COURTHOUSE NEWS AND RECORDS
Real Estate Transfers, Marriages, Suits Filed, Court Judgments, Orders, Etc.

INSTRUMENTS FILED
Albert Adkisson to Taber, Coleman & Carr Drilling Co., oil and gas lease.
P. P. Barber to The Public, proof of heirship.
Beale Brashear to The Public, proof of heirship.
W. S. Brashear to The Public, proof of heirship.
Roy M. Blackman to Hanna Hdw. & Lbr. Company, MML & assignment.
R. E. Boueber to Odis Rodgers, warranty deed.
Commercial State Bank, Ranger to Hall Walker, warranty deed.
A. S. Cross to The Public, proof of heirship.
C. M. Construction Company to Ed Tex Refining Company, MML.
Betty Cartway to Raymon Bryan, warranty deed.
City of Ranger to Raymon Bryan, warranty deed.
R. B. Dawson to Taber, Coleman & Carr Drilling Company, oil and gas lease.
Paul DeCleva to Ovid Youngblood, assignment of oil and gas lease.
First Federal S & L Assn. to Clyde C. Harris, release of deed of trust.
H. J. Greenhaw to First National Bank, Gorman, deed of trust.
City of Gorman to The Public, resolution.
City of Gorman to Frank S. Perry Estate, quit claim deed.
Nettie Hughes to W. E. Lusk, release of judgment.
L. P. Hancock to Taber, Coleman & Carr Drilling Co., subord. of lien.
J. T. Horn to Eastland National Bank, deed of trust.
G. M. Harris to The Public, proof of heirship.
Mollie E. Hancock to H. L. Dykes, warranty deed.
Ivan L. Johnson to R. M. Benton, warranty deed.
W. C. Kirkwood to J. B. Morton, Jr., release of oil and gas lease.
T. C. Kelley to Paul F. Williams, deed of trust.
Wayne Pettit Long to Taber, Coleman & Carr Drilling Company, oil and gas lease.
Horace T. Miller to Southland Life Insurance Company, deed of trust.
Mid-Continent Petroleum Corp. to Sunray Oil Corporation, assignment of oil and gas lease.
J. B. Morton to Taber, Coleman & Carr Drilling Co., oil and gas lease.
Guy E. Morris to The Public, cc probate.
Frank Conway Perry to Lewis Andrus, warranty deed.
Orville Penick to V. D. Maynard, warranty deed.
Plain Oil Company, Inc. to Clifton H. Jones, deed of trust.
Robert G. Stephens to Lane Star Producing Company, right of way.
S. J. Savage to Verne N. Peterson, warranty deed.
S. J. Savage to Frank Gryder, warranty deed.
The Texas Company v. E. S. Ratcliffe, abstract of judgment.
Hall Walker to H. T. Miller, warranty deed.
Hall Walker to Fred Brown, release of deed of trust.
Hall Walker to Fred Brown, release of deed of trust.
F. C. Williamson to Milton D.

Around the Town At Olden
By Mrs. Dick Yielding

The Olden economic cottage was the scene of a beautiful bridal shower last Thursday evening, honoring Miss Margaret Alford, bride-elect of Richard Southerland. Two large tables were covered with beautiful gifts. About thirty-five guests were present.
Another beautiful scene was the annual coronation. Miss Eleanor Patterson and Mr. Rex Martin were elected queen and king of the high school and Gary and Patsie Fox were elected king and queen of the grade school. The Ranger Dixiecat Band presented a nice program.
Miss Shirley Mallock of Howard Payne spent the week-end here with her mother.
Mr. and Mrs. O. T. Grubbs spent Saturday and Sunday in Fort Worth with their daughter and family, Mr. and Mrs. Shelby Cox.
Brown, lease agreement.
C. A. Williamson to Sarah E. Williamson, warranty deed.
Walter W. Weeks to Marion C. Williams, warranty deed.
MARRIAGE LICENSES
Danny Woods and Vera Eleene Dyer.
B. J. Lavens and Lou Corynne Benton.
Donald Graham Varner and Joan Virginia Lunardon.
Mark Moton Sheffield, Jr. and Margery Jeanette Weathers.
Roy Donald Harris and Dema Lou Quarles.
PROBATE
Gary Lynn Shultz, minor, application for guardianship.
SUITS FILED
Johnnie Richardson v. Ola Richardson, divorce.
ORDERS AND JUDGMENTS
Betty May Mahan v. Marvin Mahan, judgment.
A. W. Wright, Jr. v. Wanda Wright, judgment.
Juanita Piggim v. Ether Piggim, judgment.

Mr. and Mrs. Fred Moffett and son of West Texas spent Sunday in the home of Mr. and Mrs. D. O. Moffett.

Mr. and Mrs. John B. Wright of Kermit, formerly of Olden, have bought a home in Eastland and moved there. Mr. Wright has been a Magnolia employe for a number of years. He will retire the first of the year.

Mr. and Mrs. Will Arnie have

returned home from a two weeks stay in Houston.
Mrs. Ethel Rouch received word early Saturday morning that her brother, Grover Greynolds, of Kansas had passed away. She and her son, Gene, left immediately for Kansas.
Mrs. Stella Jarrett attended the district postmasters' meeting in Brownwood Saturday.

See It Now!
The New **BULOVA "23"**
• 23 JEWELS
• SELF-WINDING
• CERTIFIED WATERPROOF
• UNBREAKABLE MAINSPRING
• SHOCK RESISTANT • ANTI-MAGNETIC



Also available with black dial

Out-Performs, Out-Styles Any Watch Ever Created!

D. E. PULLEY
JEWELER
Jewelry - Silverware
Diamonds - Watches

Each and every BULOVA watch is Certified Waterproof by the U. S. TESTING CO. after being scientifically tested to test actual government specifications.

REDCHAIN DRY-CO
IS NOW HIGHLY FORTIFIED WITH PROTECTIVE LEVELS OF **VITAMIN D**
Increase Your Milk Profits Control Milk Fever

Calfing time is a critical time for a good dairy cow. A mineral shortage results in milk fever. The mineral in the feed for the dry cow should be in balance. Even though the mineral is in balance and adequate, the cow cannot use it unless she has an adequate supply of Vitamin D.

With good cows, every pound of flesh you put on during the dry period enables the cow to produce 25 lbs. more milk during the lactation period.

The mineral requirements for individual animals vary considerably, therefore it is advisable to provide RED CHAIN STOCK MINERAL. Free Choice in Self-Feeders.



TIP TOP FEED & HATCHERY
Your One-Stop Feed & Hatchery Service
RANGER, TEXAS

TERRIFIC! COMBINATION SALE
BIG 40-IN. DELUXE **TAPPAN** GAS RANGE
CHROME OVEN

WITH ALL THESE WONDERFUL CONVENIENCE FEATURES!
• EXCLUSIVE VISUALITE OVEN
• BIG SIZE—FULL 40 INCHES
• NEW LIFT OFF OVEN DOOR
• CHROMIUM OVEN LINING
• ALL ONE-PIECE COVE TOP
• ELECTRIC CLOCK AND TIMER



PLUS
THIS BEAUTIFUL 5-PIECE **BLACK 'n BRASS DINETTE**
IN YOUR CHOICE OF COLORS!



GET BOTH! \$75 OFF!

TRADE-IN YOUR OLD STOVE NOW!
Only TAPPAN can give you so many features at so low a price! Famous Tappan Visualite Ovens let you see at a glance how things are coming in the oven. Chrome lining makes baking faster, cleaning easier! Handsome dinette is made of gleaming black metal, brass tipped, with plastic top that won't chip, won't burn, won't mar. Trade in your old stove now... get this wonderful new TAPPAN and the dinette set, both at terrific savings!

REGULAR PRICE \$244.95
DINETTE SET 45.95
TOTAL VALUE \$290.90
LESS TRADE 75.00
YOU GET BOTH FOR ONLY	
\$259.90	PLUS OLD STOVE
MANY MONTHS TO PAY!	

This Chevrolet keeps a secret... beautifully!

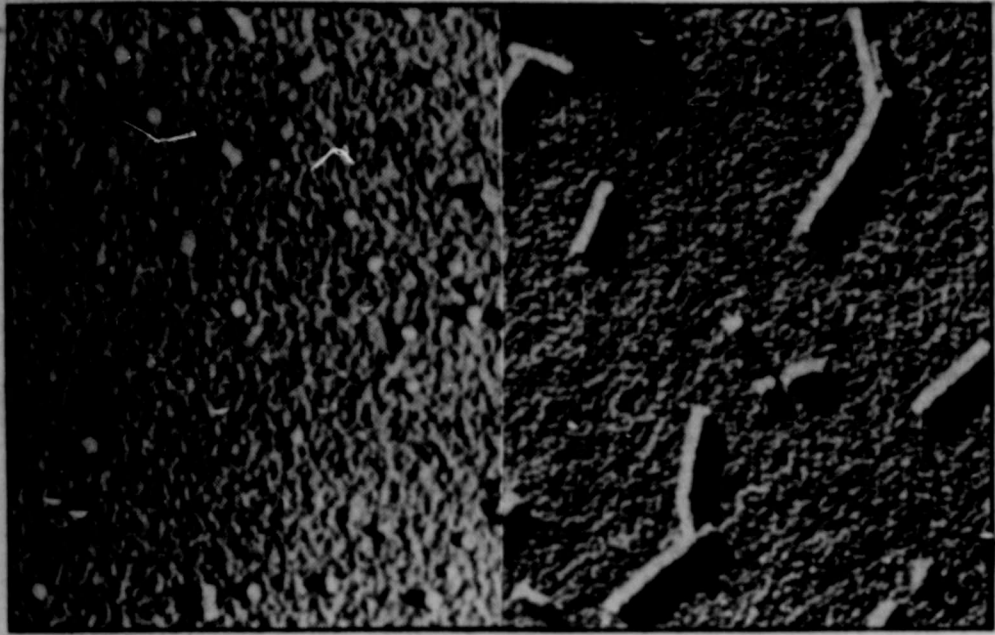


The "One-Fifty" 2-door sedan—one of 4 models in Chevrolet's smart and sprightly "One-Fifty" series.

It's one of Chevrolet's New "ONE-FIFTY" series... the lowest priced of all the high-priced-looking Chevrolet series for '56. But you'd never know it to look at that speedline chrome treatment or to feel that new power ranging up to 205 H.P.

There's so much fresh new styling in the "One-Fifty" it's hard to believe the car costs so little. It has new chrome—including both windshield and back window reveals—and its own distinctive two-toning. It stretches long and clean from grille to taillights (the left one hides the gas cap). It offers new power, V8 or 6, steering and handling ease few cars can match, plus all of Chevrolet's great performance and safety features. Directional signals and safety door locks are standard equipment. Seat belts, with or without shoulder harnesses, and instrument panel padding are available at extra cost. Truly, the "One-Fifty" represents more quality than before. Come in soon and let us tell you its big secret—its low price tag!

ANDERSON CHEVROLET CO.
Sales—CHEVROLET—Service
111 S. Austin Street RANGER Phone 14



ON THE BORDERLINE OF LIFE—Pictures above, taken with aid of the electron microscope, record the first time inert fragments of matter have ever been put together by man to form a living substance. Co-researchers Dr. Heinz L. Frankel-Conrat and Dr. Robley Williams, University of California, made the experiment. It was hailed as "an utterly fantastic discovery on the borderline of life" by Dr. Wendell M. Stanley, head of University of California's virus laboratory. Picture at left shows inert protein portion of the tobacco mosaic virus. At right, rod-like objects are "rebuilt" viruses, constructed with inert protein and nucleic acid parts of the virus in an alkaline solution. Man-made virus reproduces itself, causes mosaic disease in the tobacco plant. Tailor-made immunization to disease and a key to the hereditary secrets hidden in the chromosomes are seen as possible achievements in the light of the historic experiment.



LIFE INSURANCE POLICY MAY BE COMMUNITY

Many people fail to think of a policy of life insurance as being property in the same way they think of real estate or jewelry or automobiles. But the Texas Community Property laws governing the rights and duties and ownership of all forms of property are similarly applicable to life insurance policies. Under our community property system, one-half of all wages earned by either spouse during the marriage belongs to the other. If the husband pays all the premiums on his life insurance policy from his salary, he is using community property funds to do so. Thus the cash surrender value of the policy is community property, belonging half to the husband and half to the wife.

ly this is difficult or impossible. If the ex-spouse refuses to sign a release, it is sometimes necessary to bring a new lawsuit to reform the original decree.

If the insured does not file a new suit, he or she will occasionally discontinue premium payments. The equity in the policy is then normally used for some form of continued insurance. Even if the premium payments are continued, the insured can never deal freely with the policy, nor can he enjoy its full benefits, until the divorced spouse's community interest is extinguished.

The moral of this story is this: A great deal of trouble and expense can be avoided in divorce cases if the plaintiff will advise his or her attorney about life insurance policies owned by either spouse. By doing so, provision for the disposition of the cash value can be made in the property settlement and in the divorce decree. (This column, based on Texas law, is written to inform—not to advise. No person should ever apply or interpret any law without the aid of an attorney who knows the facts because the facts may change the application of the law.)

NEW AUTOS

- Ira Jennings, Eastland, Merc. 4 dr.
H. J. Carter, Odessa, Merc. 4 dr.
Odus Redwine, Odessa, Merc. Cpe.
J. W. Ray, Cisco, Chev. 2 dr.
Paul A. Meeks, Eastland, Merc. 4 dr.
Ode Monroe, Eastland, Ford 4 dr.
Lone Star Prod. Co., Eastland, Ford 4 dr.
Stanley J. Pirtle, Cisco, Plym. 4 dr.
Ola Frazer, Cisco, Ford 4 dr.
G. O. Kimbrough, Ranger, DeSoto 4 dr.
Lone Star Prod. Co., Ranger, Chev. Carryall.
Cecil Self, Eastland, Ford 4 dr.
C. M. Cox, Eastland, Ford Pkup.
Lone Star Gas Co., Eastland, Ford 2 dr.
Buel Bryan, Desdemona, Chev. 4 dr.
Troy Lee Hunt, Eastland, Ford 4 dr.

- Mrs. Lucy Robinson, Moran, Chev. 4 dr.
W. A. Harder, Cisco, Chev. 4 dr.
Mrs. Jim Underwood, Gorman, Chev. 4 dr.
J. Elmo Smith, Rising Star, Chev. Pkup.
Rice & Phagan Co., Cisco, Chev. Trk.
Jimmy Ray Bell, Lubbock, Chrys. 4 dr.
Travis Spence, Carbon, Ford 4 dr.

- R. E. L. Porter, Eastland, Olds. 4 dr.
J. O. Fuqua, Desdemona, Chev. Pkup.

ACHING MUSCLES

Relieve pain of tired, sore, aching muscles with STANBACK, tablets or powder. STANBACK acts fast to bring comforting relief... because the STANBACK formula combines several prescription type ingredients for fast relief of pain.

Advertisement for Alex Rawlins & Sons, featuring a building illustration and text: 'For Over Seventy-One Years. It has been our privilege to render a service to this community as monument builders. ALEX RAWLINS & SONS. Weatherford Phone 4-2726 Texas.'

Court Of Civil Appeals Eleventh District

Appeal Dismissed
3206 Polk County vs. H. A. Thurman. (Opinion by Judge Collins). Baylor.

Affirmed
3188 Vesta Kimble, et al. vs.

Fred R. Baker, et al. (Opinion by Judge Collins). Stephens. Motions Submitted

3180 Texas Employers Insurance Association vs. John C. Brockman. Appellant's motion for rehearing. Throckmorton

3201 Missouri - Kansas - Texas Railroad Co. of Texas vs. Hon. Owen Thomas, District Judge, et al. Petitioner's motion to withdraw the record. Fisher

3205 Scurry Area Canyon Reef

Operators Corp., et al vs. R. C. Poppoe. Appellants' motion for rehearing. Scurry

3224 Malone & Hogan Clinic Hospital Foundation vs. City of Big Spring, et al. Appellant's motion for extension of time to file briefs. Howard

Motions Granted
3224 Malone & Hogan Clinic Hospital Foundation vs. City of Big Spring, et al. Appellant's motion for extension of time to file briefs. Howard

3201 Missouri - Kansas - Texas Railroad Co. of Texas vs. Hon. Owen Thomas, District Judge, et al. Petitioner's motion to withdraw the record. Fisher

Motions Overruled
3180 Texas Employers Insurance Association vs. John C. Brockman. Appellant's motion for rehearing. Throckmorton

3205 Scurry Area Canyon Reef Operators Corp., et al vs. R. C. Poppoe. Appellants' motion for rehearing. Scurry

Cases Set for Submission December 9, 1955

3209 J. S. Rodgers, et al vs. C. E. Boykin, et al. Mitchell

3214 Charlie Robinson vs. County of Howard. Howard

3215 John T. L. Jones, Jr., et al vs. Marion Chowning, Jr., et al. Knox

3216 Cecil Ellis, et al vs. J. C. Bruce, et ux. Nolan

TRADE WITH YOUR HOMETOWN MERCHANTS.

Advertisement for C. E. May Insurance and Real Estate. Includes text: 'You'll be glad you have the policy with the P.E. (Personal Service)...' and 'C. E. MAY INSURANCE AND REAL ESTATE. Phones 418 or 564 214 Mtn'.

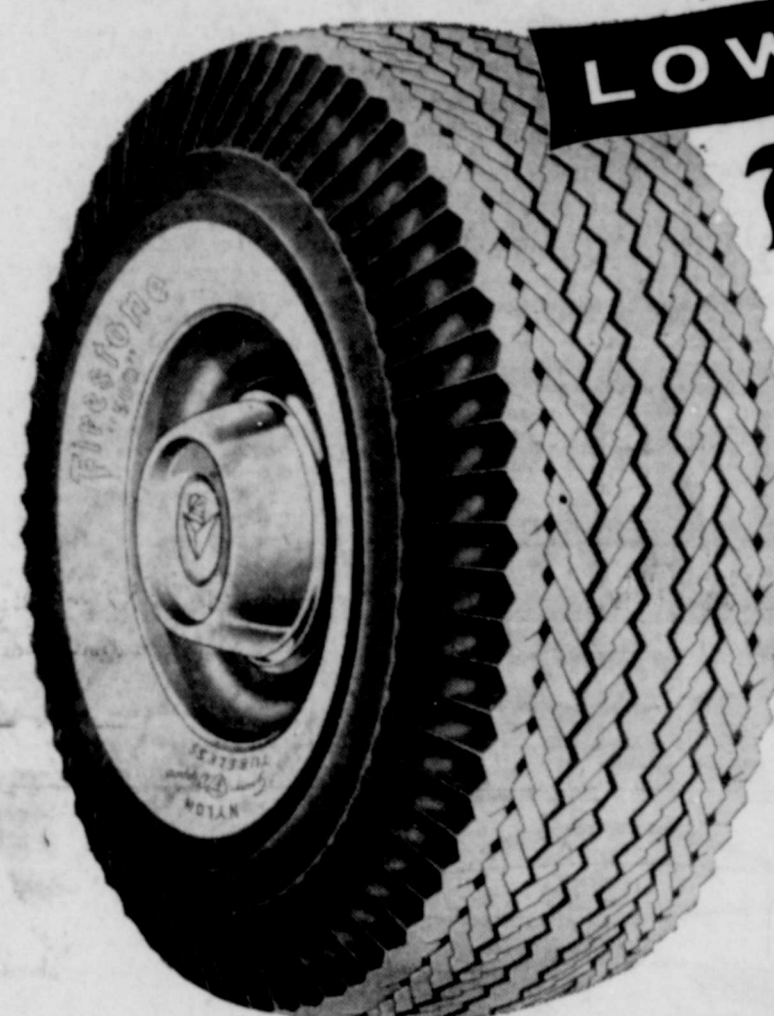
When a marriage is dissolved by divorce or death the community estate is likewise dissolved. In the case of divorce, the community estate is distributed in accordance with the terms of the divorce decree. The decree usually provides for division of the community real estate, automobiles, stocks and bonds, and money. Many times, however, the plaintiff fails to think of the cash surrender value of the insurance policy or forgets to tell his attorney about it. As a result, the divorce decree divides all the property except the cash value of the policy.

Suppose the insured later takes his or her policy to the insurance company to surrender it for its cash value or to obtain a policy loan. The insurance company, upon learning of the divorce, can not grant the request. The ex-spouse still has a community interest in the cash surrender value of the policy for which the divorce decree failed to provide. It then becomes necessary for the insured to obtain from the divorced spouse a release or assignment of his or her community interest in the policy. Frequent-

SHOP AND MAIL EARLY
Avoid the Last Minute Rush—Be Sure Your Christmas Cards and Gifts Arrive on Time.

Advertisement for jewelry featuring watches and bracelets. Includes text: 'ELIZABETH 17 jewels Unbreakable mainspring \$29.75', 'MINUTE MAN 17 jewels Unbreakable mainspring Shock resistant \$29.75', 'MISS AMERICA 17 jewels Unbreakable mainspring Expansion bracelet \$35.75'.

NOW-3 WAY TIRE SAFETY AT SURPRISINGLY LOW COST



Firestone ALL-NYLON "500" TUBELESS TIRES

A product of the speedway for your safety on the highway

Here's the only tire on the road that's built with racing tire construction principles. Gives all the protection you need under all driving conditions, more than enough for normal driving. Get our liberal exchange price today!

Advertisement for SAFER AT HIGHER SPEEDS. Includes illustration of a race car and text: 'SAFER AT HIGHER SPEEDS. Proven safe in test after test at racing car speeds. Will run indefinitely at top speed without cord fatigue. Withstands up to 40° hotter road temperature and provides up to 15 m.p.h safety margin over ordinary tires.'

Advertisement for SAFER ON STOPS AND TURNS. Includes illustration of a car on a curve and text: 'SAFER ON STOPS AND TURNS. New Silent-Ride Safety-Grip Tread, with hundreds of cross slots in the ribs, gives extra grip within the ribs in addition to the saw tooth grip between the ribs. This means quicker stops in any weather, safer steering on any curve.'

Advertisement for SAFER ON ROUGH ROADS. Includes illustration of a car on a bumpy road and text: 'SAFER ON ROUGH ROADS. Double the shock resistance of ordinary tires — That's what you have with the Safety-Tensioned Gum-Dipped cord body of this tire. Where other tires fail, the "500" will "roll with the punch," soak up the most severe road shocks.'

SPECIAL TRADE-IN ALLOWANCE \$175 PER WEEK Your Old Tires Make The Down Payment

PROTECT YOURSELF, YOUR FAMILY, YOUR CAR—INVEST IN THIS THREE-WAY SAFETY TODAY!

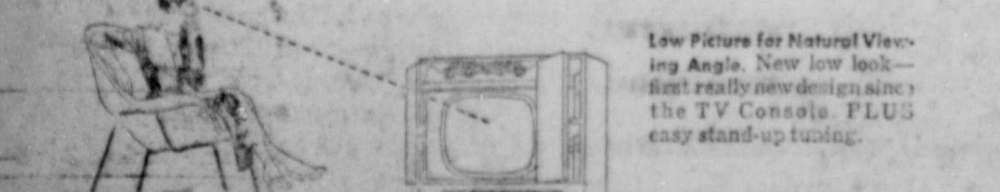
H. H. Highway 80 East Phone 23

Now own the finest TV FOR ONLY \$3.99 A WEEK



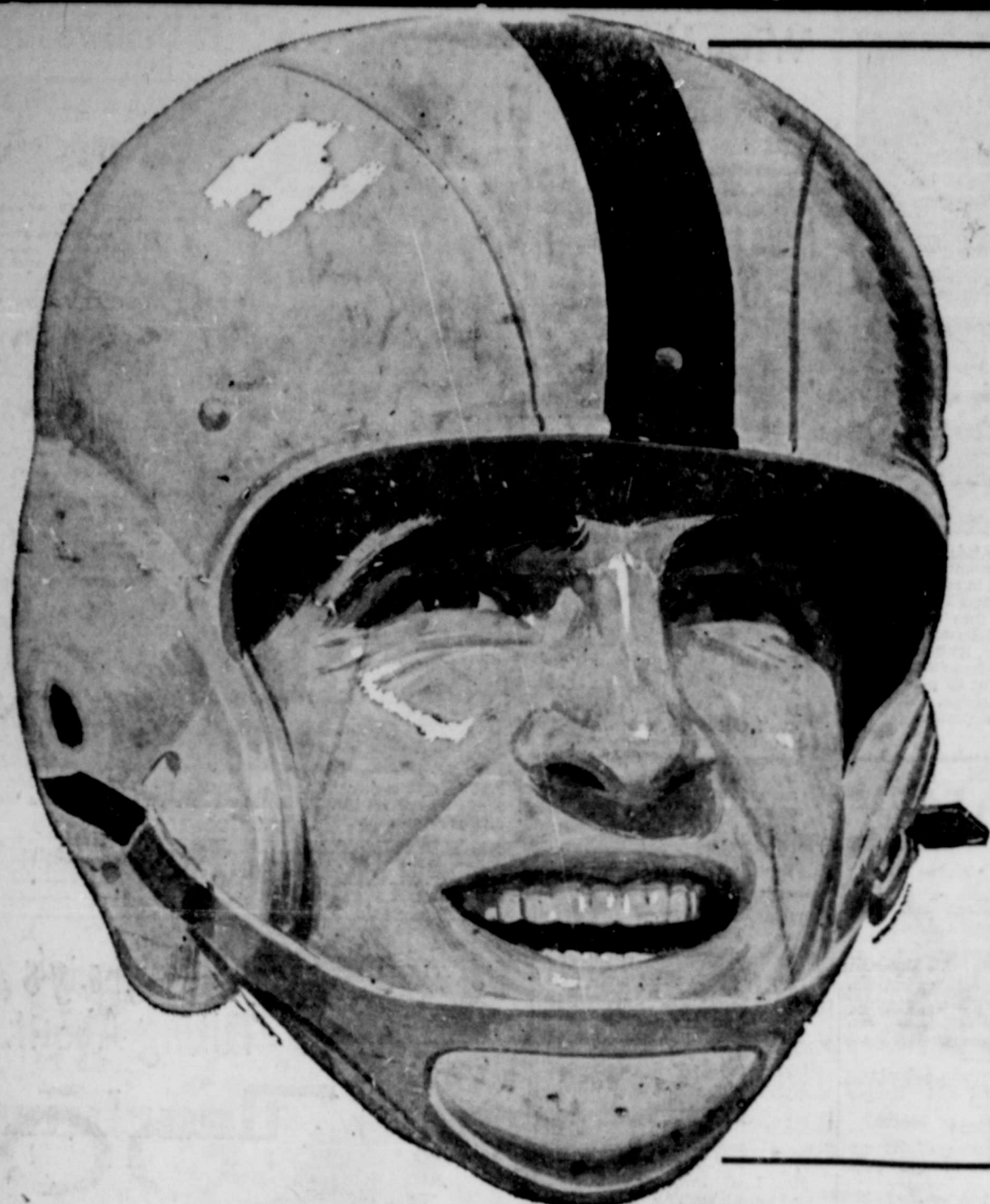
Model 21C125, 21-inch Ultra-Vision Lo-Boy. Genuine Mahogany. Full-door, concealed casters. NEW G-E ULTRA-VISION LO-BOY

G-E Ultra-Vision voted best 7 to 1 by 108,792 shoppers! Voted best in all areas—city and country, UHF and VHF! Best in side-by-side showdown comparisons against leading makes. Now with improved sound reproduction—dual speakers for finest listening!



Low Picture for Natural Viewing Angle. New low look—first really new design since the TV Console. PLUS easy stand-up tuning. Ranger Farm Store JOHN TIBBELS Ranger Phone 803

Use Our Convenient Lay-A-Way Plan Ranger Jewelry Co. J. R. and Ethel Ervin 220 Main Phone 778 Price includes federal tax



FOOTBALL

QUARTER-FINAL PLAYOFF

BULLDOGS vs. STINNETT

SATURDAY, DEC. 10 - AT CHILDRESS

2:00 p.m.

BI-DISTRICT PLAYOFF - Ranger 20, Albany 6
REGIONAL PLAYOFF-Ranger 20, McCamey 16

1955 STINNETT RECORD

- Stinnett 12, Hollis, Oklahoma 12
- Stinnett 38, Friona 7
- Stinnett 32, White Deer 13
- Stinnett 46, Claredon 0
- Stinnett 31, McLean 0
- Stinnett 38, Panhandle 13
- Stinnett 46, Lefors 13
- Stinnett 19, Memphis 6
- Stinnett 27, Canadian 0
- Stinnett 31, Wellington 13
- Stinnett 34, Spring Lake 6 (Bi-District)
- Stinnett 27, Hale Center 19 (Regional)



First Methodist Church

Bruce Weaver, Pastor

First Baptist Church

Ralph E. Perkins, Pastor
"You Are Always Welcome"

RANGER BULLDOGS 1955 SCHEDULE

- Friday, Sept. 9, Bulldogs 13, Mineral Wells 13
- Friday, Sept. 16-Open
- Friday, Sept. 23-Bulldogs 49, DeLeon 13
- Friday, Sept. 30-Bulldogs 48, Dublin 19
- Friday, Oct. 7-Bulldogs 13, Winters 19
- Friday, Oct. 14-Open
- Friday, Oct. 21-*Bulldogs 45, Rising Star 0
- Friday, Oct. 28-*Bulldogs 25, Cross Plains 0
- Friday, Nov. 4-*Bulldogs 39, Gorman 0
- Friday, Nov. 11-*Bulldogs 58, Wylie 0
- Friday, Nov. 18-Bulldogs 28, Eastland 0

Gholson Hotel, Inc.
Lawrence Hart, Mgr.

Ussery Refrigeration & Electric
Phone 161

Paramount Hotel & Coffee Shop
Ralph and Nellie Lockwood
You'll Like Our Food and Pleasant Service

Ranger Steam Laundry
S. W. Rainey

Texas Electric Service Co.
A. N. Larson, Manager

Page Plumbing Company
Mr. and Mrs. Carl Page

Ranger Dry Cleaners
Mr. and Mrs. Jess Weaver

Mathena's Flower Shop
FLOWERS FOR ALL OCCASIONS

420 Alice Phone 144

E. F. Penn Service Station

Lee's Service Station

Gorman Morton, Operator
Onyx Gasoline - All Popular Brands Motor Oil
Washing - Greasing - Polishing - Tire Repairing
Highway 80 East Ranger

Cozby Pontiac

C. L. Cozby, Owner
Your Old Car may make the down payment

F & R Oil Company

R. R. Phillips

Bob Earnest

Consignee The Texas Company

Art's Tool and Supply Co.

Mr. and Mrs. E. F. Arterburn

Campbell's Humble Serv. Sta.

Highway 80 & Main Street Crossing

Social Science Laboratories

A. W. Warford

The 500 Cleaners

Mr. and Mrs. Lonnie Cozby and Sons

Ranger Transfer & Storage Co.

A. L. Wood

Buck Wallace

Welding - Fabricating

A. H. Powell Grocery & Market

Phone 103 We Deliver

Burton - Lingo Company

J. D. Nichols, Manager

Compliments of . . .

Carl Lummus & Son

Cable Tool Drilling Contractors
Phone 868 - 457 W. Main - Mobil Phone 2F3-8626

Ogden Steam Laundry

Mr. and Mrs. B. J. Ogden
908 Blackwell Road Phone 342
Wet Wash - Rough Dry - Finish

Ranger Lumber & Supply Co.

Calvin Brown - Earl Brown

Dr. Pepper Bottling Co.

Compliments of

WESTERN AUTO Associate Store

Home Owned by Betty and Ken Lewis
Ranger, Texas

Tommie's Grocery & Market

Open Every Day in the Week - 6:30 a.m. to 10 p.m.
Tommie and Mary Highway 80 East

Law's Premier Service Station

Mr. and Mrs. Maxie Law
Your Friendly Service Station

Brownie King's Cafe

Catering To Parties
Ranger, Texas

American Aggregate Corp.

Frigid Queen

Super Dogs - Hot Dogs - Steak Sandwiches
Milk Shakes - Malts - Ice Cream

Ranger Insurance Agency

C. B. Pruet

Betty's Flower Shop

FLOWERS FOR ALL OCCASIONS
210 Main Phone 640

Porkey Pig

RAYMOND BRYAN
The Ranger Times

El Rancho Coffee Shop

L. N. Bryan - Raymond Bryan
Highway 80 West Ranger

Ford & Jones

Ranger Hill Cafe - Texaco Service Station
Modern Courts

Roberson Motors

Sales-FORD-Service

J. C. Penney Company

John L. Smith, Mgr.

Moffett Electric

Mr. and Mrs. D. O. Moffett

C. E. Maddocks & Co.

Insurance - Real Estate
Phone 252

The Smart Shop

Especially For You

Commercial State Bank

Member F. D. I. C.

Bob Baileys Texaco Station

Washing - Greasing - Tires - Batteries
Main and Commerce

Beck's Cafe

-You'll Enjoy Our Good Home Cooked Food-

Montgomery Ward

Anything Wards Sells May Be Bought On
Convenient Monthly Terms

Locasa Lines
Mrs. D. B. Raney
Visitors in the home of Mr. and Mrs. Jack Pockrus this week were

Mr. and Mrs. R. S. McColium and daughter, Mary Kathryn of Minto, Arizona, Mrs. M. L. Eudy, Mr. A. W. Sechrist, Mr. and Mrs. G. A. Guess, Mrs. Monrow, Mrs. Dora Dempsey and children, Gerald and Carlton, Mr. and Mrs. Truman

Dempsey and Bobby Dale, all of Ranger, Mr. and Mrs. Robert Jackson, Mr. and Mrs. Carson McNabb and Melba Jean, Mr. and Mrs. Hubert Pockrus and Billy Jack.

Mr. and Mrs. Howton and children, and A. E. Howton, Jr., and family of Ranger visited their parents, Mr. and Mrs. A. E. Howton, Sr. Sunday

Mrs. J. A. Caraway visited her daughter, Mrs. Melton Huttrell of Fort Worth this week.

Mr. and Mrs. D. B. Raney, James and Ann spent Sunday with Mrs. Raney's mother, Mrs. J. C. Stark and sister, Mrs. Joe Davis and other relatives at Goldthwaite.

All Training union workers of New Hope Baptist church are urged to attend "M" night at Cisco, Friday night, Dec. 9.

John Richards, Jerry Bennett, and Don Roberts of Breckenridge visited James Raney Saturday. They all went hunting.

Airman First Class Alton Stiles, who is being transferred from Newfoundland to El Paso and wife visited his aunt, Mrs. A. N. Bradford, Sunday.

Other visitors to Mr. and Mrs. Bradford Sunday were Mr. and Mrs. Virgil Stiles and son, Darrah of Houston and Mr. and Mrs. Lloyd Howton and children Linda Carol and Lloyd Douglas of Fort Worth.

The Wise Man Is Wise—
... before, not after an emergency. And wise indeed is he if he looks into the title before he pays out his money for real estate. The best way to find out about a title is to get an abstract and have it checked by your attorney. If he, after examination, tells you that the title is sufficient and merchantable, you may feel safe in making the purchase. Otherwise, don't buy for faulty titles are not only expensive but troublesome.

EARL BENDER & COMPANY
Eastland (Abstracting since 1923) Texas

Pre-Christmas SPECIAL
10% OFF
ON ALL COSTUME JEWELRY FOR WED. - THURS. - FRI. and SAT.
S & H GREEN STAMPS GIVEN
Ranger Jewelry Company
J. R. and Ethel Ervin
PARAMOUNT HOTEL BUILDING

TRY A CLASSIFIED FOR QUICK RESULTS!

GETTING UP NIGHTS
If worried by "Bladder Weakness" (Getting Up Nightly too frequent, burning or itching irritation of Bladder, Cloudy Urine) due to common kidney and bladder irritations, try **CYRTEX** for quick, gratifying, comforting help. A unique **CYRTEX** tablet used in past 25 years gives safety and success. Ask druggist for **CYRTEX** under satisfaction or money-back guarantee.

BARBER SHOP
Modern Equipment
Don't forget, to look your best at all times. You need to visit Tony's at least every 10 days. "Keep your appearance up."
TONY'S BARBER SHOP
223 1/2 Main - Phone 108



PLATTER PALACE—It's one of the few commercial buildings ever built in circular form. This headquarters for a photograph record firm nears completion in Hollywood, Calif. Architecturally, its builders say it's a very efficient form for office use. About 85 per cent of floor space is usable. All offices have outside exposure.

NEWS FROM STAFF
By Mrs. M. O. Hazard

Mr. and Mrs. Wayne White visited recently with their son-in-law and daughter, Mr. and Mrs. James Butler, in Austin.

Mr. and Mrs. J. C. Foreman and children, Kenneth and Allen, of Olden were visitors recently with Mrs. Foreman's parents, Mr. and Mrs. Allen Crosby.

John M. White was a business visitor in Eastland and Ranger lately.

The Rev. Hampton of Brownwood was a visitor in the community recently.

Mr. and Mrs. M. O. Hazard

Wrap Up Kitchen Freedom in Gift Dishwasher

BY EDNA MILES

IT'S fun to entertain. The excitement of getting ready, of trying out a new recipe, of polishing up the silver and getting out your prettiest linen all make for a festive feeling. But the letdown comes when the party's over. Surveying the wreckage, you ask yourself if it was worth it. But that's all wrong. Because sharing your home with your friends—being hospitable—brings everyone concerned the healthiest kind of emotional reward. Nevertheless, few of us relish the cleanup department. By the time the last dish and ash tray have been put neatly away, it's usually two a.m. That's why, when you make up your Christmas list, it might be well to consider pooling family funds for gift-buying and putting them all into the purchase of a mobile dishwasher, one that you can guide around to pick up dirty dishes or store clean ones. It's a family investment, true, but your husband and children don't relish k.p. any more than you do. One particular mobile dishwasher is designed for easy toploading, is easy to move around but is still a full-sized dishwasher and you can take it along when you move.



Mobile dishwasher is a gift the whole family will enjoy. It needs no special installation and can even be used as a dirty-dish pick-up cart.

CALL 224 FOR CLASSIFIEDS

Everybody's Talking About...
Dearborn
Mr. and Mrs. C. L. Henderson and Mrs. M. A. Abel were recent shoppers in Eastland and Cisco.
Mr. and Mrs. M. O. Hazard were Abilene visitors lately.
Mrs. L. G. Powell and Mrs. T. Pope were shopping in Eastland recently.

AREA HEAT
24.95 up
RANGER FURNITURE EXCHANGE
123 N. Rusk RANGER Phone 242

visited with their son-in-law and daughter, Mr. and Mrs. Sam Fonville, Desdemona.

Farmers here are much in need of rain on their grain and pastures.

Mr. and Mrs. C. L. Henderson and Mrs. M. A. Abel were recent shoppers in Eastland and Cisco.

Mr. and Mrs. M. O. Hazard were Abilene visitors lately.

Mrs. L. G. Powell and Mrs. T. Pope were shopping in Eastland recently.

Mr. and Mrs. W. K. Hawthorn of Abilene were guests of Mr. and Mrs. Walter Duncan. The Hawthorns accompanied by Mrs. Duncan visited in Stephenville.

Mr. and Mrs. Jim Coop were Eastland visitors last Saturday.

Friends of Mrs. M. O. Hazard surprised her with a kitchen shower. The Hazard recently had their kitchen redecorated and newly furnished.

Mrs. Wayne White visited in Eastland with her sister, Mrs. Virgil Massengill, and their mother, Mrs. Agnes Williamson. Mrs. Williamson returned home with Mrs. White for a few days' visit.

Mr. and Mrs. T. E. Pope visited in Gorman recently.

Mr. and Mrs. M. O. Hazard were guests of their son, Boyd Hazard, and family in Morton Valley recently.

UNCORK 25 FEET OF STOMACH TUBES
Feel half-awake, headache, when stomach is sore by constipation? Black-Draught brings wonderful relief when you feel lousy, suffer gassy digestive upset from constipation. Helps sweeten your stomach at same time!
Laxative-Stomach Sweetener Works Overnight! No harsh griping. Thoroughly but gently uncorks all 25 feet of clogged intestines. Comforting relief from constipation while you sleep. Helps sweeten your stomach too. **Old Black-Draught today.**
*In Powder or Granulated form... and now in new, easy-to-take **Tab's**, too!
FOR CHILDREN When constipation causes children's indigestion, get honey-sweet Syrup of Black-Draught.

WORLD FAMOUS Perfect QUALITY Keepsake
COPLEY \$200.00
Also \$190 to 1800 Wedding Ring \$100.00
You can pay more, but you can't buy a finer diamond ring than a Keepsake.
GUARANTEED REGISTERED and PERFECT!
D. E. PULLEY JEWELER
Jewelry - Silverware - Diamonds - Watches

Montgomery Ward
407 MAIN PHONE 447
Operates for 100 miles for Less than 50¢
The most economical "powered-vehicle" you can own! Come in today—ride Ward's new English-styled, American-made Power-Cycle. Easy to operate... automatic clutch and transmission. Speeds... 40-45 miles per hour. Economical... 85 to 100 miles per gallon. Operates for less than 1/2c a mile! Comfortable to ride—safe to own. Warranted. Ask about Terms. **298⁵⁰**
PRIZES TO BE GIVEN AWAY
You Are Invited To **MONTGOMERY WARDS**
Thursday Evening at 6:30 p.m.
WE WILL GIVE AWAY SOME VALUABLE PRIZES.
No Obligations. You don't have to buy anything to participate.

Give your family "The Gift That Keeps On Giving!"
new RCA VICTOR TV
Never before such a wide range of models, styles and finishes to choose from—at the lowest prices in RCA VICTOR TV HISTORY.

THIS CHRISTMAS give your family new RCA Victor TV! Choose from dozens of models, styles and finishes—many at new low prices—all part of RCA Victor's Big Change in TV!
THERE'S NEW ROLLAROUND TV you can watch in any room of your house... new swivel sets that let you watch TV from anywhere in the room. There are new two-tone finishes... new advances in performance and value!
COME IN TODAY... select the RCA Victor TV that will make your family happiest. And remember, when you give RCA Victor TV, you give "The Gift That Keeps On Giving!"

RCA Victor Thrifteen 17. Lowest priced RCA Victor TV! "Hidden Panel" tuning. Famous "Deep Image" picture tube. Ebony finish. Model 175022. **159.95**

RCA Victor Brady 21. Lowest priced RCA Victor console. Mahogany grained finish. Lined oak grained finish, extra. Model 215632. **259.95**

RCA Victor Towne 21. Lowest priced RCA Victor big-screen TV! New "Hidden Panel" tuning. Black textured finish. Model 215603. **189.95**

RCA Victor Gladstone 21. "4-Flu" picture. Mahogany grained finish. Walnut and lined oak grained finishes, extra. Model 217435. **279.95**

Killingsworth's
Phone 29 - Ranger