

# Lockney Beacon

FLOYD COUNTY LEADS ALL WEST TEXAS IN VALUE OF CROPS PRODUCED. LOCKNEY IS IN THE HIART OF THE BEST FARMING SECTION OF THE PLAINS, AND IN TH E GREAT SHALLOW WATER BELT

VOLUME TWENTY-FIVE

Lockney, Texas, Thursday, September 2nd, 1926

Number 50

## LOCKNEY SCHOOL TO OPEN MONDAY

1926-27 TERM WILL OPEN WITH LARGEST ENROLLMENT IN SCHOOL'S HISTORY

The 1926-27 term of the Lockney Public School will begin next Monday, Sept. 6th, with the largest enrollment and brightest prospects for a big school year that has ever been the case in Lockney. A corps of teachers have been selected from the very best talent available, and this year there will be two more teachers in the faculty than there were last year.

The teachers are in Canyon this week attending the Teachers' Institute at the West Texas State Teachers' College, and will return to Lockney by the end of the week to be in readiness to take up their duties for the term next Monday morning.

Every scholastic in the Lockney District should be on hand promptly Monday morning and start off the next school year's work with a vim and determination to make this a big school year and learn as much as possible.

The teachers elected for this year's term of school in Lockney, are as follows:

W. D. Biggers, Superintendent, HIGH SCHOOL

M. A. Noble, Principal and Coach, Miss Willie Merle Trapp, Miss Ethel Rice of Hereford, Miss Ethelene Senter, of Waco, Miss Mary Lucy Cleore, of Madisonville, Texas, Miss Alice Bridges, Miss Corma Thomas.

GRAMMAR SCHOOL

Gordon Denman, of Alpine, Texas, Principal, Miss Anna Mae Collins, Miss Hula Coleman, Miss Thelma Steele, Miss Mollie Newman, Miss Olga Honea, Miss Mary Chambers, Miss Ethel Cochran, Miss Jettie Wells, Miss Carabel Biffle of Silvertown, Miss Watson of Canyon, one teacher yet to be elected.

Miss Laurean Christian is Musical Director, and Mrs. Chas. Simpson, Expression.

### A. WEDMORE DEAD

Mr. A. Wedmore, age 78 years, six months and 1 day, died at his home near Roseland School House, eight miles northeast of Lockney Saturday evening at 8:30 o'clock, after an illness of several months with paralysis. Mr. Wedmore was stricken with paralysis on Jan. 28th, 1926, but recuperated sufficiently to be about until about four weeks ago, when he was forced to remain in his bed until the time of his death.

Mr. Wedmore was born in Portishead, near Briston, England, on Feb. 24th, 1848, coming to the United States in 1869. He was married to Mrs. Amanda Christian at Denison, Texas, on Dec. 29th, 1877. To this union was born four children, Samuel Wedmore, who died at the home of his sister, Mrs. C. H. Brown, eight years ago, Mrs. J. W. Ormond of Elba, Ark., Mrs. J. T. Alexander, of San Antonio, Texas, and Mrs. C. H. Brown of Lockney. He lived with his daughter, Mrs. C. H. Brown, near Roseland, for the past ten years.

Mr. Wedmore was a member of the Baptist Church at Roseland.

Funeral services were conducted by Revs. J. W. Saffle and C. J. McCarty Sunday afternoon, and interment was in the Lockney cemetery at 5 o'clock Sunday afternoon, under the direction of Undertaker Grady R. Crager.

Mr. Wedmore has one sister, Mrs. Daw, who lives in Briston, England, surviving him.

### BOY DIES FROM GUN WOUND; KIN IS HELD

Sweetwater, Aug. 30.—Elmore Widener, 18, died at the home of his parents here Thursday afternoon from infection in a wound suffered in a shooting affray near Roby, thirty miles north of here, on July 24. A brother-in-law, J. W. Reeves, of Roby, is held under \$1,000 bond.

After the shooting Widener was brought to a sanitarium here and a leg was amputated; but the move failed to save his life.

While doctors attended Widener, his sister, Mrs. J. W. Reeves, wife of the man held, died in an adjoining room in the same hospital. Her death was pronounced due to natural causes.

Mary Ollie and Sue Mae Persons of Quitaque are visiting Ruth Harper this week.

## TABLE OF FLOYD COUNTY RETURNS FOR SATURDAY ELECTION

	Governor	*Atty. Gen.	Treasurer	Co. Judge	Sheriff & Tax Col.	Co. Clerk	Co. Treas.	Co. Com. Precinct 2
FLOYDADA	164	642	574	135	260	401	575	246
STARKEY	43	71	74	26	43	53	62	70
ALLMON	11	39	25	12	14	24	22	28
SAND HILL	16	86	74	12	37	44	43	57
LOCKNEY	115	552	519	94	146	453	208	467
AIKEN	14	51	41	18	26	34	33	31
PROVIDENCE	27	27	21	19	27	11	40	10
LONE STAR	24	92	89	16	24	72	65	60
SUNSET	18	38	39	15	21	30	27	32
FAIRMONT	13	23	23	12	13	21	18	17
CEDAR	56	50	69	26	39	49	31	79
BAKER	99	80	94	40	68	62	90	87
CENTER	21	81	62	20	40	24	48	51
ANTELOPE	31	30	43	12	21	30	24	34
LAKEVIEW	46	58	59	18	39	36	54	43
HARMONY	4	39	27	7	22	11	26	17
GOODNIGHT	9	14	17	3	5	16	10	12
TOTAL	711	1973	1856	487	835	1398	1337	1363

W. W. Payne was the nominee in Precinct No. 4, for re-election to the office of County Commissioner of Precinct No. 4, over A. A. Beedy, by a majority of 27 votes. The vote for J. H. Byington, justice of the peace, and Leonard Brewster, for constable, were nominated in Justice Precinct No. 2, without opposition.

## WANT EXHIBIT FOR AMARILLO FAIR

PEOPLE ASKED TO PHONE BEACON IF THEY HAVE GOOD SPECIMENS TO SHOW

The Amarillo Fair will begin on Sept. 22nd and Floyd county must have a farm exhibit at the fair, first because the ten counties of the Shallow Water Belt are going to have a special department at the fair exhibit hall, and it would not be a very good advertisement for Floyd county to only have a vacant booth in the lot. Second, because this will be a good place to advertise Floyd county, and we have one of the best crops this year from which to pick an exhibit.

Any person in Floyd county who has a fine specimen of any field or garden crop and is willing to let us have it to put in the exhibit will confer us a favor by phoning the Lockney Beacon office and we will have some one to come out and get same, or if you are coming to town bring the specimens along with you and leave them at the Beacon office.

We will need several bundles of wheat, rye, barley, oats, speltz, millet, sudan grass, alfalfa, all the different kinds of maize, kaffirs, etc., some cotton stalks with holes on them, Indian corn, all kinds of garden truck and fruits. In bringing in maize, kaffirs, Indian corn, etc., we will need ten heads or ears for each variety. You will certainly confer us a favor if you will assist us in getting up this exhibit as we do not have very much time in which to gather the exhibit and get it in shape to carry to Amarillo.

### 2,303 GIVEN CLEMENCY BY GOVERNOR FERGUSON

Austin, Aug. 30.—A total of 2,303 clemency proclamations issued by Gov. Miriam A. Ferguson since her induction into office Jan. 20, 1925, is shown by the records of the Secretary of State's office.

Full pardons issued numbered 365 and conditional pardons 756. Persons to the number of 336 who have served their sentences have been restored to citizenship. Other clemency proclamations include: Paroles 168, furloughs and extensions of furloughs 549, death sentences commuted 8, jail sentences remitted 20, fines remitted 22, bond forfeitures remitted 7, conditional pardons revoked 9, paroles and furloughs revoked 31, bond forfeitures reduced 17, suspended service on mandates of the Court of Criminal Appeals 2.

Mrs. J. H. Hohlaus and children are visiting friends in Plainview for a few days.

### FLOYDADA AND LOCKNEY WILL HAVE GAS SOON

Engineers to Begin Work of Surveying Line from Amarillo Field

Floydada and Lockney will probably have natural gas by Dec. 1, according to M. L. Cunningham of the Bonham Construction Co. Surveys on the line from the Amarillo gas field will start at once, it is expected that they will be completed by Sept. 10 and the contracts will be let by Sept. 15.

The line will be surveyed by the construction company up to Swisher county line where it will be taken over by different engineers. The Lockney-Floydada line from Plainview will be surveyed by G. A. Linder, county surveyor. A. H. Harris of Lubbock will survey the line from that place to Slaton.

### MORGAN LAWSON'S HOME BURNS

The farm home of Morgan Lawson, 16 miles north of Lockney was burned Tuesday about noon, when a stove on which Mr. Lewis was cooking exploded. Mr. and Mrs. Lawson are in the region of San Angelo on a visit, and Mr. Lewis was looking after the place while they were away.

The house was a total loss, and only a few household goods were saved. It is no known whether there was any insurance on the house or furniture.

### MOODY TO IGNORE FERGUSON THRUST

Austin, Aug. 31.—Attorney General Dan Moody, after reading a statement issued to the press Tuesday by former governor James E. Ferguson on the anniversary of his 55th birthday, said that he would not make a reply at this time.

One of the democratic gubernatorial nominee's advisers said, however, "We are not for peace at any price, but we are for peace with honor."

### SANDHILL COMMUNITY TO HAVE ANNUAL FAIR

September 22 is the date set for the Sandhill Community Fair to be held at the Sandhill school. This community is recognized as one of the liveliest in West Texas and the community fair is an annual event. Special effort will be made this year to conform with the rules and regulations of the County Fair to be held in Floydada Sept. 24-25, in order to bring a winning exhibit to the county fair.

Officers and directors have been assigned their duties and everyone in the community is making preparations to have the best community fair in the history of the community.

Mont Carter and Dennis Heflinger of Plainview were here Tuesday.

## MOODY IS NOMINATED FOR GOVERNOR

HATCHER WINS OVER BALL; ALLRED LOSES TO POLLARD; MOODY HAS ABOUT 250,000 MAJORITY

In Saturday's primary Moody defeated Ferguson by the largest majority possibly ever given a nominee in a primary in the United States. At last reports Moody led with 190 counties complete and 248 counties out of 252 counties from, was about 250,000.

Allred is defeated by Pollard by a majority of about 9,000.

Hatcher has defeated Ball by about 135,000 votes.

Governor: Ferguson 261,948; Moody 483,398.

Attorney General: Allred 344,591; Pollard 353,867.

Treasurer: Ball 267,272; Hatcher 398,297.

### FATHER IS KILLED FOLLOWING A QUARREL WITH SON

Coleman, Aug. 31.—D. F. Sanderson, 48, was shot and killed here Tuesday afternoon following a disagreement with his son growing out of a divorce suit filed by Mrs. Sanderson several days ago. The son, D. F. Sanderson, Jr., 18, was arrested in connection with the shooting.

The son told officers that last night the father had beaten his mother and that the treatment was repeated this morning. This afternoon, when the father started to abuse his wife, the son went to her aid, officers were told, with a 45-calibre pistol.

### Robert Ayres Mashes Hand

Robert Ayres is carrying a very badly mashed hand in a sling this week, caused from an accident that happened Tuesday. While unloading a barrel of lubricating oil at Waller Motor Co., the barrel fell on his right hand, cutting one finger nearly off, and bruising and mashing the hand very badly.

### CAGE AND RAINEY SILENT ON PLAINS W. T. C. ACTION

Austin, Aug. 31.—Pohn Cage, highway commissioner, and Doak Rainey, assistant highway engineer, refused to comment Tuesday on resolutions of the Panhandle-Plains district convention of the West Texas chamber of commerce, asking Rainey's resignation.

Last week, Cage demanded Rainey retract certain statements in an article on West Texas weather published in the Texas highway bulletin, or resign. Rainey promptly modified the article.

## MAY HEAR FROM PERMIT THIS MONTH

THINKS I. C. C. WILL TAKE PROMPT ACTION ON RETURN FROM VACATION

That the Interstate Commerce Commission will take prompt final action on the application of the Texas Panhandle & Gulf, Santa Fe, Fort Worth and Denver and Quannah, Acme and Pacific applications for permission to build in West Texas is indicated in correspondence of The Herald.

Oral arguments were heard before the full commission in July. The commission is in vacation this month, but convenes in September.

Jay Jerome Williams, publisher of The United States Daily, Washington, D. C., at the request of The Herald detailed the regular reporter of this paper on Interstate Commerce Commission activities on an assignment to determine possible date of action on these application for certificates of necessity and convenience.

"The cases referred to in the memorandum returned herewith have been closed and now await final action of the Commissioner," Mr. Williams' reporter states. "With reference to the probable date of decision, Examiner Davis, in charge of these cases, said: 'Your guess is as good as mine, and I have no reason to believe his statement is literally true. This is vacation month for the Commission. When its meeting commences again next month it will doubtless decide these cases as quickly as possible, Mr. Davis said, but he has no idea how long a time preparation of the final report and order will take.'"—Plainview Evening Herald.

### CATALOGUES FOR FLOYD COUNTY FAIR PUBLISHED

Catalogues for the Floyd County Fair to be held at Floydada, Sept. 24 and 25 have been mailed out to those interested in the fair. The catalogue contains a complete list of the \$1,000 in premiums to be given away during the fair. One thousand catalogues were made and every person in Floyd county interested in bringing in some product to the fair will be mailed one as long as they last.

The fair, which is the first to be held in the county since 1919, will be held this year in the city tabernacle and other buildings to be erected near the tabernacle. It is believed that it will be necessary to erect two more buildings or tents in order to take care of the many exhibits.

A splendid educational and entertainment program is being arranged by the local American Legion Post who have charge of the concession and amusement rights.

### MOODY URGES DEMOCRATS LAY ASIDE CAMPAIGN BITTERNESS

FERGUSONS REFUSE TO COMMENT

Austin, Aug. 30.—A call to the Democrats of Texas to lay aside the bitterness of the campaign just closed was sounded here Saturday night by Attorney General Dan Moody, Democratic gubernatorial nominee.

With Mrs. Moody, he watched returns at a local newspaper office. Attired in striped rousers, blue coat and white shoes, "Fighting Dan" wore his happiest of smiles. He beseeched reporters not "to write about my pants."

Gov. Miriam A. Ferguson and her husband, James E. Ferguson, declined to comment on the election.

Moody's statement: "The returns at this time indicate a substantial and decisive majority in favor of my candidacy, and this I accept with humility. I see in the results of the primary the complete triumph of the principles of government advocated in the campaign, and I do not regard it as a personal victory."

"It is my sincere hope that whatever of bitterness and dissension the campaign may have engendered will be forgotten and that the Democrats of Texas will unite to promote the welfare of our state and the peace, happiness and prosperity of our people."

Sell Watson and family, Earnest Reece and wife and J. B. Reece of Grayson county, are here this week visiting H. P. Coleman and family.

## WORKING FOR HIGHWAY TO SPUR

FLOYDADA AND LOCKNEY CHAMBERS WILL STRIVE TO PUT ROAD THROUGH

The need of a connection between the Lee Highway and Highway No. 53—Spur Highway—was brought out in a meeting of the Floydada Chamber of Commerce at a banquet held at the Commercial Hotel in Floydada Tuesday night. Lockney was represented at the meeting by H. B. Adams, who was accompanied to Floydada by Mr. Geo. F. Kinyon of Ranger.

The proposed cut-off—for a cut-off is what it would be—would leave the Spur-Lubbock highway a few miles this side of the caprock, and come straight to Floydada, and through Lockney over the Lee Highway to Plainview, saving the travelers about fifty miles between Spur and Plainview. The present highway goes to Lubbock, then up the Santa Fe to Plainview. With this road put up in first-class the people wanting to go to Plainview, Amarillo, New Mexico points, or Colorado, by taking the road leading through Floydada and Lockney could save about fifty miles distance in reaching Plainview, over this route instead of going over the route that now leads through Lubbock. The writer has traveled this route a number of times in making trips to Central Texas, and while the road at this time is good, and most all the way you can run as fast as you desire, it is not standard width in places, and is not graded up as it should be. An effort will be made to get the very shortest mileage from Floydada to an intersection with the Spur road somewhere just this side of the caprock, and then get the road widened out to the standard highway width, have it graded up, and then an effort will be made to get the State Highway Department to designate the highway and take it over for maintenance.

If the State takes this road over or if by getting it up in good shape and advertising the saving of mileage over it, it is hoped to divert a large per cent of the travel from Central Texas over the line and through Floydada and Lockney. This new road would connect with the Lee and F. F. Highways at Floydada, and run over these two highways to Plainview and west, and intersect the highway to Amarillo and Colorado at Plainview.

Every person in Floyd county should be in favor of putting this road through, as it will give the county one more highway, and will be the means of an extra lot of travel thru these two towns, besides it will be a means of getting more state highway money for the county, and will be the logical route for people to travel when they want to see the country in the newly formed counties organization, which will be extensively advertised, and would be a direct highway right through the center of the Shallow Water Belt of the Plains.

### APPROPRIATIONS TO BE READY SEPTEMBER 1

Austin, Aug. 28.—Appropriations approximating \$17,500,000 will become available Sept. 1 for the support of the state government.

All unexpended appropriations for the year ending Aug. 31, 1927, this fiscal year will revert to the general revenue fund with the closing of books Aug. 31, 1926.

Governor Miriam A. Ferguson has authorized this fiscal year more than \$2,000,000 in deficiencies. Appropriations to cover these deficiencies may be made at the special session of the legislature convening Sept. 13.

More than \$6,000,000 will be available Sept. 1 for support of educational institutions and \$3,291,431 for the various state departments.

### Boy Breaks Elbow

The eight-year-old son of Mr. and Mrs. Calvin Hilburn, was carried to the Plainview sanitarium Wednesday afternoon, following an accident at his home. The little fellow jumped off of a cow shed, striking on his elbow, causing the elbow to be tor and the knuckle broke off of the bone at the elbow.

The baby of Mr. and M. Jetton is quite sick at this

The Lockney Beacon

Entered April 14th, 1902, as second class mail matter at the Post Office at Lockney Texas, by act of Congress March 3rd, 1879.

H. B. ADAMS, Editor and Owner

TERMS OF SUBSCRIPTION
One Year \$1.50
Six Months .75
Three Months .40
Subscription Cash in Advance

MEMBER OF TEXAS PRESS WEEKLIES, Inc.

ADVERTISING RATES
Display, per column inch 35c
Classified Advs. per word 2c
No Classified Adv. less than 25c

The victory over Fergusonism was complete, as far as the voice of the people was concerned in the primary held last Saturday, but that will not stop the Fergusonists in Texas, for Jim Ferguson is going to hang on to office until he is forced out. Whether he will stay in office until the inauguration of Dan Moody or not, will depend upon what the extra session of the legislature does when it meets this month. However, we predict there will be no meeting of the legislature if Mrs. Ferguson has the power to recall her proclamation calling the legislature together. Mrs. Ferguson is aware of the fact that the first steps that the legislature will take when they meet will be to impeach her as governor of Texas, and to repeal the amnesty bill, and take forever the rights of Jim Ferguson as a free citizen away from him. The Fergusonists threaten court procedure against Moody on the ground of illegal campaign contributions, and Moody can come back at them with the same charge; Moody has already proven that the contributions in question in his campaign were regular and not a violation of the law; Ferguson has never said anything about the illegal contributions in Mrs. Ferguson's campaign that we have heard about. No doubt the Fergusonists will either enter the November election as the standard bearers of some unknown party, or as independent democrats-republicans, and try to defeat Moody in the fall election, or give all the support they can muster to the republican candidate. We believe that the Fergusonists know that they are done for in Texas, but that they will hang on to the governor's office until they are forced out, in order to get every dime of the state that they can. Jim Ferguson has a check-up on up on Texas for the next five months provided the legislature don't throw a wrench into the cogs of the Ferguson machinery. We are in hopes that the legislature will be able to dethrone the Fergusonists and save the state the expense from now until the monarchy is succeeded by good government.

Well the election is over, and we both won and lost preferred candidates, but we are very well satisfied, and can support ever man elected to office in the county without any animosity. They were all good men, and while we had our personal choice, we had no ill feelings against any man in the race for any office, and we say here that we still stand for law enforcement and the rights of the people to say how, when and where their tax money is spent, and we are strictly in favor of every officer who does his duty as an officer, and are here to help him in any way we can. We are sure that each of the officers elected want to do their duty and want the backing of the lawabiding citizens of the county, and it is the duty of every lawabiding citizen, whether the man you preferred was victorious or not, to fall in line and help the new officers enforce the laws to the letter. We want to congratulate the winners on the nice campaign that was made in the county, and wish for them a successful term of office. We want to thank all the candidates for the business given this office during the campaign, and assure them of our appreciation.

Panhandle Baptist Sunday School and B. Y. P. U. Convention
The Panhandle Baptist Sunday School and B. Y. P. U. Convention will meet with the First Baptist Church in Amarillo, Sept. 2nd and 3rd. The following program will be rendered during the two days session:
DAILY SCHEDULE
September 2nd and 3rd, 1926
Thursday, Sept. 2nd
J. B. TAYLOR, Presiding
10 A. M.—Opening Praise Service, directed by I. E. Reynolds, Baptist Seminary, Fort Worth, accompanied by Orchestra of First Baptist Church, Amarillo.
A. M.—Welcome Address—Yates, Pastor First Baptist Amarillo.
M.—Response—Rev. Jno. Hart.
Get Acquainted—I. E. Reynolds.
L.—Address—L. E.

WRIGLEYS PEPPERMINT FLAVOR
A lasting treat and good for teeth, appetite, and digestion.

3 handy packs for 5c

White, Canyon.
11:05 A. M.—Address—J. B. Taylor Wellington.
11:20 A. M.—Inspirational Message—Rev. Fred Eastham, Pastor McKinney Ave. Baptist Church, Dallas.
12:00 A. M.—Adjourn.
Afternoon Session
2:00 P. M.—Song Service—I. E. Reynolds.
2:15 P. M.—Devotional and Chalk Talk—Miss Ethel Hudson, Dallas.
2:35 P. M.—Special Music.
2:40 P. M.—Address—I. E. Reynolds.
3:10 P. M.—Sunday School Conferences, Cradle Roll, Beginners and Primary Departments.—Led by Mrs. W. L. Day, Amarillo.
Junior Department—Led by Mrs. W. W. McClasky, Wellington.
Intermediate Department—Led by Mrs. A. O. Thompson, Hereford.
Young Peoples' and Adults Depts.—Led by G. S. Hopkins, Dallas.
3:50 P. M.—B. Y. P. U. Conference Period.
Primary Department—Led by Mrs. L. S. Zimmerman, Amarillo.
Junior Dept.—Led by Mrs. L. E. Waite, Canyon.
Intermediate Dept.—Led by Miss Ethel Hudson, Dallas.
Senior-Adult Dept.—Led by T. C. Gardner, Dallas.
7:30 P. M.—Song Service—Led by I. E. Reynolds.
8:00 P. M.—Address by T. C. Gardner.
8:30 P. M.—Special Music.
8:40 P. M.—Inspirational Message by Rev. Fred Eastham.
Friday, Sept. 3rd, 1926.
9:00 A. M.—Opening Praise Service led by I. E. Reynolds, Ft. Worth.
9:30 A. M.—Address by Dr. C. E. Routh, Editor Baptist Standard, Dallas.
10:10 A. M.—Business Session—Election of officers, reports of committees, etc.
10:45 A. M.—Special Music.
11:00 A. M.—Inspirational Message by Rev. Fred Eastham, Dallas.
12:00 A. M.—Adjourn.
Afternoon Session
2:00 P. M.—Song Service led by I. E. Reynolds, Fort Worth.
2:20 P. M.—Address by Dr. F. S. Greener, Gen. Secy. of Baptist General Convention, Dallas.
3:00 P. M.—B. Y. P. U. Conference Period.
Primary Dept. led by Mrs. J. L. Racker, Amarillo.
Junior Dept. led by Miss Sarah Barnett, Pampa.
Intermediate Dept. led by Miss Ethel Hudson, Dallas.
Senior-Adult Dept. led by T. C. Gardner, Dallas.
3:40 P. M.—Sunday School Conference Period.
Cradle Roll, Beginners and Primary Depts. led by Mrs. J. L. McLaughlin, Amarillo.
Junior Dept. led by Mrs. G. C. Elder, Amarillo.
Intermediate Dept. led by Mrs. L. E. Waite, Canyon.
Young Peoples' and Adult Depts.—Led by G. S. Hopkins, Dallas.
4:20 P. M.—Adjourn.
Evening Session
7:30 P. M.—Praise Service led by I. E. Reynolds, Ft. Worth Baptist Seminary.
8:00 P. M.—Address by G. S. Hopkins.
8:30 P. M.—Special Music.
8:40 P. M.—Inspirational Message by Rev. Fred Eastham, McKinney Avenue Baptist Church, Dallas.
NOTICE—On the first afternoon of the convention, at 3:10 simultaneously with the Sunday School conference period, there will be a conference directed by Mr. I. E. Reynolds of Fort Worth, on Sunday School music. On the second afternoon at 3:00, he will direct a conference simultaneously with the B. Y. P. U. confer-

ences, on music for B. Y. P. U.
GENERAL INFORMATION
OUR MUSIC
will be directed by the best leader that can be obtained, namely Mr. I. E. Reynolds, director of the department of Gospel Music of the Southwestern Baptist Theological Seminary, Fort Worth, Texas. He will be assisted by the orchestra of the First Baptist Church, Amarillo.
CONFERENCES
There will be conferences on every phase of our Sunday school and B. Y. P. U. Work. There will also be a conference on Gospel Music, directed by Mr. Reynolds, Fort Worth.
NO REGISTRATION FEE
Be sure to register on reaching the First Baptist Church, Amarillo. Do not fail. At the proper time, an offering will be taken to defray the expenses of the convention. There will be no registration fee.
ENTERTAINMENT
will be on the Harvard plan, that is, bed and breakfast free.
WHAT'S DOING
IN WEST TEXAS
White Deer—A contract for a new forty-five room hotel has been closed here recently. Each of the rooms will have outside exposure and will be equipped with all modern conveniences. This building will also be used for a number of offices, which will also have the advantage of an outside exposure.
Lubbock—Lubbock's new \$500,000 six-story hotel will be opened Sept. 1, according to the manager. The hotel is modern in every particular. There are 124 guest rooms, a large lobby and coffee shop on the main floor, a banquet hall, and 3 private dining rooms. There will also be an open court for dancing and for public gatherings.
Big Lake—This city's paving program is to be gotten under way soon, following a recent meeting of property owners relative to carrying out the program which has been arranged, calling for paving from the Orient railroad north on Main and one block each way on all streets at their intersection with Main Street.
Rising Star—Work on the Brownwood-Rising Star state highway is making good progress. The right-of-way, which will go through fields will be delayed until crops are gathered. Three crews are at work on this project at present.
Clyde—Answering the call of Secretary W. H. Shanks of the Chamber of Commerce, the Callahan County Sheep and Goat Raisers Association, has recently been organized. The organization plans to build ware houses at Clyde and make the city a market center for their products.
Plainview—An incubator with a 12,000 egg capacity will be installed in Plainview by the Bonner-Price Co., of this city. The firm will have baby chicks to sell in season. M. M. Bonner believes that there will be a good market for the custom-hatching. The incubator to be used is one of the largest of its type sold.
Sweetwater—Agitation is being started here for the establishment of a

local creamery to be owned and operated by local dairymen. This project was started soon after the recent organization of the Nolan County Dairymen's Association.
Slaton—The Southwestern Bell Telephone Co. expects to spend an amount of \$77,000 in new building, new outside equipment and the installation of the new common battery system here soon. The completion of the new system is expected early in the new year.
Alamogorda, N. M.—Work on the new power and light plant for this city has begun. C. M. Einhart of this city is to be manager of the new plant. A total of 2300 volts of current will be generated by the plant. Lines are to be built immediately to Tularora and to a shallowwater pumping belt. They will be constructed to other cities later. The cost of the entire plant is to exceed \$200,000.
Stamford—The West Texas Chamber of Commerce has been instrumental in aiding the farmer to kill the leaf worm which has recently made its way into the bumper cotton crop of West Texas. The Chamber has put those communities needing calcium arsenate or other poisons for this pest in touch with places where supply was in excess of the demand.

MUSICAL FESTIVAL AT TECH COLLEGE

Music lovers from all corners of the South Plains will gather in Lubbock Sept. 8 to hear the Imperial

Run-Down gave out easily
"MY health wasn't any account at all," says Mrs. H. L. Cayton, of Washington, N. C. "I would start to do my housework and I would give out before I had done anything at all. I did not have any strength, and if I did the least thing it seemed to tax me so I could not finish. I was run-down sure enough. "Several of my friends had taken Cardui and they said to me, "Why don't you try it?" I knew I needed something to build up my general health and to increase my strength. "Finally one day when I was recovering from a spell of sickness, I decided to try Cardui. I got a bottle and began to take it. I could notice that I was improving as my appetite got better and I did not give out nearly so quick. I took several bottles and I felt lots better. "Two years ago I decided to take it again. It built me up and made me feel like a different person. It is the grandest medicine for women that I know anything about."
CARDUI For Female Troubles

Symphony Orchestra of Mexico at the Tech Pavilion, according to Miss Mary Dunn, resident and other members of the South Plains Music Teachers Association that is sponsoring the program.
The program will be the outstanding musical program to be offered to South Plains music lovers in several months, Miss Dunn stated.
Professor Robert S. Rechi, graduate of the Conservatory of Music in Mexico City in 1895, is director of the orchestra which is receiving acclaim from every American city where the orchestra renders a program.
The musicians will render a varied program ranging from Grand Opera to Jazz all of which will be played in the same masterful style and tone.
The musicians are more responsive to the applause of the audience than their American brothers and will play encore after encore to please the audiences who clammer for more after each number.
The orchestra will only be here one night and prices for seats are very reasonable. Adult tickets are sold at \$1.50, children, \$1.00, and children under 14 years of age, 50c. Tickets may be purchased thru the mail from Miss

PIANO TUNING
We have an expert Piano Tuner and Repairman.
PLAYER PIANOS A SPECIALTY
All Work fully guaranteed.
J. W. BOYLE & SON
PLAINVIEW, TEXAS

CROP GATHERING SEASON
Now that we have an assurance of a bumper crop of cotton and feedstuff, you are going to need the services of a good strong more so than ever before. You will have money you will want to place in a safe bank, where you can write checks for the expenses contracted in gathering and marketing your crops. Remember you check is a receipt, and often saves you paying a bill the second time. We want your account and will appreciate an opportunity to serve you.

THE FIRST NATIONAL BANK
A SAFE DEPOSITORY FOR YOUR MONEY
"There is no Substitute for Safety"

GOOD PLAINS LAND FOR SALE
ON GOOD TERMS
Land situated in Floyd, Hale, Lamb, Bailey, Swisher, Castro, Parmer, Randall and Deaf Smith Counties.
If you can make a good cash payment will consider trading for your land worth the money located elsewhere.
BAKER AND CARTER
LOCKNEY, TEXAS

JUST AS YOU LIKE IT
If you want to be certain that your daily meat be just as you like it—stop in here and order the kind you prefer. Always the choicest cuts from the prime meats of the market.
We also have a full stock of anything you might desire in staple and fancy groceries. Phone No. 10 and your wants will be cared for.
RILEY & BREWSTER
GROCERIES AND MEATS. PHONE 10.

Beauty Comfort Economy Dependability Performance
So Smooth—so Powerful
What more do you need in an Automobile?
--- at these Low Prices!
Touring \$ 510
Coach \$ 645
Four Door Sedan \$ 735
Landau \$ 765
4-Ton Truck Chassis Only \$ 375
1-Ton Truck Chassis Only \$ 495
All Prices f. o. b. Plant, Mich.
DYER MOTOR COMPANY
LOCKNEY, TEXAS
QUALITY AT LOW COST

U. S. D. A. BELIEVES CATTLE PRICES WILL INCREASE

Decreasing Supply and the Slaughter of She-Staff Are the Factors

Washington, Aug. 28.—The department of agriculture summarizes the beef cattle situation as follows:

Numbers of breeding stock, of cattle on feed, and of young stock, seem to be materially lower than for several years. Continued heavy marketings have cut into supplies of cattle, and material reductions in market movements seem likely during the next year or so.

Supply Situation

The disposition of the beef cattle-man for several years past has been to liquidate holdings and reduce production. Market prices and bank commitments prevented ranchmen from materially reducing their stocks for some time after the 1920 break but, during the last three or four years, marked reductions in the number of steers accompanied by less rapid reductions in the number of cows have taken place.

Slaughter of cows and heifers has been increasing at an average rate of something like 10 per cent per year since 1921 and the number slaughtered during the first six months of 1926 was the largest for any corresponding period since 1918, indicating that further reductions in breeding stock are taking place.

It seems probable that the market supplies of cattle for the remainder of 1926 and for 1927 will be smaller than in several years. Movements of cattle and calves from market to feed lots during the first six months of 1926 were 6 per cent less than a year earlier, while marketings were 1 per cent greater and slaughter 3 per cent greater than in 1925.

In the southwest, there are lighter supplies of cattle available for marketing than a year ago. The supply of two-year-old steers is considerably below that of a year ago, when unusual numbers were on hand because of the drouth in 1924 and 1925, which prevented putting them into condition for sale earlier.

In the northern Great Plains region certain areas recently have suffered severely from drouth. These areas sent large numbers of cattle to market during the fall of 1925. Although unusually large numbers from these districts have already been marketed this year it seems certain the total will not be any larger this year than last.

With a material reduction in the number of range cattle to be sold this fall indicated price conditions such as to discourage feeders, the number of cattle put on feed may be smaller

than last year. This is likely to result in light supplies of fed cattle to be marketed next spring and summer. The full extent of the reductions of beef cattle that have been taking place should be apparent by the autumn of 1927. Barring drouth on the range or unexpected financial disturbances, there are likely to be fewer cattle marketed at that time, and with reduced numbers of cattle on the range, in feed lots, and consequently at market centers optimistic sentiment might prompt restocking which would further reduce market supplies.

The margin between the prices of United States and Argentine cattle remains about the same as last year, and this fact when considered in the light of decreased supplies in the Argentine and the well frozen or chilled beef into the United States, Canadian supplies of beef cattle seem to be somewhat larger this year than last and the exports of both cattle and beef from Canada to the United States have been on a higher level. The movement is too small, however, to materially affect the beef situation in the United States.

Demand Situation

Present indications are that consumptive demand for beef during the next 12 months will continue good, although no better and possibly below that during the past twelve months. General industrial activity during that time has been at an unusually high level which is hardly likely to be maintained for another year.

The margin between the present price of fed cattle and feeder cattle is exceptionally narrow. In July heavy steers sold only about \$2 above the comparable grades of feeders, whereas a year earlier the margin was nearly \$5, while on good lightweight steers the July margin was only about \$2.50 above feeders, as compared to about \$5 a year earlier.

In contrast with a year ago light weight steers have been more profitable than heavier ones. If feeders respond to this situation as they have usually done in the past, there will be a better demand for lightweight than for heavyweight feeders this fall and the present unfavorable position of heavy feed steers may be reversed next summer.

Price Outlook

Fed cattle prices averaged lower during the summer of 1926 than for several years past, being only slightly higher than in 1921. For this fall and winter, the probable lighter marketings may be offset to some extent by a slightly lower demand for beef and by a hesitancy to buy feeders.

Prospects for fair supplies of corn, only a slight increase in the number of hogs to be fed, and a decrease in cattle available for feeding will tend to maintain the price of feeders on a level slightly higher than that which prevailed in the fall of 1925. Lighter weight cattle in feedlots will enable feeders to distribute market supplies over a longer period and in accordance with the movement of prices. Together with the reduced supplies, this may result in higher fed cattle prices during the coming winter and the spring of 1927 than a year earlier.

BEST CONDITION OF COTTON IN NORTHWEST

Houston, Aug. 28.—Cottons condition is best in Northwest Texas, H. H. Schutz, Government statistician here, who places it at 75 per cent, reports. The condition of cotton in North Texas is poor, his investigation showing that it rates only 53 per cent.

In all sections of the State the condition of the crop is considerably above that of the same date a year ago, according to the survey, except in North Texas where it has fallen 4 per cent below last year's 57 per cent, and in Northwest Texas, where it was 18 per cent under the 72 per cent condition in August, 1925.

In Northwest Texas it has risen 4 per cent; West and West Central Texas 13 per cent to 71 per cent; Central Texas 34 to 56 per cent; East Texas

20 to 63 per cent; South Texas 37 to 33 per cent, and in Southeast Texas 10 to 61 per cent.

Is Much Late Cotton

In Northwest Texas, the report says, there is much late cotton which can not make unless Fall frosts are delayed. Meanwhile insect damage is extensive and shedding has been very bad. Favorable weather, however, will make a great improvement.

In North Texas some growers are cutting out every other row, because of insect damage. Generally the crop is late and still to be made. Until three weeks ago prospects were considered good.

In Northwest Texas the crop is good in spots, very poor in others. Insects have taken a greater part of the making the report recites. At this time last year twice as many bolls were considered safe as now.

Insect Damage Large

Two weeks ago prospects were considered fine in West and West Central Texas, but insect damage now makes the larger percentage of late cotton very doubtful. There are fields without a boll that can be considered safe; others, particularly in the irrigated section, have a dozen or more.

In Central Texas the outturn depends largely upon combatting the leaf worm which is prevalent in every county. Deterioration has been as great as 30 to 60 per cent in some localities in the last 10 days. Every county in East Texas is infested with leaf worm and weevil and bollworms are active in most of them. Shedding has been bad.

In South Texas the crop is made and is being ginned fast. In Southeast Texas practically all the cotton is late and was doing well until the insects came. Rains are causing shedding and rotting of bolls. Blooming has been checked by the weevil.

Pleasant Valley Home Demonstration Club

The Pleasant Valley Home Demonstration Club met last Thursday, Aug. 26th, at the home of Mrs. Clarence Ginn. The call of summer vacations caused many of our members to be absent at this meeting.

Miss Bass, and the president, Mrs. Rivers, both being absent. The time was devoted to a general discussion of plans for the exhibit of our articles at the fair.

The next meeting will be with Mrs. Will Sherbert, Sept. 9th. The program for this meeting will be along the line of "How to Make a Good Exhibit." Each member is requested to bring her work as far as it is convenient, that it may be commented upon by other members, thus getting and giving ideas that will help all.

It is very important that all members be present. The date of the fair

is near and we need to prove our interest and worth as a member—Reporter.

SETH WARD WOMAN MOTHER OF 12 DIED HERE MONDAY

Mrs. Elizabeth Settle, 52, an old Hale county resident died at her home in Seth Ward yesterday at 2:30 in the afternoon. She is survived by her husband, W. E. Settle, and twelve children.

Funeral services will be held this afternoon at two o'clock from the Nazarene church with Rev. R. M. Hoeker officiating. Interment will follow in the Plainview cemetery under the direction of the Plainview Undertaking Co.

Her twelve children are all living:

ANNOUNCEMENTS

The following are the Democratic Nominees for office in Floyd county, subject to the November General election.

- FOR DISTRICT JUDGE CHARLES CLEMENTS
FOR DISTRICT ATTORNEY MEADE F. GRIFFIN
FOR DISTRICT CLERK T. P. GUIMARIN
FOR COUNTY JUDGE Wm. McGEHEE
FOR COUNTY CLERK TOM W. DEEN
FOR SHERIFF AND AX COLLECTOR P. G. STEGALL
FOR COUNTY TREASURER MRS. MAUD MERRICK
FOR COUNTY SUPT. OF PUBLIC INSTRUCTION PRICE SCOTT
FOR TAX ASSESSOR C. M. MEREDITH
FOR COMMISSIONER, Prec. NO. 2 E. H. RANKIN
FOR COMMISSIONER, PRE. No. 3 WALTER WOOD (Re-election)
FOR PUBLIC WEIGHER PRECINCTS, NO. 2 AND 3 C. K. BENNETT

FLOYD COUNTY ABSTRACT CO. R. C. SCOTT, Manager. Abstracts of Title to all Lands and Town Lots in Floyd County. Deeds and other instruments of writing prepared. Twenty years experience with Floyd County Land Titles. Room 7, First National Bank Building, Floydada, Texas.

WE ARE AFTER YOUR HEADS. We are in the market for all your different kinds of grain crops, and pay the best prices the market affords at all time. Come in and let us figure on buying your maize and kaffir heads.

WE CAN SUPPLY YOUR COAL NEEDS, TOO. We keep a supply of the best Coals obtainable, and when you are in need of fuel this is the place to get it.

LOCKNEY COAL & GRAIN COMPANY. PHONE 60. LOCKNEY, TEXAS.

Mrs. Minnie Prescott, Mrs. Beulah Johnson, Mrs. Mildred Griffin, Clyde and Clarence and five unmarried children in Plainview and Mrs. Jessie Lee of Prescott, Arizona. She is survived by her sister, Mrs. Willie Griffith of Lockney, her brother, Tom Wardlow of Plainview and two half-brothers, Andrew Wardlow, who lives in California, and Leonard Weatherspoon of Ferris, Texas.—Plainview Herald.



WE ARE AT YOUR SERVICE. We are just on the eve of gathering, what promises to be one of the largest and best cotton and feed crops that the Plains has had in a number of years, and you are going to need the services of a bank in transacting your business during the harvesting season.

SECURITY STATE BANK. Small enough to know you, large enough to serve you. The Bank for Everybody.



BUILDING SERVICE. DEVOE PAINTS AND KYANIZE VARNISHES. DEMPSTER SELF-OILING WINDMILLS. 2 gallons of Oil furnished with each mill to start it off on. PLENTY OF WELL CASING, PUMP PIPE, PUMP ROD, ALL SIZES. FLOYD COUNTY LUMBER CO. PHONE 9.

SCHOOL SUPPLIES. We have a complete stock of School Supplies for the children who will be starting another school term on Monday, September 6th. Send the children to us for the School Supplies, and they will be cared for just as efficiently as if the parents come with them. STEWART DRUG CO. Member Texas Qualified Druggists' League.

PAVING THE WAY



FIND GIRL DEAD IN TEXAS HOTEL  
Woman On Trip With Two Boys Found Shot at Childress

Childress, Aug. 30.—A "cheerful journey" into the West to take up new work ended abruptly in death here Friday for Miss Lila Clark Franklin, 22 years old, girl lawyer of Ardmore, Ok., who was found dead in a hotel room. She had been shot through the heart, but officials were unable to determine whether death was due to accident or suicide.

Miss Franklin, whose mother resides in Albuquerque, N. M., arrived here after midnight Thursday in an automobile with Norman T. Spann, 24 years old, and Carl Farmer, 22 years old, of Herdand, Ala. When she did not respond to calls hotel employees entered her room thru an adjoining room at 8 a. m. and found her lying dead on the bed, face downward, with

a small caliber automatic pistol beneath her. She had been dead several hours.

Spann said that he and Farmer went to Ardmore Thursday to take Miss Franklin on their trip to California, where the young men expected to enter the law school of the University of Southern California.

Had Been Cheerful

"She was cheerful all the way and glad she was going to California where an uncle and a brother resided," said Spann. "She expected to practice law there and considered it a great journey."

"I graduated in the same class with Miss Franklin last spring at Cumberland law school, Lebanon, Tenn. I had not seen her since, but we had corresponded in a friendly way, and when I wrote her I expected to go to California by automobile she wanted to make the trip with us."

"The idea of picking her up at Ardmore was really an after thought. When we reached Baton Rouge, La.,

we thought we could just as well go by way of Ardmore, so we went slightly out of our way to get her.

"She got ready in two hours. We told her we didn't have enough money to take three people on, so she drew her account of \$100 and we started on a lark."

Was Not Engaged

Spann said there was no question of an engagement between himself and Miss Franklin as reported.

A Coroner's jury returned a verdict of death by gunshot wound, but left the cause open. Coroner T. D. Knight said he was unable to determine whether it was suicide or accident.

TELEPHONE BILLS WILL BE MAILED ON A DIFFERENT SCHEDULE

Telephone bills have always been mailed on the first of each month. The Southwestern Bell Telephone Company now announces that the bills for Lockney will be received by subscribers on the 16th day of each month. This plan will give the subscribers an up-to-date bill. The charges will be posted up to within five days of the date the bill is received by the subscriber. It is thought that this will be more satisfactory to the subscribers and will make it easier to have the bills correct, as by

having different dates for different cities the company will be able to give all billing more careful supervision.

Printed notices will accompany the bill which will explain the new plan and will show what charges are in-

cluded. Nearly all water, light, gas and telephone companies have adopted this plan, which is called "rotation billing," and it has been found out that the plan is very satisfactory from the standpoint of the patrons as

well as for the company.

The Business Office of the Telephone Company will be glad to furnish any information in connection with this that the patron may desire.

A FULL LINE OF  
MASTERPIECE  
SCHOOL SUPPLIES  
STEVENSON'S VARIETY STORE



SMARTNESS

IS THAT SOMETHING THAT DISTINGUISHES THE CHIC FROM THE COMMONPLACE.

Quality and style can be found in many a good line, but if you are looking for that smart note of difference that savours of individuality you will enthuse over the CLASSY—

PALMER DRESSES AND COATS

—and too, our New York Line,—it's great just to take a look. You cannot help but want to buy.

\$19.75, \$24.75, \$29.00 to \$65.00

WE GIVE AND REDEEM GOLD BOND SAVINGS STAMPS

Martin Dry Goods Company

FLOYDADA, TEXAS

FLOYDADA, TEXAS

THE NEW FALL SILKS ARE AN INSPIRATION

The moment you see them you'll want to convert them into new frocks—for yourself, for the Miss going to college, or high school girls; for they are truly an inspiraion in themselves in the creating of new clothes. Silks and satins of marvelous quality, new moire silks, new satins in most popular Fall shades, it's securing time now. See the silks for day or evening wear. Reasonably priced.

GENTS' FURNISHINGS

A complete line now on hand and new Fall and Winter Furnishings for Men arriving daily. We can fit you out in the very latest clothing and novelties for your Fall and Winter Wardrobe, and the materials of the best—Such as Hart Schaffner & Marx make. Make it a point to look over our stock for the many things you will need for the season.

E. L. AYRES, DRY GOODS

SOUTHWESTERN LIFE INSURANCE CO.

LIFE INSURANCE AND FARM LOANS

If you are interested in Life Insurance or a Farm loan it will pay you to see us at once, our rates are cheaper than any other Company, and the Southwestern Life renders a real service to the policy holder. Ask your neighbor, we have about 1500 policy holders in Floyd County, and not a dissatisfied one. Remember if it's Life Insurance it should be Southwestern Life Insurance.

ANGEL & CHILDERS, Agents

Life, Fire, Tornado, Automobile, Hail Insurance and FARM LOANS

**PERSONAL MENTION**

A. P. Barker and wife visited in Floydada Tuesday afternoon.

Floyd Huff was a business visitor to Plainview Wednesday morning.

Bill Hampton was injured in a runaway last Thursday, while breaking land.

Mr. and Mrs. Baxter of Ft. Worth are here visiting their daughter, Mrs. Homer Howard.

Mrs. J. W. Mitchell of Oklahoma City, Okla., is here visiting her mother, Mrs. Byars.

Ira Simpson and family have returned from a visit of several days to relatives in Missouri.

Mrs. C. L. Gass of Palacios, Texas, is here this week visiting her son, Roscoe Gass, and wife.

Miss Alma Smith of Sand Hill has been here this week visiting her sister, Mrs. Robin Baker.

Gerald Barton is suffering with a broken nose, caused from a fall from a bicycle last Thursday.

Thos Griffith and wife returned last Thursday from a several weeks visit and outing in Colorado.

Joe Lackey, son of R. L. Lackey of Aledo community, is sick with an attack of Typhoid fever.

Mrs. Cleo Montgomery of Childress is here this week visiting her parents Mr. and Mrs. E. L. Ayres.

F. A. Anderson and family and Mrs. C. L. Anderson are in Dumas this week visiting with relatives.

Mrs. Jim Hannon of Plainview was in Lockney Tuesday visiting her parents, Mr. and Mrs. Theo Griffith.

Mrs. E. W. Suggs returned to her home at Crosbyton, Texas, after a visit with her sister, Mrs. A. J. Sams.

Miss Tommie Merrick is here visiting her mother, after spending the past year at C. I. A. attending school.

Mrs. F. E. Brown left Sunday for Abilene, Texas, where she will visit for some time with relatives and friends.

Miss Billie Griffin returned Sunday from a visit of several weeks with her mother in Stamford, and sister in Abilene, Texas.

Mr. I. Isnell and family, former residents of Lockney, are here this week visiting E. C. Cox and family, and other friends.

Claude Thornton and family, Mr. & Mrs. T. J. Thornton and son, Fred, Cope and Jack Gilbert are spending this week in New Mexico on an outing.

A. P. Barker, wife and son, of Lockney, returned last Thursday from a trip of several weeks to Colorado and Utah, where they have been on a summer vacation.

Ben Teaff, wife and two daughters, Miss Viola and Mrs. G. J. Roming of Troy, Texas, left for their home last Saturday, after a visit with their son and brother, J. B. Teaff, north of Lockney.

Miss Lou Emma Henry, who was operated on at the Plainview Sanitarium several days ago for appendicitis, was able to be brought home Sunday afternoon, and is recovering very rapidly at this time.

Mrs. Eaf Milton and children of Kress returned Monday after a visit of several days in Lockney with her parents, Mr. and Mrs. Hadley. Eaf Milton came down Monday and accompanied them home.

E. E. Dyer and family returned Friday from a visit to Lake Providence, La. Mr. Dyer states that the cotton is very rank in that section and is infested with many kinds of insects, and that the crop will be very short this year.

Miss Johnnie Christian, daughter of Mr. and Mrs. J. B. Christian of Blanco community, and sister of Miss Lauream Christian of Lockney, is here from C. I. A. at Denton, visiting with her parents and sister. Miss Johnnie graduated from C. I. A. in August and will teach Home Economics in a South Texas school this year.

A. H. McGavock was here the first of the week visiting friends and relatives. Mr. McGavock was nominated in the primary for the office of County and District clerk of Lamb county by a majority of 333 votes. Mr. McGavock was formerly a Lockney resident, and his many friends will be glad to know that he was successful in his race for office in Lamb county.

A. B. Brown, J. W. McCarley, Harrie Meek, J. H. Hohlaus, J. B. Jarnigan, Mr. Martin of Loraine, and possibly others from Lockney, went to the North Panhandle Tuesday, to be ready to make a drive on the Prairie chickens early Wednesday morning, when the open season on these birds became effective for this season. The supply of Prairie chickens this year is reported to be plentiful and these sportsmen expect to bag the limit in a short time.

Family Reunion at Jaspech Home

A family reunion was held at the home of Mr. and Mrs. J. N. Jasper, who live near the south line of Briscoe county, north of Lockney, last Wednesday, Aug. 25th. There were thirteen brothers and sisters present, thirty-seven grandchildren, and ten

great grand children. On this occasion there were 121 people present, 114 being present at the big dinner served.

Mr. Jasper came to Briscoe county in 1898 from Haskell county, Texas.

Mr. Jasper's mother died in 1915, and his father died in 1924. There were fifteen children born to the elder Jaspers, two children being dead at this time—they are Ben Jasper, who died Sept. 28th, 1924, and Clara Jasper, twin sister of Milt Jasper, who died in 1894.

Mrs. Bowman, Mrs. Jasper's only sister, of Comanche; her brother, W. R. Caruth, of Stephenville, Texas, and Frank Jasper, Mr. Jasper's youngest brother, of Victor, Texas, were present.

A big time was enjoyed on this occasion by the family, and in the afternoon several visitors came in to help make the occasion more enjoyable.

Fay Guthrie and Miss Etheline Senter Married at Crosbyton Aug. 8th

Announcements have been sent out announcing the marriage of Mr. Fay Guthrie to Miss Etheline Senter, which occurred at Crosbyton on Aug. 8th. The ceremony was performed by Rev. Bieu, pastor of the Presbyterian church of Crosbyton. The young couple kept the marriage a secret until the announcements were mailed out Wednesday of this week.

Mrs. Guthrie came here from Waco several weeks ago and accepted a position as Spanish teacher in the Lockney High School for the coming term, her mother coming with her.

Mr. Guthrie is the son of Mr. and Mrs. E. Guthrie of Lockney, and since returning from the State University of Oklahoma, has been managing the dry goods store for his father in Lockney.

Mrs. Guthrie is a cousin of A. B. Brown, president of the First National Bank.

The newly weds will be at home in an apartment at the S. W. Perry home in West Lockney.

A host of friends extend their best wishes to Mr. and Mrs. Guthrie for a long, happy and prosperous married life.

Baptist Woman's Missionary Society

The Baptist W. M. S. met Monday afternoon at four o'clock at the home of Mrs. Leo Wofford, for the regular business and social hour.

Mrs. Grace Bvans read an interesting report on the work done by the members of the society the past year.

This being the time for the election of officers for the new associational year the following were elected:

President, Mrs. E. E. Dyer; vice president, Mrs. A. A. Suits; secretary

treasurer, Mrs. Floyd Barber; pianist Mrs. C. J. McCarty; Reporter, Mrs. L. Buchanan.

There being no further business we were dismissed by prayer.

We then enjoyed a social hour and were served delicious watermelon by our hostess.

There were eleven present. All the ladies of the church are cordially invited to come to the meetings and help us carry on the work.

We meet at Mrs. Perry's home next Monday afternoon at 4 o'clock. Help us have a large crowd by coming and bringing somebody with you.—Reporter.

MISTLETOE MANAGER AT PLAINVIEW WILL TAKE TRIP

Plainview, Aug. 31.—Frank Hassell manager of the Mistletoe Creamery at Plainview, will leave this city Sept. 10th for a European tour. He will visit major cities in the eastern part of the United States and on Oct. 1st will leave New York for Europe. He

plans to take his automobile to Europe with him and will tour France, Germany, Belgium, Holland, Switzerland and Italy. He will spend some time at Nuremberg, Germany, visiting his mother. He and his family expect to be gone several months.

**Young Wife Afraid To Eat Anything**

"I was afraid to eat because I always had stomach trouble afterwards. Since taking Adlerika I can eat and feel fine." (signed) Mrs. A. Howard.

ONE spoonful Adlerika removes GAS and often brings surprising relief to the stomach. Stops that full, bloated feeling. Removes old waste matter from intestines and makes you feel happy and hungry. Excellent for obstinate constipation.—City Drug Co.

**Work That Pleases**

Phone us your desires in the Cleaning, Pressing and Alteration line, we call for and deliver promptly, and take the utmost care in handling your clothes.

**SUITS MADE TO ORDER**

PHONE 133

**City Tailor Shop**

Mrs. Annie Wilkinson, Prop.

**ISIS THEATRE PROGRAM**

**For the Week Beginning SEPTEMBER 6th, 1926**

**Monday and Tuesday—PARAMOUNT WEEK**

**ADLPHE MENJOU**

— IN —

**"THE GRAND DUCHESS AND THE WAITER"**

**"CHARLESTON" Comedy**

No. 2

**Wednesday & Thursday**

**THOMAS MEIGHAN**

— IN —

**"THE NEW KLONDIKE"**

**OUR GANG COMEDY**

**"OFFICIAL OFFICERS"**

**Friday—**

**CONWAY TEARLE**

— IN —

**"DANCING MOTHERS"**

**Saturday—**

**FLORENCE VIDOR**

— IN —

**"YOU NEVER KNOW WOMEN"**

**COMEDY—**

**"PUNCH IN NOSE"**

**PARAMOUNT WEEK**

**WE WANT TO SERVE YOU**

We guarantee prompt and efficient service at this station, and assure you that you will get the very best gas and oils to be found in the town. Our crew of service men are constantly on the job and you can get waited upon at a moments notice.

**OUR TIRE SERVICE THE BEST**

Our Tire service is the best to be had, and we handle the famous FIRESTONE AND FEDERAL TIRES AND TUBES in both the Baloon and High Pressure. You will be a satisfied customer if you let us look after your tire troubles.

**ONE DAY BATTERY CHARGING SERVICE**

Our Battery Station is now in operation and we can give you one day service in this department. Bring your battery in and within ten to twelve hours your battery will be fully charged and ready to be used again. When your battery needs recharging or repairing make it a point to bring it to us. Capable and efficient repair men are at your service here.

**OZARK FILLING STATION**

FRANK DUNN, Proprietor

**NORTHCUTT'S SPECIALS FOR SATURDAY**

AGAIN WE OFFER YOU BARGAINS

10 lbs. Sugar	68c
6 lb. box Crackers	72c
Malt, per can	59c
Gallon can Good Apples	45c
No. 2 Pork & Beans, per can	9c
Heinz White Pickling Vinegar, per gallon	48c
Bulk Cookies, all kinds, per pound	30c

TRADE WITH US AND LIVE CHEAPER

**NORTHCUTT'S CASH GROCERY**

**AUTOMOBILE PAINTING**

We have moved our paint shop from the Lockney Auto Company to Waller Motor Company, where we have fitted up an air tight drying room, and are now better prepared than ever before to give you first class painting service.

**CURTAIN AND TOP WORK A SPECIALTY**

We also do curtain and top work. Get our prices on your curtain and top work before you buy elsewhere.

**AYRES & MCGONIGUL, Proprietors**

**SCHOOL DAYS**

**WILL SOON BE HERE AGAIN—AND**

**WE ARE BETTER ABLE THAN**

**EVER TO TAKE CARE**

**OF YOUR WANTS.**

**ASK ABOUT OUR CONTEST**

**Lockney Drug Co**

**be REXALL Store** **Phone 50**

# HOW ENDLESS CHAIN SELLING PLANS ARE USED TO ROB SAVERS

### W. R. Morehouse Continues His Exposures of Modern "Gold Erick" Schemes—American Bankers Association Official Tells How Life-Time Savings Are Wiped Out.

By W. R. MOREHOUSE,  
Public Relations Commission, American Bankers Association.

#### ARTICLE NO. II

I FIRMLY believe that promoters and high-pressure salesmen are becoming more and more crafty. Shrewder ways are being resorted to in order to trap the novice investor. It is deplorable that the investor does not profit by experience and is victimized a second time in his endeavor to recover that which he has already lost. It is the old, old story of trying to recover, but in the attempt losing. This very hour thousands of hard-earned dollars have slipped from the grasp of the calloused hands that earned them into the clutches of unscrupulous skin-game artists. Tomorrow the scenes of today will be re-enacted with a new and larger list of victims. A month from today depositors will still be pouring in an ever increasing volume of their savings into the hopper of unwise investments. A year from today the same tragedy will be re-enacted unless our savings bankers come to the rescue and help to stop this nefarious business of defrauding and swindling our savers of the fruits of their labors.



W. R. Morehouse

Here is a typical case. A group of men undertook to promote a vending or self-serving machine. Their plan called for the sale of \$37,000,000 worth of leases in the United States. Similar projects previously started throughout the United States had failed. As a matter of fact, the average daily sale of one of these self-service machines was only \$3.10, which in itself made it impossible for a machine to produce sufficient revenue to make it profitable. Servicing the machines was another obstacle which had not been successfully overcome. In three months the promoters were successful in selling over \$2,500,000 worth of rights to use these machines.

**\$40,000 in Savings Lost by One Man**  
I know of one man who withdrew \$40,000 from a savings bank and invested it in this promotion. He told me it represented the accumulations of a lifetime. "And now I have lost it all," he said in a trembling voice. "I haven't a cent left and I am past sixty years of age—too old to work!" he added.

Of the more than \$2,500,000 invested by savers, over \$1,000,000 was taken by these wily promoters as commission. Think of making a commission of over \$1,000,000 on \$2,500,000 of sales in about three months' time! Think of what this more than \$1,000,000 of commission represents—think of the struggles and the sacrifices of the men and women who saved it! With some it was saved penny by penny over a period of years. Think of the sorrow it caused,—the heartaches, the misery and the disappointment which followed in the wake of the collapse of this promotion. Think of the old man who lost \$40,000—all he had been able to save during his lifetime. Think of the widow's mite, for she lost it also. All that is left today of the original investment is less than 10 cents on every dollar.

Here is an endless chain scheme which relieved working girls of a portion of their savings. The loss ran into many thousands of dollars. The scheme is to sell silk hose to girls by getting them to act as selling agents.

A hosiery company rents offices in the shopping district. Soon an attractive offer is made through the local newspapers by cleverly worded advertisements in which it would appear that any young lady can secure five pairs of hose worth \$2 a pair for only \$1. In other words, \$10 worth of silk stockings for only \$1! Without stopping to analyze the proposition or to consider how impossible it is for any concern to stay in business and sell \$10 worth of silk hose for \$1, thousands of young women instantly fall for the scheme.

**How Endless Chain Catches Victims**  
Here is how it catches its victims. Each victim pays \$1 and receives three one dollar coupons which she must sell to her friends, and the friends must come in and pay down \$4 each, get three coupons each which they must sell to three friends and then these friends must perpetuate the scheme by selling coupons to their friends and so on indefinitely.

Here is where the promoters make a clean-up. One of the conditions which must be met before the young woman who purchased the first coupons receives her \$10 worth of hose for \$1 is that all three to whom she sold her three coupons must come in, pay down \$4 each for three more coupons and then go out and sell them. Before the three have done this, one or perhaps all three get "cold feet" on the proposition and, rather than go out and "soak" three of their friends \$1 each, they simply give up the job and charge their loss to experience. But in doing so they also block the girl who purchased the first coupons from completing her contract, and of course she, too, loses the money she invested in the scheme.

At a glance the loss appears to be small, but the truth is the scheme is capable of such great expansion that it soon takes in hundreds and thousands of victims. This is but one of many endless chain schemes in use today in the United States.

*Article III will deal with land schemes and loan shark plans for robbing people of their savings.*

and Mr. Stanhope said that he was surprised that a woman with the good business judgment I had should be getting such a small income as those bonds paid—scarcely anything. He said that I should make my money work harder for me. He knew I must have good business judgment, he said, because I brought my children up so beautifully. He offered to take the bonds and change them for his stock.

"Oh, Lord!" exclaimed Aunt Emmy, "did he give you a receipt?"

"Why, of course, he was the nicest man. But Junior said after he left that he didn't like him. He said he looked slick. Boys are so funny. Well, I got the platinum stock but Mr. Barnes at the bank says it's no good. He must be mistaken. But I want my bonds back so I came to you for help. And you're always so lucky about your investments."

"Not lucky, just sensible," corrected Aunt Emmy. "Why, oh why, don't you consult your banker, who understands finance before you risk your money? This is not your first loss. Remember that piece of land you bought that was under water?"

"That was different," said Mrs. Norris blushing, "and anyway, Mr. Stanhope is honest, I can tell that."

"If he were honest, he would not have promised you the things he promised. Reputable houses don't send out representatives who make promises about repurchase of stock. Why don't you phone your Mr. Stanhope?"

"I did, but he's out of town. I've written, too, but I suppose I shall have to wait until he gets back. It's been several weeks now, so he should be back soon."

Just then the evening paper came. Aunt Emmy glanced at it, then read it attentively. Her expression grew serious. She handed the paper to Mrs. Norris. On the front page was an account of a financial scandal. The house that sold Mrs. Norris her mining stock was involved and the men who ran the business had been indicted for fraud.—A. B. Ayres.

# LIVE STOCK NEWS

## IMPROVE METHODS FOR RANGE SHEEP

Do you remember when the only investment a sheep man had was in his camp outfit and in his sheep? Such a business could be managed to yield a profit by methods which would spell ruin if owned by the range sheep man today.

The sheep man of today must own or lease land to stay in the business. This land must be purchased or leased to maintain watering places, to control and be assured of sufficient range, or produce feed for feeding. It is even necessary to own improved ranch property before a permit will be granted upon the national forests. Investments have also been made in dipping vats, warehouses, storehouses, lambing sheds and the like. All of these mean increased capitalization. A man with 800 to 1,000 breeding ewes can easily have an investment in his range business of \$12,000 to \$14,000. Such an investment requires managerial ability, and the adoption of modern and approved methods of range sheep management, which was not needed in the old days.

Aside from an increase in capitalization, there has been an increase in the operating expenses. The sheep have been crowded out of the land which formerly afforded range, and now they must be fed hay during the winter. Labor charges have advanced, due to advances in the wage scale and also because the flocks have decreased in size.

In order to realize a profit from the business it is necessary to increase the per cent of lambs dropped. A great loss of lambs is suffered from dropping to docking time. A range sheep man on the Colorado National forest had 20 per cent lamb loss during this time. He plans a lambing shed to reduce this loss. Many range sheep men have found that the saving in lambs soon pays for the cost of the lambing shed.—B. W. Fairbanks, Extension Service, Colorado Agricultural College.

## Hogs Require Shade and Clean Water in Summer

Shade and clean water during the summer months are essential to successful pork production. All kinds of hogs must have shade. Too much direct sunlight and heat is a frequent cause of hogs falling to thrive and is often the cause of hogs dying. During July and August small pigs often blister on the backs and about the ears which causes, in some cases, severe infections and bad sores.

Expensive shelter is not necessary. Shade trees provide ample protection. Where no trees exist temporary shade may be provided by the covering of a frame with canvas, under which the hogs may go for protection. Some producers build individual hoghouses with sides that may be lifted to provide an increased amount of shade during the summer months. This plan furnishes shade for hogs where only a few are kept.

Clean fresh water for drinking and wallow is equally as important as, or more important than, shade. The old time wallow hole covered with scum, which was once also the drinking fountain, is no longer in favor with the successful hog breeder. Hogs must have water to drink, and if they cannot get fresh, clean water in the trough or fountain, they will drink where they can find it, regardless of its condition. This fact has caused some to believe that hogs prefer nothing better, but they do, and will demonstrate the fact when they are able to get fresh water from the well.

## Live Stock Notes

- Don't feed moldy, or spoiled silage.
- Don't put fresh feed in dirty or sour troughs.
- Don't forget to salt all animals regularly.
- Don't feed milk from tuberculous cattle to your animals.
- Keep the brood sows on the farm—hogs are going to be high the coming year.
- Supplement pasture with sufficient grain to keep the hogs in good thrifty condition.
- Protect cattle, horses, and mules from the torment of the biting fly and the horn fly by using fly repellents.
- About 62 per cent of pure-bred live stock is marketed directly for meat purposes.
- Low ceilings for hoghouses save heat and lumber. But don't overlook the necessity of ventilation—and sunshine.
- Two litters of not less than seven pigs each, raised to maturity each year, more than double average profits from hogs.
- The ewe with twin lambs should produce much more milk and consequently needs more feed than is best for the ewe that is feeding only one lamb.

## Millions in Pearls



This pagoda, a part of the Japanese exhibit at the Sesqui-Centennial International Exposition in Philadelphia, celebrating the 150th anniversary of the signing of the Declaration of Independence, is made entirely of pearls and its value exceeds \$1,000,000. The exposition continues until December 5.

Trinity Evangelical Lutheran Church at Providence  
Sunday, Sept. 5, 10 a. m., English Sunday school.  
8:30 p. m. English services.  
Tuesday, Sept. 7 at 8:30 p. m. choir practice.

J. FLIERL, Pastor.  
Route 1.

## THE BEST OF SERVICE

Let us look after your CLEANING - PRESSING ALTERATIONS

We give prompt and efficient service, and guarantee to please you with our work. Phone us at 114 or Call on us in the rear of Roy Griffith's confectionery.

**D. F. McDUFFEE**

## LET US DELIVER YOUR MILK

Phone us your orders for Fresh Milk and Cream and it will be promptly delivered.

**Sunnyside Dairy**

Phone 9001-F3

**DR. D. J. THOMAS**  
Physician and Surgeon  
Office in LOCKNEY DRUG CO.  
A Share of your Patronage solicited.  
OFFICE PHONE 50 RES. 77

Have Your Abstracts Made By  
**ARTHUR B. DUNCAN**  
The Old Reliable Abstract Man  
Floydada, Texas

**Grady R. Crager**  
UNDERAKER AND EMBALMER  
Hears to all parts of the Country  
Day Phones 126 and 121; Night 72  
In Crager Furniture Co.  
Day and Night Service  
LOCKNEY, TEXAS

**DR. R. E. L. MEWSHAW**  
Physician and Surgeon  
Office in City Drug Store  
Phones: Residence 146; office 126  
LOCKNEY, TEXAS

**ARTHUR B. DUNCAN**  
Have your Abstracts made by  
The Old Reliable Abstract Man.  
Floydada, Texas

**KENNETH BAIN**  
LAWYER  
Room 4, First National Bank  
FLOYDADA, TEXAS

**Dr. S. M. HENRY**  
PHYSICIAN AND SURGEON  
Special Attention Given to Women's Diseases.  
Office Lockney Drug Co.  
Office Phone 50—Res. 87  
Lockney, Texas

J. C. Dickey A. C. Goen

**DICKEY & GOEN**  
REAL ESTATE & LOANS  
Farm Lands, Ranches, City Property  
ALWAYS A BARGAIN  
Floyd County Correspondents for the  
First Texas Joint Stock Land Bank of  
Houston, Texas. 6 per cent Interest.  
Prompt inspection.  
"SEE US FOR YOUR LOANS"  
Surginer Building, North Side Square  
Phone No. 107  
FLOYDADA, TEXAS

## SERVICE THAT WILL SURELY PLEASE YOU

Plenty of ice to supply your wants at all times. Just Phone No. 24 and we are on the way with your order.

## HAMBURGERS THAT MAKE YOU LIKE 'EM

The place where you get those Good Hamburgers that satisfy your appetite and make you come back often for more.

A nice line of Candies, Confections, and Tobaccos, and most anything you want in the Quick Lunch line.

## ZOEL'S HAMBURGER FACTORY

## READY TO TAKE CARE OF YOUR FALL GROCERY NEEDS

We have a fresh supply of Staple and Fancy Groceries on hand at all times to care for the needs of the people of Lockney and the Lockney country. In a few more days the farmers are going to be very busy gathering their crops, and there will be an extra lot of farm hands to be fed. Come here and get your grocery needs, and we assure you that you will find everything that is needed for your table. Prompt and courteous treatment at prices that will please you at all times.

## LOCKNEY GROCERY

## STRAIGHT TALKS WITH AUNT EMMY

### On How to Lose Your Inheritance

"It is so hard for me to get along on what John left me," complained Mrs. Norris to Aunt Emmy. "Junior wants to get a job, but I always wanted him to go to college."

"Yes, yes, I know," interrupted Aunt Emmy, "but what about this mining stock?"

"I'm coming to that. You see I thought I could invest some of those bonds John left, they yield such a tiny income, in something that would bring real money. I needed more money, so when the telephone rang that day and a man, he had the nicest voice, said he had been referred to me by a friend and wanted to talk over some gilt-edged investments, I told him to come right up."

"His name was Mr. Stanhope. He was so nice. He told me all about the big money people are making in platinum mines. Platinum jewelry is so fashionable now. He said he could let me have some stock in a wonderful mine, and that the company would buy the stock back if I ever wanted my money."

"Have you a statement signed by one of the officers of the mining company to the effect that the company will repurchase your stock?" asked Aunt Emmy.

"Why no—"

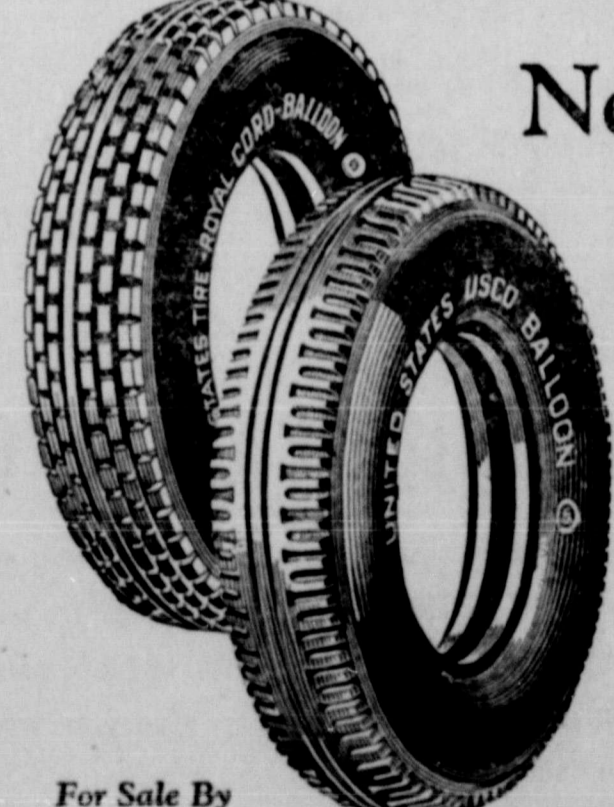
"Well, you will have trouble getting your money back. A company cannot be compelled to buy its own stock back."

"Oh, I don't know. Anyhow, I got out my bonds and showed them to him—"

"What, you keep your bonds in the house instead of at the bank?" exclaimed Aunt Emmy.

"Why, yes, but in a box that locks—"

# Now!



## New Low Prices on U.S. ROYAL and USCO

Less need now than ever before to shop around for "bargain" tires that you know nothing about. Come in and let us tell you the New Low Prices of good United States Tires to fit your car.

For Sale By  
**F. F. F. SERVICE STATION**  
LOCKNEY, TEXAS  
UNITED STATES TIRES ARE GOOD TIRES

Sure Thing If Bride Is Cook



By KATHRYN ST. JOHN

Haphazard meals yearly ruin thousands of marriages. Most marital ships would maintain an even keel if brides knew cooking.

Many of the first year's troubles between newlyweds would be avoided if the wife were capable of preparing foods with an experienced hand.

The expert home manager sees to it that her husband never comes home to a delicatessen lunch. There is a carefully planned meal waiting for him.

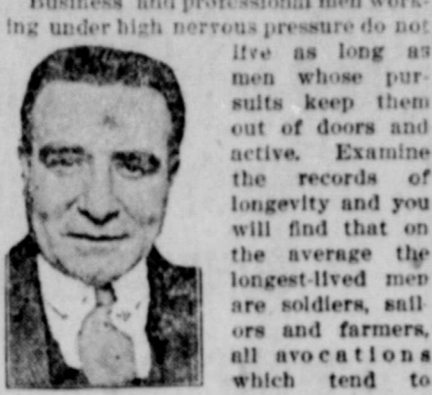
Frozen Salad. 1/2 cup mayonnaise 1/2 cup candied dressing 1/2 cup diced pine-apple 1/2 cup diced apple 4 tbs. pineapple juice 2 tbs. lemon juice 1/2 cup evaporated milk

Orange Bavarian. 1 tbs. gelatin 2-3 cup evaporated milk 1 cup cold water 1-3 cup whipping cream 1 tbs. lemon juice 1/2 cup sugar 1/2 tsp. salt

CARD OF THANKS—We wish to thank all those, and especially our neighbors, for the kindness and sympathy extended to us during the illness and death of our father and grandfather.

Eat Less and Live Longer, Says Lawyer

By W. W. O'BRIEN (Noted Criminal Lawyer of Chicago.)



Business and professional men working under high nervous pressure do not live as long as men whose pursuits keep them out of doors and active.

Man, in general, rolls down the hill of life fastest when his figure is rotund. "Leanness and longevity" is a good axiom for business men to remember.

Overfeeding is as dangerous to adults as underfeeding is to children. Foods difficult to digest, or which overstimulate, should be avoided by persons whose work does not require any particular amount of physical exercise.

There is no more necessary lesson to be learned by the brain worker than how to keep well and healthy by proper attention to food habits.

Eating Greater Cause of Death Than Drinking

Drink is the second greatest cause of disease and death. Food comes first, then drink. Excluding alcoholic beverages, there are dozens of drinks on the market today whose effect is detrimental, particularly to children.

Milk is the best drink for children. Not only is it drink, but food as well—the most nearly perfect food known to man.

Milk is an all-the-year-round drink and for this reason the children often rebel against drinking it. This condition, however, may be overcome by the introduction of the mixed drink. Milk or diluted evaporated milk may be mixed with eggs or used in fruit juices or in some other way which will disguise the fact that the drink contains milk.



In connection with mixed drinks, the following formulas for milk beverages may aid mothers in serving something new:

Iced Cocoa. 1 tbs. cocoa 1 1/2 cups evaporated milk 1 tbs. sugar diluted with 1/2 cup hot water 1/2 cup water Few grains salt 1/2 tsp. vanilla

Scald the diluted milk in a double boiler. Mix cocoa, sugar, salt and add the hot water. Cook over a low flame from 10 to 15 minutes, stirring occasionally to prevent burning.

Egg-Nog. 1 egg diluted with 2-3 cup ice water 1 tbs. sugar 2 tbs. berry or cherry juice or nutmeg 2 tbs. non-alcoholic sherry

Separate white from yolk of egg. Add salt to white and beat until stiff. Beat yolk until thick and lemon colored and add the fruit juices, nutmeg and sugar.

Orange-Nog. 1/2 cup orange juice 1-2 cup evaporated milk diluted with 1-3 tsp. sugar 1-3 cup cold water

Large advertisement for Paramount Week at Isis Theatre, Lockney. Features 'Celebrate! Paramount Week' and lists movies like 'The Grand Duchess and the Waiter' and 'Dancing Mothers'.

GULF STORM TOO MOUNTS Death List In Storm Is Heavy; 17 Dead, Much Property Damage

New Orleans, La., Aug. 30.—The death list from the tropical hurricane mounted to seventeen late Saturday, when a naval seaplane found seven additional bodies at Point-au-Chine on Lower Terrebonne Bayou.

The victims found by the seaplane had comprised the crew of the Point-au-Chine fishing camp, headed by Claude and Charles Dupont of Houma.

Mrs. George Theis, wife of the captain of the towboat Patton, drowned and her husband and six other members of the crew are missing.

A heavy rain, accompanied by hail fell in the Sunset community, northeast of Lockney early Monday morning, and in some place considerable damage was done to crops.

WOULD REGULATE PICKING PRICES

Stamford, Aug. 30.—The West Texas Chamber of Commerce, in co-operation with the Texas farm labor division of the United States Department of Labor, is seeking to maintain a reasonable uniform price for cotton picking and, at the same time, to see that cotton pickers are distributed over the West Texas territory more equally than heretofore.

Several of the larger newspapers of the state have carried advertisements recently for cotton pickers. These advertisements, it is said, often come from places where cotton is not ready for pickers to begin on regular jobs.

The fair will be held this year Sept. 28, 30, Oct. 1 and 2, and the officials are looking forward to the biggest fair in the thirteen years of their continued improvement.

LUBBOCK FAIR ISSUES CATALOGUES

A full page of display advertising in the fair catalog which is sold at a considerable rate to regular advertisers has been given to Floyd county free by the Panhandle South Plains Fair Association at Lubbock.

The advertising will be of immense benefit to Floyd county in view of the fact that the catalog has a large circulation outside of this section in addition to the large distribution of the books in every community in the Panhandle South Plains section.

The United States Tire Company started eleven years ago to educate people to their interest in supporting the legitimate home town tire dealer.

In addition to running its own educational campaign in local papers without interruption for eleven consecutive years, the Company encourages the dealer to supplement it with advertising of his own and helps him do it.

Recent improvements in production methods now enable the United States Rubber Company to market, through the local dealers, tires of known quality, bearing the Company's trade mark and full warranty, for as little money or even less than the cost of mail order tires or off-brand tires of uncertain value.

REORGANIZATIONS OF COUNTY GOVERNMENTS

There is much talk of a new Constitution for the State of Texas. To those who are giving thought to this subject and who may be called upon to help frame a new document as a guide to our future lawmakers, Farm and Ranch suggests a complete reorganization of county governments.

Provisions should be made that would permit the consolidation of city and county governments wherever such a consolidation proves to be economical and desirable. County governments should be placed on a business basis and the number of elective offices reduced.

BIG COMPANY HELPS LOCAL MERCHANTS KEEP BUSINESS AT HOME

How one of the largest manufacturing concerns in the country cooperates with their dealers to keep local business in the hands of local concerns, was interestingly brought out in a talk with one of our leading tire merchants last week.

The company to which he pointed particularly for its works in this direction is The United States Rubber Co., which has perhaps gone further along these lines than any other tire concern.

There are several reasons, aside from the very good point of keeping home money at home, while our own local tire stores are the logical place to buy tires rather than the mail order houses.

Tires need looking after by an experienced tire man. He must have a well equipped and well stocked shop and be able to tell whether a tire is doing its work properly, and if not, why not.

For instance, an expert tire man can tell whether tires are wearing unduly because of the wheels being out of alignment and can correct the trouble in time.

If improperly equalized brakes are causing tire wear, the tire man can tell that and warn the owner.

This sort of service you cannot expect when you buy tires from mail order houses.

The United States Tire Company started eleven years ago to educate people to their interest in supporting the legitimate home town tire dealer.

There is much talk of a new Constitution for the State of Texas. To those who are giving thought to this subject and who may be called upon to help frame a new document as a guide to our future lawmakers, Farm and Ranch suggests a complete reorganization of county governments.

stitution for the State of Texas. To those who are giving thought to this subject and who may be called upon to help frame a new document as a guide to our future lawmakers, Farm and Ranch suggests a complete reorganization of county governments.

Provisions should be made that would permit the consolidation of city and county governments wherever such a consolidation proves to be economical and desirable. County governments should be placed on a business basis and the number of elective offices reduced.

No officer should be paid in fees, but should receive a salary paid by the county treasurer, and if fees for service are charged, they should go directly into the general fund. A commission form of government should be established and the county commissioners be obligated and authorized to conduct the affairs of the county in a business-like manner, hiring such men to perform the work as conditions justify.

With county governments out of politics, the people would be saved enough money to permit the doubling of the amount now spent for public education without any increase in the amount of taxes assessed and collected.

The city of Dallas and all other cities elect a board of education. This board hires the best man obtainable as superintendent of the schools and retains his services from year to year. No account is taken of his residence or where he was born, for it is the service that is demanded and paid for.

The county superintendent may or may not be qualified. The office is political, and he must become a candidate and conduct a campaign before he is elected. Should he prove to be a good man for the position he may hold down the job for two terms, when custom steps in and another superintendent is elected. The same objection and the same argument is found in practically all other official positions in the county. It would be easier for the voters to select good men for county commissioners and authorize them to conduct the business of the county than it is to select men for every job in the county government.

Good men could be hired 50 per cent cheaper than what the people now pay through the fee system, nor would these men object, for in most cases their jobs would be secure if they rendered satisfactory service, and they would not be forced to go out and spend their time and money every two years in a scramble for office.

Reorganization of our system of county government is as important and necessary as the reorganization of our system of courts.—Farm & Ranch.

Advertisement for Badger Tires, featuring 'Fulfill Your Every Demand' and '29x4.40 TIRE & TUBE \$15.00'. Includes 'EAST-WEST SERVICE STATION'.

# The NEW THINGS

which are most interesting to the Ladies are now being shown in this department.

We are showing the New Tweeds, with a full line of Staple Dress materials for those desiring to do their own sewing—

## NOVELTY TRIMMING

FANCY BRAIDS FANCY BUTTONS FANCY FURS  
They cost little, but they are important.

Full Line of Silk and Jersey Underwear Being Shown.

## MILLINERY AND READY-TO-WEAR

We are showing the NEW Dress Coats and Sport Models—

Priced from \$13.50 to \$58.75

The NEW Satin Faced Crepe Dresses—Priced from—

Priced from \$13.50 to \$25.00

SPECIAL MENTION should be made of our MILLINERY DEPARTMENT, where you can obtain the latest styles, for less money than is asked in competing towns.

## FULL LINE OF FELTS AND VELVETS

# FREE

## Set of Silverware

DRAWING 4 P. M. SATURDAY, SEPT. 4th

## BAKER MERCANTILE COMPANY

"THE STORE WITH THE GOODS"

### WANT COLUMN

PHONE 159 for our attractive price on Ice Books.—Lockney Ice & Electric

FOR RENT—Two room house.—Geo. T. Meriwether. 39-tf

LOST—A C. O. D. package, some where between Main street and Mrs. Collier's place. Reward if returned to Post Office.—A. A. Suits. 1t

WANTED—A cow to milk, will take good care of same.—D. K. Miller, at Knox-Patterson Gin. 50-1t-p

FOR SALE—A new Ford truck.—T. B. Hill, at City Bakery. 50-tf-c

FOR SALE—Well improved place in Lockney.—W. J. Myers. 50-4t-pd

FOR SALE—160 acres of good Plains land, located 9 mi. Friona, Palmer county. Price \$17.50 per acre, \$800 cash, balance 1 to five years, 6% interest. M. A. Crum, Friona, Texas. 49-2t-p.

Just arrived a car of living room, bed room and dining room furniture.—Cragger Furniture Co. 49

FOR SALE—Kentucky drill, cheap.—B. R. Carabel, Route 1. 1t-pd

FOR RENT—Three-room house one-half mile from Main street. See or write J. E. Hammit, Lockney, Texas, Route 2. 50-2t-c

WANTED—Clean cotton rags, to use for washing presses and wiping machinery. Don't bring silk or wool rags—will pay 5c per pound.—Beacon office.

FOR SALE—Emerson Grain drill.—See L. H. Gruver.

PHONE 159 for our attractive price on Ice Books.—Lockney Ice & Electric

FOR RENT—Nice three room apartment, well furnished, lights, water and bath. For terms see Mrs. W. L. Whitt, Phone 156.

WE REPAIR ANYTHING ELECTRICAL.—Lockney Ice & Electric.

FOR SALE—452 acre farm, well improved, 400 acres in cultivation, 300 acres ready to be planted to wheat; 14 room house, barn 100 foot long, in shallow water district, windmill, concrete tanks, only two miles from Lockney. This place is in a high state of cultivation, excellent improvements, well located and well worth the money. Can give good terms, on long time payments, and reasonable cash down. Has \$3,200 33 year government loan. Also have 4 room house, near Lockney High School, with three lots at bargain. If interested write or call at Beacon office for further particulars.

FOR SALE—ONE of the best of saddle ponies, has good saddle gait, gentle for small children to ride or drive.—See Y. M. Moore, 11 miles east of Lockney, Texas. 49-2t-c

160 ACRES, Hart County, Castro county; all in cultivation, but no other improvements; have three of these tracts with one half of the land ready for wheat. \$500 spot cash pay, long time on balance, J. F. DuBose, Plainview, Texas. 49-4t-p

Mrs. M. L. McIntyre and daughter, Miss Imogene, of Canyon, were in Lockney Sunday visiting Mr. and Mrs. R. L. Gass.

**MAE ARMONTROUT**  
PROGRESSIVE SERIES PIANO  
TEACHER  
Opens studio Sept. 1st at Mrs. E. J. Barkers.

**WILSON STUDIO & ART SHOP**  
FLOYDADA, TEXAS  
PORTRAITS, VIEWS, PANORAMA VIEWS

KODAK FINISHING, ENLARGING, ART PICTURES AND FRAMING

### Town Planning Needs Ability of High Order

There is little to be gained by attempting to determine whether the engineer, the architect, or the landscape architect is better fitted for the work of town planning. Each has his own peculiar advantages and limitations. In this country, the landscape architect has taken a prominent part in town planning for two reasons: First, the profession has had the good fortune for several generations of having a leading firm of gifted men, with high ideals of professional work and public service and a developed social sense, who in turn have trained many younger men.

"A second reason for the high place occupied by the landscape architect in town planning is the fact that the most complete course of specialized training in town planning offered by an American university is most closely related to the advanced technical courses and research work in landscape architecture. These courses of instruction, however, are equally open to engineers and architects, and have been taken by many men already well trained in these professions.

Town planning finally simmers down very largely to the relation between design and construction, and the methods by which design can be translated successfully into construction, keeping always in view the element of cost and the legal authority with which to proceed.

There must be wider training in design of those who have to do primarily with construction, and a larger experience in construction of those who have to do primarily with design. The town plan itself must show an orderly distribution of all its parts, with a nice regard for the practical requirements of each part, and its esthetic potentialities. And there must be foresight and vision as to what is involved in the social and civic life of the community in the execution of the plan.—Philadelphia Record.

### TO THE VOTERS OF FLOYD COUNTY, TEXAS

I want to thank each and every one of you for the loyal support that you gave me Saturday, Aug. 28th, in my race for county clerk.

I want to thank the supporters of Miss Sims for the courtesy shown me and the many nice things they also said to me, and when I go into the clerk's office it shall be my ambition to give the entire citizenship the best service that it is possible for me to give.

Yours truly,  
TOM W. DEEN.

To the Citizens of Lockney and the North Part of Floyd County

I wish to express my sincere appreciation, for the support and courtesy shown me in this campaign, will say as we get better acquainted I'm sure we will appreciate one another more. I will try at all times to be fair and impartial in the discharge of my duties.

Will say that I have no bitterness in my heart against any man who did not support me in this race.

Hoping to see the people often and get better acquainted,

I remain, yours truly,  
P. G. SEGALL.

### TO THE VOTERS OF FLOYD COUNTY

I take this method of thanking the voters of Floyd county for the substantial support given me in last Saturday's primary election. It was indeed gratifying to me to know that the returns indicated an even vote throughout the county, and that no factional or partisan politics entered into the judges race. I appreciate the victory, even more because of the great opposition that had to be overcome.

My honorable opponent made a magnificent race, and received a support anyone might be proud of.

The primary election is over, let us unite as true democrats in carrying out the principals of a true democracy.

Again thanking you, I am yours for service.

Wm. McGEHEE.

Candidate for the office of county judge.  
Subject to the General Election.

**AN APPRECIATION**  
I wish to thank the people of Floyd county for the many courtesies shown me during my term of office, and during the recent campaign, and especially do I wish to thank all those who so loyally supported me for re-election to the office of sheriff and tax collector. I will still be your sheriff and tax collector until the expiration of my term, and will endeavor to make you a good and efficient officer, enforcing the law without fear or favor to any one.

Again thanking you for the many favors you have extended me, and assuring you that I will serve you to the best of my ability, I am,  
Yours respectfully,  
J. R. MADDOX.

Wm. Smith and family of Dublin is here visiting L. A. Gunn and family.

**WEST TEXAS' GREATEST FAIR**  
BIGGEST ATTENDANCE BEST EXHIBITS  
BEST ADVERTISED IN THE SOUTHWEST  
MOST FUN AND AMUSEMENT  
COME—SEE FOR YOURSELF  
WE INVITE YOU ——— WE WANT YOU  
**Panhandle South Plains Fair Ass'n.**  
LUBBOCK, TEXAS


**IF YOU ARE NOT PROTECTED—WHY NOT?**  
If you are not protected against fire, you should be—fire never gives warning, and once started is hard to stop. See us today for protection on your home.  
**GRUVER INSURANCE AGENCY**  
Fone 148 Lockney, Texas

QUALITY GOODS AT BARGAIN PRICES  
**CASH GROCERY**  
WHERE YOUR DOLLARS HAVE MORE CENTS  
REGULAR SATURDAY SPECIALS  
**YOU LOSE MONEY IF YOU FAIL TO COME HERE FIRST**

**SATURDAY SPECIALS**  
SOMETHING SPECIAL EVERY SATURDAY  
1 Lot Dress Straw Hats, value to \$5 . . . \$1.49  
1 Lot "Big Yank" Khaki Shirts, Special . 99c  
8 pair 20c Hose, all colors and sizes . \$1.00  
\$1.75 Overalls, Special . . . . . \$1.49

**Floyd Huff**  
THE CLOTHIER

**TELEPHONE BILLS**  
TO BE MAILED ON A DIFFERENT SCHEDULE  
This Plan of Rendering Telephone Bills is Now in Effect.  
Please Be Sure to Read the Notices Accompanying Your Telephone Bills.  
Our Business Office will be Glad to Furnish Further Information, if Desired.



**SOUTHWESTERN BELL TELEPHONE COMPANY**