

Robert Lee Observer

CRM District Board to Meet With UCRA

Club to Brownwood, Take Bronte Here 6-2

Robert Lee had a whopping good time out at Hickman Field Saturday night when the Senior Teenagers won 6-2 over Bronte to cinch the Bronte District title.

At the end of the second inning Robert Lee was out ahead by 4-2, when Bronte made one run and another walking in when the umpire called a balk on pitcher Larry Dambrosky, and brought the score up to 4-2, in the top of the third.

But after a pitching duel for a couple of innings, mostly no runs, no hits, no errors, Robert

Lee fans got their money's worth when, at the bottom of the 5th, Rusty Dodson on his last strike smashed a long fly just right of the center fielder clear to the fence.

Rusty hustled his two hundred pounds for a three bagger, while a couple of runners were coming home to bring the tally up to 6-2.

Bronte put in a big boy, Cooke, on the mound, and after that there wasn't much but pitching ball by Dambrosky, who went all the way and by Cooke, who kept the locals fishing considerably.

The top of the seventh went by that way, with RL able to get some men on, but no more runs, and the game ended in the middle of the seventh with Robert Lee left an inning at bat to spare.

With several men from Colorado City and one from Silver, the club has improved through the season and hopes to be a lively threat at the regional tournament slated at Brownwood.

They will play the first tournament game with Midland in the afternoon of next Wednesday, July 29.

To Wingate For Return Play Saturday Night

The Senior Teen-Age baseball club will play Wingate at Wingate in a practice game Saturday night. The workout Thursday night is called off, according to Lew Heuvel, manager.

The team is entitled to pick up three players from this area to join them for the Brownwood tournament. One of these is Cooke, a Bronte pitcher; another is Adams, Wingate catcher; and Brown Collins of Talpa, who played with Santa Anna, is to be invited.

It was Denziel Pendergrass, short stop, from Colorado City, who made that first run for Robert Lee Saturday night. Robert Wink made the second run.

The team will bunk in Bangs high school gym during the tournament, courtesy of the superintendent, who was at one time high school principal here.

Gerald Allen of Robert Lee, Chairman of the Board of Directors of the Upper Colorado River Authority, attended a meeting of the Board in San Angelo Tuesday.

At that meeting the UCRA Directors discussed the CRMWD project and set plans to meet with the Municipal District Directors at some date not yet determined.

Friday of last week the directors of the Municipal District announced the choice of the Robert Lee site, and that an application to build what is described as West Texas largest lake two miles west of Robert Lee would be made with state agencies.

It is proposed to impound half a million acre feet of water, with a surface area of 14,950 acres, to cost somewhere between twelve and thirteen million dollars.

Such a reservoir would cover 23 sections of farm, ranch, and oil land above the river from Robert Lee, and would back water 18 miles up the river, which, if figured by airline distance, would put the upper end somewhere near the highway crossing between Silver and the Texas Natural plant.

The dam is to run almost directly north and south a distance of 20,400 feet, or nearly four miles. Apparently it would run at or

just east of the Wilson Bryan home and gravel pits, a few hundred yards east of the Highway 158 river bridge.

As Wilson Bryan understood the engineers who pointed out to him the location of the dam, following a line of test holes, which would be at the center of the dam, it ties into a hill at the north end, just over in the Viola Clawson land, a few yards north of the Bryans' north line. The Wilson Bryan home site will be underneath the structure itself, and from there would run just east of the Bryan gravel pits across Oscar Kresta land to a point near the mouth of Wildcat Creek. The Kresta house itself would not be disturbed. Creeks running into the lake would be Yellow Wolf, Rough, Meadow and Silver on the north, Wildcat, Paint Creek and Pecan on the south.

(See related story on page two.)

Asks for Estimate of Future Water Needs

Letters mailed early this week by Colorado River Municipal Water District to County Judge W. W. Theftford, Mayor Robert D. Vaughan of Robert Lee, and to Mayor Royce Lee of Bronte, include the following paragraph:

"It now becomes pertinent to direct our study to more detailed planning for meeting the needs for water which may be supplied from this reservoir. In order that such plans may include your interest, we invite from you a statement concerning your anticipated requirement which might reasonably be met through this source. It is understood that your statement is an expression and not binding."

Mrs. Tom Arledge Passes Away In Sweetwater at 81

Mrs. T. E. (Zella) Arledge, who died in Sweetwater at the home of her daughter, Mrs. C. L. Bast, Friday, July 10, was well known among ranch people in Coke County.

Mrs. Arledge, the former Zella Pope, was born Oct. 26, 1882, in Fannin County. She and her husband ranched near Maryneal and moved to Roscoe in 1922. Mr. Arledge (Tom) died in 1939 and she moved to Sweetwater in 1944.

Survivors are three sons, Henry Arledge of Seymour, Roy Arledge of Stamford, and Billy Arledge of Hugo, Oklahoma; another daughter, Mrs. R. D. Bridgeford of Colorado City; 10 grandchildren, four great grandchildren and a sister, Mrs. Ethel Anderson of Sacramento, California.

Funeral was held at Trinity Baptist Church, Sweetwater, and burial was in Roscoe Cemetery.

State Attorneys Now Studying Dam Site Application

Attorneys for the Texas Water Commission are studying the application of CR Municipal Water District for permit to change their original application from the Mitchell County site to the Robert Lee site.

Tuesday of this week it had not been accepted for hearing. The Upper Colorado River Authority also made a presentation some time ago for permission to make a study of this dam site and others along the river, and has done considerable preliminary work toward building a dam themselves.

THE SALE at ROACH'S is continuing. See their Ladies dresses at 1/2 price.

Azusa Quartette At Sanco Services Beginning Sunday

The Heralds Male Quartet of Azusa College, Azusa, California, will be singing at the evening service of Camp Among the Hills, held annually at Sanco, and opening there in the big tabernacle Monday night of next week, July 27.

Guest speaker is Rev. Paul Smith, pastor of Concho Baptist Church in Coleman, and Camp Director in charge is Rev. Ernest Dewitt, pastor of Evangelical Methodist Church, San Angelo and at Sanco.

The night services are announced as country-wide, evangelistic, camp meeting style, with everyone invited. The camp will run through Sunday this year.

The schedule includes Bible classes each morning Tuesday through Saturday, with a recreation time in the afternoon, including horseback riding and swimming.

Camp fee is \$10 and includes lodging and meals. Ages are 10½ and up. A camp nurse is on call at all times. Campers are asked to bring sheets, pillow cases, washing clothes, towels and soap, Bible, paper and pencil.

Jerome Sheppard In Fatal Accident Near Okla. Town

Services were held here Monday at the Baptist Church for Jerome Sheppard, with burial in the Robert Lee cemetery.

The second of two brothers to lose their lives in accidents since they both moved to Spearman some seven years ago, Jerome was killed when he apparently went to sleep about 3 a.m. Saturday, near Guymon, Oklahoma, in a one car accident.

In the water well drilling and pipe line laying business, he left Spearman around 9 o'clock Friday night to check on a job that was to be started up in Oklahoma, which is not far from Spearman.

Coke Sheriff, Melvin Childress, his father-in-law, said Jerome had been working day and night, and that it seemed, on the way back home, sometime during the night he came to a sharp curve. Evidently he had fallen asleep, as investigating officers said it appeared he never tried to bring the car around the curve, and it plowed into an embankment and overturned.

Car lights approaching from either direction would not have shone directly on the car and it was not reported until daylight

Continued on back page

Lake's Fine, But We'll Need It in Our City Mains

By the Editor

The choice of a site near Robert Lee by the Colorado River Municipal Water District does not mean that a dam is started. There is a lot to be worked out. But it is a big step in that direction.

The building of such a dam would undoubtedly give us a boom while it is building. After that, down we go, for it will take nobody knows how long for the lake to fill and recreational trade to be developed. Or do we?

A boom helps in some respects, hurts in others. IT IS PERMANENT GROWTH WE NEED. Down we go after the boom UNLESS we contract a much bigger water supply than we have now, while it is possible to contract it.

When CRMWD chose this site,

they knew they had been asked to work out with UCRA the matter of rights of users in this area. This they should, and we think, will do. Upper Colorado River Authority already has commitments to supply many towns in this area, and they are the only agency set up to handle this water in the area they cover, which includes Coke and Tom Green counties.

But can UCRA hold up for long all the water Robert Lee will need with towns like Ballinger, San Angelo, Odessa, Midland, Big Spring and others after it?

IF WE CAN'T BUY WHAT WE WILL NEED IT WILL GO SOMEWHERE ELSE as sure as wild geese fly. And those towns will

do the growing, regardless of who builds the dam.

The people of Robert Lee, with their City Commission, should begin now to explore to the fullest any POSSIBLE way they can contract for a chunk of this water. When we have that water in our future, we will have growth and taxable values in our future. Without it, we won't have any considerable growth.

IT IS WATER IN THE MAINS will keep the town here and growing — PLENTY of water — IN THE MAINS.

A recreational area won't keep us growing unless we have water enough in the mains. Your newspaper is working to interest people with money and know-how in com-

ing here with enterprises with payrolls. Every other town that will bargain for this water intends to use some of it for INDUSTRY. Without more water for our mains they won't come here.

You can't just have water for the family only. The sheep and the cattle have to drink too, and they are industry. These cities aim to use water from here for industry, because they know that unless the people in their cities have employment, they won't stay around for drinking water only.

We ran out of lake water last year. Remember?

The Mayor and City Commission did a fine job of financing the laying of bigger mains, which

puts us in better shape to add new users. A new pump is on order, and we are in good shape for immediate needs. But far bigger needs may soon be immediate.

Longtime dependence on wells would be very uncertain — very.

We don't know just what could be done, but we do feel that we citizens should and would back the city officials in doing just about anything possible to tie onto this water, for people and business are going to water — no question about that, and leaving where water ain't.

That means both water users and taxable property are added fast where a town gets plenty of water, and they go away fast where it doesn't.

Robert Lee Observer

PUBLISHED EVERY THURSDAY

Entered at the post office at Robert Lee, Texas 76945, as second class matter.

Editor and Publisher Ulmer S. Bird
Managing Editor Mary L. Prine
Phones 453-350' & 453-3021

Subscription Rates:
In Coke County

| | |
|---------------------------|--------|
| One Year in Advance | \$3.00 |
| Six Months | \$1.75 |
| Outside Subscriptions | |
| One Year in Advance | \$3.50 |
| Six Months | \$2.00 |

Manager Says Project Will Supply All Of Robert Lee's Water Needs For Municipal and Industrial Use

In answer to an inquiry from the Robert Lee Observer by telephone, Col. E. V. Spence, manager of the Colorado River Municipal Water District in Big Spring, said that the CRMWD was inviting the directors of the Upper Colorado River Authority to be their guests at a luncheon meeting in Big Spring to go through all the details of the proposal to build a dam on the Colorado River near Robert Lee. Col. Spence also stated that it

was their intention to supply Robert Lee with all the water they would need for municipal and industrial use. CRMWD has written letters inviting towns concerned to submit to them within some three weeks estimates of the amount of water they are likely to need.

For towns the size of Robert Lee, it is not necessary, he explained, to enter into a firm contract at the outset, but they do need to have this estimate.

Observations

(A Personal Word
By The Editor)

According to the Engineering Department of the Robert Lee Observer, the dam would back water up Yellow Wolf Creek something like half way to Sanco, possibly as far as Highway 208 bridge. Elevation at the river is around 1,800 feet. At Sanco store it is 2,065.

As we assess the situation, having talked several times with the Upper Colorado River Authority UCRA chairman and with Col. E. V. Spence, CRMWD manager, is not opposing a dam on the Colorado.

UCRA is only interested in seeing that when a dam is built, this city and others entitled to water have a definite protection of their rights to get it. UCRA is the supplier of water storage for Robert Lee, Bronte, and San Angelo.

Spokesmen for CRMWD have assured this writer that they intend fully to preserve those rights. So they should be able to work out this matter. And we should appreciate UCRA taking care of our interests. This kind of a thing cannot be taken for granted. It must be definite.

The great reservoir will be built, we believe, and it will bring far-reaching changes, how far-reaching no man can foresee. Other rights that should be regarded are the rights of those who will have their property taken in order to make others more prosperous. Much more than market value of their land is involved.

There are values for them that money cannot buy. There is great inconvenience in tearing up and relocating. Their land was not for sale. While this will bring increased prosperity to many, they are entitled to benefits in proportion to the damage done to their whole life work, and forced changing of their whole life plans.

Patronize Our Advertisers

THE TYPOGRAPHICAL ERROR

As you say, "She may be empty, but I'll tell the world she's clean!" But when the sheet is printed and is out upon the mail, On its way to the subscribers I have never seen it fail — In the center of the front page, in a most conspicuous place, Some typographical error fairly kicks you in the face.

For the typographical error is a slippery thing and sly, You can hunt 'til you are dizzy, but it somehow will get by, 'Til the forms are off the press it is strange how still it keeps, It shrinks into a corner and it never stirs or peeps.

That typographical error too small for human eyes, 'Til the ink is on the paper, when it grows to mountain size, And you see that blasted error, far as you could throw a dog, Looming up in all its splendor, like a lighthouse in a fog! That glaring blunder just out like an ulcerated tooth, Where it dodged the eagle vision of a napping comma sleuth.

THE SALE at ROACH'S is continuing. See their Ladies dresses at 1/2 price.



TIPPER FLINTLOCK
says . . .

"If staying alive is your main ambition—empty out that ammunition!

Store your gun in a good, safe place—and remain a member of the human race!"

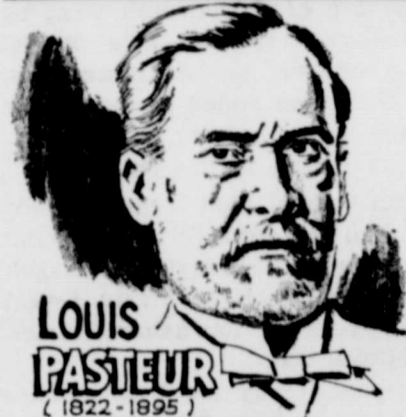
THE NATIONAL RIFLE ASSOCIATION teaches shooting safety

ACCIDENT TOOK HAROLD SHEPPARD 3 YEARS AGO

Harold Sheppard, who with Jerome, were operating an invention they had perfected for laying pipe, lost his life in 1961 when they had parked the trailer equipment on a road shoulder to do some repair on the trailer, and it was struck from behind by a passing automobile.

Learn from the mistakes of others. You can't possibly live long enough to make them all yourself.

FACTS ABOUT STROKE



LOUIS PASTEUR
(1822-1895)

HE SURVIVED A "BIG STROKE" AT 45 - THEN WORKED PRODUCTIVELY 27 MORE YEARS DURING WHICH HE HAD 50 "LITTLE STROKES"

FARM BUREAU

Insurance Service

Save with Safety

ALL TYPES OF INSURANCE

O. T. COLVIN

Blackwell, Texas
Phone 282-2291

Offices in Bronte & Robert Lee

WELCOME
YOUNG PEOPLE
PARENTS
NEIGHBORS

To SANCO

FOR CAMP AMONG THE HILLS

July 27 - Aug. 3

SANCO STORE

PENNY WISE SAYS—GETTING A LINE ON THE LOWEST FOOD PRICES IN TOWN



PURE CANE 10 LBS.

Sugar 95c

With \$5.00 Purchase or More Exc. Cigarettes

LIGHT CRUST 25 LBS.
FLOUR - - \$1.89

VAN CAMP
TUNA - 5 for \$1.00

HORMEL
OLEO - 2 Lbs. 35c

GANDY'S 1/2 GAL.
BIG DISH - 2 for \$1.00

ALL FLAVORS 6 PKGS.
KOOL AID - 25c

Market Items

ROUND STEAK - Lb. 75c

LOIN STEAK - Lb. 75c

Free Gift

Watch Our Ad in the Observer for Date Of Drawing

S & H GREEN STAMPS

We Reserve the Right to Limit Quantity

WALLACE GROCERY & MARKET

COUNTRYSIDE

By STERLING LINDSEY

Dry weather continues to be the number one discussion topic, the number one activity control and probably the number one market factor.

Despite our dry conditions, Coke County looks much better than most areas of our State and New Mexico. We are not alone in our need for a good rain. July and August, for most of Texas, are normally dry months. We may not have much relief for awhile yet.

The State sustained three cases of screwworms last week. One of these, as you know, came from Coke County. The other two cases came from Crockett and Pecos Counties, one case each.

We and the authorities of the screwworm control program are hoping all cases can be stopped before fall. If the screwworm should get a toe hold, the program could have a setback this fall.

"Stock your pond with whatever kind or kinds you like to catch," says Wallace G. Klussmann, Extension wildlife conservation specialist, Texas A&M University. "If you are a catfisherman only, then there is no reason to stock other species; the same goes for bass or sunfish. If you want all kinds, then bass, channel catfish, and redear sunfish are compatible."

Evidence indicates that it is not necessary to stock a forage fish along with largemouth bass. Many sources still recommend stocking a sunfish such as the bluegill along with bass. These cover large sections of the country including states north of Texas where the growing and spawning seasons are shorter and more favorable for bass-bluegill combinations.

A female bluegill can spawn as many as four times during a single season in Texas, notes the specialist. The result is thousands of small bluegills that never reach edible hize.

Another factor contributing to the bluegill dilemma is that bluegills are not the "ice cream" in any fish's diet. Bass prefer feeding on their own kind and other species rather than on bluegills. Channel catfish are scavengers and eat few bluegills.

If sunfish are desired, the most suitable species is the redear since it spawns only once a year and thereby lengthens the time before overcrowding occurs, says the specialist.

Crappie or white perch should not be stocked in ponds having less than five to ten surface acres because, like bluegills, they will overpopulate a small pond in one or two years.

A pond should always be stocked with fingerlings that are approximately the same size, such as those obtained from state and federal hatcheries, says the specialist. Never go to a nearby stream or pond and seine fish for stocking.

"A balanced fish population is almost impossible to obtain if stocking of all sizes and kinds of fish is practiced. Never introduce fingerlings into a pond containing adult fish, particularly bass," warns Klussmann. "A pond should

be stocked with a balanced group of fingerlings only after the adults have been removed."

Fingerlings for stocking private ponds can be obtained free of charge from either state or federal hatcheries.

Application forms and stocking recommendations can be obtained from the local game warden. Requests for stock fish may be made at any time.

It is important for pond owners to fill the application card correctly and not to "hedge" on the size of a pond in an effort to get more fish, the specialist said. It is just as bad to stock a pond with too many of the right kind as it is to stock it with undesirable kinds. Just as range land has a certain capacity for a specific number of animals, a pond can only support a specific number of pounds of desirable fish.

The program of the annual Texas A&M University Beef Cattle Short Course, July 27-28, will feature a discussion, among many others, of beef imports and their effects upon the nation's beef industry. Many other subjects of wide interest to beef producers are included on the program.

ALL ON TELEVISION

Don't write us any editorials. We don't want to think. We get that on television. David Sarnoff does that for us.

Ever notice that when the Negro is pictured on TV little is shown about what he did to get an officer after him. He may have attacked the officer.

But the TV camera is turned on him to show all his bruises in detail, and the impression is left that he was all mistreated, regardless of how guilty he was in the first place and what he had tried to do to the officers.

But no comment, please. We get that all on TV.

In case of fire Dial 453-4291.

**HOWARD'S
Barber Shop
BRONTE**

Refrigerated Air

Gobs New Funny Books

ALL HAIR CUTS
GUARANTEED

Closed on Wednesday

The Observer, Robert Lee, Texas

July 23, 1964

SOME FAMOUS SCREWBALLS

Thomas Edison
Robert Fuller
Alexander Graham Bell
Louis Pasteur

Patrick Henry
Wright Brothers
Henry Ford
And every man who signed the Declaration of Independence.



For Vacation Joy

DROP IN TO SEE US
FOR ALL YOUR CAR NEEDS

McDORMAN'S
EL PASO STATION

Not a Filling Station, But a Service Station

CHEVROLET

makes all types of quality trucks



ECONOMICAL CHEVY-VANS

The flat-floor Chevrolet delivery with the low price tag and the engine up front. Over 40 sq. ft. of completely usable floor space almost 7½ ft. long. Can carry a full ton of payload. Body and frame are welded together. Has I-beam front axle and leaf springs. Windshield is big, flat, practical one-piece unit. Side doors and rear windows are optional at extra cost.

CHEVROLET

QUALITY TRUCKS COST LESS

Telephone your Chevrolet dealer about any type of truck

42-7228

VAUGHAN CHEVROLET COMPANY

Across from Court House

ROBERT LEE, TEXAS

Phone 453-4601

HAYRICK LODGE

No. 696 A. F. & A. M.



Meets second Tuesday night in each month. Visitors welcome.

ALTON ROBERTS, W. M.
DELBERT SHOEMAKER, Sec.

ROBERT LEE CHAPTER

No. 187 O. E. S.



Meets Second Thursday Night in Each Month. Visitors Welcome.

WINNIE WALDROP, W. M.
JUANITA GODWIN, Sec.

LETTERS TO THE EDITOR

What has the Church come to, when the National Council of Churches openly espouses INVASION of a sovereign State of the Union? This organization has furnished a quarter of a million dollars and trained ill-advised students in our universities to stir up strife and perhaps cause bloodshed in Mississippi! Their main objective is the Delta area but they intend to continue this brazen harassment all summer and throughout the South! Members of churches belonging to the National Council of Churches should protest this unprecedented action and refuse support of the organization. Why should a few left-slanted clergy, responsible for this outrage, speak for millions of Protestants? If financial support were withheld by church members, this movement would soon die on the vine.

Sincerely,
William S. Hammond
P. O. Box 1160
Waco, Texas

Editor's Comment: In denominations that support it, some churches in recent years have withheld their contributions to the National Council, which has helped promote many red-slanted ideas, such as the recognition of Red China. We understand the

Methodist Church at Bronte is one of those withholding donations.

Dallas, Texas
July 7, 1964

Enclosed money order for my subscription. I still enjoy reading the Observer. I read where Mrs. Haley observed her 85th birthday. Congratulations Aunt Evie, and where is Emory now? Even though this letter isn't printed you might see her and tell her.

Sincerely,
Bertie (Warren) Therrel
(Mrs. Hayley says Emory gets his letters from home this way, so here you are, Emory. Time you wrote the Observer! — USB.)

FRIENDSHIP W.H.D. CLUB HAS MEETING WITH MRS. ROE

The Friendship W.H.D. Club met July 9 in the home of Mrs. A. J. Roe, Jr.

Nine members were present for the program on "Care of furniture and floors," given by agent, Mrs. Roe.

The next meeting will be with Mrs. Albert Fields, July 23. Members are urged to attend.

IT'S ALWAYS LIKE THAT

Ever notice that the people who know all about how a newspaper should be run never run one? And the people who do run 'em don't know how! What a pity.

Heard At Sanco

Mr. Jay Evans has returned home and is at work after being treated in the Veterans hospital at Big Spring.

Mr. and Mrs. Green Preslar visited their son-in-law and daughter, Mr. and Mrs. T. K. Whiteside at Adamsville, Texas.

Mr. and Mrs. Teddy Pitcock and family attended the Pitcock reunion at Brownwood Sunday.

Mr. and Mrs. O. R. Eubanks of Eunice, New Mexico, visited Mr. and Mrs. Sam McGallian and Mrs. Emma McGallian over the weekend, also visiting with them were Mr. and Mrs. Lloyd McGallian.

Mrs. Urden Arbuckle has returned home after a month's visit with her brother and wife at Hico.

Mrs. Marilyn Reid visited her parents, Mr. and Mrs. H. L. Reid, on her vacation. She is employed in San Angelo.

Mr. and Mrs. Ray Killam and family, with his mother, Mrs. Maudie Killam and sister, Mrs. Faye Webb and son, Stevie, and a friend, Linda, visited Mr. and Mrs. Fred Killam and the Ulmer Bird's over the weekend.

Reg. Wilson Carwile spent the weekend with his mother, Mrs. Fannie Carwile and brother, Henry.

TAKE A LOOK AT THE ADS.

The Observer, Robert Lee, Texas

July 23, 1964

Extremist — the guy who doesn't agree with my television commentator.

Take a Look at the Ads. A little time spent in reading them is time well spent.

PICNIC DAYS

CHECK YOUR GAS —

TIRES — OIL — LUBRICATION

We Are Here to Serve You

Ross Service Station

Lubrication - Washing - Oil Change

CLOSED ON SUNDAYS

Coke County Quarterly Statement

From April 1 To June 30, 1964

| Fund | Balance April 1, 1964 | Receipts | Disbursements | Balance June 30, 1964 |
|----------------------------|--------------------------|-------------|---------------|--------------------------|
| Jury | \$ 38,486.13 | \$ 475.00 | \$ 317.63 | \$38,643.50 |
| General County | 57,442.50 | 2,244.92 | 32,919.29 | 26,768.13 |
| Officers Salary | 1,132.98 | 15,213.53 | 13,960.74 | 2,385.77 |
| Road and Bridge | 39,946.18 | 27,033.42 | 30,781.99 | 36,197.61 |
| F.M. & F. C. | 40,630.15 | 857.87 | 17,033.05 | 24,454.97 |
| Social Security | 13,357.72 | 0 | 2,811.73 | 10,545.99 |
| Road Bond No. 1, Ser. 1954 | 44,694.96 | 4,154.46 | 1,302.50 | 47,546.92 |
| Road Bond No. 1, Ser. 1939 | 3,400.84 | 0 | 3,400.80 | 0 |
| Road Bond No. 1, Ser. 1959 | 31,341.40 | 421.14 | 0 | 31,762.54 |
| Road Bond No. 2, Ser. 1955 | 25,260.62 | 471.34 | 0 | 25,731.96 |
| Road Bond No. 3, Ser. 1955 | 21,355.90 | 348.12 | 451.25 | 21,252.77 |
| Courthouse Int. & Sink. | 49,888.21 | 743.10 | 1,450.00 | 49,181.31 |
| Coke County Park, I & S. | 24,381.61 | 227.00 | 9,715.76 | 14,892.85 |
| TOTALS | \$391,319.20 | \$52,189.90 | \$114,144.78 | \$329,364.32 |

THE STATE OF TEXAS
COUNTY OF COKE ss

Before me the undersigned authority appeared Inez Burns, County Treasurer of Coke County, Robert Lee, Texas, who being duly sworn says the within and foregoing is a true and correct statement as taken from the Quarterly Report of the County Treasurer of Coke County, Texas.

Inez Burns
County Treasurer, Coke County, Texas

Golda Smith, Notary Public, Coke County, Texas

(Seal)

HOSPITAL NEWS

Mrs. Ethel Green dismissed 7-15.
 Mrs. J. O. Rudd dismissed 7-16.
 A. J. Kirkpatrick admitted 7-17, remained.
 Mrs. Bonnie Walker admitted 7-18; dismissed 7-19.
 Mrs. Oscar Collett, admitted 7-18; remained.
 Mrs. Wes Kinsey admitted 7-19; remained.
 Melvin Childress admitted 7-20; remained.
 Mrs. R. S. Crum admitted 7-21; remained.

COMMENT

Strange, isn't it, that when northern leaders of the National Council of Churches organized and trained a task force to solve racial problems, they couldn't find those in Harlem, next door to the pastorate of some of their main leaders.

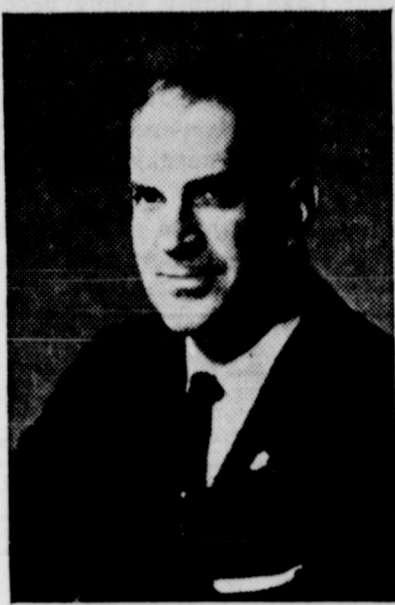
There has been more race trouble over thirty years in that one New York spot than in Mississippi and Alabama put together.

Having never solved anything that close to home, those good people have great zeal to export to Mississippi and Alabama what has never worked in the State of New York.

Bobby D. Cowley, home recently on leave, is serving as flight electrician in an anti-submarine patrol squadron, stationed at Jacksonville, Florida, for the last three years.

The Robert Lee Belles, women's baseball club, will play in the Roscoe tournament, Tuesday through Saturday.

Lions Elect International President



Claude M. DeVors of Wichita, Kansas, was elected President of Lions International at the Association's 47th annual convention in Toronto, Canada, July 8-11. Lions International, with 720,000 members in 124 countries, is the world's largest service club organization.

Lions International is best known for its many youth programs, community service projects, sight conservation activities and aid to the blind. Last year Lions Clubs around the globe completed more than 400,000 individual community projects.

DISTRICT COURT

District Court will convene here August 3, non jury cases to be heard on that date, jury cases on August 17.

THE SALE at ROACH'S is continuing. See their Ladies dresses at 1/2 price.

Neighborhood News

Mrs. C. G. Walker is moving into Robert Lee from Silver. The house is being placed just west of the Sam Williams place, back of Ronnie Bakers.

Mrs. Jeff Dean, home over a weekend, said she has been enjoying her summer at Sul Ross, Alpine, completing her Masters Degree.

Kitten was still at Burney, visiting the Orion Lewis's. Tony is in San Angelo with Mrs. Dean's sister, Mrs. Katherine Parris. He is there to work with a San Angelo contractor and plans to attend SAC this fall.

R. L. Flanagan, game warden, has been at home convalescing from eight days hospitalization recently.

Mitchell Opposes Dam Site In Coke County

The Colorado City Record, issue published last Sunday, carried a resolution signed by officials of Mitchell County, of Colorado City, and other towns in the county, stating that they would not support the application for permit to build the lake outside of Mitchell County.

The Azusa singers traveled over 7,000 miles giving concerts last summer. They are: Ed Loomis, junior, tenor; Dennis Marriott, senior, baritone; Jim Holsclaw, junior, bass; Tom Rice, sophomore, first tenor.

A little girl was telling her teacher about losing her baby teeth. One tooth was loose, and she had already lost three. She said, "Pretty soon I'll be running on the rim."

As Good As We Make It
 Today and Tomorrow
 Robert Lee!

FACTS ABOUT STROKE

THE BRAIN CAN'T WORK WITHOUT OXYGEN BROUGHT BY THE BLOOD

IN STROKE, BLOOD SUPPLY IS CUT BY-

ARTERIAL BLOCKAGE (Clotting)



OR ARTERIAL RUPTURE (Hemorrhage)



FOR MORE INFORMATION ABOUT STROKE ASK YOUR HEART ASSOCIATION

Numbers to Remember

- OBSERVER OFFICE --- 453-3501
- FIRE ----- 453-4291
If no answer 453-3231
- SHERIFF --- 453-3121
If no answer 453-4221
- AMBULANCE 453-3221
If no answer 453-3601

(To clip out and post by your telephone)

In EXTREME Emergency, Dial "0"

Ballinger Memorial Company

SOUTH BALLINGER
 P. O. Box 655 Ballinger, Texas Phone 2-4782

Before you buy your monument, please figure with us. You select the stone and design. We guarantee the granite and workmanship.

Nettie G. Lusk Mrs. W. W. Wheat Sam L. Williams
 Owner Wingate Rep. Representative

REPORT OF CONDITION OF ROBERT LEE STATE BANK

of Robert Lee in the State of Texas at the close of business on June 30, 1964.

ASSETS

| | |
|---|-----------------------|
| Cash, balances with other banks, and cash items in process of collection | \$ 558,744.61 |
| United States Government obligations, direct and guaranteed | 421,865.34 |
| Obligations of States and political subdivisions | 221,398.39 |
| Other bonds, notes, and debentures (including \$100,000.00 securities of Federal agencies and corporations not guaranteed by U. S.) | 100,000.00 |
| Loans and discounts (including \$497.71 overdrafts) | 904,290.71 |
| Bank premises owned \$41,125.00, furniture and fixtures \$6,382.36 | 47,507.36 |
| (Bank premises owned are subject to \$ None liens not assumed by bank) | |
| Other assets | 37.50 |
| TOTAL ASSETS | \$2,253,843.91 |

LIABILITIES

| | |
|--|-----------------------|
| Demand deposits of individuals, partnerships, and corporations | \$1,049,352.20 |
| Time and savings deposits of individuals, partnerships, and corporations | 615,283.92 |
| Deposits of United States Government (including postal savings) | 10,558.99 |
| Deposits of States and political subdivisions | 412,396.75 |
| Certified and officers checks, etc. | 3,159.29 |
| TOTAL DEPOSITS | \$2,090,751.15 |
| Total demand deposits | \$1,381,467.23 |
| Total time and savings deposits | \$ 709,283.92 |
| TOTAL LIABILITIES | \$2,090,751.15 |

CAPITAL ACCOUNTS

| | |
|---|-----------------------|
| Capital: Common stock, total par value | \$ 50,000.00 |
| Surplus | 90,000.00 |
| Undivided profits | 23,092.76 |
| TOTAL CAPITAL ACCOUNTS | \$ 163,092.76 |
| TOTAL LIABILITIES & CAPITAL ACCOUNTS | \$2,253,843.91 |

MEMORANDA

Assets pledged or assigned to secure liabilities and for other purposes (including notes and bills rediscounted and securities sold with agreement to repurchase) \$ 375,000.00

I, Willis W. Smith, Cashier, of the above-named bank do solemnly swear that this report of condition is true and correct, to the best of my knowledge and belief.

Willis W. Smith

Correct—Attest:

Wm. H. Allen }
 G. C. Allen } Directors.
 L. C. Ivey }

State of Texas, County of Coke, ss:

Sworn to and subscribed before me this 16th day of July, 1964, and I hereby certify that I am not an officer of this bank.
 Kenneth Lackey, Notary Public
 My commission expires June 1, 1965.

SUMMER SPECTACULAR

FRIGIDAIRE
FOOD FREEZER
 has 5-year food spoilage warranty with no top money limits!

***Protects you against food loss due to mechanical failure**

At any time within five years from the date of delivery of the Frigidaire Food Freezer to the original purchaser, the Manufacturer will reimburse the owner or user, through an authorized Frigidaire dealer or distributor, for the actual loss of frozen food by spoilage due to mechanical failure under normal use and service of the Frigidaire Food Freezer, except that the Manufacturer shall not be liable for loss unless amounting to \$5.00 and then only for the excess over and above \$5.00 for each and every loss.

Owner or user must notify an authorized Frigidaire dealer or distributor as soon as reasonably possible after discovery of said food spoilage and furnish proof of loss satisfactory to Manufacturer.

Compare! No other freezer you can buy gives you greater protection against food loss!



For refrigeration of all kinds, you can rely on FRIGIDAIRE.



West Texas Utilities Company

FREEZE BETTER... ELECTRICALLY

"an investor-owned company"

Saturday morning.
Jerome Sheppard, 31, was born July 14, 1933. He was married on Dec. 28, 1951, to Juanice Childress of Robert Lee.

Survivors are his wife, daughter of Sheriff and Mrs. Melvin Childress; one daughter, Rebecca, and two sons, Kenny and Danny, all of the home; his mother, Mrs. Delmir Sheppard, Robert Lee; two brothers, Bert and Demir M., both of Spearman; one sister, Mrs. Nella Brock, of Shallowater; and his maternal grandmother, Mrs. Temp Whiteside of San Angelo.

Services were conducted by Rev. Luther Berry, Baptist pastor at Spearman. Masonic rites were held at the graveside by the Hayrick Lodge of Robert Lee, assisted by San Angelo Masons, and by John A. Pollard, Jr., of Spearman, Grand Master of Texas, and a personal friend of Mr. Sheppard.

Pallbearers were Berlin Beck, Dick Thompson, Harold Morris, Jiggs Lofton, Bobby Hood, and Donald Mauldin.

According to relatives here, Mrs. Sheppard and children will continue to make their home at 1008 S. Blodgett Drive, Spearman.

CAPTAIN SCOTT WITH FAMILY HOME FROM SERVICE IN JAPAN

Captain H. L. Scott, Jr. is in Robert Lee after three years duty with the Air Force at Yokota Air Base in Japan. With him are Mrs. Scott and their two daughters, Sherry and Marilyn, who have been with him in Japan the past three years.

They are presently visiting Captain Scott's parents, Mr. and Mrs. H. L. Scott of Robert Lee.

He is a supply officer, and is being transferred to the Military Aircraft Transport Service, to fly a transport plane, out of McCord Airbase.

The Scotts flew by jet from Tokyo to Dallas, saw the sun set and rise within fifteen minutes at one point on their journey, and arrived in San Francisco several hours before they left Tokyo, — leaving Tokyo in the afternoon of Sunday, July 19 and arriving at San Francisco in the morning of Sunday, July 19; recovering the day they lost going to Japan. The flight Tokyo to Dallas took 11 hours flying time.

On leave or delay-en-route, they will be here two weeks.

Airman First Class Wade Anderson, son of Mr. and Mrs. Hal Anderson of Silver took part in the big exercise Desert Strike, with the U.S. Air Force Military transport airlift units.

Airman Anderson is an aircraft mechanic.

Religious Fanatic — One who seriously believes something and keeps working hard at it, but doesn't belong to my church.

FARRIS CITY DRUG

We Want Our Customers to Know That We Are at Their Service Day or Night With the Best Merchandise Available

Phone 453-3931

Robert Lee, Texas

Want Ads

Classified Advertising Rates: Minimum charge 75c per insertion. First insertion 5c per word; subsequent insertions (with no changes in copy) 3c per word. Initials, abbreviations and figures (except telephone numbers, house numbers and post office box numbers) count as one word. All classified advertising is payable upon publication.

CARD OF THANKS

We wish to take time out to thank the doctor and nurses and friends, for their visits and cards and flowers and help, while I was in the hospital. I sure appreciated it very much. It meant every thing to me. May God bless everyone, thank you.
Mrs. W. A. Payne and family.

HOUSES FOR RENT OR SALE:

One three bedroom, 2 baths, all conveniences, furnished or unfurnished. One two bedroom, all conveniences, furnished or unfurnished. Call Frank Dickey.

FOR BURIAL insurance see Sam L. Williams. tnc

WORLD'S LARGEST COSMETIC COMPANY

Has immediate openings for energetic women to earn excellent weekly income. Write Box 1629, San Angelo, Texas.

FOR SALE — Two General Electric refrigerators in good condition. Mack's Service Station.

Man over 24, vacancy in Coke & N. Runnels Co.'s for Rawleigh dealer. Full time preferred. Will consider ambitious part-timer. Many now earning \$3 per hour and up. See JOE L. SPARKS, RT. 1, BALLINGER or write Rawleigh, TXF-1230-1170, Memphis, Tenn. 6-25, 7-9, 7-23, 8-6, 8-13

TO GIVE AWAY — 3 part collie female puppies. Roy Tinkler, 453-3111.

THE SALE at ROACH'S is continuing. See their Ladies dresses at ½ price.

LOST at baseball field Saturday night child's "chu-chu" beige purse. Sue Wojtek.

NO. 833
IN RE: ESTATE OF WALLACE BRUCE CLIFT, DECEASED
IN THE COUNTY COURT OF COKE COUNTY, TEXAS
SITTING IN PROBATE

NOTICE TO CREDITORS ...
Notice is hereby given that on the 20th day of July, 1964, letters testamentary upon the Estate of Wallace Bruce Clift, deceased, were granted to the undersigned by the Honorable County Court of Coke County, Texas, in the above case pending upon the probate docket of said Court.

All persons having claims against said estate are hereby required to present the same to the undersigned within the time required by law. The post office address of the undersigned is P. O. Box 71, Robert Lee, Texas, 76945.

Ruth Simpson Clift

BUDGET HEARING

Notice is hereby given that Silver Peak School will hold their annual budget hearing on Monday, August 10, at 7.30, at the school building. Anyone interested is invited to attend.

—Guy Wheeler, Superintendent

Rev. Salter and family will leave Saturday morning to visit Mrs. Salter's parents, Mr. and Mrs. E. K. Brice, Sulphur Springs, Texas. They also plan to visit Carlsbad Caverns. Rev. Austin Masterson of Bronte will preach here at the Methodist Church on July 26 at 10 a.m.

FB Queen Contest Set for August 6

Coke County Farm Bureau officials have announced that the annual Coke County Farm Bureau Queen Contest will be held in the Bronte School Auditorium on August 6 at 8 p.m.

Entries in the contest will be divided into three groups — the first group includes girls from nine to twelve years old; the second — thirteen to fifteen years old; and the third — sixteen to twenty-two years of age. The daughters of Farm Bureau members are eligible to enter this contest.

The winner in the senior group will be the Coke County Farm Bureau's entry in district contest which will be held in Midland, Aug. 25.

Miss Peggy Corley, daughter of Mr. and Mrs. Marvin Corley, is the present senior Farm Bureau queen.

YOUNG PEOPLE WILL GIVE BCD REPORT ON CONFERENCE

Four Coke County young people who attended the Attorney Generals Youth Conference in Austin recently will give a report on their trip and the conference at the BCD meeting Tuesday noon next week.

They are Carolyn Parker and Linda Jacoby of Robert Lee, Margi

Oglesby and Ronnie Lee of Bronte. There were 750 delegates from over the state in attendance.

THE SALE at ROACH'S is continuing. See their Ladies dresses at ½ price.

It's pretty easy to be down on what you are not up to.

ALAMO THEATRE

ROBERT LEE, TEXAS

Evening Show Starts 6:30

FRIDAY AND SATURDAY, JULY 24 & 25
Tony Curtis, Angie Dickinson, Gregory Peck, Bobby Darin in
"CAPTAIN NEWMAN" in color
Also Cartoon

SUNDAY 1:30 MATINEE AND MONDAY, JULY 26 & 27
Steve McQueen, Natalie Wood, Edie Adams in
"LOVE WITH THE PROPER STRANGER"
Also Cartoon



Double Frontier Stamps on Wednesday with \$2.50 Purchase or More

KIMBELL'S

COFFEE Lb. 69c

CRISCO - - - - - 3 Lb. Can 69c

GLADIOLA

Flour 10 lb. bag 89c

CHERRIES, No. 303 Can - - - 4 for \$1.00

PORK & BEANS, Jack Sprat - - 5 for \$1.00

HEARTS DELIGHT

PEACHES, No. 2½ Can - - - 3 for 98c

TEA, Kimbell's - - - - - ¼ Lb. Box 29c

CUT-RITE WAX PAPER, - - - 125 Ft. Roll 29c

PICKLES, Kimbell's Sour or Dill - - Qt. 25c

SCOTT TOWELS - - - - - Reg. Roll 21c

GANDY'S

Big Dish 2 for \$1.00

OLEO, Hormel's - - - - - 2 Lbs. 39c

MEATS

HORMEL'S THICK SLICED

Bacon 2 lb. box 89c

BEEF RIBS - - - - - Lb. 29c

LONGHORN CHEESE - - - Lb. 49c

CLUB & T-BONE STEAK - - Lb. 73c

BAKER'S Groc. & Mkt.