

# THE WINTERS ENTERPRISE

VOLUME TWO

WINTERS, TEXAS 79567

THURSDAY, JANUARY 31, 1991

PRICE 50 CENTS

NUMBER 5

## City Council votes to give money to Winters Library

Winters City Council met in regular session Monday, January 28 with a large audience in attendance. Council members present were Sandy Griffin, James Spill, O. J. Murray and Randy Loudermilk. Councilman Steve Byrne was not present. Also present were Mayor Randy Springer, City Administrator Charles Ludwick and City Attorney Ken Slimp.

Visitors to the meeting included several members of the Library Board and librarian Pauline O'Neal. Others in attendance included the entire Government 231 extension class of Western Texas College.

Following a presentation by librarian Pauline O'Neal and Ouida Nichols concerning requirements for the library to become a member of Big Country Library Association, Council members voted unanimously to make an additional \$200 contribution to the library. Mrs. O'Neal and Mrs. Nichols told the Council that membership in Big Country Library Association would not be granted until a certain percentage of their income comes from taxing entities in the area. Currently Runnels County provides \$2100 per year, City of Winters \$600 and other income comes from donations, memberships, etc. from other individuals and companies. The total income for the 1990 year for the library was \$7154.

Membership in Big Country Library Association is important because the Winters Library cannot make application for available state grant money until such time as they become a member. According to Big Country Library Association requirements, money received from public taxing entities should be at least \$2855. With the additional \$200 approved by the Council, the Winters Library should become eligible for membership.

Plans are to begin applying for grants to enable the library to expand its facilities after such time as it becomes a member of Big Country Library Association.

Mrs. O'Neal reported the library checked out 8570 books in 1987, 12,473 in 1988, 16,361 in 1989 and 14,779 in 1990. The drop in 1990 was due to the library not having the summer reading program for students because of all of the Centennial activities during that time, according to Mrs. O'Neal.

In other action, the Council voted to appoint Mary Louise Bauer, K. W. Cook, David Bradley, Steve Ballard and Gary Moore to the Municipal Airport Board of Adjustment for two year terms.

Following that the Council went into executive session to consult with legal counsel concerning oil drilling operations adjacent to the airport. On return to open session a motion was made, seconded and carried unanimously that the Council authorize the City Administrator to take necessary action to see that Winters-Runnels County Joint Airport Board Ordinance is not violated and authorizes the City Administrator to fine for any violations of that Ordinance.

The action was taken following an incident which recently happened near the airport in which an oil well was drilled. The rig height was above that authorized by the ordinance within a certain distance of the airport.

City Administrator Charles Ludwick then reported to Council members on several items. One such item was a number of calls he had from businesses in town regarding the misuse of trash dumpsters. He said he had several complaints from businesses of their dumpsters being filled with

See "Council" pg. 2



Rev. Travis Franklin congratulates Gloria Poehls on being named Winters' female Citizen of the Year. Poehls was named at last Saturday's Chamber of Commerce banquet. Franklin emceed the banquet.



Gary Moore accepts congratulations from Rev. Travis Franklin. Moore was named Winters' male Citizen of the Year at the annual Chamber of Commerce banquet last Saturday.

## Poehls, Moore named Citizens of Year

Gloria Poehls and Gary Moore were named Citizens of the Year at the annual Winters Area Chamber of Commerce banquet Saturday.

Poehls, immediate past president of the Chamber, was born Gloria Hope in Winters. She started first grade in Winters but later moved to Norton and finished high school at Norton. High school honors included being named best all-around girl, FFA Sweetheart, Lions Club Sweetheart, and received the Good Citizen Award from the Daughters of the American Revolution. She was also captain of the basketball team, a cheerleader and played on the volleyball and tennis teams. Poehls was a member of the 4-H and Beta Clubs.

Mrs. Poehls is married to Ronnie Poehls who is in the oil-field transport business and farms near Wingate. They have three children, Missy, Wayne and Shana and one granddaughter. They are members of First Baptist Church, work with the youth and Mrs. Poehls is past secretary of the Band Boosters Club. She is co-owner of Jerrolyn's in Winters.

Gary Moore was born in Abilene and is presently manager of the Winters West Texas Utilities office. He has been employed by WTU since 1968.

Moore graduated from Hawley High School in 1963 and is a graduate of McMurry College with a bachelor of business administration degree.

He served in the U.S. Navy from 1964-67 and married the former Mary Ellen Woodard in 1967. They have two children, Rebecca and Russell and one granddaughter.

Gary Moore is a past president of the Winters Lions Club, a member and secretary-treasurer of the Winters Volunteer Fire Department. He was named 1989 Fireman of the Year and has also been a member of the Clyde Volunteer Fire Department and the Moran Volunteer Fire Department.

Moore is a member of West Texas Chamber of Commerce and has served as unit Commissioner of the Boy Scouts of America. He serves on the Winters Chamber of Commerce Industrial Committee and is a member of the Winters Independent School District Advisory Committee. He and his wife are members of First Baptist Church.

Decorations for the banquet were centered around the theme "Best Little Small Town in Texas." Tables were decorated with wooden cutouts in the shape of Texas with small yellow roses placed in the approximate location of Winters. Refrigerator magnets of wood stamped with "Best Little Small Town in Texas" were given to everyone attending as favors. The decorating committee was made up of Gloria Poehls, Mary Ellen Moore, Phyllis Boles, Dottie Loudermilk, Susan Bryan, Scarlotte Mikeska and Brenda Briley.

### New Postage Rates

New postal rates will go into effect at 12:01 a.m. Sunday, February 3, according to postmaster Deen Thompson. At that time the postage to mail a first class letter will be 29¢ and apost card will cost 19¢ to mail.

Other rates will also increase and "F" stamps are now available for sale. All mail deposited by Saturday night will be cancelled and sent at the old rate. Any mail deposited after that time will need to have the new postage on it.

## State Representative special election set for February 9

Eleven candidates have filed for the District 65 State Representative seat recently vacated by Jim Parker of Comanche. The special election to select a replacement to fill out his term is set for February 9.

Parker resigned his position in the State House of Representatives to become the Legislative Director for Governor Ann Richards. The 65th District includes Runnels, Brown, Coleman, Comanche, Eastland and McCulloch Counties.

Of the eleven candidates filing, nine filed as Democrats and two filed as Republicans. Those filing as Democrats were:

- Bob Day of Bangs, Brown County Democratic Party Chairman and owner of a teacher supply store.

- Richard Gist of Brownwood, businessman.

- H. R. Jefferies of Comanche, retired superintendent of schools.

- Kenneth "Tootsie" Mitchell of Rochelle, superintendent of Rochelle Independent School District.

- Bob Moore of Comanche, oil

and gas operator.

- Martha Parker of De Leon, housewife and rancher, wife of Jim Parker, former representative.

- Ben Doyle Sudderth, Comanche, attorney.

- Robert R. "Bob" Turner, Voss, rancher.

- James L. Williamson, Brownwood, insurance business.

Republicans filing include:

- Richard Watson, Gorman, pharmacist.

- Phil Wilson of Brownwood, marketing consultant.

According to County Clerk Linda Bruchmiller, the election will be held Saturday, February 9, 1991, from 7:00 a.m. to 7:00 p.m. at all the regular county polling places.

Absentee voting in the County Clerk's office started January 28th and will continue through February 5th. Requests by mail for an absentee ballot will be accepted through February 1st.

Any questions concerning this election may be directed to the County Clerk's Office, Box 189, Ballinger, Texas 76821 or telephone 365-2720.

## 25 vie for Pinewood Derby awards

Twenty-five Winters scouts displayed and raced their pinewood Derby cars last Friday night at the Scout Hut. Judges Travis Franklin, Joe Eubanks, and Roeneal Boles looked over the entries and named the three top entries in three categories.

Best Design winners were (1) Blake Smith, (2) Nathan Smith, (3) Bryan Smith. Most Unusual category winners were (1) Justin Minzenmayer, (2) Wade Parramore, and (3) Oscar Luz. Most Original winners were (1) Craig Conner, (2) Cole Hogan, and (3) Ryan Bland.

Following the judging, the racing began. All the cars were designed and built from identical kits with restrictions as to weight. Designs were as different as 25 different entries could be. Cars were raced two by two down an inclined track and winners raced winners until the final winners in each group were determined.

Division winners were as follows:

Webelo: (1) Eric Joeris  
(2) Blake Smith  
(3) Justin Minzenmayer

Wolf: (1) Justin Calcote  
(2) Luther Dunlap  
(3) Ryan Smith

Bear: (1) Matt Angel  
(2) Robby Heathcott  
(3) Richard Dunlap

Tiger Cub: (1) Joseph Joeris  
(2) Chris Hoppe  
(3) Ryan Bland

The winners of each division raced for the overall championship with Joseph Joeris having the speediest car of all. Second place overall went to Eric Joeris and third to Matt Angel.

Winters scouts will now take their cars to Abilene to race against those from other cities in the area. Pinewood Derby entries came from Chris Hoppe, Matthew Eubank, Ryan Bland, Jeremy Hope, Wade Parramore, Nathan Smith, Joseph Joeris, Justin Meyer, David Rowe, Oscar Luz, Welsey Calcote, Craig Conner, Richard Dunlap, Kenny Green, Robby Heathcott, Matt Angel, Luther Dunlap, Cole Hogan, Justin Calcote, Ryan Smith, Eric Joeris, Justin Minzenmayer, Blake Smith, Mark DeLaCruz, and Greg Evans.



Members of Winters Lions Club gathered almost 1,000 signatures from townfolk and sent letters to 18 service men and women last week. Names of those mailed to were gathered from Winters area residents who have relatives or friends serving in Desert Storm. Shown dropping the letters in the post office are Lions (left to right) Lanny Bahlman, Gene Wheat, Gary Moore, Boss Lion Randall Conner, and Joe Gerhart.

### WHAT'S HAPPENING?

Jan. 31-Anson JHB there at 4:30-JHG here at 4:30  
Feb. 1-Albany there at 4-JVG & B, VG & B  
Feb. 2-GROUND HOG DAY

Area 14 Special Olympics Tournament - ACU

Feb. 3-Free Throw Championship Tournament 2 pm

Feb. 5-Hamlin here at 4-JVG & B, VG & B

7:30 pm San Angelo Genealogical & Historical Society at Church of Christ Fellowship Hall

Feb. 7-Immunization Clinic 9:30-12 & 1:30-3

Commodities to be distributed 2:30-4

Hawley there 4:30 JHG - here at 4:30 JHB

Feb. 8-Stamford there 4 pm JVG & B, VG & B

Feb. 9-State Representative Election

Soccer Sign up 9 to 11



### KIDS' KORNER



Racing winners - overall - Pinewood Derby, right to left, 1st - Joseph Joeris, 2nd - Eric Joeris, 3rd - Matt Angel.

(more pictures page 2)

# OIL BUSINESS . . .

By Reg Boles



A term that is mentioned frequently when discussing the Middle East and the associated oil & gas production and reserves is "nationalized" oil companies. You may ask yourself: what the heck are they talking about?

Well, whether you actually say that or not, let's enlighten ourselves a little bit about this term and its implications.

An oil company is "nationalized" when the government of the country where the oil company originates takes control of the company. By control, I mean full ownership and possession.

This is unlike the system you and I are accustomed to in the United States, where individual citizens and/or groups of citizens own oil and gas companies. From Joe Blow Oil Company to Exxon, the ownership all boils down to individual stock holders. I admit that groups may hold ownership on behalf of pensions and charities, but the roots are with people, the citizens of this country (and even of other countries).

The nationalized system basically prohibits private ownership of petroleum assets, except in a "hybrid" system, like Great Britain (where, incidentally, private ownership is buying out the government-owned entities). To prevent confusion, we will discuss true nationalized systems.

The governments in the Middle East have nationalized just about all of the petroleum entities in their countries, even the peripheral service companies (where they exist). Saudi Arabia is a good example.

In the '60's, Saudi Aramco (acronym for Arabian-American Oil Company) was a partnership between the Saudi government and several American oil companies. These American oil companies provided a majority of the expertise and manpower to run Saudi Aramco. In exchange, the American oil companies shared ownership of the reserves and production.

In the '70's and beyond, the Saudi government terminated that agreement with whatever terms they felt fair. Of course, the American companies had their doubts about the fairness and equity of it all, but there was very little they could do about it. Through this process, Saudi Aramco became the national oil company of Saudi Arabia.

Similar nationalizations occurred in the remaining Middle East reserve centers and in South America and the Far East. It seems that those governments involved did not like the idea of foreign ownership of so valuable an asset. Interestingly enough, those countries still rely almost exclusively on U.S. consultants and professionals to advise them. Another interesting fact: just about any indigenous professionals

(engineers, geologists, etc.) are U.S. educated.

What would it be like in the U.S. if oil were nationalized? Believe it or not, the idea was taken seriously during the oil crisis of the late '70's and is now rearing its unattractive head, again.

I'm no expert, but here is a "menu" of possibilities.

First, there would be no "Big Oil" companies to get mad at when gas prices get higher. The government would have to take the heat. Also, the owners of those big companies, would no longer have those large personal fortunes, but neither would they be able to make the contributions to society as they most surely do, now.

Additionally, you royalty owners would probably be the next to lose your ownership. It would be inequitable if private citizens could own the petroleum before it reaches the surface, but no one was allowed to own it after. Therefore, mineral rights would probably be nationalized, also.

You can see that one of the casualties of nationalized oil in the U.S. would be private enterprise which offers independence to individuals and hope for an improved lifestyle. These qualities of life are really only available in the U.S., and nationalized oil would end a major part of it by choking off a virtual breeding ground of entrepreneurship.

Oh yes, if you want to see an example of what a government-run business can accomplish, check the price of a stamp next week.

## HIGHLIGHTS OF AREA DRILLING ACTIVITY COMPLETIONS

### Callahan County

JR Investments has completed the N. Foster #1 in the Callahan County Regular Field (4 miles NE of Cottonwood) at an initial rate of 15 BOPD & 1 BWPD in the Lower Palo Pinto (perms 1918-24). Loc. is 1995 FSL & 150 FWL of Subd. 7, Lavaca CSL Sur., A-262.

Aries Operating has completed the plug-back of McCarty #3 in the Grand Old Oplin Field (2 miles W of Oplin) at an initial rate of 35 BOPD & 1 BWPD in the Gray Sand (perms 3833-45). Loc. is 3463 FSL & 330 FWL of W.C. Jenks Sur. 382, A-256.

### Concho County

3-M Energy has completed the Ellis-Kinook #3 in the H&R Field (7 miles NW of Eden) at an initial rate of 33 BOPD in the Strawn (perms 3491-97). Loc. is 1334 FNL & 297 FWL of Sec. 9, GC&SF Sur., A-1544.

H.R. Sullivan has completed two wells in the Lonesome Dove II Field (3 miles SW of Eden) in the King Sand. The W&R Pfluger - C- #4 potentialized at 98 BOPD (perms 1981-96) and is loc. 174 FNL & 1185 FEL of Sec. 2088, Blk. 72, T&NO Sur. The W&R Pfluger #12 potentialized at 109 BOPD (perms 1999-2025) and is loc. 484 FSL & 1614 FEL of Sec. 2085, Blk. 72, T&NO Sur.

### Tom Green County

Marathon Oil has completed the J.W. Green-B- #14 in the Susan Peak Field (15 miles S of San Angelo) at an initial rate of 5.38 MMCFPD (AOF) in the Cisco (perms 4445-4520). Loc. is 2188 FNSL & 2219 FWL of E.A. Abbott Sur. 6, A-8169.

## STAKINGS

### Callahan County

JR Investments has staked the N. Foster #3 as a wildcard in the Scranton Field area 4 miles NE of Cottonwood (Depth 2000). Loc. is 450 FNL & 750 FWL of Subd. 7, Lavaca CSL Sur., A-262.

### Concho County

Burns Operating has staked the Stone #1 in the Southeast Speck Field 9 miles W of Eden (Depth 2300). Loc. is 990 FNL & 990 FEL of Sec. 57, Blk. 8, H&TC Sur., A-410.

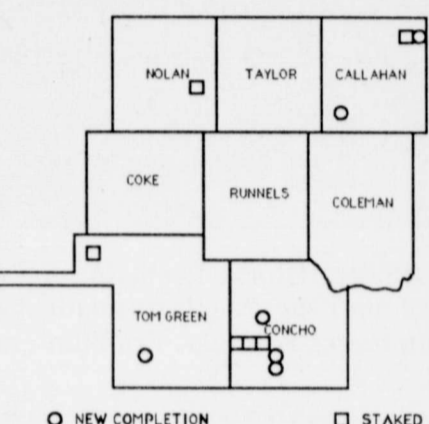
Wiser Oil has staked two wells in the Agarita Field 5 miles W of Eden (Depth 2500). The Jacoby - A- #8 is 2420 FSL & 1685 FEL of Sec. 71, BS&F Sur., A-95. The Jacoby - A- #9 is 1080 FNL & 330 FEL of same Sec.

### Nolan County

O&G Energy has staked the Group #16-A as a wildcard in the Group Field area 7 miles NE of Blackwell (Depth 4400). Loc. is 1650 FSL & 1650 FEL of Sec. 112, Blk. 1-A, H&TC Sur.

### Tom Green County

Boot Drilling has staked the M. Turner #6 in the Boot Field 20 miles NW of San Angelo (Depth 1500). Loc. is 2020 FNL & 1008 FNWL of Sec. 231, W. Geise Sur., A-238.



○ NEW COMPLETION □ STAKED

## Veterans of Foreign Wars Post 9193

The Winters Veterans of Foreign Wars Post 9193 Ladies Auxiliary met recently in the Post Home with President Ellen Meyer calling the meeting to order. Plans for the Chicken-Spaghetti Supper planned by the VFW and Auxiliary for all veterans and veterans' families in the area on Saturday, February 16, 1991, in the Post Home were discussed.

Auxiliary Community Action Chairperson Mary Kurtz reported on activities sponsored during 1990 by Post and Auxiliary: Flew United States flag on Winters' downtown streets on special days and during Centennial. Donated U. S. flag to be flown during the Centennial and buried in the time capsule. Had flag raising ceremony at opening of Centennial. Gave out 1,000 small U. S. flags during the celebration. Put up a flag pole for HeadStart school and replaced flagpole in Lutheran Cemetery. Donated flag to HeadStart.

Observed Veteran's Day by providing a barbecue for all veterans and veterans' families. Had a Christmas party for area children. Sponsored a booth at Mayfest.

Donations were given to: Winters Food Pantry \$300, HeadStart \$100, Winters Library \$63, Winters Relief Fund \$100, Senior Citizens Nursing Center in Winters \$200 for patient recreation, St. John's Preschool playground \$150.00, Runnels County D. A. R. E. Program \$25, Winters Livestock Association \$20, Winters Centennial \$85, Winters Jr. High Band \$150, mini blinds for North Runnels Hospital, Ladies Auxiliary Cancer Aid and Research \$675, Ladies Auxiliary Programs, "State Nursing Scholarships, Health and Happiness, Christmas Cheer, Wish," V. A. Hospitals and disabled veterans.



Best Design winners at last Friday's Pinewood Derby competition are pictured above. From right to left: 1st - Blake Smith, 2nd - Nathan Smith (represented by grandfather Luz Bobby Smith), 3rd - Ryan Smith.



Most Unusual winners - Pinewood Derby, left to right, 1st - Blake Smith, 2nd - Nathan Smith (represented by grandfather Luz Bobby Smith), 3rd - Ryan Smith.



Tiger Cub racing winners - Pinewood Derby, right to left, 1st - Joseph Joeris, 2nd - Chris Hoppe, 3rd - Ryan Bland.



Wolf racing winners - Pinewood Derby, right to left, 1st - Justin Calcote, 2nd - Luther Dunlap, 3rd - Ryan Smith.



Most Original winners - Pinewood Derby, right to left, 1st - Craig Conner, 2nd - Cole Hogan, 3rd - Ryan Bland.



Bear racing winners - Pinewood Derby, right to left, 1st - Matt Angel, 2nd - Robby Heathcott, 3rd - Richard Dunlap.



Webelo racing winners - Pinewood Derby, right to left, 1st - Eric Joeris, 2nd - Blake Smith, 3rd - Justin Minzenmayer.

The Winters Enterprise for all your printing needs. 754-4958

**Council**  
refuse over the weekend by unknown persons. Discussion centered around whether an ordinance prohibiting the unauthorized dumping of trash in dumpsters, with a fining provision, would hinder those who are dumping the unauthorized trash. Board members decided to take the question under advisement and perhaps consider it at a later date. They stressed that publicity should be put out that dumpsters are rented by the businesses and are specifically for the use of those who pay for their rental, not the public at large.

City Attorney Ken Slimp told the Council that the unauthorized use of dumpsters might fall under the theft of services and might be handled by the County.

Administrator Ludwick then told Council members that the report by Jim Allen on the south water tower was not in yet, that he was due to do the inspection the following day, Wednesday, January 29 and a report should be available before the next Council meeting.

Following the authorization for the payment of routine bills, the Council adjourned until their next regular meeting on February 11.

**NOTICE**  
Need information on CONSTANCE BETH (or Bethel) HOLLEY - maiden name - or any member of her family. Any information would be appreciated. Call collect 803-279-2060 or write Mrs. W.H. Presley, P.O. Box 6033, North Augusta, S.C. 29841.

Winters Funeral Home Inc. Box 395 Winters 754-4529  
Mike Meyer, Mgr. Linda Dry, Sec. Prepaid Funerals Insurance Monuments

## Harvest Your Safety Thoughts



## Buckle Up!

Texas Coalition for Safety Belts

<h2>Service Directory</h2>	
H & H Tire and Muffler Service 242 South Main Winters 754-4821	Guy's Dirt Contracting Box 576 754-4292 Winters Dozers - Motorgraders Backhoes - Dump Trucks
Serving the oil industry over 30 years Mac Oil Field Company Inc. 1007 W. Dale Winters 754-5565 1-800-588-5565 Power Kill Trucks, 30-130 BBL Transports, Vacuum Truck, Test Tanks, Frac Tanks Ronnie Poehls-owner Dickie Clough-foreman Anywhere-Anytime	 4849 Treadaway Abilene, Texas Bob Jones 915/695-9694 Owner Three rotary rigs Experienced in vertical and horizontal drilling from 2000 to 7000 feet
Winters Welding Works Inc. Box 1033 754-5418 Winters On the Ballinger Highway	Winters Oilfield Supply, Inc. Hwy 83 South 754-5545 1-800-588-5545

Ultrasound now available

Ballinger Family Health Center  
now offers  
general abdominal  
and obstetrical ultrasound  
examinations as in-office  
procedures

The latest in non-invasive  
diagnostic technology

John Psutka, M. D. Antoine Albert, M. D.  
604 Avenue B  
Ballinger, Texas 76821  
365-3507 365-3597

*The Winters Enterprise*  
(USPS 005016)  
Published by  
The Winters Enterprise, Inc.  
104 N. Main Street  
Winters, Texas 79567  
915-754-4958  
N. R. Boles  
President & General Manager  
Jean Boles.....Advertising  
Susan Ripple.....Typesetting  
Laurie Franklin.....Ad Design  
Phyllis Boles.....Office Manager  
Published every Thursday  
except the final week of the year.  
Second Class postage paid  
at Winters, TX.  
**Subscription Rates:**  
Runnels County  
\$13 per year  
Other Texas Counties  
\$15 per year  
Outside Texas  
\$17 per year

Any erroneous reflection upon the character, standing or reputation of any person, firm or corporation, which appears in the columns of this paper will be corrected upon due notice given at the Enterprise office.  
POSTMASTER: Send address changes to The Winters Enterprise, 104 N. Main, Winters, TX 79567.

**MEMBER**  
**TEXAS PRESS ASSOCIATION**  
1991

Old  
While  
depot was  
son's life  
husband  
comfort  
out San  
built in  
After  
tion of  
residence  
Cloviss,  
bility of  
she own  
The land  
Hood gra  
land own  
parents.  
Steph  
Wilmeth  
tween W  
ing her  
grandpa  
Arch and  
farms in  
At the  
in 1985  
Tahoka  
location  
transact  
signed a  
hired for  
roof was  
mile trip  
cated by  
Rita and  
mopping  
being da  
Before  
the depo  
sitting o  
of the fa  
Stephens  
summer  
directing  
construc  
When  
Wilmeth  
cotton gi  
These bu  
The School  
residence  
from the  
she taug  
The d  
place for  
member

**Poe's Corner**  
By *Charlsie Poe*



**Old depot makes new home**

While owning and restoring a depot was not one of Rita Stephenson's life long dreams, she and husband Doug have created a comfortable home from a worn out Santa Fe depot which was built in Tahoka in 1910.

After seeing the transformation of the Bovina depot into a residence between Texico and Clovis, Rita explored the possibility of locating a depot on land she owned in Runnels County. The land once belonged to her Hood grandparents and adjoined land owned by her McNeil grandparents.

Stephenson grew up in the Wilmeth Community, located between Winters and Wingate. During her childhood, both sets of grandparents and her parents, Arch and Verdie Hood, lived on farms in the community.

At the close of the school year in 1985, Rita learned that the Tahoka depot was available for location and made plans for the transaction. The contract was signed and a capable carpenter hired for the re-construction. The roof was removed for the 147 mile trip. The move was complicated by three weeks of rain, so Rita and her helpers had a lot of mopping to keep the inside from being damaged.

Before school began that fall, the depot had a new roof and was sitting on land which has been in the family since 1907. The Stephensons spent time during the summers, as well as weekends, directing and helping with the re-construction.

When Rita was growing up, Wilmeth had a general store, one cotton gin, and a blacksmith shop. These buildings are still standing. The four room Mazeland School she attended is now a residence and is about two miles from the depot. When younger, she taught school there.

The depot serves as a meeting place for Doug and Rita and other members of the family. It has

three bedrooms (one is a loft room), three baths, an antique bar from a Ramada Inn in Lubbock. A walkway joins the upper and lower floors.

Other features include an old dental cabinet, a treadle sewing machine, unique light fixtures and a wood burning stove. Mesquite wood is plentiful and the stove will be an asset in cold weather.

Added features are three decks, constructed from the original docks at the depot, and an outside shower located near the horse trough. Rita remarked, "The native grass is making a rapid comeback and the foliage from nearby creeks makes curtains unnecessary."

The Stephensons have lived in Friona for 24 years. Their daughters, Holly and Iris, are graduates of Friona High School. Like their mother, they are following the teaching profession.

Rita said "The depot will be an ideal place to meet the children and their families. Having my 90 year old mother, Verdie Hood, who lives in nearby Winters is an added bonus. Before she broke her hip, Mrs. Hood rode out on her four-wheeler.

Even though the depot is finished and a caboose has been added, the Stephensons have plans for such things as landscaping and other outdoor additions.

When Rita and Doug get tired of teaching and cattle buying, their attractive and well-furnished home in Runnels County will be ready and awaiting them. It is now in use and will be on the tour of homes conducted by the Winters Woman's Club in the spring.

The 1968 caboose, one of the last to be constructed was bought from a couple in Santa Anna last summer. It has been made as authentic as possible and is now a complete unit, including wheels and railing. The middle isle has been carpeted and topped with a red runner. It stands ready for inspection.

**Crews News**  
by *Hilda Kurtz*

You know you're getting old when you can remember the good ol' days when bacon an' eggs and sunshine were good for you.  
\*\*\*\*\*

Dee and Sam Faubion, the hosts for Saturday night, February 2, 6:00 p.m. supper and fellowship, would like to remind you to come and enjoy a delicious meal and fellowship. Bring a covered dish and join in the fun.

WMU met in the church for Bible study at 9:30 a.m. Afterwards, all cleaned the church.

Sorry to hear Inez Hambright was admitted to the Ballinger Hospital on Friday. Corra Petrie went to see her on Wednesday.

We wish Bro. Oscar and Janie Fanning many more "Happy Anniversaries," coming up soon.

The Hopewell Church congregation enjoyed a pot luck dinner between morning and evening services Sunday.

Audine, Dennis, and Roy McBeth of Midland spent Friday with Chester McBeth.

Ruth and Brad Pape ate out at the Casa Cabana in Winters Sunday. Ruth carried lunch Wednesday for those that worked with her at the Ballinger Library.

Kathy and Danny Phillips of Abilene spent Saturday and had lunch with Rodney, Bernie, and boys. All came back again on Sunday for a continuous visit. Sean O'Mara spent the weekend with Gene and Brian.

Ruth Pape is planning a Home Interior party Tuesday, February 5. Come if you can.

Brenda Jacob of San Angelo spent the weekend with her folks, Margie and Jake.

**Card of Thanks**

We would like to take this opportunity to thank everyone for their prayers, the flowers, food, and memorials during our time of loss. Our appreciation also for the home and hospital visits, and the many telephone calls. A special thanks to Bro. Gayland Broadstreet, Mike Meyer, and the ladies who served lunch. Friends are a special comfort at times like these.

The family of  
Homer Tubbs

February is  
*American Heart Month*

Margie and Jake attended a basketball game in Winters on Saturday morning and watched their two grandsons, Corey and Brad Van Zandt, play.

On Sunday, the Jacobs enjoyed having all their children for Sunday lunch (fried chicken).

Josie and Bill Hoppe had lunch and a nice visit with Albert and Alta Mae Spill on Monday.

Georgia and Connie were in Robert Lee Sunday and spent the day with Connie's uncle, Author Dean.

Sherry and Amanda Cooper of Winters came during the week to visit Pat, Earl, and J. T. Cooper. They stayed two nights.

Visiting in Hopewell Church services Sunday were Dee Bnea Baker of Abilene, Scott Gerhart, and Sean O'Mara.

Adeline Grissom, Katherine and Luke Thomas, Wanda Sims, and Sam McLarty attended the circus in Abilene Friday afternoon.

Mike Hill of Sweetwater and Gary Hill of Eastland spent the weekend with their mother, Claudia. Ronald Hill of Sweetwater came on Monday.

Fred and Sandi Gibbs of Ballinger spent Sunday night with Fairy and Wilbur Allcorn.

Selma Deitz went in to see Ernest Cooke in Hendrick Hospital Tuesday and Thursday. Ernest got to go home on Friday.

Mrs. Bessie Buchanan of Tuscola and Brother Bob Pierce of Abilene, school chums at Mazeland School with Claudia Hill a few years back, came during the week.

I spent Thursday morning with Sissie Alexander and enjoyed breakfast.

**Card of Thanks**

I am thankful for all the cards and visits while I was in the hospital. A special "thanks" to Dr. Lee and all the staff at NRH for their TLC and making my stay as pleasant as possible.

Charlie Burton

Need invoices, statements, delivery tickets, or other office forms?  
Call *The Winters Enterprise* at 754-4958  
We print almost anything!

**Immunization Special Olympics to Clinic to be held ACU**

The Texas Department of Health will hold an Immunization Clinic on Thursday, February 7, 1990 from 9:30 a.m.-12 noon and 1:30 p.m.-3 p.m. Location is in the Professional Building, Suite 108 on Grant Street entry.

For more information call 754-4945 between the hours of 9 a.m. and 12 noon Monday-Friday.

The Runnels County Special Olympics basketball team will compete in the Area 14 Special Olympics Tournament February 2nd at Abilene Christian University.

The team of special athletes is from Winters and Ballinger. Coach is Alice Boggess.

February is  
*Black History Month*

**Public Record**

**COUNTY COURT**

Holly Jean Carter, 01-18-91, DWI, Defendant entered a plea of guilty; Fined \$350.00 plus \$129.50 court costs, assessed 60 days in jail, probated for 2 years (Attend DWI school)

Alfonso Martinez aka Poncho Martinez, 01-25-91, Resisting arrest, Defendant entered a plea of guilty; Fined \$100.00 plus \$129.50 court costs

Lisa Jessen, 01-25-91, Theft of cash by check, Defendant entered a plea of guilty; Fined \$130.00 plus \$259.50 court costs (restitution \$475.00)

Lazaro Franusto Arroyo, 01-25-91, DWI, Subsequent, Defendant entered a plea of guilty; Fined \$500.00 plus \$129.50 court costs, assessed 90 days in jail, probated for 2 years, driver's license suspended for 90 days

Floyd Martinez, 01-25-91, DWLS, Defendant entered a plea of guilty, Fined \$100.00 plus \$129.50 court costs, driver's license suspended for 90 days

Holly Jean Carter, 01-23-91, Possession of marijuana; Order of dismissal, plea on another charge

Benninto C. Juarez, 01-25-91, DWI, Defendant entered a plea of guilty; Fined \$350.00 plus \$129.50 court costs, assessed 60 days in jail, probated for 2 years, driver's license suspended for 90 days

Kevin Ray Gray, 01-25-91, DWI, Defendant entered a plea of guilty; Fined \$350.00 plus \$129.50 court costs, assessed 60 days in jail, probated for 2 years, driver's license suspended for 90 days

**DISTRICT COURT**

Ben Halfman vs. J. C. Ashmore, 01-17-91, Damages

In the interest of Avel V. Rodriguez, a minor child, 01-18-91, Parent-Child relationship

In the interest of Asa James Wheeler, a minor child, 01-18-91, Parent-Child relationship

In the interest of Eddie Cortez, Jr., a minor child, 01-18-91, Parent-Child relationship

City of Winters vs. Valera Oil Company and Fred Harwell, 01-22-91, Damages

In the interest of Candance Isabel Jaloma, a minor child, 01-23-91, Parent-Child relationship

**J. P. COURT**

Monogram Bank USA vs. Dean Smith, 01-02-91, Debt for retail credit agreement

Paul Trevino, 01-21-91, Felony DWI

Candi Martinez, 01-21-91, Theft under \$20.00 by check

Shane Edward Landers, 01-23-91, Making alcoholic beverages available to a minor

Mandy Jo Polk, 01-23-91, Minor in possession of alcoholic beverage

Samantha Renee Pollard, 01-23-91, Minor in possession of alcoholic beverage



**Ben Doyle SUDDERTH**

Says...

"Recently, a longtime member of the House of Representatives (Austin) retired and put over \$400,000 in his pocket!"

This was money he had received from campaign contributions. When Sudderth was a representative in the 1950s, a law was enacted which prohibited this despicable conduct!

"If you will send me back to Austin, I will sponsor legislation to once again prohibit this type of dishonesty in our state government. I will require that all campaign funds not spent be returned to the donor or given to charity!"

Ben Doyle Sudderth is not accepting any campaign contributions from lobbyists or any special interest group.

The State of Texas and the people of this District are facing TOUGH DECISIONS! We need...

The TOUGH DECISION MAKER!

**Ben Doyle SUDDERTH**

CANDIDATE FOR STATE REPRESENTATIVE

Paid for by the Committee to Elect Ben Doyle Sudderth, Anne Sudderth, Treasurer

Isn't it time you joined the **FARM BUREAU?**

★ More than 320,000 members strong.

★ 19 organized commodity divisions.

★ Active participants in state and national legislation.

★ Insurance at competitive rates, including health and dental.

★ Tires, batteries, tillage tools available through group purchase program.

★ Economical and convenient mail order and local prescription drug service.

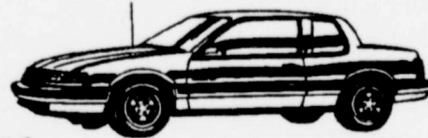
**JOIN THE WINNING TEAM ...**  
HELPING YOU IS WHAT WE DO BEST

**RUNNELS COUNTY FARM BUREAU**  
809 HUTCHINGS AVE.  
BOX 540  
BALLINGER, TEXAS 76821  
(915) 365-2562

LIFE • HEALTH  
HOME • AUTO  
ESTATE PLANNING



**\$199/Month Smartlease™**  
On Special Grand Am LE Coupes



- Equipped with:
- Automatic transmission
  - 1SB Option Group including ...
  - Air Conditioning
  - Tilt Steering Wheel
  - Controlled-cycle windshield wipers
  - R6A Value Option Package including ...
  - Hi-Tech Turbo aluminum wheels
  - P195/70R14 BSW touring tires
  - Delco ETR® AM/FM stereo with auto-reverse cassette player
  - Cruise Control
  - Power Door Locks

See Ben Alexander, Billy Sims or Joseph Toliver

**Toliver TOLIVER BROTHERS**  
Your Full-Line General Motors Dealer  
Ballinger, Texas  
1-800-588-2552  
365-2552

\*48 month lease

We've just returned from Market with special gifts for that special valentine.  
• Free Gift Wrapping •



**Bahlman Jewelers**

Use our convenient layaway or credit plan.  
754-4057 • 106 S. Main • Winters, Texas

## Twain Talk

by Taryla Twain

### A woman and her purse - the key to survival!

Do you carry a purse? Purses can say a lot about their owners. Some females tote those tiny, dainty things. It's obvious their only needs in life are a tube of new lipstick and a box of Tic Tacs.

Naw, give me a lady who handles a good 15-pounder day in and day out, and I'll show you a woman with a zest for life. She's as prepared for any situation or emergency as the Red Cross. Her purse may resemble a fine piece of luggage, a pet travel carrier, or your basic bur-lap bag.

So if you tend to criticize these women for their purses, stop and consider the fine, unselfish service they provide. These seasoned bag ladies have a natural instinct for what's important in life.

Especially mothers. These women are unsung heroes and I feel it's time we give credit (and physical support) where it's due.

Now I confess that we moms carry a couple of things for ourselves - emergency medical information that says to call Tom Selleck if we're injured, a tube of all-purpose lipstick that's had the lid put on while it was rolled up, and a 1987 datebook with expired coupons, old Christmas cards, recipes, and unpaid bills. That just about covers our own personal belongings.

The other two hundred items we carry are for our loved ones. Depending on our kids' ages, we have diapers, toys, crayons,

Cheerios in little cups, boy scout manuals, small cars, hair bows and ribbons, belts, socks of undetermined cleanliness, dental retainers, contact lens equipment, mirrors, make-up, perfume, watches, rings, friends' jewelry, homework pages, curling irons, midget blow dryers, nail repair kits, bags of Cheetos, and medical gear for anything from headaches to splinters to brain surgery.

We have almost exceeded the legal weight limit at this point.

Then hubby asks if he can stick a couple of things in what has now become the community purse. Important stuff like his sunglasses, lip balm, nail clippers, antacid tablets, golf balls and tees, messages written on napkins, his own kind of aspirin (he's afraid to take any of that women's kind), eye drops, and even his baseball cap.

Then there's the "neutral" items that nobody will claim but everybody "might" need - the umbrella, road map, coupons for the taco place, and six packages of assorted gum because everybody has their favorite.

No, these women don't haul around back-breaking loads for the sake of their health. These women are obeying one of the rules of motherhood.

So the next time you see a lady with an oversize purse, pause just a moment and think. She might be carrying the weight of the world in that bag - and she may have something you'll be needing.

©1991 The Winters Enterprise, Inc.



## The Methodist's Message

The Centennial Sunday Celebration was wonderful. If you weren't there, you really missed something. Our church sanctuary is now open from 7:30 am until 9:00 pm for prayer. Our trustees voted unanimously to open our facility during this time. The trustees also unanimously approved the recommendation to remodel the storefront portion of the Foxworth property as an ongoing Centennial project.

New Bible Study  
On Sunday evening, Feb. 10, a new 7 week study will begin on

### Wee Care School has 2 openings

Beginning February 4, Wee Care School will add an extra adult, Phyllis Boles, to the program. Phyllis has a rich crafts background and will be bringing her years of experience to our preschool. Six of the eight openings for students have been filled. For more information, call Laurie Franklin at 754-4172, Mary Wilkerson at 754-5702, or Nancy Davis at 767-2040.

"What does it mean to be a Christian." Anyone is invited to attend. The study will begin at 7:30 pm and end at 8:30 pm. A nursery will be provided. The study will conclude on Sunday, March 24.

**Youth News:**  
Handbell choir began this past Sunday evening. Maria Henry will be directing and organizing this choir.

The youth will also be have a ski trip meeting this Sunday evening at 7:30 in the parlor. Parents are encouraged to attend and ask questions.

The door is open for the people of the 65th Legislative District to say NO to "business as usual" in Austin.

Traditional representation has severely damaged this State and the people of this State. It is time for a change.

MARTHA PARKER CAN and WILL bring a new perspective and attitude to the legislative process.

"AS A WOMAN, MY APPROACH MUST BE DIFFERENT, BUT I BELIEVE WE CAN ALL AGREE THAT IT IS TIME FOR A DIFFERENT APPROACH."

"HELP ME KEEP THE DOOR OPEN FOR YOU"

VOTE FOR MARTHA PARKER  
STATE REPRESENTATIVE - DISTRICT 65

Paid Political Advertising paid for by Martha Parker, Rt. 2, Box 256 B, De Leon, TX 76444



## The Purple Leap

Wingate School

Mrs. Emry's kindergarten class decorated the hallway this week with their life-sized "self portraits". These children have quite an imagination! Surprise! Some students in the school are purple and green. Following this art project, there was a study of appropriate skin colors for the human race.

Mrs. Hogan's first and second grade class made paper plate Uncle Sams. They have studied symbols of the United Nation and what they mean.

Mrs. Sneed's third and fourth grade classes made flags to represent the six different flags that have flown over Texas. They did a wonderful job and made them very realistic.

### Third Six Weeks & First Semester Honor Roll Wingate School

"A"

Aaron Pritchard

Debbie Baize

"A-B"

Michael Pritchard

### Spring SOCCER Registration

Spring soccer registration has sprung. If your child was between the ages of four and thirteen by January 1, 1991, he or she is eligible to play soccer this spring.

There will be a soccer sign up at the Winters High School gym on Saturday, February 9, 1991, from 9:00 a.m. to 11:00 a.m. February 13 is absolutely the last day to register. As of last year, the registration fee is now \$15.00 for the first child and \$10.00 for each additional child per family. This fee must be paid at the time of registration.

The scheduled games begin March 2, 1991 with the last game being played on April 13, 1991.

Also, the Soccer Association welcomes anyone interested in helping out in any form or fashion. Coaches, officers, general flunkies, and many other volunteers are needed. Anyone interested should contact Monte Angel at 754-4963. You do not have to be a parent to participate. Anyone can help out and make a difference for the children and the Soccer Association.

Project Graduation is coming!

## Spirit Filled Happenings

by Dixie Leverett  
Church Editor

In the trenches a young soldier crouches in fear, as the prospect of battle is drawing near.

The beating of his heart is all he can hear, and the possibility of dying is becoming too clear.

He uses his sleeve to wipe a tear from his eye.

For he doesn't want anyone to see him cry.

Overhead there's a flash of light in the sky.

As a missile explodes, surely someone could die.

He sobs now in utter despair.

Is there no one with whom this fear he can share.

Quietly he remembers who is always there.

As he kneels down humbly and murmurs a prayer.

In his pockets his fingers touch the small cross of gold.

While he grasps it tightly there in the cold.

It brings back memories of teachings he'd been told.

In a sweet gentle voice that is loud and clear.

Your dear loving saviour - Jesus Christ is near.

I'll never leave you my son.

I'll be with you till this battle is done.

And on beyond till all conflicts are fought and won.

My little soldier be brave and true.

Because I have said: That I am with you.

"Yea, though I walk through the valley of the shadow of death, I will fear no evil: for Thou art with me; Thy rod and Thy staff they comfort me." Psalms: 23:4

We at the Guiding Light Spirit Filled Baptist Church are continually praying (without ceasing) for every member and soldier that is in this crisis.

On January 30 at 7:00 p.m. our youth will be holding services under the direction of Bro. Myron Halford. For a spiritual blessing come and join us at each:

Sunday Morning Service 9:45 a.m.  
Sunday Worship Service 11:00 a.m.  
Sunday Evening Service 6:00 p.m.  
Wednesday Service 7:00 p.m.

We are located at 1017N. Cryer in Winters, Texas, and are a spiritual light growing ever brighter in a seemingly darkened world. Reverend John Haley is Pastor.

## FROM A GOLDFISH BOWL



BY PASTOR STEVE BYRNE

The sense of smell is one of the most under-rated gifts that God has given us. It is mentioned only nine times in all of Scripture. Three of those times deal with Jacob's deception of his father, Isaac, to receive the blessing and the promise of God's people.

Yet I can still remember waking up that first morning after we got to Tres Ritos in the Sangre De Cristo Mountains when I was 9. The smell of pine and wood-smoke. An olfactory feast which is both priceless and free.

I can't imagine any one not being invigorated by such a smell. There are other smells, however, which are pleasant, depending upon one's viewpoint.

Once in college at West Texas State, one of my classmates from Hereford found out I was from Andrews. "Oh, that is down there where you can hardly breathe for that awful smell of oil and sour gas."

I had never thought of it like that. It was the smell of home. It meant that we would eat and have

clothes and a car and such. Anyway, I thought it was a little ironic for someone from Hereford to talk about a place that stinks. What with all those feed yards along the highway! But that smell meant that my friend would eat and have clothes and go to college. It was a good smell to him. It meant home and life.

Lately I have noticed that it is starting to smell like oil and gas in West Texas again. Right around here. This is a good smell to many of our olfactory nerves.

It means that some folks will have work and a means to make a living. For some, it smells like prosperity. For others, survival.

Most of us in West Central Texas would no more gripe about that nasal sensation than a farmer's wife would gripe about mud on her kitchen floor. It means life. And home. And blessing.

Thank the Lord for pine and wood-smoke. And for the smell of oil and feed lots. Even for muddy floors. We are blessed!

Courtesy of

**St. John's Lutheran Church**

1100 W. Parsonage 754-4820  
Sunday School 9:30 A.M.  
Worship Services 10:40 A.M.

## CRAIG GEHRELS

Health - Life - Accident  
Medicare Supplement - IRA

INSURANCE BROKER  
915-754-4818  
P.O. Box 488  
Winters, Texas 79567



**Pray for Peace and the Safe and Early Return of our Armed Forces**

**Benny R. Polston, C.P.A.**  
Accounting, Auditing, and Tax Services

110 South Main, Suite 101 P.O. Box 884  
Winters, Texas 79567 915-754-5325

**Sun Set Stages Bus Station**

Has moved to 201 N. Main  
(915) 754-4866 • Winters, Texas

Office Hours:  
7 am to 6 pm • Monday through Saturday

**SCHEDULE:**

<b>Southbound</b>	<b>Northbound</b>
7:25 am	1:05 pm
3:35 pm	6:55 pm
12:20 am (night)	

WE APPRECIATE YOUR BUSINESS!  
Managers: W.D. Waggoner, J.D. Overman



Mrs. H... of Winters... Magna... science de... in physical... honor soc... Debra... She is man... Soil and W... Anne, who... shopping... Debra... ability to...

Mrs. G... been an... 1978 and... math and... committe... A grad... of scienc... physical e... program... tary class... Helen... coach in... taught P.E... for Todd... From 197... She taught... to present... Mrs. G... principal... Helen... She has s... trustee.

LEGAL TITLE OF...  
The Winters...  
PO Box 127...  
Winters, Tex...  
CITY...  
Winters...  
ASSETS...  
1. Cash and balanc...  
2. Securities...  
3. Federal funds...  
4. or of Edge & B...  
4. Loans and balanc...  
a. Loans and balanc...  
b. LESS: Allowanc...  
c. LESS: Allowanc...  
4. Loans and balanc...  
5. Assets held in trust...  
6. Pensions and benef...  
7. Other real estate...  
8. Investments in othe...  
9. Customers' health...  
10. Intangible assets...  
11. Other assets...  
12. a. Total assets less...  
b. Loans secured...  
c. Total assets of...  
LIABILITIES...  
12. Deposits...  
a. (1) ...  
(2) ...  
b. In ...  
(1) ...  
(2) ...  
14. Federal funds paid...  
a. of its Edge & B...  
15. Demand notes...  
16. Other borrowed...  
17. Mortgage notes...  
18. Bank's liability...  
19. Subordinated not...  
20. Other liabilities...  
21. Total liabilities less...  
22. Limited - No pro...  
23. EQUITY CAPITAL...  
24. Preferred stock...  
24. Common stock...  
26. Surplus (credit)...  
26. a. Undivided prof...  
b. LESS: Retain...  
27. Contingent liab...  
28. a. Total equity...  
b. Less: Conting...  
c. Total equity...  
29. Total equity...  
30. Total assets...  
12 U.S.C. 1825...  
FEDERAL RESERVE ACT...  
1. Amount of Stat...  
NOTE: This report...  
and contact in the...  
SIGNATURE OF P...  
NAME AND TITLE...  
We, the undersign...  
and the...  
NOTARY SEAL

**School Days,  
School Days**



**Deborah Haley  
4th Grade Teacher**

Mrs. Haley is a native of San Angelo and has been an employee of Winters Independent School District since 1986. She graduated Magna Cum Laude from Angelo State University with a bachelor of science degree. She has a major in elementary education and a minor in physical education. She is also a member of Alpha Chi, a national honor society.

Deborah previously worked for Southwest Bank in San Angelo. She is married to Don Haley, who is a technician for Runnels County Soil and Water Conservation District. She has one daughter, Michal Anne, who is 5 years old. Mrs. Haley's hobbies include reading and shopping.

Deborah would like to instill in her students the desire and the ability to think independently.



**Helen Grantham  
6th Grade Teacher**

Mrs. Grantham is a native of Carizo Springs, Texas. She has been an employee of Winters Independent School District since 1978 and is presently a lead teacher for the sixth grade. She teaches math and language arts. Helen serves on the textbook selection committee and the effective school committee.

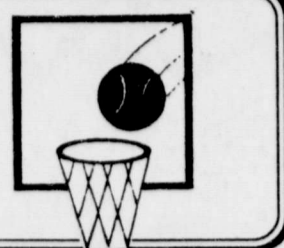
A graduate of Southwest Texas State University with a bachelor of science degree in education, Mrs. Grantham has a major in physical education and a minor in biology. She began her masters program at Sam Houston State College. She received her elementary classroom certification from Abilene Christian University.

Helen taught physical education and was the girls basketball coach in Hondo I.S.D. from 1963 to 1965. From 1965 to 1969 she taught P.E. and health. From 1969 to 1974 she stayed at home to care for Todd and Tracey and did some substitute teaching. From 1974 to 1978 she taught junior high and elementary physical education. From 1978 to 1983 she taught in the Chapter I program in WISD. She taught math for one year and reading for four years. From 1983 to present she has taught sixth grade.

Mrs. Grantham is the widow of Mike G. Grantham, former WHS principal. She has two children, Todd, 21, and Tracey, 19.

Helen is an active member of the First United Methodist Church. She has served the church in many capacities and at present is a trustee.

**Basketball Hoopla**



**Tigers R-O-A-R over the JV girls**

On Friday, January 25, Winters and Anson met at the den for a tough round of play. The Blizzard team was deprived of a victory - losing 23 to 33.

Blizzards Robin Galloway and Tambar Cox scored 4 points each; followed by Mandy Hall with 3 points; Stacey Deike, Cara Cathey, Kayla Priddy, Melinda Kraatz, and Tabatha Grohman, each with 2 points; and Carolyn Horton and Angela Bryan with 1 point each.

Fifteen of twenty-five Blizzard free throws were successful.

The Blizzard girls out rebounded Anson and had eighteen ball steals. Melinda Kraatz was high rebounder (10). Tambar Cox had 4 steals.

The first and third quarters were low-scoring periods for both teams, Winters making 2 points and Anson making 4 points. Majority of points came in the second quarter, Winters 11 and Anson 13.

Coach Whittenburg states, "The girls played really hard, but were unable to score enough to win."

**By the skin of their teeth**

The boys seventh grade Breezes, supervised and coached by Coach Lipsey, defeated the Bearcats January 17 by a mere one point; however, this one point was all it took - 26 to 25!

During the first round of the game the Winters team led 7 to 4 and were able to hold on to the high score until the half, 14 to 13.

Hawley came back during the third quarter and scored 10 points to Winters' 4.

The Winters Breezes pulled it off in the fourth by scoring 8 points and allowing their challenger to score only one goal for 2 points.

High scorer of the game was John P. Belew, 16. Also scoring for the Breezes were Stephen Herrington, 5; Kevin Conner, 3; and Michael Mostad, 2.

Sixty percent of all free throws were made by Winters.

**Indians ride over the Breezes**

The eighth grade girls teams from Winters and Jim Ned played basketball January 24 with Winters coming up short of a win. Final score of the game was Winters 21, Jim Ned 33.

Brooke Killough made 10 points, followed by Dianne Abernathie with 3 pts., Lis Anne Smith 3 pts., Alisa Presley 3 pts., and Jamie Brown with 2 points.

**Blizzards munch on Tigers**

Anson met a hungry Blizzard team on Friday, January 25. Winters defeated Anson, 55 to 42, for their first win in the second half of district play.

Willie Belk was Blizzard high scorer with fourteen points. Followed by Greg Tamez with eleven points, Keith Gerhart with ten points, Brandon Boles with eight points, Craig Slaughter with seven points, and Leo Campos with five points. Twelve of eighteen free throws were made. Twenty-one of forty-six throws from the field were made.

Willie Belk and Keith Gerhart shared honors as high rebounders. Others making rebounds were Greg Tamez, Josh Bahlman, Craig Slaughter, Brandon Boles, and Ahmad Griffin. Making steals were Greg Tamez, Leo Campos, Willie Belk, Keith Gerhart, Josh Bahlman, and Craig Slaughter. Helping with assists were Leo Campos, Josh Bahlman, and Craig Slaughter.

**Haskell Indians trim the Winters Blizzards**

Scoring contributions from Keith Gerhart (13), Craig Slaughter (9), Greg Tamez (7), Willie Belk (6), Leo Campos (2), and Josh Bahlman (2) were to no avail Tuesday, January 22, in Blizzard Country. The Blizzards were beaten, 39 to 44.

The blue and white Blizzard team took control of the game and held on to the lead until the fourth quarter.

Keith Gerhart was high rebounder. Making steals were Greg Tamez, Leo Campos, Willie Belk, and Brandon Boles. Helping with assists was Leo Campos.

Blizzards scored 7 of 8 free throws, an 88%; and 15 of 49 from the field, a 31%.

This loss gives the Blizzards a 15-7 record for the season and 0-2 for the second half in district play.

**Free throw contest**

The Knights of Columbus, Winters Council, is sponsoring a free throw championship contest. The contest will be held at the old gymnasium next to the football field Sunday, February 3, at 2:00 p.m..

There will be age groups of 10, 11, 12, 13, 14, and 15 years of age, with a winner in both boys and girls divisions. Proof of age must be shown.

Winners of this contest can advance to district competition. For more information, contact Ray Guevara at 767-3651. Everyone is invited to participate.

**Fairest of all? Winters Lady Blizzards or Haskell Maidens**

The Lady Blizzards began the game slow and never seemed to get off to a good start Tuesday, January 22. The opposing Haskell team nearly doubled the points of the Lady Blizzards, final score 29 to 53.

Jamie Smith was Blizzard high scorer making 10 points. Ashley Allcorn scored 8 points, Kim Deike scored 4 points, Sara Jackson and Kim Thompson scored 2 points each, and Shanna Poehls and Susan Bryan scored 1 point each.

Forty percent or 9 of 22 free throws were made.

**Three-point loser**

Friday, January 25, the Lady Blizzards tried to overtake the Anson Tigers, but were unable to do so. Ending score of the game was 49 to 52 in the Tiger's favor.

The Lady Blizzards played just as well as the Tigers throughout the game but could not manage to make the scoreboard read to such. Individual stats of each quarter are as follows:

1st Qtr.	Winters	10
	Anson	11
2nd Qtr.	Winters	16
	Anson	6
3rd Qtr.	Winters	10
	Anson	19
4th Qtr.	Winters	13
	Anson	16

Fifty percent, 11 of 22, of Winters free throws were completed.

Scoring for the Blizzards were Jamie Smith (18), Ashley Allcorn (12), Kim Deike (7), Shanna Poehls (4), Susan Bryan (4), and Sara Jackson (4).

**Seventh Grade teams face Jim Ned**

The "A" and "B" Breezes matched skills against the Jim Ned Indians January 24.

The "A" girls ended their game, 30 to 26, Winters' favor. Rachel Edwards scored 16 points, Virginia Thomas 10 points, and Jana Beth Bryan 4 points.

The "B" girls were not as fortunate. The team lost 5 to 16. Araceli Jimenez made 3 points and Stacie Springer made 2 points for the Breezes.

The "A" boys pulled off a victory, 46 to 24. John P. Belew was high scoring team member making 27 points. Other team mates scoring were Jerry Esquivel 10, Kevin Conner 5, Stephen Herrington 2, and Michael Mostad 2.

The "B" boys played to the same tune as the "B" girls - losing 22 to 37. Jessie Ortiz scored 12 pts., Sean Byrne 5 pts., J. W. Angel 2 pts., George Villareal 2 pts., and Chad Kraatz 1 point.

**LUNCH ROOM MENU**

- Breakfast**  
Monday-February 4  
Biscuits, sausage, mixed fruit, milk
- Tuesday-February 5  
Waffles, oatmeal, syrup, sliced peaches, milk
- Wednesday-February 6  
Biscuits, sausage links, apricot halves, milk
- Thursday-February 7  
Raspberry muffin square, cheese wedge, pear half, milk
- Friday-February 8  
Toast, Frosted Flakes, orange juice, milk

**Lunch**  
Monday-February 4  
West Side

Ham and cheese sandwich or hamburger, French fries, lettuce, tomatoes, pickles, mustard, mayonnaise, catsup, blue berry cobbler, milk

**East Side**  
Italian spaghetti, tossed salad, buttered carrots, garlic bread, blue berry cobbler, milk

Tuesday-February 5  
West Side

Tuna sandwich or hamburger, French fries, lettuce, tomatoes, pickles, mustard, mayonnaise, catsup, fruit Jello, milk

**East Side**

Chicken dumplings, buttered corn, green peas in sauce, hot rolls, fruit Jello, milk

Wednesday-February 6  
West Side

Turkey and cheese sandwich or hamburger, French fries, lettuce, tomatoes, pickles, mustard, mayonnaise, catsup, brownie pudding, milk

**East Side**

Baked potato/chili/cheese, fried okra, tossed salad, hot rolls, brownie pudding, milk

Thursday-February 7  
West Side

Sloppy Joe on a bun, French fries, pickles, catsup, mixed fruit, milk

**East Side**

Friday-February 8  
West Side

Fried chicken with gravy, mashed potatoes, green beans, hot rolls, peach half, milk

**East Side**  
Same Subject to Change

**Winters resident on Dean's List**

Landa Michelle England, daughter of Mr. and Mrs. Lanny England of Winters and Ms. Andy England of San Angelo, was listed on the Texas Tech Dean's List for the 1990 fall semester.

More than 2,600 Texas Tech University students qualified for academic honors based on final grades reported for the semester.

Students making the President's List earned a perfect 4.0 grade-point-average. Dean's List recipients earned a 3.5-3.9 grade-point-average during the semester. To qualify for the honor, students had to be enrolled in at least 12 credit hours of class work.

**Notice**

The Enterprise has been asked by school officials to inform businesses of the following:

A company called Custom Sports Publications has been calling businesses in the Winters area recently. They have used the name of the cheerleader sponsor and inferred approval by school officials for their solicitation of businesses paying for small footballs for cheerleaders to throw at football games next fall. No authorization from school officials has been given for this solicitation and businesses are urged to contact school officials concerning solicitations of this type before committing to anything.

**Veteran - Korea & Vietnam Businessman**  
**Elect BOB DAY**  
**State Representative Feb. 9th**  
Democratic Party Chairman  
Conservative  
(Political Ad. Pd. by Bob Day, Box 128, Bangs, TX 76823)

**Sweetwater Council On Alcoholism & Drug Abuse**

Do you or a loved one have an alcohol or drug abuse problem?

Call 915-235-8955 or on Thursday call 754-5591 or 754-5592 from 1 to 5 pm

Delores Stone, CADAC Mental Health Center 110 S. Main, Suite 106 Winters, TX 79567

**No Charge**

**CENTRAL TEXAS' NEWEST TOYOTA STORE**  
**PICKARD MOTORS**  
*In Brownwood*  
*We treat you like a best friend ... We want to be the best car dealership in Central Texas with*  
**100% Customer Satisfaction**  
*Please tell us what you want!*  
**TOYOTA: #1 Customer Satisfaction Vehicle in U.S.**

**NEW ONLY**

**1991 Toyota Pickup**

Stock #6078  
List Price \$10,038.85  
**\$8,999** +TT&L

**NEW ONLY**

**1991 Toyota Camry**

Stock #5096  
List Price \$15,138.95  
**\$12,999** +TT&L

**TOYOTA: You'll Love What We Do For You!**  
**Over 100 New Vehicles In Stock ...**  
*If we don't have what you want, we'll get it!*  
**Large Selection of Used Cars & Trucks.**

**PICKARD MOTORS**  
**Toyota Of Brownwood**  
104 E. Commerce • Brownwood, Texas  
(915) 646-7425

**TAKE THE PICKARD CHALLENGE: NOBODY WILL BEAT OUR PRICE!**

LEGAL TITLE OF BANK (378) **1381-19**  
The Winters State Bank  
PO Box 127  
Winters, Texas 79567-0127  
CITY COUNTY STATE ZIP CODE CLOSE OF BUSINESS DATE  
Winters Runnels Texas 79567-0127 December 31, 1990  
Other Amounts in Thousands (\$, M, T, H, O, S, C, E, N, T)

ASSETS		
1. Cash and balances due from depository institutions	126.63	126.63
2. Securities	198.28	198.28
3. Federal funds sold & securities purchased under agreements to resell in domestic offices of the bank	4,530.00	4,530.00
4. Loans and leases (net of unearned income)	17,812.12	17,812.12
5. Allowance for loan and lease losses	32.72	32.72
6. LESS: Allowance for loan and lease losses		
7. Other real estate owned	12,549.44	12,549.44
8. Premises and fixed assets (including capitalized leases)	829.00	829.00
9. Investments in unconsolidated subsidiaries and associated companies	1,234.77	1,234.77
10. Intangible assets	363.11	363.11
11. Other assets	32,156.24	32,156.24
12. Total assets (sum of items 1 through 11)	47,428.47	47,428.47
13. Liabilities		
14. Deposits:		
(a) In domestic offices	2,764.14	2,764.14
(1) Noninterest-bearing	134.00	134.00
(2) Interest-bearing	2,630.14	2,630.14
(b) In foreign offices, Edge and Agreement subsidiaries, and IFBs	0.00	0.00
(1) Noninterest-bearing	0.00	0.00
(2) Interest-bearing	0.00	0.00
15. Federal funds purchased and securities sold under agreements to repurchase in domestic offices of the bank	0.00	0.00
16. Demand notes issued to the U.S. Treasury	0.00	0.00
17. Other borrowed money	1,887.17	1,887.17
18. Mortgage indebtedness and obligations under capitalized leases	0.00	0.00
19. Bank's liability on acceptance securities and outstanding	0.00	0.00
20. Subordinated notes and debentures	0.00	0.00
21. Total liabilities (sum of items 13 through 20)	30,135.31	30,135.31
22. Surplus (the prepared stock and related surplus)	17,293.16	17,293.16
EQUITY CAPITAL		
23. Preferred (par value) stock and related surplus (No. of shares outstanding)	NONE	0.00
24. Common stock (No. of shares):		
a. Authorized	100,000.00	100,000.00
b. Outstanding	100,000.00	100,000.00
25. Surplus (includes all surplus related to preferred stock)	17,293.16	17,293.16
26. Undivided profits and other reserves	0.00	0.00
27. Cumulative foreign currency translation adjustments	0.00	0.00
28. Total equity capital (sum of items 23 through 27)	17,293.16	17,293.16
29. Total liabilities (sum of items 13 through 21)	30,135.31	30,135.31
30. Total assets (sum of items 1 through 11)	47,428.47	47,428.47
31. Total liabilities (sum of items 13 through 21)	30,135.31	30,135.31
32. Total equity capital (sum of items 23 through 27)	17,293.16	17,293.16
33. Total assets (sum of items 1 through 11)	47,428.47	47,428.47
34. Total liabilities (sum of items 13 through 21)	30,135.31	30,135.31
35. Total equity capital (sum of items 23 through 27)	17,293.16	17,293.16

NOTE: This report must be signed by an authorized officer and attested by not less than three directors other than the officer signing the report. The undersigned officers, whose certificates of office are on file with the Secretary of State, certify that the Report of Condition has been prepared in accordance with official instructions and is a true and correct statement of the condition of the bank as of the date hereon.

SIGNATURE OF OFFICER AUTHORIZED TO SIGN REPORT: *James J. Jordan, President*  
DATE SIGNED: *30 Jan 1991*  
OFFICE: *Winters, Texas*  
SIGNATURE OF DIRECTOR: *Angela S. Rodriguez*  
DATE SIGNED: *31/1/91*  
OFFICE: *Winters, Texas*

STATE OF TEXAS, County of Runnels, ss: *James J. Jordan*, President of the above-named bank, do hereby certify that I am an officer or director of the bank, and I hereby certify that the Report of Condition has been prepared in accordance with official instructions and is a true and correct statement of the condition of the bank as of the date hereon.

WITNESSED my hand and the seal of said office this 31st day of January, 1991.

Notary Public  
Angela S. Rodriguez

DEL MONTE  
**CANNED VEGETABLES**  
16 - 17 OZ. CANS • 12 VARIETIES  
MIX & MATCH



**10/4.50**



Steve Mohler is the new manager of Village Market in Ballinger. He has been with Village Market for about a year and assumed his new position in Ballinger on January 14.

Mr. Mohler is a former San Angelo Safeway manager. He and his wife, Teri, will be living in Ballinger. They have a 10-month old daughter, Kasey.

Steve expressed excitement about being back in west Texas and looks forward to working with the fine folks of this area.

7 & c

# VILLAGE MARKET

WE ACCEPT  
FOOD STAMPS  
& WIC CARDS

## WEEK-LONG SPECIALS

SAVE THIS AD, SHOP ANY DAY YOU WANT  
SPECIAL PRICES IN THIS AD EFFECTIVE  
JANUARY 30 thru FEBRUARY 5, 1991

\* FREE COFFEE WHILE YOU SHOP \*

## DOUBLE COUPONS

### "NEW" DEL MONTE VEGETABLE CLASSICS

9 VARIETIES • 9 OZ. PKG.  
READY TO MICROWAVE

**99¢**

### DEL MONTE FRUIT COCKTAIL PEACHES & PEAR HALVES

16 - 17 OZ.  
YOUR CHOICE

**79¢**

### DEL MONTE TOMATO SAUCE

8 OZ.

**5/1.00**

### DEL MONTE KETCHUP

32 OZ. JUG

**99¢**

- DEL MONTE - 46 OZ. **PINEAPPLE JUICE** 99¢
- DEL MONTE - 8 OZ. BAG **PITTED PRUNES** 99¢
- MCCORMICK - 5 OZ. BONUS PAK **BLACK PEPPER** 1.49
- "NEW" FRENCH'S **MICROWAVE SEASONING COATING MIX** YOUR CHOICE 99¢
- PRICE SAVER - 10 LB. BOX **LAUNDRY DETERGENT** 2.79
- PRICE SAVER - AUTOMATIC **DISH DETERGENT** 50 OZ. BOX 1.29

- RITZ BITS - 10.5 OZ. BOX **CHEESE OR PEANUT BUTTER SANDWICH CRACKERS** 1.99
- NABISCO - 12 - 16 OZ. ALL VARIETIES **FRUIT NEWTONS** 1.99
- NABISCO - 10.5 OZ. PKG. **"NEW" CHEDDAR WEDGES** 1.99
- NINTENDO - 6 CT. PKG. **LINK FRUIT SNACKS** 99¢
- TROPICANA - 10 OZ. ASSORTED **FRUIT DRINKS** FLAVORS 3/1.00
- SUNSHINE - KRISPY 16 OZ. BOX **SALTINE CRACKERS** 99¢
- KRAFT - 10 OZ. PKG. 1/2 MOON **CHEDDAR CHEESE** 2.49

- \* HEALTH & BEAUTY AIDS \*
- DURATION - .5 OZ. SPRAY **NASAL SPRAY** BOTTLE 2.49
  - TYLENOL 24 CT. CAPLETS **ALLERGY SINUS** 3.69
  - TYLENOL - 4 OZ. CHERRY OR GRAPE **CHILDREN'S ELIXIR** 3.99
  - MYLANTA II - 60 CT. **TABLETS** 3.29
  - NOXEMA - 11 OZ. CAN **SHAVE CREAM** 1.49
  - 6.5 OZ. PUMP. **KERI LOTION** ORIGINAL HERBAL SILKY SMOOTH 2.99

**PUDDING CUPS**  
4 PACK CARTON  
**99¢**

DEL MONTE  
WHOLE PEELLED  
**TOMATOES**  
14 OZ. CAN  
**79¢**

SHURFINE  
**BATHROOM TISSUE**  
**79¢**  
4 ROLL PACK

SHURFINE  
**DIAPERS**  
MEDIUM 36 CT.  
LARGE 24 CT.  
**4.99**

**COCA-COLA**  
6 PACK 12 OZ. CANS  
**1.69**

**BARQ'S • MINUTE MAID  
WELCHS • MELLO YELLO  
• DELAWARE PUNCH •**  
2 LITER BOTTLES  
-YOUR CHOICE-  
**79¢**

**COORS OR COORS LIGHT BEER**  
12 PACK 12 OZ. CANS  
**5.99**



**FRITOS**  
REG. 2.29 PKG.  
**2/3.00**

MRS. BAIRD'S  
**LIGHT BREAD**  
16 OZ. WHITE OR WHEAT  
**88¢**  
MRS. BAIRD'S  
**FRUIT PIES OR HONEY BUNS**  
**3/88¢**

# MARKET

## G SPECIALS

ANY DAY YOU LIKE—  
THIS AD EFFECTIVE  
FEBRUARY 5, 1991

We Have  
Money Orders  
&  
Postage Stamps

QUANTITY  
RIGHTS  
RESERVED

EVERY MONDAY IS  
SENIOR CITIZENS DAY  
—5% DISCOUNT ON  
YOUR TOTAL PURCHASES  
EXCLUDING BEER & CIGARETTES

**STORE HOURS**  
MONDAY - SATURDAY, 7 A.M. - 8 P.M.  
SUNDAY, 8 A.M. - 8 P.M.  
PHONE 365-3313 BALLINGER, TEXAS  
PHONE 554-9377 TUSCOLA, TEXAS

## ONS 7 DAYS A WEEK


U.S.D.A. CHOICE • BONELESS  
**CHUCK ROAST**  
LB.  
**1.59**  
BONELESS  
**SHOULDER ROAST**  
LB.  
**1.79**




EXTRA LEAN  
**STEW MEAT**  
LB. **1.99**  
EXTRA LEAN • GROUND FRESH  
**GROUND CHUCK**  
LB. **1.89**




BONELESS  
**CHUCK STEAK**  
LB. **1.79**  
BONELESS SHOULDER  
**ROUND STEAK**  
LB. **2.09**




SHURFRESH  
**BONELESS HAMS**  
5-7 LB. AVE.  
LB. **1.49**



LEAN & TENDER  
**PORK RIBS**  
SMALL RIBS  
LB. **1.59**



SHURFRESH  
**PORK SAUSAGE**  
LB. ROLL **1.59**  
2 LB. ROLL **2.99**



SHURFRESH - SLICED  
**LUNCH MEAT**  
12 OZ. PKG.  
**1.29**



SHURFRESH  
**BACON**  
LB. PKG.  
**1.69**



\* FREEZER PAK #4 \*  
5 LBS. FRESH GROUND BEEF  
5 LBS. PORK CHOPS  
5 LBS. BONELESS CHUCK ROAST  
6 LBS. WHOLE FRYERS **32.95** ONLY  
\* FREEZER PAK #5 \*  
3 LBS. PORK CHOPS  
6 LBS. WHOLE FRYERS  
4 LBS. FRESH GROUND BEEF  
3 LBS. BONELESS CHUCK ROAST  
2 LBS. PORK SAUSAGE (HOMEMADE)  
2 LBS. SLICED SLAB BACON **28.55** ONLY  
All 10 different Freezer Paks are available every day at money saving prices. Fresh or frozen - Your Choice.

\* FREEZER PAK #8 \*  
5 LBS. FRESH GROUND BEEF  
5 LBS. BONELESS CHUCK ROAST  
5 LBS. CUBE STEAK  
6 LBS. WHOLE FRYERS **41.52** ONLY  
\* FREEZER PAK #9 \*  
5 LBS. FRESH GROUND BEEF  
5 LBS. BONELESS SIRLOIN STEAK  
5 LBS. BONELESS ROUND STEAK  
5 LBS. BONELESS CHUCK ROAST **48.09** ONLY  
All 10 different Freezer Paks are available every day at money saving prices - fresh or frozen - your choice. You may order at store or call ahead - 365-3313.

RATH - 12 OZ. PKG. **88¢**  
**ALL MEAT FRANKS**  
DANKWORTH - 12 OZ. PKG.  
**GERMAN SAUSAGE** EA. **1.99**  
DANKWORTH - 1.5 LB. PKG.  
**SUMMER SAUSAGE** LB. **1.89**  
ADVANCE - BREADED 12 OZ. PKG.  
**STEAK FINGERS** **1.29**  
ADVANCE - BREADED 12 OZ. PKG.  
**BEEF PATTIES** **1.29**  
BAR-S - LB. PKG.  
**LUNCH MEATS** EA. **1.29**  
PEYTON - MKT. PKG.  
**CHORIZO** LB. **1.69**

LARGE STALK  
**CELERY**  
**39¢** EA.



**SLAW MIX**  
8 OZ. PKG. **59¢**  
**CARROTS**  
**69¢** 2 LB. BAG




VALENCIA  
**JUICE ORANGES**  
**49¢** LB.



DELICIOUS  
**APPLES**  
WASHINGTON EXTRA-FANCY  
**RED OR GOLDEN**  
**69¢** LB.




**YELLOW ONIONS**  
LB. **3/1.00**  
ZEBBIES 6 OZ. PKG.  
**ONION RING BATTER MIX**  
**99¢**




GOLDEN RIPE  
**BANANAS**  
LB. **3/1.00**  
U.S. NO. 1  
RUSSET  
**POTATOES**  
10 LB. BAG  
**1.29**



RED RIPE  
**TOMATOES**  
LB. **59¢**  
ICEBERG  
**LETTUCE**  
EA. **59¢**



**BELL PEPPERS**  
**CUCUMBERS**  
**GREEN ONIONS**  
MIX OR MATCH  
EA. **4/1.00**



# Obituaries

## Nina Gunyon

Nina Gunyon, 72, of Ballinger, died Friday, January 25, 1991, in the home of her son, Orean.

She was born April 11, 1918 in Mills County, Texas. She graduated from Ballinger High School and married Orean Clay Gunyon, Sr. at Menard on July 29, 1940.

Ms. Gunyon was a retired teller of First National Bank in Ballinger and a member of the First United Methodist Church and Eastern Star.

She was preceded in death by her husband, Orean Gunyon, Sr.; 4 brothers, Earl, Fletcher, Walter, and Ralph; and a granddaughter, Donna Lynn Fowler.

Survivors include two sons, Orean (Butch) and his wife Charlotte (Charli) Gunyon of Ballinger, John and his wife Arlene Gunyon of San Angelo; one daughter, Janice and her husband Virgil Fowler of Grape Creek; 4 grandsons; 4 granddaughters; 1 great granddaughter; two sisters, Myrell Simmons of Bethel and Ina and her husband Bill Warren of Paint Rock; two brothers, Frank and his wife Dorothy Crockett of Horseshoe Bay, Tom and his wife Billie Crockett of San Antonio; two sister-in-laws, Velma Crockett of Austin and Leona Crockett of Dallas; and 18 nieces and nephews.

Services were held Monday, January 28, 1991 at First United Methodist Church with Rev. Bobby Baggett officiating. Burial followed in the Evergreen Cemetery under the direction of Rains-Seale Funeral Home.

The family was pallbearers.

The family was pallbearers.

The family was pallbearers.

The family was pallbearers.

The family was pallbearers.

The family was pallbearers.

The family was pallbearers.

The family was pallbearers.

The family was pallbearers.

The family was pallbearers.

The family was pallbearers.

The family was pallbearers.

The family was pallbearers.

The family was pallbearers.

The family was pallbearers.

The family was pallbearers.

The family was pallbearers.

The family was pallbearers.

The family was pallbearers.

Abilene. She worked for the Winters State Bank as a secretary for 40 years and was a member of the North Main Street Church of Christ.

Her husband preceded her in death in 1952.

Survivors include one daughter, Doris Stoecker of Winters; one granddaughter, Margaret Ellen McCormack of Houston; and two great grandsons, Michael McCormack and Myles McCormack of Houston.

Services were held Tuesday, January 29, 1991 at the North Main Street Church of Christ in Winters with Glenn Gray and Doug Peters officiating. Burial was in Lakeview Cemetery under the direction of Winters Funeral Home.

Pallbearers were Charles Bahlman, Lanny Bahlman, W. T. Colburn, Ozzie Reid, Paul King, Jack Shriver, and Bill Minzenmayer.

Pallbearers were Charles Bahlman, Lanny Bahlman, W. T. Colburn, Ozzie Reid, Paul King, Jack Shriver, and Bill Minzenmayer.

Pallbearers were Charles Bahlman, Lanny Bahlman, W. T. Colburn, Ozzie Reid, Paul King, Jack Shriver, and Bill Minzenmayer.

Pallbearers were Charles Bahlman, Lanny Bahlman, W. T. Colburn, Ozzie Reid, Paul King, Jack Shriver, and Bill Minzenmayer.

Pallbearers were Charles Bahlman, Lanny Bahlman, W. T. Colburn, Ozzie Reid, Paul King, Jack Shriver, and Bill Minzenmayer.

Pallbearers were Charles Bahlman, Lanny Bahlman, W. T. Colburn, Ozzie Reid, Paul King, Jack Shriver, and Bill Minzenmayer.

Pallbearers were Charles Bahlman, Lanny Bahlman, W. T. Colburn, Ozzie Reid, Paul King, Jack Shriver, and Bill Minzenmayer.

Pallbearers were Charles Bahlman, Lanny Bahlman, W. T. Colburn, Ozzie Reid, Paul King, Jack Shriver, and Bill Minzenmayer.

Pallbearers were Charles Bahlman, Lanny Bahlman, W. T. Colburn, Ozzie Reid, Paul King, Jack Shriver, and Bill Minzenmayer.

Pallbearers were Charles Bahlman, Lanny Bahlman, W. T. Colburn, Ozzie Reid, Paul King, Jack Shriver, and Bill Minzenmayer.

Pallbearers were Charles Bahlman, Lanny Bahlman, W. T. Colburn, Ozzie Reid, Paul King, Jack Shriver, and Bill Minzenmayer.

Pallbearers were Charles Bahlman, Lanny Bahlman, W. T. Colburn, Ozzie Reid, Paul King, Jack Shriver, and Bill Minzenmayer.

Pallbearers were Charles Bahlman, Lanny Bahlman, W. T. Colburn, Ozzie Reid, Paul King, Jack Shriver, and Bill Minzenmayer.

Pallbearers were Charles Bahlman, Lanny Bahlman, W. T. Colburn, Ozzie Reid, Paul King, Jack Shriver, and Bill Minzenmayer.

Pallbearers were Charles Bahlman, Lanny Bahlman, W. T. Colburn, Ozzie Reid, Paul King, Jack Shriver, and Bill Minzenmayer.

Pallbearers were Charles Bahlman, Lanny Bahlman, W. T. Colburn, Ozzie Reid, Paul King, Jack Shriver, and Bill Minzenmayer.

Pallbearers were Charles Bahlman, Lanny Bahlman, W. T. Colburn, Ozzie Reid, Paul King, Jack Shriver, and Bill Minzenmayer.

Pallbearers were Charles Bahlman, Lanny Bahlman, W. T. Colburn, Ozzie Reid, Paul King, Jack Shriver, and Bill Minzenmayer.

Pallbearers were Charles Bahlman, Lanny Bahlman, W. T. Colburn, Ozzie Reid, Paul King, Jack Shriver, and Bill Minzenmayer.

Pallbearers were Charles Bahlman, Lanny Bahlman, W. T. Colburn, Ozzie Reid, Paul King, Jack Shriver, and Bill Minzenmayer.

Pallbearers were Charles Bahlman, Lanny Bahlman, W. T. Colburn, Ozzie Reid, Paul King, Jack Shriver, and Bill Minzenmayer.

Pallbearers were Dickie Clough, Johnny Wilson, Jim Prine, Donald Prine, Alton O'Neal, Jr., and Allen Andrae.

## Senior Citizens Nursing Home News

By Billie Ruth Bishop

At this writing, we have two residents in the hospital. They are Dora Busher and Gene New. We hope they have a restful day.

Mrs. Trudie Foreman's family celebrated her birthday with her Saturday at the nursing home with cake and punch. They reported a good time together.

We are getting ready for the Valentine season. We will be electing a king and queen as we do every year. We are looking forward to that.

## Commodities to be Distributed

Central Texas Opportunities, Inc. will distribute USDA Commodities at the Winters Multi-Purpose Center, 601 West Pierce, on Thursday, February 7, 1991 from 2:30 p.m. to 4 p.m.

Items available this month are flour and butter.

CTO has no control over what items are available or the quantity of the items. Allocations of all commodities depend on the availability of food items from USDA.

All eligible persons will receive this emergency food assistance without regard to race, sex, age, political beliefs, national origin and/or handicap. Shut-ins are encouraged to designate an authorized representative to pick up for them. Commodities will be distributed on a first come/first served basis.

Volunteers are greatly needed and appreciated to help with this much-needed program. Please bring large paper sacks.



## Richard Watson announces candidacy for 65th district

Richard Watson, 45 year old pharmacist-businessman and pastor has filed for election to the District 65 State Representative Seat recently vacated by Jim Parker.

Watson and his wife of twenty-two years, the former Connie Coan, live in Gorman and are both lifelong residents of the District. They have three children, Rachel-20, Leah-16, and Stephen-9.

In commenting on his reasons for seeking the 65th District Seat, Watson said, "I am grateful to my parents, extended family, teachers, and other role models who have contributed to my life over the years. It is my desire to take to Austin the values that those people have built into my life."

"There are many serious issues facing Texas in the nineties. Many of these are obvious such as ethics, education, taxation, redistricting, criminal justice reform, and development of our natural resources both in agriculture and energy."

"However, the most critical issue facing Texas today is the crisis in families. The building block of our society is the traditional nuclear family, and as the family goes, so goes Texas. Every piece of legislation in Austin needs to be examined from the perspective of, 'How will this affect the family?'"

"Forexample, taxes are already the largest single item in the typical household budget. Further

taxation is, I believe, detrimental to the family. Control of the educational process needs to make a pronounced move away from Austin and back toward the local school district with an increasing emphasis of parental responsibility. Local district (local families) should not be sent the bill to pay for programs mandated by an educational bureaucracy in Austin.

"The way the Legislature handles these issues and others like criminal justice reform and development of resources will all impact the family."

"The votes I will cast in the House of Representatives will be based on underlying principles such as the protection of family values, the limitation of government, the prevention of further erosion of local control of our lives, and the accountability of state agencies to the elected representatives of the people."

"My associations and activities over the years as listed below are consistent with the philosophy that I desire to bring to this office."

Watson is a 1969 graduate of the University of Texas College of Pharmacy where he was an officer in the Phi Delta Chi professional pharmacy fraternity. He is currently a member of the Central Texas Pharmaceutical Association, the Texas Pharmaceutical Association and its Section of Consultant Pharmacists.

Having been in business for more than twenty years, he is well acquainted with the need for business to find relief from bureaucratic hindrance in the marketplace.

He has served as pastor of New Hope Baptist Church for the past thirteen years during which time he has held various denominational positions including Moderator of Cisco Baptist Association and the Executive Board of Big Country Baptist Assembly.

His activity in community affairs has included service as Chamber of Commerce President, United Way Chairman, Little League Baseball Coach, and Volunteer Fireman.

As a political and fiscal conservative, Watson has over ten years of political involvement from the grassroots to the state level. He has been active in a number of conservative organi-

zations including the Free Market Foundation advocating free enterprise, the American Security Council generating support for a strong national defense, the National Taxpayers Union working to limit wasteful government spending, Justice Fellowship promoting effective criminal justice reform, and others that promote and protect basic family values.

Watson has stated that these are the types of values that he desires to bring to the House of Representatives from the 65th District.

## Wingate Sew & Sew Club

The Wingate Sew & Sew Club met January 22, 1991 at the Lions Building with Lucille Pritchard as hostess. A quilt was done for her.

Minutes were read and approved and roll call was answered by nine members. They were: Pauline Huckaby, Lorine Kinard, Annie Faye King, Martha O'Dell, Oma Lee Overman, Midred Patton, Ethel Polk, Lucille Pritchard, and Lessie Robinson. There were two guests present, Lynn and Christopher Groening (Ethel's visitors).

Refreshments were enjoyed by all.

Lessie Robinson will be hostess at our next meeting February 5. Hope to see you all there.

## Newcomer!

April, Alisa, and Ashley New are proud to announce the arrival of a new baby sister, Andrea Nicole.

Andrea was born Thursday, January 24, 1991, at Hendrick Medical Center in Abilene. She weighed 7 pounds and 1/2 ounce and was 19 1/2 inches long.

Proud parents are Kim and Billy New of Merkel.

Maternal grandparents are Bobbie Fry of Winters and Joe B. Fry of Abilene. Maternal great grandparents are Mr. and Mrs. Luther Smith, Sr. of Winters and Lydia Drake of Ballinger.

Paternal grandmother is Betty Chancellor of Merkel. Paternal great grandparents are Mr. and Mrs. L. A. Sargent of Winters.

REPORT OF CONDITION	
Consolidating domestic subsidiaries of the	
PEOPLES NATIONAL BANK OF WINTERS	
in the state of TEXAS, at the close of business on December 31, 1990 published in response to call made by Comptroller of the Currency, under title 12, United States Code, Section 161. Charter No. 18234 Comptroller of the Currency Southwestern District.	
ASSETS	
Thousands of Dollars	
Cash and balances due from depository institutions:	
Nonint. bearing bal. & currency coin.....	210
Interest-bearing balances.....	300
Securities.....	1,508
Federal funds sold.....	1,715
Securities purchased under agreements to resell.....	-0-
Loans and lease financing receivables:	
Loans and leases, net of unearned income.....	5,599
LESS: Allowance for loan & lease losses.....	49
LESS: Allocated transfer risk reserve.....	-0-
Loans & leases, net of unearned income, allowance, & reserve.....	5,550
Assets held in trading accounts.....	-0-
Premises & fixed assets (inc. capitalized assets).....	277
Other real estate owned.....	259
Investments in unconsolidated subsidiaries & associated companies.....	-0-
Customers' liability to this bank on acceptances outstanding.....	-0-
Intangible assets.....	-0-
Other assets.....	119
Total assets.....	9,938
Losses deferred pursuant to 12 USC 1823(j).....	N/A
Total assets and losses pursuant to 12 USC 1823(j).....	9,938
LIABILITIES	
Deposits:	
In domestic offices.....	8,820
Noninterest-bearing.....	700
Interest-bearing.....	8,120
Fed funds purchased.....	-0-
Securities sold under agreements to repurchase.....	-0-
Demand notes issued to the U.S. Treasury.....	-0-
Other borrowed money.....	-0-
Mortgage indebtedness & obligations under capitalized leases.....	-0-
Subordinated notes and debentures.....	-0-
Other liabilities.....	43
Total liabilities.....	8,863
Limited-life preferred stock & related surplus.....	-0-
EQUITY CAPITAL	
Perpetual preferred stock and related surplus.....	-0-
Common stock.....	625
Surplus.....	625
Undivided profits & capital reserves.....	(154)
LESS: Net unrealized loss on marketable equity securities.....	21
Total equity capital.....	1,075
Total liabilities, limited-life preferred stock, equity capital and losses deferred pursuant to 12 USC 1823(j).....	9,938
I, Stanley Boulter, Vice President & Cashier of Peoples National Bank, do hereby declare that this Report of Condition is true and correct to the best of my knowledge and belief.	
Stanley Boulter, Vice Pres./Cashier Date 1-27-91	
We, the undersigned directors, attest to the correctness of this statement of resources and liabilities. We declare that it has been examined by us, and to the best of our knowledge and belief has been prepared in conformance with the instructions and is true and correct.	
Directors	

# Back by Popular Demand!

## Lawrence Bros. Supermarket

### will now double manufacturer's coupons\* up to face value of 50¢.

## Any coupons over that amount will be redeemed at face value.

\*(All tobacco & cigarette coupons redeemed at face value)

**New Store Hours:**  
**Mon.-Sat. 8 am to 8 pm**  
**Sun. 8 am to 7 pm**

# Lawrence Bros.

Hometown Proud  
 900 N. Main  
 754-5524

Fire meet  
 On the  
 had the  
 at the h  
 was a f  
 Webb.  
 Mem  
 Pinker  
 Beth He  
 tenburg  
 Doty, N  
 Mary E  
 rill, Te  
 Webb.  
 The r  
 inducte  
 Mildred  
 Lindley,  
 Webb, P  
 Parliam  
 tenburg,  
 Secretar  
 President  
 dent. All  
 small co  
 Nina Be  
 Heidenh  
 Presiden  
 ful engra  
 hard wo  
 The  
 nounced  
 committe  
 new busi  
 Hill Cou  
 tion will  
 October,  
 the men  
 making  
 which ev  
 ing to sh  
 for the r  
 Middle B  
 have be  
 are going  
 teer Fire  
 After  
 ness, inc  
 report, th  
 and refr  
 Those th  
 time and  
 who did  
 next mee  
 7:00 p.m.

Bu  
 DR  
 A CO  
 Texas Co  
 R



### Fireman's Auxiliary meets

On Tuesday, January 22, 1991, the Ladies Fireman's Auxiliary had their first meeting of the year at the home of Janice Merrill who was a hostess along with Oleta Webb.

Members present were Joanna Pinkerton, Betty Easterly, Sarah Beth Heidenheimer, Diane Whitteburg, Debbie Lindley, Mildred Doty, Nina Bedford, Tina Smith, Mary Ellen Moore, Janice Merrill, Teresa Davis, and Oleta Webb.

The new officers for 1991 were inducted by Nina Bedford: Mildred Doty, Chaplain; Debbie Lindley, Racing Captain; Oleta Webb, Historian; Betty Easterly, Parliamentarian; Diane Whitteburg, Treasurer; Teresa Davis, Secretary; Debra Lindsey, Vice President; Janice Merrill, President. All the officers were given a small corsage, compliments of Nina Bedford. Also, Sarah Beth Heidenheimer was recognized as President for 1990 with a beautiful engraved glass dish for all her hard work for the past year.

The 1991 schedule was announced along with the new committees, after which old and new business was discussed. The Hill Country Fireman's Convention will be held in Winters in October. During the meeting, all the members participated in making the little yellow roses which everyone has been wearing to show the care and concern for the men and women in the Middle East. The donations that have been given for these roses are going to the Winters Volunteer Firemen.

After discussion of all business, including the Treasurer's report, the meeting was adjourned and refreshments were served. Those that attended had a good time and hope that the members who didn't attend will be at the next meeting held February 26 at 7:00 p.m.

### Women's Service League meets

On Thursday, January 17, 1991, the Women's Service League met at the Methodist Church. Hostesses were Donna Guy, Fran Walker, and Chris Parramore.

Jean Boles, President, introduced the speaker, Christi Byrne. Christi has just received her Master's Degree in counseling psychology. She is presently on staff at Pastoral Care and Counseling in Abilene, as a therapist. The topic of her talk was "Women Using Anger as a Tool for Growth."

Members present were Debbie Dexter, Brenda Hope, Jana Smith, Tina Smith, Amy Lujano, Yolanda Bridgeman, Nancy Davis, Lea Angel, Rhonda Goetz, Sheila Paschal, Donna Pritchard, Chris Parramore, Jean Boles, Debbie Sudduth, Leslie Cathey, Becky Airhart, Rhonda Kruse, Sherri Mikeska, Karen Colburn, Donna Guy, Julie Springer, and Fran Walker.

Names were drawn for February secret pals. Each member will send a card and gift to their pal and senders' names will be revealed at the next meeting on February 21.

A special program is planned for March 12 when David Bacon, local sportscaster for KTAB in Abilene, will present "Sports Follies" for members and their special guests.



### Newcomer!

Lauren and Ketta Garduno of Abilene are the proud parents of a baby girl, Amber Lauren, born at Hendrick Medical Center, November 29, 1990.

Amber weighed 7 pounds and 4 1/2 ounces and was 20 1/2 inches long.

Paternal grandparents are Mr. and Mrs. Laurencio Garduno of Borger, Texas. Maternal grandparents are Mr. and Mrs. Carlos Walker of Wingate.

### Academic Scholarships offered by ASU

Applications from high school seniors are being accepted by Angelo State University for Carr Academic Scholarships for 1991-92.

Over 400 Carr Academic Scholarships for 1991-92, ranging in value from \$1,000 to \$5,000, are available to qualified high school seniors. During the current year over 900 students throughout Texas and the nation, as well as numerous foreign countries are attending Angelo State University on Carr Academic Scholarships.

As a general rule, students must be in the top 10 percent of their high school class, have a high school grade average of 90 or above, and present a combined math and verbal score of 1000 or higher on the SAT or a composite score of 25 or higher on the Enhanced ACT Assessment.

Supported by a growing multi-million dollar trust established by the late Robert G. and Nona K. Carr of San Angelo, the undergraduate scholarships may be renewed annually by the University for students who maintain the required academic record. During a four-year course of undergraduate study at ASU, Carr Academic Scholarships can be worth from \$4,000 to \$20,000.

The priority deadline for submitting applications and all supporting materials is March 1, 1991, although completed applications from outstanding students will be considered up until June 1, 1991, to the extent that funds are still available.

Application materials and information regarding the Carr Academic Scholarships can be obtained by contacting or writing to: Carr Academic Scholarship Program Office, Angelo State University, Box 11007-C, ASU Station, San Angelo, Texas 76909 (915/942-2103).

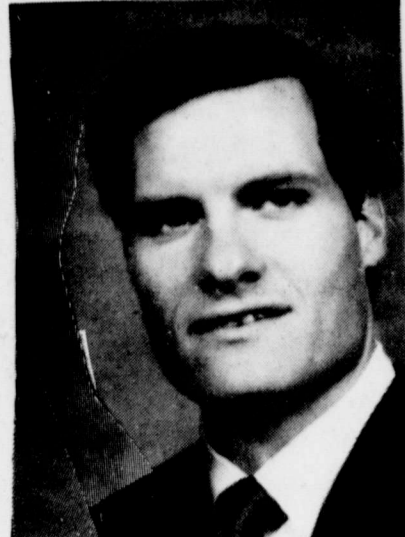
### San Angelo Genealogical and Historical Society Meeting

The San Angelo Genealogical and Historical Society will meet Tuesday, February 5, 1991, at 7:30 p.m. in the Fellowship Hall of the Church of Christ at 901 North Main.

The program speaker will be John C. Neilson, Librarian. He will speak about the Fort Concho Library of San Angelo.

The Beginners Genealogical Class taught by Billy Scattergood will be held at 6:30 p.m. Visitors are always welcome.

### Groundhog Day Feb. 2



### New manager of Runnels County Farm Bureau

Runnels County Farm Bureau would like to introduce their new agency manager, David Swain.

David was born and raised in Brownfield, Texas, graduated from Brownfield High School, and received his Agricultural Business degree from Texas Tech University.

He worked on the family farm growing irrigated cotton and has farmed for 5 years on his own growing cotton.

He started as a Farm Bureau agent in Lubbock, Texas in 1986 and was promoted to Farm Bureau agency manager of Marshall, Texas in 1988.

His position as Farm Bureau manager of Ballinger began January 21, 1991.

David and his wife Linda, a native of Abilene and a graduate of Texas Tech University with a Home Economics degree, have one son, Bradley, 5 months old.

Everyone is invited to a reception at the Runnels County Farm Bureau office on February 5th from 2:00 p.m. to 5:00 p.m.

### Representative Candidates Forum, February 7

The Comanche Chamber of Commerce will host a Candidates Forum Thursday, February 7, 1991 at 7:00 p.m. at the Comanche Community Center for those running for the District 65 State Representative place vacated by Jim Parker.

All candidates have been invited and everyone in this district is encouraged to attend and hear their views on current issues in the Legislature. Prepared questions will be asked and each candidate will have a brief response time. Candidates will also have five minutes each to make a presentation of their choice at the beginning of the forum. District Judge James Morgan will serve as moderator.

Following the question/answer session, refreshments will be served allowing time for the public to meet and visit with the candidates.

The Community Center is located at 100 Indian Creek Dr. and Hwy. 377 at the West edge of Comanche. This Candidates Forum will be an excellent opportunity to learn more about the candidates before the election on Saturday, February 9th. Everyone has a cordial invitation to attend. For more information call the Chamber office at 915-356-3233.

### Letter to the Editor

The high price of freedom

Freedom does not come without bloodshed for the innocent, as well as the wrongdoers. Jesus Christ shed His blood on the cross so that we might acquire freedom from sin.

Many have fought for our nation's freedom. Some will protest and burn the flag, a symbol of our liberty, and yet they enjoy freedoms because of some one else's efforts to preserve that which is right and just.

By one man's ambitions, portraying himself as a religious man, destroying any opposition in his climb to power, rising and hiding behind children to fulfill his ambitions, sending the whole world into economic strain and unrest, as well as, trying to pit one religion against another.

Peace can not come until the factions that cause dissension are eliminated.

Joe Emmert

### Runnels Historical Commission meets

The Runnels County Historical Commission had a busy and rewarding year in 1990.

The first meeting of the year was conducted at the Runnels County Courthouse at 2 p.m. Jan. 20, 1990.

The first order of business was to welcome Jeanette Findlay as a new member of the Commission.

Jeanette and her family recently purchased the Park Hotel, located across the street from the county courthouse. They plan to restore the hotel as a bed and breakfast business, along with a restaurant that serves specialty meals in an antique atmosphere in a charming dining room.

The hotel is known as Olde Park Hotel.

Chairman Neuman Smith reported that he submitted the yearly report of the Commission to County Judge Michael B. Murchison.

A copy of the report was also sent to the Texas State Historical Commission in Austin.

The Commission voted to work with the county judge and the State Historical Commission in declaring the month of March as National Women's History Month.

A review of the 1990 activities of the Commission was presented. During the year numerous articles were written by members on the history of Runnels County.

Sell through the classifieds

### Please support service personnel with local V.F.W.

The Winters Veterans of Foreign Wars Post 9193 and its Ladies Auxiliary have joined with other Posts and Auxiliaries across the country in supporting a new program called "Operation Home-town" launched in the fall by the National V.F.W. Commander-in-Chief James L. Kimery and National Auxiliary President Frances Booth.

As of December, over two hundred thousand dollars had been collected. The first commitment of 50,000 "Operation Home-town" packages reached the men and women serving in Operation Desert Shield, now Operation Desert Storm, during the Christmas holidays. These packages contained urgently requested personal and necessary items for the service personnel. All funds are coordinated through the V.F.W. National Headquarters.

The V.F.W. is committed to continue providing these packages and needs the help of all V.F.W. and Ladies Auxiliary members. They also invite all other interested persons to take part.


If you would like to help with the project, please contact R. C. or Mary Kurtz, Donnie Oats, or Ellen Meyer, or send donations to Winters V.F.W. Post 9193, Box 353, Winters, Texas 79567. All contributions, large or small, will be appreciated and sent to National Headquarters.

### Buckle Up!



DRIVING CAN BE A CONTACT SPORT

Texas Coalition for Safety Belts



## Richard Watson

For

## State Representative

**R Prescription for 65th District R**

**Mix And Deliver To Texas Legislature:**

- Protection of Family Values
- Limitation of Government
- Accountability of State Agencies to Elected Representatives

**DIRECTIONS: Cast Your Vote On**

# Feb. 9th For

# RICHARD WATSON

Pd. Pol. Adv. By Watson For State Representative, P. O. Box 249, Gorman, Texas 76454 - Bob Rodgers, Treasurer

## Oh My Heavens



## Look who is 47!

**Winters Medical Clinic, P.A.**  
will be closed  
**Friday, February 1**

**Dr. Stanley K. Taylor**  
**Family Practice**  
will be attending a  
**Continuing Education Seminar**


**(915) 754-4507**  
205 E. Dale  
Winters

**We will be open again for regular office hours on Monday, February 4**

# She'll kiss and tell.


The FTD® Flower Basket Bouquet. Just call or visit us today.

Surprise her and send one early!



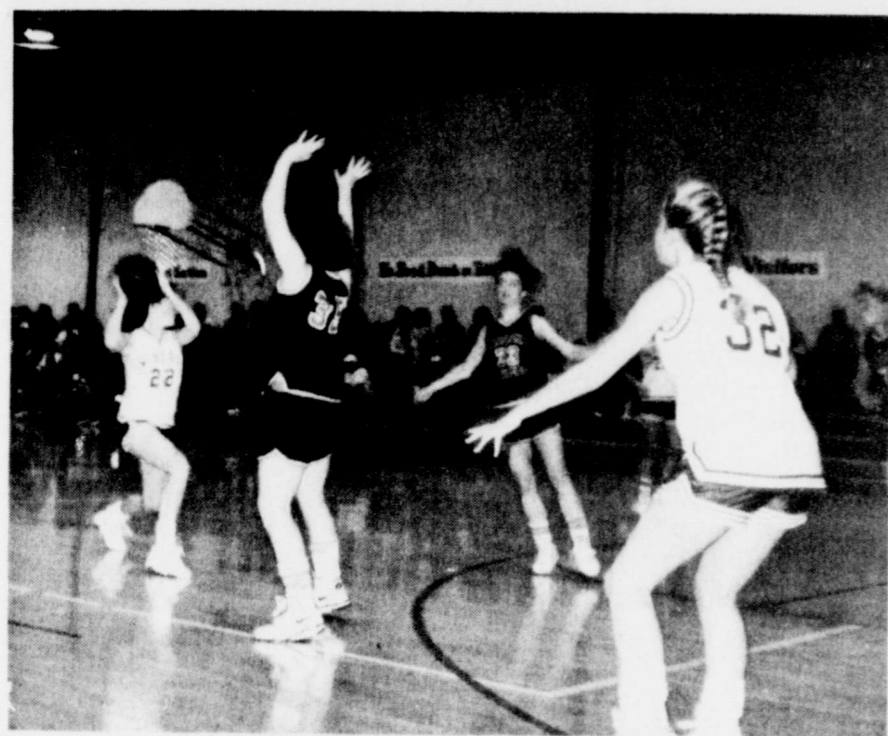
*Winters Flower Shop... & More*

**119 S. Main**  
**754-4568**  
**Janice Pruser, Owner**



**Bedford-Norman  
Insurance Agency**  
George Mostad, Owner  
P.O. Box 155  
754-4515

**Jerrolyn's Jewelry & Gifts**  
101 S. Main  
754-4635

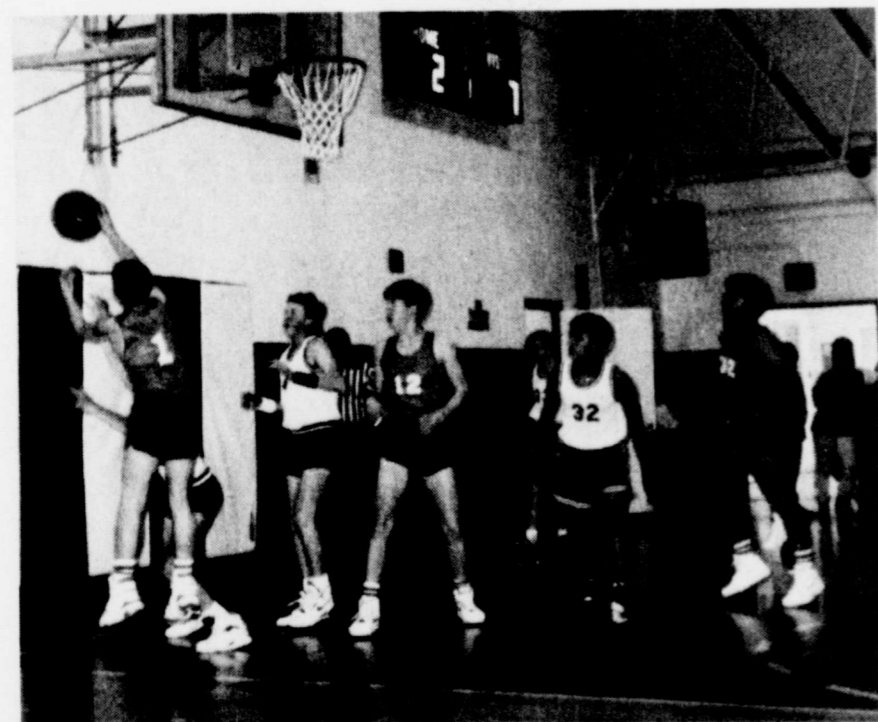


Lady Blizzard Kim Thompson #22 readies for a pass against the Haskell Indian Maidens. Also playing for the Blizzard varsity is Cara Bahlman #32.

**Bahlman Jewelers**  
Lanny Bahlman  
106 S. Main  
754-4057

**Winters Oilfield Supply, Inc.**  
Hwy 83 South  
754-5545

**Winters Funeral Home, Inc.**  
Mike Meyer, Mgr.  
Box 395  
754-4529



7th grade Breezes "A" team at work against the Jim Ned Indians: #1 Michael Mostad, #12 John Paul Belew, and #32 Jerry Esquivel.

**Peoples National Bank**  
158 N. Main  
754-5526

**Winters State Bank**  
500 S. Main  
754-5511

**Wingate Gin Corporation**  
Wingate, Texas 79566  
743-6453

**Lawrence Bros. IGA**  
Hometown Proud  
900 N. Main  
754-5524

These businesses proudly  
sponsor the Blizzards  
and wish them  
a victorious basketball season!

**Main Drug Company**  
James Cross, R.Ph.  
100 N. Main  
754-5557

**SPONSOR SPOTLIGHT**



**Mac Oil Field Company, Inc.**  
Ronnie Poehls, Owner  
1007 W. Dale  
754-5565  
1-800-588-5565

**Go Blizzards!**



Blizzard varsity players #23 Willie Belk, #22 Leo Campos, and #14 Ahmad Griffin defend the basket against the Anson Tigers.



**Winters Flower Shop & More**  
Janice Pruser, Owner  
119 S. Main  
754-4568

**Beat Albany!**

**SPONSOR SPOTLIGHT**

**Springer's Pharmacy**  
Randy Springer, R. Ph.  
900 N. Main  
754-4543

**The Winters Enterprise, Inc.**  
104 N. Main  
754-4958



Senior Brandi Brown helps lead cheers for the Big Blue during home basketball games.

**Alderman - Cave  
Milling & Grain Company**  
754-4546  
1-800-843-3141

**Gene & Jeanie Wheat  
Bob Loyd L.P. Gas Co.**  
915/754-4555



Little Dribblers from the 4th, 5th, and 6th grades combine efforts during last Saturday's morning basketball game.

**Video Hut**  
205 S. Main  
754-4435

**Winters Welding Works Inc.**  
Box 1033  
754-5418

**Joe Pritchard  
Runnels County Farm Bureau**  
Box 540  
Ballinger, TX 76821  
915-365-2562



#25 Kevin Briley, #14 Sean Byrne, #11 Jessie Ortiz of the 7th grade "B" team watch as team mate, Chad Kraatz shoots a free throw against Jim Ned.

**Winters Service Co.**  
Robert & Rhea Parramore  
Box 777  
915/754-4531

**The Shed**  
Texas Style Bar-B-Q & Steaks  
Wingate, TX  
743-6142

**Tom Poe Real Estate**  
1017 N. Main  
754-5022

**Sneed's Agri-Supply, Inc.**  
210 W. Dale  
754-5116

Mr. a  
ment of  
Forrest  
Chris  
of Lulin  
played b  
also the  
is the gr  
is the ol  
The  
employe  
education  
The p  
an empl  
Universi  
A Ma  
Abilene.

Home 7  
Office 7

B  
St

Qu  
★ F  
★ S  
★ 2  
★ E  
★ T  
★ C

(Pd. P



Miss Chapman, Chris Shade to wed

Mr. and Mrs. Carlton Chapman of Abilene announce the engagement of their daughter, Carolee, to Christopher Lynn Shade, son of Forrest and Merrikey Shade of Luling.

Chris is the grandson of Mr. and Mrs. Clarence (Joy) S. Shade, Jr. of Luling, former 10-year residents of Winters. Clarence was employed by Exxon Company and Joy by the Beauty Center. Chris is also the grandson of Mr. and Mrs. W. B. Gobbert of Mart, Texas. He is the great grandson of Mrs. Ben Fuller. Chris' uncle, Richard Shade, is the older brother of Forrest and resides in Canyon.

The bride-elect is a graduate of Cooper High School and is employed by Bank of the West in San Angelo. She is an elementary education major at Angelo State.

The prospective bridegroom is a graduate of Luling High School, an employee of Wal-Mart, and is an education major at Angelo State University.

A March 16 wedding is planned at Elmcrest Baptist Church in Abilene.



Mrs. Bret David Moore

**Moore and Burton Wed**

Gina Kathleen Moore and Bret David Burton were married December 29th, at First Baptist Church in Ballinger.

Mr. and Mrs. Nathan B. Moore of Ft. Davis are the bride's parents. The bridegroom is the son of Mr. and Mrs. David Burton of Ballinger.

The bride, given in marriage by her father wore a white satin gown. The heavily beaded bodice had a cameo yolk detail. Beaded appliques decorated the V-back. The Gibson sleeves were decorated with alecon lace, sequins and pearls. The full skirt extended into a cathedral length train. Her fingertip veil was sprinkled with pearls and fell from a headpiece of pearls and sequins. She carried a bouquet of gardenias, white and bridal pink roses and greenery.

Mrs. Rusty Johnson of Lubbock was matron of honor. Bridesmaids were Tracey Moore of San Angelo, sister of the bride, Misty Moore of Fort Davis, sister of the bride, and Jana Burton, of Ballinger, sister of the groom.

The bridesmaids wore forest green velvet dresses and carried a single red rose.

David Burton, father of the groom, served as bestman. Robert

Spreen of San Angelo, Casey Srader of Lubbock, and Vernon Monzingo of Austin served as groomsmen. Ushers included Chris Rollins of College Station, Steven Fath of San Antonio, and Daryl Buckalew of San Antonio. Candlelighters were James and John Moore of Fort Davis, brothers of the bride.

The Rev. Jerry Howe officiated. Vocalist was Mrs. Jerry Howe. Mrs. Ferris Akins provided the organ music and Mrs. Scott Warren was the pianist.

The reception followed in the church fellowship hall.

The bride graduated from Fort Davis High School and Angelo State University with an Associate Degree in Nursing. She is employed by Methodist Hospital in San Antonio.

The groom, a graduate of Ballinger High School, received a Bachelor of Science Degree from Angelo State University, and is a second year Medical student at the University of Texas at San Antonio Health Science Center in San Antonio.

The couple will make their home in San Antonio.

**Runnels Soil Conservation News and Notes**

**Soil's protective cover --- residue**

The heart and soul of any conservation tillage system is a cover crop, natural vegetation, or residue from previous crops that cover the soil.

Conservation tillage systems leave 30 percent or more of the soil surface covered with residue to protect the soil. According to Melinda Hudson of the Soil Conservation Service, residue protects the soil against the impact of rainfall and slows the runoff rate giving more time for infiltration of water. Residue on the surface absorbs wind energy and helps reduce wind erosion.

The more residue left on the soil surface, the more protection available. No-till, which blankets the soil with residue, can reduce erosion by 90 percent or more over the use of the moldboard plow. A chisel plow can reduce water erosion by 65 to 75 percent over conventional tillage. The system best suited to a farm operation depends on the soils and

slopes. Generally speaking, more residue cover is needed as slope increases.

Residue helps save valuable soil moisture for growing crops. With a good residue cover, up to 2 inches of soil water is available for the growing crop. It reduces the evaporation of water and allows rainfall to soak into the ground before it has a chance to run off. Because residue limits the rate of runoff, fertilizer and pesticides are less likely to be removed from the field. This helps improve water quality in the area.

During dry periods, conservation tillage crops maintained their growth longer than crops grown in conventional systems. This is because of all the residue cover and the improved tilth of the soil, which holds more moisture.

For more information on conservation tillage and residue management, contact the Soil Conservation Service in Ballinger.

**RSWCD tree sale coming to a close**

The Windbreak Tree Program, sponsored by the Runnels Soil and Water Conservation District, is coming to a close for this year. To date, 78 landowners/residents have purchased approximately 3,700 trees for planting this spring.

According to SWCD Technician Don Haley, several species are still available in the hardwood line. Remaining inventories include American plum, catalpa, desert willow, green ash, osage orange, skunkbush sumac, and sandcherry. These hardwood seedlings may be purchased for

\$ .60 each. Wildlife packets, which include 100 trees in four different species that are beneficial to wildlife, are still available for \$40.00 per packet.

This year's program will conclude on February 7. Trees are scheduled to arrive at the Soil Conservation office in Ballinger on February 13. If you are interested in ordering any tree seedlings this year, please stop by the SCS office at 610 Strong Avenue in Ballinger or call 365-3415 for more information.

**Carter, Walden announce engagement**

Mr. and Mrs. Frank Carter announce the engagement of their daughter, Karen Joyce Carter of Irving, to Stephen Earl Walden of Euless. The couple will be married on March 23 at St. John's Lutheran Church.

Miss Carter graduated from Winters High School and is employed by Baylor University Medical Center of Dallas.

Mr. Walden, son of Mr. John Walden of Euless and Mrs. Dixie Allen of Dallas, graduated from Euless High School. He is employed by Baylor University Medical Center of Dallas.

**FIELDS Refrigeration and Appliance Repair FIELDS**

P.O. Box 823, Winters, Tx

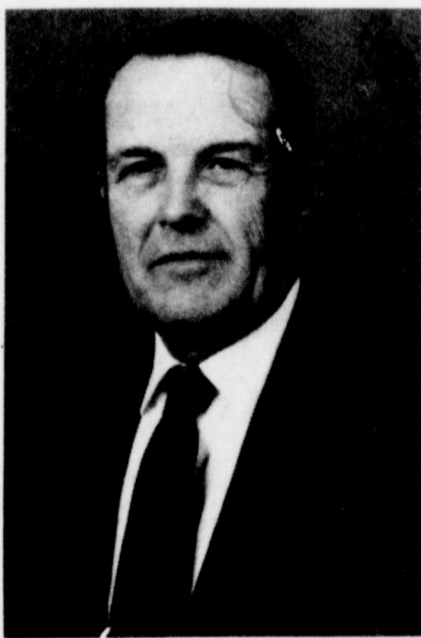
Serving Ballinger, Coleman Bronte, Winters & Surrounding Area

We service all name brands of appliances We also do commercial refrigeration & heating/air conditioning

Home 754-5309 Office 754-4342

Tommy Fields, Owner 24 hr. call, 7 days a week

**Bob Turner**  
Candidate for  
State Representative



**Qualifications and Experience**

- ★ Farmer and Rancher
- ★ School Board President
- ★ 20 Years Retail Merchant
- ★ Retired Lt. Col. U.S. Army Reserve
- ★ Texas Farm Bureau - State Director
- ★ Chairman American Farm Bureau Health Committee

(Pd. Pol. Adv. By Bob Turner Campaign, Buddy Hale-Treas., Talpa, TX)

**Memo from the Chamber**

The annual banquet was a great success. Thanks go to the Decorating Committee, The Shed, Travis Franklin, Doug Peters, the Jordan River Jubilee Group, W.T.U., The Winters Enterprise, and a host of others who made this special event possible.

The programs printed and furnished by The Winters Enterprise were well done and added to the decorations.

Congratulations to the outgoing President Gloria Poehls and to W.T.U. manager Gary Moore for receiving the honors of being chosen Citizens of the Year. Two very deserving people.

If you live in the Winters area and have an idea about what you would like to see happen downtown Winters, give the office a call at 754-5210 and express it. Your 1991 directors are here to promote Winters and its businesses.

Remember Winters is the "Best Little Town in Texas."

**Letters to the Editor Policy**

Letters to the editor on issues of general interest are welcomed by The Winters Enterprise.

Please write your name and address on the letter and include a phone number for verification. Letters submitted without signatures will not be published. We will consider requests to include initials only or a pseudonym in the published letter, but the letter with signature and phone number will be kept on file in the Enterprise office.

Letters to the editor do not necessarily reflect the opinion of The Winters Enterprise.

Letters should be addressed to: Editor, The Winters Enterprise, 104 North Main Street, Winters, Texas, 79567.

**Project Graduation Just Do It!**

754-5118

**WEST DALE**

501 W. DALE

**GROCERY & MARKET**

Prices Good January 30 thru February 5, 1991  
6 a.m.-8 p.m. Monday-Saturday & 7 a.m.-8 p.m. Sunday

**T-Bone Steak**  
lb.  
**2.99**

**Sirloin Steak**  
Boneless lb.  
**2.89**

**Breakfast Burritos ea. 1.25**

**Eckrich Pork Sausage lb. 99¢**

**Dr. Pepper**  
2 liter bottles  
**89¢**

**Tenderized Beef Cutlets**  
lb.  
**2.99**

**West Dale Muffin**  
Egg, Sausage, Cheese **1.25 ea.**

**Submarine Sandwiches 1.99 ea.**

**Made Anytime Hamburgers 1.39 ea.**

**Cold Cut Sandwiches 99¢ ea.**

**Food Stamps Welcome \$35**  
5 lb Pork Chops  
5 lb Ground Beef  
4 lb Cutlets  
6 lb Fryers

**Freezer Packs \$35**  
5 lb Round Steak  
6 lb Fryers  
5 lb Pork Steak  
5 lb Ground Beef

**Food Stamps Welcome \$45**  
9 lb Fryers  
8 lb Pork Steak  
8 lb Ground Beef  
4 lb Cutlets

**\$45**  
5 lb Round Steak  
5 lb Pork Chops  
6 lb Fryers  
8 lb Ground Beef

**\$59**  
6 lb Roast  
6 lb Ground Beef  
6 lb Pork Chops  
6 lb Cutlets

**\$89**  
10 lb Sirloin Steak  
10 lb Ground Beef  
10 lb Pork Chops  
or Round Steak  
12 lb Fryers

## Weekly Livestock Report

**SAN ANGELO** -- Weekly Trends/Texas Markets: At major Texas livestock market centers last week, slaughter cows and bulls steady to 2.00 higher; feeder cattle and calves steady to 4.00 higher. Barrows and gilts firm to 3.00 higher, sows steady to 2.00 lower.

At San Angelo last week, receipts totaled 1808 head of sheep in a one day sale. Feeder lambs not well tested, slaughter ewes weak to 2.00 lower, instances 5.00 lower; slaughter lambs weak.

In direct trading slaughter steers and heifers 1.00 higher in the Panhandle area. In the South Texas area slaughter steers and heifers steady. In the West Texas area slaughter steers not well tested, heifers .50 higher. Slaughter lambs steady. 67,400 head of slaughter steers and heifers sold out of Texas feedlots last week, with 64,300 head from the Panhandle area.

**Wool & mohair:** Trading on Texas mohair slow under light demand. 100,000 lbs. of average adult sold at .75-.77. 100,000 lbs. of spring 1990 fine adult brought 1.00. 60,000 lbs. of capes sold at .67, all grease fob warehouse. No new sales of Texas wool reported.

**SHEEP AUCTION:** Receipts for the week: 1808; last week: 9024; last year: 6156. Compared with last week, feeder lambs not well tested. Slaughter ewes weak to 3.00 lower, instances 5.00 lower. Slaughter lambs fully weak. Trading and demand moderate for storm shortened supply. Supply included 35% slaughter ewes, 20% feeder lambs, 15% slaughter lambs, 15% stock ewes, balance goats. This report compiled by the Federal-State Livestock Market News Service.

### FEEDER CLASSES

**Lambs:** Choice and prime 30-50 lb. spring, 53-54; 60-90 lbs. 48-50, set 83 lbs. 45; 90-110 lbs., 44-47; mixed good and choice 30-50 lbs., 44-53; 60-90 lbs., 38-48; 90-105 lbs., 35-44.

**SLAUGHTER CLASSES**  
**Lambs:** Choice and prime shorn and wooded 95-125 lbs. 45-48; 125-145 lbs. 40-45.

**Ewes:** Good 27-32, utility 23-32, culls 15-23.

**Bucks:** 22.50-30.

**Goats:** Spanish billies and muttons 44-53 per head, small billies and muttons 35-45 per head. Spanish nannies 35-52.50 per head; spanish kids and yearlings 29-41 per head; small kids 16-25 per head.

**Stock ewes:** Good baby tooth 35-40.50 per head; ewes and baby lambs 19-24 per head.

**CATTLE AND CALF AUCTION:** Estimated receipts for the week: 2803; last week: 5584; last year: 3877. Compared to last week, feeder steers 1.00-3.00 higher, heifers 2.00-5.00 higher. Slaughter cows steady to 1.00 higher, bulls firm. Stock cows and pairs slightly higher. Trading active, demand good. Overall quality not as attractive as last week. Supply included 45% calves, 10% stock cows and pairs, 20% slaughter cows and bulls, and 25% yearlings.

**Feeder steers and steer calves:** Medium and large frame No. 1, 200-300 lbs., 135-150; 300-400 lbs., 116-130; 400-500 lbs., 104-115; 500-600 lbs., 93-105, set 521 lb., 110; 600-700 lbs. 88-96, few 101-103.50; 700-850 lbs. 84-91. Medium and large frame No. 1-2: 300-400 lbs., 100-116; 400-500 lbs., 90-104; 500-600 lbs., 83-93; 600-700 lbs. 77-88; 700-800 lbs. 74-84.

### Feeder heifers and heifer calves:

Medium and large frame No. 1: 300-400 lbs., 102-112.50; 400-500 lbs., 91-103; 500-600 lbs., 85-95, set 546 lbs., 100; 600-700 lbs., 84-91, few 700-800 lbs., 81.50-82.50. Medium and large frame No. 1-2: 300-400 lbs., 85-102; 400-500 lbs., 81-91; 500-600 lbs., 75-85; 600-700 lbs., 74-84; 700-900 lbs. including heiferettes, 74-81.

**Slaughter cows:** Breaking utility 2-3, 50-57.75, high dressing 58-60; utility and commercial 3-4, 44.50-50; cutter and boning utility 1-2, 48.50-57, high dressing 57-59.75; canner and low cutter 1-2, 40-48.50.

**Slaughter bulls:** Yield grade 1: 1400-2000 lbs., 64.50-68; low dressing 1100-1500 lbs., 55-64.50.

**Pregnancy tested stock cows and heifers (young & middle aged):** Medium and large frame No. 1-2, \$670-780 per head; medium frame No. 1-2 \$510-670 per head.

**Cow/calf pairs (young & middle aged):** Large frame No. 1-2 three-year old cows with 250 lb. calves, \$1200 per pair; medium and large frame No. 1-2 cows with 350 lb. calves \$985 per pair; medium frame No. 1-2 cows with 100-300 lb. calves \$680-820 per pair.

**Stocker & feeder cows:** Medium and large frame No. 1-2, (young) 700-1000 lbs., 60-68; (young and middle age) 700-1050 lbs., 55-60; (middle age) 650-900 lbs., 48-52.50.

**ABILENE** -- The market at Abilene Livestock Auction had a run of 1400 head of cattle at its sale Monday.

**Slaughter cows:** Utility, 50-55; canner, 43-50; cutter, 50-59; fat cows, 48-53.

**Slaughter bulls:** Good, 60-70.

**Medium and Large Frame Steers:** 200-300 lbs., 110-145; 300-400, 100-130; 400-500 lbs., 95-124; 500-600 lbs., 85-107; 600-700 lbs., 85-95; 700-800 lbs., 83-93; 800-900 lbs., 75-85; 900 and over, 70-80.

**Medium and Large Frame Heifers:** 200-300 lbs., 95-120; 300-400 lbs., 88-115; 400-500 lbs., 85-110; 500-600 lbs., 80-96; 600-700 lbs., 75-90; 700-800 lbs., 72-84; 800 lbs. and over, 60-78.

**Cow/Calf Pairs:** Old shelly, \$550-600; plain, \$600-750; good, \$750-950.

**Pregnancy tested cows:** Old shelly, \$400-500; plain, \$500-650; good, \$650-850.

**COLEMAN** -- The market at Coleman Livestock Auction had a run of 750 head of cattle and calves at its sale January 23, compared to 950 last week and 875 last year.

Compared with last week, feeder cattle and calves \$2-3 higher, instances \$4 higher on thin offerings. Slaughter cows and bulls mostly \$2 higher. Stock cows and pairs \$3-5 higher. Demand good, trade active. Run included about 10% slaughter cows and bulls. Balance mostly feeders with bulk of supply weighing from 450-650 lbs.

**Feeder steers:** Medium and large frame No. 1 300-400 lbs., 120-130; 400-500 lbs., 104-115; 500-600 lbs., 95-105; 600-700 lbs., 89-94; 700-800 lbs., 83-89. No. 2, 400-500 lbs., 97-107; 500-600, 86-97; 600-700 lbs., 82-89.

**Slaughter cows:** Cutter & utility 1-4, 47-53; high dressing, 53-55.

**Slaughter Bulls:** Yield grade 1-2, 1250-1950 lbs., 59-63.50.

**Feeder Heifers:** Medium and large frame No. 1, 300-400 lbs., 110-115; 400-500 lbs., 94-100, few thin 100-105; 500-600 lbs., 88-95; 600-700 lbs., 83-88; 700-800 lbs., 81-84. No. 2, 400-500 lbs., 90-96; 500-600 lbs., 83-90; 600-700, 78-83.50.

**Stock cows:** Pregnancy tested, medium and large frame No. 1 \$685-750.

**Cow and calf pairs:** Large frame No. 1, \$850-1000; medium frame No. 1 \$750-850.

## VETERINARY UPDATE

by Jimmy Smith, DVM

### It's lambing time again

If Little Bo Peep is still looking for her sheep, it's a sure bet that she'll be able to find hers and more in the lambing barn before too long. We've had the heavy bred ewes separated from those that will lamb later so that we can give them that extra feed to prevent pregnancy disease. We have out a high calcium mineral (2il up to 4il) to make sure we have a high enough serum calcium in the ewe so that her cervix will dilate when she gets ready to lamb. We have immunized the ewes with overeating C & D, PI3, and tetanus vaccines within the last month so that passive immunity to these diseases will be available to the new lamb when it consumes colostrum. The lambing jugs are all ready, some with heat lamps just in case we have that unexpected cold snap. So we are all ready for the new babies to arrive.

As with other birthing processes, some go smoothly and quickly while others seem to be doomed from the start. When the first stage of labor begins, the ewe will act nervous and colicky. This stage should last no longer than 1 hour. The actual labor should not last longer than 30 minutes. If either of these are longer than the times mentioned, there could very well be a problem. Get out the warm water, soap, and clean towel and check her out. It is usually a simple problem that can be corrected without much effort. The main thing is not to wait too long. It's a hollow victory to deliver a dead lamb.

Once the lamb is on the ground, it's necessary for that lamb to consume colostrum or first milk in order to get those necessary antibodies which are so critical for survival. Six to eight ounces of colostrum from another sheep, a cow, a goat, or freeze dried packaged colostrum will do if

none is available from the mother of the lamb. If you are forced to raise baby orphan lambs on a bottle, be careful not to have too large a hole in the nipple. Lambs are very vigorous nurses. If too much milk comes out of the nipple, some of it is going to end up in the lungs. So be careful and don't use a nipple with too large an opening.

Most lambs are bottle fed warm milk at regular intervals. This is highly effective and it's easy to keep tabs on how each baby lamb is doing, but it's also a heck of a lot of work. Somebody invented a little device called the "lamb bar." This handy little device is nothing more than a reservoir in which cold lamb milk replacer is kept available free choice. With this apparatus, the lambs can nurse as often and as much as they wish. Because the milk replacer is cold, lambs do not overconsume and become sick. If you have very many orphan lambs, this is the route to choose.

Also, it is a good idea to give an overeating shot to the orphan lamb on the day you start him on the bottle (Day 0) and a booster on Day 10. Overeating and pneumonia/diarrhea complex cause a large number of deaths in the newborn. The same figures apply to sheep that you find in cattle - over 75% of the death losses occur in the first few days of life.

Hypothermia is also a killer. Sometimes supplemental sources of heat and energy are required. Lambing time is a time of a lot of work and a lot of fun. If you'll follow these simple guidelines that we've just gone over, you should be able to greatly reduce newborn death losses and get your 1991 lamb crop off to a roaring good start.

©1991 by Jimmy Smith, DVM

## Classified Ads

### Real Estate

**FOR SALE:** 200 acre farm and 3 bedroom/2 bath home. 1 mile N. Winters past rodeo arena. Price negotiable. Will consider selling separately. May call collect (409) 567-7885.

36-tfc

**HOUSE FOR SALE:** 3 BR, 2 B, brick, with central H/A, fireplace, corner lot, with outside storage, fenced backyard. Call 754-4468 after 6 p.m.

41-tfc

**House for Sale:** BY OWNER, 4 bedroom, 2 1/2 baths, central H/A, corner lot, fenced backyard, storage room, nice neighborhood. Call 754-4412 after 5.

49-tfc

**Land For Sale:** 116 acre farm at Bradshaw, 73 acres in cultivation. Contact Ann Gerlach Baldwin. (915)754-5158. 610 Tinkle, Winters, Tx 79567

2-3 (4tc)

### For Sale

**PECAN TREES, FRUIT TREES, SHADE TREES, FRESH!!! GROWN IN RUNNELS COUNTY AND SOLD AT WHOLESALE PRICES 365-5043.**

2-1 (14 TC)

**John Deere 214 Garden Tractor** with tiller, mowboard, bedder and bar, and cultivator. 754-4855 James Bomar.

2-5 (2tc)

### For Rent

**ACE MINI STORAGE: MONTHLY RATES. CONTACT FARMERS SEED AND SUPPLY 754-5373**

1-tfc

### Employment

**Help Wanted:** State certified nurses aids wanted! Current opening 10 to 6 shift. Contact Darlene McDaniel at Ballinger Nursing Center, 365-5666.

49-tfc

**Relief LVN needed:** At Ballinger nursing center. Contact Darlene McDaniel, 365-5666

49-tfc

**Registered Nurse:** Wanted for a clean 74 bed I.C.F. nursing facility. Good benefits. Salary negotiable according to experience. Send resume to: Coleman Care Center, Box 392, Coleman, Texas 76834.

49-tfc

### CLASSIFIED RATES

#### CASH

\$3.50 Minimum, 1 time, \$3.00 per insertion thereafter, 20 words; 10 cents per word over 20 words.

#### CHARGE

\$4.50 Minimum, 1 time, \$4.00 per insertion thereafter, 20 words; 10 cents per word over 20 words.

### Automobiles

**For Sale:** 1983 Buick LeSabre 4-dr sedan, gray, AM/FM stereo. Excellent condition. Low mileage. Call 754-5268. Estella Bredemeyer

2-4 (2tc)

**For Sale:** A-3 Buick Riviera Diesel. Good Condition. \$2000. Call 754-4342.

2-5 (2tc)

### Agriculture

**Hay for sale:** \$25 a bale, wheat seed \$4 a bushel. Call Howard Pruser 365-3656.

44-tfc

**Haygrazer:** 30 rolls in large round bales. Call 754-4842 for more information.

49-tfc

### Miscellaneous

**Rattlesnakes Bought:** We buy rattlesnakes. Wendell Lee, 206 N. Church, After 5 p.m. 754-4113.

2-2 (4tp)

**Need information on Constance Beth (or Bethel) HOLLEY** - maiden name - or any member of her family. Any information would be appreciated. Call collect 803-279-2060 or write Mrs. W. H. Presley, P. O. Box 6033, North Augusta, S. C. 29841.

2-5 (1tp)

**To a very special friend:** Your four-of-a-kind beats any six-pack any day. Congratulations and Best Wishes to the whole bunch! SR

2-5 (1tp)

### Livestock Services

**Livestock Services** for all your livestock needs. Experienced and will travel. Call 754-5124 or mobile number 1-235-7797.

43-tfc

### Special Services

**Pecan Cracking** - 25 cents a pound. Farmers Seed and Supply.

48-tfc

**The Winters Laundromat** offers the finest in laundry and dry cleaning service. Attendant on duty 9 a.m. - 5 p.m. Monday-Friday. Laundry hours 7 a.m. - 8 p.m. 7 days per week. 103 Murray St. 754-5673.

2-1 (1fc)

**Bobbie Calcote** has one opening for child care. Please call 754-5376.

2-4 (2tc)

### Garage Sales

**Sandy Griffin** is having a Garage Sale on Sat., Feb. 2 from 9 a.m. till 1 p.m., 603 Floyd St.

2-5 (1tp)

### Need Business Cards?

Call **The Winters Enterprise** 754-4958

## WEEKLY GRAIN MARKET REPORT

As of Tuesday 1/29/91:

Wheat	2.40/Bu
Oats	1.40/Bu
Milo	4.35/Cwt

All Prices Subject To Change

## ALDERMAN-CAVE MILLING & GRAIN COMPANY

Winters, Texas (915) 754-4546

Roswell, New Mexico (505) 622-3260

Toll Free 1-800-843-3141

# H. R. JEFFERIES

For

## STATE REPRESENTATIVE

FOR

\*Equal Funding for all School Districts

\*Affordable Insurance

\*Conservative Spending



FOR

\*Code of Ethics

\*Decision Making Input From Local Citizens

\*Place Honesty and Integrity Back Into Government

A Representative of the people - not the lobbyist

Honest - Dependable

Retired Superintendent of Schools, Comanche

(Pol. Adv. Paid For by H. R. Jefferies, H. R. Jefferies Treasurer, 305 Armstrong, Comanche, TX 76442)

The Winters Enterprise your Commercial Printing Headquarters

### Your Hair Place

504 West Dale Winters, Texas 7956



Leslie R. Pruser (915) 754-5108

Open 9:00 am Tues.-Sat.

**Charles Bahlman Chevrolet, Inc.** Winters • 754-5310 1-800-588-CHEV



### Underwood Real Estate

100 W. Dale • 754-5128 • Winters

**COMMERCIAL**-40 x 60 building on 4 acres. N. Hiway 83. **MAKE OFFER**- 3 BR, 1 bath, large rooms, corner lot. **COUNTRY LIVING**- 3 BR, 2 bath on 1 acre. Mid teens. **REMODELED**- 2 BR, 1 bath, H/A, mid teens.

**82-1/2 ACRES** - Good land. Mostly cultivated. Call for info. **CLOSE IN** - Good family home, 3 BR, 1 bath, low 20's.

**NEW LISTING**- 3 BR, 2 bath, brick on 16 acres, with missile silo. **NEW LISTING**- 100 Acres, mostly cultivation, close in.

**GOOD LOCATION**, 3 BR, 1 1/2 bath on large lot. Upper 20's. **NEWER HOME IN GOOD AREA**- 4 BR, 2 bath, all electric, brick, w/pump, workshop on 2 lots.

**NEW LISTING**- 8 adjoining lots on Redtner Street. **ACREAGE**- 142 acres, mostly cultivation, spring fed tank, some minerals, priced right.

**NEW LISTING** - 32 acres with modern mobil home, close in.

**SMALL LOT** - 2 BR, 1 Bath, lrg rooms; \$6,500. **REMODELED** - 2 BR, 1 Bath, carpeted, drapes, floor furnace, 2 refrigerated window units, mid teens. **COMMERCIAL** bldg. on West Dale. For rent or Sale.

**EXTRA NICE** - Remodeled 3 BR, 2 bath, H-A, fenced yard, lots of storage. **VERY ATTRACTIVE**, spacious 3 BR, 3 bath, H-A, quiet location, upper 50's.

**NEW LISTING**- Neat 3 BR, 1 bath, in good condition. **EDGE OF CITY LIMIT**- 2 BR, 1 bath, frame, fenced for stock, low 20's, large lot.

**OWNER FINANCED** - 3 BR, 2 bath, brick on 2 acres, H/A. **CLOSE IN** - 5 miles SE of town, 30 acres with 2 BR, 1 bath house, good well.

**COMMERCIAL** - Corner lot on North Main with small building. **TRINITY STREET** - Nice 3 BR, 1 bath, large lot, mid 20's.

**GOOD BUY** - Neat 2 BR, 1 Bath, large corner lot.