

THE WINTERS ENTERPRISE

VOLUME ONE

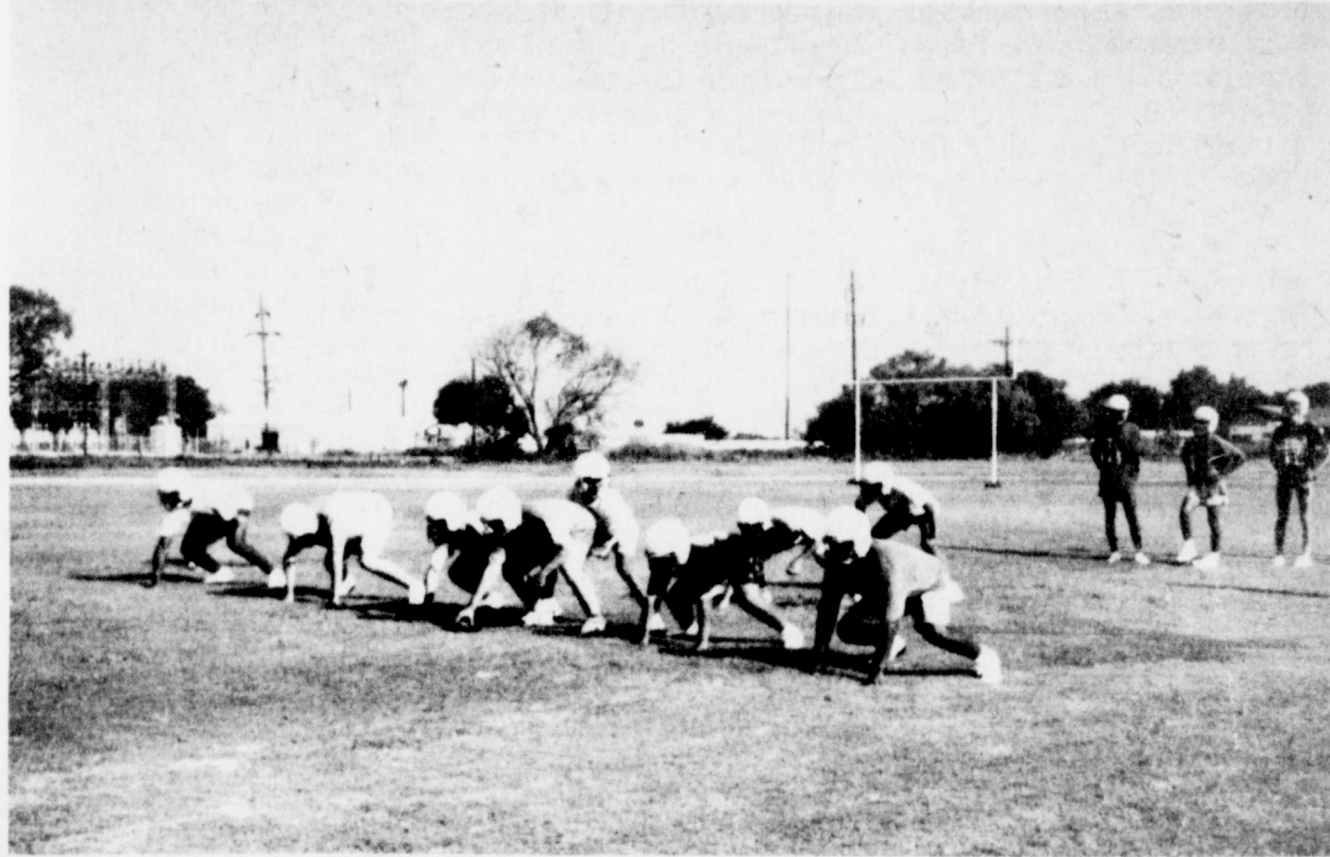
WINTERS, TEXAS 79567

THURSDAY, AUGUST 16, 1990

PRICE 25 CENTS

NUMBER 34

Blizzards prepare for 1990 season



Down! Set! Go Blue! Go!

Blizzards to have scrimmage Friday

The Winters Blizzard football teams will have an intrasquad scrimmage Friday night, August 17, beginning at 10 p.m. The public is encouraged to attend and catch a sneak preview of this year's Blizzard Football squads.



At-ten-tion! Left! Right! Left! Right!

Members of the WHS Blizzard Marching Band go through some basics as they begin marching practice in preparation for the upcoming football season.

Hospital taxes to stay identical for 1990

In the regular monthly board meeting on Monday, August 13, the North Runnels Hospital Board of Directors set a tax rate of \$.28 per \$100 valuation for property in the district. This is the same rate as the last three years.

Administrator Bob Prewit stated that the tax base for the hospital district increased a small amount and if the hospital continued operating on a level of the past couple of years, no tax increase was needed.

Of the \$.28 tax rate, \$.036 is bonded indebtedness for building the hospital. The board approved the rate unanimously.

In other business, the control-

ler, Sandy Moore, stated the hospital was in stable financial condition at the present time. Administrator Prewit also reported that a new chemical analysis machine in the lab had been installed and the state should certify it next week.

Bob Prewit also wished to clear some possible confusion by explaining a helicopter visit approximately two weeks ago. A baby was born in the hospital that needed acute care and was airlifted to Ft. Worth via helicopter. The confusion came about as the helicopter had trouble finding the airport. The helicopter and the baby made it safely back to Ft. Worth.

Blizzard ribbons available

The Winters Ex-Students Association will be selling spirit ribbons for the upcoming football season.

Ribbons will be sold in packets of ten for all Blizzard games. Each packet includes a unique helmet pin and will be sold for \$5.

Ribbon packets may be purchased from any board member including Barron Guy, Mary Lynn Presley, Fran Walker, Paul or Lavera Tharp, Puny or Deb Whittenburg and Donny Killough.

Homecoming is set for October 19 during the Winters vs. Anson football game, and will be followed by a reception in the old gym. Classes to be honored will be the Classes of 1940 and 1965.

School Board has long agenda, sets tax rate same for '90

The board of Winters Independent School District burned the midnight oil considering a long agenda in their regular meeting August 9. The tax rate of \$1.24 per \$100 of valuation was set for 1990, which is not an increase in rate over 1989.

In a lengthy budget workshop, board members considered budget requests from all areas and set a general budget hearing date of August 20. A public hearing on the 1990 tax rate will be held August 23 at 6:00 p.m. It was explained by business manager Johnny Bob Smith that although the tax rate will remain the same, there will be an increase in total tax revenues because of an increase in valuation of properties within the District.

In other business, the daily pay rate for substitute teachers was established at \$45 per day for the first four days of substitution and \$50 per day thereafter. Payroll deduction for personal business absences of regular teachers was set at \$17 per day. The travel reimbursement rate for travel on school business was set at 24¢ per mile.

Pay schedules for bus drivers on extra bus trips were accepted. Salaries of bus drivers, maintenance personnel and cafeteria workers were discussed at some length and pay rates for the 1990-91 year were accepted.

The Career Ladder Committee for 1990-91 was established with Johnny Bob Smith, Charles Kidwell, L. C. Hounsel appointed and Tommy Lancaster serving as appeals officer. A discussion as to whether to hire an outside appraisal person to do a second appraisal of teachers ended in the board voting not to do so. The second appraisals will be handled by local staff members.

Approval was given by the Board for the District to offer a Cafeteria Plan of insurance for District employees. This was explained as a health and life insurance plan with different options which can be decided upon by each employee and the insurer will meet with each and explain the options. The approval for the offering of the plan was given with the stipulation that it be at no cost to the District.

The bulk fuel bid of The Reedy Company was accepted for supply of fuel for the coming year.

Resignations were accepted from four teachers, Tara Embry, a 6th grade teacher; Cynthia Rogers, 4th grade; Lea Rutherford, 3rd grade; and LaShae Butts, P.E. aide.

Eight teachers were recommended to fill vacancies and were accepted unanimously by the board. Five of the new teachers will be in the Elementary School and three will be teaching in the Secondary School. New teachers accepted were as follows: Kayla A. Anders, Tonja S. Gray, Sheila L. Hankins, Connie H. Holden and Tammy L. Reeves in the Elementary School. New teachers in the Secondary School will be Laura Lee Dees, Angi H. Richards and Teri Lynn Johnson.

Dean of Students Bill Cathey presented the Board a proposed drug education curriculum for grades Kindergarten through 12 and the program was accepted.

Following the approval of the payment of routine bills, the Board adjourned.

School class schedules, orientation day to be August 16

August 16 is the date for all 8th, 9th, 10th, 11th and 12th grade students in Winters schools to pick up class schedules. Schedules will be available in the High School Auditorium at 9 a.m.

Seventh grade students and other secondary students new to Winters Secondary School will meet in the auditorium for orientation and class schedules at 2 p.m. on August 16. A short program will be presented by the Student Council, cheerleaders and TAFE representatives. Following the program, students will be taken on a tour of the building and campus.

Parents are invited and encouraged to attend the orientation program.

It has also been announced that High School annuals will be handed out in the library on the 16th.

Band Boosters to meet August 20

The Winters Blizzard Band Boosters will have a meeting Monday, August 20, at 6:00 pm in the band hall.

All parents and interested Blizzard Band supporters are invited to come and meet the new band director.

1990 Football season tickets on sale

Sale of season tickets for the 1990 Winters High School season will begin Thursday, August 23, 1990, with a one-week option period for people who had reserved seats last year and who wish to obtain the same seats for this season.

Regular season ticket sales will begin Friday, August 31, 1990 and will close September 10, 1990 for fans who did not have season tickets last year. These season tickets will be sold on a first come, first serve basis.

Season tickets will be sold as a book of five tickets and will include all home games. Price

per book will be \$15. Tickets will be sold at the school business office between 8 a.m. and 4 p.m. on the dates specified.

Tickets for out-of-town games will be available at the business office on Wednesday morning until Friday noon prior to the game being played on Friday. Tickets for out-of-town games will be sold on a first come, first serve basis. Students may purchase student tickets each week at the Principal's Office.

The first home game of the season will be September 14 with Coahoma.

WHAT'S HAPPENING?

- August 16-9:00 a.m. 8th, 9th, 10th, 11th, 12th grade students pick up schedules, auditorium; annuals, library
- 2:00 p.m. 7th grade orientation, auditorium
- 9:00-Noon Pre-K thru 6th grade registration, elementary library
- August 17-10 p.m. Blizzards Intrasquad Scrimmage, Blizzard Field
- August 18-Firemen's Golf Tourney, Winters Country Club
- 7:30 p.m. Meet the Blizzards, Ice Cream Supper, Blizzard Field
- August 19-Firemen's Bar-b-que and Auxiliary gas giveaway
- 7:00 p.m. Gabriel Concert, First Baptist Church, Bronte
- August 20-6:00 p.m. Band Boosters meet, Band Hall
- 7:00 p.m. North Runnels Hospital Diabetic Support Group, Winters Housing Authority Bldg.
- 7:00 p.m. Runnels County Baptist Ass'n, First Baptist Church, Bronte
- 7:30 p.m. Eastern Star Meeting
- August 23-Prior season ticketholders 1990 season Blizzard Football tickets go on sale



1990-91 Back To School Issue



See Page 4

OIL BUSINESS . . .

By Reg Boles



Things have changed a little bit since the last time we spoke. It seems that a lunatic has started a war in the Middle East, and oil is suddenly valuable, again. I should be in a really good mood! right? After all, I derive my living from the oil business and higher prices mean more money for the industry. Why am I not dancing on air?

To be honest, I have to admit that a smile has crossed my lips a time or two when contemplating oil prices above \$25/bbl. But, I have some reservations. First and foremost, war is not a happy occurrence, and the fighting is not over, yet. More trouble looms on the horizon. Also, I have serious doubts about how long the higher prices will be around. I do think that \$20+ oil is much more likely for the long term, but nothing will really prevent it from dropping to \$10, again. I guess it just depends upon what kind of mood King Fahd or Saddam Hussein is in on any given day. Therein lie my deepest concerns.

We need to think about what is really happening as a result of this new Middle East crisis. A fanatic currently controls the price of oil in the world. No 'ifs', 'ands' or 'buts' about it. Whatever he chooses to do next will affect the entire world. Do we trust someone who has used chemical weapons on women and children to decide our fate? Evidently, we do. Our government has adopted no national energy policy for such events to preserve our independence. The only reaction we can have is to protect our interests in the Middle East with force and hope Hussein doesn't send one of his Exocet missiles heading toward Saudi terminals, where 30 percent of the world's productive capacity is located. We have nothing to fall back on. Our domestic production is at a 40 year low and 75% of the equipment and manpower once available in this country for oil exploration and development is out of service.

But what about that strategic petroleum reserve thing? Don't we have several trillion barrels stored for just such an occasion? Well, you have a point there. The

only thing we have done right so far energy-policy-wise is to maintain the SPR. Unfortunately, it only holds a 20 day supply 550 million bbls). Kind of limits our options. We will not be able to find a new supergiant oil field in 20 days, nor can we even drill & complete a horizontal well in that length of time. Let's face it—we are dependent on imported oil.

It doesn't have to stay that way, but it is not something you can change overnight whenever there is a supply disruption. It requires long range planning and effective policy changes that encourage stability in the energy market. Note that I said energy—not oil. As hard as it is to say it, I have to. Oil and gas will not be around forever.

What's the answer, then? Smarter men than me have been wrong, but I think that oil price stability, however it is achieved, must be a priority. In that scenario, oil companies can plan for the future and develop the maximum amount of domestic reserves. Oil price swings (even the current increases) are counterproductive. A reasonable assurance in the future oil price (or at least a floor) will insure that a strong domestic industry stays intact and is ready for an emergency like we are experiencing. Oil is not the only answer, though. Alternative energy sources must be found, perfected, and developed. The economic incentive must be there, but if oil prices stay relatively consistent, then alternative energy sources will have a target to shoot for when it comes to viability. Low oil prices only discourage development of these potential resources—both hydrocarbon and renewable.

I am reminded that this is not an editorial column. Let's get back to the basics of what all of this means to the average oil man and woman.

If oil prices stay high, we need to remember the bumper sticker that reads "Lord, let there be one more oil boom and I won't blow it all this time." I think you get the point. There is no reason to waste all of the gains we have

made in cost efficiency during the last 5 years just because we can still make money while throwing it away. Everyone, from oil producer to service company needs to remember that oil prices aren't high forever and they can go down as fast as they go up. If you can make money at \$12/bbl oil then you can make MORE money at \$25/bbl. Some people choose to make the same amount by not trying as hard. Most of those guys are gone after the boom is over.

And finally, I would say to everyone else that is just an observer of the oil business and a consumer of its products: Let this episode remind you of the fact that you do need this country's domestic producers. Danger lies around every corner when you depend on other countries for over 50% of your supply of fuel. You also need to develop alternatives to fossil fuels to make the transition that will be required in the next 50 to 100 years from oil and gas to who-knows-what. The oil supply is not endless and it will not always be cheap. Hussein knows that better than most.

HIGHLIGHTS OF AREA DRILLING ACTIVITY

COMPLETIONS

Concho County
Wiser Oil has completed yet another successful well in the Agarita Field (5 miles W of Eden) at an initial rate of 75 BOPD in the King Sand (perfs 2110-17). Loc. is 1825 FSL & 1950 FWL of Sec. 70, BS&F Sur.

Nolan County
Texaco has completed the Nolan -D- Fee #1 in the E.A. Field (5 miles SE of Nolan) at an initial rate of 70 BOPD & 3 BWPD in the Ellenburger (perfs 6040-53). Loc. is 330 FNL & 360 FEL of Sec. 15, Blk. Z, T&P Sur.

Runnels County
Pace Operating has completed the McCaughan #3 as a wildcat 3 miles NE of Norton at an initial rate of 100 BOPD & 130 BWPD in the Ellenburger (perfs 4989-94). Loc. is 808 FSL & 467 FWL of Sec. 25, T.M. Fowler Sur., A-177.

TKP Petroleum has completed the Werner #1 in the Byers Field (7 miles E of Ballinger) at an initial rate of 20 BOPD & 240 BWPD in the Home Creek (perfs 2804-08). Loc. is 2097 FSL & 2030 FEL of Sec. 157, ETRR Sur., A-162.

Adams Branch Exploration has completed the Chadbourne Ranch -288- #6 in the West Wingate Field (4 miles W of Wingate) at an initial rate of 20 BOPD in the Gray Sand (perfs 5144-56). Loc. is 1516 FNL & 2392 FNL of S.H. Lucker Sur. 288, A-350.

Tom Green County
IP Petroleum has completed the Pfluger -B- #17-4 in the Sugg Ranch Field (18 miles SW of Sterling City) at an initial rate of 14 BOPD in the Canyon (perfs 7743-7865). Loc. is 2300 FSL & 1780 FWL of Sec. 17, Blk. A, GC&SF Sur., A-8554.

STAKINGS

Callahan County
R.E. Greene has staked three wells in the Callahan County Regular Field 7 miles N of Baird (Depth 1000). The Jackson -D- #19 is 700 FSL & 2100 FWL of Sec. 20, ETRR Sur. The #29 is

1600 FSL & 2600 FWL of same Sec. The #30 is 2450 FSL & 1840 FEL of same Sec.

Coleman County
Cedar Oil has staked the G.M. Vaughn -B- #1 as a wildcat in the Hrubetz Field area 3 miles W of Novice (Depth 4500). Loc. is 4677 FSL & 467 FEL of H. Kegan Sur. 520. Page 2

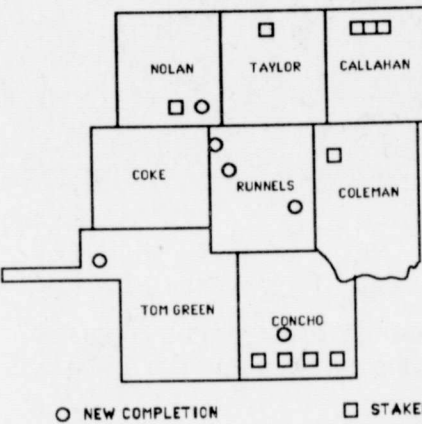
Concho County
Perkins-Prothro has staked the Sorrell #1 as a wildcat 8 miles SW of Eden (Depth 4500). Loc. is 1800 FSL & 1000 FWL of Sec. 44, Blk. 8, H&TC Sur., A-1186.

K.H. Baxter has staked the Roca-Carpenter #1 as a wildcat 12 miles SW of Eden (Depth 3800). Loc. is 1980 FSL & 1980 FEL of Sec. 47, Blk. 8, H&TC Sur.

Elco Oil has staked two wells in the Letcher Field 4 miles S of Eden (Depth 3000). The Tallaferrero #1 is 467 FSL & 2270 FWL of Sec. 116, Blk. 72, T&NO Sur., A-1663. The Green #1 is 467 FSL & 2270 FEL of same Sec.

Nolan County
Texaco has staked another well in the E.A. Field 4 miles SW of Nolan (Depth 6200). The Nolan -D- Fee #3 is 330 FNL & 1293 FEL of Sec. 15, Blk. Z, T&P Sur.

Taylor County
Ohlhausen Oil Co. has staked the Stephan #1 as a wildcat 5 miles N of View (Depth 2500). Loc. is 380 FNL & 2309 FEL of Subd. 29, Guadalupe CSL Sur.



Oil and gas permits issued down in July

AUSTIN, Texas, Aug. 9—A total of 1,166 drilling permits were issued by the Railroad Commission in July, according to RRC Chairman Kent Hance. In June, the total was 1,228. July 1989's total was 1,200.

The July total included 663 permits to drill new oil and gas tests, 52 to re-enter existing well bores, 52 to deepen existing holes, 178 to plugback existing holes, and 81 for other wells. Operators were also issued 140 amended drilling permits.

Hance said permits issued for new oil and gas holes in July included 36 in the San Antonio area (District 1), 32 in the Refugio area (District 2), 70 in Southeast Texas (District 3), 52 in deep South Texas (District 4), 17 in East Central Texas (District 5), 36 in East Texas (District 6), 73 in West Central Texas (District 7B), 60 in the San Angelo area (District 7C), 82 in the Midland area (District 8), 89 in the Lubbock area (District 8A), 85 in North Texas (District 9), and 31 in the Panhandle (District 10).

In the first seven months of 1990, the Commission has issued 7,783 drilling permits, a ten percent increase from the 7,072 issued during the same period of 1989.

The 1,166 permits issued in July included 508 oil permits, 195 gas permits, 393 oil and gas permits, 29 injection permits, 14 disposal permits, and 27 other permits.

Oil well completions up in July

AUSTIN, Texas, Aug. 9—Texas oil and gas operators reported 260 gas and 437 oil completions in July, according to Railroad Commission Chairman Kent Hance. In June the total was 241 gas and 459 oil completions. July 1989's total was 196 gas and 324 oil completions.

Gas completions in July included five in the San Antonio area (District 1), 34 in the Refugio area (District 2), 26 in Southeast Texas (District 3), 78 in deep South Texas (District 4), nine in East Central Texas (District 5), 35 in East Texas (District 6), 14 in West Central Texas (District 7B), 34 in the San Angelo area (District 7C) five in the Midland area (District 8), ten in North Texas (District 9), and ten in the Panhandle (District 10), according to Hance.

Oil completions included 64 in the San Antonio area (District 1), ten in the Refugio area (District 2), 38 in Southeast Texas (District 3), 12 in deep South Texas (District 4), five in East Central Texas (District 5), eight in East Texas (District 6), 61 in West Central Texas (District 7B), 33 in the San Angelo area (District 7C), 86 in the Midland area (District 8), 44 in the Lubbock area (District 8A), 57 in North Texas (District 9), and 19 in the Panhandle (District 10).

Total completions reported in July included 437 oil, 260 gas, and 48 service completions. In July 1989, operators filed 324 oil, 196 gas, and 31 service completion reports.

In the first seven months of 1990 the Commission has recorded a total of 5,567 well completions, a 15 percent increase from the 4,748 well completions recorded during the same period of 1989.

Hance said operators reported 1,041 holes plugged in July, compared to 893 in June. A total of 211 dry holes were reported in July, compared to 233 in June.

Facts About Anabolic Steroids

Anabolic steroids are synthetic drugs similar to the male hormone testosterone and cause decreased production of the body's own testosterone. They have both anabolic (tissue building) and androgenic (masculinizing) properties, although much of the desired weight gain is caused not by muscle build up but retained fluids. Anabolic steroids change the electrolyte balance causing retention of sodium, which causes the fluid retention.

Despite tending to make muscles grow, steroids do not equally increase the connective tendons and ligaments resulting in extra stress in these areas and creating greater risk for injury. Use during adolescence is especially harmful since anabolic steroids cause a closing of the growth plate at the ends of the long bones which results in permanently stunting growth.

Although physicians often prescribe steroids for athletic injuries, they may actually be more harmful than helpful because they retard the healing process and suppress the immune system.

There are over 70 side effects associated with the use of steroids ranging from liver cancer to acne. Steroids are also mind altering and can cause mood elevation or depression, increase or decrease sex drive, increase aggressive behavior, even psychotic episodes. Once steroid use is started, it is difficult to stop. Steroids are addictive and cause dependency. Many of the effects from anabolic steroids may not be reversible once the drugs are stopped.

Muscles fade quickly after the chemicals are stopped and body weight will drop by 10-25%. Withdrawal symptoms included depression, manic-like symptoms, insomnia, loss of energy or appetite, nausea and headaches—any of which can last from one to three weeks.

Source: Anabolic Steroids, Forrest Tennant, M.D. Campuses Without Drugs Newsletter Quarterly, 1989.

Letter to the Editor

On May 4, 1989, a possibly tragic accident was avoided by the alertness of one of our Winters school bus drivers. Mark Briley was taking the kids home that live between Winters and Crews when he made a bus stop at a marked school bus stop just east of Winters on Tx 153. Mark noticed an 18 wheel transport truck approaching quickly from the rear. At least four of the tires on the truck were skidding as the driver was attempting to stop the truck. (The faded skid marks still remain there today, over one year later.) Mark had already let two children out of the bus and his alertness and fast thinking resulted in the two children on the outside of the bus running clear of the bus to safety which allowed Mark to get the school bus out of the path of the transport truck. I am sincerely grateful for Mark Briley and thankful that he protected all the kids riding the bus that day, including one of my children. We are lucky to have Mark as our bus driver. The driver of the transport truck was filed on in Justice of the Peace Court, had a jury trial and was found guilty. The jury gave him the maximum fine allowed by law. The driver then filed an appeal to county court and plead out to a different charge but was still assessed the same fine the jury gave him. The case is now settled so I can now commend Mark Briley on his actions.

A grateful parent
Keith Collom

Letters to the Editor Policy

Letters to the editor on issues of general interest are welcomed by *The Winters Enterprise*.

Please write your name and address on the letter and include a phone number for verification. Letters submitted without signatures will not be published.

Letters should be addressed to: Editor, *The Winters Enterprise*, 104 North Main Street, Winters, Texas, 79567.

Newcomer

Shawn and Amy Bean are proud to announce the arrival of their daughter, Ashley Shenay.

She was born July 29, 1990 at 12:08 a.m. at Community Hospital in San Angelo. She weighed 5 pounds 10 ounces and was 18 and 3/4 inches long.

Proud grandparents are Ms. Mary Coleman of Winters and Mr. and Mrs. Earnest Cooke of Ballinger.

Great-grandparents are Mr. and Mrs. Albert Wuistingner, Mr. Pud Cooke, all of Winters and Mrs. Verda Pruett of Ballinger and numerous aunts and uncles.

The Winters Enterprise

(USPS 005016)
Published by
The Winters Enterprise, Inc.
104 N. Main Street
Winters, Texas 79567
915-754-4958

N. R. Boles
President & General Manager
Jean Boles.....Advertising
Jerro Heathcott.....Typesetting
Laurie Franklin.....Ad Design
Phyllis Boles.....Office Manager
Published every Thursday
except the final week of the year.

Second Class postage paid at Winters, TX.

Subscription Rates:

Runnels County \$10 per year
Other Texas Counties \$12 per year
Outside Texas \$14 per year

Any erroneous reflection upon the character, standing or reputation of any person, firm or corporation, which appears in the columns of this paper will be corrected upon due notice given at the Enterprise office.

POSTMASTER: Send address changes to The Winters Enterprise, 104 N. Main, Winters, TX 79567.

MEMBER 1990
TEXAS PRESS ASSOCIATION

Service Directory

H & H Tire and Muffler Service
242 South Main
Winters
754-4821

Guy's Dirt Contracting
Box 576 754-4292
Winters
Dozers - Motorgraders
Backhoes - Dump Trucks

Serving the oil industry over 30 years
Mac Oil Field Company Inc
1007 W. Dale
Winters
754-5565
1-800-588-5565
Power Kill Trucks, 30-130 BBL
Transports, Vacuum Truck, Test
Tanks, Frac Tanks
Ronnie Pochls-owner
Dickie Clough-foreman
Anywhere-Anytime

Win-Tex Drilling
4849 Treadaway
Abilene, Texas Bob Jones
915/695-9694 Owner
Three rotary rigs
Experienced in vertical
and horizontal drilling from
2000 to 7000 feet

Winters Welding Works Inc.
Box 1033 754-5418
Winters
On the Ballinger Highway

Winters Oilfield Supply, Inc.
Hwy 83 South
754-5545
1-800-588-5545

DAB D. A. B. Oil Service, Inc.
Abilene, Texas
Rack Casing and Tubing Testing
H-5 Disposal/Injection Pressure Testing
Competitive Prices
915/695-8400 Office
915/698-9335 Home

Mitch Davis, Inc.
Acidizing and Cementing Services
Mitch Davis
3810 Musgrave Trail
Abilene, Texas 79606
Phones:
Bus: 915-692-5477
Res: 915-695-8445

CLERK II/DISPATCHER
Pool Company, an industry leader in oilfield services, has an immediate opening for a **CLERK II/DISPATCHER** in the Winters office. Job responsibilities include payroll, invoicing, A/P, etc. for rigs and trucks. Candidate must have 3 years office experience. Oilfield knowledge a plus.

Pool offers an excellent wage and benefit package including medical/dental insurance, paid vacation, holiday pay, and other off time benefits such as sick leave, jury duty, etc.

Applicants should apply at:

Highway 53 West
P.O. Box 245
Winters, TX 79567

POOL COMPANY
AN EQUAL OPPORTUNITY EMPLOYER M/F/V/H

THE BY V...
COURT...
DATE...
decrees...
of said...
causes...
have on...
Tuesday...
month at...
ger, Run...
A.M. and...
the high...
in such...
upon as...
lying and...
Texas, to...
CAUSE NUM...
3419

3421

3474

or upon...
sufficient...
ties, and...
penalties...
property...
the record...
subject to...
anyone in...
law. Said...
in the abo...
penalties...
to the sat...
the law di...

DATED...
SHERIFF...
By...
DEPUTY...
(August...)

A to...
break...
Crisp...
and...
on a...
That...
Chick...
from...
T...
CO...
* Reg. U...

Old...
Wh...
dec...
t...
def...

Top Prices for Your Trade-In...
T...
See...

*rebat...

NOTICE OF SALE

THE STATE OF TEXAS
BY VIRTUE OF AN ORDER
COUNTY OF RUNNELS

DATED August 10, 1989, and issued pursuant to the judgment decrees of the District Court of Runnels County, Texas, by the Clerk of said Court on said date in the hereinafter numbered and styled causes and to me directed and delivered as sheriff of said Court, I have on August 3, 1990, seized, levied upon, and will on the first Tuesday in September, 1990, the same being the 4th day of said month at the Courthouse door of said County, in the City of Ballinger, Runnels County, Texas, between the hours of 10:00 o'clock A.M. and 4:00 o'clock P.M. on said day, proceed to sell for cash to the highest bidder all of the right, title, and interest of the defendants in such suits in and to the following described real estates levied upon as the property of said property of said defendants, the same lying and being situated in the County of Runnels, and the State of Texas, to wit:

CAUSE NUMBER	STYLE OF SUIT, DEFENDANTS, AND PROPERTY DESCRIPTION
3419	City of Winters et al vs. Johnnie Jackson Lot 1, Block 2, Roberts Addition to the City of Winters, Runnels County, Texas, being that property more particularly described in Vol. 472, Page 595 of the Deed Records, Runnels County, Texas
3421	City of Winters et al vs. Ray L. Hale, aka R. L. Hale, Alice Hale, and The Winters State Bank, Lienholder Lot 8, Block 27, College Heights Addition to the City of Winters, Runnels County, Texas being that property more particularly described in Vol. 456, Page 4 of the Deed Records, and Vol. 120, Page 493 of the Deed of Trust Records, Runnels County, Texas
3474	City of Winters et al vs. Wesley Crouch, Judy Crouch, Lynn Carpenter, Lienholder, Sammy J. Terrell, Lienholder, and Winters State Bank, Lienholder Lot 14, Block 2, College Heights Addition to the City of Winters, Runnels County, Texas being that property more particularly described in Vol. 535, Page 94 of the Deed Records, Vol. 535, Page 438 of the Quit Claim Deed Records, and Vol. 121, Page 603 and Vol. 121, Page 607 of the Deed of Trust Records, Runnels County, Texas

or upon the written request of said defendants or their attorney, a sufficient portion thereof to satisfy said judgment, interest, penalties, and costs; subject, however, to the right of redemption, interest, penalties and costs; having an interest therein, to redeem the said property, or their interest therein, at any time within two years from the recordation of the deed in the manner provided by law, and subject to any other and further rights to which the defendants or anyone interested therein may be entitled, under the provisions of law. Said sale to be made by me to satisfy the judgment, rendered in the above styled and numbered causes, together with interest, penalties and costs of suit, and the proceeds of said sale to be applied to the satisfaction thereof, and the remainder, if any, to be applied as the law directs.

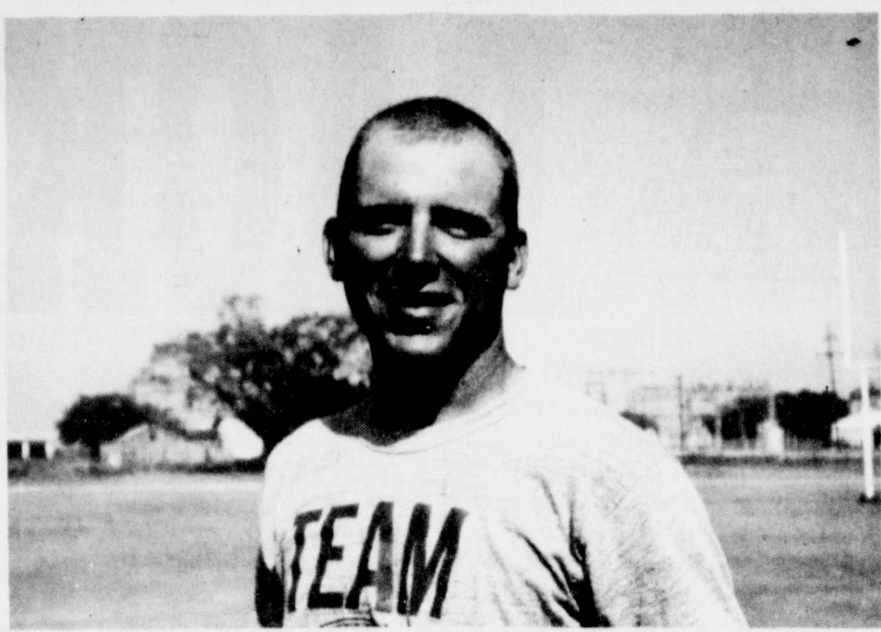
DATED August 3, 1990, at Ballinger, Runnels County, Texas.

William Baird
SHERIFF, Runnels County, Texas

By *Quentin R. Wetherill*
DEPUTY

(August 9, 16, 23)

**School Days,
School Days**



New Winters Blizzard Coach

Joining the ranks of the Blizzard Coaching Staff is Chuck Lipsey. Coach Lipsey is originally from Mason and is a 1988 graduate of San Angelo State University with a Bachelor of Science degree in kinesiology with a minor in biology.

His coaching duties on the varsity level will include assisting with the running backs and secondary. He will also be coaching football, basketball and track

on the 7th grade junior high level. Teaching responsibilities will be four 7th grade classes of Life Science and one 8th grade class of Earth Science.

Chuck and his wife, Kelly, will reside in the Pumphrey community.

Coach Lipsey stated he is excited about being in Winters. He enjoys the coaching staff and is looking forward to being a Blizzard.

Introducing . . .

Each week *The Winters Enterprise* will be featuring an employee or employees of the Winters Independent School District, along with a brief biography and area of service.



Children and workers enjoy a resounding singing during Vacation Bible School at the Winters Church of Christ. Approximately 55 participants gathered for the service held August 11.

**FROM A
GOLDFISH BOWL**



BY PASTOR STEVE BYRNE

"We are going to have to learn to manage our trash." He might as well have been talking in a foreign language.

I always thought you just flushed your toilet, took your trash to the trash can, then it disappeared. You paid a few bucks a month, along with some other services they said you were rendered. No problem.

Enter, stage right, City Council membership. About the same time, enter, stage left, EPA rules. The result is that this garbage doesn't just disappear. We have been paying, all along, for someone to take our trash and move it from where we live to someplace else.

The problem is that the "someplace else" which are safe to take our used refuse to are getting fewer and less safe, while our refuse is growing. Enter, center stage, PPOBLEM!

"We are going to have to learn, not just to throw away our trash, but to manage our garbage." What is he talking about?

What he was talking about, I realized later, was responsible management of God's creation.

One way to look at it is that somebody is forcing us to change our ways. Another view of the situation is that, if we are going

to be good managers of God's creation, we are going to have to begin to manage our garbage.

Saving the stuff that can be reused. Saving what-ever can be recycled. Separating the recyclable cans, bottles, and papers from each other. Sending the rest to be disposed of in responsible disposal destinations, which are growing scarce.

The Old Testament prophets kept on telling the people of Israel that they were on a collision course with destiny. If they continued to live life solely to their own convenience, they would lose their land. And their identity.

Israel didn't listen. Assyria and Babylon came along. And Israel lost everything. Because they didn't manage, adequately and faithfully, what God had given them.

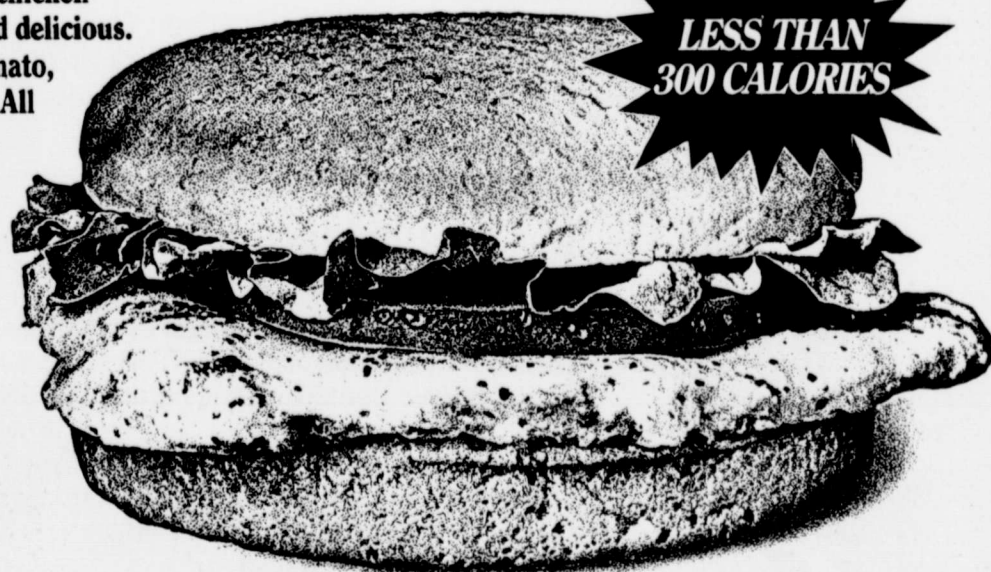
Do you reckon that history repeats itself? Is there something to all that prophetic stuff about being good managers of God's creation - including garbage?

Is the bottom line the profit-loss statement? Or is it the future of the planet?

I suppose we will find out in 20 or 30 years. One way or the other. Probably the way Israel did.

**NEW! GRILLED
CHICKEN SANDWICH!**

A tender, marinated chicken breast fillet, grilled and delicious. Crisp lettuce, fresh tomato, and light mayonnaise. All on a whole wheat bun. That's the new Grilled Chicken Sandwich from Dairy Queen.



**LESS THAN
300 CALORIES**

**THIS IS
DQ
COUNTRY**

* Reg. U.S. Pat. & Tm. Off. Am. D.Q. Corp. / TM Reg. U.S. Pat. & Tm. Tx. D.Q. Op. Coun. © Tx. D.Q. Op. Coun.

**Lions'
Roar**

The Winters Lions Club has elected new officers for the 1990-91 year. President of the club is Randall Conner; first vice president, George Mostad; second vice president, Lanny Bahlman; third vice president, Bob Prewit; secretary, Jim Lincycumb; treasurer, Benny Polston; tail twister, Joe Gerhart; and Lion tamer, John McMinn.

Directors of the organization are Deen Thompson, Roeneal Boles, Gerald Smith, Charles Ludwick, Mike Meyer and Travis Franklin.

The Winters Lions Club meets every Tuesday at noon at the Community Center.

The
Winters Enterprise
your
Commercial Printing
Headquarters

**Courtesy of
St. John's Lutheran
Church**

1100 W. Parsonage
Sunday School
Worship Services

754-4820
9:30 A.M.
10:40 A.M.

Booster Club ice cream supper Aug. 18

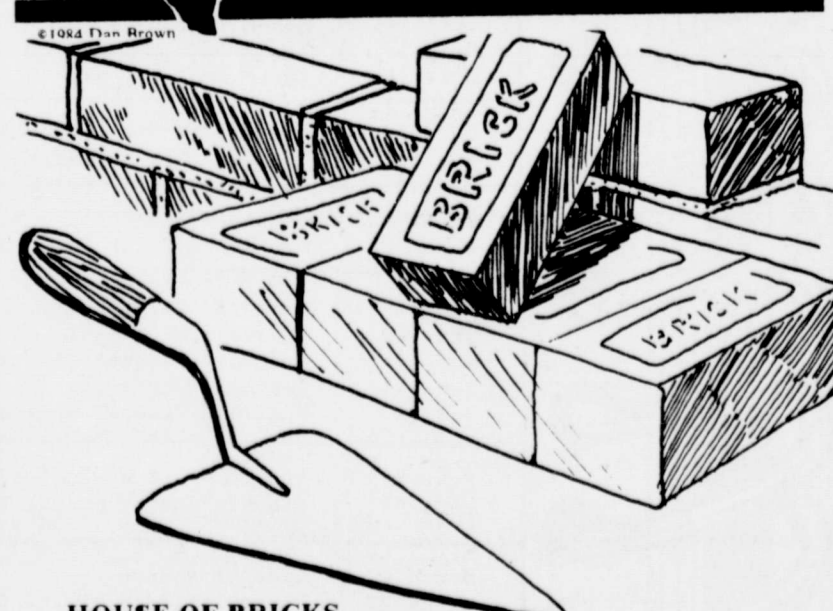
The Blizzard Booster Club will sponsor an ice cream supper and "Meet the Blizzards" night on Saturday, August 18, at 7:30 p.m. Location will be Blizzard Field.

Following the supper, a short business meeting of the Booster Club will be held. Everyone is encouraged to attend and start the year with lots of support and enthusiasm.



TEXAS TRAILS

LONE STAR STATE HISTORY by DAN BROWN



HOUSE OF BRICKS . . .

Built in Marshall in 1850, a southern plantation style house called "Wyalucing" was one of the first brick houses erected in Texas. It was the childhood home of Lucy Holcombe Pickens, whose picture and that of "Wyalucing" adorned the Confederate currency. The house was purchased by former slaves in 1880 for the all-black Bishop College.

"Come in to see us for your Home Improvement & Auto loans"



**PEOPLES NATIONAL
BANK**
Member F.D.I.C.

158 N. MAIN, P.O. BOX 578
WINTERS, TEXAS 79567-578

TELEPHONE:
(915) 754-5526

**Oldsmobile 88 Royale Brougham
Boss's Demo**

Wire wheel covers, high capacity cooling, deck lid rack, pulse wipers, cruise control, tilt, power locks, front and rear mats, door edge moldings, power seats, rear defogger, power windows, power antenna, reminder package, recliners, electronic air conditioner.

Beautiful white color
Blue velour trim

Oldsmobile Price \$20,342.00

Toliver Quality Price \$15,990.00*

See Ben Alexander, Billy Sims or Joseph Toliver

TOLIVER BROTHERS

Ballinger, Texas
1-800-588-2552

*rebate to dealer

365-2552

Main Street Hair Parlor

108 North Main
Winters
754-5193

**Tanya Gehrels
Owner & Operator**



**Back-To-School-Special
Perm \$25 & includes Haircut**

Also, I carry Phoenix Fiber Diet Cookies

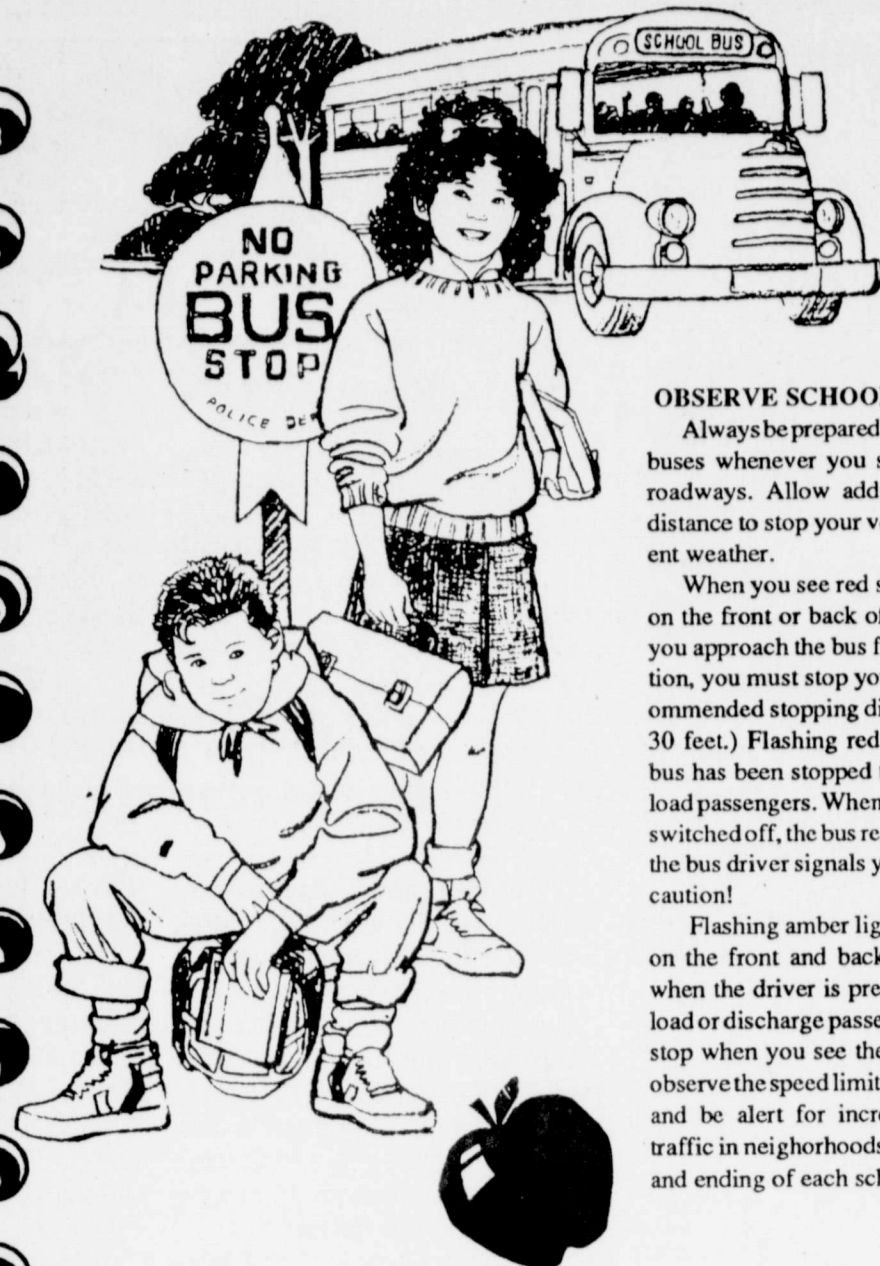
Hours:

Tuesday-Friday 8-5
Saturday 8-2

Top Prices for Your Trade-In

Complete Financing Available

BACK TO THE BOOKS



OBSERVE SCHOOL BUS LAWS!

Always be prepared to stop for school buses whenever you see them on our roadways. Allow additional time and distance to stop your vehicle in inclement weather.

When you see red signals displayed on the front or back of a school bus as you approach the bus from either direction, you must stop your vehicle. (Recommended stopping distance from bus: 30 feet.) Flashing red lights mean the bus has been stopped to take on or unload passengers. When the red lights are switched off, the bus resumes motion, or the bus driver signals you, proceed with caution!

Flashing amber lights are displayed on the front and back of school bus when the driver is preparing to stop to load or discharge passengers. Prepare to stop when you see these lights. Please observe the speed limits in school zones, and be alert for increased pedestrian traffic in neighborhoods at the beginning and ending of each school day.

Winters Public Schools free or reduced meals

If you want to apply for your child/children to receive free or reduced-price meals in the Winters Independent School District cafeteria for the upcoming school year, you may do this Wednesday, August 22, 1990. Mrs. Hounsel will be in the cafeteria beginning at 8:30 a.m. until 11:30 a.m. and again that afternoon from 1:30 p.m. until 3 p.m.

Seen here is a copy of the application and the letter to households that will be issued to school children. Please read this carefully so you will be able to

correctly fill it out.

If you do not apply prior to the beginning of school, and your child was not receiving free-reduced benefits during the past school year, your child will be expected to have money for his/her lunches until the application is filled out and approved.

Mrs. Hounsel will be in the WISD Administrative offices beginning August 17, 1990 and will accept phone calls at 754-4415, but no applications will be accepted until August 22.

School Lunch Prices

Grades 1-6\$1.50
Grades 7-12..... 1.65
Reduced..... .40

WINTERS INDEPENDENT SCHOOL DISTRICT

CALENDAR

1990 - 1991

Aug. 17, 20	Comp Time Inservice
Aug. 21	General Faculty Meeting
Aug. 22	Local Inservice
Aug. 23, 24	Teacher Workday
Aug. 27	First Day of School
Sept. 3 Labor Day Holiday	
Oct. 5	End of 1st 6 Weeks...29 days
Oct. 16	TAAS* Test for Grades 3,5,7,9, and Exit Level (Writing)
Oct. 17	TAAS* Test for Grades 3,5,7,9, and Exit Level (Reading)
Oct. 18	TAAS* Test for Grades 3,5,7,9, and Exit Level (Mathematics)
Nov. 16 End of 2nd 6 Weeks...30 days	
Nov. 22, 23	Thanksgiving Holidays - Dismiss 2:30 p.m.
Dec. 1 Christmas Parade - No activities will be planned	
Dec. 19	Classes End for Christmas Vacation - Dismiss 2:30 p.m.
Jan. 2 Classes Resume	
Jan. 10	End of 3rd 6 Weeks...28 days
Jan. 11	End of 1st Semester...87 days
Jan. 11	Teacher Workday or 1st Choice Makeup Day
Jan. 12	Possible Teacher Workday
Feb. 22 End of 4th 6 Weeks...30 days	
Feb. 22	Classes End of Spring Break
March 4 Classes Resume	
March 29	Easter Holiday or 2nd Choice Makeup Day
April 2	TAAS* Testing-Exit Level (Writing)
April 3	TAAS* Testing-Exit Level (Reading)
April 4	TAAS* Testing-Exit Level (Mathematics)
April 12	End of 5th 6 Weeks...29 days
May 23 End of 6th 6 Weeks...29 days	
May 23	End of 2nd Semester...88 days
May 24	Last Day of School for Students...175 days
May 24	Teacher Workday
May 24	Commencement Exercises

*Texas Assessment of Academic Skills (TAAS)

About School Bus Routes

Buses will run for the first time on August 27, to pick up students for the first day of regular classes in the Winters Schools. There are eight regular bus routes, one handicap route, and two noon day kindergarten routes. Ninety-five children are picked up daily on the seven regular routes, thirty children per day on the CAPS route, and seven per day on the handicap route.

Parents are urged to contact Cecil Sudduth, Transportation Supervisor, at 754-4415, ext. 322, for information concerning bus routes and schedules.

Routes & drivers:

- | | |
|-------------------------------|-------------------------------|
| #1 David Evans (Norton) | #6 Mark Briley (Crews) |
| #2 Clyde Reid (Wilmeth) | #7 Barbara Danford (83 South) |
| #3 David Smith (Wingate) | #8 Betty Grenwelge (CAPS) |
| #4 Johnny Weems (Drasco) | #9 Gloria Lujano (Handicap) |
| #5 Jerry Whitlow (Novice Hwy) | Route |

1990-91 School Board Members

Gary Don Pinkerton - President Joe Bryan - Vice President
Charles Allcom, Secretary Ronald Presley

Bob Webb Ronnie Poehls Bob Prewitt

Administration

Superintendent - T. D. Lancaster
High School Principal - Charles T. Kidwell
Dean of Students - William G. (Bill) Cathey
Elementary Principal - L. C. Hounsel

69 Faculty Members (53 Bachelor's, 16 Master's Degrees)

Curriculum, Instruction and Other Programs

- | | |
|-------------------------|---------------------------------------|
| English | Fine Arts |
| Mathematics | At Risk Program |
| Science | (CAP) Cooperative Alternative Program |
| Social Studies | Vocational Home Economics |
| Health | Vocational Agriculture |
| Physical Education | Driver Education |
| Band | Basic Skills Computer Labs |
| Guidance and Counseling | Interscholastic Athletics |
| Business Education | Speech |
| Reading | Spanish |
| Reading Improvement | Drug/Alcohol Education |
| School Lunch Program | Marine Science/Astronomy |
| Special Education | Correlated Language Arts |
| Gifted/Talented Program | Chapter I Regular Program |
| Computer Literacy | Compensatory Education |
| Language Arts | Interscholastic Literary Events |
| Pre-Kindergarten | Academic Decathlon |
| Kindergarten | |

1990 Blizzard Football Schedule

Dan Slaughter, head football coach of the Winters High School Blizzards has announced the 1990 game schedule. The Blizzards will compete in the newly realigned District 7-AA.

1990 Schedule			
August	24	Colorado City (scrimmage)	T 6:00
	31	Eden (scrimmage)	H 6:00
September	7	Coleman	T 8:00
	14	Coahoma	H 8:00
	21	Goldthwaite	H 8:00
	28	*Haskell	T 7:30
October	5	*Jim Ned	T 7:30
	12	*Hawley	H 7:30
	19	*Anson	H 7:30
	26	*Hamlin	T 7:30
November	2	*Albany	H 7:30
	9	*Stamford	T 7:30

*Denotes District 7-AA games

Junior Varsity and Junior High

September	6	Coleman	JV only	H	6:30
	13	Coahoma	JV only	T	6:30
	20	Goldthwaite	7-8-JV	T	5:00
	27	Haskell	7-8-JV	H	4:45
October	4	Jim Ned	7-8-JV	H	4:45
	11	Hawley	7-8-JV	T	4:45
	18	Anson	7-8-JV	T	4:45
	25	Hamlin	7-8-JV	H	4:45
November	1	Albany	7-8-JV	T	4:45
	8	Stamford	7-8-JV	H	4:45

This Page Presented as a Public Service of The Winters Enterprise

It doesn't that you are kicked from

Corkie, net of Ben admitted to Hospital. S for Monday the daughter Earl Cooper

Sunday spent the with Pat Brenda, Ric bliss of Bla Amanda an all waiting Jerry Al Arizona cam up his son, the summer parents, the Saturday.

Lawan F pointment w San Angelo

Fairy Al wedding of Jennifer Der Steve Christ Iowa, was th were marrie Side Bapti Angelo. Jo Mathis of Sp visit after th ding Saturd Selma Di bor, Margie Dietz went bors, Mario Mike Hill

the weeken Claudia. Ro also of Swe day aftermo Noble an were in San for Noble's was good.

Hopewell ing preach Abilene, G tending were his sister, McCrum, D rell and Na Abilene we

The Jerry on vacation tonio. They also had a Keith, who Antonio. T Christi, wen

Fund held A

The Wiri liary will h conjunction Bar-b-que ions of gas \$1.00 donat ated. Ticke from any A Fireman or ties and Fle

Don't fo ment spons Firemen to

Rhea S 75

NOW

FAST &

Crews News

By Hilda Kurtz

It doesn't necessarily mean that you are ahead when you are kicked from behind.

Corkie, wife of Ronnie Bennerd, Arkansas, was admitted to M. D. Anderson Hospital. Surgery is scheduled for Monday, August 13, she is the daughter-in-law of Pat and Earl Cooper.

Sunday the Cooper family spent the day and had dinner with Pat and Earl Cooper. Brenda, Richard and Gina Chambliss of Blackwell, Sherry, Ray, Amanda and J. T. Cooper were all waiting to hear from Corkie.

Jerry Alexander of Tucson, Arizona came Wednesday to pick up his son, Casey, after he spent the summer here with his grandparents, they returned home Saturday.

Lawan Foreman has an appointment with Dr. Coughlin in San Angelo Tuesday.

Fairy Alcorn attended the wedding of her granddaughter, Jennifer Denson, of San Angelo. Steve Christensen of Sioux City, Iowa, was the groom. The couple were married Saturday in West Side Baptist Church in San Angelo. Joanie and Johnnie Mathis of Springfield came by to visit after the Christensen wedding Saturday.

Selma Dietz visited her neighbor, Margie Jacob, and Hazel Dietz went to the other neighbors, Marion Wood on Friday.

Mike Hill, Sweetwater, spent the weekend with his mother, Claudia, Ronald and Eugenia, also of Sweetwater, came Sunday afternoon.

Noble and Bernie Faubion were in San Angelo Thursday for Noble's eye checkup, report was good.

Hopewell Church had a visiting preacher Sunday from Abilene, Greg Rake. Also attending were his mother, Jo Rake, his sister, Molly Rake. Brian McCrum, David Vinson, Darrell and Nancy Watson, all of Abilene were visitors.

The Jerry Kraatz family was on vacation four days in San Antonio. They visited Sea World, also had a nice visit with son Keith, who is stationed in San Antonio. Then on to Corpus Christi, went swimming on the

beach at Padre Island. Then they traveled on to Port Aransas. Jerry and son, Chad, remained a few more days to fish for shrimp and other fish.

Brad and Ruth Pape, Debbie and Garland Horn met a plane in Abilene Tuesday morning to pick up her son, Mike Craig, who flew to the states, he is stationed in Aiciano, Italy.

On Saturday Brad, Ruth and Mike drove to Kerens to spend the weekend with the Horn family. While there, Jack, Terri and son William Craig of Irving also came.

Dinner guests with Eileen Prater Sunday were Brian Faubion, Aaron Bradley, Harvey Mae Faubion, Melinda and Shawn Kraatz, Tiffany and Jeremy Prater. Rudy, Paula and Ronnie New ate out at the Dairy Queen Sunday. Tiffany spent Sunday night with Michele Paschal.

Louise Walters and Eula Graham, Fort Worth, returned home Friday after several days here with Doris and Marion Wood. On Sunday the Larry Calcote family, Maloy Bryant family of Abilene, Doug Bryant of Brownwood, came. Jeff, Darla and Steven Cameron, Coleman, came Saturday night.

Karen Wesley, John and Stefanie McGallian, of Wingate, and Louise Osborne spent Sunday with Nila and Therin Osborne.

Lonnie Webb, San Angelo, was a Saturday visitor with Noble and Harvey Mae Faubion. Nadine Martin came awhile Sunday.

Adilene Grissom, Katherine and Luke Thomas were in Eden to see Mae and Marvin Hoelscher Thursday. Marvin is home recuperating after back surgery and is doing nicely. Adilene attended the Linderman reunion in Ballinger Sunday.

The Walter Jacobs joined the Mike Kozelsky family at the Brownwood Lake Sunday with a picnic dinner. Others who came were Joe Kozelsky, Sr., the Herbert Jacobs, Father Zientek, Jerry Engler, Beverly VanZandt and boys and Sharon Busenlehner and boys.

Memo from the Chamber of Commerce

Your Chamber of Commerce goal is to make Winters a better place in which to live, work, play, and do business.

What is it that the Chamber does? The Chamber serves you daily by:

Answering all inquiries seeking information about Winters and the surrounding area;

Assisting newcomers in finding available housing. Directing calls to our local manufacturers. Providing information on all local organizations including names of residents and addresses;

Maintaining up-to-date library of city directories and phone books for your use;

Affiliation with national and state chamber organizations which offer specialized services in community and industrial development as well as legislative matters;

Distributing city maps, printed facts and information pertaining to local businesses and individuals;

Standing ready at all times to coordinate events felt to be in the best interest of the community;

Acting as an official host for visiting groups;

Promote Spring Fling and Mayfest;

Bass Classic;

Halloween Contest among businesses and residents;

Annual Arts and Crafts Show; Host play-off games; Weekly newspaper articles;

Any citizen or business interested in helping to develop this area is eligible to be a member of the Winters Area Chamber of Commerce. The dues structure is designed to permit any business or individual to be a member.

If you would like to become a member or if you are already a member and would like to serve as a Director in the future, please call the office at 754-5210.

Sales tax payment down from this period last year

Although State Comptroller Bob Bullock says that sales tax collections for April, May and June increased, the check mailed to Winters was down. This year's check for the period mailed to the City of Winters amounted to \$20,501.98. Last year's collections for the same period were \$21,433.73.

Sales tax payments for the year to date have totaled \$106,271.36, up slightly from the same period in 1989.

Statewide, sales tax payments to cities increased 11 percent over last August's payments and 8

percent over last year's total payments to date.

This month's checks reflect taxes collected on June sales and reported in July by businesses filing monthly returns. Also included in this month's payments are sales taxes reported by quarterly filers whose collections reflect sales made in April, May and June.

Other Runnels County Cities receiving sales tax rebates include Ballinger, \$72,067.64, up 36.31% over the same period in 1989; Miles received \$2,053.24, up 1.59% over the same period last year.

Eastern Star to hold meeting

Winters chapter #80 Order of the Eastern Star will hold its regular meeting Monday, August 20, 1990, at 7:30 p.m.

Worthy Matron Donna Guy and Worthy Patron Jim Abernathie encourage all members and visitors to attend.

Notice for CAPS Students

The first day of school for CAPS Students will be held August 27. Buses will leave in front of Winters High School at 7:30 a.m. School hours will be the same as last year 8 a.m. until 3 p.m.



Twain Talk

by Twyla Twain

Fat Pencils & Woodchip Paper

Is it time for school again already? My, how time flies! Once again it's the season to put aside the carefree days of summer, get the ol' brain off the shelf, and gear up for battle in the halls of education.

But first, you gotta get the right school supplies. I remember.

A new box of crayons is a must. It's as simple as that. You just cannot start a new school year with those peeled down, rounded, short crayons that make it impossible to stay in the lines. And it's such a big deal trying to decide whether to get the basic set the teacher recommended, or go for broke and get the big box of 48! Never can tell when you'll need Ailing Azure or Pitiful Purple.

Then there were the scissors. Why did we have to get those stupid kind that wouldn't cut hot butter? The ends were blunt and the hinge part was welded so they made those gosh-awful creases around your thumb and smushed your left-over fingers when you tried to put them in the other hole.

No - I needed some real scissors. Some that would cut the hair of the person sitting in the desk in front of me without making too much noise. Good scissors.

Now let's get to the paper. Couldn't be just any paper. Had to be that funny kind with the big lines and chunks of wood floating around. I blame my poor penmanship today on those wood

slivers that I worked so painstakingly to draw over and around.

My teachers always felt that pencils were important. They were kinda funny that way. They had some really strange ideas like making you use giant pencils twice the size of your hand.

The only way I could physically manage one of those was to use both hands at the same time. Something similar to the way a witch stirs her broiling brew. But the good thing about these mammoth pencils was that they provided me with more paint to chew off and swallow.

Speaking of swallowing school stuff, how much glue can one kid consume and still live? Now I'm sure I ate my share of paste and glue, but we had one kid who was incredible. Guess it didn't affect him too much - except that he now works as an agent for the Internal Revenue and smiles a lot.

I was so deprived way back then. Didn't even have a Dale Evans lunch box! Would you believe I had to carry a paper sack. And sometime I had to carry the same sack more than once.

It was always amazing how soft and wrinkled a paper sack could get and still hold a warm peanut butter and jelly sandwich, crumbled chips, a half-eaten apple (turned brown), sixteen pieces of bubble gum for trading, and one hunk of ponytail from the girl who sat in front of me.

I loved school!
--And Ne'er the Twain Shall Meet--

Flowers, Etc.
Flowers for all occasions
and all budgets
115 S. Main 754-5311

The Winters Enterprise
your Commercial Printing
Headquarters

Fund raiser to be held August 19

The Winters Fireman's Auxiliary will have a fund raiser in conjunction with their annual Bar-b-que August 19. 100 gallons of gas will be given away. \$1.00 donations will be appreciated. Tickets may be purchased from any Auxiliary member or Fireman or at West Texas Utilities and Flowers, Etc.

Don't forget the golf tournament sponsored by the Winters Firemen to be held August 18.

Avon call
Rhea Sue Parramore
754-4422

PRICED TO SELL NOW!

4 Bedroom, 2 1/2 bath, 2500 square foot residence located in a good part of Winters, on 2 lots. Two heating and cooling units, fireplace, new cabinets, disposal and trash compactor. Good water well with new pump for lawn irrigation with sprinkler system in good working order. Building adjoining residence, 34 x 22 office. Three car garage with electric door openers. Garage has plenty of built in storage. Screened in patio - 15x15 with cement floor.

To be shown to qualified buyers by appointment only.

Tom Poe Real Estate

1017 N. Main 915-754-5022

Sell through the classifieds

CRAIG GEHRELS

INSURANCE BROKER



See me for all your Health, Life, & Accident Insurance needs.

Abilene: 915/676-2823
Winters: 915/754-5193

F & F PLUMBING

BOX 382
BUFFALO GAP, TEXAS 79508
NOW SERVING RUNNELS & SOUTH TAYLOR COUNTY
SERVING ALL YOUR PLUMBING NEEDS
GAS LINE WATER LINE
SEWER SERVICE BACKHOE SERVICE
WATER HEATERS CENTRAL HEAT & AIR
FAUCET REPAIR HOUSES REPIPED
FLOOR FURNACES NEW CONSTRUCTION
REMODELING WATER PUMPS

CALL (915) 675-8327

FAST & FRIENDLY SERVICE • 7 DAYS A WEEK • 24 HOURS A DAY

Your Ad Could be in this Space

Call

754-4958

to Place Your Classified or Display Ad



The public is invited to a reception honoring the faculty and administration of the Winters Independent School District

August 22, at 3 o'clock

in the lobby Winters State Bank

Eastern Star to hold meeting

Winters chapter #80 Order of the Eastern Star will hold its regular meeting Monday, August 20, 1990, at 7:30 p.m.

Worthy Matron Donna Guy and Worthy Patron Jim Abernathie encourage all members and visitors to attend.

WINTERS STATE BANK

Member F.D.I.C.

Your Full Service Community bank!

500 South Main

Winters

754-5511

Poe's Corner
By Charlsie Poe

Cowboys Had Good Times at Reunion

Strike up the fiddle and the bow! Swing your partner and do-si-do!

Echoes of fun and frolic at the old cowboy reunions held on the L. P. (Luce) Wood Ranch for 20 years can still be heard by those who remember listening to tales of long ago.

When one of the early day cow men died and friends came to his funeral from the four corners of the earth, they decided that they should all meet together at some other time than at one of the old-timer's funerals. In short order, they decided to organize a Cowpunchers Association.

On September 10, 1910, a group of hard riders of the early days of Runnels and adjacent counties met under a large elm tree overlooking Coyote Creek on the Wood ranch six miles north of Ballinger. They had the idea that they could keep alive memories of experiences incurred on ranges that since have been chiefly divided into farms.

August's First Full Moon

The men chose to meet each year at the Wood ranch the Tuesday and Wednesday on or before the first full moon in August. For the next 20 years, this was their custom.

J. M. Johnson, a foreman of the J. H. Parramore ranch (later a prominent Winters business man) was elected president of the association—a post he held until the group disbanded. Two other men who held officer positions for the life of the organization were C. M. Hunt, vice president and C. A. Dooze, secretary-treasurer.

There were about 40 charter members, and later a number of ex-open range cowboys were allowed to join the association.

Storytelling, Barbecues, Dancing

Old cowboys, of course, are full of old stories, and it was a thrill to sit and listen to the experiences these old-timers had in

the pioneer days. During the reunion, they camped on Coyote Creek, and the stories just rolled out. Jim Johnson would ask, "Remember the time, Luce, that we rounded up near the Moro Mountains and you were heeling that steer when the girl on your saddle broke?" And Charley Bradshaw would break in, "Yeah, if I hadn't been there, that old steer would have carried Luce clean to the top of the mountains," and on and on the stories went as the old cowboys relived their lives during those two happy days each year.

Ben Smith, an ex-trail drive cook, was in charge of the meals, and with the help of everybody, he barbecued beef, goat and mutton. The meat was served with plenty of bread, pickles, onions, black coffee and the "fixings" brought by the women. They would also fill a 55-gallon wooden barrel with lemonade and hang tin cups on the barrel. Everyone drank out of the same cups—germs had not yet been discovered.

For entertainment a pavilion was built and there was always on hand a bunch of old-time fiddlers, who made music for old-time square dances. They would also waltz, two-step and do the schottische. D. W. Turner of Norton was one of the main fiddlers for the life of the association.

Beginning of the End

By the 1920's, the association had grown and there were large numbers of men attending the annual meetings. But by the end of the 1920 era, most of the old fellows were gone, Wood would attend. He died in 1928. Mrs. Wood insisted that the men hold the meeting just the same, but they met only once after that. Luce was so prominent in making everybody happy that they couldn't carry on without him.

Firemen's Annual Benefit Tournament

The Firemen's Annual Benefit Golf Tournament will be held Saturday, August 18, at the Winters Country Club. Registration will be at 9:00 and Tee Off at 9:30. The tournament will be ABC Format with a \$10 entry

fee. Firemen will furnish barbecue sandwiches, tea and chips for lunch.

For further details call Ronnie Poehls or Dickie Clough at 754-5565.

Elementary school registration

Registration for new students in Winters Elementary School in grades Pre-K through sixth grade will be Thursday, August 16, from 9:00 a.m. until 12 noon. Registration for those students who have not previously registered will be at the Elementary School Library.

First through sixth grade students will need immunization records. Pre-kindergarten and kindergarten students will need immunization records and birth certificates with them when they register.

Horse Show coming soon

The Ballinger Horse Club and the Runnels County 4-H Horse Club are sponsoring an Open Horse Show Saturday, August 18, 1990, at the Ballinger Horse Club Arena. Halter will begin at 9 a.m. with books opening at 8 a.m. The fee will be \$5 per class. A \$20 maximum on each horse and rider team (enter as many classes as you want.) Ages are: Pee-wee 8 and under; Junior 9-13; Senior 14-19; Adult 20 and over.

For more information please call the County Extension Office at 365-2219.

HOSPITAL NOTES

Admissions

August 8
Irmadine McKown

August 9
Hilda Woffenden
Tammie Tamez
Sherryl Webb

August 10
Salvador Esquivel
baby boy Tamez

August 11
Margarie Allmand

August 12
None

August 13
None

Dismissals
August 8
None

August 9
Hattye Hensley
Daniel Beechly
James Earl Richey

August 10
None

August 11
Katie Gideon

August 12
James Burk
Sherryl Webb
Salvador Esquivel

August 13
Hilda Woffenden
Tammie Tamez
and baby boy

We print it all for you quickly & professionally at The Enterprise!

Charles Bahlman
Chevrolet, Inc.
Sales & Service

754-5310
134 S. Main
Winters, Texas

Lawn Mowing
call
Zane Crouch
754-5680

Notice of Effective Tax Rate

1990 Property Tax Rates in City of Winters

This notice concerns 1990 property tax rates for City of Winters. It presents information about three tax rates. Last year's tax rate is the actual rate the taxing unit used to determine property taxes last year. This year's effective tax rate would impose the same total taxes as last year if you compare properties taxed in both years. This year's rollback tax rate is the highest tax rate the taxing unit can set before taxpayers can start tax rollback procedures. In each case these rates are found by dividing the total amount of taxes by the tax base (the total value of taxable property) with adjustments as required by state law. The rates are given per \$100 of property value.

Last year's tax rate:	
Last year's operating taxes	\$ 252,973
+ Last year's debt taxes	\$ -0-
= Last year's total taxes	\$ 252,973
÷ Last year's tax base	\$ 40,547,047
= Last year's total tax rate	\$.6239 /\$100
This year's effective tax rate:	
Last year's adjusted taxes (after subtracting taxes on lost property)	\$ 252,987
÷ This year's adjusted tax base (after subtracting value of new property)	\$ 40,251,723
= This year's effective tax rate	\$.62851 /\$100

(In the first year a city or county collects the additional sales tax it must insert the following lines unless it made its first adjustment last year.)

— Sales tax adjustment rate	\$ N/A /\$100
= Effective tax rate	\$ N/A /\$100

× 1.03 = maximum rate unless unit publishes notices and holds hearing

	\$.64736 /\$100
--	------------------

This year's rollback tax rate:	
Last year's adjusted operating taxes (after subtracting taxes on lost property)	\$ 375,349
÷ This year's adjusted tax base	\$ 40,251,723
= This year's effective operating rate	\$.93250 /\$100
× 1.08 = this year's maximum operating rate	\$ 1.00710 /\$100
+ This year's debt rate	\$ N/A /\$100

(A school district must insert the following lines)

= This year's rollback rate before adjustment	\$ /\$100
+ Rate to recoup lost state funds	\$ /\$100
= A. Adjusted rollback rate	\$ /\$100
= B. Rate that would result in maximum state funds	\$ /\$100
Rollback Rate (greater of A or B)	\$ /\$100
= This year's rollback rate	\$ 1.00710 /\$100

(A city or county that collects the additional sales tax (including one that collects the tax for the first time this year) must insert the following lines):

— Sales tax adjustment rate	\$.38572 /\$100
= Rollback tax rate	\$.62138 /\$100

SCHEDULE A: Unencumbered Fund Balances

The following balances will probably be left in the unit's property tax accounts at the end of the fiscal year. These balances are not encumbered by a corresponding debt obligation.

Type of Property Tax Fund	Balance
Maintenance & Operation	\$39,000.00

SCHEDULE B: 1990 Debt Service

The unit plans to pay the following amounts for long-term debts that are secured by property taxes. These amounts will be paid from property tax revenues (or additional sales tax revenues, if applicable).

Description of Debt	Principal or Contract Payment to be Paid	Interest to be Paid	Other Amounts to be Paid	Total Payment
		N/A		
Total required for 1990 debt service				
- Amount (if any) paid from funds listed in Schedule A				
- Excess collections last year				
= Total to be paid from taxes in 1990				
+ Amount added in anticipation that the unit will collect only ___% of its taxes in 1990				
= Total Debt Service Levy				

SCHEDULE C: Expected Revenue from Additional Sales Tax

(For counties and cities with additional 1/2 cent sales tax)

In calculating its effective and rollback tax rates, the unit estimated that it will receive \$ 122,362.00 in additional sales and use tax revenues.

This notice contains a summary of actual effective and rollback tax rate calculations. You can inspect a copy of the full calculations at City Hall.

Name of person preparing this notice: Shelia M. Paschal
Title: Tax Assessor-Collector
Date prepared: July 25, 1990

YOUR PRESCRIPTION FOR SUPERIOR SERVICE
The next time you need a prescription filled or a question answered, stop in or give us a call.

SPRINGER'S PHARMACY
at Lawrence Bros. IGA

OPEN:
MONDAY thru FRIDAY 8:30 am-6 pm
SATURDAY 9 am-1 pm

900 N. Main FAX 754-4545 754-4543

HIGH SCHOOL CLASS RINGS

CATCH THE SPIRIT

Now's the time to "Get into the Spirit" with this terrific sale on the popular Atlas and Athena Class Rings.

Personalize your ring with hundreds of mascots and activities.
Notice the bold detail and our full lifetime warranty.
Hurry... offer expires September 5, 1990!

OFFERED EXCLUSIVELY BY
R. JOHNS, LTD.

Bahlman Jewelers
106 S. Main Winters 754-4057

Charles Bahlman
Chevrolet, Inc.
Sales & Service

754-5310
134 S. Main
Winters, Texas

Lawn Mowing
call
Zane Crouch
754-5680

Winters Funeral Home Inc.
Box 395
Winters
754-4529

Mike Meyer, Mgr.
Linda Dry, Sec.
Prepaid Funerals
Insurance
Monuments

Back to School Special

Budget Waves Reg. \$30—Special \$27.50
Long Hair Extra

Selected Matrix Waves Reg. \$35—Special \$30
Special wraps, spirals & long hair extra

All other Perms \$2.50 off

Matrix, Redken & Nexxus Hair Care Products \$1.50 off regular price

Swiftly Stain/Spot Remover (same as DD7)
Reg. \$13.95 Sale \$5.95

Prices good Aug. 15 thru Sept. 14
Present this coupon for these special prices

Beauty Center • 137 N. Main • 754-4322

Call Sherry for a \$6.00 haircut special

SA
Trend
for Te
ters 1
1.00
cattle
higher
2.00
lower
1.50
At
ceipts
in a ty
last W
San A
Feeder
5.00
steady
higher
slaugh
lished
higher
In
steers
in the
South
fully s
2.00
area s
steady
lambs
slaugh
out of
with 8
handle
Wo
Texas
under
of spr
with st
grease
lbs. of
brough
house.
SHI
ceipts
week:
Compa
lambs
higher,
Slaugh
higher,
Slaugh
lished.
higher.
good.
feeder
ewes,
slaugh
This re
eral-st
service
Spr
fancy
lbs. 71
80lbs.
lambs
56.50,
good a
60; 60
44-54;
SL
Spe
prime
115 lb
Ew
25-36
Bu
Go
mutto
billies
head.
head,
head,
Sto
47-59
good
head.
Br
head.
CA
AUC
for th

Weekly livestock report

SAN ANGELO -- Weekly Trends/Texas Markets: At major Texas livestock market centers this week slaughter cows 1.00 to 4.00 higher, slaughter bulls firm to 2.00 higher, feeder cattle and calves steady to 3.00 higher. Barrows and gilts 1.00 to 2.00 lower, sows steady to 2.00 lower, except San Antonio, 1.00-1.50 higher.

At San Angelo last week receipts totaled 7568 head of sheep in a two day sale. This was the last Wednesday sheep sale in San Angelo until further notice. Feeder lambs under 80 lbs. 3.00-5.00 higher, heavier weights steady; slaughter ewes 2.00-3.00 higher, instances 5.00 higher; slaughter lambs not fully established; stock ewes moderately higher.

In direct trading slaughter steers and heifers .50-1.00 higher in the Panhandle area. In the South Texas area slaughter steers fully steady and heifers steady to 2.00 higher. In the West Texas area slaughter steers and heifers steady to .50 higher. Slaughter lambs steady. 85,200 head of slaughter steers and heifers sold out of Texas feedlots this week, with 82,200 head from the Panhandle area.

Wool & mohair: Trading on Texas Mohair was very slow under poor demand. 80,000 lbs. of spring low adult matchings with stain removed sold at .825 grease fob warehouse. 20,000 lbs. of original bag spring adult brought .70 grease fob warehouse.

SHEEP AUCTION: Receipts for the week: 7700; last week: 12015; last year: 9345. Compared with last week feeder lambs under 80 lbs. 3.00-5.00 higher, heavier weights steady. Slaughter ewes 2.00 to 3.00 higher, instances 5.00 higher. Slaughter lambs not fully established. Stock ewes moderately higher. Trading active, demand good. Supply included 35% feeder lambs, 30% slaughter ewes, 25% stock ewes, 1% slaughter lambs, balance goats. This report compiled by the federal-state livestock market news service.

FEEDER CLASSES

Spring lambs: Choice and fancy 40-60 lbs., 60-70, set 42 lbs. 71; 60-70 lbs. 56-66.50; 70-80 lbs. 54-62.50, couple sets ewe lambs 64.50-65; 80-100 lbs. 52-56.50, few 82 lbs. 57-58; mixed good and choice 40-60 lbs., 47-60; 60-70 lbs. 46-66; 70-80 lbs., 44-54; 80-100 lbs., 42-52.

SLAUGHTER CLASSES

Spring lambs: Choice and prime 100-110 lbs. 50-52; 110-115 lbs. 55-57.

Ewes: Good 35-40, utility 25-36.50, culls 15-25.

Bucks:

25-36.

Goats: Spanish billies and muttons 50-97 per head, small billies and muttons 35-50 per head. Spanish nannies 30-50 per head, spanish kids 23-35 per head, small kids 15-19 per head.

Stock ewes: Good mixed age 47-59 per head. Medium and good solid mouths 35-51 per head.

Breeding bucks: 65-95 per head.

CATTLE AND CALF AUCTION:

Estimated receipts for the week: 2481; last week:

1813; last year: 8214 (This includes 5531 calves for feeder calf sale same week last year). Compared with last week feeder steers and heifers firm to 1.00 higher. Slaughter cows and bulls 1.00 to 2.00 higher. Stock cows and pairs firm to slightly higher. Trading active, demand good. Supply included 20% stock cows and pairs, 45% calves, and 25% slaughter cows and bulls, and 10% yearlings.

Feeder steers and steer calves: Medium and large frame No. 1: 200-300 lbs., 130-152.50; 300-400 lbs., 114-130; 400-500 lbs., 104-113, few 116-119; 500-600 lbs. 95-104, few 105-106; 600-700 lbs. 90-97; 700-800 lbs. 87-90; few 800-900 lbs. 83-85. Medium and large frame No. 1-2: 200-300 lbs., 115-130; 300-400 lbs., 95-115; 400-500 lbs., 90-104; 500-600 lbs., 85-95; 600-700 lbs. 80-90; 700-800 lbs. 74-87.

Feeder heifers and heifer calves: Medium and large frame No. 1: 200-300 lbs., 112-125; 300-400 lbs., 105-115; 400-500 lbs., 91-102, few 106-110; 500-600 lbs., 86-93.50, set 95; 600-700 lbs., 85-90; few 700-800 lbs. 83.50-84. Medium and large frame No. 1-2: 200-300 lbs., 105-115; 300-400 lbs., 85-105; 400-500 lbs., 81-91; 500-700 lbs., 76-86; 700-950 lbs. including heiferettes 72.50-82.

Slaughter cows: Breaking utility 2-3, 53-60, high dressing 63.50-63.75; utility and commercial 3-4, 52-57; cutter and boning utility 1-2, 51.50-60, high dressing 61.75-62.50; canner and low cutter 1-2, 44.50-52.

Slaughter bulls: Yield grade 1: 1400-2200 lbs., 69-75.25; high dressing, 76.25-79; low dressing 1100-1500 lbs., 62-69.

Pregnancy tested stock cows and heifers (young & middle aged): Medium and large frame No. 1-2, 670-780 per head, couple sets 810-830 per head. Medium frame No. 1-2 525-650 per head.

Cow/calf pairs (young & middle aged): Medium and large frame No. 1-2 cows with 100-300 lb. calves 800-820 per pair. Medium frame No. 1-2 cows with 100-300 lb. calves 720-790 per pair.

Stocker & feeder cows: Medium and large frame No. 1-2, (young) 800-1075 lbs., 69; (young and middle age) 750-1000 lbs. 55-59.50, set 1345 lbs., 61; (middle age) 750-950 lbs., 46.50-56.

ABILENE -- The market at Abilene Livestock Auction had estimated receipts of 1200 head of cattle at its sale August 13. Feeder cattle fully steady to strong. Cow-calf pairs and replacement cows fully steady to strong. Packer cattle steady.

Slaughter cows: Utility, 55-60; canner, 45-55; cutter, 55-65; fat cows, 49-56.

Slaughter bulls: Good, 65-75, utility 55-65.

Card of Thanks

I would like to thank all of you for the love and concern shown to me and my family during my recent stay at Hendrick Medical Center.

The cards, visits, flowers and food were all appreciated.

My thanks to Pastor Steve Byrne for being there for us.
Nadine Bedford

Feeder bulls: 550-700 lbs., 75-95; 700-900, 65-75.

Steers: 200-300 lbs., 110-150; 300-400, 95-136; 400-500 lbs., 90-120; 500-600 lbs., 85-105; 600-700 lbs., 80-100; 700-800 lbs., 78-92; 800-900 lbs., 75-85; 900 and over 70-80.

Heifers: 200-300 lbs., 110-137; 300-400 lbs., 95-121; 400-500 lbs., 85-110; 500-600 lbs., 80-95; 600-700 lbs., 78-92.50; 700-800 lbs., 75-88.50; 800 and over, 65-77.

Cow/Calf Pairs: Plain, \$600-800; good, \$800-1000.

Pregnancy tested cows: plain, \$450-550; good, \$550-750, instances \$800.

COLEMAN -- The market at Coleman Livestock Auction saw a run of 700 head of cattle and calves at its sale August 8, compared to 975 last week. Feeder steers over 600 lbs. mostly \$1 cwt. higher. Steer calves steady, instances \$3 higher on calves under 350 lbs.. Feeder steers steady. Fewer heifers, with heifer calves steady. Slaughter bulls mostly steady. Slaughter cows mostly \$3 higher. Stock cows and pairs \$3-5 higher. Demand good, trade active. Run included about 15% slaughter cows and bulls, with about 75 head of stock cows and pairs, balance mostly feeders, with quality not as attractive as last week.

Feeder steers: Medium and large frame No. 1 240-300 lbs., 125-140; 300-400 lbs., 110-127.50; 400-500 lbs., 100-113; 500-600 lbs., 95-103; 600-700 lbs., 88-95; 700-800 lbs. 85-88. No. 2, 300-400 lbs. 98-107; 400-500 lbs., 92-104; 500-600 lbs., 83-89.

Feeder bulls: 500-700 lbs., 82-92.

Slaughter cows: utility 1-4, 55-60; cutters, 50-56.

Slaughter Bulls: Yield grade 1-2, 1100-1775 lbs. 66-68.75; high dressing, 69-72.50.

Feeder Heifers: Medium and large frame No. 1, 300-400 lbs., 100-107; 400-500, 90-100; 500-600, 87-95; 600-700, 84-88; few 700-800 lbs., 82-85; No. 2, 400-500 lbs., 85-93; 500-600 lbs., 82-89.

Stock cows: Pregnancy tested medium and large frame 4-9 year olds, \$650-\$750; No. 2 \$575-\$675.

Cow and calf pairs: With small calves at side, medium and large frame No. 1, 3-10 yr. olds \$800-900; No. 2 \$725-800.

The Crop Connection

by Richard Minzenmayer
Extension Agent-Entomology (PM)
Runnels-Tom Green Counties

General Situation

Well, we finally received several days of much needed SUNSHINE. Cotton should really progress now with these warm, sunny days. The bollworm egg, which was predicted, has arrived and we should be seeing small worms from this egg in the next day or two. Grain sorghum harvest has begun in some areas.

Cotton

The cotton seems to be slowing down in vegetative growth and beginning to pump, the necessary carbohydrates into the fruit. There is a tremendous amount of Pix® being applied right now, and I hope it is necessary.

We are fast approaching peak bloom and this is the time in which maximum water and nitrogen usage occurs. Therefore, excessive vegetative growth is unlikely to occur.

Bollworm egg counts ranged from 10-130 eggs per 100 plants last week. Remember, the bollworm egg is about the size of the head of a pin and is shaped like an inverted coffee cup and has ridges. The egg is milky-white when first laid, turns tan or brown on the second day and will get darker and hatch on day 3 or 4, depending on weather conditions. The eggs are laid singly and scattered over the plant, but most often occur in the plant terminal on the lush, tender growth. Upon hatching the young larvae feed on the tender tissue and very small squares in the plant terminals before moving down the plant to attack larger squares and bolls.

Bollworm larvae counts ranged from 0-26 treatable worms per 100 plants. It's time to be scouting your cotton closely for the presence of bollworms. Here are some tips:

What To Do:

Successful bollworm management will be impossible without regular thorough scouting.

Check 100 plants throughout the cotton field for bollworm eggs

and small larvae. Do not check only field margins because this will bias your count. Count the number of white eggs, tan or brown eggs, small (less than 1/4") worms, medium (between 1/4 and 1/2") worms and large (greater than 1/2") worms.

Now don't lose count of your 100 plants or your egg and worm count, which should be based on 100 plant check, will be inaccurate.

With regular scouting you will be able to watch the worm population develop. When an "egg" first occurs you'll see primary white eggs. If it's a day or two after the peak egg, you'll see more brown eggs than white ones. Soon you may be seeing small worms.

1. Do not spray before you find some worms. Eggs don't eat cotton, worms do. So wait until there are small worms present.

2. Don't be wishy-washy. Make your decision to spray or to check again later. If you delay decision-making, you'll soon have medium and large worms to contend with and those are much harder to kill with insecticide.

3. The pyrethroids will generally give the best control for the money in most cases. The exception would be early in the season or with resistant tobacco budworms where another class of compound would be preferable. Although some pyrethroids appear to be faster acting than others, all work about the same so price becomes the determining factor.

4. Application and timing is critical to getting good control. The first two instars are the easiest to kill, so applications should be targeted at the smallest larvae. An emulsifiable oil should be added if temperatures are high or if plant growth is excessive. The oil will help in the coverage of the pyrethroid, but it does not extend the length of control for the pyrethroid.

Cotton aphid populations continue to increase in many

fields. I would recommend trying to hold off on spraying just aphids. Wait for the bollworm eggs to hatch and then go in and clean everything up at once. Use a pyrethroid for the bollworms and either Swat, Bidrin, Cygon, Dimethoate, Orthene, Di-Syston, or others for the aphids.

Boll weevils remain at low levels, but could increase substantially at any time. I am finding adults in various fields now, but punctures remain relatively low. The weather conditions which we have had are very favorable for the weevil survival. DO NOT let the weevils sneak in the back door and grab ya. Every time you check for worms, pull 100 one-third crown squares and check them for feeding and/or egg laying punctures. If punctures reach 15 to 20 percent, it's time to make weevil applications.

Grain Sorghum

(Written by Dr. Tom Fuchs)
Most of the dryland grain sorghum had suffered severely before the rains and will probably sucker out sufficiently to make harvest a real dilemma. I wouldn't be surprised to see a lot of sorghum harvested after frost.

I have had a number of questions about the potential for midge if the sorghum does sucker out and produce late heads. While you always have the potential for midge in this situation, there may be a long enough gap between the early and late heads where midge will not be a major factor. Usually if you have 4 to 6 weeks between flowering periods, midge populations essentially have to rebuild to reach economic levels and this takes several weeks after the sorghum begins to bloom again. One exception to this is in areas that have sorghum planted from May to June, which is just reaching the bloom stage now. If midge populations develop in the late sorghum, populations may be sufficient to cause economic damage in the sucker head in older fields in the vicinity.

CAMPUS BOUND

Take along a subscription to The Winters Enterprise

1982 Ford Futura, 2 door, 53,000 miles.
Nice car in all respects.

1988 model Jeep Laredo Wagon, 4x4, all options. Super sharp inside and out.

1985 Chevrolet Cavalier, 4 door, 31,000 miles. Automatic, air - Sharp!

Charles Bahlman Chevrolet, Inc.
134 S. Main • Winters • 754-5310

WEEKLY GRAIN MARKET REPORT

As of Tuesday 8/14/90:

Wheat	2.55/Bu
Oats	1.40/Bu
New Crop Milo Contract	4.50/Cwt

All Prices Subject To Change

ALDERMAN-CAVE MILLING & GRAIN COMPANY

Winters, Texas (915) 754-4546
Roswell, New Mexico (505) 622-3260
Toll Free 1-800-843-3141

Archery Club

to form

Beginners, intermediate and advanced

For more details

Contact William Tischler
754-4462



DEUTZ ALLIS

SNEED'S AGRI-SUPPLY, INC.

210 West Dale St.
Winters, Texas

915-754-5116

"GOT IT, GET IT, OR IT CANT BE GOT"

Bush Hog
Crustbuster
Sunflower

Parts & Service for all makes

C.W. Sneed
Terry Sneed
Res. 915-754-5362
Res. 915-754-4758

AG CHEMICALS

Cotton Insecticides
Cotton Herbicides

Let us help you maximize
Cotton Yields and Profits.

FARMERS SEED & SUPPLY
WINTERS, TEXAS
(915) 754-5373



J. R. Sims & Sons has been in business since 1925 and continues with the same traditions.

We may have shorter office hours but we're still available 24 hours a day by calling
754-4224 or 754-4226

Offering service in the areas of:
LP Gas and Rental Tanks
Diesel Fuel
Oil Products
Parts Service

J. R. Sims & Sons

600 S. Main Winters, Tx 79567

Obituaries

Telitha Tullos

Telitha Mae Tullos, eldest child of James H. and Ella (Thigpin) Tullos was born November 27, 1894 in Groveton, Texas, and passed from this life on Sunday, August 5, 1990, at the home of her daughter, Mrs. Lucille Lee, in Winters, Texas.

Her family moved to Aspermont, Texas when she was a small child. It was there she received her education in a one room country school.

On March 4, 1911, she was united in marriage to James A. Templeton and they shared over 50 years together before his passing in 1972. To this union were born 12 children, this includes one set of triplets. Due to the death of Telitha's mother she and her husband James, took into their home and heart her two younger sisters, and reared them to young adulthood. One of three sisters, Exa Obar, survives.

In 1936 the family moved to Winters where Mr. Templeton was employed by the late C. L. Green's Milling Co. and later by the City of Winters.

Mrs. Templeton was a member of the Assembly of God Church.

Memorial services were at 2:30 p.m. Tuesday, in the Winters Funeral Home Chapel, with Pastor Dale Griswold and former Pastor Leonard Pringle officiating. Burial was in Aspermont Cemetery.

Pallbearers were: Johnny Plumley, Bill Jones, Deward Hamilton, Jack Davis, Sr., Bobby Staggs and Benny O'Dell.

The church choir sang "Whispering Hope", "A Million Years From Now" and "I'll meet You In The Morning."

Those remaining to cherish her memory are two sons, J. B. Templeton of Ballinger and Joe Templeton of Farmington, New Mexico; four daughters, Myrtle Jones of Fresno, California, Lucille Lee of Winters, Opal Woods of Salina, Kansas and Juanita Drummond of Winters; plus 26 grandchildren; 47 great-grandchildren; six great-great-grandchildren; and a host of friends.

Jerrie Miller

Jerrie Miller, 62, of Winters, died at 6 p.m. Saturday, August 11, 1990, in North Runnels Hospital.

Born May 19, 1928 in Burbank, California, she married Elby F. Miller, Jr. January 25, 1946 in Yuma, Arizona, moving to Winters in April 1946.

She worked in the Winters School Cafeteria, Dry Manufacturing and made baked goods for the public. She was a member of St. John's Lutheran Church, and was also presently serving as President for the Winters VFW Post 9193 Ladies Auxiliary.

Survivors include her husband, Elby F. Miller, Jr. of Winters; two sons, Tommy Miller of Brookwood, Alabama and Johnny Miller of Winters; one daughter, Dorie Hord of Rankin; a sister, Alice Fields of Vista, California; and nine grandchildren.

Services for Jerrie Miller were held at 2 p.m. Tuesday at St. John's Lutheran Church with Pastor Steve Byrne officiating. Burial was in Lakeview Cemetery under the direction of Winters Funeral Home.

Pallbearers were: August McWilliams, Dan Miller, Connie Mac Gibbs, Tim Dexter, R. C. Kurtz and Luke Colbath.

Mabel Williams

Mabel Irene Williams, 86, of Winters, died Saturday, August 11, 1990, in a Mineral Wells Hospital.

Born Mabel Irene Downing September 9, 1903 in Lone oak, Texas. She moved to Winters in 1927 where she taught school at Baldwin and Winters. She married A. T. Williams May 17, 1929 in Runnels County.

Mrs. Williams attended school in Meridan and Lone Oak; and attended East Texas State College.

Her husband preceded her in death in 1966.

She was a homemaker, retired school teacher and a member of Drasco Baptist Church.

Survivors include one son, M. R. Williams of Winters; a daughter, Adalene Stathem of Santo; six grandchildren; and seven great-grandchildren.

Graveside services for Mabel Irene Williams were held at 2:30 p.m. Sunday, August 12, in Lakeview Cemetery with the Rev. Ferris Akins officiating, directed by Winters Funeral Home.

Pallbearers were: Doug Williams, Lane Stathem, Bill Armstrong, Warner Fox, Mike Davis and Randall Connor.

Evelyn Matschek

Evelyn Theresa Matschek, 74, of Rowena, died at 9:40 p.m. Thursday, August 9, 1990, in Ballinger Memorial Hospital.

Born November 17, 1915 in Taylor, Texas, she married Charles John Matschek November 26, 1935 in Rowena.

She was a homemaker, a member of St. Joseph Catholic Church, Catholic Daughters and St. Ann's Altar Society.

She was preceded in death by three brothers, William, Adolf, and Raymond.

Mrs. Matschek is survived by two sons, Charles Matschek, Jr. of Rowena and Tom Matschek of New Braunfels; two sisters, Pauline Halfmann of Rowena and Della Halfmann of Ballinger; eight grandchildren; and two great-grandchildren.

Rosary for Evelyn Theresa Matschek was recited at 7:30 p.m. Sunday, August 12, in St. Joseph Catholic Church, Rowena. Services were held at 10 a.m. Monday in St. Joseph Catholic Church with Father Kevin Heyburn officiating. Burial was in St. Joseph Catholic Cemetery, Rowena, under the direction of Rains-Seale Funeral Home.

Ray Pritchard

Ray Pritchard, 74, passed away August 9, 1990 at 7:30 a.m. in Brownwood. Mr. Pritchard was a resident of May.

Born August 16, 1915 in Aspermont, he moved to Coleman in 1951. He was a retired oil field worker, member of the Methodist Church, and veteran of World War II with the Merchant Marines.

Survivors include two daughters, Erma Ray Hicks and Barbara Marrs, both of Lubbock; one son, Ray Pritchard of Midland; a sister, Hazel West of Abilene; and ten grandchildren.

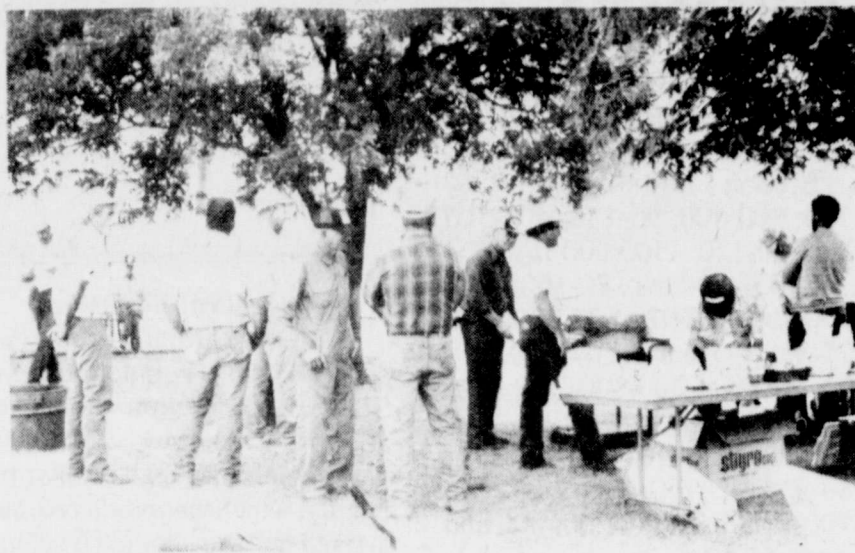
Services for Ray Pritchard were held Saturday, August 11, at 2 p.m. in Walker Funeral Home Chapel, Coleman, with the Rev. James Gehrels of Winters officiating. Interment was in Coleman Cemetery.

Cody Tubbs

Cody Dale Tubbs, infant son of Richie and Sandy Tubbs of Abilene, died Tuesday, August 7, 1990, in an Abilene hospital.

Survivors include his parents, Richie and Sandy Tubbs of Abilene; a sister, Juanita Rashae Tubbs of Abilene; his grandparents, Dale and Jo Ann Tubbs and Emilio and Becky Martinez, all of Winters; his great-grandparents, Berl and Annie Tubbs of Brady, Luther and Vivian Smith, Demetrio and Francisca Martinez and Jessie and Amelia Tamez, all of Winters.

Graveside services for Cody Dale Tubbs were held at 5 p.m. Thursday, August 9, in Lakeview Cemetery with the Rev. James Gehrels officiating.



Winters Young Farmers prepare hamburgers for those attending the special grain sorghum production and alternatives program at Ted Meyer Park on Monday. Dr. Tom Fuchs, Dr. Billy Warrick, and Dr. Jake Landers, all of the Texas Agricultural Extension Service, presented the program.

First Baptist's Beat

Dorcas Class met

The Dorcas Class of the First Baptist Church met with Eunice Polk for their monthly social.

Verda Smith gave the opening prayer, Roll Call was answered with "Instruments of the Bible." The business was attended to; Mrs. Roberson gave the treasurers report for Verlene Anthis. The offering was then taken.

Nadine Smith gave the devotional on "Listen—that you say."

Linda Morrison gave the Division on "Texas Cities and Towns." It was a very interesting subject. The benediction was then said.

Lovely plates of cake, ice cream, nuts, tea and coffee were served to the following: Mrs. Roberson, Alice Traylor, Nadine Smith, Eunice Polk, Dortha Lawrence, Dorothy Long, Linda Morrison, Eula Cook, Charlsie Poe, Verda Smith, Stella White and Ella Mae Sawyer.

Baptist Women held meeting

"Range of Strangers" was the subject discussed at the Baptist Women's monthly meeting held in the fellowship hall Tuesday.

"Our society ranges from the very rich to the very poor," said Beth Bradley, program leader. "These people have different life styles but the same spiritual need, for everyone needs to know Christ."

Ways of meeting these needs was discussed and Jo Olive Hancock, president, announced that August was the time to bring donations for the Winters Food Pantry. She also said there was a need for help in buying school supplies for those entering the first grade. The group voted to contribute \$50 for this cause.

Hancock appointed a committee to nominate officers for the new year. Committee members are Darlene Sims, Hortell McCaughan, Sarah Beth Heidenheimer and Charlsie Poe.

The Sue Carter and Lounette Templeton Circles will have a combined meeting in fellowship hall August 21 at 9:30 a.m.

The Week of Prayer for State Missions will be observed September 9-16, as announced by Mrs. Poe, chairman. The emphasis will begin Sunday night, September 9, with a unique video program to help gain an overview of the mission challenge, directed by Glenn Shoemaker, pastor.

Bethany Class met

The Bethany Sunday School Class of the First Baptist Church met at noon August 7 for the monthly meeting. The opening prayer was given by Charlsie Poe.

After the meal, president, Mrs. Jo Olive Hancock presided for the business meeting. The prayer was led by Mrs. Vivian Foster, Scripture on "Devine Comfort" was read responsively by the group. The minutes of the last meeting were read and approved. The sick were mentioned and a silent prayer was said for them. Happy Birthday was sung to two of the members.

The meeting was dismissed with the Class Prayer, said in unison by all.

Attending were: Mrs. Jo Olive Hancock, Ethel Mae Clark, Vivian Foster, Margaret Favor, Lucille Virden, Lillian Eubanks, Hortel McCaughan, Omega Priddy and visitors, Mrs. Charlsie Poe and Emily Pendergrass.

Baptist Association to hold meeting

The regular meeting of the Runnels Baptist Association will be held August 20 at the First Baptist Church, Bronte.

The W.M.U. and Executive Board will meet at 5:30 p.m. The evening meal will be served at 6:30 p.m. and the program will begin at 7 p.m.

The program is to be on State Missions. Christine Clark, Association W.M.U. Director is in charge of the program. Dr. Gerald Edwards, Church Extension Field Service Representative of the Baptist General Convention of Texas serving the West Texas Area, will be the speaker.

The public is invited to attend.

Support Your Local Paper

VETERINARY UPDATE

by Jimmy Smith, DVM

Nitrate Intoxication

Today, we want to spend a little time talking about nitrates. We mentioned this earlier when we talked about prussic acid poisoning. It's not something we see all the time but the potential hazard for intoxication of our sheep, cattle and goats is present at this time.

We need to talk about the conditions necessary to get nitrate intoxication. The conditions under which you can get nitrate poisoning are several. One situation is when there is heavy fertilization of the field crops. Of course, nitrogen is necessary for fast and heavy volume growth of forage crops, but it can be a potential hazard.

Two other things we see that are associated with nitrate intoxication are drought, and rain after drought. Also, a condition that is peculiar to our area is high nitrates in the ground water.

Any one of these four factors, by itself or in combination can lead us to a nitrate intoxication problem. Usually we see an intoxication problem after a cool, cloudy day or after a cool night. The amount of nitrate in the plant is controlled by an enzyme called nitrate reductase. This enzyme in the plant is what we call light and temperature dependent. In other words, in order for this nitrate reductase to decrease the amount of nitrates in the plant, we have to have lots of sunshine and warm weather. However, on cool, cloudy days and at night,

the amount of nitrate in the plant will become higher.

There are also some plants that are what we call nitrate accumulators. These plants have a tendency to develop higher amounts of nitrates than other plants. Among these plants that we commonly see in this area are careless weed, lambs-quarter, sunflower, the nightshade family and some of our more common forage plants like oats, corn, and hybrid sudan.

We'll continue next week with more details of plants known as nitrate accumulators and how you can protect yourself, and the clinical signs of nitrate intoxication.

Last week we talked about rabies in small animals and I left out some information I would like to include. Rabies vaccinations should be done at three months of age and annually. If you vaccinate a dog earlier than three months of age, it is recommended that this be repeated at three months. These recommendations are made by the World Health Organization.

One last word - we're just now getting into the time of year when the incidence of encephalitis or "sleeping sickness" is the greatest. So now is the time to vaccinate your horses.

If you have questions you'd like to have answered in this column, please get in touch with *The Winters Enterprise*, and I'll be glad to print a reply.

FAX
SERVICE NOW AVAILABLE
SEND OR RECEIVE
YOUR FAX MESSAGES
OR ORDERS BY **THE ENTERPRISE**
SPEEDY FAX
915-754-4628

Exercise Tap Ballet Jazz Tumbling

K. G.'s Dance Studio
Karey Gail Morelock
Opening soon in Winters
Call
1-365-3109
for registration information

LISTEN TO THE
NEW NOSTALGIA PROGRAM,
"WAX WORKS"
ON K.R.U.N. AM/FM
SUNDAY AT 12 NOON.

The WAX WORKS
Radio Network, Inc.

HAPPY 100TH BIRTHDAY, WINTERS!

Central West Broadcasting Company, Inc.
P.O. Box 351
Ballinger, TX 76821
915-365-5500

WE WELCOME NEWS ITEMS!

Winters
Flower Shop ... & More
119 S. Main 754-4568
Flowers, Gifts, Tuxedo Rental
Janice Pruser
Owner

It's nifty being "50"

Happy Birthday
August 19

DIST...
 Naon...
 Divo...
 Dorc...
 In th...
 relat...
 DIV...
 Shell...
 COU...
 Dan...
 orde...
 Mike...
 guilt...
 Gera...
 conte...
 prob...
 scho...
 Jame...
 enter...
 Rich...
 plea...
 Rich...
 guilt...
 Jan...
 enter...
 Lave...
 dism...
 John...
 ente...
 90 d...
 fees...
 Albe...
 fined...
 2 ye...
 6 m...
 Gilb...
 cont...
 prob...
 DW...
 Herb...
 a ple...
 jail...
 susp...
 Rob...
 plea...
 jail...
 DW...
 Ren...
 ente...
 60 d...
 fees...
 Bern...
 ente...
 90 d...
 (lic...
 Del...
 a pl...
 Reg...
 of m...
 prob...
 scho...
 Mike...
 guilt...
 Jose...
 of n...
 jail...
 DW...
 Bett...
 guilt...
 Rae...
 ple...
 Kap...
 also...
 a p...
 Jan...
 hol...
 of...
 Mil...
 del...
 Ka...
 ent...
 res...
 Au...
 of...
 pr...
 DV...
 Ju...
 pr...
 Al...
 gu...
 lic...
 Al...
 gu...
 mo...
 Al...
 ing...
 Ju...
 gu...
 pr...
 D...
 Bi...
 gu...
 pr...
 D...
 Sh...
 ch...
 D...
 fi...
 so...
 T...
 de...
 co...
 Di...
 Gr...
 T...
 Diab...
 meet...
 p.m...
 Auth...

PUBLIC RECORD

DISTRICT COURT (Filings)

Naomi Lynn Coleman vs. William Everett Coleman, 8/3/90 Divorce
Dorothy L. Bullard vs. Albert L. Bullard, 8/6/90, Divorce
In the interest of Tiffany Danielle Cole, 8/10/90, Parent-Child relationship

DIVORCES GRANTED (District Court)

Shelia Ann Coulter and Timothy Edward Coulter, 7/31/90

COUNTY COURT

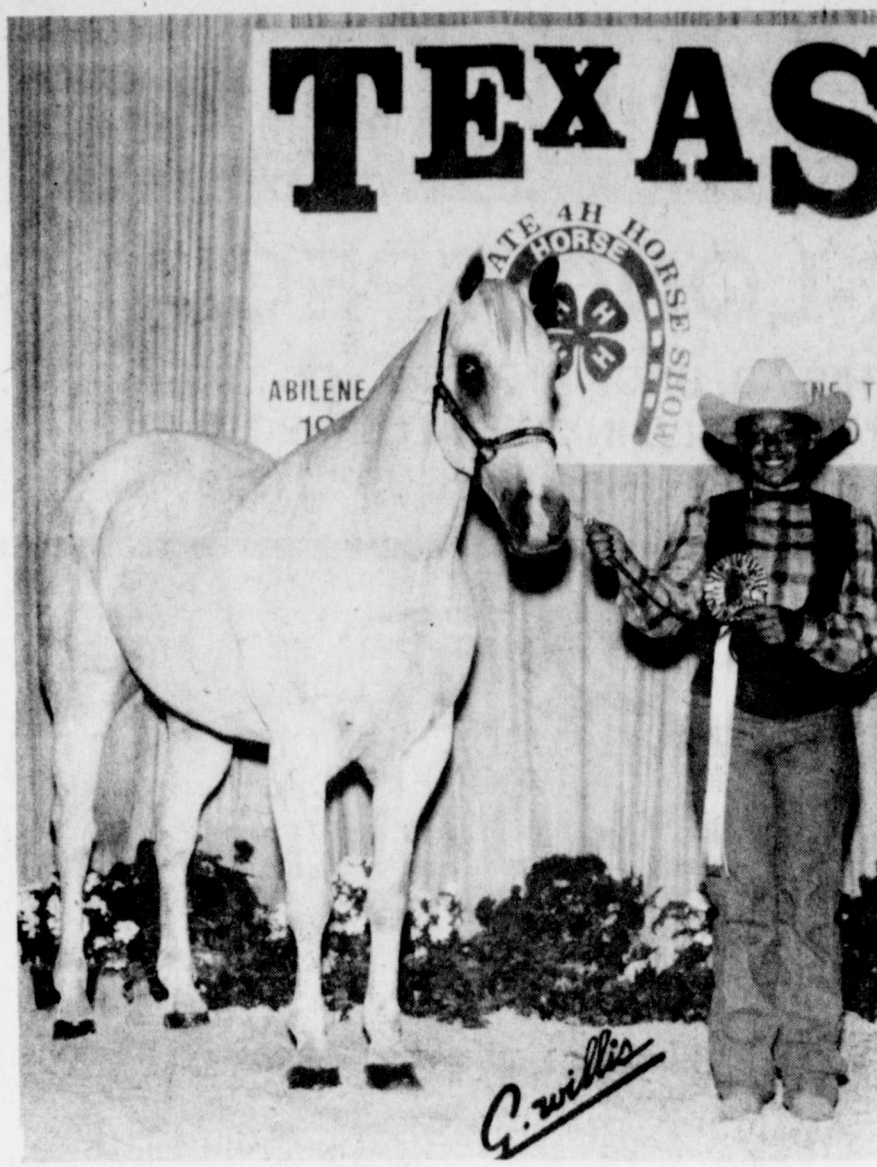
Dana Wright, 7/16/90; speeding, appealed from J.P. Court #1, order of dismissal, completed deferred adjudication period
Mike Luna, 7/18/90; criminal trespass, defendant entered a plea of guilty, fined \$100 plus \$129.50 costs
Gerald Lee Keas, 7/18/90; DWI, defendant entered a plea of no contest, fined \$350 plus \$127.50 costs; assessed 60 days jail, probated for 2 years @ \$25 per month probation fees (attend DWI school)
James Lee Miller, 7/18/90; violation of a court order, defendant entered a plea of guilty, fined \$100 plus \$127.50 costs
Richie Dale Tubbs, 7/18/90; resisting arrest, defendant entered a plea of guilty, fined \$150 plus \$127.50 costs
Richie Dale Tubbs, 7/18/90; assault, defendant entered a plea of guilty, fined \$150 plus \$127.50 costs
Jan Meyer aka Jan Nitch, 7/18/90; criminal trespass, defendant entered a plea of guilty, fined \$150 plus \$127.50 costs
Laverne Meyer, 7/18/90; criminal trespass, motion and order dismissing, insufficient evidence
Johnny Lopez Martinez, 7/18/90; DWI subsequent, defendant entered a plea of guilty, fined \$500 plus \$127.50 costs; assessed 90 days jail, probated for 2 years @ \$25 per month probation fees (license suspended for 6 months)
Albert Campos, 7/18/90; DWI, defendant entered a plea of guilty, fined \$350 plus \$127.50 costs; assessed 60 days jail, probated for 2 years @ \$25 per month probation fees (license suspended for 6 months)
Gilberto Jimenez, 7/18/90; DWI, defendant entered a plea of no contest, fined \$350 plus \$127.50 costs; assessed 60 days jail, probated for 2 years @ \$25 per month probation fees (attend DWI school)
Herbie C. Albarado, 7/18/90; DWI subsequent, defendant entered a plea of guilty, fined \$500 plus \$127.50 costs; assessed 90 days jail probated for 2 years @ \$25 per month probation fees (license suspended for 6 months)
Roberto Macdonado Alfaro, 7/18/90; DWI, defendant entered a plea of no contest, fined \$350 plus \$127.50 costs; assessed 60 days jail, probated for 2 years @ \$25 per month probation fees (attend DWI school)
Rene Segura Guerra, 7/18/90; DWI subsequent, defendant entered a plea of guilty, fined \$500 plus \$127.50 costs; assessed 60 days jail, probated for 2 years @ \$25 per month probation fees (license suspended for 6 months)
Benny Sanchez Vela, 7/18/90; DWI subsequent, defendant entered a plea of guilty, fined \$500 plus \$127.50 costs; assessed 90 days jail, probated for 2 years @ \$25 per month probation fees (license suspended for 6 months)
Delia Portillo, 7/18/90; Harboring a run-away, defendant entered a plea of guilty, fined \$100 plus \$129.50 costs
Regileo Gomez Fuentes, 7/18/90; DWI, defendant entered a plea of no contest, fined \$350 plus \$127.50 costs; assessed 60 days jail, probated for 2 years @ \$25 per month probation fees (attend DWI school)
Mike Luna, 7/18/90; Resisting arrest, defendant entered a plea of guilty, fined \$100 plus \$129.50 costs
Jose Eleazar C. Rangel, 7/18/90; DWI, defendant entered a plea of no contest, fined \$350 plus \$127.50 costs; assessed 60 days jail, probated for 2 years @ \$25 per month probation fees (attend DWI school)
Betty Cortez Nava, 7/18/90; Theft, defendant entered a plea of guilty, fined \$100 plus \$129.50 costs
Rachel Galvan, 7/18/90; Criminal trespass, defendant entered a plea of guilty, fined \$100 plus \$129.50 costs
Katherine Louann Garza, 7/18/90; Permit consumption of alcoholic beverage during prohibited hours, defendant entered a plea of guilty, fined \$100 plus \$129.50 costs
James Louis Newby, 7/18/90; Permit minor to possess alcoholic beverage on licensed premises, defendant entered a plea of guilty, fined \$100 plus \$129.50 costs
Mike Luna, 7/18/90; Assault, motion and order dismissing, defendant convicted in another case
Katrina Torres, 7/19/90; Theft of tapes by check, defendant entered a plea of guilty, fined \$10 plus \$137.50 costs (\$51.83 restitution)
Aubrey Leon Daniel, 7/19/90; DWI, defendant entered a plea of guilty, fined \$350 plus \$127.50 costs; assessed 60 days jail, probated for 2 years @ \$25 per month probation fees (attend DWI school)
Juanita Garcia, 7/20/90; Order discharging defendant from probation
Alfonso Martinez, 7/20/90; DWI, defendant entered a plea of guilty, fined \$100 plus \$127.50 costs; assessed 3 days jail, license suspended for 6 months
Alfonso Martinez, 7/20/90; DWI, defendant entered a plea of guilty, fined \$100 plus \$127.50 costs (license suspended for 6 mo.)
Alfonso Martinez, 7/20/90; Assault, motion and order dismissing, defendant entered plea in two other cases
Juan Rodriguez, 7/24/90; DWI, defendant entered a plea of guilty, fined \$350 plus \$127.50 costs; assessed 60 days jail, probated for 2 years @ \$25 per month probation fees (attend DWI school)
Billy Ray Shields, 7/24/90; DWI, defendant entered a plea of guilty, fined \$350 plus \$127.50 costs; assessed 60 days jail, probated for 2 years @ \$25 per month probation fees (attend DWI school)
Shirley Baker, 7/24/90; Theft of groceries and/or cash by check, motion and order dismissing
David Luera, 7/27/90; DWI, defendant entered a plea of guilty, fined \$350 plus \$127.50 costs; assessed 60 days jail, probated for 2 years @ \$25 per month probation fees (attend DWI school)
Thomas Hester Marshall, 7/27/90; Possession of marijuana, defendant entered a plea of guilty, fined \$150 plus \$127.50 costs

Diabetic Support Group to meet

The North Runnels Hospital Diabetic Support Group will meet Monday, August 20, at 7 p.m. in the Winters Housing Authority Building.

Domino Party to be held at Shep

A Domino Party will be held at Shep Community Center Saturday night, August 18, at 7 p.m. Bring your favorite snack and dominos.



Beatriz Cisneros

Beatriz Cisneros takes 3rd in State 4-H Horse Show

The State 4-H Horse Show was held the week of July 22-28 at the Taylor County Exposition Center in Abilene. Over 700 4-Hers participated in the show after qualifying at district shows from the 14 Extension Districts around the state.

Runnels County 4-H Horse Club was represented by (5) 4-Hers from Ballinger and Winters. Beatriz Cisneros of Winters

was 3rd in the grade gelding halter class and Sara Jackson of Winters had a 10th place grade gelding and a 15th place futurity filly. Bridget Mansell of Ballinger was 12th in the gelding futurity class and 8th in the 3 yr. old stock horse futurity class. Todd Virden of Ballinger was 5th in the breakaway calf roping. Cheri Dry of Winters also participated.

Bronte Baptist to host concert

"Gabriel" Concert will be held at First Baptist Church, Bronte, August 19 at 7 p.m. There will be no admission to this concert.

The public is invited to attend. Records, tapes and T-shirts will be available. For more information contact Brenda Barnett 8 a.m.-12 noon at 473-2331 or after 12 noon, 473-3400.

Card of Thanks

We would like to thank the Winters Centennial Committee and the City of Winters for all the gifts presented to our son. It has been a special honor to have Cody named the Winters Centennial Baby and to be a trustee for the opening of the time capsule in 2040.

Thank you,
Howard and Jacalyn Pruser

RUNNELS COUNTY CRIMESTOPPERS

On Wednesday, July 18, a red Sears tool box with two drawers and a dented top lid was stolen from a Silver Ford club cab pickup in front of the Chowing residence at the corner of 11th and Hamilton in Ballinger, Tx. The toolbox contained a full set of craftsman tools. If you have any information concerning this theft, please call Runnels County Crimestoppers at 365-3591 or call any local law enforcement agency. You do not have to give your name and your information may be worth a cash reward of up to \$1000.00.

Crimestoppers made \$400 in cash rewards in July for information leading to arrests in several narcotics cases.

ATTENTION

Miles Locker Plant will be closed Sunday, August 12 through Sunday, August 26 for repairs and vacation. There will be NO CUSTOM SLAUGHTERING from Friday, August 3 through Sunday, August 26. We are sorry for any inconvenience this may cause. However, we will be back & open on Monday, Aug. 27. Please call 468-3501 if you have any questions or to make any arrangements.

Subscribe Today

The "new" WINTERS ENTERPRISE

Runnels County: \$10.00 per year

Other Texas Counties: \$12.00 per year

Out of State: \$14.00 per year

Mail this coupon and your payment to:

The Winters Enterprise, Inc.

104 N. Main
Winters, TX 79567
915-754-4958

Name _____

Address _____

City _____ State _____

County _____ Zip Code _____

Classified Ads

CLASSIFIED RATES

CASH

\$3.50 Minimum, 1 time, \$3.00 per insertion thereafter, 20 words; 10 cents per word over 20 words.

CHARGE

\$4.50 Minimum, 1 time, \$4.00 per insertion thereafter, 20 words; 10 cents per word over 20 words.

For Sale

FOR SALE: 24' Travel Trailer self contained. See to appreciate. Call Winters after 6:00 p.m. 915-754-4782. 31-6tp

FOR SALE: 25' Midas Travel Trailer, sleeps 4 comfortably. Self contained, will include E-Z load hitch & brakes. Call 754-4883. 32-3tp

FOR SALE: Hydrodyne 200 hp. tournament ski boat. Antique sewing machine. 1983 Chevrolet Silverado pickup, new engine. Call 754-4719. 33-2tp

FOR SALE: 2 twin beds (frame only). Call 754-5000 8 a.m. to 5 p.m. or 754-5124 after 5 p.m. 34-1tc

FOR SALE: House trailer, 1972 model, 12 x 56, 2 BR. \$2,500, to be moved. Phone 754-4640 after 5 p.m. 34-1tc

Garage Sales

3 FAMILY GARAGE SALE: Sat. only, beginning at 8 a.m. One mile north of Winters on Feed Lot Road, second house across railroad. Baby clothes, furniture, swing, table, toys, misc. and lots more. 34-1tp

NEIGHBORHOOD SALE: 8 a.m.-2 p.m., Saturday, August 18, 207 Parrison. Quilts, blankets, bedspreads, handmade items, clothes, lots of miscellaneous. 34-1tp

GARAGE SALE: 109 Penny Lane, Fri. 17, Sat. 18. Starts at 8 a.m. School clothes, girls 6-10. Women's clothes 8-12. Stationary bike, stereo with speakers. 34-1tp

CARPOR SALE: Sat., 8 a.m.-5 p.m., 502 Majestic. 34-1tc

GARAGE SALE: Go to Wes-T-Go on the south side of town, turn east on Hwy. 153. Go approx. 2 1/2 miles, turn right and follow signs for approx. 2 miles. Camper top, clothes, desks, old rocking chairs, trollyline weights, welding rods, cloth and lots of misc. 34-1tp

GARAGE SALE: August 17, 204 Penny Lane from 8 a.m. till ? Furniture, toys, linens, clothes, shoes and rowing machine. 34-1tc

GARAGE SALE: Sat., August 18, Belair Drive, 8 a.m.-2 p.m. Household items, children and adult clothing and fresh peaches. 34-1tc

For Rent

ACEMINISTORAGE: MONTHLY RATES. CONTACT FARMERS SEED AND SUPPLY 754-5373 1-TFC

2 BEDROOM APARTMENTS FOR RENT: Stove & refrigerator furnished. Central heat and air conditioning. Water paid. Ample off-street parking. Apply at 300 N. Grant. 19-tfc

1 BEDROOM DESIGNATED ELDERLY UNITS AVAILABLE: 1 handicapped wheelchair-accessible available. Great homes for retired men or women wishing to get away from the yard work and repairs. Water paid. Rent based on income. Apply in person at 300 N. Grant. 19-tfc

FOR RENT: 1 Bedroom house. Phone 754-4546. 29-tfc

FOR RENT: 1 BR apt., utilities paid, furnished; 2 BR, partly furnished; 2 BR house in Sunlawn. Call 754-4883. 32-3tp

FOR RENT: Nice 3 bedroom country home, carpet, screened porch, double garage, south of Winters. Call 767-3747. 34-1tp

FOR RENT: 3 BR house, close to school. Also studio apartment "Possible Rent-to-Buy." Call 754-5686. 34-tfc

Real Estate

FOR SALE: 3 BR, 1 1/2 B, central H/A. Large lot, close to school. Call 754-4334. 31-4tp

HOUSE FOR SALE OR LEASE: 3 bedroom, 2 bath on large lot with fenced yard in Winters. Call (806) 592-3904. 34-4tc

FOR SALE: 3 BR home, completely remodeled, refrigerated air, storm windows, new 6 ft. privacy fence, fresh paint, corner lot, shade trees. Many extras including dishwasher, disposal, wallpaper, large walk-in closets. Priced to sell at \$32,000. Call 754-5372 or 573-5266. 34-2tc

Automobiles

GOVERNMENT SEIZED - Vehicles from \$100.00. Miata's, Corvettes, Mercedes, Jaguars, Porches & other misc. confiscated property now being sold to the general public. For buyers guide call (708) 355-9802 Ext. 7585. Open 7 days 8:00 a.m. to 11:00 p.m. 33-2tc

Special Services

SUN COMPUTER TIRE BALANCING: 4 for \$20.00. Carl Greenwidge Texaco & Tire Center, 754-4112. 21-tfc

Help Wanted

NEED A RESPONSIBLE PERSON: To care for 2 children in their home in Wingate. Call Kelly Walker 743-2157. 34-2tc

Work Wanted

HAY HAULING: 636-4415 or 636-4317 and ask for Tonya or Jesse. 34-4tc

Agriculture

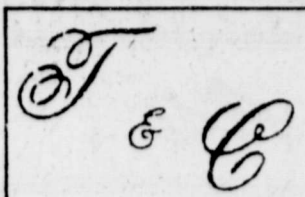
CRP GRASS SEEDING: Shredding and related services. Call Howard Pruser, 365-3656. 13-tfc

INSURED **Knight's** CERTIFIED
Pest Control Co.
"The Royal Treatment"
Rt. 1, Box 152A • Winters, Texas 79567
(915) SOS-BUGS
(915) 767-2847
KELLY KNIGHT

Underwood Real Estate
100 West Dale 754-5128 Winters

NEW LISTING - Like new, 3 BR, 2 bath brick, screened in back porch, beautiful yard, mid 50's.
NEW LISTING - Outskirts of town, 2 BR, 1 bath on 1 acre with water well.
NEW LISTING - Good family home, 3 BR, 1 bath, low 20's.
NEW LISTING - Extra nice, 3 BR, 2 bath, insulated, fireplace, on large corner lot.
CIRCLE DR. - 3 BR, 2 bath, large beautiful lot with shade trees, H/A.
EDGE OF CITY LIMIT - 2 BR, 2 bath, frame, fenced for stock, low 20's, large lot.
CLOSE IN - 30 acres with 2 BR, 1 bath house, good well.
CRAYER STREET - 2 BR, 1 bath, large corner lot, mid teens.
COMMERCIAL - Corner lot on North Main with small building.
TRINITY STREET - Nice 3 BR, 1 bath, large lot, mid 20's.
GOOD BUY - Neat 2 BR, 1 Bath, corner lot, \$10,800.

NEWER HOME IN GOOD AREA - 4 BR, 2 bath, all electric, brick, w/pump, workshop on 2 lots.
ACREAGE - 142 acres, mostly cultivation, spring fed tank, some minerals, priced right.
MAKE OFFER - 3 BR, 1 bath, in good repair, upper teens.
OWNER FINANCE - 3 BR, 2 bath, brick on 2 acres, H/A.
OWNER ANXIOUS - 4 BR, 2 Bath, lg. workshop, fenced yard, mid 40's.
COMMERCIAL - 40 x 60 building on 4 acres. N. Hiway 83.
PRICE REDUCED - Owner Financed, 3 BR, 1-1/2 bath, large fenced yard, also doublewide trailer on 10 acres, will sell separately.
MAKE OFFER - 3 BR, 1 bath, large rooms, corner lot.
COUNTRY LIVING - 3 BR, 2 bath on 1 acre. Mid teens.
REMODELED - 2 BR, 1 bath, H/A, mid teens.
GOOD LOCATION, 3 BR, 1 1/2 bath on large lot. Upper 20's.
82-1/2 ACRES - Good land. Mostly cultivated. Call for info.



VILLAGE MARKET

We Have
Money Orders
&
Postage Stamps

EVERY MONDAY IS
SENIOR CITIZENS DAY
—5% DISCOUNT ON
YOUR TOTAL PURCHASES
EXCLUDING BEER & CIGARETTES

WE ACCEPT
FOOD STAMPS
& WIC CARDS

WEEK-LONG SPECIALS

SAVE THIS AD, SHOP ANY DAY YOU LIKE—
SPECIAL PRICES IN THIS AD EFFECTIVE
AUGUST 15 thru AUGUST 21, 1990

QUANTITY
RIGHTS
RESERVED

STORE HOURS
MONDAY - SATURDAY, 7 A.M. - 8 P.M.
SUNDAY, 8 A.M. - 8 P.M.
PHONE 365-3313 BALLINGER, TEXAS

SHURFRESH
Grade 'A' Large

EGGS

77¢

LIMIT 2 DOZ,
THEREAFTER
89¢

USDA CHOICE
BONELESS

CHUCK ROAST

1.59

LB.

BONELESS

CHUCK STEAK

1.88

LB.

FRESH GROUND X-TRA LEAN

CHUCK GROUND BEEF

1.98

LB.

5 LB. BAG

FRYER LEG QUARTERS

39¢

LB.

PILGRIM PRIDE
MIXED

FRYER PARTS

59¢

LB.

FRESH GROUND

FAMILY PAK GROUND BEEF

1.29

LB.

DOLE GOLDEN RIPE

BANANAS

29¢

LB.

MACARONI & CHEESE

DINNERS

5/\$1

7.25 OZ. BOX

SHURFINE

CUT GREEN BEANS

3/\$1

16 OZ. CAN

PRICE SAVER

BACON

1.49

LB. PKG.

PRICE SAVER

TURKEY HAM HALVES

1.49

LB.

CALIFORNIA

STRAWBERRIES

79¢

PT. BASKET

WHITE SEEDLESS

GRAPES

69¢

LB.

LIBBY'S PLAIN

CHILI

79¢

15 OZ. CAN

TOSTITOS

TORTILLA CHIPS

1.99

BIG 16 OZ. BAG

VILLAGE BUTCHER

FRANKS

89¢

12 OZ. PKG.

FANCY NEW CROP

SWEET CORN

4/\$1

EA.

ROMA

TOMATOES

49¢

LB.

UTOPIA DRINKING

WATER

59¢

GAL. JUG

COORS OR COORS LITE

BEER

10.99

24 PK. 12 OZ. CANS

CLASSIC DELIGHT

ICE CREAM

2.99

1/2 GAL. CARTON

NOW AVAILABLE

BLUE BELL ICE CREAM

REG. OR DIET

PEPSI

COLA

OR

DR. PEPPER

1.39

6 PK. 12 OZ. CANS

DOUBLE COUPONS 7 DAYS A WEEK