

THE WINTERS ENTERPRISE

VOLUME ONE

WINTERS, TEXAS 79567

THURSDAY, JULY 19, 1990

PRICE 25 CENTS

NUMBER 30



Community forum discusses child sexual abuse

On Tuesday night, July 10, thirty concerned individuals met with Jane Bingham, MICSAIT director from Tarrant County Junior College in Fort Worth, to discuss child sexual abuse. During a very informative hour, Ms. Bingham provided the group with a profile of the child sexual assault offender, revealed indicator "flags" which victims might show, and encouraged all present to become involved as a part of the solution. An open and frank question and answer session followed Ms. Bingham's presentation.

Ultimately, the group wanted to know what the citizens of Winters could do concerning the high incidence of child sexual

abuse in Runnels County. Discussions revealed that Runnels County has only one foster care home. The group quickly resolved that there exists a great need for a facility in Winters which could house children in cases of emergency placement; perhaps this facility needs to serve as an emergency family shelter.

Ms. Bingham also told the group that it is imperative that a good program of awareness be conducted with the children of Winters. From a very early age, children should be told about "stranger danger." Most often the one who is abusing children is someone the children know and trust. Children need to under-

stand the difference in "good touches" and "bad touches," those which make them feel uncomfortable. They need to be encouraged to reveal activities which they've been told to "keep secret."

Members of the group discussed ways to make an effective difference in Winters. All were encouraged to go out and spread the information and knowledge which had been gathered. The greatest tragedy would be to let the momentum created during this meeting die. Each member of the community must take an active role in stopping child sexual abuse in Winters.

School Board accepts resignations; hires new teachers for 1990-91

Closed campus policy outlined

The Winters Independent School District Board of Trustees met on Monday, July 16 at the Administrative Offices. The board heard a request from maintenance personnel for a substantial increase in salaries for their department. Johnny Merrill and Mark Briley told the board the maintenance department had operated during the 1989-90 school year with one less person than the previous year and had been able to maintain their standards even with less personnel. They requested the board consider seriously their request as the new budget is formulated. Johnny Bob Smith, Business Manager, commended the maintenance department on keeping the eight buses with over 100,000 miles running and in good condition.

Smith also reported a \$336,000 payment will be made this week on interest and principal due on the 1982 bond issue. He also reported that following an interest payment in February, 1991 and another \$336,000 payment in August of 1991, the 1982 bond issue will be paid off. One half of that money is already in the bank. Smith also reported that 95.7% of the revenue from taxes is in at this time.

Following the financial report, High School Principal Charles Kidwell outlined the proposed rules for the closed campus policy adopted by the school board. Mr. Kidwell stated the policy would be as follows:

Winters Independent School District has adopted a closed campus policy for the school year 1990-91. Any student departure from the cam-

pus at any time during regular school hours must have permission from the principal's office and the student must sign out and back in upon return to the campus. Permission for leaving the campus will be handled on an individual basis.

Resignations of teachers Dana Moore and Nancy Michaelis were accepted with regret by the board. The board then voted to approve the hiring of a new band director, Stephen R. Henry. Mr. Henry is coming from Floydada where he has been for a year following graduation from North Texas State University with a Master's degree. Also approved was the hiring of Nancy Thornton of Ballinger as a math instructor.

In other business, School Board members opened and discussed bids for bulk fuel and milk for the 1990-91 school year. The acceptance or rejection of fuel bids was tabled until clarification could be received on one of the bids. The low milk bid was accepted and won by Gandy's Dairies.

Business Manager Johnny Bob Smith reported the school cafeteria lost \$46,600 in the 1989-90 school year and that needed to be considered as Board Members discussed and set lunch prices for the coming year. Chief cause of the loss according to Smith was the escalating cost of groceries and the reduction of the amount of commodities received from the federal government. After some lengthy discussion as to causes, solutions and duty to taxpayers, the Board voted to increase lunch prices by 15¢ for the coming year. Grades

6-12 will pay \$1.50 and grades 6-12 will pay \$1.65 for lunches for the 1990-91 school year.

A resolution from the Student Council requesting they be allowed to name the auditorium Winters Memorial Auditorium in memory and honor of deceased administrators, teachers, students, etc. No objections were voiced from the Board and no action was taken, and it was stressed there would be no objection from the board if the Student Council wanted to put up a sign designating the auditorium as Winters Memorial Auditorium.

Business then turned to the awarding of Career Ladder bonuses based on last year's performance and evaluations. These monetary awards are made possible through state funds given to the school district and must be passed through to teachers or returned to the state. Awards in the amount of \$1880 for Level II and \$3760 for Level III teachers on the career ladder.

The budget workshop scheduled as the last new business item was delayed until more information is received on Senate Bill 1 (the new school funding bill). Superintendent Tommy Lancaster and Business Manager Johnny Bob Smith will be attending a workshop in Lubbock on Friday of this week to learn more about the funding bill.

Following the approval of payment of routine bills, the Board adjourned until their next regular meeting Tuesday, August 14. The 1990-91 budget hearing is scheduled for August 20.

Molestation charges filed against Winters man

Three charges of child molestation were filed Monday against Randy Nolte, 34, of Winters. Nolte was arrested at 9 p.m. on Saturday, July 14, at a home near Wingate and charged with two counts of sexual assault of a child under 17 and one case of indecency with a child under 17 by contact. Nolte is, however a County Court misdemeanor charge of display of harmful material to a child. Justice of the Peace Wilburn Davis set bond of \$250,000 each on the felony charges and \$4,000 on the misdemeanor charge. Nolte is being held in the Runnels County jail in Ballinger in lieu of the \$754,000 bond. His attorney, Stan Brown of Abilene, has requested a bond reduction hearing.

Runnels County Sheriff Bill Baird said Nolte was arrested after a warrant was issued by 119th District Judge John Sut-

ton, stemming from a complaint filed by an individual. Sheriff Baird said he had been working on the case about a week, along with District Attorney Diane Wilson and the Department of Human Services. The four charges and perhaps others, will be presented to the grand jury in the next few days, however a specific date has not yet been determined.

Nolte is the owner and operator of the North Runnels Emergency Service, which has no relation to the North Runnels Hospital, a public facility owned by the taxpayers of the North Runnels Hospital District. Nolte has lived in Winters for approximately six years and previously lived in Ballinger. The ambulance service has been in business for six years. Sheriff Baird stated that at this time no previous criminal record has been found on the accused.

Welcome rains fall on Winters area

Rain began falling on the Winters area in the early hours of Sunday morning and has continued daily through Tuesday. The moisture was welcomed by all as a near drought had plagued the area for the month of June. The moisture was the first significant rain since early June for most areas. Rainfall amounts have been fairly consistent throughout the North Runnels County area. Reports indicate near 2 inches in the Crews area, about the same amount south of Winters with rain gauges in the Wingate area measuring upwards of 1.5 inches. In the Drasco area 1.25 inches fell and the Novice road area out near Harmony received 1.8 inches.

Some crops were past help from the moisture, but cotton and late grain sorghum will be helped tremendously. At press time skies were still overcast with weathermen forecasting more rain to come.



Vacation Bible School - A summer treat for all kids!!

WHAT'S HAPPENING?

- July 19-VBS First Baptist Church 6:30 to 8:30 pm
Family Night Swim 7-9 pm
- July 20-VBS First Baptist Church 6:30 to 8:30 pm
Coleman County Electric Co-op 7 pm at BHS Auditorium
8 pm Robert Lee Historical Musical
- July 21-6 pm Family Festival at Tuscola Football Field
7 pm Pacesetter Quartet at First Baptist Church
7 pm Shep Domino Party, Shep Community Center
8 pm Robert Lee Historical Musical
- July 22-7 pm Revival Hopewell Baptist Church with dinner on the grounds afterward
- July 23-Social Security Representative at Winters Housing Authority 9:30 am to 10:30 am.
5:30 Ladies Swim, City Pool
8 pm Revival Hopewell Baptist Church
- July 24-7 to 9 pm Family Night Swim
7:30 Advisory Committee at WHS Auditorium
8 pm Revival Hopewell Church
- July 25-5:30 Ladies Swim
8 pm Revival Hopewell Baptist Church with sand wiches and ice cream afterward
- July 26-7 to 9 pm Family Night Swim
- July 27 & 28-8 pm Robert Lee Historical Musical

City Council votes to hire new police officer

Winters City Council met for their regular meeting on Monday, July 16 at City Hall. The board voted to hire a new police officer, Virginia Lee Skaggs, who was one of 24 applicants for the opening. West Central Texas Council of Governments administered tests to the applicants and four were selected for further interviews. Following the interviews, Ms. Skaggs was the choice of Police Chief Larry Willis and City Administrator Charles Ludwick and the interview board. She was recommended to the Council and they voted unanimously to offer the position to her. Ms. Skaggs has served two years on the Ranger, Texas police force and received certification from Tarleton State University. The hiring of Ms. Skaggs brings the Winters Police force to a total of five officers.

In other business, Council members authorized City Administrator Charles Ludwick to ask Browning Ferris Industries to give the city a written proposal on options for garbage collection and approximate costs involved.

Administrator Ludwick re-

ported that the Texas Department of Aviation had notified the city that a grant would be approved for airport improvements but no money will be available until 1993. A new letter to the department has been sent urging expediency and the pressing needs for runway repairs.

Ludwick also reported that advertising for bids has begun on replacement of the standpipe in the north water tower. He also reported that in order for Winters to maintain its current fire rating, street signs which are missing must be replaced. In a survey conducted last week, 36 intersections were without street signs. Ludwick stated the street department is running between \$3000 and \$5000 below budget and he would recommend going ahead and replacing the signs at a cost of \$1300 - \$1500 out of that budget.

It was also reported that Police Chief Larry Willis had attended the Child Abuse Workshop held in Ballinger in July.

After paying routine bills, the Council adjourned until its August 6 meeting.

Williams to visit Runnels County

Clayton Williams, Republican candidate for Governor of Texas will visit Ballinger on Wednesday, July 25. He will be at Pioneer Plaza across from the Runnels County Courthouse at 3:30 p.m. A reception will be held for Williams at that time and the public is invited to attend.

OIL BUSINESS

By Reg Boles

Well, folks, I've seen everything, now. I've seen the Berlin Wall come down and I've seen Tom Landry fired, but they are nothing compared to the newest innovations in the oil patch. It seems that some fast-track guys are now ready to produce oil from shale. That's right. The sure-fire indicator for non-productive oil wells and zones is now a target.

For the uninitiated, shale is an extremely non-permeable (it won't produce diddly) rock that usually divides productive zones from each other and is usually a non-desirable as far as a successful well goes. Not that Ph.D.'s haven't always claimed that oil and gas is trapped in this rock. It was just theoretical, though, and any good oil person looked for nice productive rock like sand and limestone and maybe dolomite and even conglomerates (not big corporation-but a bunch of big rocks stuck together). Shale was definitely something to avoid.

But not anymore! Horizontal drilling (the great saviour of the oil patch) is here to solve the problems associated with shale. It seems that geologists (and even a few other decent folk) are convinced that a horizontal well in carefully selected shales could produce real gushers—if one can just get that stinky shale to open up and share a little.

The theory goes like this. A horizontal wellbore can provide enough conduit over a long enough range to make that shale economically productive. But, you might say, that shale has all that gas and oil bound up and won't let it go. Ah yes, but some shales are fractured due to brittleness and overburden. The Woodford Shale in Oklahoma and the Bakken Shale in the Dakotas are prime examples. Does that word 'fractured' ring a bell? Think Austin Chalk' and fractures—we talked about that some time ago. That is the name of the game (fractures and linking them up) in the huge horizontal wells in the Chalk. The same could be true for those fractured shales. The fractures can provide a conduit to the horizontal shaft and thus produce hydrocarbons (oil & gas). The shales have been known to produce minute amounts of fluid in vertical wells, and, if enough of those minute amounts can be added together by linking fractures in a horizontal well, then a gusher is born.

Shale has something else going for it. It is considered a 'source' rock for hydrocarbons. A source rock is one that actually is a location where hydrocarbons were formed in the geologic past. Shale is considered by many experts to be the primary source rock for a large percentage of hydrocarbons in the world. Let me explain source rocks a little more.

A source rock must have had the necessary combination of the right kind of organic material,

temperature and processing time to form oil and gas. Shale usually had that combination, and, even though shale is stinky with fluid, given the right amount of percolating time, it can send a large volume of hydrocarbons out into other formations looking for a place to be trapped. A few million years is just the ticket for such a process. The theory is that shale provided most of the hydrocarbons we find in oil and gas reservoirs that produce today. There are other source rocks like carbonates (reefs, limestones, etc), but shale is the most prolific.

Why is this an advantage? Think of it this way: if shale is stinky and it has given up as much as it has—just think how much must be trapped inside the shale that couldn't get out.

I'm starting to get a bit more interested, now. It might have a chance, but Oklahoma and Dakota (North and South) are too far away. Probably wouldn't work here in Texas—right? Wrong.

There are several fractured shales right here in the currently producing fields in Texas and as close as 50 miles from right here. A group is trying to build a consortium to drill the first such well and it might be as close as a nearby county. There is still a long way to go and someone might beat them to it in another part of Texas where such shales occur. We'll see who wins this race and if there is a prize at the end.

In any case, this just proves to me what innovation can do for the oil patch. Horizontal drain-holes were considered a pipe dream for many years and the first guy to suggest it in south Texas was probably snickered at. But, he carried through with a good idea and see where it has gotten the whole industry (and the lucky royalty owners around Dilley). The shale idea is the same way. I have snickered about this one a few times myself, but it just might prove to be a great idea. It is a good idea to keep snickering to oneself until the 'proof is in the pudding'.

I just about thought I had everything figured out and now they go and change the rules. Shale can be good? It is hard to get that into my thick head, but I am going to have to do it to stay up with the changing times. You just can't be sure about anything these days—except maybe Jimmy Johnson's hairdo.

temperature and processing time to form oil and gas. Shale usually had that combination, and, even though shale is stinky with fluid, given the right amount of percolating time, it can send a large volume of hydrocarbons out into other formations looking for a place to be trapped. A few million years is just the ticket for such a process. The theory is that shale provided most of the hydrocarbons we find in oil and gas reservoirs that produce today. There are other source rocks like carbonates (reefs, limestones, etc), but shale is the most prolific.

Why is this an advantage? Think of it this way: if shale is stinky and it has given up as much as it has—just think how much must be trapped inside the shale that couldn't get out.

I'm starting to get a bit more interested, now. It might have a chance, but Oklahoma and Dakota (North and South) are too far away. Probably wouldn't work here in Texas—right? Wrong.

There are several fractured shales right here in the currently producing fields in Texas and as close as 50 miles from right here. A group is trying to build a consortium to drill the first such well and it might be as close as a nearby county. There is still a long way to go and someone might beat them to it in another part of Texas where such shales occur. We'll see who wins this race and if there is a prize at the end.

In any case, this just proves to me what innovation can do for the oil patch. Horizontal drain-holes were considered a pipe dream for many years and the first guy to suggest it in south Texas was probably snickered at. But, he carried through with a good idea and see where it has gotten the whole industry (and the lucky royalty owners around Dilley). The shale idea is the same way. I have snickered about this one a few times myself, but it just might prove to be a great idea. It is a good idea to keep snickering to oneself until the 'proof is in the pudding'.

I just about thought I had everything figured out and now they go and change the rules. Shale can be good? It is hard to get that into my thick head, but I am going to have to do it to stay up with the changing times. You just can't be sure about anything these days—except maybe Jimmy Johnson's hairdo.

HIGHLIGHTS OF AREA DRILLING ACTIVITY

COMPLETIONS

Coleman County
Western Sky has completed the Lake Coleman Graves #1 as a wildcat 6 miles NE of Silver Valley at an initial rate of 12000 MCFPD (AOF) in the Morris Sand (perfs 2855-60). Loc. is 483 FSL & 830 FWL of A. Hinton Sur. 749.
Rocky Mountain Resources

has completed the R.O. Matthews #6 in the Coleman County Santa Anna) at an initial rate of 9 BOPD & 72 BWPD in the Breneke (perfs 1690-96). Loc. is 1275 FSL & 800 FWL of Sec. 98, C.T. Pendleton Sur. 276.

Delta Hydrocarbons has completed the Cooper-Lavelle -104-#3 in the Vivian Field (5 miles SE of Oplin) in the Gray (perfs 3493-99). Loc. is 1138 FSL & 2447 FWL of Sec. 104, Blk. 2, GH&H Sur.

Concho County
Bowman has completed the A. Blaylock #3 as yet another well in the Lonesome Dove II Field (5 miles SW of Eden) at an initial rate of 120 BOPD in the King Sand (perfs 2070-90). Loc. is 1217 FNL & 1217 FWL of J. Hall Sur. 2, A-1941.

Tom Green County
IP Petroleum has completed the Pflugger-B-#20-2 in the Sugg Ranch Field (29 miles SW of Water Valley) at an initial rate of 50 BOPD in the Canyon (perfs 7617-86). Loc. is 900 FNL & 660 FEL of Sec. 20, Blk. A, Sherrick Sur., A-8196.

Phillips Petroleum has completed the Munn "B-1125" #4 in the Everett Field (4 miles SW of Carlsbad) at an initial rate of 197 MCFPD (AOF) in the Cisco (perfs 5386-5432). Loc. is 660 FSL & 660 FEL of Sec. 1125, TTRR Sur., A-4369.

STAKINGS

Callahan County
Davis Brothers has staked the R.W. Pruet #1 as a wildcat in the Mask Field area 3 miles NE of Putnam (Depth 4200). Loc. is 1554 FSL & 2000 FWL of Sec. 2286, TE&L Sur.

Fidelity American has staked the Alexander #2 as a wildcat in the Scranton Field area 4 miles SE of Putnam (Depth 2000). Loc. is 467 north & 767 east of NW corner of E.C. Tanner Sur., A-936 in the M. Cherry Sur., A-110.

C.W. Kramer has filed to re-enter the Fibley Estate #1-10 as a wildcat 3 miles NW of Putnam (Depth 800). Loc. is 330 FNL & 2970 FEL of S/2 of Sec. 10, D&DA Sur.

Big M Oil has staked the Thompson #2 in the Scranton Field 3 miles S of Scranton (Depth 2000). Loc. is 1349 FNL & 986 FEL of Subd. 18, A.T. Burnley Sur., A-11.

Rojo Operating has staked the Alvey Estate #17 in the Callahan County Regular Field 3 miles N of Putnam (Depth 1000). Loc. is 1440 FSL & 467 FWL of Sec. 2297, TE&L Sur., A-448. Page 2

Coleman County
Hayes Oil & Gas has staked the Kearley #1-A as a wildcat in the North Echo Field area 6 miles N of Echo (Depth 2800). Loc. is 2121 FSL & 2703 FWL of Sec. 79, ETRR Sur., A-162.

B.A. Wagman has staked the Rhone -A- #3-H in the Burt-Ogden-Mabee Field 2 miles N of Talpa as a HORIZONTAL well (TVD 3100). Loc. is (surf) 500 FSL & 1400 FEL of R.F. Clark Sur. 118, A-644 and (BH) 500 FSL & 960 FWL of Sec. 68, BBB&C Sur., A-1275.

Concho County
H.R. Sullivan has staked the W. Pflugger #4 as a wildcat in the Lonesome Dove II Field area 3 miles SW of Eden (Depth 3999). Loc. is 2642 FSL 1043 FWL of Sec. 2087, A. Sator Sur.

Runnels County
MSR Exploration has staked the D. Stoecker #2 in the Winters Field 3 miles NE of Winters (Depth 4300). Loc. is 1825 FNL & 467 FWL of Sec. 327, Blk. 64, H&TC Sur., A-302.

Taylor County
Victory Oil has staked the King-C-#5-V as a wildcat in the Chalky Mountain Field area 6 miles S of Trent (Depth 3900). Loc. is 330 FNL & 1300 FEL of Sec. 71, Blk. 19, T&P Sur., A-895.

The Winters Enterprise your Commercial Printing Headquarters

H & H Tire and Muffler Service 242 South Main Winters 754-4841

Roy Calcote & Sons
Locations, Pits & Roads
Dozers, Backhoes
Box 896 767-3241
24 hrs Fully Insured

Winters Oilfield Supply, Inc.
Hwy 83 South
754-5545
1-800-588-5545

Win-Tex Drilling
4849 Treadaway
Abilene, Texas Bob Jones
915/695-9694 Owner
Three rotary rigs
Experienced in vertical and horizontal drilling from 2000 to 7000 feet

Guy's Dirt Contracting
Box 576 754-4292
Winters
Dozers - Motorgraders
Backhoes - Dump Trucks

Serving the oil industry over 30 years
Mac Oil Field Company
Inc
1007 W. Dale
Winters
754-5565
1-800-588-5565
Power Kill Trucks, 30-130 BBL
Transports, Vacuum Truck, Test
Tanks, Frac Tanks
Ronnie Poehls-owner
Dickie Clough-foreman
Anywhere-Anytime

Winters Welding Works Inc.
Box 1033 754-5418
Winters
On the Ballinger Highway

RUNNELS COUNTY 4-H FASHION SHOW

On Saturday, July 14th, the Runnels County 4-H Fashion Show was held at the Carnegie Library in Ballinger. The Fashion Show is an achievement event that concludes 4-H clothing projects. Fifty-six (56) 4-H'ers were involved in this activity, according to Patricia Hohensee, County Extension Agent-Home Economics.

Deron Robinson and Jared Eggemeyer served as commentators for the evening. Recognition of the leaders was given by Beth Eggemeyer. Tammy Strube gave acknowledgments for the evening.

Prior to the public show, the 4-H'ers competed in two rounds of judging: construction and appearance of the garment on the 4-H'er. The results of the judging were announced at the conclusion of the show.

Rosette winners in each category and age division were: **JUNIOR - Pants, Shorts, Split Skirts**

1st - Tamra Schwertner, daughter of Larry and Patsy Schwertner of Rowena, 2nd - Jamie McWright, Ballinger, 3rd - Wayne Strube, Norton.

JUNIOR - Skirts and Tops
1st - Lucy Binder, daughter of Ed and Karen Binder of Ballinger, 2nd - Brooke Sikes, Rowena 3rd - Candy Day, Miles.

JUNIOR - School Dress
1st - Christina Velardo, daughter of Jodie Jacobs of Ballinger, 2nd - Phoebe Harrell of Norton, 3rd - Lindsey Brown of Winters.

JUNIOR - Dressy
1st - Shauna Halfmann, daughter of Al and Marilyn Halfmann, Ballinger, 2nd - Robyn Parramore of Winters.

INTERMEDIATES - Pants, Shorts, Split Skirts
1st - Tammy Strube, daughter of Ricky and Teresa Strube of Norton, 2nd - Amanda McCown of Miles, 3rd - Ann Cowan, Ballinger.

INTERMEDIATES - Skirts and Tops
1st - Jill Halfmann, daughter of William and Nancy Halfmann, Norton.

INTERMEDIATES - School Dress
1st - Angela Bryan, daughter of Gary and Cheryl Bryan of Winters, 2nd - Christa Gower, Ballinger.

INTERMEDIATES - Dressy
1st - Jill Frey, daughter of Charlie and Judy Frey, Ballinger.

SENIORS - Daywear
1st - Tracye Binder, daughter of Ed and Karen Binder of Ballinger, 2nd - Melissa Asbill of Miles 3rd - Kendra McCown, Miles.

SENIORS - Sportswear
1st - Christy Strube, daughter of Al and Ann Strube of Ballinger, 2nd - Beth Eggemeyer, Miles.

SENIORS - Tailored
1st - Gera Burrus, daughter of Bobby and Janice Burrus, Miles.

SENIORS - Evening wear
1st - Leslie Moeller, daughter of David and Rita Moeller of Miles, 2nd - Susan Bryan of Winters, 3rd - Sherry Schaefer, Rowena.

Oro Petro has staked the C.E. Humphrey #1 as a wildcat 1 mile E of Merkel (Depth 2850). Loc. is 547 FSWL & 1292 FEL of Subd. 28, Grimes CSL Sur. 147.

Tom Green County
CrossTimbers Production has staked the J.W. Johnson #1 in the North Christoval Field 5 miles N of Christoval (Depth 3500). Loc. is 2467 FSWL & 920 FSEL of Sec. 537, J. Heinrich Sur., A-335.

Fortune Production has staked the Hasty-Livingston #1 as a wildcat 2 miles NW of San Angelo (Depth 5800). Loc. is 2500 FNL & 660 FWL of Sec. 172, WCRR Sur., A-8032.

INTERMEDIATES - Consumer Buying

1st - James Moeller, son of David and Rita Moeller of Miles, 2nd - Angela Bryan of Winters, 3rd - Christa Gower, Ballinger.

SENIORS - Consumer Buying Daywear
1st - Bridget Mansell, daughter of Kyle and Kay Mansell of Ballinger 2nd - Tracye Binder, Ballinger.

Tailored
1st - Angie Hohensee, daughter of Alan and Patricia Hohensee, Miles.

Sportswear
1st - Melissa Asbill, daughter of Marvin and Carol Asbill of Miles, 2nd - Leslie Moeller, daughter of David and Rita Moeller of Miles.

Eveningwear
1st - Jennifer Bickel, daughter of Stan and Gayle Bickel of Ballinger, 2nd - Beth Eggemeyer, Miles.

All of the above champions received rosettes and awards from the Fashion Show donors. The 1st place person in each category will advance to District competition in San Angelo on July 26.

Several natural fiber cash awards were presented. Ballinger Co-op Gin provided \$50.00 Savings Bonds to Tiffany Lange, Amanda McCown, and Kendra McCown for the best use of 100% fabrics. Receiving 3 yd. lengths of denim fabric were: Katy Duggan, Jessica Buxkemper, Kim Jansa, Jessica King, Amy Hays, Jennifer Bickel, Tabitha Grohman, Bridget Mansell, and Beth Allison.

Ballinger Wool and Mohair provide the wool award to Angela Bryan for sewing with wool.

Poise and self control is also taught in 4-H clothing projects. Receiving stage presence awards were Tamra Grohman, Robyn Parramore, Beth Allison, Melissa Asbill, and Angela Bryan.

Winning recognition for outstanding project forms were Brooke Sikes, Christa Gower and Heather Schertner.

Honorable mention cotton awards were presented to Rebecca Pollan, Brent Jacob, Brandie Havlak, Kendra Book, Chanda Hoppe, Tamra Grohman, Beth Eggemeyer, Tabitha Halfmann, and Shannon Cowan.

Honorable mention construction awards were presented to Julie Heinze, Alisha Frey, Hollie Cathey, Amanda Harrell, Melissa Asbill, and Susan Bryan.

Outstanding 1st year achievement awards went to Whitney Young, Mandy Day, Kristen Bauerlein and Lori King.

All 4-H'ers receiving blue ribbon recognition were:
Seniors - Consumer Buying
Sherry Schaefer, Heather Schwertner, Tabitha Halfmann, Susan Buyan, Brenda Schaefer.

Juniors - Pants, Shorts, Split Skirts
Rebecca Pollan, Jessica Buxkemper, Tamra Grohman, Alisha Frey, Brandee Havlak,

Julie Heinze, Katy Duggan, Amy Hays, Whitney Young, Tiffany Lange, Brent Jacob, Kimberly Jansa, Courtney Cathey.

JUNIORS - Skirts and Tops
Jessica King, Kristen Bauerlein, **JUNIORS - School Dress and Jumpers**
Lori King, Jennifer Prewitt, Chanda Hoppe, Hollie Cathey, Kendra Book, Mandy Day.

INTERMEDIATES
Amanda McCown

SENIORS
Bridget Mansell, Jennifer Bickel, Tabitha Grohmann, Tabitha Halfmann, Beth Allison, Shannon Cowan.

Also participating in the show were three exhibitors who sewed but are not yet of 4-H age. These were Angela Jacob, Craig Jacob and Kayla Latzel.

A Clover Kids Fashion Show concluded the program. Participants were youngsters between 4 - 9 years of age aspiring to be competing 4-H'ers some day. Tracye Binder was the chairman of the Clover Kids Show and the participants were:

Sarah Blessing, Kayla Jansa, Amber Frey, Carrie Smith, Thomas Moeller, Cody Faubion, David Blessing, Michael Velardo, Zachary Pollan, Megan Pollan, Courtney Faubion, Angela Jacob, Whitney Lange, Anita Book, Nicole Latzel, Holly Englert, Brett Bickel, Shaun Cowan, Lance Schwertner, Carol Hays, Jamie Buxkemper, Christopher Mueller, Jessica Mueller, Bradley Bickel, Brandon Dierschke, Kayla Niehues.

The primary donor of the Runnels County 4-H Fashion Show is Runnels County Farm Bureau. Other financial contributors and donors are Extension Homemakers, Ballinger Tire, Runnels County Gin, Wingate Gin, Ballinger Wool and Mohair, Norton Gin, Wilde Gin, Miles Gin and Auto, Miles Co-op, Heidenheimers, Merle Norman - Winters, Merle Norman - Ballinger, Mary Kay Cosmetics - Kathy Halfmann, Mary Kay Cosmetics - Jean Boles, Middletons, Fashion Crossroads, Wins of Winters, Winns of Ballinger, Wal-Mart, Dairy Kremer, 1st National Bank of Rotan - Ballinger Branch, Pizza Hut, and Lady Love Cosmetics - Donna Springer.

Serving of the 1990 Fashion Show Steering Committee were: Darlene Gower, Dinell Jacob, Carol Asbill, Lucy Hays and Connie Havlak.

Thanks to everyone who assisted 4-H'ers in their project work and came to the Fashion Show.

The Winters Enterprise

(USPS 005016)

Published by

The Winters Enterprise, Inc.
104 N. Main Street
Winters, Texas 79567
915-754-4958

N. R. Boles

President & General Manager
Jean Boles.....Advertising
Jerre Heathcote.....Typesetting
Laurie Franklin.....Ad Design
Phyllis Boles.....Office Manager

Published every Thursday except the final week of the year.
Second Class postage paid at Winters, TX.

Subscription Rates:
Runnels County
\$10 per year
Other Texas Counties
\$12 per year
Outside Texas
\$14 per year

Any erroneous reflection upon the character, standing or reputation of any person, firm or corporation, which appears in the columns of this paper will be corrected upon due notice given at the Enterprise office.

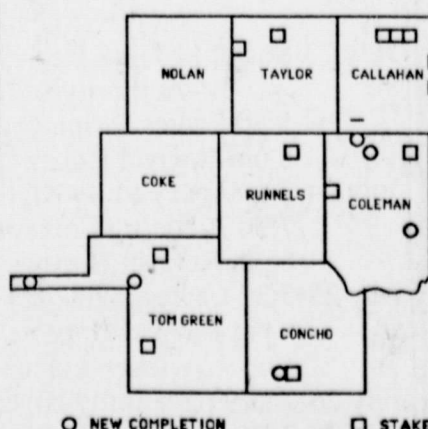
POSTMASTER: Send address changes to The Winters Enterprise, 104 N. Main, Winters, TX 79567.

MEMBER 1990

TEXAS PRESS ASSOCIATION

For all your Job Printing Needs Call Us!
The Winters Enterprise
104 N. Main St.
Winters
754-4958

JULY IS... ICE CREAM
National Ice Cream Month
Nothing can beat this frozen treat!



PAC to be

The P...
Burleson
First Ba...
Each...
talent, a...
style of...
Tradition...
form a s...
The P...
Singers...
fulfilling...
them on...
were goi...
"set the...
an even...
The PAC...
Appe...
United S...
The Batt...
The Con...
(a produ...
sion), S...
Greenvi...
The...
Associa...
Hensley...
"Walkin...
in 1986...
Other...
Smith, ...
TERS h...
in honor...
my Way...
is on the...
The p...
Saturday...
a love o...

Beth met

The B...
class of...
met July...
Hall for...
Opening...
Mrs. Vi...
were Eth...
Whitlow...
was brot...
Olive H...
Hancock...
our men...
are on t...
reading...
Christia...
national...
Standly...
friends...
urer's an...
given and...
were rea...
Memb...
ing the lu...
Clark, B...
Verden...
Eubanks...
ive Han...
Omega P...
Dollie S...
Julie and...
meeting...
prayer s...

Hon
HA



PACESETTERS gospel quartet to be at First Baptist Saturday

The PACESETTERS, an award winning gospel group, based in Burleson, Texas will be in concert at 7:30 p.m., Saturday, July 21 at First Baptist Church in Winters.

Each member of the PACESETTERS has a God-given musical talent, a versatility which puts the group in much demand. Their style of singing encompasses Southern Gospel, Country Gospel and Traditional Gospel and also moves beyond their musical roots to form a style of their own.

The PACESETTERS were organized in 1977 as The Redemption Singers. In January 1984, the group decided their name was not fulfilling enough and needed a change. "PACESETTERS" came to them one night during a church service when they felt that if they were going to "talk the talk," then they needed to "walk the walk" and "set the pace" as the PACESETTERS QUARTET. Now, to express an even broader view of their music, the group is known simply as The PACESETTERS.

Appearing at churches of all denominations throughout the United States, the group also has had the honor of being featured on The Battle of Songs in Fort Worth, The State Fair of Texas in Dallas, The Convention Center in Lubbock, Country Crossroads TV Show (a production of the Southern Baptist Radio & Television Commission), Six Flags Over Texas in Arlington, Nite Line Television in Greenville, SC and the Johnny High Show in Fort Worth.

The group has been honored by the Southern Gospel Music Association of Texas as its "Group of the Year" and tenor singer, Jeff Hensley was nominated "Male Vocalist of the Year." Their single, "Walking Home from Babylon" was nominated "Song of the Year" in 1986.

Other members in the group include Jim Smith, bass, Troyanna Smith, baritone and Randy Hart as lead singer. The PACESETTERS have recorded several albums, their latest being a live album in honor of their 10th anniversary. They have a new single "I'm on my Way," that is now being played nationally on radio stations and is on the charts at several stations.

The public is invited to attend the concert at First Baptist Church, Saturday, July 21 at 7:30 p.m. There is no charge for the concert, but a love offering will be taken.

Bethany Class met July 10

The Bethany Sunday School class of the First Baptist Church met July 10 in the Fellowship Hall for their monthly meeting. Opening prayer was given by Mrs. Vivian Foster. Hostesses were Ethel Mae Clark and Billie Whitlow. The business meeting was brought to order by Mrs. Jo Olive Hancock, President. Mrs. Hancock also gave a prayer for our members and friends who are on the sick list. The Scripture reading was read by all on "The Christian Home." The devotional was given by Mrs. Dollie Standly, a visitor, on "Making friends a Hobby." The Treasurer's and Secretary's report was given and May and June minutes were read and approved.

Members present and enjoying the luncheon were Ethel Mae Clark, Billie Whitlow, Lucille Verden, Pinkie Irvin, Lillian Eubanks, Vivian Foster, Jo Olive Hancock, Opal Hamilton, Omega Priddy, and visitors Mrs. Dollie Standly, Pat Simpson, Julie and Matthew Whitlow. The meeting adjourned with the class prayer said in unison.

New Arrival

Rudolph and Antonia Torres of Winters are proud to announce the birth of a baby boy. Rudolph Torres, Jr. was born Thursday, July 5, 1990 at 3:18 p.m. at Hendrick Medical Center in Abilene. The newborn weighed 6 lbs. 10 1/2 ozs and was 20 inches long.

Rudolph, Jr. will be welcomed at home with his four sisters. Paternal grandparents are Mr. and Mrs. Joe Ayala and Mr. and Mrs. Jake Cortez, Jr., both of Winters.

Runnels Farm Bureau Barbecue

The annual Runnels County Farm Bureau barbecue will be held Thursday, August 2 in the Ballinger City Park at 6:00 p.m. Each Farm Bureau membership is entitled to two free adult plates. All non-members are invited to attend. Tickets for non-members will be \$4.00 and a child's plate will be \$1.00 each.

In case of bad weather, serving will be in the Community Center.



Family Festival July 21 at Tuscola

Saturday, July 21, the Elm Creek Citizens Association Volunteer Fire Department and South Taylor Emergency Service will sponsor a Family Festival at the Tuscola football field. There will be no admission charge to the festivities which begin at 6:00 p.m. ECCA Volunteer Fire Department will be selling brisket sandwiches and other refreshments. There will also be music, arts and crafts for sale, games and activities for the children and adults as they await the "big event."

The main attraction of the evening will be the Cow Patty Bingo. The "big event" is the dropping of the first cow patty. A forty yard section of the football field will be lined off in one yard squares which may be purchased that evening or in advance for \$5 each. A cow will be turned into the area and the person "owning" the square on which the first patty lands will win \$500. If the lucky square has not been purchased, the \$500 will go to the Ben Richey Boys Ranch.

Taylor County Commissioners Jack Turner and John Thompson will be the referees for the event. Charlie Jordan will be the announcer.

Notice

Chamber of Commerce Directors will not meet in July. Next scheduled meeting is August 14.

WHS Class of '61 meets on June 30

Winters High School Class of 1961 met Saturday, June 30 beginning with the All School Reunion at the school cafeteria. The class toured the high school building and met in a classroom for a short class meeting and picture taking.

After touring downtown and enjoying the Centennial Parade, a meeting was held at the Burger Hut. Class members enjoyed reminiscing their school days of the 50's and early 60's. The business session was presided over by Connie Mac Gibbs. Donations were taken for the Pearl Jackson Scholarship Fund and the class then voted to have their next reunion in the fall of 1991. The class had an excellent reunion and looks forward to the "30th" next year.

Later in the day a delicious Bar-B-Que was served before saying goodbyes and departing for the final performance of the Winters Centennial Pageant.

Class members present for the reunion were Diane (Buckner) Young, Midland; Ernest Cathey, Burleson; Virginia (Foster) Appleby, Irving; Connie Mac Gibbs, Winters; Leon Good, El Paso; Gwen (Graham) Adams, Bedford; Margaret (Guy) DeMarco, Hobbs, New Mexico; Gary R. Hill, Eastland; Sandra (Hord) Long, Ingleside; Virgie (James) Wade, Winters; Cecile (Nitsch) Wiginton, Midland; Pat Pritchard, Clyde; Jeannie (Seals) Wheat, Winters; David Smith, Winters; Nancy Spill, Winters; Margaret (Stoecker) McCormack, Houston; Bruce Waggoner, Deer Park; Betty (Wessels) Ehlers, Tahoka.

Special visitors were spouses, children and former school teachers, Corrine Buckner, Big Spring; Swede Hanson, Bryan; Nell Benson, Rough & Ready, Ca.



Left to right: Kathryn Kozelsky, Rhonda Bethel, Kim Baker

Band members attend camp

Five members of the Winters Blizzard Band attended the Howard Payne University Auxiliary and Percussion Camp the week of July 9. Three flag members, Kathryn Kozelsky, Kim Baker and Rhonda Bethel, learned new jazz routines and brought home a blue ribbon.


Also attending were drum majors Tammy Dry, who brought back a blue ribbon, and Gene Faubion, who won a red ribbon. Together the group brought back to Winters three white ribbons, three red ribbons and two blue ribbons.



Bob South
675-6121
1-800-588-6121

4047 North First • Abilene, Texas 79603

FROM A GOLDFISH BOWL



BY PASTOR STEVE BYRNE

The past few years I have looked forward to the Fourth of July. Primarily as a day our whole family spends together and I take the day off. That is a special treat for us, since many of our cultural holidays are also religious holidays. These days are work days for preachers.

We were looking forward to the 4th. Played some baseball and tennis. Then fired up the barbeque pit.

Then Ryan sauntered up to me. "Dad, I have an idea. Why don't we gather around the table while the fire is going and you can read the Declaration of Independence out loud to the whole family?"

Out of the mouths of babes! We were thinking of the fourth as a special family time and a day off from work. But the original meaning of the holiday, although acknowledged, was not being celebrated in the Byrne household.

We did just that. Have you read the Declaration of Independence lately? It is a marvelous document! Early into the reading, I began to sense the intense commitment, excitement and fear that those early fathers must have experienced in writing a document that had no precedent

in our part of the world. Knowing that if the venture failed, it would cost them their lives. Believing, if it succeeded, that their vision would become reality.

It was my best Independence Day celebration in years!

I wonder how many celebrations lose their original meaning, and along with that, their excitement and inspiration?

In the Old Testament, God gave his people strict instructions that when they celebrated the Mighty Acts of God, like the Exodus, they were to gather and tell the story. Each year. Again and again. To relive the events which had happened in the past, bringing them to the place they were and determining their identities.

Family holidays are special, in and of themselves. But when families celebrate the formative events from which the holidays sprang, families bond themselves together AND bond themselves to their families which have gone before.

Like I said, out of the mouths of babes! Maybe the Old Testament prophecy still holds true. "And a little child shall lead them."

Courtesy of
St. John's Lutheran Church

1100 W. Parsonage 754-4820
Sunday School 9:30 A.M.
Worship Services 10:40 A.M.

The Winters Enterprise your Commercial Printing Headquarters

Flowers, Etc.
Flowers for all occasions and all budgets





115 S. Main 754-5311

ATTENTION

Miles Locker Plant will be closed Sunday, August 12 through Sunday, August 26 for repairs and vacation.

There will be **NO CUSTOM SLAUGHTERING** from Friday, August 3 through Sunday, August 26. We are sorry for any inconvenience this may cause. However, we will be back & open on Monday, Aug. 27. Please call 468-3501 if you have any questions or to make any arrangements.

WHAT A TALENTED GUY!

Horse & Wagon Cowboy The Happy Banker

HAPPY 43rd BIRTHDAY, MAC!

COKE COUNTY RODEO

Coke County Roping Arena
Bronte, Texas
July 20-21, 1990 • 8:00 p.m.

ADMISSION

- Adults - \$3
- Children (12 & under) - \$1
- Children under - 5 FREE

AWARDS

- Hand-tooled saddle pads to all-round cowboy & cowgirl in 8 & under through 16 - 18 divisions.
- Pay back - 1-4 monies for 10 or more entries. 1-2 monies for events with less than 10 entries.

For More Information
CALL 915-453-2956

ACTION HEATING & AIR CONDITIONING
707 Strong Ave.
Ballinger

SALES • SERVICE • INSTALLATION
• RESIDENTIAL • COMMERCIAL • MOBILE HOMES •
• FINANCING AVAILABLE •



MONTHLY SPECIAL
GOOD NOW
\$50 OFF on Condenser Change Out
\$100 OFF on Complete System Change Out
with this ad ----- no expiration date

FAST & DEPENDABLE SERVICE

365-2189 Days Lic. No. TACLB006705 Nights 365-5645

Poe's Corner

By Charlsie Poe



Five finalists ride in style

Many individuals and groups cooperated to make the Centennial Celebration a huge success. Tribute is due the women in the "First Lady of Winters" contest. They helped in almost every phase of the ceremonies as well as boosting finances by the sale of tickets prior to the pageant.

Some 14 ladies entered the contest, but five finalists were chosen and they had many responsibilities during the week before the pageant.

It wasn't until the first night of the show, just before curfew, that sealed envelopes were opened and each contestant learned her position on the ballot.

LaRue Harrison, fourth runner-up, was escorted by her nephew, Larry Collom, when presented to the show goers. She played the part of a pioneer woman in the picnic scene, where she was a wife and mother. In other acts, she was a barroom huzzy and Charleston dancer.

Harrison has been a business woman in Winters since 1948 when she and her husband, P.L. bought into the parts business with his Uncle Jack Harrison. After his death, they bought the business and operated it until P.L.'s death in 1976. LaRue continues to work full time and has also built a store in Ballinger.

Harrison has two sons, Phil and Rex, and two grandchildren, Jennifer and Matt. Adopted and separated from her brothers and sisters when she was four years old, P.L. helped LaRue find her family - one sister, Mary Lou Mitchell of San Antonio is living. Her daughter, Bobby Lou Collom and husband, assist in the business.

Harrison finished a Catholic school in Dallas and returned to Abilene to work for one year. She then returned to Winters to be near the L. S. Wilsons, cafe people, who rescued her from her first unfortunate adoption. It was here she met P. L. and they were married in 1940. For a time during the war they were away helping to build airplanes.

Third runner-up was Lura Lee Garrett. She was escorted by her son George Lee. The daughter of Dr. and Mrs. Fred Tinkle, who came to Winters in 1900, Lura Lee was born and reared here. She graduated high school in 1931 and married George Garrett, a civil engineer, the same year. A graduate of A & M, he was with the highway department for 32 years. They lived in Austin, Bryan and Lubbock before moving to Ft. Worth where he was employed with Portland Cement for 12 years before returning to Winters 24 years ago. He died in 1979.

Garrett's brother, J. S. Tinkle, was looking forward to the celebration but died on May 13. His wife Mildred attended the celebration. He was proud of his venture in business when he was in high school. He operated Tinkle's confectionary for two years in a building on Main Street owned by his mother.

George Lee Garrett followed in his father's footsteps and was employed by the highway department. He retired four years ago and he and his wife live in the Dr. Tinkle homeplace. A son, Dr. and Mrs. Neil Garrett live in Moorepark, Ca. He is a sociologist at a veterans hospital in Los Angeles. His daughter, Elizabeth Lee Garrett lives in Fort Worth.

Lura Lee was a member of the tinkle Belles, worked in the hospitality room and helped serve the school reunion breakfast where over 1000 attended.

Debra Lindsey, second runner-up was escorted by her husband, Raymond. The family has been in Winters only 4 1/2 years, but Debra has been very active in civic and social work. In the Centennial Pageant she was a mother in the church scene, Martha in a special act, a photographic model and in the marathon dance.

Lindsey has been executive director of the Housing Authority for three years. She received her training through the Institute of Real Estate as a Certified Public Housing manager. She graduated from high school in Hawley. There are three daughters, Teri Ledbetter, Carla and Darci Lindsey of the home.

The Lindseys attend St. John's Lutheran Church and through the Woodmen of the World Lodge, have done some beautification on the Melba Emmert Art building. She has served her first year as coach of a minor league baseball team. Her parents, Mr. and Mrs. G. M. Winkler of Hawley attended the pageant. A brother, Danny, of Lake Jackson was unable to be present.

Lindsey said that the pageant helped her to make many friends and to feel like she was part of the community. We hope this fellowship can continue through some activities that have been started.

Ferrell Dean Brown was first runner-up, escorted by her husband, Frank. She is a native and was born April 14, 1928 to Newt and Lucille Stoecker, who lived in the Victory community. They moved several times during the depression, but returned to the Victory community to live. Ferrell Dean graduated from Winters High School in 1946. In August of that year she married Frank Brown, son of John Sanford and Sally Brown. They lived in the Dale community and several other places, but returned to Winters in 1956. They have lived in town 33 years in the same home on Main Street. The Browns are local agents for the Germania Insurance Company of Brenham.

Ferrell Dean has been active in club work and the Ladies Auxiliary of VFW Post 9193. She worked for the Winters Independent School District for 15 years. Afterwards, she opened a dog grooming shop and enjoys every minute of "being in the dog house."

Brown is proud of her ancestry. Her mother's father, J. W. Corum, was a blacksmith here in early days. Her father's grandfather, a Lutheran pastor, came from Germany and established a little church at Round Top, Texas which is still standing and over 100 years old.

The Browns have two daughters, Ron and Sarah Graham of Dallas and Ace and Marty Polk of Winters. The grandchildren are Jarrett Graham, Dallas, Noel Graham and Amanda Polk of Winters.

Ferrell Dean enjoyed being a pioneer in the pageant dancing the square dance, something she had not been able to do since a car wreck in 1962. She also enjoyed promoting the production on TV with Julie Springer.

Last on the program was the first lady honor which I received and was escorted by son Dennis.

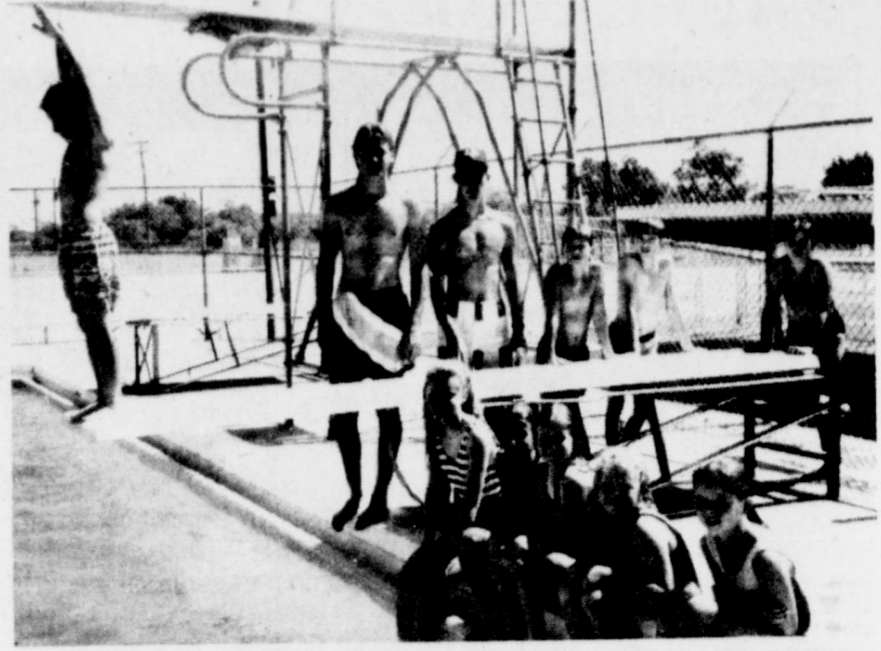
We began immediately to think about our carriage in the parade Saturday. We would have enjoyed riding in a limousine but none was available. We engaged a new white pickup from Bahlman Chevrolet and decorated it in red, white and blue, with Darlene Sims help on the signs and Jeannine Poe from Tillamook, Oregon helping tie the bows. We now had a carriage in which to ride.

Winners

The winners of \$25 gift certificates given by Joni-Lyn Factory Outlet at the Industrial Day Show June 27 were Pauline Huckaby and Ferrell Dean Brown.

Revival services at Hopewell Baptist

Hopewell Baptist Church will have a revival beginning Sunday, July 22 at 7:00 p.m., followed by dinner on the grounds. The services will continue July 23, 24, and 25 at 8:00 p.m. On Wednesday night following the services sandwiches and ice cream will be served. Preaching services will be led by Brother John Stanislaw and music will be led by Henry Pinkston.



An Advanced Swim Class (11:00-12:00) taught by Dan Killough and Brandon Killough. On the board is Barrett Brown. Behind the board (l to r) Dan Killough, Brandon Killough, Kyle Loudermilk, Kyle Green, Angie Lee. Seated (l to r): Tabatha Grohmann, Janet Guy, Robyn Parramore, Michelle Paschall, Julie Lancaster.



An Intermediate Swim Class (11:00-12:00) taught by Willie Belk and Josh Awalt, in the background. Front row (l to r): Jeremy Hope, Craig Jacobs, Joseph Joeris, Justin Calcote, John Hoppe, Travis Grohmann, Tanner Donica, and Wade Parramore.



A Beginner Swim Class (11:00-12:00) taught by Brandi Brown, with Marcie Paschall and Britney Franklin on the "Boogie Boards".

Swimming lessons are under way

The first session of swimming lessons is in full swing. A total of 45 kids are enrolled in the classes now taking place.

The 10:00 to 11:00 am session has five classes, which are made up of two beginner classes, two intermediate classes, and one advanced class. The 11:00 to 12:00 session has four classes, which are two beginner classes, one intermediate, and one advanced.

Dottie Loudermilk, pool manager, has six lifeguards instructing these classes. These

lifeguards are Dan Killough, Willie Belk, Brandon Killough, Kim Deike, Brandi Brown, and Barbie Bradley. Future lifeguard, Josh Awalt, assists the regular teachers.

The classes run everyday for two weeks at \$25 per child. The second session will begin July 23 and run through August 3. Only beginner and intermediate classes will be taught during this session.

For more information call Dottie Loudermilk at the pool, 754-4645.

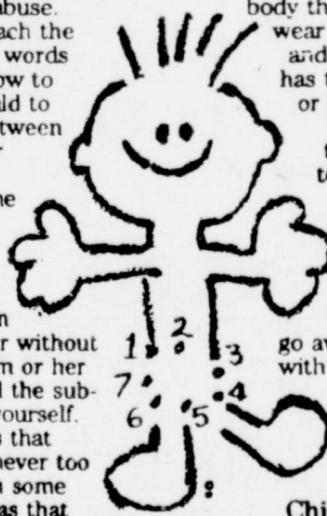
Sheriff's Report

On June 29, an incident occurred on the Rodeo Arena road involving Brandon Killough, Lavelle Killough, Chris Matthews, and R. C. Kurtz. Charges were filed on Mr. Kurtz by Mrs. Killough for one count of reckless driving and two counts of disorderly conduct. Mr. Kurtz posted one bond of \$1000 and two \$400 bonds.

Randy Nolte of Winters, arrested on Saturday, July 14, at Wintgate, and charged with two counts of sexual assault of a child under 17 and one count of indecency with a child under 17 by contact. Also charged with display of harmful material to a child. Currently being held in Runnels County Jail in Ballinger (see related story Page 1).

SHOW YOUR CHILD WHERE TO DRAW THE LINE

If you're like most parents, you may wonder at what age your child should be told about sexual abuse. How to approach the subject. What words to use. And how to teach your child to distinguish between affectionate or "good" touch and unwelcome or "bad" touch. But perhaps most difficult of all, is how to warn your youngster without frightening him or her when you find the subject so scary yourself. The truth is that your child is never too young to learn some very basic ideas that can provide a lot of protection.



One concept that a two-year old can understand is that any part of his or her body that is covered by underwear are "private parts" and that no one has the right to touch him or her there. It is also important that your son or daughter be encouraged to bring any "touchy" situations to your immediate attention. While avoiding the difficult of all, issue won't make the problem sexual abuse go away, open discussion with your child can prevent a lifetime of heartache. So take a moment to help safeguard your child today.

Child Safety. It's a matter of show and tell.

The Winters Enterprise, Inc.
104 North Main
Winters, Texas 79567
915-754-4958

Sell through the classifieds

Winters Funeral Home Inc.
Box 395
Winters
754-4529

Mike Meyer, Mgr.
Linda Dry, Sec.
Prepaid Funerals
Insurance
Monuments

COKE COUNTY

HOME OF THE RABBIT TWISTERS
"OLE COKE COUNTY - HOME OF THE RABBIT TWISTERS"
A colorful story of Coke County in music, drama & comedy
Four Performances: Friday & Saturday Nights The Last Two Weekends In July
July 20-21, 27-28
Tickets are \$2.50 & \$5.00
Production Time is 8:30 pm
For More Information Call:
915-453-2831
Or Write: Coke County Pageant Association, Inc.
P. O. Box 26, Robert Lee, Texas 76945

Bahlman Jewelers
Free gift wrapping
&
Free engraving
Good Old
SUMMERTIME
S.A.V.I.N.G.S.
Other special services
Use our convenient layaway or credit plan
106 S. Main 754-4057
Winters

1990 Cadillac
Sedan De Ville Stk #81
Beautiful Cotillion White
Red Leather Interior
\$30,111.00 MSRP
\$5376.00 *Discount
\$24,735.00 Toliver Price
See Billy Sims, Ben Alexander
or Joseph Toliver
TOLIVER BROTHERS
Ballinger, Texas
1-800-588-2552
365-2552
*rebate to dealer
Complete Financing Available
Top Prices for Your Trade-In

Crews News
By Hilda Kurtz

A friend you have to buy is not worth what you paid for him.

Coleman Forman attended the Blanton Reunion Sunday. Seventy-four registered for the reunion which took place at the St. Mary's Hall in Ballinger. He met cousins he hadn't seen in years. Coleman's sister, Dean and Weldon Tate of San Angelo also came.

Before I continue writing I must tell that my rain gauge has 2.4/10" in it. I have a good mind not to pour it out.

Around 50 attended the Hambright reunion in the Winters Community Center. Gaston and Ophelia Ernst of San Antonio were the hosts. Everyone was glad Effie Dietz of Canterbury Villa of Ballinger got to come. Nila and Therin Osborne and John and Stephine McGallion from here attended. Later John and Stephine came home with them.

Gary Hill, Eastland, spent Tuesday through Thursday with his mother Claudia. Mike Hill of Sweetwater also came during the week.

Glad to hear Earl Cooper came home Tuesday after being in the North Runnels Hospital in Winters for checkup and treatments.

Neysa and Melinda Sommerville, San Antonio, spent several days with Corra Petrie. On Sunday they ate out at the Peachtree Plaza after church services.

We, up at the Winters Community Center, enjoyed having Kathy Phillips, Abilene and Bernie Faubion for coffee break on Tuesday.

Rodney, Bernie, Gene and

Brian Faubion were in Abilene and had supper with Kathy and Dan Phillips Tuesday night.

Chester McBeth had a checkup Friday with his Abilene heart doctor. The Doc says he's doing just fine.

Chester's daughter, Sybil Tounget of Blackwell came during the week.

Hopewell Church Revival starts Sunday a.m., the 22nd through 25th. On Wednesday night ice cream and sandwiches will be served. The speaker will be John Stanislaw from Santa Anna and Song Leader will be Henry Pinkston of View.

Adilene Grissom, Wanda Sims and Melinda Amidom of San Angelo spent Friday and Saturday with Kris Sims in Austin. On Sunday, Adilene attended the Blanton Reunion in Ballinger.

Margie and Walter Jacob spent Sunday afternoon in Ballinger with her mother, Louise Michalewicz. Others also there were Beatrice Michalewicz, Barbara Heathcott and children and Mr. and Mrs. Cecil Halfman of Garden City.

Bro. Oscar and Janie Fanning were Sunday lunch guests with Hazel and Selma Dietz.

Hazel and Selma attended cousin John Couch's funeral in Big Spring Tuesday. Our sympathy to the Couch relatives.

Those enjoying a picnic at Hords Creek Lake Saturday night were Doris and Marion Wood, Jeff, Darla and Steven Cameron, Coleman; Doug Bryant, Brownwood; Pat and Douglas Malloy, Abilene and Frances Mincey, Big Spring.

CCEC 52nd Annual Membership Meeting to be held in Ballinger

Coleman County Electric Cooperative's Annual Membership Meeting will be held Friday night, July 20, at the Ballinger High School Auditorium. Registration and entertainment will begin at 7:00 P.M. with the Business Meeting to begin at 8:00 P.M.

This will be the second time for the Cooperative to hold its Annual Membership Meeting in Runnels County. Last year was one of the largest crowds ever and over 50 door prizes were awarded to those attending.

Every member attending will receive a very nice door prize package at the door, and also become eligible to win other prizes to be given away at a drawing after the business meeting. Those attending are asked to bring the ballot and drawing card from the back page of the Annual Meeting Booklet. If ballots are mailed, they must be in the Cooperative's office by 11:00 A.M., July 20, 1990. Everyone in attendance will receive a free

cup of homemade ice cream, cookies and punch, prepared by the Runnels County 4-H Club.

Coleman County Electric Cooperative is an electric distribution Co-op serving over 7,500 meters in the rural areas of Coleman, Runnels and surrounding counties. Each member is represented by a director from their area who is elected every three years to serve on a nine member board. The Cooperative has been providing dependable electric power to this area for over 52 years.

There will be a blood pressure check offered, rural TV Satellite information, a video presentation, the Second Typically Texas Cookbooks will be on sale, entertainment will be provided by "The Echo Rumble Band" and an electrical arcing demonstration.



Call The Winters Enterprise for all your job printing needs



JPs Attend Seminar Attending were: (1 to r) J. C. Hodnett of Runnels County, Pct. 2 Pl. 2; Opal I. Jacoby of Coke County, Pct. 1 Pl. 1; and Wilburn Davis of Runnels County, Pct. 1

JUDGES ATTEND SEMINAR

One hundred two justices of the peace from around the state were certified at a 20-hour basic justice of the peace seminar May 22-25 in San Angelo. The seminar, conducted by the Texas Justice Court Training Center headquartered at Southwest Texas State University in San Marcos, is held in compliance with supreme court rule and statute (Art. 27.005) Texas Government Code. Topics covered included judicial demeanor, new legislation impacting the Justice

of the Peace Court, code of judicial conduct, criminal trial procedure and simulations, forcible entry and detainer, emergency detentions (mental, drug and alcohol), judicial liabilities, juvenile law, alcoholic beverage laws, parks and wildlife laws, protective orders and peace bonds, rules of evidence, search and arrest warrants, duties of a magistrate, hot checks, inquests and financial management. Attending were J.C. Hodnett, Opal I. Jacoby, and Wilburn Davis.

PUBLIC RECORD

DISTRICT COURT (Filings)
The First National Bank of Rowena, Texas vs. Martha Simecek, 7-10-90, Note.
Randy D. Ashton vs. Marshall Stovall and Pride Refining Company, 7-10-90, Damages.
In the interest of Scott Mitchell Pounds, a minor child, 7-12-90, Parent-child relationship.
Mac Oil Field Company, Inc. vs. Shartex Energy, Inc., 7-12-90, Account.
In the interest of Lori Anna Escobar, Jonathan Martin Escobar, Angelica Marie Escobar, Patricia Yvonne Escobar, 7-13-90, Parent-child relationship.
In the interest of Steven Kane Crouch, a minor child, 7-13-90, Parent-child relationship.
In the interest of Danny Lee Duffy, a minor child, 7-13-90, Parent-child relationship.
Mary Katherine Ramos vs. Sam Tony Ramos, 7-13-90, Divorce filed.

DIVORCES GRANTED (District Court)
Audra Fay Hart and Donald Allen Hart, 7-9-90.

MARRIAGE LICENSES
Roger Dean Killingsworth and Margaret Ailene Steele, 7-3-90.
Timothy Torres and Michelle Lee Esquivel, 7-9-90.
Steven Lavon Cochran and Rabecca Marie Helm, 7-10-90.

COUNTY COURT
Eric A. Howard-Assault, 6-26-90, Order of Dismissal.
Daniel Beechley-Failure to control speed, 6-27-90, Defendant entered plea of guilty to failure to control speed. Fined \$200 plus \$112.50 costs.

Ronald Wayne Koonce -Speeding, completed deferred adjudication period, 6-29-90, Order of dismissal.
Jim David Fenwick-DWLS, Convicted of a felony, time in TDC, 7-3-90, Order of dismissal.

Jim David Fenwick-Failure to stop and notify of an accident, convicted of a felony, time in TDC, 7-3-90, Order of dismissal.
Rueben Torres Castillo-Prohibited weapon, plead to another charge, 7-5-90, Motion and order dismissing.

Rueben Torres Castillo-DWI-subsequent, 7-5-90, defendant entered a plea of guilty. Fined \$500 plus \$127.50 costs; assessed one year jail probated for two years at \$25 per month probation (license suspended for six months).

Lupe Ormalez-Prohibited Weapon, 7-5-90, defendant entered a plea of guilty. Fined \$200 plus \$127.50 costs.

Chris Keys-Assault, 7-6-90, Defendant entered a plea of no contest fined \$500 plus \$129.50 costs.

Gerald Williams, Jr-Terroristic Threat, 7-9-90, defendant entered a plea of guilty fined \$100 plus \$127.50 costs.



Twain Talk

by Twyla Twain

Been to the movies lately? I don't mean renting a movie, popping your microwave popcorn, and settling down on the couch at home. I mean driving in the car, looking for a place to park, walking on hot asphalt, standing in line to chunk down some big bucks, and going into a mysterious door to see a "real" movie at the "real" picture show.

I love going to the movies. Always have. Even when it only cost a dollar for everything - movie, popcorn & coke. Even when I sat in seats with holes everywhere and walked on a floor so sticky that I didn't dare wear thongs for fear of losing them forever. That's because I feel that just getting to the right seat in the theatre is half the fun.

I think it's fun standing in line behind a 6-foot "kid" who's trying to pass as a 12-year-old. My heart softens at the sight of an elderly couple getting their senior citizen discount but then I wince when the lady in the booth asks me the same question. I especially enjoy passing by the expensive concession counter with my own supply of hot dogs steaming in my purse (my hubby is so kind - he allows me several trips to the water fountain during the movie).

Then there's the big moment of decision - which door do you enter to get the best seat? Do you go right or left? I love the sensation of going into the theatre when it's all dark and my eyes haven't adjusted yet and I'm stumbling around, unable to see anybody or anything, while everyone else in the theatre can see me plain as day.

My little hubby has a theory that if a couple arrives ahead of time, they will easily be seated only to have the woman wait until the movie begins and nature calls so she has to get up and

leave. I'm afraid I'll have to agree with him on this one cause the last time we went to a movie, this very thing happened all over the theatre. I didn't "go" because I didn't want to miss any part of Ben Hur.

Anyway, getting to the seat in the middle of the row is fun and seems to present a strange situation. Tell me, as you squeeze down the row, which side of your body do you turn toward the folks already seated? I watched a poor pregnant lady struggle with this dilemma as she bumped people in the head like stacks of dominoes as she tried to get to her seat. She just couldn't decide which direction to turn and tried everything. I'd estimate that woman said "excuse me" nine times while trying to get to her seat. And all the while her husband was waiting in the aisle, munching his popcorn, watching the movie, completely oblivious to his wife's struggle.

The next choice of available seats is always on the front row. Now who in the world ever wants to sit on the front row at the movies? Of course, I'd like to offer the suggestion that these seats would be prime choice if they were reclining seats that provided a warm, gentle massage during the entire show and came equipped with pillows and blankets since the temperature in most theatres hovers at the frostbite stage.

But then the lights would come on and you'd probably have a whole row of sleeping, drooling, exhausted housewives who couldn't stay awake long enough to see the "Switching Theatres is Prohibited" warning. Oh well, maybe that's entertainment!

--And Ne'er the Twain Shall Meet--

Social Security Rep. to be in Winters July 23

A representative of the San Angelo Social Security Office will be at the Winters Housing Authority Monday, July 23, from 9:30 to 10:30 a.m.

If you need to sign up for benefits, or have any questions about benefits you may consult with him at this time.

HEIDENHEIMER'S
JULY CLEARANCE SALES
1/2 PRICE
Rack of Mens Leather Tennis Shoes
Girls & Ladies Assorted Shoe Styles
Juniors Jeans-Silver Lake, L.A. Gear
Ladies Blouses-Big Assortment
Other Specials throughout the Store
105 S. Main WINTERS 754-4401

Winters Flower Shop ... & More
119 S. Main 754-4568
Flowers, Gifts, Tuxedo Rental
Janice Pruser
Owner

FOREIGN CARS aren't FOREIGN TO US
We sell Quality EIS Brake Parts . . . engineered specifically for today's Import Vehicles.
Harrison's Auto Parts
122 S. Main Winters, Texas
754-5561
EIS BRAKE PARTS

JULY SPECIAL
FREE lining with all custom drapes
QUALITY INTERIOR SERVICE
Everything custom fitted!
CALL TODAY
754-5625 • 128 S. Main • Winters

Weekly livestock report

SAN ANGELO -- Weekly Trends/Texas Markets: At major Texas livestock market centers this week slaughter cows steady to 2.00 lower, bulls steady to 3.00 lower, feeder cattle and calves steady to 3.00 higher. Barrows and gilts steady to 2.00 higher, sows steady to 1.50 higher.

At San Angelo last week receipts totaled 17,325 head of sheep in a two day sale. Feeder lambs steady; slaughter ewes steady to 2.00 higher, slaughter lambs not fully established. In direct trading slaughter steers and heifers steady to .50 higher in the Panhandle area. In the South Texas area slaughter steers and heifers steady. In the West Texas area no recent comparison on slaughter steers or heifers. Slaughter lambs steady. 82,200 head of slaughter steers and heifers sold out of Texas feedlots this week, with 80,000 head from the Panhandle area.

Wool & mohair: Trading on Texas wool at a standstill. Trading on Texas mohair slow under very light demand. 200,000 lbs. of clean-up sales of spring adult brought .75-.85 late, .75 grease fob warehouse.

SHEEP AUCTION: Receipts 5818; for the week: 17,325; two weeks ago: 14,268; last year: 22,786. Compared with two weeks ago feeder lambs generally steady. Slaughter ewes steady to 2.00 higher. Slaughter lambs not fully established. Trading fairly active, demand moderate. Supply included 33% feeder lambs, 45% ewes, 10% stock ewes, 2% slaughter lambs, balance goats. This report compiled by the federal-state livestock market news service.

FEEDER CLASSES
Spring lambs: Choice and fancy 40-100 lbs., 50-56.50, bulk 52-55; mixed good and choice 40-100 lbs., 40-50.

SLAUGHTER CLASSES
Spring lambs: Choice and prime few 90-100 lbs. 55-58.50; 100-110 lbs., 50-52. Choice yearlings 100-135 lbs. 42-48.

Ewes: Good 30-36, utility 21-30, culls 10-20.
Bucks: 22-30.

Goats: Spanish billies and muttoms 54-80 per head, small billies and muttoms 40-50 per head. Spanish nannies 30-46 per head, spanish kids 25-39 per head, small kids 12.50-25 per head.

Stock ewes: Good and choice yearlings 50-62 per head. Good mixed age 35-45 per head. Medium and good baby tooth to solid mouths 28-39 per head.

CATTLE AND CALF AUCTION: Estimated receipts for the week: 6000; two weeks ago: 7680 (includes 3915 calves for special feeder calf sale two weeks ago); last year: 4293. Compared with two weeks ago feeder steers and heifers steady to 2.00 higher. Slaughter cows steady to 2.00 lower, bulls 2.00-3.00 lower. Stock cows and pairs weak to moderately lower. Trading and demand moderate. Supply included 20% stock cows and pairs, 35% calves, and 30% slaughter cows and bulls, and 15% yearlings.

Sell through the classifieds

Old Settlers Reunion to feature food, fun

BUFFALO GAP -- The 70th Annual Taylor County Old Settlers Reunion is scheduled for Friday through Sunday at the Old Settlers Grounds. Admission is free. A dance from 8 p.m. Friday to midnight gets things under way. It features the Lone Star Band and costs \$4 per person. Registration for the reunion begins at 8:30 a.m. Saturday. A hometown parade is set for 10 a.m., and introductions and awards are scheduled at 11:30 a.m. At noon, a barbecue lunch is to be served. Cost is \$4.50 per person. In the afternoon, live musical entertainment, a domino tournament, variety dance exhibit, children's area, mule jumping, washer pitching and horseshoes are planned. Serving for a hamburger supper begins at 5 p.m., and musical entertainment, including a square dance exhibit, follows at 6. A dance is set for 9 p.m., and the cost is \$4 per person. Sunday, coffee and doughnuts are served at 8:30 a.m., and at 9 a.m. Sunday services begin.

Feeder steers and steer calves: Medium and large frame No. 1: 200-300 lbs., 122-135; 300-400 lbs., 110-125; 400-500 lbs., 98-106, few 108-109; 500-600 lbs 89.50-99, few 100-102; 600-700 lbs. 86-92; few 700-800 lbs. 84-87. Medium and large frame No. 1-2: 200-300 lbs., 105-120; 300-400 lbs., 90-110; 400-500 lbs., 84-98; 500-600 lbs., 80-89.50; 600-700 lbs. 74-86; 700-900 lbs. 72-82.

Feeder heifers and heifer calves: Medium and large frame No. 1: 200-300 lbs., 101-113; 300-400 lbs., 94-100; 400-500 lbs., 87-95, set 97; 500-700 lbs., 82-89.75; 700-800 lbs. 78-83. Medium and large frame No. 1-2: 200-300 lbs., 90-100; 300-400 lbs., 85-95; 400-500 lbs., 74-87; 500-700 lbs., 72-82; 700-900 lbs. including heiferettes 68-78.

Slaughter cows: Breaking utility 2-3, 49-55.50, high dressing 55.75-56; utility and commercial 3-4, 41.50-51.50; cutter and boning utility 1-2, 46-55.50, high dressing 55.50-56.25; canner and low cutter 1-2, 40-46.50.

Slaughter bulls: Yield grade 1: 1400-2000 lbs., 60-68; low dressing 1050-1500 lbs., 54-63.

Pregnancy tested stock cows and heifers (young & middle aged): Medium and large frame No. 1-2, 560-655 per head. Medium frame No. 1-2, 450-575 per head.

Cow/calf pairs (young & middle aged): Medium and large frame No. 1-2 cows with 100-350 lb. calves 720-820 per pair. Medium frame No. 1-2 cows with 100-300 lb. calves 590-720 per pair.

Stock & feeder cows: Medium and large frame No. 1-2, (young and middle age) 700-1100 lbs., 52.50-58; (middle age) 750-1000 lbs. 45.50-51.

ABILENE -- The market at Abilene Livestock Auction had estimated receipts of 650 head of cattle at its sale July 16. Feeder cattle fully steady, cow-calf pairs and replacement cows steady. Packer cattle steady.

Slaughter cows: Utility, 47-53; canner, 42-48; cutter, 48-58; fat cows, 46-52.

Slaughter bulls: Good, 60-68, utility 52-60.

Feeder bulls: 550-700 lbs., 75-95; 700-900, 65-75.

Steers: 200-300 lbs., 110-140; 300-400, 95-125; 400-500 lbs., 90-110; 500-600 lbs., 85-100; 600-700 lbs., 80-93.50; 700-800 lbs., 77-87; 800-900 lbs., 73-84; 900 and over 71-81.

Heifers: 200-300 lbs., 100-120; 300-400 lbs., 90-111; 400-500 lbs., 80-100; 500-600 lbs., 78-95; 600-700 lbs., 76-88; 700-800 lbs., 74-82.50; 800 and over, 65-82.

Cow/Calf Pairs: Plain, \$550-700; good, \$700-850.

Pregnancy tested cows: plain, \$450-550; good, \$550-700.

COLEMAN -- The market at Coleman Livestock Auction saw a run of 1700 head of cattle and calves at its sale July 12. There was no sale to compare from last week. All feeder cattle and calves mostly steady, fleshy and number two offsprings weak to \$1 lower. Stock cows and pairs \$2-\$5 lower. Demand good with yearlings in strongest demand.

Run includes around 15% slaughter cows and bulls. Balance mostly feeders with a good supply of yearlings on offer.

Feeder steers: Medium frame No. 1 300-400 lbs., 1-116; 400-500 lbs., 90-105; 500-600 lbs. 89-95, few bid up to 99; 600-700 lbs., 79-85; 700-800 lbs. 78-81. No. 2, 300-400 lbs., 95-108; 400-500 lbs., 89-95; 500-600 lbs., 83-89; 600-700 lbs., 80-85. **Slaughter cows:** utility 1-4, 47-52.50; cutters, 45-50.50; high dressing, 52-54.

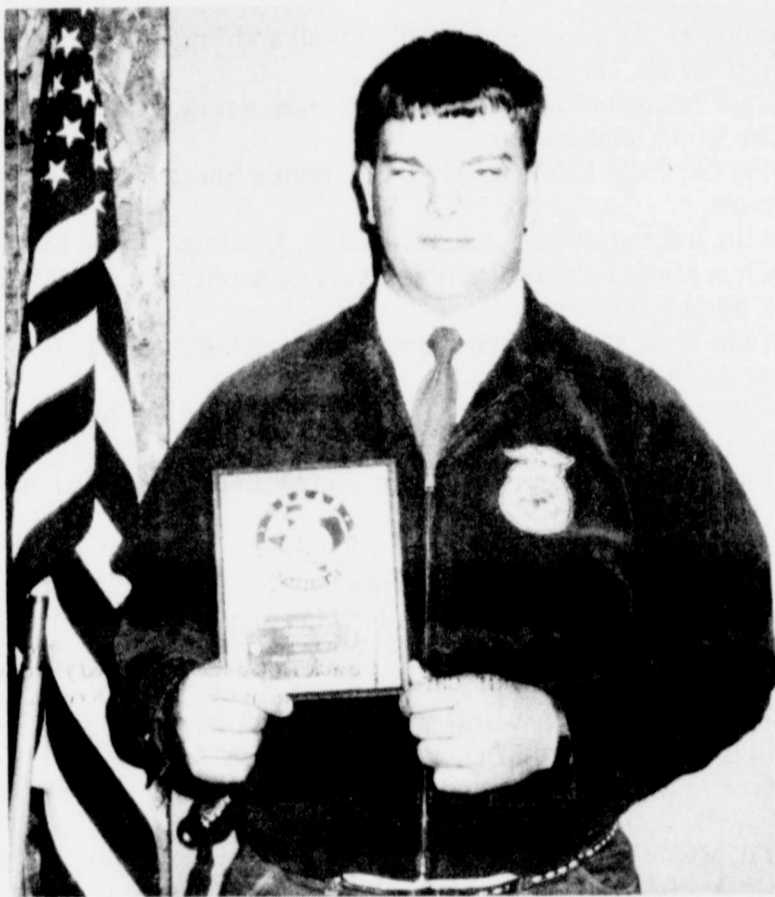
Slaughter Bulls: Yield grade 1-2, 1250-1850 lbs. 60-65.

Feeder Bulls: 500-700 lbs. 80-86.

Feeder Heifers: Medium and large frame No. 1, 250-300 lbs., 93-100; 300-400, 90-95; 400-500, 89-94; 500-600, 84-91; 600-700, 79-85; 700-800, 78-81; No. 2, 300-400 lbs., 83-91; 400-500 lbs., 81-88; 500-600 lbs., 79-85; 600-700 lbs., 78-82; Small frame 1-2, 300-500 lbs. 77-85.

Pregnancy-tested stock cows: Large frame No. 1 3-9 year-olds, \$550-\$625; Medium frame, \$500-600; No. 2 and aged cows \$385-\$445.

FFA Member wins state award



Mark Jacob

Mark Jacob of Winters and a member of the Winters FFA Chapter was named the State FFA Cereal Grain Production Proficiency award winner, receiving a \$100 check at the state FFA convention.

Mark will compete against other state winners in his region. One person will be selected as a national finalist. Each of the four national finalists will receive a plaque, a \$250 check and travel expenses to the national FFA convention in Kansas City, Mo. in November. The national winner will be selected from this group, he or she will receive an additional plaque, \$250 check and the opportunity to participate in the International Travel Seminar.

The award program recognizes outstanding agricultural education students for their ability to efficiently produce and market cereal crops. Twenty-nine National FFA Proficiency Award program areas recognize FFA members for achievement in activities leading to careers in agriculture.

The cereal grain production award program is sponsored by Unocal 76 and Kellogg Company as a special project of the National FFA Foundation.

FFA is a national organization of 397,115 students in 7,705 local chapters preparing for agricultural careers. FFA activities and award programs complement instruction in agricultural education by giving students practical experience in the application of agricultural skills and knowledge gained in classes. Developing agricultural leadership, cooperation and citizenship are FFA's major objectives.

The office of

DR. RICHARD THORPE

will be closed

July 16-20.

His office will reopen

at 9:00 am

on July 23rd.

Schwartz family reunion held

The family of W. H. and Sadie Moore Schwartz met recently for their annual reunion at Lake Whitney. There were 72 children, grandchildren and great grandchildren present. Hartwell Schwartz of Comanche had the highest number present in his family. Nancy Allison came the farthest, coming from Tularosa, New Mexico. Grandchildren Greg and Dawn Fulton were present from Bakersfield, California. There were eight sisters and three brothers present.

Children of W. H. and Sadie Schwartz present were Dorretta and Charlie Gerhart, Lometa and Jennie Margaret and Doyle Lee, Abilene; Alta Belfiore, Port Arthur; Arlene and Monroe Boles, Winters; Waldene and Al Walpole, Monroe, Louisiana; W.H. and Christene Schwartz, Odessa; Martha and A. D. Standlee, Smithville; Hartwell and Era Mae Schwartz, Comanche; Don and Carole Schwartz, Odessa; Phyllis and Ellis Fulton, Odessa; and Nancy Allison of Tularosa, New Mexico.

Others attended from San Angelo, Mesquite, Midland, Odessa, Abilene, Godley and Mineral Wells.

The Crop Connection

by Richard Minzenmayer
Extension Agent-Entomology (PM)
Runnels-Tom Green Counties

General Situation

Well, we missed another good chance for rain. Maybe we will be blessed with a good rain this week. Cotton continues to hold on under these dry conditions.

Cotton

Dryland cotton which is blooming now will start to decline rapidly without a much needed rain. Cotton growth stage ranges in size from pre-square to boll stage. Small bollworms range from 0 to 43 worms per 100 plants. If you haven't checked your irrigated cotton lately, it would be advisable to do so now. Dryland cotton also has problems with bollworm pressure, but nothing has been done "to date" to control them. Once it rains and gives us adequate moisture to load, we will get aggressive in the dryland cotton.

There are lots of questions pertaining to what insecticides to use for bollworms right now. The Extension strategy is to use insecticides other than synthetic pyrethroids early in the cotton production season in order to save the SP's for the critical mid-season period when tobacco budworms are likely to be most numerous and cause the most damage. This strategy will not work unless it is followed by the entire area. It's very easy to recommend a pyrethroid right now, but it may very well come back to haunt us later.

There has been some questions concerning the effectiveness of Larvin®. Remember, when using Larvin®, to use recommended rates and that thorough coverage is necessary. Larvin® has worked well in fields when applied thoroughly at the labeled rate of .6 to .9 lb. AI/ acre. The pyrethroids have covered up application problems for years due to their effectiveness. I'll get off my soap box now.

The egg lay declined for several days and now has increased substantially again in many fields which were sprayed last week. This could be due to a migration into the area. So stay on top of the situation.

A few spider mites have been found in a few fields around Veribest. Let's hope for a good rain to take care of the mites. These fields should be watched closely and sprayed if necessary. Cotton fields adjacent to grain sorghum and corn fields are most likely to have problems first. Recommended materials for spidermite control would include:

Curacron at .75 - 1 lb AI/acre
Capture at .06 - 0.1 lb AI/acre
Kelthane at 1.0 - 1.5 lb AI/acre
Comite at 0.8 - 1.6 lb AI/acre

Grain Sorghum

Dryland grain sorghum continues to decline due to severe drought stress. Irrigated sorghum continues to progress rapidly with most fields in the bloom to soft dough stage.

Headworms can be found easily in most fields right now. Headworms range from 0 to 6 small worms per head. The economic threshold is based on a sliding scale, which uses the estimated crop value and the estimated cost of control.

Based on \$5.00 grain sorghum or better, we should be using an average of 1 to 1.5 small worms per panicle as our economic threshold. Listed below are the recommended insecticides for controlling headworms.

| Insecticide (listed alphabetically) | Concentration per gallon or pound | Concentrate per acre | Harvest | Grazing |
|-------------------------------------|-----------------------------------|----------------------|---------|---------|
| Carbaryl (Sevin®) | 1.25 1.6 lb | 1.2 gal | 21 | 6 |
| Disulfoton (D-40) | 1.2 gal | 1.2 gal | 21 | 6 |
| Malathion (Lannate® or Nudrin®) | 1.2 pt | 1.2 pt | 14 | 14 |
| Permethrin (Pest-Off) | 0.75 1.5 pt | 0.75 1.5 pt | 14 | 14 |
| Phosphamidon (phosphamidon) | 0.5 1 pt | 0.5 1 pt | 14 | 12 |
| Phosphamidon (phosphamidon) | 0.25 0.5 pt | 0.25 0.5 pt | 12 | 12 |

Greenbugs are also building in most fields. If you are spraying for headworms and have greenbug numbers large enough to cause death to one functional leaf, it would be advisable to put an insecticide in your load to take out the greenbugs. Lannate® or Sevin® XLR Plus will not control greenbugs. Some suggested insecticides for controlling greenbugs are as follows:

| Insecticide (listed alphabetically) | Concentration per gallon or pound | Concentrate per acre | Harvest | Grazing |
|---|-----------------------------------|----------------------|-------------|---------|
| Attention: Review all remarks thoroughly. | | | See remarks | |
| Carbaryl (Sevin®) | 0.5 1 pt | 0.5 1 pt | 30 | 30 |
| Chlorpyrifos (Dursban®) | 0.25 1 pt | 0.25 1 pt | 30 | 30 |
| Cyfluthrin (Cygon®) | 0.5 1 pt | 0.5 1 pt | 28 | 28 |
| Deltamethrin (Deltathion) | 0.66 1.3 pt | 0.66 1.3 pt | 28 | 28 |
| Disulfoton (D-40) | 4.0 1 pt | 4.0 1 pt | 7 | 28 |
| Malathion (Lannate®) | 3.5 1 pt | 3.5 1 pt | 30 | 14 |
| Permethrin (Pest-Off) | 0.5 1 pt | 0.5 1 pt | 7 | 7 |
| Phosphamidon (phosphamidon) | 1.2 pt | 1.2 pt | 45 | 11 |
| Phosphamidon (phosphamidon) | 0.25 1 pt | 0.25 1 pt | 12 | 12 |
| Phosphamidon (phosphamidon) | 0.25 0.5 pt | 0.25 0.5 pt | 12 | 12 |
| Phosphamidon (phosphamidon) | 5.6 1 pt | 5.6 1 pt | 28 | 28 |
| Phosphamidon (phosphamidon) | 4.9 1 pt | 4.9 1 pt | 28 | 28 |

Spidermites are also building in some sorghum fields around Veribest. This is another pest which should be watched closely in the weeks ahead.

Fundal and Galecron Collection Dates Set

Ciba-Geigy and Nor-Am will collect all leftover supplies of chlordimeform (Galecron and Fundal) to include product and empty containers at 8 sites in Texas during the month of July. These chemical companies will pay \$75.00 per gallon and \$18.75 per pound for UNOPENED containers at the collection site. Empty or partially-filled containers of Galecron or Fundal will also be collected, but will not be purchased from individuals disposing of the products. Up until now, there has not been a logical way to dispose of this material. No other pesticides should be brought to the collection sites! Collection days and locations follow (all collection times are 8 a.m. to 1 p.m.):

Tuesday, July 17, Pecos
Wednesday, July 18, Lamesa
Friday, July 20, Veribest
Monday, July 23, Taylor
Tuesday, July 24, Weslaco
Wednesday, July 25, Burleson County
Thursday, July 26, Robstown
Friday, July 27, El Campo
The information given herein is for educational purposes only. References to commercial products or trade names is made with the understanding that no discrimination is intended and no endorsement by the Cooperative Extension Service is implied.

754-4958



WE CAN HELP GET YOUR BUSINESS OFF THE GROUND

A polished image starts with a professional business card and is reflected in every document you send out. Why not start on the road to success by having one of our graphic artists assist you in designing your own distinctive logo, stationery and business forms? Ask about our special "Start-Up" package for all your printing needs—it's more affordable than you think!

The Winters Enterprise, Inc.

Prus...
problem...
ducer...
of year...
to John...
sorghum...
other m...
family...
which...
occurs...
stressed...
stress...
not only...
plant bu...
feeds an...
too earl...
prussic...
break do...
In run...
cattle),...
globin...
family...
lease th...
If a bloo...
an im...
signs -...
respirat...
ing), a...
is bright...
hide poi...
Cyan...
When w...
weeds...
nitrate...
soak up...
accumul...
all the...
soil arou...
grow du...
volume...
mass is...
Clinic...
sembles...
but the...
ous bloo...
nitrate...
color. N...
den death...
ruminant...
in the t...
soning...
quiet as...
treatment...
The ef...
ing in...
tion of...
short tim...
in an su...
people li...
hay graz...
and leave...
this is...
the horse...
prussic...
effects...
affecting...
hind lim...
organs. T...
with a...
ghum...
weaknes...
incoordi...
inability...
because...
The blad...
properly...

VETERINARY UPDATE

by Jimmy Smith, DVM

Prussic acid poisoning is a problem that any livestock producer has to deal with at this time of year if his livestock has access to Johnsongrass or any kind of sorghum. Johnsongrass and other members of the sorghum family can produce prussic acid which is a form of cyanide. This occurs when the sorghum is stressed by drought, mechanical stress or freezing and happens not only in the green growing plant but also in green, chopped feeds and hay that has been baled too early after mowing. The prussic acid has not had time to break down in these plants.

In ruminants (sheep, goats & cattle), cyanide ties the hemoglobin so that it is unable to release the oxygen that it carries. If a blood sample is taken from an animal who exhibits peculiar signs - inability to get up, severe respiratory distress (rapid breathing), a venous blood sample that is bright red will indicate cyanide poisoning.

Cyanide poisoning can be confused with nitrate poisoning. When weeds such as careless weeds become stressed, they are nitrate-accumulators. They will soak up all the available nitrate-accumulators. They will soak up all the available nitrogen in the soil around them but they cannot grow due to drought. So the volume of nitrates per volume of mass is great.

Clinically nitrate poisoning resembles prussic acid poisoning but the difference is in the venous blood sample. The blood in nitrate poisoning is chocolate in color. Nitrate poisoning is a sudden death situation also for most ruminants. The main importance in the treatment of cyanide poisoning is to keep the animal as quiet as possible until further treatment can be given.

The effect of cyanide poisoning in horses is different. Ingestion of cyanide occurs for a very short time -- a couple of weeks, in a susceptible pasture. Many people like to put their horses on hay grazer in the summertime and leave them there but I think this is a mistake because when the horse starts consuming the prussic acid, there are long-term effects of a neurological nature affecting the nerves going to the hind limbs, bladder, and genital organs. The bladder is affected with a condition known as sorghum cystitis. The horse gets a weakness of the hind legs with incoordination, wobbliness and inability to control the hind legs because the nerves are damaged. The bladder does not function properly; instead of controlled

urination, the animal has incontinence. On mares, there is always a urine scald inside the hind legs. If the mare is palpated, the bladder feels somewhat like a doughy basketball with a thickened wall. The urine is somewhat cloudy and thick because this irreversible condition persists until the animal's death, there are many problems which arise -- the horse is not safe to ride, a mare trying to raise a foal is unable to care even for herself, the horse cannot cross a water draw, etc.

Anytime a livestock producer feels his sorghum is being stressed, he should probably take his cows and horses off the field. I do not recommend that horses be allowed to run on hay grazer at any time, nor do I like to see cut hay grazer fed to horses. The best thing to do is to watch the stress levels of the fields. A stressed field is present when the leaves start to turn blue, twist and curl, ready to die. Plants that look that way have probably produced prussic acid and the level has deteriorated. The places of most concern are the little spots behind the terraces where the water stood and a nice green spot is growing. This area is starting to stress but the leaves haven't started to curl up yet. These are the spots that are most dangerous. Of course, any time a frost occurs, all fields are dangerous until the forage becomes dry.

To insure a safe field, a sample of grass should be taken to the local County Agent. This sample should be taken from prime suspect areas such as those greener or with water standing.

Blood drive at North Runnels Hospital July 31

North Runnels Hospital in Winters will sponsor a Blood Drive on Tuesday, July 31 in cooperation with United Blood Services of San Angelo. Volunteer blood donors are requested to come by Room 203 of the Hospital from 3:00 to 7:00 p.m. for collection.

The need for blood in this area is continual. During the first six months of 1990, NRH gave approximately 30 units of blood to patients of this community. The availability of blood enabled these people to receive quality care closer to home and assisted in the return of optimal health without journeying to a large medical center outside this vicinity.

For more information, please call North Runnels Hospital at 754-4553.

ALL SCHOOL REUNION REGISTRANTS

| | | | |
|-----------------------------|--------------------|----------------------------------|---------------------|
| J. C. Wilkerson | Winters | Billy & Ruth Green, Kyle & Kenny | Winters |
| Louise Burleson | Arlington | Dorie Miller Hord | Rankin |
| Richard Chambliss | Blackwell | Milton & Betty Wessels Ehlers | Tahoka |
| Louette Glover Templeton | Kowloon, Hong Kong | Mike & Dana Moore | Winters |
| Michael L. Deike | Winters | Gene & Carolyn Baldwin | Kermit |
| Bobbie Cramer Jobe | Burleson | Durward & Lou Hamilton | Winters |
| Norvene Cramer Adams | Ft. Worth | Sara Wetzel Hughes | Sherman |
| Bonnie Mapes Lee | Winters | Nancy Murphy | Great Bend, K |
| Richard A. Lee | Amarillo | J. T. Craig | McKinney |
| Bailey Mayo | Reno, Nevada | Shirley Scott Hughes | Sweetwater |
| John Hancock | Winters | Bob Dunivan | Deer Park |
| Kay England Busher | Winters | Jerline McCartney | Melvin |
| Marthiel Russell | Winters | Albert Gilman | Sugarland |
| JLynn Russell | Winters | John G. Key | Winters |
| David & Nona Burton | Ballinger | Marvin & Fran Sullivan | Abilene |
| Diane Buckner Young | Midland | Leland & Jo Miller | Winters |
| Janice McCaughan Merrifield | Lewisville | Raye Nell Shelton | Abilene |
| Carolyn Nelson Lockett | Lubbock | Shirley Hamilton Crouch | Winters |
| Sharon Gresham Reed | Ranger | Bobbie Briley Conlee | Winters |
| Len & Cynthia Stone | Irving | Betty Hood Tischer | Winters |
| Cal & Sylvia Frisch | Austin | Eva Leta Wright Smith | Winters |
| James & Jan Schroeder | Ft. Worth | Ben & Jauona Colburn | Levelland |
| Charlie & Dee Damron | Dallas | Pybrom Brown | Winters |
| RoeNeal & Phyllis Boles | Winters | Virginia Brown | Winters |
| Eunice Gardner Lail | Abilene | William H. Green | Winters |
| Leota Smith Stephens | Granbury | Gertie Marie Parks Stephens | San Antonio |
| Margie Kraatz Chaney | Brady | Euel D. Stephens | San Antonio |
| Lavanda Russell Hayward | Abilene | Darlene Smith | Ballinger |
| Betty Simpson Cowlishaw | Kerrville | Helen Smith Raper | Abilene |
| Betty Campbell Knight | | Oneta Parks McKnight | Winters |
| Jim Knight | | Troy B. McKnight | Winters |
| Ervin & Dorothy Compton | Wingate | Maurice Holle | Chandler |
| Ken Lloyd | Lexington, Ky | Arliss & Helen Hantsche | Arlington |
| Wilma Cooke Grisham | Eden | Bertalena Lewis Ballenger | Council Bluffs, In. |
| Curtis McCartney | Abilene | Harold & Randy Ballenger | |
| Imogene Carroll Williams | Gruver | Button & Rita Little | Lubbock |
| Boots (E.M.) Williams | Gruver | Connie Mac Gibbs | Winters |
| Dana Bishop Chambliss | Clarendon | Helen Ruth Smyth & Glen | Abilene |
| Jerry Chambliss | Clarendon | Josie Reeves Brown | Winters |
| Willene Vogelsang Gerhart | | James R. Brown | Winters |
| David Craig Flauchmann | | Jack Tatum | Dallas |
| M. J. Kimbrough | Austin | James H. Bryan | Austin |
| Barbara Yates Everett | Winters | Louise Fuller | Winters |
| Janet Kendrick Vaughan | Ballinger | Kenneth & Marylea Byrd Marks | Midland |
| Arlen Vaughan | Ballinger | Pat Wade Fenter | Winters |
| Maurine Weaver | San Benito | Linda Eoff Wooten | Buffalo Gap |
| Alma Benson | Montague, Ca. | Mary Beth Abbott Drake | Winters |
| Gamer Young | Albuquerque, N.M. | J. P. Drake | Winters |
| Max Strothers | Lubbock | Sudell Mosley Jeffreys | Abilene |
| Denny & Mary Aldridge | Decatur | Eldon Jeffreys | Abilene |
| B. E. Baldwin | Winters | Pat Wessels Dearing | Winters |
| Lenda Fuller Denson | | Keva Harrison Green | Houston |
| Lavena Collinsworth Nance | | Michael Green | Houston |
| Launa Collinsworth Brand | Abilene | Winford & Patsy Hogan | Clyde |
| Euell B. (Bo) & Bess Byers | Houston | Gill Burton | Abilene |
| Audra L. & Lila Mitchell | Winters | Louise (Wiley) Hatcher | Victoria |
| Jimmy Fine, Jr. | Garden City | Bob Hatcher | Victoria |
| Ronald Presley | Winters | Freddy Jonas & Marty | San Angelo |
| Robert C. Davis | Gill | Johnny Gann | Winters |
| Nadine & Tom Kute (Pierce) | Abilene | Andy Gann | Winters |
| Hudson White, Sr. | | Helen Schumann (Cooke) | Eden |
| | | Geraldine Wessels Long | Castell |

Letter to the Editor

On July 6, we were traveling in our car from Denton to Ballinger on Highway 83. About two miles north of Winters we had a terrible accident when our car went off the road, flipped and rolled.

Within seconds, people began stopping to offer their assistance to us (a young woman and her teenage niece and nephew). Within minutes police, ambulance and even a Dr. Lee had arrived. A young Winters policeman (Patrick?) came even though we were out of the city limits and also contacted the state highway patrol for us. Our nearby relatives had been contacted, arrived and were great support. Those older relatives traveling just ahead of us were reassured and calmed when they returned to the scene. Complete strangers began collecting our belongings that were scattered everywhere.

Even more importantly, they extended their warmth and concern by staying with us until they were certain that the situation was under control, and the shock of the situation had "soaked in."

To all these wonderful people, we would like to extend our gratitude, AND to all the people at the hospital emergency room, most whose names we never learned but whose West Texas kindness and helpfulness we will never forget. The goodness of mankind and God's protection were clearly demonstrated to us that day. We also think our seatbelts kept us from being seriously hurt and remind all of you to keep wearing yours! Thank you all and God bless you.

Becki Nunley Larrinaga
Amy Giles
Jason Giles

Letters to the Editor Policy

Letters to the editor on issues of general interest are welcomed by *The Winters Enterprise*. Please write your name and address on the letter and include a phone number for verification. Letters submitted without signatures will not be published. Letters should be addressed to: Editor, *The Winters Enterprise*, 104 North Main Street, Winters, Texas, 79567.

WINTERS RODEO ASSOCIATION OPEN FUNDAY RESULTS

| 5 & Under | 1st Place | 2nd Place | 3rd Place |
|---------------------|------------------|--------------------------|------------------|
| Straightway Barrels | Krystal Loggins | Brandi Lee | Jake Misenheimer |
| Poles | Krystal Loggins | Brandi Lee | |
| Great Ribbon Pull | Krystal Loggins | Brandi Lee | |
| Stick Horse Race | Krystal Loggins | Brandi Lee | |
| Boot Scramble | Krystal Loggins | Brandi Lee | |
| 6 - 8 year olds | | | |
| Barrels | Travis Hanson | Steven Ball | B. R. Loggins |
| Poles | B. R. Loggins | 4th place | Keith Thate |
| Great Ribbon Pull | Travis Hanson | Steven Ball | B. R. Loggins |
| Flags | Travis Hanson | 4th place | Keith Thate |
| Calf Head Roping | Tanner Jobe | Steven Ball | Keith Thate |
| 9 - 12 year olds | | | |
| Barrels | Krystal Carver | Calvin Williams | Reccia Jobe |
| Poles | Reccia Jobe | Krystal Carver | Jana Jackson |
| Flags | Calvin Williams | Krystal Carver | Reccia Jobe |
| Goat Tying | Paige Bishop | Jana Jackson | Reccia Jobe |
| Breakaway Roping | Paige Bishop | Jana Jackson | Reccia Jobe |
| 13 - 15 year olds | | | |
| Barrels | Sara Jackson | Beatriz Cisneros | Rhonda Williams |
| Poles | Beatriz Cisneros | (split 2nd & 3rd places) | Marilyn Jackson |
| Flags | Beatriz Cisneros | Rhonda Williams | Marilyn Jackson |
| 16 - 19 year olds | | | |
| Barrels | Joey Carter | Joe Diego | Eric Kinzer |
| Poles | Joey Carter | Joe Diego | Eric Kinzer |
| 20 and over | | | |
| Barrels | Cheryl Blackwell | Ruby Lee | |
| Poles | Ruby Lee | Cheryl Blackwell | |
| Ribbon Roping | Lanham Bishop | | |
| Tie Down Roping | Lanham Bishop | | |
| Breakaway Roping | Ruby Lee | Cheryl Blackwell | |

Eighteen boys came from the West Texas Boys Ranch and 12 participated. A fun time was had by all.

Subscribe Today

The "new" **WINTERS ENTERPRISE**

Runnels County: \$10.00 per year

Other Texas Counties: \$12.00 per year

Out of State: \$14.00 per year

Mail this coupon and your payment to:
The Winters Enterprise, Inc.
104 N. Main
Winters, TX 79567
915-754-4958

Name _____
Address _____
City _____ State _____
County _____ Zip Code _____

If you had paid your subscription to the previous Winters Enterprise, we will honor that expiration date if you will send your name and complete address along with your expiration date to the address above.

Grand opening set Aug. 17 for San Marcos Factory Shops

SAN MARCOS, Texas - A new showplace for Texas shoppers has arisen at the heart of the IH 35 Corridor between Austin and San Antonio as the 300,000-square foot San Marcos Factory Shops readies for its August 17 opening.

The manufacturers outlet center, developed by the Chicago-based Prime Group, Inc., will feature over 60 stores plus a 60,000-square foot V.F. Outlet.

The project will consist of four clusters built in the style of an authentic southwestern village and feature the best in apparel, accessories and home furnishings at prices significantly below retail. A 10,000-square foot food court will allow shoppers a wide variety of meals while they visit the complex.

"San Marcos Factory Shops visitors will be able to get merchandise directly from the manufacturer at incredible savings," Abraham Rosenthal, Senior Vice-President of the Prime Group, Inc., said.

"Low prices combined with an upscale environment, San Marcos Factory Shops will change the way people look at outlets," Rosenthal said.

The Prime Group's first retail development, Warehouse Row, located in downtown Chattanooga, Tenn., opened in the fall of 1989 to huge crowds and tremendous success and San Marcos Factory Shops, situated in one of the fastest growing tourism markets in America is expecting similar success.

Call
or
Send
Your
News
Items
to
The
Enterprise

754-4958

TEXAS TRAILS
LONE STAR STATE HISTORY by DAN BROWN

ICE PLANT...
The first artificial ice plant in the United States was established in Jefferson, Texas, in the middle 1870's by the partnership of David Boyle and Henry Scott. The cakes of ice were four feet long, two feet wide, and one inch thick. The price per pound was ten cents.

"Come in to see us for your Home Improvement & Auto loans"

PEOPLES NATIONAL BANK
Member F.D.I.C.

158 N. MAIN, P.O. BOX 578
WINTERS, TEXAS 79567-578

TELEPHONE: (915) 754-5526

Obituaries

Maggie Hodnett

MORTON (Special) - Services for Maggie Ann Hodnett, 89, of Morton were held at 10 a.m. Saturday in First Baptist Church with the Rev. Preston Nix officiating.

The Rev. Gordon Renshaw assisted, and burial was in Morton Memorial Cemetery under the direction of Ellis Funeral Home.

Mrs. Hodnett died at 4:20 pm Wednesday at Levelland's Methodist Hospital after a lengthy illness.

She was born in Taylor County and moved from Maple to Morton in 1963. She married William Hodnett Aug. 30, 1925, in Bradshaw. He died in 1973. She was a homemaker and a member of First Baptist Church. Two daughters, Florence Moore and Laurene Collins, and a son William Hodnett, preceded her in death.

Survivors include three sons, Jack of Three Way, John of Summerville, Mo., and Dalton of Dalhart; a daughter, Pauline Gilbreath of Kent; a brother, Fred Crow of Morton; 13 grandchildren; and eight great-grandchildren.

Radford Sanderson

Radford Daniel Sanderson, 92, of Ballinger died Sunday July 15, 1990 at the Ballinger Nursing Center.

Mr. Sanderson was the son of James Henry and Sarah Elizabeth Sanderson, area pioneer ranching family who settled in the Brown and Coleman County area in the 1880's. He was married to Lillie Belle Lindsey in Brown County, Texas in 1919. She preceded him in death in 1985.

Mr. Sanderson was a stock farmer and a member of the Church of Christ.

Services were held from the Rains-Seale Funeral Home Chapel on Tuesday July 17 at 10:00 a.m. Interment was in the Garden of Memories in Ballinger. Max Pratt and Mike Lum, Church of Christ ministers officiated.

Survivors include a daughter, Mrs. Al (Bettye) Dallinger, Ballinger; two sisters, Josephine Vardaman, Longview and Eliza-

Birth Announcement

Jerry and Susan Harvey of San Angelo announce the birth of their son, John Paul. John was born on Thursday, July 5, 1990 at 5:00 a.m. He weighed 6 pounds and 4 ounces and was 19 5/8 inches long. His grandparents are Bud and Frances Lisso of Ballinger, formerly of Winters and Vivian Hamey of Edna, Texas. Arthur and Julie Lisso of Rowena and Jewel Hardy of Smithville are John's great-grandparents.

beth Green, Paradise, California; granddaughter, Mrs. Joanne Cheshier, Ballinger; great-grandson, Jefferson Daniel Cheshier, Ballinger.

Arrangements were handled by Rains-Seale Funeral Home of Ballinger.

Anita Cummings

Anita Geraldine Cummings, 70, of Winters died at 5:30 p.m. Monday at North Runnels Hospital in Winters. She was born September 29, 1919 in Arkansas and was raised in Drasco. She married Buck Cummings on October 17, 1936 in Winters. She was a homemaker.

Graveside services were held at 10:30 a.m. Wednesday with Rev. Kim Broadstreet and Rev. Gayland Broadstreet officiating. Burial followed with direction by Winters Funeral Home.

Survivors include her husband, Buck Cummings of Winters; one son and daughter-in-law, Ricki and Vickie Cummings of San Angelo; a brother, Aubrey Leon Daniel of Andrews; a sister, Mildred Williams of Sunray; two granddaughters, Wendi Cummings and Kimberly Cum-

Notice

The city pool is looking for a used refrigerator. If anyone has one that they would like to donate or sell for a small amount, please contact Dottie Loudermilk at the pool, 754-4645.

Shep Domino Party

This Saturday night, July 21, at 7:00 pm Shep will sponsor his monthly domino party. It will be at the Community Center in Shep. Everyone is invited. Please bring a snack and your dominos.

Public Notice

Sealed proposals addressed to James A. McSwain, Principal, CAP School, in care of Dr. Arthur C. Case, Superintendent of Schools, Coleman Independent School District, Coleman, Texas, shall be received in the Superintendent's office, at 300 West Pecan St., or P. O. Box 900, Coleman, Texas 76834, until 12:00 noon, Thursday, July 19, 1990.

Bids to be Received at This Time:

Site work, excavation and fill
Building Pad, Concrete & Slab
Wood Doors & Frames, Finish Carpentry, Millwork
Specialties
Plumbing
Mechanical

The successful bidder will be required to enter into a sub-contract with the CAP School, Talpa, Texas. Should the successful bidder's contract be \$25,000.00 or more, then bidder shall be required to furnish a Performance and Payment Bond in the amount of the sub-contract. Drawing and specifications may be obtained from the Principal's office at CAP school, RR1, Box 43, Talpa, TX 76882, (Phone 915-636-4355) during the hours of 8:00 A.M. to 3:00 P.M., Monday through Friday.

The Bidder acknowledges the right of the owner to reject any or all bids and to waive any informality or irregularity on any bid received. In addition, the bidder recognizes the right of the requested bid security or to submit the data required, or if the bid is in any way incomplete or irregular.

HOSPITAL NOTES

Admissions

July 10
Nita Cummings
Margaret Gideon
Rosemary Anderson

July 11
Baby Boy Carson
Marjorie Tischler

July 12
Maria Antu

July 13
Arlice Vinson

July 14
No Admissions

July 15
No Admissions

July 16
Mike Meyer
Christina Vela

Dismissals

July 10
No dismissals

July 11
Katie Gideon

July 12
John J. Swatchuse

July 13
Rosemary Anderson and
baby boy Carson

July 14
Shana Hernandez
Marie Antu

July 15
Marjorie Tischler
Arlice Vinson

July 16
Margaret Gideon
Nita Cummings (expired)

ALL SCHOOL REUNION REGISTRANTS

| | |
|-------------------------------|--------------------|
| Mamie Dell Mapes Reed | Winters |
| Ruby Nell Rougas | Winters |
| Gary Antille & Stasia | Guthrie |
| Frances Bredemeyer | Winters |
| Randall L. Sneed | Winters |
| Mack Young | Austin |
| Brenda Cooper Chambliss | Blackwell |
| Cecilia Chambliss Heeta | Hillsborough, N.C. |
| Barbara Danford | Winters |
| Virginia Spill Flathmann | Hallottsville |
| Albert Flathmann | Hallottsville |
| Barbara Daniel DeWitt | New Braunfels |
| Edna England | Winters |
| Joe & Mary Lindley | Abilene |
| Rita Pells | Miles |
| Gene & Lennis Robertson | Broken Arrow, Ok. |
| James & Jan Schroeder | Ft. Worth |
| Kleta Gerhart | Houston |
| Don & Carolyn Roach | Ft. Worth |
| Bob & Jean Milliom McClelland | Willow Park |
| Donna England Riddle | San Angelo |
| Doyle Riddle | San Angelo |
| Devon Goen | Abilene |
| Joe & Sarah Cortez | Haskell |
| Mr. & Mrs. Bo McMillan | Cisco |
| Dorretha King Dunnam | Graham |
| Jerry Dunnam & Dustin | Graham |
| Joyce Spill Gosh | Elgin |
| Scott Gosh | Elgin |
| Sylvia Spill Frisch | Portland |
| Bob Best | Portland |
| Thomas & Gail Chapmond | Abilene |
| Barney Brevard "Fuzz" Bedford | Abilene |
| Dollie Virden Standley | Sumner, Wa. |
| Jerry & Nancy Strickland | San Angelo |
| Darlene Kurtz Bachman | Dallas |
| Martha Lloyd Johnson | Clyde |
| Gladys Graham Swofford | Clyde |
| Nell Glover Lewis | Abilene |
| Margaret Williams Carter | Abilene |
| Mary Gerhart Kurtz | Winters |
| R. C. Kurtz | Winters |
| Jean Seals Wheat | Winters |
| Gene Wheat | Winters |
| Maudella Hill Reeves | Abilene |
| Mike Mitchell | Winters |
| Pauline Gerhart Brinkley | Quannah |
| Doris Hale Bryan | Coleman |
| Nan L. King Beaugez | Biloxi, Ms |
| Mary Emma McWilliams McIntosh | |
| Joe Bryan | |
| Stan Bolden | Odessa |
| Charles Alcorn | Winters |
| Linden Hargrove | Gainesville |
| Joyce Dodson | Robert Lee |
| Billy H. Thelson | Buffalo Gap |
| Zane & Judy Hensley | Ft. Worth |
| Gordon Anthony | Willcox, Az. |
| Norma Faye Best Morgan | New Mexico |
| Jerry Morgan | New Mexico |
| Betty Mathis Hargrove | |
| Ham Middleton | |
| Mary Beth Dodson | |
| Joyce Lett | |
| Tessie Brown Lacy | |
| J. R. Lacy | |
| Lorena Ernst Gerhart Anthony | |
| Earl Emmert | |
| Gerald Proctor | |
| Eddie Merle Proctor | |
| Eunice Gardner Lail | |
| Jim & Sarah Lou Gardner | |
| Anita Poynter | |
| Jean Parramore Teal | |
| Shirley Puckett Pierce | |
| Perry Pierce | |
| Joy Allen Brandon | |
| Rick DeLaCruz | |
| Becky DeLaCruz Runbaugh | |
| Garland O'Dell | |
| Kathryn Jobe | |
| Benny Jobe | |
| Lanny E. Lacy & Spencer | |
| Elouise Rahman | |
| Cynthia Davis Stone | |
| Jean Barron McElfratrik | |
| Terrell Woodrow | |
| Mike Mathis | |
| John Gray Gardner | |
| Dewitt & Frances Bryan | |
| Carolee Henslee Patton | |
| Joe Young | |
| Bob Holland | |
| Cindy Davis Biery | |
| Mitch Davis | |
| Allene Carroll Gamble | |

All Church Garage Sale scheduled

Renewal Class of First United Methodist Church will sponsor an All-Church Garage Sale August 4, 1990.

Anyone wishing to contribute items may call one of the phone numbers listed below, and your contribution will be picked up or you may bring it by the church between 9 a.m. and 12 noon. These items will be stored until the sale.

Especially requested are white elephants, knick knacks, dishes, glassware, etc. Call Dorece Colburn, 754-4116; Lura Lee Garrett, 754-4441; or Jackie Murray, 754-4601.

Every donation is appreciated.

The Winters Enterprise
your
Commercial Printing
Headquarters

Charles Bahlman
Chevrolet, Inc.
Sales & Service

754-310
134 S. Main
Winters, Texas

Senior Citizens Nursing Home News

By Billie Ruth Bishop

Thanks to George and Cleo Brown for grapes, peaches, squash, and tomatoes; to O. C. Hill and Ardell and Wanda Monroe for squash; to the McKinney family and the Pruser family for the beautiful flowers.

We appreciate your thoughtfulness and care for all you do for us from day to day. I feel I'm speaking for all the residents when I say how much our visitors and volunteers mean to us. You are all needed and appreciated very much.

On Wednesday, July 25, the Lutheran Ladies will sponsoring our monthly birthday party.

We extend our prayers and sympathy to Nita Cummings' family for their loss this week.


Dan Brown
Janet Gerhart Brown
Louise Blackwood Wilson
Alton Ray Wilson
Bonnie Bryan Dry
Don & Elizabeth Clark
Paula Buckner Packer
Linda White Hall
Patsy Wilkerson Watkins
Tayland Broadstreet
Virginia Cramer
Alpheus Hill
Leonia Tutt
Dudley Hargraves & Billie
Earl Knight
Rose Marie Spill Mitchell
Roger Long
Sandra Jean Hord Long
John B. Oliver
Jere Merck Barnes
Chris Compton Davis
Jan Johnson Baker, Jennifer & Kimberly
Bobbie Sue King Jackson
Virgie Wade
Dana Wade
Roy & Noleta Rice & Lana
Maurine Davis
Minor Nelson & Robby Dale Nelson
Bill, Stephanie, Jason & Katelin Clark
Kenneth & Brenda Kraatz
Betty Evans Busbee
Reba Osborne Wheeler
James Schroeder
Tommy Young
Ann Gerlach Baldwin
ElizaBeth Mitchell Young
Jackie Pruette McKnight
Elsie Mercer

Rhonda Gerhart Sockwell San Angelo
Mr. & Mrs. Delbert Stanley Big Spring
Frances Lamberth Campbell Winters
Susan White Austin
Gary Bryan Winters
Barbara Jackson Ala. Ca.
David Harmon Ala. Ca.
Don Davis Winters
Gene Davis Winters
George Eastes & Mary Dallas
Gary Young Garland
Doris Sommel Buchanan Abilene
Ernest (Buck) Buchanan Abilene
Johnny & Joanie Mathis Springfield, Mo.
Richard & Robbie Puckett Plano
Kathryn Clark Mooney Eden
J. N. Clark Anchorage, Alaska
Bobby Rogers Winters

Stan Brown
Board Certified in Criminal Law
by
The Texas Board of Legal Specialization
Announces The Association Of
ROGER M. NICHOLS
In The General Practice of Law
(915) 677-1851
334 Chestnut
Abilene, Texas 79602 P.O. Box 3122
Abilene, Texas 79604

WEEKLY GRAIN MARKET REPORT
As of Tuesday 7/17/90:
Wheat 2.50/Bu
Oats 1.40/Bu
New Crop Milo Contract 4.30/Cwt
All Prices Subject To Change
ALDERMAN-CAVE MILLING & GRAIN COMPANY
Winters, Texas (915) 754-4546
Roswell, New Mexico (505) 622-3260
Toll Free 1-800-843-3141

LISTEN TO THE
NEW NOSTALGIA PROGRAM,
"WAX WORKS"
ON K.R.U.N. AM/FM
SUNDAY AT 12 NOON.

 The
WAX WORKS
Radio Network, Inc.

Central West Broadcasting Company, Inc.
P.O. Box 351
Ballinger, TX 76821
915-365-5500

WE WELCOME NEWS ITEMS!

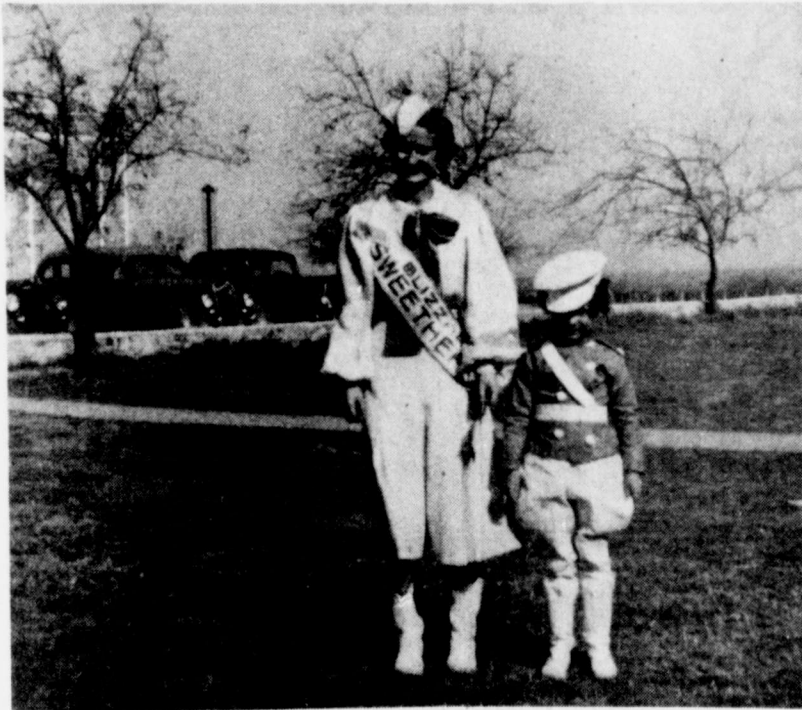
AL
Wanda
Albert
Emily
Reta
Martha
Carroll
Mike
Betty
Eugene
Ernest
Odesa
May
Elaine
Gladys
Lena
Anita
Alta
Adrien
Mr. & M
David
Nell
Becky
Dale
Chris
Garry
Ferrell
Lavera
Mark
Vernon
Dorothy
Biff
Whit
Corinne
Ella
Hortell
Mr. & M
Buford
Mr. & M
Sue
Naomi
Jerry
Clara
Cecil
Bill
Helen
Fannie
Jannie
Harlan
G. F. S
James
Kei
Kenneth
Bill
Jean
W. A. I
Robert
Margan
Clifton
Benny
Mona
Lee
Grady
Debby
Horte
JoAnn
Helen
Don
J. P. (P
Sam
Barbara
Kay
Mildred
Nell
Ruth
Joanie
Mary
Naomi
Byron
Ima
Jerrill
Andy
Jerry
Joe
Ann

Picture
Sweethea
appeared
Peggy Li
appeared

ALL SCHOOL REUNION REGISTRANTS

| | |
|---------------------------------|--------------------|
| Wanda Jean Wessels Howell | Midland |
| Albert H. Brown | Winters |
| Emily Pendergrass | Winters |
| Reta Wetzel Castleberry | Grand Prairie |
| Martha Turk Strube | Odessa |
| Carroll Tatom | Abilene |
| Mike Gray | Winters |
| Betty Virden | Winters |
| Eugene S. Baker | Austin |
| Ernest M. Cathy | Burleson |
| Odessa & M. L. Dobbins | Winters |
| May Dell Henniger Burrows | Crane |
| Elaine Hoppe Miller | Winters |
| Glady's & Glenn White | San Antonio |
| Lena Pruette Jehle | Midland |
| Anita Cane Sowers | Wingate |
| Alta (Awalt) Komegay | Brownfield |
| Adrien Komegay | Brownfield |
| Mr. & Mrs. Gordon Barnes | Blackwell |
| David Carroll | Winters |
| Nell Patton | San Angelo |
| Becky Young | Abilene |
| Dale Young | Lakewood, Wa. |
| Chris & Claudene Walker | Abilene |
| Gary & Kay Hill | Eastland |
| Ferrell Dean Brown | Winters |
| Lavera Williams Tharp | Winters |
| Mark Harrison | San Antonio |
| Vernon McCartney | Odessa |
| Dorothy (Gray) McCartney | Odessa |
| Biff White | Springtown |
| Corinne Gardener Buckner | Big Spring |
| Ella Schippick Lang & Clifford | Castell |
| Hortell (Coward) McCaughon | Winters |
| Mr & Mrs. Britton Smart | Abilene |
| Buford & Margaret Baldwin | Winters |
| Mr. & Mrs. Neal Barrett | Moorpark, Ca. |
| Sue Hinds Monk | Dallas |
| Naomi Stephens Fish | Midland |
| Jerry Whitlow | Winters |
| Clara Baker Thornton | Columbus, Ga. |
| Cecil & Susie (Baker) McDaniel | Ft. Worth |
| Bill Little & Kim Scofield | Austin |
| Helen Clanton Mayfield | Winters |
| Fannie Mae Sanders | Lynden, Wa. |
| Jannine Lee Nix | Abilene |
| Harlan Dorsett | Abilene |
| G. F. Scott | Eldorado |
| James Burleson | |
| Kei Antilly | Robert Lee |
| Kenneth & Ruth Hardegrew | Abilene |
| Bill Ivey | Garland |
| Jean Mostad Boles | Winters |
| W. A. Lowe | Odessa |
| Robert Alan Benson | Rabat, Morocco |
| Margaret McCormack | Houston |
| Clifton Poe | Winters |
| Benny Mayo | Duncanville, Ok. |
| Mona & Sam Blalock | Duncanville, Ok. |
| Lee & Sue Wood | Carrollton |
| Grady & Adelle Baker | Denton |
| Debbye Minzenmayer | Anchorage, Alaska |
| Horte Joyce | Winters |
| JoAnn Smith Harlan & Don Harlan | The Woodlands |
| Helen Simpson Henrichs | Clifton |
| Don White | San Antonio |
| J. P. (Pete) Davidson | Winters |
| Sam Albro | Abilene |
| Barbara Buchanan | Hendrix, Ok. |
| Kay & J. B. Guy, Jr. | Winters |
| Mildred DeBerry | Winters |
| Nell Benson | Rough & Ready, Ca. |
| Ruth Ann Tower | San Angelo |
| Joanie McAdoo | Winters |
| Mary Bauer | Winters |
| Naomi Gerhart | Winters |
| Byron D. Jobe | Winters |
| Ima Gene Davis Bullock | Bishop |
| Jerrill Walker | Wingate |
| Andy Chisum | El Paso |
| Jerry Robertson Lloyd | Winters |
| Joe Kraatz | Grover |
| Ann Presley Terhune | Arlington |

| | |
|--|--------------------|
| Weldon Holbrooks | Stamford |
| Peggy Holbrooks | Stamford |
| Billy W. Kurtz | San Angelo |
| Dorothy Chambers | Midland |
| Kat & Roy Young | Winters |
| Jerry Sullivan | Lockhart |
| Swede Hanson | Bryan |
| Anita Jennings Springstun | Clearfield, Utah |
| W. T. & Betty Colburn | Winters |
| Martha Phillips O'Dell | Wingate |
| Suven O'Dell | Wingate |
| Cecile Nitsch Wiginton | Midland |
| Barbara Giles Hoelscher | Georgia |
| Elva Ashley Faulkner | Hamilton |
| Virginia Jo Ashley Dyson | Dallas |
| David & Betty Bedford | Abilene |
| Lazelle Ashley Fagan | Dublin |
| Marshall & Speedy Simon | Irving |
| Bill & Kristen Baldwin | DelMar, California |
| Brent, Dawn & Scott Bryan | Winters |
| Rose Marie Spill Mitchell | San Antonio |
| Verlene Anthis | Winters |
| Lera Cummings Randolph | Corpus Christi |
| Shirley Scott Hall | Winters |
| Joline Baker Wiley | Winters |
| Bill Colburn | Winters |
| A. E. Speer | Enumchaw, Wa. |
| Norman E. Melver | Houston |
| Jim Benson | Montague, Ca. |
| Peggy Lindley Edwards | Abilene |
| Margaret Wessels | Bryan |
| Jack Bruce | Grand Prairie |
| Bobette & Lawrence Jennings | Irving |
| Bobbie Mills Morinello | Arlington |
| R. Q. & Doxie Lou Marks | Winters |
| Eunice Collinsworth Thompson | Abilene |
| Howard Thompson | Abilene |
| Shana Young Hernandez | Natchitoches, La. |
| James Spill | Winters |
| Dana Davis Long | Abilene |
| Martha A. McCarney Blackerby | Mesquite |
| John and Arline Strother | Charlotte, N.C. |
| Joe and Janie Strother | Bellaire |
| Claire N. Hightower | Norton |
| John & Lennis Couch | Big Spring |
| Edna Ruth & Thurman Self | Wingate |
| Gaston Boatright | Winters |
| Reggie Boles | Midland |
| Bryan Beaugz | D'Arville, Ms. |
| Marvin Traylor | Winters |
| Charlie & Dee Dameron | |
| Skeet Penny | Winters |
| Rose Parcoe | Abilene |
| Jennings Cotton | Metairie, La. |
| Ann Boatright Haines | Christoval |
| Frank Haines | Christoval |
| Emily Bailey Parks | Winters |
| Lynn Traylor | Pasadena |
| Frank O'Dell | Winters |
| Ola Graham | Bedford |
| Emma Marks | Winters |
| Paul Tharp | Winters |
| Helen Yates Wilson | San Antonio |
| Kay Shedd Hambright | Bronte |
| Ben Hambright | Bronte |
| Ralph Hightower | Winters |
| Verlita Wheelless Christiansen | Abilene |
| LaNell Workman Naegele | Abilene |
| Naomi Woolam (Dawson) | San Benito |
| Enid Spill Anderson | LaMarque |
| A. L. Mitchell, Jr. | Houston |
| Mr. & Mrs. Buddy Ramsel | Lubbock |
| Kelly, Vicki & Andrew Blackerby | Coleman |
| Tommy D. Cranford | Midland |
| Marilyn & Bob Rock | Spring Branch |
| Rickey L. Mathis | Levelland |
| Loretta (White) Reynolds | Cisco |
| Jane Bedford Hardey | Taos, N.M. |
| Karen Austin | Dallas |
| Wadene Colburn Riggs | Salem, Ill. |
| Robert J. Riggs | Salem, Ill. |
| Charlie Poe | Winters |
| Wanda Russell Brown | Abilene |
| Robert Brown | Abilene |
| C. O. Patterson | College Station |
| Lynaann Kruse Simpson | Stephenville |
| Charles Simpson | Stephenville |
| Roscoe Morrison | Winters |
| Al & Donna Jackson | Wingate |
| Ann Bean Calahan | Stephenville |
| Rodney & Lawanna Lloyd | Katy |
| Pauline Hinds Scott | San Angelo |
| Tooter Harrison | Winters |
| Cynthia Moore Autrey | Temple |
| Elvia Rodriguez Gann | Lubbock |
| James M. Reese | Houston |
| Noma Eoff | Winters |
| Bettye Nichols Moilan | S. Burlington, Vt. |
| Frances Lamberth Campbell | Winters |
| Jesse W. & Venita Mitchell | Longview |
| Wanda Clark Dillard | Eden |
| Robin W. Middleton | Arlington |
| Harold & LeAnna Hand | Aurora, Co. |
| Richard & Jo Ellen Pullin | Ft. Morgan, Co. |
| Ginger White Helm | Abilene |
| Archie Nelson | Gruver |
| Greg Busbee | |
| Darrin Busbee | Houston |
| David, Dorothy & Mary Cryer | Buffalo |
| Milburn Curry | Ft. Worth |
| Jim & Jeanette Hodges | Bullard |
| James Chaney | Brady |
| Larry & Holly Fisackerly | Kingwood |
| Brenda Bahlman, John & Jena | Winters |
| David McAdoo | San Angelo |
| Jeanine Poe | Tillamook, Or. |
| John McAdoo | Winters |
| John & Dot McClan | Clyde |
| Priscilla Grisham Hodge | Dallas |
| Alton, Betty, Sonya, DiDi, Kari Pierce | Sheffield |
| Carol & Walter Kraatz | Ft. Worth |
| Estella Briley | Ft. Worth |
| Dauida Neece | Ft. Worth |
| Carmela Smith Polston | Talpa |
| Marc & David Dobbins | Junction |
| William Green | Winters |
| Brenda Bryan | |
| Pauline Proctor | Snyder |
| Ira June Brannon Sibley | Winters |
| Pamella Miller | Grand Prairie |
| D. & Nevell Waggoner | Tulia |
| Bill Jonas | Clyde |
| Dorothy Jonas | Abilene |
| Pauline Johnson | Winters |
| Nancy Young Hart | Winters |
| Charlotte R. Robertson Miller | Winters |
| Randall Conner | Winters |
| Mary Crockett Underwood | Conroe |
| Dale & Doris (Pruser) Eubanks | Winters |
| Eunice Polk | Winters |
| Margaret DeMarco | Hobbs, N.M. |
| Mike DeMarco | Hobbs, N.M. |
| Jerry Duke Carey | Merkel |
| DeLone Eager Wood | Odessa |
| Sam D. McCartney | Melvin |
| Jack Gray | Stockton |
| Nancy Grundy | Dumas |



Pictured above are Mamie Dell Reed, left, 1936 Blizzard Football Sweeheart and, right, Peggy Lindley Edwards, mascot as they appeared in front of Winters High School in 1936. Below, left, Peggy Lindley Edwards and, right, Mamie Dell Reed as they appeared at the All Class Reunion on June 30, 1990.



Classified Ads

CLASSIFIED RATES

CASH
\$3.50 Minimum, 1 time, \$3.00 per insertion thereafter, 20 words; 10 cents per word over 20 words.

CHARGE

\$4.50 Minimum, 1 time, \$4.00 per insertion thereafter, 20 words; 10 cents per word over 20 words.

Real Estate

FOR SALE ALBERT'S MEAT MARKET: With groceries, deli, and dining room. 920 N. Main Street, Winters, Texas, Phone 754-4174. **24-tfc**

FOR SALE: 111 acres, all cultivated. Located 2 miles northeast of Norton. Call Roger Bryan 915-786-4142. **27-4tc**

FOR SALE: 100 acres, all cultivated with 4 bedroom, 2 bath home. Located 3 1/2 miles northeast of Norton, Texas. Call 915-786-4142. **27-4tc**

FOR SALE: 190 acre farm for sale west of Winters. Call 754-4063. **29-2tp**

Automobiles

For sale: 1976 Oldsmobile Cutlass, runs good. Call 754-4454. **30-1tc**

For sale: 1984 model GMC 1/2 ton shortbed, PW/PL, tilt, cruise. Chas. Bahlman Chevrolet, Inc., 754-5310. **30-1tc**

1982 Ford Futura, 2 dr, buckets, automatic, 54,000 miles. Very nice condition - mechanical and appearance. Chas. Bahlman Chevrolet, Inc., 754-5310 **30-1tc**

Agriculture

CRP GRASS SEEDING: Shredding and related services. Call Howard Pruser, 365-3656. **13-tfc**

LIVESTOCK SERVICES: Custom livestock work - will travel - call Kenny Hope 754-5124. **28-3tp**

Garage Sales

Garage Sale July 21, 1990 from 8:30 to ? 100 N. West Street. Corner of West and West Dale St. Lots of clothes and miscellaneous. **30-1tp**

Garage Sale: 116 Bel Air Friday noon till ? and Saturday 9-4. Lots of children's clothes, shoes, toys, water skis and lots of miscellaneous. **30-1tp**

Garage Sale: Saturday only from 9 a.m. to 2 p.m. Three families - clothes, toys, bicycles, stereo speakers and lots more. Boles house, 111 Hunters Glen (1 block east of Penny Lane) **30-1tp**

For Sale

TREES & SHRUBS: Heritage, Live Oaks, Shade Trees, St. Augustine Grass, Shrubs & Roses. Quality plants. Excellent prices. PBS Nursery, Ballinger (915) 365-3269 or nights (915) 365-2372. **18-tfc**

For Sale: 9 ft. satellite dish, Uniden Receiver, remote dish positioner. \$750.00. Call 754-4432. **30-1tc**

For Rent

ACEMINI STORAGE: MONTHLY RATES. CONTACT FARMERS SEED AND SUPPLY 754-5373 **1-TFC**

2 BEDROOM APARTMENTS FOR RENT: Stove & refrigerator furnished. Central heat and air conditioning. Water paid. Ample off-street parking. Apply at 300 N. Grant. **19-tfc**

1 BEDROOM DESIGNATED ELDERLY UNITS AVAILABLE: 1 handicapped wheelchair-accessible available. Great homes for retired men or women wishing to get away from the yard work and repairs. Water paid. Rent based on income. Apply in person at 300 N. Grant. **19-tfc**

FOR RENT: 1 Bedroom house. Phone 754-4546. **29-tfc**

Work Wanted

TREE SPRAYING: Also will spray yards for fleas & ticks. PBS Nursery, Ballinger (915) 365-3269 or nights (915) 365-2372. **24-tfc**

Help Wanted

Now hiring for 7-3 and 11-7 shifts - LVN's. SALARY ABOVE AREA AVERAGES. West Coke County Nursing Home, 307 W. 8th, Robert Lee, Texas 76945. Phone 453-2511. **30-2tc**

Special Services

SUN COMPUTER TIRE BALANCING: 4 for \$20.00. Carl Grenvelge Texaco & Tire Center, 754-4112. **21-tfc**

TYPING IN MY HOME: Will type letters, reports, forms, school reports, and more. Fast, accurate, reasonable rates. Call Jeri, 754-4632. **29-2tc**

ORGAN AND PIANO LESSONS: Are being offered at 304 Northwest in Winters. Call 365-3702 for further information. **29-2tp**

Have opening in my registered family home for child care. Fenced yard, nutritious meals and snacks. Call Pat Stamper 754-4074. **30-4tc**

Pets

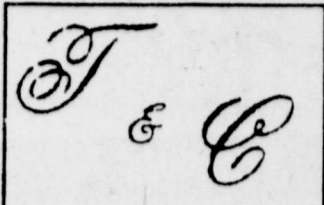
For Sale: Blue Heeler puppies. Call Randall Sneed. 767-3977. **30-1tp**

INSURED Knight's Pest Control Co. CERTIFIED
"The Royal Treatment"
Rt. 1, Box 152A • Winters, Texas 79567
(915) SOS-BUGS
(915) 767-2847
KELLY KNIGHT

Underwood Real Estate
100 West Dale 754-5128 Winters

NEW LISTING - Circle Dr. 3 BR, 2 bath, large beautiful lot with shade trees, H/A.
NEW LISTING - Out of city limits, 2 BR, 2 bath, frame, fenced for stock, low 20's.
OWNER ANXIOUS - 4 BR, 2 Bath, lg. workshop, fenced yard, mid 40's.
COMMERCIAL - 40 x 60 building on 4 acres. N. Hiway 83.
PRICE REDUCED - Owner Financed, 3 BR, 1-1/2 bath, large fenced yard, also doublewide trailer on 10 acres, will sell separately.
MAKE OFFER - 3 BR, 1 bath, large rooms, corner lot.
COUNTRY LIVING - 3 BR, 2 bath on 1 acre. FM 383, tip top condition, mid teens.
REMODELED - 2 BR, 1 bath, H/A, mid teens.
ACREAGE - 142 acres, mostly cultivation, spring fed tank, some minerals.

NEW LISTING - 4 BR, 2 bath, all electric, brick, w/pump, workshop on 2 lots.
NEW LISTING - 3 BR, 1 bath, in good repair, upper teens.
CLOSE IN - 30 acres with 2 BR, 1 bath house, good well.
CRAYER STREET - 2 BR, 1 bath, large corner lot, mid teens.
COMMERCIAL - Corner lot on North Main with small building.
TRINITY STREET - Nice 3 BR, 1 bath, large lot, mid 20's.
GOOD BUY - Neat 2 BR, 1 Bath, corner lot, \$10,800.
OWNER FINANCE - 3 BR, 2 bath, brick on 2 acres, H/A.
GOOD LOCATION, 3 BR, 1 1/2 bath on large lot. Upper 20's.
82-1/2 ACRES - Good land. Mostly cultivated. Call for info.



VILLAGE MARKET

We Have
Money Orders
&
Postage Stamps

EVERY MONDAY IS
SENIOR CITIZENS DAY
—5% DISCOUNT ON
YOUR TOTAL PURCHASES
EXCLUDING BEER & CIGARETTES

WE ACCEPT
FOOD STAMPS
& WIC CARDS

WEEK-LONG SPECIALS

SAVE THIS AD, SHOP ANY DAY YOU LIKE—
SPECIAL PRICES IN THIS AD EFFECTIVE
JULY 18 thru JULY 24, 1990

QUANTITY
RIGHTS
RESERVED

STORE HOURS
MONDAY - SATURDAY, 7 A.M. - 8 P.M.
SUNDAY, 8 A.M. - 8 P.M.
PHONE 365-3313 BALLINGER, TEXAS

SHURFRESH
GRADE 'A' LARGE

EGGS

59¢

LIMIT 2 DOZEN, ADDITIONALS
69¢

PORK CHOPS

ASST'D CHOPS
FAMILY PACK
LB.

1.69

ALL CENTER CUT
RIB CHOPS
LB. 1.99
ALL CENTER CUT
LOIN CHOPS
LB. 2.09

FRYER

LEG QUARTERS

5 LB. BAG

39¢

lb.

U.S.D.A. CHOICE

BOTTOM ROUND ROAST

LB. 1.79

BONELESS

RUMP ROAST

LB. 1.99

LARGE RED RIPE

TOMATOES

lb. 38¢

NORTHERN

BATHROOM TISSUE

4 ROLL PACK

99¢

BRAWNY

PAPER TOWELS

JUMBO ROLL

59¢

SHURFRESH

BACON

LB. PACKAGE

1.69

PLANTATION

TURKEY HAM

2-3 LB. AVERAGE
LB.

1.79

GROUND
TURKEY

LB. ROLL

79¢

RED SEEDLESS

GRAPES

LB. 88¢

FRESH PECOS

CANTALOUPE

LB. 38¢

COUPON • COUPON • COUPON • COUPON

89¢ WITH COUPON

1/2 Gallon Square Assorted Flavors

89¢

WITH THIS COUPON

Shurfresh Ice Cream

Effective July 16-25, 1990 • Limit 1 Item Per Coupon
Good Only At Affiliated Food Stores. This Is An In Store Coupon and Cannot Be Doubled.

COUPON • COUPON • COUPON • COUPON

50¢ OFF WITH COUPON

5 LB. BAG Shurfresh Oranges

50¢ OFF

WITH THIS COUPON

Effective July 16-25, 1990 • Limit 1 Item Per Coupon
Good Only At Affiliated Food Stores. This Is An In Store Coupon and Cannot Be Doubled.

TETLEY

TEA BAGS

24 CT. FAMILY SIZE

99¢

BEER

MILWAUKEE'S BEST
12 PK. 12 OZ. CANS

3.99

SHURFINE

SHERBERT

1/2 GALLON CARTON

1.68

LAY'S

POTATO CHIPS

BIG 16 OZ. BAG

1.98

COCA COLA

2 LITER BOTTLES
ALL VARIETIES

98¢

DOUBLE COUPONS 7 DAYS A WEEK