

The Winters Enterprise

VOLUME EIGHTY-FOUR

USPS NO. 687-220

WINTERS, TEXAS 79567, THURSDAY JUNE 23, 1988

PRICE 25 CENTS

NUMBER 14

Wait a minute...

By Kerry Craig

By now, you have noticed that a good portion of this front page has been taken up with information concerning the problems with the hospital in Ballinger.

It has been done with, we feel, good reason. The future of that hospital could have quite a bit of effect here. It is also newsworthy inasmuch as it involves probably the majority of the folks in our county.

Also, we felt that some response was due to comments contained in one of the election fliers being circulated around the county. Maybe that is what got my attention.

We, in Winters and north Runnels County, are fortunate that we have a hospital like we do. It is an integral part of our community, something we can be proud of. And, as such, we are sometimes quick to come to its defense.

Before I go any further, let me say that I am in favor of Ballinger having a hospital. If it is necessary to support it with tax dollars, then do so. Our hospital is supported by tax dollars and its future is not in question (as long as Medicare acts like it is supposed to).

Now what got my attention in that printed sheet was the comment that if the Ballinger hospital closes, persons there needing hospitalization might have to go to Winters.

The other comment said that if Ballinger's hospital closes, the hospital here would be the only one in the county and said that it would be "feasible" that our hospital district would call for a county-wide district and levy taxes.

It is a sure bet if folks reject the idea of paying taxes to support a local hospital, they wouldn't be too favorable to paying taxes for another hospital somewhere else, either.

Perhaps we have seen too much of the big-time political propaganda in which one candidate attempts to muddy the water, thus diverting attention from its own shortcomings.

In reality, what they are doing is to try, probably successfully, to confuse the voters. The same ones whose support they need.

Our hospital has already begun feeling the impact of the hospital problems in Ballinger with some patients from there. The ones who pay and some who don't.

Regardless of the outcome, those of us in the North Runnels Hospital District will be affected. We are not going to have a vote in that election, nor would we have to pay taxes there.

If the issue is approved by the voters, it is hoped that the governing body of that hospital district will read a little history and learn by it—their own history. To see what got them to where they are now and how to avoid letting that kind of history repeat itself.

Now, I have put away that trusty soap box. Time to discuss something else that we all feel—age.

For some reason, for many years, I have really disregarded age. Sure there are reminders of the passage of time.

Those reminders include aches in places you didn't remember you had, arms seeming to suddenly be too short for comfortable reading, a notice of the 25-year reunion of your high school graduation.

Then there are other little reminders that sometime happen—grandchildren.

Yep. I got my first one Monday. Number one is Kendra. She and mother Teri are both fine.

Maybe so age is not so bad after all.

Farmers Market
Every Friday
4 p.m. until dusk
Every Tuesday
8 a.m. until 1 p.m.
Peoples Bank Parking Lot



First Place Winners

The Winters Dudes, Senior League, were the first place winners in the Clyde League which consisted of teams from Clyde, Baird, Jim Ned, Robert Lee, Bronte and Winters.

Winters Record was 12-3 for the season. The Dudes won their first game of the 1st. Place Team Tournament, held in Abilene June 17, by defeating Albany 11-5.

The boys played a real good game, representing Winters well with their spirit and sportsman-

ship. The Dudes were scheduled to play again Wednesday evening, June 22, at Sears Park in Abilene.

The Dudes, pictured above, include: front row, left to right, Albert Campos, Jamie Perez, Raul Rodriguez, and Greg Tamez. Middle row, Raul Ochoa, Albert Bernal, Alfred Fenwick and Bodie Collins. Back row: Coach Eloy Rodriguez, Billy Waller, Michael Ramon, Robbie Cortez, Ahmad Griffin and manager Louie Collins.

Ballinger hospital tax district election August 6

With only one vote against calling a special election to create a hospital district for southern Runnels County, the newly empaneled interim directors set Saturday, August 6, as the date for voters to decide whether or not to establish the Ballinger Memorial Hospital District.

If voters approve the issue, it would allow the board to raise revenue through taxes. The area involved includes all of Runnels County except that covered by the North Runnels County Hospital District.

Financially plagued, the privately operated Ballinger Memorial Hospital is currently in debt some \$338,000 and has been unable to meet its financial obligations on 30-day accounts.

In calling the August 6 election, the board designated four voting boxes for that special election, a box at the Ballinger Courthouse, a box in Rowena, and a voting box in Miles. The absentee voting box will be in the Runnels County Clerk's office.

In the vote by the board to call the election, member Edgar Poehls of Miles voiced the only opposition on the board. Miles residents have said that, rather than paying taxes for a hospital in Ballinger, they would rather

have an emergency clinic in Miles.

Miles, in extreme southwest Runnels County, is about 13 miles from San Angelo with three major hospitals, and almost 20 miles from Ballinger.

Board members have projected a tax rate of 13 cents per \$100 property evaluation. The board said, however, that it cannot set a tax rate before the election. The maximum allowable tax rate that could be levied by the district is 75 cents per \$100 property value.

Also in its first meeting, the board members who were appointed by the Runnels County Commissioners' Court, elected Price Middleton as its chairman with Cecil Darby Jr. as vice chairman.

Ballinger Memorial Hospital administrator Barry Cheshire, and also a board member, was elected to serve as the board's secretary. Ballinger attorney O. L. Parish Jr. was named as the board's attorney.

The financial plight of the Ballinger hospital came to light early this year after the hospital's directors voted to enter into a management agreement with Shannon Hospital of San Angelo.

That action was taken by the board without seeking input

from the doctors who make up the medical staff. Subsequently, one of the doctors halted his association with the Ballinger hospital and another doctor greatly reduced his use of the hospital.

Doctors John Psutka and Antoine Albert have now opened a family practice medical clinic in San Angelo and Doctor Albert has continued his obstetric services using either a San Angelo hospital or North Runnels Hospital in Winters.

The election is of vital interest to the residents of south Runnels County and Ballinger. If the issue fails to get voter approval, the closure of Ballinger Memorial Hospital could be near.

With approval of the voters, the tax revenue generated by the newly created hospital district would allow the hospital to remain open and provide the vital services as well as to starting its past due bills.

The board members also called a public hearing for 7:30 Thursday evening to discuss the problems of the financially plagued hospital. That public hearing will be held in the district court room in the Runnels County Courthouse.

Gospel Singing set

Old Fashioned Gospel Singing will be held at Bronte Senior Center on Sunday, June 26, from 2 to 4 p.m.

The public is cordially invited to attend.

Baptist Church to hold concert

The College & Career Singing Ensemble from Meadowbrook Baptist Church in Robinson, Texas will present a concert at the Wingate Baptist Church, Saturday evening, June 25, at 8:00. The ensemble will perform a Variety of Christian music, including contemporary music, old-time gospel, and hymn arrangements.

The ensemble is made up of young, single adults from the college and career department of Meadowbrook Baptist, which is south of Waco. The public is invited to attend the concert for a great time of worship and fellowship.

Goal achieved in Pearl Jackson Scholarship Fund Drive

Alton Lowe, Chairman of the Class of 1940 of Winters High School, has announced that the goal which was set for the Pearl Jackson Scholarship Fund has been surpassed. When the class began the campaign in September 1986, a minimal goal of \$10,000 was set for the endowment fund. Recent contributions from the participants in the reunion activities of the Classes of 1940, 1941 and 1942 and substantial contributions from two members of 1940 have brought the total to \$10,500.

The achievement of the goal means that each year a graduate of Winters High School will receive a scholarship grant in the amount of the annual earnings of an endowment of at least \$10,500. Any future contributions will increase the endowment and subsequently enhance the scholarship grant.

Two scholarship grants have already been awarded. In 1987 a grant of \$700 was presented, and in 1988 a grant of \$650 was awarded a graduate. Each of these grants was made on the premise of an endowment fund of \$10,000. While the fund was less than that amount in those years, a member of the Class of 1940 made a special contribution to assume that the graduates of those two years would receive a significant grant.

A total of \$11,300 has been contributed to the Pearl Jackson Scholarship Fund. This includes the \$10,500 in the endowment fund and the \$800 special contributions for the 1987 and 1988 grants. Individual members of the Class of 1940 have con-

tributed a total of \$7,600.

The Class of 1940 expresses its gratitude and appreciation to all who have contributed and helped to make this project a success. The class also invites and urges all who are interested in providing a scholarship grant to deserving graduates each year to continue to make contributions. A contribution to the Pearl Jackson Scholarship Fund is also an appropriate memorial. Designated members of the family will be notified of the contribution.

Contributions should be made payable to the Pearl Jackson Scholarship Fund, Winters Independent School District, Winters, Texas 79567. All contributions will be placed in the endowment fund and it will never be reduced. Only the earnings of the fund will be given as a scholarship grant each year.

VFW slates benefit BBQ

Winters VFW Post 9192, and its Ladies Auxiliary, will be serving Bar-B-Que Sunday, June 26, at the Post Home on Highway 83 south in Winters.

The proceeds from the Bar-B-Que will benefit the Winters Volunteer Fire Department in its efforts to outfit new rural fire fighting equipment.

The Bar-B-Que luncheon will be served from 11:00 a.m. to 2:00 p.m. The price of the lunch is \$4.00 for adults and \$2.50 for children. Brisket and sausage are on the menu along with traditional trimmings.

Lou Wright is named Employee of the Year

Lou Wright was selected as Employee of the Year at North Runnels Hospital in balloting by all employees. A registered nurse, she received her Associate of Science in Nursing degree from Angelo State University in May 1985.

She has been employed at North Runnels Hospital since late May 1987 when she took the

position of Director of Home Health. In April 1988, she assumed new duties as the Quality Assurance Director for the hospital.

An active volunteer with the West Coke County (Robert Lee) Emergency Medical Service, she is an EMT-Paramedic and instructor.

Farmers Home County Committee Election is June 30

Farmers in Taylor County and Runnels County will have an opportunity to choose one person from among two candidates, running for the Farmers Home Administration county committee in the June 30 election. FmHA County Supervisor Don M. Newhouse said today.

Any person who has a interest in a farm in the county as owner, tenant or sharecropper is considered a farmer and is eligible to vote, Newhouse said. Spouses of eligible farmers also are considered farmers for voting eligibility.

Ballots for the election are published in the local newspapers and also are available at the FmHA county office at 2203 Federal Building, Abilene, Texas. If they cannot be returned to the county office in person, ballots may be mailed in, Mr. Newhouse said.

Among other duties, county

committees help determine whether an applicant is eligible for a FmHA farm loan. Two of the three members are elected by county farmers, and the third is appointed by FmHA.

WHS Class of 1963 planing reunion

The Winters High School Class of 1963 are planing a 25th reunion to be held July 2, 1988, at the Winters Country Club.

Golf will be played at 9 a.m., social and visiting will start at 4 p.m. and dinner will be served at 7 p.m.

Contact Alvis Jackson at 915-743-2650 if you are a member and plan to attend in order that preparations can be completed.

Former teachers, classmates, class sponsors and friends are invited to the reunion. After dinner is served more visiting will be held until 12 p.m.



Rodeo results next week

TA

MEMBER 1988

TEXAS PRESS ASSOCIATION

The Winters Enterprise

Published by RyKel Corporation
(USPS 687-220)

915/754-5221 P.O. Box 37 Winters, Texas 79567

Yvonne Thomas, President
Kelley Thomas Craig, Vice-President
Kerry Craig, Managing Editor
Jerre Heathcott, Circulation Manager
Cheryl Grenwelge, Account Executive

Entered at Post Office, Winters, Texas 79567

As Second Class Matter

SUBSCRIPTION RATES

In Runnels County, One Year.....\$10.00
In Other Texas Counties, One Year.....\$12.00
Outside Texas, One Year.....\$16.00

Any erroneous reflection upon the character, standing, or reputation of any person, firm or corporation which may appear in the columns of this newspaper will be gladly corrected upon due notice of same being given to the editor in writing personally at this office.

Poe's corner

by Charlsie Poe

Settler's memoirs show how Big Country grew

Imagine if you can, this country in 1846, when Cameron was the County Seat of Milam, the most western organized county of that time.

The memoirs of F. M. Cross, an early day settler in the area, can provide insight into the development of Central West Texas.

Cross was born in Pontotoc County, Mississippi, in the year 1834. His family moved to Missouri when he was but a child and from there to Texas, arriving in the town of Cameron, in the fall of 1846.

The improvements of the town consisted of a court house made of clapboards, a hut 14 x 16 feet in size; and dry goods store and one grocery store. The capital stock of those two stores combined amounted to about \$600, though the supply was sufficient for the population at that time. One family lived a half mile from the store, but claimed citizenship in the town. They were gladly accepted, for they had the only mill to grind meal for everyone. It was a steel mill run by physical power and each man had to do his own grinding.

Four families and one bachelor named Dr. Flemming, constituted the population of the town until the arrival of the J. M. Cross family, and three other families. A man named Trotter

put up a shop and went to work, and being a fine gunsmith, was kept busy. Everybody had to have firearms in good condition in order to protect themselves from the red man.

A great many immigrants came and located on the Brazos and Little Rivers, and Cross' father, desiring to go a little farther to the front, sold his two lots for \$25, thinking he was doing well to double his money. He paid for them with a brace of pistols that cost him \$12.50. On one of these lots he built a log cabin which the family lived in during the winter and spring of 1847. They went on up the Little River and built another log cabin. They planted a corn crop on Knob Creek and made good corn without a fence.

"We kept the buffalo run off through the day, there were no other stock nearer than the three folks of Little River, so this crop was gathered and in the fall we settled on the Lampasas River about 30 miles from Cameron, which was still under the jurisdiction of Milam County.

"As to the wild game, there were buffalo, bear, deer, antelope and all kinds of smaller game from the lobo wolf down. The rivers were full of alligators and fish of all kinds," related Cross.

The Cross family kept moving westward and helped to organize Bell County in 1850. The father, J. M. Cross, was a member of the commission that located the town of Belton, quoting from the memoirs. "As people immigrated from the old states and towns began to grow the government sent a line of troops to Texas for the protection of the settlers, one company was stationed at Fort Graham on the Brazos River, one on the Leon River 18 miles below the present town of Gatesville, and one company near the Colorado River, where the town of Burnet is today, called Fort Grogan. The camp on Leon River was called Fort Gates in that day and for a number of years afterward.

"The line of stations was above all settlements at that time. I was not yet grown, but drove a team in company with others hauling forage from Little River and Diers Creek, in the lower part of Bell County, to the soldiers at Fort Gates.

"The county was settling so fast, it became expedient for the soldiers to be moved farther west of the line of stations already established. I think it was in the year 1850 that they were stationed on a line across the state from Red River to the Rio Grande, called the Overland Mail Road for a long time. I started out to do for myself, got employment with McCoy and Dalrymple who had a contract with the government to furnish supplies for the soldiers on that line.

"We left the farm of Dalrymple, near Leon Junction, with teams and wagons loaded with shelled corn, ranging from 100 to 125 bushels to the wagon, each wagon drawn by six yoke of oxen. Thus, we opened up what was called the old Phantom Hill Road, Phantom Hill is on the Clear Fork of the Brazos River.

"It took just one month to make the round trip to Fort Phantom or Fort Chadbourne, which was the next station on the line south, and Fort Belknap was north of Phantom Hill. We ran this train of wagons to all three of the forts, following the old Phantom Hill Trail until we reached the Little Pecan Creek in the upper Cross Timbers where we turned to the left for Chadbourne, since most of our forage went there.

"The best camping place was on the Pecan Bayou, about 35 miles above Brownwood. The next camp was on a little branch heading up against the mountains just above what is called Tecumpey Peak; the stream has no name. From there we went to Elm Creek, a regular camping place. From there we went to Valley Creek, last on the trail (Valley Creek is at Wingate)."

"The next day we reached Fort Chadbourne, unloaded and got back to Valley Creek where

By Hilda Kurtz

Crews

People who want by the yard, but buy by the inch, should be kicked by the foot.

Selma Dietz and 26 other people returned Thursday from the Magic Tour in Ballinger, after a week through Arkansas, Oklahoma and Missouri.

Last Sunday Corra Petrie enjoyed the day, dinner and visiting with out of town relatives in the home of Pat and Cecil Hambright; Brandon, from Iowa; Brandi of Albany and Toni and Arthur Spragg of Abilene.

During the week with Marie Kurtz were Odelleta and Roy Minzenmayer, Betty and Marvin Gray. I visited a while Sunday afternoon and Natalia and Adolph Minzenmayer ate dinner on Sunday. Afterwards they all went to evening church services at the Lutheran Church.

The Wesley McGallians prepared Father's Day dinner Sunday for Therin and Nila Osborne. Others there were Sue Campbell, Louise Osborne and Viola Foster.

Gathering in the Marion Wood's home for Father's Day were Mr. and Mrs. Maloy Bryant of Abilene; Mr. and Mrs. Larry Calcote and boys, Winters; Mr. and Mrs. Bailey McAnulty and Brian of Winters; Jennifer Brown, Abilene; Frances Mincey, Big Spring; Jeff, Darla and Steven Camron, Coleman. Sunday evening the McAnulty, the Calcote families and Doris and Marion Wood ate supper at Hords Creek Lake.

Randall Kurtz, Ballinger, was honored with a birthday supper in the home of his parents Mary and R. C. Kurtz Friday night. Those who came were Alvina and Walter Gerhart, Elvira Minzenmayer, "Darrell Kurtz, the honoree, Randall, Janice, Carrie and a friend of Ballinger.

Many more of those nice Birthdays Randall.

Hopewell Church Sunday visitors were, Lynn and Carrol Faubion, Dusty Alexander of Tucson, Arizona, the Mike Prater family, Norval and Dusty Alexander attended the Winters Rodeo Saturday. Dusty caught his calf and won a ribbon and also received a whole dollar. (Congratulations Dusty)

Howard Morrison came home Thursday afternoon after a stay in Humana Hospital in Abilene,

McCoy and Gooch had a ranch, (Dalrymple and McCoy having dissolved partnership) I stayed with them on the ranch which was six miles for Chadbourne on Oak Creek."

Cross died in 1921 at age 86, was the grandfather of the late Beatrice Traylor. He became a Methodist preacher in her later life.

To be continued next week.

Library Notes

by Pauline O'Neal

NEW MEMBERS

Mr. and Mrs. Randall Sneed, Steven and Stacy Lydia Luz Carla Briley Kathi Edwards Jackie Hill Brandon Boles Steve, Amanda and Nicole Cross

Memorials

Mary Compton by Jiggs and Ouida Nichols
ARTIST OF THE MONTH
Gordon Barnes, Blackwell, Texas

BOOKS DONATED BY

Dewey Chestnut Children enjoying the Storytime and games with Teri Vogler were: Tarra and Tracy Burns, Sandy and Travis Calcote, Heather Freeman, Joseph and Justin Davis, Keri and Wayne Heidenheimers, Kristen Goff, Justin and Alison Calcote, Leisel and Sarah Schuman, Jana Presley, Steve, Amanda and Nicole Cross.

Those who came to the Library on Thursday were entertained by Brooke Killough and Teri Vogler were as follows: Jason Hall, Josh Lineycomb, Tiffany Donica, Robert Bedford, J. G. Heidenheimer, Amanda, Steve and Nicole Cross, Kelli Haggerton, Leisel Schuman, Kiva Anderson, Jennifer Davis, J. W. Anderson, Wayne Heidenheimer and Marissa Allmand.

See you at the Library!

see her and she was doing some what better and Effie told Eunice that her daughter, Mrs. Gaston Ernst, San Antonio was up over the weekend.

Dee and Sam Faubion took a pleasant sight-seeing trip down to Fredericksburg way Saturday and Sunday. On Friday they went to see her brother, Mr. and Mrs. Cone Robinson in Ballinger.

The Walter Jacobs attended supper and 42 night in the home of Mr. and Mrs. Roy Schafer Saturday night, others present were, Mr. and Mrs. James Halfmann, Mr. and Mrs. Herbert Jacob, Mr. and Mrs. Earl Cooper, Mr. and Mrs. Jerry Holle and Hattie Minzenmayer.

On Father's Day the Walter Jacob families and the Joe Kozelsky, Jr. families had a picnic at Hords Creek Lake, this affair was to honor Mr. Joe, Sr.

On Saturday Mr. and Mrs. Monroe Hoelscher of Atlanta, Mrs. Herman Giles, Brownwood, came by for a nice long visit with Walter and Margie. Monroe is her cousin and Mrs. Giles is well known here as Barbara, once living in these parts.

Ken, Paula and Dee Bena Baker attended the Faulkner Reunion Saturday and Sunday at Hords Creek Lake. The Bakers attended the Coleman Rodeo and heard the concert Saturday night.

Randy Nolte joins Reserve

The Abilene Naval and Marine Corps proudly announces the recent enlistment of HM2 Randy Nolte to the Naval Reserve. Nolte served previously two years in active duty Navy, some of which was aboard the USS LaSalle and the USS Glover. He has served another three years in the Reserve Program. Nolte, a native of Highland, Ill., has lived in Winters for the last four years. He has his own business in Winters. He runs the North Runnels Emergency Service. This provides ambulance service for the Winters Area.

Visitor

Miss Patricia Emmert spent the past week with her mother, Mrs. J. G. Emmert, who underwent eye surgery at Abilene Eye Institute Tuesday, June 14, and is now recuperating at home.

Keep up with the latest happenings in the Winters area. Subscribe to the Enterprise.

Second National Beef Conference scheduled for July 7-8 at A&M

Changes in beef at the retail case, along with diet, health and nutrition issues, will be the focus of the opening day's program when the second annual National Beef Industry Conference opens at Texas A&M University, July 7-8.

Dr. Dan Hale, meats specialist with the Texas Agricultural Extension Service, says home economists, dietitians and food editors will be introduced to the latest beef/nutritional research findings, consumer trends and beef retailing trends in the United States. Hale says he hopes that producers, feeders, and meat industry personnel also will come to the first day's program to learn more about the product they are producing and the product consumers want.

Thrust of the program for the second day will be to examine how current trends in the beef industry will affect cattlemen.

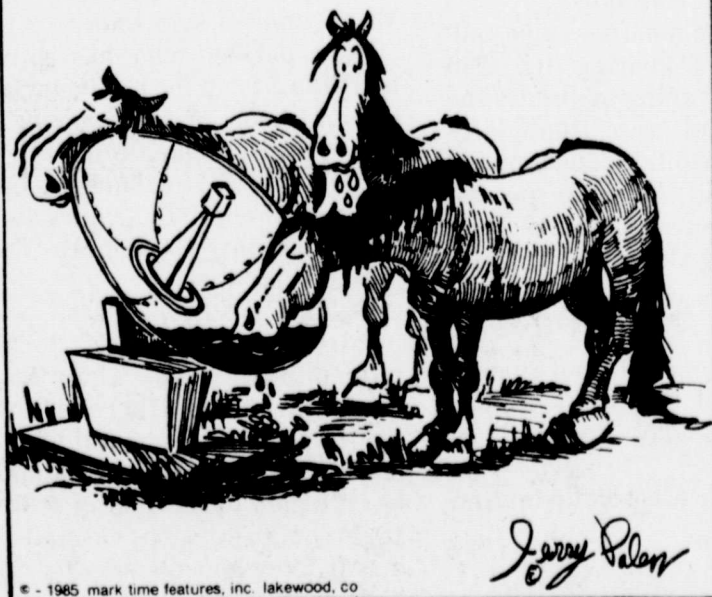
Dr. Larry Boleman, Extension beef cattle specialist, says specification beef production or targeted beef production will be examined by the teaching, research and Extension staff of Texas A&M University. Cattle herds, representing various breeds and crosses, will be evaluated by national industry leaders in regard to their economical productivity and possible marketing niche. Boleman says that many breed stereotypes will be analyzed for accuracy and cattle selection discussed during the conference.

Both Hale and Boleman feel that this year's seminar will place much more emphasis on issues of major importance to the producer and feeder. These issues, they add, will have major ramifications concerning the way cattlemen select and manage their cattle.

YOUR

BANK

STAMPEDE By Jerry Palen



A Checking Account Designed For The 21st Century Is Here...We Call It **N.O.W.**! You Earn Interest On Your Balance And Write As Many Checks As You Wish!

WINTERS STATE BANK

Your Full Service Community Bank!

754-5511 500 South Main

Member FDIC

Winters, Texas

John Montgomery's



Texas Smoked Meats

Vacuum Packed Briskets
(fully cooked)

Orders Taken at Jedd Mfg. Co.

Call 754-4988 or

Call John 915/554-7595

Catering Available 554-7595



Girls basketball camp a success

by Zee Barnes

The girls basketball program took a giant step forward this past week, as 52 girls participated in a week long practice of shooting, dribbling, passing, and defensive fundamentals.

Emphasis was placed on performing the necessary skills using proper techniques.

We had 23 girls from the third, fourth, and fifth grades, and 29 girls from the sixth, seventh and eighth grades.

Besides the basic skills that were taught the upper level girls learned some individual moves from their positions. The purpose of this camp was to keep as much interest as possible in basketball during the summer.

These 52 young ladies work-

ed very hard this week trying to improve their skills for next season. To go with our daily drills we had three contests: Hot Shot, Lay-ups, and Free Throws. The camp Hot Shot Champions were Rachel Edwards and Kim Deike. The Free Throw Champions were Janabeth Bryan and Sara Jackson. The Lay-up Champions were Janet Guy and Carrie Smith.

It was a fun week of basketball for the players and coaches. This group of young ladies will sure make basketball success easier to obtain because of their dedication and desire to improve.

I want to thank the parents for their positive support of the basketball program. I want to thank our future players for their hard work this week, and a special thanks to Coach Whitteburg and Coach Butts for their hard work. With this kind of desire and work habits the future Blizzard teams will be fun to coach and watch.

Helping heart attack victims

Heart attacks can happen without much warning, and they happen anywhere, any time. Do you know how to help someone who is having a heart attack? The Texas Medical Association says that you can help save a life if you recognize the signs an attack and take action immediately.

Severe chest pain usually is the first sign. The pain often is described as pressure beneath the breast bone. It can become severe, and can move into the neck and jaw area and the left shoulder or arm. Any kind of exertion makes it worse. The pain will be continuous, but may subside.

Other early warning signals of a heart attack that accompany the pain include nausea, sweating, difficulty in breathing, and dizziness.

The first step to helping a victim is to call an ambulance im-

mediately. Then, make the person as comfortable as possible, which is usually sitting, with the legs up and bent at the knees. Loosen ties, collars and any tight clothing around his or her upper body.

Another way you can help is simply by being prepared for all types of emergencies. Know what the emergency number is in your area. Know where the closest hospital is. Learn CPR. If the victim loses consciousness, and has no pulse or stops breathing—you may not have time to wait for medical help to start CPR.

Knowing all of these things also will help you remain calm and reassure the victim.

The Texas Medical Association is a professional organization with more than 28,000 physician and medical student members. It is located in Austin, and has 116 component county medical societies around the state.

Want ads pay call The Winters Enterprise 754-5221

Sommy's

200 E. Tinkle
Home Owned Home Operated

Phone 754-4752

We Accept
WIC Cards



Grocery & Market

Open All Day Sunday

Prices Good: Wed. June 22 thru Tues. June 28

Boneless Family Style

Chuck Steak

\$1.98
lb.

Gooch Sliced

Bacon

1-lb. Pkg
\$1.39

Gooch German

Sausage

12-oz. Pkg.
\$1.29

Gooch Smoked

Ham

Center Cut
\$1.98
lb.

Gooch Golden Award

Ham

\$2.98
lb.

Gooch Cedar Creek

Franks

12-oz. Pkg.
79¢

Boneless

Stew Meat

Extra Lean
\$1.98
lb.

Fresh Daily

Ground Chuck

\$1.49
lb.

Boneless

Arm Roast

\$1.98
lb.

Parade

Sugar

5-lb. Bag
\$1.39

Soft N' Pretty

Bathroom Tissue

4 Roll Pkg.
99¢

Purex Laundry

Detergent

Family Style
\$3.89
Box

Dr Pepper

6-Pack 12-oz. Cans

\$1.29

Viva

Paper Towels

Roll
79¢

Parade

Biscuits 10-Count Can

5/\$1

Best Maid

Sauce

18-oz.
89¢



Fritos Chips

\$1.79
Reg. \$1.99

Kounty Kist

Cut Green

Beans

Sweet

Peas

Whole Kernel

Corn

Mix or Match 16-oz. Can
3 Cans \$1
for

Gandy's

Cottage Cheese

Reg. or Slim & Trim
24-oz.
\$1.39



Crackers

1-lb. Box
79¢

Gandy's

Sherbet

All Flavors
\$1.59
1/2-Gal.

Russet

Potatoes

10-lb. Bag

89¢

Peaches

39¢
lb.

Vine Ripe

Tomatoes

39¢
lb.

Yellow

Squash

39¢
lb.

Bell Peppers

Medium Size

10¢
each

BUY, SELL, TRADE OR RENT THROUGH THE CLASSIFIED ADS

CLASSIFIED RATES

CASH
Minimum—\$3.00, 1 time
20 words; 10 cents per word
for over 20 words.

CHARGED
Minimum—\$3.50, first in-
sertion, \$3.00 per insertion
thereafter, 10 cents per
word over 20 words.

DEADLINE FOR ALL ADS
12:00 noon Tuesday week
of publication.

FLOWERS

FLOWERS for all occasions.
Orders wired anywhere,
any time. Bonded FTD,
Janice Pruser, Winters
Flower Shop.
754-4568/754-4688.

FOR SALE

NEW & USED PICKUP TOOL BOXES & HEADACHE RACKS CHROME & PAINTED. D & H PALLET CO. Winters, Texas.
767-2022. If no answer Call 754-4466 for appointments.

FOR SALE: Lot, plumbed and ready for travel trailer or mobile home w/storm cellar. Call 754-4928 or 754-5352.

HONDA: 3-wheeler for sale. Call 754-4928 or 754-5352.

FOR SALE: Good older chestnut mare. Has Play Day experience. Call 754-4568 or 754-4120 after 6 p.m.

FOR SALE: Upright 10 cubic ft. deepfreeze, upright piano, canning jars, infant seat, carrier & clothes size 9-12 mos. See at 606 State Street or call 754-5084.

FOR SALE: 3000 BTU window water cooler. 309 N. Cryer or 754-5181.

FIREWORKS! Open Friday, June 24 thru July 4. Fireworks for all ages. Come by and check for best prices!! Hoppe Fireworks, just west of Dry Mfg. on old Hwy. 53 west.

FOR SALE: 112 sq. yd. green carpet with pad for \$2/yd. Singer Touch & Sew sewing machine in maple cabinet. Call Edna England 754-4272.

FOR SALE: 1985 Yamaha 750 motorcycle, less than 7,000 miles. Also 1972 Volkswagen Super Beetle. Call 754-4843.

FOR SALE: We still have wooden tables and stools. Used electric and gas stove also refrigerator and several other items for sale. Call 754-4984 or come by Video Hut.

REAL ESTATE

HOME FOR SALE: Custom built, on 8 and 1/2 acres. East of Winters near the lake, with breath-taking view. Shown by appointment. Please call Preston or Naida Barker, 754-4650, 13-1fc

REAL ESTATE

NICE 3 BEDROOM HOUSE: S. Penny Lane, brick, central H/A, curbed & paved. Dead end street. Call K.W. Cook, 754-4719.

FOR SALE: 4-5 BR, 2 1/2 B, central H/A, large trees, large storage shed, water well. Just outside city limits. Call 754-4016 after 5 p.m.

3 BEDROOM HOUSE FOR SALE: Call for appointment after 5 p.m., weekdays and anytime weekends 754-5073.

FOR SALE: Ralph Lloyd residence and business building 102 S. Main Street. Contact Mrs. Raymond Lloyd 754-4971, 506 West State Street.

QUALITY CUSTOM BUILT: 3 BR, 2 B, 63.62 acres, 6 miles northwest of Ballinger. All minerals 1/4 royalty, 2 horses, fenced, beautiful hill-top view; close to Lake Ballinger. Good well, rural water system. Agnes Leatherwood 944-8611 or 949-7133. Steve Stewart Real Estate.

FOR RENT

NOTICE! The Winters Housing Authority has always accepted single elderly handicapped or disabled qualified tenants and we will continue to do so. However, as of June 14, 1988 we will now accept and place single non-elderly, non-handicapped and non-disabled qualified applicants. Apply in person at 300 N. Grant, Winters, or call 754-4232 Monday-Friday 8 a.m. - 3 p.m. Equal Opportunity Housing.

THE HOUSING AUTHORITY OF THE CITY OF WINTERS NEEDS APARTMENTS: has vacant 2 BR, apartments, available NOW, to qualified applicants. Apply in person at 300 N. Grant, Winters. Monday thru Friday 8-3. Equal Opportunity Housing.

FOR RENT: 2 BR house for rent, 207 S. Arlington, \$200 per month. Call 754-4004.

COUNTRY APARTMENT: Single person or couple. No children or pets. Call 754-5093.

FOR RENT: 1 BR apt. with utilities paid. Also 3 BR house. Call 754-4286.

FOR RENT: 1 BR, furnished apt. with utilities paid. **FOR RENT:** 2 BR unfurnished apt. Call Halley Sims 754-4883.

THE HOUSING AUTHORITY OF THE CITY OF WINTERS: has vacant 1-2 & 3 bedroom apartments available immediately to qualified applicants. Apply in person at 300 N. Grant, Winters. Monday thru Friday 8-3. Equal Opportunity Housing.

FOR RENT: 2 BR mobile home, partly furnished. Call 754-5306 after 5 p.m.

FOR RENT

FOR RENT: Mobile home space. 1/2 block East of Triple J. Grocery. Phone 915/784-6221.

HELP WANTED

EARN \$400 WEEKLY processing mail from home. No experience necessary. No obligation. Free details. Rush self-addressed stamped envelope. McConnell, 840 W. 3rd St., Rushville IN 46173.

GET PAID for reading books! \$100.00 per title. Write: PASE-E153, 161 S. Lincolnway, N. Aurora, IL 60542.

EASY WORK! Excellent Pay! Assemble products at home. Call for information. 504-641-8003 EXT. A8997.

WORK WANTED

ALL TYPES OF UPHOLSTERING: done, couches, chairs, etc. Also available custom built upholstered furniture. Dankworth Home Center, 802 Hutchings Ave., Ballinger, Texas. Phone 365-2300.

JOB WANTED: Licensed beautician seeking position. Will do manicures, shampoos, hair cuts, perms. Will work Tuesday-Friday and half day Saturday. Call 767-2090, ask for Sharon. Will work in Winters or Ballinger. Baby sitting wanted in your home day or night, call Jeannie 767-2090.

WANTED

SCRAP IRON copper — brass — Auto — Tractors — Machinery — Engines — Motors — Radiators. BALLINGER SALVAGE, PINE ST. SALVAGE, Abilene.

WANTED QUAIL HUNTING LEASE: R. W. Newland, 104 Sunny Lane, Gatesville, Texas 76728 or call 817-865-7779.

AGRICULTURE

SAVE FREIGHT AND TIME: Brunson Feed Mill, Ballinger, has many of your native grass seed in stock for your CRP Acreage. We have approved grass drills and charge a reasonable fee for sowing, 709 Seely, Ballinger, Texas, 365-2419.

BUSINESS SERVICES

WINTERS SHEET METAL & PLUMBING WORKS

Plumbing, Heating, and Cooling
215 W. Dale
Phone: 754-4343

Air-Conditioning Service

Washers-Dryers
Dishwashers
Refrigerators-Freezers
Disposals-Kitchen eq.
and Small Appliances
Repairs-Sales-Service
Call Collect
Mark Lester
915-673-7560
No mileage charge

Emergency Ambulance

754-4940
North Runnels
Emergency Service
Inc.

WINTERS FUNERAL HOME

Insurance and Markers
24 Hour Service
754-4529

Harold W. Shelburne

Certified Public Accountant
100 W. Dale
Winters, Texas
915/754-5753

Kraatz Plumbing

754-4816
If no answer, call 754-5610

Commercial Residential Happy Painters
Painting and Decorating Services
Taping-Texture-Sand Blasting
Fully Insured
Local References
Ted Hantsche
Contractor
(806) 665-3214
Box 1643-Pampa, Texas
55 Relocation for long distance

Advertising Job Printing Rubber Stamps Business Cards Envelopes Quick Copies Binding Caps — Padding The Winters Enterprise
754-5221

Magnetic or Decal Business Cards Signs
Magnetic Sheet-Vinyl Decal-Metal
(915) 365-5511
Engraved oil field signs
S. A. Enterprises
P.O. Box 304 Ballinger, Texas

24-Hour Service All Makes
Morris Service Company
Heating & Air Conditioning Service
203 Twelfth Street
Ballinger, TX 76821 365-3966

Broach Electric Co.
Oil Field, Commercial & Residential Wiring
Air Conditioning Sales & Service
Authorized Dealer for:
GE - GIBSON - FRIEDRICH
Phone 754-5115 • P.O. Box 307 • Winters, Texas 79587
JOSE S. DE LA CRUZ — Home Ph. 754-4440

NOTICE OF APPLICATION FOR OIL AND GAS WASTE DISPOSAL WELL PERMIT

W.L.K. PROPERTIES, INC., 401 N. Colorado, Suite 103, Midland, Tx 79701 has applied to the Railroad Commission of Texas for a permit to dispose of produced salt water or other oil and gas waste by well injection into a porous formation not productive of oil or gas.

The applicant proposes to dispose of oil and gas waste into the Lower Cisco Formation Fennell Unit, Well Number 607. The proposed disposal well is located 4 1/2 miles W of Winters in the Fennell (Cisco) Field, in Runnels County. The waste water will be injected into strata in the subsurface depth interval from 3203 to 3530 feet.

LEGAL AUTHORITY: Chapter 27 of the Texas Water Code, as amended, Title 3 of the Natural Resources Code, as amended, and the Statewide Rules of the Oil and Gas Division of the Railroad Commission of Texas.

Requests for a public hearing from persons who can show they are adversely affected, or requests for further information concerning any aspect of the application should be submitted in writing, within fifteen days of publication, to the Underground Injection Control Section, Oil and Gas Division, Railroad Commission of Texas, Drawer 12967, Capitol Station, Austin, Texas 78711 (Telephone 512/445-1373). (June 23, 1988)

NOTICE TO BIDDERS

Sealed proposals addressed to Michael B. Murchison, County Judge of Runnels County, Texas, will be received in the Commissioners' Court Room at Ballinger, Texas, until 10:00 A.M., July 11, 1988.

You may bid on the following equipment:

One (1) new, 1988-89 1/2 ton pickup, crew cab, heavy duty chassis, 350 8-cylinder motor, year round factory air conditioning and heating, wide bed, spare wheel and tire, radio, automatic transmission, power steering and power brakes and with mounted trailer hitch.

There will be a 1983 Ford 1/2 ton crew cab pickup, motor number 2FTHW35GXDC18951 exempt license number 436397 to be traded as part of the payment.

Runnels County will retain the butane system that is on the 1983 Ford pickup.

Delivery must be made within 60 days from receipt of order. The County reserves the right to reject any or all bids and to waive any or all formalities.

BY ORDER of Commissioners' Court, June 14, 1988.

Darlene Smith, County Auditor
Runnels County, Texas.

(June 23, 30, 1988)

MISCELLANEOUS GARAGE SALES

WE BUY ALUMINUM CANS: 38¢ per pound, also copper and brass. Every Tuesday 12 noon to 2 p.m. at Peoples National Bank Parking lot, Larada Metals.

Holloway's Video: Nintendo Games \$1.25 Monday thru Thurs. Friday and Sat. \$2.50. New movies weekly. Hrs. 11 a.m.-8 p.m. Friday & Sat. open later. Phone 754-4984.

WANT TO SHARE RIDE: to Abilene State School. Please contact me at 786-4187.

GARAGE SALES

GARAGE SALE: Church wide yard sale at Southside Baptist Church. Saturday, June 25, 8-3.

CARPOR SALE: Boys jeans and clothes and lots of misc. Fri. & Sat. Hwy 83 North, Soon Lee.

Re:Location Of Dennis Poe Cotton Office to Poe Corner
754-5468 754-5798
Cotton Equities — Generic Certificates

Ricky's Detail Shop
1102 N. Concho
Winters, Texas
Wash & Wax Detail
Inside & Out
Carpet Shampoo Service
Residential — Automotive
Mon. — Sat. 9-5 754-5775

UNDERWOOD REAL ESTATE 100 West Dale

NEW LISTING: 2 story 3 BR, 1 B, w/apr. at back, mid 20's.
LOTS: Residential & commercial lots, call for locations.
OWNER FINANCE: 142 acres, east of town, price reduced.
PRICE DROPPED: Two story, 4 BR, 1 1/2 B, on 1 acre.
DRASCO ROAD: 3 BR, 2 1/2 B, brick, 1 acre W/satellite.
PRICE REDUCED: 3 BR, 1 B, w/fireplace, mid teens.
PARK LANE: 3 BR, 2 B, brick, workshop/garage.
NEAR SCHOOL: 3BR, 2 B, chain link fence.
PRICE REDUCED: 3 BR, 2 B, brick on corner lot.
LOTS OF AMENITIES: 3 BR, 1 1/2 B, on corner lot, mid 40's.
VERY NICE: 2 BR, 1 B, H/A, mid 20's.

NEW LISTING: House to be moved, 4 rooms and bath, \$2,000.
VERY NICE: 3 or 4 BR, 1 B, on 23 acres at Wilmethe, Mid 30's.
CORNER LOT: 3 BR, 1 B, workshop mid 30's.
WEST DALE: 2 BR, 1 B, double c/p, low teens.
INCOME PROPERTY: 3 BR, 2 B, w/2 apts. at back.
ALMOST NEW: 2 BR, 2 B, w/51 acres, oil well.
SPACIOUS OLDER: home, 3 BR, 2 B, H/A, on corner lot.
CLOSE IN: 3 BR, 1 1/2 B, brick.
MAIN STREET: 3 BR, 1 B, brick, central air, double cp.
SUPER CONDITION: 3 BR, 2 B, mid 30's.
48 ACRES: w/lg. house, pecan orchard, creek & barns.

NEW LISTING: 29 acres with creek on FM Road, low 20's.
4 ACRES: almost new house, 3 BR, 2 B.
NEW LISTING: Country living, A-frame, 3 BR, 2 B.
NEW LISTING: A real deal, 2 BR, 1 B on 2 lots, \$9,000.
LOVELY FAMILY HOME: 3 BR, 2 B, w/pool.
PENNY LANE: 3 BR, 2 B, central H/A, priced right.
OWNER SAYS MAKE OFFER: on 3BR, 2 B, H/A.
NEW LISTING: 2 BR, 1 B, near downtown low 20's.
WOOD STREET: 3 BR, 2 B, brick, low 30's.
NEW LISTING: 2 BR, 1 B, real clean, mid 20's.
OLDER TYPE: 3 BR, 1 B, very neat and clean.
COMMERCIAL: 2 acres FM 53

PUBLIC NOTICE

The United States Environmental Protection Agency (EPA) has adopted requirements that all public water systems notify their customers about lead exposure. This notification is intended to educate and inform consumers on this issue in light of the fact that your drinking water may be a potential source of lead exposure. This is being done even though your water system is not in violation of the current standard. There are also other potential sources of lead contamination in the environment.

The following specific language is required by EPA in this notice:

The United States Environmental Protection Agency (EPA) sets drinking water standards and has determined that lead is a health concern at certain levels of exposure. There is currently a standard of 0.050 parts per million (PPM). Based on new health information, EPA is likely to lower this standard significantly.

Part of the purpose of this notice is to inform you of the potential adverse health effects of lead. This is being done even though your water may not be in violation of the current standard.

EPA and others are concerned about lead in drinking water. Too much lead in the human body can cause serious damage to the brain; kidneys, nervous system, and red blood cells. The greatest risk, even with short-term exposure, is to young children and pregnant women.

Lead levels in your drinking water are likely to be highest:

1. if your home or water system has lead pipes, and
2. if the home is less than five years old or
- if you have soft or acidic water, or
- if water sits in the pipes for several hours

Ways to avoid potential lead exposure are to "flush" faucets before use and to use cold water for drinking and cooking. You may wish to have your home tap water tested for lead content by a competent laboratory. You may also wish to check to see if lead pipes, solder, or flux were used in your home plumbing.

If you have questions regarding this matter that we can help you with, please call 754-4424.

City of Winters
Winters, Texas

(June 9, 16, 23, 1988)

PUBLIC NOTICE

Notice is hereby given that the North Runnels Hospital District, a governmental entity of North Runnels County, will receive bids in the office of the administrator at North Runnels Hospital, East Highway 53, Winters, Texas until 5:00 p.m. Friday, July 1, 1988, for a copy machine.

Specifications may be secured in the office of the hospital administrator. All bids must substantially comply with specifications.

The North Runnels Hospital District reserves the right to reject any or all bids and to award the bid considered most advantageous to North Runnels Hospital, Winters, Texas. (June 23, 30, 1988)

PUBLIC NOTICE

Notice is hereby given that the North Runnels Hospital District, a governmental entity of North Runnels County, will receive bids in the office of the administrator at North Runnels Hospital, East Highway 53, Winters, Texas until 5:00 p.m. Friday, July 1, 1988, for a copy machine.

Specifications may be secured in the office of the hospital administrator. All bids must substantially comply with specifications.

The North Runnels Hospital District reserves the right to reject any or all bids and to award the bid considered most advantageous to North Runnels Hospital, Winters, Texas. (June 23, 30, 1989)

NOTICE TO BIDDERS

Sealed proposals addressed to Michael B. Murchison, County Judge of Runnels County, Texas, will be received in the Commissioners' Court Room at Ballinger, Texas, until 10:00 A.M., July 11, 1988.

You may bid on the following equipment:

One (1) used 1978 or newer, Backhoe with front-end loader with 4505KW) SAE net horsepower, 45 SAE horsepower diesel; choice of two synchronized transmissions (8-speed mechanical shuttle or optional 4-speed with full power shuttle and torque converter); 12' backhoe or 12' 15' telescoping Extendahoe; 3,000 lb Lift capacity loader with dual-lever controls, in-line linkage with 5700 lbs breakout; Unitized Main Frame that absorbs heavy shock loads, maintains power train alignment and simplifies servicing; 3 or better number of cylinders; 188" Displacement; 12V Electrical System; 300 amps Battery; 42 amps Alternator; 17.5 to 1 Compression Ratio; Fuel Injection Injectors; Injection Pump Fuel Supply; Dry type - replaceable element Air Cleaner; Replaceable Cartridge Oil Filter - full flow; Positive Pressure Lubrication; Pressurized 4 psi Cooling System; Horsepower (1) SAE Gross - 52 @ 2100 rpm; (2) SAE Net - 45 @ 2100 rpm or equivalent; Power Train to be standard transmission, 8-speed synchronized sliding spur-gear with dual range lever and synchronized shuttle shift. Permits on the go shifting up from 2nd to 3rd and down from 4th to 3rd in both Hi and Lo ranges OR Optional transmission, 4-speed sliding spur gear with full power converter. Permits on the go shifting up from 2nd to 3rd and down from 4th to 3rd.

Delivery must be made within 60 days from receipt of order. Runnels County reserves the right to reject any or all bids and to waive any or all formalities.

BY ORDER of Commissioners' Court, May 9, 1988

Darlene Smith, County Auditor
Runnels County, Texas.

(June 23, 30, 1988)

"The beaten path is the safest."

Proverb

CONSUMER ORNER

Now you can get broader credit for buying broadband.

A major company has a new program that allows a family to charge its carpet purchases at competitive rates without tying up a large portion of the family's credit line. The line of credit associated with the Credit Card for Wear-Dated* carpet will be in addition to that of the various major credit cards.



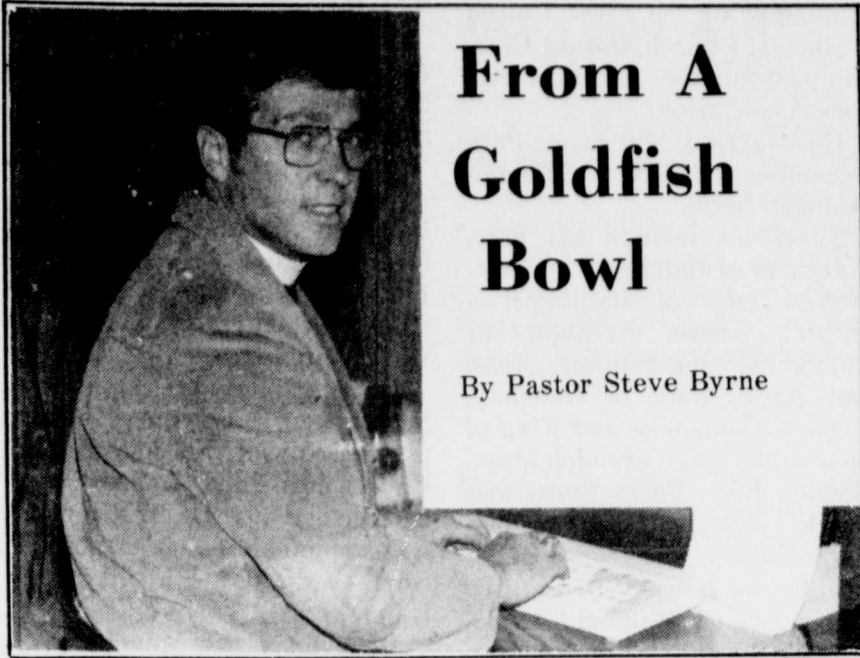
You can now get a special credit card for carpeting with an instant \$1,500 credit line.

Also, by extending payments on the carpet purchase, a buyer can upgrade the quality of the carpet purchased for just a few more dollars per month.

The retail salesperson can approve an instant \$1,500 credit line for each qualifying customer. If the customer wants more credit, the salesperson can call for approval, usually given in under four hours.



The average life expectancy in 1900 was only 47 in the U.S. Today it is over 70.



From A Goldfish Bowl

By Pastor Steve Byrne

This has been my 5th wheat harvest season to be in Winters. Wheat that is ripe for harvest is a beautiful sight. Standing strong and sometimes tall. Watching it being flexible enough to bend with the wind so as not to break. I can't help but wish every time I see a wheat field at that point in its development that I had that much grace and dignity.

I do a lot of driving in the area to visit my parishioners, many of whom live in the country. I get used to seeing those wheat fields in the four or five mounds that they are growing. It becomes a part of my world when I am out driving.

Consciously or unconsciously I get used to seeing the wheat here, the maize there, the pasture land over yonder. The fields become landmarks.

The other day I was driving along on a route that I take fairly often. But it didn't feel right. It didn't look right. Part of my landmarks had been harvested. In a sense I was lost, or at least disoriented. I took the wrong turn.

The further I got from the highway down the county road, the less familiar it looked. I decided that I had turned too early. Taken the wrong road. I whipped in to a location and turned around. Went back to the highway. Driving

on to find the proper road.

As it turned out, I had turned on the right road in the first place. There wasn't another turn-off down the highway. I came to an intersection. It took me a little longer to get where I was going that day. There was another, longer way to go. And I took that. Eventually got to my destination.

The problem was that I had used landmarks that were temporary. The wheat fields. Once they were harvested, the whole country-side looked different. And I became disoriented.

In our lives sometimes we become disoriented because we have landmarks that are temporary. Not permanent. And when they are gone, we get lost. Things look different.

Fortunately, God is gracious and usually provides another way to get to our destination. But it takes longer and extracts a toll from us before we get there. Thanks to God that he has provided this "other way," which is forgiveness.

But sooner or later, we need to get correct bearings. Proper landmarks. Landmarks to find our way that are not temporary. Landmarks that are eternal, if you will.

Jesus said, "I am the Way, the Truth, and the Life." He sounds like he is saying he is a Landmark.

Courtesy Of St. John's Lutheran Church

1100 W. Parsonage 754-4820
Sunday School 9:30 A.M.
Worship Services 10:40 A.M.



The Welsh once believed the first to see the daffodils bloom would be rich that year.

Ava's Dreams By The Yard Fabric, Patterns, Notions & Classes

104 North Main Winters, Texas 79567 754-4497

WAL-MART

Pictureland Portrait Studio

SUMMERTIME SAVINGS

SAVE \$3

on our 13-piece portrait package one 8x10, two 5x7s and 10 wallets on your choice of a traditional, nursery, spring or fall background

NOW ONLY 6.95

(reg. 9.95)

Bring in any lower priced advertised offer and we'll match it! We welcome everyone... babies, children, adults and family groups. No appointment is ever necessary. Satisfaction guaranteed!

Poses our selection. Black and White Backgrounds, Double Exposure and other Special Effects Portraits not available in advertised package. \$1.50 for each additional person in portrait. Minors must be accompanied by an adult. *approximate size

Studio Hours: 10 a.m. until one hour prior to store closing
Sunday (where open): store opening until one hour prior to store closing

3 Days Only!
Thursday, June 23 through Saturday, June 25
Ballinger, TX
2305 Highway 67 West

Howard Annual Reunion held

The Howard Annual Reunion was held June 12 in Wingate.

Those attending were: Faye Hanes, Ima Lee Daniels of Lubbock; Pearl Copland, Mearl Adcock, Mr. and Mrs. Ed Huffman, Odessa; Mr. and Mrs. J. L. Wetsel, Stanton; Ovella Lindsey, Brady; Mary and James Hurd, Ft. Stockton; Larry and Shirley Henderson, Voca; Dale and Cliff Ferguson, Big Spring; Randy, Vicky and Arbury Hanes, Sweetwater; Maudie Bartee, Ozell Howard, Winters, Carl, Velda, Zack and Blake Howard, Abilene.

Calvin and Billie Sue Helm, Madge Robinson, Bernice Helm, Arvin and Grace Childers, Mike and Pam Helm and son, Ruby Phillips, Oletha Riley, all of Wingate; Lora and Art Pindergrass, San Angelo.

Those who could not come were, Allen and Dortha Howard and family, R. V. and Anna Lura Robinson, Ray Robinson, Bill and Nala Howard, W. T. and Deulah Howard.

Ronnie L. Luera completes basic

Marine Pfc. Ronnie L. Luera, son of Jimmy R. and Henrietta Luera of 1801 Eighth Street, Ballinger, Texas, has completed recruit training at Marine Corps Recruit Depot, San Diego.

During the 11-week training cycle, Luera was taught the basics of battlefield survival. He was introduced to the typical daily routine that he will experience during his enlistment and studied the personal and professional standards traditionally exhibited by Marines.

He participated in an active physical conditioning program and gained proficiency in a variety of military skills, including first aid, rifle marksmanship and close order drill. Teamwork and self-discipline were emphasized throughout the training cycle.

A 1987 graduate of Ballinger High School, he joined the Marine Corps in February 1988.

Seminar to be held

"Building Self Confidence Through Image Improvement" is a seminar offered for girls ages 9-14 on Wednesday, June 29 at the First Baptist Fellowship Hall, in Ballinger. The Seminar is being sponsored by Runnels County 4-H and is open to all interested girls.

Presenting the Seminar will be Bonnie Reed, consultant with Beauty Control, Inc. Seminar registration is \$2 and it begins at 1 p.m. The Seminar itself will be from 1:30-4 p.m.

During the Seminar, the girls will be learning about being the best that they can be. They will be made aware of the influences of posture, grooming, manners, attitudes and above all, confidence levels. Our personal happiness is affected by our self image and we can make improvements that make us feel good about ourselves.

Patricia Hohensee, County Extension Agent-H.E., stated that any girl will certainly benefit by attending this Seminar.

Nursing Home news

We would like to say Thank You to all who have volunteered their time and efforts to come and help us. Especially this week a big Thank you to Billie Lindley and Mamie Little. We appreciate you.

We welcome a new resident to our home. She is Mrs. Rube Whitley. She has lived in Winters 20 years and came here from the Crews Community, where she and her husband farmed for 45 years.

Residents here are interested in our city and want to remain informed. Our City Administrator, Chuck McIlvaine has graciously accepted our invitation to come and explain Winters financial operations to us at the next regularly scheduled Council Meeting to be held Thursday, July 7 at 10 a.m. The public is welcome to attend. Our city's budget process gets underway in July according to Mayor Randy Springer.



The maximum weight of a bowling ball is 16 pounds.

Martha Stone and Curtis Michalewicz to marry

Mr. and Mrs. Len Stone of Irving are pleased to announce the engagement of the daughter, Martha Michelle to Curtis Anthony Michalewicz, son of Mr. and Mrs. Don Michalewicz of Ballinger.

Martha, the granddaughter of Mrs. Maurine Davis, is a 1988

graduate of McMurry College. She is employed by STE Printers in Abilene.

Curtis is a graduate of Ballinger High School. He is employed by West Texas Utilities in Abilene.

A September 3, 1988 wedding is planned at First United Methodist Church in Winters.

John Albert Lehr salutatorian of Eden High School

John Albert Lehr was selected salutatorian of the Class of '88 of Eden High School with a 92.81 grade point average.

He is the son of Mr. and Mrs. Stuart D. Lehr and Deanna Kozelsky of Eola, and the grandson of Mr. and Mrs. Joe Kozelsky of Winters and Mr. and Mrs. Emmitt Lehr of San Angelo.

A member of FFA three years, he served as vice president and president and competed with the judging team. John served his class as president four years.

Playing football for four years, he earned a number of post-season honors. He also played golf one year and ran track one year. He competed with the one-act play four years and won all-star recognition a number of times. Other academic competition included Science and speaking events. He was a regional speech qualifier three years.

Chosen by the faculty as the most likely to succeed, John is a member of the National Honor Society. He won a Rural Electric Youth trip to Washington, D.C. last summer. He has been selected FHA beau and the best dressed male EHS student. He's listed in Who's Who and was named a West Texas Scholar.

Farmers Market
Every Friday
4 p.m. until dusk
Every Tuesday
8 a.m. until 1 p.m.
Peoples Bank Parking Lot



James E. Glenn

James E. Glenn graduates from basic training

Air National Guard Airman James E. Glenn, son of Jim Glenn of 5154 Saum Street, Fairborn, Ohio, and Eris Campbell of Rural Route 1, Winters, has graduated from Air Force basic training at Lackland Air Force Base, Texas.

During the six weeks of training the airman studied the Air Force mission, organization and customs and received special training in human relations.

In addition, airmen who complete basic training earn credits toward an associate degree through the community college of the Air Force.

He is a 1986 graduate of Winters High School.

Keep up with the latest happenings in the Winters area. Subscribe to the Enterprise.

LOWREY ORGAN CENTER-GUITARS ETC.

Owned & operated by Jim & Gerry Rollins

Bring the appreciation and enjoyment of music into your home with a new organ from LOWREY ORGAN CENTER located in San Angelo at 1262 Sunset Mall, phone 949-4651. It's easy to do, you know! All you do is follow the instruction book carefully and before you know it you're actually playing music on the amazing LOWREY! They also carry a complete line of YOUNG CHANG, LOWREY, BALDWIN pianos and ROLAND DIGITAL pianos. They're practical, inexpensive and a beautiful addition to any home. GUITARS ETC. located next door, phone 944-0466, carries FENDER, KRAMER, AND ALVAREZ guitars, CRATE AND FENDER amplifiers and all guitar accessories. They carry the largest selection of E-Z PLAY MUSIC IN WEST TEXAS. Coming soon BALDWIN organs and keyboards. They offer lessons, repairs, rentals, and of course easy terms to suit your budget. WE RECOMMEND THEM!

West Dale Grocery & Mkt.

Open 6 a.m. - 7 p.m. Mon. - Sat. 7 - 7 Sun.

Prices Good: Wed. June 22 thru Mon. June 27

| | | |
|---|---|---|
| Market Made Pork Sausage \$1.49 lb. | Sliced Slab Bacon \$1.39 lb. | Russet Potatoes 10-lb. Bag 99¢ |
| Ground Beef \$1.19 lb. | Eckrich Chopped Ham \$1.69 lb. | Gandy's Dairy Gold Milk Low fat or Homo 1 Gallon \$1.99 |
| Boston Butt Pork Steak \$1.59 lb. | Hot Bar-B-Que Sandwich 99¢ | Plus Tax |
| Whole Boneless Sirloin 10-12-lb. Av. \$2.59 | Armour Bologna \$1.69 lb. | Vine Ripe Tomatoes 59¢ lb. |
| \$32 10-lb. Fryers 8-lb. Pork Steak 8-lb. Ground Meat | \$32 4-lb. Pork Chops 6-lb. Fryers 5-lb. Ground Meat 4-lb. Cutlets | \$32 6-lb. Pork Steak 6-lb. Fryers 5-lb. Ground Meat 4-lb. Cutlets |
| \$88 9-lb. Ground Meat 10-lb. Fryers 8-lb. Pork Chops 6-lb. Cutlets 7-lb. Round Steak 6-lb. Roast | \$88 15-lb. Ground Meat 10-lb. Pork Steak 10-lb. Fryers 9-lb. Roast 8-lb. Cutlets | \$55 9-lb. Pork Steak 9-lb. Ground Meat 10-lb. Fryers 7-lb. Cutlets |
| | | \$55 10-lb. Boneless Sirloin 7-lb. Ground Meat 5-lb. Round Steak 6-lb. Fryers |
| | | \$55 9-lb. Roast 9-lb. Ground Meat 10-lb. Fryers 5-lb. Cutlets |
| | | \$55 10-lb. Boneless Sirloin 7-lb. Ground Meat 5-lb. Round Steak 6-lb. Fryers |

Obituaries

Mattie Talley

Mattie Jo Talley, 92, of Santo, Texas, formerly of Winters, died at 3:12 p.m. Thursday, June 16, 1988, in Mulberry Manor Nursing Home in Stephenville.

Born February 14, 1896 in Henderson, Texas, she lived in Abilene until her marriage to W. T. Talley November 15, 1933, when they moved to Shep. Mr. Talley preceded her in death August 15, 1971. Mrs. Talley moved to Santo in 1979 and had lived there since.

She was a housewife and a member of the Church of Christ.

Survivors include one son, Gene Talley of Santo, Texas; a daughter, Shirley Akens of Ranger; four stepsons, Irvey Talley, W. C. Talley and Alva Talley, all of Wingate and A. D. Talley of Abilene; five stepdaughters, Lucille Reagan of Shep, Eva Jolley of Abilene, Edna Jackson of Novice, Muri Howard of Amarillo, and Zada Robinson of California; a sister, Verna Jones of Abilene; five grandchildren; three great-grandchildren; 36 step grandchildren; 101 step great-grandchildren; and 45 step great-great-grandchildren.

Services for Mattie Jo Talley were held at 2:30 p.m. Saturday, June 18, at the Winters Funeral Home Chapel with E. B. McCowan and Herman McMullen, both of Abilene, officiating. Burial was in Shep Cemetery under the direction of Winters Funeral Home.

Grandsons served as pallbearers.

Ann Hill

Funeral services for Mrs. Ann Glass Hill, wife of former Linden Mayor Bracey C. Hill, were conducted at 2 p.m. Sunday, June 5, 1988, in Linden United Methodist Church.

The Rev. Tom Sheppard and Dr. John Vickers officiated in the services. Interment was in Linden Memorial Garden with Cook and Spigener Mortuary

directing the arrangements.

Mrs. Hill, who had retired as professor emeritus at Livingston University in 1979, died in South Haven Nursing Home in Hoover Saturday, June 4, 1988. She was 68 years old.

Mrs. Hill began her career as a case worker for the Alabama Department of Public Welfare in 1941-42. She taught English at Linden High School from 1955 to 1968 and was head of the English Department from 1946-68. She was a research fellow at the University of Alabama in 1969-70 and was a professor in education at Livingston from 1968-79.

In 1941 she graduated with an AB degree in sociology and English from Alabama College in Montevallo. She received her Master of Education degree from Livingston University in secondary education and English. In 1970 she received her doctorate degree in curriculum and research from the University of Alabama.

Mrs. Hill was an active member of Linden United Methodist Church where she served as an organist for a number of years. She was active in many civic and social organizations in the community. She has traveled to Europe and to the Bahamas in keeping with her keen interest in learning and in others.

Among the many honors bestowed upon her were the service to youth award for Marengo County, teacher of the year at Linden High, Society of the Golden Key at Livingston University, Kappa Delta Pi Honorary at the University of Alabama, Outstanding American Educator, Who's Who of Women in Alabama and Who's Who, American Women.

Professional organizations she was affiliated with include Delta Kappa Gamma, National Society of Study of Education, Alabama Council on Teaching Composition, past president of the Alabama Association of Teacher Educators, and member

of the state public relations committee of A.E.A.

In addition to her husband of 46 years, Mrs. Hill is also survived by one son, William Stephen Hill and his wife, Sherry Rentz Hill of Hoover; two grandchildren, Brian Cobb Hill and Christina Hill, both of Hoover; two sisters, Mrs. Gerry Singley of Greensboro and Mrs. Katherine Hunt of Columbus, Georgia.

Local survivors include an aunt, Mrs. O. D. Bradford and a cousin, Obie Dee Bradford, both of Wingate.

Serving as pallbearers were: Danny Singley, Bill Hunt, Danny Kosobucki, Jim Deavers, Johnny Hill and Harold Glass.

Honorary pallbearers were: Billy Scott, Billy Whitlow, Charles Miller, Jr., Paul Owensby, Bill Moseley, and Jim Pritchett.

Martha McQueen

Martha Mae McQueen, 90, of Bronte, died Sunday, June 19, 1988, at a San Angelo hospital.

Born in Comanche, she moved to Bronte in 1913.

She worked for the Bronte Hospital, was a member of the First Baptist Church and the widow of Alex McQueen.

Survivors include a son, Morgan McQueen of San Angelo; a daughter, Leona Hulstutler of Richardson; a sister, Lola Allison of Bronte; and four grandchildren.

Services for Martha Mae McQueen were held at 10 a.m. Tuesday, June 21, at Bronte First Baptist Church with the Rev. Charles Woodward officiating. Burial was in Bronte Fairview Cemetery, directed by Shaffer Funeral Home.

Juan Nunez

Juan Nunez, 71, of Ballinger, died Saturday, June 18, 1988 at 11:10 a.m. in Ballinger Memorial Hospital.

Born May 30, 1917 in Lampasas, Texas, he married Trinidad Soliz October 5, 1940 in

Brady, Texas.

He was a member of St. Mary's Catholic Church.

Survivors include his wife, Trinidad of Ballinger; six daughters, Alice Galvan, Delia Hernandez and Kay Jaramillo, all of Ballinger, Mary Mata and Julia Florez, both of San Angelo and Hope Gonzales of Lubbock; a son, Johnny Nunez, Jr. of San Angelo; two sisters, Mary Gomez of Abilene and Dora Jaloma of Ballinger; two brothers, Fred Gomez of Kermit and Jessie Gomez of Abilene; 15 grandchildren; and seven great-grandchildren.

Rosary for Juan Nunez was recited at 7 p.m. Sunday, June 19, at St. Mary's Catholic Church. Funeral Mass was held at 2 p.m. Monday in St. Mary's Catholic Church with Father Sam Homsey officiating. Burial was in Garden of Memories Cemetery, directed by Rains-Seale Funeral Home.

Grandsons served as pallbearers.

Scott Barrett

Scott William Barrett, 62, a life-long resident of Norton, died at 3 p.m. Friday, June 17, 1988, northeast of Norton.

Born January 25, 1926 in Norton, he was a pumper in the oil field, and a member of Norton United Methodist Church.

Survivors include a daughter, Shelia Barrett of Bronte; two sons, Tony Barrett of Bronte and Kim Barrett of Abilene; his parents, Curtis and Sallie Barrett of Norton.

Services for Scott William Barrett were held 2 p.m. Sunday, June 19, in Rains-Seale Funeral Home Chapel with Rev. Bobby Baggett and Rev. Leroy Burris officiating. Burial was in Bronte Fairview Cemetery, directed by Rains-Seale Funeral Home.

Pallbearers were: Jack Lee, Sonny Gentry, Donnie Killough, Dolf Richards, Harley Hillard and Dalton Crockett.

William Irby

William Otis "W. O." Irby, 88, of Ballinger died Tuesday, June 14, 1988 at 3:30 p.m. in Canterbury Villa Nursing Home.

Born September 22, 1899 in Comanche, Texas, he was a

retail petroleum dealer. He was a member of the First United Methodist Church, Rotary Club, and past member of Texas Jobbers Association.

He married Margaret Pate December 11, 1926 in Coleman County, Texas.

Survivors include his wife, Margaret of Ballinger; one son, Wayne Irby of Ballinger; a sister, Lillie Brinson of Longview; four brothers, Otto and Artie, both of Coleman, Cyril of Comanche and Elva of Seagoville; three grandchildren, Rodney Irby, Terry Selby and Mark Irby; two great-grandchildren, Gregory Selby and Jarred Irby.

Services for William "W. O." Irby were held at 2 p.m. Thursday, June 16, at Ballinger First Methodist Church with Rev. Bobby Baggett and Rev. Don Shepherd officiating. Burial was in Evergreen Cemetery, directed by Rains-Seale Funeral Home.

Cecil Smith

Cecil B. Smith, 86, of Blackwell, died Sunday, June 19, 1988, in a San Angelo hospital.

Born in Eola, he moved to Blackwell in 1909.

He was a rancher, farmer, a member of the Blackwell Methodist Church and past member of the school board.

Survivors include his wife, Esther Smith of Blackwell; two sons, Cecil L. Smith of Blackwell and Dixie R. Smith of Fort Collins, Colorado; a sister, Lucille Raney of Salina; five grandchildren; and six great-grandchildren.

Services for Cecil B. Smith were held at 2 p.m. Monday, June 20, at the Blackwell Methodist Church with the Rev. Joe Walker officiating. Burial was in Blackwell Cemetery, directed by McCoy Funeral Home of Sweetwater.

Correction

In the story in our last issue regarding the Dudes winning first place a couple of errors were made.

Three homeruns were hit instead of two. One by Billy Wallar, one by Bodie Collins, and one by Robbie Cortez (not Robbie Carter).

Robert Werner

Robert O. Werner, 77, of San Angelo, died at 7:30 a.m. Sunday, June 19, 1988 at his residence.

Mr. Werner was born to Emil and Sophie Heidmann Werner. He was baptized into the Catholic faith December 29, 1936, in Saint Mary's Catholic Church in Ballinger by the Rev. H. M. Jaunies April 12, 1937.

He was married to Katherine Schwertner in Rowena. He was a member of Sacred Heart Church until Saint Ambrose was established in 1941. Mr. Werner was a member of Saint Ambrose Society and Knights of Columbus.

He lived in the Mereta community for 41 years where he was active in community and 4-H projects, retiring in 1977 moving to San Angelo.

Survivors include his wife, Katherine of the home; one son and daughter-in-law, Calvin and Lucille Werner of Miles; a daughter and son-in-law, Theresa and Dalton Sonnenberg of Paint Rock; three brothers, Edwin Werner of Ballinger, Monroe Werner of Talpa and Arnold Werner of San Angelo; a sister, Clara Werner of Ballinger; and seven grandchildren, Steven, Janell and Richard Werner, all of Miles, and Stacey, Scott, Clifton and Jill Sonnenberg of Paint Rock.

Rosary for Robert Werner was recited at 8 p.m. Monday, June 20, in Johnson's Funeral Home Chapel with Mass was held at 2 p.m. Tuesday in Sacred Heart Cathedral. Burial was in Saint Joseph Catholic Cemetery in Rowena with the Rev. Bernard Gully of Sacred Heart Cathedral officiating. Funeral arrangements were under the direction of Johnson's Funeral Home.

Grandsons and nephew served as pallbearers.

Farmers Market
Every Friday
4 p.m. until dusk
Every Tuesday
8 a.m. until 1 p.m.
Peoples Bank Parking Lot

Grad

Grady Mrs. A. Winters Christian listed on for the To be a student grade hours

Sav

am Sales ings Bo to \$28, 1988 fo \$152,630 District Saving Texas, a repres fiscal ye goal of 1

Sales amounte tober 19 Runnels Grindsta Chairma Nation first hal to \$3,66 outstand Bonds reached by \$5,49 1, 1987, year.

Sen

water The U final app energy tions bil million in Senator

Overall billion wo wide, Gr

The fu thousand out the the depar Energy my Corp noted.

"Parti projects

Conf

On Th business all over t ticipate Business ference Abilene the Car Develop

Mr. F deputy business ment of keynote do will ac plan for ing smal

To wr of inform conferen part in a discussi speakers

The co ference which co and the breakfas

You w important business now to a at least o person t

For a contact Business 674-2776 complete

N

M

W

T

F

R

S

S

S

S

S

S

S

S

S

S

S

S

S

S

S

S

S

S

Grady Bryan graduates from ACU

Grady Bryan, son of Mr. and Mrs. Alton Sealy Bryan of Winters, is one of 676 Abilene Christian University students listed on the Dean's Honor Roll for the spring 1988 semester.

To be listed on the honor roll, a student must be enrolled for a grade in at least 12 semester hours and earn a 3.45 grade

point average or higher.

ACU is the fourth largest private university in the Southwest, offering degrees in more than 80 fields through its five undergraduate colleges, Graduate School and School of Nursing. It is the largest university affiliated with the Churches of Christ.

Savings Bonds sales in Texas amount to over \$153 million

Sales of United States Savings Bonds in Texas amounted to \$28,200,757 during March 1988 for a six-month total of \$152,635,454. T. J. Morrow, District Director for the U.S. Savings Bonds Division in Texas, announced. These sales represent 43.6% of the state's fiscal year 1988 assigned dollar goal of 135 million.

Sales of Series EE Bonds amounted to \$15,424 during October 1987-March 1988 period in Runnels County, Judge E. C. Grindstaff Volunteer County Chairman, said.

Nationally, total sales for the first half of FY 1988 amounted to \$3,669 million. The amount outstanding in U.S. Savings Bonds as of March 31, 1988 reached \$104 billion—increasing by \$5,491 million since October 1, 1987, the start of the fiscal year.

All Series EE Bonds purchas-

ed on or after November 1, 1982—and held at least five years—will earn 85% of the average market yield on Treasury marketable securities. The average yield for Bonds held since the beginning of the market-based interest rate on November 1, 1982 is 8.50%; the 6-month rate for the period May 1-October 30, 1988 is 6.90%.

Outstanding Series E/EE Bonds and Savings Notes held for at least five years after November 1, 1982 are also eligible for this market-based yield. Bonds held less than five years earn interest on a fixed, graduated scale.

Since May 1, 1988 United Savings Bonds may now be ordered by telephone, using a VISA or Master Card credit card—and current interest rates and other information—may be obtained by calling 1-800-U S BONDS-Toll Free.

Senate approves San Angelo water project, Gramm reports

The U.S. Senate has given final approval to a broad-ranging energy and water appropriations bill that will fund \$255 million in Texas projects, U.S. Senator Phil Gramm reported.

Overall, the bill funds \$18 billion worth of projects nationwide, Gramm said.

The funding affects literally thousands of projects throughout the United States through the departments of Interior and Energy as well as the U.S. Army Corps of Engineers, Gramm noted.

"Particularly in Texas, these projects are vital for such varied

activities as flood control, navigation and economic development," he said.

"They mean jobs for Texans and a specific return on the investment we make in the federal government through our taxes," the senator said.

Among the Texas projects contained in the legislation was \$897,000 for further operations and maintenance work at O. C. Fisher Dam and Lake in Tom Green County.

"The funding approved by the Senate will keep this project on track throughout 1989 and will serve to directly benefit area citizens," Gramm said.

Other projects included in the bill were:

- \$100 million for the Superconducting Super Collider project;
- \$15.6 million for operations and maintenance along the Gulf Intracoastal Waterway in Texas.

Ask Bob Bullock

Dear Bob Bullock:

My company provides management services for several commercial real estate properties. Should we collect tax on these services?

D. B.

Bryan

Dear D. B.:

That depends on the services you're providing that are included in the fee.

If you're charging for any of these services—landscaping and lawn maintenance, garbage pick-up, janitorial/custodial services, pest control service, security services, newsletters, parking, and/or telecommunications services—then, yes, you should be collecting tax. (There are other services that might be taxable, so call or write my office if you aren't sure.)

If you are providing a taxable service, you should separate the charges for it from charges for non-taxable services. If you don't separate the charges, the entire fee is taxable.

Hospital

Notes

ADMISSIONS

June 14

None

June 15

None

June 16

Hermalinda Garcia

Mattie Whitley

Martina Ochoa

June 17

None

June 18

None

June 19

Ella Hudson

June 20

Gloria Torres

DISMISSALS

June 14

None

June 15

None

June 16

None

June 17

None

June 18

None

June 19

None

June 20

Hermalinda Garcia

VA Questions and Answers

Q. Do National Guardsmen or Reservists qualify for VA financing on homes?

A. They qualify only if they have served "federalized" or "activated" duty. Active duty for training in the National Guard or Reserves is not qualifying service for VA home loan purposes.

Dear Betty Crocker

Q. What distinguishes half-and-half and whipping cream and which should I use for cooking?

Mrs. D. M.

Waxachachie, TX

A. The difference between creams is percent of butterfat. Half-and-half contains 10 to 18 percent butterfat. Heavy whipping cream must contain at least 36 percent butterfat. Use half-and-half in recipes calling for cream. Whipped cream can only be made from heavy or whipping cream.

STATEMENT OF INTENT TO CHANGE RATES

GTE Southwest Incorporated, in accordance with the Rules of the Public Utility Commission of Texas, hereby gives notice of the Company's intent to implement a new schedule of rates in Texas, effective July 6, 1988. This proceeding has been previously docketed by the Commission as Docket No. 5610.

The proposed changes in rates will affect approximately 970,500 of the Company's Texas customers who represent all classes of customers subscribing to the Company's local exchange and foreign exchange services within the State of Texas, as well as all entities subscribing to the Company's billing and collection services within the state. The proposed changes in rates are designed to increase the Company's intrastate revenues by \$81,407,000, or approximately 11.8 percent annually.

Persons who wish to intervene or otherwise participate in these proceedings should notify the Commission as soon as possible. A request to intervene, participate, or for further information should be mailed to the Public Utility Commission of Texas, 7800 Shoal Creek Boulevard, Suite 400N, Austin, Texas 78757. Further information may also be obtained by calling the Public Utility Commission Consumer Affairs Division at (512) 458-0223, (512) 458-0227, or (512) 458-0221 teletypewriter for the deaf.

A complete set of revised rate schedules has been filed with the Public Utility Commission at Austin, Texas, and is available for public inspection in each of the Company's Business Offices in the State of Texas. A summary of the Company's rate filing has also been sent to the Mayor's office of each affected Municipality.

GTE

GTE Southwest Incorporated

"Think Safety" for a vacation to remember

Now that school is out, family vacations are just around the corner. The Texas Medical Association reminds you to "think safety" to help avoid some of the most common "accidents" that can spoil your vacation.

If you are driving long distances, you or a mechanic should give your car a thorough inspection. Check the brakes, battery, fluids, oil, and tires, including the spare.

Buckle up every time you get into the car. If you have toddlers, be sure to have child restraint seats—not only for safety reasons, but also to allow the child to see outside and enjoy the ride more.

Being outdoors in the summer sun and heat can cause unpleasant side effects such as sunburn and heat exhaustion if you're not careful. Use a sunscreen whenever you plan to be outdoors—even on cloudy days. Wear protective clothing such as t-shirts, hats, and sunglasses. Take the sun in small doses, and don't overexert yourself in the heat. Drink plenty of water to replace what you lose through perspiration.

Review first aid, pack accordingly for your trip, and remember to pack a first aid kit.

Finally, use your common sense and "think safety" to make your vacation accident free.

The Texas Medical Association is a professional organization with more than 28,000 physician and medical student members. It is located in Austin, and has 116 component county medical societies around the state.

Keep up with the latest happenings in the Winters area. Subscribe to the Enterprise.



LaTricia Palmer

District 7 4-H Horse Show held

The District 7 4-H Horse Show was held in Sweetwater this past weekend. There were approximately 75 4-H'ers participating, including seven from Runnels County.

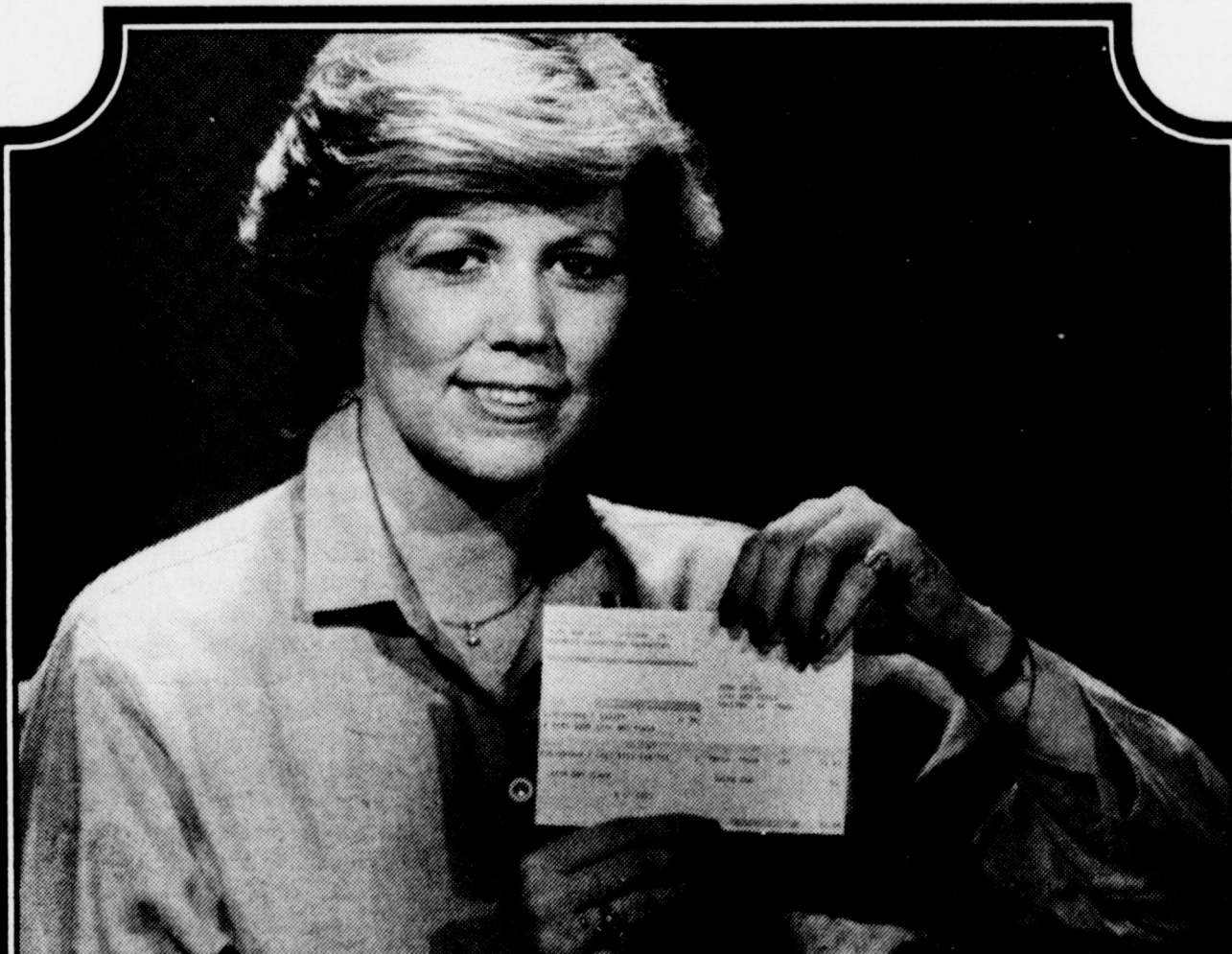
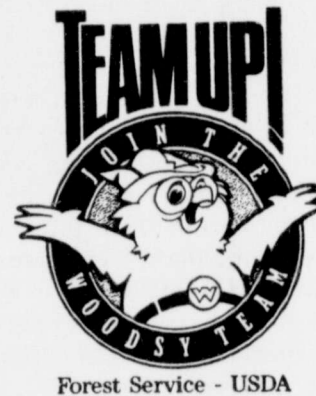
There were three from Runnels County who qualified to show at the State Horse Show, which will be held in Abilene July 25-30. They were and their placings:

—Latricia Palmer, from Winters 1st Pole Bending, 2nd Grade Mares 5 years and over, 2nd Barrel Racing, 2nd Stake Racing, and 5th roping.

—Stacy Lee, from Ballinger: 2nd Showmanship, 2nd Western Horsemanship, 2nd Western Riding, 3rd Judged Events, and 4th Halter Gelding 5 years and over.

—Todd Virden, from Ballinger: 7th Breakaway Roping.

Others from Runnels County participating were: Bridget Mansell, Deena Hampton, and Kelly Hays—all from Ballinger; and Beatrice Cisneros, from Winters.



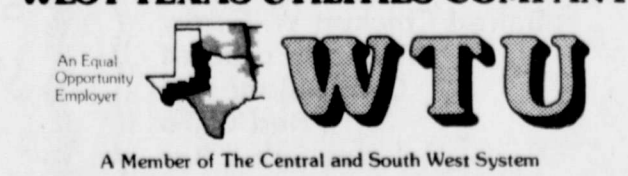
"Now you can forget your electric bill and still pay it on time every month!"

You can make remembering to pay your electric bill easier with a WTU bank draft.

Each month your electric bill is sent to your bank and they take the proper amount from your checking account. A copy of the bill will be mailed to you on the day we draft from your bank.

Signing up for a WTU bank draft is easy and you may cancel the agreement at anytime. Just call or go by your local WTU office and they will provide you with a bank draft agreement.

WEST TEXAS UTILITIES COMPANY



Serving you with dependable electrical energy from the Red River to the Rio Grande.

Winters Country Club

Men's Championship

Sunday
June 26
Tee Time — 1 p.m.

Plaques will be awarded to
First and Second Place
Of Each Flight

Contact
Dickie Clough
Call before noon for entries

USDA tentatively amends Texas federal milk marketing order

The U.S. Department of Agriculture today, June 9, reported issuing a tentative decision amending the Texas federal milk marketing order.

J. Patrick Boyle, administrator of USDA's Agricultural Marketing Service, said the amendments provide transportation credits to handlers for hauling surplus milk to distant plants during March through June as well as the last half of December, when the area's surplus milk production exceeds the capacity of Texas milk products manufacturing plants. The credits would apply to milk produced in northern Texas and southern Oklahoma.

The credits would be computed at 2.4 cents per hundredweight per 10 miles for the distance handlers move the surplus milk from a pool plant. Handlers would receive a further credit for moving surplus milk directly from the farm to

milk products manufacturing plants outside Texas. That further credit would equal the difference between the value of the surplus milk where it is produced and its value at the milk products manufacturing plant receiving it. The credits would come from the pool of income from which producers are paid. A handler's credit would be reduced, however, to the extent that the handler caused milk produced outside of Texas to be received at plants in the Texas milk marketing area.

Boyle said that the decision is being issued tentatively, with a comment period, so that the order can be amended within the statutory deadline applying in this case.

USDA will poll cooperative associations to determine whether producers under the Texas order approve the amended order. At least two-thirds of the dairy farmers under it must favor it as amended.

Prevent plant disease in your garden

by Rick Minzenmayer

This winter's cool temperatures may have killed your garden plants but it did not kill the disease-causing organisms that overwintering in garden refuse.

White powdery mildew, wilt, rust and other leaf stem disease organisms can produce spores or develop special overwintering structures. These can survive in the plant debris and weeds.

Prevention is the key to the control of plant diseases. As early as possible, clean up garden refuse to prevent the infection of new spring plants. Diseases can also overwinter in nearby weeds and grasses, so as many of these as possible should also be removed.

Following certain cultural practices in your garden will also help prevent plant diseases. Always use well-drained soil. Add sand or peat moss, if necessary. Also, plant suitable crops for your soil and climate.

Even by following all of these suggestions, some disease-causing organisms, which are present in the soil, will not be controlled, so plant disease resistant varieties and certified disease-free seeds whenever possible to help reduce the chance of plant disease.

After clean-up and proper planting, a regular spray program is the best way to prevent or control diseases. Spray susceptible plants with a fungicide before there is evidence of damage. Repeat the treatment every week or ten days. More frequent applications may be necessary during moist weather when plant disease tend to be more severe.

Once plant disease starts in your garden, you will not be able to save affected areas. But you can stop its spread with a regular fungicide spray program.

Fungicides are available as a dust or spray, including new formulations that control a wide variety of diseases. Sprays are usually preferable for prevention of plant diseases in the home garden. Sprays stick to plant surfaces better than dusts. And they are most effective when applied with an easy to use compressed air sprayer.

Educational programs conducted by the Texas Agricultural Extension Service are for people of all ages regardless of socio-economic level, race, color, sex, religion, handicap or national origin.

Manage lawn to cut your water bill

When the weather turns dry, don't just turn on your lawn sprinkler and then gripe about your high water bill.

By watering, fertilizing and mowing your lawn properly, you can reduce your water bill as much as 40 percent, said a turfgrass specialist.

"Conservation by the homeowner provides the only solution to high water bills and excessive water demands during our hot and usually dry Texas summers," said Dr. Richard Dumble with the Texas A&M University Agricultural Extension Service.

In small cities where industrial demand for water is low, lawn watering may account for as much as half of all the water used during summer months. Even in larger cities, lawns get 30 to 40 percent of all the water supplied by municipalities.

"Most Texas lawns use about two inches of water per week during the summer, and most of this usually comes from irrigation," Dumble said. "However, as little as one inch of water per week can keep lawns alive and green."

Exactly what can a homeowner do to reduce the summer water bill?

"First, water your lawn only when grass starts to show signs of drought stress," said Dumble. "Look for discoloration and wilting. If leaves roll up in the late afternoon and footprints remain after walking across the lawn, then water within 24 hours."

"Once you've decided that your lawn needs watering, do it right," said the specialist. "Most homeowners don't water their lawns properly. They either water too often, causing grass to develop shallow roots and making it a prime target for insects, diseases and temperature ex-



Sausage and Vegetable Soup

A hearty sausage and vegetable soup flavored with apples and thickened with corn starch is a perfect all-in-one dish for cold weather. Economical and easy-to-prepare, it's equally at home on the kitchen table or in front of the fireplace or TV for informal, family-style entertaining.



- 1 tablespoon Mazola corn oil
- 3 medium apples, peeled and chopped
- 1/2 cup chopped onion
- 3 1/2 cups beef broth or bouillon, divided
- 1 pound Polish sausage, cut in half lengthwise and then cut in 1/2-inch slices
- 1 1/2 cups sliced carrots
- 1/4 teaspoon salt
- 1/8 teaspoon pepper
- 2 cups shredded cabbage
- 2 tablespoons Argo corn starch

In 4-quart saucepot heat corn oil over medium heat. Add apples and onion; stirring frequently, cook 5 minutes or until very tender. Stir in 3 cups broth, sausage, carrots, salt and pepper. Bring to boil. Reduce heat; cover and simmer 30 minutes. Stir in cabbage; simmer 10 minutes longer. In small bowl mix corn starch and remaining 1/2 cup broth until smooth. Stir into soup. Stirring constantly, bring to boil over medium heat and boil 1 minute. Makes 8 (1-cup) servings.

For more free American Sampler recipes, send a postcard with name, address and zip code to: American Sampler, Dept. KAS, Box 307, Coventry, CT 06238.

Senior Citizens Homes required to register with State

State law now requires many board and lodging homes for the elderly to register with the Texas Department on Aging by Sept. 1, 1988.

This law was passed to give social service agencies at the state and local levels a resource for referring senior citizens or disabled persons to facilities in their area.

Homes that are required to register include all establishments which provide room and board to four or more senior citizens or disabled persons unrelated to the proprietor.

Senior citizens are defined as any one 60 or older. Disabled persons include anyone with physical or mental impairments that substantially limit their major life activities.

Facilities licensed, inspected and regulated by the Texas Department of Health are ex-

empt from registering with the Department on Aging, as are adult foster homes certified by the Texas Department of Human Services.

All establishments registering as board and lodging homes must add the following statement to their advertisements: "This home is registered with the Texas Department on Aging, but is not inspected, licensed, or otherwise regulated by the State of Texas."

Licensed custodial care and personal care homes may register as board and lodging homes on a voluntary basis. No advertising disclaimers or limitations apply to facilities that are licensed, inspected and regulated by the Health Department.

The Department on Aging registration is good for one year and costs \$10. This amount may change in future years, but the amount can never exceed \$15 without approval by the Texas Legislature.

For information on the registration procedure, contact Ola Kidd of the Texas Department on Aging at 1-800-252-9240.

Ask Bob Bullock

Dear Bob Bullock:

Please explain how the local sales tax on telecommunications applies to calls made from mobile phones.

G. G. Abilene

Dear G. G.:

In most cases, the local sales tax on telecommunications is imposed based on where the call originates. Calls made from mobile phones can present a problem since you can't always tell where the call was placed from. In those cases, the tax rate is determined by where the bill is sent.

Remember, there isn't a local sales tax on interstate long distance calls.

Prevent Social Security overpayments

People should promptly report any changes that may affect their monthly benefits, Franklin H. Upp, District Manager in San Angelo, said recently.

People who do not report may become overpaid and have to return some of this money later. Also, they may have to pay a penalty.

The most common cause of overpayments -- in 6 out of 10 cases -- is too much earnings from work. Some payments must be withheld from a person under 70 whose 1988 earnings exceed a certain amount: \$8,400 if the person is 65 through 69; or \$6,120 if the person is under 65. If a person goes over the limit, \$1 in benefits is withheld for each \$2 of annual earnings above the limit. Also, there is a monthly test that applies in the first year of retirement.

There are different rules, which include medical considerations, if a person works while

getting disability checks.

A person should let Social Security know if he or she starts or stops working or if 1988 earnings will be higher than reported earlier. A person should do this anytime during the year there is a change. The easiest way to report is by phone.

Also, Social Security should be notified of certain other changes that often lead to overpayments such as:

- death or marriage;
- medical improvement of a disabled person;
- a student 18 or over stops attending school full time; and
- a parent or other payee no longer has custody of a child or other beneficiary.

More information about reporting requirements can be obtained at the San Angelo Social Security Office located at 2214 Sherwood Way. The telephone number is 949-4608.

Take the right course of action when a child reports sexual abuse

Every day, children suffer the pain and horror of sexual abuse. If your child or any child tells you that he or she has been sexually abused, how you react can make a difference in the emotional and psychological development of the child, says the Texas Medical Association.

If a child reports being abused, you should believe him or her. Children rarely lie about being sexually abused. You may be the only person the child is willing to tell. Not believing the report could cause the child to be silent about the abuse for years.

Next, let the child know that what happened was not his or her fault and what you are going to do. According to the Texas Department of Health, it is important not to make any promises you may not be able to keep such as "I'll make sure this doesn't happen again". Many children who report sexual abuse continue to be abused.

You should take the child for a thorough physical examination and a psychiatric evaluation. Physicians can look for bruises and anal ulcers, bleeding from the vagina or anus, and signs of internal abdominal injury among other things. A child psychiatrist can help restore a sense of self-esteem and help family members assist the child during this emotionally trying time.

Behavioral changes may develop in a sexually abused child. These changes can include sleep problems, nightmares, an unusual interest in or avoidance of all things of a sexual nature, secretiveness, crying spells, or portraying aspects of sexual molestation in drawings, games, or fantasies.

Ignoring the problem will not make it go away, says TMA. A child who repeatedly has suffered sexual abuse can develop low self-esteem, a feeling of worthlessness, and suicidal tendencies. As adults, they can become child abusers. So take the right steps when a child tells you he or she has been sexually abused.

The Texas Medical Association is a professional organization with more than 28,000

Keep up with the latest happenings in the Winters area. Subscribe to the Enterprise.

Conference to focus on 'lean beef'

Production as well as consumption of "lean beef" will be the focus of the second annual National Beef Industry Conference at Texas A&M University July 7-8.

Major sessions of the conference will deal with the nutritional value of lean beef and dietary matters and with producing beef products to meet consumer demands.

"Use of beef in the diet is a key national health issue today, and we will have a number of speakers address that issue," said Dr. Larry Boleman, a beef cattle specialist with the Texas A&M University Agricultural Extension Service, which is hosting the conference along with the Texas Agricultural Experiment Station.

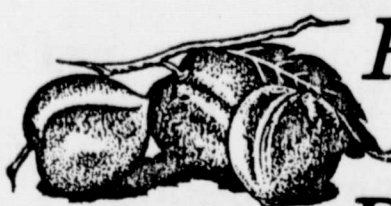
A general session on lean beef, which features results of a recent national beef market basket survey, will open the two-day conference. One concurrent session that afternoon will deal with individuals with various disorders. The other session will focus on the cutability value of beef as it relates to producers, feeders, packers and retailers.

A banquet that evening will feature an address by Martin Jorgensen, a South Dakota rancher who was named the 1988 "Cattle Businessman of the Year" by the National Cattlemen's Association.

The second day of the conference will focus on producing cattle to meet packer specifications and production and marketing options for cattlemen.

"We want to answer cattlemen's questions about selecting, producing and marketing lean beef," Boleman said. "That includes numerous production and marketing options to be considered in today's cattle business, including the development of branded beef."

The conference will be at Rudder Center on the Texas A&M University campus, with the opening session set for 9 a.m. July 7.



Peachtree Plaza Restaurant

Mon. — Thurs 6:00 A.M. — 9:00 P.M.

Fri. & Sat. 6:00 A.M. to 10:00 P.M.

Sunday 6:00 A.M. to 2:00 P.M.

Serving Breakfast Daily
6:00 A.M. to 11:00 A.M.

Friday Night Special

\$4.95

Delicious Treat of
Crispy Fried Fish
Served with
French Fries
Cole Slaw and
Hush Puppies
And For Desert
Hot Peach Cobbler

Lunch Special

This Sunday \$4.95

Choice of One Entree

Beef Brisket or
Baked Chicken W/Gravy
Mashed Potatoes
Green Beans or
Fried Okra
Includes Salad Bar
Hot Rolls and
Peach Cobbler

Phone 754-5070

Hwy 53 West

CROP HAIL

Please come by and let us show you how we can save you up to 15% on your Crop Hail Insurance.

Bedford Norman Insurance Agency

111 W. Dale, Winters, Texas

754-4915

Name the NAPE Contest

For a \$20 Gift Certificate

Drawing August 1, 1988

Yellow NAPE Amazon (4 mos. old)

Double Yellow Headed Amazon (2 mos. old)

Green Winged

Macaw (6 wks. old)

Registered

Beagles

Full Line of Tropical & Salt Water Fish

Complete Supplies For

All Your Aquarium & Exotic Pet Needs

Bring this ad when you buy

2 fish and get a third

of equal value

FREE

Reptiles

Primates

Come See Our Monkey "C J"

Abilene Aquarium & Pet Shop

1634 Butternut

Abilene, Texas

Beef

feren

Texas

Panhandl

Valley ar

what pro

options w

ty. And t

the focus

dustry C

A&M Uni

Texas

will be pr

current a

directions

said Dr.

cattle spe

A&M Ag

Service.

Speake

character

productio

Texas an

native pr

ticular att

empha

carcass m

Th

Gen

Most of

ground no

emerging

No rainfa

during the

causing pr

Scot

The fie

locating

week are

of the scou

training se

Monday an

it went ver

posed to

which they

and how to

scouts for

season are

Allen, Nel

Halfmann,

Michaelis,

Rose and

Thrips

be high

economic

2.5 per pl

plant, the

to thrips

damage to

after the

stage.

Any con

Location

Miles

Norton

Wingate

Rowena

Vancourt

Veribest

Wall

Grape Cre

Hiwa

Dine

Smoke

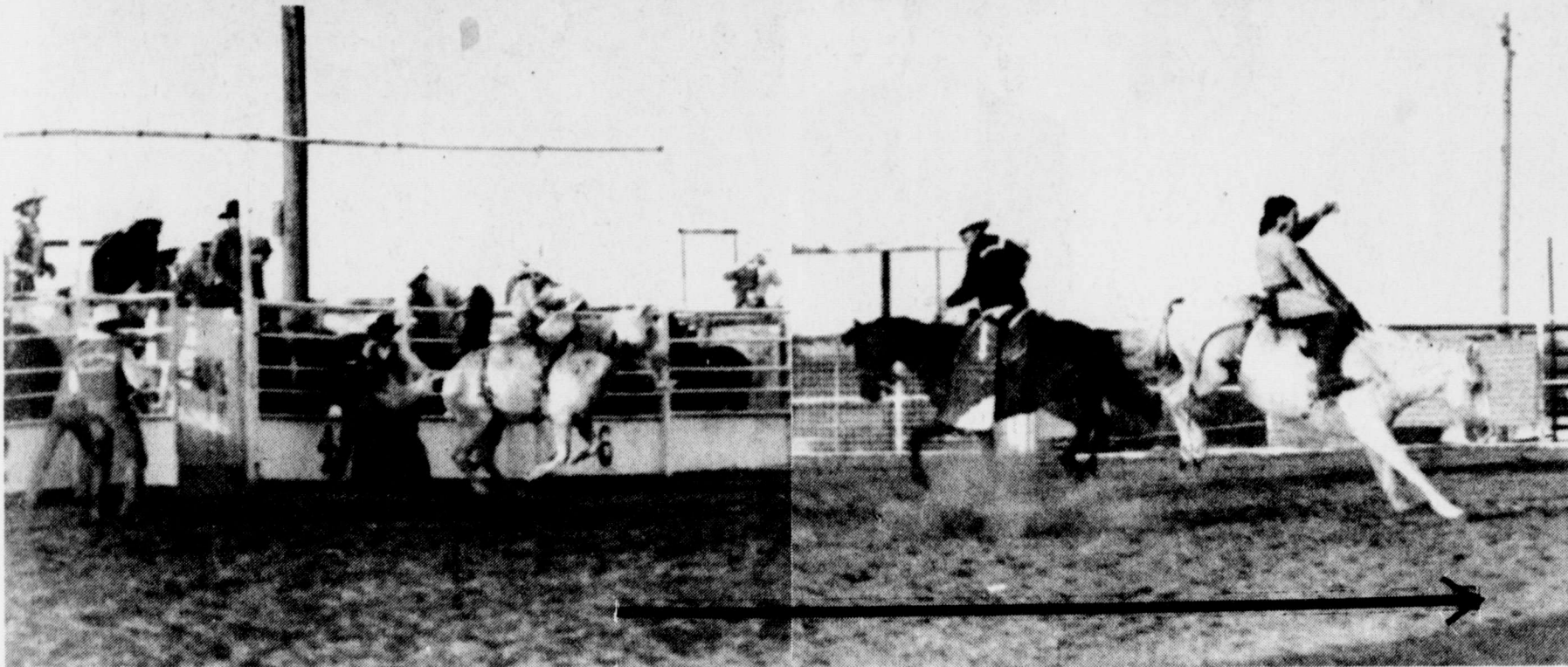
Brocc

Walde

E

Ev

9th Annual Winters Rodeo



Beef Industry Conference to be held

Texas cattlemen from the Panhandle to the Rio Grande Valley are trying to determine what production and marketing options will maximize profitability. And that objective will be the focus of the second Beef Industry Conference at Texas A&M University July 7-8.

Texas and national leaders will be presenting their views on current and future trends and directions of the cattle industry, said Dr. Larry Boleman, beef cattle specialist with the Texas A&M Agricultural Extension Service.

Speakers will first characterize current beef cattle production practices across Texas and then discuss alternative practices, giving particular attention to the increased emphasis on lean beef and carcass merit.

"Many cattlemen are confused with the lean beef issue," Boleman said, "and are turning exclusively to producing cattle with less fat, often at the expense of feedlot performance and reproductive efficiency. Reducing the fat level of cattle sent to the packer is important. However, the move to leanness must be put into the whole cattle production picture, which is the major objective of this year's beef conference."

Dr. Dan Hale, Extension meats specialist, said that some exciting research results will be released for the first time that examine carcass value of several breed types all the way to the retail meat case. Several speakers will address misconceptions many cattle buyers and feedlot operators have regarding different cattle breed types.

The opening session of the Beef Industry conference begins at 9 a.m. on July 7 at Rudder

Center on the A&M Campus. Special sessions will focus on lean beef, beef nutrition, carcass cutability, meeting industry need, and cattle production and marketing options.

Conference details are available at any county Extension office.

Hance reports on his OPEC trip

Texas Railroad Commissioner Kent Hance reported on his recent trip to OPEC in an address to the San Antonio Rotary Club. Hance stated that the OPEC members agreed to continue the present quota system. "This is positive," he noted "because many people were concerned that OPEC would drop the quota system or increase the quotas which would further destabilize the price of our oil and cause further dependency on foreign oil.

At the present time, the United States obtains over 40% of its oil from foreign sources. The projections are that over the next 18 months it will be over 50%, and that by the early 1990's it will be over 65%. At that point we will be vulnerable to another oil price shock that would send gasoline prices soar-

ing to over \$2 a gallon and send gasoline lines wrapped around the corner for at least a mile.

Another issue discussed during the OPEC meetings was the definition of "condensate" for purposes of equalizing the quota system. Hance delivered a report to some OPEC members on how the Texas Railroad Commission treats this issue. "In my opinion, this issue will have to be settled before the OPEC leadership will consider cutting their exports."

Hance commented on another subject of increasing concern. "I am concerned about foreign takeovers of our energy and energy-related companies. Our industry will recover economically, but the question of 'who' owns the industry once it has recovered is of concern to me." Hance expressed his concern that although the purchase of energy companies in today's market may be a wise investment, we should not sell the foundation that will provide our national security in the future.

"We encourage capital investment in the state of Texas," Hance stated, "but I believe foreign investment in energy-related companies should be monitored very closely." Hance stated that he was in the process of studying this and related



issues and will make further recommendations in the coming years.

VA Questions and Answers

Q. Who is barred by statute from participating in the Montgomery GI Bill?

A. Those who receive commissions after December 31, 1976 as officers in the armed forces from the U.S. Military Academy, Naval Academy, Air Force Academy or Coast Guard Academy and those who completed a program with educa-

tional assistance under an ROTC Scholarship Program after December 31, 1976. Not affected are those completing the ROTC Program without a scholarship.

Q. Must I reside in the house I purchase with a Veterans Administration home loan guaranty?

A. Veterans must certify that they intend to live in the home they are buying or building with a VA loan.

If a baked cake sticks to the pan, try placing the pan on a cloth wrung out in hot water. It may help remove the cake from the pan.

The Crop Connection

General Situation

Most of the cotton is in the ground now. Cotton ranges from emerging to 5th true leaf stage. No rainfall has been received during the past week. Thrips are causing problems in some fields.

Scouting Program

The field scouts started locating fields last week and this week are checking for thrips. All of the scouts attended the scout training school held in Taylor on Monday and Tuesday. I feel like it went very well. They were exposed to all the insect pests which they will need to know and how to scout for each. The scouts for the 1988 growing season are as follows: James Allen, Nell Ballard, Charlotte Halfmann, Michele Glass, Robin Michaelis, Paul Patton, Kenneth Rose and Greg Schaefer.

Thrips

Thrips numbers continue to be high in some fields. The economic threshold for thrips is 25 per plant. The smaller the plant, the more susceptible it is to thrips damage. Significant damage to plants rarely occurs after the 4th to 6th true-leaf stage.

Any conditions that slow cot-

ton growth compound thrips damage. If you have cotton that is not progressing well, you should scout closely for thrips and apply a systemic insecticide where necessary.

Thrips are slender, straw-colored insects about 1/15th inch long, with rasping and sucking mouthparts. They cause a silverying of the lower leaf surface and deformed or blackened leaves. Scout the young cotton closely. This age cotton does not have as much leaf surface and terminal area to feed on and fewer thrips can cause excessive damage.

Overwintering Boll Weevil

Trap catches were up considerably last week, but back down this week. Normally the first peak is during the last week in May, then trap catches drop off for a week or so before peaking again during the second week of June. I feel last week was the first peak in weevil emergence from overwintering sites. Within the next week or so we should see another peak in overwintering boll weevil emergence. Below are the trap locations for the past several weeks.

| Location | 6-01 | 6-06 | 6-15 |
|-------------|-------|-------|-------|
| Miles | 17.00 | 54.33 | 12.25 |
| Norton | 3.00 | 11.50 | 3.75 |
| Wingate | 15.42 | 35.83 | 15.85 |
| Rowena | 11.20 | 31.10 | 15.80 |
| Vancourt | 5.50 | 22.80 | 5.16 |
| Veribest | 6.05 | 9.50 | 2.50 |
| Wall | 11.53 | 38.06 | 4.73 |
| Grape Creek | 61.00 | 54.00 | 16.16 |

Extension at Home

By Pat Hohensee
County Extension Agent

How do you like your denim?

The popularity of denim clothing is a wonderful example of the old saying that "you can't please all of the people all of the time." For every person who likes faded denim, there seems to be another who is unhappy about creases, streaking or color loss, states Patricia Hohensee, County Extension Agent-H.E.

Denims Always Lose Dye

Changes in most denim fabrics are inevitable because they're indigo piece dyed fabrics. The dye is applied in a heavily concentrated form so the residuals are mostly on the surface of the fabric. Friction with the body, rubbing or mechanical action during laundering will dislodge the dye particles from clothing.

The loss of color will be most apparent on creases, double seam thicknesses and edges, since they receive greater abrasion. Heavy denim lacks draping capabilities and retain the same position of creases in the washer and dryer, this also contributes to color loss and streaking.

Reducing color loss, creases and streaks

So what if you don't like the creases and streaks? They can't be eliminated, but you can reduce them. Turn the garment inside out for washing if it's not

heavily soiled. Underload the washer, increase the water level and shake out the garment before putting in the dryer.

Another alternative is to buy jeans made from a polyester-cotton blend. The dyes used on blends are different from the dyes used on 100% cotton, and are less likely to fade.

Fading your denim jeans

Do you like the faded, streaked look for your jeans and other denim clothes? If you do, you can save money by purchasing regular denim cloth or clothes and fading them yourself.

At least two companies are marketing products for fading denim at clothing. Fast fade for jeans is made by the Rit Company. It's a concentrated pre-wash product designed to fade and soften jeans and denim. The product claims that it fades and softens jeans right in the washer without damage to the fabric.

Old Blue is a denim pre-wash that softens and fades in one washing. It's manufactured by Malco Products, Inc.

Cautions on bleaching and fading

Bleaching jeans will weaken the fibers, so they will not be as strong and durable as they were before the bleaching process. Commercial pre-wash products may also have a similar effect.

CARD OF THANKS

I wish to express my sincere thanks again for the flowers, food, cards, phone calls and visits from everyone. All the things so many did for me helped a lot. Appreciate everyone very much.

A Special Thanks to Pastor Steve Byrne for his visit at the hospital in Abilene with special prayers for me. With a new knee, 2 new feet

I'm bound to make it with all the wonderful people that helped me along the way.

Sincerely
Esther Sharpes

Pull on workin' comfort...
...AND STEEL TOE PROTECTION, TOO!
Pecos comfort with Class 75 Steel Toe protection. This 12" full-grain, oil-tanned Velvea Retan boot features a lightweight, supple, tough, slip and oil-resistant blown Urethane sole and heel.

SUPER SOLE SAFETY BOOTS

HEIDENHEIMER'S

Red Wings

Congratulations!!

Teri
On Your
New Baby
Daughter
Kendra Lynnette
(Number No. 1)
(Grandpa) Kerry &
(Grandma) Kelley
Aunt Angie, Uncle Bryan
and Uncle Brandon

Hiway 53 E. **Burger Hut** Phone 754-4181
Dine In — Take Out — Drive Thru

Special Sunday Lunch

Smoked Brisket Texas Hominy
Broccoli/Cheese Sauce Creamed Potatoes
Waldorf Salad English Trifle

Special Only \$3.95

**B-B-Q Brisket
Plate Lunch
Every Thursday**

Volleyball Fundraiser Tournament

For: Crimestoppers — Runnels County

Sponsored By: Wal-Mart, Ballinger

Wal-Mart Foundation Will Match Up

to \$2,000 Of All Funds Raised

Entry Fee: \$50 per team

Place: Wal-Mart, Ballinger, Texas

Time: To Be Announced

Date: June 25th

For More Information

Call

365-5731 Ask For Jackie, Wanda or Darrel

Editorial —

which is the closest, or San Angelo.

Now back to that subject word—communication.

The present financial problems at Ballinger Memorial Hospital increased greatly back about the start of this year when a "management agreement" was signed with Shannon Hospital of San Angelo.

The hospital's directors continued with their policy of not consulting—communicating—with the medical staff (doctors) before making the commitment to Shannon. This was not the first communication break-down in this area.

The agreement with Shannon raised some questions. Especially after Shannon officials said that this county was not "in their area." There could be other questions, too.

With the work being done to promote the forthcoming election to give voters the opportunity to create a hospital district with taxing authority in Ballinger and south Runnels County, communication has again reared its head.

A hand-out, available in Ballinger, entitled *Save The Hospital Election* was authored by Ballinger Memorial Hospital administrator Barry Cheshire. He makes some good points in his list of nine reasons to vote for the hospital district there. He fails to communicate adequately on a couple of the reasons he gives. And, for some reason, when he mentions the hospital in Winters, he does so slightly.

In his item number 2, he said, "should this hospital (Ballinger) close, Medicare and Medicaid patients who are transported by ambulance will be taken to the nearest Medicare-approved hospital—which for most of our residents will be Winters."

He doesn't mention the requirements of Medicare which mandate the nearest appropriate medical facility. That same thought is also conveyed by the Texas Department of Health and good old common sense.

His item number nine says, "if this hospital closes, North Runnels will be the only hospital in the county. It is feasible that they will call for a county-wide hospital district at some point, and we could all be paying taxes to support that hospital."

Again, communication is lacking. If the voters do not approve a taxing hospital district for southern parts of the county and Ballinger, who is to say that they would approve the SAME idea for a hospital in another part of the county?

In fact, to expand the North Runnels Hospital tax district, it would take an act of the Texas Legislature, approval of the voters in a Texas Constitutional Amendment Election, the calling of the local option election, and ultimately, the action of the voters. All this has been done in Ballinger and southern Runnels County—with the exception of

the much-needed support of the voters.

Here again, communication is the key. Presentation of the positive, rather than the negative, side of an issue would seem far more effective.

Ballinger, and all of Southern Runnels County, need their hospital—a vote for the hospital is in order.

But, in communicating, that old adage, you can catch more flies with honey than vinegar, might hold true. You can catch more voters with positive accurate truths than with negative, nebulous, thoughts.

Playday scheduled

The Winters Rodeo Association will sponsor a Playday, Saturday, June 25, in the Winters Rodeo Arena. Books open at 6:30 p.m. and the Playday will begin at 7 p.m. Entry fee will be \$1.50 per person, per event. This Playday will be the second in a series of six. Ribbons will be awarded each participant in each event. Participants in the All-Around Contest will receive special prizes at the end of the season. To enter the All-Around Contest a participant will pay a one time only fee of \$5. Participants must enter All-Around at the first Playday he/she enters, and must enter at least four Playdays to be eligible for All-Around. In order to win the All-Around participants must have the highest number of points at the end of all Playdays and only the top five scores will be counted.

Events for the six and under age group will be Clover Leaf Barrels, Pylon Alley, Straight Away Barrels, and the special event for this date will be Stick Horse Racing.

Seven to eleven age group events will be Barrels, Horse Back Goat Hair Pulling, Poles and the special event of this date will be Catalog Racing.

Twelve to 15 and 16 to 19 age groups will have the same events. Those events are Barrels, Goat Tying, Poles, and this week's special event will be Catalog Racing.

Volleyball tourney to be held June 25

Walmart is sponsoring a Co-Ed Volleyball Fundraiser Tournament on Saturday, June 25. The tournament will benefit Runnels County Crimestoppers.

Teams will consist of an eight member roster and must have three women playing at all times. The tournament is open to all area teams.

Team trophies will be awarded to first, second and third places with individual trophies for the winning team.

There will be a concession stand available selling hot dogs, sausage on a stick, cold drinks and home-baked sweets. All proceeds will go to Runnels County Crimestoppers and Walmart Corporation will match all funds raised, up to \$2,000.

Teams interested in entering or for more information call 365-5731 for Darrel, Jackie



Attended seminar

Left to right: Wilburn Davis of Ballinger, Runnels County Precinct 1; Dorothy Granzin of Miles, Runnels County Precinct 6, Place 1; and J. C. Hodnett of Winters, Runnels County Precinct 2, Place 2

Judges attended seminar May 24-27

A total of 98 justices of the peace attended a 20-hour seminar May 24-27 in San Angelo conducted by the Texas Justice Court Training Center headquartered at Southwest Texas State University in San Marcos. The seminars are held in compliance with Article 5972, Section B of the Texas Revised

Civil Statutes.

Topics covered included a review of new legislation impacting the justice court system passed by the 70th Legislature, Civil Law, Code of Judicial Conduct, Criminal Trial Procedure, Forcible Entry, and Detainer and Lease Agreement Laws, Contracts and Torts, Justice Court vs. Small Claim Court Jurisdiction, Regulatory Law Review, Inquests, Autopsies and a review of the Penal Code.

Ballinger Volunteer Fire Department received check

The Ballinger Volunteer Fire Department received a check for \$150 recently from Texas Farm Bureau Insurance Companies as an expression of thanks for the department's work on the property of Don Trowbridge, Route 2, box 365, Ballinger, Texas 76821.

The money will be used for their loss prevention program.

The Texas Farm Bureau Insurance Companies pay fire

Governor says his Ag Task Force will 'Go out on the road'

Governor Bill Clements announced that his Task Force on Agricultural Development will seek input from grassroots agriculture representative during three public hearings in late June and early July.

The public hearings will be held in Lubbock on June 27, Dallas on June 28, and San Antonio on July 12.

"I've encouraged this committee to go out on the road to find out what their fellow farmers and ranchers think is needed in the way of an agriculture policy," the governor said. "When this task force presents its report in September, it will be a report that represents all segments of Texas agriculture."

Clements appointed the 26-member task force to develop short- and long-term recommendations for state and federal review to protect and enhance the vitality of Texas' agriculture industry in the coming decades.

Chairman of the Governor's Task Force on Agricultural Development is Jerry Harris, a Lamesa cotton producer who also served as chairman of the Texas Agricultural Stabilization and Conservation Committee. "The Governor has stated he feels this committee and its recommendations are extremely important, not only to Texas agriculture but to the overall economy of the State. We want to make sure we give everyone interested in Texas agriculture an opportunity for input," stated Chairman Harris.

Members of the task force include farmers and ranchers serving in leadership positions in Texas commodity groups and

departments this amount when the department works at a fire in rural areas, involving property insured by them.

The Insurance Company believes fire departments have contributed to reduce the amount of loss involved by fire and more importantly, to prevent fires. It is their hope this money will help the Ballinger Volunteer Fire Department in their program.

agricultural organizations, as well as leaders in private agribusiness and education.

The task force has divided itself into five committees to focus on the following areas: Research and technology, taxation and finance, federal issues, state planning, and rural development.



Ruthie Sparks retires

Ruthie M. Sparks of Blackwell is taking an early retirement from Dry Manufacturing Division effective July 1. She has worked 16 years 9 months in the Finish Department. She was honored with a retirement party on June 17. She is being congratulated by Mickie Gann and E. A. Scates.

Social Security visit set for June 27

Garland Gregg, representative for the San Angelo Social Security Office, has scheduled his June visit to Winters. He will be at the Housing Authority Project Office on Monday, June 27, between 9:30 a.m. and 10:30 a.m.

Anyone who wants to file a

claim for benefits, get information, or transact other business with the Social Security Administration may contact him at this time.

Farmers Market
Every Friday
4 p.m. until dusk
Every Tuesday
8 a.m. until 1 p.m.
Peoples Bank Parking Lot

Wingate Baptist Church

Presents

The College & Career Singing Ensemble

From

Meadowbrook Baptist Church Robinson, Texas

Saturday June 25

8:00 P.M.

DR. ANTOINE R. ALBERT OBSTETRICS

PRE-NATAL CARE IS VITAL TO YOUR HEALTH AND YOUR NEW BABY'S.

DELIVERING WITH FULL STAFF AT NORTH RUNNELS HOSPITAL

OUR OFFICE IS LOCATED ON HWY. 67 SOUTH, AT CARDINAL HOMES IN BALLINGER

OFFICE HOURS:

9 a.m. To 5 p.m. Monday-Friday

7 p.m. To 9:30 p.m. Tuesday

9 a.m. To 12 Noon Saturday

PHONE: 365-3507

EMERGENCY MEDICAL NUMBER: 365-5677



— Excellent Products
— Excellent Service

Open
24 Hours

Hamburgers Every day low price \$1.29

BBQ Brisket Sandwich....\$1.89

Steak Sandwich.....\$1.49

Steak Finger Basket.....\$1.79

Chicken 8 pieces.....\$3.99

W/potato wedges & rolls \$4.99

3 Liter Pepsi.....99¢

Slice, Diet Pepsi, Mountain Dew

12 Pack Cans.....\$2.89

Pepsi, Diet Pepsi, Mountain Dew

Conoco 10-w-30.....99¢

Conoco 10-w-40.....99¢

Call Ahead For
Deli Orders



754-5214

Computer Course

Fundamentals of operating the IBM PC/AT and all compatible computers using PC-DOS or MS-DOS operating system. This is a ten-hour course in four sessions of 2½ hours each. Classes are from 7PM to 9:30 PM, held on Mon, Tue, Thur, and Friday, at 119 N. Eighth Street in Ballinger. A new class begins on Monday of each week. Each class is limited to 10 people in order to give each student personal attention and time on the computers. These classes will be held throughout the summer months.

Instructor: Willis Kreager
Qualifications: 30 years experience
computer programming
BS Math & Physics

The fee for this course is \$50.00.

For additional information call:

Micro Print-X, Inc.

119 N. Eighth St. 365-2347

Ballinger's Computer Store