

The Winters Enterprise

VOLUME EIGHTY-THREE

USPS NO. 687-220

WINTERS, TEXAS 79567, THURSDAY OCTOBER 1, 1987

PRICE 25 CENTS

NUMBER 28



The Blizzards — Touchdown Bound

Winters Young Farmers win three top awards

Dale Duggan of Winters was chosen Star Young Farmer of Area IV, September 26 at the Area Young Farmer convention in Stephenville. Duggan and his wife, Linda, produce wheat, sorghum and oats on their farm south of Winters. They also manage a commercial cow-calf

operation for her father. Duggan has been a member of the Winters Young Farmers since 1980 and has held offices at the local, area and state level. He is currently a candidate for state president of Texas Young Farmers.

The Winters chapter received

the Public Relations award at the convention. This award is based on the scrapbook kept by the chapter. The Winters chapter was named as runner-up for outstanding chapter.

A tour of Texas A&M peanut research facilities was the afternoon activity at the convention. Runnels County native, Charles Simpson is the head of peanut research there and conducted the tour for the group. They also saw research being done on water intake of pecans, peaches and peanuts.

Speaker for the awards banquet was Billy Markum, Stephenville banker. He worked in Saudi Arabia for three years and fascinated the group with stories of life in that country.

The Winters chapter expresses thanks to Alderman-Cave, Farmers Seed and Supply, and Sneed Agri-Center for furnishing door prizes for the convention. A special note of appreciation is due the *Winters Enterprise* for their cooperation in publishing news of the Winters Young Farmers activities. This made the winning of the scrapbook award possible.

Attending the convention were Dale and Linda Duggan, Rodney and Bernadette Faubion, Rodrick and Jill Bredemeyer, Dub and Jo McMillan, Randall and Susan Conner, Gary and Dinell Jacob, and Scotty Belew.

People need to pick up their T-shirts

The shirts that were ordered last year from cheerleaders and booster club members are now in and need to be picked up at Jerrolyn's Jewellery and Gifts before October 9.

If not picked up the T-shirts will be sold on a first come, first serve basis.

Band Boosters to meet

Band Boosters will meet Monday, October 5th at 7 p.m. in the Band Hall.

New band uniforms will be discussed. Interested parents and others are urged to attend this important meeting.

Social Security sets October visit

Garland Gregg, representative for the San Angelo Social Security Office, has scheduled his October visit to Winters. He will be at the Housing Project Office on Monday, October 26, between 9:30 a.m. and 10:30 a.m.

Wear Blue on Friday

Blizzards freeze Jim Ned 27-14

There was a feel of Winters in the air Friday evening as the Blizzards officially opened District football play by icing the Jim Ned Indians with a 27-14 score.

The Indians came to town fresh from their second win after they broke the ice on a 23 game losing streak only to have the brief thaw re-freeze.

The Blizzards, 0-3 on the season, took control of the game early in the opening period with the recovery of a Jim Ned fumble. As the Blizzards began their first series of plays, quarterback Chris Rives used a bit of slight of hand and kept the football to run 74 yards to set the tone for the evening. Richard Lett split the uprights to add the PAT.

Before the first quarter was over, Jim Ned answered Winters opening score with a four-yard run by Tom Maley in to the end zone. The Indian's attempt at the extra point failed and the period ended with the Blizzards holding a one-point

Gene Shields picked for lake

Following an executive session Monday evening in a called meeting the Winters City Council named Gene Shields as Lakekeeper for the Winters-Elm Creek Reservoir.

Shields will replace Wilbur Waggoner at the lake, Waggoner's retirement from that position became effective the first of October. He had held the position for the past two years.

The new lakekeeper is the owner of G & M Security Service and also owned the Circle S Restaurant, which later became the Hitching Post when Shields sold the business.

Shields will assume the duties at the lake on Thursday.

edge. What started out in the first quarter as a blue norther turned into a full-scale Blue Blizzard in the second quarter when Senior wingback Michael Thompson blasted around the Indians' line for 78 yards and the score.

Blizzard Stadium took on the appearance of a Winter Wonderland still in the second period when Chuck Patterson intercepted a Jim Ned pass and returned it 43 yards for the touchdown. Richard Lett's PAT was the icing on the game for Winters.

Also in the second quarter, Jim Ned scored on a four-yard pass play to post their final touchdown and a short pass added the two extra points.

In the third quarter, the defensive teams took the field for both teams and the score remained 20-14 until late in the final period when Chris Rives took a long step into the end-zone. With the PAT, added by Richard Lett, the Blizzards put the game on ice.

In the statistics, Jim Ned led Winters in first downs 19 to 9, but the Blizzards rushed for a total of 267 yards, compared to only 166 for the Indians.

The Blizzards go back on the road this week to meet the Wall

Hawks in Wall for a game that kicks off at 7:30 p.m.

The Wall Hawks, winless so far this season, were soundly defeated by the Cross Plains Buffaloes last week by a score of 20-0. Although nearly matching on first downs, Cross Plains out rushed Wall 303 to 63. The Hawks took the air to gain a total of 113 yards in the game.

As Winters Coach Dan Slaughter said early in the season, the Blizzards just might surprise folks this season. Their execution of assignments against Jim Ned Friday showed that the 1987 Winters Blizzards have thoughts of a district win in mind.

THE WINTERS BLIZZARDS ARE NUMBER ONE!

Hamburger & Ice Cream Supper in Wall

The Wall Senior class offers a hamburger and ice cream supper before the game October 2.

Sponsored by the parents. The hamburgers, ice cream, desserts, chips and dips will be served Oct. 2, from 6 p.m. before the game and during the game.

Hamburgers are \$2.00, Ice Cream is 50 cents, and Dessert is 50 cents.

Ranch Heritage Roundup

It's nearly here! The Winters Area Chamber of Commerce and the Winters Rodeo Association are sponsoring a BIG DAY of activities in the Winters Rodeo Arena on Saturday, October 10 which will be the very first Ranch Heritage Roundup for the Winters and Runnels County Area.

Sign up for one of the activities! Visitors and residents can enjoy GOAT ROPING,

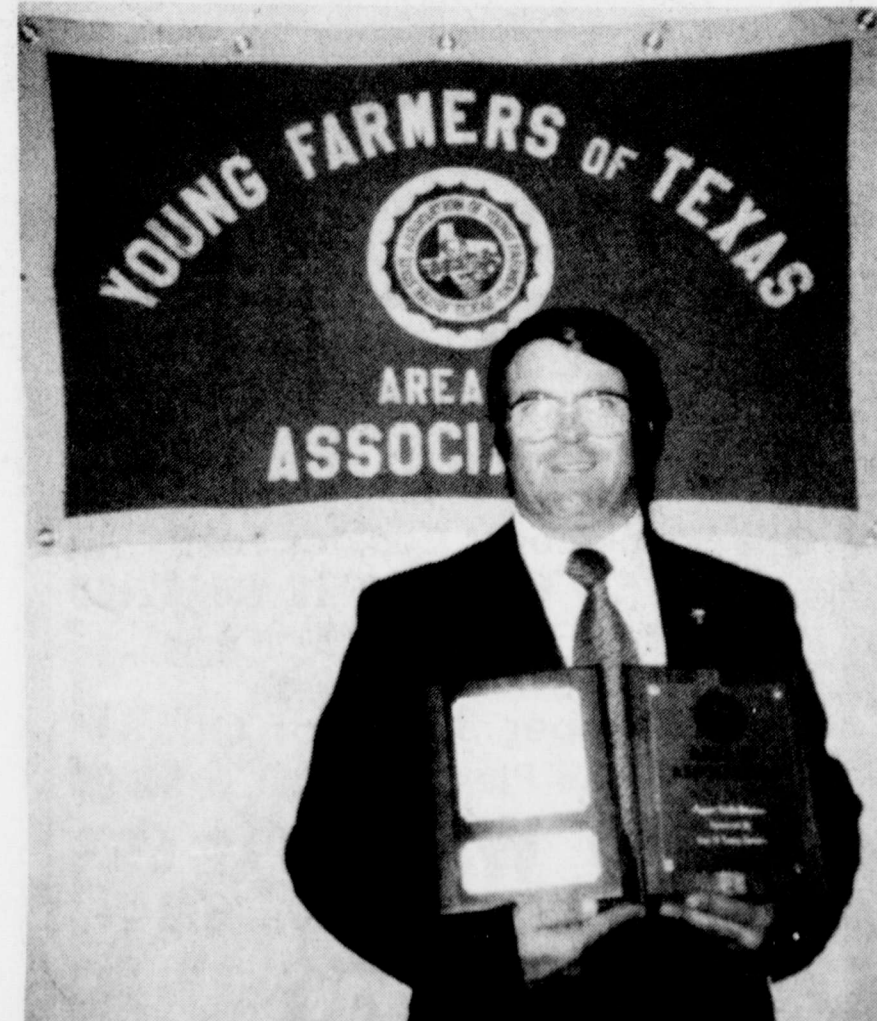
TEAM ROPING, A CAMP-FIRE COOK OFF, A BARBECUE BRISKET SUPPER, A WESTERN ART SHOW, A WESTERN DANCE, and additional entertainment planned for children. Also, during the day hamburgers and cold drinks will be on sale.

Let's promote the Winters Area and make our visitors feel welcome!



Dale Duggan receives Award

Dale Duggan receives a belt buckle from Kevin Coffman, Area IV President, for winning the Star Young Farmer Award.



Duggan proudly displays plaques

Duggan proudly displays plaques awarded to the Winters Young Farmers for their scrapbook award and runner-up for outstanding chapter.



Save our ship

School children as well as all Texans are being asked to recycle aluminum cans with the proceeds going to refurbish the Battleship Texas.

The youngsters in front of the Battleship are from Parkway Elementary School located just northeast of Houston and they are doing their part.

Aluminum cans should be turned in to any of

the more than 1,000 Battleship Texas Recycling Centers in cities across the state. Call toll-free 1-800-64 TEXAS for the nearest participating recycling center.

A coalition of business firms and community groups launched the three-month campaign in early September.

TA
MEMBER 1987
TEXAS PRESS ASSOCIATION

The Winters Enterprise

Published by RyKel Corporation
(USPS 687-220)

915/754-5221 P.O. Box 37 Winters, Texas 79567

Yvonne Thomas, President
Kelley Thomas Craig, Vice-President
Kerry Craig, Managing Editor
Lee F. Craig, Retired Again
Jerre Heathcott, Circulation Manager

Entered at Post Office, Winters, Texas 79567
As Second Class Matter

SUBSCRIPTION RATES

In Runnels County, One Year.....\$10.00
In Other Texas Counties, One Year.....\$12.00
Outside Texas, One Year.....\$16.00

Any erroneous reflection upon the character, standing, or reputation of any person, firm or corporation which may appear in the columns of this newspaper will be gladly corrected upon due notice of same being given to the editor in writing personally at this office.



Evelyn Smith

Poe's corner

by Charlie Poe

Winters Novelist Autograph Party

Evelyn Smith will be at the Winters Public Library on North Main Saturday, October 3, from 2 to 5 p.m. to autograph copies of her new novel. Hosts will be the library board members, directed by Marthiel Russell, president.

Mrs. Smith has been writing for four years and has two other books in the making. She has been working on her present book, *Warrior Maker*, for two years. The first to be published.

It is an exciting romance which captures the struggles and violence of the early 19th century and the drama of the war of 1912.

Evelyn says she has always been a reader and was inspired to write when she began to work at the Winters Theatre and saw *Gone with The Wind*. She was running the projection booth at that time and saw many other magnificent movies.

Warrior Maker concerns Lori Kennedy, Governess to Latimar house, who fights her growing love of the dashing Shane Latimar, until the day her dreaded secret begins to become obvious. Shamed, yet terribly proud, Lori decides to escape the embarrassment and humiliation her family would face if her secret is discovered.

Abandoning family and home in Ireland, Lori shrewdly contracts to become governess for a wealthy Louisiana plantation owner. Sailing to America, Lori learns war is eminent and New

Orleans may be in the heart of the battle when she and the Prince family arrive. Toby Perique, cruel and cunning neighbor to the Prince plantation, quickly eyes Lori and plots to make her his own. While fleeing from Perique, Lori must escape road bandits and kidnappers, only to face a terrifying capture by Starfire and the Caddo Indians.

This book makes fascinating reading and one will want to discover what happened to Lori in the ending.

Evelyn attended school at Winters and finished by correspondence. She got her diploma at Draughan's Business College. Not quite 12 years old when she began working as a popcorn girl for Mrs. Homer Hodge, Sr., at the theatre, she continued to work in the projection booth, as cashier, wherever needed until just before her oldest son, Alvin, was born.

Her marriage to Billy Dunn ended tragically when he was killed in a butane truck fire the following Year, February of 1949. Their son Alvin Dunn now lives in Ballinger.

She was later married to Luther (Doc) Smith who served as a policeman in Winters for 21 years. During this time Evelyn worked as a nurse for seven years and later worked for Dry Manufacturing Company for 19 years. They have two children: Luther Charles, who manages the West Texas Utilities in Sterling City and Karen, Mrs.

Carl Niehues of San Angelo.

Following Luther's death, Evelyn inherited his stock farming business which she ran for two years. After selling the stock farm, she has been semi-retired, devoting her energies and talents to writing.

Her current novel takes place in Turkey back when they wore light mail armor and had gally slaves on ships. She is having a

hard time on the research. The other novel is more modern taking place on an island, and concerning a girl who was shipwrecked and grew up there.

Evelyn is the daughter of E. C. Bredemeyer and Rutha Malaney. She probably gets her vivid imagination from her Irish mother and her Irish grandfather, who once lived with them.

DeVRY Inc. to offer scholarships

DeVRY INC. will offer 40 full-tuition and 80 half-tuition scholarships at a total value of \$1.36 million to 1988 high school graduates throughout the United States.

According to DeVRY INC. Chairman Dennis J. Keller, each full-tuition scholarship, valued between \$17,661 and \$18,957, and each half-tuition scholarship, valued between \$8,830 and \$9,478, may be used for application fees and tuition toward a Bachelor of Science degree program in Electronics Engineering Technology, Computer Information Systems, Business Operations, or Telecommunications Management. The scholarship can be applied at any of the nine DeVRY Institutes in the United States. (Not all programs are offered at each institute.)

Finalists will be determined on the basis of SAT, ACT or WPCT scores and will be announced in April of 1988. Scholarship recipients will be chosen on the basis of those scores, high school academic

achievement, extracurricular activities and an essay. Announcement of winners will be made shortly thereafter.

Applications are available at the Admissions Office at each DeVRY Institute and must be returned before April 1, 1988.

Keller said scholarship recipients will receive a plaque to commemorate the honor, and a similar plaque will be presented to the students' high schools for permanent display.

The number of scholarships granted to each DeVRY Institute will be determined by the number of applications received by that school. Each campus will have the opportunity to award at least one scholarship to an outstanding student from the area. All 1988 high school graduates are eligible, with the exception of the immediate families of DeVRY INC. employees.

For further information, students should contact their high school guidance counselor, or write to the Office of Admissions at their local DeVRY Institute. Campuses are located in Atlanta (Decatur), Chicago and Lombard (IL), Columbus, Dallas (Irving), Kansas City (MO), Los Angeles (City of Industry), Phoenix, and Woodbridge (NJ).

DeVRY INC. is one of the largest proprietary postsecondary education networks in North America.

Betty Crocker

Q. Why do recipes say not to grease the tube pan for angel food, chiffon and sponge cakes?

A. An ungreased pan allows the delicate batter for each of these cakes to cling to the sides of the pan as it rises during baking.

Q. What's an easy way to measure uncooked spaghetti?

A. It's most accurate to weigh spaghetti on a scale. You can estimate that a tightly held bundle the diameter of a quarter will weigh about four ounces and makes about two servings. Longer spaghetti increases the number of servings.

Q. This year I want to use fresh pumpkin for my pies. What's the procedure?

A. Choose smaller sizes that have bright orange color and a firm rind. To prepare the pumpkin, halve or quarter it, scrape out the seeds and stringy portions. Cut the pumpkin into smaller pieces and cut the rind away. Then either boil, mash and drain well or bake it in the oven as for hard-shelled squash. From one 5-pound pumpkin you'll have about 4 1/2 cups of mashed, cooked pumpkin. That's enough for two pies.

Do you have a question? Write Dear Betty Crocker, Box 1113, Dept. Betty, Minneapolis, MN 55440.

Crisis Intrevention and Stress Management Seminar scheduled

A Crisis Intervention and Stress Management Seminar will be conducted by Hendrick Care Center at First United Methodist Church, in the Fellowship Hall 141 N. Church, Winters. The Seminar will be held Saturday, October 3 from 9 a.m. until 12 noon.

Topics to be covered in the Seminar will be: 1) How to help people in the midst of a crisis situation; 2) How to personally deal with various kinds of stress in your life; 3) How to establish a "Crisis Hotline" in Winters. A nursery will be provided.

Hospital

Notes

ADMISSIONS

September 22

Oscar Hubach

Olga Fisher

September 23

None

September 24

Dena Santoya and baby girl

September 25

Amy Pate

September 26

None

September 27

None

September 28

Lana Burton and baby boy

DISMISSALS

September 22

Flora Burton

September 23

None

September 24

None

September 25

Joyce Weems

Olga Fisher

Nancy Foreman

September 26

Dena Santoya

Cathy Beltran

September 27

None

September 28

None

Nursing Home news

Our Nursing home is a very busy place as the leaves began to turn colors and the air began to turn chilly.

Last Thursday our September birthday party honored J. O. Smith. Our thanks goes to the Wilmeth Friendly Helpers Club. Those who brought cookies were Oma Lee Overman, Mary and Richard Watkins, Rosalie Albro, B. B. McNeill, Eva Wright, Thelma Tubbs, Genevieve Denson and Jewell Pennington. Our party was entertained by the wonderful voices of Cassie and Shaya Mahan, Sara and Rachel Wilson and Angela Shoemaker. Others visiting our celebration were Rosalie Simpson, Pastor Gayland Broadstreet and his wife. Our party enjoyed the music of the piano played by Mrs. Sims.

Our Bingo Banner has been proudly displayed by Reba Morris and Curtis Morrison. We would also like to welcome to our home, Mrs. Lula Belle Leeman. Also we have elected a new Resident Council. Our officers include: Cecil Fox, President; Rex Hamner, Vice President; and Pauline Templeton, Secretary.

Our special thanks to Frank Carter for the watermelon, Jewel and Richard Denny and John McBee for the okra, Sue Hukill for the craft scraps, and Mrs. Murphy's flowers. Thank you for making our home a more pleasant place with your gifts.

Pastoral Care has courses for women

A new six-week, self-improvement course for women, titled *Improving Your Body and Mind*, has been added to the programs at Pastoral Care and Counseling Center. Classes, which will be led by staff therapist Olga Roman, will meet every Tuesday, from 5:30-6:30 p.m. beginning October 13 at the Center, 751 Hickory.

The course, which costs \$60 per person, will include theory, exercise, and spiritual and stress management techniques geared toward individual needs. Included in the fee is an individualized life management evaluation.

Participation is limited. Call the Center, 672-5683 for more information. Pre-registration is requested.

Sneed's Agri-Supply, Inc.

All Makes Of Farm Equipment
Parts And Service

"Got It, Get It, Or It Can't Be Got"

Pickup And Delivery Also Available

210 West Dale St.

Winters, Texas

915-754-5116

G. W. Sneed

Terry Sneed

WEST-GO
Convenience Stores

— Excellent Products
— Excellent Service

Steak Finger Basket.....\$1.79

4 steak fingers, gravy, roll, 2 potato wedges

Hamburgers.....\$1.29

W/Cheese.....\$1.39

Double Meat And Double Cheese...\$2.39

Hot Dogs.....59¢

Chili Dogs.....69¢

Chicken 8 Piece.....\$3.99

W/Potato Wedges & Rolls.....\$4.99

Otis Spunkmeyer Cookies....25¢ each

5 for \$1.00 12 for \$2.00

Sugar Cookie, Chocolate Chip, Oatmeal Raisin

Baked Fresh Daily

Conoco Super 30 Motor Oil..89¢

August Fried Pies 3 for.....\$1.00

Chilly Willie 59¢ 69¢

Lemonade and Strawberry 79¢



Call Ahead For
Open 24 Hours Deli Orders 754-5214

YOUR

BANK

STAMPEDE By Jerry Palen



"You folks buy a new bull?"

If You Are In The Farming Or Ranching Business And Need Anything New Or Replaced, See Our Sympathetic Loan Officers! We Like To Say 'Yes' When At All Possible.

WINTERS STATE BANK

Your Full Service Community Bank!

754-5511

Member FDIC

Winters, Texas

By Hil

Some wom
their age, co
are older th

Our sympa
Foreman fa
relatives due
uncle, Roscoe
Carlsbad, Ne
services were
tist Church i
was buried in
one time he
Ballinger, a so
lives i

Coleman
Mr. and Mrs.
Stockdale, s
Saturday wi
Lawan.

Hopewell l
at 9:30 a.m.
Hall for Bible

Walter Pap
were visitors
morning serv
they had din
Mae and Nob

Hazel and S
with Alta H
Fuller in Cole
Bishop family.
ed from a trip
their son, Lou

On Sunday
Dietz attende
dinner in the
Ernest Cook
Others presen
and Jimmy C
Angelo and M

Many more
Hazel!

Bernie and
Linda and Dal
ed the Young
tion Saturday

Linda and D
ly Mae and W
be hostesses f
supper and ga
a big crowd
Crews gym. B
dish and join
fun.

After chure
morning the M
Winters, had
Bro. Oscar F
Marvin, Mel
Keith Gerhart
Mikeska and

During the
Effie Dietz we
and Winnie C
Dayton and E
Hambright, al
Carlos Burnet

Noble and I
bion were in A
and also to see
had knee surg
in Hendrick T
Carroll Faub
spent part of
Faubions.

U.M.W. me
Corra Petrie,
were: Ozzie S
dlebrook, Lo
Bridwell, Pau
Carroll, Odes
Vinson, and
After stud
refreshments

Dennis an
Midland, sp
with Chester
spent Satu
daughter, M
Toungat, at
Lake cabin.

Saturday
was all the v
1 1/2 inches.

The Earl
Ft. Worth, s
with Marion
Doris is goin
Abilene for

Katherine
spent Tuesd
with her s
Adeline Gri

Sisile Ale
part of Satu
Sunday d
Therin Osb
Wesley, J
McGallian,

Wi

Crews

By Hilda Kurtz

Some women like to fib about their age, could it be their kids are older than they are?

Our sympathy to the Coleman Foreman family and other relatives due to the death of his uncle, Roscoe Foreman, 84, of Carlsbad, New Mexico. Funeral services were at Southside Baptist Church in Winters and he was buried in Old Runnels. At one time he was a resident of Ballinger, a son, Frank Foreman, lives in Winters.

Coleman Foreman's sister, Mr. and Mrs. Wayne Rutland, of Stockdale, spent Friday and Saturday with Coleman and Lawan.

Hopewell ladies met Monday at 9:30 a.m. in the Fellowship Hall for Bible study hour.

Walter Pape and Chad Kraatz were visitors at the Hopewell morning services. Afterwards they had dinner with Harvey Mae and Noble Faubion.

Hazel and Selma Dietz visited with Alta Hale and Amber Fuller in Coleman and the Allen Bishop family. The Dietz returned from a trip to Kansas to see their son, Louis, and his family.

On Sunday Selma and Hazel Dietz attended Hazel's birthday dinner in the home of Judy and Ernest Cooke in Winters. Others present were, Frances and Jimmy Chapman of San Angelo and Mrs. Sam Cooke.

Many more of these Birthdays Hazel!

Bernie and Rodney Faubion, Linda and Dale Duggan attended the Young Farmers Convention Saturday in Stephenville.

Linda and Dale Duggan, Sally Mae and Wilmer Gerhart will be hostesses for Saturday night supper and games. Hope to see a big crowd turn out at the Crews gym. Bring your favorite dish and join the fellowship and fun.

After church services Sunday morning the Marvin Gerharts, of Winters, had as dinner guests, Bro. Oscar Fanning and Janie, Marvin, Melvina, Scott and Keith Gerhart, Sherri and Brett Mikeska and Gene Faubion.

During the week with Mrs. Effie Dietz were, Gladys Cotton, and Winnie Cotton of Ballinger, Dayton and Era Smith and Inez Hambright, all of Ballinger and Carlos Burnett of Alaska.

Noble and Harvey Mae Faubion were in Abilene on business and also to see Walter Spill who had knee surgery on both knees in Hendrick Tuesday. Lynn and Carrol Faubion, Ft. Worth, spent part of Tuesday with the Faubions.

U.M.W. met in the home of Corra Petrie. Those attending were: Ozzie Stanley, Billie Middlebrook, Louise Jones, Ethel Bridwell, Pauline Mavhew, Mrs. Carrol, Odessa Dobbins, Ionah Vinson, and Salda Lee Lange. After studying on Russia refreshments were served.

Dennis and Audine McBeth, Midland, spent Friday night with Chester McBeth. Chester spent Saturday with his daughter, Mr. and Mrs. A. C. Tounget, at their Blackwell Lake cabin.

Saturday moisture out here was all the way from a trace to 1 1/2 inches.

The Earl Ambrose family, of Ft. Worth, spent the weekend with Marion and Doris Wood. Doris is going to the Rehab in Abilene for treatment.

Katherine Thomas, Dallas, spent Tuesday and Wednesday with her parents, Kat and Adeline Grissom.

Sisie Alexander and I spent part of Saturday in Abilene.

Sunday dinner with Nila and Therin Osborne were: Karen, Wesley, John and Stefanie McGallian, Viola Foster, Brian

Faubion. Brian also spent the night Saturday.

Walter and Margie Jacob spent Sunday evening in Ballinger with her mom, Mrs. Louise Michalewicz.

During the week with Larue and Doug Bryan were: Nila and Therin Osborne, Margurite Bryan, Dewitt, Frances, Lelon, Brent, Dawn and Scott Bryan.

Randall, Janis, Jenny and Frances came by and had freezer cream with me Sunday night, all the time it was pouring down rain.

Too late for last week

Designers have come up with clothes, dresses and suits so ugly that hangings to good for them.

After morning services at Hopewell church Sunday a covered dish dinner was enjoyed. Afterwards Janie Fanning was honored on her birthday with kind of a tiny party. Cake and refreshments were served and "Happy Birthday" was sang and then the opening of the gifts. Later with the evening services, Janie's children and families were visitors, they were, Carolyn, Kelly, their children; Sabrina and Sean and son John Fanning; Sherry Fanning and daughter, Emily, all of Abilene.

Many more Happy Birthdays Janie!

Congratulations to Laura and

Aaron Clendenen of Jim Ned. Laura was honored by becoming the Homecoming Queen Friday night and Aaron got a ribbon for his steer in the Abilene fair.

Chester McBeth and Dennis McBeth of Midland had dinner and a short visit in Winters Friday.

Doris Wood was in Arlington, Texas Thursday for a checkup, hope you'll be feeling better.

Adeline and Kat Grissom visited with Emily and Carl Parks Saturday afternoon. Mae and Marvin of Ballinger came Saturday night.

During the week with Laura and Doug Bryan were, Kendra and Jason Nitsch and Dewitt, Lelon, Brent, Dawn and Scott Bryan.

Lavona Foreman, Snyder, spent Wednesday and Thursday with the Norval Alexanders.

The Walter Clendenen family, Norval and Helen Alexander, Wayne, Melinda and Chad Kraatz, are a few who attended the Abilene fair.

Kyle Kraatz spent the weekend at home from school in Dallas. Glad to report Jerry Kraatz is home since Tuesday after his surgery.

Kathy Phillips, Abilene, spent Monday night visiting with Rodney, Bernie, Gene and Brian Faubion.

Mike Hill, Sweetwater, spent Sunday with Claudia and Robert Hill.

The Marvin Gerharts and boys honored their daughter, Sherri, with a hamburger cook-out Sunday night on her birthday. Present were, of course, Sherri and Brent Mikeska; Loyd and Lillian Ramsey, Edgewood, Texas; Pauline and John Bradshaw, Ballinger; Rodney, Bernie, Gene and Brian Faubion; Sally Mae and Wilmer Gerhart, Winters; Scott Gerhart, Stephenville; and Dess Glover, Ballinger.

We wish you many more Happy Birthdays Sherri!

The Walter Jacobs attended the 42 supper party in the home of the James Halfmanns. Present for the party were, the Herbert Jacobs; Mr. and Mrs. Earl Cooper and granddaughter, Amanda Cooper; Mr. and Mrs. Roy Schafer; Mr. and Mrs. Jerry

Womans Support Group to meet

The Womans Support Group will meet Thursday, October 1 at 6:30 p.m. at the Winters Housing Authority Room.

There will be a program presented by Kandy Sheppard to outline the MHMR meeting. The MHMR meeting which will be held October 3rd from 9 a.m.

Sportsman's Show well attended

Approximately 50 people attended the Sportsman's Show at the Z. I. Hale Museum Sunday. Out of town visitors were Steve Davis and a friend from Independence, Missouri. Exhibits of guns, fishing gear, mounted birds and animals were featured in the entrance room.

Boys Scouts took the day with their assembled tent, tripod with a hanging lantern and demonstration of cobbler cooking on a camp fire, which they served to those attending. Those taking part were John Austin, Russell Parramore, Ed Bredemeyer, Josh Bahlman, Raul Rodriguez and Billy Gerhart. Scout Masters are Lanny Bahlman and Robert Parramore.

A 1900 Springfield Army shot gun, 12 gauge-double barrel, belonging to his grandfather, Bill Bredemeyer, was displayed by Ed Bredemeyer, Jr.

Josh Bahlman exhibited a Hopkins-Allen shot gun that belonged to his great-grandfather, Otto Bahlman. It is a 12 gauge that can kill 7 ducks with one shot.

Two shot guns were shown by Russell Parramore a 12 gauge owned by R. C. Parramore in the early 1930's, and a Remington, used by R. J. Bauer's father. It was carried by a deputy sheriff in El Paso in the later part of 1890 to 1910.

A case of antique revolvers dating from 1856 to 1900 displayed by Roy Young attracted attention as did the American Bayonet with the blue steel blade of the 22 survivor gun shown by Carl Hancock, there were also decorations of camouflage war suits.

Ed Bredemeyer, Jr. presented a complete fishing equipment including a seining net, two rods and reels, 29 lures, hooks, bobbers and weights. He exhibited a mounted bass, "The One That Didn't Get Away."

Jeff Buxkemper's display included a European Golden Pheasant that he raised from an egg, a pheasant in flight, a mallard duck, two quail in a glass case and the audad sheep.

The Winters String Band composed of Garland Crouch, Jim Prine, Bill Ivey and Leon Springer furnished entertainment which climaxed the day.

Holle; and Hattie Minzenmeyer. Carol and Mike Kozelsky and children honored her dad, Walter Jacob, on his birthday with lunch in their home in Winters. Present were, the Walter Jacobs; Brenda Jacob, San Angelo; Beverly VanZandt and boys; the Herbert Jacobs; Mark and Mary Beth; the Ervin Wessels; Sharon Busenlehner and boys; and Mr. and Mrs. Joe Kozelsky.

Janie and Oscar Fanning came awhile Sunday afternoon to chat with Nila and Therin Osborne.

During the week with Mrs. Effie Dietz were, Nila Osborne Stefanie McGallian, Bessie Baldwin, Clarence Hambright, Debbie Minzenmeyer, Rev. Travis Franklin. Four of the Troy Pullins family came and did repair on her clothes line and did some odd jobs.

Mary Kurtz and I had breakfast Thursday with Sisie Alexander in Winters.

Mrs. Effie Dietz company Sunday were, Mr. and Mrs. Dayton Smith, Ballinger; and Mrs. Smith's three brothers, Carlos Burnette, Alaska; P. R., California; and Harlin of Oregon.

Cope With Stress.

At the Womans Support meeting their will be a salad supper. All bring a salad and a friend.

Phone Numbers for any who are needing to talk, During the Day, 754-5680 or 754-4607, Nights 754-5401 or 754-4114. Glen Cove 636-4330.

Anyone under the age of 20 please call 754-5061. to 12 p.m. at the Methodist Church.

The meeting is about How to

Winters Woman's Club held meeting

Members of the Winters Woman's Club met in the home of Naida Barker for the first meeting of a new year. Co-hostesses were Edna England and Dolly Airhart.

Sandy Griffin, president, called the meeting to order.

The program, "The Elegance of Jewelry," was presented by Lanny Bahlman and Garland Richards. They were introduced by Naida Barker.

Lanny Bahlman, owner of Bahlman Jewelers, and Garland Richards, rancher, discussed the latest designs in fine jewelry. They have attended seminars in casting metals and designing original mountings in gold and silver for diamonds as well as colored gems.

Following the program a short business meeting was held.

Ways and Means Chairpersons, Marthiel Russell and Kay Colburn, discussed the work schedule and ticket sales for the chicken spaghetti supper, September 25. All proceeds from the supper will go to the Rock Hotel Restoration Project.

Members present were: Dolly Airhart, Naida Barker, Dorothy Bedford, Nina Hale, Theresa Briley, Virginia Brown, Kay Colburn, Edna England, Vivian Foster, Margaret Favor, Melvena Gerhart, Sandy Griffin, Nina Hale, Tooter Harrison, Janie Humble, Lois Jones, Horte Joyce, Dorothea Laughon, Dickie Lloyd, Ouida Nichols, Lillian Roberson, Marthiel Russell, Halley Sims, Carolyn Slaughter and Mary Slimp.

Coming events: The autograph party for Evelyn



Ben E. Richey Boys Ranch Benefit

Under the direction of Charles Jordan, director. Ice cream and Root beer were furnished by all Super Duper stores in Abilene and area stores.

Volunteers from the Triple L Club served from 11 a.m. to 7 p.m. at Winters.

Serving were: Flora McWilliams, Charlsie Poe, Hortell McCaughan, Ethel Mae Clark, Elsie Sanders, Dorothy Bedford, Lillian Eubanks and David Speegle.

Pictured from (l-r) Charlsie Poe, Super Duper Representative, and Flora McWilliams.

Library Notes

Books donated by Sam Wood, Mrs. W. J. Daniels

Memorials: In the memory of Mrs. Bruce Smith given by Jackie, Marilyn, J. J. and James Tension of Winters and Clinton and Mary Ellen Little of Abilene.

Artist of the Month is Betty Rhoten.

Coming events: The autograph party for Evelyn

Smith will be held Saturday, October 3 from 2 p.m. to 5 p.m. Her new book is "Warrior Makers."

Few Americans stop to realize that the USDA administers conservation programs covering nearly 81 percent of this country's land...all the cropland, the grassland pasture and range, and the National Forests.

Secretary of Agriculture Orville L. Freeman

NOTICE OF NEW TARIFF OFFERING CENTRANETSM SERVICE

General Telephone Company of the Southwest gives notice of its proposed new tariff offering, CentranetSM Service, which is to be offered in all company wire centers where such facilities exist to provide the service.

Centranet is a central office based service which provides PBX type features to multi-line business customers. Basic operating features include Direct Inward Dialing (DID), Direct Outward Dialing (DOD), Station-to-Station Dialing, Automatic Identified Outward Dialing (AIOD), and Touch Calling. The tariff is designed for Centranet customers with a minimum of 2 and maximum of 100 main station lines.

Effective with this tariff, ECENTREX Service will be limited to existing installations only.

The proposed new tariff offering has been assigned Docket No. 7652, and will become effective upon approval of the Public Utility Commission of Texas.

Rates for service will be applicable to customers who subscribe to the service, therefore, there will be no effect on any other rates of the company. The new offering will increase the company's gross annual revenues by approximately \$423,013 or less than one percent annually.

The proposed rates are on file with the Public Utility Commission of Texas, and are available for public inspection at the offices of General Telephone Company of the Southwest. Persons who wish to intervene or otherwise participate in these proceedings should notify the Commission within fifteen (15) days of the date of this notice. The deadline to intervene in this docket is November 9, 1987.

A request to intervene, participate, or for further information, should be mailed to the Public Utility Commission of Texas, 7800 Shoal Creek Blvd., Suite 400N, Austin, Texas, 78757. Further information may also be obtained by calling the Public Utility Commission Consumer Affairs Division at (512) 458-0223 or (512) 458-0227 or (512) 458-0221 teletypewriter for the deaf.

General Telephone **GTE**

Winters Sr. Citizens

601 Wood
Have Cookies For Sale
Tuesday & Thursday
After 1 P.M.

Cookies

\$1.00 per doz.

Bread—White or Brown

Read the Classifieds

Wear Blue on Friday

EMERGENCY NUMBERS

Police 754-4121
Ambulance 754-4940
Fire 754-4222
Hospital 754-4553

BUY, SELL, TRADE OR RENT THROUGH THE
CLASSIFIED ADS

CLASSIFIED RATES

CASH
Minimum—\$3.00, 1 time 20 words; 10 cents per word for over 20 words.
CHARGED
Minimum—\$3.50, first insertion, \$3.00 per insertion thereafter, 10 cents per word over 20 words.
DEADLINE FOR ALL ADS
12:00 noon Tuesday week of publication.

FLOWERS

FLOWERS for all occasions. Orders wired anywhere, any time. Bonded FTD, Florafax Florist, Mayme Little, Winters Flower Shop, 754-4568.

FLOWERS, ETC.

Full Service Florist. Funerals, weddings, wire service. Something for all occasions. Mary Ellen Moore, Owner. 754-5311

FOR SALE

STORAGE UNITS: For rent, also parts and repairs on washer & dryers. Rebuilt washers & clothes dryers for sale Garland Crouch, telephone 754-4712 in the afternoons, or 504 Enterprise Street, Winters.

NEW & USED PICKUP TOOL BOXES & HEADACHE RACKS CHROME & PAINTED. 2 miles north of Winters on Highway 83. 767-2022 if no answer 754-4466 for appointment.

FOR SALE: King size waterbed with glass headboard and 12 drawer under-dresser, heater, mattress pad, padded side rails, 2 sets of sheets, comforter and pillows. Call 754-4648 after 5 p.m.

283 JOHN DEERE STRIPPER: good shape. Call Alton Jansga, Norton, Texas 915-786-2151.

FOR SALE: 1982 Yamaha Seca 750 CC Motorcycle. Excellent condition. Will accept best offer. Benjamin Zapata, 754-4120/754-5129, 27-41p

FOR SALE: King size water bed, 6 drawer w/mirror, 2 drawer night stand. Call 754-5756.

FIREWOOD FOR SALE: Cut, split and delivered mesquite \$60 cord, oak \$85 cord. McCaulley 962-5023.

FOR SALE: '84 Nitro Fish 'N ski, beautiful blue and silver boat, low hours with 150 Yamaha \$8,500. Call after 6 p.m. 754-4013.

FOR SALE: Portable dishwasher, \$35. Contact 754-5093.

WANTED: Responsible party to assume small r onthly payments on piano. See locally. Call Credit Manager 1-800-447-4266.

AUTOMOBILES FOR SALE

FOR SALE: Extra clean 1985 XLT 150, 1/2 ton super cab Ford pickup. 350 engine, loaded w/extras. Johnnie Wilson, 212 Jewel Street or 754-4837.

REAL ESTATE

NICE 3 BEDROOM HOUSE: S. Penny Lane, brick, central H/A, curbed & paved. Dead end street. Call K.W. Cook, 754-4719.

LAWN AND ORNAMENTAL PEST CONTROL
Fertilizing
Yard Spraying
Tree Spraying
American Pest Control
Fully Licensed and Insured
COMMERCIAL and RESIDENTIAL
Free Estimates
Pat Brooks (915) 754-5076
Randy Brooks Winters, Tx 79567

Swatchmoe Electric Co.
Oil Field, Commercial & Residential Wiring
Air Conditioning Sales & Service
Authorized Dealer for:
GE · GIBSON · ROPER · FRIEDRICH
Phone 754-5115 • P.O. Box 307 • Winters, Texas 79567

REAL ESTATE

HOME FOR SALE: Custom built, on 8 and 1/2 acres. East of Winters near the lake with breath-taking view. Shown by appointment. Please call Preston or Naida Barker, 754-4650.

DUPLEX FOR SALE: Nicest rental property in town, within walking distance from Winters schools. Excellent rental history. Will consider trading for equity, or pay commission to anyone who sends me a buyer. Evening or early mornings 572-3766.

MID 30's 4 BR, central H/A, water well, large pecan trees, good location, Willowood Properties, call collect 698-3083 or Patsy Lynch 767-2052.

MOBILE HOMES Credit problems? Down payment problems? I specialize in approvals with easy terms! For sincere help call Kathy, collect, 806-763-4051

FOR SALE: Nice 14 X 70, 2 BR, 2 B, mobile home, with all the extras. On 2 corner lots with privacy fence, 2 car carport, fenced garden area and front porch. Also includes 2 60 X 140 lots and partial fence. Priced to sell. Call 754-5745.

EXTRA NICE, BRICK: 3 BR, 2 B, built-ins, fireplace, great area and yard with water well.

REMODELED: 3 BR, 1 B, 3 carports, double garage, storage, close to school. Tom Poe Real Estate, Shirley Brewer, 754-5073 after 5 p.m.

FOR SALE: 162.2 acres, 5 miles east of Winters, Hwy frontage. Deer, quail, permanent water. Call 754-4771.

FOR SALE: S. J. Morrison farm, 104 acres, 5 miles South of Crews, 4 BR, older house. Call 754-5211 or 754-5040.

HOUSE FOR SALE: 3 BR, 1 B, on large lot with garden space. Garage is separate, in Wingate. Call 743-6105.

FOR SALE: 4 or 5 BR, 2 1/2 B, central H/A, large storage shed, water well. Just out of city limits. Phone 754-4016.

FOR SALE: 2 BR house with carport, new cabinets \$10,500. Call 754-4436.

THREE BEDROOM: 1 1/2 B, central H/A, 1.19 acres, large storage shed, fenced back, just out of city limits. Phone 754-4016.

FOR RENT: Three 2-BR apartments. FHA Rental Assistance possible. Winters Housing Authority, 300 N. Grant, Winters, equal opportunity housing. Call 754-4232.

FOR RENT: 1-2-3 & 4 BR apartments. Equal opportunity housing. 300 N. Grant or call 754-4232.

FOR RENT: 2 BR house with major kitchen appliances furnished, also unfurnished 2 BR house in Sunlawn. Halley Sims 754-4883.

FOR RENT: 1 BR apartment, stove, refrigerator, dishwasher, disposal, utility room, refrigerated air cond and central heat. Call 754-4511.

REAL ESTATE

DETACHED STUDIO APARTMENT: \$100 per month, plus deposit, appliances. Inquire 606 Fannin.

FOR RENT OR SALE: 2 bedroom, partly furnished mobile home. Call after 5 p.m. 754-5306.

FOR RENT: Working in Abilene? Need Closer? For rent 2 BR house on 2 lots in Tuscola. Call 554-7814.

FEDERAL, STATE, & CIVIL SERVICE JOBS: \$16,707 to \$59,148/year. Now Hiring. Call JOB LINE 1-518-459-3611 Ext F8039 for info. 24 Hrs.

EXCELLENT INCOME: taking short phone messages at home. Call for info. Ext. 58997 504-649-7922.

GIRLING HEALTH CARE LVN PRIVATE DUTY positions available today. LVNs needed to staff cases with large Health Care Agency, pay wages, hourly. For your opportunity to join our winning team call 915-676-2668, **Girling Health Care Services, Inc. (EOE)**

STANLEY HOME PRODUCTS: Carmela Polston-Dealer, P.O. Box 71, Winters, Texas or call 915-723-2661.

SCRAP IRON copper — brass — Auto — Tractors — Machinery — Engines — Motors — Radiators. BALLINGER SALVAGE, PINE ST. SALVAGE, Abilene.

CALLIGRAPHY CLASSES to begin October 8 at 9:30 to 11:30 a.m. at Melba's Arts Crafts & Gifts, 213 S. Main. Learn the beautiful art of writing. To register call 754-5473.

WORK WANTED

WOULD LIKE TO DO: Custom plowing and grass seeding. Weldon Mills 767-3152.

WANTED

OWN YOUR OWN Jean-Sportswear, Ladies Apparel, Children's/Maternity, Large Sizes, Petite, Dancewear/Aerobic, bridal, lingerie or Accessories Store. Jordache, Chic, Lee, Levi, Izod, Gitano, Guess, Calvin Klein, Sergio Valente, Evan Plicone, Liz Claiborne, Members Only, Gasoline, Healthtex over 1000 others. \$14,800 to \$26,900 inventory. Training, Fixtures, Grand Opening Etc. Can Open 15 days. Mr. Loughlin (612) 888-6555.

Soil conservation is soil insurance.

BUSINESS OPPORTUNITIES

OWN YOUR OWN Jean-Sportswear, Ladies Apparel, Children's/Maternity, Large Sizes, Petite, Dancewear/Aerobic, bridal, lingerie or Accessories Store. Jordache, Chic, Lee, Levi, Izod, Gitano, Guess, Calvin Klein, Sergio Valente, Evan Plicone, Liz Claiborne, Members Only, Gasoline, Healthtex over 1000 others. \$14,800 to \$26,900 inventory. Training, Fixtures, Grand Opening Etc. Can Open 15 days. Mr. Loughlin (612) 888-6555.

Soil conservation is soil insurance.

BUSINESS SERVICES

WINTERS SHEET METAL & PLUMBING WORKS
Plumbing, Heating, and Cooling
215 W. Dale
Phone: 754-4343

Emergency Ambulance
754-4940

North Rannels Emergency Service Inc.

Harold W. Shelburne
Certified Public Accountant
100 W. Dale
Winters, Texas
915/754-5753

Kraatz Plumbing
754-4816
If no answer, call 754-5610

MISCELLANEOUS

COMPLETE BACKHOE SERVICE
Approved septic systems installed. K.W. Cook, 754-4719.

ROY CALCOTE & SONS, INC.
Yard dirt for quick delivery. Dozers, maintainers, backhoes, loaders, and dump trucks. 24 hour service. 915-767-3241, P.O. Box 896, Winters, TX.

FOR ALL YOUR ADVERTISING NEEDS: Pencils, pens, caps, calendars, etc. Call 754-4984. Sunshine Advertising Co. Rep. Calvin Holloway.

HOLLOWAY'S VIDEO: Open Sunday evening 1 p.m.-6 p.m., Monday thru Saturday 10 a.m.-8 p.m.

GARAGE SALES

GARAGE SALE: Fri. & Sat. Oct. 2 & 3, 9 a.m.-? Come to the back of 405 N. Main. Baby furniture and items, kid's clothes and much more.

GARAGE SALE: 210 Laurel Drive. Sat., Oct. 3, 8 a.m.-? Years of collecting. Baby items and much more.

GARAGE SALE: Sat., Oct. 3. Bedspreads, sheets, lamp, misc. items, 300 E. Pierce.

GARAGE SALE: 600 Trinity St. Children's and adult's clothes, toys, bike and misc. Fri. & Sat., Oct. 1 & 2, 7 a.m.-6 p.m.

7 FAMILY YARD SALE: Bicycles, toys, clothes and lots of misc. Thurs., Fri. & Sat., 600 Wood Street.

GARAGE SALE: Fri. & Sat. Bedspreads, pillows, dishes, assorted kitchen ware. Plants, antique books, tools, clothes, misc. 411 Tinkle.

Notice To Bidders

Sealed bids in envelopes marked "Group Health and Life Insurance", and addressed to Rannels County Judge, Michael B. Murchison, Ballinger, Texas and received in the Commissioners' Courtroom of Ballinger, Texas, until 10:00 A.M., October 12, 1987.

Bids will be opened and considered by the Commissioners' Court in their regular meeting for that date for Group Health and Life Insurance for County employees and their dependents.

Specifications are available in the County Auditor's Office on the Third Floor of the Courthouse.

The Rannels County Commissioners' Court reserves the right to reject any and all bids.

BY ORDER OF Commissioners' Court September 15, 1987.
Darlene Smith, County Auditor Rannels County, Texas (Sept. 24, Oct. 1, 1987)

PUBLIC NOTICE

City of Winters Landfill Hours
Tuesday 2 P.M. to 6 P.M.
Thursday 2 P.M. to 6 P.M.
Saturday 10 A.M. to Noon & 1 P.M. to 5 P.M.
Effective October 1, 1987.
(Sep. 17, 24, Oct. 1, 1987)

Soil erosion in the United States is at least as old as the Nation. Washington, Jefferson, and other early leaders recognized the danger. Patrick Henry said: "He is the greatest patriot, who stops the most gullies."

There is no possible way of stopping the siltation of our reservoirs, streams, ditches and harbors except with soil conservation.

H. H. Bennett

Eleanor Roosevelt

Ancient art from the Israel Museum on view at the Museum of Fine Arts, Houston

The Museum of Fine Arts, Houston presents *Treasures of the Holy Land: Ancient Art from the Israel Museum*, the first American exhibition to survey the rich collections of the Israel Museum in Jerusalem. The exhibition, which includes nearly two hundred objects many made of gold, silver, and ivory, opens November 3, 1987 and remains on view through January 17, 1988.

This monumental exhibition is an overview of the artistic triumphs of the people who have lived in Israel from the dawn of history to the seventh century A.D. The works in *Treasures of the Holy Land* range from tiny clay figurines from the seventh millennium B.C.; to the burnished bronze statue of the Roman emperor Hadrian found by chance and dating from A.D. 135-138; to the Dead Sea Scrolls from the first century B.C. and the first century A.D.

The land of Israel has great religious and cultural significance for followers of Judaism, Christianity, and Islam, thereby commanding the attention of nearly a quarter of the world's believers. Situated between the great civilizations of Egypt and Mesopotamia, Israel's history can be traced in the foreign influences on the native art that was produced. The appearance of Egyptian, Assyrian, Persian, Greek, Roman, and Byzantine elements in the art reflects the cultural and political forces that shaped the Holy Land.

The exhibition *Treasures of the Holy Land* includes objects from numerous archaeological excavations in Israel in this century. Many of the works are new discoveries from excavations in the past ten years.

Often the sites from which works in the exhibition were drawn were systematically excavated and researched by teams from universities and other institutions. Other objects were originally found by chance and subsequently excavated.

Most of the works in the exhibition *Treasures of the Holy Land* were unearthed at sites significant in biblical history. Many of the objects relate directly to biblical passages or biblical heroes. Besides being the spiritual document of both Jews and Christians, the Bible is a major source of information for historians and archaeologists.

One inscribed seal of gray opal bears the name Yezebel (biblical Isebel/Jezebel), recorded in the Bible as the wife of Ahab, king of Israel, and daughter of Ethbaal, king of the Sidonians. Although a seal of such quality could have belonged to a queen, there is not sufficient evidence to identify its owner with the biblical Jezebel.

A limestone block excavated from Caesarea bears a fragment of a dedication to Pontius Pilate, the Roman prefect of Judea in A.D. 26-36, who is tradi-

Anson to host Mason Dixon Band

Mason Dixon, one of the top country recording acts in the nation, will play for the first legal public dance in Anson since 1933.

According to Mason Dixon manager Marc W. Oswald, the group is offering their services "in the interest of putting a little pep into the step" of the youth of Anson.

There has not been public dancing allowed in Anson since a 1933 ordinance prohibited dancing with the exception of three days in December during Anson's annual Cowboy's Christmas Ball. A group called Footloose formed in January of this year to change the outdated ordinance. A compromise was reached in August between Footloose and the Anson city council.

Manager Oswald stated in a May 7 letter to Anson Mayor Gene Rodgers that "alcohol, drugs and promiscuity are not all a part of Mason Dixon's show or lifestyle. This group is dedicated to our Lone Star State, and just recently spearheaded the 'Tyler says NO to Drugs' campaign in Tyler, Texas." Dances free of alcohol and drugs have been the goal of the Footloose organization since its beginning.

Mason Dixon will perform in the Pioneer Hall at the Jones County Fairgrounds on Thursday, Oct. 8. The door will be open at 8 p.m. Bittercreek, a Sweetwater based band, will open the show. Tickets will be available at a cost of \$5 each. Proceeds from the dance will be used by Footloose for the youth of Anson.

VA Questions and Answers

Q. Does the New GI Bill, which was started July 1, 1985, have an ending date for participation by active duty military personnel?

A. This program was made permanent on June 1, 1987. It was redesignated the Montgomery GI Bill with no termination date.

Q. I was denied reimbursement for a privately purchased headstone because I purchased it prior to my husband's death. Is this correct?

A. Yes. Reimbursement may only be paid for a headstone or marker purchased after a veteran's death. If a headstone or marker was purchased prior to the veteran's death, an allowance may be paid for separate charges for engraving the existing headstone or marker following the death.

Q. Is there a maximum VA-guaranteed home loan?

A. Depending upon the income of the veteran, lenders will approve a loan up to four times the maximum VA loan quantity of \$27,500, with no down payment. Beyond that amount, \$110,000, lenders usually require a down payment.

America was built by men and women seeking independence and security. Our shelter, food and clothing all come from the soil. As the soil is lost so is our security and our freedom.

Conservation means intelligent utilization of our resources today and their maintenance for the use of our children tomorrow.

Live as if you were going to die tomorrow. Farm as if you were going to live forever.
An old saying from the north of England



Michael Oswald

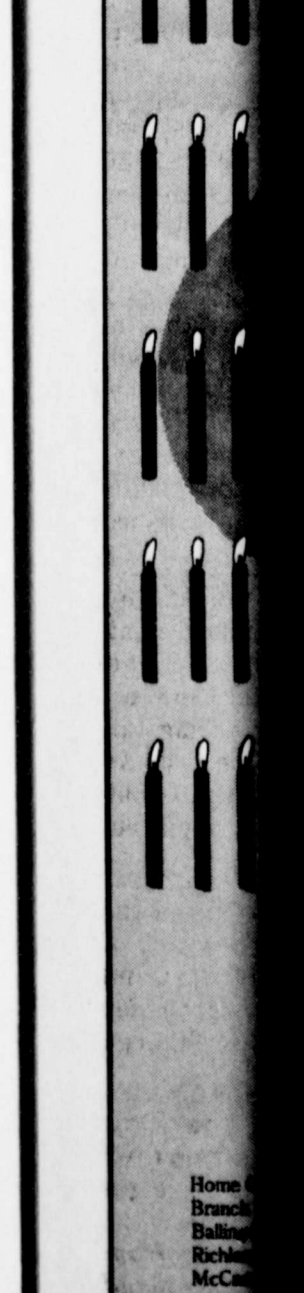
Michael Oswald, Executive Director of "CROP" for Rannels County, name chosen for Hunger App. Founded World Service, the National Churches of Christ composed of Orthodox meets human than 7000 grams of development emergency service to refugee. Saturday, been Chosen local "CROP"

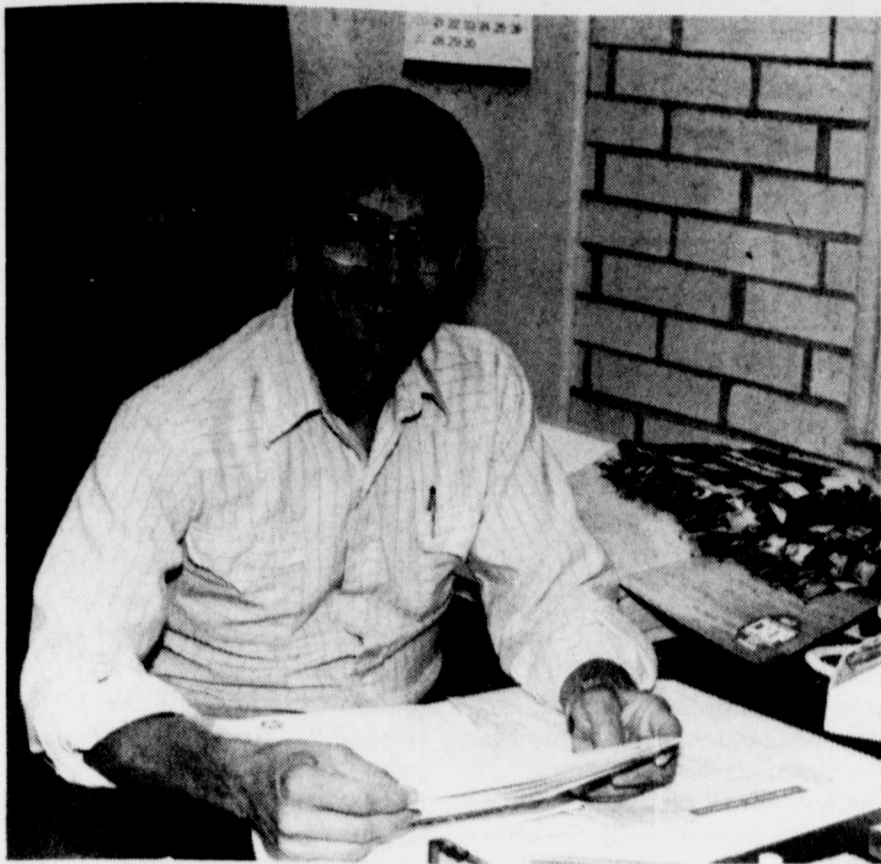
Offshore down in

Leases in waters produced of oil during 137,442 barrels to the nation. Gas well offshore led 6,260,121 (feet) in July. Mef in June Casinghead totaled 294,3 pared to 24 Casinghead produced from Condensate offshore led 15,227 barrels



General New C





Michael O'Dell named executive director of "CROP"

Michael O'Dell has been named Executive director of "CROP" for Winters and North Runnels County. "CROP" is a name chosen by Church World Service for local Community Hunger Appeals.

Founded in 1946, Church World Service is a division of the National Council of Churches of Christ in the U.S.A. It is composed of 31 Protestant and Orthodox Communions and meets human needs in more than 70 countries through programs of social and economic development, disaster and emergency response, and service to refugees.

Saturday, October 31 has been Chosen as the day for a local "CROP" Walk-a-Thon. All

ages of children and adults are urged to get out and walk because, we can help stop hunger; one step at a time.

25% of the Walk-a-Thon proceeds will be used for support at the local Food Pantry in Winters.

Volunteers are needed in planning organizing and supporting this Walk-a-Thon. The coordinating Committee meetings are held every Monday night at 7:30 p.m. at the St. John's Lutheran Church Education Building, 1100 West Parsonage. All interested persons are invited and encouraged to attend.

This is a unique and exciting challenge to the community of Winters that gives each of us the opportunity to participate at a local and national level; bringing renewed strength and pride in ourselves and our community.

Offshore production down in July

Leases in state offshore waters produced 137,414 barrels of oil during July, down from 137,442 barrels in June, according to the Railroad Commission.

Gas well gas production from offshore leases amounted to 6,260,121 Mcf (thousand cubic feet) in July, against 6,527,791 Mcf in June.

Casinghead gas production totaled 294,561 Mcf in July, compared to 244,067 Mcf in June. Casinghead gas is natural gas produced from oil wells.

Condensate production from offshore leases amounted to 15,227 barrels in July, against

16,311 barrels in June. Condensates are liquid hydrocarbons produced from gas wells.

In July, offshore crude production made up about 0.23 percent of the preliminary figure for crude production in Texas. Offshore gas well gas production was approximately 1.92 percent of the preliminary state total.

July offshore production in state waters was reported from 41 oil and 395 gas wells.

Soil is the farmer's bank. It won't stand too many promissory notes.

Southwestern Crop and Stock

Bud Lisso
Phone 365-2868
Ballinger, Texas

General Const. Remodeling
New Const. Cabinet Building

25 Years Experience
Free Estimates

HAPPY BIRTHDAY!

97 and COUNTING...

September 27, 1890 to
September 27, 1987

You gotta have Heart!

HEART O' TEXAS
SAVINGS ASSOCIATION
ESTABLISHED 1890

Home Office - San Saba
Branch Offices - Austin, San Angelo,
Ballinger, Winters, Robert Lee, Big Lake,
Richland Springs, Lampasas, Stanton,
McCamey, Houston, Temple, Waco

Heart O' Texas Mortgage Co.
Kerrville & Killen
Member FSLIC and Federal Home Loan
Bank System
Equal Opportunity Lender

Bentsen bill would establish National Commission on Children

Senator Lloyd Bentsen, Chairman of the Senate Finance Committee, introduced legislation aimed at forging "a new consensus on behalf of the most vulnerable of America's citizens, its children."

The Bentsen bill, cosponsored by 13 of his colleagues, would establish a National Commission on Children "to determine the causes of and propose cures for an increasing array of serious problems" facing America's children.

"Nothing short of this nation's destiny depends on the quality of our children's formative years. The conscience of America must be raised to the point that we are all striving to see that our children have whole and healthy bodies and minds. This should be our goal not only because we are a compassionate nation, but because in this tough, competitive world of ours, this country can afford no less," Bentsen said.

Under terms of the bill, a 36-member commission would report to the President and to Congress no later than September 30, 1988 on "ideas and strategies from which can spring the national resolve to assure productive and happy futures for coming generations," Bentsen said.

Senator Bentsen said he chose the September date for the commission to report its findings so that candidates in next year's elections, especially presidential candidates, will focus on children's issues.

Bike-a-thon slated

Nadine DeLaCruz and David Willson encourage all the citizens of Winters to share in the challenge to fight Cystic Fibrosis and join in the victory over it.

"A bike-a-thon will be held Saturday, October 10, 1987 at Winters High School Track beginning at 10 a.m.," reports Nadine DeLaCruz. Everyone's help is needed through both donations and active participation. "Cystic fibrosis is the number one genetic killer of children, but new research discoveries now offer hope for a cure. We can all share in the victory over CF by raising much needed dollars for research," stated Mrs. DeLaCruz.

Everyone can be a winner! Each person who collects \$35 will win a CF T-shirt. Additional prizes are available. Call Nadine DeLaCruz at 754-4440 for details. Mrs. DeLaCruz continues, "please accept our challenge, get involved. Research is the only answer for the 30,000 children and young adults in this country who suffer from cystic fibrosis."

"School, clubs, civic clubs, church school classes and neighborhood groups are encouraged to sponsor a young person to ride representing their group in the spirit of wholesome American competition," states David Willson. Support for each rider should be a certain amount per mile ridden with all laps being ridden in the safety of the enclosed track at Winters High School instead of an open route through the countryside. Persons of all ages may ride to benefit the persons with this disease. 100% of all funds raised will go directly to the Cystic Fibrosis Foundation.

When the soil is gone, man must go, and the process does not take long.

If we did not take great pains to corrupt our nature, our nature would never corrupt us.
Clarendon

Sue, Happy Birthday

Now that you have come so close to that half-way mark. Let me assure you that you still have lots of good things to live for.

Just look at how your lawn loves you—it just grows and grows for you. And how about your house? It's always there for you to come to. (So what if you can't walk thru it very good).

How about all your good company that comes in without notice.

And most of all how about your good friends that are always there for you?? It doesn't matter if they want you to fix or make something for them. They are your "Friends."

Cheer up my Friend this year will go by fast and then you will be the Big "50"

I hope this has made you feel better—Hey!! What are friends for?

Farm machinery safety makes good \$ense

Farm machinery must be respected and operated with care to get optimum benefits and assure safety.

The best way to prevent accidents is to determine and correct potential trouble situations before they happen, says Allen Turner, county agent with the Texas Agricultural Extension Service, The Texas A&M University System.

Proper maintenance of farm equipment and safety devices could prevent many deaths and serious injuries, emphasizes the Agent.

The agent lists a few precautions to take when working with farm machinery.

—1. Make sure that all farm machinery is operated and cared for according to the instruction manuals and that everyone involved is instructed in safe operation.

—2. Keep shields and guards in place when operating machinery, turn off the engine before refueling, adjusting or servicing a machine, and always replace defective parts as soon as possible.

—3. Keep children and pets away from operating machinery.

—4. Always hitch drawbar loads to a drawbar in the proper towing position, not to the tractor's axle or frame.

—5. Equip tractors with protec-

tive cabs, fire extinguishers and first aid kits.

—6. Make sure lights on machinery are adequate. When using a public road, have "slow-moving vehicle" emblems mounted on machinery.

—7. Have sprayer operators wear protective clothing, such as long rubber gloves and goggles; change clothes daily, and wash thoroughly before eating or smoking and immediately after completing the operation.

—8. Equip sprayers with nozzle cleaning devices and at least five gallons of "first-aid" water to be carried on the applicator or tractor where it can be reached easily.

—9. Always position support jacks or transport wheels before disconnecting hydraulic cylinders, block movable parts before repairing, and have faulty coupling and hose repaired promptly.

—10. Make sure tires are inspected and properly inflated, hitches are sturdy, wagons are properly loaded, hydraulic couplings are connected correctly, and lines and fittings are inspected and repaired promptly if found to be faulty.

"Safety is everyone's business," the agent says.

Wear Blue on Friday

State law requires signs on commercial vehicles

DPS License and weight Service officers report encountering truckers unaware of a recently enacted law.

A state law which became effective last year requires the name of the owner, operator or lessee of commercial vehicles with three, or more, axles to be displayed on both sides of the vehicles.

All truck-tractors are also in-

cluded in the statute which mandates lettering of a two-inch minimum height.

Failure to comply is a Class C misdemeanor offense punishable by a maximum fine of \$200.

Public utility and farm vehicles and trucks hauling timber in its natural state on the first movement are exempt from the statute.

ATTENTION ALL
Commercial Truck & Vehicle
Owners — Operators
Magnetic Signs & Decals — Lettering
Conforming To DPS Requirements
S.A. Enterprises
Signs
365-5511 Ballinger, Texas


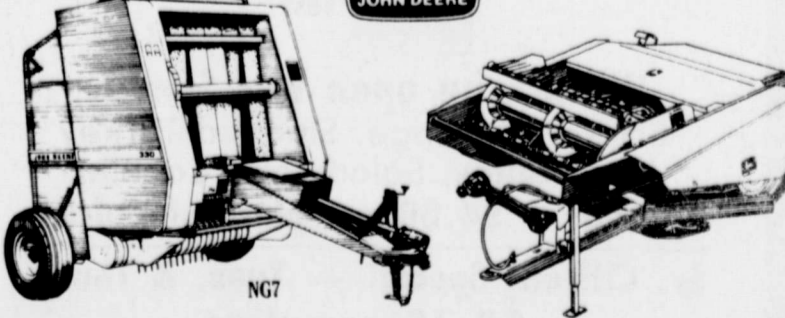
GOOD DEALS
from a Good Dealer

HAY DAYS
0.0% financing until May 1, 1988,
on new John Deere hay equipment

And that's just the start of the "hay day" specials now available. We're also offering thousands of dollars in savings on direct-to-you "Good Deal" discounts on balers, mower/conditioners and windrowers...plus special "Package Deal" savings on new John Deere tractor/hay tool combinations...as well as additional pass-along savings.

Stop by today. These good deals are good for a limited time only.

NOTE: Availability of John Deere financing subject to approval of credit. This offer may be withdrawn at any time.

MANSSELL BROS.
Hwy. 67 South Ballinger, Texas
Phone 1-800-426-9991



B.A.S.A. SOCCER
By J. F. PSUTKA, M.D.

The first thing that I have to do is to make two corrections. Last week's score between the Mustangs and the Badgers in the Under 6 group was reportedly wrong and the score should read Mustangs 8 and the Badgers 6. The Mustangs still won.

Also one game in the Under 12 group played this Saturday between the Wolverines and Apollos, has not been completed and remains deadlocked at one. The game, during a shoot out, was erroneously terminated by the referee. He and I have consulted and we will complete that game October 17, 1987, which is the first time that the Apollos and Wolverines will be on the field together again. The exciting game ended tied at one and the shoot out commenced. However, the Apollos have not scored in 2 attempts, but do need at least one more shot. Shoot outs are determined on the basis of the most goals in 5 shot attempts. So we must complete that game although it will be very tough for the Apollos to come back. The best they can possibly do is tie at 3. If that possibility were to come true, then the shoot out would continue. In fairness it was the referees error, but it can be corrected October 12, 1987. On Saturday the Cosmos continued their winning ways as they clipped the Lazars 4-2 and they look to be a very powerful team.

In the Under 10 age group, the Spurs appear to be the powerhouse of the league as they stuck the Rover 10-2. The Rangers continue to win as they won their 3rd straight game and eked out a victory over the

Mustangs 4-2. Next week the Spurs versus the Rangers on Field III at 10 a.m. and this should be a super shoot out game as first place is on the line.

In the Under 8 age group the Stingers continue to be the best in Runnels County as they surprisingly panted the Wizards 8 to zip. The Gunners continue to win as well as they BLANKED the Bumblebees and as yet have not been scored on this year.

In the Under 6 age group there was plenty of scoring as the referee's pencil's often became dull. The Eagles and Muppets went on a scoring rampage netting 27 goals between them and tiring out the referee. The Badgers played better this week and the Mustangs continue to play well.

October 3, 1987

U6 Field 1			
Mustangs vs Muppets	12:00	Eagles vs Badgers	11:00
Grasshoppers vs Halpints	10:00	U8 Field 2	
Wizards vs B-bees	11:00	Gunners vs Tornados	12:15
Stingers Off		U10 Field 3	
Rangers vs Spurs	10:00	Rovers vs Gremlins	11:15
Mustangs Off		U12 Field 3	
Apollos vs Lazars	12:30	Cosmos vs Scorpions	1:45
Wolverines Off			

Sat., 9-26-87 B.A.S.A. SOCCER SCORES

UNDER 6			
Mustangs	9	Grasshoppers	5
Badgers	10	Halpints	8
Eagles	18	Muppets	9
UNDER 8			
Stingers	8	Wizards	0
Gunners	2	Bumblebees	0
UNDER 10			
Spurs	10	Rovers	2
Rangers	4	Mustangs	2
UNDER 12			
Cosmos	4	Lazars	2
Apollos	1	Wolverines	1

Shoot out incomplete - Wolverines lead 3-0

SOCCER STANDINGS Sept. 26, 1987						
UNDER 12	W	L	T	F	A	PTS
Wolverines	2	0	1	6	4	4
Cosmos	2	0	-	7	3	4
Apollos	1	1	1	4	5	2
Scorpions	0	2	-	3	5	0
Lazars	0	2	-	3	6	0
UNDER 10						
Rangers	3	0		11	6	6
Spurs	2	0		15	1	4
Mustangs	1	2		9	13	2
Rovers	0	2		3	13	0
Gremlins	0	2		7	10	0

The hand that worked the plow—that led the team—that husked the corn—was the hand that guided America to its greatness.

President Lyndon B. Johnson

Poverty is the parent of revolution and crime.

Aristotle

To make us love our country, our country ought to be lovely.

Burke

Holloway's Bar-B-Q Barn
Hwy. 53 East

We will be open this Sunday
Brisket, Sausage, Smoked Turkey
Vegetables, Salads and Cobbler
Special — \$4.00 per plate plus drink

Sr. Citizens Special — Tues. & Thurs.
\$2.75 per plate
plus tax for tea and plate
Let us cater your parties
Chopped Sandwich Everyday
\$1.29 Each
Hours—11-2 & 5-8 Mon.-Sat.—11-2 Sat.

John Austin celebrates 14th birthday

Sunday, September 27, 1987, John Austin celebrated his 14th birthday with a skating party at the Winters skating rink.

The cake decorated by John Austin, was illustrated with fighting dinosaurs, punch was also served.

Games on skates were en-

joyed by: Andy Webb, Billy Clough, Billy Gerhart, John Austin, Buddy Jim Miller, J'Dan Miller, Raul Rodriguez and Ralph Austin.

Also present were: Debra Dexter, Jacque and Michelle Dexter, Mrs. Cora Hord and John's mother, Barbara Austin.

Pack 249 met

On September 24th, at 7 p.m. Pack 249 had its monthly committee meeting at the Scout Hut. Present at the meeting were Gary Moore, Commissioner, Jeff Heidenheimer, Den Leader, Debbye Minzenmayer, Den Leader, Enrique Luz, Tommy Burton, Tommy Stamper, all committee members.

Also present was Norma Jo Sudduth who is stepping down from her many duties. The Scouts and parents would like to thank Norma Jo for all her contributions she has given us.

Discussion was held to announce that on October 20th the Boy Scouts, Cub Scouts will start their fund raising. They will again sell popcorn. Please remember when you place your order your helping the boys in our community.

Den Leaders are also reminded that on October 20th we will have our Pack meeting, and on October 22nd at 7 p.m. there will be a Round Table in Lawn at 7:30 p.m., and on October 29th there will be a Committee meeting at 7 p.m. at the Scout Hut.

We need more committee members; any parent or persons in the community may be a member please come and give us your input.

Boys it's not late to join up for the Scouts. It's a lot of fun.

Applying for SSI

People who believe they may be eligible for supplemental security income (SSI) payments should apply without delay, Franklin H. Upp, Social Security manager in San Angelo, said recently. Payment can begin only with their day of application or the date of eligibility, whichever is later. In the case of a child, an application can be made by a parent or guardian or by some other responsible person.

The application process can be speeded up is the person brings along certain information at the time he or she applies; however, the application should not be delayed simply because all of the information is not available. Social Security personnel will help obtain whatever else is needed. This information includes:

- * The applicant's Social Security card;
- * A birth certificate or other proof of age;
- * Details of income and assets (such as payroll slips, bank books, and copies of tax returns);
- * Details about living conditions (the landlord's name, lease, or mortgage);
- * Medical records for applicants claiming eligibility for SSI on the basis of disability or blindness.

Sometimes, a blind or disabled person who lives in a public institution becomes capable of living in the community but lacks the necessary funds to do so. Monthly SSI checks may permit the person to live outside the institution.

An alternative, a responsible person can apply on behalf of the institutionalized person when it appears that he or she will soon be discharged.

Additional information about the SSI program can be obtained at the San Angelo Social Security Office located at 2214 Sherwood Way. The telephone number is 949-4608.

We must halt senseless pollution...we must shepherd our remaining last resources with great care; we must evaluate any project which threatens to disrupt our environment. This may well be our last chance. We all must decide what kind of world we want this to be for us, our children, and our grandchildren. Now is the time for decision.

Sen. Gaylord Nelson (Wisc.)

Millions of people in other lands live today because of food grown and shipped from American farms.

President Lyndon B. Johnson

READ THE CLASSIFIEDS!

Extension at Home

By Pat Hohensee
County Extension Agent

Kids—take care of yourself—school and homework

Whether they like it or not, most kids have homework to do after school. By using your time wisely, you can get your homework done. Here are some ideas about doing homework on your own.

* Always read the directions first, even if you think you already know what to do.

* If your teacher gives you time in class, do as much homework as you can. The teacher will be there to answer your questions and you will have more free time when you get home.

* Have a homework phone friend. This is somebody you can call if you forget directions or what the teacher said in class. Your phone friend can call you for help, too.

* If you get stuck on something, do not quit working. Go back and look at the sample problem or read the directions. If you still do not understand, skip that part or problem and go on to the next.

* If you do not understand a word you are reading, look to see if there is a glossary in the back of the book. A glossary is a small dictionary and will tell the meaning of special words in your book. The words in a glossary are arranged alphabetically.

* Have a dictionary to use. If you cannot find a word in the glossary of your text book, you can look it up in the dictionary.

* If you have some really hard homework, do not try to do it all at once. Do one part of it and then put it aside. Do something easier or a more enjoyable assignment, and then come back to the difficult work. That will make it easier.

* Show all your homework to your parents and let them check it over later that evening.

There are many good reasons for doing your homework after school instead of waiting until after dinner. You will have time to do other things later in the evening. You can spend time with your parents when they are home. It gives you something to do while you are by yourself. And you can get it done while the material is fresh on your mind.

Where do you study and do your homework? Your bed? The sofa? The floor? Working at a table or desk will make it easier

to concentrate and get it done faster.

Make a study area for yourself and work there each day. It does not have to be fancy. You can use a desk or a table. But no matter where you study, make sure you have good lighting. Light filling a room prevents shadows and glares that make your eyes tired. Also have a lamp on your table or desk to put light directly on your paper and books.

Chores and other Challenges will be the topic of next week's "Kids-Take Care of Yourself." Skills for self-care are valuable for all children.

Winters Public Schools BREAKFAST MENU

MONDAY	
Biscuits, sausage, brown gravy, sliced peaches, milk	
TUESDAY	
Buttered toast, Frosted Flakes, orange juice, milk	
WEDNESDAY	
Blueberry muffins, ham-cheese strip, applesauce cake, milk	
THURSDAY	
Buttered biscuits, oatmeal, grape juice, milk	
FRIDAY	
Biscuits, eggs, sausage, mixed fruit, milk	

LUNCHROOM MENU

October 5-October 9	
MONDAY	
WEST SIDE	Hamburgers, mustard, mayonnaise, French fries, catsup, lettuce, tomatoes, Peanut butter-scotch bars, milk
EAST SIDE	Ravioli W/meat-cheese, tossed salad, seasoned green beans, peanut butterscotch bars, garlic bread, milk
TUESDAY	
WEST SIDE	Ham-cheese sandwich, French fries, catsup, tomatoes, mustard, mayonnaise, fruit jello, milk
EAST SIDE	German sausage, fried okra, blackeyed peas, fruit jello, hot rolls, milk
WEDNESDAY	
WEST SIDE	Soft tacos W/meat-cheese, tossed salad, chili beans, jalapeno cornbread, cherry cobbler, milk
EAST SIDE	Same
THURSDAY	
WEST SIDE	Cheeseburgers, lettuce, tomatoes, pickles, French fries, catsup, mustard, mayonnaise, applesauce cake, milk
EAST SIDE	Salisbury steak W/gravy, mashed potatoes, peas, carrots, applesauce cake, hot rolls, milk
FRIDAY	
WEST SIDE	Same

Texas Historical Commission hosts revitalization conference

"Successful Downtowns: A Green Spot in Today's Red Ink Economy" is the theme of the fifth annual downtown revitalization conference sponsored by the Texas Historical Commission and the Texas Downtown Association.

Set for November 4-5 at the Driskill Hotel in Austin, the conference is designed for neighborhood leaders, city officials and staff, downtown merchants, investors, and preservationists interested in developing economic strategies for the revitalization of downtown areas.

Conference activities will include a special luncheon for participants and speakers, as well as a bus tour of nearby Lampasas, a Main Street city that has generated more than \$1.3 million in private sector reinvestment in the last four years.

A variety of workshops will be offered at the meeting, including "Keeping Your Customers Happy," "Making Downtown beautiful: Public improvements and Landscaping," "Easy Maintenance and Repair of Older Buildings," and "Business Recruitment for Downtown."

Leading the list of speakers will be Philip Morris of Birmingham, Alabama, who serves as executive director of *Southern Living* magazine, and Ralph McCalmont of Stillwater, Oklahoma, who is a member of the Board of Trustees of the National Trust for Historic Preservation.

Participants are encouraged to register early. Registration

fee is \$85; two luncheon activities also are available for \$13 each. Checks should be made payable to the Texas Downtown Association.

For more information, contact the Texas Historical Commission, P.O. Box 12276, Austin, Texas 78711, 512/463-6092.

The trail of civilization is strewn with the wrecks of derelict races and nations which fell by the wayside when their soil resources played out.

Southwestern Crop and Stock Magazine

New Merchandise

Arriving Daily From Market

Gold & Silver Jewelry
Watches
Pottery
Diamonds
Many Other Items

Bahlman Jewelers
106 South Main
Winters, Texas

Last w

Children's Worth. W came to t operating Sherry p to the a Brenton Darrell

Lots of were the Travis a cessfully tears. It was ment. An surgery So dan when the explain could go talking r but ver bilities.

Yet the tions. Th done.

In a wa Sherry p the arms were pla the arms doctor w matter of was total They we

We w There wa of us cou I led the chapel on we praye We di Darrell a symboli

1100 Sunday Worshi

1100 Sunday Worshi

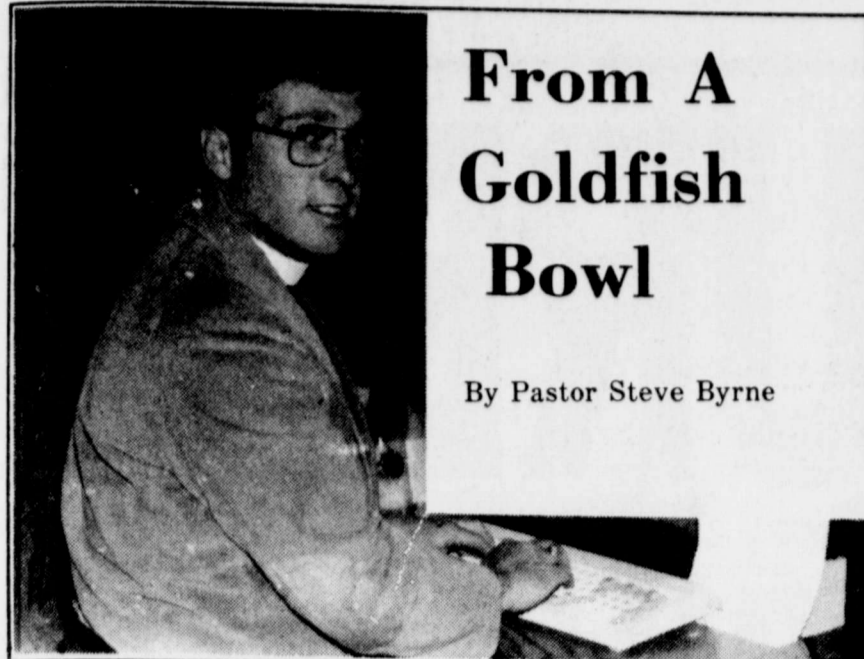
Payment

Medicare can help pay vices, outp outpatient p speech path health care services are

Medical pays 80 per charges aft curred the charges; th surance dec is responsib 20 percent charges an the approv

Medicare payments c one of two may be ma to the supp vice, or th made direc

If paym physician a method of "assignment The ass



From A Goldfish Bowl

By Pastor Steve Byrne

Last week I sat in Cook Children's Hospital in Ft. Worth. When the O.R. nurse came to take Brenton into the operating room, Darrell and Sherry placed their child into the arms of the nurse. Brenton cried.

Darrell and Sherry cried. Lots of family and friends were there. They all cried. Travis and I fought unsuccessfully to hold back our tears.

It was an emotional moment. An emotional time. The surgery was dangerous.

So dangerous in fact, that when the doctor came out to explain all the things that could go wrong, he was not talking remote possibilities, but very present probabilities.

Yet there were no other options. The surgery had to be done.

In a way, when Darrell and Sherry placed Brenton into the arms of that nurse, they were placing their child into the arms of God. Not that the doctor was God. But that the matter of life and death itself was totally out of their hands. They were helpless.

We were all helpless. There was nothing more any of us could do. So Travis and I led the family to a little chapel on the first floor. And we prayed.

We did consciously what Darrell and Sherry had done symbolically at the operating

room door. Placed the very life and care of Brenton into the arms of One Stronger.

The doctor came out in a few hours. Smiling and shaking his head. The operation had far exceeded their hopes. Another emotional time. Only better. A lot better.

On the long drive home to Winters my mind kept going back to the scene in front of the O.R. door.

I realized how reluctant I am (and maybe all of us are) to place my life and all things into God's hands for his keeping. Most of the time I do all I can. And only when all my efforts are exhausted do I turn it over to One Stronger. You might call it faith by default. And I thought about times past and how much better things usually turn out when I do that finally.

Darrell and Sherry know what is like to feel helpless and weak. To walk by faith and not by sight. They're doing it. It is hard. And sometimes it hurts. And yet in a way it is very freeing.

Faith begins when we realize just how helpless and weak and inadequate we are about the really important things in life. And turn it over. It's funny. But somehow, then we are no longer helpless, weak, or inadequate.

"My grace is sufficient for you, for my power is made perfect in weakness." (2 Corinthians 12:9)

Courtesy Of St. John's Lutheran Church

1100 W. Parsonage 754-4820
 Sunday School 9:30 A.M.
 Worship Services 10:40 A.M.

Payment for Medicare medical insurance

Medicare medical insurance can help pay for physicians' services, outpatient hospital care, outpatient physical therapy and speech pathology services, home health care, and other health services and supplies.

Medical insurance generally pays 80 percent of the approved charges after the patient has incurred the first \$75 of approved charges; this is the medical insurance deductible. The patient is responsible for the remaining 20 percent of the approved charges and any amount above the approved charges.

Medicare medical insurance payments can be made in either one of two ways. The payment may be made to the physician or to the supplier or medical service, or the payment may be made directly to the patient.

If payment is made to the physician or to the supplier, the method of payment is called "assignment."

The assignment method can

be used only if both the physician or the supplier and the patient agree to it. When this method is used, the physician or the supplier agrees that his or her charge for the service will be no more than that approved by the Medicare carrier. Medicare will then pay 80 percent of the approved charge after subtracting any part of the \$75 deductible that the patient has not met.

No all physicians will accept assignment. A list of those who have may be obtained from the San Angelo Social Security Office located at 2214 Sherwood Way. The telephone number is 949-4608.

Private long-term care insurance

Private long-term care insurance is a new product emerging from the life and health insurance industries to help

Obituaries

Pearl Harrison

Pearl May Harrison, 52, of Ballinger, died Wednesday, September 23, 1987 at 6 a.m. in Riverside Manor in San Angelo.

Born November 12, 1934 in Gary, Indiana, she was an institutional cook, in a nursing home.

She was a member of the Pentecostal church.

Survivors include two daughters, Deborah Willborn of Ballinger and Brenda White of Bullhead City, Arizona; two sons, Raymond Deloria, Escondido, California and John Harrison of Bullhead City, Arizona; five sisters, Francis Lyons, Los Angeles, California, Edna Wood and Ruth Smith, both of Demotte, Indiana, Dorothy Harper and Carol Martin, both of Gary Indiana; three brothers, Everett Brummet of Washington, Earl Brummet and David Brummet, both of Gary Indiana; and six grandchildren.

Services for Pearl May Harrison were held Friday, September 25 in Rains-Seale Funeral Home Chapel with Rev. Larry Howard officiating. Burial was in Evergreen Cemetery, directed by Rains-Seale Funeral Home.

Bessie Phillips

Bessie Elizabeth Phillips, 90, died Thursday, September 24, 1987, in an Abilene nursing home.

Born in Bell County, she had been a longtime resident of Runnels County. She was a member of Wingate Baptist Church and was a homemaker. She was the widow of Leonard Phillips.

Survivors include two sisters, Flossie Kirkland of Wingate and Estelle Harding of Silver Valley; a half sister, Mary Perry of Wheaton, Missouri; and several nieces and nephews.

Services for Bessie Elizabeth Phillips were held at 10:30 a.m. Saturday, September 26, at Wingate Baptist Church with Rev. Charles Meyers officiating. Burial was in Wingate Cemetery, directed by Winters Funeral Home.

Historical Commission to host Edwards Plateau Historical association.

The Runnels County Historical Commission will host the Annual Session of the Edwards Plateau Historical Association at 10 a.m. Saturday, October 3 in the Ballinger Carnegie Library, as announced by Mrs. Edger Boelsche, president.

Registration and a coffee hour beginning at 9 a.m. will precede the program. Winters women who will be serving on the hospitality committee are Lillian Roberson at the register; Jo Olive Hancock, Mary Margaret Leathers and Charlsie Poe.

Program features will include a history of the Carnegie Library and a biography of the Guion family with emphases on David Guion's musical works, world renowned composer and Ballinger native.

Presenting papers on these subjects will be Neuman and Barbara Smith.

Mrs. Leathers will read the song Runnels is My County; Runnels is My Home composed

finance long-term care. "While not intended to replace Medicaid, long-term care insurance offers another option for protection against the potentially devastating costs of long-term chronic diseases and disabilities," says Mary Clayton Nance, a resource management specialist with the Texas A&M University Agricultural Extension Service home economics program. "Long-term care insurance is not designed to pay all bills associated with long-term care. Whether long-term care insurance is appropriate for you or your family depends on age, health and the family's financial condition," she observes. Because the long-term care insurance industry is in its infancy, policies may vary greatly from company to company. "It's especially important to determine if a long-term care policy offers custodial care, because many do not," emphasizes Nance. She advises consumers to carefully study and comparison shop among policies to find one that meets their needs.



Tiger Cubs from 1986

These Tiger Cubs have graduated and have become Cub Scouts and all are members of Pack #249, Den 4.

Front row: Joe Folsom, Jason Gray, Stacey McMinn, Rickey Stamper, Ricky Luz

Back row: Alex Rodriguez, Justin Minzenmayer, Greg Evans and Eric Joeris,

Third row: Den Leader, Rhonda Joeris; Assistant Leaders, David Evans and Gail Minzenmayer

Card of Thanks

We would like to say thank you for all your prayers, your thoughtfulness, the beautiful cards, food, contributions, and for being such wonderful caring people during our time of sorrow.

A special thank you to Milt Bunger and Buck Cummings for their help during Daddy's illness.

Also our thanks to the employee's of Mac Oil Field, Brother Shoemaker, the First Baptist Church, and Mike Meyer for your help and kindness.

The family of Clem J. Rozmen

Wear Blue on Friday

Historical Commission to host Edwards Plateau Historical association.

by Guion with words by Loyd Roberson.

A selection of David Guion's musical works will be played by Mrs. Richard Dishinger of San Angelo.

Those attending will be treated to a catered luncheon at the First Baptist Church prior to a bus tour of Ballinger's turn of the century homes concluding at Pioneer Plaza.

Climaxing the days events will be a walking tour of the courthouse grounds, historic downtown buildings, and the Santa Fe depot.

Card of Thanks

I want to thank my friends and neighbors for the beautiful flowers, cards, telephone calls and food that was sent to me during my stay in St. John's Hospital in San Angelo and my stay in Humana Hospital in San Antonio. Especially do I thank our pastor, Galen Broadstreet and wife, Joyce for their visits and prayers.

My husband joins me in saying thanks to everyone. May God bless each of you.

Lessie Robinson

Gifts toward the purchase of the Rock Hotel continue to climb

Gifts toward the purchase of the Rock Hotel continue to climb and now stand at \$22,855 total, cash donations are \$20,980. The building fund and pledges provide the rest.

The Museum Finance Committee wishes to express a special word of thanks to the Winters Alumni who have so generously remembered their home town this week.

Those contributing this week are: Mrs. John Kennedy, Sun City, Arizona; Tillman Jennings, San Angelo; W. A. Lowe, Odessa; Clyde Harville, San Angelo; Mr. and Mrs. James Hughes, Sherman; Naomi S. Woolam, San Benito; Mrs. Helen Phipps Little, Big Spring; Omega D. Snow, Altus, Oklahoma; Willie Kraatz, Wilmington, Del.; Mr. and Mrs. Bob Foster, Marble Falls; Mr. and Mrs. P. H. Eckstein, Kerrville; Mr. and Mrs. Charles Brown, Carbon; Mr. and Mrs. Mack Young, Austin; Mr. and Mrs. Garner Young, Albuquerque, N.M.; Mozelle Colby, San

Angelo; Lorena Gerhart, Pecos.

Winters donors are Mr. and Mrs. Bud Busher, Mr. and Mrs. Elton Smith, Mr. and Mrs. A. C. Minzenmayer, Hal Dry, Mr. and Mrs. J. R. Lacy, Dr. C. T. Rives, Mr. and Mrs. Melvin Ray Williams, Mrs. M. E. Leeman, Mr. and Mrs. A. L. Mitchell, Mrs. C. R. Kendrick, George Browning, Mr. and Mrs. Homer Hodge, Lillian Roberson, L. B. Jordan, Garland Crouch, in honor of Mrs. Reese Jones, Mr. and Mrs. Roy Young, Mr. and Mrs. R. Q. Marks, Mr. and Mrs. Mansfield Foster, Holyce Hutchins, Mr. and Mrs. Ozzie Reed and Alderman Cave.

Names added to the Museum Family Memorial Plaque, this week are: T. O. and Ada Williams by their children; Buna Crow, Morton; Pearl Davidson, Wilson; Ena Montgomery, Kingsland; Edna England, Vera Lee Sneed and M. R. Williams. All of Winters, Bernis and Anne Camp of Muleshoe send a memorial to her parents, Bob and Olive McFarland.

The Burger Hut

Hwy. 53 East Phone 754-4181

Dine In or Take Out

Now Serving Plate Lunches Sunday Thru Friday 10 A.M. Till 2 P.M.

Choice of two meats and three vegetables, roll and butter

Dessert — Tea or Coffee included

Special

\$3.95

Fresh Catfish Plate — 7 days a week 10 A.M.—2 P.M. and 5 P.M.—8 P.M.

Crisis Intervention And Stress Management Seminar

Conducted by Hendrick Care Center Sat. — October 3 — 9 A.M.-12 Noon at Methodist Church Fellowship Hall, Winters Nursery care provided Phone 754-5213 for more information

Jerrolyn's Jewelry and Gifts Winters

Jerrolyn's, in Ballinger, is 3 years old this month. So come and take advantage of the Anniversary Month sales in our Winters store also.

Register each visit for a weekly door prize to be given each Saturday.

New registration begins each Monday.

October 1-10

All Stoneware dishes — 20% off

All 14 kt. Gold rings — 20% off

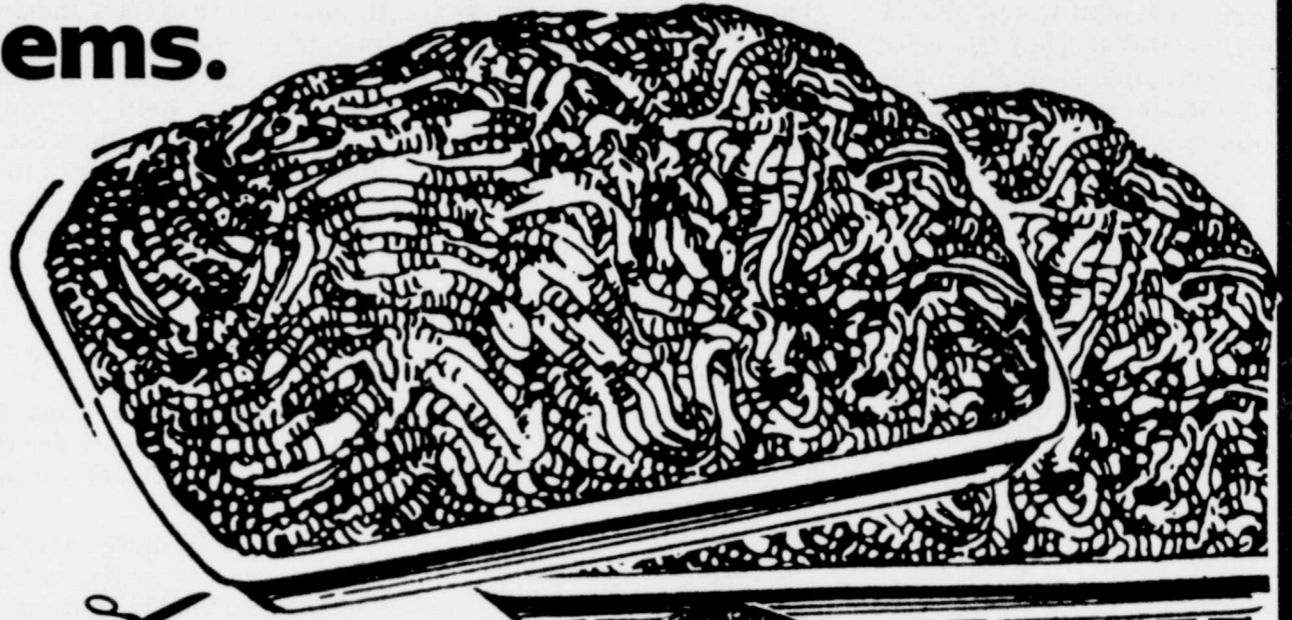
All jewelry boxes — 20% off

EXTRA FEATURES The Big Country!!!

These Features Are In Addition to Our Regular Advertised Items.

Fresh Daily
Ground Beef

Lb. **.88**



STORE COUPON GOOD THRU 10-6-87		Imperial Margarine 1 Lb. Qtrs.	.19
		With Coupon Limit 2 Per Coupon. 1 Coupon Per Family	
STORE COUPON GOOD THRU 10-6-87		Borden Lowfat Milk 1 1/2% 1/2 Gal. Ctn.	.59
		With Coupon Limit 2 Per Coupon. 1 Coupon Per Family	
STORE COUPON GOOD THRU 10-6-87		Contadina Tomato Sauce 8 Oz. Can	.9
		With Coupon Limit 3 Per Coupon. 1 Coupon Per Family	
STORE COUPON GOOD THRU 10-6-87		Donald Duck Orange Juice 100% PURE FROZEN CONCENTRATED Regular or More Pulp 12 Oz. Ctn.	.49
		With Coupon Limit 3 Per Coupon. 1 Coupon Per Family	

STORE COUPON GOOD THRU 10-6-87		Russet Potatoes 10 Lb. Bag	.49
		With Coupon Limit 1 Per Coupon. 1 Coupon Per Family	
STORE COUPON GOOD THRU 10-6-87		Webber Farms Pork Sausage Sage or Hot 16 Oz.	.99
		With Coupon Limit 2 Per Coupon. 1 Coupon Per Family	
STORE COUPON GOOD THRU 10-6-87		Food Club Longhorn Cheese Cheddar or Colby Halfmoon 8 - Oz. Pkg.	.99
		With Coupon Limit 2 Per Coupon. 1 Coupon Per Family	
STORE COUPON GOOD THRU 10-6-87		Mello Crisp Sliced Bacon 16 Oz. Pkg.	.99
		With Coupon Limit 2 Per Coupon. 1 Coupon Per Family	

- 2160 Pine Street
- 12th & Grape
- 4209 Buffalo Gap
- University Hills
- 3661 North 6th
- 920 North Willis
- 2540 Barrow
- River Oaks
- 14th & Barrow
- 2665 Buffalo Gap
- 155 Sayles
- Coleman
- Eastland
- Ballinger
- Clyde
- Winters
- Sweetwater

Prices Effective Wednesday, September 30 thru Tuesday, October 6, 1987.

SUPER

DUPER

Furr's
SUPERMARKET

We put in extra specials for you because we really want your business. And we think that these prices will tempt you to come shop with us. But the 8 coupons and the Ground Beef are not the only things we have on sale for you. We still have our regular circular full of features and specials in this newspaper. So keep looking till you find our circular. Cause we really want your business this week.

CA
UP
by

A potent receiving late is the Harley C judge of T fectively o state publ formula u because th ing wide n is not the not mean ramificatio impact are To ref generally says that formula w receive st tional be discrimina poor schoo on the the is entitled quality ed lives in the which is districts in Highland one of the fairly close stitutional years ago vote." Pe simply, if ruling, it entire tax state, divi school ch would be a of money spent on es the child's

Bentse united

Senator ed by the delegation September Department port a bi Texas A&M Houston.

Bentse Senator P 27 House M delegation Secretary E by Texas unique fac vance rese medicine a

"Texas planning t stitute of Technology of the Med Bentse a said in the

"This in top-notch a ing and ve pertise of University class progr disease an establishe Center Co

"Your de ed to provi constructi research fa is eligible apply for f gram," the "We stro

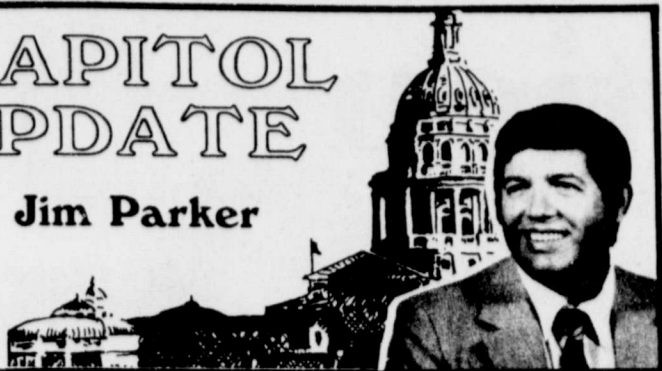
Task f homel

A speci amine the minority c the first ti The Edna Fort Wort

The Spe Committe The Natio Adoption Washingto ways to fin ing number minority cl manent spokesper Rosenberg An est

CAPITOL UPDATE

by Jim Parker



A potentially disastrous issue receiving little press coverage of late is the ruling by Judge Harley Clark, state district judge of Travis County, that effectively declared our current state public education funding formula unconstitutional. Just because that issue is not receiving wide notice does not mean it is not there and certainly does not mean it has gone away. The ramifications and potential fiscal impact are as great as ever.

To refresh your memory, generally speaking, that ruling says that the current funding formula whereby school districts receive state aid is unconstitutional because it unfairly discriminates against property poor school districts. It is based on the theory that a Texas child is entitled to the same dollar quality education if that child lives in the Hutto school district which is one of the poorest districts in the state or in the Highland Park district which is one of the richest in the state. A fairly close analogy is the constitutional holding of several years ago of "one man, one vote." Perhaps stated more simply, if I fully understand the ruling, it would mean that the entire tax property value of the state, divided by the number of school children in the state would be at or near the amount of money that would have to be spent on each child regardless of the child's geographic location.

The concept is fairly difficult in its theory but it is simple in its application and if carried to its logical conclusion would create a system whereby the same number of dollars would be available to educating every child everywhere in the state. While it is fairly simply stated, it can and will create a chaotic situation in school finance and will eventually lead to the ultimate elimination of independent school districts as we know them today.

Of course, Judge Clark's ruling is being appealed and one would have to be clairvoyant to predict the outcome with any accuracy. I would say, based on the current social attitudes of our Supreme Court, there is a better than even chance that the court's decision will be sustained and upheld. That means that the Legislature will effectively have to revamp completely public school finance.

With the current problems the state faces, this is probably not an issue that we need to devote a great deal of time and thought to right now; but, for those who wish to keep themselves informed, and by the way of a "preview of coming attractions," it promises to be perhaps the next major issue of statewide significance, especially since it deals with a subject that is responsible for the expenditure of over half of our state budget.

Bentsen, Texas delegation show united support for bio-tech center

Senator Lloyd Bentsen, backed by the Texas Congressional delegation, urged Thursday, September 3, that the U.S. Department of Agriculture support a biotechnology center Texas A&M plans to establish in Houston.

Bentsen, in a letter signed by Senator Phil Gramm and 25 of 27 House Members in the Texas delegation, told Agriculture Secretary Richard Lyng of plans by Texas A&M to establish a unique facility that would advance research into agriculture, medicine and nutrition.

"Texas A&M University is planning to establish an Institute of Biosciences and Technology in Houston as part of the Medical Center Complex," Bentsen and the other Texans said in the letter to Lyng.

"This institution will add the top-notch agricultural, engineering and veterinary medical expertise of the Texas A&M University System to the world-class programs in cancer, heart disease and nutrition already established in the Medical Center Complex."

"Your department is authorized to provide matching funds for construction of agricultural research facilities. Texas A&M is eligible for and would like to apply for funds under this program," the letter said.

"We strongly support that re-

quest and would appreciate your assistance in this effort. As a first step, we urge you to designate one of your key staff members within the Cooperative State Research Service to work with representatives of Texas A&M and the Houston Medical Center Complex in establishing this program."

The letter noted that many medical problems, such as arteriosclerosis, are diet-related and said a program combining agricultural, medical and nutritional research could lead to the development of foods tailored for specific health needs.

"Research underway at the USDA's Children's Nutrition Research Center in the Medical Center Complex is producing major advances, such as the isolation of a protein in mother's milk that is necessary for timely development of the digestive system but which is absent from infant formula. This protein will soon be added to formula," Bentsen and the other Texans said.

"Similarly, certain substances found in broccoli, cauliflower and other foods are known to help prevent cancer of the colon. This institute's resources could pave the way for producing other food crops which also contain these substances, or for increasing the amount found in existing plants," Senator Bentsen said.

Task force to examine needs of homeless minority children

A special task force to examine the needs of homeless minority children will meet for the first time October 1 and 2 at The Edna Gladney Center in Fort Worth.

The Special Needs Adoption Committee was established by The National Committee For Adoption (N.C.F.A.) in Washington, D.C., to explore ways to find homes for the growing number of special needs and minority children in need of permanent families. N.C.F.A. spokesperson Jeffrey Rosenberg said.

An estimated 50,000 to

100,000 children are waiting for adoptive homes at any given time, Mr. Rosenberg said. Forty percent of those waiting are black, although only 12% of the national population is black. On the average, minority children wait twice as long to be adopted as white children, he said.

"The goal of the committee is to develop strategies for meeting the needs of these kids," Mr. Rosenberg said.

Co-chairs of the committee are Jane Edwards, of Spence-Chapin, an adoption agency in New York, and Richard Van Deelen of Bethany Christian

Kent Hance takes oath as Railroad Commissioner

Kent Hance became the 33rd commissioner to serve on the 96-year-old Texas Railroad Commission in ceremonies in the Senate chamber of the state capitol today.

Hance was sworn in by State Senator Cyndi Taylor Krier (R-San Antonio) after introductory remarks by Governor William P. Clements.

Hance told the crowd filling the Senate chamber that energy challenges face both Texas and the nation and pledged that he would work with fellow commissioners and state and national leaders to establish a national energy policy. A policy, he said, that "will ensure the maximum utilization of our natural resources and will at the same time secure the economic and political independence of our nation."

Hance called "reckless and regrettable" any public policy that refused to adequately address the long range energy needs of Texas and the nation. "Our nation's security hinges on the implementation of an effective national energy policy," he said.

The Railroad Commissioner noted Texans have faced some tough times recently, with the effects of the oil and gas industry downturn rippling out to touch banking, real estate, farming, small business, and many

TEC looking for poultry workers

Texas Employment Commission is taking applications for employment with Mountaire of Delmarva, Inc., a poultry products processing company located in Selbyville, Delaware. They bring in chickens from farms and prepare them for sale, either as whole chickens or cut-up parts, to supermarkets, other stores and restaurants.

Positions are open in the processing plant. Starting pay on day shift is \$4.85 per hour. After a probationary period of 60 days, there is an automatic pay increase to \$5.30 per hour. Pay rates are arrived at through negotiations between the company and the union. They have a standard range of benefits including holidays, vacation, medical insurance, etc. In addition, they have a plant nurse on duty to treat any minor injuries or ailments.

They are willing to pay for applicant's first week's lodging at a motel. They will hire family members, assist in location low cost housing, and give applicants a \$600 loan, repayable at \$20 a week to help them get established.

They offer stable, year-round employment in a growing industry. As the company grows, good performers have the opportunity to move to a higher paying position or into supervision.

The plant is located in a small town in southern Delaware. This is a generally rural area with several attractive communities nearby. They are about 20 miles from the resort cities of Rehoboth Beach, DE and Ocean City, MD. Delaware has no sales tax and other taxes are generally lower than in nearby states. Adequate housing is available.

If there are 12-15 people in a community who are interested, they will come to the location, present a slide program about the company and the area and talk with each person. Or, you may call the Texas Employment Commission in Abilene at 672-4361 and ask for Ann, Judy or Linda.

Services, headquartered in Michigan.

Aid To The Adoption of Special Needs Kids, an agency in San Francisco, Children's Services Bureau of San Antonio, and Latter Day Saints Social Services of Salt Lake City, as well as The Edna Gladney Center, which is celebrating its Centennial year, are a few of the agencies which will be represented at the task force meeting.

The National Committee For Adoption is a support and advocacy organization for birthparents, adoptees and adoptive parents, and 130 member agencies seeking to provide quality, licensed services to the members of the adoption triangle.

other elements of the Texas economy.

The crisis, Hance said, has hurt state government by siphoning funds away from important state functions such as health care, highways, and education. He voiced special concern for education, saying, "This becomes a question of the future as well as of the present because a strong and healthy energy industry is vital to our continued efforts to improve the quality of education in our state today and for future generations of Texans."

Although the challenges facing the state and nation are great, Hance said he welcomed them. "Pulling together to face and conquer challenges is part of being a Texan," he said. "The problems facing us are not partisan issues. We have to work together in a united front to meet the challenges of today."

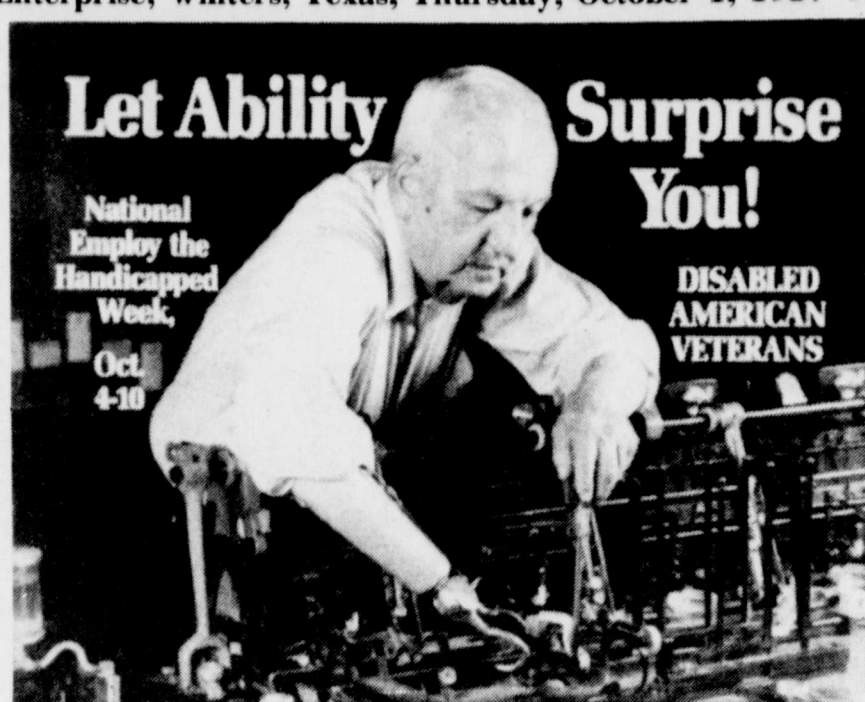
Hance was named to the three-member Railroad Commission by Governor Clements following the resignation of Mack Wallace. Wallace, who served 14 years on the Commission, left to become a partner in the Austin office of the law firm of Hughes and Luce.

Chlordane use calls for using caution

Chlordane, an amber-colored, odorless pesticide introduced in the U.S. 40 years ago, once was used against all types of insect pests. But because of growing evidence that the chemical could be dangerous to public health, use of the chemical was limited in 1983 for application only against subterranean termites.

More recently (August 11), the federal Environmental Protection Agency (EPA) banned the manufacture of chlordane, and the State of Texas prohibited (after November 1) the sale of existing stocks of the chemical to everyone except licensed pest control operators.

Bobby Davis, director of the Texas Department of Health's General Sanitation Division, said chlordane has proved to cause cancer in laboratory animals,



and its poisonous effects diminish slowly in the environment.

"To my knowledge there is no proof that anyone has ever died from environmental exposure to chlordane," Davis said, "but some people exposed to high levels after misuse of the pesticide have suffered headaches, dizziness, muscle twitching and weakness, tingling sensations, and nausea. The severity of illness is related to how long a person is exposed and the level of chlordane concentration."

Davis said that until recently, "There was no real substitute for chlordane in controlling termites. Chlordane treatment became almost synonymous with termite proofing. When used properly, underground, with all precautions taken to prevent vapors from entering buildings, chlordane is still unparalleled for effective, long-term termite control." Other chemicals are effective against termites and other pests, but must be reapplied more often, Davis said.

He stressed that while chlordane produced before the recent manufacturing ban is still available in Texas, it can be purchased only by licensed pest control operators after November 1. "We hope it is now clear to everyone that misuse of chlordane, such as spraying in homes, is forbidden."

"Our main concern is that non-professionals, who may have old supplies of chlordane on hand, use proper caution if they use

the chemical at all. Poison is poison, whether it is chlordane or anything else, and its use requires knowledge of how not to make mistakes. Anyone uncertain of how to use chlordane should carefully read all directions, and if any doubt remains, seek professional advice."

Davis said anyone wishing to dispose of old supplies of chlordane should do so in accordance with directions on the container label, state laws, and local ordinances. It is illegal to dump chlordane in sinks, toilets, storm drains, or any body of water.

Some local governments sponsor "clean-up days" to help people dispose of unwanted chemicals and contaminated items. Local county agents, the TDH Division of Solid Waste Management (512/458-7271), the Texas Department of Agriculture (512/463-7699), or the EPA Office of Pesticides and Toxic Substances (1-800-858-7378) in Washington D.C. can help clarify label directions and advise on proper disposal of pesticides.

Wingate community to have meeting

The Wingate Community Center will have their regular monthly business meeting Tuesday, October 6, at 7 p.m. in the Community Center.

Everyone is urged to come and join the planning for fall and holiday festivities.

West Dale Grocery & Mkt.

Open 6 a.m. to 7 p.m. Mon. - Sat. 7 a.m. to 7 p.m. Sun.
Prices Good: Oct. 1 thru Oct. 4

<div style="border: 1px solid black; padding: 5px; margin-bottom: 10px;"> <h3 style="text-align: center;">Dr Pepper</h3> <p style="text-align: center;">2-Litre Bottle</p> <h2 style="text-align: center;">79¢</h2> </div> <div style="border: 1px solid black; padding: 5px; margin-bottom: 10px;"> <h3 style="text-align: center;">Beef Cutlets</h3> <p style="text-align: center;">Extra Lean</p> <h2 style="text-align: center;">\$2.39 lb.</h2> </div> <div style="border: 1px solid black; padding: 5px;"> <h3 style="text-align: center;">Ground Beef</h3> <h2 style="text-align: center;">\$1.09 lb.</h2> </div>	<div style="border: 1px solid black; padding: 5px; margin-bottom: 10px;"> <h3 style="text-align: center;">Bar-B-Que Sandwich, Grab Bag Chips</h3> <p style="text-align: center;">16-oz. Dr Pepper 1.79 Plus Tax</p> </div> <div style="border: 1px solid black; padding: 5px; margin-bottom: 10px;"> <h3 style="text-align: center;">Apples</h3> <p style="text-align: center;">Red Delicious</p> <h2 style="text-align: center;">3 lb. \$1</h2> </div> <div style="border: 1px solid black; padding: 5px; margin-bottom: 10px;"> <h3 style="text-align: center;">Cabbage</h3> <h2 style="text-align: center;">19¢ lb.</h2> </div> <div style="border: 1px solid black; padding: 5px; margin-bottom: 10px;"> <h3 style="text-align: center;">Potatoes</h3> <p style="text-align: center;">10 lb. Bag</p> <h2 style="text-align: center;">98¢</h2> </div> <div style="border: 1px solid black; padding: 5px;"> <h3 style="text-align: center;">Frito Lays Grab Bag</h3> <h2 style="text-align: center;">39¢ each</h2> </div>
--	---

Freezer Pack

\$50 ⁰⁰	\$30 ⁰⁰
15 lb. Round Steak	5 lb. Ground Beef
5 lb. Ground Chuck	5 lb. Fryers
5 lb. Roast	4 lb. Pork Chops
	4 lb. Cutlets

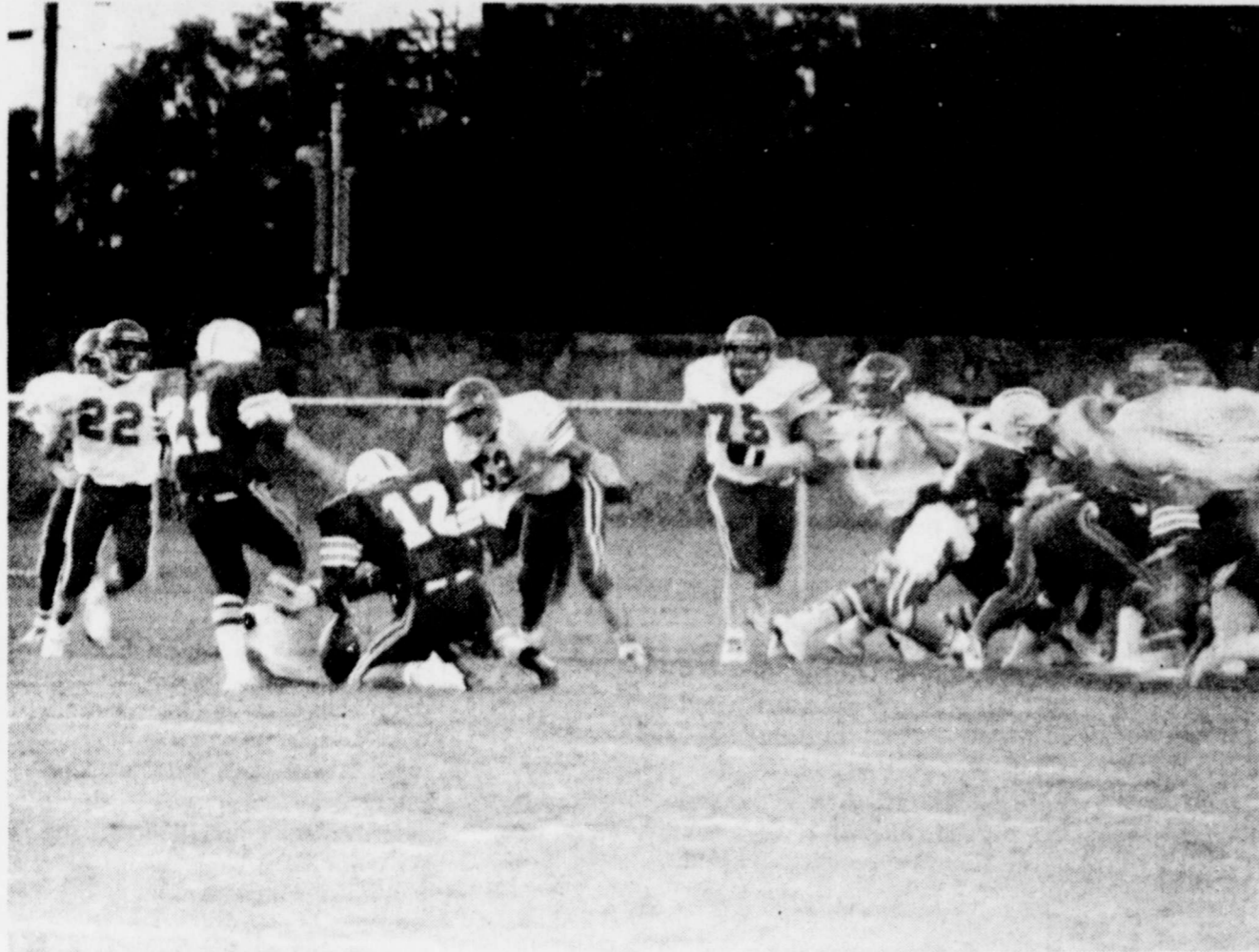
Fall & Winter Special

Atlas (Permaguard) Anti-Freeze

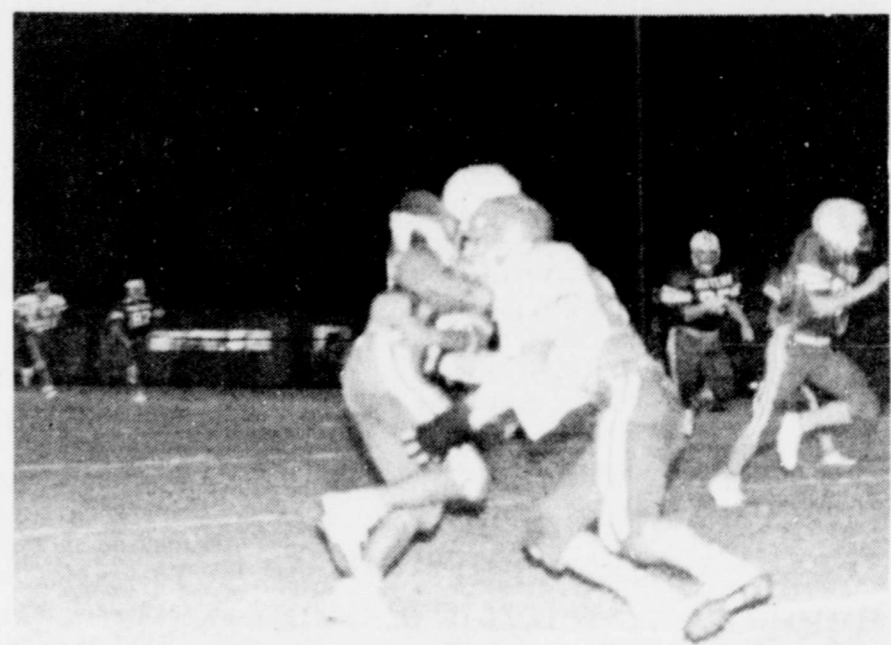
\$3.25 per gal. plus tax
While supply last

Reedy Oil Company
1015 N. Main

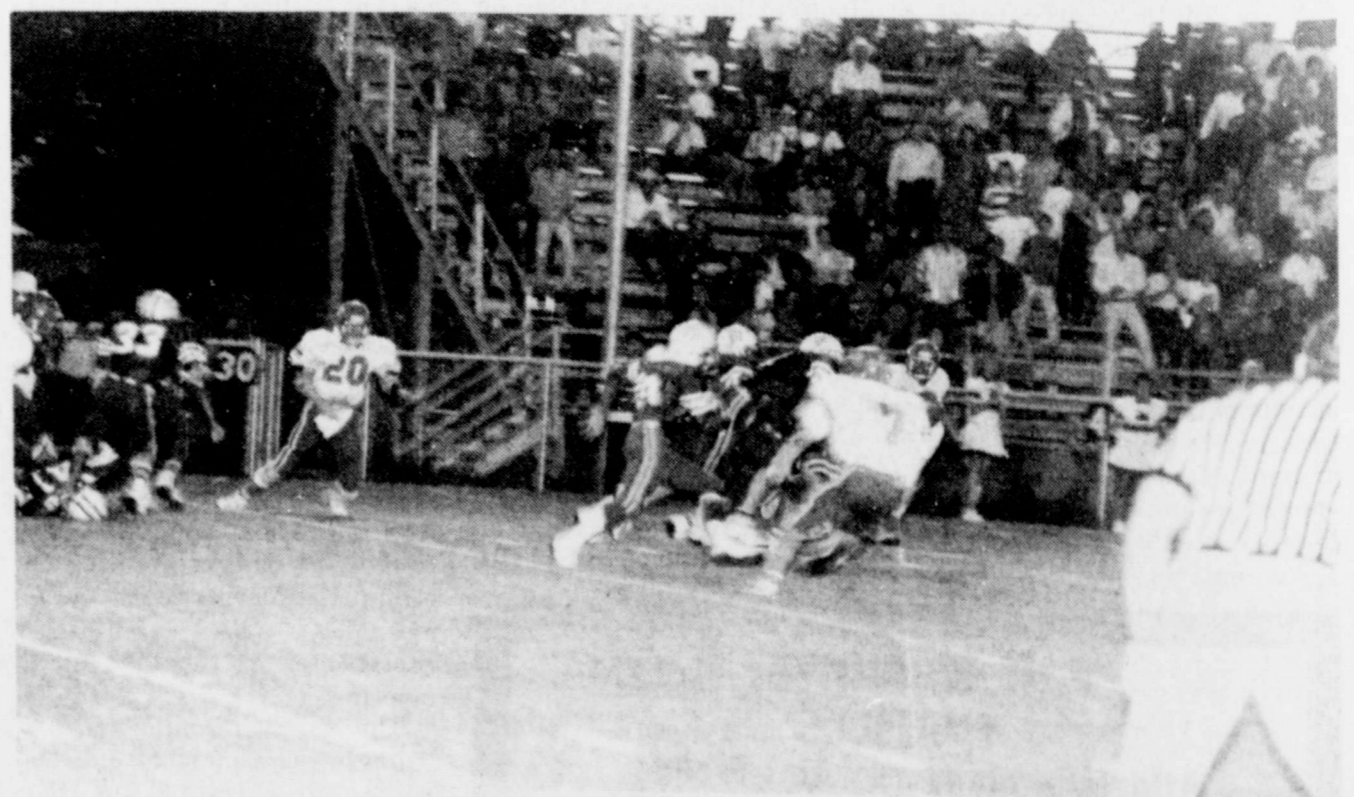
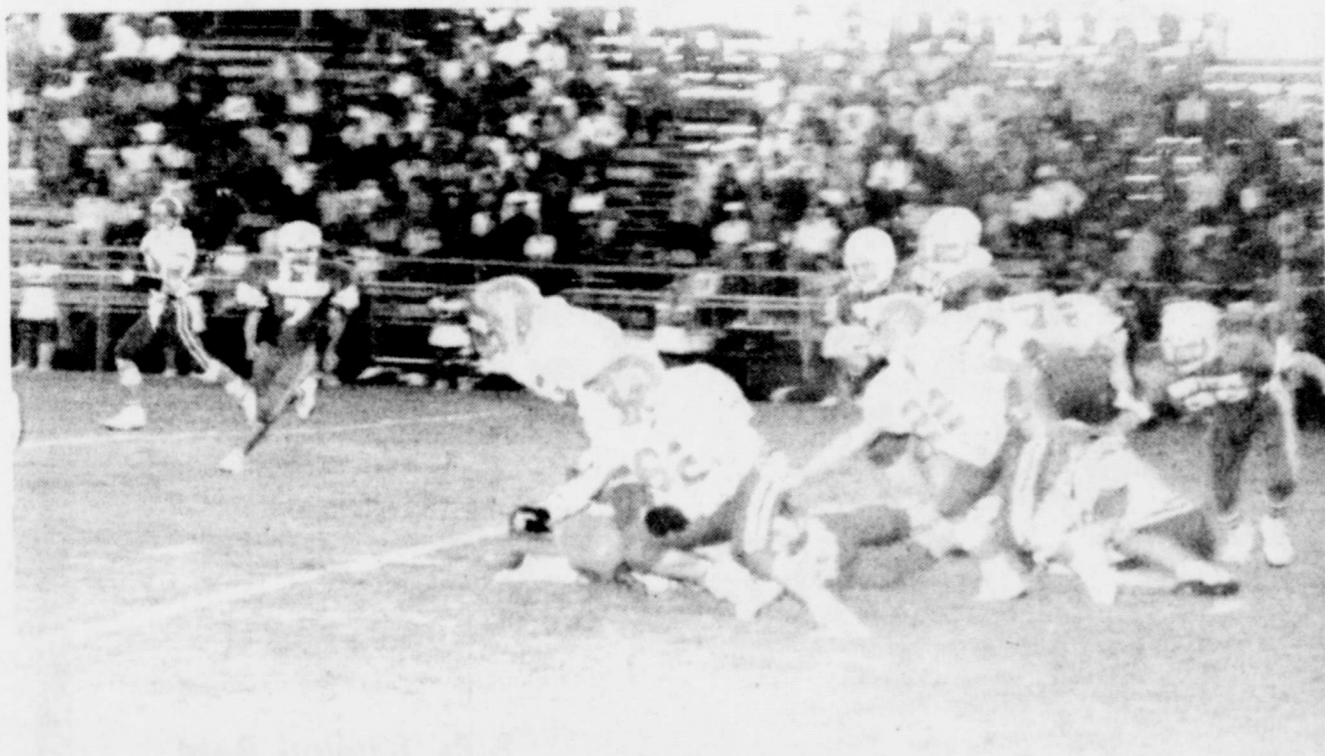
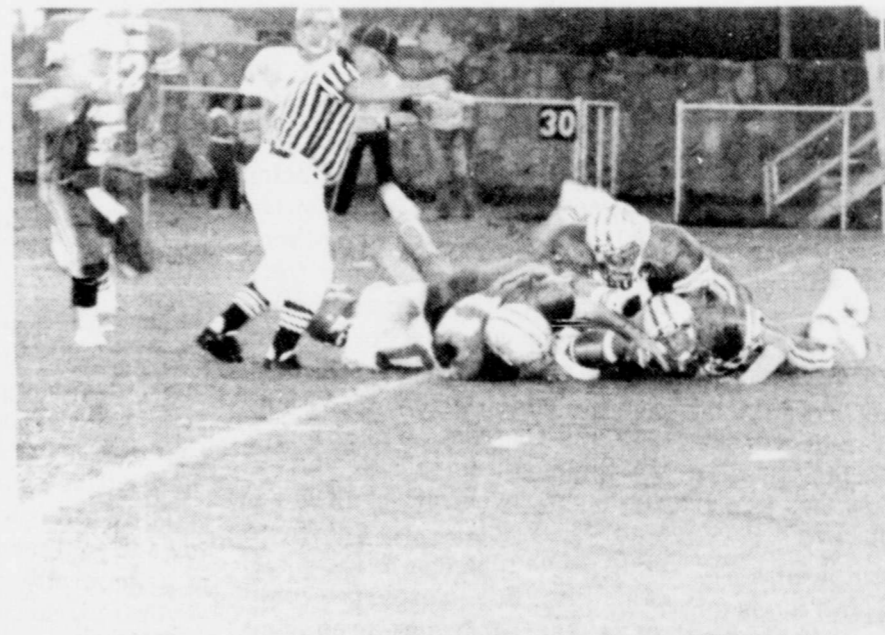
Our Blizzards in action



WE'RE WITH YOU



CARL GREENWEGE OF TEXAS
ALL THE WAY



You're Rollin' ----- Keep Goin' !!!

GO BLIZZARDS!

Varsity Schedule			
9-4	Ballinger	8:00	T
9-11	Roscoe	8:00	H
9-18	Hamlin	8:00	H
9-25	Jim Ned	7:30	H
10-2	Wall	7:30	T
10-9	Cross Plains	7:30	T
10-16	San Saba	7:30	H
10-23	Goldthwaite	7:30	T
10-30	Coleman	7:30	H
11-6	Bangs	7:30	T



Kick-off 7:30 p.m.

Wallop Wall
THERE
Friday, October 2

CARL GRENWELGE TEXACO
Texaco & Tire Service

HIGGINBOTHAM BROS.
Lumber & Hardware

SONNY'S GROCERY & MARKET
WEST DALE GROC. & MKT

WINTERS STATE BANK

JERROLYN'S JEWELRY
AND GIFTS

NORTH RUNNELS
EMERGENCY SERVICE, INC.

WINTERS FLOWER SHOP

WINTERS FUNERAL HOME, INC.
WINTERS LIFE INS. CO.
Mike Meyer

Heart O' Texas
SAVINGS ASSOCIATION
WINTERS
201 South Main

SPILL BROS. FURNITURE

BOB LOYD L P GAS CO.
AND SHELL STATION
Gene Wheat

BEDFORD-NORMAN
Insurance Agency

WINTERS OIL
FIELD SUPPLY

THE REEDY COMPANY

BARNES RADIO & TV

SPRINGER'S PHARMACY

UNDERWOOD REAL ESTATE

JIM'S AUTOMOTIVE
& Tire Service

ALDERMAN CAVE —
MILLING & Grain

GLENN HOPPE TEXACO
& TIRE SERVICE

BEAUTY CENTER
Merle Norman Cosmetics

WINTERS SEED COMPANY

WIN-TEX CATTLE FEEDERS

THE HAIR POST

HARRISON'S AUTO PARTS

HEIDENHEIMER'S

COLEMAN COUNTY
ELECTRIC COOPERATIVE

SWATCHSUE ELECTRIC CO.

R & M TRANSPORT

HOLT CLEANERS

PEOPLES NATIONAL BANK

MUFFLER SHOP
Joe Kozelsky Jr.

MANSELL BROTHERS

SLIP N' STITCH

CHARLES BAHLMAN
CHEVROLET

WINTERS AREA
CHAMBER OF COMMERCE

MAC OIL FIELD COMPANY

H & H TIRE SERVICE

WINTERS WELDING WORKS

CASA CABANA
RESTAURANT

JOHNNY WEEMS SHELL
Service Station
Johnny and Joyce Weems

BAHLMAN JEWELERS



Former Winters man receives honor

Danny Long, pictured on the left, was recently chosen Citizen of the Year by the Goldthwaite Chamber of Commerce.

Danny a former resident of Winters, is a graduate of Winters High School.

He is the Mills County Extension agent, is an avid supporter of youth and church activities and has worked hard on the construction of the Mills County golf course. He was instrumental in getting construction of the

Goldthwaite Civic Center and Stock Show Barn.

Danny is married to the former Becky Knight, daughter of Mr. and Mrs. C. R. Knight of Winters.

They have three daughters Tassie a sophomore at John Tarleton, Mindy a Senior in high school, and Jenny a sophomore in high school.

He is the son of Mr. and Mrs. Wardell Long of Comanche, formerly of Winters.

First United Methodist Church plans for Annual Lord's Acre

The Winters First United Methodist Church will have their Annual Lord's Acre Saturday, October 17, 1987, in the Winters Community Center.

A barbeque brisket meal will

be served starting at 5 p.m. and ending at 7 p.m., after the meal the auction will be held.

In conjunction with the Lord's Acre there will be a softball tournament all day Saturday.

Elementary students to have individual pictures taken

The Winters Elementary students in grades PK-6th will have their individual pictures made on Friday morning, Oc-

tober 2, 1987. Parents please send your child to school that day ready for a good picture. Bright colors look best.

Local leaders attend state meeting

Extension Homemakers Edleen Buxkemper, Elizabeth Urbaneck and Martha Crawford attended the 1987 State Texas Extension Homemakers Association meeting in Fort Worth. Educational workshops,

business meetings, a luncheon for area legislators, entertainment and fun were all a part of the activities September 22-24.

Participants acquired knowledge about AIDS and Parliamentary law. Club

Voters to be issued new registrations

Senate Bill 4, in part, amends Section 14001 (a) of the Texas Election Code to require the Voter Registrar to issue new voter registration Certificates between November 15 and December 6 of each odd-numbered year (this year).

The Secretary of State maintains a master file of all qualified voters in the State. We are required to have the following information on each registration card in order to enter the registration on the State's list of Voters.

- 1. Birthday & place of birth
- 2. Given name (Not just the husband's name)

-3. Current mailing address (can not be forwarded)

-4. And the location of residence if you reside on a rural route. (Directions from town, No. of miles and any other identifying remarks)

We are in the process of contacting as many as possible by telephone to reduce the cost of a mail-out. We must have the information and would appreciate your coming by the office or calling 365-2339 to update your Voter Registration Card. Your Voter Registration is null and void without the proper entries to be included on the State's list.

Va Rue McWilliams

PROCLAMATION City of Winters, Texas

By the virtue of the authority vested in me as Mayor, I do proudly proclaim October, 1987 as SAVE THE BATTLESHIP TEXAS MONTH in the City of Winters to focus attention on the charitable aluminum can recycling activity sponsored by Alcoa, Coca-Cola, Patrick Media Group, Reynolds Metals, Texaco, Texas Parks and Wildlife Department, Texas State Department of Highways and Keep Texas Beautiful to restore Battleship Texas for future generations of Americans; to commend participating firms, agencies and all others committed to this most worthy endeavor to preserve for all time an important part of Texas history; to encourage Winters area residents to participate in the SAVE THE BATTLESHIP TEXAS recycling activity by donating used cans at participating SAVE BATTLESHIP TEXAS recycling centers, and to share the gratitude of our citizens for the generous and compassionate persons, groups and firms of this, the Lone Star State, for they were touched and they responded.

In WITNESS whereof I have hereunto set my hand and caused the Seal of the City of Winters to be affixed this 23rd day of September, 1987.

Randy M. Springer
Mayor, City of Winters, Texas

members also studied about our water resources, communication skills, coping with stress, home and personal safety, immigration laws, and how to work within the State and Local Government system.

Of special interest was the announcement of the new Family and Community Development project. In the next several years, Extension Homemaker leaders will receive in-depth training to prepare them for involvement in public policy decision-making. The special

project, funded jointly by the Cooperative Extension Service, Extension Homemakers, and the W. K. Kellogg Foundation, is open to anyone who will receive 30 hours of instruction in Leadership Communication, Working with Groups, Issue Analysis and Resolution, Community Affairs and Public Policy, Volunteerism, and Teaching Methods.

If you are interested in the FCL project or in becoming a member of our local Extension Homemaker Clubs are a part of the Texas Agricultural Extension Service of the Texas A&M University System. Clubs are open to people of all ages regardless of socio-economic level, race, color, sex, religion, handicap or national origin. Come join us for learning, community leadership and good fellowship.

Memo from the Chamber of Commerce

Hey Blizzards - Friday night's game was great! You really did do a good job - keep it up - we are really proud of you. Also, wasn't the band performance excellent?

Be sure and make plans to participate in the Ranch Heritage Roundup on October 10, sponsored by the Winters Rodeo Association. Arch Jobe is in charge of the GOAT ROPING, Barry Hilliard is in charge of the TEAM ROPING, Richard and Karen Thorpe are in charge

of the CAMPFIRE COOKOFF, Andy Smith is in charge of the WESTERN DANCE, Mary Slimp is in charge of the WESTERN ART SHOW, and Chamber directors and friends will be running the drink stands, and brisket supper. It's great to have all the volunteers.

Everyone is looking forward to the Scarecrow Contest to be held during the last week of October. Look out for the goblins!! Lets support our area - SHOP WINTERS!

Save the Battleship Texas

Save a piece of Texas History. The Battleship Texas, pride of our state and the flagship of Texas Navy, needs your help. The only surviving battleship to have fought in two world wars is springing leaks and her hull is rapidly deteriorating. The ship needs a major dockyard overhaul to be made shipshape for the enjoyment and education of the millions who will visit the ship at San Jacinto State Park.

The Battleship Texas (BB-35) was commissioned March 12, 1914 as world's most powerful warship it is the only remaining dreadnought, a special class of battleship.

The Battleship Texas' twin steam engines are registered as National Historical Engineering Landmarks.

It served with the British fleet in the North Sea during World War I, and supported the invasions of North Africa, Normandy, Southern France, Iwo Jima and Okinawa during World War II. It was also flagship of U.S. fleet between the wars.

Battleship Texas was known as a "lucky ship." During World War I she avoided an enemy torpedo. During the 1944 Normandy invasion, she was hit

twice hit by gunfire, but one shell failed to explode. A sailor died in the attack, the ships only battle fatality in two wars.

She was saved from destruction by Texas school children, civic groups and Admiral Chester Nimitz at the War's end.


The Battleship Texas has been berthed at San Jacinto Battleground State Historical Park since 1948.

To help save the Battleship Texas just donate your used aluminum cans at any official Save the Battleship Recycling Center from September through November. Money earned from recycling these cans will be donated to the Texas Parks and Wildlife Department to help pay for the restoration costs.

Recycling aluminum creates jobs, fights litter, conserves natural resources, eases the burden on municipal landfills and saves precious energy.

For your nearest Save the Battleship Texas Recycling Center Call Toll-Free 1-800-64 TEXAS from 8 a.m. to 8 p.m. Monday through Saturday.

Let's Help Save A Piece of Texas History!



Ranch Heritage Roundup

Saturday, October 10, 1987

Winters Rodeo Arena

Goat Roping
3 Head For \$35.00
Money Paid In Each Go
And In The Average
Championship Buckle
Donated By
Alderman-Cave Milling &
Grain Co. Of Winters
Presented To Average Winner
Books Close At 11:00 A.M.
For Goat Roping
For Entry Information Call
Country Cobbler At 915/754-5650

Team Roping
"B" Roping
3 Head For \$20.00 A Team
Progressive After 1
Buckles Awarded To
Average Winners
Limit 150 Teams
Books Open at 10:00
Close Promptly at 10:30
Morning Of The Roping
Roping Starting At 11:00
For Entry Information Call
Barry Hilliard at 915/786-2066

Campfire Cookoff
Brisket - Beans
Mesquite Wood Furnished
Entry Fee \$25.00
\$250.00 Guaranteed
Prize Money
Award For Best Campsite
Campsites Available
Friday Night
For Entry Information Call
Winters Area
Chamber of Commerce
915/754-5210

Western Dance
Music By
"Southern Cross"
Country Dance Band
From Coleman, Texas
\$5.00 Per Person Or
\$8.00 Per Couple
9:00 P.M. to 1:00 A.M.
Rodeo Pavilion

Wagon Rides
For
Children
And Other Entertainment
Throughout The Day

Western Art Show
For Further Information
Mary Slimp 915/754-4646 Or
Chamber Office

**Exotic Animal
Petting Zoo**
By Runnels County
4-H Horse Club

Sponsored by

Winters Area Chamber Of Commerce **Winters Rodeo Assoc.**



Attention



Registration for
EMT/Special Skills and EMT/Paramedic
Classes

will be held Thursday, October 15,
7:00 p.m.

National Guard Armory
2709 Commercial Avenue,
Coleman

Tri-County School of EMS
For More information call:

Randy Nolte EMT/P
754-5775
Winters

Patsy Freeman RN/EMT
643-4936
Brownwood

Blankets

Casa Cabana

Dresses

Tables
and
Chairs

Pinatas

Zarapes

Restaurants

Presents

**A Shopping Spree of Curios
and Items from Mexico**

Saturday and Sunday - Morning and Afternoon

**Come and take part in our
Weekend Festivities**

**There will be a Concession Stand
parked in front where we will be selling**

**Carne Guisada
Fajitas**

**Bean & Cheese Burritos
Beef Tacos on Flour Tortillas
and soft drinks**

For those who just want a bite to eat

**Fire Convention
Members
Welcome**

**eat in or, take out
754-5796
Winters, Texas**