

# The Winters Enterprise

VOLUME EIGHTY-ONE

USPS NO. 687-220

WINTERS, TEXAS 79567, THURSDAY, March 6, 1986

PRICE 25 CENTS PLUS TAX NUMBER 50

## Wait a minute...

By Kerry Craig

I wonder what he will use for an excuse now.

If you remember back to the day of the Great American Smokeout, you will remember that Gary Turner, Sky Pilot, at the local Methodist Church entered into a wager with me with the stakes being a steak.

It has now been some time since the pulpiteer became indebted and there have been numerous ideas to prolong the clergyman's procrastination.

His latest excuse was that his wife was very pregnant. Well, he can't use that excuse now.

Gary and Carol are the proud parents of a brand spanking new baby girl.

I will have to offer congratulations to Carol and lend a bit of encouragement to Gary. He will now have to dream up another excuse to prolong the agony and further delay that tempting tidbit of beef steak.

Fear not. I shall keep you well informed on his efforts to keep me away from the table.

Something just may not be up to snuff.

I can already imagine the big-time television guys bidding for production rights to the continuing saga of why a dauntless reporter is being given so many delays in getting to the meat of things.

They could call it "Tempest in a Snuff-box."

This preacher probably will offer a "double-or-nothing" proposition to me, that he can grow a beard faster than I can. I won't fall for that one—it takes me three weeks to just grow a five-o'clock shadow and he has one before lunch.

It was interesting to read, in one of the big city papers last week, that there was to be a big feed at the elementary cafeteria. Well there was. The big-time newspaper guys read the story right but did not read the name of the community right.

You see, the folks down in Ballinger pulled a really big birthday party for Texas and topped it off with fireworks.

If you missed it, you really missed out on quite an affair.

The Ballinger Chamber of Commerce and the community is to be commended for their efforts last Saturday.

Some of the folks here have picked up on something from some of the folks down there. We now have a beard growing contest.

Down at the bottom of local beard growing thing we find, a coalition of four members of the local clergy. They are telling their respective flocks that the one of the guys at one of the other churches is to be credited (or blamed) for the fuzzy affair.

They say it is all in fun, but are seriously scratching the budding chin-whiskers.

Have you noticed that the gas prices are going down more rapidly in other places? Going east, from here to Brownwood, there is an almost 20 cent difference in the pump prices. Makes you wonder.

Talking about prices, there is a rumor floating about that the local constabulary will be limited to a specific number of hours per week. This is going to make it very difficult to enforce the laws, make arrests, and to do the time-consuming reports and preparation for trial.

Perhaps the basis of the rumored restriction has overlooked the fact that these guys that are prepared to put their life on the line at any time are not doing such a job for just the fun of it.

If this rumor is based on fact, we are possessed with a growing problem that is becoming increasingly serious.

It is too late now to do anything but hope that our district court juries, when faced with assessing punishment for a serious felony conviction, get better instructions.

An apparent lack of explana-



## Hair-raising discussion

Four members of the Winters clergy met Wednesday morning for coffee and to discuss their beard-growing competition. Pictured are: (l-r) Glen Shoemaker, First Baptist Church; Gary Turner, First United Methodist Church; Steve Byrne, St. John's Lutheran Church; and Bill Hooten, Main Street Church of Christ.

The beard-growing challenge was issued by

Hooten during the recent Chamber of Commerce banquet and the preachers are meeting regularly to inform their peers of what stories are being told to which congregation about the beards and who to blame.

The project is a fund raising gimmick backed by the local ministers and is open to the public for competition.

tion led a recent jury to set a probated sentence for a man it had just convicted of robbing a drugstore of dangerous drugs and of using a gun to commit the crime.

This information, or instruction, is given to a jury by the judge and, in this case, a judge of unquestionable character and disposition.

An error such as this has to be either a mistake or oversight. It is something that must not be repeated.

## Winters Area Little League to begin organizing March 10

A meeting of all persons interested in the Winters Area Little League program has been scheduled for Monday, March 10, at the Lutheran Church.

Officials of the local Little League program said that registration nights for the different leagues in the program will be held on March 17 and 18 in the school cafeteria.

Registration for T-Ball and Senior League will be on Monday, March 17. The registration for the Minor and Major leagues will be on Tuesday, March 18.

Parents of youngsters wishing to participate in Little League are reminded that the child's birth certificate must be taken to the meeting if it is the first year for the child to play. It was also emphasized that the registration fee of \$12 must also be paid.

Tryouts for Little League will begin on Monday, March 24, and Thursday, March 27. The tryouts will begin at 6:00 p.m. at the Little League field.

The opening day for the Little League season will be Saturday, April 26, and officials said that team pictures will be made at that time.

Little League officials said that a Winters Area Little League Volunteer Umpire's Association is now being formed. Anyone interested in the association can contact Fran Polston at 754-5325 during the day or at 583-2651 at night.

The Winters Area Little League Association board of directors has been in full swing since November. Mrs. Polston said that the board is excited about the coming season.

She said that there has been a lot accomplished in the past few months and there is a lot more to be done.

In her report, Mrs. Polston said that the board has received almost all of the paper work for the incorporation of the Winters Area Little League Association. She said that the bookkeeping is being set up on a computer system so the financial status

## Burglaries at Winters school cleared by police

At least three burglaries at the Winters Schools complex have been cleared with the apprehension of four juveniles according to assistant police chief W. C. Reel.

Reel said that a large amount of property that had been taken from the athletic field house, the Home Economics building, and

an annex building.

Officers recovered football jerseys, sweat suits, stop watches, a watch, and several footballs that were taken from the field house. Also recovered was a tape recorder that was taken from the Home Economics building. Also taken were sweets and some spices.

Assistant chief Reel said that the juveniles were also involved in the theft of a large number of bicycles that were recovered several weeks ago.

Reel said that three of the youngsters were 13 years old and that one was 16.

Information on the case will be turned over to juvenile authorities in San Angelo and be handled by the District Attorney's office.

## Hendrick League House topped with donations

Hendrick Medical Development Corporation and the Junior League of Abilene are following an old German custom of tree topping today at the construction site of Hendrick League House, announced Winston C. Beard, Hendrick Medical Center Foundation president.

"After the basic structure is completed, then the custom is to plant a tree on the roof," said Stanley Goldsmith, Contractor, H & G Construction.

Construction on the Hendrick League House began last fall. Citizens in Abilene and the surrounding counties have made generous contributions to the joint project of Hendrick Medical Development Corporation and the Junior League of Abilene.

In early November, 1985 an anonymous donor, made a \$50,000 challenge grant to the Hendrick League House project. The challenge was that the grant had to be matched dollar-for-dollar with gifts from outside Abilene by March 1, 1986.

The Meadows Foundation in Dallas helped get the matching campaign underway with a generous \$30,000 grant. On February 24, the goal was reached when Charles Meyers, pastor of the Wingate Baptist Church, presented a check for \$4500 from his church. This was in addition to a \$2500 gift from the church presented earlier in support of a "Wingate Room" in the Hendrick League House. The fund to match the \$50,000

## Felony assault charges names Winters man

Bond of \$20,000 was set for Milton Rios Cortez, of Winters, on a charge of aggravated assault on a peace officer.

The charges were filed after Winters Police officer Tim Dexter stopped an automobile for suspicion of DWI. Dexter said, in his report, that he attempted to stop the vehicle for several blocks before finally getting it stopped.

After learning, by a radio check, that the driver did not have a valid driver's license, Dexter asked the man to perform a field sobriety test and

then placed the man under arrest.

The officer said that while making a routine search for weapons, the suspect struck him in the stomach and face, knocking him to the ground.

Dexter then subdued the suspect and transported him to the county jail.

Dexter was treated by a local physician for minor lacerations as the result of the affray.

Cortez, 30, was arraigned on the charges Friday and the bond was set by Justice of the Peace Wilburn Davis.

## Ballinger teacher suspended for use of excessive force

A Ballinger teacher was suspended last week, with pay, after being accused of using excessive force in extending corporal punishment to a student.

David Burton, a physical education teacher in Ballinger for 18 years, has notified the Ballinger School Board that he wants a hearing before the school board concerning the charges against him and his subsequent suspension.

A special session of the Runnels County Grand Jury, last Wednesday passed on action against the teacher.

Burton is accused of causing injuries to a youth with a paddle, causing deep bruises on the buttocks and legs of a fourth grade boy and a fifth grade boy.

The teacher had been prohibited from using corporal punishment in 1979 after a similar incident. School administrators dropped the restriction against Burton in 1984.

The grand jury heard information in the incident after the school board took steps to suspend the teacher.

It is anticipated that the school board will consider further action on the incident within the next two weeks.

A large number of parents of children in the Ballinger Schools have joined together in a effort to see that criminal charges are

formally filed against the teacher and to insure that such incidents are not repeated.

## Girl Scout week

During the week of March 9-15th the Winters Brownie and Girl Scout Troops will be joining with Girl Scouts throughout the world in observance of "Girl Scout Week."

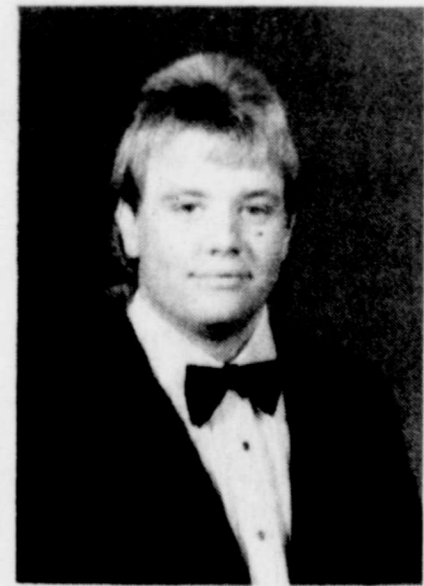
The Winters Girl Scouts will be involved in several projects throughout the week. Murals and posters will be displayed at both banks in town depicting what the girls have been busy with this year. Also on Sunday March 9th all the Troops will be attending church as representatives of Girl Scouting. That afternoon they will meet at the City Park to collect litter in the park and around the school yard.

Brownies and Girl Scouts not only learn from and enjoy projects they undertake, but they work so that their community may benefit from them also. Watch for our girls this week to see what they're accomplishing!

## Social Security schedules visit

John Willis, representative for the San Angelo Social Security Office, has scheduled his March visit to Winters. He will be at the Housing Project Office on Monday, March 24, between 9:30 a.m. and 10:30 a.m.

Anyone who wants to file a claim for benefits, get information, or transact other business with the Social Security Administration may contact him at this time.



## Archie Austin signs with Ranger Junior

Winters High School senior Archie Austin Monday signed a letter of intent to attend Ranger Junior College and participate in the RJC football program.

Austin, 17, is the son of Mr. and Mrs. Archie Austin of Winters and has been very active in the Blizzard athletic program for the past three years.

He was a member of the 1984 District AA Bi-district championship Blizzard team. In 1985 Austin advanced to regional in the discus.

He was elected to the 1986 District AA All-district teams, on the offensive and defensive lines. Austin was also named to the All West Texas Team's defensive squad.

## Bake Sale slated

The Senior Citizens Nursing Home will have a Bake Sale Friday, March 7, at 10 a.m. on the Piggly Wiggly parking lot.

Everyone is urged to come by and buy some goodies to help the nursing home.

## Nursing home seeks volunteers

Volunteer help is needed at least one day a month at the Nursing home. You may choose your day or days.

If interested contact the activity director at the Senior Citizens Nursing Home. Call 754-4566.



**TPA** MEMBER 1986  
**TEXAS PRESS ASSOCIATION**

**The Winters Enterprise**

Published by RyKel Corporation  
 (USPS 687-220)

915/754-5221 P.O. Box 37 Winters, Texas 79567  
 Yvonne Thomas, President  
 Kelley Thomas Craig, Vice-President  
 Kerry Craig, Managing Editor  
 Lee F. Craig, Business Manager  
 Jerre Heathcott, Circulation Manager

Entered at Post Office, Winters, Texas 79567,  
 As Second Class Matter

**SUBSCRIPTION RATES**

In Runnels County, One Year.....\$10.51  
 In Other Texas Counties, One Year.....\$12.62  
 Outside Texas, One Year.....\$16.00

Any erroneous reflection upon the character, standing, or reputation of any person, firm or corporation which may appear in the columns of this newspaper will be gladly corrected upon due notice of same being given to the editor in writing personally at this office.

**Poe's corner**

by Charlsie Poe

**Fajitas for lunch**

Following the stop at Garner Museum in Uvalde, the Young Farmer's Tour had an uneventful journey to McAllen. They arrived on schedule with the option of checking in at the Holidome Motel and enjoying a free evening or eating and shopping in Reynosa, Mexico.

Since the bus had to be serviced and it required \$25 for a taxi most of us "Golden Oldies" decided to stay in. It had already been a long and rainy day. I believe there were eight people who made the trip to Mexico, but they didn't give us a report.

Because of a two inch rain the week before, we were unable to see any harvesting or processing of vegetables and citrus, but Mark Smith, Hidalgo County agriculturist, boarded our bus and explained the kinds of farming in the area as we drove down the highway on Friday morning.

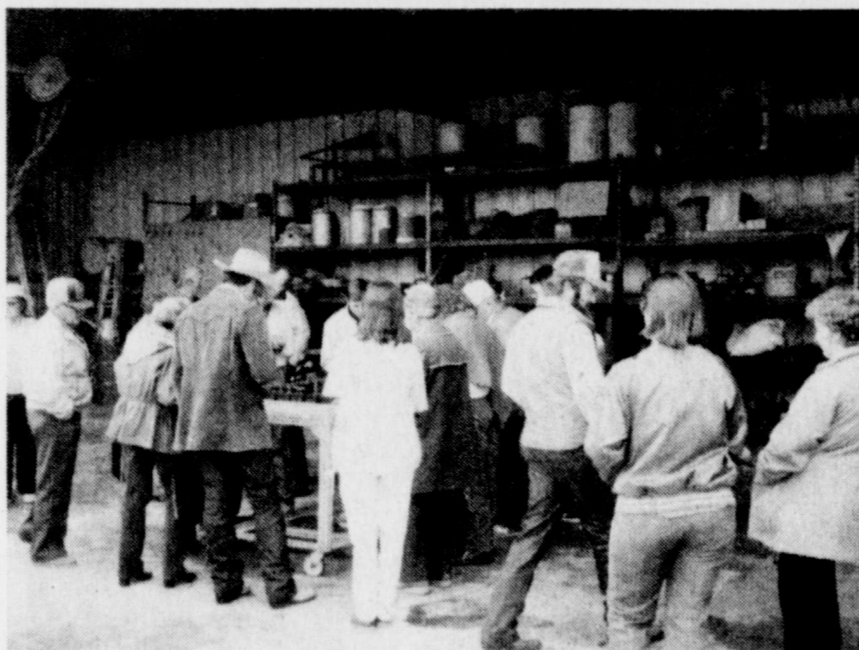
The first question asked was about the citrus—Mr. Smith said that before the freeze they had 70,000 acres of citrus trees and now only about 20 or 25,000 acres. It will take several years to replace the trees as all citrus is started on sour orange seed and grown for a year. It is then budded with grapefruit or lime.

It takes two years to get ready for planting.

Trees that were cut off down to the stump have come back pretty well. But the life of a palm tree is in the top and when it is frozen there is no way to revive the tree.

The Sherry Plantation, one of the oldest and largest plantations, uses the method of wrapping the tree base to produce heat by chemical reaction. Wind generators are also used to protect orchards, but following a strong wind—10 to 30 miles per hour—there is no way to protect the trees. "Wind erosion is one of the biggest problems," said Mr. Smith, "if it is clear it's windy."

It is a transition period for crops in the Valley—winter is on its way out—cabbage, broccoli, and cauliflower are being gathered. They have to be hand cut but carrots are mechanically harvested. It is mostly peppers and grapefruit being planted now. The Valley has from 22 to 25 inches of rainfall a year, but at least 18 inches of irrigation is also needed. All water comes from the river for irrigation. It flows by canals—more drainage than pumping system—most of the land is double-cropped, grain and cotton



We all try our hand at naming plants—it's not easy.



Bill Long explains the various types of machinery used on the research farm.

are followed by mustard, dill, greens and parsley.

Mr. Smith said that the biggest boost to their economy is the 20 to 30 thousand Texans who come down for the winter to spend their money.

Bill Long, Elanco representative, for 20 years, conducted our tour to the Lilly Research Labs located near Mission, where new products are being developed for agricultural use by Eli Lilly. They also do testing for new labels on products already on the market. This company is a sister company of Elanco and both are part of the parent company, Eli Lilly.

The research farm of 60 acres was established six years ago. It includes labs, green houses, and a sprinkler-irrigation operation. One major thing is to grow these crops, keep them alive, and away from insects, until the chemical comes in. It takes expertise and lots of equipment.

The object is to make farming economical for the farmer—more and more it is necessary to stay on label. There is no advantage in trying to send out unlabeled seed, because people can't take a chance now on a crop. Disease resistant seed in the vegetable market now sells for \$100 a pound, because the growers have patents on them.

**Search for Miss Texas-USA begins**

State pageant officials announced that applications for the upcoming Miss Texas-USA Pageant are being accepted for statewide contestants-at-large. The Miss Texas-USA Pageant, an official state preliminary pageant to the nationally televised Miss USA and Miss Universe Pageants, will be staged in San Antonio during the month of July and televised live throughout the Lone Star State.

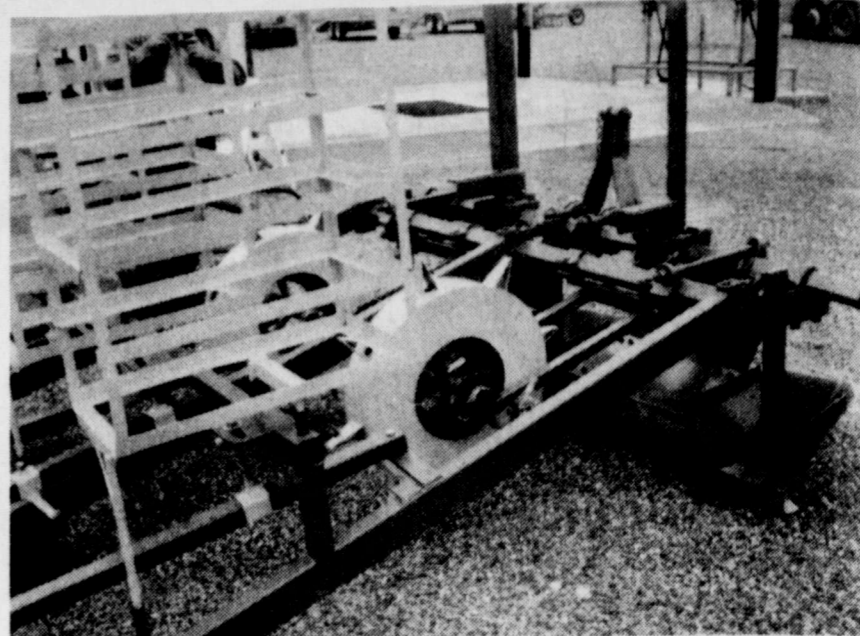
Interested contestants must be between the ages of 17 and 24, high school graduates as of June 1986, female, must never have been married, had a marriage annulled nor given birth to a child and residents of their city and county for a least six months. Filing deadline has been designated for March 15.

Winner of the annual extravaganza will not only win a prize package valued at over \$80,000 but also represent Texas throughout the year on countless personal appearances in addition to carrying the state banner in the Miss USA Pageant in February of 1987.

Produced and directed by Guyrex Associates of El Paso, the Miss Texas-USA Pageant will celebrate its thirteenth anniversary this year. Applications and additional information is available by contacting the Miss Texas-USA Pageant Office, 1302 Montana Avenue, El Paso 79902 or by calling the state office at 915/533-5279. Reigning Miss Texas-USA is Christy Fichtner of Dallas. Also from Texas is the current Miss USA, Laura Martinez-Herring.

Of all forms of cation, caution in love is perhaps the most fatal to true happiness.

Bertrand Russell



**You name it!**

This one punches holes in the ground and drops the seed automatically.



**Lunch time**

Just what we had waited for.

chemicals to test the seeds are also very expensive.

The aroma of fajitas being cooked for lunch, by Mike Pierce of Elanco, made us all hungry but there was a plant naming contest before we could eat. Even some seasoned farmers couldn't tell the difference between a cotton and watermelon plant. Daniel Gully placed first by naming 24 plants out of 32 correctly. Anthony Lange was second with 19. Gully was presented a cap as prize.

The fajitas were so tasty that Glenda Duggan managed to get the recipe:

- Marinade sauce for 10 lbs. fajitas
- 1 large bottle Worcestershire sauce
- 1 large bottle Soy Sauce
- 1 large bottle Metus White Wine
- 1 box (2 packets) instant Lipton Onion Soup
- 2 diced onions
- 2 cloves garlic
- Marinate fajitas in this mixture for 24 hours—cook for about 15 minutes for each side.

Our next stop was at the Funk Research Facilities to see the testing and research program for corn and sorghum in the Rio Grand Valley. Larry Martin conducted this part of the program and gave a slide presentation.

**USED CAR SAVINGS**

**Cream Puff**

**1978 Chevrolet Malibu Classic Landau**

2-dr 305 v-8 Power steering & brakes  
 50,000 miles AM-FM stereo

**C & C Used Cars**

Phone 754-5039 230 S. Main

**Tom Nixon**

**ANNOUNCING**

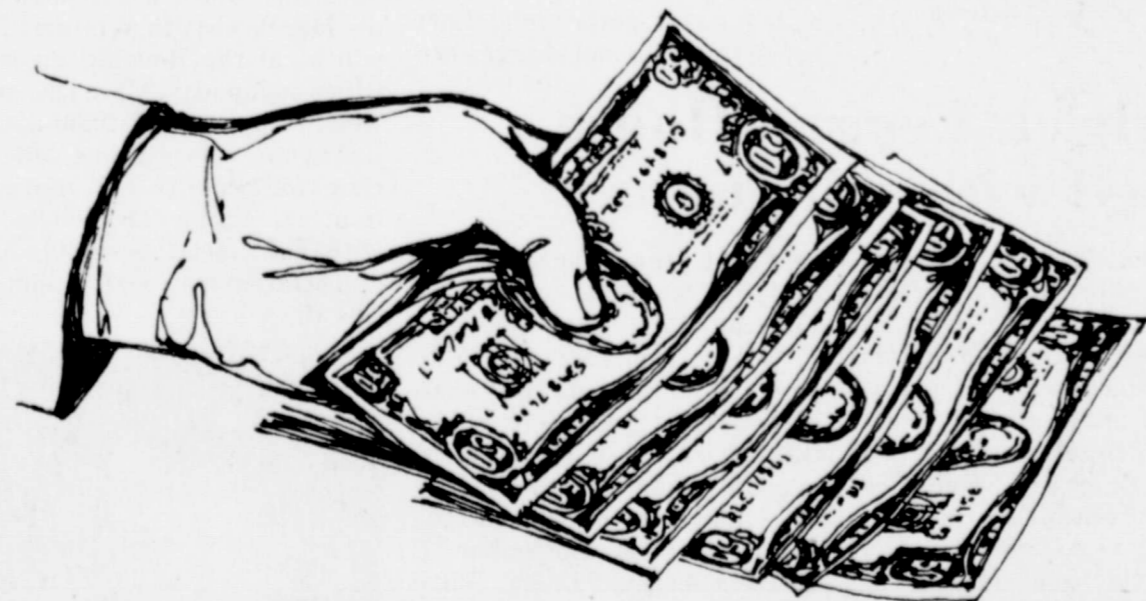
the **Opening** of

**Hatchel Stop & Go**

Located in downtown Hatchel

We will be selling

**Beer and Wine**



**These Dollars Mean A Lot to Our Area!**

Spend them at home and they mean jobs for our young people. They support the payrolls that keep our town a busy, prosperous place.

Spend them away and they are gone for good. They will be greatly missed.

Buy at home and bank at home. That's the way to keep our community a good place to live and raise a family.

**WINTERS STATE BANK**

Your Full Service Community Bank!

754-5511 500 South Main Member FDIC Winters, Texas

Winners contest he charm. Fro La Petite Petite Bea

**Dorcas**

The Dorcas Baptist Ch Jack Smith 2:30 p.m.

Mrs. Buck Mrs. D.C. E opening p Graham g "Caring in A Memo church i memory. reported fe Cards w Hart, who in Abilene. Benedict Mrs. Quinc Refreshn the hostes Olettha El Ethel Grah and Lillian

**Dale S met r**

The Dal recently in G.W. Scott worked on Refreshn Mmes. Al Jones, Clif Virden, O Fisher, W Rogers, A Traylor, Walter Kr Carl Baldu Visitors da Bethel, Pearl Law The next March 11. meeting w as hostess.

The silkworm times as comparable spinning

400

3 Bedroom Payment We trade

Ou

F





**Reigning Monarchs**

Winners of the Runnels Area Our Little Miss contest held Saturday display their winning charm. From left are Ideal Miss Tonya Everett, La Petite multi-winner Chantale Albert, Baby Petite Beauty winner Shelby Wisenhunt (center front), Ideal Miss Universal Beauty winner Jill Traylor, Our Little Miss Netasha Smith, Baby Petite Meagan Galvan, (center right), and Our Little Miss Universal Beauty winner Tonya Sanchez.

**Dorcas Class met**

The Dorcas Class of the First Baptist Church met with Mrs. Jack Smith Monday, March 3 at 2:30 p.m. Mrs. Buck Smith presided and Mrs. D.C. Robertson voiced the opening prayer. Mrs. Lester Graham gave the devotional "Caring in Christ's Name".

A Memorial was sent to the church in Frank Laird's memory. A Memorial was reported for Johnnie Woodfin.

Cards were sent to Velma Hart, who is with her daughter, in Abilene.

Benediction was given by Mrs. Quincy Traylor.

Refreshments were served by the hostess to Alma Hughes, Oletha Elder, Stella White, Ethel Graham, Freda Robertson and Lillian Roberson.

**Dale Sewing Club met recently**

The Dale Sewing Club met recently in the home of Mrs. G.W. Scott. A bow tie quilt was worked on for the Club.

Refreshments were served to: Mmes. Alvis Waldrop, Reese Jones, Clifford Lehman, Gene Virden, Oliver Wood, Verge Fisher, Walter Onken, I.W. Rogers, Anita Wood, Quincy Traylor, Ralph McWilliams, Walter Kruse, Leland Hoppe, Carl Baldwin.

Visitors present were: Rhonda Bethel, Myrtle Duncan and Pearl Lawrence.

The next meeting will be held March 11. This will be an all day meeting with Mrs. Gene Virden as hostess.

The silkworm spins a thread 12,000 times as long as his body. That's comparable to a six-foot tall man spinning a thread 15 miles long.

**Spring style show and luncheon set**

Overall Morris Memorial Hospital Auxiliary of Coleman will have their annual spring style show and luncheon on March 15 at 11:30 at Sacred Heart Catholic Church Parish Hall, 303 East College Avenue, Coleman, Texas.

Fashions Today and Yesterday will be modeled at the luncheon. Mrs. Fay Gill, auxiliary, president, states that tickets may be purchased at the hospital gift counter for \$8. No tickets will be sold at the door.

**Methodist women met**

The United Methodist Women met in the church parlor Tuesday morning with Billie Middlebrook presiding. Billie gave the devotional, "Tie the Yellow Ribbon" followed by prayer.

The secretary read the minutes and the Treasurer gave the financial report.

A Skit, "Daniel and The Lions Den," was given by Odessa, Billie, Lois, Corra, Ionah, Ozie and Pauline.

We are starting the bible study on "Daniel" and Mrs. Mildred Correll, presented the 1st chapter. Sang 'Onward Christian Women' Dismissed by repeating the Lords Prayer.

Present were: Mildred Correll, Odessa Dobbins, Zelma Lee Lange, Corra Petri, Ozie Stanley, Margurite Mathis, Billie Middlebrook, Margaret Anderson, Pauline Mayhew, Ionah Vinson and Lois Jones.

An optimist is someone who tells you to cheer up when things are going his way. Edward R. Murrow

**Retired Teachers held luncheon**

Runnels County Retired Teachers' Association met for a catered luncheon at the Circle S Steakhouse in Winters on Thursday, February 27, 1986.

Rev. Marvin Burgess offered thanks.

After a delicious meal, the meeting was called to order by the president, Mrs. Josephine Estes. Mrs. Eula Mae Kruse introduced the speaker for the program, Mrs. Mina Green, Brownwood president of District XV.

During the business session, the secretary read the minutes of the last meeting, and the treasurer gave her report. The state meeting will be in Dallas April 10-12. Nina Hale moved the election of the three delegates, the motion carried, they were Josephine Estes, Beatrice Schroeder, and Eula Mae Kruse.

Reports were given by Mildred Bigby on legislation. Mrs. Eleanor Burgess announced the testing program on March 10 for any retired teacher who cares to take it.

Members present were: Eula Mae Kruse, Nina Hale, Beatrice Schroeder, Myra Dorsett, Betty Wessell, Aline Womack, Sybil Forgey, Helen Williams, Lola Eubank, N.T. Gault, Mildred Bigby, Josephine Estes, Iola Crawford, Jo Olive Hancock, Doris Prewitt, Margurite Mathis, Lucy Kitzell, Eleanor Burgess, and Evelyn Batchelor.

Guest were: Mr. and Mrs. James Green, Brownwood, Mr. and Mrs. Ray Fisher, Brownwood, Marvin Burgess, Bryon Estes, Laura Pace, Mary Robertson, Ethel McDonald, Lillian Roberson, Willie Belle Cornet, Ruthie Beard, Hortense Joyce, and Charlsie Poe.

**First Friday Trades Day**

Thelma Tubbs was ill and wasn't able to attend the meeting. The next meeting will be in the home of Leslie Robinson, March 12.

**Crews**

By Hilda Kurtz  
Did you know there is more feet in the world than people? \*\*\*\*\* A good small crowd attended the St. Patrick supper in Crews Saturday night. The Fred Watkins and the Walter Clendenens were the host.

Sympathy to the two sisters and their families of Miss. Willie Hale of Ballinger, who was buried in Crews Cemetery Wednesday.

Walter Pape Jr., Santa Anna, had lunch with Harvey Mae and Noble Faubion Sunday, he also was a visitor in church.

Doris and Marion had their children and families over for Sunday dinner, those attending were, Mr. and Mrs. Larry Calcote, Jim, West, and Aaron of Winters; Frances Mincey of Big Spring; Mr. and Mrs. Jeff Camron and baby, Steven, of Coleman. Mr. and Mrs. G.C. Walters of Ft. Worth came during the week.

Ann and Amber Fuller spent Friday in Coleman.

"Happy Birthday Corra" Those eating dinner with Nila and Therin Osborne Sunday were, Karen, Wesley, John and Stephine McGallian of Wingate, Mrs. Viola Foster and Louise Osborne of Winters.

Ray and Amanda Cooper, Abilene, visited Pat and Earl Cooper Saturday night, Amanda stayed longer.

Bro. Oscar and Janie Fanning, Abilene, were luncheon guest with Selma and Hazel Dietz Sunday after church services.

Hazel Mae Bragg carried Corra Petrie out for lunch Sunday on her birthday. Russell Bragg was also a guest.

Hazel Mae Bragg spent Thursday in San Angelo with Dr. Larry Bragg and family.

I had lunch Friday with the daughter, Hildegard and W.A. Asbury, San Angelo, after seeing my doctor. Later we visited my great-granddaughter, Shanon Kay, and her mother, Brenda Villers.

During the week with Mrs. Effie Dietz were, Dale Herring from Talpa, Dayton and Era Smith of Ballinger, Paul Burnette of Alaska, and Bessie Baldwin of Winters.



**NEWCOMERS**

Gary and Carol Turner are proud to announce the arrival of a daughter, Mary Louise. She was born March 3, 1986, at 6:09 a.m. at Hendrick Medical Center. She weighed 9lbs. 10oz. and was 20 1/2 inches.

Mary Louise is welcomed home by one sister Tamara and one brother Allen.

Paternal grandparents are Rev. and Mrs. Frank L. Turner of Cleburne.

Maternal grandparents are Mr. and Mrs. W. A. Criswell of Graham.

**Wilmeth Friendly Helpers Club met**

Wilmeth Friendly Helpers Club met recently in the home of B.B. McNeil, a short business meeting was held, we had one new member, Joyce Broadstreet.

Others present were: Grace Barker, Oma Lee Overman, Genevieve Denson, Rosalie Simpson, Thelma Tubbs, Rosalie Albro, B.B. McNeill, Joyce Broadstreet, Eva Wright and three visitors, Glenda McNeill, Lavoy McNeill and Mrs. Sonny King all of Wingate.

A Valentine Motif was carried out for our refreshments, Mrs. B.B. McNeill always has everything so pretty, we all enjoyed it very much.

The next meeting last Wednesday (February 26), we met in the home of Oma Lee Overman, who served delicious refreshments to: Grace Barker, Joyce Broadstreet, Rosalie Albro, Genevieve Denson, Eva Wright and the hostess.

Blocks were pieced for a double knit bedspread.

Thelma Tubbs was ill and wasn't able to attend the meeting.

The next meeting will be in the home of Leslie Robinson, March 12.

**READ THE CLASSIFIEDS!**

**Rebekah Class met**

The Rebekah Sunday School Class of the First Baptist Church met Monday evening in the home of Mr. and Mrs. Hudson White. Hostesses were Emily White, Janice Humble and Mary Beth Drake.

Darlene Sims, president, presided. June Sibley led the opening prayer. The class song was sung "I Need Thee Every Hour."

It was decided as our March project to give a walker to the nursery and to give money to world hunger.

Roll call was given on strength. Our next meeting will be a trip to the Abilene Mall in a group.

Mary Beth Drake gave the devotional on "God's Unfailing Compassion." Dottie Lou Marks gave the closing prayer.

Those present were: Dorothea Laughan, Dottie Lou Marks, Lillian Cooper, June Sibley, Mary Beth Drake, Darlene Sims, Janice Humble and Emily White.

**Card of Thanks**

I would like to express my thank you to each and everyone for the cards, notes, flowers, gifts and most of all prayers for my recovery.

I'd like to express a big thank you to each pastor of the churches for their special prayer requests. A great Big Thank You to Dr. Y.K. Lee and North Runnels Hospital Staff for such good care they gave me.

God Bless you and keep each one of you in my prayer.

We love you,  
Beth Hamilton and family

**Lutherans CONFESS**

Because we sin: Our Corruption, Hunger, Disease, Short tempers, Long Feuds, Broken Homes, Shattered Dreams, All betray our sin.  
Luther said all of us were "sinners and sinners at the same time." That our wills were captive to the chains of sin. The same thing that said: "All have sinned and fallen short of the glory of God."  
Lutherans confess: Because what we deny in doctrine our lives betray. And because confession is the first step toward discovering the deeper truth of God.  
We are forgiven, justified by grace as a gift. Freely, Faithfully, Forever. We are forgiven.  
The Lutheran Church Welcomes You.

**St. John's Lutheran Church**

1100 W. Parsonage  
Sundays: 10:40 A.M.  
Pastor Steve Byrne 754-4820

**Happy 30th**



from your younger friends



**LUXIVA. THE MOST LUXURIOUS SKIN CARE IMAGINABLE**

**FREE WITH ANY \$7.50 PURCHASE OF MERLE NORMAN COSMETICS.**

Give this gift of luxury to your skin and see its grateful response to kind treatment. "Luxiva Gift of Luxury" — a collection of four very special skin-care products, tucked into a reusable faux pearl box with classic spring motif.

Such a luxurious offer comes along rarely, so snip out the coupon and hurry to Merle Norman today.

Bring in this coupon to get your FREE Luxiva Gift of Luxury (Luxiva Collagen Cleanser, Luxiva Collagen Clarifier, Luxiva Collagen Support, Luxiva Protein Creme) with a purchase of \$7.50.

This offer is good through February 28, 1986, while supplies last. One to a customer.



137 N. Main  
754-4322

**Special Group Of Cosmetics 50% Off — Blush, Eye Shadow, Lipstick Compacts**

**A+ Plus Mobile Homes**  
4006 N. Chadbourne 915-658-8915  
**DESPERATION SALE!**  
3 Bedroom, 2 Bath, Masonite Siding. \$12,900.00 With Refrigerated Air.  
**Payment under \$170<sup>00</sup> per month for 12 years**  
We trade for downpayment. Delivery, blocking and tie down included.  
CALL KEN FOR THIS HOME 658-8915

**Come Hear Bob Long**  
Pastor  
**Our Savior's Church**  
San Angelo, Texas  
**Praise And Worship**  
Begins at 7:30 P.M.  
Tuesday, March 11  
**At The Winters Community Center**  
**Everyone Welcome**  
For more information, Contact Terry Ferguson at 754-5719



# CLASSIFIED ADS... for results

## CLASSIFIED RATES

**CASH**  
Minimum—\$3.00, 1 time 20 words; 10 cents per word for over 20 words.  
**CHARGED**  
Minimum—\$3.50, first insertion, \$3.00 per insertion thereafter. 10 cents per word over 20 words.  
**DEADLINE FOR ALL ADS**  
12:00 noon Tuesday week of publication.

## FLOWERS

FLOWERS for all occasions. Orders wired anywhere, any time. Bonded FTD, Florafax florist, Mayme Little, Winters Flower Shop, 754-4568.

## FLOWERS, ETC.

Full Service Florist. Funerals, weddings, wire service. Something for all occasions. Mary Ellen Moore, Owner, 754-5311

## FOR SALE

**FOR SALE USED** wooden benches 2, \$15, refrigerator, gas stove, 32 ft travel trailer-needs repair, cash register, call 754-4984 or come by Bar-B-Q Barn, 49-4fc

**ROUND HAY BALES FOR SALE**, hay grazer, costal, maize stalk and NK-300, Callom Custom Hay Baling, 723-2242 or 723-2378, 44-4fc

**2 YEAR OLD COUCH** and loveseat from Spill's, 10 speed bike, infants car seat, and dishwasher, 602 Crews Road or call 754-4363 after 5 p.m., 49-2fc

**14 FOOT POLARCRRAFT BOAT** with 50 HP Evenrude Motor, swivel seats, trolling motor, depth finder and trailer, Call 754-5084, after 5 p.m., 49-4fc

**MINNOWS FOR SALE** at Missile Site east of town on Novice Highway, 49-4fc

**FOR SALE 15' 5" Glastron Boat** with 1984 90 HP VRO Evenrude on 1984 trailer with accessories, Call after 5 p.m., 915-365-2873, 50-2fc

## AUTOMOBILES FOR SALE

**FOR SALE 1981 Volkswagen Jetta**, excellent condition AM, FM, cassette tape, air cond., 5 speed \$3950, Phone 754-4721 days or 754-5339 nights, 46-4fc

## AUTOMOBILES FOR SALE

**FOR SALE BY OWNER 1976 Monte Carlo**, good condition, Call 754-4288, 49-4fc

**1980 CHEVROLET CAPRICE 4 door**, air, power, \$1800, Call 754-4608 or 754-4546, 50-2fc

**1973 BUICK CENTURA** good condition with new tires in front, \$1500., 102 Copeland or call 754-5015, 50-2fc

**'84 BUICK REGAL 2 door**, V-6, AM, FM stereo, excellent condition 42000 miles, Call 754-4087 before 5 p.m., 50-4fc

## REAL ESTATE

**NICE 3 BEDROOM HOUSE**, 5 Panny Lane, brick, central H/A, curbed & paved, Dead end street, Call K.W. Cook, 754-4719, 30-4fc

**3 BR 2 B house for sale**, Den with fireplace, water well, fenced yard, By appointment only, 754-5025 after 6 p.m., 21-4fc

**HOUSE FOR SALE 3 BR, 1 B**, built in appliances, central H/A, quiet neighborhood, and pecan trees, 214 N. Church Street, or call 754-5215, 33-4fc

**HOME FOR SALE 3 BR, 2 B** on 2 acres 2 1/2 miles from city limits, Call 754-5608 after 5:30 p.m., 48-4fc

**FOR SALE 3 bedroom, 2 bath** house, 212 E. Truett, Call 754-5290 or 365-2843, 50-3fc

## FOR RENT

**RENTALS: 2 and 3 BR houses**, apartments and mobile homes, Call 754-4286, 49-4fc

**DUPLEX FOR LEASE 2 BR, 1 B**, central H/A, 817 N. Heights, Call 915-572-3766 evenings, 35-4fc

**FOR RENT 3 Neely Apts. 2 BR**, Apply in person at Winters Housing Authority, Monday-Friday 8 a.m. until 12 noon, Equal Housing Opportunity, 47-4fc

**FOR RENT 2 rooms and bath** furnished apartment, all utilities paid, adults only \$200 monthly, Also nice 4 rooms and bath furnished apartment, all utilities paid, adults only \$275 monthly, Call 754-5346 or contact owner at 616 E. Truett on March 8 or 9, 50-4fc

## STRICKLAND REAL ESTATE

**WE ARE ACCREDITED M.R.A. APPRAISERS**  
**NEW LISTING:** 2 BR, carpet, corner lot, close to town, all new plumbing.  
**ACROSS FROM SCHOOL:** Attractive 4 BR, 2 B, carpet, fenced yard, extra building in back. Nice for growing family.  
**QUIT NEIGHBORHOOD:** 3 BR, 2 B, fireplace, detached guest house, fenced in yard, corner lot, 2 car garage, also 2 car carport and storm cellar.  
**GOOD BUY:** Lovely 4 BR, 2 B, den and living area, stone fireplace, fenced yard, private deck, Reduced Price.  
**CLOSE TO TOWN:** 3 BR, 2 B, carpet, brick, fenced yard, central air.  
**COMMERCIAL BUILDINGS:** One block off main street, building 5,484 sq. ft., lot 51,255 sq. ft. Also commercial building downtown shopping area.  
**FOR RENT:** The old Pool yard, 2 offices, 1 crew office, truck wash rack, and more.  
**LOTS FOR NEW HOMES:** Utilities and curb.  
**LOTS FOR MOBILE HOME:**  
**ALL IN ONE:** 14 x 70 mobile home 2 BR, 2 B, covered carport and patio, fenced yard, water well, and a metal 35 x 45 building for your business all on 6 lots.  
**LOOKING FOR A GOOD DEAL:** 4 BR, 2 story house on shady lot or a 2 BR house, corner lot or a 2 BR remodeled home close to school.  
**INTERESTED IN LAND IN COUNTRY GIVE US A CALL**  
Feel Free To Call Us Anytime  
**OFFICE: 754-5218**  
**Weekends, Holidays, and Nights**  
**754-5257 or 754-5073**  
**100 West Dale Winters, Texas**

## FOR RENT

**FOR SALE OR RENT 2 bedroom** mobile home, unfurnished, deposit required, 754-4928, 49-4fc

## HELP WANTED

**TYPISTS—\$500 weekly** at home! Write P.O. Box 975, Elizabeth, NJ 07207, 34-4fc

**WE NEED HARD-WORKING** person to sell our Goodyear roof products. Write Ed Mahon, Consolidated Companies, 1801 East 9th Street, Cleveland, Ohio 44114, 48-3fc

**MAKE \$700 TO \$1200 MONTHLY** processing mail from your home. No experience necessary. As long as you know how to read and write English you can do it. Work part time or full time!! For free details enclose a self-addressed envelope. World Worker, TX, 47534 Athens 13110, Greece, 48-4fc

## WORK WANTED

**WORK WANTED** will plow your yard or garden, Call E. L. Bennie 754-4584 or contact at 900 N. Concho, 50-11p

## WANTED

**SCRAP IRON** copper — brass — Auto — Tractors — Machinery — Engines — Motors — Radiators, BALLINGER SALVAGE, PINE ST. SALVAGE, Abilene, 48-4fc

## I WILL BUY

**Your Silver Coins**, other coins and paper money. Highest prices paid for rare and choice items. **FLOYD SIMS** 754-4224 or 754-4883

## BUSINESS OPPORTUNITIES

**OWN YOUR OWN BUSINESS** Own your Own Jean-Sportswear, ladies apparel, childrens, large size, combination, store, accessories, Jordache, Chic, Lee, Levi, Easy Street, Izod, Esprit, Tommy, Calvin Klein, Sergio Valente, Evan Picone, Liz Claiborne, Members Only, Organically Grown, Healthtex, over 1000 others, \$7,900 to \$24,900 inventory, training, fixtures, grand opening etc. Can open 15 days, Mr. Loughlin (612) 888-6555, 49-11p

## OPEN YOUR OWN BEAUTIFUL DISCOUNT

shoe store. Ladies-Childrens-Mens. Nationally known brands ★ Jordache ★ Evan Picone ★ 9 West ★ Capezio ★ Amalfi ★ Nike ★ Old Main Trotter ★ Zodiac ★ Naturalizer ★ Famolare ★ Adidas ★ Converse ★ Puma ★ Andrew Geller ★ Gloria Vanderbilt and many more, \$16,900.00 to \$39,900.00 includes beginning inventory, training, fixtures, grand opening and round trip air fare. Call today, Prestige Fashions 501-329-2362, 50-11p

## AGRICULTURE

**HAY FOR SALE:** good quality, Small stems and high leaf content. Large bales, \$20 per bale, or \$16 if take all, 754-4030, 43-4fc

## MISCELLANEOUS

**COMPLETE BACKHOE SERVICE** Approved septic systems installed, K.W. Cook, 754-4719, 37-4fc

## TIME TO RE-POT:

We have a new shipment of Carl Pool Potting Soil, Also Carl Pool Magic Grow plant food, Winters Flower Shop, 1-4fc

## GEMSTONE IDENTIFICATION

Is your gem natural or synthetic? If you want to know positively call 754-4954 after 11 a.m. for an appointment, 50-2fc

## MISCELLANEOUS

**HALF PRICE!** Flashing arrow signs \$289! Lighted, non-arrow \$269! Nonlighted \$219! Free letters! Only few left. See locally, 1-800-423-0163, any time, 50-11p

## FIX IT

washing machine, clothes dryer, electrical, woodworking, home improvement. Also have storage units for rent: Crouch Rent-A-Storage, Call 754-4712, 45-4fc

## LADIES:

If you can't find your Big and Tall size clothing, shop E & W Outlet, 1107 N. Neches, Coleman, Texas. You won't believe the prices, 49-4fc

## MISCELLANEOUS

**ROY CALCOTE & SONS, INC.** Yard dirt for quick delivery. Dozers, maintainers, backhoes, loaders, and dump trucks, 24 hour service, 915-767-3241, P.O. Box 896, Winters, TX, 24-4fc

## GARAGE SALE

**GARAGE SALE 501 Wood Street**, plenty of goodies, 7 years accumulation, Wednesday thru Saturday, 50-11c

## 3 FAMILY GARAGE SALE

1st house on Hwy 53 West, Friday and Saturday 9 a.m. till 2. Light fixtures, curtains, pillows, childrens clothes, and many misc. items, 50-11c

**All Types Concrete Work**  
Quality Concrete Work Any Time — Any Place  
**Affordable Construction Company Incorporated**  
Calvin "Jack" Jackson  
Route 2 Wingate, Texas 79566 Phone 915/743-2916 Mobile 653-3363 - 6179

ALL TYPES RAISED PANEL DOORS  
ALL TYPES CUSTOM CABINET WORK  
Remodeling Cabinetry  
**KOZELSKY CABINET SHOP**  
908 N. TRINITY WINTERS, TEXAS  
FREE ESTIMATES YOU CAN AFFORD THE BEST  
MAILING ADDRESS: 605 NOVICE ROAD WINTERS, TEXAS 79567 TELEPHONE: (915) 754-4713

**Szalcszue Electric Co.**  
Oil Field, Commercial & Residential Wiring  
Air Conditioning Sales & Service  
Authorized Dealer for  
GE - GIBSON - ROPER - FRIEDRICH  
Phone 754-5115 • P.O. Box 307 • Winters, Texas 79567

**SAM'S AUTO-RAD. WELDING SERVICE**  
1200 So. Concho Phone 625-5000 Coleman, Texas

## BUSINESS SERVICES

**WINTERS SHEET METAL & PLUMBING WORKS**  
Plumbing, Heating, and Cooling  
215 W. Dale  
Phone: 754-4343

**RCA TV Authorized Dealer WE SERVICE ALL MAKES SALES & SERVICE BARNES RADIO-TV**  
754-4223 135 N. Main

**MANSELL BROTHERS**  
Ballinger-Winters "Your Authorized John Deere Dealer" Ballinger 365-3011 Winters 754-4027  
Parts and Service Complete Shop Facilities Hwy. 53 West

**WINTERS FUNERAL HOME**  
Insurance and Markers  
24 Hour Service  
754-4529

**Harold W. Shelburne Certified Public Accountant**  
100 W. Dale Winters, Texas 915/754-5753

**Kraatz Plumbing**  
754-4816  
If no answer, call 754-5610

"There is too little public recognition of how much we all depend upon farmers as stewards of our soil, water and wildlife resources."  
John F. Kennedy

"We are just beginning to become aware how precious pure water is. And most of our fresh water originates on the same farms that produce our food."  
John F. Kennedy

Most scientists now agree that the earth came into being 7 to 15 billion years ago.

**Bonded Livestock-Dealer B. E. Baldwin Stocker & Feeder Cattle**  
610 Tinkle Street Winters, Texas 79567 915-754-5158

## Tender Loving Care For Appliances

### Trash Compactor

Disposing of messy household trash is a problem solved by a trash compactor. This small appliance compacts a week's worth of trash for an average family of four into a small, portable bag that is easy to take to the curb on trash pickup day.



According to home economists from Whirlpool Corporation, just a little "T.L.C." can help keep your trash compactor working efficiently throughout its life time. They recommend:  
• Frequently cleaning the exterior surface with warm sudsy water and damp cloth. Rinse and dry.  
• Wipe up any spills right away. Some food drippings

can mar the finish if left on the exterior.

• Clean inside of the drawer periodically with sudsy water. Rinse and dry—wear rubber gloves as there may be bits of glass in the drawer.  
• Wipe off the paper towels—wear rubber gloves.  
• Clean inside of cabinet—remove drawer and vacuum using the small vacuum brush.

"I can think of a few things more important than teaching both children and grown-ups the value of the soil. The good earth is not only the foundation of a nation's economy; it is the basis of civilization itself."  
Louis Bromfield

"A nation deprived of its liberty may win it; a nation divided may reunite, but a nation whose natural resources are destroyed must inevitably pay the penalty of poverty, degradation and decay."  
Clifford Pinchot

**Fresh Seafood Sale**  
Thursday, March 6  
3:30 — 7 p.m.  
On Piggly Wiggly Lot  
Ya'll Come  
**Simon's Seafood Of Abilene**

**WIN-TEX CATTLE FEEDERS**  
Phil Smith P.O. Box 696 Charles Smith 915-754-5571  
Coffee's always on!  
Come see our improvements!

**NOTICE BURGER HUT WINTERS OPEN**  
Mon. thru Sat. 10 a.m. - 2 p.m. 5 p.m. - 8 p.m. Closed on Sunday

**J & J Insulation**  
713 W. 5th Coleman, Texas 625-3210 625-3159  
Blown Cellulose In Walls And Ceilings Metal Buildings

**Main Drug Now Offers Do-It-Yourself Photo Copy 15¢**  
Enlargements, Reductions, Legal Size, Letter Size, Postcards

**Boyd Bedford**  
Tax Consultant And Accountant  
100 W. Dale (Old Bank Building) 754-4983

**Find Out Why Leasing Makes Sense. Talk to Charles at CHARLES BAHLMAN CHEVROLET.**  
754-5310

**Larry's Truck & Tractor Repair**  
3 Miles North Of Winters On U.S. 83 Specializing In Agriculture Equipment Repair  
Larry Calcote Owner 754-2030 Days 754-5266 Nights

## UNDERWOOD Real Estate

**OUTSKIRTS OF TOWN**  
3BR, 2B, w/large playground, on 5 acres. **BEAUTIFUL**  
3BR, brick on 7 acres, with all the extras-9 miles W. of town.  
**OUTSIDE CITY LIMITS**  
Neat 3BR, 1 bath, fenced, reasonably priced.  
**OUTSTANDING**  
3 BR, 3 1/2 bath, brick, workshop, with all the extras.  
**MOBILE HOME**  
Furnished, lot, garage, 2 BR, 1 bath, H/A.  
**LOTS**  
Residential lot, call for information  
**EXECUTIVE**  
4 BR, 3 1/2 bath, with all the extras, workshop.  
**MAKE OFFER**  
3BR, 1B, brick, CP, water well and fenced.  
**TWO STORY**  
3 BR, 2 B, with swimming pool, and all the extras.  
**NEW LISTING**  
Tip top condition, 2 BR, 1 B, chain link fence on corner lot.  
**CIRCLE DRIVE**  
3 BR, 2 B, brick home, H/A, double garage, negotiable.

**SOUTH OF CITY**  
New building on one acre with nice offices and work shop.  
**CLOSE IN**  
2 BR, 1 B, with new 30' x 30' workshop. Low 20's.  
**ACREAGE**  
130 acres all cultivation, east of town.  
**MUST SELL**  
Neat 3BR, 2B, with large workshop.  
**NEAR SCHOOL**  
4 BR, 2 B, with asbestos siding. Mid 20's.  
**NEWLY DECORATED**  
5 BR, 3 1/2 B, large play room, 2 wood burning stoves.  
**REMODELED**  
2 BR, 1 B, near school, mid teens.  
**GOOD INVESTMENT**  
Apartment house with 5 furnished rental units.  
**BACK ON THE MARKET**  
Red Top Station with Living quarters. Price reduced.  
**FOR RENT**  
Lot equipped for trailer house.  
**LIKE NEW**  
2 BR, 1 B, possible 3rd BR. Central H/A, new carpet, good location, mid 30's.

**1.19 ACRES**  
10 year old brick home, 3 BR, 1 1/2 B.  
**18 ACRES**  
4 BR, 1 B, new siding and insulation. Wood-burning stove, Norton.  
**NEW LISTING**  
3 BR, 2 B w/eff. apartment. Double carport.  
**LAND**  
142 acres east of town, owner will finance, spring-fed tank, creek.  
**REMODELED**  
Two BR, 1 B, in good condition. Mid 20's.  
**SUPER NICE!**  
Three BR, 2 B, H/A and carport.  
**COLONIAL CHARM**  
Two story, 4 BR, 1 1/2 B, on 5.9 acres.  
**NEW LISTING**  
Extra nice, 2 BR, 2 B, central H/A.  
**NEW LISTING**  
Take up payments on 14 x 76 mobile home with small down. Call for more information.  
**NEW LISTING**  
For rent 2 BR, 1 B, newly painted, outside city limits.  
**CORNER LOT**  
2 BR, 1B, large shade trees, Mid Teen's.







# THE TEXAS EXPERIENCE

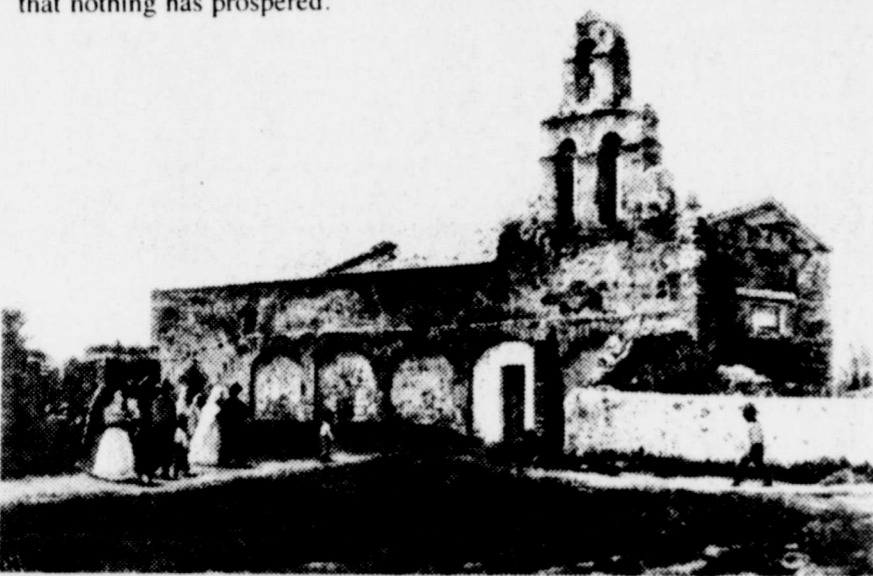
## Missionary Zeal

Conquistadors and later, Spanish soldiers, moved into Texas to claim the land. The "religious" from Mexico soon followed, establishing missions on the frontier to enlist Indian souls. The missions were transitory agencies of both the state and the church and their purpose was to convert the Indians and civilize the frontier.

The Catholic missionaries were given ten years from the time of their arrival to tame the area; in their eyes, weaning the Indians from their savage ways, and teaching them to pray and plant crops. Few of the missions in Texas achieved their goal in ten years and some were abandoned without hope, admitting a kind of mission impossible. Padre Francisco Garcés wrote in his diary in 1775, "I see that for a century the faith has been planted in these provinces, and that nothing has prospered."

Missions became training centers for Indian converts to take on municipal responsibilities. The plaza of the mission was tantamount to the plaza of a civil town. The Spanish church and government officials never intended the missions to become permanent government fixtures. Once the conversion process was complete, the missions were secularized. The church remained the center of Christian spiritual development while property was distributed to the newly designated *vecinos*, landowners, and citizens of the Spanish empire.

Mission San Antonio de Valero, or the Alamo, was the first mission to be secularized in 1793, followed by the partial secularization of N.S. la Purísima Concepción de Acuña, San José y San Miguel de Aguayo, San Juan Capistrano, and San Francisco de la Espada, all in the San Antonio



The Spanish viceroys required that East Texas missions be withdrawn to San Antonio de Bexar, as this San Juan Capistrano mission was in 1731. It was still in use when 19th-century artist Theodore Gentilz painted this scene. Photo courtesy of the Daughters of the Republic of Texas Library.

area. The East Texas missions had become ineffectual as soon as the presidios were removed.

Among the missions in West Texas, Spain had issued a grant of 36 square miles to the Tigua Indians who had left New Mexico during the Pueblo Wars and migrated to the Juarez area. Their grant near El Paso del Norte was centered at the mission church Corpus Christi de los Tihuas de Ysleta.

But after almost a century of persistence, historian Félix D. Almaráz asserts in his book *Lone Star*, the total population of Spanish Texas was less than three thousand, including all the converted Indians and garrison troops. This thinly-settled territory was hard-pressed to prevent the advance of Plains Indians and Anglo-Americans into New Spain from the north and east.

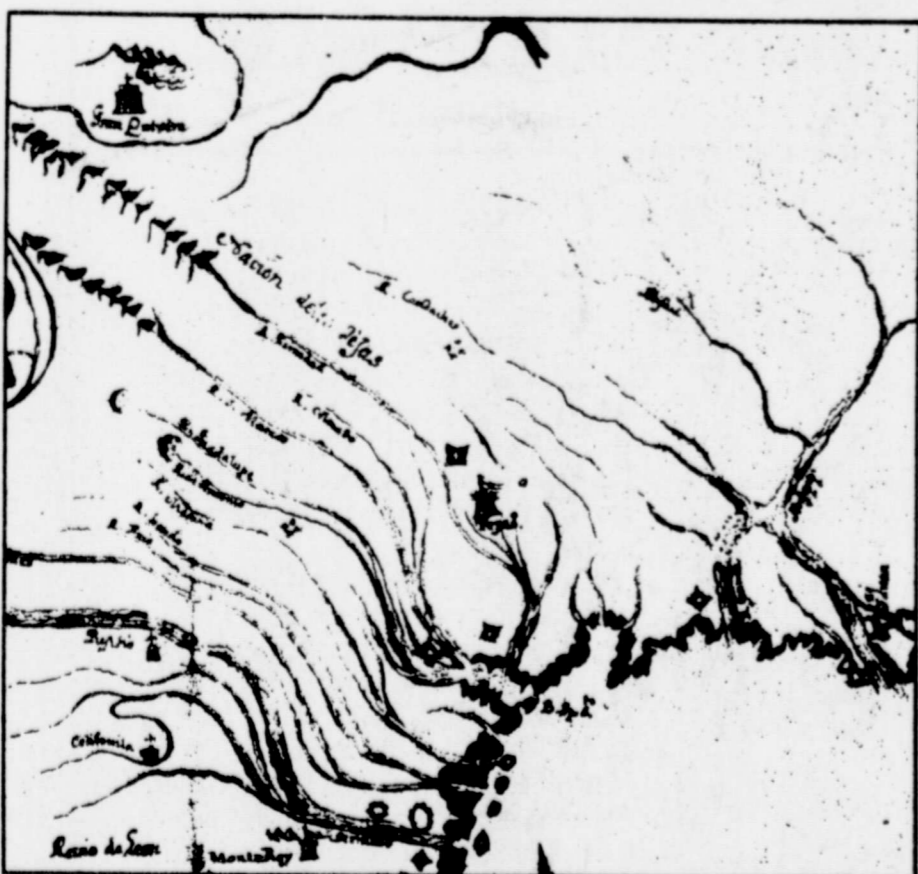
Still, missions and presidios combined to create stable communities that resulted in settlements ranging from East Texas to the Rio Grande frontier. Funded by the Spanish crown and administered by missionary friars from the apostolic Colleges of Santa Cruz and Guadalupe, the missions were set up as industrial and agricultural schools as well as Christian seminaries. Franciscan missionaries were trained to communicate with the natives in their own dialect and to integrate Spanish as a second language, historian Félix D. Almaráz explains. The friars then introduced stone masonry, carpentry, farming, animal husbandry, weaving, leather tanning, blacksmithing and even some of the fine arts—church music, choir singing, dancing and painting.

Once founded and established, Almaráz says, around 1690 in East Texas and later in 1718 along the banks of the San Antonio River, the

## The Search for the Fabulous

In 1528, the ill-fated Spanish expedition to "La Florida," consisting of five homemade boats, was shipwrecked on the coast of Texas. This landing on the "Isle of Malhado,"

(most likely Galveston Island), marked the first recorded European intrusion into the present state of Texas. Of about 300 Spaniards who survived, historian William Griggs



"Gran Quivira" was still noted (top left) on this Spanish map of New Spain in 1717, long after Coronado's visit. Courtesy of the Panhandle-Plains Historical Museum Research Center.

**Cowboy Shack**  
101 S. Main Winters, Texas

Going Out of Business  
**SALE**  
Bargains  
for Everyone

## Card of Thanks

We would like to express our thanks to all our friends, neighbors and relatives when we lost my sister, Ida Vogler Onken, our Aunt. May we be as gracious to all of you when you are grieving. God bless you.

Mrs. Ethel Hantsche  
Ted, Arliss and  
Harvey Hantsche

recounts, only four men eventually lived through sickness and encounters with hostile coastal Indians. These four, Alvar Nuñez Cabeza de Vaca, Andrés Dorantes de Carranca, Alonso del Castillo Maldonado, and Estevancio, a black slave of Dorantes', lived among the Texas Indians for nearly eight years, acting as healers and medicine men. Traveling from tribe to tribe, the four eventually made their way through Texas back to Spanish settlements on the east coast of New Spain, or what is now Mexico.

It was Cabeza de Vaca who perpetuated rumors of seven cities of gold on the frontier. New Spain Viceroy Antonio de Mendoza purchased Estevancio from Dorantes and sent him as a guide for Friar Marcos de Niza, who was to make a preliminary search for the seven cities. Estevancio was killed by the Pueblo Indians, but Friar Marcos returned to Mexico more convinced than ever that the legendary riches did indeed exist.

To locate and claim the wealth that he was sure could be found, Mendoza appointed Francisco Vasquez de Coronado, Governor of New Galicia, to lead an expedition into the unknown country in the North. The small army of 1,000 men began their journey at the small Mexican town of Compostela in February, 1540. Traveling north with 1,500 horses and mules, the largest European expedition ever to penetrate the region conquered pueblo after pueblo, devastating the Indians with more powerful military tactics.

Historian David Weber notes that Coronado called upon the Pueblo Indians to "acknowledge the Catholic Church as the ruler and superior of the whole world, and the high priest called the Pope, and in his name the king and queen of Spain." He promised kind treatment to those who acquiesced and war and slavery to those who resisted. Coronado lived up to his promise with the hundreds of Pueblos who resisted.

Some historians believe that the Pueblos conspired with the Plains Indian whom the Spanish called "The Turk" to lead the expedition east out of Pueblo country in search of a land called Quivira. "El Turco" convinced the Spanish that they would find great wealth there. After a Mass of Thanksgiving in Palo Duro Canyon, they continued the search for gold, moving into present-day Kansas. They did find Quivira. But it was only a modest Wichita Indian village and did not hold treasures of gold.

Disheartened, the expedition turned south and headed back to Mexico, torturing and executing "The Turk" for his trickery along the way. Coronado reported to the King of Spain, "I have done all that I could possibly do to serve Your Majesty and to discover a country where God our Lord might be served and the royal patrimony of Your Majesty increased."

Deep in the "New World," the desire to conquer, to gain wealth and power, took root. Indeed, according to historian Roberto Mario Salmon, this search for "the fabulous" spawned a rich folkloric and historic tradition among Spanish Mexicans. And for more than three hundred years, Spanish, French, and American adventurers traversed the unmapped lands of Texas searching for elusive wealth and power. Eventually, these quests fueled the western development of the North American frontier and the permanent settlements that resulted.

This Texas Sesquicentennial series is courtesy of The Texas Committee for the Humanities, The Shell Companies Foundation, Inc., and this newspaper. © Texas Committee for the Humanities, 1985.

**MARCH 15**  
Anniversary Month  
We Are Celebrating Our First Year  
In Business

Special PRICES On All  
Units In Stock  
FREE Tank Of Gas With Each  
Unit Sold. New Units Are  
Coming In Every Week  
Help Us Celebrate  
Our First Year In  
Business

**S & L MOTOR CO.**  
Ovalo, Texas 915-554-7729  
Stan Boulter, Owner

## Firemens Auxiliary met recently

Firemens Auxiliary met for their February regular meeting in the City Hall.

Hostesses were Pat Simpson and Pauline Sherman. Parliamentary Procedure drill was given by Jeanne Hilliard, prayer was led by Jo Miller.

Homemade cookies were served by Pat Simpson. Those present were: Pat Simpson, Jo Miller, Jeanne Hilliard, Tressa Davis, Melba Jo Emmert, Debbie Goff, Oleta Webb, Dianne Whittenburg, Mary Ellen Moore and Lue Bowden.

## Card of Thanks

Words cannot express our heartfelt thanks to each of you for your kind deeds during the long illness and death of our loved one, Virgil Fuller.

We express our appreciation to Dr. Y.K. Lee, the ambulance service, the nursing home staff and many friends for the beautiful cards, flowers, food, memorial gifts, and other deeds of kindness.

We would also like to thank Revs. Emmitt Brooks and Edmond Nowell, Ted and Mike Meyer for the memorial services.

May God continue to bless each of you.

Emma Fuller  
Vernon Fuller  
and family members

## 5th Marine Division reunion scheduled

Following 36 successful years of 5th Marine Division Reunions from coast to coast, but never before in Texas, this organization will make San Antonio its headquarters from Wednesday 18 June 1986 until noon on Sunday 22 June 1986. Noted for its historical flag raising on Iwo Jima in February 1945, the Division was deactivated following WWII, and then became a part of The Marine Corps Reserve Forces. During the Vietnam conflict many Marines served with activated elements of the 5th Marine Division.

Any veteran who served attached to or with the 5th Marine Division at any time, is eligible for membership with the Association. Membership application will be available at the Reunion Headquarters in The El Tropicano Hotel in downtown San Antonio, or by sending a SASE to Mike Sekerak GySgt USMCRet., Rt 1 Box 170AA, Buchanan Dam, Texas 78609.

The 5th Marine Division Association currently lists membership over a 1000 comprised of WWII and Vietnam Vets, but there is always room for more. Our Sesquicentennial Year of celebration makes San Antonio that much more attractive as a reunion site for visitors since it too is particularly significant in history.

All who attend will have many memories of old friendships renewed, new friendships made, and neighborly memories of Texas hospitality. The San Antonio reunion site represents a convenient location for Texans, Marines who may or may not have attended previous reunions, to enjoy some home state pleasure.

"Nowhere but Texas, done better by Texans", "Y'all Come!"

## Most Wanted

This is the same tune, second verse, for John DeWayne Christie.

Christie was selected for the Texas Most Wanted list back in November, 1985, but was captured shortly before his story could be featured by media throughout the state.

Now he has been placed on the fugitive list.

Christie and two other inmates at the Hopkins County Jail escaped from custody on January 30. One of the inmates was quickly captured.

However, Christie—who is wanted for rape of a 14-year-old girl and the assault of the girl's mother—remains at large.

Hopkins County law enforcement officials say Christie, Milton Wilemon, and James Corley escaped sometime around 10 p.m. and 11 p.m. on January 30. They theorize that Wilemon, who was a jail trustee obtained a key and then unlocked an outside door to allow the inmates to escape.

Corley, 27 who was being held on charges of possession of a prohibited weapon, possession of a controlled substance and felony theft of property, was arrested a short time later.

Wilemon, 21, who had been jailed on burglary charges and violation of parole, has eluded capture along with Christie.

Officials do not believe that Christie and Wilemon are still together.

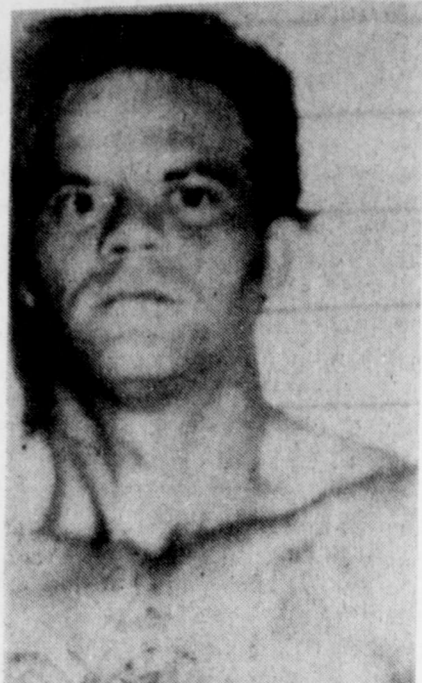
Christie, 33, was arrested at Rockwall, Texas, truck stop on November 21, 1985, on warrants stemming from the sexual assault of a 14-year-old Sulphur Springs girl on September 1, 1985.

He had been scheduled to stand trial early this month.

Police reports indicate the 14-year-old victim of the sexual assault was attacked by an intruder armed with a butcher knife.

## Prepare low-calorie, low-fat egg dishes

Eggs are low in calories—with 80 calories for one large egg—and also contain a good level of vitamins and minerals for those calories. To keep egg dishes low in calories and fat, Texas A&M University Agricultural Extension Service nutritionists recommend using non-stick pans and cooking sprays to cut down on fat when cooking. Poached, soft cooked or hard cooked eggs require no fat at all for cooking. In quiche, omelets, frittatas and other egg dishes, use low fat dairy products, such as lowfat milk and reduced fat cheese to cut calories. Substitute a cracker crumb crust for a pie crust which is high in fat and calories when you make quiche. Or use rice, potatoes or bread on the bottom of the pie plate. Use vegetables for filling quiches and omelets.



However, the intruder ran into more than he bargained for when he tried to attack the girl's mother. She bit the intruder on the neck and forced him to flee the house.

The September incident was not the first time that Christie had run afoul of the law. He had two prior convictions for sexually-related offenses and had served time in the Texas Department of Corrections for indecency with a child.

Christie is a white male, 6-0, 170 pounds, with a light complexion, brown hair and brown eyes. He has a number of tattoos over his body, including a three-leaf clover on his left arm and a butterfly on his chest.

In addition to the aggravated sexual assault, assault and burglary charges he faced from the September incident, Christie now also faces escape charges.

A reward of up to \$1,000 is being offered by the Governor's Office for information leading to Christie's re-capture.

Anyone with knowledge of Christie's possible whereabouts is asked to call the Texas Crime Stoppers Advisory Council toll-free at 1-800-252-8477 or their local Crime Stoppers program. In all cases, callers do not have to reveal their identities.

Texas Most Wanted is a cooperative program between the Department of Public Safety and Texas Crime Stoppers.

**"H&R Block guarantees you the biggest refund you have coming."**

Henry Block

At H&R Block, we guarantee you the biggest refund you have coming, or your return is FREE. Don't settle for less—come to H&R Block.

**H&R BLOCK**  
THE INCOME TAX PEOPLE  
306 Hwy. 67 South  
Ballinger, Texas  
Open 9 A.M.—9 P.M. Weekdays  
365-2591  
MasterCard and Visa accepted  
Jerry Holden—Owner

**THIS WEEKS Specials**

1.75 ml Ancient Age 80 proof \$14.57

Lit. Jim Beam 80 proof \$8.34

750 ml. Smirnoff Vodka 80 proof \$6.83

1.75 ml. Johnnie Walker Red Scotch 86.8 proof \$23.99

Budweiser 12 pack 12 oz cans \$5.76

Old Milwaukee & Old Milwaukee Light 24 pack 12 oz cans \$8.40

All prices plus tax

**Discount Liquor**

Discount Liquor #1 Ballinger  
Discount Liquor #2 South of Bronte  
Discount Liquor #3 South of Winters

Phone 365-3624

Winte  
BREA  
Buttered  
flakes, ap  
Biscuits,  
juice, mil  
Sopopilla  
stick, app  
Cheese  
oatmeal,  
Scramble  
biscuits,  
LU  
Hamburg  
pickles,  
mustard,  
pudding,  
Tacos, to  
beans, mi  
ter cookie  
Bacon-ton  
French f  
tomatoes  
mayonnai  
Beef tips  
ed potato  
pleasauce  
milk  
Hamburg,  
lettuce,  
peach hal  
Salmon  
macaroni  
slaw, appl  
butter, m  
Tuna-pim  
fries, lett  
mustard,  
roll, milk  
Burritos,  
June pea  
Hamburg  
sup, lett  
mustard,  
chunks, m  
Roast, gr  
green bea  
butter, m  
The l  
One of  
down by  
Alabama-  
tells of  
strangers  
who took  
into their  
out to hel  
Instead  
legend wh  
March/Ap  
Gardener  
led the h  
green pla  
ears of wh  
The hunte  
forgot al  
\*\*\*\*\*  
H  
\*\*\*\*\*  
S  
Ice  
We  
B  
G  
B  
\*\*\*\*\*



**Winters Public Schools  
BREAKFAST MENU**

- MONDAY**  
Buttered toast, jelly, frosted flakes, applesauce, milk
- TUESDAY**  
Biscuits, sausage, gravy, orange juice, milk
- WEDNESDAY**  
Sopopillas, honey, syrup, cheese stick, apple juice, milk
- THURSDAY**  
Cheese biscuits, honey, jelly, oatmeal, grape juice, milk
- FRIDAY**  
Scrambled eggs, sausage, biscuits, orange juice, milk

**LUNCHROOM  
MENU**

- March 10-14**
- MONDAY  
WEST SIDE**  
Hamburgers, lettuce, tomatoes, pickles, French fries, catsup, mustard, mayonnaise, brownie pudding, milk
- EAST SIDE**  
Tacos, tossed salad, vegetarian beans, mixed fruit, peanut butter cookie, milk
- TUESDAY  
WEST SIDE**  
Bacon-tomato-cheese sandwich, French fries, catsup, lettuce, tomatoes, pickles, mustard, mayonnaise, fruit jello, milk
- EAST SIDE**  
Beef tips w/brown gravy, mashed potatoes, brussel sprouts, applesauce cake, hot rolls, butter, milk
- WEDNESDAY  
WEST SIDE**  
Hamburgers, French fries, catsup, lettuce, tomatoes, pickles, peach half, milk
- EAST SIDE**  
Salmon patties w/catsup, macaroni w/cheese, cabbage slaw, applesauce cake, hot rolls, butter, milk
- THURSDAY  
WEST SIDE**  
Tuna-pimento sandwich, French fries, lettuce, tomatoes, pickles, mustard, mayonnaise, cinnamon roll, milk
- EAST SIDE**  
Burritos, chili, cheese, corn, June peas, cinnamon roll, milk
- FRIDAY  
WEST SIDE**  
Hamburgers, French fries, catsup, lettuce, tomatoes, pickles, mustard, mayonnaise, pineapple chunks, milk
- EAST SIDE**  
Roast, gravy, mashed potatoes, green beans, fruit jello, hot rolls, butter, milk

**The legend of Indian corn**

One of the legends passed down by members of the Alabama-Coushatta Indian tribe tells of two mysterious strangers from the spirit world who took a young Indian hunter into their camp, fed him and set out to help him find a bear.

Instead, according to the legend which is recounted in the March/April issue of Texas Gardener Magazine, the spirits led the hunter to a field of tall green plants bearing beautiful ears of what they called "corn." The hunter was so amazed, he forgot about the bear and

**New tour features summer study at Cambridge University**

Adult travelers can study at England's renowned Cambridge University this summer on a new tour program offered by the American Institute For Foreign Study (AIFS) of Greenwich, Connecticut.

Founded in 1964 to provide educational travel for students and their teachers, AIFS has devised the English Life and letters tour in response to the growing number of adult travelers who wish to learn while they travel.

From August 1 to August 24 travelers follow in the footsteps of legendary Cambridge scholars such as Bacon, Newton, Drake, Cromwell and others. Tour participants are placed in residence at Clare College at Cambridge University for three weeks of morning classes in subjects such as The Royal Family, Major British Painters, Post War British Theater, British Art & Architecture and other offerings. The instructors are a distinguished group of tutors from Clare and other Cambridge Colleges.

Prior to the Cambridge stay, travelers travel by escorted coach to Stratford-upon-Avon, Coventry, and Woodstock.

The program is priced at \$2269 which includes round trip air fare from New York (departs twice a week from 31 U.S. cities—supplements apply), two meals a day, all sightseeing and lectures and theater visits.

For a free brochure write: American Institute For Foreign Study, 102 Greenwich Avenue, Greenwich, CT 06830, telephone 203-869-9090.

**ICI Americas & The Cotton Foundation establish scholarships**

ICI Americas Inc. and The Cotton Foundation have established a scholarship program for the children of cotton growers. Called ICI Americas-Cotton Foundation Scholarship Program, the project involves the distribution of at least \$50,000 in scholarship money to high school seniors and currently enrolled college students who are children of cotton growers.

In announcing the program, ICI group product manager Charles R. Nash explained that additional funds for the scholarship program will be based on the 1986 sales of CYMBUSH insecticide. "We've created a program that will benefit both the present and the future of the cotton industry," stated Nash. "By using CYNABUSH, growers can have the highest yields and more profit now while aiding the most important growth component in the cotton industry—its young people."

The program will be administered by The Cotton Foundation. In accepting the initial scholarship contribution from ICI, Dr. Arlie Bowling, director of The Cotton Foundation, explained why the foundation

became involved in the program. "We have always been involved in activities that are important to the educational support of the cotton industry," said Bowling, "and this project is certainly important to those who are continuing their educations in a way that will benefit the industry."

Scholarship candidates will be evaluated on their academic records, faculty recommendations, extracurricular activities, and an essay describing how the candidate's major field of study could be used to benefit the cotton industry. Scholarship winners will be announced in January 1987, with each recipient receiving \$2,000.

"We're looking forward to reading the essays presented by these young people," asserted Nash. "It will allow us to gain some insight into how a variety of disciplines can improve, update, and enhance what is already a vital and important industry."

Scholarship applications can be obtained through ICI Americas distributors or The Cotton Foundation. Deadline for application is July 15, 1986.

For additional information, write ICI Americas-Cotton Foundation Scholarship Program, P.O. box 12285, Memphis, TN 38182-0284.

CYMBUSH is a Restricted Use Pesticide.

**Sauces add up on low-sodium diet**

You can carefully avoid the salt shaker and still be getting significant amounts of sodium from the sauces you use to flavor says Texas A&M University Agricultural Extension Service nutritionist Mary K. Sweeten. For example, soy sauce contains about 1,029 milligrams of sodium per tablespoon. One tablespoon of Teriyaki sauce contains 690 milligrams, chili sauce 227, Worcestershire sauce 206 and barbecue sauce 130 milligrams. Those people on a physician-prescribed low-sodium diet of 1,000 to 2,000 milligrams per day, should carefully select from sauces and other condiments to avoid exceeding their sodium allotment, she says.

plants are appropriate for such landscaping such homes.

Other articles in the March/April issue tell readers how to select the best garden tools, how to conserve water during the summer months, and how to preserve and cook with herbs.

Texas Gardener is available at many newstands and nurseries.

**Student named on semester honor roll**

Theresa Janine Porter, 413 North Main, was one of 180 students named on The University of Texas honor roll for the Fall Semester announced by Dean J. Robert Wills.

To qualify for the fine arts honor roll, a student must complete at least 12 semester hours in residence on a letter-grade basis, earning a grade-point average of at least 3.5, passing all courses with no grade below a "C" (A equals 4 points).

**Lloyd Bentsen introduces Legislation at request of Texas A&M President**

Senator Lloyd Bentsen said Tuesday a system of Space Grant Colleges would do for space exploration what Land Grant Colleges have done for agriculture and mechanical arts over the past 123 years.

Bentsen, acting on a request by Texas A&M University President Dr. Frank E. Vandiver, introduced legislation Tuesday to establish the National Space Grant College Program.

"Texas A&M was established as a Land Grant College in 1876, only 14 years after Congress passed legislation permitting the creation of such institutions of higher learning. In 1981 A&M became one of the first four universities in this country to be designated a Sea Grant College," Bentsen said.

"Officials of the school believe, and I wholeheartedly agree, that it is time to take their programs of research and education beyond the bounds of earth and into space exploration and development."

"It is only a quarter-century after the first people ventured into space, yet our first tentative explorations have already led to the creation of whole new industries. Satellites launched by the space program have revolutionized communications, mapping and weather forecasting. Developments fostered by our space effort include microcircuitry, which has created huge new computer and electronics industries."

"As we contemplate this country's \$148.5 billion trade deficit of last year, commercial development of space technology offers a bright ray of hope for the future. It is one field in which we are far ahead of foreign competition. But we do have competition, in Europe and Japan and elsewhere, and we must redouble our efforts to move forward."

The National Space Grant

**Four Lady Blizzards make honors**

Carolyn Garcia, Leslie Pruser, Melissa Poehls, and Sonya Belk were selected to the 11-AA 1985-86 District Honors Basketball team.

The Lady Blizzards placed 4th in District play, while Coleman and Baird were first and second. They Lady Blizzards lost a couple of District games at the sound of the buzzer, which could of easily placed the team higher.

The team leaders were, Leslie Pruser with 227 rebounds; followed by Melissa Poehls, with

195; Sonya Belk, with 131. Leading in scores were Leslie Pruser, with 303 points; Melissa Poehls, with 176; Sonya Belk, with 141; and Carolyn Garcia, with 88 points. Leading in steals were, Carolyn Garcia, 40; Melissa Poehls, 39; and Rosie Salazar, with 30.

In District play the Lady Blizzards attempted 281 free shots and made 137. Top point makers were, Melissa Poehls, with 40; Leslie Pruser, 25; and Carolyn Garcia, with 15.

Program would be administered by the National Aeronautics and Space Administration, utilizing existing universities. Research and development efforts under the program would be directed toward space technology and commercialization for the purpose of furthering commerce, national security and the general quality of life. It would encourage universities to establish schools of space as well as regional consortiums of universities and industry.

The program would award grants on a competitive basis to universities and fellowships to graduate and undergraduate students. Total funding would be \$10 million in fiscal 1986 and \$7 and \$15 million each of the next two years.

"The National Space Grant Program would provide needed coordination and unity for the many, diverse space research efforts we have in this country," Bentsen said.

"But this is far more than a program to foster commercial development of space. We are talking, too, about a program of education to prepare young Americans for a future that will increasingly move far beyond the terrestrial limits of earth," Senator Bentsen said.

**Meat labeling**

"Because there's no mandatory system for naming beef once it reaches the market, extra lean might mean 85 percent lean to one butcher and 75 percent lean to another," says nutritionist Mary K. Sweeten. But the beef industry does have a voluntary standard limiting lean ground beef to 24 percent fat and extra lean to 15 percent fat, she adds. According to the Texas A&M University Agricultural Extension specialist, the only time you can be certain about the names of beef steak and roasts is when they're called "prime," "choice," or "good." Only meat graded at the packinghouse using U.S. Department of Agriculture guidelines can be labeled with these words. Government graders assign these designations on specific criteria, such as age and the degree of fat marbling. The beef with the most fat marbling tends to be the most tender and is the most likely to be called "prime."

He that defers his charity until he is dead is, if you weigh it rightly, liberal of another man's goods rather than his own.

Francis Bacon

**The Filling Station**  
707 N. Main  
Phone 754-4877

**Now Serving Plate Lunches At Noon**  
Monday—Friday \$2.99  
**Fried Fish Dinners Daily-\$3.39**  
**New: Steak Fingers, Gravy, Fries Slaw and Rolls-\$2.79**

Open 10 A.M.—2 P.M. 5 P.M.—8 P.M.  
Monday—Saturday Closed Sunday  
All Prices Subject To Sales Tax

**THE EMPIRE STRIKES BACK, STAR TREK III—THE SEARCH FOR SPOCK, AMADEUS AND MORE.**

**2 MONTHS OF SHOWTIME FOR THE PRICE OF ONE.**

For a limited time, when you subscribe to Showtime, you get the first two months for the price of one. Plus you receive a FREE upgrade.

It's not just more television...it's better television.

As an example in the next few months alone, Showtime will bring you movies like, *The Empire Strikes Back*, *Star Trek III—The Search for Spock*, *The Breakfast Club*, *The Flamingo Kid*... and that's just the beginning of the excitement.

Showtime also has the best comedy series like 'Brothers'; fine family programming with Shelley Duvall's 'Fairy Tale Theatre' and 'Tall Tales and Legends'; drama with 'The Paper Chase' and 'Robin Hood' plus music excitement from Dire Straits to John Lennon.

By signing up now, "The Lost Episodes" of *The Honeymooners* will be yours at the flick of a switch. Just think, 52 shows that haven't been seen since their original screening 30 years ago.

Act now. This offer expires March 31, 1986. Showtime makes excitement. Call Rogers Cable TV today.

**855-8911**

**SHOWTIME Excitement**

Rogers Cable TV


Ballinger - 365-2726 - Winters

**Have a cone**



**Soft Serv Ice Cream Cones**  
Wed., Thurs. & Friday  
**Buy One Get One Free**  
**Burger Hut**

**Baseball Equipment**  
**Team Uniforms**  
**Team Caps**  
**Treadmill**



Open 10 A.M. to 5:30 P.M.  
808 Hutchings Ballinger



**PUBLIC NOTICE**

The City of Winters, a Municipal Corporation of Runnels County, is accepting sealed bids for the mineral lease of the airport properties as described.

TRACT 1: 9.03 acres of land out of the Hugh Lewis Survey No. 64, Abst. #804, in Runnels County, Texas, described in Deed from Mrs. M.B. Osborne to City of Winters, dated Nov. 28, 1972, recorded in Vol. 427, Page 408, Deed records of Runnels County.

TRACT 2: 11.2 acres (comprising 10.6 acres of Vancil Sur. #2, Abst. #1283, and 0.6 acre out of Poitevaut Sur. #1, Abst. #594), described in Deed from C.N. Kornegay et al to City of Winters, Dated Nov. 28, 1972, recorded in Vol. 427, Page 409, Deed Records of Runnels County.

TRACT 3: 9.8 acres of land out of the Poitevaut Survey #1, Abst. #594, described in Deed from C.N. Kornegay, et al to City of Winters, date July 14, 1967, recorded in Vol. 393, Page 6, Deed Records of Runnels County.

TRACT 4: 5.9 acres of land (being 0.7 acre of Vancil Survey #2, Abst. #1283, and 5.2 acres of the Poitevaut Survey #1, Abst. #594) described in Deed from C.N. Kornegay et al to City of Winters, dated March 27, 1973, recorded in Vol. 429, Page 242, Deed Records of Runnels County.

Said aggregate of 35.93 acres shall conform to all Texas Aeronautics Commission requirements and the City of Winters Airport Zoning Ordinance.

Bids will be received in the office of the City Administrator, 310 S. Main, Winters, Texas 79567, until 2:15 p.m., March 14, 1986. Bids will be reviewed by the City Council at the next regularly scheduled Council meeting.

The City reserves the right to reject any and all bids.  
(February 27, March 6, March 13, 1986)

**NOTICE OF AN APPLICATION TO APPROPRIATE PUBLIC WATERS OF THE STATE OF TEXAS**

No. A-3428A

Notice is given that Audra L. Mitchell  
Route 1, Box 86  
Winters, Texas 79567

applicant, seeks to amend Permit No. 3137 pursuant to §11.122, Texas Water Code, and Texas Water Commission Emergency Rules 31 TAC §§303.1 and 307.21-307.22 et seq.

Permit No. 3137 was issued on July 1, 1975, pursuant to Water Code Section 11.143 and authorizes the diversion and use of 50 acre-feet of water per annum from an existing 35 acre-foot capacity exempt reservoir on Big Coyote Creek, tributary of Elm Creek, tributary of the Colorado River, Colorado River Basin for the irrigation of 50 acres of land out of a 70-acre tract, 6 miles northwest of the Town of Winters, Runnels County, Texas. The permittee is further authorized to use the bed and banks of Big Coyote Creek for transporting releases of water from the reservoir to the downstream diversion point (200 feet downstream). A special condition in the permit states that the authorization for irrigation shall become null and void on December 31, 1985.

The applicant seeks to amend Permit No. 3137 in order to delete the expiration date, all being more fully set out in the application.

Application No. A-3428A was received on November 19, 1985 and accepted for filing on January 14, 1986. The Executive Director has reviewed this application and declares it to be administratively complete.

No public hearing will be held on this application unless an affected person requests a public hearing. Any such request must be in writing and contain (1) the name, mailing address and telephone number of the requester; (2) the application number or other recognizable reference to this application; (3) a brief explanation of how the requester, or persons represented by the requester would be adversely impacted by the granting of this application, and (4) a clear statement of the objections of the requester or represented persons.

This application will be presented to the Commission for final decision on April 29, 1986 at 10:00 a.m. in Room 118 of the Stephen F. Austin State Office Building, 1700 N. Congress Avenue, Austin, Texas unless a sufficient request for hearing is received within 30 days of the date of newspaper publication of this notice. If a hearing request is filed, and the Commission determines that the request sets out an issue relevant to the decision on the application, and/or that a public hearing would serve the public interest, the Commission will remand the application for a public hearing. If this application is remanded for hearing, no further notice of the hearing or hearing date will be issued other than advising all interested persons of the time and place where the hearing is to convene. Therefore, all individuals who wish to be notified of the setting of a hearing must submit a written request for notification to the Texas Water Commission.

Requests for a public hearing and/or requests for further information concerning any aspect of the application should be submitted in writing to the Chief Hearings Examiner, Texas Water Commission, P. O. Box 13087, Capitol Station, Austin, Texas 78711, Telephone (512) 463-7898.

Issued this 21st day of February, 1986.

Mary Ann Hefner, Chief Clerk  
Texas Water Commission  
(February 27, 1986)

**PUBLIC NOTICE**

Election order and Notice  
THE STATE OF TEXAS  
COUNTY OF RUNNELS

On this the 17th day of February the Board of Directors of North Runnels Hospital District convened in called session, open to the public, with the following members present wit: George Mostad, Chairman, Lanny Bahlman, Vice-Chairman, Ronnie Poehls, Director, Bob Webb Director, Bill Cathey, Director, and Mike Mitchell, Director constituting a quorum and among other proceedings had by said Board of Directors was the following:

Whereas, the term of office of 3 directors will expire on the first Saturday in April, 1986 said 1st Saturday, being April 5, 1986 and on said date a Director election will be held in said Hospital District.

Whereas, IT IS NECESSARY FOR THIS Board to pass an order establishing the procedure for filing for and conducting said Director election; in accordance with Chapter 206, H.B. No. 145.

THEREFORE, BE IT ORDERED BY THE BOARD OF DIRECTORS OF NORTH RUNNELS HOSPITAL DISTRICT.

1. That an election be held in said Hospital District on April 5, 1986 for the purpose of electing to the Board of Directors of said Hospital District 3 (three) directors, who shall serve for two years and until their successors have been duly elected and have qualified.

2. That all requests by candidates to have their names placed upon the ballot for the above mentioned election shall file a petition signed by at least 10 qualified property Taxpaying electors asking that such name be printed on the ballot with the Secretary of the Board of Directors. Such petition shall be filed with the Secretary at least 10 days prior to the date of the election. Said Secretary shall otherwise comply with the terms and provisions of Art. 13.32 of the Election Code.

3. That said Election shall be at the following places and the following named persons are hereby appointed officers for said election:

At the Chamber of Commerce Building in Winters, Texas with Mary Beth Drake, president, Rhuennell Poe and Floyd Million as clerks.

At the school building in Wingate, Texas with Kathleen Shedd presiding, and Edna Rodgers and Mrs. Polk, as clerks.

The polls at the above designated polling places shall on election day be open from 7:00 a.m. to 7:00 p.m.  
4. Diann Whittenburg is hereby appointed Clerk for absentee voting. The Absentee voting for the above designated election shall be held at the North Runnels Hospital Business Office. The above order being read, it was moved and seconded that the same do pass. Thereupon, the question being called for, the following members of the board voted AYE: ALL; and the following voted NO: NONE.

ATTEST:  
George Mostad  
Chairman, Board of Directors  
Randall Boles  
Secretary, Board of Directors

**AVISO PUBLICO**

Orden Y Aviso De Election  
EL ESTADO DE TEXAS  
CONDADO DE RUNNELS

En este día 17th day of February, el Consejo de Administradores del Distrito Hospital de Norte de Runnels se reunio en sesion regular, abierta al publico, con los siguientes miembros presentes, a saber: George Mostad, Presidente; Lanny Bahlman, Vice-Presidente; Bob Webb, Director; Ronnie Poehls, Director; Bill Cathey, Director; Mike Mitchell, Director, constituyendo un quorum y entre otras actas tomadas por dicho Consejo de Administradores se encuentra la siguiente:

EN VISTA de que el regimen de 3 Directores miembros del Consejo de Administradores expira April, 1986, dicho 1st Saturday April 5, 1986, y en dicha fecha se llevara a cabo una eleccion de Directores en dicho Distrito Hospital.

EN VISTA de que es necesario que este Consejo pase una orden estableciendo el procedimiento para archivar y conducir dicha eleccion de administrador; de acuerdo con el capitulo 106 H.B. 145.

POR LO TANTO, SE ORDENA POR EL CONSEJO DE ADMINISTRADORES DEL DISTRITO HOSPITAL DE NORTE RUNNELS:

1. Que se lleve a cabo una eleccion en dicho Distrito Hospital el día April 5, 1986 para el proposito de elegir al Consejo de Administradores de dicho Distrito Hospital 3 (tres) directores quienes serviran por dos años y hasta que los sucesores han sido elegidos y se han calificados.

2. Que todas las solicitudes de candidatos a que se incluyan sus nombres en la boleta de la arriba mencionada eleccion, sera archivo la petition firmadas por no menos que lo electores calificados contribuyentes de propiedad pidiendo

que tal nombre sea imprimido en la boleta con el secretario. Tal peticion sera archivado con el secretario no menos que 10 dias antes la fecha de la eleccion. Dicho secretario no otro modo se cumplira con los terminos de Art. 13.32.  
3. Que dicha eleccion se llevara a cabo en los siguientes lugares, y las personas nombradas a continuacion se les nombra por la presente como oficiales de dicha eleccion:

en el Chamber of Commerce Building en Winters, Texas en dicho Distrito Hospital y Mary Beth Drake como Juez Directivo y Rhuennell Poe, y Floyd Million, Ayudantes.

en el Edificio de la escuela en Wingate, Texas, en dicho Distrito Hospital, con Kathleen Shedd como Juez Directivo y Senoras Edna Rodgers, Mrs. Polk Ayudantes

Los lugares de votacion arriba designados se mantendran abiertos el dia de eleccion de los 7:00 a.m. a las 7:00 p.m.

4. A la Senor Diann Whittenburg se le nombra Secretario de votacion ausente. La votacion ausente para la eleccion arriba designada se llevara a cabo en la oficina de negocios de la Hospital de Norte Runnels.

Habiendose dado lectura a lo anterior, se hizo la mocion y fue secundada para ser adoptada. Despues al llamado sobre esta pregunta, los siguientes miembros del Consejo votaron AFIRMATIVAMENTE: TODOS y los siguientes votaron NEGATIVAMENTE: NINGUNO.  
CERTIFICA:

George Mostad  
Presidente, del Consejo de Administradores  
Randall Boles  
Secretario del Consejo de Administradores  
(March 6, 13, 1986)

**PUBLIC NOTICE**

Notice is hereby given that North Runnels Hospital District, a government entity of North Runnels County, will receive bids in the office of the administrator at North Runnels Hospital Hwy. 53 East, Winters, Texas until 11:30 a.m. Friday, March 7, 1986 for a Blood Gas Analyzer.

Specifications may be secured in the office of the hospital administrator. All bids must substantially comply with specifications.

The North Runnels Hospital District reserves the right to reject any or all bids and to award the bid considered most advantageous to North Runnels Hospital, Winters, Texas.  
(February 27, March 6, 1986)

**PUBLIC NOTICE**

The City of Winters, a municipal Corporation of Runnels County, is accepting sealed bids on the following vehicles to be sold:

One 1981 Chevrolet Impala 4 Door - VIN 6618  
One 1982 Chevrolet Impala 4 Door - VIN 9147

Bids will be received in the office of the City Administrator, 310 S. Main, Winters, Texas 79567, until 2:00 p.m., March 14, 1986. Bids will be reviewed by the City Council at the next regularly scheduled Council meeting.

The cars may be inspected by contacting the Police Department at the above address. The City of Winters reserves the right to reject any and all bids.  
(February 27, March 6, 1986)

**Scholarships available for travel**

Scholarships of up to \$800 that can be applied toward international education and travel programs are available to families who host English speaking high school students who come to the U.S. for a semester or academic year. This Scholarship program is sponsored by the non profit American Institute For Foreign Study Scholarship Foundation of Greenwich, Connecticut.

Visiting students coming to the U.S. from Germany, Spain, Japan and other countries stay with "Host Families," attend the local high school and learn about American life and culture. This program, first offered in 1964, is a rewarding opportunity to "Share America With the World."

three meals a day was reported most frequently. Seventy-six percent of the women and 83 percent of the children in the current study, identified one or more of their eating occasions as a "snack." Those figures were much lower—60 percent for women and 62 percent for children—in 1977. "Because we're eating more snacks, they are making a greater nutritive contribution to our diets," says Hung. For example, women in

Host family members then earn scholarships applicable to over 100 different international learning programs suitable for junior high, high school, college or adult travelers. Worldwide programs ranging from one week to a full year include homestays, cruises and campus stays.

The Foundation is also seeking Local Coordinators in communities throughout the nation whose duties will include placing and supervising the students.

For additional information write AIFS Scholarship Foundation, 100 Greenwich Avenue, Greenwich, CT 06830; or call, toll free 800-243-4567 east of the Mississippi, 800-841-9028 in California, or 800-458-7100 west of the Mississippi.

the USDA study got 9 to 19 percent of their calories and nutrients from snacks in 1985, compared with 6 to 15 percent in 1977. Children got 9 to 22 percent of their food energy and nutrients from snacks in 1985 compared with 6 to 16 percent in 1977.

A honeymoon is a short period of doting between dating and debting.

Ray C. Bandy

**Snacks accounting for more nutrients**

Recent research shows that snacks are making a greater nutritional contribution to the diets of women and children, says a Texas A&M University Agricultural Extension Service nutritionist. According to Dr. Alice Hunt, U.S. Department of Agriculture (USDA) scientists compared data on the food intake of women and children in 1977 to new data collected in 1985. The 1985 data showed that more women and children reported eating four times a day than three times a day. In 1977,

**Ask Your Realtor or Builder About WTU's Energy Savings Plan**

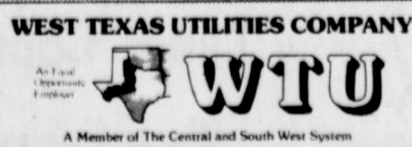


**It Will Save You Money!**

An E.S.P. Home will save you up to twenty-six percent in home energy bills a year. An average 1800 square foot home will cost approximately \$775 a year to heat and cool. The same size E.S.P. Home will cost approximately \$570 a year to heat and cool. That results in an annual savings of over \$200! (Energy savings may vary according to the type of home, family size and individual energy usage habits.)  
All E.S.P. Homes have been

carefully inspected and qualified to meet the strict energy efficiency requirements that will help you get the maximum value for every kilowatt-hour of electricity you buy.

And, if you decide to sell your E.S.P. Home in the future, you'll have the Energy Savings Plan helping you save money again through an increased resale value. Most prospective homebuyers will be looking for a home that will give them the best value for their energy dollar — YOUR E.S.P. HOME!



**HOLLOWAY'S BAR-B-Q BARN**

Highway 53

**Trades Day Special**

Friday, March 7  
Chopped Sandwiches  
\$1.00  
Bowl Of Beans  
.50¢

**We Specialize In Barbeque, Brisket & Sausage Also Salads**

For Catering Large or Small Parties  
Please Call 754-4984

**NOW OPEN FOR BUSINESS ON HIGHWAY 67 IN SOUTH BALLINGER**

Rufus "Copper" Williams

Tresea Mueller

Sylvia Medrano



Dorothy Williams

Patrick Mueller

Ricky Williams

**COMPETITIVE PRICES, FAST SERVICE DRIVE-UP WINDOW**

**Frank**  
Frank L. died at 6:30 p.m. at Briarstone Home in illness.

He was born in Winnsboro, Texas, and lived there until he moved to Runnels County farm east of Winters, Texas, where he died on March 9, 1931 in Runnels County. He moved into where they farmed for a member of the Survivors of the War.

Survivors of the War include Vela of Winters, Texas, Charles Edman, Texas, of Graham, Texas, Laird of D. children; grandchild Charlotte St. death in 1941.

Services will be held at 2 p.m. Saturday at the Glenn Funeral Home. The minister, off duty, is Paul Ransberger. Burial will be in the Winters Cemetery.

Services will be held at 2 p.m. Tuesday at the Funeral Home with the Rev. Paul Ransberger. Burial will be in the Winters Cemetery.

**'Babe'**  
Services will be held at 2 p.m. Tuesday at the Funeral Home with the Rev. Paul Ransberger. Burial will be in the Winters Cemetery.

**Willie H.**  
Willie Bell died at 10:30 p.m. at Memorial Hospital on February 24, 1986.

She was born in Texas, and lived in Houston until she moved to Ballinger, Texas. She was also a member of the United Methodist Church.

Services will be held at 2 p.m. Wednesday at the Funeral Home. The minister, off duty, is Eugene Gore. Burial will be in the Winters Cemetery. Survivors include Mrs. Flay (Belle) Ballinger, and the Routh of Winters. Services will be held at 2 p.m. Wednesday at the Funeral Home. The minister, off duty, is Eugene Gore. Burial will be in the Winters Cemetery. Survivors include Mrs. Flay (Belle) Ballinger, and the Routh of Winters. Services will be held at 2 p.m. Wednesday at the Funeral Home. The minister, off duty, is Eugene Gore. Burial will be in the Winters Cemetery. Survivors include Mrs. Flay (Belle) Ballinger, and the Routh of Winters.

Services will be held at 2 p.m. Wednesday at the Funeral Home. The minister, off duty, is Eugene Gore. Burial will be in the Winters Cemetery. Survivors include Mrs. Flay (Belle) Ballinger, and the Routh of Winters.

Services will be held at 2 p.m. Wednesday at the Funeral Home. The minister, off duty, is Eugene Gore. Burial will be in the Winters Cemetery. Survivors include Mrs. Flay (Belle) Ballinger, and the Routh of Winters.

Services will be held at 2 p.m. Wednesday at the Funeral Home. The minister, off duty, is Eugene Gore. Burial will be in the Winters Cemetery. Survivors include Mrs. Flay (Belle) Ballinger, and the Routh of Winters.



# Obituaries

## Frank Laird

Frank Laird, 78, of Winters died at 6:30 p.m. Thursday in the Briarstone Manor Nursing Home in Anson after a short illness.

He was born January 16, 1908 in Winstonsboro, Texas, and lived there until 1929 when he came to Runnels County settling on a farm east of Winters. He married Vela Derden on September 9, 1931 in Runnels County, they moved into Winters in 1977 where they have lived since. He farmed for 48 years and was a member of the Baptist Church.

Survivors include his wife, Vela of Winters; four sons, Charles Edwin Laird of Kauffman, Texas, Carlton Ross Laird of Graham, Calvin Russell Laird of Hamlin, and Chester Dail Laird of Desoto; 18 grandchildren; and 19 great-grandchildren. One daughter, Charlotte Sue preceded him in death in 1941.

Services were held at 2:30 p.m. Saturday in the Winters Funeral Home Chapel with Rev. Glenn Shoemaker, Baptist minister, officiating.

Burial was in Lakeview Cemetery under the direction of the Winters Funeral Home.

Pallbearers were: Jim Prince, Johnny Usery, James Usery, Chilton Brown, Johnny Weems, and Jack King.

## 'Babe' Glasgow

Services for N.N. "Babe" Glasgow, 77, were held at 2 p.m. Tuesday at Cate Spencer Funeral Home in Sweetwater with the Revs. Marion Oden and Paul Ransberger officiating.

Burial was in Sweetwater Cemetery.

He died Saturday at Oak Creek Reservoir, south of Blackwell, after a sudden illness.

He was a Blackwell native and owned an auto parts store.

Survivors include his wife, Sylvia Glasgow; a son, Johnny of Sweetwater; a daughter, Elaine Roberts of El Mirage, Arizona; two sisters, Ethel Wilson of Platteville, Louisiana, Eunice Davis of Snyder; three grandchildren; and a great-grandchild.

## Willie Hale

Willie Belle "B" Hale, 87, of Ballinger died in Ballinger Memorial Hospital Monday, February 24, 1986, at 5:55 p.m.

She was born in Lometa, Texas, and had resided in Houston until 1961 when she moved to Ballinger. She was a Western Union Operator, she also was a member of the First United Methodist Church and active in the Ballinger Garden Club.

She was preceded in death by seven brothers and two sisters.

Survivors include two sisters, Mrs. Flay (Bernice) Brevard of Ballinger, and Mrs. Ralph (Myrtle) Routh of Fort Worth.

Services were held at 10 a.m. Wednesday in the Rains-Seale Funeral Home Chapel, with Dr. Noble Atkins, and Rev. Winford Gore officiating.

Burial was in the Crews Cemetery under the direction of Rains-Seale Funeral Home.

Pallbearers were: Ira D. Hale, Weldon Brevard, Arnold Alcorn, Bobby Jones, Roy "Car" Parker, Eugene Payne, Fred Dameron, and Billy Hale.

## Pierson Corder

Pierson Franklin Corder, 75, died Wednesday, March 26, 1986 in the Ballinger Memorial Hospital.

He was born in Ballinger October 23, 1910, and married Camilla Findlay April, 10, 1938 in Ballinger. They resided in Menard from 1930 to 1948. He was a member of the First Presbyterian Church, and was a mechanic by trade.

Survivors include his wife, Camilla of Ballinger; one daughter, Ola Beth Dlugas of Abilene, two sons, Tommy Corder of Edmond, Oklahoma, and Franklin Lee Corder of Ballinger; three grandchildren also survive.

Services for Mr. Corder were held Thursday in the Rains-Seale Funeral Home Chapel with Rev. Don Shepherd officiating.

Burial was in Evergreen Cemetery under the direction of Rains-Seale Funeral Home.

Pallbearers were: Carlos Martin, Carl Nelson, Bob Wheeler, Ray McNight, Garry Thompson, Frank Wilson, and Shorty Zertuche.

## 'Red' Adams

John Monroe "Red" Adams, 92, of Bronte died Sunday at a San Angelo hospital.

Services were held 3 p.m. Monday at the Bronte First United Methodist Church, with the Rev. Howard Johnson officiating.

Burial was in Fairview Cemetery in Bronte, under the direction of Shaffer Funeral Home.

A Titus County native, he was a Methodist. He was a veteran of World War I and a member of the Veterans of Foreign Wars. He worked for the Texas Department of Highways and Public Transportation.

Survivors include his wife, Ida Adams of Bronte; two brothers, Bill of Indianapolis, Indiana, and Arthur of Tahoka; two sisters, Mamie Wilkerson of Winters and Gertrude Lowe of Abilene; two grandchildren; and three great grandchildren.

## Edward Brice

Edward Julius Brice, 59, of Bronte died Sunday at a San Angelo hospital after an illness.

Services were held 10 a.m. Monday at Central Baptist Church with the Rev. Don Sheppard, Presbyterian pastor from Ballinger, officiating.

Burial was in Fairview Cemetery in Bronte under the direction of Shaffer Funeral Home.

He was an oil construction worker for Burwick Oilfield Service in Bronte and a World War II veteran. A Wingate Native, he moved to Bronte in 1948. He was a member of the Veterans of Foreign Wars.

Survivors include his wife, Virginia Lee Brice of Bronte; a son, Bobby Ray of Bronte; four daughters, Shirley Starkos, Darlene Gowen and Pam Gandy, all of San Angelo, and Judy Snowden of Odessa; four brothers, Billy of Sweetwater, Charles of Odessa, Leon of Comanche and Leslie of San Angelo; seven sisters, Juanita Bradley of Rowena, Joyce Weidner of San Angelo, Fayrene Hewager of

Belton, Oleta Webb of Winters, Iris Coffey, of Port Lavaca, Odell McGinnis of Mineral Wells and Frances Faglie of Merkel; six stepchildren; seven grandchildren; and 11 step-grandchildren.

## Raymond Bagwell

Raymond A. Bagwell, 73, of Ballinger died in the Ballinger Memorial Hospital Monday, March 24, at 9:05 p.m.

Mr. Bagwell was born in Loraine, Texas March 29, 1912. He married Lois Irene Smith, May 13, 1939 in Bradshaw.

He was an agent for Shell Oil Company for many years prior to being a consignee for Texaco. He graduated from McMurry College in 1948 and taught school at Bradshaw. He was a member of the Ballinger Noon Lions Club, Ballinger Masonic Lodge #643, the Waco Scottish Rite Consistory, the Suez Shrine Temple, and a member of the First United Methodist Church. Mr. Bagwell also had extended farming and ranching interests in the Runnels County area.

Survivors include his wife, Lois of Ballinger; one daughter, Mary Etta Kvapil of Ballinger; three sisters, Mrs. Belva Orr of Trent, Mrs. Lavelle Deaton of Winters, Mrs. Essie Smith of Bradshaw; one brother, Arzo (Bob) Bagwell of Robert Lee; and three grandchildren.

Services for Mr. Bagwell were held 2 p.m. Wednesday at the First United Methodist Church with Dr. Noble Atkins, Ballinger Methodist minister and Rev. Ramsdell of Santa Anna officiating.

Burial was in Garden of Memories under the direction of Rains-Seale Funeral Home.

Honorary pallbearers were Doss Bible Class and Ballinger Lodge #643.

## Delton Riddle

Delton Jesse Riddle, 72, of Abilene, formerly of Winters died at 7:56 p.m. Sunday in Abilene at Hendrick Medical Center.

He was born November 3, 1913 in Ballinger. At the age of two he moved to Winters and lived in Runnels County until 1952 when he moved to Abilene, where he had lived since.

He was a general laborer and a member of the Baptist Church.

Survivors include on son, Delton Roy Riddle of Dallas; five daughters, Glenda Angley of Abilene, Jackie Sue Walker of Sweetwater, Martha Dale Pendleton of Seven Points, Texas, Anna Paulette Baucum, and Jeanie Marlene Woods both of Abilene; one brother, Anderson Riddle of Abilene; 20 grandchildren; and 27 great-grandchildren.

Services were held at 2 p.m. Wednesday in the Winters Memorial Chapel with Rev. Jamie Jett, minister of the Highland Park Baptist Church in Abilene, officiating, being assisted by Rev. Ronnie Newton, Methodist minister.

Burial was in Northview Cemetery under the direction of the Winters Funeral Home.

Grandsons were pallbearers.

## Bess Shultz

Bess Charles Shultz, 85, of Paint Rock died Friday, February 8, at 3:22 p.m. in the San Angelo Community Hospital.

Born December 4, 1900 in Georgetown, she was a long time ranch woman. She married Tom A. Shultz July 4, 1920, he preceded her in death January 17, 1940, she was a member of Paint Rock Methodist Church.

Services for Mrs. Shultz were held 10 a.m. Monday, in the Paint Rock Methodist Church,

with Rev. Paul Terry officiating.

Burial was in the Paint Rock Cemetery under the direction of Rains-Seale Funeral Home.

Survivors include one daughter, Mrs. Edgar (Oneil) Hutcheson of Paint Rock; one son, Dick Hadley also of Paint Rock; one sister, Mrs. E.A. (Deedie) Glass of Adamsville, Texas; one brother, D.J. Ward of San Angelo; 10 grandchildren; several great-grandchildren; also several nieces and nephews.

Pallbearers were: Bob Hutcheson, Dickie Hadley, Shultz Hadley, Tony Paty, Ernest Paty, and Don Vick. Honorary pallbearers were, W.F. Houston and P.W. Williams.

## Correction

In last weeks obituary of Ida Onken, Carl Onken was listed as one of the pallbearers, he was a grandson, Henry Bredemeyer was a pallbearer but not listed.

## Hospital

### Notes

#### ADMISSIONS

February 25

None

February 26

None

February 27

Kathy Danford

February 28

None

March 1

None

March 2

Eloyse Rodriguez

and baby girl

Clarence Tharp

March 3

None

#### DISMISSALS

February 25

None

February 26

Ronnie Tounget

George Watson

February 27

Ted Butler

Mitchell Fenwick

Alene Watson

February 28

None

March 1

Kathy Danford

March 2

None

March 3

Eloyse Rodriguez

and baby girl

## Protect credit card numbers

"Practically any cashless transaction can leave consumers open to fraud," says family economics expert Nancy Granovsky. "Since fraudulent schemes change as fast as we become aware of them, the general rule for consumers is to guard their credit card numbers as they would cash. According to Granovsky, a home economics specialist with the Texas A&M University Agricultural Extension Service, one of the most recent scams is to request a credit card account number over the phone so that a free gift can be sent. Of course, no prize of free gift comes, and the caller has your credit charge card number to use for ordering merchandise by phone or even applying for a charge card number by phone or even applying for a lost card using your number. "It's not a good idea to give your credit card number over the phone," she says. "If you do, make sure it's to a reliable company that you have had dealings with before, rather than an unknown firm."

"Soil cannot be considered as soil alone. People live on it. They own it, rent it, plow and cultivate its crops, and live upon the fruits of the harvest. When the soil fails, people suffer."

Katherine Glover

## Hot-Line set for Big Spring State Hospital

A completely new service—a Crisis Hot-Line—is scheduled to begin service for a 23-county area surrounding Big Spring, it was announced this week by A.K. Smith, Superintendent, and Jack Stovall, Director of Community Programs for Big Spring State Hospital. On-line date for the new service, mandated by Senate Bill 633, is March 1.

"This newly established Crisis Hot-Line will be operative 24 hours a day, seven days a week," Mr. Smith said. "it is being established to provide constant crisis coverage to the 23 counties in West Texas that make up Regions 37 and 38 the region for which Big Spring State Hospital is the mental health authority."

In explaining the operation of the new service, the two hospital officials pointed out that any call to the new line will light up an emergency light on the switch board at the hospital and the operator will promptly transfer the call to a mental health professional.

"All that any caller from the counties covered has to do is contact the telephone operator in his area and ask for "Enterprise 8-4357," Mr. Smith explained. "When the call comes in to the hospital it will be handled promptly. During the day service hours—8 a.m. to 5 p.m.—the call will go immediately to the Outpatient Clinic, where it will be handled by one of the 14 professionals of community services. At other times the request will be referred to a professional on call for that purpose."

"The professional who takes the call will evaluate the call and decide just what measures need to be taken. The community services workers will rotate the after-hours duty, so that some of them will be constantly available to offer help," Mr. Smith explained.

"Even if it is three a.m., the person handling the call at the hospital will take appropriate action which may require contacting a worker in the community where the call originates to take care of the emergency," Mr. Stovall noted. "This hot-line service is intended to serve as a full time link for people requiring mental health services."

The Crisis Hot-Line number will be listed in the yellow pages of all telephone directories that cover the 23 counties in the Big Spring State Hospital service area. A completely new line has been installed to handle the emergency calls, and any call will activate the light on the switchboard for a prompt transfer to Outpatient Clinic or to the professional on night duty.

"The salient feature of this new service is that there WILL ALWAYS be someone on duty to deal with the crisis," Mr. Stovall concluded.

"The person on call will be

able to judge the severity of the problem, and take appropriate action to deal with the crisis."

The 23 counties included in the Big Spring State Hospital service area are: Andrews, Dawson, Gaines, Garza, Howard, Mitchell, Nolan, Reeves, Loving, Scurry, Terry, Ward, Upton, Crane, Fisher, Kent, Martin, Runnels, Terrell, Winkler, Yoakum, Glasscock and Borden.

## Eye physicians offer help to 1246 elderly residents

The Texas Eye Care Project Helpline, the medical program to help provide eye care to the elderly, has received 1246 calls in its first two weeks of operation.

Of the callers, 830 elderly Texas residents—24 of whom have no insurance—have been referred to volunteer ophthalmologists for eye care. Other callers have received free information about eye care.

John E. Eisenlohr, MD, president of the Texas Ophthalmologists Association, has encouraged US citizens and legal residents age 65 and older to call the toll-free Helpline—1-800-222-EYES—if they think they have medical eye problems but do not have an eye physician. Disadvantaged elderly are eligible for medical eye care at no out-of-pocket cost.

The Texas Helpline is open from 8 am to 5 pm Monday through Friday. Other states will be opening at two-week intervals until July 21, when the Helpline will be operating throughout the country.

The program—supported by voluntary donations from ophthalmologists and by contribution from corporations associated with the eye care profession—is sponsored by the Foundation of the American Academy of Ophthalmology and state ophthalmology societies across the US.

The American Academy of Ophthalmology is the world's largest association of eye physicians and surgeons, with nearly 14,000 members. Ophthalmologists provide comprehensive eye exams, prescribe corrective lenses and diagnose and treat eye disease.

## Flying squirrels visit

You may not know it, but flying squirrels could be visiting your backyard bird feeder. According to *National Wildlife* magazine, if you have mature leaf-bearing trees on your property, chances are good that squirrels which look like they're flying have been by at night. How can you tell? At dusk, turn on an outdoor light that's just bright enough for you to see the feeder...and check the feeder for visitors about once an hour.

## Paul And Mary's Quick Grocery

243 S. Main 754-4914

Big Grocery Store Prices  
With Convenience Store Hours

6-10 Monday Through Saturday  
8-10 Sunday

Smokaroma BBQ Sand \$1.88  
Smokaroma Plate W/Drink 2.75  
Dairy Gold Milk 1.99  
All 16 Oz. R C Products 45¢

## FOR SALE CHOICE REGISTERED BEEFMASTER BULLS

9 MONTHS-3 YEARS  
BRADSHAW, TEXAS

Keith D. Graham  
767-3366

Johnny Walker  
767-3460



also feeds lawn  
for  
deep green growth

ferti-lome

\$1 TRADES DAY SPECIAL \$1

This Coupon Good For \$1 Off  
Every Bag Of All Fertilizer  
Purchased At:  
FARMERS SEED AND SUPPLY  
108 South Melwood

\$1 Expires March 8, 1986 \$1



### NORTH RUNNELS HOSPITAL EQUIPMENT FUND

Memorials	Amount
Marion L. Blackmon	\$50.00
Jolly Bunger	25.00
O.C. Barker	20.00
Clara Bridwell	10.00
Chester A. Crimm	20.00
LaDell Davis	182.50
Virgil Fuller	15.00
Mildred Gardner	10.00
Eula B. Gardner	39.00
Ruby Hollingshead	15.00
Eula Johnson	10.00
Harold McCabe	18.00
Marie Neely	93.00
Aurora Ortega	8.00
Ida Onken	20.00
Albert Plumley	10.00
Catherine R. Sullivan	60.00
Marvin Seals	120.00
Beatrice Traylor	140.00
H.H. Taylor	15.00
Ernest Thormeyer	347.50
Vivian Tupper	10.00
Frank Windham, Sr.	5.00
Johnnie Woodfin	175.00
Venita Worthington	55.00
Jack Whittenberg	15.00
Total Update	52,076.20

### Chamber News

Anyone wishing to order a 3' x 5' Texas flag kit may contact the Chamber of Commerce office by March 24 to be included in a new order of flags. A kit consists of a 3' x 5' Texas Flag, a two piece aluminum pole with finial and string, and a bracket to hold the flag. The flags sell for about \$12.50 each and can be attached to buildings, homes etc.

Wouldn't it look great if every building and home in Winters had a Texas Flag.

There are many occasions when it will be appropriate to fly a Texas Flag. March 6 is the anniversary of the Battle of the Alamo. All those who already have Texas Flags may want to fly them then. Be sure to get your order in by March 24.

### Firemen of the month

Two firemen were selected for the month of February by the Firemen's Auxiliary. They are Marvin Bedford and Leonard Bowden.

Marvin Bedford has been a member of the fire department for 46 years 1940-1986. Secretary & Treasurer 6 yrs. 1942-1948. Secretary & Treasurer 1951-1961. Fire Chief 1962-1979. Asst. Chief 1980. He is now serving as Secretary. President of the Hill Country Fire Dept. 1 year 1971. Fire Marshall 7 yrs. Asst. Fire Marshall 20 yrs.

Leonard Bowden has been a member of the fire department for 17 years 1969-1986. He served on the pension board 1972-73 & 74. Vice-president 1975. President 1976. Asst. Captain

### James Cross joins information network

There are more questions than sources for how-to consumer health information, according to James Cross, R. Ph.

To meet this need, (Main Drug) has joined a national health information network offering a bimonthly health magazine covering all aspects of personal health care.

"You And Your Health" Magazine provides a potent new source of up-to-date information by experts and is available free to the public. The magazine is distributed only by pharmacists, the most consulted source for

### User fee collection program to start

The Fort Worth District, U.S. Army Corps of Engineers will start its 1986 User Fee Collection Program on March 1 at its 22 lakes.

When economically feasible, fee collection is authorized by law at all federal campgrounds providing tent or trailer spaces, drinking water, sanitary facilities, access roads, reasonable visitor protection and electric hookups. The Corps of Engineers provides at least one free camping area, without electrical hookups, at each lake.

Since 1981, basic camping fees have ranged from \$3 to \$6 per day and most fee areas will remain unchanged for the 1986 season. However, there are new or increased charges at some group facilities and camping areas.

Holders of the "Golden Age or Golden Access" Passports will still receive 50 percent reduction of basic camping and electrical hookup fees at Corps' operated fee recreation areas. This discount does not apply to group facilities. For additional information call U.S. Army Corps of Engineer, Public Affairs Office, 817-334-2150.

The local Hords Creek Lake fees are as follows: Flatrock Park, basic family fee, \$4, fee with electrical hookups, \$6, group camping, \$30/45, group day use, \$30/45; Lakeside Park, fee with electrical hookup, \$8, group camping, \$30/45, group day use, \$30/45, screened shelters, \$9; Friendship Park, group camping \$50, group day use \$50.

"Before all else we must learn how to use our American earth wisely with the greatest possible benefits to all."

Carleton Beals

#2-1977. Captain #2-1978. Captain #2-1979. Captain #2-1980. Asst. Chief 1981-86.

We want to thank them and all of our firemen for their many hours of hard work to help us all.

health product information. "You And Your Health" explores health care concerns in a concise four-color format that makes expert information both attractive and available.

To avoid fads and stick to medically sound facts, "You And Your Health" employs experts in the health care field and relies on the input of an authoritative advisory board.

Each issue covers a spectrum of health care subjects and regular departments provide the reader with ongoing editorial involvement.

### Pollution, plugging penalties

Problems under the Commission's well plugging and pollution regulations netted eight oil and gas operators \$47,250 in penalties Monday.

Gat-Man Petro, Inc. of La Veria received \$25,000 in administrative penalties for violations of Commission well plugging rules on four leases in Wilson and Guadalupe Counties. The penalties included \$7,000 for one well on the Donoho-Church Unit lease in Wilson County plus \$8,000 for three wells on the Ernest Doege "A" lease, \$5,000 for one well on the E. Doege "A" lease, and \$5,000 for one well on the Ernest Doege "B" lease, all in Guadalupe County.

Commission rules require operators to plug or bring back into production wells that have been inactive for 90 days. Each of the Gat Man Petro wells involved in the penalty action had been inactive and unplugged for at least two years. The company failed to appear at a Commission hearing called to examine the violations.

Crown Petroleum, Inc. of Dallas was fined a total of \$14,000 for well plugging violations on three leases in Frio County. Included in the penalty total was \$3,000 for one well on the Hardin "C" lease, \$3,000 for a well on the Hardin lease, and \$8,000 for four wells on the L.W. Sartain lease. Crown Petroleum also failed to appear for a Commission hearing on the violations.

Southern States Petroleum Corp. of Dallas was also fined for well plugging violations involving two wells on the Hommel lease in Gray County. The penalty was \$4,000.

Several companies agreed to penalties for unplugged wells on leases they operate without admitting any violation of Commission rules. They included Thursday Oil and Gas of Texas, Inc. of Lafayette, La., \$500 for a well of the Dr. J.E. Brewer lease, Brown County; J. Roy McCoy of Lubbock, \$1,500 for a well on the Superior-Dean lease, Cochran County; Tri-Mor Production Co. of Graham, \$750 for a well on the Repass lease, Stephens County; Blanco Industries, Inc. of Blanco, \$500 for four wells on the

Burkhead-Falls lease, Eastland County; and Monterey Petroleum Corp. of San Antonio, \$1,000 for three wells on the Bruni Estate lease, Webb County.

To date in 1986, the Commission has levied more than \$178,000 in pollution and well plugging penalties. Last year, the Commission assessed more than \$1 million in such penalties.

### Right to appeal SSI decision

Anyone who is informed that he or she is not eligible for supplemental security income (SSI) payments, or that the monthly payments will stop or be reduced, has a right to appeal the decision. The appeal may be handled by the person with help from Social Security, or the person may be represented by someone of his or her choice.

There are four appeals process, reconsideration, involves a complete review of the case by someone who did not take part in the initial decision. The reconsideration must be requested within 60 days from the date the notice of the decision was received. If the decision involved stopping or reducing the amount of the SSI checks, the recipient may request that payments continue unchanged; in such cases, however, the reconsideration must be requested within 10 days.

The next step in the appeals process is a hearing before an administrative law judge. The hearing must be requested within 60 days from the date of the notice of the reconsideration. The hearing is usually held in the same city in which the Social Security office handling the case is located.

The third step is a review by the Appeals Council, which is part of the Social Security Administration's Office of Hearings and Appeals. Here, too, the request for review must be filed within 60 days of the notice of the hearing decision.

If the person disagrees with the Appeals Council's decision, or if the Appeals Council refuses to review the hearing decision, suit may be brought in a Federal district court. The complaint must be filed within 60 days after receipt of the Appeals Council's decision.

For more information, contact the San Angelo Social Security Office located at 2214 Sherwood Way. The telephone number is 949-4608.



About half as much hot water is used in the average shower as in the average bath.

Civility costs nothing. English proverb

### State study shows property tax increase

The property tax base of Texas school districts grew by 3.9 percent from 1984 to 1985, according to estimates released by the State Property Tax Board (SPTB). Preliminary results of the agency's 1985 Property Value Study show that school districts contained a total of \$718.9 billion in taxable property value as of January 1, 1985.

This 3.9 percent growth rate in the school tax base is less than half the 8.7 percent increase that occurred between SPTB's 1983 and 1984 studies.

State law requires SPTB to estimate the taxable value of property annually in each of the state's 1,063 school districts.

"A school district's taxable property value is one of the important factors that determine the amount of state education aid the district will receive," explained Ron Patterson, SPTB's executive director. The Texas Education Agency will use the values for the 1985 Property Value Study in calculating education aid allotments for the 1986-87 school year.

"The slower growth in taxable values between 1984 and 1985 reflects a slowdown in portions of the Texas economy brought on by falling oil prices," said Patterson. He noted that the price for a barrel of oil fell by about \$2 during this period, on top of an \$8 decline during 1981-84. "This price drop produced a ripple effect in real estate values, which make up most of the school tax base."

The study's preliminary results indicate that the taxable value of minerals in Texas, including oil and gas, actually declined by \$1.5 billion between 1984 and 1985.

Another factor in the difference is that state law excludes personal automobiles and the personal property of banks from the study beginning with 1985.

The 1985 Property Value Study combines the school district value study with another study required by law. The other portion of SPTB's study evaluates the equality and uniformity of local tax appraisals performed by county appraisal districts.

"The Texas Constitution requires tax appraisals to reflect the full value of property and to be equal and uniform," said Patterson. "Our study of local tax appraisals indicates the extent to which appraisal districts met these legal standards on their 1985 appraisal rolls."

SPTB's study develops a statistical measure called the "median level of appraisal" which shows how close, overall, property is appraised to its full

value. "All property is supposed to be appraised at 100 percent of its full value," Patterson explained. "A median appraisal level is a 'middle' value. An Appraisal district should try to achieve a median as close to 100 percent as possible, without going over."

If a taxpayer can prove to an appraisal review board that his property's appraised value is greater than the median level of appraisal for all property in the appraisal district, the review board can reduce the property's appraised value to the median level.

"However," Patterson cautioned, "the 1985 Property Value Study is a year behind the appraised values being considered by appraisal review boards in 1986. As a result, the appraisal levels in the study don't always indicate the appraisal levels for the current year, especially if the appraisal district has reappraised property in 1986."

Patterson added that other statistical measures in the study show how uniform the appraisals are. "As a whole, the level of the appraisal district's values may be close to actual value. However, if individual property appraisals vary widely, some taxpayers will pay taxes on high values while others pay taxes on low values."

The findings of the 1985 Property Value Study are only preliminary. School districts and appraisal districts may seek adjustments through an appeals process.

SPTB will certify the final school district taxable values to the commissioner of education by May 30, for use in calculating state aid for the 1986-87 school year.

### Future looks bright for Aquaculture

Aquaculture, the cultivation of water products such as fish and shellfish, appears to have a bright future, said an official with the Department of Wildlife and Fisheries Sciences at Texas A&M University at a recent fish farming conference. Per capita fish consumption, for example, is expected to increase from the current 33 pounds to about 47 pounds by the year 2000 and to about 55 pounds by 2010. U.S. aquaculture production should take a quantum leap of some 400 percent, with crawfish and catfish leading the way. Red drum, or redfish, also appears to have a lot of potential as a farm produced fish.



One of the costliest spices is saffron, at \$70 per ounce.

## A Super Sale On Loans

When it comes time to make that purchase of a life time on the deal you can't refuse, we don't want you to be caught short of funds.

We can help you with a loan for just about any worthwhile item.

So talk it over with us..then go out and enjoy that purchase.

**You'll Like Our Attitude**

*Peoples National Bank*  
Full Service Bank  
Member F.D.I.C. 158 N. Main Winters, Texas 79567

## SHOP HEIDENHEIMER'S

For Big Savings Or First Friday Weekend Special's Throught The Store

<p>Winters Blizzard Bag Reg. \$6.95 <b>Sale 4.95</b></p> <p>Boy's Stripe Top Crew Socks <b>99¢</b></p> <p>Pillowtex Standard Pillow Polyester Fiberfill Reg. \$5.95 <b>Sale \$3.95</b></p>	<p>All Fall Jewelry Earring, Necklace 1/2 Price</p> <p>Fruit of Loom Brief 3/Pr. To Pkg. Pkg. <b>Sale 4.99</b></p> <p>Solid, Strips, Plaid Cannon Wash Cloths Reg. \$1.69 Pkg. 3/To Pkg. <b>Sale 99¢</b></p>
--	--

### Friday nite fish-fry

Shrimp Plate	\$8 <sup>95</sup>
Combo Froglegs & Shrimp	\$8 <sup>95</sup>
Combo Froglegs & Catfish Plate	\$6 <sup>95</sup>
Combo Shrimp & Catfish	\$8 <sup>95</sup>
Order of (6) Froglegs	\$7 <sup>50</sup>
Catfish plate	\$6 <sup>50</sup>

All orders include choice of potato and ONE trip to Salad Bar

---

### Thursday Night Special

## Mexican Food Night

Mexican Plates \$5<sup>75</sup>

Guacamole Salad	\$2 <sup>00</sup> & \$3 <sup>00</sup>
Nachos	\$1 <sup>75</sup>
Tacos	\$1 <sup>25</sup> Each

All prices subject to sales tax.

---

## Circle Restaurant and Steak House

HIGHWAY 53 WEST WINTERS, TEXAS 79567 915/ 754-4814