



REFLECTIONS "REFLECTIONS" REFLECTIONS

BY RICHARD C. THOMAS

It's kinda fun to be alive in the fall, when all things seem to be content with the labor of the summer. When the sky seems to change to a softer blue, and a haze hovers over the horizon. When the sun's rays are more comforting in the day, and the nights are just a bit cooler. When the cotton leaves start turning brown, and the smell of the countryside fills the air with a zest and a tang.

It's kinda fun to be alive in the fall, when the days grow shorter, and we can go home sooner after leaving the office, because it's too dark by the time we get there and we don't have to mow the lawn or spade up a flower bed.

I always thought that fall should be the time for vacations, in place of summer. Why summer became the season to "get away from it all" is a mystery; it's always hot, most every place you go, and even the fish don't bite as they do in the fall. And there is no hunting in the summer; the seasons always start in the fall. Some of these days we're going to get wise, and change our activities around to suit the seasons.

There's one disadvantage about fall, though. It's the season we have to begin wearing ties and coats again, when we go out to fashionable get-togethers. During the summer a man can go many places with only an open throat sport shirt and no coat—even to church. But when fall gets here, we have to follow convention and put the tie and coat back on if we are to go among the elite.

Of course, even in these times of free and easy living and disdain for things conventional, there are many places where a sport shirt, or even a sport jacket, is out of fashion even in the summer. Can't understand where man got the idea he had to put a choking tie around his neck, drape a coat across his shoulders, even on the hottest days. Even though our bodies protest, we go along with the tide of convention choking ourselves to a shorter life... if we don't want to be branded out of place. Some of these younguns have the best idea, though... they refuse to conform to convention. In that avenue, I'll go along with them.

Deep in the swamps of southern Louisiana three men stopped their car and watched a small boy fishing in a roadside lake. After about five minutes of silence, one of the men asked, "Boy, are there any snakes in this water?"

"Naw, Suh, they sure ain't!" replied the lad slowly.

The three men left their clothes on the bank and all had a refreshing swim. After dressing, one of the men asked the boy, "How come there aren't any snakes in this lake?"

"Cause the alligators et 'em," replied the boy.



At dam site

Prospective bidders for the construction of the new dam for Winters visited the site of the dam and reservoir Monday to get a first hand look at the terrain the successful bidder will be working. At least 31 construction companies submitted requests for plans and specifications, and most are expected to

submit bids which will be opened next Tuesday at the Winters City Hall. Mayor W. Lee Colburn, third from right (in cap) squinted the visitors around the dam and reservoir area, and also the water treatment plant and the raw water storage area which will be constructed about two miles east of town.

State Agency pushes for better fishing in new lake

The Parks & Wildlife Dept. of the State of Texas is interested in the future sports fishing

possibilities connected with the new lake Winters will build below the present Lake Winters.

WHS band won trophy

The Winters High School Blizzard Band participated in the Angelo State University homecoming parade Saturday, and was awarded a trophy as the "outstanding band in Class AA."

Band members also were guests of ASU at a barbecue for participating bands and performed with all the bands in a mass pre-game performance before the Angelo State-Abilene Christian football game.

"I am very proud of the progress our band made this year," band director Eddie Pace said. "This award should give the members the confidence and desire to make further strides and improvement. This was a good experience for the students, and they seemed to enjoy it very much."

Bands participating in the ASU homecoming activities included bands from ASU and ACU, all of the San Angelo high school and junior high school bands, Buena Vista, Santa Anna, Bronte, Robert Lee, Wall, Center Point, Rock Springs, Roscoe, Winters, Coleman, Wylie and Colorado City.

Two representatives of the state agency appeared before the City Council Monday night to make recommendations concerning construction planning which would make the lake more habitable for game fish. They recommended leaving brush shelters in the new lake, especially in the coves and at the edges, to provide habitats for the fish. They also suggested that the brush and timber which must be cut during construction be piled and anchored, to be covered with water, to provide shelter for fish. They said that most of the trees in the north section of the lake area should be left.

Because of the size of the new lake, and the fact that most of the area is not now covered with brush or trees, there still would be room for other water sports than fishing, such as boating and skiing, and the trees and brush left would not interfere with these sports. It was also recommended that at least two boat ramps be built, one on the south end, east side, and one on the north end, west side. There was some suggestion that state funds probably would be available for such projects.

There are several stock tanks in the new lake area which will be used by the Parks & Wildlife Dept. for "rearing" fish to be transferred to the new lake, they said.

Arts & Crafts Festival set November 14

The annual Arts & Crafts Festival, sponsored by the Winters Area Chamber of Commerce, will be held in the Winters Community Center Friday and Saturday, Nov. 14-15.

Organizations and individuals wishing to reserve booths for the festival should contact Mrs. Buddy Miller, 754-5401, or Edna England at the chamber office, 754-5210.

lake, and the fact that most of the area is not now covered with brush or trees, there still would be room for other water sports than fishing, such as boating and skiing, and the trees and brush left would not interfere with these sports.

It was also recommended that at least two boat ramps be built, one on the south end, east side, and one on the north end, west side. There was some suggestion that state funds probably would be available for such projects.

There are several stock tanks in the new lake area which will be used by the Parks & Wildlife Dept. for "rearing" fish to be transferred to the new lake, they said.

The state agency representatives said it is not feasible at this time to "kill" the old lake in order to get rid of the rough fish, mainly because of the cost. If a proposed transfer pumping system, to pump water from the old lake into the new lake, is undertaken, it will be necessary to drain the old lake. The rough fish kill could be accomplished at that time, it was suggested. The new lake will be stocked by the Parks & Wildlife Dept., it was said.

93 registered for Women's clubs workshop

See story on Page 12

Will open lake bids Tuesday

Bids for construction of the new dam and water reservoir, and the pipeline from the water supply to the water treatment plant, will be received and opened next Tuesday, Oct. 28, at 2 p. m., at the city hall.

Prospective bidders on the dam and reservoir, and the pipeline, which will be a separate contract, met with city officials and a representative of the engineering firm preparing the plans for the project Monday afternoon for a visit to the site of the reservoir and dam. Kenneth L. Choffell, PE, representing Henningson, Durham & Richardson, Inc., of Texas, the engineers, said that 31 prospective construction bidders on the lake and/or the pipeline, had requested plans and specifications for the projects. Near that number were present for the site tour Monday afternoon, meeting at the City Hall for a briefing before driving to the dam site five miles east of town. Enroute to the dam site, some of the contractors made an inspection of the treatment plant, which will be updated during this program, and the right-of-way for the pipeline and the open raw water storage area, which will be located

about two miles east of town. The City Council will take no action on the bids next Tuesday, but will announce acceptance of appropriate bids at a later date, probably within a few days, it was understood. Following acceptance of the bids, and the awarding and signing of contracts, it is anticipated by city officials and engineers that actual work should begin at least by Christmas.

Construction of the dam and reservoir will take about 23 months, engineers said, from date of first dirt turning. Contract No. 2, for construction of approximately 5.5 miles of pipeline, and the raw water storage pits, must be completed within 350 days of notice to proceed, it was stated. Because construction of the pipeline will not take as long as the reservoir and dam proper, pipeline contractors may not begin this part of the project until the lake construction is well underway, it was said.

This project will be financed in part by funds from the Farmers Home Administration, U. S. Department of Agriculture, in the form of loans and grants.

Blizzards to Baird

The Winters Blizzards, after experiencing their first conference loss of the season to Jim Ned last Friday, this week will travel to Baird to take on the leaders of the league.

Until last week's game, the Blizzards were a half game behind Baird, with conference wins over Rotan, Hawley and Albany, and a tie with Merkel.

Baird has been a high scoring

team all year. They hit Cisco 21-0 in a non-conference tilt, and then went into the conference season by knocking down Hawley 72-8, Merkel 31-0, Albany 35-20, and Jim Ned 18-13. Baird had an off date last week.

Although the Blizzards let Jim Ned slip up on them last week for a wide-margin defeat, they are capable of turning the tables, given the right opportunities.

Stew cook-off during Arts-Crafts event

The Winters Area Chamber of Commerce will sponsor a "Stew Cook Off" to be held on the first day of the annual Arts & Crafts Festival, Nov. 14.

Rules for entry will be simple, according to committee members. The stew may be prepared at home and brought to the Winters Community Center for judging. After the judging, the stew will be sold to those visiting the Arts & Crafts Festival. Those entering stew for

judging will prepare a 3-quart or more container of stew. The stew must be made from "scratch." The pot of stew must be at the Community Center no later than 9:30 a. m. Nov. 14 for judging. Stew will become the property of the Winters Area Chamber of Commerce.

Awards will be given for the best stew.

Deadline date for entering the stew cook off will be Monday, Nov. 10.



Club presidents

Winters women's clubs hosted the workshop for delegates of clubs in the Heart of Texas District Saturday. Presidents of the three local clubs are, left to right, Mrs. Roy Young, Diversity Club; Mrs. Danny Killough, Junior Culture Club; and Mrs. Wayne Sims, Literary and Service Club.

Steering committee

These representatives of Winters' women's clubs served as the steering committee for the fall workshop of the Heart of Texas District, Federated Women's Clubs, held in Winters Saturday. They are, front row, left to right, Mrs. Charles Kruse Jr., Mrs. Weldon Middleton. Back row, Mrs. E. E. Thormeyer, Mrs. Wayne Sims and Mrs. T. S. Tierce.



MEMBER 1980
TEXAS PRESS ASSOCIATION

The Winters Enterprise

(USPS 687-220)
 915/754-5221 P. O. Box 37 Winters, Texas 79567

RICHARD C. THOMAS, Editor-Publisher
 YVONNE THOMAS, Asst. Publisher
 LOICE OSBORN, Advertising Manager
 SANDRA RADFORD, Circulation Manager
 KELLEY THOMAS, Staff Writer, Photographer

Entered At Post Office, Winters, Texas 79567,
 As Second-Class Matter.

SUBSCRIPTION RATES

In Runnels County, 1 Year \$ 6.00
 In Other Texas Counties, 1 Year \$ 8.00
 Outside Texas, 1 Year \$10.00

Any erroneous reflection upon the character, standing or reputation of any person, firm or corporation which may appear in the columns of this newspaper, will be gladly corrected upon due notice of same being given to the editor in writing personally at this office.

Poe's Corner
 BY CHARLSE POE

NIAGARA FALLS

On the first Sunday out, and the first day of sunshine, the Magic travelers had breakfast at Collinsville, Illinois, lunch in Terra Haute, Indiana and dinner in Columbus, Ohio.

A piece of pie cost 95 cents at Laughner's Cafeteria in Terra Haute, and a rest stop in Indianapolis gave opportunity to explore Monument Place. In the center of this plaza is the soldiers' and sailors' monument, a shaft of bronze and stone 285 feet in height, topped by a figure 38 feet high, representing "Victory." Two fountains play at the base and the monument is surrounded by bronze statues of men prominent in the history of the state.

The travelers motored through Ohio and across a portion of Pennsylvania before entering New York to spend the next two nights in the Holiday Inn at Niagara Falls.

But it wasn't that easy. New York requires inspection for every bus that crosses the state line. The bus driver unloaded the passengers at Rater's fruit stand before driving into Ripley for the inspection. Everyone went wild over the fresh peaches, grapes, prunes, plums, apples and maple syrup, not to mention

Qualified elderly entitled to disability benefits 24 months

Medicare is a health insurance program for people 65 and older and some people under 65 who are disabled and are entitled to disability benefits for 24 consecutive months. You may be eligible for Medicare at any age if you suffer from permanent kidney failure and need kidney dialysis or a kidney transplant. It is a Federal Government program run by the Health Care Financing Administration. Medicare hospital insurance (sometimes called Part A) can help pay for medically necessary inpatient hospital care, and after a hospital stay, for inpatient care in a skilled nursing facility and for care in your home by a home health agency. Medicare medical insurance (sometimes called Part B) can help pay for medically necessary doctors' services, outpatient hospital services, outpatient physical therapy and speech pathology services, and a number of other medical services and supplies.

It is recommended that a person apply for Medicare insurance three months before their birthday month even though they do not plan to retire. That way their Medicare protection will start with the month they reach 65. When you apply for hospital insurance you will be enrolled automatically for the medical insurance part of Medicare unless you tell the Social Security Administration you do not want it.

If you become entitled to Social Security benefits at an age earlier than 65, it will not be necessary for you to come into the office and file for Medicare, you will be automatically enrolled for Medicare the month you reach age 65, the Social Security Administration said. People 65 and over who haven't worked long enough to be eligible for hospital insurance can get this protection by enrolling and paying a monthly premium just as they would for other health insurance. The basic premium is \$78.00 a

month through June 1981. People who buy Medicare hospital insurance also must enroll in medical insurance. The premium for medical insurance is \$9.60 a month through June 1981. For more information about Medicare, ask at any social security office, or call a social security office.

medically necessary doctors' services, outpatient hospital services, outpatient physical therapy and speech pathology services, and a number of other medical services and supplies. It is recommended that a person apply for Medicare insurance three months before their birthday month even though they do not plan to retire. That way their Medicare protection will start with the month they reach 65. When you apply for hospital insurance you will be enrolled automatically for the medical insurance part of Medicare unless you tell the Social Security Administration you do not want it.

If you become entitled to Social Security benefits at an age earlier than 65, it will not be necessary for you to come into the office and file for Medicare, you will be automatically enrolled for Medicare the month you reach age 65, the Social Security Administration said.

People 65 and over who haven't worked long enough to be eligible for hospital insurance can get this protection by enrolling and paying a monthly premium just as they would for other health insurance. The basic premium is \$78.00 a

month through June 1981. People who buy Medicare hospital insurance also must enroll in medical insurance. The premium for medical insurance is \$9.60 a month through June 1981. For more information about Medicare, ask at any social security office, or call a social security office.

medically necessary doctors' services, outpatient hospital services, outpatient physical therapy and speech pathology services, and a number of other medical services and supplies. It is recommended that a person apply for Medicare insurance three months before their birthday month even though they do not plan to retire. That way their Medicare protection will start with the month they reach 65. When you apply for hospital insurance you will be enrolled automatically for the medical insurance part of Medicare unless you tell the Social Security Administration you do not want it.

If you become entitled to Social Security benefits at an age earlier than 65, it will not be necessary for you to come into the office and file for Medicare, you will be automatically enrolled for Medicare the month you reach age 65, the Social Security Administration said.

People 65 and over who haven't worked long enough to be eligible for hospital insurance can get this protection by enrolling and paying a monthly premium just as they would for other health insurance. The basic premium is \$78.00 a

month through June 1981. People who buy Medicare hospital insurance also must enroll in medical insurance. The premium for medical insurance is \$9.60 a month through June 1981. For more information about Medicare, ask at any social security office, or call a social security office.

medically necessary doctors' services, outpatient hospital services, outpatient physical therapy and speech pathology services, and a number of other medical services and supplies. It is recommended that a person apply for Medicare insurance three months before their birthday month even though they do not plan to retire. That way their Medicare protection will start with the month they reach 65. When you apply for hospital insurance you will be enrolled automatically for the medical insurance part of Medicare unless you tell the Social Security Administration you do not want it.

If you become entitled to Social Security benefits at an age earlier than 65, it will not be necessary for you to come into the office and file for Medicare, you will be automatically enrolled for Medicare the month you reach age 65, the Social Security Administration said.

People 65 and over who haven't worked long enough to be eligible for hospital insurance can get this protection by enrolling and paying a monthly premium just as they would for other health insurance. The basic premium is \$78.00 a

month through June 1981. People who buy Medicare hospital insurance also must enroll in medical insurance. The premium for medical insurance is \$9.60 a month through June 1981. For more information about Medicare, ask at any social security office, or call a social security office.

month through June 1981. People who buy Medicare hospital insurance also must enroll in medical insurance. The premium for medical insurance is \$9.60 a month through June 1981. For more information about Medicare, ask at any social security office, or call a social security office.

Elementary, Junior High honor roll

The following students of Winters Elementary and Junior High schools made an average of 90 or above on all subjects for the first six weeks period of the 1980-81 school year. David L. Laman, principal, has announced.

- FOURTH GRADE**
 Clint Deike
 Tracey Grantham
 Gina Priddy
 Kris Sims
- FIFTH GRADE**
 None
- SIXTH GRADE**
 Deedra Blackshear
 Jennifer Browning
 Marci Caffey
 Douglas Wheat
 Michelle Wheeler

- SEVENTH GRADE**
 None
- EIGHTH GRADE**
 Marie Fisher
 Stacey Grissom
 Melinda Kvapil
 Michael Lee
 Resa Porter

Dinner was at "Como's", a beautifully decorated Italian restaurant with lighted grapes hanging on wall trellises and overhead, giving a garden appearance.

But the waitresses were something else. They had Dean so cowed that he was afraid to ask for the butter. At the table where I sat, we were bossed throughout the evening. And when we mentioned the food was good but the servings were too large, the waitress said, "You should have ordered one serving for two people and an extra plate."

"Why didn't you tell us," we moaned.
 "You didn't ask me," she retorted.

Following dinner we drove over to the Canadian side to see the Horseshoe Falls under lights. We could also say we had been to Canada. We watched a great spectacle of power and beauty as the floodlights turned the plunging waters from blue, to green, to gold and then to red.

Somewhere, I read that the Niagara Power Project, one of the world's largest, produces enough electricity to light more than 24 million 100-watt bulbs.

Tomorrow we will be on our way to the famous resort area of Lake George, N. Y.

PUBLIC NOTICE
NOTICE OF ELECTION
AVISO DE ELECCION

To the Registered Voters of the County of Runnels, Texas:
 A los Votantes registrados del condado de Runnels, Texas:

Notice is hereby given that the polling places listed below will be open from 7:00 a. m. to 7:00 p. m. November 4, 1980 for voting in the General Election for the purpose of: Electing the President and Vice President of the United States, members of the United States Congress, members of the Legislature, state, district, county, and precinct officers and submitting (9) proposed Constitutional Amendments.

Notifiquese por la presente que los sitios de votacion indicados abajo se abriran desde 7:00 a. m. hasta las 7:00 p. m. el 4 de Noviembre de 1980 para votar en la eleccion General con el proposito de: Elgir esta Presidente el Vice-Presidente de los Estados Unidos, miembros del Congreso, de los Estados Unidos, miembros de la Legislatura, oficiales del estado, de los distritos, de los condados, y los precintos, y de someter (9) enmiendas propuestas a la constitucion.

BILL B. STULTZ
 County Judge
 (Juez del Condado)

LOCATIONS OF POLLING PLACES
 Direcciones de los sitios de votacion

- VOTER PRECINCT 1 - Courthouse, Ballinger
 VOTER PRECINCT 3 - Community Center, Winters
 VOTER PRECINCT 4 - City Hall, Winters
 VOTER PRECINCT 5 - Lion's Club Building, Wingate
 VOTED PRECINCT 6 - Community Center, Norton
 VOTER PRECINCT 7 - Community Center, Ballinger
 VOTER PRECINCT 8 - City Hall, Ballinger
 VOTER PRECINCT 9 - City Hall, Miles
 VOTER PRECINCT 10 - Fire Station, Rowena
 (Oct. 23, 1980)

WE WILL BE CLOSED
Oct. 31, Nov. 1
FOR INVENTORY
HIGGINBOTHAM'S
 HARDWARE - LUMBER
 (Oct. 23-30)

SHUGART COUPON
Winn's
 VARIETY STORES
 The REAL variety store.
TUESDAY
OCTOBER 28
9
WALLET SIZE
COLOR PORTRAITS
99¢
 ASK FOR FREE 8 x 10 OFFER
 Extra charge for GROUPS

You'll save time and energy while enjoying sparkling clean dishes with this Frigidaire Electri-Saver Dishwasher.



Check These Features

- Porcelain Enamel on Steel**: To resist staining, fading and the absorption of food acids and odors, you can't beat the durability of a Porcelain-Enamel-On-Steel tub.
- Sound Absorbing Insulation**: Doesn't make a lot of noise thanks to thick, Sound Absorbing Insulation on the back and all around the top and sides of the tub as well.
- Cleans pots, pans and crusty casseroles** as easy as pie thanks to a triple wash Pots & Pans Cycle.
- For easy loading of silverware and utensils**, this Frigidaire Dishwasher offers a removable Open-Mesh Basket.
- You can change the color** anytime with this Frigidaire Dishwasher. Interchangeable door panels offer a choice of Almond, Avocado, Harvest Wheat or White.
- No more embarrassing water-spotted glasses and silverware**. A Spots Away Rinse Injector dispenses a liquid rinse additive in the final rinse cycle.

WEST TEXAS UTILITIES COMPANY
WTU
 A Member of The Central and South West Systems
 Qualified Factory-Trained Servicemen Offer You The Finest In Appliance Service.

Winters Public School LUNCHROOM MENU

Monday, Oct. 27
 Baked ham, cream potatoes, green beans, tossed green salad with french dressing, fruit, peanut butter cookies, hot rolls with butter on top, milk or chocolate milk.

Tuesday, Oct. 28
 Hot dogs or combination sandwiches, french fries, catsup in cups, pear halves, peanuts in cups, pinto beans, chocolate cake, milk.


Wednesday, Oct. 29
 Western spaghetti, cream potatoes, whole kernel corn, tossed salad with Italian dressing, peach pie, hot rolls with butter on top, milk or chocolate milk.

Thursday, Oct. 30
 Fried chicken, cream gravy, whipped potatoes, green beans, tossed salad, fruit, cake, hot rolls with butter on top, milk or chocolate milk.

Friday, Oct. 31
 It's SPOOK TIME in the Cafeteria; Witches on a broomstick, pinto beans, combination sandwiches, mustard sauce, cabbage slaw, cupcakes with orange icing, cornbread squares, white witches brew, chocolate witches brew.

CARD OF THANKS
 I would like to express my deep appreciation to all my friends for the cards, flowers, visits and words of encouragement during my recent hospitalization. I also wish to thank the hospital staff of No. Runnels for their care and concern. L.H. "Doc" Smith

"When you get a good one, I say, 'keep him!'"



O. C. Fisher, Former Democratic Congressman, 21st District

The Honorable O. C. Fisher, our Democratic Congressman for 32 years, has endorsed Republican Tom Loeffler for reelection to Congress. In fact, Mr. Fisher now serves as Co-Chairman of the Loeffler Campaign '80 Committee.

To use Mr. Fisher's own words:
 "I served in Congress for 32 years. During that time, I served with some 1,500 members and I think I learned something about how to evaluate members who come and go. I'm not supporting Tom Loeffler because he's a Republican—I'm supporting him because I'm worried about the future of this country. I think

this is probably the most critical peacetime election that has come about in many years, and Tom Loeffler, during the two years he's served in Washington, has given an excellent account of himself. When you get a good one, I say, 'keep him!'"

We agree. During the two years Tom Loeffler has served us, he's proven his performance is beyond campaign promises. He's the best of a new breed of responsible and responsive congressmen forging a new brand of leadership in Congress. He deserves our overwhelming vote of confidence on November 4th!

TOM LOEFFLER
 Let's re elect
 Congressman
 21st District-Texas
 The best of a new breed!

Paid for by the Loeffler Campaign '80 Committee, the Honorable O. C. Fisher and Jim Lutz, Co-Chairmen, June Deason, Manager.

SUPER D FOODS

We Reserve The Right To
Limit Quantities

Monday's ad in the Abilene Reporter good for Monday thru Wednesday

THE LOW PRICE LEADER

GOOCH BLUE RIBBON
Bacon
\$1.29
lb. pkg.

USDA HEAVY BEEF
ROUND STEAK
\$1.89
lb.

CHARMIN FAMILY PAK
WHITE TISSUE
\$1.39
6-rolls

MEAT MARKET

LEAN TENDER PORK STEAKlb.	\$1.29
CENTER CUT PORK CHOPSlb.	\$1.89
MRS. PAUL'S (14-oz. box) FISH FILLETS	\$1.69
BORDEN HALF MOON (9-oz. pkg.) Longhorn Cheese ..	\$1.39
SUPER DUPER (10 per pkg.) CORN DOGS	\$1.99
PRIME RIB ROASTlb.	\$2.29
CLUB STEAKlb.	\$2.99

GLADIOLA
6-oz. packets
Yellow, White, Mexican
Cornbread Mixes
5/\$1

STERNO
3-Hour Log
FIREPLACE LOG
99¢

Borden Novelties
12-pak
**FUDGESICLES
POPSICLES
DREAMSICLES
NIFTY BARS**
99¢

GLAD
30-ct. pkg.
TRASH BAGS
\$2.99

HI-DRI
Jumbo Roll
Paper Towels
49¢

FROZEN FOODS

T.V. WHIPPED TOPPING (8-oz. tub)	2/\$1
MRS. SMITH (2 - 9 5/8 inch) PIE SHELLS	87¢
BANQUET 11-oz. box FROZEN DINNERS ..	69¢
SARA LEE PECAN (Small - 6.5 oz. tin) COFFEE CAKE	\$1.19

EAGLE BRAND
MILK
14-oz. can
89¢

15¢ off!
24-oz. bottle
CRISCO OIL
\$1.09

24-oz. jar
GRAPE, RED, WHITE
WELCH JUICE
89¢

OXYDOL, CHEER,
OR AJAX
GIANT SIZE - 19 oz.
Detergent
\$1.79

Box of 1 Dozen
HOLSUM
DONUTS
\$1.49

HEINZ
16-oz. jar
**HAMBURGER
DILL SLICES**
59¢

CRYSTAL
ICE
GLASSWARE
**ON SALE
THIS WEEK:
SHERBERT
DISH**
ONLY 39¢
With each \$5.00 purchase

coupon (Exp. date 10-25-80)
JERGENS LOTION
Bath Size
Bar Soap 5/\$1
LIMIT 5 WITH COUPON
Without Coupon 3/1

BEST MAID
KITCHEN STYLE
PICKLES
32-oz. **79¢**
25-lb. bag
FIELD TRIAL
DOG FOOD
\$3.99

15¢ off!
22-oz. Dish Detergent
AJAX
99¢

VLASIC
32-oz. jar
POLISH, KOSHER, DILL
DILL PICKLES
99¢

coupon (Exp. date 10-25-80)
LAYS BRAND (reg. 99¢)
Plain, BBQ, Sour Cream
POTATO CHIPS
59¢
LIMIT 3 WITH COUPON
Without Coupon 79¢ each

FIRESIDE
lb. Box
**SALTINE
CRACKERS**
49¢

COAST
3-bar pkg.
BAR SOAP
99¢

FRESH PRODUCE

RED OR GOLDEN DELICIOUS APPLESlb.	59¢
MEDIUM YELLOW ONIONS 4 lbs. for	\$1
TEXAS ORANGESlb.	39¢
FRESH WAXED RUTABAGASlb.	19¢
NO. 1 RUSSET Potatoes (8-lb. bag)	\$1.89
FLORIDA LARGE AVOCADOS each	59¢

DAIRY PRODUCTS

MAZOLA CORN OIL
MARGARINE (lb. qtrs.) **79¢**
T.V. 9.5-oz. can
Cinnamon Rolls **69¢**
GANDY'S DIPS &
Sour Cream (8-oz. ctn) **2/89¢**
MINUTE MAID 64-oz. carton
ORANGE JUICE **\$1.29**

SENECA
32-oz. jar
**LEMON
JUICE**
99¢

RANCH STYLE
19-oz. can
**PLAIN
CHILI**
99¢

BUY, SELL, TRADE OR RENT THROUGH THE CLASSIFIED ADS

CLASSIFIED AD RATES

CASH
Minimum—\$2.50, 1 time 20 words; 8 cents per word for over 20 words.

CHARGED
Minimum—\$3.00, first insertion, \$2.50 per insertion thereafter. (8 cents per word over 20 words.)

LEGAL PUBLIC NOTICES
Regular Classified Ad Rates will apply for all Legal Public Notices.

DEADLINE FOR ALL ADS
12:00 noon Tuesday week of publication.

FLOWERS

FLOWERS for all occasions. Orders wired anywhere, any time. Bonded FTD, Florafax florist. Mayme Little, Winters Flower Shop. Dial 754-4568. tfc

BLOSSOM Shop. Bonded FTD, Teleflora and Florafax florists. Flowers for all occasions. Flowers wired anywhere. Phone 754-5311. tfc

FLOWER CENTER. Florist, Greenhouse and Nursery. Orders wired anywhere. Repotting service. Operated by Mrs. Calvin Holloway. (Across from hospital). Phone 754-4984. 44-tfc

FOR SALE

1977 FORD Pickup Super Cab, automatic with super 35,000 miles. K. W. Cook, phone 754-4719. 41-tfc

REGULAR GAS

10 cents Per Gallon In Silver Coins SIMS STATION 601 South Main

FOR SALE: 1976 Blazer. Call 743-6777 or 743-2356. 32-tfc

FOR SALE: Good Frigidaire Ice maker. Burger Hut. Phone, 754-4181. 23-tfc

FOR SALE: White '79 Silverado. All power, cruise control, low mileage. \$5,900. After 5 p.m. call 754-4052. 30-4tc

1977 FORD 1/2-TON PICKUP
6-cyl., std. trans.
\$2495
ROBINSON CHEVROLET CO.
Winters, Texas

FOR SALE: Like new, 10-speed bike, new tubes in tires. Call 754-5221. 32-tfc

FOR SALE

FOR SALE: 14'x70' mobile home. 2 bedroom, 1 1/2 baths, central heat and air. Call 365-3830. 32-2tc

FOR SALE: Mesquite wood; \$45 a cord. Call 743-8199. E.L. Broadstreet. 33-2tp

1977 CHEVROLET 1/2-TON V8, Std. trans. \$1995
ROBINSON CHEVROLET CO.
Winters, Texas

REAL ESTATE

ALLSTATE protects you against loss from many home hazards at a surprisingly low cost—35% off Texas state rates for Homeowners. COME IN AND COMPARE. JNO. W. NORMAN, 105 W. Dale, Winters, Tex. 36-tfc

FOR SALE: Bishop & Sons office building and lots on North Main. Call 754-4526 or 754-4642. 2-tfc

FOR SALE: 30 acres in 5-acre tracts. 3 1/4 miles north of Winters on Highway 83, on right hand side of road. Also 7700 John Deer Combine for Sale. Contact Roy Calcote at 767-3241 or 754-4995. 5-tfc

FOR SALE: 3 bedroom, 1 bath. Newly remodeled kitchen with bar. Formal dining room, den with ceiling fan, storm cellar, privacy fence, 2 car garage, double lot. Call 754-4294. 32-4tc

FOR SALE: Good 2 bedroom home in south Winters. Good location, pecan trees and fruit trees. Call 915/673-0314 or 743-6142. 32-4tp

BARGAIN IN LAWN, TEXAS!!! 2 Bedroom home. 1 car attached garage. Storage building with attached carport. 150' x 100' lot. Shade & fruit trees. Panell and carpeted throughout. \$18,750.00 Franklin Real Estate 915/554-7814 30-4tc

TUESDAY'S MARKET
WEATHERMASTER
SEED WHEAT 8.00 bu.
EARLY TRIUMPH
SEED WHEAT 7.50 bu.
OCTOBER
WHEAT MARKET 4.28 bu.
NOVEMBER
WHEAT MARKET 4.35 bu.
LATE NOVEMBER
WHEAT 4.40 bu.
MILO MARKET 5.75 cwt.
Dealer Accounts Welcome
ALDERMAN-CAVE
Milling & Grain Co.
754-4546

REAL ESTATE

OWNER NEEDS QUICK SALE, make an offer on this redecorated 3 BR, 1 bath home, no city taxes.

NEW LISTING, open the door and you will like what you see, 2 BR, 1 bath on corner lot near school. Will not last long at this price.

IMMEDIATE POSSESSION with very good built house, 3 BR, 1 bath, top condition.

NEW TO THE MARKET, Red brick, 3 BR, 1 bath, LR. Den, with lots of storage. Privacy fenced and large tree shaded back yard. Reasonably priced.

CHARMING 2 BR, 1 bath, immaculate, with carpet and many closets and storage.

BRAND NEW 3 BR, 2 baths, lovely carpet, dishwasher, garbage disposal, range, vent hood and fireplace. Just waiting for new owners.

DON'T DELAY, on this 2 BR, 1 bath, LR & DR. See today.

—WE HAVE OTHER LISTINGS—

STRICKLAND REAL ESTATE

158 North Main 754-5218 Winters, Texas

FOR RENT

YATES TRAILER COURT. Park by the night, week, or all times. East Dale, close to Huffman House Cafeteria. Call 754-4369. 13-tfc

FOR RENT: Unfurnished 2 bedroom house with car port and laundry room. Also furnished 2 bedroom mobile home. See Halley Sims, 1010 State St., or call 754-4883. 26-tfc

FOR RENT: 1 BR apartment for rent. Call 754-4232 between 8:30 a.m. and 12:00 noon. 31-tfc

FOR RENT: Unfurnished, 2 bedroom house. \$175 per month. Call 754-4814. 33-2tc

1977 CHEVROLET 1/2-TON V8, air cond., power steering and power brakes \$2695
ROBINSON CHEVROLET CO.
Winters, Texas

HELP WANTED

HELP WANTED: Applications being taken for men to deliver Petroleum Products and do other related duties. Must be Honest, Dependable, in good health and live in or very near Winters. Knowledge of Rural Area & People important. Excellent Hospitalization and Life Insurance Benefits. Inquire at BOB LOYD L.P. GAS CO., 104 E. Parsonage St., or call 754-4555 days or 754-4146 nights. 26-tfc

CHRISTMAS HELP: Work from your own home on new telephone program for major companies in local area. Flexible hours. Earnings up to \$7 per hour. A. Cisneros, 1801 40th, Snyder, Tx. 79549, or call 915/573-0776. 32-6tc

NuCorp Supply, Inc.
Tye, Texas

We are now accepting applications for stable, conscientious individuals to work in our pipe yard. Various job openings. Previous experience and knowledge of pipe is preferred.

Paid holidays, accrued sick leave and vacation time, group insurance plan offered.

For more information call the Personnel Department:
1-800-592-4445
Equal Opportunity Employer

BURGER HUT
201 East Hwy. 53
Open
7 Days A Week
11 a.m. to 2 p.m.
5 p.m. to 9 p.m.
Phone 754-4181

Superior Muffler

Mufflers
Tailpipes
Exhausts
Custom Dual Exhausts
JOHNNY'S SHELL STA.
301 South Main
Phone 915-754-4040
Closed on Saturday

HELP WANTED

HELP WANTED: Babysitter in my home to care for 2 children, ages 2 and 3, from 12:30 to 5:30. Call 754-4252. 32-tfc

WANTED: Service station attendant at Grenwelle Texaco. Call 754-4112. 31-tfc

WANTED

WANTED—Scrap iron, cables, metals. Ballinger Salvage Company. tfc

WANT TO LEASE: Wheat grazing for heifers, bulls or steers. Contact E. J. Bishop, 754-4526 or 754-4642. 32-2tc

I WILL BUY
Your Silver Coins, other coins and paper money. Highest prices paid for rare and choice items.
FLOYD SIMS
754-4224 or 754-4883

LOST & FOUND

FOUND: One pair of glasses in case. Found on road going south of Fairview Cemetery. Come by and pay for ad, and pick up glasses. 28-tfc

FOUND: Set of 9 keys on retractable key chain, including house keys and GM keys. Come by Enterprise office, pay for ad, and pick up keys. 30-tfc

FOUND: Ford Keys (ignition & truck) found in the vicinity of 215 N. Main. Come by and pay for ad and pick up keys. 29-tfc

LOST: Man's gold watch. Lost between airport and Red Top. \$1,000.00 reward offered. Call 915/676-4973. If no answer, call 673-3103. 31-4tp

MISCELLANEOUS

SEE Western Auto for a super fine tire balance on the new electronic NORTON Balancer! 4 for \$16.88 for most cars and light trucks. 34-tfc

INSULATION
Lower utility bills this winter with non-combustible solar-therm insulation. Central Texas Insulation, Coleman, Texas. Phone 625-2332 or nights 625-5414. 14-tfc

COMPLETE BACKHOE SERVICE. Approved septic systems installed. K. W. Cook, 754-4719. 37-tfc

ALL kinds of dirt work. ROY CALCOTE & SONS DIRT WORK. Dozer, backhoe, loader and dump trucks. Have yard dirt in stock for quick delivery. Call 767-3241 or if no answer 754-4995. 9-tfc

TERMITES? ROACHES? WOOD ANTS?
Free estimate without obligation. All work guaranteed.
ABC PEST CONTROL
For information call
Abilene collect
915-677-3921

PROFESSIONAL DIRECTORY

JNO. W. NORMAN
ATTORNEY-AT-LAW
Winters, Texas

Marvin L. Jones
Income Tax & Bookkeeping Service
105 W. Dale - 754-5393
Winters, Texas

Dr. C. R. Bolis
CHIROPRACTOR
407 N. Rogers, 754-5464
Hours 9-5:30
Wed. By Appointment

T. M. HAMNER
Certified Public Accountant
PUBLIC ACCOUNTING
(Offices with Hatler Ins. Agency)
110 S. Main 754-4604

MISCELLANEOUS

THE BAKERY now has a phone! 10% off each purchase called in from 10-23-80 to 10-31-80. Phone 754-5313. 33-2tc

PIANO tuning and repair. 25 years experience. All work guaranteed. Ben G. Arnold, Robert Lee, Texas. Phone 453-2361. Call day or night. 6-tfc

TIME to re-pot. We have a new shipment of Carl Pool Potting Soil. Also Carl Pool Magic Grow plant food. Winters Flower Shop. 1-tfc

SEE Western Auto for a super fine tire balance on the new electronic NORTON Balancer! 4 for \$16.88 for most cars and light trucks. 34-tfc

WESTERN MATTRESS CO. Bi-weekly sales and service. New or renovated. Complete bedding. Ph. 754-4558. 33-8tc

100 Bic ball pens FREE with every 300 purchased. (Limited time) "See me First" Roy Rice, 201 E. Truitt, Winters. Ph. 754-5417 or 754-4286. REPRESENTATIVE FOR SUNSHINE ADVERTISING COMPANY, ABILENE, TEXAS. 27-tfc

OWN YOUR OWN BUSINESS. If you qualify you will own two related businesses. First, you will distribute name brands of merchandise such as Kodak, Polaroid, GE, Westinghouse, Sylvania, Ray-O-Vac or Eveready. There is no selling involved. You need only service retail accounts established for you by the company. Second, you will own a related mail order film processing business. Minimum investment \$9975. Call Opr. 38 at 1-800-633-4588 or Write NAMCO, 2121 Montevilla Road, S. W., Birmingham, Alabama 35211. 33-1tc

PLANNING a company party? For your party favors and party sets, "See me First", ROY RICE, 201 E. Truitt, Winters. Ph. 754-5417 or 754-4286. REPRESENTATIVE FOR SUNSHINE ADVERTISING COMPANY, ABILENE, TEXAS. 27-tfc

YOUR SPECIALTY advertising counselor, Roy Rice, is anxious to be of service to you. "See me First" ROY RICE, 201 E. Truitt, Winters. Ph. 754-5417 or 754-4286. REPRESENTATIVE FOR SUNSHINE ADVERTISING COMPANY, ABILENE, TEXAS. 27-tfc

MERLE NORMAN COSMETICS
"Place for the custom face"
Tues. — Fri.
9 to 6
Try before you buy!
Call for your appointment today
754-4322

KING GOOSE BROZ
TRAILER SALES
Box 5 Paint Rock, Tex.
915/732-4221
Grain, Stock and Implement Dealer 4-tfc

WINTERS SHEET METAL & PLUMBING WORKS
Plumbing, Heating & Cooling
215 W. Dale
Phone 754-4343

"the fashion center of Runnels County"
fashion shop
123 So. Main
Winters, Texas
Carolyn Gally, owner 915 754-4724 915 583-2545

MISCELLANEOUS

1972 CAPRICE
4-door, air, and power
\$1495
ROBINSON CHEVROLET CO.
Winters, Texas

HAVE A HIGHLY PROFITABLE, non-franchised, Jean & Sportswear Shop of your own. Featuring over 100 brands — Levi, Vanderbilt, Klein, Sedgfield, Britannia, many more. \$16,500.00 includes inventory, in-shop training, installed fixtures and Grand Opening. Open within 15 days. Call Mr. Summers at PACESETTER FASHIONS (214) 937-6442. 33-1tp

STEEL BUILDING SALE: Overstocked on certain sizes. Will sell for dealer cost. Available Slantwalls 48x16x50 — \$5,992.00; 48x16x75 — \$7,994.00; 48x16x100 — \$9,983.00; Straight-walls 50x16x50 — \$7,697.00; 50x16x75 — \$9,881.00; 50x16x100 — \$11,993.00. All buildings include 24x14 double sliding doors. These prices limited to amount in stock. Call JIM — PERMANENT BUILDING SYSTEMS, INC. Toll free 800 525-9926. 32-2tc

EXTERMINATOR

WESLEY'S Spraying Service. Home pest control a specialty. Licensed by State of Texas. Wesley Vogler, 754-5352. 30-tfc

GARAGE SALE

2-FAMILY GARAGE SALE: Saturday, Oct. 25, from 8:00 a.m. to 5:00 p.m. Clothes, toys, and household items. 208 Roselane. 33-1tp

INSIDE SALE: Clothes, record player, misc. items. 908 N. Main. Friday and Saturday from 10 a.m. to 6 p.m. 33-1tp

For Your Spraying needs, cotton defoliating, weeds, insects, grass seeding, or free field inspection
Call
BROOKS FLYING SERVICE
Over 20 years experience
754-5076 754-5150
Winters, Tx.

Wavy Kay COSMETICS
Call to arrange a fascinating and complimentary facial with instructions in correct beauty procedure.
Kay Brown
417 N. Main
754-4892

WINTERS FUNERAL HOME
Insurance and Markers
24-Hour Service
754-4529

GARAGE SALE

GARAGE SALE: Everything priced to go. Clothing — Sewing machine — dishes — cookware — all household misc. — 102

GARAGE SALE

Belair Drive on Novice Road. Friday and Saturday. Starts at 8:00 a.m. 33-1tp

PUBLIC NOTICE

In compliance with Sec. 43(a) of Art. 1446c, V.A.C.S., West Texas Utilities Company hereby publishes NOTICE that it has filed, on September 30, 1980, its statement of intent to make changes in its rates charged for electricity and services sold and rendered inside and outside municipal jurisdictions, such proposed changes to be effective November 4, 1980. Such Statement of Intent includes the proposed revisions of tariffs and schedules and a statement specifying in detail each proposed change, the effect the proposed change is expected to have on the revenues of the Company and the classes and numbers of utility customers affected. Gross revenues are expected to be increased 8.27 per cent by the new rates. Statements of intent were filed with the Public Utility Commission of Texas and with the following municipalities:

Abilene	Haskell	Quitaque
Albany	Hawley	Rankin
Alpine	Hedley	Rising Star
Anson	Impact	Roaring Springs
Aspermont	Iraan	Robert Lee
Baird	Jayton	Roby
Balmorhea	Junction	Rochester
Ballinger	Knox City	Rotan
Benjamin	Lakeview	Rule
Big Lake	Lawn	Santa Anna
Blackwell	Lueders	Shamrock
Bronte	Marfa	Sonora
Buffalo Gap	Matador	Spur
Childress	McCamey	Stamford
Chillicothe	Melvin	Sterling City
Cisco	Menard	Talpa
Clarendon	Merkel	Throckmorton
Clyde	Mertzon	Trent
Cross Plains	Miles	Turkey
Crowell	Moran	Tuscola
Dickens	Munday	Tye
Dodson	O'Brien	Valentine
Eden	Paducah	Weinert
Eldorado	Paint Rock	Wellington
Estelline	Putnam	Winters
Goree	Quanah	Woodson
Hamlin		

Areas affected by the filing with the Public Utility Commission of Texas are in the following counties:

Baylor	Fisher	Nolan
Brewster	Foard	Pecos
Briscoe	Gillispie	Presidio
Brown	Hall	Reagan
Callahan	Hardeman	Reeves
Childress	Haskell	Runnels
Coke	Irion	Schleicher
Coleman	Jeff Davis	Shackelford
Collingsworth	Jones	Stephens
Concho	Kent	Sterling
Cottle	Kimble	Stonewall
Crane	King	Sutton
Crockett	Knox	Taylor
Dickens	Mason	Throckmorton
Donley	McCulloch	Tom Green
Eastland	Menard	Upton
Edwards	Motley	Wheeler
		Wilbarger

Business Services

RCA TV
Authorized Dealer
WE SERVICE ALL MAKES
SALES & SERVICE
BARNES RADIO-TV
754-4223 135 N. Main

Mansell Bros.
Ballinger-Winters
"Your Authorized John Deere Dealer"
Ballinger 365-3011
Winters 754-4027
Parts & Service
Complete Shop Facilities
HWY. 53 WEST

Swatchesue Electric Co.
Winters, Tex.
GENERAL ELECTRIC Appliances
ROPER & GIBSON Appliances
FRIEDRICH Air Conditioners
139 West Dale
Ph. 754-5115 — Box 307

PRESLEY OIL CO.
Exxon Distributors
All Major Brands of Oil
Delivery For Gasoline & Diesel Fuel
Phone 754-4218
1015 N. Main
Ronald Presley
Joe Pritchard

MARVIN L. JONES
INCOME TAX & BOOKKEEPING SERVICES
Preparation Of Quarterly State And Federal Reports
Business & Farm Bookkeeping Needs
Tax Returns:
• Individual • Farm
• Partnership
• Sole Proprietor
Auditing
754-5393
105 W. Dale Winters

TYSON MIXED



FRYER PARTS

lb. **53¢**

- EXTRA LEAN **GROUND CHUCK** ...lb. **\$1.89**
- SHURFRESH 12-oz. **FRANKS** **98¢**
- SHURFRESH SLICED **BACON**lb. **\$1.39**
- SWIFT'S CENTER CUT RIB **PORK CHOPS**lb. **\$1.89**
- SWIFT'S CENTER CUT LOIN **PORK CHOPS**lb. **\$1.99**
- SWIFT'S FAMILY PACK **PORK CHOPS**lb. **\$1.48**

USDA CHOICE BONELESS VAC-PAK

BRISKET

lb. **\$1.38**

USDA CHOICE BONELESS **ARM ROAST**
lb. **\$2.09**

USDA CHOICE BONELESS **CHUCK STEAK**
lb. **\$1.99**

USDA CHOICE BONELESS **STEW MEAT**
lb. **\$1.99**

USDA CHOICE BONELESS **CHUCK ROAST**
lb. **\$1.78**

- LIPTON 3-oz. **INSTANT TEA** **\$2.19**
- 12-oz. **LUNCHEON SPAM** **\$1.29**



- SHURFINE 1.4-oz. cans **PORK & BEANS** **4/\$1**
- SHURFINE (Cream of Mushroom) **SOUP** **4/\$1**

WINTERS, TEXAS



We Reserve Rights To Limit Quantity

- LIGHT CRUST (Pancake, Biscuit, Cornbread, Hush Puppy) **POUCH MIXES** **5/\$1**
- LIGHT CRUST 5-lb. bag **FLOUR** **79¢**

- WOLF PLAIN 15-oz. **CHILI** **69¢**
LIMIT 2



SHURFRESH 1 1/2-lb. Loaf

BREAD **2/\$1**

- HUNT'S 32-oz. **CATSUP** **99¢**

- SHURFINE 16-oz. **MIXED VEG.** ... **2/79¢**
- SHURFINE 16-oz. **SWEET PEAS** **3/\$1**
- WAGNER 32-oz. **FRUIT DRINK** **59¢**
- SHURFINE **Salad Mustard** **59¢**
- RAINBO 32-oz. **PICKLES** **89¢**
- POPSRITE 2-lb. **POPCORN** **59¢**

SHURFINE
1-lb. Can
COFFEE
\$1.99



LIMIT 1 WITH \$10.00 PURCHASE

- LUX 32-oz. **Liq. Detergent** **\$1.19**
- SHURFINE 49-oz. **Laun. Detergent** ... **\$1.19**
- MISS BRECK **HAIR SPRAY** **\$1.19**
- NICE N SOFT 4-roll pkg. **TOILET TISSUE** **\$1.03**
- ARROW 10-lb. **CHARCOAL** **99¢**
- HEFTY 10-ct. **Lawn & Leaf Bag** . **\$1.69**

THRIFT KING lb. qtrs. **SPREAD**
2 pkgs. **79¢**

- SHURFRESH 1/2-gal. **BUTTERMILK** **89¢**
- CHIFFON 1-lb. tubs **MARGARINE** **69¢**

SHURFRESH 1/2-gal. **MELLORINE**
68¢ LIMIT 2

- MORTONS **T.V. DINNERS** **79¢**
- PET RITZ Deep Dish **PIE SHELLS** **79¢**

RED RIPE **TOMATOES**
lb. **59¢**

- TEXAS (5-lb.) **ORANGES** **99¢**
- YELLOW **ONIONS** **5 lbs. \$1**

FRESH **BANANAS**
4 lbs. for **\$1**

- RUSSET **POTATOES**lb. **39¢**
- GOLDEN DELICIOUS **APPLES**lb. **39¢**

This Week's SilverStone Feature Piece

10" Open Saute Pan

\$6.99 only



with each and every \$10 purchase all week.

CHICKEN OF THE SEA 6 1/2-oz. can

TUNA
89¢



SHASTA 12-oz. cans **SOFT DRINKS**
6/\$1.29



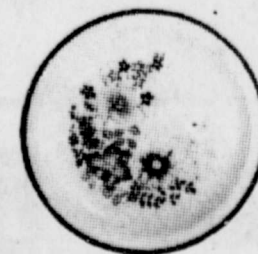
SNOWDRIFT 3-lb.

SHORTENING
\$2.19



AFFILIATED QUEEN **PANTY HOSE**
89¢

This week's featured completer item of the ALPINE MOUNTAIN STONWARE COLLECTION.



Matching 12" Chop Plate

This week **\$8.49**

Lions Club pancake feed December 5

The Winters Lions Club will sponsor a pancake supper Friday, Dec. 5, at the Winters Community Center.

All proceeds will go to the West Texas Rehabilitation Center.

Naomi Circle met Oct. 21

The Naomi Circle of the UMW met on Oct. 21 with Mrs. Beatrice Traylor.

Circle Chairman, Alene Mapes, was in charge.

Beatrice Traylor read a letter she received from a lady in Oklahoma, and the devotional poem was read by the chairman.

The playlet, "Clowning" was given by Willie Lois Nichols and Ethel Bridwell. Alene Mapes also read poems.

The group was dismissed by all saying the Lord's Prayer.

Others present were Lillie Marks, Jewel Mitchell, Ava Crawford, Lillie Rose, Bertha Tharp, Lula Belle Leeman, and Esther Shook.

Mother-In-Law's Day Coming on October 26

Mother-In-Law's Day, the holiday honoring the unsung heroines of American families, will be celebrated this year on Sunday, October 26, according to the Winters Flower Shop. Comedians and others will put away their tired jokes and snide remarks on this day which is being celebrated for the fourth year in a row.

TV personality "Lonesome George" Gobel has been selected national chairman for Mother-In-Law's Day by Florists' Transworld Delivery, sponsors of the event. Gobel's own mother-in-law, Mrs. Lucy Humecke, will be featured.

Ruth Circle meeting Tuesday

Ruth Circle of the First United Methodist Church met at the Church Tuesday morning with 10 members and one visitor present. Mrs. W. T. Stanley led the opening prayer.

Mrs. Ralph Arnold had charge of the program on missionaries. Mrs. T. C. Stanley also took part on the program. A general discussion was held.

has lived with him for more than 30 years.

While some may still agree that the best mother-in-law is one who lives in a distant city — or in a foreign country — the great majority of Americans are truly fond of their "other" mothers. After centuries of abuse, mothers-in-law have come into their own and are being recognized for their many contributions to family life.

Families remember mothers-in-law on their day with thoughtful acts and gifts. The Winters Flower Shop will be featuring the Charm-Her Bouquet, a special floral gift designed especially for mothers-in-law.

Wingate Sew and Sew met recently

The Wingate Sew and Sew Club met recently with hostesses Fay Pinegar and Mabel Hancock.

Quilting with them were Eura Lloyd, Grace Smith, Mildred Patton, Lorene Kinard, Marie Bradford, Leila Harter, Lessie Robinson, Jo Lindsey, Flossie Kirkland, Vida Talley, Nellie Adcock, Ethel Polk, Edna Rogers, Bessie Phillips, and Hattie Hensley.

The next meeting will be Oct. 28 with Eura Lloyd and Lessie Robinson.

CARD OF THANKS

Floyd joins me in saying thank you to the Jerry Lawrence's, store employees, the church, Dr. Rives and the nurses at No. Runnels, the OES, and all our friends. I enjoyed the food, flowers, cards and visits. My friends mean so much to me.

Anita Wood

Having trouble drying sweaters?

Try using a framed aluminum screen for a "drying tray" to dry small items that require blocking (shaping) instead of hanging so they won't stretch — such as sweaters, suggests Becky Saunders, a clothing specialist with the Texas A&M University System.

Miss Gerhart and Mr. Koca plan wedding

Mr. and Mrs. Paul R. Gerhart of Winters announce the engagement of their daughter, Rebecca Carlene, to Mr. James Paul Koca, son of Mr. and Mrs. Joseph J. Koca of Alamogordo, N. M.

The bride-elect is a graduate of Winters High School and San Angelo Business School. She is employed by Southwest Bank of San Angelo.

The prospective bridegroom is a graduate of Alamogordo High School and New Mexico State University. He is employed by the City of San Angelo as a patrolman.

The couple plans a Dec. 31 wedding at St. John's Lutheran Church, Winters.

Blackwell

The United Methodist Women of the Blackwell Church met Monday, October 13th in the home of Mrs. Mary Louise Alderman with eight of the members attending.

The meeting was called to order by the President, Mrs. Abe Lanier, and opening prayer was voiced by Mrs. John McReory.

Mrs. Terry Barrett conducted the business meeting. The nomination committee was selected consisting of Mrs. Cecil Smith and Mrs. Mary Louise Alderman. Mrs. John English was elected as Christian Social Relations.

A motion was made and carried to get a stand for the Bible in the Prayer Room in memory of Mrs. Austin (Opal) Jordan.

Fannie Mae Wilson returned home last Sunday after spending six weeks in Austin with her son Charles and family. He and his family came home with her and visited with his brother Curtis and family and other relatives, and their friends.

The Blackwell Omega Coterie met October 8 in the home of Mrs. Margaret Stout, with Mrs. Laura Seale as co-hostess.

Mrs. Verla Smith presided and welcomed new members and a guest.

Mrs. Emily Monroe had yearbooks printed for the members which she presented.

Plans were made for the Halloween and Thanksgiving treats for residents of the Bronte Nursing Home.

Mrs. Verla Smith reported she had reserved the Fire Station office for the Bazaar and Bake Sale to be on Election Day, November 4.

Those attending the meeting were Bobbie Barrett, Opal Jeffcoat, Emma Lee Lanier, Rhoda McCarley, Ruby Patterson, Esther Smith, Noba Ware, Emily Monroe, Verla Smith, Lillie Mae Walters, one new member, Jane Wheat, one visitor, Louise May, a house guest of Opal Jeffcoat.

Mrs. Audrey Smith and children from So. Dakota visited several days last week with Mr. and Mrs. Leroy Chew and other friends.

Blackwell had a thunderstorm last Thursday night and early Friday morning, and received a good yard and garden rain, from one-half to one inch. It was really fine on the fall gardens.

Use horizontal lines to make a narrow room look wider, suggests Dr. Jane Berry, housing and home furnishings specialist.

Achieve this using a striped rug or carpet with horizontal bands of color. Or place a horizontal piece of furniture, such as a striped-back sofa or long table along the narrow end wall of the room, she says.

Dr. Berry is a home economist with the Texas Agricultural Extension Service, the Texas A&M University System.

Sub Deb Club meeting Monday

The Sub Deb Club met Monday evening in the home of Mr. and Mrs. Johnny Merrill, with Tina Merrill serving as hostess.

Those present were Kathy Grenweige, Jodie Wearden, Tina Merrill, Shanna Weems, DeAnn Deaton, Susie Vera, Lee Boykin, Rosalinda Vera, Ruth Eubanks, Marianne Mostad, and Anna Vera, and sponsors, Glenda Matthews and Nancy Evans.

The next meeting will be Oct. 29 with Lee Boykin as hostess.

In determining wash-water temperature for laundry, remember that hot-water temperatures will average 10 degrees below the hot-water heater temperature setting due to the cooling effects from the washer itself and garmets, says Becky Saunders, a clothing specialist.

Mrs. Saunders is on the home economics staff of the Texas A&M University System.

TEXAS CROSSROADS PUZZLE

IMAGINE... YOURSELF TRAVELING TEXAS.

You become lost and find this group of highway signs and refer to your map to find your location. There is only one place in the state you can be...

WHERE ARE YOU? Find the answer and some interesting facts about the area in the next edition.

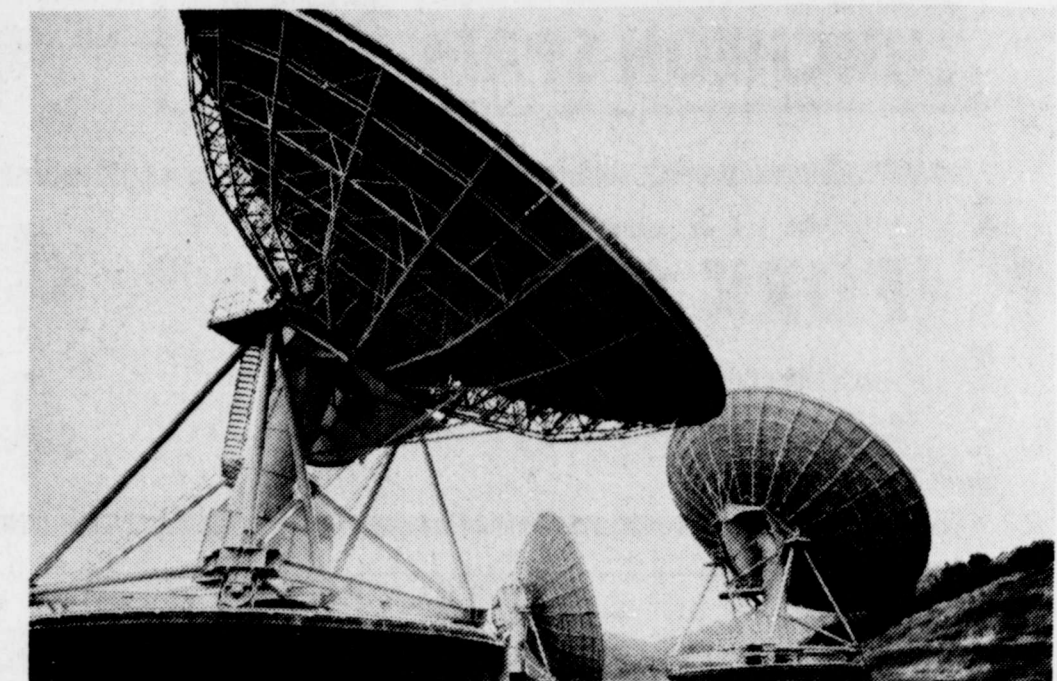
Use Your Texas Road Map To Solve The Puzzle

See Texas First

Answer to Puzzling Crossroads

These highway crossings would put you in Andrews and Andrews County. The county was not organized until 1910. It only had 400 residents in 1929, yet had produced its billionth barrel of oil by 1965 and had proven reserves of over a billion more. The personification of the Texas dream, a just reward for the tenacious spirit of the pioneers that settled the last frontier of Texas.

A cloud takes 20 seconds to recharge after lightning flashes.



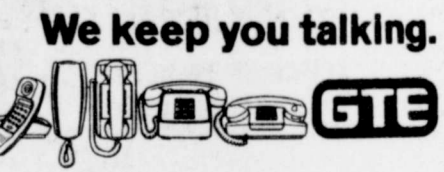
Who goes out of this world for you?

It's an earth station talking to outer space, or a cute little phone built like Mickey Mouse. Because we realize how important it is to keep you in touch with your world. We spend hundreds of millions of dollars every year, making sure that when you pick up your phone... It works.

We do... General Telephone.

This is one of our earth stations. It beams 18,000 phone calls at a clip to a satellite hovering more than 20,000 miles above the equator. It gathers in the same number of calls, and sends them out over our regular telephone network.

It's part of the incredibly complex system that's just about the world's most efficient communications system. And it has reliability built in, whether



LOOKING FOR A BARGAIN

On Your Auto Insurance... but still insist on service you can be proud of?

For a Savings of up to 20% on your Auto Insurance, call Jim Hatler at

HATLER INSURANCE

110 S. Main
Winters, Tx.
915-754-5032

"Our Policy is Saving You Money"

W-I-D-E SELECTION of Irregular Bath TOWELS

Solids only by CANNON

VALUES to \$3.95 **\$2.98**

CLOSE OUT Men's & Boy's Sport Shirts

\$2.69 ea. or 2 for \$5.00

MEN'S FLANNEL SHIRTS **\$5.95**

New fall colors in flannel shirts that boast of two pockets, regular collar and tails. Poly-bagged. Sizes S/M/L/XL. ASSTD. COLORS.

Clearance Sale — Boys Dingo Boots **\$9.95**

SALE — Polyester Double Knits **88¢** yd. 60 in. wide

SURPLUS STORE

NORTH RUNNELS HOSPITAL

REPORT ADMISSIONS

Oct. 14
Ola Heard
Odella Coalson
A. L. Vinson
Roy Hardesty
Melton Ray Kennedy
Roy Davis
Minnie B. Belitz
Oct. 15
James Torrence
Oct. 16
No Admissions
Oct. 17
No Admissions
Oct. 18
Era Duncan
Oct. 19
No Admissions
Oct. 20
Mabel Thomason
Leigh Ann Mullens

DISMISSALS

Oct. 14
James O. West
Pearlie Abbott
Oct. 15
Monroe Tischler
Edna Lisso
Oct. 16
James Torrence
Roy Hardesty, trans.
Minnie B. Belitz
Oct. 17
Ettie Bishop
Adella Coalson
Oct. 18
Melton Ray Kennedy
Oct. 19
No Dismissals
Oct. 20
Ola Heard, trans.

We're the Key to better financing on your Auto

Remember

...the cost of all auto loans is not the same. Therefore, compare our bank rates before you buy.

We Will

...arrange your car loan in advance and it can be tailored to fit your budget.

We're Here

...to serve you with dependable banking.

WINTERS STATE BANK

500 So. Main Member Of F.D.I.C. Winters, Tx. 79567

IRS imposes "marriage" tax penalty

Working marrieds pay "extra" tax bill

Who brings home the bacon in your family?

If it is both husband and wife, then you are assessed more taxes than if just one spouse earned the same total income, according to Texas A & M Extension Service family resource management specialist Nancy Granovsky.

According to the specialist, if each spouse earns \$5,000, they will be taxed \$202 more than they would if they were single and earned \$5,000 each. That \$202 "extra" amounts to a 40 percent increase in their total tax bill, hence, a \$202 "marriage-tax penalty."

In 1979, a person earning \$15,000 would have been taxed \$1,635 if married to a non-working spouse.

That same person with the same salary if married to a working spouse who also earns \$15,000 would be taxed \$2,796 on that one \$15,000 income.

A single person making \$15,000 would be taxed \$2,345.

In other words, just because you're married and both work outside the home, you're penalized that extra amount, according to current tax regulations.

Some people call this the "sting" of the "marriage-tax penalty."

It happens only to working marrieds.

How can that be?

It works this way: the presence of a second income means the total earnings of the couple are thrust into a higher tax bracket.

In fact, the government looks at both salaries as one total salary.

Make your own 'high-power, low-cost' cleaning products

You can make your own "high-power, low-cost" home cleaners, says a housing and home furnishings specialist.

According to Jane Berry, you can conjure up homemade products that clean bathroom fixtures, windows, mirrors, furniture, marble, tile and aluminum.

Dr. Berry is on the home economics staff of the Texas Agricultural Extension Service, the Texas A&M University System.

Here are the recipes:

Bathroom Fixtures

Start with a recipe for soap jelly and add whitening. To make soap jelly, mix one cup shaved bar soap or soap flakes with one quart of boiling water.

Dissolve the soap in the boiling water. Once it's entirely melted or dissolved, pour it into a wide-mouth jar. Let it stand in a cool place until it jells.

To make a rust remover for lavatories or tubs, combine one part of the soap jelly with four parts of whitening.

This makes a mild scouring agent which won't injure most surfaces.

Windows, Mirrors

For this job, there are four ideas.

1) For heavy greasy soil, add four tablespoons of household ammonia to one quart of warm water.

2) For water-spot removal, add two tablespoons vinegar to one quart of warm water.

3) For light greasy soil, use one tablespoon kerosene to two quarts of warm water.

4) For general cleaning, use one tablespoon washing soda with one quart of warm water.

Remove surface soil with tissue or soft cloth, apply cleaner, then rub dry and polish with news-

The "first dollars" that are earned by the second worker-which would be subject to lower rates if he or she were single-are taxed at the maximum rate (a higher rate) applied to the "last dollars" earned by the other spouse.

How did this happen? It all started back in 1948, with a tax provision to help the majority of families.

In 1948, the majority of families depended on one wage earner for financial support.

So, to "take pressure off" of families who depended financially on just one wage earner, the 1948 tax provision began "penalizing" those married couples with two wage earners.

But the nation's majority has changed since 1948.

Today, 32 million working marrieds are affected by the 1948 tax provision-as more than half of the nations married women work outside the home for wages, the specialist points out.

Working marrieds need to become aware of both the obvious and the hidden costs entailed in earning a living.

They must grapple with making enough from the second income to offset the higher taxes they'll have to pay when they are both working-in addition to other extra expenses that the "second" job will create-such as transportation costs, clothing, and perhaps, babysitting fees.

Since they cannot break the tax rules, some couples simply do not marry in order to avoid

paper or cloth. Avoid spilling ammonia on painted or varnished woodwork because it may damage the finish.

Furniture
This can be a breeze without spending a fortune.

Clean furniture with "dustless" cloths made at home.

Here's how:

Mix one tablespoon of kerosene with one quart of hot water.

Dip squares of clean lintless cloths into the solution, wring them out, dry and store them.

Store in covered containers, such as glass jars or coffee cans. Keep them clean by washing and re-treating.

Marble, Tile
Remove acid stains with household ammonia, baking soda or borax. If acid has roughened surfaces, rub the spots with pumice stone and water. Polish with a soft cloth.

For grease spots, make a thin paste of Fuller's Earth, spread it on the spot and let it stand for 24 hours. Wash with soap and water.

Repeat the process, if necessary. Scrub very soiled spots with pumice stone.

Aluminum
This metal can produce surprisingly bright results when soap jelly and whitening are part of the "cleaning plan."

Scour badly abused aluminum vessels with whitening and soap jelly.

Use very fine steel wool on aluminum.

Brighten discolored aluminum pans by boiling one of the following solutions in them until the discoloration disappears:

a) one tablespoon vinegar to one quart of water, or

b) two teaspoons cream of tartar to one quart of water.

the "marriage-tax penalty," while some working marrieds have actually divorced to avoid the "penalty."

This is causing greater awareness among national policymakers, Mrs. Granovsky adds, who are beginning to recognize that current tax regulations do not meet the needs of today's families. Most probably, tax rules will change.

But here's where things get rather complicated.

It isn't a simple matter of just throwing out the marriage-tax penalty.

Since the provision that created it depends on the idea of "lower tax brackets" and "higher tax brackets"-and on married persons, single persons and "unmarried head of household" persons, then any changes in the tax rules must deal with all these factors.

Mrs. Granovsky has this to say about the future:

Although we do not know when changes will occur, the U. S. Congress is definitely involved in ideas for change.

The House Ways and Means Committee held meetings last April on the tax treatment of married and single taxpayers.

Bills to reduce tax inequities have been introduced in both the House and Senate.

At the three White House Conference on Families held this summer, the proposal to eliminate the "marriage tax" drew more support than any other issue.

By a margin of 17-1, the 2,000 delegates specifically called for permitting a married couple the option of filing joint or separate returns. Support for the issue cut across regional, econom-

ic, ideological and political divisions within the delegations.

Several ways to resolve the issue have been proposed, and each proposal has potential benefits-and costs-for families, as well as for American society as a whole, says Mrs. Granovsky.

"The possible impact of each proposal to change tax rules needs careful evaluation before specific tax-reform measures can be adopted," the specialist stresses.

4) Eliminate the tax-rate schedule for marrieds filing separate returns.

On the other side of the coin, if the "marriage-tax penalty" were "thrown out," it would cost the United States government billions of dollars, some experts argue.

They estimate it would result in a loss to the government of about \$8.3 billion a year.

Whatever the changes, the public will be affected, Mrs. Granovsky.

How satisfactory and fair to the majority these changes might be will depend largely on the public's understanding of these issues and their effects; on the nation's individuals and families, and on the nation's economy, the specialist concludes.



WINTERS

EMERGENCY NUMBERS

Police754-4121
Ambulance . . 754-4940
Fire754-4222
Hospital . . . 754-4553

Looking for Longer-Lasting Advertising Messages?
 . . . the answer is simple:
 Use **PRINTED** Advertising!

Winn's Lets You Have A HAPPY HALLOWEEN!

Sat., Oct., 25-Fri., Oct. 31

DELICIOUS & CHEWY CANDY KISSES

Each is individually wrapped in black or orange. Get plenty for everyone. 80 ct. Reg. 88¢

SPECIAL! 69¢

MELLOCREME PUMPKINS

FROM BRACH'S! Mellocreme Pumpkins are delicious treats, colored in traditional Halloween orange. 12 oz. pkg.

JUST 79¢

COMPLETE HALLOWEEN WITH JACK-O-LANTERNS!

6" plastic Jack-O-Lanterns are decorative and functional. Get several to add to the Halloween festive decor and for storing candy and treats.

SPECIAL! 77¢

Larger sizes also available

BIG TASTE FROM TINY SWEETARTS

You get a burst of flavor everytime you bite into a Tiny Sweetart. 103 individual packages in every bag.

ONLY \$1.29

RUBBER MASKS ARE GUARANTEED TO SCARE!

Be a creature, a monster, or a ghoul. In life-like durable pliable rubber.

WITHOUT HAIR WITH HAIR

\$2.59 \$3.59

PLASTIC MASKS ARE BIG ON SCARE. LOW ON PRICE!

Full face and half-masks with a big selection. Choose your favorite! Elastic bands attached and ready to wear.

ONLY 19¢ \$1.29

TOP OFF YOUR COSTUME!

Get a hat! Choose derby or hobo hat. Use them at parties or as part of your Halloween disguise. Made of durable vinyl.

ONLY 59¢

NOISEMAKERS ADD TO THE HALLOWEEN SPIRIT

Great for party fun or for trick-or-treating. Get one for everyone.

JUST 29¢ ea

16 oz. JUDSON'S "SPARKLE MIX" WRAPPED CANDY

A Great Halloween treat at a great price! Individually wrapped candies in assorted flavors from Judson candies. Reg. \$1.17

SPECIAL! 99¢

THE DIFFERENT TREAT - SWEET & SOUR SMARTIES

Assorted flavored candy rolls. 12 oz. bag of individually wrapped rolls. A truly different candy taste.

ONLY 99¢

Kid's Announcing ... WINN'S WINTERS, TEX. 5TH ANNUAL HALLOWEEN COSTUME CONTEST

CONTEST DATE: OCTOBER 25, 1980

AT 4:00 P.M. JUDGING OF "ORIGINAL" COSTUMES WILL BEGIN. "ORIGINAL" MEANS THAT PURE STORE BOUGHT COSTUMES AREN'T ELIGIBLE. JUDGING WILL BE BY A PANEL OF IMPARTIAL JUDGES. ONE PRIZE WILL BE AWARDED FOR EACH WINNING PLACE IN EACH CATEGORY. PRIZES TO BE AWARDED ARE:

- * 0-6 YR. OLD CATEGORY:
 - 1ST PRIZE - FISHER PRICE PLAY FAMILY HOUSE (\$17.99 VALUE)
 - 2ND PRIZE - KEYS OF LEARNING SET BY CHILD GUIDANCE (\$3.99 VALUE)
- * 7-12 YR. OLD CATEGORY:
 - 1ST PRIZE - TELEPHONE SOLID-STATE PHONOGRAPH (\$18.99 VALUE)
 - 2ND PRIZE - ENGLISH FLINGER CLINGER GAME (\$5.99 VALUE)

(PRIZES CAN BE SEEN AT THE STORE UNTIL CONTEST TIME.)

EACH CHILD ENTERING WILL RECEIVE A COMPLIMENTARY HALLOWEEN SURPRISE BAG.

Winn's
VARIETY STORES

The REAL variety store.

106 W. Broadway
WINTERS, TEXAS

GO BLIZZARDS!



**BANG BAIRD
FRIDAY, OCT. 24
THERE**

Kickoff at 7:30 p. m.



Sept. 5	Ballinger	Here
Sept. 12	Roscoe	There
Sept. 19	Rotan	Here
Sept. 26	Hawley	There
Oct. 3	Merkel	Here
Oct. 10	Albany	There
Oct. 17	Jim Ned	Here
Oct. 24	Baird	There
Oct. 31	Open	
Nov. 7	Hamlin	Here
Nov. 14	Anson	There

GO, BIG BLUE!

**We're with
you all the
way!**

- JNO. W. NOR **MAN**
The Insurance
- MANSELL BROS.**
John Deere Farm Equipment
Hwy. 53 West
- MARVIN L. JONES**
Income Tax & Bookkeeping
- CARL GRENWELGE**
Texaco & Tire Service
- BISHOP BOYS FORD**
- WINN'S VARIETY STORE**
- WINTERS FLOWER SHOP**
- BUSHER AG SERVICE**
Hwy. 53 East
- NAIDA'S**
- McDORMAN**
FURNITURE & APPLIANCE
- FOXWORTH-GALBRAITH**
Lumber Co.
- BEDFORD**
Insurance Agency



- RAMCO**
Oil Field Hauling & Construction
- PRESLEY OIL CO.**
Exxon Distributor
- ROBINSON CHEVROLET**
- REAL ESTATE? TOM POE!**
- DAIRY QUEEN**
Winters
- WINTERS STATE BANK**
- WINTERS FARM EQUIPMENT**
J. I. Case & Allis Chalmers
Farm Equipment
- WINTERS FUNERAL HOME, INC.**
Life Insurance-Monuments-24 Hour Service
Ted Meyer-Mike Meyer
- POOL WELL SERVICING CO.**
Oil & Well Production Service
- WINTERS CONSTRUCTION CO.**
Williams Paraffin Co.
- JOHNNY'S SHELL STATION**
Superior Muffler Center



- SPILL BROS. FURNITURE**
Gifts & Accessories
- ALDERMAN-CAVE**
Milling & Grain Co.
- HOPPE**
Texaco & Tire Service
- HARRISON'S AUTO PARTS**
- HIGGINBOTHAM'S**
Lumber & Hardware
- WESTERN AUTO**
Associate Store
- MELBA'S**
Arts, Crafts & Gifts
- BEAUTY CENTER**
MERLE NORMAN COSMETICS
DRY MANUFACTURING DIV.
Wallace Murray Corp.
- SENIOR CITIZEN NURSING HOME**
Johnny & Janice Merrill
- BOB LOYD LP GAS CO.**
Bob Loyd & Gene Wheat
- BAHLMAN JEWELERS**
- JOHN'S INTERNATIONAL**



- RUNNELS COUNTY SHERIFF'S OFFICE**
Hershal Hall, Sheriff
- WEST DALE GROCERY & MARKET**
- RED TOP STATION & GROCERY**
Phone 754-5488
- SEARS CATALOG STORE**
Kobert & Betty Paschal
- SWATCHSUE ELECTRIC CO.**
G.E. Dealer
- WINTERS**
Sheet Metal & Plumbing
- WINTERS WELDING WORKS**
- MAC OIL FIELD CO. INC.**
- AMERICAN SUPPLY**
- MOTEL WINTERS**
Go Big Blue
- THE WINTERS ENTERPRISE**
- G & G RUSTIC SIGNWORKS**
- BISHOP & SONS**
Dirt Contractors, Inc.
- HEIDENHEIMER'S**
- TRIPLE "J"**

Crews

Success comes in cans; failure comes in can'ts.

Mrs. Corra Petrie returned from visiting the Brandon relatives in Yadkinville, N.C., while the Cecil Hambrights returned from Kings Mountain N.C., where they attended the Hambright reunion. They flew both ways.

Visitors on with Mrs. Corra Petrie on Sunday were her children, Mr. and Mrs. Luther Summerville of S.A., Kenneth and Melinda. Also Mr. and Mrs. Cecil Hambright and Toni of Winters, Brandon and Donna

Hambright of Albany, and David Brewer.

Mrs. Earl Cooper stayed Thursday night with the Richard Chambliss family in Hawley and did some shopping in Abilene on her way home.

Bob Hill of Fort Worth spent Friday and Saturday with his folks, the Robert Hills. The Mike Hills of Drasco came on Friday night.

We're sure sorry to hear that Mrs. Doug Bryan is ill and hope for her a speedy recovery. Visiting the Bryans during the week were Mr. and Mrs. Dewitt Bryan,

Mr. and Mrs. Leyon Bryan, Brent and Vicki Bryan.

During the week with Mrs. Effie Dietz were Mr. and Mrs. Coleman Foreman, Mr. and Mrs. Truman Brandon of Fairfield, Mrs. Lilly Osborne and Selma, Mrs. Leona Witt, Mrs. Corra Petrie, Felma Conden of Abilene, Inez Conden of Stanford, and Maxcie Hambright.

Those attending the Alexander reunion Sunday in the Norval Alexander home were Mr. and Mrs. Jay Archer of Glen Dale, California, Mr. and Mrs. Jerry Alexander, Dusty and Casey of Tucson, Ariz., Mr. and Mrs. Serrill Alexander, Blue and Tabbie of San Angelo, Mr. and Mrs. Dwayne Thompson, Trait and Tye of Novice, Wanda Foreman of Snyder, and Margie Montgomery of Sweetwater.

Mrs. Wilbert Alcorn attended the 8th birthday party for Aaron Denson in the home of Mr. and Mrs. Johnnie Mathis and Mark on Friday night. Mrs. Alcorn spent the night Friday with the Densons.

Mr. and Mrs. Jack Prater of San Angelo came by on their way home to see the Noble Faubions Sunday after spending several days at the Brownwood Lake camping.

Hopewell Church will sponsor a Halloween Carnival Sunday night, the 26th, at 7 p.m. at the Crews gym. Bring cakes, cookies, bread, etc., for the cakewalk, homemade gifts, and gifts for bingo. There will be lots more games and ghosts for everyone. Why not have some fun?

The visiting speaker at

Hopewell Sunday was Rodney Weatherby and wife of Wheeler. They were dinner guests of the Sam Faubions along with Paula Baker and Sammie Brown.

Jack Parker had a birthday this week and Mrs. Amber Fuller had dinner with him at the Tradewinds Cafe in Coleman.

Mrs. John Sims, Melinda, Kris and Joe Riley had lunch with the George Davis' and Tommy after church Sunday. Mr. Sims is in Okla. on business.

Mr. and Mrs. Chester McBeth spent Monday night and Tuesday in Rotan with his aunt Mrs. George McBeth.

Visitors with the Chester McBeths were Mr. and Mrs. R. T. Duncan and Mrs. Ella Phipps of Winters, Mr. and Mrs. Willis Phipps of Stephenville, Irvin Phipps of Dallas, Mrs. Lola Ward of Houston and Dennis McBeth of Colorado.

Mr. and Mrs. Jerry Kraatz entertained with a birthday dinner Sunday for their son Keith Kraatz, Barbara Heathcott, and Chance Stenard all having birthdays. Attending were Mr. and Mrs. Robert Kraatz of Winters, Mr. and Mrs. Noble Faubion, Mr. and Mrs. Lucius Wood of Ballinger, Mr. and Mrs. Denny Heathcott and Amy, Mr. and Mrs. O'Neal Bloom of Snyder, Rosemarie, Melissa and Claudette.

Our sympathy to the families of Mr. H. T. Simpson, 97, who passed on Saturday in N.M. and buried in Oleta, Col. He was the father of Mrs. Charlie Foster of Winters and grandfather to Mrs. Theron Osborne.

Boy Scouts attended Camporee

Members of Winters Troop 249, Boy Scouts of America, attended the Chisholm Trail Council Fall Camporee at Camp Tonkawa Oct. 17 and 18, and brought back some awards.

The Winters troop was divided into three patrols, the Warriors, the Eagles and the Longhorns.

In contests, the Eagles made 73 points of a possible 90 for Scout Patrols, for second place. Members of the Eagles were Scott Shifflett, David Childers, C. J. Young, Gilbert Campos and Chuck Patterson.

The Longhorns won a second place ribbon with 55 points. They were Scott Pinkerton, Joe Vallis, Tony Sanchez and Robert Vera.

The Warriors had 48 points for a third place ribbon. They were Shawn Dale Bean, Steven Pasterson, Paul Bishop, Michael Barnett and Richy Hobbs.

Attending the camporee were 254 Boy Scouts and 59 leaders.

Several Winters Cub Scouts visited the Scouts Saturday, including Ronny Barnes, Johnny Barnes, Lance Taylor, Bill Garner. Mrs. Sudduth accompanied the Cubs to Tonkawa.

Winters Troop Leaders at the camp were Eddie Childers and Manuel Vera.

Advertising doesn't cost — it PAYS OFF! Especially if the message is PRINTED!

Everyone's work clothes affect safety

People wear their work clothes for eight hours or more a day, which is more than just about any other set of clothes. Not only are they worn a lot, but work clothes affect their owners' safety and health. Even office workers' clothes can endanger them, the Texas Medical Association (TMA) says.

Although not as dangerous as for manual laborers, office workers' ties, jewelry, and other objects can get caught in some typewriters and other office machines, possibly damaging apparel, people

and machinery. Worse yet, office workers often are ill-prepared for occasional lifting or other manual labor so high-heel shoes or men's slick-soled leather shoes can interfere with even simple physical tasks.

There is probably no way for office workers to avoid wearing ties and other possibly dangerous clothing. But just being aware of hazards can help avoid many mishaps.

Other types of workers should make a special effort to wear safe clothing.

Even clothes' cleanliness can make a difference since clean clothes are less likely to catch fire than greasy or chemical-contaminated garments. Work clothes should have safe sleeves and cuffs that cannot get caught in machinery. Long belts and jewelry that might get caught also should be avoided. Even the seemingly harmless wedding ring can be dangerous because it can hang on so many things. A worker simply jumping off a pickup truck hung his ring on the metal and almost left his finger in the truck. Loose-fitting clothing can do similar damage or get hung in machinery easily.

Mother-In-Law's Day
Is
Sunday, October 26.
Send Our FTD Charm-Her™ Bouquet.



Call or visit us to send one to your Mother-In-Law. She'll think you're a real charmer!

A beautiful bouquet of flowers created for this special day.

WINTERS FLOWER SHOP

Helping you say it right.



11.657%

MONEY MARKET CERTIFICATES

Interest Paid Monthly If Desired

Effective date Oct. 23-29

Our 6-month certificate offers you a very high rate for \$10,000 or more, but only commits you for a very short time. Come in today, and see how much fun savings can be.

We're MORE than a Savings Association - We MAKE Loans Too!

Heart O' Texas SAVINGS ASSOCIATION

Home Office: 200 E. Wallace St., San Saba, TX 76877, Phone 915-372-5121

308 S. Church St., Winters, TX, 79567, Phone 915-754-5064

35% DISCOUNT* ON HOME OWNERS INSURANCE

WITH Allstate® You're in good hands

Now Available to Customers that have Homes that Qualify

ALSO REPRESENTING
FLOYD WEST & COMPANY
LAWYERS SURETY COMPANY
THE WESTERN COMPANIES
RANGER INSURANCE COMPANY
MAYFLOWER INSURANCE COMPANY
WESTERN SURETY COMPANY

YOUR WINTERS AREA


Allstate® AGENCY
You're in good hands

JNO. W. NORMAN LOANS & INSURANCE
100 WEST DALE STREET
WINTERS, TEXAS 79567
(915)754-5111
(915)654-5393
Marvin L. Jones, Manager

COVERAGES AVAILABLE

LIFE
AUTOS
HOMES
BUSINESS
R.V.'s
BOATS
LONG HAUL TRUCKS

Allstate rates now 35%* lower than Texas state rates for Homeowners insurance.



Texas Homeowners: Allstate Homeowners Dwelling insurance helps you fight the cost of living—as we protect your home against loss from fire and many other hazards.

Just call or drop in, and compare. Bring your present Homeowners policy.
*Applies to policies with \$40,000 or greater coverage on dwelling.

Allstate®
You're in good hands.
Allstate Insurance Co., Northbrook, Ill.

AGENT: JNO. W. NOR THE INSURANCE MAN
754-5111 Winters, Texas 79567



Jerry Lackey's Country Folk

There is something about autumn and the cooler temperatures that moves the adrenalin in cowboys and horses to the point that roping fever becomes so high that every weekend is spent somewhere...and the gatherings usually include the whole family. Two such big weekends are forthcoming.

JOHN STOKES of Sonora will host a two-day roping on his K-Bar Ranch in Sutton County Nov. 1-2. The San Angelo Stock Show and Rodeo Assn. will have its 27th Annual Cowboy Roping Fiesta Nov. 8-9.

The Stokes event will kickoff Saturday morning, Nov. 1, with a "scrambled egg roping," he explains, "and will consist of mixed age groups. The juniors must be under 18 years of age and the senior ropers over age 35.

"That event will be followed by an 80 year old (combined age) team roping," he said. This means two 40 year old cowboys can make up a team or other combinations which total 80 years.

An open roping at the K-Bar cannot be entered by anyone who has won over \$5,000 in the past three years.

"All these ropings will feature \$30, three headers, progressive after one," adds Stokes. There will be a \$6 cattle charge and ropers can enter all roping events six times. "They can tie on one end if they are female or over 45 years of age."

This year's San Angelo Roping Fiesta will feature a matching roping between ROY COOPER of Durant, Okla., the world's number one roper, and PAUL TIERNEY of Rapid City, S. D., the world's number two. Each will rope and tie 12 calves for a winner take all purse of approximately \$7,500 or 40 percent of the gate.

Also on Saturday, there will be a jackpot roping with 40 of the top ropers competing for a purse of approximately \$14,500. They will rope and tie two calves each with the top twelve roping a third calf for the finals. Twelve of these ropers are among the top 20 ropers in the world.

On Sunday, Nov. 9, 35 of the top steer ropers will rope, trip and tie three steers each with the top roping a fourth steer for the finals for a purse of approximately \$24,000. Thirteen of the steer ropers scheduled to participate in the San Angelo roping finished in the top 20 in the world.

"Some 5,000 spectators are expected to brave any kind of weather and attend each day of roping," comments SHEILA RATHMELL, SASSA secretary. "Roping fans already purchasing tickets come from all over the United States. Orders have been received from Asburnham, Mass.; Roswell, N. M.; Kiowa, Kans.; Broadlands, Ill.; Welsh, La., as well as from East Coast to West Coast of Texas."

So, roping fans, get your windbreakers out and make your plans.

Sagging auto sales reflected in motor vehicle sales taxes

State Comptroller Bob Bullock has said the automobile industry's woes brought about by sagging sales in the past year are reflected in the state's income from the motor vehicle sales tax.

Bullock said for the 12-month period that ended Sept. 1, 1980, the four percent motor vehicle tax levied on the sales of cars, trucks, motorcycles and mobile homes amounted to \$439.4 million. He said this was \$3.7 million less than was collected in the previous one-year period.

Motor vehicle sales taxes are collected by county tax assessor-collectors and the counties retain five percent of the amount and send the rest to the state.

Motor vehicle sales and use tax gross collections for Runnels County for the Sept. 1, 1979 to Aug. 31, 1980 period were \$352,622.01.

Grandson of resident was killed Sunday

Mike Waggoner, 21, of Garland, grandson of Mrs. Grace Waggoner of Winters, died in a one-car accident at 1:30 a. m. Sunday in Dallas.

Services were held at 10 a. m. Tuesday in the Williams Funeral Home Chapel in Garland, with the Rev. John Allen, pastor of the Axe Memorial Methodist Church of Garland, officiating.

Graveside services were at 5 p. m. Tuesday in the Blackwell Cemetery in Nolan County, under direction of Winters Funeral Home.

Born Aug. 19, 1959, in Sweetwater, he later moved to Garland with his family. In 1977 he graduated from Garland High School where he was president of the senior class.

He was a senior at Southern Methodist University, attending the school on an athletic scholarship.

Survivors include his parents, Mr. and Mrs. Harley Waggoner of Garland; two brothers, Gerry of Dallas and Robert of Garland; his paternal grandmother, Grace Waggoner of Winters; and his maternal grandmother, Josie Hipp of Bronte.

WTRC cattle sale set November 12

The West Texas Rehabilitation Center Cattlemen's Roundup final livestock sale for 1980 will be held at the Brownwood Cattle Auction Nov. 12.

Feed lots have been reopened for livestock that was missed. Due to the severe weather, primarily rain and flooding, which occurred during the last week of September, some cattlemen were unable to get their livestock picked up or delivered.

For example, if you're just sitting around watching television, you will take an hour to use up the 105 calories in two tablespoons of peanuts. If you run or swim fast, you can use up those calories in about 20 minutes.

So how many calories you need daily, depends on how active you are.

Carpet shopping tips

Carpet can add greatly to the warmth and comfort of a home, says Dr. Jane Berry, a housing and home furnishings specialist.

Dr. Berry is with the Texas Agricultural Extension Service, The Texas A&M University System.

To get quality carpeting suited to your needs, here are a few tips for consideration:

Construction

There are four types of carpet construction, she explains.

1) Tufted carpet is the most popular today. A machine punches the yarn through a pre-formed backing material, and the yarn is locked in place by a latex adhesive.

2) Woven carpet is made of pile yarns, weft yarns and warp yarns interwoven so all three lock together in one fabric.

3) Needle-punched construction is a flat abrasive-resistant sandwich of unspun fibers atop a pre-woven fabric core.

4) Flocked carpet is chopped fibers applied with adhesive to a backing.

Surface Treatments

Many surface treatments are used on the four construction methods, Dr. Berry points out.

Looped carpet is tightly tufted and hard wearing — best for high traffic.

Shags have a casual appearance and are meant for medium traffic areas.

Plushes have the look of luxury with an even-cut pile — perfect for low traffic.

Saxony has tightly twisted yarns, woven closely so long pile stands up.

Random shear has all one-level loops with some cut — great for heavy traffic.

High and low-looped pile is uncut and looks pebbly. It's very durable.

Press as you sew.

Don't cross a seam with another seam before pressing it, says Nancy Brown, a clothing specialist on the home economics staff of the Texas A&M University System.

Control weight — eat less and exercise more

Even the "back-to-school" crowd is counting calories, especially teenage girls, observe school food service directors.

Such interest has brought up a lot of questions from students about calories.

"Come to think of it," said one student, "what are calories?"

Calories are not nutrients, points out food specialists with the U.S. Department of Agriculture. Calories are a measure, like inches or pounds. They measure the energy in food. They are also a measure of the amount of energy you use to live, grow, and act.

The idea is to get a balance — to take in about the same amount of calories from food as you use up.

Except for water, all foods have calories. Different foods provide different amounts of calories. And you use up different amounts of energy depending on how active you are.

For example, if you're just sitting around watching television, you will take an hour to use up the 105 calories in two tablespoons of peanuts. If you run or swim fast, you can use up those calories in about 20 minutes.

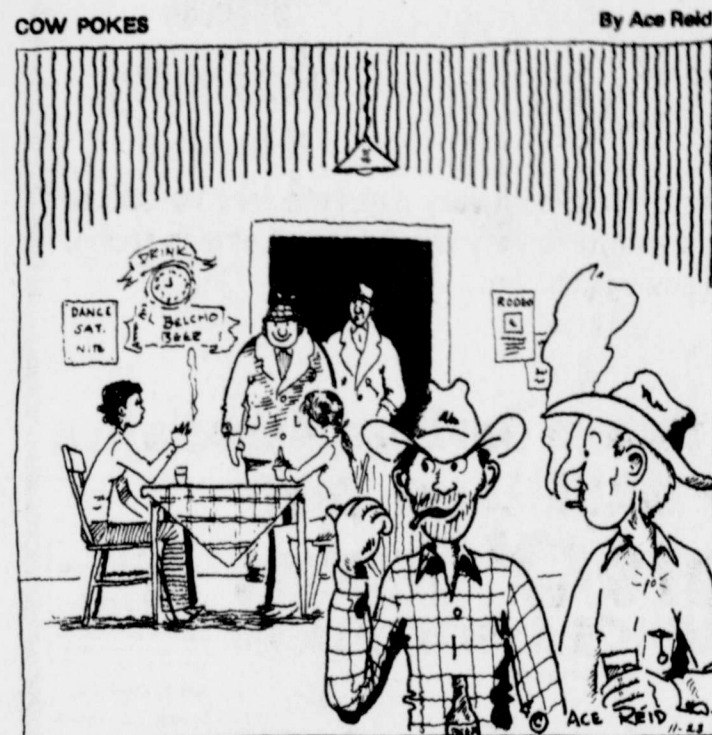
So how many calories you need daily, depends on how active you are.

If you're counting calories to lose weight, remember there is only one way to lose body fat. That's to eat less and exercise more. To lose one pound, for instance, you have to eliminate 3,500 calories. That means cutting out or using up 500 extra calories every day for a week — or 100 calories every day for a month.

But to remain healthy, it's still important to eat a basic variety of foods even though you are cutting down on the amount of these foods. And it's especially important to eat less of the high calorie, low nutrient foods, such as sodas, candy, cookies, cake and fried snacks.

DR. RUTH Y. ACKERS
PODIATRIST, INC.
ANNOUNCES
OUR NEWEST LOCATION
2150 S. Danville Abilene, Tx.
695-1890 695-1891

Tuesday, Oct. 28
9 99¢
KING SIZE WALLET CREATIVE COLOR PORTRAITS FOR ONLY
Kodak paper. For a Good Look at the Times of Your Life.
SEND OUR PICTURES IN YOUR CHRISTMAS CARDS
"ORDER NOW"
Extra Charge for GROUPS
NO LIMIT
Shugart's inc. COLOR PHOTOS
Winn's VARIETY STORES
ASK About Our FREE 8 x 10 OFFER
Don't be fooled by big TALK — take the sensible route, use PRINTED ADVERTISING!



"Now them ain't deer hunters, they're dearie hunters!"

USE THE CLASSIFIEDS

ANNOUNCING OUR MOVE TO NEW OFFICES

Jno. W. Norman and Marvin L. Jones announce the moving to the Norman-Jones-McAdams Building of:

Jno. W. Norman, Attorney-at-Law
Jno. W. Norman Loans & Insurance
Marvin L. Jones Income Tax Service

Our new location will be across the street from our present offices at 100 West Dale (former Winters State Bank).

Our offices will be closed to business on Thursday and Friday - October 23 and 24. We will open for business on Monday, October 27, in our new location.

In an emergency during this period, clients can call 754-5111 for assistance.

WRAP UP YOUR ENERGY VILLIAN

SOLID VINYL SIDING

INSULATES WALLS

SAVES ON UTILITIES

ELIMINATES ALL THE NEEDLESS PAINTING

100% FINANCING AVAILABLE

CALL FOR FREE ESTIMATE 944-0468

CRAIG HOME IMPROVEMENT

2017 W. Beauregard San Angelo, Tx 7690

we love our children, DRIVE CAREFULLY!

The 26-Week Money Market Certificate

Put in \$10,000, and get back
\$10,589
26-week return reflects interest earned on \$10,000 principal and accumulated interest for 26 weeks at current rate.

Current Rate of 11.657% Yields 12.169%*

Staying ahead financially has always been a race. But the 80's present new, tougher challenges. At First Texas Savings, we have ways to beat the 80's. Like our 26-Week Money Market Certificate. It offers the maximum rate allowed by law for maximum yields on amounts from \$10,000. Rates for new certificates are set weekly and are good for the entire term. Sure, our 26-Week Money Market Certificate is a good investment, but it's also a no-risk investment. Your money is insured up to \$100,000 by a federal agency. And your deposit is backed by First Texas' over 1.6 billion dollars in assets.

Best of all, at First Texas Savings, your money is always available. Penalty on early withdrawal is 3 months' interest** and only on the amount withdrawn. And as a convenient reminder, you will be automatically notified prior to renewal. Also ask about our 2 1/2-Year Money Market Certificate. So, before you put your money anywhere, remember: Others may keep you even in the 80's, but First Texas Savings will keep you ahead. **Effective date Oct. 23-29**

Federal regulations prohibit compounding of interest on 26-Week Money Market Certificates. Annual yield assumes reinvestment of principal and interest at maturity at the same annual interest rate. However, the annual interest rate is subject to, and likely to, change at maturity.

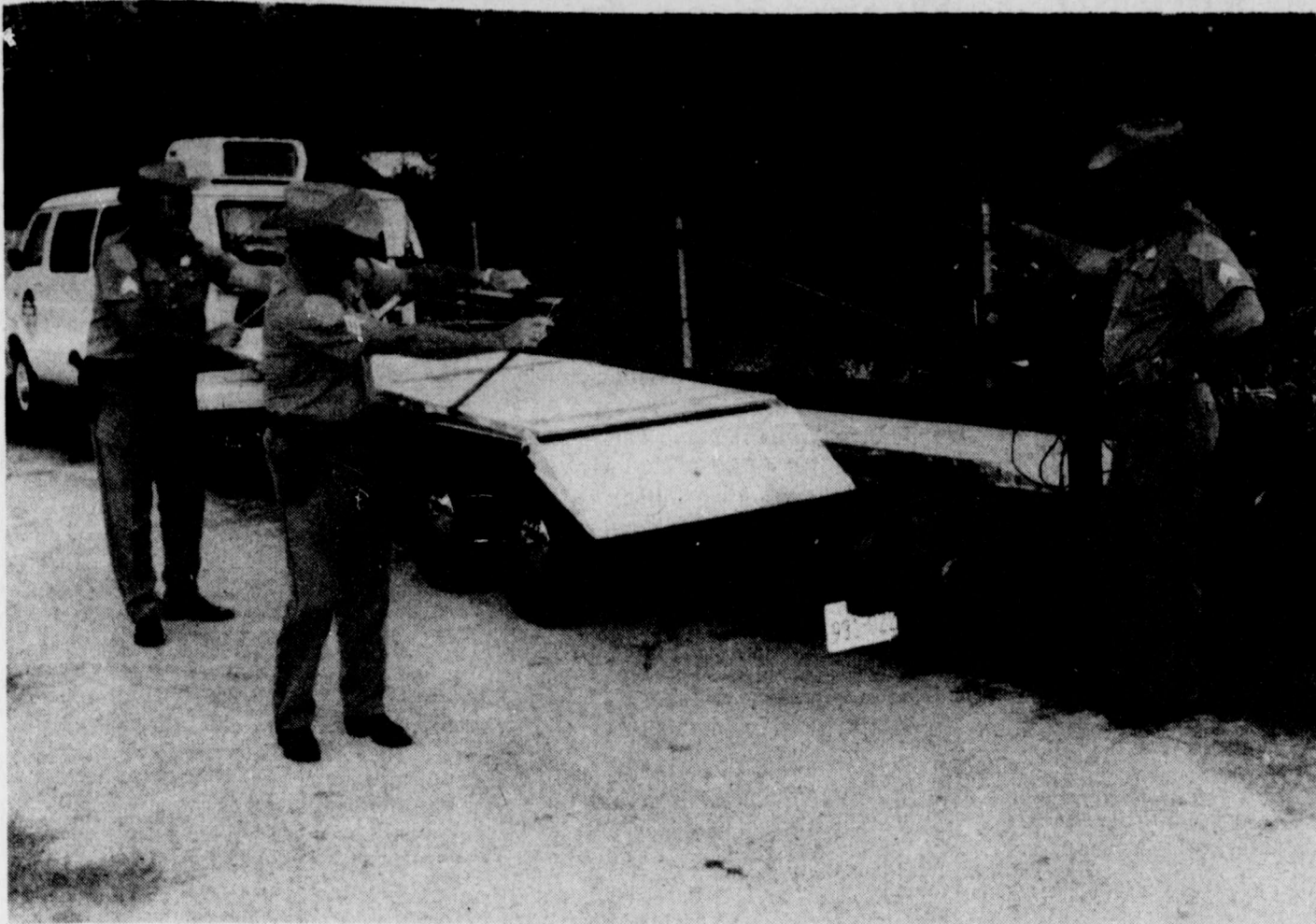
**Recent federal regulations require principal reduction if sufficient interest does not exist.

Over 60 Offices Statewide.
Regional Office: 105 W. Beauregard San Angelo, Texas 76903 655-7191
Winters Office: 102 S. Main 754-4513

FIRST TEXAS
Savings Association
We have ways to beat the 80's.

No insured bank or savings and loan can pay more on your investment.





Mobile weight station

Colonel Jim Adams, director of the Texas Department of Public Safety, has announced that 12 new vans with trailers containing semi-portable scales will be used by State Troopers to weigh trucks and other heavy vehicles. The mobile scales will provide more flexibility in administering the license and weight laws and will result in a higher percentage of compliance with the statute while preventing additional damage to the state highways from

overweight trucks. State License and Weight Sergeants Wesley Johnson of Pecos, left, Harold Kornegay of Garland, center, and Bill Summerlin of Abilene check out one of the new items of equipment. The new equipment, which was funded through a Federal grant by the Department of Highways and Public Transportation, will make the weight-enforcement program more effective, Col. Adams said.

Absentee voting deadline Oct. 31

Absentee voting for the November 4 General Election is in progress in the county clerk's office, with the last day to be Oct. 31.

Qualified voters who expect to be out of the county on Nov. 4 or anyone 65 years of age or older may vote absentee.

Voters will cast ballots in the Presidential election, U. S. Representative 21st District, Railroad Commissioner, Texas Associate Supreme Court Justice election, in addition to several balloting for several unopposed candidates for various state, district and local offices.

Also, Texas voters will vote on nine proposed state constitutional amendments.

Amendment No. 1: Would permit the legislature to authorize banks to use unmanned teller machines within the county or the city of their domicile on a shared basis to serve the public convenience.

Amendment No. 2: Is a constitu-

tional amendment authorizing appeal of certain pretrial rulings of a trial court in a criminal case by either the state or the accused.

Amendment No. 3: Would require setting up a single appraisal board and a single board of equalization within each county for ad valorem tax purposes.

Amendment No. 4: Would authorize bingo games on a local option election basis if the games are conducted by a church, synagogue, religious society, volunteer fire department, non-profit veterans organization, fraternal organization, or non-profit organization supporting medical research or treatment programs and if the proceeds are to be spent in Texas for charitable purposes of the organizations.

Amendment No. 5: A constitutional amendment to grant the governor power to exercise fiscal control over the expenditure of appropriated funds as provided by law.

Amendment No. 6: Would authorize the governor to remove appointed officers with the advice and consent of the senate.

Amendment No. 7: Would authorize counties with a population of 5,000 or less to perform private road work.

Amendment No. 8: Would authorize the changing of the name of the Courts of Civil Appeals and the names and qualifications of the justices of the Supreme Court and to prescribe the jurisdiction and authority of the appellate courts, and would require members of the Supreme Court to be attorneys licensed in this state while holding office, and provide that these courts have immediate appellate jurisdiction over both criminal and civil cases.

Amendment No. 9: Would allow spouses to agree that income or property arising from separate property to be separate property.

STATE CAPITAL HIGHLIGHTS

By Lyndell Williams
TEXAS PRESS ASSOCIATION

Farms, ranches and oil wells. Sometimes during an election year you begin to think that's all there is in Texas.

Both candidates in the presidential slugfest, or at least their proxies, tuned in to those two BIG ISSUES all last week. Texas is regarded by both President Jimmy Carter and former Calif. Gov. Ronald Reagan as a must-win state.

Carter's Secretary of Agriculture Bob Bergland started the ball rolling with a swing through the Panhandle, then the Central and Northeast Texas farm belts.

Following him all the way were a band of angry, protesting farmers who staged a public walkout wherever Bergland began to speak. Although the small band of radicals, generally considered to belong to the American Agriculture Movement, appear to be a splinter group, they nevertheless have won sympathy from the farmers who stay home in the fields. Their message: enough of Carter, let's try Reagan. Whether or not they are actually winning farmers over to Reagan is another matter.

Just an hour after the farmers plagued him at a Temple breakfast, Bergland toured the prototype "on-farm" gasohol plant in Rockdale built by Rep. Dan Kubiak and spoke of the need for several more such plants in Texas.

Dollars for Gasohol

Bergland also promised Kubiak, a gasohol advocate in the Legislature, that \$260 million in Farmers Home Administration loans are available for gasohol plants across the nation immediately including two in the Texas Panhandle. Kubiak apparently was relieved at Bergland's commitment of gasohol dollars for Texas, having stuck his political neck out for his pet project. The radical farmers had angrily threatened to picket Bergland in Rockdale, then reportedly promised Kubiak's aide they would back off only out of respect for Kubiak's 100 percent pro-farm voting record.

Carter's folks then released the Farmers and Ranchers for Carter/Mondale steering committee, which contained a few noteworthy names in the agriculture world. Heading it is former chairman of the U.S. House Agriculture Committee Bob Poage, and also Texas Agriculture Commissioner Reagan V. Brown. Also named were six members of the Texas House Agriculture Committee: Kubiak, vice chairman Pete Patterson, solar advocate Bill Keese, Tip Hall, Betty Denton and Tony Garcia. State Senator Ray Farabee was named as was Jay Naman, president of the well-respected Texas Farmers Union.

Republicans: "Big Deal"

Texas Republicans were unimpressed. Vice Presidential candidate George Bush was stumping the Panhandle area, pointing out the inadequacies of Carter's farm program and getting loud applause from AAM members and others.

State party chairman Chet Upham unveiled Reagan's program for farmers, in which expanding international export markets will play a big part.

Upham, swinging through south Texas, also predicted Republican voters will turn out over 50 percent

while Democrats will muster a little over 30 percent... thus assuring a Reagan victory. Democratic national chairman John C. White, a former Texas Agriculture Commissioner, aimed higher, saying Republican turnout will near 80 percent and Democrats could lose the race with lower than a 50 percent turnout.

Now for Oil

Republican Gov. Bill Clements and Democrat Atty. Gen. Mark White may finally have found something to agree on: they both dislike the windfall profits tax Congress levied this summer. Clements has asked White to file suit attacking the tax, and White already had indicated he may do just that. White's staff met last week with Louisiana and Oklahoma officials to discuss various legal strategies to fight the tax.

Clements and White have different politics behind their action, though. Clements is committed to President Carter's political defeat and wants to hang the windfall tax around Carter's neck. White reminds people that the whole issue of oil price decontrol, including the Windfall Profits Tax (which actually was shaped by Congress), never would have been necessary had it not been for the controls imposed by Republican President Richard Nixon.

And so it goes... One certain thing is this: neither Clements, White nor few other Texas officials like the manner in which the new tax eats into the small royalties of independent oil well owners, particularly the aged.

Medicaid Imbroglia

In the latest chapter of the state Medicaid contract imbroglia, in which two insurance companies are battling for the right to administer the lucrative program, the two companies may fight the final round in the courtroom.

Last week Atty. Gen. White ruled the state had made a binding contract allowing Bradford Corp. to oversee the \$2 billion program. His ruling, in effect, took the contract away from the insurance company owned by Dallas millionaire H. Ross Perot, now administering the contract which will expire in 1981.

Perot, who had personally contacted all three board members of the Department of Human Resources seeking an appeal of their original decision, filed suit last week to fight White's ruling and enjoin the department from finalizing the contract. His company contends the state did not create a legally binding contract when it awarded the contract to Bradford in July.

NOTICE

Customers of North Runnels Water Supply Corp. please note change in my home phone number:

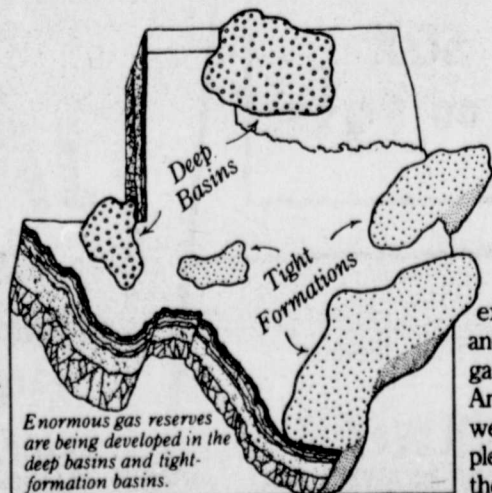
**NEW NUMBER IS:
754-5608**

**JOHN LLOYD
MANAGER**

(Oct. 23, 80)

Now in production.

DECADES OF GAS SUPPLY FROM TWO OF NATURE'S BEST-PROTECTED SOURCES.



Did your mother ever hide some of her spare cash in a cookie jar, out of easy reach until she needed it?

Well, that's what Mother Nature did when she placed enormous deposits of natural gas in hard-to-reach places.

Places like the deep basins in Texas and Oklahoma, where the gas deposits were miles too deep for man to reach them.

Places like the tight basins in Texas, where formations were so tight-fisted the gas could barely flow to the wells.

Now, after spending years and millions of dollars, producers have the technology to

explore five-mile depths and speed up the flow of gas through dense rock. And high-production gas wells are being completed in the deep and tight basins.

Many industry experts believe that each of these sources can double the nation's current proven reserves. Exciting news, because Lone Star is well situated to buy your share of this new gas for the 1980's, the 1990's and beyond.

Lone Star Gas Company

GAS. IT'S PLENTIFUL, EFFICIENT AND RIGHT FOR THE TIMES.

SAFETY SENSE FOR HALLOWEEN

The fun and adventure of Halloween have been around for centuries. Neighborhood children out trick-or-treating on "All Hallows' Eve" probably aren't aware of it, but they're following a very old English custom called "going a souling," where visitors went from house to house calling "a soul cake, a soul cake, a penny or a soul cake!"



Before your children make the trick-or-treat rounds this year, be sure to review some of these basic Halloween safety rules:

* Young children should be escorted by an adult on house-to-house calls; advise older children to stay in familiar neighborhoods and to avoid dark streets.

* Ask your children to bring home all the candy and fruit they receive so you can give it your seal of approval. Make sure they eat a regular meal before they go out to discourage nibbling.

* Halloween costumes should be fun and safe at the same time. To ensure your children's well-being, dress them in new Kooky Spooks™ inflatable Halloween costumes. Available in six original cartoon characters whose faces appear on the playful inflatable headgear, these costumes are tons of fun for children of all ages.

* Make sure your witches, ghosts, and goblins are dressed warmly underneath their costumes. Be sure to choose an all-weather-proof costume that allows plenty of room for sweaters, coats, and free and easy arm movement.

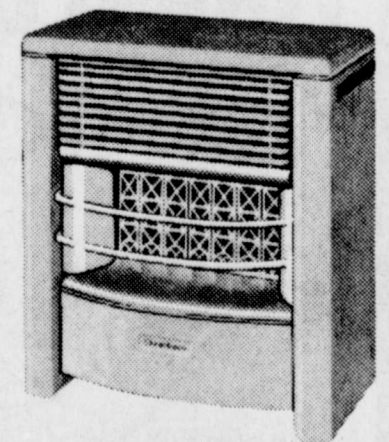
* Instead of pumpkins with candles inside, have your children carry a bright flashlight for a safe and accident-free "All Hallows' Eve."



There are over 400 U.S. satellites orbiting the earth.

WHEN YOU CHOOSE DEARBORN IT'S FOR A LONG, LONG TIME

Chases chills from hard to heat spots and fills a room with delightful warmth in almost no time. Features the Forward Heat Flow that keeps the cold from settling along your floors. Often copied, but never matched in efficiency and durability, the Deluxe has a cool-to-touch cabinet for extra safety, a lifetime burner - and is Dearborn crafted for dependable, long life. Natural or LP gas. Sizes 12,000 to 39,950 BTUs.



- DWC10 119.95
- DRC12CM 144.95
- DRC20CM 157.95
- DRC30CM 176.50
- DRC40CM 198.50

The most respected name in gas area heating

Dearborn
STOVE COMPANY - DALLAS, TEXAS
A Division of Addison Products Company

Available in LP or Natural Gas.

HIGGINBOTHAM'S

18 FRIENDLY LOCATIONS TO SERVE YOU

WINTERS, TEXAS



Club delegates

These ladies form the executive committee of the Heart of Texas District, Federated Women's Clubs, attending the district workshop in Winters Saturday. They are, front row, left to right, Mrs. W. L. Bangston, San Angelo, district president; Mrs. Bonnie Worth, Ozona, district treasurer; Mrs. Martha Graves, Cisco, parliamentarian; Mrs. Eddie Serfare,

San Angelo, junior district director. Back row, Mrs. T. J. Bailey, Ozona, trustee; Mrs. L. A. Bryson, Rochelle, president elect; Mrs. Arnold Schneeman, San Angelo, second vice president; Mrs. Leta Casey, Brady, first vice president; and Mrs. Fred Ball, San Angelo, district secretary.

93 registered for club workshop

Ninety-three women registered for the fall workshop of the Heart of Texas district, Texas Federation of Women's Clubs, held in the fellowship hall of St. John's Lutheran Church Saturday. The women represented 20 clubs from 15 towns.

Winters Federated Women's Clubs, the Diversity Club, the Literary and Service Club, and the Junior Culture Club, hosted the event.

The host clubs presented special gifts and door prizes to visiting clubwomen. They expressed special thanks to Winters merchants and individuals for their help in providing the gifts and other services for the workshop event. Merchants and individuals participating included the Blossom Shop, Holloways' Flower Center, Smith Drug, Winn's, and the Winters Flower Shop, for the door prizes; and Spill Bros. Furniture,

Winters Farm Supply, Winters Funeral Home, Winters State Bank, Alderman-Cave Milling & Grain Co., Bahlman Jewelers, Beauty Center, Chamber of Commerce, Fashion Shop, First Texas Savings, Heidenheimer's, John Norman Insurance Agency, Marvin Jones Bookkeeping Service, Mansell Bros., Naida's, Springer Fabrics, J. R. Sims & Sons Oil Co., and the Winters Enterprise for publicity.

Department of Health advises drinking water be checked

If consumers of public water systems are concerned about the quality of the water they are drinking, they should ask their water suppliers, the Texas Department of Health (TDH) advises. Approximately 20 percent of the water systems in Texas are not submitting water samples for bacteriological testing each month as required, according to Ronald C. Catchings, Chief of the Enforcement Branch in the TDH Division of Water Hygiene. "We send out about

1,100 letters every month notifying the officials of public water systems they did not submit the required number of satisfactory bacteriological samples," said Catchings. Catchings, who said their are a considerable number of repeat violators, revealed that eight or more systems missed submitting samples at least eight out of the 12 months during 1979. The submission of bacteriological samples is required by the "Safe Drinking Water Act," P. L. 93-523, and State Statu-

tes, Article 4477-1, V. C.S. Catchings said the quality of the water being supplied by the water systems not submitting samples is questionable. "We cannot evaluate whether the water being served by these systems is bacteriologically safe as an adequate number of samples are not being tested," he said. For the month of July, the following 11 counties received approximately one-half of the letters sent to the owners or officials of water systems for not submitting the required number of satisfactory bacteriological samples: Bexar 27, Brazoria 17, Denton 17, Ector 17, Fort Bend 18, Galveston 21, Harris 226, Lubbock 28, Matagorda 24, Montgomery 46 and Orange 17.

AROUND THE LOOP

ROTAN
Rotan 20, Roscoe 6
Rotan 48, Coleman 8
*Rotan 6, Winters 7
*Rotan 20, Hamlin 12
*Rotan 42, Anson 0
*Rotan 48, Hawley 0

HAWLEY
Hawley 12, K. City 53
Hawley 8, Aspermont 41

*Hawley 8, Baird 72
*Hawley 7, Winters 14
*Hawley 0, Hamlin 39
*Hawley 0, Anson 26
*Hawley 0, Rotan 48

MERKEL
Merkel 0, Menard 35
Merkel 0, Eastland 37
*Merkel 3, Jim Ned 14
*Merkel 0, Baird 31
*Merkel 0, Winters 0
*Merkel 13, Hamlin 32
*Merkel 3, Anson 2

ALBANY
Albany 67, Ranger 0
Albany 36, C. Plains 0
*Albany 8, J. Ned 17
*Albany 20, Baird 35
*Albany 12, Winters 13
*Albany 6, Hamlin 29

JIM NED
Jim Ned 35, Wylie 0
Jim Ned 13, Wall 12
*Jim Ned 14, Merkel 3
*Jim Ned 17, Albany 8
*Jim Ned 13, Baird 18
*Jim Ned 31, Winters 6

BAIRD
Baird 21, Cisco 0
*Baird 72, Hawley 8

DISTRICT 8-AA RECORDS

NON-DISTRICT		W	L	T	Pts.	Opp.
Rotan	2	0	0	68	14
Hawley	0	2	0	20	94
Merkel	0	2	0	0	72
Albany	2	0	0	103	0
Jim Ned	2	0	0	48	12
Baird	1	0	0	21	0
Hamlin	1	1	0	34	52
Anson	1	1	0	33	32
Winters	0	2	0	18	36
DISTRICT 8-AA		W	L	T	Pts.	Opp.
Baird	4	0	0	156	41
Hamlin	4	1	0	166	39
Rotan	3	1	0	110	19
Jim Ned	3	1	0	75	35
Winters	3	1	1	40	56
Albany	0	4	0	46	94
Anson	1	3	0	28	105
Merkel	1	2	1	6	47
Hawley	0	0	0	21	199

**Winters 6
Jim Ned 31**

The Winters Blizzards grabbed the lead momentarily Friday night against the Jim Ned Indians, but could not hold it long, putting their first conference loss for 1980 in the record book. Jim Ned took the game 31-6.

The Indians drew first blood early with a field goal, only about 4 minutes in the first stanza. The Blizzards came back early in the second quarter to take that lead 6-3 when Toby Gerhart slashed through the middle for a one-yard counter. The try for PAT failed.

Then the Indians came back to take the lead again and to hold it the rest of the night, as Bobby Cleveland of the Tribe ran a kickoff back 75 yards to the one, and then Jerry Don Atwell carried it over for the counter.

Jim Ned hit again twice in the third period to put the Indians way out ahead. The final score was made by Jim Ned early in the fourth quarter.

STATISTICS

Winters	Jim Ned
7	12
84	222
-63	65
4 of 16	3 of 11
1	1
7 for 40	6 for 41
4 for 45	11 for 150
2	2

*Baird 31, Merkel 0
*Baird 35, Albany 20
*Baird 18, J. Ned 13

*Anson 26, Hawley 6
*Anson 2, Merkel 3

HAMLIN
Hamlin 8, Stamford 38
Hamlin 26, Haskell 14
*Hamlin 54, Anson 0
*Hamlin 12, Rotan 20
*Hamlin 39, Hawley 0
*Hamlin 32, Merkel 13
*Hamlin 29, Albany 6

WINTERS
Winters 12, Ballinger 15

Winters 6, Roscoe 21
*Winters 7, Rotan 6
*Winters 14, Hawley 7
*Winters 0, Merkel 0
*Winters 13, Albany 12
*Winters 6, J. Ned 31
*District 8-AA games.

ANSON
Anson 12, Munday 20
Anson 21, Menard 12
*Anson 0, Hamlin 54
*Anson 0, Rotan 42



REAL ESTATE

OVER OR UNDER-SPENDING

Some people spend more than they can afford when buying a house. Equally painful is the mistake of buying the cheapest possible house and then suffering through its shortcomings. I have no intention of stating how much anyone can afford for a house. This is a very personal decision. There are guidelines of monthly averages that lending institutions use for housing expenses. But — like the "height/weight" charts printed on scales — these are only averages. Don't hold back if you feel you can exceed the guidelines. When you are willing and sufficiently disciplined to economize on other expenses, you can get a better house than the average calls for. A good house may seem costly, but the rewards are well worth it. Investing in a house that's a little more expensive gives you an excellent inflation hedge while your whole family enjoys a better place to live. And often, the resale opportunity is brighter.

If there is anything we can do to help you in the field of real estate, please phone or drop in at

**TOM POE
REAL ESTATE**
716 S. Main Street, Winters, Tx.
Phone 754-5022
We're here to help!

**To My
"Second" Mom
Happy
Mothers-In-Law
Day!
Love, John**

GOT A TOUGH JOB?

You've earned your Wings!

If your job demands safety shoes, do your feet a favor. Wear Safety Red Wings. They're job tough, yet fit and feel just great. Red Wings come in a wide range of styles and sizes. Invest in the best!

915
Safety
Red Wings
HEIDENHEIMER'S

MENS' POPLIN JACKETS
Easy to Wear is a must for leisure time...The light weight polyester-cotton unlined jacket has neat tub collars, slash pockets and adjustable cuffs.

\$10⁹⁵

MENS' FLANNEL SHIRTS
New soft flannel plaids
100% Cotton Machine Wash

\$6⁹⁵

FIVE BUCKLE WORK ARCTIC STYLE NO. 5/BW

COLOR: BLACK, GREY SOLE
SIZES: 8 to 13
DESCRIPTION: Five reinforced buckle closure, heavy duty rubber, reinforced heavy gusset, heavy lining, full work last, cleated grip sole and heel.

\$14⁹⁵

BOOTS \$12⁹⁵

MENS' THERMAL WOOL & OTHER WARM WORK SOX

\$1⁰⁰ to \$3⁹⁵

MENS' HEAVY WT. THERMAL UNDERWEAR SHIRTS OR DRAWERS

Beige
Sizes S-M-L-XL

\$3⁹⁵

MENS' JACKET

POPLIN SHELL SHERRA LINING
Style 33/316

Assortment of Colors
Sizes 36 - 48

\$29⁹⁵

HEIDENHEIMER'S