

# The Winters Enterprise



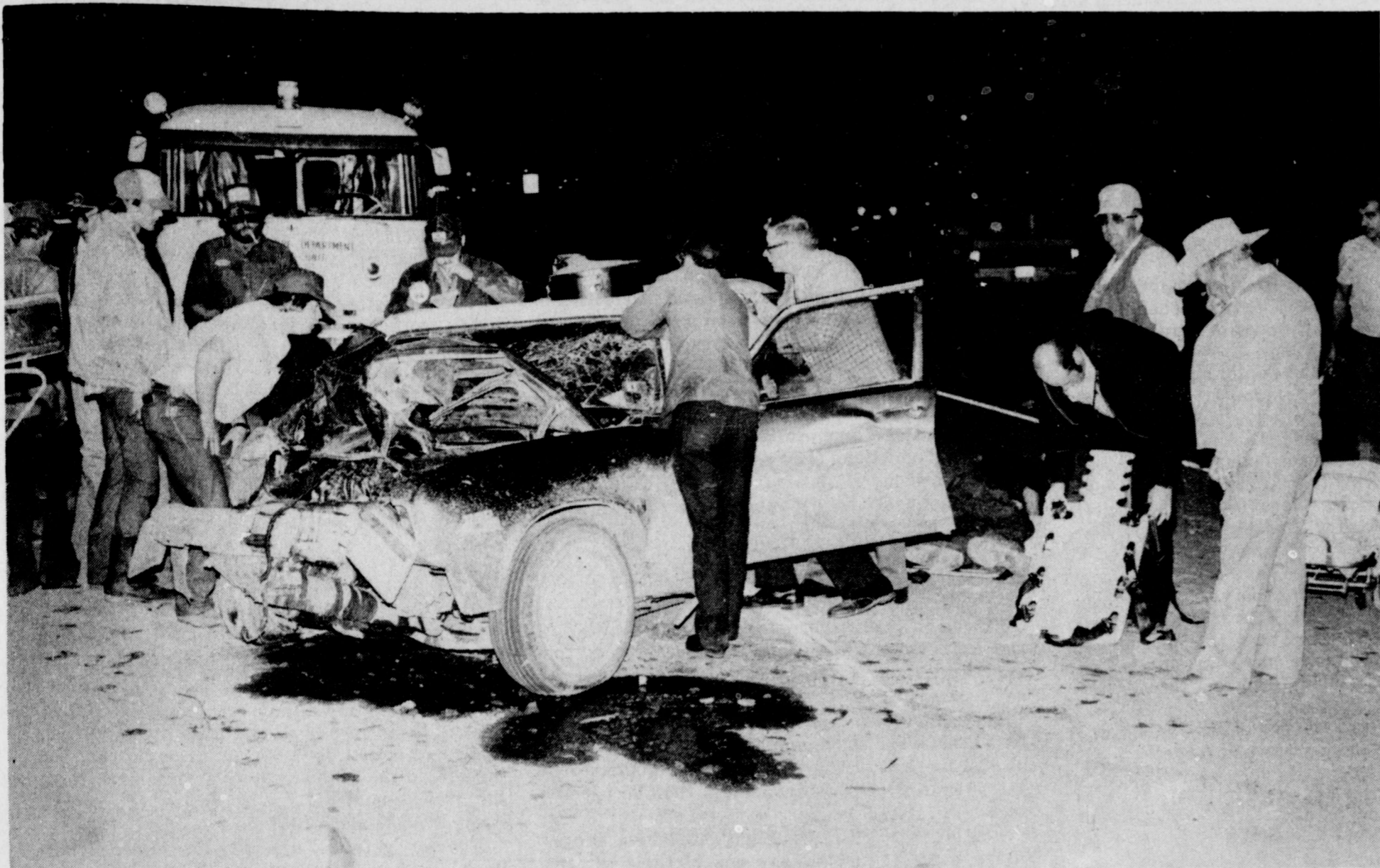
VOLUME SEVENTY-FIVE

USPS NO. 687-220

WINTERS, TEXAS 79567, THURSDAY, JANUARY 17, 1980

PRICE 20 CENTS

NUMBER 45



## Rescue Efforts

Emergency Service personnel and Winters firemen work to free occupants of a car which was demolished in an accident just south of Winters last Wednesday night. Three persons from Ballinger were seriously injured in the accident when the car in which they were riding rammed into the back of a truck about a

quarter-mile south of the US 83-FM 53. The two passengers, Joe Wayne Jackson, 14, and Shoneri Jackson, 13, were listed in serious condition in Hendricks Medical Center in Abilene. The driver of the car, Jerry E. Ripple, 19, was reported in fair condition at Hendricks. Rescue crews worked for several minutes removing

Shoneri from the car. They also had difficulty removing the car door on the passenger side to take Joe Wayne from the wreckage. Police Chief Luther (Doc) Smith said the car ran into the rear end of the truck as the truck was preparing to make a right-hand turn onto a country road.

## Rescue Equipment Needed

The need for more suitable rescue equipment in the Winters Fire Department was never more graphically shown than during the time firemen and Emergency Service personnel were attempting to remove three persons from a wrecked automobile just south of Winters last Wednesday night. The rescue teams worked for some time to take two persons from the left side of the wreckage. Meanwhile, others were attempting to remove a jammed door on the right side of the vehicle. They used prying bars, a small hydraulic "PortaPower" unit, and brute strength to tear the door off the body of the car; they worked about 30 minutes before the victim could be removed. That few minutes could have been the difference in a life saved or a life lost.

The Winters Volunteer Firemen are going to attempt to do something about the situation. This week, a campaign was started to raise money

through public subscription to purchase some type of heavy-duty power unit to be used to tear a wrecked car apart—or anything else, for that matter. They feel, as we do, that this community will see the need for such a rescue unit, and will readily respond. The unit would cost about \$6,000, they said, but the saving of just one life would more than justify the cost.

A special "Rescue Unit" fund has been opened at the Winters State Bank . . . and already, just a few minutes after it had been opened, a total of \$200 had been contributed. Those who feel they would like to take part in this life-saving campaign may send their checks to the bank, hand them to Mike Meyer at the Winters Funeral Home, or leave their contributions at *The Enterprise* office. This is a good cause, and deserves the consideration of everyone in this community. We feel sure it will be successful.

## Firemen Elected Chief, Officers

Johnny Merrill was elected chief of the Winters Fire Department last week, succeeding Marvin Bedford, who had served in that capacity for many years. Bedford was elected assistant fire chief by the Volunteer Firemen.

David Carroll was elected second assistant fire chief.

Richard Hamilton was named president of the Volunteer Firemen, with Bob Webb vice president. Mike Meyer was named secretary-treasurer.

Captain of Company No. 1 will be Jack Davis Sr., with Leon Hilliard assistant.

Company No. 2 captain is Leonard Bowden, with Don Emmert assistant.

Bonnie Dry was elected senior sponsor of the fire department, and Elizabeth Bowden junior sponsor. Mascot is Buddy Jim Miller. Dana Carroll is fire department sweetheart.

Joe Emmert was elected fire department chaplain.

Pension fund trustees are J. C. Hodnett, one-year term; Robert Carey, two-year term; and Raymond Lindsey, three-year term.

## Jim Jordan Joins Winters State Bank

Jim Jordan has joined the Winters State Bank as operations officer, according to an announcement by Audra L. Mitchell, chairman of the board, and Charles D. Hudson, president of the Winters Bank.

Jordan assumed his duties with the bank Jan. 1.

He was born and reared in Gorman, and after graduating from Eastland High School, attended Tarleton State University where he earned a bachelor of science degree in mathematics. Following graduation, he moved to Winters and taught math in Winters High School for eight years.

For the past 18 months, Jordan has been employed by Dry Division, Wallace Murray Corporation, as an accountant.

He is married to the former Jan Schwartz of Winters. They have one son, Jason.

## School Election Saturday, April 7

The regular election to elect members to the board of trustees of Winters Independent School District has been called for Saturday, April 7, by the board.

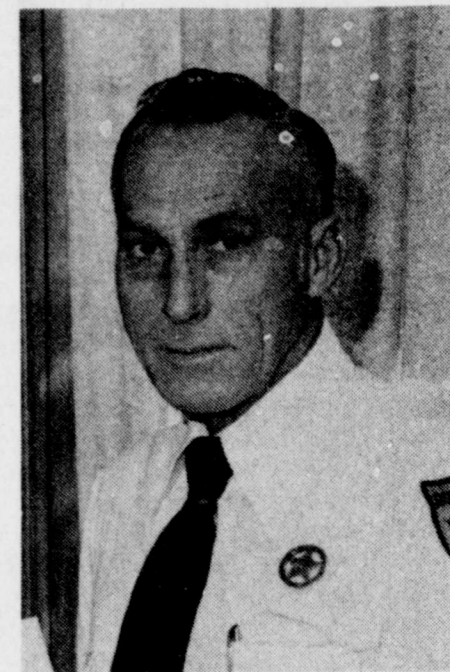
Two persons will be elected to the board, for Places 1 and 2.

Gene Wheat, incumbent, has filed as a candidate for reelection to Place 2. He is presently president of the board.

Connie Mac Gibbs has filed as a candidate for Place 1, to succeed

Delbert Kruse, who will not seek to return to office, it was reported.

Prospective candidates have 30 days prior to the election to file.



HERSHALL HALL

## Rates Set For Use of C-Center

Winters City Council Monday night approved proposed rates for use of the Winters Community Center and the meeting rooms in the city hall building. An ordinance setting forth the established rates will be presented for approval at the next meeting of the council.

Rates for use of the two city facilities have been increased in most areas, because of the increasing cost of maintenance, it was understood.

The new rates, which will become effective immediately, according to Buford Baldwin, City Secretary, will be for both facilities:

—One day on weekend, \$30, increased from \$25.

—Two days on weekend, \$50, from \$40.

—Non-profit service clubs, midweek, \$15 (no change).

—Individual, one day midweek, \$20, from \$15.

A key deposit of \$25 will be required, to be refunded following a cleanup by facility users, it was stated. This fee has been \$5 in the past.

It was pointed out that only legitimate organizations will be permitted to reserve the Community Center for dances; no single individual will be permitted to rent the facility for a dance or any other meeting of this type.

## Animal Control Officer Resigns

James Meredith, who was named Animal Control Officer for Winters several weeks ago, submitted his resignation to the City Council Monday night. His plans were not announced.

## Sheriff Hall Will Seek Reelection

Runnels County Sheriff Hershall Hall has filed for reelection to office. He will be a candidate for nomination in the Democratic Primary in May.

Hall took office in January, 1977, after defeating Don Atkins in the Democratic Primary the previous May, and also defeating write-in candidate Oran Rake in the November 1976 general election.

Hall was a deputy with the sheriff's department for about eight years prior to his election to office.

Grady Campbell, of Ballinger also has announced as a candidate for sheriff. He is a former Ballinger police chief.

## Classes Will Dismiss Early Next Monday

Classes in Winters Public Schools will dismiss at 3 p. m. Monday, March 21, so teachers may attend a workshop on School Planning.

The faculty will plan career education curriculum, to meet requirements of the Texas Education Agency regarding accreditation.

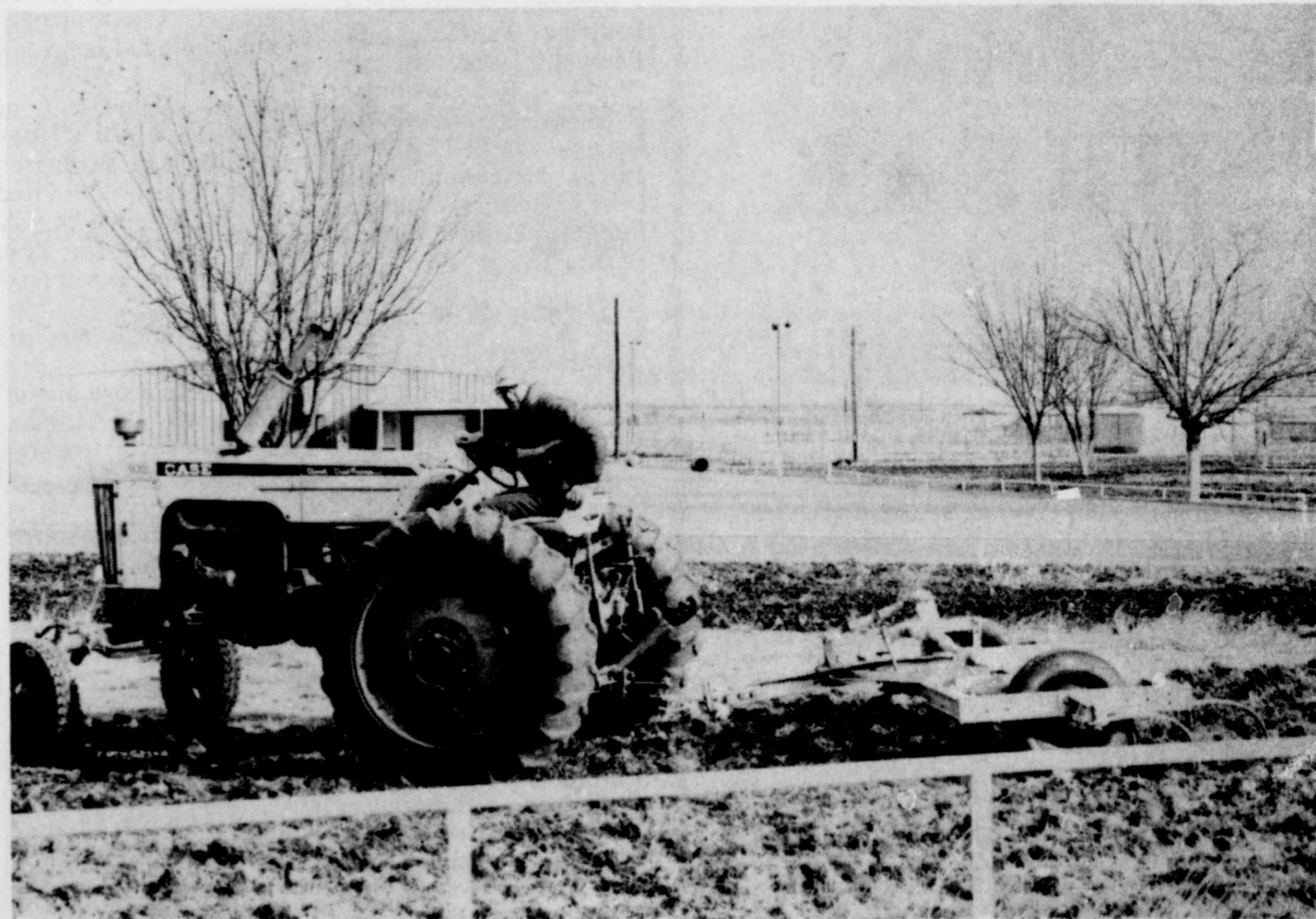
Classes will continue on regular schedule on Tuesday.



## Chamber Officers

Randy Springer, right, and Mike Meyer are the new president and vice president of the Winters Chamber of Commerce. They

were elected in December by the new board of directors, and assumed office Jan. 1.



## Park Work

Franklin O'Dell, employed by the city to work on the City Park, runs a chisel plow over the grassed area at the park. The area is to be reseeded. The entire

project calls for re-building fences, some painting, and general repair and maintenance.



MON.-SAT.  
8:00-7:30  
CLOSED SUN.

# SUPER D FOODS

## THE LOW PRICE LEADER

We Reserve  
Rights to  
Limit  
Quantities

USDA CHOICE  
HEAVY BEEF  
**SIRLOIN  
STEAK**  
lb. **\$2.18**

### STONEWARE



**FEATURE  
OF THE WEEK**  
Dessert Dish **49¢**

ALL PURPOSE  
SHORTENING  
**CRISCO**  
**\$1.78**  
3-lb. can

USDA CHOICE HEAVY BEEF  
**T-BONE  
STEAK**  
lb. **\$2.78**

GOOD VALUE  
SLICED  
**BACON**  
lb. **\$1.29**

**ONION SETS**  
Red, Yellow, White  
**49¢** bunch

MAXWELL HOUSE  
**COFFEE**  
lb. CAN  
**\$2.99**

5-oz. Can  
HORMEL  
**VIENNA  
SAUSAGE**  
2 for **89¢**

### MEAT MARKET

USDA CHOICE HEAVY BEEF  
**ROUND STEAK** ... lb. **\$1.88**  
CHUCK QUALITY  
**GROUND BEEF** ... lb. **\$1.89**  
VANDE KAMP  
**FISH STICKS** ... 20-oz. **\$2.69**  
HORMEL  
**L'IL SIZZLERS** ... 12-oz. **\$1.19**

QUARTER SLICED  
**PORK LOIN** ... lb. **\$1.29**  
FRESH PORK  
**SPARE RIBS** ... lb. **\$1.29**  
LEAN TENDER  
**PORK STEAK** ... lb. **\$1.29**

5-oz. AIRWICK  
**SOLIDS**  
Rose, Spearmint, Honeysuckle  
**3 for \$1.00**

**PEPSI-COLA**  
and  
**MOUNTAIN DEW**  
REG. or DIET  
6-PAK.  
**\$1.29**

### DAIRY PRODUCTS

GANDYS 24-oz. can  
**Cottage Cheese** **\$1.19**  
Regular or Slim 'n Trim  
KRAFT MARGARINE  
**PARKAY** ... lb. qtrs. **59¢**  
T.V. CINNAMON  
**ROLLS** ... 9.5-oz. can **67¢**

BORDEN'S  
**AMERICAN  
CHEESE**  
16 Individually  
wrapped pieces  
**\$1.69**

STARKIST  
**TUNA**  
6-oz.  
**77¢**

NEO-SYNEPHRINE 1/2-oz.  
**NASAL SPRAY** **\$1.79**  
Extra Strength Tablets  
**TYLENOL** 60 Ct. **\$2.59**  
**ANACIN** 100's **\$1.99**  
PEPSODENT 6.5-oz.  
**TOOTHPASTE** **99¢**

GIANT SUPER SUDS  
**LAUNDRY  
DETERGENT**  
**89¢**

WASHINGTON Extra Fancy  
WINESAP  
**APPLES**  
b. **49¢**



KRAFT  
MACARONI AND CHEESE  
**DINNERS**  
7 1/4-oz. box  
**3 \$1** for

### FRESH PRODUCE

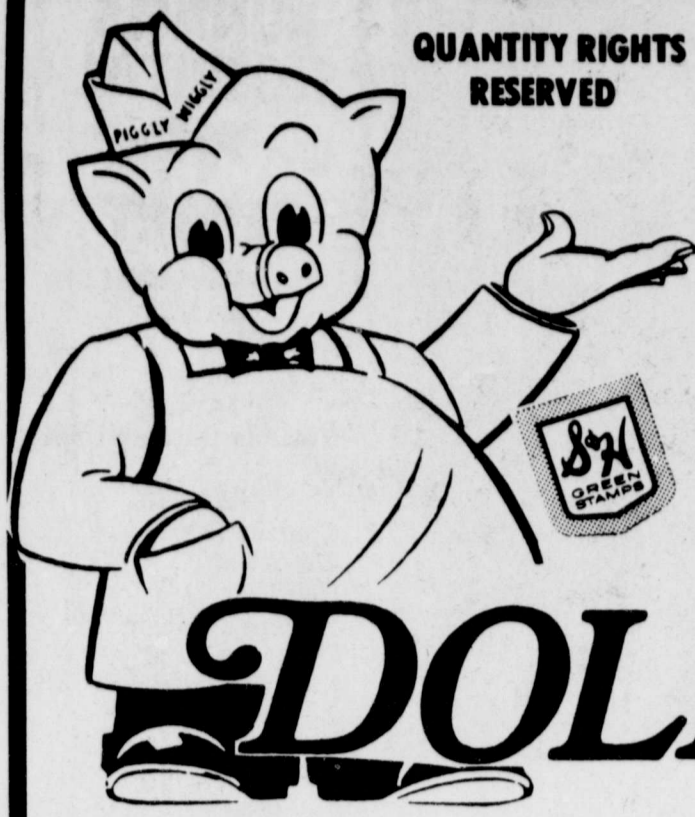
CALIFORNIA LARGE HEAD  
**LETTUCE** ... each **39¢**  
CELLO-PAK  
**TOMATOES** ... 12-oz. pkg. **59¢**  
1-lb. pkg.  
**CARROTS** ... 3 pkgs. **89¢**

RANCH STYLE  
15 oz. can  
**BEANS**  
**3 \$1.00** for

### FROZEN FOODS

MINUTE MAID 6-oz. can  
**ORANGE JUICE** ... **39¢**  
BANQUET FRIED  
**CHICKEN** ... 2-lb. box **\$2.39**  
T.V. 16-oz. box  
**HUSH PUPPIES** ... **59¢**  
GOOD VALUE  
**WAFFLES** ... 5-oz. box **3 89¢** for





QUANTITY RIGHTS RESERVED

PRICES GOOD THURSDAY, FRIDAY, SATURDAY

HELP YOUR GROCERY BUDGET GO FURTHER!



# Piggly Wiggly's

# DOLLAR STRETCHERS

**SHURFINE**  
5 lb. Bag  
**SUGAR**  
**58¢**  
Limit 1 with \$10.00 or more purchase



**ON SALE NOW!**  
**Beautiful, Fine Porcelain China**  
Now you can collect a beautiful set of china through this exclusive offer. Each week a different place setting piece will be featured at this special price and purchase requirement.  
Matching accessories are also available to complete your collection. Each accessory is available throughout the program with no purchase requirement.  
**THIS WEEK'S FEATURE ITEM: SAUCER** **89¢ EACH** with each \$10.00 Grocery Purchase



**CRISCO OIL**  
48-oz. **\$1.98**  
Bottle



**THRIFT KING 6-OZ.**  
**ORANGE JUICE**  
**3 Cans \$1.00** Limit 3



**FOOD KING 16-OZ.**  
**GREEN BEANS**  
**5 Cans \$1.00** Limit 5



**GEBHARDT'S 15-OZ.**  
**CHILI**  
**49¢** Limit 3



**KRAFT 18-OZ.**  
**BBQ SAUCE**  
**69¢**

**\$150.00 Winner**



**Betty Ortiz**

32-oz. Thrift King Liquid **Detergent 39¢** 42-oz. Thrift King **Detergent 89¢**

1 gal Thrift King **Fabric Softener 89¢**

32-oz. Thrift King Pancake **Syrup 65¢** Thrift King Macaroni-Cheese **Dinners 19¢**

32 oz. Thrift King **Salad Dressing 79¢**

16-oz. Thrift King **Crackers 39¢** 32-oz. Thrift King **Preserves 99¢** Strawberry

**U.S.D.A. GRADE "A" FRYERS**  
WHOLE **49¢** lb.



**Spare Ribs** lb. **79¢**

Thrift King 16-oz. **CORN 26¢**

16-oz Thrift King **Tomatoes 4/\$1**

Thrift King 14-oz. **Hominy 5 for \$1**

8-oz. Thrift King Tomato **SAUCE 6 for \$1**

17-oz. Thrift King Sweet **PEAS 3 for \$1**

16-oz. Thrift King **Pork-Beans 4/\$1**

15-oz. Thrift King Blackeye **PEAS 4 for \$1**

16-oz. Thrift King Fruit **MIX 49¢**

15-oz. Thrift King **Potatoes 4/\$1**

16-oz. Thrift King **Peaches 45¢**

Kraft Oleo **PARKAY 1 lb. Quarters 59¢**

Florida **Oranges 5 lb. \$1**

2-Pound Cello Bag **Carrots 39¢**

3-Pound Bag **APPLES 79¢**

Bell **Peppers lb. 39¢**

Iceberg **LETTUCE**  
**\$1.00**  
4 Heads



**SLICED SLAB Bacon 99¢** lb.

**MARKET SLICED Bologna \$1.29** lb.

Extra Lean **Ground Meat \$1.79** lb.  
**SHURFRESH FRANKS 99¢** lb.

Fresh Frosted **CHOPPED BEEF STEAKS \$6.99**  
5 lb Box  
Limit 1



**DOUBLE S & H GREEN STAMPS EVERY WEDNESDAY**





### WIND CHILL CHART

Est. Wind MPH	50	40	30	20	10	0	-10	-20	-30	-40	-50	-60
Calm	50	40	30	20	10	0	-10	-20	-30	-40	-50	-60
5	48	37	27	16	6	-5	-15	-26	-36	-47	-57	-68
10	40	28	16	4	-9	-21	-33	-46	-58	-70	-83	-95
15	36	22	9	-5	-18	-36	-45	-58	-72	-85	-99	-112
20	32	18	4	-10	-25	-39	-53	-67	-82	-96	-110	-124
25	30	16	0	-15	-29	-44	-59	-74	-88	-104	-118	-133
30	28	13	-2	-18	-33	-48	-63	-79	-94	-109	-125	-140
35	27	11	-4	-20	-35	-49	-67	-82	-98	-113	-129	-145
40	26	10	-6	-21	-37	-53	-69	-85	-100	-116	-132	-148

Little Danger for properly clothed person. Increasing Danger! Bold Figure. GREAT DANGER! Danger from freezing of exposed flesh. Wind Speeds greater than 40 MPH have little additional effect.

### VA Compensation Rates Will Be Increased

Checks reflecting a 9.9 percent increase in Veterans Administration compensation payments were mailed at the end of December to more than two-and-a-quarter million veterans, 235,000 surviving spouses and more than 85,000 children of deceased veterans, according to Jack Coker, Waco VA Regional Office Director.

The increased payments were authorized by Congress earlier in December and were signed into law by President Carter Nov. 28. They are retroactive to Oct. 1. A separate adjustment check covering the increased amount due in November and December will be mailed during the latter part of December.

The new rates mean that a veteran with a service-connected disability rated at 10 percent will receive \$48 a month, up from \$44. The rate for a 50 percent disability goes from \$232 monthly to \$255, and a veteran with a 100 percent disability will receive \$889 monthly, an increase of \$80.

Additional amounts providing up to a maximum payment of \$2,536 a month (up from \$2,308) are paid for specific severe disabilities.

The new legislation also increases by 9.9 percent the added amounts paid for dependents to veterans rated 30 percent or more disabled.

erans totally disabled from service-connected causes whose deaths were not the result of such disabilities.

#### CARD OF THANKS

We wish to thank everyone for the memorials, cards, visits, flowers, and the food that was brought to our homes. Thanks to the First Methodist Church for the beautiful service. May you have someone to help you in your time of need. May God bless all of you.—The Loved Ones of Marvin Hambright.

"Talk not of wasted affection; affection never was wasted." Longfellow

#### Dorcas SS Class Meeting Recently

The Dorcas Sunday School Class of the First Baptist Church met recently in the home of Nadine Smith. Mrs. Ella Phipps led the opening prayer.

Mrs. Merle Bains gave the devotional, "The Day I Stopped Feeling Ashamed."

Members answered roll call by naming flowers of the Bible.

Present were Mmes. Ella Phipps, Merle Bains, Grace Waggoner, Ivy Traylor, Alice Traylor, Lizzie Whitley, Verda Smith, Velma Hart and Nadine.

#### Melanie McGinnis, J. E. Rose Wed

Melanie McGinnis, daughter of Mr. and Mrs. L. T. McGinnis of Winters, and Jimmie E. Rose, son of Mrs. Mary Sue Rose of El Paso, were married Jan. 4.

The Rev. Hayward Morrison, pastor of the Southside Baptist Church, performed the ceremony.

The bride is a graduate of Winters High School. The bridegroom is formerly of Ft. Stockton. He is employed by Winters Construction Co.

Mr. and Mrs. Rose will reside in Winters.

#### Sew and Sew Sewing Club

Quilting was done for the hostesses, Vida Talley and Grace Smith, when the Sew and Sew Club met recently.

Others helping were Nellie Adcock, Marie Bradford, Mayola Cathey, Mabel Hancock, Leila Harter, Ethel Polk, Lorene Kinard, Flossie Kirkland, Madlin King, Eura Lloyd, Mildred Patton, Fay Pinegar, Edna Rogers, Lessie Robinson, Pauline Schulz, Melba Vick, Minnie Williams and Hattie Hensley.

Melba Vick and Minnie Williams will host the next meeting, Jan. 22.

"Behind an able man there are always other able men." Chinese Proverb



The Intracoastal Waterway of North Carolina had its beginning with a survey of the Great Dismal Swamp by George Washington in 1763.

### CONSOLIDATED REPORT OF CONDITION (Including Domestic Subsidiaries)

LEGAL TITLE OF BANK		CITY		COUNTY	STATE	ZIP CODE
Winters State Bank		Winters		Runnels	Texas	79567
STATE BANK NO.		FEDERAL RESERVE DIST. NO.		CLOSE OF BUSINESS DATE		
1381		11		12-31-79		
ASSETS						
1. Cash and due from banks		2,622				1
2. Due from other depositories and all cash items in the process of collection		6				2
3. U.S. Treasury securities		2,766				3
4. Obligations of other U.S. Government agencies and corporations		1,812				4
5. Obligations of States and political subdivisions in the United States		7,137				5
6. All other securities		None				6
7. Federal funds sold and securities purchased under agreements to resell		350				7
8. Total loans (including overdrafts totaling \$ 20,000.00 ) (From Schedule A, Item 8)		11,848				8
9. Lease financing receivables		None				9
10. Bank premises, furniture and fixtures, and other assets representing bank premises		329				10
11. Real estate owned other than bank premises		22				11
12. Letters of credit and customers' liability on acceptances outstanding		None				12
13. All other assets		88				13
14. TOTAL ASSETS (sum of items 1 thru 13)		26,980				14
LIABILITIES						
15. Demand deposits of individuals, partnerships, and corporations		7,379				15
16. Time and savings deposits of individuals, partnerships, and corporations		14,398				16
17. Deposits of United States Government		34				17
18. Deposits of States and political subdivisions in the United States		2,639				18
19. Due to banks		17				19
20. All other deposits		None				20
21. Certified and officers' checks		143				21
22. Total Deposits (sum of items 15 thru 21)		24,610				22
a. Total demand deposits		8,111				22a
b. Total time and savings deposits		16,499				22b
23. Federal funds purchased and securities sold under agreements to repurchase		None				23
24. Interest-bearing demand notes issued to the U.S. Treasury and other liabilities for borrowed money		None				24
25. Mortgage indebtedness for which the bank is directly liable		None				25
26. Unearned discount on loans		249				26
27. Letters of credit and acceptances outstanding		None				27
28. All other liabilities		97				28
29. TOTAL LIABILITIES (excluding subordinated notes and debentures) (sum of items 22 thru 28)		24,956				29
30. Subordinated notes and debentures		None				30
31. Allowance for possible loan and investment losses		145				31
EQUITY CAPITAL						
32. Common stock (No. of shares outstanding 30,000 )		300				32
33. Certified surplus		1,100				33
34. Undivided profits		329				34
35. Uncertified surplus, reserve for contingencies, and other capital reserves		150				35
36. TOTAL EQUITY CAPITAL (sum of items 32 thru 35)		1,879				36
37. TOTAL LIABILITIES AND EQUITY CAPITAL (sum of items 29, 30, 31 and 36)		26,980				37

NOTE: This report must be signed by an authorized officer and attested by not less than three directors other than the officer signing the report.

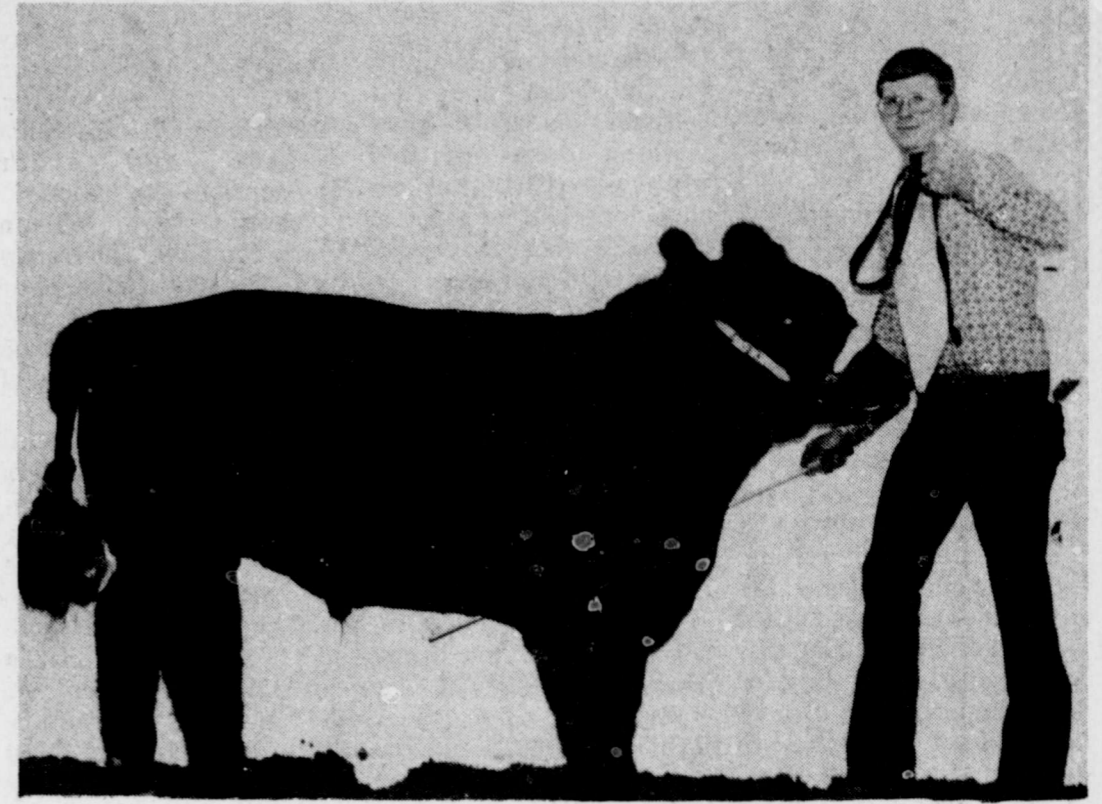
I, the undersigned officer, do hereby declare that this Report of Condition (including the supporting schedules) has been prepared in conformance with the instructions and is true to the best of my knowledge and belief.

SIGNATURE OF OFFICER AUTHORIZED TO SIGN REPORT	AREA CODE/TELEPHONE NO.	DATE SIGNED
<i>Jim Jordan</i>	915-754-4517	January 11, 1980

NAME AND TITLE OF OFFICER AUTHORIZED TO SIGN REPORT	We the undersigned directors, attest the correctness of this Report of Condition (including the supporting schedules) and declare that it has been examined by us and to the best of our knowledge and belief has been prepared in conformance with the instructions and is true and correct.
Jim Jordan, Operations Officer	

SIGNATURE OF DIRECTOR	SIGNATURE OF DIRECTOR	SIGNATURE OF DIRECTOR
<i>Jim Norman</i>	<i>J.W. Beckman</i>	<i>Tom Smith</i>

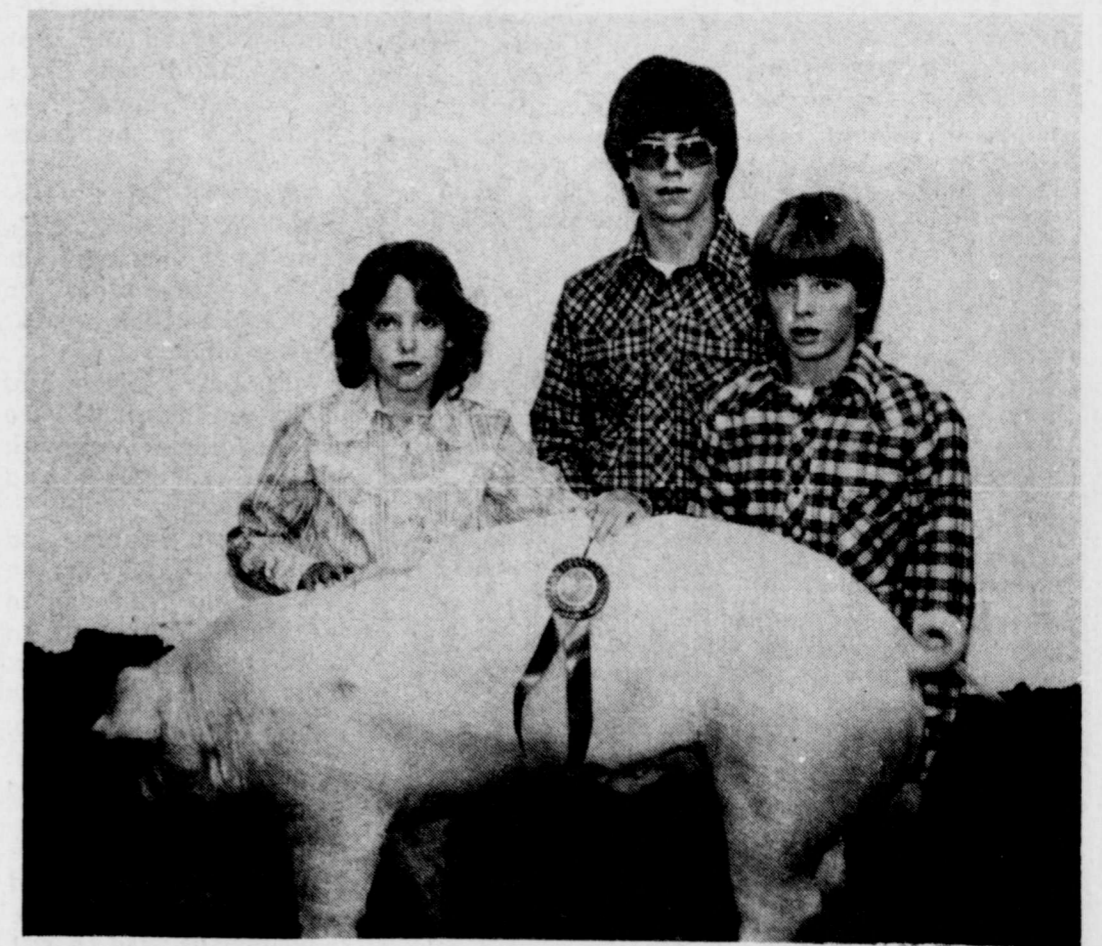
(MAKE MARK FOR NOTARY'S SEAL) State of Texas, County of Runnels, Sworn to and subscribed before me this 11th day of January, 1980. My commission expires May 19 81. Notary Public.



BILL BREDEMEYER ... Grand Champion Steer



BRAD MIKESKA ... Reserve Barrow



LANCASTER FAMILY ... Champ Chester White



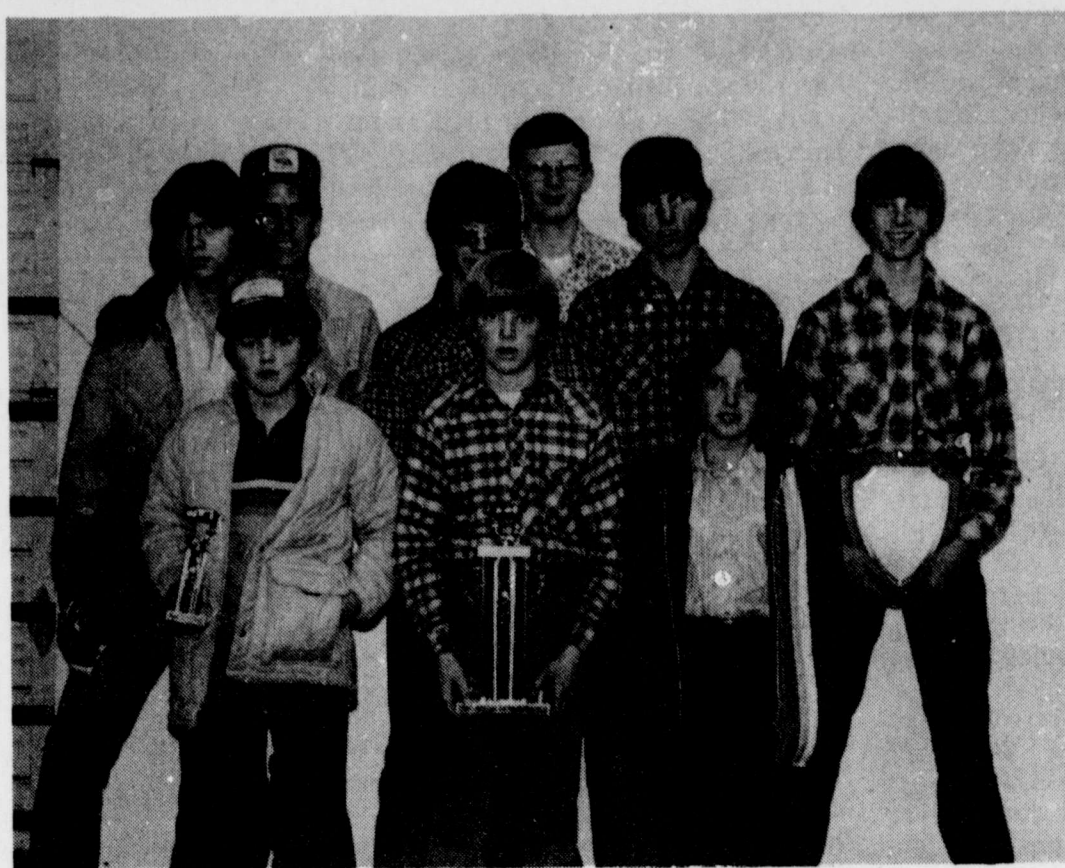
BRETT MIKESKA ... Champion Duroc Barrow



# In Annual Junior Stock Show



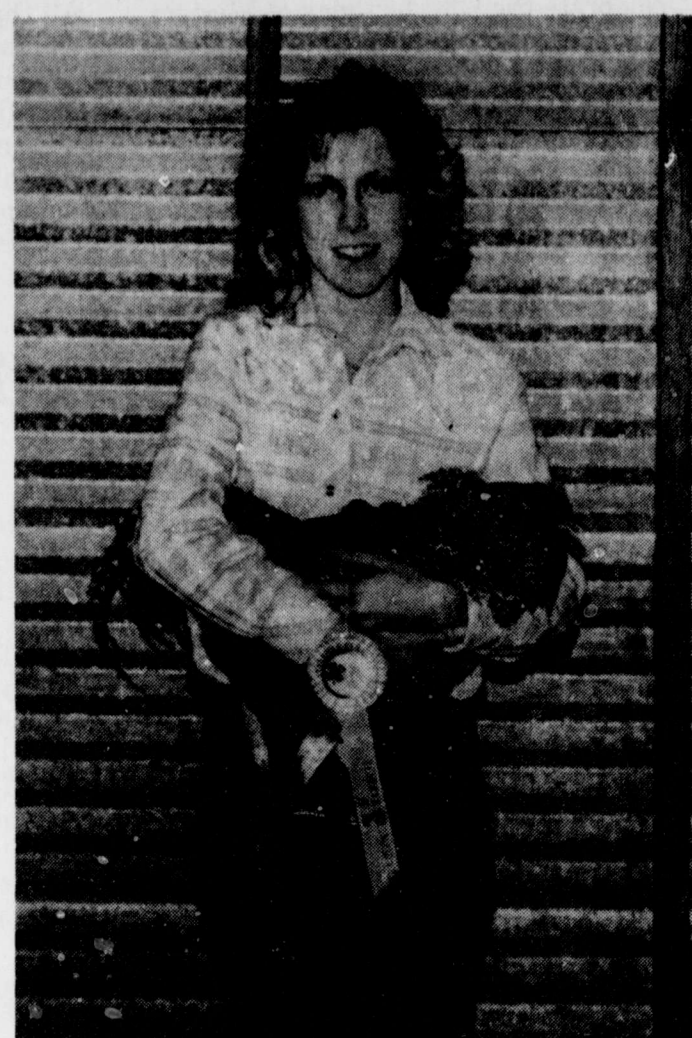
KAREN CARTER . . . and Champion Capon



### Award Winners

This group of youngsters were given the Showmanship Award, the Herdman Award, and were Grand Champion exhibitors in the annual Junior Livestock Show last week. In the

picture are Brad Mikeska, Scott Lancaster, Camille Lancaster, Henry Huback, Jay West, Brent Lancaster, Bill Bredemeyer, Walker Walston and Roy Walston.



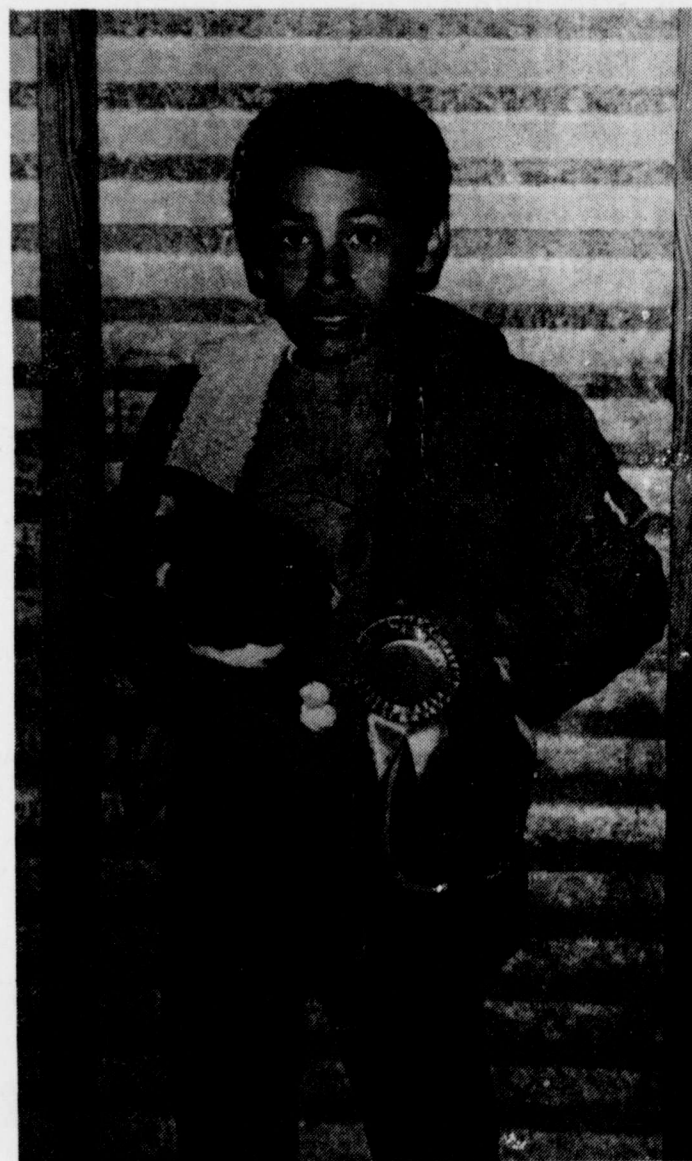
DAWN MILLER . . . and Reserve Champion Capon



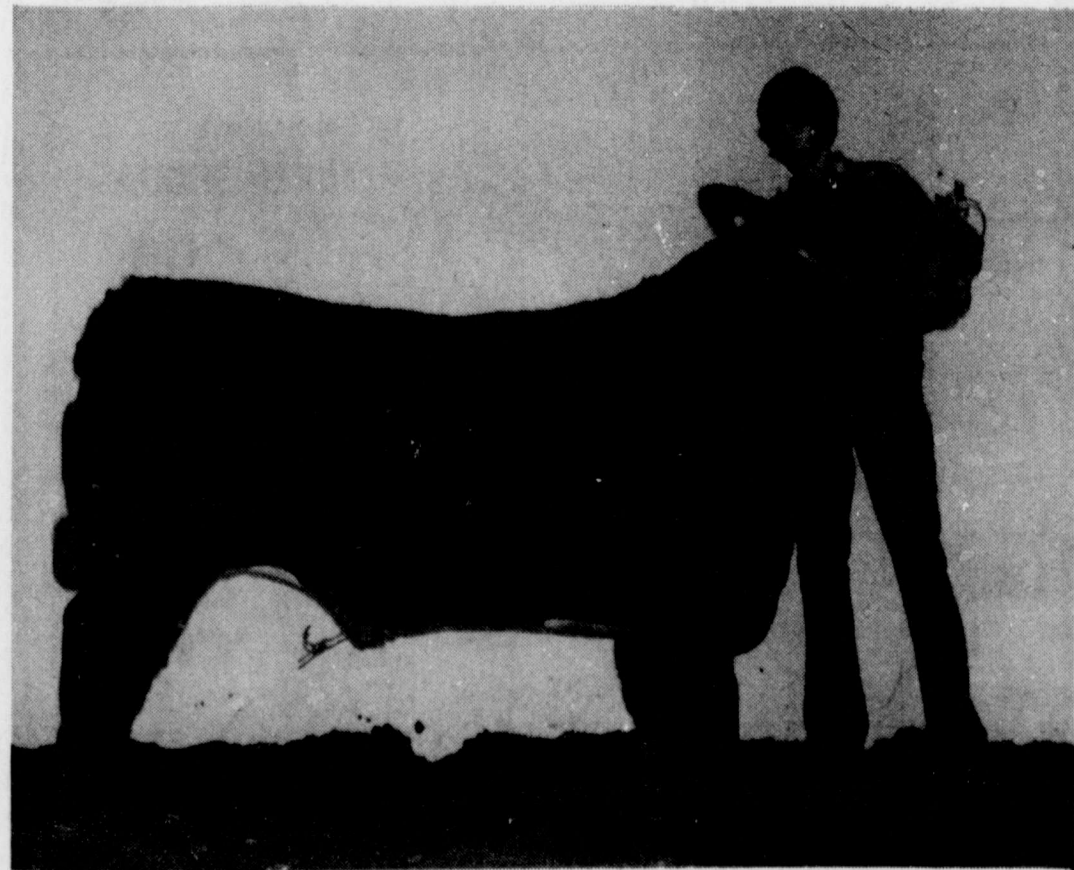
HENRY HUBACK . . . and Reserve Doe



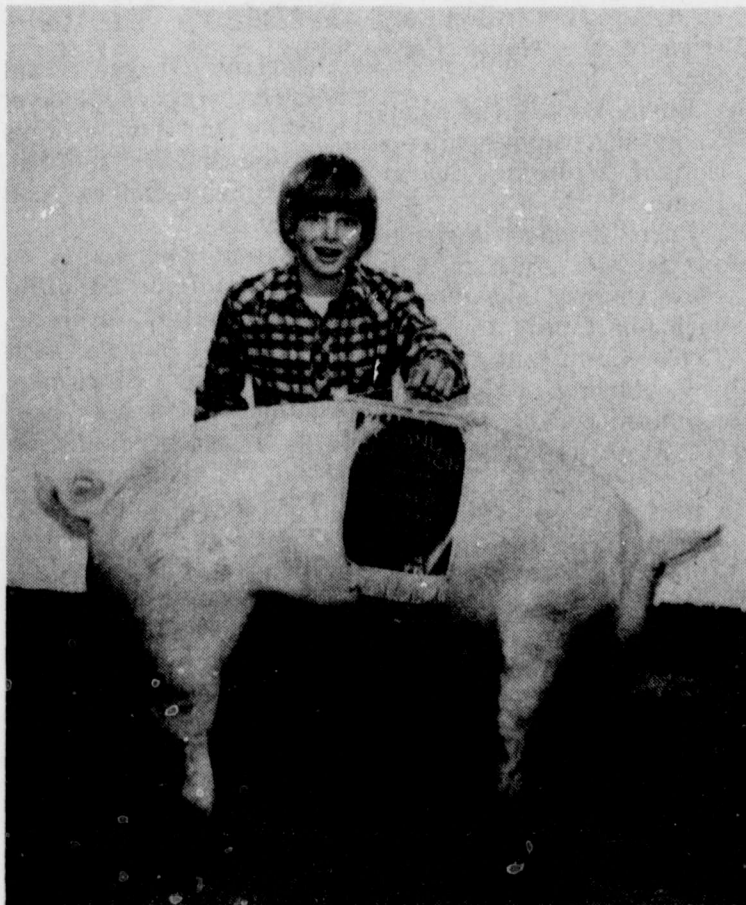
MICHELLE CARTER . . . and First Place Capon



ROBERT VERA . . . and Champion Buck



ROY WALSTON . . . 1st Place Middleweight Steer



SCOTT LANCASTER . . . Grand Champion Barrow



MARK ROGERS . . . Champion O. P. B.

Stock Show Pictures By Bill Walker

# City Park Area To Be Reseeded

In preparation for the program to celebrate the 90th birthday of Winters and the county's centennial—dates of which are as yet unannounced—the City Park and swimming pool area are undergoing a major facelifting, in addition to the major park improvement program which has been underway for

some months. All the grassed area in the park has been plowed, to be leveled and reseeded within a few weeks. Fences are being repaired and suitable fences installed in some places. Plans also are being made to do some repair work on the Community Center, including some

painting where needed. The fence surrounding the swimming pool will be taken down, straightened and reinstalled. Playground equipment will be repaired if needed, and repainted. Franklin O'Dell has been employed by the city to put the park in top shape.

A tractor was loaned by Winters Farm Equipment for the plowing. Fences around the new tennis courts have been completed, and the boundary lines on the courts will be painted. Nets will be hung, and the courts will be ready for use.

# Meeting Set To Discuss Student Financial Aid

A meeting to discuss financial assistance for Winters High School junior and senior students planning to attend college after graduation will be held in the high school auditorium Thursday, Jan. 24, at 7 p. m.

Mrs. Lee Harrison, school counselor, said students who plan to attend college, and their parents, are urged to attend this discussion meeting to gain additional important information regarding financial assistance available to students. She said, "Cost of higher education is up, but financial aid is available through the U. S. Office of Education," which offers six student aid programs. The state offers several additional programs, Mrs. Harrison said.

Mrs. Harrison said that "because of recent changes in the Basic Program, more students than ever can qualify for Federal Basic Grant Program assistance."

# Young Farmers To Be Recognized At Convention

Highlighting the 1980 Young Farmers of Texas state convention Jan. 17-19 in San Antonio will be the annual awards banquet, at which four Winters Young Farmers will be recognized.

David Bradley has been selected as the Area IV Young Agri-Businessman, and will be recognized. From the ten area nominees across the state, the Texas Young Agri-Businessman will be selected.

Erwin Schroeder will be honored as the Area IV Outstanding Associate Member in recognition of his dedication and support of the Winters chapter.

The Outstanding Area Officer awardee, Scotty Belew, will be presented an award at the state convention.

Charles Allcorn, vo-ag teacher in Winters High School, will be recognized as the Outstanding Area Advisor. He is advisor of the local chapter.

In addition to individual honors, the Winters chapter will compete for the Outstanding Chapter Award, as the area nominee.

Nine Winters Young Farmer couples will attend the convention in San Antonio.

# D. Bradley To Be Honored At Convention

David R. Bradley, owner of Bradley Grain Storage System and partner in the BCP Manufacturing Co. will be honored Jan. 18 as the Area IV Outstanding Young Agribusinessman during the 26th annual convention of the State Association of Young Farmers of Texas in San Antonio.

He will be honored at the Young Farmers annual awards banquet at 6 p. m., Jan. 18, at the San Antonio Convention Center. More than 600 persons are expected to attend. Ten area winners are selected from throughout Texas, and one is chosen as the state Outstanding Young Agribusinessman.

The area winner is selected on the basis of the agribusinessman's knowledge of his occupation, business practices, Young Farmers activities, and community service.

Bradley's business involves the sales and construction of on-farm grain storage and handling facilities, including storage and drying bins, bucket elevators, augers, continuous flow dryers, aeration systems, and steel buildings. In two years, his company has constructed more than one-third the total on-farm storage capacity in the country.

The State Association of Young Farmers is an educational organization sponsored by the Texas Education Agency for persons under 35 years old who are involved in agriculture. The association has over 4,000 members in 200 local chapters.

# Week of Prayer Jan. 18 thru Jan. 25

The week of Jan. 18 through Jan. 25 marks the Week of Prayer for Christian Unity throughout the United States. The Week of Prayer was begun by the Graymoor Ecumenical Institute at New York in 1908. Each year, responsibility for the promotion of the Week of Prayer is assigned to a different denomination. In 1979 the task was assigned to the Disciples of Christ, and in 1981 it will go to the Presbyterians. For the current year, the responsibility is in the hands of the Lutherans. Lawrence Keene, pastor at St. John's Lutheran Church, offered the following comments.

"The aim of the Week of Prayer for Christian Unity is to turn the attention of Christians to those things which we have in common. Surprising as it may seem, Christians are already united by Christ, regardless of denominational affiliations. This statement may cause some people to shudder, but the fact is that if you attend any Christian worship service, the person behind the worship is Jesus Christ. The specific forms of worship may be different, but the cause of worship is God's activity in Jesus Christ. He is our unity.

"This is not to suggest that denominational affiliations make no difference," said Keene. "But we waste so much time worrying about the negative aspects of denominational differences. God in his wisdom and glory has created us different from one another, so that the message of

God's love must come to us in different ways. Denominations serve this purpose. And we should not forget that just as individuals are given gifts of different talents and skills, so are denominations given different gifts. One denomination might be more effective in overseas mission work, while another might be more effective in Biblical research, while still another might be more effective in reaching people in prison, and so on.

"However, these differences are all within the framework of what we have in common. It is this commonality that the Week of Prayer for Christian Unity wants to emphasize. And look at what we have in common: we all proclaim Jesus Christ to the world; we all worship through the same Jesus Christ; we are all concerned to feed and clothe the starving and naked people of the world; we all care for the sick; we come together as brothers and sisters in Christ to strengthen and encourage one another in times of tragedy, and to celebrate together in times of joy. We actually do these things. They could at times be done better, but the important thing is that they are done.

"But the Week of Prayer for Christian Unity is not about us, but about God," said Keene. "We pray in the Lord's Prayer, 'Thy kingdom come, Thy will be done.' In the final analysis, God will work His way. In the prayer we indicate our willingness and hope to be instruments of His will. During the Week of Prayer for Christian Unity I would encourage Christians to be especially mindful of this in their private devotions. And when it is appropriate in our worship services, we could pray that God would so work in us that a wholesome cooperation among the denominations may be achieved to work His will."

# S. S. Rep Sets Winters Visits

Garland Gregg, Social Security representative, will be in the Winters Housing Authority office, Jan. 28, from 9:30 to 11:30 a. m.

Anyone who wants to file a claim for benefits, get information, or transact other business with the Social Security Administration may contact the representative during his visit here.

The San Angelo SS office announced that the 1980 Medicare hospital insurance deductible will increase from \$160 to \$180 for each benefit period beginning Jan. 1, 1980.

San Marino, a country surrounded by Italy, is said to be the world's oldest and smallest republic.

Add sparkle to your dishes by adding vinegar to the dishwasher.



Contrary to popular belief, ivy does not ordinarily harm the plant that supports it.

# Mrs. Burleson Died Saturday In Wyoming

Mrs. Augla Burleson, 60, of Casper, Wyo., formerly of Winters, died Saturday following a brief illness.

Funeral services will be held at 2 p. m. Friday at Oklahoma City Church of Christ, Oklahoma City, Okla.

She was born Minnie Bryant at Stonewall, Okla., Sept. 11, 1919. She moved with her parents, Mrs. Ettie Bryant and the late Mr. Bryant, to Winters when she was two years of age.

She married Augla D. Burleson at Winters, Jan. 16, 1941. Mr. Burleson died March 16, 1976. Following their marriage they lived in Winters for several years, and later moved to Moore, Okla., where they lived until he died. She then moved to Casper, Wyo.

She was a member of the Church of Christ.

Survivors include two sons, Charles Wayne and Ray Burleson, both of Casper; a daughter, Mrs. Tim Davenport of Casper; her mother, Mrs. Ettie Bryant of Winters; a sister, Mrs. Lillie Morris of Gallup, N. M.; a brother, Charles R. Bryant of Midland; and four grandchildren, all of Casper, Wyo.

Newcastle, England, was built on the site of an old Roman fort that defended the eastern end of the wall Hadrian built across Britain.

# COW POKES

By Ace Reid



Well Doc, he has been there for three years without moving. I just thought he liked them football games.

# Mrs. Allred Died Friday In Abilene

Mrs. W. A. Allred, 87, of Abilene, died at 1 p. m. Friday in Hendrick Medical Center in Abilene following a brief illness.

Funeral services were held at 2:30 p. m. Sunday in Caps Baptist Church in Abilene, with the Rev. Jerry Heald, pastor of the Collegeview Baptist Church, officiating, assisted by the Rev. Allen Carrite of the North Park Baptist Church.

Burial was in the Shep Cemetery, under direction of Winters Funeral Home.

Born Bernice Jackson on Oct. 16, 1892, in Upshaw County, she moved with her family to south Taylor County at the age of 7, settling in the Shep community. She married W. A. Allred, Aug. 24, 1909, at Shep.

She moved to the Caps community in 1945, and to Abilene in 1964.

She was a member of the Caps Baptist Church. Her husband died in 1964, and her daughter, Jewell, died in 1944.

Survivors include a son, Alfred of Abilene; four daughters, Ruby Allred and Ava Talley, both of Abilene, Opal Pillion of Littlefield, and Earlene Riles of Santa Fe, N. M.; four brothers, the Rev. Clyde Jackson and Lucian Jackson, both of Abilene; Dewey and Wilbur Jackson, both of Midland; two sisters, Gladys Walker of Winters and Mae Hamilton of Sweetwater; five grandchildren; 12 great-grandchildren and a great-great-grandchild.

## An important part of your electric bill.

**WEST TEXAS UTILITIES CO.**

ADDRESS CORRECTION REQUESTED

ACCOUNT NUMBER MAIL DATE DUE DATE

**You.**

AMOUNT DUE CURRENT ELEC PREV ELEC INST MOSE 30 DAY MOSE TOTAL AMT DUE

AMOUNT DUE CURRENT ELEC PREV ELEC INST MOSE 30 DAY MOSE TOTAL AMOUNT DUE

RETURN THIS STUB WITH PAYMENT

Time was when your electric bill probably was "just another item" in the family budget. You knew from the year before about what to expect. Regrettably, this is no longer true. As the costs of producing and supplying electricity have gone up, WTU has had no choice but to pass on fuel cost increases through fuel clause adjustments on your bill. The electric bill has become a large item in your family budget.

You and each member of your family are important parts of your electric bill. How you use appliances and equipment makes a big difference in the amounts of your bills. Make a family project of keeping the heating thermostat set at 68° in the winter. Operate the clothes washer, dryer and dishwasher only with full loads. Turn the television off when you leave it. And check around the house for other energy-saving, dollar-saving measures.

WTU is working to assure an adequate supply of electric power for all of its customers and to help them get the most value for their electric dollars.

**WEST TEXAS UTILITIES COMPANY**

Remember **REDDY** Supplies the energy— but only **YOU** can use it wisely!

# City Gets \$3.414 From Sales Taxes

The City of Winters has received \$3,414.08 from the State Comptroller's office as the city's rebate in the one-percent city sales tax for January.

This amount is only slightly more than the amount received for the same period in 1979, which totaled \$3,370.91.

The optional one-percent sales tax is collected by merchants and businesses along with the state sales tax and is rebated monthly by the Comptroller's office to the cities where it is collected.

Receipts for this period by comparable cities in the area were:

Albany	\$ 2,425
Anson	648
Ballinger	3,739
Cisco	7,696
Coleman	10,457
Hamlin	3,023
Haskell	3,218
Stamford	3,752
Winters	3,414



Newfoundland is known for the first trans-Atlantic cable connecting it to Ireland in 1858 and the first wireless message received, from England, in 1901.

# CLEARANCE SALE

Ladies' & Children's  
**COATS**  
**1/2 Price**

Ladies' Boots  
From  
Lo-Heels to Hi-Heels  
**1/2 Price**

Ladies' Dresses  
**1/2 Price**

Ladies' Skirts  
**\$5.95**

Ladies' Pants  
**\$8.95**

Ladies' & Jrs.  
**BLOUSES**  
**1/3 to 1/2 off**

Must-Have!  
**FLANNEL SHIRTS**  
**\$6.95 ea.**

Versatile, warm shirt to wear! Bold plaids, two pockets. Easy-care. S, M, L, XL.

Shirts that were as high as \$14. Clearance Sale \$6.95

**HEIDENHEIMER'S**