

The Winters Enterprise

VOLUME SEVENTY-FIVE

USPS NO. 687-220

WINTERS, TEXAS 79567, THURSDAY, SEPTEMBER 6, 1979

PRICE 20 CENTS

NUMBER 26



Lutheran Pastor

The Rev. and Mrs. Lawrence Keene and their children, Joel 3, and the twins, Deborah and Saul.

The Rev. Mr. Keene has been called to pastor St. John's Lutheran Church of Winters.

Rev. Keene Pastor At St. John's Lutheran

The Rev. Lawrence S. Keene has been called as pastor of St. John's Lutheran Church in Winters. He and his family moved to Winters last week.

The Rev. Mr. Keene is married to the former Susan Solovitz of St. Louis, Mo. They have three

children, a son, Joel 3, and twins, Deborah and Saul, six months old.

The son of Mr. and Mrs. Elmer Keehe, he lived in Johnstown, Pa., until he was 13. In 1961, the family moved to Canoga Park, Calif., where he graduated from high school in 1966. He attended San Fernando Valley State College in California, and then entered the U.S. Army, assigned to an army band. He "played trombone in Vietnam and Hawaii." He played with a circus band for a time, and in 1972 entered California State University at Northridge, where he received a bachelor of arts degree in the humanities in 1975.

Following graduation, they moved to St. Paul, Minn., where he attended Luther Seminary for four years. He graduated in May, and was ordained Aug. 19 in California.

State Tax Rep To Be Here Sept. 24

A representative from the San Angelo office of the State Comptroller will be in Winters Sept. 24 to assist local taxpayers and answer questions about state taxes.

Enforcement Officer Steve Mercer will meet with local taxpayers on the second floor of the Winters City Hall from 11 a.m. to 12:30 p.m.

Blizzard Band To March In Abilene Parade

The Winters High School Blizzard Band, under direction of Eddie Pace, will march in the West Texas Fair parade at Abilene Saturday, Sept. 8, to help open the annual West Texas Fair.

All band fans and boosters have been asked to support the band at the parade.

School Enrollment Down Slightly

First-day enrollment in Winters Public School was down by 13 students from the total on the first day last year, Superintendent of Schools Tommy Lancaster said Monday afternoon, but this difference is expected to change within the next few days. Usually, he said, there are some students who do not enroll on the first day, but wait a couple of days—or even a week—before signing in. So within

a week or two, enrollment figures should equal 1978's figures.

In grades kindergarten through eight, there were 557 students enrolled, ten more than were listed on the first day of school in 1978.

In the four high school grades, 238 had enrolled Monday, below the 261 on Sept. 6 in 1978.

Blizzards Open Season At Clyde

The Winters High School Blizzards have three non-conference football games, and a off-week, before plunging into the District 6-AA schedule.

The Blizzards open the '79 season Friday night of this week, traveling to Clyde for a game with the Bulldogs. The following week, the team goes to Coleman, and then will host Roscoe for the first home varsity game Sept. 21.

The game at Clyde begins at 8 p.m. Tickets may be obtained at the Winters school business office for \$2.50 for adults until noon Friday; at the gate, adult admission will be \$3.

Because of the short distance to Clyde, classes at Winters schools will be on the regular time schedule, dismissing at 4 p.m.

The Blizzards will be seeking a turnaround on the scoreboard from last year's experience with the Clyde Bulldogs, when they lost 3-25.

The Bulldogs showed good in a scrimmage with the Ballinger Bearcats last week. They have a good quarterback who can throw as well as run, and both offensive and defensive lines are big and strong. In the offensive area, they have some speed in the backfield.

Coach Les Fisher said Monday, following the scrimmage with Hawley last Friday, that "we've got to work on the secondary and try to contain outside gains." Offensively, he said, "we think we can throw the ball this year." He also pointed to "good leadership" on the team.

Probable starters for Friday night's encounter will be:

OFFENSE
QB—Scott Billups, Toby Gerhart
Running backs—Pat Salas, Brett Billups
Wingback—Robert Johnson
Split End—Gene Bowden
Tackle—Bryan Davis, Scott Hall
Guards—Wayne Kraatz, David Brewer
Center—Andy Smith or Bill Bredemeyer
Tight End—Tommy Chambliss
There are seven returning starters.

DEFENSE
Ends—Scott Hall, Tommy Chambliss
Tackles—Bryan Davis, Wayne Kraatz
Noseguard—John Esquivel
Linebackers—David Brewer, Adolfo Torres
Cornerbacks—Brett Billups, Rusty Allen
Free Safety—Mark Whitlow
Strong Safety—Gene Bowden

Junior Varsity Meets Clyde Thursday
Blizzard Field
7:30 p. m.

Parents Night At Elementary School Sept. 10

Teachers in grades kindergarten, first, second and third, Plan A, Title I, and music, will host a special parent's night for parents of pupils next Monday, Sept. 10, beginning at 7 p.m., in the Elementary school building.

Each teacher will discuss the scope and sequence of subject matter, grading and reporting methods, homework, attendance, how parents can help, parent-teacher conferences, visits, teaching methods and goals, and objectives for the 1979-80 school year, Principal George M. Beard said.

Parents are asked to follow the See PARENTS Page 8

Veterinarian Joins Dr. Smith Here

Dr. Gene Gibbens, DVM, has joined Dr. Jimmy Smith at Pioneer Veterinary Clinic in Winters.

Dr. Gibbens is from Marfa, and received his DVM degree from Texas A&M University.

Band Boosters Will Meet On Third Mondays

The Winters Blizzard Band Boosters will meet each third Monday, with the first regular meeting scheduled for Sept. 17, at 6 p.m., at the band hall.

At the first meeting, plans for the year will be discussed, and all parents of band members have been urged to attend.

Parents are needed to work in the concession stand on Thursday and Friday nights during football games. Schedule forms will be sent to parents this week, and parents are asked to return them as early as possible.

Commissioners Hire Attorneys For Law Suit

The law firm of Grindstaff, Grindstaff & Reese will represent the Runnels County Judge and the four County Commissioners in a suit brought by Glen Pratt of Sweetwater against the officials.

Commissioners, at a called session last Tuesday, approved an order to employ the law firm in the suit entitled Glen Pratt vs. Runnels County, et al., No. 9258, 119th Judicial District Court, Runnels County.

The law firm will be employed

for the sum of \$4,000 for all legal representation of the County Judge and the four Commissioners through the trial court. However, the County will be liable for any court costs, deposition fees, travel expenses and any other court costs, according to the minutes of the called session.

The suit involves an alleged breach of contract between the County and Pratt, in regards to the county's emergency ambulance service.



New To System

These members of the 1979-80 faculty are new to the Winters school system. Seated, left to right, Cindy Rogers, Patsy Roach, Denise Heaton, Libby Croft.

Standing, Bill Howard, Tom Roach, Eddie Pace, Annie Mills, and Richard Brown.

Band Beginners Asked To Meet Thursday Night

All fifth grade students who plan to join the beginning band program in the Winters Public Schools, and their parents, and others who wish to join the band, have been asked to attend an orientation meeting Thursday evening, Sept. 6, at the band hall. The meeting will begin at 6 p.m. and end at 9 p.m.

Eddie Pace, band director, said this meeting will be to assist students and parents in selecting instruments best suited for each individual. He said instruments will be available for the student to see and try, and he will give advice on selection of instruments and answer any questions parents may have.

Pace said students selected to play flute, clarinet, saxophone, cornet, trumpet, trombone, and percussion must furnish their own instruments for beginning instructions.

An instrument supply representative will be at the band hall Monday, Sept. 10, from 4 to 7 p.m., to explain rental-purchase plans for instruments for those students who plan to purchase instruments.



The Winters Enterprise

(USPS 687-220)

754-5221 P.O. Box 37 Winters, Texas

RICHARD C. THOMAS, Publisher

Entered At Post Office, Winters, Texas 79567, As Second-Class Matter.

SUBSCRIPTION RATES

In Runnels County, 1 year	\$6.00
In Other Texas Counties, 1 year	\$7.75
Outside Texas, 1 year	\$9.50

Any erroneous reflection upon the character, standing or reputation of any person, firm or corporation which may appear in the columns of this newspaper, will be gladly corrected upon due notice of same being given to the editor personally at this office.

Poe's Corner

BY CHARLIE POE

Island Hopping and Bridge Crossing

When our tour group finished shopping in Kusadasi, Turkey, we sailed through the night for several days of island hopping which began at Rhodes the next day.

The main attraction at Rhodes, praised by the poets as the "Island of Roses," was the walled medieval city of the Knights (Hospitalers) of St. John of Jerusalem. We saw the palace of the Grand Masters and the Hospital, both now museums. The 15th century hospital, now an archeological museum, contains the Aphrodite of Rhodes.

The port entrance, now flanked by two bronze deer, was the site of the Colossus of Rhodes of ancient times. It was a bronze image of the Sun God, set up to commemorate the city's successful resistance to the siege of Demetrios in 305 B.C.

There were three clumsy looking rock windmills, several centuries old but in perfect working order. They were on a strip of land linking the shore to a small rocky islet on which the Fort of St. Nicholas was built by the Knights. It is a circular tower with a lighthouse set on its roof and it played an impor-

tant part in the defense of the island.

Rhodes has the finest white sand for pottery making. We visited the factory to see and buy some beautiful pieces that were hand painted with original designs.

Our next visit was to the Greek Island of Patmos. A group of fishermen and others began to gather as our ship docked. We were met by our buses, a few cars and many donkeys with their small masters.

A winding road led us to the mountain top monastery for an inspiring view over the Aegean with our ship in sight at the harbor.

The monastery holds religious and historical treasures of great worth. The small whitewashed houses and narrow streets add to the island's charm. We were a little early but soon there were people at every level out to sell us souvenirs as we walked up the steps.

This rocky island is dedicated to the historical significance of its most famous visitor. It is here, in a cave on Patmos, that St. John, while he was a prisoner, wrote the book of Revelations.

Next was a fun stop on Santorini, a remarkable volcanic island. In fact, the harbor is actually the crater of an extinct volcano, called Thera in ancient times. The high, steep, red and black cliff rises sharply out of the sea. A donkey was the only means of transportation up the steep incline to the tiny village of Thira perched at the top. Then visitors walked back down the hill on their own, a total of 587 steps.

Some of the tourists were content to view Santorini from the deck of the ship, and I was one of them.

By Saturday morning we had completed the loop and were back in Piraeus after leaving it on Tuesday. Following an early breakfast we gathered up our luggage, bid the ships crew farewell and debarked. There was time for flea market shopping and lunch in Athens before departing by air for Amman, Jordan.

The real fun began when we said goodbye to Jordan two days later and drove in buses to cross the historic Allenby Bridge and enter Israel. We were stopped three times before we arrived and it took us from 8:15 to 11:15 a.m. to clear customs at the border. We were thoroughly searched and the contents of our suitcases spread out for the world to see.

Later, we learned that Dr. Carl Singer, one of our party, was delayed another hour and a half because he was carrying a video-tape recorder and customs officials had never seen one.

These people cannot be blamed for their extreme caution for they have suffered greatly at the hands of the terrorists.

After our ordeal, we crossed the bad lands bordering the Jordan River, near the site where John baptized Jesus. We visited Jerico, said to be the oldest inhabited city in the world. Continuing on to Mt. Zion, we had lunch and visited the tomb of Daniel on the way to the Shalom hotel in Jerusalem.

Tuesday was spent in a walking tour of the old city of Jerusalem, but that is another story.

We left Jerusalem on Wednesday for a drive to Tiberios where we took a boat ride across the Sea of Galilee to Capernaum to visit the ruins of the 2nd century Synagogue, where Jesus preached.

The restaurant where we ate lunch was right on the shore of the sea and we were served St. Peter's fish. A small fish broiled with its head on. Some diners didn't want to eat anything looking at them so they took fish filets. But I liked St. Peter's fish, it was something like our perch.

The Sea of Galilee covers 30 miles and about 250 families make their living by fishing during a three months season. While there are 52 varieties most of the fishing is for sardines and more than 200 pounds can be brought in at a haul.

After touring Capernaum we went on to the site of the Multiplication, where Jesus fed the multitude with the loaves and fishes.

We continued on to the Jordan River that flows out of the Sea of Galilee and saw two of the daughters of ministers on the tour baptized by their fathers in this river. A fitting climax to the day.

Miss Kruse and Mr. King Wed Saturday

Debbie Sue Kruse and Mr. Scott Alan King were married in a double-ring ceremony, Saturday, Sept. 1, at seven-thirty o'clock in the evening, in St. John's Lutheran Church in Winters.

Mr. and Mrs. Delbert Kruse and Mr. and Mrs. Wayne King are parents of the couple.

The Rev. Mel Swoyer of Grace Lutheran Church in Abilene, a former Winters minister, performed the ceremony before a setting of white gladioli and pom-pom mums.

The bride was given in marriage by her father. She wore a white organza gown with empire waistline, bishop sleeves, and Queen Ann neckline. The bodice was trimmed with Chantilly lace and pearls as was the boufant skirt. The attached chapel train and skirt were encircled with three lace trimmed ruffles.

Her walking length veil was edged with matching lace attached to a Camelot cape covered in lace and pearls. She carried a cascade bouquet of pom-pom mums and yellow roses.

Rita Williams was matron of honor. Bridesmaids were Rhonda Goetz, Fran Hoppe and Sherri Gerhart, all of Winters, and Brenda King, sister of the bridegroom, of Abilene.

The bride's attendants wore yellow Quiana with blouson bodice and pleated skirts. They carried single stem yellow roses.

Stan Tatom of Winters served as best man. Groomsman were Ricky Marks of Raymondville, Norman Halfmann of Ballinger, Rodney Kruse, brother of the bride of Winters, and Gary Clayton of Belton.

Ushers were Kelly King of San Angelo and Pat King of Winters, brothers of the bridegroom, and Roger Kruse, brother of the bride, of Winters.

Karla Schroeder of San Angelo was organist. Soloists were Terry Sneed of Winters and Laurie Pruser of Ballinger.

The bride's parents hosted the wedding reception in the Fellowship Hall of the church. Members of the house party were Audrey Lucas and Linda Gonzales of Midland, Stephanie Seccrest and Valerie Splawn of Dallas.

The bride is a 1976 graduate of Winters High School and is attending Angelo State University. She is employed by Pool Co.

The bridegroom is a 1973 graduate of Winters

High School and a 1977 graduate of Tarleton State University. He is employed by Justin Industries.

The bridegroom's parents hosted the rehearsal dinner at Zentner's Daughter's Restaurant in San Angelo.

The couple will live in San Angelo.

Anniversary Tea Planned By Woman's Club

Plans for a 25th anniversary tea were made at a recent meeting of the Junior Culture Club in the home of Mrs. Donald Wade.

The anniversary tea will be held Sunday, Sept. 20, in the home of Mrs. Hal Dry.

At the recent president's party meeting, yearbooks were presented to members by Melanie Wade and Cindy Hatler.

Present were Jeanette Black, Linda Dry, Melvina Gerhart, Pat Hambright, Cindy Hatler, Tonya Hoeflein, Jan Jordan, Brenda Killough, Suzan Marks, Rhea Parramore, Jan Sims, Linda Smith, Cheryl Springer and Melanie Wade.

Pre-School Classes Will Begin Sept. 12

First day of classes for the St. John's Lutheran Church pre-school program will begin at 9 a.m. Sept. 12. Classes will be over at 11 a.m.

Children of the community who are 3 or 4 by Sept. 4, 1979, may enroll in these classes.

A short meeting of the mothers of pupils will be held at 9 a.m. Sept. 12.

Director of the program is Mary Kurtz, with Linda Dry as assistant director.

Happy Birthday Randy

Now Allstate can save you 25% off Texas state rates for Homeowners Dwelling Insurance.

Come in and compare.

Your Allstate agent will show you just how much you may save on homeowners insurance with Allstate's new low rates.

We're helping you keep your insurance costs down—as we protect your home against loss from fire and many other hazards. Come in soon and find out how much you might save. Or just phone us.



Allstate
You're in good hands.

1625 "good hands" people in Texas invite you to come in and compare.

JNO. W. NOR
THE INSURANCE MAN

754-5111 Winters, Texas 79567

In 2,000 B.C. Babylonians could deposit their valuables for a service charge of one-sixtieth of an item's value.



Fostoria
Save Up To 31%

- A 10 oz. Goblet, Hex Foot
- B 9 oz. Low Goblet
- C 7 oz. Claret
- D 2 1/2 oz. Wine, Hex Foot
- E Cake Stand
- F Shaker & Chrome Top "A" (Pair)
- G Cheese/Sugar Shaker
- H 5 oz. Low Sherbet (Flared)
- J 2 Part Relish
- K 10 in. Salad Bowl
- L Napkin Rings (Set of 4)
- M 5 oz. Low Sherbet (Regular)
- N Footed Cup
- O Footed Cup & Saucer
- P 3 in. Candlestick
- Q 12 oz. Luncheon Goblet/Ice Tea
- R 12 in. Footed Cake Plate
- S Drip-Cut Syrup
- T 10 in. Cetera
- U 3 Toed Bon Bon
- V 5 in. Nappy
- W 9 1/2 in. Dinner Plate
- X 14 in. Torte Plate

Bahlman Jewelers

9.775%

Annual Rate*

Effective Sept. 6-12

Flexible Money Market Certificates.

Invest \$10,000 or more in our 26-week Money Market Certificate and pick the interest option best for you. Earned interest is available, at your option, by monthly or quarterly checks, or may be left in the certificate until maturity.

*Federal regulations require a substantial penalty for early withdrawals and prohibit compounding of interest on these accounts.

WHEN IT COMES TO MAKING MONEY GROW, WE HAVE A GREEN THUMB.

FIRST TEXAS
Savings Association

Winters Office:
102 South Main St.
Winters (79567) 754-4513

Home office — Dallas

Member FSLIC

FINAL CLOSE-OUT

ON

1979

CHEVROLETS!

PICKUPS

IMPALAS

BEL AIR

CHEVETTES

ROBINSON CHEVROLET CO.

WINTERS, TEXAS

To prevent scratching your fine china when storing, intersperse each plate with a paper plate.

CORRECTION

In last week's ad, the prices for boots were reversed. The prices should have read:

BOOTS
WRANGLER BULLHIDES

\$29⁹⁵

Larry Mahan & Nocona
Calf & Bullhides

\$65⁰⁰

BRYAN'S
WESTERN WEAR

115 S. Main

Brother of Local Woman Died

Mitchell "Curley" Lee, 65, of Hubbard Creek Lake, died at 2:30 a. m. Wednesday of last week at his home after a sudden illness.

He was a brother of Merle McCabe of Winters.

Funeral services were held at 11 a. m. Friday in Satterwhite Chapel of Grace, Breckenridge, with the Rev. Harry Grantz, pastor of the First Baptist Church there, officiating.

Burial was in Norton Cemetery in Runnels County, with the Rev. Gene Stark of Ballinger officiating.

Supplementing Medicare Protection

Many people who have protection under Medicare hospital insurance and medical insurance believe they need private medical insurance to complement Medicare, Franklin H. Upp, social security manager in San Angelo, said recently.

These people want some kind of insurance to pay that part of the cost of their medical care not covered by Medicare. Private insurance companies offer many different policies.

Generally, these policies make payment for the Medicare deductibles and the portion of approved costs which Medicare does not pay, Mr. Upp said.

Most private Medicare supplements, very much like Medicare, do not pay the entire bill for every service. Nor do they usually make payments for the expenses which Medicare pays.

Of course, Mr. Upp said, some policies are

Born April 12, 1914, in Ballinger, he had worked as a bus driver for Texas, New Mexico and Oklahoma Bus Lines for 25 years, living in Lubbock. He retired and moved to Breckenridge in 1972, and owned and operated Village Inn Restaurant at Hubbard Lake.

He married Mary Starkey, July 21, 1969, in Lubbock.

He was a member of the First Baptist Church in Ballinger.

Survivors include his wife; two daughters, Georgia Patcheck of Mancos, Colo., and Linda Dennis of Detroit, Mich.; two sons, Terry L. Starkey and Woody Starkey, both of Sherman; two sisters, Jerry Bartlett of Abilene and Merle McCabe of Winters; and nine grandchildren.

Get Gutsy About Inflation—Smother It With 'Budget Guard'

Enraged about inflation?

Then smother it with "budget guard"—at least for your own family, says a consumer information specialist, Claudia Kerbel, with the Texas Agricultural Extension Service, The Texas A&M University System.

"Budget guard" is simple, but it takes guts.

Here's how it works: keep very close tabs on debts you already owe, and DO NOT set up any more.

Mrs. Proctor Died Thursday In Stamford

Mrs. Wallace Proctor, 81, died at 3:30 p. m. Thursday in the Stamford Memorial Hospital, Stamford, where she had been hospitalized for two days.

She had been in ill health for a number of months and she and her husband had been living in Teakwood Manor in Stamford.

Funeral services were held at 10:30 a. m. Saturday in Winters Memorial Chapel with Howard Swenney, minister of Orient Church of Christ of Stamford, officiating.

Burial was in the Wilmeth Cemetery under the direction of Winters Funeral Home.

Mrs. Proctor was born Clara Belle Hood, Sept. 12, 1897, near Rosebeck in Limestone County. In 1906 the family moved to Runnels County, settling in the Wilmeth Community. She attended school at Maizeland where she graduated and then attended Simmons College, now Hardin-Simmons University, in Abilene. Following graduation she taught school in the Pumphrey Community north of Winters.

She married Wallace Proctor, Aug. 6, 1916, at Wilmeth. They later moved to a ranch at Aspermont, and in 1971 they moved to Stamford.

Survivors are her husband; one son, Gerald L. Proctor of Stamford; three grandchildren and five great-grandchildren. A son, Merle, died July 20, 1976.

Pallbearers were Roscoe Morrison, J. B. Denson, Jack High, Durward Young, J. V. Weaver and Kenneth Carlton.

Homemakers Will Meet On Monday

Winters Young Homemakers will meet Monday, Sept. 10, at 7:30, in a regular meeting, at the school Homemaking Cottage.

Betty White will present a program on "Bread

LEARN TO LIVE ON YOUR PRESENT INCOME.

Does your family need "budget guard"?

There are definite warning signs of possible money problems for each family.

If you answer "yes" to two of the questions below, you may have problems.

If you answer "yes" to three of them, you're already in trouble—and you may welcome the smother-inflation promise of "budget guard."

1) Do you charge small day-to-day items, such as groceries and housekeeping things because you don't have the money to pay for them?

2) Have you recently put off paying a bill until next month due to lack of funds to cover it?

3) Do you borrow money to pay fixed expenses, such as insurance premiums, a loan installment or tax payments?

4) Do your creditors phone or write to remind you about overdue bills?

5) Do annual payments on long-term debts, excluding mortgage payments, amount to more than 20 percent of your annual income?

6) Are you confused about exactly how much you owe on long-term debts?

Clyde Club To Have Taco Supper

The Clyde Kiwanis Club will sponsor a taco supper Friday, Sept. 7, in the Clyde High School cafeteria, before the Winters-Clyde football game.

Serving will be from 5:30 to 7:30 p. m., at \$2 per plate. Those attending the taco supper will have time to eat and get to the football field in time for the 8 p. m. kickoff.

Proceeds from the supper will go to support youth activities, including Boy Scouts, Girl Scouts, and elementary children.

Winters football fans traveling to Clyde for the football game have been especially invited to attend the taco supper.

dough crafts," giving ideas for Christmas ornaments and decorations.

Hostesses for this meeting will be Betty White, Cindy Rogers, Sheila Paschal and Barbara Heathcott.

A small piece of leftover new carpeting can be tacked or glued onto a block of wood to make a shoe buffer.

Ernest Lail Died Last Week In Abilene

Ernest Lail, 75, died at 4:30 p. m. Monday of last week in West Texas Medical Center in Abilene following a lengthy illness.

Funeral services were held at 10:30 a. m. Wednesday in Winters Memorial Chapel with Dr. Thomas Tribble, pastor of the First United Methodist Church, officiating.

Burial was in Lakeview Cemetery under direction of Winters Funeral Home.

Mr. Lail was born in the Bluff Creek Community of South Taylor County, Nov. 1, 1903, the son of Jasper and Sarah Porter Lail. When he was 14, he moved to California to live with his brother in Los Angeles. He attended school there, and later was in the garage business. From 1939 until his retirement in 1976, he was associated with his brothers in an auto dealership.

He married Eunice Gardner, May 25, 1924, at the home of the bride's parents five miles north of Winters.

He and his wife and son moved to Abilene in July, 1978.

He was a member of the United Methodist Church. Survivors include his wife; one son, Jack E. Lail of Abilene; two brothers, P. F. Lail of Abilene and John O. Lail of West Los Angeles, Calif.

Pallbearers were Gattis Neely, Henry Webb, LaDell Davis, Bruce Webb, Vivian Colburn and Milburn Shaffer.

Dale Sewing Club Will Meet Sept. 18

The Dale Sewing Club will meet for an all-day session, Sept. 18, in the reception room of the Winters Housing Authority.

Quilting will be done on the West Texas Rehab quilt.

NORTH RUNNELS HOSPITAL

REPORT

August 28

Cecil Waller
Glynn Seals
Pauline Wright

August 29

Clara Barnes
Baby girl Wright

August 30

No one admitted

August 31

Bill (W. J.) Daniels

September 1

Thelma Cummings
September 2

A. W. Hoelscher
George Garrett
Rhodie Crofton

September 3

Marvin Powers
Wayne (Foy) Bryan
Terri Perry
Selita Bowen

DISMISSALS

August 28

No one dismissed

August 29

Floyd Taylor
Donato Sanchez

August 30

No one dismissed

August 31

Pauline Wright and baby girl

September 1

W. J. Daniels, expired

September 2

No one dismissed

September 3

Clara Barnes
Minnie B. Belitz

W. J. Daniels Died Saturday In NR Hospital

William J. Daniels, 72, of Winters, died at 8:15 a. m. Saturday in North Runnels Hospital following a lengthy illness.

Funeral services were held at 4 p. m. Sunday in Winters Memorial Chapel, with Max Pratt, minister of Ninth Street Church of Christ, Ballinger, officiating.

Burial was in Lakeview Cemetery.

Born Jan. 30, 1907, in Edgewood, he moved to Winters in 1937. He and Johnnie Pierce were partners in a produce business in Winters for several years. He retired recently due to ill health.

He served in the U. S. Army during World War II.

He was a member of Ninth Street Church of Christ in Ballinger.

He married Willie Lois Briley, Feb. 29, 1964, in Abilene.

Survivors include his wife; two stepsons, W. C. Briley of Veribest and

Billie Briley of San Angelo; a sister, Inez Thompson of Dallas; a niece; a nephew; and seven grandchildren.

A sister, Doris McCullough, died in 1965.

Pallbearers were Paul Shero, Mike Shero, David Shero, Bo Shero, W. C. Briley, Billie Briley, Wendell Morris and Dan Stultz.



NEWCOMERS

Mr. and Mrs. Danny Calcote of Winters announce the birth of a son, Travis David, born at 2:32 Wednesday, Aug. 28, 1979, in Hendricks Medical Center in Abilene. The baby weighed 6 pounds 2 ounces.

Maternal grandmother is Mrs. Lola Johnston of Vista, Calif. Paternal grandparents are Mr. and Mrs. Roy Calcote of Winters.

COW POKES By Ace Reid



Yeah Jake, this was a beautiful day. Are you puttin' in or takin' out?

SMITH DRUG CO.

Your WALGREEN Agency
Dependable Professional Prescription Service
Winters, Texas—Ph. 754-4543

Happy Birthday

Michael

GRAND OPENING

Heart O' Texas Savings cordially invites you and your family to attend the Grand Opening celebration of our newest branch office located at 403 W. 10th, in Robert Lee.

You could win a free trip for two to exciting Las Vegas (includes airfare, plush accommodations at a Las Vegas Hotel and ground transfer).

Be sure to attend and be sure to bring this ad with you. It entitles you to register for our free trip to Las Vegas and drawings for 10 Saving Accounts of \$25.00 each, free key chain and refreshments.

You do not have to be present to win, and you can register at the Branch Office in Ballinger or Winters, if you are unable to go to Robert Lee.

Heart O' Texas SAVINGS ASSOCIATION
A State Chartered Association
403 W. 10th, Robert Lee, Texas 76945

MEET:
Dwala Casey, Branch Manager and our
Coke County Director
Robert Vaughan

WHEN: Sept. 10 thru Sept. 15
WHERE: 403 W. 10th
Robert Lee, Texas
HOURS: 10:00 to 3:00 P. M. M-F
10:00 to 11:30 Saturday
ENTERTAINMENT: 11:00 — 11:30 on Saturday with Music by the Robert Lee Steers Band under the direction of Mary Grace Ray
RIBBON CUTTING: 11:30 — Saturday, Sept. 15
GRAND PRIZE: Free round trip excursion for two to Las Vegas or a \$500 Savings Account.

Name _____
Address _____
City _____ State _____ Zip _____
Phone _____

MONEY MARKET CD's

Federal regulations prohibit the compounding of interest during the term of the account.

Rate Sept. 6 - 12

9.775%

ANNUAL DIVIDEND	DAILY COMPOUNDING
5 1/2 %	PASSBOOK SAVINGS INTEREST PAID DAY-IN TO DAY-OUT 5.65% ANNUAL YIELD
5 3/4 %	90-DAY NOTICE PASSBOOK SAVINGS 5.92% ANNUAL YIELD
5 3/4 %	90-DAY CERTIFICATES \$100 OR MORE 5.92% ANNUAL YIELD
6 1/2 %	ONE YEAR CERTIFICATES \$100 OR MORE 6.71% ANNUAL YIELD
6 3/4 %	30-MONTH CERTIFICATES \$100 OR MORE 6.98% ANNUAL YIELD
8.20 %	4-YEAR CERT. \$100 OR MORE SEPTEMBER RATE 8.545% ANNUAL YIELD
7 1/2 %	FOUR YEARS OR MORE CERTIFICATES \$100 OR MORE 7.79% ANNUAL YIELD
7 3/4 %	SIX YEARS CERTIFICATES \$100 OR MORE 8.06% ANNUAL YIELD
8.0 %	EIGHT YEARS CERTIFICATES \$100 OR MORE 8.33% ANNUAL YIELD

Federal regulations require a substantial interest penalty for early withdrawal of Savings Certificates.

WE MAKE HOME LOANS

Heart O' Texas SAVINGS ASSOCIATION
A State Chartered Association
Winters, Texas 79567

Phone 754-5064
Home Office San Saba, Texas 200 E. Wallace 372-5121

for anything... for everything... WANT ADS

CLASSIFIED AD RATES

CASH
Minimum—\$2.50, 1 time 20 words; 8 cents per word for over 20 words.

CHARGED
Minimum—\$3.00 first insertion, \$2.50 per insertion thereafter. (8 cents per word over 20 words.)

LEGAL PUBLIC NOTICES
Regular Classified Ad Rates will apply for all Legal Public Notices.

DEADLINE FOR ALL ADS
12:00 noon Tuesday week of publication.

FLOWERS

FLOWERS for all occasions. Orders wired anywhere, any time. Bonded FTD, Florafax florist. Mayme Little, Winters Flower Shop. Dial 754-4568. tfc

BLOSSOM Shop. Bonded FTD, Teleflora and Florafax florists. Flowers for all occasions. Flowers wired anywhere. Phone 754-5311. tfc

FOR SALE

FOR SALE—'63 Ford grain truck, tandem with lift and factory bed. 767-3241 after 6 p.m. 26-4tc

FOR SALE—Plenty of equipment, guns and ammunition and other hunting equipment. Winters Sporting Goods, 157 N. Main. 26-11p

FOR SALE—One Conn cornet with case. One Bessor cornet with case. Both in good condition. Freddie Bredemeyer, 754-5460. 26-11p

FOR SALE—1978 Z-28 Camaro Contact Jim Parramore, 754-5437. 26-11p

FOR SALE—1973 Vega, good running condition, \$500. Ross A. Sheppard, Rt. 1, Wingate. 25-2tp

FOR RENT

FOR RENT—1 bedroom furnished apartment and large travel trailer with bills paid. 2 bedroom furnished mobile home. 2 bedroom unfurnished apartment. Mrs. Floyd Sims. 22-tfc

YATES TRAILER COURT. Park by the night, week, or all time. East Dale, close to Huffman House Cafeteria. Call 754-4369. 6-tfc

Real Estate

Charming 2 BR, 1 bath, close to town. Priced right.

UNIQUE AND UNUSUALLY GOOD TASTE describe this new brick home. Cathedral beamed ceiling, 3 BR, 2 bath, only carpet, lots of storage space in a good neighborhood.

Commercial property on Main Street, prime location with modern store front. Reasonably priced.

Restaurant in the heart of Winters with good clientele, plenty of parking. Call today.

Corner building on Main Street with large private office and lots of room. Modern brick front—established business—priced to sell.

Make an offer on this 3/2, privacy fence, 2 car garage, washer & dryer connections conveniently located upstairs or down. Storage space galore. Reduced to \$29,500.

GOOD NEIGHBORHOOD—3/1, carport, large living room, lots of kitchen cabinets. See today—priced right.

ENTERTAIN in this lovely 3/2 1/2 with large den, fireplace. Has decorator windows, central a/h, built-ins, sewing room, formal dining room overlooking lovely backyard. See today.

Fifty acres, all in cultivation, owner will finance with 29% down. Some minerals—call today.

Five hundred plus acres east of town—priced to sell—come in for details.

NEW LISTINGS DAILY

Marva Jean Underwood — Sales Associate
Jerry Strickland — Sales Associate
Billie Alderman — Sales Associate/Broker
Nancy Strickland — Broker

STRICKLAND REAL ESTATE

158 North Main 754-5218 Winters, Texas

Real Estate

FOR SALE—2 bedroom home 1 bath, den with fireplace. Large backyard with trees and workshop. Shown by appointment only. 209 Laurel Drive. Phone 754-5013. 26-8tp

DRIVE by 505 Wood Street. Call us for information about this large, 3 bedroom, 1 bath home; and get settled in for winter.

WANT a super return on your money? Repair the house at 416 East Pierce for rental property. Total price \$2,000. Franklin Real Estate. Phone 915-554-7814. 25-4tc

FOR SALE—Well cared for 3 bedroom, 2 bath home, play room, large closets, central heat and air, energy saving features. FHA loan available with low down payment and approved credit. See to appreciate. 402 E. Pierce, 754-4296. 25-2tp

Help Wanted

WANTED—Part time secretary for light bookkeeping and general office work. Contact Dr. Tom Tribble, First United Methodist Church, 754-5213. 26-1tc

AFTER SCHOOL Help Wanted—3 days a week. Person to keep two children after school, in my home. Monday, Tuesday, and Friday from 2:30 - 5:30. Ages 8 and 9. Call C. Hatler, 754-4466 or 754-5032. 26-1tc

CRUDE OIL driver needed to work in Ballinger area. Good pay, insurance and vacation time. Must have good driving record and must be 25 or older. Please call Ray or Grady at 915-677-1961. 26-4tc

HELP WANTED—Housekeeper or janitor. 5 days a week, Monday thru Friday. Apply in person 9 to 5. Merrill Senior Citizens Home. 25-tfc

FARM equipment salesman. Top line of equipment. Various compensation plans to choose from. Apply Lacy Truck & Tractor, Ballinger, Texas, Hwy. 67 West. 25-tfc

Miscellaneous

VINYL SKIRTING will keep your mobile home warmer this winter. Do-it-yourself or we install. Mobile parts, supplies, and insurance! Abilene Mobile Homes, 672-6466. 26-3tc

PAINTING and general repair. Dub Mow, 625-4422, 625-2518, Novice. 26-4tc

Miscellaneous

NOW OPEN
Lewis Blackmon
402 Lamar St.
AUTO ENGINE TUNE-UP A/COND. WORK LAWN MOWERS & TILLERS 24-4tp

REWARD to anyone who has information regarding the stealing of flags off the VFW flag pole. Please call 754-4703 or 754-9921. 34-tfc

MEMBERSHIP drive, free fish fry for anyone paying their dues. Fish fry is Sept. 22 at 7:30 p.m. at VFW Post Home. 26-3tc

PIANO in storage. 1978 Model Spinnet Piano in storage. Responsible party can assume low payment balance. Write: Credit Dept., National Keyboard Inc., 6611 N. Lamar, Austin, Tx. 78752. 25-2tp

INTERIOR and exterior house painting. Blow ceilings, patchwork. Free estimate. Fair prices. Call 698-0532, Abilene, Tex. 24-tfc

SEE Western Auto for a super fine tire balance on the new electronic NORTON Balancer! 4 for \$16.88 for most cars and light trucks. 34-tfc

INSULATION Lower utility bills this summer with non-combustible solar-therm insulation. Central Texas Insulation, Coleman, Texas. Phone 625-2332 or nights 625-5414. 14-tfc

COMPLETE backhoe service. Approved septic systems installed. K. W. Cook, 754-4719. 37-tfc

PIANO tuning and repair. 25 years experience. All work guaranteed. Ben G. Arnold, Robert Lee, Texas. Phone 453-2361. Call day or night. 6-tfc

ALL kinds of dirt work. ROY CALCOTE & SONS DIRT WORK. Dozer, backhoe, loader and dump trucks. Have yard dirt in stock for quick delivery. Call 767-3241 or if no answer 754-4995. 9-tfc

BURGER HUT

201 East Hwy. 53 Open
7 Days A Week
11 a.m. to 2 p.m.
5 p.m. to 9 p.m.
Phone 754-4181

ABSTRACTS

of TITLE to ALL LANDS AND LOTS in Runnels County

J. W. PURIFOY

ABSTRACTOR
Bernie Purfoy, Mgr.
701 Hutchings
Dial 365-3572

PROFESSIONAL DIRECTORY

JNO. W. NORMAN

ATTORNEY-AT-LAW
Winters, Texas

Marvin L. Jones

Income Tax & Bookkeeping Service
105 W. Dale - 754-5393
Winters, Texas

Dr. C. R. Bellis

CHIROPRACTOR
407 N. Rogers, 754-5464
Hours 9-5:30
Wed. By Appointment

Jim Hatler

REAL ESTATE APPRAISALS
Hatler Insurance Agency
110 S. Main Winters, Texas

Charles H Miller, AAPL

Petroleum Landman
Title Search—Cure—Lease
(915) 754-4952—(915) 754-5483
602 Tinkle St
Winters, Texas 79567

Miscellaneous

I WILL BUY
Your Silver Coins, other coins and paper money. Highest prices paid for rare and choice items.
FLOYD SIMS
754-4224 or 754-4883

TIME to re-pot. We have a new shipment of Carl Pool Potting Soil. Also Carl Pool Magic Grow plant food. Winters Flower Shop. 11tc

SEE Western Auto for a super fine tire balance on the new electronic NORTON Balancer! 4 for \$16.88 for most cars and light trucks. 34-tfc

WANTED

WANTED—Scrap iron, cables, metals. Ballinger Salvage Company. tfc

Exterminator

TERMITES ?? ROACHES ?? WOOD ANTS ??
Free estimate without obligation. All work guaranteed. ABC Pest Control. For information call Abilene 915-677-3921 collect. tfc

WESLEY'S Spraying Service. Home pest control a specialty. Licensed by State of Texas. Wesley Vogler, 754-5352. 30-tfc

Garage Sale

GARAGE SALE—Thursday and Friday, Sept. 6 and 7. 304 Alvera, Winters, Texas. 26-11p



WINTERS FUNERAL HOME

Insurance and Markers
24-Hour Service
754-4529

HOT LINE

Alcohol or Drug Emergency or Information.
CALL COLLECT
235-8955 Day
235-9509 Nite
Nolan, Runnels & Coke Co. Alcohol & Drug Council 13-tfc

WINTERS SHEET METAL & PLUMBING WORKS

Plumbing, Heating & Cooling
215 W. Dale
Phone 754-4343

No contest.

Superior Muffler

Lifetime Guarantee (FULL LIFETIME WARRANTY)

on the muffler, tailpipe, exhaust pipe and labor!

(for as long as you own your American car)

CUSTOM PIPE BENDING DUAL CONVERSIONS • HEADERS OVER 1500 DEALERS IN NORTH AMERICA

Johnny's Shell

301 South Main Winters, Tex. Phone: 915-754-4040 Close At 1 p.m. on Saturday

NOTICE OF BIDS

Applications are now being accepted for two positions with the Emergency Medical Services. Application forms may be picked up at the County Judges office, the Emergency Services office in the courthouse annex building or from Juanita Baker in Winters, Texas. All application forms are to be submitted by 10 a.m. September 10, 1979. Applicants should be at least an E.C.A. Any and all applications are subject to approval or refusal. For further information call 365-3400 or 754-4940. 25-2tc

When buying a gas clothes dryer, consider buying a model with an electric ignition system, suggests a housing and home furnishings specialist with the Texas Agricultural Extension Service, The Texas A&M University System.

By not requiring a pilot light, they save energy and can cut operating costs by up to 50 percent, explains Pat Seaman.

& PHILCO TELEVISIONS & STEREOS

Authorized Sales and Service
J&K ELECTRONICS
We Service All Makes Pickup & Delivery
CUSTOMER CARE EVERYWHERE
754-4770 710 N. Main

Mary Kay COSMETICS

Call to arrange a fascinating and complimentary facial with instructions in correct beauty procedure.
754-5401
MRS. JO MILLER

SEE US FOR:

*Preparation of Quarterly, State & Federal Reports
*Business & Farm Bookkeeping Needs
*Individual, Farm, Partnership, Sole Proprietor Tax Returns
Marvin L. Jones
Income Tax & Bookkeeping Service
105 West Dale Winters, Texas 754-5393
(Located in Offices with Jno. W. Norman)

AUCTION

Saturday Sept. 8, 1979 10:30 A.M.

ALVIE JONES FARM

Rochester, Texas
Located 3 miles south of Rochester, or 7 miles north of Rule, Texas on Hwy. 6.
"QUITTING FARMING"
"1175" Case diesel tractor w/duals (low hours); "175" Massey-Ferguson diesel tractor w/cab & front-end loader; 1973—"7700" John Deere diesel combine w/24' header & pickup reel (extra nice); 1963—Chevrolet grain truck w/16' all steel bed w/hoist & 900 x 20 rubber (clean); 1953—Chevrolet truck w/13' grain bed & hoist; 1975—Ford pickup, 4 wheel drive; 1973—Chevrolet 4 dr. Malibu; "Apache" 16' tandem stock trailer; flat bed trailer; WB camper shell; 2" irrigation pipe; Oliver 4 Bt. 16" rollover moldboard; Case 5 Bt. 16" moldboard; Krause 14' wheel type tandem disc; John Deere 4 row planter; John Deere double tool bar lister; Stanton clod buster packer; John Deere mixer-grinder; 4 row crust buster; 3 row stalk cutter; 4 row knifing rig; cotton burr truck box; hog feeders; metal grain bin; approx. 400 bales Alfalfa hay; approx. 200 bales Coastal hay; some household items; plus other farm related items too numerous to list.

Col. Tex Herring

(Lic. Txs. 010-0258)
FULL TIME AUCTIONEER
Phone 915-583-2244, P. O. Box 55
LAWN, TEXAS 79530
Catering By The 3 K'S of Coleman, Texas

SCHOOL MENU

Monday Sept. 10

Chicken salad on lettuce leaf, macaroni and cheese, pickles and carrot sticks, pears, butter ice box cookies, crackers, milk or chocolate milk.

Tuesday Sept. 11

Beef tacos with grated cheese on top, pinto beans, cabbage slaw, sliced peaches, cake, corn muffins, milk or chocolate milk.

Wednesday Sept. 12

Meat balls and spaghetti rings, whole kernel corn, tossed green salad with French dressing,

Thursday Sept. 13

Hamburger or combination sandwiches, French fries, catsup in cups, pinto beans, pears, brownies, milk.

Friday Sept. 14

Fried chicken, cream gravy (by choice), whipped potatoes, seasoned green beans, tossed salad, cake with vanilla cream frosting, hot rolls with butter on top, milk or chocolate milk.

Do you want extra money?

Learn to Prepare Income Tax Returns

People who have a flair for dealing with figures, enjoy working with the public, and would like to earn extra income may enroll in HBR Block's Tax School. With classes in over 2,000 communities, there is almost certain to be a class near you. Job interviews available for best students. Send for free information and class schedules today. HURRY! Classes start Sept. 5. Classes will be held at 1612 W. Beauregard in San Angelo.

DOOR BLOCK

1612 W. Beauregard San Angelo, TX 76901

Please send me free information about your tax preparation course. I understand there is no obligation.
Name _____
Address _____
City _____
State _____
Phone _____

CLIP AND MAIL TODAY

PUBLIC NOTICE

Lone Star Gas Company, in accordance with Section 43(a) of Article 1446c V.A.T.C.S. hereby gives notice of the Company's intent to implement a new schedule of rates for natural gas service to be charged to the residential and commercial consumers in the City of Winters, Texas effective September 26, 1979.

The rate schedule is expected to furnish a 27.24 percent increase in the Company's revenues from Residential and Commercial customers in the City of Winters, Texas.

A Statement of intent has been filed with the City of Winters and is available for inspection at the Company's business office located at 116 N. Main St., Winters, Texas.

Lone Star Gas Company

Building Materials Center

"OPEN UNTIL 5:00 p.m. ON SATURDAYS"

Business Services

RCA TV

Authorized Dealer
WE SERVICE ALL MAKES
SALES & SERVICE
BARNES RADIO-TV
754-4223 135 N. Main

Mansell Bros.

Ballinger-Winters
"Your Authorized John Deere Dealer"
Ballinger 365-3011
Winters 754-4027
Parts & Service Complete Shop Facilities
HWY. 53 WEST

Swatschue Electric Co.

Winters, Texas
GENERAL ELECTRIC Appliances
FRIEDRICH Air Conditioners
GIBSON Appliances
139 West Dale Ph. 754-5115 • Box 307

PRESLEY OIL CO.

Exxon Distributors All Major Brands of Oil Delivery For Gasoline & Diesel Fuel
Phone 754-4218
1015 N. Main
Ronald Presley Joe Pritchard

FOR YOUR PROTECTION

AGAINST THE LOSS OF...
your home from fire, flood, wind or accidents to others. Make sure you are not underinsured on today's market. Call us today for free appraisal.

BEDFORD INSURANCE AGENCY

Back to School Specials



STORE HOURS
7:30 till 6:30
MONDAY
THRU
SATURDAY



at

Piggly Wiggly

QUANTITY RIGHTS RESERVED

Prices Good Thurs.-Sat.

WE GIVE WE GIVE WE GIVE

GANDY'S PURE ICE CREAM
\$1.29
1/2 - GAL

171-oz.
TIDE \$4.69

22-oz. bottle
IVORY LIQUID 99¢

DEL MONTE CUT GREEN BEANS 2/79¢

DEL MONTE - 15-oz. SPINACH 2.79¢

AMERICAN BEAUTY FLOUR 5 lb. Bag 99¢

KRAFT MACARONI & CHEESE Dinners 3/89¢

LUNCHEON SPAM \$1.29

SHURFINE PINK - 46-oz. Can G'fruit Juice 59¢

SHURFINE PURE CANE SUGAR 5 lb. bag 78¢
With \$10 or more purchase, excluding cigarettes. Limit One

FABRIC SOFTENER BOUNCE \$1.69

SHURFINE COFFEE 1 lb. can \$2.39

PURINA Cat Chow 5 lb. Bag \$1.99

GREEN GIANT - 16-oz. Sweet Peas 2/79¢

BRAWNY - PAPER TOWELS Jumbo Roll 69¢

HEINZ ASSORTED RELISH 9-oz. 49¢

HEINZ KETCHUP 32-oz. Bot. 89¢

FOX DELUXE PIZZA Each 68¢
Limit 4 with \$10 or more purchase, Excluding Cigarettes

JEWEL SHORTENING 3 lb. can 1.49

WELLA BALSAM SHAMPOO 8-oz. \$1.49

ANTI-PERSPIRANT Right Guard 4-oz. \$1.49

BIC Lighters 69¢

WE GIVE WE GIVE WE GIVE WE GIVE WE GIVE

PUREPAK STRAWBERRIES 10-oz. 2/69¢
SHURFINE WHIPPED TOPPING 8-oz. 59¢

NEW CROP DELICIOUS APPLES 3 lb. Bag 99¢

CALIFORNIA RED PLUMS 4 lbs \$1.00

RUSSET POTATOES lb. 15¢

FIRM GREEN CABBAGE lb. 12¢

RED RIPE TOMATOES lb. 39¢

HEAVY BEEF RIB STEAK \$1.98 lb.

SHURFRESH FRANKS 12-oz. Pkg. 98¢

MARKET SLICED BOLOGNA lb. \$1.19

FRESH LEAN GROUND MEAT \$1.49 lb.

SLICED SLAB BACON lb. 89¢

HEAVY BEEF ROUND STEAK \$1.68 lb.

DOUBLE S & H GREEN STAMPS EVERY WEDNESDAY

Miss Lewis and Mr. Hall Recently Wed

Dixie Joy Lewis and Donny Hartzog and Kevin Joe Hall were united in marriage in the Rio Hondo First Baptist Church Saturday, Aug. 25, at 7 p.m.

The Rev. James Gehrels of Winters performed the double-ring ceremony.

The bride is the daughter of Mr. and Mrs. Tom Tatum of Rio Hondo. The bridegroom is the son of Mr. and Mrs. James D. (Sonny) Hall of Winters.

Church decorations included a golden arch decorated with fern garlands and baby's breath, two pedestals on each side of the arch holding arrangements of white carnations and gladiolas. Two golden candleabras flanked the arch.

Michael Brotzman, Jack and Denise Damron, and Pam Prescott presented wedding music.

Corey Michelle Brotzman of Rio Hondo, niece of the bride, was flower girl.

Best man was Craig Gehrels of Winters. Denny Lewis of Rio Hondo and Benji Alldredge of Winters were ushers.

Groomsmen were Marvin Moore of San Angelo, Steve Hall of Winters,

wreath of white sweetheart roses and baby's breath with attached veil of white net bordered by lace. The bride carried a cascade of white sweetheart roses and baby's breath with white streamers forming love knots. She wore a diamond cross pendant, a gift from her parents, and had a sixpence coin in her shoe.

At a reception in Richard's Gold Room in Harlingen, Cathy Colburn of Winters served coffee and Letty Fernancez of Brownsville served punch. Serelda Tatum of Harlingen served the bride's cake, and Merrily Krueger of Rio Hondo served the bridegroom's cake.

The bride is a graduate of Rio Hondo High School and Southwest Texas State University, and is employed by the Association & Society Management, Inc., in Austin.

The bridegroom is a graduate of Winters High School, and is attending Southwest Texas State University.

The couple will make their home in San Marcos.

CARD OF THANKS

Mrs. Floyd Millorn and Mrs. Z. I. Hale, nieces and nephews, great nieces and nephews, great-greats and other relatives express our thanks and appreciation to Rev. Jackson and wife, DeOnn Dalton, Johnny Key, Dr. Rives, Senior Citizen's Nursing Home, Methodist Church, O.E.S. and host of friends who fed, sent memorials, flowers and cards when our aunt, Mrs. Ella R. Goble died. May God bless you.

CARD OF THANKS

I wish to thank every person who helped make my recent hospital stay more pleasant. I appreciated the cards, flowers, prayers, concerns, and visits since I have been home. I especially thank Dr. C. T. Rives and the nurses and aides at the hospital. May God's richest blessings be yours. --Margurite Mathis. 26-1tp

CARD OF THANKS

We would like to thank everyone for the visits, cards, prayers and food and for each kind deed you showed us in our time of sorrow. May God bless each of you is our prayer. --The Family of Mrs. E. A. Green. 26-1tp

Blackwell School Sets Homecoming For Sept. 22

The Blackwell School homecoming will be held Saturday, Sept. 22, with registration to begin at 1 p.m.

A barbecue supper sponsored by the senior class will be served from 4:30 to 6:20 p.m. Meals will be \$3.25 for adults, and \$1.75 for children under 10.

A pep rally will begin at 6:30, with a business meeting of ex-students at 7 p.m. At that time, exes will elect a Coming Home King and Queen. At 8 p.m., the football team will meet the Hermleigh team.

Half-time activities will include crowning of the Football Sweetheart and Hero, and the Coming Home King and Queen.

Classes to be honored during this year's homecoming celebration will be 1919, 1929, 1939, 1949, 1959, 1969 and 1979. Officers for 1979 are Cecil L. Smith, president; Gordon Montgomery, vice president; Lillie Burwick, secretary; Hulene Con-7 rad, treasurer; Wanda Saunders, Leva Self, Verla Smith, and Charlie Roland, publicity.

Those planning to attend may reserve

RAINFALL RECORD FOR WINTERS

Courtesy ROY RICE, Cooperative Weather Observer, National Oceanic & Atmospheric Administration

Year	Jan	Feb	Mar	Apr	May	Jun	Jul	Aug	Sep	Oct	Nov	Dec	Tot
1959	.00	.20	.00	2.40	4.70	9.70	5.00	.40	3.70	5.80	1.30	5.20	38.40
1960	3.50	.90	1.00	1.40	1.50	.90	5.30	1.20	1.80	2.60	.00	3.70	22.80
1961	5.30	1.60	1.30	.30	5.40	9.30	4.20	*	*	*	*	*	27.70
1962	.00	.00	.30	4.40	1.00	5.70	8.70	1.30	5.30	3.00	1.20	1.00	31.90
1963	.00	1.30	.00	2.80	7.70	2.20	.00	5.20	.80	.10	3.20	1.20	24.50
1964	1.90	3.10	1.80	2.30	1.50	3.50	1.00	3.50	5.20	.70	3.30	.60	28.40
1965	2.50	3.70	.30	2.00	9.30	3.80	.10	.80	3.90	2.80	2.00	1.90	33.10
1966	1.70	1.00	1.30	7.80	1.20	1.90	1.10	7.30	2.80	2.70	.00	.00	27.80
1967	.00	.10	1.20	1.00	1.30	5.00	4.20	1.10	8.70	.00	5.30	2.00	29.90
1968	5.61	3.50	4.70	4.70	6.80	.20	3.11	2.67	1.97	.12	3.44	.16	36.97
1969	.33	1.05	2.29	4.46	6.98	3.36	.05	2.09	8.44	3.19	1.53	1.76	36.51
1970	.35	1.98	5.02	4.45	2.25	.00	.00	1.04	2.78	.75	.00	.23	20.11
1971	.04	.29	.00	2.51	1.42	8.33	2.92	7.44	7.21	4.87	.56	1.57	37.16
1972	.20	3.33	.03	.94	4.11	2.72	2.24	3.76	2.88	6.41	.96	.07	24.68
1973	1.83	1.62	1.86	3.36	1.52	5.84	5.48	.45	4.37	2.78	.24	.07	29.42
1974	.05	.47	1.03	1.70	1.60	.91	.54	3.79	8.23	?	?	?	18.32
1975	*To be obtained.												
1976	.00	.09	.59	4.22	1.18	.84	5.83	.49	7.85	5.79	.68	.10	27.66
1977	1.07	.44	1.46	4.84	1.22	3.26	2.17	.82	.85	2.16	.58	.19	19.06
1978	.83	1.62	.31	.52	2.80	.49	.89	5.72	2.65	.79	1.57	.08	18.27
1979	1.33	1.19	5.59	3.24	2.82	1.65	4.10	2.91					26.24

*Not Recorded. Figures through 1967 unofficial.

Fifty-Two Golfers In Labor Day Tourney

They teed off about 10:30 Monday morning for 18 holes of golf—nine in the morning, and nine in the afternoon—and before the final ball was sunk, the sun had almost disappeared beyond the western horizon.

The No. 1 team was known earlier, but three teams had tied for third place and had to go six more holes before second, third and fourth places were determined.

Fifty-two golfers from Abilene, Ballinger, San Angelo, Fort Worth, Wingate, Menard, Benjamin and Winters played in the annual Labor Day Tournament at the Winters Country Club Monday.

Winning first place with 60 were Pat Wood, John Dry, Beth Whitlow, Charlie Wade and Connie Gibbs.

Three teams tied for second and third places, with scores of 62. Teams were Herman Baker, Pat-sy Rogers, Cliff Poe, George Witte and Tommy Antilley; Jim Gehrels, Hattie Belle Bishop, Randy Springer, Jerry Sims and Jerry B. Whitlow; Donnie Gibbs, Jason Gibbs, Fred Cummings, Birdie Brown and Lee Harrison.

In the sudden-victory playoff, Jim Gehrels' team won second place on

the sixth hole. The other two teams played on for third, with the Herman Baker team winning on the seventh.

John McAdoo won close-to-pin honors on No. 6 green.

Winners of Best Ball Tournament

In a best ball tournament at the Winters Country Club golf course Sunday, the team of Buddy Hoefflein, Cliff Poe, James West, John Dry and Jerry B. Whitlow won first place with a nine under par 59.

Taking second place with 60 were E. B. Underwood, Preston Barker, Lois West, Tommy Selby and Mike Davis.

Jiggs Nichols and his team, Scotty Belew, Beth Whitlow, Nita Dry, June Marks and Paul Michaelis tool third place with a 61.

James West won closest to pin honors on No. 6 green.

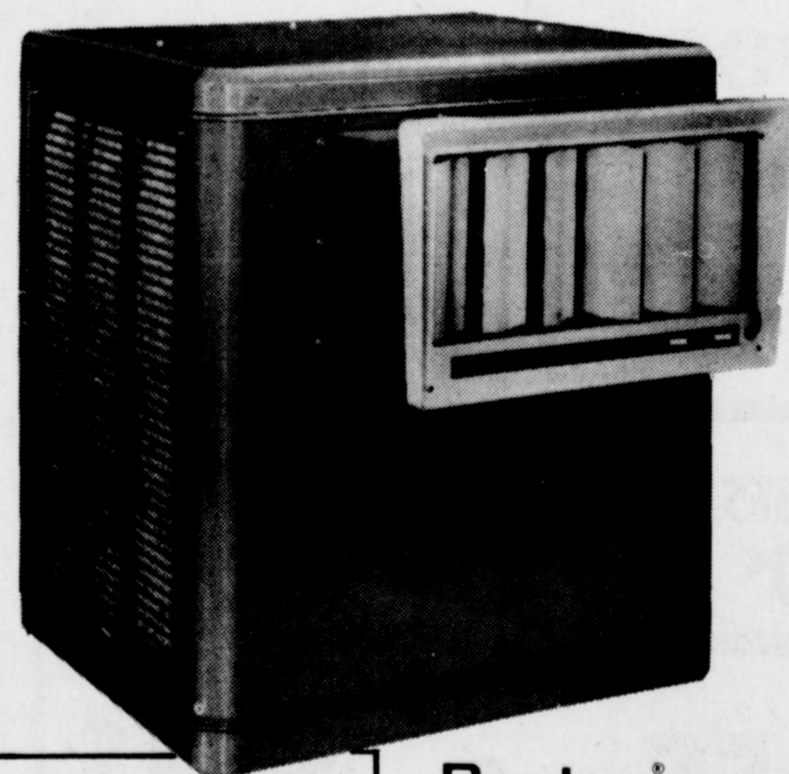
One pound of cooked fresh mushrooms is equal to the contents of three four-ounce cans of canned mushrooms, says Gwendolyne Clyatt, a consumer marketing information specialist with the Texas Agricultural Extension Service, The Texas A&M University System.

Shop **THE CUPBOARD** for Gifts & Accessories for All Occasions! **SPILL'S FURNITURE**

138 S. Main Phone 754-4511
"Where Quality, Service and Integrity Are A Way of Life"

DEPEND ON 'EM LONGER!

Save \$10 on Dearborn Evaporative Coolers 1 week only

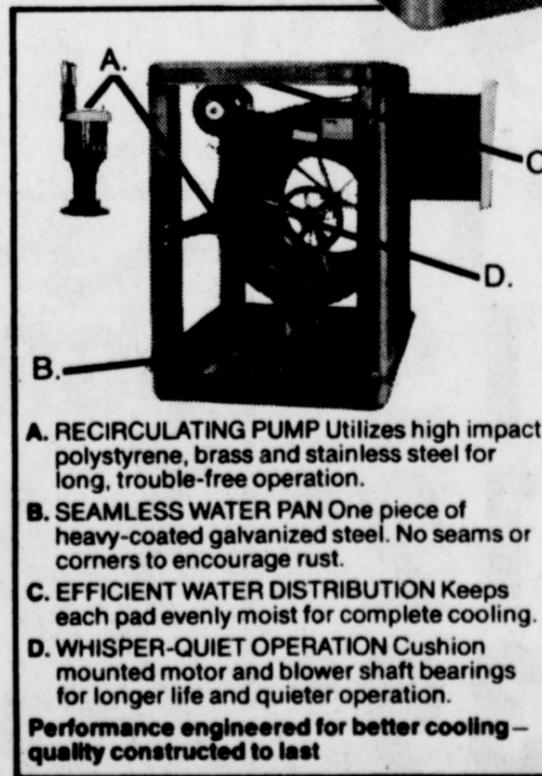


Dearborn

- Features
- Slip stream louvers to direct cool air
 - High speed for quick-cool; quiet, low speed
 - Water-saving recirculating pump
 - Extra-durable Bonderized® finish
 - Exclusive no-weld steel pan
 - Plated screws—for rust resistance easy servicing
 - Window blower models—panels and mounts included

Now

- W-32E Reg. 294.95 **\$284.95**
W-43E Reg. 319.95 **\$309.95**
W-48E Reg. 349.95 **\$339.95**
S-255E Reg. 379.95 **\$369.95**



HIGGINBOTHAM'S
18 FRIENDLY LOCATIONS TO SERVE YOU

120 West Dale Winters, Texas

Wonder where you fit in God's Plan For the church?

If you do, come join us on the Sunday nights of Sept. 9, 16, 23 at 6:00 at the Church of Christ.

KING of the CLASSICS a shoe you can depend on

Timeless good taste. Solid quality. Sure-footed comfort. This long-time Jarman favorite is truly a shoe you can depend on for all your needs. Rich grain leather. Butyl-treated leather sole. Comfortable rubber heel.

\$29⁹⁵



Style to fit your style Jarman

HEIDENHEIMER'S

homecoming corsages by contacting the junior class, P.O. Box 505, Blackwell 79506.

Proteins from legumes, especially soybeans, chickpeas and peanuts, are almost as good as proteins from animal sources.

MERLE NORMAN

All Nail Polish Items In Stock

1/2 OFF
GIFT WITH PURCHASE!

137 N. Main

754-4322

SUPER BUYS!



\$108.¹⁰ A MONTH

NEW! 2 BEDROOM, 1 BATH. Furnished. Delivered, set up, anchored for only \$8,671.00 (\$766.23 down, 180 months, 12.5% annual percentage rate).

\$123.⁰⁹ A MONTH

NEW! 3 BEDROOM, 1 1/2 BATH. Furnished. Delivered, set up, anchored for only \$9,889.00 (\$900.37 down, 180 months, 12.5% annual percentage rate).

18x80

TEXAS' LARGEST MOBILE HOME ON DISPLAY

VINYL SKIRTING!

Keep your mobile home warmer this winter with our Vinyl Skirting! Mobile Home parts: Windows, doors, etc.

Abilene Mobile Homes

4618 No. 1st

672-6466

CLOUT CLYDE

Sept. 7—There

CARL GRENWELGE
Texaco & Tire Service

J & K ELECTRONICS
TV Sales & Service

BISHOP BOYS FORD

JOHNNY'S SHELL STATION
Superior Muffler Center

HEART O' TEXAS SAVINGS ASSN.

WINN'S VARIETY STORE

HOPPE
Texaco & Tire Service

JEWELRY HUT

HARRISON'S AUTO PARTS

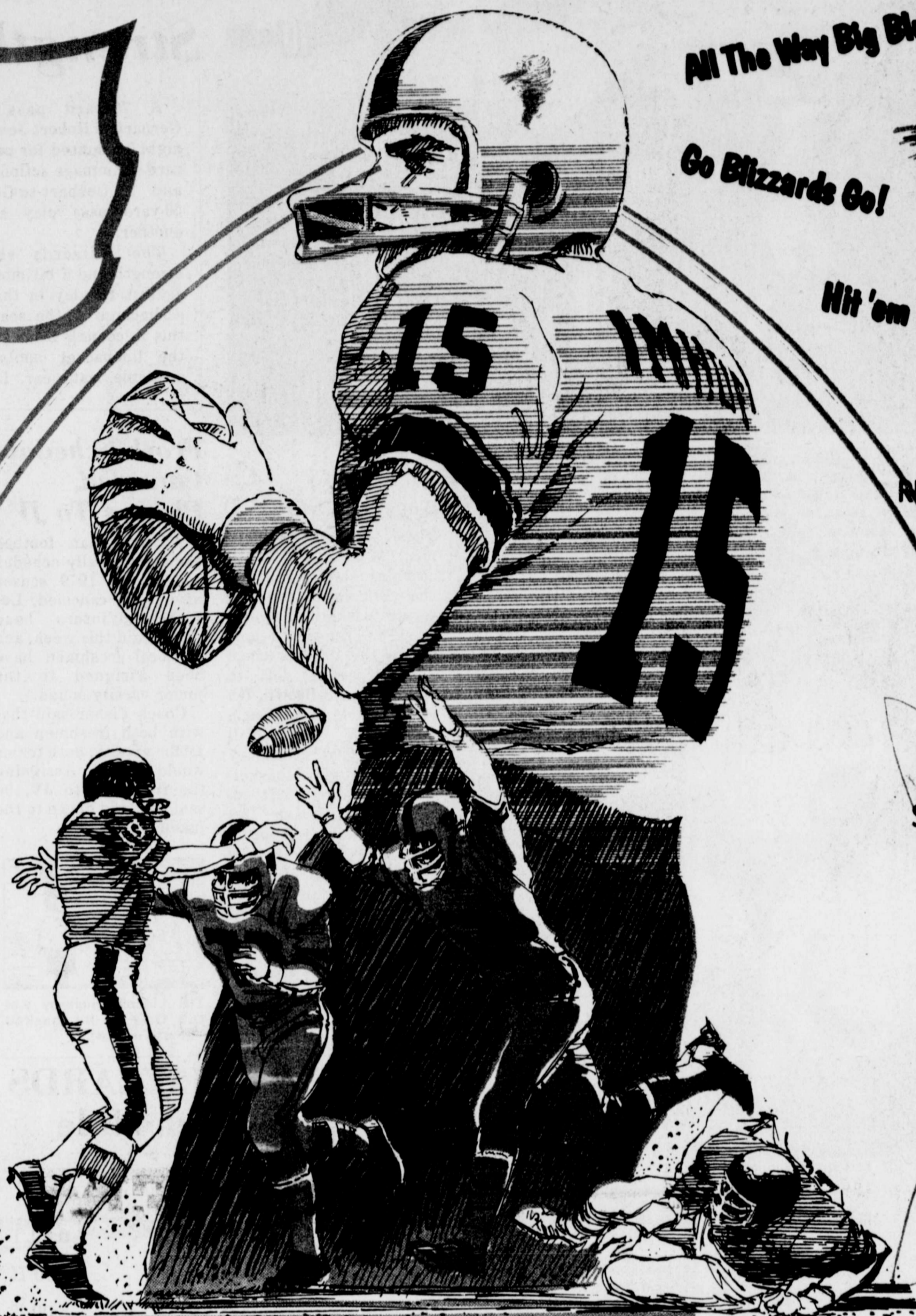
BAHLMAN JEWELERS

MAIN DRUG CO.

MELBA'S
Arts, Crafts & Gifts
110 N. Main

STRICKLAND REAL ESTATE

JOHN'S INTERNATIONAL



All The Way Big Blue

Go Blizzards Go!

Hit 'em Hard!



RUNNELS COUNTY SHERIFF'S OFFICE

Hershal Hall, Sheriff

MANSELL BROS.

John Deere Farm Equipment
Hwy. 53 West

DRY MANUFACTURING DIV.

Wallace Murray Corp.

BOB BLACK OIL FIELD
Hauling & Const.

SENIOR CITIZENS NURSING HOME

Johnny & Janice Merrill

BOB LOYD LP GAS CO.

Bob Loyd & Gene Wheat

Winters Construction Co.
Williams Paraffin
Servicing Co.

SPILL BROS. FURNITURE
Gifts & Accessories

ROBINSON CHEVROLET CO.

REAL ESTATE? TOM POE!

WOODY'S STOP & GO

GO BLIZZARDS!

HIGGINBOTHAM'S
Lumber & Hardware

BEAUTY CENTER
Merle Norman Cosmetics

BARNES RADIO-TV

BLOSSOM SHOP

WINTERS STATE BANK

SMITH DRUG CO.

POOL WELL SERVICING CO.
Oil & Well Production Service

WINTERS
Sheet Metal & Plumbing

WINTERS
FARM EQUIPMENT
J.L. Case & Allis Chalmers
Farm Equipment

WINTERS FUNERAL HOME, INC.
Life Insurance—24 Hour Service
Ted Meyer—Mike Meyer

WESTERN AUTO
Associate Store

WINTERS FLOWER SHOP

HEIDENHEIMER'S

SEARS CATALOG AGENT
Chapel Yarn & Gift Shop
Robert & Betty Paschal

MARVIN L. JONES
Income Tax & Bookkeeping

ALDERMAN-CAVE
Milling & Grain Co.

PRESLEY OIL CO.
Exxon Distributor
Ronald Presley & Joe Pritchard

DAIRY QUEEN
WINTERS

NAIDA'S

McDORMAN
Furniture & Appliance

FOXWORTH-GALBRAITH
Lumber Co.

BEDEFORD
Insurance Agency

SWATCHSUE ELECTRIC CO.
G.E. Dealer

WINTERS WELDING WORKS

MAC OIL FIELD CO., INC.

AMERICAN SUPPLY CO.

MOTEL WINTERS
Go Big Blue

FASHION SHOP
Fashion Center of Runnels County

JNO. W. NOR
The Insurance MAN

FIRST TEXAS
Savings Association
WINTERS BRANCH

THE WINTERS ENTERPRISE

TAYLOR'S #2

G & G RUSTIC SIGNWORKS

BISHOP & SONS
Dirt Contractors, Inc.

JEDD MANUFACTURING CO.

BORDEN, INC.

WILSON'S WEST DALE GROCERY

NON-CONFERENCE GAMES

Game Time 8:00

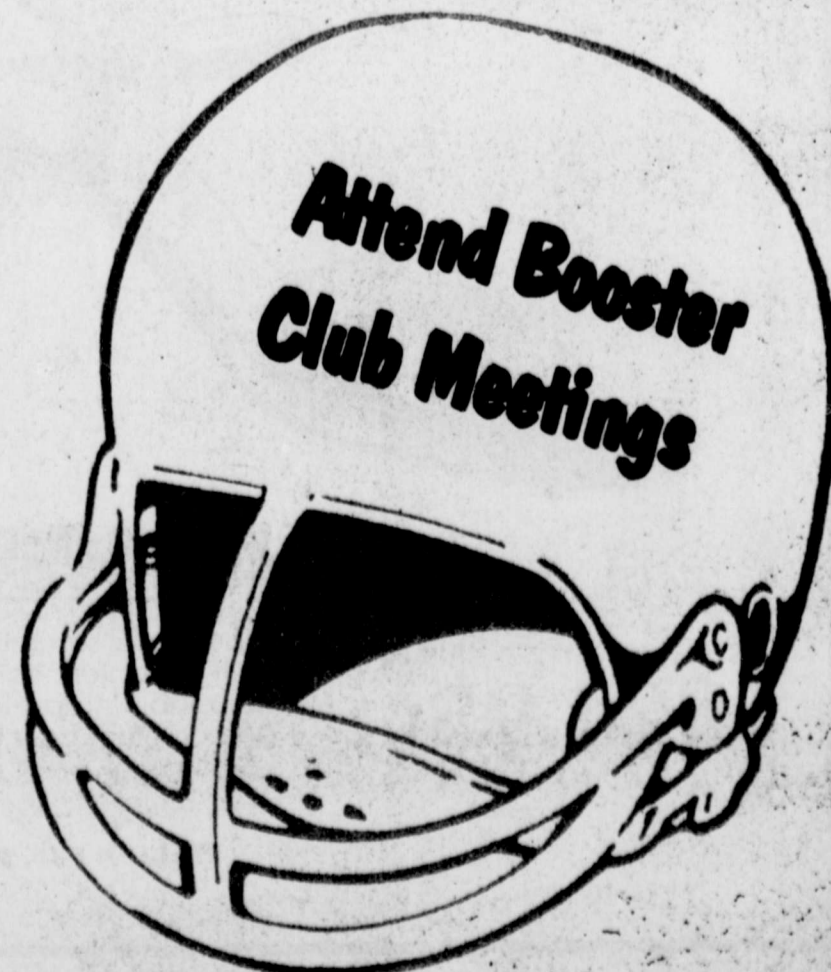
Sept. 7	Clyde	There
Sept. 14	Coleman	There
Sept. 21	Roscoe	Here
Sept. 28	Open	

DISTRICT 6-AA GAMES

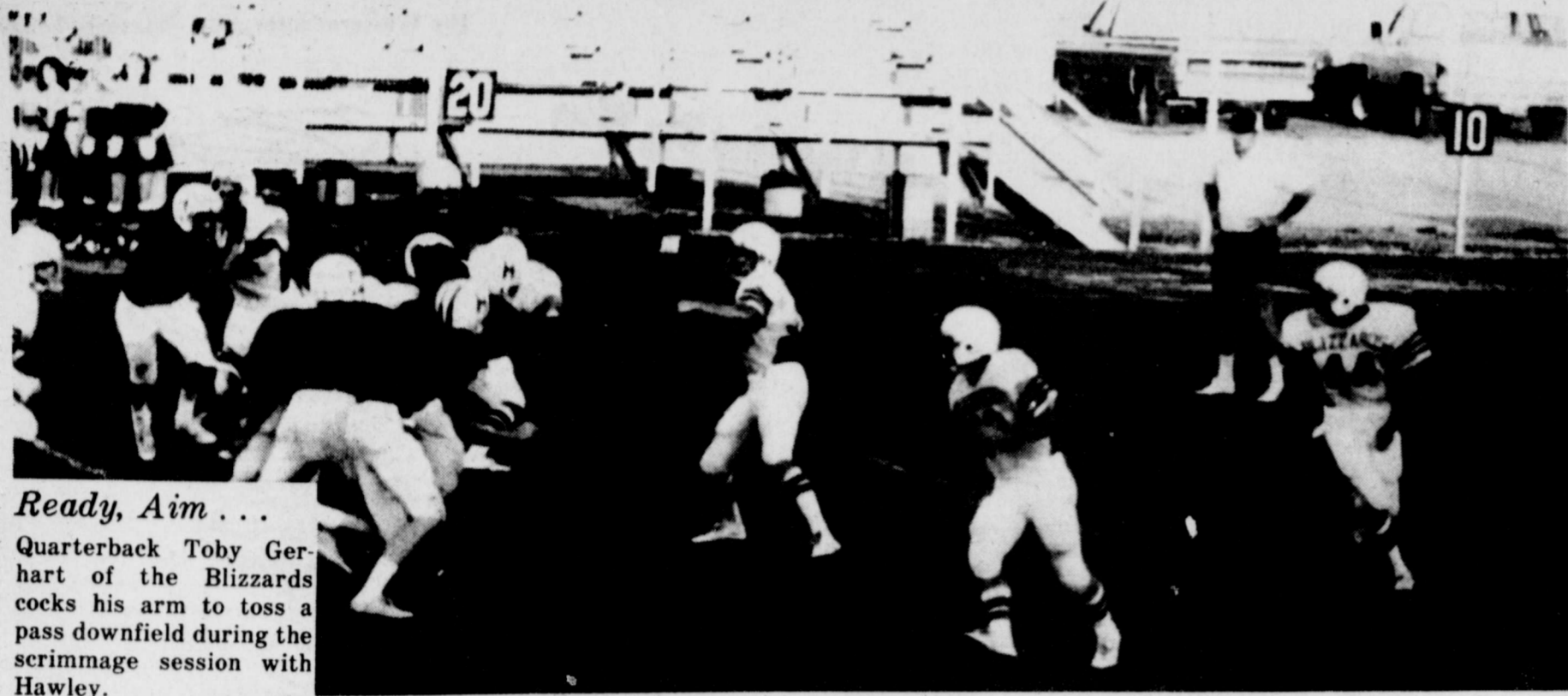
Game Time 7:30

Oct. 5	Stamford	There
Oct. 12	Merkel	Here
Oct. 19	Coahoma	There
Oct. 26	Wylie	Here
Nov. 2	Anson	Here
Nov. 9	Ballinger	There
Nov. 16	Colorado City	Here

Attend Booster
Club Meetings



Be A Booster-Support The Blizzards!



Ready, Aim . . .
Quarterback Toby Gerhart of the Blizzards cocks his arm to toss a pass downfield during the scrimmage session with Hawley.



Coaching Staff

These seven members of the Winters school coaching staff will guide the Blizzards football teams, basketball teams, track, and the girls' teams during the 1979-80 school year. Kneeling, left to right, Richard Brown, 7th grade coach; Tom Roach, 8th grade coach; Bill Howard, grid secondary coach and girls' basketball. Standing, left to right, head coach Les Fisher; Kerry Hibbitts, defensive interior line coach; Murray Golson, defensive coordinator and defensive ends and linebacker coach; Gary Ledford, offensive line coach and boys' basketball.

Blizzards Show Some Strength In Scrimmage

A 70-yard pass play—Toby Gerhart to Robert Johnson—Friday night accounted for one TD in Blizzards scrimmage action with Hawley, and a Gerhart-to-Gene Bowden 56-yard pass play accounted for another.

The Blizzards showed some strength and a bit more experience against Hawley in this the second scrimmage of the season. Some of this is coming from some depth at the linebacker spots; depth not available last year. David Brewer

returns from last year, and Pat Salas is back. Adolfo Torres did a fine job in the LB slot.

Head Coach Les Fisher said the scrimmage with Hawley served to give the players needed field experience, in addition to allowing the coaches to make further assignment plans.

The junior varsity got a TD on a 60-yard run by Jimmy Hall, which was called back for a penalty. The coach said "everybody" played on the JV squad.

Frosh Schedule Canceled, Players To JV

All freshman football games originally scheduled for the 1979 season have been canceled, Les Fisher, Winters' head coach, said this week, and all local freshmen have been assigned to the junior varsity squad.

Coach Fisher said that with both freshmen and junior varsity, both teams would be weak. Assigning the freshmen to JV, he said, will add depth to the juniors.



The Lincoln Highway was the first to be marked "Coast-To-Coast."

WINTERS BLIZZARDS Football Schedule

1979 VARSITY

Aug. 24	Jim Ned (Scrimmage)	6:00 T
Aug. 31	Hawley (Scrimmage)	6:00 H
Sept. 7	Clyde	8:00 T
Sept. 14	Coleman	8:00 T
Sept. 21	Roscoe	8:00 H
Sept. 28	Open	

District 6-AA Conference Games

Oct. 5	Stamford	7:30 T
Oct. 12	Merkel	7:30 H
Oct. 19	Coahoma	7:30 T
Oct. 26	Wylie	7:30 H
Nov. 2	Anson	7:30 H
Nov. 9	Ballinger	7:30 T
Nov. 16	Colorado City	7:30 H

JUNIOR VARSITY

Aug. 24	Jim Ned (Scrimmage)	5:00T
Aug.31	Hawley (Scrimmage)	5:00 H
Sept. 6	Clyde	7:30 H
Sept. 13	Coleman	7:00 H
Sept. 20	Roscoe	7:30 T
Sept. 27	Ballinger	7:30 T
Oct. 4	Merkel	7:30 T
Oct. 11	Coleman	7:00 T
Oct. 18	Ballinger	7:30 H
Oct. 25	Wylie	7:30 T
Nov. 1	Anson	7:30 T
Nov. 8	Open	
Nov. 15	Open	

8TH GRADE

Sept. 6		7:00 T
Sept. 13	Coleman	7:00 T
Sept. 20	Roscoe	6:00 T
Sept. 27	Ballinger	7:30H
Oct. 4	Merkel	6:00 T
Oct. 11	Coleman	7:00 H
Oct. 18	Ballinger	6:00 T
Oct. 25	Wylie	6:00 H
Nov. 1	Anson	6:30 H
Nov. 8	Open	
Nov. 15	Open	

7TH GRADE

Sept. 6		6:00 T
Sept. 13	Coleman	6:00 T
Sept. 20	Roscoe	5:00 T
Sept. 27	Ballinger	6:00 H
Oct. 4	Merkel	5:00 T
Oct. 11	Coleman	6:00 H
Oct. 18	Ballinger	5:00 T
Oct. 25	Wylie	5:00 H
Nov. 1	Anson	5:00 H
Nov. 8	Open	
Nov. 15	Open	



Junior Varsity

The Winters High School Junior Varsity quarterback hands off to a backfield man during the pre-season scrimmage with Hawley Friday night.

HEIDENHEIMER'S

flatters and comforts busy feet



Halo

EASY STREET

A gorgeous sandal with built-in comfort features an adjustable strap. Flatters and comforts busy feet.

\$24.95

HALO N-6-10, M-5-10

Parents Asked

(Continued from Page 1) schedule below in making their visits during the special night:

KINDERGARTEN
7-7:30 p.m. Room 7, Brilla Magee; Room 14, Diane Davis.

GRADE 1
7:30-8 p.m. Room 5, Libby Croft; Room 6, Janice Stagger; Room 12, Joyce Krause; Room 13, Marthiel Russell.

GRADE 2
8-8:30 p.m. Room 3, Denise Heaton; Room 10, Betty Byrns; Room 11, Doris Stoecker.

GRADE 3
8:30-9 p.m. Room 2, Nina Hale; Room 8, Ernestine Geistmann; Room 9, Ouida Nichols.

PLAN A
7-9 p.m. Room 38, Cheryl Sneed, Annie Mills, Linda Beber, Barbara Reese, Landa Grohman.

TITLE I
7-9 p.m. Room 4, Ann Fisher; Room 39, Barbara Everett; Room 35, Mary Browning; Room 24, Angela Golson.

MUSIC
7-9 p.m. Music Bldg., Vikki Southern.

AFRICAN BEAD NECKLACE



HAND STRUNG IN KENYA

Beads are made of multi-color natural seeds, nuts, cones, African wood and leather.

Popular with men and women.

JEWELRY HUT

211 S. Main

BETTY ROSE by SSP



LUXNYL—One inch vertical quilting, the Luxnyl coat from the Betty Rose® Luxnyl collection for Fall 1979, trimmed with look like seal Borgazia®. The go anywhere, do anything, anytime coat at affordable prices. Wear it for dress, wear it casual, wear it in inclement weather or sparkling sunshine. The newest look for Fall '79 from the Betty Rose® collection.

\$79.95

HEIDENHEIMER'S