

The Winters Enterprise

VOLUME SEVENTY-FIVE

USPS NO. 687-220

WINTERS, TEXAS 79567, THURSDAY, AUGUST 16, 1979

PRICE 20 CENTS

NUMBER 23



Goodbye

Winters' Mayor W. Lee Colburn presents an appreciation plaque to Mrs. Walker (Bonnie) Tatum during a party in her honor at the City Hall Friday. Mrs. Tatum, who has been employed in the administration department of the city for 19 years, is moving to Tulia, where she and her husband have purchased a food market.

Repeat: No Increase In School Taxes

The board of trustees of Winters Independent School District this week reemphasized that, despite public notice to the contrary, there will be no increase in taxes for district taxpayers this year.

A public notice is being published in this week's issue of *The Enterprise* which states that "The Winters Independent School District proposes to increase your property taxes by 11 percent. A public meeting to vote on the proposed increase will be held on Aug. 20."

Although this notice states the board proposes to increase the school taxes, Tax Assessor J. B. Smith said there will be no increase in actual taxes. He pointed out again that "everyone will be paying less

taxes in 1979 because of the new home exemptions."

In a same-size notice adjacent to the one required by state statute, the school board points out that "Article 7244-C, Section I, of the Truth in Taxation Law of the Texas Constitution, Tax Relief Amendment, requires that the public notice be placed in the local paper..." The school board stressed that, "according to the law, your taxes appear to be increasing 11 percent but in reality they are remaining the same as 1978 and there is not an increase for 1979."

For the sixth consecutive year, Smith said, the Winters school district taxes will be 90 percent of assessed value, at \$1.10 per \$100. This is not an increase, he said.

Blizzards Report For Pre-School Work

Head Coach Les Fisher said the Winters Blizzards reported to the field house Monday morning to begin three weeks of workouts and practice before the beginning of school, and the opening of the football season, with a great deal of enthusiasm and determination for the new football year.

The coach indicated the Blizzards are already exhibiting a will to be a force to be reckoned with in the coming schoolboy football season, and not to be taken for granted.

The first few days of the training period is being devoted to no-contact practice and skull sessions. The Blizzards will not put on uniforms or contact equipment until Aug. 17, and there will be no body contact practice until the 17th.

The weatherman favored the team for Monday morning's first session, but it began to warm up in time for the evening practice.

There will be some new faces on the squad this season, the coach said, and position change

probably will be necessary. No definite assignments will be made until after the first scrimmage of the season, with Jim Ned there Aug. 24. The Blizzards will meet Hawley in a scrimmage affair Aug. 31. The first game of the season, a non-conference tilt, will be with Clyde, at Clyde, Sept. 7, following the first week of school.

Seventh and eighth grade team members are reminded to pick up their physical exam forms at the field house as soon as possible.



DR. CHARLES D. WHITTLE

Revival At U-Methodist Begins Aug. 19

Dr. Charles E. Whittle, pastor of the First United Methodist Church in Abilene, will be the speaker for a series of revival meetings in the Winters First United Methodist Church, beginning August 19, and continuing through Aug. 22.

Gary Mauldin will be music director for the revival, and Cynthia Marie Carter, pianist.

A covered dish supper will be served each night at 6:30, with Bible study periods from 7 to 7:45 p.m. for different age groups. Worship services will begin at 8 p.m. each day.

Dr. Whittle is a native of Green- See REVIVAL Page 8

Museum Foundation Receives Charter

The Z. I. Hale Museum Foundation, Inc., has received a state charter from the secretary of State, as a non-profit, perpetual organization.

Members of the board of the foundation were informed of receipt of the charter at a meeting this week. The charter is dated July 24, 1979, with Homer Hodge as initial agent, and Rankin Pace, Mildred Gardner, Jo Arnold and Nina Hale as trustees.

Marvin Jones told the board that he will file papers for tax exemption soon, so that contributions to the foundation may be deducted for income tax purposes.

Nina Hale told the board that

she will present deeds to the museum building at the next meeting, Sept. 10. Mrs. Hale and her daughters are giving the building to the foundation to be used as a museum. The building on West Dale St. formerly housed the offices of the late Dr. Z. I. Hale, for whom the museum foundation has been named.

See MUSEUM Page 10

Students Should Register

Students who will attend Winters schools for the first time this year, and have not registered, are asked to register during the few days remaining before school begins Sept. 4.

Primary and elementary students from kindergarten through Grade 8 are asked to register next week, Aug. 22, 23 or 24.

High school students, who have not pre-registered or are new to the Winters system, may register at the high school at the office of the principal, Mike Grantham. They are asked to register Aug. 22, 23 or 24, so schedules can be completed before the start of school.

Tuesday

County Rescinds Hiring of Baker

After hiring a supervisor for the Runnels County Emergency Service on Friday, the county commissioners have asked Mrs. Juanita Baker of Winters for her resignation. The action took place yesterday in a closed-door, executive session.

In the called meeting Friday, the Runnels County Commissioners hired Mrs. Baker at a salary of \$850 per month plus county benefits. The appointment was to become effective yesterday.

Mrs. Baker has been in charge of the Winters branch of the county emergency service for the past year

and has been working for the branch since its inception two years ago.

According to Mrs. Baker, the commissioners decision to go back on their action Friday was "because of a previous felony conviction."

She stated that the request for her resignation was unfair because her conviction was several years ago and that she had lived a good life since. She cited public opinion as being the force that motivated the commissioners' actions.

Mrs. Baker turned in a verbal resignation Tuesday and stated that she expects to turn in a formal, written resignation some time this week. Although not sure of future plans, Mrs. Baker said she would continue her duties with the ambulance service until a new supervisor was named.

In a related area Tuesday, the Runnels County Commissioners were notified of a \$324,000 lawsuit filed against them by Glenn Pratt of Sweetwater.

Pratt, in June, was awarded a contract to provide emergency ambulance service to Runnels County. The contract was rescinded, however, when commissioners found they were required to advertise for bids on the contract, of which they did not do.

Pratt, again submitted a bid at a latter time, but the county decided to continue the ambulance service themselves and did not accept any bids.

"Bumps" Again Appear On City Streets

"Bumps" have again appeared on city streets in the vicinity of the school, after having disappeared some months ago.

The "bumps" are speed-reducing devices placed to slow down the traffic near the schools. Some months ago, similar bumps were built, but were immediately removed because they did not meet the specifications desired by the city council. The bumps, constructed of asphalt, have been put down by the street department.

School Budget Hearing Set Next Monday

A public hearing on the proposed budget for the 1979-80 fiscal year for the Winters Independent School District, will be held Monday, Aug. 20, at 7:30 p.m. in the school administration office.

The school board will adopt the budget for the year following the public hearing, required by law.

Faculty Almost Full

The faculty is almost complete for the 1979-80 school year in Winters Public Schools, Tommy Lancaster, superintendent, said Monday, and should be completed within the next few days.

A new vo-ag teacher, to replace the vacancy created by the resignation of Stanley Blackwell, has been employed, subject only to action by the board of trustees next week, and an additional coach has been employed, also

subject to board approval. Other positions also are being filled, but formal action by the school board is necessary, Lancaster said.

Final phases of summer maintenance within the school plant are about completed, the superintendent said, and all should be in readiness for the first day of school.

A faculty meeting will be held before the first day of school, and teachers will be notified.



Construction

Rolls of reinforcing wire dominate this picture of the construction site on East Broadway where eleven housing units are being built. The project is under the Housing Authority of the City of Winters.



The Winters Enterprise

(USPS 687-220)
754-5221 P.O. Box 37 Winters, Texas

RICHARD C. THOMAS, Publisher

Entered At Post Office, Winters, Texas 79567,
As Second-Class Matter.

SUBSCRIPTION RATES

In Runnels County, 1 year	\$6.00
In Other Texas Counties, 1 year	\$7.75
Outside Texas, 1 year	\$9.50

Any erroneous reflection upon the character, standing or reputation of any person, firm or corporation which may appear in the columns of this newspaper, will be gladly corrected upon due notice of same being given to the editor personally at this office.

Poe's Corner

BY CHARLES POE

APOLLO XI

The tour group with whom I traveled in Europe and the Middle East did not know what strange events awaited us when we checked out of the Beverly Hills Hotel in Rome immediately after lunch on Saturday.

We boarded our special air-conditioned motor-coaches which took us across picturesque Italian countryside to the port-city of Aconna on the opposite side of the boot where our chartered Greek ship MTS Apollo XI was supposed to be waiting for us.

Traveling by Assisi, we stopped for a quick tour of the Basilica of St. Francis and had dinner in the austere dining room. Waitresses were French and wore the traditional black with white aprons and caps. If butter was desired it had to be bought extra but fresh apples from nearby orchards were presented as a gift at the close of the meal.

St. Francis, according to our guide, grew tired of the opulence and corruption of Rome and taking a vow of poverty, founded an order of traveling friars that were to bear his name. He was sainted in 1228, two years after his death at age 45.

Upon arriving at Aconna about dark, we learned that our ship had been in a heavy storm at sea and was eight hours behind schedule. The buses were required to report back to Rome so we were directed to a bar, the only place open, and dumped.

Imagine 142 people descending upon a place of this nature asking for coffee and soft drinks, mostly cokes and orange. But finally, somewhere around, or

after, midnight most of the group had been served and everyone settled down.

Then we had church against a wall of liquor bottles of all shapes and sizes. Dr. Paige Patterson, our director, preached after group singing and a testimony by Andrew Horner, a witty Irishman. I doubt if the Italians understood what was said but they stood at the doors and windows and looked on.

Even bars have to close sometime and the word came to us about 3 a.m. that we would have to move out. We started walking toward our ship and were soon allowed to board. It took some time to find luggage and be assigned rooms but we were in bed by 4:30 a.m.

Is it any wonder that we slept through breakfast and had to be awakened for lunch at 1 o'clock. We were off schedule but we had a get acquainted time and special services on board, and Father's Day was recognized, Sunday evening.

While sailing down the Adriatic Sea, through the Strait of Oranto, for our first port-of-call, Korinthus, Greece, in the Ionian Sea, we had time to explore our surroundings and become familiar with the ship and other tour members.

Another rare experience awaited those of us who were willing to get up at 1:30 a.m. Monday and go on deck to watch the ship enter the Corinth Canal.

The Corinth Canal is of great importance as it connects the Aegean and Ionian Seas and saves ships many days of travel. It was started before the 18th century and took several hundred years to build. It is four miles long, 90 feet wide, 200 feet high, and 30 feet deep. As the tug boat led the ship through the canal it seemed as if the ship would touch land on one or both sides, but the passage was traveled without incident. The sides of the canal are straight up and appear to be chiseled out of solid rock.

At 8 a.m. the ship arrived at Piraeus a city of 3 1/2 million people, and the largest port in Greece. We departed for Corinth by buses over a beautiful road that was lined with oleanders and eucalyptus trees.

Old Corinth was destroyed by an earthquake in 1855 and again in 1938. It has no population only excavation which goes on all the time at intervals. New Corinth, several miles away, has about 30,000 people.

From Bible history we know that Corinth was the intellectual capital of the world, also the most wicked city anywhere. The Epicureans believed that man was born to enjoy the good things of life, and they did.

In the old city we saw the Temple of Apollo and the Bema Seat before which Paul confronted Gallio.

The walls of the old Bema (judgement) Seat are still standing and Dr. Patterson stood on top of these walls to speak to the travelers. He read from Acts 18:11, which explains why Paul was brought to trial.

We returned to Athens for lunch and spent the afternoon sightseeing at the Acropolis, Mars Hill and Athens before boarding ship to sail to Dikili, Turkey.

County Oil Production \$23 Million During 1978

The sale of crude oil and natural gas from Runnels County wells in 1978 boosted the county economy and accounted for \$23-million of the \$17.1-billion value placed on Texas production last year, according to Texas Mid-Continent Oil & Gas Association.

In a report on the economic impact of oil and gas industry operations in the top producing counties of Texas, the Dallas-based Association said the county ranked 120th among the 202 counties having marketed production valued at \$100,000 or more, not including the sale of natural gas liquids.

The county's wells produced 2.1-million barrels of crude oil, valued at \$19.6-million, and 3.3-million Mcfs of natural gas, valued at \$3.4-million. Owners of royalty in the county received \$2.9-million as their share of the output, the Association said.

"Considering the shortfall in total U.S. petroleum production relative to our nation's

energy needs, production from every Texas county is more vitally important today than ever before," said the Association's president, H. B. (Hank) Harkins of Alice, an independent producer and drilling contractor.

In addition to paying local, county, and state property taxes, producers in the county also supported state government through production tax payments estimated at \$1.2-million, according to the Association. Crude oil taxes amounted to \$900,000, while natural gas levies totaled \$300,000.

Based on Texas Employment Commission figures, some 333 oil and gas industry employees in the county received wages of about \$4.8-million in 1978. In the search for new petroleum reserves in the county, oil and gas operators spent a reported \$30.3-million in the drilling of 216 wells, including 48 wildcat, or exploratory, wells. This effort resulted in the completion of 88 oil wells and 15 gas wells, although some \$13.4-million was lost in the drilling of 113 dry holes.

The black rhinoceros cow bears only one calf about every three years, and both parents guard it jealously.

RESIDENTS OF WINTERS AND NORTH RUNNELS...

WANT TO BEAT THE GAS CRUNCH?

...Save that Precious Gas?
...Save time and Money?

THE PRACTICAL THING...? SIMPLE...

DO YOUR SHOPPING IN WINTERS....

Save those precious few gallons of gas... make every drop count... I think of the many gallons you'd burn driving out of town to do your shopping!

SHOP IN WINTERS...!

You'll Save Many Ways!

SUPER SPORTS

FORTUNES

Coppertone
Leather
"Punt"
*Mould
6 1/2 to 13



\$19.95

HEIDENHEIMER'S

PUBLIC NOTICE

I, Shirley Hill Tax Assessor-Collector for the Wingate Independent School District, in accordance with the provisions of Article 7244c, VTCS: have calculated the tax rate which may not be exceeded by more than three percent by the Board of Trustees of the Wingate Independent School District without holding a public hearing as required by Article 7244c, V.T.C.S. That rate is as follows: \$.75 per \$100 of assessed value.

Shirley Hill
Tax Assessor-Collector

Consumer Food News

Best buys at Texas grocery markets include poultry, pork, some produce and several "specials," according to Gwendolyne Clyatt, a consumer marketing information specialist.

"Specials" appear on a variety of canned fruits and vegetables, pasta products, tuna fish and salmon—along with dairy products, she reports.

Mrs. Clyatt is with the Texas Agricultural Extension Service, The Texas A&M University System.

POULTRY—Both whole fryers and parts have low prices, while turkeys have moderate prices.

Egg prices remain at bargain levels.

PORK—Supplies are plentiful and prices are down.

Pay special attention to Boston butt roasts, end and mixed chops, boneless hams, bacon and liver.

FRESH FRUITS—Most economical items are bananas, nectarines, peaches, grapes, plums, cantaloupes and watermelons.

In choosing cantaloupe, notice the larger sizes have the best quality.

FRESH VEGETABLES—Budget items include potatoes—a real bargain, along with green beans, cabbage, carrots, corn and soft-shell squash.

Also, purple hull and blackeye peas and okra.

DAIRY—"Specials" appear on milk, half-and-half, sour cream, yogurt and several cheeses, including cottage cheese.

BEEF—Beef prices are staying at the same level, but there are some features, especially on chuck roast and steaks, ground beef and liver.

CONSUMER WATCH-WORDS: For the biggest impact on your food budget, build menus around meat "specials."

Convenient Banking

DIRECT DEPOSIT

the simplest and safest way of depositing

- Social Security Checks
- Other Government Checks
- Pension and Annuity Checks
- Dividend & Interest
- Other Checks

Receipt of your deposit will be mailed to you.

We have the forms authorizing direct deposits and will help you with them.

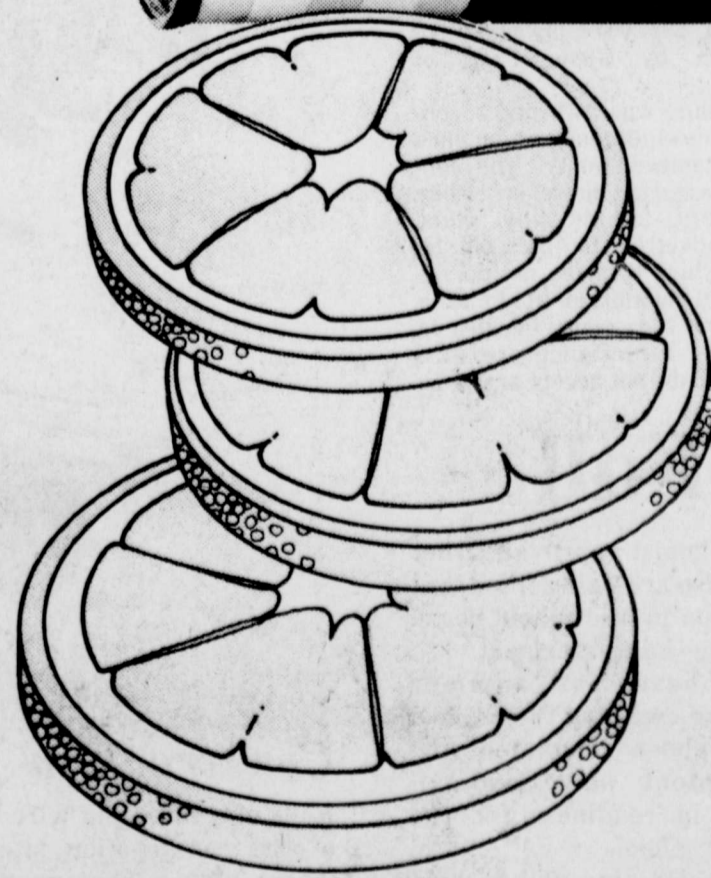
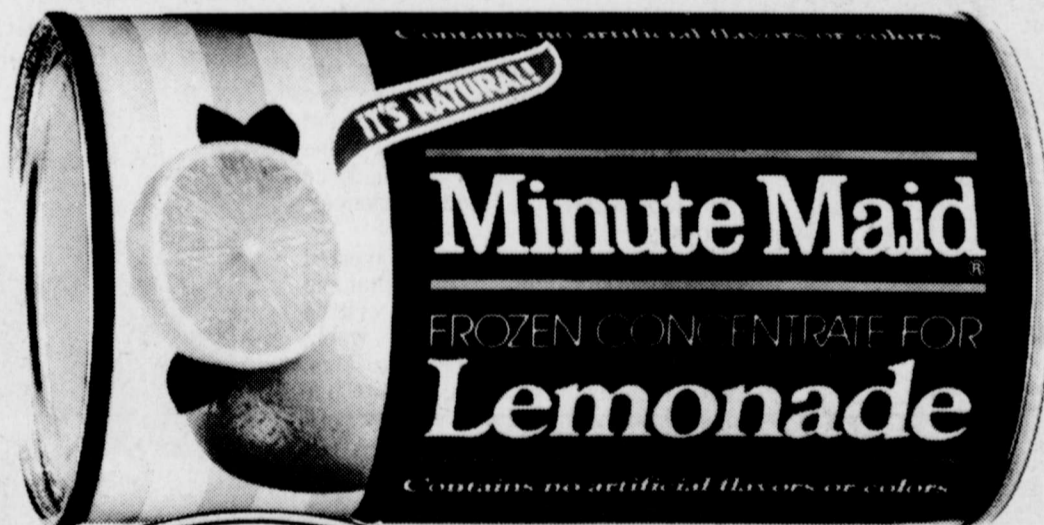
STOP IN TODAY AT

Winters State Bank

Member Of F.D.I.C.

Your Community Active Bank Money deposited is invested back into this Community

It's a Natural Anyway You Slice It.



Minute Maid
Lemonade

6-oz.

4 / 88¢



SUPER D FOODS

MON.-SAT.
8:00-7:30
CLOSED SUN.

We Reserve
Rights to
Limit
Quantities

SEE OUR
CRYSTAL DISPLAY
Check Featured
Item of the Week.

HARD TO BEAT FOOD PRICES

USDA CHOICE
HEAVY BEEF

**CHUCK
ROAST**

\$1.69

GOLD MEDAL

FLOUR

5 lb. Bag **59¢**

Limit One With *10 Purchase

USDA CHOICE
HEAVY BEEF

**ROUND
STEAK**

lb. **\$1.78**

SUPER DUPER
PREMIUM QUALITY

**ICE
CREAM**

HALF GALLON
ROUND CARTON **\$1.19**

Reg. or Diet

**PEPSI
COLA**

2-liter Plastic **79¢**

GOOD VALUE
SLICED

BACON

lb. pkg. **\$1.19**

RENOWN
SLICED

**GREEN
BEANS**

3 for **\$1.00**

SCHILLING

**BLACK
PEPPER**

4-oz. can **89¢**

3-lb. Can
CRISCO

SHORTENING

\$1.99

Limit one please

Jumbo Roll
BOUNTY

**PAPER
TOWELS**

2 for **\$1.00**

Limit 2 with *10 purchase,
otherwise 63¢ ea.

LIPTON

INSTANT TEA 3-oz. jar **\$1.89**

DAIRY PRODUCTS

CHIFFON SOFT STICK
MARGARINE POUND 2 for **\$1.00**
QTRS.

TV
BISCUITS ... 8-oz. Can 6 for **\$1.00**
Sweetmilk or Buttermilk

FLEISHMANN'S SOFT
MARGARINE lb. Tub **97¢**

KRAFT 32-oz.
ORANGE JUICE **69¢**

MEAT MARKET

PACKER TRIM BONELESS
BRISKET lb. **\$1.19**

GOOD VALUE
FRANKS lb. **99¢**

GOOD VALUE WHOLE HOG
SAUSAGE lb. roll **\$1.49**

CHUCK QUALITY
GROUND BEEF lb. **\$1.69**

CENTER CUT BONELESS SLICED
COOKED HAM lb. **\$1.89**

WHOLE BONELESS
COOKED HAM lb. **\$1.69**

USDA CHOICE HEAVY BEEF
ARM ROAST lb. **\$1.69**

DEL MONTE
SLICED OR HALVES
PEACHES

69¢

KRAFT
BAR-B-QUE

SAUCE

18-oz. Jar **59c**

SKINNERS
SHORT CUT
**ELBOW
MACARONI**

12-oz. 3 for **89¢**

RANCH STYLE
BEANS

16-oz. 3 for **89c**

20¢ off
JOY
DISHWASHING
DETERGENT **99¢**

HOLLY FARM
GRADE A
**WHOLE
FRYERS**

lb. **43c**

VAN CAMP
**PORK
'N
BEANS** 4 for **\$1.00**

PETER PAN
**P'NUT
BUTTER**
18-oz. jar **99¢**

FRESH PRODUCE

CALIFORNIA NAVEL
ORANGES lb. **29¢**

NEW CROP YELLOW
SQUASH 3 for **99¢**

CALIFORNIA CRISP
CARROTS lb. bag **25¢**

WASHINGTON
PRUNE PLUMS lb. **39¢**

OKRA lb. **59¢**

KRAFT
MACARONI & CHEESE
DINNERS

7 1/4-oz. box 4 for **\$1.00**

6-oz. can
CHICKEN OF THE SEA
TUNA

79¢

KRAFT 8-oz. bottle
SALAD DRESSINGS **49¢**
1000 Island, Franch, Oil & Vinegar Catalina, Cole Slaw

NICE ' SOFT

**BATHROOM
TISSUE**

4 Roll Pkg. **79c**

FROZEN FOODS

TROPHY 10-oz. CTN.
STRAWBERRIES **39¢**

MINUTE MAID
LIMEADE 12-oz. **39¢**

BANQUET 2-lb. box
FRIED CHICKEN **\$1.99**

BANQUET FROZEN
DINNERS 11-oz. box **59¢**

for anything... for everything... WANT ADS

CLASSIFIED AD RATES

CASH
Minimum—\$2.50, 1 time 20 words; 8 cents per word for over 20 words.
CHARGED
Minimum—\$3.00 first insertion, \$2.50 per insertion thereafter. (8 cents per word over 20 words.)
LEGAL PUBLIC NOTICES
Regular Classified Ad Rates will apply for all Legal Public Notices.
DEADLINE FOR ALL ADS
12:00 noon Tuesday week of publication.

FLOWERS

FLOWERS for all occasions. Orders wired anywhere, any time. Bonded FTD, Florafax florist. Mayme Little, Winters Flower Shop. Dial 754-4568. tfc

BLOSSOM Shop. Bonded FTD, Teleflora and Florafax florists. Mrs. Floyd Grant, Sr. Flowers for all occasions. Flowers wired anywhere. Phone 754-5311. tfc

FOR SALE

1976
3/4-TON CHEVROLET PICKUP
Automatic & Power
\$2795⁰⁰
ROBINSON CHEVROLET CO.

FOR SALE—3-N-1 packages. Saddle broke registered mares bred to Jolly Van Bar with 4 month old "Jolly" colts by side; yearling "Jolly" filly out of King-bred mare; Double-bred Poco Bueno registered 3 year old Dun mare, good looking, natural ability, rides good. We break and train. Bobby Rabon, Novice, Texas, 915-625-2764. 22-2tc

Real Estate

BRAND NEW BRICK HOME FOR SALE
3 Bedrooms, 2 Full Baths, 2-Car Carport, Living Room with Fireplace, Cathedral Beamed Ceiling, Loft or Upstairs Room looks down on fireplace.
Large covered back Patio.
All Well-Insulated.
Central Heat and Air Conditioned.
Fully Carpeted, even kitchen and baths.

GEORGE DAVIS
723-2418 after 10 p. m.

Real Estate

On Roselane—3 BR, 1 BT—lots of cabinets—utility room—ready for new owners.
Quite and gracious living—3 BR, 2 1/2 BT, den, lots of room in this one. Reasonably priced.
House on Parsonage—3 BR, 1 bath.
Corner Lot—2 BR, 1 BT, on East Truett.
Reduced—3 BR, 1 BT, dishwasher, lots of cabinets, doll house in backyard. Better see today!
CLOSE TO TOWN—**SOLD**—large backyard & cellar on State St.
Laurel Drive—2/1 fantastic den w/fireplace. Lovely backyard with lots of trees & workshop. Priced reduced. Better not wait.
FANTASTIC UPSTAIRS BEDROOM—2 BR downstairs—walk in closets—new carpet—privacy fence, cellar—on Dale St.

NEW LISTINGS DAILY

STRICKLAND REAL ESTATE
158 North Main 754-5218 Winters, Texas

FOR SALE

1973
1/2-TON PICKUP
Air & Power
\$1695⁰⁰
ROBINSON CHEVROLET CO.

FOR SALE—1974 1800 International truck-tractor. Good rubber and good condition. Contact: Jim Parramore, 754-5437. 22-2tp

1971
1/2-TON PICKUP
Nice!
\$1495⁰⁰
ROBINSON CHEVROLET CO.

Real Estate

FOR SALE—3 bedroom, 2 bath, walk-in-closets, central heat and air, low utility bills, workshop, storage building, beautiful backyard. FHA appraisal in hand. Call 754-4296 after 6:30. 21-2tp

FOR RENT

YATES TRAILER COURT. Park by the night, week, or all time. East Dale, close to Huffman House Cafeteria. Call 754-4369. 6-tfc

FOR RENT

FOR RENT—1 bedroom furnished apartment and large travel trailer with bills paid. 2 bedroom furnished mobile home. 2 bedroom unfurnished apartment. Mrs. Floyd Sims. 22-tfc

FOR RENT—Upstairs apartment. 611 Tinkle. 21-tfc

Lost & Found

LOST—Strayed from 3 miles north of Crews. High-horned cross bred cow. Bar-B brand on left hip. B. E. Baldwin, 610 Tinkle, Winters. 754-5158. 23-1tp

Help Wanted

HELP WANTED—Grocery clerk. Apply at Piggly Wiggly. 15-tfc

Miscellaneous

NOW OPEN
Lewis Blackmon
402 Lamar St.
AUTO ENGINE TUNE-UP
A/COND. WORK LAWN MOWERS & TILLERS 24-4tp

SEE Western Auto for a super fine tire balance on the new electronic NORTRON Balancer! 4 for \$16.88 for most cars and light trucks. 34-tfc

INSULATION
Lower utility bills this summer with non-combustible solar-therm insulation. Central Texas Insulation, Coleman, Texas. Phone 625-2332 or nights 625-5414. 14-tfc

FOR SALE

23 DODGE PICKUPS BRAND NEW '79's 6's and V-8's
Long & Short Beds
Automatic & 4-Speeds
END OF MODEL DISCOUNTS NOW!
Call Collect
NICK TAYLOR
915/625-4111
TAYLOR MTR. CO.
Coleman, Tex.
Authorized Dealer for
CHRYSLER, DODGE, PLYMOUTH
in Coleman Since 1922

PROFESSIONAL DIRECTORY

JNO. W. NORMAN
ATTORNEY-AT-LAW
Winters, Texas

Marvin L. Jones
Income Tax & Bookkeeping Service
105 W. Dale - 754-5393
Winters, Texas

Dr. C. R. Belts
CHIROPRACTOR
407 N. Rogers, 754-5464
Hours 9-5:30
Wed. By Appointment

Jim Hattler
REAL ESTATE APPRAISALS
Hattler Insurance Agency
110 S. Main Winters, Texas

Miscellaneous

REDUCE safe & fast with GoBese Tablets & E-Vap "water pills" Main Drug. 23-2tp

BEDFORD Child Care Center. Open Sept. 4th. Hours 6:30 to 6:30. Ages 18 months and up. For more information call Nadin Bedford, 754-4593. 22-4tc

WE BUY Trucks & Trailers. We buy, sell & trade all kinds of Heavy Duty Trucks, Trailers & Related Equip. Johnston Truck, Cross Plains, Tex. 817-725-6181. 23-5tc

COMPLETE backhoe service. Approved septic systems installed. K. W. Cook, 754-4719. 37-tfc

PIANO tuning and repair. 25 years experience. All work guaranteed. Ben G. Arnold, Robert Lee, Texas. Phone 453-2361. Call day or night. 6-tfc

ALL kinds of dirt work. **ROY CALCOTE & SONS DIRT WORK.** Dozer, backhoe, loader and dump trucks. Have yard dirt in stock for quick delivery. Call 767-3241 or if no answer 754-4995. 9-tfc

TIME to re-pot. We have a new shipment of Carl Pool Potting Soil. Also Carl Pool Magic Grow plant food. Winters Flower Shop. 11tc

SEE Western Auto for a super fine tire balance on the new electronic NORTRON Balancer! 4 for \$16.88 for most cars and light trucks. 34-tfc

I WILL BUY
Your Silver Coins, other coins and paper money. Highest prices paid for rare and choice items.
FLOYD SIMS
754-4224 or 754-4883

WANTED

WANTED—Mature person to babysit infant part-time. Preferably middle aged woman or young mother. No smokers, please. 754-5247. 23-1tp

WANTED—Scrap iron, cables, metals. Ballinger Salvage Company. tfe

Exterminator

TERMITES? ROACHES? WOOD ANTS??
Free estimate without obligation. All work guaranteed. ABC Pest Control. For information call Foxworth Galbraith Lumber Co., at 754-5318 or call Abilene 915-677-3921 collect. 8-tfc

WESLEY'S Spraying Service. Home pest control a specialty. Licensed by State of Texas. Wesley Vogler, 754-6352. 30-tfc

READ THE CLASSIFIEDS

drive friendly
Texas Office of Traffic Safety

WINTERS SHEET METAL & PLUMBING WORKS
Plumbing, Heating & Cooling
215 W. Dale
Phone 754-4343

No contest.
Superior Muffler
Lifetime Guarantee
(FULL LIFETIME WARRANTY) on the muffler, tailpipe, exhaust pipe and labor! (for as long as you own your American car)
CUSTOM PIPE BENDING
DUAL CONVERSIONS • HEADERS
OVER 1000 DEALERS IN NORTH AMERICA
Johnny's Shell
301 South Main
Winters, Tex.
Phone: 915-754-4040
Close At
1 p.m. on Saturday

CITATION BY PUBLICATION

THE STATE OF TEXAS COUNTY OF RUNNELS TO: UNKNOWN HEIRS OF G. F. SHETTLES, Deceased, Defendants, in the hereinafter styled and numbered cause:

You and each of you are hereby commanded to appear before the District Court of Runnels County, Texas, to be held at the courthouse of said County in the City of Ballinger, Runnels County, Texas, at or before 10 o'clock A.M. of the first Monday after the expiration of 42 days from the date of issuance hereof; that is to say, at or before 10 o'clock A.M. of Monday the 17 day of September, 1979, and answer the petition of plaintiff **LOUIS WADE**, in Cause Number 9255, in which Louis Wade, Plaintiff vs. Unknown Heirs of G. F. Shettles, Deceased, Defendants, filed in said Court on the 3 day of August, 1979, and the nature of which said suit is as follows:

That on or about the 13th day of May, 1946, plaintiff was lawfully seized and possessed of the following described land and premises, situated in Runnels County, Texas, holding and claiming the same in fee simple, to wit:

Being all of Lots No. Seven (7) and Eight (8), Block Eight (8), Dale West Addition to the City of Winters; Runnels County, Texas according to the map or plat of said addition to the City of Winters to which reference is hereby made for further description, and that defendants unlawfully entered upon said premises and ejected plaintiff therefrom, and unlawfully holds from him the possession thereof.

Witness, Myrt Jobe, Clerk of the District Court of Runnels County, Texas.

Price Middleton
County Auditor
Runnels County, Texas
22-2tc

Drasco SS Class Meeting Recently
The King's Messengers Sunday School Class of Drasco Baptist Church held a quarterly business meeting following church services Sunday.

The class discussed repairs for the nursery. Ice cream and cake were served.

Present were Carrie Lee, Judy Pennington, Annie D. West, Celestine Downing, Ila Conners, Zora Hill, Viola and Neva Lewis, Mary Lee Ballew and Mabel Williams. Hostesses were Edna England and Billie Ruth Bishop.

Garage Sale
GARAGE SALE—Saturday Aug. 18 at Winters Beauty Salon on East Dale. Featuring little girls clothes and lots of other items. 23-1tp

3 FAMILY garage sale. Thursday and Friday. 113 Pennylane. Everything priced to sell. 23-1tp

GARAGE SALE—In rear of Springer Fabrics. Hardware, fishing equipment, clothes. All bargains. Variety Cheerleaders. Everyday all summer. 15-1tnc

& PHILCO TELEVISIONS & STEREOS
Authorized Sales and Service
J&K ELECTRONICS
We Service All Makes Pickup & Delivery
CUSTOMER CARE EVERYWHERE
754-4770 710 N. Main

ABSTRACTS
of TITLE to ALL LANDS AND LOTS in Runnels County
J. W. PURIFOY
ABSTRACTOR
Bernie Purfoy, Mgr.
701 Hutchings
Dial 365-3572

WINTERS FUNERAL HOME
Insurance and Markers
24-Hour Service
754-4529

Mobile Home Insurance
★ LOW RATES ★ SUPERIOR COVERAGE
WE CAN FINANCE YOUR PREMIUM WITH ONLY A SMALL DOWN PAYMENT!
CALL **CAROLE 672-6466**
ABILENE MOBILE HOMES INC.

SEE US FOR:
*Preparation of Quarterly, State & Federal Reports
*Business & Farm Bookkeeping Needs
*Individual, Farm, Partnership, Sole Proprietor Tax Returns
Marvin L. Jones
Income Tax & Bookkeeping Service
105 West Dale
Winters, Texas
754-5393
(Located in Offices with Jno. W. Norman)

Issued and given under my hand and seal of said Court at office in the city of Ballinger, this the 3 day of August, 1979.
Myrt Jobe
Clerk of the District Court, Runnels County, Texas. 22-3tc

NOTICE TO BIDDERS

Sealed proposals addressed to Bill Stultz, County Judge, of Runnels County, Texas, will be received at the Commissioner's Courtroom in the Courthouse at Ballinger, Texas, until 10:00 A.M. September 14, 1979, for the purchase of a new or used ambulance with the following specifications:

Type II High top van; V-8 engine; automatic transmission; front and rear air conditioning and heating; power steering; power brakes; storage cabinets; squad benches; piped oxygen; suction; siren with mike; roof mounted lights; spot lights-left and right sides; emergency and load lights.

Equipment must meet minimum State standards. The County of Runnels, Texas reserves the right to reject any and all bids, and waives any or all formalities.
BY ORDER OF COMMISSIONER'S COURT.

Price Middleton
County Auditor
Runnels County, Texas
22-2tc

Do you want extra money?

Learn to Prepare Income Tax Returns
People who have a flair for dealing with figures, enjoy working with the public, and would like to earn extra income may enroll in H&R Block's Tax School. With classes in over 2,000 communities, there is almost certain to be a class near you. Job interviews available for best students. Send for free information and class schedules today. HURRY! Classes start: Sept. 5. Classes will be held at 1612 W. Beaugard in San Angelo.
Contact the office nearest you:
BLOCK
1612 W. Beaugard San Angelo, TX 76901
Please send me free information about your tax preparation course. I understand there is no obligation.
Name _____
Address _____
City _____
State _____
Phone _____
CLIP AND MAIL TODAY

Blackwell

1977 CAMERO
2-door Air & Power Steering, & Automatic
35,000 Miles
\$3795⁰⁰
ROBINSON CHEVROLET CO.

Do you want extra money?
Learn to Prepare Income Tax Returns
People who have a flair for dealing with figures, enjoy working with the public, and would like to earn extra income may enroll in H&R Block's Tax School. With classes in over 2,000 communities, there is almost certain to be a class near you. Job interviews available for best students. Send for free information and class schedules today. HURRY! Classes start: Sept. 5. Classes will be held at 1612 W. Beaugard in San Angelo.
Contact the office nearest you:
BLOCK
1612 W. Beaugard San Angelo, TX 76901
Please send me free information about your tax preparation course. I understand there is no obligation.
Name _____
Address _____
City _____
State _____
Phone _____
CLIP AND MAIL TODAY

Business Services

RCA TV
Authorized Dealer
WE SERVICE ALL MAKES
SALES & SERVICE
BARNES RADIO-TV
754-4223 135 N. Main

Mansell Bros.
Ballinger-Winters
"Your Authorized John Deere Dealer"
Ballinger 365-3011
Winters 754-4027
Parts & Service Complete Shop Facilities
HWY. 53 WEST

Swatches Electric Co.
Winters, Texas
GENERAL ELECTRIC Appliances
FRIEDRICH Air Conditioners
GIBSON Appliances
139 West Dale
Ph. 754-5115 - Box 307

PRESLEY OIL CO.
Exxon Distributors All Major Brands of Oil Delivery For Gasoline & Diesel Fuel
Phone 754-4218
1015 N. Main
Ronald Presley
Joe Pritchard

FOR YOUR PROTECTION
AGAINST THE LOSS OF...
your home from fire, flood, wind or accidents to others. Make sure you are not underinsured on today's market. Call us today for free appraisal.
BEDFORD INSURANCE AGENCY



WE GIVE WE GIVE WE GIVE WE GIVE WE GIVE WE GIVE WE GIVE WE GIVE WE GIVE WE GIVE WE GIVE WE GIVE WE GIVE

Backyard Chefs

Prefer Foods From

QUANTITY RIGHTS RESERVED

PIGGLY WIGGLY

TOSTITOS 7 1/2-oz.

Tortilla Chips Reg. 89¢ **69¢**

CHICKEN OF THE SEA

TUNA 6.5-oz Can **79¢**

OPEN PIT

BARBECUE SAUCE Bottle **79¢**

DEL MONTE

SPINACH 15-oz cans **2 79¢**

DEL MONTE

Fruit Cocktail 17-oz. **59¢**

HUNT'S 8-OZ.

Tomato Sauce 3 cans **69¢**

GANDY'S

Buttermilk 1/2-gal. **89¢**

AF NUDE
PANTY HOSE
pr. **69¢**

COLGATE
Toothpaste
7-oz. **\$1 29**

SHURFINE

Tomatoes 16-oz. cans **2 79¢**

GREEN GIANT

SWEET PEAS 17-oz. cans **2 79¢**

GREEN GIANT NIBLETS

CORN 12-oz. cans **2 79¢**

LUNCHEON

SPAM 12-oz. can **\$1 29**

TOTINO'S

PIZZA 12.5-oz. each **\$1 09**

CHEER

DETERGENT 84-oz. box **\$2 49**

GLADIOLA
CORN BREAD MIX

2 bags **49¢**

1/2 Gal.

SHURFRESH

SHERBET

59¢

Limit 2 with \$10 or more purchase excl. cigs.

KRAFT

Miracle Whip

\$1 19

32-oz. jar

LIPTON'S 3-OZ. JAR

Instant Tea **\$1 99**

CLOROX

BLEACH Gal. **89¢**

SCOTT

TOWELS Jumbo Roll **69¢**

DOWNY 33-OZ.

Fabric Softner **95¢**

COKE **\$1 59**

With bottle deposit

SHURFRESH
Biscuits 15¢ can

SHURFRESH
Medium Eggs Grade A 55¢ doz.

HOT OR MILD

SMOKED LINKS lb. **99¢**

LETTUCE 4 heads **\$1 00**

SUPER SELECT
CUCUMBERS 4 lbs. for **\$1 00**

FRESH
CORN 5 ears **59¢**

THOMPSON SEEDLESS
GRAPES **59¢**

SHURFRESH

FRANKS 12-oz. pkg. **99¢**

FRESH LEAN

Ground Meat lb. **\$1 49**

HEAVY BEEF

Boneless Roast lb. **\$1 79**

SHURFRESH

BACON 1-lb. pkg. **88¢**

PIGGLY WIGGLY

DANKWORTH

GERMAN SAUSAGE 12-oz. pkg. **\$1 29**

HEAVY BEEF

Chuck Roast lb. **\$1 39**

DOUBLE S & H GREEN STAMPS EVERY WEDNESDAY

J. R. Hobbs Died In Eastland

James H. (Harley) Hobbs, Jr., 72, died at 1:10 p.m. Monday of last week in the Eastland Memorial Hospital.

Funeral services were held at 2:30 p.m. Wednesday in Winters Memorial Chapel, with the Rev. Burdette Hitt and the Rev. J. R. Hallford officiating. Masonic graveside rites were conducted by Winters Masonic Lodge.

Burial was in Lakeview Cemetery under the direction of Winters Funeral Home.

Mr. Hobbs was born Sept. 7, 1906, at Hatchel, son of the late James H. and Elnora Bledsoe Hobbs. He married Inez Whittenberg, May 23, 1937, at Winters.

He lived in the Winters area for a number of years, and moved to Gorman. In 1972, he moved to a ranch 12 miles north of Ranger.

He was a member of the New Home Baptist Church and a member of the Gorman Masonic Lodge No. 716, of which he was a past master. He also was a member of the Order of the Eastern Star, and was a past patron of Garden City Chapter 143. He also was

a member of the Scottish Rite Masonic bodies of Waco.

Survivors are his wife; a daughter, Norene Burrow of Fresno, Calif.; a brother, Sylvester Hobbs of Long Beach, Calif.; five grandchildren and five great-grandchildren.

Pallbearers were Jack Whittenberg, Ralph Whittenberg, Van Whittenberg, Willis Whittenberg, Van Ray Whittenberg, James Brown, Coy Bargsley and Troyce Boone.

CARD OF THANKS

We wish to express our sincere appreciation to all our friends and relatives who made our sorrow easier to bear by their many calls, visits, prayers and the many memorials and flowers. To Gene Wheat and the choir and to Susan Conner; to those who took care of our livestock, we say thanks. It is our prayer that we may be of comfort to you in your hours of need. -The Family of C. L. (Dock) Rogers. 23-1tp

CARD OF THANKS

I would like to thank my friends and family for the prayers, flowers, food and visits while I was in the hospital. May God bless each of you. -Mrs. Cecil Scott. 23-1tp

NORTH RUNNELS HOSPITAL

REPORT

ADMISSIONS

August 7
Ettie Bishop
August 8
Hudson White, Jr.
Steve Grenwelge
August 9
Rachel Seldon
August 10
No one admitted
August 11
Leonard Heath
August 12
Geneva Emmert
August 13
Grace Cavanaugh
Bertha Gerhart
Paula Patton
Ascencion Fernandez
Annie Faye King
Matthew Dinger
George Moore

DISMISSALS

August 7
Sam Cooke
Melvin Williams
Annelie Wheeler and baby boy
Johnny Pierce
J. R. Willis, Jr.
August 8
Charlotte Davis
August 9
Hudson White, Jr.
August 10
Grabiela Ramos
August 11
Pauline Ortiz
Rachel Seldon
Leonard Heath
August 12
Steve Grenwelge
Preston Powers
August 13
No one dismissed

CARD OF THANKS

We would like to express our appreciation to our many friends and neighbors during the sickness and death of our loved one, William Patterson. We are sincerely grateful to those who brought food, for the beautiful flowers, cards, memorials and your prayers. Also to the ladies of the church who served lunch. We especially thank Bro. Thomas, Gene Wheat and Susan Conner for the beautiful memorial service. Our thanks to Dr. C. T. Rives and the hospital staff and to Ted and Mike Meyer for their services and kindness shown to us. May the Lord bless each of you. -The Patterson Family. 23-1tp

C. Rogers Died Thursday In Abilene

Calvin (Dock) Rogers, 69, died at 5:25 p.m. Thursday in Hendrick Medical Center in Abilene following a brief illness.

Funeral services were held at 2 p.m. Saturday in Winters Memorial Chapel, with Mr. W. D. Ramsey, pastor of the Wingate Primitive Baptist Church, and the Rev. Emmitt Brooks of Abilene officiating.

Burial was in Wingate Cemetery under the direction of Winters Funeral Home.

Mr. Rogers was born in Sweetwater, Feb. 10, 1910, the son of Hugh and Delia Brock Rogers. At the age of 10, he moved with his parents to Wingate, where he had lived for the past 59 years.

He married Edna Wood, Aug. 9, 1930, at Ballinger.

He was a retired oil pumper and at the time of his death he was engaged in stockfarming.

He was a member of the Primitive Baptist Church at Wingate, and was a

CARD OF THANKS

We extend thanks to all our friends who so graciously expressed your concern for us and your love and respect for Samuel at his death. We will always remember you for it and may God bless you. -The Family of Sam Cooke. 23-1tp

CARD OF THANKS

We want to thank everyone for all their thoughts, prayers, help, visits, food, and cards sent during Justin's stay in the hospital. We especially want to thank all the churches for their special prayers. These surely helped him make it this far. Special thanks also to David Smith, Allen Andrae, Gary Jacob, Robert Holder, R. Q. Marks, Scotty Belew, Glenn Hoppe, Mike Mitchell, and Charles Allcorn for helping with our field work and Erwin Schroeder for providing a barbecue dinner for them. All these things helped us and continue to help us through a trying time. God bless each and every one of you. -Edwin, Sharon, Clint, Stacey, and Justin Deike. 23-1tp

CARD OF THANKS

I would like to express my thanks for all the nice things done for me during my stay in the hospital. Thanks to those friends who sent the flowers and a special thanks to the nurses, and Dr. Lee for the care I received. A very special thanks to Bro. Thomas and his wife for their visits and also the many friends of the church who came by or sent cards, and especially the Bethany Class. God bless you. -Mrs. C. R. (Cassie) Knight. 23-1tp

Family Clinic August 23

A family planning clinic will be held Aug. 23, from 6 to 8 p.m., at the Winters Multi-Purpose Center, 142 W. Dale St.

Those planning to attend for the first time should register at the office prior to the clinic date. For additional information, call 754-4443, or visit the office.

Friendly Helpers Club Meeting

The Wilmeth Friendly Helpers Club met recently with Mrs. B. B. McNeill. Four members were present, Genevieve Denson, Mrs. McNeill, Eva Wright, Rosalie Albro, and one visitor, Lavoy McNeill of Wingate.

The next meeting will be Aug. 20 with Pauline O'Neal at the Winters Country Club.

long time deacon of that church. He also was a past president of the Wingate School board, and was a member of the Wingate Lions Club.

Survivors are his wife; one son, B. E. (Gene) Rogers of Tuscola; a brother, F. P. Rogers of El Paso; a step-brother, Morris Shook of Sweetwater; a sister, Delia Lewis of Abilene; two step-sisters, seven grandchildren and four great-grandchildren.

Pallbearers were Alton Lewis, Jack Pritchard, C. T. Rogers, Pat Pritchard, Steve Pritchard, D. E. Pinegar, Press Gallaway and Duncan Hensley.



NEWCOMERS

Mr. and Mrs. James Whaley announce the birth of a son, Stephen Paul, born Aug. 9, 1979. The baby weighed 7 pounds 15 1/2 ounces. Paternal grandparents are Mr. and Mrs. John P. Ely II of Mineral Wells, and Mr. and Mrs. James Whaley of Nairobi, Kenya, Africa. Maternal grandparents are Mr. and Mrs. Wyman C. Burson Sr. of Winters. Paternal great-grandparents are William Weiler of California. Maternal great-grandparents are Mike Zuniga Sr., of Winters, Alice Zuniga of Winters and Mr. and Mrs. Paul B. Burson of Brownwood.

Mr. and Mrs. Alton Pierce of Sonora announce the birth of a daughter, Kari Dianne, born July 27, 1979, in San Angelo Community Hospital. The baby weighed 6 pounds 7 1/2 ounces. Maternal grandparents are Mr. and Mrs. C. R. Knight of Winters. Paternal grandparents are Mr. and Mrs. Jack Pierce of Winters. They have two other daughters, Sonya and DiDi.

Baldwin Family Reunion Sunday

Members of the Baldwin Family held a reunion in the Winters Community Center Sunday. Approximately 80 members were present.

A highlight of the reunion was a table upon which were displayed old family portraits and a history of the family.

Family members were present from Albuquerque, N.M.; Ballinger, Colorado City, Dublin, Odessa, Lubbock, Santa Anna, California, Kermit, Bronte, Midland, Big Spring, Fort Worth, Wichita Falls, Abilene, Georgetown, Harlingen, Albany, Winters, Farmers Branch, Temple, Fort Hood and Snyder.

VISITORS

Visitors in the Buford Baldwin home over the weekend were Dr. and Mrs. Richard Pearce, Sara and Amber of Georgetown; Mrs. Robert Shaw and Taley and Matt of Killeen. Mrs. Shaw is the former Karen Knapp, former resident of Winters.

VISITORS

Visitors in the home of Mrs. James Lee Johnson over the weekend were Mr. and Mrs. Robert Robinson, Doug and Mrs. Mike Lancaster of San Angelo; Mr. and Mrs. Jim Johnson, Jim Jr., John and Jeff of Lubbock; Mr. and Mrs. Randy Baker, Kim, Jennie and Scott of Harlingen. They attended the Baldwin reunion.

Fathers, you'll get respect, cooperation, love and positive rapport with your children when you're warm, nurturant, involved and caring.

Also, your sons are more likely to become appropriately masculine and your daughters appropriately feminine, says Patricia Lamson, a family life education specialist with the Texas Agricultural Extension Service, The Texas A&M University System.

W. S. Cooke Died Tuesday Of Last Week

William Samuel (Sam) Cooke, 75, died at 2:45 p.m. Tuesday of last week at his home, 404 Murray St.

Funeral services were held at 10:30 a.m. Thursday in Winters Memorial Chapel with the Rev. Fred Thomas, pastor of the First Baptist Church, officiating.

Burial was in Lakeview Cemetery under direction of Winters Funeral Home.

Mr. Cooke was born Nov. 27, 1903, at Goldthwaite, the son of J. R. and Martha Stark Cooke. In 1909 the family moved to Winters. He later worked in a grocery store and in a service station.

He married Eula McNeill, June 7, 1922, at Winters.

He was an employee of the Postal Department for 42 years, a rural carrier out of the Winters post office. He retired in 1972.

He was a member of the First Baptist Church.

Survivors include his wife; a son, Ernest Cooke of Winters; two daughters, Mrs. Floyd Turner of San Angelo and Mrs. James Gehrels of Winters; three brothers, Earl Cooke of Winters, John L. Cooke of Robstown, and Raymond Cooke of Eureka Springs, Ark.; two sisters, Ora Mae Steele of Winters and Oma Lindley of Abilene; 14 grandchildren and eight great-grandchildren. A son, Bob, died in 1955.

Pallbearers were Billy George Moore, Granville Long, L. D. Herrington, Dennis Poe, Ellis Zane Moore, Hudson White, Kenneth Sneed, and Wardell Long.

Now Allstate can save you 25% off Texas state rates for Homeowners Dwelling Insurance.

Come in and compare.

Your Allstate agent will show you just how much you may save on homeowners insurance with Allstate's new low rates.

We're helping you keep your insurance costs down - as we protect your home against loss from fire and many other hazards. Come in soon and find out how much you might save. Or just phone us.



Allstate
You're in good hands.

1625 "good hands" people in Texas invite you to come in and compare.

JNO. W. NOR
THE INSURANCE MAN
754-5111 Winters, Texas 79567

Beat the October 1st Price Increase

Floor Sample Sale



Buy now and save 3 ways

1. Save on floor samples & discontinued models
2. Save on electric bills
3. Save by buying before the price increase



There's lots of summer left to save now. Reduced prices on floor samples, discontinued models, and last year's models. Save again, when you run it. Friedrich makes more models of high efficiency room air conditioners than anyone. Prices are going up October 1st. Model availability is limited, so hurry, see us today!

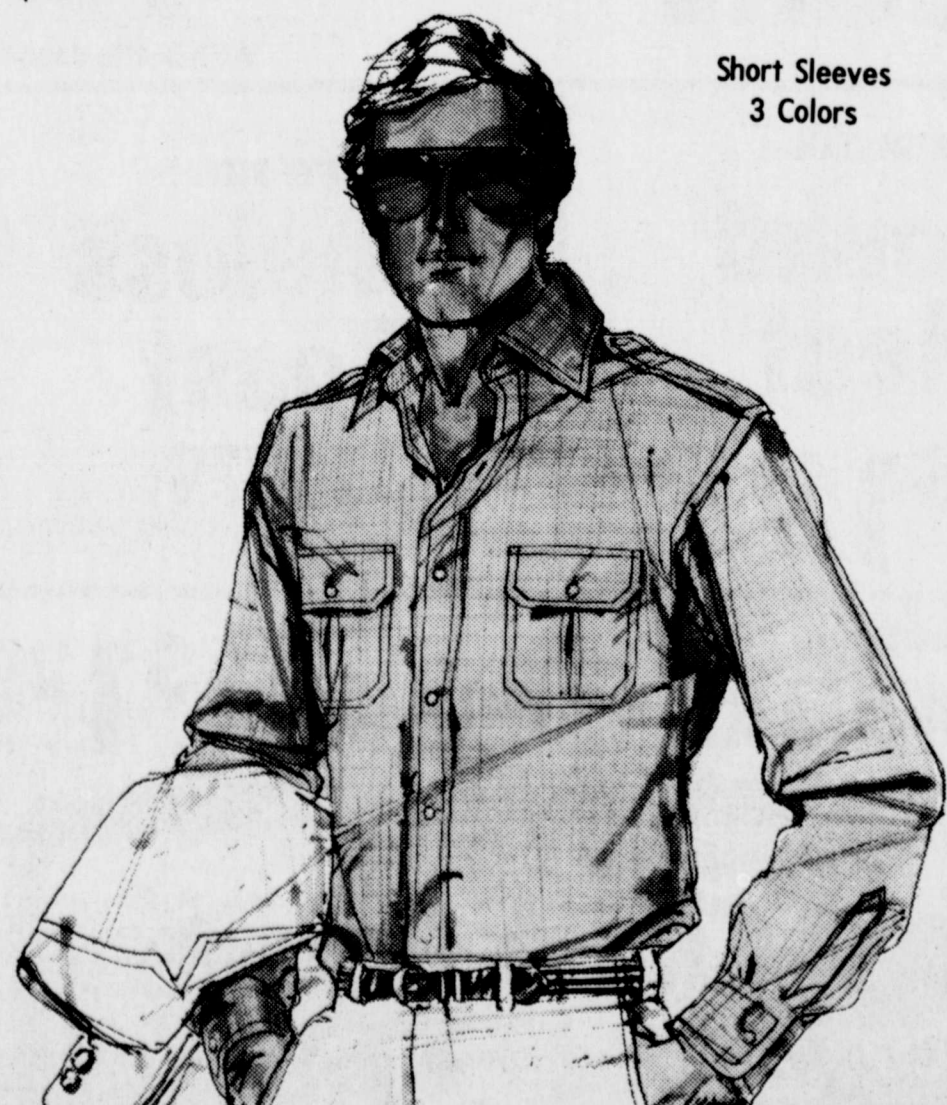
Friedrich
THE ENERGY ECONOMISER

Swatsue Electric Co.

139 W. Dale Winters, Tx.

Arrow Sport Shirt

Soft, kindly, absorbent 100% pure cotton fabric makes this sport shirt a must for casual comfort. Add the convenience of no-iron performance by "Sanfor-Set"® for the best of the easy-care, easy wear world. Distinctively tailored with epaulets.



Short Sleeves
3 Colors

The comfortable casual — Short Sleeves Only
COTTON-EASE by Arrow

HEIDENHEIMER'S

Heart O' Texas

- SAVINGS PLAN -

ANNUAL DIVIDEND		DAILY COMPOUNDING
5 1/2%	PASSBOOK SAVINGS INTEREST PAID DAY-IN-TO-DAY-OUT	5.65% ANNUAL YIELD
5 3/4%	90 DAY NOTICE PASSBOOK SAVINGS	5.92% ANNUAL YIELD
5 3/4%	90 DAY CERTIFICATES \$100 OR MORE	5.92% ANNUAL YIELD
6 1/2%	ONE YEAR CERTIFICATES \$100 OR MORE	6.71% ANNUAL YIELD
6 3/4%	30 MONTH CERTIFICATES \$100 OR MORE	6.98% ANNUAL YIELD
7 1/2%	FOUR YEARS OR MORE CERTIFICATES \$100 OR MORE	7.79% ANNUAL YIELD
7 3/4%	SIX YEARS CERTIFICATES \$100 OR MORE	8.06% ANNUAL YIELD
8%	EIGHT YEARS CERTIFICATES \$100 OR MORE	8.33% ANNUAL YIELD
7.95%	FOUR YEAR TO TEN YEAR CERTIFICATES \$100 OR MORE	8.27% ANNUAL YIELD
9.481%	SIX MONTH CERTIFICATES \$10,000 OR MORE	

FEDERAL REGULATIONS CONCERNING CERTIFICATES REQUIRE A SUBSTANTIAL PENALTY FOR EARLY WITHDRAWAL

SAN ANGELO
337 W. Twelfth
San Angelo, Texas 76901
Phone 915/653-6778

HOME OFFICE
SAN SABA
200 East Wallace Street
San Saba, Texas 76877
Phone 915/372-5121

BALLINGER
718 Hutchings Ave.
Ballinger, Texas 76821
Phone 915/385-5164

LAKEWAY
801 S. Ranch Road 620
Austin, Texas 78734
Phone 512/263-2081

WINTERS
308 S. Church St.
Winters, Texas 79567
Phone 915/754-5064

ROBERT LEE
403 West 10th
Robert Lee, Texas 76945
Phone 915/453-2345

Each account insured up to \$40,000 by the Federal Savings & Loan Insurance Corporation, Washington, D.C.



Heart O' Texas
SAVINGS ASSOCIATION
Winters, Texas 79567

WE MAKE HOME LOANS

4-H Leaders Encouraged To Attend Workshop

4-H foods and nutrition leaders from Runnels County are encouraged to attend a September 8 and 9 weekend workshop at the Texas 4-H Center near Brownwood, County Extension agent Juanita O'Connor said that the workshop will include a wide variety of 4-H foods and nutrition project helps for teen and adult leaders.

Topics to be covered are: teaching methods; weight control; conditioning exercises; method demonstrations; food show preparation; record

Be Busy Club Meeting Recently

The Be Busy Club met recently in the home of Mrs. Bill Millioin. The afternoon was spent doing handwork for the hostess.

Present were Meses. James Torrence, Lewis Blackmon, Faye Hogan, Eura Lloyd, Nadeen Smith, Vallie Brannon, and two visitors, Lana and Jana Hogan of Plainview.

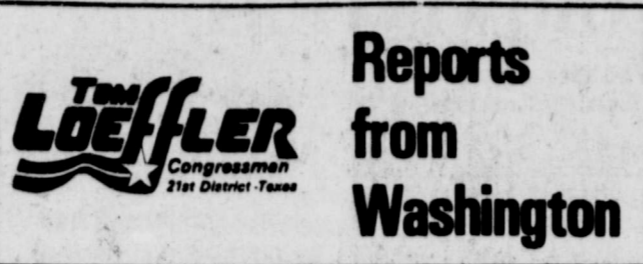
The next meeting will be Monday, Aug. 27, in the home of Mrs. Vallie Brannon.

books; and recreation. Instructors for this workshop are: Mrs. Mary K. Sweeten, Extension foods and nutrition specialist, College Station; Iris Kalich, area 4-H & youth specialist, San Angelo; and other 4-H adult and teen volunteer leaders who have successful experiences in 4-H foods and nutrition activities.

For further information and registration details, those interested in participating may contact Mrs. O'Connor at the Runnels County Extension office located at the courthouse or phone 365-5042.

Whenever practical, use the more efficient fluorescent lights in place of incandescent lamps, suggests a housing and home furnishings specialist.

One 40-watt fluorescent tube provides more light than three incandescent bulbs, yet uses less electricity, reports Pat Seaman with the Texas Agricultural Extension Service, The Texas A&M University System.



Reports from Washington

MIDYEAR UPDATE

The month of August, while not exactly in the middle of the year, is the mid-point adjournment period for Congress. On July 30th, the House voted 338 to 70 to adjourn from August 2 to September 5. I voted for the resolution to adjourn.

Seventy of my colleagues felt that the pace of Congress so far this year has been so slow that we should curtail or eliminate the August Work Period. The majority of us, however, felt for somewhat different reasons that this recess is quite necessary. From my perspective, the less time this Congress is in session, the less damage will be inflicted on American taxpayers. Further, considering the recent developments in the Executive Branch, it seems clear to me that the Carter Administration needs some quiet time to get its own "new" house in order.

Finally, a month in Texas helps to ensure that I stay in close touch with you and your opinions, a process which I feel is especially essential if I am to accurately represent the wishes of a majority of the people of the 21st District.

Toward that end, as most of you know by now, I will be holding a series of town meetings throughout the District so that I may hear your views and help with problems you may be having with any Federal agencies. In addition, I will be making a series of visits to local service clubs, and I hope to visit with many of you personally throughout these travels.

To bring you up to date on what has happened, generally, in this first half of the first term of the 96th Congress, let me outline briefly where things stand.

Energy

There is probably no topic of more current interest right now than the energy problems this country faces. The President has proposed creation of two new super-agencies to expedite "critical" construction programs for energy facilities, and to directly involve the Federal government in the development of synthetic fuel resources.

In addition, the President has previously announced his intention to decontrol crude oil prices over a two and one-half year period, and impose a "windfall profits tax" on America's energy industries, with proceeds from this tax to fund the Federal synthetic fuel production program.

Finally, the House passed standby authority for a gasoline rationing plan on August 1st, allowing him to present a rationing plan to Congress when a shortfall of 20 percent of supply of crude oil exists or will exist for at least a thirty day period.

There are persuasive "pros" and "cons" to all these proposals, and, as you know, some I have supported for some time; others, I remain strongly opposed to. The House will take up final disposition on these important subjects in September.

Busing

On July 24th, despite our best efforts, the House rejected a Constitutional Amendment which would have banned forced busing of our school children.

Busing clearly has not worked, does not work, and will not work. And, because the majority of people throughout the United States strongly disapprove of busing, even though we lost this fight, I assure you, we will have another opportunity in the future to stop this inequitable and unfair practice.

Positive Achievements

On the positive side, these first few months have seen victories for Conservatives in these areas: we defeated H.R. 1, the taxpayer-financing of Congressional elections; defeated a congressional pay raise proposal; succeeded in adding amendments to the not-yet-final Department of Education bill which would allow voluntary prayer in schools and perhaps bring forced busing to a grinding halt; and preserved the important MX missile system.

All in all, not everything you and I would have hoped for... but things are looking better than they might, and we certainly have reason to expect more success in the future. Until my next report, thank you for your time.

Fertilized Eggs More Nutritious?

There is no evidence that fertile eggs are more nutritious than nonfertile eggs, says Dr. David B. Mellor.

Some 15 to 20 years ago many producers removed roosters from hens producing table eggs because of possible blood ring development in fertile eggs. Today, essentially no table eggs are fertile, says Mellor, a poultry marketing specialist with the Texas Agricultural Extension Service, Texas A&M University System.

In the Orient, chicken and duck embryos which have developed 10 to 14 days are considered a delicacy. However, these are not fertile eggs, emphasizes Mellor. He says the nutritional value of an embryo is quite different than an egg, be it fertile or nonfertile.

A fertile egg is usually more expensive to produce than a nonfertile one, says Mellor. The rooster requires feed and space and his presence usually decreases production. He is not necessary for egg production.

The specialist contends that clean, sound shelled, graded eggs under refrigeration are still the best choice. People willing to pay the high price for fertilized eggs should recognize that the Texas Egg Law requires eggs to be graded, have a clean, sound shell and be kept under 60 degrees F.

School Supplies Approved For Winters Public School

Following is the approved list of school supplies needed by Winters School students in the following grades:

PLAN A

- Comprehensive Education**
- 1 box 16 crayons
- 1 pair pointed scissors
- 1 small Elmer's glue
- 1 box map colors
- 1 ruler
- 2 pencils #2 lead
- 1 large pencil eraser
- Notebook paper

KINDERGARTEN

- Primary pencil (Huskey #683 or King Cole #77)
- 2 large pkg. assorted colored construction paper 12"x18"
- Kleenex (one 200 count box)
- Toothbrush & toothpaste
- Scissors - blunt end
- Crayons - basic 8 (large, no roll)
- 1 Elmer's glue (1 1/4 oz.)
- Plastic cup
- Cigar box
- 1 bar deodorant soap

FIRST GRADE

- Primary pencil (Huskey #683 or King Cole -77)
- 1 large pkg. assorted colored construction paper 12"x18"
- Tablet (No. 1, Item #140021 Zaner-Bloser, Inc.)
- Washable glue or paste
- Scissors - blunt end
- Crayons - basic 8
- Kleenex (one 200 count box)

SECOND GRADE

- Big Chief Tablet
- Tablet (No. 2, Item #140022 Zaner-Bloser, Inc.)

- Ruler (12 inch, wood)
- Elmer's glue in plastic bottle
- Eraser (blue or pink)
- 2 pencils #2 lead
- Scissors - blunt end
- Crayons - Basic 8
- Kleenex (one 200 count box)

THIRD GRADE

- Tablet or notebook paper
- Pencil #2 lead
- Ruler (12 inch, wood)
- Elmer's glue
- Scissors - blunt end
- Crayons - basic 8
- Kleenex (one 200 count box)
- Tablet (No. 3, Item #140023 Zaner-Bloser, Inc.)

FOURTH GRADE

- 1 pkg. of assorted colored construction paper
- Kleenex (one 200 box count)
- 1 box 16 crayons
- 1 pair pointed scissors
- 1 box map colors
- 1 ruler
- 1 red lead pencil
- Notebook paper
- 1 large pencil eraser
- 1 pencil #2 lead
- 1 pkg. Scotch Tape
- 1 pkg. 9"x12" manila paper
- 1 Elmer's glue (plastic bottle) 1 1/4 oz.
- Tablet (No. 4, Item #140024-0, Zaner-Bloser, Inc.)

FIFTH GRADE

- 1 box 16 crayons
- Notebook paper
- 1 pair pointed scissors
- 1 small Elmer's glue
- 1 box map colors

- 1 ruler
- 1 pencil #2 lead
- Kleenex (one 200 count box)
- 1 red ball point Bic pen
- 1 pkg. typing paper
- 1 pkg. Scotch Tape
- SIXTH GRADE**
- 1 pair pointed scissors
- 1 Elmer's glue
- 1 box map colors
- 1 ruler
- 1 pkg. typing paper
- 6 expansion folders w/notebook paper & w/pockets
- 3 blue ink ball point pens (no cartridges)
- 2 red ink ball point pens (no cartridges)
- 2 pencils #2 lead
- Physical Education Uniform - blue shorts, white T-shirts, & white sweat socks
- SEVENTH GRADE**
- Pencils #2 lead
- 1 ruler
- 6 expansion folders w/notebook paper & w/pockets
- 2 red ink ball point pens (no cartridges)
- 2 blue ink ball point pens (no cartridges)
- Physical Education Uniform - blue shorts, white T-shirt, & white sweat socks
- EIGHTH GRADE**
- Notebook paper
- Pencils #2 lead
- 1 ruler
- 2 blue ink ball point pens (no cartridges)
- 2 red ink ball point pens (no cartridges)
- 5 expansion folders w/notebook paper & w/pockets
- Physical Education Uniform - blue shorts, white T-shirt, & white sweat socks

Happy Birthday Pa - Pa Love Deanne, Ginny, Jeremy & Michael

IMAGINE A WORLD WITHOUT COMMUNICATION

Communication is important not only between individuals, but between business and the consumer.

At WTU, we think it's important that consumers know about the services we offer, our billing practices and the details, and all the portions of your bill. We also want to provide you with information on how to use electrical energy in the most efficient manner possible. Conservation of our energy is important to our future and to you as a billpayer. It's also important that you and your family know the proper safety measures required when working around electricity.

These are just a few of the reasons WTU feels it's important to communicate with you on topics that concern and involve you. At West Texas Utilities, we're working to serve you better.

WEST TEXAS UTILITIES COMPANY WTU

A Member of The Central and South West System

Egg Laying Keyed To Day Length

"It's not nice to fool mother nature," but egg producers must do it if they expect their hens to lay at a profitable rate during fall and winter months.

"To maintain a profitable rate of lay the year round, egg producers must make their flock believe spring is eternal," points out Dr. William O. Cawley, poultry specialist with the Texas Agricultural Extension Service, Texas A&M University System.

It all has to do with the changing day length brought about by the seasons and its influence on both wild and domesticated birds. Normally, both produce their hatching eggs in spring, thus giving rise to the term "spring chicken." Most birds cease egg production and begin preparing for winter as day length decreases in fall. Actually, it is the decreasing day length which triggers the southern migration of wild fowl and not the cool winds of autumn, says Cawley.

ATTENTION FARMERS

Milo harvest is upon us and we wish to remind you that you have several choices as to the way your crop can be marketed.

- CASH SALE.** We pay you top market price load by load as the grain is delivered.
- GRAIN BANK STORAGE.** Milo can be stored in our grain bank to be milled out to you later as cubes or mixed feed. There is no charge for this storage service.
- COMMERCIAL STORAGE.** The grain is stored in our elevator or forwarded to terminal storage for later sale. You have complete control of when this grain is sold and may sell all or any part of it at any time you wish. This method is superior to on-the-farm storage in that you are protected against shrinkage and deterioration of grade. We must know in advance of unloading if you want your grain to go commercial storage. Grain not so marked will be considered sold for cash.

All grain will be marked sold unless you register in office either in person or by phone.

ALDERMAN CAVE MILLING & GRAIN CO.

319 West Dale St. Winters, Texas Phone 754-4546

Congratulations To MARGARET DAVIS for winning our \$50 Drawing!

VISA Merle Norman Cosmetic Studio

754-4322 Winters, Texas 79567 137 N. Main

EXCLUSIVE MERLE NORMAN FRAGRANCES...

Experiment with:

- ARABESQUE... elegant floral fantasy
- BAROQUE... bright and classical
- CHATELAINE... romantic yet sophisticated
- KARI... heady and voluptuous
- MN... foresty freshness

Fragrances from \$4.50 to \$35.00

MERLE NORMAN
The Place for the Custom Face

FREE ARABESQUE Cologne with Beauty Consultation while supplies last.

Miss LaBedelle and Mr. Diffey To Wed

Wedding vows will be said Oct. 19 for Miss Linda Kay LaBedelle and Mr. James Vinson Diffey, in the Trinity Lutheran Church in San Angelo. Mr. and Mrs. M. LaBedelle are the parents of the bride-elect. The prospective bridegroom is the son of Mrs. Elizabeth Diffey. Miss LaBedelle is a 1975 graduate of Winters High School. Mr. Diffey is a 1973 graduate of Central High School, San Angelo. Friends and relatives are invited.

RAINFALL RECORD FOR WINTERS

Courtesy ROY RICE, Cooperative Weather Observer, National Oceanic & Atmospheric Administration

Year	Jan	Feb	Mar	Apr	May	Jun	Jul	Aug	Sep	Oct	Nov	Dec	Tot
1959	.00	.20	.00	2.40	4.70	9.70	5.00	.40	3.70	5.80	1.30	5.20	38.40
1960	3.50	.90	1.00	1.40	1.50	.90	5.30	1.20	1.80	2.60	.00	3.70	22.80
1961	5.30	1.60	1.30	.30	5.40	9.30	4.20	*	*	*	*	*	27.70
1962	.00	.00	.30	4.40	1.00	5.70	8.70	1.30	5.30	3.00	1.20	1.00	31.90
1963	.00	1.30	.00	2.80	7.70	2.20	.00	5.20	.80	.10	3.20	1.20	24.50
1964	1.90	3.10	1.80	2.30	1.50	3.50	1.00	3.50	5.20	.70	3.30	.60	28.40
1965	2.50	3.70	.30	2.00	9.30	3.80	.10	.80	3.90	2.80	2.00	1.90	33.10
1966	1.70	1.00	1.30	7.80	1.20	1.90	.10	7.30	2.80	2.70	.00	.00	27.80
1967	.00	.10	1.20	1.00	1.30	5.00	4.20	1.10	8.70	.00	5.30	2.00	29.90
1968	5.61	3.50	4.70	4.70	6.80	.20	3.11	2.67	1.97	.12	3.44	.16	36.97
1969	.33	1.05	2.29	4.46	6.98	3.36	.05	2.09	8.44	3.19	1.53	1.76	36.51
1970	.35	1.98	5.02	4.45	2.25	.00	.00	1.04	2.78	.75	.00	.23	20.11
1971	.04	.29	.00	2.51	1.42	8.33	2.92	7.44	7.21	4.87	.56	1.57	37.16
1972	.20	3.33	.03	.94	4.11	2.72	2.24	3.76	2.88	6.41	.96	.07	24.68
1973	1.83	1.62	1.86	3.36	1.52	5.84	5.48	.45	4.37	2.78	.24	.07	29.42
1974	.05	.47	1.03	1.70	1.60	.91	.54	3.79	8.23	?	?	?	18.32
1975	To be obtained.												
1976	.00	.09	.59	4.22	1.18	.84	5.83	.49	7.85	5.79	.68	.10	27.66
1977	1.07	.44	1.46	4.84	1.22	3.26	2.17	.82	.85	2.16	.58	.19	19.06
1978	.83	1.62	.31	.52	2.80	.49	.89	5.72	2.65	.79	1.57	.08	18.27
1979	1.33	1.19	5.59	3.24	2.82	4.65	4.10	1.52					24.85

*Not Recorded. Figures through 1967 unofficial.

HORSE RACES SADDLE HORSE RACES

Labor Day, 4 P.M.
DEAD COW RACEWAY
3 miles east of Bronte, Hwy. 158

To enter, see Don Bell, Bell Auto Parts
Robert Lee, Texas
DAY 453-2911
NIGHT 453-2259
Entry Form must be filled out by Aug. 24.

20-5tc

Back To School

Jeans... Jeans... Jeans...
Terry, Velour, Lurex
Tops
Jr. Dept.



The trend toward terry....

A practical experience in luxury... to take you from morning coffees to evening parties beautifully. Far left, from JERELL.

Lay-Away your Winter Coat NOW 10% off thru August

Fashion Shop

Revival—

(Continued from Page 1) ville, served in the U.S. Navy in 1945-46. He is a graduate of Texas Wesleyan College, Fort Worth, and Perkins School of Theology, Southern Methodist University. He received an Honorary Doctor of Divinity Degree from Texas Wesleyan College in 1977, and from Asbury Theological Seminary in 1979.

He has served as pastor of several churches, and conducted a weekly radio program for two years. He served as Bible teacher in a Fort Worth school, conducted missions in Argentina and Uruguay, Chile, Bolivia, Peru, Brazil, Argentina. He participated in the International Congress on World Evangelization in Lousanne, Switzerland in 1974.

Gary Mauldin is a 1979



GARY MAULDIN

graduate of McMurry College in Abilene. While in college he was elected to several key positions of leadership within the campus ministry program. He is currently Youth Minister at the First United Methodist Church in Abilene. Cynthia Marie Carter is

a native of Pampa. She is a graduate of Hardin-Simmons University in Abilene, and was summer youth director at Phillips United Methodist Church at Phillips. She spent the summer of 1977 living with a Japanese family in Japan, and became director of Bells and Youth choirs of the Abilene church.

Museum—

(Continued from Page 1) Roy Young reported on a visit to the Coleman Museum, and Mrs. Charles Poe reported on her visit to the Panhandle-Plains Historical Museum at Canyon.

The museum board has asked that persons who have items which they wish to donate or loan to the museum notify the Chamber of Commerce, and these items will be picked up when the museum building is ready.

Collins Buys Ballinger H&R Block

Oliver Collins of San Angelo, owner of the H&R Block Income Tax Office franchise office in Winters, recently purchased the franchise for the Ballinger office. Collins purchased the Winters franchise from Mrs. Dell Proctor. He is from Tolar, is retired from the U.S. Air Force, and Civil Service. He and his wife moved to San Angelo from Illinois.

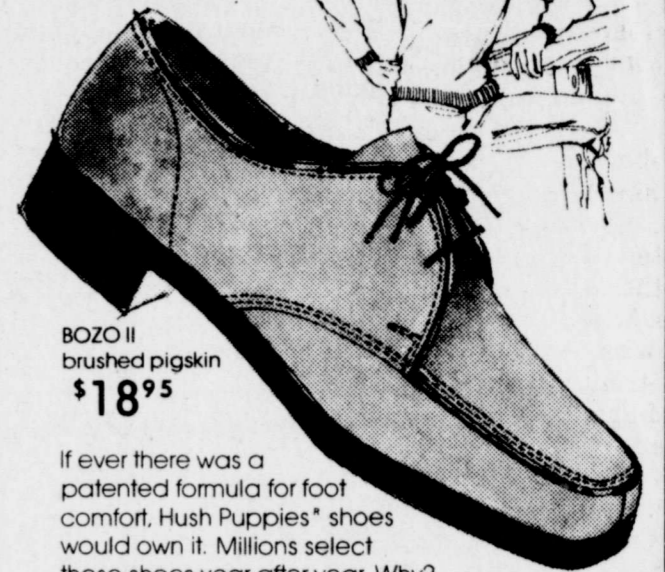
Plans are to hire part time employees for the two offices. The Winters office is open Wednesday afternoons, and the Ballinger office will be open Wednesday mornings.



Some consider it bad luck to drop a bunch of keys.



Hush Puppies® all-time comfort classics



BOZO II brushed pigskin \$18.95

If ever there was a patented formula for foot comfort, Hush Puppies' shoes would own it. Millions select these shoes year after year. Why? It could be the rain and stain resistant Breathin' Brushed Pigskin™, the smooth glove leathers, the extra steel shank support, the soft, flexible Microcrepe™ soles or years of shoemaking craftsmanship. Whatever the reason, treat yourself to the classic comfort of Hush Puppies' shoes... more comfortable than feet.

HEIDENHEIMER'S

PUBLIC NOTICE

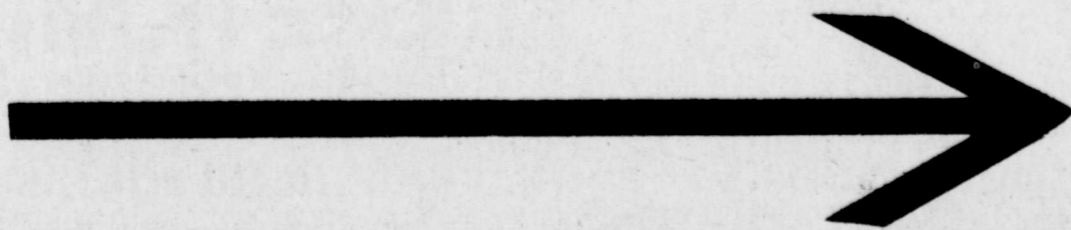
Elsewhere in this paper there is an ad stating that your taxes will be increased 11% for 1979.

Article 7244-C, Section I, of the Truth in Taxation Law of the Texas Constitution, Tax Relief Amendment, requires that this advertisement be placed in the local paper at an expense to the local district. Article 7244-C also sets the standard calculations that all taxing bodies must use to figure local district taxes for the year.

By using this standard form, Winters ISD tax rate was determined to be .99 cents per \$100 assessed value. Your taxes for the past five years have been figured at a rate of \$1.10 per \$100 assessed value.

Therefore, according to the law, your taxes appear to be increasing 11% but in reality, they are remaining the same as 1978 and there is not an increase in your school taxes for 1979.

In fact, everyone will be paying less taxes in 1979 because of the new homestead exemptions.



NOTICE OF TAX INCREASE

The Winters Independent School District proposes to increase your property taxes by 11 percent.

A public hearing on the increase will be held on August 20, 1979, at 7:30 p. m. in the Winters Independent School District Building, 613 North Heights, Winters, Texas.

The Winters ISD Board of Trustees has considered the proposal and voted in a meeting of the school board as follows:

FOR the proposal to increase taxes:
Gene Wheat, Board President
Roscoe Morrison, Board Member
Gary Pinkerton, Board Member
Delbert Kruse, Board Member
Freddie Bredemeyer, Board Member
Randall Conner, Board Member
Wesley Hays, Board Member

AGAINST the proposal to increase taxes:
None

ABSENT None

Crews

Whoever said there is no use crying over spilled milk, must have been talking about the days when it was 10 cents a quart. Our community wishes to thank Therin and Nila Osborne for the splendid job they did with this year's Crews reunion. A good crowd was present, about 150 from far and near. May I mention a few? Mrs. Edmond Dial, Richcrest, Calif.; Mr. and Mrs. Woodrow Worthington, Banning, Calif.; Gary (Robinson) Moore, San Francisco, Calif.; Mrs. Irving (Louise) Fuller, Portales, N.M.; Mr. and Mrs. Lenniv Phipps and boys, Dallas; F. L. Gerhart, Dublin; Mr. and Mrs. Mike Boatright, Anson. Also there were five Baptist preachers: Bro. Ken Jenks, Johnnie Halford, Dr. Shields, Bob Scott and H. P. Morrison. Larry, Kenneth, Gene, Wesley, Kimberly Phipps came by plane from Dallas.

Mr. Osborne called a brief business meeting where L. C. Fuller Jr. was elected the new officer for the next reunion in 2 years. Mrs. H. P. Morrison was elected secretary-treasurer. Leo Shelton of Ballinger had a good report on the cemetery work. Let's thank Mr. and Mrs. Obed Fuller of Coleman for furnishing the nice table covering. Perry Bragg of Pecos for the pickup load of cantaloupe's he furnished and gave away. To Bernie Faubion for helping address the cards. Sure appreciated Mrs. Thelma Hoppe for typing the cards and Mrs. Roy Rice did the stencils. Mr. and Mrs. Sam Faubion, Mrs. Mildred Morrison for helping clean up the gym and David Carroll for the water truck. Mr. and Mrs. Burley Campbell attended the

Warren reunion in Gorman Sunday. Afterwards they drove to San Angelo to see Mrs. Cleo Martin. Gaston Ernst of San Antonio is spending several weeks here painting his dad's rent houses, Adolph Ernst. They are staying with Mrs. Effie Dietz. Mrs. Louise Fuller and children Lawanda and Greg of Portales, N.M., were visitors during the week. She reports her dad Ergle Berry also of Portales, N.M., is doing fine.

Mrs. Paula Herrington returned home this week after surgery in Hendricks Hospital in Abilene. On Friday she's doing nicely, hopes to be back at work in 2 weeks.

Mr. and Mrs. Mike Hill of Drasco were over for supper Saturday night with the Robert Hills. Welcome home Mrs. Amber Fuller. She's spent several weeks in the Coleman hospital.

I carried a load of lambs to the San Angelo auction Wednesday and spent the day with my daughter Mrs. Bill Villers. She and her son Jimmy surprised me with a steak dinner at Zetner's Daughters on my anniversary.

I have to mention the rain. Some got over 2 inches and some only .02. I emptied .06 out of my gauge. Mr. and Mrs. Marion Wood were in Dangerfield last week and visited in the Jassie Ray Klutts home. Then on to Gladewater to see Mr. and Mrs. Weimer Jones and Mr. and Mrs. T. C. Stinson. The Bobbie Calcote family of Winters spent Sunday afternoon.

Mr. and Mrs. B. M. Batts of Ballinger came out to see Mrs. Corra Petrie on Sunday. Hope you'll soon feel better Corra. Hazel Mae Bragg is seeing after her.

Glen Bragg, Shelly and David of Hondo spent Tuesday and Wednesday out here with Mrs. Bragg. The Jerry Kraatz family were in Dallas last weekend visiting friends, Mr. and Mrs. Dennis Sexton. On Sunday they attended the Kraatz reunion at Hords Creek Lake. Around 70 attended.

Mrs. Edmond Dial of Richcrest, Calif., is here visiting her mother Mrs. Ella Phipps in Winters.

Mr. and Mrs. Ralph Lopez and family returned Sunday at noon from Mexico City where they visited his folks Mr. and Mrs. George Zaula. Mr. Zaula is in a hospital there. While there Billie, their son, got ill and was admitted to the hospital. He's doing fine now.

Mr. and Mrs. Wilbert Alcorn had supper with the Johnny Mathis' Friday in Abilene. They went by to see Mrs. Amber Fuller after the reunion Sunday. When they got home Mr. and Mrs. Jerry Giles of Brownwood came.

Mr. and Mrs. Earl Cooper spent the weekend in San Angelo with their son Ray, where they enjoyed boating and fishing. Also on Sunday they attended her aunt Mrs. Zena Mayfield's 92nd birthday dinner. Among others Mr. and Mrs. Richard Chambliss and girls of Hawley also were present.

Mr. and Mrs. Arthur Kirby served hamburgers and the trimmings to all the pastors and singers Sunday night after the close of the Hopewell revival.

Horse Show At Miles August 25

A horse show and play day, sponsored by the Miles Cotton Festival, will be held at the Granzin Arena at Miles, Saturday, Aug. 25, beginning at 6 p.m.

Four age groups, including adults, will participate.

Fabrics Stretch For Action

Popular fabrics stretch for action with increasing popularity, variety and availability, says Becky Culp, a clothing specialist with the Texas Agricultural Extension Service, The Texas A&M University System.

Variety is the key with traditional non-stretch fabrics in the action. For example, think stretch corduroy. Today's stretch fabrics are often created from the spandex fiber blended with others such as nylon or polyester, she points out.

The resulting action fabric usually stretches in both directions and can be styled into fashionable drapable or tighter form-fitting looks.

When selecting ready-made garments or fabrics for homesewing, check that the fabric recovers when stretched, the specialist recommends.

Stretch a short length, about four to six inches or 15 to 20 cm, against a ruler or marked length.

After stretching, check that the fabric returned to the same size.

For two-way stretch fabrics, test stretch in both lengthwise and crosswise directions to avoid purchases that will bag or sag out of shape during wear, Ms. Culp adds.

It's never too early to talk to children—even tiny babies need this, says Patricia Lamson, a family life education specialist with the Texas Agricultural Extension Service, The Texas A&M University System.

The more children hear, the more they learn, she points out.

Rebekah SS Class Meeting

The Rebekah Sunday School Class of the First Baptist Church met in the home of Mrs. G. W. Sneed recently, with Mrs. Marvin Traylor as co-hostess.

Projects for the class were discussed, and roll call was answered with favorite scripture verses. Mrs. Lillian Roberson led the opening prayer, and special music was furnished by Mrs. Walker Tatum and Mrs. Wayne Sims.

Mrs. Ellis Moore was elected assistant teacher and Mrs. L. D. Herrington vice president.

Mrs. Tatum was presented a going away gift from the class. Mrs. Tatum and her husband are moving to Tulsa.

Present were Mes. Ray Laughon, Kenneth Sneed, Jack Pierce, Ellis Moore, Fred Thomas, Evelyn Simmons, L. D. Herrington, Walker Tatum, Wayne Sims, Lillian Roberson, and a visitor, Jill Traylor.

Lutheran Ladies Aid Meeting

Nineteen members were present for the August meeting of St. John's Lutheran Church Ladies Aid.

The program was directed by Mrs. Jack Whittenburg, with Mrs. Walter Gerhart presenting the devotional.

A birthday number was presented honoring those members with August birthdays.

Homemade cookies were brought by members to be sent to the Clifton Home.

Hostesses were Mes. W. F. Minzenmayer, Jake Presley and Fritz Pruser.

Homemakers Make Awards During Monday Meeting

Winters Young Homemakers Monday night presented awards to several persons, and installed officers for 1979-80.

Doxie Lou Marks and Patsy Rogers were presented engraved silver trays as Outstanding Associate Members. Dinell Jacob was named the Outstanding Young Homemaker, and received an engraved jewelry box. Kathryn Bredemeyer,

daughter of Mr. and Mrs. Edward Bredemeyer, was presented a jewelry box and named Winters Chapter Outstanding FHAer.

Dinell Jacob and Linda Mitchell installed the new officers for 1979-80, including Betty White, president; Cindy Rogers, vice president; Shelia Paschal, secretary-treasurer; Barbara Heathcott, reporter-historian.

Young Farmers Will Note Year's End With Celebration

The Winters Young Farmers have elected their officers for the coming year and will celebrate the completion of another year with a swim party and ice cream supper.

The swim party will begin at 6 p.m., August 17 at the Municipal Pool, with the ice cream supper to follow at 8 p.m., in the City Park. All Young Farmers, their families, and anyone interested in Young Farmers are invited to attend. Each family should bring either ice cream, cookies, or cake.

Mike Mitchell has been elected to serve as president of the Winters Young Farmers for the coming year. Serving as vice president will be Keith Paschal; secretary

New Law Changes Vehicle Right-of-Way On Highways

Drivers on Texas freeways and frontage roads may notice a change when they are entering or leaving the freeway.

The recent legislature passed a new law which provides that vehicles entering or leaving a freeway have the right-of-way over vehicles on the frontage road. This is true regardless of whether the frontage road is one way or two way traffic.

District Maintenance Engineer James R. "Bobby" Evans said that in San Angelo all signs have been changed to conform to the new law.

Along Interstate Highway 10 in Kimble, Sutton and Crockett Counties the signs will be changed on August 23 and 24. This will make the signing uniform within the District simultaneously.

Drivers should be alert and heed the new signs as they encounter them.



COW POKES By Ace Reid



Yeah, I'm gonna examine you list as soon as I examine yore Blue Cross.

SMITH DRUG CO.
Your WALGREEN Agency
Dependable Professional Prescription Service
Winters, Texas—Ph. 754-4543

Portrait Special
A BEAUTIFUL 8x10 NATURAL COLOR PORTRAIT
only **99¢**
*ONLY ONE ADVERTISING OFFER PER FAMILY
*MINORS MUST BE ACCOMPANIED BY PARENT

Motel Winters
Wed. August 22 1-8 p.m.

PHOTOGRAPHIC LOCATION
LE-MANN STUDIOS

9.481%
Annual Rate*
Effective Aug. 16 - 22
Flexible Money Market Certificates.
Invest \$10,000 or more in our 26-week Money Market Certificate and pick the interest option best for you. Earned interest is available, at your option, by monthly or quarterly checks, or may be left in the certificate until maturity.

FIRST TEXAS Savings Association

Winters Office:
102 South Main St.
Winters (79567) 754-4513

Home office — Dallas Member FSLIC

FIRST TEXAS SAVINGS HAS WHAT IT TAKES TO MAKE YOUR MONEY GROW. A GREEN THUMB.

Identifying the right financial institution for you isn't easy. They all seem pretty much the same. But at First Texas Savings there is a difference. Because we give you something no one else can offer. Our green thumb.

It's the knack First Texas people have for making money grow. The professional ability and financial skill they can put to work for you. So your savings grow at the absolute maximum rate allowed by law.

First Texas offers a variety of savings plans, designed to meet your individual needs. A convenient Passbook account, for example, will keep your money immediately available, while it earns at the annual rate of 5.50%. For longer term investments at higher interest rates, our Savings Certificates are ideal. Both Passbook accounts and Certificates earn interest from day of deposit. And, First Texas increases your earnings with daily compounding for a higher annual yield.

If your money isn't growing where it is, come in and talk to a First Texas Savings Counselor. Because it takes more than money to make your savings grow. It takes First Texas people. And their green thumb.

WHEN IT COMES TO MAKING MONEY GROW, WE HAVE A GREEN THUMB.

FIRST TEXAS Savings Association

Winters Office:
102 South Main St.
Winters (79567)
754-4513

Home Office — Dallas

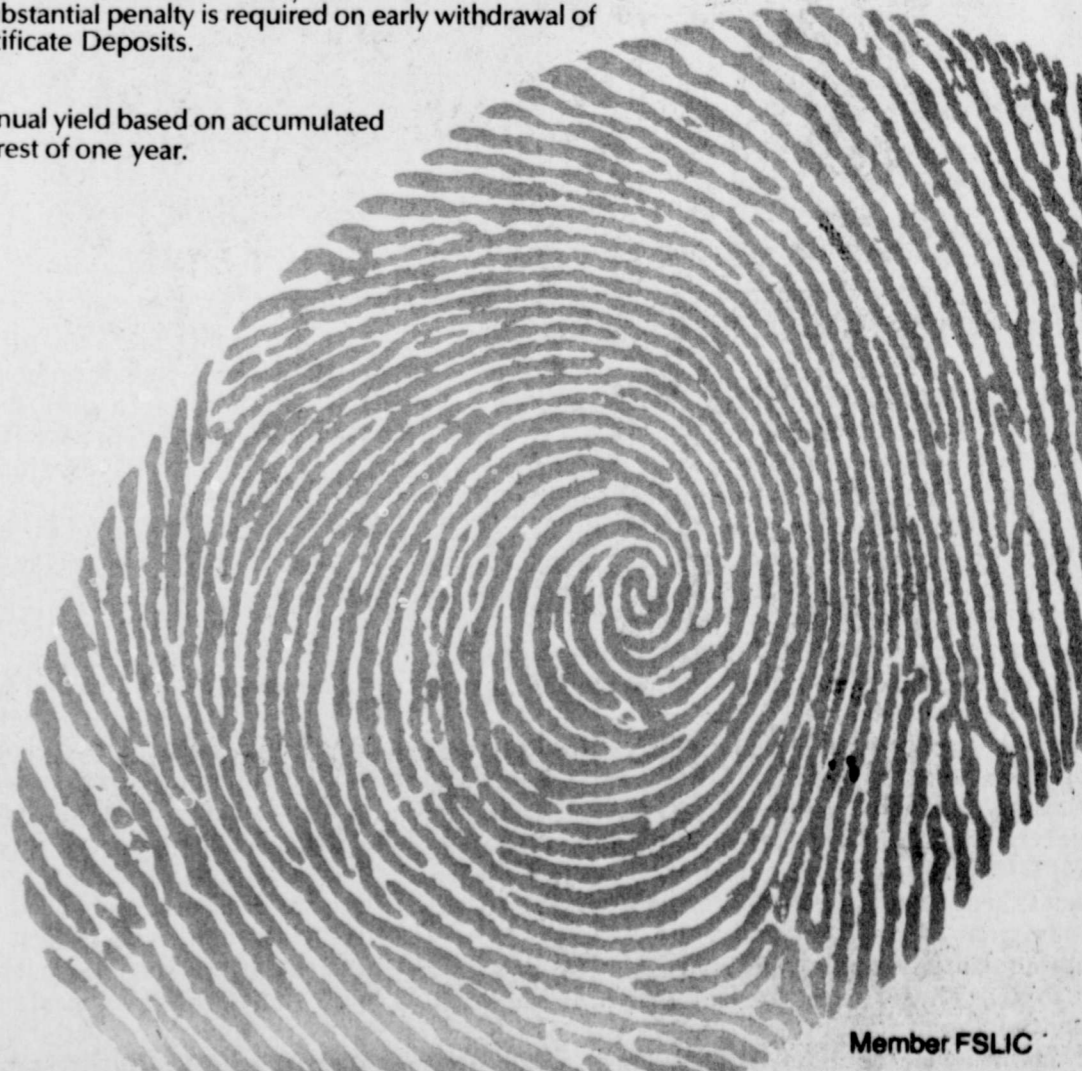
Certificates of Deposit			
Annual Rate	Minimum Term	Minimum Deposit	Annual Yield*
5.75%	3-Mos.	\$ 50	5.92%
6.50%	1-Year	\$100	6.72%
6.75%	2½-Years	\$100	6.98%
7.50%	4-Years	\$100	7.79%
7.75%	6-Years	\$100	8.06%
8.0%	8-Years	\$100	8.33%

Certificates above are automatically renewable unless the Association gives written notice of cancellation at least 15 days prior to the maturity date. Earnings are compounded daily and paid quarterly.

Money Market Certificates			
Annual Rate	Minimum Term	Minimum Deposit	Annual Yield*
Fixed Weekly	6 Mos.	\$10,000	Varying
Fixed Monthly	4 Years	\$100	Varying

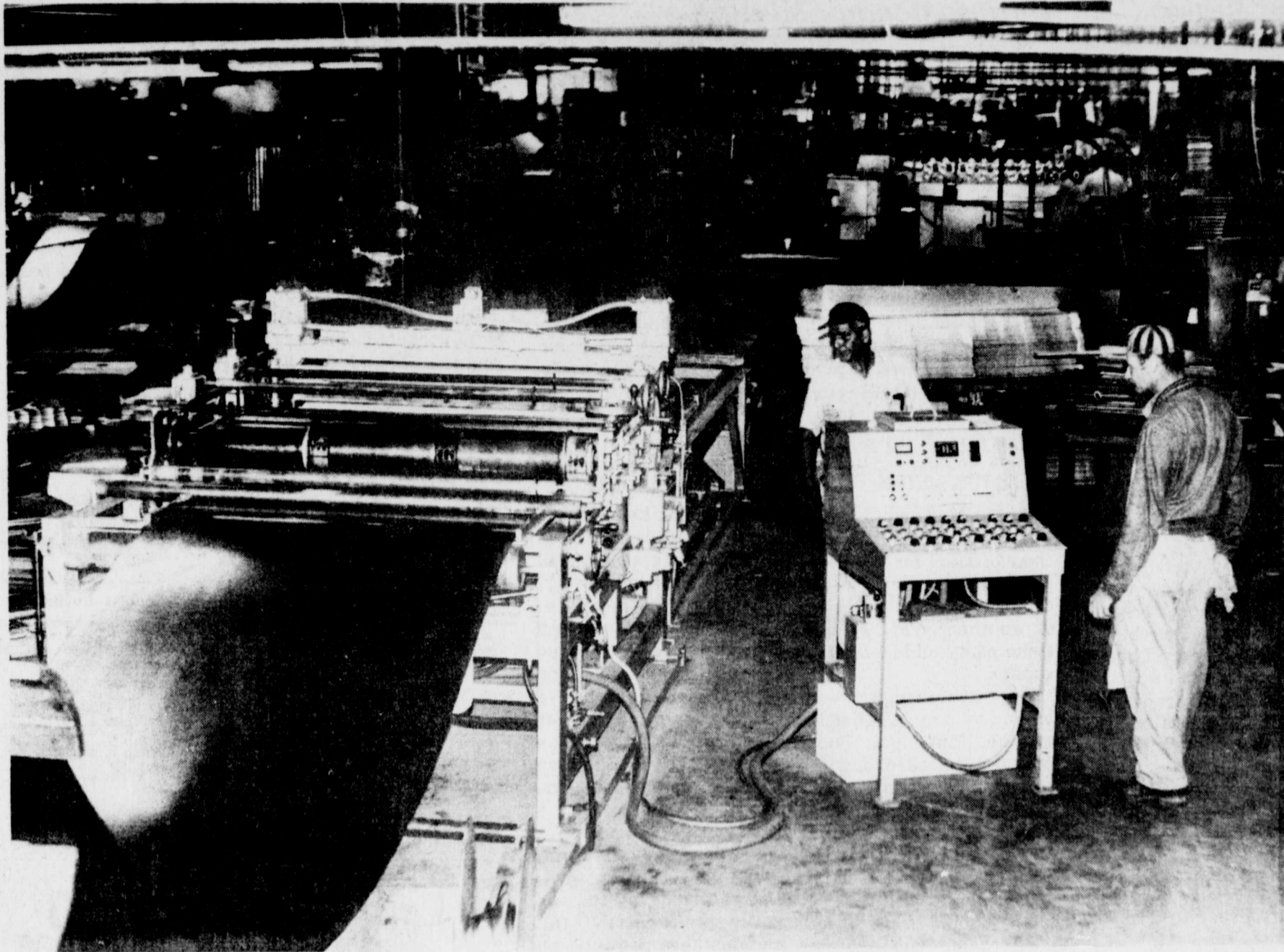
Money Market Certificate renewable rates will vary at maturity. Federal regulations prohibit compounding of interest on 26-week Money Market Certificates. A substantial penalty is required on early withdrawal of Certificate Deposits.

*Annual yield based on accumulated interest of one year.



Member FSLIC

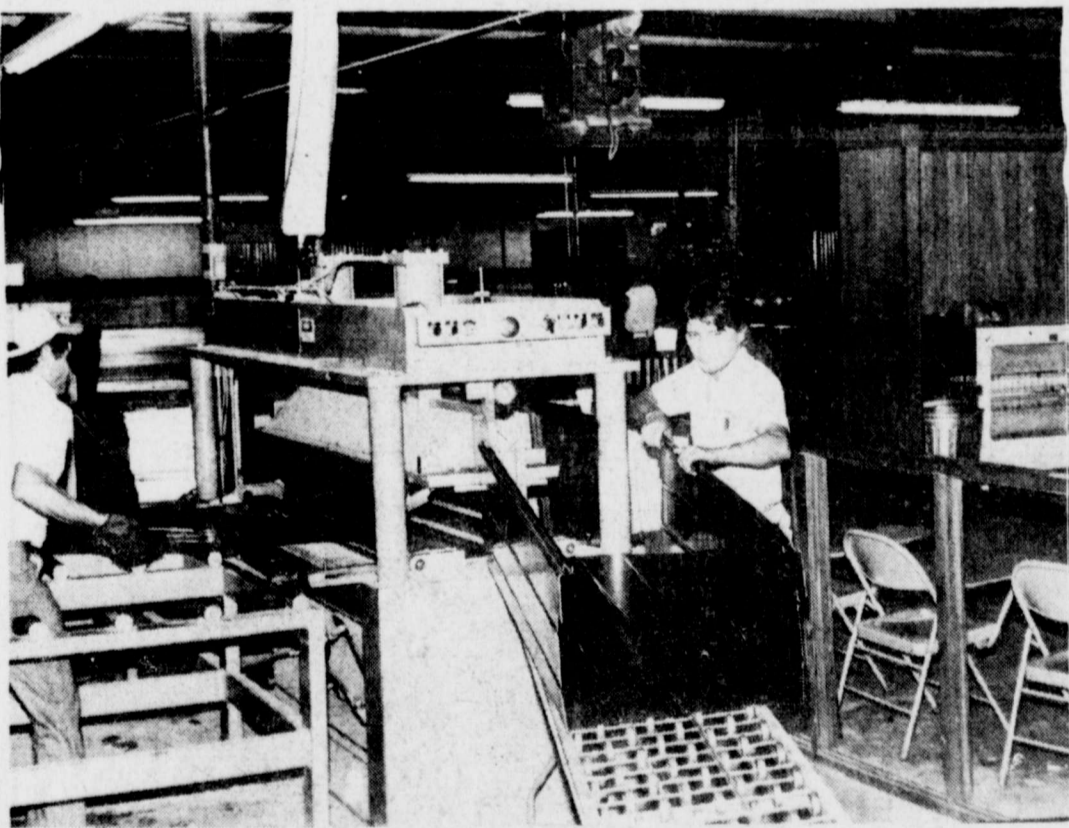
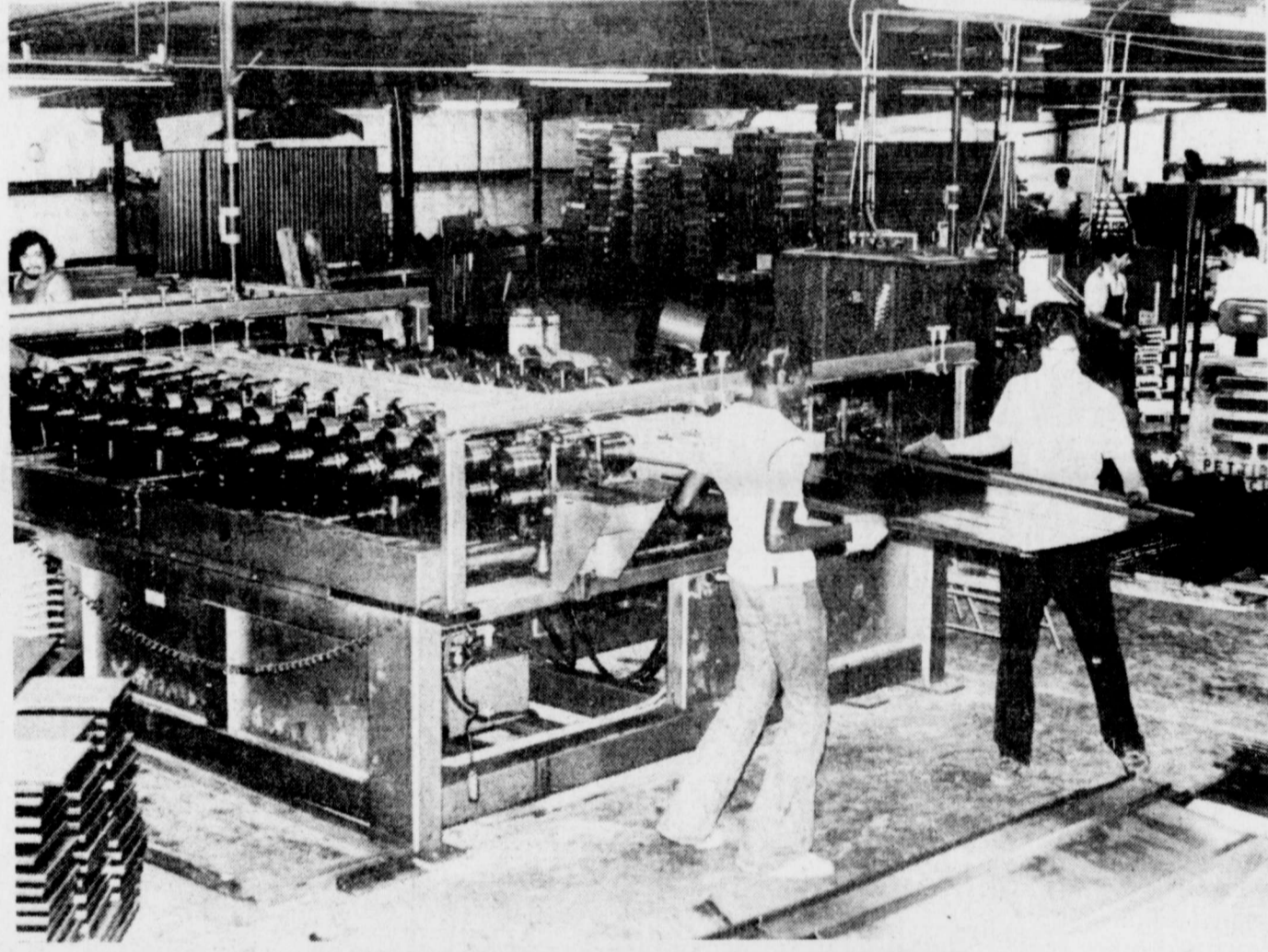
A Winters Industry



Off the Coil

This machine was installed a short time ago by John's International to convert coiled steel to flat sheets, to be used for the main body of the pickup boxes manufactured by the Winters company. The flat sheets from this machine are transferred to a

"ribbing" machine where strengthening ribs are moulded, and then to a former. After this machine was installed, it was wired by Fred Armbricht, at the right of the picture. Steel is received in coils weighing 10,000 pounds.



"Ribber"

The flat sheets of steel are run through this machine to form ribs or corrugations, and then transferred to . . .

The Former

. . . the flat corrugated or ribbed sheets are processed through this forming machine to bend the heavy sheet metal into the form desired for sides and bottom of the pickup boxes. Other machines fabricate ends and tops for the boxes from coils of steel. Barry Sullivan, president of the company, said production at the plant has been increasing steadily.

Immunization Required For Children Entering School

Winters school administrators have reminded parents that Texas state law requires full immunization of children entering school.

Children must be immunized against polio, diphtheria, tetanus, measles and the mumps before they can attend school.

Parents are being asked to have these necessary immunization shots completed prior to the start of the new school year.

The Texas Department of Health estimates that 20 percent of preschool children over the state do not complete the recommended series of doses and boosters for full protection against these diseases.

Most children receive only one or two of the required three doses of vaccine for polio, and DPT, the Department of Health says.

Immunization requirements are:

- Polio—Three doses, the last dose must be taken after the age of four.
- Diphtheria, Tetanus (DPT)—Three doses, the

last dose must be taken after the age of four.
 * Measles—One dose during the month of a child's first birthday or a note from the doctor saying a child has had the disease.
 * Rubella (3-day/German measles)—One dose before age 11.
 * Mumps—One dose for children through age 7 or a note from the doctor saying a child has had the mumps.

This is the first year the mumps vaccine has been required, Simon Polisky, regional public health technician for the immunization program, said.

He recommends that students who were immunized against measles before 1968 or their first birthday be reimmunized against the disease.

Prior to 1968, students were immunized with less effective measles vaccine and the immunity decreases as the student grows older. The same is true with those children who were immunized with live virus before their first birthday.

Most of the measles cases reported are in junior high and high school students, he said. The Department of Health reported a near-epidemic of 2,032 cases of measles in the state in 1977.

Spray Now To Prevent Pecan Weevil

The pecan weevil is one of our most destructive pecan insects. The weevil is brownish colored and about 3/8 inch long. As the pecans go from the water stage to the jell stage, which generally occurs about the middle of August, we need to start looking for the weevil. To check your tree for weevils, place a white sheet under the pecan tree limb and then jar the limb. If a weevil is present, it will drop to the ground and remain motionless for a few seconds, then start to move about.

To control the pecan weevil, spray with Sevin. Since aphids are also showing up, it is recommended to include Guthion in your spray since Sevin is not effective against the aphid. By using 2 lbs. of 80% Sevin and 1 1/2 pints of Guthion per 100 gallons of water, you should get good control.

A check of the pecans here in Runnels County indicates we will need to spray for the weevil starting about August 15. Allen E. Turner, County Extension Agent, advises.

Spaghetti Supper At Country Club Aug. 24

A spaghetti supper will be served at the Winters Country Club Friday, Aug. 24. The supper will be prepared by Ed Roller.

A social hour will begin at 6 p.m., with supper at 7. A game hour has been scheduled at 8 p.m.

A draw tournament will be played Sunday, Aug. 26, at the Country Club.

Home Insurance—Can It Match Inflation?

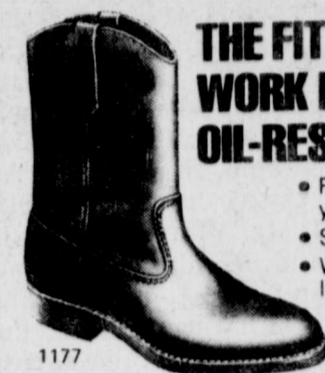
Can your home insurance match today's inflated prices—if you have to replace your property?

Be sure to insure your home up to at least 80 percent of its replacement value, cautions Linda McCormack, a family resource management specialist.

Many people who've failed to increase their homeowner's insurance coverage over the years would be unable to handle replacement costs on their house or its furnishings in today's market, she says.

Parents of Kindergarteners Asked To Meet Teachers

Parents of all children who will be enrolled in kindergarten in Winters Primary School this year are asked to meet with the kindergarten teachers in rooms 6 and 7, Thursday, August 30.



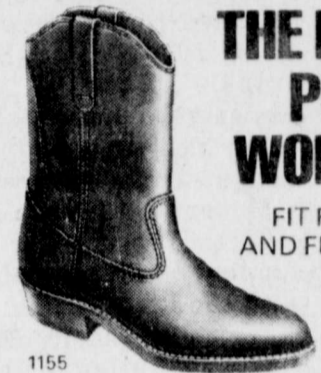
THE FITTIN'EST PULL-ON WORK BOOT with OIL-RESISTANT SOLE

- Fit for your feet and fit for your job
- Steel shank for solid support
- Water repellent leather for long comfort and wear

1177

B-8/12 D-6 1/2/12

RED WING



THE FITTIN'EST PULL-ON WORK BOOTS

FIT FOR YOUR FEET AND FIT FOR YOUR JOB!

SIZES:

1155

B & D Widths

RED WING

Large Selection of sizes in stock



\$49⁹⁵

AMERICA'S MOST COMFORTABLE SAFETY SHOE

RED WING

SHOE

HEIDENHEIMER'S

USE THE CLASSIFIED

FOUR FAMILY NIGHTS FOR GOD! REVIVAL

FIRST UNITED METHODIST CHURCH

141 N. Church

Winters, Texas

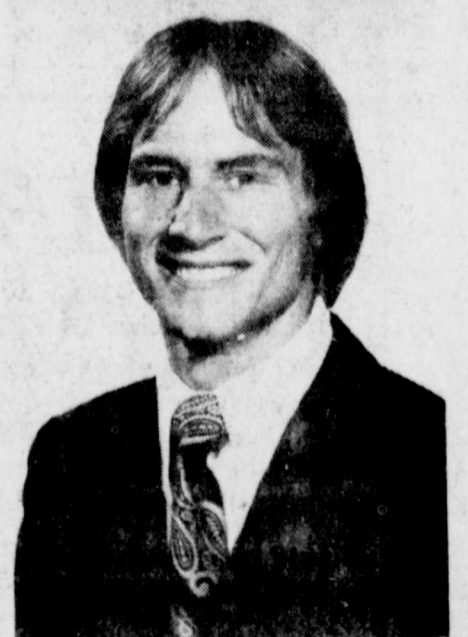
Rev. B. Thomas Tribble, Pastor

AUGUST 19th thru 22nd

8:00 P. M.



Charles D. Whittle
 Pastor
 First United Methodist Church
 Abilene, Texas



Gary Mauldin
 Youth Minister
 First United Methodist Church
 Abilene, Texas

Bible Study
 •
 Fellowship
 •
 Great Preaching
 •
 Inspiring Music

PIANIST: Cynthia Marie Carter

DAILY SCHEDULE

6:30 p. m. — Covered Dish Supper
7:00 p. m. — Bible Study, For All Ages
8:00 p. m. — Evening REVIVAL Service

VISITORS WELCOME

NURSERY WILL BE OPEN